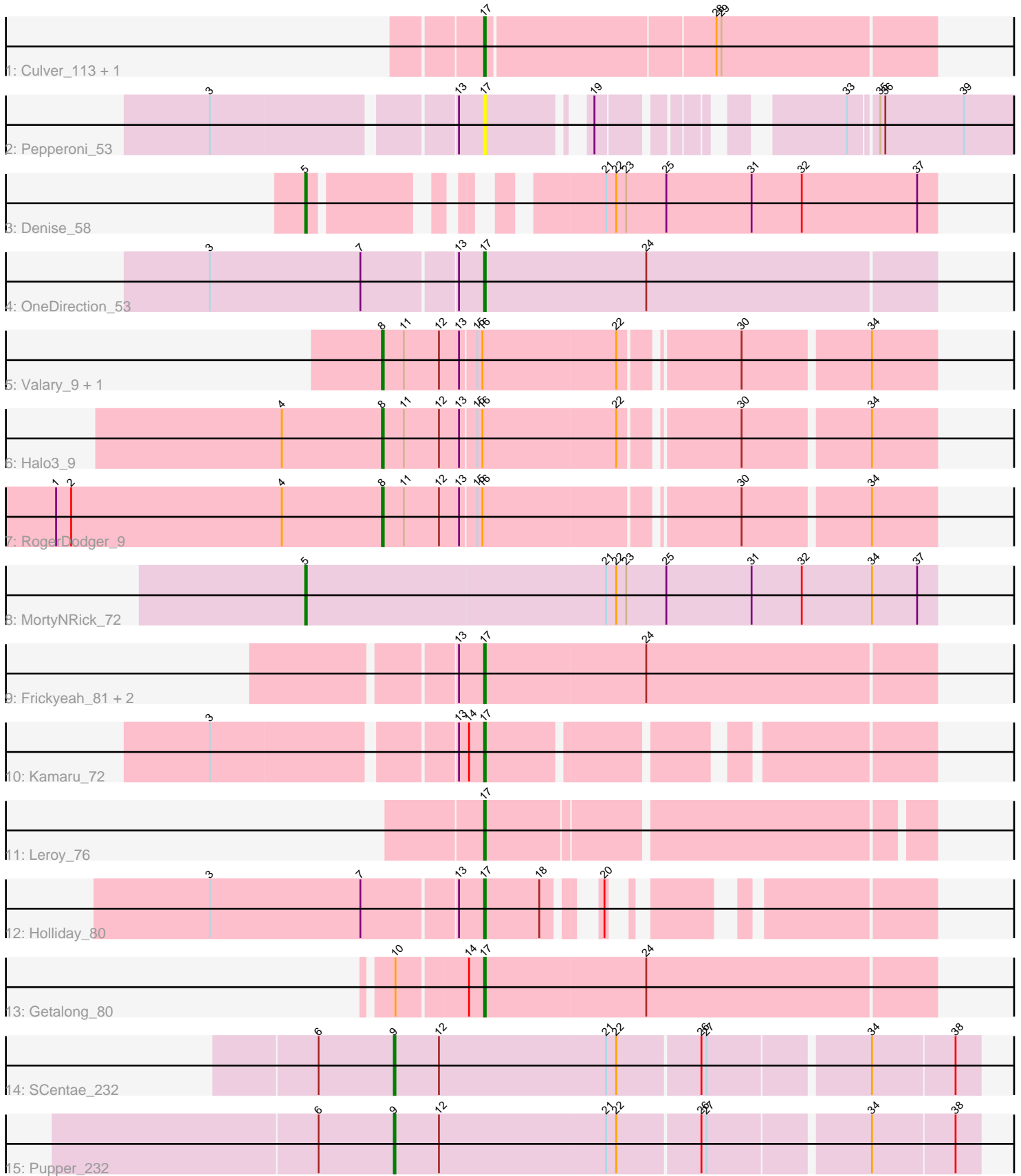


# Pham 295119



Note: Tracks are now grouped by subcluster and scaled. Switching in subcluster is indicated by changes in track color. Track scale is now set by default to display the region 30 bp upstream of start 1 to 30 bp downstream of the last possible start. If this default region is judged to be packed too tightly with annotated starts, the track will be further scaled to only show that region of the ORF with annotated starts. This action will be indicated by adding "Zoomed" to the title. For starts, yellow indicates the location of called starts comprised solely of Glimmer/GeneMark auto-annotations, green indicates the location of called starts with at least 1 manual gene annotation.

## Pham 295119 Report

This analysis was run 04/18/26 on database version 643.

Pham number 295119 has 19 members, 2 are drafts.

Phages represented in each track:

- Track 1 : Culver\_113, Abscondus\_112
- Track 2 : Pepperoni\_53
- Track 3 : Denise\_58
- Track 4 : OneDirection\_53
- Track 5 : Valary\_9, CherryCola\_9
- Track 6 : Halo3\_9
- Track 7 : RogerDodger\_9
- Track 8 : MortyNRick\_72
- Track 9 : Frickyeah\_81, BotCity\_81, BENtherdunthat\_79
- Track 10 : Kamaru\_72
- Track 11 : Leroy\_76
- Track 12 : Holliday\_80
- Track 13 : Getalong\_80
- Track 14 : SCentae\_232
- Track 15 : Pupper\_232

### ***Summary of Final Annotations (See graph section above for start numbers):***

The start number called the most often in the published annotations is 17, it was called in 9 of the 17 non-draft genes in the pham.

Genes that call this "Most Annotated" start:

- Abscondus\_112, BENtherdunthat\_79, BotCity\_81, Culver\_113, Frickyeah\_81, Getalong\_80, Holliday\_80, Kamaru\_72, Leroy\_76, OneDirection\_53, Pepperoni\_53,

Genes that have the "Most Annotated" start but do not call it:

- 

Genes that do not have the "Most Annotated" start:

- CherryCola\_9, Denise\_58, Halo3\_9, MortyNRick\_72, Pupper\_232, RogerDodger\_9, SCentae\_232, Valary\_9,

**Summary by start number:**

Start 5:

- Found in 2 of 19 ( 10.5% ) of genes in pham
- Manual Annotations of this start: 2 of 17
- Called 100.0% of time when present
- Phage (with cluster) where this start called: Denise\_58 (CZ5), MortyNRick\_72 (DN),

Start 8:

- Found in 4 of 19 ( 21.1% ) of genes in pham
- Manual Annotations of this start: 4 of 17
- Called 100.0% of time when present
- Phage (with cluster) where this start called: CherryCola\_9 (DC1), Halo3\_9 (DC1), RogerDodger\_9 (DC1), Valary\_9 (DC1),

Start 9:

- Found in 2 of 19 ( 10.5% ) of genes in pham
- Manual Annotations of this start: 2 of 17
- Called 100.0% of time when present
- Phage (with cluster) where this start called: Pupper\_232 (DO), SCentae\_232 (DO),

Start 17:

- Found in 11 of 19 ( 57.9% ) of genes in pham
- Manual Annotations of this start: 9 of 17
- Called 100.0% of time when present
- Phage (with cluster) where this start called: Abscondus\_112 (CQ1), BENTherdunthat\_79 (DN1), BotCity\_81 (DN), Culver\_113 (CQ1), Frickyeah\_81 (DN1), Getalong\_80 (DN1), Holliday\_80 (DN1), Kamaru\_72 (DN1), Leroy\_76 (DN1), OneDirection\_53 (CZ6), Pepperoni\_53 (CZ),

**Summary by clusters:**

There are 8 clusters represented in this pham: DN, DO, CZ6, CZ5, CZ, DN1, CQ1, DC1,

Info for manual annotations of cluster CQ1:

- Start number 17 was manually annotated 2 times for cluster CQ1.

Info for manual annotations of cluster CZ5:

- Start number 5 was manually annotated 1 time for cluster CZ5.

Info for manual annotations of cluster CZ6:

- Start number 17 was manually annotated 1 time for cluster CZ6.

Info for manual annotations of cluster DC1:

- Start number 8 was manually annotated 4 times for cluster DC1.

Info for manual annotations of cluster DN:

- Start number 5 was manually annotated 1 time for cluster DN.
- Start number 17 was manually annotated 1 time for cluster DN.

Info for manual annotations of cluster DN1:

- Start number 17 was manually annotated 5 times for cluster DN1.

Info for manual annotations of cluster DO:

•Start number 9 was manually annotated 2 times for cluster DO.

**Gene Information:**

Gene: Abscondus\_112 Start: 65388, Stop: 65648, Start Num: 17

Candidate Starts for Abscondus\_112:

(Start: 17 @65388 has 9 MA's), (28, 65520), (29, 65523),

Gene: BENtherdunthat\_79 Start: 44974, Stop: 45240, Start Num: 17

Candidate Starts for BENtherdunthat\_79:

(13, 44959), (Start: 17 @44974 has 9 MA's), (24, 45070),

Gene: BotCity\_81 Start: 46482, Stop: 46748, Start Num: 17

Candidate Starts for BotCity\_81:

(13, 46467), (Start: 17 @46482 has 9 MA's), (24, 46578),

Gene: CherryCola\_9 Start: 4423, Stop: 4731, Start Num: 8

Candidate Starts for CherryCola\_9:

(Start: 8 @4423 has 4 MA's), (11, 4435), (12, 4456), (13, 4468), (15, 4477), (16, 4480), (22, 4558), (30, 4621), (34, 4693),

Gene: Culver\_113 Start: 64860, Stop: 65120, Start Num: 17

Candidate Starts for Culver\_113:

(Start: 17 @64860 has 9 MA's), (28, 64992), (29, 64995),

Gene: Denise\_58 Start: 36910, Stop: 37233, Start Num: 5

Candidate Starts for Denise\_58:

(Start: 5 @36910 has 2 MA's), (21, 37036), (22, 37042), (23, 37048), (25, 37072), (31, 37123), (32, 37153), (37, 37222),

Gene: Frickyeah\_81 Start: 45105, Stop: 45371, Start Num: 17

Candidate Starts for Frickyeah\_81:

(13, 45090), (Start: 17 @45105 has 9 MA's), (24, 45201),

Gene: Getalong\_80 Start: 46400, Stop: 46666, Start Num: 17

Candidate Starts for Getalong\_80:

(10, 46352), (14, 46391), (Start: 17 @46400 has 9 MA's), (24, 46496),

Gene: Halo3\_9 Start: 4498, Stop: 4806, Start Num: 8

Candidate Starts for Halo3\_9:

(4, 4438), (Start: 8 @4498 has 4 MA's), (11, 4510), (12, 4531), (13, 4543), (15, 4552), (16, 4555), (22, 4633), (30, 4696), (34, 4768),

Gene: Holliday\_80 Start: 48011, Stop: 48211, Start Num: 17

Candidate Starts for Holliday\_80:

(3, 47852), (7, 47942), (13, 47996), (Start: 17 @48011 has 9 MA's), (18, 48044), (20, 48062),

Gene: Kamaru\_72 Start: 43594, Stop: 43830, Start Num: 17

Candidate Starts for Kamaru\_72:

(3, 43444), (13, 43579), (14, 43585), (Start: 17 @43594 has 9 MA's),

Gene: Leroy\_76 Start: 44184, Stop: 44435, Start Num: 17

Candidate Starts for Leroy\_76:

(Start: 17 @44184 has 9 MA's),

Gene: MortyNRick\_72 Start: 45215, Stop: 45589, Start Num: 5

Candidate Starts for MortyNRick\_72:

(Start: 5 @45215 has 2 MA's), (21, 45392), (22, 45398), (23, 45404), (25, 45428), (31, 45479), (32, 45509), (34, 45551), (37, 45578),

Gene: OneDirection\_53 Start: 33352, Stop: 33618, Start Num: 17

Candidate Starts for OneDirection\_53:

(3, 33193), (7, 33283), (13, 33337), (Start: 17 @33352 has 9 MA's), (24, 33448),

Gene: Pepperoni\_53 Start: 34740, Stop: 35117, Start Num: 17

Candidate Starts for Pepperoni\_53:

(3, 34590), (13, 34725), (Start: 17 @34740 has 9 MA's), (19, 34788), (33, 34899), (35, 34914), (36, 34917), (39, 34962),

Gene: Pupper\_232 Start: 149879, Stop: 150214, Start Num: 9

Candidate Starts for Pupper\_232:

(6, 149834), (Start: 9 @149879 has 2 MA's), (12, 149906), (21, 150005), (22, 150011), (26, 150059), (27, 150062), (34, 150152), (38, 150200),

Gene: RogerDodger\_9 Start: 4423, Stop: 4731, Start Num: 8

Candidate Starts for RogerDodger\_9:

(1, 4228), (2, 4237), (4, 4363), (Start: 8 @4423 has 4 MA's), (11, 4435), (12, 4456), (13, 4468), (15, 4477), (16, 4480), (30, 4621), (34, 4693),

Gene: SCentae\_232 Start: 150365, Stop: 150700, Start Num: 9

Candidate Starts for SCentae\_232:

(6, 150320), (Start: 9 @150365 has 2 MA's), (12, 150392), (21, 150491), (22, 150497), (26, 150545), (27, 150548), (34, 150638), (38, 150686),

Gene: Valary\_9 Start: 4423, Stop: 4731, Start Num: 8

Candidate Starts for Valary\_9:

(Start: 8 @4423 has 4 MA's), (11, 4435), (12, 4456), (13, 4468), (15, 4477), (16, 4480), (22, 4558), (30, 4621), (34, 4693),