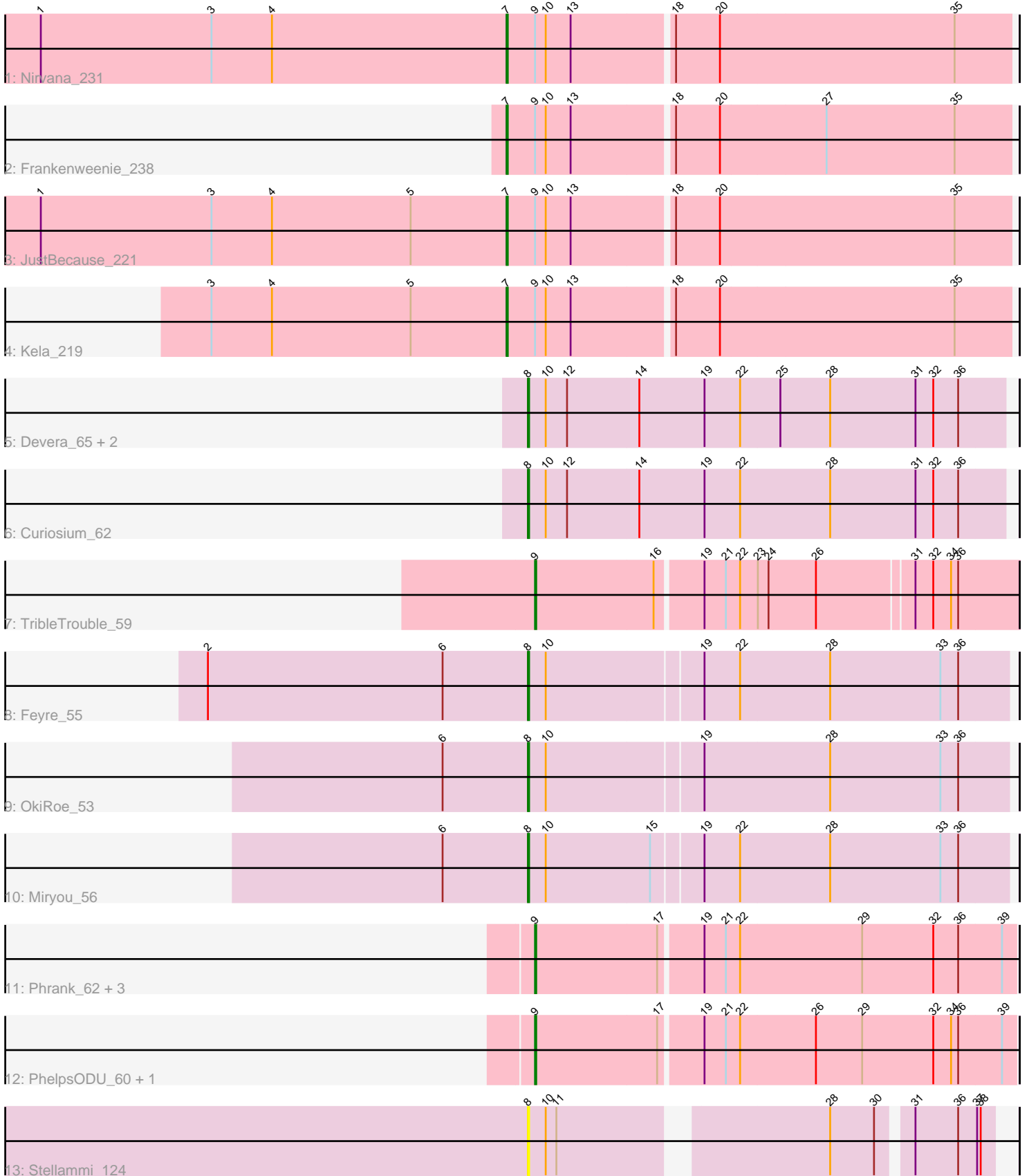


Pham 295127



Note: Tracks are now grouped by subcluster and scaled. Switching in subcluster is indicated by changes in track color. Track scale is now set by default to display the region 30 bp upstream of start 1 to 30 bp downstream of the last possible start. If this default region is judged to be packed too tightly with annotated starts, the track will be further scaled to only show that region of the ORF with annotated starts. This action will be indicated by adding "Zoomed" to the title. For starts, yellow indicates the location of called starts comprised solely of Glimmer/GeneMark auto-annotations, green indicates the location of called starts with at least 1 manual gene annotation.

Pham 295127 Report

This analysis was run 04/18/26 on database version 643.

Pham number 295127 has 19 members, 1 are drafts.

Phages represented in each track:

- Track 1 : Nirvana_231
- Track 2 : Frankenweenie_238
- Track 3 : JustBecause_221
- Track 4 : Kela_219
- Track 5 : Devera_65, Illumine_63, Dole_63
- Track 6 : Curiosium_62
- Track 7 : TribbleTrouble_59
- Track 8 : Feyre_55
- Track 9 : OkiRoe_53
- Track 10 : Miryou_56
- Track 11 : Phrank_62, Bryler_62, Cain_62, Tierra_62
- Track 12 : PhelpsODU_60, Unicorn_60
- Track 13 : Stellammi_124

Summary of Final Annotations (See graph section above for start numbers):

The start number called the most often in the published annotations is 9, it was called in 7 of the 18 non-draft genes in the pham.

Genes that call this "Most Annotated" start:

- Bryler_62, Cain_62, PhelpsODU_60, Phrank_62, Tierra_62, TribbleTrouble_59, Unicorn_60,

Genes that have the "Most Annotated" start but do not call it:

- Frankenweenie_238, JustBecause_221, Kela_219, Nirvana_231,

Genes that do not have the "Most Annotated" start:

- Curiosium_62, Devera_65, Dole_63, Feyre_55, Illumine_63, Miryou_56, OkiRoe_53, Stellammi_124,

Summary by start number:

Start 7:

- Found in 4 of 19 (21.1%) of genes in pham

- Manual Annotations of this start: 4 of 18
- Called 100.0% of time when present
- Phage (with cluster) where this start called: Frankenweenie_238 (BM), JustBecause_221 (BM), Kela_219 (BM), Nirvana_231 (BM),

Start 8:

- Found in 8 of 19 (42.1%) of genes in pham
- Manual Annotations of this start: 7 of 18
- Called 100.0% of time when present
- Phage (with cluster) where this start called: Curiosium_62 (K1), Devera_65 (K1), Dole_63 (K1), Feyre_55 (K5), Illumine_63 (K1), Miryou_56 (K5), OkiRoe_53 (K5), Stellammi_124 (UNK),

Start 9:

- Found in 11 of 19 (57.9%) of genes in pham
- Manual Annotations of this start: 7 of 18
- Called 63.6% of time when present
- Phage (with cluster) where this start called: Bryler_62 (K6), Cain_62 (K6), PhelpsODU_60 (K6), Phrank_62 (K6), Tierra_62 (K6), TripleTrouble_59 (K3), Unicorn_60 (K6),

Summary by clusters:

There are 6 clusters represented in this pham: BM, K3, K1, K6, K5, UNK,

Info for manual annotations of cluster BM:

- Start number 7 was manually annotated 4 times for cluster BM.

Info for manual annotations of cluster K1:

- Start number 8 was manually annotated 4 times for cluster K1.

Info for manual annotations of cluster K3:

- Start number 9 was manually annotated 1 time for cluster K3.

Info for manual annotations of cluster K5:

- Start number 8 was manually annotated 3 times for cluster K5.

Info for manual annotations of cluster K6:

- Start number 9 was manually annotated 6 times for cluster K6.

Gene Information:

Gene: Bryler_62 Start: 40362, Stop: 40757, Start Num: 9

Candidate Starts for Bryler_62:

(Start: 9 @40362 has 7 MA's), (17, 40464), (19, 40497), (21, 40515), (22, 40527), (29, 40629), (32, 40689), (36, 40710), (39, 40746),

Gene: Cain_62 Start: 40350, Stop: 40745, Start Num: 9

Candidate Starts for Cain_62:

(Start: 9 @40350 has 7 MA's), (17, 40452), (19, 40485), (21, 40503), (22, 40515), (29, 40617), (32, 40677), (36, 40698), (39, 40734),

Gene: Curiosium_62 Start: 40040, Stop: 40438, Start Num: 8

Candidate Starts for Curiosium_62:

(Start: 8 @40040 has 7 MA's), (10, 40055), (12, 40073), (14, 40133), (19, 40187), (22, 40217), (28, 40292), (31, 40364), (32, 40379), (36, 40400),

Gene: Devera_65 Start: 41933, Stop: 42331, Start Num: 8

Candidate Starts for Devera_65:

(Start: 8 @41933 has 7 MA's), (10, 41948), (12, 41966), (14, 42026), (19, 42080), (22, 42110), (25, 42143), (28, 42185), (31, 42257), (32, 42272), (36, 42293),

Gene: Dole_63 Start: 41936, Stop: 42334, Start Num: 8

Candidate Starts for Dole_63:

(Start: 8 @41936 has 7 MA's), (10, 41951), (12, 41969), (14, 42029), (19, 42083), (22, 42113), (25, 42146), (28, 42188), (31, 42260), (32, 42275), (36, 42296),

Gene: Feyre_55 Start: 41389, Stop: 41784, Start Num: 8

Candidate Starts for Feyre_55:

(2, 41119), (6, 41317), (Start: 8 @41389 has 7 MA's), (10, 41404), (19, 41530), (22, 41560), (28, 41635), (33, 41728), (36, 41743),

Gene: Frankenweenie_238 Start: 141929, Stop: 142342, Start Num: 7

Candidate Starts for Frankenweenie_238:

(Start: 7 @141929 has 4 MA's), (Start: 9 @141953 has 7 MA's), (10, 141962), (13, 141983), (18, 142064), (20, 142100), (27, 142187), (35, 142295),

Gene: Illumine_63 Start: 41935, Stop: 42333, Start Num: 8

Candidate Starts for Illumine_63:

(Start: 8 @41935 has 7 MA's), (10, 41950), (12, 41968), (14, 42028), (19, 42082), (22, 42112), (25, 42145), (28, 42187), (31, 42259), (32, 42274), (36, 42295),

Gene: JustBecause_221 Start: 129596, Stop: 130009, Start Num: 7

Candidate Starts for JustBecause_221:

(1, 129203), (3, 129347), (4, 129398), (5, 129515), (Start: 7 @129596 has 4 MA's), (Start: 9 @129620 has 7 MA's), (10, 129629), (13, 129650), (18, 129731), (20, 129767), (35, 129962),

Gene: Kela_219 Start: 129441, Stop: 129854, Start Num: 7

Candidate Starts for Kela_219:

(3, 129192), (4, 129243), (5, 129360), (Start: 7 @129441 has 4 MA's), (Start: 9 @129465 has 7 MA's), (10, 129474), (13, 129495), (18, 129576), (20, 129612), (35, 129807),

Gene: Miryou_56 Start: 42105, Stop: 42500, Start Num: 8

Candidate Starts for Miryou_56:

(6, 42033), (Start: 8 @42105 has 7 MA's), (10, 42120), (15, 42207), (19, 42246), (22, 42276), (28, 42351), (33, 42444), (36, 42459),

Gene: Nirvana_231 Start: 140165, Stop: 140578, Start Num: 7

Candidate Starts for Nirvana_231:

(1, 139772), (3, 139916), (4, 139967), (Start: 7 @140165 has 4 MA's), (Start: 9 @140189 has 7 MA's), (10, 140198), (13, 140219), (18, 140300), (20, 140336), (35, 140531),

Gene: OkiRoe_53 Start: 39776, Stop: 40171, Start Num: 8

Candidate Starts for OkiRoe_53:

(6, 39704), (Start: 8 @39776 has 7 MA's), (10, 39791), (19, 39917), (28, 40022), (33, 40115), (36, 40130),

Gene: PhelpsODU_60 Start: 40279, Stop: 40674, Start Num: 9

Candidate Starts for PhelpsODU_60:

(Start: 9 @40279 has 7 MA's), (17, 40381), (19, 40414), (21, 40432), (22, 40444), (26, 40507), (29, 40546), (32, 40606), (34, 40621), (36, 40627), (39, 40663),

Gene: Phrank_62 Start: 40340, Stop: 40735, Start Num: 9

Candidate Starts for Phrank_62:

(Start: 9 @40340 has 7 MA's), (17, 40442), (19, 40475), (21, 40493), (22, 40505), (29, 40607), (32, 40667), (36, 40688), (39, 40724),

Gene: Stellammi_124 Start: 57456, Stop: 57809, Start Num: 8

Candidate Starts for Stellammi_124:

(Start: 8 @57456 has 7 MA's), (10, 57471), (11, 57480), (28, 57684), (30, 57720), (31, 57744), (36, 57780), (37, 57795), (38, 57798),

Gene: Tierra_62 Start: 41151, Stop: 41546, Start Num: 9

Candidate Starts for Tierra_62:

(Start: 9 @41151 has 7 MA's), (17, 41253), (19, 41286), (21, 41304), (22, 41316), (29, 41418), (32, 41478), (36, 41499), (39, 41535),

Gene: TribelTrouble_59 Start: 41359, Stop: 41751, Start Num: 9

Candidate Starts for TribelTrouble_59:

(Start: 9 @41359 has 7 MA's), (16, 41458), (19, 41494), (21, 41512), (22, 41524), (23, 41539), (24, 41548), (26, 41587), (31, 41665), (32, 41680), (34, 41695), (36, 41701),

Gene: Unicorn_60 Start: 40279, Stop: 40674, Start Num: 9

Candidate Starts for Unicorn_60:

(Start: 9 @40279 has 7 MA's), (17, 40381), (19, 40414), (21, 40432), (22, 40444), (26, 40507), (29, 40546), (32, 40606), (34, 40621), (36, 40627), (39, 40663),