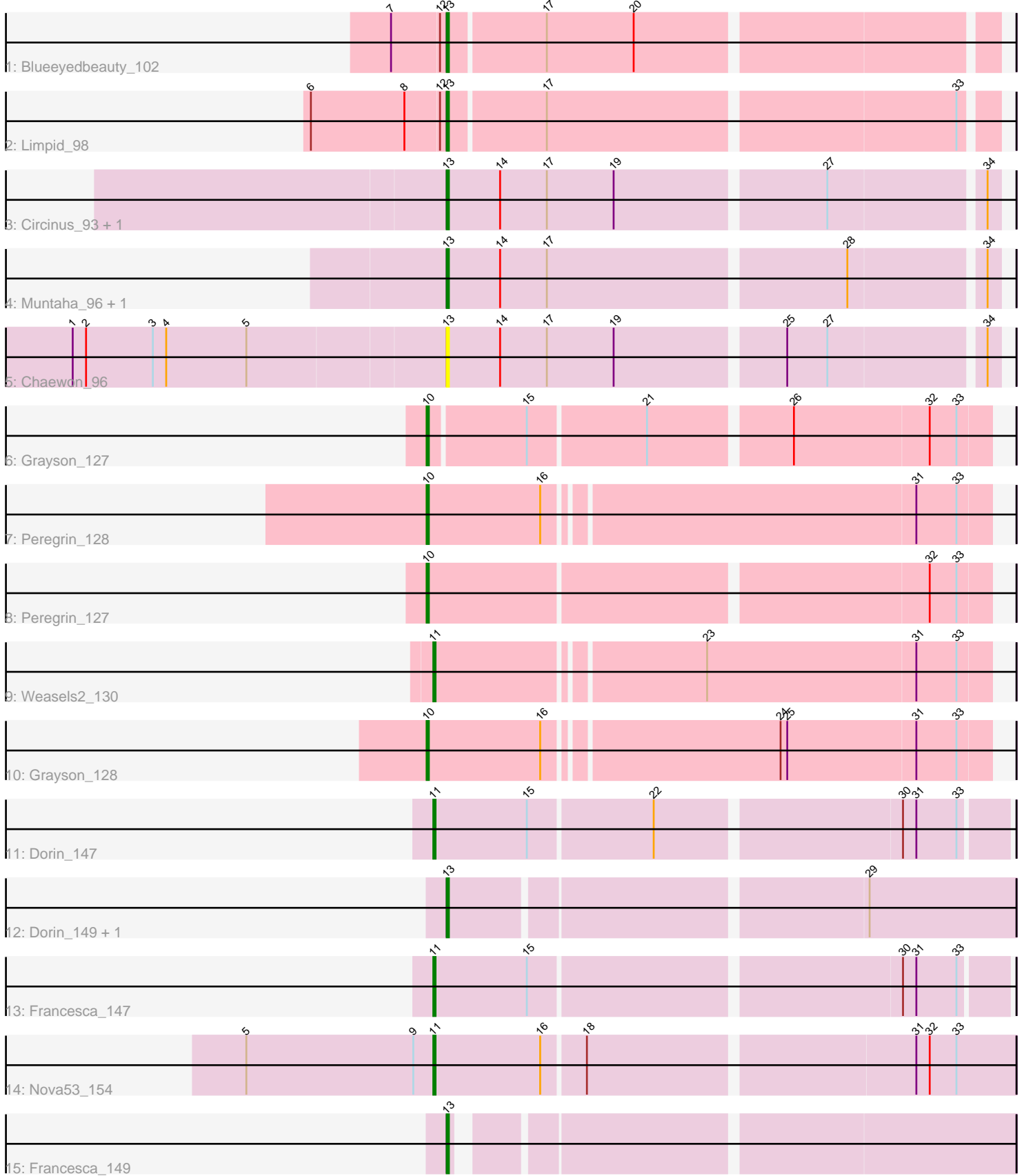


Pham 295139



Note: Tracks are now grouped by subcluster and scaled. Switching in subcluster is indicated by changes in track color. Track scale is now set by default to display the region 30 bp upstream of start 1 to 30 bp downstream of the last possible start. If this default region is judged to be packed too tightly with annotated starts, the track will be further scaled to only show that region of the ORF with annotated starts. This action will be indicated by adding "Zoomed" to the title. For starts, yellow indicates the location of called starts comprised solely of Glimmer/GeneMark auto-annotations, green indicates the location of called starts with at least 1 manual gene annotation.

Pham 295139 Report

This analysis was run 04/18/26 on database version 643.

Pham number 295139 has 18 members, 1 are drafts.

Phages represented in each track:

- Track 1 : Blueeyedbeauty_102
- Track 2 : Limpid_98
- Track 3 : Circinus_93, BillNye_92
- Track 4 : Muntaha_96, Wakanda_94
- Track 5 : Chaewon_96
- Track 6 : Grayson_127
- Track 7 : Peregrin_128
- Track 8 : Peregrin_127
- Track 9 : Weasels2_130
- Track 10 : Grayson_128
- Track 11 : Dorin_147
- Track 12 : Dorin_149, Nova53_156
- Track 13 : Francesca_147
- Track 14 : Nova53_154
- Track 15 : Francesca_149

Summary of Final Annotations (See graph section above for start numbers):

The start number called the most often in the published annotations is 13, it was called in 9 of the 17 non-draft genes in the pham.

Genes that call this "Most Annotated" start:

- BillNye_92, Blueeyedbeauty_102, Chaewon_96, Circinus_93, Dorin_149, Francesca_149, Limpid_98, Muntaha_96, Nova53_156, Wakanda_94,

Genes that have the "Most Annotated" start but do not call it:

-

Genes that do not have the "Most Annotated" start:

- Dorin_147, Francesca_147, Grayson_127, Grayson_128, Nova53_154, Peregrin_127, Peregrin_128, Weasels2_130,

Summary by start number:

Start 10:

- Found in 4 of 18 (22.2%) of genes in pham
- Manual Annotations of this start: 4 of 17
- Called 100.0% of time when present
- Phage (with cluster) where this start called: Grayson_127 (CB), Grayson_128 (CB), Peregrin_127 (CB), Peregrin_128 (CB),

Start 11:

- Found in 4 of 18 (22.2%) of genes in pham
- Manual Annotations of this start: 4 of 17
- Called 100.0% of time when present
- Phage (with cluster) where this start called: Dorin_147 (CG), Francesca_147 (CG), Nova53_154 (CG), Weasels2_130 (CB),

Start 13:

- Found in 10 of 18 (55.6%) of genes in pham
- Manual Annotations of this start: 9 of 17
- Called 100.0% of time when present
- Phage (with cluster) where this start called: BillNye_92 (BK2), Blueeyedbeauty_102 (BK1), Chaewon_96 (BK2), Circinus_93 (BK2), Dorin_149 (CG), Francesca_149 (CG), Limpid_98 (BK1), Muntaha_96 (BK2), Nova53_156 (CG), Wakanda_94 (BK2),

Summary by clusters:

There are 4 clusters represented in this pham: CB, CG, BK1, BK2,

Info for manual annotations of cluster BK1:

- Start number 13 was manually annotated 2 times for cluster BK1.

Info for manual annotations of cluster BK2:

- Start number 13 was manually annotated 4 times for cluster BK2.

Info for manual annotations of cluster CB:

- Start number 10 was manually annotated 4 times for cluster CB.
- Start number 11 was manually annotated 1 time for cluster CB.

Info for manual annotations of cluster CG:

- Start number 11 was manually annotated 3 times for cluster CG.
- Start number 13 was manually annotated 3 times for cluster CG.

Gene Information:

Gene: BillNye_92 Start: 68857, Stop: 69093, Start Num: 13

Candidate Starts for BillNye_92:

(Start: 13 @68857 has 9 MA's), (14, 68881), (17, 68902), (19, 68932), (27, 69022), (34, 69088),

Gene: Blueeyedbeauty_102 Start: 67743, Stop: 67976, Start Num: 13

Candidate Starts for Blueeyedbeauty_102:

(7, 67719), (12, 67740), (Start: 13 @67743 has 9 MA's), (17, 67785), (20, 67824),

Gene: Chaewon_96 Start: 68701, Stop: 68937, Start Num: 13

Candidate Starts for Chaewon_96:

(1, 68536), (2, 68542), (3, 68572), (4, 68578), (5, 68614), (Start: 13 @68701 has 9 MA's), (14, 68725), (17, 68746), (19, 68776), (25, 68848), (27, 68866), (34, 68932),

Gene: Circinus_93 Start: 68844, Stop: 69080, Start Num: 13

Candidate Starts for Circinus_93:

(Start: 13 @68844 has 9 MA's), (14, 68868), (17, 68889), (19, 68919), (27, 69009), (34, 69075),

Gene: Dorin_147 Start: 88197, Stop: 88442, Start Num: 11

Candidate Starts for Dorin_147:

(Start: 11 @88197 has 4 MA's), (15, 88239), (22, 88293), (30, 88398), (31, 88404), (33, 88422),

Gene: Dorin_149 Start: 88606, Stop: 88848, Start Num: 13

Candidate Starts for Dorin_149:

(Start: 13 @88606 has 9 MA's), (29, 88783),

Gene: Francesca_147 Start: 88894, Stop: 89139, Start Num: 11

Candidate Starts for Francesca_147:

(Start: 11 @88894 has 4 MA's), (15, 88936), (30, 89095), (31, 89101), (33, 89119),

Gene: Francesca_149 Start: 89303, Stop: 89536, Start Num: 13

Candidate Starts for Francesca_149:

(Start: 13 @89303 has 9 MA's),

Gene: Grayson_127 Start: 76957, Stop: 77196, Start Num: 10

Candidate Starts for Grayson_127:

(Start: 10 @76957 has 4 MA's), (15, 76999), (21, 77050), (26, 77110), (32, 77170), (33, 77182),

Gene: Grayson_128 Start: 77193, Stop: 77435, Start Num: 10

Candidate Starts for Grayson_128:

(Start: 10 @77193 has 4 MA's), (16, 77244), (24, 77343), (25, 77346), (31, 77403), (33, 77421),

Gene: Limpid_98 Start: 67780, Stop: 68013, Start Num: 13

Candidate Starts for Limpid_98:

(6, 67720), (8, 67762), (12, 67777), (Start: 13 @67780 has 9 MA's), (17, 67822), (33, 67999),

Gene: Muntaha_96 Start: 67690, Stop: 67926, Start Num: 13

Candidate Starts for Muntaha_96:

(Start: 13 @67690 has 9 MA's), (14, 67714), (17, 67735), (28, 67864), (34, 67921),

Gene: Nova53_156 Start: 90976, Stop: 91218, Start Num: 13

Candidate Starts for Nova53_156:

(Start: 13 @90976 has 9 MA's), (29, 91153),

Gene: Nova53_154 Start: 90559, Stop: 90810, Start Num: 11

Candidate Starts for Nova53_154:

(5, 90475), (9, 90550), (Start: 11 @90559 has 4 MA's), (16, 90607), (18, 90625), (31, 90766), (32, 90772), (33, 90784),

Gene: Peregrin_128 Start: 77403, Stop: 77645, Start Num: 10

Candidate Starts for Peregrin_128:

(Start: 10 @77403 has 4 MA's), (16, 77454), (31, 77613), (33, 77631),

Gene: Peregrin_127 Start: 77164, Stop: 77406, Start Num: 10

Candidate Starts for Peregrin_127:

(Start: 10 @77164 has 4 MA's), (32, 77380), (33, 77392),

Gene: Wakanda_94 Start: 67532, Stop: 67768, Start Num: 13

Candidate Starts for Wakanda_94:

(Start: 13 @67532 has 9 MA's), (14, 67556), (17, 67577), (28, 67706), (34, 67763),

Gene: Weasels2_130 Start: 78415, Stop: 78654, Start Num: 11

Candidate Starts for Weasels2_130:

(Start: 11 @78415 has 4 MA's), (23, 78529), (31, 78622), (33, 78640),