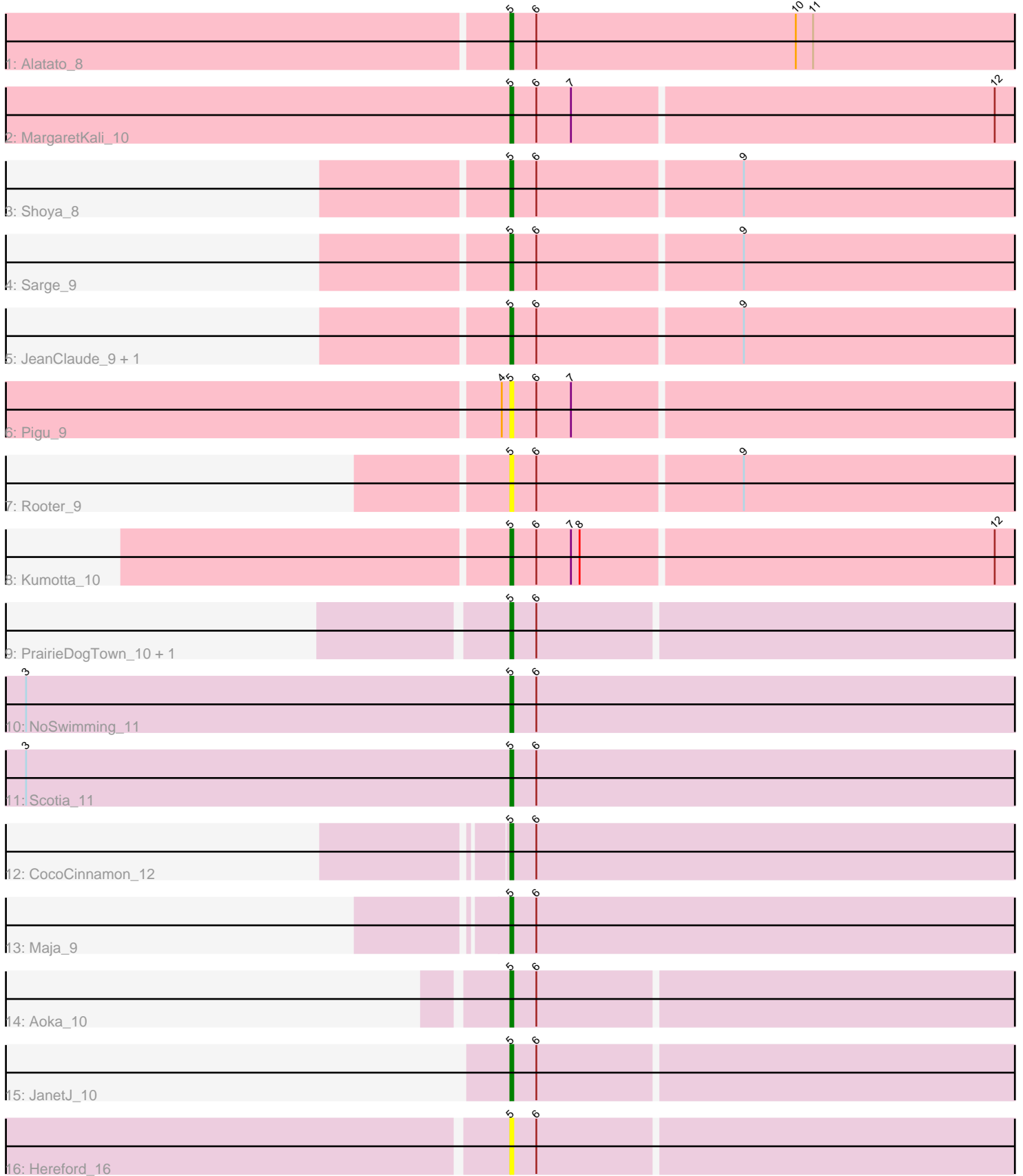


Zoomed Pham 295140



Note: Tracks are now grouped by subcluster and scaled. Switching in subcluster is indicated by changes in track color. Track scale is now set by default to display the region 30 bp upstream of start 1 to 30 bp downstream of the last possible start. If this default region is judged to be packed too tightly with annotated starts, the track will be further scaled to only show that region of the ORF with annotated starts. This action will be indicated by adding "Zoomed" to the title. For starts, yellow indicates the location of called starts comprised solely of Glimmer/GeneMark auto-annotations, green indicates the location of called starts with at least 1 manual gene annotation.

Pham 295140 Report

This analysis was run 04/18/26 on database version 643.

Pham number 295140 has 18 members, 4 are drafts.

Phages represented in each track:

- Track 1 : Alatato_8
- Track 2 : MargaretKali_10
- Track 3 : Shoya_8
- Track 4 : Sarge_9
- Track 5 : JeanClaude_9, BrayBeast_9
- Track 6 : Pigu_9
- Track 7 : Rooter_9
- Track 8 : Kumotta_10
- Track 9 : PrairieDogTown_10, EvenBluerMoon_10
- Track 10 : NoSwimming_11
- Track 11 : Scotia_11
- Track 12 : CocoCinnamon_12
- Track 13 : Maja_9
- Track 14 : Aoka_10
- Track 15 : JanetJ_10
- Track 16 : Hereford_16

Summary of Final Annotations (See graph section above for start numbers):

The start number called the most often in the published annotations is 5, it was called in 14 of the 14 non-draft genes in the pham.

Genes that call this "Most Annotated" start:

- Alatato_8, Aoka_10, BrayBeast_9, CocoCinnamon_12, EvenBluerMoon_10, Hereford_16, JanetJ_10, JeanClaude_9, Kumotta_10, Maja_9, MargaretKali_10, NoSwimming_11, Pigu_9, PrairieDogTown_10, Rooter_9, Sarge_9, Scotia_11, Shoya_8,

Genes that have the "Most Annotated" start but do not call it:

-

Genes that do not have the "Most Annotated" start:

-

Summary by start number:

Start 5:

- Found in 18 of 18 (100.0%) of genes in pham
- Manual Annotations of this start: 14 of 14
- Called 100.0% of time when present
- Phage (with cluster) where this start called: Alatato_8 (FB), Aoka_10 (FO), BrayBeast_9 (FB), CocoCinnamon_12 (FO), EvenBluerMoon_10 (FO), Hereford_16 (FO), JanetJ_10 (FO), JeanClaude_9 (FB), Kumotta_10 (FB), Maja_9 (FO), MargaretKali_10 (FB), NoSwimming_11 (FO), Pigu_9 (FB), PrairieDogTown_10 (FO), Rooter_9 (FB), Sarge_9 (FB), Scotia_11 (FO), Shoya_8 (FB),

Summary by clusters:

There are 2 clusters represented in this pham: FB, FO,

Info for manual annotations of cluster FB:

- Start number 5 was manually annotated 6 times for cluster FB.

Info for manual annotations of cluster FO:

- Start number 5 was manually annotated 8 times for cluster FO.

Gene Information:

Gene: Alatato_8 Start: 6552, Stop: 6920, Start Num: 5

Candidate Starts for Alatato_8:

(Start: 5 @6552 has 14 MA's), (6, 6561), (10, 6651), (11, 6657), (13, 6735), (17, 6780), (21, 6876), (23, 6909),

Gene: Aoka_10 Start: 8106, Stop: 8438, Start Num: 5

Candidate Starts for Aoka_10:

(Start: 5 @8106 has 14 MA's), (6, 8115),

Gene: BrayBeast_9 Start: 7001, Stop: 7333, Start Num: 5

Candidate Starts for BrayBeast_9:

(Start: 5 @7001 has 14 MA's), (6, 7010), (9, 7079), (16, 7223), (20, 7250), (23, 7322),

Gene: CocoCinnamon_12 Start: 8205, Stop: 8576, Start Num: 5

Candidate Starts for CocoCinnamon_12:

(Start: 5 @8205 has 14 MA's), (6, 8214), (13, 8388), (18, 8448), (20, 8493), (22, 8556), (23, 8565),

Gene: EvenBluerMoon_10 Start: 8140, Stop: 8472, Start Num: 5

Candidate Starts for EvenBluerMoon_10:

(Start: 5 @8140 has 14 MA's), (6, 8149),

Gene: Hereford_16 Start: 8285, Stop: 8617, Start Num: 5

Candidate Starts for Hereford_16:

(1, 7853), (Start: 5 @8285 has 14 MA's), (6, 8294),

Gene: JanetJ_10 Start: 7922, Stop: 8254, Start Num: 5

Candidate Starts for JanetJ_10:

(Start: 5 @7922 has 14 MA's), (6, 7931),

Gene: JeanClaude_9 Start: 6908, Stop: 7240, Start Num: 5

Candidate Starts for JeanClaude_9:

(Start: 5 @6908 has 14 MA's), (6, 6917), (9, 6986), (16, 7130), (20, 7157), (23, 7229),

Gene: Kumotta_10 Start: 7839, Stop: 8171, Start Num: 5

Candidate Starts for Kumotta_10:

(Start: 5 @7839 has 14 MA's), (6, 7848), (7, 7860), (8, 7863), (12, 8004), (13, 8019), (17, 8064), (20, 8088), (22, 8151), (23, 8160),

Gene: Maja_9 Start: 7424, Stop: 7792, Start Num: 5

Candidate Starts for Maja_9:

(Start: 5 @7424 has 14 MA's), (6, 7433), (13, 7607), (14, 7610), (16, 7649), (17, 7652), (19, 7685), (20, 7709), (22, 7772), (23, 7781),

Gene: MargaretKali_10 Start: 7474, Stop: 7806, Start Num: 5

Candidate Starts for MargaretKali_10:

(Start: 5 @7474 has 14 MA's), (6, 7483), (7, 7495), (12, 7639), (13, 7654), (15, 7678), (17, 7699), (22, 7786), (23, 7795),

Gene: NoSwimming_11 Start: 9047, Stop: 9415, Start Num: 5

Candidate Starts for NoSwimming_11:

(2, 8651), (3, 8879), (Start: 5 @9047 has 14 MA's), (6, 9056), (17, 9275), (20, 9332),

Gene: Pigu_9 Start: 6514, Stop: 6882, Start Num: 5

Candidate Starts for Pigu_9:

(4, 6511), (Start: 5 @6514 has 14 MA's), (6, 6523), (7, 6535), (13, 6694), (18, 6754), (20, 6799), (22, 6862), (23, 6871),

Gene: PrairieDogTown_10 Start: 8142, Stop: 8474, Start Num: 5

Candidate Starts for PrairieDogTown_10:

(Start: 5 @8142 has 14 MA's), (6, 8151),

Gene: Rooter_9 Start: 6545, Stop: 6877, Start Num: 5

Candidate Starts for Rooter_9:

(Start: 5 @6545 has 14 MA's), (6, 6554), (9, 6623), (13, 6725), (16, 6767), (20, 6794), (21, 6833), (23, 6866),

Gene: Sarge_9 Start: 6912, Stop: 7244, Start Num: 5

Candidate Starts for Sarge_9:

(Start: 5 @6912 has 14 MA's), (6, 6921), (9, 6990), (16, 7134), (17, 7137), (20, 7161), (23, 7233),

Gene: Scotia_11 Start: 9053, Stop: 9421, Start Num: 5

Candidate Starts for Scotia_11:

(2, 8657), (3, 8885), (Start: 5 @9053 has 14 MA's), (6, 9062), (17, 9281), (20, 9338),

Gene: Shoya_8 Start: 6548, Stop: 6880, Start Num: 5

Candidate Starts for Shoya_8:

(Start: 5 @6548 has 14 MA's), (6, 6557), (9, 6626), (15, 6752), (16, 6770), (20, 6797), (23, 6869),