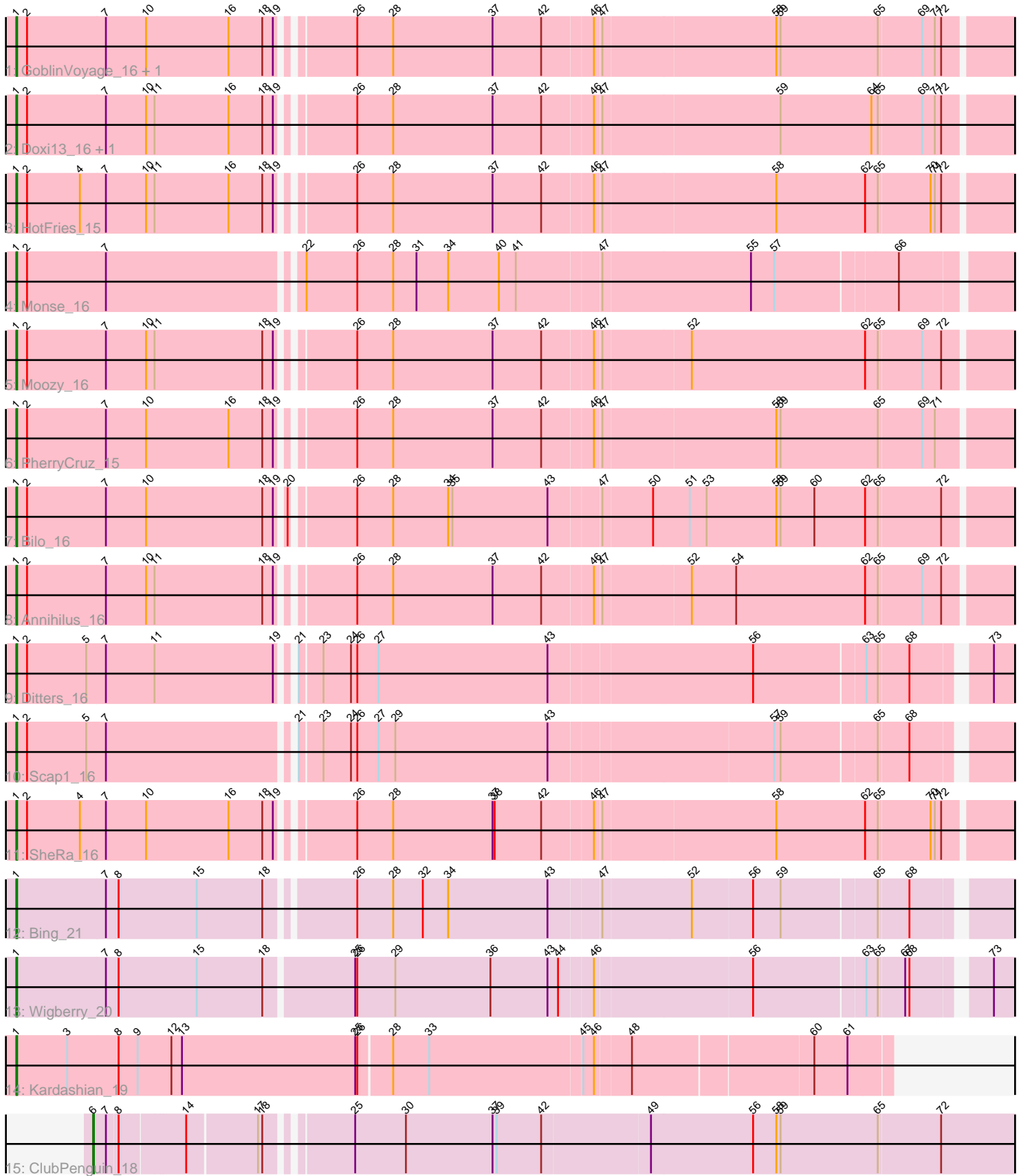


Pham 295172



Note: Tracks are now grouped by subcluster and scaled. Switching in subcluster is indicated by changes in track color. Track scale is now set by default to display the region 30 bp upstream of start 1 to 30 bp downstream of the last possible start. If this default region is judged to be packed too tightly with annotated starts, the track will be further scaled to only show that region of the ORF with annotated starts. This action will be indicated by adding "Zoomed" to the title. For starts, yellow indicates the location of called starts comprised solely of Glimmer/GeneMark auto-annotations, green indicates the location of called starts with at least 1 manual gene annotation.

## Pham 295172 Report

This analysis was run 04/18/26 on database version 643.

Pham number 295172 has 17 members, 1 are drafts.

Phages represented in each track:

- Track 1 : GoblinVoyage\_16, RavenPuff\_15
- Track 2 : Doxi13\_16, Sangak\_16
- Track 3 : HotFries\_15
- Track 4 : Monse\_16
- Track 5 : Moozy\_16
- Track 6 : PherryCruz\_15
- Track 7 : Bilo\_16
- Track 8 : Annihilus\_16
- Track 9 : Ditters\_16
- Track 10 : Scap1\_16
- Track 11 : SheRa\_16
- Track 12 : Bing\_21
- Track 13 : Wigberry\_20
- Track 14 : Kardashian\_19
- Track 15 : ClubPenguin\_18

### ***Summary of Final Annotations (See graph section above for start numbers):***

The start number called the most often in the published annotations is 1, it was called in 15 of the 16 non-draft genes in the pham.

Genes that call this "Most Annotated" start:

- Annihilus\_16, Bilo\_16, Bing\_21, Ditters\_16, Doxi13\_16, GoblinVoyage\_16, HotFries\_15, Kardashian\_19, Monse\_16, Moozy\_16, PherryCruz\_15, RavenPuff\_15, Sangak\_16, Scap1\_16, SheRa\_16, Wigberry\_20,

Genes that have the "Most Annotated" start but do not call it:

- 

Genes that do not have the "Most Annotated" start:

- ClubPenguin\_18,

### **Summary by start number:**

#### Start 1:

- Found in 16 of 17 ( 94.1% ) of genes in pham
- Manual Annotations of this start: 15 of 16
- Called 100.0% of time when present
- Phage (with cluster) where this start called: Annihilus\_16 (BI2), Bilo\_16 (BI2), Bing\_21 (BI5), Ditters\_16 (BI2), Doxi13\_16 (BI2), GoblinVoyage\_16 (BI2), HotFries\_15 (BI2), Kardashian\_19 (BI6), Monse\_16 (BI2), Moozy\_16 (BI2), PherryCruz\_15 (BI2), RavenPuff\_15 (BI2), Sangak\_16 (BI2), Scap1\_16 (BI2), SheRa\_16 (BI2), Wigberry\_20 (BI5),

#### Start 6:

- Found in 1 of 17 ( 5.9% ) of genes in pham
- Manual Annotations of this start: 1 of 16
- Called 100.0% of time when present
- Phage (with cluster) where this start called: ClubPenguin\_18 (BI7),

### Summary by clusters:

There are 4 clusters represented in this pham: BI6, BI7, BI5, BI2,

Info for manual annotations of cluster BI2:

- Start number 1 was manually annotated 12 times for cluster BI2.

Info for manual annotations of cluster BI5:

- Start number 1 was manually annotated 2 times for cluster BI5.

Info for manual annotations of cluster BI6:

- Start number 1 was manually annotated 1 time for cluster BI6.

Info for manual annotations of cluster BI7:

- Start number 6 was manually annotated 1 time for cluster BI7.

### Gene Information:

Gene: Annihilus\_16 Start: 11469, Stop: 12845, Start Num: 1

Candidate Starts for Annihilus\_16:

(Start: 1 @11469 has 15 MA's), (2, 11484), (7, 11595), (10, 11652), (11, 11664), (18, 11817), (19, 11832), (26, 11922), (28, 11973), (37, 12114), (42, 12183), (46, 12252), (47, 12261), (52, 12381), (54, 12444), (62, 12627), (65, 12645), (69, 12705), (72, 12732),

Gene: Bilo\_16 Start: 11961, Stop: 13340, Start Num: 1

Candidate Starts for Bilo\_16:

(Start: 1 @11961 has 15 MA's), (2, 11976), (7, 12087), (10, 12144), (18, 12309), (19, 12324), (20, 12333), (26, 12414), (28, 12465), (34, 12543), (35, 12549), (43, 12684), (47, 12753), (50, 12822), (51, 12873), (53, 12897), (58, 12996), (59, 13002), (60, 13050), (62, 13122), (65, 13140), (72, 13227),

Gene: Bing\_21 Start: 13993, Stop: 15351, Start Num: 1

Candidate Starts for Bing\_21:

(Start: 1 @13993 has 15 MA's), (7, 14119), (8, 14137), (15, 14248), (18, 14341), (26, 14452), (28, 14503), (32, 14545), (34, 14581), (43, 14722), (47, 14791), (52, 14914), (56, 14998), (59, 15037), (65, 15166), (68, 15208),

Gene: ClubPenguin\_18 Start: 13733, Stop: 15007, Start Num: 6

Candidate Starts for ClubPenguin\_18:

(Start: 6 @13733 has 1 MA's), (7, 13751), (8, 13766), (14, 13853), (17, 13949), (18, 13955), (25, 14057), (30, 14129), (37, 14252), (39, 14258), (42, 14321), (49, 14471), (56, 14615), (58, 14648), (59, 14654), (65, 14792), (72, 14879),

Gene: Ditters\_16 Start: 11957, Stop: 13312, Start Num: 1

Candidate Starts for Ditters\_16:

(Start: 1 @11957 has 15 MA's), (2, 11972), (5, 12056), (7, 12083), (11, 12152), (19, 12320), (21, 12332), (23, 12362), (24, 12401), (26, 12410), (27, 12440), (43, 12680), (56, 12959), (63, 13112), (65, 13127), (68, 13169), (73, 13262),

Gene: Doxi13\_16 Start: 11439, Stop: 12815, Start Num: 1

Candidate Starts for Doxi13\_16:

(Start: 1 @11439 has 15 MA's), (2, 11454), (7, 11565), (10, 11622), (11, 11634), (16, 11739), (18, 11787), (19, 11802), (26, 11892), (28, 11943), (37, 12084), (42, 12153), (46, 12222), (47, 12231), (59, 12477), (64, 12606), (65, 12615), (69, 12675), (71, 12693), (72, 12702),

Gene: GoblinVoyage\_16 Start: 11439, Stop: 12815, Start Num: 1

Candidate Starts for GoblinVoyage\_16:

(Start: 1 @11439 has 15 MA's), (2, 11454), (7, 11565), (10, 11622), (16, 11739), (18, 11787), (19, 11802), (26, 11892), (28, 11943), (37, 12084), (42, 12153), (46, 12222), (47, 12231), (58, 12471), (59, 12477), (65, 12615), (69, 12675), (71, 12693), (72, 12702),

Gene: HotFries\_15 Start: 11439, Stop: 12815, Start Num: 1

Candidate Starts for HotFries\_15:

(Start: 1 @11439 has 15 MA's), (2, 11454), (4, 11529), (7, 11565), (10, 11622), (11, 11634), (16, 11739), (18, 11787), (19, 11802), (26, 11892), (28, 11943), (37, 12084), (42, 12153), (46, 12222), (47, 12231), (58, 12471), (62, 12597), (65, 12615), (70, 12687), (71, 12693), (72, 12702),

Gene: Kardashian\_19 Start: 14201, Stop: 15406, Start Num: 1

Candidate Starts for Kardashian\_19:

(Start: 1 @14201 has 15 MA's), (3, 14273), (8, 14345), (9, 14372), (12, 14420), (13, 14435), (25, 14681), (26, 14684), (28, 14729), (33, 14780), (45, 14993), (46, 15008), (48, 15056), (60, 15302), (61, 15347),

Gene: Monse\_16 Start: 11471, Stop: 12841, Start Num: 1

Candidate Starts for Monse\_16:

(Start: 1 @11471 has 15 MA's), (2, 11486), (7, 11597), (22, 11858), (26, 11930), (28, 11981), (31, 12014), (34, 12059), (40, 12131), (41, 12155), (47, 12269), (55, 12476), (57, 12509), (66, 12674),

Gene: Moozy\_16 Start: 11456, Stop: 12832, Start Num: 1

Candidate Starts for Moozy\_16:

(Start: 1 @11456 has 15 MA's), (2, 11471), (7, 11582), (10, 11639), (11, 11651), (18, 11804), (19, 11819), (26, 11909), (28, 11960), (37, 12101), (42, 12170), (46, 12239), (47, 12248), (52, 12368), (62, 12614), (65, 12632), (69, 12692), (72, 12719),

Gene: PherryCruz\_15 Start: 11439, Stop: 12815, Start Num: 1

Candidate Starts for PherryCruz\_15:

(Start: 1 @11439 has 15 MA's), (2, 11454), (7, 11565), (10, 11622), (16, 11739), (18, 11787), (19, 11802), (26, 11892), (28, 11943), (37, 12084), (42, 12153), (46, 12222), (47, 12231), (58, 12471), (59, 12477), (65, 12615), (69, 12675), (71, 12693),

Gene: RavenPuff\_15 Start: 11439, Stop: 12815, Start Num: 1

Candidate Starts for RavenPuff\_15:

(Start: 1 @11439 has 15 MA's), (2, 11454), (7, 11565), (10, 11622), (16, 11739), (18, 11787), (19, 11802), (26, 11892), (28, 11943), (37, 12084), (42, 12153), (46, 12222), (47, 12231), (58, 12471), (59, 12477), (65, 12615), (69, 12675), (71, 12693), (72, 12702),

Gene: Sangak\_16 Start: 11440, Stop: 12816, Start Num: 1

Candidate Starts for Sangak\_16:

(Start: 1 @11440 has 15 MA's), (2, 11455), (7, 11566), (10, 11623), (11, 11635), (16, 11740), (18, 11788), (19, 11803), (26, 11893), (28, 11944), (37, 12085), (42, 12154), (46, 12223), (47, 12232), (59, 12478), (64, 12607), (65, 12616), (69, 12676), (71, 12694), (72, 12703),

Gene: Scap1\_16 Start: 11427, Stop: 12779, Start Num: 1

Candidate Starts for Scap1\_16:

(Start: 1 @11427 has 15 MA's), (2, 11442), (5, 11526), (7, 11553), (21, 11802), (23, 11832), (24, 11871), (26, 11880), (27, 11910), (29, 11934), (43, 12150), (57, 12456), (59, 12465), (65, 12594), (68, 12636),

Gene: SheRa\_16 Start: 11439, Stop: 12815, Start Num: 1

Candidate Starts for SheRa\_16:

(Start: 1 @11439 has 15 MA's), (2, 11454), (4, 11529), (7, 11565), (10, 11622), (16, 11739), (18, 11787), (19, 11802), (26, 11892), (28, 11943), (37, 12084), (38, 12087), (42, 12153), (46, 12222), (47, 12231), (58, 12471), (62, 12597), (65, 12615), (70, 12687), (71, 12693), (72, 12702),

Gene: Wigberry\_20 Start: 13534, Stop: 14904, Start Num: 1

Candidate Starts for Wigberry\_20:

(Start: 1 @13534 has 15 MA's), (7, 13660), (8, 13678), (15, 13789), (18, 13882), (25, 14002), (26, 14005), (29, 14059), (36, 14194), (43, 14275), (44, 14290), (46, 14335), (56, 14551), (63, 14704), (65, 14719), (67, 14755), (68, 14761), (73, 14854),