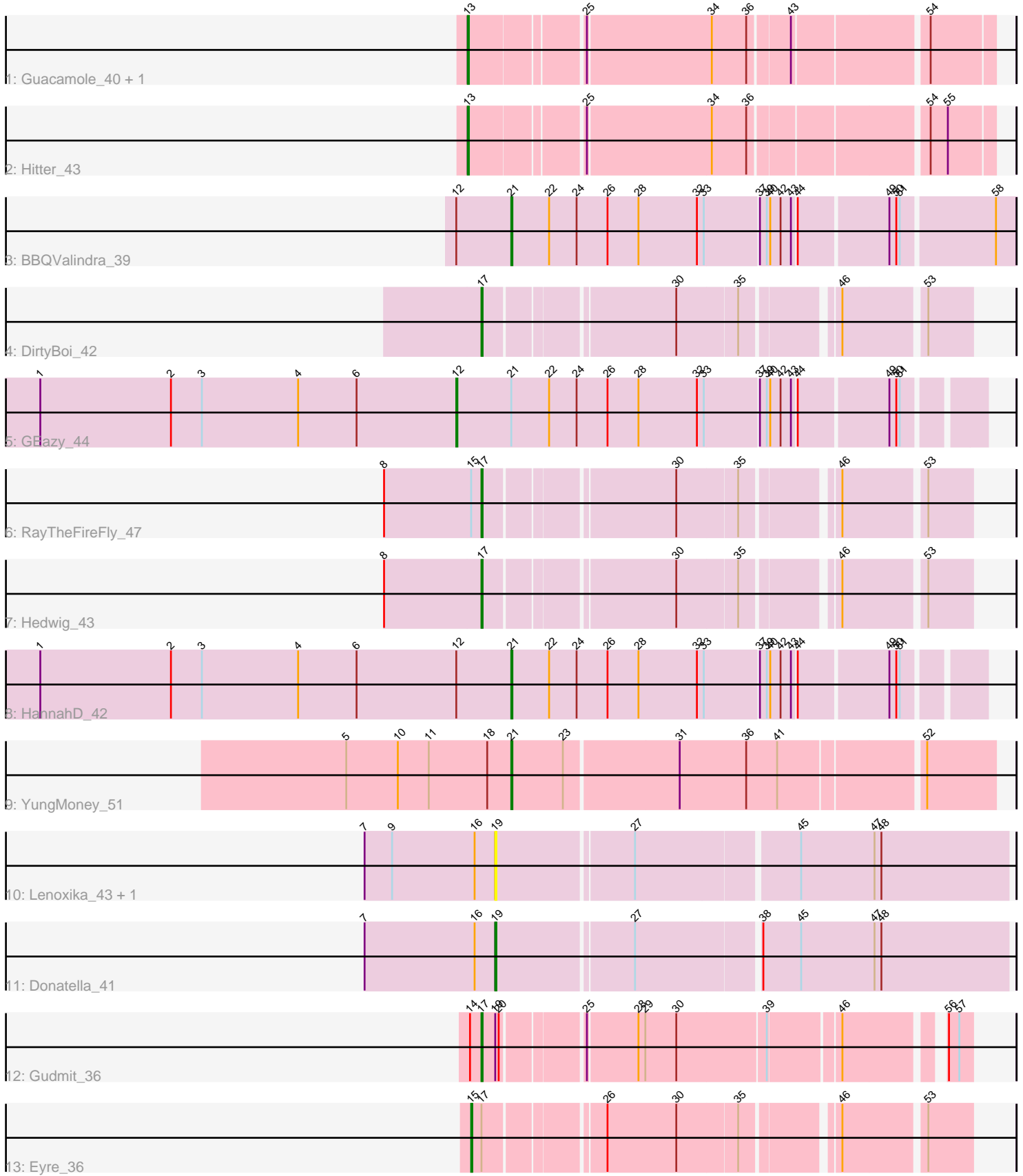


Pham 295200



Note: Tracks are now grouped by subcluster and scaled. Switching in subcluster is indicated by changes in track color. Track scale is now set by default to display the region 30 bp upstream of start 1 to 30 bp downstream of the last possible start. If this default region is judged to be packed too tightly with annotated starts, the track will be further scaled to only show that region of the ORF with annotated starts. This action will be indicated by adding "Zoomed" to the title. For starts, yellow indicates the location of called starts comprised solely of Glimmer/GeneMark auto-annotations, green indicates the location of called starts with at least 1 manual gene annotation.

Pham 295200 Report

This analysis was run 04/18/26 on database version 643.

Pham number 295200 has 15 members, 2 are drafts.

Phages represented in each track:

- Track 1 : Guacamole_40, JasperJr_40
- Track 2 : Hitter_43
- Track 3 : BBQValindra_39
- Track 4 : DirtyBoi_42
- Track 5 : GEazy_44
- Track 6 : RayTheFireFly_47
- Track 7 : Hedwig_43
- Track 8 : HannahD_42
- Track 9 : YungMoney_51
- Track 10 : Lenoxika_43, ToastyOats_45
- Track 11 : Donatella_41
- Track 12 : Gudmit_36
- Track 13 : Eyre_36

Summary of Final Annotations (See graph section above for start numbers):

The start number called the most often in the published annotations is 17, it was called in 4 of the 13 non-draft genes in the pham.

Genes that call this "Most Annotated" start:

- DirtyBoi_42, Gudmit_36, Hedwig_43, RayTheFireFly_47,

Genes that have the "Most Annotated" start but do not call it:

- Eyre_36,

Genes that do not have the "Most Annotated" start:

- BBQValindra_39, Donatella_41, GEazy_44, Guacamole_40, HannahD_42, Hitter_43, JasperJr_40, Lenoxika_43, ToastyOats_45, YungMoney_51,

Summary by start number:

Start 12:

- Found in 3 of 15 (20.0%) of genes in pham
- Manual Annotations of this start: 1 of 13

- Called 33.3% of time when present
- Phage (with cluster) where this start called: GEazy_44 (DB),

Start 13:

- Found in 3 of 15 (20.0%) of genes in pham
- Manual Annotations of this start: 3 of 13
- Called 100.0% of time when present
- Phage (with cluster) where this start called: Guacamole_40 (CV), Hitter_43 (CV), JasperJr_40 (CV),

Start 15:

- Found in 2 of 15 (13.3%) of genes in pham
- Manual Annotations of this start: 1 of 13
- Called 50.0% of time when present
- Phage (with cluster) where this start called: Eyre_36 (singleton),

Start 17:

- Found in 5 of 15 (33.3%) of genes in pham
- Manual Annotations of this start: 4 of 13
- Called 80.0% of time when present
- Phage (with cluster) where this start called: DirtyBoi_42 (DB), Gudmit_36 (singleton), Hedwig_43 (DB), RayTheFireFly_47 (DB),

Start 19:

- Found in 4 of 15 (26.7%) of genes in pham
- Manual Annotations of this start: 1 of 13
- Called 75.0% of time when present
- Phage (with cluster) where this start called: Donatella_41 (FF), Lenoxika_43 (FF), ToastyOats_45 (FF),

Start 21:

- Found in 4 of 15 (26.7%) of genes in pham
- Manual Annotations of this start: 3 of 13
- Called 75.0% of time when present
- Phage (with cluster) where this start called: BBQValindra_39 (DB), HannahD_42 (DB), YungMoney_51 (DC1),

Summary by clusters:

There are 5 clusters represented in this pham: singleton, DB, CV, FF, DC1,

Info for manual annotations of cluster CV:

- Start number 13 was manually annotated 3 times for cluster CV.

Info for manual annotations of cluster DB:

- Start number 12 was manually annotated 1 time for cluster DB.
- Start number 17 was manually annotated 3 times for cluster DB.
- Start number 21 was manually annotated 2 times for cluster DB.

Info for manual annotations of cluster DC1:

- Start number 21 was manually annotated 1 time for cluster DC1.

Info for manual annotations of cluster FF:

- Start number 19 was manually annotated 1 time for cluster FF.

Gene Information:

Gene: BBQValindra_39 Start: 32907, Stop: 32485, Start Num: 21

Candidate Starts for BBQValindra_39:

(Start: 12 @32955 has 1 MA's), (Start: 21 @32907 has 3 MA's), (22, 32874), (24, 32850), (26, 32823), (28, 32796), (32, 32745), (33, 32739), (37, 32694), (39, 32688), (40, 32685), (42, 32676), (43, 32667), (44, 32664), (49, 32589), (50, 32583), (51, 32580), (58, 32502),

Gene: DirtyBoi_42 Start: 31803, Stop: 31423, Start Num: 17

Candidate Starts for DirtyBoi_42:

(Start: 17 @31803 has 4 MA's), (30, 31650), (35, 31599), (46, 31527), (53, 31461),

Gene: Donatella_41 Start: 30320, Stop: 29892, Start Num: 19

Candidate Starts for Donatella_41:

(7, 30434), (16, 30338), (Start: 19 @30320 has 1 MA's), (27, 30206), (38, 30104), (45, 30071), (47, 30008), (48, 30002),

Gene: Eyre_36 Start: 27990, Stop: 27601, Start Num: 15

Candidate Starts for Eyre_36:

(Start: 15 @27990 has 1 MA's), (Start: 17 @27981 has 4 MA's), (26, 27888), (30, 27828), (35, 27777), (46, 27705), (53, 27639),

Gene: GEazy_44 Start: 32533, Stop: 32096, Start Num: 12

Candidate Starts for GEazy_44:

(1, 32896), (2, 32782), (3, 32755), (4, 32671), (6, 32620), (Start: 12 @32533 has 1 MA's), (Start: 21 @32485 has 3 MA's), (22, 32452), (24, 32428), (26, 32401), (28, 32374), (32, 32323), (33, 32317), (37, 32272), (39, 32266), (40, 32263), (42, 32254), (43, 32245), (44, 32242), (49, 32167), (50, 32161), (51, 32158),

Gene: Guacamole_40 Start: 32920, Stop: 32501, Start Num: 13

Candidate Starts for Guacamole_40:

(Start: 13 @32920 has 3 MA's), (25, 32830), (34, 32725), (36, 32695), (43, 32662), (54, 32554),

Gene: Gudmit_36 Start: 27005, Stop: 26628, Start Num: 17

Candidate Starts for Gudmit_36:

(14, 27014), (Start: 17 @27005 has 4 MA's), (Start: 19 @26993 has 1 MA's), (20, 26990), (25, 26927), (28, 26885), (29, 26879), (30, 26852), (39, 26777), (46, 26720), (56, 26648), (57, 26639),

Gene: HannahD_42 Start: 31852, Stop: 31463, Start Num: 21

Candidate Starts for HannahD_42:

(1, 32263), (2, 32149), (3, 32122), (4, 32038), (6, 31987), (Start: 12 @31900 has 1 MA's), (Start: 21 @31852 has 3 MA's), (22, 31819), (24, 31795), (26, 31768), (28, 31741), (32, 31690), (33, 31684), (37, 31639), (39, 31633), (40, 31630), (42, 31621), (43, 31612), (44, 31609), (49, 31534), (50, 31528), (51, 31525),

Gene: Hedwig_43 Start: 32226, Stop: 31846, Start Num: 17

Candidate Starts for Hedwig_43:

(8, 32310), (Start: 17 @32226 has 4 MA's), (30, 32073), (35, 32022), (46, 31950), (53, 31884),

Gene: Hitter_43 Start: 32564, Stop: 32145, Start Num: 13

Candidate Starts for Hitter_43:

(Start: 13 @32564 has 3 MA's), (25, 32474), (34, 32369), (36, 32339), (54, 32198), (55, 32183),

Gene: JasperJr_40 Start: 32920, Stop: 32501, Start Num: 13

Candidate Starts for JasperJr_40:

(Start: 13 @32920 has 3 MA's), (25, 32830), (34, 32725), (36, 32695), (43, 32662), (54, 32554),

Gene: Lenoxika_43 Start: 30210, Stop: 29782, Start Num: 19

Candidate Starts for Lenoxika_43:

(7, 30324), (9, 30300), (16, 30228), (Start: 19 @30210 has 1 MA's), (27, 30096), (45, 29961), (47, 29898), (48, 29892),

Gene: RayTheFireFly_47 Start: 33400, Stop: 33020, Start Num: 17

Candidate Starts for RayTheFireFly_47:

(8, 33484), (Start: 15 @33409 has 1 MA's), (Start: 17 @33400 has 4 MA's), (30, 33247), (35, 33196), (46, 33124), (53, 33058),

Gene: ToastyOats_45 Start: 30397, Stop: 29969, Start Num: 19

Candidate Starts for ToastyOats_45:

(7, 30511), (9, 30487), (16, 30415), (Start: 19 @30397 has 1 MA's), (27, 30283), (45, 30148), (47, 30085), (48, 30079),

Gene: YungMoney_51 Start: 42233, Stop: 41832, Start Num: 21

Candidate Starts for YungMoney_51:

(5, 42377), (10, 42332), (11, 42305), (18, 42254), (Start: 21 @42233 has 3 MA's), (23, 42188), (31, 42092), (36, 42035), (41, 42008), (52, 41891),