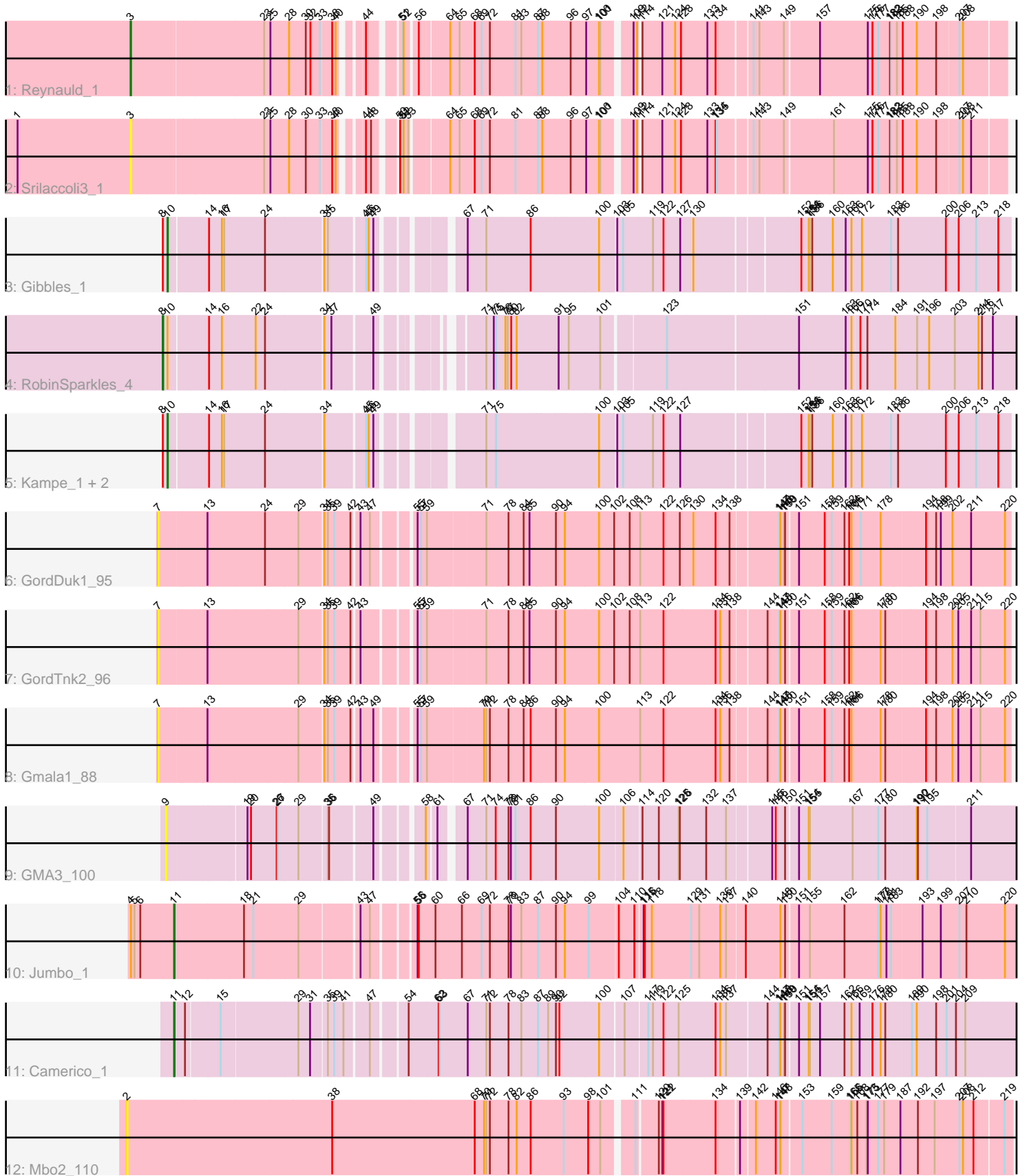


Pham 295213



Note: Tracks are now grouped by subcluster and scaled. Switching in subcluster is indicated by changes in track color. Track scale is now set by default to display the region 30 bp upstream of start 1 to 30 bp downstream of the last possible start. If this default region is judged to be packed too tightly with annotated starts, the track will be further scaled to only show that region of the ORF with annotated starts. This action will be indicated by adding "Zoomed" to the title. For starts, yellow indicates the location of called starts comprised solely of Glimmer/GeneMark auto-annotations, green indicates the location of called starts with at least 1 manual gene annotation.

Pham 295213 Report

This analysis was run 04/18/26 on database version 643.

Pham number 295213 has 14 members, 6 are drafts.

Phages represented in each track:

- Track 1 : Reynauld_1
- Track 2 : Srilaccoli3_1
- Track 3 : Gibbles_1
- Track 4 : RobinSparkles_4
- Track 5 : Kampe_1, Orchid_1, PatrickStar_1
- Track 6 : GordDuk1_95
- Track 7 : GordTnk2_96
- Track 8 : Gmala1_88
- Track 9 : GMA3_100
- Track 10 : Jumbo_1
- Track 11 : Camerico_1
- Track 12 : Mbo2_110

Summary of Final Annotations (See graph section above for start numbers):

The start number called the most often in the published annotations is 10, it was called in 4 of the 8 non-draft genes in the pham.

Genes that call this "Most Annotated" start:

- Gibbles_1, Kampe_1, Orchid_1, PatrickStar_1,

Genes that have the "Most Annotated" start but do not call it:

- RobinSparkles_4,

Genes that do not have the "Most Annotated" start:

- Camerico_1, GMA3_100, Gmala1_88, GordDuk1_95, GordTnk2_96, Jumbo_1, Mbo2_110, Reynauld_1, Srilaccoli3_1,

Summary by start number:

Start 2:

- Found in 1 of 14 (7.1%) of genes in pham
- No Manual Annotations of this start.
- Called 100.0% of time when present

- Phage (with cluster) where this start called: Mbo2_110 (singleton),

Start 3:

- Found in 2 of 14 (14.3%) of genes in pham
- Manual Annotations of this start: 1 of 8
- Called 100.0% of time when present
- Phage (with cluster) where this start called: Reynauld_1 (CH), Srilaccoli3_1 (CH),

Start 7:

- Found in 3 of 14 (21.4%) of genes in pham
- No Manual Annotations of this start.
- Called 100.0% of time when present
- Phage (with cluster) where this start called: Gmala1_88 (DF1), GordDuk1_95 (DF1), GordTnk2_96 (DF1),

Start 8:

- Found in 5 of 14 (35.7%) of genes in pham
- Manual Annotations of this start: 1 of 8
- Called 20.0% of time when present
- Phage (with cluster) where this start called: RobinSparkles_4 (CX),

Start 9:

- Found in 1 of 14 (7.1%) of genes in pham
- No Manual Annotations of this start.
- Called 100.0% of time when present
- Phage (with cluster) where this start called: GMA3_100 (DF2),

Start 10:

- Found in 5 of 14 (35.7%) of genes in pham
- Manual Annotations of this start: 4 of 8
- Called 80.0% of time when present
- Phage (with cluster) where this start called: Gibbles_1 (CX), Kampe_1 (CX), Orchid_1 (CX), PatrickStar_1 (CX),

Start 11:

- Found in 2 of 14 (14.3%) of genes in pham
- Manual Annotations of this start: 2 of 8
- Called 100.0% of time when present
- Phage (with cluster) where this start called: Camerico_1 (DF4), Jumbo_1 (DF3),

Summary by clusters:

There are 7 clusters represented in this pham: singleton, CH, DF4, DF1, DF3, DF2, CX,

Info for manual annotations of cluster CH:

- Start number 3 was manually annotated 1 time for cluster CH.

Info for manual annotations of cluster CX:

- Start number 8 was manually annotated 1 time for cluster CX.
- Start number 10 was manually annotated 4 times for cluster CX.

Info for manual annotations of cluster DF3:

•Start number 11 was manually annotated 1 time for cluster DF3.

Info for manual annotations of cluster DF4:

•Start number 11 was manually annotated 1 time for cluster DF4.

Gene Information:

Gene: Camerico_1 Start: 3035, Stop: 1032, Start Num: 11

Candidate Starts for Camerico_1:

(Start: 11 @3035 has 2 MA's), (12, 3014), (15, 2933), (29, 2741), (31, 2711), (35, 2672), (39, 2657), (41, 2636), (47, 2585), (54, 2507), (62, 2432), (63, 2429), (67, 2357), (71, 2309), (72, 2300), (78, 2255), (83, 2222), (87, 2180), (89, 2156), (90, 2138), (92, 2129), (100, 2030), (107, 1973), (117, 1919), (119, 1907), (122, 1880), (125, 1841), (134, 1751), (136, 1739), (137, 1724), (144, 1625), (147, 1598), (148, 1595), (149, 1586), (150, 1583), (151, 1556), (154, 1535), (155, 1532), (157, 1508), (162, 1448), (166, 1433), (169, 1412), (176, 1379), (178, 1358), (180, 1346), (189, 1283), (190, 1271), (198, 1223), (201, 1196), (204, 1175), (209, 1151),

Gene: GMA3_100 Start: 75102, Stop: 73141, Start Num: 9

Candidate Starts for GMA3_100:

(9, 75102), (19, 74913), (20, 74904), (26, 74838), (27, 74835), (29, 74784), (35, 74715), (36, 74712), (49, 74619), (58, 74529), (61, 74508), (67, 74463), (71, 74415), (74, 74391), (78, 74361), (79, 74355), (81, 74343), (86, 74304), (90, 74244), (100, 74136), (106, 74079), (114, 74037), (120, 73995), (125, 73944), (126, 73941), (132, 73878), (137, 73827), (145, 73722), (146, 73716), (150, 73692), (151, 73665), (154, 73647), (155, 73644), (167, 73542), (177, 73476), (180, 73458), (190, 73386), (192, 73383), (195, 73359), (211, 73257),

Gene: Gibbles_1 Start: 2768, Stop: 786, Start Num: 10

Candidate Starts for Gibbles_1:

(Start: 8 @2780 has 1 MA's), (Start: 10 @2768 has 4 MA's), (14, 2672), (16, 2639), (17, 2633), (24, 2531), (34, 2390), (35, 2381), (45, 2297), (46, 2291), (49, 2279), (67, 2111), (71, 2063), (86, 1952), (100, 1787), (103, 1748), (105, 1733), (119, 1658), (122, 1631), (127, 1589), (130, 1556), (152, 1307), (154, 1292), (155, 1289), (156, 1283), (160, 1238), (163, 1205), (166, 1190), (172, 1163), (183, 1088), (186, 1070), (200, 947), (206, 914), (213, 869), (218, 815),

Gene: Gmala1_88 Start: 73511, Stop: 71493, Start Num: 7

Candidate Starts for Gmala1_88:

(7, 73511), (13, 73397), (29, 73172), (34, 73112), (35, 73103), (39, 73088), (42, 73046), (43, 73031), (49, 73004), (55, 72926), (57, 72917), (59, 72902), (70, 72770), (71, 72764), (72, 72755), (78, 72710), (84, 72671), (86, 72653), (90, 72593), (94, 72572), (100, 72485), (113, 72380), (122, 72320), (134, 72191), (136, 72179), (138, 72155), (144, 72071), (147, 72044), (148, 72041), (150, 72029), (151, 72002), (158, 71945), (159, 71927), (162, 71897), (164, 71888), (166, 71882), (178, 71807), (180, 71795), (194, 71699), (198, 71675), (202, 71636), (205, 71621), (211, 71588), (215, 71564), (220, 71507),

Gene: GordDuk1_95 Start: 74616, Stop: 72598, Start Num: 7

Candidate Starts for GordDuk1_95:

(7, 74616), (13, 74502), (24, 74358), (29, 74277), (34, 74217), (35, 74208), (39, 74193), (42, 74151), (43, 74136), (47, 74118), (55, 74031), (57, 74022), (59, 74007), (71, 73869), (78, 73815), (84, 73776), (85, 73761), (90, 73698), (94, 73677), (100, 73590), (102, 73551), (108, 73512), (113, 73485), (122,

73425), (126, 73383), (130, 73353), (134, 73296), (138, 73260), (147, 73149), (148, 73146), (149, 73137), (150, 73134), (151, 73107), (158, 73050), (159, 73032), (162, 73002), (164, 72993), (166, 72987), (171, 72963), (178, 72912), (194, 72804), (198, 72780), (199, 72768), (202, 72741), (211, 72693), (220, 72612),

Gene: GordTnk2_96 Start: 74328, Stop: 72310, Start Num: 7

Candidate Starts for GordTnk2_96:

(7, 74328), (13, 74214), (29, 73989), (34, 73929), (35, 73920), (39, 73905), (42, 73863), (43, 73848), (55, 73743), (57, 73734), (59, 73719), (71, 73581), (78, 73527), (84, 73488), (85, 73473), (90, 73410), (94, 73389), (100, 73302), (102, 73263), (108, 73224), (113, 73197), (122, 73137), (134, 73008), (136, 72996), (138, 72972), (144, 72888), (147, 72861), (148, 72858), (150, 72846), (151, 72819), (158, 72762), (159, 72744), (162, 72714), (164, 72705), (166, 72699), (178, 72624), (180, 72612), (194, 72516), (198, 72492), (202, 72453), (205, 72438), (211, 72405), (215, 72381), (220, 72324),

Gene: Jumbo_1 Start: 3224, Stop: 1203, Start Num: 11

Candidate Starts for Jumbo_1:

(4, 3335), (5, 3326), (6, 3311), (Start: 11 @3224 has 2 MA's), (18, 3053), (21, 3029), (29, 2918), (43, 2780), (47, 2762), (55, 2672), (56, 2669), (60, 2630), (66, 2567), (69, 2516), (72, 2495), (78, 2450), (79, 2444), (83, 2417), (87, 2375), (90, 2333), (94, 2312), (99, 2252), (104, 2180), (110, 2141), (115, 2126), (116, 2123), (118, 2105), (129, 2009), (131, 1988), (136, 1934), (137, 1919), (140, 1874), (148, 1796), (150, 1784), (151, 1757), (155, 1733), (162, 1649), (177, 1565), (178, 1559), (181, 1544), (183, 1532), (193, 1460), (199, 1415), (207, 1370), (210, 1352), (220, 1259),

Gene: Kampe_1 Start: 2767, Stop: 785, Start Num: 10

Candidate Starts for Kampe_1:

(Start: 8 @2779 has 1 MA's), (Start: 10 @2767 has 4 MA's), (14, 2671), (16, 2638), (17, 2632), (24, 2530), (34, 2389), (45, 2296), (46, 2290), (49, 2278), (71, 2062), (75, 2038), (100, 1786), (103, 1747), (105, 1732), (119, 1657), (122, 1630), (127, 1588), (152, 1306), (154, 1291), (155, 1288), (156, 1282), (160, 1237), (163, 1204), (166, 1189), (172, 1162), (183, 1087), (186, 1069), (200, 946), (206, 913), (213, 868), (218, 814),

Gene: Mbo2_110 Start: 79722, Stop: 77578, Start Num: 2

Candidate Starts for Mbo2_110:

(2, 79722), (38, 79203), (68, 78840), (70, 78816), (71, 78810), (72, 78801), (78, 78756), (82, 78735), (86, 78699), (93, 78621), (98, 78561), (101, 78531), (111, 78468), (120, 78423), (121, 78414), (122, 78411), (134, 78282), (139, 78228), (142, 78195), (146, 78147), (147, 78138), (148, 78135), (153, 78087), (159, 78021), (165, 77976), (166, 77973), (168, 77958), (173, 77934), (175, 77931), (177, 77904), (179, 77889), (187, 77847), (192, 77802), (197, 77766), (207, 77703), (208, 77694), (212, 77667), (219, 77598),

Gene: Orchid_1 Start: 2767, Stop: 785, Start Num: 10

Candidate Starts for Orchid_1:

(Start: 8 @2779 has 1 MA's), (Start: 10 @2767 has 4 MA's), (14, 2671), (16, 2638), (17, 2632), (24, 2530), (34, 2389), (45, 2296), (46, 2290), (49, 2278), (71, 2062), (75, 2038), (100, 1786), (103, 1747), (105, 1732), (119, 1657), (122, 1630), (127, 1588), (152, 1306), (154, 1291), (155, 1288), (156, 1282), (160, 1237), (163, 1204), (166, 1189), (172, 1162), (183, 1087), (186, 1069), (200, 946), (206, 913), (213, 868), (218, 814),

Gene: PatrickStar_1 Start: 2767, Stop: 785, Start Num: 10

Candidate Starts for PatrickStar_1:

(Start: 8 @2779 has 1 MA's), (Start: 10 @2767 has 4 MA's), (14, 2671), (16, 2638), (17, 2632), (24, 2530), (34, 2389), (45, 2296), (46, 2290), (49, 2278), (71, 2062), (75, 2038), (100, 1786), (103, 1747), (105, 1732), (119, 1657), (122, 1630), (127, 1588), (152, 1306), (154, 1291), (155, 1288), (156, 1282),

(160, 1237), (163, 1204), (166, 1189), (172, 1162), (183, 1087), (186, 1069), (200, 946), (206, 913),
(213, 868), (218, 814),

Gene: Reynauld_1 Start: 3050, Stop: 1041, Start Num: 3

Candidate Starts for Reynauld_1:

(Start: 3 @3050 has 1 MA's), (23, 2720), (25, 2705), (28, 2657), (30, 2615), (32, 2603), (33, 2579), (38, 2555), (40, 2546), (44, 2507), (51, 2450), (52, 2447), (56, 2420), (64, 2351), (65, 2330), (68, 2291), (69, 2273), (72, 2252), (81, 2189), (83, 2174), (87, 2132), (88, 2123), (96, 2057), (97, 2018), (100, 1985), (101, 1982), (109, 1919), (112, 1910), (114, 1907), (121, 1859), (124, 1826), (128, 1811), (133, 1748), (134, 1727), (141, 1646), (143, 1631), (149, 1571), (157, 1493), (175, 1376), (176, 1364), (177, 1349), (182, 1319), (183, 1316), (185, 1301), (188, 1286), (190, 1250), (198, 1205), (207, 1151), (208, 1142),

Gene: RobinSparkles_4 Start: 3076, Stop: 1076, Start Num: 8

Candidate Starts for RobinSparkles_4:

(Start: 8 @3076 has 1 MA's), (Start: 10 @3064 has 4 MA's), (14, 2968), (16, 2935), (22, 2851), (24, 2827), (34, 2686), (37, 2668), (49, 2575), (71, 2392), (73, 2374), (75, 2368), (76, 2344), (77, 2338), (80, 2329), (82, 2317), (91, 2209), (95, 2185), (101, 2110), (123, 1963), (151, 1636), (163, 1516), (166, 1501), (170, 1483), (174, 1465), (184, 1393), (191, 1339), (196, 1309), (203, 1243), (214, 1183), (216, 1174), (217, 1147),

Gene: Srilaccoli3_1 Start: 3027, Stop: 1018, Start Num: 3

Candidate Starts for Srilaccoli3_1:

(1, 3318), (Start: 3 @3027 has 1 MA's), (23, 2697), (25, 2682), (28, 2634), (30, 2592), (33, 2556), (38, 2532), (40, 2523), (44, 2484), (48, 2475), (50, 2433), (51, 2427), (52, 2424), (53, 2412), (64, 2328), (65, 2307), (68, 2268), (69, 2250), (72, 2229), (81, 2166), (87, 2109), (88, 2100), (96, 2034), (97, 1995), (100, 1962), (101, 1959), (109, 1896), (112, 1887), (114, 1884), (121, 1836), (124, 1803), (128, 1788), (133, 1725), (134, 1704), (135, 1701), (141, 1623), (143, 1608), (149, 1548), (161, 1437), (175, 1353), (176, 1341), (177, 1326), (182, 1296), (183, 1293), (185, 1278), (188, 1263), (190, 1227), (198, 1182), (207, 1128), (208, 1119), (211, 1098),