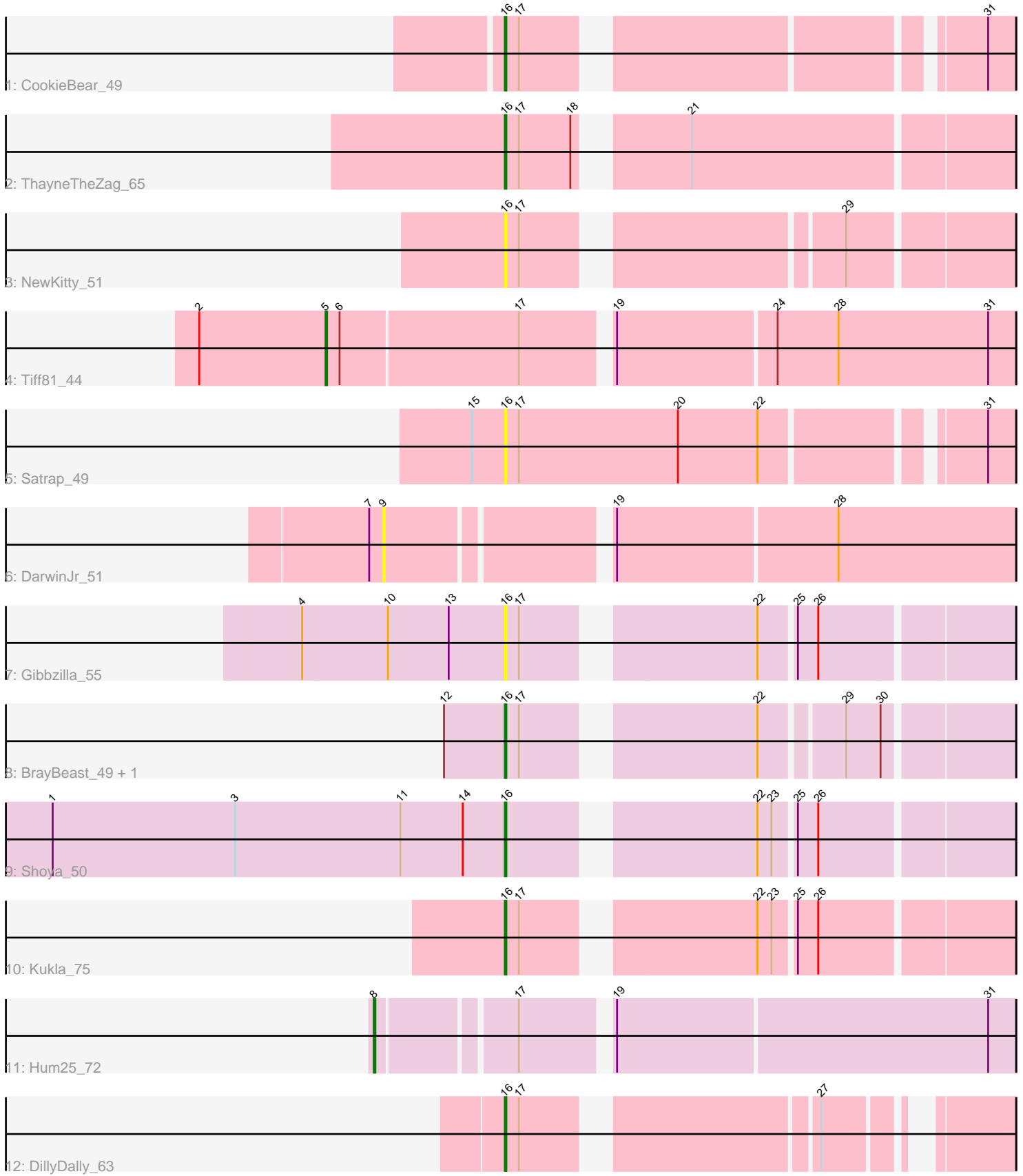


Pham 295231



Note: Tracks are now grouped by subcluster and scaled. Switching in subcluster is indicated by changes in track color. Track scale is now set by default to display the region 30 bp upstream of start 1 to 30 bp downstream of the last possible start. If this default region is judged to be packed too tightly with annotated starts, the track will be further scaled to only show that region of the ORF with annotated starts. This action will be indicated by adding "Zoomed" to the title. For starts, yellow indicates the location of called starts comprised solely of Glimmer/GeneMark auto-annotations, green indicates the location of called starts with at least 1 manual gene annotation.

Pham 295231 Report

This analysis was run 04/18/26 on database version 643.

Pham number 295231 has 13 members, 5 are drafts.

Phages represented in each track:

- Track 1 : CookieBear_49
- Track 2 : ThayneTheZag_65
- Track 3 : NewKitty_51
- Track 4 : Tiff81_44
- Track 5 : Satrap_49
- Track 6 : DarwinJr_51
- Track 7 : Gibbzilla_55
- Track 8 : BrayBeast_49, Raqqa_60
- Track 9 : Shoya_50
- Track 10 : Kukla_75
- Track 11 : Hum25_72
- Track 12 : DillyDally_63

Summary of Final Annotations (See graph section above for start numbers):

The start number called the most often in the published annotations is 16, it was called in 6 of the 8 non-draft genes in the pham.

Genes that call this "Most Annotated" start:

- BrayBeast_49, CookieBear_49, DillyDally_63, Gibbzilla_55, Kukla_75, NewKitty_51, Raqqa_60, Satrap_49, Shoya_50, ThayneTheZag_65,

Genes that have the "Most Annotated" start but do not call it:

-

Genes that do not have the "Most Annotated" start:

- DarwinJr_51, Hum25_72, Tiff81_44,

Summary by start number:

Start 5:

- Found in 1 of 13 (7.7%) of genes in pham
- Manual Annotations of this start: 1 of 8
- Called 100.0% of time when present

- Phage (with cluster) where this start called: Tiff81_44 (AY),

Start 8:

- Found in 1 of 13 (7.7%) of genes in pham
- Manual Annotations of this start: 1 of 8
- Called 100.0% of time when present
- Phage (with cluster) where this start called: Hum25_72 (FQ),

Start 9:

- Found in 1 of 13 (7.7%) of genes in pham
- No Manual Annotations of this start.
- Called 100.0% of time when present
- Phage (with cluster) where this start called: DarwinJr_51 (AY),

Start 16:

- Found in 10 of 13 (76.9%) of genes in pham
- Manual Annotations of this start: 6 of 8
- Called 100.0% of time when present
- Phage (with cluster) where this start called: BrayBeast_49 (FB), CookieBear_49 (AY), DillyDally_63 (singleton), Gibbzilla_55 (FB), Kukla_75 (FJ), NewKitty_51 (AY), Raqqa_60 (AY), Satrap_49 (AY), Shoya_50 (FB), ThayneTheZag_65 (AY),

Summary by clusters:

There are 5 clusters represented in this pham: AY, FQ, FB, singleton, FJ,

Info for manual annotations of cluster AY:

- Start number 5 was manually annotated 1 time for cluster AY.
- Start number 16 was manually annotated 2 times for cluster AY.

Info for manual annotations of cluster FB:

- Start number 16 was manually annotated 2 times for cluster FB.

Info for manual annotations of cluster FJ:

- Start number 16 was manually annotated 1 time for cluster FJ.

Info for manual annotations of cluster FQ:

- Start number 8 was manually annotated 1 time for cluster FQ.

Gene Information:

Gene: BrayBeast_49 Start: 28984, Stop: 29268, Start Num: 16

Candidate Starts for BrayBeast_49:

(12, 28945), (Start: 16 @28984 has 6 MA's), (17, 28993), (22, 29122), (29, 29170), (30, 29191),

Gene: CookieBear_49 Start: 30179, Stop: 30457, Start Num: 16

Candidate Starts for CookieBear_49:

(Start: 16 @30179 has 6 MA's), (17, 30188), (31, 30440),

Gene: DarwinJr_51 Start: 31100, Stop: 31480, Start Num: 9

Candidate Starts for DarwinJr_51:

(7, 31091), (9, 31100), (19, 31229), (28, 31367),

Gene: DillyDally_63 Start: 38118, Stop: 38381, Start Num: 16

Candidate Starts for DillyDally_63:

(Start: 16 @38118 has 6 MA's), (17, 38127), (27, 38289),

Gene: Gibbzilla_55 Start: 29845, Stop: 30132, Start Num: 16

Candidate Starts for Gibbzilla_55:

(4, 29716), (10, 29770), (13, 29809), (Start: 16 @29845 has 6 MA's), (17, 29854), (22, 29983), (25, 30004), (26, 30016),

Gene: Hum25_72 Start: 38173, Stop: 38556, Start Num: 8

Candidate Starts for Hum25_72:

(Start: 8 @38173 has 1 MA's), (17, 38254), (19, 38305), (31, 38539),

Gene: Kukla_75 Start: 42658, Stop: 42945, Start Num: 16

Candidate Starts for Kukla_75:

(Start: 16 @42658 has 6 MA's), (17, 42667), (22, 42796), (23, 42805), (25, 42817), (26, 42829),

Gene: NewKitty_51 Start: 30242, Stop: 30526, Start Num: 16

Candidate Starts for NewKitty_51:

(Start: 16 @30242 has 6 MA's), (17, 30251), (29, 30428),

Gene: Raqqa_60 Start: 33013, Stop: 33297, Start Num: 16

Candidate Starts for Raqqa_60:

(12, 32974), (Start: 16 @33013 has 6 MA's), (17, 33022), (22, 33151), (29, 33199), (30, 33220),

Gene: Satrap_49 Start: 30579, Stop: 30881, Start Num: 16

Candidate Starts for Satrap_49:

(15, 30558), (Start: 16 @30579 has 6 MA's), (17, 30588), (20, 30690), (22, 30741), (31, 30864),

Gene: Shoya_50 Start: 29154, Stop: 29441, Start Num: 16

Candidate Starts for Shoya_50:

(1, 28866), (3, 28983), (11, 29088), (14, 29127), (Start: 16 @29154 has 6 MA's), (22, 29292), (23, 29301), (25, 29313), (26, 29325),

Gene: ThayneTheZag_65 Start: 34279, Stop: 34572, Start Num: 16

Candidate Starts for ThayneTheZag_65:

(Start: 16 @34279 has 6 MA's), (17, 34288), (18, 34321), (21, 34375),

Gene: Tiff81_44 Start: 28183, Stop: 28605, Start Num: 5

Candidate Starts for Tiff81_44:

(2, 28102), (Start: 5 @28183 has 1 MA's), (6, 28192), (17, 28303), (19, 28354), (24, 28453), (28, 28492), (31, 28588),