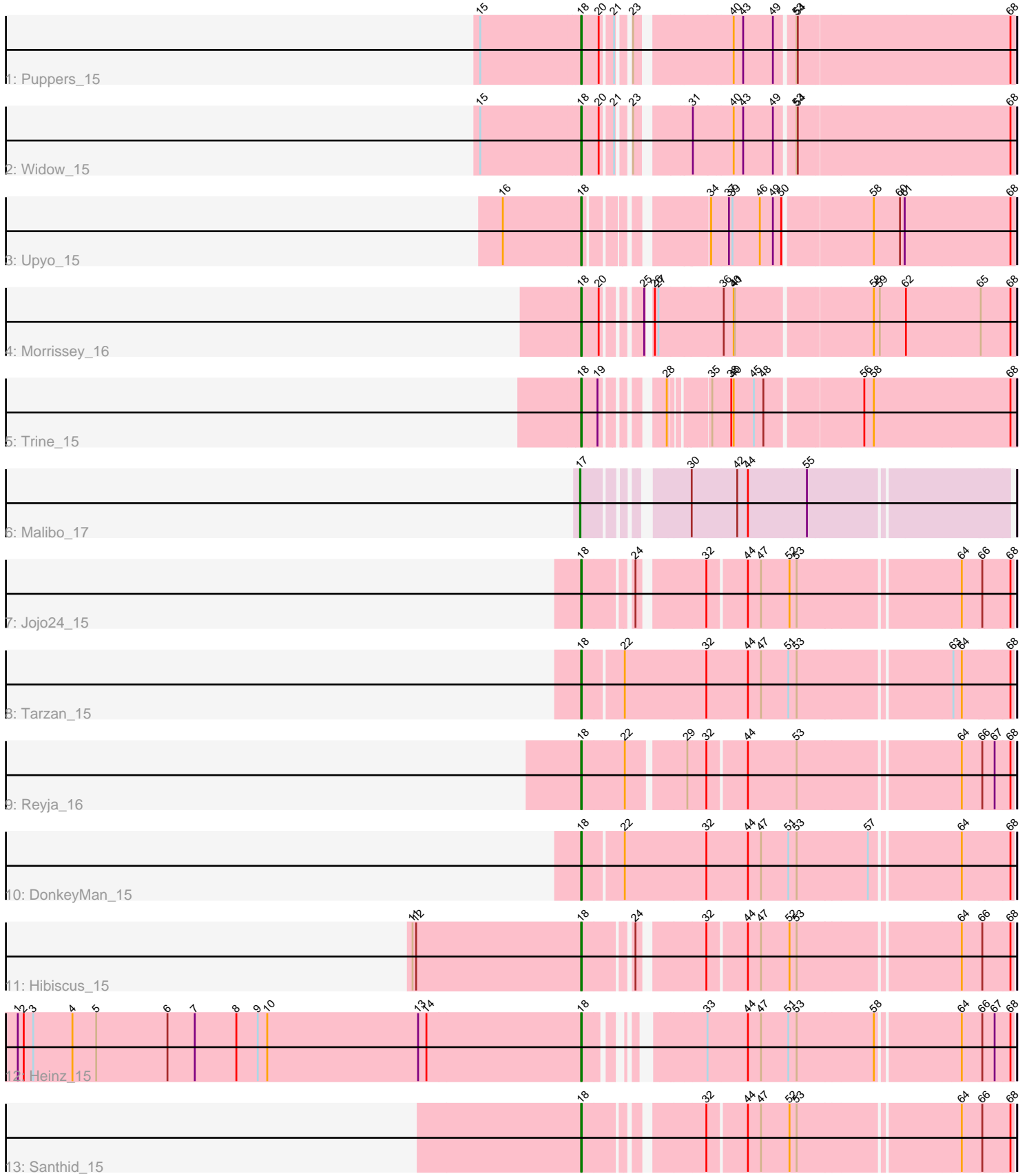


Pham 295236



Note: Tracks are now grouped by subcluster and scaled. Switching in subcluster is indicated by changes in track color. Track scale is now set by default to display the region 30 bp upstream of start 1 to 30 bp downstream of the last possible start. If this default region is judged to be packed too tightly with annotated starts, the track will be further scaled to only show that region of the ORF with annotated starts. This action will be indicated by adding "Zoomed" to the title. For starts, yellow indicates the location of called starts comprised solely of Glimmer/GeneMark auto-annotations, green indicates the location of called starts with at least 1 manual gene annotation.

## Pham 295236 Report

This analysis was run 04/18/26 on database version 643.

Pham number 295236 has 13 members, 0 are drafts.

Phages represented in each track:

- Track 1 : Puppies\_15
- Track 2 : Widow\_15
- Track 3 : Upyo\_15
- Track 4 : Morrissey\_16
- Track 5 : Trine\_15
- Track 6 : Malibo\_17
- Track 7 : Jojo24\_15
- Track 8 : Tarzan\_15
- Track 9 : Reyja\_16
- Track 10 : DonkeyMan\_15
- Track 11 : Hibiscus\_15
- Track 12 : Heinz\_15
- Track 13 : Santhid\_15

### ***Summary of Final Annotations (See graph section above for start numbers):***

The start number called the most often in the published annotations is 18, it was called in 12 of the 13 non-draft genes in the pham.

Genes that call this "Most Annotated" start:

- DonkeyMan\_15, Heinz\_15, Hibiscus\_15, Jojo24\_15, Morrissey\_16, Puppies\_15, Reyja\_16, Santhid\_15, Tarzan\_15, Trine\_15, Upyo\_15, Widow\_15,

Genes that have the "Most Annotated" start but do not call it:

- 

Genes that do not have the "Most Annotated" start:

- Malibo\_17,

### **Summary by start number:**

Start 17:

- Found in 1 of 13 ( 7.7% ) of genes in pham
- Manual Annotations of this start: 1 of 13

- Called 100.0% of time when present
- Phage (with cluster) where this start called: Malibo\_17 (DW),

Start 18:

- Found in 12 of 13 ( 92.3% ) of genes in pham
- Manual Annotations of this start: 12 of 13
- Called 100.0% of time when present
- Phage (with cluster) where this start called: DonkeyMan\_15 (DY), Heinz\_15 (DY), Hibiscus\_15 (DY), Jojo24\_15 (DY), Morrissey\_16 (CD), Puppies\_15 (CD), Reyja\_16 (DY), Santhid\_15 (DY), Tarzan\_15 (DY), Trine\_15 (CD), Upyo\_15 (CD), Widow\_15 (CD),

### **Summary by clusters:**

There are 3 clusters represented in this pham: DW, CD, DY,

Info for manual annotations of cluster CD:

- Start number 18 was manually annotated 5 times for cluster CD.

Info for manual annotations of cluster DW:

- Start number 17 was manually annotated 1 time for cluster DW.

Info for manual annotations of cluster DY:

- Start number 18 was manually annotated 7 times for cluster DY.

### **Gene Information:**

Gene: DonkeyMan\_15 Start: 8928, Stop: 9955, Start Num: 18

Candidate Starts for DonkeyMan\_15:

(Start: 18 @8928 has 12 MA's), (22, 9024), (32, 9225), (44, 9324), (47, 9357), (51, 9426), (53, 9447), (57, 9621), (64, 9828), (68, 9948),

Gene: Heinz\_15 Start: 8959, Stop: 9896, Start Num: 18

Candidate Starts for Heinz\_15:

(1, 7540), (2, 7555), (3, 7579), (4, 7678), (5, 7738), (6, 7918), (7, 7987), (8, 8092), (9, 8146), (10, 8170), (13, 8551), (14, 8572), (Start: 18 @8959 has 12 MA's), (33, 9166), (44, 9265), (47, 9298), (51, 9367), (53, 9388), (58, 9577), (64, 9769), (66, 9820), (67, 9850), (68, 9889),

Gene: Hibiscus\_15 Start: 8943, Stop: 9913, Start Num: 18

Candidate Starts for Hibiscus\_15:

(11, 8517), (12, 8526), (Start: 18 @8943 has 12 MA's), (24, 9048), (32, 9192), (44, 9282), (47, 9315), (52, 9387), (53, 9405), (64, 9786), (66, 9837), (68, 9906),

Gene: Jojo24\_15 Start: 8937, Stop: 9907, Start Num: 18

Candidate Starts for Jojo24\_15:

(Start: 18 @8937 has 12 MA's), (24, 9042), (32, 9186), (44, 9276), (47, 9309), (52, 9381), (53, 9399), (64, 9780), (66, 9831), (68, 9900),

Gene: Malibo\_17 Start: 9627, Stop: 10582, Start Num: 17

Candidate Starts for Malibo\_17:

(Start: 17 @9627 has 1 MA's), (30, 9828), (42, 9936), (44, 9963), (55, 10107),

Gene: Morrissey\_16 Start: 9186, Stop: 10171, Start Num: 18

Candidate Starts for Morrissey\_16:

(Start: 18 @9186 has 12 MA's), (20, 9228), (25, 9300), (26, 9306), (27, 9315), (36, 9471), (40, 9495), (41, 9498), (58, 9822), (59, 9837), (62, 9903), (65, 10086), (68, 10161),

Gene: Poppers\_15 Start: 8726, Stop: 9696, Start Num: 18

Candidate Starts for Poppers\_15:

(15, 8477), (Start: 18 @8726 has 12 MA's), (20, 8768), (21, 8795), (23, 8813), (40, 9023), (43, 9047), (49, 9122), (53, 9167), (54, 9170), (68, 9686),

Gene: Reyja\_16 Start: 9079, Stop: 10085, Start Num: 18

Candidate Starts for Reyja\_16:

(Start: 18 @9079 has 12 MA's), (22, 9184), (29, 9319), (32, 9364), (44, 9454), (53, 9577), (64, 9958), (66, 10009), (67, 10039), (68, 10078),

Gene: Santhid\_15 Start: 8945, Stop: 9915, Start Num: 18

Candidate Starts for Santhid\_15:

(Start: 18 @8945 has 12 MA's), (32, 9194), (44, 9284), (47, 9317), (52, 9389), (53, 9407), (64, 9788), (66, 9839), (68, 9908),

Gene: Tarzan\_15 Start: 8933, Stop: 9960, Start Num: 18

Candidate Starts for Tarzan\_15:

(Start: 18 @8933 has 12 MA's), (22, 9029), (32, 9230), (44, 9329), (47, 9362), (51, 9431), (53, 9452), (63, 9812), (64, 9833), (68, 9953),

Gene: Trine\_15 Start: 8732, Stop: 9684, Start Num: 18

Candidate Starts for Trine\_15:

(Start: 18 @8732 has 12 MA's), (19, 8768), (28, 8867), (35, 8948), (38, 8996), (40, 9002), (45, 9053), (48, 9077), (56, 9305), (58, 9329), (68, 9668),

Gene: Upyo\_15 Start: 8842, Stop: 9809, Start Num: 18

Candidate Starts for Upyo\_15:

(16, 8647), (Start: 18 @8842 has 12 MA's), (34, 9082), (37, 9121), (39, 9130), (46, 9199), (49, 9232), (50, 9253), (58, 9460), (60, 9526), (61, 9538), (68, 9799),

Gene: Widow\_15 Start: 8717, Stop: 9687, Start Num: 18

Candidate Starts for Widow\_15:

(15, 8468), (Start: 18 @8717 has 12 MA's), (20, 8759), (21, 8786), (23, 8804), (31, 8918), (40, 9014), (43, 9038), (49, 9113), (53, 9158), (54, 9161), (68, 9677),