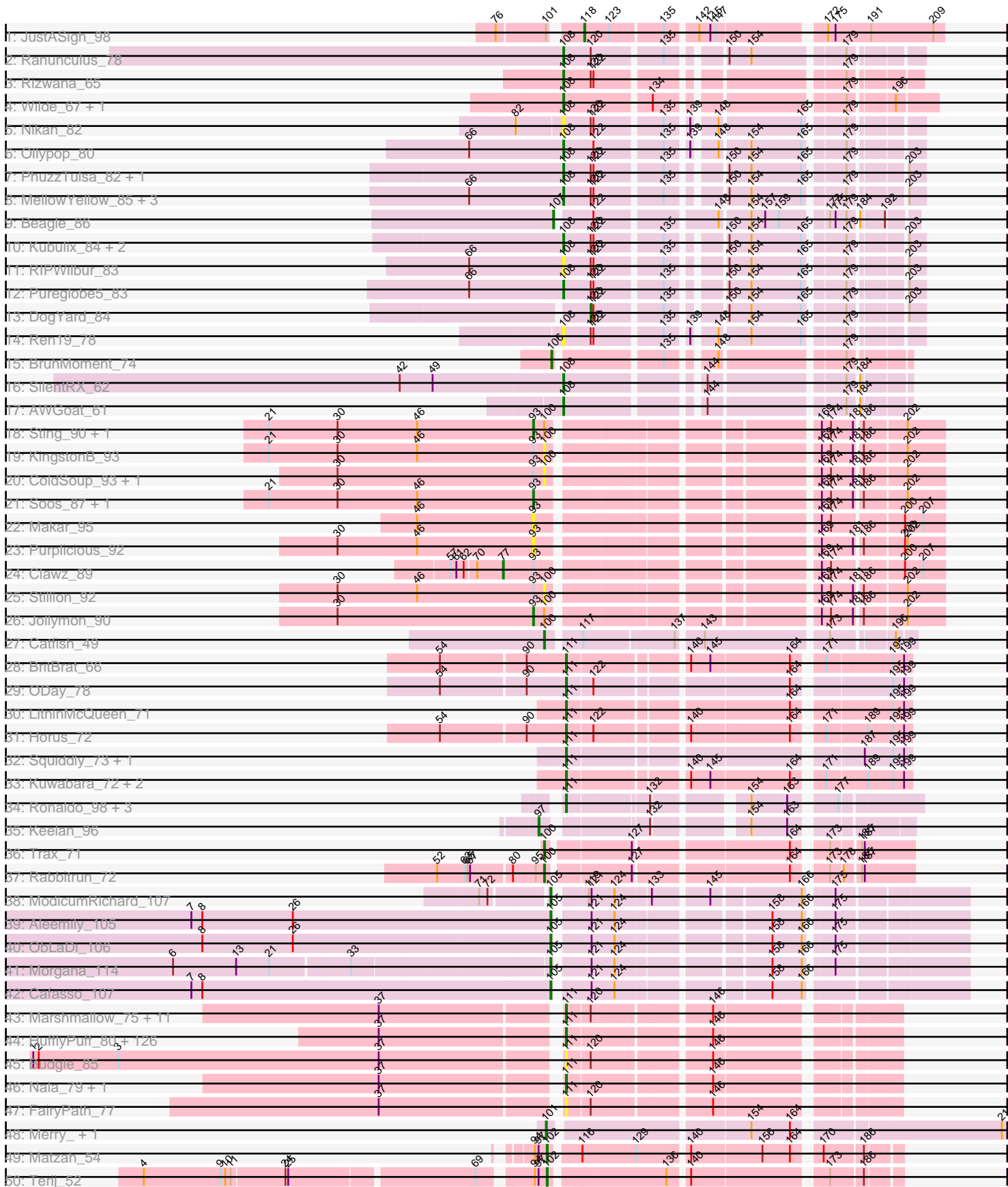
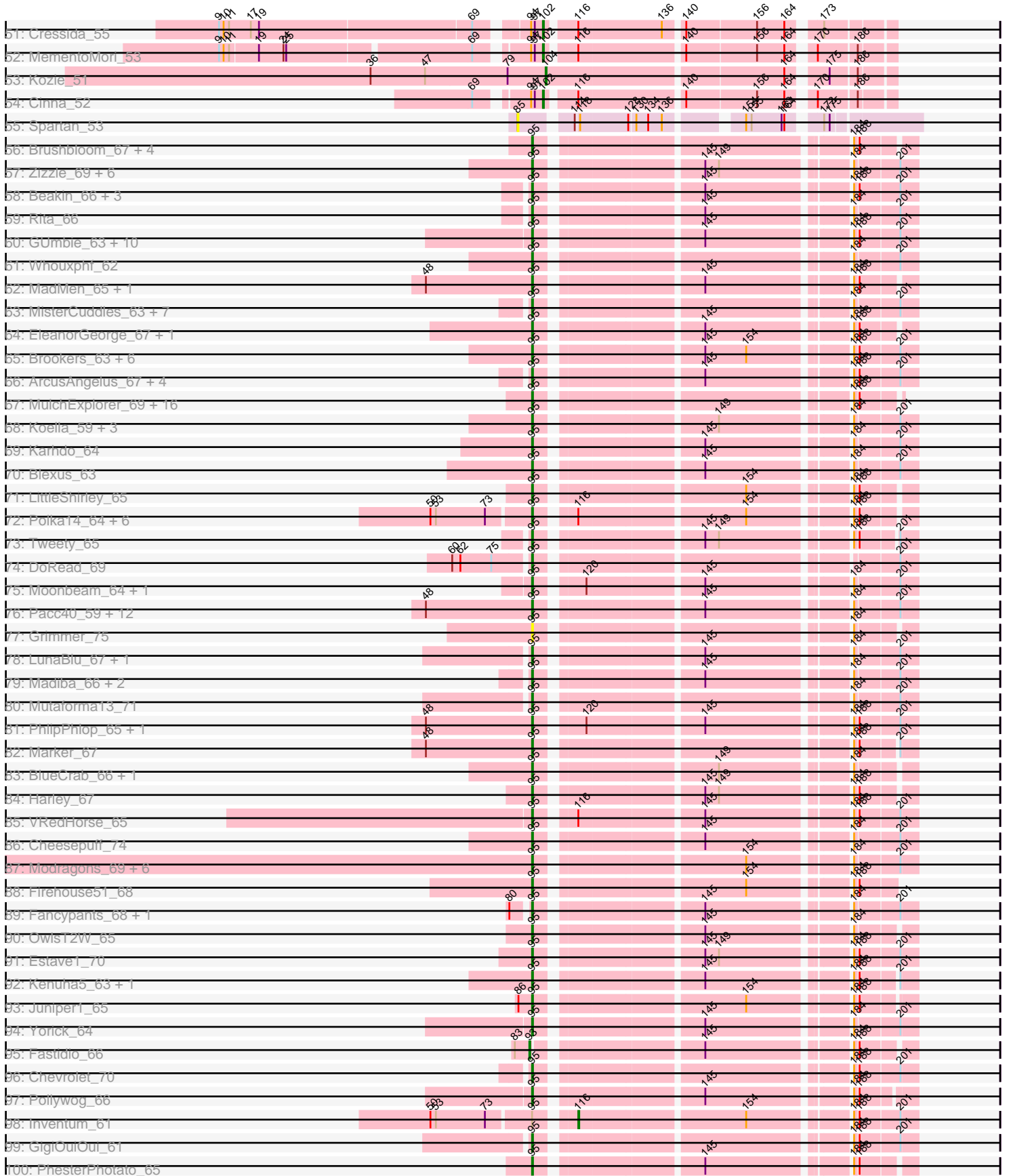


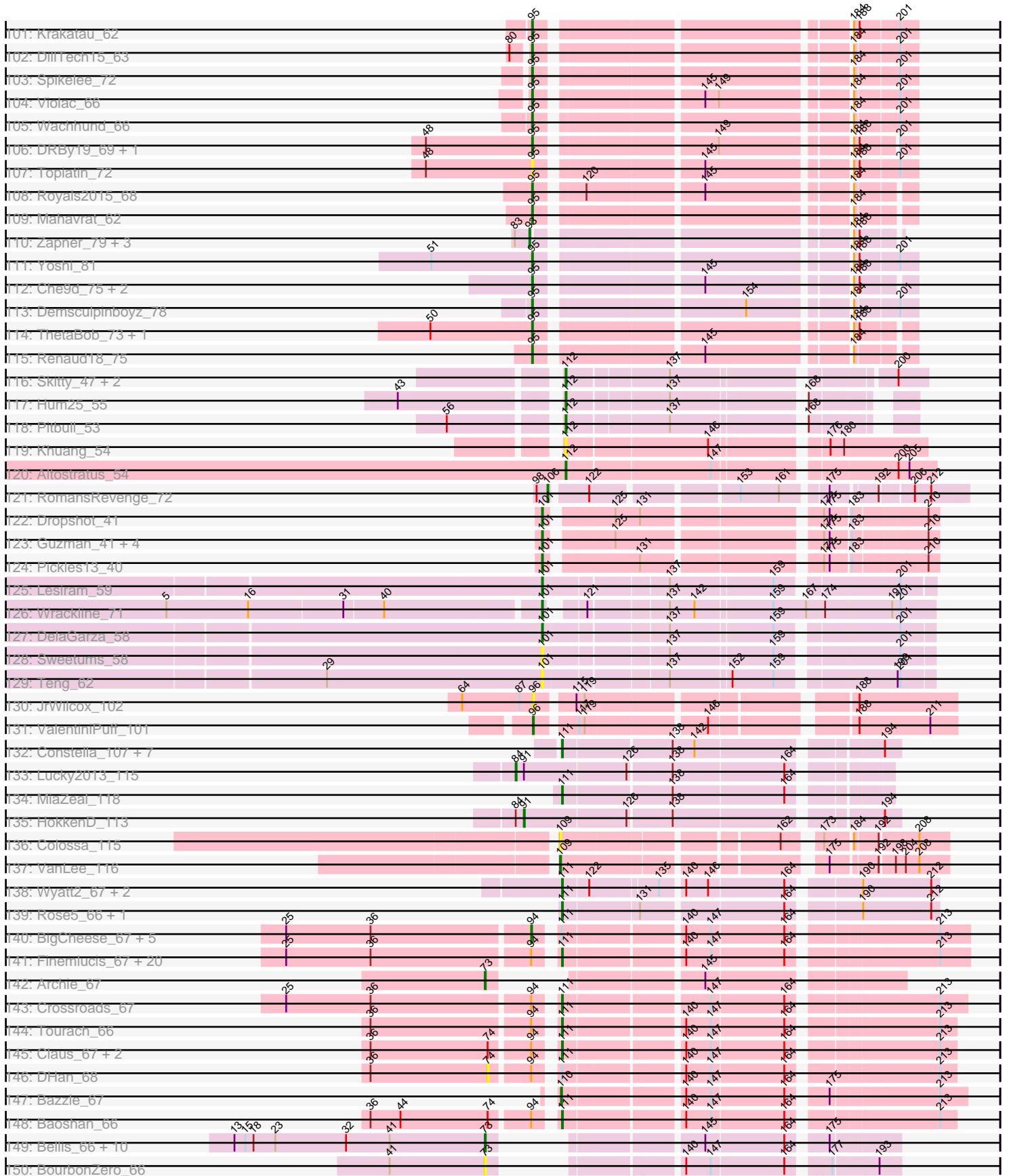
Pham 296109



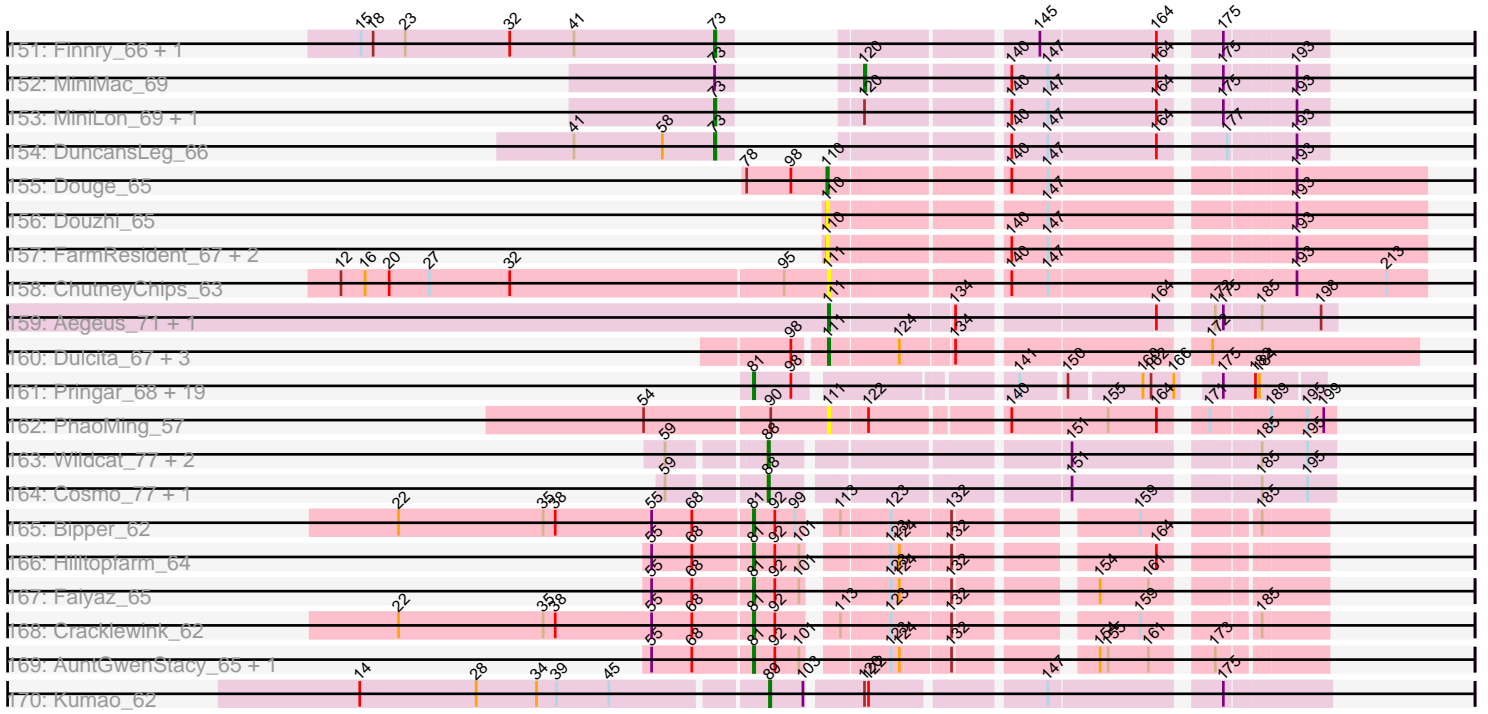
Pham 296109



Pham 296109



Pham 296109



Note: Tracks are now grouped by subcluster and scaled. Switching in subcluster is indicated by changes in track color. Track scale is now set by default to display the region 30 bp upstream of start 1 to 30 bp downstream of the last possible start. If this default region is judged to be packed too tightly with annotated starts, the track will be further scaled to only show that region of the ORF with annotated starts. This action will be indicated by adding "Zoomed" to the title. For starts, yellow indicates the location of called starts comprised solely of Glimmer/GeneMark auto-annotations, green indicates the location of called starts with at least 1 manual gene annotation.

Pham 296109 Report

This analysis was run 04/25/26 on database version 644.

Pham number 296109 has 509 members, 63 are drafts.

Phages represented in each track:

- Track 1 : JustASigh_98
- Track 2 : Ranunculus_78
- Track 3 : Rizwana_65
- Track 4 : Wilde_67, Tank_65
- Track 5 : Nikan_82
- Track 6 : Ollypop_80
- Track 7 : PhuzzTulsa_82, Odyssey395_85
- Track 8 : MellowYellow_85, RazzB_84, Forrestell_84, NyleyClemson_84
- Track 9 : Beagle_86
- Track 10 : Kubulix_84, Pointis_81, BetaFish_84
- Track 11 : RIPWilbur_83
- Track 12 : Pureglobe5_83
- Track 13 : DogYard_84
- Track 14 : Ren19_78
- Track 15 : BruhMoment_74
- Track 16 : SilentRX_62
- Track 17 : AWGoat_61
- Track 18 : Sting_90, DonTron_91
- Track 19 : KingstonB_93
- Track 20 : ColdSoup_93, Amo99_93
- Track 21 : Soos_87, Grumio_93
- Track 22 : Makar_95
- Track 23 : Purplicious_92
- Track 24 : Clawz_89
- Track 25 : Stillion_92
- Track 26 : Jollymon_90
- Track 27 : Catfish_49
- Track 28 : BritBrat_66
- Track 29 : ODay_78
- Track 30 : LitninMcQueen_71
- Track 31 : Horus_72
- Track 32 : Squiddly_73, Spooky_68
- Track 33 : Kuwabara_72, Ecliptus_75, CheeseTouch_74
- Track 34 : Ronaldo_98, Guey18_100, Volt_99, Fryberger_95
- Track 35 : Keelan_96
- Track 36 : Trax_71
- Track 37 : Rabbitrun_72

- Track 38 : ModicumRichard_107
- Track 39 : Aleemily_105
- Track 40 : ObLaDi_106
- Track 41 : Morgana_114
- Track 42 : Cafasso_107
- Track 43 : Marshmallow_75, Cookies_74, ChotaBhai_77, SirDuracell_76, Bask21_77, TeamEdward_79, YassJohnny_74, Pat3_75, Tomaszewski_72, DoctorDiddles_76, OrionPax_76, Amao_77
- Track 44 : HufflyPuff_80, Bogg_77, Teaspoon_78, Moldemort_80, Buck_78, Petra64142_81, NoSleep_78, Highbury_76, PaddyBaddy_77, Glexan_76, TeardropMSU_73, Lilizi_78, Thresher_79, Inca_74, 244_78, MISSy_78, Nimrod_78, Stank_80, Gage_79, Phaja_75, Becksu_76, BilboSwaggins_75, StellaBean_75, Bench_80, AmericanBeauty_81, Myrale_77, Manda_78, Ukulele_72, Rimmer_78, Kostya_77, SophKB_74, FoghornLeghorn_71, HankKaySha_77, Pumpkin_80, Terminus_80, IHOP_75, Icee_78, Sassay_72, MPhalcon_78, Balomoji_77, Dusk_74, Kanye_74, Saints25_76, Cactus_80, NonchalantPear_75, JeTaime_77, Simpliphy_76, BadStone_74, GooberAzure_80, PhatBacter_81, Palpatine_79, xkcd_80, Lilpickle_76, Holt_82, Murica_80, Rakim_78, Adnama_81, Gemini_82, MadamMonkfish_77, Greep_81, Mindy_76, Mosby_73, Dumbo_77, Lilac_79, Kimchi_81, Phaux_79, NelitzaMV_75, Eureka_75, TBrady12_80, Goku_75, BigBubba_77, Brewer_72, CrystalP_76, BugsBunny_77, Cjw1_77, Hoonter_80, Willez_72, BaboJay_74, Asriel_76, Henry_75, Barbarian_76, Bruin_74, Xandras_76, Tuco_78, Contagion_73, Quallification_78, Goldilocks_80, StolenFromERC_80, GoldenSpark_81, Traaww1_73, Flypotenuse_73, Daikon_79, Easy2Say_78, Filch_78, ShamWow_77, Porky_76, Czyszczonek_78, RiverMonster_77, Sotrice96_78, Phrux_74, Harella_77, Elph10_77, Policronamos_80, Youngblood_80, Toto_75, Murphy_77, Pharsalus_74, Command613_79, Gator_75, StormChicken_79, Stark_78, Hopey_77, Miniwave_72, Elite2014_76, Misfit_78, Maxxinista_79, ChosenOne_77, Emmina_77, Tarkin_76, Argent26_81, ABCat_74, Wiggin_79, Ptowny_74, DrDrey_77, MollyToe_72, Paperbeatsrock_76, Thimble_78
- Track 45 : Budgie_85
- Track 46 : Nala_79, FireRed_81
- Track 47 : FairyPath_77
- Track 48 : Merry_, Sunny_
- Track 49 : Matzah_54
- Track 50 : Terij_52
- Track 51 : Cressida_55
- Track 52 : MementoMori_53
- Track 53 : Kozie_51
- Track 54 : Cinna_52
- Track 55 : Spartan_53
- Track 56 : Brushbloom_67, Bobi_69, Batiatus_63, MilleniumForce_68, Ibhubes_i_65
- Track 57 : Zizzle_69, Maravista_67, ByChance_58, Pippy_64, ShowerHandel_68, Crumble_60, BobaPhett_69
- Track 58 : Beakin_66, Guppsters_66, Hades_66, Soul22_71
- Track 59 : Rita_66
- Track 60 : GUmbie_63, James_69, BuzzLyseyear_71, Tchotchke_64, Mattes_69, Gorge_69, Saal_67, Che8_70, Lizziana_71, Eradicator_58, OlympiaSaint_67
- Track 61 : Whouxphf_62
- Track 62 : MadMen_65, Martik_65
- Track 63 : MisterCuddles_63, XFactor_63, Doug_67, Zerg_65, RockyHorror_66, Alexphander_69, Girr_63, Ruby_61
- Track 64 : EleanorGeorge_67, Leozinho_64

- Track 65 : Brookers_63, Kingsley_63, Coco12_65, Sarma624_64, Cerasum_62, Velveteen_61, BigPhil_62
- Track 66 : ArcusAngelus_67, Eish_68, Totinger_65, DosHalletts_67, Radiance_64
- Track 67 : MulchExplorer_69, Rockne_66, Kimberlium_70, QuickMath_69, Hamulus_65, Chuckly_68, Juice456_66, Byougenkin_65, JalFarm20_78, Jant_69, PMC_62, Boomer_70, SiSi_63, Ardmore_57, KristaRAM_68, Starcevich_65, Avani_73
- Track 68 : Koella_59, NormanBulbieJr_65, Cabrinians_66, Priscilla_65
- Track 69 : Karhdo_64
- Track 70 : Blexus_63
- Track 71 : LittleShirley_65
- Track 72 : Polka14_64, JoeyJr_61, PHappiness_61, Leperchaun_58, Spoonbill_63, RitaG_61, Daenerys_60
- Track 73 : Tweety_65
- Track 74 : DoRead_69
- Track 75 : Moonbeam_64, Emma_67
- Track 76 : Pacc40_59, LastJedi_59, MinionDave_64, Nivrat_62, Minnie_68, CaptainTrips_63, LilMoolah_64, Clifton_60, Brocalys_60, Aubs_65, Burwell21_63, SwagPigglett_70, Sandalphon_66
- Track 77 : Grimmer_75
- Track 78 : LunaBlu_67, Galactic_64
- Track 79 : Madiba_66, Ramsey_64, DaWorst_65
- Track 80 : Mutaforma13_71
- Track 81 : PhlipPhlop_65, Vivum_66
- Track 82 : Marker_67
- Track 83 : BlueCrab_66, FreddyB_66
- Track 84 : Harley_67
- Track 85 : VRedHorse_65
- Track 86 : Cheesepuff_74
- Track 87 : Modragons_69, OfUltron_71, Llama_70, Jinglebell_71, Ochi17_69, AlpineSix_71, Seabastian_71
- Track 88 : Firehouse51_68
- Track 89 : Fancypants_68, Mozy_75
- Track 90 : OwlsT2W_65
- Track 91 : Estave1_70
- Track 92 : Kenuha5_63, SuperGrey_69
- Track 93 : Juniper1_65
- Track 94 : Yorick_64
- Track 95 : Fastidio_66
- Track 96 : Chevrolet_70
- Track 97 : Pollywog_66
- Track 98 : Inventum_61
- Track 99 : GigiOuiOui_61
- Track 100 : PhesterPhotato_65
- Track 101 : Krakatau_62
- Track 102 : DillTech15_63
- Track 103 : Spikelee_72
- Track 104 : Violac_66
- Track 105 : Wachhund_66
- Track 106 : DRBy19_69, Philus_69
- Track 107 : Topiatin_72
- Track 108 : Royals2015_68
- Track 109 : Mahavrat_62

- Track 110 : Zapner_79, Jabbawokkie_80, Blarby_78, Mantra_62
- Track 111 : Yoshi_81
- Track 112 : Che9d_75, ShiLan_64, Kersh_67
- Track 113 : Demsculpinboyz_78
- Track 114 : ThetaBob_73, Ogopogo_71
- Track 115 : Renaud18_75
- Track 116 : Skitty_47, MrSmee_53, Merpity_54
- Track 117 : Hum25_55
- Track 118 : Pitbull_53
- Track 119 : Khuang_54
- Track 120 : Altostratus_54
- Track 121 : RomansRevenge_72
- Track 122 : Dropshot_41
- Track 123 : Guzman_41, Appa_41, Winchester007_57, PhillyJawn_42, Losacky_42
- Track 124 : Pickles13_40
- Track 125 : Lesiram_59
- Track 126 : Wrackline_71
- Track 127 : DelaGarza_58
- Track 128 : Sweetums_58
- Track 129 : Teng_62
- Track 130 : JrWilcox_102
- Track 131 : ValentiniPuff_101
- Track 132 : Constella_107, JuicyJay_120, Phoebus_124, Thibault_106, Dallas_124, Beem_125, NihilNomen_125, Dove_109
- Track 133 : Lucky2013_115
- Track 134 : MiaZeal_118
- Track 135 : HokkenD_113
- Track 136 : Colossa_115
- Track 137 : VanLee_116
- Track 138 : Wyatt2_67, AvadaKedavra_66, Tyson_67
- Track 139 : Rose5_66, Wamburgrxpress_66
- Track 140 : BigCheese_67, Vetric_67, BobsGarage_67, Nicholasp3_67, Underpass_58, Lewan_68
- Track 141 : Finemlucis_67, GuuelaD_66, Itos_66, Rumpelstiltskin_66, Winky_67, Wigglewiggles_67, Zakai_68, Lynnae_69, Gardann_68, Breezona_67, Sarshaun_68, LilDestine_67, Wilder_68, Miley16_67, MkaliMitinis3_68, Loadrie_66, Gabriela_64, OverPar_69, Kahlid_67, Rossetti_69, Hafay_69
- Track 142 : Archie_67
- Track 143 : Crossroads_67
- Track 144 : Tourach_66
- Track 145 : Claus_67, DanBing_68, ZhongYanYuan_66
- Track 146 : DHan_68
- Track 147 : Bazzle_67
- Track 148 : Baoshan_66
- Track 149 : Bellis_66, MsGreen_66, Snenia_65, Jubie_65, TriFive_67, Lumos_67, Krypton555_67, Clautastrophe_65, Jobypre_66, Whirlwind_66, Red305_66
- Track 150 : BourbonZero_66
- Track 151 : Finnry_66, Samty_66
- Track 152 : MiniMac_69
- Track 153 : MiniLon_69, Lolly9_65
- Track 154 : DuncansLeg_66
- Track 155 : Douge_65
- Track 156 : Douzhi_65

- Track 157 : FarmResident_67, Quby_65, PYPDinur_63
- Track 158 : ChutneyChips_63
- Track 159 : Aegeus_71, Baudelaire_71
- Track 160 : Dulcita_67, Glaske16_67, FreakyGoo_67, Izel_67
- Track 161 : Pringar_68, VasuNzinga_68, MosMoris_66, Clarkson_70, Tesla_66, JoieB_70, Blackbeetle_69, FeliMaine_71, Poise_69, Gattaca_67, Raela_69, Huphlepuuff_71, Beelzebub_73, Caprice_64, LittleLaf_69, Corazon_67, Marvin_65, RedRaider77_68, GoongGoong_68, Lilbit_67
- Track 162 : PhaoMing_57
- Track 163 : Wildcat_77, MaryV_77, EniyanLRS_168
- Track 164 : Cosmo_77, Azrael100_76
- Track 165 : Bipper_62
- Track 166 : Hilltopfarm_64
- Track 167 : Faiyaz_65
- Track 168 : Cracklewink_62
- Track 169 : AuntGwenStacy_65, Typha_64
- Track 170 : Kumao_62

Summary of Final Annotations (See graph section above for start numbers):

The start number called the most often in the published annotations is 111, it was called in 180 of the 446 non-draft genes in the pham.

Genes that call this "Most Annotated" start:

- 244_78, ABCat_74, Adnama_81, Aegeus_71, Amao_77, AmericanBeauty_81, Argent26_81, Asriel_76, AvadaKedavra_66, BaboJay_74, BadStone_74, Balomoji_77, Baoshan_66, Barbarian_76, Bask21_77, Baudelaire_71, Becksu_76, Beem_125, Bench_80, BigBubba_77, BilboSwaggins_75, Bogg_77, Breezona_67, Brewer_72, BritBrat_66, Bruin_74, Buck_78, Budgie_85, BugsBunny_77, Cactus_80, CheeseTouch_74, ChosenOne_77, ChotaBhai_77, ChutneyChips_63, Cjw1_77, Claus_67, Command613_79, Constella_107, Contagion_73, Cookies_74, Crossroads_67, CrystalP_76, Czystczon1_78, Daikon_79, Dallas_124, DanBing_68, DoctorDiddles_76, Dove_109, DrDrey_77, Dulcita_67, Dumbo_77, Dusk_74, Easy2Say_78, Ecliptus_75, Elite2014_76, Elph10_77, Emmina_77, Eureka_75, FairyPath_77, Filch_78, Finemlucis_67, FireRed_81, Flypotenuse_73, FoghornLeghorn_71, FreakyGoo_67, Fryberger_95, Gabriela_64, Gage_79, Gardann_68, Gator_75, Gemini_82, Glaske16_67, Glexan_76, Goku_75, GoldenSpark_81, Goldilocks_80, GooberAzure_80, Greep_81, Guey18_100, GuelaD_66, Hafay_69, HanKaySha_77, Harella_77, Henry_75, Highbury_76, Holt_82, Hoonter_80, Hopey_77, Horus_72, HuffyPuff_80, IHOP_75, Icee_78, Inca_74, Itos_66, Izel_67, JeTaime_77, JuicyJay_120, Kahlid_67, Kanye_74, Kimchi_81, Kostya_77, Kuwabara_72, LilDestine_67, Lilac_79, Lilizi_78, Lilpickle_76, LitninMcQueen_71, Loadrie_66, Lynnae_69, MISSy_78, MPhalcon_78, MadamMonkfish_77, Manda_78, Marshmallow_75, Maxxinista_79, MiaZeal_118, Miley16_67, Mindy_76, Miniwave_72, Misfit_78, MkaliMitinis3_68, Moldemort_80, MollyToe_72, Mosby_73, Murica_80, Murphy_77, Myrale_77, Nala_79, NelitzaMV_75, NihilNomen_125, Nimrod_78, NoSleep_78, NonchalantPear_75, ODay_78, OrionPax_76, OverPar_69, PaddyBaddy_77, Palpatine_79, Paperbeatsrock_76, Pat3_75, Petra64142_81, Phaja_75, PhaoMing_57, Pharsalus_74, PhatBacter_81, Phaux_79, Phoebus_124, Phrux_74,

Policronamos_80, Porky_76, Ptowny_74, Pumpkin_80, Quallification_78, Rakim_78, Rimmer_78, RiverMonster_77, Ronaldo_98, Rose5_66, Rossetti_69, Rumpelstiltskin_66, Saints25_76, Sarshaun_68, Sassay_72, ShamWow_77, Simpliphy_76, SirDuracell_76, SophKB_74, Sotrice96_78, Spooky_68, Squiddly_73, Stank_80, Stark_78, StellaBean_75, StolenFromERC_80, StormChicken_79, TBrady12_80, Tarkin_76, TeamEdward_79, TeardropMSU_73, Teaspoon_78, Terminus_80, Thibault_106, Thimble_78, Thresher_79, Tomaszewski_72, Toto_75, Tourach_66, Traaww1_73, Tuco_78, Tyson_67, Ukulele_72, Volt_99, Wamburgxpress_66, Wiggin_79, Wigglewiggles_67, Wilder_68, Willez_72, Winky_67, Wyatt2_67, Xandras_76, YassJohnny_74, Youngblood_80, Zakai_68, ZhongYanYuan_66, xkcd_80,

Genes that have the "Most Annotated" start but do not call it:

- BigCheese_67, BobsGarage_67, DHan_68, Lewan_68, Nicholas3_67, Underpass_58, Vetrix_67,

Genes that do not have the "Most Annotated" start:

- AWGoat_61, Aleemily_105, Alexphander_69, AlpineSix_71, Altostratus_54, Amo99_93, Appa_41, Archie_67, ArcusAngelus_67, Ardmore_57, Aubs_65, AuntGwenStacy_65, Avani_73, Azrael100_76, Batiatus_63, Bazzle_67, Beagle_86, Beakin_66, Beelzebub_73, Bellis_66, BetaFish_84, BigPhil_62, Bipper_62, Blackbeetle_69, Blarby_78, Blexus_63, BlueCrab_66, BobaPhett_69, Bobi_69, Boomer_70, BourbonZero_66, Brocalys_60, Brookers_63, BruhMoment_74, Brushbloom_67, Burwell21_63, BuzzLyseyear_71, ByChance_58, Byougenkin_65, Cabrinians_66, Cafasso_107, Caprice_64, CaptainTrips_63, Catfish_49, Cerasum_62, Che8_70, Che9d_75, CheesePuff_74, Chevrolet_70, Chuckly_68, Cinna_52, Clarkson_70, Clautastrophe_65, Clawz_89, Clifton_60, Coco12_65, ColdSoup_93, Colossa_115, Corazon_67, Cosmo_77, Cracklewink_62, Cressida_55, Crumble_60, DRBy19_69, DaWorst_65, Daenerys_60, DelaGarza_58, Demsculpinboyz_78, DillTech15_63, DoRead_69, DogYard_84, DonTron_91, DosHalletts_67, Doug_67, Douge_65, Douzhi_65, Dropshot_41, DuncansLeg_66, Eish_68, EleanorGeorge_67, Emma_67, EniyanLRS_168, Eradicator_58, Estave1_70, Faiyaz_65, Fancypants_68, FarmResident_67, Fastidio_66, FeliMaine_71, Finnry_66, Firehouse51_68, Forrestell_84, FreddyB_66, GUmbie_63, Galactic_64, Gattaca_67, GigiOuiOui_61, Girr_63, GoongGoong_68, Gorge_69, Grimmer_75, Grumio_93, Guppsters_66, Guzman_41, Hades_66, Hamulus_65, Harley_67, Hilltopfarm_64, HokkenD_113, Hum25_55, HuphlePuff_71, Ibhubesi_65, Inventum_61, Jabbawokkie_80, JalFarm20_78, James_69, Jant_69, Jinglebell_71, Jobypre_66, JoeyJr_61, JoieB_70, Jollymon_90, JrWilcox_102, Jubie_65, Juice456_66, Juniper1_65, JustASigh_98, Karhdo_64, Keelan_96, Kenuha5_63, Kersh_67, Khuang_54, Kimberlium_70, Kingsley_63, KingstonB_93, Koella_59, Kozie_51, Krakatau_62, KristaRAM_68, Krypton555_67, Kubulix_84, Kumao_62, LastJedi_59, Leozinho_64, Leperchaun_58, Lesiram_59, LilMoolah_64, Lilbit_67, LittleLaf_69, LittleShirley_65, Lizziana_71, Llama_70, Lolly9_65, Losacky_42, Lucky2013_115, Lumos_67, LunaBlu_67, MadMen_65, Madiba_66, Mahavrat_62, Makar_95, Mantra_62, Maravista_67, Marker_67, Martik_65, Marvin_65, MaryV_77, Mattes_69, Matzah_54, MellowYellow_85, MementoMori_53, Merpity_54, Merry_, MilleniumForce_68, MiniLon_69, MiniMac_69, MinionDave_64, Minnie_68, MisterCuddles_63, ModicumRichard_107, Modragons_69, Moonbeam_64, Morgana_114, MosMoris_66, Mozy_75, MrSmeem_53, MsGreen_66, MulchExplorer_69, Mutaforma13_71, Nikan_82, Nivrat_62, NormanBulbieJr_65, NyleyClemson_84, ObLaDi_106, Ochi17_69, Odyssey395_85, OfUltron_71, Ogopogo_71, Ollypop_80, OlympiaSaint_67, OwlsT2W_65, PHappiness_61,

PMC_62, PYPDinur_63, Pacc40_59, PhesterPhotato_65, PhillyJawn_42, Philus_69, PhilipPhlop_65, PhuzzTulsa_82, Pickles13_40, Pippy_64, Pitbull_53, Pointis_81, Poise_69, Polka14_64, Pollywog_66, Pringar_68, Priscilla_65, Pureglobe5_83, Purplicious_92, Quby_65, QuickMath_69, RIPWilbur_83, Rabbitrun_72, Radiance_64, Raela_69, Ramsey_64, Ranunculus_78, RazzB_84, Red305_66, RedRaider77_68, Ren19_78, Renaud18_75, RitaG_61, Rita_66, Rizwana_65, Rockne_66, RockyHorror_66, RomansRevenge_72, Royals2015_68, Ruby_61, Saal_67, Samty_66, Sandalphon_66, Sarma624_64, Seabastian_71, ShiLan_64, ShowerHandel_68, SiSi_63, SilentRX_62, Skitty_47, Snenia_65, Soos_87, Soul22_71, Spartan_53, Spikelee_72, Spoonbill_63, Starcevich_65, Stillion_92, Sting_90, Sunny_, SuperGrey_69, SwagPiggett_70, Sweetums_58, Tank_65, Tchotchke_64, Teng_62, Terij_52, Tesla_66, ThetaBob_73, Topiatin_72, Totinger_65, Trax_71, TriFive_67, Tweety_65, Typha_64, VRedHorse_65, ValentiniPuff_101, VanLee_116, VasuNzinga_68, Velveteen_61, Violac_66, Vivum_66, Wachhund_66, Whirlwind_66, Whouxphf_62, Wildcat_77, Wilde_67, Winchester007_57, Wrackline_71, XFactor_63, Yorick_64, Yoshi_81, Zapner_79, Zerg_65, Zizzle_69,

Summary by start number:

Start 73:

- Found in 27 of 509 (5.3%) of genes in pham
- Manual Annotations of this start: 16 of 446
- Called 66.7% of time when present
- Phage (with cluster) where this start called: Archie_67 (L2), Bellis_66 (L3), BourbonZero_66 (L3), Clautastrophe_65 (L3), DuncansLeg_66 (L3), Finnry_66 (L3), Jobypre_66 (L3), Jubie_65 (L3), Krypton555_67 (L3), Lolly9_65 (L3), Lumos_67 (L3), MiniLon_69 (L3), MsGreen_66 (L3), Red305_66 (L3), Samty_66 (L3), Snenia_65 (L3), TriFive_67 (L3), Whirlwind_66 (L3),

Start 74:

- Found in 5 of 509 (1.0%) of genes in pham
- No Manual Annotations of this start.
- Called 20.0% of time when present
- Phage (with cluster) where this start called: DHan_68 (L2),

Start 77:

- Found in 1 of 509 (0.2%) of genes in pham
- Manual Annotations of this start: 1 of 446
- Called 100.0% of time when present
- Phage (with cluster) where this start called: Clawz_89 (CP),

Start 81:

- Found in 26 of 509 (5.1%) of genes in pham
- Manual Annotations of this start: 24 of 446
- Called 100.0% of time when present
- Phage (with cluster) where this start called: AuntGwenStacy_65 (Y), Beelzebub_73 (S), Bipper_62 (Y), Blackbeetle_69 (S), Caprice_64 (S), Clarkson_70 (S), Corazon_67 (S), Cracklewink_62 (Y), Faiyaz_65 (Y), FeliMaine_71 (S), Gattaca_67 (S), GoongGoong_68 (S), Hilltopfarm_64 (Y), Huphlepuuff_71 (S), JoieB_70 (S), Lilbit_67 (S), LittleLaf_69 (S), Marvin_65 (S), MosMoris_66 (S), Poise_69 (S), Pringar_68 (S), Raela_69 (S), RedRaider77_68 (S), Tesla_66 (S), Typha_64 (Y), VasuNzinga_68 (S),

Start 84:

- Found in 2 of 509 (0.4%) of genes in pham
- Manual Annotations of this start: 1 of 446
- Called 50.0% of time when present
- Phage (with cluster) where this start called: Lucky2013_115 (J),

Start 85:

- Found in 1 of 509 (0.2%) of genes in pham
- No Manual Annotations of this start.
- Called 100.0% of time when present
- Phage (with cluster) where this start called: Spartan_53 (ES),

Start 88:

- Found in 5 of 509 (1.0%) of genes in pham
- Manual Annotations of this start: 5 of 446
- Called 100.0% of time when present
- Phage (with cluster) where this start called: Azrael100_76 (V), Cosmo_77 (V), EniyanLRS_168 (V), MaryV_77 (V), Wildcat_77 (V),

Start 89:

- Found in 1 of 509 (0.2%) of genes in pham
- Manual Annotations of this start: 1 of 446
- Called 100.0% of time when present
- Phage (with cluster) where this start called: Kumao_62 (singleton),

Start 91:

- Found in 2 of 509 (0.4%) of genes in pham
- Manual Annotations of this start: 1 of 446
- Called 50.0% of time when present
- Phage (with cluster) where this start called: HokkenD_113 (J),

Start 93:

- Found in 17 of 509 (3.3%) of genes in pham
- Manual Annotations of this start: 8 of 446
- Called 70.6% of time when present
- Phage (with cluster) where this start called: Blarby_78 (F), DonTron_91 (CP), Fastidio_66 (F1), Grumio_93 (CP), Jabbawokkie_80 (F2), Jollymon_90 (CP), Makar_95 (CP), Mantra_62 (F1), Purplicious_92 (CP), Soos_87 (CP), Sting_90 (CP), Zapner_79 (F2),

Start 94:

- Found in 39 of 509 (7.7%) of genes in pham
- Manual Annotations of this start: 6 of 446
- Called 15.4% of time when present
- Phage (with cluster) where this start called: BigCheese_67 (L2), BobsGarage_67 (L2), Lewan_68 (L2), Nicholasp3_67 (L2), Underpass_58 (L2), Vetrix_67 (L2),

Start 95:

- Found in 157 of 509 (30.8%) of genes in pham
- Manual Annotations of this start: 149 of 446
- Called 98.1% of time when present

- Phage (with cluster) where this start called: Alexphander_69 (F1), AlpineSix_71 (F1), ArcusAngelus_67 (F1), Ardmore_57 (F1), Aubs_65 (F1), Avani_73 (F2), Batiatus_63 (F1), Beakin_66 (F1), BigPhil_62 (F1), Blexus_63 (F1), BlueCrab_66 (F1), BobaPhett_69 (F1), Bobi_69 (F1), Boomer_70 (F1), Brocalys_60 (F1), Brookers_63 (F1), Brushbloom_67 (F1), Burwell21_63 (F1), BuzzLyseyear_71 (F1), ByChance_58 (F1), Byougenkin_65 (F1), Cabrinians_66 (F1), CaptainTrips_63 (F1), Cerasum_62 (F1), Che8_70 (F1), Che9d_75 (F2), Cheesepuff_74 (F1), Chevrolet_70 (F1), Chuckly_68 (F1), Clifton_60 (F1), Coco12_65 (F1), Crumble_60 (F1), DRBy19_69 (F1), DaWorst_65 (F1), Daenerys_60 (F1), Demsculpinboyz_78 (F2), DillTech15_63 (F1), DoRead_69 (F1), DosHalletts_67 (F1), Doug_67 (F1), Eish_68 (F1), EleanorGeorge_67 (F1), Emma_67 (F1), Eradicator_58 (F1), Estave1_70 (F1), Fancypants_68 (F1), Firehouse51_68 (F1), FreddyB_66 (F1), GUmbe_63 (F1), Galactic_64 (F1), GigiOuiOui_61 (F1), Girr_63 (F1), Gorge_69 (F1), Grimmer_75 (F1), Guppsters_66 (F1), Hades_66 (F1), Hamulus_65 (F1), Harley_67 (F1), Ibhuesi_65 (F1), JalFarm20_78 (F1), James_69 (F1), Jant_69 (F1), Jinglebell_71 (F1), JoeyJr_61 (F1), Juice456_66 (F1), Juniper1_65 (F1), Karhdo_64 (F1), Kenuha5_63 (F1), Kersh_67 (F1), Kimberlium_70 (F1), Kingsley_63 (F1), Koella_59 (F1), Krakatau_62 (F1), KristaRAM_68 (F1), LastJedi_59 (F1), Leozinho_64 (F1), Leperchaun_58 (F1), LilMoolah_64 (F1), LittleShirley_65 (F1), Lizziana_71 (F1), Llama_70 (F1), LunaBlu_67 (F1), MadMen_65 (F1), Madiba_66 (F1), Mahavrat_62 (F1), Maravista_67 (F1), Marker_67 (F1), Martik_65 (F1), Mattes_69 (F1), MilleniumForce_68 (F1), MinionDave_64 (F1), Minnie_68 (F1), MisterCuddles_63 (F1), Modragons_69 (F1), Moonbeam_64 (F1), Mozy_75 (F1), MulchExplorer_69 (F1), Mutaforma13_71 (F1), Nivrat_62 (F1), NormanBulbieJr_65 (F1), Ochi17_69 (F1), OfUltron_71 (F1), Ogopogo_71 (F1), OlympiaSaint_67 (F1), OwlsT2W_65 (F1), PHappiness_61 (F1), PMC_62 (F1), Pacc40_59 (F1), PhesterPotato_65 (F1), Philus_69 (F1), PhilipPhlop_65 (F1), Pippy_64 (F1), Polka14_64 (F1), Pollywog_66 (F1), Priscilla_65 (F1), QuickMath_69 (F1), Radiance_64 (F1), Ramsey_64 (F1), Renaud18_75 (F4), RitaG_61 (F1), Rita_66 (F1), Rockne_66 (F1), RockyHorror_66 (F1), Royals2015_68 (F1), Ruby_61 (F1), Saal_67 (F1), Sandalphon_66 (F1), Sarma624_64 (F1), Seabastian_71 (F1), ShiLan_64 (F1), ShowerHandel_68 (F1), SiSi_63 (F1), Soul22_71 (F2), Spikelee_72 (F1), Spoonbill_63 (F1), Starcevich_65 (F1), SuperGrey_69 (F1), SwagPigglett_70 (F1), Tchotchke_64 (F1), ThetaBob_73 (F4), Topiatin_72 (F1), Totinger_65 (F1), Tweety_65 (F1), VRedHorse_65 (F1), Velveteen_61 (F1), Violac_66 (F1), Vivum_66 (F1), Wachhund_66 (F1), Whouxphf_62 (F1), XFactor_63 (F1), Yorick_64 (F1), Yoshi_81 (F2), Zerg_65 (F1), Zizzle_69 (F1),

Start 96:

- Found in 2 of 509 (0.4%) of genes in pham
- Manual Annotations of this start: 1 of 446
- Called 100.0% of time when present
- Phage (with cluster) where this start called: JrWilcox_102 (GL), ValentiniPuff_101 (GL),

Start 97:

- Found in 6 of 509 (1.2%) of genes in pham
- Manual Annotations of this start: 1 of 446
- Called 16.7% of time when present
- Phage (with cluster) where this start called: Keelan_96 (DP),

Start 100:

- Found in 10 of 509 (2.0%) of genes in pham

- Manual Annotations of this start: 3 of 446
- Called 70.0% of time when present
- Phage (with cluster) where this start called: Amo99_93 (CP), Catfish_49 (CU5), ColdSoup_93 (CP), KingstonB_93 (CP), Rabbitrun_72 (DU2), Stillion_92 (CP), Trax_71 (DU2),

Start 101:

- Found in 19 of 509 (3.7%) of genes in pham
- Manual Annotations of this start: 9 of 446
- Called 73.7% of time when present
- Phage (with cluster) where this start called: Appa_41 (GA), DelaGarza_58 (GF), Dropshot_41 (GA), Guzman_41 (GA), Lesiram_59 (GF), Losacky_42 (GA), Merry_(EC), PhillyJawn_42 (GA), Pickles13_40 (GA), Sunny_(EC), Sweetums_58 (GF), Teng_62 (GF), Winchester007_57 (GA), Wrackline_71 (GF),

Start 102:

- Found in 5 of 509 (1.0%) of genes in pham
- Manual Annotations of this start: 5 of 446
- Called 100.0% of time when present
- Phage (with cluster) where this start called: Cinna_52 (EI), Cressida_55 (EI), Matzah_54 (EI), MementoMori_53 (EI), Terij_52 (EI),

Start 104:

- Found in 1 of 509 (0.2%) of genes in pham
- Manual Annotations of this start: 1 of 446
- Called 100.0% of time when present
- Phage (with cluster) where this start called: Kozie_51 (EI),

Start 105:

- Found in 5 of 509 (1.0%) of genes in pham
- Manual Annotations of this start: 5 of 446
- Called 100.0% of time when present
- Phage (with cluster) where this start called: Aleemily_105 (DZ), Cafasso_107 (DZ), ModicumRichard_107 (DZ), Morgana_114 (DZ), ObLaDi_106 (DZ),

Start 106:

- Found in 2 of 509 (0.4%) of genes in pham
- Manual Annotations of this start: 2 of 446
- Called 100.0% of time when present
- Phage (with cluster) where this start called: BruhMoment_74 (AP3), RomansRevenge_72 (FT),

Start 107:

- Found in 1 of 509 (0.2%) of genes in pham
- Manual Annotations of this start: 1 of 446
- Called 100.0% of time when present
- Phage (with cluster) where this start called: Beagle_86 (AP2),

Start 108:

- Found in 20 of 509 (3.9%) of genes in pham
- Manual Annotations of this start: 14 of 446
- Called 100.0% of time when present

- Phage (with cluster) where this start called: AWGoat_61 (AP4), BetaFish_84 (AP2), Forrestell_84 (AP2), Kubulix_84 (AP2), MellowYellow_85 (AP2), Nikan_82 (AP2), NyleyClemson_84 (AP2), Odyssey395_85 (AP2), Ollypop_80 (AP2), PhuzzTulsa_82 (AP2), Pointis_81 (AP2), Pureglobe5_83 (AP2), RIPWilbur_83 (AP2), Ranunculus_78 (AP), RazzB_84 (AP2), Ren19_78 (AP2), Rizwana_65 (AP1), SilentRX_62 (AP4), Tank_65 (AP1), Wilde_67 (AP1),

Start 109:

- Found in 2 of 509 (0.4%) of genes in pham
- Manual Annotations of this start: 1 of 446
- Called 100.0% of time when present
- Phage (with cluster) where this start called: Colossa_115 (KA), VanLee_116 (KA),

Start 110:

- Found in 6 of 509 (1.2%) of genes in pham
- Manual Annotations of this start: 2 of 446
- Called 100.0% of time when present
- Phage (with cluster) where this start called: Bazzle_67 (L2), Douge_65 (L4), Douzhi_65 (L4), FarmResident_67 (L4), PYPDinur_63 (L4), Quby_65 (L4),

Start 111:

- Found in 212 of 509 (41.7%) of genes in pham
- Manual Annotations of this start: 180 of 446
- Called 96.7% of time when present
- Phage (with cluster) where this start called: 244_78 (E), ABCat_74 (E), Adnama_81 (E), Aegeus_71 (L5), Amao_77 (E), AmericanBeauty_81 (E), Argent26_81 (E), Asriel_76 (E), AvadaKedavra_66 (L1), BaboJay_74 (E), BadStone_74 (E), Balomoji_77 (E), Baoshan_66 (L2), Barbarian_76 (E), Bask21_77 (E), Baudelaire_71 (L5), Becksu_76 (E), Beem_125 (J), Bench_80 (E), BigBubba_77 (E), BilboSwaggins_75 (E), Bogg_77 (E), Breezona_67 (L2), Brewer_72 (E), BritBrat_66 (CY2), Bruin_74 (E), Buck_78 (E), Budgie_85 (E), BugsBunny_77 (E), Cactus_80 (E), CheeseTouch_74 (DN1), ChosenOne_77 (E), ChotaBhai_77 (E), ChutneyChips_63 (L4), Cjw1_77 (E), Claus_67 (L2), Command613_79 (E), Constella_107 (J), Contagion_73 (E), Cookies_74 (E), Crossroads_67 (L2), CrystalP_76 (E), Czystczon1_78 (E), Daikon_79 (E), Dallas_124 (J), DanBing_68 (L2), DoctorDiddles_76 (E), Dove_109 (J), DrDrey_77 (E), Dulcita_67 (M1), Dumbo_77 (E), Dusk_74 (E), Easy2Say_78 (E), Ecliptus_75 (DN), Elite2014_76 (E), Elph10_77 (E), Emmina_77 (E), Eureka_75 (E), FairyPath_77 (E), Filch_78 (E), Finemlucis_67 (L2), FireRed_81 (E), Flypotenuse_73 (E), FoghornLeghorn_71 (E), FreakyGoo_67 (M1), Fryberger_95 (DP), Gabriela_64 (L2), Gage_79 (E), Gardann_68 (L2), Gator_75 (E), Gemini_82 (E), Glaske16_67 (M1), Glexan_76 (E), Goku_75 (E), GoldenSpark_81 (E), Goldilocks_80 (E), GooberAzure_80 (E), Greep_81 (E), Guey18_100 (DP), GuuelaD_66 (L2), Hafay_69 (L2), HanKaySha_77 (E), Harella_77 (E), Henry_75 (E), Highbury_76 (E), Holt_82 (E), Hoonter_80 (E), Hopey_77 (E), Horus_72 (DN1), HufflyPuff_80 (E), IHOP_75 (E), Icee_78 (E), Inca_74 (E), Itos_66 (L2), Izel_67 (M1), JeTaimie_77 (E), JuicyJay_120 (J), Kahlid_67 (L2), Kanye_74 (E), Kimchi_81 (E), Kostya_77 (E), Kuwabara_72 (DN4), LilDestine_67 (L2), Lilac_79 (E), Lilizi_78 (E), Lilpickle_76 (E), LitninMcQueen_71 (DN1), Loadrie_66 (L2), Lynnae_69 (L2), MISSy_78 (E), MPhalcon_78 (E), MadamMonkfish_77 (E), Manda_78 (E), Marshmallow_75 (E), Maxxinista_79 (E), MiaZeal_118 (J), Miley16_67 (L2), Mindy_76 (E), Miniwave_72 (E), Misfit_78 (E), MkaliMitinis3_68 (L2), Moldemort_80 (E), MollyToe_72 (E), Mosby_73 (E), Murica_80 (E), Murphy_77 (E), Myrale_77 (E), Nala_79 (E), NelitzaMV_75 (E), NihilNomen_125 (J), Nimrod_78 (E), NoSleep_78

(E), NonchalantPear_75 (E), ODay_78 (DN), OrionPax_76 (E), OverPar_69 (L2), PaddyBaddy_77 (E), Palpatine_79 (E), Paperbeatsrock_76 (E), Pat3_75 (E), Petra64142_81 (E), Phaja_75 (E), PhaoMing_57 (UNK), Pharsalus_74 (E), PhatBacter_81 (E), Phaux_79 (E), Phoebus_124 (J), Phrux_74 (E), Policronamos_80 (E), Porky_76 (E), Ptowny_74 (E), Pumpkin_80 (E), Qualification_78 (E), Rakim_78 (E), Rimmer_78 (E), RiverMonster_77 (E), Ronaldo_98 (DP), Rose5_66 (L1), Rossetti_69 (L2), Rumpelstiltskin_66 (L2), Saints25_76 (E), Sarshaun_68 (L2), Sassay_72 (E), ShamWow_77 (E), Simpliphy_76 (E), SirDuracell_76 (E), SophKB_74 (E), Sotrice96_78 (E), Spooky_68 (DN2), Squiddly_73 (DN2), Stank_80 (E), Stark_78 (E), StellaBean_75 (E), StolenFromERC_80 (E), StormChicken_79 (E), TBrady12_80 (E), Tarkin_76 (E), TeamEdward_79 (E), TeardropMSU_73 (E), Teaspoon_78 (E), Terminus_80 (E), Thibault_106 (J), Thimble_78 (E), Thresher_79 (E), Tomaszewski_72 (E), Toto_75 (E), Tourach_66 (L2), Traaww1_73 (E), Tuco_78 (E), Tyson_67 (L1), Ukulele_72 (E), Volt_99 (DP), Wamburgxpress_66 (L1), Wiggin_79 (E), Wigglewobble_67 (L2), Wilder_68 (L2), Willez_72 (E), Winky_67 (L2), Wyatt2_67 (L1), Xandras_76 (E), YassJohnny_74 (E), Youngblood_80 (E), Zakai_68 (L2), ZhongYanYuan_66 (L2), xkcd_80 (E),

Start 112:

- Found in 7 of 509 (1.4%) of genes in pham
- Manual Annotations of this start: 5 of 446
- Called 100.0% of time when present
- Phage (with cluster) where this start called: Altostratus_54 (FS), Hum25_55 (FQ), Khuang_54 (FS), Merpity_54 (FQ), MrSmee_53 (FQ), Pitbull_53 (FQ), Skitty_47 (FQ),

Start 116:

- Found in 13 of 509 (2.6%) of genes in pham
- Manual Annotations of this start: 1 of 446
- Called 7.7% of time when present
- Phage (with cluster) where this start called: Inventum_61 (F1),

Start 118:

- Found in 2 of 509 (0.4%) of genes in pham
- Manual Annotations of this start: 1 of 446
- Called 50.0% of time when present
- Phage (with cluster) where this start called: JustASigh_98 (AH),

Start 120:

- Found in 39 of 509 (7.7%) of genes in pham
- Manual Annotations of this start: 2 of 446
- Called 5.1% of time when present
- Phage (with cluster) where this start called: DogYard_84 (AP2), MiniMac_69 (L3),

Summary by clusters:

There are 43 clusters represented in this pham: DN, FQ, singleton, FS, FT, AP2, AP3, UNK, AP1, AP4, M1, EI, DP, CU5, CP, DN4, DN1, DN2, DU2, CY2, V, E, F, AH, J, KA, EC, GF, L4, L5, L2, L3, GA, L1, Y, GL, ES, F1, F2, F4, AP, S, DZ,

Info for manual annotations of cluster AH:

- Start number 118 was manually annotated 1 time for cluster AH.

Info for manual annotations of cluster AP:

- Start number 108 was manually annotated 1 time for cluster AP.

Info for manual annotations of cluster AP1:

- Start number 108 was manually annotated 3 times for cluster AP1.

Info for manual annotations of cluster AP2:

- Start number 107 was manually annotated 1 time for cluster AP2.
- Start number 108 was manually annotated 8 times for cluster AP2.
- Start number 120 was manually annotated 1 time for cluster AP2.

Info for manual annotations of cluster AP3:

- Start number 106 was manually annotated 1 time for cluster AP3.

Info for manual annotations of cluster AP4:

- Start number 108 was manually annotated 2 times for cluster AP4.

Info for manual annotations of cluster CP:

- Start number 77 was manually annotated 1 time for cluster CP.
- Start number 93 was manually annotated 4 times for cluster CP.

Info for manual annotations of cluster CU5:

- Start number 100 was manually annotated 1 time for cluster CU5.

Info for manual annotations of cluster CY2:

- Start number 111 was manually annotated 1 time for cluster CY2.

Info for manual annotations of cluster DN:

- Start number 111 was manually annotated 2 times for cluster DN.

Info for manual annotations of cluster DN1:

- Start number 111 was manually annotated 3 times for cluster DN1.

Info for manual annotations of cluster DN2:

- Start number 111 was manually annotated 2 times for cluster DN2.

Info for manual annotations of cluster DN4:

- Start number 111 was manually annotated 1 time for cluster DN4.

Info for manual annotations of cluster DP:

- Start number 97 was manually annotated 1 time for cluster DP.
- Start number 111 was manually annotated 4 times for cluster DP.

Info for manual annotations of cluster DU2:

- Start number 100 was manually annotated 2 times for cluster DU2.

Info for manual annotations of cluster DZ:

- Start number 105 was manually annotated 5 times for cluster DZ.

Info for manual annotations of cluster E:

- Start number 111 was manually annotated 127 times for cluster E.

Info for manual annotations of cluster EC:

- Start number 101 was manually annotated 2 times for cluster EC.

Info for manual annotations of cluster EI:

- Start number 102 was manually annotated 5 times for cluster EI.
- Start number 104 was manually annotated 1 time for cluster EI.

Info for manual annotations of cluster F1:

- Start number 93 was manually annotated 2 times for cluster F1.
- Start number 95 was manually annotated 142 times for cluster F1.
- Start number 116 was manually annotated 1 time for cluster F1.

Info for manual annotations of cluster F2:

- Start number 93 was manually annotated 2 times for cluster F2.
- Start number 95 was manually annotated 5 times for cluster F2.

Info for manual annotations of cluster F4:

- Start number 95 was manually annotated 2 times for cluster F4.

Info for manual annotations of cluster FQ:

- Start number 112 was manually annotated 4 times for cluster FQ.

Info for manual annotations of cluster FS:

- Start number 112 was manually annotated 1 time for cluster FS.

Info for manual annotations of cluster FT:

- Start number 106 was manually annotated 1 time for cluster FT.

Info for manual annotations of cluster GA:

- Start number 101 was manually annotated 4 times for cluster GA.

Info for manual annotations of cluster GF:

- Start number 101 was manually annotated 3 times for cluster GF.

Info for manual annotations of cluster GL:

- Start number 96 was manually annotated 1 time for cluster GL.

Info for manual annotations of cluster J:

- Start number 84 was manually annotated 1 time for cluster J.
- Start number 91 was manually annotated 1 time for cluster J.
- Start number 111 was manually annotated 9 times for cluster J.

Info for manual annotations of cluster KA:

- Start number 109 was manually annotated 1 time for cluster KA.

Info for manual annotations of cluster L1:

- Start number 111 was manually annotated 5 times for cluster L1.

Info for manual annotations of cluster L2:

- Start number 73 was manually annotated 1 time for cluster L2.
- Start number 94 was manually annotated 6 times for cluster L2.
- Start number 110 was manually annotated 1 time for cluster L2.
- Start number 111 was manually annotated 20 times for cluster L2.

Info for manual annotations of cluster L3:

- Start number 73 was manually annotated 15 times for cluster L3.
- Start number 120 was manually annotated 1 time for cluster L3.

Info for manual annotations of cluster L4:

- Start number 110 was manually annotated 1 time for cluster L4.

Info for manual annotations of cluster L5:

- Start number 111 was manually annotated 2 times for cluster L5.

Info for manual annotations of cluster M1:

- Start number 111 was manually annotated 4 times for cluster M1.

Info for manual annotations of cluster S:

- Start number 81 was manually annotated 19 times for cluster S.

Info for manual annotations of cluster V:

- Start number 88 was manually annotated 5 times for cluster V.

Info for manual annotations of cluster Y:

- Start number 81 was manually annotated 5 times for cluster Y.

Gene Information:

Gene: 244_78 Start: 48609, Stop: 48926, Start Num: 111

Candidate Starts for 244_78:

(37, 48426), (Start: 111 @48609 has 180 MA's), (146, 48750),

Gene: ABCat_74 Start: 48962, Stop: 49279, Start Num: 111

Candidate Starts for ABCat_74:

(37, 48779), (Start: 111 @48962 has 180 MA's), (146, 49103),

Gene: AWGoat_61 Start: 44482, Stop: 44168, Start Num: 108

Candidate Starts for AWGoat_61:

(Start: 108 @44482 has 14 MA's), (144, 44356), (179, 44224), (184, 44215),

Gene: Adnama_81 Start: 48988, Stop: 49305, Start Num: 111

Candidate Starts for Adnama_81:

(37, 48805), (Start: 111 @48988 has 180 MA's), (146, 49129),

Gene: Aegeus_71 Start: 46495, Stop: 46824, Start Num: 111

Candidate Starts for Aegeus_71:

(Start: 111 @46495 has 180 MA's), (134, 46579), (164, 46717), (173, 46744), (175, 46750), (185, 46774), (198, 46813),

Gene: Aleemily_105 Start: 59933, Stop: 60322, Start Num: 105

Candidate Starts for Aleemily_105:

(7, 59546), (8, 59558), (26, 59657), (Start: 105 @59933 has 5 MA's), (121, 59966), (124, 59987), (158, 60134), (166, 60164), (175, 60188),

Gene: Alexphander_69 Start: 42282, Stop: 42644, Start Num: 95

Candidate Starts for Alexphander_69:

(Start: 95 @42282 has 149 MA's), (184, 42582), (201, 42627),

Gene: AlpineSix_71 Start: 45319, Stop: 45681, Start Num: 95

Candidate Starts for AlpineSix_71:

(Start: 95 @45319 has 149 MA's), (154, 45523), (184, 45619), (201, 45664),

Gene: Altostratus_54 Start: 31416, Stop: 31790, Start Num: 112

Candidate Starts for Altostratus_54:

(Start: 112 @31416 has 5 MA's), (147, 31569), (200, 31749), (205, 31761),

Gene: Amao_77 Start: 48382, Stop: 48699, Start Num: 111

Candidate Starts for Amao_77:

(37, 48199), (Start: 111 @48382 has 180 MA's), (Start: 120 @48406 has 2 MA's), (146, 48523),

Gene: AmericanBeauty_81 Start: 49131, Stop: 49448, Start Num: 111

Candidate Starts for AmericanBeauty_81:

(37, 48948), (Start: 111 @49131 has 180 MA's), (146, 49272),

Gene: Amo99_93 Start: 57523, Stop: 57891, Start Num: 100

Candidate Starts for Amo99_93:

(30, 57298), (Start: 93 @57511 has 8 MA's), (Start: 100 @57523 has 3 MA's), (169, 57772), (174, 57781), (181, 57805), (186, 57811), (202, 57853),

Gene: Appa_41 Start: 25620, Stop: 25997, Start Num: 101

Candidate Starts for Appa_41:

(Start: 101 @25620 has 9 MA's), (125, 25683), (173, 25884), (175, 25890), (183, 25911), (210, 25986),

Gene: Archie_67 Start: 46551, Stop: 46892, Start Num: 73

Candidate Starts for Archie_67:

(Start: 73 @46551 has 16 MA's), (145, 46698),

Gene: ArcusAngelus_67 Start: 42632, Stop: 42994, Start Num: 95

Candidate Starts for ArcusAngelus_67:

(Start: 95 @42632 has 149 MA's), (145, 42791), (184, 42932), (188, 42935), (201, 42977),

Gene: Ardmore_57 Start: 40049, Stop: 40405, Start Num: 95

Candidate Starts for Ardmore_57:

(Start: 95 @40049 has 149 MA's), (184, 40349), (188, 40352),

Gene: Argent26_81 Start: 48769, Stop: 49086, Start Num: 111

Candidate Starts for Argent26_81:

(37, 48586), (Start: 111 @48769 has 180 MA's), (146, 48910),

Gene: Asriel_76 Start: 47325, Stop: 47642, Start Num: 111

Candidate Starts for Asriel_76:

(37, 47142), (Start: 111 @47325 has 180 MA's), (146, 47466),

Gene: Aubs_65 Start: 42690, Stop: 43052, Start Num: 95

Candidate Starts for Aubs_65:

(48, 42573), (Start: 95 @42690 has 149 MA's), (145, 42849), (184, 42990), (201, 43035),

Gene: AuntGwenStacy_65 Start: 45161, Stop: 45511, Start Num: 81

Candidate Starts for AuntGwenStacy_65:

(55, 45089), (68, 45119), (Start: 81 @45161 has 24 MA's), (92, 45176), (Start: 101 @45194 has 9 MA's), (123, 45242), (124, 45248), (132, 45284), (154, 45368), (155, 45374), (161, 45404), (173, 45437),

Gene: AvadaKedavra_66 Start: 45153, Stop: 45521, Start Num: 111

Candidate Starts for AvadaKedavra_66:

(Start: 111 @45153 has 180 MA's), (122, 45180), (135, 45249), (140, 45270), (146, 45294), (164, 45375), (190, 45438), (212, 45513),

Gene: Avani_73 Start: 42666, Stop: 43022, Start Num: 95

Candidate Starts for Avani_73:

(Start: 95 @42666 has 149 MA's), (184, 42966), (188, 42969),

Gene: Azrael100_76 Start: 48787, Stop: 49152, Start Num: 88

Candidate Starts for Azrael100_76:

(59, 48724), (Start: 88 @48787 has 5 MA's), (151, 48979), (185, 49099), (195, 49132),

Gene: BaboJay_74 Start: 48162, Stop: 48479, Start Num: 111

Candidate Starts for BaboJay_74:

(37, 47979), (Start: 111 @48162 has 180 MA's), (146, 48303),

Gene: BadStone_74 Start: 48531, Stop: 48848, Start Num: 111

Candidate Starts for BadStone_74:

(37, 48348), (Start: 111 @48531 has 180 MA's), (146, 48672),

Gene: Balomoji_77 Start: 49092, Stop: 49409, Start Num: 111

Candidate Starts for Balomoji_77:

(37, 48909), (Start: 111 @49092 has 180 MA's), (146, 49233),

Gene: Baoshan_66 Start: 46306, Stop: 46692, Start Num: 111

Candidate Starts for Baoshan_66:

(36, 46120), (44, 46153), (74, 46249), (Start: 94 @46288 has 6 MA's), (Start: 111 @46306 has 180 MA's), (140, 46423), (147, 46450), (164, 46528), (213, 46675),

Gene: Barbarian_76 Start: 47325, Stop: 47642, Start Num: 111

Candidate Starts for Barbarian_76:

(37, 47142), (Start: 111 @47325 has 180 MA's), (146, 47466),

Gene: Bask21_77 Start: 47945, Stop: 48262, Start Num: 111

Candidate Starts for Bask21_77:

(37, 47762), (Start: 111 @47945 has 180 MA's), (Start: 120 @47969 has 2 MA's), (146, 48086),

Gene: Batiatus_63 Start: 41925, Stop: 42281, Start Num: 95

Candidate Starts for Batiatus_63:

(Start: 95 @41925 has 149 MA's), (184, 42225), (188, 42228),

Gene: Baudelaire_71 Start: 46495, Stop: 46824, Start Num: 111

Candidate Starts for Baudelaire_71:

(Start: 111 @46495 has 180 MA's), (134, 46579), (164, 46717), (173, 46744), (175, 46750), (185, 46774), (198, 46813),

Gene: Bazzle_67 Start: 46701, Stop: 47099, Start Num: 110

Candidate Starts for Bazzle_67:

(Start: 110 @46701 has 2 MA's), (140, 46818), (147, 46845), (164, 46923), (175, 46956), (213, 47070),

Gene: Beagle_86 Start: 50592, Stop: 50260, Start Num: 107

Candidate Starts for Beagle_86:

(Start: 107 @50592 has 1 MA's), (122, 50559), (148, 50442), (154, 50412), (157, 50397), (159, 50382), (173, 50340), (175, 50334), (179, 50322), (184, 50313), (192, 50289),

Gene: Beakin_66 Start: 41229, Stop: 41591, Start Num: 95

Candidate Starts for Beakin_66:

(Start: 95 @41229 has 149 MA's), (145, 41388), (184, 41529), (188, 41532), (201, 41574),

Gene: Becksu_76 Start: 49161, Stop: 49478, Start Num: 111

Candidate Starts for Becksu_76:

(37, 48978), (Start: 111 @49161 has 180 MA's), (146, 49302),

Gene: Beelzebub_73 Start: 40109, Stop: 40462, Start Num: 81

Candidate Starts for Beelzebub_73:

(Start: 81 @40109 has 24 MA's), (98, 40136), (141, 40271), (150, 40301), (160, 40352), (162, 40358), (166, 40373), (175, 40391), (182, 40415), (184, 40418),

Gene: Beem_125 Start: 69590, Stop: 69922, Start Num: 111

Candidate Starts for Beem_125:

(Start: 111 @69590 has 180 MA's), (138, 69701), (142, 69725), (194, 69905),

Gene: Bellis_66 Start: 46470, Stop: 46802, Start Num: 73

Candidate Starts for Bellis_66:

(13, 46194), (15, 46206), (18, 46215), (23, 46239), (32, 46317), (41, 46365), (Start: 73 @46470 has 16 MA's), (145, 46614), (164, 46698), (175, 46731),

Gene: Bench_80 Start: 48629, Stop: 48946, Start Num: 111

Candidate Starts for Bench_80:

(37, 48446), (Start: 111 @48629 has 180 MA's), (146, 48770),

Gene: BetaFish_84 Start: 50810, Stop: 50484, Start Num: 108

Candidate Starts for BetaFish_84:

(Start: 108 @50810 has 14 MA's), (Start: 120 @50780 has 2 MA's), (122, 50777), (135, 50711), (150, 50666), (154, 50642), (165, 50588), (179, 50552), (203, 50501),

Gene: BigBubba_77 Start: 48341, Stop: 48658, Start Num: 111

Candidate Starts for BigBubba_77:

(37, 48158), (Start: 111 @48341 has 180 MA's), (146, 48482),

Gene: BigCheese_67 Start: 46345, Stop: 46764, Start Num: 94

Candidate Starts for BigCheese_67:

(25, 46084), (36, 46177), (Start: 94 @46345 has 6 MA's), (Start: 111 @46363 has 180 MA's), (140, 46480), (147, 46507), (164, 46585), (213, 46732),

Gene: BigPhil_62 Start: 39148, Stop: 39510, Start Num: 95

Candidate Starts for BigPhil_62:

(Start: 95 @39148 has 149 MA's), (145, 39307), (154, 39352), (184, 39448), (188, 39451), (201, 39493),

Gene: BilboSwaggins_75 Start: 48970, Stop: 49287, Start Num: 111

Candidate Starts for BilboSwaggins_75:

(37, 48787), (Start: 111 @48970 has 180 MA's), (146, 49111),

Gene: Bipper_62 Start: 43632, Stop: 43982, Start Num: 81

Candidate Starts for Bipper_62:

(22, 43371), (35, 43479), (38, 43488), (55, 43560), (68, 43590), (Start: 81 @43632 has 24 MA's), (92, 43647), (99, 43662), (113, 43680), (123, 43713), (132, 43755), (159, 43869), (185, 43935),

Gene: Blackbeetle_69 Start: 39121, Stop: 39474, Start Num: 81

Candidate Starts for Blackbeetle_69:

(Start: 81 @39121 has 24 MA's), (98, 39148), (141, 39283), (150, 39313), (160, 39364), (162, 39370), (166, 39385), (175, 39403), (182, 39427), (184, 39430),

Gene: Blarby_78 Start: 44162, Stop: 44503, Start Num: 93

Candidate Starts for Blarby_78:

(83, 44147), (Start: 93 @44162 has 8 MA's), (184, 44462), (188, 44465),

Gene: Blexus_63 Start: 42819, Stop: 43181, Start Num: 95

Candidate Starts for Blexus_63:

(Start: 95 @42819 has 149 MA's), (145, 42978), (184, 43119), (201, 43164),

Gene: BlueCrab_66 Start: 43528, Stop: 43884, Start Num: 95

Candidate Starts for BlueCrab_66:

(Start: 95 @43528 has 149 MA's), (149, 43702), (184, 43828),

Gene: BobaPhett_69 Start: 45114, Stop: 45476, Start Num: 95

Candidate Starts for BobaPhett_69:

(Start: 95 @45114 has 149 MA's), (145, 45273), (149, 45288), (184, 45414), (201, 45459),

Gene: Bobi_69 Start: 43528, Stop: 43884, Start Num: 95

Candidate Starts for Bobi_69:

(Start: 95 @43528 has 149 MA's), (184, 43828), (188, 43831),

Gene: BobsGarage_67 Start: 46345, Stop: 46764, Start Num: 94

Candidate Starts for BobsGarage_67:

(25, 46084), (36, 46177), (Start: 94 @46345 has 6 MA's), (Start: 111 @46363 has 180 MA's), (140, 46480), (147, 46507), (164, 46585), (213, 46732),

Gene: Bogg_77 Start: 47908, Stop: 48225, Start Num: 111

Candidate Starts for Bogg_77:

(37, 47725), (Start: 111 @47908 has 180 MA's), (146, 48049),

Gene: Boomer_70 Start: 44186, Stop: 44542, Start Num: 95

Candidate Starts for Boomer_70:

(Start: 95 @44186 has 149 MA's), (184, 44486), (188, 44489),

Gene: BourbonZero_66 Start: 46515, Stop: 46847, Start Num: 73

Candidate Starts for BourbonZero_66:

(41, 46410), (Start: 73 @46515 has 16 MA's), (140, 46638), (147, 46665), (164, 46743), (177, 46779), (193, 46824),

Gene: Breezona_67 Start: 46363, Stop: 46764, Start Num: 111

Candidate Starts for Breezona_67:

(25, 46084), (36, 46177), (Start: 94 @46345 has 6 MA's), (Start: 111 @46363 has 180 MA's), (140, 46480), (147, 46507), (164, 46585), (213, 46732),

Gene: Brewer_72 Start: 47431, Stop: 47748, Start Num: 111

Candidate Starts for Brewer_72:

(37, 47248), (Start: 111 @47431 has 180 MA's), (146, 47572),

Gene: BritBrat_66 Start: 43849, Stop: 44178, Start Num: 111

Candidate Starts for BritBrat_66:

(54, 43735), (90, 43825), (Start: 111 @43849 has 180 MA's), (140, 43963), (145, 43984), (164, 44068), (171, 44092), (195, 44158), (199, 44170),

Gene: Brocalys_60 Start: 39296, Stop: 39658, Start Num: 95

Candidate Starts for Brocalys_60:

(48, 39179), (Start: 95 @39296 has 149 MA's), (145, 39455), (184, 39596), (201, 39641),

Gene: Brookers_63 Start: 42099, Stop: 42461, Start Num: 95

Candidate Starts for Brookers_63:

(Start: 95 @42099 has 149 MA's), (145, 42258), (154, 42303), (184, 42399), (188, 42402), (201, 42444),

Gene: BruhMoment_74 Start: 49610, Stop: 49293, Start Num: 106

Candidate Starts for BruhMoment_74:

(Start: 106 @49610 has 2 MA's), (135, 49508), (148, 49469), (179, 49349),

Gene: Bruin_74 Start: 47505, Stop: 47822, Start Num: 111

Candidate Starts for Bruin_74:

(37, 47322), (Start: 111 @47505 has 180 MA's), (146, 47646),

Gene: Brushbloom_67 Start: 42857, Stop: 43213, Start Num: 95

Candidate Starts for Brushbloom_67:

(Start: 95 @42857 has 149 MA's), (184, 43157), (188, 43160),

Gene: Buck_78 Start: 49210, Stop: 49527, Start Num: 111

Candidate Starts for Buck_78:

(37, 49027), (Start: 111 @49210 has 180 MA's), (146, 49351),

Gene: Budgie_85 Start: 49000, Stop: 49317, Start Num: 111

Candidate Starts for Budgie_85:

(1, 48439), (2, 48445), (3, 48532), (37, 48817), (Start: 111 @49000 has 180 MA's), (Start: 120 @49024 has 2 MA's), (146, 49141),

Gene: BugsBunny_77 Start: 49037, Stop: 49354, Start Num: 111

Candidate Starts for BugsBunny_77:

(37, 48854), (Start: 111 @49037 has 180 MA's), (146, 49178),

Gene: Burwell21_63 Start: 42397, Stop: 42759, Start Num: 95

Candidate Starts for Burwell21_63:

(48, 42280), (Start: 95 @42397 has 149 MA's), (145, 42556), (184, 42697), (201, 42742),

Gene: BuzzLyseyear_71 Start: 43599, Stop: 43961, Start Num: 95

Candidate Starts for BuzzLyseyear_71:

(Start: 95 @43599 has 149 MA's), (145, 43758), (184, 43899), (188, 43902), (201, 43944),

Gene: ByChance_58 Start: 38456, Stop: 38818, Start Num: 95

Candidate Starts for ByChance_58:

(Start: 95 @38456 has 149 MA's), (145, 38615), (149, 38630), (184, 38756), (201, 38801),

Gene: Byougenkin_65 Start: 42188, Stop: 42544, Start Num: 95

Candidate Starts for Byougenkin_65:

(Start: 95 @42188 has 149 MA's), (184, 42488), (188, 42491),

Gene: Cabrinians_66 Start: 42475, Stop: 42837, Start Num: 95

Candidate Starts for Cabrinians_66:

(Start: 95 @42475 has 149 MA's), (149, 42649), (184, 42775), (201, 42820),

Gene: Cactus_80 Start: 47986, Stop: 48303, Start Num: 111

Candidate Starts for Cactus_80:

(37, 47803), (Start: 111 @47986 has 180 MA's), (146, 48127),

Gene: Cafasso_107 Start: 60484, Stop: 60873, Start Num: 105

Candidate Starts for Cafasso_107:

(7, 60097), (8, 60109), (Start: 105 @60484 has 5 MA's), (121, 60517), (124, 60538), (158, 60685), (166, 60715),

Gene: Caprice_64 Start: 39435, Stop: 39788, Start Num: 81

Candidate Starts for Caprice_64:

(Start: 81 @39435 has 24 MA's), (98, 39462), (141, 39597), (150, 39627), (160, 39678), (162, 39684), (166, 39699), (175, 39717), (182, 39741), (184, 39744),

Gene: CaptainTrips_63 Start: 42210, Stop: 42572, Start Num: 95

Candidate Starts for CaptainTrips_63:

(48, 42093), (Start: 95 @42210 has 149 MA's), (145, 42369), (184, 42510), (201, 42555),

Gene: Catfish_49 Start: 34051, Stop: 34401, Start Num: 100

Candidate Starts for Catfish_49:

(Start: 100 @34051 has 3 MA's), (117, 34084), (137, 34174), (143, 34198), (173, 34324), (196, 34384),

Gene: Cerasum_62 Start: 39166, Stop: 39528, Start Num: 95

Candidate Starts for Cerasum_62:

(Start: 95 @39166 has 149 MA's), (145, 39325), (154, 39370), (184, 39466), (188, 39469), (201, 39511),

Gene: Che8_70 Start: 45095, Stop: 45457, Start Num: 95

Candidate Starts for Che8_70:

(Start: 95 @45095 has 149 MA's), (145, 45254), (184, 45395), (188, 45398), (201, 45440),

Gene: Che9d_75 Start: 42864, Stop: 43220, Start Num: 95

Candidate Starts for Che9d_75:

(Start: 95 @42864 has 149 MA's), (145, 43023), (184, 43164), (188, 43167),

Gene: CheeseTouch_74 Start: 39429, Stop: 39758, Start Num: 111
Candidate Starts for CheeseTouch_74:
(Start: 111 @39429 has 180 MA's), (140, 39543), (145, 39564), (164, 39648), (171, 39672), (189, 39711), (195, 39738), (199, 39750),

Gene: CheesePuff_74 Start: 44480, Stop: 44842, Start Num: 95
Candidate Starts for CheesePuff_74:
(Start: 95 @44480 has 149 MA's), (145, 44639), (184, 44780), (201, 44825),

Gene: Chevrolet_70 Start: 42633, Stop: 42995, Start Num: 95
Candidate Starts for Chevrolet_70:
(Start: 95 @42633 has 149 MA's), (184, 42933), (188, 42936), (201, 42978),

Gene: ChosenOne_77 Start: 47986, Stop: 48303, Start Num: 111
Candidate Starts for ChosenOne_77:
(37, 47803), (Start: 111 @47986 has 180 MA's), (146, 48127),

Gene: ChotaBhai_77 Start: 48310, Stop: 48627, Start Num: 111
Candidate Starts for ChotaBhai_77:
(37, 48127), (Start: 111 @48310 has 180 MA's), (Start: 120 @48334 has 2 MA's), (146, 48451),

Gene: Chuckly_68 Start: 42655, Stop: 43011, Start Num: 95
Candidate Starts for Chuckly_68:
(Start: 95 @42655 has 149 MA's), (184, 42955), (188, 42958),

Gene: ChutneyChips_63 Start: 45296, Stop: 45694, Start Num: 111
Candidate Starts for ChutneyChips_63:
(12, 44936), (16, 44954), (20, 44972), (27, 45002), (32, 45062), (Start: 95 @45263 has 149 MA's), (Start: 111 @45296 has 180 MA's), (140, 45413), (147, 45440), (193, 45599), (213, 45665),

Gene: Cinna_52 Start: 36948, Stop: 37283, Start Num: 102
Candidate Starts for Cinna_52:
(69, 36891), (Start: 94 @36936 has 6 MA's), (Start: 97 @36939 has 1 MA's), (Start: 102 @36948 has 5 MA's), (Start: 116 @36975 has 1 MA's), (140, 37083), (156, 37158), (164, 37188), (170, 37209), (186, 37248),

Gene: Cjw1_77 Start: 49683, Stop: 50000, Start Num: 111
Candidate Starts for Cjw1_77:
(37, 49500), (Start: 111 @49683 has 180 MA's), (146, 49824),

Gene: Clarkson_70 Start: 39837, Stop: 40190, Start Num: 81
Candidate Starts for Clarkson_70:
(Start: 81 @39837 has 24 MA's), (98, 39864), (141, 39999), (150, 40029), (160, 40080), (162, 40086), (166, 40101), (175, 40119), (182, 40143), (184, 40146),

Gene: Claus_67 Start: 46444, Stop: 46830, Start Num: 111
Candidate Starts for Claus_67:
(36, 46258), (74, 46387), (Start: 94 @46426 has 6 MA's), (Start: 111 @46444 has 180 MA's), (140, 46561), (147, 46588), (164, 46666), (213, 46813),

Gene: Clautastrophe_65 Start: 46467, Stop: 46799, Start Num: 73
Candidate Starts for Clautastrophe_65:

(13, 46191), (15, 46203), (18, 46212), (23, 46236), (32, 46314), (41, 46362), (Start: 73 @46467 has 16 MA's), (145, 46611), (164, 46695), (175, 46728),

Gene: Clawz_89 Start: 57153, Stop: 57563, Start Num: 77

Candidate Starts for Clawz_89:

(57, 57102), (61, 57108), (62, 57114), (70, 57126), (Start: 77 @57153 has 1 MA's), (Start: 93 @57183 has 8 MA's), (169, 57444), (174, 57453), (200, 57522), (207, 57540),

Gene: Clifton_60 Start: 39647, Stop: 40009, Start Num: 95

Candidate Starts for Clifton_60:

(48, 39530), (Start: 95 @39647 has 149 MA's), (145, 39806), (184, 39947), (201, 39992),

Gene: Coco12_65 Start: 43223, Stop: 43585, Start Num: 95

Candidate Starts for Coco12_65:

(Start: 95 @43223 has 149 MA's), (145, 43382), (154, 43427), (184, 43523), (188, 43526), (201, 43568),

Gene: ColdSoup_93 Start: 57604, Stop: 57972, Start Num: 100

Candidate Starts for ColdSoup_93:

(30, 57379), (Start: 93 @57592 has 8 MA's), (Start: 100 @57604 has 3 MA's), (169, 57853), (174, 57862), (181, 57886), (186, 57892), (202, 57934),

Gene: Colossa_115 Start: 60533, Stop: 60895, Start Num: 109

Candidate Starts for Colossa_115:

(Start: 109 @60533 has 1 MA's), (162, 60746), (173, 60773), (184, 60800), (192, 60824), (208, 60863),

Gene: Command613_79 Start: 49025, Stop: 49342, Start Num: 111

Candidate Starts for Command613_79:

(37, 48842), (Start: 111 @49025 has 180 MA's), (146, 49166),

Gene: Constella_107 Start: 63055, Stop: 63387, Start Num: 111

Candidate Starts for Constella_107:

(Start: 111 @63055 has 180 MA's), (138, 63166), (142, 63190), (194, 63370),

Gene: Contagion_73 Start: 47786, Stop: 48103, Start Num: 111

Candidate Starts for Contagion_73:

(37, 47603), (Start: 111 @47786 has 180 MA's), (146, 47927),

Gene: Cookies_74 Start: 48167, Stop: 48484, Start Num: 111

Candidate Starts for Cookies_74:

(37, 47984), (Start: 111 @48167 has 180 MA's), (Start: 120 @48191 has 2 MA's), (146, 48308),

Gene: Corazon_67 Start: 40031, Stop: 40384, Start Num: 81

Candidate Starts for Corazon_67:

(Start: 81 @40031 has 24 MA's), (98, 40058), (141, 40193), (150, 40223), (160, 40274), (162, 40280), (166, 40295), (175, 40313), (182, 40337), (184, 40340),

Gene: Cosmo_77 Start: 48788, Stop: 49153, Start Num: 88

Candidate Starts for Cosmo_77:

(59, 48725), (Start: 88 @48788 has 5 MA's), (151, 48980), (185, 49100), (195, 49133),

Gene: Cracklewink_62 Start: 43613, Stop: 43963, Start Num: 81

Candidate Starts for Cracklewink_62:

(22, 43352), (35, 43460), (38, 43469), (55, 43541), (68, 43571), (Start: 81 @43613 has 24 MA's), (92, 43628), (113, 43661), (123, 43694), (132, 43736), (159, 43850), (185, 43916),

Gene: Cressida_55 Start: 36599, Stop: 36934, Start Num: 102

Candidate Starts for Cressida_55:

(9, 36272), (10, 36275), (11, 36281), (17, 36305), (19, 36314), (69, 36542), (Start: 94 @36587 has 6 MA's), (Start: 97 @36590 has 1 MA's), (Start: 102 @36599 has 5 MA's), (Start: 116 @36626 has 1 MA's), (136, 36716), (140, 36734), (156, 36809), (164, 36839), (173, 36866),

Gene: Crossroads_67 Start: 46441, Stop: 46839, Start Num: 111

Candidate Starts for Crossroads_67:

(25, 46162), (36, 46255), (Start: 94 @46423 has 6 MA's), (Start: 111 @46441 has 180 MA's), (147, 46585), (164, 46663), (213, 46810),

Gene: Crumble_60 Start: 38411, Stop: 38773, Start Num: 95

Candidate Starts for Crumble_60:

(Start: 95 @38411 has 149 MA's), (145, 38570), (149, 38585), (184, 38711), (201, 38756),

Gene: CrystalP_76 Start: 48970, Stop: 49287, Start Num: 111

Candidate Starts for CrystalP_76:

(37, 48787), (Start: 111 @48970 has 180 MA's), (146, 49111),

Gene: Czyszczone1_78 Start: 48492, Stop: 48809, Start Num: 111

Candidate Starts for Czyszczone1_78:

(37, 48309), (Start: 111 @48492 has 180 MA's), (146, 48633),

Gene: DHan_68 Start: 46287, Stop: 46730, Start Num: 74

Candidate Starts for DHan_68:

(36, 46158), (74, 46287), (Start: 94 @46326 has 6 MA's), (Start: 111 @46344 has 180 MA's), (140, 46461), (147, 46488), (164, 46566), (213, 46713),

Gene: DRBy19_69 Start: 43907, Stop: 44263, Start Num: 95

Candidate Starts for DRBy19_69:

(48, 43790), (Start: 95 @43907 has 149 MA's), (149, 44081), (184, 44207), (188, 44210), (201, 44246),

Gene: DaWorst_65 Start: 42022, Stop: 42384, Start Num: 95

Candidate Starts for DaWorst_65:

(Start: 95 @42022 has 149 MA's), (145, 42181), (184, 42322), (201, 42367),

Gene: Daenerys_60 Start: 41329, Stop: 41685, Start Num: 95

Candidate Starts for Daenerys_60:

(50, 41224), (53, 41230), (Start: 73 @41284 has 16 MA's), (Start: 95 @41329 has 149 MA's), (Start: 116 @41362 has 1 MA's), (154, 41533), (184, 41629), (188, 41632),

Gene: Daikon_79 Start: 49113, Stop: 49430, Start Num: 111

Candidate Starts for Daikon_79:

(37, 48930), (Start: 111 @49113 has 180 MA's), (146, 49254),

Gene: Dallas_124 Start: 69105, Stop: 69437, Start Num: 111

Candidate Starts for Dallas_124:

(Start: 111 @69105 has 180 MA's), (138, 69216), (142, 69240), (194, 69420),

Gene: DanBing_68 Start: 46313, Stop: 46699, Start Num: 111

Candidate Starts for DanBing_68:

(36, 46127), (74, 46256), (Start: 94 @46295 has 6 MA's), (Start: 111 @46313 has 180 MA's), (140, 46430), (147, 46457), (164, 46535), (213, 46682),

Gene: DelaGarza_58 Start: 33298, Stop: 33687, Start Num: 101

Candidate Starts for DelaGarza_58:

(Start: 101 @33298 has 9 MA's), (137, 33424), (159, 33532), (201, 33652),

Gene: Demsculpinboyz_78 Start: 42611, Stop: 42973, Start Num: 95

Candidate Starts for Demsculpinboyz_78:

(Start: 95 @42611 has 149 MA's), (154, 42815), (184, 42911), (201, 42956),

Gene: DillTech15_63 Start: 40922, Stop: 41284, Start Num: 95

Candidate Starts for DillTech15_63:

(80, 40907), (Start: 95 @40922 has 149 MA's), (184, 41222), (201, 41267),

Gene: DoRead_69 Start: 42341, Stop: 42703, Start Num: 95

Candidate Starts for DoRead_69:

(60, 42263), (62, 42272), (75, 42305), (Start: 95 @42341 has 149 MA's), (201, 42686),

Gene: DoctorDiddles_76 Start: 48354, Stop: 48671, Start Num: 111

Candidate Starts for DoctorDiddles_76:

(37, 48171), (Start: 111 @48354 has 180 MA's), (Start: 120 @48378 has 2 MA's), (146, 48495),

Gene: DogYard_84 Start: 50267, Stop: 49971, Start Num: 120

Candidate Starts for DogYard_84:

(Start: 120 @50267 has 2 MA's), (122, 50264), (135, 50198), (150, 50153), (154, 50129), (165, 50075), (179, 50039), (203, 49988),

Gene: DonTron_91 Start: 57708, Stop: 58088, Start Num: 93

Candidate Starts for DonTron_91:

(21, 57420), (30, 57495), (46, 57582), (Start: 93 @57708 has 8 MA's), (Start: 100 @57720 has 3 MA's), (169, 57969), (174, 57978), (181, 58002), (186, 58008), (202, 58050),

Gene: DosHalletts_67 Start: 43303, Stop: 43665, Start Num: 95

Candidate Starts for DosHalletts_67:

(Start: 95 @43303 has 149 MA's), (145, 43462), (184, 43603), (188, 43606), (201, 43648),

Gene: Doug_67 Start: 42635, Stop: 42997, Start Num: 95

Candidate Starts for Doug_67:

(Start: 95 @42635 has 149 MA's), (184, 42935), (201, 42980),

Gene: Douge_65 Start: 45034, Stop: 45432, Start Num: 110

Candidate Starts for Douge_65:

(78, 44974), (98, 45007), (Start: 110 @45034 has 2 MA's), (140, 45151), (147, 45178), (193, 45337),

Gene: Douzhi_65 Start: 45087, Stop: 45485, Start Num: 110

Candidate Starts for Douzhi_65:

(Start: 110 @45087 has 2 MA's), (147, 45231), (193, 45390),

Gene: Dove_109 Start: 64018, Stop: 64350, Start Num: 111

Candidate Starts for Dove_109:

(Start: 111 @64018 has 180 MA's), (138, 64129), (142, 64153), (194, 64333),

Gene: DrDrey_77 Start: 49411, Stop: 49728, Start Num: 111

Candidate Starts for DrDrey_77:

(37, 49228), (Start: 111 @49411 has 180 MA's), (146, 49552),

Gene: Dropshot_41 Start: 25455, Stop: 25832, Start Num: 101

Candidate Starts for Dropshot_41:

(Start: 101 @25455 has 9 MA's), (125, 25518), (131, 25545), (173, 25719), (175, 25725), (183, 25746), (210, 25821),

Gene: Dulcita_67 Start: 43444, Stop: 43842, Start Num: 111

Candidate Starts for Dulcita_67:

(98, 43423), (Start: 111 @43444 has 180 MA's), (124, 43492), (134, 43528), (172, 43693),

Gene: Dumbo_77 Start: 47891, Stop: 48208, Start Num: 111

Candidate Starts for Dumbo_77:

(37, 47708), (Start: 111 @47891 has 180 MA's), (146, 48032),

Gene: DuncansLeg_66 Start: 46503, Stop: 46835, Start Num: 73

Candidate Starts for DuncansLeg_66:

(41, 46398), (58, 46464), (Start: 73 @46503 has 16 MA's), (140, 46626), (147, 46653), (164, 46731), (177, 46767), (193, 46812),

Gene: Dusk_74 Start: 48191, Stop: 48508, Start Num: 111

Candidate Starts for Dusk_74:

(37, 48008), (Start: 111 @48191 has 180 MA's), (146, 48332),

Gene: Easy2Say_78 Start: 49435, Stop: 49752, Start Num: 111

Candidate Starts for Easy2Say_78:

(37, 49252), (Start: 111 @49435 has 180 MA's), (146, 49576),

Gene: Ecliptus_75 Start: 44750, Stop: 45079, Start Num: 111

Candidate Starts for Ecliptus_75:

(Start: 111 @44750 has 180 MA's), (140, 44864), (145, 44885), (164, 44969), (171, 44993), (189, 45032), (195, 45059), (199, 45071),

Gene: Eish_68 Start: 42537, Stop: 42899, Start Num: 95

Candidate Starts for Eish_68:

(Start: 95 @42537 has 149 MA's), (145, 42696), (184, 42837), (188, 42840), (201, 42882),

Gene: EleanorGeorge_67 Start: 43317, Stop: 43673, Start Num: 95

Candidate Starts for EleanorGeorge_67:

(Start: 95 @43317 has 149 MA's), (145, 43476), (184, 43617), (188, 43620),

Gene: Elite2014_76 Start: 47985, Stop: 48302, Start Num: 111

Candidate Starts for Elite2014_76:

(37, 47802), (Start: 111 @47985 has 180 MA's), (146, 48126),

Gene: Elph10_77 Start: 47990, Stop: 48307, Start Num: 111

Candidate Starts for Elph10_77:

(37, 47807), (Start: 111 @47990 has 180 MA's), (146, 48131),

Gene: Emma_67 Start: 42045, Stop: 42407, Start Num: 95

Candidate Starts for Emma_67:

(Start: 95 @42045 has 149 MA's), (Start: 120 @42087 has 2 MA's), (145, 42204), (184, 42345), (201, 42390),

Gene: Emmina_77 Start: 47892, Stop: 48209, Start Num: 111

Candidate Starts for Emmina_77:

(37, 47709), (Start: 111 @47892 has 180 MA's), (146, 48033),

Gene: EniyanLRS_168 Start: 48527, Stop: 48892, Start Num: 88

Candidate Starts for EniyanLRS_168:

(59, 48464), (Start: 88 @48527 has 5 MA's), (151, 48719), (185, 48839), (195, 48872),

Gene: Eradicator_58 Start: 40449, Stop: 40811, Start Num: 95

Candidate Starts for Eradicator_58:

(Start: 95 @40449 has 149 MA's), (145, 40608), (184, 40749), (188, 40752), (201, 40794),

Gene: Estave1_70 Start: 44873, Stop: 45235, Start Num: 95

Candidate Starts for Estave1_70:

(Start: 95 @44873 has 149 MA's), (145, 45032), (149, 45047), (184, 45173), (188, 45176), (201, 45218),

Gene: Eureka_75 Start: 48456, Stop: 48773, Start Num: 111

Candidate Starts for Eureka_75:

(37, 48273), (Start: 111 @48456 has 180 MA's), (146, 48597),

Gene: FairyPath_77 Start: 49104, Stop: 49421, Start Num: 111

Candidate Starts for FairyPath_77:

(37, 48921), (Start: 111 @49104 has 180 MA's), (Start: 120 @49128 has 2 MA's), (146, 49245),

Gene: Faiyaz_65 Start: 45151, Stop: 45501, Start Num: 81

Candidate Starts for Faiyaz_65:

(55, 45079), (68, 45109), (Start: 81 @45151 has 24 MA's), (92, 45166), (Start: 101 @45184 has 9 MA's), (123, 45232), (124, 45238), (132, 45274), (154, 45358), (161, 45394),

Gene: Fancypants_68 Start: 43057, Stop: 43419, Start Num: 95

Candidate Starts for Fancypants_68:

(80, 43042), (Start: 95 @43057 has 149 MA's), (145, 43216), (184, 43357), (201, 43402),

Gene: FarmResident_67 Start: 45043, Stop: 45441, Start Num: 110

Candidate Starts for FarmResident_67:

(Start: 110 @45043 has 2 MA's), (140, 45160), (147, 45187), (193, 45346),

Gene: Fastidio_66 Start: 41072, Stop: 41428, Start Num: 93

Candidate Starts for Fastidio_66:

(83, 41057), (Start: 93 @41072 has 8 MA's), (145, 41231), (184, 41372), (188, 41375),

Gene: FeliMaine_71 Start: 40079, Stop: 40432, Start Num: 81

Candidate Starts for FeliMaine_71:

(Start: 81 @40079 has 24 MA's), (98, 40106), (141, 40241), (150, 40271), (160, 40322), (162, 40328), (166, 40343), (175, 40361), (182, 40385), (184, 40388),

Gene: Filch_78 Start: 47917, Stop: 48234, Start Num: 111

Candidate Starts for Filch_78:

(37, 47734), (Start: 111 @47917 has 180 MA's), (146, 48058),

Gene: Finemlucis_67 Start: 46684, Stop: 47085, Start Num: 111

Candidate Starts for Finemlucis_67:

(25, 46405), (36, 46498), (Start: 94 @46666 has 6 MA's), (Start: 111 @46684 has 180 MA's), (140, 46801), (147, 46828), (164, 46906), (213, 47053),

Gene: Finnry_66 Start: 46731, Stop: 47063, Start Num: 73

Candidate Starts for Finnry_66:

(15, 46467), (18, 46476), (23, 46500), (32, 46578), (41, 46626), (Start: 73 @46731 has 16 MA's), (145, 46875), (164, 46959), (175, 46992),

Gene: FireRed_81 Start: 49479, Stop: 49796, Start Num: 111

Candidate Starts for FireRed_81:

(37, 49296), (Start: 111 @49479 has 180 MA's), (146, 49620),

Gene: Firehouse51_68 Start: 46363, Stop: 46704, Start Num: 95

Candidate Starts for Firehouse51_68:

(Start: 95 @46363 has 149 MA's), (154, 46567), (184, 46663), (188, 46666),

Gene: Flypotenuse_73 Start: 47976, Stop: 48293, Start Num: 111

Candidate Starts for Flypotenuse_73:

(37, 47793), (Start: 111 @47976 has 180 MA's), (146, 48117),

Gene: FoghornLeghorn_71 Start: 46989, Stop: 47306, Start Num: 111

Candidate Starts for FoghornLeghorn_71:

(37, 46806), (Start: 111 @46989 has 180 MA's), (146, 47130),

Gene: Forrestell_84 Start: 49543, Stop: 49217, Start Num: 108

Candidate Starts for Forrestell_84:

(66, 49636), (Start: 108 @49543 has 14 MA's), (Start: 120 @49513 has 2 MA's), (122, 49510), (135, 49444), (150, 49399), (154, 49375), (165, 49321), (179, 49285), (203, 49234),

Gene: FreakyGoo_67 Start: 43444, Stop: 43842, Start Num: 111

Candidate Starts for FreakyGoo_67:

(98, 43423), (Start: 111 @43444 has 180 MA's), (124, 43492), (134, 43528), (172, 43693),

Gene: FreddyB_66 Start: 41323, Stop: 41679, Start Num: 95

Candidate Starts for FreddyB_66:

(Start: 95 @41323 has 149 MA's), (149, 41497), (184, 41623),

Gene: Fryberger_95 Start: 48138, Stop: 48464, Start Num: 111

Candidate Starts for Fryberger_95:

(Start: 111 @48138 has 180 MA's), (132, 48219), (154, 48303), (163, 48342), (177, 48381),

Gene: GUmbie_63 Start: 41676, Stop: 42038, Start Num: 95

Candidate Starts for GUmbie_63:

(Start: 95 @41676 has 149 MA's), (145, 41835), (184, 41976), (188, 41979), (201, 42021),

Gene: Gabriela_64 Start: 44813, Stop: 45211, Start Num: 111

Candidate Starts for Gabriela_64:

(25, 44534), (36, 44627), (Start: 94 @44795 has 6 MA's), (Start: 111 @44813 has 180 MA's), (140, 44930), (147, 44957), (164, 45035), (213, 45182),

Gene: Gage_79 Start: 48769, Stop: 49086, Start Num: 111

Candidate Starts for Gage_79:

(37, 48586), (Start: 111 @48769 has 180 MA's), (146, 48910),

Gene: Galactic_64 Start: 41833, Stop: 42195, Start Num: 95

Candidate Starts for Galactic_64:

(Start: 95 @41833 has 149 MA's), (145, 41992), (184, 42133), (201, 42178),

Gene: Gardann_68 Start: 46399, Stop: 46797, Start Num: 111

Candidate Starts for Gardann_68:

(25, 46120), (36, 46213), (Start: 94 @46381 has 6 MA's), (Start: 111 @46399 has 180 MA's), (140, 46516), (147, 46543), (164, 46621), (213, 46768),

Gene: Gator_75 Start: 48822, Stop: 49139, Start Num: 111

Candidate Starts for Gator_75:

(37, 48639), (Start: 111 @48822 has 180 MA's), (146, 48963),

Gene: Gattaca_67 Start: 39225, Stop: 39578, Start Num: 81

Candidate Starts for Gattaca_67:

(Start: 81 @39225 has 24 MA's), (98, 39252), (141, 39387), (150, 39417), (160, 39468), (162, 39474), (166, 39489), (175, 39507), (182, 39531), (184, 39534),

Gene: Gemini_82 Start: 49286, Stop: 49603, Start Num: 111

Candidate Starts for Gemini_82:

(37, 49103), (Start: 111 @49286 has 180 MA's), (146, 49427),

Gene: GigiOuiOui_61 Start: 40822, Stop: 41184, Start Num: 95

Candidate Starts for GigiOuiOui_61:

(Start: 95 @40822 has 149 MA's), (184, 41122), (188, 41125), (201, 41167),

Gene: Girr_63 Start: 41692, Stop: 42054, Start Num: 95

Candidate Starts for Girr_63:

(Start: 95 @41692 has 149 MA's), (184, 41992), (201, 42037),

Gene: Glaske16_67 Start: 43443, Stop: 43841, Start Num: 111

Candidate Starts for Glaske16_67:

(98, 43422), (Start: 111 @43443 has 180 MA's), (124, 43491), (134, 43527), (172, 43692),

Gene: Glexan_76 Start: 49106, Stop: 49423, Start Num: 111

Candidate Starts for Glexan_76:

(37, 48923), (Start: 111 @49106 has 180 MA's), (146, 49247),

Gene: Goku_75 Start: 48185, Stop: 48502, Start Num: 111

Candidate Starts for Goku_75:

(37, 48002), (Start: 111 @48185 has 180 MA's), (146, 48326),

Gene: GoldenSpark_81 Start: 48769, Stop: 49086, Start Num: 111

Candidate Starts for GoldenSpark_81:

(37, 48586), (Start: 111 @48769 has 180 MA's), (146, 48910),

Gene: Goldilocks_80 Start: 48267, Stop: 48584, Start Num: 111

Candidate Starts for Goldilocks_80:

(37, 48084), (Start: 111 @48267 has 180 MA's), (146, 48408),

Gene: GooberAzure_80 Start: 48769, Stop: 49086, Start Num: 111

Candidate Starts for GooberAzure_80:

(37, 48586), (Start: 111 @48769 has 180 MA's), (146, 48910),

Gene: GoongGoong_68 Start: 39024, Stop: 39377, Start Num: 81

Candidate Starts for GoongGoong_68:

(Start: 81 @39024 has 24 MA's), (98, 39051), (141, 39186), (150, 39216), (160, 39267), (162, 39273), (166, 39288), (175, 39306), (182, 39330), (184, 39333),

Gene: Gorge_69 Start: 43618, Stop: 43980, Start Num: 95

Candidate Starts for Gorge_69:

(Start: 95 @43618 has 149 MA's), (145, 43777), (184, 43918), (188, 43921), (201, 43963),

Gene: Greep_81 Start: 49768, Stop: 50085, Start Num: 111

Candidate Starts for Greep_81:

(37, 49585), (Start: 111 @49768 has 180 MA's), (146, 49909),

Gene: Grimmer_75 Start: 43862, Stop: 44218, Start Num: 95

Candidate Starts for Grimmer_75:

(Start: 95 @43862 has 149 MA's), (184, 44162),

Gene: Grumio_93 Start: 57321, Stop: 57701, Start Num: 93

Candidate Starts for Grumio_93:

(21, 57033), (30, 57108), (46, 57195), (Start: 93 @57321 has 8 MA's), (169, 57582), (174, 57591), (181, 57615), (186, 57621), (202, 57663),

Gene: Guey18_100 Start: 49458, Stop: 49784, Start Num: 111

Candidate Starts for Guey18_100:

(Start: 111 @49458 has 180 MA's), (132, 49539), (154, 49623), (163, 49662), (177, 49701),

Gene: Guppsters_66 Start: 41977, Stop: 42339, Start Num: 95

Candidate Starts for Guppsters_66:

(Start: 95 @41977 has 149 MA's), (145, 42136), (184, 42277), (188, 42280), (201, 42322),

Gene: GuuelaD_66 Start: 46478, Stop: 46879, Start Num: 111

Candidate Starts for GuuelaD_66:

(25, 46199), (36, 46292), (Start: 94 @46460 has 6 MA's), (Start: 111 @46478 has 180 MA's), (140, 46595), (147, 46622), (164, 46700), (213, 46847),

Gene: Guzman_41 Start: 25719, Stop: 26096, Start Num: 101

Candidate Starts for Guzman_41:

(Start: 101 @25719 has 9 MA's), (125, 25782), (173, 25983), (175, 25989), (183, 26010), (210, 26085),

Gene: Hades_66 Start: 42692, Stop: 43054, Start Num: 95

Candidate Starts for Hades_66:

(Start: 95 @42692 has 149 MA's), (145, 42851), (184, 42992), (188, 42995), (201, 43037),

Gene: Hafay_69 Start: 46467, Stop: 46868, Start Num: 111

Candidate Starts for Hafay_69:

(25, 46188), (36, 46281), (Start: 94 @46449 has 6 MA's), (Start: 111 @46467 has 180 MA's), (140, 46584), (147, 46611), (164, 46689), (213, 46836),

Gene: Hamulus_65 Start: 42334, Stop: 42690, Start Num: 95
Candidate Starts for Hamulus_65:
(Start: 95 @42334 has 149 MA's), (184, 42634), (188, 42637),

Gene: HanKaySha_77 Start: 48070, Stop: 48387, Start Num: 111
Candidate Starts for HanKaySha_77:
(37, 47887), (Start: 111 @48070 has 180 MA's), (146, 48211),

Gene: Harella_77 Start: 49622, Stop: 49939, Start Num: 111
Candidate Starts for Harella_77:
(37, 49439), (Start: 111 @49622 has 180 MA's), (146, 49763),

Gene: Harley_67 Start: 42941, Stop: 43297, Start Num: 95
Candidate Starts for Harley_67:
(Start: 95 @42941 has 149 MA's), (145, 43100), (149, 43115), (184, 43241), (188, 43244),

Gene: Henry_75 Start: 48410, Stop: 48727, Start Num: 111
Candidate Starts for Henry_75:
(37, 48227), (Start: 111 @48410 has 180 MA's), (146, 48551),

Gene: Highbury_76 Start: 48058, Stop: 48375, Start Num: 111
Candidate Starts for Highbury_76:
(37, 47875), (Start: 111 @48058 has 180 MA's), (146, 48199),

Gene: Hilltopfarm_64 Start: 44853, Stop: 45203, Start Num: 81
Candidate Starts for Hilltopfarm_64:
(55, 44781), (68, 44811), (Start: 81 @44853 has 24 MA's), (92, 44868), (Start: 101 @44886 has 9 MA's), (123, 44934), (124, 44940), (132, 44976), (164, 45102),

Gene: HokkenD_113 Start: 67777, Stop: 68151, Start Num: 91
Candidate Starts for HokkenD_113:
(Start: 84 @67768 has 1 MA's), (Start: 91 @67777 has 1 MA's), (126, 67885), (138, 67930), (194, 68134),

Gene: Holt_82 Start: 49183, Stop: 49500, Start Num: 111
Candidate Starts for Holt_82:
(37, 49000), (Start: 111 @49183 has 180 MA's), (146, 49324),

Gene: Hoonter_80 Start: 48769, Stop: 49086, Start Num: 111
Candidate Starts for Hoonter_80:
(37, 48586), (Start: 111 @48769 has 180 MA's), (146, 48910),

Gene: Hopecy_77 Start: 48602, Stop: 48919, Start Num: 111
Candidate Starts for Hopecy_77:
(37, 48419), (Start: 111 @48602 has 180 MA's), (146, 48743),

Gene: Horus_72 Start: 44321, Stop: 44650, Start Num: 111
Candidate Starts for Horus_72:
(54, 44207), (90, 44297), (Start: 111 @44321 has 180 MA's), (122, 44348), (140, 44435), (164, 44540), (171, 44564), (189, 44603), (195, 44630), (199, 44642),

Gene: HufflyPuff_80 Start: 49435, Stop: 49752, Start Num: 111

Candidate Starts for HufflyPuff_80:

(37, 49252), (Start: 111 @49435 has 180 MA's), (146, 49576),

Gene: Hum25_55 Start: 30658, Stop: 30984, Start Num: 112

Candidate Starts for Hum25_55:

(43, 30499), (Start: 112 @30658 has 5 MA's), (137, 30763), (168, 30895),

Gene: Huphleuff_71 Start: 39642, Stop: 39995, Start Num: 81

Candidate Starts for Huphleuff_71:

(Start: 81 @39642 has 24 MA's), (98, 39669), (141, 39804), (150, 39834), (160, 39885), (162, 39891), (166, 39906), (175, 39924), (182, 39948), (184, 39951),

Gene: IHOP_75 Start: 48534, Stop: 48851, Start Num: 111

Candidate Starts for IHOP_75:

(37, 48351), (Start: 111 @48534 has 180 MA's), (146, 48675),

Gene: lbhubesi_65 Start: 41957, Stop: 42313, Start Num: 95

Candidate Starts for lbhubesi_65:

(Start: 95 @41957 has 149 MA's), (184, 42257), (188, 42260),

Gene: lcee_78 Start: 48433, Stop: 48750, Start Num: 111

Candidate Starts for lcee_78:

(37, 48250), (Start: 111 @48433 has 180 MA's), (146, 48574),

Gene: Inca_74 Start: 47059, Stop: 47376, Start Num: 111

Candidate Starts for Inca_74:

(37, 46876), (Start: 111 @47059 has 180 MA's), (146, 47200),

Gene: Inventum_61 Start: 42492, Stop: 42821, Start Num: 116

Candidate Starts for Inventum_61:

(50, 42354), (53, 42360), (Start: 73 @42414 has 16 MA's), (Start: 95 @42459 has 149 MA's), (Start: 116 @42492 has 1 MA's), (154, 42663), (184, 42759), (188, 42762), (201, 42804),

Gene: Itos_66 Start: 45269, Stop: 45670, Start Num: 111

Candidate Starts for Itos_66:

(25, 44990), (36, 45083), (Start: 94 @45251 has 6 MA's), (Start: 111 @45269 has 180 MA's), (140, 45386), (147, 45413), (164, 45491), (213, 45638),

Gene: lzel_67 Start: 43443, Stop: 43841, Start Num: 111

Candidate Starts for lzel_67:

(98, 43422), (Start: 111 @43443 has 180 MA's), (124, 43491), (134, 43527), (172, 43692),

Gene: Jabbawokkie_80 Start: 44082, Stop: 44423, Start Num: 93

Candidate Starts for Jabbawokkie_80:

(83, 44067), (Start: 93 @44082 has 8 MA's), (184, 44382), (188, 44385),

Gene: JalFarm20_78 Start: 46016, Stop: 46372, Start Num: 95

Candidate Starts for JalFarm20_78:

(Start: 95 @46016 has 149 MA's), (184, 46316), (188, 46319),

Gene: James_69 Start: 43743, Stop: 44105, Start Num: 95

Candidate Starts for James_69:

(Start: 95 @43743 has 149 MA's), (145, 43902), (184, 44043), (188, 44046), (201, 44088),

Gene: Jant_69 Start: 43594, Stop: 43950, Start Num: 95
Candidate Starts for Jant_69:
(Start: 95 @43594 has 149 MA's), (184, 43894), (188, 43897),

Gene: JeTaime_77 Start: 49251, Stop: 49568, Start Num: 111
Candidate Starts for JeTaime_77:
(37, 49068), (Start: 111 @49251 has 180 MA's), (146, 49392),

Gene: Jinglebell_71 Start: 45318, Stop: 45680, Start Num: 95
Candidate Starts for Jinglebell_71:
(Start: 95 @45318 has 149 MA's), (154, 45522), (184, 45618), (201, 45663),

Gene: Jobypre_66 Start: 46467, Stop: 46799, Start Num: 73
Candidate Starts for Jobypre_66:
(13, 46191), (15, 46203), (18, 46212), (23, 46236), (32, 46314), (41, 46362), (Start: 73 @46467 has 16 MA's), (145, 46611), (164, 46695), (175, 46728),

Gene: JoeyJr_61 Start: 41497, Stop: 41853, Start Num: 95
Candidate Starts for JoeyJr_61:
(50, 41392), (53, 41398), (Start: 73 @41452 has 16 MA's), (Start: 95 @41497 has 149 MA's), (Start: 116 @41530 has 1 MA's), (154, 41701), (184, 41797), (188, 41800),

Gene: JoieB_70 Start: 40075, Stop: 40428, Start Num: 81
Candidate Starts for JoieB_70:
(Start: 81 @40075 has 24 MA's), (98, 40102), (141, 40237), (150, 40267), (160, 40318), (162, 40324), (166, 40339), (175, 40357), (182, 40381), (184, 40384),

Gene: Jollymon_90 Start: 57592, Stop: 57972, Start Num: 93
Candidate Starts for Jollymon_90:
(30, 57379), (Start: 93 @57592 has 8 MA's), (Start: 100 @57604 has 3 MA's), (169, 57853), (174, 57862), (181, 57886), (186, 57892), (202, 57934),

Gene: JrWilcox_102 Start: 57042, Stop: 57449, Start Num: 96
Candidate Starts for JrWilcox_102:
(64, 56964), (87, 57027), (Start: 96 @57042 has 1 MA's), (115, 57078), (119, 57087), (188, 57342),

Gene: Jubie_65 Start: 46602, Stop: 46934, Start Num: 73
Candidate Starts for Jubie_65:
(13, 46326), (15, 46338), (18, 46347), (23, 46371), (32, 46449), (41, 46497), (Start: 73 @46602 has 16 MA's), (145, 46746), (164, 46830), (175, 46863),

Gene: Juice456_66 Start: 43972, Stop: 44328, Start Num: 95
Candidate Starts for Juice456_66:
(Start: 95 @43972 has 149 MA's), (184, 44272), (188, 44275),

Gene: JuicyJay_120 Start: 70726, Stop: 71058, Start Num: 111
Candidate Starts for JuicyJay_120:
(Start: 111 @70726 has 180 MA's), (138, 70837), (142, 70861), (194, 71041),

Gene: Juniper1_65 Start: 42735, Stop: 43091, Start Num: 95
Candidate Starts for Juniper1_65:
(86, 42720), (Start: 95 @42735 has 149 MA's), (154, 42939), (184, 43035), (188, 43038),

Gene: JustASigh_98 Start: 55410, Stop: 55766, Start Num: 118

Candidate Starts for JustASigh_98:

(76, 55332), (Start: 101 @55383 has 9 MA's), (Start: 118 @55410 has 1 MA's), (123, 55437), (135, 55491), (142, 55521), (145, 55533), (147, 55539), (172, 55644), (175, 55650), (191, 55689), (209, 55755),

Gene: Kahlid_67 Start: 46369, Stop: 46770, Start Num: 111

Candidate Starts for Kahlid_67:

(25, 46090), (36, 46183), (Start: 94 @46351 has 6 MA's), (Start: 111 @46369 has 180 MA's), (140, 46486), (147, 46513), (164, 46591), (213, 46738),

Gene: Kanye_74 Start: 48115, Stop: 48432, Start Num: 111

Candidate Starts for Kanye_74:

(37, 47932), (Start: 111 @48115 has 180 MA's), (146, 48256),

Gene: Karhdo_64 Start: 43305, Stop: 43667, Start Num: 95

Candidate Starts for Karhdo_64:

(Start: 95 @43305 has 149 MA's), (145, 43464), (184, 43605), (201, 43650),

Gene: Keelan_96 Start: 49018, Stop: 49347, Start Num: 97

Candidate Starts for Keelan_96:

(Start: 97 @49018 has 1 MA's), (132, 49114), (154, 49198), (163, 49237),

Gene: Kenuha5_63 Start: 41295, Stop: 41651, Start Num: 95

Candidate Starts for Kenuha5_63:

(Start: 95 @41295 has 149 MA's), (145, 41454), (184, 41595), (188, 41598), (201, 41634),

Gene: Kersh_67 Start: 44741, Stop: 45097, Start Num: 95

Candidate Starts for Kersh_67:

(Start: 95 @44741 has 149 MA's), (145, 44900), (184, 45041), (188, 45044),

Gene: Khuang_54 Start: 31611, Stop: 31976, Start Num: 112

Candidate Starts for Khuang_54:

(Start: 112 @31611 has 5 MA's), (146, 31761), (176, 31872), (180, 31887),

Gene: Kimberlium_70 Start: 44253, Stop: 44594, Start Num: 95

Candidate Starts for Kimberlium_70:

(Start: 95 @44253 has 149 MA's), (184, 44553), (188, 44556),

Gene: Kimchi_81 Start: 48772, Stop: 49089, Start Num: 111

Candidate Starts for Kimchi_81:

(37, 48589), (Start: 111 @48772 has 180 MA's), (146, 48913),

Gene: Kingsley_63 Start: 41956, Stop: 42318, Start Num: 95

Candidate Starts for Kingsley_63:

(Start: 95 @41956 has 149 MA's), (145, 42115), (154, 42160), (184, 42256), (188, 42259), (201, 42301),

Gene: KingstonB_93 Start: 57137, Stop: 57505, Start Num: 100

Candidate Starts for KingstonB_93:

(21, 56837), (30, 56912), (46, 56999), (Start: 93 @57125 has 8 MA's), (Start: 100 @57137 has 3 MA's), (169, 57386), (174, 57395), (181, 57419), (186, 57425), (202, 57467),

Gene: Koella_59 Start: 38373, Stop: 38735, Start Num: 95
Candidate Starts for Koella_59:
(Start: 95 @38373 has 149 MA's), (149, 38547), (184, 38673), (201, 38718),

Gene: Kostya_77 Start: 48633, Stop: 48950, Start Num: 111
Candidate Starts for Kostya_77:
(37, 48450), (Start: 111 @48633 has 180 MA's), (146, 48774),

Gene: Kozie_51 Start: 36191, Stop: 36532, Start Num: 104
Candidate Starts for Kozie_51:
(36, 35999), (47, 36059), (79, 36149), (Start: 104 @36191 has 1 MA's), (164, 36437), (175, 36470),
(186, 36497),

Gene: Krakatau_62 Start: 41145, Stop: 41507, Start Num: 95
Candidate Starts for Krakatau_62:
(Start: 95 @41145 has 149 MA's), (184, 41445), (188, 41448), (201, 41490),

Gene: KristaRAM_68 Start: 44341, Stop: 44697, Start Num: 95
Candidate Starts for KristaRAM_68:
(Start: 95 @44341 has 149 MA's), (184, 44641), (188, 44644),

Gene: Krypton555_67 Start: 46693, Stop: 47025, Start Num: 73
Candidate Starts for Krypton555_67:
(13, 46417), (15, 46429), (18, 46438), (23, 46462), (32, 46540), (41, 46588), (Start: 73 @46693 has 16
MA's), (145, 46837), (164, 46921), (175, 46954),

Gene: Kubulix_84 Start: 49967, Stop: 49641, Start Num: 108
Candidate Starts for Kubulix_84:
(Start: 108 @49967 has 14 MA's), (Start: 120 @49937 has 2 MA's), (122, 49934), (135, 49868), (150,
49823), (154, 49799), (165, 49745), (179, 49709), (203, 49658),

Gene: Kumao_62 Start: 44058, Stop: 44420, Start Num: 89
Candidate Starts for Kumao_62:
(14, 43764), (28, 43851), (34, 43896), (39, 43911), (45, 43950), (Start: 89 @44058 has 1 MA's), (103,
44082), (Start: 120 @44118 has 2 MA's), (122, 44121), (147, 44235), (175, 44346),

Gene: Kuwabara_72 Start: 44078, Stop: 44407, Start Num: 111
Candidate Starts for Kuwabara_72:
(Start: 111 @44078 has 180 MA's), (140, 44192), (145, 44213), (164, 44297), (171, 44321), (189,
44360), (195, 44387), (199, 44399),

Gene: LastJedi_59 Start: 39690, Stop: 40052, Start Num: 95
Candidate Starts for LastJedi_59:
(48, 39573), (Start: 95 @39690 has 149 MA's), (145, 39849), (184, 39990), (201, 40035),

Gene: Leozinho_64 Start: 41151, Stop: 41507, Start Num: 95
Candidate Starts for Leozinho_64:
(Start: 95 @41151 has 149 MA's), (145, 41310), (184, 41451), (188, 41454),

Gene: Leperchaun_58 Start: 40727, Stop: 41083, Start Num: 95
Candidate Starts for Leperchaun_58:

(50, 40622), (53, 40628), (Start: 73 @40682 has 16 MA's), (Start: 95 @40727 has 149 MA's), (Start: 116 @40760 has 1 MA's), (154, 40931), (184, 41027), (188, 41030),

Gene: Lesiram_59 Start: 33428, Stop: 33817, Start Num: 101

Candidate Starts for Lesiram_59:

(Start: 101 @33428 has 9 MA's), (137, 33554), (159, 33662), (201, 33782),

Gene: Lewan_68 Start: 46405, Stop: 46821, Start Num: 94

Candidate Starts for Lewan_68:

(25, 46144), (36, 46237), (Start: 94 @46405 has 6 MA's), (Start: 111 @46423 has 180 MA's), (140, 46540), (147, 46567), (164, 46645), (213, 46792),

Gene: LilDestine_67 Start: 46396, Stop: 46797, Start Num: 111

Candidate Starts for LilDestine_67:

(25, 46117), (36, 46210), (Start: 94 @46378 has 6 MA's), (Start: 111 @46396 has 180 MA's), (140, 46513), (147, 46540), (164, 46618), (213, 46765),

Gene: LilMoolah_64 Start: 42220, Stop: 42582, Start Num: 95

Candidate Starts for LilMoolah_64:

(48, 42103), (Start: 95 @42220 has 149 MA's), (145, 42379), (184, 42520), (201, 42565),

Gene: Lilac_79 Start: 48387, Stop: 48704, Start Num: 111

Candidate Starts for Lilac_79:

(37, 48204), (Start: 111 @48387 has 180 MA's), (146, 48528),

Gene: Lilbit_67 Start: 39805, Stop: 40158, Start Num: 81

Candidate Starts for Lilbit_67:

(Start: 81 @39805 has 24 MA's), (98, 39832), (141, 39967), (150, 39997), (160, 40048), (162, 40054), (166, 40069), (175, 40087), (182, 40111), (184, 40114),

Gene: Lilizi_78 Start: 48100, Stop: 48417, Start Num: 111

Candidate Starts for Lilizi_78:

(37, 47917), (Start: 111 @48100 has 180 MA's), (146, 48241),

Gene: Lilpickle_76 Start: 47985, Stop: 48302, Start Num: 111

Candidate Starts for Lilpickle_76:

(37, 47802), (Start: 111 @47985 has 180 MA's), (146, 48126),

Gene: LitninMcQueen_71 Start: 42944, Stop: 43273, Start Num: 111

Candidate Starts for LitninMcQueen_71:

(Start: 111 @42944 has 180 MA's), (164, 43163), (195, 43253), (199, 43265),

Gene: LittleLaf_69 Start: 39534, Stop: 39887, Start Num: 81

Candidate Starts for LittleLaf_69:

(Start: 81 @39534 has 24 MA's), (98, 39561), (141, 39696), (150, 39726), (160, 39777), (162, 39783), (166, 39798), (175, 39816), (182, 39840), (184, 39843),

Gene: LittleShirley_65 Start: 42793, Stop: 43149, Start Num: 95

Candidate Starts for LittleShirley_65:

(Start: 95 @42793 has 149 MA's), (154, 42997), (184, 43093), (188, 43096),

Gene: Lizziana_71 Start: 43224, Stop: 43586, Start Num: 95

Candidate Starts for Lizziana_71:

(Start: 95 @43224 has 149 MA's), (145, 43383), (184, 43524), (188, 43527), (201, 43569),

Gene: Llama_70 Start: 45173, Stop: 45535, Start Num: 95

Candidate Starts for Llama_70:

(Start: 95 @45173 has 149 MA's), (154, 45377), (184, 45473), (201, 45518),

Gene: Loadrie_66 Start: 46451, Stop: 46849, Start Num: 111

Candidate Starts for Loadrie_66:

(25, 46172), (36, 46265), (Start: 94 @46433 has 6 MA's), (Start: 111 @46451 has 180 MA's), (140, 46568), (147, 46595), (164, 46673), (213, 46820),

Gene: Lolly9_65 Start: 46290, Stop: 46622, Start Num: 73

Candidate Starts for Lolly9_65:

(Start: 73 @46290 has 16 MA's), (Start: 120 @46320 has 2 MA's), (140, 46413), (147, 46440), (164, 46518), (175, 46551), (193, 46599),

Gene: Losacky_42 Start: 25840, Stop: 26217, Start Num: 101

Candidate Starts for Losacky_42:

(Start: 101 @25840 has 9 MA's), (125, 25903), (173, 26104), (175, 26110), (183, 26131), (210, 26206),

Gene: Lucky2013_115 Start: 64045, Stop: 64419, Start Num: 84

Candidate Starts for Lucky2013_115:

(Start: 84 @64045 has 1 MA's), (Start: 91 @64054 has 1 MA's), (126, 64162), (138, 64207), (164, 64327),

Gene: Lumos_67 Start: 46464, Stop: 46796, Start Num: 73

Candidate Starts for Lumos_67:

(13, 46188), (15, 46200), (18, 46209), (23, 46233), (32, 46311), (41, 46359), (Start: 73 @46464 has 16 MA's), (145, 46608), (164, 46692), (175, 46725),

Gene: LunaBlu_67 Start: 42492, Stop: 42854, Start Num: 95

Candidate Starts for LunaBlu_67:

(Start: 95 @42492 has 149 MA's), (145, 42651), (184, 42792), (201, 42837),

Gene: Lynnae_69 Start: 46394, Stop: 46795, Start Num: 111

Candidate Starts for Lynnae_69:

(25, 46115), (36, 46208), (Start: 94 @46376 has 6 MA's), (Start: 111 @46394 has 180 MA's), (140, 46511), (147, 46538), (164, 46616), (213, 46763),

Gene: MISSy_78 Start: 48491, Stop: 48808, Start Num: 111

Candidate Starts for MISSy_78:

(37, 48308), (Start: 111 @48491 has 180 MA's), (146, 48632),

Gene: MPhalcon_78 Start: 48484, Stop: 48801, Start Num: 111

Candidate Starts for MPhalcon_78:

(37, 48301), (Start: 111 @48484 has 180 MA's), (146, 48625),

Gene: MadMen_65 Start: 42619, Stop: 42975, Start Num: 95

Candidate Starts for MadMen_65:

(48, 42502), (Start: 95 @42619 has 149 MA's), (145, 42778), (184, 42919), (188, 42922),

Gene: MadamMonkfish_77 Start: 47709, Stop: 48026, Start Num: 111

Candidate Starts for MadamMonkfish_77:

(37, 47526), (Start: 111 @47709 has 180 MA's), (146, 47850),

Gene: Madiba_66 Start: 41725, Stop: 42087, Start Num: 95

Candidate Starts for Madiba_66:

(Start: 95 @41725 has 149 MA's), (145, 41884), (184, 42025), (201, 42070),

Gene: Mahavrat_62 Start: 41431, Stop: 41787, Start Num: 95

Candidate Starts for Mahavrat_62:

(Start: 95 @41431 has 149 MA's), (184, 41731),

Gene: Makar_95 Start: 57425, Stop: 57805, Start Num: 93

Candidate Starts for Makar_95:

(46, 57299), (Start: 93 @57425 has 8 MA's), (169, 57686), (174, 57695), (200, 57764), (207, 57782),

Gene: Manda_78 Start: 49571, Stop: 49888, Start Num: 111

Candidate Starts for Manda_78:

(37, 49388), (Start: 111 @49571 has 180 MA's), (146, 49712),

Gene: Mantra_62 Start: 41207, Stop: 41563, Start Num: 93

Candidate Starts for Mantra_62:

(83, 41192), (Start: 93 @41207 has 8 MA's), (184, 41507), (188, 41510),

Gene: Maravista_67 Start: 44362, Stop: 44724, Start Num: 95

Candidate Starts for Maravista_67:

(Start: 95 @44362 has 149 MA's), (145, 44521), (149, 44536), (184, 44662), (201, 44707),

Gene: Marker_67 Start: 42458, Stop: 42814, Start Num: 95

Candidate Starts for Marker_67:

(48, 42341), (Start: 95 @42458 has 149 MA's), (184, 42758), (188, 42761), (201, 42797),

Gene: Marshmallow_75 Start: 49264, Stop: 49581, Start Num: 111

Candidate Starts for Marshmallow_75:

(37, 49081), (Start: 111 @49264 has 180 MA's), (Start: 120 @49288 has 2 MA's), (146, 49405),

Gene: Martik_65 Start: 42396, Stop: 42752, Start Num: 95

Candidate Starts for Martik_65:

(48, 42279), (Start: 95 @42396 has 149 MA's), (145, 42555), (184, 42696), (188, 42699),

Gene: Marvin_65 Start: 39295, Stop: 39648, Start Num: 81

Candidate Starts for Marvin_65:

(Start: 81 @39295 has 24 MA's), (98, 39322), (141, 39457), (150, 39487), (160, 39538), (162, 39544), (166, 39559), (175, 39577), (182, 39601), (184, 39604),

Gene: MaryV_77 Start: 48609, Stop: 48974, Start Num: 88

Candidate Starts for MaryV_77:

(59, 48546), (Start: 88 @48609 has 5 MA's), (151, 48801), (185, 48921), (195, 48954),

Gene: Mattes_69 Start: 43743, Stop: 44105, Start Num: 95

Candidate Starts for Mattes_69:

(Start: 95 @43743 has 149 MA's), (145, 43902), (184, 44043), (188, 44046), (201, 44088),

Gene: Matzah_54 Start: 37029, Stop: 37364, Start Num: 102

Candidate Starts for Matzah_54:

(Start: 94 @37017 has 6 MA's), (Start: 97 @37020 has 1 MA's), (Start: 102 @37029 has 5 MA's),
(Start: 116 @37056 has 1 MA's), (129, 37113), (140, 37164), (156, 37239), (164, 37269), (170, 37290),
(186, 37329),

Gene: Maxxinista_79 Start: 48360, Stop: 48677, Start Num: 111

Candidate Starts for Maxxinista_79:

(37, 48177), (Start: 111 @48360 has 180 MA's), (146, 48501),

Gene: MellowYellow_85 Start: 50209, Stop: 49883, Start Num: 108

Candidate Starts for MellowYellow_85:

(66, 50302), (Start: 108 @50209 has 14 MA's), (Start: 120 @50179 has 2 MA's), (122, 50176), (135,
50110), (150, 50065), (154, 50041), (165, 49987), (179, 49951), (203, 49900),

Gene: MementoMori_53 Start: 36606, Stop: 36941, Start Num: 102

Candidate Starts for MementoMori_53:

(9, 36288), (10, 36291), (11, 36297), (19, 36327), (24, 36354), (25, 36357), (69, 36549), (Start: 94
@36594 has 6 MA's), (Start: 97 @36597 has 1 MA's), (Start: 102 @36606 has 5 MA's), (Start: 116
@36633 has 1 MA's), (140, 36741), (156, 36816), (164, 36846), (170, 36867), (186, 36906),

Gene: Merpity_54 Start: 31317, Stop: 31670, Start Num: 112

Candidate Starts for Merpity_54:

(Start: 112 @31317 has 5 MA's), (137, 31422), (200, 31638),

Gene: Merry_ Start: 37459, Stop: 37911, Start Num: 101

Candidate Starts for Merry_:

(Start: 101 @37459 has 9 MA's), (154, 37657), (164, 37699), (214, 37906),

Gene: MiaZeal_118 Start: 64854, Stop: 65177, Start Num: 111

Candidate Starts for MiaZeal_118:

(Start: 111 @64854 has 180 MA's), (138, 64965), (164, 65085),

Gene: Miley16_67 Start: 46363, Stop: 46764, Start Num: 111

Candidate Starts for Miley16_67:

(25, 46084), (36, 46177), (Start: 94 @46345 has 6 MA's), (Start: 111 @46363 has 180 MA's), (140,
46480), (147, 46507), (164, 46585), (213, 46732),

Gene: MilleniumForce_68 Start: 44060, Stop: 44416, Start Num: 95

Candidate Starts for MilleniumForce_68:

(Start: 95 @44060 has 149 MA's), (184, 44360), (188, 44363),

Gene: Mindy_76 Start: 47576, Stop: 47893, Start Num: 111

Candidate Starts for Mindy_76:

(37, 47393), (Start: 111 @47576 has 180 MA's), (146, 47717),

Gene: MiniLon_69 Start: 46291, Stop: 46623, Start Num: 73

Candidate Starts for MiniLon_69:

(Start: 73 @46291 has 16 MA's), (Start: 120 @46321 has 2 MA's), (140, 46414), (147, 46441), (164,
46519), (175, 46552), (193, 46600),

Gene: MiniMac_69 Start: 46319, Stop: 46621, Start Num: 120

Candidate Starts for MiniMac_69:

(Start: 73 @46289 has 16 MA's), (Start: 120 @46319 has 2 MA's), (140, 46412), (147, 46439), (164,
46517), (175, 46550), (193, 46598),

Gene: MinionDave_64 Start: 42746, Stop: 43108, Start Num: 95

Candidate Starts for MinionDave_64:

(48, 42629), (Start: 95 @42746 has 149 MA's), (145, 42905), (184, 43046), (201, 43091),

Gene: Miniwave_72 Start: 48029, Stop: 48346, Start Num: 111

Candidate Starts for Miniwave_72:

(37, 47846), (Start: 111 @48029 has 180 MA's), (146, 48170),

Gene: Minnie_68 Start: 43966, Stop: 44328, Start Num: 95

Candidate Starts for Minnie_68:

(48, 43849), (Start: 95 @43966 has 149 MA's), (145, 44125), (184, 44266), (201, 44311),

Gene: Misfit_78 Start: 49503, Stop: 49820, Start Num: 111

Candidate Starts for Misfit_78:

(37, 49320), (Start: 111 @49503 has 180 MA's), (146, 49644),

Gene: MisterCuddles_63 Start: 41692, Stop: 42054, Start Num: 95

Candidate Starts for MisterCuddles_63:

(Start: 95 @41692 has 149 MA's), (184, 41992), (201, 42037),

Gene: MkaliMitinis3_68 Start: 46435, Stop: 46833, Start Num: 111

Candidate Starts for MkaliMitinis3_68:

(25, 46156), (36, 46249), (Start: 94 @46417 has 6 MA's), (Start: 111 @46435 has 180 MA's), (140, 46552), (147, 46579), (164, 46657), (213, 46804),

Gene: ModicumRichard_107 Start: 60769, Stop: 61155, Start Num: 105

Candidate Starts for ModicumRichard_107:

(71, 60703), (72, 60712), (Start: 105 @60769 has 5 MA's), (119, 60796), (121, 60799), (124, 60820), (133, 60856), (145, 60910), (166, 60997), (175, 61021),

Gene: Modragons_69 Start: 45162, Stop: 45524, Start Num: 95

Candidate Starts for Modragons_69:

(Start: 95 @45162 has 149 MA's), (154, 45366), (184, 45462), (201, 45507),

Gene: Moldemort_80 Start: 48588, Stop: 48905, Start Num: 111

Candidate Starts for Moldemort_80:

(37, 48405), (Start: 111 @48588 has 180 MA's), (146, 48729),

Gene: MollyToe_72 Start: 47330, Stop: 47647, Start Num: 111

Candidate Starts for MollyToe_72:

(37, 47147), (Start: 111 @47330 has 180 MA's), (146, 47471),

Gene: Moonbeam_64 Start: 41974, Stop: 42336, Start Num: 95

Candidate Starts for Moonbeam_64:

(Start: 95 @41974 has 149 MA's), (Start: 120 @42016 has 2 MA's), (145, 42133), (184, 42274), (201, 42319),

Gene: Morgana_114 Start: 62857, Stop: 63246, Start Num: 105

Candidate Starts for Morgana_114:

(6, 62464), (13, 62533), (21, 62569), (33, 62653), (Start: 105 @62857 has 5 MA's), (121, 62890), (124, 62911), (158, 63058), (166, 63088), (175, 63112),

Gene: MosMoris_66 Start: 39225, Stop: 39578, Start Num: 81
Candidate Starts for MosMoris_66:
(Start: 81 @39225 has 24 MA's), (98, 39252), (141, 39387), (150, 39417), (160, 39468), (162, 39474),
(166, 39489), (175, 39507), (182, 39531), (184, 39534),

Gene: Mosby_73 Start: 47786, Stop: 48103, Start Num: 111
Candidate Starts for Mosby_73:
(37, 47603), (Start: 111 @47786 has 180 MA's), (146, 47927),

Gene: Mozy_75 Start: 44841, Stop: 45203, Start Num: 95
Candidate Starts for Mozy_75:
(80, 44826), (Start: 95 @44841 has 149 MA's), (145, 45000), (184, 45141), (201, 45186),

Gene: MrSmee_53 Start: 31291, Stop: 31644, Start Num: 112
Candidate Starts for MrSmee_53:
(Start: 112 @31291 has 5 MA's), (137, 31396), (200, 31612),

Gene: MsGreen_66 Start: 46467, Stop: 46799, Start Num: 73
Candidate Starts for MsGreen_66:
(13, 46191), (15, 46203), (18, 46212), (23, 46236), (32, 46314), (41, 46362), (Start: 73 @46467 has 16
MA's), (145, 46611), (164, 46695), (175, 46728),

Gene: MulchExplorer_69 Start: 44252, Stop: 44593, Start Num: 95
Candidate Starts for MulchExplorer_69:
(Start: 95 @44252 has 149 MA's), (184, 44552), (188, 44555),

Gene: Murica_80 Start: 49435, Stop: 49752, Start Num: 111
Candidate Starts for Murica_80:
(37, 49252), (Start: 111 @49435 has 180 MA's), (146, 49576),

Gene: Murphy_77 Start: 48872, Stop: 49189, Start Num: 111
Candidate Starts for Murphy_77:
(37, 48689), (Start: 111 @48872 has 180 MA's), (146, 49013),

Gene: Mutaforma13_71 Start: 45673, Stop: 46035, Start Num: 95
Candidate Starts for Mutaforma13_71:
(Start: 95 @45673 has 149 MA's), (184, 45973), (201, 46018),

Gene: Myrale_77 Start: 49129, Stop: 49446, Start Num: 111
Candidate Starts for Myrale_77:
(37, 48946), (Start: 111 @49129 has 180 MA's), (146, 49270),

Gene: Nala_79 Start: 48993, Stop: 49310, Start Num: 111
Candidate Starts for Nala_79:
(37, 48810), (Start: 111 @48993 has 180 MA's), (146, 49134),

Gene: NelitzaMV_75 Start: 48075, Stop: 48392, Start Num: 111
Candidate Starts for NelitzaMV_75:
(37, 47892), (Start: 111 @48075 has 180 MA's), (146, 48216),

Gene: Nicholasp3_67 Start: 46381, Stop: 46797, Start Num: 94
Candidate Starts for Nicholasp3_67:

(25, 46120), (36, 46213), (Start: 94 @46381 has 6 MA's), (Start: 111 @46399 has 180 MA's), (140, 46516), (147, 46543), (164, 46621), (213, 46768),

Gene: NihilNomen_125 Start: 68678, Stop: 69010, Start Num: 111

Candidate Starts for NihilNomen_125:

(Start: 111 @68678 has 180 MA's), (138, 68789), (142, 68813), (194, 68993),

Gene: Nikan_82 Start: 50187, Stop: 49861, Start Num: 108

Candidate Starts for Nikan_82:

(82, 50226), (Start: 108 @50187 has 14 MA's), (Start: 120 @50157 has 2 MA's), (122, 50154), (135, 50088), (139, 50070), (148, 50049), (165, 49965), (179, 49929),

Gene: Nimrod_78 Start: 49696, Stop: 50013, Start Num: 111

Candidate Starts for Nimrod_78:

(37, 49513), (Start: 111 @49696 has 180 MA's), (146, 49837),

Gene: Nivrat_62 Start: 42093, Stop: 42455, Start Num: 95

Candidate Starts for Nivrat_62:

(48, 41976), (Start: 95 @42093 has 149 MA's), (145, 42252), (184, 42393), (201, 42438),

Gene: NoSleep_78 Start: 48330, Stop: 48647, Start Num: 111

Candidate Starts for NoSleep_78:

(37, 48147), (Start: 111 @48330 has 180 MA's), (146, 48471),

Gene: NonchalantPear_75 Start: 48183, Stop: 48500, Start Num: 111

Candidate Starts for NonchalantPear_75:

(37, 48000), (Start: 111 @48183 has 180 MA's), (146, 48324),

Gene: NormanBulbieJr_65 Start: 42386, Stop: 42748, Start Num: 95

Candidate Starts for NormanBulbieJr_65:

(Start: 95 @42386 has 149 MA's), (149, 42560), (184, 42686), (201, 42731),

Gene: NyleyClemson_84 Start: 49827, Stop: 49501, Start Num: 108

Candidate Starts for NyleyClemson_84:

(66, 49920), (Start: 108 @49827 has 14 MA's), (Start: 120 @49797 has 2 MA's), (122, 49794), (135, 49728), (150, 49683), (154, 49659), (165, 49605), (179, 49569), (203, 49518),

Gene: ODay_78 Start: 45557, Stop: 45886, Start Num: 111

Candidate Starts for ODay_78:

(54, 45443), (90, 45533), (Start: 111 @45557 has 180 MA's), (122, 45584), (164, 45776), (195, 45866), (199, 45878),

Gene: ObLaDi_106 Start: 60168, Stop: 60557, Start Num: 105

Candidate Starts for ObLaDi_106:

(8, 59793), (26, 59892), (Start: 105 @60168 has 5 MA's), (121, 60201), (124, 60222), (158, 60369), (166, 60399), (175, 60423),

Gene: Ochi17_69 Start: 44769, Stop: 45131, Start Num: 95

Candidate Starts for Ochi17_69:

(Start: 95 @44769 has 149 MA's), (154, 44973), (184, 45069), (201, 45114),

Gene: Odyssey395_85 Start: 50318, Stop: 49992, Start Num: 108

Candidate Starts for Odyssey395_85:

(Start: 108 @50318 has 14 MA's), (Start: 120 @50288 has 2 MA's), (122, 50285), (135, 50219), (150, 50174), (154, 50150), (165, 50096), (179, 50060), (203, 50009),

Gene: OfUltron_71 Start: 45318, Stop: 45680, Start Num: 95
Candidate Starts for OfUltron_71:
(Start: 95 @45318 has 149 MA's), (154, 45522), (184, 45618), (201, 45663),

Gene: Ogotopogo_71 Start: 42797, Stop: 43153, Start Num: 95
Candidate Starts for Ogotopogo_71:
(50, 42686), (Start: 95 @42797 has 149 MA's), (184, 43097), (188, 43100),

Gene: Ollypop_80 Start: 50972, Stop: 50646, Start Num: 108
Candidate Starts for Ollypop_80:
(66, 51065), (Start: 108 @50972 has 14 MA's), (122, 50939), (135, 50873), (139, 50855), (148, 50834), (154, 50804), (165, 50750), (179, 50714),

Gene: OlympiaSaint_67 Start: 42685, Stop: 43047, Start Num: 95
Candidate Starts for OlympiaSaint_67:
(Start: 95 @42685 has 149 MA's), (145, 42844), (184, 42985), (188, 42988), (201, 43030),

Gene: OrionPax_76 Start: 48081, Stop: 48398, Start Num: 111
Candidate Starts for OrionPax_76:
(37, 47898), (Start: 111 @48081 has 180 MA's), (Start: 120 @48105 has 2 MA's), (146, 48222),

Gene: OverPar_69 Start: 46451, Stop: 46849, Start Num: 111
Candidate Starts for OverPar_69:
(25, 46172), (36, 46265), (Start: 94 @46433 has 6 MA's), (Start: 111 @46451 has 180 MA's), (140, 46568), (147, 46595), (164, 46673), (213, 46820),

Gene: OwlsT2W_65 Start: 42020, Stop: 42376, Start Num: 95
Candidate Starts for OwlsT2W_65:
(Start: 95 @42020 has 149 MA's), (145, 42179), (184, 42320),

Gene: PHappiness_61 Start: 41273, Stop: 41629, Start Num: 95
Candidate Starts for PHappiness_61:
(50, 41168), (53, 41174), (Start: 73 @41228 has 16 MA's), (Start: 95 @41273 has 149 MA's), (Start: 116 @41306 has 1 MA's), (154, 41477), (184, 41573), (188, 41576),

Gene: PMC_62 Start: 42410, Stop: 42766, Start Num: 95
Candidate Starts for PMC_62:
(Start: 95 @42410 has 149 MA's), (184, 42710), (188, 42713),

Gene: PYPDinur_63 Start: 45117, Stop: 45515, Start Num: 110
Candidate Starts for PYPDinur_63:
(Start: 110 @45117 has 2 MA's), (140, 45234), (147, 45261), (193, 45420),

Gene: Pacc40_59 Start: 40742, Stop: 41104, Start Num: 95
Candidate Starts for Pacc40_59:
(48, 40625), (Start: 95 @40742 has 149 MA's), (145, 40901), (184, 41042), (201, 41087),

Gene: PaddyBaddy_77 Start: 48084, Stop: 48401, Start Num: 111
Candidate Starts for PaddyBaddy_77:
(37, 47901), (Start: 111 @48084 has 180 MA's), (146, 48225),

Gene: Palpatine_79 Start: 49462, Stop: 49779, Start Num: 111

Candidate Starts for Palpatine_79:

(37, 49279), (Start: 111 @49462 has 180 MA's), (146, 49603),

Gene: Paperbeatsrock_76 Start: 48707, Stop: 49024, Start Num: 111

Candidate Starts for Paperbeatsrock_76:

(37, 48524), (Start: 111 @48707 has 180 MA's), (146, 48848),

Gene: Pat3_75 Start: 47239, Stop: 47556, Start Num: 111

Candidate Starts for Pat3_75:

(37, 47056), (Start: 111 @47239 has 180 MA's), (Start: 120 @47263 has 2 MA's), (146, 47380),

Gene: Petra64142_81 Start: 49926, Stop: 50243, Start Num: 111

Candidate Starts for Petra64142_81:

(37, 49743), (Start: 111 @49926 has 180 MA's), (146, 50067),

Gene: Phaja_75 Start: 48533, Stop: 48850, Start Num: 111

Candidate Starts for Phaja_75:

(37, 48350), (Start: 111 @48533 has 180 MA's), (146, 48674),

Gene: PhaoMing_57 Start: 39593, Stop: 39922, Start Num: 111

Candidate Starts for PhaoMing_57:

(54, 39479), (90, 39569), (Start: 111 @39593 has 180 MA's), (122, 39620), (140, 39707), (155, 39776), (164, 39812), (171, 39836), (189, 39875), (195, 39902), (199, 39914),

Gene: Pharsalus_74 Start: 48507, Stop: 48824, Start Num: 111

Candidate Starts for Pharsalus_74:

(37, 48324), (Start: 111 @48507 has 180 MA's), (146, 48648),

Gene: PhatBacter_81 Start: 49479, Stop: 49796, Start Num: 111

Candidate Starts for PhatBacter_81:

(37, 49296), (Start: 111 @49479 has 180 MA's), (146, 49620),

Gene: Phaux_79 Start: 49474, Stop: 49791, Start Num: 111

Candidate Starts for Phaux_79:

(37, 49291), (Start: 111 @49474 has 180 MA's), (146, 49615),

Gene: PhesterPhotato_65 Start: 41443, Stop: 41799, Start Num: 95

Candidate Starts for PhesterPhotato_65:

(Start: 95 @41443 has 149 MA's), (145, 41602), (184, 41743), (188, 41746),

Gene: PhillyJawn_42 Start: 25617, Stop: 25994, Start Num: 101

Candidate Starts for PhillyJawn_42:

(Start: 101 @25617 has 9 MA's), (125, 25680), (173, 25881), (175, 25887), (183, 25908), (210, 25983),

Gene: Philus_69 Start: 43883, Stop: 44239, Start Num: 95

Candidate Starts for Philus_69:

(48, 43766), (Start: 95 @43883 has 149 MA's), (149, 44057), (184, 44183), (188, 44186), (201, 44222),

Gene: PhlipPhlop_65 Start: 44108, Stop: 44470, Start Num: 95

Candidate Starts for PhlipPhlop_65:

(48, 43991), (Start: 95 @44108 has 149 MA's), (Start: 120 @44150 has 2 MA's), (145, 44267), (184, 44408), (188, 44411), (201, 44453),

Gene: Phoebus_124 Start: 70535, Stop: 70867, Start Num: 111

Candidate Starts for Phoebus_124:

(Start: 111 @70535 has 180 MA's), (138, 70646), (142, 70670), (194, 70850),

Gene: Phrux_74 Start: 48070, Stop: 48387, Start Num: 111

Candidate Starts for Phrux_74:

(37, 47887), (Start: 111 @48070 has 180 MA's), (146, 48211),

Gene: PhuzzTulsa_82 Start: 50446, Stop: 50120, Start Num: 108

Candidate Starts for PhuzzTulsa_82:

(Start: 108 @50446 has 14 MA's), (Start: 120 @50416 has 2 MA's), (122, 50413), (135, 50347), (150, 50302), (154, 50278), (165, 50224), (179, 50188), (203, 50137),

Gene: Pickles13_40 Start: 25930, Stop: 26307, Start Num: 101

Candidate Starts for Pickles13_40:

(Start: 101 @25930 has 9 MA's), (131, 26020), (173, 26194), (175, 26200), (183, 26221), (210, 26296),

Gene: Pippy_64 Start: 41724, Stop: 42086, Start Num: 95

Candidate Starts for Pippy_64:

(Start: 95 @41724 has 149 MA's), (145, 41883), (149, 41898), (184, 42024), (201, 42069),

Gene: Pitbull_53 Start: 29779, Stop: 30105, Start Num: 112

Candidate Starts for Pitbull_53:

(56, 29674), (Start: 112 @29779 has 5 MA's), (137, 29884), (168, 30016),

Gene: Pointis_81 Start: 49894, Stop: 49568, Start Num: 108

Candidate Starts for Pointis_81:

(Start: 108 @49894 has 14 MA's), (Start: 120 @49864 has 2 MA's), (122, 49861), (135, 49795), (150, 49750), (154, 49726), (165, 49672), (179, 49636), (203, 49585),

Gene: Poise_69 Start: 39121, Stop: 39474, Start Num: 81

Candidate Starts for Poise_69:

(Start: 81 @39121 has 24 MA's), (98, 39148), (141, 39283), (150, 39313), (160, 39364), (162, 39370), (166, 39385), (175, 39403), (182, 39427), (184, 39430),

Gene: Policronamos_80 Start: 49474, Stop: 49791, Start Num: 111

Candidate Starts for Policronamos_80:

(37, 49291), (Start: 111 @49474 has 180 MA's), (146, 49615),

Gene: Polka14_64 Start: 42337, Stop: 42693, Start Num: 95

Candidate Starts for Polka14_64:

(50, 42232), (53, 42238), (Start: 73 @42292 has 16 MA's), (Start: 95 @42337 has 149 MA's), (Start: 116 @42370 has 1 MA's), (154, 42541), (184, 42637), (188, 42640),

Gene: Pollywog_66 Start: 43003, Stop: 43359, Start Num: 95

Candidate Starts for Pollywog_66:

(Start: 95 @43003 has 149 MA's), (145, 43162), (184, 43303), (188, 43306),

Gene: Porky_76 Start: 47900, Stop: 48217, Start Num: 111

Candidate Starts for Porky_76:

(37, 47717), (Start: 111 @47900 has 180 MA's), (146, 48041),

Gene: Pringar_68 Start: 39443, Stop: 39796, Start Num: 81

Candidate Starts for Pringar_68:

(Start: 81 @39443 has 24 MA's), (98, 39470), (141, 39605), (150, 39635), (160, 39686), (162, 39692), (166, 39707), (175, 39725), (182, 39749), (184, 39752),

Gene: Priscilla_65 Start: 42485, Stop: 42847, Start Num: 95

Candidate Starts for Priscilla_65:

(Start: 95 @42485 has 149 MA's), (149, 42659), (184, 42785), (201, 42830),

Gene: Ptowny_74 Start: 47369, Stop: 47686, Start Num: 111

Candidate Starts for Ptowny_74:

(37, 47186), (Start: 111 @47369 has 180 MA's), (146, 47510),

Gene: Pumpkin_80 Start: 49128, Stop: 49445, Start Num: 111

Candidate Starts for Pumpkin_80:

(37, 48945), (Start: 111 @49128 has 180 MA's), (146, 49269),

Gene: Pureglobe5_83 Start: 50341, Stop: 50015, Start Num: 108

Candidate Starts for Pureglobe5_83:

(66, 50434), (Start: 108 @50341 has 14 MA's), (Start: 120 @50311 has 2 MA's), (122, 50308), (135, 50242), (150, 50197), (154, 50173), (165, 50119), (179, 50083), (203, 50032),

Gene: Purpicious_92 Start: 57086, Stop: 57466, Start Num: 93

Candidate Starts for Purpicious_92:

(30, 56873), (46, 56960), (Start: 93 @57086 has 8 MA's), (169, 57347), (181, 57380), (186, 57386), (200, 57425), (202, 57428),

Gene: Quallification_78 Start: 49115, Stop: 49432, Start Num: 111

Candidate Starts for Quallification_78:

(37, 48932), (Start: 111 @49115 has 180 MA's), (146, 49256),

Gene: Quby_65 Start: 45009, Stop: 45407, Start Num: 110

Candidate Starts for Quby_65:

(Start: 110 @45009 has 2 MA's), (140, 45126), (147, 45153), (193, 45312),

Gene: QuickMath_69 Start: 44476, Stop: 44817, Start Num: 95

Candidate Starts for QuickMath_69:

(Start: 95 @44476 has 149 MA's), (184, 44776), (188, 44779),

Gene: RIPWilbur_83 Start: 49861, Stop: 49535, Start Num: 108

Candidate Starts for RIPWilbur_83:

(66, 49954), (Start: 108 @49861 has 14 MA's), (Start: 120 @49831 has 2 MA's), (122, 49828), (135, 49762), (150, 49717), (154, 49693), (165, 49639), (179, 49603), (203, 49552),

Gene: Rabbitrun_72 Start: 44571, Stop: 44918, Start Num: 100

Candidate Starts for Rabbitrun_72:

(52, 44460), (63, 44490), (65, 44493), (67, 44496), (80, 44538), (Start: 95 @44562 has 149 MA's), (Start: 100 @44571 has 3 MA's), (127, 44652), (164, 44808), (173, 44835), (178, 44847), (185, 44862), (187, 44865),

Gene: Radiance_64 Start: 41901, Stop: 42263, Start Num: 95

Candidate Starts for Radiance_64:

(Start: 95 @41901 has 149 MA's), (145, 42060), (184, 42201), (188, 42204), (201, 42246),

Gene: Raela_69 Start: 39678, Stop: 40031, Start Num: 81

Candidate Starts for Raela_69:

(Start: 81 @39678 has 24 MA's), (98, 39705), (141, 39840), (150, 39870), (160, 39921), (162, 39927), (166, 39942), (175, 39960), (182, 39984), (184, 39987),

Gene: Rakim_78 Start: 48584, Stop: 48901, Start Num: 111

Candidate Starts for Rakim_78:

(37, 48401), (Start: 111 @48584 has 180 MA's), (146, 48725),

Gene: Ramsey_64 Start: 42214, Stop: 42576, Start Num: 95

Candidate Starts for Ramsey_64:

(Start: 95 @42214 has 149 MA's), (145, 42373), (184, 42514), (201, 42559),

Gene: Ranunculus_78 Start: 52647, Stop: 52321, Start Num: 108

Candidate Starts for Ranunculus_78:

(Start: 108 @52647 has 14 MA's), (Start: 120 @52617 has 2 MA's), (135, 52548), (150, 52503), (154, 52479), (179, 52389),

Gene: RazzB_84 Start: 49953, Stop: 49627, Start Num: 108

Candidate Starts for RazzB_84:

(66, 50046), (Start: 108 @49953 has 14 MA's), (Start: 120 @49923 has 2 MA's), (122, 49920), (135, 49854), (150, 49809), (154, 49785), (165, 49731), (179, 49695), (203, 49644),

Gene: Red305_66 Start: 46467, Stop: 46799, Start Num: 73

Candidate Starts for Red305_66:

(13, 46191), (15, 46203), (18, 46212), (23, 46236), (32, 46314), (41, 46362), (Start: 73 @46467 has 16 MA's), (145, 46611), (164, 46695), (175, 46728),

Gene: RedRaider77_68 Start: 39066, Stop: 39419, Start Num: 81

Candidate Starts for RedRaider77_68:

(Start: 81 @39066 has 24 MA's), (98, 39093), (141, 39228), (150, 39258), (160, 39309), (162, 39315), (166, 39330), (175, 39348), (182, 39372), (184, 39375),

Gene: Ren19_78 Start: 49730, Stop: 49404, Start Num: 108

Candidate Starts for Ren19_78:

(Start: 108 @49730 has 14 MA's), (Start: 120 @49700 has 2 MA's), (122, 49697), (135, 49631), (139, 49613), (148, 49592), (154, 49562), (165, 49508), (179, 49472),

Gene: Renaud18_75 Start: 44207, Stop: 44563, Start Num: 95

Candidate Starts for Renaud18_75:

(Start: 95 @44207 has 149 MA's), (145, 44366), (184, 44507),

Gene: Rimmer_78 Start: 48820, Stop: 49137, Start Num: 111

Candidate Starts for Rimmer_78:

(37, 48637), (Start: 111 @48820 has 180 MA's), (146, 48961),

Gene: Rita_66 Start: 40513, Stop: 40875, Start Num: 95

Candidate Starts for Rita_66:

(Start: 95 @40513 has 149 MA's), (145, 40672), (184, 40813), (201, 40858),

Gene: RitaG_61 Start: 41618, Stop: 41974, Start Num: 95
Candidate Starts for RitaG_61:
(50, 41513), (53, 41519), (Start: 73 @41573 has 16 MA's), (Start: 95 @41618 has 149 MA's), (Start: 116 @41651 has 1 MA's), (154, 41822), (184, 41918), (188, 41921),

Gene: RiverMonster_77 Start: 48648, Stop: 48965, Start Num: 111
Candidate Starts for RiverMonster_77:
(37, 48465), (Start: 111 @48648 has 180 MA's), (146, 48789),

Gene: Rizwana_65 Start: 46684, Stop: 46358, Start Num: 108
Candidate Starts for Rizwana_65:
(Start: 108 @46684 has 14 MA's), (Start: 120 @46654 has 2 MA's), (122, 46651), (179, 46426),

Gene: Rockne_66 Start: 42422, Stop: 42778, Start Num: 95
Candidate Starts for Rockne_66:
(Start: 95 @42422 has 149 MA's), (184, 42722), (188, 42725),

Gene: RockyHorror_66 Start: 41564, Stop: 41926, Start Num: 95
Candidate Starts for RockyHorror_66:
(Start: 95 @41564 has 149 MA's), (184, 41864), (201, 41909),

Gene: RomansRevenge_72 Start: 48362, Stop: 47964, Start Num: 106
Candidate Starts for RomansRevenge_72:
(98, 48374), (Start: 106 @48362 has 2 MA's), (122, 48326), (153, 48185), (161, 48143), (175, 48101), (192, 48056), (206, 48023), (212, 48005),

Gene: Ronaldo_98 Start: 49040, Stop: 49366, Start Num: 111
Candidate Starts for Ronaldo_98:
(Start: 111 @49040 has 180 MA's), (132, 49121), (154, 49205), (163, 49244), (177, 49283),

Gene: Rose5_66 Start: 45488, Stop: 45859, Start Num: 111
Candidate Starts for Rose5_66:
(Start: 111 @45488 has 180 MA's), (131, 45566), (164, 45713), (190, 45776), (212, 45851),

Gene: Rossetti_69 Start: 46945, Stop: 47343, Start Num: 111
Candidate Starts for Rossetti_69:
(25, 46666), (36, 46759), (Start: 94 @46927 has 6 MA's), (Start: 111 @46945 has 180 MA's), (140, 47062), (147, 47089), (164, 47167), (213, 47314),

Gene: Royals2015_68 Start: 42421, Stop: 42777, Start Num: 95
Candidate Starts for Royals2015_68:
(Start: 95 @42421 has 149 MA's), (Start: 120 @42463 has 2 MA's), (145, 42580), (184, 42721),

Gene: Ruby_61 Start: 41693, Stop: 42055, Start Num: 95
Candidate Starts for Ruby_61:
(Start: 95 @41693 has 149 MA's), (184, 41993), (201, 42038),

Gene: Rumpelstiltskin_66 Start: 45792, Stop: 46190, Start Num: 111
Candidate Starts for Rumpelstiltskin_66:
(25, 45513), (36, 45606), (Start: 94 @45774 has 6 MA's), (Start: 111 @45792 has 180 MA's), (140, 45909), (147, 45936), (164, 46014), (213, 46161),

Gene: Saal_67 Start: 43437, Stop: 43799, Start Num: 95

Candidate Starts for Saal_67:

(Start: 95 @43437 has 149 MA's), (145, 43596), (184, 43737), (188, 43740), (201, 43782),

Gene: Saints25_76 Start: 48058, Stop: 48375, Start Num: 111

Candidate Starts for Saints25_76:

(37, 47875), (Start: 111 @48058 has 180 MA's), (146, 48199),

Gene: Samty_66 Start: 46475, Stop: 46807, Start Num: 73

Candidate Starts for Samty_66:

(15, 46211), (18, 46220), (23, 46244), (32, 46322), (41, 46370), (Start: 73 @46475 has 16 MA's), (145, 46619), (164, 46703), (175, 46736),

Gene: Sandalphon_66 Start: 42944, Stop: 43306, Start Num: 95

Candidate Starts for Sandalphon_66:

(48, 42827), (Start: 95 @42944 has 149 MA's), (145, 43103), (184, 43244), (201, 43289),

Gene: Sarma624_64 Start: 39148, Stop: 39510, Start Num: 95

Candidate Starts for Sarma624_64:

(Start: 95 @39148 has 149 MA's), (145, 39307), (154, 39352), (184, 39448), (188, 39451), (201, 39493),

Gene: Sarshaun_68 Start: 46459, Stop: 46857, Start Num: 111

Candidate Starts for Sarshaun_68:

(25, 46180), (36, 46273), (Start: 94 @46441 has 6 MA's), (Start: 111 @46459 has 180 MA's), (140, 46576), (147, 46603), (164, 46681), (213, 46828),

Gene: Sassay_72 Start: 46748, Stop: 47065, Start Num: 111

Candidate Starts for Sassay_72:

(37, 46565), (Start: 111 @46748 has 180 MA's), (146, 46889),

Gene: Seabastian_71 Start: 45319, Stop: 45681, Start Num: 95

Candidate Starts for Seabastian_71:

(Start: 95 @45319 has 149 MA's), (154, 45523), (184, 45619), (201, 45664),

Gene: ShamWow_77 Start: 48970, Stop: 49287, Start Num: 111

Candidate Starts for ShamWow_77:

(37, 48787), (Start: 111 @48970 has 180 MA's), (146, 49111),

Gene: ShiLan_64 Start: 42432, Stop: 42788, Start Num: 95

Candidate Starts for ShiLan_64:

(Start: 95 @42432 has 149 MA's), (145, 42591), (184, 42732), (188, 42735),

Gene: ShowerHandel_68 Start: 42396, Stop: 42758, Start Num: 95

Candidate Starts for ShowerHandel_68:

(Start: 95 @42396 has 149 MA's), (145, 42555), (149, 42570), (184, 42696), (201, 42741),

Gene: SiSi_63 Start: 41202, Stop: 41558, Start Num: 95

Candidate Starts for SiSi_63:

(Start: 95 @41202 has 149 MA's), (184, 41502), (188, 41505),

Gene: SilentRX_62 Start: 45416, Stop: 45102, Start Num: 108

Candidate Starts for SilentRX_62:

(42, 45581), (49, 45545), (Start: 108 @45416 has 14 MA's), (144, 45290), (179, 45158), (184, 45149),

Gene: Simpliphy_76 Start: 48048, Stop: 48365, Start Num: 111

Candidate Starts for Simpliphy_76:

(37, 47865), (Start: 111 @48048 has 180 MA's), (146, 48189),

Gene: SirDuracell_76 Start: 47334, Stop: 47651, Start Num: 111

Candidate Starts for SirDuracell_76:

(37, 47151), (Start: 111 @47334 has 180 MA's), (Start: 120 @47358 has 2 MA's), (146, 47475),

Gene: Skitty_47 Start: 29133, Stop: 29486, Start Num: 112

Candidate Starts for Skitty_47:

(Start: 112 @29133 has 5 MA's), (137, 29238), (200, 29454),

Gene: Snenia_65 Start: 46468, Stop: 46800, Start Num: 73

Candidate Starts for Snenia_65:

(13, 46192), (15, 46204), (18, 46213), (23, 46237), (32, 46315), (41, 46363), (Start: 73 @46468 has 16 MA's), (145, 46612), (164, 46696), (175, 46729),

Gene: Soos_87 Start: 57034, Stop: 57414, Start Num: 93

Candidate Starts for Soos_87:

(21, 56746), (30, 56821), (46, 56908), (Start: 93 @57034 has 8 MA's), (169, 57295), (174, 57304), (181, 57328), (186, 57334), (202, 57376),

Gene: SophKB_74 Start: 47726, Stop: 48043, Start Num: 111

Candidate Starts for SophKB_74:

(37, 47543), (Start: 111 @47726 has 180 MA's), (146, 47867),

Gene: Sotrice96_78 Start: 48729, Stop: 49046, Start Num: 111

Candidate Starts for Sotrice96_78:

(37, 48546), (Start: 111 @48729 has 180 MA's), (146, 48870),

Gene: Soul22_71 Start: 43477, Stop: 43839, Start Num: 95

Candidate Starts for Soul22_71:

(Start: 95 @43477 has 149 MA's), (145, 43636), (184, 43777), (188, 43780), (201, 43822),

Gene: Spartan_53 Start: 40162, Stop: 40533, Start Num: 85

Candidate Starts for Spartan_53:

(85, 40162), (114, 40210), (Start: 118 @40213 has 1 MA's), (128, 40264), (130, 40270), (134, 40282), (136, 40297), (154, 40366), (155, 40372), (163, 40405), (164, 40408), (173, 40435), (175, 40441),

Gene: Spikelee_72 Start: 44062, Stop: 44424, Start Num: 95

Candidate Starts for Spikelee_72:

(Start: 95 @44062 has 149 MA's), (184, 44362), (201, 44407),

Gene: Spooky_68 Start: 42098, Stop: 42427, Start Num: 111

Candidate Starts for Spooky_68:

(Start: 111 @42098 has 180 MA's), (187, 42377), (195, 42407), (199, 42419),

Gene: Spoonbill_63 Start: 41578, Stop: 41934, Start Num: 95

Candidate Starts for Spoonbill_63:

(50, 41473), (53, 41479), (Start: 73 @41533 has 16 MA's), (Start: 95 @41578 has 149 MA's), (Start: 116 @41611 has 1 MA's), (154, 41782), (184, 41878), (188, 41881),

Gene: Squiddly_73 Start: 46416, Stop: 46745, Start Num: 111
Candidate Starts for Squiddly_73:
(Start: 111 @46416 has 180 MA's), (187, 46695), (195, 46725), (199, 46737),

Gene: Stank_80 Start: 48987, Stop: 49304, Start Num: 111
Candidate Starts for Stank_80:
(37, 48804), (Start: 111 @48987 has 180 MA's), (146, 49128),

Gene: Starcevich_65 Start: 41944, Stop: 42300, Start Num: 95
Candidate Starts for Starcevich_65:
(Start: 95 @41944 has 149 MA's), (184, 42244), (188, 42247),

Gene: Stark_78 Start: 48531, Stop: 48848, Start Num: 111
Candidate Starts for Stark_78:
(37, 48348), (Start: 111 @48531 has 180 MA's), (146, 48672),

Gene: StellaBean_75 Start: 48294, Stop: 48611, Start Num: 111
Candidate Starts for StellaBean_75:
(37, 48111), (Start: 111 @48294 has 180 MA's), (146, 48435),

Gene: Stillion_92 Start: 57704, Stop: 58072, Start Num: 100
Candidate Starts for Stillion_92:
(30, 57479), (46, 57566), (Start: 93 @57692 has 8 MA's), (Start: 100 @57704 has 3 MA's), (169, 57953), (174, 57962), (181, 57986), (186, 57992), (202, 58034),

Gene: Sting_90 Start: 57473, Stop: 57853, Start Num: 93
Candidate Starts for Sting_90:
(21, 57185), (30, 57260), (46, 57347), (Start: 93 @57473 has 8 MA's), (Start: 100 @57485 has 3 MA's), (169, 57734), (174, 57743), (181, 57767), (186, 57773), (202, 57815),

Gene: StolenFromERC_80 Start: 48769, Stop: 49086, Start Num: 111
Candidate Starts for StolenFromERC_80:
(37, 48586), (Start: 111 @48769 has 180 MA's), (146, 48910),

Gene: StormChicken_79 Start: 49427, Stop: 49744, Start Num: 111
Candidate Starts for StormChicken_79:
(37, 49244), (Start: 111 @49427 has 180 MA's), (146, 49568),

Gene: Sunny_ Start: 37461, Stop: 37913, Start Num: 101
Candidate Starts for Sunny_:
(Start: 101 @37461 has 9 MA's), (154, 37659), (164, 37701), (214, 37908),

Gene: SuperGrey_69 Start: 44472, Stop: 44828, Start Num: 95
Candidate Starts for SuperGrey_69:
(Start: 95 @44472 has 149 MA's), (145, 44631), (184, 44772), (188, 44775), (201, 44811),

Gene: SwagPiggett_70 Start: 44704, Stop: 45066, Start Num: 95
Candidate Starts for SwagPiggett_70:
(48, 44587), (Start: 95 @44704 has 149 MA's), (145, 44863), (184, 45004), (201, 45049),

Gene: Sweetums_58 Start: 33367, Stop: 33756, Start Num: 101
Candidate Starts for Sweetums_58:
(Start: 101 @33367 has 9 MA's), (137, 33493), (159, 33601), (201, 33721),

Gene: TBrady12_80 Start: 48468, Stop: 48785, Start Num: 111

Candidate Starts for TBrady12_80:

(37, 48285), (Start: 111 @48468 has 180 MA's), (146, 48609),

Gene: Tank_65 Start: 46679, Stop: 46338, Start Num: 108

Candidate Starts for Tank_65:

(Start: 108 @46679 has 14 MA's), (134, 46592), (179, 46421), (196, 46379),

Gene: Tarkin_76 Start: 48716, Stop: 49033, Start Num: 111

Candidate Starts for Tarkin_76:

(37, 48533), (Start: 111 @48716 has 180 MA's), (146, 48857),

Gene: Tchotchke_64 Start: 41928, Stop: 42290, Start Num: 95

Candidate Starts for Tchotchke_64:

(Start: 95 @41928 has 149 MA's), (145, 42087), (184, 42228), (188, 42231), (201, 42273),

Gene: TeamEdward_79 Start: 49421, Stop: 49738, Start Num: 111

Candidate Starts for TeamEdward_79:

(37, 49238), (Start: 111 @49421 has 180 MA's), (Start: 120 @49445 has 2 MA's), (146, 49562),

Gene: TeardropMSU_73 Start: 47716, Stop: 48033, Start Num: 111

Candidate Starts for TeardropMSU_73:

(37, 47533), (Start: 111 @47716 has 180 MA's), (146, 47857),

Gene: Teaspoon_78 Start: 48610, Stop: 48927, Start Num: 111

Candidate Starts for Teaspoon_78:

(37, 48427), (Start: 111 @48610 has 180 MA's), (146, 48751),

Gene: Teng_62 Start: 33271, Stop: 33660, Start Num: 101

Candidate Starts for Teng_62:

(29, 33037), (Start: 101 @33271 has 9 MA's), (137, 33397), (152, 33460), (159, 33505), (199, 33622), (201, 33625),

Gene: Terij_52 Start: 35668, Stop: 36003, Start Num: 102

Candidate Starts for Terij_52:

(4, 35263), (9, 35347), (10, 35350), (11, 35356), (24, 35413), (25, 35416), (69, 35608), (Start: 94 @35656 has 6 MA's), (Start: 97 @35659 has 1 MA's), (Start: 102 @35668 has 5 MA's), (136, 35785), (140, 35803), (173, 35935), (186, 35968),

Gene: Terminus_80 Start: 49503, Stop: 49820, Start Num: 111

Candidate Starts for Terminus_80:

(37, 49320), (Start: 111 @49503 has 180 MA's), (146, 49644),

Gene: Tesla_66 Start: 38915, Stop: 39268, Start Num: 81

Candidate Starts for Tesla_66:

(Start: 81 @38915 has 24 MA's), (98, 38942), (141, 39077), (150, 39107), (160, 39158), (162, 39164), (166, 39179), (175, 39197), (182, 39221), (184, 39224),

Gene: ThetaBob_73 Start: 44248, Stop: 44604, Start Num: 95

Candidate Starts for ThetaBob_73:

(50, 44137), (Start: 95 @44248 has 149 MA's), (184, 44548), (188, 44551),

Gene: Thibault_106 Start: 63336, Stop: 63668, Start Num: 111
Candidate Starts for Thibault_106:
(Start: 111 @63336 has 180 MA's), (138, 63447), (142, 63471), (194, 63651),

Gene: Thimble_78 Start: 47951, Stop: 48268, Start Num: 111
Candidate Starts for Thimble_78:
(37, 47768), (Start: 111 @47951 has 180 MA's), (146, 48092),

Gene: Thresher_79 Start: 49590, Stop: 49907, Start Num: 111
Candidate Starts for Thresher_79:
(37, 49407), (Start: 111 @49590 has 180 MA's), (146, 49731),

Gene: Tomaszewski_72 Start: 47879, Stop: 48196, Start Num: 111
Candidate Starts for Tomaszewski_72:
(37, 47696), (Start: 111 @47879 has 180 MA's), (Start: 120 @47903 has 2 MA's), (146, 48020),

Gene: Topiatin_72 Start: 44952, Stop: 45314, Start Num: 95
Candidate Starts for Topiatin_72:
(48, 44835), (Start: 95 @44952 has 149 MA's), (145, 45111), (184, 45252), (188, 45255), (201, 45297),

Gene: Totinger_65 Start: 41519, Stop: 41875, Start Num: 95
Candidate Starts for Totinger_65:
(Start: 95 @41519 has 149 MA's), (145, 41678), (184, 41819), (188, 41822), (201, 41858),

Gene: Toto_75 Start: 48970, Stop: 49287, Start Num: 111
Candidate Starts for Toto_75:
(37, 48787), (Start: 111 @48970 has 180 MA's), (146, 49111),

Gene: Tourach_66 Start: 46445, Stop: 46831, Start Num: 111
Candidate Starts for Tourach_66:
(36, 46259), (Start: 94 @46427 has 6 MA's), (Start: 111 @46445 has 180 MA's), (140, 46562), (147, 46589), (164, 46667), (213, 46814),

Gene: Traaww1_73 Start: 48154, Stop: 48471, Start Num: 111
Candidate Starts for Traaww1_73:
(37, 47971), (Start: 111 @48154 has 180 MA's), (146, 48295),

Gene: Trax_71 Start: 44944, Stop: 45291, Start Num: 100
Candidate Starts for Trax_71:
(Start: 100 @44944 has 3 MA's), (127, 45025), (164, 45181), (173, 45208), (185, 45235), (187, 45238),

Gene: TriFive_67 Start: 46467, Stop: 46799, Start Num: 73
Candidate Starts for TriFive_67:
(13, 46191), (15, 46203), (18, 46212), (23, 46236), (32, 46314), (41, 46362), (Start: 73 @46467 has 16 MA's), (145, 46611), (164, 46695), (175, 46728),

Gene: Tuco_78 Start: 49478, Stop: 49795, Start Num: 111
Candidate Starts for Tuco_78:
(37, 49295), (Start: 111 @49478 has 180 MA's), (146, 49619),

Gene: Tweety_65 Start: 43115, Stop: 43471, Start Num: 95
Candidate Starts for Tweety_65:

(Start: 95 @43115 has 149 MA's), (145, 43274), (149, 43289), (184, 43415), (188, 43418), (201, 43454),

Gene: Typha_64 Start: 45161, Stop: 45511, Start Num: 81

Candidate Starts for Typha_64:

(55, 45089), (68, 45119), (Start: 81 @45161 has 24 MA's), (92, 45176), (Start: 101 @45194 has 9 MA's), (123, 45242), (124, 45248), (132, 45284), (154, 45368), (155, 45374), (161, 45404), (173, 45437),

Gene: Tyson_67 Start: 45417, Stop: 45785, Start Num: 111

Candidate Starts for Tyson_67:

(Start: 111 @45417 has 180 MA's), (122, 45444), (135, 45513), (140, 45534), (146, 45558), (164, 45639), (190, 45702), (212, 45777),

Gene: Ukulele_72 Start: 47861, Stop: 48178, Start Num: 111

Candidate Starts for Ukulele_72:

(37, 47678), (Start: 111 @47861 has 180 MA's), (146, 48002),

Gene: Underpass_58 Start: 41417, Stop: 41833, Start Num: 94

Candidate Starts for Underpass_58:

(25, 41156), (36, 41249), (Start: 94 @41417 has 6 MA's), (Start: 111 @41435 has 180 MA's), (140, 41552), (147, 41579), (164, 41657), (213, 41804),

Gene: VRedHorse_65 Start: 41397, Stop: 41759, Start Num: 95

Candidate Starts for VRedHorse_65:

(Start: 95 @41397 has 149 MA's), (Start: 116 @41430 has 1 MA's), (145, 41556), (184, 41697), (188, 41700), (201, 41742),

Gene: ValentiniPuff_101 Start: 57583, Stop: 57990, Start Num: 96

Candidate Starts for ValentiniPuff_101:

(Start: 96 @57583 has 1 MA's), (117, 57622), (119, 57628), (146, 57748), (188, 57883), (211, 57961),

Gene: VanLee_116 Start: 60612, Stop: 60974, Start Num: 109

Candidate Starts for VanLee_116:

(Start: 109 @60612 has 1 MA's), (175, 60858), (192, 60903), (198, 60918), (204, 60927), (208, 60942),

Gene: VasuNzinga_68 Start: 39017, Stop: 39370, Start Num: 81

Candidate Starts for VasuNzinga_68:

(Start: 81 @39017 has 24 MA's), (98, 39044), (141, 39179), (150, 39209), (160, 39260), (162, 39266), (166, 39281), (175, 39299), (182, 39323), (184, 39326),

Gene: Velveteen_61 Start: 39148, Stop: 39510, Start Num: 95

Candidate Starts for Velveteen_61:

(Start: 95 @39148 has 149 MA's), (145, 39307), (154, 39352), (184, 39448), (188, 39451), (201, 39493),

Gene: Vetric_67 Start: 46385, Stop: 46804, Start Num: 94

Candidate Starts for Vetric_67:

(25, 46124), (36, 46217), (Start: 94 @46385 has 6 MA's), (Start: 111 @46403 has 180 MA's), (140, 46520), (147, 46547), (164, 46625), (213, 46772),

Gene: Violac_66 Start: 42928, Stop: 43290, Start Num: 95

Candidate Starts for Violac_66:

(Start: 95 @42928 has 149 MA's), (145, 43087), (149, 43102), (184, 43228), (201, 43273),

Gene: Vivum_66 Start: 42717, Stop: 43079, Start Num: 95

Candidate Starts for Vivum_66:

(48, 42600), (Start: 95 @42717 has 149 MA's), (Start: 120 @42759 has 2 MA's), (145, 42876), (184, 43017), (188, 43020), (201, 43062),

Gene: Volt_99 Start: 49204, Stop: 49530, Start Num: 111

Candidate Starts for Volt_99:

(Start: 111 @49204 has 180 MA's), (132, 49285), (154, 49369), (163, 49408), (177, 49447),

Gene: Wachhund_66 Start: 42028, Stop: 42390, Start Num: 95

Candidate Starts for Wachhund_66:

(Start: 95 @42028 has 149 MA's), (184, 42328), (201, 42373),

Gene: Wamburgexpress_66 Start: 45044, Stop: 45415, Start Num: 111

Candidate Starts for Wamburgexpress_66:

(Start: 111 @45044 has 180 MA's), (131, 45122), (164, 45269), (190, 45332), (212, 45407),

Gene: Whirlwind_66 Start: 46283, Stop: 46615, Start Num: 73

Candidate Starts for Whirlwind_66:

(13, 46007), (15, 46019), (18, 46028), (23, 46052), (32, 46130), (41, 46178), (Start: 73 @46283 has 16 MA's), (145, 46427), (164, 46511), (175, 46544),

Gene: Whouxphf_62 Start: 42311, Stop: 42673, Start Num: 95

Candidate Starts for Whouxphf_62:

(Start: 95 @42311 has 149 MA's), (184, 42611), (201, 42656),

Gene: Wiggin_79 Start: 48555, Stop: 48872, Start Num: 111

Candidate Starts for Wiggin_79:

(37, 48372), (Start: 111 @48555 has 180 MA's), (146, 48696),

Gene: Wigglewobble_67 Start: 46423, Stop: 46821, Start Num: 111

Candidate Starts for Wigglewobble_67:

(25, 46144), (36, 46237), (Start: 94 @46405 has 6 MA's), (Start: 111 @46423 has 180 MA's), (140, 46540), (147, 46567), (164, 46645), (213, 46792),

Gene: Wildcat_77 Start: 48619, Stop: 48984, Start Num: 88

Candidate Starts for Wildcat_77:

(59, 48556), (Start: 88 @48619 has 5 MA's), (151, 48811), (185, 48931), (195, 48964),

Gene: Wilde_67 Start: 46978, Stop: 46637, Start Num: 108

Candidate Starts for Wilde_67:

(Start: 108 @46978 has 14 MA's), (134, 46891), (179, 46720), (196, 46678),

Gene: Wilder_68 Start: 46369, Stop: 46770, Start Num: 111

Candidate Starts for Wilder_68:

(25, 46090), (36, 46183), (Start: 94 @46351 has 6 MA's), (Start: 111 @46369 has 180 MA's), (140, 46486), (147, 46513), (164, 46591), (213, 46738),

Gene: Willez_72 Start: 46748, Stop: 47065, Start Num: 111

Candidate Starts for Willez_72:

(37, 46565), (Start: 111 @46748 has 180 MA's), (146, 46889),

Gene: Winchester007_57 Start: 31732, Stop: 32109, Start Num: 101
Candidate Starts for Winchester007_57:
(Start: 101 @31732 has 9 MA's), (125, 31795), (173, 31996), (175, 32002), (183, 32023), (210, 32098),

Gene: Winky_67 Start: 46363, Stop: 46764, Start Num: 111
Candidate Starts for Winky_67:
(25, 46084), (36, 46177), (Start: 94 @46345 has 6 MA's), (Start: 111 @46363 has 180 MA's), (140, 46480), (147, 46507), (164, 46585), (213, 46732),

Gene: Wrackline_71 Start: 37367, Stop: 37759, Start Num: 101
Candidate Starts for Wrackline_71:
(5, 36971), (16, 37061), (31, 37163), (40, 37205), (Start: 101 @37367 has 9 MA's), (121, 37394), (137, 37475), (142, 37502), (159, 37583), (167, 37619), (174, 37640), (197, 37712), (201, 37721),

Gene: Wyatt2_67 Start: 45415, Stop: 45783, Start Num: 111
Candidate Starts for Wyatt2_67:
(Start: 111 @45415 has 180 MA's), (122, 45442), (135, 45511), (140, 45532), (146, 45556), (164, 45637), (190, 45700), (212, 45775),

Gene: XFactor_63 Start: 40832, Stop: 41194, Start Num: 95
Candidate Starts for XFactor_63:
(Start: 95 @40832 has 149 MA's), (184, 41132), (201, 41177),

Gene: Xandras_76 Start: 47963, Stop: 48280, Start Num: 111
Candidate Starts for Xandras_76:
(37, 47780), (Start: 111 @47963 has 180 MA's), (146, 48104),

Gene: YassJohnny_74 Start: 47918, Stop: 48235, Start Num: 111
Candidate Starts for YassJohnny_74:
(37, 47735), (Start: 111 @47918 has 180 MA's), (Start: 120 @47942 has 2 MA's), (146, 48059),

Gene: Yorick_64 Start: 42551, Stop: 42913, Start Num: 95
Candidate Starts for Yorick_64:
(Start: 95 @42551 has 149 MA's), (145, 42710), (184, 42851), (201, 42896),

Gene: Yoshi_81 Start: 44512, Stop: 44874, Start Num: 95
Candidate Starts for Yoshi_81:
(51, 44401), (Start: 95 @44512 has 149 MA's), (184, 44812), (188, 44815), (201, 44857),

Gene: Youngblood_80 Start: 49430, Stop: 49747, Start Num: 111
Candidate Starts for Youngblood_80:
(37, 49247), (Start: 111 @49430 has 180 MA's), (146, 49571),

Gene: Zakai_68 Start: 46689, Stop: 47090, Start Num: 111
Candidate Starts for Zakai_68:
(25, 46410), (36, 46503), (Start: 94 @46671 has 6 MA's), (Start: 111 @46689 has 180 MA's), (140, 46806), (147, 46833), (164, 46911), (213, 47058),

Gene: Zapner_79 Start: 44176, Stop: 44517, Start Num: 93
Candidate Starts for Zapner_79:
(83, 44161), (Start: 93 @44176 has 8 MA's), (184, 44476), (188, 44479),

Gene: Zerg_65 Start: 41676, Stop: 42038, Start Num: 95

Candidate Starts for Zerg_65:

(Start: 95 @41676 has 149 MA's), (184, 41976), (201, 42021),

Gene: ZhongYanYuan_66 Start: 46258, Stop: 46644, Start Num: 111

Candidate Starts for ZhongYanYuan_66:

(36, 46072), (74, 46201), (Start: 94 @46240 has 6 MA's), (Start: 111 @46258 has 180 MA's), (140, 46375), (147, 46402), (164, 46480), (213, 46627),

Gene: Zizzle_69 Start: 44029, Stop: 44391, Start Num: 95

Candidate Starts for Zizzle_69:

(Start: 95 @44029 has 149 MA's), (145, 44188), (149, 44203), (184, 44329), (201, 44374),

Gene: xkcd_80 Start: 49620, Stop: 49937, Start Num: 111

Candidate Starts for xkcd_80:

(37, 49437), (Start: 111 @49620 has 180 MA's), (146, 49761),