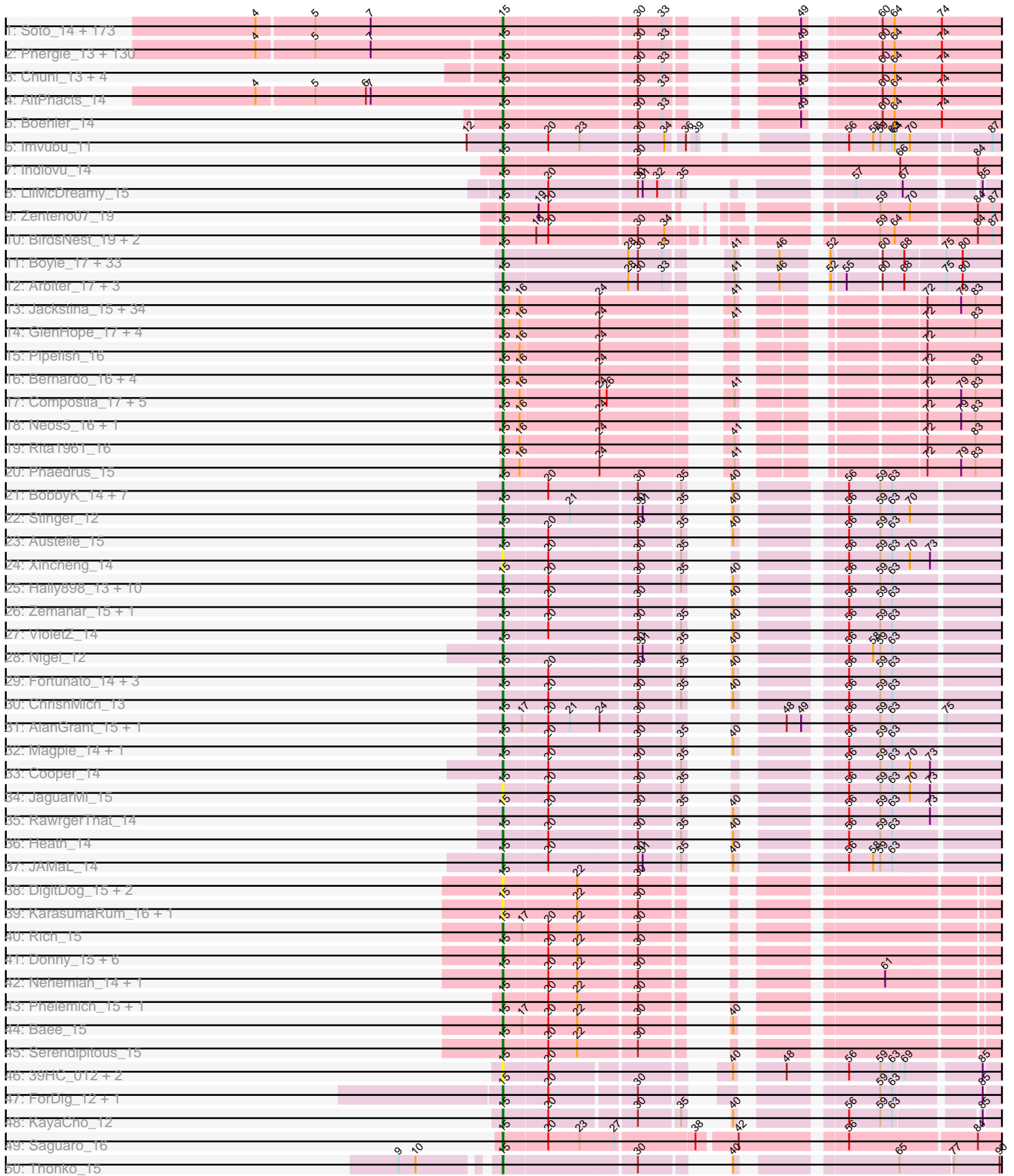
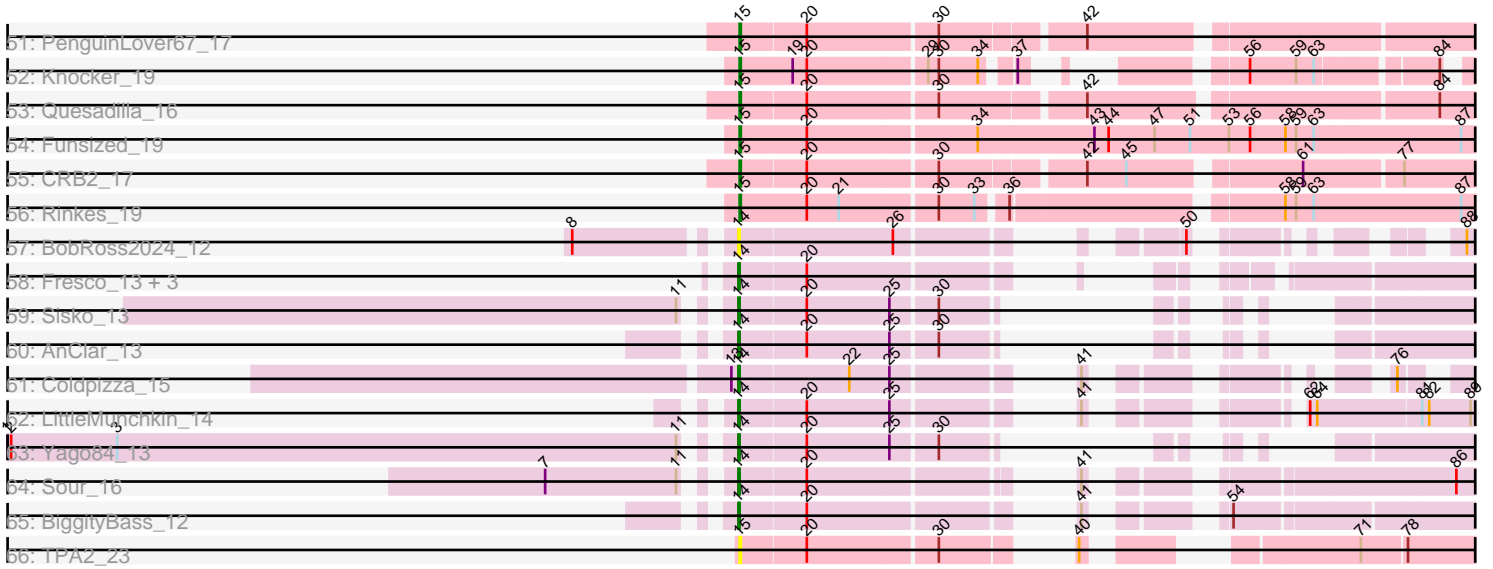


Zoomed Pham 296112



Zoomed Pham 296112



Note: Tracks are now grouped by subcluster and scaled. Switching in subcluster is indicated by changes in track color. Track scale is now set by default to display the region 30 bp upstream of start 1 to 30 bp downstream of the last possible start. If this default region is judged to be packed too tightly with annotated starts, the track will be further scaled to only show that region of the ORF with annotated starts. This action will be indicated by adding "Zoomed" to the title. For starts, yellow indicates the location of called starts comprised solely of Glimmer/GeneMark auto-annotations, green indicates the location of called starts with at least 1 manual gene annotation.

Pham 296112 Report

This analysis was run 04/25/26 on database version 644.

Pham number 296112 has 499 members, 66 are drafts.

Phages represented in each track:

- Track 1 : Soto_14, TallGrassMM_14, HSavage_14, Puhltonio_14, HenryJackson_13, Gyarad_0014, Cornobble_13, FugateOSU_13, Numberten_14, Vaishali24_13, Carthage_13, Phamished_14, OliverWalter_14, Doddsville_14, OSmaximus_14, Gwilliam_14, Yoshand_14, Virgeve_13, Vivaldi_14, Plmatters_14, Newman_14, UAch1_14, Khan1_14, Nacho_0014, Karn_13, JakeO_13, Piglet_0013, Daffy_14, Morty_14, Windsor_13, Antonia_13, TooFast2Furius_15, DelRivs_13, Serpentine_0014, BlueHusk_14, SallyH_14, KlimbOn_14, ShadowBud_14, Suffolk_14, Mikota_14, Rimu_14, ThreeOh3D2_14, Grand2040_13, DonSanchon_13, Kikipoo_14, Jesabah_14, Solosis_13, Mutante_13, Aonishiki_14, Crownjwl_14, Maru_13, Aelin_13, Serendipity_14, Dati_14, DirtJuice_14, Pherdinand_14, Jiraiya_13, Riverton_13, Altwerkus_13, Jillium_13, Surely_14, Hetaeria_14, Chorkpop_14, Slatt_14, KLucky39_14, Selr12_14, Chipette_15, DaddyDaniels_14, MrPhizzler_14, Frankicide_14, Pipsqueak_14, UncleHowie_14, Childish_13, MiniBoss_14, Ricotta_13, Soile_14, Prickles_14, Duggie_13, IsaacEli_14, Iridessa_14, Horchata_14, RedRaider89_15, Mana_13, Morgushi_14, Timmi_13, MitKao_14, FleetyMac_13, Thunderbird_13, BlackStallion_14, SDcharge11_14, Mesh1_14, AbsoluteMadLad_13, Quisquillae_14, Craff_14, Phipps_14, Manad_13, Kwksand96_13, JDog_13, GreenChile_14, Beaglebox_13, Robyn_13, Podrick_14, FriarPreacher_14, Scoot17C_14, Lasso_14, Sheila_14, LostAndPhound_13, Lopsy_13, Tooj_14, Schadenfreude_13, Scrick_13, Haleema_13, Olive_14, Chaelin_13, Xavier_13, Lulwa_14, Vortex_14, PG1_14, Megatron_14, Cobra_14, Telesworld_13, Omniscient_14, Kahve_13, DolOn_15, KingTut_13, HogWash_13, ElvisPhasley_14, Potter_13, PinheadLarry_14, Chunky_14, Pops_14, Held_14, OneBrain_14, Lego3393_14, Kimbrough_14, Dingo_14, CheetO_14, Roliet_14, Harvey_14, Legolas_13, LemonSlice_14, Phareon_14, Triad_14, Inverness_14, Fozzie_13, Badfish_14, SirBeauregard_13, MRabcd_13, Thora_14, Hekos_13, Eremos_14, Basato_15, Cornbread_13, Apizium_13, LuckyMarjie_13, Katniss_14, Cher_13, Buckeye_14, Colbert_14, Aleia_14, Mosaic_13, FluffyNinja_14, Plata_14, Usavi_14, LeiMonet_14, RedMaple_13, Cosmolli16_13, KingVeVeVe_14, Megamind20_14, Chah_14, Lehmann_14, Kloppinator_14, PhatCats2014_14, Nathan_14
- Track 2 : Phergie_13, Zaider_15, Simielle_13, Struggle_13, Fringe_14, JacAttac_14, Andre_14, Mesmerelda_13, Etaye_14, Toni_13, Hocus_13, Hartsy_14, Spartan300_14, Squid_14, CamL_14, Roscoe_15, ABU_14, Hamish_14, PhenghisKhan_13, Vista_14, Sophia_13, ImtiyazSitla_13, PhatLouie_14, PhrankReynolds_13, Roy17_14, TomBombadil_14, Maskar_13, Inchworm_14, CharlieGBrown_13, Placalicious_13, BatteryCK_13, Swish_14, Gwennie1_14,

Haimas_14, Oline_13, DuchessDung_13, Orwigg_13, LeeLot_14, Nicole21_14, Pinkman_13, Orfeu_13, Phleuron_13, Derpp_13, Burr_13, Valjean_14, Virapocalypse_14, Mulan_13, Dione_13, MichaelPhcott_13, Gophee_14, Schueller_13, AngelCake_14, PallasAthena_14, Magic8_14, Zonia_14, TyrionL_13, True_13, Olak_13, JangoPhett_14, DoesntMatter_14, Durga_14, Sigman_14, MelsMeow_13, Riggan_14, Bishoperium_13, Mcshane_13, Mecca_13, Fang_14, Labeouficaum_13, Happabalu_14, Wallhey_13, Kwadwo_13, Waterdiva_14, PhrodoBaggins_13, Longacauda_13, Gareth_13, FremontTroll_14, Chute_13, Mag7_13, Cannibal_14, Bluephacebaby_13, Ashraf_13, Freya_13, Melc17_14, Pacifista_13, Lulumae_13, Kailash_14, BoogieWoogie_13, Orion_14, SassyCat97_13, Charles1_14, Emiris_14, QueenBeane_14, Giraffe_14, Murdoc_14, Vaticameos_14, Iridoclysis_14, ProfessorX_14, CampRoach_14, Lumine_13, Oosterbaan_14, Anderson_14, Tomlarah_14, Matalotodo_14, Nyala_13, GeneCoco_14, SilverBell_14, Caspiboi_13, Hertubise_14, Jiminy_13, Samaymay_14, Banjo_13, Zelda_14, EmpTee_14, Adriana_14, HighStump_13, LasagnaCat_14, Daka_14, Dice_13, Trypo_14, Brilliant_14, Veritas_13, Skippy_14, Coletti_14, Swiphy_14, Phunky_14, Weher20_14, YouGoGlencoco_14, Squiggle_14, Eugenia_14, ShiVal_14

- Track 3 : Chuni_13, Keitherie_14, BlacksBerry_13, Flake_15, Larson_15
- Track 4 : AltPhacts_14
- Track 5 : Boehler_14
- Track 6 : Imvubu_11
- Track 7 : Indlovu_14
- Track 8 : LilMcDreamy_15
- Track 9 : Zenteno07_19
- Track 10 : BirdsNest_19, LittleMinkey_20, Hashim76_19
- Track 11 : Boyle_17, LizLemon_17, Kheth_17, Ares_17, Eaglehorse_17, ItsyBitsy1_17, Godines_17, FrenchFry_17, Calamitous_17, Blocker23_17, Phantasmagoria_17, TA17A_17, Laurie_17, Faze9_17, Vic9_00017, Tinciduntolum_18, Lars_17, Kaleb_17, Tres_17, Brownie5_17, Holeinone_17, Rosebush_17, PrinceCharming_17, Glass_17, West99_17, LilSmirk_17, Kolhan_17, Opia_17, Allegro_17, Sabella_17, Rhinoforte_17, Bananafish_17, Hedgerow_17, Coffee_17
- Track 12 : Arbiter_17, Lephleur_17, Qyrzula_16, MasterPo_17
- Track 13 : Jackstina_15, Yinz_16, SynergyX_16, RagingRooster_16, Chentzyk_15, Audrey_16, Ben11_15, Mulaychimus_16, Corofin_16, Briakila_16, Heathcliff_16, Baloo_16, Kronus_15, Halfpint_15, Athena_17, Daisy_16, RomaT_16, Nozo_16, MmasiCarm_16, Glubnar_16, Kamiyu_16, OrangeOswald_16, Phlyer_16, Tydolla_16, LestyG_16, TinyTerror_16, Olivio_15, Abinghost_16, Gadget_17, Deenasa_16, Devonte_16, Obutu_16, SlippinJimmy_16, Phayeta_16, Shenandoah_16
- Track 14 : GlenHope_17, Marlia_16, ChaChing_16, Gervas_16, Mortcellus_15
- Track 15 : Pipefish_16
- Track 16 : Bernardo_16, Yahalom_16, Morty007_16, Marley1013_16, Akoma_16
- Track 17 : Compostia_17, HarveySr_16, SwainyDoc_16, Philly_15, Casbah_15, Chandler_16
- Track 18 : Neos5_16, Chalmers_16
- Track 19 : Rita1961_16
- Track 20 : Phaedruss_15
- Track 21 : BobbyK_14, Hangman_14, Frederick_14, Hydro_14, JoyceMaria_14, Mithril_14, Lolalove_14, BrownCNA_15
- Track 22 : Stinger_12
- Track 23 : Austelle_15

- Track 24 : Xincheng_14
- Track 25 : Hally898_13, Lambano_13, Nanao_13, Epah_13, Poster_13, GinPorsche_13, LittleDigger_13, Antihero_13, QueenPie_14, Renkei_13, Ahwei_13
- Track 26 : Zemanar_15, Waleliano_14
- Track 27 : VioletZ_14
- Track 28 : Nigel_12
- Track 29 : Fortunato_14, Apex_14, Mudslide_14, Prince_14
- Track 30 : ChrisnMich_13
- Track 31 : AlanGrant_15, Vincenzo_15
- Track 32 : Magpie_14, Fanaw_14
- Track 33 : Cooper_14
- Track 34 : JaguarMi_15
- Track 35 : RawrgerThat_14
- Track 36 : Heath_14
- Track 37 : JAMaL_14
- Track 38 : DigitDog_15, Shenyu_15, Nangang_15
- Track 39 : KarasumaRum_16, StinkyVeggy_16
- Track 40 : Rich_15
- Track 41 : Donny_15, SirJeffery_15, Reccee_16, Acadian_15, Suigeneris_15, Rita130_15, EastView9101_15
- Track 42 : Nehemiah_14, Mysterious_15
- Track 43 : Phelemich_15, Reprobate_15
- Track 44 : Bae_15
- Track 45 : Serendipitous_15
- Track 46 : 39HC_012, Hosp_010, 40BC_012
- Track 47 : ForDig_12, Jolie1_012
- Track 48 : KayaCho_12
- Track 49 : Saguaro_16
- Track 50 : Thonko_15
- Track 51 : PenguinLover67_17
- Track 52 : Knocker_19
- Track 53 : Quesadilla_16
- Track 54 : Funsized_19
- Track 55 : CRB2_17
- Track 56 : Rinkes_19
- Track 57 : BobRoss2024_12
- Track 58 : Fresco_13, Axumite_13, Shatter_13, Ligma_13
- Track 59 : Sisko_13
- Track 60 : AnClar_13
- Track 61 : Coldpizza_15
- Track 62 : LittleMunchkin_14
- Track 63 : Yago84_13
- Track 64 : Sour_16
- Track 65 : BiggityBass_12
- Track 66 : TPA2_23

Summary of Final Annotations (See graph section above for start numbers):

The start number called the most often in the published annotations is 15, it was called in 422 of the 433 non-draft genes in the pham.

Genes that call this "Most Annotated" start:

• 39HC_012, 40BC_012, ABU_14, Abinghost_16, AbsoluteMadLad_13, Acadian_15, Adriana_14, Aelin_13, Ahwei_13, Akoma_16, AlanGrant_15, Aleia_14, Allegro_17, AltPhacts_14, Altwerkus_13, Anderson_14, Andre_14, AngelCake_14, Antihero_13, Antonia_13, Aonishiki_14, Apex_14, Apizium_13, Arbiter_17, Ares_17, Ashraf_13, Athena_17, Audrey_16, Austelle_15, Badfish_14, Bae_15, Baloo_16, Bananafish_17, Banjo_13, Basato_15, BatteryCK_13, Beaglebox_13, Ben11_15, Bernardo_16, BirdsNest_19, Bishoperium_13, BlackStallion_14, BlacksBerry_13, Blocker23_17, BlueHusk_14, Bluephacebaby_13, BobbyK_14, Boehler_14, BoogieWoogie_13, Boyle_17, Briakila_16, Brilliant_14, BrownCNA_15, Brownie5_17, Buckeye_14, Burr_13, CRB2_17, Calamitous_17, CamL_14, CampRoach_14, Cannibal_14, Carthage_13, Casbah_15, Caspiboi_13, ChaChing_16, Chaelin_13, Chah_14, Chalmers_16, Chandler_16, Charles1_14, CharlieGBrown_13, CheetO_14, Chentzyk_15, Cher_13, Childish_13, Chipette_15, Chorkpop_14, ChrisnMich_13, Chuni_13, Chunky_14, Chute_13, Cobra_14, Coffee_17, Colbert_14, Coletti_14, Compostia_17, Cooper_14, Cornbread_13, Cornobble_13, Corofin_16, Cosmolli16_13, Craff_14, Crownjwl_14, DaddyDaniels_14, Daffy_14, Daisy_16, Daka_14, Dati_14, Deenasa_16, DelRivs_13, Derpp_13, Devonte_16, Dice_13, DigitDog_15, Dingo_14, Dione_13, DirtJuice_14, Doddsville_14, DoesntMatter_14, DolOn_15, DonSanchon_13, Donny_15, DuchessDung_13, Duggie_13, Durga_14, Eaglehorse_17, EastView9101_15, ElvisPhasley_14, Emiris_14, EmpTee_14, Epah_13, Eremos_14, Etaye_14, Eugenia_14, Fanaw_14, Fang_14, Faze9_17, Flake_15, FleetyMac_13, FluffyNinja_14, ForDig_12, Fortunato_14, Fozzie_13, Frankicide_14, Frederick_14, FremontTroll_14, FrenchFry_17, Freya_13, FriarPreacher_14, Fringe_14, FugateOSU_13, Funsized_19, Gadget_17, Gareth_13, GeneCoco_14, Gervas_16, GinPorsche_13, Giraffe_14, Glass_17, GlenHope_17, Glubnar_16, Godines_17, Gophee_14, Grand2040_13, GreenChile_14, Gwennie1_14, Gwilliam_14, Gyarad_0014, HSavage_14, Haimas_14, Haleema_13, Halfpint_15, Hally898_13, Hamish_14, Hangman_14, Happabalu_14, Hartsy_14, HarveySr_16, Harvey_14, Hashim76_19, Heath_14, Heathcliff_16, Hedgerow_17, Hekos_13, Held_14, HenryJackson_13, Hertubise_14, Hetaeria_14, HighStump_13, Hocus_13, HogWash_13, Holeinone_17, Horchata_14, Hosp_010, Hydro_14, ImtiyazSitla_13, Imvubu_11, Inchworm_14, Indlovu_14, Inverness_14, Iridessa_14, Iridoclysis_14, IsaacEli_14, ItsyBitsy1_17, JAMaL_14, JDog_13, JacAttac_14, Jackstina_15, JaguarMi_15, JakeO_13, JangoPhett_14, Jesabah_14, Jillium_13, Jiminy_13, Jiraiya_13, Jolie1_012, JoyceMaria_14, KLucky39_14, Kahve_13, Kailash_14, Kaleb_17, Kamiyu_16, KarasumaRum_16, Karn_13, Katniss_14, KayaCho_12, Keitherie_14, Khan1_14, Kheth_17, Kikipoo_14, Kimbrough_14, KingTut_13, KingVeVeVe_14, KlimbOn_14, Kloppinator_14, Knocker_19, Kolhan_17, Kronus_15, Kwadwo_13, Kwksand96_13, Labeouficaum_13, Lambano_13, Lars_17, Larson_15, LasagnaCat_14, Lasso_14, Laurie_17, LeeLot_14, Lego3393_14, Legolas_13, Lehmann_14, LeiMonet_14, LemonSlice_14, Lephleur_17, LestyG_16, LilMcDreamy_15, LilSmirk_17, LittleDigger_13, LittleMinkey_20, LizLemon_17, Lolalove_14, Longacauda_13, Lopsy_13, LostAndPhound_13, LuckyMarjie_13, Lulumae_13, Lulwa_14, Lumine_13, MRabcd_13, Mag7_13, Magic8_14, Magpie_14, Mana_13, Manad_13, Marley1013_16, Marlia_16, Maru_13, Maskar_13, MasterPo_17, Matalotodo_14, Mcshane_13, Mecca_13, Megamind20_14, Megatron_14, Melc17_14, MelsMeow_13, Mesh1_14, Mesmerelda_13, MichaelPhcott_13, Mikota_14, MiniBoss_14, MitKao_14, Mithril_14, MmasiCarm_16, Morgushi_14, Mortcellus_15, Morty007_16, Morty_14, Mosaic_13, MrPhizzler_14, Mudslide_14, Mulan_13, Mulaychimus_16, Murdoc_14, Mutante_13, Mysterious_15, Nacho_0014, Nanao_13, Nangang_15, Nathan_14, Nehemiah_14, Neos5_16,

Newman_14, Nicole21_14, Nigel_12, Nozo_16, Numberten_14, Nyala_13, OSmaximus_14, Obutu_16, Olak_13, Oline_13, Olive_14, OliverWalter_14, Olivio_15, Omniscient_14, OneBrain_14, Oosterbaan_14, Opia_17, OrangeOswald_16, Orfeu_13, Orion_14, Orwigg_13, PG1_14, Pacifista_13, PallasAthena_14, PenguinLover67_17, Phaedrus_15, Phamished_14, Phantasmagoria_17, Phareon_14, PhatCats2014_14, PhatLouie_14, Phayeta_16, Phelemich_15, PhenghisKhan_13, Pherdinand_14, Phergie_13, Philly_15, Phipps_14, Phleuron_13, Phlyer_16, PhrankReynolds_13, PhrodoBaggins_13, Phunky_14, Piglet_0013, PinheadLarry_14, Pinkman_13, Pipefish_16, Pipsqueak_14, Placalicious_13, Plata_14, Plmatters_14, Podrick_14, Pops_14, Poster_13, Potter_13, Prickles_14, PrinceCharming_17, Prince_14, ProfessorX_14, Puhltonio_14, QueenBeane_14, QueenPie_14, Quesadilla_16, Quisquilliae_14, Qyrzula_16, RagingRooster_16, RawrgerThat_14, Reccee_16, RedMaple_13, RedRaider89_15, Renkei_13, Reprobate_15, Rhinoforte_17, Rich_15, Ricotta_13, Riggan_14, Rimu_14, Rinkes_19, Rita130_15, Rita1961_16, Riverton_13, Robyn_13, Roliet_14, RomaT_16, Roscoe_15, Rosebush_17, Roy17_14, SDcharge11_14, Sabella_17, Saguaro_16, SallyH_14, Samaymay_14, SassyCat97_13, Schadenfreude_13, Schueller_13, Scoot17C_14, Scrick_13, Selr12_14, Serendipitous_15, Serendipity_14, Serpentine_0014, ShadowBud_14, Sheila_14, Shenandoah_16, Shenyu_15, ShiVal_14, Sigman_14, SilverBell_14, Simielle_13, SirBeauregard_13, SirJeffery_15, Skippy_14, Slatt_14, SlippinJimmy_16, Soile_14, Solosis_13, Sophia_13, Soto_14, Spartan300_14, Squid_14, Squiggle_14, Stinger_12, StinkyVeggy_16, Struggle_13, Suffolk_14, Suigeneris_15, Surely_14, SwainyDoc_16, Swiphy_14, Swish_14, SynergyX_16, TA17A_17, TPA2_23, TallGrassMM_14, Telesworld_13, Thonko_15, Thora_14, ThreeOh3D2_14, Thunderbird_13, Timmi_13, Tinciduntolum_18, TinyTerror_16, TomBombadil_14, Tomlarah_14, Toni_13, TooFast2Furius_15, Tooj_14, Tres_17, Triad_14, True_13, Trypo_14, Tydolla_16, TyrionL_13, UAch1_14, UncleHowie_14, Usavi_14, Vaishali24_13, Valjean_14, Vaticameos_14, Veritas_13, Vic9_00017, Vincenzo_15, VioletZ_14, Virapocalypse_14, Virgeve_13, Vista_14, Vivaldi_14, Vortex_14, Waleliano_14, Wallhey_13, Waterdiva_14, Weher20_14, West99_17, Windsor_13, Xavier_13, Xincheng_14, Yahalom_16, Yinz_16, Yoshand_14, YouGoGlencoco_14, Zaider_15, Zelda_14, Zemanar_15, Zenteno07_19, Zonia_14,

Genes that have the "Most Annotated" start but do not call it:

-

Genes that do not have the "Most Annotated" start:

- AnClar_13, Axumite_13, BiggityBass_12, BobRoss2024_12, Coldpizza_15, Fresco_13, Ligma_13, LittleMunchkin_14, Shatter_13, Sisko_13, Sour_16, Yago84_13,

Summary by start number:

Start 14:

- Found in 12 of 499 (2.4%) of genes in pham
- Manual Annotations of this start: 11 of 433
- Called 100.0% of time when present
- Phage (with cluster) where this start called: AnClar_13 (DR), Axumite_13 (DR), BiggityBass_12 (DR), BobRoss2024_12 (DR), Coldpizza_15 (DR), Fresco_13 (DR), Ligma_13 (DR), LittleMunchkin_14 (DR), Shatter_13 (DR), Sisko_13 (DR), Sour_16 (DR), Yago84_13 (DR),

Start 15:

- Found in 487 of 499 (97.6%) of genes in pham
- Manual Annotations of this start: 422 of 433
- Called 100.0% of time when present
- Phage (with cluster) where this start called: 39HC_012 (B6), 40BC_012 (B6), ABU_14 (B1), Abinghost_16 (B3), AbsoluteMadLad_13 (B1), Acadian_15 (B5), Adriana_14 (B1), Aelin_13 (B1), Ahwei_13 (B4), Akoma_16 (B3), AlanGrant_15 (B4), Aleia_14 (B1), Allegro_17 (B2), AltPhacts_14 (B1), Altwerkus_13 (B1), Anderson_14 (B1), Andre_14 (B1), AngelCake_14 (B1), Antihero_13 (B4), Antonia_13 (B1), Aonishiki_14 (B1), Apex_14 (B4), Apizium_13 (B1), Arbiter_17 (B2), Ares_17 (B2), Ashraf_13 (B1), Athena_17 (B3), Audrey_16 (B3), Austelle_15 (B4), Badfish_14 (B1), Bae_15 (B5), Baloo_16 (B3), Bananafish_17 (B2), Banjo_13 (B1), Basato_15 (B1), BatteryCK_13 (B1), Beaglebox_13 (B1), Ben11_15 (B3), Bernardo_16 (B3), BirdsNest_19 (B13), Bishoperium_13 (B1), BlackStallion_14 (B1), BlacksBerry_13 (B1), Blocker23_17 (B2), BlueHusk_14 (B1), Bluephacebaby_13 (B1), BobbyK_14 (B4), Boehler_14 (B1), BoogieWoogie_13 (B1), Boyle_17 (B2), Briakila_16 (B3), Brilliant_14 (B1), BrownCNA_15 (B4), Brownie5_17 (B2), Buckeye_14 (B1), Burr_13 (B1), CRB2_17 (B9), Calamitous_17 (B2), CamL_14 (B1), CampRoach_14 (B1), Cannibal_14 (B1), Carthage_13 (B1), Casbah_15 (B3), Caspiboi_13 (B1), ChaChing_16 (B3), Chaelin_13 (B1), Chah_14 (B1), Chalmers_16 (B3), Chandler_16 (B3), Charles1_14 (B1), CharlieGBrown_13 (B1), CheetO_14 (B1), Chentzyk_15 (B3), Cher_13 (B1), Childish_13 (B1), Chipette_15 (B1), Chorkpop_14 (B1), ChrisnMich_13 (B4), Chuni_13 (B1), Chunky_14 (B1), Chute_13 (B1), Cobra_14 (B1), Coffee_17 (B2), Colbert_14 (B1), Coletti_14 (B1), Compostia_17 (B3), Cooper_14 (B4), Cornbread_13 (B1), Cornobble_13 (B1), Corofin_16 (B3), Cosmolli16_13 (B1), Craff_14 (B1), Crownjwl_14 (B1), DaddyDaniels_14 (B1), Daffy_14 (B1), Daisy_16 (B3), Daka_14 (B1), Dati_14 (B1), Deenasa_16 (B3), DelRivs_13 (B1), Derpp_13 (B1), Devonte_16 (B3), Dice_13 (B1), DigitDog_15 (B5), Dingo_14 (B1), Dione_13 (B1), DirtJuice_14 (B1), Doddsville_14 (B1), DoesntMatter_14 (B1), DolOn_15 (B1), DonSanchon_13 (B1), Donny_15 (B5), DuchessDung_13 (B1), Duggie_13 (B1), Durga_14 (B1), Eaglehorse_17 (B2), EastView9101_15 (B5), ElvisPhasley_14 (B1), Emiris_14 (B1), EmpTee_14 (B1), Epah_13 (B4), Eremos_14 (B1), Etaye_14 (B1), Eugenia_14 (B1), Fanaw_14 (B4), Fang_14 (B1), Faze9_17 (B2), Flake_15 (B1), FleetyMac_13 (B1), FluffyNinja_14 (B1), ForDig_12 (B6), Fortunato_14 (B4), Fozzie_13 (B1), Frankicide_14 (B1), Frederick_14 (B4), FremontTroll_14 (B1), FrenchFry_17 (B2), Freya_13 (B1), FriarPreacher_14 (B1), Fringe_14 (B1), FugateOSU_13 (B1), Funsized_19 (B9), Gadget_17 (B3), Gareth_13 (B1), GeneCoco_14 (B1), Gervas_16 (B3), GinPorsche_13 (B4), Giraffe_14 (B1), Glass_17 (B2), GlenHope_17 (B3), Glubnar_16 (B3), Godines_17 (B2), Gophee_14 (B1), Grand2040_13 (B1), GreenChile_14 (B1), Gwennie1_14 (B1), Gwilliam_14 (B1), Gyarad_0014 (B1), HSavage_14 (B1), Haimas_14 (B1), Haleema_13 (B1), Halfpint_15 (B3), Hally898_13 (B4), Hamish_14 (B1), Hangman_14 (B4), Happabalu_14 (B1), Hartsy_14 (B1), HarveySr_16 (B3), Harvey_14 (B1), Hashim76_19 (B13), Heath_14 (B4), Heathcliff_16 (B3), Hedgerow_17 (B2), Hekos_13 (B1), Held_14 (B1), HenryJackson_13 (B1), Hertubise_14 (B1), Hetaeria_14 (B1), HighStump_13 (B1), Hocus_13 (B1), HogWash_13 (B1), Holeinone_17 (B2), Horchata_14 (B1), Hosp_010 (B6), Hydro_14 (B4), ImtiyazSitla_13 (B1), Imvubu_11 (B10), Inchworm_14 (B1), Indlovu_14 (B11), Inverness_14 (B1), Iridessa_14 (B1), Iridoclysis_14 (B1), IsaacEli_14 (B1), ItsyBitsy1_17 (B2), JAMaL_14 (B4), JDog_13 (B1), JacAttac_14 (B1), Jackstina_15 (B3), JaguarMi_15 (B4), JakeO_13 (B1), JangoPhett_14 (B1), Jesabah_14 (B1), Jillium_13 (B1), Jiminy_13 (B1), Jiraiya_13 (B1), Jolie1_012 (B6), JoyceMaria_14 (B4), KLucky39_14 (B1), Kahve_13 (B1), Kailash_14 (B1), Kaleb_17 (B2), Kamiyu_16

(B3), KarasumaRum_16 (B5), Karn_13 (B1), Katniss_14 (B1), KayaCho_12 (B6), Keitherie_14 (B1), Khan1_14 (B1), Kheth_17 (B2), Kikipoo_14 (B1), Kimbrough_14 (B1), KingTut_13 (B1), KingVeVeVe_14 (B1), KlimbOn_14 (B1), Kloppinator_14 (B1), Knocker_19 (B9), Kolhan_17 (B2), Kronus_15 (B3), Kwadwo_13 (B1), Kwksand96_13 (B1), Labeouficaum_13 (B1), Lambano_13 (B4), Lars_17 (B2), Larson_15 (B1), LasagnaCat_14 (B1), Lasso_14 (B1), Laurie_17 (B2), LeeLot_14 (B1), Lego3393_14 (B1), Legolas_13 (B1), Lehmann_14 (B1), LeiMonet_14 (B1), LemonSlice_14 (B1), Lephleur_17 (B2), LestyG_16 (B3), LilMcDreamy_15 (B12), LilSmirk_17 (B2), LittleDigger_13 (B4), LittleMinkey_20 (B13), LizLemon_17 (B2), Lolalove_14 (B4), Longacauda_13 (B1), Lopsy_13 (B1), LostAndPhound_13 (B1), LuckyMarjie_13 (B1), Lulumae_13 (B1), Lulwa_14 (B1), Lumine_13 (B1), MRabcd_13 (B1), Mag7_13 (B1), Magic8_14 (B1), Magpie_14 (B4), Mana_13 (B1), Manad_13 (B1), Marley1013_16 (B3), Marlia_16 (B3), Maru_13 (B1), Maskar_13 (B1), MasterPo_17 (B2), Matalotodo_14 (B1), Mcshane_13 (B1), Mecca_13 (B1), Megamind20_14 (B1), Megatron_14 (B1), Melc17_14 (B1), MelsMeow_13 (B1), Mesh1_14 (B1), Mesmerelda_13 (B1), MichaelPhcott_13 (B1), Mikota_14 (B1), MiniBoss_14 (B1), MitKao_14 (B1), Mithril_14 (B4), MmasiCarm_16 (B3), Morgushi_14 (B1), Mortcellus_15 (B3), Morty007_16 (B3), Morty_14 (B1), Mosaic_13 (B1), MrPhizzler_14 (B1), Mudslide_14 (B4), Mulan_13 (B1), Mulaychimus_16 (B3), Murdoc_14 (B1), Mutante_13 (B1), Mysterious_15 (B5), Nacho_0014 (B1), Nanao_13 (B4), Nangang_15 (B5), Nathan_14 (B1), Nehemiah_14 (B5), Neos5_16 (B3), Newman_14 (B1), Nicole21_14 (B1), Nigel_12 (B4), Nozo_16 (B3), Numberten_14 (B1), Nyala_13 (B1), OSmaximus_14 (B1), Obutu_16 (B3), Olak_13 (B1), Oline_13 (B1), Olive_14 (B1), OliverWalter_14 (B1), Olivio_15 (B3), Omniscient_14 (B1), OneBrain_14 (B1), Oosterbaan_14 (B1), Opia_17 (B2), OrangeOswald_16 (B3), Orfeu_13 (B1), Orion_14 (B1), Orwigg_13 (B1), PG1_14 (B1), Pacifista_13 (B1), PallasAthena_14 (B1), PenguinLover67_17 (B9), Phaedrus_15 (B3), Phamished_14 (B1), Phantasmagoria_17 (B2), Phareon_14 (B1), PhatCats2014_14 (B1), PhatLouie_14 (B1), Phayeta_16 (B3), Phelemich_15 (B5), PhenghisKhan_13 (B1), Pherdinand_14 (B1), Phergie_13 (B1), Philly_15 (B3), Phipps_14 (B1), Phleuron_13 (B1), Phlyer_16 (B3), PhrankReynolds_13 (B1), PhrodoBaggins_13 (B1), Phunky_14 (B1), Piglet_0013 (B1), PinheadLarry_14 (B1), Pinkman_13 (B1), Pipefish_16 (B3), Pipsqueak_14 (B1), Placalicious_13 (B1), Plata_14 (B1), Plmatters_14 (B1), Podrick_14 (B1), Pops_14 (B1), Poster_13 (B4), Potter_13 (B1), Prickles_14 (B1), PrinceCharming_17 (B2), Prince_14 (B4), ProfessorX_14 (B1), Puhltonio_14 (B1), QueenBeane_14 (B1), QueenPie_14 (B4), Quesadilla_16 (B9), Quisquiliae_14 (B1), Qyrzula_16 (B2), RagingRooster_16 (B3), RawrgerThat_14 (B4), Reccee_16 (B5), RedMaple_13 (B1), RedRaider89_15 (B1), Renkei_13 (B4), Reprobate_15 (B5), Rhinoforte_17 (B2), Rich_15 (B5), Ricotta_13 (B1), Riggan_14 (B1), Rimu_14 (B1), Rinkes_19 (B9), Rita130_15 (B5), Rita1961_16 (B3), Riverton_13 (B1), Robyn_13 (B1), Roliet_14 (B1), RomaT_16 (B3), Roscoe_15 (B1), Rosebush_17 (B2), Roy17_14 (B1), SDcharge11_14 (B1), Sabella_17 (B2), Saguario_16 (B7), SallyH_14 (B1), Samaymay_14 (B1), SassyCat97_13 (B1), Schadenfreude_13 (B1), Schueller_13 (B1), Scoot17C_14 (B1), Scrick_13 (B1), Selr12_14 (B1), Serendipitous_15 (B5), Serendipity_14 (B1), Serpentine_0014 (B1), ShadowBud_14 (B1), Sheila_14 (B1), Shenandoah_16 (B3), Shenyu_15 (B5), ShiVal_14 (B1), Sigman_14 (B1), SilverBell_14 (B1), Simielle_13 (B1), SirBeauregard_13 (B1), SirJeffery_15 (B5), Skippy_14 (B1), Slatt_14 (B1), SlippinJimmy_16 (B3), Soile_14 (B1), Solosis_13 (B1), Sophia_13 (B1), Soto_14 (B1), Spartan300_14 (B1), Squid_14 (B1), Squiggle_14 (B1), Stinger_12 (B4), StinkyVeggy_16 (B5), Struggle_13 (B1), Suffolk_14 (B1), Suigeneris_15 (B5), Surely_14 (B1), SwainyDoc_16 (B3), Swiphy_14 (B1), Swish_14 (B1), SynergyX_16 (B3), TA17A_17 (B2), TPA2_23 (singleton), TallGrassMM_14 (B1), Telesworld_13 (B1), Thonko_15 (B8), Thora_14 (B1),

ThreeOh3D2_14 (B1), Thunderbird_13 (B1), Timmi_13 (B1), Tinciduntolum_18 (B2), TinyTerror_16 (B3), TomBombadil_14 (B1), Tomlarah_14 (B1), Toni_13 (B1), TooFast2Furius_15 (B1), Tooj_14 (B1), Tres_17 (B2), Triad_14 (B1), True_13 (B1), Trypo_14 (B1), Tydolla_16 (B3), TyrionL_13 (B1), UAch1_14 (B1), UncleHowie_14 (B1), Usavi_14 (B1), Vaishali24_13 (B1), Valjean_14 (B1), Vaticameos_14 (B1), Veritas_13 (B1), Vic9_00017 (B2), Vincenzo_15 (B4), VioletZ_14 (B4), Virapocalypse_14 (B1), Virgeve_13 (B1), Vista_14 (B1), Vivaldi_14 (B1), Vortex_14 (B1), Waleliano_14 (B4), Wallhey_13 (B1), Waterdiva_14 (B1), Weher20_14 (B1), West99_17 (B2), Windsor_13 (B1), Xavier_13 (B1), Xincheng_14 (B4), Yahalom_16 (B3), Yinz_16 (B3), Yoshand_14 (B1), YouGoGlencoco_14 (B1), Zaider_15 (B1), Zelda_14 (B1), Zemanar_15 (B4), Zenteno07_19 (B13), Zonia_14 (B1),

Summary by clusters:

There are 15 clusters represented in this pham: singleton, B10, B8, B11, B4, B5, B6, B7, B12, B13, B2, B3, DR, B9, B1,

Info for manual annotations of cluster B1:

- Start number 15 was manually annotated 282 times for cluster B1.

Info for manual annotations of cluster B10:

- Start number 15 was manually annotated 1 time for cluster B10.

Info for manual annotations of cluster B11:

- Start number 15 was manually annotated 1 time for cluster B11.

Info for manual annotations of cluster B12:

- Start number 15 was manually annotated 1 time for cluster B12.

Info for manual annotations of cluster B13:

- Start number 15 was manually annotated 3 times for cluster B13.

Info for manual annotations of cluster B2:

- Start number 15 was manually annotated 37 times for cluster B2.

Info for manual annotations of cluster B3:

- Start number 15 was manually annotated 51 times for cluster B3.

Info for manual annotations of cluster B4:

- Start number 15 was manually annotated 26 times for cluster B4.

Info for manual annotations of cluster B5:

- Start number 15 was manually annotated 10 times for cluster B5.

Info for manual annotations of cluster B6:

- Start number 15 was manually annotated 2 times for cluster B6.

Info for manual annotations of cluster B7:

- Start number 15 was manually annotated 1 time for cluster B7.

Info for manual annotations of cluster B8:

- Start number 15 was manually annotated 1 time for cluster B8.

Info for manual annotations of cluster B9:

- Start number 15 was manually annotated 6 times for cluster B9.

Info for manual annotations of cluster DR:

- Start number 14 was manually annotated 11 times for cluster DR.

Gene Information:

Gene: 39HC_012 Start: 12612, Stop: 13553, Start Num: 15

Candidate Starts for 39HC_012:

(Start: 15 @12612 has 422 MA's), (20, 12666), (40, 12840), (48, 12882), (56, 12939), (59, 12978), (63, 12993), (69, 13005), (85, 13089), (94, 13122), (116, 13227),

Gene: 40BC_012 Start: 12612, Stop: 13553, Start Num: 15

Candidate Starts for 40BC_012:

(Start: 15 @12612 has 422 MA's), (20, 12666), (40, 12840), (48, 12882), (56, 12939), (59, 12978), (63, 12993), (69, 13005), (85, 13089), (94, 13122), (116, 13227),

Gene: ABU_14 Start: 12409, Stop: 13245, Start Num: 15

Candidate Starts for ABU_14:

(4, 12112), (5, 12181), (7, 12250), (Start: 15 @12409 has 422 MA's), (30, 12568), (33, 12598), (49, 12685), (60, 12754), (64, 12769), (74, 12826), (111, 12952), (143, 13198),

Gene: Abinghost_16 Start: 13964, Stop: 14569, Start Num: 15

Candidate Starts for Abinghost_16:

(Start: 15 @13964 has 422 MA's), (16, 13985), (24, 14081), (41, 14201), (72, 14363), (79, 14402), (83, 14420),

Gene: AbsoluteMadLad_13 Start: 12413, Stop: 13249, Start Num: 15

Candidate Starts for AbsoluteMadLad_13:

(4, 12110), (5, 12179), (7, 12248), (Start: 15 @12413 has 422 MA's), (30, 12572), (33, 12602), (49, 12689), (60, 12758), (64, 12773), (74, 12830), (111, 12956), (143, 13202),

Gene: Acadian_15 Start: 14167, Stop: 14832, Start Num: 15

Candidate Starts for Acadian_15:

(Start: 15 @14167 has 422 MA's), (20, 14221), (22, 14257), (30, 14326), (117, 14758), (127, 14803),

Gene: Adriana_14 Start: 12411, Stop: 13247, Start Num: 15

Candidate Starts for Adriana_14:

(4, 12114), (5, 12183), (7, 12252), (Start: 15 @12411 has 422 MA's), (30, 12570), (33, 12600), (49, 12687), (60, 12756), (64, 12771), (74, 12828), (111, 12954), (143, 13200),

Gene: Aelin_13 Start: 11964, Stop: 12812, Start Num: 15

Candidate Starts for Aelin_13:

(4, 11661), (5, 11730), (7, 11799), (Start: 15 @11964 has 422 MA's), (30, 12123), (33, 12153), (49, 12240), (60, 12309), (64, 12324), (74, 12381), (111, 12519), (143, 12765),

Gene: Ahwei_13 Start: 13057, Stop: 13908, Start Num: 15

Candidate Starts for Ahwei_13:

(Start: 15 @13057 has 422 MA's), (20, 13111), (30, 13216), (35, 13264), (40, 13273), (56, 13372), (59, 13411), (63, 13426), (93, 13558), (97, 13561), (102, 13582), (103, 13585), (147, 13792), (151, 13876),

Gene: Akoma_16 Start: 13964, Stop: 14569, Start Num: 15

Candidate Starts for Akoma_16:

(Start: 15 @13964 has 422 MA's), (16, 13985), (24, 14081), (72, 14363), (83, 14420),

Gene: AlanGrant_15 Start: 14918, Stop: 15751, Start Num: 15

Candidate Starts for AlanGrant_15:

(Start: 15 @14918 has 422 MA's), (17, 14942), (20, 14972), (21, 14999), (24, 15035), (30, 15077), (48, 15176), (49, 15194), (56, 15233), (59, 15272), (63, 15287), (75, 15344), (102, 15443), (147, 15632), (148, 15674), (151, 15716),

Gene: Aleia_14 Start: 11984, Stop: 12826, Start Num: 15

Candidate Starts for Aleia_14:

(4, 11681), (5, 11750), (7, 11819), (Start: 15 @11984 has 422 MA's), (30, 12143), (33, 12173), (49, 12260), (60, 12329), (64, 12344), (74, 12401), (111, 12533), (143, 12779),

Gene: Allegro_17 Start: 15353, Stop: 16102, Start Num: 15

Candidate Starts for Allegro_17:

(Start: 15 @15353 has 422 MA's), (28, 15506), (30, 15518), (33, 15548), (41, 15584), (46, 15617), (52, 15650), (60, 15704), (68, 15731), (75, 15779), (80, 15797), (95, 15863), (105, 15884), (113, 15929), (114, 15941), (119, 15962),

Gene: AltPhacts_14 Start: 12418, Stop: 13242, Start Num: 15

Candidate Starts for AltPhacts_14:

(4, 12115), (5, 12184), (6, 12247), (7, 12253), (Start: 15 @12418 has 422 MA's), (30, 12577), (33, 12607), (49, 12694), (60, 12763), (64, 12778), (74, 12835), (111, 12949), (143, 13195),

Gene: Altwerkus_13 Start: 12124, Stop: 12942, Start Num: 15

Candidate Starts for Altwerkus_13:

(4, 11821), (5, 11890), (7, 11959), (Start: 15 @12124 has 422 MA's), (30, 12283), (33, 12313), (49, 12400), (60, 12469), (64, 12484), (74, 12541), (111, 12649), (143, 12895),

Gene: AnClar_13 Start: 13251, Stop: 13772, Start Num: 14

Candidate Starts for AnClar_13:

(Start: 14 @13251 has 11 MA's), (20, 13305), (25, 13374), (30, 13410), (104, 13617), (111, 13644),

Gene: Anderson_14 Start: 12414, Stop: 13238, Start Num: 15

Candidate Starts for Anderson_14:

(4, 12117), (5, 12186), (7, 12255), (Start: 15 @12414 has 422 MA's), (30, 12573), (33, 12603), (49, 12690), (60, 12759), (64, 12774), (74, 12831), (111, 12945), (143, 13191),

Gene: Andre_14 Start: 12412, Stop: 13236, Start Num: 15

Candidate Starts for Andre_14:

(4, 12115), (5, 12184), (7, 12253), (Start: 15 @12412 has 422 MA's), (30, 12571), (33, 12601), (49, 12688), (60, 12757), (64, 12772), (74, 12829), (111, 12943), (143, 13189),

Gene: AngelCake_14 Start: 12408, Stop: 13250, Start Num: 15

Candidate Starts for AngelCake_14:

(4, 12111), (5, 12180), (7, 12249), (Start: 15 @12408 has 422 MA's), (30, 12567), (33, 12597), (49, 12684), (60, 12753), (64, 12768), (74, 12825), (111, 12957), (143, 13203),

Gene: Antihero_13 Start: 13057, Stop: 13908, Start Num: 15

Candidate Starts for Antihero_13:

(Start: 15 @13057 has 422 MA's), (20, 13111), (30, 13216), (35, 13264), (40, 13273), (56, 13372), (59, 13411), (63, 13426), (93, 13558), (97, 13561), (102, 13582), (103, 13585), (147, 13792), (151, 13876),

Gene: Antonia_13 Start: 11964, Stop: 12812, Start Num: 15

Candidate Starts for Antonia_13:

(4, 11661), (5, 11730), (7, 11799), (Start: 15 @11964 has 422 MA's), (30, 12123), (33, 12153), (49, 12240), (60, 12309), (64, 12324), (74, 12381), (111, 12519), (143, 12765),

Gene: Aonishiki_14 Start: 12420, Stop: 13268, Start Num: 15

Candidate Starts for Aonishiki_14:

(4, 12117), (5, 12186), (7, 12255), (Start: 15 @12420 has 422 MA's), (30, 12579), (33, 12609), (49, 12696), (60, 12765), (64, 12780), (74, 12837), (111, 12975), (143, 13221),

Gene: Apex_14 Start: 14332, Stop: 15153, Start Num: 15

Candidate Starts for Apex_14:

(Start: 15 @14332 has 422 MA's), (20, 14386), (30, 14491), (35, 14539), (40, 14548), (56, 14647), (59, 14686), (63, 14701), (99, 14842), (102, 14857), (147, 15037), (151, 15121), (152, 15124),

Gene: Apizium_13 Start: 12122, Stop: 12982, Start Num: 15

Candidate Starts for Apizium_13:

(4, 11819), (5, 11888), (7, 11957), (Start: 15 @12122 has 422 MA's), (30, 12281), (33, 12311), (49, 12398), (60, 12467), (64, 12482), (74, 12539), (111, 12677), (143, 12923),

Gene: Arbiter_17 Start: 15440, Stop: 16189, Start Num: 15

Candidate Starts for Arbiter_17:

(Start: 15 @15440 has 422 MA's), (28, 15593), (30, 15605), (33, 15635), (41, 15671), (46, 15704), (52, 15737), (55, 15752), (60, 15791), (68, 15818), (75, 15866), (80, 15884), (95, 15950), (105, 15971), (113, 16016), (114, 16028), (119, 16049),

Gene: Ares_17 Start: 15353, Stop: 16102, Start Num: 15

Candidate Starts for Ares_17:

(Start: 15 @15353 has 422 MA's), (28, 15506), (30, 15518), (33, 15548), (41, 15584), (46, 15617), (52, 15650), (60, 15704), (68, 15731), (75, 15779), (80, 15797), (95, 15863), (105, 15884), (113, 15929), (114, 15941), (119, 15962),

Gene: Ashraf_13 Start: 11958, Stop: 12800, Start Num: 15

Candidate Starts for Ashraf_13:

(4, 11661), (5, 11730), (7, 11799), (Start: 15 @11958 has 422 MA's), (30, 12117), (33, 12147), (49, 12234), (60, 12303), (64, 12318), (74, 12375), (111, 12507), (143, 12753),

Gene: Athena_17 Start: 14727, Stop: 15332, Start Num: 15

Candidate Starts for Athena_17:

(Start: 15 @14727 has 422 MA's), (16, 14748), (24, 14844), (41, 14964), (72, 15126), (79, 15165), (83, 15183),

Gene: Audrey_16 Start: 13964, Stop: 14569, Start Num: 15

Candidate Starts for Audrey_16:

(Start: 15 @13964 has 422 MA's), (16, 13985), (24, 14081), (41, 14201), (72, 14363), (79, 14402), (83, 14420),

Gene: Austelle_15 Start: 14785, Stop: 15609, Start Num: 15

Candidate Starts for Austelle_15:

(Start: 15 @14785 has 422 MA's), (20, 14839), (30, 14944), (35, 14992), (40, 15001), (56, 15100), (59, 15139), (63, 15154), (99, 15295), (102, 15310), (103, 15313), (147, 15493), (151, 15577),

Gene: Axumite_13 Start: 12434, Stop: 12952, Start Num: 14

Candidate Starts for Axumite_13:

(Start: 14 @12434 has 11 MA's), (20, 12488), (104, 12869), (112, 12899),

Gene: Badfish_14 Start: 12417, Stop: 13271, Start Num: 15

Candidate Starts for Badfish_14:

(4, 12114), (5, 12183), (7, 12252), (Start: 15 @12417 has 422 MA's), (30, 12576), (33, 12606), (49, 12693), (60, 12762), (64, 12777), (74, 12834), (111, 12978), (143, 13224),

Gene: Bae_15 Start: 14169, Stop: 14978, Start Num: 15

Candidate Starts for Bae_15:

(Start: 15 @14169 has 422 MA's), (17, 14193), (20, 14223), (22, 14259), (30, 14328), (40, 14385), (112, 14727), (117, 14769), (127, 14814), (141, 14901), (146, 14946),

Gene: Baloo_16 Start: 13964, Stop: 14569, Start Num: 15

Candidate Starts for Baloo_16:

(Start: 15 @13964 has 422 MA's), (16, 13985), (24, 14081), (41, 14201), (72, 14363), (79, 14402), (83, 14420),

Gene: Bananafish_17 Start: 15350, Stop: 16099, Start Num: 15

Candidate Starts for Bananafish_17:

(Start: 15 @15350 has 422 MA's), (28, 15503), (30, 15515), (33, 15545), (41, 15581), (46, 15614), (52, 15647), (60, 15701), (68, 15728), (75, 15776), (80, 15794), (95, 15860), (105, 15881), (113, 15926), (114, 15938), (119, 15959),

Gene: Banjo_13 Start: 12119, Stop: 12949, Start Num: 15

Candidate Starts for Banjo_13:

(4, 11822), (5, 11891), (7, 11960), (Start: 15 @12119 has 422 MA's), (30, 12278), (33, 12308), (49, 12395), (60, 12464), (64, 12479), (74, 12536), (111, 12656), (143, 12902),

Gene: Basato_15 Start: 12651, Stop: 13475, Start Num: 15

Candidate Starts for Basato_15:

(4, 12348), (5, 12417), (7, 12486), (Start: 15 @12651 has 422 MA's), (30, 12810), (33, 12840), (49, 12927), (60, 12996), (64, 13011), (74, 13068), (111, 13182), (143, 13428),

Gene: BatteryCK_13 Start: 11964, Stop: 12806, Start Num: 15

Candidate Starts for BatteryCK_13:

(4, 11667), (5, 11736), (7, 11805), (Start: 15 @11964 has 422 MA's), (30, 12123), (33, 12153), (49, 12240), (60, 12309), (64, 12324), (74, 12381), (111, 12513), (143, 12759),

Gene: Beaglebox_13 Start: 12124, Stop: 12966, Start Num: 15

Candidate Starts for Beaglebox_13:

(4, 11821), (5, 11890), (7, 11959), (Start: 15 @12124 has 422 MA's), (30, 12283), (33, 12313), (49, 12400), (60, 12469), (64, 12484), (74, 12541), (111, 12673), (143, 12919),

Gene: Ben11_15 Start: 13788, Stop: 14393, Start Num: 15

Candidate Starts for Ben11_15:

(Start: 15 @13788 has 422 MA's), (16, 13809), (24, 13905), (41, 14025), (72, 14187), (79, 14226), (83, 14244),

Gene: Bernardo_16 Start: 13963, Stop: 14568, Start Num: 15
Candidate Starts for Bernardo_16:
(Start: 15 @13963 has 422 MA's), (16, 13984), (24, 14080), (72, 14362), (83, 14419),

Gene: BiggityBass_12 Start: 12234, Stop: 12866, Start Num: 14
Candidate Starts for BiggityBass_12:
(Start: 14 @12234 has 11 MA's), (20, 12288), (41, 12450), (54, 12519), (104, 12717), (106, 12720),
(111, 12744), (118, 12792),

Gene: BirdsNest_19 Start: 13243, Stop: 14265, Start Num: 15
Candidate Starts for BirdsNest_19:
(Start: 15 @13243 has 422 MA's), (18, 13285), (20, 13300), (30, 13405), (34, 13438), (59, 13639), (64,
13657), (84, 13753), (87, 13771), (132, 14005), (145, 14119),

Gene: Bishoperium_13 Start: 12119, Stop: 12955, Start Num: 15
Candidate Starts for Bishoperium_13:
(4, 11822), (5, 11891), (7, 11960), (Start: 15 @12119 has 422 MA's), (30, 12278), (33, 12308), (49,
12395), (60, 12464), (64, 12479), (74, 12536), (111, 12662), (143, 12908),

Gene: BlackStallion_14 Start: 12415, Stop: 13257, Start Num: 15
Candidate Starts for BlackStallion_14:
(4, 12112), (5, 12181), (7, 12250), (Start: 15 @12415 has 422 MA's), (30, 12574), (33, 12604), (49,
12691), (60, 12760), (64, 12775), (74, 12832), (111, 12964), (143, 13210),

Gene: BlacksBerry_13 Start: 12118, Stop: 12960, Start Num: 15
Candidate Starts for BlacksBerry_13:
(Start: 15 @12118 has 422 MA's), (30, 12277), (33, 12307), (49, 12394), (60, 12463), (64, 12478), (74,
12535), (111, 12667), (143, 12913),

Gene: Blocker23_17 Start: 15470, Stop: 16219, Start Num: 15
Candidate Starts for Blocker23_17:
(Start: 15 @15470 has 422 MA's), (28, 15623), (30, 15635), (33, 15665), (41, 15701), (46, 15734), (52,
15767), (60, 15821), (68, 15848), (75, 15896), (80, 15914), (95, 15980), (105, 16001), (113, 16046),
(114, 16058), (119, 16079),

Gene: BlueHusk_14 Start: 12414, Stop: 13238, Start Num: 15
Candidate Starts for BlueHusk_14:
(4, 12111), (5, 12180), (7, 12249), (Start: 15 @12414 has 422 MA's), (30, 12573), (33, 12603), (49,
12690), (60, 12759), (64, 12774), (74, 12831), (111, 12945), (143, 13191),

Gene: Bluephacebaby_13 Start: 12119, Stop: 12955, Start Num: 15
Candidate Starts for Bluephacebaby_13:
(4, 11822), (5, 11891), (7, 11960), (Start: 15 @12119 has 422 MA's), (30, 12278), (33, 12308), (49,
12395), (60, 12464), (64, 12479), (74, 12536), (111, 12662), (143, 12908),

Gene: BobRoss2024_12 Start: 12263, Stop: 12784, Start Num: 14
Candidate Starts for BobRoss2024_12:
(8, 12149), (Start: 14 @12263 has 11 MA's), (26, 12389), (50, 12533), (88, 12656), (120, 12755),

Gene: BobbyK_14 Start: 14148, Stop: 14972, Start Num: 15
Candidate Starts for BobbyK_14:
(Start: 15 @14148 has 422 MA's), (20, 14202), (30, 14307), (35, 14355), (40, 14364), (56, 14463), (59,
14502), (63, 14517), (99, 14658), (102, 14673), (103, 14676), (147, 14856), (151, 14940), (152,

14943),

Gene: Boehler_14 Start: 12417, Stop: 13265, Start Num: 15

Candidate Starts for Boehler_14:

(Start: 15 @12417 has 422 MA's), (30, 12576), (33, 12606), (49, 12693), (60, 12762), (64, 12777), (74, 12834), (111, 12972), (143, 13218),

Gene: BoogieWoogie_13 Start: 12118, Stop: 12942, Start Num: 15

Candidate Starts for BoogieWoogie_13:

(4, 11821), (5, 11890), (7, 11959), (Start: 15 @12118 has 422 MA's), (30, 12277), (33, 12307), (49, 12394), (60, 12463), (64, 12478), (74, 12535), (111, 12649), (143, 12895),

Gene: Boyle_17 Start: 15471, Stop: 16220, Start Num: 15

Candidate Starts for Boyle_17:

(Start: 15 @15471 has 422 MA's), (28, 15624), (30, 15636), (33, 15666), (41, 15702), (46, 15735), (52, 15768), (60, 15822), (68, 15849), (75, 15897), (80, 15915), (95, 15981), (105, 16002), (113, 16047), (114, 16059), (119, 16080),

Gene: Briakila_16 Start: 14729, Stop: 15334, Start Num: 15

Candidate Starts for Briakila_16:

(Start: 15 @14729 has 422 MA's), (16, 14750), (24, 14846), (41, 14966), (72, 15128), (79, 15167), (83, 15185),

Gene: Brilliant_14 Start: 12117, Stop: 12959, Start Num: 15

Candidate Starts for Brilliant_14:

(4, 11820), (5, 11889), (7, 11958), (Start: 15 @12117 has 422 MA's), (30, 12276), (33, 12306), (49, 12393), (60, 12462), (64, 12477), (74, 12534), (111, 12666), (143, 12912),

Gene: BrownCNA_15 Start: 14402, Stop: 15226, Start Num: 15

Candidate Starts for BrownCNA_15:

(Start: 15 @14402 has 422 MA's), (20, 14456), (30, 14561), (35, 14609), (40, 14618), (56, 14717), (59, 14756), (63, 14771), (99, 14912), (102, 14927), (103, 14930), (147, 15110), (151, 15194), (152, 15197),

Gene: Brownie5_17 Start: 15470, Stop: 16219, Start Num: 15

Candidate Starts for Brownie5_17:

(Start: 15 @15470 has 422 MA's), (28, 15623), (30, 15635), (33, 15665), (41, 15701), (46, 15734), (52, 15767), (60, 15821), (68, 15848), (75, 15896), (80, 15914), (95, 15980), (105, 16001), (113, 16046), (114, 16058), (119, 16079),

Gene: Buckeye_14 Start: 12419, Stop: 13273, Start Num: 15

Candidate Starts for Buckeye_14:

(4, 12116), (5, 12185), (7, 12254), (Start: 15 @12419 has 422 MA's), (30, 12578), (33, 12608), (49, 12695), (60, 12764), (64, 12779), (74, 12836), (111, 12980), (143, 13226),

Gene: Burr_13 Start: 12119, Stop: 12955, Start Num: 15

Candidate Starts for Burr_13:

(4, 11822), (5, 11891), (7, 11960), (Start: 15 @12119 has 422 MA's), (30, 12278), (33, 12308), (49, 12395), (60, 12464), (64, 12479), (74, 12536), (111, 12662), (143, 12908),

Gene: CRB2_17 Start: 15034, Stop: 16038, Start Num: 15

Candidate Starts for CRB2_17:

(Start: 15 @15034 has 422 MA's), (20, 15088), (30, 15193), (42, 15304), (45, 15337), (61, 15466), (77, 15544), (121, 15754), (151, 16009),

Gene: Calamitous_17 Start: 15350, Stop: 16099, Start Num: 15

Candidate Starts for Calamitous_17:

(Start: 15 @15350 has 422 MA's), (28, 15503), (30, 15515), (33, 15545), (41, 15581), (46, 15614), (52, 15647), (60, 15701), (68, 15728), (75, 15776), (80, 15794), (95, 15860), (105, 15881), (113, 15926), (114, 15938), (119, 15959),

Gene: CamL_14 Start: 12411, Stop: 13253, Start Num: 15

Candidate Starts for CamL_14:

(4, 12114), (5, 12183), (7, 12252), (Start: 15 @12411 has 422 MA's), (30, 12570), (33, 12600), (49, 12687), (60, 12756), (64, 12771), (74, 12828), (111, 12960), (143, 13206),

Gene: CampRoach_14 Start: 12408, Stop: 13244, Start Num: 15

Candidate Starts for CampRoach_14:

(4, 12111), (5, 12180), (7, 12249), (Start: 15 @12408 has 422 MA's), (30, 12567), (33, 12597), (49, 12684), (60, 12753), (64, 12768), (74, 12825), (111, 12951), (143, 13197),

Gene: Cannibal_14 Start: 12414, Stop: 13238, Start Num: 15

Candidate Starts for Cannibal_14:

(4, 12117), (5, 12186), (7, 12255), (Start: 15 @12414 has 422 MA's), (30, 12573), (33, 12603), (49, 12690), (60, 12759), (64, 12774), (74, 12831), (111, 12945), (143, 13191),

Gene: Carthage_13 Start: 12092, Stop: 12916, Start Num: 15

Candidate Starts for Carthage_13:

(4, 11789), (5, 11858), (7, 11927), (Start: 15 @12092 has 422 MA's), (30, 12251), (33, 12281), (49, 12368), (60, 12437), (64, 12452), (74, 12509), (111, 12623), (143, 12869),

Gene: Casbah_15 Start: 13816, Stop: 14421, Start Num: 15

Candidate Starts for Casbah_15:

(Start: 15 @13816 has 422 MA's), (16, 13837), (24, 13933), (26, 13942), (41, 14053), (72, 14215), (79, 14254), (83, 14272),

Gene: Caspiboi_13 Start: 12118, Stop: 12960, Start Num: 15

Candidate Starts for Caspiboi_13:

(4, 11821), (5, 11890), (7, 11959), (Start: 15 @12118 has 422 MA's), (30, 12277), (33, 12307), (49, 12394), (60, 12463), (64, 12478), (74, 12535), (111, 12667), (143, 12913),

Gene: ChaChing_16 Start: 13979, Stop: 14584, Start Num: 15

Candidate Starts for ChaChing_16:

(Start: 15 @13979 has 422 MA's), (16, 14000), (24, 14096), (41, 14216), (72, 14378), (83, 14435),

Gene: Chaelin_13 Start: 12078, Stop: 12920, Start Num: 15

Candidate Starts for Chaelin_13:

(4, 11775), (5, 11844), (7, 11913), (Start: 15 @12078 has 422 MA's), (30, 12237), (33, 12267), (49, 12354), (60, 12423), (64, 12438), (74, 12495), (111, 12627), (143, 12873),

Gene: Chah_14 Start: 12418, Stop: 13272, Start Num: 15

Candidate Starts for Chah_14:

(4, 12115), (5, 12184), (7, 12253), (Start: 15 @12418 has 422 MA's), (30, 12577), (33, 12607), (49, 12694), (60, 12763), (64, 12778), (74, 12835), (111, 12979), (143, 13225),

Gene: Chalmers_16 Start: 14772, Stop: 15377, Start Num: 15

Candidate Starts for Chalmers_16:

(Start: 15 @14772 has 422 MA's), (16, 14793), (24, 14889), (72, 15171), (79, 15210), (83, 15228),

Gene: Chandler_16 Start: 14738, Stop: 15343, Start Num: 15

Candidate Starts for Chandler_16:

(Start: 15 @14738 has 422 MA's), (16, 14759), (24, 14855), (26, 14864), (41, 14975), (72, 15137), (79, 15176), (83, 15194),

Gene: Charles1_14 Start: 12411, Stop: 13235, Start Num: 15

Candidate Starts for Charles1_14:

(4, 12114), (5, 12183), (7, 12252), (Start: 15 @12411 has 422 MA's), (30, 12570), (33, 12600), (49, 12687), (60, 12756), (64, 12771), (74, 12828), (111, 12942), (143, 13188),

Gene: CharlieGBrown_13 Start: 11982, Stop: 12824, Start Num: 15

Candidate Starts for CharlieGBrown_13:

(4, 11685), (5, 11754), (7, 11823), (Start: 15 @11982 has 422 MA's), (30, 12141), (33, 12171), (49, 12258), (60, 12327), (64, 12342), (74, 12399), (111, 12531), (143, 12777),

Gene: CheetO_14 Start: 12417, Stop: 13253, Start Num: 15

Candidate Starts for CheetO_14:

(4, 12114), (5, 12183), (7, 12252), (Start: 15 @12417 has 422 MA's), (30, 12576), (33, 12606), (49, 12693), (60, 12762), (64, 12777), (74, 12834), (111, 12960), (143, 13206),

Gene: Chentzyk_15 Start: 13834, Stop: 14439, Start Num: 15

Candidate Starts for Chentzyk_15:

(Start: 15 @13834 has 422 MA's), (16, 13855), (24, 13951), (41, 14071), (72, 14233), (79, 14272), (83, 14290),

Gene: Cher_13 Start: 12124, Stop: 12978, Start Num: 15

Candidate Starts for Cher_13:

(4, 11821), (5, 11890), (7, 11959), (Start: 15 @12124 has 422 MA's), (30, 12283), (33, 12313), (49, 12400), (60, 12469), (64, 12484), (74, 12541), (111, 12685), (143, 12931),

Gene: Childish_13 Start: 12124, Stop: 12966, Start Num: 15

Candidate Starts for Childish_13:

(4, 11821), (5, 11890), (7, 11959), (Start: 15 @12124 has 422 MA's), (30, 12283), (33, 12313), (49, 12400), (60, 12469), (64, 12484), (74, 12541), (111, 12673), (143, 12919),

Gene: Chipette_15 Start: 12652, Stop: 13476, Start Num: 15

Candidate Starts for Chipette_15:

(4, 12349), (5, 12418), (7, 12487), (Start: 15 @12652 has 422 MA's), (30, 12811), (33, 12841), (49, 12928), (60, 12997), (64, 13012), (74, 13069), (111, 13183), (143, 13429),

Gene: Chorkpop_14 Start: 12124, Stop: 12978, Start Num: 15

Candidate Starts for Chorkpop_14:

(4, 11821), (5, 11890), (7, 11959), (Start: 15 @12124 has 422 MA's), (30, 12283), (33, 12313), (49, 12400), (60, 12469), (64, 12484), (74, 12541), (111, 12685), (143, 12931),

Gene: ChrisnMich_13 Start: 13057, Stop: 13908, Start Num: 15

Candidate Starts for ChrisnMich_13:

(Start: 15 @13057 has 422 MA's), (20, 13111), (30, 13216), (35, 13264), (40, 13273), (56, 13372), (59, 13411), (63, 13426), (93, 13558), (97, 13561), (102, 13582), (103, 13585), (108, 13597), (147, 13792),

(151, 13876),

Gene: Chuni_13 Start: 12427, Stop: 13269, Start Num: 15

Candidate Starts for Chuni_13:

(Start: 15 @12427 has 422 MA's), (30, 12586), (33, 12616), (49, 12703), (60, 12772), (64, 12787), (74, 12844), (111, 12976), (143, 13222),

Gene: Chunky_14 Start: 12417, Stop: 13265, Start Num: 15

Candidate Starts for Chunky_14:

(4, 12114), (5, 12183), (7, 12252), (Start: 15 @12417 has 422 MA's), (30, 12576), (33, 12606), (49, 12693), (60, 12762), (64, 12777), (74, 12834), (111, 12972), (143, 13218),

Gene: Chute_13 Start: 12426, Stop: 13268, Start Num: 15

Candidate Starts for Chute_13:

(4, 12129), (5, 12198), (7, 12267), (Start: 15 @12426 has 422 MA's), (30, 12585), (33, 12615), (49, 12702), (60, 12771), (64, 12786), (74, 12843), (111, 12975), (143, 13221),

Gene: Cobra_14 Start: 12414, Stop: 13256, Start Num: 15

Candidate Starts for Cobra_14:

(4, 12111), (5, 12180), (7, 12249), (Start: 15 @12414 has 422 MA's), (30, 12573), (33, 12603), (49, 12690), (60, 12759), (64, 12774), (74, 12831), (111, 12963), (143, 13209),

Gene: Coffee_17 Start: 15467, Stop: 16216, Start Num: 15

Candidate Starts for Coffee_17:

(Start: 15 @15467 has 422 MA's), (28, 15620), (30, 15632), (33, 15662), (41, 15698), (46, 15731), (52, 15764), (60, 15818), (68, 15845), (75, 15893), (80, 15911), (95, 15977), (105, 15998), (113, 16043), (114, 16055), (119, 16076),

Gene: Colbert_14 Start: 12414, Stop: 13256, Start Num: 15

Candidate Starts for Colbert_14:

(4, 12111), (5, 12180), (7, 12249), (Start: 15 @12414 has 422 MA's), (30, 12573), (33, 12603), (49, 12690), (60, 12759), (64, 12774), (74, 12831), (111, 12963), (143, 13209),

Gene: Coldpizza_15 Start: 14404, Stop: 14931, Start Num: 14

Candidate Starts for Coldpizza_15:

(13, 14398), (Start: 14 @14404 has 11 MA's), (22, 14494), (25, 14527), (41, 14620), (76, 14770), (122, 14908),

Gene: Coletti_14 Start: 12426, Stop: 13268, Start Num: 15

Candidate Starts for Coletti_14:

(4, 12129), (5, 12198), (7, 12267), (Start: 15 @12426 has 422 MA's), (30, 12585), (33, 12615), (49, 12702), (60, 12771), (64, 12786), (74, 12843), (111, 12975), (143, 13221),

Gene: Compostia_17 Start: 14397, Stop: 15002, Start Num: 15

Candidate Starts for Compostia_17:

(Start: 15 @14397 has 422 MA's), (16, 14418), (24, 14514), (26, 14523), (41, 14634), (72, 14796), (79, 14835), (83, 14853),

Gene: Cooper_14 Start: 13153, Stop: 14016, Start Num: 15

Candidate Starts for Cooper_14:

(Start: 15 @13153 has 422 MA's), (20, 13207), (30, 13312), (35, 13360), (56, 13468), (59, 13507), (63, 13522), (70, 13543), (73, 13567), (99, 13663), (102, 13678), (103, 13681), (123, 13780), (148, 13942), (151, 13984),

Gene: Cornbread_13 Start: 12121, Stop: 12969, Start Num: 15

Candidate Starts for Cornbread_13:

(4, 11818), (5, 11887), (7, 11956), (Start: 15 @12121 has 422 MA's), (30, 12280), (33, 12310), (49, 12397), (60, 12466), (64, 12481), (74, 12538), (111, 12676), (143, 12922),

Gene: Cornobble_13 Start: 11965, Stop: 12813, Start Num: 15

Candidate Starts for Cornobble_13:

(4, 11662), (5, 11731), (7, 11800), (Start: 15 @11965 has 422 MA's), (30, 12124), (33, 12154), (49, 12241), (60, 12310), (64, 12325), (74, 12382), (111, 12520), (143, 12766),

Gene: Corofin_16 Start: 13989, Stop: 14594, Start Num: 15

Candidate Starts for Corofin_16:

(Start: 15 @13989 has 422 MA's), (16, 14010), (24, 14106), (41, 14226), (72, 14388), (79, 14427), (83, 14445),

Gene: Cosmolli16_13 Start: 12122, Stop: 12970, Start Num: 15

Candidate Starts for Cosmolli16_13:

(4, 11819), (5, 11888), (7, 11957), (Start: 15 @12122 has 422 MA's), (30, 12281), (33, 12311), (49, 12398), (60, 12467), (64, 12482), (74, 12539), (111, 12677), (143, 12923),

Gene: Craff_14 Start: 12417, Stop: 13259, Start Num: 15

Candidate Starts for Craff_14:

(4, 12114), (5, 12183), (7, 12252), (Start: 15 @12417 has 422 MA's), (30, 12576), (33, 12606), (49, 12693), (60, 12762), (64, 12777), (74, 12834), (111, 12966), (143, 13212),

Gene: Crownjwl_14 Start: 12202, Stop: 13026, Start Num: 15

Candidate Starts for Crownjwl_14:

(4, 11899), (5, 11968), (7, 12037), (Start: 15 @12202 has 422 MA's), (30, 12361), (33, 12391), (49, 12478), (60, 12547), (64, 12562), (74, 12619), (111, 12733), (143, 12979),

Gene: DaddyDaniels_14 Start: 12120, Stop: 12962, Start Num: 15

Candidate Starts for DaddyDaniels_14:

(4, 11817), (5, 11886), (7, 11955), (Start: 15 @12120 has 422 MA's), (30, 12279), (33, 12309), (49, 12396), (60, 12465), (64, 12480), (74, 12537), (111, 12669), (143, 12915),

Gene: Daffy_14 Start: 12124, Stop: 12978, Start Num: 15

Candidate Starts for Daffy_14:

(4, 11821), (5, 11890), (7, 11959), (Start: 15 @12124 has 422 MA's), (30, 12283), (33, 12313), (49, 12400), (60, 12469), (64, 12484), (74, 12541), (111, 12685), (143, 12931),

Gene: Daisy_16 Start: 13985, Stop: 14590, Start Num: 15

Candidate Starts for Daisy_16:

(Start: 15 @13985 has 422 MA's), (16, 14006), (24, 14102), (41, 14222), (72, 14384), (79, 14423), (83, 14441),

Gene: Daka_14 Start: 12414, Stop: 13256, Start Num: 15

Candidate Starts for Daka_14:

(4, 12117), (5, 12186), (7, 12255), (Start: 15 @12414 has 422 MA's), (30, 12573), (33, 12603), (49, 12690), (60, 12759), (64, 12774), (74, 12831), (111, 12963), (143, 13209),

Gene: Dati_14 Start: 12118, Stop: 12966, Start Num: 15

Candidate Starts for Dati_14:

(4, 11815), (5, 11884), (7, 11953), (Start: 15 @12118 has 422 MA's), (30, 12277), (33, 12307), (49, 12394), (60, 12463), (64, 12478), (74, 12535), (111, 12673), (143, 12919),

Gene: Deenasa_16 Start: 14727, Stop: 15332, Start Num: 15

Candidate Starts for Deenasa_16:

(Start: 15 @14727 has 422 MA's), (16, 14748), (24, 14844), (41, 14964), (72, 15126), (79, 15165), (83, 15183),

Gene: DelRivs_13 Start: 12123, Stop: 12965, Start Num: 15

Candidate Starts for DelRivs_13:

(4, 11820), (5, 11889), (7, 11958), (Start: 15 @12123 has 422 MA's), (30, 12282), (33, 12312), (49, 12399), (60, 12468), (64, 12483), (74, 12540), (111, 12672), (143, 12918),

Gene: Derpp_13 Start: 11970, Stop: 12812, Start Num: 15

Candidate Starts for Derpp_13:

(4, 11673), (5, 11742), (7, 11811), (Start: 15 @11970 has 422 MA's), (30, 12129), (33, 12159), (49, 12246), (60, 12315), (64, 12330), (74, 12387), (111, 12519), (143, 12765),

Gene: Devonte_16 Start: 13964, Stop: 14569, Start Num: 15

Candidate Starts for Devonte_16:

(Start: 15 @13964 has 422 MA's), (16, 13985), (24, 14081), (41, 14201), (72, 14363), (79, 14402), (83, 14420),

Gene: Dice_13 Start: 12117, Stop: 12953, Start Num: 15

Candidate Starts for Dice_13:

(4, 11820), (5, 11889), (7, 11958), (Start: 15 @12117 has 422 MA's), (30, 12276), (33, 12306), (49, 12393), (60, 12462), (64, 12477), (74, 12534), (111, 12660), (143, 12906),

Gene: DigitDog_15 Start: 14152, Stop: 14817, Start Num: 15

Candidate Starts for DigitDog_15:

(Start: 15 @14152 has 422 MA's), (22, 14242), (30, 14311), (117, 14743), (127, 14788),

Gene: Dingo_14 Start: 12414, Stop: 13238, Start Num: 15

Candidate Starts for Dingo_14:

(4, 12111), (5, 12180), (7, 12249), (Start: 15 @12414 has 422 MA's), (30, 12573), (33, 12603), (49, 12690), (60, 12759), (64, 12774), (74, 12831), (111, 12945), (143, 13191),

Gene: Dione_13 Start: 12118, Stop: 12954, Start Num: 15

Candidate Starts for Dione_13:

(4, 11821), (5, 11890), (7, 11959), (Start: 15 @12118 has 422 MA's), (30, 12277), (33, 12307), (49, 12394), (60, 12463), (64, 12478), (74, 12535), (111, 12661), (143, 12907),

Gene: DirtJuice_14 Start: 12417, Stop: 13241, Start Num: 15

Candidate Starts for DirtJuice_14:

(4, 12114), (5, 12183), (7, 12252), (Start: 15 @12417 has 422 MA's), (30, 12576), (33, 12606), (49, 12693), (60, 12762), (64, 12777), (74, 12834), (111, 12948), (143, 13194),

Gene: Doddsville_14 Start: 12118, Stop: 12966, Start Num: 15

Candidate Starts for Doddsville_14:

(4, 11815), (5, 11884), (7, 11953), (Start: 15 @12118 has 422 MA's), (30, 12277), (33, 12307), (49, 12394), (60, 12463), (64, 12478), (74, 12535), (111, 12673), (143, 12919),

Gene: DoesntMatter_14 Start: 12411, Stop: 13235, Start Num: 15

Candidate Starts for DoesntMatter_14:

(4, 12114), (5, 12183), (7, 12252), (Start: 15 @12411 has 422 MA's), (30, 12570), (33, 12600), (49, 12687), (60, 12756), (64, 12771), (74, 12828), (111, 12942), (143, 13188),

Gene: DolOn_15 Start: 12652, Stop: 13488, Start Num: 15

Candidate Starts for DolOn_15:

(4, 12349), (5, 12418), (7, 12487), (Start: 15 @12652 has 422 MA's), (30, 12811), (33, 12841), (49, 12928), (60, 12997), (64, 13012), (74, 13069), (111, 13195), (143, 13441),

Gene: DonSanchon_13 Start: 12124, Stop: 12954, Start Num: 15

Candidate Starts for DonSanchon_13:

(4, 11821), (5, 11890), (7, 11959), (Start: 15 @12124 has 422 MA's), (30, 12283), (33, 12313), (49, 12400), (60, 12469), (64, 12484), (74, 12541), (111, 12661), (143, 12907),

Gene: Donny_15 Start: 14169, Stop: 14834, Start Num: 15

Candidate Starts for Donny_15:

(Start: 15 @14169 has 422 MA's), (20, 14223), (22, 14259), (30, 14328), (117, 14760), (127, 14805),

Gene: DuchessDung_13 Start: 11964, Stop: 12806, Start Num: 15

Candidate Starts for DuchessDung_13:

(4, 11667), (5, 11736), (7, 11805), (Start: 15 @11964 has 422 MA's), (30, 12123), (33, 12153), (49, 12240), (60, 12309), (64, 12324), (74, 12381), (111, 12513), (143, 12759),

Gene: Duggie_13 Start: 12120, Stop: 12968, Start Num: 15

Candidate Starts for Duggie_13:

(4, 11817), (5, 11886), (7, 11955), (Start: 15 @12120 has 422 MA's), (30, 12279), (33, 12309), (49, 12396), (60, 12465), (64, 12480), (74, 12537), (111, 12675), (143, 12921),

Gene: Durga_14 Start: 12425, Stop: 13267, Start Num: 15

Candidate Starts for Durga_14:

(4, 12128), (5, 12197), (7, 12266), (Start: 15 @12425 has 422 MA's), (30, 12584), (33, 12614), (49, 12701), (60, 12770), (64, 12785), (74, 12842), (111, 12974), (143, 13220),

Gene: Eaglehorse_17 Start: 15374, Stop: 16123, Start Num: 15

Candidate Starts for Eaglehorse_17:

(Start: 15 @15374 has 422 MA's), (28, 15527), (30, 15539), (33, 15569), (41, 15605), (46, 15638), (52, 15671), (60, 15725), (68, 15752), (75, 15800), (80, 15818), (95, 15884), (105, 15905), (113, 15950), (114, 15962), (119, 15983),

Gene: EastView9101_15 Start: 14176, Stop: 14841, Start Num: 15

Candidate Starts for EastView9101_15:

(Start: 15 @14176 has 422 MA's), (20, 14230), (22, 14266), (30, 14335), (117, 14767), (127, 14812),

Gene: ElvisPhasley_14 Start: 12418, Stop: 13266, Start Num: 15

Candidate Starts for ElvisPhasley_14:

(4, 12115), (5, 12184), (7, 12253), (Start: 15 @12418 has 422 MA's), (30, 12577), (33, 12607), (49, 12694), (60, 12763), (64, 12778), (74, 12835), (111, 12973), (143, 13219),

Gene: Emiris_14 Start: 12412, Stop: 13248, Start Num: 15

Candidate Starts for Emiris_14:

(4, 12115), (5, 12184), (7, 12253), (Start: 15 @12412 has 422 MA's), (30, 12571), (33, 12601), (49, 12688), (60, 12757), (64, 12772), (74, 12829), (111, 12955), (143, 13201),

Gene: EmpTee_14 Start: 12412, Stop: 13254, Start Num: 15

Candidate Starts for EmpTee_14:

(4, 12115), (5, 12184), (7, 12253), (Start: 15 @12412 has 422 MA's), (30, 12571), (33, 12601), (49, 12688), (60, 12757), (64, 12772), (74, 12829), (111, 12961), (143, 13207),

Gene: Epah_13 Start: 13057, Stop: 13908, Start Num: 15

Candidate Starts for Epah_13:

(Start: 15 @13057 has 422 MA's), (20, 13111), (30, 13216), (35, 13264), (40, 13273), (56, 13372), (59, 13411), (63, 13426), (93, 13558), (97, 13561), (102, 13582), (103, 13585), (147, 13792), (151, 13876),

Gene: Eremos_14 Start: 12411, Stop: 13253, Start Num: 15

Candidate Starts for Eremos_14:

(4, 12108), (5, 12177), (7, 12246), (Start: 15 @12411 has 422 MA's), (30, 12570), (33, 12600), (49, 12687), (60, 12756), (64, 12771), (74, 12828), (111, 12960), (143, 13206),

Gene: Etaye_14 Start: 12408, Stop: 13238, Start Num: 15

Candidate Starts for Etaye_14:

(4, 12111), (5, 12180), (7, 12249), (Start: 15 @12408 has 422 MA's), (30, 12567), (33, 12597), (49, 12684), (60, 12753), (64, 12768), (74, 12825), (111, 12945), (143, 13191),

Gene: Eugenia_14 Start: 12412, Stop: 13266, Start Num: 15

Candidate Starts for Eugenia_14:

(4, 12115), (5, 12184), (7, 12253), (Start: 15 @12412 has 422 MA's), (30, 12571), (33, 12601), (49, 12688), (60, 12757), (64, 12772), (74, 12829), (111, 12973), (143, 13219),

Gene: Fanaw_14 Start: 14151, Stop: 15002, Start Num: 15

Candidate Starts for Fanaw_14:

(Start: 15 @14151 has 422 MA's), (20, 14205), (30, 14310), (35, 14358), (40, 14367), (56, 14466), (59, 14505), (63, 14520), (99, 14661), (102, 14676), (138, 14793), (147, 14886), (151, 14970),

Gene: Fang_14 Start: 12415, Stop: 13269, Start Num: 15

Candidate Starts for Fang_14:

(4, 12118), (5, 12187), (7, 12256), (Start: 15 @12415 has 422 MA's), (30, 12574), (33, 12604), (49, 12691), (60, 12760), (64, 12775), (74, 12832), (111, 12976), (143, 13222),

Gene: Faze9_17 Start: 15467, Stop: 16216, Start Num: 15

Candidate Starts for Faze9_17:

(Start: 15 @15467 has 422 MA's), (28, 15620), (30, 15632), (33, 15662), (41, 15698), (46, 15731), (52, 15764), (60, 15818), (68, 15845), (75, 15893), (80, 15911), (95, 15977), (105, 15998), (113, 16043), (114, 16055), (119, 16076),

Gene: Flake_15 Start: 12428, Stop: 13270, Start Num: 15

Candidate Starts for Flake_15:

(Start: 15 @12428 has 422 MA's), (30, 12587), (33, 12617), (49, 12704), (60, 12773), (64, 12788), (74, 12845), (111, 12977), (143, 13223),

Gene: FleetyMac_13 Start: 12415, Stop: 13251, Start Num: 15

Candidate Starts for FleetyMac_13:

(4, 12112), (5, 12181), (7, 12250), (Start: 15 @12415 has 422 MA's), (30, 12574), (33, 12604), (49, 12691), (60, 12760), (64, 12775), (74, 12832), (111, 12958), (143, 13204),

Gene: FluffyNinja_14 Start: 12415, Stop: 13257, Start Num: 15

Candidate Starts for FluffyNinja_14:

(4, 12112), (5, 12181), (7, 12250), (Start: 15 @12415 has 422 MA's), (30, 12574), (33, 12604), (49, 12691), (60, 12760), (64, 12775), (74, 12832), (111, 12964), (143, 13210),

Gene: ForDig_12 Start: 12599, Stop: 13540, Start Num: 15

Candidate Starts for ForDig_12:

(Start: 15 @12599 has 422 MA's), (20, 12653), (30, 12752), (59, 12965), (63, 12980), (85, 13076), (94, 13109), (116, 13214),

Gene: Fortunato_14 Start: 14145, Stop: 14966, Start Num: 15

Candidate Starts for Fortunato_14:

(Start: 15 @14145 has 422 MA's), (20, 14199), (30, 14304), (35, 14352), (40, 14361), (56, 14460), (59, 14499), (63, 14514), (99, 14655), (102, 14670), (147, 14850), (151, 14934), (152, 14937),

Gene: Fozzie_13 Start: 12415, Stop: 13263, Start Num: 15

Candidate Starts for Fozzie_13:

(4, 12112), (5, 12181), (7, 12250), (Start: 15 @12415 has 422 MA's), (30, 12574), (33, 12604), (49, 12691), (60, 12760), (64, 12775), (74, 12832), (111, 12970), (143, 13216),

Gene: Frankicide_14 Start: 12419, Stop: 13255, Start Num: 15

Candidate Starts for Frankicide_14:

(4, 12116), (5, 12185), (7, 12254), (Start: 15 @12419 has 422 MA's), (30, 12578), (33, 12608), (49, 12695), (60, 12764), (64, 12779), (74, 12836), (111, 12962), (143, 13208),

Gene: Frederick_14 Start: 14151, Stop: 14975, Start Num: 15

Candidate Starts for Frederick_14:

(Start: 15 @14151 has 422 MA's), (20, 14205), (30, 14310), (35, 14358), (40, 14367), (56, 14466), (59, 14505), (63, 14520), (99, 14661), (102, 14676), (103, 14679), (147, 14859), (151, 14943), (152, 14946),

Gene: FremontTroll_14 Start: 12116, Stop: 12952, Start Num: 15

Candidate Starts for FremontTroll_14:

(4, 11819), (5, 11888), (7, 11957), (Start: 15 @12116 has 422 MA's), (30, 12275), (33, 12305), (49, 12392), (60, 12461), (64, 12476), (74, 12533), (111, 12659), (143, 12905),

Gene: FrenchFry_17 Start: 15470, Stop: 16219, Start Num: 15

Candidate Starts for FrenchFry_17:

(Start: 15 @15470 has 422 MA's), (28, 15623), (30, 15635), (33, 15665), (41, 15701), (46, 15734), (52, 15767), (60, 15821), (68, 15848), (75, 15896), (80, 15914), (95, 15980), (105, 16001), (113, 16046), (114, 16058), (119, 16079),

Gene: Fresco_13 Start: 12434, Stop: 12952, Start Num: 14

Candidate Starts for Fresco_13:

(Start: 14 @12434 has 11 MA's), (20, 12488), (104, 12869), (112, 12899),

Gene: Freya_13 Start: 12119, Stop: 12949, Start Num: 15

Candidate Starts for Freya_13:

(4, 11822), (5, 11891), (7, 11960), (Start: 15 @12119 has 422 MA's), (30, 12278), (33, 12308), (49, 12395), (60, 12464), (64, 12479), (74, 12536), (111, 12656), (143, 12902),

Gene: FriarPreacher_14 Start: 12420, Stop: 13274, Start Num: 15

Candidate Starts for FriarPreacher_14:

(4, 12117), (5, 12186), (7, 12255), (Start: 15 @12420 has 422 MA's), (30, 12579), (33, 12609), (49, 12696), (60, 12765), (64, 12780), (74, 12837), (111, 12981), (143, 13227),

Gene: Fringe_14 Start: 12412, Stop: 13236, Start Num: 15

Candidate Starts for Fringe_14:

(4, 12115), (5, 12184), (7, 12253), (Start: 15 @12412 has 422 MA's), (30, 12571), (33, 12601), (49, 12688), (60, 12757), (64, 12772), (74, 12829), (111, 12943), (143, 13189),

Gene: FugateOSU_13 Start: 12124, Stop: 12960, Start Num: 15

Candidate Starts for FugateOSU_13:

(4, 11821), (5, 11890), (7, 11959), (Start: 15 @12124 has 422 MA's), (30, 12283), (33, 12313), (49, 12400), (60, 12469), (64, 12484), (74, 12541), (111, 12667), (143, 12913),

Gene: Funsized_19 Start: 16242, Stop: 17348, Start Num: 15

Candidate Starts for Funsized_19:

(Start: 15 @16242 has 422 MA's), (20, 16299), (34, 16437), (43, 16533), (44, 16545), (47, 16584), (51, 16614), (53, 16647), (56, 16665), (58, 16695), (59, 16704), (63, 16719), (87, 16842), (101, 16902), (120, 17010), (128, 17055), (131, 17079), (134, 17091), (140, 17118), (142, 17133), (144, 17208), (145, 17211), (151, 17322),

Gene: Gadget_17 Start: 13968, Stop: 14573, Start Num: 15

Candidate Starts for Gadget_17:

(Start: 15 @13968 has 422 MA's), (16, 13989), (24, 14085), (41, 14205), (72, 14367), (79, 14406), (83, 14424),

Gene: Gareth_13 Start: 12115, Stop: 12957, Start Num: 15

Candidate Starts for Gareth_13:

(4, 11818), (5, 11887), (7, 11956), (Start: 15 @12115 has 422 MA's), (30, 12274), (33, 12304), (49, 12391), (60, 12460), (64, 12475), (74, 12532), (111, 12664), (143, 12910),

Gene: GeneCoco_14 Start: 12417, Stop: 13259, Start Num: 15

Candidate Starts for GeneCoco_14:

(4, 12120), (5, 12189), (7, 12258), (Start: 15 @12417 has 422 MA's), (30, 12576), (33, 12606), (49, 12693), (60, 12762), (64, 12777), (74, 12834), (111, 12966), (143, 13212),

Gene: Gervas_16 Start: 13947, Stop: 14552, Start Num: 15

Candidate Starts for Gervas_16:

(Start: 15 @13947 has 422 MA's), (16, 13968), (24, 14064), (41, 14184), (72, 14346), (83, 14403),

Gene: GinPorsche_13 Start: 13057, Stop: 13908, Start Num: 15

Candidate Starts for GinPorsche_13:

(Start: 15 @13057 has 422 MA's), (20, 13111), (30, 13216), (35, 13264), (40, 13273), (56, 13372), (59, 13411), (63, 13426), (93, 13558), (97, 13561), (102, 13582), (103, 13585), (147, 13792), (151, 13876),

Gene: Giraffe_14 Start: 12119, Stop: 12961, Start Num: 15

Candidate Starts for Giraffe_14:

(4, 11822), (5, 11891), (7, 11960), (Start: 15 @12119 has 422 MA's), (30, 12278), (33, 12308), (49, 12395), (60, 12464), (64, 12479), (74, 12536), (111, 12668), (143, 12914),

Gene: Glass_17 Start: 15470, Stop: 16219, Start Num: 15

Candidate Starts for Glass_17:

(Start: 15 @15470 has 422 MA's), (28, 15623), (30, 15635), (33, 15665), (41, 15701), (46, 15734), (52, 15767), (60, 15821), (68, 15848), (75, 15896), (80, 15914), (95, 15980), (105, 16001), (113, 16046), (114, 16058), (119, 16079),

Gene: GlenHope_17 Start: 13954, Stop: 14559, Start Num: 15

Candidate Starts for GlenHope_17:

(Start: 15 @13954 has 422 MA's), (16, 13975), (24, 14071), (41, 14191), (72, 14353), (83, 14410),

Gene: Glubnar_16 Start: 13968, Stop: 14573, Start Num: 15

Candidate Starts for Glubnar_16:

(Start: 15 @13968 has 422 MA's), (16, 13989), (24, 14085), (41, 14205), (72, 14367), (79, 14406), (83, 14424),

Gene: Godines_17 Start: 15353, Stop: 16102, Start Num: 15

Candidate Starts for Godines_17:

(Start: 15 @15353 has 422 MA's), (28, 15506), (30, 15518), (33, 15548), (41, 15584), (46, 15617), (52, 15650), (60, 15704), (68, 15731), (75, 15779), (80, 15797), (95, 15863), (105, 15884), (113, 15929), (114, 15941), (119, 15962),

Gene: Gophee_14 Start: 12414, Stop: 13238, Start Num: 15

Candidate Starts for Gophee_14:

(4, 12117), (5, 12186), (7, 12255), (Start: 15 @12414 has 422 MA's), (30, 12573), (33, 12603), (49, 12690), (60, 12759), (64, 12774), (74, 12831), (111, 12945), (143, 13191),

Gene: Grand2040_13 Start: 12122, Stop: 12976, Start Num: 15

Candidate Starts for Grand2040_13:

(4, 11819), (5, 11888), (7, 11957), (Start: 15 @12122 has 422 MA's), (30, 12281), (33, 12311), (49, 12398), (60, 12467), (64, 12482), (74, 12539), (111, 12683), (143, 12929),

Gene: GreenChile_14 Start: 12419, Stop: 13255, Start Num: 15

Candidate Starts for GreenChile_14:

(4, 12116), (5, 12185), (7, 12254), (Start: 15 @12419 has 422 MA's), (30, 12578), (33, 12608), (49, 12695), (60, 12764), (64, 12779), (74, 12836), (111, 12962), (143, 13208),

Gene: Gwennie1_14 Start: 12429, Stop: 13277, Start Num: 15

Candidate Starts for Gwennie1_14:

(4, 12132), (5, 12201), (7, 12270), (Start: 15 @12429 has 422 MA's), (30, 12588), (33, 12618), (49, 12705), (60, 12774), (64, 12789), (74, 12846), (111, 12984), (143, 13230),

Gene: Gwilliam_14 Start: 12414, Stop: 13250, Start Num: 15

Candidate Starts for Gwilliam_14:

(4, 12111), (5, 12180), (7, 12249), (Start: 15 @12414 has 422 MA's), (30, 12573), (33, 12603), (49, 12690), (60, 12759), (64, 12774), (74, 12831), (111, 12957), (143, 13203),

Gene: Gyarad_0014 Start: 12417, Stop: 13253, Start Num: 15

Candidate Starts for Gyarad_0014:

(4, 12114), (5, 12183), (7, 12252), (Start: 15 @12417 has 422 MA's), (30, 12576), (33, 12606), (49, 12693), (60, 12762), (64, 12777), (74, 12834), (111, 12960), (143, 13206),

Gene: HSavage_14 Start: 12419, Stop: 13261, Start Num: 15

Candidate Starts for HSavage_14:

(4, 12116), (5, 12185), (7, 12254), (Start: 15 @12419 has 422 MA's), (30, 12578), (33, 12608), (49, 12695), (60, 12764), (64, 12779), (74, 12836), (111, 12968), (143, 13214),

Gene: Haimas_14 Start: 12411, Stop: 13253, Start Num: 15

Candidate Starts for Haimas_14:

(4, 12114), (5, 12183), (7, 12252), (Start: 15 @12411 has 422 MA's), (30, 12570), (33, 12600), (49, 12687), (60, 12756), (64, 12771), (74, 12828), (111, 12960), (143, 13206),

Gene: Haleema_13 Start: 12124, Stop: 12978, Start Num: 15

Candidate Starts for Haleema_13:

(4, 11821), (5, 11890), (7, 11959), (Start: 15 @12124 has 422 MA's), (30, 12283), (33, 12313), (49, 12400), (60, 12469), (64, 12484), (74, 12541), (111, 12685), (143, 12931),

Gene: Halfpint_15 Start: 13789, Stop: 14394, Start Num: 15

Candidate Starts for Halfpint_15:

(Start: 15 @13789 has 422 MA's), (16, 13810), (24, 13906), (41, 14026), (72, 14188), (79, 14227), (83, 14245),

Gene: Hally898_13 Start: 13057, Stop: 13908, Start Num: 15

Candidate Starts for Hally898_13:

(Start: 15 @13057 has 422 MA's), (20, 13111), (30, 13216), (35, 13264), (40, 13273), (56, 13372), (59, 13411), (63, 13426), (93, 13558), (97, 13561), (102, 13582), (103, 13585), (147, 13792), (151, 13876),

Gene: Hamish_14 Start: 12411, Stop: 13247, Start Num: 15

Candidate Starts for Hamish_14:

(4, 12114), (5, 12183), (7, 12252), (Start: 15 @12411 has 422 MA's), (30, 12570), (33, 12600), (49, 12687), (60, 12756), (64, 12771), (74, 12828), (111, 12954), (143, 13200),

Gene: Hangman_14 Start: 14151, Stop: 14975, Start Num: 15

Candidate Starts for Hangman_14:

(Start: 15 @14151 has 422 MA's), (20, 14205), (30, 14310), (35, 14358), (40, 14367), (56, 14466), (59, 14505), (63, 14520), (99, 14661), (102, 14676), (103, 14679), (147, 14859), (151, 14943), (152, 14946),

Gene: Happabalu_14 Start: 12111, Stop: 12947, Start Num: 15

Candidate Starts for Happabalu_14:

(4, 11814), (5, 11883), (7, 11952), (Start: 15 @12111 has 422 MA's), (30, 12270), (33, 12300), (49, 12387), (60, 12456), (64, 12471), (74, 12528), (111, 12654), (143, 12900),

Gene: Hartsy_14 Start: 12408, Stop: 13250, Start Num: 15

Candidate Starts for Hartsy_14:

(4, 12111), (5, 12180), (7, 12249), (Start: 15 @12408 has 422 MA's), (30, 12567), (33, 12597), (49, 12684), (60, 12753), (64, 12768), (74, 12825), (111, 12957), (143, 13203),

Gene: Harvey_14 Start: 12421, Stop: 13275, Start Num: 15

Candidate Starts for Harvey_14:

(4, 12118), (5, 12187), (7, 12256), (Start: 15 @12421 has 422 MA's), (30, 12580), (33, 12610), (49, 12697), (60, 12766), (64, 12781), (74, 12838), (111, 12982), (143, 13228),

Gene: HarveySr_16 Start: 13941, Stop: 14546, Start Num: 15

Candidate Starts for HarveySr_16:

(Start: 15 @13941 has 422 MA's), (16, 13962), (24, 14058), (26, 14067), (41, 14178), (72, 14340), (79, 14379), (83, 14397),

Gene: Hashim76_19 Start: 13526, Stop: 14509, Start Num: 15

Candidate Starts for Hashim76_19:

(Start: 15 @13526 has 422 MA's), (18, 13568), (20, 13583), (30, 13688), (34, 13721), (59, 13922), (64, 13940), (84, 14036), (87, 14054), (132, 14288), (145, 14372),

Gene: Heath_14 Start: 14151, Stop: 14972, Start Num: 15

Candidate Starts for Heath_14:

(Start: 15 @14151 has 422 MA's), (20, 14205), (30, 14310), (35, 14358), (40, 14367), (56, 14466), (59, 14505), (63, 14520), (93, 14652), (97, 14655), (102, 14676), (103, 14679), (147, 14856), (151, 14940), (152, 14943),

Gene: Heathcliff_16 Start: 13926, Stop: 14531, Start Num: 15

Candidate Starts for Heathcliff_16:

(Start: 15 @13926 has 422 MA's), (16, 13947), (24, 14043), (41, 14163), (72, 14325), (79, 14364), (83, 14382),

Gene: Hedgerow_17 Start: 15452, Stop: 16201, Start Num: 15

Candidate Starts for Hedgerow_17:

(Start: 15 @15452 has 422 MA's), (28, 15605), (30, 15617), (33, 15647), (41, 15683), (46, 15716), (52, 15749), (60, 15803), (68, 15830), (75, 15878), (80, 15896), (95, 15962), (105, 15983), (113, 16028), (114, 16040), (119, 16061),

Gene: Hekos_13 Start: 12123, Stop: 12977, Start Num: 15

Candidate Starts for Hekos_13:

(4, 11820), (5, 11889), (7, 11958), (Start: 15 @12123 has 422 MA's), (30, 12282), (33, 12312), (49, 12399), (60, 12468), (64, 12483), (74, 12540), (111, 12684), (143, 12930),

Gene: Held_14 Start: 12125, Stop: 12961, Start Num: 15

Candidate Starts for Held_14:

(4, 11822), (5, 11891), (7, 11960), (Start: 15 @12125 has 422 MA's), (30, 12284), (33, 12314), (49, 12401), (60, 12470), (64, 12485), (74, 12542), (111, 12668), (143, 12914),

Gene: HenryJackson_13 Start: 12127, Stop: 12975, Start Num: 15

Candidate Starts for HenryJackson_13:

(4, 11824), (5, 11893), (7, 11962), (Start: 15 @12127 has 422 MA's), (30, 12286), (33, 12316), (49, 12403), (60, 12472), (64, 12487), (74, 12544), (111, 12682), (143, 12928),

Gene: Hertubise_14 Start: 12414, Stop: 13268, Start Num: 15

Candidate Starts for Hertubise_14:

(4, 12117), (5, 12186), (7, 12255), (Start: 15 @12414 has 422 MA's), (30, 12573), (33, 12603), (49, 12690), (60, 12759), (64, 12774), (74, 12831), (111, 12975), (143, 13221),

Gene: Hetaeria_14 Start: 12417, Stop: 13271, Start Num: 15

Candidate Starts for Hetaeria_14:

(4, 12114), (5, 12183), (7, 12252), (Start: 15 @12417 has 422 MA's), (30, 12576), (33, 12606), (49, 12693), (60, 12762), (64, 12777), (74, 12834), (111, 12978), (143, 13224),

Gene: HighStump_13 Start: 12118, Stop: 12960, Start Num: 15

Candidate Starts for HighStump_13:

(4, 11821), (5, 11890), (7, 11959), (Start: 15 @12118 has 422 MA's), (30, 12277), (33, 12307), (49, 12394), (60, 12463), (64, 12478), (74, 12535), (111, 12667), (143, 12913),

Gene: Hocus_13 Start: 12118, Stop: 12960, Start Num: 15

Candidate Starts for Hocus_13:

(4, 11821), (5, 11890), (7, 11959), (Start: 15 @12118 has 422 MA's), (30, 12277), (33, 12307), (49, 12394), (60, 12463), (64, 12478), (74, 12535), (111, 12667), (143, 12913),

Gene: HogWash_13 Start: 12414, Stop: 13256, Start Num: 15

Candidate Starts for HogWash_13:

(4, 12111), (5, 12180), (7, 12249), (Start: 15 @12414 has 422 MA's), (30, 12573), (33, 12603), (49, 12690), (60, 12759), (64, 12774), (74, 12831), (111, 12963), (143, 13209),

Gene: Holeinone_17 Start: 15352, Stop: 16101, Start Num: 15

Candidate Starts for Holeinone_17:

(Start: 15 @15352 has 422 MA's), (28, 15505), (30, 15517), (33, 15547), (41, 15583), (46, 15616), (52, 15649), (60, 15703), (68, 15730), (75, 15778), (80, 15796), (95, 15862), (105, 15883), (113, 15928), (114, 15940), (119, 15961),

Gene: Horchata_14 Start: 12416, Stop: 13240, Start Num: 15

Candidate Starts for Horchata_14:

(4, 12113), (5, 12182), (7, 12251), (Start: 15 @12416 has 422 MA's), (30, 12575), (33, 12605), (49, 12692), (60, 12761), (64, 12776), (74, 12833), (111, 12947), (143, 13193),

Gene: Hosp_010 Start: 10814, Stop: 11755, Start Num: 15

Candidate Starts for Hosp_010:

(Start: 15 @10814 has 422 MA's), (20, 10868), (40, 11042), (48, 11084), (56, 11141), (59, 11180), (63, 11195), (69, 11207), (85, 11291), (94, 11324), (116, 11429),

Gene: Hydro_14 Start: 14148, Stop: 14972, Start Num: 15

Candidate Starts for Hydro_14:

(Start: 15 @14148 has 422 MA's), (20, 14202), (30, 14307), (35, 14355), (40, 14364), (56, 14463), (59, 14502), (63, 14517), (99, 14658), (102, 14673), (103, 14676), (147, 14856), (151, 14940), (152, 14943),

Gene: ImtiyazSitla_13 Start: 11958, Stop: 12800, Start Num: 15

Candidate Starts for ImtiyazSitla_13:

(4, 11661), (5, 11730), (7, 11799), (Start: 15 @11958 has 422 MA's), (30, 12117), (33, 12147), (49, 12234), (60, 12303), (64, 12318), (74, 12375), (111, 12507), (143, 12753),

Gene: Imvubu_11 Start: 11532, Stop: 12530, Start Num: 15

Candidate Starts for Imvubu_11:

(12, 11487), (Start: 15 @11532 has 422 MA's), (20, 11589), (23, 11628), (30, 11694), (34, 11727), (36, 11745), (39, 11754), (56, 11853), (58, 11883), (59, 11892), (63, 11907), (64, 11910), (70, 11925), (87, 12015), (93, 12033), (98, 12063), (100, 12069), (133, 12261), (139, 12291), (151, 12492),

Gene: Inchworm_14 Start: 12408, Stop: 13244, Start Num: 15

Candidate Starts for Inchworm_14:

(4, 12111), (5, 12180), (7, 12249), (Start: 15 @12408 has 422 MA's), (30, 12567), (33, 12597), (49, 12684), (60, 12753), (64, 12768), (74, 12825), (111, 12951), (143, 13197),

Gene: Indlovu_14 Start: 13853, Stop: 14830, Start Num: 15

Candidate Starts for Indlovu_14:

(Start: 15 @13853 has 422 MA's), (30, 14012), (66, 14318), (84, 14408), (97, 14471), (145, 14681), (148, 14750), (151, 14801),

Gene: Inverness_14 Start: 12419, Stop: 13261, Start Num: 15

Candidate Starts for Inverness_14:

(4, 12116), (5, 12185), (7, 12254), (Start: 15 @12419 has 422 MA's), (30, 12578), (33, 12608), (49, 12695), (60, 12764), (64, 12779), (74, 12836), (111, 12968), (143, 13214),

Gene: Iridessa_14 Start: 12120, Stop: 12929, Start Num: 15

Candidate Starts for Iridessa_14:

(4, 11817), (5, 11886), (7, 11955), (Start: 15 @12120 has 422 MA's), (30, 12279), (33, 12309), (49, 12363), (60, 12432), (64, 12447), (74, 12504), (111, 12636), (143, 12882),

Gene: Iridoclysis_14 Start: 12415, Stop: 13233, Start Num: 15

Candidate Starts for Iridoclysis_14:

(4, 12118), (5, 12187), (7, 12256), (Start: 15 @12415 has 422 MA's), (30, 12574), (33, 12604), (49, 12691), (60, 12760), (64, 12775), (74, 12832), (111, 12940), (143, 13186),

Gene: IsaacEli_14 Start: 12417, Stop: 13265, Start Num: 15

Candidate Starts for IsaacEli_14:

(4, 12114), (5, 12183), (7, 12252), (Start: 15 @12417 has 422 MA's), (30, 12576), (33, 12606), (49, 12693), (60, 12762), (64, 12777), (74, 12834), (111, 12972), (143, 13218),

Gene: ItsyBitsy1_17 Start: 15344, Stop: 16093, Start Num: 15

Candidate Starts for ItsyBitsy1_17:

(Start: 15 @15344 has 422 MA's), (28, 15497), (30, 15509), (33, 15539), (41, 15575), (46, 15608), (52, 15641), (60, 15695), (68, 15722), (75, 15770), (80, 15788), (95, 15854), (105, 15875), (113, 15920), (114, 15932), (119, 15953),

Gene: JAMaL_14 Start: 14326, Stop: 15156, Start Num: 15

Candidate Starts for JAMaL_14:

(Start: 15 @14326 has 422 MA's), (20, 14380), (30, 14485), (31, 14491), (35, 14533), (40, 14542), (56, 14641), (58, 14671), (59, 14680), (63, 14695), (102, 14851), (147, 15040), (151, 15124), (152, 15127),

Gene: JDog_13 Start: 12120, Stop: 12968, Start Num: 15

Candidate Starts for JDog_13:

(4, 11817), (5, 11886), (7, 11955), (Start: 15 @12120 has 422 MA's), (30, 12279), (33, 12309), (49, 12396), (60, 12465), (64, 12480), (74, 12537), (111, 12675), (143, 12921),

Gene: JacAttac_14 Start: 12408, Stop: 13244, Start Num: 15

Candidate Starts for JacAttac_14:

(4, 12111), (5, 12180), (7, 12249), (Start: 15 @12408 has 422 MA's), (30, 12567), (33, 12597), (49, 12684), (60, 12753), (64, 12768), (74, 12825), (111, 12951), (143, 13197),

Gene: Jackstina_15 Start: 13890, Stop: 14495, Start Num: 15

Candidate Starts for Jackstina_15:

(Start: 15 @13890 has 422 MA's), (16, 13911), (24, 14007), (41, 14127), (72, 14289), (79, 14328), (83, 14346),

Gene: JaguarMi_15 Start: 13981, Stop: 14802, Start Num: 15

Candidate Starts for JaguarMi_15:

(Start: 15 @13981 has 422 MA's), (20, 14035), (30, 14140), (35, 14188), (56, 14296), (59, 14335), (63, 14350), (70, 14371), (73, 14395), (99, 14491), (102, 14506), (103, 14509), (147, 14686), (151, 14770),

Gene: JakeO_13 Start: 12120, Stop: 12968, Start Num: 15

Candidate Starts for JakeO_13:

(4, 11817), (5, 11886), (7, 11955), (Start: 15 @12120 has 422 MA's), (30, 12279), (33, 12309), (49, 12396), (60, 12465), (64, 12480), (74, 12537), (111, 12675), (143, 12921),

Gene: JangoPhett_14 Start: 12409, Stop: 13245, Start Num: 15

Candidate Starts for JangoPhett_14:

(4, 12112), (5, 12181), (7, 12250), (Start: 15 @12409 has 422 MA's), (30, 12568), (33, 12598), (49, 12685), (60, 12754), (64, 12769), (74, 12826), (111, 12952), (143, 13198),

Gene: Jesabah_14 Start: 12125, Stop: 12973, Start Num: 15

Candidate Starts for Jesabah_14:

(4, 11822), (5, 11891), (7, 11960), (Start: 15 @12125 has 422 MA's), (30, 12284), (33, 12314), (49, 12401), (60, 12470), (64, 12485), (74, 12542), (111, 12680), (143, 12926),

Gene: Jillium_13 Start: 12124, Stop: 12966, Start Num: 15

Candidate Starts for Jillium_13:

(4, 11821), (5, 11890), (7, 11959), (Start: 15 @12124 has 422 MA's), (30, 12283), (33, 12313), (49, 12400), (60, 12469), (64, 12484), (74, 12541), (111, 12673), (143, 12919),

Gene: Jiminy_13 Start: 11966, Stop: 12808, Start Num: 15

Candidate Starts for Jiminy_13:

(4, 11669), (5, 11738), (7, 11807), (Start: 15 @11966 has 422 MA's), (30, 12125), (33, 12155), (49, 12242), (60, 12311), (64, 12326), (74, 12383), (111, 12515), (143, 12761),

Gene: Jiraiya_13 Start: 12120, Stop: 12968, Start Num: 15

Candidate Starts for Jiraiya_13:

(4, 11817), (5, 11886), (7, 11955), (Start: 15 @12120 has 422 MA's), (30, 12279), (33, 12309), (49, 12396), (60, 12465), (64, 12480), (74, 12537), (111, 12675), (143, 12921),

Gene: Jolie1_012 Start: 12596, Stop: 13534, Start Num: 15

Candidate Starts for Jolie1_012:

(Start: 15 @12596 has 422 MA's), (20, 12650), (30, 12749), (59, 12962), (63, 12977), (85, 13067), (94, 13100), (116, 13208),

Gene: JoyceMaria_14 Start: 14151, Stop: 14975, Start Num: 15

Candidate Starts for JoyceMaria_14:

(Start: 15 @14151 has 422 MA's), (20, 14205), (30, 14310), (35, 14358), (40, 14367), (56, 14466), (59, 14505), (63, 14520), (99, 14661), (102, 14676), (103, 14679), (147, 14859), (151, 14943), (152, 14946),

Gene: KLucky39_14 Start: 12417, Stop: 13253, Start Num: 15

Candidate Starts for KLucky39_14:

(4, 12114), (5, 12183), (7, 12252), (Start: 15 @12417 has 422 MA's), (30, 12576), (33, 12606), (49, 12693), (60, 12762), (64, 12777), (74, 12834), (111, 12960), (143, 13206),

Gene: Kahve_13 Start: 12127, Stop: 12975, Start Num: 15

Candidate Starts for Kahve_13:

(4, 11824), (5, 11893), (7, 11962), (Start: 15 @12127 has 422 MA's), (30, 12286), (33, 12316), (49, 12403), (60, 12472), (64, 12487), (74, 12544), (111, 12682), (143, 12928),

Gene: Kailash_14 Start: 12420, Stop: 13262, Start Num: 15

Candidate Starts for Kailash_14:

(4, 12123), (5, 12192), (7, 12261), (Start: 15 @12420 has 422 MA's), (30, 12579), (33, 12609), (49, 12696), (60, 12765), (64, 12780), (74, 12837), (111, 12969), (143, 13215),

Gene: Kaleb_17 Start: 15470, Stop: 16219, Start Num: 15

Candidate Starts for Kaleb_17:

(Start: 15 @15470 has 422 MA's), (28, 15623), (30, 15635), (33, 15665), (41, 15701), (46, 15734), (52, 15767), (60, 15821), (68, 15848), (75, 15896), (80, 15914), (95, 15980), (105, 16001), (113, 16046),

(114, 16058), (119, 16079),

Gene: Kamiyu_16 Start: 13935, Stop: 14540, Start Num: 15

Candidate Starts for Kamiyu_16:

(Start: 15 @13935 has 422 MA's), (16, 13956), (24, 14052), (41, 14172), (72, 14334), (79, 14373), (83, 14391),

Gene: KarasumaRum_16 Start: 14308, Stop: 14973, Start Num: 15

Candidate Starts for KarasumaRum_16:

(Start: 15 @14308 has 422 MA's), (22, 14398), (30, 14467), (117, 14899),

Gene: Karn_13 Start: 12120, Stop: 12968, Start Num: 15

Candidate Starts for Karn_13:

(4, 11817), (5, 11886), (7, 11955), (Start: 15 @12120 has 422 MA's), (30, 12279), (33, 12309), (49, 12396), (60, 12465), (64, 12480), (74, 12537), (111, 12675), (143, 12921),

Gene: Katniss_14 Start: 12418, Stop: 13272, Start Num: 15

Candidate Starts for Katniss_14:

(4, 12115), (5, 12184), (7, 12253), (Start: 15 @12418 has 422 MA's), (30, 12577), (33, 12607), (49, 12694), (60, 12763), (64, 12778), (74, 12835), (111, 12979), (143, 13225),

Gene: KayaCho_12 Start: 12607, Stop: 13527, Start Num: 15

Candidate Starts for KayaCho_12:

(Start: 15 @12607 has 422 MA's), (20, 12661), (30, 12760), (35, 12808), (40, 12817), (56, 12916), (59, 12955), (63, 12970), (85, 13060), (92, 13084), (94, 13093), (116, 13201), (129, 13270),

Gene: Keitherie_14 Start: 12425, Stop: 13273, Start Num: 15

Candidate Starts for Keitherie_14:

(Start: 15 @12425 has 422 MA's), (30, 12584), (33, 12614), (49, 12701), (60, 12770), (64, 12785), (74, 12842), (111, 12980), (143, 13226),

Gene: Khan1_14 Start: 12120, Stop: 12968, Start Num: 15

Candidate Starts for Khan1_14:

(4, 11817), (5, 11886), (7, 11955), (Start: 15 @12120 has 422 MA's), (30, 12279), (33, 12309), (49, 12396), (60, 12465), (64, 12480), (74, 12537), (111, 12675), (143, 12921),

Gene: Kheth_17 Start: 15353, Stop: 16102, Start Num: 15

Candidate Starts for Kheth_17:

(Start: 15 @15353 has 422 MA's), (28, 15506), (30, 15518), (33, 15548), (41, 15584), (46, 15617), (52, 15650), (60, 15704), (68, 15731), (75, 15779), (80, 15797), (95, 15863), (105, 15884), (113, 15929), (114, 15941), (119, 15962),

Gene: Kikipoo_14 Start: 12417, Stop: 13265, Start Num: 15

Candidate Starts for Kikipoo_14:

(4, 12114), (5, 12183), (7, 12252), (Start: 15 @12417 has 422 MA's), (30, 12576), (33, 12606), (49, 12693), (60, 12762), (64, 12777), (74, 12834), (111, 12972), (143, 13218),

Gene: Kimbrough_14 Start: 12127, Stop: 12963, Start Num: 15

Candidate Starts for Kimbrough_14:

(4, 11824), (5, 11893), (7, 11962), (Start: 15 @12127 has 422 MA's), (30, 12286), (33, 12316), (49, 12403), (60, 12472), (64, 12487), (74, 12544), (111, 12670), (143, 12916),

Gene: KingTut_13 Start: 12125, Stop: 12955, Start Num: 15

Candidate Starts for KingTut_13:

(4, 11822), (5, 11891), (7, 11960), (Start: 15 @12125 has 422 MA's), (30, 12284), (33, 12314), (49, 12401), (60, 12470), (64, 12485), (74, 12542), (111, 12662), (143, 12908),

Gene: KingVeVeVe_14 Start: 12418, Stop: 13242, Start Num: 15

Candidate Starts for KingVeVeVe_14:

(4, 12115), (5, 12184), (7, 12253), (Start: 15 @12418 has 422 MA's), (30, 12577), (33, 12607), (49, 12694), (60, 12763), (64, 12778), (74, 12835), (111, 12949), (143, 13195),

Gene: KlimbOn_14 Start: 12417, Stop: 13253, Start Num: 15

Candidate Starts for KlimbOn_14:

(4, 12114), (5, 12183), (7, 12252), (Start: 15 @12417 has 422 MA's), (30, 12576), (33, 12606), (49, 12693), (60, 12762), (64, 12777), (74, 12834), (111, 12960), (143, 13206),

Gene: Kloppinator_14 Start: 12415, Stop: 13269, Start Num: 15

Candidate Starts for Kloppinator_14:

(4, 12112), (5, 12181), (7, 12250), (Start: 15 @12415 has 422 MA's), (30, 12574), (33, 12604), (49, 12691), (60, 12760), (64, 12775), (74, 12832), (111, 12976), (143, 13222),

Gene: Knocker_19 Start: 16707, Stop: 17675, Start Num: 15

Candidate Starts for Knocker_19:

(Start: 15 @16707 has 422 MA's), (19, 16752), (20, 16764), (29, 16860), (30, 16869), (34, 16902), (37, 16920), (56, 17025), (59, 17064), (63, 17079), (84, 17169), (99, 17214), (100, 17217), (101, 17223), (107, 17241), (126, 17358), (128, 17376), (130, 17394), (144, 17529), (147, 17559), (149, 17610), (151, 17643),

Gene: Kolhan_17 Start: 15350, Stop: 16099, Start Num: 15

Candidate Starts for Kolhan_17:

(Start: 15 @15350 has 422 MA's), (28, 15503), (30, 15515), (33, 15545), (41, 15581), (46, 15614), (52, 15647), (60, 15701), (68, 15728), (75, 15776), (80, 15794), (95, 15860), (105, 15881), (113, 15926), (114, 15938), (119, 15959),

Gene: Kronus_15 Start: 14547, Stop: 15152, Start Num: 15

Candidate Starts for Kronus_15:

(Start: 15 @14547 has 422 MA's), (16, 14568), (24, 14664), (41, 14784), (72, 14946), (79, 14985), (83, 15003),

Gene: Kwadwo_13 Start: 12118, Stop: 12954, Start Num: 15

Candidate Starts for Kwadwo_13:

(4, 11821), (5, 11890), (7, 11959), (Start: 15 @12118 has 422 MA's), (30, 12277), (33, 12307), (49, 12394), (60, 12463), (64, 12478), (74, 12535), (111, 12661), (143, 12907),

Gene: Kwksand96_13 Start: 11970, Stop: 12818, Start Num: 15

Candidate Starts for Kwksand96_13:

(4, 11667), (5, 11736), (7, 11805), (Start: 15 @11970 has 422 MA's), (30, 12129), (33, 12159), (49, 12246), (60, 12315), (64, 12330), (74, 12387), (111, 12525), (143, 12771),

Gene: Labeouficaum_13 Start: 11970, Stop: 12812, Start Num: 15

Candidate Starts for Labeouficaum_13:

(4, 11673), (5, 11742), (7, 11811), (Start: 15 @11970 has 422 MA's), (30, 12129), (33, 12159), (49, 12246), (60, 12315), (64, 12330), (74, 12387), (111, 12519), (143, 12765),

Gene: Lambano_13 Start: 13057, Stop: 13908, Start Num: 15

Candidate Starts for Lambano_13:

(Start: 15 @13057 has 422 MA's), (20, 13111), (30, 13216), (35, 13264), (40, 13273), (56, 13372), (59, 13411), (63, 13426), (93, 13558), (97, 13561), (102, 13582), (103, 13585), (147, 13792), (151, 13876),

Gene: Lars_17 Start: 15470, Stop: 16219, Start Num: 15

Candidate Starts for Lars_17:

(Start: 15 @15470 has 422 MA's), (28, 15623), (30, 15635), (33, 15665), (41, 15701), (46, 15734), (52, 15767), (60, 15821), (68, 15848), (75, 15896), (80, 15914), (95, 15980), (105, 16001), (113, 16046), (114, 16058), (119, 16079),

Gene: Larson_15 Start: 12428, Stop: 13270, Start Num: 15

Candidate Starts for Larson_15:

(Start: 15 @12428 has 422 MA's), (30, 12587), (33, 12617), (49, 12704), (60, 12773), (64, 12788), (74, 12845), (111, 12977), (143, 13223),

Gene: LasagnaCat_14 Start: 12420, Stop: 13256, Start Num: 15

Candidate Starts for LasagnaCat_14:

(4, 12123), (5, 12192), (7, 12261), (Start: 15 @12420 has 422 MA's), (30, 12579), (33, 12609), (49, 12696), (60, 12765), (64, 12780), (74, 12837), (111, 12963), (143, 13209),

Gene: Lasso_14 Start: 12408, Stop: 13232, Start Num: 15

Candidate Starts for Lasso_14:

(4, 12105), (5, 12174), (7, 12243), (Start: 15 @12408 has 422 MA's), (30, 12567), (33, 12597), (49, 12684), (60, 12753), (64, 12768), (74, 12825), (111, 12939), (143, 13185),

Gene: Laurie_17 Start: 15348, Stop: 16097, Start Num: 15

Candidate Starts for Laurie_17:

(Start: 15 @15348 has 422 MA's), (28, 15501), (30, 15513), (33, 15543), (41, 15579), (46, 15612), (52, 15645), (60, 15699), (68, 15726), (75, 15774), (80, 15792), (95, 15858), (105, 15879), (113, 15924), (114, 15936), (119, 15957),

Gene: LeeLot_14 Start: 12411, Stop: 13253, Start Num: 15

Candidate Starts for LeeLot_14:

(4, 12114), (5, 12183), (7, 12252), (Start: 15 @12411 has 422 MA's), (30, 12570), (33, 12600), (49, 12687), (60, 12756), (64, 12771), (74, 12828), (111, 12960), (143, 13206),

Gene: Lego3393_14 Start: 12415, Stop: 13269, Start Num: 15

Candidate Starts for Lego3393_14:

(4, 12112), (5, 12181), (7, 12250), (Start: 15 @12415 has 422 MA's), (30, 12574), (33, 12604), (49, 12691), (60, 12760), (64, 12775), (74, 12832), (111, 12976), (143, 13222),

Gene: Legolas_13 Start: 12122, Stop: 12970, Start Num: 15

Candidate Starts for Legolas_13:

(4, 11819), (5, 11888), (7, 11957), (Start: 15 @12122 has 422 MA's), (30, 12281), (33, 12311), (49, 12398), (60, 12467), (64, 12482), (74, 12539), (111, 12677), (143, 12923),

Gene: Lehmann_14 Start: 11967, Stop: 12797, Start Num: 15

Candidate Starts for Lehmann_14:

(4, 11664), (5, 11733), (7, 11802), (Start: 15 @11967 has 422 MA's), (30, 12126), (33, 12156), (49, 12243), (60, 12312), (64, 12327), (74, 12384), (111, 12504), (143, 12750),

Gene: LeiMonet_14 Start: 12120, Stop: 12962, Start Num: 15

Candidate Starts for LeiMonet_14:

(4, 11817), (5, 11886), (7, 11955), (Start: 15 @12120 has 422 MA's), (30, 12279), (33, 12309), (49, 12396), (60, 12465), (64, 12480), (74, 12537), (111, 12669), (143, 12915),

Gene: LemonSlice_14 Start: 12128, Stop: 12964, Start Num: 15

Candidate Starts for LemonSlice_14:

(4, 11825), (5, 11894), (7, 11963), (Start: 15 @12128 has 422 MA's), (30, 12287), (33, 12317), (49, 12404), (60, 12473), (64, 12488), (74, 12545), (111, 12671), (143, 12917),

Gene: Lephleur_17 Start: 15350, Stop: 16099, Start Num: 15

Candidate Starts for Lephleur_17:

(Start: 15 @15350 has 422 MA's), (28, 15503), (30, 15515), (33, 15545), (41, 15581), (46, 15614), (52, 15647), (55, 15662), (60, 15701), (68, 15728), (75, 15776), (80, 15794), (95, 15860), (105, 15881), (113, 15926), (114, 15938), (119, 15959),

Gene: LestyG_16 Start: 13968, Stop: 14573, Start Num: 15

Candidate Starts for LestyG_16:

(Start: 15 @13968 has 422 MA's), (16, 13989), (24, 14085), (41, 14205), (72, 14367), (79, 14406), (83, 14424),

Gene: Ligma_13 Start: 12434, Stop: 12952, Start Num: 14

Candidate Starts for Ligma_13:

(Start: 14 @12434 has 11 MA's), (20, 12488), (104, 12869), (112, 12899),

Gene: LilMcDreamy_15 Start: 14910, Stop: 15785, Start Num: 15

Candidate Starts for LilMcDreamy_15:

(Start: 15 @14910 has 422 MA's), (20, 14964), (30, 15069), (31, 15075), (32, 15093), (35, 15117), (57, 15234), (67, 15288), (85, 15366), (129, 15525), (135, 15552), (152, 15753),

Gene: LilSmirk_17 Start: 15350, Stop: 16099, Start Num: 15

Candidate Starts for LilSmirk_17:

(Start: 15 @15350 has 422 MA's), (28, 15503), (30, 15515), (33, 15545), (41, 15581), (46, 15614), (52, 15647), (60, 15701), (68, 15728), (75, 15776), (80, 15794), (95, 15860), (105, 15881), (113, 15926), (114, 15938), (119, 15959),

Gene: LittleDigger_13 Start: 13064, Stop: 13915, Start Num: 15

Candidate Starts for LittleDigger_13:

(Start: 15 @13064 has 422 MA's), (20, 13118), (30, 13223), (35, 13271), (40, 13280), (56, 13379), (59, 13418), (63, 13433), (93, 13565), (97, 13568), (102, 13589), (103, 13592), (147, 13799), (151, 13883),

Gene: LittleMinkey_20 Start: 13704, Stop: 14687, Start Num: 15

Candidate Starts for LittleMinkey_20:

(Start: 15 @13704 has 422 MA's), (18, 13746), (20, 13761), (30, 13866), (34, 13899), (59, 14100), (64, 14118), (84, 14214), (87, 14232), (132, 14466), (145, 14550),

Gene: LittleMunchkin_14 Start: 13719, Stop: 14384, Start Num: 14

Candidate Starts for LittleMunchkin_14:

(Start: 14 @13719 has 11 MA's), (20, 13773), (25, 13842), (41, 13935), (62, 14049), (64, 14055), (81, 14136), (82, 14142), (89, 14175), (110, 14226), (120, 14286), (125, 14307),

Gene: LizLemon_17 Start: 15470, Stop: 16219, Start Num: 15

Candidate Starts for LizLemon_17:

(Start: 15 @15470 has 422 MA's), (28, 15623), (30, 15635), (33, 15665), (41, 15701), (46, 15734), (52, 15767), (60, 15821), (68, 15848), (75, 15896), (80, 15914), (95, 15980), (105, 16001), (113, 16046),

(114, 16058), (119, 16079),

Gene: Lolalove_14 Start: 14148, Stop: 14972, Start Num: 15

Candidate Starts for Lolalove_14:

(Start: 15 @14148 has 422 MA's), (20, 14202), (30, 14307), (35, 14355), (40, 14364), (56, 14463), (59, 14502), (63, 14517), (99, 14658), (102, 14673), (103, 14676), (147, 14856), (151, 14940), (152, 14943),

Gene: Longacauda_13 Start: 12114, Stop: 12956, Start Num: 15

Candidate Starts for Longacauda_13:

(4, 11817), (5, 11886), (7, 11955), (Start: 15 @12114 has 422 MA's), (30, 12273), (33, 12303), (49, 12390), (60, 12459), (64, 12474), (74, 12531), (111, 12663), (143, 12909),

Gene: Lopsy_13 Start: 11964, Stop: 12812, Start Num: 15

Candidate Starts for Lopsy_13:

(4, 11661), (5, 11730), (7, 11799), (Start: 15 @11964 has 422 MA's), (30, 12123), (33, 12153), (49, 12240), (60, 12309), (64, 12324), (74, 12381), (111, 12519), (143, 12765),

Gene: LostAndPhound_13 Start: 12124, Stop: 12966, Start Num: 15

Candidate Starts for LostAndPhound_13:

(4, 11821), (5, 11890), (7, 11959), (Start: 15 @12124 has 422 MA's), (30, 12283), (33, 12313), (49, 12400), (60, 12469), (64, 12484), (74, 12541), (111, 12673), (143, 12919),

Gene: LuckyMarjie_13 Start: 12124, Stop: 12978, Start Num: 15

Candidate Starts for LuckyMarjie_13:

(4, 11821), (5, 11890), (7, 11959), (Start: 15 @12124 has 422 MA's), (30, 12283), (33, 12313), (49, 12400), (60, 12469), (64, 12484), (74, 12541), (111, 12685), (143, 12931),

Gene: Lulumae_13 Start: 12119, Stop: 12955, Start Num: 15

Candidate Starts for Lulumae_13:

(4, 11822), (5, 11891), (7, 11960), (Start: 15 @12119 has 422 MA's), (30, 12278), (33, 12308), (49, 12395), (60, 12464), (64, 12479), (74, 12536), (111, 12662), (143, 12908),

Gene: Lulwa_14 Start: 12420, Stop: 13244, Start Num: 15

Candidate Starts for Lulwa_14:

(4, 12117), (5, 12186), (7, 12255), (Start: 15 @12420 has 422 MA's), (30, 12579), (33, 12609), (49, 12696), (60, 12765), (64, 12780), (74, 12837), (111, 12951), (143, 13197),

Gene: Lumine_13 Start: 12106, Stop: 12948, Start Num: 15

Candidate Starts for Lumine_13:

(4, 11809), (5, 11878), (7, 11947), (Start: 15 @12106 has 422 MA's), (30, 12265), (33, 12295), (49, 12382), (60, 12451), (64, 12466), (74, 12523), (111, 12655), (143, 12901),

Gene: MRabcd_13 Start: 12121, Stop: 12957, Start Num: 15

Candidate Starts for MRabcd_13:

(4, 11818), (5, 11887), (7, 11956), (Start: 15 @12121 has 422 MA's), (30, 12280), (33, 12310), (49, 12397), (60, 12466), (64, 12481), (74, 12538), (111, 12664), (143, 12910),

Gene: Mag7_13 Start: 11970, Stop: 12812, Start Num: 15

Candidate Starts for Mag7_13:

(4, 11673), (5, 11742), (7, 11811), (Start: 15 @11970 has 422 MA's), (30, 12129), (33, 12159), (49, 12246), (60, 12315), (64, 12330), (74, 12387), (111, 12519), (143, 12765),

Gene: Magic8_14 Start: 12408, Stop: 13250, Start Num: 15

Candidate Starts for Magic8_14:

(4, 12111), (5, 12180), (7, 12249), (Start: 15 @12408 has 422 MA's), (30, 12567), (33, 12597), (49, 12684), (60, 12753), (64, 12768), (74, 12825), (111, 12957), (143, 13203),

Gene: Magpie_14 Start: 14306, Stop: 15157, Start Num: 15

Candidate Starts for Magpie_14:

(Start: 15 @14306 has 422 MA's), (20, 14360), (30, 14465), (35, 14513), (40, 14522), (56, 14621), (59, 14660), (63, 14675), (99, 14816), (102, 14831), (138, 14948), (147, 15041), (151, 15125),

Gene: Mana_13 Start: 12124, Stop: 12960, Start Num: 15

Candidate Starts for Mana_13:

(4, 11821), (5, 11890), (7, 11959), (Start: 15 @12124 has 422 MA's), (30, 12283), (33, 12313), (49, 12400), (60, 12469), (64, 12484), (74, 12541), (111, 12667), (143, 12913),

Gene: Manad_13 Start: 11968, Stop: 12810, Start Num: 15

Candidate Starts for Manad_13:

(4, 11665), (5, 11734), (7, 11803), (Start: 15 @11968 has 422 MA's), (30, 12127), (33, 12157), (49, 12244), (60, 12313), (64, 12328), (74, 12385), (111, 12517), (143, 12763),

Gene: Marley1013_16 Start: 14748, Stop: 15353, Start Num: 15

Candidate Starts for Marley1013_16:

(Start: 15 @14748 has 422 MA's), (16, 14769), (24, 14865), (72, 15147), (83, 15204),

Gene: Marlia_16 Start: 13950, Stop: 14555, Start Num: 15

Candidate Starts for Marlia_16:

(Start: 15 @13950 has 422 MA's), (16, 13971), (24, 14067), (41, 14187), (72, 14349), (83, 14406),

Gene: Maru_13 Start: 12122, Stop: 12958, Start Num: 15

Candidate Starts for Maru_13:

(4, 11819), (5, 11888), (7, 11957), (Start: 15 @12122 has 422 MA's), (30, 12281), (33, 12311), (49, 12398), (60, 12467), (64, 12482), (74, 12539), (111, 12665), (143, 12911),

Gene: Maskar_13 Start: 11958, Stop: 12800, Start Num: 15

Candidate Starts for Maskar_13:

(4, 11661), (5, 11730), (7, 11799), (Start: 15 @11958 has 422 MA's), (30, 12117), (33, 12147), (49, 12234), (60, 12303), (64, 12318), (74, 12375), (111, 12507), (143, 12753),

Gene: MasterPo_17 Start: 15350, Stop: 16099, Start Num: 15

Candidate Starts for MasterPo_17:

(Start: 15 @15350 has 422 MA's), (28, 15503), (30, 15515), (33, 15545), (41, 15581), (46, 15614), (52, 15647), (55, 15662), (60, 15701), (68, 15728), (75, 15776), (80, 15794), (95, 15860), (105, 15881), (113, 15926), (114, 15938), (119, 15959),

Gene: Matalotodo_14 Start: 12412, Stop: 13248, Start Num: 15

Candidate Starts for Matalotodo_14:

(4, 12115), (5, 12184), (7, 12253), (Start: 15 @12412 has 422 MA's), (30, 12571), (33, 12601), (49, 12688), (60, 12757), (64, 12772), (74, 12829), (111, 12955), (143, 13201),

Gene: Mcshane_13 Start: 12118, Stop: 12954, Start Num: 15

Candidate Starts for Mcshane_13:

(4, 11821), (5, 11890), (7, 11959), (Start: 15 @12118 has 422 MA's), (30, 12277), (33, 12307), (49, 12394), (60, 12463), (64, 12478), (74, 12535), (111, 12661), (143, 12907),

Gene: Mecca_13 Start: 12115, Stop: 12951, Start Num: 15

Candidate Starts for Mecca_13:

(4, 11818), (5, 11887), (7, 11956), (Start: 15 @12115 has 422 MA's), (30, 12274), (33, 12304), (49, 12391), (60, 12460), (64, 12475), (74, 12532), (111, 12658), (143, 12904),

Gene: Megamind20_14 Start: 12125, Stop: 12973, Start Num: 15

Candidate Starts for Megamind20_14:

(4, 11822), (5, 11891), (7, 11960), (Start: 15 @12125 has 422 MA's), (30, 12284), (33, 12314), (49, 12401), (60, 12470), (64, 12485), (74, 12542), (111, 12680), (143, 12926),

Gene: Megatron_14 Start: 12417, Stop: 13253, Start Num: 15

Candidate Starts for Megatron_14:

(4, 12114), (5, 12183), (7, 12252), (Start: 15 @12417 has 422 MA's), (30, 12576), (33, 12606), (49, 12693), (60, 12762), (64, 12777), (74, 12834), (111, 12960), (143, 13206),

Gene: Melc17_14 Start: 12408, Stop: 13244, Start Num: 15

Candidate Starts for Melc17_14:

(4, 12111), (5, 12180), (7, 12249), (Start: 15 @12408 has 422 MA's), (30, 12567), (33, 12597), (49, 12684), (60, 12753), (64, 12768), (74, 12825), (111, 12951), (143, 13197),

Gene: MelsMeow_13 Start: 11964, Stop: 12812, Start Num: 15

Candidate Starts for MelsMeow_13:

(4, 11667), (5, 11736), (7, 11805), (Start: 15 @11964 has 422 MA's), (30, 12123), (33, 12153), (49, 12240), (60, 12309), (64, 12324), (74, 12381), (111, 12519), (143, 12765),

Gene: Mesh1_14 Start: 12420, Stop: 13262, Start Num: 15

Candidate Starts for Mesh1_14:

(4, 12117), (5, 12186), (7, 12255), (Start: 15 @12420 has 422 MA's), (30, 12579), (33, 12609), (49, 12696), (60, 12765), (64, 12780), (74, 12837), (111, 12969), (143, 13215),

Gene: Mesmerelda_13 Start: 12118, Stop: 12954, Start Num: 15

Candidate Starts for Mesmerelda_13:

(4, 11821), (5, 11890), (7, 11959), (Start: 15 @12118 has 422 MA's), (30, 12277), (33, 12307), (49, 12394), (60, 12463), (64, 12478), (74, 12535), (111, 12661), (143, 12907),

Gene: MichaelPhcott_13 Start: 11970, Stop: 12812, Start Num: 15

Candidate Starts for MichaelPhcott_13:

(4, 11673), (5, 11742), (7, 11811), (Start: 15 @11970 has 422 MA's), (30, 12129), (33, 12159), (49, 12246), (60, 12315), (64, 12330), (74, 12387), (111, 12519), (143, 12765),

Gene: Mikota_14 Start: 12415, Stop: 13239, Start Num: 15

Candidate Starts for Mikota_14:

(4, 12112), (5, 12181), (7, 12250), (Start: 15 @12415 has 422 MA's), (30, 12574), (33, 12604), (49, 12691), (60, 12760), (64, 12775), (74, 12832), (111, 12946), (143, 13192),

Gene: MiniBoss_14 Start: 12417, Stop: 13241, Start Num: 15

Candidate Starts for MiniBoss_14:

(4, 12114), (5, 12183), (7, 12252), (Start: 15 @12417 has 422 MA's), (30, 12576), (33, 12606), (49, 12693), (60, 12762), (64, 12777), (74, 12834), (111, 12948), (143, 13194),

Gene: MitKao_14 Start: 12124, Stop: 12960, Start Num: 15

Candidate Starts for MitKao_14:

(4, 11821), (5, 11890), (7, 11959), (Start: 15 @12124 has 422 MA's), (30, 12283), (33, 12313), (49, 12400), (60, 12469), (64, 12484), (74, 12541), (111, 12667), (143, 12913),

Gene: Mithril_14 Start: 14151, Stop: 14975, Start Num: 15

Candidate Starts for Mithril_14:

(Start: 15 @14151 has 422 MA's), (20, 14205), (30, 14310), (35, 14358), (40, 14367), (56, 14466), (59, 14505), (63, 14520), (99, 14661), (102, 14676), (103, 14679), (147, 14859), (151, 14943), (152, 14946),

Gene: MmasiCarm_16 Start: 13961, Stop: 14566, Start Num: 15

Candidate Starts for MmasiCarm_16:

(Start: 15 @13961 has 422 MA's), (16, 13982), (24, 14078), (41, 14198), (72, 14360), (79, 14399), (83, 14417),

Gene: Morgushi_14 Start: 12122, Stop: 12964, Start Num: 15

Candidate Starts for Morgushi_14:

(4, 11819), (5, 11888), (7, 11957), (Start: 15 @12122 has 422 MA's), (30, 12281), (33, 12311), (49, 12398), (60, 12467), (64, 12482), (74, 12539), (111, 12671), (143, 12917),

Gene: Mortcellus_15 Start: 14602, Stop: 15207, Start Num: 15

Candidate Starts for Mortcellus_15:

(Start: 15 @14602 has 422 MA's), (16, 14623), (24, 14719), (41, 14839), (72, 15001), (83, 15058),

Gene: Morty_14 Start: 12414, Stop: 13262, Start Num: 15

Candidate Starts for Morty_14:

(4, 12111), (5, 12180), (7, 12249), (Start: 15 @12414 has 422 MA's), (30, 12573), (33, 12603), (49, 12690), (60, 12759), (64, 12774), (74, 12831), (111, 12969), (143, 13215),

Gene: Morty007_16 Start: 14748, Stop: 15353, Start Num: 15

Candidate Starts for Morty007_16:

(Start: 15 @14748 has 422 MA's), (16, 14769), (24, 14865), (72, 15147), (83, 15204),

Gene: Mosaic_13 Start: 12125, Stop: 12967, Start Num: 15

Candidate Starts for Mosaic_13:

(4, 11822), (5, 11891), (7, 11960), (Start: 15 @12125 has 422 MA's), (30, 12284), (33, 12314), (49, 12401), (60, 12470), (64, 12485), (74, 12542), (111, 12674), (143, 12920),

Gene: MrPhizzler_14 Start: 12117, Stop: 12965, Start Num: 15

Candidate Starts for MrPhizzler_14:

(4, 11814), (5, 11883), (7, 11952), (Start: 15 @12117 has 422 MA's), (30, 12276), (33, 12306), (49, 12393), (60, 12462), (64, 12477), (74, 12534), (111, 12672), (143, 12918),

Gene: Mudslide_14 Start: 14399, Stop: 15220, Start Num: 15

Candidate Starts for Mudslide_14:

(Start: 15 @14399 has 422 MA's), (20, 14453), (30, 14558), (35, 14606), (40, 14615), (56, 14714), (59, 14753), (63, 14768), (99, 14909), (102, 14924), (147, 15104), (151, 15188), (152, 15191),

Gene: Mulan_13 Start: 12118, Stop: 12960, Start Num: 15

Candidate Starts for Mulan_13:

(4, 11821), (5, 11890), (7, 11959), (Start: 15 @12118 has 422 MA's), (30, 12277), (33, 12307), (49, 12394), (60, 12463), (64, 12478), (74, 12535), (111, 12667), (143, 12913),

Gene: Mulaychimus_16 Start: 13941, Stop: 14546, Start Num: 15

Candidate Starts for Mulaychimus_16:

(Start: 15 @13941 has 422 MA's), (16, 13962), (24, 14058), (41, 14178), (72, 14340), (79, 14379), (83, 14397),

Gene: Murdoc_14 Start: 12411, Stop: 13253, Start Num: 15

Candidate Starts for Murdoc_14:

(4, 12114), (5, 12183), (7, 12252), (Start: 15 @12411 has 422 MA's), (30, 12570), (33, 12600), (49, 12687), (60, 12756), (64, 12771), (74, 12828), (111, 12960), (143, 13206),

Gene: Mutante_13 Start: 12121, Stop: 12963, Start Num: 15

Candidate Starts for Mutante_13:

(4, 11818), (5, 11887), (7, 11956), (Start: 15 @12121 has 422 MA's), (30, 12280), (33, 12310), (49, 12397), (60, 12466), (64, 12481), (74, 12538), (111, 12670), (143, 12916),

Gene: Mysterious_15 Start: 14410, Stop: 15075, Start Num: 15

Candidate Starts for Mysterious_15:

(Start: 15 @14410 has 422 MA's), (20, 14464), (22, 14500), (30, 14569), (61, 14770), (117, 15001), (127, 15046),

Gene: Nacho_0014 Start: 12417, Stop: 13253, Start Num: 15

Candidate Starts for Nacho_0014:

(4, 12114), (5, 12183), (7, 12252), (Start: 15 @12417 has 422 MA's), (30, 12576), (33, 12606), (49, 12693), (60, 12762), (64, 12777), (74, 12834), (111, 12960), (143, 13206),

Gene: Nanao_13 Start: 13057, Stop: 13908, Start Num: 15

Candidate Starts for Nanao_13:

(Start: 15 @13057 has 422 MA's), (20, 13111), (30, 13216), (35, 13264), (40, 13273), (56, 13372), (59, 13411), (63, 13426), (93, 13558), (97, 13561), (102, 13582), (103, 13585), (147, 13792), (151, 13876),

Gene: Nangang_15 Start: 14152, Stop: 14817, Start Num: 15

Candidate Starts for Nangang_15:

(Start: 15 @14152 has 422 MA's), (22, 14242), (30, 14311), (117, 14743), (127, 14788),

Gene: Nathan_14 Start: 12415, Stop: 13263, Start Num: 15

Candidate Starts for Nathan_14:

(4, 12112), (5, 12181), (7, 12250), (Start: 15 @12415 has 422 MA's), (30, 12574), (33, 12604), (49, 12691), (60, 12760), (64, 12775), (74, 12832), (111, 12970), (143, 13216),

Gene: Nehemiah_14 Start: 14410, Stop: 15075, Start Num: 15

Candidate Starts for Nehemiah_14:

(Start: 15 @14410 has 422 MA's), (20, 14464), (22, 14500), (30, 14569), (61, 14770), (117, 15001), (127, 15046),

Gene: Neos5_16 Start: 14754, Stop: 15359, Start Num: 15

Candidate Starts for Neos5_16:

(Start: 15 @14754 has 422 MA's), (16, 14775), (24, 14871), (72, 15153), (79, 15192), (83, 15210),

Gene: Newman_14 Start: 12417, Stop: 13253, Start Num: 15

Candidate Starts for Newman_14:

(4, 12114), (5, 12183), (7, 12252), (Start: 15 @12417 has 422 MA's), (30, 12576), (33, 12606), (49, 12693), (60, 12762), (64, 12777), (74, 12834), (111, 12960), (143, 13206),

Gene: Nicole21_14 Start: 12409, Stop: 13245, Start Num: 15

Candidate Starts for Nicole21_14:

(4, 12112), (5, 12181), (7, 12250), (Start: 15 @12409 has 422 MA's), (30, 12568), (33, 12598), (49, 12685), (60, 12754), (64, 12769), (74, 12826), (111, 12952), (143, 13198),

Gene: Nigel_12 Start: 12973, Stop: 13824, Start Num: 15

Candidate Starts for Nigel_12:

(Start: 15 @12973 has 422 MA's), (30, 13132), (31, 13138), (35, 13180), (40, 13189), (56, 13288), (58, 13318), (59, 13327), (63, 13342), (102, 13498), (123, 13588), (147, 13708), (151, 13792), (152, 13795),

Gene: Nozo_16 Start: 14729, Stop: 15334, Start Num: 15

Candidate Starts for Nozo_16:

(Start: 15 @14729 has 422 MA's), (16, 14750), (24, 14846), (41, 14966), (72, 15128), (79, 15167), (83, 15185),

Gene: Numberten_14 Start: 12420, Stop: 13256, Start Num: 15

Candidate Starts for Numberten_14:

(4, 12117), (5, 12186), (7, 12255), (Start: 15 @12420 has 422 MA's), (30, 12579), (33, 12609), (49, 12696), (60, 12765), (64, 12780), (74, 12837), (111, 12963), (143, 13209),

Gene: Nyala_13 Start: 12119, Stop: 12955, Start Num: 15

Candidate Starts for Nyala_13:

(4, 11822), (5, 11891), (7, 11960), (Start: 15 @12119 has 422 MA's), (30, 12278), (33, 12308), (49, 12395), (60, 12464), (64, 12479), (74, 12536), (111, 12662), (143, 12908),

Gene: OSmaximus_14 Start: 12415, Stop: 13263, Start Num: 15

Candidate Starts for OSmaximus_14:

(4, 12112), (5, 12181), (7, 12250), (Start: 15 @12415 has 422 MA's), (30, 12574), (33, 12604), (49, 12691), (60, 12760), (64, 12775), (74, 12832), (111, 12970), (143, 13216),

Gene: Obutu_16 Start: 13959, Stop: 14564, Start Num: 15

Candidate Starts for Obutu_16:

(Start: 15 @13959 has 422 MA's), (16, 13980), (24, 14076), (41, 14196), (72, 14358), (79, 14397), (83, 14415),

Gene: Olak_13 Start: 12116, Stop: 12952, Start Num: 15

Candidate Starts for Olak_13:

(4, 11819), (5, 11888), (7, 11957), (Start: 15 @12116 has 422 MA's), (30, 12275), (33, 12305), (49, 12392), (60, 12461), (64, 12476), (74, 12533), (111, 12659), (143, 12905),

Gene: Oline_13 Start: 11970, Stop: 12812, Start Num: 15

Candidate Starts for Oline_13:

(4, 11673), (5, 11742), (7, 11811), (Start: 15 @11970 has 422 MA's), (30, 12129), (33, 12159), (49, 12246), (60, 12315), (64, 12330), (74, 12387), (111, 12519), (143, 12765),

Gene: Olive_14 Start: 12414, Stop: 13244, Start Num: 15

Candidate Starts for Olive_14:

(4, 12111), (5, 12180), (7, 12249), (Start: 15 @12414 has 422 MA's), (30, 12573), (33, 12603), (49, 12690), (60, 12759), (64, 12774), (74, 12831), (111, 12951), (143, 13197),

Gene: OliverWalter_14 Start: 12413, Stop: 13261, Start Num: 15

Candidate Starts for OliverWalter_14:

(4, 12110), (5, 12179), (7, 12248), (Start: 15 @12413 has 422 MA's), (30, 12572), (33, 12602), (49, 12689), (60, 12758), (64, 12773), (74, 12830), (111, 12968), (143, 13214),

Gene: Olivio_15 Start: 13813, Stop: 14418, Start Num: 15

Candidate Starts for Olivio_15:

(Start: 15 @13813 has 422 MA's), (16, 13834), (24, 13930), (41, 14050), (72, 14212), (79, 14251), (83, 14269),

Gene: Omniscient_14 Start: 12420, Stop: 13262, Start Num: 15

Candidate Starts for Omniscient_14:

(4, 12117), (5, 12186), (7, 12255), (Start: 15 @12420 has 422 MA's), (30, 12579), (33, 12609), (49, 12696), (60, 12765), (64, 12780), (74, 12837), (111, 12969), (143, 13215),

Gene: OneBrain_14 Start: 12120, Stop: 12956, Start Num: 15

Candidate Starts for OneBrain_14:

(4, 11817), (5, 11886), (7, 11955), (Start: 15 @12120 has 422 MA's), (30, 12279), (33, 12309), (49, 12396), (60, 12465), (64, 12480), (74, 12537), (111, 12663), (143, 12909),

Gene: Oosterbaan_14 Start: 12412, Stop: 13254, Start Num: 15

Candidate Starts for Oosterbaan_14:

(4, 12115), (5, 12184), (7, 12253), (Start: 15 @12412 has 422 MA's), (30, 12571), (33, 12601), (49, 12688), (60, 12757), (64, 12772), (74, 12829), (111, 12961), (143, 13207),

Gene: Opia_17 Start: 15350, Stop: 16099, Start Num: 15

Candidate Starts for Opia_17:

(Start: 15 @15350 has 422 MA's), (28, 15503), (30, 15515), (33, 15545), (41, 15581), (46, 15614), (52, 15647), (60, 15701), (68, 15728), (75, 15776), (80, 15794), (95, 15860), (105, 15881), (113, 15926), (114, 15938), (119, 15959),

Gene: OrangeOswald_16 Start: 13964, Stop: 14569, Start Num: 15

Candidate Starts for OrangeOswald_16:

(Start: 15 @13964 has 422 MA's), (16, 13985), (24, 14081), (41, 14201), (72, 14363), (79, 14402), (83, 14420),

Gene: Orfeu_13 Start: 12117, Stop: 12953, Start Num: 15

Candidate Starts for Orfeu_13:

(4, 11820), (5, 11889), (7, 11958), (Start: 15 @12117 has 422 MA's), (30, 12276), (33, 12306), (49, 12393), (60, 12462), (64, 12477), (74, 12534), (111, 12660), (143, 12906),

Gene: Orion_14 Start: 12412, Stop: 13254, Start Num: 15

Candidate Starts for Orion_14:

(4, 12115), (5, 12184), (7, 12253), (Start: 15 @12412 has 422 MA's), (30, 12571), (33, 12601), (49, 12688), (60, 12757), (64, 12772), (74, 12829), (111, 12961), (143, 13207),

Gene: Orwigg_13 Start: 12122, Stop: 12946, Start Num: 15

Candidate Starts for Orwigg_13:

(4, 11825), (5, 11894), (7, 11963), (Start: 15 @12122 has 422 MA's), (30, 12281), (33, 12311), (49, 12398), (60, 12467), (64, 12482), (74, 12539), (111, 12653), (143, 12899),

Gene: PG1_14 Start: 12418, Stop: 13266, Start Num: 15

Candidate Starts for PG1_14:

(4, 12115), (5, 12184), (7, 12253), (Start: 15 @12418 has 422 MA's), (30, 12577), (33, 12607), (49, 12694), (60, 12763), (64, 12778), (74, 12835), (111, 12973), (143, 13219),

Gene: Pacifista_13 Start: 12115, Stop: 12957, Start Num: 15

Candidate Starts for Pacifista_13:

(4, 11818), (5, 11887), (7, 11956), (Start: 15 @12115 has 422 MA's), (30, 12274), (33, 12304), (49, 12391), (60, 12460), (64, 12475), (74, 12532), (111, 12664), (143, 12910),

Gene: PallasAthena_14 Start: 12119, Stop: 12961, Start Num: 15

Candidate Starts for PallasAthena_14:

(4, 11822), (5, 11891), (7, 11960), (Start: 15 @12119 has 422 MA's), (30, 12278), (33, 12308), (49, 12395), (60, 12464), (64, 12479), (74, 12536), (111, 12668), (143, 12914),

Gene: PenguinLover67_17 Start: 15047, Stop: 16012, Start Num: 15

Candidate Starts for PenguinLover67_17:

(Start: 15 @15047 has 422 MA's), (20, 15101), (30, 15206), (42, 15317), (115, 15737), (144, 15869), (145, 15872),

Gene: Phaedrus_15 Start: 13882, Stop: 14487, Start Num: 15

Candidate Starts for Phaedrus_15:

(Start: 15 @13882 has 422 MA's), (16, 13903), (24, 13999), (41, 14119), (72, 14281), (79, 14320), (83, 14338),

Gene: Phamished_14 Start: 12417, Stop: 13259, Start Num: 15

Candidate Starts for Phamished_14:

(4, 12114), (5, 12183), (7, 12252), (Start: 15 @12417 has 422 MA's), (30, 12576), (33, 12606), (49, 12693), (60, 12762), (64, 12777), (74, 12834), (111, 12966), (143, 13212),

Gene: Phantasmagoria_17 Start: 15350, Stop: 16099, Start Num: 15

Candidate Starts for Phantasmagoria_17:

(Start: 15 @15350 has 422 MA's), (28, 15503), (30, 15515), (33, 15545), (41, 15581), (46, 15614), (52, 15647), (60, 15701), (68, 15728), (75, 15776), (80, 15794), (95, 15860), (105, 15881), (113, 15926), (114, 15938), (119, 15959),

Gene: Phareon_14 Start: 12124, Stop: 12960, Start Num: 15

Candidate Starts for Phareon_14:

(4, 11821), (5, 11890), (7, 11959), (Start: 15 @12124 has 422 MA's), (30, 12283), (33, 12313), (49, 12400), (60, 12469), (64, 12484), (74, 12541), (111, 12667), (143, 12913),

Gene: PhatCats2014_14 Start: 12421, Stop: 13269, Start Num: 15

Candidate Starts for PhatCats2014_14:

(4, 12118), (5, 12187), (7, 12256), (Start: 15 @12421 has 422 MA's), (30, 12580), (33, 12610), (49, 12697), (60, 12766), (64, 12781), (74, 12838), (111, 12976), (143, 13222),

Gene: PhatLouie_14 Start: 12411, Stop: 13253, Start Num: 15

Candidate Starts for PhatLouie_14:

(4, 12114), (5, 12183), (7, 12252), (Start: 15 @12411 has 422 MA's), (30, 12570), (33, 12600), (49, 12687), (60, 12756), (64, 12771), (74, 12828), (111, 12960), (143, 13206),

Gene: Phayeta_16 Start: 13840, Stop: 14445, Start Num: 15

Candidate Starts for Phayeta_16:

(Start: 15 @13840 has 422 MA's), (16, 13861), (24, 13957), (41, 14077), (72, 14239), (79, 14278), (83, 14296),

Gene: Phelemich_15 Start: 14414, Stop: 15079, Start Num: 15

Candidate Starts for Phelemich_15:

(Start: 15 @14414 has 422 MA's), (20, 14468), (22, 14504), (30, 14573), (117, 15005), (127, 15050),

Gene: PhenghisKhan_13 Start: 11970, Stop: 12812, Start Num: 15

Candidate Starts for PhenghisKhan_13:

(4, 11673), (5, 11742), (7, 11811), (Start: 15 @11970 has 422 MA's), (30, 12129), (33, 12159), (49, 12246), (60, 12315), (64, 12330), (74, 12387), (111, 12519), (143, 12765),

Gene: Pherdinand_14 Start: 12415, Stop: 13257, Start Num: 15

Candidate Starts for Pherdinand_14:

(4, 12112), (5, 12181), (7, 12250), (Start: 15 @12415 has 422 MA's), (30, 12574), (33, 12604), (49, 12691), (60, 12760), (64, 12775), (74, 12832), (111, 12964), (143, 13210),

Gene: Phergie_13 Start: 11964, Stop: 12806, Start Num: 15

Candidate Starts for Phergie_13:

(4, 11667), (5, 11736), (7, 11805), (Start: 15 @11964 has 422 MA's), (30, 12123), (33, 12153), (49, 12240), (60, 12309), (64, 12324), (74, 12381), (111, 12513), (143, 12759),

Gene: Philly_15 Start: 13830, Stop: 14435, Start Num: 15

Candidate Starts for Philly_15:

(Start: 15 @13830 has 422 MA's), (16, 13851), (24, 13947), (26, 13956), (41, 14067), (72, 14229), (79, 14268), (83, 14286),

Gene: Phipps_14 Start: 12408, Stop: 13232, Start Num: 15

Candidate Starts for Phipps_14:

(4, 12105), (5, 12174), (7, 12243), (Start: 15 @12408 has 422 MA's), (30, 12567), (33, 12597), (49, 12684), (60, 12753), (64, 12768), (74, 12825), (111, 12939), (143, 13185),

Gene: Phleuron_13 Start: 11970, Stop: 12812, Start Num: 15

Candidate Starts for Phleuron_13:

(4, 11673), (5, 11742), (7, 11811), (Start: 15 @11970 has 422 MA's), (30, 12129), (33, 12159), (49, 12246), (60, 12315), (64, 12330), (74, 12387), (111, 12519), (143, 12765),

Gene: Phlyer_16 Start: 14698, Stop: 15303, Start Num: 15

Candidate Starts for Phlyer_16:

(Start: 15 @14698 has 422 MA's), (16, 14719), (24, 14815), (41, 14935), (72, 15097), (79, 15136), (83, 15154),

Gene: PhrankReynolds_13 Start: 11970, Stop: 12812, Start Num: 15

Candidate Starts for PhrankReynolds_13:

(4, 11673), (5, 11742), (7, 11811), (Start: 15 @11970 has 422 MA's), (30, 12129), (33, 12159), (49, 12246), (60, 12315), (64, 12330), (74, 12387), (111, 12519), (143, 12765),

Gene: PhrodoBaggins_13 Start: 12411, Stop: 13247, Start Num: 15

Candidate Starts for PhrodoBaggins_13:

(4, 12114), (5, 12183), (7, 12252), (Start: 15 @12411 has 422 MA's), (30, 12570), (33, 12600), (49, 12687), (60, 12756), (64, 12771), (74, 12828), (111, 12954), (143, 13200),

Gene: Phunky_14 Start: 12411, Stop: 13253, Start Num: 15

Candidate Starts for Phunky_14:

(4, 12114), (5, 12183), (7, 12252), (Start: 15 @12411 has 422 MA's), (30, 12570), (33, 12600), (49, 12687), (60, 12756), (64, 12771), (74, 12828), (111, 12960), (143, 13206),

Gene: Piglet_0013 Start: 12420, Stop: 13256, Start Num: 15

Candidate Starts for Piglet_0013:

(4, 12117), (5, 12186), (7, 12255), (Start: 15 @12420 has 422 MA's), (30, 12579), (33, 12609), (49, 12696), (60, 12765), (64, 12780), (74, 12837), (111, 12963), (143, 13209),

Gene: PinheadLarry_14 Start: 12124, Stop: 12972, Start Num: 15

Candidate Starts for PinheadLarry_14:

(4, 11821), (5, 11890), (7, 11959), (Start: 15 @12124 has 422 MA's), (30, 12283), (33, 12313), (49, 12400), (60, 12469), (64, 12484), (74, 12541), (111, 12679), (143, 12925),

Gene: Pinkman_13 Start: 11970, Stop: 12812, Start Num: 15

Candidate Starts for Pinkman_13:

(4, 11673), (5, 11742), (7, 11811), (Start: 15 @11970 has 422 MA's), (30, 12129), (33, 12159), (49, 12246), (60, 12315), (64, 12330), (74, 12387), (111, 12519), (143, 12765),

Gene: Pipefish_16 Start: 14848, Stop: 15453, Start Num: 15

Candidate Starts for Pipefish_16:

(Start: 15 @14848 has 422 MA's), (16, 14869), (24, 14965), (72, 15247),

Gene: Pipsqueak_14 Start: 12417, Stop: 13259, Start Num: 15

Candidate Starts for Pipsqueak_14:

(4, 12114), (5, 12183), (7, 12252), (Start: 15 @12417 has 422 MA's), (30, 12576), (33, 12606), (49, 12693), (60, 12762), (64, 12777), (74, 12834), (111, 12966), (143, 13212),

Gene: Placalicious_13 Start: 12118, Stop: 12954, Start Num: 15

Candidate Starts for Placalicious_13:

(4, 11821), (5, 11890), (7, 11959), (Start: 15 @12118 has 422 MA's), (30, 12277), (33, 12307), (49, 12394), (60, 12463), (64, 12478), (74, 12535), (111, 12661), (143, 12907),

Gene: Plata_14 Start: 12120, Stop: 12968, Start Num: 15

Candidate Starts for Plata_14:

(4, 11817), (5, 11886), (7, 11955), (Start: 15 @12120 has 422 MA's), (30, 12279), (33, 12309), (49, 12396), (60, 12465), (64, 12480), (74, 12537), (111, 12675), (143, 12921),

Gene: Plmatters_14 Start: 12417, Stop: 13253, Start Num: 15

Candidate Starts for Plmatters_14:

(4, 12114), (5, 12183), (7, 12252), (Start: 15 @12417 has 422 MA's), (30, 12576), (33, 12606), (49, 12693), (60, 12762), (64, 12777), (74, 12834), (111, 12960), (143, 13206),

Gene: Podrick_14 Start: 12420, Stop: 13244, Start Num: 15

Candidate Starts for Podrick_14:

(4, 12117), (5, 12186), (7, 12255), (Start: 15 @12420 has 422 MA's), (30, 12579), (33, 12609), (49, 12696), (60, 12765), (64, 12780), (74, 12837), (111, 12951), (143, 13197),

Gene: Pops_14 Start: 12414, Stop: 13256, Start Num: 15

Candidate Starts for Pops_14:

(4, 12111), (5, 12180), (7, 12249), (Start: 15 @12414 has 422 MA's), (30, 12573), (33, 12603), (49, 12690), (60, 12759), (64, 12774), (74, 12831), (111, 12963), (143, 13209),

Gene: Poster_13 Start: 13057, Stop: 13908, Start Num: 15

Candidate Starts for Poster_13:

(Start: 15 @13057 has 422 MA's), (20, 13111), (30, 13216), (35, 13264), (40, 13273), (56, 13372), (59, 13411), (63, 13426), (93, 13558), (97, 13561), (102, 13582), (103, 13585), (147, 13792), (151, 13876),

Gene: Potter_13 Start: 12125, Stop: 12967, Start Num: 15

Candidate Starts for Potter_13:

(4, 11822), (5, 11891), (7, 11960), (Start: 15 @12125 has 422 MA's), (30, 12284), (33, 12314), (49, 12401), (60, 12470), (64, 12485), (74, 12542), (111, 12674), (143, 12920),

Gene: Prickles_14 Start: 12423, Stop: 13247, Start Num: 15

Candidate Starts for Prickles_14:

(4, 12120), (5, 12189), (7, 12258), (Start: 15 @12423 has 422 MA's), (30, 12582), (33, 12612), (49, 12699), (60, 12768), (64, 12783), (74, 12840), (111, 12954), (143, 13200),

Gene: Prince_14 Start: 14311, Stop: 15132, Start Num: 15

Candidate Starts for Prince_14:

(Start: 15 @14311 has 422 MA's), (20, 14365), (30, 14470), (35, 14518), (40, 14527), (56, 14626), (59, 14665), (63, 14680), (99, 14821), (102, 14836), (147, 15016), (151, 15100), (152, 15103),

Gene: PrinceCharming_17 Start: 15470, Stop: 16219, Start Num: 15

Candidate Starts for PrinceCharming_17:

(Start: 15 @15470 has 422 MA's), (28, 15623), (30, 15635), (33, 15665), (41, 15701), (46, 15734), (52, 15767), (60, 15821), (68, 15848), (75, 15896), (80, 15914), (95, 15980), (105, 16001), (113, 16046), (114, 16058), (119, 16079),

Gene: ProfessorX_14 Start: 12409, Stop: 13245, Start Num: 15

Candidate Starts for ProfessorX_14:

(4, 12112), (5, 12181), (7, 12250), (Start: 15 @12409 has 422 MA's), (30, 12568), (33, 12598), (49, 12685), (60, 12754), (64, 12769), (74, 12826), (111, 12952), (143, 13198),

Gene: Puhltonio_14 Start: 12408, Stop: 13262, Start Num: 15

Candidate Starts for Puhltonio_14:

(4, 12105), (5, 12174), (7, 12243), (Start: 15 @12408 has 422 MA's), (30, 12567), (33, 12597), (49, 12684), (60, 12753), (64, 12768), (74, 12825), (111, 12969), (143, 13215),

Gene: QueenBeane_14 Start: 12411, Stop: 13253, Start Num: 15

Candidate Starts for QueenBeane_14:

(4, 12114), (5, 12183), (7, 12252), (Start: 15 @12411 has 422 MA's), (30, 12570), (33, 12600), (49, 12687), (60, 12756), (64, 12771), (74, 12828), (111, 12960), (143, 13206),

Gene: QueenPie_14 Start: 14655, Stop: 15506, Start Num: 15

Candidate Starts for QueenPie_14:

(Start: 15 @14655 has 422 MA's), (20, 14709), (30, 14814), (35, 14862), (40, 14871), (56, 14970), (59, 15009), (63, 15024), (93, 15156), (97, 15159), (102, 15180), (103, 15183), (147, 15390), (151, 15474),

Gene: Quesadilla_16 Start: 14845, Stop: 15846, Start Num: 15

Candidate Starts for Quesadilla_16:

(Start: 15 @14845 has 422 MA's), (20, 14899), (30, 15004), (42, 15118), (84, 15391), (115, 15541), (136, 15634), (144, 15703), (145, 15706), (150, 15799), (151, 15817),

Gene: Quisquilliae_14 Start: 12420, Stop: 13268, Start Num: 15

Candidate Starts for Quisquilliae_14:

(4, 12117), (5, 12186), (7, 12255), (Start: 15 @12420 has 422 MA's), (30, 12579), (33, 12609), (49, 12696), (60, 12765), (64, 12780), (74, 12837), (111, 12975), (143, 13221),

Gene: Qyrzula_16 Start: 15440, Stop: 16189, Start Num: 15

Candidate Starts for Qyrzula_16:

(Start: 15 @15440 has 422 MA's), (28, 15593), (30, 15605), (33, 15635), (41, 15671), (46, 15704), (52, 15737), (55, 15752), (60, 15791), (68, 15818), (75, 15866), (80, 15884), (95, 15950), (105, 15971), (113, 16016), (114, 16028), (119, 16049),

Gene: RagingRooster_16 Start: 13965, Stop: 14570, Start Num: 15

Candidate Starts for RagingRooster_16:

(Start: 15 @13965 has 422 MA's), (16, 13986), (24, 14082), (41, 14202), (72, 14364), (79, 14403), (83, 14421),

Gene: RawrgerThat_14 Start: 14145, Stop: 14969, Start Num: 15

Candidate Starts for RawrgerThat_14:

(Start: 15 @14145 has 422 MA's), (20, 14199), (30, 14304), (35, 14352), (40, 14361), (56, 14460), (59, 14499), (63, 14514), (73, 14559), (93, 14646), (97, 14649), (102, 14670), (103, 14673), (147, 14853), (151, 14937), (152, 14940),

Gene: Reccee_16 Start: 14348, Stop: 15013, Start Num: 15

Candidate Starts for Reccee_16:

(Start: 15 @14348 has 422 MA's), (20, 14402), (22, 14438), (30, 14507), (117, 14939), (127, 14984),

Gene: RedMaple_13 Start: 12411, Stop: 13265, Start Num: 15

Candidate Starts for RedMaple_13:

(4, 12108), (5, 12177), (7, 12246), (Start: 15 @12411 has 422 MA's), (30, 12570), (33, 12600), (49, 12687), (60, 12756), (64, 12771), (74, 12828), (111, 12972), (143, 13218),

Gene: RedRaider89_15 Start: 12649, Stop: 13485, Start Num: 15

Candidate Starts for RedRaider89_15:

(4, 12346), (5, 12415), (7, 12484), (Start: 15 @12649 has 422 MA's), (30, 12808), (33, 12838), (49, 12925), (60, 12994), (64, 13009), (74, 13066), (111, 13192), (143, 13438),

Gene: Renkei_13 Start: 13064, Stop: 13915, Start Num: 15

Candidate Starts for Renkei_13:

(Start: 15 @13064 has 422 MA's), (20, 13118), (30, 13223), (35, 13271), (40, 13280), (56, 13379), (59, 13418), (63, 13433), (93, 13565), (97, 13568), (102, 13589), (103, 13592), (147, 13799), (151, 13883),

Gene: Reprobate_15 Start: 14411, Stop: 15076, Start Num: 15

Candidate Starts for Reprobate_15:

(Start: 15 @14411 has 422 MA's), (20, 14465), (22, 14501), (30, 14570), (117, 15002), (127, 15047),

Gene: Rhinoforte_17 Start: 15467, Stop: 16216, Start Num: 15

Candidate Starts for Rhinoforte_17:

(Start: 15 @15467 has 422 MA's), (28, 15620), (30, 15632), (33, 15662), (41, 15698), (46, 15731), (52, 15764), (60, 15818), (68, 15845), (75, 15893), (80, 15911), (95, 15977), (105, 15998), (113, 16043), (114, 16055), (119, 16076),

Gene: Rich_15 Start: 14166, Stop: 14975, Start Num: 15

Candidate Starts for Rich_15:

(Start: 15 @14166 has 422 MA's), (17, 14190), (20, 14220), (22, 14256), (30, 14325), (112, 14724), (117, 14766), (127, 14811), (141, 14898), (146, 14943),

Gene: Ricotta_13 Start: 12123, Stop: 12977, Start Num: 15

Candidate Starts for Ricotta_13:

(4, 11820), (5, 11889), (7, 11958), (Start: 15 @12123 has 422 MA's), (30, 12282), (33, 12312), (49, 12399), (60, 12468), (64, 12483), (74, 12540), (111, 12684), (143, 12930),

Gene: Riggan_14 Start: 12415, Stop: 13233, Start Num: 15

Candidate Starts for Riggan_14:

(4, 12118), (5, 12187), (7, 12256), (Start: 15 @12415 has 422 MA's), (30, 12574), (33, 12604), (49, 12691), (60, 12760), (64, 12775), (74, 12832), (111, 12940), (143, 13186),

Gene: Rimu_14 Start: 12117, Stop: 12965, Start Num: 15

Candidate Starts for Rimu_14:

(4, 11814), (5, 11883), (7, 11952), (Start: 15 @12117 has 422 MA's), (30, 12276), (33, 12306), (49, 12393), (60, 12462), (64, 12477), (74, 12534), (111, 12672), (143, 12918),

Gene: Rinkes_19 Start: 16207, Stop: 17280, Start Num: 15

Candidate Starts for Rinkes_19:

(Start: 15 @16207 has 422 MA's), (20, 16264), (21, 16291), (30, 16369), (33, 16399), (36, 16420), (58, 16627), (59, 16636), (63, 16651), (87, 16774), (93, 16792), (96, 16810), (101, 16834), (116, 16921), (120, 16942), (128, 16987), (130, 17002), (140, 17059), (144, 17140), (145, 17143), (151, 17254),

Gene: Rita130_15 Start: 14168, Stop: 14833, Start Num: 15

Candidate Starts for Rita130_15:

(Start: 15 @14168 has 422 MA's), (20, 14222), (22, 14258), (30, 14327), (117, 14759), (127, 14804),

Gene: Rita1961_16 Start: 13960, Stop: 14565, Start Num: 15

Candidate Starts for Rita1961_16:

(Start: 15 @13960 has 422 MA's), (16, 13981), (24, 14077), (41, 14197), (72, 14359), (83, 14416),

Gene: Riverton_13 Start: 12417, Stop: 13259, Start Num: 15

Candidate Starts for Riverton_13:

(4, 12114), (5, 12183), (7, 12252), (Start: 15 @12417 has 422 MA's), (30, 12576), (33, 12606), (49, 12693), (60, 12762), (64, 12777), (74, 12834), (111, 12966), (143, 13212),

Gene: Robyn_13 Start: 11972, Stop: 12826, Start Num: 15

Candidate Starts for Robyn_13:

(4, 11669), (5, 11738), (7, 11807), (Start: 15 @11972 has 422 MA's), (30, 12131), (33, 12161), (49, 12248), (60, 12317), (64, 12332), (74, 12389), (111, 12533), (143, 12779),

Gene: Roliet_14 Start: 12417, Stop: 13253, Start Num: 15

Candidate Starts for Roliet_14:

(4, 12114), (5, 12183), (7, 12252), (Start: 15 @12417 has 422 MA's), (30, 12576), (33, 12606), (49, 12693), (60, 12762), (64, 12777), (74, 12834), (111, 12960), (143, 13206),

Gene: RomaT_16 Start: 14745, Stop: 15350, Start Num: 15

Candidate Starts for RomaT_16:

(Start: 15 @14745 has 422 MA's), (16, 14766), (24, 14862), (41, 14982), (72, 15144), (79, 15183), (83, 15201),

Gene: Roscoe_15 Start: 12646, Stop: 13494, Start Num: 15

Candidate Starts for Roscoe_15:

(4, 12349), (5, 12418), (7, 12487), (Start: 15 @12646 has 422 MA's), (30, 12805), (33, 12835), (49, 12922), (60, 12991), (64, 13006), (74, 13063), (111, 13201), (143, 13447),

Gene: Rosebush_17 Start: 15467, Stop: 16216, Start Num: 15

Candidate Starts for Rosebush_17:

(Start: 15 @15467 has 422 MA's), (28, 15620), (30, 15632), (33, 15662), (41, 15698), (46, 15731), (52, 15764), (60, 15818), (68, 15845), (75, 15893), (80, 15911), (95, 15977), (105, 15998), (113, 16043), (114, 16055), (119, 16076),

Gene: Roy17_14 Start: 12119, Stop: 12955, Start Num: 15

Candidate Starts for Roy17_14:

(4, 11822), (5, 11891), (7, 11960), (Start: 15 @12119 has 422 MA's), (30, 12278), (33, 12308), (49, 12395), (60, 12464), (64, 12479), (74, 12536), (111, 12662), (143, 12908),

Gene: SDcharge11_14 Start: 12410, Stop: 13234, Start Num: 15

Candidate Starts for SDcharge11_14:

(4, 12107), (5, 12176), (7, 12245), (Start: 15 @12410 has 422 MA's), (30, 12569), (33, 12599), (49, 12686), (60, 12755), (64, 12770), (74, 12827), (111, 12941), (143, 13187),

Gene: Sabella_17 Start: 15353, Stop: 16102, Start Num: 15

Candidate Starts for Sabella_17:

(Start: 15 @15353 has 422 MA's), (28, 15506), (30, 15518), (33, 15548), (41, 15584), (46, 15617), (52, 15650), (60, 15704), (68, 15731), (75, 15779), (80, 15797), (95, 15863), (105, 15884), (113, 15929), (114, 15941), (119, 15962),

Gene: Saguaro_16 Start: 15049, Stop: 16023, Start Num: 15

Candidate Starts for Saguaro_16:

(Start: 15 @15049 has 422 MA's), (20, 15103), (23, 15142), (27, 15184), (38, 15277), (42, 15322), (56, 15439), (84, 15592), (109, 15682), (144, 15871), (145, 15874), (148, 15943), (151, 15994),

Gene: SallyH_14 Start: 12415, Stop: 13263, Start Num: 15

Candidate Starts for SallyH_14:

(4, 12112), (5, 12181), (7, 12250), (Start: 15 @12415 has 422 MA's), (30, 12574), (33, 12604), (49, 12691), (60, 12760), (64, 12775), (74, 12832), (111, 12970), (143, 13216),

Gene: Samaymay_14 Start: 12411, Stop: 13253, Start Num: 15

Candidate Starts for Samaymay_14:

(4, 12114), (5, 12183), (7, 12252), (Start: 15 @12411 has 422 MA's), (30, 12570), (33, 12600), (49, 12687), (60, 12756), (64, 12771), (74, 12828), (111, 12960), (143, 13206),

Gene: SassyCat97_13 Start: 12118, Stop: 12960, Start Num: 15

Candidate Starts for SassyCat97_13:

(4, 11821), (5, 11890), (7, 11959), (Start: 15 @12118 has 422 MA's), (30, 12277), (33, 12307), (49, 12394), (60, 12463), (64, 12478), (74, 12535), (111, 12667), (143, 12913),

Gene: Schadenfreude_13 Start: 11962, Stop: 12810, Start Num: 15

Candidate Starts for Schadenfreude_13:

(4, 11659), (5, 11728), (7, 11797), (Start: 15 @11962 has 422 MA's), (30, 12121), (33, 12151), (49, 12238), (60, 12307), (64, 12322), (74, 12379), (111, 12517), (143, 12763),

Gene: Schueller_13 Start: 12115, Stop: 12951, Start Num: 15

Candidate Starts for Schueller_13:

(4, 11818), (5, 11887), (7, 11956), (Start: 15 @12115 has 422 MA's), (30, 12274), (33, 12304), (49, 12391), (60, 12460), (64, 12475), (74, 12532), (111, 12658), (143, 12904),

Gene: Scoot17C_14 Start: 12418, Stop: 13254, Start Num: 15

Candidate Starts for Scoot17C_14:

(4, 12115), (5, 12184), (7, 12253), (Start: 15 @12418 has 422 MA's), (30, 12577), (33, 12607), (49, 12694), (60, 12763), (64, 12778), (74, 12835), (111, 12961), (143, 13207),

Gene: Scrick_13 Start: 12125, Stop: 12973, Start Num: 15

Candidate Starts for Scrick_13:

(4, 11822), (5, 11891), (7, 11960), (Start: 15 @12125 has 422 MA's), (30, 12284), (33, 12314), (49, 12401), (60, 12470), (64, 12485), (74, 12542), (111, 12680), (143, 12926),

Gene: Selr12_14 Start: 12124, Stop: 12978, Start Num: 15

Candidate Starts for Selr12_14:

(4, 11821), (5, 11890), (7, 11959), (Start: 15 @12124 has 422 MA's), (30, 12283), (33, 12313), (49, 12400), (60, 12469), (64, 12484), (74, 12541), (111, 12685), (143, 12931),

Gene: Serendipitous_15 Start: 14216, Stop: 15022, Start Num: 15

Candidate Starts for Serendipitous_15:

(Start: 15 @14216 has 422 MA's), (20, 14270), (22, 14306), (30, 14375), (117, 14816), (127, 14861), (137, 14906), (141, 14948), (146, 14993),

Gene: Serendipity_14 Start: 12420, Stop: 13274, Start Num: 15

Candidate Starts for Serendipity_14:

(4, 12117), (5, 12186), (7, 12255), (Start: 15 @12420 has 422 MA's), (30, 12579), (33, 12609), (49, 12696), (60, 12765), (64, 12780), (74, 12837), (111, 12981), (143, 13227),

Gene: Serpentine_0014 Start: 12420, Stop: 13256, Start Num: 15

Candidate Starts for Serpentine_0014:

(4, 12117), (5, 12186), (7, 12255), (Start: 15 @12420 has 422 MA's), (30, 12579), (33, 12609), (49, 12696), (60, 12765), (64, 12780), (74, 12837), (111, 12963), (143, 13209),

Gene: ShadowBud_14 Start: 12420, Stop: 13268, Start Num: 15

Candidate Starts for ShadowBud_14:

(4, 12117), (5, 12186), (7, 12255), (Start: 15 @12420 has 422 MA's), (30, 12579), (33, 12609), (49, 12696), (60, 12765), (64, 12780), (74, 12837), (111, 12975), (143, 13221),

Gene: Shatter_13 Start: 12434, Stop: 12952, Start Num: 14

Candidate Starts for Shatter_13:

(Start: 14 @12434 has 11 MA's), (20, 12488), (104, 12869), (112, 12899),

Gene: Sheila_14 Start: 12415, Stop: 13245, Start Num: 15

Candidate Starts for Sheila_14:

(4, 12112), (5, 12181), (7, 12250), (Start: 15 @12415 has 422 MA's), (30, 12574), (33, 12604), (49, 12691), (60, 12760), (64, 12775), (74, 12832), (111, 12952), (143, 13198),

Gene: Shenandoah_16 Start: 13943, Stop: 14548, Start Num: 15

Candidate Starts for Shenandoah_16:

(Start: 15 @13943 has 422 MA's), (16, 13964), (24, 14060), (41, 14180), (72, 14342), (79, 14381), (83, 14399),

Gene: Shenyu_15 Start: 14152, Stop: 14817, Start Num: 15

Candidate Starts for Shenyu_15:

(Start: 15 @14152 has 422 MA's), (22, 14242), (30, 14311), (117, 14743), (127, 14788),

Gene: ShiVal_14 Start: 12411, Stop: 13247, Start Num: 15

Candidate Starts for ShiVal_14:

(4, 12114), (5, 12183), (7, 12252), (Start: 15 @12411 has 422 MA's), (30, 12570), (33, 12600), (49, 12687), (60, 12756), (64, 12771), (74, 12828), (111, 12954), (143, 13200),

Gene: Sigman_14 Start: 12408, Stop: 13244, Start Num: 15

Candidate Starts for Sigman_14:

(4, 12111), (5, 12180), (7, 12249), (Start: 15 @12408 has 422 MA's), (30, 12567), (33, 12597), (49, 12684), (60, 12753), (64, 12768), (74, 12825), (111, 12951), (143, 13197),

Gene: SilverBell_14 Start: 12411, Stop: 13259, Start Num: 15

Candidate Starts for SilverBell_14:

(4, 12114), (5, 12183), (7, 12252), (Start: 15 @12411 has 422 MA's), (30, 12570), (33, 12600), (49, 12687), (60, 12756), (64, 12771), (74, 12828), (111, 12966), (143, 13212),

Gene: Simielle_13 Start: 12109, Stop: 12945, Start Num: 15

Candidate Starts for Simielle_13:

(4, 11812), (5, 11881), (7, 11950), (Start: 15 @12109 has 422 MA's), (30, 12268), (33, 12298), (49, 12385), (60, 12454), (64, 12469), (74, 12526), (111, 12652), (143, 12898),

Gene: SirBeauregard_13 Start: 12078, Stop: 12920, Start Num: 15

Candidate Starts for SirBeauregard_13:

(4, 11775), (5, 11844), (7, 11913), (Start: 15 @12078 has 422 MA's), (30, 12237), (33, 12267), (49, 12354), (60, 12423), (64, 12438), (74, 12495), (111, 12627), (143, 12873),

Gene: SirJeffery_15 Start: 14169, Stop: 14834, Start Num: 15

Candidate Starts for SirJeffery_15:

(Start: 15 @14169 has 422 MA's), (20, 14223), (22, 14259), (30, 14328), (117, 14760), (127, 14805),

Gene: Sisko_13 Start: 12759, Stop: 13280, Start Num: 14

Candidate Starts for Sisko_13:

(11, 12738), (Start: 14 @12759 has 11 MA's), (20, 12813), (25, 12882), (30, 12918), (104, 13125), (111, 13152), (119, 13203),

Gene: Skippy_14 Start: 12414, Stop: 13238, Start Num: 15

Candidate Starts for Skippy_14:

(4, 12117), (5, 12186), (7, 12255), (Start: 15 @12414 has 422 MA's), (30, 12573), (33, 12603), (49, 12690), (60, 12759), (64, 12774), (74, 12831), (111, 12945), (143, 13191),

Gene: Slatt_14 Start: 12422, Stop: 13270, Start Num: 15

Candidate Starts for Slatt_14:

(4, 12119), (5, 12188), (7, 12257), (Start: 15 @12422 has 422 MA's), (30, 12581), (33, 12611), (49, 12698), (60, 12767), (64, 12782), (74, 12839), (111, 12977), (143, 13223),

Gene: SlippinJimmy_16 Start: 14729, Stop: 15334, Start Num: 15

Candidate Starts for SlippinJimmy_16:

(Start: 15 @14729 has 422 MA's), (16, 14750), (24, 14846), (41, 14966), (72, 15128), (79, 15167), (83, 15185),

Gene: Soile_14 Start: 12123, Stop: 12965, Start Num: 15

Candidate Starts for Soile_14:

(4, 11820), (5, 11889), (7, 11958), (Start: 15 @12123 has 422 MA's), (30, 12282), (33, 12312), (49, 12399), (60, 12468), (64, 12483), (74, 12540), (111, 12672), (143, 12918),

Gene: Solosis_13 Start: 12124, Stop: 12972, Start Num: 15

Candidate Starts for Solosis_13:

(4, 11821), (5, 11890), (7, 11959), (Start: 15 @12124 has 422 MA's), (30, 12283), (33, 12313), (49, 12400), (60, 12469), (64, 12484), (74, 12541), (111, 12679), (143, 12925),

Gene: Sophia_13 Start: 12118, Stop: 12960, Start Num: 15

Candidate Starts for Sophia_13:

(4, 11821), (5, 11890), (7, 11959), (Start: 15 @12118 has 422 MA's), (30, 12277), (33, 12307), (49, 12394), (60, 12463), (64, 12478), (74, 12535), (111, 12667), (143, 12913),

Gene: Soto_14 Start: 12414, Stop: 13250, Start Num: 15

Candidate Starts for Soto_14:

(4, 12111), (5, 12180), (7, 12249), (Start: 15 @12414 has 422 MA's), (30, 12573), (33, 12603), (49, 12690), (60, 12759), (64, 12774), (74, 12831), (111, 12957), (143, 13203),

Gene: Sour_16 Start: 14097, Stop: 14714, Start Num: 14

Candidate Starts for Sour_16:

(7, 13965), (11, 14076), (Start: 14 @14097 has 11 MA's), (20, 14151), (41, 14310), (86, 14553),

Gene: Spartan300_14 Start: 12408, Stop: 13250, Start Num: 15

Candidate Starts for Spartan300_14:

(4, 12111), (5, 12180), (7, 12249), (Start: 15 @12408 has 422 MA's), (30, 12567), (33, 12597), (49, 12684), (60, 12753), (64, 12768), (74, 12825), (111, 12957), (143, 13203),

Gene: Squid_14 Start: 12118, Stop: 12960, Start Num: 15

Candidate Starts for Squid_14:

(4, 11821), (5, 11890), (7, 11959), (Start: 15 @12118 has 422 MA's), (30, 12277), (33, 12307), (49, 12394), (60, 12463), (64, 12478), (74, 12535), (111, 12667), (143, 12913),

Gene: Squiggle_14 Start: 12118, Stop: 12960, Start Num: 15

Candidate Starts for Squiggle_14:

(4, 11821), (5, 11890), (7, 11959), (Start: 15 @12118 has 422 MA's), (30, 12277), (33, 12307), (49, 12394), (60, 12463), (64, 12478), (74, 12535), (111, 12667), (143, 12913),

Gene: Stinger_12 Start: 12611, Stop: 13471, Start Num: 15

Candidate Starts for Stinger_12:

(Start: 15 @12611 has 422 MA's), (21, 12692), (30, 12770), (31, 12776), (35, 12818), (40, 12827), (56, 12926), (59, 12965), (63, 12980), (70, 13001), (91, 13109), (93, 13112), (100, 13124), (102, 13136), (103, 13139), (123, 13235), (147, 13355), (148, 13397), (151, 13439), (152, 13442),

Gene: StinkyVeggy_16 Start: 14308, Stop: 14973, Start Num: 15

Candidate Starts for StinkyVeggy_16:

(Start: 15 @14308 has 422 MA's), (22, 14398), (30, 14467), (117, 14899),

Gene: Struggle_13 Start: 11964, Stop: 12806, Start Num: 15

Candidate Starts for Struggle_13:

(4, 11667), (5, 11736), (7, 11805), (Start: 15 @11964 has 422 MA's), (30, 12123), (33, 12153), (49, 12240), (60, 12309), (64, 12324), (74, 12381), (111, 12513), (143, 12759),

Gene: Suffolk_14 Start: 12416, Stop: 13252, Start Num: 15

Candidate Starts for Suffolk_14:

(4, 12113), (5, 12182), (7, 12251), (Start: 15 @12416 has 422 MA's), (30, 12575), (33, 12605), (49, 12692), (60, 12761), (64, 12776), (74, 12833), (111, 12959), (143, 13205),

Gene: Suigeneris_15 Start: 14169, Stop: 14834, Start Num: 15
Candidate Starts for Suigeneris_15:
(Start: 15 @14169 has 422 MA's), (20, 14223), (22, 14259), (30, 14328), (117, 14760), (127, 14805),

Gene: Surely_14 Start: 12420, Stop: 13262, Start Num: 15
Candidate Starts for Surely_14:
(4, 12117), (5, 12186), (7, 12255), (Start: 15 @12420 has 422 MA's), (30, 12579), (33, 12609), (49, 12696), (60, 12765), (64, 12780), (74, 12837), (111, 12969), (143, 13215),

Gene: SwainyDoc_16 Start: 13962, Stop: 14567, Start Num: 15
Candidate Starts for SwainyDoc_16:
(Start: 15 @13962 has 422 MA's), (16, 13983), (24, 14079), (26, 14088), (41, 14199), (72, 14361), (79, 14400), (83, 14418),

Gene: Swiphy_14 Start: 12411, Stop: 13253, Start Num: 15
Candidate Starts for Swiphy_14:
(4, 12114), (5, 12183), (7, 12252), (Start: 15 @12411 has 422 MA's), (30, 12570), (33, 12600), (49, 12687), (60, 12756), (64, 12771), (74, 12828), (111, 12960), (143, 13206),

Gene: Swish_14 Start: 12412, Stop: 13248, Start Num: 15
Candidate Starts for Swish_14:
(4, 12115), (5, 12184), (7, 12253), (Start: 15 @12412 has 422 MA's), (30, 12571), (33, 12601), (49, 12688), (60, 12757), (64, 12772), (74, 12829), (111, 12955), (143, 13201),

Gene: SynergyX_16 Start: 13965, Stop: 14570, Start Num: 15
Candidate Starts for SynergyX_16:
(Start: 15 @13965 has 422 MA's), (16, 13986), (24, 14082), (41, 14202), (72, 14364), (79, 14403), (83, 14421),

Gene: TA17A_17 Start: 15350, Stop: 16099, Start Num: 15
Candidate Starts for TA17A_17:
(Start: 15 @15350 has 422 MA's), (28, 15503), (30, 15515), (33, 15545), (41, 15581), (46, 15614), (52, 15647), (60, 15701), (68, 15728), (75, 15776), (80, 15794), (95, 15860), (105, 15881), (113, 15926), (114, 15938), (119, 15959),

Gene: TPA2_23 Start: 15116, Stop: 15712, Start Num: 15
Candidate Starts for TPA2_23:
(Start: 15 @15116 has 422 MA's), (20, 15170), (30, 15275), (40, 15335), (71, 15494), (78, 15530),

Gene: TallGrassMM_14 Start: 12124, Stop: 12978, Start Num: 15
Candidate Starts for TallGrassMM_14:
(4, 11821), (5, 11890), (7, 11959), (Start: 15 @12124 has 422 MA's), (30, 12283), (33, 12313), (49, 12400), (60, 12469), (64, 12484), (74, 12541), (111, 12685), (143, 12931),

Gene: Telesworld_13 Start: 12124, Stop: 12960, Start Num: 15
Candidate Starts for Telesworld_13:
(4, 11821), (5, 11890), (7, 11959), (Start: 15 @12124 has 422 MA's), (30, 12283), (33, 12313), (49, 12400), (60, 12469), (64, 12484), (74, 12541), (111, 12667), (143, 12913),

Gene: Thonko_15 Start: 12057, Stop: 12863, Start Num: 15
Candidate Starts for Thonko_15:
(9, 11952), (10, 11973), (Start: 15 @12057 has 422 MA's), (30, 12216), (40, 12273), (65, 12435), (77, 12495), (90, 12552), (124, 12657), (127, 12681),

Gene: Thora_14 Start: 12414, Stop: 13262, Start Num: 15

Candidate Starts for Thora_14:

(4, 12111), (5, 12180), (7, 12249), (Start: 15 @12414 has 422 MA's), (30, 12573), (33, 12603), (49, 12690), (60, 12759), (64, 12774), (74, 12831), (111, 12969), (143, 13215),

Gene: ThreeOh3D2_14 Start: 12415, Stop: 13263, Start Num: 15

Candidate Starts for ThreeOh3D2_14:

(4, 12112), (5, 12181), (7, 12250), (Start: 15 @12415 has 422 MA's), (30, 12574), (33, 12604), (49, 12691), (60, 12760), (64, 12775), (74, 12832), (111, 12970), (143, 13216),

Gene: Thunderbird_13 Start: 12120, Stop: 12962, Start Num: 15

Candidate Starts for Thunderbird_13:

(4, 11817), (5, 11886), (7, 11955), (Start: 15 @12120 has 422 MA's), (30, 12279), (33, 12309), (49, 12396), (60, 12465), (64, 12480), (74, 12537), (111, 12669), (143, 12915),

Gene: Timmi_13 Start: 12124, Stop: 12972, Start Num: 15

Candidate Starts for Timmi_13:

(4, 11821), (5, 11890), (7, 11959), (Start: 15 @12124 has 422 MA's), (30, 12283), (33, 12313), (49, 12400), (60, 12469), (64, 12484), (74, 12541), (111, 12679), (143, 12925),

Gene: Tinciduntolum_18 Start: 15469, Stop: 16218, Start Num: 15

Candidate Starts for Tinciduntolum_18:

(Start: 15 @15469 has 422 MA's), (28, 15622), (30, 15634), (33, 15664), (41, 15700), (46, 15733), (52, 15766), (60, 15820), (68, 15847), (75, 15895), (80, 15913), (95, 15979), (105, 16000), (113, 16045), (114, 16057), (119, 16078),

Gene: TinyTerror_16 Start: 13964, Stop: 14569, Start Num: 15

Candidate Starts for TinyTerror_16:

(Start: 15 @13964 has 422 MA's), (16, 13985), (24, 14081), (41, 14201), (72, 14363), (79, 14402), (83, 14420),

Gene: TomBombadil_14 Start: 12414, Stop: 13256, Start Num: 15

Candidate Starts for TomBombadil_14:

(4, 12117), (5, 12186), (7, 12255), (Start: 15 @12414 has 422 MA's), (30, 12573), (33, 12603), (49, 12690), (60, 12759), (64, 12774), (74, 12831), (111, 12963), (143, 13209),

Gene: Tomlarah_14 Start: 12411, Stop: 13247, Start Num: 15

Candidate Starts for Tomlarah_14:

(4, 12114), (5, 12183), (7, 12252), (Start: 15 @12411 has 422 MA's), (30, 12570), (33, 12600), (49, 12687), (60, 12756), (64, 12771), (74, 12828), (111, 12954), (143, 13200),

Gene: Toni_13 Start: 12122, Stop: 12958, Start Num: 15

Candidate Starts for Toni_13:

(4, 11825), (5, 11894), (7, 11963), (Start: 15 @12122 has 422 MA's), (30, 12281), (33, 12311), (49, 12398), (60, 12467), (64, 12482), (74, 12539), (111, 12665), (143, 12911),

Gene: TooFast2Furius_15 Start: 12652, Stop: 13494, Start Num: 15

Candidate Starts for TooFast2Furius_15:

(4, 12349), (5, 12418), (7, 12487), (Start: 15 @12652 has 422 MA's), (30, 12811), (33, 12841), (49, 12928), (60, 12997), (64, 13012), (74, 13069), (111, 13201), (143, 13447),

Gene: Tooj_14 Start: 12418, Stop: 13260, Start Num: 15

Candidate Starts for Tooj_14:

(4, 12115), (5, 12184), (7, 12253), (Start: 15 @12418 has 422 MA's), (30, 12577), (33, 12607), (49, 12694), (60, 12763), (64, 12778), (74, 12835), (111, 12967), (143, 13213),

Gene: Tres_17 Start: 15350, Stop: 16099, Start Num: 15

Candidate Starts for Tres_17:

(Start: 15 @15350 has 422 MA's), (28, 15503), (30, 15515), (33, 15545), (41, 15581), (46, 15614), (52, 15647), (60, 15701), (68, 15728), (75, 15776), (80, 15794), (95, 15860), (105, 15881), (113, 15926), (114, 15938), (119, 15959),

Gene: Triad_14 Start: 11967, Stop: 12797, Start Num: 15

Candidate Starts for Triad_14:

(4, 11664), (5, 11733), (7, 11802), (Start: 15 @11967 has 422 MA's), (30, 12126), (33, 12156), (49, 12243), (60, 12312), (64, 12327), (74, 12384), (111, 12504), (143, 12750),

Gene: True_13 Start: 12119, Stop: 12961, Start Num: 15

Candidate Starts for True_13:

(4, 11822), (5, 11891), (7, 11960), (Start: 15 @12119 has 422 MA's), (30, 12278), (33, 12308), (49, 12395), (60, 12464), (64, 12479), (74, 12536), (111, 12668), (143, 12914),

Gene: Trypo_14 Start: 12408, Stop: 13250, Start Num: 15

Candidate Starts for Trypo_14:

(4, 12111), (5, 12180), (7, 12249), (Start: 15 @12408 has 422 MA's), (30, 12567), (33, 12597), (49, 12684), (60, 12753), (64, 12768), (74, 12825), (111, 12957), (143, 13203),

Gene: Tydolla_16 Start: 14702, Stop: 15307, Start Num: 15

Candidate Starts for Tydolla_16:

(Start: 15 @14702 has 422 MA's), (16, 14723), (24, 14819), (41, 14939), (72, 15101), (79, 15140), (83, 15158),

Gene: TyrionL_13 Start: 11970, Stop: 12812, Start Num: 15

Candidate Starts for TyrionL_13:

(4, 11673), (5, 11742), (7, 11811), (Start: 15 @11970 has 422 MA's), (30, 12129), (33, 12159), (49, 12246), (60, 12315), (64, 12330), (74, 12387), (111, 12519), (143, 12765),

Gene: UAch1_14 Start: 12417, Stop: 13271, Start Num: 15

Candidate Starts for UAch1_14:

(4, 12114), (5, 12183), (7, 12252), (Start: 15 @12417 has 422 MA's), (30, 12576), (33, 12606), (49, 12693), (60, 12762), (64, 12777), (74, 12834), (111, 12978), (143, 13224),

Gene: UncleHowie_14 Start: 12124, Stop: 12960, Start Num: 15

Candidate Starts for UncleHowie_14:

(4, 11821), (5, 11890), (7, 11959), (Start: 15 @12124 has 422 MA's), (30, 12283), (33, 12313), (49, 12400), (60, 12469), (64, 12484), (74, 12541), (111, 12667), (143, 12913),

Gene: Usavi_14 Start: 12414, Stop: 13262, Start Num: 15

Candidate Starts for Usavi_14:

(4, 12111), (5, 12180), (7, 12249), (Start: 15 @12414 has 422 MA's), (30, 12573), (33, 12603), (49, 12690), (60, 12759), (64, 12774), (74, 12831), (111, 12969), (143, 13215),

Gene: Vaishali24_13 Start: 12089, Stop: 12913, Start Num: 15

Candidate Starts for Vaishali24_13:

(4, 11786), (5, 11855), (7, 11924), (Start: 15 @12089 has 422 MA's), (30, 12248), (33, 12278), (49, 12365), (60, 12434), (64, 12449), (74, 12506), (111, 12620), (143, 12866),

Gene: Valjean_14 Start: 12411, Stop: 13253, Start Num: 15

Candidate Starts for Valjean_14:

(4, 12114), (5, 12183), (7, 12252), (Start: 15 @12411 has 422 MA's), (30, 12570), (33, 12600), (49, 12687), (60, 12756), (64, 12771), (74, 12828), (111, 12960), (143, 13206),

Gene: Vaticameos_14 Start: 12115, Stop: 12951, Start Num: 15

Candidate Starts for Vaticameos_14:

(4, 11818), (5, 11887), (7, 11956), (Start: 15 @12115 has 422 MA's), (30, 12274), (33, 12304), (49, 12391), (60, 12460), (64, 12475), (74, 12532), (111, 12658), (143, 12904),

Gene: Veritas_13 Start: 11958, Stop: 12800, Start Num: 15

Candidate Starts for Veritas_13:

(4, 11661), (5, 11730), (7, 11799), (Start: 15 @11958 has 422 MA's), (30, 12117), (33, 12147), (49, 12234), (60, 12303), (64, 12318), (74, 12375), (111, 12507), (143, 12753),

Gene: Vic9_00017 Start: 15790, Stop: 16539, Start Num: 15

Candidate Starts for Vic9_00017:

(Start: 15 @15790 has 422 MA's), (28, 15943), (30, 15955), (33, 15985), (41, 16021), (46, 16054), (52, 16087), (60, 16141), (68, 16168), (75, 16216), (80, 16234), (95, 16300), (105, 16321), (113, 16366), (114, 16378), (119, 16399),

Gene: Vincenzo_15 Start: 14918, Stop: 15751, Start Num: 15

Candidate Starts for Vincenzo_15:

(Start: 15 @14918 has 422 MA's), (17, 14942), (20, 14972), (21, 14999), (24, 15035), (30, 15077), (48, 15176), (49, 15194), (56, 15233), (59, 15272), (63, 15287), (75, 15344), (102, 15443), (147, 15632), (148, 15674), (151, 15716),

Gene: VioletZ_14 Start: 14154, Stop: 15005, Start Num: 15

Candidate Starts for VioletZ_14:

(Start: 15 @14154 has 422 MA's), (20, 14208), (30, 14313), (35, 14361), (40, 14370), (56, 14469), (59, 14508), (63, 14523), (93, 14655), (97, 14658), (102, 14679), (103, 14682), (138, 14796), (147, 14889), (151, 14973), (152, 14976),

Gene: Virapocalypse_14 Start: 12409, Stop: 13245, Start Num: 15

Candidate Starts for Virapocalypse_14:

(4, 12112), (5, 12181), (7, 12250), (Start: 15 @12409 has 422 MA's), (30, 12568), (33, 12598), (49, 12685), (60, 12754), (64, 12769), (74, 12826), (111, 12952), (143, 13198),

Gene: Virgeve_13 Start: 12124, Stop: 12966, Start Num: 15

Candidate Starts for Virgeve_13:

(4, 11821), (5, 11890), (7, 11959), (Start: 15 @12124 has 422 MA's), (30, 12283), (33, 12313), (49, 12400), (60, 12469), (64, 12484), (74, 12541), (111, 12673), (143, 12919),

Gene: Vista_14 Start: 12414, Stop: 13256, Start Num: 15

Candidate Starts for Vista_14:

(4, 12117), (5, 12186), (7, 12255), (Start: 15 @12414 has 422 MA's), (30, 12573), (33, 12603), (49, 12690), (60, 12759), (64, 12774), (74, 12831), (111, 12963), (143, 13209),

Gene: Vivaldi_14 Start: 12415, Stop: 13287, Start Num: 15

Candidate Starts for Vivaldi_14:

(4, 12112), (5, 12181), (7, 12250), (Start: 15 @12415 has 422 MA's), (30, 12574), (33, 12604), (49, 12691), (60, 12760), (64, 12775), (74, 12832), (111, 12994), (143, 13240),

Gene: Vortex_14 Start: 12125, Stop: 12967, Start Num: 15

Candidate Starts for Vortex_14:

(4, 11822), (5, 11891), (7, 11960), (Start: 15 @12125 has 422 MA's), (30, 12284), (33, 12314), (49, 12401), (60, 12470), (64, 12485), (74, 12542), (111, 12674), (143, 12920),

Gene: Waleliano_14 Start: 14151, Stop: 14975, Start Num: 15

Candidate Starts for Waleliano_14:

(Start: 15 @14151 has 422 MA's), (20, 14205), (30, 14310), (40, 14367), (56, 14466), (59, 14505), (63, 14520), (99, 14661), (102, 14676), (103, 14679), (147, 14859), (151, 14943), (152, 14946),

Gene: Wallhey_13 Start: 11970, Stop: 12818, Start Num: 15

Candidate Starts for Wallhey_13:

(4, 11673), (5, 11742), (7, 11811), (Start: 15 @11970 has 422 MA's), (30, 12129), (33, 12159), (49, 12246), (60, 12315), (64, 12330), (74, 12387), (111, 12525), (143, 12771),

Gene: Waterdiva_14 Start: 12412, Stop: 13254, Start Num: 15

Candidate Starts for Waterdiva_14:

(4, 12115), (5, 12184), (7, 12253), (Start: 15 @12412 has 422 MA's), (30, 12571), (33, 12601), (49, 12688), (60, 12757), (64, 12772), (74, 12829), (111, 12961), (143, 13207),

Gene: Weher20_14 Start: 12408, Stop: 13244, Start Num: 15

Candidate Starts for Weher20_14:

(4, 12111), (5, 12180), (7, 12249), (Start: 15 @12408 has 422 MA's), (30, 12567), (33, 12597), (49, 12684), (60, 12753), (64, 12768), (74, 12825), (111, 12951), (143, 13197),

Gene: West99_17 Start: 15470, Stop: 16219, Start Num: 15

Candidate Starts for West99_17:

(Start: 15 @15470 has 422 MA's), (28, 15623), (30, 15635), (33, 15665), (41, 15701), (46, 15734), (52, 15767), (60, 15821), (68, 15848), (75, 15896), (80, 15914), (95, 15980), (105, 16001), (113, 16046), (114, 16058), (119, 16079),

Gene: Windsor_13 Start: 12078, Stop: 12920, Start Num: 15

Candidate Starts for Windsor_13:

(4, 11775), (5, 11844), (7, 11913), (Start: 15 @12078 has 422 MA's), (30, 12237), (33, 12267), (49, 12354), (60, 12423), (64, 12438), (74, 12495), (111, 12627), (143, 12873),

Gene: Xavier_13 Start: 12124, Stop: 12972, Start Num: 15

Candidate Starts for Xavier_13:

(4, 11821), (5, 11890), (7, 11959), (Start: 15 @12124 has 422 MA's), (30, 12283), (33, 12313), (49, 12400), (60, 12469), (64, 12484), (74, 12541), (111, 12679), (143, 12925),

Gene: Xincheng_14 Start: 13975, Stop: 14796, Start Num: 15

Candidate Starts for Xincheng_14:

(Start: 15 @13975 has 422 MA's), (20, 14029), (30, 14134), (35, 14182), (56, 14290), (59, 14329), (63, 14344), (70, 14365), (73, 14389), (99, 14485), (102, 14500), (103, 14503), (147, 14680), (151, 14764), (152, 14767),

Gene: Yago84_13 Start: 12768, Stop: 13289, Start Num: 14

Candidate Starts for Yago84_13:

(1, 12180), (2, 12183), (3, 12273), (11, 12747), (Start: 14 @12768 has 11 MA's), (20, 12822), (25, 12891), (30, 12927), (104, 13134), (111, 13161),

Gene: Yahalom_16 Start: 13976, Stop: 14581, Start Num: 15

Candidate Starts for Yahalom_16:

(Start: 15 @13976 has 422 MA's), (16, 13997), (24, 14093), (72, 14375), (83, 14432),

Gene: Yinz_16 Start: 14003, Stop: 14608, Start Num: 15

Candidate Starts for Yinz_16:

(Start: 15 @14003 has 422 MA's), (16, 14024), (24, 14120), (41, 14240), (72, 14402), (79, 14441), (83, 14459),

Gene: Yoshand_14 Start: 12415, Stop: 13257, Start Num: 15

Candidate Starts for Yoshand_14:

(4, 12112), (5, 12181), (7, 12250), (Start: 15 @12415 has 422 MA's), (30, 12574), (33, 12604), (49, 12691), (60, 12760), (64, 12775), (74, 12832), (111, 12964), (143, 13210),

Gene: YouGoGlencoco_14 Start: 12408, Stop: 13250, Start Num: 15

Candidate Starts for YouGoGlencoco_14:

(4, 12111), (5, 12180), (7, 12249), (Start: 15 @12408 has 422 MA's), (30, 12567), (33, 12597), (49, 12684), (60, 12753), (64, 12768), (74, 12825), (111, 12957), (143, 13203),

Gene: Zaider_15 Start: 12641, Stop: 13483, Start Num: 15

Candidate Starts for Zaider_15:

(4, 12344), (5, 12413), (7, 12482), (Start: 15 @12641 has 422 MA's), (30, 12800), (33, 12830), (49, 12917), (60, 12986), (64, 13001), (74, 13058), (111, 13190), (143, 13436),

Gene: Zelda_14 Start: 12411, Stop: 13253, Start Num: 15

Candidate Starts for Zelda_14:

(4, 12114), (5, 12183), (7, 12252), (Start: 15 @12411 has 422 MA's), (30, 12570), (33, 12600), (49, 12687), (60, 12756), (64, 12771), (74, 12828), (111, 12960), (143, 13206),

Gene: Zemanar_15 Start: 14151, Stop: 14975, Start Num: 15

Candidate Starts for Zemanar_15:

(Start: 15 @14151 has 422 MA's), (20, 14205), (30, 14310), (40, 14367), (56, 14466), (59, 14505), (63, 14520), (99, 14661), (102, 14676), (103, 14679), (147, 14859), (151, 14943), (152, 14946),

Gene: Zenteno07_19 Start: 13531, Stop: 14463, Start Num: 15

Candidate Starts for Zenteno07_19:

(Start: 15 @13531 has 422 MA's), (19, 13576), (20, 13588), (59, 13894), (70, 13930), (84, 14008), (87, 14026), (145, 14326), (151, 14437),

Gene: Zonia_14 Start: 12425, Stop: 13267, Start Num: 15

Candidate Starts for Zonia_14:

(4, 12128), (5, 12197), (7, 12266), (Start: 15 @12425 has 422 MA's), (30, 12584), (33, 12614), (49, 12701), (60, 12770), (64, 12785), (74, 12842), (111, 12974), (143, 13220),