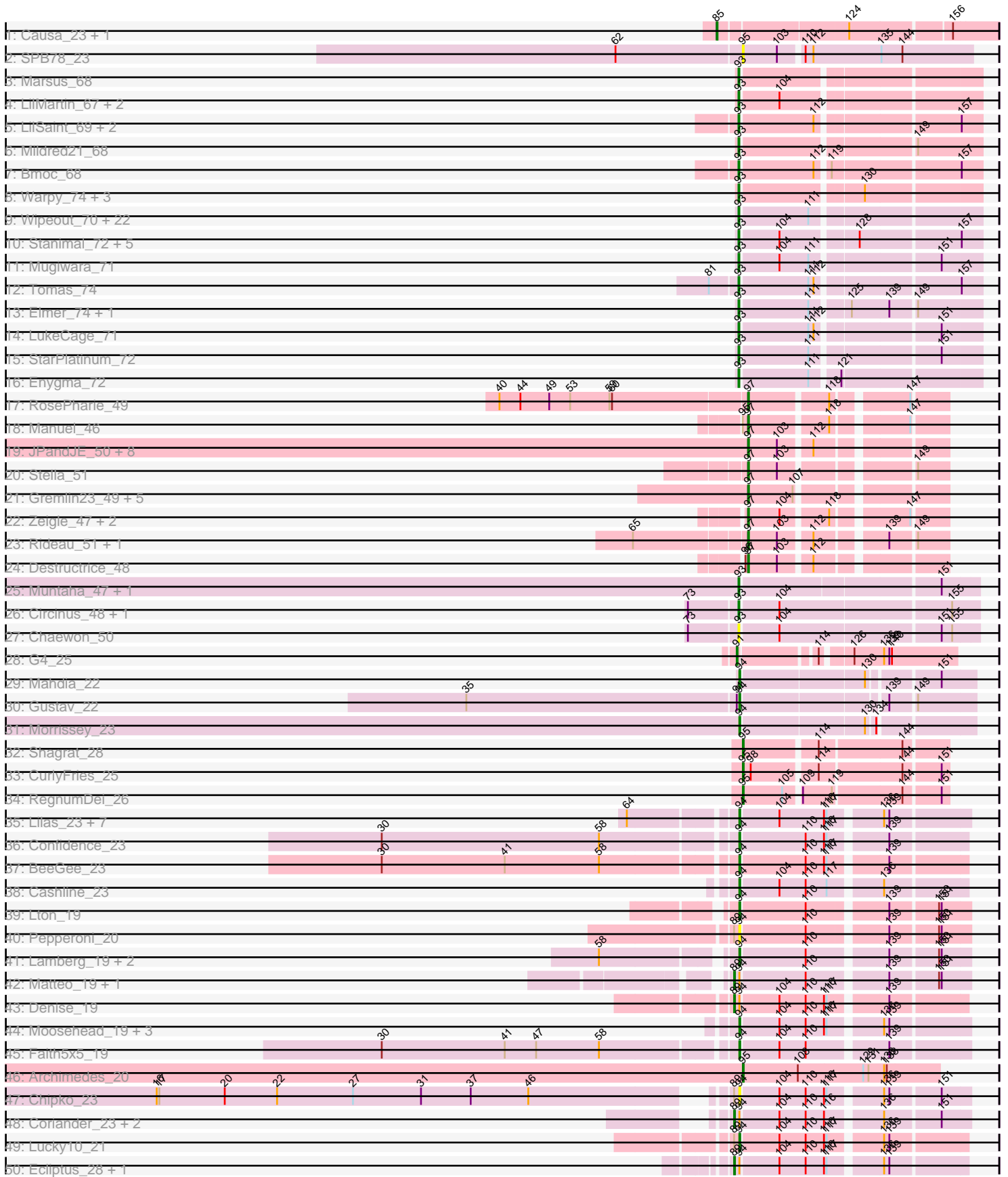
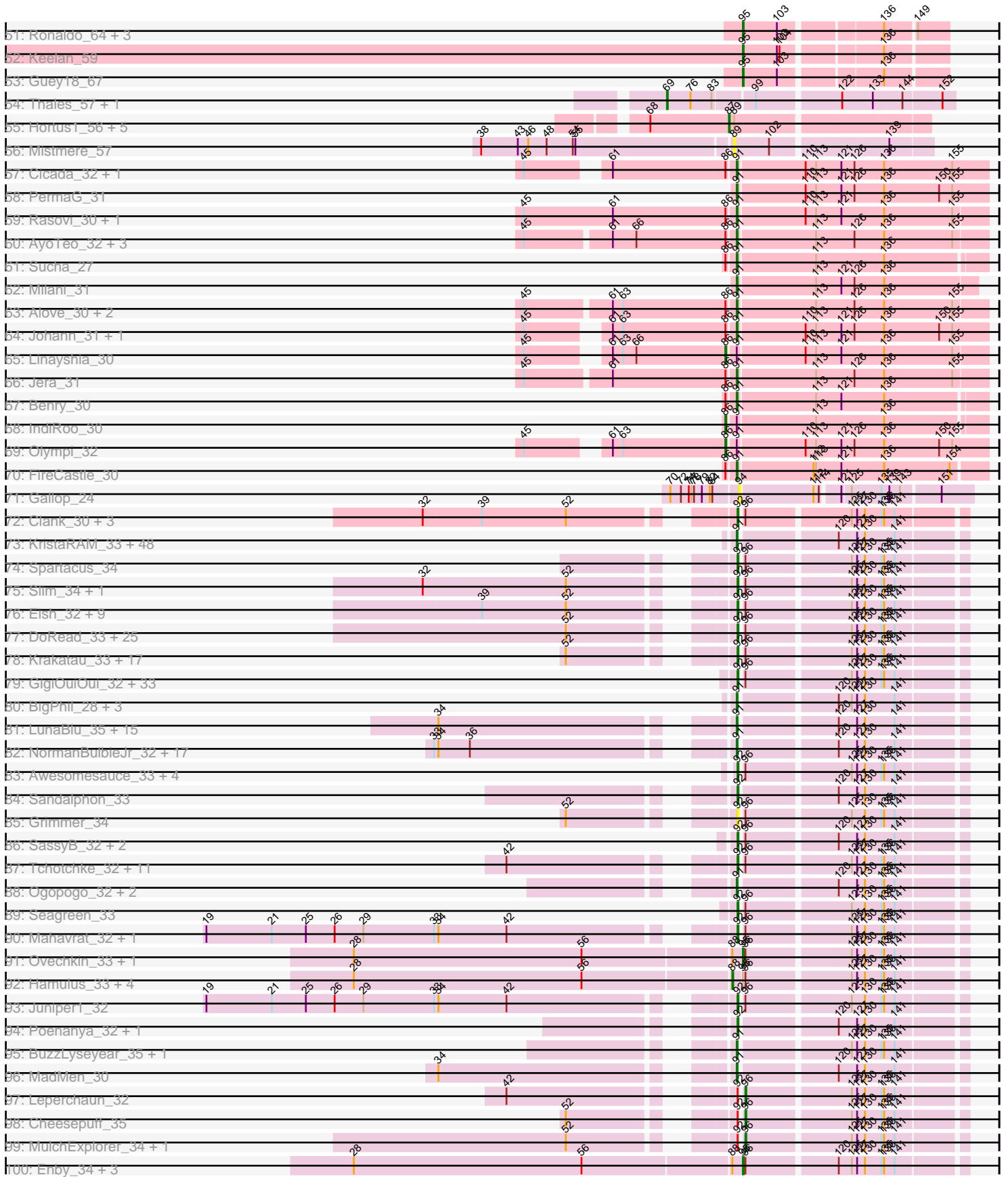


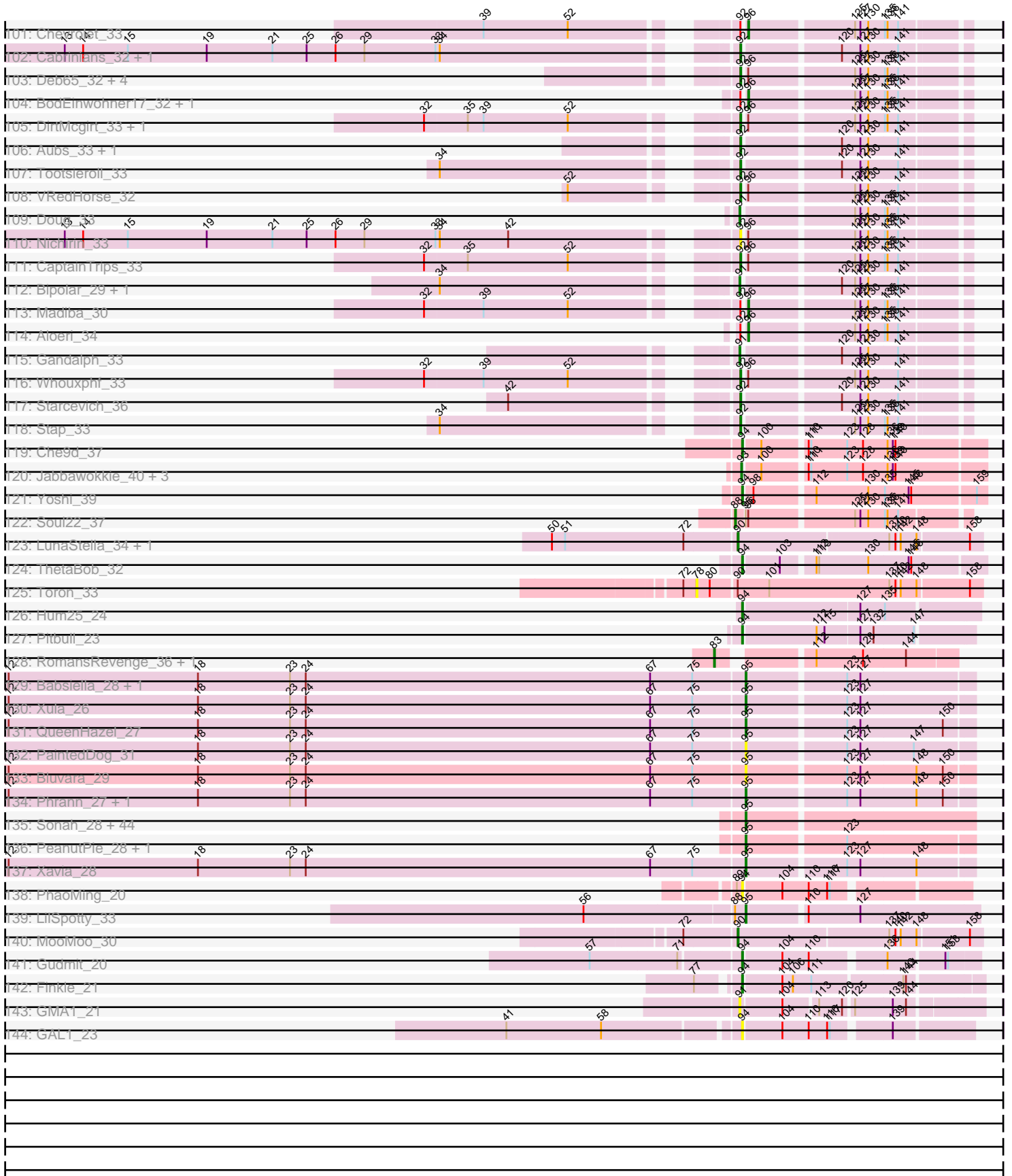
Zoomed Pham 296116



Zoomed Pham 296116



Zoomed Pham 296116



Note: Tracks are now grouped by subcluster and scaled. Switching in subcluster is indicated by changes in track color. Track scale is now set by default to display the region 30 bp upstream of start 1 to 30 bp downstream of the last possible start. If this default region is judged to be packed too tightly with annotated starts, the track will be further scaled to only show that region of the ORF with annotated starts. This action will be indicated by adding "Zoomed" to the title. For starts, yellow indicates the location of called starts comprised solely of Glimmer/GeneMark auto-annotations, green indicates the location of called starts with at least 1 manual gene annotation.

Pham 296116 Report

This analysis was run 04/25/26 on database version 644.

Pham number 296116 has 494 members, 55 are drafts.

Phages represented in each track:

- Track 1 : Causa_23, StAugustine_21
- Track 2 : SPB78_23
- Track 3 : Marsus_68
- Track 4 : LilMartin_67, MulchMansion_67, Angela_67
- Track 5 : LilSaint_69, Riptide_67, Anedea_68
- Track 6 : Mildred21_68
- Track 7 : Bmoc_68
- Track 8 : Warpy_74, Jay2Jay_75, Evy_71, Targaryen_71
- Track 9 : Wipeout_70, Quaran19_72, Spelly_72, Spilled_73, Gibbi_76, MindFlayer_70, JimJam_72, Jollison_71, Brizzy_71, Bordeaux_70, Battuta_70, Birchlyn_69, Karimac_71, Amabiko_72, AcciDwight_76, SaltySpitoon_72, KentuckyRacer_72, PumpkinSpice_71, CeilingFan_71, TomSawyer_70, IchabodCrane_69, Rikishi_72, Starbow_70
- Track 10 : Stanimal_72, Sollertia_72, Genie2_72, BoomerJR_72, AngryGiraffe_71, Yaboi_72
- Track 11 : Mugiwara_71
- Track 12 : Tomas_74
- Track 13 : Elmer_74, Wofford_71
- Track 14 : LukeCage_71
- Track 15 : StarPlatinum_72
- Track 16 : Enygma_72
- Track 17 : RosePharie_49
- Track 18 : Manuel_46
- Track 19 : JPandJE_50, Romero_49, ToriToki_49, HaugeAnator_49, Percastrophe_49, Immanuel3_49, Olicious_49, ZooBear_49, Treat_49
- Track 20 : Stella_51
- Track 21 : Gremlin23_49, Geostin_44, Fabian_46, RetrieverFever_49, Vorvolakos_49, FlowerPower_49
- Track 22 : Zeigle_47, WRightOn_50, Kumquat_47
- Track 23 : Rideau_51, Dennebes_50
- Track 24 : Destructrice_48
- Track 25 : Muntaha_47, Wakanda_47
- Track 26 : Circinus_48, BillNye_46
- Track 27 : Chaewon_50
- Track 28 : G4_25
- Track 29 : Mahdia_22
- Track 30 : Gustav_22

- Track 31 : Morrissey_23
- Track 32 : Shagrat_28
- Track 33 : CurlyFries_25
- Track 34 : RegnumDei_26
- Track 35 : Lilas_23, EMsquaredA_23, Pollux_23, BritBrat_23, Bradissa_23, EnalisNailo_23, Marteena_23, Floral_23
- Track 36 : Confidence_23
- Track 37 : BeeGee_23
- Track 38 : Cashline_23
- Track 39 : Lton_19
- Track 40 : Pepperoni_20
- Track 41 : Lamberg_19, Nettuno_19, EdnaMode_19
- Track 42 : Matteo_19, Pickett_19
- Track 43 : Denise_19
- Track 44 : Moosehead_19, Morkie_21, InLimbo_22, PhorbesPhlower_21
- Track 45 : Faith5x5_19
- Track 46 : Archimedes_20
- Track 47 : Chipko_23
- Track 48 : Coriander_23, RayTheFireFly_23, Doggs_22
- Track 49 : Lucky10_21
- Track 50 : Ecliptus_28, ODay_29
- Track 51 : Ronaldo_64, Ziko_64, Fryberger_61, Volt_64
- Track 52 : Keelan_59
- Track 53 : Guey18_67
- Track 54 : Thales_57, DalanDe_58
- Track 55 : Hortus1_56, Alleb_57, Pioneer3_56, OlinDD_56, Tandem_56, Platte_56
- Track 56 : Mistmere_57
- Track 57 : Cicada_32, SBlackberry_30
- Track 58 : PermaG_31
- Track 59 : Rasovi_30, Htur_30
- Track 60 : AyoTeo_32, Labella_32, TurboVicky_30, Typher_32
- Track 61 : Sucha_27
- Track 62 : Milani_31
- Track 63 : Alove_30, Zanella_30, Rootkit7_30
- Track 64 : Johann_31, Goodman_31
- Track 65 : Linayshia_30
- Track 66 : Jera_31
- Track 67 : Benry_30
- Track 68 : IndiRoo_30
- Track 69 : Olympi_32
- Track 70 : FireCastle_30
- Track 71 : Gallop_24
- Track 72 : Clank_30, Harley_32, Ibhubesi_32, Minnie_34
- Track 73 : KristaRAM_33, Shauna1_29, Hegedechwinu_33, MinionDave_35, MilleniumForce_33, Hlubikazi_33, Whatsapiecost_33, Eradicator_32, Melissauren88_32, Violac_33, DeadP_32, Fruitloop_31, Akhila_26, Batiatus_32, WillSterrel_34, Piper2020_34, Juice456_34, Tweety_32, Mandlovu_33, Latretium_33, JalFarm20_35, IrishSherpFalk_34, Flathead_32, Ardmore_31, Doomslug_36, Blarby_41, Brocalys_27, Strokeseat_33, OwlsT2W_33, Ms6_26, PhesterPhotato_32, MilanaBonita_26, NewHope4_36, Brushbloom_33, Coco12_32, Taj_32, Phanphagia_29, Pippy_26, Vivum_33, SilverChicken_40, Mutaforma13_32, Wee_33, DLane_32, Beanstalk_37, Brookers_30, MulchSalad_31, Wachhund_32, Phalconet_32, Leozinho_34

- Track 74 : Spartacus_34
- Track 75 : Slim_34, Emmaloid_34
- Track 76 : Eish_32, KingJulian_32, Corium_32, PatoPoderoso_32, Sabbb_33, Job42_36, Fancypants_32, Moonbeam_33, DosHalletts_34, ArcusAngelus_32
- Track 77 : DoRead_33, Gorge_32, Enzomatic_37, QuickMath_33, Kimberlium_34, Quico_33, Girafales_33, Saal_32, Spoonbill_32, Sparkdehlily_32, EmiMonkey_33, DRBy19_32, James_32, PhilipPhlop_33, SeaLumen_36, Florinda_32, Mattes_32, Crumble_26, Kersh_31, Okabe_33, Radiance_32, BobaPhett_32, OlympiaSaint_32, Philus_32, Polo2Bam_37, TDanisky_32
- Track 78 : Krakatau_33, Peridot_37, Cornucopia_33, DillTech15_32, Fastidio_34, Mantra_32, Chuckly_32, Totinger_33, LittleShirley_35, Rockne_32, Phatniss_33, UncleRicky_35, Llij_32, DotProduct_32, Drago_33, PMC_32, Rialto_36, XFactor_32
- Track 79 : GigiOuiOui_32, Blexus_32, Empress_33, Royals2015_32, Inventum_32, JoeyJr_32, OldBen_32, Phasih_33, Plumbus_34, Beakin_33, SiSi_32, RockyHorror_33, Pollywog_32, Veteran_32, DaddyRickover_32, Scottish_33, Sassafras_33, Frankie_36, Zerg_32, RitaG_33, Polka14_33, Dorothy_32, GUmbie_32, Mozy_34, KingMidas_34, Nitzel_33, Che8_34, Karhdo_32, Dante_32, Daenerys_32, RedBird_32, Alexphander_35, Mwanjiwa_33, DaWorst_34
- Track 80 : BigPhil_28, Sarma624_28, Cerasum_28, Velveteen_28
- Track 81 : LunaBlu_35, Jant_33, Cornie_32, Emma_34, Galactic_34, Renaud18_32, Filuzino_32, ShroomBoi_29, Firehouse51_33, Mova_33, Kenuha5_29, Bobi_34, SuperGrey_33, Byougenkin_32, Bubbles123_34, Guppsters_34
- Track 82 : NormanBulbieJr_32, SwagPiggett_32, Yorick_32, Jarcob_32, LastJedi_26, Martik_32, Koella_26, Maravista_32, LilMoolah_32, Lizziana_32, Hades_33, Jennelsea_26, ShiLan_32, Clifton_26, Nivrat_32, ShowerHandel_32, Burwell21_32, Zizzle_32
- Track 83 : Awesomesauce_33, Misha28_33, TootsiePop_33, ChickenDinner_34, DocMcStuffins_34
- Track 84 : Sandalphon_33
- Track 85 : Grimmer_34
- Track 86 : SassyB_32, PopTart_32, Boomer_34
- Track 87 : Tchotchke_32, Seabastian_32, Ochi17_30, Estave1_30, Pacc40_32, OfUltron_32, Llama_32, Jinglebell_31, Modragons_32, AlpineSix_33, SimranZ1_35, Oksu_33
- Track 88 : Ogopogo_32, IbOuu_33, Ramsey_35
- Track 89 : Seagreen_33
- Track 90 : Mahavrat_32, Topiatin_35
- Track 91 : Ovechkin_33, StAnnes_31
- Track 92 : Hamulus_33, Girr_34, Ruby_34, Kingsley_31, MisterCuddles_34
- Track 93 : Juniper1_32
- Track 94 : Poenanya_32, Doomphist_32
- Track 95 : BuzzLyseyear_35, Spikelee_34
- Track 96 : MadMen_30
- Track 97 : Leperchaun_32
- Track 98 : Cheesepuff_35
- Track 99 : MulchExplorer_34, FreddyB_32
- Track 100 : Enby_34, SG4_33, Lorde_34, EleanorGeorge_33
- Track 101 : Chevrolet_33
- Track 102 : Cabrinians_32, Priscilla_32
- Track 103 : Deb65_32, BlueCrab_32, Geralt_32, Nimbo_32, PHappiness_32
- Track 104 : BodEinwohner17_32, Marker_33
- Track 105 : DirtMcgirt_33, Lucia_34
- Track 106 : Aubs_33, Donkeykong_32

- Track 107 : Tootsieroll_33
- Track 108 : VRedHorse_32
- Track 109 : Doug_33
- Track 110 : Nichirin_33
- Track 111 : CaptainTrips_33
- Track 112 : Bipolar_29, Rita_33
- Track 113 : Madiba_30
- Track 114 : Aloeri_34
- Track 115 : Gandalph_33
- Track 116 : Whouxphf_33
- Track 117 : Starcevich_36
- Track 118 : Stap_33
- Track 119 : Che9d_37
- Track 120 : Jabbawokkie_40, Zapner_39, Demsculpinboyz_38, Avani_37
- Track 121 : Yoshi_39
- Track 122 : Soul22_37
- Track 123 : LunaStella_34, TChen_32
- Track 124 : ThetaBob_32
- Track 125 : Toron_33
- Track 126 : Hum25_24
- Track 127 : Pitbull_23
- Track 128 : RomansRevenge_36, Boise_35
- Track 129 : Babsiella_28, HC_29
- Track 130 : Xula_26
- Track 131 : QueenHazel_27
- Track 132 : PaintedDog_31
- Track 133 : Bluvara_29
- Track 134 : Phrann_27, Impisi_28
- Track 135 : Sonah_28, Jung_27, Gavriela_28, Chubbello_28, Ksquared_28, Phegasus_28, Fishburne_28, Techage_28, BronnyJr_28, Brusacoram_28, Shipwreck_30, Pygmy_30, Jebeks_28, Etoile_28, Zilizebeth_28, CactusJack_28, Juniormint_28, Atcoo_28, StressBall_28, Glaske_28, Bartholomew_27, Venti_28, Dynamo_28, Polkaroo_28, Necropolis_28, Mangethe_28, Majeke_28, HUHilltop_28, FirstPlacePfu_28, Vidya_28, Megiddo_28, Camster_28, Kari_28, KilKor_28, Phalm_28, Phineas_28, Langerak_28, GreaseLightnin_28, StevieRay_28, Bunnies_28, Donovan_28, Malithi_28, Thespis_28, Arib1_28, GaloreK_28
- Track 136 : PeanutPie_28, Bhagsy_28
- Track 137 : Xavia_28
- Track 138 : PhaoMing_20
- Track 139 : LilSpotty_33
- Track 140 : MooMoo_30
- Track 141 : Gudmit_20
- Track 142 : Finkle_21
- Track 143 : GMA1_21
- Track 144 : GAL1_23

Summary of Final Annotations (See graph section above for start numbers):

The start number called the most often in the published annotations is 92, it was called in 124 of the 439 non-draft genes in the pham.

Genes that call this "Most Annotated" start:

- Alexphander_35, AlpineSix_33, ArcusAngelus_32, Aubs_33, Awesomesauce_33, Beakin_33, Blexus_32, BlueCrab_32, BobaPhett_32, Boomer_34, Cabrinians_32, CaptainTrips_33, Che8_34, ChickenDinner_34, Chuckly_32, Clank_30, Corium_32, Cornucopia_33, Crumble_26, DRBy19_32, DaWorst_34, DaddyRickover_32, Daenerys_32, Dante_32, Deb65_32, DillTech15_32, DirtMcgirt_33, DoRead_33, DocMcStuffins_34, Donkeykong_32, Doomphist_32, Dorothy_32, DosHalletts_34, DotProduct_32, Drago_33, Eish_32, EmiMonkey_33, Emmaloid_34, Empress_33, Enzomatic_37, Estave1_30, Fancypants_32, Fastidio_34, Florinda_32, Frankie_36, GUmble_32, Geralt_32, GigiOuiOui_32, Girafales_33, Gorge_32, Grimmer_34, Harley_32, Ibhubesi_32, Inventum_32, James_32, Jinglebell_31, Job42_36, JoeyJr_32, Juniper1_32, Karhdo_32, Kersh_31, Kimberlium_34, KingJulian_32, KingMidas_34, Krakatau_33, LittleShirley_35, Llama_32, Llij_32, Lucia_34, Mahavrat_32, Mantra_32, Mattes_32, Minnie_34, Misha28_33, Modragons_32, Moonbeam_33, Mozy_34, Mwanjiwa_33, Nichirin_33, Nimbo_32, Nitzel_33, Ochi17_30, OfUltron_32, Okabe_33, Oksu_33, OldBen_32, OlympiaSaint_32, PHappiness_32, PMC_32, Pacc40_32, PatoPoderoso_32, Peridot_37, Phasih_33, Phatniss_33, Philus_32, PhlipPhlop_33, Plumbus_34, Poenanya_32, Polka14_33, Pollywog_32, Polo2Bam_37, PopTart_32, Priscilla_32, QuickMath_33, Quico_33, Radiance_32, RedBird_32, Rialto_36, RitaG_33, Rockne_32, RockyHorror_33, Royals2015_32, Saal_32, Sabbb_33, Sandalphon_33, Sassafras_33, SassyB_32, Scottish_33, SeaLumen_36, Seabastian_32, Seagreen_33, SiSi_32, SimranZ1_35, Slim_34, Sparkdehlily_32, Spartacus_34, Spoonbill_32, Stap_33, Starcevich_36, TDanisky_32, Tchotchke_32, TootsiePop_33, Tootsieroll_33, Topiatin_35, Totinger_33, UncleRicky_35, VRedHorse_32, Veteran_32, Whouxphf_33, XFactor_32, Zerg_32,

Genes that have the "Most Annotated" start but do not call it:

- Aleri_34, BodEinwohner17_32, CheesePuff_35, Chevrolet_33, FreddyB_32, Leperchaun_32, Madiba_30, Marker_33, MulchExplorer_34,

Genes that do not have the "Most Annotated" start:

- AcciDwight_76, Akhila_26, Alleb_57, Alove_30, Amabiko_72, Anedea_68, Angela_67, AngryGiraffe_71, Archimedes_20, Ardmore_31, Arib1_28, Atcoo_28, Avani_37, AyoTeo_32, Babsiella_28, Bartholomew_27, Batiatus_32, Battuta_70, Beanstalk_37, BeeGee_23, Benry_30, Bhagsy_28, BigPhil_28, BillNye_46, Bipolar_29, Birchlyn_69, Blarby_41, Bluvara_29, Bmoc_68, Bobi_34, Boise_35, BoomerJR_72, Bordeaux_70, Bradissa_23, BritBrat_23, Brizzy_71, Brocalys_27, BronnyJr_28, Brookers_30, Brusacoram_28, Brushbloom_33, Bubbles123_34, Bunnies_28, Burwell21_32, BuzzLyseyear_35, Byougenkin_32, CactusJack_28, Camster_28, Cashline_23, Causa_23, CeilingFan_71, Cerasum_28, Chaewon_50, Che9d_37, Chipko_23, Chubbello_28, Cicada_32, Circinus_48, Clifton_26, Coco12_32, Confidence_23, Coriander_23, Cornie_32, CurlyFries_25, DLane_32, DalanDe_58, DeadP_32, Demsculpinboyz_38, Denise_19, Dennebes_50, Destructrice_48, Doggs_22, Donovan_28, Doomslug_36, Doug_33, Dynamo_28, EMSquaredA_23, Ecliptus_28, EdnaMode_19, EleanorGeorge_33, Elmer_74, Emma_34, EnalisNailo_23, Enby_34, Enygma_72, Eradicator_32, Etoile_28, Evy_71, Fabian_46, Faith5x5_19, Filuzino_32, Finkle_21, FireCastle_30, Firehouse51_33, FirstPlacePfu_28, Fishburne_28, Flathead_32, Floral_23, FlowerPower_49, Fruitloop_31, Fryberger_61, G4_25, GAL1_23, GMA1_21, Galactic_34, Gallop_24, GaloreK_28, Gandolph_33, Gavriela_28, Genie2_72, Geostin_44, Gibbi_76, Girr_34, Glaske_28, Goodman_31, GreaseLightnin_28, Gremlin23_49, Gudmit_20,

Guey18_67, Guppsters_34, Gustav_22, HC_29, HUHilltop_28, Hades_33, Hamulus_33, HaugeAnator_49, Hegedechwinu_33, Hlubikazi_33, Hortus1_56, Htur_30, Hum25_24, IbOuu_33, IchabodCrane_69, Immanuel3_49, Impisi_28, InLimbo_22, IndiRoo_30, IrishSherpFalk_34, JPandJE_50, Jabbawokkie_40, JalFarm20_35, Jant_33, Jarcob_32, Jay2Jay_75, Jebeks_28, Jennelsea_26, Jera_31, JimJam_72, Johann_31, Jollison_71, Juice456_34, Jung_27, Juniormint_28, Kari_28, Karimac_71, Keelan_59, KentuckyRacer_72, Kenuha5_29, KilKor_28, Kingsley_31, Koella_26, KristaRAM_33, Ksquared_28, Kumquat_47, Labela_32, Lamberg_19, Langerak_28, LastJedi_26, Latretium_33, Leozinho_34, LilMartin_67, LilMoolah_32, LilSaint_69, LilSpotty_33, Lilas_23, Linayshia_30, Lizziana_32, Lorde_34, Lton_19, Lucky10_21, LukeCage_71, LunaBlu_35, LunaStella_34, MadMen_30, Mahdia_22, Majeke_28, Malithi_28, Mandlovu_33, Mangethe_28, Manuel_46, Maravista_32, Marsus_68, Marteena_23, Martik_32, Matteo_19, Megiddo_28, Melissauren88_32, MilanaBonita_26, Milani_31, Mildred21_68, MilleniumForce_33, MindFlayer_70, MinionDave_35, MisterCuddles_34, Mistmere_57, MooMoo_30, Moosehead_19, Morkie_21, Morrissey_23, Mova_33, Ms6_26, Mugiwara_71, MulchMansion_67, MulchSalad_31, Muntaha_47, Mutaforma13_32, Necropolis_28, Nettuno_19, NewHope4_36, Nivrat_32, NormanBulbieJr_32, ODay_29, Ogopogo_32, Olicious_49, OlinDD_56, Olympi_32, Ovechkin_33, OwlsT2W_33, PaintedDog_31, PeanutPie_28, Pepperoni_20, Percastrophe_49, PermaG_31, Phalconet_32, Phalm_28, Phanphagia_29, PhaoMing_20, Phegasus_28, PhesterPhotato_32, Phineas_28, PhorbesPhlower_21, Phrann_27, Pickett_19, Pioneer3_56, Piper2020_34, Pippy_26, Pitbull_23, Platte_56, Polkaroo_28, Pollux_23, PumpkinSpice_71, Pygmy_30, Quarant19_72, QueenHazel_27, Ramsey_35, Rasovi_30, RayTheFireFly_23, RegnumDei_26, Renaud18_32, RetrieverFever_49, Rideau_51, Rikishi_72, Riptide_67, Rita_33, RomansRevenge_36, Romero_49, Ronaldo_64, Rootkit7_30, RosePharie_49, Ruby_34, SBlackberry_30, SG4_33, SPB78_23, SaltySpittoon_72, Sarma624_28, Shagrat_28, Shauna1_29, ShiLan_32, Shipwreck_30, ShowerHandel_32, ShroomBoi_29, SilverChicken_40, Sollertia_72, Sonah_28, Soul22_37, Spelly_72, Spikelee_34, Spilled_73, StAnnes_31, StAugustine_21, Stanimal_72, StarPlatinum_72, Starbow_70, Stella_51, StevieRay_28, StressBall_28, Strokeseat_33, Sucha_27, SuperGrey_33, SwagPigglett_32, TChen_32, Taj_32, Tandem_56, Targaryen_71, Techage_28, Thales_57, Thespis_28, ThetaBob_32, TomSawyer_70, Tomas_74, ToriToki_49, Toron_33, Treat_49, TurboVicky_30, Tweety_32, Typher_32, Velveteen_28, Venti_28, Vidya_28, Violac_33, Vivum_33, Volt_64, Vorvolakos_49, WRightOn_50, Wachhund_32, Wakanda_47, Warpy_74, Wee_33, Whatsapiecost_33, WillSterrel_34, Wipeout_70, Wofford_71, Xavia_28, Xula_26, Yaboi_72, Yorick_32, Yoshi_39, Zanella_30, Zapner_39, Zeigle_47, Ziko_64, Zilizebeth_28, Zizzle_32, ZooBear_49,

Summary by start number:

Start 69:

- Found in 2 of 494 (0.4%) of genes in pham
- Manual Annotations of this start: 1 of 439
- Called 100.0% of time when present
- Phage (with cluster) where this start called: DalanDe_58 (DQ), Thales_57 (DQ),

Start 78:

- Found in 2 of 494 (0.4%) of genes in pham
- No Manual Annotations of this start.
- Called 50.0% of time when present

- Phage (with cluster) where this start called: Toron_33 (F6),

Start 83:

- Found in 4 of 494 (0.8%) of genes in pham
- Manual Annotations of this start: 1 of 439
- Called 50.0% of time when present
- Phage (with cluster) where this start called: Boise_35 (FT), RomansRevenge_36 (FT),

Start 85:

- Found in 2 of 494 (0.4%) of genes in pham
- Manual Annotations of this start: 2 of 439
- Called 100.0% of time when present
- Phage (with cluster) where this start called: Causa_23 (AI), StAugustine_21 (AI),

Start 86:

- Found in 20 of 494 (4.0%) of genes in pham
- Manual Annotations of this start: 3 of 439
- Called 15.0% of time when present
- Phage (with cluster) where this start called: IndiRoo_30 (EJ), Linayshia_30 (EJ), Olympi_32 (EJ),

Start 87:

- Found in 6 of 494 (1.2%) of genes in pham
- Manual Annotations of this start: 6 of 439
- Called 100.0% of time when present
- Phage (with cluster) where this start called: Alleb_57 (ED1), Hortus1_56 (ED1), OlinDD_56 (ED1), Pioneer3_56 (ED1), Platte_56 (ED1), Tandem_56 (ED1),

Start 88:

- Found in 13 of 494 (2.6%) of genes in pham
- Manual Annotations of this start: 6 of 439
- Called 46.2% of time when present
- Phage (with cluster) where this start called: Girr_34 (F1), Hamulus_33 (F1), Kingsley_31 (F1), MisterCuddles_34 (F1), Ruby_34 (F1), Soul22_37 (F2),

Start 89:

- Found in 19 of 494 (3.8%) of genes in pham
- Manual Annotations of this start: 8 of 439
- Called 47.4% of time when present
- Phage (with cluster) where this start called: Coriander_23 (DB), Denise_19 (CZ5), Doggs_22 (DB), Ecliptus_28 (DN), Matteo_19 (CZ2), Mistmere_57 (ED3), ODay_29 (DN), Pickett_19 (CZ2), RayTheFireFly_23 (DB),

Start 90:

- Found in 4 of 494 (0.8%) of genes in pham
- Manual Annotations of this start: 3 of 439
- Called 75.0% of time when present
- Phage (with cluster) where this start called: LunaStella_34 (F4), MooMoo_30 (singleton), TChen_32 (F4),

Start 91:

- Found in 122 of 494 (24.7%) of genes in pham

- Manual Annotations of this start: 104 of 439
- Called 96.7% of time when present
- Phage (with cluster) where this start called: Akhila_26 (F1), Alove_30 (EJ), Ardmore_31 (F1), AyoTeo_32 (EJ), Batiatus_32 (F1), Beanstalk_37 (F1), Benry_30 (EJ), BigPhil_28 (F1), Bipolar_29 (F1), Blarby_41 (F), Bobi_34 (F1), Brocalys_27 (F1), Brookers_30 (F1), Brushbloom_33 (F1), Bubbles123_34 (F1), Burwell21_32 (F1), BuzzLyseyear_35 (F1), Byougenkin_32 (F1), Cerasum_28 (F1), Cicada_32 (EJ), Clifton_26 (F1), Coco12_32 (F1), Cornie_32 (F5), DLane_32 (F1), DeadP_32 (F1), Doomslug_36 (F), Doug_33 (F1), Emma_34 (F1), Eradicator_32 (F1), Filuzino_32 (F1), FireCastle_30 (EJ), Firehouse51_33 (F1), Flathead_32 (F1), Fruitloop_31 (F1), G4_25 (BW), GMA1_21 (singleton), Galactic_34 (F1), Gandolph_33 (F1), Goodman_31 (EJ), Guppsters_34 (F1), Hades_33 (F1), Hegedechwinu_33 (F1), Hlubikazi_33 (F1), Htur_30 (EJ), IbOuu_33 (F1), IrishSherpFalk_34 (F1), JalFarm20_35 (F1), Jant_33 (F1), Jarcob_32 (F1), Jennelsea_26 (F1), Jera_31 (EJ), Johann_31 (EJ), Juice456_34 (F1), Kenuha5_29 (F1), Koella_26 (F1), KristaRAM_33 (F1), Labela_32 (EJ), LastJedi_26 (F1), Latretium_33 (F1), Leozinho_34 (F1), LilMoolah_32 (F1), Lizziana_32 (F1), LunaBlu_35 (F1), MadMen_30 (F1), Mandlovu_33 (F1), Maravista_32 (F1), Martik_32 (F1), Melissauren88_32 (F1), MilanaBonita_26 (F1), Milani_31 (EJ), MilleniumForce_33 (F1), MinionDave_35 (F1), Mova_33 (F1), Ms6_26 (F1), MulchSalad_31 (F7), Mutaforma13_32 (F1), NewHope4_36 (F1), Nivrat_32 (F1), NormanBulbieJr_32 (F1), Ogopogo_32 (F1), OwlsT2W_33 (F1), PermaG_31 (EJ), Phalconet_32 (F1), Phanphagia_29 (F1), PhesterPhotato_32 (F1), Piper2020_34 (F1), Pippy_26 (F1), Ramsey_35 (F1), Rasovi_30 (EJ), Renaud18_32 (F4), Rita_33 (F1), Rootkit7_30 (EJ), SBlackberry_30 (EJ), Sarma624_28 (F1), Shauna1_29 (F1), ShiLan_32 (F1), ShowerHandel_32 (F1), ShroomBoi_29 (F1), SilverChicken_40 (F2), Spikelee_34 (F1), Strokeseat_33 (F1), Sucha_27 (EJ), SuperGrey_33 (F1), SwagPigglett_32 (F1), Taj_32 (F1), TurboVicky_30 (EJ), Tweety_32 (F1), Typher_32 (EJ), Velveteen_28 (F1), Violac_33 (F1), Vivum_33 (F1), Wachhund_32 (F1), Wee_33 (F1), Whatsapiecost_33 (F1), WillSterrel_34 (F1), Yorick_32 (F1), Zanella_30 (EJ), Zizzle_32 (F1),

Start 92:

- Found in 150 of 494 (30.4%) of genes in pham
- Manual Annotations of this start: 124 of 439
- Called 94.0% of time when present
- Phage (with cluster) where this start called: Alexphander_35 (F1), AlpineSix_33 (F1), ArcusAngelus_32 (F1), Aubs_33 (F1), Awesomesauce_33 (F1), Beakin_33 (F1), Blexus_32 (F1), BlueCrab_32 (F1), BobaPhett_32 (F1), Boomer_34 (F1), Cabrinians_32 (F1), CaptainTrips_33 (F1), Che8_34 (F1), ChickenDinner_34 (F1), Chuckly_32 (F1), Clank_30 (F), Corium_32 (F1), Cornucopia_33 (F1), Crumble_26 (F1), DRBy19_32 (F1), DaWorst_34 (F1), DaddyRickover_32 (F1), Daenerys_32 (F1), Dante_32 (F1), Deb65_32 (F1), DillTech15_32 (F1), DirtMcgirt_33 (F1), DoRead_33 (F1), DocMcStuffins_34 (F1), Donkeykong_32 (F1), Doomphist_32 (F1), Dorothy_32 (F1), DosHalletts_34 (F1), DotProduct_32 (F1), Drago_33 (F1), Eish_32 (F1), EmiMonkey_33 (F1), Emmaloid_34 (F1), Empress_33 (F1), Enzomatic_37 (F1), Estave1_30 (F1), Fancypants_32 (F1), Fastidio_34 (F1), Florinda_32 (F1), Frankie_36 (F1), GUmbie_32 (F1), Geralt_32 (F1), GigiOuiOui_32 (F1), Girafales_33 (F1), Gorge_32 (F1), Grimmer_34 (F1), Harley_32 (F1), Ibhubesi_32 (F1), Inventum_32 (F1), James_32 (F1), Jinglebell_31 (F1), Job42_36 (F1), JoeyJr_32 (F1), Juniper1_32 (F1), Karhdo_32 (F1), Kersh_31 (F1), Kimberlium_34 (F1), KingJulian_32 (F1), KingMidas_34 (F1), Krakatau_33 (F1), LittleShirley_35 (F1), Llama_32 (F1), Llij_32 (F1), Lucia_34 (F1), Mahavrat_32 (F1), Mantra_32 (F1), Mattes_32 (F1), Minnie_34 (F1), Misha28_33 (F1), Modragons_32 (F1),

Moonbeam_33 (F1), Mozy_34 (F1), Mwanjiwa_33 (F1), Nichirin_33 (F1), Nimbo_32 (F1), Nitzel_33 (F1), Ochi17_30 (F1), OfUltron_32 (F1), Okabe_33 (F8), Oksu_33 (F1), OldBen_32 (F1), OlympiaSaint_32 (F1), PHappiness_32 (F1), PMC_32 (F1), Pacc40_32 (F1), PatoPoderoso_32 (F1), Peridot_37 (F1), Phasih_33 (F1), Phatniss_33 (F1), Philus_32 (F1), PhilipPhlop_33 (F1), Plumbus_34 (F1), Poenanya_32 (F1), Polka14_33 (F1), Pollywog_32 (F1), Polo2Bam_37 (F1), PopTart_32 (F1), Priscilla_32 (F1), QuickMath_33 (F1), Quico_33 (F1), Radiance_32 (F1), RedBird_32 (F1), Rialto_36 (F1), RitaG_33 (F1), Rockne_32 (F1), RockyHorror_33 (F1), Royals2015_32 (F1), Saal_32 (F1), Sabbb_33 (F1), Sandalphon_33 (F1), Sassafras_33 (F1), SassyB_32 (F1), Scottish_33 (F1), SeaLumen_36 (F1), Seabastian_32 (F1), Seagreen_33 (F1), SiSi_32 (F1), SimranZ1_35 (F1), Slim_34 (F1), Sparkdehlily_32 (F1), Spartacus_34 (F1), Spoonbill_32 (F1), Stap_33 (F1), Starceвич_36 (F1), TDanisky_32 (F1), Tchochke_32 (F1), TootsiePop_33 (F1), Tootsieroll_33 (F1), Topiatin_35 (F1), Totinger_33 (F1), UncleRicky_35 (F1), VRedHorse_32 (F1), Veteran_32 (F1), Whouphf_33 (F1), XFactor_32 (F1), Zerg_32 (F1),

Start 93:

- Found in 58 of 494 (11.7%) of genes in pham
- Manual Annotations of this start: 55 of 439
- Called 100.0% of time when present
- Phage (with cluster) where this start called: AcciDwight_76 (BE2), Amabiko_72 (BE2), Anedeia_68 (BE1), Angela_67 (BE1), AngryGiraffe_71 (BE2), Avani_37 (F2), Battuta_70 (BE2), BillNye_46 (BK2), Birchlyn_69 (BE2), Bmoc_68 (BE1), BoomerJR_72 (BE2), Bordeaux_70 (BE2), Brizzy_71 (BE2), CeilingFan_71 (BE2), Chaewon_50 (BK2), Circinus_48 (BK2), Demsculpinboyz_38 (F2), Elmer_74 (BE2), Enygma_72 (BE2), Evy_71 (BE1), Genie2_72 (BE2), Gibbi_76 (BE2), IchabodCrane_69 (BE2), Jabbawokkie_40 (F2), Jay2Jay_75 (BE1), JimJam_72 (BE2), Jollison_71 (BE2), Karimac_71 (BE2), KentuckyRacer_72 (BE2), LilMartin_67 (BE1), LilSaint_69 (BE1), LukeCage_71 (BE2), Marsus_68 (BE1), Mildred21_68 (BE1), MindFlayer_70 (BE2), Mugiwara_71 (BE2), MulchMansion_67 (BE1), Muntaha_47 (BK2), PumpkinSpice_71 (BE2), Quarant19_72 (BE2), Rikishi_72 (BE2), Riptide_67 (BE1), SaltySpittoon_72 (BE2), Sollertia_72 (BE2), Spelly_72 (BE2), Spilled_73 (BE2), Stanimal_72 (BE2), StarPlatinum_72 (BE2), Starbow_70 (BE2), Targaryen_71 (BE1), TomSawyer_70 (BE2), Tomas_74 (BE2), Wakanda_47 (BK2), Warpy_74 (BE1), Wipeout_70 (BE2), Wofford_71 (BE2), Yaboi_72 (BE2), Zapner_39 (F2),

Start 94:

- Found in 44 of 494 (8.9%) of genes in pham
- Manual Annotations of this start: 30 of 439
- Called 81.8% of time when present
- Phage (with cluster) where this start called: BeeGee_23 (CY5), Bradissa_23 (CY1), BritBrat_23 (CY2), Cashline_23 (CY6), Che9d_37 (F2), Chipko_23 (DB), Confidence_23 (CY1), EMSquaredA_23 (CY1), EdnaMode_19 (CZ2), EnalisNailo_23 (CY1), Faith5x5_19 (CZ6), Finkle_21 (singleton), Floral_23 (CY1), GAL1_23 (singleton), Gallop_24 (ES), Gudmit_20 (singleton), Gustav_22 (CD), Hum25_24 (FQ), InLimbo_22 (DH), Lamberg_19 (CZ2), Lilas_23 (CY1), Lton_19 (CZ), Lucky10_21 (DH), Mahdia_22 (CD), Marteena_23 (CY1), Moosehead_19 (CZ6), Morkie_21 (DH), Morrissey_23 (CD), Nettuno_19 (CZ2), Pepperoni_20 (CZ), PhaoMing_20 (UNK), PhorbesPhlower_21 (DH), Pitbull_23 (FQ), Pollux_23 (CY1), ThetaBob_32 (F4), Yoshi_39 (F2),

Start 95:

- Found in 81 of 494 (16.4%) of genes in pham
- Manual Annotations of this start: 64 of 439
- Called 91.4% of time when present
- Phage (with cluster) where this start called: Archimedes_20 (DA), Arib1_28 (P1), Atcoo_28 (P1), Babsiella_28 (I1), Bartholomew_27 (P1), Bhagsy_28 (P1), Bluvara_29 (I3), BronnyJr_28 (P1), Brusacoram_28 (P1), Bunnies_28 (P1), CactusJack_28 (P1), Camster_28 (P1), Chubbello_28 (P1), CurlyFries_25 (CF), Donovan_28 (P1), Dynamo_28 (P1), EleanorGeorge_33 (F1), Enby_34 (F1), Etoile_28 (P1), FirstPlacePfu_28 (P1), Fishburne_28 (P1), Fryberger_61 (DP), GaloreK_28 (P1), Gavriela_28 (P1), Glaske_28 (P1), GreaseLightnin_28 (P1), Guey18_67 (DP), HC_29 (I1), HUHilltop_28 (P1), Impisi_28 (N), Jebeks_28 (P1), Jung_27 (P1), Juniormint_28 (P1), Kari_28 (P1), Keelan_59 (DP), KilKor_28 (P1), Ksquared_28 (P1), Langerak_28 (P1), LilSpotty_33 (singleton), Lorde_34 (F1), Majeke_28 (P1), Malithi_28 (P1), Mangethe_28 (P1), Megiddo_28 (P1), Necropolis_28 (P1), Ovechkin_33 (F1), PaintedDog_31 (I1), PeanutPie_28 (P1), Phalm_28 (P1), Phegasus_28 (P1), Phineas_28 (P1), Phrann_27 (N), Polkaroo_28 (P1), Pygmy_30 (P1), QueenHazel_27 (I1), RegnumDei_26 (CF), Ronaldo_64 (DP), SG4_33 (F1), SPB78_23 (BA), Shagrat_28 (CF), Shipwreck_30 (P1), Sonah_28 (P1), StAnnes_31 (F1), StevieRay_28 (P1), StressBall_28 (P1), Techage_28 (P1), Thespi_28 (P1), Venti_28 (P1), Vidya_28 (P1), Volt_64 (DP), Xavia_28 (P3), Xula_26 (I1), Ziko_64 (DP), Zilizebeth_28 (P1),

Start 96:

- Found in 153 of 494 (31.0%) of genes in pham
- Manual Annotations of this start: 9 of 439
- Called 5.9% of time when present
- Phage (with cluster) where this start called: Aloeri_34 (F1), BodEinwohner17_32 (F1), Cheesepuff_35 (F1), Chevrolet_33 (F1), FreddyB_32 (F1), Leperchaun_32 (F1), Madiba_30 (F1), Marker_33 (F1), MulchExplorer_34 (F1),

Start 97:

- Found in 24 of 494 (4.9%) of genes in pham
- Manual Annotations of this start: 23 of 439
- Called 100.0% of time when present
- Phage (with cluster) where this start called: Dennebes_50 (BF), Destructrice_48 (BF), Fabian_46 (BF), FlowerPower_49 (BF), Geostin_44 (BF), Gremlin23_49 (BF), HaugeAnator_49 (BF), Immanuel3_49 (BF), JPandJE_50 (BF), Kumquat_47 (BF), Manuel_46 (BF), Olicious_49 (BF), Percastrophe_49 (BF), RetrieverFever_49 (BF), Rideau_51 (BF), Romero_49 (BF), RosePharie_49 (BF), Stella_51 (BF), ToriToki_49 (BF), Treat_49 (BF), Vorvolakos_49 (BF), WRightOn_50 (BF), Zeigle_47 (BF), ZooBear_49 (BF),

Summary by clusters:

There are 44 clusters represented in this pham: DN, FQ, BF, FT, BA, DH, P3, CZ2, CZ6, singleton, DA, ED3, ED1, CZ5, DP, DQ, I1, I3, F, CY2, CY1, P1, CY6, CY5, EJ, AI, DB, CF, N, CZ, BK2, UNK, ES, F1, F2, F4, F5, F6, F7, F8, CD, BW, BE2, BE1,

Info for manual annotations of cluster AI:

- Start number 85 was manually annotated 2 times for cluster AI.

Info for manual annotations of cluster BE1:

- Start number 93 was manually annotated 13 times for cluster BE1.

Info for manual annotations of cluster BE2:

- Start number 93 was manually annotated 34 times for cluster BE2.

Info for manual annotations of cluster BF:

- Start number 97 was manually annotated 23 times for cluster BF.

Info for manual annotations of cluster BK2:

- Start number 93 was manually annotated 4 times for cluster BK2.

Info for manual annotations of cluster BW:

- Start number 91 was manually annotated 1 time for cluster BW.

Info for manual annotations of cluster CD:

- Start number 94 was manually annotated 3 times for cluster CD.

Info for manual annotations of cluster CF:

- Start number 95 was manually annotated 3 times for cluster CF.

Info for manual annotations of cluster CY1:

- Start number 94 was manually annotated 8 times for cluster CY1.

Info for manual annotations of cluster CY2:

- Start number 94 was manually annotated 1 time for cluster CY2.

Info for manual annotations of cluster CY5:

- Start number 94 was manually annotated 1 time for cluster CY5.

Info for manual annotations of cluster CY6:

- Start number 94 was manually annotated 1 time for cluster CY6.

Info for manual annotations of cluster CZ:

- Start number 94 was manually annotated 1 time for cluster CZ.

Info for manual annotations of cluster CZ2:

- Start number 89 was manually annotated 2 times for cluster CZ2.
- Start number 94 was manually annotated 3 times for cluster CZ2.

Info for manual annotations of cluster CZ5:

- Start number 89 was manually annotated 1 time for cluster CZ5.

Info for manual annotations of cluster CZ6:

- Start number 94 was manually annotated 2 times for cluster CZ6.

Info for manual annotations of cluster DA:

- Start number 95 was manually annotated 1 time for cluster DA.

Info for manual annotations of cluster DB:

- Start number 89 was manually annotated 3 times for cluster DB.

Info for manual annotations of cluster DH:

- Start number 94 was manually annotated 3 times for cluster DH.

Info for manual annotations of cluster DN:

- Start number 89 was manually annotated 2 times for cluster DN.

Info for manual annotations of cluster DP:

- Start number 95 was manually annotated 6 times for cluster DP.

Info for manual annotations of cluster DQ:

- Start number 69 was manually annotated 1 time for cluster DQ.

Info for manual annotations of cluster ED1:

- Start number 87 was manually annotated 6 times for cluster ED1.

Info for manual annotations of cluster EJ:

- Start number 86 was manually annotated 3 times for cluster EJ.
- Start number 91 was manually annotated 15 times for cluster EJ.

Info for manual annotations of cluster F1:

- Start number 88 was manually annotated 5 times for cluster F1.
- Start number 91 was manually annotated 86 times for cluster F1.
- Start number 92 was manually annotated 124 times for cluster F1.
- Start number 95 was manually annotated 6 times for cluster F1.
- Start number 96 was manually annotated 9 times for cluster F1.

Info for manual annotations of cluster F2:

- Start number 88 was manually annotated 1 time for cluster F2.
- Start number 93 was manually annotated 4 times for cluster F2.
- Start number 94 was manually annotated 2 times for cluster F2.

Info for manual annotations of cluster F4:

- Start number 90 was manually annotated 2 times for cluster F4.
- Start number 91 was manually annotated 1 time for cluster F4.
- Start number 94 was manually annotated 1 time for cluster F4.

Info for manual annotations of cluster F5:

- Start number 91 was manually annotated 1 time for cluster F5.

Info for manual annotations of cluster FQ:

- Start number 94 was manually annotated 2 times for cluster FQ.

Info for manual annotations of cluster FT:

- Start number 83 was manually annotated 1 time for cluster FT.

Info for manual annotations of cluster I1:

- Start number 95 was manually annotated 4 times for cluster I1.

Info for manual annotations of cluster N:

- Start number 95 was manually annotated 1 time for cluster N.

Info for manual annotations of cluster P1:

- Start number 95 was manually annotated 41 times for cluster P1.

Info for manual annotations of cluster P3:

- Start number 95 was manually annotated 1 time for cluster P3.

Gene Information:

Gene: AcciDwight_76 Start: 53084, Stop: 53335, Start Num: 93

Candidate Starts for AcciDwight_76:

(Start: 93 @53084 has 55 MA's), (111, 53159),

Gene: Akhila_26 Start: 24607, Stop: 24840, Start Num: 91

Candidate Starts for Akhila_26:

(Start: 91 @24607 has 104 MA's), (120, 24706), (127, 24727), (130, 24736), (141, 24769),

Gene: Alexphander_35 Start: 29298, Stop: 29531, Start Num: 92

Candidate Starts for Alexphander_35:

(Start: 92 @29298 has 124 MA's), (Start: 96 @29301 has 9 MA's), (125, 29412), (127, 29418), (130, 29427), (135, 29445), (136, 29448), (141, 29460),

Gene: Alleb_57 Start: 35882, Stop: 36097, Start Num: 87

Candidate Starts for Alleb_57:

(68, 35792), (Start: 87 @35882 has 6 MA's), (Start: 89 @35888 has 8 MA's),

Gene: Aloeri_34 Start: 29154, Stop: 29384, Start Num: 96

Candidate Starts for Aloeri_34:

(Start: 92 @29151 has 124 MA's), (Start: 96 @29154 has 9 MA's), (125, 29265), (127, 29271), (130, 29280), (135, 29298), (136, 29301), (141, 29313),

Gene: Alove_30 Start: 22521, Stop: 22799, Start Num: 91

Candidate Starts for Alove_30:

(45, 22290), (61, 22383), (63, 22395), (Start: 86 @22512 has 3 MA's), (Start: 91 @22521 has 104 MA's), (113, 22608), (126, 22650), (136, 22683), (155, 22761),

Gene: AlpineSix_33 Start: 28745, Stop: 28978, Start Num: 92

Candidate Starts for AlpineSix_33:

(42, 28529), (Start: 92 @28745 has 124 MA's), (Start: 96 @28748 has 9 MA's), (125, 28859), (127, 28865), (130, 28874), (135, 28892), (136, 28895), (141, 28907),

Gene: Amabiko_72 Start: 53129, Stop: 53380, Start Num: 93

Candidate Starts for Amabiko_72:

(Start: 93 @53129 has 55 MA's), (111, 53204),

Gene: Anedea_68 Start: 52701, Stop: 52952, Start Num: 93

Candidate Starts for Anedea_68:

(Start: 93 @52701 has 55 MA's), (112, 52782), (157, 52929),

Gene: Angela_67 Start: 52161, Stop: 52412, Start Num: 93

Candidate Starts for Angela_67:

(Start: 93 @52161 has 55 MA's), (104, 52203),

Gene: AngryGiraffe_71 Start: 53092, Stop: 53343, Start Num: 93

Candidate Starts for AngryGiraffe_71:

(Start: 93 @53092 has 55 MA's), (104, 53134), (128, 53212), (157, 53320),

Gene: Archimedes_20 Start: 18843, Stop: 19064, Start Num: 95

Candidate Starts for Archimedes_20:

(Start: 95 @18843 has 64 MA's), (108, 18906), (129, 18978), (131, 18984), (136, 19002), (138, 19005),

Gene: ArcusAngelus_32 Start: 29080, Stop: 29313, Start Num: 92

Candidate Starts for ArcusAngelus_32:

(39, 28837), (52, 28933), (Start: 92 @29080 has 124 MA's), (Start: 96 @29083 has 9 MA's), (125, 29194), (127, 29200), (130, 29209), (135, 29227), (136, 29230), (141, 29242),

Gene: Ardmore_31 Start: 28524, Stop: 28757, Start Num: 91

Candidate Starts for Ardmore_31:

(Start: 91 @28524 has 104 MA's), (120, 28623), (127, 28644), (130, 28653), (141, 28686),

Gene: Arib1_28 Start: 25246, Stop: 25494, Start Num: 95

Candidate Starts for Arib1_28:

(Start: 95 @25246 has 64 MA's),

Gene: Atcoo_28 Start: 25729, Stop: 25977, Start Num: 95

Candidate Starts for Atcoo_28:

(Start: 95 @25729 has 64 MA's),

Gene: Aubs_33 Start: 28859, Stop: 29092, Start Num: 92

Candidate Starts for Aubs_33:

(Start: 92 @28859 has 124 MA's), (120, 28958), (127, 28979), (130, 28988), (141, 29021),

Gene: Avani_37 Start: 28000, Stop: 28257, Start Num: 93

Candidate Starts for Avani_37:

(Start: 93 @28000 has 55 MA's), (100, 28018), (110, 28063), (111, 28066), (123, 28105), (128, 28123), (136, 28150), (139, 28156), (140, 28159),

Gene: Awesomesauce_33 Start: 28413, Stop: 28646, Start Num: 92

Candidate Starts for Awesomesauce_33:

(Start: 92 @28413 has 124 MA's), (Start: 96 @28416 has 9 MA's), (125, 28527), (127, 28533), (130, 28542), (135, 28560), (136, 28563), (141, 28575),

Gene: AyoTeo_32 Start: 22645, Stop: 22923, Start Num: 91

Candidate Starts for AyoTeo_32:

(45, 22414), (61, 22507), (66, 22534), (Start: 86 @22636 has 3 MA's), (Start: 91 @22645 has 104 MA's), (113, 22732), (126, 22774), (136, 22807), (155, 22885),

Gene: Babsiella_28 Start: 25313, Stop: 25558, Start Num: 95

Candidate Starts for Babsiella_28:

(1, 23846), (2, 23891), (3, 23966), (4, 24071), (5, 24230), (12, 24476), (18, 24692), (23, 24797), (24, 24815), (67, 25208), (75, 25256), (Start: 95 @25313 has 64 MA's), (123, 25418), (127, 25433),

Gene: Bartholomew_27 Start: 25240, Stop: 25488, Start Num: 95

Candidate Starts for Bartholomew_27:

(Start: 95 @25240 has 64 MA's),

Gene: Batiatus_32 Start: 28517, Stop: 28750, Start Num: 91

Candidate Starts for Batiatus_32:

(Start: 91 @28517 has 104 MA's), (120, 28616), (127, 28637), (130, 28646), (141, 28679),

Gene: Battuta_70 Start: 53103, Stop: 53354, Start Num: 93

Candidate Starts for Battuta_70:

(Start: 93 @53103 has 55 MA's), (111, 53178),

Gene: Beakin_33 Start: 28431, Stop: 28664, Start Num: 92

Candidate Starts for Beakin_33:

(Start: 92 @28431 has 124 MA's), (Start: 96 @28434 has 9 MA's), (125, 28545), (127, 28551), (130, 28560), (135, 28578), (136, 28581), (141, 28593),

Gene: Beanstalk_37 Start: 28722, Stop: 28955, Start Num: 91

Candidate Starts for Beanstalk_37:

(Start: 91 @28722 has 104 MA's), (120, 28821), (127, 28842), (130, 28851), (141, 28884),

Gene: BeeGee_23 Start: 20766, Stop: 21002, Start Num: 94

Candidate Starts for BeeGee_23:

(30, 20376), (41, 20517), (58, 20625), (Start: 94 @20766 has 30 MA's), (110, 20838), (116, 20859), (117, 20862), (139, 20919),

Gene: Benry_30 Start: 20899, Stop: 21171, Start Num: 91

Candidate Starts for Benry_30:

(Start: 86 @20890 has 3 MA's), (Start: 91 @20899 has 104 MA's), (113, 20986), (121, 21013), (136, 21061),

Gene: Bhagsy_28 Start: 25241, Stop: 25486, Start Num: 95

Candidate Starts for Bhagsy_28:

(Start: 95 @25241 has 64 MA's), (123, 25346),

Gene: BigPhil_28 Start: 24741, Stop: 24974, Start Num: 91

Candidate Starts for BigPhil_28:

(Start: 91 @24741 has 104 MA's), (120, 24840), (125, 24855), (127, 24861), (130, 24870), (141, 24903),

Gene: BillNye_46 Start: 46091, Stop: 46348, Start Num: 93

Candidate Starts for BillNye_46:

(73, 46037), (Start: 93 @46091 has 55 MA's), (104, 46133), (155, 46319),

Gene: Bipolar_29 Start: 27603, Stop: 27836, Start Num: 91

Candidate Starts for Bipolar_29:

(34, 27315), (Start: 91 @27603 has 104 MA's), (120, 27702), (125, 27717), (127, 27723), (130, 27732), (141, 27765),

Gene: Birchlyn_69 Start: 50986, Stop: 51237, Start Num: 93

Candidate Starts for Birchlyn_69:
(Start: 93 @50986 has 55 MA's), (111, 51061),

Gene: Blarby_41 Start: 28996, Stop: 29229, Start Num: 91
Candidate Starts for Blarby_41:
(Start: 91 @28996 has 104 MA's), (120, 29095), (127, 29116), (130, 29125), (141, 29158),

Gene: Blexus_32 Start: 28853, Stop: 29086, Start Num: 92
Candidate Starts for Blexus_32:
(Start: 92 @28853 has 124 MA's), (Start: 96 @28856 has 9 MA's), (125, 28967), (127, 28973), (130, 28982), (135, 29000), (136, 29003), (141, 29015),

Gene: BlueCrab_32 Start: 28703, Stop: 28936, Start Num: 92
Candidate Starts for BlueCrab_32:
(Start: 92 @28703 has 124 MA's), (Start: 96 @28706 has 9 MA's), (125, 28817), (127, 28823), (130, 28832), (135, 28850), (136, 28853), (141, 28865),

Gene: Bluvara_29 Start: 25643, Stop: 25888, Start Num: 95
Candidate Starts for Bluvara_29:
(12, 24806), (18, 25022), (23, 25127), (24, 25145), (67, 25538), (75, 25586), (Start: 95 @25643 has 64 MA's), (123, 25748), (127, 25763), (148, 25826), (150, 25856),

Gene: Bmoc_68 Start: 52505, Stop: 52756, Start Num: 93
Candidate Starts for Bmoc_68:
(Start: 93 @52505 has 55 MA's), (112, 52586), (119, 52598), (157, 52733),

Gene: BobaPhett_32 Start: 28723, Stop: 28956, Start Num: 92
Candidate Starts for BobaPhett_32:
(52, 28576), (Start: 92 @28723 has 124 MA's), (Start: 96 @28726 has 9 MA's), (125, 28837), (127, 28843), (130, 28852), (135, 28870), (136, 28873), (141, 28885),

Gene: Bobi_34 Start: 29230, Stop: 29463, Start Num: 91
Candidate Starts for Bobi_34:
(34, 28942), (Start: 91 @29230 has 104 MA's), (120, 29329), (127, 29350), (130, 29359), (141, 29392),

Gene: BodEinwohner17_32 Start: 28926, Stop: 29156, Start Num: 96
Candidate Starts for BodEinwohner17_32:
(Start: 92 @28923 has 124 MA's), (Start: 96 @28926 has 9 MA's), (125, 29037), (127, 29043), (130, 29052), (135, 29070), (136, 29073), (141, 29085),

Gene: Boise_35 Start: 33483, Stop: 33725, Start Num: 83
Candidate Starts for Boise_35:
(Start: 83 @33483 has 1 MA's), (112, 33570), (128, 33621), (144, 33669),

Gene: Boomer_34 Start: 28593, Stop: 28826, Start Num: 92
Candidate Starts for Boomer_34:
(Start: 92 @28593 has 124 MA's), (Start: 96 @28596 has 9 MA's), (120, 28692), (127, 28713), (130, 28722), (141, 28755),

Gene: BoomerJR_72 Start: 52981, Stop: 53232, Start Num: 93
Candidate Starts for BoomerJR_72:
(Start: 93 @52981 has 55 MA's), (104, 53023), (128, 53101), (157, 53209),

Gene: Bordeaux_70 Start: 53258, Stop: 53509, Start Num: 93
Candidate Starts for Bordeaux_70:
(Start: 93 @53258 has 55 MA's), (111, 53333),

Gene: Bradissa_23 Start: 20951, Stop: 21190, Start Num: 94
Candidate Starts for Bradissa_23:
(64, 20843), (Start: 94 @20951 has 30 MA's), (104, 20993), (116, 21044), (117, 21047), (136, 21098),
(139, 21104),

Gene: BritBrat_23 Start: 20804, Stop: 21043, Start Num: 94
Candidate Starts for BritBrat_23:
(64, 20696), (Start: 94 @20804 has 30 MA's), (104, 20846), (116, 20897), (117, 20900), (136, 20951),
(139, 20957),

Gene: Brizzy_71 Start: 52777, Stop: 53028, Start Num: 93
Candidate Starts for Brizzy_71:
(Start: 93 @52777 has 55 MA's), (111, 52852),

Gene: Brocalys_27 Start: 24320, Stop: 24553, Start Num: 91
Candidate Starts for Brocalys_27:
(Start: 91 @24320 has 104 MA's), (120, 24419), (127, 24440), (130, 24449), (141, 24482),

Gene: BronnyJr_28 Start: 25705, Stop: 25953, Start Num: 95
Candidate Starts for BronnyJr_28:
(Start: 95 @25705 has 64 MA's),

Gene: Brookers_30 Start: 27466, Stop: 27699, Start Num: 91
Candidate Starts for Brookers_30:
(Start: 91 @27466 has 104 MA's), (120, 27565), (127, 27586), (130, 27595), (141, 27628),

Gene: Brusacoram_28 Start: 25235, Stop: 25483, Start Num: 95
Candidate Starts for Brusacoram_28:
(Start: 95 @25235 has 64 MA's),

Gene: Brushbloom_33 Start: 28541, Stop: 28774, Start Num: 91
Candidate Starts for Brushbloom_33:
(Start: 91 @28541 has 104 MA's), (120, 28640), (127, 28661), (130, 28670), (141, 28703),

Gene: Bubbles123_34 Start: 29508, Stop: 29741, Start Num: 91
Candidate Starts for Bubbles123_34:
(34, 29220), (Start: 91 @29508 has 104 MA's), (120, 29607), (127, 29628), (130, 29637), (141, 29670),

Gene: Bunnies_28 Start: 25256, Stop: 25504, Start Num: 95
Candidate Starts for Bunnies_28:
(Start: 95 @25256 has 64 MA's),

Gene: Burwell21_32 Start: 28707, Stop: 28940, Start Num: 91
Candidate Starts for Burwell21_32:
(33, 28416), (34, 28419), (36, 28455), (Start: 91 @28707 has 104 MA's), (120, 28806), (127, 28827),
(130, 28836), (141, 28869),

Gene: BuzzLyseyear_35 Start: 29322, Stop: 29555, Start Num: 91
Candidate Starts for BuzzLyseyear_35:

(Start: 91 @29322 has 104 MA's), (125, 29436), (127, 29442), (130, 29451), (135, 29469), (136, 29472), (141, 29484),

Gene: Byougenkin_32 Start: 28605, Stop: 28838, Start Num: 91

Candidate Starts for Byougenkin_32:

(34, 28317), (Start: 91 @28605 has 104 MA's), (120, 28704), (127, 28725), (130, 28734), (141, 28767),

Gene: Cabrinians_32 Start: 28785, Stop: 29018, Start Num: 92

Candidate Starts for Cabrinians_32:

(13, 28071), (14, 28092), (15, 28143), (19, 28233), (21, 28308), (25, 28347), (26, 28380), (29, 28413), (33, 28494), (34, 28497), (Start: 92 @28785 has 124 MA's), (120, 28884), (127, 28905), (130, 28914), (141, 28947),

Gene: CactusJack_28 Start: 25499, Stop: 25747, Start Num: 95

Candidate Starts for CactusJack_28:

(Start: 95 @25499 has 64 MA's),

Gene: Camster_28 Start: 25272, Stop: 25520, Start Num: 95

Candidate Starts for Camster_28:

(Start: 95 @25272 has 64 MA's),

Gene: CaptainTrips_33 Start: 28930, Stop: 29163, Start Num: 92

Candidate Starts for CaptainTrips_33:

(32, 28621), (35, 28669), (52, 28783), (Start: 92 @28930 has 124 MA's), (Start: 96 @28933 has 9 MA's), (125, 29044), (127, 29050), (130, 29059), (135, 29077), (136, 29080), (141, 29092),

Gene: Cashline_23 Start: 20633, Stop: 20869, Start Num: 94

Candidate Starts for Cashline_23:

(Start: 94 @20633 has 30 MA's), (104, 20675), (110, 20705), (117, 20729), (136, 20780),

Gene: Causa_23 Start: 16883, Stop: 17179, Start Num: 85

Candidate Starts for Causa_23:

(Start: 85 @16883 has 2 MA's), (124, 17021), (156, 17129),

Gene: CeilingFan_71 Start: 53018, Stop: 53269, Start Num: 93

Candidate Starts for CeilingFan_71:

(Start: 93 @53018 has 55 MA's), (111, 53093),

Gene: Cerasum_28 Start: 24741, Stop: 24974, Start Num: 91

Candidate Starts for Cerasum_28:

(Start: 91 @24741 has 104 MA's), (120, 24840), (125, 24855), (127, 24861), (130, 24870), (141, 24903),

Gene: Chaewon_50 Start: 46231, Stop: 46488, Start Num: 93

Candidate Starts for Chaewon_50:

(73, 46177), (Start: 93 @46231 has 55 MA's), (104, 46273), (151, 46447), (155, 46459),

Gene: Che8_34 Start: 28974, Stop: 29207, Start Num: 92

Candidate Starts for Che8_34:

(Start: 92 @28974 has 124 MA's), (Start: 96 @28977 has 9 MA's), (125, 29088), (127, 29094), (130, 29103), (135, 29121), (136, 29124), (141, 29136),

Gene: Che9d_37 Start: 28009, Stop: 28266, Start Num: 94

Candidate Starts for Che9d_37:

(Start: 94 @28009 has 30 MA's), (100, 28027), (110, 28072), (111, 28075), (123, 28114), (128, 28132), (136, 28159), (139, 28165), (140, 28168),

Gene: Cheesepuff_35 Start: 29796, Stop: 30026, Start Num: 96

Candidate Starts for Cheesepuff_35:

(52, 29646), (Start: 92 @29793 has 124 MA's), (Start: 96 @29796 has 9 MA's), (125, 29907), (127, 29913), (130, 29922), (135, 29940), (136, 29943), (141, 29955),

Gene: Chevrolet_33 Start: 29084, Stop: 29314, Start Num: 96

Candidate Starts for Chevrolet_33:

(39, 28838), (52, 28934), (Start: 92 @29081 has 124 MA's), (Start: 96 @29084 has 9 MA's), (125, 29195), (127, 29201), (130, 29210), (135, 29228), (136, 29231), (141, 29243),

Gene: ChickenDinner_34 Start: 29151, Stop: 29384, Start Num: 92

Candidate Starts for ChickenDinner_34:

(Start: 92 @29151 has 124 MA's), (Start: 96 @29154 has 9 MA's), (125, 29265), (127, 29271), (130, 29280), (135, 29298), (136, 29301), (141, 29313),

Gene: Chipko_23 Start: 21360, Stop: 21599, Start Num: 94

Candidate Starts for Chipko_23:

(7, 20469), (8, 20496), (10, 20559), (11, 20562), (16, 20739), (17, 20742), (20, 20817), (22, 20877), (27, 20964), (31, 21042), (37, 21099), (46, 21165), (Start: 89 @21354 has 8 MA's), (Start: 94 @21360 has 30 MA's), (104, 21402), (110, 21432), (116, 21453), (117, 21456), (136, 21507), (139, 21513), (151, 21567),

Gene: Chubbello_28 Start: 25239, Stop: 25487, Start Num: 95

Candidate Starts for Chubbello_28:

(Start: 95 @25239 has 64 MA's),

Gene: Chuckly_32 Start: 28706, Stop: 28939, Start Num: 92

Candidate Starts for Chuckly_32:

(52, 28559), (Start: 92 @28706 has 124 MA's), (Start: 96 @28709 has 9 MA's), (125, 28820), (127, 28826), (130, 28835), (135, 28853), (136, 28856), (141, 28868),

Gene: Cicada_32 Start: 22721, Stop: 23002, Start Num: 91

Candidate Starts for Cicada_32:

(45, 22508), (61, 22583), (Start: 86 @22712 has 3 MA's), (Start: 91 @22721 has 104 MA's), (110, 22796), (113, 22808), (121, 22835), (126, 22850), (136, 22883), (155, 22961),

Gene: Circinus_48 Start: 46230, Stop: 46487, Start Num: 93

Candidate Starts for Circinus_48:

(73, 46176), (Start: 93 @46230 has 55 MA's), (104, 46272), (155, 46458),

Gene: Clank_30 Start: 27963, Stop: 28196, Start Num: 92

Candidate Starts for Clank_30:

(32, 27654), (39, 27720), (52, 27816), (Start: 92 @27963 has 124 MA's), (Start: 96 @27966 has 9 MA's), (125, 28077), (127, 28083), (130, 28092), (135, 28110), (136, 28113), (141, 28125),

Gene: Clifton_26 Start: 24671, Stop: 24904, Start Num: 91

Candidate Starts for Clifton_26:

(33, 24380), (34, 24383), (36, 24419), (Start: 91 @24671 has 104 MA's), (120, 24770), (127, 24791), (130, 24800), (141, 24833),

Gene: Coco12_32 Start: 28590, Stop: 28823, Start Num: 91

Candidate Starts for Coco12_32:

(Start: 91 @28590 has 104 MA's), (120, 28689), (127, 28710), (130, 28719), (141, 28752),

Gene: Confidence_23 Start: 20796, Stop: 21032, Start Num: 94

Candidate Starts for Confidence_23:

(30, 20406), (58, 20655), (Start: 94 @20796 has 30 MA's), (110, 20868), (116, 20889), (117, 20892), (139, 20949),

Gene: Coriander_23 Start: 21339, Stop: 21584, Start Num: 89

Candidate Starts for Coriander_23:

(Start: 89 @21339 has 8 MA's), (Start: 94 @21345 has 30 MA's), (104, 21387), (110, 21417), (116, 21438), (136, 21492), (151, 21552),

Gene: Corium_32 Start: 28730, Stop: 28963, Start Num: 92

Candidate Starts for Corium_32:

(39, 28487), (52, 28583), (Start: 92 @28730 has 124 MA's), (Start: 96 @28733 has 9 MA's), (125, 28844), (127, 28850), (130, 28859), (135, 28877), (136, 28880), (141, 28892),

Gene: Cornie_32 Start: 29028, Stop: 29261, Start Num: 91

Candidate Starts for Cornie_32:

(34, 28740), (Start: 91 @29028 has 104 MA's), (120, 29127), (127, 29148), (130, 29157), (141, 29190),

Gene: Cornucopia_33 Start: 28549, Stop: 28782, Start Num: 92

Candidate Starts for Cornucopia_33:

(52, 28402), (Start: 92 @28549 has 124 MA's), (Start: 96 @28552 has 9 MA's), (125, 28663), (127, 28669), (130, 28678), (135, 28696), (136, 28699), (141, 28711),

Gene: Crumble_26 Start: 24720, Stop: 24953, Start Num: 92

Candidate Starts for Crumble_26:

(52, 24573), (Start: 92 @24720 has 124 MA's), (Start: 96 @24723 has 9 MA's), (125, 24834), (127, 24840), (130, 24849), (135, 24867), (136, 24870), (141, 24882),

Gene: CurlyFries_25 Start: 25102, Stop: 25317, Start Num: 95

Candidate Starts for CurlyFries_25:

(Start: 95 @25102 has 64 MA's), (98, 25111), (114, 25180), (144, 25270), (151, 25309),

Gene: DLane_32 Start: 28494, Stop: 28727, Start Num: 91

Candidate Starts for DLane_32:

(Start: 91 @28494 has 104 MA's), (120, 28593), (127, 28614), (130, 28623), (141, 28656),

Gene: DRBy19_32 Start: 28632, Stop: 28865, Start Num: 92

Candidate Starts for DRBy19_32:

(52, 28485), (Start: 92 @28632 has 124 MA's), (Start: 96 @28635 has 9 MA's), (125, 28746), (127, 28752), (130, 28761), (135, 28779), (136, 28782), (141, 28794),

Gene: DaWorst_34 Start: 29072, Stop: 29305, Start Num: 92

Candidate Starts for DaWorst_34:

(Start: 92 @29072 has 124 MA's), (Start: 96 @29075 has 9 MA's), (125, 29186), (127, 29192), (130, 29201), (135, 29219), (136, 29222), (141, 29234),

Gene: DaddyRickover_32 Start: 28715, Stop: 28948, Start Num: 92

Candidate Starts for DaddyRickover_32:

(Start: 92 @28715 has 124 MA's), (Start: 96 @28718 has 9 MA's), (125, 28829), (127, 28835), (130, 28844), (135, 28862), (136, 28865), (141, 28877),

Gene: Daenerys_32 Start: 28536, Stop: 28769, Start Num: 92

Candidate Starts for Daenerys_32:

(Start: 92 @28536 has 124 MA's), (Start: 96 @28539 has 9 MA's), (125, 28650), (127, 28656), (130, 28665), (135, 28683), (136, 28686), (141, 28698),

Gene: DalanDe_58 Start: 53771, Stop: 54076, Start Num: 69

Candidate Starts for DalanDe_58:

(Start: 69 @53771 has 1 MA's), (76, 53798), (Start: 83 @53822 has 1 MA's), (99, 53864), (122, 53954), (133, 53987), (144, 54020), (152, 54062),

Gene: Dante_32 Start: 28654, Stop: 28887, Start Num: 92

Candidate Starts for Dante_32:

(Start: 92 @28654 has 124 MA's), (Start: 96 @28657 has 9 MA's), (125, 28768), (127, 28774), (130, 28783), (135, 28801), (136, 28804), (141, 28816),

Gene: DeadP_32 Start: 28691, Stop: 28924, Start Num: 91

Candidate Starts for DeadP_32:

(Start: 91 @28691 has 104 MA's), (120, 28790), (127, 28811), (130, 28820), (141, 28853),

Gene: Deb65_32 Start: 28537, Stop: 28770, Start Num: 92

Candidate Starts for Deb65_32:

(Start: 92 @28537 has 124 MA's), (Start: 96 @28540 has 9 MA's), (125, 28651), (127, 28657), (130, 28666), (135, 28684), (136, 28687), (141, 28699),

Gene: Demsculpinboyz_38 Start: 27942, Stop: 28199, Start Num: 93

Candidate Starts for Demsculpinboyz_38:

(Start: 93 @27942 has 55 MA's), (100, 27960), (110, 28005), (111, 28008), (123, 28047), (128, 28065), (136, 28092), (139, 28098), (140, 28101),

Gene: Denise_19 Start: 17855, Stop: 18097, Start Num: 89

Candidate Starts for Denise_19:

(Start: 89 @17855 has 8 MA's), (Start: 94 @17861 has 30 MA's), (104, 17903), (110, 17933), (116, 17954), (117, 17957), (139, 18014),

Gene: Dennebes_50 Start: 27480, Stop: 27677, Start Num: 97

Candidate Starts for Dennebes_50:

(65, 27357), (Start: 97 @27480 has 23 MA's), (103, 27513), (112, 27546), (139, 27615), (149, 27642),

Gene: Destructrice_48 Start: 27852, Stop: 28049, Start Num: 97

Candidate Starts for Destructrice_48:

(Start: 96 @27849 has 9 MA's), (Start: 97 @27852 has 23 MA's), (103, 27885), (112, 27918),

Gene: DillTech15_32 Start: 28622, Stop: 28855, Start Num: 92

Candidate Starts for DillTech15_32:

(52, 28475), (Start: 92 @28622 has 124 MA's), (Start: 96 @28625 has 9 MA's), (125, 28736), (127, 28742), (130, 28751), (135, 28769), (136, 28772), (141, 28784),

Gene: DirtMcgirt_33 Start: 28357, Stop: 28590, Start Num: 92

Candidate Starts for DirtMcgirt_33:

(32, 28048), (35, 28096), (39, 28114), (52, 28210), (Start: 92 @28357 has 124 MA's), (Start: 96 @28360 has 9 MA's), (125, 28471), (127, 28477), (130, 28486), (135, 28504), (136, 28507), (141, 28519),

Gene: DoRead_33 Start: 28766, Stop: 28999, Start Num: 92

Candidate Starts for DoRead_33:

(52, 28619), (Start: 92 @28766 has 124 MA's), (Start: 96 @28769 has 9 MA's), (125, 28880), (127, 28886), (130, 28895), (135, 28913), (136, 28916), (141, 28928),

Gene: DocMcStuffins_34 Start: 29151, Stop: 29384, Start Num: 92

Candidate Starts for DocMcStuffins_34:

(Start: 92 @29151 has 124 MA's), (Start: 96 @29154 has 9 MA's), (125, 29265), (127, 29271), (130, 29280), (135, 29298), (136, 29301), (141, 29313),

Gene: Doggs_22 Start: 21038, Stop: 21283, Start Num: 89

Candidate Starts for Doggs_22:

(Start: 89 @21038 has 8 MA's), (Start: 94 @21044 has 30 MA's), (104, 21086), (110, 21116), (116, 21137), (136, 21191), (151, 21251),

Gene: Donkeykong_32 Start: 28717, Stop: 28950, Start Num: 92

Candidate Starts for Donkeykong_32:

(Start: 92 @28717 has 124 MA's), (120, 28816), (127, 28837), (130, 28846), (141, 28879),

Gene: Donovan_28 Start: 25229, Stop: 25477, Start Num: 95

Candidate Starts for Donovan_28:

(Start: 95 @25229 has 64 MA's),

Gene: Doomphist_32 Start: 28654, Stop: 28887, Start Num: 92

Candidate Starts for Doomphist_32:

(Start: 92 @28654 has 124 MA's), (120, 28753), (127, 28774), (130, 28783), (141, 28816),

Gene: Doomslug_36 Start: 28365, Stop: 28598, Start Num: 91

Candidate Starts for Doomslug_36:

(Start: 91 @28365 has 104 MA's), (120, 28464), (127, 28485), (130, 28494), (141, 28527),

Gene: Dorothy_32 Start: 28500, Stop: 28733, Start Num: 92

Candidate Starts for Dorothy_32:

(Start: 92 @28500 has 124 MA's), (Start: 96 @28503 has 9 MA's), (125, 28614), (127, 28620), (130, 28629), (135, 28647), (136, 28650), (141, 28662),

Gene: DosHalletts_34 Start: 28918, Stop: 29151, Start Num: 92

Candidate Starts for DosHalletts_34:

(39, 28675), (52, 28771), (Start: 92 @28918 has 124 MA's), (Start: 96 @28921 has 9 MA's), (125, 29032), (127, 29038), (130, 29047), (135, 29065), (136, 29068), (141, 29080),

Gene: DotProduct_32 Start: 28523, Stop: 28756, Start Num: 92

Candidate Starts for DotProduct_32:

(52, 28376), (Start: 92 @28523 has 124 MA's), (Start: 96 @28526 has 9 MA's), (125, 28637), (127, 28643), (130, 28652), (135, 28670), (136, 28673), (141, 28685),

Gene: Doug_33 Start: 29095, Stop: 29328, Start Num: 91

Candidate Starts for Doug_33:

(Start: 91 @29095 has 104 MA's), (125, 29209), (127, 29215), (130, 29224), (135, 29242), (136, 29245), (141, 29257),

Gene: Drago_33 Start: 28350, Stop: 28583, Start Num: 92

Candidate Starts for Drago_33:

(52, 28203), (Start: 92 @28350 has 124 MA's), (Start: 96 @28353 has 9 MA's), (125, 28464), (127, 28470), (130, 28479), (135, 28497), (136, 28500), (141, 28512),

Gene: Dynamo_28 Start: 25651, Stop: 25899, Start Num: 95

Candidate Starts for Dynamo_28:

(Start: 95 @25651 has 64 MA's),

Gene: EMSquaredA_23 Start: 20804, Stop: 21043, Start Num: 94

Candidate Starts for EMSquaredA_23:

(64, 20696), (Start: 94 @20804 has 30 MA's), (104, 20846), (116, 20897), (117, 20900), (136, 20951), (139, 20957),

Gene: Ecliptus_28 Start: 22063, Stop: 22305, Start Num: 89

Candidate Starts for Ecliptus_28:

(Start: 89 @22063 has 8 MA's), (Start: 94 @22069 has 30 MA's), (104, 22111), (110, 22141), (116, 22162), (117, 22165), (136, 22216), (139, 22222),

Gene: EdnaMode_19 Start: 17610, Stop: 17849, Start Num: 94

Candidate Starts for EdnaMode_19:

(58, 17475), (Start: 94 @17610 has 30 MA's), (110, 17682), (139, 17763), (150, 17814), (151, 17817),

Gene: Eish_32 Start: 29242, Stop: 29475, Start Num: 92

Candidate Starts for Eish_32:

(39, 28999), (52, 29095), (Start: 92 @29242 has 124 MA's), (Start: 96 @29245 has 9 MA's), (125, 29356), (127, 29362), (130, 29371), (135, 29389), (136, 29392), (141, 29404),

Gene: EleanorGeorge_33 Start: 29267, Stop: 29500, Start Num: 95

Candidate Starts for EleanorGeorge_33:

(28, 28832), (56, 29093), (Start: 88 @29258 has 6 MA's), (Start: 95 @29267 has 64 MA's), (Start: 96 @29270 has 9 MA's), (120, 29366), (125, 29381), (127, 29387), (130, 29396), (135, 29414), (136, 29417), (141, 29429),

Gene: Elmer_74 Start: 54196, Stop: 54447, Start Num: 93

Candidate Starts for Elmer_74:

(Start: 93 @54196 has 55 MA's), (111, 54271), (125, 54307), (139, 54349), (149, 54376),

Gene: EmiMonkey_33 Start: 30146, Stop: 30379, Start Num: 92

Candidate Starts for EmiMonkey_33:

(52, 29999), (Start: 92 @30146 has 124 MA's), (Start: 96 @30149 has 9 MA's), (125, 30260), (127, 30266), (130, 30275), (135, 30293), (136, 30296), (141, 30308),

Gene: Emma_34 Start: 29135, Stop: 29368, Start Num: 91

Candidate Starts for Emma_34:

(34, 28847), (Start: 91 @29135 has 104 MA's), (120, 29234), (127, 29255), (130, 29264), (141, 29297),

Gene: Emmaloid_34 Start: 29915, Stop: 30148, Start Num: 92

Candidate Starts for Emmaloid_34:

(32, 29606), (52, 29768), (Start: 92 @29915 has 124 MA's), (Start: 96 @29918 has 9 MA's), (125, 30029), (127, 30035), (130, 30044), (135, 30062), (136, 30065), (141, 30077),

Gene: Empress_33 Start: 29950, Stop: 30183, Start Num: 92

Candidate Starts for Empress_33:

(Start: 92 @29950 has 124 MA's), (Start: 96 @29953 has 9 MA's), (125, 30064), (127, 30070), (130, 30079), (135, 30097), (136, 30100), (141, 30112),

Gene: EnalisNailo_23 Start: 20953, Stop: 21192, Start Num: 94

Candidate Starts for EnalisNailo_23:

(64, 20845), (Start: 94 @20953 has 30 MA's), (104, 20995), (116, 21046), (117, 21049), (136, 21100), (139, 21106),

Gene: Enby_34 Start: 28796, Stop: 29029, Start Num: 95

Candidate Starts for Enby_34:

(28, 28361), (56, 28622), (Start: 88 @28787 has 6 MA's), (Start: 95 @28796 has 64 MA's), (Start: 96 @28799 has 9 MA's), (120, 28895), (125, 28910), (127, 28916), (130, 28925), (135, 28943), (136, 28946), (141, 28958),

Gene: Enygma_72 Start: 54921, Stop: 55172, Start Num: 93

Candidate Starts for Enygma_72:

(Start: 93 @54921 has 55 MA's), (111, 54996), (121, 55023),

Gene: Enzomatic_37 Start: 28713, Stop: 28946, Start Num: 92

Candidate Starts for Enzomatic_37:

(52, 28566), (Start: 92 @28713 has 124 MA's), (Start: 96 @28716 has 9 MA's), (125, 28827), (127, 28833), (130, 28842), (135, 28860), (136, 28863), (141, 28875),

Gene: Eradicator_32 Start: 28637, Stop: 28870, Start Num: 91

Candidate Starts for Eradicator_32:

(Start: 91 @28637 has 104 MA's), (120, 28736), (127, 28757), (130, 28766), (141, 28799),

Gene: Estave1_30 Start: 28054, Stop: 28287, Start Num: 92

Candidate Starts for Estave1_30:

(42, 27838), (Start: 92 @28054 has 124 MA's), (Start: 96 @28057 has 9 MA's), (125, 28168), (127, 28174), (130, 28183), (135, 28201), (136, 28204), (141, 28216),

Gene: Etoile_28 Start: 25240, Stop: 25488, Start Num: 95

Candidate Starts for Etoile_28:

(Start: 95 @25240 has 64 MA's),

Gene: Evy_71 Start: 53796, Stop: 54047, Start Num: 93

Candidate Starts for Evy_71:

(Start: 93 @53796 has 55 MA's), (130, 53922),

Gene: Fabian_46 Start: 27549, Stop: 27746, Start Num: 97

Candidate Starts for Fabian_46:

(Start: 97 @27549 has 23 MA's), (107, 27600),

Gene: Faith5x5_19 Start: 17558, Stop: 17797, Start Num: 94

Candidate Starts for Faith5x5_19:

(30, 17168), (41, 17309), (47, 17345), (58, 17417), (Start: 94 @17558 has 30 MA's), (104, 17600), (110, 17630), (139, 17711),

Gene: Fancypants_32 Start: 28543, Stop: 28776, Start Num: 92

Candidate Starts for Fancypants_32:

(39, 28300), (52, 28396), (Start: 92 @28543 has 124 MA's), (Start: 96 @28546 has 9 MA's), (125, 28657), (127, 28663), (130, 28672), (135, 28690), (136, 28693), (141, 28705),

Gene: Fastidio_34 Start: 28851, Stop: 29084, Start Num: 92

Candidate Starts for Fastidio_34:

(52, 28704), (Start: 92 @28851 has 124 MA's), (Start: 96 @28854 has 9 MA's), (125, 28965), (127, 28971), (130, 28980), (135, 28998), (136, 29001), (141, 29013),

Gene: Filuzino_32 Start: 28485, Stop: 28718, Start Num: 91

Candidate Starts for Filuzino_32:

(34, 28197), (Start: 91 @28485 has 104 MA's), (120, 28584), (127, 28605), (130, 28614), (141, 28647),

Gene: Finkle_21 Start: 18973, Stop: 19227, Start Num: 94

Candidate Starts for Finkle_21:

(77, 18934), (Start: 94 @18973 has 30 MA's), (104, 19015), (106, 19027), (111, 19048), (143, 19144), (144, 19147),

Gene: FireCastle_30 Start: 22475, Stop: 22750, Start Num: 91

Candidate Starts for FireCastle_30:

(Start: 86 @22466 has 3 MA's), (Start: 91 @22475 has 104 MA's), (112, 22559), (113, 22562), (121, 22589), (136, 22637), (154, 22712),

Gene: Firehouse51_33 Start: 29324, Stop: 29557, Start Num: 91

Candidate Starts for Firehouse51_33:

(34, 29036), (Start: 91 @29324 has 104 MA's), (120, 29423), (127, 29444), (130, 29453), (141, 29486),

Gene: FirstPlacePfu_28 Start: 25240, Stop: 25488, Start Num: 95

Candidate Starts for FirstPlacePfu_28:

(Start: 95 @25240 has 64 MA's),

Gene: Fishburne_28 Start: 25240, Stop: 25488, Start Num: 95

Candidate Starts for Fishburne_28:

(Start: 95 @25240 has 64 MA's),

Gene: Flathead_32 Start: 29131, Stop: 29364, Start Num: 91

Candidate Starts for Flathead_32:

(Start: 91 @29131 has 104 MA's), (120, 29230), (127, 29251), (130, 29260), (141, 29293),

Gene: Floral_23 Start: 20804, Stop: 21043, Start Num: 94

Candidate Starts for Floral_23:

(64, 20696), (Start: 94 @20804 has 30 MA's), (104, 20846), (116, 20897), (117, 20900), (136, 20951), (139, 20957),

Gene: Florinda_32 Start: 28535, Stop: 28768, Start Num: 92

Candidate Starts for Florinda_32:

(52, 28388), (Start: 92 @28535 has 124 MA's), (Start: 96 @28538 has 9 MA's), (125, 28649), (127, 28655), (130, 28664), (135, 28682), (136, 28685), (141, 28697),

Gene: FlowerPower_49 Start: 27549, Stop: 27746, Start Num: 97

Candidate Starts for FlowerPower_49:

(Start: 97 @27549 has 23 MA's), (107, 27600),

Gene: Frankie_36 Start: 29679, Stop: 29912, Start Num: 92

Candidate Starts for Frankie_36:

(Start: 92 @29679 has 124 MA's), (Start: 96 @29682 has 9 MA's), (125, 29793), (127, 29799), (130, 29808), (135, 29826), (136, 29829), (141, 29841),

Gene: FreddyB_32 Start: 28802, Stop: 29032, Start Num: 96

Candidate Starts for FreddyB_32:

(52, 28652), (Start: 92 @28799 has 124 MA's), (Start: 96 @28802 has 9 MA's), (125, 28913), (127, 28919), (130, 28928), (135, 28946), (136, 28949), (141, 28961),

Gene: Fruitloop_31 Start: 28680, Stop: 28913, Start Num: 91

Candidate Starts for Fruitloop_31:

(Start: 91 @28680 has 104 MA's), (120, 28779), (127, 28800), (130, 28809), (141, 28842),

Gene: Fryberger_61 Start: 34752, Stop: 34964, Start Num: 95

Candidate Starts for Fryberger_61:

(Start: 95 @34752 has 64 MA's), (103, 34791), (136, 34896), (149, 34929),

Gene: G4_25 Start: 19311, Stop: 19532, Start Num: 91

Candidate Starts for G4_25:

(Start: 91 @19311 has 104 MA's), (114, 19389), (126, 19416), (136, 19449), (139, 19455), (140, 19458),

Gene: GAL1_23 Start: 20309, Stop: 20548, Start Num: 94

Candidate Starts for GAL1_23:

(41, 20060), (58, 20168), (Start: 94 @20309 has 30 MA's), (104, 20351), (110, 20381), (116, 20402), (117, 20405), (139, 20462),

Gene: GMA1_21 Start: 18613, Stop: 18861, Start Num: 91

Candidate Starts for GMA1_21:

(Start: 91 @18613 has 104 MA's), (104, 18658), (113, 18694), (120, 18718), (125, 18727), (139, 18769), (144, 18784),

Gene: GUmbie_32 Start: 28554, Stop: 28787, Start Num: 92

Candidate Starts for GUmbie_32:

(Start: 92 @28554 has 124 MA's), (Start: 96 @28557 has 9 MA's), (125, 28668), (127, 28674), (130, 28683), (135, 28701), (136, 28704), (141, 28716),

Gene: Galactic_34 Start: 29372, Stop: 29605, Start Num: 91

Candidate Starts for Galactic_34:

(34, 29084), (Start: 91 @29372 has 104 MA's), (120, 29471), (127, 29492), (130, 29501), (141, 29534),

Gene: Gallop_24 Start: 23254, Stop: 23496, Start Num: 94

Candidate Starts for Gallop_24:

(70, 23179), (72, 23191), (74, 23200), (77, 23203), (78, 23206), (79, 23215), (82, 23224), (84, 23227), (Start: 94 @23254 has 30 MA's), (112, 23335), (114, 23341), (121, 23356), (125, 23365), (135, 23398), (139, 23407), (143, 23419), (151, 23461),

Gene: GaloreK_28 Start: 25236, Stop: 25484, Start Num: 95

Candidate Starts for GaloreK_28:

(Start: 95 @25236 has 64 MA's),

Gene: Gandalph_33 Start: 28870, Stop: 29103, Start Num: 91
Candidate Starts for Gandalph_33:
(Start: 91 @28870 has 104 MA's), (120, 28969), (127, 28990), (130, 28999), (141, 29032),

Gene: Gavriela_28 Start: 25499, Stop: 25747, Start Num: 95
Candidate Starts for Gavriela_28:
(Start: 95 @25499 has 64 MA's),

Gene: Genie2_72 Start: 53095, Stop: 53346, Start Num: 93
Candidate Starts for Genie2_72:
(Start: 93 @53095 has 55 MA's), (104, 53137), (128, 53215), (157, 53323),

Gene: Geostin_44 Start: 27549, Stop: 27746, Start Num: 97
Candidate Starts for Geostin_44:
(Start: 97 @27549 has 23 MA's), (107, 27600),

Gene: Geralt_32 Start: 28536, Stop: 28769, Start Num: 92
Candidate Starts for Geralt_32:
(Start: 92 @28536 has 124 MA's), (Start: 96 @28539 has 9 MA's), (125, 28650), (127, 28656), (130, 28665), (135, 28683), (136, 28686), (141, 28698),

Gene: Gibbi_76 Start: 53241, Stop: 53492, Start Num: 93
Candidate Starts for Gibbi_76:
(Start: 93 @53241 has 55 MA's), (111, 53316),

Gene: GigiOuiOui_32 Start: 28666, Stop: 28899, Start Num: 92
Candidate Starts for GigiOuiOui_32:
(Start: 92 @28666 has 124 MA's), (Start: 96 @28669 has 9 MA's), (125, 28780), (127, 28786), (130, 28795), (135, 28813), (136, 28816), (141, 28828),

Gene: Girafales_33 Start: 28343, Stop: 28576, Start Num: 92
Candidate Starts for Girafales_33:
(52, 28196), (Start: 92 @28343 has 124 MA's), (Start: 96 @28346 has 9 MA's), (125, 28457), (127, 28463), (130, 28472), (135, 28490), (136, 28493), (141, 28505),

Gene: Girr_34 Start: 29563, Stop: 29805, Start Num: 88
Candidate Starts for Girr_34:
(28, 29137), (56, 29398), (Start: 88 @29563 has 6 MA's), (Start: 95 @29572 has 64 MA's), (Start: 96 @29575 has 9 MA's), (125, 29686), (127, 29692), (130, 29701), (135, 29719), (136, 29722), (141, 29734),

Gene: Glaske_28 Start: 25499, Stop: 25747, Start Num: 95
Candidate Starts for Glaske_28:
(Start: 95 @25499 has 64 MA's),

Gene: Goodman_31 Start: 22634, Stop: 22915, Start Num: 91
Candidate Starts for Goodman_31:
(45, 22421), (61, 22496), (63, 22508), (Start: 86 @22625 has 3 MA's), (Start: 91 @22634 has 104 MA's), (110, 22709), (113, 22721), (121, 22748), (126, 22763), (136, 22796), (150, 22859), (155, 22874),

Gene: Gorge_32 Start: 28766, Stop: 28999, Start Num: 92

Candidate Starts for Gorge_32:

(52, 28619), (Start: 92 @28766 has 124 MA's), (Start: 96 @28769 has 9 MA's), (125, 28880), (127, 28886), (130, 28895), (135, 28913), (136, 28916), (141, 28928),

Gene: GreaseLightnin_28 Start: 25491, Stop: 25739, Start Num: 95

Candidate Starts for GreaseLightnin_28:

(Start: 95 @25491 has 64 MA's),

Gene: Gremlin23_49 Start: 27549, Stop: 27746, Start Num: 97

Candidate Starts for Gremlin23_49:

(Start: 97 @27549 has 23 MA's), (107, 27600),

Gene: Grimmer_34 Start: 29257, Stop: 29490, Start Num: 92

Candidate Starts for Grimmer_34:

(52, 29110), (Start: 92 @29257 has 124 MA's), (Start: 96 @29260 has 9 MA's), (125, 29371), (130, 29386), (135, 29404), (136, 29407), (141, 29419),

Gene: Gudmit_20 Start: 18449, Stop: 18694, Start Num: 94

Candidate Starts for Gudmit_20:

(57, 18287), (71, 18386), (Start: 94 @18449 has 30 MA's), (104, 18491), (110, 18521), (136, 18596), (151, 18656), (153, 18659),

Gene: Guey18_67 Start: 36272, Stop: 36484, Start Num: 95

Candidate Starts for Guey18_67:

(Start: 95 @36272 has 64 MA's), (103, 36311), (136, 36416),

Gene: Guppsters_34 Start: 29052, Stop: 29285, Start Num: 91

Candidate Starts for Guppsters_34:

(34, 28764), (Start: 91 @29052 has 104 MA's), (120, 29151), (127, 29172), (130, 29181), (141, 29214),

Gene: Gustav_22 Start: 19031, Stop: 19273, Start Num: 94

Candidate Starts for Gustav_22:

(35, 18722), (Start: 91 @19028 has 104 MA's), (Start: 94 @19031 has 30 MA's), (139, 19181), (149, 19208),

Gene: HC_29 Start: 25369, Stop: 25614, Start Num: 95

Candidate Starts for HC_29:

(1, 23902), (2, 23947), (3, 24022), (4, 24127), (5, 24286), (12, 24532), (18, 24748), (23, 24853), (24, 24871), (67, 25264), (75, 25312), (Start: 95 @25369 has 64 MA's), (123, 25474), (127, 25489),

Gene: HUHilltop_28 Start: 25240, Stop: 25488, Start Num: 95

Candidate Starts for HUHilltop_28:

(Start: 95 @25240 has 64 MA's),

Gene: Hades_33 Start: 28863, Stop: 29096, Start Num: 91

Candidate Starts for Hades_33:

(33, 28572), (34, 28575), (36, 28611), (Start: 91 @28863 has 104 MA's), (120, 28962), (127, 28983), (130, 28992), (141, 29025),

Gene: Hamulus_33 Start: 29517, Stop: 29759, Start Num: 88

Candidate Starts for Hamulus_33:

(28, 29091), (56, 29352), (Start: 88 @29517 has 6 MA's), (Start: 95 @29526 has 64 MA's), (Start: 96 @29529 has 9 MA's), (125, 29640), (127, 29646), (130, 29655), (135, 29673), (136, 29676), (141,

29688),

Gene: Harley_32 Start: 28472, Stop: 28705, Start Num: 92

Candidate Starts for Harley_32:

(32, 28163), (39, 28229), (52, 28325), (Start: 92 @28472 has 124 MA's), (Start: 96 @28475 has 9 MA's), (125, 28586), (127, 28592), (130, 28601), (135, 28619), (136, 28622), (141, 28634),

Gene: HaugeAnator_49 Start: 27959, Stop: 28156, Start Num: 97

Candidate Starts for HaugeAnator_49:

(Start: 97 @27959 has 23 MA's), (103, 27992), (112, 28025),

Gene: Hegedechwinu_33 Start: 28561, Stop: 28794, Start Num: 91

Candidate Starts for Hegedechwinu_33:

(Start: 91 @28561 has 104 MA's), (120, 28660), (127, 28681), (130, 28690), (141, 28723),

Gene: Hlubikazi_33 Start: 29358, Stop: 29591, Start Num: 91

Candidate Starts for Hlubikazi_33:

(Start: 91 @29358 has 104 MA's), (120, 29457), (127, 29478), (130, 29487), (141, 29520),

Gene: Hortus1_56 Start: 35872, Stop: 36087, Start Num: 87

Candidate Starts for Hortus1_56:

(68, 35782), (Start: 87 @35872 has 6 MA's), (Start: 89 @35878 has 8 MA's),

Gene: Htur_30 Start: 22726, Stop: 23004, Start Num: 91

Candidate Starts for Htur_30:

(45, 22486), (61, 22588), (Start: 86 @22717 has 3 MA's), (Start: 91 @22726 has 104 MA's), (110, 22801), (113, 22813), (121, 22840), (136, 22888), (155, 22966),

Gene: Hum25_24 Start: 17738, Stop: 17992, Start Num: 94

Candidate Starts for Hum25_24:

(Start: 94 @17738 has 30 MA's), (127, 17864), (135, 17891),

Gene: lbOuu_33 Start: 29111, Stop: 29344, Start Num: 91

Candidate Starts for lbOuu_33:

(Start: 91 @29111 has 104 MA's), (120, 29210), (127, 29231), (130, 29240), (135, 29258), (136, 29261), (141, 29273),

Gene: lbhubesi_32 Start: 28479, Stop: 28712, Start Num: 92

Candidate Starts for lbhubesi_32:

(32, 28170), (39, 28236), (52, 28332), (Start: 92 @28479 has 124 MA's), (Start: 96 @28482 has 9 MA's), (125, 28593), (127, 28599), (130, 28608), (135, 28626), (136, 28629), (141, 28641),

Gene: IchabodCrane_69 Start: 52830, Stop: 53081, Start Num: 93

Candidate Starts for IchabodCrane_69:

(Start: 93 @52830 has 55 MA's), (111, 52905),

Gene: Immanuel3_49 Start: 27963, Stop: 28160, Start Num: 97

Candidate Starts for Immanuel3_49:

(Start: 97 @27963 has 23 MA's), (103, 27996), (112, 28029),

Gene: Impisi_28 Start: 24168, Stop: 24413, Start Num: 95

Candidate Starts for Impisi_28:

(6, 23151), (12, 23331), (18, 23547), (23, 23652), (24, 23670), (67, 24063), (75, 24111), (Start: 95 @24168 has 64 MA's), (123, 24273), (127, 24288), (148, 24351), (150, 24381),

Gene: InLimbo_22 Start: 18439, Stop: 18675, Start Num: 94

Candidate Starts for InLimbo_22:

(Start: 94 @18439 has 30 MA's), (104, 18481), (110, 18511), (116, 18532), (117, 18535), (136, 18586), (139, 18592),

Gene: IndiRoo_30 Start: 20923, Stop: 21204, Start Num: 86

Candidate Starts for IndiRoo_30:

(Start: 86 @20923 has 3 MA's), (Start: 91 @20932 has 104 MA's), (113, 21019), (136, 21094),

Gene: Inventum_32 Start: 29216, Stop: 29449, Start Num: 92

Candidate Starts for Inventum_32:

(Start: 92 @29216 has 124 MA's), (Start: 96 @29219 has 9 MA's), (125, 29330), (127, 29336), (130, 29345), (135, 29363), (136, 29366), (141, 29378),

Gene: IrishSherpFalk_34 Start: 30123, Stop: 30356, Start Num: 91

Candidate Starts for IrishSherpFalk_34:

(Start: 91 @30123 has 104 MA's), (120, 30222), (127, 30243), (130, 30252), (141, 30285),

Gene: JPandJE_50 Start: 28427, Stop: 28624, Start Num: 97

Candidate Starts for JPandJE_50:

(Start: 97 @28427 has 23 MA's), (103, 28460), (112, 28493),

Gene: Jabbawokkie_40 Start: 29390, Stop: 29647, Start Num: 93

Candidate Starts for Jabbawokkie_40:

(Start: 93 @29390 has 55 MA's), (100, 29408), (110, 29453), (111, 29456), (123, 29495), (128, 29513), (136, 29540), (139, 29546), (140, 29549),

Gene: JalFarm20_35 Start: 29611, Stop: 29844, Start Num: 91

Candidate Starts for JalFarm20_35:

(Start: 91 @29611 has 104 MA's), (120, 29710), (127, 29731), (130, 29740), (141, 29773),

Gene: James_32 Start: 28723, Stop: 28956, Start Num: 92

Candidate Starts for James_32:

(52, 28576), (Start: 92 @28723 has 124 MA's), (Start: 96 @28726 has 9 MA's), (125, 28837), (127, 28843), (130, 28852), (135, 28870), (136, 28873), (141, 28885),

Gene: Jant_33 Start: 28705, Stop: 28938, Start Num: 91

Candidate Starts for Jant_33:

(34, 28417), (Start: 91 @28705 has 104 MA's), (120, 28804), (127, 28825), (130, 28834), (141, 28867),

Gene: Jacob_32 Start: 28759, Stop: 28992, Start Num: 91

Candidate Starts for Jacob_32:

(33, 28468), (34, 28471), (36, 28507), (Start: 91 @28759 has 104 MA's), (120, 28858), (127, 28879), (130, 28888), (141, 28921),

Gene: Jay2Jay_75 Start: 54649, Stop: 54900, Start Num: 93

Candidate Starts for Jay2Jay_75:

(Start: 93 @54649 has 55 MA's), (130, 54775),

Gene: Jebeks_28 Start: 25225, Stop: 25473, Start Num: 95

Candidate Starts for Jebeks_28:
(Start: 95 @25225 has 64 MA's),

Gene: Jennelsea_26 Start: 24671, Stop: 24904, Start Num: 91
Candidate Starts for Jennelsea_26:
(33, 24380), (34, 24383), (36, 24419), (Start: 91 @24671 has 104 MA's), (120, 24770), (127, 24791),
(130, 24800), (141, 24833),

Gene: Jera_31 Start: 21768, Stop: 22046, Start Num: 91
Candidate Starts for Jera_31:
(45, 21537), (61, 21630), (Start: 86 @21759 has 3 MA's), (Start: 91 @21768 has 104 MA's), (113,
21855), (126, 21897), (136, 21930), (155, 22008),

Gene: JimJam_72 Start: 53204, Stop: 53455, Start Num: 93
Candidate Starts for JimJam_72:
(Start: 93 @53204 has 55 MA's), (111, 53279),

Gene: Jinglebell_31 Start: 28744, Stop: 28977, Start Num: 92
Candidate Starts for Jinglebell_31:
(42, 28528), (Start: 92 @28744 has 124 MA's), (Start: 96 @28747 has 9 MA's), (125, 28858), (127,
28864), (130, 28873), (135, 28891), (136, 28894), (141, 28906),

Gene: Job42_36 Start: 30532, Stop: 30765, Start Num: 92
Candidate Starts for Job42_36:
(39, 30289), (52, 30385), (Start: 92 @30532 has 124 MA's), (Start: 96 @30535 has 9 MA's), (125,
30646), (127, 30652), (130, 30661), (135, 30679), (136, 30682), (141, 30694),

Gene: JoeyJr_32 Start: 28704, Stop: 28937, Start Num: 92
Candidate Starts for JoeyJr_32:
(Start: 92 @28704 has 124 MA's), (Start: 96 @28707 has 9 MA's), (125, 28818), (127, 28824), (130,
28833), (135, 28851), (136, 28854), (141, 28866),

Gene: Johann_31 Start: 22634, Stop: 22915, Start Num: 91
Candidate Starts for Johann_31:
(45, 22421), (61, 22496), (63, 22508), (Start: 86 @22625 has 3 MA's), (Start: 91 @22634 has 104
MA's), (110, 22709), (113, 22721), (121, 22748), (126, 22763), (136, 22796), (150, 22859), (155,
22874),

Gene: Jollison_71 Start: 53086, Stop: 53337, Start Num: 93
Candidate Starts for Jollison_71:
(Start: 93 @53086 has 55 MA's), (111, 53161),

Gene: Juice456_34 Start: 29832, Stop: 30065, Start Num: 91
Candidate Starts for Juice456_34:
(Start: 91 @29832 has 104 MA's), (120, 29931), (127, 29952), (130, 29961), (141, 29994),

Gene: Jung_27 Start: 25202, Stop: 25450, Start Num: 95
Candidate Starts for Jung_27:
(Start: 95 @25202 has 64 MA's),

Gene: Juniormint_28 Start: 25278, Stop: 25526, Start Num: 95
Candidate Starts for Juniormint_28:
(Start: 95 @25278 has 64 MA's),

Gene: Juniper1_32 Start: 28502, Stop: 28735, Start Num: 92

Candidate Starts for Juniper1_32:

(19, 27944), (21, 28019), (25, 28058), (26, 28091), (29, 28124), (33, 28205), (34, 28208), (42, 28286), (Start: 92 @28502 has 124 MA's), (Start: 96 @28505 has 9 MA's), (125, 28616), (130, 28631), (135, 28649), (136, 28652), (141, 28664),

Gene: Karhdo_32 Start: 28668, Stop: 28901, Start Num: 92

Candidate Starts for Karhdo_32:

(Start: 92 @28668 has 124 MA's), (Start: 96 @28671 has 9 MA's), (125, 28782), (127, 28788), (130, 28797), (135, 28815), (136, 28818), (141, 28830),

Gene: Kari_28 Start: 25237, Stop: 25485, Start Num: 95

Candidate Starts for Kari_28:

(Start: 95 @25237 has 64 MA's),

Gene: Karimac_71 Start: 53235, Stop: 53486, Start Num: 93

Candidate Starts for Karimac_71:

(Start: 93 @53235 has 55 MA's), (111, 53310),

Gene: Keelan_59 Start: 34992, Stop: 35204, Start Num: 95

Candidate Starts for Keelan_59:

(Start: 95 @34992 has 64 MA's), (103, 35031), (104, 35034), (136, 35136),

Gene: KentuckyRacer_72 Start: 53019, Stop: 53270, Start Num: 93

Candidate Starts for KentuckyRacer_72:

(Start: 93 @53019 has 55 MA's), (111, 53094),

Gene: Kenuha5_29 Start: 27646, Stop: 27879, Start Num: 91

Candidate Starts for Kenuha5_29:

(34, 27358), (Start: 91 @27646 has 104 MA's), (120, 27745), (127, 27766), (130, 27775), (141, 27808),

Gene: Kersh_31 Start: 29742, Stop: 29975, Start Num: 92

Candidate Starts for Kersh_31:

(52, 29595), (Start: 92 @29742 has 124 MA's), (Start: 96 @29745 has 9 MA's), (125, 29856), (127, 29862), (130, 29871), (135, 29889), (136, 29892), (141, 29904),

Gene: KilKor_28 Start: 25499, Stop: 25747, Start Num: 95

Candidate Starts for KilKor_28:

(Start: 95 @25499 has 64 MA's),

Gene: Kimberlium_34 Start: 29660, Stop: 29893, Start Num: 92

Candidate Starts for Kimberlium_34:

(52, 29513), (Start: 92 @29660 has 124 MA's), (Start: 96 @29663 has 9 MA's), (125, 29774), (127, 29780), (130, 29789), (135, 29807), (136, 29810), (141, 29822),

Gene: KingJulian_32 Start: 28730, Stop: 28963, Start Num: 92

Candidate Starts for KingJulian_32:

(39, 28487), (52, 28583), (Start: 92 @28730 has 124 MA's), (Start: 96 @28733 has 9 MA's), (125, 28844), (127, 28850), (130, 28859), (135, 28877), (136, 28880), (141, 28892),

Gene: KingMidas_34 Start: 30399, Stop: 30632, Start Num: 92

Candidate Starts for KingMidas_34:

(Start: 92 @30399 has 124 MA's), (Start: 96 @30402 has 9 MA's), (125, 30513), (127, 30519), (130, 30528), (135, 30546), (136, 30549), (141, 30561),

Gene: Kingsley_31 Start: 28346, Stop: 28588, Start Num: 88

Candidate Starts for Kingsley_31:

(28, 27920), (56, 28181), (Start: 88 @28346 has 6 MA's), (Start: 95 @28355 has 64 MA's), (Start: 96 @28358 has 9 MA's), (125, 28469), (127, 28475), (130, 28484), (135, 28502), (136, 28505), (141, 28517),

Gene: Koella_26 Start: 24683, Stop: 24916, Start Num: 91

Candidate Starts for Koella_26:

(33, 24392), (34, 24395), (36, 24431), (Start: 91 @24683 has 104 MA's), (120, 24782), (127, 24803), (130, 24812), (141, 24845),

Gene: Krakatau_33 Start: 29229, Stop: 29462, Start Num: 92

Candidate Starts for Krakatau_33:

(52, 29082), (Start: 92 @29229 has 124 MA's), (Start: 96 @29232 has 9 MA's), (125, 29343), (127, 29349), (130, 29358), (135, 29376), (136, 29379), (141, 29391),

Gene: KristaRAM_33 Start: 29355, Stop: 29588, Start Num: 91

Candidate Starts for KristaRAM_33:

(Start: 91 @29355 has 104 MA's), (120, 29454), (127, 29475), (130, 29484), (141, 29517),

Gene: Ksquared_28 Start: 25256, Stop: 25504, Start Num: 95

Candidate Starts for Ksquared_28:

(Start: 95 @25256 has 64 MA's),

Gene: Kumquat_47 Start: 27506, Stop: 27703, Start Num: 97

Candidate Starts for Kumquat_47:

(Start: 97 @27506 has 23 MA's), (104, 27542), (118, 27590), (147, 27665),

Gene: Labella_32 Start: 22644, Stop: 22922, Start Num: 91

Candidate Starts for Labella_32:

(45, 22413), (61, 22506), (66, 22533), (Start: 86 @22635 has 3 MA's), (Start: 91 @22644 has 104 MA's), (113, 22731), (126, 22773), (136, 22806), (155, 22884),

Gene: Lamberg_19 Start: 17610, Stop: 17849, Start Num: 94

Candidate Starts for Lamberg_19:

(58, 17475), (Start: 94 @17610 has 30 MA's), (110, 17682), (139, 17763), (150, 17814), (151, 17817),

Gene: Langerak_28 Start: 25224, Stop: 25472, Start Num: 95

Candidate Starts for Langerak_28:

(Start: 95 @25224 has 64 MA's),

Gene: LastJedi_26 Start: 24714, Stop: 24947, Start Num: 91

Candidate Starts for LastJedi_26:

(33, 24423), (34, 24426), (36, 24462), (Start: 91 @24714 has 104 MA's), (120, 24813), (127, 24834), (130, 24843), (141, 24876),

Gene: Latretium_33 Start: 29314, Stop: 29547, Start Num: 91

Candidate Starts for Latretium_33:

(Start: 91 @29314 has 104 MA's), (120, 29413), (127, 29434), (130, 29443), (141, 29476),

Gene: Leozinho_34 Start: 28957, Stop: 29190, Start Num: 91
Candidate Starts for Leozinho_34:
(Start: 91 @28957 has 104 MA's), (120, 29056), (127, 29077), (130, 29086), (141, 29119),

Gene: Leperchaun_32 Start: 28612, Stop: 28842, Start Num: 96
Candidate Starts for Leperchaun_32:
(42, 28393), (Start: 92 @28609 has 124 MA's), (Start: 96 @28612 has 9 MA's), (125, 28723), (127, 28729), (130, 28738), (135, 28756), (136, 28759), (141, 28771),

Gene: LilMartin_67 Start: 52109, Stop: 52360, Start Num: 93
Candidate Starts for LilMartin_67:
(Start: 93 @52109 has 55 MA's), (104, 52151),

Gene: LilMoolah_32 Start: 28807, Stop: 29040, Start Num: 91
Candidate Starts for LilMoolah_32:
(33, 28516), (34, 28519), (36, 28555), (Start: 91 @28807 has 104 MA's), (120, 28906), (127, 28927), (130, 28936), (141, 28969),

Gene: LilSaint_69 Start: 52373, Stop: 52624, Start Num: 93
Candidate Starts for LilSaint_69:
(Start: 93 @52373 has 55 MA's), (112, 52454), (157, 52601),

Gene: LilSpotty_33 Start: 26076, Stop: 26330, Start Num: 95
Candidate Starts for LilSpotty_33:
(56, 25902), (Start: 88 @26067 has 6 MA's), (Start: 95 @26076 has 64 MA's), (110, 26139), (127, 26196),

Gene: Lilas_23 Start: 20953, Stop: 21192, Start Num: 94
Candidate Starts for Lilas_23:
(64, 20845), (Start: 94 @20953 has 30 MA's), (104, 20995), (116, 21046), (117, 21049), (136, 21100), (139, 21106),

Gene: Linayshia_30 Start: 22682, Stop: 22969, Start Num: 86
Candidate Starts for Linayshia_30:
(45, 22478), (61, 22553), (63, 22565), (66, 22580), (Start: 86 @22682 has 3 MA's), (Start: 91 @22691 has 104 MA's), (110, 22766), (113, 22778), (121, 22805), (136, 22853), (155, 22931),

Gene: LittleShirley_35 Start: 30174, Stop: 30407, Start Num: 92
Candidate Starts for LittleShirley_35:
(52, 30027), (Start: 92 @30174 has 124 MA's), (Start: 96 @30177 has 9 MA's), (125, 30288), (127, 30294), (130, 30303), (135, 30321), (136, 30324), (141, 30336),

Gene: Lizziana_32 Start: 28682, Stop: 28915, Start Num: 91
Candidate Starts for Lizziana_32:
(33, 28391), (34, 28394), (36, 28430), (Start: 91 @28682 has 104 MA's), (120, 28781), (127, 28802), (130, 28811), (141, 28844),

Gene: Llama_32 Start: 28743, Stop: 28976, Start Num: 92
Candidate Starts for Llama_32:
(42, 28527), (Start: 92 @28743 has 124 MA's), (Start: 96 @28746 has 9 MA's), (125, 28857), (127, 28863), (130, 28872), (135, 28890), (136, 28893), (141, 28905),

Gene: Llij_32 Start: 28514, Stop: 28747, Start Num: 92

Candidate Starts for Llij_32:

(52, 28367), (Start: 92 @28514 has 124 MA's), (Start: 96 @28517 has 9 MA's), (125, 28628), (127, 28634), (130, 28643), (135, 28661), (136, 28664), (141, 28676),

Gene: Lorde_34 Start: 28771, Stop: 29004, Start Num: 95

Candidate Starts for Lorde_34:

(28, 28336), (56, 28597), (Start: 88 @28762 has 6 MA's), (Start: 95 @28771 has 64 MA's), (Start: 96 @28774 has 9 MA's), (120, 28870), (125, 28885), (127, 28891), (130, 28900), (135, 28918), (136, 28921), (141, 28933),

Gene: Lton_19 Start: 17639, Stop: 17878, Start Num: 94

Candidate Starts for Lton_19:

(Start: 94 @17639 has 30 MA's), (110, 17711), (139, 17792), (150, 17843), (151, 17846),

Gene: Lucia_34 Start: 28645, Stop: 28878, Start Num: 92

Candidate Starts for Lucia_34:

(32, 28336), (35, 28384), (39, 28402), (52, 28498), (Start: 92 @28645 has 124 MA's), (Start: 96 @28648 has 9 MA's), (125, 28759), (127, 28765), (130, 28774), (135, 28792), (136, 28795), (141, 28807),

Gene: Lucky10_21 Start: 18592, Stop: 18828, Start Num: 94

Candidate Starts for Lucky10_21:

(Start: 89 @18586 has 8 MA's), (Start: 94 @18592 has 30 MA's), (104, 18634), (110, 18664), (116, 18685), (117, 18688), (136, 18739), (139, 18745),

Gene: LukeCage_71 Start: 52989, Stop: 53240, Start Num: 93

Candidate Starts for LukeCage_71:

(Start: 93 @52989 has 55 MA's), (111, 53064), (112, 53070), (151, 53196),

Gene: LunaBlu_35 Start: 29546, Stop: 29779, Start Num: 91

Candidate Starts for LunaBlu_35:

(34, 29258), (Start: 91 @29546 has 104 MA's), (120, 29645), (127, 29666), (130, 29675), (141, 29708),

Gene: LunaStella_34 Start: 29277, Stop: 29540, Start Num: 90

Candidate Starts for LunaStella_34:

(50, 29070), (51, 29085), (72, 29220), (Start: 90 @29277 has 3 MA's), (137, 29442), (140, 29448), (142, 29451), (148, 29469), (158, 29526),

Gene: MadMen_30 Start: 27967, Stop: 28200, Start Num: 91

Candidate Starts for MadMen_30:

(34, 27679), (Start: 91 @27967 has 104 MA's), (120, 28066), (127, 28087), (130, 28096), (141, 28129),

Gene: Madiba_30 Start: 27447, Stop: 27677, Start Num: 96

Candidate Starts for Madiba_30:

(32, 27135), (39, 27201), (52, 27297), (Start: 92 @27444 has 124 MA's), (Start: 96 @27447 has 9 MA's), (125, 27558), (127, 27564), (130, 27573), (135, 27591), (136, 27594), (141, 27606),

Gene: Mahavrat_32 Start: 28574, Stop: 28807, Start Num: 92

Candidate Starts for Mahavrat_32:

(19, 28016), (21, 28091), (25, 28130), (26, 28163), (29, 28196), (33, 28277), (34, 28280), (42, 28358), (Start: 92 @28574 has 124 MA's), (Start: 96 @28577 has 9 MA's), (125, 28688), (127, 28694), (130, 28703), (135, 28721), (136, 28724), (141, 28736),

Gene: Mahdia_22 Start: 18708, Stop: 18950, Start Num: 94
Candidate Starts for Mahdia_22:
(Start: 94 @18708 has 30 MA's), (130, 18840), (151, 18912),

Gene: Majeke_28 Start: 25246, Stop: 25494, Start Num: 95
Candidate Starts for Majeke_28:
(Start: 95 @25246 has 64 MA's),

Gene: Malithi_28 Start: 25165, Stop: 25413, Start Num: 95
Candidate Starts for Malithi_28:
(Start: 95 @25165 has 64 MA's),

Gene: Mandlovu_33 Start: 29300, Stop: 29533, Start Num: 91
Candidate Starts for Mandlovu_33:
(Start: 91 @29300 has 104 MA's), (120, 29399), (127, 29420), (130, 29429), (141, 29462),

Gene: Mangethe_28 Start: 25246, Stop: 25494, Start Num: 95
Candidate Starts for Mangethe_28:
(Start: 95 @25246 has 64 MA's),

Gene: Mantra_32 Start: 28633, Stop: 28866, Start Num: 92
Candidate Starts for Mantra_32:
(52, 28486), (Start: 92 @28633 has 124 MA's), (Start: 96 @28636 has 9 MA's), (125, 28747), (127, 28753), (130, 28762), (135, 28780), (136, 28783), (141, 28795),

Gene: Manuel_46 Start: 27594, Stop: 27791, Start Num: 97
Candidate Starts for Manuel_46:
(Start: 95 @27588 has 64 MA's), (Start: 97 @27594 has 23 MA's), (118, 27678), (147, 27753),

Gene: Maravista_32 Start: 28464, Stop: 28697, Start Num: 91
Candidate Starts for Maravista_32:
(33, 28173), (34, 28176), (36, 28212), (Start: 91 @28464 has 104 MA's), (120, 28563), (127, 28584), (130, 28593), (141, 28626),

Gene: Marker_33 Start: 28403, Stop: 28633, Start Num: 96
Candidate Starts for Marker_33:
(Start: 92 @28400 has 124 MA's), (Start: 96 @28403 has 9 MA's), (125, 28514), (127, 28520), (130, 28529), (135, 28547), (136, 28550), (141, 28562),

Gene: Marsus_68 Start: 52381, Stop: 52632, Start Num: 93
Candidate Starts for Marsus_68:
(Start: 93 @52381 has 55 MA's),

Gene: Marteena_23 Start: 20804, Stop: 21043, Start Num: 94
Candidate Starts for Marteena_23:
(64, 20696), (Start: 94 @20804 has 30 MA's), (104, 20846), (116, 20897), (117, 20900), (136, 20951), (139, 20957),

Gene: Martik_32 Start: 28709, Stop: 28942, Start Num: 91
Candidate Starts for Martik_32:
(33, 28418), (34, 28421), (36, 28457), (Start: 91 @28709 has 104 MA's), (120, 28808), (127, 28829), (130, 28838), (141, 28871),

Gene: Matteo_19 Start: 17541, Stop: 17786, Start Num: 89
Candidate Starts for Matteo_19:
(Start: 89 @17541 has 8 MA's), (Start: 94 @17547 has 30 MA's), (110, 17619), (139, 17700), (150, 17751), (151, 17754),

Gene: Mattes_32 Start: 28723, Stop: 28956, Start Num: 92
Candidate Starts for Mattes_32:
(52, 28576), (Start: 92 @28723 has 124 MA's), (Start: 96 @28726 has 9 MA's), (125, 28837), (127, 28843), (130, 28852), (135, 28870), (136, 28873), (141, 28885),

Gene: Megiddo_28 Start: 25499, Stop: 25747, Start Num: 95
Candidate Starts for Megiddo_28:
(Start: 95 @25499 has 64 MA's),

Gene: Melissauren88_32 Start: 28676, Stop: 28909, Start Num: 91
Candidate Starts for Melissauren88_32:
(Start: 91 @28676 has 104 MA's), (120, 28775), (127, 28796), (130, 28805), (141, 28838),

Gene: MilanaBonita_26 Start: 24607, Stop: 24840, Start Num: 91
Candidate Starts for MilanaBonita_26:
(Start: 91 @24607 has 104 MA's), (120, 24706), (127, 24727), (130, 24736), (141, 24769),

Gene: Milani_31 Start: 21543, Stop: 21809, Start Num: 91
Candidate Starts for Milani_31:
(Start: 91 @21543 has 104 MA's), (113, 21630), (121, 21657), (126, 21672), (136, 21705),

Gene: Mildred21_68 Start: 52306, Stop: 52557, Start Num: 93
Candidate Starts for Mildred21_68:
(Start: 93 @52306 has 55 MA's), (149, 52486),

Gene: MilleniumForce_33 Start: 29468, Stop: 29701, Start Num: 91
Candidate Starts for MilleniumForce_33:
(Start: 91 @29468 has 104 MA's), (120, 29567), (127, 29588), (130, 29597), (141, 29630),

Gene: MindFlayer_70 Start: 52737, Stop: 52988, Start Num: 93
Candidate Starts for MindFlayer_70:
(Start: 93 @52737 has 55 MA's), (111, 52812),

Gene: MinionDave_35 Start: 29705, Stop: 29938, Start Num: 91
Candidate Starts for MinionDave_35:
(Start: 91 @29705 has 104 MA's), (120, 29804), (127, 29825), (130, 29834), (141, 29867),

Gene: Minnie_34 Start: 29518, Stop: 29751, Start Num: 92
Candidate Starts for Minnie_34:
(32, 29209), (39, 29275), (52, 29371), (Start: 92 @29518 has 124 MA's), (Start: 96 @29521 has 9 MA's), (125, 29632), (127, 29638), (130, 29647), (135, 29665), (136, 29668), (141, 29680),

Gene: Misha28_33 Start: 28418, Stop: 28651, Start Num: 92
Candidate Starts for Misha28_33:
(Start: 92 @28418 has 124 MA's), (Start: 96 @28421 has 9 MA's), (125, 28532), (127, 28538), (130, 28547), (135, 28565), (136, 28568), (141, 28580),

Gene: MisterCuddles_34 Start: 29563, Stop: 29805, Start Num: 88

Candidate Starts for MisterCuddles_34:

(28, 29137), (56, 29398), (Start: 88 @29563 has 6 MA's), (Start: 95 @29572 has 64 MA's), (Start: 96 @29575 has 9 MA's), (125, 29686), (127, 29692), (130, 29701), (135, 29719), (136, 29722), (141, 29734),

Gene: Mistmere_57 Start: 34724, Stop: 34936, Start Num: 89

Candidate Starts for Mistmere_57:

(38, 34445), (43, 34487), (46, 34499), (48, 34520), (54, 34550), (55, 34553), (Start: 89 @34724 has 8 MA's), (102, 34763), (139, 34889),

Gene: Modragons_32 Start: 28588, Stop: 28821, Start Num: 92

Candidate Starts for Modragons_32:

(42, 28372), (Start: 92 @28588 has 124 MA's), (Start: 96 @28591 has 9 MA's), (125, 28702), (127, 28708), (130, 28717), (135, 28735), (136, 28738), (141, 28750),

Gene: MooMoo_30 Start: 27824, Stop: 28087, Start Num: 90

Candidate Starts for MooMoo_30:

(72, 27767), (Start: 90 @27824 has 3 MA's), (137, 27989), (140, 27995), (142, 27998), (148, 28016), (158, 28073),

Gene: Moonbeam_33 Start: 29222, Stop: 29455, Start Num: 92

Candidate Starts for Moonbeam_33:

(39, 28979), (52, 29075), (Start: 92 @29222 has 124 MA's), (Start: 96 @29225 has 9 MA's), (125, 29336), (127, 29342), (130, 29351), (135, 29369), (136, 29372), (141, 29384),

Gene: Moosehead_19 Start: 17566, Stop: 17805, Start Num: 94

Candidate Starts for Moosehead_19:

(Start: 94 @17566 has 30 MA's), (104, 17608), (110, 17638), (116, 17659), (117, 17662), (136, 17713), (139, 17719),

Gene: Morkie_21 Start: 18439, Stop: 18675, Start Num: 94

Candidate Starts for Morkie_21:

(Start: 94 @18439 has 30 MA's), (104, 18481), (110, 18511), (116, 18532), (117, 18535), (136, 18586), (139, 18592),

Gene: Morrissey_23 Start: 19911, Stop: 20153, Start Num: 94

Candidate Starts for Morrissey_23:

(Start: 94 @19911 has 30 MA's), (130, 20043), (134, 20052),

Gene: Mova_33 Start: 28357, Stop: 28590, Start Num: 91

Candidate Starts for Mova_33:

(34, 28069), (Start: 91 @28357 has 104 MA's), (120, 28456), (127, 28477), (130, 28486), (141, 28519),

Gene: Mozy_34 Start: 29413, Stop: 29646, Start Num: 92

Candidate Starts for Mozy_34:

(Start: 92 @29413 has 124 MA's), (Start: 96 @29416 has 9 MA's), (125, 29527), (127, 29533), (130, 29542), (135, 29560), (136, 29563), (141, 29575),

Gene: Ms6_26 Start: 24139, Stop: 24372, Start Num: 91

Candidate Starts for Ms6_26:

(Start: 91 @24139 has 104 MA's), (120, 24238), (127, 24259), (130, 24268), (141, 24301),

Gene: Mugiwara_71 Start: 53488, Stop: 53739, Start Num: 93

Candidate Starts for Mugiwara_71:

(Start: 93 @53488 has 55 MA's), (104, 53530), (111, 53563), (151, 53695),

Gene: MulchExplorer_34 Start: 29662, Stop: 29892, Start Num: 96

Candidate Starts for MulchExplorer_34:

(52, 29512), (Start: 92 @29659 has 124 MA's), (Start: 96 @29662 has 9 MA's), (125, 29773), (127, 29779), (130, 29788), (135, 29806), (136, 29809), (141, 29821),

Gene: MulchMansion_67 Start: 52109, Stop: 52360, Start Num: 93

Candidate Starts for MulchMansion_67:

(Start: 93 @52109 has 55 MA's), (104, 52151),

Gene: MulchSalad_31 Start: 25420, Stop: 25653, Start Num: 91

Candidate Starts for MulchSalad_31:

(Start: 91 @25420 has 104 MA's), (120, 25519), (127, 25540), (130, 25549), (141, 25582),

Gene: Muntaha_47 Start: 44490, Stop: 44744, Start Num: 93

Candidate Starts for Muntaha_47:

(Start: 93 @44490 has 55 MA's), (151, 44703),

Gene: Mutaforma13_32 Start: 28792, Stop: 29025, Start Num: 91

Candidate Starts for Mutaforma13_32:

(Start: 91 @28792 has 104 MA's), (120, 28891), (127, 28912), (130, 28921), (141, 28954),

Gene: Mwanjiwa_33 Start: 28667, Stop: 28900, Start Num: 92

Candidate Starts for Mwanjiwa_33:

(Start: 92 @28667 has 124 MA's), (Start: 96 @28670 has 9 MA's), (125, 28781), (127, 28787), (130, 28796), (135, 28814), (136, 28817), (141, 28829),

Gene: Necropolis_28 Start: 25237, Stop: 25485, Start Num: 95

Candidate Starts for Necropolis_28:

(Start: 95 @25237 has 64 MA's),

Gene: Nettuno_19 Start: 17613, Stop: 17852, Start Num: 94

Candidate Starts for Nettuno_19:

(58, 17478), (Start: 94 @17613 has 30 MA's), (110, 17685), (139, 17766), (150, 17817), (151, 17820),

Gene: NewHope4_36 Start: 29348, Stop: 29581, Start Num: 91

Candidate Starts for NewHope4_36:

(Start: 91 @29348 has 104 MA's), (120, 29447), (127, 29468), (130, 29477), (141, 29510),

Gene: Nichirin_33 Start: 28772, Stop: 29005, Start Num: 92

Candidate Starts for Nichirin_33:

(13, 28052), (14, 28073), (15, 28124), (19, 28214), (21, 28289), (25, 28328), (26, 28361), (29, 28394), (33, 28475), (34, 28478), (42, 28556), (Start: 92 @28772 has 124 MA's), (Start: 96 @28775 has 9 MA's), (125, 28886), (127, 28892), (130, 28901), (135, 28919), (136, 28922), (141, 28934),

Gene: Nimbo_32 Start: 28540, Stop: 28773, Start Num: 92

Candidate Starts for Nimbo_32:

(Start: 92 @28540 has 124 MA's), (Start: 96 @28543 has 9 MA's), (125, 28654), (127, 28660), (130, 28669), (135, 28687), (136, 28690), (141, 28702),

Gene: Nitzel_33 Start: 29256, Stop: 29489, Start Num: 92

Candidate Starts for Nitzel_33:

(Start: 92 @29256 has 124 MA's), (Start: 96 @29259 has 9 MA's), (125, 29370), (127, 29376), (130, 29385), (135, 29403), (136, 29406), (141, 29418),

Gene: Nivrat_32 Start: 28681, Stop: 28914, Start Num: 91

Candidate Starts for Nivrat_32:

(33, 28390), (34, 28393), (36, 28429), (Start: 91 @28681 has 104 MA's), (120, 28780), (127, 28801), (130, 28810), (141, 28843),

Gene: NormanBulbieJr_32 Start: 28696, Stop: 28929, Start Num: 91

Candidate Starts for NormanBulbieJr_32:

(33, 28405), (34, 28408), (36, 28444), (Start: 91 @28696 has 104 MA's), (120, 28795), (127, 28816), (130, 28825), (141, 28858),

Gene: ODay_29 Start: 22346, Stop: 22588, Start Num: 89

Candidate Starts for ODay_29:

(Start: 89 @22346 has 8 MA's), (Start: 94 @22352 has 30 MA's), (104, 22394), (110, 22424), (116, 22445), (117, 22448), (136, 22499), (139, 22505),

Gene: Ochi17_30 Start: 28195, Stop: 28428, Start Num: 92

Candidate Starts for Ochi17_30:

(42, 27979), (Start: 92 @28195 has 124 MA's), (Start: 96 @28198 has 9 MA's), (125, 28309), (127, 28315), (130, 28324), (135, 28342), (136, 28345), (141, 28357),

Gene: OfUltron_32 Start: 28744, Stop: 28977, Start Num: 92

Candidate Starts for OfUltron_32:

(42, 28528), (Start: 92 @28744 has 124 MA's), (Start: 96 @28747 has 9 MA's), (125, 28858), (127, 28864), (130, 28873), (135, 28891), (136, 28894), (141, 28906),

Gene: Ogopogo_32 Start: 27888, Stop: 28121, Start Num: 91

Candidate Starts for Ogopogo_32:

(Start: 91 @27888 has 104 MA's), (120, 27987), (127, 28008), (130, 28017), (135, 28035), (136, 28038), (141, 28050),

Gene: Okabe_33 Start: 25582, Stop: 25815, Start Num: 92

Candidate Starts for Okabe_33:

(52, 25435), (Start: 92 @25582 has 124 MA's), (Start: 96 @25585 has 9 MA's), (125, 25696), (127, 25702), (130, 25711), (135, 25729), (136, 25732), (141, 25744),

Gene: Oksu_33 Start: 28588, Stop: 28821, Start Num: 92

Candidate Starts for Oksu_33:

(42, 28372), (Start: 92 @28588 has 124 MA's), (Start: 96 @28591 has 9 MA's), (125, 28702), (127, 28708), (130, 28717), (135, 28735), (136, 28738), (141, 28750),

Gene: OldBen_32 Start: 28571, Stop: 28804, Start Num: 92

Candidate Starts for OldBen_32:

(Start: 92 @28571 has 124 MA's), (Start: 96 @28574 has 9 MA's), (125, 28685), (127, 28691), (130, 28700), (135, 28718), (136, 28721), (141, 28733),

Gene: Olicious_49 Start: 27959, Stop: 28156, Start Num: 97

Candidate Starts for Olicious_49:

(Start: 97 @27959 has 23 MA's), (103, 27992), (112, 28025),

Gene: OlinDD_56 Start: 35871, Stop: 36086, Start Num: 87
Candidate Starts for OlinDD_56:
(68, 35781), (Start: 87 @35871 has 6 MA's), (Start: 89 @35877 has 8 MA's),

Gene: Olympi_32 Start: 22612, Stop: 22902, Start Num: 86
Candidate Starts for Olympi_32:
(45, 22408), (61, 22483), (63, 22495), (Start: 86 @22612 has 3 MA's), (Start: 91 @22621 has 104 MA's), (110, 22696), (113, 22708), (121, 22735), (126, 22750), (136, 22783), (150, 22846), (155, 22861),

Gene: OlympiaSaint_32 Start: 28985, Stop: 29218, Start Num: 92
Candidate Starts for OlympiaSaint_32:
(52, 28838), (Start: 92 @28985 has 124 MA's), (Start: 96 @28988 has 9 MA's), (125, 29099), (127, 29105), (130, 29114), (135, 29132), (136, 29135), (141, 29147),

Gene: Ovechkin_33 Start: 29544, Stop: 29777, Start Num: 95
Candidate Starts for Ovechkin_33:
(28, 29109), (56, 29370), (Start: 88 @29535 has 6 MA's), (Start: 95 @29544 has 64 MA's), (Start: 96 @29547 has 9 MA's), (125, 29658), (127, 29664), (130, 29673), (135, 29691), (136, 29694), (141, 29706),

Gene: OwlsT2W_33 Start: 28960, Stop: 29193, Start Num: 91
Candidate Starts for OwlsT2W_33:
(Start: 91 @28960 has 104 MA's), (120, 29059), (127, 29080), (130, 29089), (141, 29122),

Gene: PHappiness_32 Start: 28513, Stop: 28746, Start Num: 92
Candidate Starts for PHappiness_32:
(Start: 92 @28513 has 124 MA's), (Start: 96 @28516 has 9 MA's), (125, 28627), (127, 28633), (130, 28642), (135, 28660), (136, 28663), (141, 28675),

Gene: PMC_32 Start: 28514, Stop: 28747, Start Num: 92
Candidate Starts for PMC_32:
(52, 28367), (Start: 92 @28514 has 124 MA's), (Start: 96 @28517 has 9 MA's), (125, 28628), (127, 28634), (130, 28643), (135, 28661), (136, 28664), (141, 28676),

Gene: Pacc40_32 Start: 28705, Stop: 28938, Start Num: 92
Candidate Starts for Pacc40_32:
(42, 28489), (Start: 92 @28705 has 124 MA's), (Start: 96 @28708 has 9 MA's), (125, 28819), (127, 28825), (130, 28834), (135, 28852), (136, 28855), (141, 28867),

Gene: PaintedDog_31 Start: 27027, Stop: 27272, Start Num: 95
Candidate Starts for PaintedDog_31:
(9, 26148), (18, 26406), (23, 26511), (24, 26529), (67, 26922), (75, 26970), (Start: 95 @27027 has 64 MA's), (123, 27132), (127, 27147), (147, 27207),

Gene: PatoPoderoso_32 Start: 28730, Stop: 28963, Start Num: 92
Candidate Starts for PatoPoderoso_32:
(39, 28487), (52, 28583), (Start: 92 @28730 has 124 MA's), (Start: 96 @28733 has 9 MA's), (125, 28844), (127, 28850), (130, 28859), (135, 28877), (136, 28880), (141, 28892),

Gene: PeanutPie_28 Start: 25241, Stop: 25486, Start Num: 95
Candidate Starts for PeanutPie_28:
(Start: 95 @25241 has 64 MA's), (123, 25346),

Gene: Pepperoni_20 Start: 18419, Stop: 18658, Start Num: 94

Candidate Starts for Pepperoni_20:

(Start: 89 @18413 has 8 MA's), (Start: 94 @18419 has 30 MA's), (110, 18491), (139, 18572), (150, 18623), (151, 18626),

Gene: Percastrophe_49 Start: 27893, Stop: 28090, Start Num: 97

Candidate Starts for Percastrophe_49:

(Start: 97 @27893 has 23 MA's), (103, 27926), (112, 27959),

Gene: Peridot_37 Start: 30033, Stop: 30266, Start Num: 92

Candidate Starts for Peridot_37:

(52, 29886), (Start: 92 @30033 has 124 MA's), (Start: 96 @30036 has 9 MA's), (125, 30147), (127, 30153), (130, 30162), (135, 30180), (136, 30183), (141, 30195),

Gene: PermaG_31 Start: 22670, Stop: 22951, Start Num: 91

Candidate Starts for PermaG_31:

(Start: 91 @22670 has 104 MA's), (110, 22745), (113, 22757), (121, 22784), (126, 22799), (136, 22832), (150, 22895), (155, 22910),

Gene: Phalconet_32 Start: 28642, Stop: 28875, Start Num: 91

Candidate Starts for Phalconet_32:

(Start: 91 @28642 has 104 MA's), (120, 28741), (127, 28762), (130, 28771), (141, 28804),

Gene: Phalm_28 Start: 25499, Stop: 25747, Start Num: 95

Candidate Starts for Phalm_28:

(Start: 95 @25499 has 64 MA's),

Gene: Phanphagia_29 Start: 27665, Stop: 27898, Start Num: 91

Candidate Starts for Phanphagia_29:

(Start: 91 @27665 has 104 MA's), (120, 27764), (127, 27785), (130, 27794), (141, 27827),

Gene: PhaoMing_20 Start: 19060, Stop: 19296, Start Num: 94

Candidate Starts for PhaoMing_20:

(Start: 89 @19054 has 8 MA's), (Start: 94 @19060 has 30 MA's), (104, 19102), (110, 19132), (116, 19153), (117, 19156),

Gene: Phasih_33 Start: 29091, Stop: 29324, Start Num: 92

Candidate Starts for Phasih_33:

(Start: 92 @29091 has 124 MA's), (Start: 96 @29094 has 9 MA's), (125, 29205), (127, 29211), (130, 29220), (135, 29238), (136, 29241), (141, 29253),

Gene: Phatniss_33 Start: 29031, Stop: 29264, Start Num: 92

Candidate Starts for Phatniss_33:

(52, 28884), (Start: 92 @29031 has 124 MA's), (Start: 96 @29034 has 9 MA's), (125, 29145), (127, 29151), (130, 29160), (135, 29178), (136, 29181), (141, 29193),

Gene: Phegasus_28 Start: 25246, Stop: 25494, Start Num: 95

Candidate Starts for Phegasus_28:

(Start: 95 @25246 has 64 MA's),

Gene: PhesterPhotato_32 Start: 28562, Stop: 28795, Start Num: 91

Candidate Starts for PhesterPhotato_32:

(Start: 91 @28562 has 104 MA's), (120, 28661), (127, 28682), (130, 28691), (141, 28724),

Gene: Philus_32 Start: 28608, Stop: 28841, Start Num: 92

Candidate Starts for Philus_32:

(52, 28461), (Start: 92 @28608 has 124 MA's), (Start: 96 @28611 has 9 MA's), (125, 28722), (127, 28728), (130, 28737), (135, 28755), (136, 28758), (141, 28770),

Gene: Phineas_28 Start: 25611, Stop: 25859, Start Num: 95

Candidate Starts for Phineas_28:

(Start: 95 @25611 has 64 MA's),

Gene: PhlipPhlop_33 Start: 30146, Stop: 30379, Start Num: 92

Candidate Starts for PhlipPhlop_33:

(52, 29999), (Start: 92 @30146 has 124 MA's), (Start: 96 @30149 has 9 MA's), (125, 30260), (127, 30266), (130, 30275), (135, 30293), (136, 30296), (141, 30308),

Gene: PhorbesPhlower_21 Start: 18439, Stop: 18675, Start Num: 94

Candidate Starts for PhorbesPhlower_21:

(Start: 94 @18439 has 30 MA's), (104, 18481), (110, 18511), (116, 18532), (117, 18535), (136, 18586), (139, 18592),

Gene: Phrann_27 Start: 24392, Stop: 24637, Start Num: 95

Candidate Starts for Phrann_27:

(6, 23375), (12, 23555), (18, 23771), (23, 23876), (24, 23894), (67, 24287), (75, 24335), (Start: 95 @24392 has 64 MA's), (123, 24497), (127, 24512), (148, 24575), (150, 24605),

Gene: Pickett_19 Start: 17534, Stop: 17779, Start Num: 89

Candidate Starts for Pickett_19:

(Start: 89 @17534 has 8 MA's), (Start: 94 @17540 has 30 MA's), (110, 17612), (139, 17693), (150, 17744), (151, 17747),

Gene: Pioneer3_56 Start: 35879, Stop: 36094, Start Num: 87

Candidate Starts for Pioneer3_56:

(68, 35789), (Start: 87 @35879 has 6 MA's), (Start: 89 @35885 has 8 MA's),

Gene: Piper2020_34 Start: 29134, Stop: 29367, Start Num: 91

Candidate Starts for Piper2020_34:

(Start: 91 @29134 has 104 MA's), (120, 29233), (127, 29254), (130, 29263), (141, 29296),

Gene: Pippy_26 Start: 24672, Stop: 24905, Start Num: 91

Candidate Starts for Pippy_26:

(Start: 91 @24672 has 104 MA's), (120, 24771), (127, 24792), (130, 24801), (141, 24834),

Gene: Pitbull_23 Start: 17606, Stop: 17854, Start Num: 94

Candidate Starts for Pitbull_23:

(Start: 94 @17606 has 30 MA's), (112, 17687), (115, 17696), (127, 17732), (132, 17747), (147, 17792),

Gene: Platte_56 Start: 35664, Stop: 35879, Start Num: 87

Candidate Starts for Platte_56:

(68, 35574), (Start: 87 @35664 has 6 MA's), (Start: 89 @35670 has 8 MA's),

Gene: Plumbus_34 Start: 28611, Stop: 28844, Start Num: 92

Candidate Starts for Plumbus_34:

(Start: 92 @28611 has 124 MA's), (Start: 96 @28614 has 9 MA's), (125, 28725), (127, 28731), (130, 28740), (135, 28758), (136, 28761), (141, 28773),

Gene: Poenanya_32 Start: 28654, Stop: 28887, Start Num: 92

Candidate Starts for Poenanya_32:

(Start: 92 @28654 has 124 MA's), (120, 28753), (127, 28774), (130, 28783), (141, 28816),

Gene: Polka14_33 Start: 29157, Stop: 29390, Start Num: 92

Candidate Starts for Polka14_33:

(Start: 92 @29157 has 124 MA's), (Start: 96 @29160 has 9 MA's), (125, 29271), (127, 29277), (130, 29286), (135, 29304), (136, 29307), (141, 29319),

Gene: Polkaroo_28 Start: 25256, Stop: 25504, Start Num: 95

Candidate Starts for Polkaroo_28:

(Start: 95 @25256 has 64 MA's),

Gene: Pollux_23 Start: 20804, Stop: 21043, Start Num: 94

Candidate Starts for Pollux_23:

(64, 20696), (Start: 94 @20804 has 30 MA's), (104, 20846), (116, 20897), (117, 20900), (136, 20951), (139, 20957),

Gene: Pollywog_32 Start: 28866, Stop: 29099, Start Num: 92

Candidate Starts for Pollywog_32:

(Start: 92 @28866 has 124 MA's), (Start: 96 @28869 has 9 MA's), (125, 28980), (127, 28986), (130, 28995), (135, 29013), (136, 29016), (141, 29028),

Gene: Polo2Bam_37 Start: 28713, Stop: 28946, Start Num: 92

Candidate Starts for Polo2Bam_37:

(52, 28566), (Start: 92 @28713 has 124 MA's), (Start: 96 @28716 has 9 MA's), (125, 28827), (127, 28833), (130, 28842), (135, 28860), (136, 28863), (141, 28875),

Gene: PopTart_32 Start: 28847, Stop: 29080, Start Num: 92

Candidate Starts for PopTart_32:

(Start: 92 @28847 has 124 MA's), (Start: 96 @28850 has 9 MA's), (120, 28946), (127, 28967), (130, 28976), (141, 29009),

Gene: Priscilla_32 Start: 28794, Stop: 29027, Start Num: 92

Candidate Starts for Priscilla_32:

(13, 28080), (14, 28101), (15, 28152), (19, 28242), (21, 28317), (25, 28356), (26, 28389), (29, 28422), (33, 28503), (34, 28506), (Start: 92 @28794 has 124 MA's), (120, 28893), (127, 28914), (130, 28923), (141, 28956),

Gene: PumpkinSpice_71 Start: 53129, Stop: 53380, Start Num: 93

Candidate Starts for PumpkinSpice_71:

(Start: 93 @53129 has 55 MA's), (111, 53204),

Gene: Pygmy_30 Start: 27079, Stop: 27327, Start Num: 95

Candidate Starts for Pygmy_30:

(Start: 95 @27079 has 64 MA's),

Gene: Quaran19_72 Start: 53120, Stop: 53371, Start Num: 93

Candidate Starts for Quaran19_72:

(Start: 93 @53120 has 55 MA's), (111, 53195),

Gene: QueenHazel_27 Start: 25412, Stop: 25657, Start Num: 95
Candidate Starts for QueenHazel_27:
(12, 24575), (18, 24791), (23, 24896), (24, 24914), (67, 25307), (75, 25355), (Start: 95 @25412 has 64 MA's), (123, 25517), (127, 25532), (150, 25625),

Gene: QuickMath_33 Start: 29883, Stop: 30116, Start Num: 92
Candidate Starts for QuickMath_33:
(52, 29736), (Start: 92 @29883 has 124 MA's), (Start: 96 @29886 has 9 MA's), (125, 29997), (127, 30003), (130, 30012), (135, 30030), (136, 30033), (141, 30045),

Gene: Quico_33 Start: 28343, Stop: 28576, Start Num: 92
Candidate Starts for Quico_33:
(52, 28196), (Start: 92 @28343 has 124 MA's), (Start: 96 @28346 has 9 MA's), (125, 28457), (127, 28463), (130, 28472), (135, 28490), (136, 28493), (141, 28505),

Gene: Radiance_32 Start: 28707, Stop: 28940, Start Num: 92
Candidate Starts for Radiance_32:
(52, 28560), (Start: 92 @28707 has 124 MA's), (Start: 96 @28710 has 9 MA's), (125, 28821), (127, 28827), (130, 28836), (135, 28854), (136, 28857), (141, 28869),

Gene: Ramsey_35 Start: 29367, Stop: 29600, Start Num: 91
Candidate Starts for Ramsey_35:
(Start: 91 @29367 has 104 MA's), (120, 29466), (127, 29487), (130, 29496), (135, 29514), (136, 29517), (141, 29529),

Gene: Rasovi_30 Start: 22726, Stop: 23004, Start Num: 91
Candidate Starts for Rasovi_30:
(45, 22486), (61, 22588), (Start: 86 @22717 has 3 MA's), (Start: 91 @22726 has 104 MA's), (110, 22801), (113, 22813), (121, 22840), (136, 22888), (155, 22966),

Gene: RayTheFireFly_23 Start: 21371, Stop: 21616, Start Num: 89
Candidate Starts for RayTheFireFly_23:
(Start: 89 @21371 has 8 MA's), (Start: 94 @21377 has 30 MA's), (104, 21419), (110, 21449), (116, 21470), (136, 21524), (151, 21584),

Gene: RedBird_32 Start: 28512, Stop: 28745, Start Num: 92
Candidate Starts for RedBird_32:
(Start: 92 @28512 has 124 MA's), (Start: 96 @28515 has 9 MA's), (125, 28626), (127, 28632), (130, 28641), (135, 28659), (136, 28662), (141, 28674),

Gene: RegnumDei_26 Start: 25854, Stop: 26069, Start Num: 95
Candidate Starts for RegnumDei_26:
(Start: 95 @25854 has 64 MA's), (105, 25899), (109, 25914), (119, 25947), (144, 26022), (151, 26061),

Gene: Renaud18_32 Start: 28732, Stop: 28965, Start Num: 91
Candidate Starts for Renaud18_32:
(34, 28444), (Start: 91 @28732 has 104 MA's), (120, 28831), (127, 28852), (130, 28861), (141, 28894),

Gene: RetrieverFever_49 Start: 27549, Stop: 27746, Start Num: 97
Candidate Starts for RetrieverFever_49:
(Start: 97 @27549 has 23 MA's), (107, 27600),

Gene: Rialto_36 Start: 30865, Stop: 31098, Start Num: 92
Candidate Starts for Rialto_36:
(52, 30718), (Start: 92 @30865 has 124 MA's), (Start: 96 @30868 has 9 MA's), (125, 30979), (127, 30985), (130, 30994), (135, 31012), (136, 31015), (141, 31027),

Gene: Rideau_51 Start: 27480, Stop: 27677, Start Num: 97
Candidate Starts for Rideau_51:
(65, 27357), (Start: 97 @27480 has 23 MA's), (103, 27513), (112, 27546), (139, 27615), (149, 27642),

Gene: Rikishi_72 Start: 53035, Stop: 53286, Start Num: 93
Candidate Starts for Rikishi_72:
(Start: 93 @53035 has 55 MA's), (111, 53110),

Gene: Riptide_67 Start: 51923, Stop: 52174, Start Num: 93
Candidate Starts for Riptide_67:
(Start: 93 @51923 has 55 MA's), (112, 52004), (157, 52151),

Gene: Rita_33 Start: 28781, Stop: 29014, Start Num: 91
Candidate Starts for Rita_33:
(34, 28493), (Start: 91 @28781 has 104 MA's), (120, 28880), (125, 28895), (127, 28901), (130, 28910), (141, 28943),

Gene: RitaG_33 Start: 28977, Stop: 29210, Start Num: 92
Candidate Starts for RitaG_33:
(Start: 92 @28977 has 124 MA's), (Start: 96 @28980 has 9 MA's), (125, 29091), (127, 29097), (130, 29106), (135, 29124), (136, 29127), (141, 29139),

Gene: Rockne_32 Start: 28514, Stop: 28747, Start Num: 92
Candidate Starts for Rockne_32:
(52, 28367), (Start: 92 @28514 has 124 MA's), (Start: 96 @28517 has 9 MA's), (125, 28628), (127, 28634), (130, 28643), (135, 28661), (136, 28664), (141, 28676),

Gene: RockyHorror_33 Start: 28458, Stop: 28691, Start Num: 92
Candidate Starts for RockyHorror_33:
(Start: 92 @28458 has 124 MA's), (Start: 96 @28461 has 9 MA's), (125, 28572), (127, 28578), (130, 28587), (135, 28605), (136, 28608), (141, 28620),

Gene: RomansRevenge_36 Start: 33483, Stop: 33725, Start Num: 83
Candidate Starts for RomansRevenge_36:
(Start: 83 @33483 has 1 MA's), (112, 33570), (128, 33621), (144, 33669),

Gene: Romero_49 Start: 27952, Stop: 28149, Start Num: 97
Candidate Starts for Romero_49:
(Start: 97 @27952 has 23 MA's), (103, 27985), (112, 28018),

Gene: Ronaldo_64 Start: 35651, Stop: 35863, Start Num: 95
Candidate Starts for Ronaldo_64:
(Start: 95 @35651 has 64 MA's), (103, 35690), (136, 35795), (149, 35828),

Gene: Rootkit7_30 Start: 22521, Stop: 22799, Start Num: 91
Candidate Starts for Rootkit7_30:
(45, 22290), (61, 22383), (63, 22395), (Start: 86 @22512 has 3 MA's), (Start: 91 @22521 has 104 MA's), (113, 22608), (126, 22650), (136, 22683), (155, 22761),

Gene: RosePharie_49 Start: 28196, Stop: 28393, Start Num: 97
Candidate Starts for RosePharie_49:
(40, 27917), (44, 27941), (49, 27974), (53, 27998), (59, 28043), (60, 28046), (Start: 97 @28196 has 23 MA's), (118, 28280), (147, 28355),

Gene: Royals2015_32 Start: 28631, Stop: 28864, Start Num: 92
Candidate Starts for Royals2015_32:
(Start: 92 @28631 has 124 MA's), (Start: 96 @28634 has 9 MA's), (125, 28745), (127, 28751), (130, 28760), (135, 28778), (136, 28781), (141, 28793),

Gene: Ruby_34 Start: 29563, Stop: 29805, Start Num: 88
Candidate Starts for Ruby_34:
(28, 29137), (56, 29398), (Start: 88 @29563 has 6 MA's), (Start: 95 @29572 has 64 MA's), (Start: 96 @29575 has 9 MA's), (125, 29686), (127, 29692), (130, 29701), (135, 29719), (136, 29722), (141, 29734),

Gene: SBlackberry_30 Start: 22499, Stop: 22780, Start Num: 91
Candidate Starts for SBlackberry_30:
(45, 22286), (61, 22361), (Start: 86 @22490 has 3 MA's), (Start: 91 @22499 has 104 MA's), (110, 22574), (113, 22586), (121, 22613), (126, 22628), (136, 22661), (155, 22739),

Gene: SG4_33 Start: 29281, Stop: 29514, Start Num: 95
Candidate Starts for SG4_33:
(28, 28846), (56, 29107), (Start: 88 @29272 has 6 MA's), (Start: 95 @29281 has 64 MA's), (Start: 96 @29284 has 9 MA's), (120, 29380), (125, 29395), (127, 29401), (130, 29410), (135, 29428), (136, 29431), (141, 29443),

Gene: SPB78_23 Start: 20233, Stop: 20484, Start Num: 95
Candidate Starts for SPB78_23:
(62, 20095), (Start: 95 @20233 has 64 MA's), (103, 20272), (110, 20296), (112, 20305), (135, 20380), (144, 20404),

Gene: Saal_32 Start: 28586, Stop: 28819, Start Num: 92
Candidate Starts for Saal_32:
(52, 28439), (Start: 92 @28586 has 124 MA's), (Start: 96 @28589 has 9 MA's), (125, 28700), (127, 28706), (130, 28715), (135, 28733), (136, 28736), (141, 28748),

Gene: Sabbb_33 Start: 28931, Stop: 29164, Start Num: 92
Candidate Starts for Sabbb_33:
(39, 28688), (52, 28784), (Start: 92 @28931 has 124 MA's), (Start: 96 @28934 has 9 MA's), (125, 29045), (127, 29051), (130, 29060), (135, 29078), (136, 29081), (141, 29093),

Gene: SaltySpittoon_72 Start: 53129, Stop: 53380, Start Num: 93
Candidate Starts for SaltySpittoon_72:
(Start: 93 @53129 has 55 MA's), (111, 53204),

Gene: Sandalphon_33 Start: 29315, Stop: 29548, Start Num: 92
Candidate Starts for Sandalphon_33:
(Start: 92 @29315 has 124 MA's), (120, 29414), (127, 29435), (130, 29444), (141, 29477),

Gene: Sarma624_28 Start: 24741, Stop: 24974, Start Num: 91
Candidate Starts for Sarma624_28:

(Start: 91 @24741 has 104 MA's), (120, 24840), (125, 24855), (127, 24861), (130, 24870), (141, 24903),

Gene: Sassafras_33 Start: 29216, Stop: 29449, Start Num: 92

Candidate Starts for Sassafras_33:

(Start: 92 @29216 has 124 MA's), (Start: 96 @29219 has 9 MA's), (125, 29330), (127, 29336), (130, 29345), (135, 29363), (136, 29366), (141, 29378),

Gene: SassyB_32 Start: 28847, Stop: 29080, Start Num: 92

Candidate Starts for SassyB_32:

(Start: 92 @28847 has 124 MA's), (Start: 96 @28850 has 9 MA's), (120, 28946), (127, 28967), (130, 28976), (141, 29009),

Gene: Scottish_33 Start: 29837, Stop: 30070, Start Num: 92

Candidate Starts for Scottish_33:

(Start: 92 @29837 has 124 MA's), (Start: 96 @29840 has 9 MA's), (125, 29951), (127, 29957), (130, 29966), (135, 29984), (136, 29987), (141, 29999),

Gene: SeaLumen_36 Start: 28713, Stop: 28946, Start Num: 92

Candidate Starts for SeaLumen_36:

(52, 28566), (Start: 92 @28713 has 124 MA's), (Start: 96 @28716 has 9 MA's), (125, 28827), (127, 28833), (130, 28842), (135, 28860), (136, 28863), (141, 28875),

Gene: Seabastian_32 Start: 28744, Stop: 28977, Start Num: 92

Candidate Starts for Seabastian_32:

(42, 28528), (Start: 92 @28744 has 124 MA's), (Start: 96 @28747 has 9 MA's), (125, 28858), (127, 28864), (130, 28873), (135, 28891), (136, 28894), (141, 28906),

Gene: Seagreen_33 Start: 28654, Stop: 28887, Start Num: 92

Candidate Starts for Seagreen_33:

(Start: 92 @28654 has 124 MA's), (Start: 96 @28657 has 9 MA's), (125, 28768), (130, 28783), (135, 28801), (136, 28804), (141, 28816),

Gene: Shagrat_28 Start: 27081, Stop: 27296, Start Num: 95

Candidate Starts for Shagrat_28:

(Start: 95 @27081 has 64 MA's), (114, 27159), (144, 27249),

Gene: Shauna1_29 Start: 27668, Stop: 27901, Start Num: 91

Candidate Starts for Shauna1_29:

(Start: 91 @27668 has 104 MA's), (120, 27767), (127, 27788), (130, 27797), (141, 27830),

Gene: ShiLan_32 Start: 28750, Stop: 28983, Start Num: 91

Candidate Starts for ShiLan_32:

(33, 28459), (34, 28462), (36, 28498), (Start: 91 @28750 has 104 MA's), (120, 28849), (127, 28870), (130, 28879), (141, 28912),

Gene: Shipwreck_30 Start: 27054, Stop: 27302, Start Num: 95

Candidate Starts for Shipwreck_30:

(Start: 95 @27054 has 64 MA's),

Gene: ShowerHandel_32 Start: 28709, Stop: 28942, Start Num: 91

Candidate Starts for ShowerHandel_32:

(33, 28418), (34, 28421), (36, 28457), (Start: 91 @28709 has 104 MA's), (120, 28808), (127, 28829), (130, 28838), (141, 28871),

Gene: ShroomBoi_29 Start: 27607, Stop: 27840, Start Num: 91

Candidate Starts for ShroomBoi_29:

(34, 27319), (Start: 91 @27607 has 104 MA's), (120, 27706), (127, 27727), (130, 27736), (141, 27769),

Gene: SiSi_32 Start: 28515, Stop: 28748, Start Num: 92

Candidate Starts for SiSi_32:

(Start: 92 @28515 has 124 MA's), (Start: 96 @28518 has 9 MA's), (125, 28629), (127, 28635), (130, 28644), (135, 28662), (136, 28665), (141, 28677),

Gene: SilverChicken_40 Start: 28433, Stop: 28666, Start Num: 91

Candidate Starts for SilverChicken_40:

(Start: 91 @28433 has 104 MA's), (120, 28532), (127, 28553), (130, 28562), (141, 28595),

Gene: SimranZ1_35 Start: 28834, Stop: 29067, Start Num: 92

Candidate Starts for SimranZ1_35:

(42, 28618), (Start: 92 @28834 has 124 MA's), (Start: 96 @28837 has 9 MA's), (125, 28948), (127, 28954), (130, 28963), (135, 28981), (136, 28984), (141, 28996),

Gene: Slim_34 Start: 29906, Stop: 30139, Start Num: 92

Candidate Starts for Slim_34:

(32, 29597), (52, 29759), (Start: 92 @29906 has 124 MA's), (Start: 96 @29909 has 9 MA's), (125, 30020), (127, 30026), (130, 30035), (135, 30053), (136, 30056), (141, 30068),

Gene: Sollertia_72 Start: 53095, Stop: 53346, Start Num: 93

Candidate Starts for Sollertia_72:

(Start: 93 @53095 has 55 MA's), (104, 53137), (128, 53215), (157, 53323),

Gene: Sonah_28 Start: 25227, Stop: 25475, Start Num: 95

Candidate Starts for Sonah_28:

(Start: 95 @25227 has 64 MA's),

Gene: Soul22_37 Start: 28902, Stop: 29144, Start Num: 88

Candidate Starts for Soul22_37:

(Start: 88 @28902 has 6 MA's), (Start: 95 @28911 has 64 MA's), (Start: 96 @28914 has 9 MA's), (125, 29025), (127, 29031), (130, 29040), (135, 29058), (136, 29061), (141, 29073),

Gene: Sparkdehlily_32 Start: 28632, Stop: 28865, Start Num: 92

Candidate Starts for Sparkdehlily_32:

(52, 28485), (Start: 92 @28632 has 124 MA's), (Start: 96 @28635 has 9 MA's), (125, 28746), (127, 28752), (130, 28761), (135, 28779), (136, 28782), (141, 28794),

Gene: Spartacus_34 Start: 29042, Stop: 29275, Start Num: 92

Candidate Starts for Spartacus_34:

(Start: 92 @29042 has 124 MA's), (Start: 96 @29045 has 9 MA's), (125, 29156), (127, 29162), (130, 29171), (135, 29189), (136, 29192), (141, 29204),

Gene: Spelly_72 Start: 53084, Stop: 53335, Start Num: 93

Candidate Starts for Spelly_72:

(Start: 93 @53084 has 55 MA's), (111, 53159),

Gene: Spikelee_34 Start: 28780, Stop: 29013, Start Num: 91
Candidate Starts for Spikelee_34:
(Start: 91 @28780 has 104 MA's), (125, 28894), (127, 28900), (130, 28909), (135, 28927), (136, 28930), (141, 28942),

Gene: Spilled_73 Start: 53201, Stop: 53452, Start Num: 93
Candidate Starts for Spilled_73:
(Start: 93 @53201 has 55 MA's), (111, 53276),

Gene: Spoonbill_32 Start: 28796, Stop: 29029, Start Num: 92
Candidate Starts for Spoonbill_32:
(52, 28649), (Start: 92 @28796 has 124 MA's), (Start: 96 @28799 has 9 MA's), (125, 28910), (127, 28916), (130, 28925), (135, 28943), (136, 28946), (141, 28958),

Gene: StAnnes_31 Start: 29111, Stop: 29344, Start Num: 95
Candidate Starts for StAnnes_31:
(28, 28676), (56, 28937), (Start: 88 @29102 has 6 MA's), (Start: 95 @29111 has 64 MA's), (Start: 96 @29114 has 9 MA's), (125, 29225), (127, 29231), (130, 29240), (135, 29258), (136, 29261), (141, 29273),

Gene: StAugustine_21 Start: 16877, Stop: 17173, Start Num: 85
Candidate Starts for StAugustine_21:
(Start: 85 @16877 has 2 MA's), (124, 17015), (156, 17123),

Gene: Stanimal_72 Start: 52984, Stop: 53235, Start Num: 93
Candidate Starts for Stanimal_72:
(Start: 93 @52984 has 55 MA's), (104, 53026), (128, 53104), (157, 53212),

Gene: Stap_33 Start: 28688, Stop: 28921, Start Num: 92
Candidate Starts for Stap_33:
(34, 28397), (Start: 92 @28688 has 124 MA's), (125, 28802), (127, 28808), (130, 28817), (135, 28835), (136, 28838), (141, 28850),

Gene: StarPlatinum_72 Start: 53629, Stop: 53880, Start Num: 93
Candidate Starts for StarPlatinum_72:
(Start: 93 @53629 has 55 MA's), (111, 53704), (151, 53836),

Gene: Starbow_70 Start: 53105, Stop: 53356, Start Num: 93
Candidate Starts for Starbow_70:
(Start: 93 @53105 has 55 MA's), (111, 53180),

Gene: Starcevich_36 Start: 29410, Stop: 29643, Start Num: 92
Candidate Starts for Starcevich_36:
(42, 29200), (Start: 92 @29410 has 124 MA's), (120, 29509), (127, 29530), (130, 29539), (141, 29572),

Gene: Stella_51 Start: 28187, Stop: 28384, Start Num: 97
Candidate Starts for Stella_51:
(Start: 97 @28187 has 23 MA's), (103, 28220), (149, 28349),

Gene: StevieRay_28 Start: 25219, Stop: 25464, Start Num: 95
Candidate Starts for StevieRay_28:
(Start: 95 @25219 has 64 MA's),

Gene: StressBall_28 Start: 25499, Stop: 25747, Start Num: 95

Candidate Starts for StressBall_28:

(Start: 95 @25499 has 64 MA's),

Gene: Strokeseat_33 Start: 29357, Stop: 29590, Start Num: 91

Candidate Starts for Strokeseat_33:

(Start: 91 @29357 has 104 MA's), (120, 29456), (127, 29477), (130, 29486), (141, 29519),

Gene: Sucha_27 Start: 19896, Stop: 20168, Start Num: 91

Candidate Starts for Sucha_27:

(Start: 86 @19887 has 3 MA's), (Start: 91 @19896 has 104 MA's), (113, 19983), (136, 20058),

Gene: SuperGrey_33 Start: 29503, Stop: 29736, Start Num: 91

Candidate Starts for SuperGrey_33:

(34, 29215), (Start: 91 @29503 has 104 MA's), (120, 29602), (127, 29623), (130, 29632), (141, 29665),

Gene: SwagPiggett_32 Start: 28520, Stop: 28753, Start Num: 91

Candidate Starts for SwagPiggett_32:

(33, 28229), (34, 28232), (36, 28268), (Start: 91 @28520 has 104 MA's), (120, 28619), (127, 28640), (130, 28649), (141, 28682),

Gene: TChen_32 Start: 29278, Stop: 29541, Start Num: 90

Candidate Starts for TChen_32:

(50, 29071), (51, 29086), (72, 29221), (Start: 90 @29278 has 3 MA's), (137, 29443), (140, 29449), (142, 29452), (148, 29470), (158, 29527),

Gene: TDanisky_32 Start: 28632, Stop: 28865, Start Num: 92

Candidate Starts for TDanisky_32:

(52, 28485), (Start: 92 @28632 has 124 MA's), (Start: 96 @28635 has 9 MA's), (125, 28746), (127, 28752), (130, 28761), (135, 28779), (136, 28782), (141, 28794),

Gene: Taj_32 Start: 28693, Stop: 28926, Start Num: 91

Candidate Starts for Taj_32:

(Start: 91 @28693 has 104 MA's), (120, 28792), (127, 28813), (130, 28822), (141, 28855),

Gene: Tandem_56 Start: 35818, Stop: 36033, Start Num: 87

Candidate Starts for Tandem_56:

(68, 35728), (Start: 87 @35818 has 6 MA's), (Start: 89 @35824 has 8 MA's),

Gene: Targaryen_71 Start: 54698, Stop: 54949, Start Num: 93

Candidate Starts for Targaryen_71:

(Start: 93 @54698 has 55 MA's), (130, 54824),

Gene: Tchotchke_32 Start: 28135, Stop: 28368, Start Num: 92

Candidate Starts for Tchotchke_32:

(42, 27919), (Start: 92 @28135 has 124 MA's), (Start: 96 @28138 has 9 MA's), (125, 28249), (127, 28255), (130, 28264), (135, 28282), (136, 28285), (141, 28297),

Gene: Techage_28 Start: 25231, Stop: 25479, Start Num: 95

Candidate Starts for Techage_28:

(Start: 95 @25231 has 64 MA's),

Gene: Thales_57 Start: 52686, Stop: 52991, Start Num: 69

Candidate Starts for Thales_57:

(Start: 69 @52686 has 1 MA's), (76, 52713), (Start: 83 @52737 has 1 MA's), (99, 52779), (122, 52869), (133, 52902), (144, 52935), (152, 52977),

Gene: Thespis_28 Start: 25235, Stop: 25483, Start Num: 95

Candidate Starts for Thespis_28:

(Start: 95 @25235 has 64 MA's),

Gene: ThetaBob_32 Start: 28234, Stop: 28491, Start Num: 94

Candidate Starts for ThetaBob_32:

(Start: 94 @28234 has 30 MA's), (103, 28273), (112, 28306), (113, 28309), (130, 28363), (145, 28408), (146, 28411),

Gene: TomSawyer_70 Start: 52723, Stop: 52974, Start Num: 93

Candidate Starts for TomSawyer_70:

(Start: 93 @52723 has 55 MA's), (111, 52798),

Gene: Tomas_74 Start: 55444, Stop: 55695, Start Num: 93

Candidate Starts for Tomas_74:

(81, 55414), (Start: 93 @55444 has 55 MA's), (111, 55519), (112, 55525), (157, 55672),

Gene: TootsiePop_33 Start: 28418, Stop: 28651, Start Num: 92

Candidate Starts for TootsiePop_33:

(Start: 92 @28418 has 124 MA's), (Start: 96 @28421 has 9 MA's), (125, 28532), (127, 28538), (130, 28547), (135, 28565), (136, 28568), (141, 28580),

Gene: Tootsieroll_33 Start: 28584, Stop: 28817, Start Num: 92

Candidate Starts for Tootsieroll_33:

(34, 28293), (Start: 92 @28584 has 124 MA's), (120, 28683), (127, 28704), (130, 28713), (141, 28746),

Gene: Topiatin_35 Start: 29220, Stop: 29453, Start Num: 92

Candidate Starts for Topiatin_35:

(19, 28662), (21, 28737), (25, 28776), (26, 28809), (29, 28842), (33, 28923), (34, 28926), (42, 29004), (Start: 92 @29220 has 124 MA's), (Start: 96 @29223 has 9 MA's), (125, 29334), (127, 29340), (130, 29349), (135, 29367), (136, 29370), (141, 29382),

Gene: ToriToki_49 Start: 27955, Stop: 28152, Start Num: 97

Candidate Starts for ToriToki_49:

(Start: 97 @27955 has 23 MA's), (103, 27988), (112, 28021),

Gene: Toron_33 Start: 29073, Stop: 29384, Start Num: 78

Candidate Starts for Toron_33:

(72, 29058), (78, 29073), (80, 29088), (Start: 90 @29115 has 3 MA's), (101, 29151), (137, 29286), (140, 29292), (142, 29295), (148, 29313), (158, 29370),

Gene: Totinger_33 Start: 28516, Stop: 28749, Start Num: 92

Candidate Starts for Totinger_33:

(52, 28369), (Start: 92 @28516 has 124 MA's), (Start: 96 @28519 has 9 MA's), (125, 28630), (127, 28636), (130, 28645), (135, 28663), (136, 28666), (141, 28678),

Gene: Treat_49 Start: 27896, Stop: 28093, Start Num: 97

Candidate Starts for Treat_49:

(Start: 97 @27896 has 23 MA's), (103, 27929), (112, 27962),

Gene: TurboVicky_30 Start: 22515, Stop: 22793, Start Num: 91
Candidate Starts for TurboVicky_30:
(45, 22284), (61, 22377), (66, 22404), (Start: 86 @22506 has 3 MA's), (Start: 91 @22515 has 104 MA's), (113, 22602), (126, 22644), (136, 22677), (155, 22755),

Gene: Tweety_32 Start: 28751, Stop: 28984, Start Num: 91
Candidate Starts for Tweety_32:
(Start: 91 @28751 has 104 MA's), (120, 28850), (127, 28871), (130, 28880), (141, 28913),

Gene: Typher_32 Start: 22644, Stop: 22922, Start Num: 91
Candidate Starts for Typher_32:
(45, 22413), (61, 22506), (66, 22533), (Start: 86 @22635 has 3 MA's), (Start: 91 @22644 has 104 MA's), (113, 22731), (126, 22773), (136, 22806), (155, 22884),

Gene: UncleRicky_35 Start: 29847, Stop: 30080, Start Num: 92
Candidate Starts for UncleRicky_35:
(52, 29700), (Start: 92 @29847 has 124 MA's), (Start: 96 @29850 has 9 MA's), (125, 29961), (127, 29967), (130, 29976), (135, 29994), (136, 29997), (141, 30009),

Gene: VRedHorse_32 Start: 28705, Stop: 28938, Start Num: 92
Candidate Starts for VRedHorse_32:
(52, 28558), (Start: 92 @28705 has 124 MA's), (Start: 96 @28708 has 9 MA's), (125, 28819), (127, 28825), (130, 28834), (141, 28867),

Gene: Velveteen_28 Start: 24741, Stop: 24974, Start Num: 91
Candidate Starts for Velveteen_28:
(Start: 91 @24741 has 104 MA's), (120, 24840), (125, 24855), (127, 24861), (130, 24870), (141, 24903),

Gene: Venti_28 Start: 25240, Stop: 25488, Start Num: 95
Candidate Starts for Venti_28:
(Start: 95 @25240 has 64 MA's),

Gene: Veteran_32 Start: 28554, Stop: 28787, Start Num: 92
Candidate Starts for Veteran_32:
(Start: 92 @28554 has 124 MA's), (Start: 96 @28557 has 9 MA's), (125, 28668), (127, 28674), (130, 28683), (135, 28701), (136, 28704), (141, 28716),

Gene: Vidya_28 Start: 25240, Stop: 25488, Start Num: 95
Candidate Starts for Vidya_28:
(Start: 95 @25240 has 64 MA's),

Gene: Violac_33 Start: 29236, Stop: 29469, Start Num: 91
Candidate Starts for Violac_33:
(Start: 91 @29236 has 104 MA's), (120, 29335), (127, 29356), (130, 29365), (141, 29398),

Gene: Vivum_33 Start: 28532, Stop: 28765, Start Num: 91
Candidate Starts for Vivum_33:
(Start: 91 @28532 has 104 MA's), (120, 28631), (127, 28652), (130, 28661), (141, 28694),

Gene: Volt_64 Start: 35815, Stop: 36027, Start Num: 95
Candidate Starts for Volt_64:

(Start: 95 @35815 has 64 MA's), (103, 35854), (136, 35959), (149, 35992),

Gene: Vorvolakos_49 Start: 27548, Stop: 27745, Start Num: 97

Candidate Starts for Vorvolakos_49:

(Start: 97 @27548 has 23 MA's), (107, 27599),

Gene: WRightOn_50 Start: 27662, Stop: 27859, Start Num: 97

Candidate Starts for WRightOn_50:

(Start: 97 @27662 has 23 MA's), (104, 27698), (118, 27746), (147, 27821),

Gene: Wachhund_32 Start: 28708, Stop: 28941, Start Num: 91

Candidate Starts for Wachhund_32:

(Start: 91 @28708 has 104 MA's), (120, 28807), (127, 28828), (130, 28837), (141, 28870),

Gene: Wakanda_47 Start: 44427, Stop: 44681, Start Num: 93

Candidate Starts for Wakanda_47:

(Start: 93 @44427 has 55 MA's), (151, 44640),

Gene: Warpy_74 Start: 54162, Stop: 54413, Start Num: 93

Candidate Starts for Warpy_74:

(Start: 93 @54162 has 55 MA's), (130, 54288),

Gene: Wee_33 Start: 29231, Stop: 29464, Start Num: 91

Candidate Starts for Wee_33:

(Start: 91 @29231 has 104 MA's), (120, 29330), (127, 29351), (130, 29360), (141, 29393),

Gene: Whatsapiecost_33 Start: 28967, Stop: 29200, Start Num: 91

Candidate Starts for Whatsapiecost_33:

(Start: 91 @28967 has 104 MA's), (120, 29066), (127, 29087), (130, 29096), (141, 29129),

Gene: Whouxphf_33 Start: 29025, Stop: 29258, Start Num: 92

Candidate Starts for Whouxphf_33:

(32, 28716), (39, 28782), (52, 28878), (Start: 92 @29025 has 124 MA's), (Start: 96 @29028 has 9 MA's), (125, 29139), (127, 29145), (130, 29154), (141, 29187),

Gene: WillSterrel_34 Start: 30156, Stop: 30389, Start Num: 91

Candidate Starts for WillSterrel_34:

(Start: 91 @30156 has 104 MA's), (120, 30255), (127, 30276), (130, 30285), (141, 30318),

Gene: Wipeout_70 Start: 53474, Stop: 53725, Start Num: 93

Candidate Starts for Wipeout_70:

(Start: 93 @53474 has 55 MA's), (111, 53549),

Gene: Wofford_71 Start: 54159, Stop: 54410, Start Num: 93

Candidate Starts for Wofford_71:

(Start: 93 @54159 has 55 MA's), (111, 54234), (125, 54270), (139, 54312), (149, 54339),

Gene: XFactor_32 Start: 28712, Stop: 28945, Start Num: 92

Candidate Starts for XFactor_32:

(52, 28565), (Start: 92 @28712 has 124 MA's), (Start: 96 @28715 has 9 MA's), (125, 28826), (127, 28832), (130, 28841), (135, 28859), (136, 28862), (141, 28874),

Gene: Xavia_28 Start: 25869, Stop: 26114, Start Num: 95

Candidate Starts for Xavia_28:

(6, 24852), (12, 25032), (18, 25248), (23, 25353), (24, 25371), (67, 25764), (75, 25812), (Start: 95 @25869 has 64 MA's), (123, 25974), (127, 25989), (148, 26052),

Gene: Xula_26 Start: 24936, Stop: 25181, Start Num: 95

Candidate Starts for Xula_26:

(12, 24099), (18, 24315), (23, 24420), (24, 24438), (67, 24831), (75, 24879), (Start: 95 @24936 has 64 MA's), (123, 25041), (127, 25056),

Gene: Yaboi_72 Start: 53072, Stop: 53323, Start Num: 93

Candidate Starts for Yaboi_72:

(Start: 93 @53072 has 55 MA's), (104, 53114), (128, 53192), (157, 53300),

Gene: Yorick_32 Start: 28707, Stop: 28940, Start Num: 91

Candidate Starts for Yorick_32:

(33, 28416), (34, 28419), (36, 28455), (Start: 91 @28707 has 104 MA's), (120, 28806), (127, 28827), (130, 28836), (141, 28869),

Gene: Yoshi_39 Start: 28311, Stop: 28568, Start Num: 94

Candidate Starts for Yoshi_39:

(Start: 94 @28311 has 30 MA's), (98, 28320), (112, 28383), (130, 28440), (135, 28458), (145, 28485), (146, 28488), (159, 28557),

Gene: Zanella_30 Start: 22523, Stop: 22801, Start Num: 91

Candidate Starts for Zanella_30:

(45, 22292), (61, 22385), (63, 22397), (Start: 86 @22514 has 3 MA's), (Start: 91 @22523 has 104 MA's), (113, 22610), (126, 22652), (136, 22685), (155, 22763),

Gene: Zapner_39 Start: 29391, Stop: 29648, Start Num: 93

Candidate Starts for Zapner_39:

(Start: 93 @29391 has 55 MA's), (100, 29409), (110, 29454), (111, 29457), (123, 29496), (128, 29514), (136, 29541), (139, 29547), (140, 29550),

Gene: Zeigle_47 Start: 27506, Stop: 27703, Start Num: 97

Candidate Starts for Zeigle_47:

(Start: 97 @27506 has 23 MA's), (104, 27542), (118, 27590), (147, 27665),

Gene: Zerg_32 Start: 28567, Stop: 28800, Start Num: 92

Candidate Starts for Zerg_32:

(Start: 92 @28567 has 124 MA's), (Start: 96 @28570 has 9 MA's), (125, 28681), (127, 28687), (130, 28696), (135, 28714), (136, 28717), (141, 28729),

Gene: Ziko_64 Start: 35637, Stop: 35849, Start Num: 95

Candidate Starts for Ziko_64:

(Start: 95 @35637 has 64 MA's), (103, 35676), (136, 35781), (149, 35814),

Gene: Zilizebeth_28 Start: 25240, Stop: 25488, Start Num: 95

Candidate Starts for Zilizebeth_28:

(Start: 95 @25240 has 64 MA's),

Gene: Zizzle_32 Start: 28651, Stop: 28884, Start Num: 91

Candidate Starts for Zizzle_32:

(33, 28360), (34, 28363), (36, 28399), (Start: 91 @28651 has 104 MA's), (120, 28750), (127, 28771),
(130, 28780), (141, 28813),

Gene: ZooBear_49 Start: 27959, Stop: 28156, Start Num: 97

Candidate Starts for ZooBear_49:

(Start: 97 @27959 has 23 MA's), (103, 27992), (112, 28025),