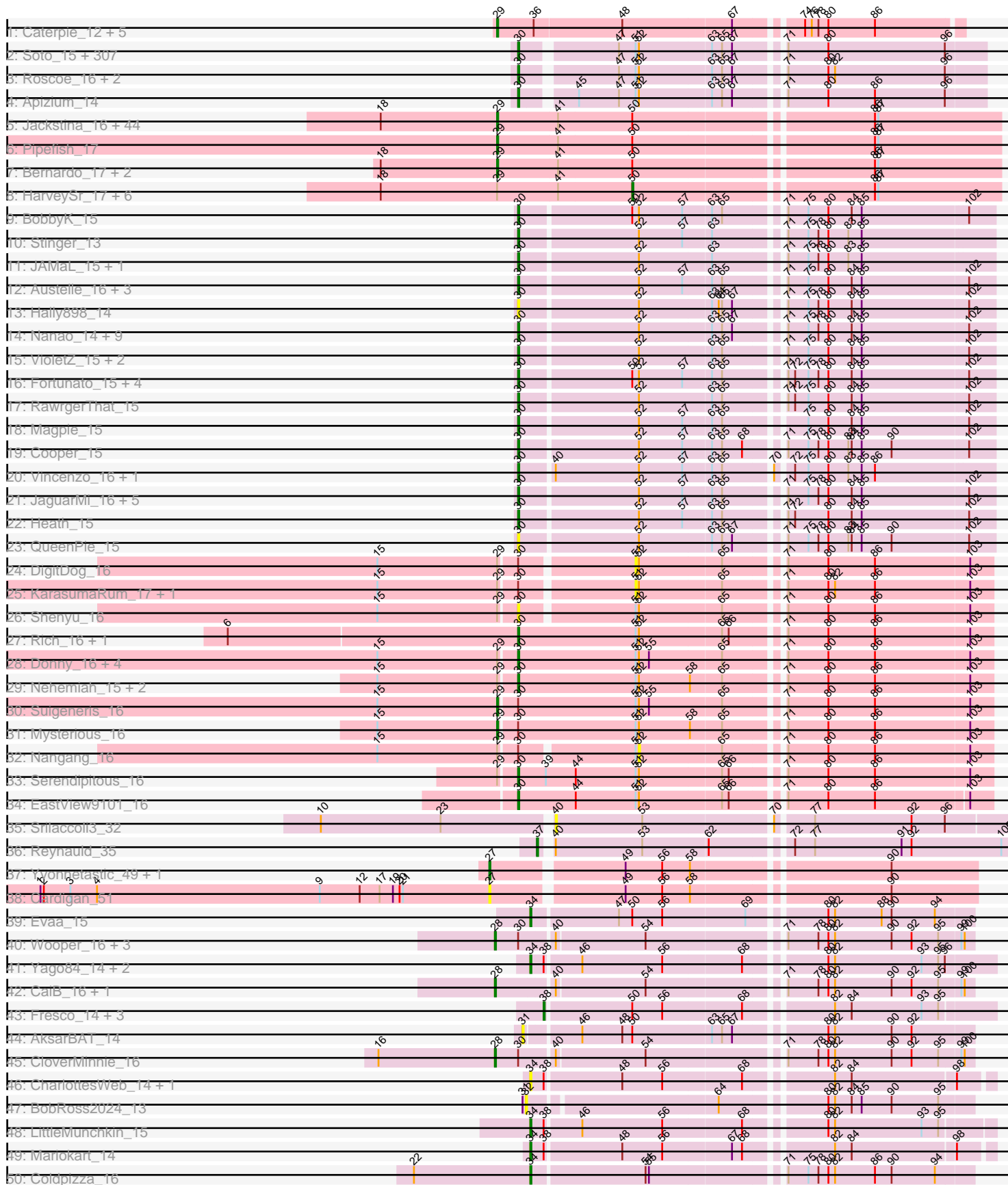
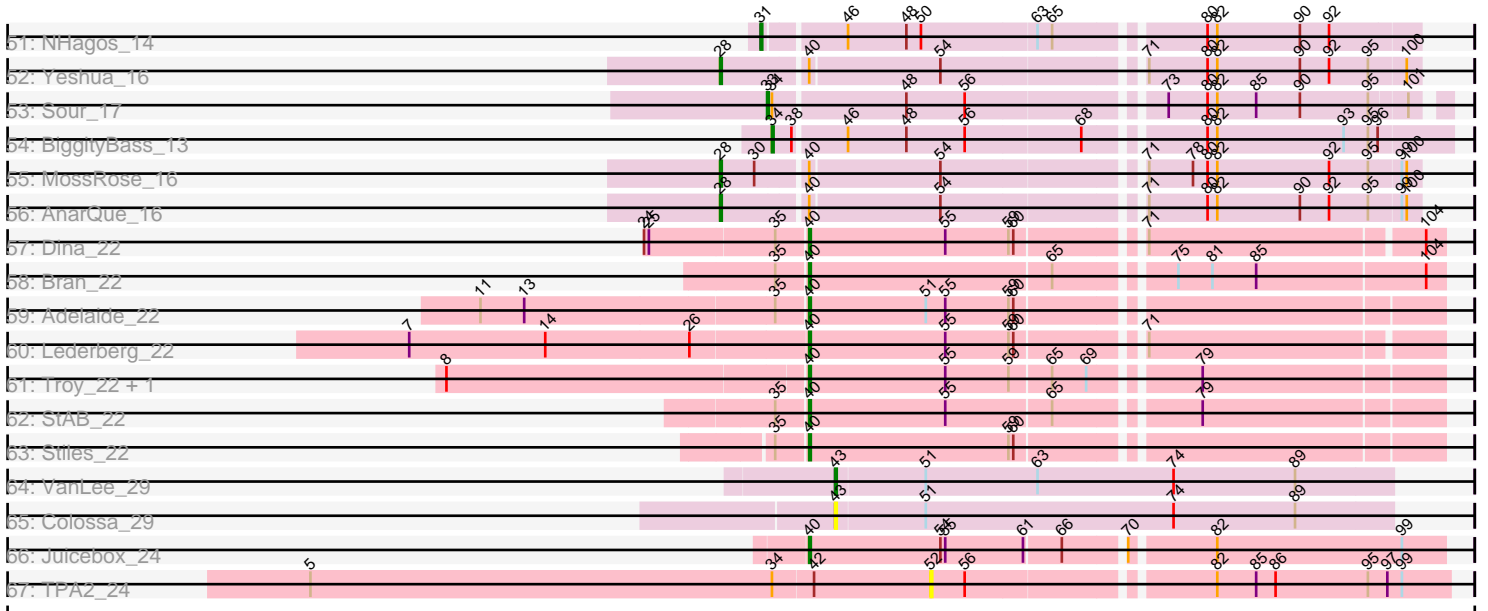


Pham 296119



Pham 296119



Note: Tracks are now grouped by subcluster and scaled. Switching in subcluster is indicated by changes in track color. Track scale is now set by default to display the region 30 bp upstream of start 1 to 30 bp downstream of the last possible start. If this default region is judged to be packed too tightly with annotated starts, the track will be further scaled to only show that region of the ORF with annotated starts. This action will be indicated by adding "Zoomed" to the title. For starts, yellow indicates the location of called starts comprised solely of Glimmer/GeneMark auto-annotations, green indicates the location of called starts with at least 1 manual gene annotation.

Pham 296119 Report

This analysis was run 04/25/26 on database version 644.

Pham number 296119 has 478 members, 71 are drafts.

Phages represented in each track:

- Track 1 : Caterpie_12, Sejanus_13, Mao1_12, Dori_13, Mask_13, JohnLord_13
- Track 2 : Soto_15, TallGrassMM_15, HSavage_15, Simielle_14, Puhltonio_15, HenryJackson_14, Gyarad_0015, Struggle_14, Cornobble_14, Fringe_15, Ashraf_14, Vaishali24_14, Numberten_15, JacAttac_15, Orfeu_14, Pinkman_14, Phamished_15, OliverWalter_15, Andre_15, Doddsville_15, OSmaximus_15, Dione_14, Gwilliam_15, Phergie_14, Yoshand_15, Etaye_15, Virgeve_14, Toni_14, Vivaldi_15, Plmatters_15, Zaider_16, Melc17_15, Mcshane_14, Banjo_14, Hocus_14, Khan1_15, Karn_14, Nacho_0015, Hartsy_15, CheetO_15, JakeO_14, Piglet_0014, Spartan300_15, Chuni_14, CamL_15, Morty_15, Antonia_14, DelRivs_14, Mosaic_14, Serpentine_0015, ABU_15, BlueHusk_15, SallyH_15, Vista_15, KlimbOn_15, Hamish_15, ShadowBud_15, Suffolk_15, Mikota_15, PhenghisKhan_14, Rimu_15, ThreeOh3D2_15, Grand2040_14, Sophia_14, Badfish_15, FugateOSU_14, ImtiyazSitla_14, PhatLouie_15, Kikipoo_15, Jesabah_15, Solosis_14, Vortex_15, Mutante_14, Keitherie_15, PhrankReynolds_14, Crownjwl_15, Roy17_15, Serendipity_15, Aelin_14, BlacksBerry_14, Maskar_14, Inchworm_15, Labeouficaum_14, CharlieGBrown_14, Placalicious_14, MrPhizzler_15, BatteryCK_14, Swish_15, Dati_15, Flake_16, Haimas_15, Gwennie1_15, DirtJuice_15, DonSancho_14, Oline_14, DuchessDung_14, Larson_16, Riverton_14, Jillium_14, Nicole21_15, Surely_15, Hetaeria_15, Chorkpop_15, Slatt_15, Phleuron_14, Derpp_14, Carthage_14, KLucky39_15, Burr_14, Selr12_15, Chipette_16, DaddyDaniels_15, Valjean_15, Frankicide_15, Pipsqueak_15, Virapocalypse_15, UncleHowie_15, Childish_14, Basato_16, MiniBoss_15, Ricotta_14, Soile_15, Mulan_14, Prickles_15, Duggie_14, Aonishiki_15, MichaelPhcott_14, Mesmerelda_14, Gophee_15, Schueller_14, AngelCake_15, Iridessa_15, Horchata_15, RedRaider89_16, PallasAthena_15, Magic8_15, Mana_14, Morgushi_15, True_14, Zonia_15, MitKao_15, Timmi_14, Maru_14, FleetyMac_14, Olak_14, Thunderbird_14, IsaacEli_15, JangoPhett_15, PinheadLarry_15, DoesntMatter_15, Sigman_15, Durga_15, BlackStallion_15, SDcharge11_15, MelsMeow_14, Riggan_15, Bishoperium_14, Mecca_14, Mesh1_15, UAch1_15, AbsoluteMadLad_14, Fang_15, Happabalu_15, Quisquillae_15, TomBombadil_15, Wallhey_14, Cher_14, Craff_15, Phipps_15, Kwadwo_14, Waterdiva_15, Manad_14, Weher20_15, PhrodoBaggins_14, Gareth_14, Chute_14, Kwksand96_14, JDog_14, GreenChile_15, Beaglebox_14, Mag7_14, Robyn_14, Bluephacebaby_14, FriarPreacher_15, Cannibal_15, Scoot17C_15, Lasso_15, Sheila_15, Lopsy_14, LostAndPhound_14, Tooj_15, Schadenfreude_14, Freya_14, Haleema_14, Scrick_14, ProfessorX_15, Lulwa_15, Pacifista_14, Dingo_15, Lulumae_14, Chaelin_14, AltPhacts_15, Kailash_15,

Newman_15, BoogieWoogie_14, Orion_15, Olive_15, Xavier_14, Charles1_15, Emiris_15, Podrick_15, PG1_15, Megatron_15, Cobra_15, QueenBeane_15, Telesworld_14, Giraffe_15, LeeLot_15, Omniscient_15, Murdoc_15, DolOn_16, KingTut_14, Vaticameos_15, Iridoclysis_15, ElvisPhasley_15, Potter_14, Chunky_15, Pops_15, Held_15, Longacauda_14, OneBrain_15, FremontTroll_15, Lego3393_15, CampRoach_15, Kimbrough_15, Lumine_14, Oosterbaan_15, Roliet_15, Harvey_15, Tomlarah_15, Legolas_14, Nyala_14, Matalotodo_15, GeneCoco_15, LemonSlice_15, TyrionL_14, Anderson_15, Phareon_15, Colbert_15, Pherdinand_15, Chah_15, Triad_15, SilverBell_15, Inverness_15, Caspiboi_14, Hertubise_15, Jiminy_14, Squid_15, Fozzie_14, Jiraiya_14, Samaymay_15, Zelda_15, HogWash_14, EmpTee_15, Daffy_15, SirBeauregard_14, MRabcd_14, Adriana_15, HighStump_14, Thora_15, Windsor_14, LasagnaCat_15, Altwerkus_14, Eremos_15, Hekos_14, LuckyMarjie_14, Cornbread_14, Daka_15, Katniss_15, Dice_14, Orwigg_14, FluffyNinja_15, Buckeye_15, RedMaple_14, Trypo_15, Aleia_15, TooFast2Furius_16, Brilliant_15, Veritas_14, Skippy_15, Plata_15, Coletti_15, Usavi_15, Kahve_14, LeiMonet_15, Swiphy_15, Phunky_15, Squiggle_15, YouGoGlencoco_15, Eugenia_15, Cosmolli16_14, ShiVal_15, KingVeVeVe_15, Megamind20_15, Lehmann_15, Kloppinator_15, PhatCats2014_15, Nathan_15

- Track 3 : Roscoe_16, Boehler_15, SassyCat97_14
- Track 4 : Apizium_14
- Track 5 : Jackstina_16, SynergyX_17, GlenHope_18, RagingRooster_17, Chentzyk_16, Audrey_17, Compostia_18, Yinz_17, Ben11_16, Neos5_17, Chalmers_17, Corofin_17, Briakila_17, Heathcliff_17, Baloo_17, SwainyDoc_17, Kronus_16, Halfpint_16, Daisy_17, Athena_18, RomaT_17, Nozo_17, Obutu_17, ChaChing_17, Gervas_17, Philly_16, Rita1961_17, Morty007_17, Glubnar_17, Mortcellus_16, Casbah_16, Kamiyu_17, Marley1013_17, OrangeOswald_17, Phlyer_17, Tydolla_17, LestyG_17, TinyTerror_17, Chandler_17, Abinghost_17, Gadget_18, Deenasa_17, Devonte_17, MmasiCarm_17, Phayeta_17
- Track 6 : Pipefish_17
- Track 7 : Bernardo_17, Yahalom_17, Akoma_17
- Track 8 : HarveySr_17, Marlia_17, Mulaychimus_17, Phaedrus_16, SlippinJimmy_17, Olivio_16, Shenandoah_17
- Track 9 : BobbyK_15
- Track 10 : Stinger_13
- Track 11 : JAMaL_15, Nigel_13
- Track 12 : Austelle_16, Hydro_15, Fanaw_15, Hangman_15
- Track 13 : Hally898_14
- Track 14 : Nanao_14, GinPorsche_14, Lambano_14, ChrisnMich_14, Epah_14, Poster_14, Antihero_14, LittleDigger_14, Renkei_14, Ahwei_14
- Track 15 : VioletZ_15, Waleliano_15, Zemanar_16
- Track 16 : Fortunato_15, Apex_15, Mudslide_15, Frederick_15, Prince_15
- Track 17 : RawrgerThat_15
- Track 18 : Magpie_15
- Track 19 : Cooper_15
- Track 20 : Vincenzo_16, AlanGrant_16
- Track 21 : JaguarMi_16, JoyceMaria_15, Mithril_15, Lolalove_15, Xincheng_15, BrownCNA_16
- Track 22 : Heath_15
- Track 23 : QueenPie_15
- Track 24 : DigitDog_16
- Track 25 : KarasumaRum_17, StinkyVeggy_17
- Track 26 : Shenyu_16
- Track 27 : Rich_16, Bae_16

- Track 28 : Donny_16, SirJeffery_16, Reccee_17, Acadian_16, Rita130_16
- Track 29 : Nehemiah_15, Phelemich_16, Reprobate_16
- Track 30 : Suigeneris_16
- Track 31 : Mysterious_16
- Track 32 : Nangang_16
- Track 33 : Serendipitous_16
- Track 34 : EastView9101_16
- Track 35 : Srilaccoli3_32
- Track 36 : Reynauld_35
- Track 37 : Yvonnetastic_49, JonJames_51
- Track 38 : Cardigan_51
- Track 39 : Evaa_15
- Track 40 : Wooper_16, Blackpen_16, MakoManhole_16, FelixTres_16
- Track 41 : Yago84_14, Sisko_14, AnClar_14
- Track 42 : CaiB_16, TraderJ_16
- Track 43 : Fresco_14, Ligma_14, Axumite_14, Shatter_14
- Track 44 : AksarBAT_14
- Track 45 : CloverMinnie_16
- Track 46 : CharlottesWeb_14, JellyBelly_14
- Track 47 : BobRoss2024_13
- Track 48 : LittleMunchkin_15
- Track 49 : Mariokart_14
- Track 50 : Coldpizza_16
- Track 51 : NHagos_14
- Track 52 : Yeshua_16
- Track 53 : Sour_17
- Track 54 : BiggityBass_13
- Track 55 : MossRose_16
- Track 56 : AnarQue_16
- Track 57 : Dina_22
- Track 58 : Bran_22
- Track 59 : Adelaide_22
- Track 60 : Lederberg_22
- Track 61 : Troy_22, SamW_22
- Track 62 : StAB_22
- Track 63 : Stiles_22
- Track 64 : VanLee_29
- Track 65 : Colossa_29
- Track 66 : Juicebox_24
- Track 67 : TPA2_24

Summary of Final Annotations (See graph section above for start numbers):

The start number called the most often in the published annotations is 30, it was called in 316 of the 407 non-draft genes in the pham.

Genes that call this "Most Annotated" start:

• ABU_15, AbsoluteMadLad_14, Acadian_16, Adriana_15, Aelin_14, Ahwei_14, AlanGrant_16, Aleia_15, AltPhacts_15, Altwerkus_14, Anderson_15, Andre_15, AngelCake_15, Antihero_14, Antonia_14, Aonishiki_15, Apex_15, Apizium_14,

Ashraf_14, Austelle_16, Badfish_15, Bae_16, Banjo_14, Basato_16, BatteryCK_14, Beaglebox_14, Bishoperium_14, BlackStallion_15, BlacksBerry_14, BlueHusk_15, Bluephacebaby_14, BobbyK_15, Boehler_15, BoogieWoogie_14, Brilliant_15, BrownCNA_16, Buckeye_15, Burr_14, CamL_15, CampRoach_15, Cannibal_15, Carthage_14, Caspiboi_14, Chaelin_14, Chah_15, Charles1_15, CharlieGBrown_14, CheetO_15, Cher_14, Childish_14, Chipette_16, Chorkpop_15, ChrisMich_14, Chuni_14, Chunky_15, Chute_14, Cobra_15, Colbert_15, Coletti_15, Cooper_15, Cornbread_14, Cornobble_14, Cosmolli16_14, Craff_15, Crownjwl_15, DaddyDaniels_15, Daffy_15, Daka_15, Dati_15, DelRivs_14, Derpp_14, Dice_14, Dingo_15, Dione_14, DirtJuice_15, Doddsville_15, DoesntMatter_15, DolOn_16, DonSanchon_14, Donny_16, DuchessDung_14, Duggie_14, Durga_15, EastView9101_16, ElvisPhasley_15, Emiris_15, EmpTee_15, Epah_14, Eremos_15, Etaye_15, Eugenia_15, Fanaw_15, Fang_15, Flake_16, FleetyMac_14, FluffyNinja_15, Fortunato_15, Fozzie_14, Frankicide_15, Frederick_15, FremontTroll_15, Freya_14, FriarPreacher_15, Fringe_15, FugateOSU_14, Gareth_14, GeneCoco_15, GinPorsche_14, Giraffe_15, Gophee_15, Grand2040_14, GreenChile_15, Gwennie1_15, Gwilliam_15, Gyarad_0015, HSavage_15, Haimas_15, Haleema_14, Hally898_14, Hamish_15, Hangman_15, Happabalu_15, Hartsy_15, Harvey_15, Heath_15, Hekos_14, Held_15, HenryJackson_14, Hertubise_15, Hetaeria_15, HighStump_14, Hocus_14, HogWash_14, Horchata_15, Hydro_15, ImtiyazSitla_14, Inchworm_15, Inverness_15, Iridessa_15, Iridoclysis_15, IsaacEli_15, JAMaL_15, JDog_14, JacAttac_15, JaguarMi_16, JakeO_14, JangoPhett_15, Jesabah_15, Jillium_14, Jiminy_14, Jiraiya_14, JoyceMaria_15, KLucky39_15, Kahve_14, Kailash_15, Karn_14, Katniss_15, Keitherie_15, Khan1_15, Kikipoo_15, Kimbrough_15, KingTut_14, KingVeVeVe_15, KlimbOn_15, Kloppinator_15, Kwadwo_14, Kwksand96_14, Labeouficaum_14, Lambano_14, Larson_16, LasagnaCat_15, Lasso_15, LeeLot_15, Lego3393_15, Legolas_14, Lehmann_15, LeiMonet_15, LemonSlice_15, LittleDigger_14, Lolalove_15, Longacauda_14, Lopsy_14, LostAndPhound_14, LuckyMarjie_14, Lulumae_14, Lulwa_15, Lumine_14, MRabcd_14, Mag7_14, Magic8_15, Magpie_15, Mana_14, Manad_14, Maru_14, Maskar_14, Matalotodo_15, Mcshane_14, Mecca_14, Megamind20_15, Megatron_15, Melc17_15, MelsMeow_14, Mesh1_15, Mesmerelda_14, MichaelPhcott_14, Mikota_15, MiniBoss_15, MitKao_15, Mithril_15, Morgushi_15, Morty_15, Mosaic_14, MrPhizzler_15, Mudslide_15, Mulan_14, Murdoc_15, Mutante_14, Nacho_0015, Nanao_14, Nathan_15, Nehemiah_15, Newman_15, Nicole21_15, Nigel_13, Numberten_15, Nyala_14, OSmaximus_15, Olak_14, Oline_14, Olive_15, OliverWalter_15, Omniscient_15, OneBrain_15, Oosterbaan_15, Orfeu_14, Orion_15, Orwigg_14, PG1_15, Pacifista_14, PallasAthena_15, Phamished_15, Phareon_15, PhatCats2014_15, PhatLouie_15, Phelemich_16, PhenghisKhan_14, Pherdinand_15, Phergie_14, Phipps_15, Phleuron_14, PhrankReynolds_14, PhrodoBaggins_14, Phunky_15, Piglet_0014, PinheadLarry_15, Pinkman_14, Pipsqueak_15, Placalicious_14, Plata_15, Plmatters_15, Podrick_15, Pops_15, Poster_14, Potter_14, Prickles_15, Prince_15, ProfessorX_15, Puhltonio_15, QueenBeane_15, QueenPie_15, Quisquilliae_15, RawrgerThat_15, Reccee_17, RedMaple_14, RedRaider89_16, Renkei_14, Reprobate_16, Rich_16, Ricotta_14, Riggan_15, Rimu_15, Rita130_16, Riverton_14, Robyn_14, Roliet_15, Roscoe_16, Roy17_15, SDcharge11_15, SallyH_15, Samaymay_15, SassyCat97_14, Schadenfreude_14, Schueller_14, Scoot17C_15, Scrick_14, Selr12_15, Serendipitous_16, Serendipity_15, Serpentine_0015, ShadowBud_15, Sheila_15, Shenyu_16, ShiVal_15, Sigman_15, SilverBell_15, Simielle_14, SirBeauregard_14, SirJeffery_16, Skippy_15, Slatt_15, Soile_15, Solosis_14, Sophia_14, Soto_15, Spartan300_15, Squid_15, Squiggle_15, Stinger_13, Struggle_14, Suffolk_15, Surely_15, Swiphy_15, Swish_15,

TallGrassMM_15, Telesworld_14, Thora_15, ThreeOh3D2_15, Thunderbird_14, Timmi_14, TomBombadil_15, Tomlarah_15, Toni_14, TooFast2Furius_16, Tooj_15, Triad_15, True_14, Trypo_15, TyrionL_14, UAch1_15, UncleHowie_15, Usavi_15, Vaishali24_14, Valjean_15, Vaticameos_15, Veritas_14, Vincenzo_16, VioletZ_15, Virapocalypse_15, Virgeve_14, Vista_15, Vivaldi_15, Vortex_15, Waleliano_15, Wallhey_14, Waterdiva_15, Weher20_15, Windsor_14, Xavier_14, Xincheng_15, Yoshand_15, YouGoGlencoco_15, Zaider_16, Zelda_15, Zemanar_16, Zonia_15,

Genes that have the "Most Annotated" start but do not call it:

- Blackpen_16, CloverMinnie_16, DigitDog_16, FelixTres_16, KarasumaRum_17, MakoManhole_16, MossRose_16, Mysterious_16, Nangang_16, StinkyVeggy_17, Suigeneris_16, Wooper_16,

Genes that do not have the "Most Annotated" start:

- Abinghost_17, Adelaide_22, Akoma_17, AksarBAT_14, AnClar_14, AnarQue_16, Athena_18, Audrey_17, Axumite_14, Baloo_17, Ben11_16, Bernardo_17, BiggityBass_13, BobRoss2024_13, Bran_22, Briakila_17, CaiB_16, Cardigan_51, Casbah_16, Caterpie_12, ChaChing_17, Chalmers_17, Chandler_17, CharlottesWeb_14, Chentzyk_16, Coldpizza_16, Colossa_29, Compostia_18, Corofin_17, Daisy_17, Deenasa_17, Devonte_17, Dina_22, Dori_13, Evaa_15, Fresco_14, Gadget_18, Gervas_17, GlenHope_18, Glubnar_17, Halfpint_16, HarveySr_17, Heathcliff_17, Jackstina_16, JellyBelly_14, JohnLord_13, JonJames_51, Juicebox_24, Kamiyu_17, Kronus_16, Lederberg_22, LestyG_17, Ligma_14, LittleMunchkin_15, Mao1_12, Mariokart_14, Marley1013_17, Marlia_17, Mask_13, MmasiCarm_17, Mortcellus_16, Morty007_17, Mulaychimus_17, NHagos_14, Neos5_17, Nozo_17, Obutu_17, Olivio_16, OrangeOswald_17, Phaedruss_16, Phayeta_17, Philly_16, Phlyer_17, Pipefish_17, RagingRooster_17, Reynauld_35, Rita1961_17, RomaT_17, SamW_22, Sejanus_13, Shatter_14, Shenandoah_17, Sisko_14, SlippinJimmy_17, Sour_17, Srilaccoli3_32, StAB_22, Stiles_22, SwainyDoc_17, SynergyX_17, TPA2_24, TinyTerror_17, TraderJ_16, Troy_22, Tydolla_17, VanLee_29, Yago84_14, Yahalom_17, Yeshua_16, Yinz_17, Yvonnestic_49,

Summary by start number:

Start 27:

- Found in 3 of 478 (0.6%) of genes in pham
- Manual Annotations of this start: 2 of 407
- Called 100.0% of time when present
- Phage (with cluster) where this start called: Cardigan_51 (DD), JonJames_51 (DD), Yvonnestic_49 (DD),

Start 28:

- Found in 10 of 478 (2.1%) of genes in pham
- Manual Annotations of this start: 7 of 407
- Called 100.0% of time when present
- Phage (with cluster) where this start called: AnarQue_16 (DR), Blackpen_16 (DR), CaiB_16 (DR), CloverMinnie_16 (DR), FelixTres_16 (DR), MakoManhole_16 (DR), MossRose_16 (DR), TraderJ_16 (DR), Wooper_16 (DR), Yeshua_16 (DR),

Start 29:

- Found in 78 of 478 (16.3%) of genes in pham
- Manual Annotations of this start: 55 of 407

- Called 73.1% of time when present
- Phage (with cluster) where this start called: Abinghost_17 (B3), Akoma_17 (B3), Athena_18 (B3), Audrey_17 (B3), Baloo_17 (B3), Ben11_16 (B3), Bernardo_17 (B3), Briakila_17 (B3), Casbah_16 (B3), Caterpie_12 (AD), ChaChing_17 (B3), Chalmers_17 (B3), Chandler_17 (B3), Chentzyk_16 (B3), Compostia_18 (B3), Corofin_17 (B3), Daisy_17 (B3), Deenasa_17 (B3), Devonte_17 (B3), Dori_13 (AD), Gadget_18 (B3), Gervas_17 (B3), GlenHope_18 (B3), Glubnar_17 (B3), Halfpint_16 (B3), Heathcliff_17 (B3), Jackstina_16 (B3), JohnLord_13 (AD), Kamiyu_17 (B3), Kronus_16 (B3), LestyG_17 (B3), Mao1_12 (AD), Marley1013_17 (B3), Mask_13 (AD), MmasiCarm_17 (B3), Mortcellus_16 (B3), Morty007_17 (B3), Mysterious_16 (B5), Neos5_17 (B3), Nozo_17 (B3), Obutu_17 (B3), OrangeOswald_17 (B3), Phayeta_17 (B3), Philly_16 (B3), Phlyer_17 (B3), Pipefish_17 (B3), RagingRooster_17 (B3), Rita1961_17 (B3), RomaT_17 (B3), Sejanus_13 (AD), Suigeneris_16 (B5), SwainyDoc_17 (B3), SynergyX_17 (B3), TinyTerror_17 (B3), Tydolla_17 (B3), Yahalom_17 (B3), Yinz_17 (B3),

Start 30:

- Found in 377 of 478 (78.9%) of genes in pham
- Manual Annotations of this start: 316 of 407
- Called 96.8% of time when present
- Phage (with cluster) where this start called: ABU_15 (B1), AbsoluteMadLad_14 (B1), Acadian_16 (B5), Adriana_15 (B1), Aelin_14 (B1), Ahwei_14 (B4), AlanGrant_16 (B4), Aleia_15 (B1), AltPhacts_15 (B1), Altwerkus_14 (B1), Anderson_15 (B1), Andre_15 (B1), AngelCake_15 (B1), Antihero_14 (B4), Antonia_14 (B1), Aonishiki_15 (B1), Apex_15 (B4), Apizium_14 (B1), Ashraf_14 (B1), Austelle_16 (B4), Badfish_15 (B1), Bae_16 (B5), Banjo_14 (B1), Basato_16 (B1), BatteryCK_14 (B1), Beaglebox_14 (B1), Bishoperium_14 (B1), BlackStallion_15 (B1), BlacksBerry_14 (B1), BlueHusk_15 (B1), Bluephacebaby_14 (B1), BobbyK_15 (B4), Boehler_15 (B1), BoogieWoogie_14 (B1), Brilliant_15 (B1), BrownCNA_16 (B4), Buckeye_15 (B1), Burr_14 (B1), CamL_15 (B1), CampRoach_15 (B1), Cannibal_15 (B1), Carthage_14 (B1), Caspiboi_14 (B1), Chaelin_14 (B1), Chah_15 (B1), Charles1_15 (B1), CharlieGBrown_14 (B1), CheetO_15 (B1), Cher_14 (B1), Childish_14 (B1), Chipette_16 (B1), Chorkpop_15 (B1), ChrisnMich_14 (B4), Chuni_14 (B1), Chunky_15 (B1), Chute_14 (B1), Cobra_15 (B1), Colbert_15 (B1), Coletti_15 (B1), Cooper_15 (B4), Cornbread_14 (B1), Cornobble_14 (B1), Cosmolli16_14 (B1), Craff_15 (B1), Crownjwl_15 (B1), DaddyDaniels_15 (B1), Daffy_15 (B1), Daka_15 (B1), Dati_15 (B1), DelRivs_14 (B1), Derpp_14 (B1), Dice_14 (B1), Dingo_15 (B1), Dione_14 (B1), DirtJuice_15 (B1), Doddsville_15 (B1), DoesntMatter_15 (B1), DolOn_16 (B1), DonSanchon_14 (B1), Donny_16 (B5), DuchessDung_14 (B1), Duggie_14 (B1), Durga_15 (B1), EastView9101_16 (B5), ElvisPhasley_15 (B1), Emiris_15 (B1), EmpTee_15 (B1), Epah_14 (B4), Eremos_15 (B1), Etaye_15 (B1), Eugenia_15 (B1), Fanaw_15 (B4), Fang_15 (B1), Flake_16 (B1), FleetyMac_14 (B1), FluffyNinja_15 (B1), Fortunato_15 (B4), Fozzie_14 (B1), Frankicide_15 (B1), Frederick_15 (B4), FremontTroll_15 (B1), Freya_14 (B1), FriarPreacher_15 (B1), Fringe_15 (B1), FugateOSU_14 (B1), Gareth_14 (B1), GeneCoco_15 (B1), GinPorsche_14 (B4), Giraffe_15 (B1), Gophee_15 (B1), Grand2040_14 (B1), GreenChile_15 (B1), Gwennie1_15 (B1), Gwilliam_15 (B1), Gyrad_0015 (B1), HSavage_15 (B1), Haimas_15 (B1), Haleema_14 (B1), Hally898_14 (B4), Hamish_15 (B1), Hangman_15 (B4), Happabalu_15 (B1), Hartsy_15 (B1), Harvey_15 (B1), Heath_15 (B4), Hekos_14 (B1), Held_15 (B1), HenryJackson_14 (B1), Hertubise_15 (B1), Hetaeria_15 (B1), HighStump_14 (B1), Hocus_14 (B1), HogWash_14 (B1), Horchata_15 (B1), Hydro_15 (B4), ImtiyazSitla_14 (B1), Inchworm_15 (B1), Inverness_15 (B1), Iridessa_15 (B1), Iridoclysis_15 (B1), IsaacEli_15 (B1), JAMaL_15

(B4), JDog_14 (B1), JacAttac_15 (B1), JaguarMi_16 (B4), JakeO_14 (B1), JangoPhett_15 (B1), Jesabah_15 (B1), Jillium_14 (B1), Jiminy_14 (B1), Jiraiya_14 (B1), JoyceMaria_15 (B4), KLucky39_15 (B1), Kahve_14 (B1), Kailash_15 (B1), Karn_14 (B1), Katniss_15 (B1), Keitherie_15 (B1), Khan1_15 (B1), Kikipoo_15 (B1), Kimbrough_15 (B1), KingTut_14 (B1), KingVeVeVe_15 (B1), KlimbOn_15 (B1), Kloppinator_15 (B1), Kwadwo_14 (B1), Kwksand96_14 (B1), Labeouficaum_14 (B1), Lambano_14 (B4), Larson_16 (B1), LasagnaCat_15 (B1), Lasso_15 (B1), LeeLot_15 (B1), Lego3393_15 (B1), Legolas_14 (B1), Lehmann_15 (B1), LeiMonet_15 (B1), LemonSlice_15 (B1), LittleDigger_14 (B4), Lolalove_15 (B4), Longacauda_14 (B1), Lopsy_14 (B1), LostAndPhound_14 (B1), LuckyMarjie_14 (B1), Lulumae_14 (B1), Lulwa_15 (B1), Lumine_14 (B1), MRabcd_14 (B1), Mag7_14 (B1), Magic8_15 (B1), Magpie_15 (B4), Mana_14 (B1), Manad_14 (B1), Maru_14 (B1), Maskar_14 (B1), Matalotodo_15 (B1), Mcshane_14 (B1), Mecca_14 (B1), Megamind20_15 (B1), Megatron_15 (B1), Melc17_15 (B1), MelsMeow_14 (B1), Mesh1_15 (B1), Mesmerelda_14 (B1), MichaelPhcott_14 (B1), Mikota_15 (B1), MiniBoss_15 (B1), MitKao_15 (B1), Mithril_15 (B4), Morgushi_15 (B1), Morty_15 (B1), Mosaic_14 (B1), MrPhizzler_15 (B1), Mudslide_15 (B4), Mulan_14 (B1), Murdoc_15 (B1), Mutante_14 (B1), Nacho_0015 (B1), Nanao_14 (B4), Nathan_15 (B1), Nehemiah_15 (B5), Newman_15 (B1), Nicole21_15 (B1), Nigel_13 (B4), Numberten_15 (B1), Nyala_14 (B1), OSmaximus_15 (B1), Olak_14 (B1), Oline_14 (B1), Olive_15 (B1), OliverWalter_15 (B1), Omniscient_15 (B1), OneBrain_15 (B1), Oosterbaan_15 (B1), Orfeu_14 (B1), Orion_15 (B1), Orwigg_14 (B1), PG1_15 (B1), Pacifista_14 (B1), PallasAthena_15 (B1), Phamished_15 (B1), Phareon_15 (B1), PhatCats2014_15 (B1), PhatLouie_15 (B1), Phelemich_16 (B5), PhenghisKhan_14 (B1), Pherdinand_15 (B1), Phergie_14 (B1), Phipps_15 (B1), Phleuron_14 (B1), PhrankReynolds_14 (B1), PhrodoBaggins_14 (B1), Phunky_15 (B1), Piglet_0014 (B1), PinheadLarry_15 (B1), Pinkman_14 (B1), Pipsqueak_15 (B1), Placalicious_14 (B1), Plata_15 (B1), Plmatters_15 (B1), Podrick_15 (B1), Pops_15 (B1), Poster_14 (B4), Potter_14 (B1), Prickles_15 (B1), Prince_15 (B4), ProfessorX_15 (B1), Puhltonio_15 (B1), QueenBeane_15 (B1), QueenPie_15 (B4), Quisquiliae_15 (B1), RawrgerThat_15 (B4), Reccee_17 (B5), RedMaple_14 (B1), RedRaider89_16 (B1), Renkei_14 (B4), Reprobate_16 (B5), Rich_16 (B5), Ricotta_14 (B1), Riggan_15 (B1), Rimu_15 (B1), Rita130_16 (B5), Riverton_14 (B1), Robyn_14 (B1), Roliet_15 (B1), Roscoe_16 (B1), Roy17_15 (B1), SDcharge11_15 (B1), SallyH_15 (B1), Samaymay_15 (B1), SassyCat97_14 (B1), Schadenfreude_14 (B1), Schueller_14 (B1), Scoot17C_15 (B1), Scrick_14 (B1), Selr12_15 (B1), Serendipitous_16 (B5), Serendipity_15 (B1), Serpentine_0015 (B1), ShadowBud_15 (B1), Sheila_15 (B1), Shenyu_16 (B5), ShiVal_15 (B1), Sigman_15 (B1), SilverBell_15 (B1), Simielle_14 (B1), SirBeauregard_14 (B1), SirJeffery_16 (B5), Skippy_15 (B1), Slatt_15 (B1), Soile_15 (B1), Solosis_14 (B1), Sophia_14 (B1), Soto_15 (B1), Spartan300_15 (B1), Squid_15 (B1), Squiggle_15 (B1), Stinger_13 (B4), Struggle_14 (B1), Suffolk_15 (B1), Surely_15 (B1), Swiphy_15 (B1), Swish_15 (B1), TallGrassMM_15 (B1), Telesworld_14 (B1), Thora_15 (B1), ThreeOh3D2_15 (B1), Thunderbird_14 (B1), Timmi_14 (B1), TomBombadil_15 (B1), Tomlarah_15 (B1), Toni_14 (B1), TooFast2Furius_16 (B1), Tooj_15 (B1), Triad_15 (B1), True_14 (B1), Trypo_15 (B1), TyrionL_14 (B1), UAch1_15 (B1), UncleHowie_15 (B1), Usavi_15 (B1), Vaishali24_14 (B1), Valjean_15 (B1), Vaticameos_15 (B1), Veritas_14 (B1), Vincenzo_16 (B4), VioletZ_15 (B4), Virapocalypse_15 (B1), Virgeve_14 (B1), Vista_15 (B1), Vivaldi_15 (B1), Vortex_15 (B1), Waleliano_15 (B4), Wallhey_14 (B1), Waterdiva_15 (B1), Weher20_15 (B1), Windsor_14 (B1), Xavier_14 (B1), Xincheng_15 (B4), Yoshand_15 (B1), YouGoGlencoco_15 (B1), Zaider_16 (B1), Zelda_15 (B1), Zemanar_16 (B4), Zonia_15 (B1),

Start 31:

- Found in 3 of 478 (0.6%) of genes in pham
- Manual Annotations of this start: 1 of 407
- Called 66.7% of time when present
- Phage (with cluster) where this start called: AksarBAT_14 (DR), NHagos_14 (DR),

Start 32:

- Found in 1 of 478 (0.2%) of genes in pham
- No Manual Annotations of this start.
- Called 100.0% of time when present
- Phage (with cluster) where this start called: BobRoss2024_13 (DR),

Start 33:

- Found in 1 of 478 (0.2%) of genes in pham
- Manual Annotations of this start: 1 of 407
- Called 100.0% of time when present
- Phage (with cluster) where this start called: Sour_17 (DR),

Start 34:

- Found in 12 of 478 (2.5%) of genes in pham
- Manual Annotations of this start: 8 of 407
- Called 83.3% of time when present
- Phage (with cluster) where this start called: AnClar_14 (DR), BiggityBass_13 (DR), CharlottesWeb_14 (DR), Coldpizza_16 (DR), Evaa_15 (DR), JellyBelly_14 (DR), LittleMunchkin_15 (DR), Mariokart_14 (DR), Sisko_14 (DR), Yago84_14 (DR),

Start 37:

- Found in 1 of 478 (0.2%) of genes in pham
- Manual Annotations of this start: 1 of 407
- Called 100.0% of time when present
- Phage (with cluster) where this start called: Reynauld_35 (CH),

Start 38:

- Found in 12 of 478 (2.5%) of genes in pham
- Manual Annotations of this start: 4 of 407
- Called 33.3% of time when present
- Phage (with cluster) where this start called: Axumite_14 (DR), Fresco_14 (DR), Ligma_14 (DR), Shatter_14 (DR),

Start 40:

- Found in 23 of 478 (4.8%) of genes in pham
- Manual Annotations of this start: 9 of 407
- Called 43.5% of time when present
- Phage (with cluster) where this start called: Adelaide_22 (EP), Bran_22 (EP), Dina_22 (EP), Juicebox_24 (singleton), Lederberg_22 (EP), SamW_22 (EP), Srilaccoli3_32 (CH), StAB_22 (EP), Stiles_22 (EP), Troy_22 (EP),

Start 43:

- Found in 2 of 478 (0.4%) of genes in pham
- Manual Annotations of this start: 1 of 407
- Called 100.0% of time when present
- Phage (with cluster) where this start called: Colossa_29 (KA), VanLee_29 (KA),

Start 50:

- Found in 69 of 478 (14.4%) of genes in pham
- Manual Annotations of this start: 2 of 407
- Called 10.1% of time when present
- Phage (with cluster) where this start called: HarveySr_17 (B3), Marlia_17 (B3), Mulaychimus_17 (B3), Olivio_16 (B3), Phaedrus_16 (B3), Shenandoah_17 (B3), SlippinJimmy_17 (B3),

Start 51:

- Found in 334 of 478 (69.9%) of genes in pham
- No Manual Annotations of this start.
- Called 0.9% of time when present
- Phage (with cluster) where this start called: DigitDog_16 (B5), KarasumaRum_17 (B5), StinkyVeggy_17 (B5),

Start 52:

- Found in 372 of 478 (77.8%) of genes in pham
- No Manual Annotations of this start.
- Called 0.5% of time when present
- Phage (with cluster) where this start called: Nangang_16 (B5), TPA2_24 (singleton),

Summary by clusters:

There are 11 clusters represented in this pham: KA, CH, AD, DD, singleton, B4, B5, B1, B3, DR, EP,

Info for manual annotations of cluster AD:

- Start number 29 was manually annotated 4 times for cluster AD.

Info for manual annotations of cluster B1:

- Start number 30 was manually annotated 282 times for cluster B1.

Info for manual annotations of cluster B3:

- Start number 29 was manually annotated 49 times for cluster B3.
- Start number 50 was manually annotated 2 times for cluster B3.

Info for manual annotations of cluster B4:

- Start number 30 was manually annotated 26 times for cluster B4.

Info for manual annotations of cluster B5:

- Start number 29 was manually annotated 2 times for cluster B5.
- Start number 30 was manually annotated 8 times for cluster B5.

Info for manual annotations of cluster CH:

- Start number 37 was manually annotated 1 time for cluster CH.

Info for manual annotations of cluster DD:

- Start number 27 was manually annotated 2 times for cluster DD.

Info for manual annotations of cluster DR:

- Start number 28 was manually annotated 7 times for cluster DR.
- Start number 31 was manually annotated 1 time for cluster DR.
- Start number 33 was manually annotated 1 time for cluster DR.

- Start number 34 was manually annotated 8 times for cluster DR.
- Start number 38 was manually annotated 4 times for cluster DR.

Info for manual annotations of cluster EP:

- Start number 40 was manually annotated 8 times for cluster EP.

Info for manual annotations of cluster KA:

- Start number 43 was manually annotated 1 time for cluster KA.

Gene Information:

Gene: ABU_15 Start: 13245, Stop: 13634, Start Num: 30

Candidate Starts for ABU_15:

(Start: 30 @13245 has 316 MA's), (47, 13323), (51, 13338), (52, 13341), (63, 13404), (65, 13413), (67, 13422), (71, 13458), (80, 13494), (96, 13599),

Gene: Abinghost_17 Start: 14566, Stop: 15000, Start Num: 29

Candidate Starts for Abinghost_17:

(18, 14461), (Start: 29 @14566 has 55 MA's), (41, 14620), (Start: 50 @14686 has 2 MA's), (86, 14887), (87, 14890),

Gene: AbsoluteMadLad_14 Start: 13249, Stop: 13638, Start Num: 30

Candidate Starts for AbsoluteMadLad_14:

(Start: 30 @13249 has 316 MA's), (47, 13327), (51, 13342), (52, 13345), (63, 13408), (65, 13417), (67, 13426), (71, 13462), (80, 13498), (96, 13603),

Gene: Acadian_16 Start: 14844, Stop: 15251, Start Num: 30

Candidate Starts for Acadian_16:

(15, 14721), (Start: 29 @14829 has 55 MA's), (Start: 30 @14844 has 316 MA's), (51, 14949), (52, 14952), (55, 14961), (65, 15024), (71, 15069), (80, 15105), (86, 15147), (103, 15231),

Gene: Adelaide_22 Start: 21613, Stop: 21981, Start Num: 40

Candidate Starts for Adelaide_22:

(11, 21418), (13, 21445), (35, 21595), (Start: 40 @21613 has 9 MA's), (51, 21685), (55, 21697), (59, 21736), (60, 21739),

Gene: Adriana_15 Start: 13247, Stop: 13636, Start Num: 30

Candidate Starts for Adriana_15:

(Start: 30 @13247 has 316 MA's), (47, 13325), (51, 13340), (52, 13343), (63, 13406), (65, 13415), (67, 13424), (71, 13460), (80, 13496), (96, 13601),

Gene: Aelin_14 Start: 12812, Stop: 13201, Start Num: 30

Candidate Starts for Aelin_14:

(Start: 30 @12812 has 316 MA's), (47, 12890), (51, 12905), (52, 12908), (63, 12971), (65, 12980), (67, 12989), (71, 13025), (80, 13061), (96, 13166),

Gene: Ahwei_14 Start: 13912, Stop: 14313, Start Num: 30

Candidate Starts for Ahwei_14:

(Start: 30 @13912 has 316 MA's), (52, 14014), (63, 14077), (65, 14086), (67, 14095), (71, 14131), (75, 14149), (78, 14158), (80, 14167), (84, 14188), (85, 14197), (102, 14290),

Gene: Akoma_17 Start: 14566, Stop: 15000, Start Num: 29

Candidate Starts for Akoma_17:

(18, 14461), (Start: 29 @14566 has 55 MA's), (41, 14620), (Start: 50 @14686 has 2 MA's), (86, 14887), (87, 14890),

Gene: AksarBAT_14 Start: 12848, Stop: 13225, Start Num: 31

Candidate Starts for AksarBAT_14:

(Start: 31 @12848 has 1 MA's), (46, 12893), (48, 12929), (Start: 50 @12938 has 2 MA's), (63, 13007), (65, 13016), (67, 13025), (80, 13097), (82, 13103), (90, 13154), (92, 13172),

Gene: AlanGrant_16 Start: 15755, Stop: 16156, Start Num: 30

Candidate Starts for AlanGrant_16:

(Start: 30 @15755 has 316 MA's), (Start: 40 @15782 has 9 MA's), (52, 15857), (57, 15896), (63, 15920), (65, 15929), (70, 15968), (72, 15980), (75, 15992), (80, 16010), (83, 16028), (85, 16040), (86, 16052),

Gene: Aleia_15 Start: 12826, Stop: 13215, Start Num: 30

Candidate Starts for Aleia_15:

(Start: 30 @12826 has 316 MA's), (47, 12904), (51, 12919), (52, 12922), (63, 12985), (65, 12994), (67, 13003), (71, 13039), (80, 13075), (96, 13180),

Gene: AltPhacts_15 Start: 13242, Stop: 13631, Start Num: 30

Candidate Starts for AltPhacts_15:

(Start: 30 @13242 has 316 MA's), (47, 13320), (51, 13335), (52, 13338), (63, 13401), (65, 13410), (67, 13419), (71, 13455), (80, 13491), (96, 13596),

Gene: Altwerkus_14 Start: 12942, Stop: 13331, Start Num: 30

Candidate Starts for Altwerkus_14:

(Start: 30 @12942 has 316 MA's), (47, 13020), (51, 13035), (52, 13038), (63, 13101), (65, 13110), (67, 13119), (71, 13155), (80, 13191), (96, 13296),

Gene: AnClar_14 Start: 13769, Stop: 14164, Start Num: 34

Candidate Starts for AnClar_14:

(Start: 34 @13769 has 8 MA's), (Start: 38 @13781 has 4 MA's), (46, 13811), (56, 13883), (68, 13952), (80, 14015), (82, 14021), (93, 14099), (95, 14114), (96, 14120),

Gene: AnarQue_16 Start: 14378, Stop: 14779, Start Num: 28

Candidate Starts for AnarQue_16:

(Start: 28 @14378 has 7 MA's), (Start: 40 @14426 has 9 MA's), (54, 14504), (71, 14615), (80, 14651), (82, 14657), (90, 14708), (92, 14726), (95, 14750), (99, 14768), (100, 14771),

Gene: Anderson_15 Start: 13238, Stop: 13627, Start Num: 30

Candidate Starts for Anderson_15:

(Start: 30 @13238 has 316 MA's), (47, 13316), (51, 13331), (52, 13334), (63, 13397), (65, 13406), (67, 13415), (71, 13451), (80, 13487), (96, 13592),

Gene: Andre_15 Start: 13236, Stop: 13625, Start Num: 30

Candidate Starts for Andre_15:

(Start: 30 @13236 has 316 MA's), (47, 13314), (51, 13329), (52, 13332), (63, 13395), (65, 13404), (67, 13413), (71, 13449), (80, 13485), (96, 13590),

Gene: AngelCake_15 Start: 13250, Stop: 13639, Start Num: 30

Candidate Starts for AngelCake_15:

(Start: 30 @13250 has 316 MA's), (47, 13328), (51, 13343), (52, 13346), (63, 13409), (65, 13418), (67, 13427), (71, 13463), (80, 13499), (96, 13604),

Gene: Antihero_14 Start: 13912, Stop: 14313, Start Num: 30

Candidate Starts for Antihero_14:

(Start: 30 @13912 has 316 MA's), (52, 14014), (63, 14077), (65, 14086), (67, 14095), (71, 14131), (75, 14149), (78, 14158), (80, 14167), (84, 14188), (85, 14197), (102, 14290),

Gene: Antonia_14 Start: 12812, Stop: 13201, Start Num: 30

Candidate Starts for Antonia_14:

(Start: 30 @12812 has 316 MA's), (47, 12890), (51, 12905), (52, 12908), (63, 12971), (65, 12980), (67, 12989), (71, 13025), (80, 13061), (96, 13166),

Gene: Aonishiki_15 Start: 13268, Stop: 13657, Start Num: 30

Candidate Starts for Aonishiki_15:

(Start: 30 @13268 has 316 MA's), (47, 13346), (51, 13361), (52, 13364), (63, 13427), (65, 13436), (67, 13445), (71, 13481), (80, 13517), (96, 13622),

Gene: Apex_15 Start: 15157, Stop: 15558, Start Num: 30

Candidate Starts for Apex_15:

(Start: 30 @15157 has 316 MA's), (Start: 50 @15253 has 2 MA's), (52, 15259), (57, 15298), (63, 15322), (65, 15331), (71, 15376), (72, 15382), (75, 15394), (78, 15403), (80, 15412), (84, 15433), (85, 15442), (102, 15535),

Gene: Apizium_14 Start: 12982, Stop: 13371, Start Num: 30

Candidate Starts for Apizium_14:

(Start: 30 @12982 has 316 MA's), (45, 13024), (47, 13060), (51, 13075), (52, 13078), (63, 13141), (65, 13150), (67, 13159), (71, 13195), (80, 13231), (86, 13273), (96, 13336),

Gene: Ashraf_14 Start: 12800, Stop: 13189, Start Num: 30

Candidate Starts for Ashraf_14:

(Start: 30 @12800 has 316 MA's), (47, 12878), (51, 12893), (52, 12896), (63, 12959), (65, 12968), (67, 12977), (71, 13013), (80, 13049), (96, 13154),

Gene: Athena_18 Start: 15329, Stop: 15763, Start Num: 29

Candidate Starts for Athena_18:

(18, 15224), (Start: 29 @15329 has 55 MA's), (41, 15383), (Start: 50 @15449 has 2 MA's), (86, 15650), (87, 15653),

Gene: Audrey_17 Start: 14566, Stop: 15000, Start Num: 29

Candidate Starts for Audrey_17:

(18, 14461), (Start: 29 @14566 has 55 MA's), (41, 14620), (Start: 50 @14686 has 2 MA's), (86, 14887), (87, 14890),

Gene: Austelle_16 Start: 15613, Stop: 16014, Start Num: 30

Candidate Starts for Austelle_16:

(Start: 30 @15613 has 316 MA's), (52, 15715), (57, 15754), (63, 15778), (65, 15787), (71, 15832), (75, 15850), (80, 15868), (84, 15889), (85, 15898), (102, 15991),

Gene: Axumite_14 Start: 12949, Stop: 13329, Start Num: 38

Candidate Starts for Axumite_14:

(Start: 38 @12949 has 4 MA's), (Start: 50 @13024 has 2 MA's), (56, 13051), (68, 13120), (82, 13189), (84, 13204), (93, 13267), (95, 13282),

Gene: Badfish_15 Start: 13271, Stop: 13660, Start Num: 30

Candidate Starts for Badfish_15:

(Start: 30 @13271 has 316 MA's), (47, 13349), (51, 13364), (52, 13367), (63, 13430), (65, 13439), (67, 13448), (71, 13484), (80, 13520), (96, 13625),

Gene: Bae_16 Start: 14990, Stop: 15397, Start Num: 30

Candidate Starts for Bae_16:

(6, 14732), (Start: 30 @14990 has 316 MA's), (51, 15095), (52, 15098), (65, 15170), (66, 15176), (71, 15215), (80, 15251), (86, 15293), (103, 15377),

Gene: Baloo_17 Start: 14566, Stop: 14997, Start Num: 29

Candidate Starts for Baloo_17:

(18, 14461), (Start: 29 @14566 has 55 MA's), (41, 14620), (Start: 50 @14686 has 2 MA's), (86, 14887), (87, 14890),

Gene: Banjo_14 Start: 12949, Stop: 13338, Start Num: 30

Candidate Starts for Banjo_14:

(Start: 30 @12949 has 316 MA's), (47, 13027), (51, 13042), (52, 13045), (63, 13108), (65, 13117), (67, 13126), (71, 13162), (80, 13198), (96, 13303),

Gene: Basato_16 Start: 13475, Stop: 13864, Start Num: 30

Candidate Starts for Basato_16:

(Start: 30 @13475 has 316 MA's), (47, 13553), (51, 13568), (52, 13571), (63, 13634), (65, 13643), (67, 13652), (71, 13688), (80, 13724), (96, 13829),

Gene: BatteryCK_14 Start: 12806, Stop: 13195, Start Num: 30

Candidate Starts for BatteryCK_14:

(Start: 30 @12806 has 316 MA's), (47, 12884), (51, 12899), (52, 12902), (63, 12965), (65, 12974), (67, 12983), (71, 13019), (80, 13055), (96, 13160),

Gene: Beaglebox_14 Start: 12966, Stop: 13355, Start Num: 30

Candidate Starts for Beaglebox_14:

(Start: 30 @12966 has 316 MA's), (47, 13044), (51, 13059), (52, 13062), (63, 13125), (65, 13134), (67, 13143), (71, 13179), (80, 13215), (96, 13320),

Gene: Ben11_16 Start: 14390, Stop: 14824, Start Num: 29

Candidate Starts for Ben11_16:

(18, 14285), (Start: 29 @14390 has 55 MA's), (41, 14444), (Start: 50 @14510 has 2 MA's), (86, 14711), (87, 14714),

Gene: Bernardo_17 Start: 14565, Stop: 14999, Start Num: 29

Candidate Starts for Bernardo_17:

(18, 14460), (Start: 29 @14565 has 55 MA's), (41, 14619), (Start: 50 @14685 has 2 MA's), (86, 14886), (87, 14889),

Gene: BiggityBass_13 Start: 12863, Stop: 13258, Start Num: 34

Candidate Starts for BiggityBass_13:

(Start: 34 @12863 has 8 MA's), (Start: 38 @12875 has 4 MA's), (46, 12905), (48, 12941), (56, 12977), (68, 13046), (80, 13109), (82, 13115), (93, 13193), (95, 13208), (96, 13214),

Gene: Bishoperium_14 Start: 12955, Stop: 13344, Start Num: 30

Candidate Starts for Bishoperium_14:

(Start: 30 @12955 has 316 MA's), (47, 13033), (51, 13048), (52, 13051), (63, 13114), (65, 13123), (67, 13132), (71, 13168), (80, 13204), (96, 13309),

Gene: BlackStallion_15 Start: 13257, Stop: 13646, Start Num: 30

Candidate Starts for BlackStallion_15:

(Start: 30 @13257 has 316 MA's), (47, 13335), (51, 13350), (52, 13353), (63, 13416), (65, 13425), (67, 13434), (71, 13470), (80, 13506), (96, 13611),

Gene: Blackpen_16 Start: 13795, Stop: 14196, Start Num: 28

Candidate Starts for Blackpen_16:

(Start: 28 @13795 has 7 MA's), (Start: 30 @13816 has 316 MA's), (Start: 40 @13843 has 9 MA's), (54, 13921), (71, 14032), (78, 14059), (80, 14068), (82, 14074), (90, 14125), (92, 14143), (95, 14167), (99, 14185), (100, 14188),

Gene: BlackBerry_14 Start: 12960, Stop: 13349, Start Num: 30

Candidate Starts for BlackBerry_14:

(Start: 30 @12960 has 316 MA's), (47, 13038), (51, 13053), (52, 13056), (63, 13119), (65, 13128), (67, 13137), (71, 13173), (80, 13209), (96, 13314),

Gene: BlueHusk_15 Start: 13238, Stop: 13627, Start Num: 30

Candidate Starts for BlueHusk_15:

(Start: 30 @13238 has 316 MA's), (47, 13316), (51, 13331), (52, 13334), (63, 13397), (65, 13406), (67, 13415), (71, 13451), (80, 13487), (96, 13592),

Gene: Bluephacebaby_14 Start: 12955, Stop: 13344, Start Num: 30

Candidate Starts for Bluephacebaby_14:

(Start: 30 @12955 has 316 MA's), (47, 13033), (51, 13048), (52, 13051), (63, 13114), (65, 13123), (67, 13132), (71, 13168), (80, 13204), (96, 13309),

Gene: BobRoss2024_13 Start: 12784, Stop: 13155, Start Num: 32

Candidate Starts for BobRoss2024_13:

(Start: 31 @12781 has 1 MA's), (32, 12784), (64, 12943), (80, 13027), (82, 13033), (84, 13048), (85, 13057), (90, 13084), (95, 13126),

Gene: BobbyK_15 Start: 14976, Stop: 15377, Start Num: 30

Candidate Starts for BobbyK_15:

(Start: 30 @14976 has 316 MA's), (Start: 50 @15072 has 2 MA's), (52, 15078), (57, 15117), (63, 15141), (65, 15150), (71, 15195), (75, 15213), (80, 15231), (84, 15252), (85, 15261), (102, 15354),

Gene: Boehler_15 Start: 13265, Stop: 13654, Start Num: 30

Candidate Starts for Boehler_15:

(Start: 30 @13265 has 316 MA's), (47, 13343), (51, 13358), (52, 13361), (63, 13424), (65, 13433), (67, 13442), (71, 13478), (80, 13514), (82, 13520), (96, 13619),

Gene: BoogieWoogie_14 Start: 12942, Stop: 13331, Start Num: 30

Candidate Starts for BoogieWoogie_14:

(Start: 30 @12942 has 316 MA's), (47, 13020), (51, 13035), (52, 13038), (63, 13101), (65, 13110), (67, 13119), (71, 13155), (80, 13191), (96, 13296),

Gene: Bran_22 Start: 21277, Stop: 21648, Start Num: 40

Candidate Starts for Bran_22:

(35, 21259), (Start: 40 @21277 has 9 MA's), (65, 21424), (75, 21487), (81, 21508), (85, 21535), (104, 21637),

Gene: Briakila_17 Start: 15331, Stop: 15765, Start Num: 29

Candidate Starts for Briakila_17:

(18, 15226), (Start: 29 @15331 has 55 MA's), (41, 15385), (Start: 50 @15451 has 2 MA's), (86, 15652), (87, 15655),

Gene: Brilliant_15 Start: 12959, Stop: 13348, Start Num: 30

Candidate Starts for Brilliant_15:

(Start: 30 @12959 has 316 MA's), (47, 13037), (51, 13052), (52, 13055), (63, 13118), (65, 13127), (67, 13136), (71, 13172), (80, 13208), (96, 13313),

Gene: BrownCNA_16 Start: 15230, Stop: 15631, Start Num: 30

Candidate Starts for BrownCNA_16:

(Start: 30 @15230 has 316 MA's), (52, 15332), (57, 15371), (63, 15395), (65, 15404), (71, 15449), (75, 15467), (78, 15476), (80, 15485), (84, 15506), (85, 15515), (102, 15608),

Gene: Buckeye_15 Start: 13273, Stop: 13662, Start Num: 30

Candidate Starts for Buckeye_15:

(Start: 30 @13273 has 316 MA's), (47, 13351), (51, 13366), (52, 13369), (63, 13432), (65, 13441), (67, 13450), (71, 13486), (80, 13522), (96, 13627),

Gene: Burr_14 Start: 12955, Stop: 13344, Start Num: 30

Candidate Starts for Burr_14:

(Start: 30 @12955 has 316 MA's), (47, 13033), (51, 13048), (52, 13051), (63, 13114), (65, 13123), (67, 13132), (71, 13168), (80, 13204), (96, 13309),

Gene: CaiB_16 Start: 14363, Stop: 14764, Start Num: 28

Candidate Starts for CaiB_16:

(Start: 28 @14363 has 7 MA's), (Start: 40 @14411 has 9 MA's), (54, 14489), (71, 14600), (78, 14627), (80, 14636), (82, 14642), (90, 14693), (92, 14711), (95, 14735), (99, 14753), (100, 14756),

Gene: CamL_15 Start: 13253, Stop: 13642, Start Num: 30

Candidate Starts for CamL_15:

(Start: 30 @13253 has 316 MA's), (47, 13331), (51, 13346), (52, 13349), (63, 13412), (65, 13421), (67, 13430), (71, 13466), (80, 13502), (96, 13607),

Gene: CampRoach_15 Start: 13244, Stop: 13633, Start Num: 30

Candidate Starts for CampRoach_15:

(Start: 30 @13244 has 316 MA's), (47, 13322), (51, 13337), (52, 13340), (63, 13403), (65, 13412), (67, 13421), (71, 13457), (80, 13493), (96, 13598),

Gene: Cannibal_15 Start: 13238, Stop: 13627, Start Num: 30

Candidate Starts for Cannibal_15:

(Start: 30 @13238 has 316 MA's), (47, 13316), (51, 13331), (52, 13334), (63, 13397), (65, 13406), (67, 13415), (71, 13451), (80, 13487), (96, 13592),

Gene: Cardigan_51 Start: 36197, Stop: 36607, Start Num: 27

Candidate Starts for Cardigan_51:

(1, 35792), (2, 35795), (3, 35819), (4, 35843), (9, 36044), (12, 36080), (17, 36098), (19, 36110), (20, 36116), (21, 36119), (Start: 27 @36197 has 2 MA's), (49, 36308), (56, 36341), (58, 36365), (90, 36530),

Gene: Carthage_14 Start: 12916, Stop: 13305, Start Num: 30

Candidate Starts for Carthage_14:

(Start: 30 @12916 has 316 MA's), (47, 12994), (51, 13009), (52, 13012), (63, 13075), (65, 13084), (67, 13093), (71, 13129), (80, 13165), (96, 13270),

Gene: Casbah_16 Start: 14418, Stop: 14852, Start Num: 29

Candidate Starts for Casbah_16:

(18, 14313), (Start: 29 @14418 has 55 MA's), (41, 14472), (Start: 50 @14538 has 2 MA's), (86, 14739), (87, 14742),

Gene: Caspiboi_14 Start: 12960, Stop: 13349, Start Num: 30

Candidate Starts for Caspiboi_14:

(Start: 30 @12960 has 316 MA's), (47, 13038), (51, 13053), (52, 13056), (63, 13119), (65, 13128), (67, 13137), (71, 13173), (80, 13209), (96, 13314),

Gene: Caterpie_12 Start: 11772, Stop: 12167, Start Num: 29

Candidate Starts for Caterpie_12:

(Start: 29 @11772 has 55 MA's), (36, 11805), (48, 11883), (67, 11979), (74, 12030), (76, 12036), (78, 12042), (80, 12051), (86, 12093),

Gene: ChaChing_17 Start: 14581, Stop: 14964, Start Num: 29

Candidate Starts for ChaChing_17:

(18, 14476), (Start: 29 @14581 has 55 MA's), (41, 14635), (Start: 50 @14701 has 2 MA's), (86, 14902), (87, 14905),

Gene: Chaelin_14 Start: 12920, Stop: 13309, Start Num: 30

Candidate Starts for Chaelin_14:

(Start: 30 @12920 has 316 MA's), (47, 12998), (51, 13013), (52, 13016), (63, 13079), (65, 13088), (67, 13097), (71, 13133), (80, 13169), (96, 13274),

Gene: Chah_15 Start: 13272, Stop: 13661, Start Num: 30

Candidate Starts for Chah_15:

(Start: 30 @13272 has 316 MA's), (47, 13350), (51, 13365), (52, 13368), (63, 13431), (65, 13440), (67, 13449), (71, 13485), (80, 13521), (96, 13626),

Gene: Chalmers_17 Start: 15374, Stop: 15808, Start Num: 29

Candidate Starts for Chalmers_17:

(18, 15269), (Start: 29 @15374 has 55 MA's), (41, 15428), (Start: 50 @15494 has 2 MA's), (86, 15695), (87, 15698),

Gene: Chandler_17 Start: 15340, Stop: 15774, Start Num: 29

Candidate Starts for Chandler_17:

(18, 15235), (Start: 29 @15340 has 55 MA's), (41, 15394), (Start: 50 @15460 has 2 MA's), (86, 15661), (87, 15664),

Gene: Charles1_15 Start: 13235, Stop: 13624, Start Num: 30

Candidate Starts for Charles1_15:

(Start: 30 @13235 has 316 MA's), (47, 13313), (51, 13328), (52, 13331), (63, 13394), (65, 13403), (67, 13412), (71, 13448), (80, 13484), (96, 13589),

Gene: CharlieGBrown_14 Start: 12824, Stop: 13213, Start Num: 30

Candidate Starts for CharlieGBrown_14:

(Start: 30 @12824 has 316 MA's), (47, 12902), (51, 12917), (52, 12920), (63, 12983), (65, 12992), (67, 13001), (71, 13037), (80, 13073), (96, 13178),

Gene: CharlottesWeb_14 Start: 12853, Stop: 13239, Start Num: 34

Candidate Starts for CharlottesWeb_14:

(Start: 34 @12853 has 8 MA's), (Start: 38 @12865 has 4 MA's), (48, 12931), (56, 12967), (68, 13036), (82, 13105), (84, 13120), (98, 13210),

Gene: CheetO_15 Start: 13253, Stop: 13642, Start Num: 30

Candidate Starts for CheetO_15:

(Start: 30 @13253 has 316 MA's), (47, 13331), (51, 13346), (52, 13349), (63, 13412), (65, 13421), (67, 13430), (71, 13466), (80, 13502), (96, 13607),

Gene: Chentzyk_16 Start: 14436, Stop: 14870, Start Num: 29

Candidate Starts for Chentzyk_16:

(18, 14331), (Start: 29 @14436 has 55 MA's), (41, 14490), (Start: 50 @14556 has 2 MA's), (86, 14757), (87, 14760),

Gene: Cher_14 Start: 12978, Stop: 13367, Start Num: 30

Candidate Starts for Cher_14:

(Start: 30 @12978 has 316 MA's), (47, 13056), (51, 13071), (52, 13074), (63, 13137), (65, 13146), (67, 13155), (71, 13191), (80, 13227), (96, 13332),

Gene: Childish_14 Start: 12966, Stop: 13355, Start Num: 30

Candidate Starts for Childish_14:

(Start: 30 @12966 has 316 MA's), (47, 13044), (51, 13059), (52, 13062), (63, 13125), (65, 13134), (67, 13143), (71, 13179), (80, 13215), (96, 13320),

Gene: Chipette_16 Start: 13476, Stop: 13865, Start Num: 30

Candidate Starts for Chipette_16:

(Start: 30 @13476 has 316 MA's), (47, 13554), (51, 13569), (52, 13572), (63, 13635), (65, 13644), (67, 13653), (71, 13689), (80, 13725), (96, 13830),

Gene: Chorkpop_15 Start: 12978, Stop: 13367, Start Num: 30

Candidate Starts for Chorkpop_15:

(Start: 30 @12978 has 316 MA's), (47, 13056), (51, 13071), (52, 13074), (63, 13137), (65, 13146), (67, 13155), (71, 13191), (80, 13227), (96, 13332),

Gene: ChrisnMich_14 Start: 13912, Stop: 14313, Start Num: 30

Candidate Starts for ChrisnMich_14:

(Start: 30 @13912 has 316 MA's), (52, 14014), (63, 14077), (65, 14086), (67, 14095), (71, 14131), (75, 14149), (78, 14158), (80, 14167), (84, 14188), (85, 14197), (102, 14290),

Gene: Chuni_14 Start: 13269, Stop: 13658, Start Num: 30

Candidate Starts for Chuni_14:

(Start: 30 @13269 has 316 MA's), (47, 13347), (51, 13362), (52, 13365), (63, 13428), (65, 13437), (67, 13446), (71, 13482), (80, 13518), (96, 13623),

Gene: Chunky_15 Start: 13265, Stop: 13654, Start Num: 30

Candidate Starts for Chunky_15:

(Start: 30 @13265 has 316 MA's), (47, 13343), (51, 13358), (52, 13361), (63, 13424), (65, 13433), (67, 13442), (71, 13478), (80, 13514), (96, 13619),

Gene: Chute_14 Start: 13268, Stop: 13657, Start Num: 30

Candidate Starts for Chute_14:

(Start: 30 @13268 has 316 MA's), (47, 13346), (51, 13361), (52, 13364), (63, 13427), (65, 13436), (67, 13445), (71, 13481), (80, 13517), (96, 13622),

Gene: CloverMinnie_16 Start: 14303, Stop: 14704, Start Num: 28

Candidate Starts for CloverMinnie_16:

(16, 14198), (Start: 28 @14303 has 7 MA's), (Start: 30 @14324 has 316 MA's), (Start: 40 @14351 has 9 MA's), (54, 14429), (71, 14540), (78, 14567), (80, 14576), (82, 14582), (90, 14633), (92, 14651), (95, 14675), (99, 14693), (100, 14696),

Gene: Cobra_15 Start: 13256, Stop: 13645, Start Num: 30

Candidate Starts for Cobra_15:

(Start: 30 @13256 has 316 MA's), (47, 13334), (51, 13349), (52, 13352), (63, 13415), (65, 13424), (67, 13433), (71, 13469), (80, 13505), (96, 13610),

Gene: Colbert_15 Start: 13256, Stop: 13645, Start Num: 30

Candidate Starts for Colbert_15:

(Start: 30 @13256 has 316 MA's), (47, 13334), (51, 13349), (52, 13352), (63, 13415), (65, 13424), (67, 13433), (71, 13469), (80, 13505), (96, 13610),

Gene: Coldpizza_16 Start: 14928, Stop: 15302, Start Num: 34

Candidate Starts for Coldpizza_16:

(22, 14823), (Start: 34 @14928 has 8 MA's), (54, 15027), (55, 15030), (71, 15138), (75, 15156), (78, 15165), (80, 15174), (82, 15180), (86, 15216), (90, 15231), (94, 15270),

Gene: Coletti_15 Start: 13268, Stop: 13657, Start Num: 30

Candidate Starts for Coletti_15:

(Start: 30 @13268 has 316 MA's), (47, 13346), (51, 13361), (52, 13364), (63, 13427), (65, 13436), (67, 13445), (71, 13481), (80, 13517), (96, 13622),

Gene: Colossa_29 Start: 25214, Stop: 25555, Start Num: 43

Candidate Starts for Colossa_29:

(Start: 43 @25214 has 1 MA's), (51, 25268), (74, 25421), (89, 25496),

Gene: Compostia_18 Start: 14999, Stop: 15433, Start Num: 29

Candidate Starts for Compostia_18:

(18, 14894), (Start: 29 @14999 has 55 MA's), (41, 15053), (Start: 50 @15119 has 2 MA's), (86, 15320), (87, 15323),

Gene: Cooper_15 Start: 14020, Stop: 14421, Start Num: 30

Candidate Starts for Cooper_15:

(Start: 30 @14020 has 316 MA's), (52, 14122), (57, 14161), (63, 14185), (65, 14194), (68, 14212), (71, 14239), (75, 14257), (78, 14266), (80, 14275), (83, 14293), (84, 14296), (85, 14305), (90, 14332), (102, 14398),

Gene: Cornbread_14 Start: 12969, Stop: 13358, Start Num: 30

Candidate Starts for Cornbread_14:

(Start: 30 @12969 has 316 MA's), (47, 13047), (51, 13062), (52, 13065), (63, 13128), (65, 13137), (67, 13146), (71, 13182), (80, 13218), (96, 13323),

Gene: Cornobble_14 Start: 12813, Stop: 13202, Start Num: 30

Candidate Starts for Cornobble_14:

(Start: 30 @12813 has 316 MA's), (47, 12891), (51, 12906), (52, 12909), (63, 12972), (65, 12981), (67, 12990), (71, 13026), (80, 13062), (96, 13167),

Gene: Corofin_17 Start: 14591, Stop: 15025, Start Num: 29

Candidate Starts for Corofin_17:

(18, 14486), (Start: 29 @14591 has 55 MA's), (41, 14645), (Start: 50 @14711 has 2 MA's), (86, 14912), (87, 14915),

Gene: Cosmolli16_14 Start: 12970, Stop: 13359, Start Num: 30

Candidate Starts for Cosmolli16_14:

(Start: 30 @12970 has 316 MA's), (47, 13048), (51, 13063), (52, 13066), (63, 13129), (65, 13138), (67, 13147), (71, 13183), (80, 13219), (96, 13324),

Gene: Craff_15 Start: 13259, Stop: 13648, Start Num: 30

Candidate Starts for Craff_15:

(Start: 30 @13259 has 316 MA's), (47, 13337), (51, 13352), (52, 13355), (63, 13418), (65, 13427), (67, 13436), (71, 13472), (80, 13508), (96, 13613),

Gene: Crownjwl_15 Start: 13026, Stop: 13415, Start Num: 30

Candidate Starts for Crownjwl_15:

(Start: 30 @13026 has 316 MA's), (47, 13104), (51, 13119), (52, 13122), (63, 13185), (65, 13194), (67, 13203), (71, 13239), (80, 13275), (96, 13380),

Gene: DaddyDaniels_15 Start: 12962, Stop: 13351, Start Num: 30

Candidate Starts for DaddyDaniels_15:

(Start: 30 @12962 has 316 MA's), (47, 13040), (51, 13055), (52, 13058), (63, 13121), (65, 13130), (67, 13139), (71, 13175), (80, 13211), (96, 13316),

Gene: Daffy_15 Start: 12978, Stop: 13367, Start Num: 30

Candidate Starts for Daffy_15:

(Start: 30 @12978 has 316 MA's), (47, 13056), (51, 13071), (52, 13074), (63, 13137), (65, 13146), (67, 13155), (71, 13191), (80, 13227), (96, 13332),

Gene: Daisy_17 Start: 14587, Stop: 15021, Start Num: 29

Candidate Starts for Daisy_17:

(18, 14482), (Start: 29 @14587 has 55 MA's), (41, 14641), (Start: 50 @14707 has 2 MA's), (86, 14908), (87, 14911),

Gene: Daka_15 Start: 13256, Stop: 13645, Start Num: 30

Candidate Starts for Daka_15:

(Start: 30 @13256 has 316 MA's), (47, 13334), (51, 13349), (52, 13352), (63, 13415), (65, 13424), (67, 13433), (71, 13469), (80, 13505), (96, 13610),

Gene: Dati_15 Start: 12966, Stop: 13355, Start Num: 30

Candidate Starts for Dati_15:

(Start: 30 @12966 has 316 MA's), (47, 13044), (51, 13059), (52, 13062), (63, 13125), (65, 13134), (67, 13143), (71, 13179), (80, 13215), (96, 13320),

Gene: Deenasa_17 Start: 15329, Stop: 15763, Start Num: 29

Candidate Starts for Deenasa_17:

(18, 15224), (Start: 29 @15329 has 55 MA's), (41, 15383), (Start: 50 @15449 has 2 MA's), (86, 15650), (87, 15653),

Gene: DelRivs_14 Start: 12965, Stop: 13354, Start Num: 30

Candidate Starts for DelRivs_14:

(Start: 30 @12965 has 316 MA's), (47, 13043), (51, 13058), (52, 13061), (63, 13124), (65, 13133), (67, 13142), (71, 13178), (80, 13214), (96, 13319),

Gene: Derpp_14 Start: 12812, Stop: 13201, Start Num: 30

Candidate Starts for Derpp_14:

(Start: 30 @12812 has 316 MA's), (47, 12890), (51, 12905), (52, 12908), (63, 12971), (65, 12980), (67, 12989), (71, 13025), (80, 13061), (96, 13166),

Gene: Devonte_17 Start: 14566, Stop: 15000, Start Num: 29

Candidate Starts for Devonte_17:

(18, 14461), (Start: 29 @14566 has 55 MA's), (41, 14620), (Start: 50 @14686 has 2 MA's), (86, 14887), (87, 14890),

Gene: Dice_14 Start: 12953, Stop: 13342, Start Num: 30

Candidate Starts for Dice_14:

(Start: 30 @12953 has 316 MA's), (47, 13031), (51, 13046), (52, 13049), (63, 13112), (65, 13121), (67, 13130), (71, 13166), (80, 13202), (96, 13307),

Gene: DigitDog_16 Start: 14925, Stop: 15227, Start Num: 51

Candidate Starts for DigitDog_16:

(15, 14706), (Start: 29 @14814 has 55 MA's), (Start: 30 @14829 has 316 MA's), (51, 14925), (52, 14928), (65, 15000), (71, 15045), (80, 15081), (86, 15123), (103, 15207),

Gene: Dina_22 Start: 21114, Stop: 21479, Start Num: 40

Candidate Starts for Dina_22:

(24, 21018), (25, 21021), (35, 21096), (Start: 40 @21114 has 9 MA's), (55, 21198), (59, 21237), (60, 21240), (71, 21306), (104, 21468),

Gene: Dingo_15 Start: 13238, Stop: 13627, Start Num: 30

Candidate Starts for Dingo_15:

(Start: 30 @13238 has 316 MA's), (47, 13316), (51, 13331), (52, 13334), (63, 13397), (65, 13406), (67, 13415), (71, 13451), (80, 13487), (96, 13592),

Gene: Dione_14 Start: 12954, Stop: 13343, Start Num: 30

Candidate Starts for Dione_14:

(Start: 30 @12954 has 316 MA's), (47, 13032), (51, 13047), (52, 13050), (63, 13113), (65, 13122), (67, 13131), (71, 13167), (80, 13203), (96, 13308),

Gene: DirtJuice_15 Start: 13241, Stop: 13630, Start Num: 30

Candidate Starts for DirtJuice_15:

(Start: 30 @13241 has 316 MA's), (47, 13319), (51, 13334), (52, 13337), (63, 13400), (65, 13409), (67, 13418), (71, 13454), (80, 13490), (96, 13595),

Gene: Doddsville_15 Start: 12966, Stop: 13355, Start Num: 30

Candidate Starts for Doddsville_15:

(Start: 30 @12966 has 316 MA's), (47, 13044), (51, 13059), (52, 13062), (63, 13125), (65, 13134), (67, 13143), (71, 13179), (80, 13215), (96, 13320),

Gene: DoesntMatter_15 Start: 13235, Stop: 13624, Start Num: 30

Candidate Starts for DoesntMatter_15:

(Start: 30 @13235 has 316 MA's), (47, 13313), (51, 13328), (52, 13331), (63, 13394), (65, 13403), (67, 13412), (71, 13448), (80, 13484), (96, 13589),

Gene: DolOn_16 Start: 13488, Stop: 13877, Start Num: 30

Candidate Starts for DolOn_16:

(Start: 30 @13488 has 316 MA's), (47, 13566), (51, 13581), (52, 13584), (63, 13647), (65, 13656), (67, 13665), (71, 13701), (80, 13737), (96, 13842),

Gene: DonSanchon_14 Start: 12954, Stop: 13343, Start Num: 30

Candidate Starts for DonSanchon_14:

(Start: 30 @12954 has 316 MA's), (47, 13032), (51, 13047), (52, 13050), (63, 13113), (65, 13122), (67, 13131), (71, 13167), (80, 13203), (96, 13308),

Gene: Donny_16 Start: 14846, Stop: 15253, Start Num: 30

Candidate Starts for Donny_16:

(15, 14723), (Start: 29 @14831 has 55 MA's), (Start: 30 @14846 has 316 MA's), (51, 14951), (52, 14954), (55, 14963), (65, 15026), (71, 15071), (80, 15107), (86, 15149), (103, 15233),

Gene: Dori_13 Start: 11588, Stop: 11983, Start Num: 29

Candidate Starts for Dori_13:

(Start: 29 @11588 has 55 MA's), (36, 11621), (48, 11699), (67, 11795), (74, 11846), (76, 11852), (78, 11858), (80, 11867), (86, 11909),

Gene: DuchessDung_14 Start: 12806, Stop: 13195, Start Num: 30

Candidate Starts for DuchessDung_14:

(Start: 30 @12806 has 316 MA's), (47, 12884), (51, 12899), (52, 12902), (63, 12965), (65, 12974), (67, 12983), (71, 13019), (80, 13055), (96, 13160),

Gene: Duggie_14 Start: 12968, Stop: 13357, Start Num: 30

Candidate Starts for Duggie_14:

(Start: 30 @12968 has 316 MA's), (47, 13046), (51, 13061), (52, 13064), (63, 13127), (65, 13136), (67, 13145), (71, 13181), (80, 13217), (96, 13322),

Gene: Durga_15 Start: 13267, Stop: 13656, Start Num: 30

Candidate Starts for Durga_15:

(Start: 30 @13267 has 316 MA's), (47, 13345), (51, 13360), (52, 13363), (63, 13426), (65, 13435), (67, 13444), (71, 13480), (80, 13516), (96, 13621),

Gene: EastView9101_16 Start: 14852, Stop: 15256, Start Num: 30

Candidate Starts for EastView9101_16:

(Start: 30 @14852 has 316 MA's), (44, 14903), (51, 14957), (52, 14960), (65, 15032), (66, 15038), (71, 15077), (80, 15113), (86, 15155), (103, 15236),

Gene: ElvisPhasley_15 Start: 13266, Stop: 13655, Start Num: 30

Candidate Starts for ElvisPhasley_15:

(Start: 30 @13266 has 316 MA's), (47, 13344), (51, 13359), (52, 13362), (63, 13425), (65, 13434), (67, 13443), (71, 13479), (80, 13515), (96, 13620),

Gene: Emiris_15 Start: 13248, Stop: 13637, Start Num: 30

Candidate Starts for Emiris_15:

(Start: 30 @13248 has 316 MA's), (47, 13326), (51, 13341), (52, 13344), (63, 13407), (65, 13416), (67, 13425), (71, 13461), (80, 13497), (96, 13602),

Gene: EmpTee_15 Start: 13254, Stop: 13643, Start Num: 30

Candidate Starts for EmpTee_15:

(Start: 30 @13254 has 316 MA's), (47, 13332), (51, 13347), (52, 13350), (63, 13413), (65, 13422), (67, 13431), (71, 13467), (80, 13503), (96, 13608),

Gene: Epah_14 Start: 13912, Stop: 14313, Start Num: 30

Candidate Starts for Epah_14:

(Start: 30 @13912 has 316 MA's), (52, 14014), (63, 14077), (65, 14086), (67, 14095), (71, 14131), (75, 14149), (78, 14158), (80, 14167), (84, 14188), (85, 14197), (102, 14290),

Gene: Eremos_15 Start: 13253, Stop: 13642, Start Num: 30

Candidate Starts for Eremos_15:

(Start: 30 @13253 has 316 MA's), (47, 13331), (51, 13346), (52, 13349), (63, 13412), (65, 13421), (67, 13430), (71, 13466), (80, 13502), (96, 13607),

Gene: Etaye_15 Start: 13238, Stop: 13627, Start Num: 30

Candidate Starts for Etaye_15:

(Start: 30 @13238 has 316 MA's), (47, 13316), (51, 13331), (52, 13334), (63, 13397), (65, 13406), (67, 13415), (71, 13451), (80, 13487), (96, 13592),

Gene: Eugenia_15 Start: 13266, Stop: 13655, Start Num: 30

Candidate Starts for Eugenia_15:

(Start: 30 @13266 has 316 MA's), (47, 13344), (51, 13359), (52, 13362), (63, 13425), (65, 13434), (67, 13443), (71, 13479), (80, 13515), (96, 13620),

Gene: Evaa_15 Start: 14245, Stop: 14619, Start Num: 34

Candidate Starts for Evaa_15:

(Start: 34 @14245 has 8 MA's), (47, 14320), (Start: 50 @14332 has 2 MA's), (56, 14359), (69, 14431), (80, 14491), (82, 14497), (88, 14539), (90, 14548), (94, 14587),

Gene: Fanaw_15 Start: 15006, Stop: 15407, Start Num: 30

Candidate Starts for Fanaw_15:

(Start: 30 @15006 has 316 MA's), (52, 15108), (57, 15147), (63, 15171), (65, 15180), (71, 15225), (75, 15243), (80, 15261), (84, 15282), (85, 15291), (102, 15384),

Gene: Fang_15 Start: 13269, Stop: 13658, Start Num: 30

Candidate Starts for Fang_15:

(Start: 30 @13269 has 316 MA's), (47, 13347), (51, 13362), (52, 13365), (63, 13428), (65, 13437), (67, 13446), (71, 13482), (80, 13518), (96, 13623),

Gene: FelixTres_16 Start: 14366, Stop: 14767, Start Num: 28

Candidate Starts for FelixTres_16:

(Start: 28 @14366 has 7 MA's), (Start: 30 @14387 has 316 MA's), (Start: 40 @14414 has 9 MA's), (54, 14492), (71, 14603), (78, 14630), (80, 14639), (82, 14645), (90, 14696), (92, 14714), (95, 14738), (99, 14756), (100, 14759),

Gene: Flake_16 Start: 13270, Stop: 13659, Start Num: 30

Candidate Starts for Flake_16:

(Start: 30 @13270 has 316 MA's), (47, 13348), (51, 13363), (52, 13366), (63, 13429), (65, 13438), (67, 13447), (71, 13483), (80, 13519), (96, 13624),

Gene: FleetyMac_14 Start: 13251, Stop: 13640, Start Num: 30

Candidate Starts for FleetyMac_14:

(Start: 30 @13251 has 316 MA's), (47, 13329), (51, 13344), (52, 13347), (63, 13410), (65, 13419), (67, 13428), (71, 13464), (80, 13500), (96, 13605),

Gene: FluffyNinja_15 Start: 13257, Stop: 13646, Start Num: 30

Candidate Starts for FluffyNinja_15:

(Start: 30 @13257 has 316 MA's), (47, 13335), (51, 13350), (52, 13353), (63, 13416), (65, 13425), (67, 13434), (71, 13470), (80, 13506), (96, 13611),

Gene: Fortunato_15 Start: 14970, Stop: 15371, Start Num: 30

Candidate Starts for Fortunato_15:

(Start: 30 @14970 has 316 MA's), (Start: 50 @15066 has 2 MA's), (52, 15072), (57, 15111), (63, 15135), (65, 15144), (71, 15189), (72, 15195), (75, 15207), (78, 15216), (80, 15225), (84, 15246), (85, 15255), (102, 15348),

Gene: Fozzie_14 Start: 13263, Stop: 13652, Start Num: 30

Candidate Starts for Fozzie_14:

(Start: 30 @13263 has 316 MA's), (47, 13341), (51, 13356), (52, 13359), (63, 13422), (65, 13431), (67, 13440), (71, 13476), (80, 13512), (96, 13617),

Gene: Frankicide_15 Start: 13255, Stop: 13644, Start Num: 30

Candidate Starts for Frankicide_15:

(Start: 30 @13255 has 316 MA's), (47, 13333), (51, 13348), (52, 13351), (63, 13414), (65, 13423), (67, 13432), (71, 13468), (80, 13504), (96, 13609),

Gene: Frederick_15 Start: 14979, Stop: 15380, Start Num: 30

Candidate Starts for Frederick_15:

(Start: 30 @14979 has 316 MA's), (Start: 50 @15075 has 2 MA's), (52, 15081), (57, 15120), (63, 15144), (65, 15153), (71, 15198), (72, 15204), (75, 15216), (78, 15225), (80, 15234), (84, 15255), (85, 15264), (102, 15357),

Gene: FremontTroll_15 Start: 12952, Stop: 13341, Start Num: 30

Candidate Starts for FremontTroll_15:

(Start: 30 @12952 has 316 MA's), (47, 13030), (51, 13045), (52, 13048), (63, 13111), (65, 13120), (67, 13129), (71, 13165), (80, 13201), (96, 13306),

Gene: Fresco_14 Start: 12949, Stop: 13329, Start Num: 38

Candidate Starts for Fresco_14:

(Start: 38 @12949 has 4 MA's), (Start: 50 @13024 has 2 MA's), (56, 13051), (68, 13120), (82, 13189), (84, 13204), (93, 13267), (95, 13282),

Gene: Freya_14 Start: 12949, Stop: 13338, Start Num: 30

Candidate Starts for Freya_14:

(Start: 30 @12949 has 316 MA's), (47, 13027), (51, 13042), (52, 13045), (63, 13108), (65, 13117), (67, 13126), (71, 13162), (80, 13198), (96, 13303),

Gene: FriarPreacher_15 Start: 13274, Stop: 13663, Start Num: 30

Candidate Starts for FriarPreacher_15:

(Start: 30 @13274 has 316 MA's), (47, 13352), (51, 13367), (52, 13370), (63, 13433), (65, 13442), (67, 13451), (71, 13487), (80, 13523), (96, 13628),

Gene: Fringe_15 Start: 13236, Stop: 13625, Start Num: 30

Candidate Starts for Fringe_15:

(Start: 30 @13236 has 316 MA's), (47, 13314), (51, 13329), (52, 13332), (63, 13395), (65, 13404), (67, 13413), (71, 13449), (80, 13485), (96, 13590),

Gene: FugateOSU_14 Start: 12960, Stop: 13349, Start Num: 30

Candidate Starts for FugateOSU_14:

(Start: 30 @12960 has 316 MA's), (47, 13038), (51, 13053), (52, 13056), (63, 13119), (65, 13128), (67, 13137), (71, 13173), (80, 13209), (96, 13314),

Gene: Gadget_18 Start: 14570, Stop: 15004, Start Num: 29

Candidate Starts for Gadget_18:

(18, 14465), (Start: 29 @14570 has 55 MA's), (41, 14624), (Start: 50 @14690 has 2 MA's), (86, 14891), (87, 14894),

Gene: Gareth_14 Start: 12957, Stop: 13346, Start Num: 30

Candidate Starts for Gareth_14:

(Start: 30 @12957 has 316 MA's), (47, 13035), (51, 13050), (52, 13053), (63, 13116), (65, 13125), (67, 13134), (71, 13170), (80, 13206), (96, 13311),

Gene: GeneCoco_15 Start: 13259, Stop: 13648, Start Num: 30

Candidate Starts for GeneCoco_15:

(Start: 30 @13259 has 316 MA's), (47, 13337), (51, 13352), (52, 13355), (63, 13418), (65, 13427), (67, 13436), (71, 13472), (80, 13508), (96, 13613),

Gene: Gervas_17 Start: 14549, Stop: 14983, Start Num: 29

Candidate Starts for Gervas_17:

(18, 14444), (Start: 29 @14549 has 55 MA's), (41, 14603), (Start: 50 @14669 has 2 MA's), (86, 14870), (87, 14873),

Gene: GinPorsche_14 Start: 13912, Stop: 14313, Start Num: 30

Candidate Starts for GinPorsche_14:

(Start: 30 @13912 has 316 MA's), (52, 14014), (63, 14077), (65, 14086), (67, 14095), (71, 14131), (75, 14149), (78, 14158), (80, 14167), (84, 14188), (85, 14197), (102, 14290),

Gene: Giraffe_15 Start: 12961, Stop: 13350, Start Num: 30

Candidate Starts for Giraffe_15:

(Start: 30 @12961 has 316 MA's), (47, 13039), (51, 13054), (52, 13057), (63, 13120), (65, 13129), (67, 13138), (71, 13174), (80, 13210), (96, 13315),

Gene: GlenHope_18 Start: 14556, Stop: 14990, Start Num: 29

Candidate Starts for GlenHope_18:

(18, 14451), (Start: 29 @14556 has 55 MA's), (41, 14610), (Start: 50 @14676 has 2 MA's), (86, 14877), (87, 14880),

Gene: Glubnar_17 Start: 14570, Stop: 15004, Start Num: 29

Candidate Starts for Glubnar_17:

(18, 14465), (Start: 29 @14570 has 55 MA's), (41, 14624), (Start: 50 @14690 has 2 MA's), (86, 14891), (87, 14894),

Gene: Gophee_15 Start: 13238, Stop: 13627, Start Num: 30

Candidate Starts for Gophee_15:

(Start: 30 @13238 has 316 MA's), (47, 13316), (51, 13331), (52, 13334), (63, 13397), (65, 13406), (67, 13415), (71, 13451), (80, 13487), (96, 13592),

Gene: Grand2040_14 Start: 12976, Stop: 13365, Start Num: 30

Candidate Starts for Grand2040_14:

(Start: 30 @12976 has 316 MA's), (47, 13054), (51, 13069), (52, 13072), (63, 13135), (65, 13144), (67, 13153), (71, 13189), (80, 13225), (96, 13330),

Gene: GreenChile_15 Start: 13255, Stop: 13644, Start Num: 30

Candidate Starts for GreenChile_15:

(Start: 30 @13255 has 316 MA's), (47, 13333), (51, 13348), (52, 13351), (63, 13414), (65, 13423), (67, 13432), (71, 13468), (80, 13504), (96, 13609),

Gene: Gwennie1_15 Start: 13277, Stop: 13666, Start Num: 30

Candidate Starts for Gwennie1_15:

(Start: 30 @13277 has 316 MA's), (47, 13355), (51, 13370), (52, 13373), (63, 13436), (65, 13445), (67, 13454), (71, 13490), (80, 13526), (96, 13631),

Gene: Gwilliam_15 Start: 13250, Stop: 13639, Start Num: 30

Candidate Starts for Gwilliam_15:

(Start: 30 @13250 has 316 MA's), (47, 13328), (51, 13343), (52, 13346), (63, 13409), (65, 13418), (67, 13427), (71, 13463), (80, 13499), (96, 13604),

Gene: Gyarad_0015 Start: 13253, Stop: 13642, Start Num: 30

Candidate Starts for Gyarad_0015:

(Start: 30 @13253 has 316 MA's), (47, 13331), (51, 13346), (52, 13349), (63, 13412), (65, 13421), (67, 13430), (71, 13466), (80, 13502), (96, 13607),

Gene: HSavage_15 Start: 13261, Stop: 13650, Start Num: 30

Candidate Starts for HSavage_15:

(Start: 30 @13261 has 316 MA's), (47, 13339), (51, 13354), (52, 13357), (63, 13420), (65, 13429), (67, 13438), (71, 13474), (80, 13510), (96, 13615),

Gene: Haimas_15 Start: 13253, Stop: 13642, Start Num: 30

Candidate Starts for Haimas_15:

(Start: 30 @13253 has 316 MA's), (47, 13331), (51, 13346), (52, 13349), (63, 13412), (65, 13421), (67, 13430), (71, 13466), (80, 13502), (96, 13607),

Gene: Haleema_14 Start: 12978, Stop: 13367, Start Num: 30

Candidate Starts for Haleema_14:

(Start: 30 @12978 has 316 MA's), (47, 13056), (51, 13071), (52, 13074), (63, 13137), (65, 13146), (67, 13155), (71, 13191), (80, 13227), (96, 13332),

Gene: Halfpint_16 Start: 14391, Stop: 14825, Start Num: 29

Candidate Starts for Halfpint_16:

(18, 14286), (Start: 29 @14391 has 55 MA's), (41, 14445), (Start: 50 @14511 has 2 MA's), (86, 14712), (87, 14715),

Gene: Hally898_14 Start: 13912, Stop: 14313, Start Num: 30

Candidate Starts for Hally898_14:

(Start: 30 @13912 has 316 MA's), (52, 14014), (63, 14077), (64, 14083), (65, 14086), (67, 14095), (71, 14131), (75, 14149), (78, 14158), (80, 14167), (84, 14188), (85, 14197), (102, 14290),

Gene: Hamish_15 Start: 13247, Stop: 13636, Start Num: 30

Candidate Starts for Hamish_15:

(Start: 30 @13247 has 316 MA's), (47, 13325), (51, 13340), (52, 13343), (63, 13406), (65, 13415), (67, 13424), (71, 13460), (80, 13496), (96, 13601),

Gene: Hangman_15 Start: 14979, Stop: 15380, Start Num: 30

Candidate Starts for Hangman_15:

(Start: 30 @14979 has 316 MA's), (52, 15081), (57, 15120), (63, 15144), (65, 15153), (71, 15198), (75, 15216), (80, 15234), (84, 15255), (85, 15264), (102, 15357),

Gene: Happabalu_15 Start: 12947, Stop: 13336, Start Num: 30

Candidate Starts for Happabalu_15:

(Start: 30 @12947 has 316 MA's), (47, 13025), (51, 13040), (52, 13043), (63, 13106), (65, 13115), (67, 13124), (71, 13160), (80, 13196), (96, 13301),

Gene: Hartsy_15 Start: 13250, Stop: 13639, Start Num: 30

Candidate Starts for Hartsy_15:

(Start: 30 @13250 has 316 MA's), (47, 13328), (51, 13343), (52, 13346), (63, 13409), (65, 13418), (67, 13427), (71, 13463), (80, 13499), (96, 13604),

Gene: Harvey_15 Start: 13275, Stop: 13664, Start Num: 30

Candidate Starts for Harvey_15:

(Start: 30 @13275 has 316 MA's), (47, 13353), (51, 13368), (52, 13371), (63, 13434), (65, 13443), (67, 13452), (71, 13488), (80, 13524), (96, 13629),

Gene: HarveySr_17 Start: 14663, Stop: 14977, Start Num: 50

Candidate Starts for HarveySr_17:

(18, 14438), (Start: 29 @14543 has 55 MA's), (41, 14597), (Start: 50 @14663 has 2 MA's), (86, 14864), (87, 14867),

Gene: Heath_15 Start: 14976, Stop: 15377, Start Num: 30

Candidate Starts for Heath_15:

(Start: 30 @14976 has 316 MA's), (52, 15078), (57, 15117), (63, 15141), (65, 15150), (71, 15195), (72, 15201), (80, 15231), (84, 15252), (85, 15261), (102, 15354),

Gene: Heathcliff_17 Start: 14528, Stop: 14962, Start Num: 29

Candidate Starts for Heathcliff_17:

(18, 14423), (Start: 29 @14528 has 55 MA's), (41, 14582), (Start: 50 @14648 has 2 MA's), (86, 14849), (87, 14852),

Gene: Hekos_14 Start: 12977, Stop: 13366, Start Num: 30

Candidate Starts for Hekos_14:

(Start: 30 @12977 has 316 MA's), (47, 13055), (51, 13070), (52, 13073), (63, 13136), (65, 13145), (67, 13154), (71, 13190), (80, 13226), (96, 13331),

Gene: Held_15 Start: 12961, Stop: 13350, Start Num: 30

Candidate Starts for Held_15:

(Start: 30 @12961 has 316 MA's), (47, 13039), (51, 13054), (52, 13057), (63, 13120), (65, 13129), (67, 13138), (71, 13174), (80, 13210), (96, 13315),

Gene: HenryJackson_14 Start: 12975, Stop: 13364, Start Num: 30

Candidate Starts for HenryJackson_14:

(Start: 30 @12975 has 316 MA's), (47, 13053), (51, 13068), (52, 13071), (63, 13134), (65, 13143), (67, 13152), (71, 13188), (80, 13224), (96, 13329),

Gene: Hertubise_15 Start: 13268, Stop: 13657, Start Num: 30

Candidate Starts for Hertubise_15:

(Start: 30 @13268 has 316 MA's), (47, 13346), (51, 13361), (52, 13364), (63, 13427), (65, 13436), (67, 13445), (71, 13481), (80, 13517), (96, 13622),

Gene: Hetaeria_15 Start: 13271, Stop: 13660, Start Num: 30

Candidate Starts for Hetaeria_15:

(Start: 30 @13271 has 316 MA's), (47, 13349), (51, 13364), (52, 13367), (63, 13430), (65, 13439), (67, 13448), (71, 13484), (80, 13520), (96, 13625),

Gene: HighStump_14 Start: 12960, Stop: 13349, Start Num: 30

Candidate Starts for HighStump_14:

(Start: 30 @12960 has 316 MA's), (47, 13038), (51, 13053), (52, 13056), (63, 13119), (65, 13128), (67, 13137), (71, 13173), (80, 13209), (96, 13314),

Gene: Hocus_14 Start: 12960, Stop: 13349, Start Num: 30

Candidate Starts for Hocus_14:

(Start: 30 @12960 has 316 MA's), (47, 13038), (51, 13053), (52, 13056), (63, 13119), (65, 13128), (67, 13137), (71, 13173), (80, 13209), (96, 13314),

Gene: HogWash_14 Start: 13256, Stop: 13645, Start Num: 30

Candidate Starts for HogWash_14:

(Start: 30 @13256 has 316 MA's), (47, 13334), (51, 13349), (52, 13352), (63, 13415), (65, 13424), (67, 13433), (71, 13469), (80, 13505), (96, 13610),

Gene: Horchata_15 Start: 13240, Stop: 13629, Start Num: 30

Candidate Starts for Horchata_15:

(Start: 30 @13240 has 316 MA's), (47, 13318), (51, 13333), (52, 13336), (63, 13399), (65, 13408), (67, 13417), (71, 13453), (80, 13489), (96, 13594),

Gene: Hydro_15 Start: 14976, Stop: 15377, Start Num: 30

Candidate Starts for Hydro_15:

(Start: 30 @14976 has 316 MA's), (52, 15078), (57, 15117), (63, 15141), (65, 15150), (71, 15195), (75, 15213), (80, 15231), (84, 15252), (85, 15261), (102, 15354),

Gene: ImtiyazSitla_14 Start: 12800, Stop: 13189, Start Num: 30

Candidate Starts for ImtiyazSitla_14:

(Start: 30 @12800 has 316 MA's), (47, 12878), (51, 12893), (52, 12896), (63, 12959), (65, 12968), (67, 12977), (71, 13013), (80, 13049), (96, 13154),

Gene: Inchworm_15 Start: 13244, Stop: 13633, Start Num: 30

Candidate Starts for Inchworm_15:

(Start: 30 @13244 has 316 MA's), (47, 13322), (51, 13337), (52, 13340), (63, 13403), (65, 13412), (67, 13421), (71, 13457), (80, 13493), (96, 13598),

Gene: Inverness_15 Start: 13261, Stop: 13650, Start Num: 30

Candidate Starts for Inverness_15:

(Start: 30 @13261 has 316 MA's), (47, 13339), (51, 13354), (52, 13357), (63, 13420), (65, 13429), (67, 13438), (71, 13474), (80, 13510), (96, 13615),

Gene: Iridessa_15 Start: 12929, Stop: 13318, Start Num: 30

Candidate Starts for Iridessa_15:

(Start: 30 @12929 has 316 MA's), (47, 13007), (51, 13022), (52, 13025), (63, 13088), (65, 13097), (67, 13106), (71, 13142), (80, 13178), (96, 13283),

Gene: Iridoclysis_15 Start: 13233, Stop: 13622, Start Num: 30

Candidate Starts for Iridoclysis_15:

(Start: 30 @13233 has 316 MA's), (47, 13311), (51, 13326), (52, 13329), (63, 13392), (65, 13401), (67, 13410), (71, 13446), (80, 13482), (96, 13587),

Gene: IsaacEli_15 Start: 13265, Stop: 13654, Start Num: 30

Candidate Starts for IsaacEli_15:

(Start: 30 @13265 has 316 MA's), (47, 13343), (51, 13358), (52, 13361), (63, 13424), (65, 13433), (67, 13442), (71, 13478), (80, 13514), (96, 13619),

Gene: JAMaL_15 Start: 15160, Stop: 15561, Start Num: 30

Candidate Starts for JAMaL_15:

(Start: 30 @15160 has 316 MA's), (52, 15262), (63, 15325), (71, 15379), (75, 15397), (78, 15406), (80, 15415), (83, 15433), (85, 15445),

Gene: JDog_14 Start: 12968, Stop: 13357, Start Num: 30

Candidate Starts for JDog_14:

(Start: 30 @12968 has 316 MA's), (47, 13046), (51, 13061), (52, 13064), (63, 13127), (65, 13136), (67, 13145), (71, 13181), (80, 13217), (96, 13322),

Gene: JacAttac_15 Start: 13244, Stop: 13633, Start Num: 30

Candidate Starts for JacAttac_15:

(Start: 30 @13244 has 316 MA's), (47, 13322), (51, 13337), (52, 13340), (63, 13403), (65, 13412), (67, 13421), (71, 13457), (80, 13493), (96, 13598),

Gene: Jackstina_16 Start: 14492, Stop: 14926, Start Num: 29

Candidate Starts for Jackstina_16:

(18, 14387), (Start: 29 @14492 has 55 MA's), (41, 14546), (Start: 50 @14612 has 2 MA's), (86, 14813), (87, 14816),

Gene: JaguarMi_16 Start: 14806, Stop: 15207, Start Num: 30

Candidate Starts for JaguarMi_16:

(Start: 30 @14806 has 316 MA's), (52, 14908), (57, 14947), (63, 14971), (65, 14980), (71, 15025), (75, 15043), (78, 15052), (80, 15061), (84, 15082), (85, 15091), (102, 15184),

Gene: JakeO_14 Start: 12968, Stop: 13357, Start Num: 30

Candidate Starts for JakeO_14:

(Start: 30 @12968 has 316 MA's), (47, 13046), (51, 13061), (52, 13064), (63, 13127), (65, 13136), (67, 13145), (71, 13181), (80, 13217), (96, 13322),

Gene: JangoPhett_15 Start: 13245, Stop: 13634, Start Num: 30

Candidate Starts for JangoPhett_15:

(Start: 30 @13245 has 316 MA's), (47, 13323), (51, 13338), (52, 13341), (63, 13404), (65, 13413), (67, 13422), (71, 13458), (80, 13494), (96, 13599),

Gene: JellyBelly_14 Start: 12853, Stop: 13239, Start Num: 34

Candidate Starts for JellyBelly_14:

(Start: 34 @12853 has 8 MA's), (Start: 38 @12865 has 4 MA's), (48, 12931), (56, 12967), (68, 13036), (82, 13105), (84, 13120), (98, 13210),

Gene: Jesabah_15 Start: 12973, Stop: 13362, Start Num: 30

Candidate Starts for Jesabah_15:

(Start: 30 @12973 has 316 MA's), (47, 13051), (51, 13066), (52, 13069), (63, 13132), (65, 13141), (67, 13150), (71, 13186), (80, 13222), (96, 13327),

Gene: Jillium_14 Start: 12966, Stop: 13355, Start Num: 30

Candidate Starts for Jillium_14:

(Start: 30 @12966 has 316 MA's), (47, 13044), (51, 13059), (52, 13062), (63, 13125), (65, 13134), (67, 13143), (71, 13179), (80, 13215), (96, 13320),

Gene: Jiminy_14 Start: 12808, Stop: 13197, Start Num: 30

Candidate Starts for Jiminy_14:

(Start: 30 @12808 has 316 MA's), (47, 12886), (51, 12901), (52, 12904), (63, 12967), (65, 12976), (67, 12985), (71, 13021), (80, 13057), (96, 13162),

Gene: Jiraiya_14 Start: 12968, Stop: 13357, Start Num: 30

Candidate Starts for Jiraiya_14:

(Start: 30 @12968 has 316 MA's), (47, 13046), (51, 13061), (52, 13064), (63, 13127), (65, 13136), (67, 13145), (71, 13181), (80, 13217), (96, 13322),

Gene: JohnLord_13 Start: 11291, Stop: 11686, Start Num: 29

Candidate Starts for JohnLord_13:

(Start: 29 @11291 has 55 MA's), (36, 11324), (48, 11402), (67, 11498), (74, 11549), (76, 11555), (78, 11561), (80, 11570), (86, 11612),

Gene: JonJames_51 Start: 37099, Stop: 37509, Start Num: 27

Candidate Starts for JonJames_51:

(Start: 27 @37099 has 2 MA's), (49, 37210), (56, 37243), (58, 37267), (90, 37432),

Gene: JoyceMaria_15 Start: 14979, Stop: 15380, Start Num: 30

Candidate Starts for JoyceMaria_15:

(Start: 30 @14979 has 316 MA's), (52, 15081), (57, 15120), (63, 15144), (65, 15153), (71, 15198), (75, 15216), (78, 15225), (80, 15234), (84, 15255), (85, 15264), (102, 15357),

Gene: Juicebox_24 Start: 22590, Stop: 22964, Start Num: 40

Candidate Starts for Juicebox_24:

(Start: 40 @22590 has 9 MA's), (54, 22671), (55, 22674), (61, 22722), (66, 22743), (70, 22776), (82, 22824), (99, 22938),

Gene: KLucky39_15 Start: 13253, Stop: 13642, Start Num: 30

Candidate Starts for KLucky39_15:

(Start: 30 @13253 has 316 MA's), (47, 13331), (51, 13346), (52, 13349), (63, 13412), (65, 13421), (67, 13430), (71, 13466), (80, 13502), (96, 13607),

Gene: Kahve_14 Start: 12975, Stop: 13364, Start Num: 30

Candidate Starts for Kahve_14:

(Start: 30 @12975 has 316 MA's), (47, 13053), (51, 13068), (52, 13071), (63, 13134), (65, 13143), (67, 13152), (71, 13188), (80, 13224), (96, 13329),

Gene: Kailash_15 Start: 13262, Stop: 13651, Start Num: 30

Candidate Starts for Kailash_15:

(Start: 30 @13262 has 316 MA's), (47, 13340), (51, 13355), (52, 13358), (63, 13421), (65, 13430), (67, 13439), (71, 13475), (80, 13511), (96, 13616),

Gene: Kamiyu_17 Start: 14537, Stop: 14971, Start Num: 29

Candidate Starts for Kamiyu_17:

(18, 14432), (Start: 29 @14537 has 55 MA's), (41, 14591), (Start: 50 @14657 has 2 MA's), (86, 14858), (87, 14861),

Gene: KarasumaRum_17 Start: 15081, Stop: 15383, Start Num: 51

Candidate Starts for KarasumaRum_17:

(15, 14862), (Start: 29 @14970 has 55 MA's), (Start: 30 @14985 has 316 MA's), (51, 15081), (52, 15084), (65, 15156), (71, 15201), (80, 15237), (82, 15243), (86, 15279), (103, 15363),

Gene: Karn_14 Start: 12968, Stop: 13357, Start Num: 30

Candidate Starts for Karn_14:

(Start: 30 @12968 has 316 MA's), (47, 13046), (51, 13061), (52, 13064), (63, 13127), (65, 13136), (67, 13145), (71, 13181), (80, 13217), (96, 13322),

Gene: Katniss_15 Start: 13272, Stop: 13661, Start Num: 30

Candidate Starts for Katniss_15:

(Start: 30 @13272 has 316 MA's), (47, 13350), (51, 13365), (52, 13368), (63, 13431), (65, 13440), (67, 13449), (71, 13485), (80, 13521), (96, 13626),

Gene: Keitherie_15 Start: 13273, Stop: 13662, Start Num: 30

Candidate Starts for Keitherie_15:

(Start: 30 @13273 has 316 MA's), (47, 13351), (51, 13366), (52, 13369), (63, 13432), (65, 13441), (67, 13450), (71, 13486), (80, 13522), (96, 13627),

Gene: Khan1_15 Start: 12968, Stop: 13357, Start Num: 30

Candidate Starts for Khan1_15:

(Start: 30 @12968 has 316 MA's), (47, 13046), (51, 13061), (52, 13064), (63, 13127), (65, 13136), (67, 13145), (71, 13181), (80, 13217), (96, 13322),

Gene: Kikipoo_15 Start: 13265, Stop: 13654, Start Num: 30

Candidate Starts for Kikipoo_15:

(Start: 30 @13265 has 316 MA's), (47, 13343), (51, 13358), (52, 13361), (63, 13424), (65, 13433), (67, 13442), (71, 13478), (80, 13514), (96, 13619),

Gene: Kimbrough_15 Start: 12963, Stop: 13352, Start Num: 30

Candidate Starts for Kimbrough_15:

(Start: 30 @12963 has 316 MA's), (47, 13041), (51, 13056), (52, 13059), (63, 13122), (65, 13131), (67, 13140), (71, 13176), (80, 13212), (96, 13317),

Gene: KingTut_14 Start: 12955, Stop: 13344, Start Num: 30

Candidate Starts for KingTut_14:

(Start: 30 @12955 has 316 MA's), (47, 13033), (51, 13048), (52, 13051), (63, 13114), (65, 13123), (67, 13132), (71, 13168), (80, 13204), (96, 13309),

Gene: KingVeVeVe_15 Start: 13242, Stop: 13631, Start Num: 30

Candidate Starts for KingVeVeVe_15:

(Start: 30 @13242 has 316 MA's), (47, 13320), (51, 13335), (52, 13338), (63, 13401), (65, 13410), (67, 13419), (71, 13455), (80, 13491), (96, 13596),

Gene: KlimbOn_15 Start: 13253, Stop: 13642, Start Num: 30

Candidate Starts for KlimbOn_15:

(Start: 30 @13253 has 316 MA's), (47, 13331), (51, 13346), (52, 13349), (63, 13412), (65, 13421), (67, 13430), (71, 13466), (80, 13502), (96, 13607),

Gene: Kloppinator_15 Start: 13269, Stop: 13658, Start Num: 30

Candidate Starts for Kloppinator_15:

(Start: 30 @13269 has 316 MA's), (47, 13347), (51, 13362), (52, 13365), (63, 13428), (65, 13437), (67, 13446), (71, 13482), (80, 13518), (96, 13623),

Gene: Kronus_16 Start: 15149, Stop: 15583, Start Num: 29

Candidate Starts for Kronus_16:

(18, 15044), (Start: 29 @15149 has 55 MA's), (41, 15203), (Start: 50 @15269 has 2 MA's), (86, 15470), (87, 15473),

Gene: Kwadwo_14 Start: 12954, Stop: 13343, Start Num: 30

Candidate Starts for Kwadwo_14:

(Start: 30 @12954 has 316 MA's), (47, 13032), (51, 13047), (52, 13050), (63, 13113), (65, 13122), (67, 13131), (71, 13167), (80, 13203), (96, 13308),

Gene: Kwksand96_14 Start: 12818, Stop: 13207, Start Num: 30

Candidate Starts for Kwksand96_14:

(Start: 30 @12818 has 316 MA's), (47, 12896), (51, 12911), (52, 12914), (63, 12977), (65, 12986), (67, 12995), (71, 13031), (80, 13067), (96, 13172),

Gene: Labeouficaum_14 Start: 12812, Stop: 13201, Start Num: 30

Candidate Starts for Labeouficaum_14:

(Start: 30 @12812 has 316 MA's), (47, 12890), (51, 12905), (52, 12908), (63, 12971), (65, 12980), (67, 12989), (71, 13025), (80, 13061), (96, 13166),

Gene: Lambano_14 Start: 13912, Stop: 14313, Start Num: 30

Candidate Starts for Lambano_14:

(Start: 30 @13912 has 316 MA's), (52, 14014), (63, 14077), (65, 14086), (67, 14095), (71, 14131), (75, 14149), (78, 14158), (80, 14167), (84, 14188), (85, 14197), (102, 14290),

Gene: Larson_16 Start: 13270, Stop: 13659, Start Num: 30

Candidate Starts for Larson_16:

(Start: 30 @13270 has 316 MA's), (47, 13348), (51, 13363), (52, 13366), (63, 13429), (65, 13438), (67, 13447), (71, 13483), (80, 13519), (96, 13624),

Gene: LasagnaCat_15 Start: 13256, Stop: 13645, Start Num: 30

Candidate Starts for LasagnaCat_15:

(Start: 30 @13256 has 316 MA's), (47, 13334), (51, 13349), (52, 13352), (63, 13415), (65, 13424), (67, 13433), (71, 13469), (80, 13505), (96, 13610),

Gene: Lasso_15 Start: 13232, Stop: 13621, Start Num: 30

Candidate Starts for Lasso_15:

(Start: 30 @13232 has 316 MA's), (47, 13310), (51, 13325), (52, 13328), (63, 13391), (65, 13400), (67, 13409), (71, 13445), (80, 13481), (96, 13586),

Gene: Lederberg_22 Start: 21495, Stop: 21860, Start Num: 40

Candidate Starts for Lederberg_22:

(7, 21255), (14, 21339), (26, 21426), (Start: 40 @21495 has 9 MA's), (55, 21579), (59, 21618), (60, 21621), (71, 21687),

Gene: LeeLot_15 Start: 13253, Stop: 13642, Start Num: 30

Candidate Starts for LeeLot_15:

(Start: 30 @13253 has 316 MA's), (47, 13331), (51, 13346), (52, 13349), (63, 13412), (65, 13421), (67, 13430), (71, 13466), (80, 13502), (96, 13607),

Gene: Lego3393_15 Start: 13269, Stop: 13658, Start Num: 30

Candidate Starts for Lego3393_15:

(Start: 30 @13269 has 316 MA's), (47, 13347), (51, 13362), (52, 13365), (63, 13428), (65, 13437), (67, 13446), (71, 13482), (80, 13518), (96, 13623),

Gene: Legolas_14 Start: 12970, Stop: 13359, Start Num: 30

Candidate Starts for Legolas_14:

(Start: 30 @12970 has 316 MA's), (47, 13048), (51, 13063), (52, 13066), (63, 13129), (65, 13138), (67, 13147), (71, 13183), (80, 13219), (96, 13324),

Gene: Lehmann_15 Start: 12797, Stop: 13186, Start Num: 30

Candidate Starts for Lehmann_15:

(Start: 30 @12797 has 316 MA's), (47, 12875), (51, 12890), (52, 12893), (63, 12956), (65, 12965), (67, 12974), (71, 13010), (80, 13046), (96, 13151),

Gene: LeiMonet_15 Start: 12962, Stop: 13351, Start Num: 30

Candidate Starts for LeiMonet_15:

(Start: 30 @12962 has 316 MA's), (47, 13040), (51, 13055), (52, 13058), (63, 13121), (65, 13130), (67, 13139), (71, 13175), (80, 13211), (96, 13316),

Gene: LemonSlice_15 Start: 12964, Stop: 13353, Start Num: 30

Candidate Starts for LemonSlice_15:

(Start: 30 @12964 has 316 MA's), (47, 13042), (51, 13057), (52, 13060), (63, 13123), (65, 13132), (67, 13141), (71, 13177), (80, 13213), (96, 13318),

Gene: LestyG_17 Start: 14570, Stop: 15004, Start Num: 29

Candidate Starts for LestyG_17:

(18, 14465), (Start: 29 @14570 has 55 MA's), (41, 14624), (Start: 50 @14690 has 2 MA's), (86, 14891), (87, 14894),

Gene: Ligma_14 Start: 12949, Stop: 13329, Start Num: 38

Candidate Starts for Ligma_14:

(Start: 38 @12949 has 4 MA's), (Start: 50 @13024 has 2 MA's), (56, 13051), (68, 13120), (82, 13189), (84, 13204), (93, 13267), (95, 13282),

Gene: LittleDigger_14 Start: 13919, Stop: 14320, Start Num: 30

Candidate Starts for LittleDigger_14:

(Start: 30 @13919 has 316 MA's), (52, 14021), (63, 14084), (65, 14093), (67, 14102), (71, 14138), (75, 14156), (78, 14165), (80, 14174), (84, 14195), (85, 14204), (102, 14297),

Gene: LittleMunchkin_15 Start: 14381, Stop: 14770, Start Num: 34

Candidate Starts for LittleMunchkin_15:

(Start: 34 @14381 has 8 MA's), (Start: 38 @14393 has 4 MA's), (46, 14423), (56, 14495), (68, 14564), (80, 14627), (82, 14633), (93, 14711), (95, 14726),

Gene: Lolalove_15 Start: 14976, Stop: 15377, Start Num: 30

Candidate Starts for Lolalove_15:

(Start: 30 @14976 has 316 MA's), (52, 15078), (57, 15117), (63, 15141), (65, 15150), (71, 15195), (75, 15213), (78, 15222), (80, 15231), (84, 15252), (85, 15261), (102, 15354),

Gene: Longacauda_14 Start: 12956, Stop: 13345, Start Num: 30

Candidate Starts for Longacauda_14:

(Start: 30 @12956 has 316 MA's), (47, 13034), (51, 13049), (52, 13052), (63, 13115), (65, 13124), (67, 13133), (71, 13169), (80, 13205), (96, 13310),

Gene: Lopsy_14 Start: 12812, Stop: 13201, Start Num: 30

Candidate Starts for Lopsy_14:

(Start: 30 @12812 has 316 MA's), (47, 12890), (51, 12905), (52, 12908), (63, 12971), (65, 12980), (67, 12989), (71, 13025), (80, 13061), (96, 13166),

Gene: LostAndPhound_14 Start: 12966, Stop: 13355, Start Num: 30

Candidate Starts for LostAndPhound_14:

(Start: 30 @12966 has 316 MA's), (47, 13044), (51, 13059), (52, 13062), (63, 13125), (65, 13134), (67, 13143), (71, 13179), (80, 13215), (96, 13320),

Gene: LuckyMarjie_14 Start: 12978, Stop: 13367, Start Num: 30

Candidate Starts for LuckyMarjie_14:

(Start: 30 @12978 has 316 MA's), (47, 13056), (51, 13071), (52, 13074), (63, 13137), (65, 13146), (67, 13155), (71, 13191), (80, 13227), (96, 13332),

Gene: Lulumae_14 Start: 12955, Stop: 13344, Start Num: 30

Candidate Starts for Lulumae_14:

(Start: 30 @12955 has 316 MA's), (47, 13033), (51, 13048), (52, 13051), (63, 13114), (65, 13123), (67, 13132), (71, 13168), (80, 13204), (96, 13309),

Gene: Lulwa_15 Start: 13244, Stop: 13633, Start Num: 30

Candidate Starts for Lulwa_15:

(Start: 30 @13244 has 316 MA's), (47, 13322), (51, 13337), (52, 13340), (63, 13403), (65, 13412), (67, 13421), (71, 13457), (80, 13493), (96, 13598),

Gene: Lumine_14 Start: 12948, Stop: 13337, Start Num: 30

Candidate Starts for Lumine_14:

(Start: 30 @12948 has 316 MA's), (47, 13026), (51, 13041), (52, 13044), (63, 13107), (65, 13116), (67, 13125), (71, 13161), (80, 13197), (96, 13302),

Gene: MRabcd_14 Start: 12957, Stop: 13346, Start Num: 30

Candidate Starts for MRabcd_14:

(Start: 30 @12957 has 316 MA's), (47, 13035), (51, 13050), (52, 13053), (63, 13116), (65, 13125), (67, 13134), (71, 13170), (80, 13206), (96, 13311),

Gene: Mag7_14 Start: 12812, Stop: 13201, Start Num: 30

Candidate Starts for Mag7_14:

(Start: 30 @12812 has 316 MA's), (47, 12890), (51, 12905), (52, 12908), (63, 12971), (65, 12980), (67, 12989), (71, 13025), (80, 13061), (96, 13166),

Gene: Magic8_15 Start: 13250, Stop: 13639, Start Num: 30

Candidate Starts for Magic8_15:

(Start: 30 @13250 has 316 MA's), (47, 13328), (51, 13343), (52, 13346), (63, 13409), (65, 13418), (67, 13427), (71, 13463), (80, 13499), (96, 13604),

Gene: Magpie_15 Start: 15161, Stop: 15562, Start Num: 30

Candidate Starts for Magpie_15:

(Start: 30 @15161 has 316 MA's), (52, 15263), (57, 15302), (63, 15326), (65, 15335), (75, 15398), (80, 15416), (84, 15437), (85, 15446), (102, 15539),

Gene: MakoManhole_16 Start: 14381, Stop: 14782, Start Num: 28

Candidate Starts for MakoManhole_16:

(Start: 28 @14381 has 7 MA's), (Start: 30 @14402 has 316 MA's), (Start: 40 @14429 has 9 MA's), (54, 14507), (71, 14618), (78, 14645), (80, 14654), (82, 14660), (90, 14711), (92, 14729), (95, 14753), (99, 14771), (100, 14774),

Gene: Mana_14 Start: 12960, Stop: 13349, Start Num: 30

Candidate Starts for Mana_14:

(Start: 30 @12960 has 316 MA's), (47, 13038), (51, 13053), (52, 13056), (63, 13119), (65, 13128), (67, 13137), (71, 13173), (80, 13209), (96, 13314),

Gene: Manad_14 Start: 12810, Stop: 13199, Start Num: 30

Candidate Starts for Manad_14:

(Start: 30 @12810 has 316 MA's), (47, 12888), (51, 12903), (52, 12906), (63, 12969), (65, 12978), (67, 12987), (71, 13023), (80, 13059), (96, 13164),

Gene: Mao1_12 Start: 11984, Stop: 12379, Start Num: 29

Candidate Starts for Mao1_12:

(Start: 29 @11984 has 55 MA's), (36, 12017), (48, 12095), (67, 12191), (74, 12242), (76, 12248), (78, 12254), (80, 12263), (86, 12305),

Gene: Mariokart_14 Start: 12852, Stop: 13238, Start Num: 34

Candidate Starts for Mariokart_14:

(Start: 34 @12852 has 8 MA's), (Start: 38 @12864 has 4 MA's), (48, 12930), (56, 12966), (67, 13026), (68, 13035), (82, 13104), (84, 13119), (98, 13209),

Gene: Marley1013_17 Start: 15350, Stop: 15784, Start Num: 29

Candidate Starts for Marley1013_17:

(18, 15245), (Start: 29 @15350 has 55 MA's), (41, 15404), (Start: 50 @15470 has 2 MA's), (86, 15671), (87, 15674),

Gene: Marlia_17 Start: 14672, Stop: 14986, Start Num: 50

Candidate Starts for Marlia_17:

(18, 14447), (Start: 29 @14552 has 55 MA's), (41, 14606), (Start: 50 @14672 has 2 MA's), (86, 14873), (87, 14876),

Gene: Maru_14 Start: 12958, Stop: 13347, Start Num: 30

Candidate Starts for Maru_14:

(Start: 30 @12958 has 316 MA's), (47, 13036), (51, 13051), (52, 13054), (63, 13117), (65, 13126), (67, 13135), (71, 13171), (80, 13207), (96, 13312),

Gene: Mask_13 Start: 11985, Stop: 12380, Start Num: 29

Candidate Starts for Mask_13:

(Start: 29 @11985 has 55 MA's), (36, 12018), (48, 12096), (67, 12192), (74, 12243), (76, 12249), (78, 12255), (80, 12264), (86, 12306),

Gene: Maskar_14 Start: 12800, Stop: 13189, Start Num: 30

Candidate Starts for Maskar_14:

(Start: 30 @12800 has 316 MA's), (47, 12878), (51, 12893), (52, 12896), (63, 12959), (65, 12968), (67, 12977), (71, 13013), (80, 13049), (96, 13154),

Gene: Matalotodo_15 Start: 13248, Stop: 13637, Start Num: 30

Candidate Starts for Matalotodo_15:

(Start: 30 @13248 has 316 MA's), (47, 13326), (51, 13341), (52, 13344), (63, 13407), (65, 13416), (67, 13425), (71, 13461), (80, 13497), (96, 13602),

Gene: Mcshane_14 Start: 12954, Stop: 13343, Start Num: 30

Candidate Starts for Mcshane_14:

(Start: 30 @12954 has 316 MA's), (47, 13032), (51, 13047), (52, 13050), (63, 13113), (65, 13122), (67, 13131), (71, 13167), (80, 13203), (96, 13308),

Gene: Mecca_14 Start: 12951, Stop: 13340, Start Num: 30

Candidate Starts for Mecca_14:

(Start: 30 @12951 has 316 MA's), (47, 13029), (51, 13044), (52, 13047), (63, 13110), (65, 13119), (67, 13128), (71, 13164), (80, 13200), (96, 13305),

Gene: Megamind20_15 Start: 12973, Stop: 13362, Start Num: 30

Candidate Starts for Megamind20_15:

(Start: 30 @12973 has 316 MA's), (47, 13051), (51, 13066), (52, 13069), (63, 13132), (65, 13141), (67, 13150), (71, 13186), (80, 13222), (96, 13327),

Gene: Megatron_15 Start: 13253, Stop: 13642, Start Num: 30

Candidate Starts for Megatron_15:

(Start: 30 @13253 has 316 MA's), (47, 13331), (51, 13346), (52, 13349), (63, 13412), (65, 13421), (67, 13430), (71, 13466), (80, 13502), (96, 13607),

Gene: Melc17_15 Start: 13244, Stop: 13633, Start Num: 30

Candidate Starts for Melc17_15:

(Start: 30 @13244 has 316 MA's), (47, 13322), (51, 13337), (52, 13340), (63, 13403), (65, 13412), (67, 13421), (71, 13457), (80, 13493), (96, 13598),

Gene: MelsMeow_14 Start: 12812, Stop: 13201, Start Num: 30

Candidate Starts for MelsMeow_14:

(Start: 30 @12812 has 316 MA's), (47, 12890), (51, 12905), (52, 12908), (63, 12971), (65, 12980), (67, 12989), (71, 13025), (80, 13061), (96, 13166),

Gene: Mesh1_15 Start: 13262, Stop: 13651, Start Num: 30

Candidate Starts for Mesh1_15:

(Start: 30 @13262 has 316 MA's), (47, 13340), (51, 13355), (52, 13358), (63, 13421), (65, 13430), (67, 13439), (71, 13475), (80, 13511), (96, 13616),

Gene: Mesmerelda_14 Start: 12954, Stop: 13343, Start Num: 30

Candidate Starts for Mesmerelda_14:

(Start: 30 @12954 has 316 MA's), (47, 13032), (51, 13047), (52, 13050), (63, 13113), (65, 13122), (67, 13131), (71, 13167), (80, 13203), (96, 13308),

Gene: MichaelPhcott_14 Start: 12812, Stop: 13201, Start Num: 30

Candidate Starts for MichaelPhcott_14:

(Start: 30 @12812 has 316 MA's), (47, 12890), (51, 12905), (52, 12908), (63, 12971), (65, 12980), (67, 12989), (71, 13025), (80, 13061), (96, 13166),

Gene: Mikota_15 Start: 13239, Stop: 13628, Start Num: 30

Candidate Starts for Mikota_15:

(Start: 30 @13239 has 316 MA's), (47, 13317), (51, 13332), (52, 13335), (63, 13398), (65, 13407), (67, 13416), (71, 13452), (80, 13488), (96, 13593),

Gene: MiniBoss_15 Start: 13241, Stop: 13630, Start Num: 30

Candidate Starts for MiniBoss_15:

(Start: 30 @13241 has 316 MA's), (47, 13319), (51, 13334), (52, 13337), (63, 13400), (65, 13409), (67, 13418), (71, 13454), (80, 13490), (96, 13595),

Gene: MitKao_15 Start: 12960, Stop: 13349, Start Num: 30

Candidate Starts for MitKao_15:

(Start: 30 @12960 has 316 MA's), (47, 13038), (51, 13053), (52, 13056), (63, 13119), (65, 13128), (67, 13137), (71, 13173), (80, 13209), (96, 13314),

Gene: Mithril_15 Start: 14979, Stop: 15380, Start Num: 30

Candidate Starts for Mithril_15:

(Start: 30 @14979 has 316 MA's), (52, 15081), (57, 15120), (63, 15144), (65, 15153), (71, 15198), (75, 15216), (78, 15225), (80, 15234), (84, 15255), (85, 15264), (102, 15357),

Gene: MmasiCarm_17 Start: 14563, Stop: 14997, Start Num: 29

Candidate Starts for MmasiCarm_17:

(18, 14458), (Start: 29 @14563 has 55 MA's), (41, 14617), (Start: 50 @14683 has 2 MA's), (86, 14884), (87, 14887),

Gene: Morgushi_15 Start: 12964, Stop: 13353, Start Num: 30

Candidate Starts for Morgushi_15:

(Start: 30 @12964 has 316 MA's), (47, 13042), (51, 13057), (52, 13060), (63, 13123), (65, 13132), (67, 13141), (71, 13177), (80, 13213), (96, 13318),

Gene: Mortcellus_16 Start: 15204, Stop: 15638, Start Num: 29

Candidate Starts for Mortcellus_16:

(18, 15099), (Start: 29 @15204 has 55 MA's), (41, 15258), (Start: 50 @15324 has 2 MA's), (86, 15525), (87, 15528),

Gene: Morty_15 Start: 13262, Stop: 13651, Start Num: 30

Candidate Starts for Morty_15:

(Start: 30 @13262 has 316 MA's), (47, 13340), (51, 13355), (52, 13358), (63, 13421), (65, 13430), (67, 13439), (71, 13475), (80, 13511), (96, 13616),

Gene: Morty007_17 Start: 15350, Stop: 15784, Start Num: 29

Candidate Starts for Morty007_17:

(18, 15245), (Start: 29 @15350 has 55 MA's), (41, 15404), (Start: 50 @15470 has 2 MA's), (86, 15671), (87, 15674),

Gene: Mosaic_14 Start: 12967, Stop: 13356, Start Num: 30

Candidate Starts for Mosaic_14:

(Start: 30 @12967 has 316 MA's), (47, 13045), (51, 13060), (52, 13063), (63, 13126), (65, 13135), (67, 13144), (71, 13180), (80, 13216), (96, 13321),

Gene: MossRose_16 Start: 14360, Stop: 14761, Start Num: 28

Candidate Starts for MossRose_16:

(Start: 28 @14360 has 7 MA's), (Start: 30 @14381 has 316 MA's), (Start: 40 @14408 has 9 MA's), (54, 14486), (71, 14597), (78, 14624), (80, 14633), (82, 14639), (92, 14708), (95, 14732), (99, 14750), (100, 14753),

Gene: MrPhizzler_15 Start: 12965, Stop: 13354, Start Num: 30

Candidate Starts for MrPhizzler_15:

(Start: 30 @12965 has 316 MA's), (47, 13043), (51, 13058), (52, 13061), (63, 13124), (65, 13133), (67, 13142), (71, 13178), (80, 13214), (96, 13319),

Gene: Mudslide_15 Start: 15224, Stop: 15625, Start Num: 30

Candidate Starts for Mudslide_15:

(Start: 30 @15224 has 316 MA's), (Start: 50 @15320 has 2 MA's), (52, 15326), (57, 15365), (63, 15389), (65, 15398), (71, 15443), (72, 15449), (75, 15461), (78, 15470), (80, 15479), (84, 15500), (85, 15509), (102, 15602),

Gene: Mulan_14 Start: 12960, Stop: 13349, Start Num: 30

Candidate Starts for Mulan_14:

(Start: 30 @12960 has 316 MA's), (47, 13038), (51, 13053), (52, 13056), (63, 13119), (65, 13128), (67, 13137), (71, 13173), (80, 13209), (96, 13314),

Gene: Mulaychimus_17 Start: 14663, Stop: 14977, Start Num: 50

Candidate Starts for Mulaychimus_17:

(18, 14438), (Start: 29 @14543 has 55 MA's), (41, 14597), (Start: 50 @14663 has 2 MA's), (86, 14864), (87, 14867),

Gene: Murdoc_15 Start: 13253, Stop: 13642, Start Num: 30

Candidate Starts for Murdoc_15:

(Start: 30 @13253 has 316 MA's), (47, 13331), (51, 13346), (52, 13349), (63, 13412), (65, 13421), (67, 13430), (71, 13466), (80, 13502), (96, 13607),

Gene: Mutante_14 Start: 12963, Stop: 13352, Start Num: 30

Candidate Starts for Mutante_14:

(Start: 30 @12963 has 316 MA's), (47, 13041), (51, 13056), (52, 13059), (63, 13122), (65, 13131), (67, 13140), (71, 13176), (80, 13212), (96, 13317),

Gene: Mysterious_16 Start: 15072, Stop: 15494, Start Num: 29

Candidate Starts for Mysterious_16:

(15, 14964), (Start: 29 @15072 has 55 MA's), (Start: 30 @15087 has 316 MA's), (51, 15192), (52, 15195), (58, 15240), (65, 15267), (71, 15312), (80, 15348), (86, 15390), (103, 15474),

Gene: NHagos_14 Start: 12851, Stop: 13228, Start Num: 31

Candidate Starts for NHagos_14:

(Start: 31 @12851 has 1 MA's), (46, 12896), (48, 12932), (Start: 50 @12941 has 2 MA's), (63, 13010), (65, 13019), (80, 13100), (82, 13106), (90, 13157), (92, 13175),

Gene: Nacho_0015 Start: 13253, Stop: 13642, Start Num: 30

Candidate Starts for Nacho_0015:

(Start: 30 @13253 has 316 MA's), (47, 13331), (51, 13346), (52, 13349), (63, 13412), (65, 13421), (67, 13430), (71, 13466), (80, 13502), (96, 13607),

Gene: Nanao_14 Start: 13912, Stop: 14313, Start Num: 30

Candidate Starts for Nanao_14:

(Start: 30 @13912 has 316 MA's), (52, 14014), (63, 14077), (65, 14086), (67, 14095), (71, 14131), (75, 14149), (78, 14158), (80, 14167), (84, 14188), (85, 14197), (102, 14290),

Gene: Nangang_16 Start: 14928, Stop: 15227, Start Num: 52

Candidate Starts for Nangang_16:

(15, 14706), (Start: 29 @14814 has 55 MA's), (Start: 30 @14829 has 316 MA's), (51, 14925), (52, 14928), (65, 15000), (71, 15045), (80, 15081), (86, 15123), (103, 15207),

Gene: Nathan_15 Start: 13263, Stop: 13652, Start Num: 30

Candidate Starts for Nathan_15:

(Start: 30 @13263 has 316 MA's), (47, 13341), (51, 13356), (52, 13359), (63, 13422), (65, 13431), (67, 13440), (71, 13476), (80, 13512), (96, 13617),

Gene: Nehemiah_15 Start: 15087, Stop: 15494, Start Num: 30

Candidate Starts for Nehemiah_15:

(15, 14964), (Start: 29 @15072 has 55 MA's), (Start: 30 @15087 has 316 MA's), (51, 15192), (52, 15195), (58, 15240), (65, 15267), (71, 15312), (80, 15348), (86, 15390), (103, 15474),

Gene: Neos5_17 Start: 15356, Stop: 15790, Start Num: 29

Candidate Starts for Neos5_17:

(18, 15251), (Start: 29 @15356 has 55 MA's), (41, 15410), (Start: 50 @15476 has 2 MA's), (86, 15677), (87, 15680),

Gene: Newman_15 Start: 13253, Stop: 13642, Start Num: 30

Candidate Starts for Newman_15:

(Start: 30 @13253 has 316 MA's), (47, 13331), (51, 13346), (52, 13349), (63, 13412), (65, 13421), (67, 13430), (71, 13466), (80, 13502), (96, 13607),

Gene: Nicole21_15 Start: 13245, Stop: 13634, Start Num: 30

Candidate Starts for Nicole21_15:

(Start: 30 @13245 has 316 MA's), (47, 13323), (51, 13338), (52, 13341), (63, 13404), (65, 13413), (67, 13422), (71, 13458), (80, 13494), (96, 13599),

Gene: Nigel_13 Start: 13828, Stop: 14229, Start Num: 30

Candidate Starts for Nigel_13:

(Start: 30 @13828 has 316 MA's), (52, 13930), (63, 13993), (71, 14047), (75, 14065), (78, 14074), (80, 14083), (83, 14101), (85, 14113),

Gene: Nozo_17 Start: 15331, Stop: 15762, Start Num: 29

Candidate Starts for Nozo_17:

(18, 15226), (Start: 29 @15331 has 55 MA's), (41, 15385), (Start: 50 @15451 has 2 MA's), (86, 15652), (87, 15655),

Gene: Numberten_15 Start: 13256, Stop: 13645, Start Num: 30

Candidate Starts for Numberten_15:

(Start: 30 @13256 has 316 MA's), (47, 13334), (51, 13349), (52, 13352), (63, 13415), (65, 13424), (67, 13433), (71, 13469), (80, 13505), (96, 13610),

Gene: Nyala_14 Start: 12955, Stop: 13344, Start Num: 30

Candidate Starts for Nyala_14:

(Start: 30 @12955 has 316 MA's), (47, 13033), (51, 13048), (52, 13051), (63, 13114), (65, 13123), (67, 13132), (71, 13168), (80, 13204), (96, 13309),

Gene: OSmaximus_15 Start: 13263, Stop: 13652, Start Num: 30

Candidate Starts for OSmaximus_15:

(Start: 30 @13263 has 316 MA's), (47, 13341), (51, 13356), (52, 13359), (63, 13422), (65, 13431), (67, 13440), (71, 13476), (80, 13512), (96, 13617),

Gene: Obutu_17 Start: 14561, Stop: 14995, Start Num: 29

Candidate Starts for Obutu_17:

(18, 14456), (Start: 29 @14561 has 55 MA's), (41, 14615), (Start: 50 @14681 has 2 MA's), (86, 14882), (87, 14885),

Gene: Olak_14 Start: 12952, Stop: 13341, Start Num: 30

Candidate Starts for Olak_14:

(Start: 30 @12952 has 316 MA's), (47, 13030), (51, 13045), (52, 13048), (63, 13111), (65, 13120), (67, 13129), (71, 13165), (80, 13201), (96, 13306),

Gene: Oline_14 Start: 12812, Stop: 13201, Start Num: 30

Candidate Starts for Oline_14:

(Start: 30 @12812 has 316 MA's), (47, 12890), (51, 12905), (52, 12908), (63, 12971), (65, 12980), (67, 12989), (71, 13025), (80, 13061), (96, 13166),

Gene: Olive_15 Start: 13244, Stop: 13633, Start Num: 30

Candidate Starts for Olive_15:

(Start: 30 @13244 has 316 MA's), (47, 13322), (51, 13337), (52, 13340), (63, 13403), (65, 13412), (67, 13421), (71, 13457), (80, 13493), (96, 13598),

Gene: OliverWalter_15 Start: 13261, Stop: 13650, Start Num: 30

Candidate Starts for OliverWalter_15:

(Start: 30 @13261 has 316 MA's), (47, 13339), (51, 13354), (52, 13357), (63, 13420), (65, 13429), (67, 13438), (71, 13474), (80, 13510), (96, 13615),

Gene: Olivio_16 Start: 14535, Stop: 14849, Start Num: 50

Candidate Starts for Olivio_16:

(18, 14310), (Start: 29 @14415 has 55 MA's), (41, 14469), (Start: 50 @14535 has 2 MA's), (86, 14736), (87, 14739),

Gene: Omniscient_15 Start: 13262, Stop: 13651, Start Num: 30

Candidate Starts for Omniscient_15:

(Start: 30 @13262 has 316 MA's), (47, 13340), (51, 13355), (52, 13358), (63, 13421), (65, 13430), (67, 13439), (71, 13475), (80, 13511), (96, 13616),

Gene: OneBrain_15 Start: 12956, Stop: 13345, Start Num: 30

Candidate Starts for OneBrain_15:

(Start: 30 @12956 has 316 MA's), (47, 13034), (51, 13049), (52, 13052), (63, 13115), (65, 13124), (67, 13133), (71, 13169), (80, 13205), (96, 13310),

Gene: Oosterbaan_15 Start: 13254, Stop: 13643, Start Num: 30

Candidate Starts for Oosterbaan_15:

(Start: 30 @13254 has 316 MA's), (47, 13332), (51, 13347), (52, 13350), (63, 13413), (65, 13422), (67, 13431), (71, 13467), (80, 13503), (96, 13608),

Gene: OrangeOswald_17 Start: 14566, Stop: 15000, Start Num: 29

Candidate Starts for OrangeOswald_17:

(18, 14461), (Start: 29 @14566 has 55 MA's), (41, 14620), (Start: 50 @14686 has 2 MA's), (86, 14887), (87, 14890),

Gene: Orfeu_14 Start: 12953, Stop: 13342, Start Num: 30

Candidate Starts for Orfeu_14:

(Start: 30 @12953 has 316 MA's), (47, 13031), (51, 13046), (52, 13049), (63, 13112), (65, 13121), (67, 13130), (71, 13166), (80, 13202), (96, 13307),

Gene: Orion_15 Start: 13254, Stop: 13643, Start Num: 30

Candidate Starts for Orion_15:

(Start: 30 @13254 has 316 MA's), (47, 13332), (51, 13347), (52, 13350), (63, 13413), (65, 13422), (67, 13431), (71, 13467), (80, 13503), (96, 13608),

Gene: Orwigg_14 Start: 12946, Stop: 13335, Start Num: 30

Candidate Starts for Orwigg_14:

(Start: 30 @12946 has 316 MA's), (47, 13024), (51, 13039), (52, 13042), (63, 13105), (65, 13114), (67, 13123), (71, 13159), (80, 13195), (96, 13300),

Gene: PG1_15 Start: 13266, Stop: 13655, Start Num: 30

Candidate Starts for PG1_15:

(Start: 30 @13266 has 316 MA's), (47, 13344), (51, 13359), (52, 13362), (63, 13425), (65, 13434), (67, 13443), (71, 13479), (80, 13515), (96, 13620),

Gene: Pacifista_14 Start: 12957, Stop: 13346, Start Num: 30

Candidate Starts for Pacifista_14:

(Start: 30 @12957 has 316 MA's), (47, 13035), (51, 13050), (52, 13053), (63, 13116), (65, 13125), (67, 13134), (71, 13170), (80, 13206), (96, 13311),

Gene: PallasAthena_15 Start: 12961, Stop: 13350, Start Num: 30

Candidate Starts for PallasAthena_15:

(Start: 30 @12961 has 316 MA's), (47, 13039), (51, 13054), (52, 13057), (63, 13120), (65, 13129), (67, 13138), (71, 13174), (80, 13210), (96, 13315),

Gene: Phaedrus_16 Start: 14604, Stop: 14918, Start Num: 50

Candidate Starts for Phaedrus_16:

(18, 14379), (Start: 29 @14484 has 55 MA's), (41, 14538), (Start: 50 @14604 has 2 MA's), (86, 14805), (87, 14808),

Gene: Phamished_15 Start: 13259, Stop: 13648, Start Num: 30

Candidate Starts for Phamished_15:

(Start: 30 @13259 has 316 MA's), (47, 13337), (51, 13352), (52, 13355), (63, 13418), (65, 13427), (67, 13436), (71, 13472), (80, 13508), (96, 13613),

Gene: Phareon_15 Start: 12960, Stop: 13349, Start Num: 30

Candidate Starts for Phareon_15:

(Start: 30 @12960 has 316 MA's), (47, 13038), (51, 13053), (52, 13056), (63, 13119), (65, 13128), (67, 13137), (71, 13173), (80, 13209), (96, 13314),

Gene: PhatCats2014_15 Start: 13269, Stop: 13658, Start Num: 30

Candidate Starts for PhatCats2014_15:

(Start: 30 @13269 has 316 MA's), (47, 13347), (51, 13362), (52, 13365), (63, 13428), (65, 13437), (67, 13446), (71, 13482), (80, 13518), (96, 13623),

Gene: PhatLouie_15 Start: 13253, Stop: 13642, Start Num: 30

Candidate Starts for PhatLouie_15:

(Start: 30 @13253 has 316 MA's), (47, 13331), (51, 13346), (52, 13349), (63, 13412), (65, 13421), (67, 13430), (71, 13466), (80, 13502), (96, 13607),

Gene: Phayeta_17 Start: 14442, Stop: 14876, Start Num: 29

Candidate Starts for Phayeta_17:

(18, 14337), (Start: 29 @14442 has 55 MA's), (41, 14496), (Start: 50 @14562 has 2 MA's), (86, 14763), (87, 14766),

Gene: Phelemich_16 Start: 15091, Stop: 15498, Start Num: 30

Candidate Starts for Phelemich_16:

(15, 14968), (Start: 29 @15076 has 55 MA's), (Start: 30 @15091 has 316 MA's), (51, 15196), (52, 15199), (58, 15244), (65, 15271), (71, 15316), (80, 15352), (86, 15394), (103, 15478),

Gene: PhenghisKhan_14 Start: 12812, Stop: 13201, Start Num: 30

Candidate Starts for PhenghisKhan_14:

(Start: 30 @12812 has 316 MA's), (47, 12890), (51, 12905), (52, 12908), (63, 12971), (65, 12980), (67, 12989), (71, 13025), (80, 13061), (96, 13166),

Gene: Pherdinand_15 Start: 13257, Stop: 13646, Start Num: 30

Candidate Starts for Pherdinand_15:

(Start: 30 @13257 has 316 MA's), (47, 13335), (51, 13350), (52, 13353), (63, 13416), (65, 13425), (67, 13434), (71, 13470), (80, 13506), (96, 13611),

Gene: Phergie_14 Start: 12806, Stop: 13195, Start Num: 30

Candidate Starts for Phergie_14:

(Start: 30 @12806 has 316 MA's), (47, 12884), (51, 12899), (52, 12902), (63, 12965), (65, 12974), (67, 12983), (71, 13019), (80, 13055), (96, 13160),

Gene: Philly_16 Start: 14432, Stop: 14866, Start Num: 29

Candidate Starts for Philly_16:

(18, 14327), (Start: 29 @14432 has 55 MA's), (41, 14486), (Start: 50 @14552 has 2 MA's), (86, 14753), (87, 14756),

Gene: Phipps_15 Start: 13232, Stop: 13621, Start Num: 30

Candidate Starts for Phipps_15:

(Start: 30 @13232 has 316 MA's), (47, 13310), (51, 13325), (52, 13328), (63, 13391), (65, 13400), (67, 13409), (71, 13445), (80, 13481), (96, 13586),

Gene: Phleuron_14 Start: 12812, Stop: 13201, Start Num: 30

Candidate Starts for Phleuron_14:

(Start: 30 @12812 has 316 MA's), (47, 12890), (51, 12905), (52, 12908), (63, 12971), (65, 12980), (67, 12989), (71, 13025), (80, 13061), (96, 13166),

Gene: Phlyer_17 Start: 15300, Stop: 15734, Start Num: 29

Candidate Starts for Phlyer_17:

(18, 15195), (Start: 29 @15300 has 55 MA's), (41, 15354), (Start: 50 @15420 has 2 MA's), (86, 15621), (87, 15624),

Gene: PhrankReynolds_14 Start: 12812, Stop: 13201, Start Num: 30

Candidate Starts for PhrankReynolds_14:

(Start: 30 @12812 has 316 MA's), (47, 12890), (51, 12905), (52, 12908), (63, 12971), (65, 12980), (67, 12989), (71, 13025), (80, 13061), (96, 13166),

Gene: PhrodoBaggins_14 Start: 13247, Stop: 13636, Start Num: 30

Candidate Starts for PhrodoBaggins_14:

(Start: 30 @13247 has 316 MA's), (47, 13325), (51, 13340), (52, 13343), (63, 13406), (65, 13415), (67, 13424), (71, 13460), (80, 13496), (96, 13601),

Gene: Phunky_15 Start: 13253, Stop: 13642, Start Num: 30

Candidate Starts for Phunky_15:

(Start: 30 @13253 has 316 MA's), (47, 13331), (51, 13346), (52, 13349), (63, 13412), (65, 13421), (67, 13430), (71, 13466), (80, 13502), (96, 13607),

Gene: Piglet_0014 Start: 13256, Stop: 13645, Start Num: 30

Candidate Starts for Piglet_0014:

(Start: 30 @13256 has 316 MA's), (47, 13334), (51, 13349), (52, 13352), (63, 13415), (65, 13424), (67, 13433), (71, 13469), (80, 13505), (96, 13610),

Gene: PinheadLarry_15 Start: 12972, Stop: 13361, Start Num: 30

Candidate Starts for PinheadLarry_15:

(Start: 30 @12972 has 316 MA's), (47, 13050), (51, 13065), (52, 13068), (63, 13131), (65, 13140), (67, 13149), (71, 13185), (80, 13221), (96, 13326),

Gene: Pinkman_14 Start: 12812, Stop: 13201, Start Num: 30

Candidate Starts for Pinkman_14:

(Start: 30 @12812 has 316 MA's), (47, 12890), (51, 12905), (52, 12908), (63, 12971), (65, 12980), (67, 12989), (71, 13025), (80, 13061), (96, 13166),

Gene: Pipefish_17 Start: 15450, Stop: 15884, Start Num: 29

Candidate Starts for Pipefish_17:

(Start: 29 @15450 has 55 MA's), (41, 15504), (Start: 50 @15570 has 2 MA's), (86, 15771), (87, 15774),

Gene: Pipsqueak_15 Start: 13259, Stop: 13648, Start Num: 30

Candidate Starts for Pipsqueak_15:

(Start: 30 @13259 has 316 MA's), (47, 13337), (51, 13352), (52, 13355), (63, 13418), (65, 13427), (67, 13436), (71, 13472), (80, 13508), (96, 13613),

Gene: Placalicious_14 Start: 12954, Stop: 13343, Start Num: 30

Candidate Starts for Placalicious_14:

(Start: 30 @12954 has 316 MA's), (47, 13032), (51, 13047), (52, 13050), (63, 13113), (65, 13122), (67, 13131), (71, 13167), (80, 13203), (96, 13308),

Gene: Plata_15 Start: 12968, Stop: 13357, Start Num: 30

Candidate Starts for Plata_15:

(Start: 30 @12968 has 316 MA's), (47, 13046), (51, 13061), (52, 13064), (63, 13127), (65, 13136), (67, 13145), (71, 13181), (80, 13217), (96, 13322),

Gene: Plmatters_15 Start: 13253, Stop: 13642, Start Num: 30

Candidate Starts for Plmatters_15:

(Start: 30 @13253 has 316 MA's), (47, 13331), (51, 13346), (52, 13349), (63, 13412), (65, 13421), (67, 13430), (71, 13466), (80, 13502), (96, 13607),

Gene: Podrick_15 Start: 13244, Stop: 13633, Start Num: 30

Candidate Starts for Podrick_15:

(Start: 30 @13244 has 316 MA's), (47, 13322), (51, 13337), (52, 13340), (63, 13403), (65, 13412), (67, 13421), (71, 13457), (80, 13493), (96, 13598),

Gene: Pops_15 Start: 13256, Stop: 13645, Start Num: 30

Candidate Starts for Pops_15:

(Start: 30 @13256 has 316 MA's), (47, 13334), (51, 13349), (52, 13352), (63, 13415), (65, 13424), (67, 13433), (71, 13469), (80, 13505), (96, 13610),

Gene: Poster_14 Start: 13912, Stop: 14313, Start Num: 30

Candidate Starts for Poster_14:

(Start: 30 @13912 has 316 MA's), (52, 14014), (63, 14077), (65, 14086), (67, 14095), (71, 14131), (75, 14149), (78, 14158), (80, 14167), (84, 14188), (85, 14197), (102, 14290),

Gene: Potter_14 Start: 12967, Stop: 13356, Start Num: 30

Candidate Starts for Potter_14:

(Start: 30 @12967 has 316 MA's), (47, 13045), (51, 13060), (52, 13063), (63, 13126), (65, 13135), (67, 13144), (71, 13180), (80, 13216), (96, 13321),

Gene: Prickles_15 Start: 13247, Stop: 13636, Start Num: 30

Candidate Starts for Prickles_15:

(Start: 30 @13247 has 316 MA's), (47, 13325), (51, 13340), (52, 13343), (63, 13406), (65, 13415), (67, 13424), (71, 13460), (80, 13496), (96, 13601),

Gene: Prince_15 Start: 15136, Stop: 15537, Start Num: 30

Candidate Starts for Prince_15:

(Start: 30 @15136 has 316 MA's), (Start: 50 @15232 has 2 MA's), (52, 15238), (57, 15277), (63, 15301), (65, 15310), (71, 15355), (72, 15361), (75, 15373), (78, 15382), (80, 15391), (84, 15412), (85, 15421), (102, 15514),

Gene: ProfessorX_15 Start: 13245, Stop: 13634, Start Num: 30

Candidate Starts for ProfessorX_15:

(Start: 30 @13245 has 316 MA's), (47, 13323), (51, 13338), (52, 13341), (63, 13404), (65, 13413), (67, 13422), (71, 13458), (80, 13494), (96, 13599),

Gene: Puhltonio_15 Start: 13262, Stop: 13651, Start Num: 30

Candidate Starts for Puhltonio_15:

(Start: 30 @13262 has 316 MA's), (47, 13340), (51, 13355), (52, 13358), (63, 13421), (65, 13430), (67, 13439), (71, 13475), (80, 13511), (96, 13616),

Gene: QueenBeane_15 Start: 13253, Stop: 13642, Start Num: 30

Candidate Starts for QueenBeane_15:

(Start: 30 @13253 has 316 MA's), (47, 13331), (51, 13346), (52, 13349), (63, 13412), (65, 13421), (67, 13430), (71, 13466), (80, 13502), (96, 13607),

Gene: QueenPie_15 Start: 15510, Stop: 15911, Start Num: 30

Candidate Starts for QueenPie_15:

(Start: 30 @15510 has 316 MA's), (52, 15612), (63, 15675), (65, 15684), (67, 15693), (71, 15729), (75, 15747), (78, 15756), (80, 15765), (83, 15783), (84, 15786), (85, 15795), (90, 15822), (102, 15888),

Gene: Quisquilliae_15 Start: 13268, Stop: 13657, Start Num: 30

Candidate Starts for Quisquilliae_15:

(Start: 30 @13268 has 316 MA's), (47, 13346), (51, 13361), (52, 13364), (63, 13427), (65, 13436), (67, 13445), (71, 13481), (80, 13517), (96, 13622),

Gene: RagingRooster_17 Start: 14567, Stop: 15001, Start Num: 29

Candidate Starts for RagingRooster_17:

(18, 14462), (Start: 29 @14567 has 55 MA's), (41, 14621), (Start: 50 @14687 has 2 MA's), (86, 14888), (87, 14891),

Gene: RawrgerThat_15 Start: 14973, Stop: 15374, Start Num: 30

Candidate Starts for RawrgerThat_15:

(Start: 30 @14973 has 316 MA's), (52, 15075), (63, 15138), (65, 15147), (71, 15192), (72, 15198), (75, 15210), (80, 15228), (84, 15249), (85, 15258), (102, 15351),

Gene: Reccee_17 Start: 15025, Stop: 15432, Start Num: 30

Candidate Starts for Reccee_17:

(15, 14902), (Start: 29 @15010 has 55 MA's), (Start: 30 @15025 has 316 MA's), (51, 15130), (52, 15133), (55, 15142), (65, 15205), (71, 15250), (80, 15286), (86, 15328), (103, 15412),

Gene: RedMaple_14 Start: 13265, Stop: 13654, Start Num: 30

Candidate Starts for RedMaple_14:

(Start: 30 @13265 has 316 MA's), (47, 13343), (51, 13358), (52, 13361), (63, 13424), (65, 13433), (67, 13442), (71, 13478), (80, 13514), (96, 13619),

Gene: RedRaider89_16 Start: 13485, Stop: 13874, Start Num: 30

Candidate Starts for RedRaider89_16:

(Start: 30 @13485 has 316 MA's), (47, 13563), (51, 13578), (52, 13581), (63, 13644), (65, 13653), (67, 13662), (71, 13698), (80, 13734), (96, 13839),

Gene: Renkei_14 Start: 13919, Stop: 14320, Start Num: 30

Candidate Starts for Renkei_14:

(Start: 30 @13919 has 316 MA's), (52, 14021), (63, 14084), (65, 14093), (67, 14102), (71, 14138), (75, 14156), (78, 14165), (80, 14174), (84, 14195), (85, 14204), (102, 14297),

Gene: Reprobate_16 Start: 15088, Stop: 15495, Start Num: 30

Candidate Starts for Reprobate_16:

(15, 14965), (Start: 29 @15073 has 55 MA's), (Start: 30 @15088 has 316 MA's), (51, 15193), (52, 15196), (58, 15241), (65, 15268), (71, 15313), (80, 15349), (86, 15391), (103, 15475),

Gene: Reynauld_35 Start: 36999, Stop: 37397, Start Num: 37

Candidate Starts for Reynauld_35:

(Start: 37 @36999 has 1 MA's), (Start: 40 @37005 has 9 MA's), (53, 37083), (62, 37140), (72, 37203), (77, 37221), (91, 37299), (92, 37308), (105, 37389),

Gene: Rich_16 Start: 14987, Stop: 15394, Start Num: 30

Candidate Starts for Rich_16:

(6, 14729), (Start: 30 @14987 has 316 MA's), (51, 15092), (52, 15095), (65, 15167), (66, 15173), (71, 15212), (80, 15248), (86, 15290), (103, 15374),

Gene: Ricotta_14 Start: 12977, Stop: 13366, Start Num: 30

Candidate Starts for Ricotta_14:

(Start: 30 @12977 has 316 MA's), (47, 13055), (51, 13070), (52, 13073), (63, 13136), (65, 13145), (67, 13154), (71, 13190), (80, 13226), (96, 13331),

Gene: Riggan_15 Start: 13233, Stop: 13622, Start Num: 30

Candidate Starts for Riggan_15:

(Start: 30 @13233 has 316 MA's), (47, 13311), (51, 13326), (52, 13329), (63, 13392), (65, 13401), (67, 13410), (71, 13446), (80, 13482), (96, 13587),

Gene: Rimu_15 Start: 12965, Stop: 13354, Start Num: 30

Candidate Starts for Rimu_15:

(Start: 30 @12965 has 316 MA's), (47, 13043), (51, 13058), (52, 13061), (63, 13124), (65, 13133), (67, 13142), (71, 13178), (80, 13214), (96, 13319),

Gene: Rita130_16 Start: 14845, Stop: 15252, Start Num: 30

Candidate Starts for Rita130_16:

(15, 14722), (Start: 29 @14830 has 55 MA's), (Start: 30 @14845 has 316 MA's), (51, 14950), (52, 14953), (55, 14962), (65, 15025), (71, 15070), (80, 15106), (86, 15148), (103, 15232),

Gene: Rita1961_17 Start: 14562, Stop: 14996, Start Num: 29

Candidate Starts for Rita1961_17:

(18, 14457), (Start: 29 @14562 has 55 MA's), (41, 14616), (Start: 50 @14682 has 2 MA's), (86, 14883), (87, 14886),

Gene: Riverton_14 Start: 13259, Stop: 13648, Start Num: 30

Candidate Starts for Riverton_14:

(Start: 30 @13259 has 316 MA's), (47, 13337), (51, 13352), (52, 13355), (63, 13418), (65, 13427), (67, 13436), (71, 13472), (80, 13508), (96, 13613),

Gene: Robyn_14 Start: 12826, Stop: 13215, Start Num: 30

Candidate Starts for Robyn_14:

(Start: 30 @12826 has 316 MA's), (47, 12904), (51, 12919), (52, 12922), (63, 12985), (65, 12994), (67, 13003), (71, 13039), (80, 13075), (96, 13180),

Gene: Roliet_15 Start: 13253, Stop: 13642, Start Num: 30

Candidate Starts for Roliet_15:

(Start: 30 @13253 has 316 MA's), (47, 13331), (51, 13346), (52, 13349), (63, 13412), (65, 13421), (67, 13430), (71, 13466), (80, 13502), (96, 13607),

Gene: RomaT_17 Start: 15347, Stop: 15781, Start Num: 29

Candidate Starts for RomaT_17:

(18, 15242), (Start: 29 @15347 has 55 MA's), (41, 15401), (Start: 50 @15467 has 2 MA's), (86, 15668), (87, 15671),

Gene: Roscoe_16 Start: 13494, Stop: 13883, Start Num: 30

Candidate Starts for Roscoe_16:

(Start: 30 @13494 has 316 MA's), (47, 13572), (51, 13587), (52, 13590), (63, 13653), (65, 13662), (67, 13671), (71, 13707), (80, 13743), (82, 13749), (96, 13848),

Gene: Roy17_15 Start: 12955, Stop: 13344, Start Num: 30

Candidate Starts for Roy17_15:

(Start: 30 @12955 has 316 MA's), (47, 13033), (51, 13048), (52, 13051), (63, 13114), (65, 13123), (67, 13132), (71, 13168), (80, 13204), (96, 13309),

Gene: SDcharge11_15 Start: 13234, Stop: 13623, Start Num: 30

Candidate Starts for SDcharge11_15:

(Start: 30 @13234 has 316 MA's), (47, 13312), (51, 13327), (52, 13330), (63, 13393), (65, 13402), (67, 13411), (71, 13447), (80, 13483), (96, 13588),

Gene: SallyH_15 Start: 13263, Stop: 13652, Start Num: 30

Candidate Starts for SallyH_15:

(Start: 30 @13263 has 316 MA's), (47, 13341), (51, 13356), (52, 13359), (63, 13422), (65, 13431), (67, 13440), (71, 13476), (80, 13512), (96, 13617),

Gene: SamW_22 Start: 21107, Stop: 21475, Start Num: 40

Candidate Starts for SamW_22:

(8, 20891), (Start: 40 @21107 has 9 MA's), (55, 21191), (59, 21230), (65, 21254), (69, 21275), (79, 21332),

Gene: Samaymay_15 Start: 13253, Stop: 13642, Start Num: 30

Candidate Starts for Samaymay_15:

(Start: 30 @13253 has 316 MA's), (47, 13331), (51, 13346), (52, 13349), (63, 13412), (65, 13421), (67, 13430), (71, 13466), (80, 13502), (96, 13607),

Gene: SassyCat97_14 Start: 12960, Stop: 13349, Start Num: 30

Candidate Starts for SassyCat97_14:

(Start: 30 @12960 has 316 MA's), (47, 13038), (51, 13053), (52, 13056), (63, 13119), (65, 13128), (67, 13137), (71, 13173), (80, 13209), (82, 13215), (96, 13314),

Gene: Schadenfreude_14 Start: 12810, Stop: 13199, Start Num: 30

Candidate Starts for Schadenfreude_14:

(Start: 30 @12810 has 316 MA's), (47, 12888), (51, 12903), (52, 12906), (63, 12969), (65, 12978), (67, 12987), (71, 13023), (80, 13059), (96, 13164),

Gene: Schueller_14 Start: 12951, Stop: 13340, Start Num: 30

Candidate Starts for Schueller_14:

(Start: 30 @12951 has 316 MA's), (47, 13029), (51, 13044), (52, 13047), (63, 13110), (65, 13119), (67, 13128), (71, 13164), (80, 13200), (96, 13305),

Gene: Scoot17C_15 Start: 13254, Stop: 13643, Start Num: 30

Candidate Starts for Scoot17C_15:

(Start: 30 @13254 has 316 MA's), (47, 13332), (51, 13347), (52, 13350), (63, 13413), (65, 13422), (67, 13431), (71, 13467), (80, 13503), (96, 13608),

Gene: Scrick_14 Start: 12973, Stop: 13362, Start Num: 30

Candidate Starts for Scrick_14:

(Start: 30 @12973 has 316 MA's), (47, 13051), (51, 13066), (52, 13069), (63, 13132), (65, 13141), (67, 13150), (71, 13186), (80, 13222), (96, 13327),

Gene: Sejanus_13 Start: 12918, Stop: 13313, Start Num: 29

Candidate Starts for Sejanus_13:

(Start: 29 @12918 has 55 MA's), (36, 12951), (48, 13029), (67, 13125), (74, 13176), (76, 13182), (78, 13188), (80, 13197), (86, 13239),

Gene: Selr12_15 Start: 12978, Stop: 13367, Start Num: 30

Candidate Starts for Selr12_15:

(Start: 30 @12978 has 316 MA's), (47, 13056), (51, 13071), (52, 13074), (63, 13137), (65, 13146), (67, 13155), (71, 13191), (80, 13227), (96, 13332),

Gene: Serendipitous_16 Start: 15034, Stop: 15441, Start Num: 30

Candidate Starts for Serendipitous_16:

(Start: 29 @15019 has 55 MA's), (Start: 30 @15034 has 316 MA's), (39, 15058), (44, 15085), (51, 15139), (52, 15142), (65, 15214), (66, 15220), (71, 15259), (80, 15295), (86, 15337), (103, 15421),

Gene: Serendipity_15 Start: 13274, Stop: 13663, Start Num: 30

Candidate Starts for Serendipity_15:

(Start: 30 @13274 has 316 MA's), (47, 13352), (51, 13367), (52, 13370), (63, 13433), (65, 13442), (67, 13451), (71, 13487), (80, 13523), (96, 13628),

Gene: Serpentine_0015 Start: 13256, Stop: 13645, Start Num: 30

Candidate Starts for Serpentine_0015:

(Start: 30 @13256 has 316 MA's), (47, 13334), (51, 13349), (52, 13352), (63, 13415), (65, 13424), (67, 13433), (71, 13469), (80, 13505), (96, 13610),

Gene: ShadowBud_15 Start: 13268, Stop: 13657, Start Num: 30

Candidate Starts for ShadowBud_15:

(Start: 30 @13268 has 316 MA's), (47, 13346), (51, 13361), (52, 13364), (63, 13427), (65, 13436), (67, 13445), (71, 13481), (80, 13517), (96, 13622),

Gene: Shatter_14 Start: 12949, Stop: 13329, Start Num: 38

Candidate Starts for Shatter_14:

(Start: 38 @12949 has 4 MA's), (Start: 50 @13024 has 2 MA's), (56, 13051), (68, 13120), (82, 13189), (84, 13204), (93, 13267), (95, 13282),

Gene: Sheila_15 Start: 13245, Stop: 13634, Start Num: 30

Candidate Starts for Sheila_15:

(Start: 30 @13245 has 316 MA's), (47, 13323), (51, 13338), (52, 13341), (63, 13404), (65, 13413), (67, 13422), (71, 13458), (80, 13494), (96, 13599),

Gene: Shenandoah_17 Start: 14665, Stop: 14979, Start Num: 50

Candidate Starts for Shenandoah_17:

(18, 14440), (Start: 29 @14545 has 55 MA's), (41, 14599), (Start: 50 @14665 has 2 MA's), (86, 14866), (87, 14869),

Gene: Shenyu_16 Start: 14829, Stop: 15227, Start Num: 30

Candidate Starts for Shenyu_16:

(15, 14706), (Start: 29 @14814 has 55 MA's), (Start: 30 @14829 has 316 MA's), (51, 14925), (52, 14928), (65, 15000), (71, 15045), (80, 15081), (86, 15123), (103, 15207),

Gene: ShiVal_15 Start: 13247, Stop: 13636, Start Num: 30

Candidate Starts for ShiVal_15:

(Start: 30 @13247 has 316 MA's), (47, 13325), (51, 13340), (52, 13343), (63, 13406), (65, 13415), (67, 13424), (71, 13460), (80, 13496), (96, 13601),

Gene: Sigman_15 Start: 13244, Stop: 13633, Start Num: 30

Candidate Starts for Sigman_15:

(Start: 30 @13244 has 316 MA's), (47, 13322), (51, 13337), (52, 13340), (63, 13403), (65, 13412), (67, 13421), (71, 13457), (80, 13493), (96, 13598),

Gene: SilverBell_15 Start: 13259, Stop: 13648, Start Num: 30

Candidate Starts for SilverBell_15:

(Start: 30 @13259 has 316 MA's), (47, 13337), (51, 13352), (52, 13355), (63, 13418), (65, 13427), (67, 13436), (71, 13472), (80, 13508), (96, 13613),

Gene: Simielle_14 Start: 12945, Stop: 13334, Start Num: 30

Candidate Starts for Simielle_14:

(Start: 30 @12945 has 316 MA's), (47, 13023), (51, 13038), (52, 13041), (63, 13104), (65, 13113), (67, 13122), (71, 13158), (80, 13194), (96, 13299),

Gene: SirBeauregard_14 Start: 12920, Stop: 13309, Start Num: 30

Candidate Starts for SirBeauregard_14:

(Start: 30 @12920 has 316 MA's), (47, 12998), (51, 13013), (52, 13016), (63, 13079), (65, 13088), (67, 13097), (71, 13133), (80, 13169), (96, 13274),

Gene: SirJeffery_16 Start: 14846, Stop: 15253, Start Num: 30

Candidate Starts for SirJeffery_16:

(15, 14723), (Start: 29 @14831 has 55 MA's), (Start: 30 @14846 has 316 MA's), (51, 14951), (52, 14954), (55, 14963), (65, 15026), (71, 15071), (80, 15107), (86, 15149), (103, 15233),

Gene: Sisko_14 Start: 13277, Stop: 13672, Start Num: 34

Candidate Starts for Sisko_14:

(Start: 34 @13277 has 8 MA's), (Start: 38 @13289 has 4 MA's), (46, 13319), (56, 13391), (68, 13460), (80, 13523), (82, 13529), (93, 13607), (95, 13622), (96, 13628),

Gene: Skippy_15 Start: 13238, Stop: 13627, Start Num: 30

Candidate Starts for Skippy_15:

(Start: 30 @13238 has 316 MA's), (47, 13316), (51, 13331), (52, 13334), (63, 13397), (65, 13406), (67, 13415), (71, 13451), (80, 13487), (96, 13592),

Gene: Slatt_15 Start: 13270, Stop: 13659, Start Num: 30

Candidate Starts for Slatt_15:

(Start: 30 @13270 has 316 MA's), (47, 13348), (51, 13363), (52, 13366), (63, 13429), (65, 13438), (67, 13447), (71, 13483), (80, 13519), (96, 13624),

Gene: SlippinJimmy_17 Start: 15451, Stop: 15765, Start Num: 50

Candidate Starts for SlippinJimmy_17:

(18, 15226), (Start: 29 @15331 has 55 MA's), (41, 15385), (Start: 50 @15451 has 2 MA's), (86, 15652), (87, 15655),

Gene: Soile_15 Start: 12965, Stop: 13354, Start Num: 30

Candidate Starts for Soile_15:

(Start: 30 @12965 has 316 MA's), (47, 13043), (51, 13058), (52, 13061), (63, 13124), (65, 13133), (67, 13142), (71, 13178), (80, 13214), (96, 13319),

Gene: Solosis_14 Start: 12972, Stop: 13361, Start Num: 30

Candidate Starts for Solosis_14:

(Start: 30 @12972 has 316 MA's), (47, 13050), (51, 13065), (52, 13068), (63, 13131), (65, 13140), (67, 13149), (71, 13185), (80, 13221), (96, 13326),

Gene: Sophia_14 Start: 12960, Stop: 13349, Start Num: 30

Candidate Starts for Sophia_14:

(Start: 30 @12960 has 316 MA's), (47, 13038), (51, 13053), (52, 13056), (63, 13119), (65, 13128), (67, 13137), (71, 13173), (80, 13209), (96, 13314),

Gene: Soto_15 Start: 13250, Stop: 13639, Start Num: 30

Candidate Starts for Soto_15:

(Start: 30 @13250 has 316 MA's), (47, 13328), (51, 13343), (52, 13346), (63, 13409), (65, 13418), (67, 13427), (71, 13463), (80, 13499), (96, 13604),

Gene: Sour_17 Start: 14711, Stop: 15097, Start Num: 33

Candidate Starts for Sour_17:

(Start: 33 @14711 has 1 MA's), (Start: 34 @14714 has 8 MA's), (48, 14792), (56, 14828), (73, 14936), (80, 14960), (82, 14966), (85, 14990), (90, 15017), (95, 15059), (101, 15080),

Gene: Spartan300_15 Start: 13250, Stop: 13639, Start Num: 30

Candidate Starts for Spartan300_15:

(Start: 30 @13250 has 316 MA's), (47, 13328), (51, 13343), (52, 13346), (63, 13409), (65, 13418), (67, 13427), (71, 13463), (80, 13499), (96, 13604),

Gene: Squid_15 Start: 12960, Stop: 13349, Start Num: 30

Candidate Starts for Squid_15:

(Start: 30 @12960 has 316 MA's), (47, 13038), (51, 13053), (52, 13056), (63, 13119), (65, 13128), (67, 13137), (71, 13173), (80, 13209), (96, 13314),

Gene: Squiggle_15 Start: 12960, Stop: 13349, Start Num: 30

Candidate Starts for Squiggle_15:

(Start: 30 @12960 has 316 MA's), (47, 13038), (51, 13053), (52, 13056), (63, 13119), (65, 13128), (67, 13137), (71, 13173), (80, 13209), (96, 13314),

Gene: Srilaccoli3_32 Start: 35928, Stop: 36317, Start Num: 40

Candidate Starts for Srilaccoli3_32:

(10, 35727), (23, 35835), (Start: 40 @35928 has 9 MA's), (53, 36006), (70, 36114), (77, 36144), (92, 36231), (96, 36261),

Gene: StAB_22 Start: 21542, Stop: 21910, Start Num: 40

Candidate Starts for StAB_22:

(35, 21524), (Start: 40 @21542 has 9 MA's), (55, 21626), (65, 21689), (79, 21767),

Gene: Stiles_22 Start: 21096, Stop: 21464, Start Num: 40

Candidate Starts for Stiles_22:

(35, 21078), (Start: 40 @21096 has 9 MA's), (59, 21219), (60, 21222),

Gene: Stinger_13 Start: 13475, Stop: 13876, Start Num: 30

Candidate Starts for Stinger_13:

(Start: 30 @13475 has 316 MA's), (52, 13577), (57, 13616), (63, 13640), (71, 13694), (75, 13712), (78, 13721), (80, 13730), (83, 13748), (85, 13760),

Gene: StinkyVeggy_17 Start: 15081, Stop: 15383, Start Num: 51

Candidate Starts for StinkyVeggy_17:

(15, 14862), (Start: 29 @14970 has 55 MA's), (Start: 30 @14985 has 316 MA's), (51, 15081), (52, 15084), (65, 15156), (71, 15201), (80, 15237), (82, 15243), (86, 15279), (103, 15363),

Gene: Struggle_14 Start: 12806, Stop: 13195, Start Num: 30

Candidate Starts for Struggle_14:

(Start: 30 @12806 has 316 MA's), (47, 12884), (51, 12899), (52, 12902), (63, 12965), (65, 12974), (67, 12983), (71, 13019), (80, 13055), (96, 13160),

Gene: Suffolk_15 Start: 13252, Stop: 13641, Start Num: 30

Candidate Starts for Suffolk_15:

(Start: 30 @13252 has 316 MA's), (47, 13330), (51, 13345), (52, 13348), (63, 13411), (65, 13420), (67, 13429), (71, 13465), (80, 13501), (96, 13606),

Gene: Suigeneris_16 Start: 14831, Stop: 15253, Start Num: 29

Candidate Starts for Suigeneris_16:

(15, 14723), (Start: 29 @14831 has 55 MA's), (Start: 30 @14846 has 316 MA's), (51, 14951), (52, 14954), (55, 14963), (65, 15026), (71, 15071), (80, 15107), (86, 15149), (103, 15233),

Gene: Surely_15 Start: 13262, Stop: 13651, Start Num: 30

Candidate Starts for Surely_15:

(Start: 30 @13262 has 316 MA's), (47, 13340), (51, 13355), (52, 13358), (63, 13421), (65, 13430), (67, 13439), (71, 13475), (80, 13511), (96, 13616),

Gene: SwainyDoc_17 Start: 14564, Stop: 14998, Start Num: 29

Candidate Starts for SwainyDoc_17:

(18, 14459), (Start: 29 @14564 has 55 MA's), (41, 14618), (Start: 50 @14684 has 2 MA's), (86, 14885), (87, 14888),

Gene: Swiphy_15 Start: 13253, Stop: 13642, Start Num: 30

Candidate Starts for Swiphy_15:

(Start: 30 @13253 has 316 MA's), (47, 13331), (51, 13346), (52, 13349), (63, 13412), (65, 13421), (67, 13430), (71, 13466), (80, 13502), (96, 13607),

Gene: Swish_15 Start: 13248, Stop: 13637, Start Num: 30

Candidate Starts for Swish_15:

(Start: 30 @13248 has 316 MA's), (47, 13326), (51, 13341), (52, 13344), (63, 13407), (65, 13416), (67, 13425), (71, 13461), (80, 13497), (96, 13602),

Gene: SynergyX_17 Start: 14567, Stop: 15001, Start Num: 29

Candidate Starts for SynergyX_17:

(18, 14462), (Start: 29 @14567 has 55 MA's), (41, 14621), (Start: 50 @14687 has 2 MA's), (86, 14888), (87, 14891),

Gene: TPA2_24 Start: 15808, Stop: 16110, Start Num: 52

Candidate Starts for TPA2_24:

(5, 15427), (Start: 34 @15712 has 8 MA's), (42, 15736), (52, 15808), (56, 15829), (82, 15967), (85, 15991), (86, 16003), (95, 16060), (97, 16072), (99, 16081),

Gene: TallGrassMM_15 Start: 12978, Stop: 13367, Start Num: 30

Candidate Starts for TallGrassMM_15:

(Start: 30 @12978 has 316 MA's), (47, 13056), (51, 13071), (52, 13074), (63, 13137), (65, 13146), (67, 13155), (71, 13191), (80, 13227), (96, 13332),

Gene: Telesworld_14 Start: 12960, Stop: 13349, Start Num: 30

Candidate Starts for Telesworld_14:

(Start: 30 @12960 has 316 MA's), (47, 13038), (51, 13053), (52, 13056), (63, 13119), (65, 13128), (67, 13137), (71, 13173), (80, 13209), (96, 13314),

Gene: Thora_15 Start: 13262, Stop: 13651, Start Num: 30

Candidate Starts for Thora_15:

(Start: 30 @13262 has 316 MA's), (47, 13340), (51, 13355), (52, 13358), (63, 13421), (65, 13430), (67, 13439), (71, 13475), (80, 13511), (96, 13616),

Gene: ThreeOh3D2_15 Start: 13263, Stop: 13652, Start Num: 30

Candidate Starts for ThreeOh3D2_15:

(Start: 30 @13263 has 316 MA's), (47, 13341), (51, 13356), (52, 13359), (63, 13422), (65, 13431), (67, 13440), (71, 13476), (80, 13512), (96, 13617),

Gene: Thunderbird_14 Start: 12962, Stop: 13351, Start Num: 30

Candidate Starts for Thunderbird_14:

(Start: 30 @12962 has 316 MA's), (47, 13040), (51, 13055), (52, 13058), (63, 13121), (65, 13130), (67, 13139), (71, 13175), (80, 13211), (96, 13316),

Gene: Timmi_14 Start: 12972, Stop: 13361, Start Num: 30

Candidate Starts for Timmi_14:

(Start: 30 @12972 has 316 MA's), (47, 13050), (51, 13065), (52, 13068), (63, 13131), (65, 13140), (67, 13149), (71, 13185), (80, 13221), (96, 13326),

Gene: TinyTerror_17 Start: 14566, Stop: 15000, Start Num: 29

Candidate Starts for TinyTerror_17:

(18, 14461), (Start: 29 @14566 has 55 MA's), (41, 14620), (Start: 50 @14686 has 2 MA's), (86, 14887), (87, 14890),

Gene: TomBombadil_15 Start: 13256, Stop: 13645, Start Num: 30

Candidate Starts for TomBombadil_15:

(Start: 30 @13256 has 316 MA's), (47, 13334), (51, 13349), (52, 13352), (63, 13415), (65, 13424), (67, 13433), (71, 13469), (80, 13505), (96, 13610),

Gene: Tomlarah_15 Start: 13247, Stop: 13636, Start Num: 30

Candidate Starts for Tomlarah_15:

(Start: 30 @13247 has 316 MA's), (47, 13325), (51, 13340), (52, 13343), (63, 13406), (65, 13415), (67, 13424), (71, 13460), (80, 13496), (96, 13601),

Gene: Toni_14 Start: 12958, Stop: 13347, Start Num: 30

Candidate Starts for Toni_14:

(Start: 30 @12958 has 316 MA's), (47, 13036), (51, 13051), (52, 13054), (63, 13117), (65, 13126), (67, 13135), (71, 13171), (80, 13207), (96, 13312),

Gene: TooFast2Furius_16 Start: 13494, Stop: 13883, Start Num: 30

Candidate Starts for TooFast2Furius_16:

(Start: 30 @13494 has 316 MA's), (47, 13572), (51, 13587), (52, 13590), (63, 13653), (65, 13662), (67, 13671), (71, 13707), (80, 13743), (96, 13848),

Gene: Tooj_15 Start: 13260, Stop: 13649, Start Num: 30

Candidate Starts for Tooj_15:

(Start: 30 @13260 has 316 MA's), (47, 13338), (51, 13353), (52, 13356), (63, 13419), (65, 13428), (67, 13437), (71, 13473), (80, 13509), (96, 13614),

Gene: TraderJ_16 Start: 14363, Stop: 14764, Start Num: 28

Candidate Starts for TraderJ_16:

(Start: 28 @14363 has 7 MA's), (Start: 40 @14411 has 9 MA's), (54, 14489), (71, 14600), (78, 14627), (80, 14636), (82, 14642), (90, 14693), (92, 14711), (95, 14735), (99, 14753), (100, 14756),

Gene: Triad_15 Start: 12797, Stop: 13186, Start Num: 30

Candidate Starts for Triad_15:

(Start: 30 @12797 has 316 MA's), (47, 12875), (51, 12890), (52, 12893), (63, 12956), (65, 12965), (67, 12974), (71, 13010), (80, 13046), (96, 13151),

Gene: Troy_22 Start: 21107, Stop: 21475, Start Num: 40

Candidate Starts for Troy_22:

(8, 20891), (Start: 40 @21107 has 9 MA's), (55, 21191), (59, 21230), (65, 21254), (69, 21275), (79, 21332),

Gene: True_14 Start: 12961, Stop: 13350, Start Num: 30

Candidate Starts for True_14:

(Start: 30 @12961 has 316 MA's), (47, 13039), (51, 13054), (52, 13057), (63, 13120), (65, 13129), (67, 13138), (71, 13174), (80, 13210), (96, 13315),

Gene: Trypo_15 Start: 13250, Stop: 13639, Start Num: 30

Candidate Starts for Trypo_15:

(Start: 30 @13250 has 316 MA's), (47, 13328), (51, 13343), (52, 13346), (63, 13409), (65, 13418), (67, 13427), (71, 13463), (80, 13499), (96, 13604),

Gene: Tydolla_17 Start: 15304, Stop: 15738, Start Num: 29

Candidate Starts for Tydolla_17:

(18, 15199), (Start: 29 @15304 has 55 MA's), (41, 15358), (Start: 50 @15424 has 2 MA's), (86, 15625), (87, 15628),

Gene: TyrionL_14 Start: 12812, Stop: 13201, Start Num: 30

Candidate Starts for TyrionL_14:

(Start: 30 @12812 has 316 MA's), (47, 12890), (51, 12905), (52, 12908), (63, 12971), (65, 12980), (67, 12989), (71, 13025), (80, 13061), (96, 13166),

Gene: UAch1_15 Start: 13271, Stop: 13660, Start Num: 30

Candidate Starts for UAch1_15:

(Start: 30 @13271 has 316 MA's), (47, 13349), (51, 13364), (52, 13367), (63, 13430), (65, 13439), (67, 13448), (71, 13484), (80, 13520), (96, 13625),

Gene: UncleHowie_15 Start: 12960, Stop: 13349, Start Num: 30

Candidate Starts for UncleHowie_15:

(Start: 30 @12960 has 316 MA's), (47, 13038), (51, 13053), (52, 13056), (63, 13119), (65, 13128), (67, 13137), (71, 13173), (80, 13209), (96, 13314),

Gene: Usavi_15 Start: 13262, Stop: 13651, Start Num: 30

Candidate Starts for Usavi_15:

(Start: 30 @13262 has 316 MA's), (47, 13340), (51, 13355), (52, 13358), (63, 13421), (65, 13430), (67, 13439), (71, 13475), (80, 13511), (96, 13616),

Gene: Vaishali24_14 Start: 12913, Stop: 13302, Start Num: 30

Candidate Starts for Vaishali24_14:

(Start: 30 @12913 has 316 MA's), (47, 12991), (51, 13006), (52, 13009), (63, 13072), (65, 13081), (67, 13090), (71, 13126), (80, 13162), (96, 13267),

Gene: Valjean_15 Start: 13253, Stop: 13642, Start Num: 30

Candidate Starts for Valjean_15:

(Start: 30 @13253 has 316 MA's), (47, 13331), (51, 13346), (52, 13349), (63, 13412), (65, 13421), (67, 13430), (71, 13466), (80, 13502), (96, 13607),

Gene: VanLee_29 Start: 25243, Stop: 25584, Start Num: 43

Candidate Starts for VanLee_29:

(Start: 43 @25243 has 1 MA's), (51, 25297), (63, 25366), (74, 25450), (89, 25525),

Gene: Vaticameos_15 Start: 12951, Stop: 13340, Start Num: 30

Candidate Starts for Vaticameos_15:

(Start: 30 @12951 has 316 MA's), (47, 13029), (51, 13044), (52, 13047), (63, 13110), (65, 13119), (67, 13128), (71, 13164), (80, 13200), (96, 13305),

Gene: Veritas_14 Start: 12800, Stop: 13189, Start Num: 30

Candidate Starts for Veritas_14:

(Start: 30 @12800 has 316 MA's), (47, 12878), (51, 12893), (52, 12896), (63, 12959), (65, 12968), (67, 12977), (71, 13013), (80, 13049), (96, 13154),

Gene: Vincenzo_16 Start: 15755, Stop: 16156, Start Num: 30

Candidate Starts for Vincenzo_16:

(Start: 30 @15755 has 316 MA's), (Start: 40 @15782 has 9 MA's), (52, 15857), (57, 15896), (63, 15920), (65, 15929), (70, 15968), (72, 15980), (75, 15992), (80, 16010), (83, 16028), (85, 16040), (86, 16052),

Gene: VioletZ_15 Start: 15009, Stop: 15410, Start Num: 30

Candidate Starts for VioletZ_15:

(Start: 30 @15009 has 316 MA's), (52, 15111), (63, 15174), (65, 15183), (71, 15228), (75, 15246), (80, 15264), (84, 15285), (85, 15294), (102, 15387),

Gene: Virapocalypse_15 Start: 13245, Stop: 13634, Start Num: 30

Candidate Starts for Virapocalypse_15:

(Start: 30 @13245 has 316 MA's), (47, 13323), (51, 13338), (52, 13341), (63, 13404), (65, 13413), (67, 13422), (71, 13458), (80, 13494), (96, 13599),

Gene: Virgeve_14 Start: 12966, Stop: 13355, Start Num: 30

Candidate Starts for Virgeve_14:

(Start: 30 @12966 has 316 MA's), (47, 13044), (51, 13059), (52, 13062), (63, 13125), (65, 13134), (67, 13143), (71, 13179), (80, 13215), (96, 13320),

Gene: Vista_15 Start: 13256, Stop: 13645, Start Num: 30

Candidate Starts for Vista_15:

(Start: 30 @13256 has 316 MA's), (47, 13334), (51, 13349), (52, 13352), (63, 13415), (65, 13424), (67, 13433), (71, 13469), (80, 13505), (96, 13610),

Gene: Vivaldi_15 Start: 13287, Stop: 13676, Start Num: 30

Candidate Starts for Vivaldi_15:

(Start: 30 @13287 has 316 MA's), (47, 13365), (51, 13380), (52, 13383), (63, 13446), (65, 13455), (67, 13464), (71, 13500), (80, 13536), (96, 13641),

Gene: Vortex_15 Start: 12967, Stop: 13356, Start Num: 30

Candidate Starts for Vortex_15:

(Start: 30 @12967 has 316 MA's), (47, 13045), (51, 13060), (52, 13063), (63, 13126), (65, 13135), (67, 13144), (71, 13180), (80, 13216), (96, 13321),

Gene: Waleliano_15 Start: 14979, Stop: 15380, Start Num: 30

Candidate Starts for Waleliano_15:

(Start: 30 @14979 has 316 MA's), (52, 15081), (63, 15144), (65, 15153), (71, 15198), (75, 15216), (80, 15234), (84, 15255), (85, 15264), (102, 15357),

Gene: Wallhey_14 Start: 12818, Stop: 13207, Start Num: 30

Candidate Starts for Wallhey_14:

(Start: 30 @12818 has 316 MA's), (47, 12896), (51, 12911), (52, 12914), (63, 12977), (65, 12986), (67, 12995), (71, 13031), (80, 13067), (96, 13172),

Gene: Waterdiva_15 Start: 13254, Stop: 13643, Start Num: 30

Candidate Starts for Waterdiva_15:

(Start: 30 @13254 has 316 MA's), (47, 13332), (51, 13347), (52, 13350), (63, 13413), (65, 13422), (67, 13431), (71, 13467), (80, 13503), (96, 13608),

Gene: Weher20_15 Start: 13244, Stop: 13633, Start Num: 30

Candidate Starts for Weher20_15:

(Start: 30 @13244 has 316 MA's), (47, 13322), (51, 13337), (52, 13340), (63, 13403), (65, 13412), (67, 13421), (71, 13457), (80, 13493), (96, 13598),

Gene: Windsor_14 Start: 12920, Stop: 13309, Start Num: 30

Candidate Starts for Windsor_14:

(Start: 30 @12920 has 316 MA's), (47, 12998), (51, 13013), (52, 13016), (63, 13079), (65, 13088), (67, 13097), (71, 13133), (80, 13169), (96, 13274),

Gene: Wooper_16 Start: 14369, Stop: 14770, Start Num: 28

Candidate Starts for Wooper_16:

(Start: 28 @14369 has 7 MA's), (Start: 30 @14390 has 316 MA's), (Start: 40 @14417 has 9 MA's), (54, 14495), (71, 14606), (78, 14633), (80, 14642), (82, 14648), (90, 14699), (92, 14717), (95, 14741), (99, 14759), (100, 14762),

Gene: Xavier_14 Start: 12972, Stop: 13361, Start Num: 30

Candidate Starts for Xavier_14:

(Start: 30 @12972 has 316 MA's), (47, 13050), (51, 13065), (52, 13068), (63, 13131), (65, 13140), (67, 13149), (71, 13185), (80, 13221), (96, 13326),

Gene: Xincheng_15 Start: 14800, Stop: 15201, Start Num: 30

Candidate Starts for Xincheng_15:

(Start: 30 @14800 has 316 MA's), (52, 14902), (57, 14941), (63, 14965), (65, 14974), (71, 15019), (75, 15037), (78, 15046), (80, 15055), (84, 15076), (85, 15085), (102, 15178),

Gene: Yago84_14 Start: 13286, Stop: 13681, Start Num: 34

Candidate Starts for Yago84_14:

(Start: 34 @13286 has 8 MA's), (Start: 38 @13298 has 4 MA's), (46, 13328), (56, 13400), (68, 13469), (80, 13532), (82, 13538), (93, 13616), (95, 13631), (96, 13637),

Gene: Yahalom_17 Start: 14578, Stop: 15012, Start Num: 29

Candidate Starts for Yahalom_17:

(18, 14473), (Start: 29 @14578 has 55 MA's), (41, 14632), (Start: 50 @14698 has 2 MA's), (86, 14899), (87, 14902),

Gene: Yeshua_16 Start: 14346, Stop: 14747, Start Num: 28

Candidate Starts for Yeshua_16:

(Start: 28 @14346 has 7 MA's), (Start: 40 @14394 has 9 MA's), (54, 14472), (71, 14583), (80, 14619), (82, 14625), (90, 14676), (92, 14694), (95, 14718), (100, 14739),

Gene: Yinz_17 Start: 14605, Stop: 15039, Start Num: 29

Candidate Starts for Yinz_17:

(18, 14500), (Start: 29 @14605 has 55 MA's), (41, 14659), (Start: 50 @14725 has 2 MA's), (86, 14926), (87, 14929),

Gene: Yoshand_15 Start: 13257, Stop: 13646, Start Num: 30

Candidate Starts for Yoshand_15:

(Start: 30 @13257 has 316 MA's), (47, 13335), (51, 13350), (52, 13353), (63, 13416), (65, 13425), (67, 13434), (71, 13470), (80, 13506), (96, 13611),

Gene: YouGoGlencoco_15 Start: 13250, Stop: 13639, Start Num: 30

Candidate Starts for YouGoGlencoco_15:

(Start: 30 @13250 has 316 MA's), (47, 13328), (51, 13343), (52, 13346), (63, 13409), (65, 13418), (67, 13427), (71, 13463), (80, 13499), (96, 13604),

Gene: Yvonnetastic_49 Start: 34634, Stop: 35044, Start Num: 27

Candidate Starts for Yvonnetastic_49:

(Start: 27 @34634 has 2 MA's), (49, 34745), (56, 34778), (58, 34802), (90, 34967),

Gene: Zaider_16 Start: 13483, Stop: 13872, Start Num: 30

Candidate Starts for Zaider_16:

(Start: 30 @13483 has 316 MA's), (47, 13561), (51, 13576), (52, 13579), (63, 13642), (65, 13651), (67, 13660), (71, 13696), (80, 13732), (96, 13837),

Gene: Zelda_15 Start: 13253, Stop: 13642, Start Num: 30

Candidate Starts for Zelda_15:

(Start: 30 @13253 has 316 MA's), (47, 13331), (51, 13346), (52, 13349), (63, 13412), (65, 13421), (67, 13430), (71, 13466), (80, 13502), (96, 13607),

Gene: Zemanar_16 Start: 14979, Stop: 15380, Start Num: 30

Candidate Starts for Zemanar_16:

(Start: 30 @14979 has 316 MA's), (52, 15081), (63, 15144), (65, 15153), (71, 15198), (75, 15216), (80, 15234), (84, 15255), (85, 15264), (102, 15357),

Gene: Zonia_15 Start: 13267, Stop: 13656, Start Num: 30

Candidate Starts for Zonia_15:

(Start: 30 @13267 has 316 MA's), (47, 13345), (51, 13360), (52, 13363), (63, 13426), (65, 13435), (67, 13444), (71, 13480), (80, 13516), (96, 13621),