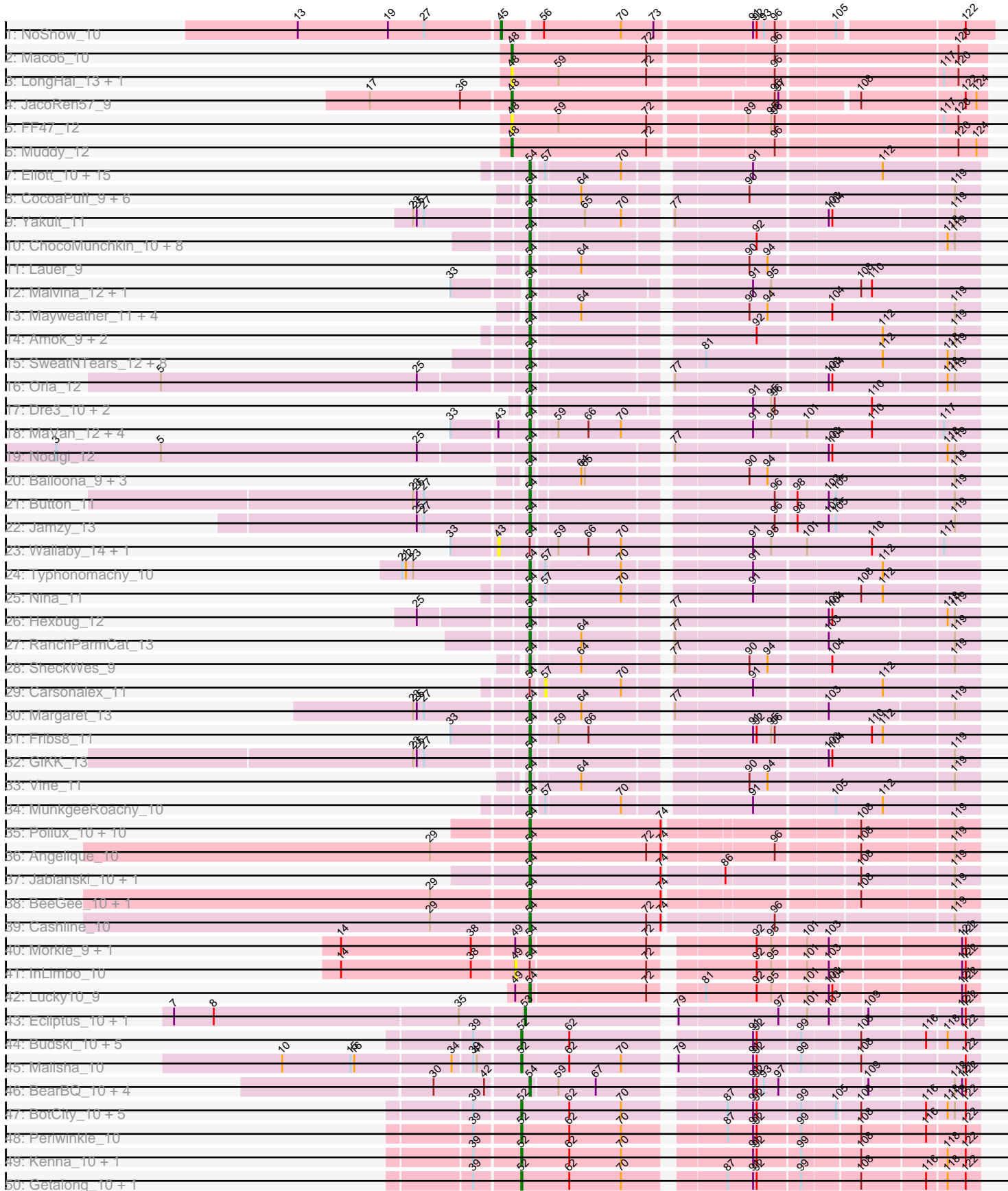
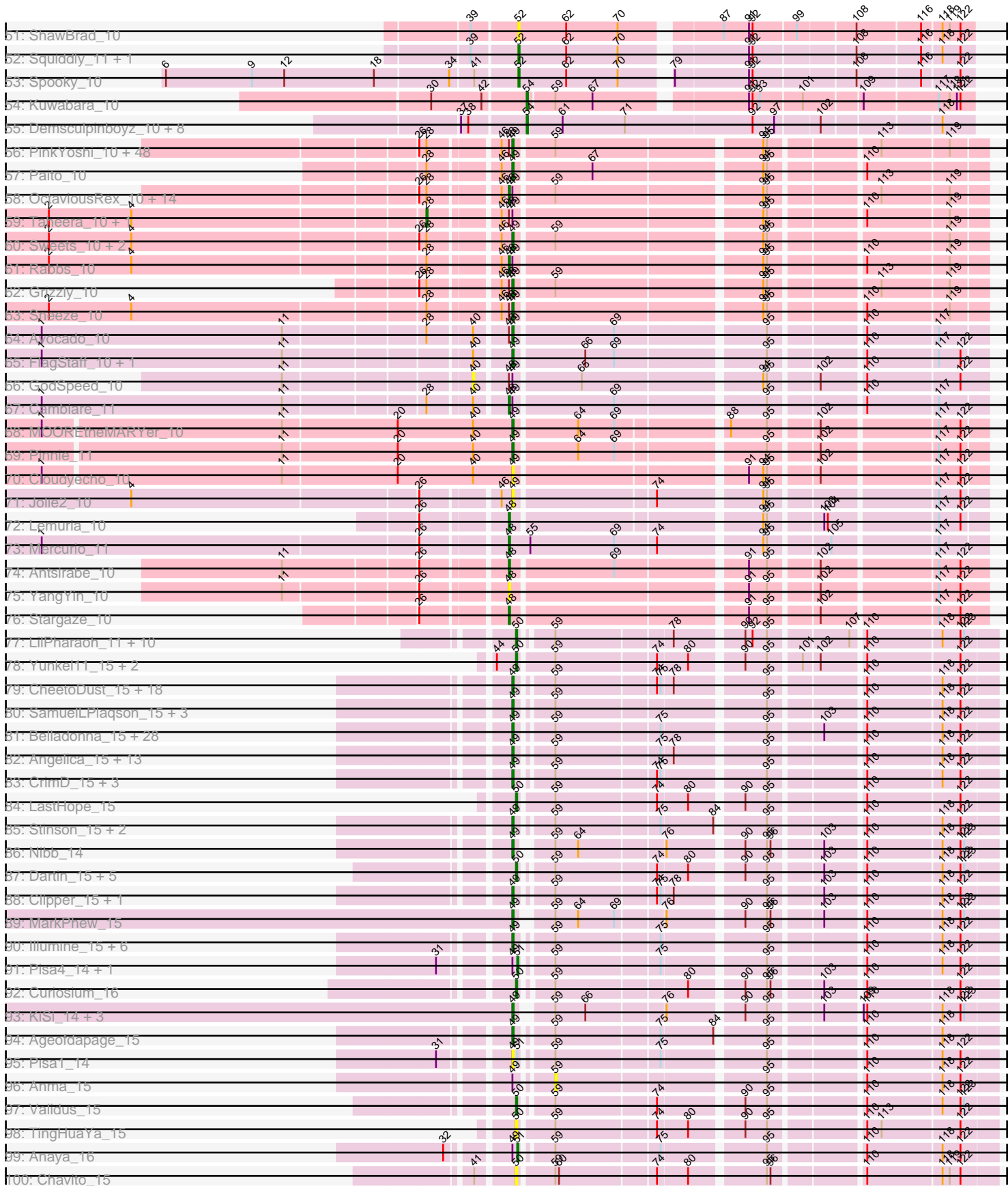


Pham 296125



Pham 296125



Note: Tracks are now grouped by subcluster and scaled. Switching in subcluster is indicated by changes in track color. Track scale is now set by default to display the region 30 bp upstream of start 1 to 30 bp downstream of the last possible start. If this default region is judged to be packed too tightly with annotated starts, the track will be further scaled to only show that region of the ORF with annotated starts. This action will be indicated by adding "Zoomed" to the title. For starts, yellow indicates the location of called starts comprised solely of Glimmer/GeneMark auto-annotations, green indicates the location of called starts with at least 1 manual gene annotation.

Pham 296125 Report

This analysis was run 04/25/26 on database version 644.

Pham number 296125 has 459 members, 68 are drafts.

Phages represented in each track:

- Track 1 : NoShow_10
- Track 2 : Maco6_10
- Track 3 : LongHai_13, Salvus_13
- Track 4 : JacoRen57_9
- Track 5 : FF47_12
- Track 6 : Muddy_12
- Track 7 : Elliott_10, Bubble_10, ChickenTender_12, Starburst_11, Burnsey_10, Socotra_11, Agatha_10, Cozz_10, PsychoKiller_10, Axym_10, RADical_11, Quasar_10, Sopespian_10, RedBaron_11, RSchmailzl_11, GoldHunter_11
- Track 8 : CocoaPuff_9, Bavailard_10, Elinal_11, Yucky_10, PotPie_10, KayGee_10, SummitAcademy_9
- Track 9 : Yakult_11
- Track 10 : ChocoMunchkin_10, Tolls_12, GTE2_08, CanesSauce_10, SteamedHams_12, CaramelLatte_10, AndPeggy_9, BillDoor_12, Yarn_9
- Track 11 : Lauer_9
- Track 12 : Malvina_12, HippoPololi_12
- Track 13 : Mayweather_11, ElJefes_9, MAnor_10, CherryonLim_11, Pons_10
- Track 14 : Amok_9, AikoCarson_9, Emalyn_9
- Track 15 : SweatNTears_12, MScarn_12, Blondies_11, SketchMex_9, Troje_10, Horseradish_11, Yummy_11, Biskit_11, Buttrmlkdreams_10
- Track 16 : Orla_12
- Track 17 : Dre3_10, Cleo_10, Gibbous_10
- Track 18 : MaVan_12, Zareef_12, Azira_12, Nibbles_12, Survivors_12
- Track 19 : Nodigi_12
- Track 20 : Balloona_9, Tarnish_10, Feastonyeet_9, BigChungus_9
- Track 21 : Button_11
- Track 22 : Jamzy_13
- Track 23 : Wallaby_14, Wolfwood_14
- Track 24 : Typhonomachy_10
- Track 25 : Nina_11
- Track 26 : Hexbug_12
- Track 27 : RanchParmCat_13
- Track 28 : SheckWes_9
- Track 29 : Carsonalex_11
- Track 30 : Margaret_13
- Track 31 : Fribs8_11
- Track 32 : GiKK_13

- Track 33 : Vine_11
- Track 34 : MunkgeeRoachy_10
- Track 35 : Pollux_10, BritBrat_10, LonelyBoi_10, EMSquaredA_10, Lilas_10, Posh_10, Bradissa_10, Floral_10, EnalisNailo_10, Confidence_10, Marteena_10
- Track 36 : Angelique_10
- Track 37 : Jablanski_10, Pytheas_10
- Track 38 : BeeGee_10, Wrigley_10
- Track 39 : Cashline_10
- Track 40 : Morkie_9, PhorbesPhlower_9
- Track 41 : InLimbo_10
- Track 42 : Lucky10_9
- Track 43 : Ecliptus_10, ODay_10
- Track 44 : Budski_10, Phabuloso_10, CheeseTouch_10, Holliday_10, LitninMcQueen_10, Kamaru_10
- Track 45 : Malisha_10
- Track 46 : BearBQ_10, MortyNRick_10, Birdsong_10, Apricot_10, Crater_10
- Track 47 : BotCity_10, Horus_10, BENtherdunthat_10, Frickyeah_10, Leroy_10, Asapag_10
- Track 48 : Periwinkle_10
- Track 49 : Kenna_10, Lutum_10
- Track 50 : Getalong_10, Whitney_10
- Track 51 : ShawBrad_10
- Track 52 : Squiddly_11, Phistory_10
- Track 53 : Spooky_10
- Track 54 : Kuwabara_10
- Track 55 : Demsculpinboyz_10, Avani_10, SilverChicken_10, Soul22_10, Che9d_10, Zapner_11, Blarby_11, Jabbawokkie_11, Yoshi_10
- Track 56 : PinkYoshi_10, DingDing_10, Jolene_10, Rattrick_10, CassieYates_10, Angel_10, ECartman_10, Phloodle_10, Periodt_10, Schiebel_10, Barkley26_10, Hope_10, Hotshotbaby7_10, Marmie_10, Cedasite_10, Renaissance_10, AzulaCat_10, BPs_10, ZoMa_10, BQuat_10, Peeb_10, DMoney_10, DNAllI_0010, Maliketh_10, Neoh_10, Plagueis_10, Kareem_10, Mowgli_10, Chance64_10, BruceB_10, TomBrady_10, Liefie_10, Crespo_10, Frosty24_10, Ruriko_10, Kasen3_10, Olga_10, MZKinsey_10, Camri_10, JorRay_10, Cherrybomb426_10, ShaboiShabazz_10, Wendigo_10, Avrafan_10, Jonghyun_10, Phish_10, Sizemore_10, GoldenAsh_10, Coleslaw_10
- Track 57 : Paito_10
- Track 58 : OctaviousRex_10, Gideon_10, Jeilious_10, LouisV14_10, Remy19_10, Aroostook_10, Darionha_10, Gomashi_10, CLED96_10, AizenPogi_10, Richarlison_10, Annihilator_10, Phreak_10, Jane_10, Zombie_10
- Track 59 : Taheera_10, Terror_10
- Track 60 : Sweets_10, Halo_10, TinaBug_10
- Track 61 : Rabbs_10
- Track 62 : Grizzly_10
- Track 63 : Sneeze_10
- Track 64 : Avocado_10
- Track 65 : FlagStaff_10, Pace1224_10
- Track 66 : GodSpeed_10
- Track 67 : Cambiare_11
- Track 68 : MOOREtheMARYer_10
- Track 69 : Pinnie_11
- Track 70 : Cloudyecho_10
- Track 71 : Jolie2_10

- Track 72 : Lemuria_10
- Track 73 : Mercurio_11
- Track 74 : Antsirabe_10
- Track 75 : YangYin_10
- Track 76 : Stargaze_10
- Track 77 : LilPharaoh_11, Nutello_11, Teejan_11, SgtBeansprout_11, Mdavu_11, Trice_11, Enkosi_11, Amelie_11, Binglebops_11, Torres_11, Nikao_11
- Track 78 : Yunkel11_15, Efra2_15, Guanica15_15
- Track 79 : CheetoDust_15, Mynx_15, Ramen_15, BaghaKamala_15, CallaLilly_15, Beezoo_15, Rapunzel97_15, Geraldini_15, Zabiza_15, Joy99_15, Slimphazie_15, YoureAdopted_14, Jayhawk_15, Apocalypse_15, Adephagia_15, ActinUp_15, HedwigODU_15, MeaningOfLife_15, TruffulaTree_15
- Track 80 : SamuelLPlaqson_15, Urkel_15, TiniBug_15, DrHayes_15
- Track 81 : Belladonna_15, Rosmarinus_15, Peel_15, CREW_15, Inky_15, Capricorn_15, Lunahalos_15, Durfee_15, Jarvi_15, BGlluviae_15, Piatt_15, Boiiii_15, Hyperbowlee_15, Spock_15, Twitch_15, Llorens_15, BarrelRoll_15, CaseJules_15, Asayake_15, Padfoot_15, JAWS_15, Blizzard_15, BEEST_15, Homura_15, ShiaSurprise_15, Dalmuri_15, Jeckyll_15, Veliki_15, Topper_15
- Track 82 : Angelica_15, Ganymede_15, AlishaPH_15, Zavala_15, Atiba_15, Tachez_15, Deby_15, Pokerus_14, QuincyRose_14, Emerson_15, Padpat_15, Tiri_15, Adonis_15, Sulley_15
- Track 83 : CrimD_15, TreyKay_15, Prithvi_15, LindNT_15
- Track 84 : LastHope_15
- Track 85 : Stinson_15, Murucutumbu_15, LaterM_15
- Track 86 : Nibb_14
- Track 87 : Dartin_15, Peanam_15, Shaobing_15, McMater_15, Niklas_15, Richo_15
- Track 88 : Clipper_15, MacKat_15
- Track 89 : MarkPhew_15
- Track 90 : Illumine_15, Megsy_15, DartGoblin_15, Devera_15, Bella96_15, Dole_15, TaiwanKao_15
- Track 91 : Pisa4_14, Bern_15
- Track 92 : Curiosium_16
- Track 93 : KiSi_14, Oscar_14, LeMond_14, Scarlett_14
- Track 94 : Ageofdapage_15
- Track 95 : Pisa1_14
- Track 96 : Anma_15
- Track 97 : Validus_15
- Track 98 : TingHuaYa_15
- Track 99 : Anaya_16
- Track 100 : Chavito_15
- Track 101 : Chris_14
- Track 102 : Findley_11, Strobilo_11, DismalFunk_11, Milly_11, DismalStressor_11, Marcoliusprime_11
- Track 103 : ZoeJ_11
- Track 104 : BoostSeason_11, Doughnut_11
- Track 105 : TM4_11
- Track 106 : Mufasa_11
- Track 107 : Lea83_14, Pixie_14, ShedlockHolmes_14, TBond007_14
- Track 108 : Keshu_14
- Track 109 : Pharb_14
- Track 110 : MacnCheese_15
- Track 111 : Hurricane_14
- Track 112 : TripleTrouble_13

- Track 113 : Slarp_16, OmniCritical_16, Y2_16, MissDaisy_16, Lebo14_16, Fionnbharth_16, Y10_16, DanSyl44_16, YasnayaPolyana_16, Reptar3000_16, Wintermute_16, Mitti_16, Cheetobro_16, Patt_16, JF1_16, Chancellor_16, Bobquesha_16, Qhanda_16, SamScheppers_14
- Track 114 : Juliette_16, Eponine_16, Ruthiejr_15
- Track 115 : Malthus_16, Kraw_16
- Track 116 : Taquito_14
- Track 117 : Omnicron_13
- Track 118 : InvictusManeo_13, Kratio_12, ViviJ_12, Agent47_13, LilDirt_12, Collard_13, BananenDer11_13, DoubleChamp_13
- Track 119 : AlleyCat_13, Edugator_12, Neighly_13, Psycho_13, Dadosky_13, Larva_13
- Track 120 : SoSeph_13, Heftyboy_13, Leston_13
- Track 121 : Miryou_13, Guillsminger_13, Paola_13, Thyatira_13, Feyre_13, OkiRoe_13, Waterfoul_13, Gengar_13
- Track 122 : Rando14_13
- Track 123 : TClif_14
- Track 124 : Amgine_13, Fefferhead_14, Lavahound_13
- Track 125 : Amohnition_14, Hammy_14, DarthP_14
- Track 126 : Ekdilam_12
- Track 127 : Ellie_12
- Track 128 : Syra333_14
- Track 129 : Yuna_15
- Track 130 : Cain_14, Krueger_14, Tierra_14, Tigress9_14, Phrank_14, Bryler_14
- Track 131 : Shadow1_13, Sunflower1121_13
- Track 132 : PhelpsODU_14, Unicorn_14
- Track 133 : Marshawn_16
- Track 134 : Applecrisp_13
- Track 135 : November_13
- Track 136 : Ximenita_15
- Track 137 : SirPhilip_14
- Track 138 : Aminay_13
- Track 139 : Boilgate_12
- Track 140 : Stellammi_7
- Track 141 : Nebkiss_7, Gaia_7

Summary of Final Annotations (See graph section above for start numbers):

The start number called the most often in the published annotations is 49, it was called in 181 of the 391 non-draft genes in the pham.

Genes that call this "Most Annotated" start:

- ActinUp_15, Adephegia_15, Adonis_15, Agent47_13, Ageofdapage_15, AlishaPH_15, AlleyCat_13, Amgine_13, Aminay_13, Amohnition_14, Angel_10, Angelica_15, Apocalypse_15, Applecrisp_13, Asayake_15, Atiba_15, Avocado_10, Avrafan_10, AzulaCat_10, BEEST_15, BGlluviae_15, BPs_10, BQuat_10, BaghaKamala_15, BananenDer11_13, Barkley26_10, BarrelRoll_15, Beezoo_15, Bella96_15, Belladonna_15, Blizzard_15, Boiii_15, BruceB_10, CREW_15, CallaLilly_15, Camri_10, Capricorn_15, CaseJules_15, CassieYates_10, Cedasite_10, Chance64_10, CheetoDust_15, Cherrybomb426_10, Chris_14,

Clipper_15, Cloudeyecho_10, Coleslaw_10, Collard_13, Crespo_10, CrimD_15, DMoney_10, DNAIII_0010, Dadosky_13, Dalmuri_15, DartGoblin_15, DarthP_14, Deby_15, Devera_15, DingDing_10, Dole_15, DoubleChamp_13, DrHayes_15, Durfee_15, ECartman_10, Edugator_12, Ekdilam_12, Ellie_12, Emerson_15, Fefferhead_14, Feyre_13, FlagStaff_10, Frosty24_10, Ganymede_15, Gengar_13, Geraldini_15, GoldenAsh_10, Grizzly_10, Guillsminger_13, Halo_10, Hammy_14, HedwigODU_15, Heftyboy_13, Homura_15, Hope_10, Hotshotbaby7_10, Hurricane_14, Hyperbowlee_15, Illumine_15, InLimbo_10, Inky_15, InvictusManeo_13, JAWS_15, Jarvi_15, Jayhawk_15, Jeckyll_15, Jolene_10, Jolie2_10, Jonghyun_10, JorRay_10, Joy99_15, Kareem_10, Kasen3_10, Keshu_14, KiSi_14, Kratio_12, Larva_13, LaterM_15, Lavahound_13, LeMond_14, Lea83_14, Leston_13, Liefie_10, LilDirt_12, LindNT_15, Llorens_15, Lunahalos_15, MOOREtheMARYer_10, MZKinsey_10, MacKat_15, MacnCheese_15, Maliketh_10, MarkPhew_15, Marmie_10, Marshawn_16, MeaningOfLife_15, Megsy_15, Miryou_13, Mowgli_10, Murucutumbu_15, Mynx_15, Neighly_13, Neoh_10, Nibb_14, November_13, OkiRoe_13, Olga_10, Oscar_14, Pace1224_10, Padfoot_15, Padpat_15, Paito_10, Paola_13, Peeb_10, Peel_15, Periodt_10, Pharb_14, Phish_10, Phloodle_10, Piatt_15, PinkYoshi_10, Pinnie_11, Pisa1_14, Pixie_14, Plagueis_10, Pokerus_14, Prithvi_15, Psycho_13, QuincyRose_14, Ramen_15, Rapunzel97_15, Rattrick_10, Renaissance_10, Rosmarinus_15, Ruriko_10, SamuelLPlaqson_15, Scarlett_14, Schiebel_10, ShaboiShabazz_10, ShedlockHolmes_14, ShiaSurprise_15, SirPhilip_14, Sizemore_10, Slimphazie_15, Sneeze_10, SoSeph_13, Spock_15, Stinson_15, Sulley_15, Sweets_10, TBond007_14, Tachez_15, TaiwanKao_15, Thyatira_13, TinaBug_10, TiniBug_15, Tiri_15, TomBrady_10, Topper_15, TreyKay_15, TripleTrouble_13, TruffulaTree_15, Twitch_15, Urkel_15, Veliki_15, ViviJ_12, Waterfoul_13, Wendigo_10, YoureAdopted_14, Zabiza_15, Zavala_15, ZoMa_10,

Genes that have the "Most Annotated" start but do not call it:

- AizenPogi_10, Anaya_16, Anma_15, Annihilator_10, Aroostook_10, Bern_15, CLED96_10, Cambiare_11, Darionha_10, Gideon_10, GodSpeed_10, Gomashi_10, Jane_10, Jeilious_10, LouisV14_10, Lucky10_9, Morkie_9, OctaviousRex_10, PhorbesPhlower_9, Phreak_10, Pisa4_14, Rabbs_10, Remy19_10, Richarlison_10, Taheera_10, Terror_10, Zombie_10,

Genes that do not have the "Most Annotated" start:

- Agatha_10, AikoCarson_9, Amelie_11, Amok_9, AndPeggy_9, Angelique_10, Antsirabe_10, Apricot_10, Asapag_10, Avani_10, Axym_10, Azira_12, BENtherdunthat_10, Balloona_9, Bavilard_10, BearBQ_10, BeeGee_10, BigChungus_9, Binglebops_11, BillDoor_12, Birdsong_10, Biskit_11, Blarby_11, Blondies_11, Bobquesha_16, Boilgate_12, BoostSeason_11, BotCity_10, Bradissa_10, BritBrat_10, Bryler_14, Bubble_10, Budski_10, Burnsey_10, Button_11, Buttrmlkdreams_10, Cain_14, CanesSauce_10, CaramelLatte_10, Carsonalex_11, Cashline_10, Chancellor_16, Chavito_15, Che9d_10, CheeseTouch_10, Cheetobro_16, CherryonLim_11, ChickenTender_12, ChocoMunchkin_10, Cleo_10, CocoaPuff_9, Confidence_10, Cozz_10, Crater_10, Curiosium_16, DanSyl44_16, Dartin_15, Demsculpinboyz_10, DismalFunk_11, DismalStressor_11, Doughnut_11, Dre3_10, EMSquaredA_10, Ecliptus_10, Efra2_15, ElJefes_9, Elinal_11, Elliott_10, Emalyn_9, EnalisNailo_10, Enkosi_11, Eponine_16, FF47_12, Feastonyeet_9, Findley_11, Fionnbharth_16, Floral_10, Fribs8_11, Frickyeah_10, GTE2_08, Gaia_7, Getalong_10, GiKK_13, Gibbous_10, GoldHunter_11, Guanica15_15, Hexbug_12, HippoPololi_12, Holliday_10, Horseradish_11, Horus_10, JF1_16, Jabbawokkie_11, Jablanski_10, JacoRen57_9, Jamzy_13, Juliette_16, Kamaru_10, KayGee_10,

Kenna_10, Kraw_16, Krueger_14, Kuwabara_10, LastHope_15, Lauer_9, Lebo14_16, Lemuria_10, Leroy_10, LilPharaoh_11, Lilas_10, LitninMcQueen_10, LonelyBoi_10, LongHai_13, Lutum_10, MAnor_10, MScarn_12, MaVan_12, Maco6_10, Malisha_10, Malthus_16, Malvina_12, Marcoliusprime_11, Margaret_13, Marteena_10, Mayweather_11, McMater_15, Mdavu_11, Mercurio_11, Milly_11, MissDaisy_16, Mitti_16, MortyNRick_10, Muddy_12, Mufasa_11, MunkgeeRoachy_10, Nebkiss_7, Nibbles_12, Nikao_11, Niklas_15, Nina_11, NoShow_10, Nodigi_12, Nutello_11, ODay_10, OmniCritical_16, Omnicron_13, Orla_12, Patt_16, Peanam_15, Periwinkle_10, Phabuloso_10, PhelpsODU_14, Phistory_10, Phrank_14, Pollux_10, Pons_10, Posh_10, PotPie_10, PsychoKiller_10, Pytheas_10, Qhanda_16, Quasar_10, RADical_11, RSchmailzl_11, RanchParmCat_13, Rando14_13, RedBaron_11, Reptar3000_16, Richo_15, Ruthiejr_15, Salvus_13, SamScheppers_14, SgtBeansprout_11, Shadow1_13, Shaobing_15, ShawBrad_10, SheckWes_9, SilverChicken_10, SketchMex_9, Slarp_16, Socotra_11, Sopespian_10, Soul22_10, Spooky_10, Squiddly_11, Starburst_11, Stargaze_10, SteamedHams_12, Stellammi_7, Strobilo_11, SummitAcademy_9, Sunflower1121_13, Survivors_12, SweatNTears_12, Syra333_14, TClif_14, TM4_11, Taquito_14, Tarnish_10, Teejan_11, Tierra_14, Tigress9_14, TingHuaYa_15, Tolls_12, Torres_11, Trice_11, Troje_10, Typhonomachy_10, Unicorn_14, Validus_15, Vine_11, Wallaby_14, Whitney_10, Wintermute_16, Wolfwood_14, Wrigley_10, Ximenita_15, Y10_16, Y2_16, Yakult_11, YangYin_10, Yarn_9, YasnayaPolyana_16, Yoshi_10, Yucky_10, Yummy_11, Yuna_15, Yunkel11_15, Zapner_11, Zareef_12, ZoeJ_11,

Summary by start number:

Start 28:

- Found in 75 of 459 (16.3%) of genes in pham
- Manual Annotations of this start: 2 of 391
- Called 2.7% of time when present
- Phage (with cluster) where this start called: Taheera_10 (G1), Terror_10 (G1),

Start 40:

- Found in 8 of 459 (1.7%) of genes in pham
- No Manual Annotations of this start.
- Called 12.5% of time when present
- Phage (with cluster) where this start called: GodSpeed_10 (G2),

Start 43:

- Found in 7 of 459 (1.5%) of genes in pham
- No Manual Annotations of this start.
- Called 28.6% of time when present
- Phage (with cluster) where this start called: Wallaby_14 (CT), Wolfwood_14 (CT),

Start 45:

- Found in 1 of 459 (0.2%) of genes in pham
- Manual Annotations of this start: 1 of 391
- Called 100.0% of time when present
- Phage (with cluster) where this start called: NoShow_10 (AB),

Start 47:

- Found in 2 of 459 (0.4%) of genes in pham
- Manual Annotations of this start: 2 of 391

- Called 100.0% of time when present
- Phage (with cluster) where this start called: Omnicron_13 (K5), Rando14_13 (K5),

Start 48:

- Found in 83 of 459 (18.1%) of genes in pham
- Manual Annotations of this start: 21 of 391
- Called 33.7% of time when present
- Phage (with cluster) where this start called: AizenPogi_10 (G1), Annihilator_10 (G1), Antsirabe_10 (G5), Aroostook_10 (G1), CLED96_10 (G1), Cambiare_11 (G2), Darionha_10 (G1), FF47_12 (AB), Gideon_10 (G1), Gomashi_10 (G1), JacoRen57_9 (AB), Jane_10 (G1), Jeilious_10 (G), Lemuria_10 (G4), LongHai_13 (AB), LouisV14_10 (G1), Maco6_10 (AB), Mercurio_11 (G4), Muddy_12 (AB), OctaviousRex_10 (G1), Phreak_10 (G1), Rabbs_10 (G1), Remy19_10 (G1), Richarlison_10 (G1), Salvus_13 (AB), Stargaze_10 (G5), YangYin_10 (G5), Zombie_10 (G1),

Start 49:

- Found in 228 of 459 (49.7%) of genes in pham
- Manual Annotations of this start: 181 of 391
- Called 88.2% of time when present
- Phage (with cluster) where this start called: ActinUp_15 (K1), Adephagia_15 (K1), Adonis_15 (K1), Agent47_13 (K5), Ageofdapage_15 (K1), AlishaPH_15 (K1), AlleyCat_13 (K5), Amgine_13 (K6), Aminay_13 (K7), Amohntion_14 (K6), Angel_10 (G1), Angelica_15 (K1), Apocalypse_15 (K1), Applecrisp_13 (K6), Asayake_15 (K1), Atiba_15 (K1), Avocado_10 (G2), Avrafan_10 (G1), AzulaCat_10 (G1), BEEST_15 (K1), BGlluviae_15 (K1), BPs_10 (G1), BQuat_10 (G1), BaghaKamala_15 (K1), BananenDer11_13 (K5), Barkley26_10 (G1), BarrelRoll_15 (K1), Beezoo_15 (K1), Bella96_15 (K1), Belladonna_15 (K1), Blizzard_15 (K1), Boiiii_15 (K1), BruceB_10 (G1), CREW_15 (K1), CallaLilly_15 (K1), Camri_10 (G1), Capricorn_15 (K1), CaseJules_15 (K1), CassieYates_10 (G1), Cedasite_10 (G1), Chance64_10 (G1), CheetoDust_15 (K1), Cherrybomb426_10 (G1), Chris_14 (K1), Clipper_15 (K1), Cloudyecho_10 (G3), Coleslaw_10 (G1), Collard_13 (K5), Crespo_10 (G1), CrimD_15 (K1), DMoney_10 (G1), DNAll_0010 (G1), Dadosky_13 (K5), Dalmuri_15 (K1), DartGoblin_15 (K1), DarthP_14 (K6), Deby_15 (K1), Devera_15 (K1), DingDing_10 (G1), Dole_15 (K1), DoubleChamp_13 (K5), DrHayes_15 (K1), Durfee_15 (K1), ECartman_10 (G1), Edugator_12 (K5), Ekdilam_12 (K6), Ellie_12 (K6), Emerson_15 (K1), Fefferhead_14 (K6), Feyre_13 (K5), FlagStaff_10 (G2), Frosty24_10 (G1), Ganymede_15 (K1), Gengar_13 (K5), Geraldini_15 (K1), GoldenAsh_10 (G1), Grizzly_10 (G1), Guillsminger_13 (K5), Halo_10 (G1), Hammy_14 (K6), HedwigODU_15 (K1), Heftyboy_13 (K5), Homura_15 (K1), Hope_10 (G1), Hotshotbaby7_10 (G1), Hurricane_14 (K3), Hyperbowlee_15 (K1), Illumine_15 (K1), InLimbo_10 (DH), Inky_15 (K1), InvictusManeo_13 (K5), JAWS_15 (K1), Jarvi_15 (K1), Jayhawk_15 (K1), Jeckyll_15 (K1), Jolene_10 (G1), Jolie2_10 (G4), Jonghyun_10 (G1), JorRay_10 (G1), Joy99_15 (K1), Kareem_10 (G1), Kasen3_10 (G1), Keshu_14 (K3), KiSi_14 (K1), Kratio_12 (K5), Larva_13 (K5), LaterM_15 (K1), Lavahound_13 (K6), LeMond_14 (K1), Lea83_14 (K3), Leston_13 (K5), Liefie_10 (G1), LilDirt_12 (K5), LindNT_15 (K1), Llorens_15 (K1), Lunahalos_15 (K1), MOOREtheMARYer_10 (G3), MZKinsey_10 (G1), MacKat_15 (K1), MacnCheese_15 (K3), Maliketh_10 (G1), MarkPhew_15 (K1), Marmie_10 (G1), Marshawn_16 (K6), MeaningOfLife_15 (K1), Megsy_15 (K1), Miryou_13 (K5), Mowgli_10 (G1), Murucutumbu_15 (K1), Mynx_15 (K1), Neighly_13 (K3), Neoh_10 (G), Nibb_14 (K1), November_13 (K6), OkiRoe_13 (K5), Olga_10 (G1), Oscar_14 (K1), Pace1224_10 (G2), Padfoot_15 (K1), Padpat_15 (K1), Paito_10 (G1), Paola_13

(K5), Peeb_10 (G1), Peel_15 (K1), Periodt_10 (G1), Pharb_14 (K3), Phish_10 (G1), Phloodle_10 (G1), Piatt_15 (K1), PinkYoshi_10 (G1), Pinnie_11 (G3), Pisa1_14 (K1), Pixie_14 (K3), Plagueis_10 (G1), Pokerus_14 (K1), Prithvi_15 (K1), Psycho_13 (K5), QuincyRose_14 (K1), Ramen_15 (K1), Rapunzel97_15 (K1), Rattrick_10 (G1), Renaissance_10 (G1), Rosmarinus_15 (K1), Ruriko_10 (G1), SamuelLPlaqson_15 (K1), Scarlett_14 (K1), Schiebel_10 (G1), ShaboiShabazz_10 (G1), ShedlockHolmes_14 (K3), ShiaSurprise_15 (K1), SirPhilip_14 (K6), Sizemore_10 (G1), Slimphazie_15 (K1), Sneeze_10 (G1), SoSeph_13 (K5), Spock_15 (K1), Stinson_15 (K1), Sulley_15 (K1), Sweets_10 (G1), TBond007_14 (K3), Tachez_15 (K1), TaiwanKao_15 (K1), Thyatira_13 (K5), TinaBug_10 (G1), TiniBug_15 (K1), Tiri_15 (K1), TomBrady_10 (G1), Topper_15 (K1), TreyKay_15 (K1), TribbleTrouble_13 (K3), TruffulaTree_15 (K1), Twitch_15 (K1), Urkel_15 (K1), Veliki_15 (K1), ViviJ_12 (K5), Waterfoul_13 (K5), Wendigo_10 (G1), YoureAdopted_14 (K1), Zabiza_15 (K1), Zavala_15 (K1), ZoMa_10 (G1),

Start 50:

- Found in 50 of 459 (10.9%) of genes in pham
- Manual Annotations of this start: 40 of 391
- Called 100.0% of time when present
- Phage (with cluster) where this start called: Amelie_11 (K1), Binglebops_11 (K1), Bobquesha_16 (K4), Chancellor_16 (K4), Chavito_15 (K1), Cheetobro_16 (K4), Curiosium_16 (K1), DanSyl44_16 (K4), Dartin_15 (K1), Efra2_15 (K1), Enkosi_11 (K1), Eponine_16 (K4), Fionnbharth_16 (K4), Guanica15_15 (K1), JF1_16 (K4), Juliette_16 (K4), Kraw_16 (K4), LastHope_15 (K1), Lebo14_16 (K4), LilPharaoh_11 (K1), Malthus_16 (K4), McMater_15 (K1), Mdavu_11 (K1), MissDaisy_16 (K4), Mitti_16 (K4), Nikao_11 (K1), Niklas_15 (K1), Nutello_11 (K1), OmniCritical_16 (K4), Patt_16 (K4), Peanam_15 (K1), Qhanda_16 (K4), Reptar3000_16 (K4), Richo_15 (K1), Ruthiejr_15 (K4), SamScheppers_14 (K4), SgtBeansprout_11 (K1), Shaobing_15 (K1), Slarp_16 (K4), Taquito_14 (K4), Teejan_11 (K1), TingHuaYa_15 (K1), Torres_11 (K1), Trice_11 (K1), Validus_15 (K1), Wintermute_16 (K4), Y10_16 (K4), Y2_16 (K4), YasnayaPolyana_16 (K4), Yunkel11_15 (K1),

Start 51:

- Found in 29 of 459 (6.3%) of genes in pham
- Manual Annotations of this start: 26 of 391
- Called 96.6% of time when present
- Phage (with cluster) where this start called: Anaya_16 (K1), Bern_15 (K1), BoostSeason_11 (K2), Bryler_14 (K6), Cain_14 (K6), DismalFunk_11 (K2), DismalStressor_11 (K2), Doughnut_11 (K2), Findley_11 (K2), Krueger_14 (K6), Marcoliusprime_11 (K2), Milly_11 (K2), Mufasa_11 (K2), PhelpsODU_14 (K6), Phrank_14 (K6), Pisa4_14 (K1), Shadow1_13 (K6), Strobilo_11 (K2), Sunflower1121_13 (K6), Syra333_14 (K6), TClif_14 (K6), TM4_11 (K2), Tierra_14 (K6), Tigress9_14 (K6), Unicorn_14 (K6), Ximenita_15 (K6), Yuna_15 (K6), ZoeJ_11 (K2),

Start 52:

- Found in 22 of 459 (4.8%) of genes in pham
- Manual Annotations of this start: 20 of 391
- Called 100.0% of time when present
- Phage (with cluster) where this start called: Asapag_10 (DN1), BENtherdunthat_10 (DN1), BotCity_10 (DN), Budski_10 (DN), CheeseTouch_10 (DN1), Frickyeah_10 (DN1), Getalong_10 (DN1), Holliday_10 (DN1), Horus_10 (DN1), Kamaru_10 (DN1), Kenna_10 (DN1), Leroy_10 (DN1), LitninMcQueen_10 (DN1), Lutum_10 (DN1),

Malisha_10 (DN), Periwinkle_10 (DN1), Phabuloso_10 (DN1), Phistory_10 (DN1), ShawBrad_10 (DN1), Spooky_10 (DN2), Squiddly_11 (DN2), Whitney_10 (DN1),

Start 53:

- Found in 2 of 459 (0.4%) of genes in pham
- Manual Annotations of this start: 2 of 391
- Called 100.0% of time when present
- Phage (with cluster) where this start called: Ecliptus_10 (DN), ODay_10 (DN),

Start 54:

- Found in 121 of 459 (26.4%) of genes in pham
- Manual Annotations of this start: 95 of 391
- Called 96.7% of time when present
- Phage (with cluster) where this start called: Agatha_10 (CT), AikoCarson_9 (CT), Amok_9 (CT), AndPeggy_9 (CT), Angelique_10 (CY1), Apricot_10 (DN3), Avani_10 (F2), Axym_10 (CT), Azira_12 (CT), Balloona_9 (CT), Bavidard_10 (CT), BearBQ_10 (DN), BeeGee_10 (CY5), BigChungus_9 (CT), BillDoor_12 (CT), Birdsong_10 (DN), Biskit_11 (CT), Blarby_11 (F), Blondies_11 (CT), Bradissa_10 (CY1), BritBrat_10 (CY2), Bubble_10 (CT), Burnsey_10 (CT), Button_11 (CT), Buttrmlkdreams_10 (CT), CanesSauce_10 (CT), CaramelLatte_10 (CT), Cashline_10 (CY6), Che9d_10 (F2), CherryonLim_11 (CT), ChickenTender_12 (CT), ChocoMunchkin_10 (CT), Cleo_10 (CT), CocoaPuff_9 (CT), Confidence_10 (CY1), Cozz_10 (CT), Crater_10 (DN3), Demsculpinboyz_10 (F2), Dre3_10 (CT), EMSquaredA_10 (CY1), ElJefes_9 (CT), Elinal_11 (CT), Elliott_10 (CT), Emalyn_9 (CT), EnalisNailo_10 (CY1), Feastonyeet_9 (CT), Floral_10 (CY1), Fribs8_11 (CT), GTE2_08 (CT), Gaia_7 (X), GiKK_13 (CT), Gibbous_10 (CT), GoldHunter_11 (CT), Hexbug_12 (CT), HippoPololi_12 (CT), Horseradish_11 (CT), Jabbawokkie_11 (F2), Jablanski_10 (CY3), Jamzy_13 (CT), KayGee_10 (CT), Kuwabara_10 (DN4), Lauer_9 (CT), Lilas_10 (CY1), LonelyBoi_10 (CY7), Lucky10_9 (DH), MAnor_10 (CT), MScarn_12 (CT), MaVan_12 (CT), Malvina_12 (CT), Margaret_13 (CT), Marteena_10 (CY1), Mayweather_11 (CT), Morkie_9 (DH), MortyNRick_10 (DN), MunkgeeRoachy_10 (CT), Nebkiss_7 (X), Nibbles_12 (CT), Nina_11 (CT), Nodigi_12 (CT), Orla_12 (CT), PhorbesPhlower_9 (DH), Pollux_10 (CY1), Pons_10 (CT), Posh_10 (CY4), PotPie_10 (CT), PsychoKiller_10 (CT), Pytheas_10 (CY3), Quasar_10 (CT), RADical_11 (CT), RSchmailzl_11 (CT), RanchParmCat_13 (CT), RedBaron_11 (CT), SheckWes_9 (CT), SilverChicken_10 (F2), SketchMex_9 (CT), Socotra_11 (CT), Sopespian_10 (CT), Soul22_10 (F2), Starburst_11 (CT), SteamedHams_12 (CT), Stellammi_7 (UNK), SummitAcademy_9 (CT), Survivors_12 (CT), SweatNTears_12 (CT), Tarnish_10 (CT), Tolls_12 (CT), Troje_10 (CT), Typhonmarchy_10 (CT), Vine_11 (CT), Wrigley_10 (CY4), Yakult_11 (CT), Yarn_9 (CT), Yoshi_10 (F2), Yucky_10 (CT), Yummy_11 (CT), Zapner_11 (F2), Zareef_12 (CT),

Start 55:

- Found in 2 of 459 (0.4%) of genes in pham
- Manual Annotations of this start: 1 of 391
- Called 50.0% of time when present
- Phage (with cluster) where this start called: Boilgate_12 (K8),

Start 57:

- Found in 20 of 459 (4.4%) of genes in pham
- No Manual Annotations of this start.
- Called 5.0% of time when present
- Phage (with cluster) where this start called: Carsonalex_11 (CT),

Start 59:

- Found in 240 of 459 (52.3%) of genes in pham
- No Manual Annotations of this start.
- Called 0.4% of time when present
- Phage (with cluster) where this start called: Anma_15 (K1),

Summary by clusters:

There are 33 clusters represented in this pham: DN, DH, K3, K2, K1, K7, K6, K5, K4, K8, G5, G4, G3, G2, G1, F, DN4, DN1, DN3, DN2, CY3, CY2, CY1, AB, CY7, CY6, G, CY4, CY5, X, UNK, CT, F2,

Info for manual annotations of cluster AB:

- Start number 45 was manually annotated 1 time for cluster AB.
- Start number 48 was manually annotated 3 times for cluster AB.

Info for manual annotations of cluster CT:

- Start number 54 was manually annotated 60 times for cluster CT.

Info for manual annotations of cluster CY1:

- Start number 54 was manually annotated 9 times for cluster CY1.

Info for manual annotations of cluster CY2:

- Start number 54 was manually annotated 1 time for cluster CY2.

Info for manual annotations of cluster CY3:

- Start number 54 was manually annotated 2 times for cluster CY3.

Info for manual annotations of cluster CY4:

- Start number 54 was manually annotated 2 times for cluster CY4.

Info for manual annotations of cluster CY5:

- Start number 54 was manually annotated 1 time for cluster CY5.

Info for manual annotations of cluster CY6:

- Start number 54 was manually annotated 1 time for cluster CY6.

Info for manual annotations of cluster CY7:

- Start number 54 was manually annotated 1 time for cluster CY7.

Info for manual annotations of cluster DH:

- Start number 54 was manually annotated 3 times for cluster DH.

Info for manual annotations of cluster DN:

- Start number 52 was manually annotated 3 times for cluster DN.
- Start number 53 was manually annotated 2 times for cluster DN.
- Start number 54 was manually annotated 3 times for cluster DN.

Info for manual annotations of cluster DN1:

- Start number 52 was manually annotated 15 times for cluster DN1.

Info for manual annotations of cluster DN2:

- Start number 52 was manually annotated 2 times for cluster DN2.

Info for manual annotations of cluster DN3:

- Start number 54 was manually annotated 2 times for cluster DN3.

Info for manual annotations of cluster DN4:

- Start number 54 was manually annotated 1 time for cluster DN4.

Info for manual annotations of cluster F2:

- Start number 54 was manually annotated 7 times for cluster F2.

Info for manual annotations of cluster G1:

- Start number 28 was manually annotated 2 times for cluster G1.
- Start number 48 was manually annotated 13 times for cluster G1.
- Start number 49 was manually annotated 47 times for cluster G1.

Info for manual annotations of cluster G2:

- Start number 48 was manually annotated 1 time for cluster G2.
- Start number 49 was manually annotated 2 times for cluster G2.

Info for manual annotations of cluster G3:

- Start number 49 was manually annotated 2 times for cluster G3.

Info for manual annotations of cluster G4:

- Start number 48 was manually annotated 2 times for cluster G4.

Info for manual annotations of cluster G5:

- Start number 48 was manually annotated 2 times for cluster G5.

Info for manual annotations of cluster K1:

- Start number 49 was manually annotated 88 times for cluster K1.
- Start number 50 was manually annotated 18 times for cluster K1.
- Start number 51 was manually annotated 2 times for cluster K1.

Info for manual annotations of cluster K2:

- Start number 51 was manually annotated 11 times for cluster K2.

Info for manual annotations of cluster K3:

- Start number 49 was manually annotated 9 times for cluster K3.

Info for manual annotations of cluster K4:

- Start number 50 was manually annotated 22 times for cluster K4.

Info for manual annotations of cluster K5:

- Start number 47 was manually annotated 2 times for cluster K5.
- Start number 49 was manually annotated 21 times for cluster K5.

Info for manual annotations of cluster K6:

- Start number 49 was manually annotated 11 times for cluster K6.
- Start number 51 was manually annotated 13 times for cluster K6.

Info for manual annotations of cluster K7:

- Start number 49 was manually annotated 1 time for cluster K7.

Info for manual annotations of cluster K8:

- Start number 55 was manually annotated 1 time for cluster K8.

Info for manual annotations of cluster X:

- Start number 54 was manually annotated 2 times for cluster X.

Gene Information:

Gene: ActinUp_15 Start: 9364, Stop: 9720, Start Num: 49

Candidate Starts for ActinUp_15:

(Start: 49 @9364 has 181 MA's), (59, 9388), (74, 9466), (75, 9469), (78, 9478), (95, 9547), (110, 9616), (118, 9676), (122, 9691),

Gene: Adephagia_15 Start: 9364, Stop: 9720, Start Num: 49

Candidate Starts for Adephagia_15:

(Start: 49 @9364 has 181 MA's), (59, 9388), (74, 9466), (75, 9469), (78, 9478), (95, 9547), (110, 9616), (118, 9676), (122, 9691),

Gene: Adonis_15 Start: 9373, Stop: 9729, Start Num: 49

Candidate Starts for Adonis_15:

(Start: 49 @9373 has 181 MA's), (59, 9397), (75, 9478), (78, 9487), (95, 9556), (110, 9625), (118, 9685), (122, 9700),

Gene: Agatha_10 Start: 6923, Stop: 7264, Start Num: 54

Candidate Starts for Agatha_10:

(Start: 54 @6923 has 95 MA's), (57, 6932), (70, 6992), (91, 7085), (112, 7187),

Gene: Agent47_13 Start: 9561, Stop: 9923, Start Num: 49

Candidate Starts for Agent47_13:

(Start: 49 @9561 has 181 MA's), (59, 9582), (66, 9606), (75, 9663), (95, 9741), (102, 9777), (110, 9810), (118, 9870), (122, 9885),

Gene: Ageofdapage_15 Start: 9294, Stop: 9650, Start Num: 49

Candidate Starts for Ageofdapage_15:

(Start: 49 @9294 has 181 MA's), (59, 9318), (75, 9399), (84, 9441), (95, 9477), (110, 9546), (118, 9606),

Gene: AikoCarson_9 Start: 6653, Stop: 6994, Start Num: 54

Candidate Starts for AikoCarson_9:

(Start: 54 @6653 has 95 MA's), (92, 6818), (112, 6917), (119, 6974),

Gene: AizenPogi_10 Start: 8808, Stop: 9167, Start Num: 48

Candidate Starts for AizenPogi_10:

(26, 8745), (Start: 28 @8751 has 2 MA's), (46, 8802), (Start: 48 @8808 has 21 MA's), (Start: 49 @8811 has 181 MA's), (59, 8841), (94, 9000), (95, 9003), (113, 9084), (119, 9138),

Gene: AlishaPH_15 Start: 9363, Stop: 9719, Start Num: 49

Candidate Starts for AlishaPH_15:

(Start: 49 @9363 has 181 MA's), (59, 9387), (75, 9468), (78, 9477), (95, 9546), (110, 9615), (118, 9675), (122, 9690),

Gene: AlleyCat_13 Start: 9439, Stop: 9801, Start Num: 49

Candidate Starts for AlleyCat_13:

(Start: 49 @9439 has 181 MA's), (66, 9484), (75, 9541), (82, 9577), (84, 9583), (90, 9601), (95, 9619), (110, 9688), (118, 9748), (122, 9763),

Gene: Amelie_11 Start: 8651, Stop: 9004, Start Num: 50

Candidate Starts for Amelie_11:

(Start: 50 @8651 has 40 MA's), (59, 8672), (78, 8762), (90, 8813), (92, 8819), (95, 8831), (107, 8891), (110, 8900), (118, 8960), (122, 8975), (123, 8978),

Gene: Amgine_13 Start: 8999, Stop: 9385, Start Num: 49

Candidate Starts for Amgine_13:

(Start: 49 @8999 has 181 MA's), (64, 9038), (75, 9101), (95, 9179), (110, 9248), (123, 9326),

Gene: Aminay_13 Start: 9263, Stop: 9607, Start Num: 49

Candidate Starts for Aminay_13:

(Start: 49 @9263 has 181 MA's), (75, 9365), (97, 9449), (110, 9512), (119, 9578),

Gene: Amohnition_14 Start: 9299, Stop: 9697, Start Num: 49

Candidate Starts for Amohnition_14:

(Start: 49 @9299 has 181 MA's), (64, 9338), (95, 9479), (110, 9548), (118, 9608), (122, 9623), (123, 9626),

Gene: Amok_9 Start: 6653, Stop: 6994, Start Num: 54

Candidate Starts for Amok_9:

(Start: 54 @6653 has 95 MA's), (92, 6818), (112, 6917), (119, 6974),

Gene: Anaya_16 Start: 9368, Stop: 9721, Start Num: 51

Candidate Starts for Anaya_16:

(32, 9323), (Start: 49 @9365 has 181 MA's), (Start: 51 @9368 has 26 MA's), (59, 9389), (75, 9470), (95, 9548), (110, 9617), (118, 9677), (122, 9692),

Gene: AndPeggy_9 Start: 6941, Stop: 7282, Start Num: 54

Candidate Starts for AndPeggy_9:

(Start: 54 @6941 has 95 MA's), (92, 7106), (118, 7256), (119, 7262),

Gene: Angel_10 Start: 8811, Stop: 9167, Start Num: 49

Candidate Starts for Angel_10:

(26, 8745), (Start: 28 @8751 has 2 MA's), (46, 8802), (Start: 48 @8808 has 21 MA's), (Start: 49 @8811 has 181 MA's), (59, 8841), (94, 9000), (95, 9003), (113, 9084), (119, 9138),

Gene: Angelica_15 Start: 9335, Stop: 9691, Start Num: 49

Candidate Starts for Angelica_15:

(Start: 49 @9335 has 181 MA's), (59, 9359), (75, 9440), (78, 9449), (95, 9518), (110, 9587), (118, 9647), (122, 9662),

Gene: Angelique_10 Start: 7476, Stop: 7823, Start Num: 54

Candidate Starts for Angelique_10:

(29, 7398), (Start: 54 @7476 has 95 MA's), (72, 7572), (74, 7584), (96, 7668), (108, 7731), (119, 7803),

Gene: Anma_15 Start: 9330, Stop: 9662, Start Num: 59

Candidate Starts for Anma_15:

(Start: 49 @9306 has 181 MA's), (59, 9330), (95, 9489), (110, 9558), (118, 9618), (122, 9633),

Gene: Annihilator_10 Start: 8808, Stop: 9167, Start Num: 48

Candidate Starts for Annihilator_10:

(26, 8745), (Start: 28 @8751 has 2 MA's), (46, 8802), (Start: 48 @8808 has 21 MA's), (Start: 49 @8811 has 181 MA's), (59, 8841), (94, 9000), (95, 9003), (113, 9084), (119, 9138),

Gene: Antsirabe_10 Start: 9102, Stop: 9464, Start Num: 48

Candidate Starts for Antsirabe_10:

(11, 8934), (26, 9039), (Start: 48 @9102 has 21 MA's), (69, 9183), (91, 9282), (95, 9297), (102, 9333), (117, 9423), (122, 9441),

Gene: Apocalypse_15 Start: 9339, Stop: 9695, Start Num: 49

Candidate Starts for Apocalypse_15:

(Start: 49 @9339 has 181 MA's), (59, 9363), (74, 9441), (75, 9444), (78, 9453), (95, 9522), (110, 9591), (118, 9651), (122, 9666),

Gene: Applecrisp_13 Start: 9400, Stop: 9786, Start Num: 49

Candidate Starts for Applecrisp_13:

(46, 9391), (Start: 49 @9400 has 181 MA's), (64, 9439), (95, 9580), (110, 9649), (123, 9727),

Gene: Apricot_10 Start: 6791, Stop: 7132, Start Num: 54

Candidate Starts for Apricot_10:

(30, 6716), (42, 6758), (Start: 54 @6791 has 95 MA's), (59, 6812), (67, 6842), (91, 6956), (92, 6959), (93, 6965), (97, 6977), (109, 7043), (119, 7112), (121, 7118), (122, 7121),

Gene: Aroostook_10 Start: 8808, Stop: 9167, Start Num: 48

Candidate Starts for Aroostook_10:

(26, 8745), (Start: 28 @8751 has 2 MA's), (46, 8802), (Start: 48 @8808 has 21 MA's), (Start: 49 @8811 has 181 MA's), (59, 8841), (94, 9000), (95, 9003), (113, 9084), (119, 9138),

Gene: Asapag_10 Start: 6480, Stop: 6827, Start Num: 52

Candidate Starts for Asapag_10:

(39, 6444), (Start: 52 @6480 has 20 MA's), (62, 6519), (70, 6561), (87, 6633), (91, 6654), (92, 6657), (99, 6690), (105, 6717), (108, 6735), (116, 6786), (118, 6801), (119, 6807), (122, 6816),

Gene: Asayake_15 Start: 9404, Stop: 9760, Start Num: 49

Candidate Starts for Asayake_15:

(Start: 49 @9404 has 181 MA's), (59, 9428), (75, 9509), (95, 9587), (103, 9626), (110, 9656), (118, 9716), (122, 9731),

Gene: Atiba_15 Start: 9327, Stop: 9683, Start Num: 49

Candidate Starts for Atiba_15:

(Start: 49 @9327 has 181 MA's), (59, 9351), (75, 9432), (78, 9441), (95, 9510), (110, 9579), (118, 9639), (122, 9654),

Gene: Avani_10 Start: 6438, Stop: 6791, Start Num: 54

Candidate Starts for Avani_10:

(37, 6387), (38, 6393), (Start: 54 @6438 has 95 MA's), (61, 6468), (71, 6519), (92, 6624), (97, 6642), (102, 6675), (118, 6765),

Gene: Avocado_10 Start: 8948, Stop: 9304, Start Num: 49

Candidate Starts for Avocado_10:

(1, 8579), (11, 8780), (Start: 28 @8888 has 2 MA's), (40, 8921), (Start: 48 @8945 has 21 MA's), (Start: 49 @8948 has 181 MA's), (69, 9026), (95, 9140), (110, 9209), (117, 9266),

Gene: Avrafan_10 Start: 8811, Stop: 9167, Start Num: 49

Candidate Starts for Avrafan_10:

(26, 8745), (Start: 28 @8751 has 2 MA's), (46, 8802), (Start: 48 @8808 has 21 MA's), (Start: 49 @8811 has 181 MA's), (59, 8841), (94, 9000), (95, 9003), (113, 9084), (119, 9138),

Gene: Axym_10 Start: 6923, Stop: 7264, Start Num: 54

Candidate Starts for Axym_10:

(Start: 54 @6923 has 95 MA's), (57, 6932), (70, 6992), (91, 7085), (112, 7187),

Gene: Azira_12 Start: 7820, Stop: 8170, Start Num: 54

Candidate Starts for Azira_12:

(33, 7760), (43, 7796), (Start: 54 @7820 has 95 MA's), (59, 7838), (66, 7862), (70, 7889), (91, 7985), (95, 8000), (101, 8030), (110, 8084), (117, 8141),

Gene: AzulaCat_10 Start: 8811, Stop: 9167, Start Num: 49

Candidate Starts for AzulaCat_10:

(26, 8745), (Start: 28 @8751 has 2 MA's), (46, 8802), (Start: 48 @8808 has 21 MA's), (Start: 49 @8811 has 181 MA's), (59, 8841), (94, 9000), (95, 9003), (113, 9084), (119, 9138),

Gene: BEEST_15 Start: 9404, Stop: 9760, Start Num: 49

Candidate Starts for BEEST_15:

(Start: 49 @9404 has 181 MA's), (59, 9428), (75, 9509), (95, 9587), (103, 9626), (110, 9656), (118, 9716), (122, 9731),

Gene: BENtherdunthat_10 Start: 6480, Stop: 6827, Start Num: 52

Candidate Starts for BENtherdunthat_10:

(39, 6444), (Start: 52 @6480 has 20 MA's), (62, 6519), (70, 6561), (87, 6633), (91, 6654), (92, 6657), (99, 6690), (105, 6717), (108, 6735), (116, 6786), (118, 6801), (119, 6807), (122, 6816),

Gene: BGlluviae_15 Start: 9404, Stop: 9760, Start Num: 49

Candidate Starts for BGlluviae_15:

(Start: 49 @9404 has 181 MA's), (59, 9428), (75, 9509), (95, 9587), (103, 9626), (110, 9656), (118, 9716), (122, 9731),

Gene: BPs_10 Start: 8811, Stop: 9167, Start Num: 49

Candidate Starts for BPs_10:

(26, 8745), (Start: 28 @8751 has 2 MA's), (46, 8802), (Start: 48 @8808 has 21 MA's), (Start: 49 @8811 has 181 MA's), (59, 8841), (94, 9000), (95, 9003), (113, 9084), (119, 9138),

Gene: BQuat_10 Start: 8811, Stop: 9167, Start Num: 49

Candidate Starts for BQuat_10:

(26, 8745), (Start: 28 @8751 has 2 MA's), (46, 8802), (Start: 48 @8808 has 21 MA's), (Start: 49 @8811 has 181 MA's), (59, 8841), (94, 9000), (95, 9003), (113, 9084), (119, 9138),

Gene: BaghaKamala_15 Start: 9330, Stop: 9686, Start Num: 49

Candidate Starts for BaghaKamala_15:

(Start: 49 @9330 has 181 MA's), (59, 9354), (74, 9432), (75, 9435), (78, 9444), (95, 9513), (110, 9582), (118, 9642), (122, 9657),

Gene: Balloona_9 Start: 6695, Stop: 7036, Start Num: 54

Candidate Starts for Balloona_9:

(Start: 54 @6695 has 95 MA's), (64, 6731), (65, 6734), (90, 6854), (94, 6869), (119, 7016),

Gene: BananenDer11_13 Start: 9522, Stop: 9884, Start Num: 49

Candidate Starts for BananenDer11_13:

(Start: 49 @9522 has 181 MA's), (59, 9543), (66, 9567), (75, 9624), (95, 9702), (102, 9738), (110, 9771), (118, 9831), (122, 9846),

Gene: Barkley26_10 Start: 8811, Stop: 9167, Start Num: 49

Candidate Starts for Barkley26_10:

(26, 8745), (Start: 28 @8751 has 2 MA's), (46, 8802), (Start: 48 @8808 has 21 MA's), (Start: 49 @8811 has 181 MA's), (59, 8841), (94, 9000), (95, 9003), (113, 9084), (119, 9138),

Gene: BarrelRoll_15 Start: 9356, Stop: 9712, Start Num: 49

Candidate Starts for BarrelRoll_15:

(Start: 49 @9356 has 181 MA's), (59, 9380), (75, 9461), (95, 9539), (103, 9578), (110, 9608), (118, 9668), (122, 9683),

Gene: Bavilard_10 Start: 7475, Stop: 7816, Start Num: 54

Candidate Starts for Bavilard_10:

(Start: 54 @7475 has 95 MA's), (64, 7511), (90, 7634), (119, 7796),

Gene: BearBQ_10 Start: 6791, Stop: 7132, Start Num: 54

Candidate Starts for BearBQ_10:

(30, 6716), (42, 6758), (Start: 54 @6791 has 95 MA's), (59, 6812), (67, 6842), (91, 6956), (92, 6959), (93, 6965), (97, 6977), (109, 7043), (119, 7112), (121, 7118), (122, 7121),

Gene: BeeGee_10 Start: 7478, Stop: 7825, Start Num: 54

Candidate Starts for BeeGee_10:

(29, 7400), (Start: 54 @7478 has 95 MA's), (74, 7586), (108, 7733), (119, 7805),

Gene: Beezoo_15 Start: 9384, Stop: 9740, Start Num: 49

Candidate Starts for Beezoo_15:

(Start: 49 @9384 has 181 MA's), (59, 9408), (74, 9486), (75, 9489), (78, 9498), (95, 9567), (110, 9636), (118, 9696), (122, 9711),

Gene: Bella96_15 Start: 9285, Stop: 9641, Start Num: 49

Candidate Starts for Bella96_15:

(Start: 49 @9285 has 181 MA's), (59, 9309), (75, 9390), (95, 9468), (110, 9537), (118, 9597), (122, 9612),

Gene: Belladonna_15 Start: 9404, Stop: 9760, Start Num: 49

Candidate Starts for Belladonna_15:

(Start: 49 @9404 has 181 MA's), (59, 9428), (75, 9509), (95, 9587), (103, 9626), (110, 9656), (118, 9716), (122, 9731),

Gene: Bern_15 Start: 9319, Stop: 9672, Start Num: 51

Candidate Starts for Bern_15:

(31, 9268), (Start: 49 @9316 has 181 MA's), (Start: 51 @9319 has 26 MA's), (59, 9340), (75, 9421), (95, 9499), (110, 9568), (118, 9628), (122, 9643),

Gene: BigChungus_9 Start: 6720, Stop: 7061, Start Num: 54

Candidate Starts for BigChungus_9:

(Start: 54 @6720 has 95 MA's), (64, 6756), (65, 6759), (90, 6879), (94, 6894), (119, 7041),

Gene: Biglebops_11 Start: 8651, Stop: 9004, Start Num: 50

Candidate Starts for Biglebops_11:

(Start: 50 @8651 has 40 MA's), (59, 8672), (78, 8762), (90, 8813), (92, 8819), (95, 8831), (107, 8891), (110, 8900), (118, 8960), (122, 8975), (123, 8978),

Gene: BillDoor_12 Start: 6906, Stop: 7247, Start Num: 54

Candidate Starts for BillDoor_12:

(Start: 54 @6906 has 95 MA's), (92, 7071), (118, 7221), (119, 7227),

Gene: Birdsong_10 Start: 6791, Stop: 7132, Start Num: 54

Candidate Starts for Birdsong_10:

(30, 6716), (42, 6758), (Start: 54 @6791 has 95 MA's), (59, 6812), (67, 6842), (91, 6956), (92, 6959), (93, 6965), (97, 6977), (109, 7043), (119, 7112), (121, 7118), (122, 7121),

Gene: Biskit_11 Start: 6907, Stop: 7248, Start Num: 54

Candidate Starts for Biskit_11:

(Start: 54 @6907 has 95 MA's), (81, 7030), (112, 7171), (118, 7222), (119, 7228),

Gene: Blarby_11 Start: 6962, Stop: 7315, Start Num: 54

Candidate Starts for Blarby_11:

(37, 6911), (38, 6917), (Start: 54 @6962 has 95 MA's), (61, 6992), (71, 7043), (92, 7148), (97, 7166), (102, 7199), (118, 7289),

Gene: Blizzard_15 Start: 9404, Stop: 9760, Start Num: 49

Candidate Starts for Blizzard_15:

(Start: 49 @9404 has 181 MA's), (59, 9428), (75, 9509), (95, 9587), (103, 9626), (110, 9656), (118, 9716), (122, 9731),

Gene: Blondies_11 Start: 6902, Stop: 7243, Start Num: 54

Candidate Starts for Blondies_11:

(Start: 54 @6902 has 95 MA's), (81, 7025), (112, 7166), (118, 7217), (119, 7223),

Gene: Bobquesha_16 Start: 10363, Stop: 10719, Start Num: 50

Candidate Starts for Bobquesha_16:

(Start: 50 @10363 has 40 MA's), (75, 10477), (97, 10561), (102, 10591), (110, 10624), (113, 10636), (119, 10690),

Gene: Boiiii_15 Start: 9406, Stop: 9762, Start Num: 49

Candidate Starts for Boiiii_15:

(Start: 49 @9406 has 181 MA's), (59, 9430), (75, 9511), (95, 9589), (103, 9628), (110, 9658), (118, 9718), (122, 9733),

Gene: Boilgate_12 Start: 9365, Stop: 9724, Start Num: 55

Candidate Starts for Boilgate_12:

(Start: 55 @9365 has 1 MA's), (56, 9374), (68, 9425), (75, 9473), (102, 9596), (114, 9650), (119, 9695),

Gene: BoostSeason_11 Start: 7354, Stop: 7704, Start Num: 51

Candidate Starts for BoostSeason_11:

(Start: 51 @7354 has 26 MA's), (60, 7378), (64, 7393), (68, 7414), (75, 7456), (78, 7465), (80, 7477), (95, 7534), (96, 7537), (110, 7603), (118, 7663), (119, 7669), (122, 7678),

Gene: BotCity_10 Start: 6478, Stop: 6825, Start Num: 52

Candidate Starts for BotCity_10:

(39, 6442), (Start: 52 @6478 has 20 MA's), (62, 6517), (70, 6559), (87, 6631), (91, 6652), (92, 6655), (99, 6688), (105, 6715), (108, 6733), (116, 6784), (118, 6799), (119, 6805), (122, 6814),

Gene: Bradissa_10 Start: 7482, Stop: 7829, Start Num: 54

Candidate Starts for Bradissa_10:

(Start: 54 @7482 has 95 MA's), (74, 7590), (108, 7737), (119, 7809),

Gene: BritBrat_10 Start: 7484, Stop: 7831, Start Num: 54

Candidate Starts for BritBrat_10:

(Start: 54 @7484 has 95 MA's), (74, 7592), (108, 7739), (119, 7811),

Gene: BruceB_10 Start: 8811, Stop: 9167, Start Num: 49

Candidate Starts for BruceB_10:

(26, 8745), (Start: 28 @8751 has 2 MA's), (46, 8802), (Start: 48 @8808 has 21 MA's), (Start: 49 @8811 has 181 MA's), (59, 8841), (94, 9000), (95, 9003), (113, 9084), (119, 9138),

Gene: Bryler_14 Start: 8315, Stop: 8668, Start Num: 51

Candidate Starts for Bryler_14:

(Start: 51 @8315 has 26 MA's), (82, 8453), (90, 8477), (95, 8495), (110, 8564), (118, 8624), (122, 8639),

Gene: Bubble_10 Start: 6923, Stop: 7264, Start Num: 54

Candidate Starts for Bubble_10:

(Start: 54 @6923 has 95 MA's), (57, 6932), (70, 6992), (91, 7085), (112, 7187),

Gene: Budski_10 Start: 6485, Stop: 6832, Start Num: 52

Candidate Starts for Budski_10:

(39, 6449), (Start: 52 @6485 has 20 MA's), (62, 6524), (91, 6659), (92, 6662), (99, 6695), (108, 6740), (116, 6791), (118, 6806), (122, 6821),

Gene: Burnsey_10 Start: 6924, Stop: 7265, Start Num: 54

Candidate Starts for Burnsey_10:

(Start: 54 @6924 has 95 MA's), (57, 6933), (70, 6993), (91, 7086), (112, 7188),

Gene: Button_11 Start: 6943, Stop: 7281, Start Num: 54

Candidate Starts for Button_11:

(23, 6853), (25, 6856), (27, 6862), (Start: 54 @6943 has 95 MA's), (96, 7123), (98, 7138), (103, 7162), (105, 7168), (119, 7261),

Gene: Buttrmlkdreams_10 Start: 6901, Stop: 7242, Start Num: 54

Candidate Starts for Buttrmlkdreams_10:

(Start: 54 @6901 has 95 MA's), (81, 7024), (112, 7165), (118, 7216), (119, 7222),

Gene: CLED96_10 Start: 8808, Stop: 9167, Start Num: 48

Candidate Starts for CLED96_10:

(26, 8745), (Start: 28 @8751 has 2 MA's), (46, 8802), (Start: 48 @8808 has 21 MA's), (Start: 49 @8811 has 181 MA's), (59, 8841), (94, 9000), (95, 9003), (113, 9084), (119, 9138),

Gene: CREW_15 Start: 9404, Stop: 9760, Start Num: 49

Candidate Starts for CREW_15:

(Start: 49 @9404 has 181 MA's), (59, 9428), (75, 9509), (95, 9587), (103, 9626), (110, 9656), (118, 9716), (122, 9731),

Gene: Cain_14 Start: 8303, Stop: 8656, Start Num: 51

Candidate Starts for Cain_14:

(Start: 51 @8303 has 26 MA's), (82, 8441), (90, 8465), (95, 8483), (110, 8552), (118, 8612), (122, 8627),

Gene: CallaLilly_15 Start: 9331, Stop: 9687, Start Num: 49

Candidate Starts for CallaLilly_15:

(Start: 49 @9331 has 181 MA's), (59, 9355), (74, 9433), (75, 9436), (78, 9445), (95, 9514), (110, 9583), (118, 9643), (122, 9658),

Gene: Cambiare_11 Start: 9407, Stop: 9766, Start Num: 48

Candidate Starts for Cambiare_11:

(1, 9041), (11, 9242), (Start: 28 @9350 has 2 MA's), (40, 9383), (Start: 48 @9407 has 21 MA's), (Start: 49 @9410 has 181 MA's), (69, 9488), (95, 9602), (110, 9671), (117, 9728),

Gene: Camri_10 Start: 8811, Stop: 9167, Start Num: 49

Candidate Starts for Camri_10:

(26, 8745), (Start: 28 @8751 has 2 MA's), (46, 8802), (Start: 48 @8808 has 21 MA's), (Start: 49 @8811 has 181 MA's), (59, 8841), (94, 9000), (95, 9003), (113, 9084), (119, 9138),

Gene: CanesSauce_10 Start: 6942, Stop: 7283, Start Num: 54

Candidate Starts for CanesSauce_10:

(Start: 54 @6942 has 95 MA's), (92, 7107), (118, 7257), (119, 7263),

Gene: Capricorn_15 Start: 9404, Stop: 9760, Start Num: 49

Candidate Starts for Capricorn_15:

(Start: 49 @9404 has 181 MA's), (59, 9428), (75, 9509), (95, 9587), (103, 9626), (110, 9656), (118, 9716), (122, 9731),

Gene: CaramelLatte_10 Start: 6942, Stop: 7283, Start Num: 54

Candidate Starts for CaramelLatte_10:

(Start: 54 @6942 has 95 MA's), (92, 7107), (118, 7257), (119, 7263),

Gene: Carsonalex_11 Start: 6989, Stop: 7321, Start Num: 57

Candidate Starts for Carsonalex_11:

(Start: 54 @6980 has 95 MA's), (57, 6989), (70, 7049), (91, 7142), (112, 7244),

Gene: CaseJules_15 Start: 9404, Stop: 9760, Start Num: 49

Candidate Starts for CaseJules_15:

(Start: 49 @9404 has 181 MA's), (59, 9428), (75, 9509), (95, 9587), (103, 9626), (110, 9656), (118, 9716), (122, 9731),

Gene: Cashline_10 Start: 7331, Stop: 7678, Start Num: 54

Candidate Starts for Cashline_10:

(29, 7253), (Start: 54 @7331 has 95 MA's), (72, 7427), (74, 7439), (96, 7523), (119, 7658),

Gene: CassieYates_10 Start: 8811, Stop: 9167, Start Num: 49

Candidate Starts for CassieYates_10:

(26, 8745), (Start: 28 @8751 has 2 MA's), (46, 8802), (Start: 48 @8808 has 21 MA's), (Start: 49 @8811 has 181 MA's), (59, 8841), (94, 9000), (95, 9003), (113, 9084), (119, 9138),

Gene: Cedasite_10 Start: 8811, Stop: 9167, Start Num: 49

Candidate Starts for Cedasite_10:

(26, 8745), (Start: 28 @8751 has 2 MA's), (46, 8802), (Start: 48 @8808 has 21 MA's), (Start: 49 @8811 has 181 MA's), (59, 8841), (94, 9000), (95, 9003), (113, 9084), (119, 9138),

Gene: Chance64_10 Start: 8811, Stop: 9167, Start Num: 49

Candidate Starts for Chance64_10:

(26, 8745), (Start: 28 @8751 has 2 MA's), (46, 8802), (Start: 48 @8808 has 21 MA's), (Start: 49 @8811 has 181 MA's), (59, 8841), (94, 9000), (95, 9003), (113, 9084), (119, 9138),

Gene: Chancellor_16 Start: 10621, Stop: 10977, Start Num: 50

Candidate Starts for Chancellor_16:

(Start: 50 @10621 has 40 MA's), (75, 10735), (97, 10819), (102, 10849), (110, 10882), (113, 10894), (119, 10948),

Gene: Chavito_15 Start: 8435, Stop: 8794, Start Num: 50

Candidate Starts for Chavito_15:

(41, 8408), (Start: 50 @8435 has 40 MA's), (59, 8462), (60, 8465), (74, 8540), (80, 8564), (95, 8621), (96, 8624), (110, 8690), (118, 8750), (119, 8756), (122, 8765),

Gene: Che9d_10 Start: 6447, Stop: 6800, Start Num: 54

Candidate Starts for Che9d_10:

(37, 6396), (38, 6402), (Start: 54 @6447 has 95 MA's), (61, 6477), (71, 6528), (92, 6633), (97, 6651), (102, 6684), (118, 6774),

Gene: CheeseTouch_10 Start: 6485, Stop: 6832, Start Num: 52

Candidate Starts for CheeseTouch_10:

(39, 6449), (Start: 52 @6485 has 20 MA's), (62, 6524), (91, 6659), (92, 6662), (99, 6695), (108, 6740), (116, 6791), (118, 6806), (122, 6821),

Gene: CheetoDust_15 Start: 9381, Stop: 9737, Start Num: 49

Candidate Starts for CheetoDust_15:

(Start: 49 @9381 has 181 MA's), (59, 9405), (74, 9483), (75, 9486), (78, 9495), (95, 9564), (110, 9633), (118, 9693), (122, 9708),

Gene: Cheetobro_16 Start: 10621, Stop: 10977, Start Num: 50

Candidate Starts for Cheetobro_16:

(Start: 50 @10621 has 40 MA's), (75, 10735), (97, 10819), (102, 10849), (110, 10882), (113, 10894), (119, 10948),

Gene: Cherrybomb426_10 Start: 8811, Stop: 9167, Start Num: 49

Candidate Starts for Cherrybomb426_10:

(26, 8745), (Start: 28 @8751 has 2 MA's), (46, 8802), (Start: 48 @8808 has 21 MA's), (Start: 49 @8811 has 181 MA's), (59, 8841), (94, 9000), (95, 9003), (113, 9084), (119, 9138),

Gene: CherryonLim_11 Start: 7446, Stop: 7787, Start Num: 54

Candidate Starts for CherryonLim_11:

(Start: 54 @7446 has 95 MA's), (64, 7482), (90, 7605), (94, 7620), (104, 7668), (119, 7767),

Gene: ChickenTender_12 Start: 6966, Stop: 7307, Start Num: 54

Candidate Starts for ChickenTender_12:

(Start: 54 @6966 has 95 MA's), (57, 6975), (70, 7035), (91, 7128), (112, 7230),

Gene: ChocoMunchkin_10 Start: 6942, Stop: 7283, Start Num: 54

Candidate Starts for ChocoMunchkin_10:

(Start: 54 @6942 has 95 MA's), (92, 7107), (118, 7257), (119, 7263),

Gene: Chris_14 Start: 8298, Stop: 8651, Start Num: 49

Candidate Starts for Chris_14:

(Start: 49 @8298 has 181 MA's), (59, 8319), (64, 8337), (69, 8367), (76, 8403), (90, 8460), (95, 8478), (96, 8481), (103, 8517), (110, 8547), (118, 8607), (122, 8622),

Gene: Cleo_10 Start: 7123, Stop: 7470, Start Num: 54

Candidate Starts for Cleo_10:

(Start: 54 @7123 has 95 MA's), (91, 7285), (95, 7300), (96, 7303), (110, 7384),

Gene: Clipper_15 Start: 9381, Stop: 9737, Start Num: 49

Candidate Starts for Clipper_15:

(Start: 49 @9381 has 181 MA's), (59, 9405), (74, 9483), (75, 9486), (78, 9495), (95, 9564), (103, 9603), (110, 9633), (118, 9693), (122, 9708),

Gene: Cloudyecho_10 Start: 8997, Stop: 9350, Start Num: 49

Candidate Starts for Cloudyecho_10:

(1, 8613), (11, 8808), (20, 8901), (40, 8964), (Start: 49 @8997 has 181 MA's), (91, 9171), (94, 9183), (95, 9186), (102, 9222), (117, 9312), (122, 9330),

Gene: CocoaPuff_9 Start: 6695, Stop: 7036, Start Num: 54

Candidate Starts for CocoaPuff_9:

(Start: 54 @6695 has 95 MA's), (64, 6731), (90, 6854), (119, 7016),

Gene: Coleslaw_10 Start: 8811, Stop: 9167, Start Num: 49

Candidate Starts for Coleslaw_10:

(26, 8745), (Start: 28 @8751 has 2 MA's), (46, 8802), (Start: 48 @8808 has 21 MA's), (Start: 49 @8811 has 181 MA's), (59, 8841), (94, 9000), (95, 9003), (113, 9084), (119, 9138),

Gene: Collard_13 Start: 9522, Stop: 9884, Start Num: 49

Candidate Starts for Collard_13:

(Start: 49 @9522 has 181 MA's), (59, 9543), (66, 9567), (75, 9624), (95, 9702), (102, 9738), (110, 9771), (118, 9831), (122, 9846),

Gene: Confidence_10 Start: 7478, Stop: 7825, Start Num: 54

Candidate Starts for Confidence_10:

(Start: 54 @7478 has 95 MA's), (74, 7586), (108, 7733), (119, 7805),

Gene: Cozz_10 Start: 6924, Stop: 7265, Start Num: 54

Candidate Starts for Cozz_10:

(Start: 54 @6924 has 95 MA's), (57, 6933), (70, 6993), (91, 7086), (112, 7188),

Gene: Crater_10 Start: 6791, Stop: 7132, Start Num: 54

Candidate Starts for Crater_10:

(30, 6716), (42, 6758), (Start: 54 @6791 has 95 MA's), (59, 6812), (67, 6842), (91, 6956), (92, 6959), (93, 6965), (97, 6977), (109, 7043), (119, 7112), (121, 7118), (122, 7121),

Gene: Crespo_10 Start: 8812, Stop: 9168, Start Num: 49

Candidate Starts for Crespo_10:

(26, 8746), (Start: 28 @8752 has 2 MA's), (46, 8803), (Start: 48 @8809 has 21 MA's), (Start: 49 @8812 has 181 MA's), (59, 8842), (94, 9001), (95, 9004), (113, 9085), (119, 9139),

Gene: CrimD_15 Start: 9333, Stop: 9689, Start Num: 49

Candidate Starts for CrimD_15:

(Start: 49 @9333 has 181 MA's), (59, 9357), (74, 9435), (75, 9438), (95, 9516), (110, 9585), (118, 9645), (122, 9660),

Gene: Curiosium_16 Start: 8809, Stop: 9162, Start Num: 50

Candidate Starts for Curiosium_16:

(Start: 50 @8809 has 40 MA's), (59, 8830), (80, 8932), (90, 8971), (95, 8989), (96, 8992), (103, 9028), (110, 9058), (122, 9133),

Gene: DMoney_10 Start: 8811, Stop: 9167, Start Num: 49

Candidate Starts for DMoney_10:

(26, 8745), (Start: 28 @8751 has 2 MA's), (46, 8802), (Start: 48 @8808 has 21 MA's), (Start: 49 @8811 has 181 MA's), (59, 8841), (94, 9000), (95, 9003), (113, 9084), (119, 9138),

Gene: DNAIII_0010 Start: 8820, Stop: 9176, Start Num: 49

Candidate Starts for DNAIII_0010:

(26, 8754), (Start: 28 @8760 has 2 MA's), (46, 8811), (Start: 48 @8817 has 21 MA's), (Start: 49 @8820 has 181 MA's), (59, 8850), (94, 9009), (95, 9012), (113, 9093), (119, 9147),

Gene: Dadosky_13 Start: 9440, Stop: 9802, Start Num: 49

Candidate Starts for Dadosky_13:

(Start: 49 @9440 has 181 MA's), (66, 9485), (75, 9542), (82, 9578), (84, 9584), (90, 9602), (95, 9620), (110, 9689), (118, 9749), (122, 9764),

Gene: Dalmuri_15 Start: 9404, Stop: 9760, Start Num: 49

Candidate Starts for Dalmuri_15:

(Start: 49 @9404 has 181 MA's), (59, 9428), (75, 9509), (95, 9587), (103, 9626), (110, 9656), (118, 9716), (122, 9731),

Gene: DanSyl44_16 Start: 10624, Stop: 10980, Start Num: 50

Candidate Starts for DanSyl44_16:

(Start: 50 @10624 has 40 MA's), (75, 10738), (97, 10822), (102, 10852), (110, 10885), (113, 10897), (119, 10951),

Gene: Darionha_10 Start: 8808, Stop: 9167, Start Num: 48

Candidate Starts for Darionha_10:

(26, 8745), (Start: 28 @8751 has 2 MA's), (46, 8802), (Start: 48 @8808 has 21 MA's), (Start: 49 @8811 has 181 MA's), (59, 8841), (94, 9000), (95, 9003), (113, 9084), (119, 9138),

Gene: DartGoblin_15 Start: 9285, Stop: 9641, Start Num: 49

Candidate Starts for DartGoblin_15:

(Start: 49 @9285 has 181 MA's), (59, 9309), (75, 9390), (95, 9468), (110, 9537), (118, 9597), (122, 9612),

Gene: DarthP_14 Start: 9299, Stop: 9697, Start Num: 49

Candidate Starts for DarthP_14:

(Start: 49 @9299 has 181 MA's), (64, 9338), (95, 9479), (110, 9548), (118, 9608), (122, 9623), (123, 9626),

Gene: Dartin_15 Start: 8435, Stop: 8788, Start Num: 50

Candidate Starts for Dartin_15:

(Start: 50 @8435 has 40 MA's), (59, 8456), (74, 8534), (80, 8558), (90, 8597), (95, 8615), (103, 8654), (110, 8684), (118, 8744), (122, 8759), (123, 8762),

Gene: Deby_15 Start: 9335, Stop: 9691, Start Num: 49

Candidate Starts for Deby_15:

(Start: 49 @9335 has 181 MA's), (59, 9359), (75, 9440), (78, 9449), (95, 9518), (110, 9587), (118, 9647), (122, 9662),

Gene: Demsculpinboyz_10 Start: 6438, Stop: 6791, Start Num: 54

Candidate Starts for Demsculpinboyz_10:

(37, 6387), (38, 6393), (Start: 54 @6438 has 95 MA's), (61, 6468), (71, 6519), (92, 6624), (97, 6642), (102, 6675), (118, 6765),

Gene: Devera_15 Start: 9352, Stop: 9708, Start Num: 49

Candidate Starts for Devera_15:

(Start: 49 @9352 has 181 MA's), (59, 9376), (75, 9457), (95, 9535), (110, 9604), (118, 9664), (122, 9679),

Gene: DingDing_10 Start: 8811, Stop: 9167, Start Num: 49

Candidate Starts for DingDing_10:

(26, 8745), (Start: 28 @8751 has 2 MA's), (46, 8802), (Start: 48 @8808 has 21 MA's), (Start: 49 @8811 has 181 MA's), (59, 8841), (94, 9000), (95, 9003), (113, 9084), (119, 9138),

Gene: DismalFunk_11 Start: 7362, Stop: 7712, Start Num: 51

Candidate Starts for DismalFunk_11:

(Start: 51 @7362 has 26 MA's), (60, 7386), (68, 7422), (75, 7464), (78, 7473), (80, 7485), (95, 7542), (103, 7581), (110, 7611), (118, 7671), (119, 7677), (122, 7686),

Gene: DismalStressor_11 Start: 7362, Stop: 7712, Start Num: 51

Candidate Starts for DismalStressor_11:

(Start: 51 @7362 has 26 MA's), (60, 7386), (68, 7422), (75, 7464), (78, 7473), (80, 7485), (95, 7542), (103, 7581), (110, 7611), (118, 7671), (119, 7677), (122, 7686),

Gene: Dole_15 Start: 9354, Stop: 9710, Start Num: 49

Candidate Starts for Dole_15:

(Start: 49 @9354 has 181 MA's), (59, 9378), (75, 9459), (95, 9537), (110, 9606), (118, 9666), (122, 9681),

Gene: DoubleChamp_13 Start: 9522, Stop: 9884, Start Num: 49

Candidate Starts for DoubleChamp_13:

(Start: 49 @9522 has 181 MA's), (59, 9543), (66, 9567), (75, 9624), (95, 9702), (102, 9738), (110, 9771), (118, 9831), (122, 9846),

Gene: Doughnut_11 Start: 7348, Stop: 7698, Start Num: 51

Candidate Starts for Doughnut_11:

(Start: 51 @7348 has 26 MA's), (60, 7372), (64, 7387), (68, 7408), (75, 7450), (78, 7459), (80, 7471), (95, 7528), (96, 7531), (110, 7597), (118, 7657), (119, 7663), (122, 7672),

Gene: DrHayes_15 Start: 9306, Stop: 9662, Start Num: 49

Candidate Starts for DrHayes_15:

(Start: 49 @9306 has 181 MA's), (59, 9330), (95, 9489), (110, 9558), (118, 9618), (122, 9633),

Gene: Dre3_10 Start: 7070, Stop: 7417, Start Num: 54

Candidate Starts for Dre3_10:

(Start: 54 @7070 has 95 MA's), (91, 7232), (95, 7247), (96, 7250), (110, 7331),

Gene: Durfee_15 Start: 9404, Stop: 9760, Start Num: 49

Candidate Starts for Durfee_15:

(Start: 49 @9404 has 181 MA's), (59, 9428), (75, 9509), (95, 9587), (103, 9626), (110, 9656), (118, 9716), (122, 9731),

Gene: ECartman_10 Start: 8811, Stop: 9167, Start Num: 49

Candidate Starts for ECartman_10:

(26, 8745), (Start: 28 @8751 has 2 MA's), (46, 8802), (Start: 48 @8808 has 21 MA's), (Start: 49 @8811 has 181 MA's), (59, 8841), (94, 9000), (95, 9003), (113, 9084), (119, 9138),

Gene: EMSquaredA_10 Start: 7484, Stop: 7831, Start Num: 54

Candidate Starts for EMSquaredA_10:

(Start: 54 @7484 has 95 MA's), (74, 7592), (108, 7739), (119, 7811),

Gene: Ecliptus_10 Start: 6513, Stop: 6860, Start Num: 53

Candidate Starts for Ecliptus_10:

(7, 6228), (8, 6261), (35, 6462), (Start: 53 @6513 has 2 MA's), (79, 6624), (97, 6705), (101, 6726), (103, 6744), (109, 6771), (121, 6843), (122, 6846),

Gene: Edugator_12 Start: 9440, Stop: 9802, Start Num: 49

Candidate Starts for Edugator_12:

(Start: 49 @9440 has 181 MA's), (66, 9485), (75, 9542), (82, 9578), (84, 9584), (90, 9602), (95, 9620), (110, 9689), (118, 9749), (122, 9764),

Gene: Efra2_15 Start: 8295, Stop: 8654, Start Num: 50

Candidate Starts for Efra2_15:

(44, 8280), (Start: 50 @8295 has 40 MA's), (59, 8322), (74, 8400), (80, 8424), (90, 8463), (95, 8481), (101, 8505), (102, 8517), (110, 8550), (122, 8625),

Gene: Ekdilam_12 Start: 9026, Stop: 9418, Start Num: 49

Candidate Starts for Ekdilam_12:

(Start: 49 @9026 has 181 MA's), (64, 9065), (90, 9188), (95, 9206), (110, 9275), (118, 9335), (122, 9350), (123, 9353),

Gene: ElJefes_9 Start: 7172, Stop: 7513, Start Num: 54

Candidate Starts for ElJefes_9:

(Start: 54 @7172 has 95 MA's), (64, 7208), (90, 7331), (94, 7346), (104, 7394), (119, 7493),

Gene: Elinal_11 Start: 6701, Stop: 7042, Start Num: 54

Candidate Starts for Elinal_11:

(Start: 54 @6701 has 95 MA's), (64, 6737), (90, 6860), (119, 7022),

Gene: Elliott_10 Start: 6923, Stop: 7264, Start Num: 54

Candidate Starts for Elliott_10:

(Start: 54 @6923 has 95 MA's), (57, 6932), (70, 6992), (91, 7085), (112, 7187),

Gene: Ellie_12 Start: 9073, Stop: 9459, Start Num: 49

Candidate Starts for Ellie_12:

(Start: 49 @9073 has 181 MA's), (64, 9112), (95, 9253), (110, 9322), (123, 9400),

Gene: Emalyn_9 Start: 6652, Stop: 6993, Start Num: 54

Candidate Starts for Emalyn_9:

(Start: 54 @6652 has 95 MA's), (92, 6817), (112, 6916), (119, 6973),

Gene: Emerson_15 Start: 9364, Stop: 9720, Start Num: 49

Candidate Starts for Emerson_15:

(Start: 49 @9364 has 181 MA's), (59, 9388), (75, 9469), (78, 9478), (95, 9547), (110, 9616), (118, 9676), (122, 9691),

Gene: EnalisNailo_10 Start: 7484, Stop: 7831, Start Num: 54

Candidate Starts for EnalisNailo_10:

(Start: 54 @7484 has 95 MA's), (74, 7592), (108, 7739), (119, 7811),

Gene: Enkosi_11 Start: 8651, Stop: 9004, Start Num: 50

Candidate Starts for Enkosi_11:

(Start: 50 @8651 has 40 MA's), (59, 8672), (78, 8762), (90, 8813), (92, 8819), (95, 8831), (107, 8891), (110, 8900), (118, 8960), (122, 8975), (123, 8978),

Gene: Eponine_16 Start: 10485, Stop: 10841, Start Num: 50

Candidate Starts for Eponine_16:

(Start: 50 @10485 has 40 MA's), (75, 10599), (97, 10683), (102, 10713), (110, 10746), (119, 10812),

Gene: FF47_12 Start: 8188, Stop: 8562, Start Num: 48

Candidate Starts for FF47_12:

(Start: 48 @8188 has 21 MA's), (59, 8227), (72, 8299), (89, 8374), (95, 8392), (96, 8395), (117, 8527), (120, 8539),

Gene: Feastonyeet_9 Start: 6720, Stop: 7061, Start Num: 54

Candidate Starts for Feastonyeet_9:

(Start: 54 @6720 has 95 MA's), (64, 6756), (65, 6759), (90, 6879), (94, 6894), (119, 7041),

Gene: Fefferhead_14 Start: 9240, Stop: 9626, Start Num: 49

Candidate Starts for Fefferhead_14:

(Start: 49 @9240 has 181 MA's), (64, 9279), (75, 9342), (95, 9420), (110, 9489), (123, 9567),

Gene: Feyre_13 Start: 9388, Stop: 9750, Start Num: 49

Candidate Starts for Feyre_13:

(Start: 49 @9388 has 181 MA's), (59, 9409), (75, 9490), (82, 9526), (84, 9532), (90, 9550), (95, 9568), (103, 9607), (110, 9637), (118, 9697), (122, 9712), (123, 9715),

Gene: Findley_11 Start: 7362, Stop: 7712, Start Num: 51

Candidate Starts for Findley_11:

(Start: 51 @7362 has 26 MA's), (60, 7386), (68, 7422), (75, 7464), (78, 7473), (80, 7485), (95, 7542), (103, 7581), (110, 7611), (118, 7671), (119, 7677), (122, 7686),

Gene: Fionnbharth_16 Start: 10611, Stop: 10967, Start Num: 50

Candidate Starts for Fionnbharth_16:

(Start: 50 @10611 has 40 MA's), (75, 10725), (97, 10809), (102, 10839), (110, 10872), (113, 10884), (119, 10938),

Gene: FlagStaff_10 Start: 8880, Stop: 9236, Start Num: 49

Candidate Starts for FlagStaff_10:

(1, 8511), (11, 8712), (40, 8853), (Start: 49 @8880 has 181 MA's), (66, 8934), (69, 8958), (95, 9072), (110, 9141), (117, 9198), (122, 9216),

Gene: Floral_10 Start: 7484, Stop: 7831, Start Num: 54

Candidate Starts for Floral_10:

(Start: 54 @7484 has 95 MA's), (74, 7592), (108, 7739), (119, 7811),

Gene: Fribs8_11 Start: 7633, Stop: 7983, Start Num: 54

Candidate Starts for Fribs8_11:

(33, 7573), (Start: 54 @7633 has 95 MA's), (59, 7651), (66, 7675), (91, 7798), (92, 7801), (95, 7813), (96, 7816), (110, 7897), (112, 7906),

Gene: Frickyeah_10 Start: 6480, Stop: 6827, Start Num: 52

Candidate Starts for Frickyeah_10:

(39, 6444), (Start: 52 @6480 has 20 MA's), (62, 6519), (70, 6561), (87, 6633), (91, 6654), (92, 6657), (99, 6690), (105, 6717), (108, 6735), (116, 6786), (118, 6801), (119, 6807), (122, 6816),

Gene: Frosty24_10 Start: 8811, Stop: 9167, Start Num: 49

Candidate Starts for Frosty24_10:

(26, 8745), (Start: 28 @8751 has 2 MA's), (46, 8802), (Start: 48 @8808 has 21 MA's), (Start: 49 @8811 has 181 MA's), (59, 8841), (94, 9000), (95, 9003), (113, 9084), (119, 9138),

Gene: GTE2_08 Start: 6602, Stop: 6943, Start Num: 54

Candidate Starts for GTE2_08:

(Start: 54 @6602 has 95 MA's), (92, 6767), (118, 6917), (119, 6923),

Gene: Gaia_7 Start: 7028, Stop: 7366, Start Num: 54

Candidate Starts for Gaia_7:

(Start: 54 @7028 has 95 MA's), (58, 7049), (59, 7052), (73, 7130), (79, 7136), (82, 7157), (83, 7160), (85, 7169), (96, 7211), (105, 7256), (110, 7283), (111, 7286), (117, 7337), (122, 7355),

Gene: Ganymede_15 Start: 9381, Stop: 9737, Start Num: 49

Candidate Starts for Ganymede_15:

(Start: 49 @9381 has 181 MA's), (59, 9405), (75, 9486), (78, 9495), (95, 9564), (110, 9633), (118, 9693), (122, 9708),

Gene: Gengar_13 Start: 9495, Stop: 9857, Start Num: 49

Candidate Starts for Gengar_13:

(Start: 49 @9495 has 181 MA's), (59, 9516), (75, 9597), (82, 9633), (84, 9639), (90, 9657), (95, 9675), (103, 9714), (110, 9744), (118, 9804), (122, 9819), (123, 9822),

Gene: Geraldini_15 Start: 9384, Stop: 9740, Start Num: 49

Candidate Starts for Geraldini_15:

(Start: 49 @9384 has 181 MA's), (59, 9408), (74, 9486), (75, 9489), (78, 9498), (95, 9567), (110, 9636), (118, 9696), (122, 9711),

Gene: Getalong_10 Start: 6480, Stop: 6827, Start Num: 52

Candidate Starts for Getalong_10:

(39, 6444), (Start: 52 @6480 has 20 MA's), (62, 6519), (70, 6561), (87, 6633), (91, 6654), (92, 6657), (99, 6690), (108, 6735), (116, 6786), (118, 6801), (122, 6816),

Gene: GiKK_13 Start: 7246, Stop: 7584, Start Num: 54

Candidate Starts for GiKK_13:

(23, 7156), (25, 7159), (27, 7165), (Start: 54 @7246 has 95 MA's), (103, 7465), (104, 7468), (119, 7564),

Gene: Gibbous_10 Start: 7070, Stop: 7417, Start Num: 54

Candidate Starts for Gibbous_10:

(Start: 54 @7070 has 95 MA's), (91, 7232), (95, 7247), (96, 7250), (110, 7331),

Gene: Gideon_10 Start: 8808, Stop: 9167, Start Num: 48

Candidate Starts for Gideon_10:

(26, 8745), (Start: 28 @8751 has 2 MA's), (46, 8802), (Start: 48 @8808 has 21 MA's), (Start: 49 @8811 has 181 MA's), (59, 8841), (94, 9000), (95, 9003), (113, 9084), (119, 9138),

Gene: GodSpeed_10 Start: 8859, Stop: 9245, Start Num: 40

Candidate Starts for GodSpeed_10:

(11, 8718), (40, 8859), (Start: 48 @8883 has 21 MA's), (Start: 49 @8886 has 181 MA's), (65, 8937), (94, 9075), (95, 9078), (102, 9114), (110, 9147), (122, 9222),

Gene: GoldHunter_11 Start: 6924, Stop: 7265, Start Num: 54

Candidate Starts for GoldHunter_11:

(Start: 54 @6924 has 95 MA's), (57, 6933), (70, 6993), (91, 7086), (112, 7188),

Gene: GoldenAsh_10 Start: 8811, Stop: 9167, Start Num: 49

Candidate Starts for GoldenAsh_10:

(26, 8745), (Start: 28 @8751 has 2 MA's), (46, 8802), (Start: 48 @8808 has 21 MA's), (Start: 49 @8811 has 181 MA's), (59, 8841), (94, 9000), (95, 9003), (113, 9084), (119, 9138),

Gene: Gomashi_10 Start: 8809, Stop: 9168, Start Num: 48

Candidate Starts for Gomashi_10:

(26, 8746), (Start: 28 @8752 has 2 MA's), (46, 8803), (Start: 48 @8809 has 21 MA's), (Start: 49 @8812 has 181 MA's), (59, 8842), (94, 9001), (95, 9004), (113, 9085), (119, 9139),

Gene: Grizzly_10 Start: 8811, Stop: 9167, Start Num: 49

Candidate Starts for Grizzly_10:

(26, 8745), (Start: 28 @8751 has 2 MA's), (46, 8802), (Start: 48 @8808 has 21 MA's), (Start: 49 @8811 has 181 MA's), (59, 8841), (94, 9000), (95, 9003), (113, 9084), (119, 9138),

Gene: Guanica15_15 Start: 8311, Stop: 8670, Start Num: 50

Candidate Starts for Guanica15_15:

(44, 8296), (Start: 50 @8311 has 40 MA's), (59, 8338), (74, 8416), (80, 8440), (90, 8479), (95, 8497), (101, 8521), (102, 8533), (110, 8566), (122, 8641),

Gene: Guillsminger_13 Start: 9470, Stop: 9832, Start Num: 49

Candidate Starts for Guillsminger_13:

(Start: 49 @9470 has 181 MA's), (59, 9491), (75, 9572), (82, 9608), (84, 9614), (90, 9632), (95, 9650), (103, 9689), (110, 9719), (118, 9779), (122, 9794), (123, 9797),

Gene: Halo_10 Start: 8806, Stop: 9162, Start Num: 49

Candidate Starts for Halo_10:

(2, 8443), (4, 8512), (26, 8740), (Start: 28 @8746 has 2 MA's), (46, 8797), (Start: 49 @8806 has 181 MA's), (59, 8836), (94, 8995), (95, 8998), (119, 9133),

Gene: Hammy_14 Start: 9293, Stop: 9691, Start Num: 49

Candidate Starts for Hammy_14:

(Start: 49 @9293 has 181 MA's), (64, 9332), (95, 9473), (110, 9542), (118, 9602), (122, 9617), (123, 9620),

Gene: HedwigODU_15 Start: 9364, Stop: 9720, Start Num: 49

Candidate Starts for HedwigODU_15:

(Start: 49 @9364 has 181 MA's), (59, 9388), (74, 9466), (75, 9469), (78, 9478), (95, 9547), (110, 9616), (118, 9676), (122, 9691),

Gene: Heftyboy_13 Start: 9597, Stop: 9959, Start Num: 49

Candidate Starts for Heftyboy_13:

(Start: 49 @9597 has 181 MA's), (59, 9618), (75, 9699), (82, 9735), (84, 9741), (90, 9759), (95, 9777), (103, 9816), (106, 9825), (110, 9846), (118, 9906), (122, 9921), (123, 9924),

Gene: Hexbug_12 Start: 7932, Stop: 8270, Start Num: 54

Candidate Starts for Hexbug_12:

(25, 7848), (Start: 54 @7932 has 95 MA's), (77, 8031), (103, 8151), (104, 8154), (118, 8244), (119, 8250),

Gene: HippoPololi_12 Start: 7722, Stop: 8069, Start Num: 54

Candidate Starts for HippoPololi_12:

(33, 7668), (Start: 54 @7722 has 95 MA's), (91, 7884), (95, 7899), (108, 7974), (110, 7983),

Gene: Holliday_10 Start: 6485, Stop: 6832, Start Num: 52

Candidate Starts for Holliday_10:

(39, 6449), (Start: 52 @6485 has 20 MA's), (62, 6524), (91, 6659), (92, 6662), (99, 6695), (108, 6740), (116, 6791), (118, 6806), (122, 6821),

Gene: Homura_15 Start: 9404, Stop: 9760, Start Num: 49

Candidate Starts for Homura_15:

(Start: 49 @9404 has 181 MA's), (59, 9428), (75, 9509), (95, 9587), (103, 9626), (110, 9656), (118, 9716), (122, 9731),

Gene: Hope_10 Start: 8811, Stop: 9167, Start Num: 49

Candidate Starts for Hope_10:

(26, 8745), (Start: 28 @8751 has 2 MA's), (46, 8802), (Start: 48 @8808 has 21 MA's), (Start: 49 @8811 has 181 MA's), (59, 8841), (94, 9000), (95, 9003), (113, 9084), (119, 9138),

Gene: Horseradish_11 Start: 6805, Stop: 7146, Start Num: 54

Candidate Starts for Horseradish_11:

(Start: 54 @6805 has 95 MA's), (81, 6928), (112, 7069), (118, 7120), (119, 7126),

Gene: Horus_10 Start: 6480, Stop: 6827, Start Num: 52

Candidate Starts for Horus_10:

(39, 6444), (Start: 52 @6480 has 20 MA's), (62, 6519), (70, 6561), (87, 6633), (91, 6654), (92, 6657), (99, 6690), (105, 6717), (108, 6735), (116, 6786), (118, 6801), (119, 6807), (122, 6816),

Gene: Hotshotbaby7_10 Start: 8811, Stop: 9167, Start Num: 49

Candidate Starts for Hotshotbaby7_10:

(26, 8745), (Start: 28 @8751 has 2 MA's), (46, 8802), (Start: 48 @8808 has 21 MA's), (Start: 49 @8811 has 181 MA's), (59, 8841), (94, 9000), (95, 9003), (113, 9084), (119, 9138),

Gene: Hurricane_14 Start: 9383, Stop: 9736, Start Num: 49

Candidate Starts for Hurricane_14:

(Start: 49 @9383 has 181 MA's), (59, 9404), (60, 9407), (75, 9485), (78, 9494), (95, 9563), (96, 9566), (118, 9692), (122, 9707), (123, 9710),

Gene: Hyperbowlee_15 Start: 9404, Stop: 9760, Start Num: 49

Candidate Starts for Hyperbowlee_15:

(Start: 49 @9404 has 181 MA's), (59, 9428), (75, 9509), (95, 9587), (103, 9626), (110, 9656), (118, 9716), (122, 9731),

Gene: Illumine_15 Start: 9354, Stop: 9710, Start Num: 49

Candidate Starts for Illumine_15:

(Start: 49 @9354 has 181 MA's), (59, 9378), (75, 9459), (95, 9537), (110, 9606), (118, 9666), (122, 9681),

Gene: InLimbo_10 Start: 5950, Stop: 6303, Start Num: 49

Candidate Starts for InLimbo_10:

(14, 5809), (38, 5917), (Start: 49 @5950 has 181 MA's), (Start: 54 @5962 has 95 MA's), (72, 6055), (92, 6130), (95, 6142), (101, 6169), (103, 6187), (121, 6289), (122, 6292),

Gene: Inky_15 Start: 9404, Stop: 9760, Start Num: 49

Candidate Starts for Inky_15:

(Start: 49 @9404 has 181 MA's), (59, 9428), (75, 9509), (95, 9587), (103, 9626), (110, 9656), (118, 9716), (122, 9731),

Gene: InvictusManeo_13 Start: 9565, Stop: 9927, Start Num: 49

Candidate Starts for InvictusManeo_13:

(Start: 49 @9565 has 181 MA's), (59, 9586), (66, 9610), (75, 9667), (95, 9745), (102, 9781), (110, 9814), (118, 9874), (122, 9889),

Gene: JAWS_15 Start: 9358, Stop: 9714, Start Num: 49

Candidate Starts for JAWS_15:

(Start: 49 @9358 has 181 MA's), (59, 9382), (75, 9463), (95, 9541), (103, 9580), (110, 9610), (118, 9670), (122, 9685),

Gene: JF1_16 Start: 10610, Stop: 10966, Start Num: 50

Candidate Starts for JF1_16:

(Start: 50 @10610 has 40 MA's), (75, 10724), (97, 10808), (102, 10838), (110, 10871), (113, 10883), (119, 10937),

Gene: Jabbawokkie_11 Start: 6961, Stop: 7314, Start Num: 54

Candidate Starts for Jabbawokkie_11:

(37, 6910), (38, 6916), (Start: 54 @6961 has 95 MA's), (61, 6991), (71, 7042), (92, 7147), (97, 7165), (102, 7198), (118, 7288),

Gene: Jablanski_10 Start: 7331, Stop: 7678, Start Num: 54

Candidate Starts for Jablanski_10:

(Start: 54 @7331 has 95 MA's), (74, 7439), (86, 7484), (108, 7586), (119, 7658),

Gene: JacoRen57_9 Start: 7271, Stop: 7642, Start Num: 48

Candidate Starts for JacoRen57_9:

(17, 7157), (36, 7232), (Start: 48 @7271 has 21 MA's), (96, 7481), (97, 7484), (108, 7541), (122, 7625), (124, 7634),

Gene: Jamzy_13 Start: 7256, Stop: 7594, Start Num: 54

Candidate Starts for Jamzy_13:

(25, 7169), (27, 7175), (Start: 54 @7256 has 95 MA's), (96, 7436), (98, 7451), (103, 7475), (105, 7481), (119, 7574),

Gene: Jane_10 Start: 8808, Stop: 9167, Start Num: 48

Candidate Starts for Jane_10:

(26, 8745), (Start: 28 @8751 has 2 MA's), (46, 8802), (Start: 48 @8808 has 21 MA's), (Start: 49 @8811 has 181 MA's), (59, 8841), (94, 9000), (95, 9003), (113, 9084), (119, 9138),

Gene: Jarvi_15 Start: 9404, Stop: 9760, Start Num: 49

Candidate Starts for Jarvi_15:

(Start: 49 @9404 has 181 MA's), (59, 9428), (75, 9509), (95, 9587), (103, 9626), (110, 9656), (118, 9716), (122, 9731),

Gene: Jayhawk_15 Start: 9365, Stop: 9721, Start Num: 49

Candidate Starts for Jayhawk_15:

(Start: 49 @9365 has 181 MA's), (59, 9389), (74, 9467), (75, 9470), (78, 9479), (95, 9548), (110, 9617), (118, 9677), (122, 9692),

Gene: Jeckyll_15 Start: 9404, Stop: 9760, Start Num: 49

Candidate Starts for Jeckyll_15:

(Start: 49 @9404 has 181 MA's), (59, 9428), (75, 9509), (95, 9587), (103, 9626), (110, 9656), (118, 9716), (122, 9731),

Gene: Jeilious_10 Start: 8807, Stop: 9166, Start Num: 48

Candidate Starts for Jeilious_10:

(26, 8744), (Start: 28 @8750 has 2 MA's), (46, 8801), (Start: 48 @8807 has 21 MA's), (Start: 49 @8810 has 181 MA's), (59, 8840), (94, 8999), (95, 9002), (113, 9083), (119, 9137),

Gene: Jolene_10 Start: 8811, Stop: 9167, Start Num: 49

Candidate Starts for Jolene_10:

(26, 8745), (Start: 28 @8751 has 2 MA's), (46, 8802), (Start: 48 @8808 has 21 MA's), (Start: 49 @8811 has 181 MA's), (59, 8841), (94, 9000), (95, 9003), (113, 9084), (119, 9138),

Gene: Jolie2_10 Start: 8054, Stop: 8407, Start Num: 49

Candidate Starts for Jolie2_10:

(4, 7757), (26, 7988), (46, 8045), (Start: 49 @8054 has 181 MA's), (74, 8162), (94, 8240), (95, 8243), (117, 8369), (122, 8387),

Gene: Jonghyun_10 Start: 8811, Stop: 9167, Start Num: 49

Candidate Starts for Jonghyun_10:

(26, 8745), (Start: 28 @8751 has 2 MA's), (46, 8802), (Start: 48 @8808 has 21 MA's), (Start: 49 @8811 has 181 MA's), (59, 8841), (94, 9000), (95, 9003), (113, 9084), (119, 9138),

Gene: JorRay_10 Start: 8811, Stop: 9167, Start Num: 49

Candidate Starts for JorRay_10:

(26, 8745), (Start: 28 @8751 has 2 MA's), (46, 8802), (Start: 48 @8808 has 21 MA's), (Start: 49 @8811 has 181 MA's), (59, 8841), (94, 9000), (95, 9003), (113, 9084), (119, 9138),

Gene: Joy99_15 Start: 9330, Stop: 9686, Start Num: 49

Candidate Starts for Joy99_15:

(Start: 49 @9330 has 181 MA's), (59, 9354), (74, 9432), (75, 9435), (78, 9444), (95, 9513), (110, 9582), (118, 9642), (122, 9657),

Gene: Juliette_16 Start: 10485, Stop: 10841, Start Num: 50

Candidate Starts for Juliette_16:

(Start: 50 @10485 has 40 MA's), (75, 10599), (97, 10683), (102, 10713), (110, 10746), (119, 10812),

Gene: Kamaru_10 Start: 6485, Stop: 6832, Start Num: 52

Candidate Starts for Kamaru_10:

(39, 6449), (Start: 52 @6485 has 20 MA's), (62, 6524), (91, 6659), (92, 6662), (99, 6695), (108, 6740), (116, 6791), (118, 6806), (122, 6821),

Gene: Kareem_10 Start: 8811, Stop: 9167, Start Num: 49

Candidate Starts for Kareem_10:

(26, 8745), (Start: 28 @8751 has 2 MA's), (46, 8802), (Start: 48 @8808 has 21 MA's), (Start: 49 @8811 has 181 MA's), (59, 8841), (94, 9000), (95, 9003), (113, 9084), (119, 9138),

Gene: Kasen3_10 Start: 8812, Stop: 9168, Start Num: 49

Candidate Starts for Kasen3_10:

(26, 8746), (Start: 28 @8752 has 2 MA's), (46, 8803), (Start: 48 @8809 has 21 MA's), (Start: 49 @8812 has 181 MA's), (59, 8842), (94, 9001), (95, 9004), (113, 9085), (119, 9139),

Gene: KayGee_10 Start: 6701, Stop: 7042, Start Num: 54

Candidate Starts for KayGee_10:

(Start: 54 @6701 has 95 MA's), (64, 6737), (90, 6860), (119, 7022),

Gene: Kenna_10 Start: 6480, Stop: 6827, Start Num: 52

Candidate Starts for Kenna_10:

(39, 6444), (Start: 52 @6480 has 20 MA's), (62, 6519), (70, 6561), (91, 6654), (92, 6657), (99, 6690), (108, 6735), (118, 6801), (122, 6816),

Gene: Keshu_14 Start: 9370, Stop: 9723, Start Num: 49

Candidate Starts for Keshu_14:

(Start: 49 @9370 has 181 MA's), (59, 9391), (75, 9472), (95, 9550), (96, 9553), (118, 9679), (122, 9694),

Gene: KiSi_14 Start: 8236, Stop: 8589, Start Num: 49

Candidate Starts for KiSi_14:

(Start: 49 @8236 has 181 MA's), (59, 8257), (66, 8281), (76, 8341), (90, 8398), (95, 8416), (103, 8455), (109, 8482), (110, 8485), (118, 8545), (122, 8560), (123, 8563),

Gene: Kratio_12 Start: 9192, Stop: 9554, Start Num: 49

Candidate Starts for Kratio_12:

(Start: 49 @9192 has 181 MA's), (59, 9213), (66, 9237), (75, 9294), (95, 9372), (102, 9408), (110, 9441), (118, 9501), (122, 9516),

Gene: Kraw_16 Start: 10530, Stop: 10886, Start Num: 50

Candidate Starts for Kraw_16:

(Start: 50 @10530 has 40 MA's), (75, 10644), (97, 10728), (102, 10758), (110, 10791), (113, 10803), (119, 10857),

Gene: Krueger_14 Start: 8293, Stop: 8646, Start Num: 51

Candidate Starts for Krueger_14:

(Start: 51 @8293 has 26 MA's), (82, 8431), (90, 8455), (95, 8473), (110, 8542), (118, 8602), (122, 8617),

Gene: Kuwabara_10 Start: 6791, Stop: 7132, Start Num: 54

Candidate Starts for Kuwabara_10:

(30, 6716), (42, 6758), (Start: 54 @6791 has 95 MA's), (59, 6812), (67, 6842), (91, 6956), (92, 6959), (93, 6965), (101, 6998), (109, 7043), (117, 7103), (119, 7112), (121, 7118), (122, 7121),

Gene: Larva_13 Start: 9307, Stop: 9669, Start Num: 49

Candidate Starts for Larva_13:

(Start: 49 @9307 has 181 MA's), (66, 9352), (75, 9409), (82, 9445), (84, 9451), (90, 9469), (95, 9487), (110, 9556), (118, 9616), (122, 9631),

Gene: LastHope_15 Start: 8383, Stop: 8742, Start Num: 50

Candidate Starts for LastHope_15:

(Start: 50 @8383 has 40 MA's), (59, 8410), (74, 8488), (80, 8512), (90, 8551), (95, 8569), (110, 8638), (122, 8713),

Gene: LaterM_15 Start: 9322, Stop: 9678, Start Num: 49

Candidate Starts for LaterM_15:

(Start: 49 @9322 has 181 MA's), (59, 9346), (75, 9427), (84, 9469), (95, 9505), (110, 9574), (118, 9634), (122, 9649),

Gene: Lauer_9 Start: 6750, Stop: 7091, Start Num: 54

Candidate Starts for Lauer_9:

(Start: 54 @6750 has 95 MA's), (64, 6786), (90, 6909), (94, 6924),

Gene: Lavahound_13 Start: 8999, Stop: 9385, Start Num: 49

Candidate Starts for Lavahound_13:

(Start: 49 @8999 has 181 MA's), (64, 9038), (75, 9101), (95, 9179), (110, 9248), (123, 9326),

Gene: LeMond_14 Start: 8308, Stop: 8661, Start Num: 49

Candidate Starts for LeMond_14:

(Start: 49 @8308 has 181 MA's), (59, 8329), (66, 8353), (76, 8413), (90, 8470), (95, 8488), (103, 8527), (109, 8554), (110, 8557), (118, 8617), (122, 8632), (123, 8635),

Gene: Lea83_14 Start: 9370, Stop: 9723, Start Num: 49

Candidate Starts for Lea83_14:

(Start: 49 @9370 has 181 MA's), (59, 9391), (75, 9472), (78, 9481), (95, 9550), (96, 9553), (118, 9679), (122, 9694),

Gene: Lebo14_16 Start: 10624, Stop: 10980, Start Num: 50

Candidate Starts for Lebo14_16:

(Start: 50 @10624 has 40 MA's), (75, 10738), (97, 10822), (102, 10852), (110, 10885), (113, 10897), (119, 10951),

Gene: Lemuria_10 Start: 8104, Stop: 8460, Start Num: 48

Candidate Starts for Lemuria_10:

(26, 8041), (Start: 48 @8104 has 21 MA's), (94, 8293), (95, 8296), (103, 8335), (104, 8338), (117, 8422), (122, 8440),

Gene: Leroy_10 Start: 6481, Stop: 6828, Start Num: 52

Candidate Starts for Leroy_10:

(39, 6445), (Start: 52 @6481 has 20 MA's), (62, 6520), (70, 6562), (87, 6634), (91, 6655), (92, 6658), (99, 6691), (105, 6718), (108, 6736), (116, 6787), (118, 6802), (119, 6808), (122, 6817),

Gene: Leston_13 Start: 9600, Stop: 9962, Start Num: 49

Candidate Starts for Leston_13:

(Start: 49 @9600 has 181 MA's), (59, 9621), (75, 9702), (82, 9738), (84, 9744), (90, 9762), (95, 9780), (103, 9819), (106, 9828), (110, 9849), (118, 9909), (122, 9924), (123, 9927),

Gene: Liefie_10 Start: 8810, Stop: 9166, Start Num: 49

Candidate Starts for Liefie_10:

(26, 8744), (Start: 28 @8750 has 2 MA's), (46, 8801), (Start: 48 @8807 has 21 MA's), (Start: 49 @8810 has 181 MA's), (59, 8840), (94, 8999), (95, 9002), (113, 9083), (119, 9137),

Gene: LilDirt_12 Start: 9322, Stop: 9684, Start Num: 49

Candidate Starts for LilDirt_12:

(Start: 49 @9322 has 181 MA's), (59, 9343), (66, 9367), (75, 9424), (95, 9502), (102, 9538), (110, 9571), (118, 9631), (122, 9646),

Gene: LilPharaoh_11 Start: 8651, Stop: 9004, Start Num: 50

Candidate Starts for LilPharaoh_11:

(Start: 50 @8651 has 40 MA's), (59, 8672), (78, 8762), (90, 8813), (92, 8819), (95, 8831), (107, 8891), (110, 8900), (118, 8960), (122, 8975), (123, 8978),

Gene: Lilas_10 Start: 7484, Stop: 7831, Start Num: 54

Candidate Starts for Lilas_10:

(Start: 54 @7484 has 95 MA's), (74, 7592), (108, 7739), (119, 7811),

Gene: LindNT_15 Start: 9328, Stop: 9684, Start Num: 49

Candidate Starts for LindNT_15:

(Start: 49 @9328 has 181 MA's), (59, 9352), (74, 9430), (75, 9433), (95, 9511), (110, 9580), (118, 9640), (122, 9655),

Gene: LitninMcQueen_10 Start: 6485, Stop: 6832, Start Num: 52

Candidate Starts for LitninMcQueen_10:

(39, 6449), (Start: 52 @6485 has 20 MA's), (62, 6524), (91, 6659), (92, 6662), (99, 6695), (108, 6740), (116, 6791), (118, 6806), (122, 6821),

Gene: Llorens_15 Start: 9404, Stop: 9760, Start Num: 49

Candidate Starts for Llorens_15:

(Start: 49 @9404 has 181 MA's), (59, 9428), (75, 9509), (95, 9587), (103, 9626), (110, 9656), (118, 9716), (122, 9731),

Gene: LonelyBoi_10 Start: 7331, Stop: 7678, Start Num: 54

Candidate Starts for LonelyBoi_10:

(Start: 54 @7331 has 95 MA's), (74, 7439), (108, 7586), (119, 7658),

Gene: LongHai_13 Start: 8524, Stop: 8898, Start Num: 48

Candidate Starts for LongHai_13:

(Start: 48 @8524 has 21 MA's), (59, 8563), (72, 8635), (96, 8731), (117, 8863), (120, 8875),

Gene: LouisV14_10 Start: 8808, Stop: 9167, Start Num: 48

Candidate Starts for LouisV14_10:

(26, 8745), (Start: 28 @8751 has 2 MA's), (46, 8802), (Start: 48 @8808 has 21 MA's), (Start: 49 @8811 has 181 MA's), (59, 8841), (94, 9000), (95, 9003), (113, 9084), (119, 9138),

Gene: Lucky10_9 Start: 6000, Stop: 6341, Start Num: 54

Candidate Starts for Lucky10_9:

(Start: 49 @5988 has 181 MA's), (Start: 54 @6000 has 95 MA's), (72, 6093), (81, 6126), (92, 6168), (95, 6180), (101, 6207), (103, 6225), (104, 6228), (121, 6327), (122, 6330),

Gene: Lunahalos_15 Start: 9404, Stop: 9760, Start Num: 49

Candidate Starts for Lunahalos_15:

(Start: 49 @9404 has 181 MA's), (59, 9428), (75, 9509), (95, 9587), (103, 9626), (110, 9656), (118, 9716), (122, 9731),

Gene: Lutum_10 Start: 6480, Stop: 6827, Start Num: 52

Candidate Starts for Lutum_10:

(39, 6444), (Start: 52 @6480 has 20 MA's), (62, 6519), (70, 6561), (91, 6654), (92, 6657), (99, 6690), (108, 6735), (118, 6801), (122, 6816),

Gene: MAnor_10 Start: 6691, Stop: 7032, Start Num: 54

Candidate Starts for MAnor_10:

(Start: 54 @6691 has 95 MA's), (64, 6727), (90, 6850), (94, 6865), (104, 6913), (119, 7012),

Gene: MOOREtheMARYer_10 Start: 8995, Stop: 9348, Start Num: 49

Candidate Starts for MOOREtheMARYer_10:

(1, 8611), (11, 8806), (20, 8899), (40, 8962), (Start: 49 @8995 has 181 MA's), (64, 9043), (69, 9073), (88, 9154), (95, 9184), (102, 9220), (117, 9310), (122, 9328),

Gene: MScarn_12 Start: 6901, Stop: 7242, Start Num: 54

Candidate Starts for MScarn_12:

(Start: 54 @6901 has 95 MA's), (81, 7024), (112, 7165), (118, 7216), (119, 7222),

Gene: MZKinsey_10 Start: 8811, Stop: 9167, Start Num: 49

Candidate Starts for MZKinsey_10:

(26, 8745), (Start: 28 @8751 has 2 MA's), (46, 8802), (Start: 48 @8808 has 21 MA's), (Start: 49 @8811 has 181 MA's), (59, 8841), (94, 9000), (95, 9003), (113, 9084), (119, 9138),

Gene: MaVan_12 Start: 7820, Stop: 8170, Start Num: 54

Candidate Starts for MaVan_12:

(33, 7760), (43, 7796), (Start: 54 @7820 has 95 MA's), (59, 7838), (66, 7862), (70, 7889), (91, 7985), (95, 8000), (101, 8030), (110, 8084), (117, 8141),

Gene: MacKat_15 Start: 9381, Stop: 9737, Start Num: 49

Candidate Starts for MacKat_15:

(Start: 49 @9381 has 181 MA's), (59, 9405), (74, 9483), (75, 9486), (78, 9495), (95, 9564), (103, 9603), (110, 9633), (118, 9693), (122, 9708),

Gene: MacnCheese_15 Start: 9598, Stop: 9951, Start Num: 49

Candidate Starts for MacnCheese_15:

(Start: 49 @9598 has 181 MA's), (59, 9619), (78, 9709), (95, 9778), (96, 9781), (103, 9817), (110, 9847), (122, 9922), (123, 9925),

Gene: Maco6_10 Start: 7480, Stop: 7854, Start Num: 48

Candidate Starts for Maco6_10:

(Start: 48 @7480 has 21 MA's), (72, 7591), (96, 7687), (120, 7831),

Gene: Maliketh_10 Start: 8811, Stop: 9167, Start Num: 49

Candidate Starts for Maliketh_10:

(26, 8745), (Start: 28 @8751 has 2 MA's), (46, 8802), (Start: 48 @8808 has 21 MA's), (Start: 49 @8811 has 181 MA's), (59, 8841), (94, 9000), (95, 9003), (113, 9084), (119, 9138),

Gene: Malisha_10 Start: 7530, Stop: 7877, Start Num: 52

Candidate Starts for Malisha_10:

(10, 7341), (15, 7398), (16, 7401), (34, 7479), (39, 7494), (41, 7497), (Start: 52 @7530 has 20 MA's), (62, 7569), (70, 7611), (79, 7644), (91, 7704), (92, 7707), (99, 7740), (108, 7785), (122, 7866),

Gene: Malthus_16 Start: 10530, Stop: 10886, Start Num: 50

Candidate Starts for Malthus_16:

(Start: 50 @10530 has 40 MA's), (75, 10644), (97, 10728), (102, 10758), (110, 10791), (113, 10803), (119, 10857),

Gene: Malvina_12 Start: 7725, Stop: 8072, Start Num: 54

Candidate Starts for Malvina_12:

(33, 7671), (Start: 54 @7725 has 95 MA's), (91, 7887), (95, 7902), (108, 7977), (110, 7986),

Gene: Marcoliusprime_11 Start: 7362, Stop: 7712, Start Num: 51

Candidate Starts for Marcoliusprime_11:

(Start: 51 @7362 has 26 MA's), (60, 7386), (68, 7422), (75, 7464), (78, 7473), (80, 7485), (95, 7542), (103, 7581), (110, 7611), (118, 7671), (119, 7677), (122, 7686),

Gene: Margaret_13 Start: 7641, Stop: 7979, Start Num: 54

Candidate Starts for Margaret_13:

(23, 7551), (25, 7554), (27, 7560), (Start: 54 @7641 has 95 MA's), (64, 7677), (77, 7740), (103, 7860), (119, 7959),

Gene: MarkPhew_15 Start: 8204, Stop: 8557, Start Num: 49

Candidate Starts for MarkPhew_15:

(Start: 49 @8204 has 181 MA's), (59, 8225), (64, 8243), (69, 8273), (76, 8309), (90, 8366), (95, 8384), (96, 8387), (103, 8423), (110, 8453), (118, 8513), (122, 8528), (123, 8531),

Gene: Marmie_10 Start: 8811, Stop: 9167, Start Num: 49

Candidate Starts for Marmie_10:

(26, 8745), (Start: 28 @8751 has 2 MA's), (46, 8802), (Start: 48 @8808 has 21 MA's), (Start: 49 @8811 has 181 MA's), (59, 8841), (94, 9000), (95, 9003), (113, 9084), (119, 9138),

Gene: Marshawn_16 Start: 8898, Stop: 9251, Start Num: 49

Candidate Starts for Marshawn_16:

(Start: 49 @8898 has 181 MA's), (80, 9021), (84, 9042), (90, 9060), (95, 9078), (102, 9114), (123, 9225),

Gene: Marteena_10 Start: 7484, Stop: 7831, Start Num: 54

Candidate Starts for Marteena_10:

(Start: 54 @7484 has 95 MA's), (74, 7592), (108, 7739), (119, 7811),

Gene: Mayweather_11 Start: 7324, Stop: 7665, Start Num: 54

Candidate Starts for Mayweather_11:

(Start: 54 @7324 has 95 MA's), (64, 7360), (90, 7483), (94, 7498), (104, 7546), (119, 7645),

Gene: McMater_15 Start: 8435, Stop: 8788, Start Num: 50

Candidate Starts for McMater_15:

(Start: 50 @8435 has 40 MA's), (59, 8456), (74, 8534), (80, 8558), (90, 8597), (95, 8615), (103, 8654), (110, 8684), (118, 8744), (122, 8759), (123, 8762),

Gene: Mdavu_11 Start: 8639, Stop: 8992, Start Num: 50

Candidate Starts for Mdavu_11:

(Start: 50 @8639 has 40 MA's), (59, 8660), (78, 8750), (90, 8801), (92, 8807), (95, 8819), (107, 8879), (110, 8888), (118, 8948), (122, 8963), (123, 8966),

Gene: MeaningOfLife_15 Start: 9337, Stop: 9693, Start Num: 49

Candidate Starts for MeaningOfLife_15:

(Start: 49 @9337 has 181 MA's), (59, 9361), (74, 9439), (75, 9442), (78, 9451), (95, 9520), (110, 9589), (118, 9649), (122, 9664),

Gene: Megsy_15 Start: 9331, Stop: 9687, Start Num: 49

Candidate Starts for Megsy_15:

(Start: 49 @9331 has 181 MA's), (59, 9355), (75, 9436), (95, 9514), (110, 9583), (118, 9643), (122, 9658),

Gene: Mercurio_11 Start: 8738, Stop: 9103, Start Num: 48

Candidate Starts for Mercurio_11:

(1, 8369), (26, 8675), (Start: 48 @8738 has 21 MA's), (Start: 55 @8756 has 1 MA's), (69, 8825), (74, 8858), (94, 8936), (95, 8939), (105, 8984), (117, 9065),

Gene: Milly_11 Start: 7362, Stop: 7712, Start Num: 51

Candidate Starts for Milly_11:

(Start: 51 @7362 has 26 MA's), (60, 7386), (68, 7422), (75, 7464), (78, 7473), (80, 7485), (95, 7542), (103, 7581), (110, 7611), (118, 7671), (119, 7677), (122, 7686),

Gene: Miryou_13 Start: 9448, Stop: 9810, Start Num: 49

Candidate Starts for Miryou_13:

(Start: 49 @9448 has 181 MA's), (59, 9469), (75, 9550), (82, 9586), (84, 9592), (90, 9610), (95, 9628), (103, 9667), (110, 9697), (118, 9757), (122, 9772), (123, 9775),

Gene: MissDaisy_16 Start: 10384, Stop: 10740, Start Num: 50

Candidate Starts for MissDaisy_16:

(Start: 50 @10384 has 40 MA's), (75, 10498), (97, 10582), (102, 10612), (110, 10645), (113, 10657), (119, 10711),

Gene: Mitti_16 Start: 10534, Stop: 10890, Start Num: 50

Candidate Starts for Mitti_16:

(Start: 50 @10534 has 40 MA's), (75, 10648), (97, 10732), (102, 10762), (110, 10795), (113, 10807), (119, 10861),

Gene: Morkie_9 Start: 5962, Stop: 6303, Start Num: 54

Candidate Starts for Morkie_9:

(14, 5809), (38, 5917), (Start: 49 @5950 has 181 MA's), (Start: 54 @5962 has 95 MA's), (72, 6055), (92, 6130), (95, 6142), (101, 6169), (103, 6187), (121, 6289), (122, 6292),

Gene: MortyNRick_10 Start: 6791, Stop: 7132, Start Num: 54

Candidate Starts for MortyNRick_10:

(30, 6716), (42, 6758), (Start: 54 @6791 has 95 MA's), (59, 6812), (67, 6842), (91, 6956), (92, 6959), (93, 6965), (97, 6977), (109, 7043), (119, 7112), (121, 7118), (122, 7121),

Gene: Mowgli_10 Start: 8811, Stop: 9167, Start Num: 49

Candidate Starts for Mowgli_10:

(26, 8745), (Start: 28 @8751 has 2 MA's), (46, 8802), (Start: 48 @8808 has 21 MA's), (Start: 49 @8811 has 181 MA's), (59, 8841), (94, 9000), (95, 9003), (113, 9084), (119, 9138),

Gene: Muddy_12 Start: 8430, Stop: 8804, Start Num: 48

Candidate Starts for Muddy_12:

(Start: 48 @8430 has 21 MA's), (72, 8541), (96, 8637), (120, 8781), (124, 8796),

Gene: Mufasa_11 Start: 7348, Stop: 7698, Start Num: 51

Candidate Starts for Mufasa_11:

(Start: 51 @7348 has 26 MA's), (60, 7372), (64, 7387), (68, 7408), (75, 7450), (78, 7459), (80, 7471), (95, 7528), (96, 7531), (103, 7567), (110, 7597), (118, 7657), (119, 7663), (122, 7672),

Gene: MunkgeeRoachy_10 Start: 6971, Stop: 7312, Start Num: 54

Candidate Starts for MunkgeeRoachy_10:

(Start: 54 @6971 has 95 MA's), (57, 6980), (70, 7040), (91, 7133), (105, 7196), (112, 7235),

Gene: Murucutumbu_15 Start: 9315, Stop: 9671, Start Num: 49

Candidate Starts for Murucutumbu_15:

(Start: 49 @9315 has 181 MA's), (59, 9339), (75, 9420), (84, 9462), (95, 9498), (110, 9567), (118, 9627), (122, 9642),

Gene: Mynx_15 Start: 9384, Stop: 9740, Start Num: 49

Candidate Starts for Mynx_15:

(Start: 49 @9384 has 181 MA's), (59, 9408), (74, 9486), (75, 9489), (78, 9498), (95, 9567), (110, 9636), (118, 9696), (122, 9711),

Gene: Nebkiss_7 Start: 7029, Stop: 7367, Start Num: 54

Candidate Starts for Nebkiss_7:

(Start: 54 @7029 has 95 MA's), (58, 7050), (59, 7053), (73, 7131), (79, 7137), (82, 7158), (83, 7161), (85, 7170), (96, 7212), (105, 7257), (110, 7284), (111, 7287), (117, 7338), (122, 7356),

Gene: Neighly_13 Start: 9306, Stop: 9668, Start Num: 49

Candidate Starts for Neighly_13:

(Start: 49 @9306 has 181 MA's), (66, 9351), (75, 9408), (82, 9444), (84, 9450), (90, 9468), (95, 9486), (110, 9555), (118, 9615), (122, 9630),

Gene: Neoh_10 Start: 8812, Stop: 9168, Start Num: 49

Candidate Starts for Neoh_10:

(26, 8746), (Start: 28 @8752 has 2 MA's), (46, 8803), (Start: 48 @8809 has 21 MA's), (Start: 49 @8812 has 181 MA's), (59, 8842), (94, 9001), (95, 9004), (113, 9085), (119, 9139),

Gene: Nibb_14 Start: 8345, Stop: 8698, Start Num: 49

Candidate Starts for Nibb_14:

(Start: 49 @8345 has 181 MA's), (59, 8366), (64, 8384), (76, 8450), (90, 8507), (95, 8525), (96, 8528), (103, 8564), (110, 8594), (118, 8654), (122, 8669), (123, 8672),

Gene: Nibbles_12 Start: 7820, Stop: 8170, Start Num: 54

Candidate Starts for Nibbles_12:

(33, 7760), (43, 7796), (Start: 54 @7820 has 95 MA's), (59, 7838), (66, 7862), (70, 7889), (91, 7985), (95, 8000), (101, 8030), (110, 8084), (117, 8141),

Gene: Nikao_11 Start: 8651, Stop: 9004, Start Num: 50

Candidate Starts for Nikao_11:

(Start: 50 @8651 has 40 MA's), (59, 8672), (78, 8762), (90, 8813), (92, 8819), (95, 8831), (107, 8891), (110, 8900), (118, 8960), (122, 8975), (123, 8978),

Gene: Niklas_15 Start: 8435, Stop: 8788, Start Num: 50

Candidate Starts for Niklas_15:

(Start: 50 @8435 has 40 MA's), (59, 8456), (74, 8534), (80, 8558), (90, 8597), (95, 8615), (103, 8654), (110, 8684), (118, 8744), (122, 8759), (123, 8762),

Gene: Nina_11 Start: 7957, Stop: 8298, Start Num: 54

Candidate Starts for Nina_11:

(Start: 54 @7957 has 95 MA's), (57, 7966), (70, 8026), (91, 8119), (108, 8203), (112, 8221),

Gene: NoShow_10 Start: 7573, Stop: 7956, Start Num: 45

Candidate Starts for NoShow_10:

(13, 7408), (19, 7483), (27, 7513), (Start: 45 @7573 has 1 MA's), (56, 7603), (70, 7666), (73, 7693), (91, 7771), (92, 7774), (93, 7780), (96, 7789), (105, 7834), (122, 7933),

Gene: Nodigi_12 Start: 7925, Stop: 8263, Start Num: 54

Candidate Starts for Nodigi_12:

(3, 7541), (5, 7628), (25, 7841), (Start: 54 @7925 has 95 MA's), (77, 8024), (103, 8144), (104, 8147), (118, 8237), (119, 8243),

Gene: November_13 Start: 9144, Stop: 9539, Start Num: 49

Candidate Starts for November_13:

(Start: 49 @9144 has 181 MA's), (64, 9183), (75, 9246), (95, 9324), (110, 9393), (118, 9453), (122, 9468), (123, 9471),

Gene: Nutello_11 Start: 8651, Stop: 9004, Start Num: 50

Candidate Starts for Nutello_11:

(Start: 50 @8651 has 40 MA's), (59, 8672), (78, 8762), (90, 8813), (92, 8819), (95, 8831), (107, 8891), (110, 8900), (118, 8960), (122, 8975), (123, 8978),

Gene: ODay_10 Start: 6511, Stop: 6858, Start Num: 53

Candidate Starts for ODay_10:

(7, 6226), (8, 6259), (35, 6460), (Start: 53 @6511 has 2 MA's), (79, 6622), (97, 6703), (101, 6724), (103, 6742), (109, 6769), (121, 6841), (122, 6844),

Gene: OctaviousRex_10 Start: 8808, Stop: 9167, Start Num: 48

Candidate Starts for OctaviousRex_10:

(26, 8745), (Start: 28 @8751 has 2 MA's), (46, 8802), (Start: 48 @8808 has 21 MA's), (Start: 49 @8811 has 181 MA's), (59, 8841), (94, 9000), (95, 9003), (113, 9084), (119, 9138),

Gene: OkiRoe_13 Start: 9470, Stop: 9832, Start Num: 49

Candidate Starts for OkiRoe_13:

(Start: 49 @9470 has 181 MA's), (59, 9491), (75, 9572), (82, 9608), (84, 9614), (90, 9632), (95, 9650), (103, 9689), (110, 9719), (118, 9779), (122, 9794), (123, 9797),

Gene: Olga_10 Start: 8811, Stop: 9167, Start Num: 49

Candidate Starts for Olga_10:

(26, 8745), (Start: 28 @8751 has 2 MA's), (46, 8802), (Start: 48 @8808 has 21 MA's), (Start: 49 @8811 has 181 MA's), (59, 8841), (94, 9000), (95, 9003), (113, 9084), (119, 9138),

Gene: OmniCritical_16 Start: 10521, Stop: 10877, Start Num: 50

Candidate Starts for OmniCritical_16:

(Start: 50 @10521 has 40 MA's), (75, 10635), (97, 10719), (102, 10749), (110, 10782), (113, 10794), (119, 10848),

Gene: Omnicron_13 Start: 8530, Stop: 8898, Start Num: 47

Candidate Starts for Omnicron_13:

(Start: 47 @8530 has 2 MA's), (59, 8557), (75, 8638), (90, 8698), (95, 8716), (103, 8755), (110, 8785), (118, 8845), (122, 8860), (123, 8863),

Gene: Orla_12 Start: 7929, Stop: 8267, Start Num: 54

Candidate Starts for Orla_12:

(5, 7632), (25, 7845), (Start: 54 @7929 has 95 MA's), (77, 8028), (103, 8148), (104, 8151), (118, 8241), (119, 8247),

Gene: Oscar_14 Start: 8309, Stop: 8662, Start Num: 49

Candidate Starts for Oscar_14:

(Start: 49 @8309 has 181 MA's), (59, 8330), (66, 8354), (76, 8414), (90, 8471), (95, 8489), (103, 8528), (109, 8555), (110, 8558), (118, 8618), (122, 8633), (123, 8636),

Gene: Pace1224_10 Start: 8880, Stop: 9236, Start Num: 49

Candidate Starts for Pace1224_10:

(1, 8511), (11, 8712), (40, 8853), (Start: 49 @8880 has 181 MA's), (66, 8934), (69, 8958), (95, 9072), (110, 9141), (117, 9198), (122, 9216),

Gene: Padfoot_15 Start: 9404, Stop: 9760, Start Num: 49

Candidate Starts for Padfoot_15:

(Start: 49 @9404 has 181 MA's), (59, 9428), (75, 9509), (95, 9587), (103, 9626), (110, 9656), (118, 9716), (122, 9731),

Gene: Padpat_15 Start: 9364, Stop: 9720, Start Num: 49

Candidate Starts for Padpat_15:

(Start: 49 @9364 has 181 MA's), (59, 9388), (75, 9469), (78, 9478), (95, 9547), (110, 9616), (118, 9676), (122, 9691),

Gene: Paito_10 Start: 8910, Stop: 9266, Start Num: 49

Candidate Starts for Paito_10:

(Start: 28 @8850 has 2 MA's), (46, 8901), (Start: 49 @8910 has 181 MA's), (67, 8970), (94, 9099), (95, 9102), (110, 9171),

Gene: Paola_13 Start: 9470, Stop: 9832, Start Num: 49

Candidate Starts for Paola_13:

(Start: 49 @9470 has 181 MA's), (59, 9491), (75, 9572), (82, 9608), (84, 9614), (90, 9632), (95, 9650), (103, 9689), (110, 9719), (118, 9779), (122, 9794), (123, 9797),

Gene: Patt_16 Start: 10360, Stop: 10716, Start Num: 50

Candidate Starts for Patt_16:

(Start: 50 @10360 has 40 MA's), (75, 10474), (97, 10558), (102, 10588), (110, 10621), (113, 10633), (119, 10687),

Gene: Peanam_15 Start: 8435, Stop: 8788, Start Num: 50

Candidate Starts for Peanam_15:

(Start: 50 @8435 has 40 MA's), (59, 8456), (74, 8534), (80, 8558), (90, 8597), (95, 8615), (103, 8654), (110, 8684), (118, 8744), (122, 8759), (123, 8762),

Gene: Peeb_10 Start: 8811, Stop: 9167, Start Num: 49

Candidate Starts for Peeb_10:

(26, 8745), (Start: 28 @8751 has 2 MA's), (46, 8802), (Start: 48 @8808 has 21 MA's), (Start: 49 @8811 has 181 MA's), (59, 8841), (94, 9000), (95, 9003), (113, 9084), (119, 9138),

Gene: Peel_15 Start: 9404, Stop: 9760, Start Num: 49

Candidate Starts for Peel_15:

(Start: 49 @9404 has 181 MA's), (59, 9428), (75, 9509), (95, 9587), (103, 9626), (110, 9656), (118, 9716), (122, 9731),

Gene: Periodt_10 Start: 8811, Stop: 9167, Start Num: 49

Candidate Starts for Periodt_10:

(26, 8745), (Start: 28 @8751 has 2 MA's), (46, 8802), (Start: 48 @8808 has 21 MA's), (Start: 49 @8811 has 181 MA's), (59, 8841), (94, 9000), (95, 9003), (113, 9084), (119, 9138),

Gene: Periwinkle_10 Start: 6480, Stop: 6827, Start Num: 52

Candidate Starts for Periwinkle_10:

(39, 6444), (Start: 52 @6480 has 20 MA's), (62, 6519), (70, 6561), (87, 6633), (91, 6654), (92, 6657), (99, 6690), (108, 6735), (116, 6786), (122, 6816),

Gene: Phabuloso_10 Start: 6485, Stop: 6832, Start Num: 52

Candidate Starts for Phabuloso_10:

(39, 6449), (Start: 52 @6485 has 20 MA's), (62, 6524), (91, 6659), (92, 6662), (99, 6695), (108, 6740), (116, 6791), (118, 6806), (122, 6821),

Gene: Pharb_14 Start: 9218, Stop: 9571, Start Num: 49

Candidate Starts for Pharb_14:

(24, 9152), (Start: 49 @9218 has 181 MA's), (59, 9239), (75, 9320), (95, 9398), (96, 9401), (103, 9437), (118, 9527), (122, 9542), (123, 9545),

Gene: PhelpsODU_14 Start: 8347, Stop: 8700, Start Num: 51

Candidate Starts for PhelpsODU_14:

(Start: 51 @8347 has 26 MA's), (82, 8485), (95, 8527), (110, 8596), (118, 8656), (122, 8671),

Gene: Phish_10 Start: 8811, Stop: 9167, Start Num: 49

Candidate Starts for Phish_10:

(26, 8745), (Start: 28 @8751 has 2 MA's), (46, 8802), (Start: 48 @8808 has 21 MA's), (Start: 49 @8811 has 181 MA's), (59, 8841), (94, 9000), (95, 9003), (113, 9084), (119, 9138),

Gene: Phistory_10 Start: 6469, Stop: 6816, Start Num: 52

Candidate Starts for Phistory_10:

(39, 6433), (Start: 52 @6469 has 20 MA's), (62, 6508), (70, 6550), (91, 6643), (92, 6646), (108, 6724), (116, 6775), (118, 6790), (122, 6805),

Gene: Phloodle_10 Start: 8811, Stop: 9167, Start Num: 49

Candidate Starts for Phloodle_10:

(26, 8745), (Start: 28 @8751 has 2 MA's), (46, 8802), (Start: 48 @8808 has 21 MA's), (Start: 49 @8811 has 181 MA's), (59, 8841), (94, 9000), (95, 9003), (113, 9084), (119, 9138),

Gene: PhorbesPhlower_9 Start: 5962, Stop: 6303, Start Num: 54

Candidate Starts for PhorbesPhlower_9:

(14, 5809), (38, 5917), (Start: 49 @5950 has 181 MA's), (Start: 54 @5962 has 95 MA's), (72, 6055), (92, 6130), (95, 6142), (101, 6169), (103, 6187), (121, 6289), (122, 6292),

Gene: Phrank_14 Start: 8291, Stop: 8644, Start Num: 51

Candidate Starts for Phrank_14:

(Start: 51 @8291 has 26 MA's), (82, 8429), (90, 8453), (95, 8471), (110, 8540), (118, 8600), (122, 8615),

Gene: Phreak_10 Start: 8808, Stop: 9167, Start Num: 48

Candidate Starts for Phreak_10:

(26, 8745), (Start: 28 @8751 has 2 MA's), (46, 8802), (Start: 48 @8808 has 21 MA's), (Start: 49 @8811 has 181 MA's), (59, 8841), (94, 9000), (95, 9003), (113, 9084), (119, 9138),

Gene: Piatt_15 Start: 9404, Stop: 9760, Start Num: 49

Candidate Starts for Piatt_15:

(Start: 49 @9404 has 181 MA's), (59, 9428), (75, 9509), (95, 9587), (103, 9626), (110, 9656), (118, 9716), (122, 9731),

Gene: PinkYoshi_10 Start: 8811, Stop: 9167, Start Num: 49

Candidate Starts for PinkYoshi_10:

(26, 8745), (Start: 28 @8751 has 2 MA's), (46, 8802), (Start: 48 @8808 has 21 MA's), (Start: 49 @8811 has 181 MA's), (59, 8841), (94, 9000), (95, 9003), (113, 9084), (119, 9138),

Gene: Pinnie_11 Start: 9461, Stop: 9814, Start Num: 49

Candidate Starts for Pinnie_11:

(11, 9272), (20, 9365), (40, 9428), (Start: 49 @9461 has 181 MA's), (64, 9509), (69, 9539), (95, 9650), (102, 9686), (117, 9776), (122, 9794),

Gene: Pisa1_14 Start: 9112, Stop: 9468, Start Num: 49

Candidate Starts for Pisa1_14:

(31, 9064), (Start: 49 @9112 has 181 MA's), (Start: 51 @9115 has 26 MA's), (59, 9136), (75, 9217), (95, 9295), (110, 9364), (118, 9424), (122, 9439),

Gene: Pisa4_14 Start: 9115, Stop: 9468, Start Num: 51

Candidate Starts for Pisa4_14:

(31, 9064), (Start: 49 @9112 has 181 MA's), (Start: 51 @9115 has 26 MA's), (59, 9136), (75, 9217), (95, 9295), (110, 9364), (118, 9424), (122, 9439),

Gene: Pixie_14 Start: 9122, Stop: 9475, Start Num: 49

Candidate Starts for Pixie_14:

(Start: 49 @9122 has 181 MA's), (59, 9143), (75, 9224), (78, 9233), (95, 9302), (96, 9305), (118, 9431), (122, 9446),

Gene: Plagueis_10 Start: 8811, Stop: 9167, Start Num: 49

Candidate Starts for Plagueis_10:

(26, 8745), (Start: 28 @8751 has 2 MA's), (46, 8802), (Start: 48 @8808 has 21 MA's), (Start: 49 @8811 has 181 MA's), (59, 8841), (94, 9000), (95, 9003), (113, 9084), (119, 9138),

Gene: Pokerus_14 Start: 9318, Stop: 9674, Start Num: 49

Candidate Starts for Pokerus_14:

(Start: 49 @9318 has 181 MA's), (59, 9342), (75, 9423), (78, 9432), (95, 9501), (110, 9570), (118, 9630), (122, 9645),

Gene: Pollux_10 Start: 7484, Stop: 7831, Start Num: 54

Candidate Starts for Pollux_10:

(Start: 54 @7484 has 95 MA's), (74, 7592), (108, 7739), (119, 7811),

Gene: Pons_10 Start: 6703, Stop: 7044, Start Num: 54

Candidate Starts for Pons_10:

(Start: 54 @6703 has 95 MA's), (64, 6739), (90, 6862), (94, 6877), (104, 6925), (119, 7024),

Gene: Posh_10 Start: 7478, Stop: 7825, Start Num: 54

Candidate Starts for Posh_10:

(Start: 54 @7478 has 95 MA's), (74, 7586), (108, 7733), (119, 7805),

Gene: PotPie_10 Start: 7554, Stop: 7895, Start Num: 54

Candidate Starts for PotPie_10:

(Start: 54 @7554 has 95 MA's), (64, 7590), (90, 7713), (119, 7875),

Gene: Prithvi_15 Start: 9328, Stop: 9684, Start Num: 49

Candidate Starts for Prithvi_15:

(Start: 49 @9328 has 181 MA's), (59, 9352), (74, 9430), (75, 9433), (95, 9511), (110, 9580), (118, 9640), (122, 9655),

Gene: Psycho_13 Start: 9437, Stop: 9799, Start Num: 49

Candidate Starts for Psycho_13:

(Start: 49 @9437 has 181 MA's), (66, 9482), (75, 9539), (82, 9575), (84, 9581), (90, 9599), (95, 9617), (110, 9686), (118, 9746), (122, 9761),

Gene: PsychoKiller_10 Start: 6923, Stop: 7264, Start Num: 54

Candidate Starts for PsychoKiller_10:

(Start: 54 @6923 has 95 MA's), (57, 6932), (70, 6992), (91, 7085), (112, 7187),

Gene: Pytheas_10 Start: 7331, Stop: 7678, Start Num: 54

Candidate Starts for Pytheas_10:

(Start: 54 @7331 has 95 MA's), (74, 7439), (86, 7484), (108, 7586), (119, 7658),

Gene: Qhanda_16 Start: 10630, Stop: 10986, Start Num: 50

Candidate Starts for Qhanda_16:

(Start: 50 @10630 has 40 MA's), (75, 10744), (97, 10828), (102, 10858), (110, 10891), (113, 10903), (119, 10957),

Gene: Quasar_10 Start: 7538, Stop: 7879, Start Num: 54

Candidate Starts for Quasar_10:

(Start: 54 @7538 has 95 MA's), (57, 7547), (70, 7607), (91, 7700), (112, 7802),

Gene: QuincyRose_14 Start: 9381, Stop: 9737, Start Num: 49

Candidate Starts for QuincyRose_14:

(Start: 49 @9381 has 181 MA's), (59, 9405), (75, 9486), (78, 9495), (95, 9564), (110, 9633), (118, 9693), (122, 9708),

Gene: RADical_11 Start: 6924, Stop: 7265, Start Num: 54

Candidate Starts for RADical_11:

(Start: 54 @6924 has 95 MA's), (57, 6933), (70, 6993), (91, 7086), (112, 7188),

Gene: RSchmailzl_11 Start: 7064, Stop: 7405, Start Num: 54

Candidate Starts for RSchmailzl_11:

(Start: 54 @7064 has 95 MA's), (57, 7073), (70, 7133), (91, 7226), (112, 7328),

Gene: Rabbs_10 Start: 8791, Stop: 9150, Start Num: 48

Candidate Starts for Rabbs_10:

(2, 8431), (4, 8500), (Start: 28 @8734 has 2 MA's), (46, 8785), (Start: 48 @8791 has 21 MA's), (Start: 49 @8794 has 181 MA's), (94, 8983), (95, 8986), (110, 9055), (119, 9121),

Gene: Ramen_15 Start: 9364, Stop: 9720, Start Num: 49

Candidate Starts for Ramen_15:

(Start: 49 @9364 has 181 MA's), (59, 9388), (74, 9466), (75, 9469), (78, 9478), (95, 9547), (110, 9616), (118, 9676), (122, 9691),

Gene: RanchParmCat_13 Start: 7641, Stop: 7979, Start Num: 54

Candidate Starts for RanchParmCat_13:

(Start: 54 @7641 has 95 MA's), (64, 7677), (77, 7740), (103, 7860), (119, 7959),

Gene: Rando14_13 Start: 8432, Stop: 8800, Start Num: 47

Candidate Starts for Rando14_13:

(Start: 47 @8432 has 2 MA's), (59, 8459), (75, 8540), (90, 8600), (95, 8618), (103, 8657), (104, 8660), (118, 8747), (122, 8762), (123, 8765),

Gene: Rapunzel97_15 Start: 9365, Stop: 9721, Start Num: 49

Candidate Starts for Rapunzel97_15:

(Start: 49 @9365 has 181 MA's), (59, 9389), (74, 9467), (75, 9470), (78, 9479), (95, 9548), (110, 9617), (118, 9677), (122, 9692),

Gene: Rattrick_10 Start: 8811, Stop: 9167, Start Num: 49

Candidate Starts for Rattrick_10:

(26, 8745), (Start: 28 @8751 has 2 MA's), (46, 8802), (Start: 48 @8808 has 21 MA's), (Start: 49 @8811 has 181 MA's), (59, 8841), (94, 9000), (95, 9003), (113, 9084), (119, 9138),

Gene: RedBaron_11 Start: 6968, Stop: 7309, Start Num: 54

Candidate Starts for RedBaron_11:

(Start: 54 @6968 has 95 MA's), (57, 6977), (70, 7037), (91, 7130), (112, 7232),

Gene: Remy19_10 Start: 8808, Stop: 9167, Start Num: 48

Candidate Starts for Remy19_10:

(26, 8745), (Start: 28 @8751 has 2 MA's), (46, 8802), (Start: 48 @8808 has 21 MA's), (Start: 49 @8811 has 181 MA's), (59, 8841), (94, 9000), (95, 9003), (113, 9084), (119, 9138),

Gene: Renaissance_10 Start: 8811, Stop: 9167, Start Num: 49

Candidate Starts for Renaissance_10:

(26, 8745), (Start: 28 @8751 has 2 MA's), (46, 8802), (Start: 48 @8808 has 21 MA's), (Start: 49 @8811 has 181 MA's), (59, 8841), (94, 9000), (95, 9003), (113, 9084), (119, 9138),

Gene: Reptar3000_16 Start: 10362, Stop: 10718, Start Num: 50

Candidate Starts for Reptar3000_16:

(Start: 50 @10362 has 40 MA's), (75, 10476), (97, 10560), (102, 10590), (110, 10623), (113, 10635), (119, 10689),

Gene: Richarlison_10 Start: 8808, Stop: 9167, Start Num: 48

Candidate Starts for Richarlison_10:

(26, 8745), (Start: 28 @8751 has 2 MA's), (46, 8802), (Start: 48 @8808 has 21 MA's), (Start: 49 @8811 has 181 MA's), (59, 8841), (94, 9000), (95, 9003), (113, 9084), (119, 9138),

Gene: Richo_15 Start: 8435, Stop: 8788, Start Num: 50

Candidate Starts for Richo_15:

(Start: 50 @8435 has 40 MA's), (59, 8456), (74, 8534), (80, 8558), (90, 8597), (95, 8615), (103, 8654), (110, 8684), (118, 8744), (122, 8759), (123, 8762),

Gene: Rosmarinus_15 Start: 9392, Stop: 9748, Start Num: 49

Candidate Starts for Rosmarinus_15:

(Start: 49 @9392 has 181 MA's), (59, 9416), (75, 9497), (95, 9575), (103, 9614), (110, 9644), (118, 9704), (122, 9719),

Gene: Ruriko_10 Start: 8811, Stop: 9167, Start Num: 49

Candidate Starts for Ruriko_10:

(26, 8745), (Start: 28 @8751 has 2 MA's), (46, 8802), (Start: 48 @8808 has 21 MA's), (Start: 49 @8811 has 181 MA's), (59, 8841), (94, 9000), (95, 9003), (113, 9084), (119, 9138),

Gene: Ruthiejr_15 Start: 10216, Stop: 10572, Start Num: 50

Candidate Starts for Ruthiejr_15:

(Start: 50 @10216 has 40 MA's), (75, 10330), (97, 10414), (102, 10444), (110, 10477), (119, 10543),

Gene: Salvus_13 Start: 8524, Stop: 8898, Start Num: 48

Candidate Starts for Salvus_13:

(Start: 48 @8524 has 21 MA's), (59, 8563), (72, 8635), (96, 8731), (117, 8863), (120, 8875),

Gene: SamScheppers_14 Start: 10137, Stop: 10493, Start Num: 50

Candidate Starts for SamScheppers_14:

(Start: 50 @10137 has 40 MA's), (75, 10251), (97, 10335), (102, 10365), (110, 10398), (113, 10410), (119, 10464),

Gene: SamuelLPlaqson_15 Start: 9306, Stop: 9662, Start Num: 49

Candidate Starts for SamuelLPlaqson_15:

(Start: 49 @9306 has 181 MA's), (59, 9330), (95, 9489), (110, 9558), (118, 9618), (122, 9633),

Gene: Scarlett_14 Start: 8308, Stop: 8661, Start Num: 49

Candidate Starts for Scarlett_14:

(Start: 49 @8308 has 181 MA's), (59, 8329), (66, 8353), (76, 8413), (90, 8470), (95, 8488), (103, 8527), (109, 8554), (110, 8557), (118, 8617), (122, 8632), (123, 8635),

Gene: Schiebel_10 Start: 8811, Stop: 9167, Start Num: 49

Candidate Starts for Schiebel_10:

(26, 8745), (Start: 28 @8751 has 2 MA's), (46, 8802), (Start: 48 @8808 has 21 MA's), (Start: 49 @8811 has 181 MA's), (59, 8841), (94, 9000), (95, 9003), (113, 9084), (119, 9138),

Gene: SgtBeansprout_11 Start: 8651, Stop: 9004, Start Num: 50

Candidate Starts for SgtBeansprout_11:

(Start: 50 @8651 has 40 MA's), (59, 8672), (78, 8762), (90, 8813), (92, 8819), (95, 8831), (107, 8891), (110, 8900), (118, 8960), (122, 8975), (123, 8978),

Gene: ShaboiShabazz_10 Start: 8811, Stop: 9167, Start Num: 49

Candidate Starts for ShaboiShabazz_10:

(26, 8745), (Start: 28 @8751 has 2 MA's), (46, 8802), (Start: 48 @8808 has 21 MA's), (Start: 49 @8811 has 181 MA's), (59, 8841), (94, 9000), (95, 9003), (113, 9084), (119, 9138),

Gene: Shadow1_13 Start: 8202, Stop: 8555, Start Num: 51

Candidate Starts for Shadow1_13:

(Start: 51 @8202 has 26 MA's), (84, 8346), (90, 8364), (95, 8382), (103, 8421), (110, 8451), (118, 8511), (122, 8526),

Gene: Shaobing_15 Start: 8435, Stop: 8788, Start Num: 50

Candidate Starts for Shaobing_15:

(Start: 50 @8435 has 40 MA's), (59, 8456), (74, 8534), (80, 8558), (90, 8597), (95, 8615), (103, 8654), (110, 8684), (118, 8744), (122, 8759), (123, 8762),

Gene: ShawBrad_10 Start: 6485, Stop: 6832, Start Num: 52

Candidate Starts for ShawBrad_10:

(39, 6449), (Start: 52 @6485 has 20 MA's), (62, 6524), (70, 6566), (87, 6638), (91, 6659), (92, 6662), (99, 6695), (108, 6740), (116, 6791), (118, 6806), (119, 6812), (122, 6821),

Gene: SheckWes_9 Start: 6691, Stop: 7032, Start Num: 54

Candidate Starts for SheckWes_9:

(Start: 54 @6691 has 95 MA's), (64, 6727), (77, 6790), (90, 6850), (94, 6865), (104, 6913), (119, 7012),

Gene: ShedlockHolmes_14 Start: 9370, Stop: 9723, Start Num: 49

Candidate Starts for ShedlockHolmes_14:

(Start: 49 @9370 has 181 MA's), (59, 9391), (75, 9472), (78, 9481), (95, 9550), (96, 9553), (118, 9679), (122, 9694),

Gene: ShiaSurprise_15 Start: 9404, Stop: 9760, Start Num: 49

Candidate Starts for ShiaSurprise_15:

(Start: 49 @9404 has 181 MA's), (59, 9428), (75, 9509), (95, 9587), (103, 9626), (110, 9656), (118, 9716), (122, 9731),

Gene: SilverChicken_10 Start: 6438, Stop: 6791, Start Num: 54

Candidate Starts for SilverChicken_10:

(37, 6387), (38, 6393), (Start: 54 @6438 has 95 MA's), (61, 6468), (71, 6519), (92, 6624), (97, 6642), (102, 6675), (118, 6765),

Gene: SirPhilip_14 Start: 8065, Stop: 8418, Start Num: 49

Candidate Starts for SirPhilip_14:

(Start: 49 @8065 has 181 MA's), (59, 8086), (80, 8188), (90, 8227), (95, 8245), (110, 8314), (118, 8374), (122, 8389), (123, 8392),

Gene: Sizemore_10 Start: 8812, Stop: 9168, Start Num: 49

Candidate Starts for Sizemore_10:

(26, 8746), (Start: 28 @8752 has 2 MA's), (46, 8803), (Start: 48 @8809 has 21 MA's), (Start: 49 @8812 has 181 MA's), (59, 8842), (94, 9001), (95, 9004), (113, 9085), (119, 9139),

Gene: SketchMex_9 Start: 6907, Stop: 7248, Start Num: 54

Candidate Starts for SketchMex_9:

(Start: 54 @6907 has 95 MA's), (81, 7030), (112, 7171), (118, 7222), (119, 7228),

Gene: Slarp_16 Start: 10621, Stop: 10977, Start Num: 50

Candidate Starts for Slarp_16:

(Start: 50 @10621 has 40 MA's), (75, 10735), (97, 10819), (102, 10849), (110, 10882), (113, 10894), (119, 10948),

Gene: Slimphazie_15 Start: 9365, Stop: 9721, Start Num: 49

Candidate Starts for Slimphazie_15:

(Start: 49 @9365 has 181 MA's), (59, 9389), (74, 9467), (75, 9470), (78, 9479), (95, 9548), (110, 9617), (118, 9677), (122, 9692),

Gene: Sneeze_10 Start: 8793, Stop: 9149, Start Num: 49

Candidate Starts for Sneeze_10:

(2, 8430), (4, 8499), (Start: 28 @8733 has 2 MA's), (46, 8784), (Start: 48 @8790 has 21 MA's), (Start: 49 @8793 has 181 MA's), (94, 8982), (95, 8985), (110, 9054), (119, 9120),

Gene: SoSeph_13 Start: 9597, Stop: 9959, Start Num: 49

Candidate Starts for SoSeph_13:

(Start: 49 @9597 has 181 MA's), (59, 9618), (75, 9699), (82, 9735), (84, 9741), (90, 9759), (95, 9777), (103, 9816), (106, 9825), (110, 9846), (118, 9906), (122, 9921), (123, 9924),

Gene: Socotra_11 Start: 6923, Stop: 7264, Start Num: 54

Candidate Starts for Socotra_11:

(Start: 54 @6923 has 95 MA's), (57, 6932), (70, 6992), (91, 7085), (112, 7187),

Gene: Sopespian_10 Start: 6923, Stop: 7264, Start Num: 54

Candidate Starts for Sopespian_10:

(Start: 54 @6923 has 95 MA's), (57, 6932), (70, 6992), (91, 7085), (112, 7187),

Gene: Soul22_10 Start: 6437, Stop: 6790, Start Num: 54

Candidate Starts for Soul22_10:

(37, 6386), (38, 6392), (Start: 54 @6437 has 95 MA's), (61, 6467), (71, 6518), (92, 6623), (97, 6641), (102, 6674), (118, 6764),

Gene: Spock_15 Start: 9404, Stop: 9760, Start Num: 49

Candidate Starts for Spock_15:

(Start: 49 @9404 has 181 MA's), (59, 9428), (75, 9509), (95, 9587), (103, 9626), (110, 9656), (118, 9716), (122, 9731),

Gene: Spooky_10 Start: 6478, Stop: 6825, Start Num: 52

Candidate Starts for Spooky_10:

(6, 6193), (9, 6265), (12, 6292), (18, 6367), (34, 6427), (41, 6445), (Start: 52 @6478 has 20 MA's), (62, 6517), (70, 6559), (79, 6592), (91, 6652), (92, 6655), (108, 6733), (116, 6784), (122, 6814),

Gene: Squiddly_11 Start: 7165, Stop: 7512, Start Num: 52

Candidate Starts for Squiddly_11:

(39, 7129), (Start: 52 @7165 has 20 MA's), (62, 7204), (70, 7246), (91, 7339), (92, 7342), (108, 7420), (116, 7471), (118, 7486), (122, 7501),

Gene: Starburst_11 Start: 6923, Stop: 7264, Start Num: 54

Candidate Starts for Starburst_11:

(Start: 54 @6923 has 95 MA's), (57, 6932), (70, 6992), (91, 7085), (112, 7187),

Gene: Stargaze_10 Start: 9061, Stop: 9423, Start Num: 48

Candidate Starts for Stargaze_10:

(26, 8998), (Start: 48 @9061 has 21 MA's), (91, 9241), (95, 9256), (102, 9292), (117, 9382), (122, 9400),

Gene: SteamedHams_12 Start: 6942, Stop: 7283, Start Num: 54

Candidate Starts for SteamedHams_12:

(Start: 54 @6942 has 95 MA's), (92, 7107), (118, 7257), (119, 7263),

Gene: Stellammi_7 Start: 5925, Stop: 6263, Start Num: 54

Candidate Starts for Stellammi_7:

(Start: 54 @5925 has 95 MA's), (63, 5961), (79, 6033), (83, 6057), (96, 6108), (97, 6111), (98, 6123), (99, 6126), (100, 6129), (111, 6183), (113, 6192), (122, 6252),

Gene: Stinson_15 Start: 9327, Stop: 9683, Start Num: 49

Candidate Starts for Stinson_15:

(Start: 49 @9327 has 181 MA's), (59, 9351), (75, 9432), (84, 9474), (95, 9510), (110, 9579), (118, 9639), (122, 9654),

Gene: Strobilo_11 Start: 7362, Stop: 7712, Start Num: 51

Candidate Starts for Strobilo_11:

(Start: 51 @7362 has 26 MA's), (60, 7386), (68, 7422), (75, 7464), (78, 7473), (80, 7485), (95, 7542), (103, 7581), (110, 7611), (118, 7671), (119, 7677), (122, 7686),

Gene: Sulley_15 Start: 9334, Stop: 9690, Start Num: 49

Candidate Starts for Sulley_15:

(Start: 49 @9334 has 181 MA's), (59, 9358), (75, 9439), (78, 9448), (95, 9517), (110, 9586), (118, 9646), (122, 9661),

Gene: SummitAcademy_9 Start: 6769, Stop: 7110, Start Num: 54

Candidate Starts for SummitAcademy_9:

(Start: 54 @6769 has 95 MA's), (64, 6805), (90, 6928), (119, 7090),

Gene: Sunflower1121_13 Start: 8213, Stop: 8566, Start Num: 51

Candidate Starts for Sunflower1121_13:

(Start: 51 @8213 has 26 MA's), (84, 8357), (90, 8375), (95, 8393), (103, 8432), (110, 8462), (118, 8522), (122, 8537),

Gene: Survivors_12 Start: 7674, Stop: 8024, Start Num: 54

Candidate Starts for Survivors_12:

(33, 7614), (43, 7650), (Start: 54 @7674 has 95 MA's), (59, 7692), (66, 7716), (70, 7743), (91, 7839), (95, 7854), (101, 7884), (110, 7938), (117, 7995),

Gene: SweatNTears_12 Start: 7427, Stop: 7768, Start Num: 54

Candidate Starts for SweatNTears_12:

(Start: 54 @7427 has 95 MA's), (81, 7550), (112, 7691), (118, 7742), (119, 7748),

Gene: Sweets_10 Start: 8806, Stop: 9162, Start Num: 49

Candidate Starts for Sweets_10:

(2, 8443), (4, 8512), (26, 8740), (Start: 28 @8746 has 2 MA's), (46, 8797), (Start: 49 @8806 has 181 MA's), (59, 8836), (94, 8995), (95, 8998), (119, 9133),

Gene: Syra333_14 Start: 8309, Stop: 8662, Start Num: 51

Candidate Starts for Syra333_14:

(Start: 51 @8309 has 26 MA's), (84, 8453), (90, 8471), (95, 8489), (118, 8618), (122, 8633),

Gene: TBond007_14 Start: 9121, Stop: 9474, Start Num: 49

Candidate Starts for TBond007_14:

(Start: 49 @9121 has 181 MA's), (59, 9142), (75, 9223), (78, 9232), (95, 9301), (96, 9304), (118, 9430), (122, 9445),

Gene: TClif_14 Start: 8297, Stop: 8650, Start Num: 51

Candidate Starts for TClif_14:

(Start: 51 @8297 has 26 MA's), (75, 8399), (90, 8459), (95, 8477), (110, 8546), (118, 8606), (122, 8621),

Gene: TM4_11 Start: 7414, Stop: 7764, Start Num: 51

Candidate Starts for TM4_11:

(Start: 51 @7414 has 26 MA's), (60, 7438), (64, 7453), (68, 7474), (75, 7516), (80, 7537), (95, 7594), (103, 7633), (110, 7663), (118, 7723), (119, 7729), (122, 7738),

Gene: Tachez_15 Start: 9327, Stop: 9683, Start Num: 49

Candidate Starts for Tachez_15:

(Start: 49 @9327 has 181 MA's), (59, 9351), (75, 9432), (78, 9441), (95, 9510), (110, 9579), (118, 9639), (122, 9654),

Gene: Taheera_10 Start: 8743, Stop: 9159, Start Num: 28

Candidate Starts for Taheera_10:

(2, 8440), (4, 8509), (Start: 28 @8743 has 2 MA's), (46, 8794), (Start: 48 @8800 has 21 MA's), (Start: 49 @8803 has 181 MA's), (94, 8992), (95, 8995), (110, 9064), (119, 9130),

Gene: TaiwanKao_15 Start: 9334, Stop: 9690, Start Num: 49

Candidate Starts for TaiwanKao_15:

(Start: 49 @9334 has 181 MA's), (59, 9358), (75, 9439), (95, 9517), (110, 9586), (118, 9646), (122, 9661),

Gene: Taquito_14 Start: 10207, Stop: 10563, Start Num: 50

Candidate Starts for Taquito_14:

(Start: 50 @10207 has 40 MA's), (75, 10321), (97, 10405), (102, 10435), (110, 10468), (119, 10534),

Gene: Tarnish_10 Start: 7068, Stop: 7409, Start Num: 54

Candidate Starts for Tarnish_10:

(Start: 54 @7068 has 95 MA's), (64, 7104), (65, 7107), (90, 7227), (94, 7242), (119, 7389),

Gene: Teejan_11 Start: 8651, Stop: 9004, Start Num: 50

Candidate Starts for Teejan_11:

(Start: 50 @8651 has 40 MA's), (59, 8672), (78, 8762), (90, 8813), (92, 8819), (95, 8831), (107, 8891), (110, 8900), (118, 8960), (122, 8975), (123, 8978),

Gene: Terror_10 Start: 8743, Stop: 9159, Start Num: 28

Candidate Starts for Terror_10:

(2, 8440), (4, 8509), (Start: 28 @8743 has 2 MA's), (46, 8794), (Start: 48 @8800 has 21 MA's), (Start: 49 @8803 has 181 MA's), (94, 8992), (95, 8995), (110, 9064), (119, 9130),

Gene: Thyatira_13 Start: 9469, Stop: 9831, Start Num: 49

Candidate Starts for Thyatira_13:

(Start: 49 @9469 has 181 MA's), (59, 9490), (75, 9571), (82, 9607), (84, 9613), (90, 9631), (95, 9649), (103, 9688), (110, 9718), (118, 9778), (122, 9793), (123, 9796),

Gene: Tierra_14 Start: 9012, Stop: 9365, Start Num: 51

Candidate Starts for Tierra_14:

(Start: 51 @9012 has 26 MA's), (82, 9150), (90, 9174), (95, 9192), (110, 9261), (118, 9321), (122, 9336),

Gene: Tigress9_14 Start: 8293, Stop: 8646, Start Num: 51

Candidate Starts for Tigress9_14:

(Start: 51 @8293 has 26 MA's), (82, 8431), (90, 8455), (95, 8473), (110, 8542), (118, 8602), (122, 8617),

Gene: TinaBug_10 Start: 8806, Stop: 9162, Start Num: 49

Candidate Starts for TinaBug_10:

(2, 8443), (4, 8512), (26, 8740), (Start: 28 @8746 has 2 MA's), (46, 8797), (Start: 49 @8806 has 181 MA's), (59, 8836), (94, 8995), (95, 8998), (119, 9133),

Gene: TingHuaYa_15 Start: 8386, Stop: 8745, Start Num: 50

Candidate Starts for TingHuaYa_15:

(Start: 50 @8386 has 40 MA's), (59, 8413), (74, 8491), (80, 8515), (90, 8554), (95, 8572), (110, 8641), (113, 8653), (122, 8716),

Gene: TiniBug_15 Start: 9306, Stop: 9662, Start Num: 49

Candidate Starts for TiniBug_15:

(Start: 49 @9306 has 181 MA's), (59, 9330), (95, 9489), (110, 9558), (118, 9618), (122, 9633),

Gene: Tiri_15 Start: 9373, Stop: 9729, Start Num: 49

Candidate Starts for Tiri_15:

(Start: 49 @9373 has 181 MA's), (59, 9397), (75, 9478), (78, 9487), (95, 9556), (110, 9625), (118, 9685), (122, 9700),

Gene: Tolls_12 Start: 6945, Stop: 7286, Start Num: 54

Candidate Starts for Tolls_12:

(Start: 54 @6945 has 95 MA's), (92, 7110), (118, 7260), (119, 7266),

Gene: TomBrady_10 Start: 8812, Stop: 9168, Start Num: 49

Candidate Starts for TomBrady_10:

(26, 8746), (Start: 28 @8752 has 2 MA's), (46, 8803), (Start: 48 @8809 has 21 MA's), (Start: 49 @8812 has 181 MA's), (59, 8842), (94, 9001), (95, 9004), (113, 9085), (119, 9139),

Gene: Topper_15 Start: 9404, Stop: 9760, Start Num: 49

Candidate Starts for Topper_15:

(Start: 49 @9404 has 181 MA's), (59, 9428), (75, 9509), (95, 9587), (103, 9626), (110, 9656), (118, 9716), (122, 9731),

Gene: Torres_11 Start: 8651, Stop: 9004, Start Num: 50

Candidate Starts for Torres_11:

(Start: 50 @8651 has 40 MA's), (59, 8672), (78, 8762), (90, 8813), (92, 8819), (95, 8831), (107, 8891), (110, 8900), (118, 8960), (122, 8975), (123, 8978),

Gene: TreyKay_15 Start: 9328, Stop: 9684, Start Num: 49

Candidate Starts for TreyKay_15:

(Start: 49 @9328 has 181 MA's), (59, 9352), (74, 9430), (75, 9433), (95, 9511), (110, 9580), (118, 9640), (122, 9655),

Gene: TribbleTrouble_13 Start: 9179, Stop: 9532, Start Num: 49

Candidate Starts for TribbleTrouble_13:

(Start: 49 @9179 has 181 MA's), (59, 9200), (75, 9281), (78, 9290), (95, 9359), (96, 9362), (103, 9398), (115, 9470), (118, 9488), (122, 9503),

Gene: Trice_11 Start: 8651, Stop: 9004, Start Num: 50

Candidate Starts for Trice_11:

(Start: 50 @8651 has 40 MA's), (59, 8672), (78, 8762), (90, 8813), (92, 8819), (95, 8831), (107, 8891), (110, 8900), (118, 8960), (122, 8975), (123, 8978),

Gene: Troje_10 Start: 6901, Stop: 7242, Start Num: 54

Candidate Starts for Troje_10:

(Start: 54 @6901 has 95 MA's), (81, 7024), (112, 7165), (118, 7216), (119, 7222),

Gene: TruffulaTree_15 Start: 9361, Stop: 9717, Start Num: 49

Candidate Starts for TruffulaTree_15:

(Start: 49 @9361 has 181 MA's), (59, 9385), (74, 9463), (75, 9466), (78, 9475), (95, 9544), (110, 9613), (118, 9673), (122, 9688),

Gene: Twitch_15 Start: 9404, Stop: 9760, Start Num: 49

Candidate Starts for Twitch_15:

(Start: 49 @9404 has 181 MA's), (59, 9428), (75, 9509), (95, 9587), (103, 9626), (110, 9656), (118, 9716), (122, 9731),

Gene: Typhonomachy_10 Start: 6923, Stop: 7264, Start Num: 54

Candidate Starts for Typhonomachy_10:

(21, 6824), (22, 6827), (23, 6833), (Start: 54 @6923 has 95 MA's), (57, 6932), (70, 6992), (91, 7085), (112, 7187),

Gene: Unicorn_14 Start: 8347, Stop: 8700, Start Num: 51

Candidate Starts for Unicorn_14:

(Start: 51 @8347 has 26 MA's), (82, 8485), (95, 8527), (110, 8596), (118, 8656), (122, 8671),

Gene: Urkel_15 Start: 9306, Stop: 9662, Start Num: 49

Candidate Starts for Urkel_15:

(Start: 49 @9306 has 181 MA's), (59, 9330), (95, 9489), (110, 9558), (118, 9618), (122, 9633),

Gene: Validus_15 Start: 8355, Stop: 8708, Start Num: 50

Candidate Starts for Validus_15:

(Start: 50 @8355 has 40 MA's), (59, 8376), (74, 8454), (90, 8517), (95, 8535), (110, 8604), (118, 8664), (122, 8679), (123, 8682),

Gene: Veliki_15 Start: 9404, Stop: 9760, Start Num: 49

Candidate Starts for Veliki_15:

(Start: 49 @9404 has 181 MA's), (59, 9428), (75, 9509), (95, 9587), (103, 9626), (110, 9656), (118, 9716), (122, 9731),

Gene: Vine_11 Start: 7698, Stop: 8039, Start Num: 54

Candidate Starts for Vine_11:

(Start: 54 @7698 has 95 MA's), (64, 7734), (90, 7857), (94, 7872), (119, 8019),

Gene: ViviJ_12 Start: 9322, Stop: 9684, Start Num: 49

Candidate Starts for ViviJ_12:

(Start: 49 @9322 has 181 MA's), (59, 9343), (66, 9367), (75, 9424), (95, 9502), (102, 9538), (110, 9571), (118, 9631), (122, 9646),

Gene: Wallaby_14 Start: 7795, Stop: 8169, Start Num: 43

Candidate Starts for Wallaby_14:

(33, 7759), (43, 7795), (Start: 54 @7819 has 95 MA's), (59, 7837), (66, 7861), (70, 7888), (91, 7984), (95, 7999), (101, 8029), (110, 8083), (117, 8140),

Gene: Waterfoul_13 Start: 9491, Stop: 9853, Start Num: 49

Candidate Starts for Waterfoul_13:

(Start: 49 @9491 has 181 MA's), (59, 9512), (75, 9593), (82, 9629), (84, 9635), (90, 9653), (95, 9671), (103, 9710), (110, 9740), (118, 9800), (122, 9815), (123, 9818),

Gene: Wendigo_10 Start: 8811, Stop: 9167, Start Num: 49

Candidate Starts for Wendigo_10:

(26, 8745), (Start: 28 @8751 has 2 MA's), (46, 8802), (Start: 48 @8808 has 21 MA's), (Start: 49 @8811 has 181 MA's), (59, 8841), (94, 9000), (95, 9003), (113, 9084), (119, 9138),

Gene: Whitney_10 Start: 6480, Stop: 6827, Start Num: 52

Candidate Starts for Whitney_10:

(39, 6444), (Start: 52 @6480 has 20 MA's), (62, 6519), (70, 6561), (87, 6633), (91, 6654), (92, 6657), (99, 6690), (108, 6735), (116, 6786), (118, 6801), (122, 6816),

Gene: Wintermute_16 Start: 10610, Stop: 10966, Start Num: 50

Candidate Starts for Wintermute_16:

(Start: 50 @10610 has 40 MA's), (75, 10724), (97, 10808), (102, 10838), (110, 10871), (113, 10883), (119, 10937),

Gene: Wolfwood_14 Start: 7795, Stop: 8169, Start Num: 43

Candidate Starts for Wolfwood_14:

(33, 7759), (43, 7795), (Start: 54 @7819 has 95 MA's), (59, 7837), (66, 7861), (70, 7888), (91, 7984), (95, 7999), (101, 8029), (110, 8083), (117, 8140),

Gene: Wrigley_10 Start: 7328, Stop: 7675, Start Num: 54

Candidate Starts for Wrigley_10:

(29, 7250), (Start: 54 @7328 has 95 MA's), (74, 7436), (108, 7583), (119, 7655),

Gene: Ximenita_15 Start: 8488, Stop: 8841, Start Num: 51

Candidate Starts for Ximenita_15:

(Start: 51 @8488 has 26 MA's), (59, 8509), (84, 8632), (90, 8650), (95, 8668), (102, 8704), (110, 8737), (118, 8797), (122, 8812),

Gene: Y10_16 Start: 10610, Stop: 10966, Start Num: 50

Candidate Starts for Y10_16:

(Start: 50 @10610 has 40 MA's), (75, 10724), (97, 10808), (102, 10838), (110, 10871), (113, 10883), (119, 10937),

Gene: Y2_16 Start: 10610, Stop: 10966, Start Num: 50

Candidate Starts for Y2_16:

(Start: 50 @10610 has 40 MA's), (75, 10724), (97, 10808), (102, 10838), (110, 10871), (113, 10883), (119, 10937),

Gene: Yakult_11 Start: 6834, Stop: 7175, Start Num: 54

Candidate Starts for Yakult_11:

(23, 6744), (25, 6747), (27, 6753), (Start: 54 @6834 has 95 MA's), (65, 6876), (70, 6906), (77, 6936), (103, 7056), (104, 7059), (119, 7155),

Gene: YangYin_10 Start: 9061, Stop: 9423, Start Num: 48

Candidate Starts for YangYin_10:

(11, 8896), (26, 8998), (Start: 48 @9061 has 21 MA's), (91, 9241), (95, 9256), (102, 9292), (117, 9382), (122, 9400),

Gene: Yarn_9 Start: 6935, Stop: 7276, Start Num: 54

Candidate Starts for Yarn_9:

(Start: 54 @6935 has 95 MA's), (92, 7100), (118, 7250), (119, 7256),

Gene: YasnayaPolyana_16 Start: 10611, Stop: 10967, Start Num: 50

Candidate Starts for YasnayaPolyana_16:

(Start: 50 @10611 has 40 MA's), (75, 10725), (97, 10809), (102, 10839), (110, 10872), (113, 10884), (119, 10938),

Gene: Yoshi_10 Start: 6437, Stop: 6790, Start Num: 54

Candidate Starts for Yoshi_10:

(37, 6386), (38, 6392), (Start: 54 @6437 has 95 MA's), (61, 6467), (71, 6518), (92, 6623), (97, 6641), (102, 6674), (118, 6764),

Gene: YoureAdopted_14 Start: 9337, Stop: 9693, Start Num: 49

Candidate Starts for YoureAdopted_14:

(Start: 49 @9337 has 181 MA's), (59, 9361), (74, 9439), (75, 9442), (78, 9451), (95, 9520), (110, 9589), (118, 9649), (122, 9664),

Gene: Yucky_10 Start: 7558, Stop: 7899, Start Num: 54

Candidate Starts for Yucky_10:

(Start: 54 @7558 has 95 MA's), (64, 7594), (90, 7717), (119, 7879),

Gene: Yummy_11 Start: 6805, Stop: 7146, Start Num: 54

Candidate Starts for Yummy_11:

(Start: 54 @6805 has 95 MA's), (81, 6928), (112, 7069), (118, 7120), (119, 7126),

Gene: Yuna_15 Start: 8481, Stop: 8834, Start Num: 51

Candidate Starts for Yuna_15:

(Start: 51 @8481 has 26 MA's), (59, 8502), (75, 8583), (90, 8643), (95, 8661), (96, 8664), (110, 8730), (118, 8790), (119, 8796), (122, 8805),

Gene: Yunkel11_15 Start: 8311, Stop: 8670, Start Num: 50

Candidate Starts for Yunkel11_15:

(44, 8296), (Start: 50 @8311 has 40 MA's), (59, 8338), (74, 8416), (80, 8440), (90, 8479), (95, 8497), (101, 8521), (102, 8533), (110, 8566), (122, 8641),

Gene: Zabiza_15 Start: 9362, Stop: 9718, Start Num: 49

Candidate Starts for Zabiza_15:

(Start: 49 @9362 has 181 MA's), (59, 9386), (74, 9464), (75, 9467), (78, 9476), (95, 9545), (110, 9614), (118, 9674), (122, 9689),

Gene: Zapner_11 Start: 6962, Stop: 7315, Start Num: 54

Candidate Starts for Zapner_11:

(37, 6911), (38, 6917), (Start: 54 @6962 has 95 MA's), (61, 6992), (71, 7043), (92, 7148), (97, 7166), (102, 7199), (118, 7289),

Gene: Zareef_12 Start: 7821, Stop: 8171, Start Num: 54

Candidate Starts for Zareef_12:

(33, 7761), (43, 7797), (Start: 54 @7821 has 95 MA's), (59, 7839), (66, 7863), (70, 7890), (91, 7986), (95, 8001), (101, 8031), (110, 8085), (117, 8142),

Gene: Zavala_15 Start: 9343, Stop: 9699, Start Num: 49

Candidate Starts for Zavala_15:

(Start: 49 @9343 has 181 MA's), (59, 9367), (75, 9448), (78, 9457), (95, 9526), (110, 9595), (118, 9655), (122, 9670),

Gene: ZoMa_10 Start: 8811, Stop: 9167, Start Num: 49

Candidate Starts for ZoMa_10:

(26, 8745), (Start: 28 @8751 has 2 MA's), (46, 8802), (Start: 48 @8808 has 21 MA's), (Start: 49 @8811 has 181 MA's), (59, 8841), (94, 9000), (95, 9003), (113, 9084), (119, 9138),

Gene: ZoeJ_11 Start: 7310, Stop: 7669, Start Num: 51

Candidate Starts for ZoeJ_11:

(Start: 51 @7310 has 26 MA's), (60, 7334), (64, 7349), (68, 7370), (75, 7412), (78, 7421), (80, 7433), (95, 7490), (103, 7529), (110, 7559), (118, 7619), (119, 7625), (122, 7634),

Gene: Zombie_10 Start: 8808, Stop: 9167, Start Num: 48

Candidate Starts for Zombie_10:

(26, 8745), (Start: 28 @8751 has 2 MA's), (46, 8802), (Start: 48 @8808 has 21 MA's), (Start: 49 @8811 has 181 MA's), (59, 8841), (94, 9000), (95, 9003), (113, 9084), (119, 9138),