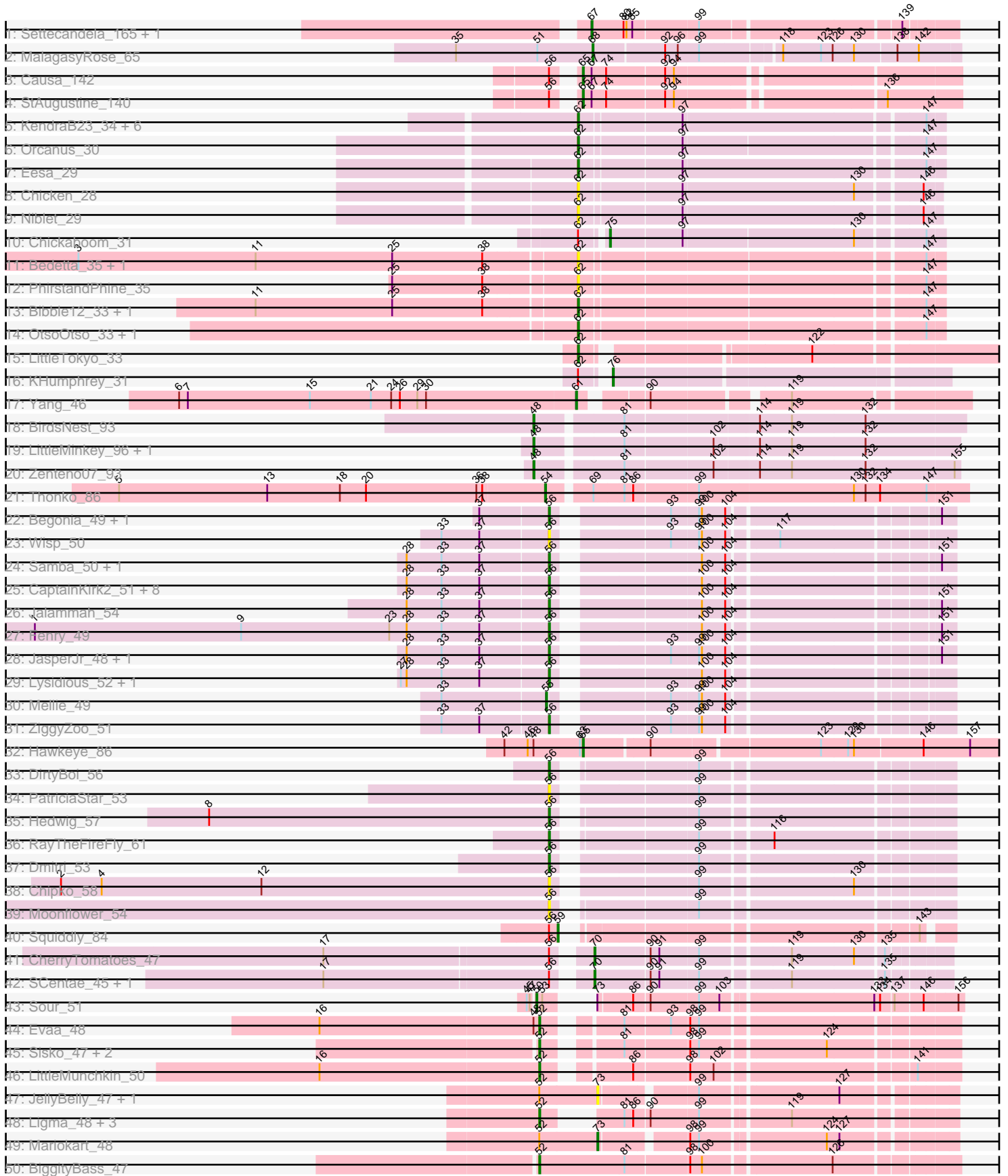


Pham 296132



Note: Tracks are now grouped by subcluster and scaled. Switching in subcluster is indicated by changes in track color. Track scale is now set by default to display the region 30 bp upstream of start 1 to 30 bp downstream of the last possible start. If this default region is judged to be packed too tightly with annotated starts, the track will be further scaled to only show that region of the ORF with annotated starts. This action will be indicated by adding "Zoomed" to the title. For starts, yellow indicates the location of called starts comprised solely of Glimmer/GeneMark auto-annotations, green indicates the location of called starts with at least 1 manual gene annotation.

Pham 296132 Report

This analysis was run 04/25/26 on database version 644.

Pham number 296132 has 432 members, 51 are drafts.

Phages represented in each track:

- Track 1 : Settecandela_165, Phrappuccino_165
- Track 2 : MalagasyRose_65
- Track 3 : Causa_142
- Track 4 : StAugustine_140
- Track 5 : KendraB23_34, Westrich_33, Gravel_33, Pelletreau_33, Toad24_32, Amanises_34, Zixiang_29
- Track 6 : Orcanus_30
- Track 7 : Eesa_29
- Track 8 : Chicken_28
- Track 9 : Niblet_29
- Track 10 : Chickaboom_31
- Track 11 : Bedetta_35, Pineda_34
- Track 12 : PhirstandPhine_35
- Track 13 : Bibble12_33, Colusalem_33
- Track 14 : OtsoOtso_33, Polka_32
- Track 15 : LittleTokyo_33
- Track 16 : KHumphrey_31
- Track 17 : Yang_46
- Track 18 : BirdsNest_93
- Track 19 : LittleMinkey_96, Hashim76_90
- Track 20 : Zenteno07_93
- Track 21 : Thonko_86
- Track 22 : Begonia_49, Malachai_49
- Track 23 : Wisp_50
- Track 24 : Samba_50, Hitter_51
- Track 25 : CaptainKirk2_51, MintFen_51, BlingBling_48, Barco_49, Melba_50, Delian_54, Zarbodnamra_50, Archis_54, Zilla_49
- Track 26 : Jalammah_54
- Track 27 : Fenry_49
- Track 28 : JasperJr_48, Guacamole_48
- Track 29 : Lysidious_52, Utz_44
- Track 30 : Mellie_49
- Track 31 : ZiggyZoo_51
- Track 32 : Hawkeye_86
- Track 33 : DirtyBoi_56
- Track 34 : PatriciaStar_53
- Track 35 : Hedwig_57

- Track 36 : RayTheFireFly_61
- Track 37 : Dmitri_53
- Track 38 : Chipko_58
- Track 39 : Moonflower_54
- Track 40 : Squiddly_84
- Track 41 : CherryTomatoes_47
- Track 42 : SCentae_45, Pupper_45
- Track 43 : Sour_51
- Track 44 : Evaa_48
- Track 45 : Sisko_47, AnClar_48, Yago84_47
- Track 46 : LittleMunchkin_50
- Track 47 : JellyBelly_47, CharlottesWeb_47
- Track 48 : Ligma_48, Fresco_48, Axumite_48, Shatter_48
- Track 49 : Mariokart_48
- Track 50 : BiggityBass_47
- Track 51 : Stormageddon_88, RedWattleHog_91
- Track 52 : Wolfstar_76
- Track 53 : Tandem_71, Pioneer3_71, Hortus1_71, OlinDD_71
- Track 54 : Platte_71
- Track 55 : Brushbloom_62, MilleniumForce_63, Ramsey_59, Batiatus_58, Aubs_60
- Track 56 : Zizzle_64, Rita_61, DeadP_66, Soul22_66, Martik_60, AlpineSix_65, Zapner_73, Dante_61, CaptainTrips_57, Maravista_61, Totinger_59, Rockne_61, Eish_64, James_64, Pippy_58, SG4_57, LastJedi_54, Dorothy_58, Crumble_55, PhilipPhlop_60, Seabastian_65, Taj_64, Jinglebell_65, Ochi17_63, Wee_64, Jabbawokkie_74, GUmbie_58, Lizziana_66, Priscilla_60, Whouxphf_57, Zerg_60, VRedHorse_60, Yorick_59, Chuckly_63, Nichirin_67, PMC_57, Modragons_64, Slim_61, Blarby_72, Boomer_65, Mattes_64, Firehouse51_61, Inventum_55, OwlsT2W_60, Mutaforma13_64, Starcevich_60, ShowerHandel_63, SiSi_58, Burwell21_58, SwagPigglett_65, EmiMonkey_58, Hegedechwinu_60, Pollywog_61, Saal_62, BuzzLyseyear_66, Alexphander_64, PatoPoderoso_57, OlympiaSaint_62, DaWorst_61, Koella_54, IbOuu_59, Karhdo_57, KingJulian_60, Sassafras_58, OfUltron_65, Oksu_64, Llama_65, MinionDave_59, Emmaloid_61, FreddyB_61, Brocalys_55, BobaPhett_64, Enby_61, ShiLan_59, NormanBulbieJr_60, Clifton_55, Eradicator_53, Cabrinians_61, Gorge_64, Peridot_61, LittleShirley_59, Polka14_58, Corium_57
- Track 57 : Phanphagia_57, Beakin_61, ArcusAngelus_62, TDanisky_67, Bobi_65, DLane_55, Ms6_55, Melissauen88_58, PopTart_54, SuperGrey_63, SassyB_54, SilverChicken_70, Ardmore_52, Kenuha5_57, Chevrolet_65, Sparkdehlily_67, Tweety_59
- Track 58 : Llij_56, Phatniss_58, Mwanjiwa_66, MulchExplorer_63, Job42_62, UncleRicky_59, Nivrat_56, Drago_58, QuickMath_62, Lorde_60, Avani_68, Kimberlium_63, Jarcob_60, LilMoolah_58, DirtMcgirt_59, Estave1_63, DRBy19_63, Kersh_62, Veteran_57, Jennelsea_57, Philus_63, Rialto_66
- Track 59 : Plumbus_62, Daenerys_54, ByChance_52, Pacc40_54, KingMidas_59, Vivum_61, Empress_58, Leozinho_59, DosHalletts_62, Tootsieroll_61, JoeyJr_55, Leperchaun_52, Doomphist_60, Poenanya_60, PHappiness_55, BodEinwohner17_60, DaddyRickover_59, Violac_62, Spoonbill_57, RitaG_55
- Track 60 : Harley_62
- Track 61 : Sarma624_56, Royals2015_61, BigPhil_54, Kingsley_55, CheesePuff_64, MulchExplorer_60, DoRead_60, Cerasum_54, Harley_61, Starcevich_57, Brookers_55, Kimberlium_60, Che8_63, Coco12_57, Ovechkin_57, Seagreen_58, Topiatin_65, QuickMath_59, Demsculpinboyz_68, JalFarm20_71, Velveteen_53, Jant_62, Che9d_66, Juice456_59, Cornie_53

- Track 62 : Sarma624_57, Starcevich_58, BigPhil_55, Cheesepuff_65, MulchExplorer_61, Cerasum_55, DotProduct_54, DoRead_61, Che8_64, Brookers_56, Coco12_58, Ovechkin_58, Seagreen_59, Jant_63, Kimberlium_61, JalFarm20_72, Topiatin_66, Velveteen_54, Juniper1_57, Che9d_67, Juice456_60, QuickMath_60, Cornie_54, Kingsley_56, Royals2015_62
- Track 63 : Scottish_58, EleanorGeorge_61, Blexus_58, ShroomBoi_62, Mova_61, KristaRAM_63, Gandalph_63, MadMen_58, Madiba_58
- Track 64 : RockyHorror_61, Doug_62
- Track 65 : SimranZ1_60, Sabbb_64, Phasih_58, Fastidio_60, DillTech15_57, Ibhubesi_60, Demsculpinboyz_71
- Track 66 : Girafales_69, Okabe_55, Quico_68, Florinda_71, Minnie_63, Bipolar_58, Fruitloop_57, Sandalphon_61
- Track 67 : Moonbeam_58
- Track 68 : Akhila_51, MilanaBonita_50, Whatsapiecost_60, Hamulus_61, Ogopogo_65, Flathead_60
- Track 69 : Filuzino_58, StAnnes_58, Medindi_56, XFactor_58
- Track 70 : Cheesepuff_67, Mozy_69, Doomslug_69, Grimmer_70, LunaBlu_62, GigiOuiOui_56, Girr_58, Ruby_56, IrishSherpFalk_61, NewHope4_61, Mahavrat_58, WillSterrel_61, Latretium_62, Cornie_56, Spartacus_62, MisterCuddles_58, Galactic_59
- Track 71 : DotProduct_53
- Track 72 : Radiance_59
- Track 73 : IMpilo_54, Juniper1_56
- Track 74 : IMpilo_55
- Track 75 : Tchotchke_60
- Track 76 : Fancypants_62, BlueCrab_60, Byougenkin_58
- Track 77 : Marker_62, Spikelee_67, OldBen_57
- Track 78 : Donkeykong_63, Squirty_62, Shauna1_58
- Track 79 : Bubbles123_56
- Track 80 : Lucia_60
- Track 81 : Hlubikazi_56, Mandlovu_56, Strokeseat_56
- Track 82 : Krakatau_57
- Track 83 : Topiatin_68, Cornucopia_62
- Track 84 : Juniper1_59
- Track 85 : Beanstalk_60
- Track 86 : PhesterPhotato_60, Phalconet_58
- Track 87 : Hades_61
- Track 88 : Wachhund_61
- Track 89 : Emma_61
- Track 90 : Yoshi_73, ThetaBob_65
- Track 91 : Demsculpinboyz_69
- Track 92 : LunaStella_56, Yoshi_70, ThetaBob_62, TChen_58
- Track 93 : LunaStella_57, Renaud18_64, Yoshi_71, ThetaBob_63, TChen_59
- Track 94 : LunaStella_59, TChen_61
- Track 95 : Renaud18_66
- Track 96 : Renaud18_63
- Track 97 : AllBusiness_48
- Track 98 : Schism_53
- Track 99 : Prairie_53
- Track 100 : Nandito_53
- Track 101 : Bumble_49
- Track 102 : Klevey_55
- Track 103 : Bolt007_53

- Track 104 : Lilmac1015_57, CalWood4100_57
- Track 105 : Circuit_48
- Track 106 : Marleymoo_127, Bobby_134, Hidrated_130
- Track 107 : Dove_130, NihilNomen_146, Halley_146, Minerva_144, JuicyJay_140, Optimus_135, Wanda_144, ThreeRngTarjay_139, Odette_148, DmpstrDiver_145, Ejimix_137, Klein_142, Zelink_139, Kalah2_135, BAKA_144, EricMillard_136, Beem_146, Constella_138, Schatzie_140, Duke13_140, Dallas_145, Phoebus_144, Bombitas_132
- Track 108 : HokkenD_137, Porcelain_140, Yeet_138, MiaZeal_143, Redno2_139, Lucky2013_136, KashFlow_143
- Track 109 : Pound_136
- Track 110 : Thibault_127
- Track 111 : Footloose_58

Summary of Final Annotations (See graph section above for start numbers):

The start number called the most often in the published annotations is 63, it was called in 242 of the 381 non-draft genes in the pham.

Genes that call this "Most Annotated" start:

- Akhila_51, Alexphander_64, AlpineSix_65, ArcusAngelus_62, Ardmore_52, Aubs_60, Avani_68, Batiatus_58, Beakin_61, Beanstalk_60, BigPhil_55, Bipolar_58, Blarby_72, Blexus_58, BlueCrab_60, BobaPhett_64, Bobi_65, BodEinwohner17_60, Boomer_65, Brocalys_55, Brookers_56, Brushbloom_62, Bubbles123_56, Burwell21_58, BuzzLyseyear_66, ByChance_52, Byougenkin_58, Cabrinians_61, CaptainTrips_57, Cerasum_55, Che8_64, Che9d_67, CheesePuff_65, CheesePuff_67, Chevrolet_65, Chuckly_63, Clifton_55, Coco12_58, Corium_57, Cornie_54, Cornie_56, Cornucopia_62, Crumble_55, DLane_55, DRBy19_63, DaWorst_61, DaddyRickover_59, Daenerys_54, Dante_61, DeadP_66, Demsculpinboyz_69, Demsculpinboyz_71, DillTech15_57, DirtMcGirt_59, DoRead_61, Donkeykong_63, Doomphist_60, Doomslug_69, Dorothy_58, DosHalletts_62, DotProduct_54, Doug_62, Drago_58, Eish_64, EleanorGeorge_61, EmiMonkey_58, Emma_61, Emmaloid_61, Empress_58, Enby_61, Eradicator_53, Estave1_63, Fancypants_62, Fastidio_60, Filuzino_58, Firehouse51_61, Flathead_60, Florinda_71, Footloose_58, FreddyB_61, Fruitloop_57, GUmBie_58, Galactic_59, Gandalph_63, GigiOuiOui_56, Girafales_69, Girr_58, Gorge_64, Grimmer_70, Hades_61, Hamulus_61, Harley_62, Hegedechwinu_60, Hlubikazi_56, IbOuu_59, Ibhubesi_60, Inventum_55, IrishSherpFalk_61, Jabbawokkie_74, JalFarm20_72, James_64, Jant_63, Jarcob_60, Jennelsea_57, Jinglebell_65, Job42_62, JoeyJr_55, Juice456_60, Juniper1_57, Juniper1_59, Karhdo_57, Kenuha5_57, Kersh_62, Kimberlium_61, Kimberlium_63, KingJulian_60, KingMidas_59, Kingsley_56, Koella_54, Krakatau_57, KristaRAM_63, LastJedi_54, Latretium_62, Leozinho_59, Leperchaun_52, LilMoolah_58, LittleShirley_59, Lizziana_66, Llama_65, Llij_56, Lorde_60, Lucia_60, LunaBlu_62, LunaStella_57, LunaStella_59, MadMen_58, Madiba_58, Mahavrat_58, Mandlovu_56, Maravista_61, Marker_62, Martik_60, Mattes_64, Medindi_56, Melissauren88_58, MilanaBonita_50, MilleniumForce_63, MinionDave_59, Minnie_63, MisterCuddles_58, Modragons_64, Moonbeam_58, Mova_61, Mozy_69, Ms6_55, MulchExplorer_61, MulchExplorer_63, Mutaforma13_64, Mwanjiwa_66, NewHope4_61, Nichirin_67, Nivrat_56, NormanBulbieJr_60, Ochi17_63, OfUltron_65, Opopogo_65, Okabe_55, Oksu_64,

OldBen_57, OlympiaSaint_62, Ovechkin_58, OwlsT2W_60, PHappiness_55, PMC_57, Pacc40_54, PatoPoderoso_57, Peridot_61, Phalconet_58, Phanphagia_57, Phasih_58, Phatniss_58, PhesterPotato_60, Philus_63, PhilipPhlop_60, Pippy_58, Plumbus_62, Poenanya_60, Polka14_58, Pollywog_61, PopTart_54, Priscilla_60, QuickMath_60, QuickMath_62, Quico_68, Radiance_59, Ramsey_59, Renaud18_64, Renaud18_66, Rialto_66, RitaG_55, Rita_61, Rockne_61, RockyHorror_61, Royals2015_62, Ruby_56, SG4_57, Saal_62, Sabbb_64, Sandalphon_61, Sarma624_57, Sassafras_58, SassyB_54, Scottish_58, Seabastian_65, Seagreen_59, Shauna1_58, ShiLan_59, ShowerHandel_63, ShroomBoi_62, SiSi_58, SilverChicken_70, SimranZ1_60, Slim_61, Soul22_66, Sparkdehlily_67, Spartacus_62, Spikelee_67, Spoonbill_57, Squirty_62, StAnnes_58, Starcevich_58, Starcevich_60, Strokeseat_56, SuperGrey_63, SwagPiggett_65, TChen_59, TChen_61, TDanisky_67, Taj_64, Tchotchke_60, ThetaBob_63, ThetaBob_65, Tootsieroll_61, Topiatin_66, Topiatin_68, Totinger_59, Tweety_59, UncleRicky_59, VRedHorse_60, Velveteen_54, Veteran_57, Violac_62, Vivum_61, Wachhund_61, Wee_64, Whatsapiecost_60, Whouxphf_57, WillSterrel_61, XFactor_58, Yorick_59, Yoshi_71, Yoshi_73, Zapner_73, Zerg_60, Zizzle_64,

Genes that have the "Most Annotated" start but do not call it:

- AllBusiness_48, Hawkeye_86, IMpilo_55, Schism_53,

Genes that do not have the "Most Annotated" start:

- Amanises_34, AnClar_48, Archis_54, Axumite_48, BAKA_144, Barco_49, Bedetta_35, Beem_146, Begonia_49, Bibble12_33, BigPhil_54, BiggityBass_47, BirdsNest_93, BlingBling_48, Bobby_134, Bolt007_53, Bombitas_132, Brookers_55, Bumble_49, CalWood4100_57, CaptainKirk2_51, Causa_142, Cerasum_54, CharlottesWeb_47, Che8_63, Che9d_66, CheesePuff_64, CherryTomatoes_47, Chickaboom_31, Chicken_28, Chipko_58, Circuit_48, Coco12_57, Colusalem_33, Constella_138, Cornie_53, Dallas_145, Delian_54, Demsculpinboyz_68, DirtyBoi_56, Dmitri_53, DmpstrDiver_145, DoRead_60, DotProduct_53, Dove_130, Duke13_140, Eesa_29, Ejimix_137, EricMillard_136, Evaa_48, Fenry_49, Fresco_48, Gravel_33, Guacamole_48, Halley_146, Harley_61, Hashim76_90, Hedwig_57, Hidrated_130, Hitter_51, HokkenD_137, Hortus1_71, IMpilo_54, JalFarm20_71, Jalammah_54, Jant_62, JasperJr_48, JellyBelly_47, Juice456_59, JuicyJay_140, Juniper1_56, KHumphrey_31, Kalah2_135, KashFlow_143, KendraB23_34, Kimberlium_60, Kingsley_55, Klein_142, Klevey_55, Ligma_48, Lilmac1015_57, LittleMinkey_96, LittleMunchkin_50, LittleTokyo_33, Lucky2013_136, LunaStella_56, Lysidious_52, Malachai_49, MalagasyRose_65, Mariokart_48, Marleymoos_127, Melba_50, Mellie_49, MiaZeal_143, Minerva_144, MintFen_51, Moonflower_54, MulchExplorer_60, Nandito_53, Niblet_29, NihilNomen_146, Odette_148, OlinDD_71, Optimus_135, Orcanus_30, OtsoOtso_33, Ovechkin_57, PatriciaStar_53, Pelletreau_33, PhirstandPhine_35, Phoebus_144, Phrappuccino_165, Pineda_34, Pioneer3_71, Platte_71, Polka_32, Porcelain_140, Pound_136, Prairie_53, Pupper_45, QuickMath_59, RayTheFireFly_61, RedWattleHog_91, Redno2_139, Renaud18_63, Royals2015_61, SCentae_45, Samba_50, Sarma624_56, Schatzie_140, Seagreen_58, Settecandela_165, Shatter_48, Sisko_47, Sour_51, Squiddly_84, StAugustine_140, Starcevich_57, Stormageddon_88, TChen_58, Tandem_71, ThetaBob_62, Thibault_127, Thonko_86, ThreeRngTarjay_139, Toad24_32, Topiatin_65, Utz_44, Velveteen_53, Wanda_144, Westrich_33, Wisp_50, Wolfstar_76, Yago84_47, Yang_46, Yeet_138, Yoshi_70, Zarbodnamra_50, Zelink_139, Zenteno07_93, ZiggyZoo_51, Zilla_49, Zixiang_29,

Summary by start number:

Start 44:

- Found in 2 of 432 (0.5%) of genes in pham
- Manual Annotations of this start: 1 of 381
- Called 50.0% of time when present
- Phage (with cluster) where this start called: Schism_53 (FF),

Start 48:

- Found in 6 of 432 (1.4%) of genes in pham
- Manual Annotations of this start: 3 of 381
- Called 66.7% of time when present
- Phage (with cluster) where this start called: BirdsNest_93 (B13), Hashim76_90 (B13), LittleMinkey_96 (B13), Zenteno07_93 (B13),

Start 50:

- Found in 1 of 432 (0.2%) of genes in pham
- Manual Annotations of this start: 1 of 381
- Called 100.0% of time when present
- Phage (with cluster) where this start called: Sour_51 (DR),

Start 52:

- Found in 13 of 432 (3.0%) of genes in pham
- Manual Annotations of this start: 10 of 381
- Called 76.9% of time when present
- Phage (with cluster) where this start called: AnClar_48 (DR), Axumite_48 (DR), BiggityBass_47 (DR), Evaa_48 (DR), Fresco_48 (DR), Ligma_48 (DR), LittleMunchkin_50 (DR), Shatter_48 (DR), Sisko_47 (DR), Yago84_47 (DR),

Start 54:

- Found in 35 of 432 (8.1%) of genes in pham
- Manual Annotations of this start: 1 of 381
- Called 2.9% of time when present
- Phage (with cluster) where this start called: Thonko_86 (B8),

Start 55:

- Found in 1 of 432 (0.2%) of genes in pham
- Manual Annotations of this start: 1 of 381
- Called 100.0% of time when present
- Phage (with cluster) where this start called: Mellie_49 (CV),

Start 56:

- Found in 36 of 432 (8.3%) of genes in pham
- Manual Annotations of this start: 24 of 381
- Called 77.8% of time when present
- Phage (with cluster) where this start called: Archis_54 (CV), Barco_49 (CV), Begonia_49 (CV), BlingBling_48 (CV), CaptainKirk2_51 (CV), Chipko_58 (DB), Delian_54 (CV), DirtyBoi_56 (DB), Dmitri_53 (DB), Fenry_49 (CV), Guacamole_48 (CV), Hedwig_57 (DB), Hitter_51 (CV), Jalammah_54 (CV), JasperJr_48 (CV), Lysidious_52 (CV), Malachai_49 (CV), Melba_50 (CV), MintFen_51 (CV), Moonflower_54 (DB), PatriciaStar_53 (DB), RayTheFireFly_61 (DB), Samba_50 (CV), Utz_44 (CV), Wisp_50 (CV), Zarbodnamra_50 (CV), ZiggyZoo_51 (CV), Zilla_49 (CV),

Start 57:

- Found in 35 of 432 (8.1%) of genes in pham
- Manual Annotations of this start: 32 of 381
- Called 100.0% of time when present
- Phage (with cluster) where this start called: BAKA_144 (J), Beem_146 (J), Bobby_134 (J), Bombitas_132 (J), Constella_138 (J), Dallas_145 (J), DmpstrDiver_145 (J), Dove_130 (J), Duke13_140 (J), Ejimix_137 (J), EricMillard_136 (J), Halley_146 (J), Hidrated_130 (J), HokkenD_137 (J), JuicyJay_140 (J), Kalah2_135 (J), KashFlow_143 (J), Klein_142 (J), Lucky2013_136 (J), Marleymoo_127 (J), MiaZeal_143 (J), Minerva_144 (J), NihilNomen_146 (J), Odette_148 (J), Optimus_135 (J), Phoebus_144 (J), Porcelain_140 (J), Pound_136 (J), Redno2_139 (J), Schatzie_140 (J), Thibault_127 (J), ThreeRngTarjay_139 (J), Wanda_144 (J), Yeet_138 (J), Zelink_139 (J),

Start 58:

- Found in 35 of 432 (8.1%) of genes in pham
- Manual Annotations of this start: 2 of 381
- Called 5.7% of time when present
- Phage (with cluster) where this start called: Bumble_49 (FH), Circuit_48 (FH),

Start 59:

- Found in 1 of 432 (0.2%) of genes in pham
- Manual Annotations of this start: 1 of 381
- Called 100.0% of time when present
- Phage (with cluster) where this start called: Squiddly_84 (DN2),

Start 61:

- Found in 1 of 432 (0.2%) of genes in pham
- Manual Annotations of this start: 1 of 381
- Called 100.0% of time when present
- Phage (with cluster) where this start called: Yang_46 (AZ1),

Start 62:

- Found in 27 of 432 (6.2%) of genes in pham
- Manual Annotations of this start: 11 of 381
- Called 92.6% of time when present
- Phage (with cluster) where this start called: Amanises_34 (AS1), Bedetta_35 (AS2), Bible12_33 (AS2), Bolt007_53 (FH), CalWood4100_57 (FH), Chicken_28 (AS1), Colusalem_33 (AS2), Eesa_29 (AS1), Gravel_33 (AS1), KendraB23_34 (AS1), Klevey_55 (FH), Lilmac1015_57 (FH), LittleTokyo_33 (AS2), Nandito_53 (FH), Niblet_29 (AS1), Orcanus_30 (AS1), OtsoOtso_33 (AS2), Pelletreau_33 (AS1), PhirstandPhine_35 (AS2), Pineda_34 (AS2), Polka_32 (AS2), Prairie_53 (FH), Toad24_32 (AS1), Westrich_33 (AS1), Zixiang_29 (AS1),

Start 63:

- Found in 269 of 432 (62.3%) of genes in pham
- Manual Annotations of this start: 242 of 381
- Called 98.5% of time when present
- Phage (with cluster) where this start called: Akhila_51 (F1), Alexphander_64 (F1), AlpineSix_65 (F1), ArcusAngelus_62 (F1), Ardmore_52 (F1), Aubs_60 (F1), Avani_68 (F2), Batiatus_58 (F1), Beakin_61 (F1), Beanstalk_60 (F1), BigPhil_55 (F1), Bipolar_58 (F1), Blarby_72 (F), Blexus_58 (F1), BlueCrab_60 (F1), BobaPhett_64 (F1), Bobi_65 (F1), BodEinwohner17_60 (F1), Boomer_65 (F1), Brocalys_55 (F1),

Brookers_56 (F1), Brushbloom_62 (F1), Bubbles123_56 (F1), Burwell21_58 (F1), BuzzLyseyear_66 (F1), ByChance_52 (F1), Byougenkin_58 (F1), Cabrinians_61 (F1), CaptainTrips_57 (F1), Cerasum_55 (F1), Che8_64 (F1), Che9d_67 (F2), Cheesepuff_65 (F1), Cheesepuff_67 (F1), Chevrolet_65 (F1), Chuckly_63 (F1), Clifton_55 (F1), Coco12_58 (F1), Corium_57 (F1), Cornie_54 (F5), Cornie_56 (F5), Cornucopia_62 (F1), Crumble_55 (F1), DLane_55 (F1), DRBy19_63 (F1), DaWorst_61 (F1), DaddyRickover_59 (F1), Daenerys_54 (F1), Dante_61 (F1), DeadP_66 (F1), Demsculpinboyz_69 (F2), Demsculpinboyz_71 (F2), DillTech15_57 (F1), DirtMcgirt_59 (F1), DoRead_61 (F1), Donkeykong_63 (F1), Doomphist_60 (F1), Doomslug_69 (F), Dorothy_58 (F1), DosHalletts_62 (F1), DotProduct_54 (F1), Doug_62 (F1), Drago_58 (F1), Eish_64 (F1), EleanorGeorge_61 (F1), EmiMonkey_58 (F1), Emma_61 (F1), Emmaloid_61 (F1), Empress_58 (F1), Enby_61 (F1), Eradicator_53 (F1), Estave1_63 (F1), Fancypants_62 (F1), Fastidio_60 (F1), Filuzino_58 (F1), Firehouse51_61 (F1), Flathead_60 (F1), Florinda_71 (F1), Footloose_58 (singleton), FreddyB_61 (F1), Fruitloop_57 (F1), GUmbie_58 (F1), Galactic_59 (F1), Gandolph_63 (F1), GigiOuiOui_56 (F1), Girafales_69 (F1), Girr_58 (F1), Gorge_64 (F1), Grimmer_70 (F1), Hades_61 (F1), Hamulus_61 (F1), Harley_62 (F1), Hegedechwinu_60 (F1), Hlubikazi_56 (F1), IbOuu_59 (F1), Ibhubesi_60 (F1), Inventum_55 (F1), IrishSherpFalk_61 (F1), Jabbawokkie_74 (F2), JalFarm20_72 (F1), James_64 (F1), Jant_63 (F1), Jarcob_60 (F1), Jennelsea_57 (F1), Jinglebell_65 (F1), Job42_62 (F1), JoeyJr_55 (F1), Juice456_60 (F1), Juniper1_57 (F1), Juniper1_59 (F1), Karhdo_57 (F1), Kenuha5_57 (F1), Kersh_62 (F1), Kimberlium_61 (F1), Kimberlium_63 (F1), KingJulian_60 (F1), KingMidas_59 (F1), Kingsley_56 (F1), Koella_54 (F1), Krakatau_57 (F1), KristaRAM_63 (F1), LastJedi_54 (F1), Latretium_62 (F1), Leozinho_59 (F1), Leperchaun_52 (F1), LilMoolah_58 (F1), LittleShirley_59 (F1), Lizziana_66 (F1), Llama_65 (F1), Llij_56 (F1), Lorde_60 (F1), Lucia_60 (F1), LunaBlu_62 (F1), LunaStella_57 (F4), LunaStella_59 (F4), MadMen_58 (F1), Madiba_58 (F1), Mahavrat_58 (F1), Mandlovu_56 (F1), Maravista_61 (F1), Marker_62 (F1), Martik_60 (F1), Mattes_64 (F1), Medindi_56 (F1), Melissauren88_58 (F1), MilanaBonita_50 (F1), MilleniumForce_63 (F1), MinionDave_59 (F1), Minnie_63 (F1), MisterCuddles_58 (F1), Modragons_64 (F1), Moonbeam_58 (F1), Mova_61 (F1), Mozy_69 (F1), Ms6_55 (F1), MulchExplorer_61 (F1), MulchExplorer_63 (F1), Mutaforma13_64 (F1), Mwanjiwa_66 (F1), NewHope4_61 (F1), Nichirin_67 (F1), Nivrat_56 (F1), NormanBulbieJr_60 (F1), Ochi17_63 (F1), OfUltron_65 (F1), Ogopogo_65 (F1), Okabe_55 (F8), Oksu_64 (F1), OldBen_57 (F1), OlympiaSaint_62 (F1), Ovechkin_58 (F1), OwlsT2W_60 (F1), PHappiness_55 (F1), PMC_57 (F1), Pacc40_54 (F1), PatoPoderoso_57 (F1), Peridot_61 (F1), Phalconet_58 (F1), Phanphagia_57 (F1), Phasih_58 (F1), Phatniss_58 (F1), PhesterPotato_60 (F1), Philus_63 (F1), PhilipPhlop_60 (F1), Pippy_58 (F1), Plumbus_62 (F1), Poenanya_60 (F1), Polka14_58 (F1), Pollywog_61 (F1), PopTart_54 (F1), Priscilla_60 (F1), QuickMath_60 (F1), QuickMath_62 (F1), Quico_68 (F1), Radiance_59 (F1), Ramsey_59 (F1), Renaud18_64 (F4), Renaud18_66 (F4), Rialto_66 (F1), RitaG_55 (F1), Rita_61 (F1), Rockne_61 (F1), RockyHorror_61 (F1), Royals2015_62 (F1), Ruby_56 (F1), SG4_57 (F1), Saal_62 (F1), Sabbb_64 (F1), Sandalphon_61 (F1), Sarma624_57 (F1), Sassafras_58 (F1), SassyB_54 (F1), Scottish_58 (F1), Sebastian_65 (F1), Seagreen_59 (F1), Shauna1_58 (F1), ShiLan_59 (F1), ShowerHandel_63 (F1), ShroomBoi_62 (F1), SiSi_58 (F1), SilverChicken_70 (F2), SimranZ1_60 (F1), Slim_61 (F1), Soul22_66 (F2), Sparkdehlily_67 (F1), Spartacus_62 (F1), Spikelee_67 (F1), Spoonbill_57 (F1), Squirty_62 (F3), StAnnes_58 (F1), Starcevic_58 (F1), Starcevic_60 (F1), Strokeseat_56 (F1), SuperGrey_63 (F1), SwagPigglett_65 (F1), TChen_59 (F4), TChen_61 (F4), TDanisky_67 (F1), Taj_64 (F1), Tchotchke_60 (F1), ThetaBob_63 (F4), ThetaBob_65 (F4), Tootsieroll_61 (F1), Topiatin_66 (F1), Topiatin_68 (F1),

Totinger_59 (F1), Tweety_59 (F1), UncleRicky_59 (F1), VRedHorse_60 (F1), Velveteen_54 (F1), Veteran_57 (F1), Violac_62 (F1), Vivum_61 (F1), Wachhund_61 (F1), Wee_64 (F1), Whatsapiecost_60 (F1), Whouxphf_57 (F1), WillSterrel_61 (F1), XFactor_58 (F1), Yorick_59 (F1), Yoshi_71 (F2), Yoshi_73 (F2), Zapner_73 (F2), Zerg_60 (F1), Zizzle_64 (F1),

Start 64:

- Found in 33 of 432 (7.6%) of genes in pham
- Manual Annotations of this start: 30 of 381
- Called 100.0% of time when present
- Phage (with cluster) where this start called: BigPhil_54 (F1), Brookers_55 (F1), Cerasum_54 (F1), Che8_63 (F1), Che9d_66 (F2), Cheesepuff_64 (F1), Coco12_57 (F1), Cornie_53 (F5), Demsculpinboyz_68 (F2), DoRead_60 (F1), DotProduct_53 (F1), Harley_61 (F1), IMpilo_54 (F1), JalFarm20_71 (F1), Jant_62 (F1), Juice456_59 (F1), Juniper1_56 (F1), Kimberlium_60 (F1), Kingsley_55 (F1), LunaStella_56 (F4), MulchExplorer_60 (F1), Ovechkin_57 (F1), QuickMath_59 (F1), Renaud18_63 (F4), Royals2015_61 (F1), Sarma624_56 (F1), Seagreen_58 (F1), Starcevich_57 (F1), TChen_58 (F4), ThetaBob_62 (F4), Topiatin_65 (F1), Velveteen_53 (F1), Yoshi_70 (F2),

Start 65:

- Found in 5 of 432 (1.2%) of genes in pham
- Manual Annotations of this start: 4 of 381
- Called 80.0% of time when present
- Phage (with cluster) where this start called: AllBusiness_48 (FF), Causa_142 (AI), Hawkeye_86 (D2), StAugustine_140 (AI),

Start 66:

- Found in 2 of 432 (0.5%) of genes in pham
- Manual Annotations of this start: 2 of 381
- Called 100.0% of time when present
- Phage (with cluster) where this start called: RedWattleHog_91 (DX), Stormageddon_88 (DX),

Start 67:

- Found in 5 of 432 (1.2%) of genes in pham
- Manual Annotations of this start: 2 of 381
- Called 40.0% of time when present
- Phage (with cluster) where this start called: Phrappuccino_165 (AA), Settecandela_165 (AA),

Start 68:

- Found in 1 of 432 (0.2%) of genes in pham
- Manual Annotations of this start: 1 of 381
- Called 100.0% of time when present
- Phage (with cluster) where this start called: MalagasyRose_65 (AG),

Start 70:

- Found in 3 of 432 (0.7%) of genes in pham
- Manual Annotations of this start: 3 of 381
- Called 100.0% of time when present
- Phage (with cluster) where this start called: CherryTomatoes_47 (DO), Pupper_45 (DO), SCentae_45 (DO),

Start 71:

- Found in 6 of 432 (1.4%) of genes in pham
- Manual Annotations of this start: 6 of 381
- Called 100.0% of time when present
- Phage (with cluster) where this start called: Hortus1_71 (ED1), OlinDD_71 (ED1), Pioneer3_71 (ED1), Platte_71 (ED1), Tandem_71 (ED1), Wolfstar_76 (ED),

Start 73:

- Found in 4 of 432 (0.9%) of genes in pham
- Manual Annotations of this start: 1 of 381
- Called 75.0% of time when present
- Phage (with cluster) where this start called: CharlottesWeb_47 (DR), JellyBelly_47 (DR), Mariokart_48 (DR),

Start 75:

- Found in 29 of 432 (6.7%) of genes in pham
- Manual Annotations of this start: 1 of 381
- Called 3.4% of time when present
- Phage (with cluster) where this start called: Chickaboom_31 (AS1),

Start 76:

- Found in 294 of 432 (68.1%) of genes in pham
- Manual Annotations of this start: 1 of 381
- Called 0.7% of time when present
- Phage (with cluster) where this start called: IMpilo_55 (F1), KHumphrey_31 (AS3),

Summary by clusters:

There are 29 clusters represented in this pham: DO, singleton, FF, DB, ED1, B13, DX, FH, DR, DN2, AA, AS2, AS1, AG, F, AI, ED, J, CV, AS3, F1, F2, F3, F4, F5, F8, B8, AZ1, D2,

Info for manual annotations of cluster AA:

- Start number 67 was manually annotated 2 times for cluster AA.

Info for manual annotations of cluster AG:

- Start number 68 was manually annotated 1 time for cluster AG.

Info for manual annotations of cluster AI:

- Start number 65 was manually annotated 2 times for cluster AI.

Info for manual annotations of cluster AS1:

- Start number 62 was manually annotated 3 times for cluster AS1.
- Start number 75 was manually annotated 1 time for cluster AS1.

Info for manual annotations of cluster AS2:

- Start number 62 was manually annotated 4 times for cluster AS2.

Info for manual annotations of cluster AS3:

- Start number 76 was manually annotated 1 time for cluster AS3.

Info for manual annotations of cluster AZ1:

- Start number 61 was manually annotated 1 time for cluster AZ1.

Info for manual annotations of cluster B13:

- Start number 48 was manually annotated 3 times for cluster B13.

Info for manual annotations of cluster B8:

- Start number 54 was manually annotated 1 time for cluster B8.

Info for manual annotations of cluster CV:

- Start number 55 was manually annotated 1 time for cluster CV.
- Start number 56 was manually annotated 20 times for cluster CV.

Info for manual annotations of cluster D2:

- Start number 65 was manually annotated 1 time for cluster D2.

Info for manual annotations of cluster DB:

- Start number 56 was manually annotated 4 times for cluster DB.

Info for manual annotations of cluster DN2:

- Start number 59 was manually annotated 1 time for cluster DN2.

Info for manual annotations of cluster DO:

- Start number 70 was manually annotated 3 times for cluster DO.

Info for manual annotations of cluster DR:

- Start number 50 was manually annotated 1 time for cluster DR.
- Start number 52 was manually annotated 10 times for cluster DR.
- Start number 73 was manually annotated 1 time for cluster DR.

Info for manual annotations of cluster DX:

- Start number 66 was manually annotated 2 times for cluster DX.

Info for manual annotations of cluster ED:

- Start number 71 was manually annotated 1 time for cluster ED.

Info for manual annotations of cluster ED1:

- Start number 71 was manually annotated 5 times for cluster ED1.

Info for manual annotations of cluster F1:

- Start number 63 was manually annotated 221 times for cluster F1.
- Start number 64 was manually annotated 22 times for cluster F1.

Info for manual annotations of cluster F2:

- Start number 63 was manually annotated 9 times for cluster F2.
- Start number 64 was manually annotated 3 times for cluster F2.

Info for manual annotations of cluster F3:

- Start number 63 was manually annotated 1 time for cluster F3.

Info for manual annotations of cluster F4:

- Start number 63 was manually annotated 8 times for cluster F4.
- Start number 64 was manually annotated 4 times for cluster F4.

Info for manual annotations of cluster F5:

- Start number 63 was manually annotated 2 times for cluster F5.
- Start number 64 was manually annotated 1 time for cluster F5.

Info for manual annotations of cluster FF:

- Start number 44 was manually annotated 1 time for cluster FF.
- Start number 65 was manually annotated 1 time for cluster FF.

Info for manual annotations of cluster FH:

- Start number 58 was manually annotated 2 times for cluster FH.
- Start number 62 was manually annotated 4 times for cluster FH.

Info for manual annotations of cluster J:

- Start number 57 was manually annotated 32 times for cluster J.

Gene Information:

Gene: Akhila_51 Start: 36387, Stop: 36752, Start Num: 63

Candidate Starts for Akhila_51:

(Start: 63 @36387 has 242 MA's), (Start: 76 @36420 has 1 MA's), (78, 36426), (87, 36438), (96, 36480), (101, 36510), (106, 36534), (107, 36537), (126, 36636), (127, 36642), (146, 36717), (147, 36720), (148, 36723),

Gene: Alexphander_64 Start: 40703, Stop: 41068, Start Num: 63

Candidate Starts for Alexphander_64:

(Start: 63 @40703 has 242 MA's), (Start: 76 @40736 has 1 MA's), (85, 40751), (87, 40754), (95, 40793), (96, 40796), (99, 40817), (106, 40850), (114, 40877), (119, 40910), (126, 40952), (127, 40958), (153, 41054),

Gene: AllBusiness_48 Start: 35021, Stop: 35380, Start Num: 65

Candidate Starts for AllBusiness_48:

(Start: 44 @34973 has 1 MA's), (Start: 56 @35006 has 24 MA's), (Start: 63 @35018 has 242 MA's), (Start: 65 @35021 has 4 MA's), (77, 35054), (86, 35072), (97, 35120), (128, 35279),

Gene: AlpineSix_65 Start: 42816, Stop: 43181, Start Num: 63

Candidate Starts for AlpineSix_65:

(Start: 63 @42816 has 242 MA's), (Start: 76 @42849 has 1 MA's), (85, 42864), (87, 42867), (95, 42906), (96, 42909), (99, 42930), (106, 42963), (114, 42990), (119, 43023), (126, 43065), (127, 43071), (153, 43167),

Gene: Amanises_34 Start: 22613, Stop: 22260, Start Num: 62

Candidate Starts for Amanises_34:

(Start: 62 @22613 has 11 MA's), (97, 22514), (147, 22277),

Gene: AnClar_48 Start: 43435, Stop: 43061, Start Num: 52

Candidate Starts for AnClar_48:

(Start: 52 @43435 has 10 MA's), (81, 43375), (98, 43312), (99, 43303), (124, 43183),

Gene: Archis_54 Start: 35570, Stop: 35932, Start Num: 56

Candidate Starts for Archis_54:

(28, 35426), (33, 35462), (37, 35501), (Start: 56 @35570 has 24 MA's), (100, 35699), (104, 35723),

Gene: ArcusAngelus_62 Start: 40946, Stop: 41311, Start Num: 63

Candidate Starts for ArcusAngelus_62:

(Start: 63 @40946 has 242 MA's), (Start: 76 @40979 has 1 MA's), (78, 40985), (87, 40997), (96, 41039), (101, 41069), (106, 41093), (107, 41096), (126, 41195), (127, 41201), (146, 41276),

Gene: Ardmore_52 Start: 38473, Stop: 38838, Start Num: 63

Candidate Starts for Ardmore_52:

(Start: 63 @38473 has 242 MA's), (Start: 76 @38506 has 1 MA's), (78, 38512), (87, 38524), (96, 38566), (101, 38596), (106, 38620), (107, 38623), (126, 38722), (127, 38728), (146, 38803),

Gene: Aubs_60 Start: 40637, Stop: 41002, Start Num: 63

Candidate Starts for Aubs_60:

(Start: 63 @40637 has 242 MA's), (Start: 76 @40670 has 1 MA's), (78, 40676), (87, 40688), (101, 40760), (106, 40784), (107, 40787), (114, 40811), (126, 40886), (127, 40892), (146, 40967),

Gene: Avani_68 Start: 41015, Stop: 41380, Start Num: 63

Candidate Starts for Avani_68:

(Start: 63 @41015 has 242 MA's), (Start: 76 @41048 has 1 MA's), (85, 41063), (87, 41066), (95, 41105), (96, 41108), (99, 41129), (106, 41162), (113, 41183), (114, 41189), (119, 41222), (126, 41264), (127, 41270), (153, 41366),

Gene: Axumite_48 Start: 41091, Stop: 40741, Start Num: 52

Candidate Starts for Axumite_48:

(Start: 52 @41091 has 10 MA's), (81, 41046), (86, 41037), (90, 41022), (99, 40974), (119, 40893),

Gene: BAKA_144 Start: 76097, Stop: 76450, Start Num: 57

Candidate Starts for BAKA_144:

(Start: 57 @76097 has 32 MA's), (119, 76298), (126, 76340),

Gene: Barco_49 Start: 34620, Stop: 34982, Start Num: 56

Candidate Starts for Barco_49:

(28, 34476), (33, 34512), (37, 34551), (Start: 56 @34620 has 24 MA's), (100, 34749), (104, 34773),

Gene: Batiatus_58 Start: 40347, Stop: 40712, Start Num: 63

Candidate Starts for Batiatus_58:

(Start: 63 @40347 has 242 MA's), (Start: 76 @40380 has 1 MA's), (78, 40386), (87, 40398), (101, 40470), (106, 40494), (107, 40497), (114, 40521), (126, 40596), (127, 40602), (146, 40677),

Gene: Beakin_61 Start: 39476, Stop: 39841, Start Num: 63

Candidate Starts for Beakin_61:

(Start: 63 @39476 has 242 MA's), (Start: 76 @39509 has 1 MA's), (78, 39515), (87, 39527), (96, 39569), (101, 39599), (106, 39623), (107, 39626), (126, 39725), (127, 39731), (146, 39806),

Gene: Beanstalk_60 Start: 39020, Stop: 39385, Start Num: 63

Candidate Starts for Beanstalk_60:

(Start: 63 @39020 has 242 MA's), (Start: 76 @39053 has 1 MA's), (85, 39068), (87, 39071), (96, 39113), (99, 39134), (106, 39167), (113, 39188), (114, 39194), (119, 39227), (127, 39275), (153, 39371),

Gene: Bedetta_35 Start: 22003, Stop: 21653, Start Num: 62

Candidate Starts for Bedetta_35:

(3, 22510), (11, 22327), (25, 22186), (38, 22093), (Start: 62 @22003 has 11 MA's), (147, 21670),

Gene: Beem_146 Start: 77695, Stop: 78048, Start Num: 57

Candidate Starts for Beem_146:

(Start: 57 @77695 has 32 MA's), (119, 77896), (126, 77938),

Gene: Begonia_49 Start: 37159, Stop: 37521, Start Num: 56

Candidate Starts for Begonia_49:

(37, 37090), (Start: 56 @37159 has 24 MA's), (93, 37258), (99, 37285), (100, 37288), (104, 37312), (151, 37507),

Gene: Bible12_33 Start: 21861, Stop: 21511, Start Num: 62

Candidate Starts for Bible12_33:

(11, 22185), (25, 22044), (38, 21951), (Start: 62 @21861 has 11 MA's), (147, 21528),

Gene: BigPhil_54 Start: 35652, Stop: 35999, Start Num: 64

Candidate Starts for BigPhil_54:

(Start: 58 @35625 has 2 MA's), (60, 35643), (Start: 64 @35652 has 30 MA's), (Start: 76 @35682 has 1 MA's), (79, 35691), (88, 35709), (99, 35763), (106, 35790), (119, 35847), (123, 35877), (126, 35889),

Gene: BigPhil_55 Start: 35996, Stop: 36349, Start Num: 63

Candidate Starts for BigPhil_55:

(Start: 54 @35960 has 1 MA's), (Start: 63 @35996 has 242 MA's), (Start: 75 @36026 has 1 MA's), (Start: 76 @36029 has 1 MA's), (83, 36041), (87, 36047), (99, 36110), (101, 36119), (102, 36125), (126, 36239), (130, 36260), (144, 36317), (150, 36329),

Gene: BiggityBass_47 Start: 42936, Stop: 42535, Start Num: 52

Candidate Starts for BiggityBass_47:

(Start: 52 @42936 has 10 MA's), (81, 42849), (98, 42786), (100, 42774), (126, 42651),

Gene: Bipolar_58 Start: 40097, Stop: 40462, Start Num: 63

Candidate Starts for Bipolar_58:

(Start: 63 @40097 has 242 MA's), (Start: 76 @40130 has 1 MA's), (79, 40139), (87, 40148), (96, 40190), (101, 40220), (106, 40244), (107, 40247), (126, 40346), (127, 40352), (146, 40427),

Gene: BirdsNest_93 Start: 66573, Stop: 66154, Start Num: 48

Candidate Starts for BirdsNest_93:

(Start: 48 @66573 has 3 MA's), (81, 66492), (114, 66363), (119, 66330), (132, 66255),

Gene: Blarby_72 Start: 42116, Stop: 42481, Start Num: 63

Candidate Starts for Blarby_72:

(Start: 63 @42116 has 242 MA's), (Start: 76 @42149 has 1 MA's), (85, 42164), (87, 42167), (95, 42206), (96, 42209), (99, 42230), (106, 42263), (114, 42290), (119, 42323), (126, 42365), (127, 42371), (153, 42467),

Gene: Blexus_58 Start: 40670, Stop: 41035, Start Num: 63

Candidate Starts for Blexus_58:

(Start: 63 @40670 has 242 MA's), (Start: 76 @40703 has 1 MA's), (85, 40718), (87, 40721), (96, 40763), (99, 40784), (106, 40817), (114, 40844), (119, 40877), (126, 40919), (127, 40925), (153, 41021),

Gene: BlingBling_48 Start: 35583, Stop: 35945, Start Num: 56

Candidate Starts for BlingBling_48:

(28, 35439), (33, 35475), (37, 35514), (Start: 56 @35583 has 24 MA's), (100, 35712), (104, 35736),

Gene: BlueCrab_60 Start: 40975, Stop: 41340, Start Num: 63

Candidate Starts for BlueCrab_60:

(Start: 63 @40975 has 242 MA's), (Start: 76 @41008 has 1 MA's), (85, 41023), (87, 41026), (96, 41068), (99, 41089), (113, 41143), (114, 41149), (119, 41182), (126, 41224), (127, 41230), (153, 41326),

Gene: BobaPhett_64 Start: 42932, Stop: 43297, Start Num: 63

Candidate Starts for BobaPhett_64:

(Start: 63 @42932 has 242 MA's), (Start: 76 @42965 has 1 MA's), (85, 42980), (87, 42983), (95, 43022), (96, 43025), (99, 43046), (106, 43079), (114, 43106), (119, 43139), (126, 43181), (127, 43187), (153, 43283),

Gene: Bobby_134 Start: 77532, Stop: 77885, Start Num: 57

Candidate Starts for Bobby_134:

(Start: 57 @77532 has 32 MA's), (119, 77733), (126, 77775),

Gene: Bobi_65 Start: 41950, Stop: 42315, Start Num: 63

Candidate Starts for Bobi_65:

(Start: 63 @41950 has 242 MA's), (Start: 76 @41983 has 1 MA's), (78, 41989), (87, 42001), (96, 42043), (101, 42073), (106, 42097), (107, 42100), (126, 42199), (127, 42205), (146, 42280),

Gene: BodEinwohner17_60 Start: 39737, Stop: 40102, Start Num: 63

Candidate Starts for BodEinwohner17_60:

(Start: 63 @39737 has 242 MA's), (Start: 76 @39770 has 1 MA's), (85, 39785), (87, 39788), (96, 39830), (99, 39851), (106, 39884), (113, 39905), (114, 39911), (119, 39944), (126, 39986), (127, 39992), (153, 40088),

Gene: Bolt007_53 Start: 38007, Stop: 38369, Start Num: 62

Candidate Starts for Bolt007_53:

(36, 37902), (37, 37905), (Start: 62 @38007 has 11 MA's), (135, 38295),

Gene: Bombitas_132 Start: 75106, Stop: 75459, Start Num: 57

Candidate Starts for Bombitas_132:

(Start: 57 @75106 has 32 MA's), (119, 75307), (126, 75349),

Gene: Boomer_65 Start: 42607, Stop: 42972, Start Num: 63

Candidate Starts for Boomer_65:

(Start: 63 @42607 has 242 MA's), (Start: 76 @42640 has 1 MA's), (85, 42655), (87, 42658), (95, 42697), (96, 42700), (99, 42721), (106, 42754), (114, 42781), (119, 42814), (126, 42856), (127, 42862), (153, 42958),

Gene: Brocalys_55 Start: 37114, Stop: 37479, Start Num: 63

Candidate Starts for Brocalys_55:

(Start: 63 @37114 has 242 MA's), (Start: 76 @37147 has 1 MA's), (85, 37162), (87, 37165), (95, 37204), (96, 37207), (99, 37228), (106, 37261), (114, 37288), (119, 37321), (126, 37363), (127, 37369), (153, 37465),

Gene: Brookers_55 Start: 38603, Stop: 38950, Start Num: 64

Candidate Starts for Brookers_55:

(Start: 58 @38576 has 2 MA's), (60, 38594), (Start: 64 @38603 has 30 MA's), (Start: 76 @38633 has 1 MA's), (79, 38642), (88, 38660), (99, 38714), (106, 38741), (119, 38798), (123, 38828), (126, 38840),

Gene: Brookers_56 Start: 38947, Stop: 39300, Start Num: 63

Candidate Starts for Brookers_56:

(Start: 54 @38911 has 1 MA's), (Start: 63 @38947 has 242 MA's), (Start: 75 @38977 has 1 MA's), (Start: 76 @38980 has 1 MA's), (83, 38992), (87, 38998), (99, 39061), (101, 39070), (102, 39076), (126, 39190), (130, 39211), (144, 39268), (150, 39280),

Gene: Brushbloom_62 Start: 41279, Stop: 41644, Start Num: 63

Candidate Starts for Brushbloom_62:

(Start: 63 @41279 has 242 MA's), (Start: 76 @41312 has 1 MA's), (78, 41318), (87, 41330), (101, 41402), (106, 41426), (107, 41429), (114, 41453), (126, 41528), (127, 41534), (146, 41609),

Gene: Bubbles123_56 Start: 40256, Stop: 40621, Start Num: 63

Candidate Starts for Bubbles123_56:

(Start: 63 @40256 has 242 MA's), (Start: 76 @40289 has 1 MA's), (79, 40298), (87, 40307), (99, 40370), (106, 40403), (107, 40406), (109, 40418), (114, 40430), (126, 40505), (127, 40511), (146, 40586),

Gene: Bumble_49 Start: 35709, Stop: 36101, Start Num: 58

Candidate Starts for Bumble_49:

(Start: 58 @35709 has 2 MA's), (120, 35925), (135, 36012),

Gene: Burwell21_58 Start: 40215, Stop: 40580, Start Num: 63

Candidate Starts for Burwell21_58:

(Start: 63 @40215 has 242 MA's), (Start: 76 @40248 has 1 MA's), (85, 40263), (87, 40266), (95, 40305), (96, 40308), (99, 40329), (106, 40362), (114, 40389), (119, 40422), (126, 40464), (127, 40470), (153, 40566),

Gene: BuzzLyseyear_66 Start: 41636, Stop: 42001, Start Num: 63

Candidate Starts for BuzzLyseyear_66:

(Start: 63 @41636 has 242 MA's), (Start: 76 @41669 has 1 MA's), (85, 41684), (87, 41687), (95, 41726), (96, 41729), (99, 41750), (106, 41783), (114, 41810), (119, 41843), (126, 41885), (127, 41891), (153, 41987),

Gene: ByChance_52 Start: 35903, Stop: 36268, Start Num: 63

Candidate Starts for ByChance_52:

(Start: 63 @35903 has 242 MA's), (Start: 76 @35936 has 1 MA's), (85, 35951), (87, 35954), (96, 35996), (99, 36017), (106, 36050), (113, 36071), (114, 36077), (119, 36110), (126, 36152), (127, 36158), (153, 36254),

Gene: Byougenkin_58 Start: 39979, Stop: 40344, Start Num: 63

Candidate Starts for Byougenkin_58:

(Start: 63 @39979 has 242 MA's), (Start: 76 @40012 has 1 MA's), (85, 40027), (87, 40030), (96, 40072), (99, 40093), (113, 40147), (114, 40153), (119, 40186), (126, 40228), (127, 40234), (153, 40330),

Gene: Cabrinians_61 Start: 40293, Stop: 40658, Start Num: 63

Candidate Starts for Cabrinians_61:

(Start: 63 @40293 has 242 MA's), (Start: 76 @40326 has 1 MA's), (85, 40341), (87, 40344), (95, 40383), (96, 40386), (99, 40407), (106, 40440), (114, 40467), (119, 40500), (126, 40542), (127, 40548), (153, 40644),

Gene: CalWood4100_57 Start: 38014, Stop: 38406, Start Num: 62

Candidate Starts for CalWood4100_57:

(Start: 62 @38014 has 11 MA's), (135, 38299), (147, 38335),

Gene: CaptainKirk2_51 Start: 34868, Stop: 35230, Start Num: 56

Candidate Starts for CaptainKirk2_51:

(28, 34724), (33, 34760), (37, 34799), (Start: 56 @34868 has 24 MA's), (100, 34997), (104, 35021),

Gene: CaptainTrips_57 Start: 39789, Stop: 40154, Start Num: 63

Candidate Starts for CaptainTrips_57:

(Start: 63 @39789 has 242 MA's), (Start: 76 @39822 has 1 MA's), (85, 39837), (87, 39840), (95, 39879), (96, 39882), (99, 39903), (106, 39936), (114, 39963), (119, 39996), (126, 40038), (127, 40044), (153, 40140),

Gene: Causa_142 Start: 83302, Stop: 82940, Start Num: 65

Candidate Starts for Causa_142:

(Start: 56 @83317 has 24 MA's), (Start: 65 @83302 has 4 MA's), (Start: 67 @83293 has 2 MA's), (74, 83278), (92, 83221), (94, 83212),

Gene: Cerasum_55 Start: 36014, Stop: 36367, Start Num: 63

Candidate Starts for Cerasum_55:

(Start: 54 @35978 has 1 MA's), (Start: 63 @36014 has 242 MA's), (Start: 75 @36044 has 1 MA's), (Start: 76 @36047 has 1 MA's), (83, 36059), (87, 36065), (99, 36128), (101, 36137), (102, 36143), (126, 36257), (130, 36278), (144, 36335), (150, 36347),

Gene: Cerasum_54 Start: 35670, Stop: 36017, Start Num: 64

Candidate Starts for Cerasum_54:

(Start: 58 @35643 has 2 MA's), (60, 35661), (Start: 64 @35670 has 30 MA's), (Start: 76 @35700 has 1 MA's), (79, 35709), (88, 35727), (99, 35781), (106, 35808), (119, 35865), (123, 35895), (126, 35907),

Gene: CharlottesWeb_47 Start: 40439, Stop: 40119, Start Num: 73

Candidate Starts for CharlottesWeb_47:

(Start: 52 @40457 has 10 MA's), (Start: 73 @40439 has 1 MA's), (99, 40352), (127, 40223),

Gene: Che8_64 Start: 42503, Stop: 42856, Start Num: 63

Candidate Starts for Che8_64:

(Start: 54 @42467 has 1 MA's), (Start: 63 @42503 has 242 MA's), (Start: 75 @42533 has 1 MA's), (Start: 76 @42536 has 1 MA's), (83, 42548), (87, 42554), (99, 42617), (101, 42626), (102, 42632), (126, 42746), (130, 42767), (144, 42824), (150, 42836),

Gene: Che8_63 Start: 42159, Stop: 42506, Start Num: 64

Candidate Starts for Che8_63:

(Start: 58 @42132 has 2 MA's), (60, 42150), (Start: 64 @42159 has 30 MA's), (Start: 76 @42189 has 1 MA's), (79, 42198), (88, 42216), (99, 42270), (106, 42297), (119, 42354), (123, 42384), (126, 42396),

Gene: Che9d_67 Start: 39585, Stop: 39938, Start Num: 63

Candidate Starts for Che9d_67:

(Start: 54 @39549 has 1 MA's), (Start: 63 @39585 has 242 MA's), (Start: 75 @39615 has 1 MA's), (Start: 76 @39618 has 1 MA's), (83, 39630), (87, 39636), (99, 39699), (101, 39708), (102, 39714), (126, 39828), (130, 39849), (144, 39906), (150, 39918),

Gene: Che9d_66 Start: 39241, Stop: 39588, Start Num: 64

Candidate Starts for Che9d_66:

(Start: 58 @39214 has 2 MA's), (60, 39232), (Start: 64 @39241 has 30 MA's), (Start: 76 @39271 has 1 MA's), (79, 39280), (88, 39298), (99, 39352), (106, 39379), (119, 39436), (123, 39466), (126, 39478),

Gene: Cheesepuff_65 Start: 41627, Stop: 41980, Start Num: 63

Candidate Starts for Cheesepuff_65:

(Start: 54 @41591 has 1 MA's), (Start: 63 @41627 has 242 MA's), (Start: 75 @41657 has 1 MA's), (Start: 76 @41660 has 1 MA's), (83, 41672), (87, 41678), (99, 41741), (101, 41750), (102, 41756), (126, 41870), (130, 41891), (144, 41948), (150, 41960),

Gene: Cheesepuff_64 Start: 41283, Stop: 41630, Start Num: 64

Candidate Starts for Cheesepuff_64:

(Start: 58 @41256 has 2 MA's), (60, 41274), (Start: 64 @41283 has 30 MA's), (Start: 76 @41313 has 1 MA's), (79, 41322), (88, 41340), (99, 41394), (106, 41421), (119, 41478), (123, 41508), (126, 41520),

Gene: Cheesepuff_67 Start: 42252, Stop: 42617, Start Num: 63

Candidate Starts for Cheesepuff_67:

(Start: 63 @42252 has 242 MA's), (Start: 76 @42285 has 1 MA's), (85, 42300), (87, 42303), (95, 42342), (96, 42345), (99, 42366), (114, 42426), (119, 42459), (126, 42501), (127, 42507), (153, 42603),

Gene: CherryTomatoes_47 Start: 15930, Stop: 16262, Start Num: 70

Candidate Starts for CherryTomatoes_47:

(17, 15675), (Start: 56 @15903 has 24 MA's), (Start: 70 @15930 has 3 MA's), (90, 15984), (91, 15993), (99, 16032), (119, 16116), (130, 16179), (135, 16206),

Gene: Chevrolet_65 Start: 40947, Stop: 41312, Start Num: 63

Candidate Starts for Chevrolet_65:

(Start: 63 @40947 has 242 MA's), (Start: 76 @40980 has 1 MA's), (78, 40986), (87, 40998), (96, 41040), (101, 41070), (106, 41094), (107, 41097), (126, 41196), (127, 41202), (146, 41277),

Gene: Chickaboom_31 Start: 21673, Stop: 21350, Start Num: 75

Candidate Starts for Chickaboom_31:

(Start: 62 @21694 has 11 MA's), (Start: 75 @21673 has 1 MA's), (97, 21601), (130, 21430), (147, 21367),

Gene: Chicken_28 Start: 22015, Stop: 21665, Start Num: 62

Candidate Starts for Chicken_28:

(Start: 62 @22015 has 11 MA's), (97, 21916), (130, 21742), (146, 21682),

Gene: Chipko_58 Start: 39692, Stop: 40057, Start Num: 56

Candidate Starts for Chipko_58:

(2, 39188), (4, 39230), (12, 39395), (Start: 56 @39692 has 24 MA's), (99, 39818), (130, 39965),

Gene: Chuckly_63 Start: 40935, Stop: 41300, Start Num: 63

Candidate Starts for Chuckly_63:

(Start: 63 @40935 has 242 MA's), (Start: 76 @40968 has 1 MA's), (85, 40983), (87, 40986), (95, 41025), (96, 41028), (99, 41049), (106, 41082), (114, 41109), (119, 41142), (126, 41184), (127, 41190), (153, 41286),

Gene: Circuit_48 Start: 36342, Stop: 36734, Start Num: 58

Candidate Starts for Circuit_48:

(Start: 58 @36342 has 2 MA's), (114, 36522), (121, 36570), (135, 36645),

Gene: Clifton_55 Start: 37465, Stop: 37830, Start Num: 63

Candidate Starts for Clifton_55:

(Start: 63 @37465 has 242 MA's), (Start: 76 @37498 has 1 MA's), (85, 37513), (87, 37516), (95, 37555), (96, 37558), (99, 37579), (106, 37612), (114, 37639), (119, 37672), (126, 37714), (127, 37720), (153, 37816),

Gene: Coco12_57 Start: 39727, Stop: 40074, Start Num: 64

Candidate Starts for Coco12_57:

(Start: 58 @39700 has 2 MA's), (60, 39718), (Start: 64 @39727 has 30 MA's), (Start: 76 @39757 has 1 MA's), (79, 39766), (88, 39784), (99, 39838), (106, 39865), (119, 39922), (123, 39952), (126, 39964),

Gene: Coco12_58 Start: 40071, Stop: 40424, Start Num: 63

Candidate Starts for Coco12_58:

(Start: 54 @40035 has 1 MA's), (Start: 63 @40071 has 242 MA's), (Start: 75 @40101 has 1 MA's), (Start: 76 @40104 has 1 MA's), (83, 40116), (87, 40122), (99, 40185), (101, 40194), (102, 40200), (126, 40314), (130, 40335), (144, 40392), (150, 40404),

Gene: Colusalem_33 Start: 21842, Stop: 21492, Start Num: 62

Candidate Starts for Colusalem_33:

(11, 22166), (25, 22025), (38, 21932), (Start: 62 @21842 has 11 MA's), (147, 21509),

Gene: Constella_138 Start: 76348, Stop: 76701, Start Num: 57

Candidate Starts for Constella_138:

(Start: 57 @76348 has 32 MA's), (119, 76549), (126, 76591),

Gene: Corium_57 Start: 39332, Stop: 39697, Start Num: 63

Candidate Starts for Corium_57:

(Start: 63 @39332 has 242 MA's), (Start: 76 @39365 has 1 MA's), (85, 39380), (87, 39383), (95, 39422), (96, 39425), (99, 39446), (106, 39479), (114, 39506), (119, 39539), (126, 39581), (127, 39587), (153, 39683),

Gene: Cornie_53 Start: 37745, Stop: 38092, Start Num: 64

Candidate Starts for Cornie_53:

(Start: 58 @37718 has 2 MA's), (60, 37736), (Start: 64 @37745 has 30 MA's), (Start: 76 @37775 has 1 MA's), (79, 37784), (88, 37802), (99, 37856), (106, 37883), (119, 37940), (123, 37970), (126, 37982),

Gene: Cornie_56 Start: 38714, Stop: 39079, Start Num: 63

Candidate Starts for Cornie_56:

(Start: 63 @38714 has 242 MA's), (Start: 76 @38747 has 1 MA's), (85, 38762), (87, 38765), (95, 38804), (96, 38807), (99, 38828), (114, 38888), (119, 38921), (126, 38963), (127, 38969), (153, 39065),

Gene: Cornie_54 Start: 38089, Stop: 38442, Start Num: 63

Candidate Starts for Cornie_54:

(Start: 54 @38053 has 1 MA's), (Start: 63 @38089 has 242 MA's), (Start: 75 @38119 has 1 MA's), (Start: 76 @38122 has 1 MA's), (83, 38134), (87, 38140), (99, 38203), (101, 38212), (102, 38218), (126, 38332), (130, 38353), (144, 38410), (150, 38422),

Gene: Cornucopia_62 Start: 40943, Stop: 41308, Start Num: 63

Candidate Starts for Cornucopia_62:

(Start: 63 @40943 has 242 MA's), (Start: 76 @40976 has 1 MA's), (85, 40991), (87, 40994), (95, 41033), (96, 41036), (99, 41057), (113, 41111), (114, 41117), (119, 41150), (126, 41192), (127,

41198), (153, 41294),

Gene: Crumble_55 Start: 36229, Stop: 36594, Start Num: 63

Candidate Starts for Crumble_55:

(Start: 63 @36229 has 242 MA's), (Start: 76 @36262 has 1 MA's), (85, 36277), (87, 36280), (95, 36319), (96, 36322), (99, 36343), (106, 36376), (114, 36403), (119, 36436), (126, 36478), (127, 36484), (153, 36580),

Gene: DLane_55 Start: 38997, Stop: 39362, Start Num: 63

Candidate Starts for DLane_55:

(Start: 63 @38997 has 242 MA's), (Start: 76 @39030 has 1 MA's), (78, 39036), (87, 39048), (96, 39090), (101, 39120), (106, 39144), (107, 39147), (126, 39246), (127, 39252), (146, 39327),

Gene: DRBy19_63 Start: 41390, Stop: 41755, Start Num: 63

Candidate Starts for DRBy19_63:

(Start: 63 @41390 has 242 MA's), (Start: 76 @41423 has 1 MA's), (85, 41438), (87, 41441), (95, 41480), (96, 41483), (99, 41504), (106, 41537), (113, 41558), (114, 41564), (119, 41597), (126, 41639), (127, 41645), (153, 41741),

Gene: DaWorst_61 Start: 40694, Stop: 41059, Start Num: 63

Candidate Starts for DaWorst_61:

(Start: 63 @40694 has 242 MA's), (Start: 76 @40727 has 1 MA's), (85, 40742), (87, 40745), (95, 40784), (96, 40787), (99, 40808), (106, 40841), (114, 40868), (119, 40901), (126, 40943), (127, 40949), (153, 41045),

Gene: DaddyRickover_59 Start: 40432, Stop: 40797, Start Num: 63

Candidate Starts for DaddyRickover_59:

(Start: 63 @40432 has 242 MA's), (Start: 76 @40465 has 1 MA's), (85, 40480), (87, 40483), (96, 40525), (99, 40546), (106, 40579), (113, 40600), (114, 40606), (119, 40639), (126, 40681), (127, 40687), (153, 40783),

Gene: Daenerys_54 Start: 38542, Stop: 38907, Start Num: 63

Candidate Starts for Daenerys_54:

(Start: 63 @38542 has 242 MA's), (Start: 76 @38575 has 1 MA's), (85, 38590), (87, 38593), (96, 38635), (99, 38656), (106, 38689), (113, 38710), (114, 38716), (119, 38749), (126, 38791), (127, 38797), (153, 38893),

Gene: Dallas_145 Start: 77162, Stop: 77515, Start Num: 57

Candidate Starts for Dallas_145:

(Start: 57 @77162 has 32 MA's), (119, 77363), (126, 77405),

Gene: Dante_61 Start: 40217, Stop: 40582, Start Num: 63

Candidate Starts for Dante_61:

(Start: 63 @40217 has 242 MA's), (Start: 76 @40250 has 1 MA's), (85, 40265), (87, 40268), (95, 40307), (96, 40310), (99, 40331), (106, 40364), (114, 40391), (119, 40424), (126, 40466), (127, 40472), (153, 40568),

Gene: DeadP_66 Start: 42861, Stop: 43226, Start Num: 63

Candidate Starts for DeadP_66:

(Start: 63 @42861 has 242 MA's), (Start: 76 @42894 has 1 MA's), (85, 42909), (87, 42912), (95, 42951), (96, 42954), (99, 42975), (106, 43008), (114, 43035), (119, 43068), (126, 43110), (127, 43116), (153, 43212),

Gene: Delian_54 Start: 34866, Stop: 35228, Start Num: 56

Candidate Starts for Delian_54:

(28, 34722), (33, 34758), (37, 34797), (Start: 56 @34866 has 24 MA's), (100, 34995), (104, 35019),

Gene: Demsculpinboyz_69 Start: 39586, Stop: 39939, Start Num: 63

Candidate Starts for Demsculpinboyz_69:

(Start: 54 @39550 has 1 MA's), (Start: 63 @39586 has 242 MA's), (Start: 75 @39616 has 1 MA's), (Start: 76 @39619 has 1 MA's), (83, 39631), (87, 39637), (99, 39700), (101, 39709), (102, 39715), (126, 39829), (130, 39850), (150, 39919),

Gene: Demsculpinboyz_68 Start: 39242, Stop: 39589, Start Num: 64

Candidate Starts for Demsculpinboyz_68:

(Start: 58 @39215 has 2 MA's), (60, 39233), (Start: 64 @39242 has 30 MA's), (Start: 76 @39272 has 1 MA's), (79, 39281), (88, 39299), (99, 39353), (106, 39380), (119, 39437), (123, 39467), (126, 39479),

Gene: Demsculpinboyz_71 Start: 40214, Stop: 40579, Start Num: 63

Candidate Starts for Demsculpinboyz_71:

(Start: 63 @40214 has 242 MA's), (Start: 76 @40247 has 1 MA's), (85, 40262), (87, 40265), (95, 40304), (96, 40307), (99, 40328), (114, 40388), (119, 40421), (126, 40463), (127, 40469), (141, 40538), (153, 40565),

Gene: DillTech15_57 Start: 38876, Stop: 39241, Start Num: 63

Candidate Starts for DillTech15_57:

(Start: 63 @38876 has 242 MA's), (Start: 76 @38909 has 1 MA's), (85, 38924), (87, 38927), (95, 38966), (96, 38969), (99, 38990), (114, 39050), (119, 39083), (126, 39125), (127, 39131), (141, 39200), (153, 39227),

Gene: DirtMcgirt_59 Start: 38957, Stop: 39322, Start Num: 63

Candidate Starts for DirtMcgirt_59:

(Start: 63 @38957 has 242 MA's), (Start: 76 @38990 has 1 MA's), (85, 39005), (87, 39008), (95, 39047), (96, 39050), (99, 39071), (106, 39104), (113, 39125), (114, 39131), (119, 39164), (126, 39206), (127, 39212), (153, 39308),

Gene: DirtyBoi_56 Start: 37313, Stop: 37675, Start Num: 56

Candidate Starts for DirtyBoi_56:

(Start: 56 @37313 has 24 MA's), (99, 37436),

Gene: Dmitri_53 Start: 39335, Stop: 39700, Start Num: 56

Candidate Starts for Dmitri_53:

(Start: 56 @39335 has 24 MA's), (99, 39461),

Gene: DmpstrDiver_145 Start: 77081, Stop: 77434, Start Num: 57

Candidate Starts for DmpstrDiver_145:

(Start: 57 @77081 has 32 MA's), (119, 77282), (126, 77324),

Gene: DoRead_60 Start: 38654, Stop: 39001, Start Num: 64

Candidate Starts for DoRead_60:

(Start: 58 @38627 has 2 MA's), (60, 38645), (Start: 64 @38654 has 30 MA's), (Start: 76 @38684 has 1 MA's), (79, 38693), (88, 38711), (99, 38765), (106, 38792), (119, 38849), (123, 38879), (126, 38891),

Gene: DoRead_61 Start: 38998, Stop: 39351, Start Num: 63

Candidate Starts for DoRead_61:

(Start: 54 @38962 has 1 MA's), (Start: 63 @38998 has 242 MA's), (Start: 75 @39028 has 1 MA's), (Start: 76 @39031 has 1 MA's), (83, 39043), (87, 39049), (99, 39112), (101, 39121), (102, 39127), (126, 39241), (130, 39262), (144, 39319), (150, 39331),

Gene: Donkeykong_63 Start: 42892, Stop: 43257, Start Num: 63

Candidate Starts for Donkeykong_63:

(Start: 63 @42892 has 242 MA's), (Start: 76 @42925 has 1 MA's), (79, 42934), (87, 42943), (106, 43039), (107, 43042), (114, 43066), (126, 43141), (127, 43147), (146, 43222),

Gene: Doomphist_60 Start: 41387, Stop: 41752, Start Num: 63

Candidate Starts for Doomphist_60:

(Start: 63 @41387 has 242 MA's), (Start: 76 @41420 has 1 MA's), (85, 41435), (87, 41438), (96, 41480), (99, 41501), (106, 41534), (113, 41555), (114, 41561), (119, 41594), (126, 41636), (127, 41642), (153, 41738),

Gene: Doomslug_69 Start: 40807, Stop: 41172, Start Num: 63

Candidate Starts for Doomslug_69:

(Start: 63 @40807 has 242 MA's), (Start: 76 @40840 has 1 MA's), (85, 40855), (87, 40858), (95, 40897), (96, 40900), (99, 40921), (114, 40981), (119, 41014), (126, 41056), (127, 41062), (153, 41158),

Gene: Dorothy_58 Start: 39606, Stop: 39971, Start Num: 63

Candidate Starts for Dorothy_58:

(Start: 63 @39606 has 242 MA's), (Start: 76 @39639 has 1 MA's), (85, 39654), (87, 39657), (95, 39696), (96, 39699), (99, 39720), (106, 39753), (114, 39780), (119, 39813), (126, 39855), (127, 39861), (153, 39957),

Gene: DosHalletts_62 Start: 41742, Stop: 42107, Start Num: 63

Candidate Starts for DosHalletts_62:

(Start: 63 @41742 has 242 MA's), (Start: 76 @41775 has 1 MA's), (85, 41790), (87, 41793), (96, 41835), (99, 41856), (106, 41889), (113, 41910), (114, 41916), (119, 41949), (126, 41991), (127, 41997), (153, 42093),

Gene: DotProduct_53 Start: 38248, Stop: 38595, Start Num: 64

Candidate Starts for DotProduct_53:

(Start: 58 @38221 has 2 MA's), (60, 38239), (Start: 64 @38248 has 30 MA's), (69, 38260), (72, 38263), (Start: 76 @38278 has 1 MA's), (79, 38287), (88, 38305), (99, 38359), (106, 38386), (119, 38443), (123, 38473), (126, 38485), (154, 38587),

Gene: DotProduct_54 Start: 38592, Stop: 38945, Start Num: 63

Candidate Starts for DotProduct_54:

(Start: 54 @38556 has 1 MA's), (Start: 63 @38592 has 242 MA's), (Start: 75 @38622 has 1 MA's), (Start: 76 @38625 has 1 MA's), (83, 38637), (87, 38643), (99, 38706), (101, 38715), (102, 38721), (126, 38835), (130, 38856), (144, 38913), (150, 38925),

Gene: Doug_62 Start: 40960, Stop: 41325, Start Num: 63

Candidate Starts for Doug_62:

(Start: 63 @40960 has 242 MA's), (Start: 76 @40993 has 1 MA's), (87, 41011), (95, 41050), (96, 41053), (99, 41074), (106, 41107), (114, 41134), (119, 41167), (126, 41209), (127, 41215), (153, 41311),

Gene: Dove_130 Start: 72680, Stop: 73033, Start Num: 57

Candidate Starts for Dove_130:

(Start: 57 @72680 has 32 MA's), (119, 72881), (126, 72923),

Gene: Drago_58 Start: 38960, Stop: 39325, Start Num: 63

Candidate Starts for Drago_58:

(Start: 63 @38960 has 242 MA's), (Start: 76 @38993 has 1 MA's), (85, 39008), (87, 39011), (95, 39050), (96, 39053), (99, 39074), (106, 39107), (113, 39128), (114, 39134), (119, 39167), (126, 39209), (127, 39215), (153, 39311),

Gene: Duke13_140 Start: 74382, Stop: 74735, Start Num: 57

Candidate Starts for Duke13_140:

(Start: 57 @74382 has 32 MA's), (119, 74583), (126, 74625),

Gene: Eesa_29 Start: 22456, Stop: 22103, Start Num: 62

Candidate Starts for Eesa_29:

(Start: 62 @22456 has 11 MA's), (97, 22357), (147, 22120),

Gene: Eish_64 Start: 41209, Stop: 41574, Start Num: 63

Candidate Starts for Eish_64:

(Start: 63 @41209 has 242 MA's), (Start: 76 @41242 has 1 MA's), (85, 41257), (87, 41260), (95, 41299), (96, 41302), (99, 41323), (106, 41356), (114, 41383), (119, 41416), (126, 41458), (127, 41464), (153, 41560),

Gene: Ejimix_137 Start: 77230, Stop: 77583, Start Num: 57

Candidate Starts for Ejimix_137:

(Start: 57 @77230 has 32 MA's), (119, 77431), (126, 77473),

Gene: EleanorGeorge_61 Start: 41073, Stop: 41438, Start Num: 63

Candidate Starts for EleanorGeorge_61:

(Start: 63 @41073 has 242 MA's), (Start: 76 @41106 has 1 MA's), (85, 41121), (87, 41124), (96, 41166), (99, 41187), (106, 41220), (114, 41247), (119, 41280), (126, 41322), (127, 41328), (153, 41424),

Gene: EmiMonkey_58 Start: 41923, Stop: 42288, Start Num: 63

Candidate Starts for EmiMonkey_58:

(Start: 63 @41923 has 242 MA's), (Start: 76 @41956 has 1 MA's), (85, 41971), (87, 41974), (95, 42013), (96, 42016), (99, 42037), (106, 42070), (114, 42097), (119, 42130), (126, 42172), (127, 42178), (153, 42274),

Gene: Emma_61 Start: 40009, Stop: 40374, Start Num: 63

Candidate Starts for Emma_61:

(Start: 63 @40009 has 242 MA's), (Start: 76 @40042 has 1 MA's), (87, 40060), (96, 40102), (101, 40132), (106, 40156), (107, 40159), (126, 40258), (127, 40264), (146, 40339), (147, 40342), (148, 40345),

Gene: Emmaloid_61 Start: 41019, Stop: 41384, Start Num: 63

Candidate Starts for Emmaloid_61:

(Start: 63 @41019 has 242 MA's), (Start: 76 @41052 has 1 MA's), (85, 41067), (87, 41070), (95, 41109), (96, 41112), (99, 41133), (106, 41166), (114, 41193), (119, 41226), (126, 41268), (127, 41274), (153, 41370),

Gene: Empress_58 Start: 39956, Stop: 40321, Start Num: 63

Candidate Starts for Empress_58:

(Start: 63 @39956 has 242 MA's), (Start: 76 @39989 has 1 MA's), (85, 40004), (87, 40007), (96, 40049), (99, 40070), (106, 40103), (113, 40124), (114, 40130), (119, 40163), (126, 40205), (127, 40211), (153, 40307),

Gene: Enby_61 Start: 39236, Stop: 39601, Start Num: 63

Candidate Starts for Enby_61:

(Start: 63 @39236 has 242 MA's), (Start: 76 @39269 has 1 MA's), (85, 39284), (87, 39287), (95, 39326), (96, 39329), (99, 39350), (106, 39383), (114, 39410), (119, 39443), (126, 39485), (127, 39491), (153, 39587),

Gene: Eradicator_53 Start: 38486, Stop: 38851, Start Num: 63

Candidate Starts for Eradicator_53:

(Start: 63 @38486 has 242 MA's), (Start: 76 @38519 has 1 MA's), (85, 38534), (87, 38537), (95, 38576), (96, 38579), (99, 38600), (106, 38633), (114, 38660), (119, 38693), (126, 38735), (127, 38741), (153, 38837),

Gene: EricMillard_136 Start: 75734, Stop: 76087, Start Num: 57

Candidate Starts for EricMillard_136:

(Start: 57 @75734 has 32 MA's), (119, 75935), (126, 75977),

Gene: Estave1_63 Start: 41407, Stop: 41772, Start Num: 63

Candidate Starts for Estave1_63:

(Start: 63 @41407 has 242 MA's), (Start: 76 @41440 has 1 MA's), (85, 41455), (87, 41458), (95, 41497), (96, 41500), (99, 41521), (106, 41554), (113, 41575), (114, 41581), (119, 41614), (126, 41656), (127, 41662), (153, 41758),

Gene: Evaa_48 Start: 41735, Stop: 41361, Start Num: 52

Candidate Starts for Evaa_48:

(16, 41960), (Start: 48 @41741 has 3 MA's), (Start: 52 @41735 has 10 MA's), (81, 41675), (93, 41630), (98, 41612), (99, 41603),

Gene: Fancypants_62 Start: 40927, Stop: 41292, Start Num: 63

Candidate Starts for Fancypants_62:

(Start: 63 @40927 has 242 MA's), (Start: 76 @40960 has 1 MA's), (85, 40975), (87, 40978), (96, 41020), (99, 41041), (113, 41095), (114, 41101), (119, 41134), (126, 41176), (127, 41182), (153, 41278),

Gene: Fastidio_60 Start: 39023, Stop: 39388, Start Num: 63

Candidate Starts for Fastidio_60:

(Start: 63 @39023 has 242 MA's), (Start: 76 @39056 has 1 MA's), (85, 39071), (87, 39074), (95, 39113), (96, 39116), (99, 39137), (114, 39197), (119, 39230), (126, 39272), (127, 39278), (141, 39347), (153, 39374),

Gene: Fenry_49 Start: 36364, Stop: 36726, Start Num: 56

Candidate Starts for Fenry_49:

(1, 35836), (9, 36049), (23, 36202), (28, 36220), (33, 36256), (37, 36295), (Start: 56 @36364 has 24 MA's), (100, 36493), (104, 36517), (151, 36712),

Gene: Filuzino_58 Start: 39299, Stop: 39664, Start Num: 63

Candidate Starts for Filuzino_58:

(Start: 63 @39299 has 242 MA's), (Start: 76 @39332 has 1 MA's), (78, 39338), (87, 39350), (96, 39392), (101, 39422), (106, 39446), (107, 39449), (126, 39548), (127, 39554), (146, 39629), (147, 39632),

Gene: Firehouse51_61 Start: 43811, Stop: 44176, Start Num: 63

Candidate Starts for Firehouse51_61:

(Start: 63 @43811 has 242 MA's), (Start: 76 @43844 has 1 MA's), (85, 43859), (87, 43862), (95, 43901), (96, 43904), (99, 43925), (106, 43958), (114, 43985), (119, 44018), (126, 44060), (127, 44066), (153, 44162),

Gene: Flathead_60 Start: 40766, Stop: 41131, Start Num: 63

Candidate Starts for Flathead_60:

(Start: 63 @40766 has 242 MA's), (Start: 76 @40799 has 1 MA's), (78, 40805), (87, 40817), (96, 40859), (101, 40889), (106, 40913), (107, 40916), (126, 41015), (127, 41021), (146, 41096), (147, 41099), (148, 41102),

Gene: Florinda_71 Start: 42396, Stop: 42761, Start Num: 63

Candidate Starts for Florinda_71:

(Start: 63 @42396 has 242 MA's), (Start: 76 @42429 has 1 MA's), (79, 42438), (87, 42447), (96, 42489), (101, 42519), (106, 42543), (107, 42546), (126, 42645), (127, 42651), (146, 42726),

Gene: Footloose_58 Start: 33452, Stop: 33814, Start Num: 63

Candidate Starts for Footloose_58:

(43, 33380), (46, 33398), (Start: 54 @33416 has 1 MA's), (Start: 63 @33452 has 242 MA's), (Start: 67 @33464 has 2 MA's), (89, 33524), (97, 33557), (99, 33572), (104, 33599), (112, 33623), (119, 33659),

Gene: FreddyB_61 Start: 39138, Stop: 39503, Start Num: 63

Candidate Starts for FreddyB_61:

(Start: 63 @39138 has 242 MA's), (Start: 76 @39171 has 1 MA's), (85, 39186), (87, 39189), (95, 39228), (96, 39231), (99, 39252), (106, 39285), (114, 39312), (119, 39345), (126, 39387), (127, 39393), (153, 39489),

Gene: Fresco_48 Start: 41091, Stop: 40741, Start Num: 52

Candidate Starts for Fresco_48:

(Start: 52 @41091 has 10 MA's), (81, 41046), (86, 41037), (90, 41022), (99, 40974), (119, 40893),

Gene: Fruitloop_57 Start: 40613, Stop: 40978, Start Num: 63

Candidate Starts for Fruitloop_57:

(Start: 63 @40613 has 242 MA's), (Start: 76 @40646 has 1 MA's), (79, 40655), (87, 40664), (96, 40706), (101, 40736), (106, 40760), (107, 40763), (126, 40862), (127, 40868), (146, 40943),

Gene: GUmbie_58 Start: 39713, Stop: 40078, Start Num: 63

Candidate Starts for GUmbie_58:

(Start: 63 @39713 has 242 MA's), (Start: 76 @39746 has 1 MA's), (85, 39761), (87, 39764), (95, 39803), (96, 39806), (99, 39827), (106, 39860), (114, 39887), (119, 39920), (126, 39962), (127, 39968), (153, 40064),

Gene: Galactic_59 Start: 40176, Stop: 40541, Start Num: 63

Candidate Starts for Galactic_59:

(Start: 63 @40176 has 242 MA's), (Start: 76 @40209 has 1 MA's), (85, 40224), (87, 40227), (95, 40266), (96, 40269), (99, 40290), (114, 40350), (119, 40383), (126, 40425), (127, 40431), (153, 40527),

Gene: Gandolph_63 Start: 40535, Stop: 40900, Start Num: 63

Candidate Starts for Gandolph_63:

(Start: 63 @40535 has 242 MA's), (Start: 76 @40568 has 1 MA's), (85, 40583), (87, 40586), (96, 40628), (99, 40649), (106, 40682), (114, 40709), (119, 40742), (126, 40784), (127, 40790), (153, 40886),

Gene: GigiOuiOui_56 Start: 39153, Stop: 39518, Start Num: 63

Candidate Starts for GigiOuiOui_56:

(Start: 63 @39153 has 242 MA's), (Start: 76 @39186 has 1 MA's), (85, 39201), (87, 39204), (95, 39243), (96, 39246), (99, 39267), (114, 39327), (119, 39360), (126, 39402), (127, 39408), (153, 39504),

Gene: Girafales_69 Start: 42187, Stop: 42552, Start Num: 63

Candidate Starts for Girafales_69:

(Start: 63 @42187 has 242 MA's), (Start: 76 @42220 has 1 MA's), (79, 42229), (87, 42238), (96, 42280), (101, 42310), (106, 42334), (107, 42337), (126, 42436), (127, 42442), (146, 42517),

Gene: Girr_58 Start: 40017, Stop: 40382, Start Num: 63

Candidate Starts for Girr_58:

(Start: 63 @40017 has 242 MA's), (Start: 76 @40050 has 1 MA's), (85, 40065), (87, 40068), (95, 40107), (96, 40110), (99, 40131), (114, 40191), (119, 40224), (126, 40266), (127, 40272), (153, 40368),

Gene: Gorge_64 Start: 41655, Stop: 42020, Start Num: 63

Candidate Starts for Gorge_64:

(Start: 63 @41655 has 242 MA's), (Start: 76 @41688 has 1 MA's), (85, 41703), (87, 41706), (95, 41745), (96, 41748), (99, 41769), (106, 41802), (114, 41829), (119, 41862), (126, 41904), (127, 41910), (153, 42006),

Gene: Gravel_33 Start: 22425, Stop: 22072, Start Num: 62

Candidate Starts for Gravel_33:

(Start: 62 @22425 has 11 MA's), (97, 22326), (147, 22089),

Gene: Grimmer_70 Start: 41812, Stop: 42177, Start Num: 63

Candidate Starts for Grimmer_70:

(Start: 63 @41812 has 242 MA's), (Start: 76 @41845 has 1 MA's), (85, 41860), (87, 41863), (95, 41902), (96, 41905), (99, 41926), (114, 41986), (119, 42019), (126, 42061), (127, 42067), (153, 42163),

Gene: Guacamole_48 Start: 35005, Stop: 35367, Start Num: 56

Candidate Starts for Guacamole_48:

(28, 34861), (33, 34897), (37, 34936), (Start: 56 @35005 has 24 MA's), (93, 35104), (99, 35131), (100, 35134), (104, 35158), (151, 35353),

Gene: Hades_61 Start: 41111, Stop: 41476, Start Num: 63

Candidate Starts for Hades_61:

(Start: 63 @41111 has 242 MA's), (Start: 76 @41144 has 1 MA's), (85, 41159), (87, 41162), (95, 41201), (96, 41204), (99, 41225), (106, 41258), (114, 41285), (119, 41318), (126, 41360), (127, 41366), (141, 41435), (153, 41462),

Gene: Halley_146 Start: 77546, Stop: 77899, Start Num: 57

Candidate Starts for Halley_146:

(Start: 57 @77546 has 32 MA's), (119, 77747), (126, 77789),

Gene: Hamulus_61 Start: 40756, Stop: 41121, Start Num: 63

Candidate Starts for Hamulus_61:

(Start: 63 @40756 has 242 MA's), (Start: 76 @40789 has 1 MA's), (78, 40795), (87, 40807), (96, 40849), (101, 40879), (106, 40903), (107, 40906), (126, 41005), (127, 41011), (146, 41086), (147, 41089), (148, 41092),

Gene: Harley_62 Start: 40658, Stop: 41011, Start Num: 63

Candidate Starts for Harley_62:

(Start: 54 @40622 has 1 MA's), (Start: 63 @40658 has 242 MA's), (Start: 75 @40688 has 1 MA's), (Start: 76 @40691 has 1 MA's), (83, 40703), (87, 40709), (99, 40772), (101, 40781), (126, 40901), (130, 40922), (144, 40979), (150, 40991),

Gene: Harley_61 Start: 40314, Stop: 40661, Start Num: 64

Candidate Starts for Harley_61:

(Start: 58 @40287 has 2 MA's), (60, 40305), (Start: 64 @40314 has 30 MA's), (Start: 76 @40344 has 1 MA's), (79, 40353), (88, 40371), (99, 40425), (106, 40452), (119, 40509), (123, 40539), (126, 40551),

Gene: Hashim76_90 Start: 66062, Stop: 65649, Start Num: 48

Candidate Starts for Hashim76_90:

(Start: 48 @66062 has 3 MA's), (81, 65981), (102, 65894), (114, 65852), (119, 65819), (132, 65744),

Gene: Hawkeye_86 Start: 58033, Stop: 58440, Start Num: 65

Candidate Starts for Hawkeye_86:

(42, 57952), (46, 57976), (Start: 48 @57982 has 3 MA's), (Start: 63 @58030 has 242 MA's), (Start: 65 @58033 has 4 MA's), (90, 58096), (123, 58261), (129, 58288), (130, 58294), (146, 58363), (157, 58411),

Gene: Hedwig_57 Start: 38509, Stop: 38871, Start Num: 56

Candidate Starts for Hedwig_57:

(8, 38158), (Start: 56 @38509 has 24 MA's), (99, 38632),

Gene: Hegedechwinu_60 Start: 39325, Stop: 39690, Start Num: 63

Candidate Starts for Hegedechwinu_60:

(Start: 63 @39325 has 242 MA's), (Start: 76 @39358 has 1 MA's), (85, 39373), (87, 39376), (95, 39415), (96, 39418), (99, 39439), (106, 39472), (114, 39499), (119, 39532), (126, 39574), (127, 39580), (153, 39676),

Gene: Hidrated_130 Start: 75865, Stop: 76218, Start Num: 57

Candidate Starts for Hidrated_130:

(Start: 57 @75865 has 32 MA's), (119, 76066), (126, 76108),

Gene: Hitter_51 Start: 34662, Stop: 35024, Start Num: 56

Candidate Starts for Hitter_51:

(28, 34518), (33, 34554), (37, 34593), (Start: 56 @34662 has 24 MA's), (100, 34791), (104, 34815), (151, 35010),

Gene: Hlubikazi_56 Start: 38331, Stop: 38696, Start Num: 63

Candidate Starts for Hlubikazi_56:

(Start: 63 @38331 has 242 MA's), (Start: 76 @38364 has 1 MA's), (85, 38379), (87, 38382), (96, 38424), (99, 38445), (106, 38478), (113, 38499), (114, 38505), (126, 38580), (127, 38586), (153, 38682),

Gene: HokkenD_137 Start: 76705, Stop: 77058, Start Num: 57

Candidate Starts for HokkenD_137:

(34, 76603), (Start: 57 @76705 has 32 MA's), (119, 76906), (126, 76948),

Gene: Hortus1_71 Start: 44930, Stop: 44580, Start Num: 71

Candidate Starts for Hortus1_71:

(34, 45071), (49, 44987), (Start: 71 @44930 has 6 MA's), (81, 44903), (86, 44894), (87, 44891), (100, 44828), (104, 44804), (140, 44627), (145, 44612), (152, 44591),

Gene: IMpilo_54 Start: 37409, Stop: 37756, Start Num: 64

Candidate Starts for IMpilo_54:

(Start: 58 @37382 has 2 MA's), (60, 37400), (Start: 64 @37409 has 30 MA's), (69, 37421), (72, 37424), (Start: 76 @37439 has 1 MA's), (79, 37448), (88, 37466), (99, 37520), (106, 37547), (119, 37604), (123, 37634), (126, 37646),

Gene: IMpilo_55 Start: 37786, Stop: 38106, Start Num: 76

Candidate Starts for IMpilo_55:

(Start: 54 @37717 has 1 MA's), (Start: 63 @37753 has 242 MA's), (Start: 75 @37783 has 1 MA's), (Start: 76 @37786 has 1 MA's), (83, 37798), (87, 37804), (99, 37867), (101, 37876), (102, 37882), (126, 37996), (130, 38017), (144, 38074), (150, 38086),

Gene: lbOuu_59 Start: 40693, Stop: 41058, Start Num: 63

Candidate Starts for lbOuu_59:

(Start: 63 @40693 has 242 MA's), (Start: 76 @40726 has 1 MA's), (85, 40741), (87, 40744), (95, 40783), (96, 40786), (99, 40807), (106, 40840), (114, 40867), (119, 40900), (126, 40942), (127, 40948), (153, 41044),

Gene: lbhubesi_60 Start: 40300, Stop: 40665, Start Num: 63

Candidate Starts for lbhubesi_60:

(Start: 63 @40300 has 242 MA's), (Start: 76 @40333 has 1 MA's), (85, 40348), (87, 40351), (95, 40390), (96, 40393), (99, 40414), (114, 40474), (119, 40507), (126, 40549), (127, 40555), (141, 40624), (153, 40651),

Gene: Inventum_55 Start: 39804, Stop: 40169, Start Num: 63

Candidate Starts for Inventum_55:

(Start: 63 @39804 has 242 MA's), (Start: 76 @39837 has 1 MA's), (85, 39852), (87, 39855), (95, 39894), (96, 39897), (99, 39918), (106, 39951), (114, 39978), (119, 40011), (126, 40053), (127, 40059), (153, 40155),

Gene: IrishSherpFalk_61 Start: 41968, Stop: 42333, Start Num: 63

Candidate Starts for IrishSherpFalk_61:

(Start: 63 @41968 has 242 MA's), (Start: 76 @42001 has 1 MA's), (85, 42016), (87, 42019), (95, 42058), (96, 42061), (99, 42082), (114, 42142), (119, 42175), (126, 42217), (127, 42223), (153, 42319),

Gene: Jabbawokkie_74 Start: 42036, Stop: 42401, Start Num: 63

Candidate Starts for Jabbawokkie_74:

(Start: 63 @42036 has 242 MA's), (Start: 76 @42069 has 1 MA's), (85, 42084), (87, 42087), (95, 42126), (96, 42129), (99, 42150), (106, 42183), (114, 42210), (119, 42243), (126, 42285), (127, 42291), (153, 42387),

Gene: JalFarm20_71 Start: 43462, Stop: 43809, Start Num: 64

Candidate Starts for JalFarm20_71:

(Start: 58 @43435 has 2 MA's), (60, 43453), (Start: 64 @43462 has 30 MA's), (Start: 76 @43492 has 1 MA's), (79, 43501), (88, 43519), (99, 43573), (106, 43600), (119, 43657), (123, 43687), (126, 43699),

Gene: JalFarm20_72 Start: 43806, Stop: 44159, Start Num: 63

Candidate Starts for JalFarm20_72:

(Start: 54 @43770 has 1 MA's), (Start: 63 @43806 has 242 MA's), (Start: 75 @43836 has 1 MA's), (Start: 76 @43839 has 1 MA's), (83, 43851), (87, 43857), (99, 43920), (101, 43929), (102, 43935), (126, 44049), (130, 44070), (144, 44127), (150, 44139),

Gene: Jalammah_54 Start: 37665, Stop: 38027, Start Num: 56

Candidate Starts for Jalammah_54:

(28, 37521), (33, 37557), (37, 37596), (Start: 56 @37665 has 24 MA's), (100, 37794), (104, 37818), (151, 38013),

Gene: James_64 Start: 41780, Stop: 42145, Start Num: 63

Candidate Starts for James_64:

(Start: 63 @41780 has 242 MA's), (Start: 76 @41813 has 1 MA's), (85, 41828), (87, 41831), (95, 41870), (96, 41873), (99, 41894), (106, 41927), (114, 41954), (119, 41987), (126, 42029), (127, 42035), (153, 42131),

Gene: Jant_63 Start: 41384, Stop: 41737, Start Num: 63

Candidate Starts for Jant_63:

(Start: 54 @41348 has 1 MA's), (Start: 63 @41384 has 242 MA's), (Start: 75 @41414 has 1 MA's), (Start: 76 @41417 has 1 MA's), (83, 41429), (87, 41435), (99, 41498), (101, 41507), (102, 41513), (126, 41627), (130, 41648), (144, 41705), (150, 41717),

Gene: Jant_62 Start: 41040, Stop: 41387, Start Num: 64

Candidate Starts for Jant_62:

(Start: 58 @41013 has 2 MA's), (60, 41031), (Start: 64 @41040 has 30 MA's), (Start: 76 @41070 has 1 MA's), (79, 41079), (88, 41097), (99, 41151), (106, 41178), (119, 41235), (123, 41265), (126, 41277),

Gene: Jacob_60 Start: 40261, Stop: 40626, Start Num: 63

Candidate Starts for Jacob_60:

(Start: 63 @40261 has 242 MA's), (Start: 76 @40294 has 1 MA's), (85, 40309), (87, 40312), (95, 40351), (96, 40354), (99, 40375), (106, 40408), (113, 40429), (114, 40435), (119, 40468), (126, 40510), (127, 40516), (153, 40612),

Gene: JasperJr_48 Start: 35005, Stop: 35367, Start Num: 56

Candidate Starts for JasperJr_48:

(28, 34861), (33, 34897), (37, 34936), (Start: 56 @35005 has 24 MA's), (93, 35104), (99, 35131), (100, 35134), (104, 35158), (151, 35353),

Gene: JellyBelly_47 Start: 40437, Stop: 40117, Start Num: 73

Candidate Starts for JellyBelly_47:

(Start: 52 @40455 has 10 MA's), (Start: 73 @40437 has 1 MA's), (99, 40350), (127, 40221),

Gene: Jennelsea_57 Start: 38940, Stop: 39305, Start Num: 63

Candidate Starts for Jennelsea_57:

(Start: 63 @38940 has 242 MA's), (Start: 76 @38973 has 1 MA's), (85, 38988), (87, 38991), (95, 39030), (96, 39033), (99, 39054), (106, 39087), (113, 39108), (114, 39114), (119, 39147), (126, 39189), (127, 39195), (153, 39291),

Gene: Jinglebell_65 Start: 42815, Stop: 43180, Start Num: 63

Candidate Starts for Jinglebell_65:

(Start: 63 @42815 has 242 MA's), (Start: 76 @42848 has 1 MA's), (85, 42863), (87, 42866), (95, 42905), (96, 42908), (99, 42929), (106, 42962), (114, 42989), (119, 43022), (126, 43064), (127, 43070), (153, 43166),

Gene: Job42_62 Start: 42198, Stop: 42563, Start Num: 63

Candidate Starts for Job42_62:

(Start: 63 @42198 has 242 MA's), (Start: 76 @42231 has 1 MA's), (85, 42246), (87, 42249), (95, 42288), (96, 42291), (99, 42312), (106, 42345), (113, 42366), (114, 42372), (119, 42405), (126, 42447), (127, 42453), (153, 42549),

Gene: JoeyJr_55 Start: 38710, Stop: 39075, Start Num: 63

Candidate Starts for JoeyJr_55:

(Start: 63 @38710 has 242 MA's), (Start: 76 @38743 has 1 MA's), (85, 38758), (87, 38761), (96, 38803), (99, 38824), (106, 38857), (113, 38878), (114, 38884), (119, 38917), (126, 38959), (127, 38965), (153, 39061),

Gene: Juice456_60 Start: 41762, Stop: 42115, Start Num: 63

Candidate Starts for Juice456_60:

(Start: 54 @41726 has 1 MA's), (Start: 63 @41762 has 242 MA's), (Start: 75 @41792 has 1 MA's), (Start: 76 @41795 has 1 MA's), (83, 41807), (87, 41813), (99, 41876), (101, 41885), (102, 41891), (126, 42005), (130, 42026), (144, 42083), (150, 42095),

Gene: Juice456_59 Start: 41418, Stop: 41765, Start Num: 64

Candidate Starts for Juice456_59:

(Start: 58 @41391 has 2 MA's), (60, 41409), (Start: 64 @41418 has 30 MA's), (Start: 76 @41448 has 1 MA's), (79, 41457), (88, 41475), (99, 41529), (106, 41556), (119, 41613), (123, 41643), (126, 41655),

Gene: JuicyJay_140 Start: 78831, Stop: 79184, Start Num: 57

Candidate Starts for JuicyJay_140:

(Start: 57 @78831 has 32 MA's), (119, 79032), (126, 79074),

Gene: Juniper1_59 Start: 40443, Stop: 40808, Start Num: 63

Candidate Starts for Juniper1_59:

(10, 40104), (14, 40122), (19, 40221), (22, 40230), (39, 40347), (40, 40353), (41, 40356), (Start: 63 @40443 has 242 MA's), (Start: 76 @40476 has 1 MA's), (79, 40485), (87, 40494), (99, 40557), (101, 40566), (107, 40593), (109, 40605), (114, 40617), (127, 40698), (144, 40770), (146, 40773),

Gene: Juniper1_56 Start: 39354, Stop: 39701, Start Num: 64

Candidate Starts for Juniper1_56:

(Start: 58 @39327 has 2 MA's), (60, 39345), (Start: 64 @39354 has 30 MA's), (69, 39366), (72, 39369), (Start: 76 @39384 has 1 MA's), (79, 39393), (88, 39411), (99, 39465), (106, 39492), (119, 39549), (123, 39579), (126, 39591),

Gene: Juniper1_57 Start: 39698, Stop: 40051, Start Num: 63

Candidate Starts for Juniper1_57:

(Start: 54 @39662 has 1 MA's), (Start: 63 @39698 has 242 MA's), (Start: 75 @39728 has 1 MA's), (Start: 76 @39731 has 1 MA's), (83, 39743), (87, 39749), (99, 39812), (101, 39821), (102, 39827), (126, 39941), (130, 39962), (144, 40019), (150, 40031),

Gene: KHumphrey_31 Start: 21190, Stop: 20867, Start Num: 76

Candidate Starts for KHumphrey_31:

(Start: 62 @21208 has 11 MA's), (Start: 76 @21190 has 1 MA's),

Gene: Kalah2_135 Start: 76437, Stop: 76790, Start Num: 57
Candidate Starts for Kalah2_135:
(Start: 57 @76437 has 32 MA's), (119, 76638), (126, 76680),

Gene: Karhdo_57 Start: 39806, Stop: 40171, Start Num: 63
Candidate Starts for Karhdo_57:
(Start: 63 @39806 has 242 MA's), (Start: 76 @39839 has 1 MA's), (85, 39854), (87, 39857), (95, 39896), (96, 39899), (99, 39920), (106, 39953), (114, 39980), (119, 40013), (126, 40055), (127, 40061), (153, 40157),

Gene: KashFlow_143 Start: 75737, Stop: 76090, Start Num: 57
Candidate Starts for KashFlow_143:
(34, 75635), (Start: 57 @75737 has 32 MA's), (119, 75938), (126, 75980),

Gene: KendraB23_34 Start: 22613, Stop: 22260, Start Num: 62
Candidate Starts for KendraB23_34:
(Start: 62 @22613 has 11 MA's), (97, 22514), (147, 22277),

Gene: Kenuha5_57 Start: 38874, Stop: 39239, Start Num: 63
Candidate Starts for Kenuha5_57:
(Start: 63 @38874 has 242 MA's), (Start: 76 @38907 has 1 MA's), (78, 38913), (87, 38925), (96, 38967), (101, 38997), (106, 39021), (107, 39024), (126, 39123), (127, 39129), (146, 39204),

Gene: Kersh_62 Start: 42556, Stop: 42921, Start Num: 63
Candidate Starts for Kersh_62:
(Start: 63 @42556 has 242 MA's), (Start: 76 @42589 has 1 MA's), (85, 42604), (87, 42607), (95, 42646), (96, 42649), (99, 42670), (106, 42703), (113, 42724), (114, 42730), (119, 42763), (126, 42805), (127, 42811), (153, 42907),

Gene: Kimberlium_60 Start: 41117, Stop: 41464, Start Num: 64
Candidate Starts for Kimberlium_60:
(Start: 58 @41090 has 2 MA's), (60, 41108), (Start: 64 @41117 has 30 MA's), (Start: 76 @41147 has 1 MA's), (79, 41156), (88, 41174), (99, 41228), (106, 41255), (119, 41312), (123, 41342), (126, 41354),

Gene: Kimberlium_63 Start: 42089, Stop: 42454, Start Num: 63
Candidate Starts for Kimberlium_63:
(Start: 63 @42089 has 242 MA's), (Start: 76 @42122 has 1 MA's), (85, 42137), (87, 42140), (95, 42179), (96, 42182), (99, 42203), (106, 42236), (113, 42257), (114, 42263), (119, 42296), (126, 42338), (127, 42344), (153, 42440),

Gene: Kimberlium_61 Start: 41461, Stop: 41814, Start Num: 63
Candidate Starts for Kimberlium_61:
(Start: 54 @41425 has 1 MA's), (Start: 63 @41461 has 242 MA's), (Start: 75 @41491 has 1 MA's), (Start: 76 @41494 has 1 MA's), (83, 41506), (87, 41512), (99, 41575), (101, 41584), (102, 41590), (126, 41704), (130, 41725), (144, 41782), (150, 41794),

Gene: KingJulian_60 Start: 39332, Stop: 39697, Start Num: 63
Candidate Starts for KingJulian_60:
(Start: 63 @39332 has 242 MA's), (Start: 76 @39365 has 1 MA's), (85, 39380), (87, 39383), (95, 39422), (96, 39425), (99, 39446), (106, 39479), (114, 39506), (119, 39539), (126, 39581), (127, 39587), (153, 39683),

Gene: KingMidas_59 Start: 40372, Stop: 40737, Start Num: 63

Candidate Starts for KingMidas_59:

(Start: 63 @40372 has 242 MA's), (Start: 76 @40405 has 1 MA's), (85, 40420), (87, 40423), (96, 40465), (99, 40486), (106, 40519), (113, 40540), (114, 40546), (119, 40579), (126, 40621), (127, 40627), (153, 40723),

Gene: Kingsley_55 Start: 38460, Stop: 38807, Start Num: 64

Candidate Starts for Kingsley_55:

(Start: 58 @38433 has 2 MA's), (60, 38451), (Start: 64 @38460 has 30 MA's), (Start: 76 @38490 has 1 MA's), (79, 38499), (88, 38517), (99, 38571), (106, 38598), (119, 38655), (123, 38685), (126, 38697),

Gene: Kingsley_56 Start: 38804, Stop: 39157, Start Num: 63

Candidate Starts for Kingsley_56:

(Start: 54 @38768 has 1 MA's), (Start: 63 @38804 has 242 MA's), (Start: 75 @38834 has 1 MA's), (Start: 76 @38837 has 1 MA's), (83, 38849), (87, 38855), (99, 38918), (101, 38927), (102, 38933), (126, 39047), (130, 39068), (144, 39125), (150, 39137),

Gene: Klein_142 Start: 75039, Stop: 75392, Start Num: 57

Candidate Starts for Klein_142:

(Start: 57 @75039 has 32 MA's), (119, 75240), (126, 75282),

Gene: Klevey_55 Start: 37550, Stop: 37951, Start Num: 62

Candidate Starts for Klevey_55:

(Start: 62 @37550 has 11 MA's),

Gene: Koella_54 Start: 36191, Stop: 36556, Start Num: 63

Candidate Starts for Koella_54:

(Start: 63 @36191 has 242 MA's), (Start: 76 @36224 has 1 MA's), (85, 36239), (87, 36242), (95, 36281), (96, 36284), (99, 36305), (106, 36338), (114, 36365), (119, 36398), (126, 36440), (127, 36446), (153, 36542),

Gene: Krakatau_57 Start: 39569, Stop: 39934, Start Num: 63

Candidate Starts for Krakatau_57:

(Start: 63 @39569 has 242 MA's), (Start: 76 @39602 has 1 MA's), (87, 39620), (101, 39692), (106, 39716), (107, 39719), (126, 39818), (127, 39824), (146, 39899),

Gene: KristaRAM_63 Start: 42760, Stop: 43125, Start Num: 63

Candidate Starts for KristaRAM_63:

(Start: 63 @42760 has 242 MA's), (Start: 76 @42793 has 1 MA's), (85, 42808), (87, 42811), (96, 42853), (99, 42874), (106, 42907), (114, 42934), (119, 42967), (126, 43009), (127, 43015), (153, 43111),

Gene: LastJedi_54 Start: 37508, Stop: 37873, Start Num: 63

Candidate Starts for LastJedi_54:

(Start: 63 @37508 has 242 MA's), (Start: 76 @37541 has 1 MA's), (85, 37556), (87, 37559), (95, 37598), (96, 37601), (99, 37622), (106, 37655), (114, 37682), (119, 37715), (126, 37757), (127, 37763), (153, 37859),

Gene: Latretium_62 Start: 40834, Stop: 41199, Start Num: 63

Candidate Starts for Latretium_62:

(Start: 63 @40834 has 242 MA's), (Start: 76 @40867 has 1 MA's), (85, 40882), (87, 40885), (95, 40924), (96, 40927), (99, 40948), (114, 41008), (119, 41041), (126, 41083), (127, 41089), (153, 41185),

Gene: Leozinho_59 Start: 39590, Stop: 39955, Start Num: 63

Candidate Starts for Leozinho_59:

(Start: 63 @39590 has 242 MA's), (Start: 76 @39623 has 1 MA's), (85, 39638), (87, 39641), (96, 39683), (99, 39704), (106, 39737), (113, 39758), (114, 39764), (119, 39797), (126, 39839), (127, 39845), (153, 39941),

Gene: Leperchaun_52 Start: 37940, Stop: 38305, Start Num: 63

Candidate Starts for Leperchaun_52:

(Start: 63 @37940 has 242 MA's), (Start: 76 @37973 has 1 MA's), (85, 37988), (87, 37991), (96, 38033), (99, 38054), (106, 38087), (113, 38108), (114, 38114), (119, 38147), (126, 38189), (127, 38195), (153, 38291),

Gene: Ligma_48 Start: 41091, Stop: 40741, Start Num: 52

Candidate Starts for Ligma_48:

(Start: 52 @41091 has 10 MA's), (81, 41046), (86, 41037), (90, 41022), (99, 40974), (119, 40893),

Gene: LilMoolah_58 Start: 39703, Stop: 40068, Start Num: 63

Candidate Starts for LilMoolah_58:

(Start: 63 @39703 has 242 MA's), (Start: 76 @39736 has 1 MA's), (85, 39751), (87, 39754), (95, 39793), (96, 39796), (99, 39817), (106, 39850), (113, 39871), (114, 39877), (119, 39910), (126, 39952), (127, 39958), (153, 40054),

Gene: Lilmac1015_57 Start: 38014, Stop: 38406, Start Num: 62

Candidate Starts for Lilmac1015_57:

(Start: 62 @38014 has 11 MA's), (135, 38299), (147, 38335),

Gene: LittleMinkey_96 Start: 66537, Stop: 66124, Start Num: 48

Candidate Starts for LittleMinkey_96:

(Start: 48 @66537 has 3 MA's), (81, 66456), (102, 66369), (114, 66327), (119, 66294), (132, 66219),

Gene: LittleMunchkin_50 Start: 44298, Stop: 43924, Start Num: 52

Candidate Starts for LittleMunchkin_50:

(16, 44523), (Start: 52 @44298 has 10 MA's), (86, 44229), (98, 44175), (102, 44151), (141, 43965),

Gene: LittleShirley_59 Start: 40750, Stop: 41115, Start Num: 63

Candidate Starts for LittleShirley_59:

(Start: 63 @40750 has 242 MA's), (Start: 76 @40783 has 1 MA's), (85, 40798), (87, 40801), (95, 40840), (96, 40843), (99, 40864), (106, 40897), (114, 40924), (119, 40957), (126, 40999), (127, 41005), (153, 41101),

Gene: LittleTokyo_33 Start: 21980, Stop: 21597, Start Num: 62

Candidate Starts for LittleTokyo_33:

(Start: 62 @21980 has 11 MA's), (122, 21776),

Gene: Lizziana_66 Start: 41261, Stop: 41626, Start Num: 63

Candidate Starts for Lizziana_66:

(Start: 63 @41261 has 242 MA's), (Start: 76 @41294 has 1 MA's), (85, 41309), (87, 41312), (95, 41351), (96, 41354), (99, 41375), (106, 41408), (114, 41435), (119, 41468), (126, 41510), (127, 41516), (153, 41612),

Gene: Llama_65 Start: 42669, Stop: 43034, Start Num: 63

Candidate Starts for Llama_65:

(Start: 63 @42669 has 242 MA's), (Start: 76 @42702 has 1 MA's), (85, 42717), (87, 42720), (95, 42759), (96, 42762), (99, 42783), (106, 42816), (114, 42843), (119, 42876), (126, 42918), (127, 42924), (153, 43020),

Gene: Llij_56 Start: 39114, Stop: 39479, Start Num: 63

Candidate Starts for Llij_56:

(Start: 63 @39114 has 242 MA's), (Start: 76 @39147 has 1 MA's), (85, 39162), (87, 39165), (95, 39204), (96, 39207), (99, 39228), (106, 39261), (113, 39282), (114, 39288), (119, 39321), (126, 39363), (127, 39369), (153, 39465),

Gene: Lorde_60 Start: 38401, Stop: 38766, Start Num: 63

Candidate Starts for Lorde_60:

(Start: 63 @38401 has 242 MA's), (Start: 76 @38434 has 1 MA's), (85, 38449), (87, 38452), (95, 38491), (96, 38494), (99, 38515), (106, 38548), (113, 38569), (114, 38575), (119, 38608), (126, 38650), (127, 38656), (153, 38752),

Gene: Lucia_60 Start: 39255, Stop: 39620, Start Num: 63

Candidate Starts for Lucia_60:

(Start: 63 @39255 has 242 MA's), (Start: 76 @39288 has 1 MA's), (85, 39303), (87, 39306), (95, 39345), (96, 39348), (99, 39369), (114, 39429), (119, 39462), (126, 39504), (127, 39510), (146, 39585),

Gene: Lucky2013_136 Start: 72791, Stop: 73144, Start Num: 57

Candidate Starts for Lucky2013_136:

(34, 72689), (Start: 57 @72791 has 32 MA's), (119, 72992), (126, 73034),

Gene: LunaBlu_62 Start: 40835, Stop: 41200, Start Num: 63

Candidate Starts for LunaBlu_62:

(Start: 63 @40835 has 242 MA's), (Start: 76 @40868 has 1 MA's), (85, 40883), (87, 40886), (95, 40925), (96, 40928), (99, 40949), (114, 41009), (119, 41042), (126, 41084), (127, 41090), (153, 41186),

Gene: LunaStella_56 Start: 38713, Stop: 39060, Start Num: 64

Candidate Starts for LunaStella_56:

(Start: 58 @38686 has 2 MA's), (60, 38704), (Start: 64 @38713 has 30 MA's), (69, 38725), (Start: 76 @38743 has 1 MA's), (79, 38752), (96, 38803), (99, 38824), (115, 38887), (119, 38908), (123, 38938),

Gene: LunaStella_57 Start: 39057, Stop: 39410, Start Num: 63

Candidate Starts for LunaStella_57:

(Start: 54 @39021 has 1 MA's), (Start: 63 @39057 has 242 MA's), (83, 39102), (87, 39108), (99, 39171), (101, 39180), (110, 39216), (116, 39240), (150, 39390),

Gene: LunaStella_59 Start: 39682, Stop: 40047, Start Num: 63

Candidate Starts for LunaStella_59:

(Start: 63 @39682 has 242 MA's), (Start: 76 @39715 has 1 MA's), (87, 39733), (95, 39772), (96, 39775), (99, 39796), (101, 39805), (106, 39829), (114, 39856), (119, 39889), (126, 39931), (127, 39937), (153, 40033),

Gene: Lysidious_52 Start: 36936, Stop: 37298, Start Num: 56

Candidate Starts for Lysidious_52:

(27, 36786), (28, 36792), (33, 36828), (37, 36867), (Start: 56 @36936 has 24 MA's), (100, 37065), (104, 37089),

Gene: MadMen_58 Start: 40038, Stop: 40403, Start Num: 63

Candidate Starts for MadMen_58:

(Start: 63 @40038 has 242 MA's), (Start: 76 @40071 has 1 MA's), (85, 40086), (87, 40089), (96, 40131), (99, 40152), (106, 40185), (114, 40212), (119, 40245), (126, 40287), (127, 40293), (153, 40389),

Gene: Madiba_58 Start: 39287, Stop: 39652, Start Num: 63

Candidate Starts for Madiba_58:

(Start: 63 @39287 has 242 MA's), (Start: 76 @39320 has 1 MA's), (85, 39335), (87, 39338), (96, 39380), (99, 39401), (106, 39434), (114, 39461), (119, 39494), (126, 39536), (127, 39542), (153, 39638),

Gene: Mahavrat_58 Start: 39663, Stop: 40028, Start Num: 63

Candidate Starts for Mahavrat_58:

(Start: 63 @39663 has 242 MA's), (Start: 76 @39696 has 1 MA's), (85, 39711), (87, 39714), (95, 39753), (96, 39756), (99, 39777), (114, 39837), (119, 39870), (126, 39912), (127, 39918), (153, 40014),

Gene: Malachai_49 Start: 37159, Stop: 37521, Start Num: 56

Candidate Starts for Malachai_49:

(37, 37090), (Start: 56 @37159 has 24 MA's), (93, 37258), (99, 37285), (100, 37288), (104, 37312), (151, 37507),

Gene: MalagasyRose_65 Start: 42032, Stop: 42385, Start Num: 68

Candidate Starts for MalagasyRose_65:

(35, 41891), (51, 41975), (Start: 68 @42032 has 1 MA's), (92, 42101), (96, 42113), (99, 42134), (118, 42209), (123, 42248), (126, 42260), (130, 42281), (138, 42323), (142, 42344),

Gene: Mandlovu_56 Start: 38273, Stop: 38638, Start Num: 63

Candidate Starts for Mandlovu_56:

(Start: 63 @38273 has 242 MA's), (Start: 76 @38306 has 1 MA's), (85, 38321), (87, 38324), (96, 38366), (99, 38387), (106, 38420), (113, 38441), (114, 38447), (126, 38522), (127, 38528), (153, 38624),

Gene: Maravista_61 Start: 41710, Stop: 42075, Start Num: 63

Candidate Starts for Maravista_61:

(Start: 63 @41710 has 242 MA's), (Start: 76 @41743 has 1 MA's), (85, 41758), (87, 41761), (95, 41800), (96, 41803), (99, 41824), (106, 41857), (114, 41884), (119, 41917), (126, 41959), (127, 41965), (153, 42061),

Gene: Mariokart_48 Start: 41216, Stop: 40896, Start Num: 73

Candidate Starts for Mariokart_48:

(Start: 52 @41234 has 10 MA's), (Start: 73 @41216 has 1 MA's), (98, 41138), (99, 41129), (124, 41012), (127, 41000),

Gene: Marker_62 Start: 40381, Stop: 40746, Start Num: 63

Candidate Starts for Marker_62:

(Start: 63 @40381 has 242 MA's), (Start: 76 @40414 has 1 MA's), (85, 40429), (87, 40432), (96, 40474), (99, 40495), (114, 40555), (119, 40588), (126, 40630), (127, 40636), (153, 40732),

Gene: Marleymoo_127 Start: 73278, Stop: 73631, Start Num: 57

Candidate Starts for Marleymoo_127:

(Start: 57 @73278 has 32 MA's), (119, 73479), (126, 73521),

Gene: Martik_60 Start: 40214, Stop: 40579, Start Num: 63

Candidate Starts for Martik_60:

(Start: 63 @40214 has 242 MA's), (Start: 76 @40247 has 1 MA's), (85, 40262), (87, 40265), (95, 40304), (96, 40307), (99, 40328), (106, 40361), (114, 40388), (119, 40421), (126, 40463), (127, 40469), (153, 40565),

Gene: Mattes_64 Start: 41780, Stop: 42145, Start Num: 63

Candidate Starts for Mattes_64:

(Start: 63 @41780 has 242 MA's), (Start: 76 @41813 has 1 MA's), (85, 41828), (87, 41831), (95, 41870), (96, 41873), (99, 41894), (106, 41927), (114, 41954), (119, 41987), (126, 42029), (127, 42035), (153, 42131),

Gene: Medindi_56 Start: 37651, Stop: 38016, Start Num: 63

Candidate Starts for Medindi_56:

(Start: 63 @37651 has 242 MA's), (Start: 76 @37684 has 1 MA's), (78, 37690), (87, 37702), (96, 37744), (101, 37774), (106, 37798), (107, 37801), (126, 37900), (127, 37906), (146, 37981), (147, 37984),

Gene: Melba_50 Start: 35408, Stop: 35770, Start Num: 56

Candidate Starts for Melba_50:

(28, 35264), (33, 35300), (37, 35339), (Start: 56 @35408 has 24 MA's), (100, 35537), (104, 35561),

Gene: Melissauren88_58 Start: 39794, Stop: 40159, Start Num: 63

Candidate Starts for Melissauren88_58:

(Start: 63 @39794 has 242 MA's), (Start: 76 @39827 has 1 MA's), (78, 39833), (87, 39845), (96, 39887), (101, 39917), (106, 39941), (107, 39944), (126, 40043), (127, 40049), (146, 40124),

Gene: Mellie_49 Start: 35048, Stop: 35410, Start Num: 55

Candidate Starts for Mellie_49:

(33, 34943), (Start: 55 @35048 has 1 MA's), (93, 35147), (99, 35174), (100, 35177), (104, 35201),

Gene: MiaZeal_143 Start: 73930, Stop: 74283, Start Num: 57

Candidate Starts for MiaZeal_143:

(34, 73828), (Start: 57 @73930 has 32 MA's), (119, 74131), (126, 74173),

Gene: MilanaBonita_50 Start: 36387, Stop: 36752, Start Num: 63

Candidate Starts for MilanaBonita_50:

(Start: 63 @36387 has 242 MA's), (Start: 76 @36420 has 1 MA's), (78, 36426), (87, 36438), (96, 36480), (101, 36510), (106, 36534), (107, 36537), (126, 36636), (127, 36642), (146, 36717), (147, 36720), (148, 36723),

Gene: MilleniumForce_63 Start: 42482, Stop: 42847, Start Num: 63

Candidate Starts for MilleniumForce_63:

(Start: 63 @42482 has 242 MA's), (Start: 76 @42515 has 1 MA's), (78, 42521), (87, 42533), (101, 42605), (106, 42629), (107, 42632), (114, 42656), (126, 42731), (127, 42737), (146, 42812),

Gene: Minerva_144 Start: 76488, Stop: 76841, Start Num: 57

Candidate Starts for Minerva_144:

(Start: 57 @76488 has 32 MA's), (119, 76689), (126, 76731),

Gene: MinionDave_59 Start: 40561, Stop: 40926, Start Num: 63

Candidate Starts for MinionDave_59:

(Start: 63 @40561 has 242 MA's), (Start: 76 @40594 has 1 MA's), (85, 40609), (87, 40612), (95, 40651), (96, 40654), (99, 40675), (106, 40708), (114, 40735), (119, 40768), (126, 40810), (127, 40816), (153, 40912),

Gene: Minnie_63 Start: 41784, Stop: 42149, Start Num: 63

Candidate Starts for Minnie_63:

(Start: 63 @41784 has 242 MA's), (Start: 76 @41817 has 1 MA's), (79, 41826), (87, 41835), (96, 41877), (101, 41907), (106, 41931), (107, 41934), (126, 42033), (127, 42039), (146, 42114),

Gene: MintFen_51 Start: 35482, Stop: 35844, Start Num: 56

Candidate Starts for MintFen_51:

(28, 35338), (33, 35374), (37, 35413), (Start: 56 @35482 has 24 MA's), (100, 35611), (104, 35635),

Gene: MisterCuddles_58 Start: 40017, Stop: 40382, Start Num: 63

Candidate Starts for MisterCuddles_58:

(Start: 63 @40017 has 242 MA's), (Start: 76 @40050 has 1 MA's), (85, 40065), (87, 40068), (95, 40107), (96, 40110), (99, 40131), (114, 40191), (119, 40224), (126, 40266), (127, 40272), (153, 40368),

Gene: Modragons_64 Start: 42659, Stop: 43024, Start Num: 63

Candidate Starts for Modragons_64:

(Start: 63 @42659 has 242 MA's), (Start: 76 @42692 has 1 MA's), (85, 42707), (87, 42710), (95, 42749), (96, 42752), (99, 42773), (106, 42806), (114, 42833), (119, 42866), (126, 42908), (127, 42914), (153, 43010),

Gene: Moonbeam_58 Start: 39938, Stop: 40303, Start Num: 63

Candidate Starts for Moonbeam_58:

(Start: 63 @39938 has 242 MA's), (Start: 76 @39971 has 1 MA's), (87, 39989), (96, 40031), (101, 40061), (106, 40085), (107, 40088), (126, 40187), (146, 40268), (147, 40271), (148, 40274),

Gene: Moonflower_54 Start: 39482, Stop: 39844, Start Num: 56

Candidate Starts for Moonflower_54:

(Start: 56 @39482 has 24 MA's), (99, 39605),

Gene: Mova_61 Start: 39791, Stop: 40156, Start Num: 63

Candidate Starts for Mova_61:

(Start: 63 @39791 has 242 MA's), (Start: 76 @39824 has 1 MA's), (85, 39839), (87, 39842), (96, 39884), (99, 39905), (106, 39938), (114, 39965), (119, 39998), (126, 40040), (127, 40046), (153, 40142),

Gene: Mozy_69 Start: 42795, Stop: 43160, Start Num: 63

Candidate Starts for Mozy_69:

(Start: 63 @42795 has 242 MA's), (Start: 76 @42828 has 1 MA's), (85, 42843), (87, 42846), (95, 42885), (96, 42888), (99, 42909), (114, 42969), (119, 43002), (126, 43044), (127, 43050), (153, 43146),

Gene: Ms6_55 Start: 35525, Stop: 35890, Start Num: 63

Candidate Starts for Ms6_55:

(Start: 63 @35525 has 242 MA's), (Start: 76 @35558 has 1 MA's), (78, 35564), (87, 35576), (96, 35618), (101, 35648), (106, 35672), (107, 35675), (126, 35774), (127, 35780), (146, 35855),

Gene: MulchExplorer_60 Start: 41116, Stop: 41463, Start Num: 64

Candidate Starts for MulchExplorer_60:

(Start: 58 @41089 has 2 MA's), (60, 41107), (Start: 64 @41116 has 30 MA's), (Start: 76 @41146 has 1 MA's), (79, 41155), (88, 41173), (99, 41227), (106, 41254), (119, 41311), (123, 41341), (126, 41353),

Gene: MulchExplorer_61 Start: 41460, Stop: 41813, Start Num: 63

Candidate Starts for MulchExplorer_61:

(Start: 54 @41424 has 1 MA's), (Start: 63 @41460 has 242 MA's), (Start: 75 @41490 has 1 MA's), (Start: 76 @41493 has 1 MA's), (83, 41505), (87, 41511), (99, 41574), (101, 41583), (102, 41589), (126, 41703), (130, 41724), (144, 41781), (150, 41793),

Gene: MulchExplorer_63 Start: 42088, Stop: 42453, Start Num: 63

Candidate Starts for MulchExplorer_63:

(Start: 63 @42088 has 242 MA's), (Start: 76 @42121 has 1 MA's), (85, 42136), (87, 42139), (95, 42178), (96, 42181), (99, 42202), (106, 42235), (113, 42256), (114, 42262), (119, 42295), (126, 42337), (127, 42343), (153, 42439),

Gene: Mutaforma13_64 Start: 43121, Stop: 43486, Start Num: 63

Candidate Starts for Mutaforma13_64:

(Start: 63 @43121 has 242 MA's), (Start: 76 @43154 has 1 MA's), (85, 43169), (87, 43172), (95, 43211), (96, 43214), (99, 43235), (106, 43268), (114, 43295), (119, 43328), (126, 43370), (127, 43376), (153, 43472),

Gene: Mwanjiwa_66 Start: 40892, Stop: 41257, Start Num: 63

Candidate Starts for Mwanjiwa_66:

(Start: 63 @40892 has 242 MA's), (Start: 76 @40925 has 1 MA's), (85, 40940), (87, 40943), (95, 40982), (96, 40985), (99, 41006), (106, 41039), (113, 41060), (114, 41066), (119, 41099), (126, 41141), (127, 41147), (153, 41243),

Gene: Nandito_53 Start: 37649, Stop: 38023, Start Num: 62

Candidate Starts for Nandito_53:

(36, 37544), (37, 37547), (Start: 62 @37649 has 11 MA's), (135, 37946),

Gene: NewHope4_61 Start: 40206, Stop: 40571, Start Num: 63

Candidate Starts for NewHope4_61:

(Start: 63 @40206 has 242 MA's), (Start: 76 @40239 has 1 MA's), (85, 40254), (87, 40257), (95, 40296), (96, 40299), (99, 40320), (114, 40380), (119, 40413), (126, 40455), (127, 40461), (153, 40557),

Gene: Niblet_29 Start: 22015, Stop: 21665, Start Num: 62

Candidate Starts for Niblet_29:

(Start: 62 @22015 has 11 MA's), (97, 21916), (146, 21682),

Gene: Nichirin_67 Start: 44200, Stop: 44565, Start Num: 63

Candidate Starts for Nichirin_67:

(Start: 63 @44200 has 242 MA's), (Start: 76 @44233 has 1 MA's), (85, 44248), (87, 44251), (95, 44290), (96, 44293), (99, 44314), (106, 44347), (114, 44374), (119, 44407), (126, 44449), (127, 44455), (153, 44551),

Gene: NihilNomen_146 Start: 76776, Stop: 77129, Start Num: 57

Candidate Starts for NihilNomen_146:

(Start: 57 @76776 has 32 MA's), (119, 76977), (126, 77019),

Gene: Nivrat_56 Start: 39576, Stop: 39941, Start Num: 63

Candidate Starts for Nivrat_56:

(Start: 63 @39576 has 242 MA's), (Start: 76 @39609 has 1 MA's), (85, 39624), (87, 39627), (95, 39666), (96, 39669), (99, 39690), (106, 39723), (113, 39744), (114, 39750), (119, 39783), (126, 39825), (127, 39831), (153, 39927),

Gene: NormanBulbieJr_60 Start: 40204, Stop: 40569, Start Num: 63

Candidate Starts for NormanBulbieJr_60:

(Start: 63 @40204 has 242 MA's), (Start: 76 @40237 has 1 MA's), (85, 40252), (87, 40255), (95, 40294), (96, 40297), (99, 40318), (106, 40351), (114, 40378), (119, 40411), (126, 40453), (127, 40459), (153, 40555),

Gene: Ochi17_63 Start: 42266, Stop: 42631, Start Num: 63

Candidate Starts for Ochi17_63:

(Start: 63 @42266 has 242 MA's), (Start: 76 @42299 has 1 MA's), (85, 42314), (87, 42317), (95, 42356), (96, 42359), (99, 42380), (106, 42413), (114, 42440), (119, 42473), (126, 42515), (127, 42521), (153, 42617),

Gene: Odette_148 Start: 78919, Stop: 79272, Start Num: 57

Candidate Starts for Odette_148:

(Start: 57 @78919 has 32 MA's), (119, 79120), (126, 79162),

Gene: OfUltron_65 Start: 42815, Stop: 43180, Start Num: 63

Candidate Starts for OfUltron_65:

(Start: 63 @42815 has 242 MA's), (Start: 76 @42848 has 1 MA's), (85, 42863), (87, 42866), (95, 42905), (96, 42908), (99, 42929), (106, 42962), (114, 42989), (119, 43022), (126, 43064), (127, 43070), (153, 43166),

Gene: Ogopogo_65 Start: 40778, Stop: 41143, Start Num: 63

Candidate Starts for Ogopogo_65:

(Start: 63 @40778 has 242 MA's), (Start: 76 @40811 has 1 MA's), (78, 40817), (87, 40829), (96, 40871), (101, 40901), (106, 40925), (107, 40928), (126, 41027), (127, 41033), (146, 41108), (147, 41111), (148, 41114),

Gene: Okabe_55 Start: 36707, Stop: 37072, Start Num: 63

Candidate Starts for Okabe_55:

(Start: 63 @36707 has 242 MA's), (Start: 76 @36740 has 1 MA's), (79, 36749), (87, 36758), (96, 36800), (101, 36830), (106, 36854), (107, 36857), (126, 36956), (127, 36962), (146, 37037),

Gene: Oksu_64 Start: 43078, Stop: 43443, Start Num: 63

Candidate Starts for Oksu_64:

(Start: 63 @43078 has 242 MA's), (Start: 76 @43111 has 1 MA's), (85, 43126), (87, 43129), (95, 43168), (96, 43171), (99, 43192), (106, 43225), (114, 43252), (119, 43285), (126, 43327), (127, 43333), (153, 43429),

Gene: OldBen_57 Start: 40129, Stop: 40494, Start Num: 63

Candidate Starts for OldBen_57:

(Start: 63 @40129 has 242 MA's), (Start: 76 @40162 has 1 MA's), (85, 40177), (87, 40180), (96, 40222), (99, 40243), (114, 40303), (119, 40336), (126, 40378), (127, 40384), (153, 40480),

Gene: OlinDD_71 Start: 44929, Stop: 44579, Start Num: 71

Candidate Starts for OlinDD_71:

(34, 45070), (49, 44986), (Start: 71 @44929 has 6 MA's), (81, 44902), (86, 44893), (87, 44890), (100, 44827), (104, 44803), (140, 44626), (145, 44611), (152, 44590),

Gene: OlympiaSaint_62 Start: 40722, Stop: 41087, Start Num: 63

Candidate Starts for OlympiaSaint_62:

(Start: 63 @40722 has 242 MA's), (Start: 76 @40755 has 1 MA's), (85, 40770), (87, 40773), (95, 40812), (96, 40815), (99, 40836), (106, 40869), (114, 40896), (119, 40929), (126, 40971), (127, 40977), (153, 41073),

Gene: Optimus_135 Start: 74056, Stop: 74409, Start Num: 57

Candidate Starts for Optimus_135:

(Start: 57 @74056 has 32 MA's), (119, 74257), (126, 74299),

Gene: Orcanus_30 Start: 22223, Stop: 21873, Start Num: 62

Candidate Starts for Orcanus_30:

(Start: 62 @22223 has 11 MA's), (97, 22124), (147, 21890),

Gene: OtsoOtso_33 Start: 21713, Stop: 21363, Start Num: 62

Candidate Starts for OtsoOtso_33:

(Start: 62 @21713 has 11 MA's), (147, 21380),

Gene: Ovechkin_57 Start: 39962, Stop: 40309, Start Num: 64

Candidate Starts for Ovechkin_57:

(Start: 58 @39935 has 2 MA's), (60, 39953), (Start: 64 @39962 has 30 MA's), (Start: 76 @39992 has 1 MA's), (79, 40001), (88, 40019), (99, 40073), (106, 40100), (119, 40157), (123, 40187), (126, 40199),

Gene: Ovechkin_58 Start: 40306, Stop: 40659, Start Num: 63

Candidate Starts for Ovechkin_58:

(Start: 54 @40270 has 1 MA's), (Start: 63 @40306 has 242 MA's), (Start: 75 @40336 has 1 MA's), (Start: 76 @40339 has 1 MA's), (83, 40351), (87, 40357), (99, 40420), (101, 40429), (102, 40435), (126, 40549), (130, 40570), (144, 40627), (150, 40639),

Gene: OwlsT2W_60 Start: 40441, Stop: 40806, Start Num: 63

Candidate Starts for OwlsT2W_60:

(Start: 63 @40441 has 242 MA's), (Start: 76 @40474 has 1 MA's), (85, 40489), (87, 40492), (95, 40531), (96, 40534), (99, 40555), (106, 40588), (114, 40615), (119, 40648), (126, 40690), (127, 40696), (153, 40792),

Gene: PHappiness_55 Start: 38486, Stop: 38851, Start Num: 63

Candidate Starts for PHappiness_55:

(Start: 63 @38486 has 242 MA's), (Start: 76 @38519 has 1 MA's), (85, 38534), (87, 38537), (96, 38579), (99, 38600), (106, 38633), (113, 38654), (114, 38660), (119, 38693), (126, 38735), (127, 38741), (153, 38837),

Gene: PMC_57 Start: 40831, Stop: 41196, Start Num: 63

Candidate Starts for PMC_57:

(Start: 63 @40831 has 242 MA's), (Start: 76 @40864 has 1 MA's), (85, 40879), (87, 40882), (95, 40921), (96, 40924), (99, 40945), (106, 40978), (114, 41005), (119, 41038), (126, 41080), (127, 41086), (153, 41182),

Gene: Pacc40_54 Start: 38560, Stop: 38925, Start Num: 63

Candidate Starts for Pacc40_54:

(Start: 63 @38560 has 242 MA's), (Start: 76 @38593 has 1 MA's), (85, 38608), (87, 38611), (96, 38653), (99, 38674), (106, 38707), (113, 38728), (114, 38734), (119, 38767), (126, 38809), (127, 38815), (153, 38911),

Gene: PatoPoderoso_57 Start: 39332, Stop: 39697, Start Num: 63

Candidate Starts for PatoPoderoso_57:

(Start: 63 @39332 has 242 MA's), (Start: 76 @39365 has 1 MA's), (85, 39380), (87, 39383), (95, 39422), (96, 39425), (99, 39446), (106, 39479), (114, 39506), (119, 39539), (126, 39581), (127, 39587), (153, 39683),

Gene: PatriciaStar_53 Start: 39194, Stop: 39559, Start Num: 56

Candidate Starts for PatriciaStar_53:

(Start: 56 @39194 has 24 MA's), (99, 39320),

Gene: Pelletreau_33 Start: 22425, Stop: 22072, Start Num: 62

Candidate Starts for Pelletreau_33:

(Start: 62 @22425 has 11 MA's), (97, 22326), (147, 22089),

Gene: Peridot_61 Start: 39669, Stop: 40034, Start Num: 63

Candidate Starts for Peridot_61:

(Start: 63 @39669 has 242 MA's), (Start: 76 @39702 has 1 MA's), (85, 39717), (87, 39720), (95, 39759), (96, 39762), (99, 39783), (106, 39816), (114, 39843), (119, 39876), (126, 39918), (127, 39924), (153, 40020),

Gene: Phalconet_58 Start: 39065, Stop: 39430, Start Num: 63

Candidate Starts for Phalconet_58:

(Start: 63 @39065 has 242 MA's), (Start: 76 @39098 has 1 MA's), (78, 39104), (87, 39116), (90, 39131), (96, 39158), (101, 39188), (106, 39212), (107, 39215), (126, 39314), (127, 39320), (146, 39395),

Gene: Phanphagia_57 Start: 40656, Stop: 41021, Start Num: 63

Candidate Starts for Phanphagia_57:

(Start: 63 @40656 has 242 MA's), (Start: 76 @40689 has 1 MA's), (78, 40695), (87, 40707), (96, 40749), (101, 40779), (106, 40803), (107, 40806), (126, 40905), (127, 40911), (146, 40986),

Gene: Phasih_58 Start: 40630, Stop: 40995, Start Num: 63

Candidate Starts for Phasih_58:

(Start: 63 @40630 has 242 MA's), (Start: 76 @40663 has 1 MA's), (85, 40678), (87, 40681), (95, 40720), (96, 40723), (99, 40744), (114, 40804), (119, 40837), (126, 40879), (127, 40885), (141, 40954), (153, 40981),

Gene: Phatniss_58 Start: 40209, Stop: 40574, Start Num: 63

Candidate Starts for Phatniss_58:

(Start: 63 @40209 has 242 MA's), (Start: 76 @40242 has 1 MA's), (85, 40257), (87, 40260), (95, 40299), (96, 40302), (99, 40323), (106, 40356), (113, 40377), (114, 40383), (119, 40416), (126, 40458), (127, 40464), (153, 40560),

Gene: PhesterPhotato_60 Start: 39882, Stop: 40247, Start Num: 63

Candidate Starts for PhesterPhotato_60:

(Start: 63 @39882 has 242 MA's), (Start: 76 @39915 has 1 MA's), (78, 39921), (87, 39933), (90, 39948), (96, 39975), (101, 40005), (106, 40029), (107, 40032), (126, 40131), (127, 40137), (146, 40212),

Gene: Philus_63 Start: 41366, Stop: 41731, Start Num: 63

Candidate Starts for Philus_63:

(Start: 63 @41366 has 242 MA's), (Start: 76 @41399 has 1 MA's), (85, 41414), (87, 41417), (95, 41456), (96, 41459), (99, 41480), (106, 41513), (113, 41534), (114, 41540), (119, 41573), (126,

41615), (127, 41621), (153, 41717),

Gene: PhirstandPhine_35 Start: 21992, Stop: 21642, Start Num: 62

Candidate Starts for PhirstandPhine_35:

(25, 22175), (38, 22082), (Start: 62 @21992 has 11 MA's), (147, 21659),

Gene: PhlipPhlop_60 Start: 41923, Stop: 42288, Start Num: 63

Candidate Starts for PhlipPhlop_60:

(Start: 63 @41923 has 242 MA's), (Start: 76 @41956 has 1 MA's), (85, 41971), (87, 41974), (95, 42013), (96, 42016), (99, 42037), (106, 42070), (114, 42097), (119, 42130), (126, 42172), (127, 42178), (153, 42274),

Gene: Phoebus_144 Start: 78670, Stop: 79023, Start Num: 57

Candidate Starts for Phoebus_144:

(Start: 57 @78670 has 32 MA's), (119, 78871), (126, 78913),

Gene: Phrappuccino_165 Start: 110158, Stop: 110505, Start Num: 67

Candidate Starts for Phrappuccino_165:

(Start: 67 @110158 has 2 MA's), (80, 110191), (82, 110194), (85, 110200), (99, 110263), (139, 110455),

Gene: Pineda_34 Start: 22001, Stop: 21651, Start Num: 62

Candidate Starts for Pineda_34:

(3, 22508), (11, 22325), (25, 22184), (38, 22091), (Start: 62 @22001 has 11 MA's), (147, 21668),

Gene: Pioneer3_71 Start: 44751, Stop: 44401, Start Num: 71

Candidate Starts for Pioneer3_71:

(34, 44892), (49, 44808), (Start: 71 @44751 has 6 MA's), (81, 44724), (86, 44715), (87, 44712), (100, 44649), (104, 44625), (140, 44448), (145, 44433), (152, 44412),

Gene: Pippy_58 Start: 39072, Stop: 39437, Start Num: 63

Candidate Starts for Pippy_58:

(Start: 63 @39072 has 242 MA's), (Start: 76 @39105 has 1 MA's), (85, 39120), (87, 39123), (95, 39162), (96, 39165), (99, 39186), (106, 39219), (114, 39246), (119, 39279), (126, 39321), (127, 39327), (153, 39423),

Gene: Platte_71 Start: 44704, Stop: 44354, Start Num: 71

Candidate Starts for Platte_71:

(49, 44761), (Start: 71 @44704 has 6 MA's), (81, 44677), (86, 44668), (87, 44665), (100, 44602), (104, 44578), (140, 44401), (145, 44386), (152, 44365),

Gene: Plumbus_62 Start: 40530, Stop: 40895, Start Num: 63

Candidate Starts for Plumbus_62:

(Start: 63 @40530 has 242 MA's), (Start: 76 @40563 has 1 MA's), (85, 40578), (87, 40581), (96, 40623), (99, 40644), (106, 40677), (113, 40698), (114, 40704), (119, 40737), (126, 40779), (127, 40785), (153, 40881),

Gene: Poenanya_60 Start: 41387, Stop: 41752, Start Num: 63

Candidate Starts for Poenanya_60:

(Start: 63 @41387 has 242 MA's), (Start: 76 @41420 has 1 MA's), (85, 41435), (87, 41438), (96, 41480), (99, 41501), (106, 41534), (113, 41555), (114, 41561), (119, 41594), (126, 41636), (127, 41642), (153, 41738),

Gene: Polka_32 Start: 21713, Stop: 21363, Start Num: 62

Candidate Starts for Polka_32:

(Start: 62 @21713 has 11 MA's), (147, 21380),

Gene: Polka14_58 Start: 39583, Stop: 39948, Start Num: 63

Candidate Starts for Polka14_58:

(Start: 63 @39583 has 242 MA's), (Start: 76 @39616 has 1 MA's), (85, 39631), (87, 39634), (95, 39673), (96, 39676), (99, 39697), (106, 39730), (114, 39757), (119, 39790), (126, 39832), (127, 39838), (153, 39934),

Gene: Pollywog_61 Start: 41040, Stop: 41405, Start Num: 63

Candidate Starts for Pollywog_61:

(Start: 63 @41040 has 242 MA's), (Start: 76 @41073 has 1 MA's), (85, 41088), (87, 41091), (95, 41130), (96, 41133), (99, 41154), (106, 41187), (114, 41214), (119, 41247), (126, 41289), (127, 41295), (153, 41391),

Gene: PopTart_54 Start: 38690, Stop: 39055, Start Num: 63

Candidate Starts for PopTart_54:

(Start: 63 @38690 has 242 MA's), (Start: 76 @38723 has 1 MA's), (78, 38729), (87, 38741), (96, 38783), (101, 38813), (106, 38837), (107, 38840), (126, 38939), (127, 38945), (146, 39020),

Gene: Porcelain_140 Start: 73737, Stop: 74090, Start Num: 57

Candidate Starts for Porcelain_140:

(34, 73635), (Start: 57 @73737 has 32 MA's), (119, 73938), (126, 73980),

Gene: Pound_136 Start: 76489, Stop: 76842, Start Num: 57

Candidate Starts for Pound_136:

(33, 76375), (34, 76387), (Start: 57 @76489 has 32 MA's), (119, 76690), (126, 76732),

Gene: Prairie_53 Start: 36909, Stop: 37310, Start Num: 62

Candidate Starts for Prairie_53:

(36, 36807), (37, 36810), (Start: 62 @36909 has 11 MA's), (131, 37170),

Gene: Priscilla_60 Start: 40303, Stop: 40668, Start Num: 63

Candidate Starts for Priscilla_60:

(Start: 63 @40303 has 242 MA's), (Start: 76 @40336 has 1 MA's), (85, 40351), (87, 40354), (95, 40393), (96, 40396), (99, 40417), (106, 40450), (114, 40477), (119, 40510), (126, 40552), (127, 40558), (153, 40654),

Gene: Pupper_45 Start: 15769, Stop: 16101, Start Num: 70

Candidate Starts for Pupper_45:

(17, 15514), (Start: 56 @15742 has 24 MA's), (Start: 70 @15769 has 3 MA's), (90, 15823), (91, 15832), (99, 15871), (119, 15955), (135, 16045),

Gene: QuickMath_62 Start: 42312, Stop: 42677, Start Num: 63

Candidate Starts for QuickMath_62:

(Start: 63 @42312 has 242 MA's), (Start: 76 @42345 has 1 MA's), (85, 42360), (87, 42363), (95, 42402), (96, 42405), (99, 42426), (106, 42459), (113, 42480), (114, 42486), (119, 42519), (126, 42561), (127, 42567), (153, 42663),

Gene: QuickMath_59 Start: 41340, Stop: 41687, Start Num: 64

Candidate Starts for QuickMath_59:

(Start: 58 @41313 has 2 MA's), (60, 41331), (Start: 64 @41340 has 30 MA's), (Start: 76 @41370 has 1 MA's), (79, 41379), (88, 41397), (99, 41451), (106, 41478), (119, 41535), (123, 41565), (126, 41577),

Gene: QuickMath_60 Start: 41684, Stop: 42037, Start Num: 63

Candidate Starts for QuickMath_60:

(Start: 54 @41648 has 1 MA's), (Start: 63 @41684 has 242 MA's), (Start: 75 @41714 has 1 MA's), (Start: 76 @41717 has 1 MA's), (83, 41729), (87, 41735), (99, 41798), (101, 41807), (102, 41813), (126, 41927), (130, 41948), (144, 42005), (150, 42017),

Gene: Quico_68 Start: 42216, Stop: 42581, Start Num: 63

Candidate Starts for Quico_68:

(Start: 63 @42216 has 242 MA's), (Start: 76 @42249 has 1 MA's), (79, 42258), (87, 42267), (96, 42309), (101, 42339), (106, 42363), (107, 42366), (126, 42465), (127, 42471), (146, 42546),

Gene: Radiance_59 Start: 40325, Stop: 40690, Start Num: 63

Candidate Starts for Radiance_59:

(Start: 63 @40325 has 242 MA's), (Start: 76 @40358 has 1 MA's), (87, 40376), (96, 40418), (99, 40439), (106, 40472), (113, 40493), (114, 40499), (119, 40532), (126, 40574), (127, 40580), (153, 40676),

Gene: Ramsey_59 Start: 40638, Stop: 41003, Start Num: 63

Candidate Starts for Ramsey_59:

(Start: 63 @40638 has 242 MA's), (Start: 76 @40671 has 1 MA's), (78, 40677), (87, 40689), (101, 40761), (106, 40785), (107, 40788), (114, 40812), (126, 40887), (127, 40893), (146, 40968),

Gene: RayTheFireFly_61 Start: 39688, Stop: 40050, Start Num: 56

Candidate Starts for RayTheFireFly_61:

(Start: 56 @39688 has 24 MA's), (99, 39811), (116, 39877),

Gene: RedWattleHog_91 Start: 82425, Stop: 82775, Start Num: 66

Candidate Starts for RedWattleHog_91:

(Start: 66 @82425 has 2 MA's), (81, 82461), (108, 82572), (116, 82599), (119, 82617), (135, 82707),

Gene: Redno2_139 Start: 74778, Stop: 75131, Start Num: 57

Candidate Starts for Redno2_139:

(34, 74676), (Start: 57 @74778 has 32 MA's), (119, 74979), (126, 75021),

Gene: Renaud18_64 Start: 40462, Stop: 40815, Start Num: 63

Candidate Starts for Renaud18_64:

(Start: 54 @40426 has 1 MA's), (Start: 63 @40462 has 242 MA's), (83, 40507), (87, 40513), (99, 40576), (101, 40585), (110, 40621), (116, 40645), (150, 40795),

Gene: Renaud18_66 Start: 41090, Stop: 41452, Start Num: 63

Candidate Starts for Renaud18_66:

(Start: 63 @41090 has 242 MA's), (Start: 76 @41123 has 1 MA's), (85, 41138), (87, 41141), (95, 41180), (96, 41183), (99, 41204), (113, 41255), (114, 41261), (127, 41342), (153, 41438),

Gene: Renaud18_63 Start: 40118, Stop: 40465, Start Num: 64

Candidate Starts for Renaud18_63:

(Start: 58 @40091 has 2 MA's), (60, 40109), (Start: 64 @40118 has 30 MA's), (69, 40130), (Start: 76 @40148 has 1 MA's), (79, 40157), (99, 40229), (115, 40292), (119, 40313), (123, 40343),

Gene: Rialto_66 Start: 43107, Stop: 43472, Start Num: 63

Candidate Starts for Rialto_66:

(Start: 63 @43107 has 242 MA's), (Start: 76 @43140 has 1 MA's), (85, 43155), (87, 43158), (95, 43197), (96, 43200), (99, 43221), (106, 43254), (113, 43275), (114, 43281), (119, 43314), (126, 43356), (127, 43362), (153, 43458),

Gene: Rita_61 Start: 38934, Stop: 39299, Start Num: 63

Candidate Starts for Rita_61:

(Start: 63 @38934 has 242 MA's), (Start: 76 @38967 has 1 MA's), (85, 38982), (87, 38985), (95, 39024), (96, 39027), (99, 39048), (106, 39081), (114, 39108), (119, 39141), (126, 39183), (127, 39189), (153, 39285),

Gene: RitaG_55 Start: 38831, Stop: 39196, Start Num: 63

Candidate Starts for RitaG_55:

(Start: 63 @38831 has 242 MA's), (Start: 76 @38864 has 1 MA's), (85, 38879), (87, 38882), (96, 38924), (99, 38945), (106, 38978), (113, 38999), (114, 39005), (119, 39038), (126, 39080), (127, 39086), (153, 39182),

Gene: Rockne_61 Start: 40843, Stop: 41208, Start Num: 63

Candidate Starts for Rockne_61:

(Start: 63 @40843 has 242 MA's), (Start: 76 @40876 has 1 MA's), (85, 40891), (87, 40894), (95, 40933), (96, 40936), (99, 40957), (106, 40990), (114, 41017), (119, 41050), (126, 41092), (127, 41098), (153, 41194),

Gene: RockyHorror_61 Start: 39889, Stop: 40254, Start Num: 63

Candidate Starts for RockyHorror_61:

(Start: 63 @39889 has 242 MA's), (Start: 76 @39922 has 1 MA's), (87, 39940), (95, 39979), (96, 39982), (99, 40003), (106, 40036), (114, 40063), (119, 40096), (126, 40138), (127, 40144), (153, 40240),

Gene: Royals2015_61 Start: 39482, Stop: 39829, Start Num: 64

Candidate Starts for Royals2015_61:

(Start: 58 @39455 has 2 MA's), (60, 39473), (Start: 64 @39482 has 30 MA's), (Start: 76 @39512 has 1 MA's), (79, 39521), (88, 39539), (99, 39593), (106, 39620), (119, 39677), (123, 39707), (126, 39719),

Gene: Royals2015_62 Start: 39826, Stop: 40179, Start Num: 63

Candidate Starts for Royals2015_62:

(Start: 54 @39790 has 1 MA's), (Start: 63 @39826 has 242 MA's), (Start: 75 @39856 has 1 MA's), (Start: 76 @39859 has 1 MA's), (83, 39871), (87, 39877), (99, 39940), (101, 39949), (102, 39955), (126, 40069), (130, 40090), (144, 40147), (150, 40159),

Gene: Ruby_56 Start: 40018, Stop: 40383, Start Num: 63

Candidate Starts for Ruby_56:

(Start: 63 @40018 has 242 MA's), (Start: 76 @40051 has 1 MA's), (85, 40066), (87, 40069), (95, 40108), (96, 40111), (99, 40132), (114, 40192), (119, 40225), (126, 40267), (127, 40273), (153, 40369),

Gene: SCentae_45 Start: 15768, Stop: 16100, Start Num: 70

Candidate Starts for SCentae_45:

(17, 15513), (Start: 56 @15741 has 24 MA's), (Start: 70 @15768 has 3 MA's), (90, 15822), (91, 15831), (99, 15870), (119, 15954), (135, 16044),

Gene: SG4_57 Start: 39721, Stop: 40086, Start Num: 63

Candidate Starts for SG4_57:

(Start: 63 @39721 has 242 MA's), (Start: 76 @39754 has 1 MA's), (85, 39769), (87, 39772), (95, 39811), (96, 39814), (99, 39835), (106, 39868), (114, 39895), (119, 39928), (126, 39970), (127, 39976), (153, 40072),

Gene: Saal_62 Start: 41474, Stop: 41839, Start Num: 63

Candidate Starts for Saal_62:

(Start: 63 @41474 has 242 MA's), (Start: 76 @41507 has 1 MA's), (85, 41522), (87, 41525), (95, 41564), (96, 41567), (99, 41588), (106, 41621), (114, 41648), (119, 41681), (126, 41723), (127, 41729), (153, 41825),

Gene: Sabbb_64 Start: 41162, Stop: 41527, Start Num: 63

Candidate Starts for Sabbb_64:

(Start: 63 @41162 has 242 MA's), (Start: 76 @41195 has 1 MA's), (85, 41210), (87, 41213), (95, 41252), (96, 41255), (99, 41276), (114, 41336), (119, 41369), (126, 41411), (127, 41417), (141, 41486), (153, 41513),

Gene: Samba_50 Start: 37695, Stop: 38057, Start Num: 56

Candidate Starts for Samba_50:

(28, 37551), (33, 37587), (37, 37626), (Start: 56 @37695 has 24 MA's), (100, 37824), (104, 37848), (151, 38043),

Gene: Sandalphon_61 Start: 40762, Stop: 41127, Start Num: 63

Candidate Starts for Sandalphon_61:

(Start: 63 @40762 has 242 MA's), (Start: 76 @40795 has 1 MA's), (79, 40804), (87, 40813), (96, 40855), (101, 40885), (106, 40909), (107, 40912), (126, 41011), (127, 41017), (146, 41092),

Gene: Sarma624_56 Start: 35652, Stop: 35999, Start Num: 64

Candidate Starts for Sarma624_56:

(Start: 58 @35625 has 2 MA's), (60, 35643), (Start: 64 @35652 has 30 MA's), (Start: 76 @35682 has 1 MA's), (79, 35691), (88, 35709), (99, 35763), (106, 35790), (119, 35847), (123, 35877), (126, 35889),

Gene: Sarma624_57 Start: 35996, Stop: 36349, Start Num: 63

Candidate Starts for Sarma624_57:

(Start: 54 @35960 has 1 MA's), (Start: 63 @35996 has 242 MA's), (Start: 75 @36026 has 1 MA's), (Start: 76 @36029 has 1 MA's), (83, 36041), (87, 36047), (99, 36110), (101, 36119), (102, 36125), (126, 36239), (130, 36260), (144, 36317), (150, 36329),

Gene: Sassafras_58 Start: 39803, Stop: 40168, Start Num: 63

Candidate Starts for Sassafras_58:

(Start: 63 @39803 has 242 MA's), (Start: 76 @39836 has 1 MA's), (85, 39851), (87, 39854), (95, 39893), (96, 39896), (99, 39917), (106, 39950), (114, 39977), (119, 40010), (126, 40052), (127, 40058), (153, 40154),

Gene: SassyB_54 Start: 38690, Stop: 39055, Start Num: 63

Candidate Starts for SassyB_54:

(Start: 63 @38690 has 242 MA's), (Start: 76 @38723 has 1 MA's), (78, 38729), (87, 38741), (96, 38783), (101, 38813), (106, 38837), (107, 38840), (126, 38939), (127, 38945), (146, 39020),

Gene: Schatzie_140 Start: 77338, Stop: 77691, Start Num: 57

Candidate Starts for Schatzie_140:

(Start: 57 @77338 has 32 MA's), (119, 77539), (126, 77581),

Gene: Schism_53 Start: 34682, Stop: 35089, Start Num: 44

Candidate Starts for Schism_53:

(Start: 44 @34682 has 1 MA's), (Start: 56 @34715 has 24 MA's), (Start: 63 @34727 has 242 MA's), (Start: 65 @34730 has 4 MA's), (77, 34763), (86, 34781), (97, 34829), (128, 34988),

Gene: Scottish_58 Start: 39849, Stop: 40214, Start Num: 63

Candidate Starts for Scottish_58:

(Start: 63 @39849 has 242 MA's), (Start: 76 @39882 has 1 MA's), (85, 39897), (87, 39900), (96, 39942), (99, 39963), (106, 39996), (114, 40023), (119, 40056), (126, 40098), (127, 40104), (153, 40200),

Gene: Seabastian_65 Start: 42816, Stop: 43181, Start Num: 63

Candidate Starts for Seabastian_65:

(Start: 63 @42816 has 242 MA's), (Start: 76 @42849 has 1 MA's), (85, 42864), (87, 42867), (95, 42906), (96, 42909), (99, 42930), (106, 42963), (114, 42990), (119, 43023), (126, 43065), (127, 43071), (153, 43167),

Gene: Seagreen_58 Start: 39051, Stop: 39398, Start Num: 64

Candidate Starts for Seagreen_58:

(Start: 58 @39024 has 2 MA's), (60, 39042), (Start: 64 @39051 has 30 MA's), (Start: 76 @39081 has 1 MA's), (79, 39090), (88, 39108), (99, 39162), (106, 39189), (119, 39246), (123, 39276), (126, 39288),

Gene: Seagreen_59 Start: 39395, Stop: 39748, Start Num: 63

Candidate Starts for Seagreen_59:

(Start: 54 @39359 has 1 MA's), (Start: 63 @39395 has 242 MA's), (Start: 75 @39425 has 1 MA's), (Start: 76 @39428 has 1 MA's), (83, 39440), (87, 39446), (99, 39509), (101, 39518), (102, 39524), (126, 39638), (130, 39659), (144, 39716), (150, 39728),

Gene: Settecandela_165 Start: 110158, Stop: 110505, Start Num: 67

Candidate Starts for Settecandela_165:

(Start: 67 @110158 has 2 MA's), (80, 110191), (82, 110194), (85, 110200), (99, 110263), (139, 110455),

Gene: Shatter_48 Start: 41091, Stop: 40741, Start Num: 52

Candidate Starts for Shatter_48:

(Start: 52 @41091 has 10 MA's), (81, 41046), (86, 41037), (90, 41022), (99, 40974), (119, 40893),

Gene: Shauna1_58 Start: 40565, Stop: 40930, Start Num: 63

Candidate Starts for Shauna1_58:

(Start: 63 @40565 has 242 MA's), (Start: 76 @40598 has 1 MA's), (79, 40607), (87, 40616), (106, 40712), (107, 40715), (114, 40739), (126, 40814), (127, 40820), (146, 40895),

Gene: ShiLan_59 Start: 40250, Stop: 40615, Start Num: 63

Candidate Starts for ShiLan_59:

(Start: 63 @40250 has 242 MA's), (Start: 76 @40283 has 1 MA's), (85, 40298), (87, 40301), (95, 40340), (96, 40343), (99, 40364), (106, 40397), (114, 40424), (119, 40457), (126, 40499), (127, 40505), (153, 40601),

Gene: ShowerHandel_63 Start: 40214, Stop: 40579, Start Num: 63

Candidate Starts for ShowerHandel_63:

(Start: 63 @40214 has 242 MA's), (Start: 76 @40247 has 1 MA's), (85, 40262), (87, 40265), (95, 40304), (96, 40307), (99, 40328), (106, 40361), (114, 40388), (119, 40421), (126, 40463), (127, 40469), (153, 40565),

Gene: ShroomBoi_62 Start: 41174, Stop: 41539, Start Num: 63

Candidate Starts for ShroomBoi_62:

(Start: 63 @41174 has 242 MA's), (Start: 76 @41207 has 1 MA's), (85, 41222), (87, 41225), (96, 41267), (99, 41288), (106, 41321), (114, 41348), (119, 41381), (126, 41423), (127, 41429), (153, 41525),

Gene: SiSi_58 Start: 39623, Stop: 39988, Start Num: 63

Candidate Starts for SiSi_58:

(Start: 63 @39623 has 242 MA's), (Start: 76 @39656 has 1 MA's), (85, 39671), (87, 39674), (95, 39713), (96, 39716), (99, 39737), (106, 39770), (114, 39797), (119, 39830), (126, 39872), (127, 39878), (153, 39974),

Gene: SilverChicken_70 Start: 40345, Stop: 40710, Start Num: 63

Candidate Starts for SilverChicken_70:

(Start: 63 @40345 has 242 MA's), (Start: 76 @40378 has 1 MA's), (78, 40384), (87, 40396), (96, 40438), (101, 40468), (106, 40492), (107, 40495), (126, 40594), (127, 40600), (146, 40675),

Gene: SimranZ1_60 Start: 40397, Stop: 40762, Start Num: 63

Candidate Starts for SimranZ1_60:

(Start: 63 @40397 has 242 MA's), (Start: 76 @40430 has 1 MA's), (85, 40445), (87, 40448), (95, 40487), (96, 40490), (99, 40511), (114, 40571), (119, 40604), (126, 40646), (127, 40652), (141, 40721), (153, 40748),

Gene: Sisko_47 Start: 41439, Stop: 41065, Start Num: 52

Candidate Starts for Sisko_47:

(Start: 52 @41439 has 10 MA's), (81, 41379), (98, 41316), (99, 41307), (124, 41187),

Gene: Slim_61 Start: 41010, Stop: 41375, Start Num: 63

Candidate Starts for Slim_61:

(Start: 63 @41010 has 242 MA's), (Start: 76 @41043 has 1 MA's), (85, 41058), (87, 41061), (95, 41100), (96, 41103), (99, 41124), (106, 41157), (114, 41184), (119, 41217), (126, 41259), (127, 41265), (153, 41361),

Gene: Soul22_66 Start: 41808, Stop: 42173, Start Num: 63

Candidate Starts for Soul22_66:

(Start: 63 @41808 has 242 MA's), (Start: 76 @41841 has 1 MA's), (85, 41856), (87, 41859), (95, 41898), (96, 41901), (99, 41922), (106, 41955), (114, 41982), (119, 42015), (126, 42057), (127, 42063), (153, 42159),

Gene: Sour_51 Start: 44771, Stop: 44406, Start Num: 50

Candidate Starts for Sour_51:

(45, 44777), (47, 44774), (Start: 50 @44771 has 1 MA's), (53, 44765), (Start: 73 @44750 has 1 MA's), (86, 44717), (90, 44702), (99, 44654), (103, 44633), (133, 44489), (134, 44483), (137, 44471), (146, 44444), (156, 44411),

Gene: Sparkdehlily_67 Start: 41576, Stop: 41941, Start Num: 63

Candidate Starts for Sparkdehlily_67:

(Start: 63 @41576 has 242 MA's), (Start: 76 @41609 has 1 MA's), (78, 41615), (87, 41627), (96, 41669), (101, 41699), (106, 41723), (107, 41726), (126, 41825), (127, 41831), (146, 41906),

Gene: Spartacus_62 Start: 40884, Stop: 41249, Start Num: 63

Candidate Starts for Spartacus_62:

(Start: 63 @40884 has 242 MA's), (Start: 76 @40917 has 1 MA's), (85, 40932), (87, 40935), (95, 40974), (96, 40977), (99, 40998), (114, 41058), (119, 41091), (126, 41133), (127, 41139), (153, 41235),

Gene: Spikelee_67 Start: 42504, Stop: 42869, Start Num: 63

Candidate Starts for Spikelee_67:

(Start: 63 @42504 has 242 MA's), (Start: 76 @42537 has 1 MA's), (85, 42552), (87, 42555), (96, 42597), (99, 42618), (114, 42678), (119, 42711), (126, 42753), (127, 42759), (153, 42855),

Gene: Spoonbill_57 Start: 38791, Stop: 39156, Start Num: 63

Candidate Starts for Spoonbill_57:

(Start: 63 @38791 has 242 MA's), (Start: 76 @38824 has 1 MA's), (85, 38839), (87, 38842), (96, 38884), (99, 38905), (106, 38938), (113, 38959), (114, 38965), (119, 38998), (126, 39040), (127, 39046), (153, 39142),

Gene: Squiddly_84 Start: 50073, Stop: 50414, Start Num: 59

Candidate Starts for Squiddly_84:

(Start: 56 @50064 has 24 MA's), (Start: 59 @50073 has 1 MA's), (143, 50388),

Gene: Squirty_62 Start: 41343, Stop: 41708, Start Num: 63

Candidate Starts for Squirty_62:

(Start: 63 @41343 has 242 MA's), (Start: 76 @41376 has 1 MA's), (79, 41385), (87, 41394), (106, 41490), (107, 41493), (114, 41517), (126, 41592), (127, 41598), (146, 41673),

Gene: StAnnes_58 Start: 40743, Stop: 41108, Start Num: 63

Candidate Starts for StAnnes_58:

(Start: 63 @40743 has 242 MA's), (Start: 76 @40776 has 1 MA's), (78, 40782), (87, 40794), (96, 40836), (101, 40866), (106, 40890), (107, 40893), (126, 40992), (127, 40998), (146, 41073), (147, 41076),

Gene: StAugustine_140 Start: 84499, Stop: 84137, Start Num: 65

Candidate Starts for StAugustine_140:

(Start: 56 @84514 has 24 MA's), (Start: 65 @84499 has 4 MA's), (Start: 67 @84490 has 2 MA's), (74, 84475), (92, 84418), (94, 84409), (136, 84211),

Gene: Starcevich_58 Start: 39755, Stop: 40108, Start Num: 63

Candidate Starts for Starcevich_58:

(Start: 54 @39719 has 1 MA's), (Start: 63 @39755 has 242 MA's), (Start: 75 @39785 has 1 MA's), (Start: 76 @39788 has 1 MA's), (83, 39800), (87, 39806), (99, 39869), (101, 39878), (102, 39884), (126, 39998), (130, 40019), (144, 40076), (150, 40088),

Gene: Starcevich_57 Start: 39411, Stop: 39758, Start Num: 64

Candidate Starts for Starcevich_57:

(Start: 58 @39384 has 2 MA's), (60, 39402), (Start: 64 @39411 has 30 MA's), (Start: 76 @39441 has 1 MA's), (79, 39450), (88, 39468), (99, 39522), (106, 39549), (119, 39606), (123, 39636), (126, 39648),

Gene: Starcevich_60 Start: 40380, Stop: 40745, Start Num: 63

Candidate Starts for Starcevich_60:

(Start: 63 @40380 has 242 MA's), (Start: 76 @40413 has 1 MA's), (85, 40428), (87, 40431), (95, 40470), (96, 40473), (99, 40494), (106, 40527), (114, 40554), (119, 40587), (126, 40629), (127, 40635), (153, 40731),

Gene: Stormageddon_88 Start: 82406, Stop: 82756, Start Num: 66

Candidate Starts for Stormageddon_88:

(Start: 66 @82406 has 2 MA's), (81, 82442), (108, 82553), (116, 82580), (119, 82598), (135, 82688),

Gene: Strokeseat_56 Start: 38330, Stop: 38695, Start Num: 63

Candidate Starts for Strokeseat_56:

(Start: 63 @38330 has 242 MA's), (Start: 76 @38363 has 1 MA's), (85, 38378), (87, 38381), (96, 38423), (99, 38444), (106, 38477), (113, 38498), (114, 38504), (126, 38579), (127, 38585), (153, 38681),

Gene: SuperGrey_63 Start: 42051, Stop: 42416, Start Num: 63

Candidate Starts for SuperGrey_63:

(Start: 63 @42051 has 242 MA's), (Start: 76 @42084 has 1 MA's), (78, 42090), (87, 42102), (96, 42144), (101, 42174), (106, 42198), (107, 42201), (126, 42300), (127, 42306), (146, 42381),

Gene: SwagPigglett_65 Start: 42522, Stop: 42887, Start Num: 63

Candidate Starts for SwagPigglett_65:

(Start: 63 @42522 has 242 MA's), (Start: 76 @42555 has 1 MA's), (85, 42570), (87, 42573), (95, 42612), (96, 42615), (99, 42636), (106, 42669), (114, 42696), (119, 42729), (126, 42771), (127, 42777), (153, 42873),

Gene: TChen_61 Start: 41633, Stop: 41998, Start Num: 63

Candidate Starts for TChen_61:

(Start: 63 @41633 has 242 MA's), (Start: 76 @41666 has 1 MA's), (87, 41684), (95, 41723), (96, 41726), (99, 41747), (101, 41756), (106, 41780), (114, 41807), (119, 41840), (126, 41882), (127, 41888), (153, 41984),

Gene: TChen_59 Start: 41008, Stop: 41361, Start Num: 63

Candidate Starts for TChen_59:

(Start: 54 @40972 has 1 MA's), (Start: 63 @41008 has 242 MA's), (83, 41053), (87, 41059), (99, 41122), (101, 41131), (110, 41167), (116, 41191), (150, 41341),

Gene: TChen_58 Start: 40664, Stop: 41011, Start Num: 64

Candidate Starts for TChen_58:

(Start: 58 @40637 has 2 MA's), (60, 40655), (Start: 64 @40664 has 30 MA's), (69, 40676), (Start: 76 @40694 has 1 MA's), (79, 40703), (96, 40754), (99, 40775), (115, 40838), (119, 40859), (123, 40889),

Gene: TDanisky_67 Start: 41576, Stop: 41941, Start Num: 63

Candidate Starts for TDanisky_67:

(Start: 63 @41576 has 242 MA's), (Start: 76 @41609 has 1 MA's), (78, 41615), (87, 41627), (96, 41669), (101, 41699), (106, 41723), (107, 41726), (126, 41825), (127, 41831), (146, 41906),

Gene: Taj_64 Start: 41975, Stop: 42340, Start Num: 63

Candidate Starts for Taj_64:

(Start: 63 @41975 has 242 MA's), (Start: 76 @42008 has 1 MA's), (85, 42023), (87, 42026), (95, 42065), (96, 42068), (99, 42089), (106, 42122), (114, 42149), (119, 42182), (126, 42224), (127, 42230), (153, 42326),

Gene: Tandem_71 Start: 44831, Stop: 44481, Start Num: 71

Candidate Starts for Tandem_71:

(34, 44972), (49, 44888), (Start: 71 @44831 has 6 MA's), (81, 44804), (86, 44795), (87, 44792), (100, 44729), (104, 44705), (140, 44528), (145, 44513), (152, 44492),

Gene: Tchotchke_60 Start: 39968, Stop: 40333, Start Num: 63

Candidate Starts for Tchotchke_60:

(Start: 63 @39968 has 242 MA's), (Start: 76 @40001 has 1 MA's), (78, 40007), (87, 40019), (96, 40061), (106, 40115), (107, 40118), (126, 40217), (127, 40223), (146, 40298),

Gene: ThetaBob_62 Start: 40738, Stop: 41085, Start Num: 64

Candidate Starts for ThetaBob_62:

(Start: 58 @40711 has 2 MA's), (60, 40729), (Start: 64 @40738 has 30 MA's), (69, 40750), (Start: 76 @40768 has 1 MA's), (79, 40777), (96, 40828), (99, 40849), (115, 40912), (119, 40933), (123, 40963),

Gene: ThetaBob_63 Start: 41082, Stop: 41435, Start Num: 63

Candidate Starts for ThetaBob_63:

(Start: 54 @41046 has 1 MA's), (Start: 63 @41082 has 242 MA's), (83, 41127), (87, 41133), (99, 41196), (101, 41205), (110, 41241), (116, 41265), (150, 41415),

Gene: ThetaBob_65 Start: 41707, Stop: 42069, Start Num: 63

Candidate Starts for ThetaBob_65:

(Start: 63 @41707 has 242 MA's), (Start: 76 @41740 has 1 MA's), (85, 41755), (87, 41758), (95, 41797), (96, 41800), (99, 41821), (101, 41830), (114, 41878), (126, 41953), (127, 41959), (153, 42055),

Gene: Thibault_127 Start: 73673, Stop: 74026, Start Num: 57

Candidate Starts for Thibault_127:

(31, 73550), (32, 73562), (Start: 57 @73673 has 32 MA's), (119, 73874), (126, 73916),

Gene: Thonko_86 Start: 63155, Stop: 62742, Start Num: 54

Candidate Starts for Thonko_86:

(5, 63593), (13, 63440), (18, 63365), (20, 63338), (36, 63224), (38, 63218), (Start: 54 @63155 has 1 MA's), (69, 63116), (81, 63086), (86, 63077), (99, 63014), (130, 62858), (132, 62846), (134, 62831), (147, 62783),

Gene: ThreeRngTarjay_139 Start: 77261, Stop: 77614, Start Num: 57

Candidate Starts for ThreeRngTarjay_139:

(Start: 57 @77261 has 32 MA's), (119, 77462), (126, 77504),

Gene: Toad24_32 Start: 22672, Stop: 22322, Start Num: 62

Candidate Starts for Toad24_32:

(Start: 62 @22672 has 11 MA's), (97, 22573), (147, 22339),

Gene: Tootsieroll_61 Start: 39546, Stop: 39911, Start Num: 63

Candidate Starts for Tootsieroll_61:

(Start: 63 @39546 has 242 MA's), (Start: 76 @39579 has 1 MA's), (85, 39594), (87, 39597), (96, 39639), (99, 39660), (106, 39693), (113, 39714), (114, 39720), (119, 39753), (126, 39795), (127, 39801), (153, 39897),

Gene: Topiatin_65 Start: 41903, Stop: 42250, Start Num: 64

Candidate Starts for Topiatin_65:

(Start: 58 @41876 has 2 MA's), (60, 41894), (Start: 64 @41903 has 30 MA's), (Start: 76 @41933 has 1 MA's), (79, 41942), (88, 41960), (99, 42014), (106, 42041), (119, 42098), (123, 42128), (126, 42140),

Gene: Topiatin_66 Start: 42247, Stop: 42600, Start Num: 63

Candidate Starts for Topiatin_66:

(Start: 54 @42211 has 1 MA's), (Start: 63 @42247 has 242 MA's), (Start: 75 @42277 has 1 MA's), (Start: 76 @42280 has 1 MA's), (83, 42292), (87, 42298), (99, 42361), (101, 42370), (102, 42376),

(126, 42490), (130, 42511), (144, 42568), (150, 42580),

Gene: Topiatin_68 Start: 42875, Stop: 43240, Start Num: 63

Candidate Starts for Topiatin_68:

(Start: 63 @42875 has 242 MA's), (Start: 76 @42908 has 1 MA's), (85, 42923), (87, 42926), (95, 42965), (96, 42968), (99, 42989), (113, 43043), (114, 43049), (119, 43082), (126, 43124), (127, 43130), (153, 43226),

Gene: Totinger_59 Start: 39476, Stop: 39841, Start Num: 63

Candidate Starts for Totinger_59:

(Start: 63 @39476 has 242 MA's), (Start: 76 @39509 has 1 MA's), (85, 39524), (87, 39527), (95, 39566), (96, 39569), (99, 39590), (106, 39623), (114, 39650), (119, 39683), (126, 39725), (127, 39731), (153, 39827),

Gene: Tweety_59 Start: 41367, Stop: 41732, Start Num: 63

Candidate Starts for Tweety_59:

(Start: 63 @41367 has 242 MA's), (Start: 76 @41400 has 1 MA's), (78, 41406), (87, 41418), (96, 41460), (101, 41490), (106, 41514), (107, 41517), (126, 41616), (127, 41622), (146, 41697),

Gene: UncleRicky_59 Start: 40457, Stop: 40822, Start Num: 63

Candidate Starts for UncleRicky_59:

(Start: 63 @40457 has 242 MA's), (Start: 76 @40490 has 1 MA's), (85, 40505), (87, 40508), (95, 40547), (96, 40550), (99, 40571), (106, 40604), (113, 40625), (114, 40631), (119, 40664), (126, 40706), (127, 40712), (153, 40808),

Gene: Utz_44 Start: 35948, Stop: 36310, Start Num: 56

Candidate Starts for Utz_44:

(27, 35798), (28, 35804), (33, 35840), (37, 35879), (Start: 56 @35948 has 24 MA's), (100, 36077), (104, 36101),

Gene: VRedHorse_60 Start: 39530, Stop: 39895, Start Num: 63

Candidate Starts for VRedHorse_60:

(Start: 63 @39530 has 242 MA's), (Start: 76 @39563 has 1 MA's), (85, 39578), (87, 39581), (95, 39620), (96, 39623), (99, 39644), (106, 39677), (114, 39704), (119, 39737), (126, 39779), (127, 39785), (153, 39881),

Gene: Velveteen_53 Start: 35652, Stop: 35999, Start Num: 64

Candidate Starts for Velveteen_53:

(Start: 58 @35625 has 2 MA's), (60, 35643), (Start: 64 @35652 has 30 MA's), (Start: 76 @35682 has 1 MA's), (79, 35691), (88, 35709), (99, 35763), (106, 35790), (119, 35847), (123, 35877), (126, 35889),

Gene: Velveteen_54 Start: 35996, Stop: 36349, Start Num: 63

Candidate Starts for Velveteen_54:

(Start: 54 @35960 has 1 MA's), (Start: 63 @35996 has 242 MA's), (Start: 75 @36026 has 1 MA's), (Start: 76 @36029 has 1 MA's), (83, 36041), (87, 36047), (99, 36110), (101, 36119), (102, 36125), (126, 36239), (130, 36260), (144, 36317), (150, 36329),

Gene: Veteran_57 Start: 39234, Stop: 39599, Start Num: 63

Candidate Starts for Veteran_57:

(Start: 63 @39234 has 242 MA's), (Start: 76 @39267 has 1 MA's), (85, 39282), (87, 39285), (95, 39324), (96, 39327), (99, 39348), (106, 39381), (113, 39402), (114, 39408), (119, 39441), (126, 39483), (127, 39489), (153, 39585),

Gene: Violac_62 Start: 41600, Stop: 41965, Start Num: 63

Candidate Starts for Violac_62:

(Start: 63 @41600 has 242 MA's), (Start: 76 @41633 has 1 MA's), (85, 41648), (87, 41651), (96, 41693), (99, 41714), (106, 41747), (113, 41768), (114, 41774), (119, 41807), (126, 41849), (127, 41855), (153, 41951),

Gene: Vivum_61 Start: 40532, Stop: 40897, Start Num: 63

Candidate Starts for Vivum_61:

(Start: 63 @40532 has 242 MA's), (Start: 76 @40565 has 1 MA's), (85, 40580), (87, 40583), (96, 40625), (99, 40646), (106, 40679), (113, 40700), (114, 40706), (119, 40739), (126, 40781), (127, 40787), (153, 40883),

Gene: Wachhund_61 Start: 40167, Stop: 40532, Start Num: 63

Candidate Starts for Wachhund_61:

(Start: 63 @40167 has 242 MA's), (Start: 76 @40200 has 1 MA's), (79, 40209), (87, 40218), (96, 40260), (101, 40290), (106, 40314), (107, 40317), (126, 40416), (127, 40422), (146, 40497), (147, 40500), (148, 40503),

Gene: Wanda_144 Start: 74968, Stop: 75321, Start Num: 57

Candidate Starts for Wanda_144:

(Start: 57 @74968 has 32 MA's), (119, 75169), (126, 75211),

Gene: Wee_64 Start: 42051, Stop: 42416, Start Num: 63

Candidate Starts for Wee_64:

(Start: 63 @42051 has 242 MA's), (Start: 76 @42084 has 1 MA's), (85, 42099), (87, 42102), (95, 42141), (96, 42144), (99, 42165), (106, 42198), (114, 42225), (119, 42258), (126, 42300), (127, 42306), (153, 42402),

Gene: Westrich_33 Start: 22349, Stop: 21999, Start Num: 62

Candidate Starts for Westrich_33:

(Start: 62 @22349 has 11 MA's), (97, 22250), (147, 22016),

Gene: Whatsapiecost_60 Start: 39457, Stop: 39822, Start Num: 63

Candidate Starts for Whatsapiecost_60:

(Start: 63 @39457 has 242 MA's), (Start: 76 @39490 has 1 MA's), (78, 39496), (87, 39508), (96, 39550), (101, 39580), (106, 39604), (107, 39607), (126, 39706), (127, 39712), (146, 39787), (147, 39790), (148, 39793),

Gene: Whouxphf_57 Start: 40126, Stop: 40491, Start Num: 63

Candidate Starts for Whouxphf_57:

(Start: 63 @40126 has 242 MA's), (Start: 76 @40159 has 1 MA's), (85, 40174), (87, 40177), (95, 40216), (96, 40219), (99, 40240), (106, 40273), (114, 40300), (119, 40333), (126, 40375), (127, 40381), (153, 40477),

Gene: WillSterrel_61 Start: 42001, Stop: 42366, Start Num: 63

Candidate Starts for WillSterrel_61:

(Start: 63 @42001 has 242 MA's), (Start: 76 @42034 has 1 MA's), (85, 42049), (87, 42052), (95, 42091), (96, 42094), (99, 42115), (114, 42175), (119, 42208), (126, 42250), (127, 42256), (153, 42352),

Gene: Wisp_50 Start: 36176, Stop: 36538, Start Num: 56

Candidate Starts for Wisp_50:

(33, 36068), (37, 36107), (Start: 56 @36176 has 24 MA's), (93, 36275), (99, 36302), (100, 36305), (104, 36329), (117, 36374),

Gene: Wolfstar_76 Start: 46237, Stop: 45881, Start Num: 71

Candidate Starts for Wolfstar_76:

(34, 46384), (49, 46300), (Start: 71 @46237 has 6 MA's), (84, 46201), (86, 46198), (91, 46171), (105, 46102), (111, 46081), (119, 46036), (125, 45997), (127, 45988), (140, 45928), (145, 45913), (149, 45904),

Gene: XFactor_58 Start: 39256, Stop: 39621, Start Num: 63

Candidate Starts for XFactor_58:

(Start: 63 @39256 has 242 MA's), (Start: 76 @39289 has 1 MA's), (78, 39295), (87, 39307), (96, 39349), (101, 39379), (106, 39403), (107, 39406), (126, 39505), (127, 39511), (146, 39586), (147, 39589),

Gene: Yago84_47 Start: 41514, Stop: 41140, Start Num: 52

Candidate Starts for Yago84_47:

(Start: 52 @41514 has 10 MA's), (81, 41454), (98, 41391), (99, 41382), (124, 41262),

Gene: Yang_46 Start: 33276, Stop: 33626, Start Num: 61

Candidate Starts for Yang_46:

(6, 32868), (7, 32877), (15, 33003), (21, 33066), (24, 33087), (26, 33096), (29, 33114), (30, 33123), (Start: 61 @33276 has 1 MA's), (90, 33330), (119, 33456),

Gene: Yeet_138 Start: 76734, Stop: 77087, Start Num: 57

Candidate Starts for Yeet_138:

(34, 76632), (Start: 57 @76734 has 32 MA's), (119, 76935), (126, 76977),

Gene: Yorick_59 Start: 40588, Stop: 40953, Start Num: 63

Candidate Starts for Yorick_59:

(Start: 63 @40588 has 242 MA's), (Start: 76 @40621 has 1 MA's), (85, 40636), (87, 40639), (95, 40678), (96, 40681), (99, 40702), (106, 40735), (114, 40762), (119, 40795), (126, 40837), (127, 40843), (153, 40939),

Gene: Yoshi_73 Start: 41971, Stop: 42333, Start Num: 63

Candidate Starts for Yoshi_73:

(Start: 63 @41971 has 242 MA's), (Start: 76 @42004 has 1 MA's), (85, 42019), (87, 42022), (95, 42061), (96, 42064), (99, 42085), (101, 42094), (114, 42142), (126, 42217), (127, 42223), (153, 42319),

Gene: Yoshi_71 Start: 41346, Stop: 41699, Start Num: 63

Candidate Starts for Yoshi_71:

(Start: 54 @41310 has 1 MA's), (Start: 63 @41346 has 242 MA's), (83, 41391), (87, 41397), (99, 41460), (101, 41469), (110, 41505), (116, 41529), (150, 41679),

Gene: Yoshi_70 Start: 41002, Stop: 41349, Start Num: 64

Candidate Starts for Yoshi_70:

(Start: 58 @40975 has 2 MA's), (60, 40993), (Start: 64 @41002 has 30 MA's), (69, 41014), (Start: 76 @41032 has 1 MA's), (79, 41041), (96, 41092), (99, 41113), (115, 41176), (119, 41197), (123, 41227),

Gene: Zapner_73 Start: 42130, Stop: 42495, Start Num: 63

Candidate Starts for Zapner_73:

(Start: 63 @42130 has 242 MA's), (Start: 76 @42163 has 1 MA's), (85, 42178), (87, 42181), (95, 42220), (96, 42223), (99, 42244), (106, 42277), (114, 42304), (119, 42337), (126, 42379), (127, 42385), (153, 42481),

Gene: Zarbodnamra_50 Start: 34890, Stop: 35252, Start Num: 56

Candidate Starts for Zarbodnamra_50:

(28, 34746), (33, 34782), (37, 34821), (Start: 56 @34890 has 24 MA's), (100, 35019), (104, 35043),

Gene: Zelink_139 Start: 77780, Stop: 78133, Start Num: 57

Candidate Starts for Zelink_139:

(Start: 57 @77780 has 32 MA's), (119, 77981), (126, 78023),

Gene: Zenteno07_93 Start: 66203, Stop: 65790, Start Num: 48

Candidate Starts for Zenteno07_93:

(Start: 48 @66203 has 3 MA's), (81, 66122), (102, 66035), (114, 65993), (119, 65960), (132, 65885), (155, 65795),

Gene: Zerg_60 Start: 40001, Stop: 40366, Start Num: 63

Candidate Starts for Zerg_60:

(Start: 63 @40001 has 242 MA's), (Start: 76 @40034 has 1 MA's), (85, 40049), (87, 40052), (95, 40091), (96, 40094), (99, 40115), (106, 40148), (114, 40175), (119, 40208), (126, 40250), (127, 40256), (153, 40352),

Gene: ZiggyZoo_51 Start: 37223, Stop: 37585, Start Num: 56

Candidate Starts for ZiggyZoo_51:

(33, 37115), (37, 37154), (Start: 56 @37223 has 24 MA's), (93, 37322), (99, 37349), (100, 37352), (104, 37376),

Gene: Zilla_49 Start: 34637, Stop: 34999, Start Num: 56

Candidate Starts for Zilla_49:

(28, 34493), (33, 34529), (37, 34568), (Start: 56 @34637 has 24 MA's), (100, 34766), (104, 34790),

Gene: Zixiang_29 Start: 22031, Stop: 21678, Start Num: 62

Candidate Starts for Zixiang_29:

(Start: 62 @22031 has 11 MA's), (97, 21932), (147, 21695),

Gene: Zizzle_64 Start: 41844, Stop: 42209, Start Num: 63

Candidate Starts for Zizzle_64:

(Start: 63 @41844 has 242 MA's), (Start: 76 @41877 has 1 MA's), (85, 41892), (87, 41895), (95, 41934), (96, 41937), (99, 41958), (106, 41991), (114, 42018), (119, 42051), (126, 42093), (127, 42099), (153, 42195),