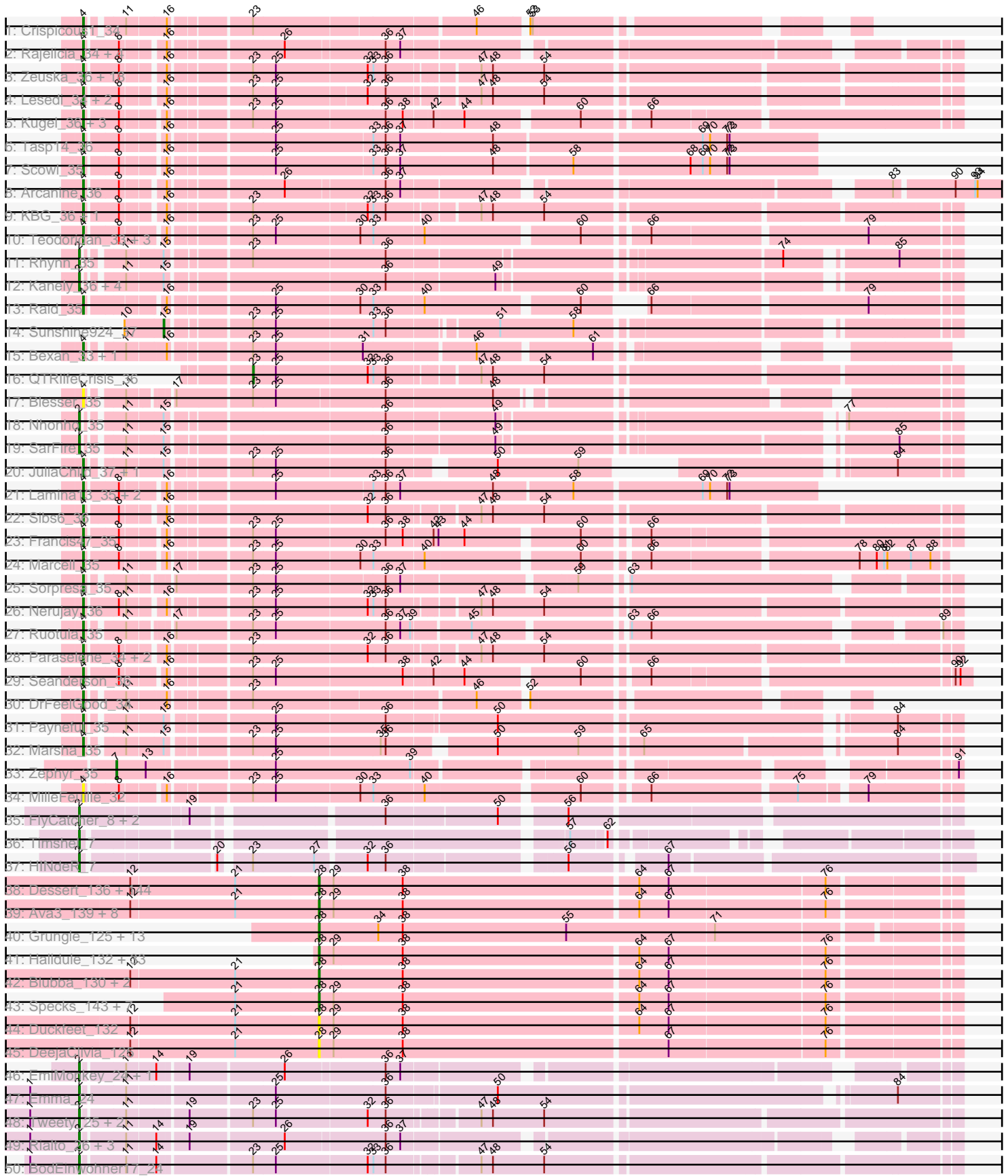
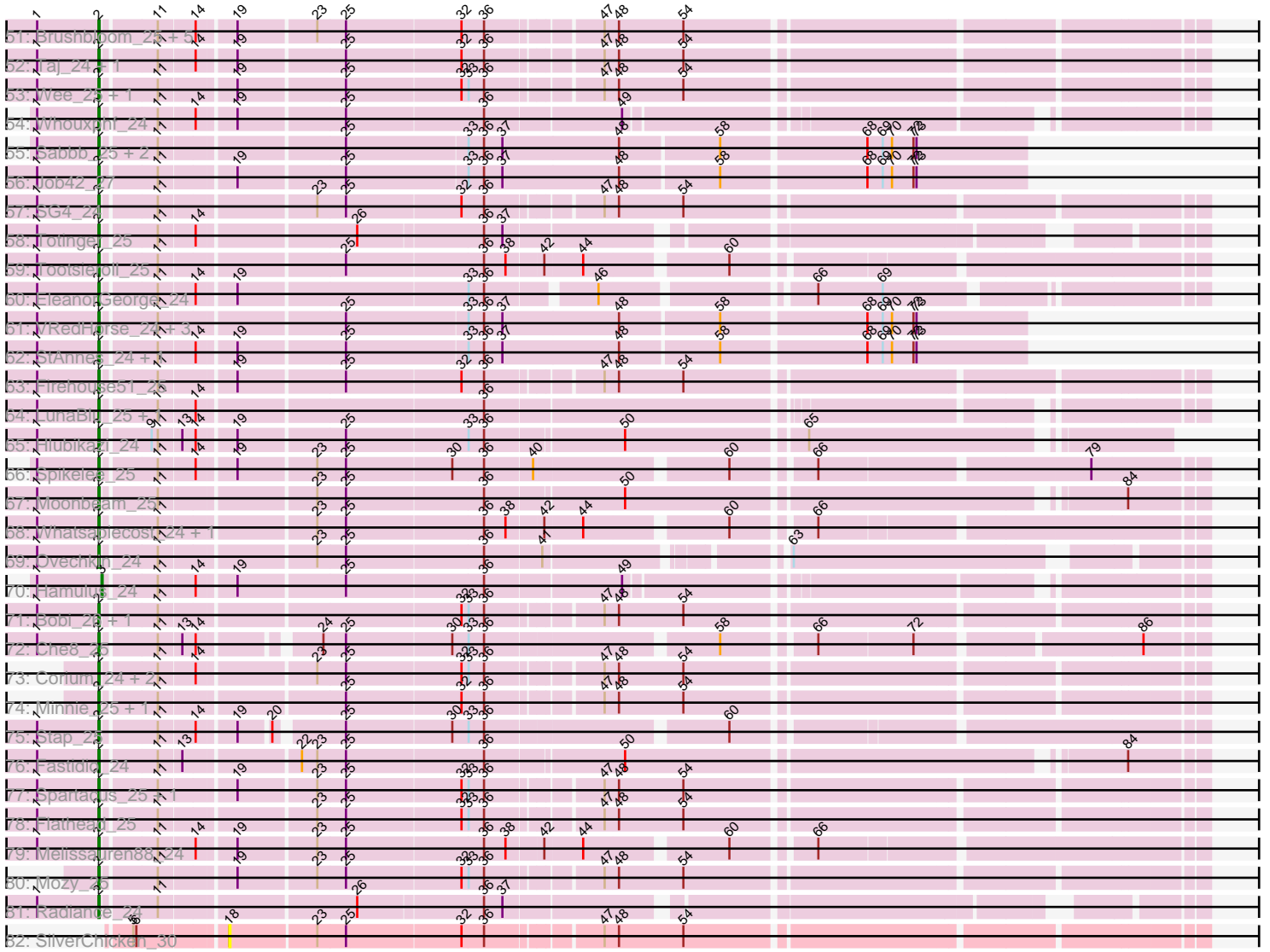


Pham 296151



Pham 296151



Note: Tracks are now grouped by subcluster and scaled. Switching in subcluster is indicated by changes in track color. Track scale is now set by default to display the region 30 bp upstream of start 1 to 30 bp downstream of the last possible start. If this default region is judged to be packed too tightly with annotated starts, the track will be further scaled to only show that region of the ORF with annotated starts. This action will be indicated by adding "Zoomed" to the title. For starts, yellow indicates the location of called starts comprised solely of Glimmer/GeneMark auto-annotations, green indicates the location of called starts with at least 1 manual gene annotation.

Pham 296151 Report

This analysis was run 04/25/26 on database version 644.

Pham number 296151 has 358 members, 51 are drafts.

Phages represented in each track:

- Track 1 : Crispicous1_34
- Track 2 : Rajelicia_34, Sanya_34, TwoPeat_36, Slagathor_36, Snazzy_34
- Track 3 : Zeuska_36, DD5_36, Rutherford_37, Traft412_37, Lockley_36, BillKnuckles_36, Perseus_37, Espresso_35, Trouble_36, AFIS_35, Ohno789_35, SpikeBT_37, CartmannCramer_35, Edtherson_36, Magnito_34, Monet_37, JackSparrow_36, SkiPole_38, NEHalo_35
- Track 4 : Lesedi_34, Abrogate_360, Marge_36
- Track 5 : Kugel_36, Paphu_34, Adahisdi_36, Ashballer_37
- Track 6 : Tasp14_36
- Track 7 : Scowl_35
- Track 8 : Arcanine_36
- Track 9 : KBG_36, Treddle_37
- Track 10 : Teodoridan_33, PhineBark_34, BarrowTuph_34, McSinger_36
- Track 11 : Rhynn_35
- Track 12 : Kanely_36, GroundGoblin_37, ConceptII_37, Altman_37, Makemake_36
- Track 13 : Raid_35
- Track 14 : Sunshine924_37
- Track 15 : Bexan_33, StrongArm_34
- Track 16 : QTRlifeCrisis_36
- Track 17 : Blesser_35
- Track 18 : Nhonho_35
- Track 19 : SarFire_35
- Track 20 : JuliaChild_37, Pita2_37
- Track 21 : Lamina13_35, Parliament_34, Norz_37
- Track 22 : Sibs6_36
- Track 23 : Francis47_35
- Track 24 : Marcell_35
- Track 25 : Sorpresa_35
- Track 26 : Nerujay_36
- Track 27 : Ruotula_35
- Track 28 : Paraselene_34, BPBiebs31_36, Magnar_35
- Track 29 : Seanderson_36
- Track 30 : DrFeelGood_34
- Track 31 : Payneful_35
- Track 32 : Marsha_35
- Track 33 : Zephyr_35
- Track 34 : MilleFeuille_32

- Track 35 : FlyCatcher_8, Sheen_7, Toro_7
- Track 36 : Timshel_7
- Track 37 : HINdeR_7
- Track 38 : Dessert_136, ArcherS7_137, Maby2021_138, Maturis_136, Basquiat_135, EmToTheThree_140, Domi_131, Phox_135, Pier_142, Yucca_137, Sprinklers_134, Pivoine_138, Jessibeth14_137, Lee7_136, Kboogie_142, Dietrick_130, Caravan_132, Bigswole_141, Stubby_131, Willis_139, Morizzled23_139, Ading_138, Gizmo_143, Rocha_136, Ghost_137, Littleton_138, MikeLiesIn_139, LolaVinca_138, ChickenPhender_134, Shrimp_138, Janiyra_141, Chargie21_135, Phusco_138, MoMoMixon_138, EggyFarm_146, FudgeTart_136, Asterius_141, Shaqnato_131, Delilah_138, EasyJones_141, Dandelion_143, Iota_133, NoodleTree_145, EmmaElysia_139, DirtMonster_132, Gamgam_139, Atlantean_138, Zalkecks_139, Nappy_140, SrishMeg2525_137, Pio_142, RoMag_133, Yassified_135, Capablanca_141, SilverDipper_140, Gabriel_138, Babyland_140, Khaleesi_137, Issimir_136, Darko_138, Bipolarisk_137, Grasshills_145, McGee_140, ET08_126, SVoro_136, Cactojaque_134, StephanieG_136, Momo_138, Alice_131, TinyTim_138, Ablatia_138, Wally_137, Bangla1971_139, Fixie_136, Lunareta_137, ParkTD_139, Tortoise16_135, McWolfish_136, ValleyTerrace_139, Drazdys_136, OrediggerDelux_136, Daffodil_143, Rahel_137, Matsumoto_136, NedWong_139, Chomp_138, BeanWater_130, NuevoMundo_143, Amataga_139, I3_143, Loanshark_137, Breeniome_137, Burrough_138, PharkleMinkus_142, Fludd_139, BadAgartude_134, Megamind_137, Cali_133, Latch_139, Norm_139, Phlegm_142, Audrick_141, Cleatunium_131, Naval22_143, Zeenon_139, Concombre_144, Naija_138, Salacia_142, Catera_134, Delylah_141, Mikro_135, StubbySaigey_142, Pleione_141, LookingGlass_138, InigoMontoya_141, Mangeria_138, Tyke_138, BigCity_146, Bxz1_135, Fongie_136, Demodog_145, Montpel_137, BackyardAgain_135, LordLeafolot_142, JigglyPuff_146, PurduePete_138, IkeLoa_132, GlutenPhree_140, BobaPhatt_133, Roots515_137, Rabinovish_137, Belieber_134, Pupusa_144, Shelob_140, Tainan_141, Patter_139, Rizal_133, Bread_137, Ngannou_135, JPickles_135, YemiJoy2021_139, Turret_134, Erdmann_138, Izajani_138, FrayBell_143
- Track 39 : Ava3_139, FoxtrotP1_138, Kamryn_138, Nidhogg_140, ZygoTaiga_136, Jezreel_138, Ewok_139, Lethe_136, DrPhinkDaddy_137
- Track 40 : Grungle_125, HyRo_129, LRRHood_131, Shifa_127, Moby_131, Lukilu_128, LinStu_136, Moiqah_130, Bezza_127, Sauce_138, Sebata_138, Koguma_135, Blackdragon_134, Pinkcreek_129
- Track 41 : Halldule_132, Substance289_136, Essence_135, Flabslab_133, JustHall_136, Spec_134, ErnieJ_132, Shnickers_138, ShiaLabeouf_137, Blackbrain_134, LifeSavor_136, SmallFry_138, CharlieB_135, Derek_137, Quasimodo_140, JayJay_143, DTDevon_138, Jediah_141, CindyLou_140, Adlitam_139, Guwapp_137, Jemmno_138, Jaygup_138, ScottMcG_134, QBert_132, Spud_137, Trinitium_136, YoungMoneyMata_140, ChaylaJr_134, Bonray_139, JulietS_132, Ronan_132, Napoleon13_134, Melpomini_132
- Track 42 : Blubba_130, Cane17_130, Colt_130
- Track 43 : Specks_143, Primadonna_132, Teardrop_137, Labradorite_137, BananaFence_137, Bowman_135, InterFolia_144, Astraea_134
- Track 44 : Duckfeet_132
- Track 45 : DeejaClivia_125
- Track 46 : EmiMonkey_24, PhlipPhlop_24
- Track 47 : Emma_24
- Track 48 : Tweety_25, Blarby_32, Wachhund_24
- Track 49 : Rialto_26, LittleShirley_25, Slim_25, Emmaloid_25

- Track 50 : BodEinwohner17_24
- Track 51 : Brushbloom_25, Fruitloop_24, XFactor_24, Juice456_26, Hegedechwinu_25, Seagreen_25
- Track 52 : Taj_24, DeadP_24
- Track 53 : Wee_25, Omega_44
- Track 54 : Whouxphf_24
- Track 55 : Sabbb_25, Guppsters_25, Minerva_45
- Track 56 : Job42_27
- Track 57 : SG4_24
- Track 58 : Totinger_25
- Track 59 : Tootsieroll_25
- Track 60 : EleanorGeorge_24
- Track 61 : VRedHorse_24, Dante_24, Phalconet_24, Beakin_25
- Track 62 : StAnnes_24, IMpilo_24
- Track 63 : Firehouse51_25
- Track 64 : LunaBlu_25, Mwanjiwa_24
- Track 65 : Hlubikazi_24
- Track 66 : Spikelee_25
- Track 67 : Moonbeam_25
- Track 68 : Whatsapiecost_24, NewHope4_26
- Track 69 : Ovechkin_24
- Track 70 : Hamulus_24
- Track 71 : Bobi_26, JalFarm20_26
- Track 72 : Che8_25
- Track 73 : Corium_24, KingJulian_24, PatoPoderoso_24
- Track 74 : Minnie_25, Sandalphon_25
- Track 75 : Stap_25
- Track 76 : Fastidio_24
- Track 77 : Spartacus_25, KristaRAM_25
- Track 78 : Flathead_25
- Track 79 : Melissauren88_24
- Track 80 : Mozy_25
- Track 81 : Radiance_24
- Track 82 : SilverChicken_30

Summary of Final Annotations (See graph section above for start numbers):

The start number called the most often in the published annotations is 28, it was called in 179 of the 307 non-draft genes in the pham.

Genes that call this "Most Annotated" start:

- Ablatia_138, Ading_138, Adlitam_139, Alice_131, Amataga_139, ArcherS7_137, Asterius_141, Astraea_134, Atlantean_138, Audrick_141, Ava3_139, Babyland_140, BackyardAgain_135, BadAgartude_134, BananaFence_137, Bangla1971_139, Basquiat_135, BeanWater_130, Belieber_134, Bezza_127, BigCity_146, Bigswole_141, Bipolarisk_137, Blackbrain_134, Blackdragon_134, Blubba_130, BobaPhatt_133, Bonray_139, Bowman_135, Bread_137, Breeniome_137, Burrough_138, Bxz1_135, Cactojaque_134, Cali_133, Cane17_130, Capablanca_141, Caravan_132, Catera_134, Chargie21_135, CharlieB_135, ChaylaJr_134, ChickenPhender_134, Chomp_138, CindyLou_140, Cleatunium_131,

Colt_130, Concombre_144, DTDevon_138, Daffodil_143, Dandelion_143, Darko_138, DeejaClivia_125, Delilah_138, Delylah_141, Demodog_145, Derek_137, Dessert_136, Dietrick_130, DirtMonster_132, Domi_131, DrPhinkDaddy_137, Drazdys_136, Duckfeet_132, ET08_126, EasyJones_141, EggyFarm_146, EmToTheThree_140, EmmaElysia_139, Erdmann_138, ErnieJ_132, Essence_135, Ewok_139, Fixie_136, Flabslab_133, Fludd_139, Fongie_136, FoxtrotP1_138, FrayBell_143, FudgeTart_136, Gabriel_138, Gamgam_139, Ghost_137, Gizmo_143, GlutenPhree_140, Grasshills_145, Grungle_125, Guwapp_137, Halldule_132, HyRo_129, I3_143, IkeLoa_132, InigoMontoya_141, InterFolia_144, Iota_133, Issimir_136, Izajani_138, JPickles_135, Janiyra_141, JayJay_143, Jaygup_138, Jedediah_141, Jemmno_138, Jessibeth14_137, Jezreel_138, JigglyPuff_146, JulietS_132, JustHall_136, Kamryn_138, Kboogie_142, Khaleesi_137, Koguma_135, LRRHood_131, Labradorite_137, Latch_139, Lee7_136, Lethe_136, LifeSavor_136, LinStu_136, Littleton_138, Loanshark_137, LolaVinca_138, LookingGlass_138, LordLeafolot_142, Lukilu_128, Lunareta_137, Maby2021_138, Mangeria_138, Matsumoto_136, Maturis_136, McGee_140, McWolfish_136, Megamind_137, Melpomini_132, MikeLiesIn_139, Mikro_135, MoMoMixon_138, Moby_131, Moiqah_130, Momo_138, Montpel_137, Morizzled23_139, Naija_138, Napoleon13_134, Nappy_140, Naval22_143, NedWong_139, Ngannou_135, Nidhogg_140, NoodleTree_145, Norm_139, NuevoMundo_143, OrediggerDelux_136, ParkTD_139, Patter_139, PharkleMinkus_142, Phlegm_142, Phox_135, Phusco_138, Pier_142, Pinkcreek_129, Pio_142, Pivoine_138, Pleione_141, Primadonna_132, Pupusa_144, PurduePete_138, QBert_132, Quasimodo_140, Rabinovish_137, Rahel_137, Rizal_133, RoMag_133, Rocha_136, Ronan_132, Roots515_137, SVoro_136, Salacia_142, Sauce_138, ScottMcG_134, Sebata_138, Shaqnato_131, Shelob_140, ShiaLabeouf_137, Shifa_127, Shnickers_138, Shrimp_138, SilverDipper_140, SmallFry_138, Spec_134, Specks_143, Sprinklers_134, Spud_137, SrishMeg2525_137, StephanieG_136, StubbySaigey_142, Stubby_131, Substance289_136, Tainan_141, Teardrop_137, TinyTim_138, Tortoise16_135, Trinitium_136, Turret_134, Tyke_138, ValleyTerrace_139, Wally_137, Willis_139, Yassified_135, YemiJoy2021_139, YoungMoneyMata_140, Yucca_137, Zalkecks_139, Zeenon_139, ZygoTaiga_136,

Genes that have the "Most Annotated" start but do not call it:

-

Genes that do not have the "Most Annotated" start:

- AFIS_35, Abrogate_360, Adahisdi_36, Altman_37, Arcanine_36, Ashballer_37, BPBiabs31_36, BarrowTuph_34, Beakin_25, Bexan_33, BillKnuckles_36, Blarby_32, Blesser_35, Bobi_26, BodEinwohner17_24, Brushbloom_25, CartmannCramer_35, Che8_25, ConceptII_37, Corium_24, Crispicous1_34, DD5_36, Dante_24, DeadP_24, DrFeelGood_34, Edtherson_36, EleanorGeorge_24, EmiMonkey_24, Emma_24, Emmaloid_25, Espresso_35, Fastidio_24, Firehouse51_25, Flathead_25, FlyCatcher_8, Francis47_35, Fruitloop_24, GroundGoblin_37, Guppsters_25, HINdeR_7, Hamulus_24, Hegedechwinu_25, Hlubikazi_24, IMpilo_24, JackSparrow_36, JalFarm20_26, Job42_27, Juice456_26, JuliaChild_37, KBG_36, Kanely_36, KingJulian_24, KristaRAM_25, Kugel_36, Lamina13_35, Lesedi_34, LittleShirley_25, Lockley_36, LunaBlu_25, Magnar_35, Magnito_34, Makemake_36, Marcell_35, Marge_36, Marsha_35, McSinger_36, Melissauren88_24, MilleFeuille_32, Minerva_45, Minnie_25, Monet_37, Moonbeam_25, Mozy_25, Mwanjiwa_24, NEHalo_35, Nerujay_36, NewHope4_26, Nhonho_35, Norz_37, Ohno789_35, Omega_44, Ovechkin_24, Paphu_34, Paraselene_34, Parliament_34, PatoPoderoso_24, Payneful_35, Perseus_37, Phalconet_24, PhineBark_34,

PhlipPhlop_24, Pita2_37, QTRlifeCrisis_36, Radiance_24, Raid_35, Rajelicia_34, Rhynn_35, Rialto_26, Ruotula_35, Rutherford_37, SG4_24, Sabbb_25, Sandalphon_25, Sanya_34, SarFire_35, Scowl_35, Seagreen_25, Seanderson_36, Sheen_7, Sibs6_36, SilverChicken_30, SkiPole_38, Slagathor_36, Slim_25, Snazzy_34, Sorpresa_35, Spartacus_25, SpikeBT_37, Spikelee_25, StAnnes_24, Stap_25, StrongArm_34, Sunshine924_37, Taj_24, Tasp14_36, Teodoridan_33, Timshel_7, Tootsieroll_25, Toro_7, Totinger_25, Traft412_37, Treddle_37, Trouble_36, Tweety_25, TwoPeat_36, VRedHorse_24, Wachhund_24, Wee_25, Whatsapiecost_24, Whouxphf_24, XFactor_24, Zephyr_35, Zeuska_36,

Summary by start number:

Start 2:

- Found in 74 of 358 (20.7%) of genes in pham
- Manual Annotations of this start: 65 of 307
- Called 100.0% of time when present
- Phage (with cluster) where this start called: Altman_37 (A1), Beakin_25 (F1), Blarby_32 (F), Bobi_26 (F1), BodEinwohner17_24 (F1), Brushbloom_25 (F1), Che8_25 (F1), Conceptll_37 (A1), Corium_24 (F1), Dante_24 (F1), DeadP_24 (F1), EleanorGeorge_24 (F1), EmiMonkey_24 (F1), Emma_24 (F1), Emmaloid_25 (F1), Fastidio_24 (F1), Firehouse51_25 (F1), Flathead_25 (F1), FlyCatcher_8 (A7), Fruitloop_24 (F1), GroundGoblin_37 (A1), Guppsters_25 (F1), HINdeR_7 (A7), Hegedechwinu_25 (F1), Hlubikazi_24 (F1), IMpilo_24 (F1), JalFarm20_26 (F1), Job42_27 (F1), Juice456_26 (F1), Kanely_36 (A1), KingJulian_24 (F1), KristaRAM_25 (F1), LittleShirley_25 (F1), LunaBlu_25 (F1), Makemake_36 (A1), Melissauren88_24 (F1), Minerva_45 (J), Minnie_25 (F1), Moonbeam_25 (F1), Mozy_25 (F1), Mwanjiwa_24 (F1), NewHope4_26 (F1), Nhonho_35 (A1), Omega_44 (J), Ovechkin_24 (F1), PatoPoderoso_24 (F1), Phalconet_24 (F1), PhlipPhlop_24 (F1), Radiance_24 (F1), Rhynn_35 (A1), Rialto_26 (F1), SG4_24 (F1), Sabbb_25 (F1), Sandalphon_25 (F1), SarFire_35 (A1), Seagreen_25 (F1), Sheen_7 (A7), Slim_25 (F1), Spartacus_25 (F1), Spikelee_25 (F1), StAnnes_24 (F1), Stap_25 (F1), Taj_24 (F1), Timshel_7 (A7), Tootsieroll_25 (F1), Toro_7 (A7), Totinger_25 (F1), Tweety_25 (F1), VRedHorse_24 (F1), Wachhund_24 (F1), Wee_25 (F1), Whatsapiecost_24 (F1), Whouxphf_24 (F1), XFactor_24 (F1),

Start 3:

- Found in 1 of 358 (0.3%) of genes in pham
- Manual Annotations of this start: 1 of 307
- Called 100.0% of time when present
- Phage (with cluster) where this start called: Hamulus_24 (F1),

Start 4:

- Found in 64 of 358 (17.9%) of genes in pham
- Manual Annotations of this start: 59 of 307
- Called 100.0% of time when present
- Phage (with cluster) where this start called: AFIS_35 (A1), Abrogate_360 (A1), Adahisdi_36 (A1), Arcanine_36 (A1), Ashballer_37 (A1), BPBiabs31_36 (A1), BarrowTuph_34 (A1), Bexan_33 (A1), BillKnuckles_36 (A1), Blesser_35 (A1), CartmannCramer_35 (A1), Crispicous1_34 (A1), DD5_36 (A1), DrFeelGood_34 (A1), Edtherson_36 (A1), Espresso_35 (A1), Francis47_35 (A1), JackSparrow_36 (A1), JuliaChild_37 (A1), KBG_36 (A1), Kugel_36 (A1), Lamina13_35 (A1), Lesedi_34 (A1), Lockley_36 (A1), Magnar_35 (A1), Magnito_34 (A1), Marcell_35 (A1), Marge_36 (A1), Marsha_35 (A1), McSinger_36 (A1), MilleFeuille_32 (A1), Monet_37 (A1), NEHalo_35

(A1), Nerujay_36 (A1), Norz_37 (A1), Ohno789_35 (A1), Paphu_34 (A1), Paraselene_34 (A1), Parliament_34 (A1), Payneful_35 (A1), Perseus_37 (A1), PhineBark_34 (A1), Pita2_37 (A1), Raid_35 (A1), Rajelicia_34 (A1), Ruotula_35 (A1), Rutherferd_37 (A1), Sanya_34 (A1), Scowl_35 (A1), Seanderson_36 (A1), Sibs6_36 (A1), SkiPole_38 (A1), Slagathor_36 (A1), Snazzy_34 (A1), Sorpresa_35 (A1), SpikeBT_37 (A1), StrongArm_34 (A1), Tasp14_36 (A1), Teodoridan_33 (A1), Traft412_37 (A1), Treddle_37 (A1), Trouble_36 (A1), TwoPeat_36 (A1), Zeuska_36 (A1),

Start 7:

- Found in 1 of 358 (0.3%) of genes in pham
- Manual Annotations of this start: 1 of 307
- Called 100.0% of time when present
- Phage (with cluster) where this start called: Zephyr_35 (A1),

Start 15:

- Found in 13 of 358 (3.6%) of genes in pham
- Manual Annotations of this start: 1 of 307
- Called 7.7% of time when present
- Phage (with cluster) where this start called: Sunshine924_37 (A1),

Start 18:

- Found in 1 of 358 (0.3%) of genes in pham
- No Manual Annotations of this start.
- Called 100.0% of time when present
- Phage (with cluster) where this start called: SilverChicken_30 (F2),

Start 23:

- Found in 80 of 358 (22.3%) of genes in pham
- Manual Annotations of this start: 1 of 307
- Called 1.2% of time when present
- Phage (with cluster) where this start called: QTRlifeCrisis_36 (A1),

Start 28:

- Found in 215 of 358 (60.1%) of genes in pham
- Manual Annotations of this start: 179 of 307
- Called 100.0% of time when present
- Phage (with cluster) where this start called: Ablatia_138 (C1), Ading_138 (C1), Adlitam_139 (C1), Alice_131 (C1), Amataga_139 (C1), ArcherS7_137 (C1), Asterius_141 (C1), Astraea_134 (C1), Atlantean_138 (C1), Audrick_141 (C1), Ava3_139 (C1), Babyland_140 (C1), BackyardAgain_135 (C1), BadAgartude_134 (C1), BananaFence_137 (C1), Bangla1971_139 (C1), Basquiat_135 (C1), BeanWater_130 (C1), Belieber_134 (C1), Bezza_127 (C1), BigCity_146 (C1), Bigswole_141 (C1), Bipolarisk_137 (C1), Blackbrain_134 (C1), Blackdragon_134 (C1), Blubba_130 (C1), BobaPhatt_133 (C1), Bonray_139 (C1), Bowman_135 (C1), Bread_137 (C1), Breeniome_137 (C1), Burrough_138 (C1), Bxz1_135 (C1), Cactojaque_134 (C1), Cali_133 (C1), Cane17_130 (C1), Capablanca_141 (C1), Caravan_132 (C1), Catera_134 (C1), Chargie21_135 (C1), CharlieB_135 (C1), ChaylaJr_134 (C1), ChickenPhender_134 (C1), Chomp_138 (C1), CindyLou_140 (C1), Cleatunium_131 (C1), Colt_130 (C1), Concombre_144 (C1), DTDevon_138 (C1), Daffodil_143 (C1), Dandelion_143 (C1), Darko_138 (C1), DeejaClivia_125 (C1), Delilah_138 (C1), Delylah_141 (C1), Demodog_145 (C1), Derek_137 (C1), Dessert_136 (C1), Dietrick_130 (C1), DirtMonster_132 (C1), Domi_131 (C1),

DrPhinkDaddy_137 (C1), Drazdys_136 (C1), Duckfeet_132 (C1), ET08_126 (C1), EasyJones_141 (C1), EggyFarm_146 (C1), EmToTheThree_140 (C1), EmmaElysia_139 (C1), Erdmann_138 (C1), ErnieJ_132 (C1), Essence_135 (C1), Ewok_139 (C1), Fixie_136 (C1), Flabslab_133 (C1), Fludd_139 (C1), Fongie_136 (C1), FoxtrotP1_138 (C1), FrayBell_143 (C1), FudgeTart_136 (C1), Gabriel_138 (C1), Gamgam_139 (C1), Ghost_137 (C1), Gizmo_143 (C1), GlutenPhree_140 (C1), Grasshills_145 (C1), Grungle_125 (C1), Guwapp_137 (C1), Halldule_132 (C1), HyRo_129 (C1), I3_143 (C1), IkeLoa_132 (C1), InigoMontoya_141 (C1), InterFolia_144 (C1), Iota_133 (C1), Issimir_136 (C1), Izajani_138 (C1), JPickles_135 (C1), JaniyrA_141 (C1), JayJay_143 (C1), Jaygup_138 (C1), Jedediah_141 (C1), Jemmno_138 (C1), Jessibeth14_137 (C1), Jezreel_138 (C1), JigglyPuff_146 (C1), JulietS_132 (C1), JustHall_136 (C1), Kamryn_138 (C1), Kboogie_142 (C1), Khaleesi_137 (C1), Koguma_135 (C1), LRRHood_131 (C1), Labradorite_137 (C1), Latch_139 (C1), Lee7_136 (C1), Lethe_136 (C1), LifeSavor_136 (C1), LinStu_136 (C1), Littleton_138 (C1), Loanshark_137 (C1), LolaVinca_138 (C1), LookingGlass_138 (C1), LordLeafolot_142 (C1), Lukilu_128 (C1), Lunareta_137 (C1), Maby2021_138 (C1), Mangeria_138 (C1), Matsumoto_136 (C1), Maturis_136 (C1), McGee_140 (C1), McWolfish_136 (C1), Megamind_137 (C1), Melpomini_132 (C1), MikeLiesIn_139 (C1), Mikro_135 (C1), MoMoMixon_138 (C1), Moby_131 (C1), Moiqah_130 (C1), Momo_138 (C1), Montpel_137 (C1), Morizzled23_139 (C1), Naija_138 (C1), Napoleon13_134 (C1), Nappy_140 (C1), Naval22_143 (C1), NedWong_139 (C1), Ngannou_135 (C1), Nidhogg_140 (C1), NoodleTree_145 (C1), Norm_139 (C1), NuevoMundo_143 (C1), OrediggerDelux_136 (C1), ParkTD_139 (C1), Patter_139 (C1), PharkleMinkus_142 (C1), Phlegm_142 (C1), Phox_135 (C1), Phusco_138 (C1), Pier_142 (C1), Pinkcreek_129 (C1), Pio_142 (C1), Pivoine_138 (C1), Pleione_141 (C1), Primadonna_132 (C1), Pupusa_144 (C1), PurduePete_138 (C1), QBert_132 (C1), Quasimodo_140 (C1), Rabinovish_137 (C1), Rahel_137 (C1), Rizal_133 (C1), RoMag_133 (C1), Rocha_136 (C1), Ronan_132 (C1), Roots515_137 (C1), SVoro_136 (C1), Salacia_142 (C1), Sauce_138 (C1), ScottMcG_134 (C1), Sebata_138 (C1), Shaqnato_131 (C1), Shelob_140 (C1), ShiaLabeouf_137 (C1), Shifa_127 (C1), Shnickers_138 (C1), Shrimp_138 (C1), SilverDipper_140 (C1), SmallFry_138 (C1), Spec_134 (C1), Specks_143 (C1), Sprinklers_134 (C1), Spud_137 (C1), SrishMeg2525_137 (C1), StephanieG_136 (C1), StubbySaigey_142 (C1), Stubby_131 (C1), Substance289_136 (C1), Tainan_141 (C1), Teardrop_137 (C1), TinyTim_138 (C1), Tortoise16_135 (C1), Trinitium_136 (C1), Turret_134 (C1), Tyke_138 (C1), ValleyTerrace_139 (C1), Wally_137 (C1), Willis_139 (C1), Yassified_135 (C1), YemiJoy2021_139 (C1), YoungMoneyMata_140 (C1), Yucca_137 (C1), Zalkecks_139 (C1), Zeenon_139 (C1), ZygoTaiga_136 (C1),

Summary by clusters:

There are 7 clusters represented in this pham: F1, F2, F, J, A1, A7, C1,

Info for manual annotations of cluster A1:

- Start number 2 was manually annotated 7 times for cluster A1.
- Start number 4 was manually annotated 59 times for cluster A1.
- Start number 7 was manually annotated 1 time for cluster A1.
- Start number 15 was manually annotated 1 time for cluster A1.
- Start number 23 was manually annotated 1 time for cluster A1.

Info for manual annotations of cluster A7:

- Start number 2 was manually annotated 3 times for cluster A7.

Info for manual annotations of cluster C1:

- Start number 28 was manually annotated 179 times for cluster C1.

Info for manual annotations of cluster F1:

- Start number 2 was manually annotated 53 times for cluster F1.
- Start number 3 was manually annotated 1 time for cluster F1.

Info for manual annotations of cluster J:

- Start number 2 was manually annotated 2 times for cluster J.

Gene Information:

Gene: AFIS_35 Start: 28138, Stop: 29097, Start Num: 4

Candidate Starts for AFIS_35:

(Start: 4 @28138 has 59 MA's), (8, 28174), (16, 28216), (Start: 23 @28303 has 1 MA's), (25, 28330), (32, 28438), (33, 28444), (36, 28459), (47, 28558), (48, 28570), (54, 28633),

Gene: Ablatia_138 Start: 79628, Stop: 80383, Start Num: 28

Candidate Starts for Ablatia_138:

(12, 79400), (21, 79526), (Start: 28 @79628 has 179 MA's), (29, 79646), (38, 79730), (64, 80012), (67, 80048), (76, 80234),

Gene: Abrogate_360 Start: 28813, Stop: 29772, Start Num: 4

Candidate Starts for Abrogate_360:

(Start: 4 @28813 has 59 MA's), (8, 28849), (16, 28891), (Start: 23 @28978 has 1 MA's), (25, 29005), (32, 29113), (36, 29134), (47, 29233), (48, 29245), (54, 29308),

Gene: Adahisdi_36 Start: 28227, Stop: 29183, Start Num: 4

Candidate Starts for Adahisdi_36:

(Start: 4 @28227 has 59 MA's), (8, 28263), (16, 28305), (Start: 23 @28392 has 1 MA's), (25, 28419), (36, 28548), (38, 28569), (42, 28602), (44, 28638), (60, 28764), (66, 28833),

Gene: Ading_138 Start: 79597, Stop: 80352, Start Num: 28

Candidate Starts for Ading_138:

(12, 79369), (21, 79495), (Start: 28 @79597 has 179 MA's), (29, 79615), (38, 79699), (64, 79981), (67, 80017), (76, 80203),

Gene: Adlitam_139 Start: 80093, Stop: 80848, Start Num: 28

Candidate Starts for Adlitam_139:

(Start: 28 @80093 has 179 MA's), (29, 80111), (38, 80195), (64, 80477), (67, 80513), (76, 80699),

Gene: Alice_131 Start: 79318, Stop: 80073, Start Num: 28

Candidate Starts for Alice_131:

(12, 79090), (21, 79216), (Start: 28 @79318 has 179 MA's), (29, 79336), (38, 79420), (64, 79702), (67, 79738), (76, 79924),

Gene: Altman_37 Start: 28857, Stop: 29801, Start Num: 2

Candidate Starts for Altman_37:

(Start: 2 @28857 has 65 MA's), (11, 28893), (Start: 15 @28935 has 1 MA's), (36, 29178), (49, 29304),

Gene: Amataga_139 Start: 79338, Stop: 80093, Start Num: 28
Candidate Starts for Amataga_139:
(12, 79110), (21, 79236), (Start: 28 @79338 has 179 MA's), (29, 79356), (38, 79440), (64, 79722), (67, 79758), (76, 79944),

Gene: Arcanine_36 Start: 27784, Stop: 28773, Start Num: 4
Candidate Starts for Arcanine_36:
(Start: 4 @27784 has 59 MA's), (8, 27820), (16, 27862), (26, 27985), (36, 28102), (37, 28120), (83, 28639), (90, 28705), (93, 28729), (94, 28732),

Gene: ArcherS7_137 Start: 79177, Stop: 79932, Start Num: 28
Candidate Starts for ArcherS7_137:
(12, 78949), (21, 79075), (Start: 28 @79177 has 179 MA's), (29, 79195), (38, 79279), (64, 79561), (67, 79597), (76, 79783),

Gene: Ashballer_37 Start: 28784, Stop: 29740, Start Num: 4
Candidate Starts for Ashballer_37:
(Start: 4 @28784 has 59 MA's), (8, 28820), (16, 28862), (Start: 23 @28949 has 1 MA's), (25, 28976), (36, 29105), (38, 29126), (42, 29159), (44, 29195), (60, 29321), (66, 29390),

Gene: Asterius_141 Start: 79853, Stop: 80608, Start Num: 28
Candidate Starts for Asterius_141:
(12, 79625), (21, 79751), (Start: 28 @79853 has 179 MA's), (29, 79871), (38, 79955), (64, 80237), (67, 80273), (76, 80459),

Gene: Astraea_134 Start: 78618, Stop: 79373, Start Num: 28
Candidate Starts for Astraea_134:
(21, 78516), (Start: 28 @78618 has 179 MA's), (29, 78636), (38, 78720), (64, 79002), (67, 79038), (76, 79224),

Gene: Atlantean_138 Start: 79338, Stop: 80093, Start Num: 28
Candidate Starts for Atlantean_138:
(12, 79110), (21, 79236), (Start: 28 @79338 has 179 MA's), (29, 79356), (38, 79440), (64, 79722), (67, 79758), (76, 79944),

Gene: Audrick_141 Start: 79317, Stop: 80072, Start Num: 28
Candidate Starts for Audrick_141:
(12, 79089), (21, 79215), (Start: 28 @79317 has 179 MA's), (29, 79335), (38, 79419), (64, 79701), (67, 79737), (76, 79923),

Gene: Ava3_139 Start: 79762, Stop: 80517, Start Num: 28
Candidate Starts for Ava3_139:
(12, 79534), (21, 79660), (Start: 28 @79762 has 179 MA's), (29, 79780), (38, 79864), (64, 80146), (67, 80182), (76, 80368),

Gene: BPBiabs31_36 Start: 28355, Stop: 29314, Start Num: 4
Candidate Starts for BPBiabs31_36:
(Start: 4 @28355 has 59 MA's), (8, 28391), (16, 28433), (Start: 23 @28520 has 1 MA's), (32, 28655), (36, 28676), (47, 28775), (48, 28787), (54, 28850),

Gene: Babyland_140 Start: 79416, Stop: 80171, Start Num: 28
Candidate Starts for Babyland_140:

(12, 79188), (21, 79314), (Start: 28 @79416 has 179 MA's), (29, 79434), (38, 79518), (64, 79800), (67, 79836), (76, 80022),

Gene: BackyardAgain_135 Start: 78765, Stop: 79520, Start Num: 28

Candidate Starts for BackyardAgain_135:

(12, 78537), (21, 78663), (Start: 28 @78765 has 179 MA's), (29, 78783), (38, 78867), (64, 79149), (67, 79185), (76, 79371),

Gene: BadAgartude_134 Start: 80064, Stop: 80819, Start Num: 28

Candidate Starts for BadAgartude_134:

(12, 79836), (21, 79962), (Start: 28 @80064 has 179 MA's), (29, 80082), (38, 80166), (64, 80448), (67, 80484), (76, 80670),

Gene: BananaFence_137 Start: 80018, Stop: 80773, Start Num: 28

Candidate Starts for BananaFence_137:

(21, 79916), (Start: 28 @80018 has 179 MA's), (29, 80036), (38, 80120), (64, 80402), (67, 80438), (76, 80624),

Gene: Bangla1971_139 Start: 79307, Stop: 80062, Start Num: 28

Candidate Starts for Bangla1971_139:

(12, 79079), (21, 79205), (Start: 28 @79307 has 179 MA's), (29, 79325), (38, 79409), (64, 79691), (67, 79727), (76, 79913),

Gene: BarrowTuph_34 Start: 27895, Stop: 28854, Start Num: 4

Candidate Starts for BarrowTuph_34:

(Start: 4 @27895 has 59 MA's), (8, 27931), (16, 27973), (Start: 23 @28060 has 1 MA's), (25, 28087), (30, 28186), (33, 28201), (40, 28261), (60, 28432), (66, 28501), (79, 28750),

Gene: Basquiat_135 Start: 78916, Stop: 79671, Start Num: 28

Candidate Starts for Basquiat_135:

(12, 78688), (21, 78814), (Start: 28 @78916 has 179 MA's), (29, 78934), (38, 79018), (64, 79300), (67, 79336), (76, 79522),

Gene: Beakin_25 Start: 24117, Stop: 24971, Start Num: 2

Candidate Starts for Beakin_25:

(1, 24057), (Start: 2 @24117 has 65 MA's), (11, 24165), (25, 24330), (33, 24444), (36, 24459), (37, 24477), (48, 24588), (58, 24681), (68, 24816), (69, 24831), (70, 24840), (72, 24861), (73, 24864),

Gene: BeanWater_130 Start: 79616, Stop: 80371, Start Num: 28

Candidate Starts for BeanWater_130:

(12, 79388), (21, 79514), (Start: 28 @79616 has 179 MA's), (29, 79634), (38, 79718), (64, 80000), (67, 80036), (76, 80222),

Gene: Belieber_134 Start: 79091, Stop: 79846, Start Num: 28

Candidate Starts for Belieber_134:

(12, 78863), (21, 78989), (Start: 28 @79091 has 179 MA's), (29, 79109), (38, 79193), (64, 79475), (67, 79511), (76, 79697),

Gene: Bexan_33 Start: 28908, Stop: 29804, Start Num: 4

Candidate Starts for Bexan_33:

(Start: 4 @28908 has 59 MA's), (11, 28944), (16, 28986), (Start: 23 @29073 has 1 MA's), (25, 29100), (31, 29202), (46, 29331), (61, 29460),

Gene: Bezza_127 Start: 79674, Stop: 80429, Start Num: 28
Candidate Starts for Bezza_127:
(Start: 28 @79674 has 179 MA's), (34, 79746), (38, 79776), (55, 79977), (71, 80157),

Gene: BigCity_146 Start: 82288, Stop: 83043, Start Num: 28
Candidate Starts for BigCity_146:
(12, 82060), (21, 82186), (Start: 28 @82288 has 179 MA's), (29, 82306), (38, 82390), (64, 82672), (67, 82708), (76, 82894),

Gene: Bigswole_141 Start: 81573, Stop: 82328, Start Num: 28
Candidate Starts for Bigswole_141:
(12, 81345), (21, 81471), (Start: 28 @81573 has 179 MA's), (29, 81591), (38, 81675), (64, 81957), (67, 81993), (76, 82179),

Gene: BillKnuckles_36 Start: 28751, Stop: 29710, Start Num: 4
Candidate Starts for BillKnuckles_36:
(Start: 4 @28751 has 59 MA's), (8, 28787), (16, 28829), (Start: 23 @28916 has 1 MA's), (25, 28943), (32, 29051), (33, 29057), (36, 29072), (47, 29171), (48, 29183), (54, 29246),

Gene: Bipolarisk_137 Start: 80030, Stop: 80785, Start Num: 28
Candidate Starts for Bipolarisk_137:
(12, 79802), (21, 79928), (Start: 28 @80030 has 179 MA's), (29, 80048), (38, 80132), (64, 80414), (67, 80450), (76, 80636),

Gene: Blackbrain_134 Start: 78801, Stop: 79556, Start Num: 28
Candidate Starts for Blackbrain_134:
(Start: 28 @78801 has 179 MA's), (29, 78819), (38, 78903), (64, 79185), (67, 79221), (76, 79407),

Gene: Blackdragon_134 Start: 79445, Stop: 80200, Start Num: 28
Candidate Starts for Blackdragon_134:
(Start: 28 @79445 has 179 MA's), (34, 79517), (38, 79547), (55, 79748), (71, 79928),

Gene: Blarby_32 Start: 24541, Stop: 25521, Start Num: 2
Candidate Starts for Blarby_32:
(1, 24481), (Start: 2 @24541 has 65 MA's), (11, 24589), (19, 24655), (Start: 23 @24727 has 1 MA's), (25, 24754), (32, 24862), (36, 24883), (47, 24982), (48, 24994), (54, 25057),

Gene: Blesser_35 Start: 28454, Stop: 29377, Start Num: 4
Candidate Starts for Blesser_35:
(Start: 4 @28454 has 59 MA's), (11, 28490), (17, 28532), (Start: 23 @28619 has 1 MA's), (25, 28646), (36, 28772), (48, 28898),

Gene: Blubba_130 Start: 81163, Stop: 81918, Start Num: 28
Candidate Starts for Blubba_130:
(12, 80935), (21, 81061), (Start: 28 @81163 has 179 MA's), (38, 81265), (64, 81547), (67, 81583), (76, 81769),

Gene: BobaPhatt_133 Start: 78380, Stop: 79135, Start Num: 28
Candidate Starts for BobaPhatt_133:
(12, 78152), (21, 78278), (Start: 28 @78380 has 179 MA's), (29, 78398), (38, 78482), (64, 78764), (67, 78800), (76, 78986),

Gene: Bobi_26 Start: 24854, Stop: 25834, Start Num: 2

Candidate Starts for Bobi_26:

(1, 24794), (Start: 2 @24854 has 65 MA's), (11, 24902), (32, 25175), (33, 25181), (36, 25196), (47, 25295), (48, 25307), (54, 25370),

Gene: BodEinwohner17_24 Start: 24438, Stop: 25418, Start Num: 2

Candidate Starts for BodEinwohner17_24:

(1, 24378), (Start: 2 @24438 has 65 MA's), (11, 24486), (14, 24519), (Start: 23 @24624 has 1 MA's), (25, 24651), (32, 24759), (33, 24765), (36, 24780), (47, 24879), (48, 24891), (54, 24954),

Gene: Bonray_139 Start: 80672, Stop: 81427, Start Num: 28

Candidate Starts for Bonray_139:

(Start: 28 @80672 has 179 MA's), (29, 80690), (38, 80774), (64, 81056), (67, 81092), (76, 81278),

Gene: Bowman_135 Start: 79754, Stop: 80509, Start Num: 28

Candidate Starts for Bowman_135:

(21, 79652), (Start: 28 @79754 has 179 MA's), (29, 79772), (38, 79856), (64, 80138), (67, 80174), (76, 80360),

Gene: Bread_137 Start: 79848, Stop: 80603, Start Num: 28

Candidate Starts for Bread_137:

(12, 79620), (21, 79746), (Start: 28 @79848 has 179 MA's), (29, 79866), (38, 79950), (64, 80232), (67, 80268), (76, 80454),

Gene: Breeniome_137 Start: 78206, Stop: 78961, Start Num: 28

Candidate Starts for Breeniome_137:

(12, 77978), (21, 78104), (Start: 28 @78206 has 179 MA's), (29, 78224), (38, 78308), (64, 78590), (67, 78626), (76, 78812),

Gene: Brushbloom_25 Start: 24149, Stop: 25129, Start Num: 2

Candidate Starts for Brushbloom_25:

(1, 24089), (Start: 2 @24149 has 65 MA's), (11, 24197), (14, 24230), (19, 24263), (Start: 23 @24335 has 1 MA's), (25, 24362), (32, 24470), (36, 24491), (47, 24590), (48, 24602), (54, 24665),

Gene: Burrough_138 Start: 80357, Stop: 81112, Start Num: 28

Candidate Starts for Burrough_138:

(12, 80129), (21, 80255), (Start: 28 @80357 has 179 MA's), (29, 80375), (38, 80459), (64, 80741), (67, 80777), (76, 80963),

Gene: Bxz1_135 Start: 81560, Stop: 82315, Start Num: 28

Candidate Starts for Bxz1_135:

(12, 81332), (21, 81458), (Start: 28 @81560 has 179 MA's), (29, 81578), (38, 81662), (64, 81944), (67, 81980), (76, 82166),

Gene: Cactojaque_134 Start: 78908, Stop: 79663, Start Num: 28

Candidate Starts for Cactojaque_134:

(12, 78680), (21, 78806), (Start: 28 @78908 has 179 MA's), (29, 78926), (38, 79010), (64, 79292), (67, 79328), (76, 79514),

Gene: Cali_133 Start: 80359, Stop: 81114, Start Num: 28

Candidate Starts for Cali_133:

(12, 80131), (21, 80257), (Start: 28 @80359 has 179 MA's), (29, 80377), (38, 80461), (64, 80743), (67, 80779), (76, 80965),

Gene: Cane17_130 Start: 81221, Stop: 81976, Start Num: 28

Candidate Starts for Cane17_130:

(12, 80993), (21, 81119), (Start: 28 @81221 has 179 MA's), (38, 81323), (64, 81605), (67, 81641), (76, 81827),

Gene: Capablanca_141 Start: 81088, Stop: 81843, Start Num: 28

Candidate Starts for Capablanca_141:

(12, 80860), (21, 80986), (Start: 28 @81088 has 179 MA's), (29, 81106), (38, 81190), (64, 81472), (67, 81508), (76, 81694),

Gene: Caravan_132 Start: 79716, Stop: 80471, Start Num: 28

Candidate Starts for Caravan_132:

(12, 79488), (21, 79614), (Start: 28 @79716 has 179 MA's), (29, 79734), (38, 79818), (64, 80100), (67, 80136), (76, 80322),

Gene: CartmannCramer_35 Start: 30066, Stop: 31022, Start Num: 4

Candidate Starts for CartmannCramer_35:

(Start: 4 @30066 has 59 MA's), (8, 30102), (16, 30144), (Start: 23 @30231 has 1 MA's), (25, 30258), (32, 30363), (33, 30369), (36, 30384), (47, 30483), (48, 30495), (54, 30558),

Gene: Catera_134 Start: 78623, Stop: 79378, Start Num: 28

Candidate Starts for Catera_134:

(12, 78395), (21, 78521), (Start: 28 @78623 has 179 MA's), (29, 78641), (38, 78725), (64, 79007), (67, 79043), (76, 79229),

Gene: Chargie21_135 Start: 78916, Stop: 79671, Start Num: 28

Candidate Starts for Chargie21_135:

(12, 78688), (21, 78814), (Start: 28 @78916 has 179 MA's), (29, 78934), (38, 79018), (64, 79300), (67, 79336), (76, 79522),

Gene: CharlieB_135 Start: 79242, Stop: 79997, Start Num: 28

Candidate Starts for CharlieB_135:

(Start: 28 @79242 has 179 MA's), (29, 79260), (38, 79344), (64, 79626), (67, 79662), (76, 79848),

Gene: ChaylaJr_134 Start: 78724, Stop: 79479, Start Num: 28

Candidate Starts for ChaylaJr_134:

(Start: 28 @78724 has 179 MA's), (29, 78742), (38, 78826), (64, 79108), (67, 79144), (76, 79330),

Gene: Che8_25 Start: 24293, Stop: 25249, Start Num: 2

Candidate Starts for Che8_25:

(1, 24233), (Start: 2 @24293 has 65 MA's), (11, 24341), (13, 24362), (14, 24374), (24, 24470), (25, 24491), (30, 24590), (33, 24605), (36, 24620), (58, 24827), (66, 24905), (72, 24995), (86, 25193),

Gene: ChickenPhender_134 Start: 78548, Stop: 79303, Start Num: 28

Candidate Starts for ChickenPhender_134:

(12, 78320), (21, 78446), (Start: 28 @78548 has 179 MA's), (29, 78566), (38, 78650), (64, 78932), (67, 78968), (76, 79154),

Gene: Chomp_138 Start: 80627, Stop: 81382, Start Num: 28

Candidate Starts for Chomp_138:

(12, 80399), (21, 80525), (Start: 28 @80627 has 179 MA's), (29, 80645), (38, 80729), (64, 81011), (67, 81047), (76, 81233),

Gene: CindyLou_140 Start: 80667, Stop: 81422, Start Num: 28
Candidate Starts for CindyLou_140:
(Start: 28 @80667 has 179 MA's), (29, 80685), (38, 80769), (64, 81051), (67, 81087), (76, 81273),

Gene: Cleatunium_131 Start: 78835, Stop: 79590, Start Num: 28
Candidate Starts for Cleatunium_131:
(12, 78607), (21, 78733), (Start: 28 @78835 has 179 MA's), (29, 78853), (38, 78937), (64, 79219), (67, 79255), (76, 79441),

Gene: Colt_130 Start: 81338, Stop: 82093, Start Num: 28
Candidate Starts for Colt_130:
(12, 81110), (21, 81236), (Start: 28 @81338 has 179 MA's), (38, 81440), (64, 81722), (67, 81758), (76, 81944),

Gene: ConceptII_37 Start: 28990, Stop: 29907, Start Num: 2
Candidate Starts for ConceptII_37:
(Start: 2 @28990 has 65 MA's), (11, 29026), (Start: 15 @29068 has 1 MA's), (36, 29311), (49, 29437),

Gene: Concombres_144 Start: 82521, Stop: 83276, Start Num: 28
Candidate Starts for Concombres_144:
(12, 82293), (21, 82419), (Start: 28 @82521 has 179 MA's), (29, 82539), (38, 82623), (64, 82905), (67, 82941), (76, 83127),

Gene: Corium_24 Start: 24305, Stop: 25285, Start Num: 2
Candidate Starts for Corium_24:
(Start: 2 @24305 has 65 MA's), (11, 24353), (14, 24386), (Start: 23 @24491 has 1 MA's), (25, 24518), (32, 24626), (33, 24632), (36, 24647), (47, 24746), (48, 24758), (54, 24821),

Gene: Crispicous1_34 Start: 27574, Stop: 28377, Start Num: 4
Candidate Starts for Crispicous1_34:
(Start: 4 @27574 has 59 MA's), (11, 27610), (16, 27652), (Start: 23 @27739 has 1 MA's), (46, 27994), (52, 28045), (53, 28048),

Gene: DD5_36 Start: 28752, Stop: 29711, Start Num: 4
Candidate Starts for DD5_36:
(Start: 4 @28752 has 59 MA's), (8, 28788), (16, 28830), (Start: 23 @28917 has 1 MA's), (25, 28944), (32, 29052), (33, 29058), (36, 29073), (47, 29172), (48, 29184), (54, 29247),

Gene: DTDevon_138 Start: 80389, Stop: 81144, Start Num: 28
Candidate Starts for DTDevon_138:
(Start: 28 @80389 has 179 MA's), (29, 80407), (38, 80491), (64, 80773), (67, 80809), (76, 80995),

Gene: Daffodil_143 Start: 80330, Stop: 81085, Start Num: 28
Candidate Starts for Daffodil_143:
(12, 80102), (21, 80228), (Start: 28 @80330 has 179 MA's), (29, 80348), (38, 80432), (64, 80714), (67, 80750), (76, 80936),

Gene: Dandelion_143 Start: 82522, Stop: 83277, Start Num: 28
Candidate Starts for Dandelion_143:
(12, 82294), (21, 82420), (Start: 28 @82522 has 179 MA's), (29, 82540), (38, 82624), (64, 82906), (67, 82942), (76, 83128),

Gene: Dante_24 Start: 24282, Stop: 25136, Start Num: 2

Candidate Starts for Dante_24:

(1, 24222), (Start: 2 @24282 has 65 MA's), (11, 24330), (25, 24495), (33, 24609), (36, 24624), (37, 24642), (48, 24753), (58, 24846), (68, 24981), (69, 24996), (70, 25005), (72, 25026), (73, 25029),

Gene: Darko_138 Start: 80022, Stop: 80777, Start Num: 28

Candidate Starts for Darko_138:

(12, 79794), (21, 79920), (Start: 28 @80022 has 179 MA's), (29, 80040), (38, 80124), (64, 80406), (67, 80442), (76, 80628),

Gene: DeadP_24 Start: 24297, Stop: 25277, Start Num: 2

Candidate Starts for DeadP_24:

(1, 24237), (Start: 2 @24297 has 65 MA's), (11, 24345), (14, 24378), (19, 24411), (25, 24510), (32, 24618), (36, 24639), (47, 24738), (48, 24750), (54, 24813),

Gene: DeejaClivia_125 Start: 76688, Stop: 77443, Start Num: 28

Candidate Starts for DeejaClivia_125:

(12, 76460), (21, 76586), (Start: 28 @76688 has 179 MA's), (29, 76706), (38, 76790), (67, 77108), (76, 77294),

Gene: Delilah_138 Start: 80484, Stop: 81239, Start Num: 28

Candidate Starts for Delilah_138:

(12, 80256), (21, 80382), (Start: 28 @80484 has 179 MA's), (29, 80502), (38, 80586), (64, 80868), (67, 80904), (76, 81090),

Gene: Delylah_141 Start: 80023, Stop: 80778, Start Num: 28

Candidate Starts for Delylah_141:

(12, 79795), (21, 79921), (Start: 28 @80023 has 179 MA's), (29, 80041), (38, 80125), (64, 80407), (67, 80443), (76, 80629),

Gene: Demodog_145 Start: 82530, Stop: 83285, Start Num: 28

Candidate Starts for Demodog_145:

(12, 82302), (21, 82428), (Start: 28 @82530 has 179 MA's), (29, 82548), (38, 82632), (64, 82914), (67, 82950), (76, 83136),

Gene: Derek_137 Start: 79949, Stop: 80704, Start Num: 28

Candidate Starts for Derek_137:

(Start: 28 @79949 has 179 MA's), (29, 79967), (38, 80051), (64, 80333), (67, 80369), (76, 80555),

Gene: Dessert_136 Start: 78904, Stop: 79659, Start Num: 28

Candidate Starts for Dessert_136:

(12, 78676), (21, 78802), (Start: 28 @78904 has 179 MA's), (29, 78922), (38, 79006), (64, 79288), (67, 79324), (76, 79510),

Gene: Dietrick_130 Start: 78025, Stop: 78780, Start Num: 28

Candidate Starts for Dietrick_130:

(12, 77797), (21, 77923), (Start: 28 @78025 has 179 MA's), (29, 78043), (38, 78127), (64, 78409), (67, 78445), (76, 78631),

Gene: DirtMonster_132 Start: 79283, Stop: 80038, Start Num: 28

Candidate Starts for DirtMonster_132:

(12, 79055), (21, 79181), (Start: 28 @79283 has 179 MA's), (29, 79301), (38, 79385), (64, 79667), (67, 79703), (76, 79889),

Gene: Domi_131 Start: 79362, Stop: 80117, Start Num: 28
Candidate Starts for Domi_131:
(12, 79134), (21, 79260), (Start: 28 @79362 has 179 MA's), (29, 79380), (38, 79464), (64, 79746), (67, 79782), (76, 79968),

Gene: DrFeelGood_34 Start: 28437, Stop: 29240, Start Num: 4
Candidate Starts for DrFeelGood_34:
(Start: 4 @28437 has 59 MA's), (11, 28473), (16, 28515), (Start: 23 @28602 has 1 MA's), (46, 28857), (52, 28908),

Gene: DrPhinkDaddy_137 Start: 80542, Stop: 81297, Start Num: 28
Candidate Starts for DrPhinkDaddy_137:
(12, 80314), (21, 80440), (Start: 28 @80542 has 179 MA's), (29, 80560), (38, 80644), (64, 80926), (67, 80962), (76, 81148),

Gene: Drazdys_136 Start: 79013, Stop: 79768, Start Num: 28
Candidate Starts for Drazdys_136:
(12, 78785), (21, 78911), (Start: 28 @79013 has 179 MA's), (29, 79031), (38, 79115), (64, 79397), (67, 79433), (76, 79619),

Gene: Duckfeet_132 Start: 78954, Stop: 79709, Start Num: 28
Candidate Starts for Duckfeet_132:
(12, 78726), (21, 78852), (Start: 28 @78954 has 179 MA's), (29, 78972), (38, 79056), (64, 79338), (67, 79374), (76, 79560),

Gene: ET08_126 Start: 79003, Stop: 79758, Start Num: 28
Candidate Starts for ET08_126:
(12, 78775), (21, 78901), (Start: 28 @79003 has 179 MA's), (29, 79021), (38, 79105), (64, 79387), (67, 79423), (76, 79609),

Gene: EasyJones_141 Start: 79570, Stop: 80325, Start Num: 28
Candidate Starts for EasyJones_141:
(12, 79342), (21, 79468), (Start: 28 @79570 has 179 MA's), (29, 79588), (38, 79672), (64, 79954), (67, 79990), (76, 80176),

Gene: Edtherson_36 Start: 28770, Stop: 29729, Start Num: 4
Candidate Starts for Edtherson_36:
(Start: 4 @28770 has 59 MA's), (8, 28806), (16, 28848), (Start: 23 @28935 has 1 MA's), (25, 28962), (32, 29070), (33, 29076), (36, 29091), (47, 29190), (48, 29202), (54, 29265),

Gene: EggyFarm_146 Start: 82288, Stop: 83043, Start Num: 28
Candidate Starts for EggyFarm_146:
(12, 82060), (21, 82186), (Start: 28 @82288 has 179 MA's), (29, 82306), (38, 82390), (64, 82672), (67, 82708), (76, 82894),

Gene: EleanorGeorge_24 Start: 24437, Stop: 25399, Start Num: 2
Candidate Starts for EleanorGeorge_24:
(1, 24377), (Start: 2 @24437 has 65 MA's), (11, 24485), (14, 24518), (19, 24551), (33, 24764), (36, 24779), (46, 24875), (66, 25058), (69, 25121),

Gene: EmToTheThree_140 Start: 81282, Stop: 82037, Start Num: 28
Candidate Starts for EmToTheThree_140:

(12, 81054), (21, 81180), (Start: 28 @81282 has 179 MA's), (29, 81300), (38, 81384), (64, 81666), (67, 81702), (76, 81888),

Gene: EmiMonkey_24 Start: 24219, Stop: 25160, Start Num: 2

Candidate Starts for EmiMonkey_24:

(Start: 2 @24219 has 65 MA's), (11, 24267), (14, 24300), (19, 24333), (26, 24441), (36, 24558), (37, 24576),

Gene: Emma_24 Start: 24316, Stop: 25299, Start Num: 2

Candidate Starts for Emma_24:

(1, 24256), (Start: 2 @24316 has 65 MA's), (11, 24364), (25, 24529), (36, 24658), (50, 24784), (84, 25228),

Gene: EmmaElysia_139 Start: 79557, Stop: 80312, Start Num: 28

Candidate Starts for EmmaElysia_139:

(12, 79329), (21, 79455), (Start: 28 @79557 has 179 MA's), (29, 79575), (38, 79659), (64, 79941), (67, 79977), (76, 80163),

Gene: Emmaloid_25 Start: 24066, Stop: 25007, Start Num: 2

Candidate Starts for Emmaloid_25:

(1, 24006), (Start: 2 @24066 has 65 MA's), (11, 24114), (14, 24147), (19, 24180), (26, 24288), (36, 24405), (37, 24423),

Gene: Erdmann_138 Start: 80331, Stop: 81086, Start Num: 28

Candidate Starts for Erdmann_138:

(12, 80103), (21, 80229), (Start: 28 @80331 has 179 MA's), (29, 80349), (38, 80433), (64, 80715), (67, 80751), (76, 80937),

Gene: ErnieJ_132 Start: 78300, Stop: 79055, Start Num: 28

Candidate Starts for ErnieJ_132:

(Start: 28 @78300 has 179 MA's), (29, 78318), (38, 78402), (64, 78684), (67, 78720), (76, 78906),

Gene: Espresso_35 Start: 28134, Stop: 29081, Start Num: 4

Candidate Starts for Espresso_35:

(Start: 4 @28134 has 59 MA's), (8, 28170), (16, 28212), (Start: 23 @28299 has 1 MA's), (25, 28326), (32, 28434), (33, 28440), (36, 28455), (47, 28554), (48, 28566), (54, 28629),

Gene: Essence_135 Start: 79179, Stop: 79934, Start Num: 28

Candidate Starts for Essence_135:

(Start: 28 @79179 has 179 MA's), (29, 79197), (38, 79281), (64, 79563), (67, 79599), (76, 79785),

Gene: Ewok_139 Start: 79708, Stop: 80463, Start Num: 28

Candidate Starts for Ewok_139:

(12, 79480), (21, 79606), (Start: 28 @79708 has 179 MA's), (29, 79726), (38, 79810), (64, 80092), (67, 80128), (76, 80314),

Gene: Fastidio_24 Start: 24233, Stop: 25216, Start Num: 2

Candidate Starts for Fastidio_24:

(1, 24173), (Start: 2 @24233 has 65 MA's), (11, 24281), (13, 24302), (22, 24404), (Start: 23 @24419 has 1 MA's), (25, 24446), (36, 24575), (50, 24701), (84, 25145),

Gene: Firehouse51_25 Start: 24825, Stop: 25805, Start Num: 2

Candidate Starts for Firehouse51_25:

(1, 24765), (Start: 2 @24825 has 65 MA's), (11, 24873), (19, 24939), (25, 25038), (32, 25146), (36, 25167), (47, 25266), (48, 25278), (54, 25341),

Gene: Fixie_136 Start: 79451, Stop: 80206, Start Num: 28

Candidate Starts for Fixie_136:

(12, 79223), (21, 79349), (Start: 28 @79451 has 179 MA's), (29, 79469), (38, 79553), (64, 79835), (67, 79871), (76, 80057),

Gene: Flabslab_133 Start: 77890, Stop: 78645, Start Num: 28

Candidate Starts for Flabslab_133:

(Start: 28 @77890 has 179 MA's), (29, 77908), (38, 77992), (64, 78274), (67, 78310), (76, 78496),

Gene: Flathead_25 Start: 24133, Stop: 25113, Start Num: 2

Candidate Starts for Flathead_25:

(1, 24073), (Start: 2 @24133 has 65 MA's), (11, 24181), (Start: 23 @24319 has 1 MA's), (25, 24346), (32, 24454), (33, 24460), (36, 24475), (47, 24574), (48, 24586), (54, 24649),

Gene: Fludd_139 Start: 79356, Stop: 80111, Start Num: 28

Candidate Starts for Fludd_139:

(12, 79128), (21, 79254), (Start: 28 @79356 has 179 MA's), (29, 79374), (38, 79458), (64, 79740), (67, 79776), (76, 79962),

Gene: FlyCatcher_8 Start: 4427, Stop: 5395, Start Num: 2

Candidate Starts for FlyCatcher_8:

(Start: 2 @4427 has 65 MA's), (19, 4550), (36, 4754), (50, 4880), (56, 4949),

Gene: Fongie_136 Start: 79921, Stop: 80676, Start Num: 28

Candidate Starts for Fongie_136:

(12, 79693), (21, 79819), (Start: 28 @79921 has 179 MA's), (29, 79939), (38, 80023), (64, 80305), (67, 80341), (76, 80527),

Gene: FoxtrotP1_138 Start: 81491, Stop: 82246, Start Num: 28

Candidate Starts for FoxtrotP1_138:

(12, 81263), (21, 81389), (Start: 28 @81491 has 179 MA's), (29, 81509), (38, 81593), (64, 81875), (67, 81911), (76, 82097),

Gene: Francis47_35 Start: 28529, Stop: 29485, Start Num: 4

Candidate Starts for Francis47_35:

(Start: 4 @28529 has 59 MA's), (8, 28565), (16, 28607), (Start: 23 @28694 has 1 MA's), (25, 28721), (36, 28850), (38, 28871), (42, 28904), (43, 28910), (44, 28940), (60, 29066), (66, 29135),

Gene: FrayBell_143 Start: 80655, Stop: 81410, Start Num: 28

Candidate Starts for FrayBell_143:

(12, 80427), (21, 80553), (Start: 28 @80655 has 179 MA's), (29, 80673), (38, 80757), (64, 81039), (67, 81075), (76, 81261),

Gene: Fruitloop_24 Start: 24297, Stop: 25277, Start Num: 2

Candidate Starts for Fruitloop_24:

(1, 24237), (Start: 2 @24297 has 65 MA's), (11, 24345), (14, 24378), (19, 24411), (Start: 23 @24483 has 1 MA's), (25, 24510), (32, 24618), (36, 24639), (47, 24738), (48, 24750), (54, 24813),

Gene: FudgeTart_136 Start: 79361, Stop: 80116, Start Num: 28

Candidate Starts for FudgeTart_136:

(12, 79133), (21, 79259), (Start: 28 @79361 has 179 MA's), (29, 79379), (38, 79463), (64, 79745), (67, 79781), (76, 79967),

Gene: Gabriel_138 Start: 78585, Stop: 79340, Start Num: 28

Candidate Starts for Gabriel_138:

(12, 78357), (21, 78483), (Start: 28 @78585 has 179 MA's), (29, 78603), (38, 78687), (64, 78969), (67, 79005), (76, 79191),

Gene: Gamgam_139 Start: 79328, Stop: 80083, Start Num: 28

Candidate Starts for Gamgam_139:

(12, 79100), (21, 79226), (Start: 28 @79328 has 179 MA's), (29, 79346), (38, 79430), (64, 79712), (67, 79748), (76, 79934),

Gene: Ghost_137 Start: 79338, Stop: 80093, Start Num: 28

Candidate Starts for Ghost_137:

(12, 79110), (21, 79236), (Start: 28 @79338 has 179 MA's), (29, 79356), (38, 79440), (64, 79722), (67, 79758), (76, 79944),

Gene: Gizmo_143 Start: 81960, Stop: 82715, Start Num: 28

Candidate Starts for Gizmo_143:

(12, 81732), (21, 81858), (Start: 28 @81960 has 179 MA's), (29, 81978), (38, 82062), (64, 82344), (67, 82380), (76, 82566),

Gene: GlutenPhree_140 Start: 79338, Stop: 80093, Start Num: 28

Candidate Starts for GlutenPhree_140:

(12, 79110), (21, 79236), (Start: 28 @79338 has 179 MA's), (29, 79356), (38, 79440), (64, 79722), (67, 79758), (76, 79944),

Gene: Grasshills_145 Start: 82288, Stop: 83043, Start Num: 28

Candidate Starts for Grasshills_145:

(12, 82060), (21, 82186), (Start: 28 @82288 has 179 MA's), (29, 82306), (38, 82390), (64, 82672), (67, 82708), (76, 82894),

Gene: GroundGoblin_37 Start: 29357, Stop: 30301, Start Num: 2

Candidate Starts for GroundGoblin_37:

(Start: 2 @29357 has 65 MA's), (11, 29393), (Start: 15 @29435 has 1 MA's), (36, 29678), (49, 29804),

Gene: Grungle_125 Start: 76603, Stop: 77358, Start Num: 28

Candidate Starts for Grungle_125:

(Start: 28 @76603 has 179 MA's), (34, 76675), (38, 76705), (55, 76906), (71, 77086),

Gene: Guppsters_25 Start: 24505, Stop: 25359, Start Num: 2

Candidate Starts for Guppsters_25:

(1, 24445), (Start: 2 @24505 has 65 MA's), (11, 24553), (25, 24718), (33, 24832), (36, 24847), (37, 24865), (48, 24976), (58, 25069), (68, 25204), (69, 25219), (70, 25228), (72, 25249), (73, 25252),

Gene: Guwapp_137 Start: 78750, Stop: 79505, Start Num: 28

Candidate Starts for Guwapp_137:

(Start: 28 @78750 has 179 MA's), (29, 78768), (38, 78852), (64, 79134), (67, 79170), (76, 79356),

Gene: HINdeR_7 Start: 4364, Stop: 5329, Start Num: 2

Candidate Starts for HINdeR_7:

(Start: 2 @4364 has 65 MA's), (20, 4511), (Start: 23 @4541 has 1 MA's), (27, 4613), (32, 4670), (36, 4691), (56, 4883), (67, 4982),

Gene: Halldule_132 Start: 77629, Stop: 78384, Start Num: 28

Candidate Starts for Halldule_132:

(Start: 28 @77629 has 179 MA's), (29, 77647), (38, 77731), (64, 78013), (67, 78049), (76, 78235),

Gene: Hamulus_24 Start: 24276, Stop: 25241, Start Num: 3

Candidate Starts for Hamulus_24:

(1, 24213), (Start: 3 @24276 has 1 MA's), (11, 24324), (14, 24357), (19, 24390), (25, 24489), (36, 24618), (49, 24744),

Gene: Hegedechwinu_25 Start: 24114, Stop: 25094, Start Num: 2

Candidate Starts for Hegedechwinu_25:

(1, 24054), (Start: 2 @24114 has 65 MA's), (11, 24162), (14, 24195), (19, 24228), (Start: 23 @24300 has 1 MA's), (25, 24327), (32, 24435), (36, 24456), (47, 24555), (48, 24567), (54, 24630),

Gene: Hlubikazi_24 Start: 24362, Stop: 25318, Start Num: 2

Candidate Starts for Hlubikazi_24:

(1, 24302), (Start: 2 @24362 has 65 MA's), (9, 24404), (11, 24410), (13, 24431), (14, 24443), (19, 24476), (25, 24575), (33, 24689), (36, 24704), (50, 24830), (65, 24995),

Gene: HyRo_129 Start: 79281, Stop: 80036, Start Num: 28

Candidate Starts for HyRo_129:

(Start: 28 @79281 has 179 MA's), (34, 79353), (38, 79383), (55, 79584), (71, 79764),

Gene: I3_143 Start: 80816, Stop: 81571, Start Num: 28

Candidate Starts for I3_143:

(12, 80588), (21, 80714), (Start: 28 @80816 has 179 MA's), (29, 80834), (38, 80918), (64, 81200), (67, 81236), (76, 81422),

Gene: IMPilo_24 Start: 24298, Stop: 25152, Start Num: 2

Candidate Starts for IMPilo_24:

(1, 24238), (Start: 2 @24298 has 65 MA's), (11, 24346), (14, 24379), (19, 24412), (25, 24511), (33, 24625), (36, 24640), (37, 24658), (48, 24769), (58, 24862), (68, 24997), (69, 25012), (70, 25021), (72, 25042), (73, 25045),

Gene: IkeLoa_132 Start: 79236, Stop: 79991, Start Num: 28

Candidate Starts for IkeLoa_132:

(12, 79008), (21, 79134), (Start: 28 @79236 has 179 MA's), (29, 79254), (38, 79338), (64, 79620), (67, 79656), (76, 79842),

Gene: InigoMontoya_141 Start: 79299, Stop: 80054, Start Num: 28

Candidate Starts for InigoMontoya_141:

(12, 79071), (21, 79197), (Start: 28 @79299 has 179 MA's), (29, 79317), (38, 79401), (64, 79683), (67, 79719), (76, 79905),

Gene: InterFolia_144 Start: 81590, Stop: 82345, Start Num: 28

Candidate Starts for InterFolia_144:

(21, 81488), (Start: 28 @81590 has 179 MA's), (29, 81608), (38, 81692), (64, 81974), (67, 82010), (76, 82196),

Gene: Iota_133 Start: 79287, Stop: 80042, Start Num: 28

Candidate Starts for Iota_133:

(12, 79059), (21, 79185), (Start: 28 @79287 has 179 MA's), (29, 79305), (38, 79389), (64, 79671), (67, 79707), (76, 79893),

Gene: Issimir_136 Start: 80295, Stop: 81050, Start Num: 28

Candidate Starts for Issimir_136:

(12, 80067), (21, 80193), (Start: 28 @80295 has 179 MA's), (29, 80313), (38, 80397), (64, 80679), (67, 80715), (76, 80901),

Gene: Izajani_138 Start: 80501, Stop: 81256, Start Num: 28

Candidate Starts for Izajani_138:

(12, 80273), (21, 80399), (Start: 28 @80501 has 179 MA's), (29, 80519), (38, 80603), (64, 80885), (67, 80921), (76, 81107),

Gene: JPickles_135 Start: 78090, Stop: 78845, Start Num: 28

Candidate Starts for JPickles_135:

(12, 77862), (21, 77988), (Start: 28 @78090 has 179 MA's), (29, 78108), (38, 78192), (64, 78474), (67, 78510), (76, 78696),

Gene: JackSparrow_36 Start: 28398, Stop: 29357, Start Num: 4

Candidate Starts for JackSparrow_36:

(Start: 4 @28398 has 59 MA's), (8, 28434), (16, 28476), (Start: 23 @28563 has 1 MA's), (25, 28590), (32, 28698), (33, 28704), (36, 28719), (47, 28818), (48, 28830), (54, 28893),

Gene: JalFarm20_26 Start: 24635, Stop: 25615, Start Num: 2

Candidate Starts for JalFarm20_26:

(1, 24575), (Start: 2 @24635 has 65 MA's), (11, 24683), (32, 24956), (33, 24962), (36, 24977), (47, 25076), (48, 25088), (54, 25151),

Gene: Janiyra_141 Start: 80265, Stop: 81020, Start Num: 28

Candidate Starts for Janiyra_141:

(12, 80037), (21, 80163), (Start: 28 @80265 has 179 MA's), (29, 80283), (38, 80367), (64, 80649), (67, 80685), (76, 80871),

Gene: JayJay_143 Start: 81296, Stop: 82051, Start Num: 28

Candidate Starts for JayJay_143:

(Start: 28 @81296 has 179 MA's), (29, 81314), (38, 81398), (64, 81680), (67, 81716), (76, 81902),

Gene: Jaygup_138 Start: 79615, Stop: 80370, Start Num: 28

Candidate Starts for Jaygup_138:

(Start: 28 @79615 has 179 MA's), (29, 79633), (38, 79717), (64, 79999), (67, 80035), (76, 80221),

Gene: Jedediah_141 Start: 80148, Stop: 80903, Start Num: 28

Candidate Starts for Jedediah_141:

(Start: 28 @80148 has 179 MA's), (29, 80166), (38, 80250), (64, 80532), (67, 80568), (76, 80754),

Gene: Jemmno_138 Start: 79595, Stop: 80350, Start Num: 28

Candidate Starts for Jemmno_138:

(Start: 28 @79595 has 179 MA's), (29, 79613), (38, 79697), (64, 79979), (67, 80015), (76, 80201),

Gene: Jessibeth14_137 Start: 80127, Stop: 80882, Start Num: 28

Candidate Starts for Jessibeth14_137:

(12, 79899), (21, 80025), (Start: 28 @80127 has 179 MA's), (29, 80145), (38, 80229), (64, 80511), (67, 80547), (76, 80733),

Gene: Jezreel_138 Start: 80281, Stop: 81036, Start Num: 28

Candidate Starts for Jezreel_138:

(12, 80053), (21, 80179), (Start: 28 @80281 has 179 MA's), (29, 80299), (38, 80383), (64, 80665), (67, 80701), (76, 80887),

Gene: JigglyPuff_146 Start: 82445, Stop: 83200, Start Num: 28

Candidate Starts for JigglyPuff_146:

(12, 82217), (21, 82343), (Start: 28 @82445 has 179 MA's), (29, 82463), (38, 82547), (64, 82829), (67, 82865), (76, 83051),

Gene: Job42_27 Start: 25950, Stop: 26804, Start Num: 2

Candidate Starts for Job42_27:

(1, 25890), (Start: 2 @25950 has 65 MA's), (11, 25998), (19, 26064), (25, 26163), (33, 26277), (36, 26292), (37, 26310), (48, 26421), (58, 26514), (68, 26649), (69, 26664), (70, 26673), (72, 26694), (73, 26697),

Gene: Juice456_26 Start: 25385, Stop: 26365, Start Num: 2

Candidate Starts for Juice456_26:

(1, 25325), (Start: 2 @25385 has 65 MA's), (11, 25433), (14, 25466), (19, 25499), (Start: 23 @25571 has 1 MA's), (25, 25598), (32, 25706), (36, 25727), (47, 25826), (48, 25838), (54, 25901),

Gene: JuliaChild_37 Start: 28576, Stop: 29454, Start Num: 4

Candidate Starts for JuliaChild_37:

(Start: 4 @28576 has 59 MA's), (11, 28612), (Start: 15 @28654 has 1 MA's), (Start: 23 @28741 has 1 MA's), (25, 28768), (36, 28897), (50, 29008), (59, 29107), (84, 29383),

Gene: JulietS_132 Start: 77482, Stop: 78237, Start Num: 28

Candidate Starts for JulietS_132:

(Start: 28 @77482 has 179 MA's), (29, 77500), (38, 77584), (64, 77866), (67, 77902), (76, 78088),

Gene: JustHall_136 Start: 80123, Stop: 80878, Start Num: 28

Candidate Starts for JustHall_136:

(Start: 28 @80123 has 179 MA's), (29, 80141), (38, 80225), (64, 80507), (67, 80543), (76, 80729),

Gene: KBG_36 Start: 28930, Stop: 29886, Start Num: 4

Candidate Starts for KBG_36:

(Start: 4 @28930 has 59 MA's), (8, 28966), (16, 29008), (Start: 23 @29095 has 1 MA's), (32, 29227), (33, 29233), (36, 29248), (47, 29347), (48, 29359), (54, 29422),

Gene: Kamryn_138 Start: 80933, Stop: 81688, Start Num: 28

Candidate Starts for Kamryn_138:

(12, 80705), (21, 80831), (Start: 28 @80933 has 179 MA's), (29, 80951), (38, 81035), (64, 81317), (67, 81353), (76, 81539),

Gene: Kanely_36 Start: 28634, Stop: 29578, Start Num: 2

Candidate Starts for Kanely_36:

(Start: 2 @28634 has 65 MA's), (11, 28670), (Start: 15 @28712 has 1 MA's), (36, 28955), (49, 29081),

Gene: Kboogie_142 Start: 79288, Stop: 80043, Start Num: 28

Candidate Starts for Kboogie_142:

(12, 79060), (21, 79186), (Start: 28 @79288 has 179 MA's), (29, 79306), (38, 79390), (64, 79672), (67, 79708), (76, 79894),

Gene: Khaleesi_137 Start: 80230, Stop: 80985, Start Num: 28

Candidate Starts for Khaleesi_137:

(12, 80002), (21, 80128), (Start: 28 @80230 has 179 MA's), (29, 80248), (38, 80332), (64, 80614), (67, 80650), (76, 80836),

Gene: KingJulian_24 Start: 24305, Stop: 25285, Start Num: 2

Candidate Starts for KingJulian_24:

(Start: 2 @24305 has 65 MA's), (11, 24353), (14, 24386), (Start: 23 @24491 has 1 MA's), (25, 24518), (32, 24626), (33, 24632), (36, 24647), (47, 24746), (48, 24758), (54, 24821),

Gene: Koguma_135 Start: 77765, Stop: 78520, Start Num: 28

Candidate Starts for Koguma_135:

(Start: 28 @77765 has 179 MA's), (34, 77837), (38, 77867), (55, 78068), (71, 78248),

Gene: KristaRAM_25 Start: 24939, Stop: 25919, Start Num: 2

Candidate Starts for KristaRAM_25:

(1, 24879), (Start: 2 @24939 has 65 MA's), (11, 24987), (19, 25053), (Start: 23 @25125 has 1 MA's), (25, 25152), (32, 25260), (33, 25266), (36, 25281), (47, 25380), (48, 25392), (54, 25455),

Gene: Kugel_36 Start: 28207, Stop: 29163, Start Num: 4

Candidate Starts for Kugel_36:

(Start: 4 @28207 has 59 MA's), (8, 28243), (16, 28285), (Start: 23 @28372 has 1 MA's), (25, 28399), (36, 28528), (38, 28549), (42, 28582), (44, 28618), (60, 28744), (66, 28813),

Gene: LRRHood_131 Start: 79573, Stop: 80328, Start Num: 28

Candidate Starts for LRRHood_131:

(Start: 28 @79573 has 179 MA's), (34, 79645), (38, 79675), (55, 79876), (71, 80056),

Gene: Labradorite_137 Start: 78302, Stop: 79057, Start Num: 28

Candidate Starts for Labradorite_137:

(21, 78200), (Start: 28 @78302 has 179 MA's), (29, 78320), (38, 78404), (64, 78686), (67, 78722), (76, 78908),

Gene: Lamina13_35 Start: 27644, Stop: 28477, Start Num: 4

Candidate Starts for Lamina13_35:

(Start: 4 @27644 has 59 MA's), (8, 27680), (16, 27722), (25, 27836), (33, 27950), (36, 27965), (37, 27983), (48, 28094), (58, 28187), (69, 28337), (70, 28346), (72, 28367), (73, 28370),

Gene: Latch_139 Start: 79338, Stop: 80093, Start Num: 28

Candidate Starts for Latch_139:

(12, 79110), (21, 79236), (Start: 28 @79338 has 179 MA's), (29, 79356), (38, 79440), (64, 79722), (67, 79758), (76, 79944),

Gene: Lee7_136 Start: 80854, Stop: 81609, Start Num: 28

Candidate Starts for Lee7_136:

(12, 80626), (21, 80752), (Start: 28 @80854 has 179 MA's), (29, 80872), (38, 80956), (64, 81238), (67, 81274), (76, 81460),

Gene: Lesedi_34 Start: 27802, Stop: 28758, Start Num: 4

Candidate Starts for Lesedi_34:

(Start: 4 @27802 has 59 MA's), (8, 27838), (16, 27880), (Start: 23 @27967 has 1 MA's), (25, 27994), (32, 28099), (36, 28120), (47, 28219), (48, 28231), (54, 28294),

Gene: Lethe_136 Start: 80292, Stop: 81047, Start Num: 28

Candidate Starts for Lethe_136:

(12, 80064), (21, 80190), (Start: 28 @80292 has 179 MA's), (29, 80310), (38, 80394), (64, 80676), (67, 80712), (76, 80898),

Gene: LifeSavor_136 Start: 79547, Stop: 80302, Start Num: 28

Candidate Starts for LifeSavor_136:

(Start: 28 @79547 has 179 MA's), (29, 79565), (38, 79649), (64, 79931), (67, 79967), (76, 80153),

Gene: LinStu_136 Start: 80182, Stop: 80937, Start Num: 28

Candidate Starts for LinStu_136:

(Start: 28 @80182 has 179 MA's), (34, 80254), (38, 80284), (55, 80485), (71, 80665),

Gene: LittleShirley_25 Start: 24086, Stop: 25027, Start Num: 2

Candidate Starts for LittleShirley_25:

(1, 24026), (Start: 2 @24086 has 65 MA's), (11, 24134), (14, 24167), (19, 24200), (26, 24308), (36, 24425), (37, 24443),

Gene: Littleton_138 Start: 79667, Stop: 80422, Start Num: 28

Candidate Starts for Littleton_138:

(12, 79439), (21, 79565), (Start: 28 @79667 has 179 MA's), (29, 79685), (38, 79769), (64, 80051), (67, 80087), (76, 80273),

Gene: Loanshark_137 Start: 80198, Stop: 80953, Start Num: 28

Candidate Starts for Loanshark_137:

(12, 79970), (21, 80096), (Start: 28 @80198 has 179 MA's), (29, 80216), (38, 80300), (64, 80582), (67, 80618), (76, 80804),

Gene: Lockley_36 Start: 27986, Stop: 28873, Start Num: 4

Candidate Starts for Lockley_36:

(Start: 4 @27986 has 59 MA's), (8, 28022), (16, 28064), (Start: 23 @28151 has 1 MA's), (25, 28178), (32, 28286), (33, 28292), (36, 28307), (47, 28406), (48, 28418), (54, 28481),

Gene: LolaVinca_138 Start: 80541, Stop: 81296, Start Num: 28

Candidate Starts for LolaVinca_138:

(12, 80313), (21, 80439), (Start: 28 @80541 has 179 MA's), (29, 80559), (38, 80643), (64, 80925), (67, 80961), (76, 81147),

Gene: LookingGlass_138 Start: 80366, Stop: 81121, Start Num: 28

Candidate Starts for LookingGlass_138:

(12, 80138), (21, 80264), (Start: 28 @80366 has 179 MA's), (29, 80384), (38, 80468), (64, 80750), (67, 80786), (76, 80972),

Gene: LordLeafolot_142 Start: 81507, Stop: 82262, Start Num: 28

Candidate Starts for LordLeafolot_142:

(12, 81279), (21, 81405), (Start: 28 @81507 has 179 MA's), (29, 81525), (38, 81609), (64, 81891), (67, 81927), (76, 82113),

Gene: Lukilu_128 Start: 80583, Stop: 81338, Start Num: 28

Candidate Starts for Lukilu_128:

(Start: 28 @80583 has 179 MA's), (34, 80655), (38, 80685), (55, 80886), (71, 81066),

Gene: LunaBlu_25 Start: 24345, Stop: 25313, Start Num: 2

Candidate Starts for LunaBlu_25:

(1, 24285), (Start: 2 @24345 has 65 MA's), (11, 24393), (14, 24426), (36, 24687),

Gene: Lunareta_137 Start: 81463, Stop: 82218, Start Num: 28

Candidate Starts for Lunareta_137:

(12, 81235), (21, 81361), (Start: 28 @81463 has 179 MA's), (29, 81481), (38, 81565), (64, 81847), (67, 81883), (76, 82069),

Gene: Maby2021_138 Start: 80314, Stop: 81069, Start Num: 28

Candidate Starts for Maby2021_138:

(12, 80086), (21, 80212), (Start: 28 @80314 has 179 MA's), (29, 80332), (38, 80416), (64, 80698), (67, 80734), (76, 80920),

Gene: Magnar_35 Start: 27771, Stop: 28730, Start Num: 4

Candidate Starts for Magnar_35:

(Start: 4 @27771 has 59 MA's), (8, 27807), (16, 27849), (Start: 23 @27936 has 1 MA's), (32, 28071), (36, 28092), (47, 28191), (48, 28203), (54, 28266),

Gene: Magnito_34 Start: 27523, Stop: 28482, Start Num: 4

Candidate Starts for Magnito_34:

(Start: 4 @27523 has 59 MA's), (8, 27559), (16, 27601), (Start: 23 @27688 has 1 MA's), (25, 27715), (32, 27823), (33, 27829), (36, 27844), (47, 27943), (48, 27955), (54, 28018),

Gene: Makemake_36 Start: 29239, Stop: 30183, Start Num: 2

Candidate Starts for Makemake_36:

(Start: 2 @29239 has 65 MA's), (11, 29275), (Start: 15 @29317 has 1 MA's), (36, 29560), (49, 29686),

Gene: Mangeria_138 Start: 80384, Stop: 81139, Start Num: 28

Candidate Starts for Mangeria_138:

(12, 80156), (21, 80282), (Start: 28 @80384 has 179 MA's), (29, 80402), (38, 80486), (64, 80768), (67, 80804), (76, 80990),

Gene: Marcell_35 Start: 28259, Stop: 29206, Start Num: 4

Candidate Starts for Marcell_35:

(Start: 4 @28259 has 59 MA's), (8, 28295), (16, 28337), (Start: 23 @28424 has 1 MA's), (25, 28451), (30, 28550), (33, 28565), (40, 28625), (60, 28796), (66, 28865), (78, 29105), (80, 29126), (81, 29135), (82, 29138), (87, 29165), (88, 29189),

Gene: Marge_36 Start: 28659, Stop: 29618, Start Num: 4

Candidate Starts for Marge_36:

(Start: 4 @28659 has 59 MA's), (8, 28695), (16, 28737), (Start: 23 @28824 has 1 MA's), (25, 28851), (32, 28959), (36, 28980), (47, 29079), (48, 29091), (54, 29154),

Gene: Marsha_35 Start: 28838, Stop: 29779, Start Num: 4

Candidate Starts for Marsha_35:

(Start: 4 @28838 has 59 MA's), (11, 28874), (Start: 15 @28916 has 1 MA's), (Start: 23 @29003 has 1 MA's), (25, 29030), (35, 29153), (36, 29159), (50, 29270), (59, 29369), (65, 29435), (84, 29708),

Gene: Matsumoto_136 Start: 79175, Stop: 79930, Start Num: 28

Candidate Starts for Matsumoto_136:

(12, 78947), (21, 79073), (Start: 28 @79175 has 179 MA's), (29, 79193), (38, 79277), (64, 79559), (67, 79595), (76, 79781),

Gene: Maturis_136 Start: 79959, Stop: 80714, Start Num: 28

Candidate Starts for Maturis_136:

(12, 79731), (21, 79857), (Start: 28 @79959 has 179 MA's), (29, 79977), (38, 80061), (64, 80343), (67, 80379), (76, 80565),

Gene: McGee_140 Start: 78929, Stop: 79684, Start Num: 28

Candidate Starts for McGee_140:

(12, 78701), (21, 78827), (Start: 28 @78929 has 179 MA's), (29, 78947), (38, 79031), (64, 79313), (67, 79349), (76, 79535),

Gene: McSinger_36 Start: 28453, Stop: 29412, Start Num: 4

Candidate Starts for McSinger_36:

(Start: 4 @28453 has 59 MA's), (8, 28489), (16, 28531), (Start: 23 @28618 has 1 MA's), (25, 28645), (30, 28744), (33, 28759), (40, 28819), (60, 28990), (66, 29059), (79, 29308),

Gene: McWolfish_136 Start: 80103, Stop: 80858, Start Num: 28

Candidate Starts for McWolfish_136:

(12, 79875), (21, 80001), (Start: 28 @80103 has 179 MA's), (29, 80121), (38, 80205), (64, 80487), (67, 80523), (76, 80709),

Gene: Megamind_137 Start: 79987, Stop: 80742, Start Num: 28

Candidate Starts for Megamind_137:

(12, 79759), (21, 79885), (Start: 28 @79987 has 179 MA's), (29, 80005), (38, 80089), (64, 80371), (67, 80407), (76, 80593),

Gene: Melissauren88_24 Start: 24296, Stop: 25273, Start Num: 2

Candidate Starts for Melissauren88_24:

(1, 24236), (Start: 2 @24296 has 65 MA's), (11, 24344), (14, 24377), (19, 24410), (Start: 23 @24482 has 1 MA's), (25, 24509), (36, 24638), (38, 24659), (42, 24692), (44, 24728), (60, 24854), (66, 24923),

Gene: Melpomini_132 Start: 77453, Stop: 78208, Start Num: 28

Candidate Starts for Melpomini_132:

(Start: 28 @77453 has 179 MA's), (29, 77471), (38, 77555), (64, 77837), (67, 77873), (76, 78059),

Gene: MikeLiesIn_139 Start: 80344, Stop: 81099, Start Num: 28

Candidate Starts for MikeLiesIn_139:

(12, 80116), (21, 80242), (Start: 28 @80344 has 179 MA's), (29, 80362), (38, 80446), (64, 80728), (67, 80764), (76, 80950),

Gene: Mikro_135 Start: 81557, Stop: 82312, Start Num: 28

Candidate Starts for Mikro_135:

(12, 81329), (21, 81455), (Start: 28 @81557 has 179 MA's), (29, 81575), (38, 81659), (64, 81941), (67, 81977), (76, 82163),

Gene: MilleFeuille_32 Start: 27876, Stop: 28823, Start Num: 4

Candidate Starts for MilleFeuille_32:

(Start: 4 @27876 has 59 MA's), (8, 27912), (16, 27954), (Start: 23 @28041 has 1 MA's), (25, 28068), (30, 28167), (33, 28182), (40, 28242), (60, 28413), (66, 28482), (75, 28650), (79, 28719),

Gene: Minerva_45 Start: 38161, Stop: 39015, Start Num: 2

Candidate Starts for Minerva_45:

(1, 38101), (Start: 2 @38161 has 65 MA's), (11, 38209), (25, 38374), (33, 38488), (36, 38503), (37, 38521), (48, 38632), (58, 38725), (68, 38860), (69, 38875), (70, 38884), (72, 38905), (73, 38908),

Gene: Minnie_25 Start: 24808, Stop: 25788, Start Num: 2

Candidate Starts for Minnie_25:

(Start: 2 @24808 has 65 MA's), (11, 24856), (25, 25021), (32, 25129), (36, 25150), (47, 25249), (48, 25261), (54, 25324),

Gene: MoMoMixon_138 Start: 79820, Stop: 80575, Start Num: 28

Candidate Starts for MoMoMixon_138:

(12, 79592), (21, 79718), (Start: 28 @79820 has 179 MA's), (29, 79838), (38, 79922), (64, 80204), (67, 80240), (76, 80426),

Gene: Moby_131 Start: 77158, Stop: 77913, Start Num: 28

Candidate Starts for Moby_131:

(Start: 28 @77158 has 179 MA's), (34, 77230), (38, 77260), (55, 77461), (71, 77641),

Gene: Moiqah_130 Start: 77135, Stop: 77890, Start Num: 28

Candidate Starts for Moiqah_130:

(Start: 28 @77135 has 179 MA's), (34, 77207), (38, 77237), (55, 77438), (71, 77618),

Gene: Momo_138 Start: 79338, Stop: 80093, Start Num: 28

Candidate Starts for Momo_138:

(12, 79110), (21, 79236), (Start: 28 @79338 has 179 MA's), (29, 79356), (38, 79440), (64, 79722), (67, 79758), (76, 79944),

Gene: Monet_37 Start: 29287, Stop: 30246, Start Num: 4

Candidate Starts for Monet_37:

(Start: 4 @29287 has 59 MA's), (8, 29323), (16, 29365), (Start: 23 @29452 has 1 MA's), (25, 29479), (32, 29587), (33, 29593), (36, 29608), (47, 29707), (48, 29719), (54, 29782),

Gene: Montpel_137 Start: 81461, Stop: 82216, Start Num: 28

Candidate Starts for Montpel_137:

(12, 81233), (21, 81359), (Start: 28 @81461 has 179 MA's), (29, 81479), (38, 81563), (64, 81845), (67, 81881), (76, 82067),

Gene: Moonbeam_25 Start: 24757, Stop: 25740, Start Num: 2

Candidate Starts for Moonbeam_25:

(1, 24697), (Start: 2 @24757 has 65 MA's), (11, 24805), (Start: 23 @24943 has 1 MA's), (25, 24970), (36, 25099), (50, 25225), (84, 25669),

Gene: Morizzled23_139 Start: 79693, Stop: 80448, Start Num: 28

Candidate Starts for Morizzled23_139:

(12, 79465), (21, 79591), (Start: 28 @79693 has 179 MA's), (29, 79711), (38, 79795), (64, 80077), (67, 80113), (76, 80299),

Gene: Mozy_25 Start: 24170, Stop: 25150, Start Num: 2

Candidate Starts for Mozy_25:

(Start: 2 @24170 has 65 MA's), (11, 24218), (19, 24284), (Start: 23 @24356 has 1 MA's), (25, 24383), (32, 24491), (33, 24497), (36, 24512), (47, 24611), (48, 24623), (54, 24686),

Gene: Mwanjiwa_24 Start: 24250, Stop: 25218, Start Num: 2

Candidate Starts for Mwanjiwa_24:

(1, 24190), (Start: 2 @24250 has 65 MA's), (11, 24298), (14, 24331), (36, 24592),

Gene: NEHalo_35 Start: 27845, Stop: 28804, Start Num: 4

Candidate Starts for NEHalo_35:

(Start: 4 @27845 has 59 MA's), (8, 27881), (16, 27923), (Start: 23 @28010 has 1 MA's), (25, 28037), (32, 28145), (33, 28151), (36, 28166), (47, 28265), (48, 28277), (54, 28340),

Gene: Naija_138 Start: 79338, Stop: 80093, Start Num: 28

Candidate Starts for Naija_138:

(12, 79110), (21, 79236), (Start: 28 @79338 has 179 MA's), (29, 79356), (38, 79440), (64, 79722), (67, 79758), (76, 79944),

Gene: Napoleon13_134 Start: 77891, Stop: 78646, Start Num: 28

Candidate Starts for Napoleon13_134:

(Start: 28 @77891 has 179 MA's), (29, 77909), (38, 77993), (64, 78275), (67, 78311), (76, 78497),

Gene: Nappy_140 Start: 81254, Stop: 82009, Start Num: 28

Candidate Starts for Nappy_140:

(12, 81026), (21, 81152), (Start: 28 @81254 has 179 MA's), (29, 81272), (38, 81356), (64, 81638), (67, 81674), (76, 81860),

Gene: Naval22_143 Start: 81787, Stop: 82542, Start Num: 28

Candidate Starts for Naval22_143:

(12, 81559), (21, 81685), (Start: 28 @81787 has 179 MA's), (29, 81805), (38, 81889), (64, 82171), (67, 82207), (76, 82393),

Gene: NedWong_139 Start: 80321, Stop: 81076, Start Num: 28

Candidate Starts for NedWong_139:

(12, 80093), (21, 80219), (Start: 28 @80321 has 179 MA's), (29, 80339), (38, 80423), (64, 80705), (67, 80741), (76, 80927),

Gene: Nerujay_36 Start: 28513, Stop: 29472, Start Num: 4

Candidate Starts for Nerujay_36:

(Start: 4 @28513 has 59 MA's), (8, 28549), (11, 28555), (16, 28591), (Start: 23 @28678 has 1 MA's), (25, 28705), (32, 28813), (33, 28819), (36, 28834), (47, 28933), (48, 28945), (54, 29008),

Gene: NewHope4_26 Start: 24314, Stop: 25291, Start Num: 2

Candidate Starts for NewHope4_26:

(1, 24254), (Start: 2 @24314 has 65 MA's), (11, 24362), (Start: 23 @24500 has 1 MA's), (25, 24527), (36, 24656), (38, 24677), (42, 24710), (44, 24746), (60, 24872), (66, 24941),

Gene: Ngannou_135 Start: 78320, Stop: 79075, Start Num: 28

Candidate Starts for Ngannou_135:

(12, 78092), (21, 78218), (Start: 28 @78320 has 179 MA's), (29, 78338), (38, 78422), (64, 78704), (67, 78740), (76, 78926),

Gene: Nhonho_35 Start: 28264, Stop: 29211, Start Num: 2

Candidate Starts for Nhonho_35:

(Start: 2 @28264 has 65 MA's), (11, 28300), (Start: 15 @28342 has 1 MA's), (36, 28585), (49, 28711), (77, 29086),

Gene: Nidhogg_140 Start: 80544, Stop: 81299, Start Num: 28

Candidate Starts for Nidhogg_140:

(12, 80316), (21, 80442), (Start: 28 @80544 has 179 MA's), (29, 80562), (38, 80646), (64, 80928), (67, 80964), (76, 81150),

Gene: NoodleTree_145 Start: 80414, Stop: 81169, Start Num: 28

Candidate Starts for NoodleTree_145:

(12, 80186), (21, 80312), (Start: 28 @80414 has 179 MA's), (29, 80432), (38, 80516), (64, 80798), (67, 80834), (76, 81020),

Gene: Norm_139 Start: 81016, Stop: 81771, Start Num: 28

Candidate Starts for Norm_139:

(12, 80788), (21, 80914), (Start: 28 @81016 has 179 MA's), (29, 81034), (38, 81118), (64, 81400), (67, 81436), (76, 81622),

Gene: Norz_37 Start: 28914, Stop: 29747, Start Num: 4

Candidate Starts for Norz_37:

(Start: 4 @28914 has 59 MA's), (8, 28950), (16, 28992), (25, 29106), (33, 29220), (36, 29235), (37, 29253), (48, 29364), (58, 29457), (69, 29607), (70, 29616), (72, 29637), (73, 29640),

Gene: NuevoMundo_143 Start: 82596, Stop: 83351, Start Num: 28

Candidate Starts for NuevoMundo_143:

(12, 82368), (21, 82494), (Start: 28 @82596 has 179 MA's), (29, 82614), (38, 82698), (64, 82980), (67, 83016), (76, 83202),

Gene: Ohno789_35 Start: 27906, Stop: 28865, Start Num: 4

Candidate Starts for Ohno789_35:

(Start: 4 @27906 has 59 MA's), (8, 27942), (16, 27984), (Start: 23 @28071 has 1 MA's), (25, 28098), (32, 28206), (33, 28212), (36, 28227), (47, 28326), (48, 28338), (54, 28401),

Gene: Omega_44 Start: 38316, Stop: 39296, Start Num: 2

Candidate Starts for Omega_44:

(1, 38256), (Start: 2 @38316 has 65 MA's), (11, 38364), (19, 38430), (25, 38529), (32, 38637), (33, 38643), (36, 38658), (47, 38757), (48, 38769), (54, 38832),

Gene: OrediggerDelux_136 Start: 80851, Stop: 81606, Start Num: 28

Candidate Starts for OrediggerDelux_136:

(12, 80623), (21, 80749), (Start: 28 @80851 has 179 MA's), (29, 80869), (38, 80953), (64, 81235), (67, 81271), (76, 81457),

Gene: Ovechkin_24 Start: 24295, Stop: 25245, Start Num: 2

Candidate Starts for Ovechkin_24:

(1, 24235), (Start: 2 @24295 has 65 MA's), (11, 24343), (Start: 23 @24481 has 1 MA's), (25, 24508), (36, 24637), (41, 24691), (63, 24886),

Gene: Paphu_34 Start: 27776, Stop: 28732, Start Num: 4

Candidate Starts for Paphu_34:

(Start: 4 @27776 has 59 MA's), (8, 27812), (16, 27854), (Start: 23 @27941 has 1 MA's), (25, 27968), (36, 28097), (38, 28118), (42, 28151), (44, 28187), (60, 28313), (66, 28382),

Gene: Paraselene_34 Start: 28248, Stop: 29207, Start Num: 4

Candidate Starts for Paraselene_34:

(Start: 4 @28248 has 59 MA's), (8, 28284), (16, 28326), (Start: 23 @28413 has 1 MA's), (32, 28548), (36, 28569), (47, 28668), (48, 28680), (54, 28743),

Gene: ParkTD_139 Start: 80327, Stop: 81082, Start Num: 28

Candidate Starts for ParkTD_139:

(12, 80099), (21, 80225), (Start: 28 @80327 has 179 MA's), (29, 80345), (38, 80429), (64, 80711), (67, 80747), (76, 80933),

Gene: Parliament_34 Start: 28115, Stop: 28948, Start Num: 4

Candidate Starts for Parliament_34:

(Start: 4 @28115 has 59 MA's), (8, 28151), (16, 28193), (25, 28307), (33, 28421), (36, 28436), (37, 28454), (48, 28565), (58, 28658), (69, 28808), (70, 28817), (72, 28838), (73, 28841),

Gene: PatoPoderoso_24 Start: 24305, Stop: 25285, Start Num: 2

Candidate Starts for PatoPoderoso_24:

(Start: 2 @24305 has 65 MA's), (11, 24353), (14, 24386), (Start: 23 @24491 has 1 MA's), (25, 24518), (32, 24626), (33, 24632), (36, 24647), (47, 24746), (48, 24758), (54, 24821),

Gene: Patter_139 Start: 79355, Stop: 80110, Start Num: 28

Candidate Starts for Patter_139:

(12, 79127), (21, 79253), (Start: 28 @79355 has 179 MA's), (29, 79373), (38, 79457), (64, 79739), (67, 79775), (76, 79961),

Gene: Payneful_35 Start: 27564, Stop: 28526, Start Num: 4

Candidate Starts for Payneful_35:

(Start: 4 @27564 has 59 MA's), (11, 27600), (Start: 15 @27642 has 1 MA's), (25, 27756), (36, 27885), (50, 28011), (84, 28455),

Gene: Perseus_37 Start: 28932, Stop: 29891, Start Num: 4

Candidate Starts for Perseus_37:

(Start: 4 @28932 has 59 MA's), (8, 28968), (16, 29010), (Start: 23 @29097 has 1 MA's), (25, 29124), (32, 29232), (33, 29238), (36, 29253), (47, 29352), (48, 29364), (54, 29427),

Gene: Phalconet_24 Start: 24310, Stop: 25164, Start Num: 2

Candidate Starts for Phalconet_24:

(1, 24250), (Start: 2 @24310 has 65 MA's), (11, 24358), (25, 24523), (33, 24637), (36, 24652), (37, 24670), (48, 24781), (58, 24874), (68, 25009), (69, 25024), (70, 25033), (72, 25054), (73, 25057),

Gene: PharkleMinkus_142 Start: 80655, Stop: 81410, Start Num: 28

Candidate Starts for PharkleMinkus_142:

(12, 80427), (21, 80553), (Start: 28 @80655 has 179 MA's), (29, 80673), (38, 80757), (64, 81039), (67, 81075), (76, 81261),

Gene: PhineBark_34 Start: 28791, Stop: 29750, Start Num: 4

Candidate Starts for PhineBark_34:

(Start: 4 @28791 has 59 MA's), (8, 28827), (16, 28869), (Start: 23 @28956 has 1 MA's), (25, 28983), (30, 29082), (33, 29097), (40, 29157), (60, 29328), (66, 29397), (79, 29646),

Gene: Phlegm_142 Start: 79338, Stop: 80093, Start Num: 28

Candidate Starts for Phlegm_142:

(12, 79110), (21, 79236), (Start: 28 @79338 has 179 MA's), (29, 79356), (38, 79440), (64, 79722), (67, 79758), (76, 79944),

Gene: PhlipPhlop_24 Start: 24219, Stop: 25160, Start Num: 2

Candidate Starts for PhlipPhlop_24:

(Start: 2 @24219 has 65 MA's), (11, 24267), (14, 24300), (19, 24333), (26, 24441), (36, 24558), (37, 24576),

Gene: Phox_135 Start: 80607, Stop: 81362, Start Num: 28

Candidate Starts for Phox_135:

(12, 80379), (21, 80505), (Start: 28 @80607 has 179 MA's), (29, 80625), (38, 80709), (64, 80991), (67, 81027), (76, 81213),

Gene: Phusco_138 Start: 79614, Stop: 80369, Start Num: 28

Candidate Starts for Phusco_138:

(12, 79386), (21, 79512), (Start: 28 @79614 has 179 MA's), (29, 79632), (38, 79716), (64, 79998), (67, 80034), (76, 80220),

Gene: Pier_142 Start: 82604, Stop: 83359, Start Num: 28

Candidate Starts for Pier_142:

(12, 82376), (21, 82502), (Start: 28 @82604 has 179 MA's), (29, 82622), (38, 82706), (64, 82988), (67, 83024), (76, 83210),

Gene: Pinkcreek_129 Start: 77948, Stop: 78703, Start Num: 28

Candidate Starts for Pinkcreek_129:

(Start: 28 @77948 has 179 MA's), (34, 78020), (38, 78050), (55, 78251), (71, 78431),

Gene: Pio_142 Start: 82216, Stop: 82971, Start Num: 28

Candidate Starts for Pio_142:

(12, 81988), (21, 82114), (Start: 28 @82216 has 179 MA's), (29, 82234), (38, 82318), (64, 82600), (67, 82636), (76, 82822),

Gene: Pita2_37 Start: 28576, Stop: 29523, Start Num: 4

Candidate Starts for Pita2_37:

(Start: 4 @28576 has 59 MA's), (11, 28612), (Start: 15 @28654 has 1 MA's), (Start: 23 @28741 has 1 MA's), (25, 28768), (36, 28897), (50, 29008), (59, 29107), (84, 29452),

Gene: Pivoine_138 Start: 79338, Stop: 80093, Start Num: 28

Candidate Starts for Pivoine_138:

(12, 79110), (21, 79236), (Start: 28 @79338 has 179 MA's), (29, 79356), (38, 79440), (64, 79722), (67, 79758), (76, 79944),

Gene: Pleione_141 Start: 80494, Stop: 81249, Start Num: 28

Candidate Starts for Pleione_141:

(12, 80266), (21, 80392), (Start: 28 @80494 has 179 MA's), (29, 80512), (38, 80596), (64, 80878), (67, 80914), (76, 81100),

Gene: Primadonna_132 Start: 78979, Stop: 79734, Start Num: 28

Candidate Starts for Primadonna_132:

(21, 78877), (Start: 28 @78979 has 179 MA's), (29, 78997), (38, 79081), (64, 79363), (67, 79399), (76, 79585),

Gene: Pupusa_144 Start: 81696, Stop: 82451, Start Num: 28

Candidate Starts for Pupusa_144:

(12, 81468), (21, 81594), (Start: 28 @81696 has 179 MA's), (29, 81714), (38, 81798), (64, 82080), (67, 82116), (76, 82302),

Gene: PurduePete_138 Start: 80741, Stop: 81496, Start Num: 28

Candidate Starts for PurduePete_138:

(12, 80513), (21, 80639), (Start: 28 @80741 has 179 MA's), (29, 80759), (38, 80843), (64, 81125), (67, 81161), (76, 81347),

Gene: QBert_132 Start: 79331, Stop: 80086, Start Num: 28

Candidate Starts for QBert_132:

(Start: 28 @79331 has 179 MA's), (29, 79349), (38, 79433), (64, 79715), (67, 79751), (76, 79937),

Gene: QTRlifeCrisis_36 Start: 28819, Stop: 29613, Start Num: 23

Candidate Starts for QTRlifeCrisis_36:

(Start: 23 @28819 has 1 MA's), (25, 28846), (32, 28954), (33, 28960), (36, 28975), (47, 29074), (48, 29086), (54, 29149),

Gene: Quasimodo_140 Start: 80755, Stop: 81510, Start Num: 28

Candidate Starts for Quasimodo_140:

(Start: 28 @80755 has 179 MA's), (29, 80773), (38, 80857), (64, 81139), (67, 81175), (76, 81361),

Gene: Rabinovish_137 Start: 80939, Stop: 81694, Start Num: 28

Candidate Starts for Rabinovish_137:

(12, 80711), (21, 80837), (Start: 28 @80939 has 179 MA's), (29, 80957), (38, 81041), (64, 81323), (67, 81359), (76, 81545),

Gene: Radiance_24 Start: 24248, Stop: 25189, Start Num: 2

Candidate Starts for Radiance_24:

(1, 24188), (Start: 2 @24248 has 65 MA's), (11, 24296), (26, 24470), (36, 24587), (37, 24605),

Gene: Rahel_137 Start: 79216, Stop: 79971, Start Num: 28

Candidate Starts for Rahel_137:

(12, 78988), (21, 79114), (Start: 28 @79216 has 179 MA's), (29, 79234), (38, 79318), (64, 79600), (67, 79636), (76, 79822),

Gene: Raid_35 Start: 28103, Stop: 29035, Start Num: 4

Candidate Starts for Raid_35:

(Start: 4 @28103 has 59 MA's), (16, 28181), (25, 28295), (30, 28394), (33, 28409), (40, 28469), (60, 28640), (66, 28682), (79, 28931),

Gene: Rajelicia_34 Start: 27812, Stop: 28732, Start Num: 4

Candidate Starts for Rajelicia_34:

(Start: 4 @27812 has 59 MA's), (8, 27848), (16, 27890), (26, 28013), (36, 28130), (37, 28148),

Gene: Rhynn_35 Start: 28103, Stop: 29047, Start Num: 2

Candidate Starts for Rhynn_35:

(Start: 2 @28103 has 65 MA's), (11, 28139), (Start: 15 @28181 has 1 MA's), (Start: 23 @28268 has 1 MA's), (36, 28424), (74, 28868), (85, 28979),

Gene: Rialto_26 Start: 24777, Stop: 25718, Start Num: 2

Candidate Starts for Rialto_26:

(1, 24717), (Start: 2 @24777 has 65 MA's), (11, 24825), (14, 24858), (19, 24891), (26, 24999), (36, 25116), (37, 25134),

Gene: Rizal_133 Start: 78364, Stop: 79119, Start Num: 28

Candidate Starts for Rizal_133:

(12, 78136), (21, 78262), (Start: 28 @78364 has 179 MA's), (29, 78382), (38, 78466), (64, 78748), (67, 78784), (76, 78970),

Gene: RoMag_133 Start: 79528, Stop: 80283, Start Num: 28

Candidate Starts for RoMag_133:

(12, 79300), (21, 79426), (Start: 28 @79528 has 179 MA's), (29, 79546), (38, 79630), (64, 79912), (67, 79948), (76, 80134),

Gene: Rocha_136 Start: 79781, Stop: 80536, Start Num: 28

Candidate Starts for Rocha_136:

(12, 79553), (21, 79679), (Start: 28 @79781 has 179 MA's), (29, 79799), (38, 79883), (64, 80165), (67, 80201), (76, 80387),

Gene: Ronan_132 Start: 77477, Stop: 78232, Start Num: 28

Candidate Starts for Ronan_132:

(Start: 28 @77477 has 179 MA's), (29, 77495), (38, 77579), (64, 77861), (67, 77897), (76, 78083),

Gene: Roots515_137 Start: 80993, Stop: 81748, Start Num: 28

Candidate Starts for Roots515_137:

(12, 80765), (21, 80891), (Start: 28 @80993 has 179 MA's), (29, 81011), (38, 81095), (64, 81377), (67, 81413), (76, 81599),

Gene: Ruotula_35 Start: 28645, Stop: 29577, Start Num: 4

Candidate Starts for Ruotula_35:

(Start: 4 @28645 has 59 MA's), (11, 28681), (17, 28723), (Start: 23 @28810 has 1 MA's), (25, 28837), (36, 28966), (37, 28984), (39, 28996), (45, 29062), (63, 29227), (66, 29251), (89, 29557),

Gene: Rutherferd_37 Start: 28709, Stop: 29668, Start Num: 4

Candidate Starts for Rutherferd_37:

(Start: 4 @28709 has 59 MA's), (8, 28745), (16, 28787), (Start: 23 @28874 has 1 MA's), (25, 28901), (32, 29009), (33, 29015), (36, 29030), (47, 29129), (48, 29141), (54, 29204),

Gene: SG4_24 Start: 24415, Stop: 25395, Start Num: 2

Candidate Starts for SG4_24:

(1, 24355), (Start: 2 @24415 has 65 MA's), (11, 24463), (Start: 23 @24601 has 1 MA's), (25, 24628), (32, 24736), (36, 24757), (47, 24856), (48, 24868), (54, 24931),

Gene: SVoro_136 Start: 80701, Stop: 81456, Start Num: 28

Candidate Starts for SVoro_136:

(12, 80473), (21, 80599), (Start: 28 @80701 has 179 MA's), (29, 80719), (38, 80803), (64, 81085), (67, 81121), (76, 81307),

Gene: Sabbb_25 Start: 24561, Stop: 25415, Start Num: 2

Candidate Starts for Sabbb_25:

(1, 24501), (Start: 2 @24561 has 65 MA's), (11, 24609), (25, 24774), (33, 24888), (36, 24903), (37, 24921), (48, 25032), (58, 25125), (68, 25260), (69, 25275), (70, 25284), (72, 25305), (73, 25308),

Gene: Salacia_142 Start: 80655, Stop: 81410, Start Num: 28

Candidate Starts for Salacia_142:

(12, 80427), (21, 80553), (Start: 28 @80655 has 179 MA's), (29, 80673), (38, 80757), (64, 81039), (67, 81075), (76, 81261),

Gene: Sandalphon_25 Start: 24822, Stop: 25802, Start Num: 2

Candidate Starts for Sandalphon_25:

(Start: 2 @24822 has 65 MA's), (11, 24870), (25, 25035), (32, 25143), (36, 25164), (47, 25263), (48, 25275), (54, 25338),

Gene: Sanya_34 Start: 28677, Stop: 29597, Start Num: 4

Candidate Starts for Sanya_34:

(Start: 4 @28677 has 59 MA's), (8, 28713), (16, 28755), (26, 28878), (36, 28995), (37, 29013),

Gene: SarFire_35 Start: 28155, Stop: 29099, Start Num: 2

Candidate Starts for SarFire_35:

(Start: 2 @28155 has 65 MA's), (11, 28191), (Start: 15 @28233 has 1 MA's), (36, 28476), (49, 28602), (85, 29031),

Gene: Sauce_138 Start: 79271, Stop: 80026, Start Num: 28

Candidate Starts for Sauce_138:

(Start: 28 @79271 has 179 MA's), (34, 79343), (38, 79373), (55, 79574), (71, 79754),

Gene: ScottMcG_134 Start: 79277, Stop: 80032, Start Num: 28

Candidate Starts for ScottMcG_134:

(Start: 28 @79277 has 179 MA's), (29, 79295), (38, 79379), (64, 79661), (67, 79697), (76, 79883),

Gene: Scowl_35 Start: 28529, Stop: 29362, Start Num: 4

Candidate Starts for Scowl_35:

(Start: 4 @28529 has 59 MA's), (8, 28565), (16, 28607), (25, 28721), (33, 28835), (36, 28850), (37, 28868), (48, 28979), (58, 29072), (68, 29207), (69, 29222), (70, 29231), (72, 29252), (73, 29255),

Gene: Seagreen_25 Start: 24109, Stop: 25089, Start Num: 2

Candidate Starts for Seagreen_25:

(1, 24049), (Start: 2 @24109 has 65 MA's), (11, 24157), (14, 24190), (19, 24223), (Start: 23 @24295 has 1 MA's), (25, 24322), (32, 24430), (36, 24451), (47, 24550), (48, 24562), (54, 24625),

Gene: Seanderson_36 Start: 28535, Stop: 29503, Start Num: 4

Candidate Starts for Seanderson_36:

(Start: 4 @28535 has 59 MA's), (8, 28571), (16, 28613), (Start: 23 @28700 has 1 MA's), (25, 28727), (38, 28877), (42, 28910), (44, 28946), (60, 29072), (66, 29141), (90, 29483), (92, 29489),

Gene: Sebata_138 Start: 80740, Stop: 81495, Start Num: 28

Candidate Starts for Sebata_138:

(Start: 28 @80740 has 179 MA's), (34, 80812), (38, 80842), (55, 81043), (71, 81223),

Gene: Shaqnato_131 Start: 78321, Stop: 79076, Start Num: 28

Candidate Starts for Shaqnato_131:

(12, 78093), (21, 78219), (Start: 28 @78321 has 179 MA's), (29, 78339), (38, 78423), (64, 78705), (67, 78741), (76, 78927),

Gene: Sheen_7 Start: 4509, Stop: 5477, Start Num: 2

Candidate Starts for Sheen_7:

(Start: 2 @4509 has 65 MA's), (19, 4632), (36, 4836), (50, 4962), (56, 5031),

Gene: Shelob_140 Start: 81123, Stop: 81878, Start Num: 28

Candidate Starts for Shelob_140:

(12, 80895), (21, 81021), (Start: 28 @81123 has 179 MA's), (29, 81141), (38, 81225), (64, 81507), (67, 81543), (76, 81729),

Gene: ShiaLabeouf_137 Start: 79651, Stop: 80406, Start Num: 28
Candidate Starts for ShiaLabeouf_137:
(Start: 28 @79651 has 179 MA's), (29, 79669), (38, 79753), (64, 80035), (67, 80071), (76, 80257),

Gene: Shifa_127 Start: 78547, Stop: 79302, Start Num: 28
Candidate Starts for Shifa_127:
(Start: 28 @78547 has 179 MA's), (34, 78619), (38, 78649), (55, 78850), (71, 79030),

Gene: Shnickers_138 Start: 79615, Stop: 80370, Start Num: 28
Candidate Starts for Shnickers_138:
(Start: 28 @79615 has 179 MA's), (29, 79633), (38, 79717), (64, 79999), (67, 80035), (76, 80221),

Gene: Shrimp_138 Start: 80334, Stop: 81089, Start Num: 28
Candidate Starts for Shrimp_138:
(12, 80106), (21, 80232), (Start: 28 @80334 has 179 MA's), (29, 80352), (38, 80436), (64, 80718), (67, 80754), (76, 80940),

Gene: Sibs6_36 Start: 27022, Stop: 27981, Start Num: 4
Candidate Starts for Sibs6_36:
(Start: 4 @27022 has 59 MA's), (8, 27058), (16, 27100), (32, 27322), (36, 27343), (47, 27442), (48, 27454), (54, 27517),

Gene: SilverChicken_30 Start: 24074, Stop: 24949, Start Num: 18
Candidate Starts for SilverChicken_30:
(5, 23993), (6, 23996), (18, 24074), (Start: 23 @24155 has 1 MA's), (25, 24182), (32, 24290), (36, 24311), (47, 24410), (48, 24422), (54, 24485),

Gene: SilverDipper_140 Start: 79338, Stop: 80093, Start Num: 28
Candidate Starts for SilverDipper_140:
(12, 79110), (21, 79236), (Start: 28 @79338 has 179 MA's), (29, 79356), (38, 79440), (64, 79722), (67, 79758), (76, 79944),

Gene: SkiPole_38 Start: 28360, Stop: 29319, Start Num: 4
Candidate Starts for SkiPole_38:
(Start: 4 @28360 has 59 MA's), (8, 28396), (16, 28438), (Start: 23 @28525 has 1 MA's), (25, 28552), (32, 28660), (33, 28666), (36, 28681), (47, 28780), (48, 28792), (54, 28855),

Gene: Slagathor_36 Start: 28020, Stop: 28940, Start Num: 4
Candidate Starts for Slagathor_36:
(Start: 4 @28020 has 59 MA's), (8, 28056), (16, 28098), (26, 28221), (36, 28338), (37, 28356),

Gene: Slim_25 Start: 24057, Stop: 24998, Start Num: 2
Candidate Starts for Slim_25:
(1, 23997), (Start: 2 @24057 has 65 MA's), (11, 24105), (14, 24138), (19, 24171), (26, 24279), (36, 24396), (37, 24414),

Gene: SmallFry_138 Start: 78840, Stop: 79595, Start Num: 28
Candidate Starts for SmallFry_138:
(Start: 28 @78840 has 179 MA's), (29, 78858), (38, 78942), (64, 79224), (67, 79260), (76, 79446),

Gene: Snazzy_34 Start: 27934, Stop: 28851, Start Num: 4
Candidate Starts for Snazzy_34:

(Start: 4 @27934 has 59 MA's), (8, 27970), (16, 28012), (26, 28135), (36, 28252), (37, 28270),

Gene: Sorpresa_35 Start: 27993, Stop: 28931, Start Num: 4

Candidate Starts for Sorpresa_35:

(Start: 4 @27993 has 59 MA's), (11, 28029), (17, 28071), (Start: 23 @28158 has 1 MA's), (25, 28185), (36, 28311), (37, 28329), (59, 28524), (63, 28572),

Gene: Spartacus_25 Start: 24348, Stop: 25328, Start Num: 2

Candidate Starts for Spartacus_25:

(1, 24288), (Start: 2 @24348 has 65 MA's), (11, 24396), (19, 24462), (Start: 23 @24534 has 1 MA's), (25, 24561), (32, 24669), (33, 24675), (36, 24690), (47, 24789), (48, 24801), (54, 24864),

Gene: Spec_134 Start: 79380, Stop: 80135, Start Num: 28

Candidate Starts for Spec_134:

(Start: 28 @79380 has 179 MA's), (29, 79398), (38, 79482), (64, 79764), (67, 79800), (76, 79986),

Gene: Specks_143 Start: 81505, Stop: 82260, Start Num: 28

Candidate Starts for Specks_143:

(21, 81403), (Start: 28 @81505 has 179 MA's), (29, 81523), (38, 81607), (64, 81889), (67, 81925), (76, 82111),

Gene: SpikeBT_37 Start: 28951, Stop: 29910, Start Num: 4

Candidate Starts for SpikeBT_37:

(Start: 4 @28951 has 59 MA's), (8, 28987), (16, 29029), (Start: 23 @29116 has 1 MA's), (25, 29143), (32, 29251), (33, 29257), (36, 29272), (47, 29371), (48, 29383), (54, 29446),

Gene: Spikelee_25 Start: 24092, Stop: 25072, Start Num: 2

Candidate Starts for Spikelee_25:

(1, 24032), (Start: 2 @24092 has 65 MA's), (11, 24140), (14, 24173), (19, 24206), (Start: 23 @24278 has 1 MA's), (25, 24305), (30, 24404), (36, 24434), (40, 24479), (60, 24650), (66, 24719), (79, 24968),

Gene: Sprinklers_134 Start: 78896, Stop: 79651, Start Num: 28

Candidate Starts for Sprinklers_134:

(12, 78668), (21, 78794), (Start: 28 @78896 has 179 MA's), (29, 78914), (38, 78998), (64, 79280), (67, 79316), (76, 79502),

Gene: Spud_137 Start: 80401, Stop: 81156, Start Num: 28

Candidate Starts for Spud_137:

(Start: 28 @80401 has 179 MA's), (29, 80419), (38, 80503), (64, 80785), (67, 80821), (76, 81007),

Gene: SrishMeg2525_137 Start: 80423, Stop: 81178, Start Num: 28

Candidate Starts for SrishMeg2525_137:

(12, 80195), (21, 80321), (Start: 28 @80423 has 179 MA's), (29, 80441), (38, 80525), (64, 80807), (67, 80843), (76, 81029),

Gene: StAnnes_24 Start: 24309, Stop: 25163, Start Num: 2

Candidate Starts for StAnnes_24:

(1, 24249), (Start: 2 @24309 has 65 MA's), (11, 24357), (14, 24390), (19, 24423), (25, 24522), (33, 24636), (36, 24651), (37, 24669), (48, 24780), (58, 24873), (68, 25008), (69, 25023), (70, 25032), (72, 25053), (73, 25056),

Gene: Stap_25 Start: 24298, Stop: 25260, Start Num: 2

Candidate Starts for Stap_25:

(1, 24238), (Start: 2 @24298 has 65 MA's), (11, 24346), (14, 24379), (19, 24412), (20, 24439), (25, 24496), (30, 24595), (33, 24610), (36, 24625), (60, 24841),

Gene: StephanieG_136 Start: 81233, Stop: 81988, Start Num: 28

Candidate Starts for StephanieG_136:

(12, 81005), (21, 81131), (Start: 28 @81233 has 179 MA's), (29, 81251), (38, 81335), (64, 81617), (67, 81653), (76, 81839),

Gene: StrongArm_34 Start: 29035, Stop: 29871, Start Num: 4

Candidate Starts for StrongArm_34:

(Start: 4 @29035 has 59 MA's), (11, 29071), (16, 29113), (Start: 23 @29200 has 1 MA's), (25, 29227), (31, 29329), (46, 29458), (61, 29587),

Gene: Stubby_131 Start: 78863, Stop: 79618, Start Num: 28

Candidate Starts for Stubby_131:

(12, 78635), (21, 78761), (Start: 28 @78863 has 179 MA's), (29, 78881), (38, 78965), (64, 79247), (67, 79283), (76, 79469),

Gene: StubbySaigey_142 Start: 79498, Stop: 80253, Start Num: 28

Candidate Starts for StubbySaigey_142:

(12, 79270), (21, 79396), (Start: 28 @79498 has 179 MA's), (29, 79516), (38, 79600), (64, 79882), (67, 79918), (76, 80104),

Gene: Substance289_136 Start: 79133, Stop: 79888, Start Num: 28

Candidate Starts for Substance289_136:

(Start: 28 @79133 has 179 MA's), (29, 79151), (38, 79235), (64, 79517), (67, 79553), (76, 79739),

Gene: Sunshine924_37 Start: 27945, Stop: 28811, Start Num: 15

Candidate Starts for Sunshine924_37:

(10, 27900), (Start: 15 @27945 has 1 MA's), (Start: 23 @28032 has 1 MA's), (25, 28059), (33, 28173), (36, 28188), (51, 28308), (58, 28398),

Gene: Tainan_141 Start: 80828, Stop: 81583, Start Num: 28

Candidate Starts for Tainan_141:

(12, 80600), (21, 80726), (Start: 28 @80828 has 179 MA's), (29, 80846), (38, 80930), (64, 81212), (67, 81248), (76, 81434),

Gene: Taj_24 Start: 24299, Stop: 25279, Start Num: 2

Candidate Starts for Taj_24:

(1, 24239), (Start: 2 @24299 has 65 MA's), (11, 24347), (14, 24380), (19, 24413), (25, 24512), (32, 24620), (36, 24641), (47, 24740), (48, 24752), (54, 24815),

Gene: Tasp14_36 Start: 28268, Stop: 29101, Start Num: 4

Candidate Starts for Tasp14_36:

(Start: 4 @28268 has 59 MA's), (8, 28304), (16, 28346), (25, 28460), (33, 28574), (36, 28589), (37, 28607), (48, 28718), (69, 28961), (70, 28970), (72, 28991), (73, 28994),

Gene: Teardrop_137 Start: 78829, Stop: 79584, Start Num: 28

Candidate Starts for Teardrop_137:

(21, 78727), (Start: 28 @78829 has 179 MA's), (29, 78847), (38, 78931), (64, 79213), (67, 79249), (76, 79435),

Gene: Teodoridan_33 Start: 27398, Stop: 28357, Start Num: 4

Candidate Starts for Teodoridan_33:

(Start: 4 @27398 has 59 MA's), (8, 27434), (16, 27476), (Start: 23 @27563 has 1 MA's), (25, 27590), (30, 27689), (33, 27704), (40, 27764), (60, 27935), (66, 28004), (79, 28253),

Gene: Timshel_7 Start: 4377, Stop: 5294, Start Num: 2

Candidate Starts for Timshel_7:

(Start: 2 @4377 has 65 MA's), (57, 4893), (62, 4932),

Gene: TinyTim_138 Start: 80081, Stop: 80836, Start Num: 28

Candidate Starts for TinyTim_138:

(12, 79853), (21, 79979), (Start: 28 @80081 has 179 MA's), (29, 80099), (38, 80183), (64, 80465), (67, 80501), (76, 80687),

Gene: Tootsieroll_25 Start: 24107, Stop: 25084, Start Num: 2

Candidate Starts for Tootsieroll_25:

(1, 24047), (Start: 2 @24107 has 65 MA's), (11, 24155), (25, 24320), (36, 24449), (38, 24470), (42, 24503), (44, 24539), (60, 24665),

Gene: Toro_7 Start: 4427, Stop: 5395, Start Num: 2

Candidate Starts for Toro_7:

(Start: 2 @4427 has 65 MA's), (19, 4550), (36, 4754), (50, 4880), (56, 4949),

Gene: Tortoise16_135 Start: 79440, Stop: 80195, Start Num: 28

Candidate Starts for Tortoise16_135:

(12, 79212), (21, 79338), (Start: 28 @79440 has 179 MA's), (29, 79458), (38, 79542), (64, 79824), (67, 79860), (76, 80046),

Gene: Totinger_25 Start: 24056, Stop: 24997, Start Num: 2

Candidate Starts for Totinger_25:

(1, 23996), (Start: 2 @24056 has 65 MA's), (11, 24104), (14, 24137), (26, 24278), (36, 24395), (37, 24413),

Gene: Traft412_37 Start: 28951, Stop: 29910, Start Num: 4

Candidate Starts for Traft412_37:

(Start: 4 @28951 has 59 MA's), (8, 28987), (16, 29029), (Start: 23 @29116 has 1 MA's), (25, 29143), (32, 29251), (33, 29257), (36, 29272), (47, 29371), (48, 29383), (54, 29446),

Gene: Treddle_37 Start: 29241, Stop: 30200, Start Num: 4

Candidate Starts for Treddle_37:

(Start: 4 @29241 has 59 MA's), (8, 29277), (16, 29319), (Start: 23 @29406 has 1 MA's), (32, 29541), (33, 29547), (36, 29562), (47, 29661), (48, 29673), (54, 29736),

Gene: Trinitium_136 Start: 79264, Stop: 80019, Start Num: 28

Candidate Starts for Trinitium_136:

(Start: 28 @79264 has 179 MA's), (29, 79282), (38, 79366), (64, 79648), (67, 79684), (76, 79870),

Gene: Trouble_36 Start: 28854, Stop: 29813, Start Num: 4

Candidate Starts for Trouble_36:

(Start: 4 @28854 has 59 MA's), (8, 28890), (16, 28932), (Start: 23 @29019 has 1 MA's), (25, 29046), (32, 29154), (33, 29160), (36, 29175), (47, 29274), (48, 29286), (54, 29349),

Gene: Turret_134 Start: 78709, Stop: 79464, Start Num: 28

Candidate Starts for Turret_134:

(12, 78481), (21, 78607), (Start: 28 @78709 has 179 MA's), (29, 78727), (38, 78811), (64, 79093), (67, 79129), (76, 79315),

Gene: Tweety_25 Start: 24317, Stop: 25297, Start Num: 2

Candidate Starts for Tweety_25:

(1, 24257), (Start: 2 @24317 has 65 MA's), (11, 24365), (19, 24431), (Start: 23 @24503 has 1 MA's), (25, 24530), (32, 24638), (36, 24659), (47, 24758), (48, 24770), (54, 24833),

Gene: TwoPeat_36 Start: 28375, Stop: 29295, Start Num: 4

Candidate Starts for TwoPeat_36:

(Start: 4 @28375 has 59 MA's), (8, 28411), (16, 28453), (26, 28576), (36, 28693), (37, 28711),

Gene: Tyke_138 Start: 80736, Stop: 81491, Start Num: 28

Candidate Starts for Tyke_138:

(12, 80508), (21, 80634), (Start: 28 @80736 has 179 MA's), (29, 80754), (38, 80838), (64, 81120), (67, 81156), (76, 81342),

Gene: VRedHorse_24 Start: 24432, Stop: 25286, Start Num: 2

Candidate Starts for VRedHorse_24:

(1, 24372), (Start: 2 @24432 has 65 MA's), (11, 24480), (25, 24645), (33, 24759), (36, 24774), (37, 24792), (48, 24903), (58, 24996), (68, 25131), (69, 25146), (70, 25155), (72, 25176), (73, 25179),

Gene: ValleyTerrace_139 Start: 79338, Stop: 80093, Start Num: 28

Candidate Starts for ValleyTerrace_139:

(12, 79110), (21, 79236), (Start: 28 @79338 has 179 MA's), (29, 79356), (38, 79440), (64, 79722), (67, 79758), (76, 79944),

Gene: Wachhund_24 Start: 24290, Stop: 25270, Start Num: 2

Candidate Starts for Wachhund_24:

(1, 24230), (Start: 2 @24290 has 65 MA's), (11, 24338), (19, 24404), (Start: 23 @24476 has 1 MA's), (25, 24503), (32, 24611), (36, 24632), (47, 24731), (48, 24743), (54, 24806),

Gene: Wally_137 Start: 78859, Stop: 79614, Start Num: 28

Candidate Starts for Wally_137:

(12, 78631), (21, 78757), (Start: 28 @78859 has 179 MA's), (29, 78877), (38, 78961), (64, 79243), (67, 79279), (76, 79465),

Gene: Wee_25 Start: 24838, Stop: 25818, Start Num: 2

Candidate Starts for Wee_25:

(1, 24778), (Start: 2 @24838 has 65 MA's), (11, 24886), (19, 24952), (25, 25051), (32, 25159), (33, 25165), (36, 25180), (47, 25279), (48, 25291), (54, 25354),

Gene: Whatsapiecost_24 Start: 24315, Stop: 25292, Start Num: 2

Candidate Starts for Whatsapiecost_24:

(1, 24255), (Start: 2 @24315 has 65 MA's), (11, 24363), (Start: 23 @24501 has 1 MA's), (25, 24528), (36, 24657), (38, 24678), (42, 24711), (44, 24747), (60, 24873), (66, 24942),

Gene: Whouxphf_24 Start: 24369, Stop: 25334, Start Num: 2

Candidate Starts for Whouxphf_24:

(1, 24309), (Start: 2 @24369 has 65 MA's), (11, 24417), (14, 24450), (19, 24483), (25, 24582), (36, 24711), (49, 24837),

Gene: Willis_139 Start: 80226, Stop: 80981, Start Num: 28

Candidate Starts for Willis_139:

(12, 79998), (21, 80124), (Start: 28 @80226 has 179 MA's), (29, 80244), (38, 80328), (64, 80610), (67, 80646), (76, 80832),

Gene: XFactor_24 Start: 24271, Stop: 25251, Start Num: 2

Candidate Starts for XFactor_24:

(1, 24211), (Start: 2 @24271 has 65 MA's), (11, 24319), (14, 24352), (19, 24385), (Start: 23 @24457 has 1 MA's), (25, 24484), (32, 24592), (36, 24613), (47, 24712), (48, 24724), (54, 24787),

Gene: Yassified_135 Start: 78936, Stop: 79691, Start Num: 28

Candidate Starts for Yassified_135:

(12, 78708), (21, 78834), (Start: 28 @78936 has 179 MA's), (29, 78954), (38, 79038), (64, 79320), (67, 79356), (76, 79542),

Gene: YemiJoy2021_139 Start: 80318, Stop: 81073, Start Num: 28

Candidate Starts for YemiJoy2021_139:

(12, 80090), (21, 80216), (Start: 28 @80318 has 179 MA's), (29, 80336), (38, 80420), (64, 80702), (67, 80738), (76, 80924),

Gene: YoungMoneyMata_140 Start: 79964, Stop: 80719, Start Num: 28

Candidate Starts for YoungMoneyMata_140:

(Start: 28 @79964 has 179 MA's), (29, 79982), (38, 80066), (64, 80348), (67, 80384), (76, 80570),

Gene: Yucca_137 Start: 80000, Stop: 80755, Start Num: 28

Candidate Starts for Yucca_137:

(12, 79772), (21, 79898), (Start: 28 @80000 has 179 MA's), (29, 80018), (38, 80102), (64, 80384), (67, 80420), (76, 80606),

Gene: Zalkecks_139 Start: 80001, Stop: 80756, Start Num: 28

Candidate Starts for Zalkecks_139:

(12, 79773), (21, 79899), (Start: 28 @80001 has 179 MA's), (29, 80019), (38, 80103), (64, 80385), (67, 80421), (76, 80607),

Gene: Zeenon_139 Start: 80086, Stop: 80841, Start Num: 28

Candidate Starts for Zeenon_139:

(12, 79858), (21, 79984), (Start: 28 @80086 has 179 MA's), (29, 80104), (38, 80188), (64, 80470), (67, 80506), (76, 80692),

Gene: Zephyr_35 Start: 28152, Stop: 29057, Start Num: 7

Candidate Starts for Zephyr_35:

(Start: 7 @28152 has 1 MA's), (13, 28188), (25, 28332), (39, 28494), (91, 29052),

Gene: Zeuska_36 Start: 28583, Stop: 29542, Start Num: 4

Candidate Starts for Zeuska_36:

(Start: 4 @28583 has 59 MA's), (8, 28619), (16, 28661), (Start: 23 @28748 has 1 MA's), (25, 28775), (32, 28883), (33, 28889), (36, 28904), (47, 29003), (48, 29015), (54, 29078),

Gene: ZygoTaiga_136 Start: 81246, Stop: 82001, Start Num: 28

Candidate Starts for ZygoTaiga_136:

(12, 81018), (21, 81144), (Start: 28 @81246 has 179 MA's), (29, 81264), (38, 81348), (64, 81630), (67, 81666), (76, 81852),