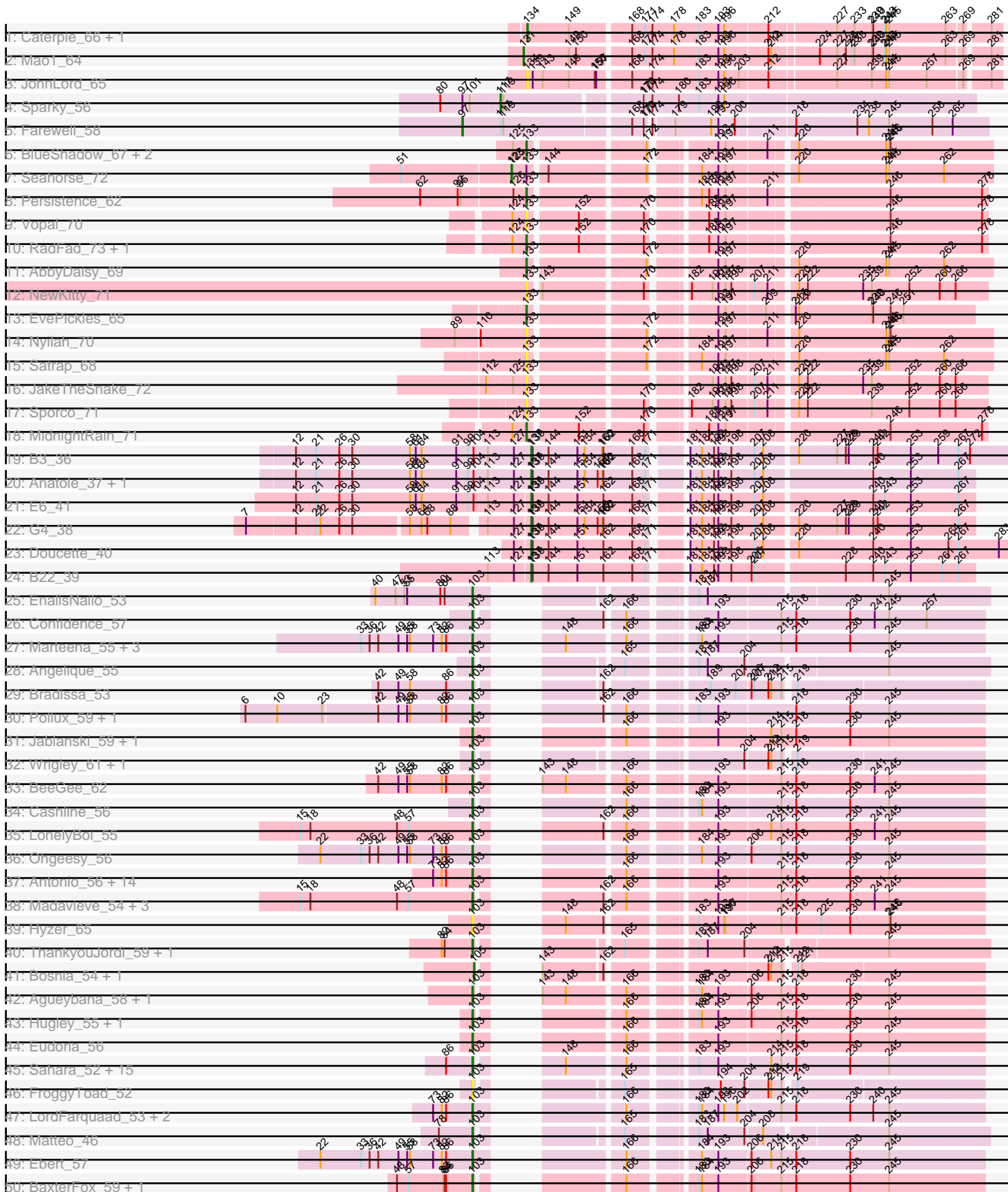
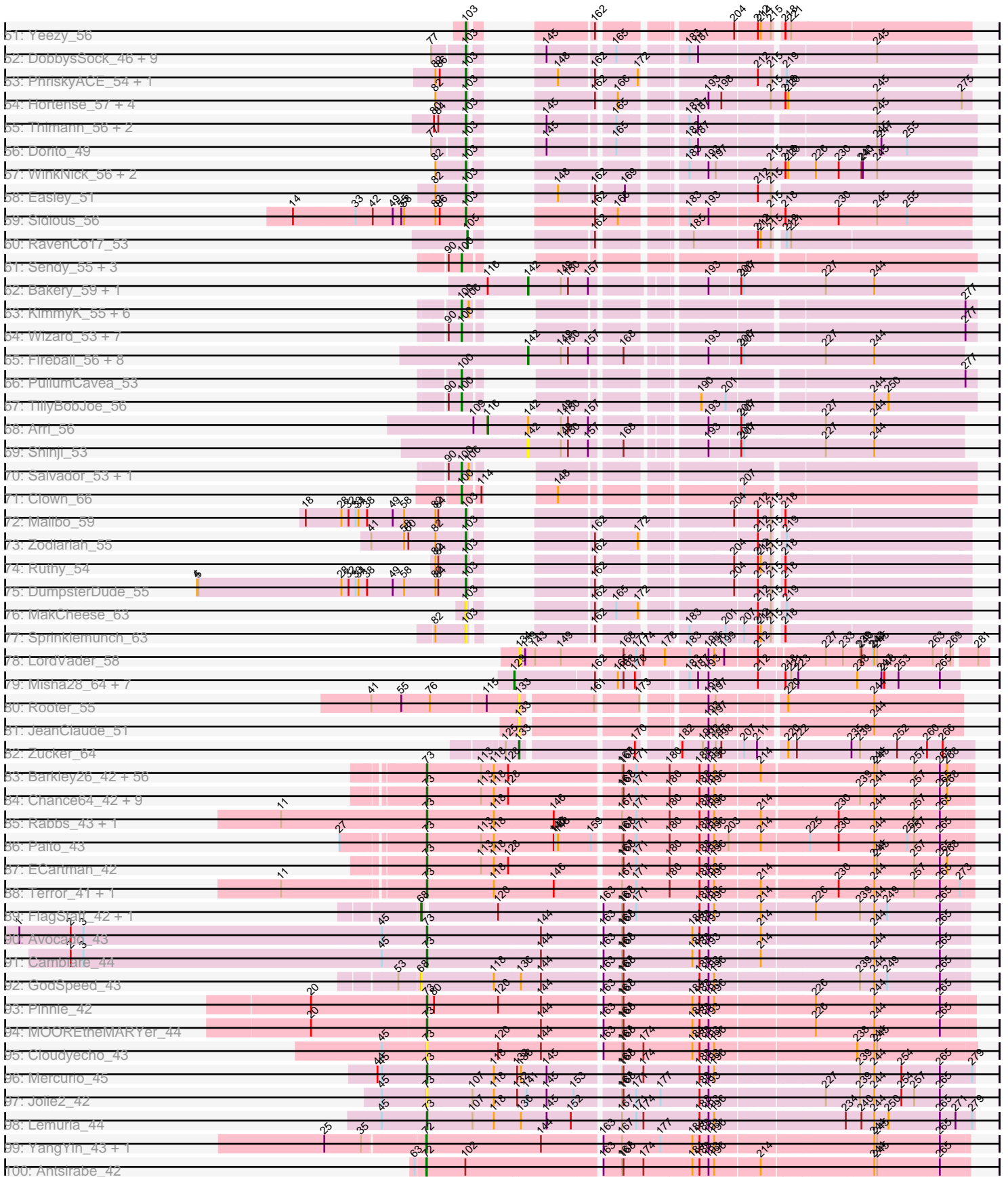


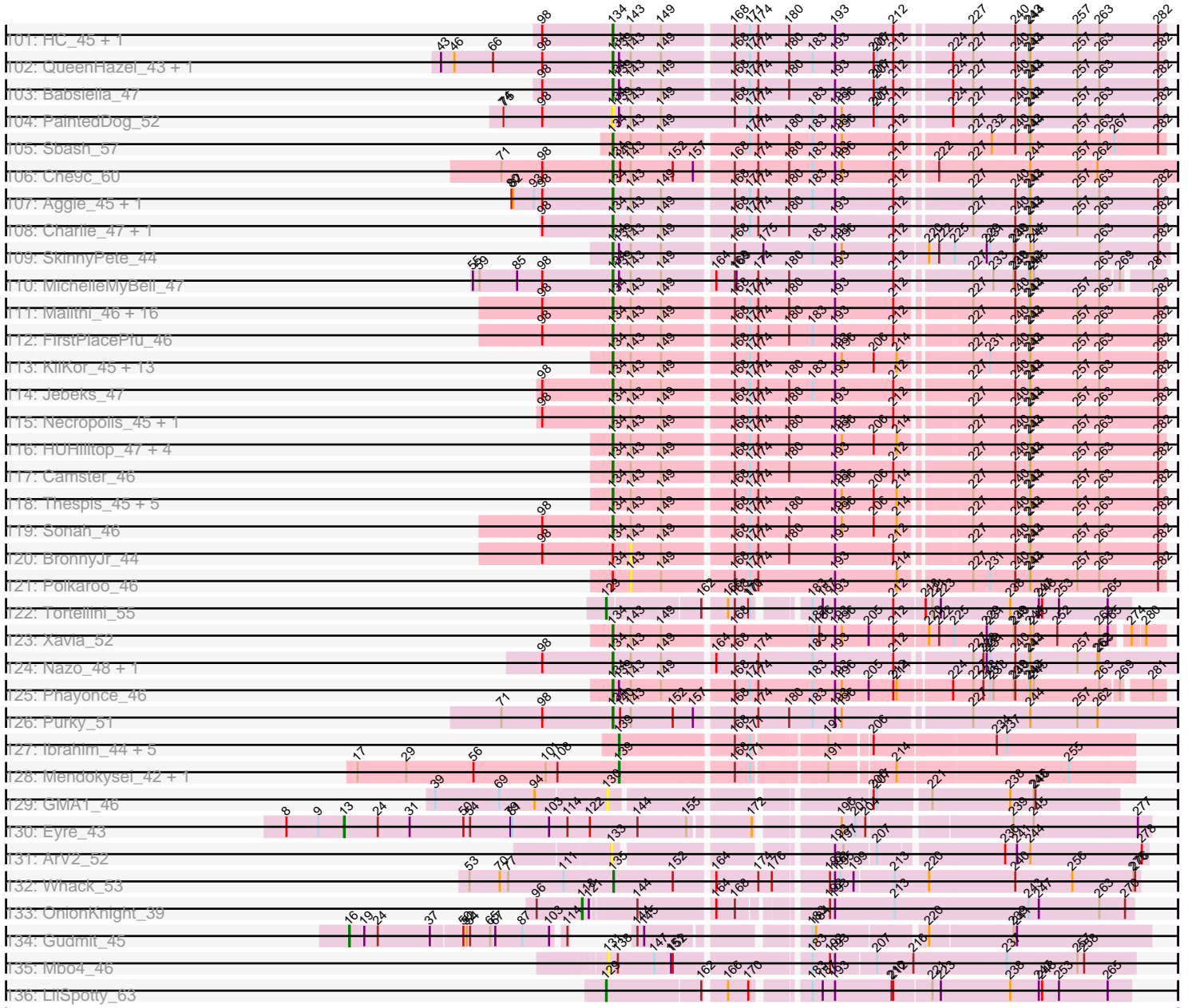
Pham 296155



Pham 296155



Pham 296155



Note: Tracks are now grouped by subcluster and scaled. Switching in subcluster is indicated by changes in track color. Track scale is now set by default to display the region 30 bp upstream of start 1 to 30 bp downstream of the last possible start. If this default region is judged to be packed too tightly with annotated starts, the track will be further scaled to only show that region of the ORF with annotated starts. This action will be indicated by adding "Zoomed" to the title. For starts, yellow indicates the location of called starts comprised solely of Glimmer/GeneMark auto-annotations, green indicates the location of called starts with at least 1 manual gene annotation.

## Pham 296155 Report

This analysis was run 04/25/26 on database version 644.

Pham number 296155 has 356 members, 57 are drafts.

Phages represented in each track:

- Track 1 : Caterpie\_66, Sejanus\_63
- Track 2 : Mao1\_64
- Track 3 : JohnLord\_65
- Track 4 : Sparky\_56
- Track 5 : Farewell\_58
- Track 6 : BlueShadow\_67, Anekin\_71, CosmicBrownie\_64
- Track 7 : Seahorse\_72
- Track 8 : Persistence\_62
- Track 9 : Vopal\_70
- Track 10 : RadFad\_73, Hillester\_73
- Track 11 : AbbyDaisy\_69
- Track 12 : NewKitty\_71
- Track 13 : EvePickles\_65
- Track 14 : Nyilah\_70
- Track 15 : Satrap\_68
- Track 16 : JakeTheSnake\_72
- Track 17 : Sporco\_71
- Track 18 : MidnightRain\_71
- Track 19 : B3\_36
- Track 20 : Anatole\_37, E1\_37
- Track 21 : E6\_41
- Track 22 : G4\_38
- Track 23 : Doucette\_40
- Track 24 : B22\_39
- Track 25 : EnalisNailo\_53
- Track 26 : Confidence\_57
- Track 27 : Marteena\_55, BoyNamedSue\_58, AlumE\_58, EMSquaredA\_56
- Track 28 : Angelique\_55
- Track 29 : Bradissa\_53
- Track 30 : Pollux\_59, Floral\_57
- Track 31 : Jablanski\_59, Pytheas\_59
- Track 32 : Wrigley\_61, Posh\_59
- Track 33 : BeeGee\_62
- Track 34 : Cashline\_56
- Track 35 : LonelyBoi\_55
- Track 36 : Ohgeesy\_56

- Track 37 : Antonio\_56, Bialota\_54, Zirinka\_53, Suscepit\_56, Trumpet\_56, Polly\_53, Yeet412\_51, Lilas\_55, Tayonia\_56, Kita\_57, EdnaMode\_50, Neobush\_56, Pickett\_49, Manasvini\_57, Zameen\_56
- Track 38 : Madavieve\_54, Bunnybear\_52, Maridalia\_60, SushiChef\_56
- Track 39 : Hyzer\_65
- Track 40 : ThankyouJordi\_59, WelcomeAyanna\_59
- Track 41 : Bosnia\_54, JCole\_50
- Track 42 : Agueybana\_58, Madeline\_57
- Track 43 : Hugley\_55, Herod\_57
- Track 44 : Eudoria\_56
- Track 45 : Sahara\_52, Jalleen\_53, Savage\_53, Mocha12\_53, Cynthia\_53, Yinzer\_53, Whiteclaw\_53, Clap\_53, Haley23\_53, GemG\_53, Gizermo\_53, Sproutie\_53, Bjanes7\_50, Nettuno\_49, Lamberg\_49, TuertoX\_53
- Track 46 : FroggyToad\_52
- Track 47 : LordFarquaad\_53, Attis\_51, SoilAssassin\_51
- Track 48 : Matteo\_46
- Track 49 : Ebert\_57
- Track 50 : BaxterFox\_59, PantheRoc\_59
- Track 51 : Yeezy\_56
- Track 52 : DobbysSock\_46, Clark\_53, Tuti\_57, Samman98\_54, Oregano\_57, Invectra\_55, Annalisa\_54, Rizz\_54, Beenie\_47, MichaelScott\_54
- Track 53 : PhriskyACE\_54, Powerball\_55
- Track 54 : Hortense\_57, Twinkle\_56, Adora\_54, Shlim410\_55, Howe\_57
- Track 55 : Thimann\_56, Suerte\_50, Mcklovin\_53
- Track 56 : Dorito\_49
- Track 57 : WinkNick\_56, Sekhmet\_55, Dolores\_55
- Track 58 : Easley\_51
- Track 59 : Sidious\_56
- Track 60 : RavenCo17\_53
- Track 61 : Sendy\_55, Nubi\_54, Togo\_53, SmokingBunny\_54
- Track 62 : Bakery\_59, Sixsevenium\_57
- Track 63 : KimmyK\_55, Fugax\_57, Barb\_56, ClamChowder\_56, Phlop\_53, Egi03\_54, PinkCoffee\_56
- Track 64 : Wizard\_53, Valary\_56, RogerDodger\_57, CherryCola\_56, Halo3\_54, VanDeWege\_57, Gezellig\_53, CoveyB\_56
- Track 65 : Fireball\_56, Twister6\_56, JohnPork\_56, Mutzi\_53, Jambalaya\_53, Danyall\_55, Portcullis\_55, Savbucketdawg\_53, YungMoney\_56
- Track 66 : PullumCavea\_53
- Track 67 : TillyBobJoe\_56
- Track 68 : Arri\_56
- Track 69 : Shinji\_53
- Track 70 : Salvador\_53, Evamon\_53
- Track 71 : Clown\_66
- Track 72 : Malibo\_59
- Track 73 : Zodiariah\_55
- Track 74 : Ruthy\_54
- Track 75 : DumpsterDude\_55
- Track 76 : MakCheese\_63
- Track 77 : Sprinklemunch\_63
- Track 78 : LordVader\_58
- Track 79 : Misha28\_64, Piper2020\_67, Aloeri\_67, TootsiePop\_64, Awesomesauce\_66, DocMcStuffins\_66, Cubone\_52, ChickenDinner\_66
- Track 80 : Rooter\_55

- Track 81 : JeanClaude\_51
- Track 82 : Zucker\_64
- Track 83 : Barkley26\_42, Olga\_42, Gideon\_42, Darionha\_42, Jeilious\_42, AizenPogi\_42, Gomashi\_42, JorRay\_42, Annihilator\_42, Peeb\_42, ShaboiShabazz\_42, Coleslaw\_42, Grizzly\_42, Halo\_42, Neoh\_42, Angel\_42, Schiebel\_42, Avrafan\_42, Plagueis\_42, BPs\_42, Ruriko\_42, AzulaCat\_42, Richarlison\_42, GoldenAsh\_42, ZoMa\_42, LouisV14\_44, Zombie\_42, Phish\_42, MZKinsey\_42, DingDing\_42, Kareem\_42, Crespo\_42, Marmie\_42, PinkYoshi\_42, Camri\_42, CassieYates\_42, OctaviousRex\_42, BQuat\_42, Maliketh\_42, Hope\_42, TinaBug\_42, Renaissance\_42, Cedasite\_42, BruceB\_42, Jane\_42, Wendigo\_42, Cherrybomb426\_42, Phreak\_42, Mowgli\_42, Frosty24\_42, CLED96\_42, TomBrady\_42, DMoney\_42, Remy19\_42, Sweets\_42, Kasen3\_42, Sizemore\_42
- Track 84 : Chance64\_42, DNAll\_0041, Periodt\_42, Liefie\_42, Jolene\_42, Phloodle\_42, Jonghyun\_41, Hotshotbaby7\_42, Aroostook\_42, Rattrick\_42
- Track 85 : Rabbs\_43, Sneeze\_43
- Track 86 : Paito\_43
- Track 87 : ECartman\_42
- Track 88 : Terror\_41, Taheera\_41
- Track 89 : FlagStaff\_42, Pace1224\_42
- Track 90 : Avocado\_43
- Track 91 : Cambiare\_44
- Track 92 : GodSpeed\_43
- Track 93 : Pinnie\_42
- Track 94 : MOOREtheMARYer\_44
- Track 95 : Cloudyecho\_43
- Track 96 : Mercurio\_45
- Track 97 : Jolie2\_42
- Track 98 : Lemuria\_44
- Track 99 : YangYin\_43, Stargaze\_43
- Track 100 : Antsirabe\_42
- Track 101 : HC\_45, Jung\_44
- Track 102 : QueenHazel\_43, Xula\_42
- Track 103 : Babsiella\_47
- Track 104 : PaintedDog\_52
- Track 105 : Sbash\_57
- Track 106 : Che9c\_60
- Track 107 : Aggie\_45, Silvy\_45
- Track 108 : Charlie\_47, Journey\_46
- Track 109 : SkinnyPete\_44
- Track 110 : MichelleMyBell\_47
- Track 111 : Malithi\_46, Vidya\_45, Kari\_45, Mangethe\_46, Bartholomew\_45, Venti\_46, GaloreK\_45, Langerak\_46, Donovan\_46, Techage\_45, Arib1\_46, Phegasus\_46, Etoile\_45, Chubbello\_45, Zilizebeth\_46, Fishburne\_45, Majeke\_46
- Track 112 : FirstPlacePfu\_46
- Track 113 : KilKor\_45, Juniormint\_46, GreaseLightnin\_46, StevieRay\_45, Bunnies\_46, CactusJack\_45, PeanutPie\_46, Phalm\_45, Bhagsy\_46, Philonius\_47, Willsammy\_44, Glaske\_45, Megiddo\_45, Ksquared\_45
- Track 114 : Jebeks\_47
- Track 115 : Necropolis\_45, Dynamo\_46
- Track 116 : HUHilltop\_47, Phineas\_47, Pygmy\_49, Shipwreck\_49, Bogie\_49
- Track 117 : Camster\_46
- Track 118 : Thespis\_45, Xeno\_47, Brusacoram\_45, Atcoo\_45, Gavriela\_45, StressBall\_45

- Track 119 : Sonah\_46
- Track 120 : BronnyJr\_44
- Track 121 : Polkaroo\_46
- Track 122 : Tortellini\_55
- Track 123 : Xavia\_52
- Track 124 : Nazo\_48, BigNuz\_47
- Track 125 : Phayonce\_46
- Track 126 : Purky\_51
- Track 127 : Ibrahim\_44, Whitty\_43, Bernal13\_44, ZenTime222\_43, RonRayGun\_44, Nairb\_43
- Track 128 : Mendokysei\_42, Nette\_45
- Track 129 : GMA1\_46
- Track 130 : Eyre\_43
- Track 131 : ArV2\_52
- Track 132 : Whack\_53
- Track 133 : OnionKnight\_39
- Track 134 : Gudmit\_45
- Track 135 : Mbo4\_46
- Track 136 : LilSpotty\_63

***Summary of Final Annotations (See graph section above for start numbers):***

The start number called the most often in the published annotations is 103, it was called in 90 of the 299 non-draft genes in the pham.

Genes that call this "Most Annotated" start:

• Adora\_54, Agueybana\_58, AlumE\_58, Angelique\_55, Annalisa\_54, Antonio\_56, Attis\_51, BaxterFox\_59, BeeGee\_62, Beenie\_47, Bialota\_54, Bjaner7\_50, BoyNamedSue\_58, Bradissa\_53, Bunnybear\_52, Cashline\_56, Clap\_53, Clark\_53, Confidence\_57, Cynthia\_53, DobbysSock\_46, Dolores\_55, Dorito\_49, DumpsterDude\_55, EMSquaredA\_56, Easley\_51, Ebert\_57, EdnaMode\_50, EnalisNailo\_53, Eudoria\_56, Floral\_57, FroggyToad\_52, GemG\_53, Gizermo\_53, Haley23\_53, Herod\_57, Hortense\_57, Howe\_57, Hugley\_55, Hyzer\_65, Invecetra\_55, Jablanski\_59, Jalleen\_53, Kita\_57, Lamberg\_49, Lilas\_55, LonelyBoi\_55, LordFarquaad\_53, Madavieve\_54, Madeline\_57, MakCheese\_63, Malibo\_59, Manasvini\_57, Maridalia\_60, Marteena\_55, Matteo\_46, Mcklovin\_53, MichaelScott\_54, Mocha12\_53, Neobush\_56, Nettuno\_49, Ohgeesy\_56, Oregano\_57, PantheRoc\_59, PhriskyACE\_54, Pickett\_49, Pollux\_59, Polly\_53, Posh\_59, Powerball\_55, Pytheas\_59, Rizz\_54, Ruthy\_54, Sahara\_52, Samman98\_54, Savage\_53, Sekhmet\_55, Shlim410\_55, Sidious\_56, SoilAssassin\_51, Sprinklemunch\_63, Sproutie\_53, Suerte\_50, Suscepit\_56, SushiChef\_56, Tayonia\_56, ThankyouJordi\_59, Thimann\_56, Trumpet\_56, TuertoX\_53, Tuti\_57, Twinkle\_56, WelcomeAyanna\_59, Whiteclaw\_53, WinkNick\_56, Wrigley\_61, Yeet412\_51, Yeezy\_56, Yinzer\_53, Zameen\_56, Zirinka\_53, Zodiariah\_55,

Genes that have the "Most Annotated" start but do not call it:

• Eyre\_43, Gudmit\_45,

Genes that do not have the "Most Annotated" start:

- AbbyDaisy\_69, Aggie\_45, AizenPogi\_42, Aleri\_67, Anatole\_37, Anekin\_71, Angel\_42, Annihilator\_42, Antsirabe\_42, ArV2\_52, Arib1\_46, Aroostook\_42, Arri\_56, Atcoo\_45, Avocado\_43, Avrafan\_42, Awesomesauce\_66, AzulaCat\_42, B22\_39, B3\_36, BPs\_42, BQuat\_42, Babsiella\_47, Bakery\_59, Barb\_56, Barkley26\_42, Bartholomew\_45, Bernal13\_44, Bhagsy\_46, BigNuz\_47, BlueShadow\_67, Bogie\_49, Bosnia\_54, BronnyJr\_44, BruceB\_42, Brusacoram\_45, Bunnies\_46, CLED96\_42, CactusJack\_45, Cambiare\_44, Camri\_42, Camster\_46, CassieYates\_42, Caterpie\_66, Cedasite\_42, Chance64\_42, Charlie\_47, Che9c\_60, CherryCola\_56, Cherrybomb426\_42, ChickenDinner\_66, Chubbello\_45, ClamChowder\_56, Cloudyecho\_43, Clown\_66, Coleslaw\_42, CosmicBrownie\_64, CoveyB\_56, Crespo\_42, Cubone\_52, DMoney\_42, DNAIII\_0041, Danyall\_55, Darionha\_42, DingDing\_42, DocMcStuffins\_66, Donovan\_46, Doucette\_40, Dynamo\_46, E1\_37, E6\_41, ECartman\_42, Egi03\_54, Etoile\_45, Evamon\_53, EvePickles\_65, Farewell\_58, Fireball\_56, FirstPlacePfu\_46, Fishburne\_45, FlagStaff\_42, Frosty24\_42, Fugax\_57, G4\_38, GMA1\_46, GaloreK\_45, Gavriela\_45, Gezellig\_53, Gideon\_42, Glaske\_45, GodSpeed\_43, GoldenAsh\_42, Gomashi\_42, GreaseLightnin\_46, Grizzly\_42, HC\_45, HUHilltop\_47, Halo3\_54, Halo\_42, Hillester\_73, Hope\_42, Hotshotbaby7\_42, Ibrahim\_44, JCole\_50, JakeTheSnake\_72, Jambalaya\_53, Jane\_42, JeanClaude\_51, Jebeks\_47, Jeilious\_42, JohnLord\_65, JohnPork\_56, Jolene\_42, Jolie2\_42, Jonghyun\_41, JorRay\_42, Journey\_46, Jung\_44, Juniomint\_46, Kareem\_42, Kari\_45, Kasen3\_42, KilKor\_45, KimmyK\_55, Ksquared\_45, Langerak\_46, Lemuria\_44, Liefie\_42, LilSpotty\_63, LordVader\_58, LouisV14\_44, MOOREtheMARYer\_44, MZKinsey\_42, Majeke\_46, Maliketh\_42, Malithi\_46, Mangethe\_46, Mao1\_64, Marmie\_42, Mbo4\_46, Megiddo\_45, Mendokyse\_42, Mercurio\_45, MichelleMyBell\_47, MidnightRain\_71, Misha28\_64, Mowgli\_42, Mutzi\_53, Nairb\_43, Nazo\_48, Necropolis\_45, Neoh\_42, Nette\_45, NewKitty\_71, Nubi\_54, Nyilah\_70, OctaviousRex\_42, Olga\_42, OnionKnight\_39, Pace1224\_42, PaintedDog\_52, Paito\_43, PeanutPie\_46, Peeb\_42, Periodt\_42, Persistence\_62, Phalm\_45, Phayonce\_46, Phegasus\_46, Philonius\_47, Phineas\_47, Phish\_42, Phloodle\_42, Phlop\_53, Phreak\_42, PinkCoffee\_56, PinkYoshi\_42, Pinnie\_42, Piper2020\_67, Plagueis\_42, Polkaroo\_46, Portcullis\_55, PullumCavea\_53, Purky\_51, Pygmy\_49, QueenHazel\_43, Rabbs\_43, RadFad\_73, Rattrick\_42, RavenCo17\_53, Remy19\_42, Renaissance\_42, Richarlison\_42, RogerDodger\_57, RonRayGun\_44, Rooter\_55, Ruriko\_42, Salvador\_53, Satrap\_68, Savbucketdawg\_53, Sbash\_57, Schiebel\_42, Seahorse\_72, Sejanus\_63, Sendy\_55, ShaboiShabazz\_42, Shinji\_53, Shipwreck\_49, Silvy\_45, Sixsevenium\_57, Sizemore\_42, SkinnyPete\_44, SmokingBunny\_54, Sneeze\_43, Sonah\_46, Sparky\_56, Sporco\_71, Stargaze\_43, StevieRay\_45, StressBall\_45, Sweets\_42, Taheera\_41, Techage\_45, Terror\_41, Thespis\_45, TillyBobJoe\_56, TinaBug\_42, Togo\_53, TomBrady\_42, TootsiePop\_64, Tortellini\_55, Twister6\_56, Valary\_56, VanDeWege\_57, Venti\_46, Vidya\_45, Vopal\_70, Wendigo\_42, Whack\_53, Whitty\_43, Willsammy\_44, Wizard\_53, Xavia\_52, Xeno\_47, Xula\_42, YangYin\_43, YungMoney\_56, ZenTime222\_43, Zilizebeth\_46, ZoMa\_42, Zombie\_42, Zucker\_64,

### Summary by start number:

Start 13:

- Found in 1 of 356 ( 0.3% ) of genes in pham
- Manual Annotations of this start: 1 of 299
- Called 100.0% of time when present
- Phage (with cluster) where this start called: Eyre\_43 (singleton),

Start 16:

- Found in 1 of 356 ( 0.3% ) of genes in pham
- Manual Annotations of this start: 1 of 299
- Called 100.0% of time when present
- Phage (with cluster) where this start called: Gudmit\_45 (singleton),

#### Start 68:

- Found in 4 of 356 ( 1.1% ) of genes in pham
- Manual Annotations of this start: 1 of 299
- Called 75.0% of time when present
- Phage (with cluster) where this start called: FlagStaff\_42 (G2), GodSpeed\_43 (G2), Pace1224\_42 (G2),

#### Start 72:

- Found in 3 of 356 ( 0.8% ) of genes in pham
- Manual Annotations of this start: 2 of 299
- Called 100.0% of time when present
- Phage (with cluster) where this start called: Antsirabe\_42 (G5), Stargaze\_43 (G5), YangYin\_43 (G5),

#### Start 73:

- Found in 105 of 356 ( 29.5% ) of genes in pham
- Manual Annotations of this start: 68 of 299
- Called 77.1% of time when present
- Phage (with cluster) where this start called: AizenPogi\_42 (G1), Angel\_42 (G1), Annihilator\_42 (G1), Aroostook\_42 (G1), Avocado\_43 (G2), Avrafan\_42 (G1), AzulaCat\_42 (G1), BPs\_42 (G1), BQuat\_42 (G1), Barkley26\_42 (G1), BruceB\_42 (G1), CLÉD96\_42 (G1), Cambiare\_44 (G2), Camri\_42 (G1), CassieYates\_42 (G1), Cedasite\_42 (G1), Chance64\_42 (G1), Cherrybomb426\_42 (G1), Cloudyecho\_43 (G3), Coleslaw\_42 (G1), Crespo\_42 (G1), DMoney\_42 (G1), DNAllI\_0041 (G1), Darionha\_42 (G1), DingDing\_42 (G1), ECartman\_42 (G1), Frosty24\_42 (G1), Gideon\_42 (G1), GoldenAsh\_42 (G1), Gomashi\_42 (G1), Grizzly\_42 (G1), Halo\_42 (G1), Hope\_42 (G1), Hotshotbaby7\_42 (G1), Jane\_42 (G1), Jeilious\_42 (G), Jolene\_42 (G1), Jolie2\_42 (G4), Jonghyun\_41 (G1), JorRay\_42 (G1), Kareem\_42 (G1), Kasen3\_42 (G1), Lemuria\_44 (G4), Liefie\_42 (G1), LouisV14\_44 (G1), MOOREtheMARYer\_44 (G3), MZKinsey\_42 (G1), Maliketh\_42 (G1), Marmie\_42 (G1), Mercurio\_45 (G4), Mowgli\_42 (G1), Neoh\_42 (G), OctaviousRex\_42 (G1), Olga\_42 (G1), Paito\_43 (G1), Peeb\_42 (G1), Periodt\_42 (G1), Phish\_42 (G1), Phloodle\_42 (G1), Phreak\_42 (G1), PinkYoshi\_42 (G1), Pinnie\_42 (G3), Plagueis\_42 (G1), Rabbs\_43 (G1), Rattrick\_42 (G1), Remy19\_42 (G1), Renaissance\_42 (G1), Richarlison\_42 (G1), Ruriko\_42 (G1), Schiebel\_42 (G1), ShaboiShabazz\_42 (G1), Sizemore\_42 (G1), Sneeze\_43 (G1), Sweets\_42 (G1), Taheera\_41 (G1), Terror\_41 (G1), TinaBug\_42 (G1), TomBrady\_42 (G1), Wendigo\_42 (G1), ZoMa\_42 (G1), Zombie\_42 (G1),

#### Start 97:

- Found in 2 of 356 ( 0.6% ) of genes in pham
- Manual Annotations of this start: 1 of 299
- Called 50.0% of time when present
- Phage (with cluster) where this start called: Farewell\_58 (AF),

#### Start 100:

- Found in 24 of 356 ( 6.7% ) of genes in pham
- Manual Annotations of this start: 23 of 299

- Called 100.0% of time when present
- Phage (with cluster) where this start called: Barb\_56 (DC1), CherryCola\_56 (DC1), ClamChowder\_56 (DC1), Clown\_66 (DC2), CoveyB\_56 (DC1), Egi03\_54 (DC1), Evamon\_53 (DC1), Fugax\_57 (DC1), Gezellig\_53 (DC1), Halo3\_54 (DC1), KimmyK\_55 (DC1), Nubi\_54 (DC1), Phlop\_53 (DC1), PinkCoffee\_56 (DC1), PullumCavea\_53 (DC1), RogerDodger\_57 (DC1), Salvador\_53 (DC1), Sendy\_55 (DC), SmokingBunny\_54 (DC1), TillyBobJoe\_56 (DC1), Togo\_53 (DC1), Valary\_56 (DC1), VanDeWege\_57 (DC1), Wizard\_53 (DC1),

#### Start 103:

- Found in 104 of 356 ( 29.2% ) of genes in pham
- Manual Annotations of this start: 90 of 299
- Called 98.1% of time when present
- Phage (with cluster) where this start called: Adora\_54 (CZ4), Agueybana\_58 (CZ1), AlumE\_58 (CZ1), Angelique\_55 (CY1), Annalisa\_54 (CZ4), Antonio\_56 (CZ1), Attis\_51 (CZ2), BaxterFox\_59 (CZ3), BeeGee\_62 (CY5), Beenie\_47 (CZ4), Bialota\_54 (CZ1), Bjanes7\_50 (CZ2), BoyNamedSue\_58 (CZ1), Bradissa\_53 (CY1), Bunnybear\_52 (CZ), Cashline\_56 (CY6), Clap\_53 (CZ2), Clark\_53 (CZ4), Confidence\_57 (CY1), Cynthia\_53 (CZ2), DobbysSock\_46 (CZ4), Dolores\_55 (CZ4), Dorito\_49 (CZ4), DumpsterDude\_55 (DW), EMSquaredA\_56 (CY1), Easley\_51 (CZ4), Ebert\_57 (CZ2), EdnaMode\_50 (CZ2), EnalisNailo\_53 (CY1), Eudoria\_56 (CZ1), Floral\_57 (CY1), FroggyToad\_52 (CZ2), GemG\_53 (CZ2), Gizermo\_53 (CZ2), Haley23\_53 (CZ2), Herod\_57 (CZ1), Hortense\_57 (CZ4), Howe\_57 (CZ4), Hugley\_55 (CZ1), Hyzer\_65 (CZ1), Invectra\_55 (CZ4), Jablanski\_59 (CY3), Jalleen\_53 (CZ2), Kita\_57 (CZ1), Lamberg\_49 (CZ2), Lilas\_55 (CY1), LonelyBoi\_55 (CY7), LordFarquaad\_53 (CZ2), Madavieve\_54 (CZ1), Madeline\_57 (CZ1), MakCheese\_63 (DW), Malibo\_59 (DW), Manasvini\_57 (CZ1), Maridalia\_60 (CZ1), Marteena\_55 (CY1), Matteo\_46 (CZ2), Mcklovin\_53 (CZ4), MichaelScott\_54 (CZ4), Mocha12\_53 (CZ2), Neobush\_56 (CZ1), Nettuno\_49 (CZ2), Ohgeesy\_56 (CZ), Oregano\_57 (CZ4), PantheRoc\_59 (CZ3), PhriskyACE\_54 (CZ4), Pickett\_49 (CZ2), Pollux\_59 (CY1), Polly\_53 (CZ1), Posh\_59 (CY4), Powerball\_55 (CZ4), Pytheas\_59 (CY3), Rizz\_54 (CZ4), Ruthy\_54 (DW), Sahara\_52 (CZ2), Samman98\_54 (CZ4), Savage\_53 (CZ2), Sekhmet\_55 (CZ4), Shlim410\_55 (CZ4), Sidious\_56 (CZ7), SoilAssassin\_51 (CZ2), Sprinklemunch\_63 (DW), Sproutie\_53 (CZ2), Suerte\_50 (CZ4), Suscepit\_56 (CZ1), SushiChef\_56 (CZ), Tayonia\_56 (CZ1), ThankyouJordi\_59 (CZ1), Thimann\_56 (CZ4), Trumpet\_56 (CZ1), TuertoX\_53 (CZ2), Tuti\_57 (CZ4), Twinkle\_56 (CZ4), WelcomeAyanna\_59 (CZ1), Whiteclaw\_53 (CZ2), WinkNick\_56 (CZ4), Wrigley\_61 (CY4), Yeet412\_51 (CZ2), Yeezy\_56 (CZ3), Yinzer\_53 (CZ2), Zameen\_56 (CZ1), Zirinka\_53 (CZ1), Zodiariah\_55 (DW),

#### Start 105:

- Found in 3 of 356 ( 0.8% ) of genes in pham
- Manual Annotations of this start: 2 of 299
- Called 100.0% of time when present
- Phage (with cluster) where this start called: Bosnia\_54 (CZ1), JCole\_50 (CZ2), RavenCo17\_53 (CZ8),

#### Start 116:

- Found in 3 of 356 ( 0.8% ) of genes in pham
- Manual Annotations of this start: 1 of 299
- Called 33.3% of time when present
- Phage (with cluster) where this start called: Arri\_56 (DC1),

Start 117:

- Found in 2 of 356 ( 0.6% ) of genes in pham
- Manual Annotations of this start: 1 of 299
- Called 50.0% of time when present
- Phage (with cluster) where this start called: Sparky\_56 (AF),

Start 118:

- Found in 78 of 356 ( 21.9% ) of genes in pham
- Manual Annotations of this start: 1 of 299
- Called 1.3% of time when present
- Phage (with cluster) where this start called: OnionKnight\_39 (singleton),

Start 123:

- Found in 1 of 356 ( 0.3% ) of genes in pham
- Manual Annotations of this start: 1 of 299
- Called 100.0% of time when present
- Phage (with cluster) where this start called: Seahorse\_72 (AY),

Start 129:

- Found in 10 of 356 ( 2.8% ) of genes in pham
- Manual Annotations of this start: 9 of 299
- Called 100.0% of time when present
- Phage (with cluster) where this start called: Aloeri\_67 (F1), Awesomesauce\_66 (F1), ChickenDinner\_66 (F1), Cubone\_52 (N), DocMcStuffins\_66 (F1), LilSpotty\_63 (singleton), Misha28\_64 (F1), Piper2020\_67 (F1), TootsiePop\_64 (F1), Tortellini\_55 (P2),

Start 130:

- Found in 1 of 356 ( 0.3% ) of genes in pham
- No Manual Annotations of this start.
- Called 100.0% of time when present
- Phage (with cluster) where this start called: GMA1\_46 (singleton),

Start 131:

- Found in 2 of 356 ( 0.6% ) of genes in pham
- Manual Annotations of this start: 1 of 299
- Called 100.0% of time when present
- Phage (with cluster) where this start called: Mao1\_64 (AD), Mbo4\_46 (singleton),

Start 133:

- Found in 20 of 356 ( 5.6% ) of genes in pham
- Manual Annotations of this start: 9 of 299
- Called 95.0% of time when present
- Phage (with cluster) where this start called: AbbyDaisy\_69 (AY), Anekin\_71 (AY), ArV2\_52 (singleton), BlueShadow\_67 (AY), CosmicBrownie\_64 (AY), EvePickles\_65 (AY), Hillester\_73 (AY), JakeTheSnake\_72 (AY), JeanClaude\_51 (FB), MidnightRain\_71 (AY), NewKitty\_71 (AY), Nyilah\_70 (AY), Persistence\_62 (AY), RadFad\_73 (AY), Rooter\_55 (FB), Satrap\_68 (AY), Sporco\_71 (AY), Vopal\_70 (AY), Zucker\_64 (FN),

Start 134:

- Found in 73 of 356 ( 20.5% ) of genes in pham
- Manual Annotations of this start: 63 of 299

- Called 97.3% of time when present
- Phage (with cluster) where this start called: Aggie\_45 (N), Arib1\_46 (P1), Atcoo\_45 (P1), Babsiella\_47 (I1), Bartholomew\_45 (P1), Bhagsy\_46 (P1), BigNuz\_47 (P4), Bogie\_49 (P1), Brusacoram\_45 (P1), Bunnies\_46 (P1), CactusJack\_45 (P1), Camster\_46 (P1), Caterpie\_66 (AD), Charlie\_47 (N), Che9c\_60 (I2), Chubbello\_45 (P1), Donovan\_46 (P1), Dynamo\_46 (P1), Etoile\_45 (P1), FirstPlacePfu\_46 (P1), Fishburne\_45 (P1), GaloreK\_45 (P1), Gavriela\_45 (P1), Glaske\_45 (P1), GreaseLightnin\_46 (P1), HC\_45 (I1), HUHilltop\_47 (P1), Jebeks\_47 (P1), JohnLord\_65 (AD), Journey\_46 (N), Jung\_44 (P1), Juniormint\_46 (P1), Kari\_45 (P1), KilKor\_45 (P1), Ksquared\_45 (P1), Langerak\_46 (P1), LordVader\_58 (F), Majeke\_46 (P1), Malithi\_46 (P1), Mangethe\_46 (P1), Megiddo\_45 (P1), MichelleMyBell\_47 (N), Nazo\_48 (P4), Necropolis\_45 (P1), PaintedDog\_52 (I1), PeanutPie\_46 (P1), Phalm\_45 (P1), Phayonce\_46 (P5), Phegasus\_46 (P1), Philonius\_47 (N), Phineas\_47 (P1), Purky\_51 (P6), Pygmy\_49 (P1), QueenHazel\_43 (I1), Sbash\_57 (I2), Sejanus\_63 (AD), Shipwreck\_49 (P1), Silvy\_45 (N), SkinnyPete\_44 (N), Sonah\_46 (P1), StevieRay\_45 (P1), StressBall\_45 (P1), Techage\_45 (P1), Thespis\_45 (P1), Venti\_46 (P1), Vidya\_45 (P1), Willsammy\_44 (P1), Xavia\_52 (P3), Xeno\_47 (N), Xula\_42 (I1), Zilizebeth\_46 (P1),

#### Start 135:

- Found in 1 of 356 ( 0.3% ) of genes in pham
- Manual Annotations of this start: 1 of 299
- Called 100.0% of time when present
- Phage (with cluster) where this start called: Whack\_53 (singleton),

#### Start 137:

- Found in 7 of 356 ( 2.0% ) of genes in pham
- Manual Annotations of this start: 7 of 299
- Called 100.0% of time when present
- Phage (with cluster) where this start called: Anatole\_37 (BV), B22\_39 (BW), B3\_36 (BV), Doucette\_40 (BW), E1\_37 (BV), E6\_41 (BW), G4\_38 (BW),

#### Start 139:

- Found in 24 of 356 ( 6.7% ) of genes in pham
- Manual Annotations of this start: 7 of 299
- Called 33.3% of time when present
- Phage (with cluster) where this start called: Bernal13\_44 (T), Ibrahim\_44 (T), Mendokysei\_42 (T), Nairb\_43 (T), Nette\_45 (T), RonRayGun\_44 (T), Whitty\_43 (T), ZenTime222\_43 (T),

#### Start 142:

- Found in 13 of 356 ( 3.7% ) of genes in pham
- Manual Annotations of this start: 9 of 299
- Called 92.3% of time when present
- Phage (with cluster) where this start called: Bakery\_59 (DC1), Danyall\_55 (DC1), Fireball\_56 (DC1), Jambalaya\_53 (DC1), JohnPork\_56 (DC), Mutzi\_53 (DC1), Portcullis\_55 (DC1), Savbucketdawg\_53 (DC1), Shinji\_53 (DC1), Sixsevenium\_57 (DC), Twister6\_56 (DC1), YungMoney\_56 (DC1),

#### Start 143:

- Found in 77 of 356 ( 21.6% ) of genes in pham
- No Manual Annotations of this start.
- Called 2.6% of time when present

- Phage (with cluster) where this start called: BronnyJr\_44 (P1), Polkaroo\_46 (P1),

### **Summary by clusters:**

There are 43 clusters represented in this pham: P2, CZ8, I2, CZ2, CZ3, CZ1, DC, CZ4, G, AY, BV, BW, DW, CY7, FN, CY6, G5, G4, G3, G2, G1, I1, CY4, P5, CY3, P3, CY1, P1, P6, AD, P4, AF, N, CZ, T, CY5, singleton, DC2, DC1, CZ7, F1, FB, F,

Info for manual annotations of cluster AD:

- Start number 131 was manually annotated 1 time for cluster AD.
- Start number 134 was manually annotated 1 time for cluster AD.

Info for manual annotations of cluster AF:

- Start number 97 was manually annotated 1 time for cluster AF.
- Start number 117 was manually annotated 1 time for cluster AF.

Info for manual annotations of cluster AY:

- Start number 123 was manually annotated 1 time for cluster AY.
- Start number 133 was manually annotated 8 times for cluster AY.

Info for manual annotations of cluster BV:

- Start number 137 was manually annotated 3 times for cluster BV.

Info for manual annotations of cluster BW:

- Start number 137 was manually annotated 4 times for cluster BW.

Info for manual annotations of cluster CY1:

- Start number 103 was manually annotated 9 times for cluster CY1.

Info for manual annotations of cluster CY3:

- Start number 103 was manually annotated 2 times for cluster CY3.

Info for manual annotations of cluster CY4:

- Start number 103 was manually annotated 2 times for cluster CY4.

Info for manual annotations of cluster CY5:

- Start number 103 was manually annotated 1 time for cluster CY5.

Info for manual annotations of cluster CY6:

- Start number 103 was manually annotated 1 time for cluster CY6.

Info for manual annotations of cluster CY7:

- Start number 103 was manually annotated 1 time for cluster CY7.

Info for manual annotations of cluster CZ:

- Start number 103 was manually annotated 2 times for cluster CZ.

Info for manual annotations of cluster CZ1:

- Start number 103 was manually annotated 20 times for cluster CZ1.
- Start number 105 was manually annotated 1 time for cluster CZ1.

Info for manual annotations of cluster CZ2:

- Start number 103 was manually annotated 22 times for cluster CZ2.

Info for manual annotations of cluster CZ3:

- Start number 103 was manually annotated 3 times for cluster CZ3.

Info for manual annotations of cluster CZ4:

- Start number 103 was manually annotated 22 times for cluster CZ4.

Info for manual annotations of cluster CZ7:

- Start number 103 was manually annotated 1 time for cluster CZ7.

Info for manual annotations of cluster CZ8:

- Start number 105 was manually annotated 1 time for cluster CZ8.

Info for manual annotations of cluster DC1:

- Start number 100 was manually annotated 22 times for cluster DC1.
- Start number 116 was manually annotated 1 time for cluster DC1.
- Start number 142 was manually annotated 9 times for cluster DC1.

Info for manual annotations of cluster DC2:

- Start number 100 was manually annotated 1 time for cluster DC2.

Info for manual annotations of cluster DW:

- Start number 103 was manually annotated 4 times for cluster DW.

Info for manual annotations of cluster F1:

- Start number 129 was manually annotated 7 times for cluster F1.

Info for manual annotations of cluster FN:

- Start number 133 was manually annotated 1 time for cluster FN.

Info for manual annotations of cluster G1:

- Start number 73 was manually annotated 62 times for cluster G1.

Info for manual annotations of cluster G2:

- Start number 68 was manually annotated 1 time for cluster G2.
- Start number 73 was manually annotated 2 times for cluster G2.

Info for manual annotations of cluster G3:

- Start number 73 was manually annotated 2 times for cluster G3.

Info for manual annotations of cluster G4:

- Start number 73 was manually annotated 2 times for cluster G4.

Info for manual annotations of cluster G5:

- Start number 72 was manually annotated 2 times for cluster G5.

Info for manual annotations of cluster I1:

- Start number 134 was manually annotated 4 times for cluster I1.

Info for manual annotations of cluster I2:

- Start number 134 was manually annotated 2 times for cluster I2.

Info for manual annotations of cluster N:

- Start number 134 was manually annotated 8 times for cluster N.

Info for manual annotations of cluster P1:

- Start number 134 was manually annotated 43 times for cluster P1.

Info for manual annotations of cluster P2:

- Start number 129 was manually annotated 1 time for cluster P2.

Info for manual annotations of cluster P3:

- Start number 134 was manually annotated 1 time for cluster P3.

Info for manual annotations of cluster P4:

- Start number 134 was manually annotated 2 times for cluster P4.

Info for manual annotations of cluster P5:

- Start number 134 was manually annotated 1 time for cluster P5.

Info for manual annotations of cluster P6:

- Start number 134 was manually annotated 1 time for cluster P6.

Info for manual annotations of cluster T:

- Start number 139 was manually annotated 7 times for cluster T.

### ***Gene Information:***

Gene: AbbyDaisy\_69 Start: 36824, Stop: 37663, Start Num: 133

Candidate Starts for AbbyDaisy\_69:

(Start: 133 @36824 has 9 MA's), (172, 37034), (193, 37145), (197, 37160), (220, 37280), (244, 37448), (245, 37454), (262, 37565),

Gene: Adora\_54 Start: 39285, Stop: 40148, Start Num: 103

Candidate Starts for Adora\_54:

(82, 39222), (Start: 103 @39285 has 90 MA's), (162, 39435), (166, 39468), (193, 39618), (198, 39645), (215, 39741), (218, 39768), (220, 39774), (245, 39954), (275, 40128),

Gene: Aggie\_45 Start: 31200, Stop: 32129, Start Num: 134

Candidate Starts for Aggie\_45:

(80, 31029), (82, 31032), (93, 31065), (98, 31080), (Start: 134 @31200 has 63 MA's), (143, 31230), (149, 31284), (168, 31401), (171, 31428), (174, 31443), (180, 31497), (183, 31539), (193, 31578), (212, 31680), (227, 31794), (240, 31866), (243, 31890), (244, 31893), (257, 31977), (263, 32016), (282, 32118),

Gene: Agueybana\_58 Start: 40560, Stop: 41423, Start Num: 103

Candidate Starts for Agueybana\_58:

(Start: 103 @40560 has 90 MA's), (143, 40584), (148, 40632), (166, 40743), (183, 40854), (184, 40860), (193, 40893), (206, 40956), (215, 41016), (218, 41043), (230, 41151), (245, 41229),

Gene: AizenPogi\_42 Start: 31907, Stop: 32992, Start Num: 73

Candidate Starts for AizenPogi\_42:

(Start: 73 @31907 has 68 MA's), (113, 32021), (Start: 118 @32045 has 1 MA's), (128, 32075), (167, 32294), (168, 32297), (171, 32324), (180, 32393), (188, 32456), (193, 32474), (196, 32486), (214, 32576), (244, 32792), (245, 32798), (257, 32876), (265, 32924), (268, 32939),

Gene: Aloeri\_67 Start: 41043, Stop: 41897, Start Num: 129

Candidate Starts for Aloeri\_67:

(Start: 129 @41043 has 9 MA's), (162, 41205), (166, 41238), (168, 41250), (170, 41274), (183, 41349), (187, 41367), (193, 41388), (212, 41490), (218, 41541), (221, 41553), (223, 41568), (238, 41685), (247, 41736), (248, 41742), (253, 41772), (265, 41856),

Gene: AlumE\_58 Start: 40324, Stop: 41199, Start Num: 103

Candidate Starts for AlumE\_58:

(33, 40093), (36, 40111), (42, 40129), (49, 40171), (55, 40189), (58, 40195), (Start: 73 @40243 has 68 MA's), (82, 40261), (86, 40270), (Start: 103 @40324 has 90 MA's), (148, 40408), (166, 40519), (183, 40630), (184, 40636), (193, 40669), (215, 40792), (218, 40819), (230, 40927), (245, 41005),

Gene: Anatole\_37 Start: 26633, Stop: 27484, Start Num: 137

Candidate Starts for Anatole\_37:

(12, 26144), (21, 26186), (26, 26234), (30, 26261), (58, 26381), (61, 26393), (64, 26405), (91, 26477), (99, 26501), (104, 26513), (113, 26543), (127, 26597), (Start: 137 @26633 has 7 MA's), (Start: 139 @26636 has 7 MA's), (144, 26669), (151, 26726), (154, 26741), (158, 26768), (160, 26777), (162, 26780), (168, 26840), (171, 26867), (181, 26921), (184, 26945), (192, 26969), (193, 26978), (198, 27005), (207, 27053), (208, 27071), (240, 27278), (253, 27356), (267, 27452),

Gene: Anekin\_71 Start: 36816, Stop: 37655, Start Num: 133

Candidate Starts for Anekin\_71:

(125, 36792), (Start: 133 @36816 has 9 MA's), (172, 37026), (193, 37137), (197, 37152), (211, 37230), (220, 37272), (244, 37440), (245, 37446), (246, 37449),

Gene: Angel\_42 Start: 31892, Stop: 32977, Start Num: 73

Candidate Starts for Angel\_42:

(Start: 73 @31892 has 68 MA's), (113, 32006), (Start: 118 @32030 has 1 MA's), (128, 32060), (167, 32279), (168, 32282), (171, 32309), (180, 32378), (188, 32441), (193, 32459), (196, 32471), (214, 32561), (244, 32777), (245, 32783), (257, 32861), (265, 32909), (268, 32924),

Gene: Angelique\_55 Start: 40522, Stop: 41361, Start Num: 103

Candidate Starts for Angelique\_55:

(Start: 103 @40522 has 90 MA's), (165, 40693), (183, 40807), (187, 40825), (204, 40900), (245, 41155),

Gene: Annalisa\_54 Start: 36687, Stop: 37526, Start Num: 103

Candidate Starts for Annalisa\_54:

(77, 36624), (Start: 103 @36687 has 90 MA's), (145, 36735), (165, 36858), (183, 36972), (187, 36990), (245, 37320),

Gene: Annihilator\_42 Start: 31898, Stop: 32983, Start Num: 73

Candidate Starts for Annihilator\_42:

(Start: 73 @31898 has 68 MA's), (113, 32012), (Start: 118 @32036 has 1 MA's), (128, 32066), (167, 32285), (168, 32288), (171, 32315), (180, 32384), (188, 32447), (193, 32465), (196, 32477), (214, 32567), (244, 32783), (245, 32789), (257, 32867), (265, 32915), (268, 32930),

Gene: Antonio\_56 Start: 38840, Stop: 39715, Start Num: 103

Candidate Starts for Antonio\_56:

(Start: 73 @38759 has 68 MA's), (82, 38777), (86, 38786), (Start: 103 @38840 has 90 MA's), (166, 39035), (193, 39185), (215, 39308), (218, 39335), (230, 39443), (245, 39521),

Gene: Antsirabe\_42 Start: 32945, Stop: 34024, Start Num: 72

Candidate Starts for Antsirabe\_42:

(63, 32927), (Start: 72 @32945 has 2 MA's), (102, 33026), (163, 33293), (167, 33332), (168, 33335), (174, 33377), (184, 33479), (188, 33494), (193, 33512), (196, 33524), (214, 33614), (244, 33833), (245, 33839), (265, 33965),

Gene: ArV2\_52 Start: 29030, Stop: 29857, Start Num: 133

Candidate Starts for ArV2\_52:

(Start: 133 @29030 has 9 MA's), (193, 29351), (197, 29366), (207, 29420), (236, 29609), (241, 29630), (244, 29654), (278, 29846),

Gene: Arib1\_46 Start: 31623, Stop: 32552, Start Num: 134

Candidate Starts for Arib1\_46:

(98, 31503), (Start: 134 @31623 has 63 MA's), (143, 31653), (149, 31707), (168, 31824), (171, 31851), (174, 31866), (180, 31920), (193, 32001), (212, 32103), (227, 32217), (240, 32289), (243, 32313), (244, 32316), (257, 32400), (263, 32439), (282, 32541),

Gene: Aroostook\_42 Start: 31907, Stop: 32992, Start Num: 73

Candidate Starts for Aroostook\_42:

(Start: 73 @31907 has 68 MA's), (113, 32021), (Start: 118 @32045 has 1 MA's), (128, 32075), (167, 32294), (168, 32297), (171, 32324), (180, 32393), (188, 32456), (193, 32474), (196, 32486), (239, 32762), (244, 32792), (257, 32876), (265, 32924), (268, 32939),

Gene: Arri\_56 Start: 40968, Stop: 41882, Start Num: 116

Candidate Starts for Arri\_56:

(109, 40938), (Start: 116 @40968 has 1 MA's), (Start: 142 @41049 has 9 MA's), (149, 41118), (150, 41133), (157, 41175), (193, 41373), (206, 41436), (207, 41442), (227, 41601), (244, 41700),

Gene: Atcoo\_45 Start: 32107, Stop: 33033, Start Num: 134

Candidate Starts for Atcoo\_45:

(Start: 134 @32107 has 63 MA's), (143, 32134), (149, 32188), (168, 32305), (171, 32332), (174, 32347), (193, 32482), (196, 32494), (206, 32551), (214, 32590), (227, 32698), (240, 32770), (243, 32794), (244, 32797), (257, 32881), (263, 32920), (282, 33022),

Gene: Attis\_51 Start: 35973, Stop: 36848, Start Num: 103

Candidate Starts for Attis\_51:

(Start: 73 @35892 has 68 MA's), (82, 35910), (86, 35919), (Start: 103 @35973 has 90 MA's), (166, 36168), (183, 36279), (184, 36285), (193, 36318), (196, 36330), (202, 36357), (215, 36441), (218, 36468), (230, 36576), (240, 36621), (245, 36654),

Gene: Avocado\_43 Start: 33992, Stop: 35071, Start Num: 73

Candidate Starts for Avocado\_43:

(1, 33143), (2, 33251), (3, 33278), (45, 33899), (Start: 73 @33992 has 68 MA's), (144, 34226), (163, 34340), (167, 34379), (168, 34382), (184, 34526), (188, 34541), (193, 34559), (214, 34661), (244, 34880), (265, 35012),

Gene: Avrafan\_42 Start: 31907, Stop: 32992, Start Num: 73

Candidate Starts for Avrafan\_42:

(Start: 73 @31907 has 68 MA's), (113, 32021), (Start: 118 @32045 has 1 MA's), (128, 32075), (167, 32294), (168, 32297), (171, 32324), (180, 32393), (188, 32456), (193, 32474), (196, 32486), (214, 32576), (244, 32792), (245, 32798), (257, 32876), (265, 32924), (268, 32939),

Gene: Awesomesauce\_66 Start: 40126, Stop: 40980, Start Num: 129

Candidate Starts for Awesomesauce\_66:

(Start: 129 @40126 has 9 MA's), (162, 40288), (166, 40321), (168, 40333), (170, 40357), (183, 40432), (187, 40450), (193, 40471), (212, 40573), (218, 40624), (221, 40636), (223, 40651), (238, 40768), (247, 40819), (248, 40825), (253, 40855), (265, 40939),

Gene: AzulaCat\_42 Start: 31907, Stop: 32992, Start Num: 73

Candidate Starts for AzulaCat\_42:

(Start: 73 @31907 has 68 MA's), (113, 32021), (Start: 118 @32045 has 1 MA's), (128, 32075), (167, 32294), (168, 32297), (171, 32324), (180, 32393), (188, 32456), (193, 32474), (196, 32486), (214, 32576), (244, 32792), (245, 32798), (257, 32876), (265, 32924), (268, 32939),

Gene: B22\_39 Start: 26398, Stop: 27249, Start Num: 137

Candidate Starts for B22\_39:

(113, 26314), (127, 26368), (Start: 137 @26398 has 7 MA's), (Start: 139 @26401 has 7 MA's), (144, 26434), (151, 26491), (162, 26545), (168, 26605), (171, 26632), (181, 26686), (184, 26710), (192, 26734), (193, 26743), (198, 26770), (206, 26812), (207, 26818), (228, 26986), (240, 27043), (243, 27067), (253, 27121), (261, 27187), (267, 27217),

Gene: B3\_36 Start: 25890, Stop: 26810, Start Num: 137

Candidate Starts for B3\_36:

(12, 25401), (21, 25443), (26, 25491), (30, 25518), (58, 25638), (61, 25650), (64, 25662), (91, 25734), (99, 25758), (104, 25770), (113, 25800), (127, 25854), (Start: 137 @25890 has 7 MA's), (Start: 139 @25893 has 7 MA's), (144, 25926), (151, 25983), (154, 25998), (160, 26034), (162, 26037), (168, 26097), (171, 26124), (181, 26178), (184, 26202), (192, 26226), (193, 26235), (198, 26262), (207, 26310), (208, 26328), (220, 26385), (227, 26460), (228, 26478), (229, 26484), (240, 26535), (242, 26544), (253, 26613), (259, 26670), (267, 26709), (272, 26733),

Gene: BPs\_42 Start: 31907, Stop: 32992, Start Num: 73

Candidate Starts for BPs\_42:

(Start: 73 @31907 has 68 MA's), (113, 32021), (Start: 118 @32045 has 1 MA's), (128, 32075), (167, 32294), (168, 32297), (171, 32324), (180, 32393), (188, 32456), (193, 32474), (196, 32486), (214, 32576), (244, 32792), (245, 32798), (257, 32876), (265, 32924), (268, 32939),

Gene: BQuat\_42 Start: 31898, Stop: 32983, Start Num: 73

Candidate Starts for BQuat\_42:

(Start: 73 @31898 has 68 MA's), (113, 32012), (Start: 118 @32036 has 1 MA's), (128, 32066), (167, 32285), (168, 32288), (171, 32315), (180, 32384), (188, 32447), (193, 32465), (196, 32477), (214, 32567), (244, 32783), (245, 32789), (257, 32867), (265, 32915), (268, 32930),

Gene: Babsiella\_47 Start: 32479, Stop: 33405, Start Num: 134

Candidate Starts for Babsiella\_47:

(98, 32359), (Start: 134 @32479 has 63 MA's), (Start: 139 @32488 has 7 MA's), (143, 32506), (149, 32560), (168, 32677), (171, 32704), (174, 32719), (180, 32773), (193, 32854), (206, 32923), (207, 32929), (212, 32956), (224, 33037), (227, 33070), (240, 33142), (243, 33166), (244, 33169), (257, 33253), (263, 33292), (282, 33394),

Gene: Bakery\_59 Start: 42229, Stop: 43062, Start Num: 142

Candidate Starts for Bakery\_59:

(Start: 116 @42148 has 1 MA's), (Start: 142 @42229 has 9 MA's), (149, 42298), (150, 42313), (157, 42355), (193, 42553), (206, 42616), (207, 42622), (227, 42781), (244, 42880),

Gene: Barb\_56 Start: 41203, Stop: 42051, Start Num: 100

Candidate Starts for Barb\_56:

(Start: 100 @41203 has 23 MA's), (106, 41218), (277, 42031),

Gene: Barkley26\_42 Start: 31914, Stop: 32999, Start Num: 73

Candidate Starts for Barkley26\_42:

(Start: 73 @31914 has 68 MA's), (113, 32028), (Start: 118 @32052 has 1 MA's), (128, 32082), (167, 32301), (168, 32304), (171, 32331), (180, 32400), (188, 32463), (193, 32481), (196, 32493), (214, 32583), (244, 32799), (245, 32805), (257, 32883), (265, 32931), (268, 32946),

Gene: Bartholomew\_45 Start: 31617, Stop: 32546, Start Num: 134

Candidate Starts for Bartholomew\_45:

(98, 31497), (Start: 134 @31617 has 63 MA's), (143, 31647), (149, 31701), (168, 31818), (171, 31845), (174, 31860), (180, 31914), (193, 31995), (212, 32097), (227, 32211), (240, 32283), (243, 32307), (244, 32310), (257, 32394), (263, 32433), (282, 32535),

Gene: BaxterFox\_59 Start: 41045, Stop: 41908, Start Num: 103

Candidate Starts for BaxterFox\_59:

(48, 40889), (57, 40913), (83, 40985), (84, 40988), (86, 40991), (Start: 103 @41045 has 90 MA's), (166, 41228), (183, 41339), (184, 41345), (193, 41378), (206, 41441), (215, 41501), (218, 41528), (230, 41636), (245, 41714),

Gene: BeeGee\_62 Start: 40767, Stop: 41630, Start Num: 103

Candidate Starts for BeeGee\_62:

(42, 40572), (49, 40614), (55, 40632), (58, 40638), (82, 40704), (86, 40713), (Start: 103 @40767 has 90 MA's), (143, 40791), (148, 40839), (166, 40950), (193, 41100), (215, 41223), (218, 41250), (230, 41358), (241, 41406), (245, 41436),

Gene: Beenie\_47 Start: 36265, Stop: 37104, Start Num: 103

Candidate Starts for Beenie\_47:

(77, 36202), (Start: 103 @36265 has 90 MA's), (145, 36313), (165, 36436), (183, 36550), (187, 36568), (245, 36898),

Gene: Bernal13\_44 Start: 32597, Stop: 33427, Start Num: 139

Candidate Starts for Bernal13\_44:

(Start: 139 @32597 has 7 MA's), (168, 32786), (171, 32813), (191, 32924), (206, 32987), (234, 33191), (237, 33206),

Gene: Bhagsy\_46 Start: 31612, Stop: 32538, Start Num: 134

Candidate Starts for Bhagsy\_46:

(Start: 134 @31612 has 63 MA's), (143, 31639), (149, 31693), (168, 31810), (171, 31837), (174, 31852), (193, 31987), (196, 31999), (206, 32056), (214, 32095), (227, 32203), (231, 32233), (240, 32275), (243, 32299), (244, 32302), (257, 32386), (263, 32425), (282, 32527),

Gene: Bialota\_54 Start: 39472, Stop: 40347, Start Num: 103

Candidate Starts for Bialota\_54:

(Start: 73 @39391 has 68 MA's), (82, 39409), (86, 39418), (Start: 103 @39472 has 90 MA's), (166, 39667), (193, 39817), (215, 39940), (218, 39967), (230, 40075), (245, 40153),

Gene: BigNuz\_47 Start: 33511, Stop: 34458, Start Num: 134

Candidate Starts for BigNuz\_47:

(98, 33391), (Start: 134 @33511 has 63 MA's), (143, 33538), (149, 33592), (164, 33676), (168, 33709), (174, 33751), (183, 33847), (193, 33886), (212, 33988), (227, 34102), (228, 34120), (229, 34126), (231, 34132), (240, 34174), (243, 34198), (244, 34201), (257, 34285), (262, 34321), (263, 34324),

Gene: Bjaner7\_50 Start: 34872, Stop: 35735, Start Num: 103

Candidate Starts for Bjaner7\_50:

(86, 34818), (Start: 103 @34872 has 90 MA's), (148, 34944), (166, 35055), (183, 35166), (193, 35205), (214, 35307), (215, 35328), (218, 35355), (230, 35463), (245, 35541),

Gene: BlueShadow\_67 Start: 35827, Stop: 36666, Start Num: 133

Candidate Starts for BlueShadow\_67:

(125, 35803), (Start: 133 @35827 has 9 MA's), (172, 36037), (193, 36148), (197, 36163), (211, 36241), (220, 36283), (244, 36451), (245, 36457), (246, 36460),

Gene: Bogie\_49 Start: 33878, Stop: 34804, Start Num: 134

Candidate Starts for Bogie\_49:

(Start: 134 @33878 has 63 MA's), (143, 33905), (149, 33959), (168, 34076), (171, 34103), (174, 34118), (180, 34172), (193, 34253), (196, 34265), (206, 34322), (214, 34361), (227, 34469), (240, 34541), (243, 34565), (244, 34568), (257, 34652), (263, 34691), (282, 34793),

Gene: Bosnia\_54 Start: 40928, Stop: 41755, Start Num: 105

Candidate Starts for Bosnia\_54:

(Start: 105 @40928 has 2 MA's), (143, 40949), (162, 41066), (212, 41345), (214, 41351), (215, 41372), (219, 41387), (221, 41396),

Gene: BoyNamedSue\_58 Start: 40324, Stop: 41199, Start Num: 103

Candidate Starts for BoyNamedSue\_58:

(33, 40093), (36, 40111), (42, 40129), (49, 40171), (55, 40189), (58, 40195), (Start: 73 @40243 has 68 MA's), (82, 40261), (86, 40270), (Start: 103 @40324 has 90 MA's), (148, 40408), (166, 40519), (183, 40630), (184, 40636), (193, 40669), (215, 40792), (218, 40819), (230, 40927), (245, 41005),

Gene: Bradissa\_53 Start: 39968, Stop: 40798, Start Num: 103

Candidate Starts for Bradissa\_53:

(42, 39776), (49, 39818), (58, 39842), (86, 39914), (Start: 103 @39968 has 90 MA's), (162, 40109), (189, 40277), (201, 40328), (206, 40355), (207, 40361), (212, 40388), (214, 40394), (215, 40415), (219, 40430),

Gene: BronnyJr\_44 Start: 32143, Stop: 33042, Start Num: 143

Candidate Starts for BronnyJr\_44:

(98, 31993), (Start: 134 @32113 has 63 MA's), (143, 32143), (149, 32197), (168, 32314), (171, 32341), (174, 32356), (180, 32410), (193, 32491), (212, 32593), (227, 32707), (240, 32779), (243, 32803), (244, 32806), (257, 32890), (263, 32929), (282, 33031),

Gene: BruceB\_42 Start: 31907, Stop: 32992, Start Num: 73

Candidate Starts for BruceB\_42:

(Start: 73 @31907 has 68 MA's), (113, 32021), (Start: 118 @32045 has 1 MA's), (128, 32075), (167, 32294), (168, 32297), (171, 32324), (180, 32393), (188, 32456), (193, 32474), (196, 32486), (214, 32576), (244, 32792), (245, 32798), (257, 32876), (265, 32924), (268, 32939),

Gene: Brusacoram\_45 Start: 31613, Stop: 32539, Start Num: 134

Candidate Starts for Brusacoram\_45:

(Start: 134 @31613 has 63 MA's), (143, 31640), (149, 31694), (168, 31811), (171, 31838), (174, 31853), (193, 31988), (196, 32000), (206, 32057), (214, 32096), (227, 32204), (240, 32276), (243, 32300), (244, 32303), (257, 32387), (263, 32426), (282, 32528),

Gene: Bunnies\_46 Start: 31627, Stop: 32553, Start Num: 134

Candidate Starts for Bunnies\_46:

(Start: 134 @31627 has 63 MA's), (143, 31654), (149, 31708), (168, 31825), (171, 31852), (174, 31867), (193, 32002), (196, 32014), (206, 32071), (214, 32110), (227, 32218), (231, 32248), (240, 32290), (243, 32314), (244, 32317), (257, 32401), (263, 32440), (282, 32542),

Gene: Bunnybear\_52 Start: 38350, Stop: 39213, Start Num: 103

Candidate Starts for Bunnybear\_52:

(15, 37996), (18, 38017), (48, 38197), (57, 38221), (Start: 103 @38350 has 90 MA's), (162, 38500), (166, 38533), (193, 38683), (215, 38806), (218, 38833), (230, 38941), (241, 38989), (245, 39019),

Gene: CLED96\_42 Start: 31907, Stop: 32992, Start Num: 73

Candidate Starts for CLED96\_42:

(Start: 73 @31907 has 68 MA's), (113, 32021), (Start: 118 @32045 has 1 MA's), (128, 32075), (167, 32294), (168, 32297), (171, 32324), (180, 32393), (188, 32456), (193, 32474), (196, 32486), (214, 32576), (244, 32792), (245, 32798), (257, 32876), (265, 32924), (268, 32939),

Gene: CactusJack\_45 Start: 31877, Stop: 32803, Start Num: 134

Candidate Starts for CactusJack\_45:

(Start: 134 @31877 has 63 MA's), (143, 31904), (149, 31958), (168, 32075), (171, 32102), (174, 32117), (193, 32252), (196, 32264), (206, 32321), (214, 32360), (227, 32468), (231, 32498), (240, 32540), (243, 32564), (244, 32567), (257, 32651), (263, 32690), (282, 32792),

Gene: Cambiare\_44 Start: 34235, Stop: 35314, Start Num: 73

Candidate Starts for Cambiare\_44:

(2, 33494), (3, 33521), (45, 34142), (Start: 73 @34235 has 68 MA's), (144, 34469), (163, 34583), (167, 34622), (168, 34625), (184, 34769), (188, 34784), (193, 34802), (214, 34904), (244, 35123), (265, 35255),

Gene: Camri\_42 Start: 31907, Stop: 32992, Start Num: 73

Candidate Starts for Camri\_42:

(Start: 73 @31907 has 68 MA's), (113, 32021), (Start: 118 @32045 has 1 MA's), (128, 32075), (167, 32294), (168, 32297), (171, 32324), (180, 32393), (188, 32456), (193, 32474), (196, 32486), (214, 32576), (244, 32792), (245, 32798), (257, 32876), (265, 32924), (268, 32939),

Gene: Camster\_46 Start: 31634, Stop: 32560, Start Num: 134

Candidate Starts for Camster\_46:

(Start: 134 @31634 has 63 MA's), (143, 31661), (149, 31715), (168, 31832), (171, 31859), (174, 31874), (180, 31928), (193, 32009), (212, 32111), (227, 32225), (240, 32297), (243, 32321), (244, 32324), (257, 32408), (263, 32447), (282, 32549),

Gene: Cashline\_56 Start: 40617, Stop: 41480, Start Num: 103

Candidate Starts for Cashline\_56:

(Start: 103 @40617 has 90 MA's), (166, 40800), (183, 40911), (184, 40917), (193, 40950), (215, 41073), (218, 41100), (230, 41208), (245, 41286),

Gene: CassieYates\_42 Start: 31907, Stop: 32992, Start Num: 73

Candidate Starts for CassieYates\_42:

(Start: 73 @31907 has 68 MA's), (113, 32021), (Start: 118 @32045 has 1 MA's), (128, 32075), (167, 32294), (168, 32297), (171, 32324), (180, 32393), (188, 32456), (193, 32474), (196, 32486), (214, 32576), (244, 32792), (245, 32798), (257, 32876), (265, 32924), (268, 32939),

Gene: Caterpie\_66 Start: 47755, Stop: 48657, Start Num: 134

Candidate Starts for Caterpie\_66:

(Start: 134 @47755 has 63 MA's), (149, 47833), (168, 47950), (171, 47977), (174, 47992), (178, 48037), (183, 48088), (193, 48127), (196, 48139), (212, 48223), (227, 48343), (233, 48379), (239, 48412), (240, 48415), (243, 48439), (244, 48442), (245, 48448), (263, 48565), (269, 48592), (281, 48637),

Gene: Cedasite\_42 Start: 31907, Stop: 32992, Start Num: 73

Candidate Starts for Cedasite\_42:

(Start: 73 @31907 has 68 MA's), (113, 32021), (Start: 118 @32045 has 1 MA's), (128, 32075), (167, 32294), (168, 32297), (171, 32324), (180, 32393), (188, 32456), (193, 32474), (196, 32486), (214, 32576), (244, 32792), (245, 32798), (257, 32876), (265, 32924), (268, 32939),

Gene: Chance64\_42 Start: 31907, Stop: 32992, Start Num: 73

Candidate Starts for Chance64\_42:

(Start: 73 @31907 has 68 MA's), (113, 32021), (Start: 118 @32045 has 1 MA's), (128, 32075), (167, 32294), (168, 32297), (171, 32324), (180, 32393), (188, 32456), (193, 32474), (196, 32486), (239, 32762), (244, 32792), (257, 32876), (265, 32924), (268, 32939),

Gene: Charlie\_47 Start: 30994, Stop: 31923, Start Num: 134

Candidate Starts for Charlie\_47:

(98, 30874), (Start: 134 @30994 has 63 MA's), (143, 31024), (149, 31078), (168, 31195), (171, 31222), (174, 31237), (180, 31291), (193, 31372), (212, 31474), (227, 31588), (240, 31660), (243, 31684), (244, 31687), (257, 31771), (263, 31810), (282, 31912),

Gene: Che9c\_60 Start: 42706, Stop: 43650, Start Num: 134

Candidate Starts for Che9c\_60:

(71, 42514), (98, 42586), (Start: 134 @42706 has 63 MA's), (140, 42712), (143, 42730), (152, 42805), (157, 42841), (168, 42901), (174, 42943), (180, 42997), (183, 43039), (193, 43078), (196, 43090), (212, 43180), (222, 43240), (227, 43294), (244, 43393), (257, 43477), (262, 43513),

Gene: CherryCola\_56 Start: 41836, Stop: 42684, Start Num: 100

Candidate Starts for CherryCola\_56:

(90, 41809), (Start: 100 @41836 has 23 MA's), (277, 42664),

Gene: Cherrybomb426\_42 Start: 31907, Stop: 32992, Start Num: 73

Candidate Starts for Cherrybomb426\_42:

(Start: 73 @31907 has 68 MA's), (113, 32021), (Start: 118 @32045 has 1 MA's), (128, 32075), (167, 32294), (168, 32297), (171, 32324), (180, 32393), (188, 32456), (193, 32474), (196, 32486), (214, 32576), (244, 32792), (245, 32798), (257, 32876), (265, 32924), (268, 32939),

Gene: ChickenDinner\_66 Start: 41043, Stop: 41897, Start Num: 129

Candidate Starts for ChickenDinner\_66:

(Start: 129 @41043 has 9 MA's), (162, 41205), (166, 41238), (168, 41250), (170, 41274), (183, 41349), (187, 41367), (193, 41388), (212, 41490), (218, 41541), (221, 41553), (223, 41568), (238, 41685), (247, 41736), (248, 41742), (253, 41772), (265, 41856),

Gene: Chubbello\_45 Start: 31613, Stop: 32542, Start Num: 134

Candidate Starts for Chubbello\_45:

(98, 31493), (Start: 134 @31613 has 63 MA's), (143, 31643), (149, 31697), (168, 31814), (171, 31841), (174, 31856), (180, 31910), (193, 31991), (212, 32093), (227, 32207), (240, 32279), (243, 32303), (244, 32306), (257, 32390), (263, 32429), (282, 32531),

Gene: ClamChowder\_56 Start: 41203, Stop: 42051, Start Num: 100

Candidate Starts for ClamChowder\_56:

(Start: 100 @41203 has 23 MA's), (106, 41218), (277, 42031),

Gene: Clap\_53 Start: 35051, Stop: 35914, Start Num: 103

Candidate Starts for Clap\_53:

(86, 34997), (Start: 103 @35051 has 90 MA's), (148, 35123), (166, 35234), (183, 35345), (193, 35384), (214, 35486), (215, 35507), (218, 35534), (230, 35642), (245, 35720),

Gene: Clark\_53 Start: 36082, Stop: 36921, Start Num: 103

Candidate Starts for Clark\_53:

(77, 36019), (Start: 103 @36082 has 90 MA's), (145, 36130), (165, 36253), (183, 36367), (187, 36385), (245, 36715),

Gene: Cloudyecho\_43 Start: 33692, Stop: 34786, Start Num: 73

Candidate Starts for Cloudyecho\_43:

(45, 33599), (Start: 73 @33692 has 68 MA's), (120, 33839), (144, 33926), (163, 34040), (167, 34079), (168, 34082), (174, 34124), (184, 34226), (188, 34241), (193, 34259), (196, 34271), (238, 34544), (244, 34580), (245, 34586),

Gene: Clown\_66 Start: 45838, Stop: 46686, Start Num: 100

Candidate Starts for Clown\_66:

(Start: 100 @45838 has 23 MA's), (114, 45871), (148, 45919), (207, 46240),

Gene: Coleslaw\_42 Start: 31898, Stop: 32983, Start Num: 73

Candidate Starts for Coleslaw\_42:

(Start: 73 @31898 has 68 MA's), (113, 32012), (Start: 118 @32036 has 1 MA's), (128, 32066), (167, 32285), (168, 32288), (171, 32315), (180, 32384), (188, 32447), (193, 32465), (196, 32477), (214, 32567), (244, 32783), (245, 32789), (257, 32867), (265, 32915), (268, 32930),

Gene: Confidence\_57 Start: 38465, Stop: 39328, Start Num: 103

Candidate Starts for Confidence\_57:

(Start: 103 @38465 has 90 MA's), (162, 38615), (166, 38648), (193, 38798), (215, 38921), (218, 38948), (230, 39056), (241, 39104), (245, 39134), (257, 39212),

Gene: CosmicBrownie\_64 Start: 34550, Stop: 35389, Start Num: 133

Candidate Starts for CosmicBrownie\_64:

(125, 34526), (Start: 133 @34550 has 9 MA's), (172, 34760), (193, 34871), (197, 34886), (211, 34964), (220, 35006), (244, 35174), (245, 35180), (246, 35183),

Gene: CoveyB\_56 Start: 40881, Stop: 41729, Start Num: 100

Candidate Starts for CoveyB\_56:

(90, 40854), (Start: 100 @40881 has 23 MA's), (277, 41709),

Gene: Crespo\_42 Start: 31908, Stop: 32993, Start Num: 73

Candidate Starts for Crespo\_42:

(Start: 73 @31908 has 68 MA's), (113, 32022), (Start: 118 @32046 has 1 MA's), (128, 32076), (167, 32295), (168, 32298), (171, 32325), (180, 32394), (188, 32457), (193, 32475), (196, 32487), (214, 32577), (244, 32793), (245, 32799), (257, 32877), (265, 32925), (268, 32940),

Gene: Cubone\_52 Start: 31835, Stop: 32689, Start Num: 129

Candidate Starts for Cubone\_52:

(Start: 129 @31835 has 9 MA's), (162, 31997), (166, 32030), (168, 32042), (170, 32066), (183, 32141), (187, 32159), (193, 32180), (212, 32282), (218, 32333), (221, 32345), (223, 32360), (238, 32477), (247, 32528), (248, 32534), (253, 32564), (265, 32648),

Gene: Cynthia\_53 Start: 35049, Stop: 35912, Start Num: 103

Candidate Starts for Cynthia\_53:

(86, 34995), (Start: 103 @35049 has 90 MA's), (148, 35121), (166, 35232), (183, 35343), (193, 35382), (214, 35484), (215, 35505), (218, 35532), (230, 35640), (245, 35718),

Gene: DMoney\_42 Start: 31907, Stop: 32992, Start Num: 73

Candidate Starts for DMoney\_42:

(Start: 73 @31907 has 68 MA's), (113, 32021), (Start: 118 @32045 has 1 MA's), (128, 32075), (167, 32294), (168, 32297), (171, 32324), (180, 32393), (188, 32456), (193, 32474), (196, 32486), (214, 32576), (244, 32792), (245, 32798), (257, 32876), (265, 32924), (268, 32939),

Gene: DNAIII\_0041 Start: 30541, Stop: 31626, Start Num: 73

Candidate Starts for DNAIII\_0041:

(Start: 73 @30541 has 68 MA's), (113, 30655), (Start: 118 @30679 has 1 MA's), (128, 30709), (167, 30928), (168, 30931), (171, 30958), (180, 31027), (188, 31090), (193, 31108), (196, 31120), (239, 31396), (244, 31426), (257, 31510), (265, 31558), (268, 31573),

Gene: Danyall\_55 Start: 40890, Stop: 41723, Start Num: 142

Candidate Starts for Danyall\_55:

(Start: 142 @40890 has 9 MA's), (149, 40959), (150, 40974), (157, 41016), (168, 41076), (193, 41214), (206, 41277), (207, 41283), (227, 41442), (244, 41541),

Gene: Darionha\_42 Start: 31907, Stop: 32992, Start Num: 73

Candidate Starts for Darionha\_42:

(Start: 73 @31907 has 68 MA's), (113, 32021), (Start: 118 @32045 has 1 MA's), (128, 32075), (167, 32294), (168, 32297), (171, 32324), (180, 32393), (188, 32456), (193, 32474), (196, 32486), (214, 32576), (244, 32792), (245, 32798), (257, 32876), (265, 32924), (268, 32939),

Gene: DingDing\_42 Start: 31907, Stop: 32992, Start Num: 73

Candidate Starts for DingDing\_42:

(Start: 73 @31907 has 68 MA's), (113, 32021), (Start: 118 @32045 has 1 MA's), (128, 32075), (167, 32294), (168, 32297), (171, 32324), (180, 32393), (188, 32456), (193, 32474), (196, 32486), (214, 32576), (244, 32792), (245, 32798), (257, 32876), (265, 32924), (268, 32939),

Gene: DobbysSock\_46 Start: 34924, Stop: 35763, Start Num: 103

Candidate Starts for DobbysSock\_46:

(77, 34861), (Start: 103 @34924 has 90 MA's), (145, 34972), (165, 35095), (183, 35209), (187, 35227), (245, 35557),

Gene: DocMcStuffins\_66 Start: 41043, Stop: 41897, Start Num: 129

Candidate Starts for DocMcStuffins\_66:

(Start: 129 @41043 has 9 MA's), (162, 41205), (166, 41238), (168, 41250), (170, 41274), (183, 41349), (187, 41367), (193, 41388), (212, 41490), (218, 41541), (221, 41553), (223, 41568), (238, 41685), (247, 41736), (248, 41742), (253, 41772), (265, 41856),

Gene: Dolores\_55 Start: 36820, Stop: 37683, Start Num: 103

Candidate Starts for Dolores\_55:

(82, 36757), (Start: 103 @36820 has 90 MA's), (183, 37114), (193, 37153), (197, 37168), (215, 37276), (218, 37303), (220, 37309), (226, 37363), (230, 37411), (240, 37456), (241, 37459), (245, 37489),

Gene: Donovan\_46 Start: 31640, Stop: 32569, Start Num: 134

Candidate Starts for Donovan\_46:

(98, 31520), (Start: 134 @31640 has 63 MA's), (143, 31670), (149, 31724), (168, 31841), (171, 31868), (174, 31883), (180, 31937), (193, 32018), (212, 32120), (227, 32234), (240, 32306), (243, 32330), (244, 32333), (257, 32417), (263, 32456), (282, 32558),

Gene: Dorito\_49 Start: 34569, Stop: 35408, Start Num: 103

Candidate Starts for Dorito\_49:

(77, 34506), (Start: 103 @34569 has 90 MA's), (145, 34617), (165, 34740), (183, 34854), (187, 34872), (245, 35202), (247, 35211), (255, 35265),

Gene: Doucette\_40 Start: 27776, Stop: 28702, Start Num: 137

Candidate Starts for Doucette\_40:

(127, 27746), (Start: 137 @27776 has 7 MA's), (Start: 139 @27779 has 7 MA's), (144, 27812), (151, 27869), (162, 27923), (168, 27983), (171, 28010), (181, 28064), (184, 28088), (192, 28112), (193, 28121), (198, 28148), (207, 28196), (208, 28214), (220, 28271), (240, 28421), (253, 28499), (264, 28574), (267, 28595), (283, 28679),

Gene: DumpsterDude\_55 Start: 42126, Stop: 42956, Start Num: 103

Candidate Starts for DumpsterDude\_55:

(4, 41562), (5, 41565), (28, 41865), (32, 41880), (33, 41895), (34, 41901), (38, 41919), (49, 41973), (58, 41997), (82, 42063), (84, 42069), (Start: 103 @42126 has 90 MA's), (162, 42267), (204, 42504), (212, 42546), (215, 42573), (218, 42585),

Gene: Dynamo\_46 Start: 32100, Stop: 33029, Start Num: 134

Candidate Starts for Dynamo\_46:

(98, 31980), (Start: 134 @32100 has 63 MA's), (143, 32130), (149, 32184), (168, 32301), (171, 32328), (174, 32343), (180, 32397), (193, 32478), (212, 32580), (227, 32694), (240, 32766), (243, 32790), (244, 32793), (257, 32877), (263, 32916), (282, 33018),

Gene: E1\_37 Start: 26633, Stop: 27484, Start Num: 137

Candidate Starts for E1\_37:

(12, 26144), (21, 26186), (26, 26234), (30, 26261), (58, 26381), (61, 26393), (64, 26405), (91, 26477), (99, 26501), (104, 26513), (113, 26543), (127, 26597), (Start: 137 @26633 has 7 MA's), (Start: 139 @26636 has 7 MA's), (144, 26669), (151, 26726), (154, 26741), (158, 26768), (160, 26777), (162, 26780), (168, 26840), (171, 26867), (181, 26921), (184, 26945), (192, 26969), (193, 26978), (198, 27005), (207, 27053), (208, 27071), (240, 27278), (253, 27356), (267, 27452),

Gene: E6\_41 Start: 29214, Stop: 30065, Start Num: 137

Candidate Starts for E6\_41:

(12, 28731), (21, 28773), (26, 28821), (30, 28848), (58, 28968), (61, 28980), (64, 28992), (91, 29064), (99, 29088), (104, 29100), (113, 29130), (127, 29184), (Start: 137 @29214 has 7 MA's), (Start: 139 @29217 has 7 MA's), (144, 29250), (151, 29307), (162, 29361), (168, 29421), (171, 29448), (181, 29502), (184, 29526), (192, 29550), (193, 29559), (198, 29586), (207, 29634), (208, 29652), (240, 29859), (243, 29883), (253, 29937), (267, 30033),

Gene: ECartman\_42 Start: 31907, Stop: 32992, Start Num: 73

Candidate Starts for ECartman\_42:

(Start: 73 @31907 has 68 MA's), (113, 32021), (Start: 118 @32045 has 1 MA's), (128, 32075), (167, 32294), (168, 32297), (171, 32324), (180, 32393), (188, 32456), (193, 32474), (196, 32486), (244, 32792), (245, 32798), (257, 32876), (265, 32924), (268, 32939),

Gene: EMSquaredA\_56 Start: 39499, Stop: 40374, Start Num: 103

Candidate Starts for EMSquaredA\_56:

(33, 39268), (36, 39286), (42, 39304), (49, 39346), (55, 39364), (58, 39370), (Start: 73 @39418 has 68 MA's), (82, 39436), (86, 39445), (Start: 103 @39499 has 90 MA's), (148, 39583), (166, 39694), (183, 39805), (184, 39811), (193, 39844), (215, 39967), (218, 39994), (230, 40102), (245, 40180),

Gene: Easley\_51 Start: 36057, Stop: 36890, Start Num: 103

Candidate Starts for Easley\_51:

(82, 35994), (Start: 103 @36057 has 90 MA's), (148, 36129), (162, 36198), (169, 36246), (212, 36477), (215, 36504),

Gene: Ebert\_57 Start: 35471, Stop: 36346, Start Num: 103

Candidate Starts for Ebert\_57:

(22, 35156), (33, 35240), (36, 35258), (42, 35276), (49, 35318), (55, 35336), (58, 35342), (Start: 73 @35390 has 68 MA's), (82, 35408), (86, 35417), (Start: 103 @35471 has 90 MA's), (166, 35666), (184, 35783), (193, 35816), (206, 35879), (214, 35918), (215, 35939), (218, 35966), (230, 36074), (245, 36152),

Gene: EdnaMode\_50 Start: 34661, Stop: 35536, Start Num: 103

Candidate Starts for EdnaMode\_50:

(Start: 73 @34580 has 68 MA's), (82, 34598), (86, 34607), (Start: 103 @34661 has 90 MA's), (166, 34856), (193, 35006), (215, 35129), (218, 35156), (230, 35264), (245, 35342),

Gene: Egi03\_54 Start: 40684, Stop: 41532, Start Num: 100

Candidate Starts for Egi03\_54:

(Start: 100 @40684 has 23 MA's), (106, 40699), (277, 41512),

Gene: EnalisNailo\_53 Start: 39490, Stop: 40341, Start Num: 103

Candidate Starts for EnalisNailo\_53:

(40, 39295), (47, 39337), (53, 39355), (55, 39361), (80, 39427), (84, 39436), (Start: 103 @39490 has 90 MA's), (183, 39787), (187, 39805), (245, 40135),

Gene: Etoile\_45 Start: 31617, Stop: 32546, Start Num: 134

Candidate Starts for Etoile\_45:

(98, 31497), (Start: 134 @31617 has 63 MA's), (143, 31647), (149, 31701), (168, 31818), (171, 31845), (174, 31860), (180, 31914), (193, 31995), (212, 32097), (227, 32211), (240, 32283), (243, 32307), (244, 32310), (257, 32394), (263, 32433), (282, 32535),

Gene: Eudoria\_56 Start: 38840, Stop: 39715, Start Num: 103

Candidate Starts for Eudoria\_56:

(Start: 103 @38840 has 90 MA's), (166, 39035), (193, 39185), (215, 39308), (218, 39335), (230, 39443), (245, 39521),

Gene: Evamon\_53 Start: 40929, Stop: 41777, Start Num: 100

Candidate Starts for Evamon\_53:

(90, 40902), (Start: 100 @40929 has 23 MA's), (106, 40944),

Gene: EvePickles\_65 Start: 36266, Stop: 37069, Start Num: 133

Candidate Starts for EvePickles\_65:

(Start: 133 @36266 has 9 MA's), (193, 36587), (197, 36602), (209, 36680), (217, 36719), (220, 36725), (239, 36863), (240, 36866), (246, 36902), (251, 36929),

Gene: Eyre\_43 Start: 29570, Stop: 30892, Start Num: 13

Candidate Starts for Eyre\_43:

(8, 29468), (9, 29525), (Start: 13 @29570 has 1 MA's), (24, 29630), (31, 29687), (50, 29783), (54, 29795), (79, 29867), (81, 29870), (Start: 103 @29936 has 90 MA's), (114, 29969), (122, 30008), (144, 30089), (155, 30176), (172, 30266), (196, 30389), (201, 30413), (204, 30431), (239, 30650), (245, 30686), (277, 30869),

Gene: Farewell\_58 Start: 39058, Stop: 40056, Start Num: 97

Candidate Starts for Farewell\_58:

(Start: 97 @39058 has 1 MA's), (Start: 117 @39133 has 1 MA's), (119, 39139), (168, 39382), (170, 39406), (171, 39409), (174, 39412), (179, 39451), (190, 39520), (193, 39532), (200, 39562), (218, 39670), (234, 39790), (238, 39811), (245, 39853), (258, 39943), (265, 39982),

Gene: Fireball\_56 Start: 41525, Stop: 42358, Start Num: 142

Candidate Starts for Fireball\_56:

(Start: 142 @41525 has 9 MA's), (149, 41594), (150, 41609), (157, 41651), (168, 41711), (193, 41849), (206, 41912), (207, 41918), (227, 42077), (244, 42176),

Gene: FirstPlacePfu\_46 Start: 31649, Stop: 32578, Start Num: 134

Candidate Starts for FirstPlacePfu\_46:

(98, 31529), (Start: 134 @31649 has 63 MA's), (143, 31679), (149, 31733), (168, 31850), (171, 31877), (174, 31892), (180, 31946), (183, 31988), (193, 32027), (212, 32129), (227, 32243), (240, 32315), (243, 32339), (244, 32342), (257, 32426), (263, 32465), (282, 32567),

Gene: Fishburne\_45 Start: 31617, Stop: 32546, Start Num: 134

Candidate Starts for Fishburne\_45:

(98, 31497), (Start: 134 @31617 has 63 MA's), (143, 31647), (149, 31701), (168, 31818), (171, 31845), (174, 31860), (180, 31914), (193, 31995), (212, 32097), (227, 32211), (240, 32283), (243, 32307), (244, 32310), (257, 32394), (263, 32433), (282, 32535),

Gene: FlagStaff\_42 Start: 33012, Stop: 34091, Start Num: 68

Candidate Starts for FlagStaff\_42:

(Start: 68 @33012 has 1 MA's), (120, 33159), (163, 33360), (167, 33399), (168, 33402), (171, 33429), (188, 33561), (193, 33579), (196, 33591), (214, 33681), (226, 33783), (239, 33870), (244, 33900), (249, 33927), (265, 34032),

Gene: Floral\_57 Start: 41384, Stop: 42259, Start Num: 103

Candidate Starts for Floral\_57:

(6, 40919), (10, 40985), (23, 41078), (42, 41189), (49, 41231), (55, 41249), (58, 41255), (82, 41321), (86, 41330), (Start: 103 @41384 has 90 MA's), (162, 41546), (166, 41579), (183, 41690), (193, 41729), (218, 41879), (230, 41987), (245, 42065),

Gene: FroggyToad\_52 Start: 35451, Stop: 36281, Start Num: 103

Candidate Starts for FroggyToad\_52:

(Start: 103 @35451 has 90 MA's), (165, 35622), (194, 35781), (204, 35829), (212, 35871), (214, 35877), (215, 35898), (219, 35913),

Gene: Frosty24\_42 Start: 31907, Stop: 32992, Start Num: 73

Candidate Starts for Frosty24\_42:

(Start: 73 @31907 has 68 MA's), (113, 32021), (Start: 118 @32045 has 1 MA's), (128, 32075), (167, 32294), (168, 32297), (171, 32324), (180, 32393), (188, 32456), (193, 32474), (196, 32486), (214, 32576), (244, 32792), (245, 32798), (257, 32876), (265, 32924), (268, 32939),

Gene: Fugax\_57 Start: 41195, Stop: 42043, Start Num: 100

Candidate Starts for Fugax\_57:

(Start: 100 @41195 has 23 MA's), (106, 41210), (277, 42023),

Gene: G4\_38 Start: 26748, Stop: 27599, Start Num: 137

Candidate Starts for G4\_38:

(7, 26205), (12, 26304), (21, 26346), (22, 26355), (26, 26394), (30, 26421), (58, 26529), (64, 26550), (Start: 68 @26562 has 1 MA's), (88, 26610), (113, 26664), (127, 26718), (Start: 137 @26748 has 7 MA's), (Start: 139 @26751 has 7 MA's), (144, 26784), (151, 26841), (154, 26856), (158, 26883), (160, 26892), (162, 26895), (168, 26955), (171, 26982), (181, 27036), (184, 27060), (192, 27084), (193, 27093), (198, 27120), (207, 27168), (208, 27186), (220, 27243), (227, 27318), (228, 27336), (229, 27342), (240, 27393), (242, 27402), (253, 27471), (267, 27567),

Gene: GMA1\_46 Start: 29913, Stop: 30710, Start Num: 130

Candidate Starts for GMA1\_46:

(39, 29616), (69, 29730), (94, 29793), (130, 29913), (206, 30309), (207, 30315), (221, 30393), (238, 30519), (245, 30561), (246, 30564),

Gene: GaloreK\_45 Start: 31613, Stop: 32542, Start Num: 134

Candidate Starts for GaloreK\_45:

(98, 31493), (Start: 134 @31613 has 63 MA's), (143, 31643), (149, 31697), (168, 31814), (171, 31841), (174, 31856), (180, 31910), (193, 31991), (212, 32093), (227, 32207), (240, 32279), (243, 32303), (244, 32306), (257, 32390), (263, 32429), (282, 32531),

Gene: Gavriela\_45 Start: 31877, Stop: 32803, Start Num: 134

Candidate Starts for Gavriela\_45:

(Start: 134 @31877 has 63 MA's), (143, 31904), (149, 31958), (168, 32075), (171, 32102), (174, 32117), (193, 32252), (196, 32264), (206, 32321), (214, 32360), (227, 32468), (240, 32540), (243, 32564), (244, 32567), (257, 32651), (263, 32690), (282, 32792),

Gene: GemG\_53 Start: 35055, Stop: 35918, Start Num: 103

Candidate Starts for GemG\_53:

(86, 35001), (Start: 103 @35055 has 90 MA's), (148, 35127), (166, 35238), (183, 35349), (193, 35388), (214, 35490), (215, 35511), (218, 35538), (230, 35646), (245, 35724),

Gene: Gezellig\_53 Start: 41034, Stop: 41882, Start Num: 100

Candidate Starts for Gezellig\_53:

(90, 41007), (Start: 100 @41034 has 23 MA's), (277, 41862),

Gene: Gideon\_42 Start: 31907, Stop: 32992, Start Num: 73

Candidate Starts for Gideon\_42:

(Start: 73 @31907 has 68 MA's), (113, 32021), (Start: 118 @32045 has 1 MA's), (128, 32075), (167, 32294), (168, 32297), (171, 32324), (180, 32393), (188, 32456), (193, 32474), (196, 32486), (214, 32576), (244, 32792), (245, 32798), (257, 32876), (265, 32924), (268, 32939),

Gene: Gizermo\_53 Start: 35051, Stop: 35914, Start Num: 103

Candidate Starts for Gizermo\_53:

(86, 34997), (Start: 103 @35051 has 90 MA's), (148, 35123), (166, 35234), (183, 35345), (193, 35384), (214, 35486), (215, 35507), (218, 35534), (230, 35642), (245, 35720),

Gene: Glaske\_45 Start: 31877, Stop: 32803, Start Num: 134

Candidate Starts for Glaske\_45:

(Start: 134 @31877 has 63 MA's), (143, 31904), (149, 31958), (168, 32075), (171, 32102), (174, 32117), (193, 32252), (196, 32264), (206, 32321), (214, 32360), (227, 32468), (231, 32498), (240, 32540), (243, 32564), (244, 32567), (257, 32651), (263, 32690), (282, 32792),

Gene: GodSpeed\_43 Start: 33106, Stop: 34194, Start Num: 68

Candidate Starts for GodSpeed\_43:

(53, 33064), (Start: 68 @33106 has 1 MA's), (Start: 118 @33253 has 1 MA's), (136, 33307), (144, 33349), (163, 33463), (167, 33502), (168, 33505), (188, 33664), (193, 33682), (196, 33694), (239, 33973), (244, 34003), (249, 34030), (265, 34135),

Gene: GoldenAsh\_42 Start: 31892, Stop: 32977, Start Num: 73

Candidate Starts for GoldenAsh\_42:

(Start: 73 @31892 has 68 MA's), (113, 32006), (Start: 118 @32030 has 1 MA's), (128, 32060), (167, 32279), (168, 32282), (171, 32309), (180, 32378), (188, 32441), (193, 32459), (196, 32471), (214, 32561), (244, 32777), (245, 32783), (257, 32861), (265, 32909), (268, 32924),

Gene: Gomashi\_42 Start: 31908, Stop: 32993, Start Num: 73

Candidate Starts for Gomashi\_42:

(Start: 73 @31908 has 68 MA's), (113, 32022), (Start: 118 @32046 has 1 MA's), (128, 32076), (167, 32295), (168, 32298), (171, 32325), (180, 32394), (188, 32457), (193, 32475), (196, 32487), (214, 32577), (244, 32793), (245, 32799), (257, 32877), (265, 32925), (268, 32940),

Gene: GreaseLightnin\_46 Start: 31856, Stop: 32782, Start Num: 134

Candidate Starts for GreaseLightnin\_46:

(Start: 134 @31856 has 63 MA's), (143, 31883), (149, 31937), (168, 32054), (171, 32081), (174, 32096), (193, 32231), (196, 32243), (206, 32300), (214, 32339), (227, 32447), (231, 32477), (240, 32519), (243, 32543), (244, 32546), (257, 32630), (263, 32669), (282, 32771),

Gene: Grizzly\_42 Start: 31892, Stop: 32977, Start Num: 73

Candidate Starts for Grizzly\_42:

(Start: 73 @31892 has 68 MA's), (113, 32006), (Start: 118 @32030 has 1 MA's), (128, 32060), (167, 32279), (168, 32282), (171, 32309), (180, 32378), (188, 32441), (193, 32459), (196, 32471), (214, 32561), (244, 32777), (245, 32783), (257, 32861), (265, 32909), (268, 32924),

Gene: Gudmit\_45 Start: 29257, Stop: 30438, Start Num: 16

Candidate Starts for Gudmit\_45:

(Start: 16 @29257 has 1 MA's), (19, 29284), (24, 29308), (37, 29401), (50, 29455), (52, 29461), (54, 29467), (65, 29503), (67, 29512), (87, 29560), (Start: 103 @29608 has 90 MA's), (114, 29626), (144, 29638), (145, 29650), (183, 29887), (184, 29893), (220, 30067), (239, 30199), (241, 30205),

Gene: HC\_45 Start: 31260, Stop: 32189, Start Num: 134

Candidate Starts for HC\_45:

(98, 31140), (Start: 134 @31260 has 63 MA's), (143, 31290), (149, 31344), (168, 31461), (171, 31488), (174, 31503), (180, 31557), (193, 31638), (212, 31740), (227, 31854), (240, 31926), (243, 31950), (244, 31953), (257, 32037), (263, 32076), (282, 32178),

Gene: HUHilltop\_47 Start: 32135, Stop: 33061, Start Num: 134

Candidate Starts for HUHilltop\_47:

(Start: 134 @32135 has 63 MA's), (143, 32162), (149, 32216), (168, 32333), (171, 32360), (174, 32375), (180, 32429), (193, 32510), (196, 32522), (206, 32579), (214, 32618), (227, 32726), (240,

32798), (243, 32822), (244, 32825), (257, 32909), (263, 32948), (282, 33050),

Gene: Haley23\_53 Start: 35051, Stop: 35914, Start Num: 103

Candidate Starts for Haley23\_53:

(86, 34997), (Start: 103 @35051 has 90 MA's), (148, 35123), (166, 35234), (183, 35345), (193, 35384), (214, 35486), (215, 35507), (218, 35534), (230, 35642), (245, 35720),

Gene: Halo\_42 Start: 31902, Stop: 32987, Start Num: 73

Candidate Starts for Halo\_42:

(Start: 73 @31902 has 68 MA's), (113, 32016), (Start: 118 @32040 has 1 MA's), (128, 32070), (167, 32289), (168, 32292), (171, 32319), (180, 32388), (188, 32451), (193, 32469), (196, 32481), (214, 32571), (244, 32787), (245, 32793), (257, 32871), (265, 32919), (268, 32934),

Gene: Halo3\_54 Start: 41619, Stop: 42467, Start Num: 100

Candidate Starts for Halo3\_54:

(90, 41592), (Start: 100 @41619 has 23 MA's), (277, 42447),

Gene: Herod\_57 Start: 41310, Stop: 42173, Start Num: 103

Candidate Starts for Herod\_57:

(Start: 103 @41310 has 90 MA's), (166, 41493), (183, 41604), (184, 41610), (193, 41643), (206, 41706), (215, 41766), (218, 41793), (230, 41901), (245, 41979),

Gene: Hillester\_73 Start: 37290, Stop: 38117, Start Num: 133

Candidate Starts for Hillester\_73:

(124, 37269), (Start: 133 @37290 has 9 MA's), (152, 37377), (170, 37494), (188, 37593), (193, 37611), (197, 37626), (246, 37923), (278, 38106),

Gene: Hope\_42 Start: 31907, Stop: 32992, Start Num: 73

Candidate Starts for Hope\_42:

(Start: 73 @31907 has 68 MA's), (113, 32021), (Start: 118 @32045 has 1 MA's), (128, 32075), (167, 32294), (168, 32297), (171, 32324), (180, 32393), (188, 32456), (193, 32474), (196, 32486), (214, 32576), (244, 32792), (245, 32798), (257, 32876), (265, 32924), (268, 32939),

Gene: Hortense\_57 Start: 40640, Stop: 41503, Start Num: 103

Candidate Starts for Hortense\_57:

(82, 40577), (Start: 103 @40640 has 90 MA's), (162, 40790), (166, 40823), (193, 40973), (198, 41000), (215, 41096), (218, 41123), (220, 41129), (245, 41309), (275, 41483),

Gene: Hotshotbaby7\_42 Start: 31907, Stop: 32992, Start Num: 73

Candidate Starts for Hotshotbaby7\_42:

(Start: 73 @31907 has 68 MA's), (113, 32021), (Start: 118 @32045 has 1 MA's), (128, 32075), (167, 32294), (168, 32297), (171, 32324), (180, 32393), (188, 32456), (193, 32474), (196, 32486), (239, 32762), (244, 32792), (257, 32876), (265, 32924), (268, 32939),

Gene: Howe\_57 Start: 40640, Stop: 41503, Start Num: 103

Candidate Starts for Howe\_57:

(82, 40577), (Start: 103 @40640 has 90 MA's), (162, 40790), (166, 40823), (193, 40973), (198, 41000), (215, 41096), (218, 41123), (220, 41129), (245, 41309), (275, 41483),

Gene: Hugley\_55 Start: 41290, Stop: 42153, Start Num: 103

Candidate Starts for Hugley\_55:

(Start: 103 @41290 has 90 MA's), (166, 41473), (183, 41584), (184, 41590), (193, 41623), (206, 41686), (215, 41746), (218, 41773), (230, 41881), (245, 41959),

Gene: Hyzer\_65 Start: 43242, Stop: 44117, Start Num: 103

Candidate Starts for Hyzer\_65:

(Start: 103 @43242 has 90 MA's), (148, 43326), (162, 43404), (183, 43548), (193, 43587), (196, 43599), (197, 43602), (215, 43710), (218, 43737), (225, 43785), (230, 43845), (245, 43923), (246, 43926),

Gene: Ibrahim\_44 Start: 33043, Stop: 33873, Start Num: 139

Candidate Starts for Ibrahim\_44:

(Start: 139 @33043 has 7 MA's), (168, 33232), (171, 33259), (191, 33370), (206, 33433), (234, 33637), (237, 33652),

Gene: Invecetra\_55 Start: 37656, Stop: 38495, Start Num: 103

Candidate Starts for Invecetra\_55:

(77, 37593), (Start: 103 @37656 has 90 MA's), (145, 37704), (165, 37827), (183, 37941), (187, 37959), (245, 38289),

Gene: JCole\_50 Start: 33782, Stop: 34609, Start Num: 105

Candidate Starts for JCole\_50:

(Start: 105 @33782 has 2 MA's), (143, 33803), (162, 33920), (212, 34199), (214, 34205), (215, 34226), (219, 34241), (221, 34250),

Gene: Jablanski\_59 Start: 42318, Stop: 43193, Start Num: 103

Candidate Starts for Jablanski\_59:

(Start: 103 @42318 has 90 MA's), (166, 42513), (193, 42663), (214, 42765), (215, 42786), (218, 42813), (230, 42921), (245, 42999),

Gene: JakeTheSnake\_72 Start: 37974, Stop: 38801, Start Num: 133

Candidate Starts for JakeTheSnake\_72:

(112, 37899), (125, 37950), (Start: 133 @37974 has 9 MA's), (191, 38283), (193, 38295), (197, 38310), (198, 38322), (207, 38364), (211, 38388), (220, 38430), (222, 38448), (235, 38550), (239, 38568), (252, 38646), (260, 38709), (266, 38736),

Gene: Jalleen\_53 Start: 34690, Stop: 35553, Start Num: 103

Candidate Starts for Jalleen\_53:

(86, 34636), (Start: 103 @34690 has 90 MA's), (148, 34762), (166, 34873), (183, 34984), (193, 35023), (214, 35125), (215, 35146), (218, 35173), (230, 35281), (245, 35359),

Gene: Jambalaya\_53 Start: 40688, Stop: 41521, Start Num: 142

Candidate Starts for Jambalaya\_53:

(Start: 142 @40688 has 9 MA's), (149, 40757), (150, 40772), (157, 40814), (168, 40874), (193, 41012), (206, 41075), (207, 41081), (227, 41240), (244, 41339),

Gene: Jane\_42 Start: 31907, Stop: 32992, Start Num: 73

Candidate Starts for Jane\_42:

(Start: 73 @31907 has 68 MA's), (113, 32021), (Start: 118 @32045 has 1 MA's), (128, 32075), (167, 32294), (168, 32297), (171, 32324), (180, 32393), (188, 32456), (193, 32474), (196, 32486), (214, 32576), (244, 32792), (245, 32798), (257, 32876), (265, 32924), (268, 32939),

Gene: JeanClaude\_51 Start: 28174, Stop: 28977, Start Num: 133

Candidate Starts for JeanClaude\_51:

(Start: 133 @28174 has 9 MA's), (193, 28495), (197, 28510), (244, 28798),

Gene: Jebeks\_47 Start: 31677, Stop: 32606, Start Num: 134

Candidate Starts for Jebeks\_47:

(98, 31557), (Start: 134 @31677 has 63 MA's), (143, 31707), (149, 31761), (168, 31878), (171, 31905), (174, 31920), (180, 31974), (183, 32016), (193, 32055), (212, 32157), (227, 32271), (240, 32343), (243, 32367), (244, 32370), (257, 32454), (263, 32493), (282, 32595),

Gene: Jeilious\_42 Start: 31906, Stop: 32991, Start Num: 73

Candidate Starts for Jeilious\_42:

(Start: 73 @31906 has 68 MA's), (113, 32020), (Start: 118 @32044 has 1 MA's), (128, 32074), (167, 32293), (168, 32296), (171, 32323), (180, 32392), (188, 32455), (193, 32473), (196, 32485), (214, 32575), (244, 32791), (245, 32797), (257, 32875), (265, 32923), (268, 32938),

Gene: JohnLord\_65 Start: 48138, Stop: 49046, Start Num: 134

Candidate Starts for JohnLord\_65:

(Start: 134 @48138 has 63 MA's), (Start: 139 @48147 has 7 MA's), (143, 48165), (149, 48219), (156, 48273), (157, 48276), (168, 48336), (174, 48378), (183, 48474), (193, 48513), (196, 48525), (203, 48555), (212, 48609), (227, 48729), (239, 48798), (244, 48828), (245, 48834), (257, 48912), (269, 48981), (281, 49026),

Gene: JohnPork\_56 Start: 40701, Stop: 41534, Start Num: 142

Candidate Starts for JohnPork\_56:

(Start: 142 @40701 has 9 MA's), (149, 40770), (150, 40785), (157, 40827), (168, 40887), (193, 41025), (206, 41088), (207, 41094), (227, 41253), (244, 41352),

Gene: Jolene\_42 Start: 31907, Stop: 32992, Start Num: 73

Candidate Starts for Jolene\_42:

(Start: 73 @31907 has 68 MA's), (113, 32021), (Start: 118 @32045 has 1 MA's), (128, 32075), (167, 32294), (168, 32297), (171, 32324), (180, 32393), (188, 32456), (193, 32474), (196, 32486), (239, 32762), (244, 32792), (257, 32876), (265, 32924), (268, 32939),

Gene: Jolie2\_42 Start: 32418, Stop: 33506, Start Num: 73

Candidate Starts for Jolie2\_42:

(45, 32328), (Start: 73 @32418 has 68 MA's), (107, 32511), (Start: 118 @32556 has 1 MA's), (132, 32604), (141, 32619), (145, 32661), (153, 32718), (167, 32802), (168, 32805), (171, 32832), (177, 32883), (188, 32964), (193, 32982), (227, 33207), (239, 33273), (244, 33303), (254, 33360), (257, 33387), (265, 33435),

Gene: Jonghyun\_41 Start: 31907, Stop: 32992, Start Num: 73

Candidate Starts for Jonghyun\_41:

(Start: 73 @31907 has 68 MA's), (113, 32021), (Start: 118 @32045 has 1 MA's), (128, 32075), (167, 32294), (168, 32297), (171, 32324), (180, 32393), (188, 32456), (193, 32474), (196, 32486), (239, 32762), (244, 32792), (257, 32876), (265, 32924), (268, 32939),

Gene: JorRay\_42 Start: 31907, Stop: 32992, Start Num: 73

Candidate Starts for JorRay\_42:

(Start: 73 @31907 has 68 MA's), (113, 32021), (Start: 118 @32045 has 1 MA's), (128, 32075), (167, 32294), (168, 32297), (171, 32324), (180, 32393), (188, 32456), (193, 32474), (196, 32486), (214, 32576), (244, 32792), (245, 32798), (257, 32876), (265, 32924), (268, 32939),

Gene: Journey\_46 Start: 30994, Stop: 31923, Start Num: 134

Candidate Starts for Journey\_46:

(98, 30874), (Start: 134 @30994 has 63 MA's), (143, 31024), (149, 31078), (168, 31195), (171, 31222), (174, 31237), (180, 31291), (193, 31372), (212, 31474), (227, 31588), (240, 31660), (243, 31684),

(244, 31687), (257, 31771), (263, 31810), (282, 31912),

Gene: Jung\_44 Start: 31575, Stop: 32504, Start Num: 134

Candidate Starts for Jung\_44:

(98, 31455), (Start: 134 @31575 has 63 MA's), (143, 31605), (149, 31659), (168, 31776), (171, 31803), (174, 31818), (180, 31872), (193, 31953), (212, 32055), (227, 32169), (240, 32241), (243, 32265), (244, 32268), (257, 32352), (263, 32391), (282, 32493),

Gene: Juniormint\_46 Start: 31649, Stop: 32575, Start Num: 134

Candidate Starts for Juniormint\_46:

(Start: 134 @31649 has 63 MA's), (143, 31676), (149, 31730), (168, 31847), (171, 31874), (174, 31889), (193, 32024), (196, 32036), (206, 32093), (214, 32132), (227, 32240), (231, 32270), (240, 32312), (243, 32336), (244, 32339), (257, 32423), (263, 32462), (282, 32564),

Gene: Kareem\_42 Start: 31907, Stop: 32992, Start Num: 73

Candidate Starts for Kareem\_42:

(Start: 73 @31907 has 68 MA's), (113, 32021), (Start: 118 @32045 has 1 MA's), (128, 32075), (167, 32294), (168, 32297), (171, 32324), (180, 32393), (188, 32456), (193, 32474), (196, 32486), (214, 32576), (244, 32792), (245, 32798), (257, 32876), (265, 32924), (268, 32939),

Gene: Kari\_45 Start: 31614, Stop: 32543, Start Num: 134

Candidate Starts for Kari\_45:

(98, 31494), (Start: 134 @31614 has 63 MA's), (143, 31644), (149, 31698), (168, 31815), (171, 31842), (174, 31857), (180, 31911), (193, 31992), (212, 32094), (227, 32208), (240, 32280), (243, 32304), (244, 32307), (257, 32391), (263, 32430), (282, 32532),

Gene: Kasen3\_42 Start: 31893, Stop: 32978, Start Num: 73

Candidate Starts for Kasen3\_42:

(Start: 73 @31893 has 68 MA's), (113, 32007), (Start: 118 @32031 has 1 MA's), (128, 32061), (167, 32280), (168, 32283), (171, 32310), (180, 32379), (188, 32442), (193, 32460), (196, 32472), (214, 32562), (244, 32778), (245, 32784), (257, 32862), (265, 32910), (268, 32925),

Gene: KilKor\_45 Start: 31877, Stop: 32803, Start Num: 134

Candidate Starts for KilKor\_45:

(Start: 134 @31877 has 63 MA's), (143, 31904), (149, 31958), (168, 32075), (171, 32102), (174, 32117), (193, 32252), (196, 32264), (206, 32321), (214, 32360), (227, 32468), (231, 32498), (240, 32540), (243, 32564), (244, 32567), (257, 32651), (263, 32690), (282, 32792),

Gene: KimmyK\_55 Start: 41637, Stop: 42485, Start Num: 100

Candidate Starts for KimmyK\_55:

(Start: 100 @41637 has 23 MA's), (106, 41652), (277, 42465),

Gene: Kita\_57 Start: 38849, Stop: 39724, Start Num: 103

Candidate Starts for Kita\_57:

(Start: 73 @38768 has 68 MA's), (82, 38786), (86, 38795), (Start: 103 @38849 has 90 MA's), (166, 39044), (193, 39194), (215, 39317), (218, 39344), (230, 39452), (245, 39530),

Gene: Ksquared\_45 Start: 31627, Stop: 32553, Start Num: 134

Candidate Starts for Ksquared\_45:

(Start: 134 @31627 has 63 MA's), (143, 31654), (149, 31708), (168, 31825), (171, 31852), (174, 31867), (193, 32002), (196, 32014), (206, 32071), (214, 32110), (227, 32218), (231, 32248), (240, 32290), (243, 32314), (244, 32317), (257, 32401), (263, 32440), (282, 32542),

Gene: Lamberg\_49 Start: 33560, Stop: 34423, Start Num: 103

Candidate Starts for Lamberg\_49:

(86, 33506), (Start: 103 @33560 has 90 MA's), (148, 33632), (166, 33743), (183, 33854), (193, 33893), (214, 33995), (215, 34016), (218, 34043), (230, 34151), (245, 34229),

Gene: Langerak\_46 Start: 31633, Stop: 32562, Start Num: 134

Candidate Starts for Langerak\_46:

(98, 31513), (Start: 134 @31633 has 63 MA's), (143, 31663), (149, 31717), (168, 31834), (171, 31861), (174, 31876), (180, 31930), (193, 32011), (212, 32113), (227, 32227), (240, 32299), (243, 32323), (244, 32326), (257, 32410), (263, 32449), (282, 32551),

Gene: Lemuria\_44 Start: 33756, Stop: 34844, Start Num: 73

Candidate Starts for Lemuria\_44:

(45, 33666), (Start: 73 @33756 has 68 MA's), (107, 33849), (Start: 118 @33894 has 1 MA's), (136, 33948), (145, 33999), (152, 34050), (167, 34140), (171, 34170), (174, 34185), (188, 34302), (193, 34320), (196, 34332), (234, 34587), (240, 34614), (244, 34641), (250, 34671), (265, 34773), (271, 34806), (279, 34839),

Gene: Liefie\_42 Start: 31905, Stop: 32990, Start Num: 73

Candidate Starts for Liefie\_42:

(Start: 73 @31905 has 68 MA's), (113, 32019), (Start: 118 @32043 has 1 MA's), (128, 32073), (167, 32292), (168, 32295), (171, 32322), (180, 32391), (188, 32454), (193, 32472), (196, 32484), (239, 32760), (244, 32790), (257, 32874), (265, 32922), (268, 32937),

Gene: LilSpotty\_63 Start: 38834, Stop: 39688, Start Num: 129

Candidate Starts for LilSpotty\_63:

(Start: 129 @38834 has 9 MA's), (162, 38996), (166, 39029), (170, 39065), (183, 39140), (187, 39158), (193, 39179), (210, 39278), (212, 39281), (221, 39344), (223, 39359), (238, 39476), (247, 39527), (248, 39533), (253, 39563), (265, 39647),

Gene: Lilas\_55 Start: 41222, Stop: 42097, Start Num: 103

Candidate Starts for Lilas\_55:

(Start: 73 @41141 has 68 MA's), (82, 41159), (86, 41168), (Start: 103 @41222 has 90 MA's), (166, 41417), (193, 41567), (215, 41690), (218, 41717), (230, 41825), (245, 41903),

Gene: LonelyBoi\_55 Start: 41380, Stop: 42243, Start Num: 103

Candidate Starts for LonelyBoi\_55:

(15, 41026), (18, 41047), (48, 41227), (57, 41251), (Start: 103 @41380 has 90 MA's), (162, 41530), (166, 41563), (193, 41713), (214, 41815), (215, 41836), (218, 41863), (230, 41971), (241, 42019), (245, 42049),

Gene: LordFarquaad\_53 Start: 35954, Stop: 36829, Start Num: 103

Candidate Starts for LordFarquaad\_53:

(Start: 73 @35873 has 68 MA's), (82, 35891), (86, 35900), (Start: 103 @35954 has 90 MA's), (166, 36149), (183, 36260), (184, 36266), (193, 36299), (196, 36311), (202, 36338), (215, 36422), (218, 36449), (230, 36557), (240, 36602), (245, 36635),

Gene: LordVader\_58 Start: 35894, Stop: 36799, Start Num: 134

Candidate Starts for LordVader\_58:

(Start: 134 @35894 has 63 MA's), (Start: 139 @35903 has 7 MA's), (143, 35921), (149, 35975), (168, 36092), (171, 36119), (174, 36134), (178, 36179), (183, 36230), (193, 36269), (196, 36281), (199, 36302), (212, 36365), (227, 36485), (233, 36521), (239, 36554), (240, 36557), (243, 36581), (244, 36584), (245, 36590), (263, 36707), (269, 36734), (281, 36779),

Gene: LouisV14\_44 Start: 34172, Stop: 35257, Start Num: 73

Candidate Starts for LouisV14\_44:

(Start: 73 @34172 has 68 MA's), (113, 34286), (Start: 118 @34310 has 1 MA's), (128, 34340), (167, 34559), (168, 34562), (171, 34589), (180, 34658), (188, 34721), (193, 34739), (196, 34751), (214, 34841), (244, 35057), (245, 35063), (257, 35141), (265, 35189), (268, 35204),

Gene: MOOREtheMARYer\_44 Start: 33458, Stop: 34549, Start Num: 73

Candidate Starts for MOOREtheMARYer\_44:

(20, 33224), (Start: 73 @33458 has 68 MA's), (144, 33692), (163, 33806), (167, 33845), (168, 33848), (184, 33992), (188, 34007), (193, 34025), (226, 34229), (244, 34346), (265, 34478),

Gene: MZKinsey\_42 Start: 31907, Stop: 32992, Start Num: 73

Candidate Starts for MZKinsey\_42:

(Start: 73 @31907 has 68 MA's), (113, 32021), (Start: 118 @32045 has 1 MA's), (128, 32075), (167, 32294), (168, 32297), (171, 32324), (180, 32393), (188, 32456), (193, 32474), (196, 32486), (214, 32576), (244, 32792), (245, 32798), (257, 32876), (265, 32924), (268, 32939),

Gene: Madavieve\_54 Start: 39306, Stop: 40169, Start Num: 103

Candidate Starts for Madavieve\_54:

(15, 38952), (18, 38973), (48, 39153), (57, 39177), (Start: 103 @39306 has 90 MA's), (162, 39456), (166, 39489), (193, 39639), (215, 39762), (218, 39789), (230, 39897), (241, 39945), (245, 39975),

Gene: Madeline\_57 Start: 40750, Stop: 41613, Start Num: 103

Candidate Starts for Madeline\_57:

(Start: 103 @40750 has 90 MA's), (143, 40774), (148, 40822), (166, 40933), (183, 41044), (184, 41050), (193, 41083), (206, 41146), (215, 41206), (218, 41233), (230, 41341), (245, 41419),

Gene: Majeke\_46 Start: 31658, Stop: 32587, Start Num: 134

Candidate Starts for Majeke\_46:

(98, 31538), (Start: 134 @31658 has 63 MA's), (143, 31688), (149, 31742), (168, 31859), (171, 31886), (174, 31901), (180, 31955), (193, 32036), (212, 32138), (227, 32252), (240, 32324), (243, 32348), (244, 32351), (257, 32435), (263, 32474), (282, 32576),

Gene: MakCheese\_63 Start: 41738, Stop: 42571, Start Num: 103

Candidate Starts for MakCheese\_63:

(Start: 103 @41738 has 90 MA's), (162, 41879), (165, 41909), (172, 41951), (212, 42158), (215, 42185), (219, 42200),

Gene: Malibo\_59 Start: 40468, Stop: 41298, Start Num: 103

Candidate Starts for Malibo\_59:

(18, 40132), (28, 40207), (32, 40222), (33, 40237), (34, 40243), (38, 40261), (49, 40315), (58, 40339), (82, 40405), (84, 40411), (Start: 103 @40468 has 90 MA's), (204, 40846), (212, 40888), (215, 40915), (218, 40927),

Gene: Maliketh\_42 Start: 31907, Stop: 32992, Start Num: 73

Candidate Starts for Maliketh\_42:

(Start: 73 @31907 has 68 MA's), (113, 32021), (Start: 118 @32045 has 1 MA's), (128, 32075), (167, 32294), (168, 32297), (171, 32324), (180, 32393), (188, 32456), (193, 32474), (196, 32486), (214, 32576), (244, 32792), (245, 32798), (257, 32876), (265, 32924), (268, 32939),

Gene: Malithi\_46 Start: 31533, Stop: 32462, Start Num: 134

Candidate Starts for Malithi\_46:

(98, 31413), (Start: 134 @31533 has 63 MA's), (143, 31563), (149, 31617), (168, 31734), (171, 31761), (174, 31776), (180, 31830), (193, 31911), (212, 32013), (227, 32127), (240, 32199), (243, 32223), (244, 32226), (257, 32310), (263, 32349), (282, 32451),

Gene: Manasvini\_57 Start: 38864, Stop: 39739, Start Num: 103

Candidate Starts for Manasvini\_57:

(Start: 73 @38783 has 68 MA's), (82, 38801), (86, 38810), (Start: 103 @38864 has 90 MA's), (166, 39059), (193, 39209), (215, 39332), (218, 39359), (230, 39467), (245, 39545),

Gene: Mangethe\_46 Start: 31658, Stop: 32587, Start Num: 134

Candidate Starts for Mangethe\_46:

(98, 31538), (Start: 134 @31658 has 63 MA's), (143, 31688), (149, 31742), (168, 31859), (171, 31886), (174, 31901), (180, 31955), (193, 32036), (212, 32138), (227, 32252), (240, 32324), (243, 32348), (244, 32351), (257, 32435), (263, 32474), (282, 32576),

Gene: Mao1\_64 Start: 47563, Stop: 48474, Start Num: 131

Candidate Starts for Mao1\_64:

(Start: 131 @47563 has 1 MA's), (149, 47650), (150, 47665), (168, 47767), (171, 47794), (174, 47809), (178, 47854), (183, 47905), (193, 47944), (196, 47956), (212, 48040), (214, 48046), (224, 48127), (227, 48160), (228, 48178), (231, 48190), (233, 48196), (239, 48229), (240, 48232), (243, 48256), (244, 48259), (245, 48265), (263, 48382), (269, 48409), (281, 48454),

Gene: Maridalia\_60 Start: 40096, Stop: 40959, Start Num: 103

Candidate Starts for Maridalia\_60:

(15, 39742), (18, 39763), (48, 39943), (57, 39967), (Start: 103 @40096 has 90 MA's), (162, 40246), (166, 40279), (193, 40429), (215, 40552), (218, 40579), (230, 40687), (241, 40735), (245, 40765),

Gene: Marmie\_42 Start: 31907, Stop: 32992, Start Num: 73

Candidate Starts for Marmie\_42:

(Start: 73 @31907 has 68 MA's), (113, 32021), (Start: 118 @32045 has 1 MA's), (128, 32075), (167, 32294), (168, 32297), (171, 32324), (180, 32393), (188, 32456), (193, 32474), (196, 32486), (214, 32576), (244, 32792), (245, 32798), (257, 32876), (265, 32924), (268, 32939),

Gene: Marteena\_55 Start: 39499, Stop: 40374, Start Num: 103

Candidate Starts for Marteena\_55:

(33, 39268), (36, 39286), (42, 39304), (49, 39346), (55, 39364), (58, 39370), (Start: 73 @39418 has 68 MA's), (82, 39436), (86, 39445), (Start: 103 @39499 has 90 MA's), (148, 39583), (166, 39694), (183, 39805), (184, 39811), (193, 39844), (215, 39967), (218, 39994), (230, 40102), (245, 40180),

Gene: Matteo\_46 Start: 32611, Stop: 33450, Start Num: 103

Candidate Starts for Matteo\_46:

(78, 32548), (Start: 103 @32611 has 90 MA's), (165, 32782), (183, 32896), (187, 32914), (204, 32989), (208, 33022), (245, 33244),

Gene: Mbo4\_46 Start: 35910, Stop: 36782, Start Num: 131

Candidate Starts for Mbo4\_46:

(Start: 131 @35910 has 1 MA's), (138, 35925), (147, 35985), (151, 36015), (152, 36018), (183, 36231), (192, 36261), (193, 36270), (207, 36339), (216, 36402), (237, 36558), (257, 36684), (258, 36696),

Gene: Mcklovin\_53 Start: 42095, Stop: 42934, Start Num: 103

Candidate Starts for Mcklovin\_53:

(80, 42032), (84, 42041), (Start: 103 @42095 has 90 MA's), (145, 42143), (165, 42266), (183, 42380), (187, 42398), (245, 42728),

Gene: Megiddo\_45 Start: 31877, Stop: 32803, Start Num: 134

Candidate Starts for Megiddo\_45:

(Start: 134 @31877 has 63 MA's), (143, 31904), (149, 31958), (168, 32075), (171, 32102), (174, 32117), (193, 32252), (196, 32264), (206, 32321), (214, 32360), (227, 32468), (231, 32498), (240, 32540), (243, 32564), (244, 32567), (257, 32651), (263, 32690), (282, 32792),

Gene: Mendokysej\_42 Start: 32149, Stop: 32979, Start Num: 139

Candidate Starts for Mendokysej\_42:

(17, 31687), (29, 31774), (56, 31894), (101, 32023), (108, 32044), (Start: 139 @32149 has 7 MA's), (168, 32338), (171, 32365), (191, 32476), (214, 32578), (255, 32869),

Gene: Mercurio\_45 Start: 34295, Stop: 35383, Start Num: 73

Candidate Starts for Mercurio\_45:

(44, 34193), (45, 34202), (Start: 73 @34295 has 68 MA's), (Start: 118 @34433 has 1 MA's), (132, 34481), (136, 34487), (145, 34538), (167, 34679), (168, 34682), (174, 34724), (188, 34841), (193, 34859), (196, 34871), (239, 35150), (244, 35180), (254, 35237), (265, 35312), (279, 35378),

Gene: MichaelScott\_54 Start: 37559, Stop: 38398, Start Num: 103

Candidate Starts for MichaelScott\_54:

(77, 37496), (Start: 103 @37559 has 90 MA's), (145, 37607), (165, 37730), (183, 37844), (187, 37862), (245, 38192),

Gene: MichelleMyBell\_47 Start: 31300, Stop: 32202, Start Num: 134

Candidate Starts for MichelleMyBell\_47:

(55, 31054), (59, 31066), (85, 31132), (98, 31177), (Start: 134 @31300 has 63 MA's), (Start: 139 @31306 has 7 MA's), (143, 31324), (149, 31378), (164, 31462), (168, 31495), (169, 31498), (174, 31537), (180, 31591), (193, 31672), (212, 31774), (227, 31888), (233, 31924), (239, 31957), (240, 31960), (243, 31984), (244, 31987), (245, 31993), (263, 32110), (269, 32137), (281, 32182),

Gene: MidnightRain\_71 Start: 37076, Stop: 37903, Start Num: 133

Candidate Starts for MidnightRain\_71:

(124, 37055), (Start: 133 @37076 has 9 MA's), (152, 37163), (170, 37280), (188, 37379), (193, 37397), (197, 37412), (246, 37709), (278, 37892),

Gene: Misha28\_64 Start: 40131, Stop: 40985, Start Num: 129

Candidate Starts for Misha28\_64:

(Start: 129 @40131 has 9 MA's), (162, 40293), (166, 40326), (168, 40338), (170, 40362), (183, 40437), (187, 40455), (193, 40476), (212, 40578), (218, 40629), (221, 40641), (223, 40656), (238, 40773), (247, 40824), (248, 40830), (253, 40860), (265, 40944),

Gene: Mocha12\_53 Start: 35051, Stop: 35914, Start Num: 103

Candidate Starts for Mocha12\_53:

(86, 34997), (Start: 103 @35051 has 90 MA's), (148, 35123), (166, 35234), (183, 35345), (193, 35384), (214, 35486), (215, 35507), (218, 35534), (230, 35642), (245, 35720),

Gene: Mowgli\_42 Start: 31907, Stop: 32992, Start Num: 73

Candidate Starts for Mowgli\_42:

(Start: 73 @31907 has 68 MA's), (113, 32021), (Start: 118 @32045 has 1 MA's), (128, 32075), (167, 32294), (168, 32297), (171, 32324), (180, 32393), (188, 32456), (193, 32474), (196, 32486), (214, 32576), (244, 32792), (245, 32798), (257, 32876), (265, 32924), (268, 32939),

Gene: Mutzi\_53 Start: 42017, Stop: 42850, Start Num: 142

Candidate Starts for Mutzi\_53:

(Start: 142 @42017 has 9 MA's), (149, 42086), (150, 42101), (157, 42143), (168, 42203), (193, 42341), (206, 42404), (207, 42410), (227, 42569), (244, 42668),

Gene: Nairb\_43 Start: 32597, Stop: 33427, Start Num: 139

Candidate Starts for Nairb\_43:

(Start: 139 @32597 has 7 MA's), (168, 32786), (171, 32813), (191, 32924), (206, 32987), (234, 33191), (237, 33206),

Gene: Nazo\_48 Start: 33708, Stop: 34655, Start Num: 134

Candidate Starts for Nazo\_48:

(98, 33588), (Start: 134 @33708 has 63 MA's), (143, 33735), (149, 33789), (164, 33873), (168, 33906), (174, 33948), (183, 34044), (193, 34083), (212, 34185), (227, 34299), (228, 34317), (229, 34323), (231, 34329), (240, 34371), (243, 34395), (244, 34398), (257, 34482), (262, 34518), (263, 34521),

Gene: Necropolis\_45 Start: 31689, Stop: 32618, Start Num: 134

Candidate Starts for Necropolis\_45:

(98, 31569), (Start: 134 @31689 has 63 MA's), (143, 31719), (149, 31773), (168, 31890), (171, 31917), (174, 31932), (180, 31986), (193, 32067), (212, 32169), (227, 32283), (240, 32355), (243, 32379), (244, 32382), (257, 32466), (263, 32505), (282, 32607),

Gene: Neobush\_56 Start: 38834, Stop: 39709, Start Num: 103

Candidate Starts for Neobush\_56:

(Start: 73 @38753 has 68 MA's), (82, 38771), (86, 38780), (Start: 103 @38834 has 90 MA's), (166, 39029), (193, 39179), (215, 39302), (218, 39329), (230, 39437), (245, 39515),

Gene: Neoh\_42 Start: 31899, Stop: 32984, Start Num: 73

Candidate Starts for Neoh\_42:

(Start: 73 @31899 has 68 MA's), (113, 32013), (Start: 118 @32037 has 1 MA's), (128, 32067), (167, 32286), (168, 32289), (171, 32316), (180, 32385), (188, 32448), (193, 32466), (196, 32478), (214, 32568), (244, 32784), (245, 32790), (257, 32868), (265, 32916), (268, 32931),

Gene: Nette\_45 Start: 32158, Stop: 32988, Start Num: 139

Candidate Starts for Nette\_45:

(17, 31696), (29, 31783), (56, 31903), (101, 32032), (108, 32053), (Start: 139 @32158 has 7 MA's), (168, 32347), (171, 32374), (191, 32485), (214, 32587), (255, 32878),

Gene: Nettuno\_49 Start: 33560, Stop: 34423, Start Num: 103

Candidate Starts for Nettuno\_49:

(86, 33506), (Start: 103 @33560 has 90 MA's), (148, 33632), (166, 33743), (183, 33854), (193, 33893), (214, 33995), (215, 34016), (218, 34043), (230, 34151), (245, 34229),

Gene: NewKitty\_71 Start: 36386, Stop: 37213, Start Num: 133

Candidate Starts for NewKitty\_71:

(Start: 133 @36386 has 9 MA's), (143, 36404), (170, 36590), (182, 36653), (191, 36695), (193, 36707), (197, 36722), (198, 36734), (207, 36776), (211, 36800), (220, 36842), (222, 36860), (235, 36962), (239, 36980), (252, 37058), (260, 37121), (266, 37148),

Gene: Nubi\_54 Start: 41034, Stop: 41882, Start Num: 100

Candidate Starts for Nubi\_54:

(90, 41007), (Start: 100 @41034 has 23 MA's),

Gene: Nyilah\_70 Start: 35008, Stop: 35847, Start Num: 133

Candidate Starts for Nyilah\_70:

(89, 34870), (110, 34918), (Start: 133 @35008 has 9 MA's), (172, 35218), (193, 35329), (197, 35344), (211, 35422), (220, 35464), (244, 35632), (245, 35638), (246, 35641),

Gene: OctaviousRex\_42 Start: 31907, Stop: 32992, Start Num: 73

Candidate Starts for OctaviousRex\_42:

(Start: 73 @31907 has 68 MA's), (113, 32021), (Start: 118 @32045 has 1 MA's), (128, 32075), (167, 32294), (168, 32297), (171, 32324), (180, 32393), (188, 32456), (193, 32474), (196, 32486), (214, 32576), (244, 32792), (245, 32798), (257, 32876), (265, 32924), (268, 32939),

Gene: Ohgeesy\_56 Start: 39515, Stop: 40390, Start Num: 103

Candidate Starts for Ohgeesy\_56:

(22, 39200), (33, 39284), (36, 39302), (42, 39320), (49, 39362), (55, 39380), (58, 39386), (Start: 73 @39434 has 68 MA's), (82, 39452), (86, 39461), (Start: 103 @39515 has 90 MA's), (166, 39710), (184, 39827), (193, 39860), (206, 39923), (215, 39983), (218, 40010), (230, 40118), (245, 40196),

Gene: Olga\_42 Start: 31907, Stop: 32992, Start Num: 73

Candidate Starts for Olga\_42:

(Start: 73 @31907 has 68 MA's), (113, 32021), (Start: 118 @32045 has 1 MA's), (128, 32075), (167, 32294), (168, 32297), (171, 32324), (180, 32393), (188, 32456), (193, 32474), (196, 32486), (214, 32576), (244, 32792), (245, 32798), (257, 32876), (265, 32924), (268, 32939),

Gene: OnionKnight\_39 Start: 28260, Stop: 29147, Start Num: 118

Candidate Starts for OnionKnight\_39:

(96, 28182), (Start: 118 @28260 has 1 MA's), (121, 28272), (144, 28338), (164, 28461), (168, 28494), (192, 28623), (193, 28632), (213, 28737), (243, 28965), (247, 28983), (263, 29091), (270, 29133),

Gene: Oregano\_57 Start: 37319, Stop: 38158, Start Num: 103

Candidate Starts for Oregano\_57:

(77, 37256), (Start: 103 @37319 has 90 MA's), (145, 37367), (165, 37490), (183, 37604), (187, 37622), (245, 37952),

Gene: Pace1224\_42 Start: 33012, Stop: 34091, Start Num: 68

Candidate Starts for Pace1224\_42:

(Start: 68 @33012 has 1 MA's), (120, 33159), (163, 33360), (167, 33399), (168, 33402), (171, 33429), (188, 33561), (193, 33579), (196, 33591), (214, 33681), (226, 33783), (239, 33870), (244, 33900), (249, 33927), (265, 34032),

Gene: PaintedDog\_52 Start: 34435, Stop: 35376, Start Num: 134

Candidate Starts for PaintedDog\_52:

(74, 34246), (75, 34249), (98, 34315), (Start: 134 @34435 has 63 MA's), (Start: 139 @34444 has 7 MA's), (143, 34462), (149, 34516), (168, 34648), (171, 34675), (174, 34690), (183, 34786), (193, 34825), (196, 34837), (206, 34894), (207, 34900), (212, 34927), (224, 35008), (227, 35041), (240, 35113), (243, 35137), (244, 35140), (257, 35224), (263, 35263), (282, 35365),

Gene: Paito\_43 Start: 32145, Stop: 33233, Start Num: 73

Candidate Starts for Paito\_43:

(27, 31989), (Start: 73 @32145 has 68 MA's), (113, 32259), (Start: 118 @32283 has 1 MA's), (146, 32406), (147, 32409), (148, 32415), (159, 32481), (167, 32532), (168, 32535), (171, 32562), (180, 32631), (188, 32694), (193, 32712), (196, 32724), (203, 32754), (214, 32814), (225, 32907), (230, 32964), (244, 33033), (255, 33102), (257, 33117), (265, 33165),

Gene: PantheRoc\_59 Start: 40114, Stop: 40977, Start Num: 103

Candidate Starts for PantheRoc\_59:

(48, 39958), (57, 39982), (83, 40054), (84, 40057), (86, 40060), (Start: 103 @40114 has 90 MA's), (166, 40297), (183, 40408), (184, 40414), (193, 40447), (206, 40510), (215, 40570), (218, 40597), (230, 40705), (245, 40783),

Gene: PeanutPie\_46 Start: 31612, Stop: 32538, Start Num: 134

Candidate Starts for PeanutPie\_46:

(Start: 134 @31612 has 63 MA's), (143, 31639), (149, 31693), (168, 31810), (171, 31837), (174, 31852), (193, 31987), (196, 31999), (206, 32056), (214, 32095), (227, 32203), (231, 32233), (240, 32275), (243, 32299), (244, 32302), (257, 32386), (263, 32425), (282, 32527),

Gene: Peeb\_42 Start: 31892, Stop: 32977, Start Num: 73

Candidate Starts for Peeb\_42:

(Start: 73 @31892 has 68 MA's), (113, 32006), (Start: 118 @32030 has 1 MA's), (128, 32060), (167, 32279), (168, 32282), (171, 32309), (180, 32378), (188, 32441), (193, 32459), (196, 32471), (214, 32561), (244, 32777), (245, 32783), (257, 32861), (265, 32909), (268, 32924),

Gene: Periodt\_42 Start: 31898, Stop: 32983, Start Num: 73

Candidate Starts for Periodt\_42:

(Start: 73 @31898 has 68 MA's), (113, 32012), (Start: 118 @32036 has 1 MA's), (128, 32066), (167, 32285), (168, 32288), (171, 32315), (180, 32384), (188, 32447), (193, 32465), (196, 32477), (239, 32753), (244, 32783), (257, 32867), (265, 32915), (268, 32930),

Gene: Persistence\_62 Start: 34633, Stop: 35460, Start Num: 133

Candidate Starts for Persistence\_62:

(62, 34423), (92, 34501), (95, 34507), (126, 34609), (Start: 133 @34633 has 9 MA's), (184, 34921), (188, 34936), (193, 34954), (197, 34969), (211, 35047), (246, 35266), (278, 35449),

Gene: Phalm\_45 Start: 31877, Stop: 32803, Start Num: 134

Candidate Starts for Phalm\_45:

(Start: 134 @31877 has 63 MA's), (143, 31904), (149, 31958), (168, 32075), (171, 32102), (174, 32117), (193, 32252), (196, 32264), (206, 32321), (214, 32360), (227, 32468), (231, 32498), (240, 32540), (243, 32564), (244, 32567), (257, 32651), (263, 32690), (282, 32792),

Gene: Phayonce\_46 Start: 33725, Stop: 34636, Start Num: 134

Candidate Starts for Phayonce\_46:

(Start: 134 @33725 has 63 MA's), (Start: 139 @33734 has 7 MA's), (143, 33752), (149, 33806), (168, 33923), (171, 33950), (174, 33965), (183, 34061), (193, 34100), (196, 34112), (205, 34160), (212, 34202), (214, 34208), (224, 34289), (227, 34322), (228, 34340), (231, 34352), (233, 34358), (239, 34391), (240, 34394), (243, 34418), (244, 34421), (245, 34427), (263, 34544), (269, 34571), (281, 34616),

Gene: Phegasus\_46 Start: 31625, Stop: 32554, Start Num: 134

Candidate Starts for Phegasus\_46:

(98, 31505), (Start: 134 @31625 has 63 MA's), (143, 31655), (149, 31709), (168, 31826), (171, 31853), (174, 31868), (180, 31922), (193, 32003), (212, 32105), (227, 32219), (240, 32291), (243, 32315), (244, 32318), (257, 32402), (263, 32441), (282, 32543),

Gene: Philonius\_47 Start: 30729, Stop: 31655, Start Num: 134

Candidate Starts for Philonius\_47:

(Start: 134 @30729 has 63 MA's), (143, 30756), (149, 30810), (168, 30927), (171, 30954), (174, 30969), (193, 31104), (196, 31116), (206, 31173), (214, 31212), (227, 31320), (231, 31350), (240, 31392), (243, 31416), (244, 31419), (257, 31503), (263, 31542), (282, 31644),

Gene: Phineas\_47 Start: 32470, Stop: 33396, Start Num: 134

Candidate Starts for Phineas\_47:

(Start: 134 @32470 has 63 MA's), (143, 32497), (149, 32551), (168, 32668), (171, 32695), (174, 32710), (180, 32764), (193, 32845), (196, 32857), (206, 32914), (214, 32953), (227, 33061), (240, 33133), (243, 33157), (244, 33160), (257, 33244), (263, 33283), (282, 33385),

Gene: Phish\_42 Start: 31907, Stop: 32992, Start Num: 73

Candidate Starts for Phish\_42:

(Start: 73 @31907 has 68 MA's), (113, 32021), (Start: 118 @32045 has 1 MA's), (128, 32075), (167, 32294), (168, 32297), (171, 32324), (180, 32393), (188, 32456), (193, 32474), (196, 32486), (214, 32576), (244, 32792), (245, 32798), (257, 32876), (265, 32924), (268, 32939),

Gene: Phloodle\_42 Start: 31907, Stop: 32992, Start Num: 73

Candidate Starts for Phloodle\_42:

(Start: 73 @31907 has 68 MA's), (113, 32021), (Start: 118 @32045 has 1 MA's), (128, 32075), (167, 32294), (168, 32297), (171, 32324), (180, 32393), (188, 32456), (193, 32474), (196, 32486), (239, 32762), (244, 32792), (257, 32876), (265, 32924), (268, 32939),

Gene: Phlop\_53 Start: 41109, Stop: 41957, Start Num: 100

Candidate Starts for Phlop\_53:

(Start: 100 @41109 has 23 MA's), (106, 41124), (277, 41937),

Gene: Phreak\_42 Start: 31907, Stop: 32992, Start Num: 73

Candidate Starts for Phreak\_42:

(Start: 73 @31907 has 68 MA's), (113, 32021), (Start: 118 @32045 has 1 MA's), (128, 32075), (167, 32294), (168, 32297), (171, 32324), (180, 32393), (188, 32456), (193, 32474), (196, 32486), (214, 32576), (244, 32792), (245, 32798), (257, 32876), (265, 32924), (268, 32939),

Gene: PhriskyACE\_54 Start: 37457, Stop: 38290, Start Num: 103

Candidate Starts for PhriskyACE\_54:

(82, 37394), (86, 37403), (Start: 103 @37457 has 90 MA's), (148, 37529), (162, 37598), (172, 37670), (212, 37877), (215, 37904), (219, 37919),

Gene: Pickett\_49 Start: 33137, Stop: 34012, Start Num: 103

Candidate Starts for Pickett\_49:

(Start: 73 @33056 has 68 MA's), (82, 33074), (86, 33083), (Start: 103 @33137 has 90 MA's), (166, 33332), (193, 33482), (215, 33605), (218, 33632), (230, 33740), (245, 33818),

Gene: PinkCoffee\_56 Start: 41212, Stop: 42060, Start Num: 100

Candidate Starts for PinkCoffee\_56:

(Start: 100 @41212 has 23 MA's), (106, 41227), (277, 42040),

Gene: PinkYoshi\_42 Start: 31898, Stop: 32983, Start Num: 73

Candidate Starts for PinkYoshi\_42:

(Start: 73 @31898 has 68 MA's), (113, 32012), (Start: 118 @32036 has 1 MA's), (128, 32066), (167, 32285), (168, 32288), (171, 32315), (180, 32384), (188, 32447), (193, 32465), (196, 32477), (214, 32567), (244, 32783), (245, 32789), (257, 32867), (265, 32915), (268, 32930),

Gene: Pinnie\_42 Start: 33163, Stop: 34254, Start Num: 73

Candidate Starts for Pinnie\_42:

(20, 32929), (Start: 73 @33163 has 68 MA's), (80, 33178), (120, 33310), (144, 33397), (163, 33511), (167, 33550), (168, 33553), (184, 33697), (188, 33712), (193, 33730), (196, 33742), (226, 33934),

(244, 34051), (265, 34183),

Gene: Piper2020\_67 Start: 41026, Stop: 41880, Start Num: 129

Candidate Starts for Piper2020\_67:

(Start: 129 @41026 has 9 MA's), (162, 41188), (166, 41221), (168, 41233), (170, 41257), (183, 41332), (187, 41350), (193, 41371), (212, 41473), (218, 41524), (221, 41536), (223, 41551), (238, 41668), (247, 41719), (248, 41725), (253, 41755), (265, 41839),

Gene: Plagueis\_42 Start: 31727, Stop: 32812, Start Num: 73

Candidate Starts for Plagueis\_42:

(Start: 73 @31727 has 68 MA's), (113, 31841), (Start: 118 @31865 has 1 MA's), (128, 31895), (167, 32114), (168, 32117), (171, 32144), (180, 32213), (188, 32276), (193, 32294), (196, 32306), (214, 32396), (244, 32612), (245, 32618), (257, 32696), (265, 32744), (268, 32759),

Gene: Polkaroo\_46 Start: 31651, Stop: 32550, Start Num: 143

Candidate Starts for Polkaroo\_46:

(Start: 134 @31624 has 63 MA's), (143, 31651), (149, 31705), (168, 31822), (171, 31849), (174, 31864), (193, 31999), (214, 32107), (227, 32215), (231, 32245), (240, 32287), (243, 32311), (244, 32314), (257, 32398), (263, 32437), (282, 32539),

Gene: Pollux\_59 Start: 41384, Stop: 42259, Start Num: 103

Candidate Starts for Pollux\_59:

(6, 40919), (10, 40985), (23, 41078), (42, 41189), (49, 41231), (55, 41249), (58, 41255), (82, 41321), (86, 41330), (Start: 103 @41384 has 90 MA's), (162, 41546), (166, 41579), (183, 41690), (193, 41729), (218, 41879), (230, 41987), (245, 42065),

Gene: Polly\_53 Start: 38283, Stop: 39158, Start Num: 103

Candidate Starts for Polly\_53:

(Start: 73 @38202 has 68 MA's), (82, 38220), (86, 38229), (Start: 103 @38283 has 90 MA's), (166, 38478), (193, 38628), (215, 38751), (218, 38778), (230, 38886), (245, 38964),

Gene: Portcullis\_55 Start: 40701, Stop: 41534, Start Num: 142

Candidate Starts for Portcullis\_55:

(Start: 142 @40701 has 9 MA's), (149, 40770), (150, 40785), (157, 40827), (168, 40887), (193, 41025), (206, 41088), (207, 41094), (227, 41253), (244, 41352),

Gene: Posh\_59 Start: 41292, Stop: 42122, Start Num: 103

Candidate Starts for Posh\_59:

(Start: 103 @41292 has 90 MA's), (204, 41670), (212, 41712), (214, 41718), (215, 41739), (219, 41754),

Gene: Powerball\_55 Start: 37583, Stop: 38416, Start Num: 103

Candidate Starts for Powerball\_55:

(82, 37520), (86, 37529), (Start: 103 @37583 has 90 MA's), (148, 37655), (162, 37724), (172, 37796), (212, 38003), (215, 38030), (219, 38045),

Gene: PullumCavea\_53 Start: 41109, Stop: 41957, Start Num: 100

Candidate Starts for PullumCavea\_53:

(Start: 100 @41109 has 23 MA's), (277, 41937),

Gene: Purky\_51 Start: 34107, Stop: 35051, Start Num: 134

Candidate Starts for Purky\_51:

(71, 33915), (98, 33987), (Start: 134 @34107 has 63 MA's), (140, 34113), (143, 34131), (152, 34206), (157, 34242), (168, 34302), (174, 34344), (180, 34398), (183, 34440), (193, 34479), (196, 34491), (227, 34695), (244, 34794), (257, 34878), (262, 34914),

Gene: Pygmy\_49 Start: 33934, Stop: 34860, Start Num: 134

Candidate Starts for Pygmy\_49:

(Start: 134 @33934 has 63 MA's), (143, 33961), (149, 34015), (168, 34132), (171, 34159), (174, 34174), (180, 34228), (193, 34309), (196, 34321), (206, 34378), (214, 34417), (227, 34525), (240, 34597), (243, 34621), (244, 34624), (257, 34708), (263, 34747), (282, 34849),

Gene: Pytheas\_59 Start: 42317, Stop: 43192, Start Num: 103

Candidate Starts for Pytheas\_59:

(Start: 103 @42317 has 90 MA's), (166, 42512), (193, 42662), (214, 42764), (215, 42785), (218, 42812), (230, 42920), (245, 42998),

Gene: QueenHazel\_43 Start: 31778, Stop: 32704, Start Num: 134

Candidate Starts for QueenHazel\_43:

(43, 31481), (46, 31505), (66, 31574), (98, 31658), (Start: 134 @31778 has 63 MA's), (Start: 139 @31787 has 7 MA's), (143, 31805), (149, 31859), (168, 31976), (171, 32003), (174, 32018), (180, 32072), (183, 32114), (193, 32153), (206, 32222), (207, 32228), (212, 32255), (224, 32336), (227, 32369), (240, 32441), (243, 32465), (244, 32468), (257, 32552), (263, 32591), (282, 32693),

Gene: Rabbs\_43 Start: 32095, Stop: 33180, Start Num: 73

Candidate Starts for Rabbs\_43:

(11, 31795), (Start: 73 @32095 has 68 MA's), (Start: 118 @32233 has 1 MA's), (146, 32356), (167, 32482), (171, 32512), (180, 32581), (188, 32644), (193, 32662), (196, 32674), (214, 32764), (230, 32911), (244, 32980), (257, 33064), (265, 33112),

Gene: RadFad\_73 Start: 37290, Stop: 38117, Start Num: 133

Candidate Starts for RadFad\_73:

(124, 37269), (Start: 133 @37290 has 9 MA's), (152, 37377), (170, 37494), (188, 37593), (193, 37611), (197, 37626), (246, 37923), (278, 38106),

Gene: Rattrick\_42 Start: 31898, Stop: 32983, Start Num: 73

Candidate Starts for Rattrick\_42:

(Start: 73 @31898 has 68 MA's), (113, 32012), (Start: 118 @32036 has 1 MA's), (128, 32066), (167, 32285), (168, 32288), (171, 32315), (180, 32384), (188, 32447), (193, 32465), (196, 32477), (239, 32753), (244, 32783), (257, 32867), (265, 32915), (268, 32930),

Gene: RavenCo17\_53 Start: 38730, Stop: 39557, Start Num: 105

Candidate Starts for RavenCo17\_53:

(Start: 105 @38730 has 2 MA's), (162, 38868), (185, 39021), (212, 39147), (214, 39153), (215, 39174), (219, 39189), (221, 39198),

Gene: Remy19\_42 Start: 31907, Stop: 32992, Start Num: 73

Candidate Starts for Remy19\_42:

(Start: 73 @31907 has 68 MA's), (113, 32021), (Start: 118 @32045 has 1 MA's), (128, 32075), (167, 32294), (168, 32297), (171, 32324), (180, 32393), (188, 32456), (193, 32474), (196, 32486), (214, 32576), (244, 32792), (245, 32798), (257, 32876), (265, 32924), (268, 32939),

Gene: Renaissance\_42 Start: 31907, Stop: 32992, Start Num: 73

Candidate Starts for Renaissance\_42:

(Start: 73 @31907 has 68 MA's), (113, 32021), (Start: 118 @32045 has 1 MA's), (128, 32075), (167, 32294), (168, 32297), (171, 32324), (180, 32393), (188, 32456), (193, 32474), (196, 32486), (214, 32576), (244, 32792), (245, 32798), (257, 32876), (265, 32924), (268, 32939),

Gene: Richarlison\_42 Start: 31892, Stop: 32977, Start Num: 73

Candidate Starts for Richarlison\_42:

(Start: 73 @31892 has 68 MA's), (113, 32006), (Start: 118 @32030 has 1 MA's), (128, 32060), (167, 32279), (168, 32282), (171, 32309), (180, 32378), (188, 32441), (193, 32459), (196, 32471), (214, 32561), (244, 32777), (245, 32783), (257, 32861), (265, 32909), (268, 32924),

Gene: Rizz\_54 Start: 36868, Stop: 37707, Start Num: 103

Candidate Starts for Rizz\_54:

(77, 36805), (Start: 103 @36868 has 90 MA's), (145, 36916), (165, 37039), (183, 37153), (187, 37171), (245, 37501),

Gene: RogerDodger\_57 Start: 41231, Stop: 42079, Start Num: 100

Candidate Starts for RogerDodger\_57:

(90, 41204), (Start: 100 @41231 has 23 MA's), (277, 42059),

Gene: RonRayGun\_44 Start: 33043, Stop: 33873, Start Num: 139

Candidate Starts for RonRayGun\_44:

(Start: 139 @33043 has 7 MA's), (168, 33232), (171, 33259), (191, 33370), (206, 33433), (234, 33637), (237, 33652),

Gene: Rooter\_55 Start: 30069, Stop: 30872, Start Num: 133

Candidate Starts for Rooter\_55:

(41, 29769), (55, 29832), (76, 29892), (115, 30006), (Start: 133 @30069 has 9 MA's), (161, 30204), (173, 30282), (193, 30390), (197, 30405), (220, 30525), (244, 30693),

Gene: Ruriko\_42 Start: 31907, Stop: 32992, Start Num: 73

Candidate Starts for Ruriko\_42:

(Start: 73 @31907 has 68 MA's), (113, 32021), (Start: 118 @32045 has 1 MA's), (128, 32075), (167, 32294), (168, 32297), (171, 32324), (180, 32393), (188, 32456), (193, 32474), (196, 32486), (214, 32576), (244, 32792), (245, 32798), (257, 32876), (265, 32924), (268, 32939),

Gene: Ruthy\_54 Start: 39658, Stop: 40491, Start Num: 103

Candidate Starts for Ruthy\_54:

(82, 39595), (84, 39601), (Start: 103 @39658 has 90 MA's), (162, 39802), (204, 40039), (212, 40081), (214, 40087), (215, 40108), (218, 40120),

Gene: Sahara\_52 Start: 34798, Stop: 35661, Start Num: 103

Candidate Starts for Sahara\_52:

(86, 34744), (Start: 103 @34798 has 90 MA's), (148, 34870), (166, 34981), (183, 35092), (193, 35131), (214, 35233), (215, 35254), (218, 35281), (230, 35389), (245, 35467),

Gene: Salvador\_53 Start: 40927, Stop: 41775, Start Num: 100

Candidate Starts for Salvador\_53:

(90, 40900), (Start: 100 @40927 has 23 MA's), (106, 40942),

Gene: Samman98\_54 Start: 36185, Stop: 37024, Start Num: 103

Candidate Starts for Samman98\_54:

(77, 36122), (Start: 103 @36185 has 90 MA's), (145, 36233), (165, 36356), (183, 36470), (187, 36488), (245, 36818),

Gene: Satrap\_68 Start: 36073, Stop: 36912, Start Num: 133

Candidate Starts for Satrap\_68:

(Start: 133 @36073 has 9 MA's), (172, 36283), (184, 36361), (193, 36394), (197, 36409), (220, 36529), (244, 36697), (245, 36703), (262, 36814),

Gene: Savage\_53 Start: 35051, Stop: 35914, Start Num: 103

Candidate Starts for Savage\_53:

(86, 34997), (Start: 103 @35051 has 90 MA's), (148, 35123), (166, 35234), (183, 35345), (193, 35384), (214, 35486), (215, 35507), (218, 35534), (230, 35642), (245, 35720),

Gene: Savbucketdawg\_53 Start: 40688, Stop: 41521, Start Num: 142

Candidate Starts for Savbucketdawg\_53:

(Start: 142 @40688 has 9 MA's), (149, 40757), (150, 40772), (157, 40814), (168, 40874), (193, 41012), (206, 41075), (207, 41081), (227, 41240), (244, 41339),

Gene: Sbash\_57 Start: 40492, Stop: 41409, Start Num: 134

Candidate Starts for Sbash\_57:

(Start: 134 @40492 has 63 MA's), (143, 40519), (149, 40573), (171, 40717), (174, 40732), (180, 40786), (183, 40828), (193, 40867), (196, 40879), (212, 40969), (227, 41083), (232, 41116), (240, 41155), (243, 41179), (244, 41182), (257, 41266), (263, 41305), (267, 41329), (282, 41398),

Gene: Schiebel\_42 Start: 31892, Stop: 32977, Start Num: 73

Candidate Starts for Schiebel\_42:

(Start: 73 @31892 has 68 MA's), (113, 32006), (Start: 118 @32030 has 1 MA's), (128, 32060), (167, 32279), (168, 32282), (171, 32309), (180, 32378), (188, 32441), (193, 32459), (196, 32471), (214, 32561), (244, 32777), (245, 32783), (257, 32861), (265, 32909), (268, 32924),

Gene: Seahorse\_72 Start: 37934, Stop: 38800, Start Num: 123

Candidate Starts for Seahorse\_72:

(51, 37712), (Start: 123 @37934 has 1 MA's), (125, 37937), (Start: 133 @37961 has 9 MA's), (144, 37991), (172, 38171), (184, 38249), (193, 38282), (197, 38297), (220, 38417), (244, 38585), (245, 38591), (262, 38702),

Gene: Sejanus\_63 Start: 48683, Stop: 49585, Start Num: 134

Candidate Starts for Sejanus\_63:

(Start: 134 @48683 has 63 MA's), (149, 48761), (168, 48878), (171, 48905), (174, 48920), (178, 48965), (183, 49016), (193, 49055), (196, 49067), (212, 49151), (227, 49271), (233, 49307), (239, 49340), (240, 49343), (243, 49367), (244, 49370), (245, 49376), (263, 49493), (269, 49520), (281, 49565),

Gene: Sekhmet\_55 Start: 37219, Stop: 38082, Start Num: 103

Candidate Starts for Sekhmet\_55:

(82, 37156), (Start: 103 @37219 has 90 MA's), (183, 37513), (193, 37552), (197, 37567), (215, 37675), (218, 37702), (220, 37708), (226, 37762), (230, 37810), (240, 37855), (241, 37858), (245, 37888),

Gene: Sendy\_55 Start: 41235, Stop: 42083, Start Num: 100

Candidate Starts for Sendy\_55:

(90, 41208), (Start: 100 @41235 has 23 MA's),

Gene: ShaboiShabazz\_42 Start: 31907, Stop: 32992, Start Num: 73

Candidate Starts for ShaboiShabazz\_42:

(Start: 73 @31907 has 68 MA's), (113, 32021), (Start: 118 @32045 has 1 MA's), (128, 32075), (167, 32294), (168, 32297), (171, 32324), (180, 32393), (188, 32456), (193, 32474), (196, 32486), (214, 32576), (244, 32792), (245, 32798), (257, 32876), (265, 32924), (268, 32939),

Gene: Shinji\_53 Start: 40451, Stop: 41284, Start Num: 142

Candidate Starts for Shinji\_53:

(Start: 142 @40451 has 9 MA's), (149, 40520), (150, 40535), (157, 40577), (168, 40637), (193, 40775), (206, 40838), (207, 40844), (227, 41003), (244, 41102),

Gene: Shipwreck\_49 Start: 33909, Stop: 34835, Start Num: 134

Candidate Starts for Shipwreck\_49:

(Start: 134 @33909 has 63 MA's), (143, 33936), (149, 33990), (168, 34107), (171, 34134), (174, 34149), (180, 34203), (193, 34284), (196, 34296), (206, 34353), (214, 34392), (227, 34500), (240, 34572), (243, 34596), (244, 34599), (257, 34683), (263, 34722), (282, 34824),

Gene: Shlim410\_55 Start: 40640, Stop: 41503, Start Num: 103

Candidate Starts for Shlim410\_55:

(82, 40577), (Start: 103 @40640 has 90 MA's), (162, 40790), (166, 40823), (193, 40973), (198, 41000), (215, 41096), (218, 41123), (220, 41129), (245, 41309), (275, 41483),

Gene: Sidious\_56 Start: 39609, Stop: 40484, Start Num: 103

Candidate Starts for Sidious\_56:

(14, 39249), (33, 39378), (42, 39414), (49, 39456), (55, 39474), (58, 39480), (82, 39546), (86, 39555), (Start: 103 @39609 has 90 MA's), (162, 39771), (166, 39804), (183, 39915), (193, 39954), (215, 40077), (218, 40104), (230, 40212), (245, 40290), (255, 40353),

Gene: Silvy\_45 Start: 31200, Stop: 32129, Start Num: 134

Candidate Starts for Silvy\_45:

(80, 31029), (82, 31032), (93, 31065), (98, 31080), (Start: 134 @31200 has 63 MA's), (143, 31230), (149, 31284), (168, 31401), (171, 31428), (174, 31443), (180, 31497), (183, 31539), (193, 31578), (212, 31680), (227, 31794), (240, 31866), (243, 31890), (244, 31893), (257, 31977), (263, 32016), (282, 32118),

Gene: Sixsevenium\_57 Start: 41458, Stop: 42291, Start Num: 142

Candidate Starts for Sixsevenium\_57:

(Start: 116 @41377 has 1 MA's), (Start: 142 @41458 has 9 MA's), (149, 41527), (150, 41542), (157, 41584), (193, 41782), (206, 41845), (207, 41851), (227, 42010), (244, 42109),

Gene: Sizemore\_42 Start: 31893, Stop: 32978, Start Num: 73

Candidate Starts for Sizemore\_42:

(Start: 73 @31893 has 68 MA's), (113, 32007), (Start: 118 @32031 has 1 MA's), (128, 32061), (167, 32280), (168, 32283), (171, 32310), (180, 32379), (188, 32442), (193, 32460), (196, 32472), (214, 32562), (244, 32778), (245, 32784), (257, 32862), (265, 32910), (268, 32925),

Gene: SkinnyPete\_44 Start: 30665, Stop: 31612, Start Num: 134

Candidate Starts for SkinnyPete\_44:

(Start: 134 @30665 has 63 MA's), (Start: 139 @30674 has 7 MA's), (143, 30692), (149, 30746), (168, 30863), (175, 30914), (183, 31001), (193, 31040), (196, 31052), (212, 31142), (220, 31199), (222, 31217), (225, 31241), (229, 31295), (231, 31301), (239, 31340), (240, 31343), (244, 31370), (245, 31376), (263, 31493), (282, 31595),

Gene: SmokingBunny\_54 Start: 41020, Stop: 41868, Start Num: 100

Candidate Starts for SmokingBunny\_54:

(90, 40993), (Start: 100 @41020 has 23 MA's),

Gene: Sneeze\_43 Start: 32094, Stop: 33179, Start Num: 73

Candidate Starts for Sneeze\_43:

(11, 31794), (Start: 73 @32094 has 68 MA's), (Start: 118 @32232 has 1 MA's), (146, 32355), (167, 32481), (171, 32511), (180, 32580), (188, 32643), (193, 32661), (196, 32673), (214, 32763), (230, 32910), (244, 32979), (257, 33063), (265, 33111),

Gene: SoilAssassin\_51 Start: 35972, Stop: 36847, Start Num: 103

Candidate Starts for SoilAssassin\_51:

(Start: 73 @35891 has 68 MA's), (82, 35909), (86, 35918), (Start: 103 @35972 has 90 MA's), (166, 36167), (183, 36278), (184, 36284), (193, 36317), (196, 36329), (202, 36356), (215, 36440), (218, 36467), (230, 36575), (240, 36620), (245, 36653),

Gene: Sonah\_46 Start: 31603, Stop: 32532, Start Num: 134

Candidate Starts for Sonah\_46:

(98, 31483), (Start: 134 @31603 has 63 MA's), (143, 31633), (149, 31687), (168, 31804), (171, 31831), (174, 31846), (180, 31900), (193, 31981), (196, 31993), (206, 32050), (214, 32089), (227, 32197), (240, 32269), (243, 32293), (244, 32296), (257, 32380), (263, 32419), (282, 32521),

Gene: Sparky\_56 Start: 39597, Stop: 40523, Start Num: 117

Candidate Starts for Sparky\_56:

(80, 39477), (Start: 97 @39522 has 1 MA's), (101, 39537), (Start: 117 @39597 has 1 MA's), (119, 39603), (170, 39864), (171, 39867), (174, 39882), (180, 39936), (183, 39978), (193, 40017), (196, 40029),

Gene: Sporco\_71 Start: 36853, Stop: 37680, Start Num: 133

Candidate Starts for Sporco\_71:

(Start: 133 @36853 has 9 MA's), (170, 37057), (182, 37120), (191, 37162), (193, 37174), (197, 37189), (198, 37201), (207, 37243), (211, 37267), (220, 37309), (222, 37327), (239, 37447), (252, 37525), (260, 37588), (266, 37615),

Gene: Sprinklemunch\_63 Start: 42753, Stop: 43580, Start Num: 103

Candidate Starts for Sprinklemunch\_63:

(82, 42690), (Start: 103 @42753 has 90 MA's), (162, 42891), (183, 43035), (201, 43110), (207, 43143), (212, 43170), (214, 43176), (215, 43197), (218, 43209),

Gene: Sproutie\_53 Start: 35051, Stop: 35914, Start Num: 103

Candidate Starts for Sproutie\_53:

(86, 34997), (Start: 103 @35051 has 90 MA's), (148, 35123), (166, 35234), (183, 35345), (193, 35384), (214, 35486), (215, 35507), (218, 35534), (230, 35642), (245, 35720),

Gene: Stargaze\_43 Start: 33184, Stop: 34263, Start Num: 72

Candidate Starts for Stargaze\_43:

(25, 32989), (35, 33064), (Start: 72 @33184 has 2 MA's), (144, 33418), (163, 33532), (167, 33571), (177, 33652), (184, 33718), (188, 33733), (193, 33751), (196, 33763), (244, 34072), (245, 34078), (265, 34204),

Gene: StevieRay\_45 Start: 31579, Stop: 32505, Start Num: 134

Candidate Starts for StevieRay\_45:

(Start: 134 @31579 has 63 MA's), (143, 31606), (149, 31660), (168, 31777), (171, 31804), (174, 31819), (193, 31954), (196, 31966), (206, 32023), (214, 32062), (227, 32170), (231, 32200), (240, 32242), (243, 32266), (244, 32269), (257, 32353), (263, 32392), (282, 32494),

Gene: StressBall\_45 Start: 31877, Stop: 32803, Start Num: 134

Candidate Starts for StressBall\_45:

(Start: 134 @31877 has 63 MA's), (143, 31904), (149, 31958), (168, 32075), (171, 32102), (174, 32117), (193, 32252), (196, 32264), (206, 32321), (214, 32360), (227, 32468), (240, 32540), (243, 32564), (244, 32567), (257, 32651), (263, 32690), (282, 32792),

Gene: Suerte\_50 Start: 36159, Stop: 36998, Start Num: 103

Candidate Starts for Suerte\_50:

(80, 36096), (84, 36105), (Start: 103 @36159 has 90 MA's), (145, 36207), (165, 36330), (183, 36444), (187, 36462), (245, 36792),

Gene: Suscepit\_56 Start: 38841, Stop: 39716, Start Num: 103

Candidate Starts for Suscepit\_56:

(Start: 73 @38760 has 68 MA's), (82, 38778), (86, 38787), (Start: 103 @38841 has 90 MA's), (166, 39036), (193, 39186), (215, 39309), (218, 39336), (230, 39444), (245, 39522),

Gene: SushiChef\_56 Start: 40864, Stop: 41727, Start Num: 103

Candidate Starts for SushiChef\_56:

(15, 40510), (18, 40531), (48, 40711), (57, 40735), (Start: 103 @40864 has 90 MA's), (162, 41014), (166, 41047), (193, 41197), (215, 41320), (218, 41347), (230, 41455), (241, 41503), (245, 41533),

Gene: Sweets\_42 Start: 31902, Stop: 32987, Start Num: 73

Candidate Starts for Sweets\_42:

(Start: 73 @31902 has 68 MA's), (113, 32016), (Start: 118 @32040 has 1 MA's), (128, 32070), (167, 32289), (168, 32292), (171, 32319), (180, 32388), (188, 32451), (193, 32469), (196, 32481), (214, 32571), (244, 32787), (245, 32793), (257, 32871), (265, 32919), (268, 32934),

Gene: Taheera\_41 Start: 31598, Stop: 32683, Start Num: 73

Candidate Starts for Taheera\_41:

(11, 31322), (Start: 73 @31598 has 68 MA's), (Start: 118 @31736 has 1 MA's), (146, 31859), (167, 31985), (171, 32015), (180, 32084), (188, 32147), (193, 32165), (196, 32177), (214, 32267), (230, 32414), (244, 32483), (257, 32567), (265, 32615), (273, 32657),

Gene: Tayonia\_56 Start: 38840, Stop: 39715, Start Num: 103

Candidate Starts for Tayonia\_56:

(Start: 73 @38759 has 68 MA's), (82, 38777), (86, 38786), (Start: 103 @38840 has 90 MA's), (166, 39035), (193, 39185), (215, 39308), (218, 39335), (230, 39443), (245, 39521),

Gene: Techage\_45 Start: 31643, Stop: 32572, Start Num: 134

Candidate Starts for Techage\_45:

(98, 31523), (Start: 134 @31643 has 63 MA's), (143, 31673), (149, 31727), (168, 31844), (171, 31871), (174, 31886), (180, 31940), (193, 32021), (212, 32123), (227, 32237), (240, 32309), (243, 32333), (244, 32336), (257, 32420), (263, 32459), (282, 32561),

Gene: Terror\_41 Start: 31598, Stop: 32683, Start Num: 73

Candidate Starts for Terror\_41:

(11, 31322), (Start: 73 @31598 has 68 MA's), (Start: 118 @31736 has 1 MA's), (146, 31859), (167, 31985), (171, 32015), (180, 32084), (188, 32147), (193, 32165), (196, 32177), (214, 32267), (230, 32414), (244, 32483), (257, 32567), (265, 32615), (273, 32657),

Gene: ThankyouJordi\_59 Start: 41692, Stop: 42531, Start Num: 103

Candidate Starts for ThankyouJordi\_59:

(82, 41632), (84, 41638), (Start: 103 @41692 has 90 MA's), (165, 41863), (183, 41977), (187, 41995), (204, 42070), (245, 42325),

Gene: Thespis\_45 Start: 31613, Stop: 32539, Start Num: 134

Candidate Starts for Thespis\_45:

(Start: 134 @31613 has 63 MA's), (143, 31640), (149, 31694), (168, 31811), (171, 31838), (174, 31853), (193, 31988), (196, 32000), (206, 32057), (214, 32096), (227, 32204), (240, 32276), (243, 32300), (244, 32303), (257, 32387), (263, 32426), (282, 32528),

Gene: Thimann\_56 Start: 37603, Stop: 38442, Start Num: 103

Candidate Starts for Thimann\_56:

(80, 37540), (84, 37549), (Start: 103 @37603 has 90 MA's), (145, 37651), (165, 37774), (183, 37888), (187, 37906), (245, 38236),

Gene: TillyBobJoe\_56 Start: 42531, Stop: 43376, Start Num: 100

Candidate Starts for TillyBobJoe\_56:

(90, 42504), (Start: 100 @42531 has 23 MA's), (190, 42849), (201, 42900), (244, 43167), (250, 43197),

Gene: TinaBug\_42 Start: 31902, Stop: 32987, Start Num: 73

Candidate Starts for TinaBug\_42:

(Start: 73 @31902 has 68 MA's), (113, 32016), (Start: 118 @32040 has 1 MA's), (128, 32070), (167, 32289), (168, 32292), (171, 32319), (180, 32388), (188, 32451), (193, 32469), (196, 32481), (214, 32571), (244, 32787), (245, 32793), (257, 32871), (265, 32919), (268, 32934),

Gene: Togo\_53 Start: 41020, Stop: 41868, Start Num: 100

Candidate Starts for Togo\_53:

(90, 40993), (Start: 100 @41020 has 23 MA's),

Gene: TomBrady\_42 Start: 31908, Stop: 32993, Start Num: 73

Candidate Starts for TomBrady\_42:

(Start: 73 @31908 has 68 MA's), (113, 32022), (Start: 118 @32046 has 1 MA's), (128, 32076), (167, 32295), (168, 32298), (171, 32325), (180, 32394), (188, 32457), (193, 32475), (196, 32487), (214, 32577), (244, 32793), (245, 32799), (257, 32877), (265, 32925), (268, 32940),

Gene: TootsiePop\_64 Start: 40131, Stop: 40985, Start Num: 129

Candidate Starts for TootsiePop\_64:

(Start: 129 @40131 has 9 MA's), (162, 40293), (166, 40326), (168, 40338), (170, 40362), (183, 40437), (187, 40455), (193, 40476), (212, 40578), (218, 40629), (221, 40641), (223, 40656), (238, 40773), (247, 40824), (248, 40830), (253, 40860), (265, 40944),

Gene: Tortellini\_55 Start: 39104, Stop: 39952, Start Num: 129

Candidate Starts for Tortellini\_55:

(Start: 129 @39104 has 9 MA's), (162, 39260), (166, 39293), (168, 39305), (170, 39329), (171, 39332), (183, 39404), (187, 39422), (193, 39443), (212, 39545), (218, 39596), (221, 39608), (223, 39623), (238, 39740), (247, 39791), (248, 39797), (253, 39827), (265, 39911),

Gene: Trumpet\_56 Start: 38841, Stop: 39716, Start Num: 103

Candidate Starts for Trumpet\_56:

(Start: 73 @38760 has 68 MA's), (82, 38778), (86, 38787), (Start: 103 @38841 has 90 MA's), (166, 39036), (193, 39186), (215, 39309), (218, 39336), (230, 39444), (245, 39522),

Gene: TuertoX\_53 Start: 35051, Stop: 35914, Start Num: 103

Candidate Starts for TuertoX\_53:

(86, 34997), (Start: 103 @35051 has 90 MA's), (148, 35123), (166, 35234), (183, 35345), (193, 35384), (214, 35486), (215, 35507), (218, 35534), (230, 35642), (245, 35720),

Gene: Tuti\_57 Start: 38067, Stop: 38906, Start Num: 103

Candidate Starts for Tuti\_57:

(77, 38004), (Start: 103 @38067 has 90 MA's), (145, 38115), (165, 38238), (183, 38352), (187, 38370), (245, 38700),

Gene: Twinkle\_56 Start: 41699, Stop: 42562, Start Num: 103

Candidate Starts for Twinkle\_56:

(82, 41636), (Start: 103 @41699 has 90 MA's), (162, 41849), (166, 41882), (193, 42032), (198, 42059), (215, 42155), (218, 42182), (220, 42188), (245, 42368), (275, 42542),

Gene: Twister6\_56 Start: 40801, Stop: 41634, Start Num: 142

Candidate Starts for Twister6\_56:

(Start: 142 @40801 has 9 MA's), (149, 40870), (150, 40885), (157, 40927), (168, 40987), (193, 41125), (206, 41188), (207, 41194), (227, 41353), (244, 41452),

Gene: Valary\_56 Start: 41836, Stop: 42684, Start Num: 100

Candidate Starts for Valary\_56:

(90, 41809), (Start: 100 @41836 has 23 MA's), (277, 42664),

Gene: VanDeWege\_57 Start: 41128, Stop: 41976, Start Num: 100

Candidate Starts for VanDeWege\_57:

(90, 41101), (Start: 100 @41128 has 23 MA's), (277, 41956),

Gene: Venti\_46 Start: 31617, Stop: 32546, Start Num: 134

Candidate Starts for Venti\_46:

(98, 31497), (Start: 134 @31617 has 63 MA's), (143, 31647), (149, 31701), (168, 31818), (171, 31845), (174, 31860), (180, 31914), (193, 31995), (212, 32097), (227, 32211), (240, 32283), (243, 32307), (244, 32310), (257, 32394), (263, 32433), (282, 32535),

Gene: Vidya\_45 Start: 31650, Stop: 32579, Start Num: 134

Candidate Starts for Vidya\_45:

(98, 31530), (Start: 134 @31650 has 63 MA's), (143, 31680), (149, 31734), (168, 31851), (171, 31878), (174, 31893), (180, 31947), (193, 32028), (212, 32130), (227, 32244), (240, 32316), (243, 32340), (244, 32343), (257, 32427), (263, 32466), (282, 32568),

Gene: Vopal\_70 Start: 38758, Stop: 39585, Start Num: 133

Candidate Starts for Vopal\_70:

(124, 38737), (Start: 133 @38758 has 9 MA's), (152, 38845), (170, 38962), (188, 39061), (193, 39079), (197, 39094), (246, 39391), (278, 39574),

Gene: WelcomeAyanna\_59 Start: 41839, Stop: 42678, Start Num: 103

Candidate Starts for WelcomeAyanna\_59:

(82, 41779), (84, 41785), (Start: 103 @41839 has 90 MA's), (165, 42010), (183, 42124), (187, 42142), (204, 42217), (245, 42472),

Gene: Wendigo\_42 Start: 31907, Stop: 32992, Start Num: 73

Candidate Starts for Wendigo\_42:

(Start: 73 @31907 has 68 MA's), (113, 32021), (Start: 118 @32045 has 1 MA's), (128, 32075), (167, 32294), (168, 32297), (171, 32324), (180, 32393), (188, 32456), (193, 32474), (196, 32486), (214, 32576), (244, 32792), (245, 32798), (257, 32876), (265, 32924), (268, 32939),

Gene: Whack\_53 Start: 36342, Stop: 37211, Start Num: 135

Candidate Starts for Whack\_53:

(53, 36096), (70, 36150), (77, 36165), (111, 36261), (Start: 135 @36342 has 1 MA's), (152, 36441), (164, 36504), (174, 36579), (176, 36600), (192, 36684), (193, 36693), (195, 36702), (199, 36726), (213, 36792), (220, 36849), (240, 36993), (256, 37095), (275, 37200), (276, 37203),

Gene: Whiteclaw\_53 Start: 35051, Stop: 35914, Start Num: 103

Candidate Starts for Whiteclaw\_53:

(86, 34997), (Start: 103 @35051 has 90 MA's), (148, 35123), (166, 35234), (183, 35345), (193, 35384), (214, 35486), (215, 35507), (218, 35534), (230, 35642), (245, 35720),

Gene: Whitty\_43 Start: 32598, Stop: 33428, Start Num: 139

Candidate Starts for Whitty\_43:

(Start: 139 @32598 has 7 MA's), (168, 32787), (171, 32814), (191, 32925), (206, 32988), (234, 33192), (237, 33207),

Gene: Willsammy\_44 Start: 31360, Stop: 32286, Start Num: 134

Candidate Starts for Willsammy\_44:

(Start: 134 @31360 has 63 MA's), (143, 31387), (149, 31441), (168, 31558), (171, 31585), (174, 31600), (193, 31735), (196, 31747), (206, 31804), (214, 31843), (227, 31951), (231, 31981), (240, 32023), (243, 32047), (244, 32050), (257, 32134), (263, 32173), (282, 32275),

Gene: WinkNick\_56 Start: 36743, Stop: 37606, Start Num: 103

Candidate Starts for WinkNick\_56:

(82, 36680), (Start: 103 @36743 has 90 MA's), (183, 37037), (193, 37076), (197, 37091), (215, 37199), (218, 37226), (220, 37232), (226, 37286), (230, 37334), (240, 37379), (241, 37382), (245, 37412),

Gene: Wizard\_53 Start: 41034, Stop: 41882, Start Num: 100

Candidate Starts for Wizard\_53:

(90, 41007), (Start: 100 @41034 has 23 MA's), (277, 41862),

Gene: Wrigley\_61 Start: 40875, Stop: 41705, Start Num: 103

Candidate Starts for Wrigley\_61:

(Start: 103 @40875 has 90 MA's), (204, 41253), (212, 41295), (214, 41301), (215, 41322), (219, 41337),

Gene: Xavia\_52 Start: 38393, Stop: 39310, Start Num: 134

Candidate Starts for Xavia\_52:

(Start: 134 @38393 has 63 MA's), (143, 38420), (149, 38474), (168, 38591), (183, 38729), (186, 38741), (193, 38768), (196, 38780), (205, 38828), (212, 38870), (220, 38927), (222, 38945), (225, 38969), (229, 39023), (231, 39029), (239, 39068), (240, 39071), (244, 39098), (245, 39104), (252, 39146), (263, 39221), (265, 39233), (274, 39260), (280, 39281),

Gene: Xeno\_47 Start: 30955, Stop: 31881, Start Num: 134

Candidate Starts for Xeno\_47:

(Start: 134 @30955 has 63 MA's), (143, 30982), (149, 31036), (168, 31153), (171, 31180), (174, 31195), (193, 31330), (196, 31342), (206, 31399), (214, 31438), (227, 31546), (240, 31618), (243, 31642), (244, 31645), (257, 31729), (263, 31768), (282, 31870),

Gene: Xula\_42 Start: 31380, Stop: 32306, Start Num: 134

Candidate Starts for Xula\_42:

(43, 31083), (46, 31107), (66, 31176), (98, 31260), (Start: 134 @31380 has 63 MA's), (Start: 139 @31389 has 7 MA's), (143, 31407), (149, 31461), (168, 31578), (171, 31605), (174, 31620), (180, 31674), (183, 31716), (193, 31755), (206, 31824), (207, 31830), (212, 31857), (224, 31938), (227, 31971), (240, 32043), (243, 32067), (244, 32070), (257, 32154), (263, 32193), (282, 32295),

Gene: YangYin\_43 Start: 33210, Stop: 34289, Start Num: 72

Candidate Starts for YangYin\_43:

(25, 33015), (35, 33090), (Start: 72 @33210 has 2 MA's), (144, 33444), (163, 33558), (167, 33597), (177, 33678), (184, 33744), (188, 33759), (193, 33777), (196, 33789), (244, 34098), (245, 34104), (265, 34230),

Gene: Yeet412\_51 Start: 35973, Stop: 36848, Start Num: 103

Candidate Starts for Yeet412\_51:

(Start: 73 @35892 has 68 MA's), (82, 35910), (86, 35919), (Start: 103 @35973 has 90 MA's), (166, 36168), (193, 36318), (215, 36441), (218, 36468), (230, 36576), (245, 36654),

Gene: Yeezy\_56 Start: 38295, Stop: 39125, Start Num: 103

Candidate Starts for Yeezy\_56:

(Start: 103 @38295 has 90 MA's), (162, 38436), (204, 38673), (212, 38715), (214, 38721), (215, 38742), (218, 38754), (221, 38766),

Gene: Yinzer\_53 Start: 35051, Stop: 35914, Start Num: 103

Candidate Starts for Yinzer\_53:

(86, 34997), (Start: 103 @35051 has 90 MA's), (148, 35123), (166, 35234), (183, 35345), (193, 35384), (214, 35486), (215, 35507), (218, 35534), (230, 35642), (245, 35720),

Gene: YungMoney\_56 Start: 44559, Stop: 45392, Start Num: 142

Candidate Starts for YungMoney\_56:

(Start: 142 @44559 has 9 MA's), (149, 44628), (150, 44643), (157, 44685), (168, 44745), (193, 44883), (206, 44946), (207, 44952), (227, 45111), (244, 45210),

Gene: Zameen\_56 Start: 38840, Stop: 39715, Start Num: 103

Candidate Starts for Zameen\_56:

(Start: 73 @38759 has 68 MA's), (82, 38777), (86, 38786), (Start: 103 @38840 has 90 MA's), (166, 39035), (193, 39185), (215, 39308), (218, 39335), (230, 39443), (245, 39521),

Gene: ZenTime222\_43 Start: 32597, Stop: 33427, Start Num: 139

Candidate Starts for ZenTime222\_43:

(Start: 139 @32597 has 7 MA's), (168, 32786), (171, 32813), (191, 32924), (206, 32987), (234, 33191), (237, 33206),

Gene: Zilizebeth\_46 Start: 31649, Stop: 32578, Start Num: 134

Candidate Starts for Zilizebeth\_46:

(98, 31529), (Start: 134 @31649 has 63 MA's), (143, 31679), (149, 31733), (168, 31850), (171, 31877), (174, 31892), (180, 31946), (193, 32027), (212, 32129), (227, 32243), (240, 32315), (243, 32339), (244, 32342), (257, 32426), (263, 32465), (282, 32567),

Gene: Zirinka\_53 Start: 39460, Stop: 40335, Start Num: 103

Candidate Starts for Zirinka\_53:

(Start: 73 @39379 has 68 MA's), (82, 39397), (86, 39406), (Start: 103 @39460 has 90 MA's), (166, 39655), (193, 39805), (215, 39928), (218, 39955), (230, 40063), (245, 40141),

Gene: ZoMa\_42 Start: 31907, Stop: 32992, Start Num: 73

Candidate Starts for ZoMa\_42:

(Start: 73 @31907 has 68 MA's), (113, 32021), (Start: 118 @32045 has 1 MA's), (128, 32075), (167, 32294), (168, 32297), (171, 32324), (180, 32393), (188, 32456), (193, 32474), (196, 32486), (214, 32576), (244, 32792), (245, 32798), (257, 32876), (265, 32924), (268, 32939),

Gene: Zodiariah\_55 Start: 41477, Stop: 42310, Start Num: 103

Candidate Starts for Zodiariah\_55:

(41, 41279), (58, 41348), (60, 41357), (82, 41414), (Start: 103 @41477 has 90 MA's), (162, 41618), (172, 41690), (212, 41897), (215, 41924), (219, 41939),

Gene: Zombie\_42 Start: 31907, Stop: 32992, Start Num: 73

Candidate Starts for Zombie\_42:

(Start: 73 @31907 has 68 MA's), (113, 32021), (Start: 118 @32045 has 1 MA's), (128, 32075), (167, 32294), (168, 32297), (171, 32324), (180, 32393), (188, 32456), (193, 32474), (196, 32486), (214, 32576), (244, 32792), (245, 32798), (257, 32876), (265, 32924), (268, 32939),

Gene: Zucker\_64 Start: 36175, Stop: 37002, Start Num: 133

Candidate Starts for Zucker\_64:

(125, 36151), (Start: 133 @36175 has 9 MA's), (170, 36379), (182, 36442), (191, 36484), (193, 36496), (197, 36511), (198, 36523), (207, 36565), (211, 36589), (220, 36631), (222, 36649), (235, 36751), (239, 36769), (252, 36847), (260, 36910), (266, 36937),