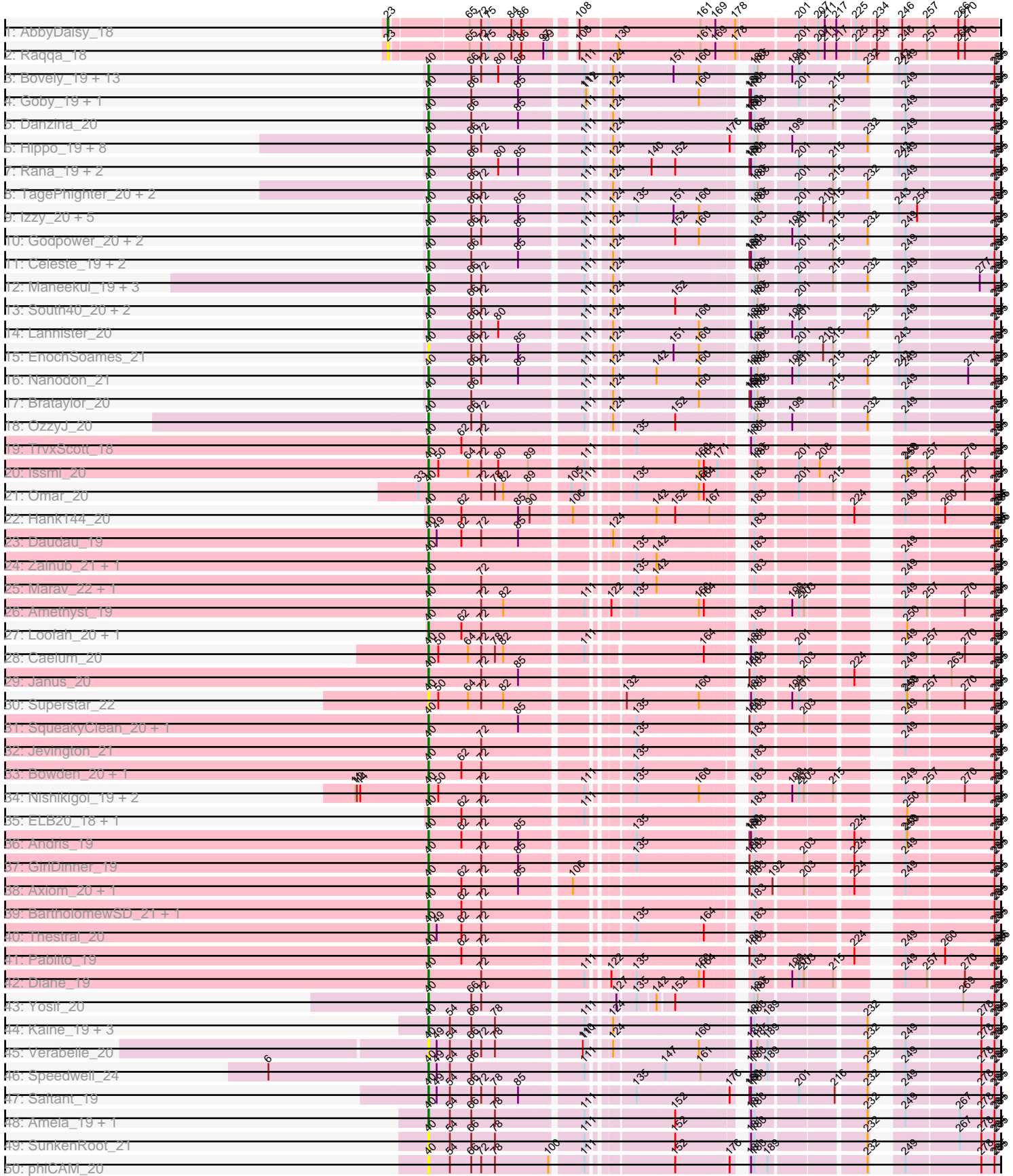
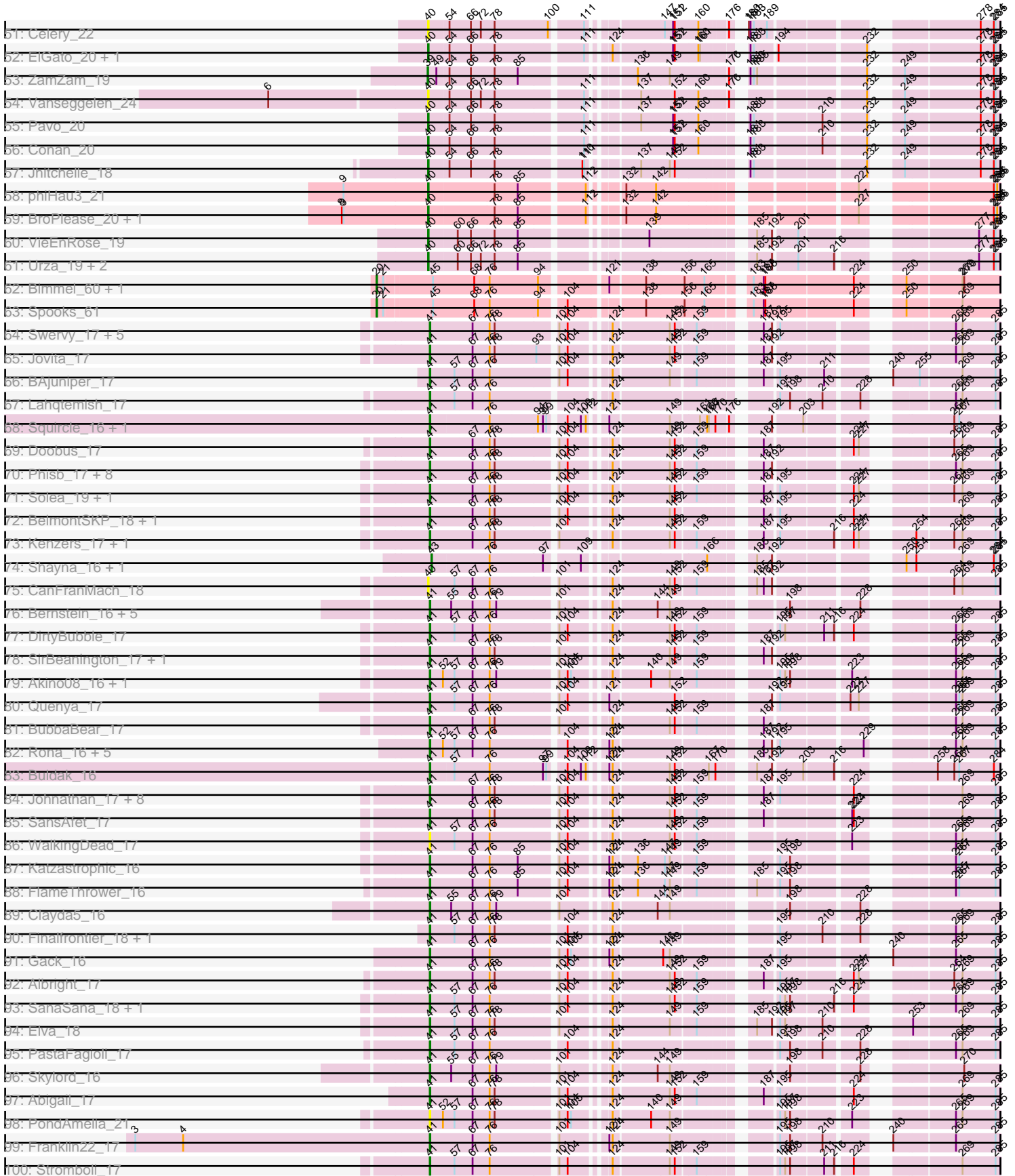


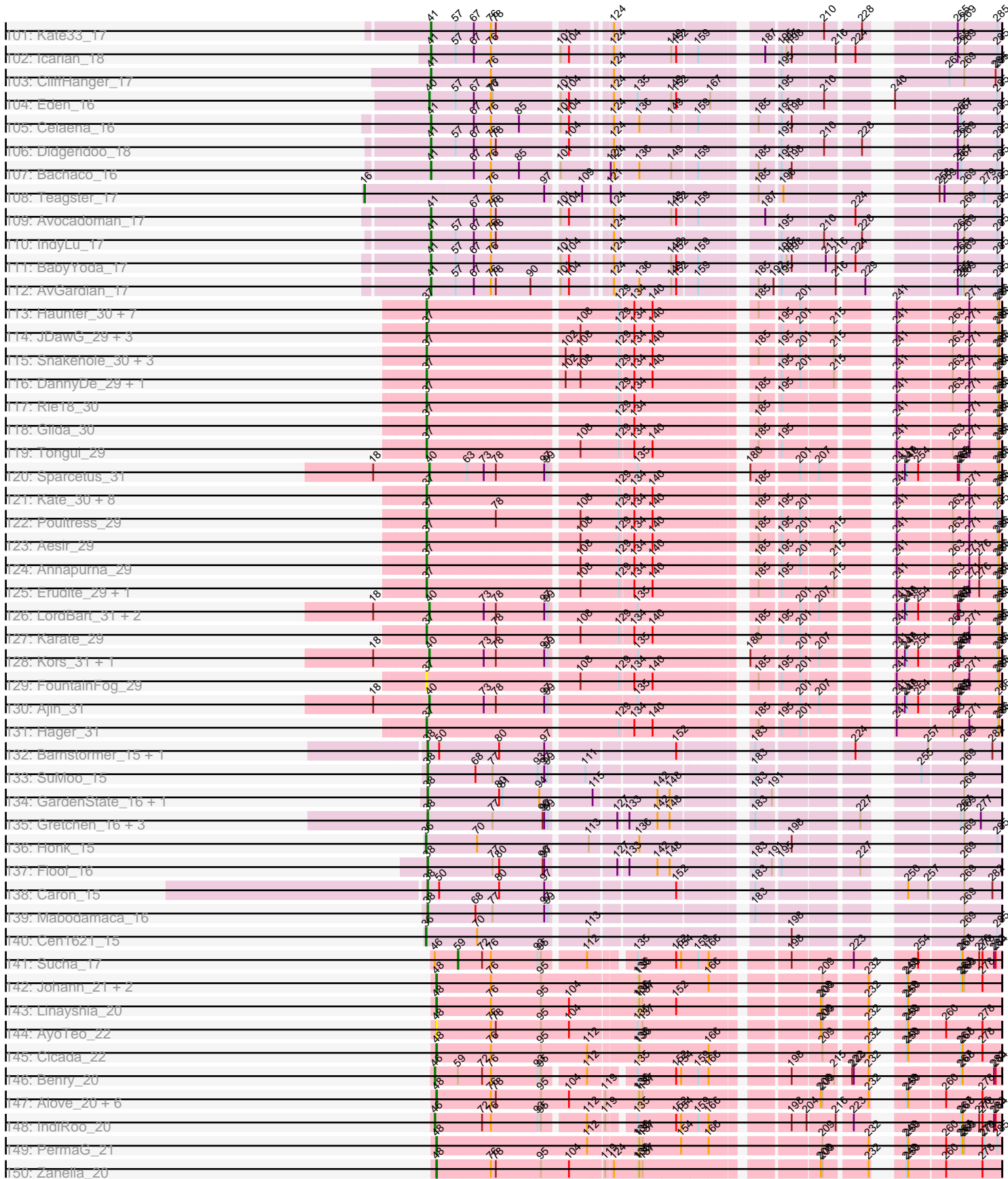
Pham 296156



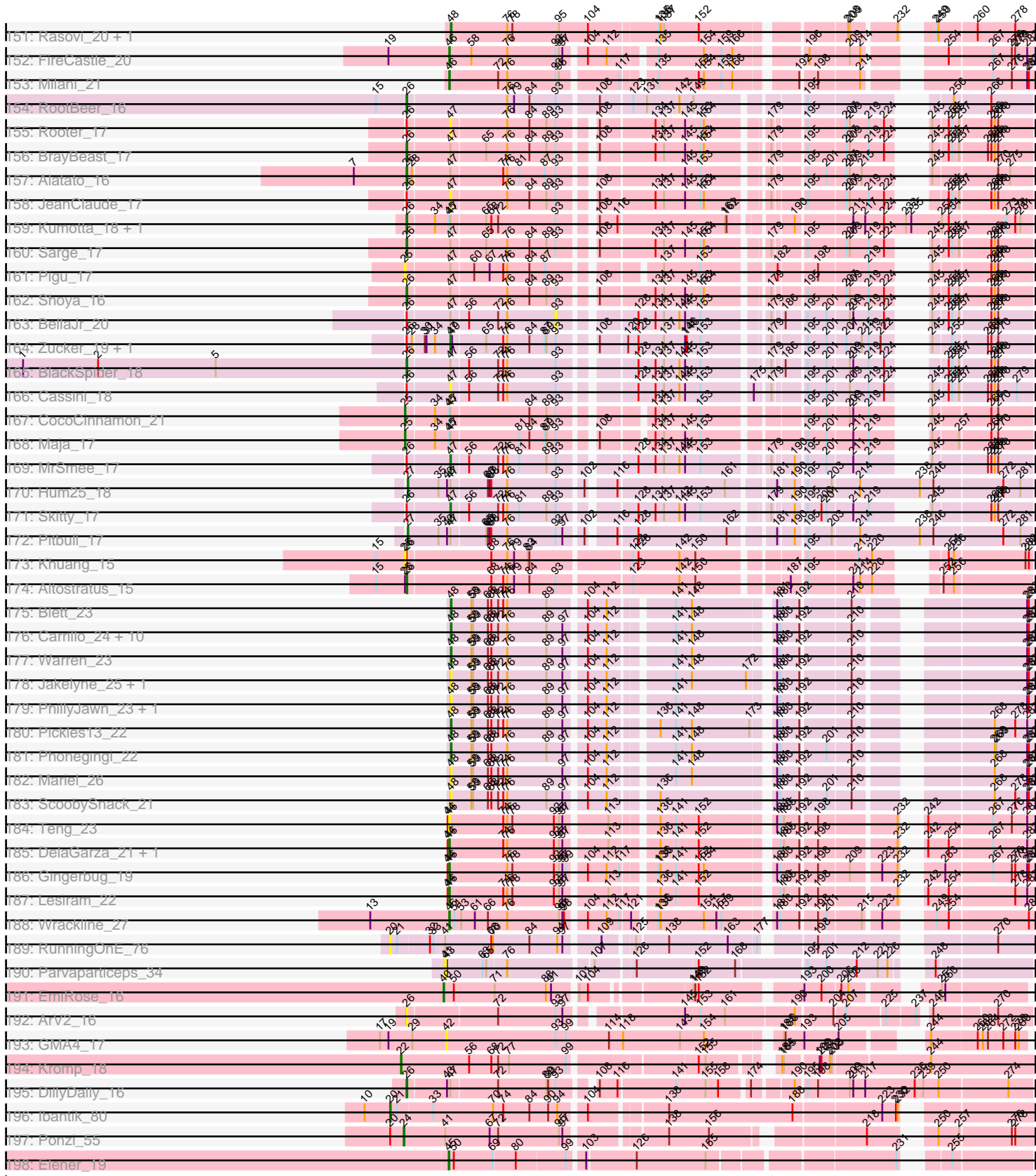
Pham 296156



Pham 296156



Pham 296156



Note: Tracks are now grouped by subcluster and scaled. Switching in subcluster is indicated by changes in track color. Track scale is now set by default to display the region 30 bp upstream of start 1 to 30 bp downstream of the last possible start. If this default region is judged to be packed too tightly with annotated starts, the track will be further scaled to only show that region of the ORF with annotated starts. This action will be indicated by adding "Zoomed" to the title. For starts, yellow indicates the location of called starts comprised solely of Glimmer/GeneMark auto-annotations, green indicates the location of called starts with at least 1 manual gene annotation.

Pham 296156 Report

This analysis was run 04/25/26 on database version 644.

WARNING: Pham size does not match number of genes in report. Either unphamerated genes have been added (by you) or starterator has removed genes due to invalid start codon.

Pham number 296156 has 352 members, 48 are drafts.

Phages represented in each track:

- Track 1 : AbbyDaisy_18
- Track 2 : Raqqa_18
- Track 3 : Bovely_19, BeardedLady_20, Nerdos_19, Ozzie_19, Aaronocolus_19, Unstoppable_19, Hydra_21, SunsetPointe_19, Esperer_19, Indigo_19, Phettuccine_19, Leviticus_19, Caliburn_19, Legacy_19
- Track 4 : Goby_19, Toma_19
- Track 5 : Danzina_20
- Track 6 : Hippo_19, Triste_19, SarahRose_19, Dwayne_19, Whatever_19, Asten_19, Emaanora_21, Werner_19, BarryBee_21
- Track 7 : Rana_19, Nabi_19, Lorelei_19
- Track 8 : TagePhighter_20, Snorlax_19, Chucky_19
- Track 9 : Izzy_20, Eddasa_20, Rusticus_20, BryanRecycles_20, Oliynyk_20, Jash_20
- Track 10 : Godpower_20, Sujidade_20, Lika_19
- Track 11 : Celeste_19, Zemlya_20, Dattran_20
- Track 12 : Maneekul_19, TuanPN_19, Ejemplo_19, Yasdnii_19
- Track 13 : South40_20, RedBear_21, Katalie_20
- Track 14 : Lannister_20
- Track 15 : EnochSoames_21
- Track 16 : Nanodon_21
- Track 17 : Brataylor_20
- Track 18 : OzzyJ_20
- Track 19 : TrvxScott_18
- Track 20 : Issmi_20
- Track 21 : Omar_20
- Track 22 : Hank144_20
- Track 23 : Daudau_19
- Track 24 : Zainub_21, Paolo_21
- Track 25 : Marav_22, Puginator_21
- Track 26 : Amethyst_19
- Track 27 : Loofah_20, Paedore_19
- Track 28 : Caelum_20
- Track 29 : Janus_20

- Track 30 : Superstar_22
- Track 31 : SqueakyClean_20, Animus_20
- Track 32 : Jevington_21
- Track 33 : Bowden_20, TinaBelcher_19
- Track 34 : Nishikigoi_19, Haizum_19, Tefunt_19
- Track 35 : ELB20_18, R4_19
- Track 36 : Andris_19
- Track 37 : GirlDinner_19
- Track 38 : Axiom_20, Triumph_21
- Track 39 : BartholomewSD_21, Alvy_21
- Track 40 : Thestral_20
- Track 41 : Pablito_19
- Track 42 : Diane_19
- Track 43 : Yosif_20
- Track 44 : Kaine_19, Dexers_18, Sudan_19, Alsaber_20
- Track 45 : Verabelle_20
- Track 46 : Speedwell_24
- Track 47 : Saftant_19
- Track 48 : Amela_19, Verse_19
- Track 49 : SunkenRoot_21
- Track 50 : phiCAM_20
- Track 51 : Celery_22
- Track 52 : ElGato_20, Provolone_20
- Track 53 : ZamZam_19
- Track 54 : Vanseggelen_24
- Track 55 : Pavo_20
- Track 56 : Conan_20
- Track 57 : Jhitchelle_18
- Track 58 : phiHau3_21
- Track 59 : BroPlease_20, GreenWeasel_21
- Track 60 : VieEnRose_19
- Track 61 : Urza_19, Itza_19, Celia_19
- Track 62 : Bimmel_60, Success_62
- Track 63 : Spooks_61
- Track 64 : Swervy_17, Slay_17, CupcakePrincess_17, Jabb_17, MsUbiquitous_17, SarBear_17
- Track 65 : Jovita_17
- Track 66 : BAjuniper_17
- Track 67 : Lahqtemish_17
- Track 68 : Squircle_16, Olliecat_16
- Track 69 : Doobus_17
- Track 70 : Phisb_17, TukTuk_17, Pecas_17, Lilo27_17, Eula_17, AylexOG_18, Softsoap_16, QMacho_18, Nicky22_18
- Track 71 : Solea_19, Milomuff_18
- Track 72 : BelmontSKP_18, AnnaLie_18
- Track 73 : Kenzers_17, Lynlen_17
- Track 74 : Shayna_16, SunnyD_16
- Track 75 : CanFranMach_18
- Track 76 : Bernstein_16, Armstrong_16, Coltrane_16, Rollins_16, Vitas_16, Brahms_16
- Track 77 : DirtyBubble_17
- Track 78 : SirBeanington_17, Albedo_17
- Track 79 : Akino08_16, Loviatar_17

- Track 80 : Quenya_17
- Track 81 : BubbaBear_17
- Track 82 : Rona_16, Kamdara_16, Sharkboy_16, Kieran_16, ChiliPepper_16, Dismas_16
- Track 83 : Buldak_16
- Track 84 : Johnathan_17, CroZenni_17, Bengal_17, Cashington_17, DickRichards_17, PhigPhack_18, LimaBean_17, Arroyo_18, Burritobowl_17
- Track 85 : SansAfet_17
- Track 86 : WalkingDead_17
- Track 87 : Katzastrophic_16
- Track 88 : FlameThrower_16
- Track 89 : Clayda5_16
- Track 90 : Finalfrontier_18, BabyDaisy_18
- Track 91 : Gack_16
- Track 92 : Albright_17
- Track 93 : SanaSana_18, Stoor_17
- Track 94 : Elva_18
- Track 95 : PastaFagioli_17
- Track 96 : Skylord_16
- Track 97 : Abigail_17
- Track 98 : PondAmelia_21
- Track 99 : Franklin22_17
- Track 100 : Stromboli_17
- Track 101 : Kate33_17
- Track 102 : Icarian_18
- Track 103 : CliffHanger_17
- Track 104 : Eden_16
- Track 105 : Celaena_16
- Track 106 : Didgeridoo_18
- Track 107 : Bachaco_16
- Track 108 : Teagster_17
- Track 109 : Avocadoman_17
- Track 110 : IndyLu_17
- Track 111 : BabyYoda_17
- Track 112 : AvGardian_17
- Track 113 : Haunter_30, Pharpay_30, CoolCookie_30, Rachella_30, AnnaSerena_30, Tedro_30, PhunaPhoke_30, Artiphact_30
- Track 114 : JDawG_29, Crestdrop_29, JingleBells_29, MortySmith_28
- Track 115 : Snakehole_30, FreddieHg_29, Hiddenleaf_29, Chivey_29
- Track 116 : DannyDe_29, SilentWarrior_29
- Track 117 : Rie18_30
- Track 118 : Gilda_30
- Track 119 : Tongui_29
- Track 120 : Sparcetus_31
- Track 121 : Kate_30, Krampus_30, Anakin_30, OhDear_30, OverHedge_30, Potty_30, NarutoRun_30, Cybele_30, Neptune_30
- Track 122 : Poultruss_29
- Track 123 : Aesir_29
- Track 124 : Annapurna_29
- Track 125 : Erudite_29, Dauntless_29
- Track 126 : LordBart_31, TinyMiny_31, RikSengupta_31
- Track 127 : Karate_29
- Track 128 : Kors_31, Bramble_31

- Track 129 : FountainFog_29
- Track 130 : Ajin_31
- Track 131 : Hager_31
- Track 132 : Barnstormer_15, UtzChips_15
- Track 133 : SuMoo_15
- Track 134 : GardenState_16, IAmGroot_16
- Track 135 : Gretchen_16, SuperHands_17, Percival_16, Forester_29
- Track 136 : Honk_15
- Track 137 : Floof_16
- Track 138 : Caron_15
- Track 139 : Mabodamaca_16
- Track 140 : Cen1621_15
- Track 141 : Sucha_17
- Track 142 : Johann_21, Goodman_21, Olympi_22
- Track 143 : Linayshia_20
- Track 144 : AyoTeo_22
- Track 145 : Cicada_22
- Track 146 : Benry_20
- Track 147 : Alove_20, TurboVicky_20, Labela_22, Typher_22, SBlackberry_20, Jera_21, Rootkit7_20
- Track 148 : IndiRoo_20
- Track 149 : PermaG_21
- Track 150 : Zanella_20
- Track 151 : Rasovi_20, Htur_20
- Track 152 : FireCastle_20
- Track 153 : Milani_21
- Track 154 : RootBeer_16
- Track 155 : Rooter_17
- Track 156 : BrayBeast_17
- Track 157 : Alatato_16
- Track 158 : JeanClaude_17
- Track 159 : Kumotta_18, MargaretKali_18
- Track 160 : Sarge_17
- Track 161 : Pigu_17
- Track 162 : Shoya_16
- Track 163 : BellaJr_20
- Track 164 : Zucker_19, Bauer_20
- Track 165 : BlackSpider_18
- Track 166 : Cassini_18
- Track 167 : CocoCinnamon_21
- Track 168 : Maja_17
- Track 169 : MrSmee_17
- Track 170 : Hum25_18
- Track 171 : Skitty_17
- Track 172 : Pitbull_17
- Track 173 : Khuang_15
- Track 174 : Altostratus_15
- Track 175 : Blett_23
- Track 176 : Carrillo_24, MenE_23, Dropshot_22, Losacky_24, NCRodriguez_24, Guzman_24, Bush_23, CookieDog_23, Antuna_23, Violeta_24, Appa_22
- Track 177 : Warren_23
- Track 178 : Jakelyne_25, Phingu_25
- Track 179 : PhillyJawn_23, Winchester007_38

- Track 180 : Pickles13_22
- Track 181 : Phonegingi_22
- Track 182 : Mariel_26
- Track 183 : ScoobySnack_21
- Track 184 : Teng_23
- Track 185 : DelaGarza_21, Sweetums_21
- Track 186 : Gingerbug_19
- Track 187 : Lesiram_22
- Track 188 : Wrackline_27
- Track 189 : RunningOnE_76
- Track 190 : Parvarticeps_34
- Track 191 : EmiRose_16
- Track 192 : ArV2_16
- Track 193 : GMA4_17
- Track 194 : Kromp_18
- Track 195 : DillyDally_16
- Track 196 : Ibantik_80
- Track 197 : Ponzi_55
- Track 198 : Elener_19

Summary of Final Annotations (See graph section above for start numbers):

The start number called the most often in the published annotations is 40, it was called in 118 of the 304 non-draft genes in the pham.

Genes that call this "Most Annotated" start:

• Aaronocolus_19, Ajin_31, Alsaber_20, Alvy_21, Amela_19, Amethyst_19, Andris_19, Animus_20, Asten_19, Axiom_20, BarryBee_21, BartholomewSD_21, BeardedLady_20, Bovely_19, Bowden_20, Bramble_31, Brataylor_20, BroPlease_20, BryanRecycles_20, Caelum_20, Caliburn_19, CanFranMach_18, Celery_22, Celeste_19, Celia_19, Chucky_19, Conan_20, Danzina_20, Dattran_20, Daudau_19, Dexers_18, Diane_19, Dwayne_19, ELB20_18, Eddasa_20, Eden_16, Ejemplo_19, ElGato_20, Emaanora_21, EmiRose_16, EnochSoames_21, Esperer_19, GirlDinner_19, Goby_19, Godpower_20, GreenWeasel_21, Haizum_19, Hank144_20, Hippo_19, Hydra_21, Indigo_19, Issmi_20, Itza_19, Izzy_20, Janus_20, Jash_20, Jevington_21, Jhitchelle_18, Kaine_19, Katalie_20, Kors_31, Lannister_20, Legacy_19, Leviticus_19, Lika_19, Loofah_20, LordBart_31, Lorelei_19, Maneekul_19, Marav_22, Nabi_19, Nanodon_21, Nerdos_19, Nishikigoi_19, Oliynyk_20, Omar_20, Ozzie_19, OzzyJ_20, Pablito_19, Paedore_19, Paolo_21, Pavo_20, Phettuccine_19, Provolone_20, Puginator_21, R4_19, Rana_19, RedBear_21, RikSengupta_31, Rusticus_20, Saftant_19, SarahRose_19, Snorlax_19, South40_20, Sparcetus_31, Speedwell_24, SqueakyClean_20, Sudan_19, Sujidade_20, SunkenRoot_21, SunsetPointe_19, Superstar_22, TaguePhighter_20, Tefunt_19, Thestral_20, TinaBelcher_19, TinyMiny_31, Toma_19, Triste_19, Triumph_21, TrvxScott_18, TuanPN_19, Unstoppable_19, Urza_19, Vanseggelen_24, Verabelle_20, Verse_19, VieEnRose_19, Werner_19, Whatever_19, Yasdnil_19, Yosif_20, Zainub_21, Zemlya_20, phiCAM_20, phiHau3_21,

Genes that have the "Most Annotated" start but do not call it:

•

Genes that do not have the "Most Annotated" start:

• AbbyDaisy_18, Abigail_17, Aesir_29, Akino08_16, Alatato_16, Albedo_17, Albright_17, Alove_20, Altostratus_15, Anakin_30, AnnaLie_18, AnnaSerena_30, Annapurna_29, Antuna_23, Appa_22, ArV2_16, Armstrong_16, Arroyo_18, Artiphact_30, AvGardian_17, Avocadoman_17, AylexOG_18, AyoTeo_22, BAjuniper_17, BabyDaisy_18, BabyYoda_17, Bachaco_16, Barnstormer_15, Bauer_20, BellaJr_20, BelmontSKP_18, Bengal_17, Benry_20, Bernstein_16, Bimmel_60, BlackSpider_18, Blett_23, Brahms_16, BrayBeast_17, BubbaBear_17, Buldak_16, Burritobowl_17, Bush_23, Caron_15, Carrillo_24, Cashington_17, Cassini_18, Celaena_16, Cen1621_15, ChiliPepper_16, Chivey_29, Cicada_22, Clayda5_16, CliffHanger_17, CocoCinnamon_21, Coltrane_16, CookieDog_23, CoolCookie_30, Crestdrop_29, CroZenni_17, CupcakePrincess_17, Cybele_30, DannyDe_29, Dauntless_29, DelaGarza_21, DickRichards_17, Didgeridoo_18, DillyDally_16, DirtyBubble_17, Dismas_16, Doobus_17, Dropshot_22, Elener_19, Elva_18, Erudite_29, Eula_17, Finalfrontier_18, FireCastle_20, FlameThrower_16, Floof_16, Forester_29, FountainFog_29, Franklin22_17, FreddieHg_29, GMA4_17, Gack_16, GardenState_16, Gilda_30, Gingerbug_19, Goodman_21, Gretchen_16, Guzman_24, Hager_31, Haunter_30, Hiddenleaf_29, Honk_15, Htur_20, Hum25_18, IAmGroot_16, Ibantik_80, Icarian_18, IndiRoo_20, IndyLu_17, JDawG_29, Jabb_17, Jakelyne_25, JeanClaude_17, Jera_21, JingleBells_29, Johann_21, Johnathan_17, Jovita_17, Kamdara_16, Karate_29, Kate33_17, Kate_30, Katzastrophic_16, Kenzers_17, Khuang_15, Kieran_16, Krampus_30, Kromp_18, Kumotta_18, Labella_22, Lahqtemish_17, Lesiram_22, Lilo27_17, LimaBean_17, Linayshia_20, Losacky_24, Loviatar_17, Lynlen_17, Mabodamaca_16, Maja_17, MargaretKali_18, Mariel_26, MenE_23, Milani_21, Milomuff_18, MortySmith_28, MrSmee_17, MsUbiquitous_17, NCRodriguez_24, NarutoRun_30, Neptune_30, Nicky22_18, OhDear_30, Olliecat_16, Olympi_22, OverHedge_30, Parvaparticeps_34, PastaFagioli_17, Pecas_17, Percival_16, PermaG_21, Pharpay_30, PhigPhack_18, PhillyJawn_23, Phingu_25, Phisb_17, Phonegingi_22, PhunaPhoke_30, Pickles13_22, Pigu_17, Pitbull_17, PondAmelia_21, Ponzi_55, Potty_30, Poultruss_29, QMacho_18, Quenya_17, Rachella_30, Raqqa_18, Rasovi_20, Rie18_30, Rollins_16, Rona_16, RootBeer_16, Rooter_17, Rootkit7_20, RunningOnE_76, SBlackberry_20, SanaSana_18, SansAfet_17, SarBear_17, Sarge_17, ScoobySnack_21, Sharkboy_16, Shayna_16, Shoya_16, SilentWarrior_29, SirBeanington_17, Skitty_17, Skylord_16, Slay_17, Snakehole_30, Softsoap_16, Solea_19, Spooks_61, Squircle_16, Stoor_17, Stromboli_17, SuMoo_15, Success_62, Sucha_17, SunnyD_16, SuperHands_17, Sweetums_21, Swervy_17, Teagster_17, Tedro_30, Teng_23, Tongui_29, TukTuk_17, TurboVicky_20, Typher_22, UtzChips_15, Violeta_24, Vitas_16, WalkingDead_17, Warren_23, Winchester007_38, Wrackline_27, ZamZam_19, Zanella_20, Zucker_19,

Summary by start number:

Start 16:

- Found in 1 of 352 (0.3%) of genes in pham
- Manual Annotations of this start: 1 of 304
- Called 100.0% of time when present
- Phage (with cluster) where this start called: Teagster_17 (EB),

Start 20:

- Found in 6 of 352 (1.7%) of genes in pham

- Manual Annotations of this start: 4 of 304
- Called 83.3% of time when present
- Phage (with cluster) where this start called: Bimmel_60 (BT), Ibantik_80 (singleton), RunningOnE_76 (UNK), Spooks_61 (BT), Success_62 (BT),

Start 22:

- Found in 1 of 352 (0.3%) of genes in pham
- Manual Annotations of this start: 1 of 304
- Called 100.0% of time when present
- Phage (with cluster) where this start called: Kromp_18 (singleton),

Start 23:

- Found in 2 of 352 (0.6%) of genes in pham
- Manual Annotations of this start: 1 of 304
- Called 100.0% of time when present
- Phage (with cluster) where this start called: AbbyDaisy_18 (AY), Raqqa_18 (AY),

Start 24:

- Found in 1 of 352 (0.3%) of genes in pham
- Manual Annotations of this start: 1 of 304
- Called 100.0% of time when present
- Phage (with cluster) where this start called: Ponzi_55 (singleton),

Start 25:

- Found in 5 of 352 (1.4%) of genes in pham
- Manual Annotations of this start: 2 of 304
- Called 80.0% of time when present
- Phage (with cluster) where this start called: CocoCinnamon_21 (FO), Khuang_15 (FS), Maja_17 (FO), Pigu_17 (FB),

Start 26:

- Found in 20 of 352 (5.7%) of genes in pham
- Manual Annotations of this start: 10 of 304
- Called 55.0% of time when present
- Phage (with cluster) where this start called: Alatato_16 (FB), Altostratus_15 (FS), ArV2_16 (singleton), BlackSpider_18 (FN), BrayBeast_17 (FB), DillyDally_16 (singleton), Kumotta_18 (FB), MargaretKali_18 (FB), RootBeer_16 (FA), Sarge_17 (FB), Shoya_16 (FB),

Start 27:

- Found in 2 of 352 (0.6%) of genes in pham
- Manual Annotations of this start: 2 of 304
- Called 100.0% of time when present
- Phage (with cluster) where this start called: Hum25_18 (FQ), Pitbull_17 (FQ),

Start 36:

- Found in 2 of 352 (0.6%) of genes in pham
- Manual Annotations of this start: 2 of 304
- Called 100.0% of time when present
- Phage (with cluster) where this start called: Cen1621_15 (EH), Honk_15 (EH),

Start 37:

- Found in 38 of 352 (10.8%) of genes in pham

- Manual Annotations of this start: 35 of 304
- Called 100.0% of time when present
- Phage (with cluster) where this start called: Aesir_29 (EF), Anakin_30 (EF), AnnaSerena_30 (EF), Annapurna_29 (EF), Artiphact_30 (EF), Chivey_29 (EF), CoolCookie_30 (EF), Crestdrop_29 (EF), Cybele_30 (EF), DannyDe_29 (EF), Dauntless_29 (EF), Erudite_29 (EF), FountainFog_29 (EF), FreddieHg_29 (EF), Gilda_30 (EF), Hager_31 (EF), Haunter_30 (EF), Hiddenleaf_29 (EF), JDawG_29 (EF), JingleBells_29 (EF), Karate_29 (EF), Kate_30 (EF), Krampus_30 (EF), MortySmith_28 (EF), NarutoRun_30 (EF), Neptune_30 (EF), OhDear_30 (EF), OverHedge_30 (EF), Pharpay_30 (EF), PhunaPhoke_30 (EF), Potty_30 (EF), Poultruss_29 (EF), Rachella_30 (EF), Rie18_30 (EF), SilentWarrior_29 (EF), Snakehole_30 (EF), Tedro_30 (EF), Tongui_29 (EF),

Start 38:

- Found in 12 of 352 (3.4%) of genes in pham
- Manual Annotations of this start: 10 of 304
- Called 100.0% of time when present
- Phage (with cluster) where this start called: Barnstormer_15 (EH), Caron_15 (EH), Floop_16 (EH), Forester_29 (EH), GardenState_16 (EH), Gretchen_16 (EH), IAmGroot_16 (EH), Mabodamaca_16 (EH), Percival_16 (EH), SuMoo_15 (EH), SuperHands_17 (EH), UtzChips_15 (EH),

Start 39:

- Found in 1 of 352 (0.3%) of genes in pham
- Manual Annotations of this start: 1 of 304
- Called 100.0% of time when present
- Phage (with cluster) where this start called: ZamZam_19 (BD3),

Start 40:

- Found in 126 of 352 (35.8%) of genes in pham
- Manual Annotations of this start: 118 of 304
- Called 100.0% of time when present
- Phage (with cluster) where this start called: Aaronocolus_19 (BD1), Ajin_31 (EF), Alsaber_20 (BD3), Alvy_21 (BD2), Amela_19 (BD3), Amethyst_19 (BD2), Andris_19 (BD2), Animus_20 (BD2), Asten_19 (BD1), Axiom_20 (BD2), BarryBee_21 (BD1), BartholomewSD_21 (BD2), BeardedLady_20 (BD1), Bovely_19 (BD1), Bowden_20 (BD2), Bramble_31 (EF), Brataylor_20 (BD1), BroPlease_20 (BD4), BryanRecycles_20 (BD1), Caelum_20 (BD2), Caliburn_19 (BD1), CanFranMach_18 (EB), Celery_22 (BD3), Celeste_19 (BD1), Celia_19 (BD6), Chucky_19 (BD1), Conan_20 (BD3), Danzina_20 (BD1), Dattran_20 (BD1), Daudau_19 (BD2), Dexters_18 (BD3), Diane_19 (BD2), Dwayne_19 (BD1), ELB20_18 (BD2), Eddasa_20 (BD1), Eden_16 (EB), Ejemplo_19 (BD1), ElGato_20 (BD3), Emaanora_21 (BD1), EmiRose_16 (singleton), EnochSoames_21 (BD1), Esperer_19 (BD1), GirlDinner_19 (BD2), Goby_19 (BD1), Godpower_20 (BD1), GreenWeasel_21 (BD4), Haizum_19 (BD2), Hank144_20 (BD2), Hippo_19 (BD1), Hydra_21 (BD1), Indigo_19 (BD1), Issmi_20 (BD2), Itza_19 (BD6), Izzy_20 (BD1), Janus_20 (BD2), Jash_20 (BD1), Jevington_21 (BD2), Jhitchelle_18 (BD3), Kaine_19 (BD3), Katalie_20 (BD1), Kors_31 (EF), Lannister_20 (BD1), Legacy_19 (BD1), Leviticus_19 (BD1), Lika_19 (BD1), Loofah_20 (BD2), LordBart_31 (EF), Lorelei_19 (BD1), Maneekul_19 (BD1), Marav_22 (BD2), Nabi_19 (BD1), Nanodon_21 (BD1), Nerdos_19 (BD1), Nishikigoi_19 (BD2), Oliynyk_20 (BD1), Omar_20 (BD2), Ozzie_19 (BD1), OzzyJ_20 (BD1), Pablito_19 (BD2), Paedore_19 (BD2), Paolo_21 (BD2), Pavo_20 (BD3), Phettuccine_19 (BD1), Provolone_20 (BD3), Puginator_21 (BD2), R4_19 (BD2),

Rana_19 (BD1), RedBear_21 (BD1), RikSengupta_31 (EF), Rusticus_20 (BD1), Saftant_19 (BD3), SarahRose_19 (BD1), Snorlax_19 (BD1), South40_20 (BD1), Sparcetus_31 (EF), Speedwell_24 (BD3), SqueakyClean_20 (BD2), Sudan_19 (BD3), Sujidade_20 (BD1), SunkenRoot_21 (BD3), SunsetPointe_19 (BD1), Superstar_22 (BD2), TagePhighter_20 (BD1), Tefunt_19 (BD2), Thestral_20 (BD2), TinaBelcher_19 (BD2), TinyMiny_31 (EF), Toma_19 (BD1), Triste_19 (BD1), Triumph_21 (BD2), TrvxScott_18 (BD2), TuanPN_19 (BD1), Unstoppable_19 (BD1), Urza_19 (BD6), Vanseggelen_24 (BD3), Verabelle_20 (BD3), Verse_19 (BD3), VieEnRose_19 (BD6), Werner_19 (BD1), Whatever_19 (BD1), Yasdnil_19 (BD1), Yosif_20 (BD3), Zainub_21 (BD2), Zemlya_20 (BD1), phiCAM_20 (BD3), phiHau3_21 (BD4),

Start 41:

- Found in 87 of 352 (24.7%) of genes in pham
- Manual Annotations of this start: 76 of 304
- Called 97.7% of time when present
- Phage (with cluster) where this start called: Abigail_17 (EB), Akino08_16 (EB), Albedo_17 (EB), Albright_17 (EB), AnnaLie_18 (EB), Armstrong_16 (EB), Arroyo_18 (EB), AvGardian_17 (EB), Avocadoman_17 (EB), AylexOG_18 (EB), BAjuniper_17 (EB), BabyDaisy_18 (EB), BabyYoda_17 (EB), Bachaco_16 (EB), BelmontSKP_18 (EB), Bengal_17 (EB), Bernstein_16 (EB), Brahms_16 (EB), BubbaBear_17 (EB), Buldak_16 (EB), Burritobowl_17 (EB), Cashington_17 (EB), Celaena_16 (EB), ChiliPepper_16 (EB), Clayda5_16 (EB), CliffHanger_17 (EB), Coltrane_16 (EB), CroZenni_17 (EB), CupcakePrincess_17 (EB), DickRichards_17 (EB), Didgeridoo_18 (EB), DirtyBubble_17 (EB), Dismas_16 (EB), Doobus_17 (EB), Elva_18 (EB), Eula_17 (EB), Finalfrontier_18 (EB), FlameThrower_16 (EB), Franklin22_17 (EB), Gack_16 (EB), Icarian_18 (EB), IndyLu_17 (EB), Jabb_17 (EB), Johnathan_17 (EB), Jovita_17 (EB), Kamdara_16 (EB), Kate33_17 (EB), Katzastrophic_16 (EB), Kenzers_17 (EB), Kieran_16 (EB), Lahqtemish_17 (EB), Lilo27_17 (EB), LimaBean_17 (EB), Loviatar_17 (EB), Lynlen_17 (EB), Milomuff_18 (EB), MsUbiquitous_17 (EB), Nicky22_18 (EB), Olliecat_16 (EB), Parvaparticeps_34 (UNK), PastaFagioli_17 (EB), Pecas_17 (EB), PhigPhack_18 (EB), Phisb_17 (EB), PondAmelia_21 (EB), QMacho_18 (EB), Quenya_17 (EB), Rollins_16 (EB), Rona_16 (EB), SanaSana_18 (EB), SansAfet_17 (EB), SarBear_17 (EB), Sharkboy_16 (EB), SirBeanington_17 (EB), Skylord_16 (EB), Slay_17 (EB), Softsoap_16 (EB), Solea_19 (EB), Squircle_16 (EB), Stoor_17 (EB), Stromboli_17 (EB), Swervy_17 (EB), TukTuk_17 (EB), Vitas_16 (EB), WalkingDead_17 (EB),

Start 42:

- Found in 1 of 352 (0.3%) of genes in pham
- No Manual Annotations of this start.
- Called 100.0% of time when present
- Phage (with cluster) where this start called: GMA4_17 (singleton),

Start 43:

- Found in 6 of 352 (1.7%) of genes in pham
- Manual Annotations of this start: 2 of 304
- Called 33.3% of time when present
- Phage (with cluster) where this start called: Shayna_16 (EB), SunnyD_16 (EB),

Start 45:

- Found in 8 of 352 (2.3%) of genes in pham
- Manual Annotations of this start: 1 of 304
- Called 12.5% of time when present

- Phage (with cluster) where this start called: Elener_19 (singleton),

Start 46:

- Found in 11 of 352 (3.1%) of genes in pham
- Manual Annotations of this start: 8 of 304
- Called 90.9% of time when present
- Phage (with cluster) where this start called: Berry_20 (EJ), DelaGarza_21 (GF), FireCastle_20 (EJ), Gingerbug_19 (GF), IndiRoo_20 (EJ), Lesiram_22 (GF), Milani_21 (EJ), Sweetums_21 (GF), Teng_23 (GF), Wrackline_27 (GF),

Start 47:

- Found in 21 of 352 (6.0%) of genes in pham
- Manual Annotations of this start: 4 of 304
- Called 33.3% of time when present
- Phage (with cluster) where this start called: Bauer_20 (FN), Cassini_18 (FN), JeanClaude_17 (FB), MrSmee_17 (FQ), Rooter_17 (FB), Skitty_17 (FQ), Zucker_19 (FN),

Start 48:

- Found in 38 of 352 (10.8%) of genes in pham
- Manual Annotations of this start: 24 of 304
- Called 100.0% of time when present
- Phage (with cluster) where this start called: Alove_20 (EJ), Antuna_23 (GA), Appa_22 (GA), AyoTeo_22 (EJ), Blett_23 (GA), Bush_23 (GA), Carrillo_24 (GA), Cicada_22 (EJ), CookieDog_23 (GA), Dropshot_22 (GA), Goodman_21 (EJ), Guzman_24 (GA), Htur_20 (EJ), Jakelyne_25 (GA), Jera_21 (EJ), Johann_21 (EJ), Labella_22 (EJ), Linayshia_20 (EJ), Losacky_24 (GA), Mariel_26 (GA), MenE_23 (GA), NCRodriguez_24 (GA), Olympi_22 (EJ), PermaG_21 (EJ), PhillyJawn_23 (GA), Phingu_25 (GA), Phonegingi_22 (GA), Pickles13_22 (GA), Rasovi_20 (EJ), Rootkit7_20 (EJ), SBlackberry_20 (EJ), ScoobySnack_21 (GA), TurboVicky_20 (EJ), Typher_22 (EJ), Violeta_24 (GA), Warren_23 (GA), Winchester007_38 (GA), Zanella_20 (EJ),

Start 59:

- Found in 23 of 352 (6.5%) of genes in pham
- Manual Annotations of this start: 1 of 304
- Called 4.3% of time when present
- Phage (with cluster) where this start called: Sucha_17 (EJ),

Start 93:

- Found in 31 of 352 (8.8%) of genes in pham
- No Manual Annotations of this start.
- Called 3.2% of time when present
- Phage (with cluster) where this start called: BellaJr_20 (FN),

Summary by clusters:

There are 21 clusters represented in this pham: FQ, singleton, FS, EH, EJ, EF, FA, EB, BT, GF, FB, BD6, BD1, BD3, BD2, AY, BD4, UNK, GA, FN, FO,

Info for manual annotations of cluster AY:

- Start number 23 was manually annotated 1 time for cluster AY.

Info for manual annotations of cluster BD1:

- Start number 40 was manually annotated 55 times for cluster BD1.

Info for manual annotations of cluster BD2:

- Start number 40 was manually annotated 33 times for cluster BD2.

Info for manual annotations of cluster BD3:

- Start number 39 was manually annotated 1 time for cluster BD3.
- Start number 40 was manually annotated 14 times for cluster BD3.

Info for manual annotations of cluster BD4:

- Start number 40 was manually annotated 3 times for cluster BD4.

Info for manual annotations of cluster BD6:

- Start number 40 was manually annotated 4 times for cluster BD6.

Info for manual annotations of cluster BT:

- Start number 20 was manually annotated 3 times for cluster BT.

Info for manual annotations of cluster EB:

- Start number 16 was manually annotated 1 time for cluster EB.
- Start number 40 was manually annotated 1 time for cluster EB.
- Start number 41 was manually annotated 76 times for cluster EB.
- Start number 43 was manually annotated 2 times for cluster EB.

Info for manual annotations of cluster EF:

- Start number 37 was manually annotated 35 times for cluster EF.
- Start number 40 was manually annotated 7 times for cluster EF.

Info for manual annotations of cluster EH:

- Start number 36 was manually annotated 2 times for cluster EH.
- Start number 38 was manually annotated 10 times for cluster EH.

Info for manual annotations of cluster EJ:

- Start number 46 was manually annotated 4 times for cluster EJ.
- Start number 48 was manually annotated 13 times for cluster EJ.
- Start number 59 was manually annotated 1 time for cluster EJ.

Info for manual annotations of cluster FA:

- Start number 26 was manually annotated 1 time for cluster FA.

Info for manual annotations of cluster FB:

- Start number 26 was manually annotated 6 times for cluster FB.

Info for manual annotations of cluster FN:

- Start number 26 was manually annotated 1 time for cluster FN.
- Start number 47 was manually annotated 2 times for cluster FN.

Info for manual annotations of cluster FO:

- Start number 25 was manually annotated 2 times for cluster FO.

Info for manual annotations of cluster FQ:

- Start number 27 was manually annotated 2 times for cluster FQ.

- Start number 47 was manually annotated 2 times for cluster FQ.

Info for manual annotations of cluster FS:

- Start number 26 was manually annotated 1 time for cluster FS.

Info for manual annotations of cluster GA:

- Start number 48 was manually annotated 11 times for cluster GA.

Info for manual annotations of cluster GF:

- Start number 46 was manually annotated 4 times for cluster GF.

Gene Information:

Gene: Aaronocolus_19 Start: 14993, Stop: 15850, Start Num: 40

Candidate Starts for Aaronocolus_19:

(Start: 40 @14993 has 118 MA's), (66, 15065), (72, 15083), (80, 15113), (85, 15146), (111, 15251), (124, 15278), (151, 15380), (160, 15425), (183, 15491), (185, 15497), (199, 15551), (201, 15563), (232, 15665), (243, 15677), (249, 15686), (284, 15839), (285, 15842),

Gene: AbbyDaisy_18 Start: 14442, Stop: 15422, Start Num: 23

Candidate Starts for AbbyDaisy_18:

(Start: 23 @14442 has 1 MA's), (65, 14571), (72, 14589), (75, 14601), (84, 14643), (86, 14661), (108, 14736), (161, 14943), (169, 14970), (178, 15006), (201, 15105), (207, 15135), (211, 15147), (217, 15168), (225, 15198), (234, 15231), (246, 15258), (257, 15300), (266, 15351), (270, 15363),

Gene: Abigail_17 Start: 13263, Stop: 14117, Start Num: 41

Candidate Starts for Abigail_17:

(Start: 41 @13263 has 76 MA's), (67, 13338), (76, 13368), (78, 13377), (101, 13476), (104, 13491), (124, 13548), (149, 13644), (152, 13653), (159, 13686), (187, 13770), (195, 13791), (224, 13908), (269, 14049), (285, 14109),

Gene: Aesir_29 Start: 17532, Stop: 18422, Start Num: 37

Candidate Starts for Aesir_29:

(Start: 37 @17532 has 35 MA's), (108, 17787), (129, 17856), (134, 17880), (140, 17913), (185, 18069), (195, 18102), (201, 18135), (215, 18192), (241, 18243), (263, 18333), (271, 18363), (285, 18414), (286, 18417),

Gene: Ajin_31 Start: 17618, Stop: 18502, Start Num: 40

Candidate Starts for Ajin_31:

(18, 17519), (Start: 40 @17618 has 118 MA's), (73, 17714), (78, 17735), (97, 17819), (99, 17825), (135, 17966), (201, 18215), (207, 18245), (241, 18323), (247, 18335), (249, 18338), (254, 18356), (265, 18422), (266, 18425), (267, 18428), (286, 18497),

Gene: Akino08_16 Start: 13047, Stop: 13904, Start Num: 41

Candidate Starts for Akino08_16:

(Start: 41 @13047 has 76 MA's), (52, 13071), (57, 13092), (67, 13122), (76, 13152), (79, 13164), (101, 13260), (104, 13275), (105, 13281), (124, 13332), (140, 13395), (149, 13428), (159, 13470), (195, 13575), (197, 13584), (198, 13593), (223, 13689), (265, 13824), (269, 13836), (285, 13896),

Gene: Alatato_16 Start: 12479, Stop: 13390, Start Num: 26

Candidate Starts for Alatato_16:

(7, 12392), (Start: 26 @12479 has 10 MA's), (28, 12488), (Start: 47 @12548 has 4 MA's), (74, 12635), (76, 12641), (81, 12662), (87, 12707), (93, 12725), (145, 12914), (153, 12941), (179, 13034), (195, 13079), (201, 13112), (207, 13142), (209, 13148), (215, 13169), (245, 13229), (270, 13331), (275, 13352),

Gene: Albedo_17 Start: 13131, Stop: 13985, Start Num: 41

Candidate Starts for Albedo_17:

(Start: 41 @13131 has 76 MA's), (67, 13206), (76, 13236), (78, 13245), (101, 13344), (124, 13416), (149, 13512), (152, 13521), (159, 13554), (187, 13638), (192, 13653), (265, 13905), (269, 13917), (285, 13977),

Gene: Albright_17 Start: 13042, Stop: 13896, Start Num: 41

Candidate Starts for Albright_17:

(Start: 41 @13042 has 76 MA's), (67, 13117), (76, 13147), (78, 13156), (101, 13255), (104, 13270), (124, 13327), (149, 13423), (152, 13432), (159, 13465), (187, 13549), (195, 13570), (224, 13687), (227, 13696), (264, 13813), (269, 13828), (285, 13888),

Gene: Alove_20 Start: 15338, Stop: 16231, Start Num: 48

Candidate Starts for Alove_20:

(Start: 48 @15338 has 24 MA's), (76, 15431), (78, 15440), (95, 15518), (104, 15569), (119, 15629), (135, 15683), (136, 15686), (137, 15692), (208, 15974), (209, 15977), (232, 16046), (249, 16067), (250, 16070), (260, 16130), (278, 16196),

Gene: Alsaber_20 Start: 15677, Stop: 16534, Start Num: 40

Candidate Starts for Alsaber_20:

(Start: 40 @15677 has 118 MA's), (54, 15713), (66, 15749), (78, 15791), (111, 15935), (124, 15962), (181, 16169), (183, 16175), (189, 16199), (232, 16349), (278, 16499), (284, 16523), (285, 16526),

Gene: Altostratus_15 Start: 12904, Stop: 13848, Start Num: 26

Candidate Starts for Altostratus_15:

(15, 12850), (Start: 25 @12901 has 2 MA's), (Start: 26 @12904 has 10 MA's), (68, 13045), (74, 13066), (76, 13072), (79, 13084), (84, 13111), (93, 13156), (123, 13273), (142, 13354), (150, 13381), (187, 13516), (195, 13537), (211, 13612), (214, 13624), (220, 13645), (252, 13702), (256, 13720),

Gene: Alvy_21 Start: 15007, Stop: 15861, Start Num: 40

Candidate Starts for Alvy_21:

(Start: 40 @15007 has 118 MA's), (62, 15061), (72, 15097), (183, 15502), (284, 15850), (285, 15853),

Gene: Amela_19 Start: 15969, Stop: 16826, Start Num: 40

Candidate Starts for Amela_19:

(Start: 40 @15969 has 118 MA's), (54, 16005), (66, 16041), (78, 16083), (111, 16227), (152, 16359), (181, 16461), (183, 16467), (232, 16641), (249, 16662), (267, 16752), (278, 16791), (284, 16815), (285, 16818),

Gene: Amethyst_19 Start: 15455, Stop: 16312, Start Num: 40

Candidate Starts for Amethyst_19:

(Start: 40 @15455 has 118 MA's), (72, 15545), (82, 15584), (111, 15713), (122, 15737), (135, 15776), (160, 15887), (164, 15896), (199, 16013), (201, 16025), (203, 16034), (249, 16148), (257, 16184), (270, 16247), (284, 16301), (285, 16304),

Gene: Anakin_30 Start: 17786, Stop: 18676, Start Num: 37

Candidate Starts for Anakin_30:

(Start: 37 @17786 has 35 MA's), (129, 18110), (134, 18134), (140, 18167), (185, 18323), (241, 18497), (271, 18617), (285, 18668), (286, 18671),

Gene: Andris_19 Start: 14711, Stop: 15565, Start Num: 40

Candidate Starts for Andris_19:

(Start: 40 @14711 has 118 MA's), (62, 14765), (72, 14801), (85, 14864), (135, 15032), (180, 15197), (181, 15200), (183, 15206), (224, 15362), (249, 15401), (250, 15404), (284, 15554), (285, 15557),

Gene: Animus_20 Start: 15047, Stop: 15901, Start Num: 40

Candidate Starts for Animus_20:

(Start: 40 @15047 has 118 MA's), (85, 15200), (135, 15368), (180, 15533), (183, 15542), (203, 15623), (249, 15737), (284, 15890), (285, 15893),

Gene: AnnaLie_18 Start: 13450, Stop: 14304, Start Num: 41

Candidate Starts for AnnaLie_18:

(Start: 41 @13450 has 76 MA's), (67, 13525), (76, 13555), (78, 13564), (101, 13663), (104, 13678), (124, 13735), (149, 13831), (152, 13840), (187, 13957), (195, 13978), (224, 14095), (269, 14236), (285, 14296),

Gene: AnnaSerena_30 Start: 17795, Stop: 18685, Start Num: 37

Candidate Starts for AnnaSerena_30:

(Start: 37 @17795 has 35 MA's), (129, 18119), (134, 18143), (140, 18176), (185, 18332), (201, 18398), (241, 18506), (271, 18626), (285, 18677), (286, 18680),

Gene: Annapurna_29 Start: 16994, Stop: 17884, Start Num: 37

Candidate Starts for Annapurna_29:

(Start: 37 @16994 has 35 MA's), (108, 17249), (129, 17318), (134, 17342), (140, 17375), (185, 17531), (195, 17564), (201, 17597), (215, 17654), (241, 17705), (263, 17795), (271, 17825), (276, 17843), (285, 17876), (286, 17879),

Gene: Antuna_23 Start: 13703, Stop: 14563, Start Num: 48

Candidate Starts for Antuna_23:

(Start: 48 @13703 has 24 MA's), (58, 13739), (Start: 59 @13742 has 1 MA's), (66, 13763), (68, 13769), (72, 13781), (76, 13796), (89, 13862), (97, 13889), (104, 13919), (112, 13952), (141, 14045), (148, 14072), (181, 14195), (183, 14201), (192, 14234), (210, 14312), (283, 14549), (284, 14552),

Gene: Appa_22 Start: 13565, Stop: 14425, Start Num: 48

Candidate Starts for Appa_22:

(Start: 48 @13565 has 24 MA's), (58, 13601), (Start: 59 @13604 has 1 MA's), (66, 13625), (68, 13631), (72, 13643), (76, 13658), (89, 13724), (97, 13751), (104, 13781), (112, 13814), (141, 13907), (148, 13934), (181, 14057), (183, 14063), (192, 14096), (210, 14174), (283, 14411), (284, 14414),

Gene: ArV2_16 Start: 12791, Stop: 13762, Start Num: 26

Candidate Starts for ArV2_16:

(Start: 26 @12791 has 10 MA's), (72, 12935), (93, 13034), (97, 13046), (145, 13220), (153, 13247), (161, 13289), (190, 13403), (204, 13463), (207, 13481), (225, 13544), (237, 13592), (246, 13604), (270, 13703),

Gene: Armstrong_16 Start: 11609, Stop: 12466, Start Num: 41

Candidate Starts for Armstrong_16:

(Start: 41 @11609 has 76 MA's), (55, 11648), (67, 11684), (76, 11714), (79, 11726), (101, 11822), (124, 11894), (144, 11969), (149, 11990), (198, 12158), (228, 12269),

Gene: Arroyo_18 Start: 13651, Stop: 14505, Start Num: 41

Candidate Starts for Arroyo_18:

(Start: 41 @13651 has 76 MA's), (67, 13726), (76, 13756), (78, 13765), (101, 13864), (104, 13879), (124, 13936), (149, 14032), (152, 14041), (159, 14074), (187, 14158), (195, 14179), (224, 14296), (269, 14437), (285, 14497),

Gene: Artiphact_30 Start: 17787, Stop: 18677, Start Num: 37

Candidate Starts for Artiphact_30:

(Start: 37 @17787 has 35 MA's), (129, 18111), (134, 18135), (140, 18168), (185, 18324), (201, 18390), (241, 18498), (271, 18618), (285, 18669), (286, 18672),

Gene: Asten_19 Start: 14959, Stop: 15816, Start Num: 40

Candidate Starts for Asten_19:

(Start: 40 @14959 has 118 MA's), (66, 15031), (72, 15049), (111, 15217), (124, 15244), (176, 15439), (183, 15457), (185, 15463), (199, 15517), (232, 15631), (249, 15652), (284, 15805), (285, 15808),

Gene: AvGardian_17 Start: 12793, Stop: 13647, Start Num: 41

Candidate Starts for AvGardian_17:

(Start: 41 @12793 has 76 MA's), (57, 12838), (67, 12868), (76, 12898), (78, 12907), (90, 12967), (101, 13006), (104, 13021), (124, 13078), (136, 13117), (149, 13174), (152, 13183), (159, 13216), (185, 13288), (192, 13315), (195, 13321), (216, 13414), (229, 13456), (265, 13567), (267, 13573), (269, 13579), (285, 13639),

Gene: Avocadoman_17 Start: 13206, Stop: 14060, Start Num: 41

Candidate Starts for Avocadoman_17:

(Start: 41 @13206 has 76 MA's), (67, 13281), (76, 13311), (78, 13320), (101, 13419), (104, 13434), (124, 13491), (149, 13587), (152, 13596), (159, 13629), (187, 13713), (224, 13851), (269, 13992), (285, 14052),

Gene: Axiom_20 Start: 14860, Stop: 15714, Start Num: 40

Candidate Starts for Axiom_20:

(Start: 40 @14860 has 118 MA's), (62, 14914), (72, 14950), (85, 15013), (106, 15097), (180, 15346), (183, 15355), (192, 15388), (203, 15436), (224, 15511), (249, 15550), (284, 15703), (285, 15706),

Gene: AylexOG_18 Start: 13465, Stop: 14319, Start Num: 41

Candidate Starts for AylexOG_18:

(Start: 41 @13465 has 76 MA's), (67, 13540), (76, 13570), (78, 13579), (101, 13678), (104, 13693), (124, 13750), (149, 13846), (152, 13855), (159, 13888), (187, 13972), (192, 13987), (265, 14239), (269, 14251), (285, 14311),

Gene: AyoTeo_22 Start: 15465, Stop: 16358, Start Num: 48

Candidate Starts for AyoTeo_22:

(Start: 48 @15465 has 24 MA's), (76, 15558), (78, 15567), (95, 15645), (104, 15696), (135, 15810), (137, 15819), (208, 16101), (209, 16104), (232, 16173), (249, 16194), (250, 16197), (260, 16257), (278, 16323),

Gene: BAjuniper_17 Start: 12793, Stop: 13644, Start Num: 41

Candidate Starts for BAjuniper_17:

(Start: 41 @12793 has 76 MA's), (57, 12838), (67, 12868), (76, 12898), (101, 13006), (104, 13021), (124, 13078), (149, 13174), (159, 13213), (187, 13297), (195, 13318), (211, 13393), (240, 13462), (255, 13504), (269, 13576), (285, 13636),

Gene: BabyDaisy_18 Start: 13266, Stop: 14120, Start Num: 41

Candidate Starts for BabyDaisy_18:

(Start: 41 @13266 has 76 MA's), (57, 13311), (67, 13341), (76, 13371), (78, 13380), (104, 13494), (124, 13551), (195, 13794), (210, 13866), (228, 13923), (265, 14040), (269, 14052), (285, 14112),

Gene: BabyYoda_17 Start: 13134, Stop: 13988, Start Num: 41

Candidate Starts for BabyYoda_17:

(Start: 41 @13134 has 76 MA's), (57, 13179), (67, 13209), (76, 13239), (101, 13347), (104, 13362), (124, 13419), (149, 13515), (152, 13524), (159, 13557), (195, 13662), (197, 13671), (198, 13680), (211, 13737), (216, 13755), (224, 13779), (265, 13908), (269, 13920), (285, 13980),

Gene: Bachaco_16 Start: 12667, Stop: 13521, Start Num: 41

Candidate Starts for Bachaco_16:

(Start: 41 @12667 has 76 MA's), (67, 12742), (76, 12772), (85, 12820), (101, 12880), (121, 12946), (124, 12952), (136, 12991), (149, 13048), (159, 13090), (185, 13162), (195, 13195), (198, 13213), (265, 13441), (267, 13447), (285, 13513),

Gene: Barnstormer_15 Start: 12284, Stop: 13150, Start Num: 38

Candidate Starts for Barnstormer_15:

(Start: 38 @12284 has 10 MA's), (50, 12305), (80, 12410), (97, 12488), (152, 12695), (183, 12797), (224, 12947), (257, 13022), (269, 13082), (282, 13133),

Gene: BarryBee_21 Start: 14969, Stop: 15826, Start Num: 40

Candidate Starts for BarryBee_21:

(Start: 40 @14969 has 118 MA's), (66, 15041), (72, 15059), (111, 15227), (124, 15254), (176, 15449), (183, 15467), (185, 15473), (199, 15527), (232, 15641), (249, 15662), (284, 15815), (285, 15818),

Gene: BartholomewSD_21 Start: 15007, Stop: 15861, Start Num: 40

Candidate Starts for BartholomewSD_21:

(Start: 40 @15007 has 118 MA's), (62, 15061), (72, 15097), (183, 15502), (284, 15850), (285, 15853),

Gene: Bauer_20 Start: 15182, Stop: 16024, Start Num: 47

Candidate Starts for Bauer_20:

(Start: 26 @15113 has 10 MA's), (28, 15122), (30, 15140), (31, 15143), (34, 15158), (Start: 47 @15182 has 4 MA's), (49, 15185), (65, 15239), (74, 15269), (76, 15275), (84, 15314), (87, 15341), (89, 15344), (93, 15359), (108, 15407), (120, 15449), (128, 15467), (137, 15512), (145, 15548), (146, 15551), (153, 15575), (179, 15668), (195, 15713), (201, 15746), (207, 15776), (215, 15803), (219, 15815), (222, 15836), (245, 15863), (255, 15893), (264, 15947), (266, 15953), (270, 15965),

Gene: BeardedLady_20 Start: 15240, Stop: 16097, Start Num: 40

Candidate Starts for BeardedLady_20:

(Start: 40 @15240 has 118 MA's), (66, 15312), (72, 15330), (80, 15360), (85, 15393), (111, 15498), (124, 15525), (151, 15627), (160, 15672), (183, 15738), (185, 15744), (199, 15798), (201, 15810), (232, 15912), (243, 15924), (249, 15933), (284, 16086), (285, 16089),

Gene: BellaJr_20 Start: 16170, Stop: 16835, Start Num: 93

Candidate Starts for BellaJr_20:

(Start: 26 @15924 has 10 MA's), (Start: 47 @15993 has 4 MA's), (56, 16020), (72, 16071), (76, 16086), (93, 16170), (128, 16278), (134, 16308), (137, 16323), (142, 16350), (145, 16359), (153, 16386), (179, 16479), (186, 16494), (195, 16524), (201, 16557), (209, 16593), (211, 16599), (219, 16626), (224, 16653), (245, 16674), (254, 16698), (255, 16704), (257, 16716), (266, 16764), (268, 16770), (270, 16776),

Gene: BelmontSKP_18 Start: 13450, Stop: 14304, Start Num: 41

Candidate Starts for BelmontSKP_18:

(Start: 41 @13450 has 76 MA's), (67, 13525), (76, 13555), (78, 13564), (101, 13663), (104, 13678), (124, 13735), (149, 13831), (152, 13840), (187, 13957), (195, 13978), (224, 14095), (269, 14236), (285, 14296),

Gene: Bengal_17 Start: 13041, Stop: 13895, Start Num: 41

Candidate Starts for Bengal_17:

(Start: 41 @13041 has 76 MA's), (67, 13116), (76, 13146), (78, 13155), (101, 13254), (104, 13269), (124, 13326), (149, 13422), (152, 13431), (159, 13464), (187, 13548), (195, 13569), (224, 13686), (269, 13827), (285, 13887),

Gene: Benry_20 Start: 13807, Stop: 14670, Start Num: 46

Candidate Starts for Benry_20:

(Start: 46 @13807 has 8 MA's), (Start: 59 @13849 has 1 MA's), (72, 13888), (76, 13903), (93, 13984), (95, 13990), (112, 14059), (135, 14125), (152, 14194), (154, 14203), (159, 14233), (166, 14251), (198, 14368), (215, 14437), (222, 14458), (223, 14461), (232, 14485), (267, 14596), (268, 14599), (283, 14656), (284, 14659),

Gene: Bernstein_16 Start: 11669, Stop: 12526, Start Num: 41

Candidate Starts for Bernstein_16:

(Start: 41 @11669 has 76 MA's), (55, 11708), (67, 11744), (76, 11774), (79, 11786), (101, 11882), (124, 11954), (144, 12029), (149, 12050), (198, 12218), (228, 12329),

Gene: Bimmel_60 Start: 37721, Stop: 38719, Start Num: 20

Candidate Starts for Bimmel_60:

(Start: 20 @37721 has 4 MA's), (21, 37733), (Start: 45 @37814 has 1 MA's), (68, 37889), (76, 37916), (94, 38003), (121, 38102), (138, 38162), (156, 38231), (165, 38267), (183, 38327), (187, 38345), (188, 38348), (224, 38504), (250, 38555), (269, 38651), (270, 38654),

Gene: BlackSpider_18 Start: 14770, Stop: 15681, Start Num: 26

Candidate Starts for BlackSpider_18:

(1, 14101), (2, 14233), (5, 14440), (Start: 26 @14770 has 10 MA's), (Start: 47 @14839 has 4 MA's), (56, 14866), (72, 14917), (74, 14926), (76, 14932), (93, 15016), (128, 15124), (134, 15154), (137, 15169), (142, 15196), (145, 15205), (153, 15232), (179, 15325), (186, 15340), (195, 15370), (201, 15403), (209, 15439), (211, 15445), (219, 15472), (224, 15499), (254, 15544), (255, 15550), (257, 15562), (266, 15610), (268, 15616), (270, 15622),

Gene: Blett_23 Start: 13718, Stop: 14578, Start Num: 48

Candidate Starts for Blett_23:

(Start: 48 @13718 has 24 MA's), (58, 13754), (Start: 59 @13757 has 1 MA's), (66, 13778), (68, 13784), (72, 13796), (74, 13805), (76, 13811), (89, 13877), (104, 13934), (112, 13967), (141, 14060), (148, 14087), (181, 14210), (183, 14216), (192, 14249), (210, 14327), (283, 14564), (284, 14567),

Gene: Bovely_19 Start: 14999, Stop: 15856, Start Num: 40

Candidate Starts for Bovely_19:

(Start: 40 @14999 has 118 MA's), (66, 15071), (72, 15089), (80, 15119), (85, 15152), (111, 15257), (124, 15284), (151, 15386), (160, 15431), (183, 15497), (185, 15503), (199, 15557), (201, 15569), (232, 15671), (243, 15683), (249, 15692), (284, 15845), (285, 15848),

Gene: Bowden_20 Start: 14939, Stop: 15793, Start Num: 40

Candidate Starts for Bowden_20:

(Start: 40 @14939 has 118 MA's), (62, 14993), (72, 15029), (135, 15260), (183, 15434), (284, 15782), (285, 15785),

Gene: Brahms_16 Start: 11609, Stop: 12466, Start Num: 41

Candidate Starts for Brahms_16:

(Start: 41 @11609 has 76 MA's), (55, 11648), (67, 11684), (76, 11714), (79, 11726), (101, 11822), (124, 11894), (144, 11969), (149, 11990), (198, 12158), (228, 12269),

Gene: Bramble_31 Start: 17584, Stop: 18468, Start Num: 40

Candidate Starts for Bramble_31:

(18, 17485), (Start: 40 @17584 has 118 MA's), (73, 17680), (78, 17701), (97, 17785), (99, 17791), (135, 17932), (180, 18100), (201, 18181), (207, 18211), (241, 18289), (247, 18301), (249, 18304), (254, 18322), (265, 18388), (266, 18391), (267, 18394), (285, 18460), (286, 18463),

Gene: Brataylor_20 Start: 14985, Stop: 15842, Start Num: 40

Candidate Starts for Brataylor_20:

(Start: 40 @14985 has 118 MA's), (66, 15057), (111, 15243), (124, 15270), (160, 15417), (180, 15474), (181, 15477), (183, 15483), (185, 15489), (215, 15612), (249, 15678), (284, 15831), (285, 15834),

Gene: BrayBeast_17 Start: 13162, Stop: 14070, Start Num: 26

Candidate Starts for BrayBeast_17:

(Start: 26 @13162 has 10 MA's), (Start: 47 @13231 has 4 MA's), (65, 13288), (76, 13321), (84, 13360), (89, 13390), (93, 13405), (108, 13453), (134, 13543), (137, 13558), (145, 13594), (153, 13621), (154, 13627), (179, 13714), (195, 13759), (207, 13822), (209, 13828), (219, 13861), (224, 13888), (245, 13909), (254, 13933), (255, 13939), (257, 13951), (264, 13993), (266, 13999), (268, 14005), (270, 14011),

Gene: BroPlease_20 Start: 15689, Stop: 16543, Start Num: 40

Candidate Starts for BroPlease_20:

(8, 15533), (9, 15536), (Start: 40 @15689 has 118 MA's), (78, 15803), (85, 15842), (112, 15950), (132, 15992), (142, 16046), (227, 16349), (284, 16532), (285, 16535), (286, 16538),

Gene: BryanRecycles_20 Start: 15156, Stop: 16013, Start Num: 40

Candidate Starts for BryanRecycles_20:

(Start: 40 @15156 has 118 MA's), (66, 15228), (72, 15246), (85, 15309), (111, 15414), (124, 15441), (135, 15477), (151, 15543), (160, 15588), (183, 15654), (185, 15660), (201, 15726), (210, 15765), (215, 15783), (243, 15840), (254, 15867), (284, 16002), (285, 16005),

Gene: BubbaBear_17 Start: 13131, Stop: 13985, Start Num: 41

Candidate Starts for BubbaBear_17:

(Start: 41 @13131 has 76 MA's), (67, 13206), (76, 13236), (78, 13245), (101, 13344), (124, 13416), (149, 13512), (152, 13521), (159, 13554), (187, 13638), (265, 13905), (269, 13917), (285, 13977),

Gene: Buldak_16 Start: 13043, Stop: 13900, Start Num: 41

Candidate Starts for Buldak_16:

(Start: 41 @13043 has 76 MA's), (57, 13085), (76, 13145), (97, 13238), (99, 13244), (104, 13268), (109, 13292), (112, 13301), (121, 13319), (124, 13325), (149, 13421), (152, 13430), (167, 13484), (170, 13493), (185, 13538), (192, 13565), (203, 13613), (216, 13664), (258, 13787), (264, 13817), (267, 13826), (284, 13889),

Gene: Burritobowl_17 Start: 13209, Stop: 14063, Start Num: 41

Candidate Starts for Burritobowl_17:

(Start: 41 @13209 has 76 MA's), (67, 13284), (76, 13314), (78, 13323), (101, 13422), (104, 13437), (124, 13494), (149, 13590), (152, 13599), (159, 13632), (187, 13716), (195, 13737), (224, 13854), (269, 13995), (285, 14055),

Gene: Bush_23 Start: 13699, Stop: 14559, Start Num: 48

Candidate Starts for Bush_23:

(Start: 48 @13699 has 24 MA's), (58, 13735), (Start: 59 @13738 has 1 MA's), (66, 13759), (68, 13765), (72, 13777), (76, 13792), (89, 13858), (97, 13885), (104, 13915), (112, 13948), (141, 14041), (148, 14068), (181, 14191), (183, 14197), (192, 14230), (210, 14308), (283, 14545), (284, 14548),

Gene: Caelum_20 Start: 15485, Stop: 16339, Start Num: 40

Candidate Starts for Caelum_20:

(Start: 40 @15485 has 118 MA's), (50, 15503), (64, 15551), (72, 15575), (78, 15599), (82, 15614), (111, 15743), (164, 15923), (181, 15974), (183, 15980), (201, 16052), (249, 16175), (257, 16211), (270, 16274), (284, 16328), (285, 16331),

Gene: Caliburn_19 Start: 14973, Stop: 15830, Start Num: 40

Candidate Starts for Caliburn_19:

(Start: 40 @14973 has 118 MA's), (66, 15045), (72, 15063), (80, 15093), (85, 15126), (111, 15231), (124, 15258), (151, 15360), (160, 15405), (183, 15471), (185, 15477), (199, 15531), (201, 15543), (232, 15645), (243, 15657), (249, 15666), (284, 15819), (285, 15822),

Gene: CanFranMach_18 Start: 13135, Stop: 13989, Start Num: 40

Candidate Starts for CanFranMach_18:

(Start: 40 @13135 has 118 MA's), (57, 13180), (67, 13210), (76, 13240), (101, 13348), (124, 13420), (149, 13516), (152, 13525), (159, 13558), (185, 13630), (187, 13642), (192, 13657), (264, 13906), (269, 13921), (285, 13981),

Gene: Caron_15 Start: 12326, Stop: 13192, Start Num: 38

Candidate Starts for Caron_15:

(Start: 38 @12326 has 10 MA's), (50, 12347), (80, 12452), (97, 12530), (152, 12737), (183, 12839), (250, 13028), (257, 13064), (269, 13124), (282, 13175),

Gene: Carrillo_24 Start: 13672, Stop: 14532, Start Num: 48

Candidate Starts for Carrillo_24:

(Start: 48 @13672 has 24 MA's), (58, 13708), (Start: 59 @13711 has 1 MA's), (66, 13732), (68, 13738), (72, 13750), (76, 13765), (89, 13831), (97, 13858), (104, 13888), (112, 13921), (141, 14014), (148, 14041), (181, 14164), (183, 14170), (192, 14203), (210, 14281), (283, 14518), (284, 14521),

Gene: Cashington_17 Start: 13058, Stop: 13912, Start Num: 41

Candidate Starts for Cashington_17:

(Start: 41 @13058 has 76 MA's), (67, 13133), (76, 13163), (78, 13172), (101, 13271), (104, 13286), (124, 13343), (149, 13439), (152, 13448), (159, 13481), (187, 13565), (195, 13586), (224, 13703), (269, 13844), (285, 13904),

Gene: Cassini_18 Start: 15074, Stop: 15916, Start Num: 47

Candidate Starts for Cassini_18:

(Start: 26 @15005 has 10 MA's), (Start: 47 @15074 has 4 MA's), (56, 15101), (72, 15152), (74, 15161), (76, 15167), (93, 15251), (128, 15359), (134, 15389), (137, 15404), (142, 15431), (145, 15440), (153, 15467), (175, 15545), (179, 15560), (195, 15605), (201, 15638), (209, 15674), (219, 15707), (224, 15734), (245, 15755), (254, 15779), (255, 15785), (257, 15797), (264, 15839), (266, 15845), (268, 15851), (270, 15857), (279, 15890),

Gene: Celaena_16 Start: 12603, Stop: 13457, Start Num: 41

Candidate Starts for Celaena_16:

(Start: 41 @12603 has 76 MA's), (67, 12678), (76, 12708), (85, 12756), (101, 12816), (104, 12831), (124, 12888), (136, 12927), (149, 12984), (159, 13026), (185, 13098), (195, 13131), (198, 13149), (265, 13377), (267, 13383), (285, 13449),

Gene: Celery_22 Start: 15630, Stop: 16484, Start Num: 40

Candidate Starts for Celery_22:

(Start: 40 @15630 has 118 MA's), (54, 15666), (66, 15702), (72, 15720), (78, 15744), (100, 15837), (111, 15888), (147, 16002), (151, 16017), (152, 16020), (160, 16062), (176, 16107), (180, 16116), (181, 16119), (183, 16125), (189, 16149), (278, 16449), (284, 16473), (285, 16476),

Gene: Celeste_19 Start: 14977, Stop: 15834, Start Num: 40

Candidate Starts for Celeste_19:

(Start: 40 @14977 has 118 MA's), (66, 15049), (85, 15130), (111, 15235), (124, 15262), (180, 15466), (181, 15469), (183, 15475), (201, 15547), (215, 15604), (249, 15670), (284, 15823), (285, 15826),

Gene: Celia_19 Start: 15416, Stop: 16273, Start Num: 40

Candidate Starts for Celia_19:

(Start: 40 @15416 has 118 MA's), (60, 15467), (66, 15488), (72, 15506), (78, 15530), (85, 15569), (185, 15920), (192, 15947), (201, 15986), (216, 16046), (277, 16235), (284, 16262), (285, 16265),

Gene: Cen1621_15 Start: 11346, Stop: 12224, Start Num: 36

Candidate Starts for Cen1621_15:

(Start: 36 @11346 has 2 MA's), (70, 11436), (113, 11619), (198, 11919), (269, 12156), (285, 12216),

Gene: ChiliPepper_16 Start: 12807, Stop: 13661, Start Num: 41

Candidate Starts for ChiliPepper_16:

(Start: 41 @12807 has 76 MA's), (52, 12831), (57, 12852), (67, 12882), (76, 12912), (104, 13035), (121, 13086), (124, 13092), (187, 13314), (192, 13329), (195, 13335), (229, 13470), (265, 13581), (269, 13593), (285, 13653),

Gene: Chivey_29 Start: 16948, Stop: 17838, Start Num: 37

Candidate Starts for Chivey_29:

(Start: 37 @16948 has 35 MA's), (102, 17176), (108, 17203), (129, 17272), (134, 17296), (140, 17329), (185, 17485), (195, 17518), (201, 17551), (215, 17608), (241, 17659), (263, 17749), (271, 17779), (285, 17830), (286, 17833),

Gene: Chucky_19 Start: 14970, Stop: 15827, Start Num: 40

Candidate Starts for Chucky_19:

(Start: 40 @14970 has 118 MA's), (66, 15042), (72, 15060), (111, 15228), (124, 15255), (183, 15468), (185, 15474), (201, 15540), (215, 15597), (232, 15642), (249, 15663), (284, 15816), (285, 15819),

Gene: Cicada_22 Start: 15575, Stop: 16468, Start Num: 48

Candidate Starts for Cicada_22:

(Start: 48 @15575 has 24 MA's), (76, 15668), (95, 15755), (112, 15839), (135, 15920), (136, 15923), (166, 16046), (209, 16214), (232, 16283), (249, 16304), (250, 16307), (267, 16394), (268, 16397), (278, 16433),

Gene: Clayda5_16 Start: 11609, Stop: 12466, Start Num: 41

Candidate Starts for Clayda5_16:

(Start: 41 @11609 has 76 MA's), (55, 11648), (67, 11684), (76, 11714), (79, 11726), (101, 11822), (124, 11894), (144, 11969), (149, 11990), (198, 12158), (228, 12269),

Gene: CliffHanger_17 Start: 12643, Stop: 13500, Start Num: 41

Candidate Starts for CliffHanger_17:

(Start: 41 @12643 has 76 MA's), (76, 12745), (124, 12925), (195, 13171), (261, 13405), (269, 13432), (284, 13489), (285, 13492),

Gene: CocoCinnamon_21 Start: 14814, Stop: 15716, Start Num: 25

Candidate Starts for CocoCinnamon_21:

(Start: 25 @14814 has 2 MA's), (34, 14862), (Start: 45 @14883 has 1 MA's), (Start: 47 @14886 has 4 MA's), (84, 15015), (89, 15045), (93, 15060), (134, 15183), (137, 15198), (153, 15261), (195, 15405), (201, 15438), (209, 15474), (211, 15480), (219, 15507), (245, 15555), (266, 15645), (270, 15657),

Gene: Coltrane_16 Start: 11609, Stop: 12466, Start Num: 41

Candidate Starts for Coltrane_16:

(Start: 41 @11609 has 76 MA's), (55, 11648), (67, 11684), (76, 11714), (79, 11726), (101, 11822), (124, 11894), (144, 11969), (149, 11990), (198, 12158), (228, 12269),

Gene: Conan_20 Start: 15399, Stop: 16256, Start Num: 40

Candidate Starts for Conan_20:

(Start: 40 @15399 has 118 MA's), (54, 15435), (66, 15471), (78, 15513), (111, 15657), (151, 15786), (152, 15789), (160, 15831), (181, 15891), (183, 15897), (210, 16008), (232, 16071), (249, 16092), (278, 16221), (284, 16245), (285, 16248),

Gene: CookieDog_23 Start: 13699, Stop: 14559, Start Num: 48

Candidate Starts for CookieDog_23:

(Start: 48 @13699 has 24 MA's), (58, 13735), (Start: 59 @13738 has 1 MA's), (66, 13759), (68, 13765), (72, 13777), (76, 13792), (89, 13858), (97, 13885), (104, 13915), (112, 13948), (141, 14041), (148, 14068), (181, 14191), (183, 14197), (192, 14230), (210, 14308), (283, 14545), (284, 14548),

Gene: CoolCookie_30 Start: 17793, Stop: 18683, Start Num: 37

Candidate Starts for CoolCookie_30:

(Start: 37 @17793 has 35 MA's), (129, 18117), (134, 18141), (140, 18174), (185, 18330), (201, 18396), (241, 18504), (271, 18624), (285, 18675), (286, 18678),

Gene: Crestdrop_29 Start: 16857, Stop: 17747, Start Num: 37

Candidate Starts for Crestdrop_29:

(Start: 37 @16857 has 35 MA's), (108, 17112), (129, 17181), (134, 17205), (140, 17238), (195, 17427), (201, 17460), (215, 17517), (241, 17568), (263, 17658), (271, 17688), (285, 17739), (286, 17742),

Gene: CroZenni_17 Start: 13041, Stop: 13895, Start Num: 41

Candidate Starts for CroZenni_17:

(Start: 41 @13041 has 76 MA's), (67, 13116), (76, 13146), (78, 13155), (101, 13254), (104, 13269), (124, 13326), (149, 13422), (152, 13431), (159, 13464), (187, 13548), (195, 13569), (224, 13686), (269, 13827), (285, 13887),

Gene: CupcakePrincess_17 Start: 13158, Stop: 14012, Start Num: 41

Candidate Starts for CupcakePrincess_17:

(Start: 41 @13158 has 76 MA's), (67, 13233), (76, 13263), (78, 13272), (101, 13371), (104, 13386), (124, 13443), (149, 13539), (152, 13548), (159, 13581), (187, 13665), (192, 13680), (195, 13686), (265, 13932), (269, 13944), (285, 14004),

Gene: Cybele_30 Start: 17763, Stop: 18653, Start Num: 37

Candidate Starts for Cybele_30:

(Start: 37 @17763 has 35 MA's), (129, 18087), (134, 18111), (140, 18144), (185, 18300), (241, 18474), (271, 18594), (285, 18645), (286, 18648),

Gene: DannyDe_29 Start: 16940, Stop: 17830, Start Num: 37

Candidate Starts for DannyDe_29:

(Start: 37 @16940 has 35 MA's), (102, 17168), (108, 17195), (129, 17264), (134, 17288), (140, 17321), (195, 17510), (201, 17543), (215, 17600), (241, 17651), (263, 17741), (271, 17771), (285, 17822), (286, 17825),

Gene: Danzina_20 Start: 15187, Stop: 16044, Start Num: 40

Candidate Starts for Danzina_20:

(Start: 40 @15187 has 118 MA's), (66, 15259), (85, 15340), (111, 15445), (124, 15472), (180, 15676), (181, 15679), (183, 15685), (215, 15814), (249, 15880), (284, 16033), (285, 16036),

Gene: Dattran_20 Start: 14976, Stop: 15833, Start Num: 40

Candidate Starts for Dattran_20:

(Start: 40 @14976 has 118 MA's), (66, 15048), (85, 15129), (111, 15234), (124, 15261), (180, 15465), (181, 15468), (183, 15474), (201, 15546), (215, 15603), (249, 15669), (284, 15822), (285, 15825),

Gene: Daudau_19 Start: 14913, Stop: 15773, Start Num: 40

Candidate Starts for Daudau_19:

(Start: 40 @14913 has 118 MA's), (49, 14928), (62, 14970), (72, 15006), (85, 15069), (124, 15201), (183, 15414), (284, 15762), (285, 15765), (286, 15768),

Gene: Dauntless_29 Start: 17500, Stop: 18390, Start Num: 37

Candidate Starts for Dauntless_29:

(Start: 37 @17500 has 35 MA's), (108, 17755), (129, 17824), (134, 17848), (140, 17881), (185, 18037), (195, 18070), (215, 18160), (241, 18211), (263, 18301), (271, 18331), (276, 18349), (285, 18382), (286, 18385),

Gene: DelaGarza_21 Start: 14265, Stop: 15128, Start Num: 46

Candidate Starts for DelaGarza_21:

(44, 14262), (Start: 46 @14265 has 8 MA's), (74, 14355), (76, 14361), (92, 14439), (95, 14448), (97, 14454), (113, 14520), (136, 14586), (141, 14613), (152, 14652), (183, 14769), (185, 14775), (192, 14802), (198, 14826), (232, 14943), (242, 14952), (254, 14982), (267, 15054), (283, 15114),

Gene: Dexers_18 Start: 15380, Stop: 16237, Start Num: 40

Candidate Starts for Dexers_18:

(Start: 40 @15380 has 118 MA's), (54, 15416), (66, 15452), (78, 15494), (111, 15638), (124, 15665), (181, 15872), (183, 15878), (189, 15902), (232, 16052), (278, 16202), (284, 16226), (285, 16229),

Gene: Diane_19 Start: 15448, Stop: 16305, Start Num: 40

Candidate Starts for Diane_19:

(Start: 40 @15448 has 118 MA's), (72, 15538), (111, 15706), (122, 15730), (135, 15769), (160, 15880), (164, 15889), (183, 15946), (199, 16006), (201, 16018), (203, 16027), (215, 16075), (249, 16141), (257, 16177), (270, 16240), (284, 16294), (285, 16297),

Gene: DickRichards_17 Start: 13536, Stop: 14390, Start Num: 41

Candidate Starts for DickRichards_17:

(Start: 41 @13536 has 76 MA's), (67, 13611), (76, 13641), (78, 13650), (101, 13749), (104, 13764), (124, 13821), (149, 13917), (152, 13926), (159, 13959), (187, 14043), (195, 14064), (224, 14181), (269, 14322), (285, 14382),

Gene: Didgeridoo_18 Start: 13268, Stop: 14122, Start Num: 41

Candidate Starts for Didgeridoo_18:

(Start: 41 @13268 has 76 MA's), (57, 13313), (67, 13343), (76, 13373), (78, 13382), (104, 13496), (124, 13553), (195, 13796), (210, 13868), (228, 13925), (265, 14042), (269, 14054), (285, 14114),

Gene: DillyDally_16 Start: 13389, Stop: 14372, Start Num: 26

Candidate Starts for DillyDally_16:

(Start: 26 @13389 has 10 MA's), (Start: 43 @13452 has 2 MA's), (Start: 47 @13458 has 4 MA's), (72, 13530), (89, 13614), (90, 13617), (93, 13629), (108, 13677), (116, 13707), (141, 13803), (155, 13854), (158, 13875), (174, 13920), (190, 13977), (195, 13992), (198, 14010), (209, 14061), (211, 14067), (217, 14088), (236, 14175), (239, 14190), (250, 14217), (274, 14331),

Gene: DirtyBubble_17 Start: 13092, Stop: 13946, Start Num: 41

Candidate Starts for DirtyBubble_17:

(Start: 41 @13092 has 76 MA's), (57, 13137), (67, 13167), (76, 13197), (101, 13305), (104, 13320), (124, 13377), (149, 13473), (152, 13482), (159, 13515), (195, 13620), (197, 13629), (211, 13695), (216, 13713), (224, 13737), (265, 13866), (269, 13878), (285, 13938),

Gene: Dismas_16 Start: 12807, Stop: 13661, Start Num: 41

Candidate Starts for Dismas_16:

(Start: 41 @12807 has 76 MA's), (52, 12831), (57, 12852), (67, 12882), (76, 12912), (104, 13035), (121, 13086), (124, 13092), (187, 13314), (192, 13329), (195, 13335), (229, 13470), (265, 13581), (269, 13593), (285, 13653),

Gene: Doobus_17 Start: 13393, Stop: 14247, Start Num: 41

Candidate Starts for Doobus_17:

(Start: 41 @13393 has 76 MA's), (67, 13468), (76, 13498), (78, 13507), (101, 13606), (104, 13621), (124, 13678), (149, 13774), (152, 13783), (159, 13816), (187, 13900), (224, 14038), (227, 14047), (264, 14164), (269, 14179), (285, 14239),

Gene: Dropshot_22 Start: 13565, Stop: 14425, Start Num: 48

Candidate Starts for Dropshot_22:

(Start: 48 @13565 has 24 MA's), (58, 13601), (Start: 59 @13604 has 1 MA's), (66, 13625), (68, 13631), (72, 13643), (76, 13658), (89, 13724), (97, 13751), (104, 13781), (112, 13814), (141, 13907), (148, 13934), (181, 14057), (183, 14063), (192, 14096), (210, 14174), (283, 14411), (284, 14414),

Gene: Dwayne_19 Start: 14966, Stop: 15823, Start Num: 40

Candidate Starts for Dwayne_19:

(Start: 40 @14966 has 118 MA's), (66, 15038), (72, 15056), (111, 15224), (124, 15251), (176, 15446), (183, 15464), (185, 15470), (199, 15524), (232, 15638), (249, 15659), (284, 15812), (285, 15815),

Gene: ELB20_18 Start: 15035, Stop: 15892, Start Num: 40

Candidate Starts for ELB20_18:

(Start: 40 @15035 has 118 MA's), (62, 15089), (72, 15125), (111, 15293), (183, 15533), (250, 15731), (284, 15881), (285, 15884),

Gene: Eddasa_20 Start: 15156, Stop: 16013, Start Num: 40

Candidate Starts for Eddasa_20:

(Start: 40 @15156 has 118 MA's), (66, 15228), (72, 15246), (85, 15309), (111, 15414), (124, 15441), (135, 15477), (151, 15543), (160, 15588), (183, 15654), (185, 15660), (201, 15726), (210, 15765), (215, 15783), (243, 15840), (254, 15867), (284, 16002), (285, 16005),

Gene: Eden_16 Start: 11733, Stop: 12590, Start Num: 40

Candidate Starts for Eden_16:

(Start: 40 @11733 has 118 MA's), (57, 11778), (67, 11808), (76, 11838), (77, 11841), (101, 11946), (104, 11961), (124, 12018), (135, 12054), (149, 12114), (152, 12123), (167, 12180), (195, 12264), (210, 12336), (240, 12408), (285, 12582),

Gene: Ejemplo_19 Start: 14966, Stop: 15823, Start Num: 40

Candidate Starts for Ejemplo_19:

(Start: 40 @14966 has 118 MA's), (66, 15038), (72, 15056), (111, 15224), (124, 15251), (183, 15464), (185, 15470), (201, 15536), (215, 15593), (232, 15638), (249, 15659), (277, 15785), (284, 15812), (285, 15815),

Gene: ElGato_20 Start: 15402, Stop: 16259, Start Num: 40

Candidate Starts for ElGato_20:

(Start: 40 @15402 has 118 MA's), (54, 15438), (66, 15474), (78, 15516), (111, 15660), (124, 15687), (151, 15789), (152, 15792), (160, 15834), (161, 15837), (181, 15894), (183, 15900), (194, 15936), (232, 16074), (278, 16224), (284, 16248), (285, 16251),

Gene: Elener_19 Start: 15583, Stop: 16464, Start Num: 45

Candidate Starts for Elener_19:

(Start: 45 @15583 has 1 MA's), (50, 15592), (69, 15658), (80, 15694), (99, 15778), (103, 15802), (126, 15883), (155, 16003), (231, 16288), (255, 16333),

Gene: Elva_18 Start: 13053, Stop: 13907, Start Num: 41

Candidate Starts for Elva_18:

(Start: 41 @13053 has 76 MA's), (57, 13098), (67, 13128), (76, 13158), (78, 13167), (101, 13266), (124, 13338), (149, 13434), (159, 13476), (185, 13548), (192, 13575), (195, 13581), (197, 13590), (210, 13653), (253, 13755), (269, 13839), (285, 13899),

Gene: Emaanora_21 Start: 14969, Stop: 15826, Start Num: 40

Candidate Starts for Emaanora_21:

(Start: 40 @14969 has 118 MA's), (66, 15041), (72, 15059), (111, 15227), (124, 15254), (176, 15449), (183, 15467), (185, 15473), (199, 15527), (232, 15641), (249, 15662), (284, 15815), (285, 15818),

Gene: EmiRose_16 Start: 13050, Stop: 13937, Start Num: 40

Candidate Starts for EmiRose_16:

(Start: 40 @13050 has 118 MA's), (50, 13068), (71, 13137), (88, 13227), (91, 13236), (101, 13269), (104, 13284), (149, 13440), (150, 13443), (152, 13449), (193, 13608), (200, 13638), (206, 13668), (208, 13680), (251, 13794), (253, 13800),

Gene: EnochSoames_21 Start: 15152, Stop: 16009, Start Num: 40

Candidate Starts for EnochSoames_21:

(Start: 40 @15152 has 118 MA's), (66, 15224), (72, 15242), (85, 15305), (111, 15410), (124, 15437), (151, 15539), (160, 15584), (183, 15650), (185, 15656), (201, 15722), (210, 15761), (215, 15779), (243, 15836), (284, 15998), (285, 16001),

Gene: Erudite_29 Start: 17500, Stop: 18390, Start Num: 37

Candidate Starts for Erudite_29:

(Start: 37 @17500 has 35 MA's), (108, 17755), (129, 17824), (134, 17848), (140, 17881), (185, 18037), (195, 18070), (215, 18160), (241, 18211), (263, 18301), (271, 18331), (276, 18349), (285, 18382), (286, 18385),

Gene: Esperer_19 Start: 14993, Stop: 15850, Start Num: 40

Candidate Starts for Esperer_19:

(Start: 40 @14993 has 118 MA's), (66, 15065), (72, 15083), (80, 15113), (85, 15146), (111, 15251), (124, 15278), (151, 15380), (160, 15425), (183, 15491), (185, 15497), (199, 15551), (201, 15563), (232, 15665), (243, 15677), (249, 15686), (284, 15839), (285, 15842),

Gene: Eula_17 Start: 13119, Stop: 13973, Start Num: 41

Candidate Starts for Eula_17:

(Start: 41 @13119 has 76 MA's), (67, 13194), (76, 13224), (78, 13233), (101, 13332), (104, 13347), (124, 13404), (149, 13500), (152, 13509), (159, 13542), (187, 13626), (192, 13641), (265, 13893), (269, 13905), (285, 13965),

Gene: Finalfrontier_18 Start: 13632, Stop: 14486, Start Num: 41

Candidate Starts for Finalfrontier_18:

(Start: 41 @13632 has 76 MA's), (57, 13677), (67, 13707), (76, 13737), (78, 13746), (104, 13860), (124, 13917), (195, 14160), (210, 14232), (228, 14289), (265, 14406), (269, 14418), (285, 14478),

Gene: FireCastle_20 Start: 15375, Stop: 16238, Start Num: 46

Candidate Starts for FireCastle_20:

(19, 15270), (Start: 46 @15375 has 8 MA's), (58, 15414), (76, 15471), (93, 15552), (95, 15558), (97, 15564), (104, 15594), (112, 15627), (135, 15693), (154, 15771), (159, 15801), (166, 15819), (196, 15921), (209, 15987), (214, 16002), (254, 16092), (267, 16164), (276, 16197), (278, 16203), (279, 16206), (283, 16224),

Gene: FlameThrower_16 Start: 12491, Stop: 13345, Start Num: 41

Candidate Starts for FlameThrower_16:

(Start: 41 @12491 has 76 MA's), (67, 12566), (76, 12596), (85, 12644), (101, 12704), (104, 12719), (121, 12770), (124, 12776), (136, 12815), (147, 12863), (149, 12872), (159, 12914), (185, 12986), (195, 13019), (198, 13037), (265, 13265), (267, 13271), (285, 13337),

Gene: Floop_16 Start: 12468, Stop: 13334, Start Num: 38

Candidate Starts for Floop_16:

(Start: 38 @12468 has 10 MA's), (77, 12582), (80, 12594), (96, 12669), (97, 12672), (127, 12780), (133, 12795), (142, 12846), (148, 12867), (183, 12981), (191, 13011), (195, 13020), (227, 13140), (269, 13266),

Gene: Forester_29 Start: 14001, Stop: 14867, Start Num: 38

Candidate Starts for Forester_29:

(Start: 38 @14001 has 10 MA's), (77, 14115), (96, 14202), (97, 14205), (99, 14211), (127, 14313), (133, 14328), (142, 14379), (148, 14400), (183, 14514), (227, 14673), (267, 14793), (269, 14799), (277, 14829),

Gene: FountainFog_29 Start: 17105, Stop: 17995, Start Num: 37

Candidate Starts for FountainFog_29:

(Start: 37 @17105 has 35 MA's), (108, 17360), (129, 17429), (134, 17453), (140, 17486), (185, 17642), (195, 17675), (201, 17708), (241, 17816), (263, 17906), (271, 17936), (285, 17987), (286, 17990),

Gene: Franklin22_17 Start: 11912, Stop: 12769, Start Num: 41

Candidate Starts for Franklin22_17:

(3, 11378), (4, 11465), (Start: 41 @11912 has 76 MA's), (67, 11987), (76, 12017), (101, 12125), (121, 12191), (124, 12197), (149, 12293), (195, 12443), (198, 12461), (210, 12515), (240, 12587), (265, 12689), (285, 12761),

Gene: FreddieHg_29 Start: 16964, Stop: 17854, Start Num: 37

Candidate Starts for FreddieHg_29:

(Start: 37 @16964 has 35 MA's), (102, 17192), (108, 17219), (129, 17288), (134, 17312), (140, 17345), (185, 17501), (195, 17534), (201, 17567), (215, 17624), (241, 17675), (263, 17765), (271, 17795), (285, 17846), (286, 17849),

Gene: GMA4_17 Start: 16043, Stop: 16957, Start Num: 42

Candidate Starts for GMA4_17:

(17, 15926), (19, 15941), (29, 15983), (42, 16043), (93, 16232), (99, 16250), (114, 16325), (118, 16349), (143, 16448), (154, 16487), (185, 16598), (186, 16601), (193, 16634), (205, 16694), (244, 16793), (260, 16871), (262, 16880), (264, 16889), (272, 16916), (278, 16937), (280, 16943),

Gene: Gack_16 Start: 11801, Stop: 12658, Start Num: 41

Candidate Starts for Gack_16:

(Start: 41 @11801 has 76 MA's), (67, 11876), (76, 11906), (101, 12014), (104, 12029), (105, 12035), (121, 12080), (124, 12086), (146, 12170), (149, 12182), (195, 12332), (240, 12476), (265, 12578), (285, 12650),

Gene: GardenState_16 Start: 12560, Stop: 13426, Start Num: 38

Candidate Starts for GardenState_16:

(Start: 38 @12560 has 10 MA's), (80, 12686), (81, 12692), (94, 12755), (115, 12836), (142, 12938), (148, 12959), (183, 13073), (191, 13103), (269, 13358),

Gene: Gilda_30 Start: 17787, Stop: 18677, Start Num: 37

Candidate Starts for Gilda_30:

(Start: 37 @17787 has 35 MA's), (129, 18111), (134, 18135), (185, 18324), (241, 18498), (271, 18618), (285, 18669), (286, 18672),

Gene: Gingerbug_19 Start: 13474, Stop: 14337, Start Num: 46

Candidate Starts for Gingerbug_19:

(44, 13471), (Start: 46 @13474 has 8 MA's), (76, 13570), (78, 13579), (92, 13648), (95, 13657), (97, 13663), (99, 13669), (104, 13693), (112, 13726), (117, 13747), (135, 13792), (136, 13795), (141, 13822), (152, 13861), (154, 13870), (181, 13972), (183, 13978), (192, 14011), (198, 14035), (209, 14086), (223, 14128), (232, 14152), (253, 14185), (267, 14263), (276, 14296), (278, 14302), (283, 14323), (284, 14326),

Gene: GirlDinner_19 Start: 14709, Stop: 15563, Start Num: 40

Candidate Starts for GirlDinner_19:

(Start: 40 @14709 has 118 MA's), (72, 14799), (85, 14862), (135, 15030), (180, 15195), (183, 15204), (203, 15285), (224, 15360), (249, 15399), (284, 15552), (285, 15555),

Gene: Goby_19 Start: 14982, Stop: 15839, Start Num: 40

Candidate Starts for Goby_19:

(Start: 40 @14982 has 118 MA's), (66, 15054), (85, 15135), (111, 15240), (112, 15243), (124, 15267), (160, 15414), (180, 15471), (181, 15474), (183, 15480), (201, 15552), (215, 15609), (249, 15675), (284, 15828), (285, 15831),

Gene: Godpower_20 Start: 14994, Stop: 15851, Start Num: 40

Candidate Starts for Godpower_20:

(Start: 40 @14994 has 118 MA's), (66, 15066), (72, 15084), (85, 15147), (111, 15252), (124, 15279), (152, 15384), (160, 15426), (183, 15492), (199, 15552), (201, 15564), (215, 15621), (232, 15666), (249, 15687), (284, 15840), (285, 15843),

Gene: Goodman_21 Start: 15488, Stop: 16381, Start Num: 48

Candidate Starts for Goodman_21:

(Start: 48 @15488 has 24 MA's), (76, 15581), (95, 15668), (135, 15833), (136, 15836), (166, 15959), (209, 16127), (232, 16196), (249, 16217), (250, 16220), (267, 16307), (268, 16310), (269, 16313), (278, 16346),

Gene: GreenWeasel_21 Start: 15698, Stop: 16552, Start Num: 40

Candidate Starts for GreenWeasel_21:

(8, 15542), (9, 15545), (Start: 40 @15698 has 118 MA's), (78, 15812), (85, 15851), (112, 15959), (132, 16001), (142, 16055), (227, 16358), (284, 16541), (285, 16544), (286, 16547),

Gene: Gretchen_16 Start: 13995, Stop: 14861, Start Num: 38

Candidate Starts for Gretchen_16:

(Start: 38 @13995 has 10 MA's), (77, 14109), (96, 14196), (97, 14199), (99, 14205), (127, 14307), (133, 14322), (142, 14373), (148, 14394), (183, 14508), (227, 14667), (267, 14787), (269, 14793), (277, 14823),

Gene: Guzman_24 Start: 13980, Stop: 14840, Start Num: 48

Candidate Starts for Guzman_24:

(Start: 48 @13980 has 24 MA's), (58, 14016), (Start: 59 @14019 has 1 MA's), (66, 14040), (68, 14046), (72, 14058), (76, 14073), (89, 14139), (97, 14166), (104, 14196), (112, 14229), (141, 14322), (148, 14349), (181, 14472), (183, 14478), (192, 14511), (210, 14589), (283, 14826), (284, 14829),

Gene: Hager_31 Start: 17349, Stop: 18239, Start Num: 37

Candidate Starts for Hager_31:

(Start: 37 @17349 has 35 MA's), (129, 17673), (134, 17697), (140, 17730), (185, 17886), (195, 17919), (201, 17952), (241, 18060), (263, 18150), (271, 18180), (285, 18231), (286, 18234),

Gene: Haizum_19 Start: 15480, Stop: 16337, Start Num: 40

Candidate Starts for Haizum_19:

(11, 15354), (12, 15357), (14, 15363), (Start: 40 @15480 has 118 MA's), (50, 15498), (72, 15570), (111, 15738), (135, 15801), (160, 15912), (183, 15978), (199, 16038), (201, 16050), (203, 16059), (215, 16107), (249, 16173), (257, 16209), (270, 16272), (284, 16326), (285, 16329),

Gene: Hank144_20 Start: 15105, Stop: 15959, Start Num: 40

Candidate Starts for Hank144_20:

(Start: 40 @15105 has 118 MA's), (62, 15159), (85, 15258), (90, 15279), (106, 15342), (142, 15462), (152, 15495), (167, 15555), (183, 15600), (224, 15756), (249, 15795), (260, 15858), (284, 15948), (285, 15951), (286, 15954),

Gene: Haunter_30 Start: 17200, Stop: 18090, Start Num: 37

Candidate Starts for Haunter_30:

(Start: 37 @17200 has 35 MA's), (129, 17524), (134, 17548), (140, 17581), (185, 17737), (201, 17803), (241, 17911), (271, 18031), (285, 18082), (286, 18085),

Gene: Hiddenleaf_29 Start: 16948, Stop: 17838, Start Num: 37

Candidate Starts for Hiddenleaf_29:

(Start: 37 @16948 has 35 MA's), (102, 17176), (108, 17203), (129, 17272), (134, 17296), (140, 17329), (185, 17485), (195, 17518), (201, 17551), (215, 17608), (241, 17659), (263, 17749), (271, 17779), (285, 17830), (286, 17833),

Gene: Hippo_19 Start: 14969, Stop: 15826, Start Num: 40

Candidate Starts for Hippo_19:

(Start: 40 @14969 has 118 MA's), (66, 15041), (72, 15059), (111, 15227), (124, 15254), (176, 15449), (183, 15467), (185, 15473), (199, 15527), (232, 15641), (249, 15662), (284, 15815), (285, 15818),

Gene: Honk_15 Start: 11270, Stop: 12148, Start Num: 36

Candidate Starts for Honk_15:

(Start: 36 @11270 has 2 MA's), (70, 11360), (113, 11543), (136, 11618), (198, 11843), (269, 12080), (285, 12140),

Gene: Htur_20 Start: 15518, Stop: 16411, Start Num: 48

Candidate Starts for Htur_20:

(Start: 48 @15518 has 24 MA's), (76, 15611), (78, 15620), (95, 15698), (104, 15749), (135, 15863), (136, 15866), (137, 15872), (152, 15932), (208, 16154), (209, 16157), (232, 16226), (249, 16247), (250, 16250), (260, 16310), (278, 16376),

Gene: Hum25_18 Start: 12574, Stop: 13560, Start Num: 27

Candidate Starts for Hum25_18:

(Start: 27 @12574 has 2 MA's), (35, 12628), (Start: 43 @12640 has 2 MA's), (Start: 47 @12646 has 4 MA's), (66, 12706), (67, 12709), (68, 12712), (76, 12736), (93, 12820), (102, 12859), (116, 12898), (161, 13078), (181, 13144), (190, 13168), (195, 13183), (203, 13225), (214, 13270), (238, 13372), (246, 13396), (272, 13510), (281, 13540),

Gene: Hydra_21 Start: 15521, Stop: 16378, Start Num: 40

Candidate Starts for Hydra_21:

(Start: 40 @15521 has 118 MA's), (66, 15593), (72, 15611), (80, 15641), (85, 15674), (111, 15779), (124, 15806), (151, 15908), (160, 15953), (183, 16019), (185, 16025), (199, 16079), (201, 16091), (232, 16193), (243, 16205), (249, 16214), (284, 16367), (285, 16370),

Gene: IAmGroot_16 Start: 13204, Stop: 14070, Start Num: 38

Candidate Starts for IAmGroot_16:

(Start: 38 @13204 has 10 MA's), (80, 13330), (81, 13336), (94, 13399), (115, 13480), (142, 13582), (148, 13603), (183, 13717), (191, 13747), (269, 14002),

Gene: lbantik_80 Start: 41938, Stop: 42960, Start Num: 20

Candidate Starts for lbantik_80:

(10, 41893), (Start: 20 @41938 has 4 MA's), (21, 41950), (33, 42007), (70, 42112), (74, 42130), (84, 42175), (90, 42208), (94, 42223), (104, 42262), (138, 42382), (188, 42598), (223, 42745), (230, 42769), (232, 42772),

Gene: Icarian_18 Start: 12974, Stop: 13828, Start Num: 41

Candidate Starts for Icarian_18:

(Start: 41 @12974 has 76 MA's), (57, 13019), (67, 13049), (76, 13079), (101, 13187), (104, 13202), (124, 13259), (149, 13355), (152, 13364), (159, 13397), (187, 13481), (195, 13502), (197, 13511), (198, 13520), (216, 13595), (224, 13619), (265, 13748), (269, 13760), (285, 13820),

Gene: IndiRoo_20 Start: 13817, Stop: 14680, Start Num: 46

Candidate Starts for IndiRoo_20:

(Start: 46 @13817 has 8 MA's), (72, 13898), (76, 13913), (93, 13994), (95, 14000), (112, 14069), (119, 14096), (135, 14135), (152, 14204), (154, 14213), (159, 14243), (166, 14261), (198, 14378), (204, 14405), (216, 14450), (223, 14471), (267, 14606), (268, 14609), (276, 14639), (278, 14645), (283, 14666), (284, 14669),

Gene: Indigo_19 Start: 14993, Stop: 15850, Start Num: 40

Candidate Starts for Indigo_19:

(Start: 40 @14993 has 118 MA's), (66, 15065), (72, 15083), (80, 15113), (85, 15146), (111, 15251), (124, 15278), (151, 15380), (160, 15425), (183, 15491), (185, 15497), (199, 15551), (201, 15563),

(232, 15665), (243, 15677), (249, 15686), (284, 15839), (285, 15842),

Gene: IndyLu_17 Start: 13090, Stop: 13944, Start Num: 41

Candidate Starts for IndyLu_17:

(Start: 41 @13090 has 76 MA's), (57, 13135), (67, 13165), (76, 13195), (78, 13204), (124, 13375), (195, 13618), (210, 13690), (228, 13747), (265, 13864), (269, 13876), (285, 13936),

Gene: Issmi_20 Start: 15911, Stop: 16768, Start Num: 40

Candidate Starts for Issmi_20:

(Start: 40 @15911 has 118 MA's), (50, 15929), (64, 15977), (72, 16001), (80, 16031), (89, 16082), (111, 16169), (160, 16343), (164, 16352), (171, 16373), (183, 16409), (185, 16415), (201, 16481), (208, 16514), (249, 16604), (250, 16607), (257, 16640), (270, 16703), (284, 16757), (285, 16760),

Gene: Itza_19 Start: 15339, Stop: 16196, Start Num: 40

Candidate Starts for Itza_19:

(Start: 40 @15339 has 118 MA's), (60, 15390), (66, 15411), (72, 15429), (78, 15453), (85, 15492), (185, 15843), (192, 15870), (201, 15909), (216, 15969), (277, 16158), (284, 16185), (285, 16188),

Gene: Izzy_20 Start: 15203, Stop: 16060, Start Num: 40

Candidate Starts for Izzy_20:

(Start: 40 @15203 has 118 MA's), (66, 15275), (72, 15293), (85, 15356), (111, 15461), (124, 15488), (135, 15524), (151, 15590), (160, 15635), (183, 15701), (185, 15707), (201, 15773), (210, 15812), (215, 15830), (243, 15887), (254, 15914), (284, 16049), (285, 16052),

Gene: JDawG_29 Start: 17530, Stop: 18420, Start Num: 37

Candidate Starts for JDawG_29:

(Start: 37 @17530 has 35 MA's), (108, 17785), (129, 17854), (134, 17878), (140, 17911), (195, 18100), (201, 18133), (215, 18190), (241, 18241), (263, 18331), (271, 18361), (285, 18412), (286, 18415),

Gene: Jabb_17 Start: 13158, Stop: 14012, Start Num: 41

Candidate Starts for Jabb_17:

(Start: 41 @13158 has 76 MA's), (67, 13233), (76, 13263), (78, 13272), (101, 13371), (104, 13386), (124, 13443), (149, 13539), (152, 13548), (159, 13581), (187, 13665), (192, 13680), (195, 13686), (265, 13932), (269, 13944), (285, 14004),

Gene: Jakelyne_25 Start: 13781, Stop: 14641, Start Num: 48

Candidate Starts for Jakelyne_25:

(Start: 48 @13781 has 24 MA's), (58, 13817), (Start: 59 @13820 has 1 MA's), (66, 13841), (68, 13847), (72, 13859), (76, 13874), (89, 13940), (97, 13967), (104, 13997), (112, 14030), (141, 14123), (148, 14150), (172, 14243), (181, 14273), (183, 14279), (192, 14312), (210, 14390), (283, 14627), (284, 14630),

Gene: Janus_20 Start: 15047, Stop: 15901, Start Num: 40

Candidate Starts for Janus_20:

(Start: 40 @15047 has 118 MA's), (72, 15137), (85, 15200), (180, 15533), (183, 15542), (203, 15623), (224, 15698), (249, 15737), (263, 15812), (284, 15890), (285, 15893),

Gene: Jash_20 Start: 15156, Stop: 16013, Start Num: 40

Candidate Starts for Jash_20:

(Start: 40 @15156 has 118 MA's), (66, 15228), (72, 15246), (85, 15309), (111, 15414), (124, 15441), (135, 15477), (151, 15543), (160, 15588), (183, 15654), (185, 15660), (201, 15726), (210, 15765), (215, 15783), (243, 15840), (254, 15867), (284, 16002), (285, 16005),

Gene: JeanClaude_17 Start: 13138, Stop: 13977, Start Num: 47

Candidate Starts for JeanClaude_17:

(Start: 26 @13069 has 10 MA's), (Start: 47 @13138 has 4 MA's), (76, 13228), (84, 13267), (89, 13297), (93, 13312), (108, 13360), (134, 13450), (137, 13465), (145, 13501), (153, 13528), (154, 13534), (179, 13621), (195, 13666), (207, 13729), (209, 13735), (219, 13768), (224, 13795), (254, 13840), (255, 13846), (257, 13858), (266, 13906), (268, 13912), (270, 13918),

Gene: Jera_21 Start: 14585, Stop: 15478, Start Num: 48

Candidate Starts for Jera_21:

(Start: 48 @14585 has 24 MA's), (76, 14678), (78, 14687), (95, 14765), (104, 14816), (119, 14876), (135, 14930), (136, 14933), (137, 14939), (208, 15221), (209, 15224), (232, 15293), (249, 15314), (250, 15317), (260, 15377), (278, 15443),

Gene: Jevington_21 Start: 15349, Stop: 16206, Start Num: 40

Candidate Starts for Jevington_21:

(Start: 40 @15349 has 118 MA's), (72, 15439), (135, 15670), (183, 15847), (249, 16042), (284, 16195), (285, 16198),

Gene: Jhitchelle_18 Start: 15308, Stop: 16165, Start Num: 40

Candidate Starts for Jhitchelle_18:

(Start: 40 @15308 has 118 MA's), (54, 15344), (66, 15380), (78, 15422), (110, 15563), (111, 15566), (137, 15638), (149, 15689), (152, 15698), (181, 15800), (183, 15806), (232, 15980), (249, 16001), (278, 16130), (284, 16154), (285, 16157),

Gene: JingleBells_29 Start: 17064, Stop: 17954, Start Num: 37

Candidate Starts for JingleBells_29:

(Start: 37 @17064 has 35 MA's), (108, 17319), (129, 17388), (134, 17412), (140, 17445), (195, 17634), (201, 17667), (215, 17724), (241, 17775), (263, 17865), (271, 17895), (285, 17946), (286, 17949),

Gene: Johann_21 Start: 15488, Stop: 16381, Start Num: 48

Candidate Starts for Johann_21:

(Start: 48 @15488 has 24 MA's), (76, 15581), (95, 15668), (135, 15833), (136, 15836), (166, 15959), (209, 16127), (232, 16196), (249, 16217), (250, 16220), (267, 16307), (268, 16310), (269, 16313), (278, 16346),

Gene: Johnathan_17 Start: 13145, Stop: 13999, Start Num: 41

Candidate Starts for Johnathan_17:

(Start: 41 @13145 has 76 MA's), (67, 13220), (76, 13250), (78, 13259), (101, 13358), (104, 13373), (124, 13430), (149, 13526), (152, 13535), (159, 13568), (187, 13652), (195, 13673), (224, 13790), (269, 13931), (285, 13991),

Gene: Jovita_17 Start: 13220, Stop: 14074, Start Num: 41

Candidate Starts for Jovita_17:

(Start: 41 @13220 has 76 MA's), (67, 13295), (76, 13325), (78, 13334), (93, 13406), (101, 13433), (104, 13448), (124, 13505), (149, 13601), (152, 13610), (159, 13643), (187, 13727), (192, 13742), (265, 13994), (269, 14006), (285, 14066),

Gene: Kaine_19 Start: 15380, Stop: 16237, Start Num: 40

Candidate Starts for Kaine_19:

(Start: 40 @15380 has 118 MA's), (54, 15416), (66, 15452), (78, 15494), (111, 15638), (124, 15665), (181, 15872), (183, 15878), (189, 15902), (232, 16052), (278, 16202), (284, 16226), (285, 16229),

Gene: Kamdara_16 Start: 12806, Stop: 13660, Start Num: 41

Candidate Starts for Kamdara_16:

(Start: 41 @12806 has 76 MA's), (52, 12830), (57, 12851), (67, 12881), (76, 12911), (104, 13034), (121, 13085), (124, 13091), (187, 13313), (192, 13328), (195, 13334), (229, 13469), (265, 13580), (269, 13592), (285, 13652),

Gene: Karate_29 Start: 17199, Stop: 18089, Start Num: 37

Candidate Starts for Karate_29:

(Start: 37 @17199 has 35 MA's), (78, 17319), (108, 17454), (129, 17523), (134, 17547), (140, 17580), (185, 17736), (195, 17769), (201, 17802), (241, 17910), (263, 18000), (271, 18030), (285, 18081), (286, 18084),

Gene: Katalie_20 Start: 15234, Stop: 16091, Start Num: 40

Candidate Starts for Katalie_20:

(Start: 40 @15234 has 118 MA's), (66, 15306), (72, 15324), (111, 15492), (124, 15519), (152, 15624), (183, 15732), (185, 15738), (201, 15804), (249, 15927), (284, 16080), (285, 16083),

Gene: Kate_30 Start: 17795, Stop: 18685, Start Num: 37

Candidate Starts for Kate_30:

(Start: 37 @17795 has 35 MA's), (129, 18119), (134, 18143), (140, 18176), (185, 18332), (241, 18506), (271, 18626), (285, 18677), (286, 18680),

Gene: Kate33_17 Start: 13089, Stop: 13943, Start Num: 41

Candidate Starts for Kate33_17:

(Start: 41 @13089 has 76 MA's), (57, 13134), (67, 13164), (76, 13194), (78, 13203), (124, 13374), (210, 13689), (228, 13746), (265, 13863), (269, 13875), (285, 13935),

Gene: Katzastrophic_16 Start: 12666, Stop: 13520, Start Num: 41

Candidate Starts for Katzastrophic_16:

(Start: 41 @12666 has 76 MA's), (67, 12741), (76, 12771), (85, 12819), (101, 12879), (104, 12894), (121, 12945), (124, 12951), (136, 12990), (147, 13038), (149, 13047), (159, 13089), (195, 13194), (198, 13212), (265, 13440), (267, 13446), (285, 13512),

Gene: Kenzers_17 Start: 13132, Stop: 13986, Start Num: 41

Candidate Starts for Kenzers_17:

(Start: 41 @13132 has 76 MA's), (67, 13207), (76, 13237), (78, 13246), (101, 13345), (124, 13417), (149, 13513), (152, 13522), (159, 13555), (187, 13639), (195, 13660), (216, 13753), (224, 13777), (227, 13786), (254, 13840), (264, 13903), (269, 13918), (285, 13978),

Gene: Khuang_15 Start: 13016, Stop: 13963, Start Num: 25

Candidate Starts for Khuang_15:

(15, 12965), (Start: 25 @13016 has 2 MA's), (Start: 26 @13019 has 10 MA's), (68, 13160), (76, 13187), (79, 13199), (83, 13223), (84, 13226), (123, 13388), (128, 13397), (142, 13469), (150, 13496), (195, 13652), (213, 13736), (220, 13760), (254, 13826), (256, 13835), (282, 13952), (284, 13958),

Gene: Kieran_16 Start: 12810, Stop: 13664, Start Num: 41

Candidate Starts for Kieran_16:

(Start: 41 @12810 has 76 MA's), (52, 12834), (57, 12855), (67, 12885), (76, 12915), (104, 13038), (121, 13089), (124, 13095), (187, 13317), (192, 13332), (195, 13338), (229, 13473), (265, 13584), (269, 13596), (285, 13656),

Gene: Kors_31 Start: 17664, Stop: 18548, Start Num: 40

Candidate Starts for Kors_31:

(18, 17565), (Start: 40 @17664 has 118 MA's), (73, 17760), (78, 17781), (97, 17865), (99, 17871), (135, 18012), (180, 18180), (201, 18261), (207, 18291), (241, 18369), (247, 18381), (249, 18384), (254, 18402), (265, 18468), (266, 18471), (267, 18474), (285, 18540), (286, 18543),

Gene: Krampus_30 Start: 17793, Stop: 18683, Start Num: 37

Candidate Starts for Krampus_30:

(Start: 37 @17793 has 35 MA's), (129, 18117), (134, 18141), (140, 18174), (185, 18330), (241, 18504), (271, 18624), (285, 18675), (286, 18678),

Gene: Kromp_18 Start: 16065, Stop: 17072, Start Num: 22

Candidate Starts for Kromp_18:

(Start: 22 @16065 has 1 MA's), (56, 16185), (68, 16224), (72, 16236), (77, 16254), (99, 16350), (152, 16554), (155, 16566), (184, 16656), (185, 16659), (199, 16713), (200, 16716), (202, 16731), (203, 16734), (244, 16896),

Gene: Kumotta_18 Start: 14074, Stop: 15051, Start Num: 26

Candidate Starts for Kumotta_18:

(Start: 26 @14074 has 10 MA's), (34, 14119), (Start: 45 @14140 has 1 MA's), (Start: 47 @14143 has 4 MA's), (65, 14197), (68, 14206), (72, 14215), (93, 14314), (108, 14362), (116, 14392), (161, 14572), (162, 14575), (190, 14659), (211, 14749), (217, 14770), (224, 14803), (233, 14839), (235, 14848), (251, 14902), (254, 14914), (273, 15007), (278, 15022), (281, 15031),

Gene: Labella_22 Start: 15468, Stop: 16361, Start Num: 48

Candidate Starts for Labella_22:

(Start: 48 @15468 has 24 MA's), (76, 15561), (78, 15570), (95, 15648), (104, 15699), (119, 15759), (135, 15813), (136, 15816), (137, 15822), (208, 16104), (209, 16107), (232, 16176), (249, 16197), (250, 16200), (260, 16260), (278, 16326),

Gene: Lahqtemish_17 Start: 13135, Stop: 13989, Start Num: 41

Candidate Starts for Lahqtemish_17:

(Start: 41 @13135 has 76 MA's), (57, 13180), (67, 13210), (76, 13240), (124, 13420), (195, 13663), (198, 13681), (210, 13735), (228, 13792), (265, 13909), (269, 13921), (285, 13981),

Gene: Lannister_20 Start: 15000, Stop: 15857, Start Num: 40

Candidate Starts for Lannister_20:

(Start: 40 @15000 has 118 MA's), (66, 15072), (72, 15090), (80, 15120), (111, 15258), (124, 15285), (160, 15432), (181, 15492), (183, 15498), (185, 15504), (199, 15558), (201, 15570), (232, 15672), (249, 15693), (284, 15846), (285, 15849),

Gene: Legacy_19 Start: 14964, Stop: 15821, Start Num: 40

Candidate Starts for Legacy_19:

(Start: 40 @14964 has 118 MA's), (66, 15036), (72, 15054), (80, 15084), (85, 15117), (111, 15222), (124, 15249), (151, 15351), (160, 15396), (183, 15462), (185, 15468), (199, 15522), (201, 15534), (232, 15636), (243, 15648), (249, 15657), (284, 15810), (285, 15813),

Gene: Lesiram_22 Start: 14235, Stop: 15098, Start Num: 46

Candidate Starts for Lesiram_22:

(44, 14232), (Start: 46 @14235 has 8 MA's), (74, 14325), (76, 14331), (78, 14340), (92, 14409), (95, 14418), (97, 14424), (113, 14490), (136, 14556), (141, 14583), (152, 14622), (183, 14739), (185, 14745), (192, 14772), (198, 14796), (232, 14913), (242, 14922), (254, 14952), (278, 15063), (283, 15084),

Gene: Leviticus_19 Start: 14993, Stop: 15850, Start Num: 40

Candidate Starts for Leviticus_19:

(Start: 40 @14993 has 118 MA's), (66, 15065), (72, 15083), (80, 15113), (85, 15146), (111, 15251), (124, 15278), (151, 15380), (160, 15425), (183, 15491), (185, 15497), (199, 15551), (201, 15563), (232, 15665), (243, 15677), (249, 15686), (284, 15839), (285, 15842),

Gene: Lika_19 Start: 14998, Stop: 15855, Start Num: 40

Candidate Starts for Lika_19:

(Start: 40 @14998 has 118 MA's), (66, 15070), (72, 15088), (85, 15151), (111, 15256), (124, 15283), (152, 15388), (160, 15430), (183, 15496), (199, 15556), (201, 15568), (215, 15625), (232, 15670), (249, 15691), (284, 15844), (285, 15847),

Gene: Lilo27_17 Start: 13092, Stop: 13946, Start Num: 41

Candidate Starts for Lilo27_17:

(Start: 41 @13092 has 76 MA's), (67, 13167), (76, 13197), (78, 13206), (101, 13305), (104, 13320), (124, 13377), (149, 13473), (152, 13482), (159, 13515), (187, 13599), (192, 13614), (265, 13866), (269, 13878), (285, 13938),

Gene: LimaBean_17 Start: 13144, Stop: 13998, Start Num: 41

Candidate Starts for LimaBean_17:

(Start: 41 @13144 has 76 MA's), (67, 13219), (76, 13249), (78, 13258), (101, 13357), (104, 13372), (124, 13429), (149, 13525), (152, 13534), (159, 13567), (187, 13651), (195, 13672), (224, 13789), (269, 13930), (285, 13990),

Gene: Linayshia_20 Start: 15510, Stop: 16403, Start Num: 48

Candidate Starts for Linayshia_20:

(Start: 48 @15510 has 24 MA's), (76, 15603), (95, 15690), (104, 15741), (135, 15855), (136, 15858), (137, 15864), (152, 15924), (208, 16146), (209, 16149), (232, 16218), (249, 16239), (250, 16242),

Gene: Loofah_20 Start: 14964, Stop: 15821, Start Num: 40

Candidate Starts for Loofah_20:

(Start: 40 @14964 has 118 MA's), (62, 15018), (72, 15054), (183, 15462), (250, 15660), (284, 15810), (285, 15813),

Gene: LordBart_31 Start: 17580, Stop: 18464, Start Num: 40

Candidate Starts for LordBart_31:

(18, 17481), (Start: 40 @17580 has 118 MA's), (73, 17676), (78, 17697), (97, 17781), (99, 17787), (135, 17928), (201, 18177), (207, 18207), (241, 18285), (247, 18297), (249, 18300), (254, 18318), (265, 18384), (266, 18387), (267, 18390), (285, 18456), (286, 18459),

Gene: Lorelei_19 Start: 14967, Stop: 15824, Start Num: 40

Candidate Starts for Lorelei_19:

(Start: 40 @14967 has 118 MA's), (66, 15039), (80, 15087), (85, 15120), (111, 15225), (124, 15252), (140, 15315), (152, 15357), (180, 15456), (181, 15459), (183, 15465), (201, 15537), (215, 15594), (243, 15651), (249, 15660), (284, 15813), (285, 15816),

Gene: Losacky_24 Start: 13845, Stop: 14705, Start Num: 48

Candidate Starts for Losacky_24:

(Start: 48 @13845 has 24 MA's), (58, 13881), (Start: 59 @13884 has 1 MA's), (66, 13905), (68, 13911), (72, 13923), (76, 13938), (89, 14004), (97, 14031), (104, 14061), (112, 14094), (141, 14187), (148, 14214), (181, 14337), (183, 14343), (192, 14376), (210, 14454), (283, 14691), (284, 14694),

Gene: Loviatar_17 Start: 13062, Stop: 13919, Start Num: 41

Candidate Starts for Loviatar_17:

(Start: 41 @13062 has 76 MA's), (52, 13086), (57, 13107), (67, 13137), (76, 13167), (79, 13179), (101, 13275), (104, 13290), (105, 13296), (124, 13347), (140, 13410), (149, 13443), (159, 13485), (195, 13590), (197, 13599), (198, 13608), (223, 13704), (265, 13839), (269, 13851), (285, 13911),

Gene: Lynlen_17 Start: 13132, Stop: 13986, Start Num: 41

Candidate Starts for Lynlen_17:

(Start: 41 @13132 has 76 MA's), (67, 13207), (76, 13237), (78, 13246), (101, 13345), (124, 13417), (149, 13513), (152, 13522), (159, 13555), (187, 13639), (195, 13660), (216, 13753), (224, 13777), (227, 13786), (254, 13840), (264, 13903), (269, 13918), (285, 13978),

Gene: Mabodamaca_16 Start: 13111, Stop: 13977, Start Num: 38

Candidate Starts for Mabodamaca_16:

(Start: 38 @13111 has 10 MA's), (68, 13195), (77, 13225), (97, 13315), (99, 13321), (183, 13624), (269, 13909),

Gene: Maja_17 Start: 13790, Stop: 14692, Start Num: 25

Candidate Starts for Maja_17:

(Start: 25 @13790 has 2 MA's), (34, 13838), (Start: 45 @13859 has 1 MA's), (Start: 47 @13862 has 4 MA's), (81, 13973), (84, 13991), (87, 14018), (89, 14021), (93, 14036), (108, 14084), (134, 14159), (137, 14174), (145, 14210), (153, 14237), (195, 14381), (201, 14414), (211, 14456), (219, 14483), (245, 14531), (257, 14573), (266, 14621), (270, 14633),

Gene: Maneekul_19 Start: 14965, Stop: 15822, Start Num: 40

Candidate Starts for Maneekul_19:

(Start: 40 @14965 has 118 MA's), (66, 15037), (72, 15055), (111, 15223), (124, 15250), (183, 15463), (185, 15469), (201, 15535), (215, 15592), (232, 15637), (249, 15658), (277, 15784), (284, 15811), (285, 15814),

Gene: Marav_22 Start: 15699, Stop: 16556, Start Num: 40

Candidate Starts for Marav_22:

(Start: 40 @15699 has 118 MA's), (72, 15789), (135, 16020), (142, 16056), (183, 16197), (249, 16392), (284, 16545), (285, 16548),

Gene: MargaretKali_18 Start: 13709, Stop: 14686, Start Num: 26

Candidate Starts for MargaretKali_18:

(Start: 26 @13709 has 10 MA's), (34, 13754), (Start: 45 @13775 has 1 MA's), (Start: 47 @13778 has 4 MA's), (65, 13832), (68, 13841), (72, 13850), (93, 13949), (108, 13997), (116, 14027), (161, 14207), (162, 14210), (190, 14294), (211, 14384), (217, 14405), (224, 14438), (233, 14474), (235, 14483), (251, 14537), (254, 14549), (273, 14642), (278, 14657), (281, 14666),

Gene: Mariel_26 Start: 14137, Stop: 14997, Start Num: 48

Candidate Starts for Mariel_26:

(Start: 48 @14137 has 24 MA's), (58, 14173), (Start: 59 @14176 has 1 MA's), (66, 14197), (68, 14203), (72, 14215), (74, 14224), (76, 14230), (97, 14323), (104, 14353), (112, 14386), (141, 14479), (148, 14506), (181, 14629), (183, 14635), (192, 14668), (210, 14746), (268, 14926), (283, 14983), (284, 14986),

Gene: MenE_23 Start: 13833, Stop: 14693, Start Num: 48

Candidate Starts for MenE_23:

(Start: 48 @13833 has 24 MA's), (58, 13869), (Start: 59 @13872 has 1 MA's), (66, 13893), (68, 13899), (72, 13911), (76, 13926), (89, 13992), (97, 14019), (104, 14049), (112, 14082), (141, 14175), (148, 14202), (181, 14325), (183, 14331), (192, 14364), (210, 14442), (283, 14679), (284, 14682),

Gene: Milani_21 Start: 14466, Stop: 15329, Start Num: 46

Candidate Starts for Milani_21:

(Start: 46 @14466 has 8 MA's), (72, 14547), (76, 14562), (93, 14643), (95, 14649), (117, 14739), (135, 14784), (152, 14853), (154, 14862), (159, 14892), (166, 14910), (192, 15003), (198, 15027), (214, 15093), (267, 15255), (276, 15288), (283, 15315), (284, 15318),

Gene: Milomuff_18 Start: 13530, Stop: 14384, Start Num: 41

Candidate Starts for Milomuff_18:

(Start: 41 @13530 has 76 MA's), (67, 13605), (76, 13635), (78, 13644), (101, 13743), (104, 13758), (124, 13815), (149, 13911), (152, 13920), (159, 13953), (187, 14037), (195, 14058), (224, 14175), (227, 14184), (264, 14301), (269, 14316), (285, 14376),

Gene: MortySmith_28 Start: 16923, Stop: 17813, Start Num: 37

Candidate Starts for MortySmith_28:

(Start: 37 @16923 has 35 MA's), (108, 17178), (129, 17247), (134, 17271), (140, 17304), (195, 17493), (201, 17526), (215, 17583), (241, 17634), (263, 17724), (271, 17754), (285, 17805), (286, 17808),

Gene: MrSmee_17 Start: 12921, Stop: 13763, Start Num: 47

Candidate Starts for MrSmee_17:

(Start: 26 @12852 has 10 MA's), (Start: 47 @12921 has 4 MA's), (56, 12948), (72, 12999), (74, 13008), (76, 13014), (81, 13035), (89, 13083), (93, 13098), (128, 13206), (134, 13236), (137, 13251), (142, 13278), (145, 13287), (153, 13314), (179, 13407), (190, 13437), (195, 13452), (201, 13485), (211, 13527), (219, 13554), (245, 13602), (264, 13686), (266, 13692), (268, 13698), (270, 13704),

Gene: MsUbiquitous_17 Start: 13158, Stop: 14012, Start Num: 41

Candidate Starts for MsUbiquitous_17:

(Start: 41 @13158 has 76 MA's), (67, 13233), (76, 13263), (78, 13272), (101, 13371), (104, 13386), (124, 13443), (149, 13539), (152, 13548), (159, 13581), (187, 13665), (192, 13680), (195, 13686), (265, 13932), (269, 13944), (285, 14004),

Gene: NCRodriguez_24 Start: 13894, Stop: 14754, Start Num: 48

Candidate Starts for NCRodriguez_24:

(Start: 48 @13894 has 24 MA's), (58, 13930), (Start: 59 @13933 has 1 MA's), (66, 13954), (68, 13960), (72, 13972), (76, 13987), (89, 14053), (97, 14080), (104, 14110), (112, 14143), (141, 14236), (148, 14263), (181, 14386), (183, 14392), (192, 14425), (210, 14503), (283, 14740), (284, 14743),

Gene: Nabi_19 Start: 14967, Stop: 15824, Start Num: 40

Candidate Starts for Nabi_19:

(Start: 40 @14967 has 118 MA's), (66, 15039), (80, 15087), (85, 15120), (111, 15225), (124, 15252), (140, 15315), (152, 15357), (180, 15456), (181, 15459), (183, 15465), (201, 15537), (215, 15594), (243, 15651), (249, 15660), (284, 15813), (285, 15816),

Gene: Nanodon_21 Start: 15175, Stop: 16032, Start Num: 40

Candidate Starts for Nanodon_21:

(Start: 40 @15175 has 118 MA's), (66, 15247), (72, 15265), (85, 15328), (111, 15433), (124, 15460), (142, 15532), (160, 15607), (181, 15667), (183, 15673), (185, 15679), (199, 15733), (201, 15745), (215, 15802), (232, 15847), (243, 15859), (249, 15868), (271, 15973), (284, 16021), (285, 16024),

Gene: NarutoRun_30 Start: 17786, Stop: 18676, Start Num: 37

Candidate Starts for NarutoRun_30:

(Start: 37 @17786 has 35 MA's), (129, 18110), (134, 18134), (140, 18167), (185, 18323), (241, 18497), (271, 18617), (285, 18668), (286, 18671),

Gene: Neptune_30 Start: 17763, Stop: 18653, Start Num: 37

Candidate Starts for Neptune_30:

(Start: 37 @17763 has 35 MA's), (129, 18087), (134, 18111), (140, 18144), (185, 18300), (241, 18474), (271, 18594), (285, 18645), (286, 18648),

Gene: Nerdos_19 Start: 14993, Stop: 15850, Start Num: 40

Candidate Starts for Nerdos_19:

(Start: 40 @14993 has 118 MA's), (66, 15065), (72, 15083), (80, 15113), (85, 15146), (111, 15251), (124, 15278), (151, 15380), (160, 15425), (183, 15491), (185, 15497), (199, 15551), (201, 15563), (232, 15665), (243, 15677), (249, 15686), (284, 15839), (285, 15842),

Gene: Nicky22_18 Start: 13563, Stop: 14417, Start Num: 41

Candidate Starts for Nicky22_18:

(Start: 41 @13563 has 76 MA's), (67, 13638), (76, 13668), (78, 13677), (101, 13776), (104, 13791), (124, 13848), (149, 13944), (152, 13953), (159, 13986), (187, 14070), (192, 14085), (265, 14337), (269, 14349), (285, 14409),

Gene: Nishikigoi_19 Start: 15480, Stop: 16337, Start Num: 40

Candidate Starts for Nishikigoi_19:

(11, 15354), (12, 15357), (14, 15363), (Start: 40 @15480 has 118 MA's), (50, 15498), (72, 15570), (111, 15738), (135, 15801), (160, 15912), (183, 15978), (199, 16038), (201, 16050), (203, 16059), (215, 16107), (249, 16173), (257, 16209), (270, 16272), (284, 16326), (285, 16329),

Gene: OhDear_30 Start: 17792, Stop: 18682, Start Num: 37

Candidate Starts for OhDear_30:

(Start: 37 @17792 has 35 MA's), (129, 18116), (134, 18140), (140, 18173), (185, 18329), (241, 18503), (271, 18623), (285, 18674), (286, 18677),

Gene: Oliynyk_20 Start: 15156, Stop: 16013, Start Num: 40

Candidate Starts for Oliynyk_20:

(Start: 40 @15156 has 118 MA's), (66, 15228), (72, 15246), (85, 15309), (111, 15414), (124, 15441), (135, 15477), (151, 15543), (160, 15588), (183, 15654), (185, 15660), (201, 15726), (210, 15765), (215, 15783), (243, 15840), (254, 15867), (284, 16002), (285, 16005),

Gene: Olliecat_16 Start: 13002, Stop: 13859, Start Num: 41

Candidate Starts for Olliecat_16:

(Start: 41 @13002 has 76 MA's), (76, 13104), (94, 13188), (97, 13197), (99, 13203), (104, 13227), (109, 13251), (112, 13260), (121, 13278), (149, 13380), (161, 13428), (166, 13440), (167, 13443), (170, 13452), (176, 13473), (192, 13524), (203, 13572), (264, 13776), (267, 13785),

Gene: Olympi_22 Start: 15475, Stop: 16368, Start Num: 48

Candidate Starts for Olympi_22:

(Start: 48 @15475 has 24 MA's), (76, 15568), (95, 15655), (135, 15820), (136, 15823), (166, 15946), (209, 16114), (232, 16183), (249, 16204), (250, 16207), (267, 16294), (268, 16297), (269, 16300), (278, 16333),

Gene: Omar_20 Start: 15815, Stop: 16672, Start Num: 40

Candidate Starts for Omar_20:

(33, 15797), (Start: 40 @15815 has 118 MA's), (72, 15905), (78, 15929), (82, 15944), (89, 15986), (105, 16049), (111, 16073), (135, 16136), (160, 16247), (164, 16256), (183, 16313), (201, 16385), (215, 16442), (249, 16508), (257, 16544), (270, 16607), (284, 16661), (285, 16664),

Gene: OverHedge_30 Start: 17753, Stop: 18643, Start Num: 37

Candidate Starts for OverHedge_30:

(Start: 37 @17753 has 35 MA's), (129, 18077), (134, 18101), (140, 18134), (185, 18290), (241, 18464), (271, 18584), (285, 18635), (286, 18638),

Gene: Ozzie_19 Start: 14973, Stop: 15830, Start Num: 40

Candidate Starts for Ozzie_19:

(Start: 40 @14973 has 118 MA's), (66, 15045), (72, 15063), (80, 15093), (85, 15126), (111, 15231), (124, 15258), (151, 15360), (160, 15405), (183, 15471), (185, 15477), (199, 15531), (201, 15543), (232, 15645), (243, 15657), (249, 15666), (284, 15819), (285, 15822),

Gene: OzzyJ_20 Start: 14960, Stop: 15817, Start Num: 40

Candidate Starts for OzzyJ_20:

(Start: 40 @14960 has 118 MA's), (66, 15032), (72, 15050), (111, 15218), (124, 15245), (152, 15350), (183, 15458), (185, 15464), (199, 15518), (232, 15632), (249, 15653), (284, 15806), (285, 15809),

Gene: Pablito_19 Start: 14808, Stop: 15662, Start Num: 40

Candidate Starts for Pablito_19:

(Start: 40 @14808 has 118 MA's), (62, 14862), (72, 14898), (180, 15294), (183, 15303), (224, 15459), (249, 15498), (260, 15561), (284, 15651), (285, 15654), (286, 15657),

Gene: Paedore_19 Start: 14964, Stop: 15821, Start Num: 40

Candidate Starts for Paedore_19:

(Start: 40 @14964 has 118 MA's), (62, 15018), (72, 15054), (183, 15462), (250, 15660), (284, 15810), (285, 15813),

Gene: Paolo_21 Start: 15362, Stop: 16219, Start Num: 40

Candidate Starts for Paolo_21:

(Start: 40 @15362 has 118 MA's), (135, 15683), (142, 15719), (183, 15860), (249, 16055), (284, 16208), (285, 16211),

Gene: Parvaparticeps_34 Start: 24373, Stop: 23477, Start Num: 41

Candidate Starts for Parvaparticeps_34:

(Start: 41 @24373 has 76 MA's), (Start: 43 @24370 has 2 MA's), (63, 24310), (65, 24304), (76, 24274), (107, 24139), (126, 24079), (152, 23974), (168, 23911), (195, 23800), (201, 23767), (212, 23716), (221, 23680), (226, 23665), (248, 23632),

Gene: PastaFagioli_17 Start: 13123, Stop: 13977, Start Num: 41

Candidate Starts for PastaFagioli_17:

(Start: 41 @13123 has 76 MA's), (57, 13168), (67, 13198), (76, 13228), (104, 13351), (124, 13408), (195, 13651), (198, 13669), (210, 13723), (228, 13780), (265, 13897), (269, 13909), (285, 13969),

Gene: Pavo_20 Start: 15672, Stop: 16529, Start Num: 40

Candidate Starts for Pavo_20:

(Start: 40 @15672 has 118 MA's), (54, 15708), (66, 15744), (78, 15786), (111, 15930), (137, 16002), (151, 16059), (152, 16062), (160, 16104), (181, 16164), (183, 16170), (210, 16281), (232, 16344), (249, 16365), (278, 16494), (284, 16518), (285, 16521),

Gene: Pecas_17 Start: 13119, Stop: 13973, Start Num: 41

Candidate Starts for Pecas_17:

(Start: 41 @13119 has 76 MA's), (67, 13194), (76, 13224), (78, 13233), (101, 13332), (104, 13347), (124, 13404), (149, 13500), (152, 13509), (159, 13542), (187, 13626), (192, 13641), (265, 13893), (269, 13905), (285, 13965),

Gene: Percival_16 Start: 13829, Stop: 14695, Start Num: 38

Candidate Starts for Percival_16:

(Start: 38 @13829 has 10 MA's), (77, 13943), (96, 14030), (97, 14033), (99, 14039), (127, 14141), (133, 14156), (142, 14207), (148, 14228), (183, 14342), (227, 14501), (267, 14621), (269, 14627), (277, 14657),

Gene: PermaG_21 Start: 15549, Stop: 16442, Start Num: 48

Candidate Starts for PermaG_21:

(Start: 48 @15549 has 24 MA's), (112, 15813), (135, 15894), (136, 15897), (137, 15903), (154, 15972), (166, 16020), (209, 16188), (232, 16257), (249, 16278), (250, 16281), (260, 16341), (267, 16368), (268, 16371), (269, 16374), (278, 16407), (279, 16410), (285, 16434),

Gene: Pharpay_30 Start: 17808, Stop: 18698, Start Num: 37

Candidate Starts for Pharpay_30:

(Start: 37 @17808 has 35 MA's), (129, 18132), (134, 18156), (140, 18189), (185, 18345), (201, 18411), (241, 18519), (271, 18639), (285, 18690), (286, 18693),

Gene: Phettuccine_19 Start: 14993, Stop: 15850, Start Num: 40

Candidate Starts for Phettuccine_19:

(Start: 40 @14993 has 118 MA's), (66, 15065), (72, 15083), (80, 15113), (85, 15146), (111, 15251), (124, 15278), (151, 15380), (160, 15425), (183, 15491), (185, 15497), (199, 15551), (201, 15563), (232, 15665), (243, 15677), (249, 15686), (284, 15839), (285, 15842),

Gene: PhigPhack_18 Start: 13118, Stop: 13972, Start Num: 41

Candidate Starts for PhigPhack_18:

(Start: 41 @13118 has 76 MA's), (67, 13193), (76, 13223), (78, 13232), (101, 13331), (104, 13346), (124, 13403), (149, 13499), (152, 13508), (159, 13541), (187, 13625), (195, 13646), (224, 13763), (269, 13904), (285, 13964),

Gene: PhillyJawn_23 Start: 13565, Stop: 14425, Start Num: 48

Candidate Starts for PhillyJawn_23:

(Start: 48 @13565 has 24 MA's), (58, 13601), (Start: 59 @13604 has 1 MA's), (66, 13625), (68, 13631), (72, 13643), (76, 13658), (89, 13724), (97, 13751), (104, 13781), (112, 13814), (141, 13907), (181, 14057), (183, 14063), (192, 14096), (210, 14174), (283, 14411), (284, 14414),

Gene: Phingu_25 Start: 13784, Stop: 14644, Start Num: 48

Candidate Starts for Phingu_25:

(Start: 48 @13784 has 24 MA's), (58, 13820), (Start: 59 @13823 has 1 MA's), (66, 13844), (68, 13850), (72, 13862), (76, 13877), (89, 13943), (97, 13970), (104, 14000), (112, 14033), (141, 14126), (148, 14153), (172, 14246), (181, 14276), (183, 14282), (192, 14315), (210, 14393), (283, 14630), (284, 14633),

Gene: Phisb_17 Start: 13132, Stop: 13986, Start Num: 41

Candidate Starts for Phisb_17:

(Start: 41 @13132 has 76 MA's), (67, 13207), (76, 13237), (78, 13246), (101, 13345), (104, 13360), (124, 13417), (149, 13513), (152, 13522), (159, 13555), (187, 13639), (192, 13654), (265, 13906), (269, 13918), (285, 13978),

Gene: Phonegingi_22 Start: 13626, Stop: 14486, Start Num: 48

Candidate Starts for Phonegingi_22:

(Start: 48 @13626 has 24 MA's), (58, 13662), (Start: 59 @13665 has 1 MA's), (66, 13686), (68, 13692), (76, 13719), (89, 13785), (97, 13812), (104, 13842), (112, 13875), (141, 13968), (148, 13995), (181, 14118), (183, 14124), (192, 14157), (201, 14196), (210, 14235), (268, 14415), (269, 14418), (283,

14472), (284, 14475),

Gene: PhunaPhoke_30 Start: 17781, Stop: 18671, Start Num: 37

Candidate Starts for PhunaPhoke_30:

(Start: 37 @17781 has 35 MA's), (129, 18105), (134, 18129), (140, 18162), (185, 18318), (201, 18384), (241, 18492), (271, 18612), (285, 18663), (286, 18666),

Gene: Pickles13_22 Start: 13990, Stop: 14850, Start Num: 48

Candidate Starts for Pickles13_22:

(Start: 48 @13990 has 24 MA's), (58, 14026), (Start: 59 @14029 has 1 MA's), (66, 14050), (68, 14056), (72, 14068), (74, 14077), (76, 14083), (89, 14149), (97, 14176), (104, 14206), (112, 14239), (136, 14305), (141, 14332), (148, 14359), (173, 14458), (181, 14482), (183, 14488), (192, 14521), (210, 14599), (268, 14779), (278, 14815), (283, 14836),

Gene: Pigu_17 Start: 12876, Stop: 13781, Start Num: 25

Candidate Starts for Pigu_17:

(Start: 25 @12876 has 2 MA's), (Start: 47 @12948 has 4 MA's), (60, 12984), (67, 13011), (74, 13035), (76, 13041), (84, 13080), (87, 13107), (137, 13263), (153, 13326), (182, 13431), (198, 13488), (219, 13572), (245, 13620), (266, 13710), (268, 13716), (270, 13722),

Gene: Pitbull_17 Start: 12204, Stop: 13190, Start Num: 27

Candidate Starts for Pitbull_17:

(Start: 27 @12204 has 2 MA's), (35, 12258), (Start: 43 @12270 has 2 MA's), (Start: 47 @12276 has 4 MA's), (65, 12333), (66, 12336), (67, 12339), (68, 12342), (76, 12366), (93, 12450), (97, 12462), (102, 12489), (116, 12528), (128, 12558), (162, 12711), (181, 12774), (190, 12798), (195, 12813), (203, 12855), (214, 12900), (238, 13002), (246, 13026), (272, 13140), (281, 13170),

Gene: PondAmelia_21 Start: 13114, Stop: 13971, Start Num: 41

Candidate Starts for PondAmelia_21:

(Start: 41 @13114 has 76 MA's), (52, 13138), (57, 13159), (67, 13189), (76, 13219), (78, 13228), (101, 13327), (104, 13342), (105, 13348), (124, 13399), (140, 13462), (149, 13495), (195, 13642), (197, 13651), (198, 13660), (223, 13756), (265, 13891), (269, 13903), (285, 13963),

Gene: Ponzi_55 Start: 36570, Stop: 37538, Start Num: 24

Candidate Starts for Ponzi_55:

(Start: 20 @36546 has 4 MA's), (Start: 24 @36570 has 1 MA's), (Start: 41 @36642 has 76 MA's), (67, 36720), (72, 36735), (95, 36840), (97, 36846), (138, 36996), (156, 37065), (218, 37296), (250, 37377), (257, 37413), (276, 37500), (278, 37506),

Gene: Potty_30 Start: 17786, Stop: 18676, Start Num: 37

Candidate Starts for Potty_30:

(Start: 37 @17786 has 35 MA's), (129, 18110), (134, 18134), (140, 18167), (185, 18323), (241, 18497), (271, 18617), (285, 18668), (286, 18671),

Gene: Poultruss_29 Start: 17550, Stop: 18440, Start Num: 37

Candidate Starts for Poultruss_29:

(Start: 37 @17550 has 35 MA's), (78, 17670), (108, 17805), (129, 17874), (134, 17898), (140, 17931), (185, 18087), (195, 18120), (201, 18153), (241, 18261), (263, 18351), (271, 18381), (285, 18432),

Gene: Provolone_20 Start: 15402, Stop: 16259, Start Num: 40

Candidate Starts for Provolone_20:

(Start: 40 @15402 has 118 MA's), (54, 15438), (66, 15474), (78, 15516), (111, 15660), (124, 15687), (151, 15789), (152, 15792), (160, 15834), (161, 15837), (181, 15894), (183, 15900), (194, 15936),

(232, 16074), (278, 16224), (284, 16248), (285, 16251),

Gene: Puginator_21 Start: 15407, Stop: 16264, Start Num: 40

Candidate Starts for Puginator_21:

(Start: 40 @15407 has 118 MA's), (72, 15497), (135, 15728), (142, 15764), (183, 15905), (249, 16100), (284, 16253), (285, 16256),

Gene: QMacho_18 Start: 13602, Stop: 14456, Start Num: 41

Candidate Starts for QMacho_18:

(Start: 41 @13602 has 76 MA's), (67, 13677), (76, 13707), (78, 13716), (101, 13815), (104, 13830), (124, 13887), (149, 13983), (152, 13992), (159, 14025), (187, 14109), (192, 14124), (265, 14376), (269, 14388), (285, 14448),

Gene: Quenya_17 Start: 12664, Stop: 13518, Start Num: 41

Candidate Starts for Quenya_17:

(Start: 41 @12664 has 76 MA's), (57, 12709), (67, 12739), (76, 12769), (101, 12877), (104, 12892), (121, 12943), (152, 13054), (192, 13186), (195, 13192), (222, 13303), (227, 13318), (265, 13438), (267, 13444), (269, 13450), (285, 13510),

Gene: R4_19 Start: 15046, Stop: 15903, Start Num: 40

Candidate Starts for R4_19:

(Start: 40 @15046 has 118 MA's), (62, 15100), (72, 15136), (111, 15304), (183, 15544), (250, 15742), (284, 15892), (285, 15895),

Gene: Rachella_30 Start: 17789, Stop: 18679, Start Num: 37

Candidate Starts for Rachella_30:

(Start: 37 @17789 has 35 MA's), (129, 18113), (134, 18137), (140, 18170), (185, 18326), (201, 18392), (241, 18500), (271, 18620), (285, 18671), (286, 18674),

Gene: Rana_19 Start: 14967, Stop: 15824, Start Num: 40

Candidate Starts for Rana_19:

(Start: 40 @14967 has 118 MA's), (66, 15039), (80, 15087), (85, 15120), (111, 15225), (124, 15252), (140, 15315), (152, 15357), (180, 15456), (181, 15459), (183, 15465), (201, 15537), (215, 15594), (243, 15651), (249, 15660), (284, 15813), (285, 15816),

Gene: Raqqa_18 Start: 14740, Stop: 15720, Start Num: 23

Candidate Starts for Raqqa_18:

(Start: 23 @14740 has 1 MA's), (65, 14869), (72, 14887), (75, 14899), (84, 14941), (86, 14959), (97, 14998), (99, 15004), (108, 15034), (130, 15097), (161, 15241), (169, 15268), (178, 15304), (201, 15403), (207, 15433), (211, 15445), (217, 15466), (225, 15496), (234, 15529), (246, 15556), (257, 15598), (266, 15649), (270, 15661),

Gene: Rasovi_20 Start: 15518, Stop: 16411, Start Num: 48

Candidate Starts for Rasovi_20:

(Start: 48 @15518 has 24 MA's), (76, 15611), (78, 15620), (95, 15698), (104, 15749), (135, 15863), (136, 15866), (137, 15872), (152, 15932), (208, 16154), (209, 16157), (232, 16226), (249, 16247), (250, 16250), (260, 16310), (278, 16376),

Gene: RedBear_21 Start: 15234, Stop: 16091, Start Num: 40

Candidate Starts for RedBear_21:

(Start: 40 @15234 has 118 MA's), (66, 15306), (72, 15324), (111, 15492), (124, 15519), (152, 15624), (183, 15732), (185, 15738), (201, 15804), (249, 15927), (284, 16080), (285, 16083),

Gene: Rie18_30 Start: 17302, Stop: 18192, Start Num: 37

Candidate Starts for Rie18_30:

(Start: 37 @17302 has 35 MA's), (129, 17626), (134, 17650), (185, 17839), (195, 17872), (241, 18013), (263, 18103), (271, 18133), (285, 18184), (286, 18187),

Gene: RikSengupta_31 Start: 17701, Stop: 18585, Start Num: 40

Candidate Starts for RikSengupta_31:

(18, 17602), (Start: 40 @17701 has 118 MA's), (73, 17797), (78, 17818), (97, 17902), (99, 17908), (135, 18049), (201, 18298), (207, 18328), (241, 18406), (247, 18418), (249, 18421), (254, 18439), (265, 18505), (266, 18508), (267, 18511), (285, 18577), (286, 18580),

Gene: Rollins_16 Start: 11669, Stop: 12526, Start Num: 41

Candidate Starts for Rollins_16:

(Start: 41 @11669 has 76 MA's), (55, 11708), (67, 11744), (76, 11774), (79, 11786), (101, 11882), (124, 11954), (144, 12029), (149, 12050), (198, 12218), (228, 12329),

Gene: Rona_16 Start: 12807, Stop: 13661, Start Num: 41

Candidate Starts for Rona_16:

(Start: 41 @12807 has 76 MA's), (52, 12831), (57, 12852), (67, 12882), (76, 12912), (104, 13035), (121, 13086), (124, 13092), (187, 13314), (192, 13329), (195, 13335), (229, 13470), (265, 13581), (269, 13593), (285, 13653),

Gene: RootBeer_16 Start: 13240, Stop: 14184, Start Num: 26

Candidate Starts for RootBeer_16:

(15, 13192), (Start: 26 @13240 has 10 MA's), (76, 13408), (79, 13420), (84, 13447), (93, 13492), (108, 13558), (123, 13609), (131, 13633), (142, 13690), (149, 13714), (195, 13873), (256, 14056), (266, 14113),

Gene: Rooter_17 Start: 12775, Stop: 13614, Start Num: 47

Candidate Starts for Rooter_17:

(Start: 26 @12706 has 10 MA's), (Start: 47 @12775 has 4 MA's), (76, 12865), (84, 12904), (89, 12934), (93, 12949), (108, 12997), (134, 13087), (137, 13102), (145, 13138), (153, 13165), (154, 13171), (179, 13258), (195, 13303), (207, 13366), (209, 13372), (219, 13405), (224, 13432), (245, 13453), (254, 13477), (255, 13483), (257, 13495), (266, 13543), (268, 13549), (270, 13555),

Gene: Rootkit7_20 Start: 15338, Stop: 16231, Start Num: 48

Candidate Starts for Rootkit7_20:

(Start: 48 @15338 has 24 MA's), (76, 15431), (78, 15440), (95, 15518), (104, 15569), (119, 15629), (135, 15683), (136, 15686), (137, 15692), (208, 15974), (209, 15977), (232, 16046), (249, 16067), (250, 16070), (260, 16130), (278, 16196),

Gene: RunningOnE_76 Start: 40650, Stop: 41642, Start Num: 20

Candidate Starts for RunningOnE_76:

(Start: 20 @40650 has 4 MA's), (21, 40662), (32, 40713), (33, 40719), (Start: 41 @40740 has 76 MA's), (68, 40821), (70, 40824), (84, 40887), (94, 40935), (97, 40944), (109, 40998), (125, 41043), (138, 41094), (163, 41196), (177, 41244), (198, 41319), (270, 41580),

Gene: Rusticus_20 Start: 15156, Stop: 16013, Start Num: 40

Candidate Starts for Rusticus_20:

(Start: 40 @15156 has 118 MA's), (66, 15228), (72, 15246), (85, 15309), (111, 15414), (124, 15441), (135, 15477), (151, 15543), (160, 15588), (183, 15654), (185, 15660), (201, 15726), (210, 15765), (215, 15783), (243, 15840), (254, 15867), (284, 16002), (285, 16005),

Gene: SBlackberry_20 Start: 15344, Stop: 16237, Start Num: 48

Candidate Starts for SBlackberry_20:

(Start: 48 @15344 has 24 MA's), (76, 15437), (78, 15446), (95, 15524), (104, 15575), (119, 15635), (135, 15689), (136, 15692), (137, 15698), (208, 15980), (209, 15983), (232, 16052), (249, 16073), (250, 16076), (260, 16136), (278, 16202),

Gene: Saftant_19 Start: 15950, Stop: 16807, Start Num: 40

Candidate Starts for Saftant_19:

(Start: 40 @15950 has 118 MA's), (49, 15965), (54, 15986), (66, 16022), (72, 16040), (78, 16064), (85, 16103), (135, 16271), (176, 16430), (180, 16439), (181, 16442), (183, 16448), (201, 16520), (216, 16580), (232, 16622), (249, 16643), (278, 16772), (284, 16796), (285, 16799),

Gene: SanaSana_18 Start: 13004, Stop: 13858, Start Num: 41

Candidate Starts for SanaSana_18:

(Start: 41 @13004 has 76 MA's), (57, 13049), (67, 13079), (76, 13109), (101, 13217), (104, 13232), (124, 13289), (149, 13385), (152, 13394), (159, 13427), (195, 13532), (197, 13541), (198, 13550), (216, 13625), (224, 13649), (265, 13778), (269, 13790), (285, 13850),

Gene: SansAfet_17 Start: 13052, Stop: 13906, Start Num: 41

Candidate Starts for SansAfet_17:

(Start: 41 @13052 has 76 MA's), (67, 13127), (76, 13157), (78, 13166), (101, 13265), (104, 13280), (124, 13337), (149, 13433), (152, 13442), (159, 13475), (187, 13559), (223, 13694), (224, 13697), (269, 13838), (285, 13898),

Gene: SarBear_17 Start: 13097, Stop: 13951, Start Num: 41

Candidate Starts for SarBear_17:

(Start: 41 @13097 has 76 MA's), (67, 13172), (76, 13202), (78, 13211), (101, 13310), (104, 13325), (124, 13382), (149, 13478), (152, 13487), (159, 13520), (187, 13604), (192, 13619), (195, 13625), (265, 13871), (269, 13883), (285, 13943),

Gene: SarahRose_19 Start: 14966, Stop: 15823, Start Num: 40

Candidate Starts for SarahRose_19:

(Start: 40 @14966 has 118 MA's), (66, 15038), (72, 15056), (111, 15224), (124, 15251), (176, 15446), (183, 15464), (185, 15470), (199, 15524), (232, 15638), (249, 15659), (284, 15812), (285, 15815),

Gene: Sarge_17 Start: 13073, Stop: 13981, Start Num: 26

Candidate Starts for Sarge_17:

(Start: 26 @13073 has 10 MA's), (Start: 47 @13142 has 4 MA's), (65, 13199), (76, 13232), (84, 13271), (89, 13301), (93, 13316), (108, 13364), (134, 13454), (137, 13469), (145, 13505), (153, 13532), (154, 13538), (179, 13625), (195, 13670), (207, 13733), (209, 13739), (219, 13772), (224, 13799), (245, 13820), (254, 13844), (255, 13850), (257, 13862), (266, 13910), (268, 13916), (270, 13922),

Gene: ScoobySnack_21 Start: 13694, Stop: 14554, Start Num: 48

Candidate Starts for ScoobySnack_21:

(Start: 48 @13694 has 24 MA's), (58, 13730), (Start: 59 @13733 has 1 MA's), (66, 13754), (68, 13760), (72, 13772), (74, 13781), (76, 13787), (89, 13853), (97, 13880), (104, 13910), (112, 13943), (136, 14009), (181, 14186), (183, 14192), (192, 14225), (201, 14264), (210, 14303), (268, 14483), (278, 14519), (283, 14540), (284, 14543),

Gene: Sharkboy_16 Start: 12806, Stop: 13660, Start Num: 41

Candidate Starts for Sharkboy_16:

(Start: 41 @12806 has 76 MA's), (52, 12830), (57, 12851), (67, 12881), (76, 12911), (104, 13034), (121, 13085), (124, 13091), (187, 13313), (192, 13328), (195, 13334), (229, 13469), (265, 13580),

(269, 13592), (285, 13652),

Gene: Shayna_16 Start: 12861, Stop: 13715, Start Num: 43

Candidate Starts for Shayna_16:

(Start: 43 @12861 has 2 MA's), (76, 12960), (97, 13053), (109, 13107), (166, 13296), (185, 13353), (192, 13380), (250, 13548), (254, 13563), (269, 13647), (284, 13704), (285, 13707),

Gene: Shoya_16 Start: 12709, Stop: 13617, Start Num: 26

Candidate Starts for Shoya_16:

(Start: 26 @12709 has 10 MA's), (Start: 47 @12778 has 4 MA's), (76, 12868), (84, 12907), (89, 12937), (93, 12952), (108, 13000), (134, 13090), (137, 13105), (145, 13141), (153, 13168), (154, 13174), (179, 13261), (195, 13306), (207, 13369), (209, 13375), (219, 13408), (224, 13435), (245, 13456), (254, 13480), (255, 13486), (257, 13498), (266, 13546), (268, 13552), (270, 13558),

Gene: SilentWarrior_29 Start: 16956, Stop: 17846, Start Num: 37

Candidate Starts for SilentWarrior_29:

(Start: 37 @16956 has 35 MA's), (102, 17184), (108, 17211), (129, 17280), (134, 17304), (140, 17337), (195, 17526), (201, 17559), (215, 17616), (241, 17667), (263, 17757), (271, 17787), (285, 17838), (286, 17841),

Gene: SirBeanington_17 Start: 13139, Stop: 13993, Start Num: 41

Candidate Starts for SirBeanington_17:

(Start: 41 @13139 has 76 MA's), (67, 13214), (76, 13244), (78, 13253), (101, 13352), (124, 13424), (149, 13520), (152, 13529), (159, 13562), (187, 13646), (192, 13661), (265, 13913), (269, 13925), (285, 13985),

Gene: Skitty_17 Start: 12921, Stop: 13763, Start Num: 47

Candidate Starts for Skitty_17:

(Start: 26 @12852 has 10 MA's), (Start: 47 @12921 has 4 MA's), (56, 12948), (72, 12999), (74, 13008), (76, 13014), (81, 13035), (89, 13083), (93, 13098), (128, 13206), (134, 13236), (137, 13251), (142, 13278), (145, 13287), (153, 13314), (179, 13407), (190, 13437), (195, 13452), (200, 13476), (201, 13485), (211, 13527), (219, 13554), (245, 13602), (266, 13692), (268, 13698), (270, 13704),

Gene: Skylord_16 Start: 11609, Stop: 12466, Start Num: 41

Candidate Starts for Skylord_16:

(Start: 41 @11609 has 76 MA's), (55, 11648), (67, 11684), (76, 11714), (79, 11726), (101, 11822), (124, 11894), (144, 11969), (149, 11990), (198, 12158), (228, 12269), (270, 12401),

Gene: Slay_17 Start: 13639, Stop: 14493, Start Num: 41

Candidate Starts for Slay_17:

(Start: 41 @13639 has 76 MA's), (67, 13714), (76, 13744), (78, 13753), (101, 13852), (104, 13867), (124, 13924), (149, 14020), (152, 14029), (159, 14062), (187, 14146), (192, 14161), (195, 14167), (265, 14413), (269, 14425), (285, 14485),

Gene: Snakehole_30 Start: 17045, Stop: 17935, Start Num: 37

Candidate Starts for Snakehole_30:

(Start: 37 @17045 has 35 MA's), (102, 17273), (108, 17300), (129, 17369), (134, 17393), (140, 17426), (185, 17582), (195, 17615), (201, 17648), (215, 17705), (241, 17756), (263, 17846), (271, 17876), (285, 17927), (286, 17930),

Gene: Snorlax_19 Start: 14969, Stop: 15826, Start Num: 40

Candidate Starts for Snorlax_19:

(Start: 40 @14969 has 118 MA's), (66, 15041), (72, 15059), (111, 15227), (124, 15254), (183, 15467), (185, 15473), (201, 15539), (215, 15596), (232, 15641), (249, 15662), (284, 15815), (285, 15818),

Gene: Softsoap_16 Start: 12873, Stop: 13727, Start Num: 41

Candidate Starts for Softsoap_16:

(Start: 41 @12873 has 76 MA's), (67, 12948), (76, 12978), (78, 12987), (101, 13086), (104, 13101), (124, 13158), (149, 13254), (152, 13263), (159, 13296), (187, 13380), (192, 13395), (265, 13647), (269, 13659), (285, 13719),

Gene: Solea_19 Start: 13530, Stop: 14384, Start Num: 41

Candidate Starts for Solea_19:

(Start: 41 @13530 has 76 MA's), (67, 13605), (76, 13635), (78, 13644), (101, 13743), (104, 13758), (124, 13815), (149, 13911), (152, 13920), (159, 13953), (187, 14037), (195, 14058), (224, 14175), (227, 14184), (264, 14301), (269, 14316), (285, 14376),

Gene: South40_20 Start: 15234, Stop: 16091, Start Num: 40

Candidate Starts for South40_20:

(Start: 40 @15234 has 118 MA's), (66, 15306), (72, 15324), (111, 15492), (124, 15519), (152, 15624), (183, 15732), (185, 15738), (201, 15804), (249, 15927), (284, 16080), (285, 16083),

Gene: Sparcetus_31 Start: 17580, Stop: 18464, Start Num: 40

Candidate Starts for Sparcetus_31:

(18, 17481), (Start: 40 @17580 has 118 MA's), (63, 17646), (73, 17676), (78, 17697), (97, 17781), (99, 17787), (135, 17928), (180, 18096), (201, 18177), (207, 18207), (241, 18285), (247, 18297), (249, 18300), (254, 18318), (265, 18384), (266, 18387), (267, 18390), (285, 18456), (286, 18459),

Gene: Speedwell_24 Start: 17695, Stop: 18552, Start Num: 40

Candidate Starts for Speedwell_24:

(6, 17407), (Start: 40 @17695 has 118 MA's), (49, 17710), (54, 17731), (66, 17767), (111, 17953), (147, 18067), (161, 18130), (181, 18187), (183, 18193), (189, 18217), (232, 18367), (249, 18388), (278, 18517), (284, 18541), (285, 18544),

Gene: Spooks_61 Start: 39025, Stop: 40023, Start Num: 20

Candidate Starts for Spooks_61:

(Start: 20 @39025 has 4 MA's), (21, 39037), (Start: 45 @39118 has 1 MA's), (68, 39193), (76, 39220), (94, 39307), (104, 39346), (138, 39466), (156, 39535), (165, 39571), (183, 39631), (187, 39649), (188, 39652), (224, 39808), (250, 39859), (269, 39955),

Gene: SqueakyClean_20 Start: 14973, Stop: 15827, Start Num: 40

Candidate Starts for SqueakyClean_20:

(Start: 40 @14973 has 118 MA's), (85, 15126), (135, 15294), (180, 15459), (183, 15468), (203, 15549), (249, 15663), (284, 15816), (285, 15819),

Gene: Squircle_16 Start: 13001, Stop: 13858, Start Num: 41

Candidate Starts for Squircle_16:

(Start: 41 @13001 has 76 MA's), (76, 13103), (94, 13187), (97, 13196), (99, 13202), (104, 13226), (109, 13250), (112, 13259), (121, 13277), (149, 13379), (161, 13427), (166, 13439), (167, 13442), (170, 13451), (176, 13472), (192, 13523), (203, 13571), (264, 13775), (267, 13784),

Gene: Stoor_17 Start: 13001, Stop: 13855, Start Num: 41

Candidate Starts for Stoor_17:

(Start: 41 @13001 has 76 MA's), (57, 13046), (67, 13076), (76, 13106), (101, 13214), (104, 13229), (124, 13286), (149, 13382), (152, 13391), (159, 13424), (195, 13529), (197, 13538), (198, 13547),

(216, 13622), (224, 13646), (265, 13775), (269, 13787), (285, 13847),

Gene: Stromboli_17 Start: 13132, Stop: 13986, Start Num: 41

Candidate Starts for Stromboli_17:

(Start: 41 @13132 has 76 MA's), (57, 13177), (67, 13207), (76, 13237), (101, 13345), (104, 13360), (124, 13417), (149, 13513), (152, 13522), (159, 13555), (195, 13660), (197, 13669), (198, 13678), (211, 13735), (216, 13753), (224, 13777), (269, 13918), (285, 13978),

Gene: SuMoo_15 Start: 12068, Stop: 12934, Start Num: 38

Candidate Starts for SuMoo_15:

(Start: 38 @12068 has 10 MA's), (68, 12152), (77, 12182), (93, 12260), (97, 12272), (99, 12278), (111, 12332), (183, 12581), (255, 12794), (269, 12866),

Gene: Success_62 Start: 38159, Stop: 39157, Start Num: 20

Candidate Starts for Success_62:

(Start: 20 @38159 has 4 MA's), (21, 38171), (Start: 45 @38252 has 1 MA's), (68, 38327), (76, 38354), (94, 38441), (121, 38540), (138, 38600), (156, 38669), (165, 38705), (183, 38765), (187, 38783), (188, 38786), (224, 38942), (250, 38993), (269, 39089), (270, 39092),

Gene: Sucha_17 Start: 12846, Stop: 13667, Start Num: 59

Candidate Starts for Sucha_17:

(Start: 46 @12804 has 8 MA's), (Start: 59 @12846 has 1 MA's), (72, 12885), (76, 12900), (93, 12981), (95, 12987), (112, 13056), (135, 13122), (152, 13191), (154, 13200), (159, 13230), (166, 13248), (198, 13365), (223, 13458), (254, 13521), (267, 13593), (268, 13596), (276, 13626), (278, 13632), (283, 13653), (284, 13656),

Gene: Sudan_19 Start: 15667, Stop: 16524, Start Num: 40

Candidate Starts for Sudan_19:

(Start: 40 @15667 has 118 MA's), (54, 15703), (66, 15739), (78, 15781), (111, 15925), (124, 15952), (181, 16159), (183, 16165), (189, 16189), (232, 16339), (278, 16489), (284, 16513), (285, 16516),

Gene: Sujidade_20 Start: 15274, Stop: 16131, Start Num: 40

Candidate Starts for Sujidade_20:

(Start: 40 @15274 has 118 MA's), (66, 15346), (72, 15364), (85, 15427), (111, 15532), (124, 15559), (152, 15664), (160, 15706), (183, 15772), (199, 15832), (201, 15844), (215, 15901), (232, 15946), (249, 15967), (284, 16120), (285, 16123),

Gene: SunkenRoot_21 Start: 15962, Stop: 16819, Start Num: 40

Candidate Starts for SunkenRoot_21:

(Start: 40 @15962 has 118 MA's), (54, 15998), (66, 16034), (78, 16076), (111, 16220), (152, 16352), (181, 16454), (183, 16460), (232, 16634), (267, 16745), (278, 16784), (284, 16808), (285, 16811),

Gene: SunnyD_16 Start: 12861, Stop: 13715, Start Num: 43

Candidate Starts for SunnyD_16:

(Start: 43 @12861 has 2 MA's), (76, 12960), (97, 13053), (109, 13107), (166, 13296), (185, 13353), (192, 13380), (250, 13548), (254, 13563), (269, 13647), (284, 13704), (285, 13707),

Gene: SunsetPointe_19 Start: 14983, Stop: 15840, Start Num: 40

Candidate Starts for SunsetPointe_19:

(Start: 40 @14983 has 118 MA's), (66, 15055), (72, 15073), (80, 15103), (85, 15136), (111, 15241), (124, 15268), (151, 15370), (160, 15415), (183, 15481), (185, 15487), (199, 15541), (201, 15553), (232, 15655), (243, 15667), (249, 15676), (284, 15829), (285, 15832),

Gene: SuperHands_17 Start: 14001, Stop: 14867, Start Num: 38

Candidate Starts for SuperHands_17:

(Start: 38 @14001 has 10 MA's), (77, 14115), (96, 14202), (97, 14205), (99, 14211), (127, 14313), (133, 14328), (142, 14379), (148, 14400), (183, 14514), (227, 14673), (267, 14793), (269, 14799), (277, 14829),

Gene: Superstar_22 Start: 16683, Stop: 17540, Start Num: 40

Candidate Starts for Superstar_22:

(Start: 40 @16683 has 118 MA's), (50, 16701), (64, 16749), (72, 16773), (82, 16812), (132, 16986), (160, 17115), (181, 17175), (183, 17181), (199, 17241), (201, 17253), (249, 17376), (250, 17379), (257, 17412), (270, 17475), (284, 17529), (285, 17532),

Gene: Sweetums_21 Start: 14346, Stop: 15209, Start Num: 46

Candidate Starts for Sweetums_21:

(44, 14343), (Start: 46 @14346 has 8 MA's), (74, 14436), (76, 14442), (92, 14520), (95, 14529), (97, 14535), (113, 14601), (136, 14667), (141, 14694), (152, 14733), (183, 14850), (185, 14856), (192, 14883), (198, 14907), (232, 15024), (242, 15033), (254, 15063), (267, 15135), (283, 15195),

Gene: Swervy_17 Start: 13097, Stop: 13951, Start Num: 41

Candidate Starts for Swervy_17:

(Start: 41 @13097 has 76 MA's), (67, 13172), (76, 13202), (78, 13211), (101, 13310), (104, 13325), (124, 13382), (149, 13478), (152, 13487), (159, 13520), (187, 13604), (192, 13619), (195, 13625), (265, 13871), (269, 13883), (285, 13943),

Gene: TagePighter_20 Start: 14969, Stop: 15826, Start Num: 40

Candidate Starts for TagePighter_20:

(Start: 40 @14969 has 118 MA's), (66, 15041), (72, 15059), (111, 15227), (124, 15254), (183, 15467), (185, 15473), (201, 15539), (215, 15596), (232, 15641), (249, 15662), (284, 15815), (285, 15818),

Gene: Teagster_17 Start: 14372, Stop: 15349, Start Num: 16

Candidate Starts for Teagster_17:

(Start: 16 @14372 has 1 MA's), (76, 14594), (97, 14687), (109, 14741), (121, 14768), (185, 14987), (196, 15023), (258, 15236), (259, 15245), (269, 15281), (279, 15317), (285, 15341),

Gene: Tedro_30 Start: 17259, Stop: 18149, Start Num: 37

Candidate Starts for Tedro_30:

(Start: 37 @17259 has 35 MA's), (129, 17583), (134, 17607), (140, 17640), (185, 17796), (201, 17862), (241, 17970), (271, 18090), (285, 18141), (286, 18144),

Gene: Tefunt_19 Start: 15480, Stop: 16337, Start Num: 40

Candidate Starts for Tefunt_19:

(11, 15354), (12, 15357), (14, 15363), (Start: 40 @15480 has 118 MA's), (50, 15498), (72, 15570), (111, 15738), (135, 15801), (160, 15912), (183, 15978), (199, 16038), (201, 16050), (203, 16059), (215, 16107), (249, 16173), (257, 16209), (270, 16272), (284, 16326), (285, 16329),

Gene: Teng_23 Start: 14262, Stop: 15125, Start Num: 46

Candidate Starts for Teng_23:

(44, 14259), (Start: 46 @14262 has 8 MA's), (74, 14352), (76, 14358), (78, 14367), (92, 14436), (95, 14445), (97, 14451), (113, 14517), (136, 14583), (141, 14610), (152, 14649), (181, 14760), (183, 14766), (185, 14772), (192, 14799), (198, 14823), (232, 14940), (242, 14949), (267, 15051), (276, 15084), (283, 15111),

Gene: Thestral_20 Start: 14942, Stop: 15796, Start Num: 40

Candidate Starts for Thestral_20:

(Start: 40 @14942 has 118 MA's), (49, 14957), (62, 14996), (72, 15032), (135, 15263), (164, 15383), (183, 15437), (284, 15785), (285, 15788),

Gene: TinaBelcher_19 Start: 14890, Stop: 15744, Start Num: 40

Candidate Starts for TinaBelcher_19:

(Start: 40 @14890 has 118 MA's), (62, 14944), (72, 14980), (135, 15211), (183, 15385), (284, 15733), (285, 15736),

Gene: TinyMiny_31 Start: 17599, Stop: 18483, Start Num: 40

Candidate Starts for TinyMiny_31:

(18, 17500), (Start: 40 @17599 has 118 MA's), (73, 17695), (78, 17716), (97, 17800), (99, 17806), (135, 17947), (201, 18196), (207, 18226), (241, 18304), (247, 18316), (249, 18319), (254, 18337), (265, 18403), (266, 18406), (267, 18409), (285, 18475), (286, 18478),

Gene: Toma_19 Start: 14982, Stop: 15839, Start Num: 40

Candidate Starts for Toma_19:

(Start: 40 @14982 has 118 MA's), (66, 15054), (85, 15135), (111, 15240), (112, 15243), (124, 15267), (160, 15414), (180, 15471), (181, 15474), (183, 15480), (201, 15552), (215, 15609), (249, 15675), (284, 15828), (285, 15831),

Gene: Tongui_29 Start: 17294, Stop: 18184, Start Num: 37

Candidate Starts for Tongui_29:

(Start: 37 @17294 has 35 MA's), (108, 17549), (129, 17618), (134, 17642), (140, 17675), (185, 17831), (195, 17864), (241, 18005), (263, 18095), (271, 18125), (285, 18176), (286, 18179),

Gene: Triste_19 Start: 14960, Stop: 15817, Start Num: 40

Candidate Starts for Triste_19:

(Start: 40 @14960 has 118 MA's), (66, 15032), (72, 15050), (111, 15218), (124, 15245), (176, 15440), (183, 15458), (185, 15464), (199, 15518), (232, 15632), (249, 15653), (284, 15806), (285, 15809),

Gene: Triumph_21 Start: 14890, Stop: 15744, Start Num: 40

Candidate Starts for Triumph_21:

(Start: 40 @14890 has 118 MA's), (62, 14944), (72, 14980), (85, 15043), (106, 15127), (180, 15376), (183, 15385), (192, 15418), (203, 15466), (224, 15541), (249, 15580), (284, 15733), (285, 15736),

Gene: TrvxScott_18 Start: 14892, Stop: 15746, Start Num: 40

Candidate Starts for TrvxScott_18:

(Start: 40 @14892 has 118 MA's), (62, 14946), (72, 14982), (135, 15213), (181, 15381), (183, 15387), (284, 15735), (285, 15738),

Gene: TuanPN_19 Start: 14966, Stop: 15823, Start Num: 40

Candidate Starts for TuanPN_19:

(Start: 40 @14966 has 118 MA's), (66, 15038), (72, 15056), (111, 15224), (124, 15251), (183, 15464), (185, 15470), (201, 15536), (215, 15593), (232, 15638), (249, 15659), (277, 15785), (284, 15812), (285, 15815),

Gene: TukTuk_17 Start: 13155, Stop: 14009, Start Num: 41

Candidate Starts for TukTuk_17:

(Start: 41 @13155 has 76 MA's), (67, 13230), (76, 13260), (78, 13269), (101, 13368), (104, 13383), (124, 13440), (149, 13536), (152, 13545), (159, 13578), (187, 13662), (192, 13677), (265, 13929), (269, 13941), (285, 14001),

Gene: TurboVicky_20 Start: 15338, Stop: 16231, Start Num: 48

Candidate Starts for TurboVicky_20:

(Start: 48 @15338 has 24 MA's), (76, 15431), (78, 15440), (95, 15518), (104, 15569), (119, 15629), (135, 15683), (136, 15686), (137, 15692), (208, 15974), (209, 15977), (232, 16046), (249, 16067), (250, 16070), (260, 16130), (278, 16196),

Gene: Typher_22 Start: 15468, Stop: 16361, Start Num: 48

Candidate Starts for Typher_22:

(Start: 48 @15468 has 24 MA's), (76, 15561), (78, 15570), (95, 15648), (104, 15699), (119, 15759), (135, 15813), (136, 15816), (137, 15822), (208, 16104), (209, 16107), (232, 16176), (249, 16197), (250, 16200), (260, 16260), (278, 16326),

Gene: Unstoppable_19 Start: 14984, Stop: 15841, Start Num: 40

Candidate Starts for Unstoppable_19:

(Start: 40 @14984 has 118 MA's), (66, 15056), (72, 15074), (80, 15104), (85, 15137), (111, 15242), (124, 15269), (151, 15371), (160, 15416), (183, 15482), (185, 15488), (199, 15542), (201, 15554), (232, 15656), (243, 15668), (249, 15677), (284, 15830), (285, 15833),

Gene: Urza_19 Start: 15351, Stop: 16208, Start Num: 40

Candidate Starts for Urza_19:

(Start: 40 @15351 has 118 MA's), (60, 15402), (66, 15423), (72, 15441), (78, 15465), (85, 15504), (185, 15855), (192, 15882), (201, 15921), (216, 15981), (277, 16170), (284, 16197), (285, 16200),

Gene: UtzChips_15 Start: 12272, Stop: 13138, Start Num: 38

Candidate Starts for UtzChips_15:

(Start: 38 @12272 has 10 MA's), (50, 12293), (80, 12398), (97, 12476), (152, 12683), (183, 12785), (224, 12935), (257, 13010), (269, 13070), (282, 13121),

Gene: Vanseggelen_24 Start: 15333, Stop: 16190, Start Num: 40

Candidate Starts for Vanseggelen_24:

(6, 15054), (Start: 40 @15333 has 118 MA's), (54, 15369), (66, 15405), (72, 15423), (78, 15447), (111, 15591), (137, 15663), (152, 15723), (160, 15765), (176, 15813), (232, 16005), (249, 16026), (278, 16155), (284, 16179), (285, 16182),

Gene: Verabelle_20 Start: 15664, Stop: 16521, Start Num: 40

Candidate Starts for Verabelle_20:

(Start: 40 @15664 has 118 MA's), (49, 15679), (54, 15700), (66, 15736), (72, 15754), (78, 15778), (110, 15919), (111, 15922), (124, 15949), (160, 16096), (181, 16156), (185, 16168), (189, 16186), (232, 16336), (249, 16357), (278, 16486), (284, 16510), (285, 16513),

Gene: Verse_19 Start: 15963, Stop: 16820, Start Num: 40

Candidate Starts for Verse_19:

(Start: 40 @15963 has 118 MA's), (54, 15999), (66, 16035), (78, 16077), (111, 16221), (152, 16353), (181, 16455), (183, 16461), (232, 16635), (249, 16656), (267, 16746), (278, 16785), (284, 16809), (285, 16812),

Gene: VieEnRose_19 Start: 15417, Stop: 16274, Start Num: 40

Candidate Starts for VieEnRose_19:

(Start: 40 @15417 has 118 MA's), (60, 15468), (66, 15489), (78, 15531), (85, 15570), (139, 15762), (185, 15921), (192, 15948), (201, 15987), (277, 16236), (284, 16263), (285, 16266),

Gene: Violeta_24 Start: 13663, Stop: 14523, Start Num: 48

Candidate Starts for Violeta_24:

(Start: 48 @13663 has 24 MA's), (58, 13699), (Start: 59 @13702 has 1 MA's), (66, 13723), (68, 13729), (72, 13741), (76, 13756), (89, 13822), (97, 13849), (104, 13879), (112, 13912), (141, 14005), (148, 14032), (181, 14155), (183, 14161), (192, 14194), (210, 14272), (283, 14509), (284, 14512),

Gene: Vitas_16 Start: 11609, Stop: 12466, Start Num: 41

Candidate Starts for Vitas_16:

(Start: 41 @11609 has 76 MA's), (55, 11648), (67, 11684), (76, 11714), (79, 11726), (101, 11822), (124, 11894), (144, 11969), (149, 11990), (198, 12158), (228, 12269),

Gene: WalkingDead_17 Start: 13121, Stop: 13978, Start Num: 41

Candidate Starts for WalkingDead_17:

(Start: 41 @13121 has 76 MA's), (57, 13166), (67, 13196), (76, 13226), (101, 13334), (104, 13349), (124, 13406), (149, 13502), (152, 13511), (159, 13544), (223, 13763), (265, 13898), (269, 13910), (285, 13970),

Gene: Warren_23 Start: 13763, Stop: 14623, Start Num: 48

Candidate Starts for Warren_23:

(Start: 48 @13763 has 24 MA's), (58, 13799), (Start: 59 @13802 has 1 MA's), (66, 13823), (68, 13829), (76, 13856), (89, 13922), (97, 13949), (104, 13979), (112, 14012), (141, 14105), (148, 14132), (181, 14255), (183, 14261), (192, 14294), (210, 14372), (283, 14609), (284, 14612),

Gene: Werner_19 Start: 14970, Stop: 15827, Start Num: 40

Candidate Starts for Werner_19:

(Start: 40 @14970 has 118 MA's), (66, 15042), (72, 15060), (111, 15228), (124, 15255), (176, 15450), (183, 15468), (185, 15474), (199, 15528), (232, 15642), (249, 15663), (284, 15816), (285, 15819),

Gene: Whatever_19 Start: 14970, Stop: 15827, Start Num: 40

Candidate Starts for Whatever_19:

(Start: 40 @14970 has 118 MA's), (66, 15042), (72, 15060), (111, 15228), (124, 15255), (176, 15450), (183, 15468), (185, 15474), (199, 15528), (232, 15642), (249, 15663), (284, 15816), (285, 15819),

Gene: Winchester007_38 Start: 19683, Stop: 20543, Start Num: 48

Candidate Starts for Winchester007_38:

(Start: 48 @19683 has 24 MA's), (58, 19719), (Start: 59 @19722 has 1 MA's), (66, 19743), (68, 19749), (72, 19761), (76, 19776), (89, 19842), (97, 19869), (104, 19899), (112, 19932), (141, 20025), (181, 20175), (183, 20181), (192, 20214), (210, 20292), (283, 20529), (284, 20532),

Gene: Wrackline_27 Start: 15094, Stop: 15957, Start Num: 46

Candidate Starts for Wrackline_27:

(13, 14956), (Start: 46 @15094 has 8 MA's), (51, 15103), (53, 15115), (61, 15139), (66, 15157), (76, 15190), (95, 15277), (97, 15283), (98, 15286), (104, 15313), (112, 15346), (117, 15367), (121, 15379), (135, 15412), (136, 15415), (154, 15490), (157, 15511), (159, 15520), (181, 15592), (183, 15598), (192, 15631), (198, 15655), (201, 15670), (215, 15724), (223, 15748), (249, 15793), (254, 15811), (284, 15946),

Gene: Yasdni1_19 Start: 14962, Stop: 15819, Start Num: 40

Candidate Starts for Yasdni1_19:

(Start: 40 @14962 has 118 MA's), (66, 15034), (72, 15052), (111, 15220), (124, 15247), (183, 15460), (185, 15466), (201, 15532), (215, 15589), (232, 15634), (249, 15655), (277, 15781), (284, 15808), (285, 15811),

Gene: Yosif_20 Start: 15949, Stop: 16794, Start Num: 40

Candidate Starts for Yosif_20:

(Start: 40 @15949 has 118 MA's), (66, 16021), (72, 16039), (127, 16240), (135, 16270), (142, 16300), (152, 16327), (183, 16435), (185, 16441), (269, 16726), (284, 16783), (285, 16786),

Gene: Zainub_21 Start: 15320, Stop: 16177, Start Num: 40

Candidate Starts for Zainub_21:

(Start: 40 @15320 has 118 MA's), (135, 15641), (142, 15677), (183, 15818), (249, 16013), (284, 16166), (285, 16169),

Gene: ZamZam_19 Start: 15956, Stop: 16813, Start Num: 39

Candidate Starts for ZamZam_19:

(Start: 39 @15956 has 1 MA's), (49, 15971), (54, 15992), (66, 16028), (78, 16070), (85, 16109), (136, 16280), (149, 16337), (176, 16436), (181, 16448), (183, 16454), (185, 16460), (232, 16628), (249, 16649), (278, 16778), (284, 16802), (285, 16805),

Gene: Zanella_20 Start: 15341, Stop: 16234, Start Num: 48

Candidate Starts for Zanella_20:

(Start: 48 @15341 has 24 MA's), (76, 15434), (78, 15443), (95, 15521), (104, 15572), (119, 15632), (124, 15644), (135, 15686), (136, 15689), (137, 15695), (208, 15977), (209, 15980), (232, 16049), (249, 16070), (250, 16073), (260, 16133), (278, 16199),

Gene: Zemlya_20 Start: 14993, Stop: 15850, Start Num: 40

Candidate Starts for Zemlya_20:

(Start: 40 @14993 has 118 MA's), (66, 15065), (85, 15146), (111, 15251), (124, 15278), (180, 15482), (181, 15485), (183, 15491), (201, 15563), (215, 15620), (249, 15686), (284, 15839), (285, 15842),

Gene: Zucker_19 Start: 14495, Stop: 15337, Start Num: 47

Candidate Starts for Zucker_19:

(Start: 26 @14426 has 10 MA's), (28, 14435), (30, 14453), (31, 14456), (34, 14471), (Start: 47 @14495 has 4 MA's), (49, 14498), (65, 14552), (74, 14582), (76, 14588), (84, 14627), (87, 14654), (89, 14657), (93, 14672), (108, 14720), (120, 14762), (128, 14780), (137, 14825), (145, 14861), (146, 14864), (153, 14888), (179, 14981), (195, 15026), (201, 15059), (207, 15089), (215, 15116), (219, 15128), (222, 15149), (245, 15176), (255, 15206), (264, 15260), (266, 15266), (270, 15278),

Gene: phiCAM_20 Start: 17629, Stop: 18483, Start Num: 40

Candidate Starts for phiCAM_20:

(Start: 40 @17629 has 118 MA's), (54, 17665), (66, 17701), (72, 17719), (78, 17743), (100, 17836), (111, 17887), (152, 18019), (176, 18106), (181, 18118), (183, 18124), (189, 18148), (232, 18298), (249, 18319), (278, 18448), (284, 18472), (285, 18475),

Gene: phiHau3_21 Start: 15666, Stop: 16520, Start Num: 40

Candidate Starts for phiHau3_21:

(9, 15513), (Start: 40 @15666 has 118 MA's), (78, 15780), (85, 15819), (112, 15927), (132, 15969), (142, 16023), (227, 16326), (284, 16509), (285, 16512), (286, 16515),