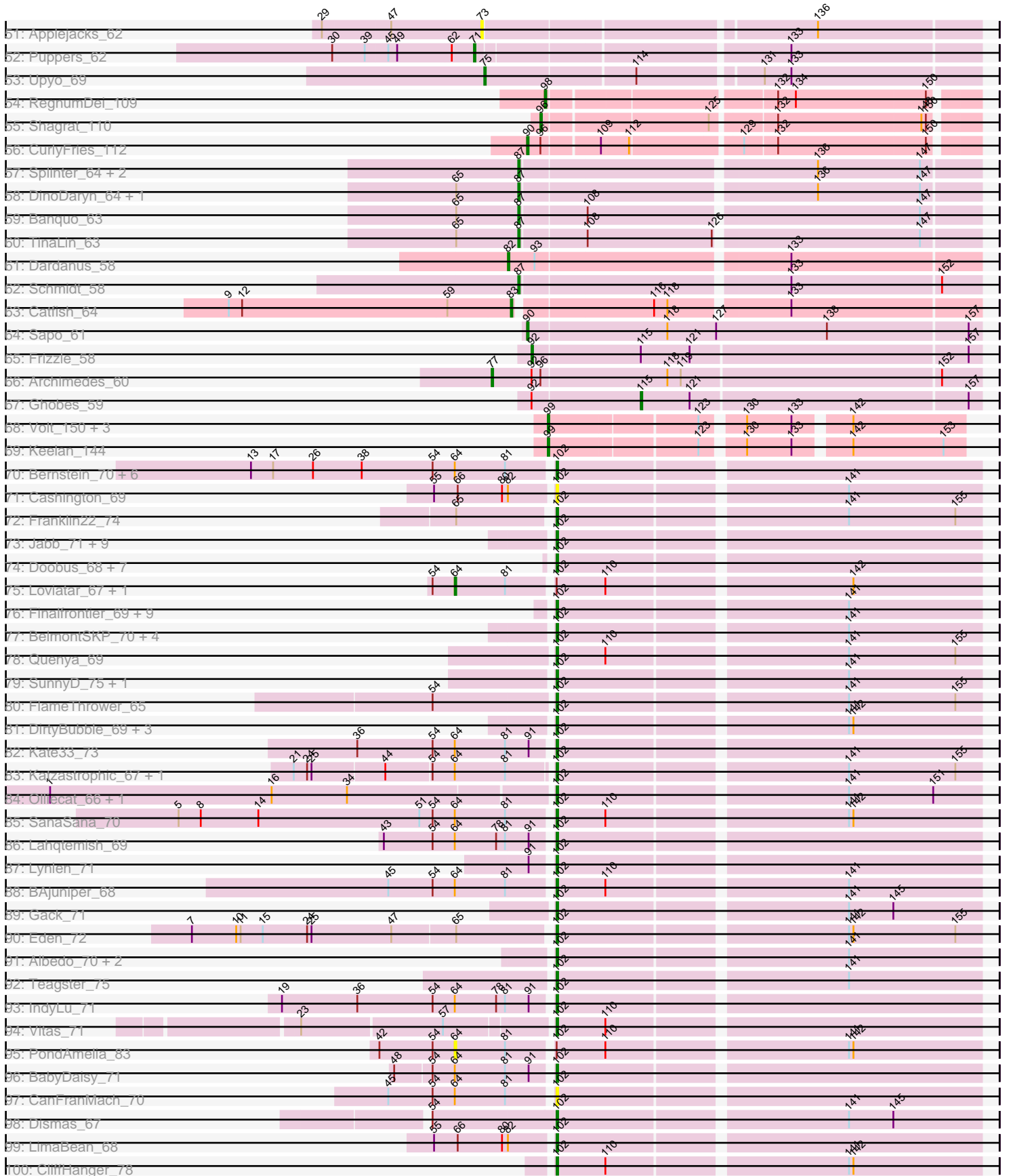
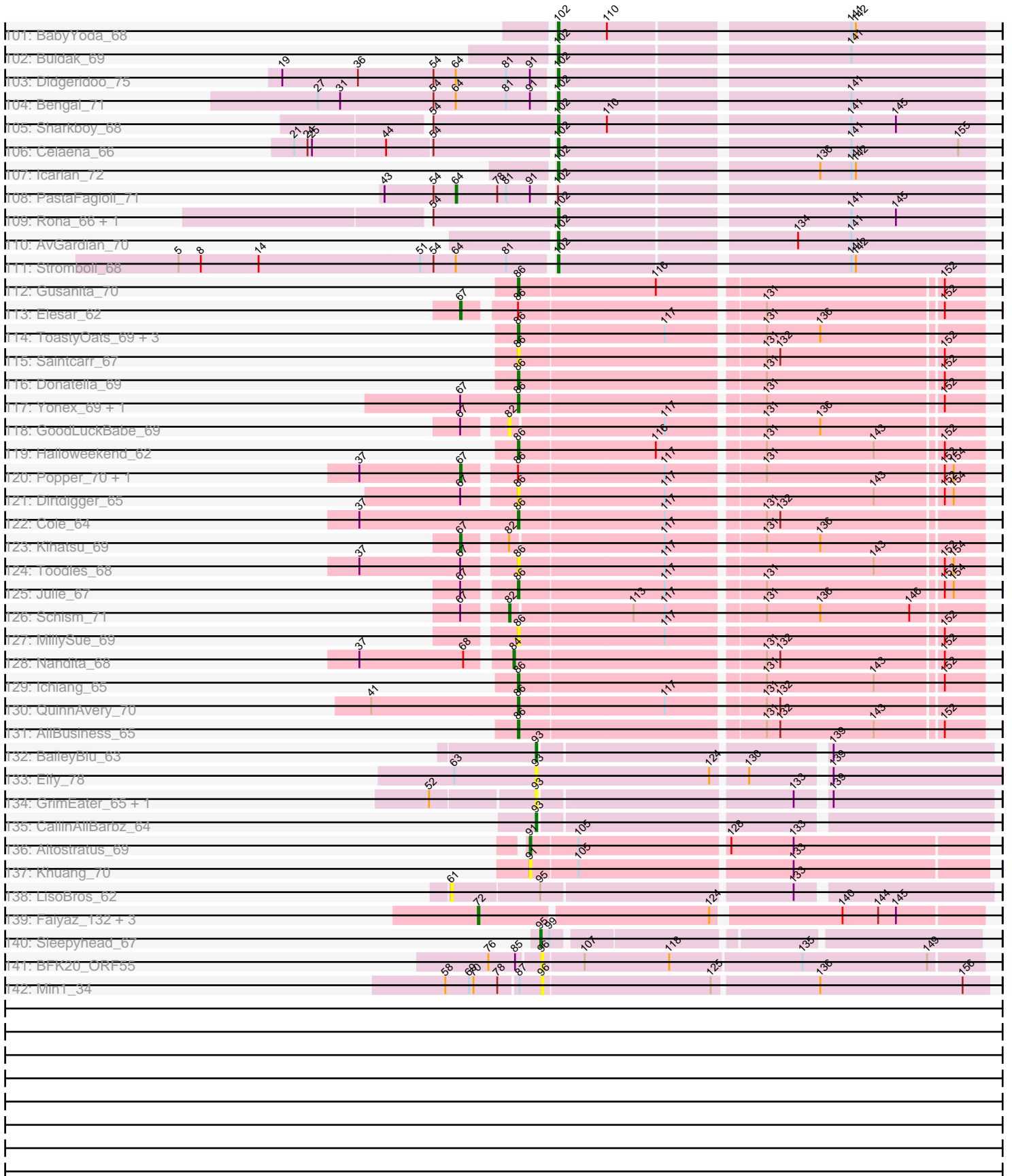


Pham 296184



Pham 296184



Note: Tracks are now grouped by subcluster and scaled. Switching in subcluster is indicated by changes in track color. Track scale is now set by default to display the region 30 bp upstream of start 1 to 30 bp downstream of the last possible start. If this default region is judged to be packed too tightly with annotated starts, the track will be further scaled to only show that region of the ORF with annotated starts. This action will be indicated by adding "Zoomed" to the title. For starts, yellow indicates the location of called starts comprised solely of Glimmer/GeneMark auto-annotations, green indicates the location of called starts with at least 1 manual gene annotation.

Pham 296184 Report

This analysis was run 04/25/26 on database version 644.

Pham number 296184 has 283 members, 38 are drafts.

Phages represented in each track:

- Track 1 : Bodacious_61, CristinaYang_61, Nancia_61, LilStuart_60, Lasagna_59
- Track 2 : Chridison_57, Supakev_60
- Track 3 : Moki_62, Huckleberry_62, HeadNerd_62
- Track 4 : Savage2526_61, Potatoes_62, BrotherBLo_62, Cholula_62, Carpal_61, Zorro_62, TattModd_61, Rozby_60, Immaculata_62, Kalizoi_62, Korra_62, Riverdale_61, Beethoven_63, Wawa_62
- Track 5 : Suppi_62, PartyCup_62, Wayne_64, Graynor_65, Canowicakte_62, MrBoss_63
- Track 6 : Misaeng_61
- Track 7 : RcigaStruga_62
- Track 8 : Bennie_63
- Track 9 : Pumancara_61, PinkFriday_61
- Track 10 : BigMack_61
- Track 11 : Pterodactyl_61, Lennox_61, Makoto_60, WonderBoy_59, ChewChew_61, OurGirlNessie_59
- Track 12 : Scuttle_61, MrGloopy_62, RAP15_63, Glenn_64, Vallejo_62, Fluke_62, Dino_62, MeganNoll_63
- Track 13 : Eunoia_62, Aledel_60, AustinPowers_60, OMalley_60, Riovina_60
- Track 14 : CallieOMalley_62, Litotes_62
- Track 15 : Herb_60, Maria1952_59, Daiboju_60, Sergei_60, KingBob_60, Temper16_60
- Track 16 : Huntingdon_61
- Track 17 : Kittykat_65, Preamble_64
- Track 18 : MamaPearl_60, EstebanJulior_60, Urla_62
- Track 19 : Christian_61, PitaDog_61
- Track 20 : Albanese_61, Greenhouse_61
- Track 21 : Gisselle_61, DreamTeam_61
- Track 22 : Lucy_60, DrRobert_59
- Track 23 : GreenHearts_62, Lakshmi_61
- Track 24 : Joann_63, Oxynfrius_62
- Track 25 : Nubia_61
- Track 26 : AppleCider_61
- Track 27 : Jumboset_62
- Track 28 : Abidatro_66
- Track 29 : Basilisk_66
- Track 30 : TaylorSipht_65
- Track 31 : Vulpecula_64

- Track 32 : Zixiang_67, Eesa_65
- Track 33 : Orcanus_65
- Track 34 : Chickaboom_66, Brynnie_64, WileyE_66
- Track 35 : Galaxy_65
- Track 36 : Toad24_68, KendraB23_76
- Track 37 : Ruchi_64
- Track 38 : Jamun_63
- Track 39 : LittleTokyo_73, Cygnet_73
- Track 40 : Antrice_75
- Track 41 : Kuleana_76
- Track 42 : Zhuangyuan_77
- Track 43 : Laphuphu24k_68, KHumphrey_70, Glotell_71, Rattail_71, Juno112_69, DanHam62_70, Fingolfin_70, PhluffyCoco_68, AmiCi24_68, Amphitrite_69, Camara_69, RedFox_71, Atlantica_70, AdoptaAdorbs_68, HamCheese_69, Oppalora_68
- Track 44 : Leona_68, Azaz_72
- Track 45 : Renna12_72
- Track 46 : Babushka_66
- Track 47 : AlexMinion_71, StuartMinion_61
- Track 48 : E1_55, Anatole_55, B3_57
- Track 49 : Mahdia_60
- Track 50 : Widow_62
- Track 51 : Applejacks_62
- Track 52 : Puppies_62
- Track 53 : Upyo_69
- Track 54 : RegnumDei_109
- Track 55 : Shagrat_110
- Track 56 : CurlyFries_112
- Track 57 : Splinter_64, TZGordon_65, Vendetta_64
- Track 58 : DinoDaryn_64, Huffy_64
- Track 59 : Banquo_63
- Track 60 : TinaLin_63
- Track 61 : Dardanus_58
- Track 62 : Schmidt_58
- Track 63 : Catfish_64
- Track 64 : Sapo_61
- Track 65 : Frizzle_58
- Track 66 : Archimedes_60
- Track 67 : Ghobes_59
- Track 68 : Volt_150, Guey18_149, Fryberger_144, Ronaldo_147
- Track 69 : Keelan_144
- Track 70 : Bernstein_70, Skylord_70, Brahms_70, Coltrane_70, Clayda5_72, Rollins_70, Armstrong_70
- Track 71 : Cashington_69
- Track 72 : Franklin22_74
- Track 73 : Jabb_71, CupcakePrincess_71, MsUbiquitous_71, Johnathan_70, SarBear_72, QMacho_72, Phisb_72, Burritobowl_72, CroZenni_71, Abigail_70
- Track 74 : Doobus_68, Albright_69, Milomuff_72, Softsoap_71, BubbaBear_68, Solea_73, DickRichards_68, Avocadoman_69
- Track 75 : Loviatar_67, Akino08_66
- Track 76 : Finalfrontier_69, Eula_69, Lilo27_70, TukTuk_70, Pecas_70, Jovita_68, Nicky22_69, AylexOG_71, Swervy_70, Slay_70
- Track 77 : BelmontSKP_70, AnnaLie_70, PhigPhack_73, Arroyo_71, SansAfet_72

- Track 78 : Quenya_69
- Track 79 : SunnyD_75, Shayna_75
- Track 80 : FlameThrower_65
- Track 81 : DirtyBubble_69, Elva_73, Stoor_69, WalkingDead_71
- Track 82 : Kate33_73
- Track 83 : Katzastrophic_67, Bachaco_66
- Track 84 : Olliecat_66, Squirrel_66
- Track 85 : SanaSana_70
- Track 86 : Lahqtemish_69
- Track 87 : Lynlen_71
- Track 88 : BAjuniper_68
- Track 89 : Gack_71
- Track 90 : Eden_72
- Track 91 : Albedo_70, Kenzers_69, SirBeanington_70
- Track 92 : Teagster_75
- Track 93 : IndyLu_71
- Track 94 : Vitas_71
- Track 95 : PondAmelia_83
- Track 96 : BabyDaisy_71
- Track 97 : CanFranMach_70
- Track 98 : Dismas_67
- Track 99 : LimaBean_68
- Track 100 : CliffHanger_78
- Track 101 : BabyYoda_68
- Track 102 : Buldak_69
- Track 103 : Didgeridoo_75
- Track 104 : Bengal_71
- Track 105 : Sharkboy_68
- Track 106 : Celaena_66
- Track 107 : Icarian_72
- Track 108 : PastaFagioli_71
- Track 109 : Rona_66, Kieran_65
- Track 110 : AvGardian_70
- Track 111 : Stromboli_68
- Track 112 : Gusanita_70
- Track 113 : Elesar_62
- Track 114 : ToastyOats_69, Lenoxika_66, Zaheer_69, Guinevere_71
- Track 115 : Saintcarr_67
- Track 116 : Donatella_69
- Track 117 : Yonex_69, Ryan_70
- Track 118 : GoodLuckBabe_69
- Track 119 : Halloweekend_62
- Track 120 : Popper_70, IsHungry_64
- Track 121 : Dirtdigger_65
- Track 122 : Cole_64
- Track 123 : Kihatsu_69
- Track 124 : Toodles_68
- Track 125 : Julie_67
- Track 126 : Schism_71
- Track 127 : MillySue_69
- Track 128 : Nandita_68
- Track 129 : Ichiang_65
- Track 130 : QuinnAvery_70

- Track 131 : AllBusiness_65
- Track 132 : BaileyBlu_63
- Track 133 : Elfy_78
- Track 134 : GrimEater_65, Jankie_67
- Track 135 : CallinAllBarbz_64
- Track 136 : Altostratus_69
- Track 137 : Khuang_70
- Track 138 : LisoBros_62
- Track 139 : Faiyaz_132, Typha_129, Hilltopfarm_134, AuntGwenStacy_132
- Track 140 : Sleepyhead_67
- Track 141 : BFK20_ORF55
- Track 142 : Min1_34

Summary of Final Annotations (See graph section above for start numbers):

The start number called the most often in the published annotations is 102, it was called in 76 of the 245 non-draft genes in the pham.

Genes that call this "Most Annotated" start:

- Abigail_70, Albedo_70, Albright_69, AnnaLie_70, Armstrong_70, Arroyo_71, AvGardian_70, Avocadoman_69, AylexOG_71, BAjuniper_68, BabyDaisy_71, BabyYoda_68, Bachaco_66, BelmontSKP_70, Bengal_71, Bernstein_70, Brahms_70, BubbaBear_68, Buldak_69, Burritobowl_72, CanFranMach_70, Cashington_69, Celaena_66, Clayda5_72, CliffHanger_78, Coltrane_70, CroZenni_71, CupcakePrincess_71, DickRichards_68, Didgeridoo_75, DirtyBubble_69, Dismas_67, Doobus_68, Eden_72, Elva_73, Eula_69, Finalfrontier_69, FlameThrower_65, Franklin22_74, Gack_71, Icarian_72, IndyLu_71, Jabb_71, Johnathan_70, Jovita_68, Kate33_73, Katzastrophic_67, Kenzers_69, Kieran_65, Lahqtemish_69, Lilo27_70, LimaBean_68, Lynlen_71, Milomuff_72, MsUbiquitous_71, Nicky22_69, Olliecat_66, Pecas_70, PhigPhack_73, Phisb_72, QMacho_72, Quenya_69, Rollins_70, Rona_66, SanaSana_70, SansAfet_72, SarBear_72, Sharkboy_68, Shayna_75, SirBeanington_70, Skylord_70, Slay_70, Softsoap_71, Solea_73, Squircle_66, Stoor_69, Stromboli_68, SunnyD_75, Swervy_70, Teagster_75, TukTuk_70, Vitas_71, WalkingDead_71,

Genes that have the "Most Annotated" start but do not call it:

- Akino08_66, Loviatar_67, PastaFagioli_71, PondAmelia_83,

Genes that do not have the "Most Annotated" start:

- Abidatro_66, AdoptaAdorbs_68, Albanese_61, Aledel_60, AlexMinion_71, AllBusiness_65, Altostratus_69, AmiCi24_68, Amphitrite_69, Anatole_55, Antrice_75, AppleCider_61, Applejacks_62, Archimedes_60, Atlantica_70, AuntGwenStacy_132, AustinPowers_60, Azaz_72, B3_57, BFK20_ORF55, Babushka_66, BaileyBlu_63, Banquo_63, Basilisk_66, Beethoven_63, Bennie_63, BigMack_61, Bodacious_61, BrotherBLo_62, Brynnie_64, CallieOMalley_62, CallinAllBarbz_64, Camara_69, Canowicakte_62, Carpal_61, Catfish_64, ChewChew_61, Chickaboom_66, Cholula_62, Chridison_57, Christian_61, Cole_64, CristinaYang_61, CurlyFries_112, Cygnet_73, Daiboju_60, DanHam62_70, Dardanus_58, DinoDaryn_64, Dino_62, Dirdigger_65, Donatella_69, DrRobert_59, DreamTeam_61, E1_55, Eesa_65, Elesar_62, Elfy_78, EstebanJulior_60, Eunoia_62, Faiyaz_132, Fingolfin_70,

Fluke_62, Frizzle_58, Fryberger_144, Galaxy_65, Ghobes_59, Gisselle_61, Glenn_64, Glotell_71, GoodLuckBabe_69, Graynor_65, GreenHearts_62, Greenhouse_61, GrimEater_65, Guey18_149, Guinevere_71, Gusanita_70, Halloweekend_62, HamCheese_69, HeadNerd_62, Herb_60, Hilltopfarm_134, Huckleberry_62, Huffy_64, Huntingdon_61, Ichiang_65, Immaculata_62, IsHungry_64, Jamun_63, Jankie_67, Joann_63, Julie_67, Jumboset_62, Juno112_69, KHumphrey_70, Kalizoi_62, Keelan_144, KendraB23_76, Khuang_70, Kihatsu_69, KingBob_60, Kittykat_65, Korra_62, Kuleana_76, Lakshmi_61, Laphuphu24k_68, Lasagna_59, Lennox_61, Lenoxika_66, Leona_68, LilStuart_60, LisoBros_62, Litotes_62, LittleTokyo_73, Lucy_60, Mahdia_60, Makoto_60, MamaPearl_60, Maria1952_59, MeganNoll_63, MillySue_69, Min1_34, Misaeng_61, Moki_62, MrBoss_63, MrGloopy_62, Nancia_61, Nandita_68, Nubia_61, OMalley_60, Oppalora_68, Orcanus_65, OurGirlNessie_59, Oxynfrius_62, PartyCup_62, PhluffyCoco_68, PinkFriday_61, PitaDog_61, Popper_70, Potatoes_62, Preamble_64, Pterodactyl_61, Pumancara_61, Puppies_62, QuinnAvery_70, RAP15_63, Rattail_71, RcigaStruga_62, RedFox_71, RegnumDei_109, Renna12_72, Rivovina_60, Riverdale_61, Ronaldo_147, Rozby_60, Ruchi_64, Ryan_70, Saintcarr_67, Sapo_61, Savage2526_61, Schism_71, Schmidt_58, Scuttle_61, Sergei_60, Shagrat_110, Sleepyhead_67, Splinter_64, StuartMinion_61, Supakev_60, Suppi_62, TZGordon_65, TattModd_61, TaylorSipht_65, Temper16_60, TinaLin_63, Toad24_68, ToastyOats_69, Toodles_68, Typha_129, Upyo_69, Urla_62, Vallejo_62, Vendetta_64, Volt_150, Vulpecula_64, Wawa_62, Wayne_64, Widow_62, WileyE_66, WonderBoy_59, Yonex_69, Zaheer_69, Zhuangyuan_77, Zixiang_67, Zorro_62,

Summary by start number:

Start 61:

- Found in 3 of 283 (1.1%) of genes in pham
- No Manual Annotations of this start.
- Called 33.3% of time when present
- Phage (with cluster) where this start called: LisoBros_62 (UNK),

Start 64:

- Found in 24 of 283 (8.5%) of genes in pham
- Manual Annotations of this start: 3 of 245
- Called 16.7% of time when present
- Phage (with cluster) where this start called: Akino08_66 (EB), Loviatar_67 (EB), PastaFagioli_71 (EB), PondAmelia_83 (EB),

Start 67:

- Found in 11 of 283 (3.9%) of genes in pham
- Manual Annotations of this start: 4 of 245
- Called 36.4% of time when present
- Phage (with cluster) where this start called: Elesar_62 (FF), IsHungry_64 (FF), Kihatsu_69 (FF), Popper_70 (FF),

Start 71:

- Found in 4 of 283 (1.4%) of genes in pham
- Manual Annotations of this start: 4 of 245
- Called 100.0% of time when present
- Phage (with cluster) where this start called: Kuleana_76 (AS2), Mahdia_60 (CD), Puppies_62 (CD), Widow_62 (CD),

Start 72:

- Found in 5 of 283 (1.8%) of genes in pham
- Manual Annotations of this start: 3 of 245
- Called 80.0% of time when present
- Phage (with cluster) where this start called: AuntGwenStacy_132 (Y), Faiyaz_132 (Y), Hilltopfarm_134 (Y), Typha_129 (Y),

Start 73:

- Found in 1 of 283 (0.4%) of genes in pham
- No Manual Annotations of this start.
- Called 100.0% of time when present
- Phage (with cluster) where this start called: Applejacks_62 (CD),

Start 75:

- Found in 1 of 283 (0.4%) of genes in pham
- Manual Annotations of this start: 1 of 245
- Called 100.0% of time when present
- Phage (with cluster) where this start called: Upyo_69 (CD),

Start 77:

- Found in 1 of 283 (0.4%) of genes in pham
- Manual Annotations of this start: 1 of 245
- Called 100.0% of time when present
- Phage (with cluster) where this start called: Archimedes_60 (DA),

Start 78:

- Found in 7 of 283 (2.5%) of genes in pham
- Manual Annotations of this start: 3 of 245
- Called 42.9% of time when present
- Phage (with cluster) where this start called: Anatole_55 (BV), B3_57 (BV), E1_55 (BV),

Start 82:

- Found in 6 of 283 (2.1%) of genes in pham
- Manual Annotations of this start: 2 of 245
- Called 50.0% of time when present
- Phage (with cluster) where this start called: Dardanus_58 (CU3), GoodLuckBabe_69 (FF), Schism_71 (FF),

Start 83:

- Found in 2 of 283 (0.7%) of genes in pham
- Manual Annotations of this start: 1 of 245
- Called 50.0% of time when present
- Phage (with cluster) where this start called: Catfish_64 (CU5),

Start 84:

- Found in 1 of 283 (0.4%) of genes in pham
- Manual Annotations of this start: 1 of 245
- Called 100.0% of time when present
- Phage (with cluster) where this start called: Nandita_68 (FF),

Start 86:

- Found in 33 of 283 (11.7%) of genes in pham
- Manual Annotations of this start: 14 of 245
- Called 66.7% of time when present
- Phage (with cluster) where this start called: AlexMinion_71 (AS3), AllBusiness_65 (FF), Babushka_66 (AS3), Cole_64 (FF), Dirdigger_65 (FF), Donatella_69 (FF), Guinevere_71 (FF), Gusanita_70 (FF), Halloween_62 (FF), Ichiang_65 (FF), Julie_67 (FF), Lenoxika_66 (FF), MillySue_69 (FF), QuinnAvery_70 (FF), Renna12_72 (AS3), Ryan_70 (FF), Saintcarr_67 (FF), StuartMinion_61 (AS3), ToastyOats_69 (FF), Toodles_68 (FF), Yonex_69 (FF), Zaheer_69 (FF),

Start 87:

- Found in 9 of 283 (3.2%) of genes in pham
- Manual Annotations of this start: 8 of 245
- Called 88.9% of time when present
- Phage (with cluster) where this start called: Banquo_63 (CU1), DinoDaryn_64 (CU1), Huffy_64 (CU1), Schmidt_58 (CU4), Splinter_64 (CU1), TZGordon_65 (CU1), TinaLin_63 (CU1), Vendetta_64 (CU1),

Start 88:

- Found in 7 of 283 (2.5%) of genes in pham
- Manual Annotations of this start: 1 of 245
- Called 14.3% of time when present
- Phage (with cluster) where this start called: Basilisk_66 (AS1),

Start 89:

- Found in 16 of 283 (5.7%) of genes in pham
- Manual Annotations of this start: 9 of 245
- Called 100.0% of time when present
- Phage (with cluster) where this start called: AdoptaAdorbs_68 (AS3), AmiCi24_68 (AS3), Amphitrite_69 (AS3), Atlantica_70 (AS3), Camara_69 (AS3), DanHam62_70 (AS3), Fingolfin_70 (AS3), Glotell_71 (AS3), HamCheese_69 (AS3), Juno112_69 (AS3), KHumphrey_70 (AS3), Laphuphu24k_68 (AS3), Oppalora_68 (AS3), PhluffyCoco_68 (AS3), Rattail_71 (AS3), RedFox_71 (AS3),

Start 90:

- Found in 3 of 283 (1.1%) of genes in pham
- Manual Annotations of this start: 2 of 245
- Called 66.7% of time when present
- Phage (with cluster) where this start called: CurlyFries_112 (CF), Sapo_61 (DA),

Start 91:

- Found in 11 of 283 (3.9%) of genes in pham
- Manual Annotations of this start: 1 of 245
- Called 18.2% of time when present
- Phage (with cluster) where this start called: Altostratus_69 (FS), Khuang_70 (FS),

Start 92:

- Found in 3 of 283 (1.1%) of genes in pham
- Manual Annotations of this start: 1 of 245
- Called 33.3% of time when present
- Phage (with cluster) where this start called: Frizzle_58 (DA),

Start 93:

- Found in 6 of 283 (2.1%) of genes in pham
- Manual Annotations of this start: 2 of 245
- Called 83.3% of time when present
- Phage (with cluster) where this start called: BaileyBlu_63 (FP), CallinAllBarbz_64 (FP), Elfy_78 (FP), GrimEater_65 (FP), Jankie_67 (FP),

Start 94:

- Found in 2 of 283 (0.7%) of genes in pham
- Manual Annotations of this start: 1 of 245
- Called 100.0% of time when present
- Phage (with cluster) where this start called: Azaz_72 (AS3), Leona_68 (AS3),

Start 95:

- Found in 2 of 283 (0.7%) of genes in pham
- Manual Annotations of this start: 1 of 245
- Called 50.0% of time when present
- Phage (with cluster) where this start called: Sleepyhead_67 (singleton),

Start 96:

- Found in 27 of 283 (9.5%) of genes in pham
- Manual Annotations of this start: 17 of 245
- Called 77.8% of time when present
- Phage (with cluster) where this start called: Abidatro_66 (AS1), Antrice_75 (AS2), BFK20_ORF55 (singleton), Brynnie_64 (AS1), Chickaboom_66 (AS1), Cygnet_73 (AS2), Eesa_65 (AS1), Galaxy_65 (AS1), Jamun_63 (AS1), KendraB23_76 (AS1), LittleTokyo_73 (AS2), Min1_34 (singleton), Orcanus_65 (AS1), Ruchi_64 (AS1), Shagrat_110 (CF), TaylorSipht_65 (AS1), Toad24_68 (AS1), Vulpecula_64 (AS1), WileyE_66 (AS1), Zhuangyuan_77 (AS2), Zixiang_67 (AS1),

Start 97:

- Found in 3 of 283 (1.1%) of genes in pham
- Manual Annotations of this start: 1 of 245
- Called 33.3% of time when present
- Phage (with cluster) where this start called: Huntingdon_61 (AK),

Start 98:

- Found in 1 of 283 (0.4%) of genes in pham
- Manual Annotations of this start: 1 of 245
- Called 100.0% of time when present
- Phage (with cluster) where this start called: RegnumDei_109 (CF),

Start 99:

- Found in 6 of 283 (2.1%) of genes in pham
- Manual Annotations of this start: 5 of 245
- Called 83.3% of time when present
- Phage (with cluster) where this start called: Fryberger_144 (DP), Guey18_149 (DP), Keelan_144 (DP), Ronaldo_147 (DP), Volt_150 (DP),

Start 100:

- Found in 47 of 283 (16.6%) of genes in pham
- Manual Annotations of this start: 13 of 245
- Called 27.7% of time when present

- Phage (with cluster) where this start called: Bennie_63 (AK), Christian_61 (AK), Dino_62 (AK), DrRobert_59 (AK), Fluke_62 (AK), Glenn_64 (AK), Lucy_60 (AK), MeganNoll_63 (AK), MrGloopy_62 (AK), PitaDog_61 (AK), RAP15_63 (AK), Scuttle_61 (AK), Vallejo_62 (AK),

Start 101:

- Found in 8 of 283 (2.8%) of genes in pham
- Manual Annotations of this start: 4 of 245
- Called 75.0% of time when present
- Phage (with cluster) where this start called: Canowicakte_62 (AK), Graynor_65 (AK), MrBoss_63 (AK), PartyCup_62 (AK), Suppi_62 (AK), Wayne_64 (AK),

Start 102:

- Found in 87 of 283 (30.7%) of genes in pham
- Manual Annotations of this start: 76 of 245
- Called 95.4% of time when present
- Phage (with cluster) where this start called: Abigail_70 (EB), Albedo_70 (EB), Albright_69 (EB), AnnaLie_70 (EB), Armstrong_70 (EB), Arroyo_71 (EB), AvGardian_70 (EB), Avocadoman_69 (EB), AylexOG_71 (EB), BAjuniper_68 (EB), BabyDaisy_71 (EB), BabyYoda_68 (EB), Bachaco_66 (EB), BelmontSKP_70 (EB), Bengal_71 (EB), Bernstein_70 (EB), Brahms_70 (EB), BubbaBear_68 (EB), Buldak_69 (EB), Burritobowl_72 (EB), CanFranMach_70 (EB), Cashington_69 (EB), Celaena_66 (EB), Clayda5_72 (EB), CliffHanger_78 (EB), Coltrane_70 (EB), CroZenni_71 (EB), CupcakePrincess_71 (EB), DickRichards_68 (EB), Didgeridoo_75 (EB), DirtyBubble_69 (EB), Dismas_67 (EB), Doobus_68 (EB), Eden_72 (EB), Elva_73 (EB), Eula_69 (EB), Finalfrontier_69 (EB), FlameThrower_65 (EB), Franklin22_74 (EB), Gack_71 (EB), Icarian_72 (EB), IndyLu_71 (EB), Jabb_71 (EB), Johnathan_70 (EB), Jovita_68 (EB), Kate33_73 (EB), Katzastrophic_67 (EB), Kenzers_69 (EB), Kieran_65 (EB), Lahqtemish_69 (EB), Lilo27_70 (EB), LimaBean_68 (EB), Lynlen_71 (EB), Milomuff_72 (EB), MsUbiquitous_71 (EB), Nicky22_69 (EB), Olliecat_66 (EB), Pecas_70 (EB), PhigPhack_73 (EB), Phisb_72 (EB), QMacho_72 (EB), Quenya_69 (EB), Rollins_70 (EB), Rona_66 (EB), SanaSana_70 (EB), SansAfet_72 (EB), SarBear_72 (EB), Sharkboy_68 (EB), Shayna_75 (EB), SirBeanington_70 (EB), Skylord_70 (EB), Slay_70 (EB), Softsoap_71 (EB), Solea_73 (EB), Squircle_66 (EB), Stoor_69 (EB), Stromboli_68 (EB), SunnyD_75 (EB), Swervy_70 (EB), Teagster_75 (EB), TukTuk_70 (EB), Vitas_71 (EB), WalkingDead_71 (EB),

Start 104:

- Found in 9 of 283 (3.2%) of genes in pham
- Manual Annotations of this start: 1 of 245
- Called 11.1% of time when present
- Phage (with cluster) where this start called: AppleCider_61 (AK),

Start 106:

- Found in 84 of 283 (29.7%) of genes in pham
- Manual Annotations of this start: 63 of 245
- Called 75.0% of time when present
- Phage (with cluster) where this start called: Albanese_61 (AK), Aledel_60 (AK), AustinPowers_60 (AK), Beethoven_63 (AK), BigMack_61 (AK), Bodacious_61 (AK), BrotherBLo_62 (AK), CallieOMalley_62 (AK), Carpal_61 (AK), ChewChew_61 (AK), Cholula_62 (AK), Chridison_57 (AK), CristinaYang_61 (AK), Daiboju_60 (AK), DreamTeam_61 (AK), EstebanJulior_60 (AK), Eunoia_62 (AK), Gisselle_61 (AK),

GreenHearts_62 (AK), Greenhouse_61 (AK), HeadNerd_62 (AK), Herb_60 (AK), Huckleberry_62 (AK), Immaculata_62 (AK), Joann_63 (AK), Jumboset_62 (AK), Kalizoi_62 (AK), KingBob_60 (AK), Kittykat_65 (AK), Korra_62 (AK), Lakshmi_61 (AK), Lasagna_59 (AK), Lennox_61 (AK), LilStuart_60 (AK), Litotes_62 (AK), Makoto_60 (AK), MamaPearl_60 (AK), Maria1952_59 (AK), Misaeng_61 (AK), Moki_62 (AK), Nancia_61 (AK), Nubia_61 (AK), OMalley_60 (AK), OurGirlNessie_59 (AK), Oxynfrius_62 (AK), PinkFriday_61 (AK), Potatoes_62 (AK), Preamble_64 (AK), Pterodactyl_61 (AK), Pumancara_61 (AK), RcigaStruga_62 (AK), Riovina_60 (AK), Riverdale_61 (AK), Rozby_60 (AK), Savage2526_61 (AK), Sergei_60 (AK), Supakev_60 (AK), TattModd_61 (AK), Temper16_60 (AK), Urla_62 (AK), Wawa_62 (AK), WonderBoy_59 (AK), Zorro_62 (AK),

Start 115:

- Found in 2 of 283 (0.7%) of genes in pham
- Manual Annotations of this start: 1 of 245
- Called 50.0% of time when present
- Phage (with cluster) where this start called: Ghobes_59 (DA),

Summary by clusters:

There are 20 clusters represented in this pham: AS3, FP, AS1, UNK, DA, CU1, AS2, AK, CF, EB, BV, FS, CU4, FF, Y, CU3, singleton, CD, DP, CU5,

Info for manual annotations of cluster AK:

- Start number 97 was manually annotated 1 time for cluster AK.
- Start number 100 was manually annotated 13 times for cluster AK.
- Start number 101 was manually annotated 4 times for cluster AK.
- Start number 104 was manually annotated 1 time for cluster AK.
- Start number 106 was manually annotated 63 times for cluster AK.

Info for manual annotations of cluster AS1:

- Start number 88 was manually annotated 1 time for cluster AS1.
- Start number 96 was manually annotated 12 times for cluster AS1.

Info for manual annotations of cluster AS2:

- Start number 71 was manually annotated 1 time for cluster AS2.
- Start number 96 was manually annotated 4 times for cluster AS2.

Info for manual annotations of cluster AS3:

- Start number 86 was manually annotated 3 times for cluster AS3.
- Start number 89 was manually annotated 9 times for cluster AS3.
- Start number 94 was manually annotated 1 time for cluster AS3.

Info for manual annotations of cluster BV:

- Start number 78 was manually annotated 3 times for cluster BV.

Info for manual annotations of cluster CD:

- Start number 71 was manually annotated 3 times for cluster CD.
- Start number 75 was manually annotated 1 time for cluster CD.

Info for manual annotations of cluster CF:

- Start number 90 was manually annotated 1 time for cluster CF.
- Start number 96 was manually annotated 1 time for cluster CF.

- Start number 98 was manually annotated 1 time for cluster CF.

Info for manual annotations of cluster CU1:

- Start number 87 was manually annotated 7 times for cluster CU1.

Info for manual annotations of cluster CU3:

- Start number 82 was manually annotated 1 time for cluster CU3.

Info for manual annotations of cluster CU4:

- Start number 87 was manually annotated 1 time for cluster CU4.

Info for manual annotations of cluster CU5:

- Start number 83 was manually annotated 1 time for cluster CU5.

Info for manual annotations of cluster DA:

- Start number 77 was manually annotated 1 time for cluster DA.
- Start number 90 was manually annotated 1 time for cluster DA.
- Start number 92 was manually annotated 1 time for cluster DA.
- Start number 115 was manually annotated 1 time for cluster DA.

Info for manual annotations of cluster DP:

- Start number 99 was manually annotated 5 times for cluster DP.

Info for manual annotations of cluster EB:

- Start number 64 was manually annotated 3 times for cluster EB.
- Start number 102 was manually annotated 76 times for cluster EB.

Info for manual annotations of cluster FF:

- Start number 67 was manually annotated 4 times for cluster FF.
- Start number 82 was manually annotated 1 time for cluster FF.
- Start number 84 was manually annotated 1 time for cluster FF.
- Start number 86 was manually annotated 11 times for cluster FF.

Info for manual annotations of cluster FP:

- Start number 93 was manually annotated 2 times for cluster FP.

Info for manual annotations of cluster FS:

- Start number 91 was manually annotated 1 time for cluster FS.

Info for manual annotations of cluster Y:

- Start number 72 was manually annotated 3 times for cluster Y.

Gene Information:

Gene: Abidatro_66 Start: 38766, Stop: 39044, Start Num: 96

Candidate Starts for Abidatro_66:

(35, 38640), (Start: 96 @38766 has 17 MA's),

Gene: Abigail_70 Start: 40540, Stop: 40815, Start Num: 102

Candidate Starts for Abigail_70:

(Start: 102 @40540 has 76 MA's),

Gene: AdoptaAdorbs_68 Start: 37992, Stop: 38279, Start Num: 89

Candidate Starts for AdoptaAdorbs_68:

(Start: 89 @37992 has 9 MA's), (132, 38145), (143, 38208),

Gene: Akino08_66 Start: 42028, Stop: 42363, Start Num: 64

Candidate Starts for Akino08_66:

(54, 42013), (Start: 64 @42028 has 3 MA's), (81, 42061), (Start: 102 @42088 has 76 MA's), (110, 42121), (142, 42277),

Gene: Albanese_61 Start: 43774, Stop: 44034, Start Num: 106

Candidate Starts for Albanese_61:

(Start: 106 @43774 has 63 MA's), (108, 43780), (117, 43831), (118, 43834), (145, 43978),

Gene: Albedo_70 Start: 41350, Stop: 41625, Start Num: 102

Candidate Starts for Albedo_70:

(Start: 102 @41350 has 76 MA's), (141, 41536),

Gene: Albright_69 Start: 40420, Stop: 40695, Start Num: 102

Candidate Starts for Albright_69:

(Start: 102 @40420 has 76 MA's),

Gene: Aledel_60 Start: 43400, Stop: 43660, Start Num: 106

Candidate Starts for Aledel_60:

(69, 43331), (79, 43352), (Start: 106 @43400 has 63 MA's), (111, 43421), (120, 43472),

Gene: AlexMinion_71 Start: 37930, Stop: 38223, Start Num: 86

Candidate Starts for AlexMinion_71:

(60, 37888), (Start: 86 @37930 has 14 MA's), (132, 38089), (152, 38197),

Gene: AllBusiness_65 Start: 43063, Stop: 43359, Start Num: 86

Candidate Starts for AllBusiness_65:

(Start: 86 @43063 has 14 MA's), (131, 43219), (132, 43228), (143, 43291), (152, 43333),

Gene: Altostratus_69 Start: 38971, Stop: 39267, Start Num: 91

Candidate Starts for Altostratus_69:

(Start: 91 @38971 has 1 MA's), (105, 39001), (128, 39097), (133, 39139),

Gene: AmiCi24_68 Start: 38101, Stop: 38388, Start Num: 89

Candidate Starts for AmiCi24_68:

(Start: 89 @38101 has 9 MA's), (132, 38254), (143, 38317),

Gene: Amphitrite_69 Start: 38005, Stop: 38292, Start Num: 89

Candidate Starts for Amphitrite_69:

(Start: 89 @38005 has 9 MA's), (132, 38158), (143, 38221),

Gene: Anatole_55 Start: 34869, Stop: 35189, Start Num: 78

Candidate Starts for Anatole_55:

(2, 34596), (3, 34635), (4, 34644), (6, 34659), (18, 34725), (20, 34728), (28, 34752), (33, 34770), (46, 34800), (Start: 78 @34869 has 3 MA's), (Start: 96 @34899 has 17 MA's), (116, 34974), (156, 35172),

Gene: AnnaLie_70 Start: 41202, Stop: 41477, Start Num: 102

Candidate Starts for AnnaLie_70:
(Start: 102 @41202 has 76 MA's), (141, 41388),

Gene: Antrice_75 Start: 38862, Stop: 39140, Start Num: 96
Candidate Starts for Antrice_75:
(Start: 90 @38853 has 2 MA's), (Start: 96 @38862 has 17 MA's),

Gene: AppleCider_61 Start: 43353, Stop: 43619, Start Num: 104
Candidate Starts for AppleCider_61:
(Start: 104 @43353 has 1 MA's), (Start: 106 @43359 has 63 MA's),

Gene: Applejacks_62 Start: 41851, Stop: 42168, Start Num: 73
Candidate Starts for Applejacks_62:
(29, 41746), (47, 41791), (73, 41851), (136, 42061),

Gene: Archimedes_60 Start: 44555, Stop: 44878, Start Num: 77
Candidate Starts for Archimedes_60:
(Start: 77 @44555 has 1 MA's), (Start: 92 @44582 has 1 MA's), (Start: 96 @44588 has 17 MA's), (118, 44672), (119, 44681), (152, 44852),

Gene: Armstrong_70 Start: 39580, Stop: 39855, Start Num: 102
Candidate Starts for Armstrong_70:
(13, 39382), (17, 39397), (26, 39424), (38, 39457), (54, 39505), (Start: 64 @39520 has 3 MA's), (81, 39553), (Start: 102 @39580 has 76 MA's),

Gene: Arroyo_71 Start: 41666, Stop: 41941, Start Num: 102
Candidate Starts for Arroyo_71:
(Start: 102 @41666 has 76 MA's), (141, 41852),

Gene: Atlantica_70 Start: 38103, Stop: 38390, Start Num: 89
Candidate Starts for Atlantica_70:
(Start: 89 @38103 has 9 MA's), (132, 38256), (143, 38319),

Gene: AuntGwenStacy_132 Start: 74981, Stop: 75304, Start Num: 72
Candidate Starts for AuntGwenStacy_132:
(Start: 72 @74981 has 3 MA's), (124, 75131), (140, 75212), (144, 75236), (145, 75248),

Gene: AustinPowers_60 Start: 43422, Stop: 43682, Start Num: 106
Candidate Starts for AustinPowers_60:
(69, 43353), (79, 43374), (Start: 106 @43422 has 63 MA's), (111, 43443), (120, 43494),

Gene: AvGardian_70 Start: 41184, Stop: 41459, Start Num: 102
Candidate Starts for AvGardian_70:
(Start: 102 @41184 has 76 MA's), (134, 41334), (141, 41370),

Gene: Avocadoman_69 Start: 40737, Stop: 41012, Start Num: 102
Candidate Starts for Avocadoman_69:
(Start: 102 @40737 has 76 MA's),

Gene: AylexOG_71 Start: 41421, Stop: 41696, Start Num: 102
Candidate Starts for AylexOG_71:
(Start: 102 @41421 has 76 MA's), (141, 41607),

Gene: Azaz_72 Start: 38251, Stop: 38532, Start Num: 94
Candidate Starts for Azaz_72:
(Start: 94 @38251 has 1 MA's), (132, 38398), (143, 38461),

Gene: B3_57 Start: 35532, Stop: 35852, Start Num: 78
Candidate Starts for B3_57:
(2, 35259), (3, 35298), (4, 35307), (6, 35322), (18, 35388), (20, 35391), (28, 35415), (33, 35433), (46, 35463), (Start: 78 @35532 has 3 MA's), (Start: 96 @35562 has 17 MA's), (116, 35637), (156, 35835),

Gene: BAjuniper_68 Start: 41633, Stop: 41908, Start Num: 102
Candidate Starts for BAjuniper_68:
(45, 41528), (54, 41558), (Start: 64 @41573 has 3 MA's), (81, 41606), (Start: 102 @41633 has 76 MA's), (110, 41666), (141, 41819),

Gene: BFK20_ORF55 Start: 42590, Stop: 42880, Start Num: 96
Candidate Starts for BFK20_ORF55:
(76, 42557), (85, 42575), (Start: 96 @42590 has 17 MA's), (107, 42617), (118, 42674), (135, 42761), (149, 42845),

Gene: Babushka_66 Start: 38003, Stop: 38302, Start Num: 86
Candidate Starts for Babushka_66:
(Start: 86 @38003 has 14 MA's), (132, 38168), (143, 38231),

Gene: BabyDaisy_71 Start: 41763, Stop: 42038, Start Num: 102
Candidate Starts for BabyDaisy_71:
(48, 41664), (54, 41688), (Start: 64 @41703 has 3 MA's), (81, 41736), (Start: 91 @41751 has 1 MA's), (Start: 102 @41763 has 76 MA's),

Gene: BabyYoda_68 Start: 41093, Stop: 41368, Start Num: 102
Candidate Starts for BabyYoda_68:
(Start: 102 @41093 has 76 MA's), (110, 41126), (141, 41279), (142, 41282),

Gene: Bachaco_66 Start: 42043, Stop: 42318, Start Num: 102
Candidate Starts for Bachaco_66:
(21, 41878), (24, 41887), (25, 41890), (44, 41938), (54, 41968), (Start: 64 @41983 has 3 MA's), (81, 42016), (Start: 102 @42043 has 76 MA's), (141, 42229), (155, 42301),

Gene: BaileyBlu_63 Start: 40002, Stop: 40289, Start Num: 93
Candidate Starts for BaileyBlu_63:
(Start: 93 @40002 has 2 MA's), (139, 40182),

Gene: Banquo_63 Start: 39126, Stop: 39422, Start Num: 87
Candidate Starts for Banquo_63:
(65, 39084), (Start: 87 @39126 has 8 MA's), (108, 39168), (147, 39384),

Gene: Basilisk_66 Start: 38281, Stop: 38571, Start Num: 88
Candidate Starts for Basilisk_66:
(40, 38188), (53, 38218), (Start: 88 @38281 has 1 MA's), (Start: 96 @38293 has 17 MA's),

Gene: Beethoven_63 Start: 43598, Stop: 43858, Start Num: 106
Candidate Starts for Beethoven_63:
(Start: 100 @43580 has 13 MA's), (Start: 106 @43598 has 63 MA's), (110, 43616), (120, 43670),

Gene: BelmontSKP_70 Start: 41202, Stop: 41477, Start Num: 102
Candidate Starts for BelmontSKP_70:
(Start: 102 @41202 has 76 MA's), (141, 41388),

Gene: Bengal_71 Start: 41208, Stop: 41483, Start Num: 102
Candidate Starts for Bengal_71:
(27, 41055), (31, 41070), (54, 41133), (Start: 64 @41148 has 3 MA's), (81, 41181), (Start: 91 @41196 has 1 MA's), (Start: 102 @41208 has 76 MA's), (141, 41394),

Gene: Bennie_63 Start: 42720, Stop: 42998, Start Num: 100
Candidate Starts for Bennie_63:
(Start: 100 @42720 has 13 MA's), (Start: 106 @42738 has 63 MA's), (110, 42756), (120, 42810), (149, 42963),

Gene: Bernstein_70 Start: 39578, Stop: 39853, Start Num: 102
Candidate Starts for Bernstein_70:
(13, 39380), (17, 39395), (26, 39422), (38, 39455), (54, 39503), (Start: 64 @39518 has 3 MA's), (81, 39551), (Start: 102 @39578 has 76 MA's),

Gene: BigMack_61 Start: 43021, Stop: 43281, Start Num: 106
Candidate Starts for BigMack_61:
(Start: 100 @43003 has 13 MA's), (Start: 106 @43021 has 63 MA's), (110, 43039), (142, 43198), (149, 43246),

Gene: Bodacious_61 Start: 42903, Stop: 43163, Start Num: 106
Candidate Starts for Bodacious_61:
(Start: 100 @42885 has 13 MA's), (Start: 106 @42903 has 63 MA's), (110, 42921), (142, 43080), (152, 43137), (154, 43143),

Gene: Brahms_70 Start: 39480, Stop: 39755, Start Num: 102
Candidate Starts for Brahms_70:
(13, 39282), (17, 39297), (26, 39324), (38, 39357), (54, 39405), (Start: 64 @39420 has 3 MA's), (81, 39453), (Start: 102 @39480 has 76 MA's),

Gene: BrotherBLo_62 Start: 43314, Stop: 43574, Start Num: 106
Candidate Starts for BrotherBLo_62:
(Start: 100 @43296 has 13 MA's), (Start: 106 @43314 has 63 MA's), (110, 43332), (120, 43386),

Gene: Brynnie_64 Start: 38238, Stop: 38516, Start Num: 96
Candidate Starts for Brynnie_64:
(Start: 88 @38226 has 1 MA's), (Start: 96 @38238 has 17 MA's),

Gene: BubbaBear_68 Start: 41351, Stop: 41626, Start Num: 102
Candidate Starts for BubbaBear_68:
(Start: 102 @41351 has 76 MA's),

Gene: Buldak_69 Start: 39158, Stop: 39433, Start Num: 102
Candidate Starts for Buldak_69:
(Start: 102 @39158 has 76 MA's), (141, 39344),

Gene: Burritobowl_72 Start: 40954, Stop: 41229, Start Num: 102
Candidate Starts for Burritobowl_72:
(Start: 102 @40954 has 76 MA's),

Gene: CallieOMalley_62 Start: 43522, Stop: 43782, Start Num: 106
Candidate Starts for CallieOMalley_62:
(Start: 86 @43489 has 14 MA's), (Start: 101 @43510 has 4 MA's), (103, 43516), (Start: 106 @43522 has 63 MA's),

Gene: CallinAllBarbz_64 Start: 40753, Stop: 41040, Start Num: 93
Candidate Starts for CallinAllBarbz_64:
(Start: 93 @40753 has 2 MA's),

Gene: Camara_69 Start: 37993, Stop: 38280, Start Num: 89
Candidate Starts for Camara_69:
(Start: 89 @37993 has 9 MA's), (132, 38146), (143, 38209),

Gene: CanFranMach_70 Start: 41004, Stop: 41279, Start Num: 102
Candidate Starts for CanFranMach_70:
(45, 40899), (54, 40929), (Start: 64 @40944 has 3 MA's), (81, 40977), (Start: 102 @41004 has 76 MA's),

Gene: Canowicakte_62 Start: 43562, Stop: 43834, Start Num: 101
Candidate Starts for Canowicakte_62:
(Start: 86 @43541 has 14 MA's), (Start: 101 @43562 has 4 MA's), (103, 43568), (Start: 106 @43574 has 63 MA's),

Gene: Carpal_61 Start: 43369, Stop: 43629, Start Num: 106
Candidate Starts for Carpal_61:
(Start: 100 @43351 has 13 MA's), (Start: 106 @43369 has 63 MA's), (110, 43387), (120, 43441),

Gene: Cashington_69 Start: 41137, Stop: 41412, Start Num: 102
Candidate Starts for Cashington_69:
(55, 41062), (66, 41077), (80, 41107), (Start: 82 @41110 has 2 MA's), (Start: 102 @41137 has 76 MA's), (141, 41323),

Gene: Catfish_64 Start: 41148, Stop: 41444, Start Num: 83
Candidate Starts for Catfish_64:
(9, 40959), (12, 40968), (59, 41106), (Start: 83 @41148 has 1 MA's), (116, 41235), (118, 41244), (133, 41319),

Gene: Celaena_66 Start: 41809, Stop: 42084, Start Num: 102
Candidate Starts for Celaena_66:
(21, 41641), (24, 41650), (25, 41653), (44, 41701), (54, 41731), (Start: 102 @41809 has 76 MA's), (141, 41995), (155, 42067),

Gene: ChewChew_61 Start: 43103, Stop: 43363, Start Num: 106
Candidate Starts for ChewChew_61:
(Start: 100 @43085 has 13 MA's), (Start: 106 @43103 has 63 MA's), (110, 43121), (121, 43178), (142, 43280), (152, 43337), (154, 43343),

Gene: Chickaboom_66 Start: 38402, Stop: 38680, Start Num: 96
Candidate Starts for Chickaboom_66:
(Start: 88 @38390 has 1 MA's), (Start: 96 @38402 has 17 MA's),

Gene: Cholula_62 Start: 43324, Stop: 43584, Start Num: 106

Candidate Starts for Cholula_62:

(Start: 100 @43306 has 13 MA's), (Start: 106 @43324 has 63 MA's), (110, 43342), (120, 43396),

Gene: Chridison_57 Start: 42676, Stop: 42936, Start Num: 106

Candidate Starts for Chridison_57:

(69, 42607), (79, 42628), (Start: 106 @42676 has 63 MA's), (110, 42694), (111, 42697), (120, 42748),

Gene: Christian_61 Start: 42727, Stop: 43005, Start Num: 100

Candidate Starts for Christian_61:

(Start: 100 @42727 has 13 MA's), (Start: 106 @42745 has 63 MA's), (110, 42763), (121, 42820), (142, 42922), (152, 42979), (154, 42985),

Gene: Clayda5_72 Start: 39546, Stop: 39821, Start Num: 102

Candidate Starts for Clayda5_72:

(13, 39348), (17, 39363), (26, 39390), (38, 39423), (54, 39471), (Start: 64 @39486 has 3 MA's), (81, 39519), (Start: 102 @39546 has 76 MA's),

Gene: CliffHanger_78 Start: 40817, Stop: 41092, Start Num: 102

Candidate Starts for CliffHanger_78:

(Start: 102 @40817 has 76 MA's), (110, 40850), (141, 41003), (142, 41006),

Gene: Cole_64 Start: 41483, Stop: 41779, Start Num: 86

Candidate Starts for Cole_64:

(37, 41378), (Start: 86 @41483 has 14 MA's), (117, 41579), (131, 41639), (132, 41648),

Gene: Coltrane_70 Start: 39480, Stop: 39755, Start Num: 102

Candidate Starts for Coltrane_70:

(13, 39282), (17, 39297), (26, 39324), (38, 39357), (54, 39405), (Start: 64 @39420 has 3 MA's), (81, 39453), (Start: 102 @39480 has 76 MA's),

Gene: CristinaYang_61 Start: 43030, Stop: 43290, Start Num: 106

Candidate Starts for CristinaYang_61:

(Start: 100 @43012 has 13 MA's), (Start: 106 @43030 has 63 MA's), (110, 43048), (142, 43207), (152, 43264), (154, 43270),

Gene: CroZenni_71 Start: 41008, Stop: 41283, Start Num: 102

Candidate Starts for CroZenni_71:

(Start: 102 @41008 has 76 MA's),

Gene: CupcakePrincess_71 Start: 41251, Stop: 41526, Start Num: 102

Candidate Starts for CupcakePrincess_71:

(Start: 102 @41251 has 76 MA's),

Gene: CurlyFries_112 Start: 57829, Stop: 58110, Start Num: 90

Candidate Starts for CurlyFries_112:

(Start: 90 @57829 has 2 MA's), (Start: 96 @57838 has 17 MA's), (109, 57874), (112, 57892), (129, 57961), (132, 57982), (150, 58081),

Gene: Cygnet_73 Start: 39144, Stop: 39422, Start Num: 96

Candidate Starts for Cygnet_73:

(Start: 96 @39144 has 17 MA's), (141, 39336),

Gene: Daiboju_60 Start: 43614, Stop: 43871, Start Num: 106

Candidate Starts for Daiboju_60:

(Start: 104 @43605 has 1 MA's), (Start: 106 @43614 has 63 MA's), (110, 43632), (122, 43689), (137, 43767),

Gene: DanHam62_70 Start: 38102, Stop: 38389, Start Num: 89

Candidate Starts for DanHam62_70:

(Start: 89 @38102 has 9 MA's), (132, 38255), (143, 38318),

Gene: Dardanus_58 Start: 37373, Stop: 37678, Start Num: 82

Candidate Starts for Dardanus_58:

(Start: 82 @37373 has 2 MA's), (Start: 93 @37391 has 2 MA's), (133, 37553),

Gene: DickRichards_68 Start: 40877, Stop: 41152, Start Num: 102

Candidate Starts for DickRichards_68:

(Start: 102 @40877 has 76 MA's),

Gene: Didgeridoo_75 Start: 42192, Stop: 42467, Start Num: 102

Candidate Starts for Didgeridoo_75:

(19, 42015), (36, 42066), (54, 42117), (Start: 64 @42132 has 3 MA's), (81, 42165), (Start: 91 @42180 has 1 MA's), (Start: 102 @42192 has 76 MA's),

Gene: Dino_62 Start: 43208, Stop: 43486, Start Num: 100

Candidate Starts for Dino_62:

(Start: 100 @43208 has 13 MA's), (Start: 106 @43226 has 63 MA's), (110, 43244), (120, 43298),

Gene: DinoDaryn_64 Start: 39227, Stop: 39523, Start Num: 87

Candidate Starts for DinoDaryn_64:

(65, 39185), (Start: 87 @39227 has 8 MA's), (136, 39416), (147, 39485),

Gene: Dirdigger_65 Start: 41774, Stop: 42070, Start Num: 86

Candidate Starts for Dirdigger_65:

(Start: 67 @41744 has 4 MA's), (Start: 86 @41774 has 14 MA's), (117, 41870), (143, 42002), (152, 42044), (154, 42050),

Gene: DirtyBubble_69 Start: 41228, Stop: 41503, Start Num: 102

Candidate Starts for DirtyBubble_69:

(Start: 102 @41228 has 76 MA's), (141, 41414), (142, 41417),

Gene: Dismas_67 Start: 41256, Stop: 41531, Start Num: 102

Candidate Starts for Dismas_67:

(54, 41181), (Start: 102 @41256 has 76 MA's), (141, 41442), (145, 41472),

Gene: Donatella_69 Start: 42522, Stop: 42818, Start Num: 86

Candidate Starts for Donatella_69:

(Start: 86 @42522 has 14 MA's), (131, 42678), (152, 42792),

Gene: Doobus_68 Start: 40732, Stop: 41007, Start Num: 102

Candidate Starts for Doobus_68:

(Start: 102 @40732 has 76 MA's),

Gene: DrRobert_59 Start: 42246, Stop: 42524, Start Num: 100

Candidate Starts for DrRobert_59:

(Start: 100 @42246 has 13 MA's), (Start: 106 @42264 has 63 MA's), (110, 42282), (142, 42441), (152, 42498), (154, 42504),

Gene: DreamTeam_61 Start: 42752, Stop: 43012, Start Num: 106

Candidate Starts for DreamTeam_61:

(Start: 100 @42734 has 13 MA's), (Start: 106 @42752 has 63 MA's), (110, 42770), (121, 42827), (137, 42908),

Gene: E1_55 Start: 34794, Stop: 35114, Start Num: 78

Candidate Starts for E1_55:

(2, 34521), (3, 34560), (4, 34569), (6, 34584), (18, 34650), (20, 34653), (28, 34677), (33, 34695), (46, 34725), (Start: 78 @34794 has 3 MA's), (Start: 96 @34824 has 17 MA's), (116, 34899), (156, 35097),

Gene: Eden_72 Start: 40483, Stop: 40758, Start Num: 102

Candidate Starts for Eden_72:

(7, 40246), (10, 40276), (11, 40279), (15, 40294), (24, 40324), (25, 40327), (47, 40381), (65, 40423), (Start: 102 @40483 has 76 MA's), (141, 40669), (142, 40672), (155, 40741),

Gene: Eesa_65 Start: 39439, Stop: 39717, Start Num: 96

Candidate Starts for Eesa_65:

(Start: 96 @39439 has 17 MA's), (157, 39709),

Gene: Elesar_62 Start: 42571, Stop: 42897, Start Num: 67

Candidate Starts for Elesar_62:

(Start: 67 @42571 has 4 MA's), (Start: 86 @42601 has 14 MA's), (131, 42757), (152, 42871),

Gene: Elfy_78 Start: 43714, Stop: 44013, Start Num: 93

Candidate Starts for Elfy_78:

(63, 43660), (Start: 93 @43714 has 2 MA's), (124, 43831), (130, 43852), (139, 43900),

Gene: Elva_73 Start: 41675, Stop: 41950, Start Num: 102

Candidate Starts for Elva_73:

(Start: 102 @41675 has 76 MA's), (141, 41861), (142, 41864),

Gene: EstebanJulior_60 Start: 43409, Stop: 43669, Start Num: 106

Candidate Starts for EstebanJulior_60:

(Start: 106 @43409 has 63 MA's), (110, 43427), (121, 43484),

Gene: Eula_69 Start: 40916, Stop: 41191, Start Num: 102

Candidate Starts for Eula_69:

(Start: 102 @40916 has 76 MA's), (141, 41102),

Gene: Eunoia_62 Start: 44077, Stop: 44337, Start Num: 106

Candidate Starts for Eunoia_62:

(69, 44008), (79, 44029), (Start: 106 @44077 has 63 MA's), (111, 44098), (120, 44149),

Gene: Faiyaz_132 Start: 75303, Stop: 75626, Start Num: 72

Candidate Starts for Faiyaz_132:

(Start: 72 @75303 has 3 MA's), (124, 75453), (140, 75534), (144, 75558), (145, 75570),

Gene: Finalfrontier_69 Start: 41583, Stop: 41858, Start Num: 102

Candidate Starts for Finalfrontier_69:

(Start: 102 @41583 has 76 MA's), (141, 41769),

Gene: Fingolfin_70 Start: 38104, Stop: 38391, Start Num: 89

Candidate Starts for Fingolfin_70:

(Start: 89 @38104 has 9 MA's), (132, 38257), (143, 38320),

Gene: FlameThrower_65 Start: 40846, Stop: 41121, Start Num: 102

Candidate Starts for FlameThrower_65:

(54, 40768), (Start: 102 @40846 has 76 MA's), (141, 41032), (155, 41104),

Gene: Fluke_62 Start: 43458, Stop: 43736, Start Num: 100

Candidate Starts for Fluke_62:

(Start: 100 @43458 has 13 MA's), (Start: 106 @43476 has 63 MA's), (110, 43494), (120, 43548),

Gene: Franklin22_74 Start: 40216, Stop: 40491, Start Num: 102

Candidate Starts for Franklin22_74:

(65, 40156), (Start: 102 @40216 has 76 MA's), (141, 40402), (155, 40474),

Gene: Frizzle_58 Start: 45018, Stop: 45314, Start Num: 92

Candidate Starts for Frizzle_58:

(Start: 92 @45018 has 1 MA's), (Start: 115 @45090 has 1 MA's), (121, 45123), (157, 45306),

Gene: Fryberger_144 Start: 66223, Stop: 66480, Start Num: 99

Candidate Starts for Fryberger_144:

(Start: 99 @66223 has 5 MA's), (123, 66319), (130, 66343), (133, 66373), (142, 66406),

Gene: Gack_71 Start: 40197, Stop: 40472, Start Num: 102

Candidate Starts for Gack_71:

(Start: 102 @40197 has 76 MA's), (141, 40383), (145, 40413),

Gene: Galaxy_65 Start: 37453, Stop: 37731, Start Num: 96

Candidate Starts for Galaxy_65:

(27, 37303), (35, 37327), (50, 37360), (Start: 96 @37453 has 17 MA's), (143, 37660),

Gene: Ghobes_59 Start: 45003, Stop: 45227, Start Num: 115

Candidate Starts for Ghobes_59:

(Start: 92 @44931 has 1 MA's), (Start: 115 @45003 has 1 MA's), (121, 45036), (157, 45219),

Gene: Gisselle_61 Start: 42752, Stop: 43012, Start Num: 106

Candidate Starts for Gisselle_61:

(Start: 100 @42734 has 13 MA's), (Start: 106 @42752 has 63 MA's), (110, 42770), (121, 42827), (137, 42908),

Gene: Glenn_64 Start: 44035, Stop: 44313, Start Num: 100

Candidate Starts for Glenn_64:

(Start: 100 @44035 has 13 MA's), (Start: 106 @44053 has 63 MA's), (110, 44071), (120, 44125),

Gene: Glotell_71 Start: 38150, Stop: 38437, Start Num: 89

Candidate Starts for Glotell_71:

(Start: 89 @38150 has 9 MA's), (132, 38303), (143, 38366),

Gene: GoodLuckBabe_69 Start: 41904, Stop: 42203, Start Num: 82

Candidate Starts for GoodLuckBabe_69:

(Start: 67 @41880 has 4 MA's), (Start: 82 @41904 has 2 MA's), (117, 42003), (131, 42063), (136, 42099),

Gene: Graynor_65 Start: 43171, Stop: 43443, Start Num: 101

Candidate Starts for Graynor_65:

(Start: 86 @43150 has 14 MA's), (Start: 101 @43171 has 4 MA's), (103, 43177), (Start: 106 @43183 has 63 MA's),

Gene: GreenHearts_62 Start: 43911, Stop: 44171, Start Num: 106

Candidate Starts for GreenHearts_62:

(Start: 106 @43911 has 63 MA's), (108, 43917), (117, 43968), (118, 43971), (120, 43983), (145, 44115),

Gene: Greenhouse_61 Start: 43637, Stop: 43897, Start Num: 106

Candidate Starts for Greenhouse_61:

(Start: 106 @43637 has 63 MA's), (108, 43643), (117, 43694), (118, 43697), (145, 43841),

Gene: GrimEater_65 Start: 41105, Stop: 41392, Start Num: 93

Candidate Starts for GrimEater_65:

(52, 41039), (Start: 93 @41105 has 2 MA's), (133, 41267), (139, 41285),

Gene: Guey18_149 Start: 67884, Stop: 68141, Start Num: 99

Candidate Starts for Guey18_149:

(Start: 99 @67884 has 5 MA's), (123, 67980), (130, 68004), (133, 68034), (142, 68067),

Gene: Guinevere_71 Start: 41765, Stop: 42061, Start Num: 86

Candidate Starts for Guinevere_71:

(Start: 86 @41765 has 14 MA's), (117, 41861), (131, 41921), (136, 41957),

Gene: Gusanita_70 Start: 42391, Stop: 42687, Start Num: 86

Candidate Starts for Gusanita_70:

(Start: 86 @42391 has 14 MA's), (116, 42481), (152, 42661),

Gene: Halloweekend_62 Start: 41095, Stop: 41391, Start Num: 86

Candidate Starts for Halloweekend_62:

(Start: 86 @41095 has 14 MA's), (116, 41185), (131, 41251), (143, 41323), (152, 41365),

Gene: HamCheese_69 Start: 38089, Stop: 38376, Start Num: 89

Candidate Starts for HamCheese_69:

(Start: 89 @38089 has 9 MA's), (132, 38242), (143, 38305),

Gene: HeadNerd_62 Start: 42632, Stop: 42892, Start Num: 106

Candidate Starts for HeadNerd_62:

(Start: 100 @42614 has 13 MA's), (Start: 106 @42632 has 63 MA's), (110, 42650), (121, 42707), (142, 42809), (149, 42857),

Gene: Herb_60 Start: 43613, Stop: 43870, Start Num: 106

Candidate Starts for Herb_60:

(Start: 104 @43604 has 1 MA's), (Start: 106 @43613 has 63 MA's), (110, 43631), (122, 43688), (137, 43766),

Gene: Hilltopfarm_134 Start: 76128, Stop: 76451, Start Num: 72

Candidate Starts for Hilltopfarm_134:

(Start: 72 @76128 has 3 MA's), (124, 76278), (140, 76359), (144, 76383), (145, 76395),

Gene: Huckleberry_62 Start: 42636, Stop: 42896, Start Num: 106

Candidate Starts for Huckleberry_62:

(Start: 100 @42618 has 13 MA's), (Start: 106 @42636 has 63 MA's), (110, 42654), (121, 42711), (142, 42813), (149, 42861),

Gene: Huffu_64 Start: 39227, Stop: 39523, Start Num: 87

Candidate Starts for Huffu_64:

(65, 39185), (Start: 87 @39227 has 8 MA's), (136, 39416), (147, 39485),

Gene: Huntingdon_61 Start: 43533, Stop: 43811, Start Num: 97

Candidate Starts for Huntingdon_61:

(Start: 97 @43533 has 1 MA's), (Start: 106 @43551 has 63 MA's), (117, 43608), (118, 43611), (120, 43623), (145, 43755),

Gene: Icarian_72 Start: 41856, Stop: 42131, Start Num: 102

Candidate Starts for Icarian_72:

(Start: 102 @41856 has 76 MA's), (136, 42021), (141, 42042), (142, 42045),

Gene: Ichiang_65 Start: 41204, Stop: 41500, Start Num: 86

Candidate Starts for Ichiang_65:

(Start: 86 @41204 has 14 MA's), (131, 41360), (143, 41432), (152, 41474),

Gene: Immaculata_62 Start: 43324, Stop: 43584, Start Num: 106

Candidate Starts for Immaculata_62:

(Start: 100 @43306 has 13 MA's), (Start: 106 @43324 has 63 MA's), (110, 43342), (120, 43396),

Gene: IndyLu_71 Start: 41495, Stop: 41770, Start Num: 102

Candidate Starts for IndyLu_71:

(19, 41318), (36, 41369), (54, 41420), (Start: 64 @41435 has 3 MA's), (Start: 78 @41462 has 3 MA's), (81, 41468), (Start: 91 @41483 has 1 MA's), (Start: 102 @41495 has 76 MA's),

Gene: IsHungry_64 Start: 40246, Stop: 40572, Start Num: 67

Candidate Starts for IsHungry_64:

(37, 40180), (Start: 67 @40246 has 4 MA's), (Start: 86 @40276 has 14 MA's), (117, 40372), (131, 40432), (152, 40546), (154, 40552),

Gene: Jabb_71 Start: 41251, Stop: 41526, Start Num: 102

Candidate Starts for Jabb_71:

(Start: 102 @41251 has 76 MA's),

Gene: Jamun_63 Start: 38467, Stop: 38745, Start Num: 96

Candidate Starts for Jamun_63:

(22, 38326), (Start: 64 @38413 has 3 MA's), (Start: 83 @38449 has 1 MA's), (Start: 88 @38455 has 1 MA's), (Start: 96 @38467 has 17 MA's),

Gene: Jankie_67 Start: 41285, Stop: 41572, Start Num: 93

Candidate Starts for Jankie_67:

(52, 41219), (Start: 93 @41285 has 2 MA's), (133, 41447), (139, 41465),

Gene: Joann_63 Start: 43843, Stop: 44103, Start Num: 106

Candidate Starts for Joann_63:

(Start: 106 @43843 has 63 MA's), (117, 43900), (118, 43903), (145, 44047),

Gene: Johnathan_70 Start: 40508, Stop: 40783, Start Num: 102

Candidate Starts for Johnathan_70:

(Start: 102 @40508 has 76 MA's),

Gene: Jovita_68 Start: 40684, Stop: 40959, Start Num: 102

Candidate Starts for Jovita_68:

(Start: 102 @40684 has 76 MA's), (141, 40870),

Gene: Julie_67 Start: 41903, Stop: 42199, Start Num: 86

Candidate Starts for Julie_67:

(Start: 67 @41873 has 4 MA's), (Start: 86 @41903 has 14 MA's), (117, 41999), (131, 42059), (152, 42173), (154, 42179),

Gene: Jumboset_62 Start: 43444, Stop: 43704, Start Num: 106

Candidate Starts for Jumboset_62:

(Start: 100 @43426 has 13 MA's), (Start: 106 @43444 has 63 MA's), (110, 43462), (118, 43504), (120, 43516),

Gene: Juno112_69 Start: 38104, Stop: 38391, Start Num: 89

Candidate Starts for Juno112_69:

(Start: 89 @38104 has 9 MA's), (132, 38257), (143, 38320),

Gene: KHumphrey_70 Start: 37978, Stop: 38265, Start Num: 89

Candidate Starts for KHumphrey_70:

(Start: 89 @37978 has 9 MA's), (132, 38131), (143, 38194),

Gene: Kalizoi_62 Start: 43182, Stop: 43442, Start Num: 106

Candidate Starts for Kalizoi_62:

(Start: 100 @43164 has 13 MA's), (Start: 106 @43182 has 63 MA's), (110, 43200), (120, 43254),

Gene: Kate33_73 Start: 41226, Stop: 41501, Start Num: 102

Candidate Starts for Kate33_73:

(36, 41100), (54, 41151), (Start: 64 @41166 has 3 MA's), (81, 41199), (Start: 91 @41214 has 1 MA's), (Start: 102 @41226 has 76 MA's),

Gene: Katzastrophic_67 Start: 41352, Stop: 41627, Start Num: 102

Candidate Starts for Katzastrophic_67:

(21, 41187), (24, 41196), (25, 41199), (44, 41247), (54, 41277), (Start: 64 @41292 has 3 MA's), (81, 41325), (Start: 102 @41352 has 76 MA's), (141, 41538), (155, 41610),

Gene: Keelan_144 Start: 66560, Stop: 66817, Start Num: 99

Candidate Starts for Keelan_144:

(Start: 99 @66560 has 5 MA's), (123, 66656), (130, 66680), (133, 66710), (142, 66743), (153, 66803),

Gene: KendraB23_76 Start: 39417, Stop: 39695, Start Num: 96

Candidate Starts for KendraB23_76:

(61, 39363), (Start: 96 @39417 has 17 MA's), (157, 39687),

Gene: Kenzers_69 Start: 40798, Stop: 41073, Start Num: 102

Candidate Starts for Kenzers_69:

(Start: 102 @40798 has 76 MA's), (141, 40984),

Gene: Khuang_70 Start: 39192, Stop: 39488, Start Num: 91
Candidate Starts for Khuang_70:

(Start: 91 @39192 has 1 MA's), (105, 39222), (133, 39360),

Gene: Kieran_65 Start: 41080, Stop: 41355, Start Num: 102

Candidate Starts for Kieran_65:

(54, 41005), (Start: 102 @41080 has 76 MA's), (141, 41266), (145, 41296),

Gene: Kihatsu_69 Start: 42860, Stop: 43183, Start Num: 67

Candidate Starts for Kihatsu_69:

(Start: 67 @42860 has 4 MA's), (Start: 82 @42884 has 2 MA's), (117, 42983), (131, 43043), (136, 43079),

Gene: KingBob_60 Start: 43614, Stop: 43871, Start Num: 106

Candidate Starts for KingBob_60:

(Start: 104 @43605 has 1 MA's), (Start: 106 @43614 has 63 MA's), (110, 43632), (122, 43689), (137, 43767),

Gene: Kittykat_65 Start: 43266, Stop: 43526, Start Num: 106

Candidate Starts for Kittykat_65:

(Start: 100 @43248 has 13 MA's), (Start: 106 @43266 has 63 MA's), (110, 43284), (121, 43341), (137, 43422), (142, 43443),

Gene: Korra_62 Start: 43371, Stop: 43631, Start Num: 106

Candidate Starts for Korra_62:

(Start: 100 @43353 has 13 MA's), (Start: 106 @43371 has 63 MA's), (110, 43389), (120, 43443),

Gene: Kuleana_76 Start: 38455, Stop: 38775, Start Num: 71

Candidate Starts for Kuleana_76:

(32, 38371), (Start: 71 @38455 has 4 MA's), (Start: 91 @38488 has 1 MA's),

Gene: Lahqtemish_69 Start: 41710, Stop: 41985, Start Num: 102

Candidate Starts for Lahqtemish_69:

(43, 41602), (54, 41635), (Start: 64 @41650 has 3 MA's), (Start: 78 @41677 has 3 MA's), (81, 41683), (Start: 91 @41698 has 1 MA's), (Start: 102 @41710 has 76 MA's),

Gene: Lakshmi_61 Start: 43678, Stop: 43938, Start Num: 106

Candidate Starts for Lakshmi_61:

(Start: 106 @43678 has 63 MA's), (108, 43684), (117, 43735), (118, 43738), (120, 43750), (145, 43882),

Gene: Laphuphu24k_68 Start: 38089, Stop: 38376, Start Num: 89

Candidate Starts for Laphuphu24k_68:

(Start: 89 @38089 has 9 MA's), (132, 38242), (143, 38305),

Gene: Lasagna_59 Start: 42266, Stop: 42526, Start Num: 106

Candidate Starts for Lasagna_59:

(Start: 100 @42248 has 13 MA's), (Start: 106 @42266 has 63 MA's), (110, 42284), (142, 42443), (152, 42500), (154, 42506),

Gene: Lennox_61 Start: 42751, Stop: 43011, Start Num: 106

Candidate Starts for Lennox_61:

(Start: 100 @42733 has 13 MA's), (Start: 106 @42751 has 63 MA's), (110, 42769), (121, 42826), (142, 42928), (152, 42985), (154, 42991),

Gene: Lenoxika_66 Start: 41766, Stop: 42062, Start Num: 86

Candidate Starts for Lenoxika_66:

(Start: 86 @41766 has 14 MA's), (117, 41862), (131, 41922), (136, 41958),

Gene: Leona_68 Start: 38237, Stop: 38518, Start Num: 94

Candidate Starts for Leona_68:

(Start: 94 @38237 has 1 MA's), (132, 38384), (143, 38447),

Gene: LilStuart_60 Start: 42614, Stop: 42874, Start Num: 106

Candidate Starts for LilStuart_60:

(Start: 100 @42596 has 13 MA's), (Start: 106 @42614 has 63 MA's), (110, 42632), (142, 42791), (152, 42848), (154, 42854),

Gene: Lilo27_70 Start: 41100, Stop: 41375, Start Num: 102

Candidate Starts for Lilo27_70:

(Start: 102 @41100 has 76 MA's), (141, 41286),

Gene: LimaBean_68 Start: 40790, Stop: 41065, Start Num: 102

Candidate Starts for LimaBean_68:

(55, 40715), (66, 40730), (80, 40760), (Start: 82 @40763 has 2 MA's), (Start: 102 @40790 has 76 MA's),

Gene: LisoBros_62 Start: 44198, Stop: 44542, Start Num: 61

Candidate Starts for LisoBros_62:

(61, 44198), (Start: 95 @44255 has 1 MA's), (133, 44417),

Gene: Litotes_62 Start: 43156, Stop: 43416, Start Num: 106

Candidate Starts for Litotes_62:

(Start: 86 @43123 has 14 MA's), (Start: 101 @43144 has 4 MA's), (103, 43150), (Start: 106 @43156 has 63 MA's),

Gene: LittleTokyo_73 Start: 38604, Stop: 38882, Start Num: 96

Candidate Starts for LittleTokyo_73:

(Start: 96 @38604 has 17 MA's), (141, 38796),

Gene: Loviatar_67 Start: 42044, Stop: 42379, Start Num: 64

Candidate Starts for Loviatar_67:

(54, 42029), (Start: 64 @42044 has 3 MA's), (81, 42077), (Start: 102 @42104 has 76 MA's), (110, 42137), (142, 42293),

Gene: Lucy_60 Start: 42591, Stop: 42869, Start Num: 100

Candidate Starts for Lucy_60:

(Start: 100 @42591 has 13 MA's), (Start: 106 @42609 has 63 MA's), (110, 42627), (142, 42786), (152, 42843), (154, 42849),

Gene: Lynlen_71 Start: 40984, Stop: 41259, Start Num: 102

Candidate Starts for Lynlen_71:

(Start: 91 @40972 has 1 MA's), (Start: 102 @40984 has 76 MA's),

Gene: Mahdia_60 Start: 41790, Stop: 42113, Start Num: 71

Candidate Starts for Mahdia_60:

(Start: 71 @41790 has 4 MA's), (74, 41796), (131, 41970), (133, 41988), (147, 42075),

Gene: Makoto_60 Start: 42571, Stop: 42831, Start Num: 106

Candidate Starts for Makoto_60:

(Start: 100 @42553 has 13 MA's), (Start: 106 @42571 has 63 MA's), (110, 42589), (121, 42646), (142, 42748), (152, 42805), (154, 42811),

Gene: MamaPearl_60 Start: 43409, Stop: 43669, Start Num: 106

Candidate Starts for MamaPearl_60:

(Start: 106 @43409 has 63 MA's), (110, 43427), (121, 43484),

Gene: Maria1952_59 Start: 43613, Stop: 43870, Start Num: 106

Candidate Starts for Maria1952_59:

(Start: 104 @43604 has 1 MA's), (Start: 106 @43613 has 63 MA's), (110, 43631), (122, 43688), (137, 43766),

Gene: MeganNoll_63 Start: 43904, Stop: 44182, Start Num: 100

Candidate Starts for MeganNoll_63:

(Start: 100 @43904 has 13 MA's), (Start: 106 @43922 has 63 MA's), (110, 43940), (120, 43994),

Gene: MillySue_69 Start: 41794, Stop: 42090, Start Num: 86

Candidate Starts for MillySue_69:

(Start: 86 @41794 has 14 MA's), (117, 41890), (152, 42064),

Gene: Milomuff_72 Start: 41357, Stop: 41632, Start Num: 102

Candidate Starts for Milomuff_72:

(Start: 102 @41357 has 76 MA's),

Gene: Min1_34 Start: 16506, Stop: 16799, Start Num: 96

Candidate Starts for Min1_34:

(58, 16446), (69, 16461), (70, 16464), (Start: 78 @16479 has 3 MA's), (Start: 87 @16491 has 8 MA's), (Start: 96 @16506 has 17 MA's), (125, 16617), (136, 16686), (156, 16782),

Gene: Misaeng_61 Start: 43477, Stop: 43737, Start Num: 106

Candidate Starts for Misaeng_61:

(Start: 106 @43477 has 63 MA's), (117, 43534), (118, 43537), (120, 43549), (145, 43681),

Gene: Moki_62 Start: 42825, Stop: 43085, Start Num: 106

Candidate Starts for Moki_62:

(Start: 100 @42807 has 13 MA's), (Start: 106 @42825 has 63 MA's), (110, 42843), (121, 42900), (142, 43002), (149, 43050),

Gene: MrBoss_63 Start: 42722, Stop: 42994, Start Num: 101

Candidate Starts for MrBoss_63:

(Start: 86 @42701 has 14 MA's), (Start: 101 @42722 has 4 MA's), (103, 42728), (Start: 106 @42734 has 63 MA's),

Gene: MrGloopy_62 Start: 43347, Stop: 43625, Start Num: 100

Candidate Starts for MrGloopy_62:

(Start: 100 @43347 has 13 MA's), (Start: 106 @43365 has 63 MA's), (110, 43383), (120, 43437),

Gene: MsUbiquitous_71 Start: 41251, Stop: 41526, Start Num: 102

Candidate Starts for MsUbiquitous_71:

(Start: 102 @41251 has 76 MA's),

Gene: Nancia_61 Start: 42902, Stop: 43162, Start Num: 106

Candidate Starts for Nancia_61:

(Start: 100 @42884 has 13 MA's), (Start: 106 @42902 has 63 MA's), (110, 42920), (142, 43079), (152, 43136), (154, 43142),

Gene: Nandita_68 Start: 42024, Stop: 42323, Start Num: 84

Candidate Starts for Nandita_68:

(37, 41931), (68, 42000), (Start: 84 @42024 has 1 MA's), (131, 42183), (132, 42192), (152, 42297),

Gene: Nicky22_69 Start: 41321, Stop: 41596, Start Num: 102

Candidate Starts for Nicky22_69:

(Start: 102 @41321 has 76 MA's), (141, 41507),

Gene: Nubia_61 Start: 43705, Stop: 43965, Start Num: 106

Candidate Starts for Nubia_61:

(Start: 97 @43687 has 1 MA's), (Start: 106 @43705 has 63 MA's), (117, 43762), (118, 43765), (145, 43909),

Gene: OMalley_60 Start: 43400, Stop: 43660, Start Num: 106

Candidate Starts for OMalley_60:

(69, 43331), (79, 43352), (Start: 106 @43400 has 63 MA's), (111, 43421), (120, 43472),

Gene: Olliecat_66 Start: 38762, Stop: 39037, Start Num: 102

Candidate Starts for Olliecat_66:

(1, 38429), (16, 38579), (34, 38630), (Start: 102 @38762 has 76 MA's), (141, 38948), (151, 39005),

Gene: Oppalora_68 Start: 38103, Stop: 38390, Start Num: 89

Candidate Starts for Oppalora_68:

(Start: 89 @38103 has 9 MA's), (132, 38256), (143, 38319),

Gene: Orcanus_65 Start: 39051, Stop: 39329, Start Num: 96

Candidate Starts for Orcanus_65:

(Start: 96 @39051 has 17 MA's),

Gene: OurGirlNessie_59 Start: 42225, Stop: 42485, Start Num: 106

Candidate Starts for OurGirlNessie_59:

(Start: 100 @42207 has 13 MA's), (Start: 106 @42225 has 63 MA's), (110, 42243), (121, 42300), (142, 42402), (152, 42459), (154, 42465),

Gene: Oxynfrius_62 Start: 43823, Stop: 44083, Start Num: 106

Candidate Starts for Oxynfrius_62:

(Start: 106 @43823 has 63 MA's), (117, 43880), (118, 43883), (145, 44027),

Gene: PartyCup_62 Start: 43576, Stop: 43848, Start Num: 101

Candidate Starts for PartyCup_62:

(Start: 86 @43555 has 14 MA's), (Start: 101 @43576 has 4 MA's), (103, 43582), (Start: 106 @43588 has 63 MA's),

Gene: PastaFagioli_71 Start: 41718, Stop: 42053, Start Num: 64

Candidate Starts for PastaFagioli_71:

(43, 41670), (54, 41703), (Start: 64 @41718 has 3 MA's), (Start: 78 @41745 has 3 MA's), (81, 41751), (Start: 91 @41766 has 1 MA's), (Start: 102 @41778 has 76 MA's),

Gene: Pecas_70 Start: 41217, Stop: 41492, Start Num: 102

Candidate Starts for Pecas_70:

(Start: 102 @41217 has 76 MA's), (141, 41403),

Gene: PhigPhack_73 Start: 41119, Stop: 41394, Start Num: 102

Candidate Starts for PhigPhack_73:

(Start: 102 @41119 has 76 MA's), (141, 41305),

Gene: Phisb_72 Start: 41092, Stop: 41367, Start Num: 102

Candidate Starts for Phisb_72:

(Start: 102 @41092 has 76 MA's),

Gene: PhluffyCoco_68 Start: 38203, Stop: 38490, Start Num: 89

Candidate Starts for PhluffyCoco_68:

(Start: 89 @38203 has 9 MA's), (132, 38356), (143, 38419),

Gene: PinkFriday_61 Start: 42959, Stop: 43216, Start Num: 106

Candidate Starts for PinkFriday_61:

(Start: 104 @42950 has 1 MA's), (Start: 106 @42959 has 63 MA's), (122, 43034), (123, 43037), (137, 43112), (154, 43196),

Gene: PitaDog_61 Start: 42609, Stop: 42887, Start Num: 100

Candidate Starts for PitaDog_61:

(Start: 100 @42609 has 13 MA's), (Start: 106 @42627 has 63 MA's), (110, 42645), (121, 42702), (142, 42804), (152, 42861), (154, 42867),

Gene: PondAmelia_83 Start: 40965, Stop: 41300, Start Num: 64

Candidate Starts for PondAmelia_83:

(42, 40914), (54, 40950), (Start: 64 @40965 has 3 MA's), (81, 40998), (Start: 102 @41025 has 76 MA's), (110, 41058), (141, 41211), (142, 41214),

Gene: Popper_70 Start: 41441, Stop: 41767, Start Num: 67

Candidate Starts for Popper_70:

(37, 41375), (Start: 67 @41441 has 4 MA's), (Start: 86 @41471 has 14 MA's), (117, 41567), (131, 41627), (152, 41741), (154, 41747),

Gene: Potatoes_62 Start: 43324, Stop: 43584, Start Num: 106

Candidate Starts for Potatoes_62:

(Start: 100 @43306 has 13 MA's), (Start: 106 @43324 has 63 MA's), (110, 43342), (120, 43396),

Gene: Preamble_64 Start: 43037, Stop: 43297, Start Num: 106

Candidate Starts for Preamble_64:

(Start: 100 @43019 has 13 MA's), (Start: 106 @43037 has 63 MA's), (110, 43055), (121, 43112), (137, 43193), (142, 43214),

Gene: Pterodactyl_61 Start: 42938, Stop: 43198, Start Num: 106

Candidate Starts for Pterodactyl_61:

(Start: 100 @42920 has 13 MA's), (Start: 106 @42938 has 63 MA's), (110, 42956), (121, 43013), (142, 43115), (152, 43172), (154, 43178),

Gene: Pumancara_61 Start: 42494, Stop: 42751, Start Num: 106
Candidate Starts for Pumancara_61:
(Start: 104 @42485 has 1 MA's), (Start: 106 @42494 has 63 MA's), (122, 42569), (123, 42572), (137, 42647), (154, 42731),

Gene: Puppies_62 Start: 41790, Stop: 42113, Start Num: 71
Candidate Starts for Puppies_62:
(30, 41697), (39, 41718), (45, 41733), (49, 41739), (62, 41775), (Start: 71 @41790 has 4 MA's), (133, 41988),

Gene: QMacho_72 Start: 41222, Stop: 41497, Start Num: 102
Candidate Starts for QMacho_72:
(Start: 102 @41222 has 76 MA's),

Gene: Quenya_69 Start: 41516, Stop: 41791, Start Num: 102
Candidate Starts for Quenya_69:
(Start: 102 @41516 has 76 MA's), (110, 41549), (141, 41702), (155, 41774),

Gene: QuinnAvery_70 Start: 42826, Stop: 43122, Start Num: 86
Candidate Starts for QuinnAvery_70:
(41, 42730), (Start: 86 @42826 has 14 MA's), (117, 42922), (131, 42982), (132, 42991),

Gene: RAP15_63 Start: 43905, Stop: 44183, Start Num: 100
Candidate Starts for RAP15_63:
(Start: 100 @43905 has 13 MA's), (Start: 106 @43923 has 63 MA's), (110, 43941), (120, 43995),

Gene: Rattail_71 Start: 38499, Stop: 38786, Start Num: 89
Candidate Starts for Rattail_71:
(Start: 89 @38499 has 9 MA's), (132, 38652), (143, 38715),

Gene: RcigaStruga_62 Start: 43551, Stop: 43811, Start Num: 106
Candidate Starts for RcigaStruga_62:
(Start: 97 @43533 has 1 MA's), (Start: 106 @43551 has 63 MA's), (117, 43608), (118, 43611), (120, 43623), (145, 43755),

Gene: RedFox_71 Start: 38363, Stop: 38650, Start Num: 89
Candidate Starts for RedFox_71:
(Start: 89 @38363 has 9 MA's), (132, 38516), (143, 38579),

Gene: RegnumDei_109 Start: 60267, Stop: 60536, Start Num: 98
Candidate Starts for RegnumDei_109:
(Start: 98 @60267 has 1 MA's), (132, 60408), (134, 60420), (150, 60507),

Gene: Renna12_72 Start: 38798, Stop: 39091, Start Num: 86
Candidate Starts for Renna12_72:
(Start: 72 @38777 has 3 MA's), (Start: 86 @38798 has 14 MA's), (132, 38957), (143, 39020),

Gene: Riovina_60 Start: 43400, Stop: 43660, Start Num: 106
Candidate Starts for Riovina_60:
(69, 43331), (79, 43352), (Start: 106 @43400 has 63 MA's), (111, 43421), (120, 43472),

Gene: Riverdale_61 Start: 43055, Stop: 43315, Start Num: 106
Candidate Starts for Riverdale_61:

(Start: 100 @43037 has 13 MA's), (Start: 106 @43055 has 63 MA's), (110, 43073), (120, 43127),

Gene: Rollins_70 Start: 39578, Stop: 39853, Start Num: 102

Candidate Starts for Rollins_70:

(13, 39380), (17, 39395), (26, 39422), (38, 39455), (54, 39503), (Start: 64 @39518 has 3 MA's), (81, 39551), (Start: 102 @39578 has 76 MA's),

Gene: Rona_66 Start: 41247, Stop: 41522, Start Num: 102

Candidate Starts for Rona_66:

(54, 41172), (Start: 102 @41247 has 76 MA's), (141, 41433), (145, 41463),

Gene: Ronaldo_147 Start: 67378, Stop: 67635, Start Num: 99

Candidate Starts for Ronaldo_147:

(Start: 99 @67378 has 5 MA's), (123, 67474), (130, 67498), (133, 67528), (142, 67561),

Gene: Rozby_60 Start: 42859, Stop: 43119, Start Num: 106

Candidate Starts for Rozby_60:

(Start: 100 @42841 has 13 MA's), (Start: 106 @42859 has 63 MA's), (110, 42877), (120, 42931),

Gene: Ruchi_64 Start: 38215, Stop: 38493, Start Num: 96

Candidate Starts for Ruchi_64:

(40, 38110), (53, 38140), (Start: 88 @38203 has 1 MA's), (Start: 96 @38215 has 17 MA's),

Gene: Ryan_70 Start: 42477, Stop: 42773, Start Num: 86

Candidate Starts for Ryan_70:

(Start: 67 @42438 has 4 MA's), (Start: 86 @42477 has 14 MA's), (131, 42633), (152, 42747),

Gene: Saintcarr_67 Start: 42490, Stop: 42786, Start Num: 86

Candidate Starts for Saintcarr_67:

(Start: 86 @42490 has 14 MA's), (131, 42646), (132, 42655), (152, 42760),

Gene: SanaSana_70 Start: 41542, Stop: 41817, Start Num: 102

Candidate Starts for SanaSana_70:

(5, 41296), (8, 41311), (14, 41350), (51, 41458), (54, 41467), (Start: 64 @41482 has 3 MA's), (81, 41515), (Start: 102 @41542 has 76 MA's), (110, 41575), (141, 41728), (142, 41731),

Gene: SansAfet_72 Start: 41068, Stop: 41343, Start Num: 102

Candidate Starts for SansAfet_72:

(Start: 102 @41068 has 76 MA's), (141, 41254),

Gene: Sapo_61 Start: 45211, Stop: 45513, Start Num: 90

Candidate Starts for Sapo_61:

(Start: 90 @45211 has 2 MA's), (118, 45304), (127, 45337), (138, 45412), (157, 45505),

Gene: SarBear_72 Start: 41148, Stop: 41423, Start Num: 102

Candidate Starts for SarBear_72:

(Start: 102 @41148 has 76 MA's),

Gene: Savage2526_61 Start: 43082, Stop: 43342, Start Num: 106

Candidate Starts for Savage2526_61:

(Start: 100 @43064 has 13 MA's), (Start: 106 @43082 has 63 MA's), (110, 43100), (120, 43154),

Gene: Schism_71 Start: 42712, Stop: 43011, Start Num: 82

Candidate Starts for Schism_71:

(Start: 67 @42688 has 4 MA's), (Start: 82 @42712 has 2 MA's), (113, 42790), (117, 42811), (131, 42871), (136, 42907), (146, 42967),

Gene: Schmidt_58 Start: 36837, Stop: 37133, Start Num: 87

Candidate Starts for Schmidt_58:

(Start: 87 @36837 has 8 MA's), (133, 37008), (152, 37107),

Gene: Scuttle_61 Start: 43375, Stop: 43653, Start Num: 100

Candidate Starts for Scuttle_61:

(Start: 100 @43375 has 13 MA's), (Start: 106 @43393 has 63 MA's), (110, 43411), (120, 43465),

Gene: Sergei_60 Start: 43614, Stop: 43871, Start Num: 106

Candidate Starts for Sergei_60:

(Start: 104 @43605 has 1 MA's), (Start: 106 @43614 has 63 MA's), (110, 43632), (122, 43689), (137, 43767),

Gene: Shagrat_110 Start: 58151, Stop: 58423, Start Num: 96

Candidate Starts for Shagrat_110:

(Start: 96 @58151 has 17 MA's), (125, 58256), (132, 58295), (148, 58391), (150, 58394),

Gene: Sharkboy_68 Start: 41611, Stop: 41886, Start Num: 102

Candidate Starts for Sharkboy_68:

(54, 41536), (Start: 102 @41611 has 76 MA's), (110, 41644), (141, 41797), (145, 41827),

Gene: Shayna_75 Start: 41004, Stop: 41279, Start Num: 102

Candidate Starts for Shayna_75:

(Start: 102 @41004 has 76 MA's), (141, 41190),

Gene: SirBeanington_70 Start: 41335, Stop: 41610, Start Num: 102

Candidate Starts for SirBeanington_70:

(Start: 102 @41335 has 76 MA's), (141, 41521),

Gene: Skylord_70 Start: 39495, Stop: 39770, Start Num: 102

Candidate Starts for Skylord_70:

(13, 39297), (17, 39312), (26, 39339), (38, 39372), (54, 39420), (Start: 64 @39435 has 3 MA's), (81, 39468), (Start: 102 @39495 has 76 MA's),

Gene: Slay_70 Start: 41458, Stop: 41733, Start Num: 102

Candidate Starts for Slay_70:

(Start: 102 @41458 has 76 MA's), (141, 41644),

Gene: Sleepyhead_67 Start: 43516, Stop: 43788, Start Num: 95

Candidate Starts for Sleepyhead_67:

(Start: 95 @43516 has 1 MA's), (Start: 99 @43522 has 5 MA's),

Gene: Softsoap_71 Start: 41189, Stop: 41464, Start Num: 102

Candidate Starts for Softsoap_71:

(Start: 102 @41189 has 76 MA's),

Gene: Solea_73 Start: 41356, Stop: 41631, Start Num: 102

Candidate Starts for Solea_73:

(Start: 102 @41356 has 76 MA's),

Gene: Splinter_64 Start: 40315, Stop: 40611, Start Num: 87

Candidate Starts for Splinter_64:

(Start: 87 @40315 has 8 MA's), (136, 40504), (147, 40573),

Gene: Squiracle_66 Start: 38761, Stop: 39036, Start Num: 102

Candidate Starts for Squiracle_66:

(1, 38428), (16, 38578), (34, 38629), (Start: 102 @38761 has 76 MA's), (141, 38947), (151, 39004),

Gene: Stoor_69 Start: 41350, Stop: 41625, Start Num: 102

Candidate Starts for Stoor_69:

(Start: 102 @41350 has 76 MA's), (141, 41536), (142, 41539),

Gene: Stromboli_68 Start: 41130, Stop: 41405, Start Num: 102

Candidate Starts for Stromboli_68:

(5, 40884), (8, 40899), (14, 40938), (51, 41046), (54, 41055), (Start: 64 @41070 has 3 MA's), (81, 41103), (Start: 102 @41130 has 76 MA's), (141, 41316), (142, 41319),

Gene: StuartMinion_61 Start: 34829, Stop: 35122, Start Num: 86

Candidate Starts for StuartMinion_61:

(60, 34787), (Start: 86 @34829 has 14 MA's), (132, 34988), (152, 35096),

Gene: SunnyD_75 Start: 41007, Stop: 41282, Start Num: 102

Candidate Starts for SunnyD_75:

(Start: 102 @41007 has 76 MA's), (141, 41193),

Gene: Supakev_60 Start: 43425, Stop: 43685, Start Num: 106

Candidate Starts for Supakev_60:

(69, 43356), (79, 43377), (Start: 106 @43425 has 63 MA's), (110, 43443), (111, 43446), (120, 43497),

Gene: Suppi_62 Start: 43562, Stop: 43834, Start Num: 101

Candidate Starts for Suppi_62:

(Start: 86 @43541 has 14 MA's), (Start: 101 @43562 has 4 MA's), (103, 43568), (Start: 106 @43574 has 63 MA's),

Gene: Swervy_70 Start: 41047, Stop: 41322, Start Num: 102

Candidate Starts for Swervy_70:

(Start: 102 @41047 has 76 MA's), (141, 41233),

Gene: TZGordon_65 Start: 39203, Stop: 39499, Start Num: 87

Candidate Starts for TZGordon_65:

(Start: 87 @39203 has 8 MA's), (136, 39392), (147, 39461),

Gene: TattModd_61 Start: 43209, Stop: 43469, Start Num: 106

Candidate Starts for TattModd_61:

(Start: 100 @43191 has 13 MA's), (Start: 106 @43209 has 63 MA's), (110, 43227), (120, 43281),

Gene: TaylorSipht_65 Start: 38681, Stop: 38959, Start Num: 96

Candidate Starts for TaylorSipht_65:

(Start: 96 @38681 has 17 MA's),

Gene: Teagster_75 Start: 41426, Stop: 41701, Start Num: 102

Candidate Starts for Teagster_75:

(Start: 102 @41426 has 76 MA's), (141, 41612),

Gene: Temper16_60 Start: 43614, Stop: 43871, Start Num: 106

Candidate Starts for Temper16_60:

(Start: 104 @43605 has 1 MA's), (Start: 106 @43614 has 63 MA's), (110, 43632), (122, 43689), (137, 43767),

Gene: TinaLin_63 Start: 39046, Stop: 39342, Start Num: 87

Candidate Starts for TinaLin_63:

(65, 39004), (Start: 87 @39046 has 8 MA's), (108, 39088), (126, 39172), (147, 39304),

Gene: Toad24_68 Start: 39472, Stop: 39750, Start Num: 96

Candidate Starts for Toad24_68:

(61, 39418), (Start: 96 @39472 has 17 MA's), (157, 39742),

Gene: ToastyOats_69 Start: 42136, Stop: 42432, Start Num: 86

Candidate Starts for ToastyOats_69:

(Start: 86 @42136 has 14 MA's), (117, 42232), (131, 42292), (136, 42328),

Gene: Toodles_68 Start: 42560, Stop: 42856, Start Num: 86

Candidate Starts for Toodles_68:

(37, 42464), (Start: 67 @42530 has 4 MA's), (Start: 86 @42560 has 14 MA's), (117, 42656), (143, 42788), (152, 42830), (154, 42836),

Gene: TukTuk_70 Start: 41237, Stop: 41512, Start Num: 102

Candidate Starts for TukTuk_70:

(Start: 102 @41237 has 76 MA's), (141, 41423),

Gene: Typha_129 Start: 74982, Stop: 75305, Start Num: 72

Candidate Starts for Typha_129:

(Start: 72 @74982 has 3 MA's), (124, 75132), (140, 75213), (144, 75237), (145, 75249),

Gene: Upyo_69 Start: 44979, Stop: 45296, Start Num: 75

Candidate Starts for Upyo_69:

(Start: 75 @44979 has 1 MA's), (114, 45075), (131, 45153), (133, 45171),

Gene: Urla_62 Start: 43603, Stop: 43863, Start Num: 106

Candidate Starts for Urla_62:

(Start: 106 @43603 has 63 MA's), (110, 43621), (121, 43678),

Gene: Vallejo_62 Start: 43253, Stop: 43531, Start Num: 100

Candidate Starts for Vallejo_62:

(Start: 100 @43253 has 13 MA's), (Start: 106 @43271 has 63 MA's), (110, 43289), (120, 43343),

Gene: Vendetta_64 Start: 40315, Stop: 40611, Start Num: 87

Candidate Starts for Vendetta_64:

(Start: 87 @40315 has 8 MA's), (136, 40504), (147, 40573),

Gene: Vitas_71 Start: 39646, Stop: 39921, Start Num: 102

Candidate Starts for Vitas_71:

(23, 39487), (57, 39580), (Start: 102 @39646 has 76 MA's), (110, 39679),

Gene: Volt_150 Start: 67542, Stop: 67799, Start Num: 99

Candidate Starts for Volt_150:

(Start: 99 @67542 has 5 MA's), (123, 67638), (130, 67662), (133, 67692), (142, 67725),

Gene: Vulpecula_64 Start: 37410, Stop: 37688, Start Num: 96

Candidate Starts for Vulpecula_64:

(Start: 88 @37398 has 1 MA's), (Start: 96 @37410 has 17 MA's),

Gene: WalkingDead_71 Start: 42012, Stop: 42287, Start Num: 102

Candidate Starts for WalkingDead_71:

(Start: 102 @42012 has 76 MA's), (141, 42198), (142, 42201),

Gene: Wawa_62 Start: 43514, Stop: 43774, Start Num: 106

Candidate Starts for Wawa_62:

(Start: 100 @43496 has 13 MA's), (Start: 106 @43514 has 63 MA's), (110, 43532), (120, 43586),

Gene: Wayne_64 Start: 44019, Stop: 44291, Start Num: 101

Candidate Starts for Wayne_64:

(Start: 86 @43998 has 14 MA's), (Start: 101 @44019 has 4 MA's), (103, 44025), (Start: 106 @44031 has 63 MA's),

Gene: Widow_62 Start: 42336, Stop: 42659, Start Num: 71

Candidate Starts for Widow_62:

(30, 42243), (39, 42264), (45, 42279), (49, 42285), (56, 42312), (62, 42321), (Start: 71 @42336 has 4 MA's), (133, 42534),

Gene: WileyE_66 Start: 38402, Stop: 38680, Start Num: 96

Candidate Starts for WileyE_66:

(Start: 88 @38390 has 1 MA's), (Start: 96 @38402 has 17 MA's),

Gene: WonderBoy_59 Start: 42399, Stop: 42659, Start Num: 106

Candidate Starts for WonderBoy_59:

(Start: 100 @42381 has 13 MA's), (Start: 106 @42399 has 63 MA's), (110, 42417), (121, 42474), (142, 42576), (152, 42633), (154, 42639),

Gene: Yonex_69 Start: 42477, Stop: 42773, Start Num: 86

Candidate Starts for Yonex_69:

(Start: 67 @42438 has 4 MA's), (Start: 86 @42477 has 14 MA's), (131, 42633), (152, 42747),

Gene: Zaheer_69 Start: 42523, Stop: 42819, Start Num: 86

Candidate Starts for Zaheer_69:

(Start: 86 @42523 has 14 MA's), (117, 42619), (131, 42679), (136, 42715),

Gene: Zhuangyuan_77 Start: 39902, Stop: 40180, Start Num: 96

Candidate Starts for Zhuangyuan_77:

(Start: 96 @39902 has 17 MA's),

Gene: Zixiang_67 Start: 38816, Stop: 39094, Start Num: 96

Candidate Starts for Zixiang_67:

(Start: 96 @38816 has 17 MA's), (157, 39086),

Gene: Zorro_62 Start: 43226, Stop: 43486, Start Num: 106

Candidate Starts for Zorro_62:

(Start: 100 @43208 has 13 MA's), (Start: 106 @43226 has 63 MA's), (110, 43244), (120, 43298),

