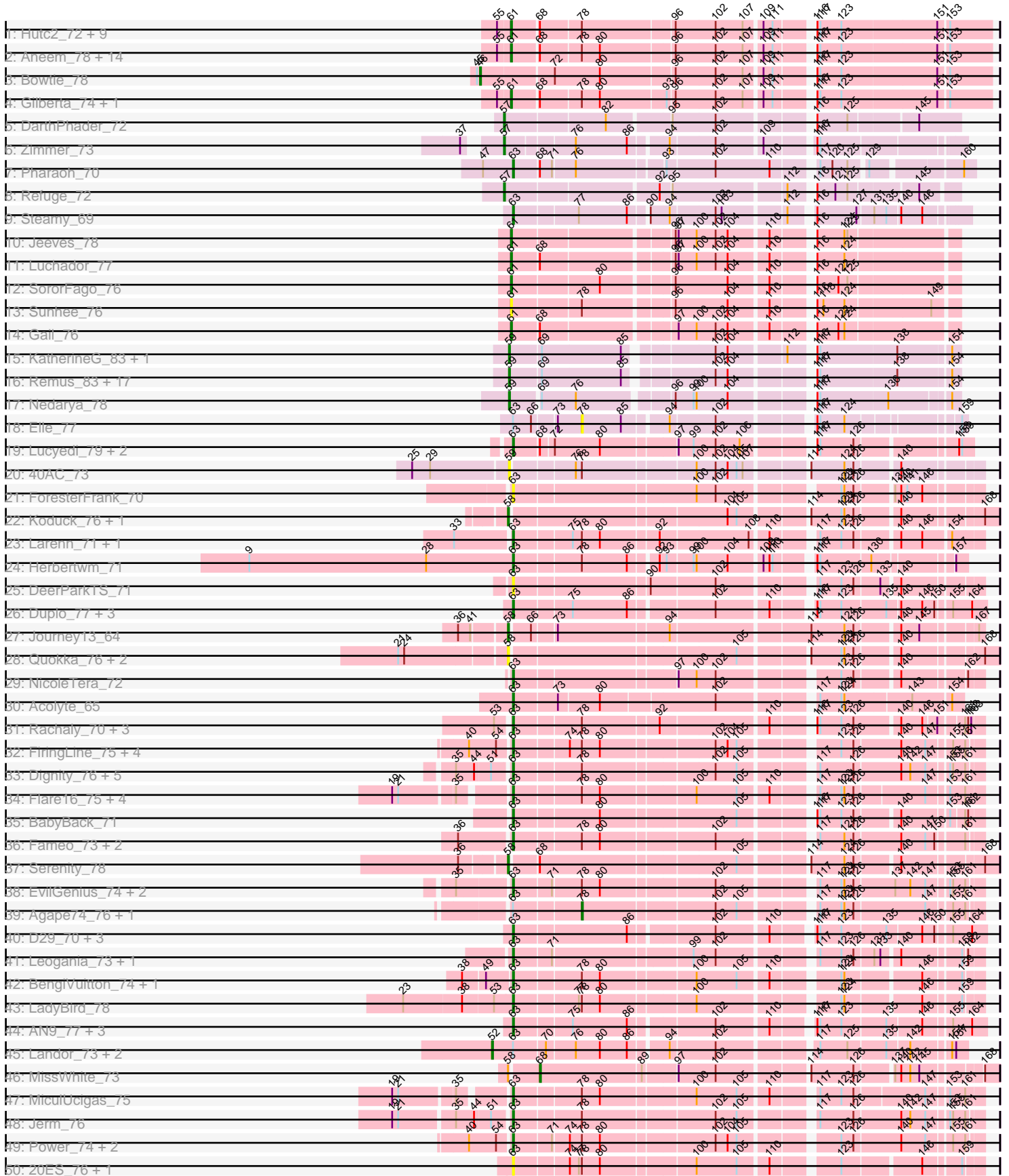
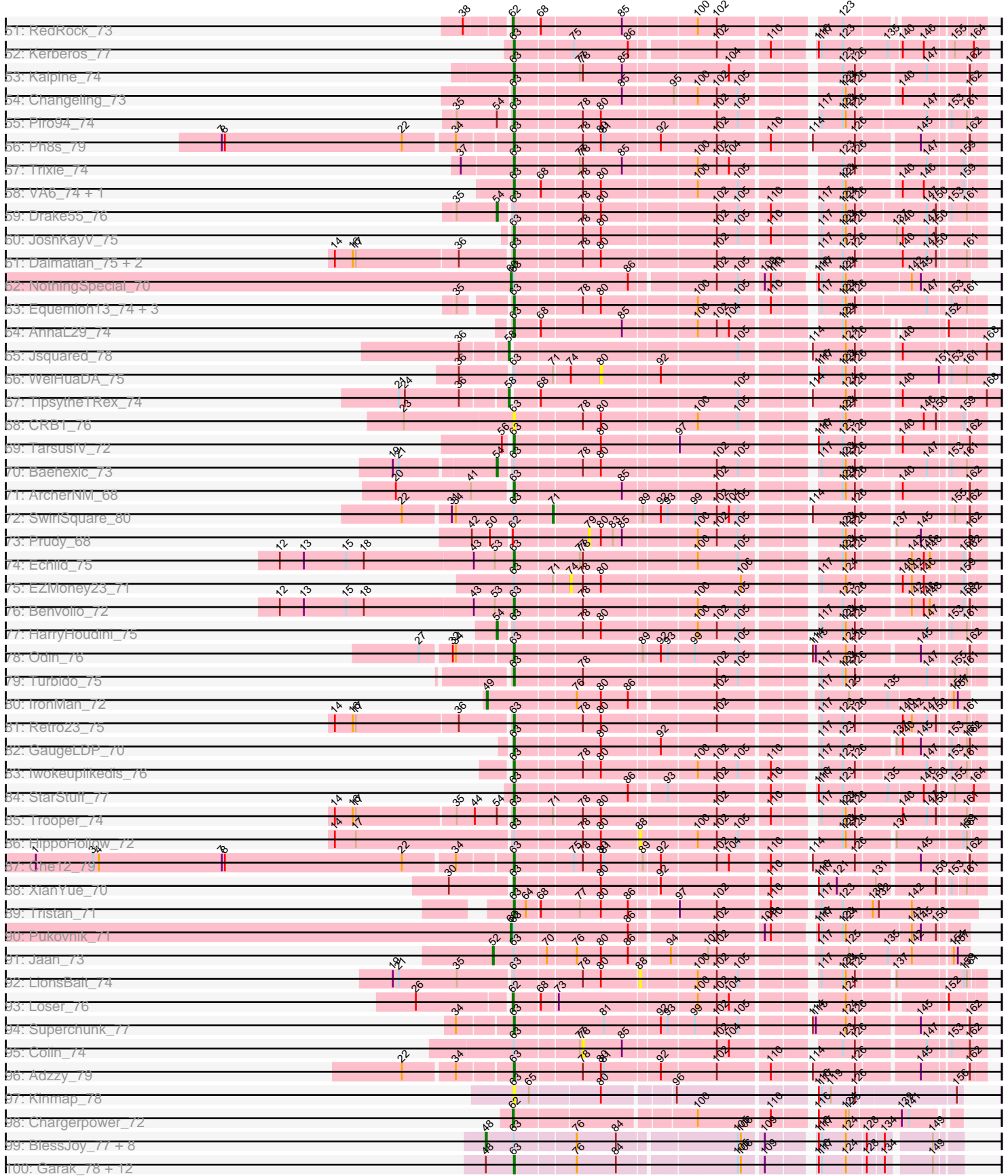


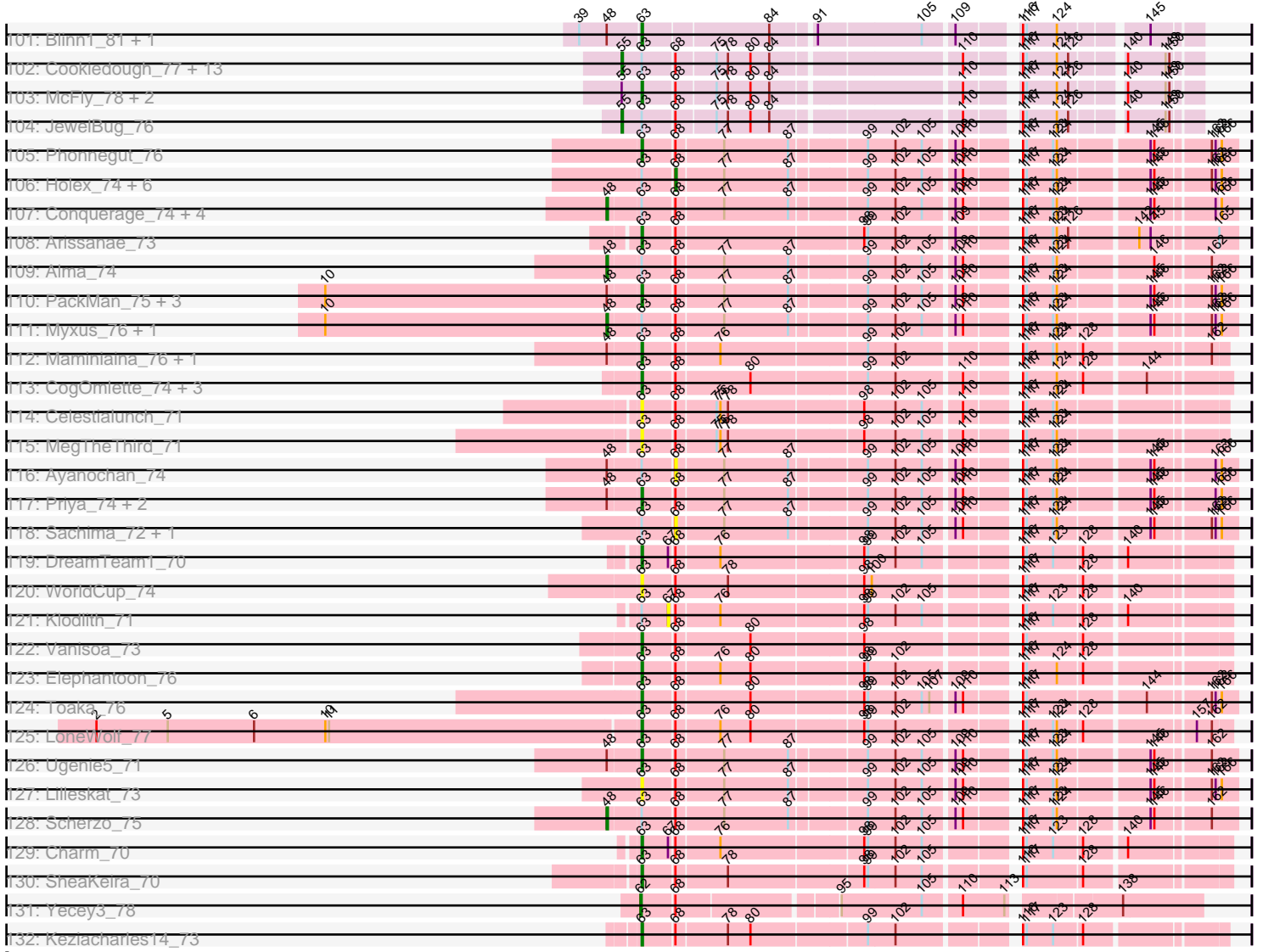
Pham 296187



Pham 296187



Pham 296187



Note: Tracks are now grouped by subcluster and scaled. Switching in subcluster is indicated by changes in track color. Track scale is now set by default to display the region 30 bp upstream of start 1 to 30 bp downstream of the last possible start. If this default region is judged to be packed too tightly with annotated starts, the track will be further scaled to only show that region of the ORF with annotated starts. This action will be indicated by adding "Zoomed" to the title. For starts, yellow indicates the location of called starts comprised solely of Glimmer/GeneMark auto-annotations, green indicates the location of called starts with at least 1 manual gene annotation.

Pham 296187 Report

This analysis was run 04/25/26 on database version 644.

Pham number 296187 has 280 members, 43 are drafts.

Phages represented in each track:

- Track 1 : Hutc2_72, Wolpertinger_76, Sham4_73, Salz_72, Saskia_74, Fibonacci_76, Insomnia_76, Ebony_77, Jabith_76, Petersenfast_71
- Track 2 : Aneem_78, Mabel_77, Et2Brutus_76, Bud_72, Flaverint_78, Mulciber_75, Timothy_77, TinyTimmy_75, Snape_77, Joselito_76, Kimba_75, Bachome_75, Orange_76, Munch_77, Lucivia_78
- Track 3 : Bowtie_78
- Track 4 : Gilberta_74, MaCh_77
- Track 5 : DarthPhader_72
- Track 6 : Zimmer_73
- Track 7 : Pharaoh_70
- Track 8 : Refuge_72
- Track 9 : Steamy_69
- Track 10 : Jeeves_78
- Track 11 : Luchador_77
- Track 12 : SororFago_76
- Track 13 : Sunhee_76
- Track 14 : Gail_76
- Track 15 : KatherineG_83, Looper_82
- Track 16 : Remus_83, Rosalind_81, Battleship_85, Epsocamisio_80, MinecraftSteve_83, ReMo_81, Ravana_85, Strosahl_83, DekHockey33_84, Soups_82, Nebulosus_80, Switzerland_82, Waits_82, Warrior24_83, LastResort_81, Anaysia_83, Oofda_82, JSwag_83
- Track 17 : Nedarya_78
- Track 18 : Elle_77
- Track 19 : Lucyedi_79, PainterBoy_78, EagleEye_80
- Track 20 : 40AC_73
- Track 21 : ForesterFrank_70
- Track 22 : Koduck_76, L5_70
- Track 23 : Larenn_71, Malec_72
- Track 24 : Herbertwm_71
- Track 25 : DeerParkTS_71
- Track 26 : Duplo_77, DBQu4n_77, Tomathan_77, Pomar16_77
- Track 27 : Journey13_64
- Track 28 : Quokka_76, Bradman_77, MajorMajor_76
- Track 29 : NicoleTera_72
- Track 30 : Acolyte_65
- Track 31 : Rachaly_70, BobSwaget_67, Miko_68, Lokk_68

- Track 32 : FiringLine_75, Crucio_75, SemperFi_75, SweetiePie_74, QueenBeesly_75
- Track 33 : Dignity_76, Leviathan_76, Buggy_76, Smeagan_77, Whabigail7_75, LilTurb_75
- Track 34 : Flare16_75, Terrific_75, Sknot_75, NaSiaTalie_75, Centaur_75
- Track 35 : BabyBack_71
- Track 36 : Fameo_73, Heffalump_72, QueenB2_72
- Track 37 : Serenity_78
- Track 38 : EvilGenius_74, ChipMunk_75, KingCyrus_74
- Track 39 : Agape74_76, AbbyPaige_76
- Track 40 : D29_70, D32_76, Travvers_76, Naji_77
- Track 41 : Leogania_73, BiancaTri92_73
- Track 42 : BengiVuitton_74, Deloris_74
- Track 43 : LadyBird_78
- Track 44 : AN9_77, C3_70, VC3_76, ANI8_77
- Track 45 : Landor_73, Phaded_70, Bactobuster_67
- Track 46 : MissWhite_73
- Track 47 : MiculUcigas_75
- Track 48 : Jerm_76
- Track 49 : Power_74, Georgie2_76, SnapTap_74
- Track 50 : 20ES_76, First_0075
- Track 51 : RedRock_73
- Track 52 : Kerberos_77
- Track 53 : Kalpine_74
- Track 54 : Changeling_73
- Track 55 : Piro94_74
- Track 56 : Ph8s_79
- Track 57 : Trixie_74
- Track 58 : VA6_74, AN3_76
- Track 59 : Drake55_76
- Track 60 : JoshKayV_75
- Track 61 : Dalmatian_75, DudeLittle_73, Anselm_76
- Track 62 : NothingSpecial_70
- Track 63 : Equemioh13_74, Gratitude_72, Updawg_75, WideWale_75
- Track 64 : AnnaL29_74
- Track 65 : Jsquared_78
- Track 66 : WeiHuaDA_75
- Track 67 : TipsytheTRex_74
- Track 68 : CRB1_76
- Track 69 : TarsusIV_72
- Track 70 : Baehexic_73
- Track 71 : ArcherNM_68
- Track 72 : SwirlSquare_80
- Track 73 : Prudy_68
- Track 74 : Echild_75
- Track 75 : EZMoney23_71
- Track 76 : Benvolio_72
- Track 77 : HarryHoudini_75
- Track 78 : Odin_76
- Track 79 : Turbido_75
- Track 80 : IronMan_72
- Track 81 : Retro23_75
- Track 82 : GaugeLDP_70

- Track 83 : Iwokeuplikedis_76
- Track 84 : StarStuff_77
- Track 85 : Trooper_74
- Track 86 : HippoHollow_72
- Track 87 : Che12_79
- Track 88 : XianYue_70
- Track 89 : Tristan_71
- Track 90 : Pukovnik_71
- Track 91 : Jaan_73
- Track 92 : LionsBait_74
- Track 93 : Loser_76
- Track 94 : Superchunk_77
- Track 95 : Colin_74
- Track 96 : Adzzy_79
- Track 97 : Kinmap_78
- Track 98 : Chargerpower_72
- Track 99 : BlessJoy_77, Zaka_77, CloudWang3_77, Artemis2UCLA_76, WunderPhul_77, Lilbunny_76, Blue7_78, Gladiator_74, Helmet_79
- Track 100 : Garak_78, Rifter_77, Tucker_77, Hexamo_76, Hammer_77, ToneTone_74, Yokurt_76, Zulu_78, Koko_78, Temprado_78, Roksolana_77, Gruunaga_76, Wiks_76
- Track 101 : Blinn1_81, Priamo_78
- Track 102 : Cookiedough_77, DaVinci_75, Kazan_78, Neeharika16_76, Dorothea_77, GreedyLawyer_72, EricB_76, Chartreuse_76, Jordennis_75, Newrala_76, VohminGhazi_77, Kipper29_77, Pmask_76, SuperAwesome_77
- Track 103 : McFly_78, Hoot_72, BABullseye_70
- Track 104 : JewelBug_76
- Track 105 : Phonnegut_76
- Track 106 : Halex_74, Beemo_76, Jiawan_73, Pioneer_76, Hanray_74, RyeScarlet_77, Onglai_74
- Track 107 : Conquerage_74, Spouty_74, Fayely_74, Qobbit_74, EmyBug_73
- Track 108 : Arissanae_73
- Track 109 : Alma_74
- Track 110 : PackMan_75, Tubs_76, Catalina_78, Phaeder_76
- Track 111 : Myxus_76, HortumSL17_77
- Track 112 : Maminiaina_76, BogosyJay_76
- Track 113 : CogOmlette_74, Bellris_74, Minispark_74, Rahalelujah_76
- Track 114 : Celestiallunch_71
- Track 115 : MegTheThird_71
- Track 116 : Ayanochan_74
- Track 117 : Priya_74, ExplosioNervosa_74, Eidsmoe_74
- Track 118 : Sachima_72, EdogawaKiddo_74
- Track 119 : DreamTeam1_70
- Track 120 : WorldCup_74
- Track 121 : Klodlith_71
- Track 122 : Vanisoa_73
- Track 123 : Elephantoon_76
- Track 124 : Toaka_76
- Track 125 : LoneWolf_77
- Track 126 : Ugenie5_71
- Track 127 : Lilleskat_73
- Track 128 : Scherzo_75
- Track 129 : Charm_70

- Track 130 : SheaKeira_70
- Track 131 : Yecey3_78
- Track 132 : Keziacharles14_73

Summary of Final Annotations (See graph section above for start numbers):

The start number called the most often in the published annotations is 63, it was called in 127 of the 237 non-draft genes in the pham.

Genes that call this "Most Annotated" start:

- 20ES_76, AN3_76, AN9_77, ANI8_77, Acolyte_65, Adzzy_79, AnnaL29_74, Anselm_76, ArcherNM_68, Arissanae_73, BABullseye_70, BabyBack_71, Bellris_74, BengiVuitton_74, Benvolio_72, BiancaTri92_73, Blinn1_81, BobSwaget_67, BogosyJay_76, Buggy_76, C3_70, CRB1_76, Catalina_78, Celestiallunch_71, Centaur_75, Changeling_73, Charm_70, Che12_79, ChipMunk_75, CogOmlette_74, Crucio_75, D29_70, D32_76, DBQu4n_77, Dalmatian_75, DeerParkTS_71, Deloris_74, Dignity_76, DreamTeam1_70, DudeLittle_73, Duplo_77, EagleEye_80, Echild_75, Eidsmoe_74, Elephantoon_76, Equemioh13_74, EvilGenius_74, ExplosioNervosa_74, Fameo_73, FiringLine_75, First_0075, Flare16_75, ForesterFrank_70, Garak_78, GaugeLDP_70, Georgie2_76, Gratitude_72, Gruunaga_76, Hammer_77, Heffalump_72, Herbertwm_71, Hexamo_76, Hoot_72, Iwokeuplikedis_76, Jerm_76, JoshKayV_75, Kalpine_74, Kerberos_77, Keziacharles14_73, KingCyrus_74, Kinmap_78, Koko_78, LadyBird_78, Larenn_71, Leogania_73, Leviathan_76, LilTurb_75, Lilleskat_73, Lokk_68, LoneWolf_77, Lucyedi_79, Malec_72, Maminiaina_76, McFly_78, MegTheThird_71, MiculUcigas_75, Miko_68, Minispark_74, NaSiaTalie_75, Naji_77, NicoleTera_72, Odin_76, PackMan_75, PainterBoy_78, Ph8s_79, Phaeder_76, Pharaoh_70, Phonnegut_76, Piro94_74, Pomar16_77, Power_74, Priamo_78, Priya_74, QueenB2_72, QueenBeesly_75, Rachaly_70, Rahalelujah_76, Retro23_75, Rifter_77, Roksolana_77, SemperFi_75, SheaKeira_70, Sknot_75, Smeagan_77, SnapTap_74, StarStuff_77, Steamy_69, Superchunk_77, SweetiePie_74, TarsusIV_72, Temprado_78, Terrific_75, Toaka_76, Tomathan_77, ToneTone_74, Travvers_76, Tristan_71, Trixie_74, Trooper_74, Tubs_76, Tucker_77, Turbido_75, Ugenie5_71, Updawg_75, VA6_74, VC3_76, Vanisoa_73, Whabigail7_75, WideWale_75, Wiks_76, WorldCup_74, XianYue_70, Yokurt_76, Zulu_78,

Genes that have the "Most Annotated" start but do not call it:

- AbbyPaige_76, Agape74_76, Alma_74, Artemis2UCLA_76, Ayanochan_74, Bactobuster_67, Baehexic_73, Beemo_76, BlessJoy_77, Blue7_78, Chartreuse_76, CloudWang3_77, Colin_74, Conquerage_74, Cookiedough_77, DaVinci_75, Dorothea_77, Drake55_76, EZMoney23_71, EdogawaKiddo_74, Elle_77, EmyBug_73, EricB_76, Fayely_74, Gladiator_74, GreedyLawyer_72, Hanray_74, HarryHoudini_75, Helmet_79, HippoHollow_72, Holesx_74, HortumSL17_77, Jaan_73, JewelBug_76, Jiawan_73, Jordennis_75, Kazan_78, Kipper29_77, Klodlith_71, Landor_73, Lilbunny_76, LionsBait_74, Myxus_76, Neeharika16_76, Newrala_76, NothingSpecial_70, Onglai_74, Phaded_70, Pioneer_76, Pmask_76, Pukovnik_71, Qobbit_74, RyeScarlet_77, Sachima_72, Scherzo_75, Spouty_74, SuperAwesome_77, SwirlSquare_80, VohminGhazi_77, WeiHuaDA_75, WunderPhul_77, Zaka_77,

Genes that do not have the "Most Annotated" start:

- 40AC_73, Anaysia_83, Aneem_78, Bachome_75, Battleship_85, Bowtie_78, Bradman_77, Bud_72, Chargerpower_72, DarthPhader_72, DekHockey33_84, Ebony_77, Epsocamisio_80, Et2Brutus_76, Fibonacci_76, Flaverint_78, Gail_76, Gilberta_74, Hutc2_72, Insomnia_76, IronMan_72, JSwag_83, Jabith_76, Jeeves_78, Joselito_76, Journey13_64, Jsquared_78, KatherineG_83, Kimba_75, Koduck_76, L5_70, LastResort_81, Looper_82, Loser_76, Luchador_77, Lucivia_78, MaCh_77, Mabel_77, MajorMajor_76, MinecraftSteve_83, MissWhite_73, Mulciber_75, Munch_77, Nebulosus_80, Nedarya_78, Oofda_82, Orange_76, Petersenfast_71, Prudy_68, Quokka_76, Ravana_85, ReMo_81, RedRock_73, Refuge_72, Remus_83, Rosalind_81, Salz_72, Saskia_74, Serenity_78, Sham4_73, Snape_77, SororFago_76, Soups_82, Strosahl_83, Sunhee_76, Switzerland_82, Timothy_77, TinyTimmy_75, TipsytheTRex_74, Waits_82, Warrior24_83, Wolpertinger_76, Yecey3_78, Zimmer_73,

Summary by start number:

Start 46:

- Found in 1 of 280 (0.4%) of genes in pham
- Manual Annotations of this start: 1 of 237
- Called 100.0% of time when present
- Phage (with cluster) where this start called: Bowtie_78 (A11),

Start 48:

- Found in 44 of 280 (15.7%) of genes in pham
- Manual Annotations of this start: 18 of 237
- Called 40.9% of time when present
- Phage (with cluster) where this start called: Alma_74 (A9), Artemis2UCLA_76 (A6), BlessJoy_77 (A6), Blue7_78 (A6), CloudWang3_77 (A6), Conquerage_74 (A9), EmyBug_73 (A9), Fayely_74 (A9), Gladiator_74 (A6), Helmet_79 (A6), HortumSL17_77 (A9), Lilbunny_76 (A6), Myxus_76 (A9), Qobbit_74 (A9), Scherzo_75 (A9), Spouty_74 (A9), WunderPhul_77 (A6), Zaka_77 (A6),

Start 49:

- Found in 3 of 280 (1.1%) of genes in pham
- Manual Annotations of this start: 1 of 237
- Called 33.3% of time when present
- Phage (with cluster) where this start called: IronMan_72 (A2),

Start 52:

- Found in 4 of 280 (1.4%) of genes in pham
- Manual Annotations of this start: 4 of 237
- Called 100.0% of time when present
- Phage (with cluster) where this start called: Bactobuster_67 (A2), Jaan_73 (A2), Landor_73 (A2), Phaded_70 (A2),

Start 54:

- Found in 13 of 280 (4.6%) of genes in pham
- Manual Annotations of this start: 3 of 237
- Called 23.1% of time when present
- Phage (with cluster) where this start called: Baehexic_73 (A2), Drake55_76 (A2), HarryHoudini_75 (A2),

Start 55:

- Found in 45 of 280 (16.1%) of genes in pham
- Manual Annotations of this start: 15 of 237
- Called 33.3% of time when present
- Phage (with cluster) where this start called: Chartreuse_76 (A6), Cookiedough_77 (A6), DaVinci_75 (A6), Dorothea_77 (A6), EricB_76 (A6), GreedyLawyer_72 (A6), JewelBug_76 (A6), Jordennis_75 (A6), Kazan_78 (A6), Kipper29_77 (A6), Neeharika16_76 (A6), Newrala_76 (A6), Pmask_76 (A6), SuperAwesome_77 (A6), VohminGhazi_77 (A6),

Start 57:

- Found in 3 of 280 (1.1%) of genes in pham
- Manual Annotations of this start: 3 of 237
- Called 100.0% of time when present
- Phage (with cluster) where this start called: DARTHPhader_72 (A12), Refuge_72 (A12), Zimmer_73 (A12),

Start 58:

- Found in 10 of 280 (3.6%) of genes in pham
- Manual Annotations of this start: 6 of 237
- Called 90.0% of time when present
- Phage (with cluster) where this start called: Bradman_77 (A2), Journey13_64 (A2), Jsquared_78 (A2), Koduck_76 (A2), L5_70 (A2), MajorMajor_76 (A2), Quokka_76 (A2), Serenity_78 (A2), TopsytheTRex_74 (A2),

Start 59:

- Found in 22 of 280 (7.9%) of genes in pham
- Manual Annotations of this start: 20 of 237
- Called 100.0% of time when present
- Phage (with cluster) where this start called: 40AC_73 (A17), Anaysia_83 (A15), Battleship_85 (A15), DekHockey33_84 (A15), Epsocamisio_80 (A15), JSwag_83 (A15), KatherineG_83 (A15), LastResort_81 (A15), Looper_82 (A15), MinecraftSteve_83 (A15), Nebulosus_80 (A15), Nedarya_78 (A15), Oofda_82 (A15), Ravana_85 (A15), ReMo_81 (A15), Remus_83 (A15), Rosalind_81 (A15), Soups_82 (A15), Strosahl_83 (A15), Switzerland_82 (A15), Waits_82 (A15), Warrior24_83 (A15),

Start 60:

- Found in 2 of 280 (0.7%) of genes in pham
- Manual Annotations of this start: 2 of 237
- Called 100.0% of time when present
- Phage (with cluster) where this start called: NothingSpecial_70 (A2), Pukovnik_71 (A2),

Start 61:

- Found in 32 of 280 (11.4%) of genes in pham
- Manual Annotations of this start: 27 of 237
- Called 100.0% of time when present
- Phage (with cluster) where this start called: Aneem_78 (A11), Bachome_75 (A11), Bud_72 (A11), Ebony_77 (A11), Et2Brutus_76 (A11), Fibonacci_76 (A11), Flaverint_78 (A11), Gail_76 (A14), Gilberta_74 (A11), Hutc2_72 (A11), Insomnia_76 (A11), Jabith_76 (A11), Jeeves_78 (A14), Joselito_76 (A11), Kimba_75 (A11), Luchador_77 (A14), Lucivia_78 (A11), MaCh_77 (A11), Mabel_77 (A11), Mulciber_75

(A11), Munch_77 (A11), Orange_76 (A11), Petersenfast_71 (A11), Salz_72 (A11), Saskia_74 (A11), Sham4_73 (A11), Snape_77 (A11), SororFago_76 (A14), Sunhee_76 (A14), Timothy_77 (A11), TinyTimmy_75 (A11), Wolpertinger_76 (A11),

Start 62:

- Found in 5 of 280 (1.8%) of genes in pham
- Manual Annotations of this start: 4 of 237
- Called 80.0% of time when present
- Phage (with cluster) where this start called: Chargerpower_72 (A22), Loser_76 (A2), RedRock_73 (A2), Yecey3_78 (A9),

Start 63:

- Found in 206 of 280 (73.6%) of genes in pham
- Manual Annotations of this start: 127 of 237
- Called 69.9% of time when present
- Phage (with cluster) where this start called: 20ES_76 (A2), AN3_76 (A2), AN9_77 (A2), AN18_77 (A2), Acolyte_65 (A2), Adzzy_79 (A2), AnnaL29_74 (A2), Anselm_76 (A2), ArcherNM_68 (A2), Arissanae_73 (A9), BABullseye_70 (A6), BabyBack_71 (A2), Bellris_74 (A9), BengiVuitton_74 (A2), Benvolio_72 (A2), BiancaTri92_73 (A2), Blinn1_81 (A6), BobSwaget_67 (A2), BogosyJay_76 (A9), Buggy_76 (A2), C3_70 (A2), CRB1_76 (A2), Catalina_78 (A9), Celestialunch_71 (A9), Centaur_75 (A2), Changeling_73 (A2), Charm_70 (A9), Che12_79 (A2), ChipMunk_75 (A2), CogOmlette_74 (A9), Crucio_75 (A2), D29_70 (A2), D32_76 (A2), DBQu4n_77 (A2), Dalmatian_75 (A2), DeerParkTS_71 (A2), Deloris_74 (A2), Dignity_76 (A2), DreamTeam1_70 (A9), DudeLittle_73 (A2), Duplo_77 (A2), EagleEye_80 (A16), Echild_75 (A2), Eidsmoe_74 (A9), Elephantoon_76 (A9), Equemioh13_74 (A2), EvilGenius_74 (A2), ExplosioNervosa_74 (A9), Fameo_73 (A2), FiringLine_75 (A2), First_0075 (A2), Flare16_75 (A2), ForesterFrank_70 (A2), Garak_78 (A6), GaugeLDP_70 (A2), Georgie2_76 (A2), Gratitude_72 (A2), Gruunaga_76 (A6), Hammer_77 (A6), Heffalump_72 (A2), Herbertwm_71 (A2), Hexamo_76 (A6), Hoot_72 (A6), Iwokeuplikedis_76 (A2), Jerm_76 (A2), JoshKayV_75 (A2), Kalpine_74 (A2), Kerberos_77 (A2), Keziacharles14_73 (A9), KingCyrus_74 (A2), Kinmap_78 (A21), Koko_78 (A6), LadyBird_78 (A2), Larenn_71 (A2), Leogania_73 (A2), Leviathan_76 (A2), LilTurb_75 (A2), Lilleskat_73 (A9), Lokk_68 (A2), LoneWolf_77 (A9), Lucyedi_79 (A16), Malec_72 (A2), Maminiaina_76 (A9), McFly_78 (A6), MegTheThird_71 (A9), MiculUcigas_75 (A2), Miko_68 (A2), Minispark_74 (A9), NaSiaTalie_75 (A2), Naji_77 (A2), NicoleTera_72 (A2), Odin_76 (A2), PackMan_75 (A9), PainterBoy_78 (A16), Ph8s_79 (A2), Phaeder_76 (A9), Pharaoh_70 (A12), Phonnegut_76 (A9), Piro94_74 (A2), Pomar16_77 (A2), Power_74 (A2), Priamo_78 (A6), Priya_74 (A9), QueenB2_72 (A2), QueenBeesly_75 (A2), Rachaly_70 (A2), Rahalelujah_76 (A9), Retro23_75 (A2), Rifter_77 (A6), Roksolana_77 (A6), SemperFi_75 (A2), SheaKeira_70 (A9), Sknot_75 (A2), Smeagan_77 (A2), SnapTap_74 (A2), StarStuff_77 (A2), Steamy_69 (A12), Superchunk_77 (A2), SweetiePie_74 (A2), TarsusIV_72 (A2), Temprado_78 (A6), Terrific_75 (A2), Toaka_76 (A9), Tomathan_77 (A2), ToneTone_74 (A6), Travvers_76 (A2), Tristan_71 (A2), Trixie_74 (A2), Trooper_74 (A2), Tubs_76 (A9), Tucker_77 (A6), Turbido_75 (A2), Ugenie5_71 (A9), Updawg_75 (A2), VA6_74 (A2), VC3_76 (A2), Vanisoa_73 (A9), Whabigail7_75 (A2), WideWale_75 (A2), Wiks_76 (A6), WorldCup_74 (A9), XianYue_70 (A2), Yokurt_76 (A6), Zulu_78 (A6),

Start 67:

- Found in 3 of 280 (1.1%) of genes in pham
- No Manual Annotations of this start.

- Called 33.3% of time when present
- Phage (with cluster) where this start called: Klodlith_71 (A9),

Start 68:

- Found in 109 of 280 (38.9%) of genes in pham
- Manual Annotations of this start: 3 of 237
- Called 10.1% of time when present
- Phage (with cluster) where this start called: Ayanochan_74 (A9), Beemo_76 (A9), EdogawaKiddo_74 (A9), Hanray_74 (A9), Halex_74 (A9), Jiawan_73 (A9), MissWhite_73 (A2), Onglai_74 (A9), Pioneer_76 (A9), RyeScarlet_77 (A9), Sachima_72 (A9),

Start 71:

- Found in 13 of 280 (4.6%) of genes in pham
- Manual Annotations of this start: 1 of 237
- Called 7.7% of time when present
- Phage (with cluster) where this start called: SwirlSquare_80 (A2),

Start 74:

- Found in 12 of 280 (4.3%) of genes in pham
- No Manual Annotations of this start.
- Called 8.3% of time when present
- Phage (with cluster) where this start called: EZMoney23_71 (A2),

Start 78:

- Found in 124 of 280 (44.3%) of genes in pham
- Manual Annotations of this start: 2 of 237
- Called 3.2% of time when present
- Phage (with cluster) where this start called: AbbyPaige_76 (A2), Agape74_76 (A2), Colin_74 (A2), Elle_77 (A15),

Start 79:

- Found in 1 of 280 (0.4%) of genes in pham
- No Manual Annotations of this start.
- Called 100.0% of time when present
- Phage (with cluster) where this start called: Prudy_68 (A2),

Start 80:

- Found in 114 of 280 (40.7%) of genes in pham
- No Manual Annotations of this start.
- Called 0.9% of time when present
- Phage (with cluster) where this start called: WeiHuaDA_75 (A2),

Start 88:

- Found in 2 of 280 (0.7%) of genes in pham
- No Manual Annotations of this start.
- Called 100.0% of time when present
- Phage (with cluster) where this start called: HippoHollow_72 (A2), LionsBait_74 (A2),

Summary by clusters:

There are 11 clusters represented in this pham: A15, A14, A22, A16, A11, A12, A17, A21, A2, A6, A9,

Info for manual annotations of cluster A11:

- Start number 46 was manually annotated 1 time for cluster A11.
- Start number 61 was manually annotated 23 times for cluster A11.

Info for manual annotations of cluster A12:

- Start number 57 was manually annotated 3 times for cluster A12.
- Start number 63 was manually annotated 2 times for cluster A12.

Info for manual annotations of cluster A14:

- Start number 61 was manually annotated 4 times for cluster A14.

Info for manual annotations of cluster A15:

- Start number 59 was manually annotated 20 times for cluster A15.

Info for manual annotations of cluster A16:

- Start number 63 was manually annotated 3 times for cluster A16.

Info for manual annotations of cluster A2:

- Start number 49 was manually annotated 1 time for cluster A2.
- Start number 52 was manually annotated 4 times for cluster A2.
- Start number 54 was manually annotated 3 times for cluster A2.
- Start number 58 was manually annotated 6 times for cluster A2.
- Start number 60 was manually annotated 2 times for cluster A2.
- Start number 62 was manually annotated 2 times for cluster A2.
- Start number 63 was manually annotated 84 times for cluster A2.
- Start number 68 was manually annotated 1 time for cluster A2.
- Start number 71 was manually annotated 1 time for cluster A2.
- Start number 78 was manually annotated 2 times for cluster A2.

Info for manual annotations of cluster A22:

- Start number 62 was manually annotated 1 time for cluster A22.

Info for manual annotations of cluster A6:

- Start number 48 was manually annotated 9 times for cluster A6.
- Start number 55 was manually annotated 15 times for cluster A6.
- Start number 63 was manually annotated 17 times for cluster A6.

Info for manual annotations of cluster A9:

- Start number 48 was manually annotated 9 times for cluster A9.
- Start number 62 was manually annotated 1 time for cluster A9.
- Start number 63 was manually annotated 21 times for cluster A9.
- Start number 68 was manually annotated 2 times for cluster A9.

Gene Information:

Gene: 20ES_76 Start: 44872, Stop: 44459, Start Num: 63

Candidate Starts for 20ES_76:

(Start: 63 @44872 has 127 MA's), (74, 44821), (77, 44812), (Start: 78 @44809 has 2 MA's), (80, 44791), (100, 44704), (105, 44665), (110, 44638), (123, 44581), (146, 44509), (159, 44476),

Gene: 40AC_73 Start: 45297, Stop: 44878, Start Num: 59

Candidate Starts for 40AC_73:

(25, 45390), (29, 45372), (Start: 59 @45297 has 20 MA's), (76, 45240), (Start: 78 @45234 has 2 MA's), (100, 45129), (102, 45111), (104, 45099), (105, 45090), (107, 45084), (114, 45030), (124, 44997), (126, 44988), (140, 44949),

Gene: AN3_76 Start: 43653, Stop: 43240, Start Num: 63

Candidate Starts for AN3_76:

(Start: 63 @43653 has 127 MA's), (Start: 68 @43629 has 3 MA's), (Start: 78 @43590 has 2 MA's), (80, 43572), (100, 43485), (105, 43446), (123, 43362), (124, 43359), (140, 43311), (146, 43290), (159, 43257),

Gene: AN9_77 Start: 44797, Stop: 44378, Start Num: 63

Candidate Starts for AN9_77:

(Start: 63 @44797 has 127 MA's), (75, 44743), (86, 44689), (102, 44614), (110, 44566), (116, 44533), (117, 44530), (123, 44509), (135, 44467), (146, 44434), (155, 44410), (164, 44392),

Gene: ANI8_77 Start: 44797, Stop: 44378, Start Num: 63

Candidate Starts for ANI8_77:

(Start: 63 @44797 has 127 MA's), (75, 44743), (86, 44689), (102, 44614), (110, 44566), (116, 44533), (117, 44530), (123, 44509), (135, 44467), (146, 44434), (155, 44410), (164, 44392),

Gene: AbbyPaige_76 Start: 45068, Stop: 44712, Start Num: 78

Candidate Starts for AbbyPaige_76:

(Start: 63 @45131 has 127 MA's), (Start: 78 @45068 has 2 MA's), (102, 44945), (105, 44924), (117, 44861), (123, 44840), (124, 44837), (126, 44828), (147, 44759), (155, 44738), (161, 44726),

Gene: Acolyte_65 Start: 42788, Stop: 42381, Start Num: 63

Candidate Starts for Acolyte_65:

(Start: 63 @42788 has 127 MA's), (73, 42746), (80, 42707), (102, 42599), (117, 42515), (123, 42494), (124, 42491), (143, 42428), (154, 42392),

Gene: Adzzy_79 Start: 44582, Stop: 44163, Start Num: 63

Candidate Starts for Adzzy_79:

(22, 44675), (34, 44630), (Start: 63 @44582 has 127 MA's), (Start: 78 @44519 has 2 MA's), (80, 44501), (81, 44498), (92, 44447), (102, 44396), (110, 44348), (114, 44315), (126, 44273), (145, 44216), (162, 44177),

Gene: Agape74_76 Start: 45063, Stop: 44707, Start Num: 78

Candidate Starts for Agape74_76:

(Start: 63 @45126 has 127 MA's), (Start: 78 @45063 has 2 MA's), (102, 44940), (105, 44919), (117, 44856), (123, 44835), (124, 44832), (126, 44823), (147, 44754), (155, 44733), (161, 44721),

Gene: Alma_74 Start: 44144, Stop: 43698, Start Num: 48

Candidate Starts for Alma_74:

(Start: 48 @44144 has 18 MA's), (Start: 63 @44120 has 127 MA's), (Start: 68 @44096 has 3 MA's), (77, 44060), (87, 44009), (99, 43955), (102, 43934), (105, 43913), (109, 43892), (110, 43886), (116, 43853), (117, 43850), (123, 43829), (124, 43826), (146, 43757), (162, 43718),

Gene: Anaysia_83 Start: 45370, Stop: 44972, Start Num: 59

Candidate Starts for Anaysia_83:

(Start: 59 @45370 has 20 MA's), (69, 45340), (85, 45262), (102, 45187), (104, 45175), (116, 45106), (117, 45103), (138, 45028), (154, 44980),

Gene: Aneem_78 Start: 44778, Stop: 44341, Start Num: 61

Candidate Starts for Aneem_78:

(Start: 55 @44790 has 15 MA's), (Start: 61 @44778 has 27 MA's), (Start: 68 @44754 has 3 MA's), (Start: 78 @44715 has 2 MA's), (80, 44697), (96, 44628), (102, 44589), (107, 44562), (109, 44547), (111, 44538), (116, 44508), (117, 44505), (123, 44484), (151, 44391), (153, 44382),

Gene: AnnaL29_74 Start: 45079, Stop: 44672, Start Num: 63

Candidate Starts for AnnaL29_74:

(Start: 63 @45079 has 127 MA's), (Start: 68 @45055 has 3 MA's), (85, 44977), (100, 44911), (102, 44893), (104, 44881), (123, 44788), (124, 44785), (152, 44704),

Gene: Anselm_76 Start: 45193, Stop: 44774, Start Num: 63

Candidate Starts for Anselm_76:

(14, 45361), (16, 45343), (17, 45340), (36, 45241), (Start: 63 @45193 has 127 MA's), (Start: 78 @45130 has 2 MA's), (80, 45112), (102, 45007), (117, 44923), (123, 44902), (126, 44890), (140, 44845), (147, 44821), (150, 44812), (161, 44788),

Gene: ArcherNM_68 Start: 44346, Stop: 43933, Start Num: 63

Candidate Starts for ArcherNM_68:

(20, 44457), (41, 44382), (Start: 63 @44346 has 127 MA's), (85, 44244), (102, 44160), (123, 44055), (124, 44052), (126, 44043), (140, 44004), (162, 43947),

Gene: Arissanae_73 Start: 44444, Stop: 44019, Start Num: 63

Candidate Starts for Arissanae_73:

(Start: 63 @44444 has 127 MA's), (Start: 68 @44420 has 3 MA's), (98, 44279), (99, 44276), (102, 44255), (109, 44213), (116, 44174), (117, 44171), (123, 44150), (124, 44147), (126, 44138), (142, 44090), (145, 44081), (165, 44033),

Gene: Artemis2UCLA_76 Start: 43341, Stop: 42928, Start Num: 48

Candidate Starts for Artemis2UCLA_76:

(Start: 48 @43341 has 18 MA's), (Start: 63 @43314 has 127 MA's), (76, 43257), (84, 43218), (105, 43110), (106, 43107), (109, 43089), (116, 43050), (117, 43047), (124, 43023), (128, 43005), (134, 42990), (149, 42951),

Gene: Ayanochan_74 Start: 43879, Stop: 43484, Start Num: 68

Candidate Starts for Ayanochan_74:

(Start: 48 @43927 has 18 MA's), (Start: 63 @43903 has 127 MA's), (Start: 68 @43879 has 3 MA's), (77, 43843), (87, 43792), (99, 43738), (102, 43717), (105, 43696), (109, 43675), (110, 43669), (116, 43636), (117, 43633), (123, 43612), (124, 43609), (145, 43543), (146, 43540), (163, 43498), (166, 43495),

Gene: BABullseye_70 Start: 41954, Stop: 41568, Start Num: 63

Candidate Starts for BABullseye_70:

(Start: 55 @41969 has 15 MA's), (Start: 63 @41954 has 127 MA's), (Start: 68 @41930 has 3 MA's), (75, 41900), (Start: 78 @41891 has 2 MA's), (80, 41873), (84, 41858), (110, 41723), (116, 41690), (117, 41687), (124, 41663), (126, 41654), (140, 41621), (149, 41591), (150, 41588),

Gene: BabyBack_71 Start: 44781, Stop: 44368, Start Num: 63

Candidate Starts for BabyBack_71:

(Start: 63 @44781 has 127 MA's), (80, 44700), (105, 44574), (116, 44514), (117, 44511), (123, 44490), (126, 44478), (140, 44439), (153, 44397), (161, 44385), (162, 44382),

Gene: Bachome_75 Start: 43657, Stop: 43220, Start Num: 61

Candidate Starts for Bachome_75:

(Start: 55 @43669 has 15 MA's), (Start: 61 @43657 has 27 MA's), (Start: 68 @43633 has 3 MA's), (Start: 78 @43594 has 2 MA's), (80, 43576), (96, 43507), (102, 43468), (107, 43441), (109, 43426), (111, 43417), (116, 43387), (117, 43384), (123, 43363), (151, 43270), (153, 43261),

Gene: Bactobuster_67 Start: 44476, Stop: 44054, Start Num: 52

Candidate Starts for Bactobuster_67:

(Start: 52 @44476 has 4 MA's), (Start: 63 @44455 has 127 MA's), (70, 44425), (76, 44398), (80, 44374), (86, 44347), (94, 44314), (102, 44272), (117, 44185), (125, 44158), (135, 44122), (142, 44101), (154, 44068), (157, 44065),

Gene: Baehexic_73 Start: 44533, Stop: 44102, Start Num: 54

Candidate Starts for Baehexic_73:

(19, 44629), (21, 44623), (Start: 54 @44533 has 3 MA's), (Start: 63 @44521 has 127 MA's), (Start: 78 @44458 has 2 MA's), (80, 44440), (102, 44335), (105, 44314), (117, 44251), (123, 44230), (124, 44227), (126, 44218), (147, 44152), (153, 44134), (161, 44119),

Gene: Battleship_85 Start: 45243, Stop: 44845, Start Num: 59

Candidate Starts for Battleship_85:

(Start: 59 @45243 has 20 MA's), (69, 45213), (85, 45135), (102, 45060), (104, 45048), (116, 44979), (117, 44976), (138, 44901), (154, 44853),

Gene: Beemo_76 Start: 44134, Stop: 43739, Start Num: 68

Candidate Starts for Beemo_76:

(Start: 63 @44158 has 127 MA's), (Start: 68 @44134 has 3 MA's), (77, 44098), (87, 44047), (99, 43993), (102, 43972), (105, 43951), (109, 43930), (110, 43924), (116, 43891), (117, 43888), (123, 43867), (124, 43864), (145, 43798), (146, 43795), (162, 43756), (163, 43753), (166, 43750),

Gene: Bellris_74 Start: 44011, Stop: 43592, Start Num: 63

Candidate Starts for Bellris_74:

(Start: 63 @44011 has 127 MA's), (Start: 68 @43987 has 3 MA's), (80, 43930), (99, 43843), (102, 43822), (110, 43774), (116, 43741), (117, 43738), (124, 43714), (128, 43696), (144, 43651),

Gene: BengiVuitton_74 Start: 44822, Stop: 44409, Start Num: 63

Candidate Starts for BengiVuitton_74:

(38, 44867), (Start: 49 @44846 has 1 MA's), (Start: 63 @44822 has 127 MA's), (Start: 78 @44759 has 2 MA's), (80, 44741), (100, 44654), (105, 44615), (110, 44588), (123, 44531), (124, 44528), (146, 44459), (159, 44426),

Gene: Benvolio_72 Start: 44419, Stop: 44006, Start Num: 63

Candidate Starts for Benvolio_72:

(12, 44644), (13, 44620), (15, 44578), (18, 44560), (43, 44452), (53, 44431), (Start: 63 @44419 has 127 MA's), (Start: 78 @44356 has 2 MA's), (100, 44251), (105, 44212), (123, 44128), (126, 44116), (142, 44068), (146, 44056), (148, 44050), (159, 44023), (162, 44020),

Gene: BiancaTri92_73 Start: 44785, Stop: 44372, Start Num: 63

Candidate Starts for BiancaTri92_73:

(Start: 63 @44785 has 127 MA's), (Start: 71 @44749 has 1 MA's), (99, 44620), (102, 44599), (117, 44515), (123, 44494), (126, 44482), (131, 44464), (133, 44458), (140, 44443), (159, 44389), (162, 44386),

Gene: BlessJoy_77 Start: 43863, Stop: 43450, Start Num: 48

Candidate Starts for BlessJoy_77:

(Start: 48 @43863 has 18 MA's), (Start: 63 @43836 has 127 MA's), (76, 43779), (84, 43740), (105, 43632), (106, 43629), (109, 43611), (116, 43572), (117, 43569), (124, 43545), (128, 43527), (134, 43512), (149, 43473),

Gene: Blinn1_81 Start: 44565, Stop: 44179, Start Num: 63

Candidate Starts for Blinn1_81:

(39, 44610), (Start: 48 @44589 has 18 MA's), (Start: 63 @44565 has 127 MA's), (84, 44469), (91, 44439), (105, 44361), (109, 44340), (116, 44301), (117, 44298), (124, 44274), (145, 44214),

Gene: Blue7_78 Start: 43561, Stop: 43148, Start Num: 48

Candidate Starts for Blue7_78:

(Start: 48 @43561 has 18 MA's), (Start: 63 @43534 has 127 MA's), (76, 43477), (84, 43438), (105, 43330), (106, 43327), (109, 43309), (116, 43270), (117, 43267), (124, 43243), (128, 43225), (134, 43210), (149, 43171),

Gene: BobSwaget_67 Start: 42656, Stop: 42240, Start Num: 63

Candidate Starts for BobSwaget_67:

(53, 42668), (Start: 63 @42656 has 127 MA's), (Start: 78 @42593 has 2 MA's), (92, 42521), (110, 42422), (116, 42389), (117, 42386), (123, 42365), (126, 42353), (140, 42311), (146, 42290), (151, 42278), (161, 42257), (162, 42254), (163, 42251),

Gene: BogosyJay_76 Start: 44392, Stop: 43976, Start Num: 63

Candidate Starts for BogosyJay_76:

(Start: 48 @44416 has 18 MA's), (Start: 63 @44392 has 127 MA's), (Start: 68 @44368 has 3 MA's), (76, 44335), (99, 44224), (102, 44203), (116, 44122), (117, 44119), (123, 44098), (124, 44095), (128, 44077), (162, 43987),

Gene: Bowtie_78 Start: 44818, Stop: 44348, Start Num: 46

Candidate Starts for Bowtie_78:

(45, 44821), (Start: 46 @44818 has 1 MA's), (72, 44749), (80, 44704), (96, 44635), (102, 44596), (107, 44569), (109, 44554), (111, 44545), (116, 44515), (117, 44512), (123, 44491), (151, 44398), (153, 44389),

Gene: Bradman_77 Start: 44213, Stop: 43776, Start Num: 58

Candidate Starts for Bradman_77:

(21, 44315), (24, 44309), (Start: 58 @44213 has 6 MA's), (105, 44003), (114, 43943), (123, 43913), (124, 43910), (126, 43901), (140, 43862), (168, 43790),

Gene: Bud_72 Start: 43215, Stop: 42778, Start Num: 61

Candidate Starts for Bud_72:

(Start: 55 @43227 has 15 MA's), (Start: 61 @43215 has 27 MA's), (Start: 68 @43191 has 3 MA's), (Start: 78 @43152 has 2 MA's), (80, 43134), (96, 43065), (102, 43026), (107, 42999), (109, 42984), (111, 42975), (116, 42945), (117, 42942), (123, 42921), (151, 42828), (153, 42819),

Gene: Buggy_76 Start: 45178, Stop: 44759, Start Num: 63

Candidate Starts for Buggy_76:

(35, 45226), (44, 45208), (51, 45193), (Start: 63 @45178 has 127 MA's), (Start: 78 @45115 has 2 MA's), (102, 44992), (105, 44971), (117, 44908), (126, 44875), (140, 44830), (142, 44821), (147, 44806), (153, 44788), (155, 44785), (161, 44773),

Gene: C3_70 Start: 44797, Stop: 44378, Start Num: 63

Candidate Starts for C3_70:

(Start: 63 @44797 has 127 MA's), (75, 44743), (86, 44689), (102, 44614), (110, 44566), (116, 44533), (117, 44530), (123, 44509), (135, 44467), (146, 44434), (155, 44410), (164, 44392),

Gene: CRB1_76 Start: 45367, Stop: 44954, Start Num: 63

Candidate Starts for CRB1_76:

(23, 45469), (Start: 63 @45367 has 127 MA's), (Start: 78 @45304 has 2 MA's), (80, 45286), (100, 45199), (105, 45160), (123, 45076), (124, 45073), (146, 45004), (150, 44992), (159, 44971),

Gene: Catalina_78 Start: 44214, Stop: 43795, Start Num: 63

Candidate Starts for Catalina_78:

(10, 44463), (Start: 48 @44238 has 18 MA's), (Start: 63 @44214 has 127 MA's), (Start: 68 @44190 has 3 MA's), (77, 44154), (87, 44103), (99, 44049), (102, 44028), (105, 44007), (109, 43986), (110, 43980), (116, 43947), (117, 43944), (123, 43923), (124, 43920), (145, 43854), (146, 43851), (162, 43812), (163, 43809), (166, 43806),

Gene: Celestiallunch_71 Start: 43395, Stop: 42979, Start Num: 63

Candidate Starts for Celestiallunch_71:

(Start: 63 @43395 has 127 MA's), (Start: 68 @43371 has 3 MA's), (75, 43341), (76, 43338), (Start: 78 @43332 has 2 MA's), (98, 43230), (102, 43206), (105, 43185), (110, 43158), (116, 43125), (117, 43122), (123, 43101), (124, 43098),

Gene: Centaur_75 Start: 44736, Stop: 44317, Start Num: 63

Candidate Starts for Centaur_75:

(19, 44835), (21, 44829), (35, 44778), (Start: 63 @44736 has 127 MA's), (Start: 78 @44673 has 2 MA's), (80, 44655), (100, 44568), (105, 44529), (110, 44502), (117, 44466), (123, 44445), (124, 44442), (126, 44433), (147, 44367), (153, 44349), (161, 44334),

Gene: Changeling_73 Start: 45069, Stop: 44656, Start Num: 63

Candidate Starts for Changeling_73:

(Start: 63 @45069 has 127 MA's), (85, 44967), (95, 44922), (100, 44901), (102, 44883), (105, 44862), (123, 44778), (124, 44775), (126, 44766), (140, 44727), (162, 44670),

Gene: Chargerpower_72 Start: 43217, Stop: 42828, Start Num: 62

Candidate Starts for Chargerpower_72:

(Start: 62 @43217 has 4 MA's), (100, 43052), (110, 42986), (116, 42953), (124, 42926), (125, 42923), (139, 42875), (141, 42869),

Gene: Charm_70 Start: 43332, Stop: 42913, Start Num: 63

Candidate Starts for Charm_70:

(Start: 63 @43332 has 127 MA's), (67, 43311), (Start: 68 @43308 has 3 MA's), (76, 43275), (98, 43167), (99, 43164), (102, 43143), (105, 43122), (116, 43062), (117, 43059), (123, 43038), (128, 43017), (140, 42987),

Gene: Chartreuse_76 Start: 42975, Stop: 42574, Start Num: 55

Candidate Starts for Chartreuse_76:

(Start: 55 @42975 has 15 MA's), (Start: 63 @42960 has 127 MA's), (Start: 68 @42936 has 3 MA's), (75, 42906), (Start: 78 @42897 has 2 MA's), (80, 42879), (84, 42864), (110, 42729), (116, 42696),

(117, 42693), (124, 42669), (126, 42660), (140, 42627), (149, 42597), (150, 42594),

Gene: Che12_79 Start: 44481, Stop: 44062, Start Num: 63

Candidate Starts for Che12_79:

(1, 44940), (3, 44883), (4, 44877), (7, 44754), (8, 44751), (22, 44574), (34, 44529), (Start: 63 @44481 has 127 MA's), (75, 44427), (Start: 78 @44418 has 2 MA's), (80, 44400), (81, 44397), (89, 44361), (92, 44346), (102, 44295), (104, 44283), (110, 44247), (114, 44214), (126, 44172), (145, 44115), (162, 44076),

Gene: ChipMunk_75 Start: 46219, Stop: 45800, Start Num: 63

Candidate Starts for ChipMunk_75:

(35, 46267), (Start: 63 @46219 has 127 MA's), (Start: 71 @46183 has 1 MA's), (Start: 78 @46156 has 2 MA's), (80, 46138), (102, 46033), (117, 45949), (123, 45928), (124, 45925), (126, 45916), (137, 45877), (142, 45862), (147, 45847), (153, 45829), (155, 45826), (161, 45814),

Gene: CloudWang3_77 Start: 43853, Stop: 43440, Start Num: 48

Candidate Starts for CloudWang3_77:

(Start: 48 @43853 has 18 MA's), (Start: 63 @43826 has 127 MA's), (76, 43769), (84, 43730), (105, 43622), (106, 43619), (109, 43601), (116, 43562), (117, 43559), (124, 43535), (128, 43517), (134, 43502), (149, 43463),

Gene: CogOmlette_74 Start: 44008, Stop: 43589, Start Num: 63

Candidate Starts for CogOmlette_74:

(Start: 63 @44008 has 127 MA's), (Start: 68 @43984 has 3 MA's), (80, 43927), (99, 43840), (102, 43819), (110, 43771), (116, 43738), (117, 43735), (124, 43711), (128, 43693), (144, 43648),

Gene: Colin_74 Start: 45728, Stop: 45375, Start Num: 78

Candidate Starts for Colin_74:

(Start: 63 @45791 has 127 MA's), (77, 45731), (Start: 78 @45728 has 2 MA's), (85, 45689), (102, 45605), (104, 45593), (123, 45500), (126, 45488), (147, 45425), (153, 45407), (162, 45389),

Gene: Conquerage_74 Start: 43913, Stop: 43470, Start Num: 48

Candidate Starts for Conquerage_74:

(Start: 48 @43913 has 18 MA's), (Start: 63 @43889 has 127 MA's), (Start: 68 @43865 has 3 MA's), (77, 43829), (87, 43778), (99, 43724), (102, 43703), (105, 43682), (109, 43661), (110, 43655), (116, 43622), (117, 43619), (123, 43598), (124, 43595), (145, 43529), (146, 43526), (163, 43484), (166, 43481),

Gene: Cookiedough_77 Start: 44279, Stop: 43878, Start Num: 55

Candidate Starts for Cookiedough_77:

(Start: 55 @44279 has 15 MA's), (Start: 63 @44264 has 127 MA's), (Start: 68 @44240 has 3 MA's), (75, 44210), (Start: 78 @44201 has 2 MA's), (80, 44183), (84, 44168), (110, 44033), (116, 44000), (117, 43997), (124, 43973), (126, 43964), (140, 43931), (149, 43901), (150, 43898),

Gene: Crucio_75 Start: 45094, Stop: 44675, Start Num: 63

Candidate Starts for Crucio_75:

(40, 45133), (Start: 54 @45106 has 3 MA's), (Start: 63 @45094 has 127 MA's), (74, 45043), (Start: 78 @45031 has 2 MA's), (80, 45013), (102, 44908), (104, 44896), (105, 44887), (123, 44803), (126, 44791), (140, 44746), (147, 44722), (155, 44701), (161, 44689),

Gene: D29_70 Start: 45277, Stop: 44858, Start Num: 63

Candidate Starts for D29_70:

(Start: 63 @45277 has 127 MA's), (86, 45169), (102, 45094), (110, 45046), (116, 45013), (117, 45010), (123, 44989), (135, 44947), (146, 44914), (150, 44902), (155, 44890), (164, 44872),

Gene: D32_76 Start: 45277, Stop: 44858, Start Num: 63

Candidate Starts for D32_76:

(Start: 63 @45277 has 127 MA's), (86, 45169), (102, 45094), (110, 45046), (116, 45013), (117, 45010), (123, 44989), (135, 44947), (146, 44914), (150, 44902), (155, 44890), (164, 44872),

Gene: DBQu4n_77 Start: 45257, Stop: 44838, Start Num: 63

Candidate Starts for DBQu4n_77:

(Start: 63 @45257 has 127 MA's), (75, 45203), (86, 45149), (102, 45074), (110, 45026), (116, 44993), (117, 44990), (123, 44969), (135, 44927), (140, 44915), (146, 44894), (150, 44882), (155, 44870), (164, 44852),

Gene: DaVinci_75 Start: 43029, Stop: 42628, Start Num: 55

Candidate Starts for DaVinci_75:

(Start: 55 @43029 has 15 MA's), (Start: 63 @43014 has 127 MA's), (Start: 68 @42990 has 3 MA's), (75, 42960), (Start: 78 @42951 has 2 MA's), (80, 42933), (84, 42918), (110, 42783), (116, 42750), (117, 42747), (124, 42723), (126, 42714), (140, 42681), (149, 42651), (150, 42648),

Gene: Dalmatian_75 Start: 44912, Stop: 44493, Start Num: 63

Candidate Starts for Dalmatian_75:

(14, 45080), (16, 45062), (17, 45059), (36, 44960), (Start: 63 @44912 has 127 MA's), (Start: 78 @44849 has 2 MA's), (80, 44831), (102, 44726), (117, 44642), (123, 44621), (126, 44609), (140, 44564), (147, 44540), (150, 44531), (161, 44507),

Gene: DarthPhader_72 Start: 45280, Stop: 44870, Start Num: 57

Candidate Starts for DarthPhader_72:

(Start: 57 @45280 has 3 MA's), (82, 45184), (95, 45127), (102, 45085), (116, 45004), (125, 44974), (145, 44911),

Gene: DeerParkTS_71 Start: 43815, Stop: 43402, Start Num: 63

Candidate Starts for DeerParkTS_71:

(Start: 63 @43815 has 127 MA's), (90, 43689), (102, 43629), (117, 43545), (123, 43524), (126, 43512), (133, 43488), (140, 43473),

Gene: DekHockey33_84 Start: 45328, Stop: 44930, Start Num: 59

Candidate Starts for DekHockey33_84:

(Start: 59 @45328 has 20 MA's), (69, 45298), (85, 45220), (102, 45145), (104, 45133), (116, 45064), (117, 45061), (138, 44986), (154, 44938),

Gene: Deloris_74 Start: 44518, Stop: 44105, Start Num: 63

Candidate Starts for Deloris_74:

(38, 44563), (Start: 49 @44542 has 1 MA's), (Start: 63 @44518 has 127 MA's), (Start: 78 @44455 has 2 MA's), (80, 44437), (100, 44350), (105, 44311), (110, 44284), (123, 44227), (124, 44224), (146, 44155), (159, 44122),

Gene: Dignity_76 Start: 45216, Stop: 44797, Start Num: 63

Candidate Starts for Dignity_76:

(35, 45264), (44, 45246), (51, 45231), (Start: 63 @45216 has 127 MA's), (Start: 78 @45153 has 2 MA's), (102, 45030), (105, 45009), (117, 44946), (126, 44913), (140, 44868), (142, 44859), (147, 44844), (153, 44826), (155, 44823), (161, 44811),

Gene: Dorothea_77 Start: 44275, Stop: 43874, Start Num: 55

Candidate Starts for Dorothea_77:

(Start: 55 @44275 has 15 MA's), (Start: 63 @44260 has 127 MA's), (Start: 68 @44236 has 3 MA's), (75, 44206), (Start: 78 @44197 has 2 MA's), (80, 44179), (84, 44164), (110, 44029), (116, 43996), (117, 43993), (124, 43969), (126, 43960), (140, 43927), (149, 43897), (150, 43894),

Gene: Drake55_76 Start: 44822, Stop: 44391, Start Num: 54

Candidate Starts for Drake55_76:

(35, 44861), (Start: 54 @44822 has 3 MA's), (Start: 63 @44810 has 127 MA's), (Start: 78 @44747 has 2 MA's), (80, 44729), (102, 44624), (105, 44603), (110, 44576), (117, 44540), (123, 44519), (124, 44516), (126, 44507), (147, 44441), (150, 44432), (153, 44423), (161, 44408),

Gene: DreamTeam1_70 Start: 43179, Stop: 42760, Start Num: 63

Candidate Starts for DreamTeam1_70:

(Start: 63 @43179 has 127 MA's), (67, 43158), (Start: 68 @43155 has 3 MA's), (76, 43122), (98, 43014), (99, 43011), (102, 42990), (105, 42969), (116, 42909), (117, 42906), (123, 42885), (128, 42864), (140, 42834),

Gene: DudeLittle_73 Start: 44678, Stop: 44259, Start Num: 63

Candidate Starts for DudeLittle_73:

(14, 44846), (16, 44828), (17, 44825), (36, 44726), (Start: 63 @44678 has 127 MA's), (Start: 78 @44615 has 2 MA's), (80, 44597), (102, 44492), (117, 44408), (123, 44387), (126, 44375), (140, 44330), (147, 44306), (150, 44297), (161, 44273),

Gene: Duplo_77 Start: 45314, Stop: 44895, Start Num: 63

Candidate Starts for Duplo_77:

(Start: 63 @45314 has 127 MA's), (75, 45260), (86, 45206), (102, 45131), (110, 45083), (116, 45050), (117, 45047), (123, 45026), (135, 44984), (140, 44972), (146, 44951), (150, 44939), (155, 44927), (164, 44909),

Gene: EZMoney23_71 Start: 44532, Stop: 44167, Start Num: 74

Candidate Starts for EZMoney23_71:

(Start: 63 @44583 has 127 MA's), (Start: 71 @44547 has 1 MA's), (74, 44532), (Start: 78 @44520 has 2 MA's), (80, 44502), (106, 44370), (117, 44310), (124, 44286), (140, 44238), (142, 44229), (146, 44217), (159, 44184),

Gene: EagleEye_80 Start: 45356, Stop: 44949, Start Num: 63

Candidate Starts for EagleEye_80:

(Start: 63 @45356 has 127 MA's), (Start: 68 @45332 has 3 MA's), (72, 45320), (80, 45275), (97, 45206), (99, 45191), (102, 45170), (106, 45146), (116, 45089), (117, 45086), (126, 45053), (158, 44963), (159, 44960),

Gene: Ebony_77 Start: 44349, Stop: 43912, Start Num: 61

Candidate Starts for Ebony_77:

(Start: 55 @44361 has 15 MA's), (Start: 61 @44349 has 27 MA's), (Start: 68 @44325 has 3 MA's), (Start: 78 @44286 has 2 MA's), (96, 44199), (102, 44160), (107, 44133), (109, 44118), (111, 44109), (116, 44079), (117, 44076), (123, 44055), (151, 43962), (153, 43953),

Gene: Echild_75 Start: 44443, Stop: 44030, Start Num: 63

Candidate Starts for Echild_75:

(12, 44668), (13, 44644), (15, 44602), (18, 44584), (43, 44476), (53, 44455), (Start: 63 @44443 has 127 MA's), (77, 44383), (Start: 78 @44380 has 2 MA's), (100, 44275), (105, 44236), (123, 44152), (124, 44149), (126, 44140), (142, 44092), (146, 44080), (148, 44074), (159, 44047), (162, 44044),

Gene: EdogawaKiddo_74 Start: 44156, Stop: 43761, Start Num: 68

Candidate Starts for EdogawaKiddo_74:

(Start: 63 @44180 has 127 MA's), (Start: 68 @44156 has 3 MA's), (77, 44120), (87, 44069), (99, 44015), (102, 43994), (105, 43973), (109, 43952), (110, 43946), (116, 43913), (117, 43910), (123, 43889), (124, 43886), (145, 43820), (146, 43817), (162, 43778), (163, 43775), (166, 43772),

Gene: Eidsmoe_74 Start: 43881, Stop: 43462, Start Num: 63

Candidate Starts for Eidsmoe_74:

(Start: 48 @43905 has 18 MA's), (Start: 63 @43881 has 127 MA's), (Start: 68 @43857 has 3 MA's), (77, 43821), (87, 43770), (99, 43716), (102, 43695), (105, 43674), (109, 43653), (110, 43647), (116, 43614), (117, 43611), (123, 43590), (124, 43587), (145, 43521), (146, 43518), (163, 43476), (166, 43473),

Gene: Elephantoon_76 Start: 44034, Stop: 43615, Start Num: 63

Candidate Starts for Elephantoon_76:

(Start: 63 @44034 has 127 MA's), (Start: 68 @44010 has 3 MA's), (76, 43977), (80, 43953), (98, 43869), (99, 43866), (102, 43845), (116, 43764), (117, 43761), (124, 43737), (128, 43719),

Gene: Elle_77 Start: 43986, Stop: 43657, Start Num: 78

Candidate Starts for Elle_77:

(Start: 63 @44049 has 127 MA's), (66, 44031), (73, 44010), (Start: 78 @43986 has 2 MA's), (85, 43947), (94, 43908), (102, 43866), (116, 43785), (117, 43782), (124, 43758), (159, 43662),

Gene: EmyBug_73 Start: 43907, Stop: 43464, Start Num: 48

Candidate Starts for EmyBug_73:

(Start: 48 @43907 has 18 MA's), (Start: 63 @43883 has 127 MA's), (Start: 68 @43859 has 3 MA's), (77, 43823), (87, 43772), (99, 43718), (102, 43697), (105, 43676), (109, 43655), (110, 43649), (116, 43616), (117, 43613), (123, 43592), (124, 43589), (145, 43523), (146, 43520), (163, 43478), (166, 43475),

Gene: Epsocamisio_80 Start: 44618, Stop: 44220, Start Num: 59

Candidate Starts for Epsocamisio_80:

(Start: 59 @44618 has 20 MA's), (69, 44588), (85, 44510), (102, 44435), (104, 44423), (116, 44354), (117, 44351), (138, 44276), (154, 44228),

Gene: Equemioh13_74 Start: 44641, Stop: 44222, Start Num: 63

Candidate Starts for Equemioh13_74:

(35, 44683), (Start: 63 @44641 has 127 MA's), (Start: 78 @44578 has 2 MA's), (80, 44560), (100, 44473), (105, 44434), (110, 44407), (117, 44371), (123, 44350), (124, 44347), (126, 44338), (147, 44272), (153, 44254), (161, 44239),

Gene: EricB_76 Start: 43621, Stop: 43220, Start Num: 55

Candidate Starts for EricB_76:

(Start: 55 @43621 has 15 MA's), (Start: 63 @43606 has 127 MA's), (Start: 68 @43582 has 3 MA's), (75, 43552), (Start: 78 @43543 has 2 MA's), (80, 43525), (84, 43510), (110, 43375), (116, 43342), (117, 43339), (124, 43315), (126, 43306), (140, 43273), (149, 43243), (150, 43240),

Gene: Et2Brutus_76 Start: 44312, Stop: 43875, Start Num: 61

Candidate Starts for Et2Brutus_76:

(Start: 55 @44324 has 15 MA's), (Start: 61 @44312 has 27 MA's), (Start: 68 @44288 has 3 MA's), (Start: 78 @44249 has 2 MA's), (80, 44231), (96, 44162), (102, 44123), (107, 44096), (109, 44081), (111, 44072), (116, 44042), (117, 44039), (123, 44018), (151, 43925), (153, 43916),

Gene: EvilGenius_74 Start: 46220, Stop: 45801, Start Num: 63

Candidate Starts for EvilGenius_74:

(35, 46268), (Start: 63 @46220 has 127 MA's), (Start: 71 @46184 has 1 MA's), (Start: 78 @46157 has 2 MA's), (80, 46139), (102, 46034), (117, 45950), (123, 45929), (124, 45926), (126, 45917), (137, 45878), (142, 45863), (147, 45848), (153, 45830), (155, 45827), (161, 45815),

Gene: ExplosioNervosa_74 Start: 43949, Stop: 43530, Start Num: 63

Candidate Starts for ExplosioNervosa_74:

(Start: 48 @43973 has 18 MA's), (Start: 63 @43949 has 127 MA's), (Start: 68 @43925 has 3 MA's), (77, 43889), (87, 43838), (99, 43784), (102, 43763), (105, 43742), (109, 43721), (110, 43715), (116, 43682), (117, 43679), (123, 43658), (124, 43655), (145, 43589), (146, 43586), (163, 43544), (166, 43541),

Gene: Fameo_73 Start: 44721, Stop: 44302, Start Num: 63

Candidate Starts for Fameo_73:

(36, 44769), (Start: 63 @44721 has 127 MA's), (Start: 78 @44658 has 2 MA's), (80, 44640), (102, 44535), (117, 44451), (124, 44427), (126, 44418), (140, 44373), (147, 44349), (150, 44340), (161, 44316),

Gene: Fayely_74 Start: 43874, Stop: 43431, Start Num: 48

Candidate Starts for Fayely_74:

(Start: 48 @43874 has 18 MA's), (Start: 63 @43850 has 127 MA's), (Start: 68 @43826 has 3 MA's), (77, 43790), (87, 43739), (99, 43685), (102, 43664), (105, 43643), (109, 43622), (110, 43616), (116, 43583), (117, 43580), (123, 43559), (124, 43556), (145, 43490), (146, 43487), (163, 43445), (166, 43442),

Gene: Fibonacci_76 Start: 44318, Stop: 43881, Start Num: 61

Candidate Starts for Fibonacci_76:

(Start: 55 @44330 has 15 MA's), (Start: 61 @44318 has 27 MA's), (Start: 68 @44294 has 3 MA's), (Start: 78 @44255 has 2 MA's), (96, 44168), (102, 44129), (107, 44102), (109, 44087), (111, 44078), (116, 44048), (117, 44045), (123, 44024), (151, 43931), (153, 43922),

Gene: FiringLine_75 Start: 45076, Stop: 44657, Start Num: 63

Candidate Starts for FiringLine_75:

(40, 45115), (Start: 54 @45088 has 3 MA's), (Start: 63 @45076 has 127 MA's), (74, 45025), (Start: 78 @45013 has 2 MA's), (80, 44995), (102, 44890), (104, 44878), (105, 44869), (123, 44785), (126, 44773), (140, 44728), (147, 44704), (155, 44683), (161, 44671),

Gene: First_0075 Start: 44772, Stop: 44359, Start Num: 63

Candidate Starts for First_0075:

(Start: 63 @44772 has 127 MA's), (74, 44721), (77, 44712), (Start: 78 @44709 has 2 MA's), (80, 44691), (100, 44604), (105, 44565), (110, 44538), (123, 44481), (146, 44409), (159, 44376),

Gene: Flare16_75 Start: 44780, Stop: 44361, Start Num: 63

Candidate Starts for Flare16_75:

(19, 44879), (21, 44873), (35, 44822), (Start: 63 @44780 has 127 MA's), (Start: 78 @44717 has 2 MA's), (80, 44699), (100, 44612), (105, 44573), (110, 44546), (117, 44510), (123, 44489), (124, 44486), (126, 44477), (147, 44411), (153, 44393), (161, 44378),

Gene: Flaverint_78 Start: 44776, Stop: 44339, Start Num: 61

Candidate Starts for Flaverint_78:

(Start: 55 @44788 has 15 MA's), (Start: 61 @44776 has 27 MA's), (Start: 68 @44752 has 3 MA's), (Start: 78 @44713 has 2 MA's), (80, 44695), (96, 44626), (102, 44587), (107, 44560), (109, 44545), (111, 44536), (116, 44506), (117, 44503), (123, 44482), (151, 44389), (153, 44380),

Gene: ForesterFrank_70 Start: 44873, Stop: 44457, Start Num: 63

Candidate Starts for ForesterFrank_70:

(Start: 63 @44873 has 127 MA's), (100, 44702), (102, 44684), (123, 44579), (124, 44576), (126, 44567), (137, 44534), (140, 44528), (141, 44522), (146, 44507),

Gene: Gail_76 Start: 45154, Stop: 44759, Start Num: 61

Candidate Starts for Gail_76:

(Start: 61 @45154 has 27 MA's), (Start: 68 @45130 has 3 MA's), (97, 45007), (100, 44989), (102, 44971), (104, 44959), (110, 44923), (116, 44890), (122, 44869), (124, 44863),

Gene: Garak_78 Start: 43777, Stop: 43391, Start Num: 63

Candidate Starts for Garak_78:

(Start: 48 @43804 has 18 MA's), (Start: 63 @43777 has 127 MA's), (76, 43720), (84, 43681), (105, 43573), (106, 43570), (109, 43552), (116, 43513), (117, 43510), (124, 43486), (128, 43468), (134, 43453), (149, 43414),

Gene: GaugeLDP_70 Start: 44348, Stop: 43935, Start Num: 63

Candidate Starts for GaugeLDP_70:

(Start: 63 @44348 has 127 MA's), (80, 44267), (92, 44213), (117, 44078), (123, 44057), (137, 44012), (140, 44006), (145, 43988), (153, 43964), (161, 43952), (162, 43949),

Gene: Georgie2_76 Start: 45121, Stop: 44702, Start Num: 63

Candidate Starts for Georgie2_76:

(40, 45160), (Start: 54 @45133 has 3 MA's), (Start: 63 @45121 has 127 MA's), (Start: 71 @45085 has 1 MA's), (74, 45070), (Start: 78 @45058 has 2 MA's), (80, 45040), (102, 44935), (104, 44923), (105, 44914), (123, 44830), (126, 44818), (140, 44773), (147, 44749), (155, 44728), (161, 44716),

Gene: Gilberta_74 Start: 43652, Stop: 43215, Start Num: 61

Candidate Starts for Gilberta_74:

(Start: 55 @43664 has 15 MA's), (Start: 61 @43652 has 27 MA's), (Start: 68 @43628 has 3 MA's), (Start: 78 @43589 has 2 MA's), (80, 43571), (93, 43508), (96, 43502), (102, 43463), (107, 43436), (109, 43421), (111, 43412), (116, 43382), (117, 43379), (123, 43358), (151, 43265), (153, 43256),

Gene: Gladiator_74 Start: 43707, Stop: 43294, Start Num: 48

Candidate Starts for Gladiator_74:

(Start: 48 @43707 has 18 MA's), (Start: 63 @43680 has 127 MA's), (76, 43623), (84, 43584), (105, 43476), (106, 43473), (109, 43455), (116, 43416), (117, 43413), (124, 43389), (128, 43371), (134, 43356), (149, 43317),

Gene: Gratitude_72 Start: 44641, Stop: 44222, Start Num: 63

Candidate Starts for Gratitude_72:

(35, 44683), (Start: 63 @44641 has 127 MA's), (Start: 78 @44578 has 2 MA's), (80, 44560), (100, 44473), (105, 44434), (110, 44407), (117, 44371), (123, 44350), (124, 44347), (126, 44338), (147, 44272), (153, 44254), (161, 44239),

Gene: GreedyLawyer_72 Start: 43594, Stop: 43193, Start Num: 55

Candidate Starts for GreedyLawyer_72:

(Start: 55 @43594 has 15 MA's), (Start: 63 @43579 has 127 MA's), (Start: 68 @43555 has 3 MA's), (75, 43525), (Start: 78 @43516 has 2 MA's), (80, 43498), (84, 43483), (110, 43348), (116, 43315),

(117, 43312), (124, 43288), (126, 43279), (140, 43246), (149, 43216), (150, 43213),

Gene: Gruunaga_76 Start: 43635, Stop: 43249, Start Num: 63

Candidate Starts for Gruunaga_76:

(Start: 48 @43662 has 18 MA's), (Start: 63 @43635 has 127 MA's), (76, 43578), (84, 43539), (105, 43431), (106, 43428), (109, 43410), (116, 43371), (117, 43368), (124, 43344), (128, 43326), (134, 43311), (149, 43272),

Gene: Hammer_77 Start: 43342, Stop: 42956, Start Num: 63

Candidate Starts for Hammer_77:

(Start: 48 @43369 has 18 MA's), (Start: 63 @43342 has 127 MA's), (76, 43285), (84, 43246), (105, 43138), (106, 43135), (109, 43117), (116, 43078), (117, 43075), (124, 43051), (128, 43033), (134, 43018), (149, 42979),

Gene: Hanray_74 Start: 44188, Stop: 43793, Start Num: 68

Candidate Starts for Hanray_74:

(Start: 63 @44212 has 127 MA's), (Start: 68 @44188 has 3 MA's), (77, 44152), (87, 44101), (99, 44047), (102, 44026), (105, 44005), (109, 43984), (110, 43978), (116, 43945), (117, 43942), (123, 43921), (124, 43918), (145, 43852), (146, 43849), (162, 43810), (163, 43807), (166, 43804),

Gene: HarryHoudini_75 Start: 44820, Stop: 44392, Start Num: 54

Candidate Starts for HarryHoudini_75:

(Start: 54 @44820 has 3 MA's), (Start: 63 @44808 has 127 MA's), (Start: 78 @44745 has 2 MA's), (80, 44727), (100, 44640), (102, 44622), (105, 44601), (117, 44538), (123, 44517), (124, 44514), (126, 44505), (147, 44439), (153, 44421), (161, 44406),

Gene: Heffalump_72 Start: 45189, Stop: 44770, Start Num: 63

Candidate Starts for Heffalump_72:

(36, 45237), (Start: 63 @45189 has 127 MA's), (Start: 78 @45126 has 2 MA's), (80, 45108), (102, 45003), (117, 44919), (124, 44895), (126, 44886), (140, 44841), (147, 44817), (150, 44808), (161, 44784),

Gene: Helmet_79 Start: 43804, Stop: 43391, Start Num: 48

Candidate Starts for Helmet_79:

(Start: 48 @43804 has 18 MA's), (Start: 63 @43777 has 127 MA's), (76, 43720), (84, 43681), (105, 43573), (106, 43570), (109, 43552), (116, 43513), (117, 43510), (124, 43486), (128, 43468), (134, 43453), (149, 43414),

Gene: Herbertwm_71 Start: 44474, Stop: 44079, Start Num: 63

Candidate Starts for Herbertwm_71:

(9, 44738), (28, 44561), (Start: 63 @44474 has 127 MA's), (Start: 78 @44411 has 2 MA's), (86, 44366), (92, 44342), (93, 44336), (99, 44312), (100, 44309), (104, 44279), (109, 44249), (110, 44243), (111, 44240), (116, 44210), (117, 44207), (130, 44159), (157, 44090),

Gene: Hexamo_76 Start: 43311, Stop: 42925, Start Num: 63

Candidate Starts for Hexamo_76:

(Start: 48 @43338 has 18 MA's), (Start: 63 @43311 has 127 MA's), (76, 43254), (84, 43215), (105, 43107), (106, 43104), (109, 43086), (116, 43047), (117, 43044), (124, 43020), (128, 43002), (134, 42987), (149, 42948),

Gene: HippoHollow_72 Start: 45776, Stop: 45480, Start Num: 88

Candidate Starts for HippoHollow_72:

(14, 46067), (17, 46046), (Start: 63 @45893 has 127 MA's), (Start: 78 @45830 has 2 MA's), (80, 45812), (88, 45776), (100, 45725), (102, 45707), (105, 45686), (123, 45602), (124, 45599), (126, 45590), (137, 45557), (159, 45497), (161, 45494),

Gene: Holec_74 Start: 44204, Stop: 43809, Start Num: 68

Candidate Starts for Holec_74:

(Start: 63 @44228 has 127 MA's), (Start: 68 @44204 has 3 MA's), (77, 44168), (87, 44117), (99, 44063), (102, 44042), (105, 44021), (109, 44000), (110, 43994), (116, 43961), (117, 43958), (123, 43937), (124, 43934), (145, 43868), (146, 43865), (162, 43826), (163, 43823), (166, 43820),

Gene: Hoot_72 Start: 41464, Stop: 41078, Start Num: 63

Candidate Starts for Hoot_72:

(Start: 55 @41479 has 15 MA's), (Start: 63 @41464 has 127 MA's), (Start: 68 @41440 has 3 MA's), (75, 41410), (Start: 78 @41401 has 2 MA's), (80, 41383), (84, 41368), (110, 41233), (116, 41200), (117, 41197), (124, 41173), (126, 41164), (140, 41131), (149, 41101), (150, 41098),

Gene: HortumSL17_77 Start: 44236, Stop: 43793, Start Num: 48

Candidate Starts for HortumSL17_77:

(10, 44461), (Start: 48 @44236 has 18 MA's), (Start: 63 @44212 has 127 MA's), (Start: 68 @44188 has 3 MA's), (77, 44152), (87, 44101), (99, 44047), (102, 44026), (105, 44005), (109, 43984), (110, 43978), (116, 43945), (117, 43942), (123, 43921), (124, 43918), (145, 43852), (146, 43849), (162, 43810), (163, 43807), (166, 43804),

Gene: Hutc2_72 Start: 43201, Stop: 42764, Start Num: 61

Candidate Starts for Hutc2_72:

(Start: 55 @43213 has 15 MA's), (Start: 61 @43201 has 27 MA's), (Start: 68 @43177 has 3 MA's), (Start: 78 @43138 has 2 MA's), (96, 43051), (102, 43012), (107, 42985), (109, 42970), (111, 42961), (116, 42931), (117, 42928), (123, 42907), (151, 42814), (153, 42805),

Gene: Insomnia_76 Start: 44493, Stop: 44056, Start Num: 61

Candidate Starts for Insomnia_76:

(Start: 55 @44505 has 15 MA's), (Start: 61 @44493 has 27 MA's), (Start: 68 @44469 has 3 MA's), (Start: 78 @44430 has 2 MA's), (96, 44343), (102, 44304), (107, 44277), (109, 44262), (111, 44253), (116, 44223), (117, 44220), (123, 44199), (151, 44106), (153, 44097),

Gene: IronMan_72 Start: 45946, Stop: 45518, Start Num: 49

Candidate Starts for IronMan_72:

(Start: 49 @45946 has 1 MA's), (76, 45862), (80, 45838), (86, 45811), (102, 45736), (117, 45649), (125, 45622), (135, 45586), (154, 45532), (157, 45529),

Gene: Iwokeuplikedis_76 Start: 45258, Stop: 44842, Start Num: 63

Candidate Starts for Iwokeuplikedis_76:

(Start: 63 @45258 has 127 MA's), (Start: 78 @45195 has 2 MA's), (80, 45177), (100, 45090), (102, 45072), (105, 45051), (110, 45024), (117, 44988), (123, 44967), (126, 44955), (147, 44889), (153, 44871), (161, 44856),

Gene: JSwag_83 Start: 44903, Stop: 44505, Start Num: 59

Candidate Starts for JSwag_83:

(Start: 59 @44903 has 20 MA's), (69, 44873), (85, 44795), (102, 44720), (104, 44708), (116, 44639), (117, 44636), (138, 44561), (154, 44513),

Gene: Jaan_73 Start: 46110, Stop: 45688, Start Num: 52

Candidate Starts for Jaan_73:

(Start: 52 @46110 has 4 MA's), (Start: 63 @46089 has 127 MA's), (70, 46059), (76, 46032), (80, 46008), (86, 45981), (94, 45948), (101, 45915), (102, 45906), (117, 45819), (125, 45792), (135, 45756), (142, 45735), (154, 45702), (157, 45699),

Gene: Jabith_76 Start: 44510, Stop: 44073, Start Num: 61

Candidate Starts for Jabith_76:

(Start: 55 @44522 has 15 MA's), (Start: 61 @44510 has 27 MA's), (Start: 68 @44486 has 3 MA's), (Start: 78 @44447 has 2 MA's), (96, 44360), (102, 44321), (107, 44294), (109, 44279), (111, 44270), (116, 44240), (117, 44237), (123, 44216), (151, 44123), (153, 44114),

Gene: Jeeves_78 Start: 44070, Stop: 43675, Start Num: 61

Candidate Starts for Jeeves_78:

(Start: 61 @44070 has 27 MA's), (96, 43926), (97, 43923), (100, 43905), (102, 43887), (104, 43875), (110, 43839), (116, 43806), (124, 43779), (125, 43776),

Gene: Jerm_76 Start: 45198, Stop: 44779, Start Num: 63

Candidate Starts for Jerm_76:

(19, 45303), (21, 45297), (35, 45246), (44, 45228), (51, 45213), (Start: 63 @45198 has 127 MA's), (Start: 78 @45135 has 2 MA's), (102, 45012), (105, 44991), (117, 44928), (126, 44895), (140, 44850), (142, 44841), (147, 44826), (153, 44808), (155, 44805), (161, 44793),

Gene: JewelBug_76 Start: 44366, Stop: 43965, Start Num: 55

Candidate Starts for JewelBug_76:

(Start: 55 @44366 has 15 MA's), (Start: 63 @44351 has 127 MA's), (Start: 68 @44327 has 3 MA's), (75, 44297), (Start: 78 @44288 has 2 MA's), (80, 44270), (84, 44255), (110, 44120), (116, 44087), (117, 44084), (124, 44060), (126, 44051), (140, 44018), (149, 43988), (150, 43985),

Gene: Jiawan_73 Start: 44220, Stop: 43825, Start Num: 68

Candidate Starts for Jiawan_73:

(Start: 63 @44244 has 127 MA's), (Start: 68 @44220 has 3 MA's), (77, 44184), (87, 44133), (99, 44079), (102, 44058), (105, 44037), (109, 44016), (110, 44010), (116, 43977), (117, 43974), (123, 43953), (124, 43950), (145, 43884), (146, 43881), (162, 43842), (163, 43839), (166, 43836),

Gene: Jordennis_75 Start: 43860, Stop: 43459, Start Num: 55

Candidate Starts for Jordennis_75:

(Start: 55 @43860 has 15 MA's), (Start: 63 @43845 has 127 MA's), (Start: 68 @43821 has 3 MA's), (75, 43791), (Start: 78 @43782 has 2 MA's), (80, 43764), (84, 43749), (110, 43614), (116, 43581), (117, 43578), (124, 43554), (126, 43545), (140, 43512), (149, 43482), (150, 43479),

Gene: Joselito_76 Start: 44530, Stop: 44093, Start Num: 61

Candidate Starts for Joselito_76:

(Start: 55 @44542 has 15 MA's), (Start: 61 @44530 has 27 MA's), (Start: 68 @44506 has 3 MA's), (Start: 78 @44467 has 2 MA's), (80, 44449), (96, 44380), (102, 44341), (107, 44314), (109, 44299), (111, 44290), (116, 44260), (117, 44257), (123, 44236), (151, 44143), (153, 44134),

Gene: JoshKayV_75 Start: 45230, Stop: 44811, Start Num: 63

Candidate Starts for JoshKayV_75:

(Start: 63 @45230 has 127 MA's), (Start: 78 @45167 has 2 MA's), (80, 45149), (102, 45044), (105, 45023), (110, 44996), (117, 44960), (123, 44939), (124, 44936), (126, 44927), (137, 44888), (140, 44882), (147, 44858), (150, 44849),

Gene: Journey13_64 Start: 41400, Stop: 40975, Start Num: 58

Candidate Starts for Journey13_64:

(36, 41442), (41, 41430), (Start: 58 @41400 has 6 MA's), (66, 41382), (73, 41361), (94, 41256), (114, 41127), (124, 41094), (126, 41085), (140, 41046), (145, 41028), (167, 40980),

Gene: Jsquared_78 Start: 44346, Stop: 43909, Start Num: 58

Candidate Starts for Jsquared_78:

(36, 44388), (Start: 58 @44346 has 6 MA's), (105, 44136), (114, 44076), (124, 44043), (126, 44034), (140, 43995), (168, 43923),

Gene: Kalpine_74 Start: 45137, Stop: 44724, Start Num: 63

Candidate Starts for Kalpine_74:

(Start: 63 @45137 has 127 MA's), (77, 45077), (Start: 78 @45074 has 2 MA's), (85, 45035), (104, 44939), (123, 44846), (126, 44834), (147, 44771), (162, 44738),

Gene: KatherineG_83 Start: 45215, Stop: 44817, Start Num: 59

Candidate Starts for KatherineG_83:

(Start: 59 @45215 has 20 MA's), (69, 45185), (85, 45107), (102, 45032), (104, 45020), (112, 44969), (116, 44951), (117, 44948), (138, 44873), (154, 44825),

Gene: Kazan_78 Start: 43634, Stop: 43233, Start Num: 55

Candidate Starts for Kazan_78:

(Start: 55 @43634 has 15 MA's), (Start: 63 @43619 has 127 MA's), (Start: 68 @43595 has 3 MA's), (75, 43565), (Start: 78 @43556 has 2 MA's), (80, 43538), (84, 43523), (110, 43388), (116, 43355), (117, 43352), (124, 43328), (126, 43319), (140, 43286), (149, 43256), (150, 43253),

Gene: Kerberos_77 Start: 45276, Stop: 44857, Start Num: 63

Candidate Starts for Kerberos_77:

(Start: 63 @45276 has 127 MA's), (75, 45222), (86, 45168), (102, 45093), (110, 45045), (116, 45012), (117, 45009), (123, 44988), (135, 44946), (140, 44934), (146, 44913), (155, 44889), (164, 44871),

Gene: Keziacharles14_73 Start: 44835, Stop: 44419, Start Num: 63

Candidate Starts for Keziacharles14_73:

(Start: 63 @44835 has 127 MA's), (Start: 68 @44811 has 3 MA's), (Start: 78 @44772 has 2 MA's), (80, 44754), (99, 44667), (102, 44646), (116, 44565), (117, 44562), (123, 44541), (128, 44520),

Gene: Kimba_75 Start: 44030, Stop: 43593, Start Num: 61

Candidate Starts for Kimba_75:

(Start: 55 @44042 has 15 MA's), (Start: 61 @44030 has 27 MA's), (Start: 68 @44006 has 3 MA's), (Start: 78 @43967 has 2 MA's), (80, 43949), (96, 43880), (102, 43841), (107, 43814), (109, 43799), (111, 43790), (116, 43760), (117, 43757), (123, 43736), (151, 43643), (153, 43634),

Gene: KingCyrus_74 Start: 46215, Stop: 45796, Start Num: 63

Candidate Starts for KingCyrus_74:

(35, 46263), (Start: 63 @46215 has 127 MA's), (Start: 71 @46179 has 1 MA's), (Start: 78 @46152 has 2 MA's), (80, 46134), (102, 46029), (117, 45945), (123, 45924), (124, 45921), (126, 45912), (137, 45873), (142, 45858), (147, 45843), (153, 45825), (155, 45822), (161, 45810),

Gene: Kinmap_78 Start: 43580, Stop: 43182, Start Num: 63

Candidate Starts for Kinmap_78:

(Start: 63 @43580 has 127 MA's), (65, 43565), (80, 43499), (96, 43436), (116, 43316), (117, 43313), (119, 43304), (126, 43280), (156, 43187),

Gene: Kipper29_77 Start: 43647, Stop: 43246, Start Num: 55

Candidate Starts for Kipper29_77:

(Start: 55 @43647 has 15 MA's), (Start: 63 @43632 has 127 MA's), (Start: 68 @43608 has 3 MA's), (75, 43578), (Start: 78 @43569 has 2 MA's), (80, 43551), (84, 43536), (110, 43401), (116, 43368), (117, 43365), (124, 43341), (126, 43332), (140, 43299), (149, 43269), (150, 43266),

Gene: Klodlith_71 Start: 43378, Stop: 42980, Start Num: 67

Candidate Starts for Klodlith_71:

(Start: 63 @43399 has 127 MA's), (67, 43378), (Start: 68 @43375 has 3 MA's), (76, 43342), (98, 43234), (99, 43231), (102, 43210), (105, 43189), (116, 43129), (117, 43126), (123, 43105), (128, 43084), (140, 43054),

Gene: Koduck_76 Start: 44123, Stop: 43686, Start Num: 58

Candidate Starts for Koduck_76:

(Start: 58 @44123 has 6 MA's), (104, 43922), (105, 43913), (114, 43853), (123, 43823), (124, 43820), (126, 43811), (140, 43772), (168, 43700),

Gene: Koko_78 Start: 44166, Stop: 43780, Start Num: 63

Candidate Starts for Koko_78:

(Start: 48 @44193 has 18 MA's), (Start: 63 @44166 has 127 MA's), (76, 44109), (84, 44070), (105, 43962), (106, 43959), (109, 43941), (116, 43902), (117, 43899), (124, 43875), (128, 43857), (134, 43842), (149, 43803),

Gene: L5_70 Start: 44276, Stop: 43839, Start Num: 58

Candidate Starts for L5_70:

(Start: 58 @44276 has 6 MA's), (104, 44075), (105, 44066), (114, 44006), (123, 43976), (124, 43973), (126, 43964), (140, 43925), (168, 43853),

Gene: LadyBird_78 Start: 45434, Stop: 45021, Start Num: 63

Candidate Starts for LadyBird_78:

(23, 45533), (38, 45476), (53, 45446), (Start: 63 @45434 has 127 MA's), (77, 45374), (Start: 78 @45371 has 2 MA's), (80, 45353), (100, 45266), (123, 45143), (124, 45140), (146, 45071), (159, 45038),

Gene: Landor_73 Start: 46033, Stop: 45611, Start Num: 52

Candidate Starts for Landor_73:

(Start: 52 @46033 has 4 MA's), (Start: 63 @46012 has 127 MA's), (70, 45982), (76, 45955), (80, 45931), (86, 45904), (94, 45871), (102, 45829), (117, 45742), (125, 45715), (135, 45679), (142, 45658), (154, 45625), (157, 45622),

Gene: Larenn_71 Start: 44473, Stop: 44057, Start Num: 63

Candidate Starts for Larenn_71:

(33, 44524), (Start: 63 @44473 has 127 MA's), (75, 44419), (Start: 78 @44410 has 2 MA's), (80, 44392), (92, 44338), (108, 44254), (110, 44239), (117, 44203), (123, 44182), (126, 44170), (140, 44131), (146, 44110), (154, 44086),

Gene: LastResort_81 Start: 45146, Stop: 44748, Start Num: 59

Candidate Starts for LastResort_81:

(Start: 59 @45146 has 20 MA's), (69, 45116), (85, 45038), (102, 44963), (104, 44951), (116, 44882), (117, 44879), (138, 44804), (154, 44756),

Gene: Leogania_73 Start: 45163, Stop: 44750, Start Num: 63

Candidate Starts for Leogania_73:

(Start: 63 @45163 has 127 MA's), (Start: 71 @45127 has 1 MA's), (99, 44998), (102, 44977), (117, 44893), (123, 44872), (126, 44860), (131, 44842), (133, 44836), (140, 44821), (159, 44767), (162,

44764),

Gene: Leviathan_76 Start: 45265, Stop: 44846, Start Num: 63

Candidate Starts for Leviathan_76:

(35, 45313), (44, 45295), (51, 45280), (Start: 63 @45265 has 127 MA's), (Start: 78 @45202 has 2 MA's), (102, 45079), (105, 45058), (117, 44995), (126, 44962), (140, 44917), (142, 44908), (147, 44893), (153, 44875), (155, 44872), (161, 44860),

Gene: LilTurb_75 Start: 45079, Stop: 44660, Start Num: 63

Candidate Starts for LilTurb_75:

(35, 45127), (44, 45109), (51, 45094), (Start: 63 @45079 has 127 MA's), (Start: 78 @45016 has 2 MA's), (102, 44893), (105, 44872), (117, 44809), (126, 44776), (140, 44731), (142, 44722), (147, 44707), (153, 44689), (155, 44686), (161, 44674),

Gene: Lilbunny_76 Start: 43435, Stop: 43022, Start Num: 48

Candidate Starts for Lilbunny_76:

(Start: 48 @43435 has 18 MA's), (Start: 63 @43408 has 127 MA's), (76, 43351), (84, 43312), (105, 43204), (106, 43201), (109, 43183), (116, 43144), (117, 43141), (124, 43117), (128, 43099), (134, 43084), (149, 43045),

Gene: Lilleskat_73 Start: 44169, Stop: 43750, Start Num: 63

Candidate Starts for Lilleskat_73:

(Start: 63 @44169 has 127 MA's), (Start: 68 @44145 has 3 MA's), (77, 44109), (87, 44058), (99, 44004), (102, 43983), (105, 43962), (109, 43941), (110, 43935), (116, 43902), (117, 43899), (123, 43878), (124, 43875), (145, 43809), (146, 43806), (162, 43767), (163, 43764), (166, 43761),

Gene: LionsBait_74 Start: 45777, Stop: 45481, Start Num: 88

Candidate Starts for LionsBait_74:

(19, 46008), (21, 46002), (35, 45945), (Start: 63 @45894 has 127 MA's), (Start: 78 @45831 has 2 MA's), (80, 45813), (88, 45777), (100, 45726), (102, 45708), (105, 45687), (117, 45624), (123, 45603), (124, 45600), (126, 45591), (137, 45558), (159, 45498), (161, 45495),

Gene: Lokk_68 Start: 43280, Stop: 42864, Start Num: 63

Candidate Starts for Lokk_68:

(53, 43292), (Start: 63 @43280 has 127 MA's), (Start: 78 @43217 has 2 MA's), (92, 43145), (110, 43046), (116, 43013), (117, 43010), (123, 42989), (126, 42977), (140, 42935), (146, 42914), (151, 42902), (161, 42881), (162, 42878), (163, 42875),

Gene: LoneWolf_77 Start: 44460, Stop: 44041, Start Num: 63

Candidate Starts for LoneWolf_77:

(2, 44889), (5, 44832), (6, 44763), (10, 44706), (11, 44703), (Start: 63 @44460 has 127 MA's), (Start: 68 @44436 has 3 MA's), (76, 44403), (80, 44379), (98, 44295), (99, 44292), (102, 44271), (116, 44190), (117, 44187), (123, 44166), (124, 44163), (128, 44145), (157, 44067), (162, 44055),

Gene: Looper_82 Start: 45058, Stop: 44660, Start Num: 59

Candidate Starts for Looper_82:

(Start: 59 @45058 has 20 MA's), (69, 45028), (85, 44950), (102, 44875), (104, 44863), (112, 44812), (116, 44794), (117, 44791), (138, 44716), (154, 44668),

Gene: Loser_76 Start: 45354, Stop: 44947, Start Num: 62

Candidate Starts for Loser_76:

(26, 45441), (Start: 62 @45354 has 4 MA's), (Start: 68 @45330 has 3 MA's), (73, 45315), (100, 45186), (102, 45168), (104, 45156), (124, 45060), (152, 44979),

Gene: Luchador_77 Start: 45554, Stop: 45159, Start Num: 61

Candidate Starts for Luchador_77:

(Start: 61 @45554 has 27 MA's), (Start: 68 @45530 has 3 MA's), (96, 45410), (97, 45407), (100, 45389), (102, 45371), (104, 45359), (110, 45323), (116, 45290), (124, 45263),

Gene: Lucivia_78 Start: 44809, Stop: 44372, Start Num: 61

Candidate Starts for Lucivia_78:

(Start: 55 @44821 has 15 MA's), (Start: 61 @44809 has 27 MA's), (Start: 68 @44785 has 3 MA's), (Start: 78 @44746 has 2 MA's), (80, 44728), (96, 44659), (102, 44620), (107, 44593), (109, 44578), (111, 44569), (116, 44539), (117, 44536), (123, 44515), (151, 44422), (153, 44413),

Gene: Lucyedi_79 Start: 45552, Stop: 45145, Start Num: 63

Candidate Starts for Lucyedi_79:

(Start: 63 @45552 has 127 MA's), (Start: 68 @45528 has 3 MA's), (72, 45516), (80, 45471), (97, 45402), (99, 45387), (102, 45366), (106, 45342), (116, 45285), (117, 45282), (126, 45249), (158, 45159), (159, 45156),

Gene: MaCh_77 Start: 44773, Stop: 44336, Start Num: 61

Candidate Starts for MaCh_77:

(Start: 55 @44785 has 15 MA's), (Start: 61 @44773 has 27 MA's), (Start: 68 @44749 has 3 MA's), (Start: 78 @44710 has 2 MA's), (80, 44692), (93, 44629), (96, 44623), (102, 44584), (107, 44557), (109, 44542), (111, 44533), (116, 44503), (117, 44500), (123, 44479), (151, 44386), (153, 44377),

Gene: Mabel_77 Start: 44774, Stop: 44337, Start Num: 61

Candidate Starts for Mabel_77:

(Start: 55 @44786 has 15 MA's), (Start: 61 @44774 has 27 MA's), (Start: 68 @44750 has 3 MA's), (Start: 78 @44711 has 2 MA's), (80, 44693), (96, 44624), (102, 44585), (107, 44558), (109, 44543), (111, 44534), (116, 44504), (117, 44501), (123, 44480), (151, 44387), (153, 44378),

Gene: MajorMajor_76 Start: 44213, Stop: 43776, Start Num: 58

Candidate Starts for MajorMajor_76:

(21, 44315), (24, 44309), (Start: 58 @44213 has 6 MA's), (105, 44003), (114, 43943), (123, 43913), (124, 43910), (126, 43901), (140, 43862), (168, 43790),

Gene: Malec_72 Start: 45040, Stop: 44624, Start Num: 63

Candidate Starts for Malec_72:

(33, 45091), (Start: 63 @45040 has 127 MA's), (75, 44986), (Start: 78 @44977 has 2 MA's), (80, 44959), (92, 44905), (108, 44821), (110, 44806), (117, 44770), (123, 44749), (126, 44737), (140, 44698), (146, 44677), (154, 44653),

Gene: Maminiaina_76 Start: 44374, Stop: 43958, Start Num: 63

Candidate Starts for Maminiaina_76:

(Start: 48 @44398 has 18 MA's), (Start: 63 @44374 has 127 MA's), (Start: 68 @44350 has 3 MA's), (76, 44317), (99, 44206), (102, 44185), (116, 44104), (117, 44101), (123, 44080), (124, 44077), (128, 44059), (162, 43969),

Gene: McFly_78 Start: 44248, Stop: 43862, Start Num: 63

Candidate Starts for McFly_78:

(Start: 55 @44263 has 15 MA's), (Start: 63 @44248 has 127 MA's), (Start: 68 @44224 has 3 MA's), (75, 44194), (Start: 78 @44185 has 2 MA's), (80, 44167), (84, 44152), (110, 44017), (116, 43984), (117, 43981), (124, 43957), (126, 43948), (140, 43915), (149, 43885), (150, 43882),

Gene: MegTheThird_71 Start: 43394, Stop: 42978, Start Num: 63

Candidate Starts for MegTheThird_71:

(Start: 63 @43394 has 127 MA's), (Start: 68 @43370 has 3 MA's), (75, 43340), (76, 43337), (Start: 78 @43331 has 2 MA's), (98, 43229), (102, 43205), (105, 43184), (110, 43157), (116, 43124), (117, 43121), (123, 43100), (124, 43097),

Gene: MiculUcigas_75 Start: 44683, Stop: 44264, Start Num: 63

Candidate Starts for MiculUcigas_75:

(19, 44782), (21, 44776), (35, 44725), (Start: 63 @44683 has 127 MA's), (Start: 78 @44620 has 2 MA's), (80, 44602), (100, 44515), (105, 44476), (110, 44449), (117, 44413), (123, 44392), (126, 44380), (147, 44314), (153, 44296), (161, 44281),

Gene: Miko_68 Start: 44058, Stop: 43642, Start Num: 63

Candidate Starts for Miko_68:

(53, 44070), (Start: 63 @44058 has 127 MA's), (Start: 78 @43995 has 2 MA's), (92, 43923), (110, 43824), (116, 43791), (117, 43788), (123, 43767), (126, 43755), (140, 43713), (146, 43692), (151, 43680), (161, 43659), (162, 43656), (163, 43653),

Gene: MinecraftSteve_83 Start: 45039, Stop: 44641, Start Num: 59

Candidate Starts for MinecraftSteve_83:

(Start: 59 @45039 has 20 MA's), (69, 45009), (85, 44931), (102, 44856), (104, 44844), (116, 44775), (117, 44772), (138, 44697), (154, 44649),

Gene: Minispark_74 Start: 44005, Stop: 43586, Start Num: 63

Candidate Starts for Minispark_74:

(Start: 63 @44005 has 127 MA's), (Start: 68 @43981 has 3 MA's), (80, 43924), (99, 43837), (102, 43816), (110, 43768), (116, 43735), (117, 43732), (124, 43708), (128, 43690), (144, 43645),

Gene: MissWhite_73 Start: 43236, Stop: 42826, Start Num: 68

Candidate Starts for MissWhite_73:

(Start: 58 @43263 has 6 MA's), (Start: 68 @43236 has 3 MA's), (89, 43137), (97, 43107), (102, 43071), (114, 42990), (126, 42948), (137, 42915), (140, 42909), (142, 42900), (145, 42891), (168, 42840),

Gene: Mulciber_75 Start: 44315, Stop: 43878, Start Num: 61

Candidate Starts for Mulciber_75:

(Start: 55 @44327 has 15 MA's), (Start: 61 @44315 has 27 MA's), (Start: 68 @44291 has 3 MA's), (Start: 78 @44252 has 2 MA's), (80, 44234), (96, 44165), (102, 44126), (107, 44099), (109, 44084), (111, 44075), (116, 44045), (117, 44042), (123, 44021), (151, 43928), (153, 43919),

Gene: Munch_77 Start: 44778, Stop: 44341, Start Num: 61

Candidate Starts for Munch_77:

(Start: 55 @44790 has 15 MA's), (Start: 61 @44778 has 27 MA's), (Start: 68 @44754 has 3 MA's), (Start: 78 @44715 has 2 MA's), (80, 44697), (96, 44628), (102, 44589), (107, 44562), (109, 44547), (111, 44538), (116, 44508), (117, 44505), (123, 44484), (151, 44391), (153, 44382),

Gene: Myxus_76 Start: 44236, Stop: 43793, Start Num: 48

Candidate Starts for Myxus_76:

(10, 44461), (Start: 48 @44236 has 18 MA's), (Start: 63 @44212 has 127 MA's), (Start: 68 @44188 has 3 MA's), (77, 44152), (87, 44101), (99, 44047), (102, 44026), (105, 44005), (109, 43984), (110, 43978), (116, 43945), (117, 43942), (123, 43921), (124, 43918), (145, 43852), (146, 43849), (162, 43810), (163, 43807), (166, 43804),

Gene: NaSiaTalie_75 Start: 44777, Stop: 44358, Start Num: 63

Candidate Starts for NaSiaTalie_75:

(19, 44876), (21, 44870), (35, 44819), (Start: 63 @44777 has 127 MA's), (Start: 78 @44714 has 2 MA's), (80, 44696), (100, 44609), (105, 44570), (110, 44543), (117, 44507), (123, 44486), (124, 44483), (126, 44474), (147, 44408), (153, 44390), (161, 44375),

Gene: Naji_77 Start: 45277, Stop: 44858, Start Num: 63

Candidate Starts for Naji_77:

(Start: 63 @45277 has 127 MA's), (86, 45169), (102, 45094), (110, 45046), (116, 45013), (117, 45010), (123, 44989), (135, 44947), (146, 44914), (150, 44902), (155, 44890), (164, 44872),

Gene: Nebulosus_80 Start: 44703, Stop: 44305, Start Num: 59

Candidate Starts for Nebulosus_80:

(Start: 59 @44703 has 20 MA's), (69, 44673), (85, 44595), (102, 44520), (104, 44508), (116, 44439), (117, 44436), (138, 44361), (154, 44313),

Gene: Nedarya_78 Start: 44930, Stop: 44535, Start Num: 59

Candidate Starts for Nedarya_78:

(Start: 59 @44930 has 20 MA's), (69, 44903), (76, 44870), (96, 44786), (99, 44768), (100, 44765), (104, 44735), (116, 44666), (117, 44663), (136, 44597), (154, 44543),

Gene: Neeharika16_76 Start: 43730, Stop: 43329, Start Num: 55

Candidate Starts for Neeharika16_76:

(Start: 55 @43730 has 15 MA's), (Start: 63 @43715 has 127 MA's), (Start: 68 @43691 has 3 MA's), (75, 43661), (Start: 78 @43652 has 2 MA's), (80, 43634), (84, 43619), (110, 43484), (116, 43451), (117, 43448), (124, 43424), (126, 43415), (140, 43382), (149, 43352), (150, 43349),

Gene: Newrala_76 Start: 44069, Stop: 43668, Start Num: 55

Candidate Starts for Newrala_76:

(Start: 55 @44069 has 15 MA's), (Start: 63 @44054 has 127 MA's), (Start: 68 @44030 has 3 MA's), (75, 44000), (Start: 78 @43991 has 2 MA's), (80, 43973), (84, 43958), (110, 43823), (116, 43790), (117, 43787), (124, 43763), (126, 43754), (140, 43721), (149, 43691), (150, 43688),

Gene: NicoleTera_72 Start: 44794, Stop: 44381, Start Num: 63

Candidate Starts for NicoleTera_72:

(Start: 63 @44794 has 127 MA's), (97, 44644), (100, 44626), (102, 44608), (123, 44503), (126, 44491), (140, 44452), (162, 44395),

Gene: NothingSpecial_70 Start: 44782, Stop: 44381, Start Num: 60

Candidate Starts for NothingSpecial_70:

(Start: 60 @44782 has 2 MA's), (Start: 63 @44779 has 127 MA's), (86, 44671), (102, 44596), (105, 44575), (109, 44554), (110, 44548), (111, 44545), (116, 44515), (117, 44512), (123, 44491), (124, 44488), (142, 44428), (145, 44419),

Gene: Odin_76 Start: 44758, Stop: 44339, Start Num: 63

Candidate Starts for Odin_76:

(27, 44836), (32, 44809), (34, 44806), (Start: 63 @44758 has 127 MA's), (89, 44638), (92, 44623), (93, 44617), (99, 44593), (105, 44551), (114, 44491), (115, 44488), (124, 44458), (126, 44449), (145, 44392), (162, 44353),

Gene: Onglai_74 Start: 42392, Stop: 41997, Start Num: 68

Candidate Starts for Onglai_74:

(Start: 63 @42416 has 127 MA's), (Start: 68 @42392 has 3 MA's), (77, 42356), (87, 42305), (99, 42251), (102, 42230), (105, 42209), (109, 42188), (110, 42182), (116, 42149), (117, 42146), (123,

42125), (124, 42122), (145, 42056), (146, 42053), (162, 42014), (163, 42011), (166, 42008),

Gene: Oofda_82 Start: 44994, Stop: 44596, Start Num: 59

Candidate Starts for Oofda_82:

(Start: 59 @44994 has 20 MA's), (69, 44964), (85, 44886), (102, 44811), (104, 44799), (116, 44730), (117, 44727), (138, 44652), (154, 44604),

Gene: Orange_76 Start: 44327, Stop: 43890, Start Num: 61

Candidate Starts for Orange_76:

(Start: 55 @44339 has 15 MA's), (Start: 61 @44327 has 27 MA's), (Start: 68 @44303 has 3 MA's), (Start: 78 @44264 has 2 MA's), (80, 44246), (96, 44177), (102, 44138), (107, 44111), (109, 44096), (111, 44087), (116, 44057), (117, 44054), (123, 44033), (151, 43940), (153, 43931),

Gene: PackMan_75 Start: 44087, Stop: 43668, Start Num: 63

Candidate Starts for PackMan_75:

(10, 44336), (Start: 48 @44111 has 18 MA's), (Start: 63 @44087 has 127 MA's), (Start: 68 @44063 has 3 MA's), (77, 44027), (87, 43976), (99, 43922), (102, 43901), (105, 43880), (109, 43859), (110, 43853), (116, 43820), (117, 43817), (123, 43796), (124, 43793), (145, 43727), (146, 43724), (162, 43685), (163, 43682), (166, 43679),

Gene: PainterBoy_78 Start: 45261, Stop: 44854, Start Num: 63

Candidate Starts for PainterBoy_78:

(Start: 63 @45261 has 127 MA's), (Start: 68 @45237 has 3 MA's), (72, 45225), (80, 45180), (97, 45111), (99, 45096), (102, 45075), (106, 45051), (116, 44994), (117, 44991), (126, 44958), (158, 44868), (159, 44865),

Gene: Petersenfast_71 Start: 43209, Stop: 42772, Start Num: 61

Candidate Starts for Petersenfast_71:

(Start: 55 @43221 has 15 MA's), (Start: 61 @43209 has 27 MA's), (Start: 68 @43185 has 3 MA's), (Start: 78 @43146 has 2 MA's), (96, 43059), (102, 43020), (107, 42993), (109, 42978), (111, 42969), (116, 42939), (117, 42936), (123, 42915), (151, 42822), (153, 42813),

Gene: Ph8s_79 Start: 44796, Stop: 44377, Start Num: 63

Candidate Starts for Ph8s_79:

(7, 45069), (8, 45066), (22, 44889), (34, 44844), (Start: 63 @44796 has 127 MA's), (Start: 78 @44733 has 2 MA's), (80, 44715), (81, 44712), (92, 44661), (102, 44610), (110, 44562), (114, 44529), (126, 44487), (145, 44430), (162, 44391),

Gene: Phaded_70 Start: 45992, Stop: 45570, Start Num: 52

Candidate Starts for Phaded_70:

(Start: 52 @45992 has 4 MA's), (Start: 63 @45971 has 127 MA's), (70, 45941), (76, 45914), (80, 45890), (86, 45863), (94, 45830), (102, 45788), (117, 45701), (125, 45674), (135, 45638), (142, 45617), (154, 45584), (157, 45581),

Gene: Phaeder_76 Start: 44087, Stop: 43668, Start Num: 63

Candidate Starts for Phaeder_76:

(10, 44336), (Start: 48 @44111 has 18 MA's), (Start: 63 @44087 has 127 MA's), (Start: 68 @44063 has 3 MA's), (77, 44027), (87, 43976), (99, 43922), (102, 43901), (105, 43880), (109, 43859), (110, 43853), (116, 43820), (117, 43817), (123, 43796), (124, 43793), (145, 43727), (146, 43724), (162, 43685), (163, 43682), (166, 43679),

Gene: Pharaoh_70 Start: 44179, Stop: 43772, Start Num: 63

Candidate Starts for Pharaoh_70:

(47, 44209), (Start: 63 @44179 has 127 MA's), (Start: 68 @44155 has 3 MA's), (Start: 71 @44143 has 1 MA's), (76, 44122), (93, 44041), (102, 43996), (110, 43942), (117, 43906), (120, 43894), (125, 43879), (129, 43864), (160, 43783),

Gene: Phonnegut_76 Start: 44157, Stop: 43738, Start Num: 63

Candidate Starts for Phonnegut_76:

(Start: 63 @44157 has 127 MA's), (Start: 68 @44133 has 3 MA's), (77, 44097), (87, 44046), (99, 43992), (102, 43971), (105, 43950), (109, 43929), (110, 43923), (116, 43890), (117, 43887), (123, 43866), (124, 43863), (145, 43797), (146, 43794), (162, 43755), (163, 43752), (166, 43749),

Gene: Pioneer_76 Start: 44133, Stop: 43738, Start Num: 68

Candidate Starts for Pioneer_76:

(Start: 63 @44157 has 127 MA's), (Start: 68 @44133 has 3 MA's), (77, 44097), (87, 44046), (99, 43992), (102, 43971), (105, 43950), (109, 43929), (110, 43923), (116, 43890), (117, 43887), (123, 43866), (124, 43863), (145, 43797), (146, 43794), (162, 43755), (163, 43752), (166, 43749),

Gene: Piro94_74 Start: 44742, Stop: 44326, Start Num: 63

Candidate Starts for Piro94_74:

(35, 44793), (Start: 54 @44754 has 3 MA's), (Start: 63 @44742 has 127 MA's), (Start: 78 @44679 has 2 MA's), (80, 44661), (102, 44556), (105, 44535), (117, 44472), (123, 44451), (124, 44448), (126, 44439), (147, 44373), (153, 44355), (161, 44340),

Gene: Pmask_76 Start: 44267, Stop: 43866, Start Num: 55

Candidate Starts for Pmask_76:

(Start: 55 @44267 has 15 MA's), (Start: 63 @44252 has 127 MA's), (Start: 68 @44228 has 3 MA's), (75, 44198), (Start: 78 @44189 has 2 MA's), (80, 44171), (84, 44156), (110, 44021), (116, 43988), (117, 43985), (124, 43961), (126, 43952), (140, 43919), (149, 43889), (150, 43886),

Gene: Pomar16_77 Start: 45317, Stop: 44898, Start Num: 63

Candidate Starts for Pomar16_77:

(Start: 63 @45317 has 127 MA's), (75, 45263), (86, 45209), (102, 45134), (110, 45086), (116, 45053), (117, 45050), (123, 45029), (135, 44987), (140, 44975), (146, 44954), (150, 44942), (155, 44930), (164, 44912),

Gene: Power_74 Start: 45119, Stop: 44700, Start Num: 63

Candidate Starts for Power_74:

(40, 45158), (Start: 54 @45131 has 3 MA's), (Start: 63 @45119 has 127 MA's), (Start: 71 @45083 has 1 MA's), (74, 45068), (Start: 78 @45056 has 2 MA's), (80, 45038), (102, 44933), (104, 44921), (105, 44912), (123, 44828), (126, 44816), (140, 44771), (147, 44747), (155, 44726), (161, 44714),

Gene: Priamo_78 Start: 43907, Stop: 43521, Start Num: 63

Candidate Starts for Priamo_78:

(39, 43952), (Start: 48 @43931 has 18 MA's), (Start: 63 @43907 has 127 MA's), (84, 43811), (91, 43781), (105, 43703), (109, 43682), (116, 43643), (117, 43640), (124, 43616), (145, 43556),

Gene: Priya_74 Start: 43884, Stop: 43465, Start Num: 63

Candidate Starts for Priya_74:

(Start: 48 @43908 has 18 MA's), (Start: 63 @43884 has 127 MA's), (Start: 68 @43860 has 3 MA's), (77, 43824), (87, 43773), (99, 43719), (102, 43698), (105, 43677), (109, 43656), (110, 43650), (116, 43617), (117, 43614), (123, 43593), (124, 43590), (145, 43524), (146, 43521), (163, 43479), (166, 43476),

Gene: Prudy_68 Start: 44804, Stop: 44460, Start Num: 79

Candidate Starts for Prudy_68:

(42, 44906), (50, 44891), (Start: 62 @44873 has 4 MA's), (79, 44804), (80, 44792), (83, 44780), (85, 44771), (100, 44705), (102, 44687), (105, 44666), (123, 44582), (124, 44579), (126, 44570), (137, 44537), (145, 44513), (162, 44474),

Gene: Pukovnik_71 Start: 45610, Stop: 45206, Start Num: 60

Candidate Starts for Pukovnik_71:

(Start: 60 @45610 has 2 MA's), (Start: 63 @45607 has 127 MA's), (86, 45499), (102, 45424), (109, 45382), (110, 45376), (116, 45343), (117, 45340), (123, 45319), (124, 45316), (142, 45256), (145, 45247), (150, 45232),

Gene: Qobbit_74 Start: 43870, Stop: 43427, Start Num: 48

Candidate Starts for Qobbit_74:

(Start: 48 @43870 has 18 MA's), (Start: 63 @43846 has 127 MA's), (Start: 68 @43822 has 3 MA's), (77, 43786), (87, 43735), (99, 43681), (102, 43660), (105, 43639), (109, 43618), (110, 43612), (116, 43579), (117, 43576), (123, 43555), (124, 43552), (145, 43486), (146, 43483), (163, 43441), (166, 43438),

Gene: QueenB2_72 Start: 44402, Stop: 43983, Start Num: 63

Candidate Starts for QueenB2_72:

(36, 44450), (Start: 63 @44402 has 127 MA's), (Start: 78 @44339 has 2 MA's), (80, 44321), (102, 44216), (117, 44132), (124, 44108), (126, 44099), (140, 44054), (147, 44030), (150, 44021), (161, 43997),

Gene: QueenBeesly_75 Start: 45076, Stop: 44657, Start Num: 63

Candidate Starts for QueenBeesly_75:

(40, 45115), (Start: 54 @45088 has 3 MA's), (Start: 63 @45076 has 127 MA's), (74, 45025), (Start: 78 @45013 has 2 MA's), (80, 44995), (102, 44890), (104, 44878), (105, 44869), (123, 44785), (126, 44773), (140, 44728), (147, 44704), (155, 44683), (161, 44671),

Gene: Quokka_76 Start: 44213, Stop: 43776, Start Num: 58

Candidate Starts for Quokka_76:

(21, 44315), (24, 44309), (Start: 58 @44213 has 6 MA's), (105, 44003), (114, 43943), (123, 43913), (124, 43910), (126, 43901), (140, 43862), (168, 43790),

Gene: Rachaly_70 Start: 44203, Stop: 43787, Start Num: 63

Candidate Starts for Rachaly_70:

(53, 44215), (Start: 63 @44203 has 127 MA's), (Start: 78 @44140 has 2 MA's), (92, 44068), (110, 43969), (116, 43936), (117, 43933), (123, 43912), (126, 43900), (140, 43858), (146, 43837), (151, 43825), (161, 43804), (162, 43801), (163, 43798),

Gene: Rahalelujah_76 Start: 44020, Stop: 43601, Start Num: 63

Candidate Starts for Rahalelujah_76:

(Start: 63 @44020 has 127 MA's), (Start: 68 @43996 has 3 MA's), (80, 43939), (99, 43852), (102, 43831), (110, 43783), (116, 43750), (117, 43747), (124, 43723), (128, 43705), (144, 43660),

Gene: Ravana_85 Start: 46406, Stop: 46008, Start Num: 59

Candidate Starts for Ravana_85:

(Start: 59 @46406 has 20 MA's), (69, 46376), (85, 46298), (102, 46223), (104, 46211), (116, 46142), (117, 46139), (138, 46064), (154, 46016),

Gene: ReMo_81 Start: 45143, Stop: 44745, Start Num: 59

Candidate Starts for ReMo_81:

(Start: 59 @45143 has 20 MA's), (69, 45113), (85, 45035), (102, 44960), (104, 44948), (116, 44879), (117, 44876), (138, 44801), (154, 44753),

Gene: RedRock_73 Start: 45123, Stop: 44716, Start Num: 62

Candidate Starts for RedRock_73:

(38, 45162), (Start: 62 @45123 has 4 MA's), (Start: 68 @45099 has 3 MA's), (85, 45021), (100, 44955), (102, 44937), (123, 44832),

Gene: Refuge_72 Start: 45324, Stop: 44920, Start Num: 57

Candidate Starts for Refuge_72:

(Start: 57 @45324 has 3 MA's), (92, 45180), (95, 45171), (112, 45066), (116, 45048), (121, 45030), (125, 45018), (145, 44955),

Gene: Remus_83 Start: 45073, Stop: 44675, Start Num: 59

Candidate Starts for Remus_83:

(Start: 59 @45073 has 20 MA's), (69, 45043), (85, 44965), (102, 44890), (104, 44878), (116, 44809), (117, 44806), (138, 44731), (154, 44683),

Gene: Retro23_75 Start: 44806, Stop: 44387, Start Num: 63

Candidate Starts for Retro23_75:

(14, 44974), (16, 44956), (17, 44953), (36, 44854), (Start: 63 @44806 has 127 MA's), (Start: 78 @44743 has 2 MA's), (80, 44725), (102, 44620), (117, 44536), (123, 44515), (126, 44503), (140, 44458), (142, 44449), (147, 44434), (150, 44425), (161, 44401),

Gene: Rifter_77 Start: 42938, Stop: 42552, Start Num: 63

Candidate Starts for Rifter_77:

(Start: 48 @42965 has 18 MA's), (Start: 63 @42938 has 127 MA's), (76, 42881), (84, 42842), (105, 42734), (106, 42731), (109, 42713), (116, 42674), (117, 42671), (124, 42647), (128, 42629), (134, 42614), (149, 42575),

Gene: Roksolana_77 Start: 43672, Stop: 43286, Start Num: 63

Candidate Starts for Roksolana_77:

(Start: 48 @43699 has 18 MA's), (Start: 63 @43672 has 127 MA's), (76, 43615), (84, 43576), (105, 43468), (106, 43465), (109, 43447), (116, 43408), (117, 43405), (124, 43381), (128, 43363), (134, 43348), (149, 43309),

Gene: Rosalind_81 Start: 44967, Stop: 44569, Start Num: 59

Candidate Starts for Rosalind_81:

(Start: 59 @44967 has 20 MA's), (69, 44937), (85, 44859), (102, 44784), (104, 44772), (116, 44703), (117, 44700), (138, 44625), (154, 44577),

Gene: RyeScarlet_77 Start: 44108, Stop: 43713, Start Num: 68

Candidate Starts for RyeScarlet_77:

(Start: 63 @44132 has 127 MA's), (Start: 68 @44108 has 3 MA's), (77, 44072), (87, 44021), (99, 43967), (102, 43946), (105, 43925), (109, 43904), (110, 43898), (116, 43865), (117, 43862), (123, 43841), (124, 43838), (145, 43772), (146, 43769), (162, 43730), (163, 43727), (166, 43724),

Gene: Sachima_72 Start: 44089, Stop: 43694, Start Num: 68

Candidate Starts for Sachima_72:

(Start: 63 @44113 has 127 MA's), (Start: 68 @44089 has 3 MA's), (77, 44053), (87, 44002), (99, 43948), (102, 43927), (105, 43906), (109, 43885), (110, 43879), (116, 43846), (117, 43843), (123, 43822), (124, 43819), (145, 43753), (146, 43750), (162, 43711), (163, 43708), (166, 43705),

Gene: Salz_72 Start: 43124, Stop: 42687, Start Num: 61

Candidate Starts for Salz_72:

(Start: 55 @43136 has 15 MA's), (Start: 61 @43124 has 27 MA's), (Start: 68 @43100 has 3 MA's), (Start: 78 @43061 has 2 MA's), (96, 42974), (102, 42935), (107, 42908), (109, 42893), (111, 42884), (116, 42854), (117, 42851), (123, 42830), (151, 42737), (153, 42728),

Gene: Saskia_74 Start: 43672, Stop: 43235, Start Num: 61

Candidate Starts for Saskia_74:

(Start: 55 @43684 has 15 MA's), (Start: 61 @43672 has 27 MA's), (Start: 68 @43648 has 3 MA's), (Start: 78 @43609 has 2 MA's), (96, 43522), (102, 43483), (107, 43456), (109, 43441), (111, 43432), (116, 43402), (117, 43399), (123, 43378), (151, 43285), (153, 43276),

Gene: Scherzo_75 Start: 44403, Stop: 43957, Start Num: 48

Candidate Starts for Scherzo_75:

(Start: 48 @44403 has 18 MA's), (Start: 63 @44379 has 127 MA's), (Start: 68 @44355 has 3 MA's), (77, 44319), (87, 44268), (99, 44214), (102, 44193), (105, 44172), (109, 44151), (110, 44145), (116, 44112), (117, 44109), (123, 44088), (124, 44085), (145, 44019), (146, 44016), (162, 43977),

Gene: SemperFi_75 Start: 44964, Stop: 44545, Start Num: 63

Candidate Starts for SemperFi_75:

(40, 45003), (Start: 54 @44976 has 3 MA's), (Start: 63 @44964 has 127 MA's), (74, 44913), (Start: 78 @44901 has 2 MA's), (80, 44883), (102, 44778), (104, 44766), (105, 44757), (123, 44673), (126, 44661), (140, 44616), (147, 44592), (155, 44571), (161, 44559),

Gene: Serenity_78 Start: 44410, Stop: 43973, Start Num: 58

Candidate Starts for Serenity_78:

(36, 44452), (Start: 58 @44410 has 6 MA's), (Start: 68 @44386 has 3 MA's), (105, 44200), (114, 44140), (124, 44107), (126, 44098), (140, 44059), (168, 43987),

Gene: Sham4_73 Start: 43208, Stop: 42771, Start Num: 61

Candidate Starts for Sham4_73:

(Start: 55 @43220 has 15 MA's), (Start: 61 @43208 has 27 MA's), (Start: 68 @43184 has 3 MA's), (Start: 78 @43145 has 2 MA's), (96, 43058), (102, 43019), (107, 42992), (109, 42977), (111, 42968), (116, 42938), (117, 42935), (123, 42914), (151, 42821), (153, 42812),

Gene: SheaKeira_70 Start: 43202, Stop: 42783, Start Num: 63

Candidate Starts for SheaKeira_70:

(Start: 63 @43202 has 127 MA's), (Start: 68 @43178 has 3 MA's), (Start: 78 @43139 has 2 MA's), (98, 43037), (99, 43034), (102, 43013), (105, 42992), (116, 42932), (117, 42929), (128, 42887),

Gene: Sknot_75 Start: 44777, Stop: 44358, Start Num: 63

Candidate Starts for Sknot_75:

(19, 44876), (21, 44870), (35, 44819), (Start: 63 @44777 has 127 MA's), (Start: 78 @44714 has 2 MA's), (80, 44696), (100, 44609), (105, 44570), (110, 44543), (117, 44507), (123, 44486), (124, 44483), (126, 44474), (147, 44408), (153, 44390), (161, 44375),

Gene: Smeagan_77 Start: 45356, Stop: 44937, Start Num: 63

Candidate Starts for Smeagan_77:

(35, 45404), (44, 45386), (51, 45371), (Start: 63 @45356 has 127 MA's), (Start: 78 @45293 has 2 MA's), (102, 45170), (105, 45149), (117, 45086), (126, 45053), (140, 45008), (142, 44999), (147, 44984), (153, 44966), (155, 44963), (161, 44951),

Gene: SnapTap_74 Start: 44775, Stop: 44356, Start Num: 63

Candidate Starts for SnapTap_74:

(40, 44814), (Start: 54 @44787 has 3 MA's), (Start: 63 @44775 has 127 MA's), (Start: 71 @44739 has 1 MA's), (74, 44724), (Start: 78 @44712 has 2 MA's), (80, 44694), (102, 44589), (104, 44577), (105, 44568), (123, 44484), (126, 44472), (140, 44427), (147, 44403), (155, 44382), (161, 44370),

Gene: Snape_77 Start: 44317, Stop: 43880, Start Num: 61

Candidate Starts for Snape_77:

(Start: 55 @44329 has 15 MA's), (Start: 61 @44317 has 27 MA's), (Start: 68 @44293 has 3 MA's), (Start: 78 @44254 has 2 MA's), (80, 44236), (96, 44167), (102, 44128), (107, 44101), (109, 44086), (111, 44077), (116, 44047), (117, 44044), (123, 44023), (151, 43930), (153, 43921),

Gene: SororFago_76 Start: 45272, Stop: 44877, Start Num: 61

Candidate Starts for SororFago_76:

(Start: 61 @45272 has 27 MA's), (80, 45191), (96, 45128), (104, 45077), (110, 45041), (116, 45008), (122, 44987), (125, 44978),

Gene: Soups_82 Start: 44862, Stop: 44464, Start Num: 59

Candidate Starts for Soups_82:

(Start: 59 @44862 has 20 MA's), (69, 44832), (85, 44754), (102, 44679), (104, 44667), (116, 44598), (117, 44595), (138, 44520), (154, 44472),

Gene: Spouty_74 Start: 43907, Stop: 43464, Start Num: 48

Candidate Starts for Spouty_74:

(Start: 48 @43907 has 18 MA's), (Start: 63 @43883 has 127 MA's), (Start: 68 @43859 has 3 MA's), (77, 43823), (87, 43772), (99, 43718), (102, 43697), (105, 43676), (109, 43655), (110, 43649), (116, 43616), (117, 43613), (123, 43592), (124, 43589), (145, 43523), (146, 43520), (163, 43478), (166, 43475),

Gene: StarStuff_77 Start: 45279, Stop: 44860, Start Num: 63

Candidate Starts for StarStuff_77:

(Start: 63 @45279 has 127 MA's), (86, 45171), (93, 45141), (102, 45096), (110, 45048), (116, 45015), (117, 45012), (123, 44991), (135, 44949), (146, 44916), (150, 44904), (155, 44892), (164, 44874),

Gene: Steamy_69 Start: 43627, Stop: 43226, Start Num: 63

Candidate Starts for Steamy_69:

(Start: 63 @43627 has 127 MA's), (77, 43567), (86, 43519), (90, 43504), (94, 43486), (102, 43444), (103, 43438), (112, 43381), (116, 43363), (127, 43324), (131, 43309), (135, 43297), (140, 43285), (146, 43264),

Gene: Strosahl_83 Start: 45073, Stop: 44675, Start Num: 59

Candidate Starts for Strosahl_83:

(Start: 59 @45073 has 20 MA's), (69, 45043), (85, 44965), (102, 44890), (104, 44878), (116, 44809), (117, 44806), (138, 44731), (154, 44683),

Gene: Sunhee_76 Start: 43354, Stop: 42959, Start Num: 61

Candidate Starts for Sunhee_76:

(Start: 61 @43354 has 27 MA's), (Start: 78 @43291 has 2 MA's), (96, 43210), (104, 43159), (110, 43123), (116, 43090), (118, 43084), (124, 43063), (149, 42982),

Gene: SuperAwesome_77 Start: 44306, Stop: 43905, Start Num: 55

Candidate Starts for SuperAwesome_77:

(Start: 55 @44306 has 15 MA's), (Start: 63 @44291 has 127 MA's), (Start: 68 @44267 has 3 MA's), (75, 44237), (Start: 78 @44228 has 2 MA's), (80, 44210), (84, 44195), (110, 44060), (116, 44027),

(117, 44024), (124, 44000), (126, 43991), (140, 43958), (149, 43928), (150, 43925),

Gene: Superchunk_77 Start: 44436, Stop: 44017, Start Num: 63

Candidate Starts for Superchunk_77:

(34, 44484), (Start: 63 @44436 has 127 MA's), (81, 44352), (92, 44301), (93, 44295), (99, 44271), (102, 44250), (105, 44229), (114, 44169), (115, 44166), (124, 44136), (126, 44127), (145, 44070), (162, 44031),

Gene: SweetiePie_74 Start: 44907, Stop: 44488, Start Num: 63

Candidate Starts for SweetiePie_74:

(40, 44946), (Start: 54 @44919 has 3 MA's), (Start: 63 @44907 has 127 MA's), (74, 44856), (Start: 78 @44844 has 2 MA's), (80, 44826), (102, 44721), (104, 44709), (105, 44700), (123, 44616), (126, 44604), (140, 44559), (147, 44535), (155, 44514), (161, 44502),

Gene: SwirlSquare_80 Start: 44189, Stop: 43806, Start Num: 71

Candidate Starts for SwirlSquare_80:

(22, 44327), (31, 44285), (34, 44282), (Start: 63 @44225 has 127 MA's), (Start: 71 @44189 has 1 MA's), (89, 44105), (92, 44090), (93, 44084), (99, 44060), (102, 44039), (104, 44027), (105, 44018), (114, 43958), (126, 43916), (155, 43832), (162, 43820),

Gene: Switzerland_82 Start: 45135, Stop: 44737, Start Num: 59

Candidate Starts for Switzerland_82:

(Start: 59 @45135 has 20 MA's), (69, 45105), (85, 45027), (102, 44952), (104, 44940), (116, 44871), (117, 44868), (138, 44793), (154, 44745),

Gene: TarsusIV_72 Start: 44821, Stop: 44408, Start Num: 63

Candidate Starts for TarsusIV_72:

(56, 44827), (Start: 63 @44821 has 127 MA's), (80, 44740), (97, 44671), (116, 44554), (117, 44551), (123, 44530), (126, 44518), (140, 44479), (162, 44422),

Gene: Temprado_78 Start: 43777, Stop: 43391, Start Num: 63

Candidate Starts for Temprado_78:

(Start: 48 @43804 has 18 MA's), (Start: 63 @43777 has 127 MA's), (76, 43720), (84, 43681), (105, 43573), (106, 43570), (109, 43552), (116, 43513), (117, 43510), (124, 43486), (128, 43468), (134, 43453), (149, 43414),

Gene: Terrific_75 Start: 44751, Stop: 44332, Start Num: 63

Candidate Starts for Terrific_75:

(19, 44850), (21, 44844), (35, 44793), (Start: 63 @44751 has 127 MA's), (Start: 78 @44688 has 2 MA's), (80, 44670), (100, 44583), (105, 44544), (110, 44517), (117, 44481), (123, 44460), (124, 44457), (126, 44448), (147, 44382), (153, 44364), (161, 44349),

Gene: Timothy_77 Start: 44294, Stop: 43857, Start Num: 61

Candidate Starts for Timothy_77:

(Start: 55 @44306 has 15 MA's), (Start: 61 @44294 has 27 MA's), (Start: 68 @44270 has 3 MA's), (Start: 78 @44231 has 2 MA's), (80, 44213), (96, 44144), (102, 44105), (107, 44078), (109, 44063), (111, 44054), (116, 44024), (117, 44021), (123, 44000), (151, 43907), (153, 43898),

Gene: TinyTimmy_75 Start: 44023, Stop: 43586, Start Num: 61

Candidate Starts for TinyTimmy_75:

(Start: 55 @44035 has 15 MA's), (Start: 61 @44023 has 27 MA's), (Start: 68 @43999 has 3 MA's), (Start: 78 @43960 has 2 MA's), (80, 43942), (96, 43873), (102, 43834), (107, 43807), (109, 43792), (111, 43783), (116, 43753), (117, 43750), (123, 43729), (151, 43636), (153, 43627),

Gene: TopsytheTRex_74 Start: 44412, Stop: 43975, Start Num: 58

Candidate Starts for TopsytheTRex_74:

(21, 44514), (24, 44508), (36, 44454), (Start: 58 @44412 has 6 MA's), (Start: 68 @44388 has 3 MA's), (105, 44202), (114, 44142), (124, 44109), (126, 44100), (140, 44061), (168, 43989),

Gene: Toaka_76 Start: 44412, Stop: 43990, Start Num: 63

Candidate Starts for Toaka_76:

(Start: 63 @44412 has 127 MA's), (Start: 68 @44388 has 3 MA's), (80, 44331), (98, 44247), (99, 44244), (102, 44223), (105, 44202), (107, 44196), (109, 44181), (110, 44175), (116, 44142), (117, 44139), (144, 44052), (162, 44007), (163, 44004), (166, 44001),

Gene: Tomathan_77 Start: 45390, Stop: 44971, Start Num: 63

Candidate Starts for Tomathan_77:

(Start: 63 @45390 has 127 MA's), (75, 45336), (86, 45282), (102, 45207), (110, 45159), (116, 45126), (117, 45123), (123, 45102), (135, 45060), (140, 45048), (146, 45027), (150, 45015), (155, 45003), (164, 44985),

Gene: ToneTone_74 Start: 43337, Stop: 42951, Start Num: 63

Candidate Starts for ToneTone_74:

(Start: 48 @43364 has 18 MA's), (Start: 63 @43337 has 127 MA's), (76, 43280), (84, 43241), (105, 43133), (106, 43130), (109, 43112), (116, 43073), (117, 43070), (124, 43046), (128, 43028), (134, 43013), (149, 42974),

Gene: Travvers_76 Start: 45276, Stop: 44857, Start Num: 63

Candidate Starts for Travvers_76:

(Start: 63 @45276 has 127 MA's), (86, 45168), (102, 45093), (110, 45045), (116, 45012), (117, 45009), (123, 44988), (135, 44946), (146, 44913), (150, 44901), (155, 44889), (164, 44871),

Gene: Tristan_71 Start: 45843, Stop: 45430, Start Num: 63

Candidate Starts for Tristan_71:

(Start: 63 @45843 has 127 MA's), (64, 45831), (Start: 68 @45819 has 3 MA's), (77, 45783), (80, 45762), (86, 45735), (97, 45696), (102, 45660), (110, 45612), (117, 45573), (123, 45552), (130, 45525), (132, 45519), (142, 45486),

Gene: Trixie_74 Start: 45538, Stop: 45125, Start Num: 63

Candidate Starts for Trixie_74:

(37, 45586), (Start: 63 @45538 has 127 MA's), (77, 45478), (Start: 78 @45475 has 2 MA's), (85, 45436), (100, 45370), (102, 45352), (104, 45340), (123, 45247), (126, 45235), (147, 45172), (159, 45142),

Gene: Trooper_74 Start: 44793, Stop: 44374, Start Num: 63

Candidate Starts for Trooper_74:

(14, 44961), (16, 44943), (17, 44940), (35, 44844), (44, 44826), (Start: 54 @44805 has 3 MA's), (Start: 63 @44793 has 127 MA's), (Start: 71 @44757 has 1 MA's), (Start: 78 @44730 has 2 MA's), (80, 44712), (102, 44607), (110, 44559), (117, 44523), (123, 44502), (124, 44499), (126, 44490), (140, 44445), (147, 44421), (150, 44412), (161, 44388),

Gene: Tubs_76 Start: 44087, Stop: 43668, Start Num: 63

Candidate Starts for Tubs_76:

(10, 44336), (Start: 48 @44111 has 18 MA's), (Start: 63 @44087 has 127 MA's), (Start: 68 @44063 has 3 MA's), (77, 44027), (87, 43976), (99, 43922), (102, 43901), (105, 43880), (109, 43859), (110, 43853), (116, 43820), (117, 43817), (123, 43796), (124, 43793), (145, 43727), (146, 43724), (162,

43685), (163, 43682), (166, 43679),

Gene: Tucker_77 Start: 43540, Stop: 43154, Start Num: 63

Candidate Starts for Tucker_77:

(Start: 48 @43567 has 18 MA's), (Start: 63 @43540 has 127 MA's), (76, 43483), (84, 43444), (105, 43336), (106, 43333), (109, 43315), (116, 43276), (117, 43273), (124, 43249), (128, 43231), (134, 43216), (149, 43177),

Gene: Turbido_75 Start: 45075, Stop: 44656, Start Num: 63

Candidate Starts for Turbido_75:

(Start: 63 @45075 has 127 MA's), (Start: 78 @45012 has 2 MA's), (102, 44889), (105, 44868), (117, 44805), (123, 44784), (124, 44781), (126, 44772), (147, 44703), (155, 44682), (161, 44670),

Gene: Ugenie5_71 Start: 44378, Stop: 43956, Start Num: 63

Candidate Starts for Ugenie5_71:

(Start: 48 @44402 has 18 MA's), (Start: 63 @44378 has 127 MA's), (Start: 68 @44354 has 3 MA's), (77, 44318), (87, 44267), (99, 44213), (102, 44192), (105, 44171), (109, 44150), (110, 44144), (116, 44111), (117, 44108), (123, 44087), (124, 44084), (145, 44018), (146, 44015), (162, 43976),

Gene: Updawg_75 Start: 44641, Stop: 44222, Start Num: 63

Candidate Starts for Updawg_75:

(35, 44683), (Start: 63 @44641 has 127 MA's), (Start: 78 @44578 has 2 MA's), (80, 44560), (100, 44473), (105, 44434), (110, 44407), (117, 44371), (123, 44350), (124, 44347), (126, 44338), (147, 44272), (153, 44254), (161, 44239),

Gene: VA6_74 Start: 44831, Stop: 44418, Start Num: 63

Candidate Starts for VA6_74:

(Start: 63 @44831 has 127 MA's), (Start: 68 @44807 has 3 MA's), (Start: 78 @44768 has 2 MA's), (80, 44750), (100, 44663), (105, 44624), (123, 44540), (124, 44537), (140, 44489), (146, 44468), (159, 44435),

Gene: VC3_76 Start: 44797, Stop: 44378, Start Num: 63

Candidate Starts for VC3_76:

(Start: 63 @44797 has 127 MA's), (75, 44743), (86, 44689), (102, 44614), (110, 44566), (116, 44533), (117, 44530), (123, 44509), (135, 44467), (146, 44434), (155, 44410), (164, 44392),

Gene: Vanisoa_73 Start: 44752, Stop: 44333, Start Num: 63

Candidate Starts for Vanisoa_73:

(Start: 63 @44752 has 127 MA's), (Start: 68 @44728 has 3 MA's), (80, 44671), (98, 44587), (116, 44482), (117, 44479), (128, 44437),

Gene: VohminGhazi_77 Start: 43629, Stop: 43228, Start Num: 55

Candidate Starts for VohminGhazi_77:

(Start: 55 @43629 has 15 MA's), (Start: 63 @43614 has 127 MA's), (Start: 68 @43590 has 3 MA's), (75, 43560), (Start: 78 @43551 has 2 MA's), (80, 43533), (84, 43518), (110, 43383), (116, 43350), (117, 43347), (124, 43323), (126, 43314), (140, 43281), (149, 43251), (150, 43248),

Gene: Waits_82 Start: 44973, Stop: 44575, Start Num: 59

Candidate Starts for Waits_82:

(Start: 59 @44973 has 20 MA's), (69, 44943), (85, 44865), (102, 44790), (104, 44778), (116, 44709), (117, 44706), (138, 44631), (154, 44583),

Gene: Warrior24_83 Start: 45450, Stop: 45052, Start Num: 59

Candidate Starts for Warrior24_83:

(Start: 59 @45450 has 20 MA's), (69, 45420), (85, 45342), (102, 45267), (104, 45255), (116, 45186), (117, 45183), (138, 45108), (154, 45060),

Gene: WeiHuaDA_75 Start: 45500, Stop: 45162, Start Num: 80

Candidate Starts for WeiHuaDA_75:

(36, 45629), (Start: 63 @45581 has 127 MA's), (Start: 71 @45545 has 1 MA's), (74, 45530), (80, 45500), (92, 45446), (116, 45314), (117, 45311), (123, 45290), (124, 45287), (126, 45278), (151, 45203), (153, 45194), (161, 45179),

Gene: Whabigail7_75 Start: 45075, Stop: 44656, Start Num: 63

Candidate Starts for Whabigail7_75:

(35, 45123), (44, 45105), (51, 45090), (Start: 63 @45075 has 127 MA's), (Start: 78 @45012 has 2 MA's), (102, 44889), (105, 44868), (117, 44805), (126, 44772), (140, 44727), (142, 44718), (147, 44703), (153, 44685), (155, 44682), (161, 44670),

Gene: WideWale_75 Start: 44641, Stop: 44222, Start Num: 63

Candidate Starts for WideWale_75:

(35, 44683), (Start: 63 @44641 has 127 MA's), (Start: 78 @44578 has 2 MA's), (80, 44560), (100, 44473), (105, 44434), (110, 44407), (117, 44371), (123, 44350), (124, 44347), (126, 44338), (147, 44272), (153, 44254), (161, 44239),

Gene: Wiks_76 Start: 43408, Stop: 43022, Start Num: 63

Candidate Starts for Wiks_76:

(Start: 48 @43435 has 18 MA's), (Start: 63 @43408 has 127 MA's), (76, 43351), (84, 43312), (105, 43204), (106, 43201), (109, 43183), (116, 43144), (117, 43141), (124, 43117), (128, 43099), (134, 43084), (149, 43045),

Gene: Wolpertinger_76 Start: 44326, Stop: 43889, Start Num: 61

Candidate Starts for Wolpertinger_76:

(Start: 55 @44338 has 15 MA's), (Start: 61 @44326 has 27 MA's), (Start: 68 @44302 has 3 MA's), (Start: 78 @44263 has 2 MA's), (96, 44176), (102, 44137), (107, 44110), (109, 44095), (111, 44086), (116, 44056), (117, 44053), (123, 44032), (151, 43939), (153, 43930),

Gene: WorldCup_74 Start: 44017, Stop: 43595, Start Num: 63

Candidate Starts for WorldCup_74:

(Start: 63 @44017 has 127 MA's), (Start: 68 @43993 has 3 MA's), (Start: 78 @43951 has 2 MA's), (98, 43849), (100, 43843), (116, 43744), (117, 43741), (128, 43699),

Gene: WunderPhul_77 Start: 43433, Stop: 43020, Start Num: 48

Candidate Starts for WunderPhul_77:

(Start: 48 @43433 has 18 MA's), (Start: 63 @43406 has 127 MA's), (76, 43349), (84, 43310), (105, 43202), (106, 43199), (109, 43181), (116, 43142), (117, 43139), (124, 43115), (128, 43097), (134, 43082), (149, 43043),

Gene: XianYue_70 Start: 44566, Stop: 44156, Start Num: 63

Candidate Starts for XianYue_70:

(30, 44623), (Start: 63 @44566 has 127 MA's), (80, 44485), (92, 44434), (110, 44335), (116, 44302), (117, 44299), (121, 44284), (131, 44248), (150, 44194), (153, 44185), (161, 44173),

Gene: Yecey3_78 Start: 44191, Stop: 43790, Start Num: 62

Candidate Starts for Yecey3_78:

(Start: 62 @44191 has 4 MA's), (Start: 68 @44167 has 3 MA's), (95, 44050), (105, 43987), (110, 43960), (113, 43927), (138, 43852),

Gene: Yokurt_76 Start: 43408, Stop: 43022, Start Num: 63

Candidate Starts for Yokurt_76:

(Start: 48 @43435 has 18 MA's), (Start: 63 @43408 has 127 MA's), (76, 43351), (84, 43312), (105, 43204), (106, 43201), (109, 43183), (116, 43144), (117, 43141), (124, 43117), (128, 43099), (134, 43084), (149, 43045),

Gene: Zaka_77 Start: 43435, Stop: 43022, Start Num: 48

Candidate Starts for Zaka_77:

(Start: 48 @43435 has 18 MA's), (Start: 63 @43408 has 127 MA's), (76, 43351), (84, 43312), (105, 43204), (106, 43201), (109, 43183), (116, 43144), (117, 43141), (124, 43117), (128, 43099), (134, 43084), (149, 43045),

Gene: Zimmer_73 Start: 45201, Stop: 44794, Start Num: 57

Candidate Starts for Zimmer_73:

(37, 45228), (Start: 57 @45201 has 3 MA's), (76, 45138), (86, 45087), (94, 45054), (102, 45012), (109, 44970), (116, 44928), (117, 44925),

Gene: Zulu_78 Start: 43786, Stop: 43400, Start Num: 63

Candidate Starts for Zulu_78:

(Start: 48 @43813 has 18 MA's), (Start: 63 @43786 has 127 MA's), (76, 43729), (84, 43690), (105, 43582), (106, 43579), (109, 43561), (116, 43522), (117, 43519), (124, 43495), (128, 43477), (134, 43462), (149, 43423),