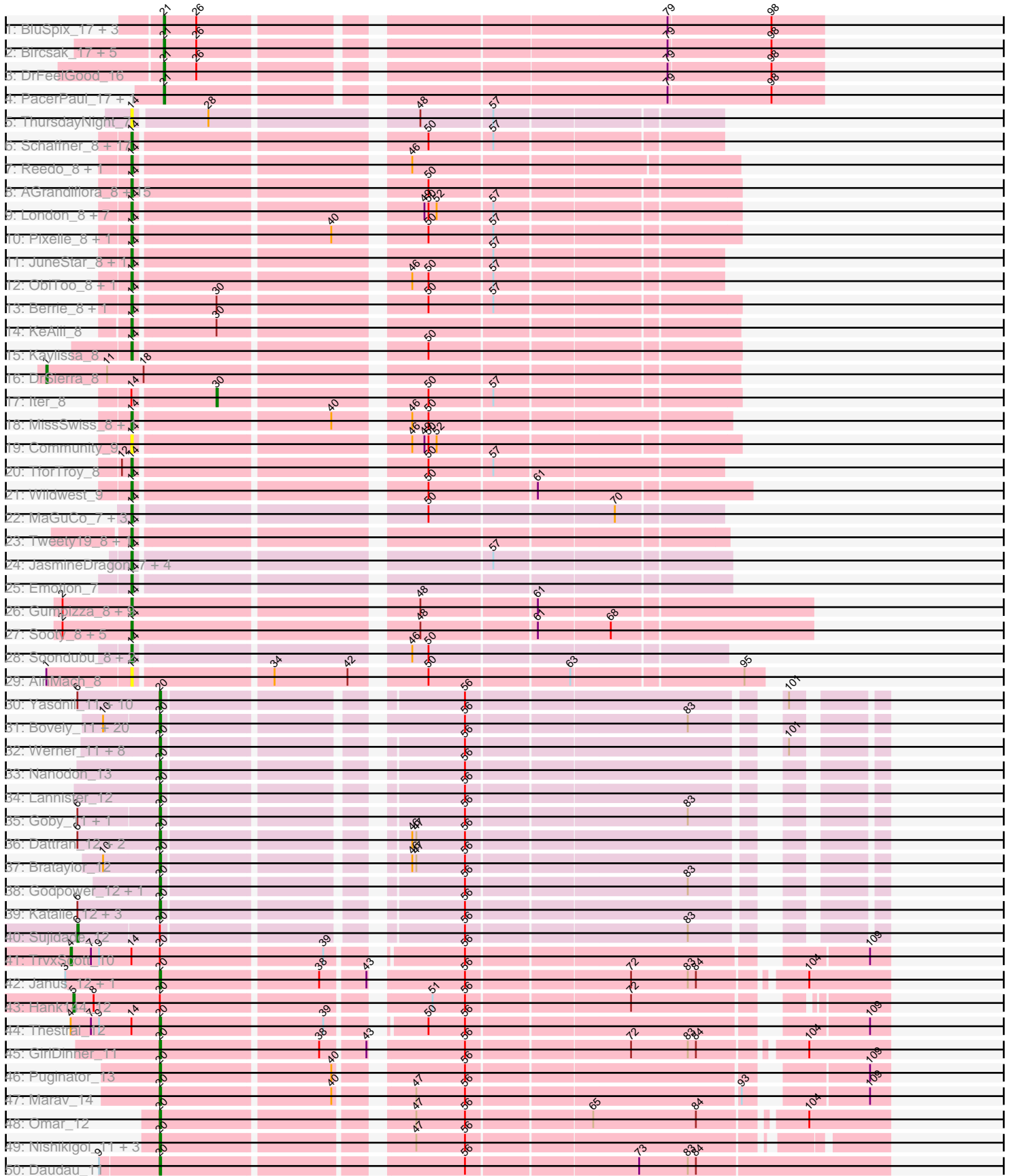
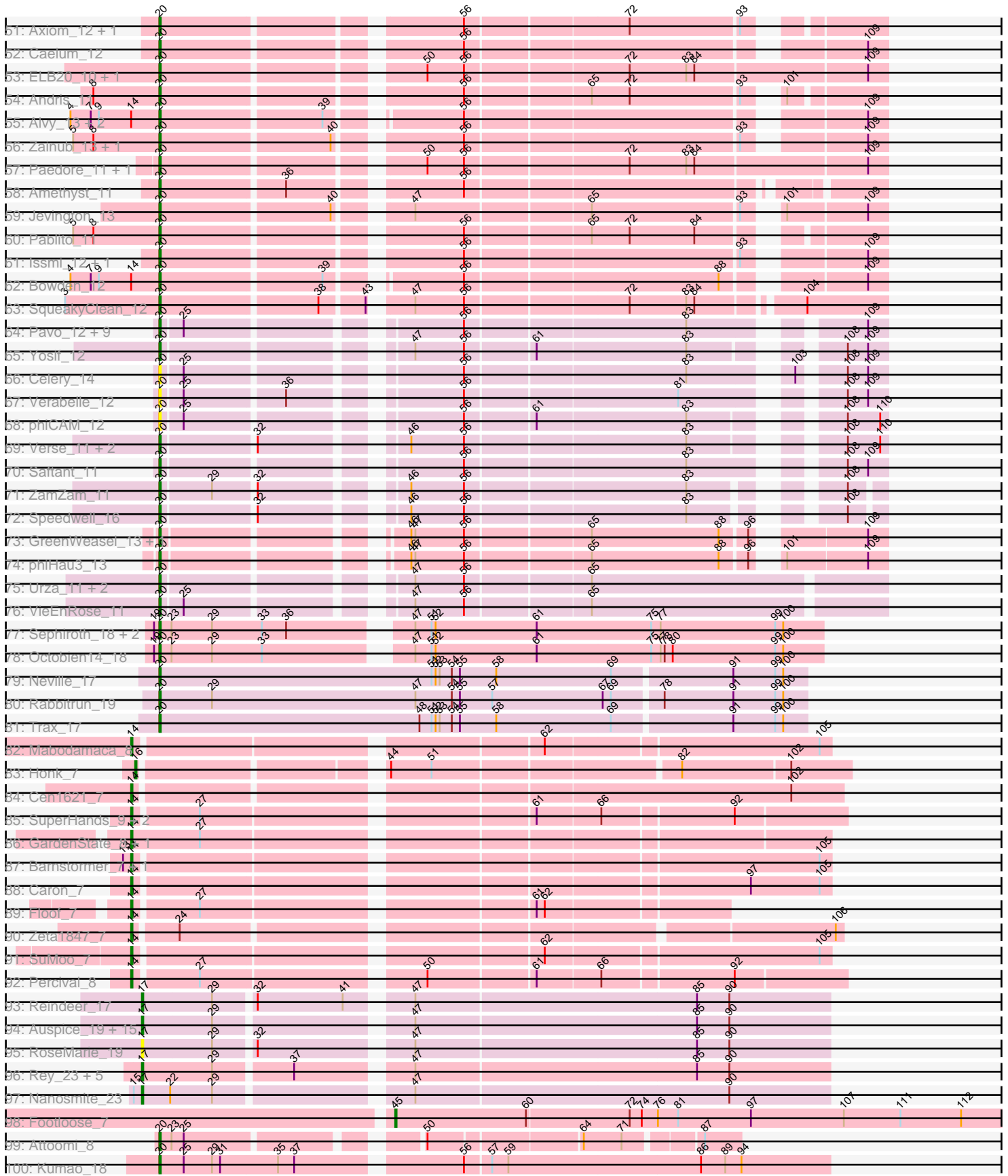


Pham 296191



Pham 296191



Note: Tracks are now grouped by subcluster and scaled. Switching in subcluster is indicated by changes in track color. Track scale is now set by default to display the region 30 bp upstream of start 1 to 30 bp downstream of the last possible start. If this default region is judged to be packed too tightly with annotated starts, the track will be further scaled to only show that region of the ORF with annotated starts. This action will be indicated by adding "Zoomed" to the title. For starts, yellow indicates the location of called starts comprised solely of Glimmer/GeneMark auto-annotations, green indicates the location of called starts with at least 1 manual gene annotation.

Pham 296191 Report

This analysis was run 04/25/26 on database version 644.

WARNING: Pham size does not match number of genes in report. Either unphamerated genes have been added (by you) or starterator has removed genes due to invalid start codon.

Pham number 296191 has 274 members, 35 are drafts.

Phages represented in each track:

- Track 1 : BluSpix_17, ChristmasHams_17, Graduation_19, IgnatiusPatJac_16
- Track 2 : Bircsak_17, Tripl3t_18, Gompeii16_17, StrongArm_16, Bexan_16, PowerRanger_17
- Track 3 : DrFeelGood_16
- Track 4 : PacerPaul_17, ConceptII_18
- Track 5 : ThursdayNight_7
- Track 6 : Schaffner_8, Origami_7, Amyev_8, IttyBittyPiggy_8, Janeemi_9, Yang_8, FiveHead_7, Tian_8, AEgle_8, Nitro_8, Turab_8, Cassia_8, Lizalica_8, JohnThicc_7, Adumb2043_8, Amploria_8, Pumpkins_8, LadyAstra_7
- Track 7 : Reedo_8, Adolin_8
- Track 8 : AGrandiflora_8, Cyan_8, YesChef_8, Flutur_8, Tallboi_8, Tbone_8, VResidence_8, JohnDoe_8, Tutumahutu_8, Mudpuppy_8, Warda_8, Simpson_8, Lego_8, Tuck_9, Powerpuff_8, Joemato_8
- Track 9 : London_8, Eraser_8, Subaru_8, Elezi_8, Niobe_8, Asa16_8, Skelbel_8, Jstan_8
- Track 10 : Pixelle_8, Phives_9
- Track 11 : JuneStar_8, Sue2_8
- Track 12 : ObiToo_8, Crewmate_9
- Track 13 : Berrie_8, Ascela_8
- Track 14 : KeAlii_8
- Track 15 : Kaylissa_8
- Track 16 : DrSierra_8
- Track 17 : lter_8
- Track 18 : MissSwiss_8, PandaPo_8
- Track 19 : Community_9
- Track 20 : TforTroy_8
- Track 21 : Wildwest_9
- Track 22 : MaGuCo_7, IUFootball_7, Liebe_7, Maureen_7
- Track 23 : Tweety19_8, Snek_8
- Track 24 : JasmineDragon_7, MiniMommy_7, ShakeltOph_7, VroomVroom_7, AceofSpades_7
- Track 25 : Emotion_7

- Track 26 : Gumpizza_8, SpecialK_8, Giorgio_8, Moss_8, Mysterium_8, Halsey_8, Stuu_8, Beaupre_8, Ashes_8, RockScotty_8
- Track 27 : Sooty_8, Cappuccino_8, Sabourin_8, Gambol_8, Donkey_8, Kalimba_8
- Track 28 : Soondubu_8, DrManhattan_8, Exile_8
- Track 29 : AinMach_8
- Track 30 : Yasdnil_11, OzzyJ_12, Nabi_11, Rana_11, TuanPN_11, Dwayne_11, Lorelei_11, Maneekul_11, Triste_11, Ejemplo_11, Asten_11
- Track 31 : Bovely_11, Esperer_11, Indigo_11, Eddasa_12, BryanRecycles_12, Oliynyk_12, Rusticus_12, Ozzie_11, Caliburn_11, Nerdos_11, SunsetPointe_11, Hydra_13, Aaronocolus_11, Leviticus_11, Unstoppable_11, EnochSoames_12, BeardedLady_12, Legacy_11, Phettuccine_11, Izzy_12, Jash_12
- Track 32 : Werner_11, Chucky_11, Hippo_11, Snorlax_11, SarahRose_11, BarryBee_13, Emaanora_13, Whatever_11, TagePhighter_12
- Track 33 : Nanodon_13
- Track 34 : Lannister_12
- Track 35 : Goby_11, Toma_11
- Track 36 : Dattran_12, Zemlya_12, Celeste_11
- Track 37 : Brataylor_12
- Track 38 : Godpower_12, Lika_11
- Track 39 : Katalie_12, RedBear_13, South40_12, Danzina_12
- Track 40 : Sujidade_12
- Track 41 : TrvxScott_10
- Track 42 : Janus_12, Animus_12
- Track 43 : Hank144_12
- Track 44 : Thestral_12
- Track 45 : GirlDinner_11
- Track 46 : Puginator_13
- Track 47 : Marav_14
- Track 48 : Omar_12
- Track 49 : Nishikigoi_11, Haizum_11, Tefunt_11, Diane_11
- Track 50 : Daudau_11
- Track 51 : Axiom_12, Triumph_13
- Track 52 : Caelum_12
- Track 53 : ELB20_10, R4_11
- Track 54 : Andris_11
- Track 55 : Alvy_13, BartholomewSD_13, TinaBelcher_11
- Track 56 : Zainub_13, Paolo_13
- Track 57 : Paedore_11, Loofah_12
- Track 58 : Amethyst_11
- Track 59 : Jevington_13
- Track 60 : Pablito_11
- Track 61 : Issmi_12, Superstar_13
- Track 62 : Bowden_12
- Track 63 : SqueakyClean_12
- Track 64 : Pavo_12, Dexers_10, Conan_12, Kaine_11, ElGato_12, Provolone_12, Alsaber_12, Sudan_11, Jhitchelle_10, Vanseggelen_14
- Track 65 : Yosif_12
- Track 66 : Celery_14
- Track 67 : Verabelle_12
- Track 68 : phiCAM_12
- Track 69 : Verse_11, SunkenRoot_13, Amela_11
- Track 70 : Saftant_11
- Track 71 : ZamZam_11

- Track 72 : Speedwell_16
- Track 73 : GreenWeasel_13, BroPlease_12
- Track 74 : phiHau3_13
- Track 75 : Urza_11, Celia_11, Itza_11
- Track 76 : VieEnRose_11
- Track 77 : Sephiroth_18, Syleon_18, Kudfre_17
- Track 78 : Octobien14_18
- Track 79 : Neville_17
- Track 80 : Rabbitrun_19
- Track 81 : Trax_17
- Track 82 : Mabodamaca_8
- Track 83 : Honk_7
- Track 84 : Cen1621_7
- Track 85 : SuperHands_9, Forester_15, Gretchen_8
- Track 86 : GardenState_8, IAmGroot_8
- Track 87 : Barnstormer_7, UtzChips_7
- Track 88 : Caron_7
- Track 89 : Floof_7
- Track 90 : Zeta1847_7
- Track 91 : SuMoo_7
- Track 92 : Percival_8
- Track 93 : Reindeer_17
- Track 94 : Auspice_19, Bricole_19, IPhane7_19, KleverKiS_19, Skinny_20, Dulcita_20, Glaske16_20, Diminimus_20, PegLeg_19, LilhomieP_18, TyDawg_19, Izel_20, Bongo_19, SlimJimmy_18, TpudiCK_20, FreakyGoo_20
- Track 95 : RoseMarie_19
- Track 96 : Rey_23, GenevaB15_23, GardenSalsa_23, Aziz_23, MrMagoo_23, Estes_24
- Track 97 : Nanosmite_23
- Track 98 : Footloose_7
- Track 99 : Attoomi_8
- Track 100 : Kumao_18

Summary of Final Annotations (See graph section above for start numbers):

The start number called the most often in the published annotations is 20, it was called in 116 of the 239 non-draft genes in the pham.

Genes that call this "Most Annotated" start:

- Aaronocolus_11, Alsaber_12, Alvy_13, Amela_11, Amethyst_11, Andris_11, Animus_12, Asten_11, Attoomi_8, Axiom_12, BarryBee_13, BartholomewSD_13, BeardedLady_12, Bovely_11, Bowden_12, Brataylor_12, BroPlease_12, BryanRecycles_12, Caelum_12, Caliburn_11, Celery_14, Celeste_11, Celia_11, Chucky_11, Conan_12, Danzina_12, Dattran_12, Daudau_11, Dexers_10, Diane_11, Dwayne_11, ELB20_10, Eddasa_12, Ejemplo_11, ElGato_12, Emaanora_13, EnochSoames_12, Esperer_11, GirlDinner_11, Goby_11, Godpower_12, GreenWeasel_13, Haizum_11, Hippo_11, Hydra_13, Indigo_11, Issmi_12, Itza_11, Izzy_12, Janus_12, Jash_12, Jevington_13, Jhitchelle_10, Kaine_11, Katalie_12, Kudfre_17, Kumao_18, Lannister_12, Legacy_11, Leviticus_11, Lika_11, Loofah_12, Lorelei_11, Maneekul_11, Marav_14, Nabi_11, Nanodon_13, Nerdos_11,

Neville_17, Nishikigoi_11, Octobien14_18, Oliynyk_12, Omar_12, Ozzie_11, OzzyJ_12, Pablito_11, Paedore_11, Paolo_13, Pavo_12, Phettuccine_11, Provolone_12, Puginator_13, R4_11, Rabbitrun_19, Rana_11, RedBear_13, Rusticus_12, Saftant_11, SarahRose_11, Sephiroth_18, Snorlax_11, South40_12, Speedwell_16, SqueakyClean_12, Sudan_11, SunkenRoot_13, SunsetPointe_11, Superstar_13, Syleon_18, TagePhighter_12, Tefunt_11, Thestral_12, TinaBelcher_11, Toma_11, Trax_17, Triste_11, Triumph_13, TuanPN_11, Unstoppable_11, Urza_11, Vanseggelen_14, Verabelle_12, Verse_11, VieEnRose_11, Werner_11, Whatever_11, Yasdnil_11, Yosif_12, Zainub_13, ZamZam_11, Zemlya_12, phiCAM_12, phiHau3_13,

Genes that have the "Most Annotated" start but do not call it:

- Hank144_12, Sujidade_12, TrvxScott_10,

Genes that do not have the "Most Annotated" start:

- AEgle_8, AGrandiflora_8, AceofSpades_7, Adolin_8, Adumb2043_8, AinMach_8, Amploria_8, Amyev_8, Asa16_8, Ascela_8, Ashes_8, Auspice_19, Aziz_23, Barnstormer_7, Beaupre_8, Berrie_8, Bexan_16, Bircsak_17, BluSpix_17, Bongo_19, Bricole_19, Cappuccino_8, Caron_7, Cassia_8, Cen1621_7, ChristmasHams_17, Community_9, ConceptII_18, Crewmate_9, Cyan_8, Diminimus_20, Donkey_8, DrFeelGood_16, DrManhattan_8, DrSierra_8, Dulcita_20, Elezi_8, Emotion_7, Eraser_8, Estes_24, Exile_8, FiveHead_7, Floof_7, Flutur_8, Footloose_7, Forester_15, FreakyGoo_20, Gambol_8, GardenSalsa_23, GardenState_8, GenevaB15_23, Giorgio_8, Glaske16_20, Gompeii16_17, Graduation_19, Gretchen_8, Gumpizza_8, Halsey_8, Honk_7, IAmGroot_8, IPhone7_19, IUFootball_7, IgnatiusPatJac_16, Iter_8, IttyBittyPiggy_8, Izel_20, Janeemi_9, JasmineDragon_7, Joemato_8, JohnDoe_8, JohnThicc_7, Jstan_8, JuneStar_8, Kalimba_8, Kaylissa_8, KeAlii_8, KleverKiS_19, LadyAstra_7, Lego_8, Liebe_7, LilhomieP_18, Lizalica_8, London_8, MaGuCo_7, Mabodamaca_8, Maureen_7, MiniMommy_7, MissSwiss_8, Moss_8, MrMagoo_23, Mudpuppy_8, Mysterium_8, Nanosmite_23, Niobe_8, Nitro_8, ObiToo_8, Origami_7, PacerPaul_17, PandaPo_8, PegLeg_19, Percival_8, Phives_9, Pixelle_8, PowerRanger_17, Powerpuff_8, Pumpkins_8, Reedo_8, Reindeer_17, Rey_23, RockScotty_8, RoseMarie_19, Sabourin_8, Schaffner_8, ShakeltOph_7, Simpson_8, Skelbel_8, Skinny_20, SlimJimmy_18, Snek_8, Soondubu_8, Sooty_8, SpecialK_8, StrongArm_16, Stuu_8, SuMoo_7, Subaru_8, Sue2_8, SuperHands_9, Tallboi_8, Tbone_8, TforTroy_8, ThursdayNight_7, Tian_8, TpudiCK_20, Tripl3t_18, Tuck_9, Turab_8, Tutumahutu_8, Tweety19_8, TyDawg_19, UtzChips_7, VResidence_8, VroomVroom_7, Warda_8, Wildwest_9, Yang_8, YesChef_8, Zeta1847_7,

Summary by start number:

Start 1:

- Found in 2 of 274 (0.7%) of genes in pham
- Manual Annotations of this start: 1 of 239
- Called 50.0% of time when present
- Phage (with cluster) where this start called: DrSierra_8 (AZ1),

Start 4:

- Found in 6 of 274 (2.2%) of genes in pham
- Manual Annotations of this start: 1 of 239
- Called 16.7% of time when present
- Phage (with cluster) where this start called: TrvxScott_10 (BD2),

Start 5:

- Found in 4 of 274 (1.5%) of genes in pham
- Manual Annotations of this start: 1 of 239
- Called 25.0% of time when present
- Phage (with cluster) where this start called: Hank144_12 (BD2),

Start 6:

- Found in 21 of 274 (7.7%) of genes in pham
- Manual Annotations of this start: 1 of 239
- Called 4.8% of time when present
- Phage (with cluster) where this start called: Sujidade_12 (BD1),

Start 14:

- Found in 113 of 274 (41.2%) of genes in pham
- Manual Annotations of this start: 83 of 239
- Called 93.8% of time when present
- Phage (with cluster) where this start called: AEgle_8 (AZ1), AGrandiflora_8 (AZ1), AceofSpades_7 (AZ4), Adolin_8 (AZ1), Adumb2043_8 (AZ1), AinMach_8 (AZ7), Amploria_8 (AZ1), Amyev_8 (AZ1), Asa16_8 (AZ1), Ascela_8 (AZ1), Ashes_8 (AZ5), Barnstormer_7 (EH), Beaupre_8 (AZ5), Berrie_8 (AZ1), Cappuccino_8 (AZ5), Caron_7 (EH), Cassia_8 (AZ1), Cen1621_7 (EH), Community_9 (AZ1), Crewmate_9 (AZ1), Cyan_8 (AZ1), Donkey_8 (AZ5), DrManhattan_8 (AZ1), Elezi_8 (AZ1), Emotion_7 (AZ4), Eraser_8 (AZ1), Exile_8 (AZ6), FiveHead_7 (AZ4), Floof_7 (EH), Flutur_8 (AZ), Forester_15 (EH), Gambol_8 (AZ5), GardenState_8 (EH), Giorgio_8 (AZ5), Gretchen_8 (EH), Gumpizza_8 (AZ5), Halsey_8 (AZ5), IAmGroot_8 (EH), IUFootball_7 (AZ2), IttyBittyPiggy_8 (AZ1), Janeemi_9 (AZ1), JasmineDragon_7 (AZ4), Joemato_8 (AZ1), JohnDoe_8 (AZ1), JohnThicc_7 (AZ4), Jstan_8 (AZ1), JuneStar_8 (AZ1), Kalimba_8 (AZ5), Kaylissa_8 (AZ1), KeAlii_8 (AZ1), LadyAstra_7 (AZ4), Lego_8 (AZ1), Liebe_7 (AZ2), Lizalica_8 (AZ1), London_8 (AZ1), MaGuCo_7 (AZ2), Mabodamaca_8 (EH), Maureen_7 (AZ2), MiniMommy_7 (AZ4), MissSwiss_8 (AZ1), Moss_8 (AZ5), Mudpuppy_8 (AZ1), Mysterium_8 (AZ5), Niobe_8 (AZ1), Nitro_8 (AZ1), ObiToo_8 (AZ1), Origami_7 (AZ4), PandaPo_8 (AZ1), Percival_8 (EH), Phives_9 (AZ1), Pixelle_8 (AZ1), Powerpuff_8 (AZ1), Pumpkins_8 (AZ1), Reedo_8 (AZ1), RockScotty_8 (AZ5), Sabourin_8 (AZ5), Schaffner_8 (AZ1), ShakeltOph_7 (AZ4), Simpson_8 (AZ1), Skelbel_8 (AZ1), Snek_8 (AZ3), Soondubu_8 (AZ6), Sooty_8 (AZ5), SpecialK_8 (AZ5), Stuu_8 (AZ5), SuMoo_7 (EH), Subaru_8 (AZ1), Sue2_8 (AZ1), SuperHands_9 (EH), Tallboi_8 (AZ1), Tbone_8 (AZ1), TforTroy_8 (AZ1), ThursdayNight_7 (AZ), Tian_8 (AZ1), Tuck_9 (AZ1), Turab_8 (AZ1), Tutumahutu_8 (AZ1), Tweety19_8 (AZ3), UtzChips_7 (EH), VResidence_8 (AZ1), VroomVroom_7 (AZ4), Warda_8 (AZ1), Wildwest_9 (AZ1), Yang_8 (AZ1), YesChef_8 (AZ1), Zeta1847_7 (EH),

Start 16:

- Found in 1 of 274 (0.4%) of genes in pham
- Manual Annotations of this start: 1 of 239
- Called 100.0% of time when present
- Phage (with cluster) where this start called: Honk_7 (EH),

Start 17:

- Found in 25 of 274 (9.1%) of genes in pham
- Manual Annotations of this start: 22 of 239
- Called 100.0% of time when present

- Phage (with cluster) where this start called: Auspice_19 (M1), Aziz_23 (M2), Bongo_19 (M1), Bricole_19 (M1), Diminimus_20 (M1), Dulcita_20 (M1), Estes_24 (M2), FreakyGoo_20 (M1), GardenSalsa_23 (M2), GenevaB15_23 (M2), Glaske16_20 (M1), IPhane7_19 (M1), Izel_20 (M1), KleverKiS_19 (M1), LilhomieP_18 (M1), MrMagoo_23 (M2), Nanosmite_23 (M3), PegLeg_19 (M1), Reindeer_17 (M1), Rey_23 (M2), RoseMarie_19 (M1), Skinny_20 (M1), SlimJimmy_18 (M1), TpudiCK_20 (M1), TyDawg_19 (M1),

Start 20:

- Found in 126 of 274 (46.0%) of genes in pham
- Manual Annotations of this start: 116 of 239
- Called 97.6% of time when present
- Phage (with cluster) where this start called: Aaronocolus_11 (BD1), Alsaber_12 (BD3), Alvy_13 (BD2), Amela_11 (BD3), Amethyst_11 (BD2), Andris_11 (BD2), Animus_12 (BD2), Asten_11 (BD1), Attoomi_8 (singleton), Axiom_12 (BD2), BarryBee_13 (BD1), BartholomewSD_13 (BD2), BeardedLady_12 (BD1), Bovely_11 (BD1), Bowden_12 (BD2), Brataylor_12 (BD1), BroPlease_12 (BD4), BryanRecycles_12 (BD1), Caelum_12 (BD2), Caliburn_11 (BD1), Celery_14 (BD3), Celeste_11 (BD1), Celia_11 (BD6), Chucky_11 (BD1), Conan_12 (BD3), Danzina_12 (BD1), Dattran_12 (BD1), Daudau_11 (BD2), Dexers_10 (BD3), Diane_11 (BD2), Dwayne_11 (BD1), ELB20_10 (BD2), Eddasa_12 (BD1), Ejemplo_11 (BD1), ElGato_12 (BD3), Emaanora_13 (BD1), EnochSoames_12 (BD1), Esperer_11 (BD1), GirlDinner_11 (BD2), Goby_11 (BD1), Godpower_12 (BD1), GreenWeasel_13 (BD4), Haizum_11 (BD2), Hippo_11 (BD1), Hydra_13 (BD1), Indigo_11 (BD1), Issmi_12 (BD2), Itza_11 (BD6), Izzy_12 (BD1), Janus_12 (BD2), Jash_12 (BD1), Jevington_13 (BD2), Jhitchelle_10 (BD3), Kaine_11 (BD3), Katalie_12 (BD1), Kudrefre_17 (DU1), Kumao_18 (singleton), Lannister_12 (BD1), Legacy_11 (BD1), Leviticus_11 (BD1), Lika_11 (BD1), Loofah_12 (BD2), Lorelei_11 (BD1), Maneekul_11 (BD1), Marav_14 (BD2), Nabi_11 (BD1), Nanodon_13 (BD1), Nerdos_11 (BD1), Neville_17 (DU2), Nishikigoi_11 (BD2), Octobien14_18 (DU1), Oliynk_12 (BD1), Omar_12 (BD2), Ozzie_11 (BD1), OzzyJ_12 (BD1), Pablito_11 (BD2), Paedore_11 (BD2), Paolo_13 (BD2), Pavo_12 (BD3), Phettuccine_11 (BD1), Provolone_12 (BD3), Puginator_13 (BD2), R4_11 (BD2), Rabbitrun_19 (DU2), Rana_11 (BD1), RedBear_13 (BD1), Rusticus_12 (BD1), Saftant_11 (BD3), SarahRose_11 (BD1), Sephiroth_18 (DU1), Snorlax_11 (BD1), South40_12 (BD1), Speedwell_16 (BD3), SqueakyClean_12 (BD2), Sudan_11 (BD3), SunkenRoot_13 (BD3), SunsetPointe_11 (BD1), Superstar_13 (BD2), Syleon_18 (DU1), TagePhighter_12 (BD1), Tefunt_11 (BD2), Thestral_12 (BD2), TinaBelcher_11 (BD2), Toma_11 (BD1), Trax_17 (DU2), Triste_11 (BD1), Triumph_13 (BD2), TuanPN_11 (BD1), Unstoppable_11 (BD1), Urza_11 (BD6), Vanseggelen_14 (BD3), Verabelle_12 (BD3), Verse_11 (BD3), VieEnRose_11 (BD6), Werner_11 (BD1), Whatever_11 (BD1), Yasdnil_11 (BD1), Yosif_12 (BD3), Zainub_13 (BD2), ZamZam_11 (BD3), Zemlya_12 (BD1), phiCAM_12 (BD3), phiHau3_13 (BD4),

Start 21:

- Found in 13 of 274 (4.7%) of genes in pham
- Manual Annotations of this start: 11 of 239
- Called 100.0% of time when present
- Phage (with cluster) where this start called: Bexan_16 (A1), Bircsak_17 (A1), BluSpix_17 (A1), ChristmasHams_17 (A1), ConceptII_18 (A1), DrFeelGood_16 (A1), Gompeii16_17 (A1), Graduation_19 (A1), IgnatiusPatJac_16 (A1), PacerPaul_17 (A1), PowerRanger_17 (A1), StrongArm_16 (A1), Tripl3t_18 (A1),

Start 30:

- Found in 4 of 274 (1.5%) of genes in pham
- Manual Annotations of this start: 1 of 239
- Called 25.0% of time when present
- Phage (with cluster) where this start called: Iter_8 (AZ1),

Start 45:

- Found in 1 of 274 (0.4%) of genes in pham
- Manual Annotations of this start: 1 of 239
- Called 100.0% of time when present
- Phage (with cluster) where this start called: Footloose_7 (singleton),

Summary by clusters:

There are 21 clusters represented in this pham: singleton, AZ3, EH, DU2, BD2, DU1, M3, A1, BD4, M1, BD6, BD1, BD3, M2, AZ1, AZ2, AZ, AZ4, AZ5, AZ6, AZ7,

Info for manual annotations of cluster A1:

- Start number 21 was manually annotated 11 times for cluster A1.

Info for manual annotations of cluster AZ1:

- Start number 1 was manually annotated 1 time for cluster AZ1.
- Start number 14 was manually annotated 44 times for cluster AZ1.
- Start number 30 was manually annotated 1 time for cluster AZ1.

Info for manual annotations of cluster AZ2:

- Start number 14 was manually annotated 3 times for cluster AZ2.

Info for manual annotations of cluster AZ3:

- Start number 14 was manually annotated 2 times for cluster AZ3.

Info for manual annotations of cluster AZ4:

- Start number 14 was manually annotated 5 times for cluster AZ4.

Info for manual annotations of cluster AZ5:

- Start number 14 was manually annotated 16 times for cluster AZ5.

Info for manual annotations of cluster AZ6:

- Start number 14 was manually annotated 1 time for cluster AZ6.

Info for manual annotations of cluster BD1:

- Start number 6 was manually annotated 1 time for cluster BD1.
- Start number 20 was manually annotated 54 times for cluster BD1.

Info for manual annotations of cluster BD2:

- Start number 4 was manually annotated 1 time for cluster BD2.
- Start number 5 was manually annotated 1 time for cluster BD2.
- Start number 20 was manually annotated 31 times for cluster BD2.

Info for manual annotations of cluster BD3:

- Start number 20 was manually annotated 15 times for cluster BD3.

Info for manual annotations of cluster BD4:

- Start number 20 was manually annotated 3 times for cluster BD4.

Info for manual annotations of cluster BD6:

- Start number 20 was manually annotated 4 times for cluster BD6.

Info for manual annotations of cluster DU1:

- Start number 20 was manually annotated 4 times for cluster DU1.

Info for manual annotations of cluster DU2:

- Start number 20 was manually annotated 3 times for cluster DU2.

Info for manual annotations of cluster EH:

- Start number 14 was manually annotated 12 times for cluster EH.
- Start number 16 was manually annotated 1 time for cluster EH.

Info for manual annotations of cluster M1:

- Start number 17 was manually annotated 15 times for cluster M1.

Info for manual annotations of cluster M2:

- Start number 17 was manually annotated 6 times for cluster M2.

Info for manual annotations of cluster M3:

- Start number 17 was manually annotated 1 time for cluster M3.

Gene Information:

Gene: AEgle_8 Start: 7858, Stop: 8265, Start Num: 14

Candidate Starts for AEgle_8:

(Start: 14 @7858 has 83 MA's), (50, 8050), (57, 8095),

Gene: AGrandiflora_8 Start: 7839, Stop: 8246, Start Num: 14

Candidate Starts for AGrandiflora_8:

(Start: 14 @7839 has 83 MA's), (50, 8031),

Gene: Aaronocolus_11 Start: 8395, Stop: 8847, Start Num: 20

Candidate Starts for Aaronocolus_11:

(10, 8356), (Start: 20 @8395 has 116 MA's), (56, 8587), (83, 8743),

Gene: AceofSpades_7 Start: 6184, Stop: 6585, Start Num: 14

Candidate Starts for AceofSpades_7:

(Start: 14 @6184 has 83 MA's), (57, 6421),

Gene: Adolin_8 Start: 7854, Stop: 8258, Start Num: 14

Candidate Starts for Adolin_8:

(Start: 14 @7854 has 83 MA's), (46, 8034),

Gene: Adumb2043_8 Start: 7857, Stop: 8264, Start Num: 14

Candidate Starts for Adumb2043_8:

(Start: 14 @7857 has 83 MA's), (50, 8049), (57, 8094),

Gene: AinMach_8 Start: 7070, Stop: 7495, Start Num: 14

Candidate Starts for AinMach_8:

(Start: 1 @7010 has 1 MA's), (Start: 14 @7070 has 83 MA's), (34, 7163), (42, 7217), (50, 7262), (63, 7361), (95, 7481),

Gene: Alsaber_12 Start: 8454, Stop: 8915, Start Num: 20

Candidate Starts for Alsaber_12:

(Start: 20 @8454 has 116 MA's), (25, 8469), (56, 8643), (83, 8799), (109, 8901),

Gene: Alvy_13 Start: 8321, Stop: 8794, Start Num: 20

Candidate Starts for Alvy_13:

(Start: 4 @8255 has 1 MA's), (7, 8270), (9, 8276), (Start: 14 @8300 has 83 MA's), (Start: 20 @8321 has 116 MA's), (39, 8435), (56, 8516), (109, 8780),

Gene: Amela_11 Start: 8566, Stop: 9024, Start Num: 20

Candidate Starts for Amela_11:

(Start: 20 @8566 has 116 MA's), (32, 8629), (46, 8716), (56, 8755), (83, 8911), (108, 8995), (110, 9019),

Gene: Amethyst_11 Start: 8131, Stop: 8607, Start Num: 20

Candidate Starts for Amethyst_11:

(Start: 20 @8131 has 116 MA's), (36, 8218), (56, 8329),

Gene: Amploria_8 Start: 7857, Stop: 8264, Start Num: 14

Candidate Starts for Amploria_8:

(Start: 14 @7857 has 83 MA's), (50, 8049), (57, 8094),

Gene: Amyev_8 Start: 7873, Stop: 8280, Start Num: 14

Candidate Starts for Amyev_8:

(Start: 14 @7873 has 83 MA's), (50, 8065), (57, 8110),

Gene: Andris_11 Start: 8194, Stop: 8664, Start Num: 20

Candidate Starts for Andris_11:

(8, 8146), (Start: 20 @8194 has 116 MA's), (56, 8392), (65, 8479), (72, 8506), (93, 8584), (101, 8599),

Gene: Animus_12 Start: 8547, Stop: 9035, Start Num: 20

Candidate Starts for Animus_12:

(3, 8478), (Start: 20 @8547 has 116 MA's), (38, 8658), (43, 8688), (56, 8745), (72, 8859), (83, 8901), (84, 8907), (104, 8976),

Gene: Asa16_8 Start: 7826, Stop: 8233, Start Num: 14

Candidate Starts for Asa16_8:

(Start: 14 @7826 has 83 MA's), (49, 8015), (50, 8018), (52, 8024), (57, 8063),

Gene: Ascela_8 Start: 7852, Stop: 8259, Start Num: 14

Candidate Starts for Ascela_8:

(Start: 14 @7852 has 83 MA's), (Start: 30 @7909 has 1 MA's), (50, 8044), (57, 8089),

Gene: Ashes_8 Start: 7343, Stop: 7810, Start Num: 14

Candidate Starts for Ashes_8:

(2, 7292), (Start: 14 @7343 has 83 MA's), (48, 7535), (61, 7616),

Gene: Asten_11 Start: 8357, Stop: 8806, Start Num: 20
Candidate Starts for Asten_11:
(Start: 6 @8300 has 1 MA's), (Start: 20 @8357 has 116 MA's), (56, 8546), (101, 8750),

Gene: Attoomi_8 Start: 6589, Stop: 6960, Start Num: 20
Candidate Starts for Attoomi_8:
(Start: 20 @6589 has 116 MA's), (23, 6598), (25, 6607), (50, 6751), (64, 6856), (71, 6883), (87, 6934),

Gene: Auspice_19 Start: 11031, Stop: 11513, Start Num: 17
Candidate Starts for Auspice_19:
(Start: 17 @11031 has 22 MA's), (29, 11082), (47, 11211), (85, 11415), (90, 11439),

Gene: Axiom_12 Start: 8226, Stop: 8696, Start Num: 20
Candidate Starts for Axiom_12:
(Start: 20 @8226 has 116 MA's), (56, 8424), (72, 8538), (93, 8616),

Gene: Aziz_23 Start: 11594, Stop: 12076, Start Num: 17
Candidate Starts for Aziz_23:
(Start: 17 @11594 has 22 MA's), (29, 11645), (37, 11699), (47, 11774), (85, 11978), (90, 12002),

Gene: Barnstormer_7 Start: 7106, Stop: 7585, Start Num: 14
Candidate Starts for Barnstormer_7:
(13, 7100), (Start: 14 @7106 has 83 MA's), (105, 7577),

Gene: BarryBee_13 Start: 8364, Stop: 8813, Start Num: 20
Candidate Starts for BarryBee_13:
(Start: 20 @8364 has 116 MA's), (56, 8553), (101, 8757),

Gene: BartholomewSD_13 Start: 8321, Stop: 8794, Start Num: 20
Candidate Starts for BartholomewSD_13:
(Start: 4 @8255 has 1 MA's), (7, 8270), (9, 8276), (Start: 14 @8300 has 83 MA's), (Start: 20 @8321 has 116 MA's), (39, 8435), (56, 8516), (109, 8780),

Gene: BeardedLady_12 Start: 8642, Stop: 9094, Start Num: 20
Candidate Starts for BeardedLady_12:
(10, 8603), (Start: 20 @8642 has 116 MA's), (56, 8834), (83, 8990),

Gene: Beaupre_8 Start: 7344, Stop: 7811, Start Num: 14
Candidate Starts for Beaupre_8:
(2, 7293), (Start: 14 @7344 has 83 MA's), (48, 7536), (61, 7617),

Gene: Berrie_8 Start: 7831, Stop: 8238, Start Num: 14
Candidate Starts for Berrie_8:
(Start: 14 @7831 has 83 MA's), (Start: 30 @7888 has 1 MA's), (50, 8023), (57, 8068),

Gene: Bexan_16 Start: 13900, Stop: 14349, Start Num: 21
Candidate Starts for Bexan_16:
(Start: 21 @13900 has 11 MA's), (26, 13924), (79, 14236), (98, 14311),

Gene: Bircsak_17 Start: 13409, Stop: 13858, Start Num: 21
Candidate Starts for Bircsak_17:
(Start: 21 @13409 has 11 MA's), (26, 13433), (79, 13745), (98, 13820),

Gene: BluSpix_17 Start: 12911, Stop: 13360, Start Num: 21
Candidate Starts for BluSpix_17:
(Start: 21 @12911 has 11 MA's), (26, 12935), (79, 13247), (98, 13322),

Gene: Bongo_19 Start: 11031, Stop: 11513, Start Num: 17
Candidate Starts for Bongo_19:
(Start: 17 @11031 has 22 MA's), (29, 11082), (47, 11211), (85, 11415), (90, 11439),

Gene: Bovely_11 Start: 8401, Stop: 8853, Start Num: 20
Candidate Starts for Bovely_11:
(10, 8362), (Start: 20 @8401 has 116 MA's), (56, 8593), (83, 8749),

Gene: Bowden_12 Start: 8235, Stop: 8708, Start Num: 20
Candidate Starts for Bowden_12:
(Start: 4 @8169 has 1 MA's), (7, 8184), (9, 8190), (Start: 14 @8214 has 83 MA's), (Start: 20 @8235 has 116 MA's), (39, 8349), (56, 8430), (88, 8610), (109, 8694),

Gene: Brataylor_12 Start: 8367, Stop: 8816, Start Num: 20
Candidate Starts for Brataylor_12:
(10, 8328), (Start: 20 @8367 has 116 MA's), (46, 8517), (47, 8520), (56, 8556),

Gene: Bricole_19 Start: 11030, Stop: 11512, Start Num: 17
Candidate Starts for Bricole_19:
(Start: 17 @11030 has 22 MA's), (29, 11081), (47, 11210), (85, 11414), (90, 11438),

Gene: BroPlease_12 Start: 8450, Stop: 8917, Start Num: 20
Candidate Starts for BroPlease_12:
(Start: 20 @8450 has 116 MA's), (46, 8600), (47, 8603), (56, 8639), (65, 8726), (88, 8819), (96, 8837), (109, 8903),

Gene: BryanRecycles_12 Start: 8558, Stop: 9010, Start Num: 20
Candidate Starts for BryanRecycles_12:
(10, 8519), (Start: 20 @8558 has 116 MA's), (56, 8750), (83, 8906),

Gene: Caelum_12 Start: 8087, Stop: 8563, Start Num: 20
Candidate Starts for Caelum_12:
(Start: 20 @8087 has 116 MA's), (56, 8285), (109, 8549),

Gene: Caliburn_11 Start: 8375, Stop: 8827, Start Num: 20
Candidate Starts for Caliburn_11:
(10, 8336), (Start: 20 @8375 has 116 MA's), (56, 8567), (83, 8723),

Gene: Cappuccino_8 Start: 7252, Stop: 7719, Start Num: 14
Candidate Starts for Cappuccino_8:
(2, 7201), (Start: 14 @7252 has 83 MA's), (48, 7444), (61, 7525), (68, 7576),

Gene: Caron_7 Start: 7134, Stop: 7613, Start Num: 14
Candidate Starts for Caron_7:
(Start: 14 @7134 has 83 MA's), (97, 7554), (105, 7605),

Gene: Cassia_8 Start: 7956, Stop: 8351, Start Num: 14
Candidate Starts for Cassia_8:
(Start: 14 @7956 has 83 MA's), (50, 8148), (57, 8193),

Gene: Celery_14 Start: 8413, Stop: 8874, Start Num: 20

Candidate Starts for Celery_14:

(Start: 20 @8413 has 116 MA's), (25, 8428), (56, 8602), (83, 8758), (103, 8818), (108, 8845), (109, 8860),

Gene: Celeste_11 Start: 8365, Stop: 8814, Start Num: 20

Candidate Starts for Celeste_11:

(Start: 6 @8308 has 1 MA's), (Start: 20 @8365 has 116 MA's), (46, 8515), (47, 8518), (56, 8554),

Gene: Celia_11 Start: 8664, Stop: 9149, Start Num: 20

Candidate Starts for Celia_11:

(Start: 20 @8664 has 116 MA's), (47, 8817), (56, 8853), (65, 8940),

Gene: Cen1621_7 Start: 6257, Stop: 6748, Start Num: 14

Candidate Starts for Cen1621_7:

(Start: 14 @6257 has 83 MA's), (102, 6710),

Gene: ChristmasHams_17 Start: 12957, Stop: 13406, Start Num: 21

Candidate Starts for ChristmasHams_17:

(Start: 21 @12957 has 11 MA's), (26, 12981), (79, 13293), (98, 13368),

Gene: Chucky_11 Start: 8365, Stop: 8814, Start Num: 20

Candidate Starts for Chucky_11:

(Start: 20 @8365 has 116 MA's), (56, 8554), (101, 8758),

Gene: Community_9 Start: 8908, Stop: 9315, Start Num: 14

Candidate Starts for Community_9:

(Start: 14 @8908 has 83 MA's), (46, 9088), (49, 9097), (50, 9100), (52, 9106),

Gene: Conan_12 Start: 8164, Stop: 8625, Start Num: 20

Candidate Starts for Conan_12:

(Start: 20 @8164 has 116 MA's), (25, 8179), (56, 8353), (83, 8509), (109, 8611),

Gene: ConceptII_18 Start: 13371, Stop: 13820, Start Num: 21

Candidate Starts for ConceptII_18:

(Start: 21 @13371 has 11 MA's), (79, 13707), (98, 13782),

Gene: Crewmate_9 Start: 8291, Stop: 8698, Start Num: 14

Candidate Starts for Crewmate_9:

(Start: 14 @8291 has 83 MA's), (46, 8471), (50, 8483), (57, 8528),

Gene: Cyan_8 Start: 7843, Stop: 8250, Start Num: 14

Candidate Starts for Cyan_8:

(Start: 14 @7843 has 83 MA's), (50, 8035),

Gene: Danzina_12 Start: 8569, Stop: 9018, Start Num: 20

Candidate Starts for Danzina_12:

(Start: 6 @8512 has 1 MA's), (Start: 20 @8569 has 116 MA's), (56, 8758),

Gene: Dattran_12 Start: 8364, Stop: 8813, Start Num: 20

Candidate Starts for Dattran_12:

(Start: 6 @8307 has 1 MA's), (Start: 20 @8364 has 116 MA's), (46, 8514), (47, 8517), (56, 8553),

Gene: Daudau_11 Start: 8198, Stop: 8698, Start Num: 20

Candidate Starts for Daudau_11:

(9, 8156), (Start: 20 @8198 has 116 MA's), (56, 8396), (73, 8516), (83, 8552), (84, 8558),

Gene: Dexers_10 Start: 8157, Stop: 8618, Start Num: 20

Candidate Starts for Dexers_10:

(Start: 20 @8157 has 116 MA's), (25, 8172), (56, 8346), (83, 8502), (109, 8604),

Gene: Diane_11 Start: 8130, Stop: 8606, Start Num: 20

Candidate Starts for Diane_11:

(Start: 20 @8130 has 116 MA's), (47, 8292), (56, 8328),

Gene: Diminimus_20 Start: 11030, Stop: 11512, Start Num: 17

Candidate Starts for Diminimus_20:

(Start: 17 @11030 has 22 MA's), (29, 11081), (47, 11210), (85, 11414), (90, 11438),

Gene: Donkey_8 Start: 7252, Stop: 7719, Start Num: 14

Candidate Starts for Donkey_8:

(2, 7201), (Start: 14 @7252 has 83 MA's), (48, 7444), (61, 7525), (68, 7576),

Gene: DrFeelGood_16 Start: 12986, Stop: 13435, Start Num: 21

Candidate Starts for DrFeelGood_16:

(Start: 21 @12986 has 11 MA's), (26, 13010), (79, 13322), (98, 13397),

Gene: DrManhattan_8 Start: 7844, Stop: 8248, Start Num: 14

Candidate Starts for DrManhattan_8:

(Start: 14 @7844 has 83 MA's), (46, 8024), (50, 8036),

Gene: DrSierra_8 Start: 7783, Stop: 8259, Start Num: 1

Candidate Starts for DrSierra_8:

(Start: 1 @7783 has 1 MA's), (11, 7828), (18, 7855),

Gene: Dulcita_20 Start: 11030, Stop: 11512, Start Num: 17

Candidate Starts for Dulcita_20:

(Start: 17 @11030 has 22 MA's), (29, 11081), (47, 11210), (85, 11414), (90, 11438),

Gene: Dwayne_11 Start: 8364, Stop: 8813, Start Num: 20

Candidate Starts for Dwayne_11:

(Start: 6 @8307 has 1 MA's), (Start: 20 @8364 has 116 MA's), (56, 8553), (101, 8757),

Gene: ELB20_10 Start: 8214, Stop: 8711, Start Num: 20

Candidate Starts for ELB20_10:

(Start: 20 @8214 has 116 MA's), (50, 8385), (56, 8412), (72, 8526), (83, 8568), (84, 8574), (109, 8697),

Gene: Eddasa_12 Start: 8558, Stop: 9010, Start Num: 20

Candidate Starts for Eddasa_12:

(10, 8519), (Start: 20 @8558 has 116 MA's), (56, 8750), (83, 8906),

Gene: Ejemplo_11 Start: 8367, Stop: 8816, Start Num: 20

Candidate Starts for Ejemplo_11:

(Start: 6 @8310 has 1 MA's), (Start: 20 @8367 has 116 MA's), (56, 8556), (101, 8760),

Gene: ElGato_12 Start: 8167, Stop: 8628, Start Num: 20
Candidate Starts for ElGato_12:
(Start: 20 @8167 has 116 MA's), (25, 8182), (56, 8356), (83, 8512), (109, 8614),

Gene: Elezi_8 Start: 7827, Stop: 8234, Start Num: 14
Candidate Starts for Elezi_8:
(Start: 14 @7827 has 83 MA's), (49, 8016), (50, 8019), (52, 8025), (57, 8064),

Gene: Emaanora_13 Start: 8364, Stop: 8813, Start Num: 20
Candidate Starts for Emaanora_13:
(Start: 20 @8364 has 116 MA's), (56, 8553), (101, 8757),

Gene: Emotion_7 Start: 6195, Stop: 6596, Start Num: 14
Candidate Starts for Emotion_7:
(Start: 14 @6195 has 83 MA's),

Gene: EnochSoames_12 Start: 8554, Stop: 9006, Start Num: 20
Candidate Starts for EnochSoames_12:
(10, 8515), (Start: 20 @8554 has 116 MA's), (56, 8746), (83, 8902),

Gene: Eraser_8 Start: 7827, Stop: 8234, Start Num: 14
Candidate Starts for Eraser_8:
(Start: 14 @7827 has 83 MA's), (49, 8016), (50, 8019), (52, 8025), (57, 8064),

Gene: Esperer_11 Start: 8395, Stop: 8847, Start Num: 20
Candidate Starts for Esperer_11:
(10, 8356), (Start: 20 @8395 has 116 MA's), (56, 8587), (83, 8743),

Gene: Estes_24 Start: 11731, Stop: 12213, Start Num: 17
Candidate Starts for Estes_24:
(Start: 17 @11731 has 22 MA's), (29, 11782), (37, 11836), (47, 11911), (85, 12115), (90, 12139),

Gene: Exile_8 Start: 7864, Stop: 8262, Start Num: 14
Candidate Starts for Exile_8:
(Start: 14 @7864 has 83 MA's), (46, 8044), (50, 8056),

Gene: FiveHead_7 Start: 6168, Stop: 6569, Start Num: 14
Candidate Starts for FiveHead_7:
(Start: 14 @6168 has 83 MA's), (50, 6360), (57, 6405),

Gene: Floof_7 Start: 6625, Stop: 7029, Start Num: 14
Candidate Starts for Floof_7:
(Start: 14 @6625 has 83 MA's), (27, 6670), (61, 6895), (62, 6901),

Gene: Flutur_8 Start: 7842, Stop: 8249, Start Num: 14
Candidate Starts for Flutur_8:
(Start: 14 @7842 has 83 MA's), (50, 8034),

Gene: Footloose_7 Start: 5771, Stop: 6229, Start Num: 45
Candidate Starts for Footloose_7:
(Start: 45 @5771 has 1 MA's), (60, 5867), (72, 5942), (74, 5951), (76, 5963), (81, 5978), (97, 6032),
(107, 6101), (111, 6143), (112, 6188),

Gene: Forester_15 Start: 8209, Stop: 8697, Start Num: 14
Candidate Starts for Forester_15:
(Start: 14 @8209 has 83 MA's), (27, 8254), (61, 8479), (66, 8524), (92, 8617),

Gene: FreakyGoo_20 Start: 11031, Stop: 11513, Start Num: 17
Candidate Starts for FreakyGoo_20:
(Start: 17 @11031 has 22 MA's), (29, 11082), (47, 11211), (85, 11415), (90, 11439),

Gene: Gambol_8 Start: 7252, Stop: 7719, Start Num: 14
Candidate Starts for Gambol_8:
(2, 7201), (Start: 14 @7252 has 83 MA's), (48, 7444), (61, 7525), (68, 7576),

Gene: GardenSalsa_23 Start: 11567, Stop: 12049, Start Num: 17
Candidate Starts for GardenSalsa_23:
(Start: 17 @11567 has 22 MA's), (29, 11618), (37, 11672), (47, 11747), (85, 11951), (90, 11975),

Gene: GardenState_8 Start: 7336, Stop: 7818, Start Num: 14
Candidate Starts for GardenState_8:
(Start: 14 @7336 has 83 MA's), (27, 7387),

Gene: GenevaB15_23 Start: 11594, Stop: 12076, Start Num: 17
Candidate Starts for GenevaB15_23:
(Start: 17 @11594 has 22 MA's), (29, 11645), (37, 11699), (47, 11774), (85, 11978), (90, 12002),

Gene: Giorgio_8 Start: 7345, Stop: 7812, Start Num: 14
Candidate Starts for Giorgio_8:
(2, 7294), (Start: 14 @7345 has 83 MA's), (48, 7537), (61, 7618),

Gene: GirlDinner_11 Start: 8209, Stop: 8697, Start Num: 20
Candidate Starts for GirlDinner_11:
(Start: 20 @8209 has 116 MA's), (38, 8320), (43, 8350), (56, 8407), (72, 8521), (83, 8563), (84, 8569),
(104, 8638),

Gene: Glaske16_20 Start: 11030, Stop: 11512, Start Num: 17
Candidate Starts for Glaske16_20:
(Start: 17 @11030 has 22 MA's), (29, 11081), (47, 11210), (85, 11414), (90, 11438),

Gene: Goby_11 Start: 8367, Stop: 8816, Start Num: 20
Candidate Starts for Goby_11:
(Start: 6 @8310 has 1 MA's), (Start: 20 @8367 has 116 MA's), (56, 8556), (83, 8712),

Gene: Godpower_12 Start: 8382, Stop: 8831, Start Num: 20
Candidate Starts for Godpower_12:
(Start: 20 @8382 has 116 MA's), (56, 8571), (83, 8727),

Gene: Gompeii16_17 Start: 13410, Stop: 13859, Start Num: 21
Candidate Starts for Gompeii16_17:
(Start: 21 @13410 has 11 MA's), (26, 13434), (79, 13746), (98, 13821),

Gene: Graduation_19 Start: 13675, Stop: 14124, Start Num: 21
Candidate Starts for Graduation_19:
(Start: 21 @13675 has 11 MA's), (26, 13699), (79, 14011), (98, 14086),

Gene: GreenWeasel_13 Start: 8459, Stop: 8926, Start Num: 20
Candidate Starts for GreenWeasel_13:
(Start: 20 @8459 has 116 MA's), (46, 8609), (47, 8612), (56, 8648), (65, 8735), (88, 8828), (96, 8846),
(109, 8912),

Gene: Gretchen_8 Start: 8203, Stop: 8691, Start Num: 14
Candidate Starts for Gretchen_8:
(Start: 14 @8203 has 83 MA's), (27, 8248), (61, 8473), (66, 8518), (92, 8611),

Gene: Gumpizza_8 Start: 7344, Stop: 7811, Start Num: 14
Candidate Starts for Gumpizza_8:
(2, 7293), (Start: 14 @7344 has 83 MA's), (48, 7536), (61, 7617),

Gene: Haizum_11 Start: 8160, Stop: 8636, Start Num: 20
Candidate Starts for Haizum_11:
(Start: 20 @8160 has 116 MA's), (47, 8322), (56, 8358),

Gene: Halsey_8 Start: 7343, Stop: 7810, Start Num: 14
Candidate Starts for Halsey_8:
(2, 7292), (Start: 14 @7343 has 83 MA's), (48, 7535), (61, 7616),

Gene: Hank144_12 Start: 8436, Stop: 8966, Start Num: 5
Candidate Starts for Hank144_12:
(Start: 5 @8436 has 1 MA's), (8, 8451), (Start: 20 @8499 has 116 MA's), (51, 8673), (56, 8697), (72,
8811),

Gene: Hippo_11 Start: 8364, Stop: 8813, Start Num: 20
Candidate Starts for Hippo_11:
(Start: 20 @8364 has 116 MA's), (56, 8553), (101, 8757),

Gene: Honk_7 Start: 6227, Stop: 6709, Start Num: 16
Candidate Starts for Honk_7:
(Start: 16 @6227 has 1 MA's), (44, 6386), (51, 6416), (82, 6587), (102, 6665),

Gene: Hydra_13 Start: 8923, Stop: 9375, Start Num: 20
Candidate Starts for Hydra_13:
(10, 8884), (Start: 20 @8923 has 116 MA's), (56, 9115), (83, 9271),

Gene: IAmGroot_8 Start: 7980, Stop: 8462, Start Num: 14
Candidate Starts for IAmGroot_8:
(Start: 14 @7980 has 83 MA's), (27, 8031),

Gene: IPhane7_19 Start: 11031, Stop: 11513, Start Num: 17
Candidate Starts for IPhane7_19:
(Start: 17 @11031 has 22 MA's), (29, 11082), (47, 11211), (85, 11415), (90, 11439),

Gene: IUFootball_7 Start: 6336, Stop: 6731, Start Num: 14
Candidate Starts for IUFootball_7:
(Start: 14 @6336 has 83 MA's), (50, 6528), (70, 6657),

Gene: IgnatiusPatJac_16 Start: 12912, Stop: 13361, Start Num: 21
Candidate Starts for IgnatiusPatJac_16:
(Start: 21 @12912 has 11 MA's), (26, 12936), (79, 13248), (98, 13323),

Gene: Indigo_11 Start: 8395, Stop: 8847, Start Num: 20

Candidate Starts for Indigo_11:

(10, 8356), (Start: 20 @8395 has 116 MA's), (56, 8587), (83, 8743),

Gene: Issmi_12 Start: 8440, Stop: 8916, Start Num: 20

Candidate Starts for Issmi_12:

(Start: 20 @8440 has 116 MA's), (56, 8638), (93, 8830), (109, 8902),

Gene: Iter_8 Start: 7909, Stop: 8259, Start Num: 30

Candidate Starts for Iter_8:

(Start: 14 @7852 has 83 MA's), (Start: 30 @7909 has 1 MA's), (50, 8044), (57, 8089),

Gene: IttyBittyPiggy_8 Start: 7843, Stop: 8253, Start Num: 14

Candidate Starts for IttyBittyPiggy_8:

(Start: 14 @7843 has 83 MA's), (50, 8035), (57, 8080),

Gene: Itza_11 Start: 8587, Stop: 9072, Start Num: 20

Candidate Starts for Itza_11:

(Start: 20 @8587 has 116 MA's), (47, 8740), (56, 8776), (65, 8863),

Gene: Izel_20 Start: 11030, Stop: 11512, Start Num: 17

Candidate Starts for Izel_20:

(Start: 17 @11030 has 22 MA's), (29, 11081), (47, 11210), (85, 11414), (90, 11438),

Gene: Izzy_12 Start: 8605, Stop: 9057, Start Num: 20

Candidate Starts for Izzy_12:

(10, 8566), (Start: 20 @8605 has 116 MA's), (56, 8797), (83, 8953),

Gene: Janeemi_9 Start: 8938, Stop: 9369, Start Num: 14

Candidate Starts for Janeemi_9:

(Start: 14 @8938 has 83 MA's), (50, 9130), (57, 9175),

Gene: Janus_12 Start: 8547, Stop: 9035, Start Num: 20

Candidate Starts for Janus_12:

(3, 8478), (Start: 20 @8547 has 116 MA's), (38, 8658), (43, 8688), (56, 8745), (72, 8859), (83, 8901), (84, 8907), (104, 8976),

Gene: Jash_12 Start: 8558, Stop: 9010, Start Num: 20

Candidate Starts for Jash_12:

(10, 8519), (Start: 20 @8558 has 116 MA's), (56, 8750), (83, 8906),

Gene: JasmineDragon_7 Start: 6172, Stop: 6573, Start Num: 14

Candidate Starts for JasmineDragon_7:

(Start: 14 @6172 has 83 MA's), (57, 6409),

Gene: Jevington_13 Start: 8742, Stop: 9218, Start Num: 20

Candidate Starts for Jevington_13:

(Start: 20 @8742 has 116 MA's), (40, 8862), (47, 8904), (65, 9027), (93, 9132), (101, 9147), (109, 9204),

Gene: Jhitchelle_10 Start: 8093, Stop: 8554, Start Num: 20

Candidate Starts for Jhitchelle_10:

(Start: 20 @8093 has 116 MA's), (25, 8108), (56, 8282), (83, 8438), (109, 8540),

Gene: Joemato_8 Start: 7843, Stop: 8250, Start Num: 14

Candidate Starts for Joemato_8:

(Start: 14 @7843 has 83 MA's), (50, 8035),

Gene: JohnDoe_8 Start: 7841, Stop: 8248, Start Num: 14

Candidate Starts for JohnDoe_8:

(Start: 14 @7841 has 83 MA's), (50, 8033),

Gene: JohnThicc_7 Start: 6168, Stop: 6569, Start Num: 14

Candidate Starts for JohnThicc_7:

(Start: 14 @6168 has 83 MA's), (50, 6360), (57, 6405),

Gene: Jstan_8 Start: 7827, Stop: 8234, Start Num: 14

Candidate Starts for Jstan_8:

(Start: 14 @7827 has 83 MA's), (49, 8016), (50, 8019), (52, 8025), (57, 8064),

Gene: JuneStar_8 Start: 7957, Stop: 8352, Start Num: 14

Candidate Starts for JuneStar_8:

(Start: 14 @7957 has 83 MA's), (57, 8194),

Gene: Kaine_11 Start: 8157, Stop: 8618, Start Num: 20

Candidate Starts for Kaine_11:

(Start: 20 @8157 has 116 MA's), (25, 8172), (56, 8346), (83, 8502), (109, 8604),

Gene: Kalimba_8 Start: 7252, Stop: 7719, Start Num: 14

Candidate Starts for Kalimba_8:

(2, 7201), (Start: 14 @7252 has 83 MA's), (48, 7444), (61, 7525), (68, 7576),

Gene: Katalie_12 Start: 8637, Stop: 9086, Start Num: 20

Candidate Starts for Katalie_12:

(Start: 6 @8580 has 1 MA's), (Start: 20 @8637 has 116 MA's), (56, 8826),

Gene: Kaylissa_8 Start: 7844, Stop: 8251, Start Num: 14

Candidate Starts for Kaylissa_8:

(Start: 14 @7844 has 83 MA's), (50, 8036),

Gene: KeAlii_8 Start: 7870, Stop: 8277, Start Num: 14

Candidate Starts for KeAlii_8:

(Start: 14 @7870 has 83 MA's), (Start: 30 @7927 has 1 MA's),

Gene: KleverKiS_19 Start: 11027, Stop: 11509, Start Num: 17

Candidate Starts for KleverKiS_19:

(Start: 17 @11027 has 22 MA's), (29, 11078), (47, 11207), (85, 11411), (90, 11435),

Gene: Kudfre_17 Start: 10644, Stop: 11111, Start Num: 20

Candidate Starts for Kudfre_17:

(19, 10641), (Start: 20 @10644 has 116 MA's), (23, 10653), (29, 10683), (33, 10719), (36, 10737), (47, 10812), (51, 10824), (52, 10827), (61, 10902), (75, 10986), (77, 10992), (99, 11076), (100, 11082),

Gene: Kumao_18 Start: 10373, Stop: 10849, Start Num: 20

Candidate Starts for Kumao_18:

(Start: 20 @10373 has 116 MA's), (25, 10391), (29, 10412), (31, 10418), (35, 10460), (37, 10472), (56, 10583), (57, 10601), (59, 10613), (86, 10754), (89, 10772), (94, 10784),

Gene: LadyAstra_7 Start: 6168, Stop: 6569, Start Num: 14

Candidate Starts for LadyAstra_7:

(Start: 14 @6168 has 83 MA's), (50, 6360), (57, 6405),

Gene: Lannister_12 Start: 8385, Stop: 8834, Start Num: 20

Candidate Starts for Lannister_12:

(Start: 20 @8385 has 116 MA's), (56, 8574),

Gene: Legacy_11 Start: 8366, Stop: 8818, Start Num: 20

Candidate Starts for Legacy_11:

(10, 8327), (Start: 20 @8366 has 116 MA's), (56, 8558), (83, 8714),

Gene: Lego_8 Start: 7842, Stop: 8249, Start Num: 14

Candidate Starts for Lego_8:

(Start: 14 @7842 has 83 MA's), (50, 8034),

Gene: Leviticus_11 Start: 8395, Stop: 8847, Start Num: 20

Candidate Starts for Leviticus_11:

(10, 8356), (Start: 20 @8395 has 116 MA's), (56, 8587), (83, 8743),

Gene: Liebe_7 Start: 6336, Stop: 6731, Start Num: 14

Candidate Starts for Liebe_7:

(Start: 14 @6336 has 83 MA's), (50, 6528), (70, 6657),

Gene: Lika_11 Start: 8383, Stop: 8832, Start Num: 20

Candidate Starts for Lika_11:

(Start: 20 @8383 has 116 MA's), (56, 8572), (83, 8728),

Gene: LilhomieP_18 Start: 11031, Stop: 11513, Start Num: 17

Candidate Starts for LilhomieP_18:

(Start: 17 @11031 has 22 MA's), (29, 11082), (47, 11211), (85, 11415), (90, 11439),

Gene: Lizalica_8 Start: 7834, Stop: 8241, Start Num: 14

Candidate Starts for Lizalica_8:

(Start: 14 @7834 has 83 MA's), (50, 8026), (57, 8071),

Gene: London_8 Start: 7827, Stop: 8234, Start Num: 14

Candidate Starts for London_8:

(Start: 14 @7827 has 83 MA's), (49, 8016), (50, 8019), (52, 8025), (57, 8064),

Gene: Loofah_12 Start: 8254, Stop: 8751, Start Num: 20

Candidate Starts for Loofah_12:

(Start: 20 @8254 has 116 MA's), (50, 8425), (56, 8452), (72, 8566), (83, 8608), (84, 8614), (109, 8737),

Gene: Lorelei_11 Start: 8361, Stop: 8804, Start Num: 20

Candidate Starts for Lorelei_11:

(Start: 6 @8304 has 1 MA's), (Start: 20 @8361 has 116 MA's), (56, 8544), (101, 8748),

Gene: MaGuCo_7 Start: 6195, Stop: 6590, Start Num: 14

Candidate Starts for MaGuCo_7:

(Start: 14 @6195 has 83 MA's), (50, 6387), (70, 6516),

Gene: Mabodamaca_8 Start: 7413, Stop: 7892, Start Num: 14

Candidate Starts for Mabodamaca_8:

(Start: 14 @7413 has 83 MA's), (62, 7689), (105, 7884),

Gene: Maneekul_11 Start: 8366, Stop: 8815, Start Num: 20

Candidate Starts for Maneekul_11:

(Start: 6 @8309 has 1 MA's), (Start: 20 @8366 has 116 MA's), (56, 8555), (101, 8759),

Gene: Marav_14 Start: 9092, Stop: 9568, Start Num: 20

Candidate Starts for Marav_14:

(Start: 20 @9092 has 116 MA's), (40, 9212), (47, 9254), (56, 9290), (93, 9482), (109, 9554),

Gene: Maureen_7 Start: 6336, Stop: 6731, Start Num: 14

Candidate Starts for Maureen_7:

(Start: 14 @6336 has 83 MA's), (50, 6528), (70, 6657),

Gene: MiniMommy_7 Start: 6172, Stop: 6573, Start Num: 14

Candidate Starts for MiniMommy_7:

(Start: 14 @6172 has 83 MA's), (57, 6409),

Gene: MissSwiss_8 Start: 7857, Stop: 8261, Start Num: 14

Candidate Starts for MissSwiss_8:

(Start: 14 @7857 has 83 MA's), (40, 7992), (46, 8037), (50, 8049),

Gene: Moss_8 Start: 7343, Stop: 7810, Start Num: 14

Candidate Starts for Moss_8:

(2, 7292), (Start: 14 @7343 has 83 MA's), (48, 7535), (61, 7616),

Gene: MrMagoo_23 Start: 11567, Stop: 12049, Start Num: 17

Candidate Starts for MrMagoo_23:

(Start: 17 @11567 has 22 MA's), (29, 11618), (37, 11672), (47, 11747), (85, 11951), (90, 11975),

Gene: Mudpuppy_8 Start: 7842, Stop: 8249, Start Num: 14

Candidate Starts for Mudpuppy_8:

(Start: 14 @7842 has 83 MA's), (50, 8034),

Gene: Mysterium_8 Start: 7344, Stop: 7811, Start Num: 14

Candidate Starts for Mysterium_8:

(2, 7293), (Start: 14 @7344 has 83 MA's), (48, 7536), (61, 7617),

Gene: Nabi_11 Start: 8361, Stop: 8804, Start Num: 20

Candidate Starts for Nabi_11:

(Start: 6 @8304 has 1 MA's), (Start: 20 @8361 has 116 MA's), (56, 8544), (101, 8748),

Gene: Nanodon_13 Start: 8557, Stop: 9006, Start Num: 20

Candidate Starts for Nanodon_13:

(Start: 20 @8557 has 116 MA's), (56, 8746),

Gene: Nanosmite_23 Start: 11785, Stop: 12267, Start Num: 17

Candidate Starts for Nanosmite_23:

(15, 11779), (Start: 17 @11785 has 22 MA's), (22, 11806), (29, 11836), (47, 11965), (90, 12193),

Gene: Nerdos_11 Start: 8395, Stop: 8847, Start Num: 20
Candidate Starts for Nerdos_11:
(10, 8356), (Start: 20 @8395 has 116 MA's), (56, 8587), (83, 8743),

Gene: Neville_17 Start: 10452, Stop: 10922, Start Num: 20
Candidate Starts for Neville_17:
(Start: 20 @10452 has 116 MA's), (51, 10653), (52, 10656), (53, 10659), (54, 10668), (55, 10674), (58, 10701), (69, 10785), (91, 10869), (99, 10899), (100, 10905),

Gene: Niobe_8 Start: 7827, Stop: 8234, Start Num: 14
Candidate Starts for Niobe_8:
(Start: 14 @7827 has 83 MA's), (49, 8016), (50, 8019), (52, 8025), (57, 8064),

Gene: Nishikigoi_11 Start: 8160, Stop: 8636, Start Num: 20
Candidate Starts for Nishikigoi_11:
(Start: 20 @8160 has 116 MA's), (47, 8322), (56, 8358),

Gene: Nitro_8 Start: 7844, Stop: 8251, Start Num: 14
Candidate Starts for Nitro_8:
(Start: 14 @7844 has 83 MA's), (50, 8036), (57, 8081),

Gene: ObiToo_8 Start: 8041, Stop: 8436, Start Num: 14
Candidate Starts for ObiToo_8:
(Start: 14 @8041 has 83 MA's), (46, 8221), (50, 8233), (57, 8278),

Gene: Octobien14_18 Start: 11707, Stop: 12174, Start Num: 20
Candidate Starts for Octobien14_18:
(19, 11704), (Start: 20 @11707 has 116 MA's), (23, 11716), (29, 11746), (33, 11782), (47, 11875), (51, 11887), (52, 11890), (61, 11965), (75, 12049), (77, 12055), (78, 12058), (80, 12064), (99, 12139), (100, 12145),

Gene: Oliynyk_12 Start: 8558, Stop: 9010, Start Num: 20
Candidate Starts for Oliynyk_12:
(10, 8519), (Start: 20 @8558 has 116 MA's), (56, 8750), (83, 8906),

Gene: Omar_12 Start: 8382, Stop: 8870, Start Num: 20
Candidate Starts for Omar_12:
(Start: 20 @8382 has 116 MA's), (47, 8544), (56, 8580), (65, 8667), (84, 8742), (104, 8811),

Gene: Origami_7 Start: 6168, Stop: 6569, Start Num: 14
Candidate Starts for Origami_7:
(Start: 14 @6168 has 83 MA's), (50, 6360), (57, 6405),

Gene: Ozzie_11 Start: 8375, Stop: 8827, Start Num: 20
Candidate Starts for Ozzie_11:
(10, 8336), (Start: 20 @8375 has 116 MA's), (56, 8567), (83, 8723),

Gene: OzzyJ_12 Start: 8358, Stop: 8807, Start Num: 20
Candidate Starts for OzzyJ_12:
(Start: 6 @8301 has 1 MA's), (Start: 20 @8358 has 116 MA's), (56, 8547), (101, 8751),

Gene: Pablito_11 Start: 8226, Stop: 8696, Start Num: 20

Candidate Starts for Pablito_11:

(Start: 5 @8163 has 1 MA's), (8, 8178), (Start: 20 @8226 has 116 MA's), (56, 8424), (65, 8511), (72, 8538), (84, 8586),

Gene: PacerPaul_17 Start: 13148, Stop: 13597, Start Num: 21

Candidate Starts for PacerPaul_17:

(Start: 21 @13148 has 11 MA's), (79, 13484), (98, 13559),

Gene: Paedore_11 Start: 8254, Stop: 8751, Start Num: 20

Candidate Starts for Paedore_11:

(Start: 20 @8254 has 116 MA's), (50, 8425), (56, 8452), (72, 8566), (83, 8608), (84, 8614), (109, 8737),

Gene: PandaPo_8 Start: 7857, Stop: 8261, Start Num: 14

Candidate Starts for PandaPo_8:

(Start: 14 @7857 has 83 MA's), (40, 7992), (46, 8037), (50, 8049),

Gene: Paolo_13 Start: 8769, Stop: 9245, Start Num: 20

Candidate Starts for Paolo_13:

(Start: 5 @8706 has 1 MA's), (8, 8721), (Start: 20 @8769 has 116 MA's), (40, 8889), (56, 8967), (93, 9159), (109, 9231),

Gene: Pavo_12 Start: 8437, Stop: 8898, Start Num: 20

Candidate Starts for Pavo_12:

(Start: 20 @8437 has 116 MA's), (25, 8452), (56, 8626), (83, 8782), (109, 8884),

Gene: PegLeg_19 Start: 11030, Stop: 11512, Start Num: 17

Candidate Starts for PegLeg_19:

(Start: 17 @11030 has 22 MA's), (29, 11081), (47, 11210), (85, 11414), (90, 11438),

Gene: Percival_8 Start: 8037, Stop: 8525, Start Num: 14

Candidate Starts for Percival_8:

(Start: 14 @8037 has 83 MA's), (27, 8082), (50, 8232), (61, 8307), (66, 8352), (92, 8445),

Gene: Phettuccine_11 Start: 8395, Stop: 8847, Start Num: 20

Candidate Starts for Phettuccine_11:

(10, 8356), (Start: 20 @8395 has 116 MA's), (56, 8587), (83, 8743),

Gene: Phives_9 Start: 8933, Stop: 9340, Start Num: 14

Candidate Starts for Phives_9:

(Start: 14 @8933 has 83 MA's), (40, 9068), (50, 9125), (57, 9170),

Gene: Pixelle_8 Start: 7876, Stop: 8283, Start Num: 14

Candidate Starts for Pixelle_8:

(Start: 14 @7876 has 83 MA's), (40, 8011), (50, 8068), (57, 8113),

Gene: PowerRanger_17 Start: 13508, Stop: 13957, Start Num: 21

Candidate Starts for PowerRanger_17:

(Start: 21 @13508 has 11 MA's), (26, 13532), (79, 13844), (98, 13919),

Gene: Powerpuff_8 Start: 7893, Stop: 8300, Start Num: 14

Candidate Starts for Powerpuff_8:

(Start: 14 @7893 has 83 MA's), (50, 8085),

Gene: Provolone_12 Start: 8167, Stop: 8628, Start Num: 20
Candidate Starts for Provolone_12:
(Start: 20 @8167 has 116 MA's), (25, 8182), (56, 8356), (83, 8512), (109, 8614),

Gene: Puginator_13 Start: 8715, Stop: 9191, Start Num: 20
Candidate Starts for Puginator_13:
(Start: 20 @8715 has 116 MA's), (40, 8835), (56, 8913), (109, 9177),

Gene: Pumpkins_8 Start: 7958, Stop: 8353, Start Num: 14
Candidate Starts for Pumpkins_8:
(Start: 14 @7958 has 83 MA's), (50, 8150), (57, 8195),

Gene: R4_11 Start: 8225, Stop: 8722, Start Num: 20
Candidate Starts for R4_11:
(Start: 20 @8225 has 116 MA's), (50, 8396), (56, 8423), (72, 8537), (83, 8579), (84, 8585), (109, 8708),

Gene: Rabbitrun_19 Start: 10976, Stop: 11446, Start Num: 20
Candidate Starts for Rabbitrun_19:
(Start: 20 @10976 has 116 MA's), (29, 11015), (47, 11165), (54, 11192), (55, 11198), (57, 11222), (67, 11303), (69, 11309), (78, 11342), (91, 11393), (99, 11423), (100, 11429),

Gene: Rana_11 Start: 8361, Stop: 8804, Start Num: 20
Candidate Starts for Rana_11:
(Start: 6 @8304 has 1 MA's), (Start: 20 @8361 has 116 MA's), (56, 8544), (101, 8748),

Gene: RedBear_13 Start: 8637, Stop: 9086, Start Num: 20
Candidate Starts for RedBear_13:
(Start: 6 @8580 has 1 MA's), (Start: 20 @8637 has 116 MA's), (56, 8826),

Gene: Reedo_8 Start: 7890, Stop: 8297, Start Num: 14
Candidate Starts for Reedo_8:
(Start: 14 @7890 has 83 MA's), (46, 8070),

Gene: Reindeer_17 Start: 10883, Stop: 11365, Start Num: 17
Candidate Starts for Reindeer_17:
(Start: 17 @10883 has 22 MA's), (29, 10934), (32, 10961), (41, 11024), (47, 11063), (85, 11267), (90, 11291),

Gene: Rey_23 Start: 11802, Stop: 12284, Start Num: 17
Candidate Starts for Rey_23:
(Start: 17 @11802 has 22 MA's), (29, 11853), (37, 11907), (47, 11982), (85, 12186), (90, 12210),

Gene: RockScotty_8 Start: 7343, Stop: 7810, Start Num: 14
Candidate Starts for RockScotty_8:
(2, 7292), (Start: 14 @7343 has 83 MA's), (48, 7535), (61, 7616),

Gene: RoseMarie_19 Start: 11274, Stop: 11756, Start Num: 17
Candidate Starts for RoseMarie_19:
(Start: 17 @11274 has 22 MA's), (29, 11325), (32, 11352), (47, 11454), (85, 11658), (90, 11682),

Gene: Rusticus_12 Start: 8558, Stop: 9010, Start Num: 20
Candidate Starts for Rusticus_12:
(10, 8519), (Start: 20 @8558 has 116 MA's), (56, 8750), (83, 8906),

Gene: Sabourin_8 Start: 7252, Stop: 7719, Start Num: 14
Candidate Starts for Sabourin_8:
(2, 7201), (Start: 14 @7252 has 83 MA's), (48, 7444), (61, 7525), (68, 7576),

Gene: Saftant_11 Start: 8442, Stop: 8903, Start Num: 20
Candidate Starts for Saftant_11:
(Start: 20 @8442 has 116 MA's), (56, 8631), (83, 8787), (108, 8874), (109, 8889),

Gene: SarahRose_11 Start: 8364, Stop: 8813, Start Num: 20
Candidate Starts for SarahRose_11:
(Start: 20 @8364 has 116 MA's), (56, 8553), (101, 8757),

Gene: Schaffner_8 Start: 7952, Stop: 8347, Start Num: 14
Candidate Starts for Schaffner_8:
(Start: 14 @7952 has 83 MA's), (50, 8144), (57, 8189),

Gene: Sephiroth_18 Start: 10815, Stop: 11282, Start Num: 20
Candidate Starts for Sephiroth_18:
(19, 10812), (Start: 20 @10815 has 116 MA's), (23, 10824), (29, 10854), (33, 10890), (36, 10908), (47, 10983), (51, 10995), (52, 10998), (61, 11073), (75, 11157), (77, 11163), (99, 11247), (100, 11253),

Gene: ShakeltOph_7 Start: 6172, Stop: 6573, Start Num: 14
Candidate Starts for ShakeltOph_7:
(Start: 14 @6172 has 83 MA's), (57, 6409),

Gene: Simpson_8 Start: 7843, Stop: 8250, Start Num: 14
Candidate Starts for Simpson_8:
(Start: 14 @7843 has 83 MA's), (50, 8035),

Gene: Skelbel_8 Start: 7827, Stop: 8234, Start Num: 14
Candidate Starts for Skelbel_8:
(Start: 14 @7827 has 83 MA's), (49, 8016), (50, 8019), (52, 8025), (57, 8064),

Gene: Skinny_20 Start: 11031, Stop: 11513, Start Num: 17
Candidate Starts for Skinny_20:
(Start: 17 @11031 has 22 MA's), (29, 11082), (47, 11211), (85, 11415), (90, 11439),

Gene: SlimJimmy_18 Start: 11030, Stop: 11512, Start Num: 17
Candidate Starts for SlimJimmy_18:
(Start: 17 @11030 has 22 MA's), (29, 11081), (47, 11210), (85, 11414), (90, 11438),

Gene: Snek_8 Start: 6968, Stop: 7366, Start Num: 14
Candidate Starts for Snek_8:
(Start: 14 @6968 has 83 MA's),

Gene: Snorlax_11 Start: 8364, Stop: 8813, Start Num: 20
Candidate Starts for Snorlax_11:
(Start: 20 @8364 has 116 MA's), (56, 8553), (101, 8757),

Gene: Soondubu_8 Start: 7865, Stop: 8263, Start Num: 14
Candidate Starts for Soondubu_8:
(Start: 14 @7865 has 83 MA's), (46, 8045), (50, 8057),

Gene: Sooty_8 Start: 7253, Stop: 7720, Start Num: 14
Candidate Starts for Sooty_8:
(2, 7202), (Start: 14 @7253 has 83 MA's), (48, 7445), (61, 7526), (68, 7577),

Gene: South40_12 Start: 8637, Stop: 9086, Start Num: 20
Candidate Starts for South40_12:
(Start: 6 @8580 has 1 MA's), (Start: 20 @8637 has 116 MA's), (56, 8826),

Gene: SpecialK_8 Start: 7250, Stop: 7717, Start Num: 14
Candidate Starts for SpecialK_8:
(2, 7199), (Start: 14 @7250 has 83 MA's), (48, 7442), (61, 7523),

Gene: Speedwell_16 Start: 10184, Stop: 10633, Start Num: 20
Candidate Starts for Speedwell_16:
(Start: 20 @10184 has 116 MA's), (32, 10247), (46, 10334), (56, 10373), (83, 10529), (108, 10610),

Gene: SqueakyClean_12 Start: 8473, Stop: 8961, Start Num: 20
Candidate Starts for SqueakyClean_12:
(3, 8404), (Start: 20 @8473 has 116 MA's), (38, 8584), (43, 8614), (47, 8635), (56, 8671), (72, 8785),
(83, 8827), (84, 8833), (104, 8902),

Gene: StrongArm_16 Start: 13900, Stop: 14349, Start Num: 21
Candidate Starts for StrongArm_16:
(Start: 21 @13900 has 11 MA's), (26, 13924), (79, 14236), (98, 14311),

Gene: Stuu_8 Start: 7343, Stop: 7810, Start Num: 14
Candidate Starts for Stuu_8:
(2, 7292), (Start: 14 @7343 has 83 MA's), (48, 7535), (61, 7616),

Gene: SuMoo_7 Start: 6373, Stop: 6852, Start Num: 14
Candidate Starts for SuMoo_7:
(Start: 14 @6373 has 83 MA's), (62, 6649), (105, 6844),

Gene: Subaru_8 Start: 7827, Stop: 8234, Start Num: 14
Candidate Starts for Subaru_8:
(Start: 14 @7827 has 83 MA's), (49, 8016), (50, 8019), (52, 8025), (57, 8064),

Gene: Sudan_11 Start: 8444, Stop: 8905, Start Num: 20
Candidate Starts for Sudan_11:
(Start: 20 @8444 has 116 MA's), (25, 8459), (56, 8633), (83, 8789), (109, 8891),

Gene: Sue2_8 Start: 7875, Stop: 8270, Start Num: 14
Candidate Starts for Sue2_8:
(Start: 14 @7875 has 83 MA's), (57, 8112),

Gene: Sujidade_12 Start: 8602, Stop: 9108, Start Num: 6
Candidate Starts for Sujidade_12:
(Start: 6 @8602 has 1 MA's), (Start: 20 @8659 has 116 MA's), (56, 8848), (83, 9004),

Gene: SunkenRoot_13 Start: 8559, Stop: 9017, Start Num: 20
Candidate Starts for SunkenRoot_13:

(Start: 20 @8559 has 116 MA's), (32, 8622), (46, 8709), (56, 8748), (83, 8904), (108, 8988), (110, 9012),

Gene: SunsetPointe_11 Start: 8385, Stop: 8837, Start Num: 20
Candidate Starts for SunsetPointe_11:
(10, 8346), (Start: 20 @8385 has 116 MA's), (56, 8577), (83, 8733),

Gene: SuperHands_9 Start: 8209, Stop: 8697, Start Num: 14
Candidate Starts for SuperHands_9:
(Start: 14 @8209 has 83 MA's), (27, 8254), (61, 8479), (66, 8524), (92, 8617),

Gene: Superstar_13 Start: 9291, Stop: 9767, Start Num: 20
Candidate Starts for Superstar_13:
(Start: 20 @9291 has 116 MA's), (56, 9489), (93, 9681), (109, 9753),

Gene: Syleon_18 Start: 10737, Stop: 11204, Start Num: 20
Candidate Starts for Syleon_18:
(19, 10734), (Start: 20 @10737 has 116 MA's), (23, 10746), (29, 10776), (33, 10812), (36, 10830), (47, 10905), (51, 10917), (52, 10920), (61, 10995), (75, 11079), (77, 11085), (99, 11169), (100, 11175),

Gene: TagePhighter_12 Start: 8364, Stop: 8813, Start Num: 20
Candidate Starts for TagePhighter_12:
(Start: 20 @8364 has 116 MA's), (56, 8553), (101, 8757),

Gene: Tallboi_8 Start: 7862, Stop: 8269, Start Num: 14
Candidate Starts for Tallboi_8:
(Start: 14 @7862 has 83 MA's), (50, 8054),

Gene: Tbone_8 Start: 7839, Stop: 8246, Start Num: 14
Candidate Starts for Tbone_8:
(Start: 14 @7839 has 83 MA's), (50, 8031),

Gene: Tefunt_11 Start: 8160, Stop: 8636, Start Num: 20
Candidate Starts for Tefunt_11:
(Start: 20 @8160 has 116 MA's), (47, 8322), (56, 8358),

Gene: TforTroy_8 Start: 7981, Stop: 8379, Start Num: 14
Candidate Starts for TforTroy_8:
(12, 7975), (Start: 14 @7981 has 83 MA's), (50, 8173), (57, 8218),

Gene: Thestral_12 Start: 8238, Stop: 8711, Start Num: 20
Candidate Starts for Thestral_12:
(Start: 4 @8172 has 1 MA's), (7, 8187), (9, 8193), (Start: 14 @8217 has 83 MA's), (Start: 20 @8238 has 116 MA's), (39, 8352), (50, 8406), (56, 8433), (109, 8697),

Gene: ThursdayNight_7 Start: 6385, Stop: 6780, Start Num: 14
Candidate Starts for ThursdayNight_7:
(Start: 14 @6385 has 83 MA's), (28, 6436), (48, 6571), (57, 6622),

Gene: Tian_8 Start: 7873, Stop: 8280, Start Num: 14
Candidate Starts for Tian_8:
(Start: 14 @7873 has 83 MA's), (50, 8065), (57, 8110),

Gene: TinaBelcher_11 Start: 8186, Stop: 8659, Start Num: 20
Candidate Starts for TinaBelcher_11:
(Start: 4 @8120 has 1 MA's), (7, 8135), (9, 8141), (Start: 14 @8165 has 83 MA's), (Start: 20 @8186 has 116 MA's), (39, 8300), (56, 8381), (109, 8645),

Gene: Toma_11 Start: 8367, Stop: 8816, Start Num: 20
Candidate Starts for Toma_11:
(Start: 6 @8310 has 1 MA's), (Start: 20 @8367 has 116 MA's), (56, 8556), (83, 8712),

Gene: TpudiCK_20 Start: 11030, Stop: 11512, Start Num: 17
Candidate Starts for TpudiCK_20:
(Start: 17 @11030 has 22 MA's), (29, 11081), (47, 11210), (85, 11414), (90, 11438),

Gene: Trax_17 Start: 10452, Stop: 10922, Start Num: 20
Candidate Starts for Trax_17:
(Start: 20 @10452 has 116 MA's), (48, 10644), (51, 10653), (52, 10656), (53, 10659), (54, 10668), (55, 10674), (58, 10701), (69, 10785), (91, 10869), (99, 10899), (100, 10905),

Gene: Tripl3t_18 Start: 13860, Stop: 14309, Start Num: 21
Candidate Starts for Tripl3t_18:
(Start: 21 @13860 has 11 MA's), (26, 13884), (79, 14196), (98, 14271),

Gene: Triste_11 Start: 8358, Stop: 8807, Start Num: 20
Candidate Starts for Triste_11:
(Start: 6 @8301 has 1 MA's), (Start: 20 @8358 has 116 MA's), (56, 8547), (101, 8751),

Gene: Triumph_13 Start: 8256, Stop: 8726, Start Num: 20
Candidate Starts for Triumph_13:
(Start: 20 @8256 has 116 MA's), (56, 8454), (72, 8568), (93, 8646),

Gene: TrvxScott_10 Start: 8121, Stop: 8660, Start Num: 4
Candidate Starts for TrvxScott_10:
(Start: 4 @8121 has 1 MA's), (7, 8136), (9, 8142), (Start: 14 @8166 has 83 MA's), (Start: 20 @8187 has 116 MA's), (39, 8301), (56, 8382), (109, 8646),

Gene: TuanPN_11 Start: 8367, Stop: 8816, Start Num: 20
Candidate Starts for TuanPN_11:
(Start: 6 @8310 has 1 MA's), (Start: 20 @8367 has 116 MA's), (56, 8556), (101, 8760),

Gene: Tuck_9 Start: 8887, Stop: 9315, Start Num: 14
Candidate Starts for Tuck_9:
(Start: 14 @8887 has 83 MA's), (50, 9079),

Gene: Turab_8 Start: 7857, Stop: 8264, Start Num: 14
Candidate Starts for Turab_8:
(Start: 14 @7857 has 83 MA's), (50, 8049), (57, 8094),

Gene: Tutumahutu_8 Start: 7893, Stop: 8300, Start Num: 14
Candidate Starts for Tutumahutu_8:
(Start: 14 @7893 has 83 MA's), (50, 8085),

Gene: Tweety19_8 Start: 6967, Stop: 7365, Start Num: 14
Candidate Starts for Tweety19_8:

(Start: 14 @6967 has 83 MA's),

Gene: TyDawg_19 Start: 11031, Stop: 11513, Start Num: 17

Candidate Starts for TyDawg_19:

(Start: 17 @11031 has 22 MA's), (29, 11082), (47, 11211), (85, 11415), (90, 11439),

Gene: Unstoppable_11 Start: 8386, Stop: 8838, Start Num: 20

Candidate Starts for Unstoppable_11:

(10, 8347), (Start: 20 @8386 has 116 MA's), (56, 8578), (83, 8734),

Gene: Urza_11 Start: 8599, Stop: 9084, Start Num: 20

Candidate Starts for Urza_11:

(Start: 20 @8599 has 116 MA's), (47, 8752), (56, 8788), (65, 8875),

Gene: UtzChips_7 Start: 7094, Stop: 7573, Start Num: 14

Candidate Starts for UtzChips_7:

(13, 7088), (Start: 14 @7094 has 83 MA's), (105, 7565),

Gene: VResidence_8 Start: 7916, Stop: 8323, Start Num: 14

Candidate Starts for VResidence_8:

(Start: 14 @7916 has 83 MA's), (50, 8108),

Gene: Vanseggelen_14 Start: 8092, Stop: 8553, Start Num: 20

Candidate Starts for Vanseggelen_14:

(Start: 20 @8092 has 116 MA's), (25, 8107), (56, 8281), (83, 8437), (109, 8539),

Gene: Verabelle_12 Start: 8442, Stop: 8903, Start Num: 20

Candidate Starts for Verabelle_12:

(Start: 20 @8442 has 116 MA's), (25, 8457), (36, 8526), (56, 8631), (81, 8781), (108, 8874), (109, 8889),

Gene: Verse_11 Start: 8560, Stop: 9018, Start Num: 20

Candidate Starts for Verse_11:

(Start: 20 @8560 has 116 MA's), (32, 8623), (46, 8710), (56, 8749), (83, 8905), (108, 8989), (110, 9013),

Gene: VieEnRose_11 Start: 8669, Stop: 9154, Start Num: 20

Candidate Starts for VieEnRose_11:

(Start: 20 @8669 has 116 MA's), (25, 8684), (47, 8822), (56, 8858), (65, 8945),

Gene: VroomVroom_7 Start: 6184, Stop: 6585, Start Num: 14

Candidate Starts for VroomVroom_7:

(Start: 14 @6184 has 83 MA's), (57, 6421),

Gene: Warda_8 Start: 7839, Stop: 8246, Start Num: 14

Candidate Starts for Warda_8:

(Start: 14 @7839 has 83 MA's), (50, 8031),

Gene: Werner_11 Start: 8365, Stop: 8814, Start Num: 20

Candidate Starts for Werner_11:

(Start: 20 @8365 has 116 MA's), (56, 8554), (101, 8758),

Gene: Whatever_11 Start: 8365, Stop: 8814, Start Num: 20

Candidate Starts for Whatever_11:
(Start: 20 @8365 has 116 MA's), (56, 8554), (101, 8758),

Gene: Wildwest_9 Start: 8762, Stop: 9178, Start Num: 14
Candidate Starts for Wildwest_9:
(Start: 14 @8762 has 83 MA's), (50, 8954), (61, 9029),

Gene: Yang_8 Start: 7957, Stop: 8352, Start Num: 14
Candidate Starts for Yang_8:
(Start: 14 @7957 has 83 MA's), (50, 8149), (57, 8194),

Gene: Yasdni1_11 Start: 8363, Stop: 8812, Start Num: 20
Candidate Starts for Yasdni1_11:
(Start: 6 @8306 has 1 MA's), (Start: 20 @8363 has 116 MA's), (56, 8552), (101, 8756),

Gene: YesChef_8 Start: 7893, Stop: 8300, Start Num: 14
Candidate Starts for YesChef_8:
(Start: 14 @7893 has 83 MA's), (50, 8085),

Gene: Yosif_12 Start: 8821, Stop: 9279, Start Num: 20
Candidate Starts for Yosif_12:
(Start: 20 @8821 has 116 MA's), (47, 8974), (56, 9010), (61, 9058), (83, 9166), (108, 9250), (109, 9265),

Gene: Zainub_13 Start: 8727, Stop: 9203, Start Num: 20
Candidate Starts for Zainub_13:
(Start: 5 @8664 has 1 MA's), (8, 8679), (Start: 20 @8727 has 116 MA's), (40, 8847), (56, 8925), (93, 9117), (109, 9189),

Gene: ZamZam_11 Start: 8459, Stop: 8908, Start Num: 20
Candidate Starts for ZamZam_11:
(Start: 20 @8459 has 116 MA's), (29, 8495), (32, 8522), (46, 8609), (56, 8648), (83, 8804), (108, 8885),

Gene: Zemlya_12 Start: 8375, Stop: 8824, Start Num: 20
Candidate Starts for Zemlya_12:
(Start: 6 @8318 has 1 MA's), (Start: 20 @8375 has 116 MA's), (46, 8525), (47, 8528), (56, 8564),

Gene: Zeta1847_7 Start: 6205, Stop: 6684, Start Num: 14
Candidate Starts for Zeta1847_7:
(Start: 14 @6205 has 83 MA's), (24, 6235), (106, 6679),

Gene: phiCAM_12 Start: 10223, Stop: 10681, Start Num: 20
Candidate Starts for phiCAM_12:
(Start: 20 @10223 has 116 MA's), (25, 10238), (56, 10412), (61, 10460), (83, 10568), (108, 10652), (110, 10676),

Gene: phiHau3_13 Start: 8427, Stop: 8894, Start Num: 20
Candidate Starts for phiHau3_13:
(Start: 20 @8427 has 116 MA's), (46, 8577), (47, 8580), (56, 8616), (65, 8703), (88, 8796), (96, 8814), (101, 8823), (109, 8880),