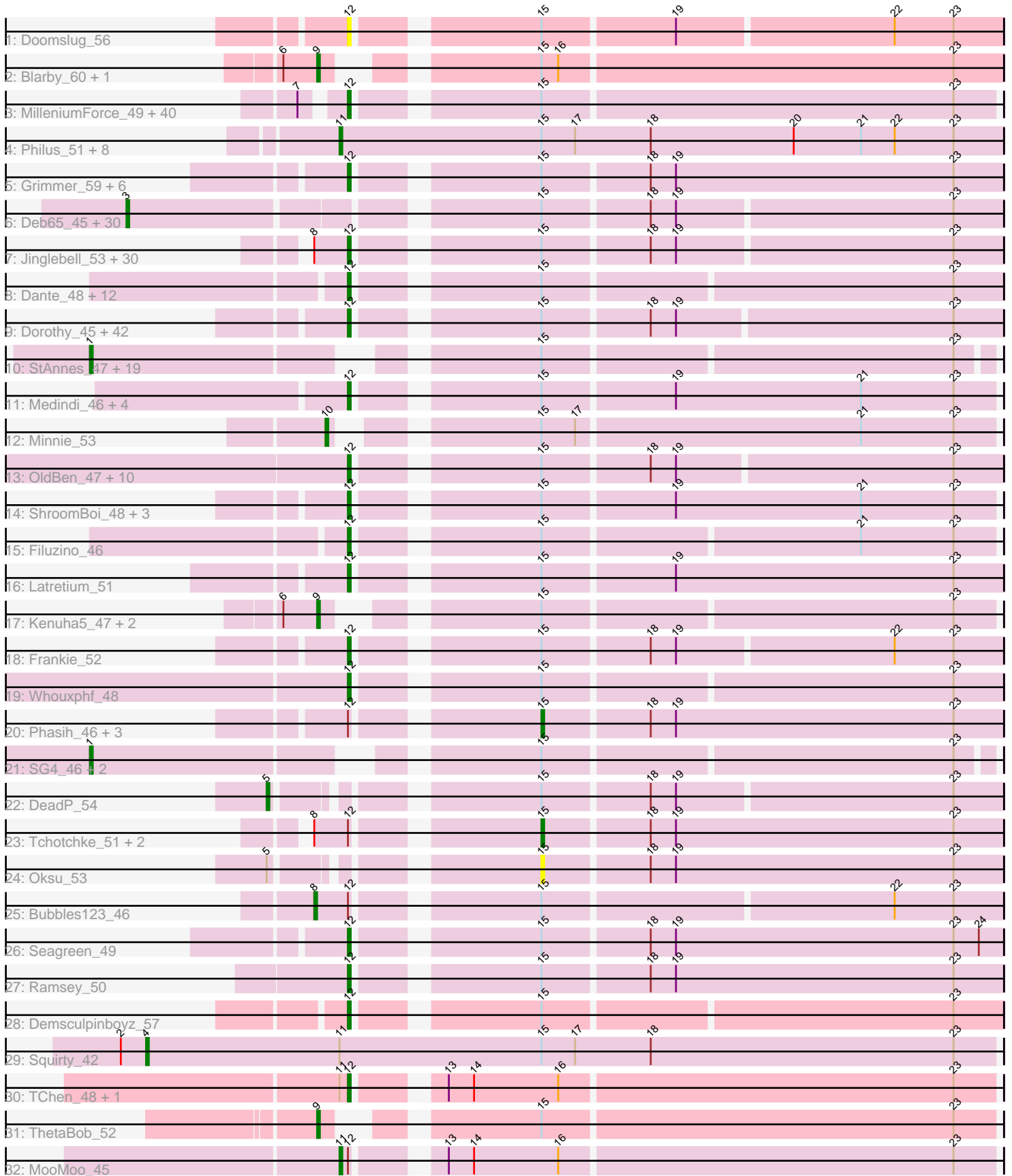


Pham 296213



Note: Tracks are now grouped by subcluster and scaled. Switching in subcluster is indicated by changes in track color. Track scale is now set by default to display the region 30 bp upstream of start 1 to 30 bp downstream of the last possible start. If this default region is judged to be packed too tightly with annotated starts, the track will be further scaled to only show that region of the ORF with annotated starts. This action will be indicated by adding "Zoomed" to the title. For starts, yellow indicates the location of called starts comprised solely of Glimmer/GeneMark auto-annotations, green indicates the location of called starts with at least 1 manual gene annotation.

Pham 296213 Report

This analysis was run 04/25/26 on database version 644.

Pham number 296213 has 247 members, 26 are drafts.

Phages represented in each track:

- Track 1 : Doomslug_56
- Track 2 : Blarby_60, Mozy_59
- Track 3 : MilleniumForce_49, Hegedechwinu_48, EleanorGeorge_47, Rialto_54, IrishSherpFalk_50, Fancypants_49, Cornie_41, Kingsley_45, Velveteen_44, Enzomatic_56, Kimberlium_51, Spartacus_51, Whatsapiecost_47, QuickMath_50, Juniper1_46, Mutaforma13_52, SeaLumen_54, Nitzel_43, BigPhil_45, Plumbus_50, LunaBlu_52, Maravista_50, Violac_52, Wachhund_51, WillSterrel_50, Brookers_46, NewHope4_51, Galactic_49, Peridot_51, Cerasum_45, Polo2Bam_56, Sarma624_46, JalFarm20_58, Juice456_51, Coco12_47, Doug_50, Soul22_53, Che8_51, Ibhubesi_48, MulchExplorer_51, Clank_52
- Track 4 : Philus_51, Mattes_51, SwagPiggett_53, DRBy19_50, Gorge_52, James_51, BobaPhett_50, Saal_50, ByChance_38
- Track 5 : Grimmer_59, Che9d_55, Estave1_49, PopTart_44, Eish_49, Mwanjiwa_54, SassyB_44
- Track 6 : Deb65_45, Empress_48, KingMidas_49, Martik_48, Crumble_43, Lizziana_54, Leperchaun_42, RitaG_45, Sassafras_47, Koella_42, Pacc40_44, ShowerHandel_50, Chevrolet_54, ArcusAngelus_51, Daenerys_44, JoeyJr_45, PHappiness_45, ShiLan_48, Polka14_46, FreddyB_48, Inventum_44, Priscilla_48, Scottish_48, Jarcob_48, Burwell21_47, Nimbo_44, Spoonbill_47, NormanBulbieJr_49, Cabrinians_49, Geralt_45, DoRead_49
- Track 7 : Jinglebell_53, DirtMcgirt_48, Sandalphon_51, TDanisky_52, Leozinho_49, Eradicator_42, Gandolph_49, EmiMonkey_46, Yorick_48, Lij_46, Ochi17_51, Drago_48, AlpineSix_53, OlympiaSaint_49, Kersh_51, Alexphander_54, OwlsT2W_47, Llama_53, Modragons_52, Royals2015_50, Seabastian_53, Sabbb_54, Avani_57, Mahavrat_46, OfUltron_53, Aubs_47, PhilipPhlop_48, Tootsieroll_51, Sparkdehlily_52, UncleRicky_49, Phatniss_47
- Track 8 : Dante_48, Cornucopia_52, DaWorst_50, Ogoopogo_49, SuperGrey_49, Fruitloop_47, Beakin_50, Brushbloom_51, KristaRAM_48, Fastidio_50, Jant_53, DillTech15_47, CheesePuff_54
- Track 9 : Dorothy_45, GigiOuiOui_45, Doomphist_48, Girr_49, Poenanya_48, BuzzLyseyear_53, StarceVich_48, Emmaloid_49, Job42_49, Chuckly_48, Pollywog_47, LilMoolah_47, RedBird_45, Blexus_46, Karhdo_47, Marker_49, Veteran_46, Topiatin_53, DotProduct_45, PMC_43, MisterCuddles_48, MadMen_43, Tweety_48, Beanstalk_51, Mantra_45, Zerg_47, Madiba_44, Nivrat_46, Krakatau_46, Stap_47, GUmbie_46, Wee_51, BodEinwohner17_48, Boomer_51, Rockne_46, LittleShirley_48, Slim_49, SiSi_48, Vivum_51, RockyHorror_49, Ruby_47, Hamulus_49, Harley_51

- Track 10 : StAnnes_47, MilanaBonita_41, XFactor_46, Melissauren88_46, Ovechkin_45, Akhila_41, Emma_48, CaptainTrips_45, MinionDave_47, IMpilo_46, Strokeseat_46, Mova_48, SilverChicken_57, Flathead_48, Ms6_41, Mandlovu_45, Hlubikazi_45, Bobi_50, Moonbeam_44, VRedHorse_48
- Track 11 : Medindi_46, Corium_46, KingJulian_47, PatoPoderoso_46, Ardmore_40
- Track 12 : Minnie_53
- Track 13 : OldBen_47, Hades_49, IbOuu_49, Shauna1_44, Rita_50, Phanphagia_43, Bipolar_45, Radiance_48, Spikelee_55, DaddyRickover_49, Nichirin_53
- Track 14 : ShroomBoi_48, Phalconet_47, Okabe_44, PhesterPhotato_50
- Track 15 : Filuzino_46
- Track 16 : Latretium_51
- Track 17 : Kenuha5_47, Renaud18_53, Taj_52
- Track 18 : Frankie_52
- Track 19 : Whouxphf_48
- Track 20 : Phasih_46, SimranZ1_48, BlueCrab_46, Totinger_48
- Track 21 : SG4_46, Enby_49, Lorde_49
- Track 22 : DeadP_54
- Track 23 : Tchotchke_51, Byougenkin_46, Lucia_49
- Track 24 : Oksu_53
- Track 25 : Bubbles123_46
- Track 26 : Seagreen_49
- Track 27 : Ramsey_50
- Track 28 : Demsculpinboyz_57
- Track 29 : Squirty_42
- Track 30 : TChen_48, LunaStella_46
- Track 31 : ThetaBob_52
- Track 32 : MooMoo_45

Summary of Final Annotations (See graph section above for start numbers):

The start number called the most often in the published annotations is 12, it was called in 146 of the 221 non-draft genes in the pham.

Genes that call this "Most Annotated" start:

- Alexphander_54, AlpineSix_53, Ardmore_40, Aubs_47, Avani_57, Beakin_50, Beanstalk_51, BigPhil_45, Bipolar_45, Blexus_46, BodEinwohner17_48, Boomer_51, Brookers_46, Brushbloom_51, BuzzLyseyear_53, Cerasum_45, Che8_51, Che9d_55, Cheese puff_54, Chuckly_48, Clank_52, Coco12_47, Corium_46, Cornie_41, Cornucopia_52, DaWorst_50, DaddyRickover_49, Dante_48, Demsculpinboyz_57, DillTech15_47, DirtMcgirt_48, Doomphist_48, Doomslug_56, Dorothy_45, DotProduct_45, Doug_50, Drago_48, Eish_49, EleanorGeorge_47, EmiMonkey_46, Emmaloid_49, Enzomatic_56, Eradicator_42, Estave1_49, Fancypants_49, Fastidio_50, Filuzino_46, Frankie_52, Fruitloop_47, GUmbe_46, Galactic_49, Gandalph_49, GigiOuiOui_45, Girr_49, Grimmer_59, Hades_49, Hamulus_49, Harley_51, Hegedechwinu_48, IbOuu_49, Ibhubes_48, IrishSherpFalk_50, JalFarm20_58, Jant_53, Jinglebell_53, Job42_49, Juice456_51, Juniper1_46, Karhdo_47, Kersh_51, Kimberlium_51, KingJulian_47, Kingsley_45, Krakatau_46, KristaRAM_48, Latretium_51, Leozinho_49, LilMoolah_47, LittleShirley_48, Llama_53, Llij_46, LunaBlu_52, LunaStella_46, MadMen_43,

Madiba_44, Mahavrat_46, Mantra_45, Maravista_50, Marker_49, Medindi_46, MilleniumForce_49, MisterCuddles_48, Modragons_52, MulchExplorer_51, Mutaforma13_52, Mwanjiwa_54, NewHope4_51, Nichirin_53, Nitzel_43, Nivrat_46, Ochi17_51, OfUltron_53, Ogopogo_49, Okabe_44, OldBen_47, OlympiaSaint_49, OwlsT2W_47, PMC_43, PatoPoderoso_46, Peridot_51, Phalconet_47, Phanphagia_43, Phatniss_47, PhesterPhotato_50, PhlipPhlop_48, Plumbus_50, Poenanya_48, Pollywog_47, Polo2Bam_56, PopTart_44, QuickMath_50, Radiance_48, Ramsey_50, RedBird_45, Rialto_54, Rita_50, Rockne_46, RockyHorror_49, Royals2015_50, Ruby_47, Sabbb_54, Sandalphon_51, Sarma624_46, SassyB_44, SeaLumen_54, Seabastian_53, Seagreen_49, Shauna1_44, ShroomBoi_48, SiSi_48, Slim_49, Soul22_53, Sparkdehily_52, Spartacus_51, Spikelee_55, Stap_47, Starceвич_48, SuperGrey_49, TChen_48, TDanisky_52, Tootsieroll_51, Topiatin_53, Tweety_48, UncleRicky_49, Velveteen_44, Veteran_46, Violac_52, Vivum_51, Wachhund_51, Wee_51, Whatsapiecost_47, Whouxphf_48, WillSterrel_50, Yorick_48, Zerg_47,

Genes that have the "Most Annotated" start but do not call it:

- BlueCrab_46, Bubbles123_46, Byougenkin_46, Lucia_49, MooMoo_45, Phasih_46, SimranZ1_48, Tchotchke_51, Totinger_48,

Genes that do not have the "Most Annotated" start:

- Akhila_41, ArcusAngelus_51, Blarby_60, BobaPhett_50, Bobi_50, Burwell21_47, ByChance_38, Cabrinians_49, CaptainTrips_45, Chevrolet_54, Crumble_43, DRBy19_50, Daenerys_44, DeadP_54, Deb65_45, DoRead_49, Emma_48, Empress_48, Enby_49, Flathead_48, FreddyB_48, Geralt_45, Gorge_52, Hlubikazi_45, IMpilo_46, Inventum_44, James_51, Jarcob_48, JoeyJr_45, Kenuha5_47, KingMidas_49, Koella_42, Leperchaun_42, Lizziana_54, Lorde_49, Mandlovu_45, Martik_48, Mattes_51, Melissauren88_46, MilanaBonita_41, MinionDave_47, Minnie_53, Moonbeam_44, Mova_48, Mozy_59, Ms6_41, Nimbo_44, NormanBulbieJr_49, Oksu_53, Ovechkin_45, PHappiness_45, Pacc40_44, Philus_51, Polka14_46, Priscilla_48, Renaud18_53, RitaG_45, SG4_46, Saal_50, Sassafras_47, Scottish_48, ShiLan_48, ShowerHandel_50, SilverChicken_57, Spoonbill_47, Squirty_42, StAnnes_47, Strokeseat_46, SwagPigglett_53, Taj_52, ThetaBob_52, VRedHorse_48, XFactor_46,

Summary by start number:

Start 1:

- Found in 23 of 247 (9.3%) of genes in pham
- Manual Annotations of this start: 20 of 221
- Called 100.0% of time when present
- Phage (with cluster) where this start called: Akhila_41 (F1), Bobi_50 (F1), CaptainTrips_45 (F1), Emma_48 (F1), Enby_49 (F1), Flathead_48 (F1), Hlubikazi_45 (F1), IMpilo_46 (F1), Lorde_49 (F1), Mandlovu_45 (F1), Melissauren88_46 (F1), MilanaBonita_41 (F1), MinionDave_47 (F1), Moonbeam_44 (F1), Mova_48 (F1), Ms6_41 (F1), Ovechkin_45 (F1), SG4_46 (F1), SilverChicken_57 (F2), StAnnes_47 (F1), Strokeseat_46 (F1), VRedHorse_48 (F1), XFactor_46 (F1),

Start 3:

- Found in 31 of 247 (12.6%) of genes in pham
- Manual Annotations of this start: 31 of 221
- Called 100.0% of time when present

- Phage (with cluster) where this start called: ArcusAngelus_51 (F1), Burwell21_47 (F1), Cabrinians_49 (F1), Chevrolet_54 (F1), Crumble_43 (F1), Daenerys_44 (F1), Deb65_45 (F1), DoRead_49 (F1), Empress_48 (F1), FreddyB_48 (F1), Geralt_45 (F1), Inventum_44 (F1), Jarcob_48 (F1), JoeyJr_45 (F1), KingMidas_49 (F1), Koella_42 (F1), Leperchaun_42 (F1), Lizziana_54 (F1), Martik_48 (F1), Nimbo_44 (F1), NormanBulbieJr_49 (F1), PHappiness_45 (F1), Pacc40_44 (F1), Polka14_46 (F1), Priscilla_48 (F1), RitaG_45 (F1), Sassafras_47 (F1), Scottish_48 (F1), ShiLan_48 (F1), ShowerHandel_50 (F1), Spoonbill_47 (F1),

Start 4:

- Found in 1 of 247 (0.4%) of genes in pham
- Manual Annotations of this start: 1 of 221
- Called 100.0% of time when present
- Phage (with cluster) where this start called: Squirty_42 (F3),

Start 5:

- Found in 2 of 247 (0.8%) of genes in pham
- Manual Annotations of this start: 1 of 221
- Called 50.0% of time when present
- Phage (with cluster) where this start called: DeadP_54 (F1),

Start 8:

- Found in 35 of 247 (14.2%) of genes in pham
- Manual Annotations of this start: 1 of 221
- Called 2.9% of time when present
- Phage (with cluster) where this start called: Bubbles123_46 (F1),

Start 9:

- Found in 6 of 247 (2.4%) of genes in pham
- Manual Annotations of this start: 5 of 221
- Called 100.0% of time when present
- Phage (with cluster) where this start called: Blarby_60 (F), Kenuha5_47 (F1), Mozy_59 (F1), Renaud18_53 (F4), Taj_52 (F1), ThetaBob_52 (F4),

Start 10:

- Found in 1 of 247 (0.4%) of genes in pham
- Manual Annotations of this start: 1 of 221
- Called 100.0% of time when present
- Phage (with cluster) where this start called: Minnie_53 (F1),

Start 11:

- Found in 13 of 247 (5.3%) of genes in pham
- Manual Annotations of this start: 10 of 221
- Called 76.9% of time when present
- Phage (with cluster) where this start called: BobaPhett_50 (F1), ByChance_38 (F1), DRBy19_50 (F1), Gorge_52 (F1), James_51 (F1), Mattes_51 (F1), MooMoo_45 (singleton), Philus_51 (F1), Saal_50 (F1), SwagPiggett_53 (F1),

Start 12:

- Found in 174 of 247 (70.4%) of genes in pham
- Manual Annotations of this start: 146 of 221
- Called 94.8% of time when present

- Phage (with cluster) where this start called: Alexphander_54 (F1), AlpineSix_53 (F1), Ardmore_40 (F1), Aubs_47 (F1), Avani_57 (F2), Beakin_50 (F1), Beanstalk_51 (F1), BigPhil_45 (F1), Bipolar_45 (F1), Blexus_46 (F1), BodEinwohner17_48 (F1), Boomer_51 (F1), Brookers_46 (F1), Brushbloom_51 (F1), BuzzLyseyear_53 (F1), Cerasum_45 (F1), Che8_51 (F1), Che9d_55 (F2), Cheesepuff_54 (F1), Chuckly_48 (F1), Clank_52 (F), Coco12_47 (F1), Corium_46 (F1), Cornie_41 (F5), Cornucopia_52 (F1), DaWorst_50 (F1), DaddyRickover_49 (F1), Dante_48 (F1), Demsculpinboyz_57 (F2), DillTech15_47 (F1), DirtMcgirt_48 (F1), Doomphist_48 (F1), Doomslug_56 (F), Dorothy_45 (F1), DotProduct_45 (F1), Doug_50 (F1), Drago_48 (F1), Eish_49 (F1), EleanorGeorge_47 (F1), EmiMonkey_46 (F1), Emmaloid_49 (F1), Enzomatic_56 (F1), Eradicator_42 (F1), Estave1_49 (F1), Fancypants_49 (F1), Fastidio_50 (F1), Filuzino_46 (F1), Frankie_52 (F1), Fruitloop_47 (F1), GUmbie_46 (F1), Galactic_49 (F1), Gandalph_49 (F1), GigiOuiOui_45 (F1), Girr_49 (F1), Grimmer_59 (F1), Hades_49 (F1), Hamulus_49 (F1), Harley_51 (F1), Hegedechwinu_48 (F1), IbOuu_49 (F1), Ibhubesi_48 (F1), IrishSherpFalk_50 (F1), JalFarm20_58 (F1), Jant_53 (F1), Jinglebell_53 (F1), Job42_49 (F1), Juice456_51 (F1), Juniper1_46 (F1), Karhdo_47 (F1), Kersh_51 (F1), Kimberlium_51 (F1), KingJulian_47 (F1), Kingsley_45 (F1), Krakatau_46 (F1), KristaRAM_48 (F1), Latretium_51 (F1), Leozinho_49 (F1), LilMoolah_47 (F1), LittleShirley_48 (F1), Llama_53 (F1), Llij_46 (F1), LunaBlu_52 (F1), LunaStella_46 (F4), MadMen_43 (F1), Madiba_44 (F1), Mahavrat_46 (F1), Mantra_45 (F1), Maravista_50 (F1), Marker_49 (F1), Medindi_46 (F1), MilleniumForce_49 (F1), MisterCuddles_48 (F1), Modragons_52 (F1), MulchExplorer_51 (F1), Mutaforma13_52 (F1), Mwanjiwa_54 (F1), NewHope4_51 (F1), Nichirin_53 (F1), Nitzel_43 (F1), Nivrat_46 (F1), Ochi17_51 (F1), OfUltron_53 (F1), Ogoopogo_49 (F1), Okabe_44 (F8), OldBen_47 (F1), OlympiaSaint_49 (F1), OwlsT2W_47 (F1), PMC_43 (F1), PatoPoderoso_46 (F1), Peridot_51 (F1), Phalconet_47 (F1), Phanphagia_43 (F1), Phatniss_47 (F1), PhesterPhotato_50 (F1), PhlipPhlop_48 (F1), Plumbus_50 (F1), Poenanya_48 (F1), Pollywog_47 (F1), Polo2Bam_56 (F1), PopTart_44 (F1), QuickMath_50 (F1), Radiance_48 (F1), Ramsey_50 (F1), RedBird_45 (F1), Rialto_54 (F1), Rita_50 (F1), Rockne_46 (F1), RockyHorror_49 (F1), Royals2015_50 (F1), Ruby_47 (F1), Sabbb_54 (F1), Sandalphon_51 (F1), Sarma624_46 (F1), SassyB_44 (F1), SeaLumen_54 (F1), Seabastian_53 (F1), Seagreen_49 (F1), Shauna1_44 (F1), ShroomBoi_48 (F1), SiSi_48 (F1), Slim_49 (F1), Soul22_53 (F2), Sparkdehlily_52 (F1), Spartacus_51 (F1), Spikelee_55 (F1), Stap_47 (F1), Starceвич_48 (F1), SuperGrey_49 (F1), TChen_48 (F4), TDanisky_52 (F1), Tootsieroll_51 (F1), Topiatin_53 (F1), Tweety_48 (F1), UncleRicky_49 (F1), Velveteen_44 (F1), Veteran_46 (F1), Violac_52 (F1), Vivum_51 (F1), Wachhund_51 (F1), Wee_51 (F1), Whatsapiecost_47 (F1), Whouxphf_48 (F1), WillSterrel_50 (F1), Yorick_48 (F1), Zerg_47 (F1),

Start 15:

- Found in 244 of 247 (98.8%) of genes in pham
- Manual Annotations of this start: 5 of 221
- Called 3.3% of time when present
- Phage (with cluster) where this start called: BlueCrab_46 (F1), Byougenkin_46 (F1), Lucia_49 (F1), Oksu_53 (F1), Phasih_46 (F1), SimranZ1_48 (F1), Tchotchke_51 (F1), Totinger_48 (F1),

Summary by clusters:

There are 8 clusters represented in this pham: F1, F2, F3, F4, F5, F, F8, singleton,

Info for manual annotations of cluster F1:

- Start number 1 was manually annotated 20 times for cluster F1.
- Start number 3 was manually annotated 31 times for cluster F1.
- Start number 5 was manually annotated 1 time for cluster F1.
- Start number 8 was manually annotated 1 time for cluster F1.
- Start number 9 was manually annotated 3 times for cluster F1.
- Start number 10 was manually annotated 1 time for cluster F1.
- Start number 11 was manually annotated 9 times for cluster F1.
- Start number 12 was manually annotated 139 times for cluster F1.
- Start number 15 was manually annotated 5 times for cluster F1.

Info for manual annotations of cluster F2:

- Start number 12 was manually annotated 4 times for cluster F2.

Info for manual annotations of cluster F3:

- Start number 4 was manually annotated 1 time for cluster F3.

Info for manual annotations of cluster F4:

- Start number 9 was manually annotated 2 times for cluster F4.
- Start number 12 was manually annotated 2 times for cluster F4.

Info for manual annotations of cluster F5:

- Start number 12 was manually annotated 1 time for cluster F5.

Gene Information:

Gene: Akhila_41 Start: 32049, Stop: 32342, Start Num: 1

Candidate Starts for Akhila_41:

(Start: 1 @32049 has 20 MA's), (Start: 15 @32184 has 5 MA's), (23, 32328),

Gene: Alexphander_54 Start: 37150, Stop: 37365, Start Num: 12

Candidate Starts for Alexphander_54:

(Start: 8 @37138 has 1 MA's), (Start: 12 @37150 has 146 MA's), (Start: 15 @37207 has 5 MA's), (18, 37243), (19, 37252), (23, 37348),

Gene: AlpineSix_53 Start: 38362, Stop: 38577, Start Num: 12

Candidate Starts for AlpineSix_53:

(Start: 8 @38350 has 1 MA's), (Start: 12 @38362 has 146 MA's), (Start: 15 @38419 has 5 MA's), (18, 38455), (19, 38464), (23, 38560),

Gene: ArcusAngelus_51 Start: 37403, Stop: 37693, Start Num: 3

Candidate Starts for ArcusAngelus_51:

(Start: 3 @37403 has 31 MA's), (Start: 15 @37535 has 5 MA's), (18, 37571), (19, 37580), (23, 37676),

Gene: Ardmore_40 Start: 33920, Stop: 34135, Start Num: 12

Candidate Starts for Ardmore_40:

(Start: 12 @33920 has 146 MA's), (Start: 15 @33977 has 5 MA's), (19, 34022), (21, 34088), (23, 34121),

Gene: Aubs_47 Start: 36045, Stop: 36260, Start Num: 12

Candidate Starts for Aubs_47:

(Start: 8 @36033 has 1 MA's), (Start: 12 @36045 has 146 MA's), (Start: 15 @36102 has 5 MA's), (18, 36138), (19, 36147), (23, 36243),

Gene: Avani_57 Start: 36353, Stop: 36568, Start Num: 12

Candidate Starts for Avani_57:

(Start: 8 @36341 has 1 MA's), (Start: 12 @36353 has 146 MA's), (Start: 15 @36410 has 5 MA's), (18, 36446), (19, 36455), (23, 36551),

Gene: Beakin_50 Start: 36135, Stop: 36344, Start Num: 12

Candidate Starts for Beakin_50:

(Start: 12 @36135 has 146 MA's), (Start: 15 @36192 has 5 MA's), (23, 36333),

Gene: Beanstalk_51 Start: 35767, Stop: 35982, Start Num: 12

Candidate Starts for Beanstalk_51:

(Start: 12 @35767 has 146 MA's), (Start: 15 @35824 has 5 MA's), (18, 35860), (19, 35869), (23, 35965),

Gene: BigPhil_45 Start: 32619, Stop: 32831, Start Num: 12

Candidate Starts for BigPhil_45:

(7, 32607), (Start: 12 @32619 has 146 MA's), (Start: 15 @32676 has 5 MA's), (23, 32817),

Gene: Bipolar_45 Start: 36067, Stop: 36282, Start Num: 12

Candidate Starts for Bipolar_45:

(Start: 12 @36067 has 146 MA's), (Start: 15 @36124 has 5 MA's), (18, 36160), (19, 36169), (23, 36265),

Gene: Blarby_60 Start: 36974, Stop: 37192, Start Num: 9

Candidate Starts for Blarby_60:

(6, 36962), (Start: 9 @36974 has 5 MA's), (Start: 15 @37031 has 5 MA's), (16, 37037), (23, 37175),

Gene: Blexus_46 Start: 36132, Stop: 36347, Start Num: 12

Candidate Starts for Blexus_46:

(Start: 12 @36132 has 146 MA's), (Start: 15 @36189 has 5 MA's), (18, 36225), (19, 36234), (23, 36330),

Gene: BlueCrab_46 Start: 35915, Stop: 36073, Start Num: 15

Candidate Starts for BlueCrab_46:

(Start: 12 @35858 has 146 MA's), (Start: 15 @35915 has 5 MA's), (18, 35951), (19, 35960), (23, 36056),

Gene: BobaPhett_50 Start: 37595, Stop: 37831, Start Num: 11

Candidate Starts for BobaPhett_50:

(Start: 11 @37595 has 10 MA's), (Start: 15 @37667 has 5 MA's), (17, 37679), (18, 37706), (20, 37757), (21, 37781), (22, 37793), (23, 37814),

Gene: Bobi_50 Start: 36824, Stop: 37111, Start Num: 1

Candidate Starts for Bobi_50:

(Start: 1 @36824 has 20 MA's), (Start: 15 @36959 has 5 MA's), (23, 37100),

Gene: BodEinwohner17_48 Start: 36074, Stop: 36289, Start Num: 12

Candidate Starts for BodEinwohner17_48:

(Start: 12 @36074 has 146 MA's), (Start: 15 @36131 has 5 MA's), (18, 36167), (19, 36176), (23, 36272),

Gene: Boomer_51 Start: 37307, Stop: 37522, Start Num: 12

Candidate Starts for Boomer_51:

(Start: 12 @37307 has 146 MA's), (Start: 15 @37364 has 5 MA's), (18, 37400), (19, 37409), (23, 37505),

Gene: Brookers_46 Start: 35570, Stop: 35782, Start Num: 12

Candidate Starts for Brookers_46:

(7, 35558), (Start: 12 @35570 has 146 MA's), (Start: 15 @35627 has 5 MA's), (23, 35768),

Gene: Brushbloom_51 Start: 36775, Stop: 36990, Start Num: 12

Candidate Starts for Brushbloom_51:

(Start: 12 @36775 has 146 MA's), (Start: 15 @36832 has 5 MA's), (23, 36976),

Gene: Bubbles123_46 Start: 36742, Stop: 36969, Start Num: 8

Candidate Starts for Bubbles123_46:

(Start: 8 @36742 has 1 MA's), (Start: 12 @36754 has 146 MA's), (Start: 15 @36811 has 5 MA's), (22, 36931), (23, 36952),

Gene: Burwell21_47 Start: 36341, Stop: 36631, Start Num: 3

Candidate Starts for Burwell21_47:

(Start: 3 @36341 has 31 MA's), (Start: 15 @36473 has 5 MA's), (18, 36509), (19, 36518), (23, 36614),

Gene: BuzzLyseyear_53 Start: 37684, Stop: 37899, Start Num: 12

Candidate Starts for BuzzLyseyear_53:

(Start: 12 @37684 has 146 MA's), (Start: 15 @37741 has 5 MA's), (18, 37777), (19, 37786), (23, 37882),

Gene: ByChance_38 Start: 30679, Stop: 30915, Start Num: 11

Candidate Starts for ByChance_38:

(Start: 11 @30679 has 10 MA's), (Start: 15 @30751 has 5 MA's), (17, 30763), (18, 30790), (20, 30841), (21, 30865), (22, 30877), (23, 30898),

Gene: Byougenkin_46 Start: 36208, Stop: 36366, Start Num: 15

Candidate Starts for Byougenkin_46:

(Start: 8 @36139 has 1 MA's), (Start: 12 @36151 has 146 MA's), (Start: 15 @36208 has 5 MA's), (18, 36244), (19, 36253), (23, 36349),

Gene: Cabrinians_49 Start: 36419, Stop: 36709, Start Num: 3

Candidate Starts for Cabrinians_49:

(Start: 3 @36419 has 31 MA's), (Start: 15 @36551 has 5 MA's), (18, 36587), (19, 36596), (23, 36692),

Gene: CaptainTrips_45 Start: 35257, Stop: 35544, Start Num: 1

Candidate Starts for CaptainTrips_45:

(Start: 1 @35257 has 20 MA's), (Start: 15 @35392 has 5 MA's), (23, 35533),

Gene: Cerasum_45 Start: 32637, Stop: 32849, Start Num: 12

Candidate Starts for Cerasum_45:

(7, 32625), (Start: 12 @32637 has 146 MA's), (Start: 15 @32694 has 5 MA's), (23, 32835),

Gene: Che8_51 Start: 37303, Stop: 37518, Start Num: 12

Candidate Starts for Che8_51:
(7, 37291), (Start: 12 @37303 has 146 MA's), (Start: 15 @37360 has 5 MA's), (23, 37501),

Gene: Che9d_55 Start: 35666, Stop: 35884, Start Num: 12
Candidate Starts for Che9d_55:
(Start: 12 @35666 has 146 MA's), (Start: 15 @35723 has 5 MA's), (18, 35759), (19, 35768), (23, 35867),

Gene: Cheese puff_54 Start: 38298, Stop: 38507, Start Num: 12
Candidate Starts for Cheese puff_54:
(Start: 12 @38298 has 146 MA's), (Start: 15 @38355 has 5 MA's), (23, 38496),

Gene: Chevrolet_54 Start: 37404, Stop: 37694, Start Num: 3
Candidate Starts for Chevrolet_54:
(Start: 3 @37404 has 31 MA's), (Start: 15 @37536 has 5 MA's), (18, 37572), (19, 37581), (23, 37677),

Gene: Chuckly_48 Start: 36105, Stop: 36320, Start Num: 12
Candidate Starts for Chuckly_48:
(Start: 12 @36105 has 146 MA's), (Start: 15 @36162 has 5 MA's), (18, 36198), (19, 36207), (23, 36303),

Gene: Clank_52 Start: 36889, Stop: 37101, Start Num: 12
Candidate Starts for Clank_52:
(7, 36877), (Start: 12 @36889 has 146 MA's), (Start: 15 @36946 has 5 MA's), (23, 37087),

Gene: Coco12_47 Start: 36694, Stop: 36906, Start Num: 12
Candidate Starts for Coco12_47:
(7, 36682), (Start: 12 @36694 has 146 MA's), (Start: 15 @36751 has 5 MA's), (23, 36892),

Gene: Corium_46 Start: 35441, Stop: 35656, Start Num: 12
Candidate Starts for Corium_46:
(Start: 12 @35441 has 146 MA's), (Start: 15 @35498 has 5 MA's), (19, 35543), (21, 35609), (23, 35642),

Gene: Cornie_41 Start: 34194, Stop: 34409, Start Num: 12
Candidate Starts for Cornie_41:
(7, 34182), (Start: 12 @34194 has 146 MA's), (Start: 15 @34251 has 5 MA's), (23, 34392),

Gene: Cornucopia_52 Start: 37404, Stop: 37613, Start Num: 12
Candidate Starts for Cornucopia_52:
(Start: 12 @37404 has 146 MA's), (Start: 15 @37461 has 5 MA's), (23, 37602),

Gene: Crumble_43 Start: 32355, Stop: 32645, Start Num: 3
Candidate Starts for Crumble_43:
(Start: 3 @32355 has 31 MA's), (Start: 15 @32487 has 5 MA's), (18, 32523), (19, 32532), (23, 32628),

Gene: DRBy19_50 Start: 36382, Stop: 36618, Start Num: 11
Candidate Starts for DRBy19_50:
(Start: 11 @36382 has 10 MA's), (Start: 15 @36454 has 5 MA's), (17, 36466), (18, 36493), (20, 36544), (21, 36568), (22, 36580), (23, 36601),

Gene: DaWorst_50 Start: 36932, Stop: 37147, Start Num: 12
Candidate Starts for DaWorst_50:

(Start: 12 @36932 has 146 MA's), (Start: 15 @36989 has 5 MA's), (23, 37130),

Gene: DaddyRickover_49 Start: 36989, Stop: 37204, Start Num: 12

Candidate Starts for DaddyRickover_49:

(Start: 12 @36989 has 146 MA's), (Start: 15 @37046 has 5 MA's), (18, 37082), (19, 37091), (23, 37187),

Gene: Daenerys_44 Start: 34725, Stop: 35015, Start Num: 3

Candidate Starts for Daenerys_44:

(Start: 3 @34725 has 31 MA's), (Start: 15 @34857 has 5 MA's), (18, 34893), (19, 34902), (23, 34998),

Gene: Dante_48 Start: 35837, Stop: 36052, Start Num: 12

Candidate Starts for Dante_48:

(Start: 12 @35837 has 146 MA's), (Start: 15 @35894 has 5 MA's), (23, 36035),

Gene: DeadP_54 Start: 37612, Stop: 37848, Start Num: 5

Candidate Starts for DeadP_54:

(Start: 5 @37612 has 1 MA's), (Start: 15 @37690 has 5 MA's), (18, 37726), (19, 37735), (23, 37831),

Gene: Deb65_45 Start: 34694, Stop: 34984, Start Num: 3

Candidate Starts for Deb65_45:

(Start: 3 @34694 has 31 MA's), (Start: 15 @34826 has 5 MA's), (18, 34862), (19, 34871), (23, 34967),

Gene: Demsculpinboyz_57 Start: 35778, Stop: 35993, Start Num: 12

Candidate Starts for Demsculpinboyz_57:

(Start: 12 @35778 has 146 MA's), (Start: 15 @35835 has 5 MA's), (23, 35976),

Gene: DillTech15_47 Start: 35347, Stop: 35562, Start Num: 12

Candidate Starts for DillTech15_47:

(Start: 12 @35347 has 146 MA's), (Start: 15 @35404 has 5 MA's), (23, 35545),

Gene: DirtMcgirt_48 Start: 35535, Stop: 35750, Start Num: 12

Candidate Starts for DirtMcgirt_48:

(Start: 8 @35523 has 1 MA's), (Start: 12 @35535 has 146 MA's), (Start: 15 @35592 has 5 MA's), (18, 35628), (19, 35637), (23, 35733),

Gene: DoRead_49 Start: 35092, Stop: 35382, Start Num: 3

Candidate Starts for DoRead_49:

(Start: 3 @35092 has 31 MA's), (Start: 15 @35224 has 5 MA's), (18, 35260), (19, 35269), (23, 35365),

Gene: Doomphist_48 Start: 37072, Stop: 37287, Start Num: 12

Candidate Starts for Doomphist_48:

(Start: 12 @37072 has 146 MA's), (Start: 15 @37129 has 5 MA's), (18, 37165), (19, 37174), (23, 37270),

Gene: Doomslug_56 Start: 36049, Stop: 36264, Start Num: 12

Candidate Starts for Doomslug_56:

(Start: 12 @36049 has 146 MA's), (Start: 15 @36106 has 5 MA's), (19, 36151), (22, 36226), (23, 36247),

Gene: Dorothy_45 Start: 35871, Stop: 36086, Start Num: 12

Candidate Starts for Dorothy_45:

(Start: 12 @35871 has 146 MA's), (Start: 15 @35928 has 5 MA's), (18, 35964), (19, 35973), (23, 36069),

Gene: DotProduct_45 Start: 35532, Stop: 35747, Start Num: 12

Candidate Starts for DotProduct_45:

(Start: 12 @35532 has 146 MA's), (Start: 15 @35589 has 5 MA's), (18, 35625), (19, 35634), (23, 35730),

Gene: Doug_50 Start: 37190, Stop: 37405, Start Num: 12

Candidate Starts for Doug_50:

(7, 37178), (Start: 12 @37190 has 146 MA's), (Start: 15 @37247 has 5 MA's), (23, 37388),

Gene: Drago_48 Start: 35538, Stop: 35753, Start Num: 12

Candidate Starts for Drago_48:

(Start: 8 @35526 has 1 MA's), (Start: 12 @35538 has 146 MA's), (Start: 15 @35595 has 5 MA's), (18, 35631), (19, 35640), (23, 35736),

Gene: Eish_49 Start: 36414, Stop: 36632, Start Num: 12

Candidate Starts for Eish_49:

(Start: 12 @36414 has 146 MA's), (Start: 15 @36471 has 5 MA's), (18, 36507), (19, 36516), (23, 36615),

Gene: EleanorGeorge_47 Start: 35727, Stop: 35939, Start Num: 12

Candidate Starts for EleanorGeorge_47:

(7, 35715), (Start: 12 @35727 has 146 MA's), (Start: 15 @35784 has 5 MA's), (23, 35925),

Gene: EmiMonkey_46 Start: 37346, Stop: 37564, Start Num: 12

Candidate Starts for EmiMonkey_46:

(Start: 8 @37334 has 1 MA's), (Start: 12 @37346 has 146 MA's), (Start: 15 @37403 has 5 MA's), (18, 37439), (19, 37448), (23, 37547),

Gene: Emma_48 Start: 35593, Stop: 35883, Start Num: 1

Candidate Starts for Emma_48:

(Start: 1 @35593 has 20 MA's), (Start: 15 @35728 has 5 MA's), (23, 35869),

Gene: Emmaloid_49 Start: 37262, Stop: 37477, Start Num: 12

Candidate Starts for Emmaloid_49:

(Start: 12 @37262 has 146 MA's), (Start: 15 @37319 has 5 MA's), (18, 37355), (19, 37364), (23, 37460),

Gene: Empress_48 Start: 36139, Stop: 36429, Start Num: 3

Candidate Starts for Empress_48:

(Start: 3 @36139 has 31 MA's), (Start: 15 @36271 has 5 MA's), (18, 36307), (19, 36316), (23, 36412),

Gene: Enby_49 Start: 34770, Stop: 35057, Start Num: 1

Candidate Starts for Enby_49:

(Start: 1 @34770 has 20 MA's), (Start: 15 @34905 has 5 MA's), (23, 35046),

Gene: Enzomatic_56 Start: 36754, Stop: 36966, Start Num: 12

Candidate Starts for Enzomatic_56:

(7, 36742), (Start: 12 @36754 has 146 MA's), (Start: 15 @36811 has 5 MA's), (23, 36952),

Gene: Eradicator_42 Start: 34754, Stop: 34969, Start Num: 12

Candidate Starts for Eradicator_42:

(Start: 8 @34742 has 1 MA's), (Start: 12 @34754 has 146 MA's), (Start: 15 @34811 has 5 MA's), (18, 34847), (19, 34856), (23, 34952),

Gene: Estave1_49 Start: 35821, Stop: 36036, Start Num: 12

Candidate Starts for Estave1_49:

(Start: 12 @35821 has 146 MA's), (Start: 15 @35878 has 5 MA's), (18, 35914), (19, 35923), (23, 36019),

Gene: Fancypants_49 Start: 37027, Stop: 37242, Start Num: 12

Candidate Starts for Fancypants_49:

(7, 37015), (Start: 12 @37027 has 146 MA's), (Start: 15 @37084 has 5 MA's), (23, 37225),

Gene: Fastidio_50 Start: 35494, Stop: 35709, Start Num: 12

Candidate Starts for Fastidio_50:

(Start: 12 @35494 has 146 MA's), (Start: 15 @35551 has 5 MA's), (23, 35692),

Gene: Filuzino_46 Start: 35251, Stop: 35463, Start Num: 12

Candidate Starts for Filuzino_46:

(Start: 12 @35251 has 146 MA's), (Start: 15 @35308 has 5 MA's), (21, 35416), (23, 35449),

Gene: Flathead_48 Start: 36525, Stop: 36836, Start Num: 1

Candidate Starts for Flathead_48:

(Start: 1 @36525 has 20 MA's), (Start: 15 @36681 has 5 MA's), (23, 36825),

Gene: Frankie_52 Start: 37474, Stop: 37689, Start Num: 12

Candidate Starts for Frankie_52:

(Start: 12 @37474 has 146 MA's), (Start: 15 @37531 has 5 MA's), (18, 37567), (19, 37576), (22, 37651), (23, 37672),

Gene: FreddyB_48 Start: 35267, Stop: 35557, Start Num: 3

Candidate Starts for FreddyB_48:

(Start: 3 @35267 has 31 MA's), (Start: 15 @35399 has 5 MA's), (18, 35435), (19, 35444), (23, 35540),

Gene: Fruitloop_47 Start: 37117, Stop: 37326, Start Num: 12

Candidate Starts for Fruitloop_47:

(Start: 12 @37117 has 146 MA's), (Start: 15 @37174 has 5 MA's), (23, 37315),

Gene: GUmbie_46 Start: 35761, Stop: 35976, Start Num: 12

Candidate Starts for GUmbie_46:

(Start: 12 @35761 has 146 MA's), (Start: 15 @35818 has 5 MA's), (18, 35854), (19, 35863), (23, 35959),

Gene: Galactic_49 Start: 36867, Stop: 37082, Start Num: 12

Candidate Starts for Galactic_49:

(7, 36855), (Start: 12 @36867 has 146 MA's), (Start: 15 @36924 has 5 MA's), (23, 37068),

Gene: Gandalph_49 Start: 36001, Stop: 36219, Start Num: 12

Candidate Starts for Gandalph_49:

(Start: 8 @35989 has 1 MA's), (Start: 12 @36001 has 146 MA's), (Start: 15 @36058 has 5 MA's), (18, 36094), (19, 36103), (23, 36202),

Gene: Geralt_45 Start: 34693, Stop: 34983, Start Num: 3

Candidate Starts for Geralt_45:

(Start: 3 @34693 has 31 MA's), (Start: 15 @34825 has 5 MA's), (18, 34861), (19, 34870), (23, 34966),

Gene: GigiOuiOui_45 Start: 35674, Stop: 35889, Start Num: 12

Candidate Starts for GigiOuiOui_45:

(Start: 12 @35674 has 146 MA's), (Start: 15 @35731 has 5 MA's), (18, 35767), (19, 35776), (23, 35872),

Gene: Girr_49 Start: 36733, Stop: 36948, Start Num: 12

Candidate Starts for Girr_49:

(Start: 12 @36733 has 146 MA's), (Start: 15 @36790 has 5 MA's), (18, 36826), (19, 36835), (23, 36931),

Gene: Gorge_52 Start: 36516, Stop: 36752, Start Num: 11

Candidate Starts for Gorge_52:

(Start: 11 @36516 has 10 MA's), (Start: 15 @36588 has 5 MA's), (17, 36600), (18, 36627), (20, 36678), (21, 36702), (22, 36714), (23, 36735),

Gene: Grimmer_59 Start: 38245, Stop: 38463, Start Num: 12

Candidate Starts for Grimmer_59:

(Start: 12 @38245 has 146 MA's), (Start: 15 @38302 has 5 MA's), (18, 38338), (19, 38347), (23, 38446),

Gene: Hades_49 Start: 36618, Stop: 36833, Start Num: 12

Candidate Starts for Hades_49:

(Start: 12 @36618 has 146 MA's), (Start: 15 @36675 has 5 MA's), (18, 36711), (19, 36720), (23, 36816),

Gene: Hamulus_49 Start: 37116, Stop: 37331, Start Num: 12

Candidate Starts for Hamulus_49:

(Start: 12 @37116 has 146 MA's), (Start: 15 @37173 has 5 MA's), (18, 37209), (19, 37218), (23, 37314),

Gene: Harley_51 Start: 36469, Stop: 36684, Start Num: 12

Candidate Starts for Harley_51:

(Start: 12 @36469 has 146 MA's), (Start: 15 @36526 has 5 MA's), (18, 36562), (19, 36571), (23, 36667),

Gene: Hegedechwinu_48 Start: 35027, Stop: 35236, Start Num: 12

Candidate Starts for Hegedechwinu_48:

(7, 35015), (Start: 12 @35027 has 146 MA's), (Start: 15 @35084 has 5 MA's), (23, 35225),

Gene: Hlubikazi_45 Start: 34709, Stop: 34996, Start Num: 1

Candidate Starts for Hlubikazi_45:

(Start: 1 @34709 has 20 MA's), (Start: 15 @34844 has 5 MA's), (23, 34985),

Gene: IMpilo_46 Start: 34649, Stop: 34936, Start Num: 1

Candidate Starts for IMpilo_46:

(Start: 1 @34649 has 20 MA's), (Start: 15 @34784 has 5 MA's), (23, 34925),

Gene: lbOuu_49 Start: 37048, Stop: 37266, Start Num: 12

Candidate Starts for lbOuu_49:

(Start: 12 @37048 has 146 MA's), (Start: 15 @37105 has 5 MA's), (18, 37141), (19, 37150), (23, 37249),

Gene: Ibhubesi_48 Start: 35556, Stop: 35771, Start Num: 12

Candidate Starts for Ibhubesi_48:

(7, 35544), (Start: 12 @35556 has 146 MA's), (Start: 15 @35613 has 5 MA's), (23, 35754),

Gene: Inventum_44 Start: 35406, Stop: 35696, Start Num: 3

Candidate Starts for Inventum_44:

(Start: 3 @35406 has 31 MA's), (Start: 15 @35538 has 5 MA's), (18, 35574), (19, 35583), (23, 35679),

Gene: IrishSherpFalk_50 Start: 37787, Stop: 37999, Start Num: 12

Candidate Starts for IrishSherpFalk_50:

(7, 37775), (Start: 12 @37787 has 146 MA's), (Start: 15 @37844 has 5 MA's), (23, 37985),

Gene: JalFarm20_58 Start: 39033, Stop: 39248, Start Num: 12

Candidate Starts for JalFarm20_58:

(7, 39021), (Start: 12 @39033 has 146 MA's), (Start: 15 @39090 has 5 MA's), (23, 39231),

Gene: James_51 Start: 36473, Stop: 36709, Start Num: 11

Candidate Starts for James_51:

(Start: 11 @36473 has 10 MA's), (Start: 15 @36545 has 5 MA's), (17, 36557), (18, 36584), (20, 36635), (21, 36659), (22, 36671), (23, 36692),

Gene: Jant_53 Start: 38128, Stop: 38337, Start Num: 12

Candidate Starts for Jant_53:

(Start: 12 @38128 has 146 MA's), (Start: 15 @38185 has 5 MA's), (23, 38326),

Gene: Jacob_48 Start: 36387, Stop: 36677, Start Num: 3

Candidate Starts for Jacob_48:

(Start: 3 @36387 has 31 MA's), (Start: 15 @36519 has 5 MA's), (18, 36555), (19, 36564), (23, 36660),

Gene: Jinglebell_53 Start: 38361, Stop: 38576, Start Num: 12

Candidate Starts for Jinglebell_53:

(Start: 8 @38349 has 1 MA's), (Start: 12 @38361 has 146 MA's), (Start: 15 @38418 has 5 MA's), (18, 38454), (19, 38463), (23, 38559),

Gene: Job42_49 Start: 37722, Stop: 37937, Start Num: 12

Candidate Starts for Job42_49:

(Start: 12 @37722 has 146 MA's), (Start: 15 @37779 has 5 MA's), (18, 37815), (19, 37824), (23, 37920),

Gene: JoeyJr_45 Start: 34893, Stop: 35183, Start Num: 3

Candidate Starts for JoeyJr_45:

(Start: 3 @34893 has 31 MA's), (Start: 15 @35025 has 5 MA's), (18, 35061), (19, 35070), (23, 35166),

Gene: Juice456_51 Start: 37629, Stop: 37841, Start Num: 12

Candidate Starts for Juice456_51:

(7, 37617), (Start: 12 @37629 has 146 MA's), (Start: 15 @37686 has 5 MA's), (23, 37827),

Gene: Juniper1_46 Start: 35839, Stop: 36054, Start Num: 12

Candidate Starts for Juniper1_46:

(7, 35827), (Start: 12 @35839 has 146 MA's), (Start: 15 @35896 has 5 MA's), (23, 36037),

Gene: Karhdo_47 Start: 36556, Stop: 36771, Start Num: 12

Candidate Starts for Karhdo_47:

(Start: 12 @36556 has 146 MA's), (Start: 15 @36613 has 5 MA's), (18, 36649), (19, 36658), (23, 36754),

Gene: Kenuha5_47 Start: 35341, Stop: 35553, Start Num: 9

Candidate Starts for Kenuha5_47:

(6, 35329), (Start: 9 @35341 has 5 MA's), (Start: 15 @35398 has 5 MA's), (23, 35539),

Gene: Kersh_51 Start: 38506, Stop: 38721, Start Num: 12

Candidate Starts for Kersh_51:

(Start: 8 @38494 has 1 MA's), (Start: 12 @38506 has 146 MA's), (Start: 15 @38563 has 5 MA's), (18, 38599), (19, 38608), (23, 38704),

Gene: Kimberlium_51 Start: 38368, Stop: 38583, Start Num: 12

Candidate Starts for Kimberlium_51:

(7, 38356), (Start: 12 @38368 has 146 MA's), (Start: 15 @38425 has 5 MA's), (23, 38566),

Gene: KingJulian_47 Start: 35441, Stop: 35656, Start Num: 12

Candidate Starts for KingJulian_47:

(Start: 12 @35441 has 146 MA's), (Start: 15 @35498 has 5 MA's), (19, 35543), (21, 35609), (23, 35642),

Gene: KingMidas_49 Start: 36555, Stop: 36845, Start Num: 3

Candidate Starts for KingMidas_49:

(Start: 3 @36555 has 31 MA's), (Start: 15 @36687 has 5 MA's), (18, 36723), (19, 36732), (23, 36828),

Gene: Kingsley_45 Start: 35427, Stop: 35639, Start Num: 12

Candidate Starts for Kingsley_45:

(7, 35415), (Start: 12 @35427 has 146 MA's), (Start: 15 @35484 has 5 MA's), (23, 35625),

Gene: Koella_42 Start: 32317, Stop: 32607, Start Num: 3

Candidate Starts for Koella_42:

(Start: 3 @32317 has 31 MA's), (Start: 15 @32449 has 5 MA's), (18, 32485), (19, 32494), (23, 32590),

Gene: Krakatau_46 Start: 36227, Stop: 36442, Start Num: 12

Candidate Starts for Krakatau_46:

(Start: 12 @36227 has 146 MA's), (Start: 15 @36284 has 5 MA's), (18, 36320), (19, 36329), (23, 36425),

Gene: KristaRAM_48 Start: 37439, Stop: 37654, Start Num: 12

Candidate Starts for KristaRAM_48:

(Start: 12 @37439 has 146 MA's), (Start: 15 @37496 has 5 MA's), (23, 37640),

Gene: Latretium_51 Start: 37342, Stop: 37560, Start Num: 12

Candidate Starts for Latretium_51:

(Start: 12 @37342 has 146 MA's), (Start: 15 @37399 has 5 MA's), (19, 37444), (23, 37543),

Gene: Leozinho_49 Start: 36306, Stop: 36521, Start Num: 12

Candidate Starts for Leozinho_49:

(Start: 8 @36294 has 1 MA's), (Start: 12 @36306 has 146 MA's), (Start: 15 @36363 has 5 MA's), (18, 36399), (19, 36408), (23, 36504),

Gene: Leperchaun_42 Start: 34123, Stop: 34413, Start Num: 3
Candidate Starts for Leperchaun_42:
(Start: 3 @34123 has 31 MA's), (Start: 15 @34255 has 5 MA's), (18, 34291), (19, 34300), (23, 34396),

Gene: LilMoolah_47 Start: 36123, Stop: 36338, Start Num: 12
Candidate Starts for LilMoolah_47:
(Start: 12 @36123 has 146 MA's), (Start: 15 @36180 has 5 MA's), (18, 36216), (19, 36225), (23, 36321),

Gene: LittleShirley_48 Start: 37154, Stop: 37369, Start Num: 12
Candidate Starts for LittleShirley_48:
(Start: 12 @37154 has 146 MA's), (Start: 15 @37211 has 5 MA's), (18, 37247), (19, 37256), (23, 37352),

Gene: Lizziana_54 Start: 37390, Stop: 37680, Start Num: 3
Candidate Starts for Lizziana_54:
(Start: 3 @37390 has 31 MA's), (Start: 15 @37522 has 5 MA's), (18, 37558), (19, 37567), (23, 37663),

Gene: Llama_53 Start: 38359, Stop: 38574, Start Num: 12
Candidate Starts for Llama_53:
(Start: 8 @38347 has 1 MA's), (Start: 12 @38359 has 146 MA's), (Start: 15 @38416 has 5 MA's), (18, 38452), (19, 38461), (23, 38557),

Gene: Llij_46 Start: 35692, Stop: 35907, Start Num: 12
Candidate Starts for Llij_46:
(Start: 8 @35680 has 1 MA's), (Start: 12 @35692 has 146 MA's), (Start: 15 @35749 has 5 MA's), (18, 35785), (19, 35794), (23, 35890),

Gene: Lorde_49 Start: 34745, Stop: 35032, Start Num: 1
Candidate Starts for Lorde_49:
(Start: 1 @34745 has 20 MA's), (Start: 15 @34880 has 5 MA's), (23, 35021),

Gene: Lucia_49 Start: 35893, Stop: 36051, Start Num: 15
Candidate Starts for Lucia_49:
(Start: 8 @35824 has 1 MA's), (Start: 12 @35836 has 146 MA's), (Start: 15 @35893 has 5 MA's), (18, 35929), (19, 35938), (23, 36034),

Gene: LunaBlu_52 Start: 37526, Stop: 37741, Start Num: 12
Candidate Starts for LunaBlu_52:
(7, 37514), (Start: 12 @37526 has 146 MA's), (Start: 15 @37583 has 5 MA's), (23, 37727),

Gene: LunaStella_46 Start: 34981, Stop: 35196, Start Num: 12
Candidate Starts for LunaStella_46:
(Start: 11 @34978 has 10 MA's), (Start: 12 @34981 has 146 MA's), (13, 35005), (14, 35014), (16, 35044), (23, 35182),

Gene: MadMen_43 Start: 35176, Stop: 35391, Start Num: 12
Candidate Starts for MadMen_43:
(Start: 12 @35176 has 146 MA's), (Start: 15 @35233 has 5 MA's), (18, 35269), (19, 35278), (23, 35374),

Gene: Madiba_44 Start: 34465, Stop: 34680, Start Num: 12

Candidate Starts for Madiba_44:

(Start: 12 @34465 has 146 MA's), (Start: 15 @34522 has 5 MA's), (18, 34558), (19, 34567), (23, 34663),

Gene: Mahavrat_46 Start: 35653, Stop: 35868, Start Num: 12

Candidate Starts for Mahavrat_46:

(Start: 8 @35641 has 1 MA's), (Start: 12 @35653 has 146 MA's), (Start: 15 @35710 has 5 MA's), (18, 35746), (19, 35755), (23, 35851),

Gene: Mandlovu_45 Start: 34651, Stop: 34938, Start Num: 1

Candidate Starts for Mandlovu_45:

(Start: 1 @34651 has 20 MA's), (Start: 15 @34786 has 5 MA's), (23, 34927),

Gene: Mantra_45 Start: 35640, Stop: 35858, Start Num: 12

Candidate Starts for Mantra_45:

(Start: 12 @35640 has 146 MA's), (Start: 15 @35697 has 5 MA's), (18, 35733), (19, 35742), (23, 35841),

Gene: Maravista_50 Start: 38127, Stop: 38342, Start Num: 12

Candidate Starts for Maravista_50:

(7, 38115), (Start: 12 @38127 has 146 MA's), (Start: 15 @38184 has 5 MA's), (23, 38325),

Gene: Marker_49 Start: 36022, Stop: 36240, Start Num: 12

Candidate Starts for Marker_49:

(Start: 12 @36022 has 146 MA's), (Start: 15 @36079 has 5 MA's), (18, 36115), (19, 36124), (23, 36223),

Gene: Martik_48 Start: 36343, Stop: 36633, Start Num: 3

Candidate Starts for Martik_48:

(Start: 3 @36343 has 31 MA's), (Start: 15 @36475 has 5 MA's), (18, 36511), (19, 36520), (23, 36616),

Gene: Mattes_51 Start: 36473, Stop: 36709, Start Num: 11

Candidate Starts for Mattes_51:

(Start: 11 @36473 has 10 MA's), (Start: 15 @36545 has 5 MA's), (17, 36557), (18, 36584), (20, 36635), (21, 36659), (22, 36671), (23, 36692),

Gene: Medindi_46 Start: 34502, Stop: 34717, Start Num: 12

Candidate Starts for Medindi_46:

(Start: 12 @34502 has 146 MA's), (Start: 15 @34559 has 5 MA's), (19, 34604), (21, 34670), (23, 34703),

Gene: Melissauren88_46 Start: 35495, Stop: 35782, Start Num: 1

Candidate Starts for Melissauren88_46:

(Start: 1 @35495 has 20 MA's), (Start: 15 @35630 has 5 MA's), (23, 35771),

Gene: MilanaBonita_41 Start: 32049, Stop: 32342, Start Num: 1

Candidate Starts for MilanaBonita_41:

(Start: 1 @32049 has 20 MA's), (Start: 15 @32184 has 5 MA's), (23, 32328),

Gene: MilleniumForce_49 Start: 37588, Stop: 37803, Start Num: 12

Candidate Starts for MilleniumForce_49:

(7, 37576), (Start: 12 @37588 has 146 MA's), (Start: 15 @37645 has 5 MA's), (23, 37789),

Gene: MinionDave_47 Start: 36032, Stop: 36319, Start Num: 1
Candidate Starts for MinionDave_47:
(Start: 1 @36032 has 20 MA's), (Start: 15 @36167 has 5 MA's), (23, 36308),

Gene: Minnie_53 Start: 38470, Stop: 38685, Start Num: 10
Candidate Starts for Minnie_53:
(Start: 10 @38470 has 1 MA's), (Start: 15 @38527 has 5 MA's), (17, 38539), (21, 38638), (23, 38671),

Gene: MisterCuddles_48 Start: 36733, Stop: 36948, Start Num: 12
Candidate Starts for MisterCuddles_48:
(Start: 12 @36733 has 146 MA's), (Start: 15 @36790 has 5 MA's), (18, 36826), (19, 36835), (23, 36931),

Gene: Modragons_52 Start: 38205, Stop: 38420, Start Num: 12
Candidate Starts for Modragons_52:
(Start: 8 @38193 has 1 MA's), (Start: 12 @38205 has 146 MA's), (Start: 15 @38262 has 5 MA's), (18, 38298), (19, 38307), (23, 38403),

Gene: MooMoo_45 Start: 35254, Stop: 35472, Start Num: 11
Candidate Starts for MooMoo_45:
(Start: 11 @35254 has 10 MA's), (Start: 12 @35257 has 146 MA's), (13, 35281), (14, 35290), (16, 35320), (23, 35458),

Gene: Moonbeam_44 Start: 35549, Stop: 35839, Start Num: 1
Candidate Starts for Moonbeam_44:
(Start: 1 @35549 has 20 MA's), (Start: 15 @35684 has 5 MA's), (23, 35825),

Gene: Mova_48 Start: 35315, Stop: 35602, Start Num: 1
Candidate Starts for Mova_48:
(Start: 1 @35315 has 20 MA's), (Start: 15 @35450 has 5 MA's), (23, 35591),

Gene: Mozy_59 Start: 39200, Stop: 39415, Start Num: 9
Candidate Starts for Mozy_59:
(6, 39188), (Start: 9 @39200 has 5 MA's), (Start: 15 @39257 has 5 MA's), (16, 39263), (23, 39401),

Gene: Ms6_41 Start: 30561, Stop: 30848, Start Num: 1
Candidate Starts for Ms6_41:
(Start: 1 @30561 has 20 MA's), (Start: 15 @30696 has 5 MA's), (23, 30837),

Gene: MulchExplorer_51 Start: 38367, Stop: 38582, Start Num: 12
Candidate Starts for MulchExplorer_51:
(7, 38355), (Start: 12 @38367 has 146 MA's), (Start: 15 @38424 has 5 MA's), (23, 38565),

Gene: Mutaforma13_52 Start: 38178, Stop: 38393, Start Num: 12
Candidate Starts for Mutaforma13_52:
(7, 38166), (Start: 12 @38178 has 146 MA's), (Start: 15 @38235 has 5 MA's), (23, 38379),

Gene: Mwanjiwa_54 Start: 37105, Stop: 37323, Start Num: 12
Candidate Starts for Mwanjiwa_54:
(Start: 12 @37105 has 146 MA's), (Start: 15 @37162 has 5 MA's), (18, 37198), (19, 37207), (23, 37306),

Gene: NewHope4_51 Start: 36900, Stop: 37112, Start Num: 12

Candidate Starts for NewHope4_51:

(7, 36888), (Start: 12 @36900 has 146 MA's), (Start: 15 @36957 has 5 MA's), (23, 37098),

Gene: Nichirin_53 Start: 37994, Stop: 38212, Start Num: 12

Candidate Starts for Nichirin_53:

(Start: 12 @37994 has 146 MA's), (Start: 15 @38051 has 5 MA's), (18, 38087), (19, 38096), (23, 38195),

Gene: Nimbo_44 Start: 34696, Stop: 34986, Start Num: 3

Candidate Starts for Nimbo_44:

(Start: 3 @34696 has 31 MA's), (Start: 15 @34828 has 5 MA's), (18, 34864), (19, 34873), (23, 34969),

Gene: Nitzel_43 Start: 34892, Stop: 35107, Start Num: 12

Candidate Starts for Nitzel_43:

(7, 34880), (Start: 12 @34892 has 146 MA's), (Start: 15 @34949 has 5 MA's), (23, 35090),

Gene: Nivrat_46 Start: 35996, Stop: 36211, Start Num: 12

Candidate Starts for Nivrat_46:

(Start: 12 @35996 has 146 MA's), (Start: 15 @36053 has 5 MA's), (18, 36089), (19, 36098), (23, 36194),

Gene: NormanBulbieJr_49 Start: 36330, Stop: 36620, Start Num: 3

Candidate Starts for NormanBulbieJr_49:

(Start: 3 @36330 has 31 MA's), (Start: 15 @36462 has 5 MA's), (18, 36498), (19, 36507), (23, 36603),

Gene: Ochi17_51 Start: 37812, Stop: 38027, Start Num: 12

Candidate Starts for Ochi17_51:

(Start: 8 @37800 has 1 MA's), (Start: 12 @37812 has 146 MA's), (Start: 15 @37869 has 5 MA's), (18, 37905), (19, 37914), (23, 38010),

Gene: OfUltron_53 Start: 38361, Stop: 38576, Start Num: 12

Candidate Starts for OfUltron_53:

(Start: 8 @38349 has 1 MA's), (Start: 12 @38361 has 146 MA's), (Start: 15 @38418 has 5 MA's), (18, 38454), (19, 38463), (23, 38559),

Gene: Ogopogo_49 Start: 35647, Stop: 35862, Start Num: 12

Candidate Starts for Ogopogo_49:

(Start: 12 @35647 has 146 MA's), (Start: 15 @35704 has 5 MA's), (23, 35845),

Gene: Okabe_44 Start: 31989, Stop: 32201, Start Num: 12

Candidate Starts for Okabe_44:

(Start: 12 @31989 has 146 MA's), (Start: 15 @32046 has 5 MA's), (19, 32091), (21, 32157), (23, 32190),

Gene: Oksu_53 Start: 38310, Stop: 38471, Start Num: 15

Candidate Starts for Oksu_53:

(Start: 5 @38232 has 1 MA's), (Start: 15 @38310 has 5 MA's), (18, 38346), (19, 38355), (23, 38454),

Gene: OldBen_47 Start: 36486, Stop: 36701, Start Num: 12

Candidate Starts for OldBen_47:

(Start: 12 @36486 has 146 MA's), (Start: 15 @36543 has 5 MA's), (18, 36579), (19, 36588), (23, 36684),

Gene: OlympiaSaint_49 Start: 36331, Stop: 36546, Start Num: 12
Candidate Starts for OlympiaSaint_49:
(Start: 8 @36319 has 1 MA's), (Start: 12 @36331 has 146 MA's), (Start: 15 @36388 has 5 MA's), (18, 36424), (19, 36433), (23, 36529),

Gene: Ovechkin_45 Start: 35876, Stop: 36169, Start Num: 1
Candidate Starts for Ovechkin_45:
(Start: 1 @35876 has 20 MA's), (Start: 15 @36011 has 5 MA's), (23, 36155),

Gene: OwlsT2W_47 Start: 36331, Stop: 36549, Start Num: 12
Candidate Starts for OwlsT2W_47:
(Start: 8 @36319 has 1 MA's), (Start: 12 @36331 has 146 MA's), (Start: 15 @36388 has 5 MA's), (18, 36424), (19, 36433), (23, 36532),

Gene: PHappiness_45 Start: 34669, Stop: 34959, Start Num: 3
Candidate Starts for PHappiness_45:
(Start: 3 @34669 has 31 MA's), (Start: 15 @34801 has 5 MA's), (18, 34837), (19, 34846), (23, 34942),

Gene: PMC_43 Start: 35543, Stop: 35758, Start Num: 12
Candidate Starts for PMC_43:
(Start: 12 @35543 has 146 MA's), (Start: 15 @35600 has 5 MA's), (18, 35636), (19, 35645), (23, 35741),

Gene: Pacc40_44 Start: 34743, Stop: 35033, Start Num: 3
Candidate Starts for Pacc40_44:
(Start: 3 @34743 has 31 MA's), (Start: 15 @34875 has 5 MA's), (18, 34911), (19, 34920), (23, 35016),

Gene: PatoPoderoso_46 Start: 35441, Stop: 35656, Start Num: 12
Candidate Starts for PatoPoderoso_46:
(Start: 12 @35441 has 146 MA's), (Start: 15 @35498 has 5 MA's), (19, 35543), (21, 35609), (23, 35642),

Gene: Peridot_51 Start: 36450, Stop: 36665, Start Num: 12
Candidate Starts for Peridot_51:
(7, 36438), (Start: 12 @36450 has 146 MA's), (Start: 15 @36507 has 5 MA's), (23, 36648),

Gene: Phalconet_47 Start: 35874, Stop: 36089, Start Num: 12
Candidate Starts for Phalconet_47:
(Start: 12 @35874 has 146 MA's), (Start: 15 @35931 has 5 MA's), (19, 35976), (21, 36042), (23, 36075),

Gene: Phanphagia_43 Start: 35726, Stop: 35941, Start Num: 12
Candidate Starts for Phanphagia_43:
(Start: 12 @35726 has 146 MA's), (Start: 15 @35783 has 5 MA's), (18, 35819), (19, 35828), (23, 35924),

Gene: Phasih_46 Start: 36143, Stop: 36304, Start Num: 15
Candidate Starts for Phasih_46:
(Start: 12 @36086 has 146 MA's), (Start: 15 @36143 has 5 MA's), (18, 36179), (19, 36188), (23, 36287),

Gene: Phatniss_47 Start: 36787, Stop: 37002, Start Num: 12
Candidate Starts for Phatniss_47:

(Start: 8 @36775 has 1 MA's), (Start: 12 @36787 has 146 MA's), (Start: 15 @36844 has 5 MA's), (18, 36880), (19, 36889), (23, 36985),

Gene: PhesterPhotato_50 Start: 36829, Stop: 37044, Start Num: 12

Candidate Starts for PhesterPhotato_50:

(Start: 12 @36829 has 146 MA's), (Start: 15 @36886 has 5 MA's), (19, 36931), (21, 36997), (23, 37030),

Gene: Philus_51 Start: 36358, Stop: 36594, Start Num: 11

Candidate Starts for Philus_51:

(Start: 11 @36358 has 10 MA's), (Start: 15 @36430 has 5 MA's), (17, 36442), (18, 36469), (20, 36520), (21, 36544), (22, 36556), (23, 36577),

Gene: PhlipPhlop_48 Start: 37346, Stop: 37564, Start Num: 12

Candidate Starts for PhlipPhlop_48:

(Start: 8 @37334 has 1 MA's), (Start: 12 @37346 has 146 MA's), (Start: 15 @37403 has 5 MA's), (18, 37439), (19, 37448), (23, 37547),

Gene: Plumbus_50 Start: 36534, Stop: 36749, Start Num: 12

Candidate Starts for Plumbus_50:

(7, 36522), (Start: 12 @36534 has 146 MA's), (Start: 15 @36591 has 5 MA's), (23, 36732),

Gene: Poenanya_48 Start: 37072, Stop: 37287, Start Num: 12

Candidate Starts for Poenanya_48:

(Start: 12 @37072 has 146 MA's), (Start: 15 @37129 has 5 MA's), (18, 37165), (19, 37174), (23, 37270),

Gene: Polka14_46 Start: 35346, Stop: 35636, Start Num: 3

Candidate Starts for Polka14_46:

(Start: 3 @35346 has 31 MA's), (Start: 15 @35478 has 5 MA's), (18, 35514), (19, 35523), (23, 35619),

Gene: Pollywog_47 Start: 36250, Stop: 36465, Start Num: 12

Candidate Starts for Pollywog_47:

(Start: 12 @36250 has 146 MA's), (Start: 15 @36307 has 5 MA's), (18, 36343), (19, 36352), (23, 36448),

Gene: Polo2Bam_56 Start: 36754, Stop: 36966, Start Num: 12

Candidate Starts for Polo2Bam_56:

(7, 36742), (Start: 12 @36754 has 146 MA's), (Start: 15 @36811 has 5 MA's), (23, 36952),

Gene: PopTart_44 Start: 35555, Stop: 35773, Start Num: 12

Candidate Starts for PopTart_44:

(Start: 12 @35555 has 146 MA's), (Start: 15 @35612 has 5 MA's), (18, 35648), (19, 35657), (23, 35756),

Gene: Priscilla_48 Start: 36429, Stop: 36719, Start Num: 3

Candidate Starts for Priscilla_48:

(Start: 3 @36429 has 31 MA's), (Start: 15 @36561 has 5 MA's), (18, 36597), (19, 36606), (23, 36702),

Gene: QuickMath_50 Start: 38591, Stop: 38806, Start Num: 12

Candidate Starts for QuickMath_50:

(7, 38579), (Start: 12 @38591 has 146 MA's), (Start: 15 @38648 has 5 MA's), (23, 38789),

Gene: Radiance_48 Start: 36656, Stop: 36874, Start Num: 12

Candidate Starts for Radiance_48:

(Start: 12 @36656 has 146 MA's), (Start: 15 @36713 has 5 MA's), (18, 36749), (19, 36758), (23, 36857),

Gene: Ramsey_50 Start: 37283, Stop: 37501, Start Num: 12

Candidate Starts for Ramsey_50:

(Start: 12 @37283 has 146 MA's), (Start: 15 @37340 has 5 MA's), (18, 37376), (19, 37385), (23, 37484),

Gene: RedBird_45 Start: 35883, Stop: 36098, Start Num: 12

Candidate Starts for RedBird_45:

(Start: 12 @35883 has 146 MA's), (Start: 15 @35940 has 5 MA's), (18, 35976), (19, 35985), (23, 36081),

Gene: Renaud18_53 Start: 36919, Stop: 37137, Start Num: 9

Candidate Starts for Renaud18_53:

(6, 36907), (Start: 9 @36919 has 5 MA's), (Start: 15 @36976 has 5 MA's), (23, 37120),

Gene: Rialto_54 Start: 39106, Stop: 39318, Start Num: 12

Candidate Starts for Rialto_54:

(7, 39094), (Start: 12 @39106 has 146 MA's), (Start: 15 @39163 has 5 MA's), (23, 39304),

Gene: Rita_50 Start: 35732, Stop: 35947, Start Num: 12

Candidate Starts for Rita_50:

(Start: 12 @35732 has 146 MA's), (Start: 15 @35789 has 5 MA's), (18, 35825), (19, 35834), (23, 35930),

Gene: RitaG_45 Start: 35014, Stop: 35304, Start Num: 3

Candidate Starts for RitaG_45:

(Start: 3 @35014 has 31 MA's), (Start: 15 @35146 has 5 MA's), (18, 35182), (19, 35191), (23, 35287),

Gene: Rockne_46 Start: 35543, Stop: 35758, Start Num: 12

Candidate Starts for Rockne_46:

(Start: 12 @35543 has 146 MA's), (Start: 15 @35600 has 5 MA's), (18, 35636), (19, 35645), (23, 35741),

Gene: RockyHorror_49 Start: 35944, Stop: 36162, Start Num: 12

Candidate Starts for RockyHorror_49:

(Start: 12 @35944 has 146 MA's), (Start: 15 @36001 has 5 MA's), (18, 36037), (19, 36046), (23, 36145),

Gene: Royals2015_50 Start: 36352, Stop: 36567, Start Num: 12

Candidate Starts for Royals2015_50:

(Start: 8 @36340 has 1 MA's), (Start: 12 @36352 has 146 MA's), (Start: 15 @36409 has 5 MA's), (18, 36445), (19, 36454), (23, 36550),

Gene: Ruby_47 Start: 36734, Stop: 36949, Start Num: 12

Candidate Starts for Ruby_47:

(Start: 12 @36734 has 146 MA's), (Start: 15 @36791 has 5 MA's), (18, 36827), (19, 36836), (23, 36932),

Gene: SG4_46 Start: 35255, Stop: 35542, Start Num: 1

Candidate Starts for SG4_46:

(Start: 1 @35255 has 20 MA's), (Start: 15 @35390 has 5 MA's), (23, 35531),

Gene: Saal_50 Start: 36336, Stop: 36572, Start Num: 11

Candidate Starts for Saal_50:

(Start: 11 @36336 has 10 MA's), (Start: 15 @36408 has 5 MA's), (17, 36420), (18, 36447), (20, 36498), (21, 36522), (22, 36534), (23, 36555),

Gene: Sabbb_54 Start: 37782, Stop: 37997, Start Num: 12

Candidate Starts for Sabbb_54:

(Start: 8 @37770 has 1 MA's), (Start: 12 @37782 has 146 MA's), (Start: 15 @37839 has 5 MA's), (18, 37875), (19, 37884), (23, 37980),

Gene: Sandalphon_51 Start: 37265, Stop: 37480, Start Num: 12

Candidate Starts for Sandalphon_51:

(Start: 8 @37253 has 1 MA's), (Start: 12 @37265 has 146 MA's), (Start: 15 @37322 has 5 MA's), (18, 37358), (19, 37367), (23, 37463),

Gene: Sarma624_46 Start: 32619, Stop: 32831, Start Num: 12

Candidate Starts for Sarma624_46:

(7, 32607), (Start: 12 @32619 has 146 MA's), (Start: 15 @32676 has 5 MA's), (23, 32817),

Gene: Sassafras_47 Start: 35405, Stop: 35695, Start Num: 3

Candidate Starts for Sassafras_47:

(Start: 3 @35405 has 31 MA's), (Start: 15 @35537 has 5 MA's), (18, 35573), (19, 35582), (23, 35678),

Gene: SassyB_44 Start: 35555, Stop: 35773, Start Num: 12

Candidate Starts for SassyB_44:

(Start: 12 @35555 has 146 MA's), (Start: 15 @35612 has 5 MA's), (18, 35648), (19, 35657), (23, 35756),

Gene: Scottish_48 Start: 36026, Stop: 36316, Start Num: 3

Candidate Starts for Scottish_48:

(Start: 3 @36026 has 31 MA's), (Start: 15 @36158 has 5 MA's), (18, 36194), (19, 36203), (23, 36299),

Gene: SeaLumen_54 Start: 36754, Stop: 36966, Start Num: 12

Candidate Starts for SeaLumen_54:

(7, 36742), (Start: 12 @36754 has 146 MA's), (Start: 15 @36811 has 5 MA's), (23, 36952),

Gene: Seabastian_53 Start: 38362, Stop: 38577, Start Num: 12

Candidate Starts for Seabastian_53:

(Start: 8 @38350 has 1 MA's), (Start: 12 @38362 has 146 MA's), (Start: 15 @38419 has 5 MA's), (18, 38455), (19, 38464), (23, 38560),

Gene: Seagreen_49 Start: 36283, Stop: 36501, Start Num: 12

Candidate Starts for Seagreen_49:

(Start: 12 @36283 has 146 MA's), (Start: 15 @36340 has 5 MA's), (18, 36376), (19, 36385), (23, 36484), (24, 36493),

Gene: Shauna1_44 Start: 35716, Stop: 35931, Start Num: 12

Candidate Starts for Shauna1_44:

(Start: 12 @35716 has 146 MA's), (Start: 15 @35773 has 5 MA's), (18, 35809), (19, 35818), (23, 35914),

Gene: ShiLan_48 Start: 36376, Stop: 36666, Start Num: 3

Candidate Starts for ShiLan_48:

(Start: 3 @36376 has 31 MA's), (Start: 15 @36508 has 5 MA's), (18, 36544), (19, 36553), (23, 36649),

Gene: ShowerHandel_50 Start: 36343, Stop: 36633, Start Num: 3

Candidate Starts for ShowerHandel_50:

(Start: 3 @36343 has 31 MA's), (Start: 15 @36475 has 5 MA's), (18, 36511), (19, 36520), (23, 36616),

Gene: ShroomBoi_48 Start: 36209, Stop: 36424, Start Num: 12

Candidate Starts for ShroomBoi_48:

(Start: 12 @36209 has 146 MA's), (Start: 15 @36266 has 5 MA's), (19, 36311), (21, 36377), (23, 36410),

Gene: SiSi_48 Start: 36104, Stop: 36322, Start Num: 12

Candidate Starts for SiSi_48:

(Start: 12 @36104 has 146 MA's), (Start: 15 @36161 has 5 MA's), (18, 36197), (19, 36206), (23, 36305),

Gene: SilverChicken_57 Start: 35783, Stop: 36070, Start Num: 1

Candidate Starts for SilverChicken_57:

(Start: 1 @35783 has 20 MA's), (Start: 15 @35918 has 5 MA's), (23, 36059),

Gene: SimranZ1_48 Start: 35608, Stop: 35766, Start Num: 15

Candidate Starts for SimranZ1_48:

(Start: 12 @35551 has 146 MA's), (Start: 15 @35608 has 5 MA's), (18, 35644), (19, 35653), (23, 35749),

Gene: Slim_49 Start: 37253, Stop: 37468, Start Num: 12

Candidate Starts for Slim_49:

(Start: 12 @37253 has 146 MA's), (Start: 15 @37310 has 5 MA's), (18, 37346), (19, 37355), (23, 37451),

Gene: Soul22_53 Start: 36456, Stop: 36671, Start Num: 12

Candidate Starts for Soul22_53:

(7, 36444), (Start: 12 @36456 has 146 MA's), (Start: 15 @36513 has 5 MA's), (23, 36657),

Gene: Sparkdehlily_52 Start: 37104, Stop: 37319, Start Num: 12

Candidate Starts for Sparkdehlily_52:

(Start: 8 @37092 has 1 MA's), (Start: 12 @37104 has 146 MA's), (Start: 15 @37161 has 5 MA's), (18, 37197), (19, 37206), (23, 37302),

Gene: Spartacus_51 Start: 36704, Stop: 36916, Start Num: 12

Candidate Starts for Spartacus_51:

(7, 36692), (Start: 12 @36704 has 146 MA's), (Start: 15 @36761 has 5 MA's), (23, 36902),

Gene: Spikelee_55 Start: 37839, Stop: 38057, Start Num: 12

Candidate Starts for Spikelee_55:

(Start: 12 @37839 has 146 MA's), (Start: 15 @37896 has 5 MA's), (18, 37932), (19, 37941), (23, 38040),

Gene: Spoonbill_47 Start: 34968, Stop: 35258, Start Num: 3

Candidate Starts for Spoonbill_47:

(Start: 3 @34968 has 31 MA's), (Start: 15 @35100 has 5 MA's), (18, 35136), (19, 35145), (23, 35241),

Gene: Squirty_42 Start: 33408, Stop: 33710, Start Num: 4

Candidate Starts for Squirty_42:

(2, 33399), (Start: 4 @33408 has 1 MA's), (Start: 11 @33477 has 10 MA's), (Start: 15 @33549 has 5 MA's), (17, 33561), (18, 33588), (23, 33696),

Gene: StAnnes_47 Start: 36474, Stop: 36761, Start Num: 1

Candidate Starts for StAnnes_47:

(Start: 1 @36474 has 20 MA's), (Start: 15 @36609 has 5 MA's), (23, 36750),

Gene: Stap_47 Start: 35845, Stop: 36060, Start Num: 12

Candidate Starts for Stap_47:

(Start: 12 @35845 has 146 MA's), (Start: 15 @35902 has 5 MA's), (18, 35938), (19, 35947), (23, 36043),

Gene: Starcevich_48 Start: 36738, Stop: 36953, Start Num: 12

Candidate Starts for Starcevich_48:

(Start: 12 @36738 has 146 MA's), (Start: 15 @36795 has 5 MA's), (18, 36831), (19, 36840), (23, 36936),

Gene: Strokeseat_46 Start: 34708, Stop: 34995, Start Num: 1

Candidate Starts for Strokeseat_46:

(Start: 1 @34708 has 20 MA's), (Start: 15 @34843 has 5 MA's), (23, 34984),

Gene: SuperGrey_49 Start: 37178, Stop: 37393, Start Num: 12

Candidate Starts for SuperGrey_49:

(Start: 12 @37178 has 146 MA's), (Start: 15 @37235 has 5 MA's), (23, 37379),

Gene: SwagPigglett_53 Start: 37364, Stop: 37600, Start Num: 11

Candidate Starts for SwagPigglett_53:

(Start: 11 @37364 has 10 MA's), (Start: 15 @37436 has 5 MA's), (17, 37448), (18, 37475), (20, 37526), (21, 37550), (22, 37562), (23, 37583),

Gene: TChen_48 Start: 36932, Stop: 37147, Start Num: 12

Candidate Starts for TChen_48:

(Start: 11 @36929 has 10 MA's), (Start: 12 @36932 has 146 MA's), (13, 36956), (14, 36965), (16, 36995), (23, 37133),

Gene: TDanisky_52 Start: 37104, Stop: 37319, Start Num: 12

Candidate Starts for TDanisky_52:

(Start: 8 @37092 has 1 MA's), (Start: 12 @37104 has 146 MA's), (Start: 15 @37161 has 5 MA's), (18, 37197), (19, 37206), (23, 37302),

Gene: Taj_52 Start: 36840, Stop: 37058, Start Num: 9

Candidate Starts for Taj_52:

(6, 36828), (Start: 9 @36840 has 5 MA's), (Start: 15 @36897 has 5 MA's), (23, 37041),

Gene: Tchotchke_51 Start: 36056, Stop: 36217, Start Num: 15

Candidate Starts for Tchotchke_51:

(Start: 8 @35987 has 1 MA's), (Start: 12 @35999 has 146 MA's), (Start: 15 @36056 has 5 MA's), (18, 36092), (19, 36101), (23, 36200),

Gene: ThetaBob_52 Start: 36585, Stop: 36800, Start Num: 9
Candidate Starts for ThetaBob_52:
(Start: 9 @36585 has 5 MA's), (Start: 15 @36642 has 5 MA's), (23, 36786),

Gene: Tootsieroll_51 Start: 36295, Stop: 36510, Start Num: 12
Candidate Starts for Tootsieroll_51:
(Start: 8 @36283 has 1 MA's), (Start: 12 @36295 has 146 MA's), (Start: 15 @36352 has 5 MA's), (18, 36388), (19, 36397), (23, 36493),

Gene: Topiatin_53 Start: 37613, Stop: 37828, Start Num: 12
Candidate Starts for Topiatin_53:
(Start: 12 @37613 has 146 MA's), (Start: 15 @37670 has 5 MA's), (18, 37706), (19, 37715), (23, 37811),

Gene: Totinger_48 Start: 35937, Stop: 36095, Start Num: 15
Candidate Starts for Totinger_48:
(Start: 12 @35880 has 146 MA's), (Start: 15 @35937 has 5 MA's), (18, 35973), (19, 35982), (23, 36078),

Gene: Tweety_48 Start: 36616, Stop: 36831, Start Num: 12
Candidate Starts for Tweety_48:
(Start: 12 @36616 has 146 MA's), (Start: 15 @36673 has 5 MA's), (18, 36709), (19, 36718), (23, 36814),

Gene: UncleRicky_49 Start: 37035, Stop: 37250, Start Num: 12
Candidate Starts for UncleRicky_49:
(Start: 8 @37023 has 1 MA's), (Start: 12 @37035 has 146 MA's), (Start: 15 @37092 has 5 MA's), (18, 37128), (19, 37137), (23, 37233),

Gene: VRedHorse_48 Start: 35719, Stop: 36030, Start Num: 1
Candidate Starts for VRedHorse_48:
(Start: 1 @35719 has 20 MA's), (Start: 15 @35875 has 5 MA's), (23, 36019),

Gene: Velveteen_44 Start: 32619, Stop: 32831, Start Num: 12
Candidate Starts for Velveteen_44:
(7, 32607), (Start: 12 @32619 has 146 MA's), (Start: 15 @32676 has 5 MA's), (23, 32817),

Gene: Veteran_46 Start: 35748, Stop: 35966, Start Num: 12
Candidate Starts for Veteran_46:
(Start: 12 @35748 has 146 MA's), (Start: 15 @35805 has 5 MA's), (18, 35841), (19, 35850), (23, 35949),

Gene: Violac_52 Start: 37916, Stop: 38131, Start Num: 12
Candidate Starts for Violac_52:
(7, 37904), (Start: 12 @37916 has 146 MA's), (Start: 15 @37973 has 5 MA's), (23, 38117),

Gene: Vivum_51 Start: 36866, Stop: 37081, Start Num: 12
Candidate Starts for Vivum_51:
(Start: 12 @36866 has 146 MA's), (Start: 15 @36923 has 5 MA's), (18, 36959), (19, 36968), (23, 37064),

Gene: Wachhund_51 Start: 36225, Stop: 36437, Start Num: 12
Candidate Starts for Wachhund_51:

(7, 36213), (Start: 12 @36225 has 146 MA's), (Start: 15 @36282 has 5 MA's), (23, 36423),

Gene: Wee_51 Start: 37115, Stop: 37330, Start Num: 12

Candidate Starts for Wee_51:

(Start: 12 @37115 has 146 MA's), (Start: 15 @37172 has 5 MA's), (18, 37208), (19, 37217), (23, 37313),

Gene: Whatsapiecost_47 Start: 35487, Stop: 35699, Start Num: 12

Candidate Starts for Whatsapiecost_47:

(7, 35475), (Start: 12 @35487 has 146 MA's), (Start: 15 @35544 has 5 MA's), (23, 35685),

Gene: Whouxphf_48 Start: 36771, Stop: 36986, Start Num: 12

Candidate Starts for Whouxphf_48:

(Start: 12 @36771 has 146 MA's), (Start: 15 @36828 has 5 MA's), (23, 36969),

Gene: WillSterrel_50 Start: 37820, Stop: 38032, Start Num: 12

Candidate Starts for WillSterrel_50:

(7, 37808), (Start: 12 @37820 has 146 MA's), (Start: 15 @37877 has 5 MA's), (23, 38018),

Gene: XFactor_46 Start: 35203, Stop: 35490, Start Num: 1

Candidate Starts for XFactor_46:

(Start: 1 @35203 has 20 MA's), (Start: 15 @35338 has 5 MA's), (23, 35479),

Gene: Yorick_48 Start: 36792, Stop: 37007, Start Num: 12

Candidate Starts for Yorick_48:

(Start: 8 @36780 has 1 MA's), (Start: 12 @36792 has 146 MA's), (Start: 15 @36849 has 5 MA's), (18, 36885), (19, 36894), (23, 36990),

Gene: Zerg_47 Start: 36053, Stop: 36271, Start Num: 12

Candidate Starts for Zerg_47:

(Start: 12 @36053 has 146 MA's), (Start: 15 @36110 has 5 MA's), (18, 36146), (19, 36155), (23, 36254),