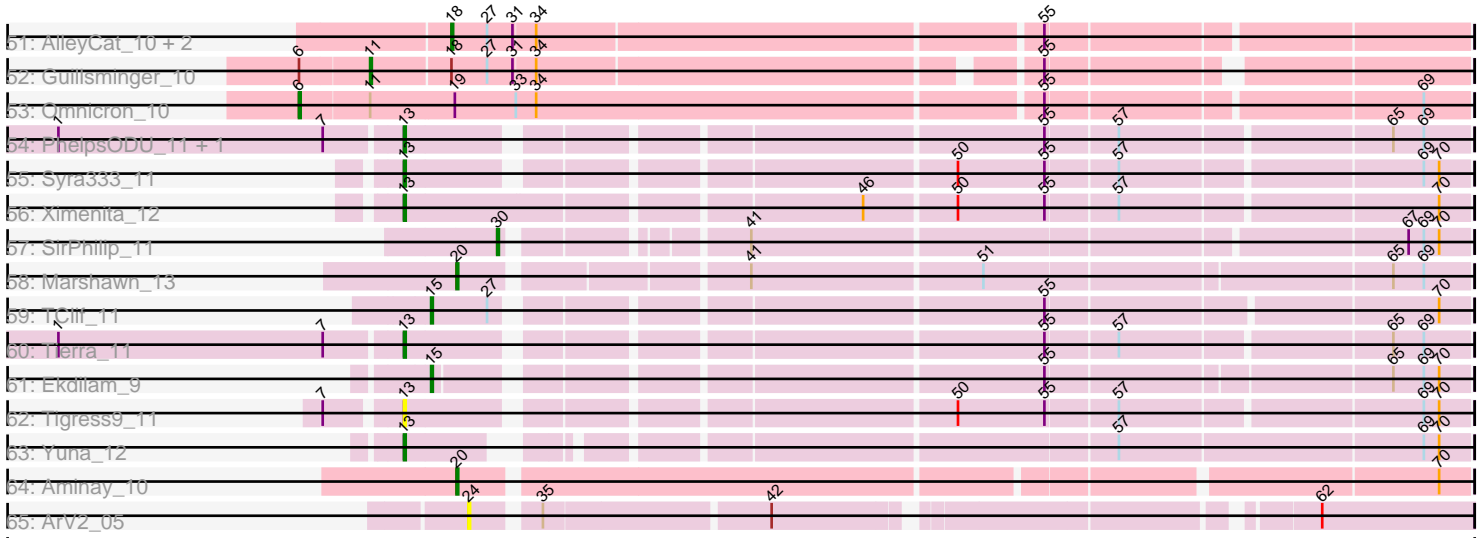


Pham 296215



Note: Tracks are now grouped by subcluster and scaled. Switching in subcluster is indicated by changes in track color. Track scale is now set by default to display the region 30 bp upstream of start 1 to 30 bp downstream of the last possible start. If this default region is judged to be packed too tightly with annotated starts, the track will be further scaled to only show that region of the ORF with annotated starts. This action will be indicated by adding "Zoomed" to the title. For starts, yellow indicates the location of called starts comprised solely of Glimmer/GeneMark auto-annotations, green indicates the location of called starts with at least 1 manual gene annotation.

Pham 296215 Report

This analysis was run 04/25/26 on database version 644.

Pham number 296215 has 247 members, 34 are drafts.

Phages represented in each track:

- Track 1 : Farewell_5, Sparky_5
- Track 2 : Volt_40, Guey18_43, Fryberger_38, Ronaldo_41, Ziko_41
- Track 3 : Keelan_36
- Track 4 : LordVader_7
- Track 5 : Alexphander_6, Leozinho_6, SimranZ1_6, LittleShirley_6, Frankie_6, Plumbus_6, Beakin_6, BigPhil_6, Bobi_6, Kingsley_6, Lorde_6, RockyHorror_6, OwlsT2W_6, Seagreen_6, Boomer_6, Enby_6, BuzzLyseyear_6, Doomslug_6, Juice456_6, JalFarm20_6, Brookers_6, MulchExplorer_6, DirtMcgirt_6, Stap_6, Cerasum_6, Beanstalk_6, Tchotchke_6, Sarma624_6, Lucia_6, DosHalletts_6, Brushbloom_6, Oksu_6, Flathead_6, UncleRicky_6, Kimberlium_6, Velveteen_6, Drago_6, Squirty_6, Tootsieroll_6
- Track 6 : Coco12_6, Emmaloid_6, Aloeri_6, Rialto_6, Starceвич_6, ChickenDinner_6, Piper2020_6, Slim_6, DocMcStuffs_6, TootsiePop_6, Mova_6, DaWorst_6, Awesomesauce_6, Peridot_6, Pollywog_6, Misha28_6, Spikelee_6, Totinger_6
- Track 7 : Job42_6, Marker_6, Madiba_6
- Track 8 : Ramsey_6
- Track 9 : Hegedechwinu_6
- Track 10 : Girafales_6, Mozy_6, Cornucopia_6, Quico_6
- Track 11 : ChuckDuck_5, LittleRon_5
- Track 12 : Neuville_7, Gerri43_7, Annabelle_7, ChamoyPickle_7, CardboardBox_7, Roberts_7, ChipsNGuac_7
- Track 13 : TMaxx_7
- Track 14 : TripleC_10, LastNadiia_10, Audell_10
- Track 15 : Ezurina_6
- Track 16 : Studio_7
- Track 17 : Mireles_7
- Track 18 : Agamoto_9
- Track 19 : Yunkel11_12, Guanica15_12, Efra2_12
- Track 20 : Clipper_12, JAWS_12, Capricorn_12, CheetoDust_12, SamuelLPlaqson_12, Blizzard_12, CallaLilly_12, Adonis_12, Lunahalos_12, BEEST_12, Belladonna_12, Adephagia_12, Tachez_12, HedwigODU_12, Beezoo_12, Mynx_12, Homura_12, YoureAdopted_11, Spock_12, Twitch_12, Atiba_12, MeaningOfLife_12, TaiwanKao_12, ShiaSurprise_12, Ganymede_12, Emerson_12, Durfee_12, Llorens_12, TreyKay_12, Rosmarinus_12, Prithvi_12, BarrelRoll_12, CaseJules_12, Jarvi_12, Tiri_12, TruffulaTree_12, Asayake_12, Peel_12, BGlluviae_12, CREW_12, TiniBug_12, Anma_12, DrHayes_12,

Geraldini_12, Megsy_12, MacKat_12, Padfoot_12, Apocalypse_12, Ramen_12, Padpat_12, Piatt_12, Boiiii_12, Topper_12, Dalmuri_12, Hyperbowlee_12, Bella96_12, Inky_12, LindNT_12, Jeckyll_12, Zabiza_12, ActinUp_12, BaghaKamala_12, Veliki_12, DartGoblin_12, Urkel_12, Zavala_12, Pokerus_11, QuincyRose_11, Joy99_12

- Track 21 : Dartin_12, McMater_12, Richo_12
- Track 22 : Shaobing_12, Niklas_12, Peanam_12
- Track 23 : Ageofdapage_12, Murucutumbu_12, Pisa1_11, Devera_12, Illumine_12, Pisa4_11, LaterM_12, Bern_12, Dole_12, Stinson_12
- Track 24 : AlishaPH_12
- Track 25 : LeMond_11, KiSi_11, Scarlett_11, Oscar_11
- Track 26 : Angelica_12, Deby_12, Sulley_12
- Track 27 : CrimD_12
- Track 28 : Anaya_13
- Track 29 : Curiosium_13
- Track 30 : Jayhawk_12, Rapunzel97_12, Slimphazie_12
- Track 31 : Validus_12
- Track 32 : MarkPhew_11
- Track 33 : Chris_11
- Track 34 : Nibb_11
- Track 35 : Pharb_11
- Track 36 : MacnCheese_12
- Track 37 : Keshu_11
- Track 38 : Pixie_11
- Track 39 : TBond007_11
- Track 40 : Lea83_11
- Track 41 : Hurricane_11
- Track 42 : ShedlockHolmes_11
- Track 43 : TribbleTrouble_10
- Track 44 : Neighly_10
- Track 45 : Agent47_10, Edugator_9, LilDirt_9, Dadosky_10, ViviJ_9, Psycho_10
- Track 46 : Collard_10, Gengar_10, Leston_10
- Track 47 : Heftyboy_10, Thyatira_10, BananenDer11_10, SoSeph_10, Miryou_10, DoubleChamp_10, Waterfoul_10
- Track 48 : Paola_10, Feyre_10, OkiRoe_10
- Track 49 : Rando14_10
- Track 50 : InvictusManeo_10
- Track 51 : AlleyCat_10, Larva_10, Kratio_9
- Track 52 : Guillsminger_10
- Track 53 : Omnicron_10
- Track 54 : PhelpsODU_11, Unicorn_11
- Track 55 : Syra333_11
- Track 56 : Ximenita_12
- Track 57 : SirPhilip_11
- Track 58 : Marshawn_13
- Track 59 : TClif_11
- Track 60 : Tierra_11
- Track 61 : Ekdilam_9
- Track 62 : Tigress9_11
- Track 63 : Yuna_12
- Track 64 : Aminay_10
- Track 65 : ArV2_05

Summary of Final Annotations (See graph section above for start numbers):

The start number called the most often in the published annotations is 22, it was called in 80 of the 213 non-draft genes in the pham.

Genes that call this "Most Annotated" start:

- ActinUp_12, Adephegia_12, Adonis_12, Ageofdapage_12, AlishaPH_12, Anaya_13, Angelica_12, Anma_12, Apocalypse_12, Asayake_12, Atiba_12, BEEST_12, BGIlluviae_12, BaghaKamala_12, BarrelRoll_12, Beezoo_12, Bella96_12, Belladonna_12, Bern_12, Blizzard_12, Boiiii_12, CREW_12, CallaLilly_12, Capricorn_12, CaseJules_12, CheetoDust_12, Clipper_12, CrimD_12, Dalmuri_12, DartGoblin_12, Deby_12, Devera_12, Dole_12, DrHayes_12, Durfee_12, Emerson_12, Ganymede_12, Geraldini_12, HedwigODU_12, Homura_12, Hyperbowlee_12, Illumine_12, Inky_12, JAWS_12, Jarvi_12, Jeckyll_12, Joy99_12, LaterM_12, LindNT_12, Llorens_12, Lunahalos_12, MacKat_12, MeaningOfLife_12, Megsy_12, Murucutumbu_12, Mynx_12, Padfoot_12, Padpat_12, Peel_12, Piatt_12, Pisa1_11, Pisa4_11, Pokerus_11, Prithvi_12, QuincyRose_11, Ramen_12, Rosmarinus_12, SamuelLPlaqson_12, ShiaSurprise_12, Spock_12, Stinson_12, Sulley_12, Tachez_12, TaiwanKao_12, TiniBug_12, Tiri_12, Topper_12, TreyKay_12, TruffulaTree_12, Twitch_12, Urkel_12, Veliki_12, YoureAdopted_11, Zabiza_12, Zavala_12,

Genes that have the "Most Annotated" start but do not call it:

-

Genes that do not have the "Most Annotated" start:

- Agamoto_9, Agent47_10, Alexphander_6, AlleyCat_10, Aloeri_6, Aminay_10, AnnabelLee_7, ArV2_05, Audell_10, Awesomesauce_6, BananenDer11_10, Beakin_6, Beanstalk_6, BigPhil_6, Bobi_6, Boomer_6, Brookers_6, Brushbloom_6, BuzzLyseyear_6, CardboardBox_7, Cerasum_6, ChamoyPickle_7, ChickenDinner_6, ChipsNGuac_7, Chris_11, ChuckDuck_5, Coco12_6, Collard_10, Cornucopia_6, Curiosium_13, DaWorst_6, Dadosky_10, Dartin_12, DirtMcGirt_6, DocMcStuffins_6, Doomslug_6, DosHalletts_6, DoubleChamp_10, Drago_6, Edugator_9, Efra2_12, Ekdilam_9, Emmaloid_6, Enby_6, Ezurina_6, Farewell_5, Feyre_10, Flathead_6, Frankie_6, Fryberger_38, Gengar_10, Gerri43_7, Girafales_6, Guanica15_12, Guey18_43, Guillsminger_10, Heftyboy_10, Hegedechwinu_6, Hurricane_11, InvictusManeo_10, JalFarm20_6, Jayhawk_12, Job42_6, Juice456_6, Keelan_36, Keshu_11, KiSi_11, Kimberlium_6, Kingsley_6, Kratio_9, Larva_10, LastNadiia_10, LeMond_11, Lea83_11, Leozinho_6, Leston_10, LilDirt_9, LittleRon_5, LittleShirley_6, LordVader_7, Lorde_6, Lucia_6, MacnCheese_12, Madiba_6, MarkPhew_11, Marker_6, Marshawn_13, McMater_12, Mireles_7, Miryou_10, Misha28_6, Mova_6, Mozy_6, MulchExplorer_6, Neighly_10, Neuville_7, Nibb_11, Niklas_12, OkiRoe_10, Oksu_6, Omnicron_10, Oscar_11, OwlsT2W_6, Paola_10, Peanam_12, Peridot_6, Pharb_11, PhelpsODU_11, Piper2020_6, Pixie_11, Plumbus_6, Pollywog_6, Psycho_10, Quico_6, Ramsey_6, Rando14_10, Rapunzel97_12, Rialto_6, Richo_12, Roberts_7, RockyHorror_6, Ronaldo_41, Sarma624_6, Scarlett_11, Seagreen_6, Shaobing_12, ShedlockHolmes_11, SimranZ1_6, SirPhilip_11, Slim_6, Slimphazie_12, SoSeph_10, Sparky_5, Spikelee_6, Squirty_6, Stap_6, Starcevich_6, Studio_7, Syra333_11, TBond007_11, TClif_11, TMaxx_7, Tchotchke_6, Thyatira_10, Tierra_11, Tigress9_11,

TootsiePop_6, Tootsieroll_6, Totinger_6, TribbleTrouble_10, TripleC_10, UncleRicky_6, Unicorn_11, Validus_12, Velveteen_6, ViviJ_9, Volt_40, Waterfoul_10, Ximenita_12, Yuna_12, Yunkel11_12, Ziko_41,

Summary by start number:

Start 6:

- Found in 16 of 247 (6.5%) of genes in pham
- Manual Annotations of this start: 4 of 213
- Called 25.0% of time when present
- Phage (with cluster) where this start called: Collard_10 (K5), Gengar_10 (K5), Leston_10 (K5), Omnicron_10 (K5),

Start 11:

- Found in 15 of 247 (6.1%) of genes in pham
- Manual Annotations of this start: 1 of 213
- Called 6.7% of time when present
- Phage (with cluster) where this start called: Guillsminger_10 (K5),

Start 12:

- Found in 1 of 247 (0.4%) of genes in pham
- Manual Annotations of this start: 1 of 213
- Called 100.0% of time when present
- Phage (with cluster) where this start called: Keelan_36 (DP),

Start 13:

- Found in 7 of 247 (2.8%) of genes in pham
- Manual Annotations of this start: 6 of 213
- Called 100.0% of time when present
- Phage (with cluster) where this start called: PhelpsODU_11 (K6), Syra333_11 (K6), Tierra_11 (K6), Tigress9_11 (K6), Unicorn_11 (K6), Ximenita_12 (K6), Yuna_12 (K6),

Start 14:

- Found in 7 of 247 (2.8%) of genes in pham
- Manual Annotations of this start: 3 of 213
- Called 42.9% of time when present
- Phage (with cluster) where this start called: MacnCheese_12 (K3), Pixie_11 (K3), ShedlockHolmes_11 (K3),

Start 15:

- Found in 2 of 247 (0.8%) of genes in pham
- Manual Annotations of this start: 2 of 213
- Called 100.0% of time when present
- Phage (with cluster) where this start called: Ekdilam_9 (K6), TClif_11 (K6),

Start 16:

- Found in 5 of 247 (2.0%) of genes in pham
- Manual Annotations of this start: 5 of 213
- Called 100.0% of time when present
- Phage (with cluster) where this start called: Fryberger_38 (DP), Guey18_43 (DP), Ronaldo_41 (DP), Volt_40 (DP), Ziko_41 (DP),

Start 17:

- Found in 6 of 247 (2.4%) of genes in pham
- No Manual Annotations of this start.
- Called 50.0% of time when present
- Phage (with cluster) where this start called: Dartin_12 (K1), McMater_12 (K1), Richo_12 (K1),

Start 18:

- Found in 27 of 247 (10.9%) of genes in pham
- Manual Annotations of this start: 5 of 213
- Called 18.5% of time when present
- Phage (with cluster) where this start called: AlleyCat_10 (K5), Farewell_5 (AF), Kratio_9 (K5), Larva_10 (K5), Sparky_5 (AF),

Start 20:

- Found in 16 of 247 (6.5%) of genes in pham
- Manual Annotations of this start: 13 of 213
- Called 81.2% of time when present
- Phage (with cluster) where this start called: Aminay_10 (K7), Chris_11 (K1), KiSi_11 (K1), LeMond_11 (K1), MarkPheW_11 (K1), Marshawn_13 (K6), Nibb_11 (K1), Niklas_12 (K1), Oscar_11 (K1), Peanam_12 (K1), Scarlett_11 (K1), Shaobing_12 (K1), Validus_12 (K1),

Start 21:

- Found in 1 of 247 (0.4%) of genes in pham
- Manual Annotations of this start: 1 of 213
- Called 100.0% of time when present
- Phage (with cluster) where this start called: Curiosium_13 (K1),

Start 22:

- Found in 85 of 247 (34.4%) of genes in pham
- Manual Annotations of this start: 80 of 213
- Called 100.0% of time when present
- Phage (with cluster) where this start called: ActinUp_12 (K1), Adephegia_12 (K1), Adonis_12 (K1), Ageofdapage_12 (K1), AlishaPH_12 (K1), Anaya_13 (K1), Angelica_12 (K1), Anma_12 (K1), Apocalypse_12 (K1), Asayake_12 (K1), Atiba_12 (K1), BEEST_12 (K1), BGlluviae_12 (K1), BaghaKamala_12 (K1), BarrelRoll_12 (K1), Beezoo_12 (K1), Bella96_12 (K1), Belladonna_12 (K1), Bern_12 (K1), Blizzard_12 (K1), Boiiii_12 (K1), CREW_12 (K1), CallaLilly_12 (K1), Capricorn_12 (K1), CaseJules_12 (K1), CheetoDust_12 (K1), Clipper_12 (K1), CrimD_12 (K1), Dalmuri_12 (K1), DartGoblin_12 (K1), Deby_12 (K1), Devera_12 (K1), Dole_12 (K1), DrHayes_12 (K1), Durfee_12 (K1), Emerson_12 (K1), Ganymede_12 (K1), Geraldini_12 (K1), HedwigODU_12 (K1), Homura_12 (K1), Hyperbowlee_12 (K1), Illumine_12 (K1), Inky_12 (K1), JAWS_12 (K1), Jarvi_12 (K1), Jeckyll_12 (K1), Joy99_12 (K1), LaterM_12 (K1), LindNT_12 (K1), Llorens_12 (K1), Lunahalos_12 (K1), MacKat_12 (K1), MeaningOfLife_12 (K1), Megsy_12 (K1), Murucutumbu_12 (K1), Mynx_12 (K1), Padfoot_12 (K1), Padpat_12 (K1), Peel_12 (K1), Piatt_12 (K1), Pisa1_11 (K1), Pisa4_11 (K1), Pokerus_11 (K1), Prithvi_12 (K1), QuincyRose_11 (K1), Ramen_12 (K1), Rosmarinus_12 (K1), SamuelLPlaqson_12 (K1), ShiaSurprise_12 (K1), Spock_12 (K1), Stinson_12 (K1), Sulley_12 (K1), Tachez_12 (K1), TaiwanKao_12 (K1), TiniBug_12 (K1), Tiri_12 (K1), Topper_12 (K1), TreyKay_12 (K1), TruffulaTree_12 (K1), Twitch_12 (K1), Urkel_12 (K1), Veliki_12 (K1), YoureAdopted_11 (K1), Zabiza_12 (K1), Zavala_12 (K1),

Start 23:

- Found in 73 of 247 (29.6%) of genes in pham
- Manual Annotations of this start: 64 of 213
- Called 98.6% of time when present
- Phage (with cluster) where this start called: Alexphander_6 (F1), Aloeri_6 (F1), Awesomesauce_6 (F1), Beakin_6 (F1), Beanstalk_6 (F1), BigPhil_6 (F1), Bobi_6 (F1), Boomer_6 (F1), Brookers_6 (F1), Brushbloom_6 (F1), BuzzLyseyear_6 (F1), Cerasum_6 (F1), ChickenDinner_6 (F1), ChuckDuck_5 (FA), Coco12_6 (F1), Cornucopia_6 (F1), DaWorst_6 (F1), DirtMcgirt_6 (F1), DocMcStuffins_6 (F1), Doomslug_6 (F), DosHalletts_6 (F1), Drago_6 (F1), Emmaloid_6 (F1), Enby_6 (F1), Flathead_6 (F1), Frankie_6 (F1), Girafales_6 (F1), Hegedechwinu_6 (F1), JalFarm20_6 (F1), Jayhawk_12 (K1), Job42_6 (F1), Juice456_6 (F1), Kimberlium_6 (F1), Kingsley_6 (F1), Leozinho_6 (F1), LittleRon_5 (FA), LittleShirley_6 (F1), LordVader_7 (F), Lorde_6 (F1), Lucia_6 (F1), Madiba_6 (F1), Marker_6 (F1), Misha28_6 (F1), Mova_6 (F1), Mozy_6 (F1), MulchExplorer_6 (F1), Oksu_6 (F1), OwlsT2W_6 (F1), Peridot_6 (F1), Piper2020_6 (F1), Plumbus_6 (F1), Pollywog_6 (F1), Quico_6 (F1), Ramsey_6 (F1), Rapunzel97_12 (K1), Rialto_6 (F1), RockyHorror_6 (F1), Sarma624_6 (F1), Seagreen_6 (F1), SimranZ1_6 (F1), Slim_6 (F1), Slimphazie_12 (K1), Spikelee_6 (F1), Squirty_6 (F3), Stap_6 (F1), Starcevich_6 (F1), Tchotchke_6 (F1), TootsiePop_6 (F1), Tootsieroll_6 (F1), Totinger_6 (F1), UncleRicky_6 (F1), Velveteen_6 (F1),

Start 24:

- Found in 1 of 247 (0.4%) of genes in pham
- No Manual Annotations of this start.
- Called 100.0% of time when present
- Phage (with cluster) where this start called: ArV2_05 (singleton),

Start 26:

- Found in 3 of 247 (1.2%) of genes in pham
- Manual Annotations of this start: 3 of 213
- Called 100.0% of time when present
- Phage (with cluster) where this start called: Efra2_12 (K1), Guanica15_12 (K1), Yunkel11_12 (K1),

Start 27:

- Found in 26 of 247 (10.5%) of genes in pham
- Manual Annotations of this start: 3 of 213
- Called 15.4% of time when present
- Phage (with cluster) where this start called: Feyre_10 (K5), Neighly_10 (K3), OkiRoe_10 (K5), Paola_10 (K5),

Start 28:

- Found in 9 of 247 (3.6%) of genes in pham
- Manual Annotations of this start: 6 of 213
- Called 66.7% of time when present
- Phage (with cluster) where this start called: Hurricane_11 (K3), Keshu_11 (K3), Lea83_11 (K3), Pharb_11 (K3), TBond007_11 (K3), TribbleTrouble_10 (K3),

Start 29:

- Found in 15 of 247 (6.1%) of genes in pham
- Manual Annotations of this start: 3 of 213
- Called 100.0% of time when present

- Phage (with cluster) where this start called: Agamoto_9 (FR), AnnabelleLee_7 (FR), Audell_10 (FR), CardboardBox_7 (FR), ChamoyPickle_7 (FR), ChipsNGuac_7 (FR), Ezurina_6 (FR), Gerri43_7 (FR), LastNadiia_10 (FR), Mireles_7 (FR), Neuville_7 (FR), Roberts_7 (FR), Studio_7 (FR), TMaxx_7 (FR), TripleC_10 (FR),

Start 30:

- Found in 1 of 247 (0.4%) of genes in pham
- Manual Annotations of this start: 1 of 213
- Called 100.0% of time when present
- Phage (with cluster) where this start called: SirPhilip_11 (K6),

Start 31:

- Found in 25 of 247 (10.1%) of genes in pham
- Manual Annotations of this start: 11 of 213
- Called 56.0% of time when present
- Phage (with cluster) where this start called: Agent47_10 (K5), BananenDer11_10 (K5), Dadosky_10 (K5), DoubleChamp_10 (K5), Edugator_9 (K5), Heftyboy_10 (K5), InvictusManeo_10 (K5), LilDirt_9 (K5), Miryou_10 (K5), Psycho_10 (K5), SoSeph_10 (K5), Thyatira_10 (K5), ViviJ_9 (K5), Waterfoul_10 (K5),

Start 33:

- Found in 2 of 247 (0.8%) of genes in pham
- Manual Annotations of this start: 1 of 213
- Called 50.0% of time when present
- Phage (with cluster) where this start called: Rando14_10 (K5),

Summary by clusters:

There are 13 clusters represented in this pham: F1, FR, F3, AF, F, singleton, K3, FA, K1, K7, K6, K5, DP,

Info for manual annotations of cluster AF:

- Start number 18 was manually annotated 2 times for cluster AF.

Info for manual annotations of cluster DP:

- Start number 12 was manually annotated 1 time for cluster DP.
- Start number 16 was manually annotated 5 times for cluster DP.

Info for manual annotations of cluster F1:

- Start number 23 was manually annotated 59 times for cluster F1.

Info for manual annotations of cluster F3:

- Start number 23 was manually annotated 1 time for cluster F3.

Info for manual annotations of cluster FA:

- Start number 23 was manually annotated 1 time for cluster FA.

Info for manual annotations of cluster FR:

- Start number 29 was manually annotated 3 times for cluster FR.

Info for manual annotations of cluster K1:

- Start number 20 was manually annotated 11 times for cluster K1.

- Start number 21 was manually annotated 1 time for cluster K1.
- Start number 22 was manually annotated 80 times for cluster K1.
- Start number 23 was manually annotated 3 times for cluster K1.
- Start number 26 was manually annotated 3 times for cluster K1.

Info for manual annotations of cluster K3:

- Start number 14 was manually annotated 3 times for cluster K3.
- Start number 28 was manually annotated 6 times for cluster K3.

Info for manual annotations of cluster K5:

- Start number 6 was manually annotated 4 times for cluster K5.
- Start number 11 was manually annotated 1 time for cluster K5.
- Start number 18 was manually annotated 3 times for cluster K5.
- Start number 27 was manually annotated 3 times for cluster K5.
- Start number 31 was manually annotated 11 times for cluster K5.
- Start number 33 was manually annotated 1 time for cluster K5.

Info for manual annotations of cluster K6:

- Start number 13 was manually annotated 6 times for cluster K6.
- Start number 15 was manually annotated 2 times for cluster K6.
- Start number 20 was manually annotated 1 time for cluster K6.
- Start number 30 was manually annotated 1 time for cluster K6.

Info for manual annotations of cluster K7:

- Start number 20 was manually annotated 1 time for cluster K7.

Gene Information:

Gene: ActinUp_12 Start: 7313, Stop: 7855, Start Num: 22

Candidate Starts for ActinUp_12:

(Start: 22 @7313 has 80 MA's), (41, 7448), (55, 7616), (65, 7811), (69, 7829), (70, 7838),

Gene: Adephagia_12 Start: 7313, Stop: 7855, Start Num: 22

Candidate Starts for Adephagia_12:

(Start: 22 @7313 has 80 MA's), (41, 7448), (55, 7616), (65, 7811), (69, 7829), (70, 7838),

Gene: Adonis_12 Start: 7324, Stop: 7866, Start Num: 22

Candidate Starts for Adonis_12:

(Start: 22 @7324 has 80 MA's), (41, 7459), (55, 7627), (65, 7822), (69, 7840), (70, 7849),

Gene: Agamoto_9 Start: 8117, Stop: 8620, Start Num: 29

Candidate Starts for Agamoto_9:

(Start: 29 @8117 has 3 MA's), (43, 8285), (45, 8300),

Gene: Agent47_10 Start: 7496, Stop: 8026, Start Num: 31

Candidate Starts for Agent47_10:

(Start: 18 @7460 has 5 MA's), (Start: 27 @7481 has 3 MA's), (Start: 31 @7496 has 11 MA's), (34, 7508), (55, 7793),

Gene: Ageofdapage_12 Start: 7253, Stop: 7795, Start Num: 22

Candidate Starts for Ageofdapage_12:

(Start: 22 @7253 has 80 MA's), (41, 7388), (55, 7556), (69, 7769), (70, 7778),

Gene: Alexphander_6 Start: 4408, Stop: 4944, Start Num: 23

Candidate Starts for Alexphander_6:

(Start: 23 @4408 has 64 MA's), (46, 4630), (52, 4699), (53, 4708), (60, 4810), (70, 4927),

Gene: AlishaPH_12 Start: 7315, Stop: 7857, Start Num: 22

Candidate Starts for AlishaPH_12:

(Start: 22 @7315 has 80 MA's), (41, 7450), (44, 7483), (55, 7618), (65, 7813), (69, 7831), (70, 7840),

Gene: AlleyCat_10 Start: 7355, Stop: 7921, Start Num: 18

Candidate Starts for AlleyCat_10:

(Start: 18 @7355 has 5 MA's), (Start: 27 @7376 has 3 MA's), (Start: 31 @7391 has 11 MA's), (34, 7403), (55, 7688),

Gene: Aloeri_6 Start: 4412, Stop: 4948, Start Num: 23

Candidate Starts for Aloeri_6:

(Start: 23 @4412 has 64 MA's), (46, 4634), (52, 4703), (53, 4712), (55, 4730), (60, 4814), (70, 4931),

Gene: Aminay_10 Start: 7229, Stop: 7786, Start Num: 20

Candidate Starts for Aminay_10:

(Start: 20 @7229 has 13 MA's), (70, 7769),

Gene: Anaya_13 Start: 7316, Stop: 7855, Start Num: 22

Candidate Starts for Anaya_13:

(Start: 22 @7316 has 80 MA's), (41, 7451), (51, 7583), (55, 7619), (65, 7811), (69, 7829), (70, 7838),

Gene: Angelica_12 Start: 7293, Stop: 7826, Start Num: 22

Candidate Starts for Angelica_12:

(Start: 22 @7293 has 80 MA's), (41, 7422), (69, 7800), (70, 7809),

Gene: Anma_12 Start: 7263, Stop: 7805, Start Num: 22

Candidate Starts for Anma_12:

(Start: 22 @7263 has 80 MA's), (41, 7398), (55, 7566), (65, 7761), (69, 7779), (70, 7788),

Gene: AnnabelLee_7 Start: 4967, Stop: 5473, Start Num: 29

Candidate Starts for AnnabelLee_7:

(Start: 29 @4967 has 3 MA's), (45, 5153), (52, 5246),

Gene: Apocalypse_12 Start: 7291, Stop: 7833, Start Num: 22

Candidate Starts for Apocalypse_12:

(Start: 22 @7291 has 80 MA's), (41, 7426), (55, 7594), (65, 7789), (69, 7807), (70, 7816),

Gene: ArV2_05 Start: 4203, Stop: 4730, Start Num: 24

Candidate Starts for ArV2_05:

(24, 4203), (35, 4236), (42, 4362), (62, 4641),

Gene: Asayake_12 Start: 7357, Stop: 7899, Start Num: 22

Candidate Starts for Asayake_12:

(Start: 22 @7357 has 80 MA's), (41, 7492), (55, 7660), (65, 7855), (69, 7873), (70, 7882),

Gene: Atiba_12 Start: 7279, Stop: 7821, Start Num: 22

Candidate Starts for Atiba_12:

(Start: 22 @7279 has 80 MA's), (41, 7414), (55, 7582), (65, 7777), (69, 7795), (70, 7804),

Gene: Audell_10 Start: 8386, Stop: 8895, Start Num: 29

Candidate Starts for Audell_10:

(Start: 29 @8386 has 3 MA's),

Gene: Awesomesauce_6 Start: 4411, Stop: 4947, Start Num: 23

Candidate Starts for Awesomesauce_6:

(Start: 23 @4411 has 64 MA's), (46, 4633), (52, 4702), (53, 4711), (55, 4729), (60, 4813), (70, 4930),

Gene: BEEST_12 Start: 7357, Stop: 7899, Start Num: 22

Candidate Starts for BEEST_12:

(Start: 22 @7357 has 80 MA's), (41, 7492), (55, 7660), (65, 7855), (69, 7873), (70, 7882),

Gene: BGlluviae_12 Start: 7357, Stop: 7899, Start Num: 22

Candidate Starts for BGlluviae_12:

(Start: 22 @7357 has 80 MA's), (41, 7492), (55, 7660), (65, 7855), (69, 7873), (70, 7882),

Gene: BaghaKamala_12 Start: 7289, Stop: 7825, Start Num: 22

Candidate Starts for BaghaKamala_12:

(Start: 22 @7289 has 80 MA's), (41, 7418), (55, 7586), (65, 7781), (69, 7799), (70, 7808),

Gene: BananenDer11_10 Start: 7478, Stop: 7987, Start Num: 31

Candidate Starts for BananenDer11_10:

(Start: 6 @7358 has 4 MA's), (Start: 11 @7397 has 1 MA's), (Start: 18 @7442 has 5 MA's), (Start: 27 @7463 has 3 MA's), (Start: 31 @7478 has 11 MA's), (34, 7490), (55, 7763),

Gene: BarrelRoll_12 Start: 7307, Stop: 7849, Start Num: 22

Candidate Starts for BarrelRoll_12:

(Start: 22 @7307 has 80 MA's), (41, 7442), (55, 7610), (65, 7805), (69, 7823), (70, 7832),

Gene: Beakin_6 Start: 4411, Stop: 4947, Start Num: 23

Candidate Starts for Beakin_6:

(Start: 23 @4411 has 64 MA's), (46, 4633), (52, 4702), (53, 4711), (60, 4813), (70, 4930),

Gene: Beanstalk_6 Start: 4408, Stop: 4944, Start Num: 23

Candidate Starts for Beanstalk_6:

(Start: 23 @4408 has 64 MA's), (46, 4630), (52, 4699), (53, 4708), (60, 4810), (70, 4927),

Gene: Beezoo_12 Start: 7339, Stop: 7875, Start Num: 22

Candidate Starts for Beezoo_12:

(Start: 22 @7339 has 80 MA's), (41, 7468), (55, 7636), (65, 7831), (69, 7849), (70, 7858),

Gene: Bella96_12 Start: 7242, Stop: 7784, Start Num: 22

Candidate Starts for Bella96_12:

(Start: 22 @7242 has 80 MA's), (41, 7377), (55, 7545), (65, 7740), (69, 7758), (70, 7767),

Gene: Belladonna_12 Start: 7357, Stop: 7899, Start Num: 22

Candidate Starts for Belladonna_12:

(Start: 22 @7357 has 80 MA's), (41, 7492), (55, 7660), (65, 7855), (69, 7873), (70, 7882),

Gene: Bern_12 Start: 7282, Stop: 7815, Start Num: 22

Candidate Starts for Bern_12:

(Start: 22 @7282 has 80 MA's), (41, 7411), (55, 7579), (69, 7789), (70, 7798),

Gene: BigPhil_6 Start: 4408, Stop: 4944, Start Num: 23

Candidate Starts for BigPhil_6:

(Start: 23 @4408 has 64 MA's), (46, 4630), (52, 4699), (53, 4708), (60, 4810), (70, 4927),

Gene: Blizzard_12 Start: 7357, Stop: 7899, Start Num: 22

Candidate Starts for Blizzard_12:

(Start: 22 @7357 has 80 MA's), (41, 7492), (55, 7660), (65, 7855), (69, 7873), (70, 7882),

Gene: Bobi_6 Start: 4408, Stop: 4944, Start Num: 23

Candidate Starts for Bobi_6:

(Start: 23 @4408 has 64 MA's), (46, 4630), (52, 4699), (53, 4708), (60, 4810), (70, 4927),

Gene: Boiiii_12 Start: 7357, Stop: 7899, Start Num: 22

Candidate Starts for Boiiii_12:

(Start: 22 @7357 has 80 MA's), (41, 7492), (55, 7660), (65, 7855), (69, 7873), (70, 7882),

Gene: Boomer_6 Start: 4408, Stop: 4944, Start Num: 23

Candidate Starts for Boomer_6:

(Start: 23 @4408 has 64 MA's), (46, 4630), (52, 4699), (53, 4708), (60, 4810), (70, 4927),

Gene: Brookers_6 Start: 4408, Stop: 4944, Start Num: 23

Candidate Starts for Brookers_6:

(Start: 23 @4408 has 64 MA's), (46, 4630), (52, 4699), (53, 4708), (60, 4810), (70, 4927),

Gene: Brushbloom_6 Start: 4408, Stop: 4944, Start Num: 23

Candidate Starts for Brushbloom_6:

(Start: 23 @4408 has 64 MA's), (46, 4630), (52, 4699), (53, 4708), (60, 4810), (70, 4927),

Gene: BuzzLyseyear_6 Start: 4407, Stop: 4943, Start Num: 23

Candidate Starts for BuzzLyseyear_6:

(Start: 23 @4407 has 64 MA's), (46, 4629), (52, 4698), (53, 4707), (60, 4809), (70, 4926),

Gene: CREW_12 Start: 7357, Stop: 7899, Start Num: 22

Candidate Starts for CREW_12:

(Start: 22 @7357 has 80 MA's), (41, 7492), (55, 7660), (65, 7855), (69, 7873), (70, 7882),

Gene: CallaLilly_12 Start: 7286, Stop: 7822, Start Num: 22

Candidate Starts for CallaLilly_12:

(Start: 22 @7286 has 80 MA's), (41, 7415), (55, 7583), (65, 7778), (69, 7796), (70, 7805),

Gene: Capricorn_12 Start: 7357, Stop: 7899, Start Num: 22

Candidate Starts for Capricorn_12:

(Start: 22 @7357 has 80 MA's), (41, 7492), (55, 7660), (65, 7855), (69, 7873), (70, 7882),

Gene: CardboardBox_7 Start: 4967, Stop: 5473, Start Num: 29

Candidate Starts for CardboardBox_7:

(Start: 29 @4967 has 3 MA's), (45, 5153), (52, 5246),

Gene: CaseJules_12 Start: 7357, Stop: 7899, Start Num: 22

Candidate Starts for CaseJules_12:

(Start: 22 @7357 has 80 MA's), (41, 7492), (55, 7660), (65, 7855), (69, 7873), (70, 7882),

Gene: Cerasum_6 Start: 4408, Stop: 4944, Start Num: 23

Candidate Starts for Cerasum_6:

(Start: 23 @4408 has 64 MA's), (46, 4630), (52, 4699), (53, 4708), (60, 4810), (70, 4927),

Gene: ChamoyPickle_7 Start: 4967, Stop: 5473, Start Num: 29

Candidate Starts for ChamoyPickle_7:

(Start: 29 @4967 has 3 MA's), (45, 5153), (52, 5246),

Gene: CheetoDust_12 Start: 7333, Stop: 7875, Start Num: 22

Candidate Starts for CheetoDust_12:

(Start: 22 @7333 has 80 MA's), (41, 7468), (55, 7636), (65, 7831), (69, 7849), (70, 7858),

Gene: ChickenDinner_6 Start: 4412, Stop: 4948, Start Num: 23

Candidate Starts for ChickenDinner_6:

(Start: 23 @4412 has 64 MA's), (46, 4634), (52, 4703), (53, 4712), (55, 4730), (60, 4814), (70, 4931),

Gene: ChipsNGuac_7 Start: 4967, Stop: 5473, Start Num: 29

Candidate Starts for ChipsNGuac_7:

(Start: 29 @4967 has 3 MA's), (45, 5153), (52, 5246),

Gene: Chris_11 Start: 6182, Stop: 6724, Start Num: 20

Candidate Starts for Chris_11:

(Start: 20 @6182 has 13 MA's), (65, 6680), (69, 6698), (70, 6707),

Gene: ChuckDuck_5 Start: 5037, Stop: 5531, Start Num: 23

Candidate Starts for ChuckDuck_5:

(Start: 23 @5037 has 64 MA's), (64, 5493),

Gene: Clipper_12 Start: 7333, Stop: 7875, Start Num: 22

Candidate Starts for Clipper_12:

(Start: 22 @7333 has 80 MA's), (41, 7468), (55, 7636), (65, 7831), (69, 7849), (70, 7858),

Gene: Coco12_6 Start: 4408, Stop: 4944, Start Num: 23

Candidate Starts for Coco12_6:

(Start: 23 @4408 has 64 MA's), (46, 4630), (52, 4699), (53, 4708), (55, 4726), (60, 4810), (70, 4927),

Gene: Collard_10 Start: 7358, Stop: 7987, Start Num: 6

Candidate Starts for Collard_10:

(Start: 6 @7358 has 4 MA's), (Start: 11 @7397 has 1 MA's), (Start: 18 @7442 has 5 MA's), (Start: 27 @7463 has 3 MA's), (Start: 31 @7478 has 11 MA's), (34, 7490), (55, 7763),

Gene: Cornucopia_6 Start: 4408, Stop: 4944, Start Num: 23

Candidate Starts for Cornucopia_6:

(Start: 23 @4408 has 64 MA's), (52, 4699), (53, 4708), (70, 4927),

Gene: CrimD_12 Start: 7285, Stop: 7827, Start Num: 22

Candidate Starts for CrimD_12:

(Start: 22 @7285 has 80 MA's), (41, 7420), (53, 7564), (55, 7588), (65, 7783), (69, 7801), (70, 7810),

Gene: Curiosium_13 Start: 6689, Stop: 7222, Start Num: 21

Candidate Starts for Curiosium_13:

(Start: 21 @6689 has 1 MA's), (41, 6824), (55, 6992), (69, 7196), (70, 7205),

Gene: DaWorst_6 Start: 4409, Stop: 4945, Start Num: 23

Candidate Starts for DaWorst_6:

(Start: 23 @4409 has 64 MA's), (46, 4631), (52, 4700), (53, 4709), (55, 4727), (60, 4811), (70, 4928),

Gene: Dadosky_10 Start: 7391, Stop: 7921, Start Num: 31

Candidate Starts for Dadosky_10:

(Start: 18 @7355 has 5 MA's), (Start: 27 @7376 has 3 MA's), (Start: 31 @7391 has 11 MA's), (34, 7403), (55, 7688),

Gene: Dalmuri_12 Start: 7357, Stop: 7899, Start Num: 22

Candidate Starts for Dalmuri_12:

(Start: 22 @7357 has 80 MA's), (41, 7492), (55, 7660), (65, 7855), (69, 7873), (70, 7882),

Gene: DartGoblin_12 Start: 7242, Stop: 7784, Start Num: 22

Candidate Starts for DartGoblin_12:

(Start: 22 @7242 has 80 MA's), (41, 7377), (55, 7545), (65, 7740), (69, 7758), (70, 7767),

Gene: Dartin_12 Start: 6370, Stop: 6936, Start Num: 17

Candidate Starts for Dartin_12:

(17, 6370), (Start: 20 @6376 has 13 MA's), (41, 6532), (55, 6700), (69, 6910),

Gene: Deby_12 Start: 7293, Stop: 7826, Start Num: 22

Candidate Starts for Deby_12:

(Start: 22 @7293 has 80 MA's), (41, 7422), (69, 7800), (70, 7809),

Gene: Devera_12 Start: 7321, Stop: 7854, Start Num: 22

Candidate Starts for Devera_12:

(Start: 22 @7321 has 80 MA's), (41, 7447), (55, 7615), (69, 7828), (70, 7837),

Gene: DirtMcgirt_6 Start: 4410, Stop: 4946, Start Num: 23

Candidate Starts for DirtMcgirt_6:

(Start: 23 @4410 has 64 MA's), (46, 4632), (52, 4701), (53, 4710), (60, 4812), (70, 4929),

Gene: DocMcStuffins_6 Start: 4412, Stop: 4948, Start Num: 23

Candidate Starts for DocMcStuffins_6:

(Start: 23 @4412 has 64 MA's), (46, 4634), (52, 4703), (53, 4712), (55, 4730), (60, 4814), (70, 4931),

Gene: Dole_12 Start: 7321, Stop: 7854, Start Num: 22

Candidate Starts for Dole_12:

(Start: 22 @7321 has 80 MA's), (41, 7447), (55, 7615), (69, 7828), (70, 7837),

Gene: Doomslug_6 Start: 4408, Stop: 4944, Start Num: 23

Candidate Starts for Doomslug_6:

(Start: 23 @4408 has 64 MA's), (46, 4630), (52, 4699), (53, 4708), (60, 4810), (70, 4927),

Gene: DosHalletts_6 Start: 4408, Stop: 4944, Start Num: 23

Candidate Starts for DosHalletts_6:

(Start: 23 @4408 has 64 MA's), (46, 4630), (52, 4699), (53, 4708), (60, 4810), (70, 4927),

Gene: DoubleChamp_10 Start: 7478, Stop: 7987, Start Num: 31

Candidate Starts for DoubleChamp_10:

(Start: 6 @7358 has 4 MA's), (Start: 11 @7397 has 1 MA's), (Start: 18 @7442 has 5 MA's), (Start: 27 @7463 has 3 MA's), (Start: 31 @7478 has 11 MA's), (34, 7490), (55, 7763),

Gene: DrHayes_12 Start: 7263, Stop: 7805, Start Num: 22

Candidate Starts for DrHayes_12:

(Start: 22 @7263 has 80 MA's), (41, 7398), (55, 7566), (65, 7761), (69, 7779), (70, 7788),

Gene: Drago_6 Start: 4408, Stop: 4944, Start Num: 23

Candidate Starts for Drago_6:

(Start: 23 @4408 has 64 MA's), (46, 4630), (52, 4699), (53, 4708), (60, 4810), (70, 4927),

Gene: Durfee_12 Start: 7357, Stop: 7899, Start Num: 22

Candidate Starts for Durfee_12:

(Start: 22 @7357 has 80 MA's), (41, 7492), (55, 7660), (65, 7855), (69, 7873), (70, 7882),

Gene: Edugator_9 Start: 7391, Stop: 7921, Start Num: 31

Candidate Starts for Edugator_9:

(Start: 18 @7355 has 5 MA's), (Start: 27 @7376 has 3 MA's), (Start: 31 @7391 has 11 MA's), (34, 7403), (55, 7688),

Gene: Efra2_12 Start: 6263, Stop: 6796, Start Num: 26

Candidate Starts for Efra2_12:

(25, 6257), (Start: 26 @6263 has 3 MA's), (41, 6392), (55, 6560), (69, 6770), (70, 6779),

Gene: Ekdilam_9 Start: 6928, Stop: 7482, Start Num: 15

Candidate Starts for Ekdilam_9:

(Start: 15 @6928 has 2 MA's), (55, 7249), (65, 7438), (69, 7456), (70, 7465),

Gene: Emerson_12 Start: 7316, Stop: 7858, Start Num: 22

Candidate Starts for Emerson_12:

(Start: 22 @7316 has 80 MA's), (41, 7451), (55, 7619), (65, 7814), (69, 7832), (70, 7841),

Gene: Emmaloid_6 Start: 4409, Stop: 4945, Start Num: 23

Candidate Starts for Emmaloid_6:

(Start: 23 @4409 has 64 MA's), (46, 4631), (52, 4700), (53, 4709), (55, 4727), (60, 4811), (70, 4928),

Gene: Enby_6 Start: 4408, Stop: 4944, Start Num: 23

Candidate Starts for Enby_6:

(Start: 23 @4408 has 64 MA's), (46, 4630), (52, 4699), (53, 4708), (60, 4810), (70, 4927),

Gene: Ezurina_6 Start: 4583, Stop: 5089, Start Num: 29

Candidate Starts for Ezurina_6:

(Start: 29 @4583 has 3 MA's), (45, 4769), (52, 4862), (54, 4880),

Gene: Farewell_5 Start: 4759, Stop: 5304, Start Num: 18

Candidate Starts for Farewell_5:

(Start: 18 @4759 has 5 MA's), (37, 4870), (38, 4879), (56, 5128), (59, 5164), (61, 5236),

Gene: Feyre_10 Start: 7278, Stop: 7802, Start Num: 27

Candidate Starts for Feyre_10:

(Start: 6 @7173 has 4 MA's), (Start: 11 @7212 has 1 MA's), (Start: 18 @7257 has 5 MA's), (Start: 27 @7278 has 3 MA's), (Start: 31 @7293 has 11 MA's), (34, 7305), (55, 7578),

Gene: Flathead_6 Start: 4408, Stop: 4944, Start Num: 23

Candidate Starts for Flathead_6:

(Start: 23 @4408 has 64 MA's), (46, 4630), (52, 4699), (53, 4708), (60, 4810), (70, 4927),

Gene: Frankie_6 Start: 4602, Stop: 5138, Start Num: 23

Candidate Starts for Frankie_6:

(Start: 23 @4602 has 64 MA's), (46, 4824), (52, 4893), (53, 4902), (60, 5004), (70, 5121),

Gene: Fryberger_38 Start: 13725, Stop: 14291, Start Num: 16

Candidate Starts for Fryberger_38:

(4, 13608), (Start: 16 @13725 has 5 MA's), (36, 13833), (53, 14055), (57, 14115), (63, 14226),

Gene: Ganymede_12 Start: 7333, Stop: 7875, Start Num: 22

Candidate Starts for Ganymede_12:

(Start: 22 @7333 has 80 MA's), (41, 7468), (55, 7636), (65, 7831), (69, 7849), (70, 7858),

Gene: Gengar_10 Start: 7279, Stop: 7908, Start Num: 6

Candidate Starts for Gengar_10:

(Start: 6 @7279 has 4 MA's), (Start: 11 @7318 has 1 MA's), (Start: 18 @7363 has 5 MA's), (Start: 27 @7384 has 3 MA's), (Start: 31 @7399 has 11 MA's), (34, 7411), (55, 7684),

Gene: Geraldini_12 Start: 7339, Stop: 7875, Start Num: 22

Candidate Starts for Geraldini_12:

(Start: 22 @7339 has 80 MA's), (41, 7468), (55, 7636), (65, 7831), (69, 7849), (70, 7858),

Gene: Gerri43_7 Start: 4967, Stop: 5473, Start Num: 29

Candidate Starts for Gerri43_7:

(Start: 29 @4967 has 3 MA's), (45, 5153), (52, 5246),

Gene: Girafales_6 Start: 4403, Stop: 4939, Start Num: 23

Candidate Starts for Girafales_6:

(Start: 23 @4403 has 64 MA's), (52, 4694), (53, 4703), (70, 4922),

Gene: Guanica15_12 Start: 6279, Stop: 6812, Start Num: 26

Candidate Starts for Guanica15_12:

(25, 6273), (Start: 26 @6279 has 3 MA's), (41, 6408), (55, 6576), (69, 6786), (70, 6795),

Gene: Guey18_43 Start: 14918, Stop: 15484, Start Num: 16

Candidate Starts for Guey18_43:

(4, 14801), (Start: 16 @14918 has 5 MA's), (36, 15026), (53, 15248), (57, 15308), (63, 15419),

Gene: Guillsminger_10 Start: 7293, Stop: 7883, Start Num: 11

Candidate Starts for Guillsminger_10:

(Start: 6 @7254 has 4 MA's), (Start: 11 @7293 has 1 MA's), (Start: 18 @7338 has 5 MA's), (Start: 27 @7359 has 3 MA's), (Start: 31 @7374 has 11 MA's), (34, 7386), (55, 7659),

Gene: HedwigODU_12 Start: 7313, Stop: 7855, Start Num: 22

Candidate Starts for HedwigODU_12:

(Start: 22 @7313 has 80 MA's), (41, 7448), (55, 7616), (65, 7811), (69, 7829), (70, 7838),

Gene: Heftyboy_10 Start: 7501, Stop: 8010, Start Num: 31

Candidate Starts for Heftyboy_10:

(Start: 6 @7381 has 4 MA's), (Start: 11 @7420 has 1 MA's), (Start: 18 @7465 has 5 MA's), (Start: 27 @7486 has 3 MA's), (Start: 31 @7501 has 11 MA's), (34, 7513), (55, 7786),

Gene: Hegedechwinu_6 Start: 4408, Stop: 4944, Start Num: 23

Candidate Starts for Hegedechwinu_6:

(Start: 23 @4408 has 64 MA's), (46, 4630), (53, 4708), (60, 4810), (70, 4927),

Gene: Homura_12 Start: 7357, Stop: 7899, Start Num: 22

Candidate Starts for Homura_12:

(Start: 22 @7357 has 80 MA's), (41, 7492), (55, 7660), (65, 7855), (69, 7873), (70, 7882),

Gene: Hurricane_11 Start: 7335, Stop: 7883, Start Num: 28

Candidate Starts for Hurricane_11:

(2, 7140), (Start: 14 @7299 has 3 MA's), (Start: 28 @7335 has 6 MA's), (40, 7461), (46, 7545), (55, 7647), (70, 7866),

Gene: Hyperbowlee_12 Start: 7357, Stop: 7899, Start Num: 22

Candidate Starts for Hyperbowlee_12:

(Start: 22 @7357 has 80 MA's), (41, 7492), (55, 7660), (65, 7855), (69, 7873), (70, 7882),

Gene: Illumine_12 Start: 7321, Stop: 7854, Start Num: 22

Candidate Starts for Illumine_12:

(Start: 22 @7321 has 80 MA's), (41, 7447), (55, 7615), (69, 7828), (70, 7837),

Gene: Inky_12 Start: 7357, Stop: 7899, Start Num: 22

Candidate Starts for Inky_12:

(Start: 22 @7357 has 80 MA's), (41, 7492), (55, 7660), (65, 7855), (69, 7873), (70, 7882),

Gene: InvictusManeo_10 Start: 7500, Stop: 8030, Start Num: 31

Candidate Starts for InvictusManeo_10:

(5, 7356), (Start: 6 @7377 has 4 MA's), (Start: 18 @7464 has 5 MA's), (Start: 27 @7485 has 3 MA's), (Start: 31 @7500 has 11 MA's), (34, 7512), (55, 7797),

Gene: JAWS_12 Start: 7310, Stop: 7852, Start Num: 22

Candidate Starts for JAWS_12:

(Start: 22 @7310 has 80 MA's), (41, 7445), (55, 7613), (65, 7808), (69, 7826), (70, 7835),

Gene: JalFarm20_6 Start: 4408, Stop: 4944, Start Num: 23

Candidate Starts for JalFarm20_6:

(Start: 23 @4408 has 64 MA's), (46, 4630), (52, 4699), (53, 4708), (60, 4810), (70, 4927),

Gene: Jarvi_12 Start: 7357, Stop: 7899, Start Num: 22

Candidate Starts for Jarvi_12:

(Start: 22 @7357 has 80 MA's), (41, 7492), (55, 7660), (65, 7855), (69, 7873), (70, 7882),

Gene: Jayhawk_12 Start: 7314, Stop: 7856, Start Num: 23

Candidate Starts for Jayhawk_12:

(3, 7131), (Start: 23 @7314 has 64 MA's), (41, 7449), (55, 7617), (65, 7812), (69, 7830), (70, 7839),

Gene: Jeckyll_12 Start: 7357, Stop: 7899, Start Num: 22

Candidate Starts for Jeckyll_12:

(Start: 22 @7357 has 80 MA's), (41, 7492), (55, 7660), (65, 7855), (69, 7873), (70, 7882),

Gene: Job42_6 Start: 4408, Stop: 4944, Start Num: 23
Candidate Starts for Job42_6:
(Start: 23 @4408 has 64 MA's), (46, 4630), (52, 4699), (53, 4708), (55, 4726), (58, 4786), (60, 4810),
(70, 4927),

Gene: Joy99_12 Start: 7289, Stop: 7825, Start Num: 22
Candidate Starts for Joy99_12:
(Start: 22 @7289 has 80 MA's), (41, 7418), (55, 7586), (65, 7781), (69, 7799), (70, 7808),

Gene: Juice456_6 Start: 4409, Stop: 4945, Start Num: 23
Candidate Starts for Juice456_6:
(Start: 23 @4409 has 64 MA's), (46, 4631), (52, 4700), (53, 4709), (60, 4811), (70, 4928),

Gene: Keelan_36 Start: 13692, Stop: 14267, Start Num: 12
Candidate Starts for Keelan_36:
(Start: 12 @13692 has 1 MA's), (36, 13821), (47, 13965), (49, 14007), (53, 14043), (57, 14103), (58,
14124), (68, 14247), (69, 14253),

Gene: Keshu_11 Start: 7324, Stop: 7872, Start Num: 28
Candidate Starts for Keshu_11:
(Start: 28 @7324 has 6 MA's), (37, 7417), (55, 7636), (70, 7855),

Gene: KiSi_11 Start: 6171, Stop: 6728, Start Num: 20
Candidate Starts for KiSi_11:
(Start: 20 @6171 has 13 MA's), (65, 6684), (69, 6702), (70, 6711),

Gene: Kimberlium_6 Start: 4409, Stop: 4945, Start Num: 23
Candidate Starts for Kimberlium_6:
(Start: 23 @4409 has 64 MA's), (46, 4631), (52, 4700), (53, 4709), (60, 4811), (70, 4928),

Gene: Kingsley_6 Start: 4408, Stop: 4944, Start Num: 23
Candidate Starts for Kingsley_6:
(Start: 23 @4408 has 64 MA's), (46, 4630), (52, 4699), (53, 4708), (60, 4810), (70, 4927),

Gene: Kratio_9 Start: 7091, Stop: 7657, Start Num: 18
Candidate Starts for Kratio_9:
(Start: 18 @7091 has 5 MA's), (Start: 27 @7112 has 3 MA's), (Start: 31 @7127 has 11 MA's), (34,
7139), (55, 7424),

Gene: Larva_10 Start: 7222, Stop: 7788, Start Num: 18
Candidate Starts for Larva_10:
(Start: 18 @7222 has 5 MA's), (Start: 27 @7243 has 3 MA's), (Start: 31 @7258 has 11 MA's), (34,
7270), (55, 7555),

Gene: LastNadiia_10 Start: 7336, Stop: 7845, Start Num: 29
Candidate Starts for LastNadiia_10:
(Start: 29 @7336 has 3 MA's),

Gene: LaterM_12 Start: 7280, Stop: 7822, Start Num: 22
Candidate Starts for LaterM_12:
(Start: 22 @7280 has 80 MA's), (41, 7415), (55, 7583), (69, 7796), (70, 7805),

Gene: LeMond_11 Start: 6171, Stop: 6728, Start Num: 20

Candidate Starts for LeMond_11:

(Start: 20 @6171 has 13 MA's), (65, 6684), (69, 6702), (70, 6711),

Gene: Lea83_11 Start: 7326, Stop: 7874, Start Num: 28

Candidate Starts for Lea83_11:

(Start: 14 @7290 has 3 MA's), (Start: 28 @7326 has 6 MA's), (51, 7602), (55, 7638), (70, 7857),

Gene: Leozinho_6 Start: 4408, Stop: 4944, Start Num: 23

Candidate Starts for Leozinho_6:

(Start: 23 @4408 has 64 MA's), (46, 4630), (52, 4699), (53, 4708), (60, 4810), (70, 4927),

Gene: Leston_10 Start: 7384, Stop: 8013, Start Num: 6

Candidate Starts for Leston_10:

(Start: 6 @7384 has 4 MA's), (Start: 11 @7423 has 1 MA's), (Start: 18 @7468 has 5 MA's), (Start: 27 @7489 has 3 MA's), (Start: 31 @7504 has 11 MA's), (34, 7516), (55, 7789),

Gene: LilDirt_9 Start: 7257, Stop: 7787, Start Num: 31

Candidate Starts for LilDirt_9:

(Start: 18 @7221 has 5 MA's), (Start: 27 @7242 has 3 MA's), (Start: 31 @7257 has 11 MA's), (34, 7269), (55, 7554),

Gene: LindNT_12 Start: 7280, Stop: 7822, Start Num: 22

Candidate Starts for LindNT_12:

(Start: 22 @7280 has 80 MA's), (41, 7415), (55, 7583), (65, 7778), (69, 7796), (70, 7805),

Gene: LittleRon_5 Start: 5037, Stop: 5531, Start Num: 23

Candidate Starts for LittleRon_5:

(Start: 23 @5037 has 64 MA's), (64, 5493),

Gene: LittleShirley_6 Start: 4409, Stop: 4945, Start Num: 23

Candidate Starts for LittleShirley_6:

(Start: 23 @4409 has 64 MA's), (46, 4631), (52, 4700), (53, 4709), (60, 4811), (70, 4928),

Gene: Llorens_12 Start: 7357, Stop: 7899, Start Num: 22

Candidate Starts for Llorens_12:

(Start: 22 @7357 has 80 MA's), (41, 7492), (55, 7660), (65, 7855), (69, 7873), (70, 7882),

Gene: LordVader_7 Start: 4404, Stop: 4940, Start Num: 23

Candidate Starts for LordVader_7:

(Start: 23 @4404 has 64 MA's), (42, 4572), (46, 4626), (52, 4695), (53, 4704), (60, 4806), (70, 4923),

Gene: Lorde_6 Start: 4408, Stop: 4944, Start Num: 23

Candidate Starts for Lorde_6:

(Start: 23 @4408 has 64 MA's), (46, 4630), (52, 4699), (53, 4708), (60, 4810), (70, 4927),

Gene: Lucia_6 Start: 4408, Stop: 4944, Start Num: 23

Candidate Starts for Lucia_6:

(Start: 23 @4408 has 64 MA's), (46, 4630), (52, 4699), (53, 4708), (60, 4810), (70, 4927),

Gene: Lunahalos_12 Start: 7357, Stop: 7899, Start Num: 22

Candidate Starts for Lunahalos_12:

(Start: 22 @7357 has 80 MA's), (41, 7492), (55, 7660), (65, 7855), (69, 7873), (70, 7882),

Gene: MacKat_12 Start: 7333, Stop: 7875, Start Num: 22

Candidate Starts for MacKat_12:

(Start: 22 @7333 has 80 MA's), (41, 7468), (55, 7636), (65, 7831), (69, 7849), (70, 7858),

Gene: MacnCheese_12 Start: 7513, Stop: 8091, Start Num: 14

Candidate Starts for MacnCheese_12:

(Start: 14 @7513 has 3 MA's), (Start: 28 @7549 has 6 MA's), (37, 7633), (55, 7852), (70, 8074),

Gene: Madiba_6 Start: 4407, Stop: 4943, Start Num: 23

Candidate Starts for Madiba_6:

(Start: 23 @4407 has 64 MA's), (46, 4629), (52, 4698), (53, 4707), (55, 4725), (58, 4785), (60, 4809), (70, 4926),

Gene: MarkPhew_11 Start: 6090, Stop: 6629, Start Num: 20

Candidate Starts for MarkPhew_11:

(Start: 20 @6090 has 13 MA's), (50, 6342), (51, 6357), (65, 6585), (69, 6603), (70, 6612),

Gene: Marker_6 Start: 4407, Stop: 4943, Start Num: 23

Candidate Starts for Marker_6:

(Start: 23 @4407 has 64 MA's), (46, 4629), (52, 4698), (53, 4707), (55, 4725), (58, 4785), (60, 4809), (70, 4926),

Gene: Marshawn_13 Start: 6726, Stop: 7280, Start Num: 20

Candidate Starts for Marshawn_13:

(Start: 20 @6726 has 13 MA's), (41, 6876), (51, 7008), (65, 7236), (69, 7254),

Gene: McMater_12 Start: 6370, Stop: 6936, Start Num: 17

Candidate Starts for McMater_12:

(17, 6370), (Start: 20 @6376 has 13 MA's), (41, 6532), (55, 6700), (69, 6910),

Gene: MeaningOfLife_12 Start: 7286, Stop: 7828, Start Num: 22

Candidate Starts for MeaningOfLife_12:

(Start: 22 @7286 has 80 MA's), (41, 7421), (55, 7589), (65, 7784), (69, 7802), (70, 7811),

Gene: Megsy_12 Start: 7283, Stop: 7825, Start Num: 22

Candidate Starts for Megsy_12:

(Start: 22 @7283 has 80 MA's), (41, 7418), (55, 7586), (65, 7781), (69, 7799), (70, 7808),

Gene: Mireles_7 Start: 4860, Stop: 5363, Start Num: 29

Candidate Starts for Mireles_7:

(Start: 23 @4845 has 64 MA's), (Start: 29 @4860 has 3 MA's), (52, 5136), (66, 5331),

Gene: Miryou_10 Start: 7374, Stop: 7883, Start Num: 31

Candidate Starts for Miryou_10:

(Start: 6 @7254 has 4 MA's), (Start: 11 @7293 has 1 MA's), (Start: 18 @7338 has 5 MA's), (Start: 27 @7359 has 3 MA's), (Start: 31 @7374 has 11 MA's), (34, 7386), (55, 7659),

Gene: Misha28_6 Start: 4412, Stop: 4948, Start Num: 23

Candidate Starts for Misha28_6:

(Start: 23 @4412 has 64 MA's), (46, 4634), (52, 4703), (53, 4712), (55, 4730), (60, 4814), (70, 4931),

Gene: Mova_6 Start: 4410, Stop: 4946, Start Num: 23

Candidate Starts for Mova_6:

(Start: 23 @4410 has 64 MA's), (46, 4632), (52, 4701), (53, 4710), (55, 4728), (60, 4812), (70, 4929),

Gene: Mozy_6 Start: 4405, Stop: 4941, Start Num: 23

Candidate Starts for Mozy_6:

(Start: 23 @4405 has 64 MA's), (52, 4696), (53, 4705), (70, 4924),

Gene: MulchExplorer_6 Start: 4409, Stop: 4945, Start Num: 23

Candidate Starts for MulchExplorer_6:

(Start: 23 @4409 has 64 MA's), (46, 4631), (52, 4700), (53, 4709), (60, 4811), (70, 4928),

Gene: Murucutumbu_12 Start: 7273, Stop: 7815, Start Num: 22

Candidate Starts for Murucutumbu_12:

(Start: 22 @7273 has 80 MA's), (41, 7408), (55, 7576), (69, 7789), (70, 7798),

Gene: Mynx_12 Start: 7336, Stop: 7878, Start Num: 22

Candidate Starts for Mynx_12:

(Start: 22 @7336 has 80 MA's), (41, 7471), (55, 7639), (65, 7834), (69, 7852), (70, 7861),

Gene: Neighly_10 Start: 7242, Stop: 7787, Start Num: 27

Candidate Starts for Neighly_10:

(Start: 18 @7221 has 5 MA's), (Start: 27 @7242 has 3 MA's), (Start: 31 @7257 has 11 MA's), (34, 7269), (55, 7554),

Gene: Neuville_7 Start: 4967, Stop: 5473, Start Num: 29

Candidate Starts for Neuville_7:

(Start: 29 @4967 has 3 MA's), (45, 5153), (52, 5246),

Gene: Nibb_11 Start: 6227, Stop: 6772, Start Num: 20

Candidate Starts for Nibb_11:

(Start: 20 @6227 has 13 MA's), (57, 6572), (65, 6728), (69, 6746), (70, 6755),

Gene: Niklas_12 Start: 6376, Stop: 6936, Start Num: 20

Candidate Starts for Niklas_12:

(17, 6370), (Start: 20 @6376 has 13 MA's), (41, 6532), (55, 6700), (69, 6910),

Gene: OkiRoe_10 Start: 7360, Stop: 7884, Start Num: 27

Candidate Starts for OkiRoe_10:

(Start: 6 @7255 has 4 MA's), (Start: 11 @7294 has 1 MA's), (Start: 18 @7339 has 5 MA's), (Start: 27 @7360 has 3 MA's), (Start: 31 @7375 has 11 MA's), (34, 7387), (55, 7660),

Gene: Oksu_6 Start: 4409, Stop: 4945, Start Num: 23

Candidate Starts for Oksu_6:

(Start: 23 @4409 has 64 MA's), (46, 4631), (52, 4700), (53, 4709), (60, 4811), (70, 4928),

Gene: Omnicron_10 Start: 6242, Stop: 6898, Start Num: 6

Candidate Starts for Omnicron_10:

(Start: 6 @6242 has 4 MA's), (Start: 11 @6281 has 1 MA's), (19, 6329), (Start: 33 @6365 has 1 MA's), (34, 6377), (55, 6665), (69, 6872),

Gene: Oscar_11 Start: 6172, Stop: 6729, Start Num: 20

Candidate Starts for Oscar_11:

(Start: 20 @6172 has 13 MA's), (65, 6685), (69, 6703), (70, 6712),

Gene: OwlsT2W_6 Start: 4408, Stop: 4944, Start Num: 23
Candidate Starts for OwlsT2W_6:
(Start: 23 @4408 has 64 MA's), (46, 4630), (52, 4699), (53, 4708), (60, 4810), (70, 4927),

Gene: Padfoot_12 Start: 7357, Stop: 7899, Start Num: 22
Candidate Starts for Padfoot_12:
(Start: 22 @7357 has 80 MA's), (41, 7492), (55, 7660), (65, 7855), (69, 7873), (70, 7882),

Gene: Padpat_12 Start: 7316, Stop: 7858, Start Num: 22
Candidate Starts for Padpat_12:
(Start: 22 @7316 has 80 MA's), (41, 7451), (55, 7619), (65, 7814), (69, 7832), (70, 7841),

Gene: Paola_10 Start: 7359, Stop: 7883, Start Num: 27
Candidate Starts for Paola_10:
(Start: 6 @7254 has 4 MA's), (Start: 11 @7293 has 1 MA's), (Start: 18 @7338 has 5 MA's), (Start: 27 @7359 has 3 MA's), (Start: 31 @7374 has 11 MA's), (34, 7386), (55, 7659),

Gene: Peanam_12 Start: 6376, Stop: 6936, Start Num: 20
Candidate Starts for Peanam_12:
(17, 6370), (Start: 20 @6376 has 13 MA's), (41, 6532), (55, 6700), (69, 6910),

Gene: Peel_12 Start: 7357, Stop: 7899, Start Num: 22
Candidate Starts for Peel_12:
(Start: 22 @7357 has 80 MA's), (41, 7492), (55, 7660), (65, 7855), (69, 7873), (70, 7882),

Gene: Peridot_6 Start: 4409, Stop: 4945, Start Num: 23
Candidate Starts for Peridot_6:
(Start: 23 @4409 has 64 MA's), (46, 4631), (52, 4700), (53, 4709), (55, 4727), (60, 4811), (70, 4928),

Gene: Pharb_11 Start: 7169, Stop: 7717, Start Num: 28
Candidate Starts for Pharb_11:
(8, 7088), (10, 7094), (Start: 28 @7169 has 6 MA's), (32, 7184), (55, 7481), (70, 7700),

Gene: PhelpsODU_11 Start: 6278, Stop: 6850, Start Num: 13
Candidate Starts for PhelpsODU_11:
(1, 6080), (7, 6236), (Start: 13 @6278 has 6 MA's), (55, 6617), (57, 6656), (65, 6806), (69, 6824),

Gene: Piatt_12 Start: 7357, Stop: 7899, Start Num: 22
Candidate Starts for Piatt_12:
(Start: 22 @7357 has 80 MA's), (41, 7492), (55, 7660), (65, 7855), (69, 7873), (70, 7882),

Gene: Piper2020_6 Start: 4411, Stop: 4947, Start Num: 23
Candidate Starts for Piper2020_6:
(Start: 23 @4411 has 64 MA's), (46, 4633), (52, 4702), (53, 4711), (55, 4729), (60, 4813), (70, 4930),

Gene: Pisa1_11 Start: 7079, Stop: 7612, Start Num: 22
Candidate Starts for Pisa1_11:
(Start: 22 @7079 has 80 MA's), (41, 7208), (55, 7376), (69, 7586), (70, 7595),

Gene: Pisa4_11 Start: 7079, Stop: 7612, Start Num: 22
Candidate Starts for Pisa4_11:
(Start: 22 @7079 has 80 MA's), (41, 7208), (55, 7376), (69, 7586), (70, 7595),

Gene: Pixie_11 Start: 7042, Stop: 7626, Start Num: 14
Candidate Starts for Pixie_11:
(Start: 14 @7042 has 3 MA's), (Start: 28 @7078 has 6 MA's), (51, 7354), (55, 7390), (70, 7609),

Gene: Plumbus_6 Start: 4409, Stop: 4945, Start Num: 23
Candidate Starts for Plumbus_6:
(Start: 23 @4409 has 64 MA's), (46, 4631), (52, 4700), (53, 4709), (60, 4811), (70, 4928),

Gene: Pokerus_11 Start: 7270, Stop: 7812, Start Num: 22
Candidate Starts for Pokerus_11:
(Start: 22 @7270 has 80 MA's), (41, 7405), (55, 7573), (65, 7768), (69, 7786), (70, 7795),

Gene: Pollywog_6 Start: 4408, Stop: 4944, Start Num: 23
Candidate Starts for Pollywog_6:
(Start: 23 @4408 has 64 MA's), (46, 4630), (52, 4699), (53, 4708), (55, 4726), (60, 4810), (70, 4927),

Gene: Prithvi_12 Start: 7280, Stop: 7822, Start Num: 22
Candidate Starts for Prithvi_12:
(Start: 22 @7280 has 80 MA's), (41, 7415), (55, 7583), (65, 7778), (69, 7796), (70, 7805),

Gene: Psycho_10 Start: 7388, Stop: 7918, Start Num: 31
Candidate Starts for Psycho_10:
(Start: 18 @7352 has 5 MA's), (Start: 27 @7373 has 3 MA's), (Start: 31 @7388 has 11 MA's), (34, 7400), (55, 7685),

Gene: Quico_6 Start: 4403, Stop: 4939, Start Num: 23
Candidate Starts for Quico_6:
(Start: 23 @4403 has 64 MA's), (52, 4694), (53, 4703), (70, 4922),

Gene: QuincyRose_11 Start: 7333, Stop: 7875, Start Num: 22
Candidate Starts for QuincyRose_11:
(Start: 22 @7333 has 80 MA's), (41, 7468), (55, 7636), (65, 7831), (69, 7849), (70, 7858),

Gene: Ramen_12 Start: 7313, Stop: 7855, Start Num: 22
Candidate Starts for Ramen_12:
(Start: 22 @7313 has 80 MA's), (41, 7448), (55, 7616), (65, 7811), (69, 7829), (70, 7838),

Gene: Ramsey_6 Start: 4408, Stop: 4944, Start Num: 23
Candidate Starts for Ramsey_6:
(Start: 23 @4408 has 64 MA's), (52, 4699), (53, 4708), (60, 4810), (70, 4927),

Gene: Rando14_10 Start: 6393, Stop: 6926, Start Num: 33
Candidate Starts for Rando14_10:
(19, 6357), (Start: 33 @6393 has 1 MA's), (34, 6405), (55, 6693), (58, 6753), (69, 6900),

Gene: Rapunzel97_12 Start: 7314, Stop: 7856, Start Num: 23
Candidate Starts for Rapunzel97_12:
(3, 7131), (Start: 23 @7314 has 64 MA's), (41, 7449), (55, 7617), (65, 7812), (69, 7830), (70, 7839),

Gene: Rialto_6 Start: 4409, Stop: 4945, Start Num: 23
Candidate Starts for Rialto_6:
(Start: 23 @4409 has 64 MA's), (46, 4631), (52, 4700), (53, 4709), (55, 4727), (60, 4811), (70, 4928),

Gene: Richo_12 Start: 6370, Stop: 6936, Start Num: 17
Candidate Starts for Richo_12:
(17, 6370), (Start: 20 @6376 has 13 MA's), (41, 6532), (55, 6700), (69, 6910),

Gene: Roberts_7 Start: 4967, Stop: 5473, Start Num: 29
Candidate Starts for Roberts_7:
(Start: 29 @4967 has 3 MA's), (45, 5153), (52, 5246),

Gene: RockyHorror_6 Start: 4408, Stop: 4944, Start Num: 23
Candidate Starts for RockyHorror_6:
(Start: 23 @4408 has 64 MA's), (46, 4630), (52, 4699), (53, 4708), (60, 4810), (70, 4927),

Gene: Ronaldo_41 Start: 14655, Stop: 15221, Start Num: 16
Candidate Starts for Ronaldo_41:
(4, 14538), (Start: 16 @14655 has 5 MA's), (36, 14763), (53, 14985), (57, 15045), (63, 15156),

Gene: Rosmarinus_12 Start: 7345, Stop: 7887, Start Num: 22
Candidate Starts for Rosmarinus_12:
(Start: 22 @7345 has 80 MA's), (41, 7480), (55, 7648), (65, 7843), (69, 7861), (70, 7870),

Gene: SamuelLPlaqson_12 Start: 7263, Stop: 7805, Start Num: 22
Candidate Starts for SamuelLPlaqson_12:
(Start: 22 @7263 has 80 MA's), (41, 7398), (55, 7566), (65, 7761), (69, 7779), (70, 7788),

Gene: Sarma624_6 Start: 4408, Stop: 4944, Start Num: 23
Candidate Starts for Sarma624_6:
(Start: 23 @4408 has 64 MA's), (46, 4630), (52, 4699), (53, 4708), (60, 4810), (70, 4927),

Gene: Scarlett_11 Start: 6171, Stop: 6728, Start Num: 20
Candidate Starts for Scarlett_11:
(Start: 20 @6171 has 13 MA's), (65, 6684), (69, 6702), (70, 6711),

Gene: Seagreen_6 Start: 4409, Stop: 4945, Start Num: 23
Candidate Starts for Seagreen_6:
(Start: 23 @4409 has 64 MA's), (46, 4631), (52, 4700), (53, 4709), (60, 4811), (70, 4928),

Gene: Shaobing_12 Start: 6376, Stop: 6936, Start Num: 20
Candidate Starts for Shaobing_12:
(17, 6370), (Start: 20 @6376 has 13 MA's), (41, 6532), (55, 6700), (69, 6910),

Gene: ShedlockHolmes_11 Start: 7290, Stop: 7874, Start Num: 14
Candidate Starts for ShedlockHolmes_11:
(Start: 14 @7290 has 3 MA's), (Start: 28 @7326 has 6 MA's), (51, 7602), (55, 7638), (70, 7857),

Gene: ShiaSurprise_12 Start: 7357, Stop: 7899, Start Num: 22
Candidate Starts for ShiaSurprise_12:
(Start: 22 @7357 has 80 MA's), (41, 7492), (55, 7660), (65, 7855), (69, 7873), (70, 7882),

Gene: SimranZ1_6 Start: 4408, Stop: 4944, Start Num: 23
Candidate Starts for SimranZ1_6:
(Start: 23 @4408 has 64 MA's), (46, 4630), (52, 4699), (53, 4708), (60, 4810), (70, 4927),

Gene: SirPhilip_11 Start: 6046, Stop: 6564, Start Num: 30

Candidate Starts for SirPhilip_11:

(Start: 30 @6046 has 1 MA's), (41, 6163), (67, 6529), (69, 6538), (70, 6547),

Gene: Slim_6 Start: 4409, Stop: 4945, Start Num: 23

Candidate Starts for Slim_6:

(Start: 23 @4409 has 64 MA's), (46, 4631), (52, 4700), (53, 4709), (55, 4727), (60, 4811), (70, 4928),

Gene: Slimphazie_12 Start: 7314, Stop: 7856, Start Num: 23

Candidate Starts for Slimphazie_12:

(3, 7131), (Start: 23 @7314 has 64 MA's), (41, 7449), (55, 7617), (65, 7812), (69, 7830), (70, 7839),

Gene: SoSeph_10 Start: 7501, Stop: 8010, Start Num: 31

Candidate Starts for SoSeph_10:

(Start: 6 @7381 has 4 MA's), (Start: 11 @7420 has 1 MA's), (Start: 18 @7465 has 5 MA's), (Start: 27 @7486 has 3 MA's), (Start: 31 @7501 has 11 MA's), (34, 7513), (55, 7786),

Gene: Sparky_5 Start: 4760, Stop: 5305, Start Num: 18

Candidate Starts for Sparky_5:

(Start: 18 @4760 has 5 MA's), (37, 4871), (38, 4880), (56, 5129), (59, 5165), (61, 5237),

Gene: Spikelee_6 Start: 4409, Stop: 4945, Start Num: 23

Candidate Starts for Spikelee_6:

(Start: 23 @4409 has 64 MA's), (46, 4631), (52, 4700), (53, 4709), (55, 4727), (60, 4811), (70, 4928),

Gene: Spock_12 Start: 7357, Stop: 7899, Start Num: 22

Candidate Starts for Spock_12:

(Start: 22 @7357 has 80 MA's), (41, 7492), (55, 7660), (65, 7855), (69, 7873), (70, 7882),

Gene: Squirty_6 Start: 4407, Stop: 4943, Start Num: 23

Candidate Starts for Squirty_6:

(Start: 23 @4407 has 64 MA's), (46, 4629), (52, 4698), (53, 4707), (60, 4809), (70, 4926),

Gene: Stap_6 Start: 4408, Stop: 4944, Start Num: 23

Candidate Starts for Stap_6:

(Start: 23 @4408 has 64 MA's), (46, 4630), (52, 4699), (53, 4708), (60, 4810), (70, 4927),

Gene: Starcevich_6 Start: 4409, Stop: 4945, Start Num: 23

Candidate Starts for Starcevich_6:

(Start: 23 @4409 has 64 MA's), (46, 4631), (52, 4700), (53, 4709), (55, 4727), (60, 4811), (70, 4928),

Gene: Stinson_12 Start: 7285, Stop: 7827, Start Num: 22

Candidate Starts for Stinson_12:

(Start: 22 @7285 has 80 MA's), (41, 7420), (55, 7588), (69, 7801), (70, 7810),

Gene: Studio_7 Start: 4771, Stop: 5280, Start Num: 29

Candidate Starts for Studio_7:

(9, 4687), (Start: 29 @4771 has 3 MA's), (39, 4876), (45, 4957),

Gene: Sulley_12 Start: 7292, Stop: 7825, Start Num: 22

Candidate Starts for Sulley_12:

(Start: 22 @7292 has 80 MA's), (41, 7421), (69, 7799), (70, 7808),

Gene: Syra333_11 Start: 6243, Stop: 6815, Start Num: 13

Candidate Starts for Syra333_11:

(Start: 13 @6243 has 6 MA's), (50, 6531), (55, 6582), (57, 6621), (69, 6789), (70, 6798),

Gene: TBond007_11 Start: 7077, Stop: 7625, Start Num: 28

Candidate Starts for TBond007_11:

(Start: 14 @7041 has 3 MA's), (Start: 28 @7077 has 6 MA's), (51, 7353), (55, 7389), (70, 7608),

Gene: TClif_11 Start: 6257, Stop: 6814, Start Num: 15

Candidate Starts for TClif_11:

(Start: 15 @6257 has 2 MA's), (Start: 27 @6290 has 3 MA's), (55, 6581), (70, 6797),

Gene: TMaxx_7 Start: 4931, Stop: 5440, Start Num: 29

Candidate Starts for TMaxx_7:

(Start: 29 @4931 has 3 MA's), (45, 5117), (48, 5162),

Gene: Tachez_12 Start: 7279, Stop: 7821, Start Num: 22

Candidate Starts for Tachez_12:

(Start: 22 @7279 has 80 MA's), (41, 7414), (55, 7582), (65, 7777), (69, 7795), (70, 7804),

Gene: TaiwanKao_12 Start: 7286, Stop: 7828, Start Num: 22

Candidate Starts for TaiwanKao_12:

(Start: 22 @7286 has 80 MA's), (41, 7421), (55, 7589), (65, 7784), (69, 7802), (70, 7811),

Gene: Tchotchke_6 Start: 4409, Stop: 4945, Start Num: 23

Candidate Starts for Tchotchke_6:

(Start: 23 @4409 has 64 MA's), (46, 4631), (52, 4700), (53, 4709), (60, 4811), (70, 4928),

Gene: Thyatira_10 Start: 7374, Stop: 7883, Start Num: 31

Candidate Starts for Thyatira_10:

(Start: 6 @7254 has 4 MA's), (Start: 11 @7293 has 1 MA's), (Start: 18 @7338 has 5 MA's), (Start: 27 @7359 has 3 MA's), (Start: 31 @7374 has 11 MA's), (34, 7386), (55, 7659),

Gene: Tierra_11 Start: 6942, Stop: 7514, Start Num: 13

Candidate Starts for Tierra_11:

(1, 6744), (7, 6900), (Start: 13 @6942 has 6 MA's), (55, 7281), (57, 7320), (65, 7470), (69, 7488),

Gene: Tigress9_11 Start: 6224, Stop: 6796, Start Num: 13

Candidate Starts for Tigress9_11:

(7, 6185), (Start: 13 @6224 has 6 MA's), (50, 6512), (55, 6563), (57, 6602), (69, 6770), (70, 6779),

Gene: TiniBug_12 Start: 7263, Stop: 7805, Start Num: 22

Candidate Starts for TiniBug_12:

(Start: 22 @7263 has 80 MA's), (41, 7398), (55, 7566), (65, 7761), (69, 7779), (70, 7788),

Gene: Tiri_12 Start: 7324, Stop: 7866, Start Num: 22

Candidate Starts for Tiri_12:

(Start: 22 @7324 has 80 MA's), (41, 7459), (55, 7627), (65, 7822), (69, 7840), (70, 7849),

Gene: TootsiePop_6 Start: 4412, Stop: 4948, Start Num: 23

Candidate Starts for TootsiePop_6:

(Start: 23 @4412 has 64 MA's), (46, 4634), (52, 4703), (53, 4712), (55, 4730), (60, 4814), (70, 4931),

Gene: Tootsieroll_6 Start: 4408, Stop: 4944, Start Num: 23

Candidate Starts for Tootsieroll_6:

(Start: 23 @4408 has 64 MA's), (46, 4630), (52, 4699), (53, 4708), (60, 4810), (70, 4927),

Gene: Topper_12 Start: 7357, Stop: 7899, Start Num: 22

Candidate Starts for Topper_12:

(Start: 22 @7357 has 80 MA's), (41, 7492), (55, 7660), (65, 7855), (69, 7873), (70, 7882),

Gene: Totinger_6 Start: 4409, Stop: 4945, Start Num: 23

Candidate Starts for Totinger_6:

(Start: 23 @4409 has 64 MA's), (46, 4631), (52, 4700), (53, 4709), (55, 4727), (60, 4811), (70, 4928),

Gene: TreyKay_12 Start: 7280, Stop: 7822, Start Num: 22

Candidate Starts for TreyKay_12:

(Start: 22 @7280 has 80 MA's), (41, 7415), (55, 7583), (65, 7778), (69, 7796), (70, 7805),

Gene: TribelTrouble_10 Start: 7121, Stop: 7663, Start Num: 28

Candidate Starts for TribelTrouble_10:

(2, 6923), (Start: 14 @7085 has 3 MA's), (Start: 28 @7121 has 6 MA's), (40, 7238),

Gene: TripleC_10 Start: 8397, Stop: 8909, Start Num: 29

Candidate Starts for TripleC_10:

(Start: 29 @8397 has 3 MA's),

Gene: TruffulaTree_12 Start: 7310, Stop: 7852, Start Num: 22

Candidate Starts for TruffulaTree_12:

(Start: 22 @7310 has 80 MA's), (41, 7445), (55, 7613), (65, 7808), (69, 7826), (70, 7835),

Gene: Twitch_12 Start: 7357, Stop: 7899, Start Num: 22

Candidate Starts for Twitch_12:

(Start: 22 @7357 has 80 MA's), (41, 7492), (55, 7660), (65, 7855), (69, 7873), (70, 7882),

Gene: UncleRicky_6 Start: 4408, Stop: 4944, Start Num: 23

Candidate Starts for UncleRicky_6:

(Start: 23 @4408 has 64 MA's), (46, 4630), (52, 4699), (53, 4708), (60, 4810), (70, 4927),

Gene: Unicorn_11 Start: 6278, Stop: 6850, Start Num: 13

Candidate Starts for Unicorn_11:

(1, 6080), (7, 6236), (Start: 13 @6278 has 6 MA's), (55, 6617), (57, 6656), (65, 6806), (69, 6824),

Gene: Urkel_12 Start: 7263, Stop: 7805, Start Num: 22

Candidate Starts for Urkel_12:

(Start: 22 @7263 has 80 MA's), (41, 7398), (55, 7566), (65, 7761), (69, 7779), (70, 7788),

Gene: Validus_12 Start: 6293, Stop: 6850, Start Num: 20

Candidate Starts for Validus_12:

(Start: 20 @6293 has 13 MA's), (41, 6446), (55, 6614), (69, 6824),

Gene: Veliki_12 Start: 7357, Stop: 7899, Start Num: 22

Candidate Starts for Veliki_12:

(Start: 22 @7357 has 80 MA's), (41, 7492), (55, 7660), (65, 7855), (69, 7873), (70, 7882),

Gene: Velveteen_6 Start: 4408, Stop: 4944, Start Num: 23

Candidate Starts for Velveteen_6:

(Start: 23 @4408 has 64 MA's), (46, 4630), (52, 4699), (53, 4708), (60, 4810), (70, 4927),

Gene: ViviJ_9 Start: 7257, Stop: 7787, Start Num: 31

Candidate Starts for ViviJ_9:

(Start: 18 @7221 has 5 MA's), (Start: 27 @7242 has 3 MA's), (Start: 31 @7257 has 11 MA's), (34, 7269), (55, 7554),

Gene: Volt_40 Start: 14655, Stop: 15221, Start Num: 16

Candidate Starts for Volt_40:

(4, 14538), (Start: 16 @14655 has 5 MA's), (36, 14763), (53, 14985), (57, 15045), (63, 15156),

Gene: Waterfoul_10 Start: 7396, Stop: 7905, Start Num: 31

Candidate Starts for Waterfoul_10:

(Start: 6 @7276 has 4 MA's), (Start: 11 @7315 has 1 MA's), (Start: 18 @7360 has 5 MA's), (Start: 27 @7381 has 3 MA's), (Start: 31 @7396 has 11 MA's), (34, 7408), (55, 7681),

Gene: Ximenita_12 Start: 6410, Stop: 6994, Start Num: 13

Candidate Starts for Ximenita_12:

(Start: 13 @6410 has 6 MA's), (46, 6659), (50, 6710), (55, 6761), (57, 6800), (70, 6977),

Gene: YoureAdopted_11 Start: 7286, Stop: 7828, Start Num: 22

Candidate Starts for YoureAdopted_11:

(Start: 22 @7286 has 80 MA's), (41, 7421), (55, 7589), (65, 7784), (69, 7802), (70, 7811),

Gene: Yuna_12 Start: 6421, Stop: 6981, Start Num: 13

Candidate Starts for Yuna_12:

(Start: 13 @6421 has 6 MA's), (57, 6781), (69, 6955), (70, 6964),

Gene: Yunkel11_12 Start: 6279, Stop: 6812, Start Num: 26

Candidate Starts for Yunkel11_12:

(25, 6273), (Start: 26 @6279 has 3 MA's), (41, 6408), (55, 6576), (69, 6786), (70, 6795),

Gene: Zabiza_12 Start: 7313, Stop: 7855, Start Num: 22

Candidate Starts for Zabiza_12:

(Start: 22 @7313 has 80 MA's), (41, 7448), (55, 7616), (65, 7811), (69, 7829), (70, 7838),

Gene: Zavala_12 Start: 7295, Stop: 7837, Start Num: 22

Candidate Starts for Zavala_12:

(Start: 22 @7295 has 80 MA's), (41, 7430), (55, 7598), (65, 7793), (69, 7811), (70, 7820),

Gene: Ziko_41 Start: 14595, Stop: 15161, Start Num: 16

Candidate Starts for Ziko_41:

(4, 14478), (Start: 16 @14595 has 5 MA's), (36, 14703), (53, 14925), (57, 14985), (63, 15096),