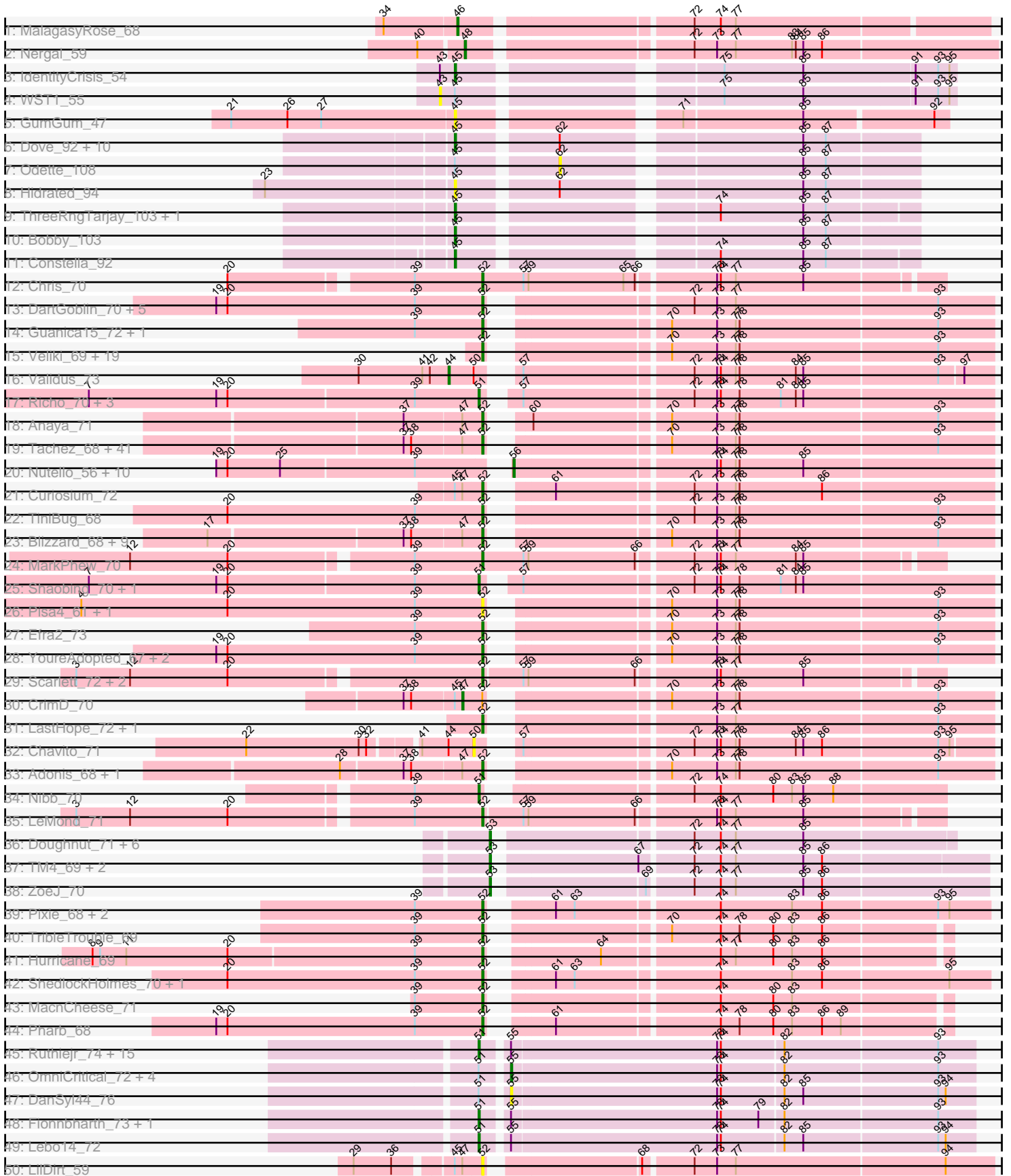
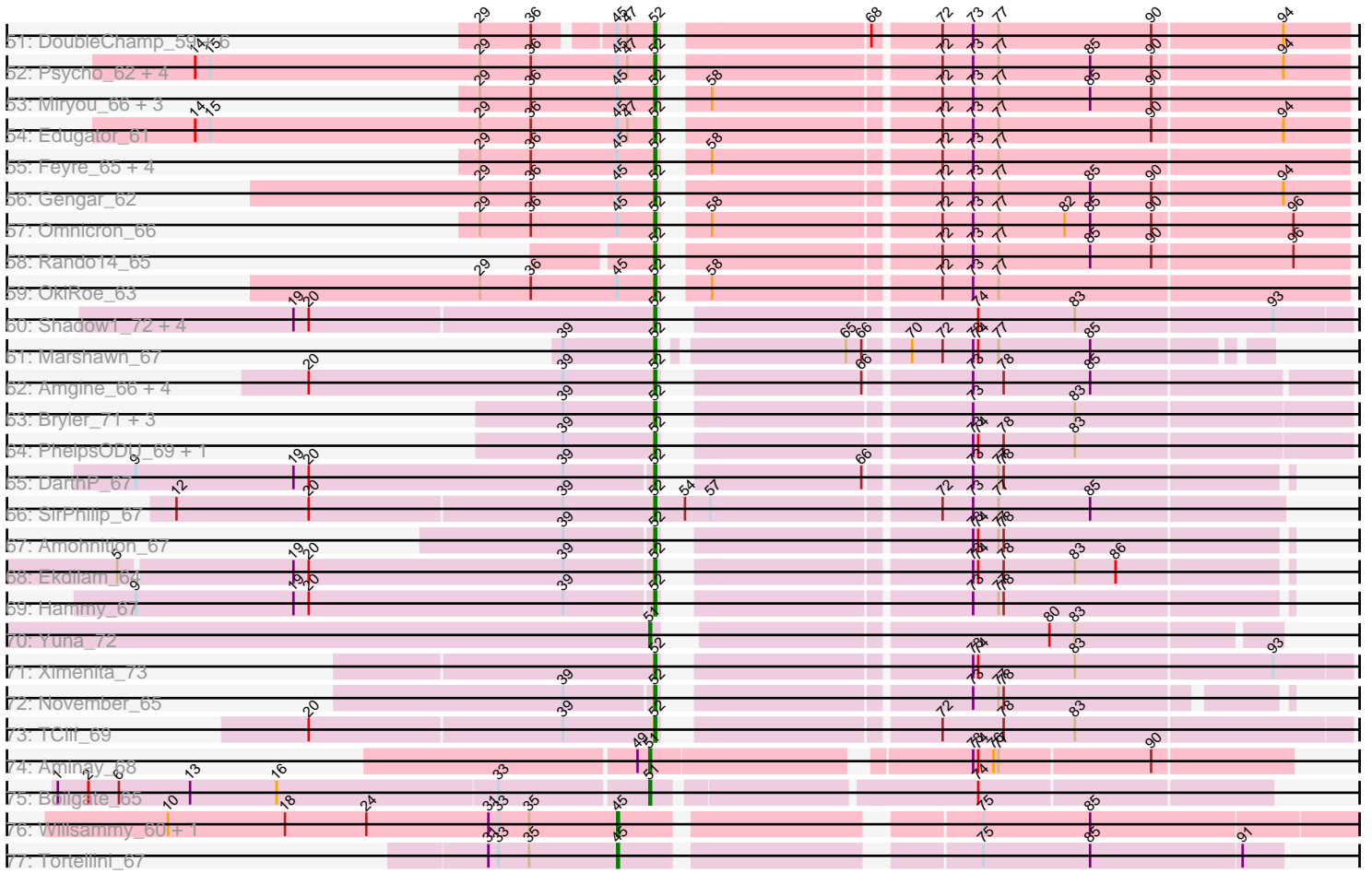


Pham 296216



Pham 296216



Note: Tracks are now grouped by subcluster and scaled. Switching in subcluster is indicated by changes in track color. Track scale is now set by default to display the region 30 bp upstream of start 1 to 30 bp downstream of the last possible start. If this default region is judged to be packed too tightly with annotated starts, the track will be further scaled to only show that region of the ORF with annotated starts. This action will be indicated by adding "Zoomed" to the title. For starts, yellow indicates the location of called starts comprised solely of Glimmer/GeneMark auto-annotations, green indicates the location of called starts with at least 1 manual gene annotation.

Pham 296216 Report

This analysis was run 04/25/26 on database version 644.

Pham number 296216 has 245 members, 25 are drafts.

Phages represented in each track:

- Track 1 : MalagasyRose_68
- Track 2 : Nergal_59
- Track 3 : IdentityCrisis_54
- Track 4 : WST1_55
- Track 5 : GumGum_47
- Track 6 : Dove_92, Bombitas_95, Ejimix_100, JuicyJay_103, Halley_108, Beem_108, Minerva_106, Schatzie_101, HokkenD_96, Redno2_98, NihilNomen_108
- Track 7 : Odette_108
- Track 8 : Hidrated_94
- Track 9 : ThreeRngTarjay_103, Optimus_100
- Track 10 : Bobby_103
- Track 11 : Constella_92
- Track 12 : Chris_70
- Track 13 : DartGoblin_70, Anma_69, DrHayes_68, Urkel_68, Bella96_68, SamuelLPlaqson_68
- Track 14 : Guanica15_72, Yunkel11_72
- Track 15 : Veliki_69, LaterM_68, Apocalypse_70, Prithvi_69, Devera_75, Ageofdapage_71, BaghaKamala_67, Stinson_69, Deby_68, Megsy_70, TaiwanKao_70, Murucutumbu_69, Dole_73, CheetoDust_67, JAWS_68, Tiri_68, Illumine_73, LindNT_67, TreyKay_69, Bern_69
- Track 16 : Validus_73
- Track 17 : Richo_70, Dartin_70, Niklas_70, McMater_70
- Track 18 : Anaya_71
- Track 19 : Tachez_68, BGlluviae_68, Jarvi_68, Twitch_68, Emerson_70, Padpat_71, Adephagia_68, Ramen_69, Zabiza_63, Pokerus_68, Homura_68, BarrelRoll_69, Rapunzel97_70, Atiba_69, Beezoo_70, Spock_68, Inky_68, TruffulaTree_69, QuincyRose_66, Joy99_68, Jeckyll_68, ActinUp_68, Slimphazie_69, Zavala_71, Peel_68, MacKat_64, Belladonna_68, Rosmarinus_68, HedwigODU_68, Topper_68, Dalmuri_68, Jayhawk_70, Clipper_72, CallaLilly_68, Lunahalos_68, Capricorn_68, Llorens_68, Ganymede_68, MeaningOfLife_69, AlishaPH_68, Mynx_70, CREW_68
- Track 20 : Nutello_56, LilPharaoh_57, Teejan_58, Torres_59, Nikao_59, Binglebops_56, Trice_56, Mdavu_57, Enkosi_58, Amelie_56, SgtBeansprout_57
- Track 21 : Curiosium_72
- Track 22 : TiniBug_68
- Track 23 : Blizzard_68, Hyperbowlee_68, CaseJules_70, Boiiii_68, Durfee_68, Piatt_68, Padfoot_68, Asayake_68, BEEST_68, ShiaSurprise_69

- Track 24 : MarkPhew_70
- Track 25 : Shaobing_70, Peanam_70
- Track 26 : Pisa4_61, Pisa1_67
- Track 27 : Efra2_73
- Track 28 : YoureAdopted_67, Sulley_67, Angelica_67
- Track 29 : Scarlett_72, KiSi_72, Oscar_71
- Track 30 : CrimD_70
- Track 31 : LastHope_72, TingHuaYa_71
- Track 32 : Chavito_71
- Track 33 : Adonis_68, Geraldini_71
- Track 34 : Nibb_70
- Track 35 : LeMond_71
- Track 36 : Doughnut_71, DismalFunk_71, Milly_71, Marcoliusprime_71, Strobilo_72, DismalStressor_71, Findley_71
- Track 37 : TM4_69, BoostSeason_71, Mufasa_71
- Track 38 : ZoeJ_70
- Track 39 : Pixie_68, Keshu_71, TBond007_65
- Track 40 : TribbleTrouble_69
- Track 41 : Hurricane_69
- Track 42 : ShedlockHolmes_70, Lea83_69
- Track 43 : MacnCheese_71
- Track 44 : Pharb_68
- Track 45 : Ruthiejr_74, Patt_69, Cheetobro_73, Reptar3000_70, Malthus_74, Y10_70, Y2_70, Mitti_73, Juliette_75, Taquito_72, Chancellor_73, MissDaisy_70, SamScheppers_71, Slarp_73, JF1_73, Wintermute_73
- Track 46 : OmniCritical_72, Qhanda_75, Kraw_73, Bobquesha_74, YasnayaPolyana_72
- Track 47 : DanSyl44_76
- Track 48 : Fionnbharth_73, Eponine_75
- Track 49 : Lebo14_72
- Track 50 : LilDirt_59
- Track 51 : DoubleChamp_59, Agent47_62, BananenDer11_59, Collard_60, ViviJ_61, Kratio_60, InvictusManeo_60
- Track 52 : Psycho_62, Dadosky_64, AlleyCat_64, Larva_63, Neighly_64
- Track 53 : Miryou_66, Leston_62, Guillsminger_63, Paola_62
- Track 54 : Edugator_61
- Track 55 : Feyre_65, Waterfoul_64, SoSeph_63, Heftyboy_63, Thyatira_65
- Track 56 : Gengar_62
- Track 57 : Omnicron_66
- Track 58 : Rando14_65
- Track 59 : OkiRoe_63
- Track 60 : Shadow1_72, Tigress9_74, Krueger_72, Sunflower1121_73, Syra333_71
- Track 61 : Marshawn_67
- Track 62 : Amgine_66, Fefferhead_65, Ellie_63, Applecrisp_64, Lavahound_66
- Track 63 : Bryler_71, Cain_71, Phrank_71, Tierra_71
- Track 64 : PhelpsODU_69, Unicorn_69
- Track 65 : DARTH_P_67
- Track 66 : SirPhilip_67
- Track 67 : Amohnition_67
- Track 68 : Ekdilam_64
- Track 69 : Hammy_67
- Track 70 : Yuna_72
- Track 71 : Ximenita_73

- Track 72 : November_65
- Track 73 : TClif_69
- Track 74 : Aminay_68
- Track 75 : Boilgate_65
- Track 76 : Willsammy_60, Ksquared_63
- Track 77 : Tortellini_67

Summary of Final Annotations (See graph section above for start numbers):

The start number called the most often in the published annotations is 52, it was called in 148 of the 220 non-draft genes in the pham.

Genes that call this "Most Annotated" start:

- ActinUp_68, Adephegia_68, Adonis_68, Agent47_62, Ageofdapage_71, AlishaPH_68, AlleyCat_64, Amgine_66, Amohnition_67, Anaya_71, Angelica_67, Anma_69, Apocalypse_70, Applecrisp_64, Asayake_68, Atiba_69, BEEST_68, BGIlluviae_68, BaghaKamala_67, BananenDer11_59, BarrelRoll_69, Beezoo_70, Bella96_68, Belladonna_68, Bern_69, Blizzard_68, Boiiii_68, Bryler_71, CREW_68, Cain_71, CallaLilly_68, Capricorn_68, CaseJules_70, CheetoDust_67, Chris_70, Clipper_72, Collard_60, Curiosium_72, Dadosky_64, Dalmuri_68, DartGoblin_70, DarthP_67, Deby_68, Devera_75, Dole_73, DoubleChamp_59, DrHayes_68, Durfee_68, Edugator_61, Efra2_73, Ekdilam_64, Ellie_63, Emerson_70, Fefferhead_65, Feyre_65, Ganymede_68, Gengar_62, Geraldini_71, Guanica15_72, Guillsminger_63, Hammy_67, HedwigODU_68, Heftyboy_63, Homura_68, Hurricane_69, Hyperbowlee_68, Illumine_73, Inky_68, InvictusManeo_60, JAWS_68, Jarvi_68, Jayhawk_70, Jeckyll_68, Joy99_68, Keshu_71, KiSi_72, Kratio_60, Krueger_72, Larva_63, LastHope_72, LaterM_68, Lavahound_66, LeMond_71, Lea83_69, Leston_62, LilDirt_59, LindNT_67, Llorens_68, Lunahalos_68, MacKat_64, MacnCheese_71, MarkPhew_70, Marshawn_67, MeaningOfLife_69, Megsy_70, Miryou_66, Murucutumbu_69, Mynx_70, Neighly_64, November_65, OkiRoe_63, Omnicron_66, Oscar_71, Padfoot_68, Padpat_71, Paola_62, Peel_68, Pharb_68, PhelpsODU_69, Phrank_71, Piatt_68, Pisa1_67, Pisa4_61, Pixie_68, Pokerus_68, Prithvi_69, Psycho_62, QuincyRose_66, Ramen_69, Rando14_65, Rapunzel97_70, Rosmarinus_68, SamuelLPlaqson_68, Scarlett_72, Shadow1_72, ShedlockHolmes_70, ShiaSurprise_69, SirPhilip_67, Slimphazie_69, SoSeph_63, Spock_68, Stinson_69, Sulley_67, Sunflower1121_73, Syra333_71, TBond007_65, TClif_69, Tachez_68, TaiwanKao_70, Thyatira_65, Tierra_71, Tigress9_74, TingHuaYa_71, TiniBug_68, Tiri_68, Topper_68, TreyKay_69, TribbleTrouble_69, TruffulaTree_69, Twitch_68, Unicorn_69, Urkel_68, Veliki_69, ViviJ_61, Waterfoul_64, Ximenita_73, YoureAdopted_67, Yunkel11_72, Zabiza_63, Zavala_71,

Genes that have the "Most Annotated" start but do not call it:

- CrimD_70,

Genes that do not have the "Most Annotated" start:

- Amelie_56, Aminay_68, Beem_108, Binglebops_56, Bobby_103, Bobquesha_74, Boilgate_65, Bombitas_95, BoostSeason_71, Chancellor_73, Chavito_71, Cheetobro_73, Constella_92, DanSyl44_76, Dartin_70, DismalFunk_71, DismalStressor_71, Doughnut_71, Dove_92, Ejimix_100, Enkosi_58, Eponine_75, Findley_71, Fionnbharth_73, GumGum_47, Halley_108, Hidrated_94, HokkenD_96,

IdentityCrisis_54, JF1_73, JuicyJay_103, Juliette_75, Kraw_73, Ksquared_63, Lebo14_72, LilPharaoh_57, MalagasyRose_68, Malthus_74, Marcoliusprime_71, McMater_70, Mdavu_57, Milly_71, Minerva_106, MissDaisy_70, Mitti_73, Mufasa_71, Nergal_59, Nibb_70, NihilNomen_108, Nikao_59, Niklas_70, Nutello_56, Odette_108, OmniCritical_72, Optimus_100, Patt_69, Peanam_70, Qhanda_75, Redno2_98, Reptar3000_70, Richo_70, Ruthiejr_74, SamScheppers_71, Schatzie_101, SgtBeansprout_57, Shaobing_70, Slarp_73, Strobilo_72, TM4_69, Taquito_72, Teejan_58, ThreeRngTarjay_103, Torres_59, Tortellini_67, Trice_56, Validus_73, WST1_55, Willsammy_60, Wintermute_73, Y10_70, Y2_70, YasnayaPolyana_72, Yuna_72, ZoeJ_70,

Summary by start number:

Start 43:

- Found in 2 of 245 (0.8%) of genes in pham
- No Manual Annotations of this start.
- Called 50.0% of time when present
- Phage (with cluster) where this start called: WST1_55 (AJ),

Start 44:

- Found in 2 of 245 (0.8%) of genes in pham
- Manual Annotations of this start: 1 of 220
- Called 50.0% of time when present
- Phage (with cluster) where this start called: Validus_73 (K1),

Start 45:

- Found in 51 of 245 (20.8%) of genes in pham
- Manual Annotations of this start: 19 of 220
- Called 41.2% of time when present
- Phage (with cluster) where this start called: Beem_108 (J), Bobby_103 (J), Bombitas_95 (J), Constella_92 (J), Dove_92 (J), Ejimix_100 (J), GumGum_47 (AY), Halley_108 (J), Hidrated_94 (J), HokkenD_96 (J), IdentityCrisis_54 (AJ), JuicyJay_103 (J), Ksquared_63 (P1), Minerva_106 (J), NihilNomen_108 (J), Optimus_100 (J), Redno2_98 (J), Schatzie_101 (J), ThreeRngTarjay_103 (J), Tortellini_67 (P2), Willsammy_60 (P1),

Start 46:

- Found in 1 of 245 (0.4%) of genes in pham
- Manual Annotations of this start: 1 of 220
- Called 100.0% of time when present
- Phage (with cluster) where this start called: MalagasyRose_68 (AG),

Start 47:

- Found in 71 of 245 (29.0%) of genes in pham
- Manual Annotations of this start: 1 of 220
- Called 1.4% of time when present
- Phage (with cluster) where this start called: CrimD_70 (K1),

Start 48:

- Found in 1 of 245 (0.4%) of genes in pham
- Manual Annotations of this start: 1 of 220
- Called 100.0% of time when present
- Phage (with cluster) where this start called: Nergal_59 (AG),

Start 50:

- Found in 2 of 245 (0.8%) of genes in pham
- No Manual Annotations of this start.
- Called 50.0% of time when present
- Phage (with cluster) where this start called: Chavito_71 (K1),

Start 51:

- Found in 35 of 245 (14.3%) of genes in pham
- Manual Annotations of this start: 26 of 220
- Called 82.9% of time when present
- Phage (with cluster) where this start called: Aminay_68 (K7), Boilgate_65 (K8), Chancellor_73 (K4), Cheetobro_73 (K4), Dartin_70 (K1), Eponine_75 (K4), Fionnbharth_73 (K4), JF1_73 (K4), Juliette_75 (K4), Lebo14_72 (K4), Malthus_74 (K4), McMater_70 (K1), MissDaisy_70 (K4), Mitti_73 (K4), Nibb_70 (K1), Niklas_70 (K1), Patt_69 (K4), Peanam_70 (K1), Reptar3000_70 (K4), Richo_70 (K1), Ruthiejr_74 (K4), SamScheppers_71 (K4), Shaobing_70 (K1), Slarp_73 (K4), Taquito_72 (K4), Wintermute_73 (K4), Y10_70 (K4), Y2_70 (K4), Yuna_72 (K6),

Start 52:

- Found in 161 of 245 (65.7%) of genes in pham
- Manual Annotations of this start: 148 of 220
- Called 99.4% of time when present
- Phage (with cluster) where this start called: ActinUp_68 (K1), Adephagia_68 (K1), Adonis_68 (K1), Agent47_62 (K5), Ageofdapage_71 (K1), AlishaPH_68 (K1), AlleyCat_64 (K5), Amgine_66 (K6), Amohnition_67 (K6), Anaya_71 (K1), Angelica_67 (K1), Anma_69 (K1), Apocalypse_70 (K1), Applecrisp_64 (K6), Asayake_68 (K1), Atiba_69 (K1), BEEEST_68 (K1), BGlluviae_68 (K1), BaghaKamala_67 (K1), BananenDer11_59 (K5), BarrelRoll_69 (K1), Beezoo_70 (K1), Bella96_68 (K1), Belladonna_68 (K1), Bern_69 (K1), Blizzard_68 (K1), Boiiii_68 (K1), Bryler_71 (K6), CREW_68 (K1), Cain_71 (K6), CallaLilly_68 (K1), Capricorn_68 (K1), CaseJules_70 (K1), CheetoDust_67 (K1), Chris_70 (K1), Clipper_72 (K1), Collard_60 (K5), Curiosium_72 (K1), Dadosky_64 (K5), Dalmuri_68 (K1), DartGoblin_70 (K1), DarthP_67 (K6), Deby_68 (K1), Devera_75 (K1), Dole_73 (K1), DoubleChamp_59 (K5), DrHayes_68 (K1), Durfee_68 (K1), Edugator_61 (K5), Efra2_73 (K1), Ekdilam_64 (K6), Ellie_63 (K6), Emerson_70 (K1), Fefferhead_65 (K6), Feyre_65 (K5), Ganymede_68 (K1), Gengar_62 (K5), Geraldini_71 (K1), Guanica15_72 (K1), Guillsminger_63 (K5), Hammy_67 (K6), HedwigODU_68 (K1), Heftyboy_63 (K5), Homura_68 (K1), Hurricane_69 (K3), Hyperbowlee_68 (K1), Illumine_73 (K1), Inky_68 (K1), InvictusManeo_60 (K5), JAWS_68 (K1), Jarvi_68 (K1), Jayhawk_70 (K1), Jeckyll_68 (K1), Joy99_68 (K1), Keshu_71 (K3), KiSi_72 (K1), Kratio_60 (K5), Krueger_72 (K6), Larva_63 (K5), LastHope_72 (K1), LaterM_68 (K1), Lavahound_66 (K6), LeMond_71 (K1), Lea83_69 (K3), Leston_62 (K5), LilDirt_59 (K5), LindNT_67 (K1), Llorens_68 (K1), Lunahalos_68 (K1), MacKat_64 (K1), MacnCheese_71 (K3), MarkPhew_70 (K1), Marshawn_67 (K6), MeaningOfLife_69 (K1), Megsy_70 (K1), Miryou_66 (K5), Murucutumbu_69 (K1), Mynx_70 (K1), Neighly_64 (K3), November_65 (K6), OkiRoe_63 (K5), Omnicron_66 (K5), Oscar_71 (K1), Padfoot_68 (K1), Padpat_71 (K1), Paola_62 (K5), Peel_68 (K1), Pharb_68 (K3), PhelpsODU_69 (K6), Phrank_71 (K6), Piatt_68 (K1), Pisa1_67 (K1), Pisa4_61 (K1), Pixie_68 (K3), Pokerus_68 (K1), Prithvi_69 (K1), Psycho_62 (K5), QuincyRose_66 (K1), Ramen_69 (K1), Rando14_65 (K5), Rapunzel97_70 (K1), Rosmarinus_68 (K1), SamuelLPlaqson_68 (K1), Scarlett_72 (K1), Shadow1_72 (K6), ShedlockHolmes_70 (K3), ShiaSurprise_69 (K1), SirPhilip_67 (K6), Slimphazie_69 (K1), SoSeph_63 (K5),

Spock_68 (K1), Stinson_69 (K1), Sulley_67 (K1), Sunflower1121_73 (K6), Syra333_71 (K6), TBond007_65 (K3), TClif_69 (K6), Tachez_68 (K1), TaiwanKao_70 (K1), Thyatira_65 (K5), Tierra_71 (K6), Tigress9_74 (K6), TingHuaYa_71 (K1), TiniBug_68 (K1), Tiri_68 (K1), Topper_68 (K1), TreyKay_69 (K1), TripleTrouble_69 (K3), TruffulaTree_69 (K1), Twitch_68 (K1), Unicorn_69 (K6), Urkel_68 (K1), Veliki_69 (K1), ViviJ_61 (K5), Waterfoul_64 (K5), Ximenita_73 (K6), YoureAdopted_67 (K1), Yunkel11_72 (K1), Zabiza_63 (K1), Zavala_71 (K1),

Start 53:

- Found in 11 of 245 (4.5%) of genes in pham
- Manual Annotations of this start: 11 of 220
- Called 100.0% of time when present
- Phage (with cluster) where this start called: BoostSeason_71 (K2), DismalFunk_71 (K2), DismalStressor_71 (K2), Doughnut_71 (K2), Findley_71 (K2), Marcoliusprime_71 (K2), Milly_71 (K2), Mufasa_71 (K2), Strobilo_72 (K2), TM4_69 (K2), ZoeJ_70 (K2),

Start 55:

- Found in 25 of 245 (10.2%) of genes in pham
- Manual Annotations of this start: 3 of 220
- Called 24.0% of time when present
- Phage (with cluster) where this start called: Bobquesha_74 (K4), DanSyl44_76 (K4), Kraw_73 (K4), OmniCritical_72 (K4), Qhanda_75 (K4), YasnayaPolyana_72 (K4),

Start 56:

- Found in 11 of 245 (4.5%) of genes in pham
- Manual Annotations of this start: 9 of 220
- Called 100.0% of time when present
- Phage (with cluster) where this start called: Amelie_56 (K1), Binglebops_56 (K1), Enkosi_58 (K1), LilPharaoh_57 (K1), Mdavu_57 (K1), Nikao_59 (K1), Nutello_56 (K1), SgtBeansprout_57 (K1), Teejan_58 (K1), Torres_59 (K1), Trice_56 (K1),

Start 62:

- Found in 13 of 245 (5.3%) of genes in pham
- No Manual Annotations of this start.
- Called 7.7% of time when present
- Phage (with cluster) where this start called: Odette_108 (J),

Summary by clusters:

There are 14 clusters represented in this pham: P2, J, AG, AJ, K3, K2, K1, P1, K7, K6, K5, K4, AY, K8,

Info for manual annotations of cluster AG:

- Start number 46 was manually annotated 1 time for cluster AG.
- Start number 48 was manually annotated 1 time for cluster AG.

Info for manual annotations of cluster AJ:

- Start number 45 was manually annotated 1 time for cluster AJ.

Info for manual annotations of cluster J:

- Start number 45 was manually annotated 15 times for cluster J.

Info for manual annotations of cluster K1:

- Start number 44 was manually annotated 1 time for cluster K1.
- Start number 47 was manually annotated 1 time for cluster K1.
- Start number 51 was manually annotated 4 times for cluster K1.
- Start number 52 was manually annotated 93 times for cluster K1.
- Start number 56 was manually annotated 9 times for cluster K1.

Info for manual annotations of cluster K2:

- Start number 53 was manually annotated 11 times for cluster K2.

Info for manual annotations of cluster K3:

- Start number 52 was manually annotated 9 times for cluster K3.

Info for manual annotations of cluster K4:

- Start number 51 was manually annotated 19 times for cluster K4.
- Start number 55 was manually annotated 3 times for cluster K4.

Info for manual annotations of cluster K5:

- Start number 52 was manually annotated 23 times for cluster K5.

Info for manual annotations of cluster K6:

- Start number 51 was manually annotated 1 time for cluster K6.
- Start number 52 was manually annotated 23 times for cluster K6.

Info for manual annotations of cluster K7:

- Start number 51 was manually annotated 1 time for cluster K7.

Info for manual annotations of cluster K8:

- Start number 51 was manually annotated 1 time for cluster K8.

Info for manual annotations of cluster P1:

- Start number 45 was manually annotated 2 times for cluster P1.

Info for manual annotations of cluster P2:

- Start number 45 was manually annotated 1 time for cluster P2.

Gene Information:

Gene: ActinUp_68 Start: 43942, Stop: 44313, Start Num: 52

Candidate Starts for ActinUp_68:

(37, 43882), (38, 43888), (Start: 47 @43927 has 1 MA's), (Start: 52 @43942 has 148 MA's), (70, 44059), (73, 44095), (77, 44110), (78, 44113), (93, 44269),

Gene: Adephagia_68 Start: 43979, Stop: 44350, Start Num: 52

Candidate Starts for Adephagia_68:

(37, 43919), (38, 43925), (Start: 47 @43964 has 1 MA's), (Start: 52 @43979 has 148 MA's), (70, 44096), (73, 44132), (77, 44147), (78, 44150), (93, 44306),

Gene: Adonis_68 Start: 44214, Stop: 44585, Start Num: 52

Candidate Starts for Adonis_68:

(28, 44106), (37, 44154), (38, 44160), (Start: 47 @44199 has 1 MA's), (Start: 52 @44214 has 148 MA's), (70, 44331), (73, 44367), (77, 44382), (78, 44385), (93, 44541),

Gene: Agent47_62 Start: 41490, Stop: 41870, Start Num: 52

Candidate Starts for Agent47_62:

(29, 41400), (36, 41430), (Start: 45 @41469 has 19 MA's), (Start: 47 @41475 has 1 MA's), (Start: 52 @41490 has 148 MA's), (68, 41598), (72, 41634), (73, 41652), (77, 41667), (90, 41757), (94, 41832),

Gene: Ageofdapage_71 Start: 45137, Stop: 45508, Start Num: 52

Candidate Starts for Ageofdapage_71:

(Start: 52 @45137 has 148 MA's), (70, 45254), (73, 45290), (77, 45305), (78, 45308), (93, 45464),

Gene: AlishaPH_68 Start: 44240, Stop: 44611, Start Num: 52

Candidate Starts for AlishaPH_68:

(37, 44180), (38, 44186), (Start: 47 @44225 has 1 MA's), (Start: 52 @44240 has 148 MA's), (70, 44357), (73, 44393), (77, 44408), (78, 44411), (93, 44567),

Gene: AlleyCat_64 Start: 41814, Stop: 42194, Start Num: 52

Candidate Starts for AlleyCat_64:

(14, 41544), (15, 41553), (29, 41712), (36, 41742), (Start: 45 @41793 has 19 MA's), (Start: 47 @41799 has 1 MA's), (Start: 52 @41814 has 148 MA's), (72, 41958), (73, 41976), (77, 41991), (85, 42045), (90, 42081), (94, 42156),

Gene: Amelie_56 Start: 41183, Stop: 41554, Start Num: 56

Candidate Starts for Amelie_56:

(19, 40970), (20, 40979), (25, 41021), (39, 41126), (Start: 56 @41183 has 9 MA's), (73, 41336), (74, 41339), (77, 41351), (78, 41354), (85, 41405),

Gene: Amgine_66 Start: 44807, Stop: 45178, Start Num: 52

Candidate Starts for Amgine_66:

(20, 44603), (39, 44753), (Start: 52 @44807 has 148 MA's), (66, 44906), (73, 44963), (78, 44981), (85, 45032),

Gene: Aminay_68 Start: 43564, Stop: 43917, Start Num: 51

Candidate Starts for Aminay_68:

(49, 43558), (Start: 51 @43564 has 26 MA's), (73, 43735), (74, 43738), (76, 43747), (77, 43750), (90, 43837),

Gene: Amohndition_67 Start: 44352, Stop: 44687, Start Num: 52

Candidate Starts for Amohndition_67:

(39, 44301), (Start: 52 @44352 has 148 MA's), (73, 44508), (74, 44511), (77, 44523), (78, 44526),

Gene: Anaya_71 Start: 44933, Stop: 45304, Start Num: 52

Candidate Starts for Anaya_71:

(37, 44873), (Start: 47 @44918 has 1 MA's), (Start: 52 @44933 has 148 MA's), (60, 44948), (70, 45050), (73, 45086), (77, 45101), (78, 45104), (93, 45260),

Gene: Angelica_67 Start: 43899, Stop: 44270, Start Num: 52

Candidate Starts for Angelica_67:

(19, 43686), (20, 43695), (39, 43845), (Start: 52 @43899 has 148 MA's), (70, 44016), (73, 44052), (77, 44067), (78, 44070), (93, 44226),

Gene: Anma_69 Start: 44604, Stop: 44975, Start Num: 52

Candidate Starts for Anma_69:

(19, 44391), (20, 44400), (39, 44550), (Start: 52 @44604 has 148 MA's), (72, 44739), (73, 44757), (77, 44772), (93, 44931),

Gene: Apocalypse_70 Start: 44662, Stop: 45033, Start Num: 52

Candidate Starts for Apocalypse_70:

(Start: 52 @44662 has 148 MA's), (70, 44779), (73, 44815), (77, 44830), (78, 44833), (93, 44989),

Gene: Applecrisp_64 Start: 43937, Stop: 44308, Start Num: 52

Candidate Starts for Applecrisp_64:

(20, 43733), (39, 43883), (Start: 52 @43937 has 148 MA's), (66, 44036), (73, 44093), (78, 44111), (85, 44162),

Gene: Asayake_68 Start: 44294, Stop: 44665, Start Num: 52

Candidate Starts for Asayake_68:

(17, 44084), (37, 44234), (38, 44240), (Start: 47 @44279 has 1 MA's), (Start: 52 @44294 has 148 MA's), (70, 44411), (73, 44447), (77, 44462), (78, 44465), (93, 44621),

Gene: Atiba_69 Start: 43942, Stop: 44313, Start Num: 52

Candidate Starts for Atiba_69:

(37, 43882), (38, 43888), (Start: 47 @43927 has 1 MA's), (Start: 52 @43942 has 148 MA's), (70, 44059), (73, 44095), (77, 44110), (78, 44113), (93, 44269),

Gene: BEEST_68 Start: 44294, Stop: 44665, Start Num: 52

Candidate Starts for BEEST_68:

(17, 44084), (37, 44234), (38, 44240), (Start: 47 @44279 has 1 MA's), (Start: 52 @44294 has 148 MA's), (70, 44411), (73, 44447), (77, 44462), (78, 44465), (93, 44621),

Gene: BGlluviae_68 Start: 44097, Stop: 44468, Start Num: 52

Candidate Starts for BGlluviae_68:

(37, 44037), (38, 44043), (Start: 47 @44082 has 1 MA's), (Start: 52 @44097 has 148 MA's), (70, 44214), (73, 44250), (77, 44265), (78, 44268), (93, 44424),

Gene: BaghaKamala_67 Start: 43528, Stop: 43899, Start Num: 52

Candidate Starts for BaghaKamala_67:

(Start: 52 @43528 has 148 MA's), (70, 43645), (73, 43681), (77, 43696), (78, 43699), (93, 43855),

Gene: BananenDer11_59 Start: 41451, Stop: 41831, Start Num: 52

Candidate Starts for BananenDer11_59:

(29, 41361), (36, 41391), (Start: 45 @41430 has 19 MA's), (Start: 47 @41436 has 1 MA's), (Start: 52 @41451 has 148 MA's), (68, 41559), (72, 41595), (73, 41613), (77, 41628), (90, 41718), (94, 41793),

Gene: BarrelRoll_69 Start: 44380, Stop: 44751, Start Num: 52

Candidate Starts for BarrelRoll_69:

(37, 44320), (38, 44326), (Start: 47 @44365 has 1 MA's), (Start: 52 @44380 has 148 MA's), (70, 44497), (73, 44533), (77, 44548), (78, 44551), (93, 44707),

Gene: Beem_108 Start: 62992, Stop: 63327, Start Num: 45

Candidate Starts for Beem_108:

(Start: 45 @62992 has 19 MA's), (62, 63064), (85, 63238), (87, 63256),

Gene: Beezoo_70 Start: 44892, Stop: 45263, Start Num: 52

Candidate Starts for Beezoo_70:

(37, 44832), (38, 44838), (Start: 47 @44877 has 1 MA's), (Start: 52 @44892 has 148 MA's), (70, 45009), (73, 45045), (77, 45060), (78, 45063), (93, 45219),

Gene: Bella96_68 Start: 44450, Stop: 44821, Start Num: 52

Candidate Starts for Bella96_68:

(19, 44237), (20, 44246), (39, 44396), (Start: 52 @44450 has 148 MA's), (72, 44585), (73, 44603), (77, 44618), (93, 44777),

Gene: Belladonna_68 Start: 44097, Stop: 44468, Start Num: 52

Candidate Starts for Belladonna_68:

(37, 44037), (38, 44043), (Start: 47 @44082 has 1 MA's), (Start: 52 @44097 has 148 MA's), (70, 44214), (73, 44250), (77, 44265), (78, 44268), (93, 44424),

Gene: Bern_69 Start: 43121, Stop: 43492, Start Num: 52

Candidate Starts for Bern_69:

(Start: 52 @43121 has 148 MA's), (70, 43238), (73, 43274), (77, 43289), (78, 43292), (93, 43448),

Gene: Binglebops_56 Start: 41183, Stop: 41554, Start Num: 56

Candidate Starts for Binglebops_56:

(19, 40970), (20, 40979), (25, 41021), (39, 41126), (Start: 56 @41183 has 9 MA's), (73, 41336), (74, 41339), (77, 41351), (78, 41354), (85, 41405),

Gene: Blizzard_68 Start: 44294, Stop: 44665, Start Num: 52

Candidate Starts for Blizzard_68:

(17, 44084), (37, 44234), (38, 44240), (Start: 47 @44279 has 1 MA's), (Start: 52 @44294 has 148 MA's), (70, 44411), (73, 44447), (77, 44462), (78, 44465), (93, 44621),

Gene: Bobby_103 Start: 64857, Stop: 65192, Start Num: 45

Candidate Starts for Bobby_103:

(Start: 45 @64857 has 19 MA's), (85, 65103), (87, 65121),

Gene: Bobquesha_74 Start: 43552, Stop: 43914, Start Num: 55

Candidate Starts for Bobquesha_74:

(Start: 51 @43534 has 26 MA's), (Start: 55 @43552 has 3 MA's), (73, 43714), (74, 43717), (82, 43765), (93, 43885),

Gene: Boiiii_68 Start: 44296, Stop: 44667, Start Num: 52

Candidate Starts for Boiiii_68:

(17, 44086), (37, 44236), (38, 44242), (Start: 47 @44281 has 1 MA's), (Start: 52 @44296 has 148 MA's), (70, 44413), (73, 44449), (77, 44464), (78, 44467), (93, 44623),

Gene: Boilgate_65 Start: 46267, Stop: 46611, Start Num: 51

Candidate Starts for Boilgate_65:

(1, 45925), (2, 45943), (6, 45961), (13, 46003), (16, 46054), (33, 46183), (Start: 51 @46267 has 26 MA's), (74, 46444),

Gene: Bombitas_95 Start: 60155, Stop: 60490, Start Num: 45

Candidate Starts for Bombitas_95:

(Start: 45 @60155 has 19 MA's), (62, 60227), (85, 60401), (87, 60419),

Gene: BoostSeason_71 Start: 46076, Stop: 46420, Start Num: 53

Candidate Starts for BoostSeason_71:

(Start: 53 @46076 has 11 MA's), (67, 46181), (72, 46220), (74, 46241), (77, 46253), (85, 46307), (86, 46322),

Gene: Bryler_71 Start: 43715, Stop: 44089, Start Num: 52

Candidate Starts for Bryler_71:

(39, 43661), (Start: 52 @43715 has 148 MA's), (73, 43871), (83, 43931),

Gene: CREW_68 Start: 44097, Stop: 44468, Start Num: 52

Candidate Starts for CREW_68:

(37, 44037), (38, 44043), (Start: 47 @44082 has 1 MA's), (Start: 52 @44097 has 148 MA's), (70, 44214), (73, 44250), (77, 44265), (78, 44268), (93, 44424),

Gene: Cain_71 Start: 43703, Stop: 44077, Start Num: 52

Candidate Starts for Cain_71:

(39, 43649), (Start: 52 @43703 has 148 MA's), (73, 43859), (83, 43919),

Gene: CallaLilly_68 Start: 44020, Stop: 44391, Start Num: 52

Candidate Starts for CallaLilly_68:

(37, 43960), (38, 43966), (Start: 47 @44005 has 1 MA's), (Start: 52 @44020 has 148 MA's), (70, 44137), (73, 44173), (77, 44188), (78, 44191), (93, 44347),

Gene: Capricorn_68 Start: 44097, Stop: 44468, Start Num: 52

Candidate Starts for Capricorn_68:

(37, 44037), (38, 44043), (Start: 47 @44082 has 1 MA's), (Start: 52 @44097 has 148 MA's), (70, 44214), (73, 44250), (77, 44265), (78, 44268), (93, 44424),

Gene: CaseJules_70 Start: 44294, Stop: 44665, Start Num: 52

Candidate Starts for CaseJules_70:

(17, 44084), (37, 44234), (38, 44240), (Start: 47 @44279 has 1 MA's), (Start: 52 @44294 has 148 MA's), (70, 44411), (73, 44447), (77, 44462), (78, 44465), (93, 44621),

Gene: Chancellor_73 Start: 44642, Stop: 45022, Start Num: 51

Candidate Starts for Chancellor_73:

(Start: 51 @44642 has 26 MA's), (Start: 55 @44660 has 3 MA's), (73, 44822), (74, 44825), (82, 44873), (93, 44993),

Gene: Chavito_71 Start: 45115, Stop: 45489, Start Num: 50

Candidate Starts for Chavito_71:

(22, 44947), (30, 45037), (32, 45043), (41, 45076), (Start: 44 @45097 has 1 MA's), (50, 45115), (57, 45130), (72, 45256), (73, 45274), (74, 45277), (77, 45289), (78, 45292), (84, 45337), (85, 45343), (86, 45358), (93, 45448), (95, 45457),

Gene: CheetoDust_67 Start: 43575, Stop: 43946, Start Num: 52

Candidate Starts for CheetoDust_67:

(Start: 52 @43575 has 148 MA's), (70, 43692), (73, 43728), (77, 43743), (78, 43746), (93, 43902),

Gene: Cheetobro_73 Start: 44639, Stop: 45019, Start Num: 51

Candidate Starts for Cheetobro_73:

(Start: 51 @44639 has 26 MA's), (Start: 55 @44657 has 3 MA's), (73, 44819), (74, 44822), (82, 44870), (93, 44990),

Gene: Chris_70 Start: 44892, Stop: 45239, Start Num: 52

Candidate Starts for Chris_70:

(20, 44703), (39, 44838), (Start: 52 @44892 has 148 MA's), (57, 44925), (59, 44928), (65, 45003), (66, 45012), (73, 45069), (74, 45072), (77, 45084), (85, 45138),

Gene: Clipper_72 Start: 44996, Stop: 45367, Start Num: 52

Candidate Starts for Clipper_72:

(37, 44936), (38, 44942), (Start: 47 @44981 has 1 MA's), (Start: 52 @44996 has 148 MA's), (70, 45113), (73, 45149), (77, 45164), (78, 45167), (93, 45323),

Gene: Collard_60 Start: 41451, Stop: 41831, Start Num: 52

Candidate Starts for Collard_60:

(29, 41361), (36, 41391), (Start: 45 @41430 has 19 MA's), (Start: 47 @41436 has 1 MA's), (Start: 52 @41451 has 148 MA's), (68, 41559), (72, 41595), (73, 41613), (77, 41628), (90, 41718), (94, 41793),

Gene: Constella_92 Start: 57167, Stop: 57499, Start Num: 45

Candidate Starts for Constella_92:

(Start: 45 @57167 has 19 MA's), (74, 57347), (85, 57413), (87, 57431),

Gene: CrimD_70 Start: 44874, Stop: 45260, Start Num: 47

Candidate Starts for CrimD_70:

(37, 44829), (38, 44835), (Start: 45 @44868 has 19 MA's), (Start: 47 @44874 has 1 MA's), (Start: 52 @44889 has 148 MA's), (70, 45006), (73, 45042), (77, 45057), (78, 45060), (93, 45216),

Gene: Curiosium_72 Start: 43619, Stop: 43990, Start Num: 52

Candidate Starts for Curiosium_72:

(Start: 45 @43598 has 19 MA's), (Start: 47 @43604 has 1 MA's), (Start: 52 @43619 has 148 MA's), (61, 43652), (72, 43754), (73, 43772), (77, 43787), (78, 43790), (86, 43856),

Gene: Dadosky_64 Start: 41816, Stop: 42196, Start Num: 52

Candidate Starts for Dadosky_64:

(14, 41546), (15, 41555), (29, 41714), (36, 41744), (Start: 45 @41795 has 19 MA's), (Start: 47 @41801 has 1 MA's), (Start: 52 @41816 has 148 MA's), (72, 41960), (73, 41978), (77, 41993), (85, 42047), (90, 42083), (94, 42158),

Gene: Dalmuri_68 Start: 44097, Stop: 44468, Start Num: 52

Candidate Starts for Dalmuri_68:

(37, 44037), (38, 44043), (Start: 47 @44082 has 1 MA's), (Start: 52 @44097 has 148 MA's), (70, 44214), (73, 44250), (77, 44265), (78, 44268), (93, 44424),

Gene: DanSyl44_76 Start: 45851, Stop: 46213, Start Num: 55

Candidate Starts for DanSyl44_76:

(Start: 51 @45833 has 26 MA's), (Start: 55 @45851 has 3 MA's), (73, 46013), (74, 46016), (82, 46064), (85, 46079), (93, 46184), (94, 46190),

Gene: DartGoblin_70 Start: 44422, Stop: 44793, Start Num: 52

Candidate Starts for DartGoblin_70:

(19, 44209), (20, 44218), (39, 44368), (Start: 52 @44422 has 148 MA's), (72, 44557), (73, 44575), (77, 44590), (93, 44749),

Gene: DarthP_67 Start: 44206, Stop: 44541, Start Num: 52

Candidate Starts for DarthP_67:

(9, 43903), (19, 43996), (20, 44005), (39, 44155), (Start: 52 @44206 has 148 MA's), (66, 44305), (73, 44362), (77, 44377), (78, 44380),

Gene: Dartin_70 Start: 44359, Stop: 44739, Start Num: 51
Candidate Starts for Dartin_70:
(7, 44050), (19, 44152), (20, 44161), (39, 44308), (Start: 51 @44359 has 26 MA's), (57, 44377), (72, 44503), (73, 44521), (74, 44524), (78, 44539), (81, 44572), (84, 44584), (85, 44590),

Gene: Deby_68 Start: 44347, Stop: 44718, Start Num: 52
Candidate Starts for Deby_68:
(Start: 52 @44347 has 148 MA's), (70, 44464), (73, 44500), (77, 44515), (78, 44518), (93, 44674),

Gene: Devera_75 Start: 45700, Stop: 46071, Start Num: 52
Candidate Starts for Devera_75:
(Start: 52 @45700 has 148 MA's), (70, 45817), (73, 45853), (77, 45868), (78, 45871), (93, 46027),

Gene: DismalFunk_71 Start: 46501, Stop: 46845, Start Num: 53
Candidate Starts for DismalFunk_71:
(Start: 53 @46501 has 11 MA's), (72, 46642), (74, 46663), (77, 46675), (85, 46729),

Gene: DismalStressor_71 Start: 46501, Stop: 46845, Start Num: 53
Candidate Starts for DismalStressor_71:
(Start: 53 @46501 has 11 MA's), (72, 46642), (74, 46663), (77, 46675), (85, 46729),

Gene: Dole_73 Start: 45703, Stop: 46074, Start Num: 52
Candidate Starts for Dole_73:
(Start: 52 @45703 has 148 MA's), (70, 45820), (73, 45856), (77, 45871), (78, 45874), (93, 46030),

Gene: DoubleChamp_59 Start: 41451, Stop: 41831, Start Num: 52
Candidate Starts for DoubleChamp_59:
(29, 41361), (36, 41391), (Start: 45 @41430 has 19 MA's), (Start: 47 @41436 has 1 MA's), (Start: 52 @41451 has 148 MA's), (68, 41559), (72, 41595), (73, 41613), (77, 41628), (90, 41718), (94, 41793),

Gene: Doughnut_71 Start: 46117, Stop: 46461, Start Num: 53
Candidate Starts for Doughnut_71:
(Start: 53 @46117 has 11 MA's), (72, 46258), (74, 46279), (77, 46291), (85, 46345),

Gene: Dove_92 Start: 58421, Stop: 58756, Start Num: 45
Candidate Starts for Dove_92:
(Start: 45 @58421 has 19 MA's), (62, 58493), (85, 58667), (87, 58685),

Gene: DrHayes_68 Start: 44604, Stop: 44975, Start Num: 52
Candidate Starts for DrHayes_68:
(19, 44391), (20, 44400), (39, 44550), (Start: 52 @44604 has 148 MA's), (72, 44739), (73, 44757), (77, 44772), (93, 44931),

Gene: Durfee_68 Start: 44294, Stop: 44665, Start Num: 52
Candidate Starts for Durfee_68:
(17, 44084), (37, 44234), (38, 44240), (Start: 47 @44279 has 1 MA's), (Start: 52 @44294 has 148 MA's), (70, 44411), (73, 44447), (77, 44462), (78, 44465), (93, 44621),

Gene: Edugator_61 Start: 43237, Stop: 43617, Start Num: 52
Candidate Starts for Edugator_61:
(14, 42967), (15, 42976), (29, 43135), (36, 43165), (Start: 45 @43216 has 19 MA's), (Start: 47 @43222 has 1 MA's), (Start: 52 @43237 has 148 MA's), (72, 43381), (73, 43399), (77, 43414), (90, 43504), (94, 43579),

Gene: Efra2_73 Start: 44448, Stop: 44819, Start Num: 52

Candidate Starts for Efra2_73:

(39, 44394), (Start: 52 @44448 has 148 MA's), (70, 44565), (73, 44601), (77, 44616), (78, 44619), (93, 44775),

Gene: Ejimix_100 Start: 62719, Stop: 63054, Start Num: 45

Candidate Starts for Ejimix_100:

(Start: 45 @62719 has 19 MA's), (62, 62791), (85, 62965), (87, 62983),

Gene: Ekdilam_64 Start: 44431, Stop: 44766, Start Num: 52

Candidate Starts for Ekdilam_64:

(5, 44122), (19, 44221), (20, 44230), (39, 44380), (Start: 52 @44431 has 148 MA's), (73, 44587), (74, 44590), (78, 44605), (83, 44647), (86, 44671),

Gene: Ellie_63 Start: 43667, Stop: 44038, Start Num: 52

Candidate Starts for Ellie_63:

(20, 43463), (39, 43613), (Start: 52 @43667 has 148 MA's), (66, 43766), (73, 43823), (78, 43841), (85, 43892),

Gene: Emerson_70 Start: 44414, Stop: 44785, Start Num: 52

Candidate Starts for Emerson_70:

(37, 44354), (38, 44360), (Start: 47 @44399 has 1 MA's), (Start: 52 @44414 has 148 MA's), (70, 44531), (73, 44567), (77, 44582), (78, 44585), (93, 44741),

Gene: Enkosi_58 Start: 43796, Stop: 44167, Start Num: 56

Candidate Starts for Enkosi_58:

(19, 43583), (20, 43592), (25, 43634), (39, 43739), (Start: 56 @43796 has 9 MA's), (73, 43949), (74, 43952), (77, 43964), (78, 43967), (85, 44018),

Gene: Eponine_75 Start: 45485, Stop: 45865, Start Num: 51

Candidate Starts for Eponine_75:

(Start: 51 @45485 has 26 MA's), (Start: 55 @45503 has 3 MA's), (73, 45665), (74, 45668), (79, 45698), (82, 45716), (93, 45836),

Gene: Fefferhead_65 Start: 43576, Stop: 43947, Start Num: 52

Candidate Starts for Fefferhead_65:

(20, 43372), (39, 43522), (Start: 52 @43576 has 148 MA's), (66, 43675), (73, 43732), (78, 43750), (85, 43801),

Gene: Feyre_65 Start: 45225, Stop: 45605, Start Num: 52

Candidate Starts for Feyre_65:

(29, 45123), (36, 45153), (Start: 45 @45204 has 19 MA's), (Start: 52 @45225 has 148 MA's), (58, 45243), (72, 45369), (73, 45387), (77, 45402),

Gene: Findley_71 Start: 46495, Stop: 46839, Start Num: 53

Candidate Starts for Findley_71:

(Start: 53 @46495 has 11 MA's), (72, 46636), (74, 46657), (77, 46669), (85, 46723),

Gene: Fionnbharth_73 Start: 44883, Stop: 45263, Start Num: 51

Candidate Starts for Fionnbharth_73:

(Start: 51 @44883 has 26 MA's), (Start: 55 @44901 has 3 MA's), (73, 45063), (74, 45066), (79, 45096), (82, 45114), (93, 45234),

Gene: Ganymede_68 Start: 44320, Stop: 44691, Start Num: 52

Candidate Starts for Ganymede_68:

(37, 44260), (38, 44266), (Start: 47 @44305 has 1 MA's), (Start: 52 @44320 has 148 MA's), (70, 44437), (73, 44473), (77, 44488), (78, 44491), (93, 44647),

Gene: Gengar_62 Start: 43211, Stop: 43591, Start Num: 52

Candidate Starts for Gengar_62:

(29, 43109), (36, 43139), (Start: 45 @43190 has 19 MA's), (Start: 52 @43211 has 148 MA's), (72, 43355), (73, 43373), (77, 43388), (85, 43442), (90, 43478), (94, 43553),

Gene: Geraldini_71 Start: 44976, Stop: 45347, Start Num: 52

Candidate Starts for Geraldini_71:

(28, 44868), (37, 44916), (38, 44922), (Start: 47 @44961 has 1 MA's), (Start: 52 @44976 has 148 MA's), (70, 45093), (73, 45129), (77, 45144), (78, 45147), (93, 45303),

Gene: Guanica15_72 Start: 44186, Stop: 44557, Start Num: 52

Candidate Starts for Guanica15_72:

(39, 44132), (Start: 52 @44186 has 148 MA's), (70, 44303), (73, 44339), (77, 44354), (78, 44357), (93, 44513),

Gene: Guillsminger_63 Start: 43165, Stop: 43545, Start Num: 52

Candidate Starts for Guillsminger_63:

(29, 43063), (36, 43093), (Start: 45 @43144 has 19 MA's), (Start: 52 @43165 has 148 MA's), (58, 43183), (72, 43309), (73, 43327), (77, 43342), (85, 43396), (90, 43432),

Gene: GumGum_47 Start: 29741, Stop: 30097, Start Num: 45

Candidate Starts for GumGum_47:

(21, 29564), (26, 29609), (27, 29636), (Start: 45 @29741 has 19 MA's), (71, 29894), (85, 29987), (92, 30086),

Gene: Halley_108 Start: 62993, Stop: 63328, Start Num: 45

Candidate Starts for Halley_108:

(Start: 45 @62993 has 19 MA's), (62, 63065), (85, 63239), (87, 63257),

Gene: Hammy_67 Start: 44194, Stop: 44529, Start Num: 52

Candidate Starts for Hammy_67:

(9, 43891), (19, 43984), (20, 43993), (39, 44143), (Start: 52 @44194 has 148 MA's), (73, 44350), (77, 44365), (78, 44368),

Gene: HedwigODU_68 Start: 43942, Stop: 44313, Start Num: 52

Candidate Starts for HedwigODU_68:

(37, 43882), (38, 43888), (Start: 47 @43927 has 1 MA's), (Start: 52 @43942 has 148 MA's), (70, 44059), (73, 44095), (77, 44110), (78, 44113), (93, 44269),

Gene: Heftyboy_63 Start: 43532, Stop: 43912, Start Num: 52

Candidate Starts for Heftyboy_63:

(29, 43430), (36, 43460), (Start: 45 @43511 has 19 MA's), (Start: 52 @43532 has 148 MA's), (58, 43550), (72, 43676), (73, 43694), (77, 43709),

Gene: Hidrated_94 Start: 60927, Stop: 61262, Start Num: 45

Candidate Starts for Hidrated_94:

(23, 60783), (Start: 45 @60927 has 19 MA's), (62, 60999), (85, 61173), (87, 61191),

Gene: HokkenD_96 Start: 61261, Stop: 61596, Start Num: 45
Candidate Starts for HokkenD_96:
(Start: 45 @61261 has 19 MA's), (62, 61333), (85, 61507), (87, 61525),

Gene: Homura_68 Start: 44097, Stop: 44468, Start Num: 52
Candidate Starts for Homura_68:
(37, 44037), (38, 44043), (Start: 47 @44082 has 1 MA's), (Start: 52 @44097 has 148 MA's), (70, 44214), (73, 44250), (77, 44265), (78, 44268), (93, 44424),

Gene: Hurricane_69 Start: 44340, Stop: 44675, Start Num: 52
Candidate Starts for Hurricane_69:
(8, 44031), (9, 44037), (11, 44058), (20, 44139), (39, 44286), (Start: 52 @44340 has 148 MA's), (64, 44412), (74, 44499), (77, 44511), (80, 44541), (83, 44556), (86, 44580),

Gene: Hyperbowlee_68 Start: 44294, Stop: 44665, Start Num: 52
Candidate Starts for Hyperbowlee_68:
(17, 44084), (37, 44234), (38, 44240), (Start: 47 @44279 has 1 MA's), (Start: 52 @44294 has 148 MA's), (70, 44411), (73, 44447), (77, 44462), (78, 44465), (93, 44621),

Gene: IdentityCrisis_54 Start: 33602, Stop: 33967, Start Num: 45
Candidate Starts for IdentityCrisis_54:
(43, 33590), (Start: 45 @33602 has 19 MA's), (75, 33785), (85, 33848), (91, 33935), (93, 33953), (95, 33962),

Gene: Illumine_73 Start: 45702, Stop: 46073, Start Num: 52
Candidate Starts for Illumine_73:
(Start: 52 @45702 has 148 MA's), (70, 45819), (73, 45855), (77, 45870), (78, 45873), (93, 46029),

Gene: Inky_68 Start: 44097, Stop: 44468, Start Num: 52
Candidate Starts for Inky_68:
(37, 44037), (38, 44043), (Start: 47 @44082 has 1 MA's), (Start: 52 @44097 has 148 MA's), (70, 44214), (73, 44250), (77, 44265), (78, 44268), (93, 44424),

Gene: InvictusManeo_60 Start: 41494, Stop: 41874, Start Num: 52
Candidate Starts for InvictusManeo_60:
(29, 41404), (36, 41434), (Start: 45 @41473 has 19 MA's), (Start: 47 @41479 has 1 MA's), (Start: 52 @41494 has 148 MA's), (68, 41602), (72, 41638), (73, 41656), (77, 41671), (90, 41761), (94, 41836),

Gene: JAWS_68 Start: 44140, Stop: 44511, Start Num: 52
Candidate Starts for JAWS_68:
(Start: 52 @44140 has 148 MA's), (70, 44257), (73, 44293), (77, 44308), (78, 44311), (93, 44467),

Gene: JF1_73 Start: 44849, Stop: 45229, Start Num: 51
Candidate Starts for JF1_73:
(Start: 51 @44849 has 26 MA's), (Start: 55 @44867 has 3 MA's), (73, 45029), (74, 45032), (82, 45080), (93, 45200),

Gene: Jarvi_68 Start: 44097, Stop: 44468, Start Num: 52
Candidate Starts for Jarvi_68:
(37, 44037), (38, 44043), (Start: 47 @44082 has 1 MA's), (Start: 52 @44097 has 148 MA's), (70, 44214), (73, 44250), (77, 44265), (78, 44268), (93, 44424),

Gene: Jayhawk_70 Start: 44440, Stop: 44811, Start Num: 52

Candidate Starts for Jayhawk_70:

(37, 44380), (38, 44386), (Start: 47 @44425 has 1 MA's), (Start: 52 @44440 has 148 MA's), (70, 44557), (73, 44593), (77, 44608), (78, 44611), (93, 44767),

Gene: Jeckyll_68 Start: 44097, Stop: 44468, Start Num: 52

Candidate Starts for Jeckyll_68:

(37, 44037), (38, 44043), (Start: 47 @44082 has 1 MA's), (Start: 52 @44097 has 148 MA's), (70, 44214), (73, 44250), (77, 44265), (78, 44268), (93, 44424),

Gene: Joy99_68 Start: 44026, Stop: 44397, Start Num: 52

Candidate Starts for Joy99_68:

(37, 43966), (38, 43972), (Start: 47 @44011 has 1 MA's), (Start: 52 @44026 has 148 MA's), (70, 44143), (73, 44179), (77, 44194), (78, 44197), (93, 44353),

Gene: JuicyJay_103 Start: 64127, Stop: 64462, Start Num: 45

Candidate Starts for JuicyJay_103:

(Start: 45 @64127 has 19 MA's), (62, 64199), (85, 64373), (87, 64391),

Gene: Juliette_75 Start: 44947, Stop: 45327, Start Num: 51

Candidate Starts for Juliette_75:

(Start: 51 @44947 has 26 MA's), (Start: 55 @44965 has 3 MA's), (73, 45127), (74, 45130), (82, 45178), (93, 45298),

Gene: Keshu_71 Start: 44440, Stop: 44811, Start Num: 52

Candidate Starts for Keshu_71:

(39, 44386), (Start: 52 @44440 has 148 MA's), (61, 44476), (63, 44491), (74, 44599), (83, 44656), (86, 44680), (93, 44770), (95, 44779),

Gene: KiSi_72 Start: 44874, Stop: 45218, Start Num: 52

Candidate Starts for KiSi_72:

(3, 44565), (12, 44607), (20, 44685), (Start: 52 @44874 has 148 MA's), (57, 44904), (59, 44907), (66, 44991), (73, 45048), (74, 45051), (77, 45063), (85, 45117),

Gene: Kratio_60 Start: 41230, Stop: 41610, Start Num: 52

Candidate Starts for Kratio_60:

(29, 41140), (36, 41170), (Start: 45 @41209 has 19 MA's), (Start: 47 @41215 has 1 MA's), (Start: 52 @41230 has 148 MA's), (68, 41338), (72, 41374), (73, 41392), (77, 41407), (90, 41497), (94, 41572),

Gene: Kraw_73 Start: 44653, Stop: 45015, Start Num: 55

Candidate Starts for Kraw_73:

(Start: 51 @44635 has 26 MA's), (Start: 55 @44653 has 3 MA's), (73, 44815), (74, 44818), (82, 44866), (93, 44986),

Gene: Krueger_72 Start: 43991, Stop: 44365, Start Num: 52

Candidate Starts for Krueger_72:

(19, 43781), (20, 43790), (Start: 52 @43991 has 148 MA's), (74, 44150), (83, 44207), (93, 44321),

Gene: Ksquared_63 Start: 41638, Stop: 42021, Start Num: 45

Candidate Starts for Ksquared_63:

(10, 41374), (18, 41443), (24, 41491), (31, 41563), (33, 41569), (35, 41587), (Start: 45 @41638 has 19 MA's), (75, 41821), (85, 41884),

Gene: Larva_63 Start: 42688, Stop: 43068, Start Num: 52

Candidate Starts for Larva_63:

(14, 42418), (15, 42427), (29, 42586), (36, 42616), (Start: 45 @42667 has 19 MA's), (Start: 47 @42673 has 1 MA's), (Start: 52 @42688 has 148 MA's), (72, 42832), (73, 42850), (77, 42865), (85, 42919), (90, 42955), (94, 43030),

Gene: LastHope_72 Start: 43303, Stop: 43674, Start Num: 52

Candidate Starts for LastHope_72:

(Start: 52 @43303 has 148 MA's), (73, 43456), (77, 43471), (93, 43630),

Gene: LaterM_68 Start: 44555, Stop: 44926, Start Num: 52

Candidate Starts for LaterM_68:

(Start: 52 @44555 has 148 MA's), (70, 44672), (73, 44708), (77, 44723), (78, 44726), (93, 44882),

Gene: Lavahound_66 Start: 44944, Stop: 45315, Start Num: 52

Candidate Starts for Lavahound_66:

(20, 44740), (39, 44890), (Start: 52 @44944 has 148 MA's), (66, 45043), (73, 45100), (78, 45118), (85, 45169),

Gene: LeMond_71 Start: 44508, Stop: 44852, Start Num: 52

Candidate Starts for LeMond_71:

(3, 44199), (12, 44241), (20, 44319), (39, 44454), (Start: 52 @44508 has 148 MA's), (57, 44538), (59, 44541), (66, 44625), (73, 44682), (74, 44685), (77, 44697), (85, 44751),

Gene: Lea83_69 Start: 44374, Stop: 44745, Start Num: 52

Candidate Starts for Lea83_69:

(20, 44170), (39, 44320), (Start: 52 @44374 has 148 MA's), (61, 44410), (63, 44425), (74, 44533), (83, 44590), (86, 44614), (95, 44713),

Gene: Lebo14_72 Start: 44968, Stop: 45348, Start Num: 51

Candidate Starts for Lebo14_72:

(Start: 51 @44968 has 26 MA's), (Start: 55 @44986 has 3 MA's), (73, 45148), (74, 45151), (82, 45199), (85, 45214), (93, 45319), (94, 45325),

Gene: Leston_62 Start: 43294, Stop: 43674, Start Num: 52

Candidate Starts for Leston_62:

(29, 43192), (36, 43222), (Start: 45 @43273 has 19 MA's), (Start: 52 @43294 has 148 MA's), (58, 43312), (72, 43438), (73, 43456), (77, 43471), (85, 43525), (90, 43561),

Gene: LilDirt_59 Start: 41252, Stop: 41632, Start Num: 52

Candidate Starts for LilDirt_59:

(29, 41162), (36, 41192), (Start: 45 @41231 has 19 MA's), (Start: 47 @41237 has 1 MA's), (Start: 52 @41252 has 148 MA's), (68, 41360), (72, 41396), (73, 41414), (77, 41429), (94, 41594),

Gene: LilPharaoh_57 Start: 40911, Stop: 41282, Start Num: 56

Candidate Starts for LilPharaoh_57:

(19, 40698), (20, 40707), (25, 40749), (39, 40854), (Start: 56 @40911 has 9 MA's), (73, 41064), (74, 41067), (77, 41079), (78, 41082), (85, 41133),

Gene: LindNT_67 Start: 44352, Stop: 44723, Start Num: 52

Candidate Starts for LindNT_67:

(Start: 52 @44352 has 148 MA's), (70, 44469), (73, 44505), (77, 44520), (78, 44523), (93, 44679),

Gene: Llorens_68 Start: 44097, Stop: 44468, Start Num: 52

Candidate Starts for Llorens_68:

(37, 44037), (38, 44043), (Start: 47 @44082 has 1 MA's), (Start: 52 @44097 has 148 MA's), (70, 44214), (73, 44250), (77, 44265), (78, 44268), (93, 44424),

Gene: Lunahalos_68 Start: 44097, Stop: 44468, Start Num: 52

Candidate Starts for Lunahalos_68:

(37, 44037), (38, 44043), (Start: 47 @44082 has 1 MA's), (Start: 52 @44097 has 148 MA's), (70, 44214), (73, 44250), (77, 44265), (78, 44268), (93, 44424),

Gene: MacKat_64 Start: 39880, Stop: 40251, Start Num: 52

Candidate Starts for MacKat_64:

(37, 39820), (38, 39826), (Start: 47 @39865 has 1 MA's), (Start: 52 @39880 has 148 MA's), (70, 39997), (73, 40033), (77, 40048), (78, 40051), (93, 40207),

Gene: MacnCheese_71 Start: 44967, Stop: 45302, Start Num: 52

Candidate Starts for MacnCheese_71:

(39, 44913), (Start: 52 @44967 has 148 MA's), (74, 45126), (80, 45168), (83, 45183),

Gene: MalagasyRose_68 Start: 43493, Stop: 43888, Start Num: 46

Candidate Starts for MalagasyRose_68:

(34, 43436), (Start: 46 @43493 has 1 MA's), (72, 43661), (74, 43682), (77, 43694),

Gene: Malthus_74 Start: 44635, Stop: 45015, Start Num: 51

Candidate Starts for Malthus_74:

(Start: 51 @44635 has 26 MA's), (Start: 55 @44653 has 3 MA's), (73, 44815), (74, 44818), (82, 44866), (93, 44986),

Gene: Marcoliusprime_71 Start: 46501, Stop: 46845, Start Num: 53

Candidate Starts for Marcoliusprime_71:

(Start: 53 @46501 has 11 MA's), (72, 46642), (74, 46663), (77, 46675), (85, 46729),

Gene: MarkPhew_70 Start: 44007, Stop: 44354, Start Num: 52

Candidate Starts for MarkPhew_70:

(12, 43740), (20, 43818), (39, 43953), (Start: 52 @44007 has 148 MA's), (57, 44040), (59, 44043), (66, 44127), (72, 44166), (73, 44184), (74, 44187), (77, 44199), (84, 44247), (85, 44253),

Gene: Marshawn_67 Start: 44384, Stop: 44707, Start Num: 52

Candidate Starts for Marshawn_67:

(39, 44330), (Start: 52 @44384 has 148 MA's), (65, 44480), (66, 44489), (70, 44510), (72, 44528), (73, 44546), (74, 44549), (77, 44561), (85, 44615),

Gene: McMater_70 Start: 44359, Stop: 44739, Start Num: 51

Candidate Starts for McMater_70:

(7, 44050), (19, 44152), (20, 44161), (39, 44308), (Start: 51 @44359 has 26 MA's), (57, 44377), (72, 44503), (73, 44521), (74, 44524), (78, 44539), (81, 44572), (84, 44584), (85, 44590),

Gene: Mdavu_57 Start: 41172, Stop: 41543, Start Num: 56

Candidate Starts for Mdavu_57:

(19, 40959), (20, 40968), (25, 41010), (39, 41115), (Start: 56 @41172 has 9 MA's), (73, 41325), (74, 41328), (77, 41340), (78, 41343), (85, 41394),

Gene: MeaningOfLife_69 Start: 44849, Stop: 45220, Start Num: 52

Candidate Starts for MeaningOfLife_69:

(37, 44789), (38, 44795), (Start: 47 @44834 has 1 MA's), (Start: 52 @44849 has 148 MA's), (70, 44966), (73, 45002), (77, 45017), (78, 45020), (93, 45176),

Gene: Megsy_70 Start: 44274, Stop: 44645, Start Num: 52

Candidate Starts for Megsy_70:

(Start: 52 @44274 has 148 MA's), (70, 44391), (73, 44427), (77, 44442), (78, 44445), (93, 44601),

Gene: Milly_71 Start: 46475, Stop: 46819, Start Num: 53

Candidate Starts for Milly_71:

(Start: 53 @46475 has 11 MA's), (72, 46616), (74, 46637), (77, 46649), (85, 46703),

Gene: Minerva_106 Start: 62938, Stop: 63273, Start Num: 45

Candidate Starts for Minerva_106:

(Start: 45 @62938 has 19 MA's), (62, 63010), (85, 63184), (87, 63202),

Gene: Miryou_66 Start: 45908, Stop: 46288, Start Num: 52

Candidate Starts for Miryou_66:

(29, 45806), (36, 45836), (Start: 45 @45887 has 19 MA's), (Start: 52 @45908 has 148 MA's), (58, 45926), (72, 46052), (73, 46070), (77, 46085), (85, 46139), (90, 46175),

Gene: MissDaisy_70 Start: 43549, Stop: 43929, Start Num: 51

Candidate Starts for MissDaisy_70:

(Start: 51 @43549 has 26 MA's), (Start: 55 @43567 has 3 MA's), (73, 43729), (74, 43732), (82, 43780), (93, 43900),

Gene: Mitti_73 Start: 44790, Stop: 45170, Start Num: 51

Candidate Starts for Mitti_73:

(Start: 51 @44790 has 26 MA's), (Start: 55 @44808 has 3 MA's), (73, 44970), (74, 44973), (82, 45021), (93, 45141),

Gene: Mufasa_71 Start: 46061, Stop: 46405, Start Num: 53

Candidate Starts for Mufasa_71:

(Start: 53 @46061 has 11 MA's), (67, 46166), (72, 46205), (74, 46226), (77, 46238), (85, 46292), (86, 46307),

Gene: Murucutumbu_69 Start: 45130, Stop: 45501, Start Num: 52

Candidate Starts for Murucutumbu_69:

(Start: 52 @45130 has 148 MA's), (70, 45247), (73, 45283), (77, 45298), (78, 45301), (93, 45457),

Gene: Mynx_70 Start: 44709, Stop: 45080, Start Num: 52

Candidate Starts for Mynx_70:

(37, 44649), (38, 44655), (Start: 47 @44694 has 1 MA's), (Start: 52 @44709 has 148 MA's), (70, 44826), (73, 44862), (77, 44877), (78, 44880), (93, 45036),

Gene: Neighly_64 Start: 42687, Stop: 43067, Start Num: 52

Candidate Starts for Neighly_64:

(14, 42417), (15, 42426), (29, 42585), (36, 42615), (Start: 45 @42666 has 19 MA's), (Start: 47 @42672 has 1 MA's), (Start: 52 @42687 has 148 MA's), (72, 42831), (73, 42849), (77, 42864), (85, 42918), (90, 42954), (94, 43029),

Gene: Nergal_59 Start: 40436, Stop: 40837, Start Num: 48

Candidate Starts for Nergal_59:

(40, 40403), (Start: 48 @40436 has 1 MA's), (72, 40598), (73, 40616), (77, 40631), (83, 40676), (84, 40679), (85, 40685), (86, 40700),

Gene: Nibb_70 Start: 44218, Stop: 44553, Start Num: 51

Candidate Starts for Nibb_70:

(39, 44167), (Start: 51 @44218 has 26 MA's), (72, 44356), (74, 44377), (80, 44419), (83, 44434), (85, 44443), (88, 44467),

Gene: NihilNomen_108 Start: 63079, Stop: 63414, Start Num: 45

Candidate Starts for NihilNomen_108:

(Start: 45 @63079 has 19 MA's), (62, 63151), (85, 63325), (87, 63343),

Gene: Nikao_59 Start: 43796, Stop: 44167, Start Num: 56

Candidate Starts for Nikao_59:

(19, 43583), (20, 43592), (25, 43634), (39, 43739), (Start: 56 @43796 has 9 MA's), (73, 43949), (74, 43952), (77, 43964), (78, 43967), (85, 44018),

Gene: Niklas_70 Start: 44420, Stop: 44800, Start Num: 51

Candidate Starts for Niklas_70:

(7, 44111), (19, 44213), (20, 44222), (39, 44369), (Start: 51 @44420 has 26 MA's), (57, 44438), (72, 44564), (73, 44582), (74, 44585), (78, 44600), (81, 44633), (84, 44645), (85, 44651),

Gene: November_65 Start: 44103, Stop: 44429, Start Num: 52

Candidate Starts for November_65:

(39, 44052), (Start: 52 @44103 has 148 MA's), (73, 44259), (77, 44274), (78, 44277),

Gene: Nutello_56 Start: 41183, Stop: 41554, Start Num: 56

Candidate Starts for Nutello_56:

(19, 40970), (20, 40979), (25, 41021), (39, 41126), (Start: 56 @41183 has 9 MA's), (73, 41336), (74, 41339), (77, 41351), (78, 41354), (85, 41405),

Gene: Odette_108 Start: 62194, Stop: 62457, Start Num: 62

Candidate Starts for Odette_108:

(Start: 45 @62122 has 19 MA's), (62, 62194), (85, 62368), (87, 62386),

Gene: OkiRoe_63 Start: 43580, Stop: 43960, Start Num: 52

Candidate Starts for OkiRoe_63:

(29, 43478), (36, 43508), (Start: 45 @43559 has 19 MA's), (Start: 52 @43580 has 148 MA's), (58, 43598), (72, 43724), (73, 43742), (77, 43757),

Gene: OmniCritical_72 Start: 44741, Stop: 45103, Start Num: 55

Candidate Starts for OmniCritical_72:

(Start: 51 @44723 has 26 MA's), (Start: 55 @44741 has 3 MA's), (73, 44903), (74, 44906), (82, 44954), (93, 45074),

Gene: Omnicron_66 Start: 43686, Stop: 44066, Start Num: 52

Candidate Starts for Omnicron_66:

(29, 43584), (36, 43614), (Start: 45 @43665 has 19 MA's), (Start: 52 @43686 has 148 MA's), (58, 43704), (72, 43830), (73, 43848), (77, 43863), (82, 43902), (85, 43917), (90, 43953), (96, 44034),

Gene: Optimus_100 Start: 61613, Stop: 61945, Start Num: 45

Candidate Starts for Optimus_100:

(Start: 45 @61613 has 19 MA's), (74, 61793), (85, 61859), (87, 61877),

Gene: Oscar_71 Start: 44425, Stop: 44769, Start Num: 52

Candidate Starts for Oscar_71:

(3, 44116), (12, 44158), (20, 44236), (Start: 52 @44425 has 148 MA's), (57, 44455), (59, 44458), (66, 44542), (73, 44599), (74, 44602), (77, 44614), (85, 44668),

Gene: Padfoot_68 Start: 44294, Stop: 44665, Start Num: 52

Candidate Starts for Padfoot_68:

(17, 44084), (37, 44234), (38, 44240), (Start: 47 @44279 has 1 MA's), (Start: 52 @44294 has 148 MA's), (70, 44411), (73, 44447), (77, 44462), (78, 44465), (93, 44621),

Gene: Padpat_71 Start: 44414, Stop: 44785, Start Num: 52

Candidate Starts for Padpat_71:

(37, 44354), (38, 44360), (Start: 47 @44399 has 1 MA's), (Start: 52 @44414 has 148 MA's), (70, 44531), (73, 44567), (77, 44582), (78, 44585), (93, 44741),

Gene: Paola_62 Start: 43165, Stop: 43545, Start Num: 52

Candidate Starts for Paola_62:

(29, 43063), (36, 43093), (Start: 45 @43144 has 19 MA's), (Start: 52 @43165 has 148 MA's), (58, 43183), (72, 43309), (73, 43327), (77, 43342), (85, 43396), (90, 43432),

Gene: Patt_69 Start: 43273, Stop: 43653, Start Num: 51

Candidate Starts for Patt_69:

(Start: 51 @43273 has 26 MA's), (Start: 55 @43291 has 3 MA's), (73, 43453), (74, 43456), (82, 43504), (93, 43624),

Gene: Peanam_70 Start: 44377, Stop: 44757, Start Num: 51

Candidate Starts for Peanam_70:

(7, 44068), (19, 44170), (20, 44179), (39, 44326), (Start: 51 @44377 has 26 MA's), (57, 44395), (72, 44521), (73, 44539), (74, 44542), (78, 44557), (81, 44590), (84, 44602), (85, 44608),

Gene: Peel_68 Start: 44099, Stop: 44470, Start Num: 52

Candidate Starts for Peel_68:

(37, 44039), (38, 44045), (Start: 47 @44084 has 1 MA's), (Start: 52 @44099 has 148 MA's), (70, 44216), (73, 44252), (77, 44267), (78, 44270), (93, 44426),

Gene: Pharb_68 Start: 43690, Stop: 44025, Start Num: 52

Candidate Starts for Pharb_68:

(19, 43477), (20, 43486), (39, 43636), (Start: 52 @43690 has 148 MA's), (61, 43726), (74, 43849), (78, 43864), (80, 43891), (83, 43906), (86, 43930), (89, 43945),

Gene: PhelpsODU_69 Start: 43630, Stop: 44004, Start Num: 52

Candidate Starts for PhelpsODU_69:

(39, 43576), (Start: 52 @43630 has 148 MA's), (73, 43786), (74, 43789), (78, 43804), (83, 43846),

Gene: Phrank_71 Start: 43693, Stop: 44067, Start Num: 52

Candidate Starts for Phrank_71:

(39, 43639), (Start: 52 @43693 has 148 MA's), (73, 43849), (83, 43909),

Gene: Piatt_68 Start: 44294, Stop: 44665, Start Num: 52

Candidate Starts for Piatt_68:

(17, 44084), (37, 44234), (38, 44240), (Start: 47 @44279 has 1 MA's), (Start: 52 @44294 has 148 MA's), (70, 44411), (73, 44447), (77, 44462), (78, 44465), (93, 44621),

Gene: Pisa1_67 Start: 44679, Stop: 45050, Start Num: 52

Candidate Starts for Pisa1_67:

(4, 44358), (20, 44475), (39, 44625), (Start: 52 @44679 has 148 MA's), (70, 44796), (73, 44832), (77, 44847), (78, 44850), (93, 45006),

Gene: Pisa4_61 Start: 40048, Stop: 40419, Start Num: 52

Candidate Starts for Pisa4_61:

(4, 39727), (20, 39844), (39, 39994), (Start: 52 @40048 has 148 MA's), (70, 40165), (73, 40201), (77, 40216), (78, 40219), (93, 40375),

Gene: Pixie_68 Start: 43865, Stop: 44236, Start Num: 52

Candidate Starts for Pixie_68:

(39, 43811), (Start: 52 @43865 has 148 MA's), (61, 43901), (63, 43916), (74, 44024), (83, 44081), (86, 44105), (93, 44195), (95, 44204),

Gene: Pokerus_68 Start: 44439, Stop: 44810, Start Num: 52

Candidate Starts for Pokerus_68:

(37, 44379), (38, 44385), (Start: 47 @44424 has 1 MA's), (Start: 52 @44439 has 148 MA's), (70, 44556), (73, 44592), (77, 44607), (78, 44610), (93, 44766),

Gene: Prithvi_69 Start: 44352, Stop: 44723, Start Num: 52

Candidate Starts for Prithvi_69:

(Start: 52 @44352 has 148 MA's), (70, 44469), (73, 44505), (77, 44520), (78, 44523), (93, 44679),

Gene: Psycho_62 Start: 41813, Stop: 42193, Start Num: 52

Candidate Starts for Psycho_62:

(14, 41543), (15, 41552), (29, 41711), (36, 41741), (Start: 45 @41792 has 19 MA's), (Start: 47 @41798 has 1 MA's), (Start: 52 @41813 has 148 MA's), (72, 41957), (73, 41975), (77, 41990), (85, 42044), (90, 42080), (94, 42155),

Gene: Qhanda_75 Start: 44669, Stop: 45031, Start Num: 55

Candidate Starts for Qhanda_75:

(Start: 51 @44651 has 26 MA's), (Start: 55 @44669 has 3 MA's), (73, 44831), (74, 44834), (82, 44882), (93, 45002),

Gene: QuincyRose_66 Start: 44320, Stop: 44691, Start Num: 52

Candidate Starts for QuincyRose_66:

(37, 44260), (38, 44266), (Start: 47 @44305 has 1 MA's), (Start: 52 @44320 has 148 MA's), (70, 44437), (73, 44473), (77, 44488), (78, 44491), (93, 44647),

Gene: Ramen_69 Start: 43944, Stop: 44315, Start Num: 52

Candidate Starts for Ramen_69:

(37, 43884), (38, 43890), (Start: 47 @43929 has 1 MA's), (Start: 52 @43944 has 148 MA's), (70, 44061), (73, 44097), (77, 44112), (78, 44115), (93, 44271),

Gene: Rando14_65 Start: 42494, Stop: 42874, Start Num: 52

Candidate Starts for Rando14_65:

(Start: 52 @42494 has 148 MA's), (72, 42638), (73, 42656), (77, 42671), (85, 42725), (90, 42761), (96, 42842),

Gene: Rapunzel97_70 Start: 44395, Stop: 44766, Start Num: 52

Candidate Starts for Rapunzel97_70:

(37, 44335), (38, 44341), (Start: 47 @44380 has 1 MA's), (Start: 52 @44395 has 148 MA's), (70, 44512), (73, 44548), (77, 44563), (78, 44566), (93, 44722),

Gene: Redno2_98 Start: 58813, Stop: 59148, Start Num: 45

Candidate Starts for Redno2_98:

(Start: 45 @58813 has 19 MA's), (62, 58885), (85, 59059), (87, 59077),

Gene: Reptar3000_70 Start: 43262, Stop: 43642, Start Num: 51

Candidate Starts for Reptar3000_70:

(Start: 51 @43262 has 26 MA's), (Start: 55 @43280 has 3 MA's), (73, 43442), (74, 43445), (82, 43493), (93, 43613),

Gene: Richo_70 Start: 44359, Stop: 44739, Start Num: 51

Candidate Starts for Richo_70:

(7, 44050), (19, 44152), (20, 44161), (39, 44308), (Start: 51 @44359 has 26 MA's), (57, 44377), (72, 44503), (73, 44521), (74, 44524), (78, 44539), (81, 44572), (84, 44584), (85, 44590),

Gene: Rosmarinus_68 Start: 44085, Stop: 44456, Start Num: 52

Candidate Starts for Rosmarinus_68:

(37, 44025), (38, 44031), (Start: 47 @44070 has 1 MA's), (Start: 52 @44085 has 148 MA's), (70, 44202), (73, 44238), (77, 44253), (78, 44256), (93, 44412),

Gene: Ruthiejr_74 Start: 44734, Stop: 45114, Start Num: 51

Candidate Starts for Ruthiejr_74:

(Start: 51 @44734 has 26 MA's), (Start: 55 @44752 has 3 MA's), (73, 44914), (74, 44917), (82, 44965), (93, 45085),

Gene: SamScheppers_71 Start: 45114, Stop: 45494, Start Num: 51

Candidate Starts for SamScheppers_71:

(Start: 51 @45114 has 26 MA's), (Start: 55 @45132 has 3 MA's), (73, 45294), (74, 45297), (82, 45345), (93, 45465),

Gene: SamuelLPlaqson_68 Start: 44604, Stop: 44975, Start Num: 52

Candidate Starts for SamuelLPlaqson_68:

(19, 44391), (20, 44400), (39, 44550), (Start: 52 @44604 has 148 MA's), (72, 44739), (73, 44757), (77, 44772), (93, 44931),

Gene: Scarlett_72 Start: 44755, Stop: 45099, Start Num: 52

Candidate Starts for Scarlett_72:

(3, 44446), (12, 44488), (20, 44566), (Start: 52 @44755 has 148 MA's), (57, 44785), (59, 44788), (66, 44872), (73, 44929), (74, 44932), (77, 44944), (85, 44998),

Gene: Schatzie_101 Start: 61869, Stop: 62204, Start Num: 45

Candidate Starts for Schatzie_101:

(Start: 45 @61869 has 19 MA's), (62, 61941), (85, 62115), (87, 62133),

Gene: SgtBeansprout_57 Start: 41183, Stop: 41554, Start Num: 56

Candidate Starts for SgtBeansprout_57:

(19, 40970), (20, 40979), (25, 41021), (39, 41126), (Start: 56 @41183 has 9 MA's), (73, 41336), (74, 41339), (77, 41351), (78, 41354), (85, 41405),

Gene: Shadow1_72 Start: 44143, Stop: 44517, Start Num: 52

Candidate Starts for Shadow1_72:

(19, 43933), (20, 43942), (Start: 52 @44143 has 148 MA's), (74, 44302), (83, 44359), (93, 44473),

Gene: Shaobing_70 Start: 44395, Stop: 44775, Start Num: 51

Candidate Starts for Shaobing_70:

(7, 44086), (19, 44188), (20, 44197), (39, 44344), (Start: 51 @44395 has 26 MA's), (57, 44413), (72, 44539), (73, 44557), (74, 44560), (78, 44575), (81, 44608), (84, 44620), (85, 44626),

Gene: ShedlockHolmes_70 Start: 44378, Stop: 44749, Start Num: 52

Candidate Starts for ShedlockHolmes_70:

(20, 44174), (39, 44324), (Start: 52 @44378 has 148 MA's), (61, 44414), (63, 44429), (74, 44537), (83, 44594), (86, 44618), (95, 44717),

Gene: ShiaSurprise_69 Start: 44294, Stop: 44665, Start Num: 52

Candidate Starts for ShiaSurprise_69:

(17, 44084), (37, 44234), (38, 44240), (Start: 47 @44279 has 1 MA's), (Start: 52 @44294 has 148 MA's), (70, 44411), (73, 44447), (77, 44462), (78, 44465), (93, 44621),

Gene: SirPhilip_67 Start: 44537, Stop: 44893, Start Num: 52

Candidate Starts for SirPhilip_67:

(12, 44258), (20, 44336), (39, 44483), (Start: 52 @44537 has 148 MA's), (54, 44555), (57, 44570), (72, 44696), (73, 44714), (77, 44729), (85, 44783),

Gene: Slarp_73 Start: 44642, Stop: 45022, Start Num: 51

Candidate Starts for Slarp_73:

(Start: 51 @44642 has 26 MA's), (Start: 55 @44660 has 3 MA's), (73, 44822), (74, 44825), (82, 44873), (93, 44993),

Gene: Slimphazie_69 Start: 44395, Stop: 44766, Start Num: 52

Candidate Starts for Slimphazie_69:

(37, 44335), (38, 44341), (Start: 47 @44380 has 1 MA's), (Start: 52 @44395 has 148 MA's), (70, 44512), (73, 44548), (77, 44563), (78, 44566), (93, 44722),

Gene: SoSeph_63 Start: 43532, Stop: 43912, Start Num: 52

Candidate Starts for SoSeph_63:

(29, 43430), (36, 43460), (Start: 45 @43511 has 19 MA's), (Start: 52 @43532 has 148 MA's), (58, 43550), (72, 43676), (73, 43694), (77, 43709),

Gene: Spock_68 Start: 44098, Stop: 44469, Start Num: 52

Candidate Starts for Spock_68:

(37, 44038), (38, 44044), (Start: 47 @44083 has 1 MA's), (Start: 52 @44098 has 148 MA's), (70, 44215), (73, 44251), (77, 44266), (78, 44269), (93, 44425),

Gene: Stinson_69 Start: 44490, Stop: 44861, Start Num: 52

Candidate Starts for Stinson_69:

(Start: 52 @44490 has 148 MA's), (70, 44607), (73, 44643), (77, 44658), (78, 44661), (93, 44817),

Gene: Strobilo_72 Start: 46477, Stop: 46821, Start Num: 53

Candidate Starts for Strobilo_72:

(Start: 53 @46477 has 11 MA's), (72, 46618), (74, 46639), (77, 46651), (85, 46705),

Gene: Sulley_67 Start: 43925, Stop: 44296, Start Num: 52

Candidate Starts for Sulley_67:

(19, 43712), (20, 43721), (39, 43871), (Start: 52 @43925 has 148 MA's), (70, 44042), (73, 44078), (77, 44093), (78, 44096), (93, 44252),

Gene: Sunflower1121_73 Start: 44289, Stop: 44663, Start Num: 52

Candidate Starts for Sunflower1121_73:

(19, 44079), (20, 44088), (Start: 52 @44289 has 148 MA's), (74, 44448), (83, 44505), (93, 44619),

Gene: Syra333_71 Start: 44003, Stop: 44377, Start Num: 52

Candidate Starts for Syra333_71:

(19, 43793), (20, 43802), (Start: 52 @44003 has 148 MA's), (74, 44162), (83, 44219), (93, 44333),

Gene: TBond007_65 Start: 43864, Stop: 44235, Start Num: 52

Candidate Starts for TBond007_65:

(39, 43810), (Start: 52 @43864 has 148 MA's), (61, 43900), (63, 43915), (74, 44023), (83, 44080), (86, 44104), (93, 44194), (95, 44203),

Gene: TClif_69 Start: 43964, Stop: 44338, Start Num: 52

Candidate Starts for TClif_69:

(20, 43763), (39, 43910), (Start: 52 @43964 has 148 MA's), (72, 44102), (78, 44138), (83, 44180),

Gene: TM4_69 Start: 41139, Stop: 41513, Start Num: 53

Candidate Starts for TM4_69:

(Start: 53 @41139 has 11 MA's), (67, 41244), (72, 41283), (74, 41304), (77, 41316), (85, 41370), (86, 41385),

Gene: Tachez_68 Start: 43942, Stop: 44313, Start Num: 52

Candidate Starts for Tachez_68:

(37, 43882), (38, 43888), (Start: 47 @43927 has 1 MA's), (Start: 52 @43942 has 148 MA's), (70, 44059), (73, 44095), (77, 44110), (78, 44113), (93, 44269),

Gene: TaiwanKao_70 Start: 44414, Stop: 44785, Start Num: 52

Candidate Starts for TaiwanKao_70:

(Start: 52 @44414 has 148 MA's), (70, 44531), (73, 44567), (77, 44582), (78, 44585), (93, 44741),

Gene: Taquito_72 Start: 44847, Stop: 45227, Start Num: 51

Candidate Starts for Taquito_72:

(Start: 51 @44847 has 26 MA's), (Start: 55 @44865 has 3 MA's), (73, 45027), (74, 45030), (82, 45078), (93, 45198),

Gene: Teejan_58 Start: 43796, Stop: 44167, Start Num: 56

Candidate Starts for Teejan_58:

(19, 43583), (20, 43592), (25, 43634), (39, 43739), (Start: 56 @43796 has 9 MA's), (73, 43949), (74, 43952), (77, 43964), (78, 43967), (85, 44018),

Gene: ThreeRngTarjay_103 Start: 63154, Stop: 63486, Start Num: 45

Candidate Starts for ThreeRngTarjay_103:

(Start: 45 @63154 has 19 MA's), (74, 63334), (85, 63400), (87, 63418),

Gene: Thyatira_65 Start: 45497, Stop: 45877, Start Num: 52

Candidate Starts for Thyatira_65:

(29, 45395), (36, 45425), (Start: 45 @45476 has 19 MA's), (Start: 52 @45497 has 148 MA's), (58, 45515), (72, 45641), (73, 45659), (77, 45674),

Gene: Tierra_71 Start: 44504, Stop: 44878, Start Num: 52
Candidate Starts for Tierra_71:
(39, 44450), (Start: 52 @44504 has 148 MA's), (73, 44660), (83, 44720),

Gene: Tigress9_74 Start: 44320, Stop: 44694, Start Num: 52
Candidate Starts for Tigress9_74:
(19, 44110), (20, 44119), (Start: 52 @44320 has 148 MA's), (74, 44479), (83, 44536), (93, 44650),

Gene: TingHuaYa_71 Start: 43669, Stop: 44040, Start Num: 52
Candidate Starts for TingHuaYa_71:
(Start: 52 @43669 has 148 MA's), (73, 43822), (77, 43837), (93, 43996),

Gene: TiniBug_68 Start: 44600, Stop: 44971, Start Num: 52
Candidate Starts for TiniBug_68:
(20, 44396), (39, 44546), (Start: 52 @44600 has 148 MA's), (72, 44735), (73, 44753), (77, 44768), (78, 44771), (93, 44927),

Gene: Tiri_68 Start: 43998, Stop: 44369, Start Num: 52
Candidate Starts for Tiri_68:
(Start: 52 @43998 has 148 MA's), (70, 44115), (73, 44151), (77, 44166), (78, 44169), (93, 44325),

Gene: Topper_68 Start: 44097, Stop: 44468, Start Num: 52
Candidate Starts for Topper_68:
(37, 44037), (38, 44043), (Start: 47 @44082 has 1 MA's), (Start: 52 @44097 has 148 MA's), (70, 44214), (73, 44250), (77, 44265), (78, 44268), (93, 44424),

Gene: Torres_59 Start: 43797, Stop: 44168, Start Num: 56
Candidate Starts for Torres_59:
(19, 43584), (20, 43593), (25, 43635), (39, 43740), (Start: 56 @43797 has 9 MA's), (73, 43950), (74, 43953), (77, 43965), (78, 43968), (85, 44019),

Gene: Tortellini_67 Start: 45000, Stop: 45356, Start Num: 45
Candidate Starts for Tortellini_67:
(31, 44925), (33, 44931), (35, 44949), (Start: 45 @45000 has 19 MA's), (75, 45183), (85, 45246), (91, 45333),

Gene: TreyKay_69 Start: 44352, Stop: 44723, Start Num: 52
Candidate Starts for TreyKay_69:
(Start: 52 @44352 has 148 MA's), (70, 44469), (73, 44505), (77, 44520), (78, 44523), (93, 44679),

Gene: TribbleTrouble_69 Start: 44867, Stop: 45202, Start Num: 52
Candidate Starts for TribbleTrouble_69:
(39, 44813), (Start: 52 @44867 has 148 MA's), (70, 44987), (74, 45026), (78, 45041), (80, 45068), (83, 45083), (86, 45107),

Gene: Trice_56 Start: 41184, Stop: 41555, Start Num: 56
Candidate Starts for Trice_56:
(19, 40971), (20, 40980), (25, 41022), (39, 41127), (Start: 56 @41184 has 9 MA's), (73, 41337), (74, 41340), (77, 41352), (78, 41355), (85, 41406),

Gene: TruffulaTree_69 Start: 44391, Stop: 44762, Start Num: 52
Candidate Starts for TruffulaTree_69:

(37, 44331), (38, 44337), (Start: 47 @44376 has 1 MA's), (Start: 52 @44391 has 148 MA's), (70, 44508), (73, 44544), (77, 44559), (78, 44562), (93, 44718),

Gene: Twitch_68 Start: 44099, Stop: 44470, Start Num: 52

Candidate Starts for Twitch_68:

(37, 44039), (38, 44045), (Start: 47 @44084 has 1 MA's), (Start: 52 @44099 has 148 MA's), (70, 44216), (73, 44252), (77, 44267), (78, 44270), (93, 44426),

Gene: Unicorn_69 Start: 43630, Stop: 44004, Start Num: 52

Candidate Starts for Unicorn_69:

(39, 43576), (Start: 52 @43630 has 148 MA's), (73, 43786), (74, 43789), (78, 43804), (83, 43846),

Gene: Urkel_68 Start: 44604, Stop: 44975, Start Num: 52

Candidate Starts for Urkel_68:

(19, 44391), (20, 44400), (39, 44550), (Start: 52 @44604 has 148 MA's), (72, 44739), (73, 44757), (77, 44772), (93, 44931),

Gene: Validus_73 Start: 44948, Stop: 45340, Start Num: 44

Candidate Starts for Validus_73:

(30, 44876), (41, 44927), (42, 44933), (Start: 44 @44948 has 1 MA's), (50, 44966), (57, 44981), (72, 45107), (73, 45125), (74, 45128), (77, 45140), (78, 45143), (84, 45188), (85, 45194), (93, 45299), (97, 45317),

Gene: Veliki_69 Start: 44131, Stop: 44502, Start Num: 52

Candidate Starts for Veliki_69:

(Start: 52 @44131 has 148 MA's), (70, 44248), (73, 44284), (77, 44299), (78, 44302), (93, 44458),

Gene: ViviJ_61 Start: 41251, Stop: 41631, Start Num: 52

Candidate Starts for ViviJ_61:

(29, 41161), (36, 41191), (Start: 45 @41230 has 19 MA's), (Start: 47 @41236 has 1 MA's), (Start: 52 @41251 has 148 MA's), (68, 41359), (72, 41395), (73, 41413), (77, 41428), (90, 41518), (94, 41593),

Gene: WST1_55 Start: 33447, Stop: 33824, Start Num: 43

Candidate Starts for WST1_55:

(43, 33447), (Start: 45 @33459 has 19 MA's), (75, 33642), (85, 33705), (91, 33792), (93, 33810), (95, 33819),

Gene: Waterfoul_64 Start: 43594, Stop: 43974, Start Num: 52

Candidate Starts for Waterfoul_64:

(29, 43492), (36, 43522), (Start: 45 @43573 has 19 MA's), (Start: 52 @43594 has 148 MA's), (58, 43612), (72, 43738), (73, 43756), (77, 43771),

Gene: Willsammy_60 Start: 40682, Stop: 41095, Start Num: 45

Candidate Starts for Willsammy_60:

(10, 40418), (18, 40487), (24, 40535), (31, 40607), (33, 40613), (35, 40631), (Start: 45 @40682 has 19 MA's), (75, 40865), (85, 40928),

Gene: Wintermute_73 Start: 44872, Stop: 45252, Start Num: 51

Candidate Starts for Wintermute_73:

(Start: 51 @44872 has 26 MA's), (Start: 55 @44890 has 3 MA's), (73, 45052), (74, 45055), (82, 45103), (93, 45223),

Gene: Ximenita_73 Start: 44332, Stop: 44706, Start Num: 52

Candidate Starts for Ximenita_73:

(Start: 52 @44332 has 148 MA's), (73, 44488), (74, 44491), (83, 44548), (93, 44662),

Gene: Y10_70 Start: 44849, Stop: 45229, Start Num: 51

Candidate Starts for Y10_70:

(Start: 51 @44849 has 26 MA's), (Start: 55 @44867 has 3 MA's), (73, 45029), (74, 45032), (82, 45080), (93, 45200),

Gene: Y2_70 Start: 44849, Stop: 45229, Start Num: 51

Candidate Starts for Y2_70:

(Start: 51 @44849 has 26 MA's), (Start: 55 @44867 has 3 MA's), (73, 45029), (74, 45032), (82, 45080), (93, 45200),

Gene: YasnayaPolyana_72 Start: 44716, Stop: 45078, Start Num: 55

Candidate Starts for YasnayaPolyana_72:

(Start: 51 @44698 has 26 MA's), (Start: 55 @44716 has 3 MA's), (73, 44878), (74, 44881), (82, 44929), (93, 45049),

Gene: YoureAdopted_67 Start: 44277, Stop: 44648, Start Num: 52

Candidate Starts for YoureAdopted_67:

(19, 44064), (20, 44073), (39, 44223), (Start: 52 @44277 has 148 MA's), (70, 44394), (73, 44430), (77, 44445), (78, 44448), (93, 44604),

Gene: Yuna_72 Start: 45450, Stop: 45779, Start Num: 51

Candidate Starts for Yuna_72:

(Start: 51 @45450 has 26 MA's), (80, 45651), (83, 45666),

Gene: Yunkel11_72 Start: 44191, Stop: 44562, Start Num: 52

Candidate Starts for Yunkel11_72:

(39, 44137), (Start: 52 @44191 has 148 MA's), (70, 44308), (73, 44344), (77, 44359), (78, 44362), (93, 44518),

Gene: Zabiza_63 Start: 40247, Stop: 40618, Start Num: 52

Candidate Starts for Zabiza_63:

(37, 40187), (38, 40193), (Start: 47 @40232 has 1 MA's), (Start: 52 @40247 has 148 MA's), (70, 40364), (73, 40400), (77, 40415), (78, 40418), (93, 40574),

Gene: Zavala_71 Start: 44669, Stop: 45040, Start Num: 52

Candidate Starts for Zavala_71:

(37, 44609), (38, 44615), (Start: 47 @44654 has 1 MA's), (Start: 52 @44669 has 148 MA's), (70, 44786), (73, 44822), (77, 44837), (78, 44840), (93, 44996),

Gene: ZoeJ_70 Start: 45880, Stop: 46251, Start Num: 53

Candidate Starts for ZoeJ_70:

(Start: 53 @45880 has 11 MA's), (69, 45988), (72, 46021), (74, 46042), (77, 46054), (85, 46108), (86, 46123),