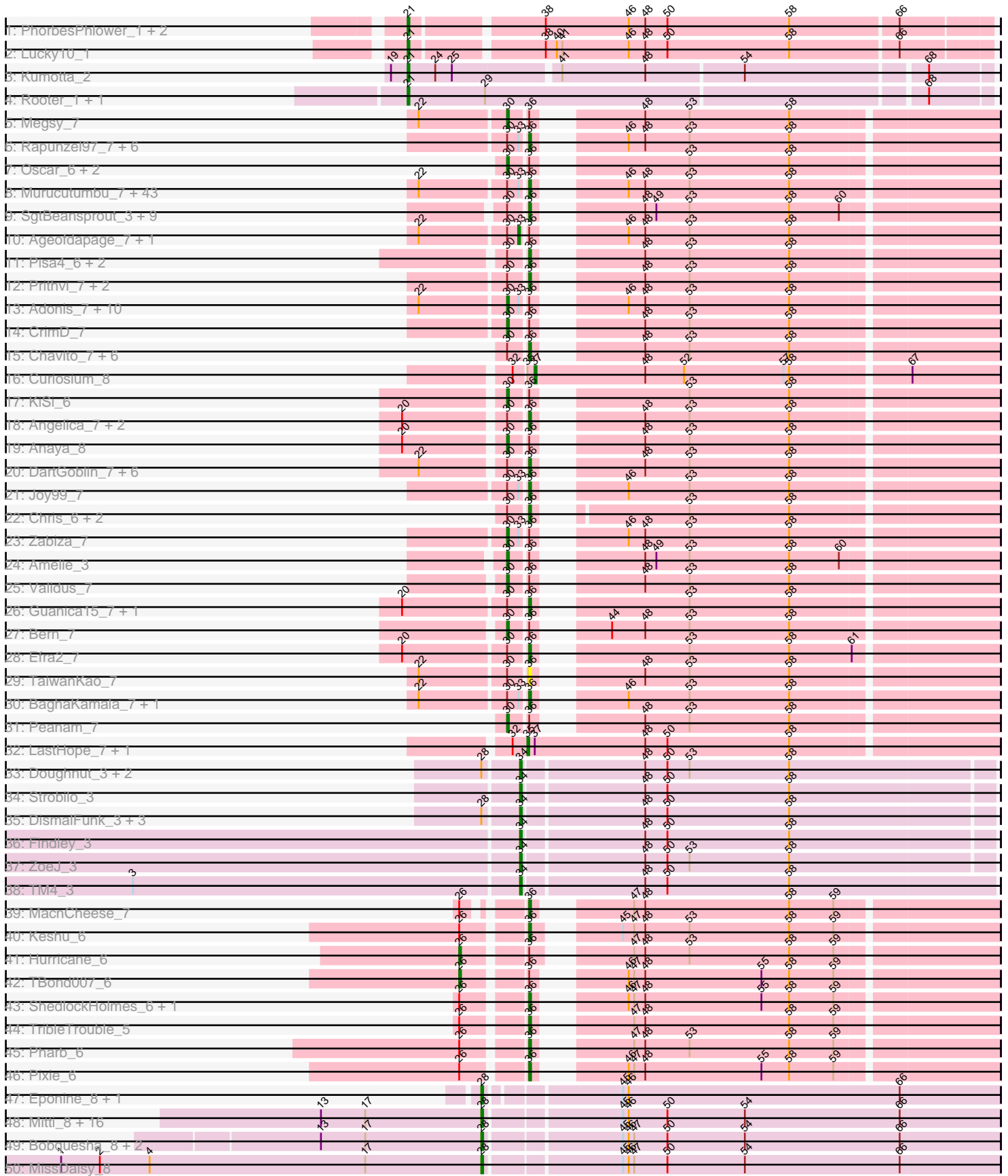
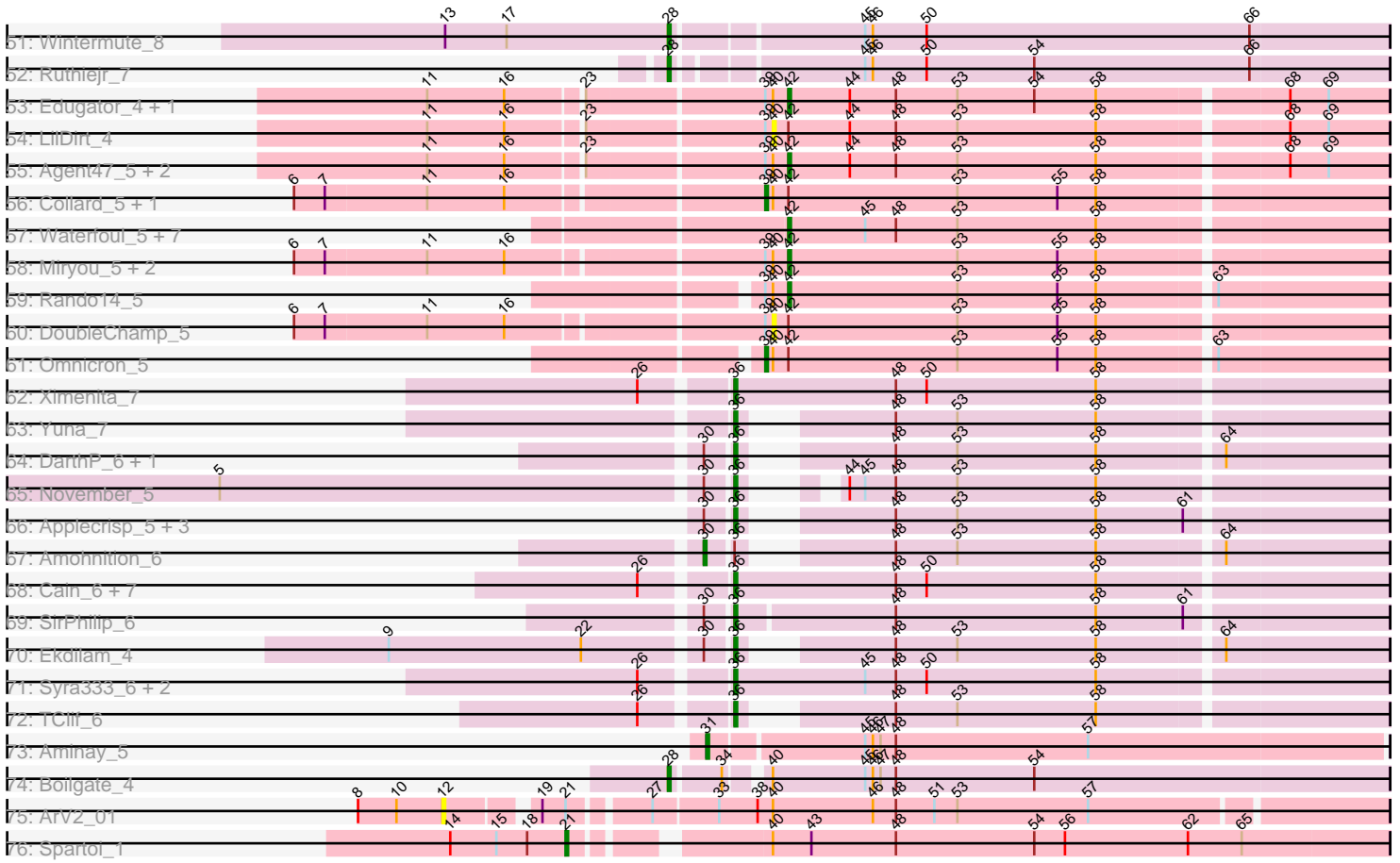


Pham 296237



Pham 296237



Note: Tracks are now grouped by subcluster and scaled. Switching in subcluster is indicated by changes in track color. Track scale is now set by default to display the region 30 bp upstream of start 1 to 30 bp downstream of the last possible start. If this default region is judged to be packed too tightly with annotated starts, the track will be further scaled to only show that region of the ORF with annotated starts. This action will be indicated by adding "Zoomed" to the title. For starts, yellow indicates the location of called starts comprised solely of Glimmer/GeneMark auto-annotations, green indicates the location of called starts with at least 1 manual gene annotation.

Pham 296237 Report

This analysis was run 04/25/26 on database version 644.

Pham number 296237 has 224 members, 24 are drafts.

Phages represented in each track:

- Track 1 : PhorbesPhlower_1, InLimbo_1, Morkie_1
- Track 2 : Lucky10_1
- Track 3 : Kumotta_2
- Track 4 : Rooter_1, Shoya_1
- Track 5 : Megsy_7
- Track 6 : Rapunzel97_7, Adephagia_7, Slimphazie_7, Ramen_7, ActinUp_7, HedwigODU_7, Jayhawk_7
- Track 7 : Oscar_6, Scarlett_6, LeMond_6
- Track 8 : Murucutumbu_7, TruffulaTree_7, JAWS_7, Devera_7, BarrelRoll_7, Durfee_7, Beezoo_7, Ganymede_7, Boiii_7, Blizzard_7, Homura_7, ShiaSurprise_7, Clipper_7, CallaLilly_7, Pokerus_6, MacKat_7, Geraldini_7, Apocalypse_7, Tiri_7, BGlluvia_7, Topper_7, CheetoDust_7, Emerson_7, LaterM_7, Capricorn_7, Veliki_7, Piatt_7, Dole_7, Illumine_7, Lunahalos_7, Dalmuri_7, Belladonna_7, Mynx_7, Llorens_7, YoureAdopted_6, Asayake_7, BEEST_7, Hyperbowlee_7, Jeckyll_7, Rosmarinus_7, Tachez_7, Inky_7, Padpat_7, Spock_7
- Track 9 : SgtBeansprout_3, Nutello_3, Enkosi_3, Torres_3, Teejan_3, Mdavu_3, Trice_3, Nikao_3, LilPharaoh_3, Binglebops_3
- Track 10 : Ageofdapage_7, Atiba_7
- Track 11 : Pisa4_6, Pisa1_6, Marshawn_8
- Track 12 : Prithvi_7, LindNT_7, TreyKay_7
- Track 13 : Adonis_7, CREW_7, QuincyRose_6, Stinson_7, Jarvi_7, Twitch_7, AlishaPH_7, Peel_7, Padfoot_7, CaseJules_7, Zavala_7
- Track 14 : CrimD_7
- Track 15 : Chavito_7, Dartin_7, Richo_7, Shaobing_7, Niklas_7, McMater_7, Lavahound_5
- Track 16 : Curiosium_8
- Track 17 : KiSi_6
- Track 18 : Angelica_7, Sulley_7, Deby_7
- Track 19 : Anaya_8
- Track 20 : DartGoblin_7, Urkel_7, DrHayes_7, Anma_7, Bella96_7, TiniBug_7, SamuelLPlaqson_7
- Track 21 : Joy99_7
- Track 22 : Chris_6, MarkPhew_6, Nibb_6
- Track 23 : Zabiza_7
- Track 24 : Amelie_3
- Track 25 : Validus_7
- Track 26 : Guanica15_7, Yunkel11_7

- Track 27 : Bern_7
- Track 28 : Efra2_7
- Track 29 : TaiwanKao_7
- Track 30 : BaghaKamala_7, MeaningOfLife_7
- Track 31 : Peanam_7
- Track 32 : LastHope_7, TingHuaYa_7
- Track 33 : Doughnut_3, BoostSeason_3, Mufasa_3
- Track 34 : Strobilo_3
- Track 35 : DismalFunk_3, Milly_3, DismalStressor_3, Marcoliusprime_3
- Track 36 : Findley_3
- Track 37 : ZoeJ_3
- Track 38 : TM4_3
- Track 39 : MacnCheese_7
- Track 40 : Keshu_6
- Track 41 : Hurricane_6
- Track 42 : TBond007_6
- Track 43 : ShedlockHolmes_6, Lea83_6
- Track 44 : TribbleTrouble_5
- Track 45 : Pharb_6
- Track 46 : Pixie_6
- Track 47 : Eponine_8, Juliette_8
- Track 48 : Mitti_8, Malthus_8, DanSyl44_8, Chancellor_8, Cheetobro_8, Kraw_8, Taquito_6, Qhanda_8, Y2_08, Lebo14_8, OmniCritical_8, Fionnbharth_8, JF1_8, SamScheppers_6, Y10_08, Slarp_8, YasnayaPolyana_8
- Track 49 : Bobquesha_8, Reptar3000_8, Patt_8
- Track 50 : MissDaisy_8
- Track 51 : Wintermute_8
- Track 52 : Ruthiejr_7
- Track 53 : Edugator_4, Dadosky_5
- Track 54 : LilDirt_4
- Track 55 : Agent47_5, Neighly_5, ViviJ_4
- Track 56 : Collard_5, BananenDer11_5
- Track 57 : Waterfoul_5, Heftyboy_5, Paola_5, Gengar_5, SoSeph_5, Guillsminger_5, OkiRoe_5, Leston_5
- Track 58 : Miryou_5, Thyatira_5, Feyre_5
- Track 59 : Rando14_5
- Track 60 : DoubleChamp_5
- Track 61 : Omnicron_5
- Track 62 : Ximenita_7
- Track 63 : Yuna_7
- Track 64 : DARTH_P_6, Hammy_6
- Track 65 : November_5
- Track 66 : Applecrisp_5, Ellie_4, Fefferhead_6, Amgine_5
- Track 67 : Amohnition_6
- Track 68 : Cain_6, Tierra_6, Phrank_6, Unicorn_6, Bryler_6, Krueger_6, PhelpsODU_6, Tigress9_6
- Track 69 : SirPhilip_6
- Track 70 : Ekdilam_4
- Track 71 : Syra333_6, Sunflower1121_5, Shadow1_5
- Track 72 : TClif_6
- Track 73 : Aminay_5
- Track 74 : Boilgate_4
- Track 75 : ArV2_01

- Track 76 : Spartoi_1

Summary of Final Annotations (See graph section above for start numbers):

The start number called the most often in the published annotations is 36, it was called in 111 of the 200 non-draft genes in the pham.

Genes that call this "Most Annotated" start:

- ActinUp_7, Adephagia_7, Amgine_5, Angelica_7, Anma_7, Apocalypse_7, Applecrisp_5, Asayake_7, BEEST_7, BGlluviae_7, BaghaKamala_7, BarrelRoll_7, Beezoo_7, Bella96_7, Belladonna_7, Biglebops_3, Blizzard_7, Boiiii_7, Bryler_6, Cain_6, CallaLilly_7, Capricorn_7, Chavito_7, CheetoDust_7, Chris_6, Clipper_7, Dalmuri_7, DartGoblin_7, DarthP_6, Dartin_7, Deby_7, Devera_7, Dole_7, DrHayes_7, Durfee_7, Efra2_7, Ekdilam_4, Ellie_4, Emerson_7, Enkosi_3, Fefferhead_6, Ganymede_7, Geraldini_7, Guanica15_7, Hammy_6, HedwigODU_7, Homura_7, Hyperbowlee_7, Illumine_7, Inky_7, JAWS_7, Jayhawk_7, Jeckyll_7, Joy99_7, Keshu_6, Krueger_6, LaterM_7, Lavahound_5, Lea83_6, LilPharaoh_3, LindNT_7, Llorens_7, Lunahalos_7, MacKat_7, MacnCheese_7, MarkPhew_6, Marshawn_8, McMater_7, Mdavu_3, MeaningOfLife_7, Murucutumbu_7, Mynx_7, Nibb_6, Nikao_3, Niklas_7, November_5, Nutello_3, Padpat_7, Pharb_6, PhelpsODU_6, Phrank_6, Piatt_7, Pisa1_6, Pisa4_6, Pixie_6, Pokerus_6, Prithvi_7, Ramen_7, Rapunzel97_7, Richo_7, Rosmarinus_7, SamuelLPlaqson_7, SgtBeansprout_3, Shadow1_5, Shaobing_7, ShedlockHolmes_6, ShiaSurprise_7, SirPhilip_6, Slimphazie_7, Spock_7, Sulley_7, Sunflower1121_5, Syra333_6, TClif_6, Tachez_7, TaiwanKao_7, Teejan_3, Tierra_6, Tigress9_6, TiniBug_7, Tiri_7, Topper_7, Torres_3, TreyKay_7, TribbleTrouble_5, Trice_3, TruffulaTree_7, Unicorn_6, Urkel_7, Veliki_7, Ximenita_7, YoureAdopted_6, Yuna_7, Yunkel11_7,

Genes that have the "Most Annotated" start but do not call it:

- Adonis_7, Ageofdapage_7, AlishaPH_7, Amelie_3, Amohnition_6, Anaya_8, Atiba_7, Bern_7, CREW_7, CaseJules_7, CrimD_7, Hurricane_6, Jarvi_7, KiSi_6, LeMond_6, Megsy_7, Oscar_6, Padfoot_7, Peanam_7, Peel_7, QuincyRose_6, Scarlett_6, Stinson_7, TBond007_6, Twitch_7, Validus_7, Zabiza_7, Zavala_7,

Genes that do not have the "Most Annotated" start:

- Agent47_5, Aminay_5, ArV2_01, BananenDer11_5, Bobquesha_8, Boilgate_4, BoostSeason_3, Chancellor_8, Cheetobro_8, Collard_5, Curiosium_8, Dadosky_5, DanSyl44_8, DismalFunk_3, DismalStressor_3, DoubleChamp_5, Doughnut_3, Edugator_4, Eponine_8, Feyre_5, Findley_3, Fionnbharth_8, Gengar_5, Guillsminger_5, Heftyboy_5, InLimbo_1, JF1_8, Juliette_8, Kraw_8, Kumotta_2, LastHope_7, Lebo14_8, Leston_5, LilDirt_4, Lucky10_1, Malthus_8, Marcoliusprime_3, Milly_3, Miryou_5, MissDaisy_8, Mitti_8, Morkie_1, Mufasa_3, Neighly_5, OkiRoe_5, OmniCritical_8, Omnicron_5, Paola_5, Patt_8, PhorbPhlower_1, Qhanda_8, Rando14_5, Reptar3000_8, Rooter_1, Ruthiejr_7, SamScheppers_6, Shoya_1, Slarp_8, SoSeph_5, Spartoi_1, Strobilo_3, TM4_3, Taquito_6, Thyatira_5, TingHuaYa_7, ViviJ_4, Waterfoul_5, Wintermute_8, Y10_08, Y2_08, YasnayaPolyana_8, ZoeJ_3,

Summary by start number:

Start 12:

- Found in 1 of 224 (0.4%) of genes in pham
- No Manual Annotations of this start.
- Called 100.0% of time when present
- Phage (with cluster) where this start called: ArV2_01 (singleton),

Start 21:

- Found in 9 of 224 (4.0%) of genes in pham
- Manual Annotations of this start: 6 of 200
- Called 88.9% of time when present
- Phage (with cluster) where this start called: InLimbo_1 (DH), Kumotta_2 (FB), Lucky10_1 (DH), Morkie_1 (DH), PhorbesPhlower_1 (DH), Rooter_1 (FB), Shoya_1 (FB), Spartoi_1 (singleton),

Start 26:

- Found in 22 of 224 (9.8%) of genes in pham
- Manual Annotations of this start: 2 of 200
- Called 9.1% of time when present
- Phage (with cluster) where this start called: Hurricane_6 (K3), TBond007_6 (K3),

Start 28:

- Found in 33 of 224 (14.7%) of genes in pham
- Manual Annotations of this start: 23 of 200
- Called 78.8% of time when present
- Phage (with cluster) where this start called: Bobquesha_8 (K4), Boilgate_4 (K8), Chancellor_8 (K4), Cheetobro_8 (K4), DanSyl44_8 (K4), Eponine_8 (K4), Fionnbharth_8 (K4), JF1_8 (K4), Juliette_8 (K4), Kraw_8 (K4), Lebo14_8 (K4), Malthus_8 (K4), MissDaisy_8 (K4), Mitti_8 (K4), OmniCritical_8 (K4), Patt_8 (K4), Qhanda_8 (K4), Reptar3000_8 (K4), Ruthiejr_7 (K4), SamScheppers_6 (K4), Slarp_8 (K4), Taquito_6 (K4), Wintermute_8 (K4), Y10_08 (K4), Y2_08 (K4), YasnayaPolyana_8 (K4),

Start 30:

- Found in 129 of 224 (57.6%) of genes in pham
- Manual Annotations of this start: 24 of 200
- Called 18.6% of time when present
- Phage (with cluster) where this start called: Adonis_7 (K1), AlishaPH_7 (K1), Amelie_3 (K1), Amohntion_6 (K6), Anaya_8 (K1), Bern_7 (K1), CREW_7 (K1), CaseJules_7 (K1), CrimD_7 (K1), Jarvi_7 (K1), KiSi_6 (K1), LeMond_6 (K1), Megsy_7 (K1), Oscar_6 (K1), Padfoot_7 (K1), Peanam_7 (K1), Peel_7 (K1), QuincyRose_6 (K1), Scarlett_6 (K1), Stinson_7 (K1), Twitch_7 (K1), Validus_7 (K1), Zabiza_7 (K1), Zavala_7 (K1),

Start 31:

- Found in 1 of 224 (0.4%) of genes in pham
- Manual Annotations of this start: 1 of 200
- Called 100.0% of time when present
- Phage (with cluster) where this start called: Aminay_5 (K7),

Start 33:

- Found in 69 of 224 (30.8%) of genes in pham
- Manual Annotations of this start: 2 of 200
- Called 2.9% of time when present

- Phage (with cluster) where this start called: Ageofdapage_7 (K1), Atiba_7 (K1),

Start 34:

- Found in 12 of 224 (5.4%) of genes in pham
- Manual Annotations of this start: 11 of 200
- Called 91.7% of time when present
- Phage (with cluster) where this start called: BoostSeason_3 (K2), DismalFunk_3 (K2), DismalStressor_3 (K2), Doughnut_3 (K2), Findley_3 (K2), Marcoliusprime_3 (K2), Milly_3 (K2), Mufasa_3 (K2), Strobilo_3 (K2), TM4_3 (K2), ZoeJ_3 (K2),

Start 35:

- Found in 3 of 224 (1.3%) of genes in pham
- Manual Annotations of this start: 1 of 200
- Called 66.7% of time when present
- Phage (with cluster) where this start called: LastHope_7 (K1), TingHuaYa_7 (K1),

Start 36:

- Found in 152 of 224 (67.9%) of genes in pham
- Manual Annotations of this start: 111 of 200
- Called 81.6% of time when present
- Phage (with cluster) where this start called: ActinUp_7 (K1), Adephagia_7 (K1), Amgine_5 (K6), Angelica_7 (K1), Anma_7 (K1), Apocalypse_7 (K1), Applecrisp_5 (K6), Asayake_7 (K1), BEEEST_7 (K1), BGlluviae_7 (K1), BaghaKamala_7 (K1), BarrelRoll_7 (K1), Beezoo_7 (K1), Bella96_7 (K1), Belladonna_7 (K1), Binglebops_3 (K1), Blizzard_7 (K1), Boiii_7 (K1), Bryler_6 (K6), Cain_6 (K6), CallaLilly_7 (K1), Capricorn_7 (K1), Chavito_7 (K1), CheetoDust_7 (K1), Chris_6 (K1), Clipper_7 (K1), Dalmuri_7 (K1), DartGoblin_7 (K1), DarthP_6 (K6), Dartin_7 (K1), Deby_7 (K1), Devera_7 (K1), Dole_7 (K1), DrHayes_7 (K1), Durfee_7 (K1), Efra2_7 (K1), Ekdilam_4 (K6), Ellie_4 (K6), Emerson_7 (K1), Enkosi_3 (K1), Fefferhead_6 (K6), Ganymede_7 (K1), Geraldini_7 (K1), Guanica15_7 (K1), Hammy_6 (K6), HedwigODU_7 (K1), Homura_7 (K1), Hyperbowlee_7 (K1), Illumine_7 (K1), Inky_7 (K1), JAWS_7 (K1), Jayhawk_7 (K1), Jeckyll_7 (K1), Joy99_7 (K1), Keshu_6 (K3), Krueger_6 (K6), LaterM_7 (K1), Lavahound_5 (K6), Lea83_6 (K3), LilPharaoh_3 (K1), LindNT_7 (K1), Llorens_7 (K1), Lunahalos_7 (K1), MacKat_7 (K1), MacnCheese_7 (K3), MarkPheW_6 (K1), Marshawn_8 (K6), McMater_7 (K1), Mdavu_3 (K1), MeaningOfLife_7 (K1), Murucutumbu_7 (K1), Mynx_7 (K1), Nibb_6 (K1), Nikao_3 (K1), Niklas_7 (K1), November_5 (K6), Nutello_3 (K1), Padpat_7 (K1), Pharb_6 (K3), PhelpsODU_6 (K6), Phrank_6 (K6), Piatt_7 (K1), Pisa1_6 (K1), Pisa4_6 (K1), Pixie_6 (K3), Pokerus_6 (K1), Prithvi_7 (K1), Ramen_7 (K1), Rapunzel97_7 (K1), Richo_7 (K1), Rosmarinus_7 (K1), SamuelLPlaqson_7 (K1), SgtBeansprout_3 (K1), Shadow1_5 (K6), Shaobing_7 (K1), ShedlockHolmes_6 (K3), ShiaSurprise_7 (K1), SirPhilip_6 (K6), Slimphazie_7 (K1), Spock_7 (K1), Sulley_7 (K1), Sunflower1121_5 (K6), Syra333_6 (K6), TClif_6 (K6), Tachez_7 (K1), TaiwanKao_7 (K1), Teejan_3 (K1), Tierra_6 (K6), Tigress9_6 (K6), TiniBug_7 (K1), Tiri_7 (K1), Topper_7 (K1), Torres_3 (K1), TreyKay_7 (K1), TribbleTrouble_5 (K3), Trice_3 (K1), TruffulaTree_7 (K1), Unicorn_6 (K6), Urkel_7 (K1), Veliki_7 (K1), Ximenita_7 (K6), YoureAdopted_6 (K1), Yuna_7 (K6), Yunkel11_7 (K1),

Start 37:

- Found in 3 of 224 (1.3%) of genes in pham
- Manual Annotations of this start: 1 of 200
- Called 33.3% of time when present
- Phage (with cluster) where this start called: Curiosium_8 (K1),

Start 39:

- Found in 14 of 224 (6.2%) of genes in pham
- Manual Annotations of this start: 2 of 200
- Called 21.4% of time when present
- Phage (with cluster) where this start called: BananenDer11_5 (K5), Collard_5 (K5), Omnicron_5 (K5),

Start 40:

- Found in 18 of 224 (8.0%) of genes in pham
- No Manual Annotations of this start.
- Called 11.1% of time when present
- Phage (with cluster) where this start called: DoubleChamp_5 (K5), LilDirt_4 (K5),

Start 42:

- Found in 22 of 224 (9.8%) of genes in pham
- Manual Annotations of this start: 16 of 200
- Called 77.3% of time when present
- Phage (with cluster) where this start called: Agent47_5 (K5), Dadosky_5 (K5), Edugator_4 (K5), Feyre_5 (K5), Gengar_5 (K5), Guillsminger_5 (K5), Heftyboy_5 (K5), Leston_5 (K5), Miryou_5 (K5), Neighly_5 (K3), OkiRoe_5 (K5), Paola_5 (K5), Rando14_5 (K5), SoSeph_5 (K5), Thyatira_5 (K5), ViviJ_4 (K5), Waterfoul_5 (K5),

Summary by clusters:

There are 11 clusters represented in this pham: singleton, DH, FB, K3, K2, K1, K7, K6, K5, K4, K8,

Info for manual annotations of cluster DH:

- Start number 21 was manually annotated 3 times for cluster DH.

Info for manual annotations of cluster FB:

- Start number 21 was manually annotated 2 times for cluster FB.

Info for manual annotations of cluster K1:

- Start number 30 was manually annotated 23 times for cluster K1.
- Start number 33 was manually annotated 2 times for cluster K1.
- Start number 35 was manually annotated 1 time for cluster K1.
- Start number 36 was manually annotated 81 times for cluster K1.
- Start number 37 was manually annotated 1 time for cluster K1.

Info for manual annotations of cluster K2:

- Start number 34 was manually annotated 11 times for cluster K2.

Info for manual annotations of cluster K3:

- Start number 26 was manually annotated 2 times for cluster K3.
- Start number 36 was manually annotated 7 times for cluster K3.

Info for manual annotations of cluster K4:

- Start number 28 was manually annotated 22 times for cluster K4.

Info for manual annotations of cluster K5:

- Start number 39 was manually annotated 2 times for cluster K5.

- Start number 42 was manually annotated 16 times for cluster K5.

Info for manual annotations of cluster K6:

- Start number 30 was manually annotated 1 time for cluster K6.
- Start number 36 was manually annotated 23 times for cluster K6.

Info for manual annotations of cluster K7:

- Start number 31 was manually annotated 1 time for cluster K7.

Info for manual annotations of cluster K8:

- Start number 28 was manually annotated 1 time for cluster K8.

Gene Information:

Gene: ActinUp_7 Start: 1376, Stop: 1603, Start Num: 36

Candidate Starts for ActinUp_7:

(Start: 30 @1367 has 24 MA's), (Start: 33 @1373 has 2 MA's), (Start: 36 @1376 has 111 MA's), (46, 1409), (48, 1418), (53, 1442), (58, 1496),

Gene: Adephagia_7 Start: 1376, Stop: 1603, Start Num: 36

Candidate Starts for Adephagia_7:

(Start: 30 @1367 has 24 MA's), (Start: 33 @1373 has 2 MA's), (Start: 36 @1376 has 111 MA's), (46, 1409), (48, 1418), (53, 1442), (58, 1496),

Gene: Adonis_7 Start: 1384, Stop: 1620, Start Num: 30

Candidate Starts for Adonis_7:

(22, 1339), (Start: 30 @1384 has 24 MA's), (Start: 33 @1390 has 2 MA's), (Start: 36 @1393 has 111 MA's), (46, 1426), (48, 1435), (53, 1459), (58, 1513),

Gene: Agent47_5 Start: 1111, Stop: 1338, Start Num: 42

Candidate Starts for Agent47_5:

(11, 979), (16, 1009), (23, 1036), (Start: 39 @1102 has 2 MA's), (40, 1105), (Start: 42 @1111 has 16 MA's), (44, 1135), (48, 1153), (53, 1177), (58, 1231), (68, 1300), (69, 1315),

Gene: Ageofdapage_7 Start: 1322, Stop: 1552, Start Num: 33

Candidate Starts for Ageofdapage_7:

(22, 1271), (Start: 30 @1316 has 24 MA's), (Start: 33 @1322 has 2 MA's), (Start: 36 @1325 has 111 MA's), (46, 1358), (48, 1367), (53, 1391), (58, 1445),

Gene: AlishaPH_7 Start: 1372, Stop: 1608, Start Num: 30

Candidate Starts for AlishaPH_7:

(22, 1327), (Start: 30 @1372 has 24 MA's), (Start: 33 @1378 has 2 MA's), (Start: 36 @1381 has 111 MA's), (46, 1414), (48, 1423), (53, 1447), (58, 1501),

Gene: Amelie_3 Start: 627, Stop: 863, Start Num: 30

Candidate Starts for Amelie_3:

(Start: 30 @627 has 24 MA's), (Start: 36 @636 has 111 MA's), (48, 678), (49, 684), (53, 702), (58, 756), (60, 783),

Gene: Amgine_5 Start: 970, Stop: 1197, Start Num: 36

Candidate Starts for Amgine_5:

(Start: 30 @961 has 24 MA's), (Start: 36 @970 has 111 MA's), (48, 1012), (53, 1036), (58, 1090), (61, 1123),

Gene: Aminay_5 Start: 1070, Stop: 1327, Start Num: 31

Candidate Starts for Aminay_5:

(Start: 31 @1070 has 1 MA's), (45, 1127), (46, 1130), (47, 1133), (48, 1139), (57, 1214),

Gene: Amohnition_6 Start: 1167, Stop: 1403, Start Num: 30

Candidate Starts for Amohnition_6:

(Start: 30 @1167 has 24 MA's), (Start: 36 @1176 has 111 MA's), (48, 1218), (53, 1242), (58, 1296), (64, 1341),

Gene: Anaya_8 Start: 1396, Stop: 1632, Start Num: 30

Candidate Starts for Anaya_8:

(20, 1345), (Start: 30 @1396 has 24 MA's), (Start: 36 @1405 has 111 MA's), (48, 1447), (53, 1471), (58, 1525),

Gene: Angelica_7 Start: 1364, Stop: 1591, Start Num: 36

Candidate Starts for Angelica_7:

(20, 1304), (Start: 30 @1355 has 24 MA's), (Start: 36 @1364 has 111 MA's), (48, 1406), (53, 1430), (58, 1484),

Gene: Anma_7 Start: 1355, Stop: 1582, Start Num: 36

Candidate Starts for Anma_7:

(22, 1304), (Start: 30 @1346 has 24 MA's), (Start: 36 @1355 has 111 MA's), (48, 1397), (53, 1421), (58, 1475),

Gene: Apocalypse_7 Start: 1360, Stop: 1587, Start Num: 36

Candidate Starts for Apocalypse_7:

(22, 1306), (Start: 30 @1351 has 24 MA's), (Start: 33 @1357 has 2 MA's), (Start: 36 @1360 has 111 MA's), (46, 1393), (48, 1402), (53, 1426), (58, 1480),

Gene: Applecrisp_5 Start: 1329, Stop: 1556, Start Num: 36

Candidate Starts for Applecrisp_5:

(Start: 30 @1320 has 24 MA's), (Start: 36 @1329 has 111 MA's), (48, 1371), (53, 1395), (58, 1449), (61, 1482),

Gene: ArV2_01 Start: 36, Stop: 380, Start Num: 12

Candidate Starts for ArV2_01:

(8, 3), (10, 18), (12, 36), (19, 66), (Start: 21 @75 has 6 MA's), (27, 102), (Start: 33 @126 has 2 MA's), (38, 141), (40, 147), (46, 186), (48, 195), (51, 210), (53, 219), (57, 270),

Gene: Asayake_7 Start: 1426, Stop: 1653, Start Num: 36

Candidate Starts for Asayake_7:

(22, 1372), (Start: 30 @1417 has 24 MA's), (Start: 33 @1423 has 2 MA's), (Start: 36 @1426 has 111 MA's), (46, 1459), (48, 1468), (53, 1492), (58, 1546),

Gene: Atiba_7 Start: 1342, Stop: 1572, Start Num: 33

Candidate Starts for Atiba_7:

(22, 1291), (Start: 30 @1336 has 24 MA's), (Start: 33 @1342 has 2 MA's), (Start: 36 @1345 has 111 MA's), (46, 1378), (48, 1387), (53, 1411), (58, 1465),

Gene: BEEST_7 Start: 1426, Stop: 1653, Start Num: 36

Candidate Starts for BEEST_7:

(22, 1372), (Start: 30 @1417 has 24 MA's), (Start: 33 @1423 has 2 MA's), (Start: 36 @1426 has 111 MA's), (46, 1459), (48, 1468), (53, 1492), (58, 1546),

Gene: BGlluviae_7 Start: 1426, Stop: 1653, Start Num: 36

Candidate Starts for BGlluviae_7:

(22, 1372), (Start: 30 @1417 has 24 MA's), (Start: 33 @1423 has 2 MA's), (Start: 36 @1426 has 111 MA's), (46, 1459), (48, 1468), (53, 1492), (58, 1546),

Gene: BaghaKamala_7 Start: 1352, Stop: 1579, Start Num: 36

Candidate Starts for BaghaKamala_7:

(22, 1298), (Start: 30 @1343 has 24 MA's), (Start: 33 @1349 has 2 MA's), (Start: 36 @1352 has 111 MA's), (46, 1385), (53, 1418), (58, 1472),

Gene: BananenDer11_5 Start: 1095, Stop: 1331, Start Num: 39

Candidate Starts for BananenDer11_5:

(6, 921), (7, 933), (11, 972), (16, 1002), (Start: 39 @1095 has 2 MA's), (40, 1098), (Start: 42 @1104 has 16 MA's), (53, 1170), (55, 1209), (58, 1224),

Gene: BarrelRoll_7 Start: 1376, Stop: 1603, Start Num: 36

Candidate Starts for BarrelRoll_7:

(22, 1322), (Start: 30 @1367 has 24 MA's), (Start: 33 @1373 has 2 MA's), (Start: 36 @1376 has 111 MA's), (46, 1409), (48, 1418), (53, 1442), (58, 1496),

Gene: Beezoo_7 Start: 1405, Stop: 1632, Start Num: 36

Candidate Starts for Beezoo_7:

(22, 1351), (Start: 30 @1396 has 24 MA's), (Start: 33 @1402 has 2 MA's), (Start: 36 @1405 has 111 MA's), (46, 1438), (48, 1447), (53, 1471), (58, 1525),

Gene: Bella96_7 Start: 1334, Stop: 1561, Start Num: 36

Candidate Starts for Bella96_7:

(22, 1283), (Start: 30 @1325 has 24 MA's), (Start: 36 @1334 has 111 MA's), (48, 1376), (53, 1400), (58, 1454),

Gene: Belladonna_7 Start: 1426, Stop: 1653, Start Num: 36

Candidate Starts for Belladonna_7:

(22, 1372), (Start: 30 @1417 has 24 MA's), (Start: 33 @1423 has 2 MA's), (Start: 36 @1426 has 111 MA's), (46, 1459), (48, 1468), (53, 1492), (58, 1546),

Gene: Bern_7 Start: 1363, Stop: 1599, Start Num: 30

Candidate Starts for Bern_7:

(Start: 30 @1363 has 24 MA's), (Start: 36 @1372 has 111 MA's), (44, 1396), (48, 1414), (53, 1438), (58, 1492),

Gene: Biglebops_3 Start: 636, Stop: 863, Start Num: 36

Candidate Starts for Biglebops_3:

(Start: 30 @627 has 24 MA's), (Start: 36 @636 has 111 MA's), (48, 678), (49, 684), (53, 702), (58, 756), (60, 783),

Gene: Blizzard_7 Start: 1426, Stop: 1653, Start Num: 36

Candidate Starts for Blizzard_7:

(22, 1372), (Start: 30 @1417 has 24 MA's), (Start: 33 @1423 has 2 MA's), (Start: 36 @1426 has 111 MA's), (46, 1459), (48, 1468), (53, 1492), (58, 1546),

Gene: Bobquesha_8 Start: 2153, Stop: 2425, Start Num: 28

Candidate Starts for Bobquesha_8:

(13, 2066), (17, 2090), (Start: 28 @2153 has 23 MA's), (45, 2222), (46, 2225), (47, 2228), (50, 2246), (54, 2288), (66, 2372),

Gene: Boiiii_7 Start: 1426, Stop: 1653, Start Num: 36

Candidate Starts for Boiiii_7:

(22, 1372), (Start: 30 @1417 has 24 MA's), (Start: 33 @1423 has 2 MA's), (Start: 36 @1426 has 111 MA's), (46, 1459), (48, 1468), (53, 1492), (58, 1546),

Gene: Boilgate_4 Start: 1309, Stop: 1578, Start Num: 28

Candidate Starts for Boilgate_4:

(Start: 28 @1309 has 23 MA's), (Start: 34 @1327 has 11 MA's), (40, 1339), (45, 1375), (46, 1378), (47, 1381), (48, 1387), (54, 1441),

Gene: BoostSeason_3 Start: 426, Stop: 674, Start Num: 34

Candidate Starts for BoostSeason_3:

(Start: 28 @408 has 23 MA's), (Start: 34 @426 has 11 MA's), (48, 489), (50, 501), (53, 513), (58, 567),

Gene: Bryler_6 Start: 1277, Stop: 1525, Start Num: 36

Candidate Starts for Bryler_6:

(Start: 26 @1247 has 2 MA's), (Start: 36 @1277 has 111 MA's), (48, 1340), (50, 1352), (58, 1418),

Gene: CREW_7 Start: 1417, Stop: 1653, Start Num: 30

Candidate Starts for CREW_7:

(22, 1372), (Start: 30 @1417 has 24 MA's), (Start: 33 @1423 has 2 MA's), (Start: 36 @1426 has 111 MA's), (46, 1459), (48, 1468), (53, 1492), (58, 1546),

Gene: Cain_6 Start: 1277, Stop: 1525, Start Num: 36

Candidate Starts for Cain_6:

(Start: 26 @1247 has 2 MA's), (Start: 36 @1277 has 111 MA's), (48, 1340), (50, 1352), (58, 1418),

Gene: CallaLilly_7 Start: 1352, Stop: 1579, Start Num: 36

Candidate Starts for CallaLilly_7:

(22, 1298), (Start: 30 @1343 has 24 MA's), (Start: 33 @1349 has 2 MA's), (Start: 36 @1352 has 111 MA's), (46, 1385), (48, 1394), (53, 1418), (58, 1472),

Gene: Capricorn_7 Start: 1426, Stop: 1653, Start Num: 36

Candidate Starts for Capricorn_7:

(22, 1372), (Start: 30 @1417 has 24 MA's), (Start: 33 @1423 has 2 MA's), (Start: 36 @1426 has 111 MA's), (46, 1459), (48, 1468), (53, 1492), (58, 1546),

Gene: CaseJules_7 Start: 1417, Stop: 1653, Start Num: 30

Candidate Starts for CaseJules_7:

(22, 1372), (Start: 30 @1417 has 24 MA's), (Start: 33 @1423 has 2 MA's), (Start: 36 @1426 has 111 MA's), (46, 1459), (48, 1468), (53, 1492), (58, 1546),

Gene: Chancellor_8 Start: 2234, Stop: 2506, Start Num: 28

Candidate Starts for Chancellor_8:

(13, 2147), (17, 2171), (Start: 28 @2234 has 23 MA's), (45, 2303), (46, 2306), (50, 2327), (54, 2369), (66, 2453),

Gene: Chavito_7 Start: 1450, Stop: 1677, Start Num: 36

Candidate Starts for Chavito_7:

(Start: 30 @1441 has 24 MA's), (Start: 36 @1450 has 111 MA's), (48, 1492), (53, 1516), (58, 1570),

Gene: CheetoDust_7 Start: 1402, Stop: 1629, Start Num: 36

Candidate Starts for CheetoDust_7:

(22, 1348), (Start: 30 @1393 has 24 MA's), (Start: 33 @1399 has 2 MA's), (Start: 36 @1402 has 111 MA's), (46, 1435), (48, 1444), (53, 1468), (58, 1522),

Gene: Cheetobro_8 Start: 2234, Stop: 2506, Start Num: 28

Candidate Starts for Cheetobro_8:

(13, 2147), (17, 2171), (Start: 28 @2234 has 23 MA's), (45, 2303), (46, 2306), (50, 2327), (54, 2369), (66, 2453),

Gene: Chris_6 Start: 1317, Stop: 1541, Start Num: 36

Candidate Starts for Chris_6:

(Start: 30 @1308 has 24 MA's), (Start: 36 @1317 has 111 MA's), (53, 1380), (58, 1434),

Gene: Clipper_7 Start: 1402, Stop: 1629, Start Num: 36

Candidate Starts for Clipper_7:

(22, 1348), (Start: 30 @1393 has 24 MA's), (Start: 33 @1399 has 2 MA's), (Start: 36 @1402 has 111 MA's), (46, 1435), (48, 1444), (53, 1468), (58, 1522),

Gene: Collard_5 Start: 1095, Stop: 1331, Start Num: 39

Candidate Starts for Collard_5:

(6, 921), (7, 933), (11, 972), (16, 1002), (Start: 39 @1095 has 2 MA's), (40, 1098), (Start: 42 @1104 has 16 MA's), (53, 1170), (55, 1209), (58, 1224),

Gene: CrimD_7 Start: 1342, Stop: 1578, Start Num: 30

Candidate Starts for CrimD_7:

(Start: 30 @1342 has 24 MA's), (Start: 36 @1351 has 111 MA's), (48, 1393), (53, 1417), (58, 1471),

Gene: Curiosium_8 Start: 1733, Stop: 1978, Start Num: 37

Candidate Starts for Curiosium_8:

(32, 1724), (Start: 35 @1730 has 1 MA's), (Start: 37 @1733 has 1 MA's), (48, 1793), (52, 1814), (57, 1868), (58, 1871), (67, 1931),

Gene: Dadosky_5 Start: 1129, Stop: 1356, Start Num: 42

Candidate Starts for Dadosky_5:

(11, 997), (16, 1027), (23, 1054), (Start: 39 @1120 has 2 MA's), (40, 1123), (Start: 42 @1129 has 16 MA's), (44, 1153), (48, 1171), (53, 1195), (54, 1225), (58, 1249), (68, 1318), (69, 1333),

Gene: Dalmuri_7 Start: 1426, Stop: 1653, Start Num: 36

Candidate Starts for Dalmuri_7:

(22, 1372), (Start: 30 @1417 has 24 MA's), (Start: 33 @1423 has 2 MA's), (Start: 36 @1426 has 111 MA's), (46, 1459), (48, 1468), (53, 1492), (58, 1546),

Gene: DanSyl44_8 Start: 2234, Stop: 2506, Start Num: 28

Candidate Starts for DanSyl44_8:

(13, 2147), (17, 2171), (Start: 28 @2234 has 23 MA's), (45, 2303), (46, 2306), (50, 2327), (54, 2369), (66, 2453),

Gene: DartGoblin_7 Start: 1334, Stop: 1561, Start Num: 36

Candidate Starts for DartGoblin_7:

(22, 1283), (Start: 30 @1325 has 24 MA's), (Start: 36 @1334 has 111 MA's), (48, 1376), (53, 1400), (58, 1454),

Gene: DarthP_6 Start: 1176, Stop: 1403, Start Num: 36

Candidate Starts for DarthP_6:

(Start: 30 @1167 has 24 MA's), (Start: 36 @1176 has 111 MA's), (48, 1218), (53, 1242), (58, 1296), (64, 1341),

Gene: Dartin_7 Start: 1449, Stop: 1676, Start Num: 36

Candidate Starts for Dartin_7:

(Start: 30 @1440 has 24 MA's), (Start: 36 @1449 has 111 MA's), (48, 1491), (53, 1515), (58, 1569),

Gene: Deby_7 Start: 1364, Stop: 1591, Start Num: 36

Candidate Starts for Deby_7:

(20, 1304), (Start: 30 @1355 has 24 MA's), (Start: 36 @1364 has 111 MA's), (48, 1406), (53, 1430), (58, 1484),

Gene: Devera_7 Start: 1393, Stop: 1620, Start Num: 36

Candidate Starts for Devera_7:

(22, 1339), (Start: 30 @1384 has 24 MA's), (Start: 33 @1390 has 2 MA's), (Start: 36 @1393 has 111 MA's), (46, 1426), (48, 1435), (53, 1459), (58, 1513),

Gene: DismalFunk_3 Start: 426, Stop: 674, Start Num: 34

Candidate Starts for DismalFunk_3:

(Start: 28 @408 has 23 MA's), (Start: 34 @426 has 11 MA's), (48, 489), (50, 501), (58, 567),

Gene: DismalStressor_3 Start: 426, Stop: 674, Start Num: 34

Candidate Starts for DismalStressor_3:

(Start: 28 @408 has 23 MA's), (Start: 34 @426 has 11 MA's), (48, 489), (50, 501), (58, 567),

Gene: Dole_7 Start: 1393, Stop: 1620, Start Num: 36

Candidate Starts for Dole_7:

(22, 1339), (Start: 30 @1384 has 24 MA's), (Start: 33 @1390 has 2 MA's), (Start: 36 @1393 has 111 MA's), (46, 1426), (48, 1435), (53, 1459), (58, 1513),

Gene: DoubleChamp_5 Start: 1098, Stop: 1331, Start Num: 40

Candidate Starts for DoubleChamp_5:

(6, 921), (7, 933), (11, 972), (16, 1002), (Start: 39 @1095 has 2 MA's), (40, 1098), (Start: 42 @1104 has 16 MA's), (53, 1170), (55, 1209), (58, 1224),

Gene: Doughnut_3 Start: 426, Stop: 674, Start Num: 34

Candidate Starts for Doughnut_3:

(Start: 28 @408 has 23 MA's), (Start: 34 @426 has 11 MA's), (48, 489), (50, 501), (53, 513), (58, 567),

Gene: DrHayes_7 Start: 1355, Stop: 1582, Start Num: 36

Candidate Starts for DrHayes_7:

(22, 1304), (Start: 30 @1346 has 24 MA's), (Start: 36 @1355 has 111 MA's), (48, 1397), (53, 1421), (58, 1475),

Gene: Durfee_7 Start: 1426, Stop: 1653, Start Num: 36

Candidate Starts for Durfee_7:

(22, 1372), (Start: 30 @1417 has 24 MA's), (Start: 33 @1423 has 2 MA's), (Start: 36 @1426 has 111 MA's), (46, 1459), (48, 1468), (53, 1492), (58, 1546),

Gene: Edugator_4 Start: 1129, Stop: 1356, Start Num: 42

Candidate Starts for Edugator_4:

(11, 997), (16, 1027), (23, 1054), (Start: 39 @1120 has 2 MA's), (40, 1123), (Start: 42 @1129 has 16 MA's), (44, 1153), (48, 1171), (53, 1195), (54, 1225), (58, 1249), (68, 1318), (69, 1333),

Gene: Efra2_7 Start: 1360, Stop: 1587, Start Num: 36

Candidate Starts for Efra2_7:

(20, 1297), (Start: 30 @1351 has 24 MA's), (Start: 36 @1360 has 111 MA's), (53, 1426), (58, 1480), (61, 1513),

Gene: Ekdilam_4 Start: 911, Stop: 1138, Start Num: 36

Candidate Starts for Ekdilam_4:

(9, 785), (22, 860), (Start: 30 @902 has 24 MA's), (Start: 36 @911 has 111 MA's), (48, 953), (53, 977), (58, 1031), (64, 1076),

Gene: Ellie_4 Start: 1002, Stop: 1229, Start Num: 36

Candidate Starts for Ellie_4:

(Start: 30 @993 has 24 MA's), (Start: 36 @1002 has 111 MA's), (48, 1044), (53, 1068), (58, 1122), (61, 1155),

Gene: Emerson_7 Start: 1382, Stop: 1609, Start Num: 36

Candidate Starts for Emerson_7:

(22, 1328), (Start: 30 @1373 has 24 MA's), (Start: 33 @1379 has 2 MA's), (Start: 36 @1382 has 111 MA's), (46, 1415), (48, 1424), (53, 1448), (58, 1502),

Gene: Enkosi_3 Start: 636, Stop: 863, Start Num: 36

Candidate Starts for Enkosi_3:

(Start: 30 @627 has 24 MA's), (Start: 36 @636 has 111 MA's), (48, 678), (49, 684), (53, 702), (58, 756), (60, 783),

Gene: Eponine_8 Start: 2229, Stop: 2498, Start Num: 28

Candidate Starts for Eponine_8:

(Start: 28 @2229 has 23 MA's), (45, 2295), (46, 2298), (66, 2445),

Gene: Fefferhead_6 Start: 1172, Stop: 1399, Start Num: 36

Candidate Starts for Fefferhead_6:

(Start: 30 @1163 has 24 MA's), (Start: 36 @1172 has 111 MA's), (48, 1214), (53, 1238), (58, 1292), (61, 1325),

Gene: Feyre_5 Start: 1105, Stop: 1332, Start Num: 42

Candidate Starts for Feyre_5:

(6, 922), (7, 934), (11, 973), (16, 1003), (Start: 39 @1096 has 2 MA's), (40, 1099), (Start: 42 @1105 has 16 MA's), (53, 1171), (55, 1210), (58, 1225),

Gene: Findley_3 Start: 426, Stop: 674, Start Num: 34

Candidate Starts for Findley_3:

(Start: 34 @426 has 11 MA's), (48, 489), (50, 501), (58, 567),

Gene: Fionnbharth_8 Start: 2221, Stop: 2493, Start Num: 28

Candidate Starts for Fionnbharth_8:

(13, 2134), (17, 2158), (Start: 28 @2221 has 23 MA's), (45, 2290), (46, 2293), (50, 2314), (54, 2356), (66, 2440),

Gene: Ganymede_7 Start: 1402, Stop: 1629, Start Num: 36

Candidate Starts for Ganymede_7:

(22, 1348), (Start: 30 @1393 has 24 MA's), (Start: 33 @1399 has 2 MA's), (Start: 36 @1402 has 111 MA's), (46, 1435), (48, 1444), (53, 1468), (58, 1522),

Gene: Gengar_5 Start: 1131, Stop: 1358, Start Num: 42

Candidate Starts for Gengar_5:

(Start: 42 @1131 has 16 MA's), (45, 1161), (48, 1173), (53, 1197), (58, 1251),

Gene: Geraldini_7 Start: 1405, Stop: 1632, Start Num: 36

Candidate Starts for Geraldini_7:

(22, 1351), (Start: 30 @1396 has 24 MA's), (Start: 33 @1402 has 2 MA's), (Start: 36 @1405 has 111 MA's), (46, 1438), (48, 1447), (53, 1471), (58, 1525),

Gene: Guanica15_7 Start: 1376, Stop: 1603, Start Num: 36

Candidate Starts for Guanica15_7:

(20, 1313), (Start: 30 @1367 has 24 MA's), (Start: 36 @1376 has 111 MA's), (53, 1442), (58, 1496),

Gene: Guillsminger_5 Start: 1106, Stop: 1333, Start Num: 42

Candidate Starts for Guillsminger_5:

(Start: 42 @1106 has 16 MA's), (45, 1136), (48, 1148), (53, 1172), (58, 1226),

Gene: Hammy_6 Start: 1173, Stop: 1400, Start Num: 36

Candidate Starts for Hammy_6:

(Start: 30 @1164 has 24 MA's), (Start: 36 @1173 has 111 MA's), (48, 1215), (53, 1239), (58, 1293), (64, 1338),

Gene: HedwigODU_7 Start: 1376, Stop: 1603, Start Num: 36

Candidate Starts for HedwigODU_7:

(Start: 30 @1367 has 24 MA's), (Start: 33 @1373 has 2 MA's), (Start: 36 @1376 has 111 MA's), (46, 1409), (48, 1418), (53, 1442), (58, 1496),

Gene: Heftyboy_5 Start: 1127, Stop: 1354, Start Num: 42

Candidate Starts for Heftyboy_5:

(Start: 42 @1127 has 16 MA's), (45, 1157), (48, 1169), (53, 1193), (58, 1247),

Gene: Homura_7 Start: 1426, Stop: 1653, Start Num: 36

Candidate Starts for Homura_7:

(22, 1372), (Start: 30 @1417 has 24 MA's), (Start: 33 @1423 has 2 MA's), (Start: 36 @1426 has 111 MA's), (46, 1459), (48, 1468), (53, 1492), (58, 1546),

Gene: Hurricane_6 Start: 1250, Stop: 1510, Start Num: 26

Candidate Starts for Hurricane_6:

(Start: 26 @1250 has 2 MA's), (Start: 36 @1280 has 111 MA's), (47, 1319), (48, 1325), (53, 1349), (58, 1403), (59, 1427),

Gene: Hyperbowlee_7 Start: 1426, Stop: 1653, Start Num: 36

Candidate Starts for Hyperbowlee_7:

(22, 1372), (Start: 30 @1417 has 24 MA's), (Start: 33 @1423 has 2 MA's), (Start: 36 @1426 has 111 MA's), (46, 1459), (48, 1468), (53, 1492), (58, 1546),

Gene: Illumine_7 Start: 1393, Stop: 1620, Start Num: 36

Candidate Starts for Illumine_7:

(22, 1339), (Start: 30 @1384 has 24 MA's), (Start: 33 @1390 has 2 MA's), (Start: 36 @1393 has 111 MA's), (46, 1426), (48, 1435), (53, 1459), (58, 1513),

Gene: InLimbo_1 Start: 44, Stop: 346, Start Num: 21

Candidate Starts for InLimbo_1:

(Start: 21 @44 has 6 MA's), (38, 110), (46, 155), (48, 164), (50, 176), (58, 242), (66, 299),

Gene: Inky_7 Start: 1426, Stop: 1653, Start Num: 36

Candidate Starts for Inky_7:

(22, 1372), (Start: 30 @1417 has 24 MA's), (Start: 33 @1423 has 2 MA's), (Start: 36 @1426 has 111 MA's), (46, 1459), (48, 1468), (53, 1492), (58, 1546),

Gene: JAWS_7 Start: 1376, Stop: 1603, Start Num: 36

Candidate Starts for JAWS_7:

(22, 1322), (Start: 30 @1367 has 24 MA's), (Start: 33 @1373 has 2 MA's), (Start: 36 @1376 has 111 MA's), (46, 1409), (48, 1418), (53, 1442), (58, 1496),

Gene: JF1_8 Start: 2221, Stop: 2493, Start Num: 28

Candidate Starts for JF1_8:

(13, 2134), (17, 2158), (Start: 28 @2221 has 23 MA's), (45, 2290), (46, 2293), (50, 2314), (54, 2356), (66, 2440),

Gene: Jarvi_7 Start: 1417, Stop: 1653, Start Num: 30

Candidate Starts for Jarvi_7:

(22, 1372), (Start: 30 @1417 has 24 MA's), (Start: 33 @1423 has 2 MA's), (Start: 36 @1426 has 111 MA's), (46, 1459), (48, 1468), (53, 1492), (58, 1546),

Gene: Jayhawk_7 Start: 1376, Stop: 1603, Start Num: 36

Candidate Starts for Jayhawk_7:

(Start: 30 @1367 has 24 MA's), (Start: 33 @1373 has 2 MA's), (Start: 36 @1376 has 111 MA's), (46, 1409), (48, 1418), (53, 1442), (58, 1496),

Gene: Jeckyll_7 Start: 1426, Stop: 1653, Start Num: 36

Candidate Starts for Jeckyll_7:

(22, 1372), (Start: 30 @1417 has 24 MA's), (Start: 33 @1423 has 2 MA's), (Start: 36 @1426 has 111 MA's), (46, 1459), (48, 1468), (53, 1492), (58, 1546),

Gene: Joy99_7 Start: 1352, Stop: 1579, Start Num: 36

Candidate Starts for Joy99_7:

(Start: 30 @1343 has 24 MA's), (Start: 33 @1349 has 2 MA's), (Start: 36 @1352 has 111 MA's), (46, 1385), (53, 1418), (58, 1472),

Gene: Juliette_8 Start: 2229, Stop: 2498, Start Num: 28

Candidate Starts for Juliette_8:

(Start: 28 @2229 has 23 MA's), (45, 2295), (46, 2298), (66, 2445),

Gene: Keshu_6 Start: 1259, Stop: 1489, Start Num: 36

Candidate Starts for Keshu_6:

(Start: 26 @1229 has 2 MA's), (Start: 36 @1259 has 111 MA's), (45, 1292), (47, 1298), (48, 1304), (53, 1328), (58, 1382), (59, 1406),

Gene: KiSi_6 Start: 1261, Stop: 1497, Start Num: 30

Candidate Starts for KiSi_6:

(Start: 30 @1261 has 24 MA's), (Start: 36 @1270 has 111 MA's), (53, 1336), (58, 1390),

Gene: Kraw_8 Start: 2221, Stop: 2493, Start Num: 28

Candidate Starts for Kraw_8:

(13, 2134), (17, 2158), (Start: 28 @2221 has 23 MA's), (45, 2290), (46, 2293), (50, 2314), (54, 2356), (66, 2440),

Gene: Krueger_6 Start: 1287, Stop: 1535, Start Num: 36

Candidate Starts for Krueger_6:

(Start: 26 @1257 has 2 MA's), (Start: 36 @1287 has 111 MA's), (48, 1350), (50, 1362), (58, 1428),

Gene: Kumotta_2 Start: 743, Stop: 1042, Start Num: 21

Candidate Starts for Kumotta_2:

(19, 734), (Start: 21 @743 has 6 MA's), (24, 758), (25, 767), (41, 821), (48, 866), (54, 917), (68, 1010),

Gene: LastHope_7 Start: 1385, Stop: 1633, Start Num: 35

Candidate Starts for LastHope_7:

(32, 1379), (Start: 35 @1385 has 1 MA's), (Start: 37 @1388 has 1 MA's), (48, 1448), (50, 1460), (58, 1526),

Gene: LaterM_7 Start: 1357, Stop: 1584, Start Num: 36

Candidate Starts for LaterM_7:

(22, 1303), (Start: 30 @1348 has 24 MA's), (Start: 33 @1354 has 2 MA's), (Start: 36 @1357 has 111 MA's), (46, 1390), (48, 1399), (53, 1423), (58, 1477),

Gene: Lavahound_5 Start: 970, Stop: 1197, Start Num: 36

Candidate Starts for Lavahound_5:

(Start: 30 @961 has 24 MA's), (Start: 36 @970 has 111 MA's), (48, 1012), (53, 1036), (58, 1090),

Gene: LeMond_6 Start: 1261, Stop: 1497, Start Num: 30

Candidate Starts for LeMond_6:

(Start: 30 @1261 has 24 MA's), (Start: 36 @1270 has 111 MA's), (53, 1336), (58, 1390),

Gene: Lea83_6 Start: 1277, Stop: 1504, Start Num: 36

Candidate Starts for Lea83_6:

(Start: 26 @1247 has 2 MA's), (Start: 36 @1277 has 111 MA's), (46, 1310), (47, 1313), (48, 1319), (55, 1382), (58, 1397), (59, 1421),

Gene: Lebo14_8 Start: 2234, Stop: 2506, Start Num: 28

Candidate Starts for Lebo14_8:

(13, 2147), (17, 2171), (Start: 28 @2234 has 23 MA's), (45, 2303), (46, 2306), (50, 2327), (54, 2369), (66, 2453),

Gene: Leston_5 Start: 1131, Stop: 1358, Start Num: 42

Candidate Starts for Leston_5:

(Start: 42 @1131 has 16 MA's), (45, 1161), (48, 1173), (53, 1197), (58, 1251),

Gene: LilDirt_4 Start: 863, Stop: 1096, Start Num: 40

Candidate Starts for LilDirt_4:

(11, 737), (16, 767), (23, 794), (Start: 39 @860 has 2 MA's), (40, 863), (Start: 42 @869 has 16 MA's), (44, 893), (48, 911), (53, 935), (58, 989), (68, 1058), (69, 1073),

Gene: LilPharaoh_3 Start: 636, Stop: 863, Start Num: 36

Candidate Starts for LilPharaoh_3:

(Start: 30 @627 has 24 MA's), (Start: 36 @636 has 111 MA's), (48, 678), (49, 684), (53, 702), (58, 756), (60, 783),

Gene: LindNT_7 Start: 1351, Stop: 1578, Start Num: 36

Candidate Starts for LindNT_7:

(Start: 30 @1342 has 24 MA's), (Start: 36 @1351 has 111 MA's), (48, 1393), (53, 1417), (58, 1471),

Gene: Llorens_7 Start: 1426, Stop: 1653, Start Num: 36

Candidate Starts for Llorens_7:

(22, 1372), (Start: 30 @1417 has 24 MA's), (Start: 33 @1423 has 2 MA's), (Start: 36 @1426 has 111 MA's), (46, 1459), (48, 1468), (53, 1492), (58, 1546),

Gene: Lucky10_1 Start: 45, Stop: 347, Start Num: 21

Candidate Starts for Lucky10_1:

(Start: 21 @45 has 6 MA's), (38, 111), (40, 117), (41, 120), (46, 156), (48, 165), (50, 177), (58, 243), (66, 300),

Gene: Lunahalos_7 Start: 1426, Stop: 1653, Start Num: 36

Candidate Starts for Lunahalos_7:

(22, 1372), (Start: 30 @1417 has 24 MA's), (Start: 33 @1423 has 2 MA's), (Start: 36 @1426 has 111 MA's), (46, 1459), (48, 1468), (53, 1492), (58, 1546),

Gene: MacKat_7 Start: 1402, Stop: 1629, Start Num: 36

Candidate Starts for MacKat_7:

(22, 1348), (Start: 30 @1393 has 24 MA's), (Start: 33 @1399 has 2 MA's), (Start: 36 @1402 has 111 MA's), (46, 1435), (48, 1444), (53, 1468), (58, 1522),

Gene: MacnCheese_7 Start: 1483, Stop: 1710, Start Num: 36

Candidate Starts for MacnCheese_7:

(Start: 26 @1459 has 2 MA's), (Start: 36 @1483 has 111 MA's), (47, 1519), (48, 1525), (58, 1603), (59, 1627),

Gene: Malthus_8 Start: 2221, Stop: 2493, Start Num: 28

Candidate Starts for Malthus_8:

(13, 2134), (17, 2158), (Start: 28 @2221 has 23 MA's), (45, 2290), (46, 2293), (50, 2314), (54, 2356), (66, 2440),

Gene: Marcoliusprime_3 Start: 426, Stop: 674, Start Num: 34

Candidate Starts for Marcoliusprime_3:

(Start: 28 @408 has 23 MA's), (Start: 34 @426 has 11 MA's), (48, 489), (50, 501), (58, 567),

Gene: MarkPhew_6 Start: 1221, Stop: 1448, Start Num: 36

Candidate Starts for MarkPhew_6:

(Start: 30 @1212 has 24 MA's), (Start: 36 @1221 has 111 MA's), (53, 1287), (58, 1341),

Gene: Marshawn_8 Start: 1819, Stop: 2043, Start Num: 36

Candidate Starts for Marshawn_8:

(Start: 30 @1810 has 24 MA's), (Start: 36 @1819 has 111 MA's), (48, 1858), (53, 1882), (58, 1936),

Gene: McMater_7 Start: 1449, Stop: 1676, Start Num: 36

Candidate Starts for McMater_7:

(Start: 30 @1440 has 24 MA's), (Start: 36 @1449 has 111 MA's), (48, 1491), (53, 1515), (58, 1569),

Gene: Mdavu_3 Start: 636, Stop: 863, Start Num: 36

Candidate Starts for Mdavu_3:

(Start: 30 @627 has 24 MA's), (Start: 36 @636 has 111 MA's), (48, 678), (49, 684), (53, 702), (58, 756), (60, 783),

Gene: MeaningOfLife_7 Start: 1352, Stop: 1579, Start Num: 36

Candidate Starts for MeaningOfLife_7:

(22, 1298), (Start: 30 @1343 has 24 MA's), (Start: 33 @1349 has 2 MA's), (Start: 36 @1352 has 111 MA's), (46, 1385), (53, 1418), (58, 1472),

Gene: Megsy_7 Start: 1342, Stop: 1578, Start Num: 30

Candidate Starts for Megsy_7:

(22, 1297), (Start: 30 @1342 has 24 MA's), (Start: 36 @1351 has 111 MA's), (48, 1393), (53, 1417), (58, 1471),

Gene: Milly_3 Start: 426, Stop: 674, Start Num: 34

Candidate Starts for Milly_3:

(Start: 28 @408 has 23 MA's), (Start: 34 @426 has 11 MA's), (48, 489), (50, 501), (58, 567),

Gene: Miryou_5 Start: 1105, Stop: 1332, Start Num: 42

Candidate Starts for Miryou_5:

(6, 922), (7, 934), (11, 973), (16, 1003), (Start: 39 @1096 has 2 MA's), (40, 1099), (Start: 42 @1105 has 16 MA's), (53, 1171), (55, 1210), (58, 1225),

Gene: MissDaisy_8 Start: 2177, Stop: 2449, Start Num: 28

Candidate Starts for MissDaisy_8:

(1, 1949), (2, 1970), (4, 1997), (17, 2114), (Start: 28 @2177 has 23 MA's), (45, 2246), (46, 2249), (47, 2252), (50, 2270), (54, 2312), (66, 2396),

Gene: Mitti_8 Start: 2234, Stop: 2506, Start Num: 28

Candidate Starts for Mitti_8:

(13, 2147), (17, 2171), (Start: 28 @2234 has 23 MA's), (45, 2303), (46, 2306), (50, 2327), (54, 2369), (66, 2453),

Gene: Morkie_1 Start: 44, Stop: 346, Start Num: 21

Candidate Starts for Morkie_1:

(Start: 21 @44 has 6 MA's), (38, 110), (46, 155), (48, 164), (50, 176), (58, 242), (66, 299),

Gene: Mufasa_3 Start: 426, Stop: 674, Start Num: 34

Candidate Starts for Mufasa_3:

(Start: 28 @408 has 23 MA's), (Start: 34 @426 has 11 MA's), (48, 489), (50, 501), (53, 513), (58, 567),

Gene: Murucutumbu_7 Start: 1351, Stop: 1578, Start Num: 36

Candidate Starts for Murucutumbu_7:

(22, 1297), (Start: 30 @1342 has 24 MA's), (Start: 33 @1348 has 2 MA's), (Start: 36 @1351 has 111 MA's), (46, 1384), (48, 1393), (53, 1417), (58, 1471),

Gene: Mynx_7 Start: 1402, Stop: 1629, Start Num: 36

Candidate Starts for Mynx_7:

(22, 1348), (Start: 30 @1393 has 24 MA's), (Start: 33 @1399 has 2 MA's), (Start: 36 @1402 has 111 MA's), (46, 1435), (48, 1444), (53, 1468), (58, 1522),

Gene: Neighly_5 Start: 869, Stop: 1096, Start Num: 42

Candidate Starts for Neighly_5:

(11, 737), (16, 767), (23, 794), (Start: 39 @860 has 2 MA's), (40, 863), (Start: 42 @869 has 16 MA's), (44, 893), (48, 911), (53, 935), (58, 989), (68, 1058), (69, 1073),

Gene: Nibb_6 Start: 1364, Stop: 1591, Start Num: 36

Candidate Starts for Nibb_6:

(Start: 30 @1355 has 24 MA's), (Start: 36 @1364 has 111 MA's), (53, 1430), (58, 1484),

Gene: Nikao_3 Start: 636, Stop: 863, Start Num: 36

Candidate Starts for Nikao_3:

(Start: 30 @627 has 24 MA's), (Start: 36 @636 has 111 MA's), (48, 678), (49, 684), (53, 702), (58, 756), (60, 783),

Gene: Niklas_7 Start: 1449, Stop: 1676, Start Num: 36

Candidate Starts for Niklas_7:

(Start: 30 @1440 has 24 MA's), (Start: 36 @1449 has 111 MA's), (48, 1491), (53, 1515), (58, 1569),

Gene: November_5 Start: 1039, Stop: 1257, Start Num: 36

Candidate Starts for November_5:

(5, 847), (Start: 30 @1030 has 24 MA's), (Start: 36 @1039 has 111 MA's), (44, 1054), (45, 1060), (48, 1072), (53, 1096), (58, 1150),

Gene: Nutello_3 Start: 636, Stop: 863, Start Num: 36

Candidate Starts for Nutello_3:

(Start: 30 @627 has 24 MA's), (Start: 36 @636 has 111 MA's), (48, 678), (49, 684), (53, 702), (58, 756), (60, 783),

Gene: OkiRoe_5 Start: 1107, Stop: 1334, Start Num: 42

Candidate Starts for OkiRoe_5:

(Start: 42 @1107 has 16 MA's), (45, 1137), (48, 1149), (53, 1173), (58, 1227),

Gene: OmniCritical_8 Start: 2221, Stop: 2493, Start Num: 28

Candidate Starts for OmniCritical_8:

(13, 2134), (17, 2158), (Start: 28 @2221 has 23 MA's), (45, 2290), (46, 2293), (50, 2314), (54, 2356), (66, 2440),

Gene: Omnicron_5 Start: 1158, Stop: 1394, Start Num: 39

Candidate Starts for Omnicron_5:

(Start: 39 @1158 has 2 MA's), (40, 1161), (Start: 42 @1167 has 16 MA's), (53, 1233), (55, 1272), (58, 1287), (63, 1329),

Gene: Oscar_6 Start: 1262, Stop: 1498, Start Num: 30

Candidate Starts for Oscar_6:

(Start: 30 @1262 has 24 MA's), (Start: 36 @1271 has 111 MA's), (53, 1337), (58, 1391),

Gene: Padfoot_7 Start: 1417, Stop: 1653, Start Num: 30

Candidate Starts for Padfoot_7:

(22, 1372), (Start: 30 @1417 has 24 MA's), (Start: 33 @1423 has 2 MA's), (Start: 36 @1426 has 111 MA's), (46, 1459), (48, 1468), (53, 1492), (58, 1546),

Gene: Padpat_7 Start: 1382, Stop: 1609, Start Num: 36

Candidate Starts for Padpat_7:

(22, 1328), (Start: 30 @1373 has 24 MA's), (Start: 33 @1379 has 2 MA's), (Start: 36 @1382 has 111 MA's), (46, 1415), (48, 1424), (53, 1448), (58, 1502),

Gene: Paola_5 Start: 1106, Stop: 1333, Start Num: 42

Candidate Starts for Paola_5:

(Start: 42 @1106 has 16 MA's), (45, 1136), (48, 1148), (53, 1172), (58, 1226),

Gene: Patt_8 Start: 2153, Stop: 2425, Start Num: 28

Candidate Starts for Patt_8:

(13, 2066), (17, 2090), (Start: 28 @2153 has 23 MA's), (45, 2222), (46, 2225), (47, 2228), (50, 2246), (54, 2288), (66, 2372),

Gene: Peanam_7 Start: 1440, Stop: 1676, Start Num: 30

Candidate Starts for Peanam_7:

(Start: 30 @1440 has 24 MA's), (Start: 36 @1449 has 111 MA's), (48, 1491), (53, 1515), (58, 1569),

Gene: Peel_7 Start: 1417, Stop: 1653, Start Num: 30

Candidate Starts for Peel_7:

(22, 1372), (Start: 30 @1417 has 24 MA's), (Start: 33 @1423 has 2 MA's), (Start: 36 @1426 has 111 MA's), (46, 1459), (48, 1468), (53, 1492), (58, 1546),

Gene: Pharb_6 Start: 1077, Stop: 1304, Start Num: 36

Candidate Starts for Pharb_6:

(Start: 26 @1047 has 2 MA's), (Start: 36 @1077 has 111 MA's), (47, 1113), (48, 1119), (53, 1143), (58, 1197), (59, 1221),

Gene: PhelpsODU_6 Start: 1317, Stop: 1565, Start Num: 36

Candidate Starts for PhelpsODU_6:

(Start: 26 @1287 has 2 MA's), (Start: 36 @1317 has 111 MA's), (48, 1380), (50, 1392), (58, 1458),

Gene: PhorbesPhlower_1 Start: 44, Stop: 346, Start Num: 21

Candidate Starts for PhorbesPhlower_1:

(Start: 21 @44 has 6 MA's), (38, 110), (46, 155), (48, 164), (50, 176), (58, 242), (66, 299),

Gene: Phrank_6 Start: 1283, Stop: 1531, Start Num: 36

Candidate Starts for Phrank_6:

(Start: 26 @1253 has 2 MA's), (Start: 36 @1283 has 111 MA's), (48, 1346), (50, 1358), (58, 1424),

Gene: Piatt_7 Start: 1426, Stop: 1653, Start Num: 36

Candidate Starts for Piatt_7:

(22, 1372), (Start: 30 @1417 has 24 MA's), (Start: 33 @1423 has 2 MA's), (Start: 36 @1426 has 111 MA's), (46, 1459), (48, 1468), (53, 1492), (58, 1546),

Gene: Pisa1_6 Start: 1151, Stop: 1378, Start Num: 36

Candidate Starts for Pisa1_6:

(Start: 30 @1142 has 24 MA's), (Start: 36 @1151 has 111 MA's), (48, 1193), (53, 1217), (58, 1271),

Gene: Pisa4_6 Start: 1151, Stop: 1378, Start Num: 36

Candidate Starts for Pisa4_6:

(Start: 30 @1142 has 24 MA's), (Start: 36 @1151 has 111 MA's), (48, 1193), (53, 1217), (58, 1271),

Gene: Pixie_6 Start: 1028, Stop: 1255, Start Num: 36

Candidate Starts for Pixie_6:

(Start: 26 @998 has 2 MA's), (Start: 36 @1028 has 111 MA's), (46, 1061), (47, 1064), (48, 1070), (55, 1133), (58, 1148), (59, 1172),

Gene: Pokerus_6 Start: 1336, Stop: 1563, Start Num: 36

Candidate Starts for Pokerus_6:

(22, 1282), (Start: 30 @1327 has 24 MA's), (Start: 33 @1333 has 2 MA's), (Start: 36 @1336 has 111 MA's), (46, 1369), (48, 1378), (53, 1402), (58, 1456),

Gene: Prithvi_7 Start: 1351, Stop: 1578, Start Num: 36

Candidate Starts for Prithvi_7:

(Start: 30 @1342 has 24 MA's), (Start: 36 @1351 has 111 MA's), (48, 1393), (53, 1417), (58, 1471),

Gene: Qhanda_8 Start: 2234, Stop: 2506, Start Num: 28

Candidate Starts for Qhanda_8:

(13, 2147), (17, 2171), (Start: 28 @2234 has 23 MA's), (45, 2303), (46, 2306), (50, 2327), (54, 2369), (66, 2453),

Gene: QuincyRose_6 Start: 1393, Stop: 1629, Start Num: 30

Candidate Starts for QuincyRose_6:

(22, 1348), (Start: 30 @1393 has 24 MA's), (Start: 33 @1399 has 2 MA's), (Start: 36 @1402 has 111 MA's), (46, 1435), (48, 1444), (53, 1468), (58, 1522),

Gene: Ramen_7 Start: 1376, Stop: 1603, Start Num: 36

Candidate Starts for Ramen_7:

(Start: 30 @1367 has 24 MA's), (Start: 33 @1373 has 2 MA's), (Start: 36 @1376 has 111 MA's), (46, 1409), (48, 1418), (53, 1442), (58, 1496),

Gene: Rando14_5 Start: 1196, Stop: 1423, Start Num: 42

Candidate Starts for Rando14_5:

(Start: 39 @1187 has 2 MA's), (40, 1190), (Start: 42 @1196 has 16 MA's), (53, 1262), (55, 1301), (58, 1316), (63, 1358),

Gene: Rapunzel97_7 Start: 1376, Stop: 1603, Start Num: 36

Candidate Starts for Rapunzel97_7:

(Start: 30 @1367 has 24 MA's), (Start: 33 @1373 has 2 MA's), (Start: 36 @1376 has 111 MA's), (46, 1409), (48, 1418), (53, 1442), (58, 1496),

Gene: Reptar3000_8 Start: 2152, Stop: 2424, Start Num: 28

Candidate Starts for Reptar3000_8:

(13, 2065), (17, 2089), (Start: 28 @2152 has 23 MA's), (45, 2221), (46, 2224), (47, 2227), (50, 2245), (54, 2287), (66, 2371),

Gene: Richo_7 Start: 1449, Stop: 1676, Start Num: 36

Candidate Starts for Richo_7:

(Start: 30 @1440 has 24 MA's), (Start: 36 @1449 has 111 MA's), (48, 1491), (53, 1515), (58, 1569),

Gene: Rooter_1 Start: 59, Stop: 364, Start Num: 21

Candidate Starts for Rooter_1:

(Start: 21 @59 has 6 MA's), (29, 101), (68, 332),

Gene: Rosmarinus_7 Start: 1426, Stop: 1653, Start Num: 36

Candidate Starts for Rosmarinus_7:

(22, 1372), (Start: 30 @1417 has 24 MA's), (Start: 33 @1423 has 2 MA's), (Start: 36 @1426 has 111 MA's), (46, 1459), (48, 1468), (53, 1492), (58, 1546),

Gene: Ruthiejr_7 Start: 1960, Stop: 2229, Start Num: 28

Candidate Starts for Ruthiejr_7:

(Start: 28 @1960 has 23 MA's), (45, 2026), (46, 2029), (50, 2050), (54, 2092), (66, 2176),

Gene: SamScheppers_6 Start: 1831, Stop: 2103, Start Num: 28

Candidate Starts for SamScheppers_6:

(13, 1744), (17, 1768), (Start: 28 @1831 has 23 MA's), (45, 1900), (46, 1903), (50, 1924), (54, 1966), (66, 2050),

Gene: SamuelLPlaqson_7 Start: 1355, Stop: 1582, Start Num: 36

Candidate Starts for SamuelLPlaqson_7:

(22, 1304), (Start: 30 @1346 has 24 MA's), (Start: 36 @1355 has 111 MA's), (48, 1397), (53, 1421), (58, 1475),

Gene: Scarlett_6 Start: 1261, Stop: 1497, Start Num: 30

Candidate Starts for Scarlett_6:

(Start: 30 @1261 has 24 MA's), (Start: 36 @1270 has 111 MA's), (53, 1336), (58, 1390),

Gene: SgtBeansprout_3 Start: 636, Stop: 863, Start Num: 36

Candidate Starts for SgtBeansprout_3:

(Start: 30 @627 has 24 MA's), (Start: 36 @636 has 111 MA's), (48, 678), (49, 684), (53, 702), (58, 756), (60, 783),

Gene: Shadow1_5 Start: 1191, Stop: 1439, Start Num: 36

Candidate Starts for Shadow1_5:

(Start: 26 @1161 has 2 MA's), (Start: 36 @1191 has 111 MA's), (45, 1242), (48, 1254), (50, 1266), (58, 1332),

Gene: Shaobing_7 Start: 1449, Stop: 1676, Start Num: 36

Candidate Starts for Shaobing_7:

(Start: 30 @1440 has 24 MA's), (Start: 36 @1449 has 111 MA's), (48, 1491), (53, 1515), (58, 1569),

Gene: ShedlockHolmes_6 Start: 1277, Stop: 1504, Start Num: 36

Candidate Starts for ShedlockHolmes_6:

(Start: 26 @1247 has 2 MA's), (Start: 36 @1277 has 111 MA's), (46, 1310), (47, 1313), (48, 1319), (55, 1382), (58, 1397), (59, 1421),

Gene: ShiaSurprise_7 Start: 1426, Stop: 1653, Start Num: 36

Candidate Starts for ShiaSurprise_7:

(22, 1372), (Start: 30 @1417 has 24 MA's), (Start: 33 @1423 has 2 MA's), (Start: 36 @1426 has 111 MA's), (46, 1459), (48, 1468), (53, 1492), (58, 1546),

Gene: Shoya_1 Start: 59, Stop: 364, Start Num: 21

Candidate Starts for Shoya_1:

(Start: 21 @59 has 6 MA's), (29, 101), (68, 332),

Gene: SirPhilip_6 Start: 1153, Stop: 1398, Start Num: 36
Candidate Starts for SirPhilip_6:
(Start: 30 @1144 has 24 MA's), (Start: 36 @1153 has 111 MA's), (48, 1213), (58, 1291), (61, 1324),

Gene: Slarp_8 Start: 2234, Stop: 2506, Start Num: 28
Candidate Starts for Slarp_8:
(13, 2147), (17, 2171), (Start: 28 @2234 has 23 MA's), (45, 2303), (46, 2306), (50, 2327), (54, 2369), (66, 2453),

Gene: Slimphazie_7 Start: 1376, Stop: 1603, Start Num: 36
Candidate Starts for Slimphazie_7:
(Start: 30 @1367 has 24 MA's), (Start: 33 @1373 has 2 MA's), (Start: 36 @1376 has 111 MA's), (46, 1409), (48, 1418), (53, 1442), (58, 1496),

Gene: SoSeph_5 Start: 1127, Stop: 1354, Start Num: 42
Candidate Starts for SoSeph_5:
(Start: 42 @1127 has 16 MA's), (45, 1157), (48, 1169), (53, 1193), (58, 1247),

Gene: Spartoi_1 Start: 95, Stop: 397, Start Num: 21
Candidate Starts for Spartoi_1:
(14, 50), (15, 68), (18, 80), (Start: 21 @95 has 6 MA's), (40, 158), (43, 173), (48, 206), (54, 260), (56, 272), (62, 320), (65, 341),

Gene: Spock_7 Start: 1426, Stop: 1653, Start Num: 36
Candidate Starts for Spock_7:
(22, 1372), (Start: 30 @1417 has 24 MA's), (Start: 33 @1423 has 2 MA's), (Start: 36 @1426 has 111 MA's), (46, 1459), (48, 1468), (53, 1492), (58, 1546),

Gene: Stinson_7 Start: 1348, Stop: 1584, Start Num: 30
Candidate Starts for Stinson_7:
(22, 1303), (Start: 30 @1348 has 24 MA's), (Start: 33 @1354 has 2 MA's), (Start: 36 @1357 has 111 MA's), (46, 1390), (48, 1399), (53, 1423), (58, 1477),

Gene: Strobilo_3 Start: 426, Stop: 674, Start Num: 34
Candidate Starts for Strobilo_3:
(Start: 34 @426 has 11 MA's), (48, 489), (50, 501), (58, 567),

Gene: Sulley_7 Start: 1364, Stop: 1591, Start Num: 36
Candidate Starts for Sulley_7:
(20, 1304), (Start: 30 @1355 has 24 MA's), (Start: 36 @1364 has 111 MA's), (48, 1406), (53, 1430), (58, 1484),

Gene: Sunflower1121_5 Start: 1190, Stop: 1438, Start Num: 36
Candidate Starts for Sunflower1121_5:
(Start: 26 @1160 has 2 MA's), (Start: 36 @1190 has 111 MA's), (45, 1241), (48, 1253), (50, 1265), (58, 1331),

Gene: Syra333_6 Start: 1295, Stop: 1543, Start Num: 36
Candidate Starts for Syra333_6:
(Start: 26 @1265 has 2 MA's), (Start: 36 @1295 has 111 MA's), (45, 1346), (48, 1358), (50, 1370), (58, 1436),

Gene: TBond007_6 Start: 997, Stop: 1254, Start Num: 26

Candidate Starts for TBond007_6:

(Start: 26 @997 has 2 MA's), (Start: 36 @1027 has 111 MA's), (46, 1060), (47, 1063), (48, 1069), (55, 1132), (58, 1147), (59, 1171),

Gene: TClif_6 Start: 1251, Stop: 1478, Start Num: 36

Candidate Starts for TClif_6:

(Start: 26 @1221 has 2 MA's), (Start: 36 @1251 has 111 MA's), (48, 1293), (53, 1317), (58, 1371),

Gene: TM4_3 Start: 438, Stop: 689, Start Num: 34

Candidate Starts for TM4_3:

(3, 231), (Start: 34 @438 has 11 MA's), (48, 501), (50, 513), (58, 579),

Gene: Tachez_7 Start: 1345, Stop: 1572, Start Num: 36

Candidate Starts for Tachez_7:

(22, 1291), (Start: 30 @1336 has 24 MA's), (Start: 36 @1342 has 2 MA's), (Start: 36 @1345 has 111 MA's), (46, 1378), (48, 1387), (53, 1411), (58, 1465),

Gene: TaiwanKao_7 Start: 1351, Stop: 1578, Start Num: 36

Candidate Starts for TaiwanKao_7:

(22, 1297), (Start: 30 @1342 has 24 MA's), (Start: 36 @1351 has 111 MA's), (48, 1393), (53, 1417), (58, 1471),

Gene: Taquito_6 Start: 1832, Stop: 2104, Start Num: 28

Candidate Starts for Taquito_6:

(13, 1745), (17, 1769), (Start: 28 @1832 has 23 MA's), (45, 1901), (46, 1904), (50, 1925), (54, 1967), (66, 2051),

Gene: Teejan_3 Start: 636, Stop: 863, Start Num: 36

Candidate Starts for Teejan_3:

(Start: 30 @627 has 24 MA's), (Start: 36 @636 has 111 MA's), (48, 678), (49, 684), (53, 702), (58, 756), (60, 783),

Gene: Thyatira_5 Start: 1105, Stop: 1332, Start Num: 42

Candidate Starts for Thyatira_5:

(6, 922), (7, 934), (11, 973), (16, 1003), (Start: 39 @1096 has 2 MA's), (40, 1099), (Start: 42 @1105 has 16 MA's), (53, 1171), (55, 1210), (58, 1225),

Gene: Tierra_6 Start: 1285, Stop: 1533, Start Num: 36

Candidate Starts for Tierra_6:

(Start: 26 @1255 has 2 MA's), (Start: 36 @1285 has 111 MA's), (48, 1348), (50, 1360), (58, 1426),

Gene: Tigress9_6 Start: 1287, Stop: 1535, Start Num: 36

Candidate Starts for Tigress9_6:

(Start: 26 @1257 has 2 MA's), (Start: 36 @1287 has 111 MA's), (48, 1350), (50, 1362), (58, 1428),

Gene: TingHuaYa_7 Start: 1386, Stop: 1634, Start Num: 35

Candidate Starts for TingHuaYa_7:

(32, 1380), (Start: 35 @1386 has 1 MA's), (Start: 37 @1389 has 1 MA's), (48, 1449), (50, 1461), (58, 1527),

Gene: TiniBug_7 Start: 1355, Stop: 1582, Start Num: 36

Candidate Starts for TiniBug_7:

(22, 1304), (Start: 30 @1346 has 24 MA's), (Start: 36 @1355 has 111 MA's), (48, 1397), (53, 1421), (58, 1475),

Gene: Tiri_7 Start: 1393, Stop: 1620, Start Num: 36

Candidate Starts for Tiri_7:

(22, 1339), (Start: 30 @1384 has 24 MA's), (Start: 33 @1390 has 2 MA's), (Start: 36 @1393 has 111 MA's), (46, 1426), (48, 1435), (53, 1459), (58, 1513),

Gene: Topper_7 Start: 1426, Stop: 1653, Start Num: 36

Candidate Starts for Topper_7:

(22, 1372), (Start: 30 @1417 has 24 MA's), (Start: 33 @1423 has 2 MA's), (Start: 36 @1426 has 111 MA's), (46, 1459), (48, 1468), (53, 1492), (58, 1546),

Gene: Torres_3 Start: 636, Stop: 863, Start Num: 36

Candidate Starts for Torres_3:

(Start: 30 @627 has 24 MA's), (Start: 36 @636 has 111 MA's), (48, 678), (49, 684), (53, 702), (58, 756), (60, 783),

Gene: TreyKay_7 Start: 1351, Stop: 1578, Start Num: 36

Candidate Starts for TreyKay_7:

(Start: 30 @1342 has 24 MA's), (Start: 36 @1351 has 111 MA's), (48, 1393), (53, 1417), (58, 1471),

Gene: TribbleTrouble_5 Start: 1095, Stop: 1322, Start Num: 36

Candidate Starts for TribbleTrouble_5:

(Start: 26 @1065 has 2 MA's), (Start: 36 @1095 has 111 MA's), (47, 1131), (48, 1137), (58, 1215), (59, 1239),

Gene: Trice_3 Start: 636, Stop: 863, Start Num: 36

Candidate Starts for Trice_3:

(Start: 30 @627 has 24 MA's), (Start: 36 @636 has 111 MA's), (48, 678), (49, 684), (53, 702), (58, 756), (60, 783),

Gene: TruffulaTree_7 Start: 1376, Stop: 1603, Start Num: 36

Candidate Starts for TruffulaTree_7:

(22, 1322), (Start: 30 @1367 has 24 MA's), (Start: 33 @1373 has 2 MA's), (Start: 36 @1376 has 111 MA's), (46, 1409), (48, 1418), (53, 1442), (58, 1496),

Gene: Twitch_7 Start: 1417, Stop: 1653, Start Num: 30

Candidate Starts for Twitch_7:

(22, 1372), (Start: 30 @1417 has 24 MA's), (Start: 33 @1423 has 2 MA's), (Start: 36 @1426 has 111 MA's), (46, 1459), (48, 1468), (53, 1492), (58, 1546),

Gene: Unicorn_6 Start: 1317, Stop: 1565, Start Num: 36

Candidate Starts for Unicorn_6:

(Start: 26 @1287 has 2 MA's), (Start: 36 @1317 has 111 MA's), (48, 1380), (50, 1392), (58, 1458),

Gene: Urkel_7 Start: 1355, Stop: 1582, Start Num: 36

Candidate Starts for Urkel_7:

(22, 1304), (Start: 30 @1346 has 24 MA's), (Start: 36 @1355 has 111 MA's), (48, 1397), (53, 1421), (58, 1475),

Gene: Validus_7 Start: 1356, Stop: 1592, Start Num: 30

Candidate Starts for Validus_7:

(Start: 30 @1356 has 24 MA's), (Start: 36 @1365 has 111 MA's), (48, 1407), (53, 1431), (58, 1485),

Gene: Veliki_7 Start: 1426, Stop: 1653, Start Num: 36

Candidate Starts for Veliki_7:

(22, 1372), (Start: 30 @1417 has 24 MA's), (Start: 33 @1423 has 2 MA's), (Start: 36 @1426 has 111 MA's), (46, 1459), (48, 1468), (53, 1492), (58, 1546),

Gene: ViviJ_4 Start: 869, Stop: 1096, Start Num: 42

Candidate Starts for ViviJ_4:

(11, 737), (16, 767), (23, 794), (Start: 39 @860 has 2 MA's), (40, 863), (Start: 42 @869 has 16 MA's), (44, 893), (48, 911), (53, 935), (58, 989), (68, 1058), (69, 1073),

Gene: Waterfoul_5 Start: 1127, Stop: 1354, Start Num: 42

Candidate Starts for Waterfoul_5:

(Start: 42 @1127 has 16 MA's), (45, 1157), (48, 1169), (53, 1193), (58, 1247),

Gene: Wintermute_8 Start: 2220, Stop: 2492, Start Num: 28

Candidate Starts for Wintermute_8:

(13, 2133), (17, 2157), (Start: 28 @2220 has 23 MA's), (45, 2289), (46, 2292), (50, 2313), (66, 2439),

Gene: Ximenita_7 Start: 1459, Stop: 1707, Start Num: 36

Candidate Starts for Ximenita_7:

(Start: 26 @1429 has 2 MA's), (Start: 36 @1459 has 111 MA's), (48, 1522), (50, 1534), (58, 1600),

Gene: Y10_08 Start: 2221, Stop: 2493, Start Num: 28

Candidate Starts for Y10_08:

(13, 2134), (17, 2158), (Start: 28 @2221 has 23 MA's), (45, 2290), (46, 2293), (50, 2314), (54, 2356), (66, 2440),

Gene: Y2_08 Start: 2221, Stop: 2493, Start Num: 28

Candidate Starts for Y2_08:

(13, 2134), (17, 2158), (Start: 28 @2221 has 23 MA's), (45, 2290), (46, 2293), (50, 2314), (54, 2356), (66, 2440),

Gene: YasnayaPolyana_8 Start: 2221, Stop: 2493, Start Num: 28

Candidate Starts for YasnayaPolyana_8:

(13, 2134), (17, 2158), (Start: 28 @2221 has 23 MA's), (45, 2290), (46, 2293), (50, 2314), (54, 2356), (66, 2440),

Gene: YoureAdopted_6 Start: 1352, Stop: 1579, Start Num: 36

Candidate Starts for YoureAdopted_6:

(22, 1298), (Start: 30 @1343 has 24 MA's), (Start: 33 @1349 has 2 MA's), (Start: 36 @1352 has 111 MA's), (46, 1385), (48, 1394), (53, 1418), (58, 1472),

Gene: Yuna_7 Start: 1452, Stop: 1679, Start Num: 36

Candidate Starts for Yuna_7:

(Start: 36 @1452 has 111 MA's), (48, 1494), (53, 1518), (58, 1572),

Gene: Yunkel11_7 Start: 1376, Stop: 1603, Start Num: 36

Candidate Starts for Yunkel11_7:

(20, 1313), (Start: 30 @1367 has 24 MA's), (Start: 36 @1376 has 111 MA's), (53, 1442), (58, 1496),

Gene: Zabiza_7 Start: 1367, Stop: 1603, Start Num: 30

Candidate Starts for Zabiza_7:

(Start: 30 @1367 has 24 MA's), (Start: 33 @1373 has 2 MA's), (Start: 36 @1376 has 111 MA's), (46, 1409), (48, 1418), (53, 1442), (58, 1496),

Gene: Zavala_7 Start: 1352, Stop: 1588, Start Num: 30

Candidate Starts for Zavala_7:

(22, 1307), (Start: 30 @1352 has 24 MA's), (Start: 33 @1358 has 2 MA's), (Start: 36 @1361 has 111 MA's), (46, 1394), (48, 1403), (53, 1427), (58, 1481),

Gene: ZoeJ_3 Start: 426, Stop: 674, Start Num: 34

Candidate Starts for ZoeJ_3:

(Start: 34 @426 has 11 MA's), (48, 489), (50, 501), (53, 513), (58, 567),