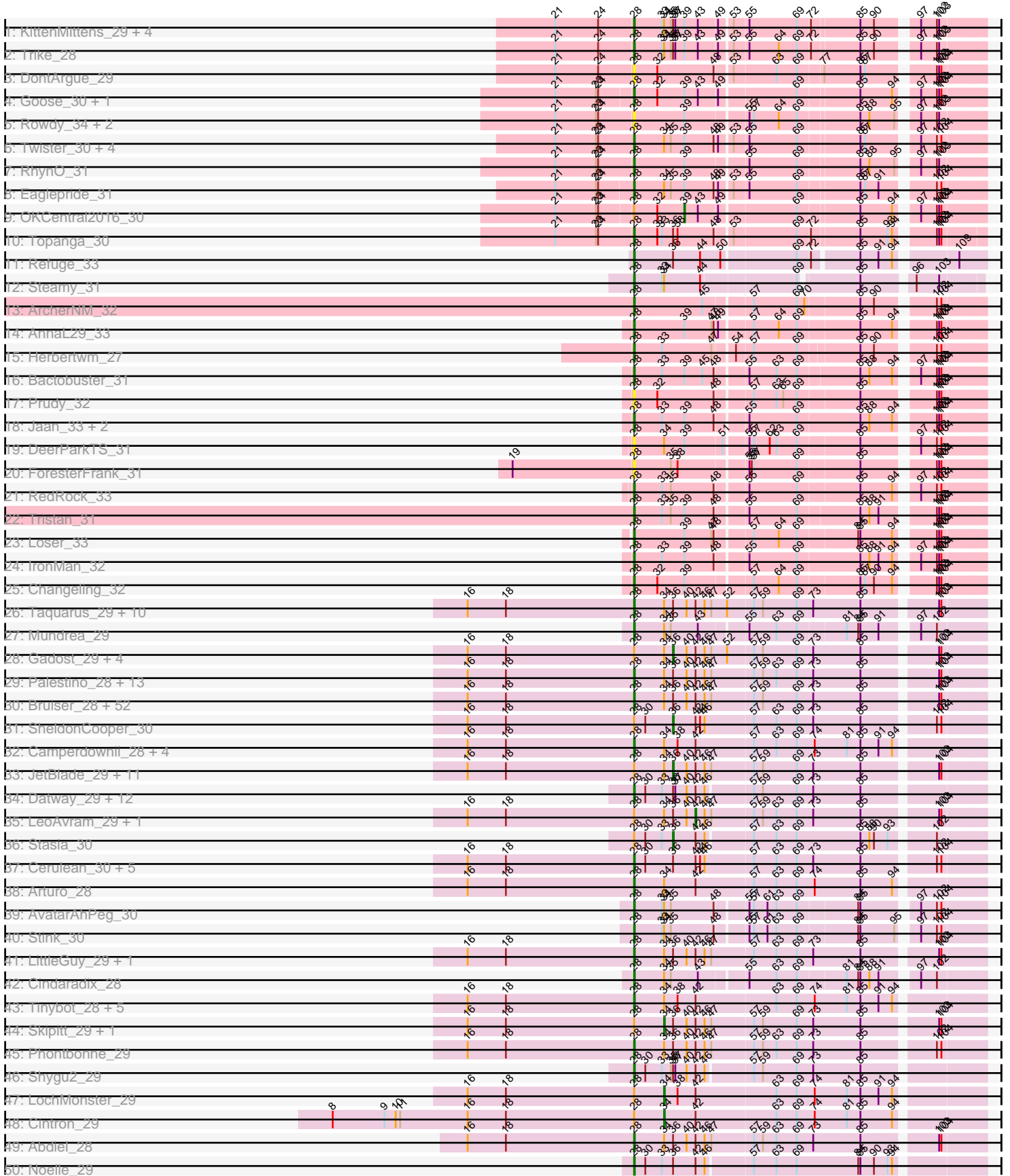
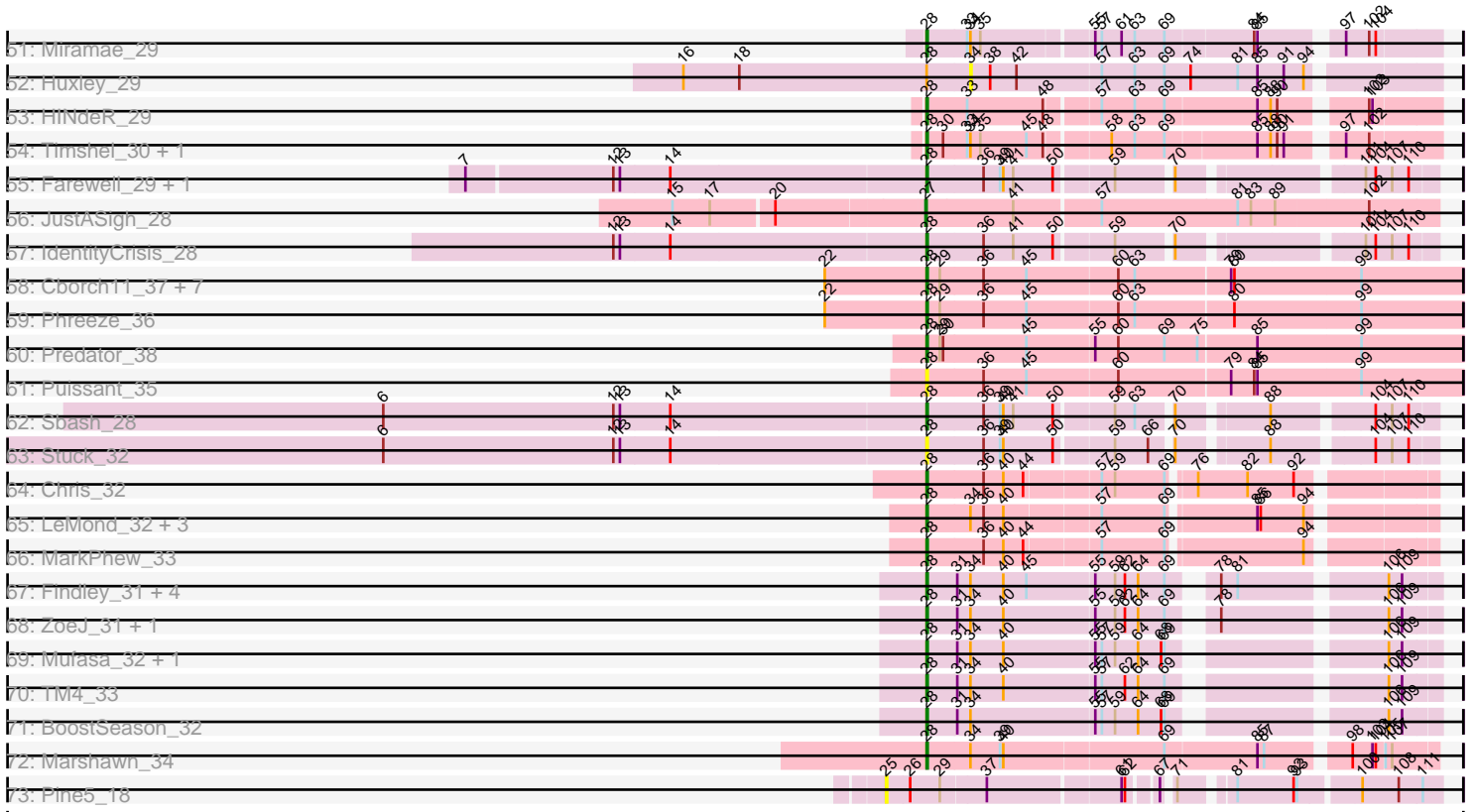


Zoomed Pham 296238



Zoomed Pham 296238



Note: Tracks are now grouped by subcluster and scaled. Switching in subcluster is indicated by changes in track color. Track scale is now set by default to display the region 30 bp upstream of start 1 to 30 bp downstream of the last possible start. If this default region is judged to be packed too tightly with annotated starts, the track will be further scaled to only show that region of the ORF with annotated starts. This action will be indicated by adding "Zoomed" to the title. For starts, yellow indicates the location of called starts comprised solely of Glimmer/GeneMark auto-annotations, green indicates the location of called starts with at least 1 manual gene annotation.

Pham 296238 Report

This analysis was run 04/25/26 on database version 644.

Pham number 296238 has 223 members, 16 are drafts.

Phages represented in each track:

- Track 1 : KittenMittens_29, Drake94_29, Severus_29, PeaceMeal1_29, Poompha_29
- Track 2 : Trike_28
- Track 3 : DontArgue_29
- Track 4 : Goose_30, Chupacabra_30
- Track 5 : Rowdy_34, DustyMartin_34, Shapes_34
- Track 6 : Twister_30, Kristoff_31, Rebeuca_31, Edison31_30, WalterMcMickey_30
- Track 7 : RhynO_31
- Track 8 : Eaglepride_31
- Track 9 : OKCentral2016_30
- Track 10 : Topanga_30
- Track 11 : Refuge_33
- Track 12 : Steamy_31
- Track 13 : ArcherNM_32
- Track 14 : AnnaL29_33
- Track 15 : Herbertwm_27
- Track 16 : Bactobuster_31
- Track 17 : Prudy_32
- Track 18 : Jaan_33, Landor_31, Phaded_33
- Track 19 : DeerParkTS_31
- Track 20 : ForesterFrank_31
- Track 21 : RedRock_33
- Track 22 : Tristan_31
- Track 23 : Loser_33
- Track 24 : IronMan_32
- Track 25 : Changeling_32
- Track 26 : Taquarus_29, Phelipe_29, Cocoaberry_29, Nemo27_29, Caelakin_29, Holli_29, LappelDuVide_29, Funston_29, Phacado_29, Mazhar510_29, Avle17_29
- Track 27 : Mundrea_29
- Track 28 : Gadost_29, SteMason_28, NotAPhaseMom_29, Relief_29, Houdini22_29
- Track 29 : Palestino_28, BubbleTrouble_29, Scamp_29, ICleared_29, Nebs_29, Commander_29, Polymorphads_29, Maxo_29, BellusTerra_29, Morrow_29, MeeZee_29, Eurydice_29, Ohfah_29, Pumbaa_29
- Track 30 : Bruiser_28, TiroTheta9_29, Alberto7_30, Roosevelt_29, Broseidon_29, Spino_29, Connomayer_29, Koreni_28, Ruin_29, YoSam321_29, Florean_29, Lorenzo_29, JoongJeon_29, Bartimeaus_29, ChampagnePapi_30, Wizard007_29, Eapen_29, Wilbur_29, Sultana_29, Chap_29, CentreCat_29, Bombshell_29,

Druantia_29, Sparxx_29, Albee_29, Flux_29, Baby16_29, Citius_29, Lemur_29, OKaNui_30, Blackmoor_29, Maverick_29, LittleB_29, Medusa_29, Dhanush_29, Wander_29, Romney_29, Iceman_30, Clarenza_29, Kremtemulon_29, Sabertooth_29, PeterPeter_29, Shaka_29, Pipcraft_29, Mayonnaise_29, Peaches_29, Burger_28, Melvin_29, Eris_28, HamSlice_28, Millski_28, TinaFeyge_29, TroyPia_29

- Track 31 : SheldonCooper_30
- Track 32 : Camperdownii_28, Kyee_29, KFPoly_29, Thanksgivukkah_29, Kratak_29
- Track 33 : JetBlade_29, Anyong_29, Lunsford_30, RockieBear_28, Kingmustik0402_29, TygerBlood_29, KekoraPapaka_28, Eros_29, NorthStar_29, Koan_29, SenorClean_29, Deano_29
- Track 34 : Datway_29, Morpher26_29, Perplexer_29, Backyardigan_29, Xena_29, PetiteSangsue_29, Badger_29, Bumblebee11_29, Katalie136_29, Achebe_28, AbbysRanger_29, Wile_29, Cici_29
- Track 35 : LeoAvram_29, Kamy_29
- Track 36 : Stasia_30
- Track 37 : Cerulean_30, Eagle_28, Obama12_30, Happiness_29, BangNhom_29, LHTSCC_30
- Track 38 : Arturo_28
- Track 39 : AvatarAhPeg_30
- Track 40 : Stink_30
- Track 41 : LittleGuy_29, Nyxis_29
- Track 42 : Cindaradix_28
- Track 43 : Tinybot_28, Ulysses_28, Iracema64_30, DirtyDunning_29, Phighter1804_29, Rosa24_28
- Track 44 : Skipitt_29, Jaykayelowell_29
- Track 45 : Phontbonne_29
- Track 46 : Shygu2_29
- Track 47 : LochMonster_29
- Track 48 : Cintron_29
- Track 49 : Abdiel_28
- Track 50 : Noelle_29
- Track 51 : Miramae_29
- Track 52 : Huxley_29
- Track 53 : HINdeR_29
- Track 54 : Timshel_30, DroogsArmy_30
- Track 55 : Farewell_29, Sparky_29
- Track 56 : JustASigh_28
- Track 57 : IdentityCrisis_28
- Track 58 : Cborch11_37, Beckerton_36, Konstantine_41, Oaker_36, Megatron06_38, Thumb_36, Damien_36, BobtimousPrime_35
- Track 59 : Phreeze_36
- Track 60 : Predator_38
- Track 61 : Puissant_35
- Track 62 : Sbash_28
- Track 63 : Stuck_32
- Track 64 : Chris_32
- Track 65 : LeMond_32, KiSi_32, Oscar_32, Scarlett_32
- Track 66 : MarkPhew_33
- Track 67 : Findley_31, DismalStressor_31, Strobilo_31, Marcoliusprime_31, DismalFunk_31
- Track 68 : ZoeJ_31, Milly_31

- Track 69 : Mufasa_32, Doughnut_32
- Track 70 : TM4_33
- Track 71 : BoostSeason_32
- Track 72 : Marshawn_34
- Track 73 : Pine5_18

Summary of Final Annotations (See graph section above for start numbers):

The start number called the most often in the published annotations is 28, it was called in 183 of the 207 non-draft genes in the pham.

Genes that call this "Most Annotated" start:

- AbbysRanger_29, Abdiel_28, Achebe_28, Albee_29, Alberto7_30, AnnaL29_33, ArcherNM_32, Arturo_28, AvatarAhPeg_30, Avle17_29, Baby16_29, Backyardigan_29, Bactobuster_31, Badger_29, BangNhom_29, Bartimeaus_29, Beckerton_36, BellusTerra_29, Blackmoor_29, BobtimousPrime_35, Bombshell_29, BoostSeason_32, Broseidon_29, Bruiser_28, BubbleTrouble_29, Bumblebee11_29, Burger_28, Caelakin_29, Camperdownii_28, Cborch11_37, CentreCat_29, Cerulean_30, ChampagnePapi_30, Changeling_32, Chaph_29, Chris_32, Chupacabra_30, Cici_29, Cindaradix_28, Citius_29, Clarenza_29, Cocoaberry_29, Commander_29, Connomayer_29, Damien_36, Datway_29, DeerParkTS_31, Dhanush_29, DirtyDunning_29, DismalFunk_31, DismalStressor_31, DontArgue_29, Doughnut_32, Drake94_29, DroogsArmy_30, Druantia_29, DustyMartin_34, Eagle_28, Eaglepride_31, Eapen_29, Edison31_30, Eris_28, Eurydice_29, Farewell_29, Findley_31, Floean_29, Flux_29, ForesterFrank_31, Funston_29, Goose_30, HINdeR_29, HamSlice_28, Happiness_29, Herbertwm_27, Holli_29, ICleared_29, Iceman_30, IdentityCrisis_28, Iracema64_30, IronMan_32, Jaan_33, JoongJeon_29, KFPoly_29, Katalie136_29, KiSi_32, KittenMittens_29, Konstantine_41, Koreni_28, Kratark_29, Kremtemulon_29, Kristoff_31, Kyee_29, LHTSCC_30, Landor_31, LappelDuVide_29, LeMond_32, Lemur_29, LittleB_29, LittleGuy_29, Lorenzo_29, Loser_33, Marcoliusprime_31, MarkPhew_33, Marshawn_34, Maverick_29, Maxo_29, Mayonnaise_29, Mazhar510_29, Medusa_29, MeeZee_29, Megatron06_38, Melvin_29, Millski_28, Milly_31, Miramae_29, Morpher26_29, Morrow_29, Mufasa_32, Mundrea_29, Nebs_29, Nemo27_29, Noelle_29, Nyxis_29, OKaNui_30, Oaker_36, Obama12_30, Ohfah_29, Oscar_32, Palestino_28, PeaceMeal1_29, Peaches_29, Perplexer_29, PeterPeter_29, PetiteSangsue_29, Phacado_29, Phaded_33, Phelipe_29, Phighter1804_29, Phontbonne_29, Phreeze_36, Pipcraft_29, Polymorphads_29, Poompha_29, Predator_38, Prudy_32, Puissant_35, Pumbaa_29, Rebeuca_31, RedRock_33, Refuge_33, RhynO_31, Romney_29, Roosevelt_29, Rosa24_28, Rowdy_34, Ruin_29, Sabertooth_29, Sbash_28, Scamp_29, Scarlett_32, Severus_29, Shaka_29, Shapes_34, Shygu2_29, Sparky_29, Sparxx_29, Spino_29, Steamy_31, Stink_30, Strobilo_31, Stuck_32, Sultana_29, TM4_33, Taquarus_29, Thanksgivukkah_29, Thumb_36, Timshel_30, TinaFeyge_29, Tinybot_28, TiroTheta9_29, Topanga_30, Trike_28, Tristan_31, TroyPia_29, Twister_30, Ulysses_28, WalterMcMickey_30, Wander_29, Wilbur_29, Wile_29, Wizard007_29, Xena_29, YoSam321_29, ZoeJ_31,

Genes that have the "Most Annotated" start but do not call it:

- Annyong_29, Cintron_29, Deano_29, Eros_29, Gadost_29, Houdini22_29, Huxley_29, Jaykayelowell_29, JetBlade_29, Kampy_29, KekoraPapaka_28, Kingmustik0402_29, Koan_29, LeoAvram_29, LochMonster_29, Lunsford_30, NorthStar_29, NotAPhaseMom_29, OKCentral2016_30, Relief_29, RockieBear_28, SenorClean_29, SheldonCooper_30, Skipitt_29, Stasia_30, SteMason_28, TygerBlood_29,

Genes that do not have the "Most Annotated" start:

- JustASigh_28, Pine5_18,

Summary by start number:

Start 25:

- Found in 1 of 223 (0.4%) of genes in pham
- No Manual Annotations of this start.
- Called 100.0% of time when present
- Phage (with cluster) where this start called: Pine5_18 (singleton),

Start 27:

- Found in 1 of 223 (0.4%) of genes in pham
- Manual Annotations of this start: 1 of 207
- Called 100.0% of time when present
- Phage (with cluster) where this start called: JustASigh_28 (AH),

Start 28:

- Found in 221 of 223 (99.1%) of genes in pham
- Manual Annotations of this start: 183 of 207
- Called 87.8% of time when present
- Phage (with cluster) where this start called: AbbysRanger_29 (A4), Abdiel_28 (A4), Achebe_28 (A4), Albee_29 (A4), Alberto7_30 (A4), AnnaL29_33 (A2), ArcherNM_32 (A2), Arturo_28 (A4), AvatarAhPeg_30 (A4), Avle17_29 (A4), Baby16_29 (A4), Backyardigan_29 (A4), Bactobuster_31 (A2), Badger_29 (A4), BangNhom_29 (A4), Bartimeaus_29 (A4), Beckerton_36 (H1), BellusTerra_29 (A4), Blackmoor_29 (A4), BobtimousPrime_35 (H1), Bombshell_29 (A4), BoostSeason_32 (K2), Broseidon_29 (A4), Bruiser_28 (A4), BubbleTrouble_29 (A4), Bumblebee11_29 (A4), Burger_28 (A4), Caelakin_29 (A4), Camperdownii_28 (A4), Cborch11_37 (H1), CentreCat_29 (A4), Cerulean_30 (A4), ChampagnePapi_30 (A4), Changeling_32 (A2), Chaph_29 (A4), Chris_32 (K1), Chupacabra_30 (A10), Cici_29 (A4), Cindaradix_28 (A4), Citius_29 (A4), Clarenza_29 (A4), Cocoaberry_29 (A4), Commander_29 (A4), Connomayer_29 (A4), Damien_36 (H1), Datway_29 (A4), DeerParkTS_31 (A2), Dhanush_29 (A4), DirtyDunning_29 (A4), DismalFunk_31 (K2), DismalStressor_31 (K2), DontArgue_29 (A10), Doughnut_32 (K2), Drake94_29 (A10), DroogsArmy_30 (A7), Druantia_29 (A4), DustyMartin_34 (A10), Eagle_28 (A4), Eaglepride_31 (A10), Eapen_29 (A4), Edison31_30 (A10), Eris_28 (A4), Eurydice_29 (A4), Farewell_29 (AF), Findley_31 (K2), Florean_29 (A4), Flux_29 (A4), ForesterFrank_31 (A2), Funston_29 (A4), Goose_30 (A10), HINdeR_29 (A7), HamSlice_28 (A4), Happiness_29 (A4), Herbertwm_27 (A2), Holli_29 (A4), ICleared_29 (A4), Iceman_30 (A4), IdentityCrisis_28 (AJ), Iracema64_30 (A4), IronMan_32 (A2), Jaan_33 (A2), JoongJeon_29 (A4), KFPoly_29 (A4), Katalie136_29 (A4), KiSi_32 (K1), KittenMittens_29 (A10), Konstantine_41 (H1), Koreni_28 (A4), Kratark_29 (A4), Kremtemulon_29 (A4), Kristoff_31 (A10), Kyee_29 (A4), LHTSCC_30 (A4), Landor_31 (A2), LappelDuVide_29 (A4), LeMond_32 (K1), Lemur_29 (A4), LittleB_29 (A4), LittleGuy_29 (A4), Lorenzo_29 (A4), Loser_33 (A2), Marcoliusprime_31 (K2),

MarkPhew_33 (K1), Marshawn_34 (K6), Maverick_29 (A4), Maxo_29 (A4), Mayonnaise_29 (A4), Mazhar510_29 (A4), Medusa_29 (A4), MeeZee_29 (A4), Megatron06_38 (H1), Melvin_29 (A4), Millski_28 (A4), Milly_31 (K2), Miramae_29 (A4), Morpher26_29 (A4), Morrow_29 (A4), Mufasa_32 (K2), Mundrea_29 (A4), Nebs_29 (A4), Nemo27_29 (A4), Noelle_29 (A4), Nyxis_29 (A4), OKaNui_30 (A4), Oaker_36 (H1), Obama12_30 (A4), Ohfah_29 (A4), Oscar_32 (K1), Palestino_28 (A4), PeaceMeal1_29 (A10), Peaches_29 (A4), Perplexer_29 (A4), PeterPeter_29 (A4), PetiteSangsue_29 (A4), Phacado_29 (A4), Phaded_33 (A2), Felipe_29 (A4), Phighter1804_29 (A4), Phontbonne_29 (A4), Phreeze_36 (H1), Pipcraft_29 (A4), Polymorphads_29 (A4), Poompha_29 (A10), Predator_38 (H1), Prudy_32 (A2), Puissant_35 (H1), Pumbaa_29 (A4), Rebeuca_31 (A10), RedRock_33 (A2), Refuge_33 (A12), RhynO_31 (A10), Romney_29 (A4), Roosevelt_29 (A4), Rosa24_28 (A4), Rowdy_34 (A10), Ruin_29 (A4), Sabertooth_29 (A4), Sbash_28 (I2), Scamp_29 (A4), Scarlett_32 (K1), Severus_29 (A10), Shaka_29 (A4), Shapes_34 (A10), Shygu2_29 (A4), Sparky_29 (AF), Sparxx_29 (A4), Spino_29 (A4), Steamy_31 (A12), Stink_30 (A4), Strobilo_31 (K2), Stuck_32 (I2), Sultana_29 (A4), TM4_33 (K2), Taquarus_29 (A4), Thanksgivukkah_29 (A4), Thumb_36 (H1), Timshel_30 (A7), TinaFeyge_29 (A4), Tinybot_28 (A4), TiroTheta9_29 (A4), Topanga_30 (A10), Trike_28 (A10), Tristan_31 (A2), TroyPia_29 (A4), Twister_30 (A10), Ulysses_28 (A4), WalterMcMickey_30 (A10), Wander_29 (A4), Wilbur_29 (A4), Wile_29 (A4), Wizard007_29 (A4), Xena_29 (A4), YoSam321_29 (A4), ZoeJ_31 (K2),

Start 34:

- Found in 155 of 223 (69.5%) of genes in pham
- Manual Annotations of this start: 4 of 207
- Called 3.2% of time when present
- Phage (with cluster) where this start called: Cintron_29 (A4), Huxley_29 (A4), Jaykayelowell_29 (A4), LochMonster_29 (A4), Skipitt_29 (A4),

Start 36:

- Found in 155 of 223 (69.5%) of genes in pham
- Manual Annotations of this start: 16 of 207
- Called 12.3% of time when present
- Phage (with cluster) where this start called: Annyong_29 (A4), Deano_29 (A4), Eros_29 (A4), Gadost_29 (A4), Houdini22_29 (A4), JetBlade_29 (A4), KekoraPapaka_28 (A4), Kingmustik0402_29 (A4), Koan_29 (A4), Lunsford_30 (A4), NorthStar_29 (A4), NotAPhaseMom_29 (A4), Relief_29 (A4), RockieBear_28 (A4), SenorClean_29 (A4), SheldonCooper_30 (A4), Stasia_30 (A4), SteMason_28 (A4), TygerBlood_29 (A4),

Start 39:

- Found in 34 of 223 (15.2%) of genes in pham
- Manual Annotations of this start: 1 of 207
- Called 2.9% of time when present
- Phage (with cluster) where this start called: OKCentral2016_30 (A10),

Start 42:

- Found in 141 of 223 (63.2%) of genes in pham
- Manual Annotations of this start: 2 of 207
- Called 1.4% of time when present
- Phage (with cluster) where this start called: Kampy_29 (A4), LeoAvram_29 (A4),

Summary by clusters:

There are 14 clusters represented in this pham: singleton, I2, A10, AF, AH, H1, AJ, K2, K1, A2, A4, A7, A12, K6,

Info for manual annotations of cluster A10:

- Start number 28 was manually annotated 16 times for cluster A10.
- Start number 39 was manually annotated 1 time for cluster A10.

Info for manual annotations of cluster A12:

- Start number 28 was manually annotated 2 times for cluster A12.

Info for manual annotations of cluster A2:

- Start number 28 was manually annotated 12 times for cluster A2.

Info for manual annotations of cluster A4:

- Start number 28 was manually annotated 119 times for cluster A4.
- Start number 34 was manually annotated 4 times for cluster A4.
- Start number 36 was manually annotated 16 times for cluster A4.
- Start number 42 was manually annotated 2 times for cluster A4.

Info for manual annotations of cluster A7:

- Start number 28 was manually annotated 3 times for cluster A7.

Info for manual annotations of cluster AF:

- Start number 28 was manually annotated 2 times for cluster AF.

Info for manual annotations of cluster AH:

- Start number 27 was manually annotated 1 time for cluster AH.

Info for manual annotations of cluster AJ:

- Start number 28 was manually annotated 1 time for cluster AJ.

Info for manual annotations of cluster H1:

- Start number 28 was manually annotated 9 times for cluster H1.

Info for manual annotations of cluster I2:

- Start number 28 was manually annotated 1 time for cluster I2.

Info for manual annotations of cluster K1:

- Start number 28 was manually annotated 6 times for cluster K1.

Info for manual annotations of cluster K2:

- Start number 28 was manually annotated 11 times for cluster K2.

Info for manual annotations of cluster K6:

- Start number 28 was manually annotated 1 time for cluster K6.

Gene Information:

Gene: AbbysRanger_29 Start: 22117, Stop: 22557, Start Num: 28

Candidate Starts for AbbysRanger_29:

(Start: 28 @22117 has 183 MA's), (30, 22132), (33, 22153), (Start: 36 @22168 has 16 MA's), (37, 22171), (40, 22186), (Start: 42 @22198 has 2 MA's), (46, 22210), (57, 22267), (59, 22279), (69, 22324), (73, 22345), (85, 22408),

Gene: Abdiel_28 Start: 22079, Stop: 22525, Start Num: 28

Candidate Starts for Abdiel_28:

(16, 21857), (18, 21908), (Start: 28 @22079 has 183 MA's), (Start: 34 @22118 has 4 MA's), (Start: 36 @22130 has 16 MA's), (40, 22148), (Start: 42 @22160 has 2 MA's), (46, 22172), (47, 22181), (57, 22235), (59, 22247), (63, 22265), (69, 22292), (73, 22313), (85, 22376), (103, 22466), (104, 22469),

Gene: Achebe_28 Start: 22100, Stop: 22540, Start Num: 28

Candidate Starts for Achebe_28:

(Start: 28 @22100 has 183 MA's), (30, 22115), (33, 22136), (Start: 36 @22151 has 16 MA's), (37, 22154), (40, 22169), (Start: 42 @22181 has 2 MA's), (46, 22193), (57, 22250), (59, 22262), (69, 22307), (73, 22328), (85, 22391),

Gene: Albee_29 Start: 22082, Stop: 22528, Start Num: 28

Candidate Starts for Albee_29:

(16, 21860), (18, 21911), (Start: 28 @22082 has 183 MA's), (Start: 34 @22121 has 4 MA's), (Start: 36 @22133 has 16 MA's), (40, 22151), (Start: 42 @22163 has 2 MA's), (46, 22175), (47, 22184), (57, 22238), (59, 22250), (69, 22295), (73, 22316), (85, 22379), (103, 22469), (104, 22472),

Gene: Alberto7_30 Start: 22384, Stop: 22830, Start Num: 28

Candidate Starts for Alberto7_30:

(16, 22162), (18, 22213), (Start: 28 @22384 has 183 MA's), (Start: 34 @22423 has 4 MA's), (Start: 36 @22435 has 16 MA's), (40, 22453), (Start: 42 @22465 has 2 MA's), (46, 22477), (47, 22486), (57, 22540), (59, 22552), (69, 22597), (73, 22618), (85, 22681), (103, 22771), (104, 22774),

Gene: AnnaL29_33 Start: 24257, Stop: 24685, Start Num: 28

Candidate Starts for AnnaL29_33:

(Start: 28 @24257 has 183 MA's), (Start: 39 @24323 has 1 MA's), (47, 24359), (48, 24362), (49, 24365), (57, 24404), (64, 24437), (69, 24461), (85, 24539), (94, 24581), (102, 24623), (103, 24626), (104, 24629),

Gene: Annyong_29 Start: 22134, Stop: 22529, Start Num: 36

Candidate Starts for Annyong_29:

(16, 21861), (18, 21912), (Start: 28 @22083 has 183 MA's), (Start: 34 @22122 has 4 MA's), (Start: 36 @22134 has 16 MA's), (40, 22152), (Start: 42 @22164 has 2 MA's), (46, 22176), (47, 22185), (57, 22239), (59, 22251), (69, 22296), (73, 22317), (85, 22380), (103, 22470), (104, 22473),

Gene: ArcherNM_32 Start: 24201, Stop: 24629, Start Num: 28

Candidate Starts for ArcherNM_32:

(Start: 28 @24201 has 183 MA's), (45, 24291), (57, 24348), (69, 24405), (70, 24414), (85, 24483), (90, 24501), (102, 24567), (104, 24573),

Gene: Arturo_28 Start: 22194, Stop: 22637, Start Num: 28

Candidate Starts for Arturo_28:

(16, 21972), (18, 22023), (Start: 28 @22194 has 183 MA's), (Start: 34 @22233 has 4 MA's), (Start: 42 @22275 has 2 MA's), (57, 22350), (63, 22380), (69, 22407), (74, 22428), (85, 22488), (94, 22530),

Gene: AvatarAhPeg_30 Start: 22382, Stop: 22810, Start Num: 28

Candidate Starts for AvatarAhPeg_30:

(Start: 28 @22382 has 183 MA's), (33, 22418), (Start: 34 @22421 has 4 MA's), (35, 22430), (48, 22487), (55, 22523), (57, 22529), (61, 22547), (63, 22559), (69, 22586), (84, 22661), (85, 22664), (97, 22727), (102, 22748), (104, 22754),

Gene: Avle17_29 Start: 22082, Stop: 22528, Start Num: 28

Candidate Starts for Avle17_29:

(16, 21860), (18, 21911), (Start: 28 @22082 has 183 MA's), (Start: 34 @22121 has 4 MA's), (Start: 36 @22133 has 16 MA's), (40, 22151), (Start: 42 @22163 has 2 MA's), (46, 22175), (47, 22184), (52, 22205), (57, 22238), (59, 22250), (69, 22295), (73, 22316), (85, 22379), (103, 22469), (104, 22472),

Gene: Baby16_29 Start: 22091, Stop: 22537, Start Num: 28

Candidate Starts for Baby16_29:

(16, 21869), (18, 21920), (Start: 28 @22091 has 183 MA's), (Start: 34 @22130 has 4 MA's), (Start: 36 @22142 has 16 MA's), (40, 22160), (Start: 42 @22172 has 2 MA's), (46, 22184), (47, 22193), (57, 22247), (59, 22259), (69, 22304), (73, 22325), (85, 22388), (103, 22478), (104, 22481),

Gene: Backyardigan_29 Start: 22112, Stop: 22552, Start Num: 28

Candidate Starts for Backyardigan_29:

(Start: 28 @22112 has 183 MA's), (30, 22127), (33, 22148), (Start: 36 @22163 has 16 MA's), (37, 22166), (40, 22181), (Start: 42 @22193 has 2 MA's), (46, 22205), (57, 22262), (59, 22274), (69, 22319), (73, 22340), (85, 22403),

Gene: Bactobuster_31 Start: 24014, Stop: 24442, Start Num: 28

Candidate Starts for Bactobuster_31:

(Start: 28 @24014 has 183 MA's), (33, 24050), (Start: 39 @24080 has 1 MA's), (45, 24104), (48, 24119), (55, 24155), (63, 24191), (69, 24218), (85, 24296), (88, 24308), (94, 24338), (97, 24359), (102, 24380), (103, 24383), (104, 24386),

Gene: Badger_29 Start: 22101, Stop: 22541, Start Num: 28

Candidate Starts for Badger_29:

(Start: 28 @22101 has 183 MA's), (30, 22116), (33, 22137), (Start: 36 @22152 has 16 MA's), (37, 22155), (40, 22170), (Start: 42 @22182 has 2 MA's), (46, 22194), (57, 22251), (59, 22263), (69, 22308), (73, 22329), (85, 22392),

Gene: BangNhom_29 Start: 22396, Stop: 22842, Start Num: 28

Candidate Starts for BangNhom_29:

(16, 22174), (18, 22225), (Start: 28 @22396 has 183 MA's), (30, 22411), (Start: 36 @22447 has 16 MA's), (Start: 42 @22477 has 2 MA's), (44, 22483), (46, 22489), (57, 22552), (63, 22582), (69, 22609), (73, 22630), (85, 22693), (102, 22780), (104, 22786),

Gene: Bartimeaus_29 Start: 22082, Stop: 22528, Start Num: 28

Candidate Starts for Bartimeaus_29:

(16, 21860), (18, 21911), (Start: 28 @22082 has 183 MA's), (Start: 34 @22121 has 4 MA's), (Start: 36 @22133 has 16 MA's), (40, 22151), (Start: 42 @22163 has 2 MA's), (46, 22175), (47, 22184), (57, 22238), (59, 22250), (69, 22295), (73, 22316), (85, 22379), (103, 22469), (104, 22472),

Gene: Beckerton_36 Start: 33410, Stop: 33889, Start Num: 28

Candidate Starts for Beckerton_36:

(22, 33317), (Start: 28 @33410 has 183 MA's), (29, 33422), (Start: 36 @33461 has 16 MA's), (45, 33500), (60, 33581), (63, 33596), (79, 33680), (80, 33683), (99, 33797),

Gene: BellusTerra_29 Start: 22079, Stop: 22525, Start Num: 28

Candidate Starts for BellusTerra_29:

(16, 21857), (18, 21908), (Start: 28 @22079 has 183 MA's), (Start: 34 @22118 has 4 MA's), (Start: 36 @22130 has 16 MA's), (40, 22148), (Start: 42 @22160 has 2 MA's), (46, 22172), (47, 22181), (57, 22235), (59, 22247), (63, 22265), (69, 22292), (73, 22313), (85, 22376), (103, 22466), (104, 22469),

Gene: Blackmoor_29 Start: 22082, Stop: 22528, Start Num: 28

Candidate Starts for Blackmoor_29:

(16, 21860), (18, 21911), (Start: 28 @22082 has 183 MA's), (Start: 34 @22121 has 4 MA's), (Start: 36 @22133 has 16 MA's), (40, 22151), (Start: 42 @22163 has 2 MA's), (46, 22175), (47, 22184), (57, 22238), (59, 22250), (69, 22295), (73, 22316), (85, 22379), (103, 22469), (104, 22472),

Gene: BobtimousPrime_35 Start: 33330, Stop: 33809, Start Num: 28

Candidate Starts for BobtimousPrime_35:

(22, 33237), (Start: 28 @33330 has 183 MA's), (29, 33342), (Start: 36 @33381 has 16 MA's), (45, 33420), (60, 33501), (63, 33516), (79, 33600), (80, 33603), (99, 33717),

Gene: Bombshell_29 Start: 22082, Stop: 22528, Start Num: 28

Candidate Starts for Bombshell_29:

(16, 21860), (18, 21911), (Start: 28 @22082 has 183 MA's), (Start: 34 @22121 has 4 MA's), (Start: 36 @22133 has 16 MA's), (40, 22151), (Start: 42 @22163 has 2 MA's), (46, 22175), (47, 22184), (57, 22238), (59, 22250), (69, 22295), (73, 22316), (85, 22379), (103, 22469), (104, 22472),

Gene: BoostSeason_32 Start: 26585, Stop: 27004, Start Num: 28

Candidate Starts for BoostSeason_32:

(Start: 28 @26585 has 183 MA's), (31, 26612), (Start: 34 @26624 has 4 MA's), (55, 26735), (57, 26741), (59, 26753), (64, 26774), (68, 26795), (69, 26798), (106, 26960), (109, 26972),

Gene: Broseidon_29 Start: 22082, Stop: 22528, Start Num: 28

Candidate Starts for Broseidon_29:

(16, 21860), (18, 21911), (Start: 28 @22082 has 183 MA's), (Start: 34 @22121 has 4 MA's), (Start: 36 @22133 has 16 MA's), (40, 22151), (Start: 42 @22163 has 2 MA's), (46, 22175), (47, 22184), (57, 22238), (59, 22250), (69, 22295), (73, 22316), (85, 22379), (103, 22469), (104, 22472),

Gene: Bruiser_28 Start: 22082, Stop: 22528, Start Num: 28

Candidate Starts for Bruiser_28:

(16, 21860), (18, 21911), (Start: 28 @22082 has 183 MA's), (Start: 34 @22121 has 4 MA's), (Start: 36 @22133 has 16 MA's), (40, 22151), (Start: 42 @22163 has 2 MA's), (46, 22175), (47, 22184), (57, 22238), (59, 22250), (69, 22295), (73, 22316), (85, 22379), (103, 22469), (104, 22472),

Gene: BubbleTrouble_29 Start: 22082, Stop: 22528, Start Num: 28

Candidate Starts for BubbleTrouble_29:

(16, 21860), (18, 21911), (Start: 28 @22082 has 183 MA's), (Start: 34 @22121 has 4 MA's), (Start: 36 @22133 has 16 MA's), (40, 22151), (Start: 42 @22163 has 2 MA's), (46, 22175), (47, 22184), (57, 22238), (59, 22250), (63, 22268), (69, 22295), (73, 22316), (85, 22379), (103, 22469), (104, 22472),

Gene: Bumblebee11_29 Start: 22103, Stop: 22543, Start Num: 28

Candidate Starts for Bumblebee11_29:

(Start: 28 @22103 has 183 MA's), (30, 22118), (33, 22139), (Start: 36 @22154 has 16 MA's), (37, 22157), (40, 22172), (Start: 42 @22184 has 2 MA's), (46, 22196), (57, 22253), (59, 22265), (69, 22310), (73, 22331), (85, 22394),

Gene: Burger_28 Start: 22082, Stop: 22528, Start Num: 28

Candidate Starts for Burger_28:

(16, 21860), (18, 21911), (Start: 28 @22082 has 183 MA's), (Start: 34 @22121 has 4 MA's), (Start: 36 @22133 has 16 MA's), (40, 22151), (Start: 42 @22163 has 2 MA's), (46, 22175), (47, 22184), (57, 22238), (59, 22250), (69, 22295), (73, 22316), (85, 22379), (103, 22469), (104, 22472),

Gene: Caelakin_29 Start: 22082, Stop: 22528, Start Num: 28

Candidate Starts for Caelakin_29:

(16, 21860), (18, 21911), (Start: 28 @22082 has 183 MA's), (Start: 34 @22121 has 4 MA's), (Start: 36 @22133 has 16 MA's), (40, 22151), (Start: 42 @22163 has 2 MA's), (46, 22175), (47, 22184), (52, 22205), (57, 22238), (59, 22250), (69, 22295), (73, 22316), (85, 22379), (103, 22469), (104, 22472),

Gene: Camperdownii_28 Start: 21704, Stop: 22147, Start Num: 28

Candidate Starts for Camperdownii_28:

(16, 21482), (18, 21533), (Start: 28 @21704 has 183 MA's), (Start: 34 @21743 has 4 MA's), (38, 21761), (Start: 42 @21785 has 2 MA's), (57, 21860), (63, 21890), (69, 21917), (74, 21938), (81, 21980), (85, 21998), (91, 22022), (94, 22040),

Gene: Cborch11_37 Start: 32875, Stop: 33354, Start Num: 28

Candidate Starts for Cborch11_37:

(22, 32782), (Start: 28 @32875 has 183 MA's), (29, 32887), (Start: 36 @32926 has 16 MA's), (45, 32965), (60, 33046), (63, 33061), (79, 33145), (80, 33148), (99, 33262),

Gene: CentreCat_29 Start: 22083, Stop: 22529, Start Num: 28

Candidate Starts for CentreCat_29:

(16, 21861), (18, 21912), (Start: 28 @22083 has 183 MA's), (Start: 34 @22122 has 4 MA's), (Start: 36 @22134 has 16 MA's), (40, 22152), (Start: 42 @22164 has 2 MA's), (46, 22176), (47, 22185), (57, 22239), (59, 22251), (69, 22296), (73, 22317), (85, 22380), (103, 22470), (104, 22473),

Gene: Cerulean_30 Start: 22397, Stop: 22843, Start Num: 28

Candidate Starts for Cerulean_30:

(16, 22175), (18, 22226), (Start: 28 @22397 has 183 MA's), (30, 22412), (Start: 36 @22448 has 16 MA's), (Start: 42 @22478 has 2 MA's), (44, 22484), (46, 22490), (57, 22553), (63, 22583), (69, 22610), (73, 22631), (85, 22694), (102, 22781), (104, 22787),

Gene: ChampagnePapi_30 Start: 22396, Stop: 22842, Start Num: 28

Candidate Starts for ChampagnePapi_30:

(16, 22174), (18, 22225), (Start: 28 @22396 has 183 MA's), (Start: 34 @22435 has 4 MA's), (Start: 36 @22447 has 16 MA's), (40, 22465), (Start: 42 @22477 has 2 MA's), (46, 22489), (47, 22498), (57, 22552), (59, 22564), (69, 22609), (73, 22630), (85, 22693), (103, 22783), (104, 22786),

Gene: Changeling_32 Start: 24255, Stop: 24683, Start Num: 28

Candidate Starts for Changeling_32:

(Start: 28 @24255 has 183 MA's), (32, 24285), (Start: 39 @24321 has 1 MA's), (57, 24402), (64, 24435), (69, 24459), (85, 24537), (87, 24543), (90, 24555), (94, 24579), (102, 24621), (103, 24624), (104, 24627),

Gene: Chaph_29 Start: 22091, Stop: 22537, Start Num: 28

Candidate Starts for Chaph_29:

(16, 21869), (18, 21920), (Start: 28 @22091 has 183 MA's), (Start: 34 @22130 has 4 MA's), (Start: 36 @22142 has 16 MA's), (40, 22160), (Start: 42 @22172 has 2 MA's), (46, 22184), (47, 22193), (57, 22247), (59, 22259), (69, 22304), (73, 22325), (85, 22388), (103, 22478), (104, 22481),

Gene: Chris_32 Start: 26948, Stop: 27370, Start Num: 28

Candidate Starts for Chris_32:

(Start: 28 @26948 has 183 MA's), (Start: 36 @26999 has 16 MA's), (40, 27017), (44, 27035), (57, 27098), (59, 27110), (69, 27155), (76, 27173), (82, 27218), (92, 27260),

Gene: Chupacabra_30 Start: 22409, Stop: 22834, Start Num: 28

Candidate Starts for Chupacabra_30:

(21, 22310), (23, 22364), (24, 22367), (Start: 28 @22409 has 183 MA's), (32, 22439), (Start: 39 @22475 has 1 MA's), (43, 22493), (49, 22517), (69, 22613), (85, 22688), (94, 22730), (97, 22751), (102, 22772), (103, 22775), (104, 22778),

Gene: Cici_29 Start: 22097, Stop: 22537, Start Num: 28

Candidate Starts for Cici_29:

(Start: 28 @22097 has 183 MA's), (30, 22112), (33, 22133), (Start: 36 @22148 has 16 MA's), (37, 22151), (40, 22166), (Start: 42 @22178 has 2 MA's), (46, 22190), (57, 22247), (59, 22259), (69, 22304), (73, 22325), (85, 22388),

Gene: Cindaradix_28 Start: 21827, Stop: 22255, Start Num: 28

Candidate Starts for Cindaradix_28:

(Start: 28 @21827 has 183 MA's), (Start: 34 @21866 has 4 MA's), (35, 21875), (43, 21911), (55, 21968), (63, 22004), (69, 22031), (81, 22091), (84, 22106), (85, 22109), (88, 22121), (91, 22133), (97, 22172), (102, 22193),

Gene: Cintron_29 Start: 22169, Stop: 22573, Start Num: 34

Candidate Starts for Cintron_29:

(8, 21728), (9, 21797), (10, 21812), (11, 21818), (16, 21908), (18, 21959), (Start: 28 @22130 has 183 MA's), (Start: 34 @22169 has 4 MA's), (Start: 42 @22211 has 2 MA's), (63, 22316), (69, 22343), (74, 22364), (81, 22406), (85, 22424), (94, 22466),

Gene: Citius_29 Start: 22082, Stop: 22543, Start Num: 28

Candidate Starts for Citius_29:

(16, 21860), (18, 21911), (Start: 28 @22082 has 183 MA's), (Start: 34 @22121 has 4 MA's), (Start: 36 @22133 has 16 MA's), (40, 22151), (Start: 42 @22163 has 2 MA's), (46, 22175), (47, 22184), (57, 22238), (59, 22250), (69, 22295), (73, 22316), (85, 22379), (103, 22484), (104, 22487),

Gene: Clarenza_29 Start: 22079, Stop: 22525, Start Num: 28

Candidate Starts for Clarenza_29:

(16, 21857), (18, 21908), (Start: 28 @22079 has 183 MA's), (Start: 34 @22118 has 4 MA's), (Start: 36 @22130 has 16 MA's), (40, 22148), (Start: 42 @22160 has 2 MA's), (46, 22172), (47, 22181), (57, 22235), (59, 22247), (69, 22292), (73, 22313), (85, 22376), (103, 22466), (104, 22469),

Gene: Cocoaberry_29 Start: 22086, Stop: 22532, Start Num: 28

Candidate Starts for Cocoaberry_29:

(16, 21864), (18, 21915), (Start: 28 @22086 has 183 MA's), (Start: 34 @22125 has 4 MA's), (Start: 36 @22137 has 16 MA's), (40, 22155), (Start: 42 @22167 has 2 MA's), (46, 22179), (47, 22188), (52, 22209), (57, 22242), (59, 22254), (69, 22299), (73, 22320), (85, 22383), (103, 22473), (104, 22476),

Gene: Commander_29 Start: 22082, Stop: 22528, Start Num: 28

Candidate Starts for Commander_29:

(16, 21860), (18, 21911), (Start: 28 @22082 has 183 MA's), (Start: 34 @22121 has 4 MA's), (Start: 36 @22133 has 16 MA's), (40, 22151), (Start: 42 @22163 has 2 MA's), (46, 22175), (47, 22184), (57, 22238), (59, 22250), (63, 22268), (69, 22295), (73, 22316), (85, 22379), (103, 22469), (104, 22472),

Gene: Connomayer_29 Start: 22082, Stop: 22528, Start Num: 28

Candidate Starts for Connomayer_29:

(16, 21860), (18, 21911), (Start: 28 @22082 has 183 MA's), (Start: 34 @22121 has 4 MA's), (Start: 36 @22133 has 16 MA's), (40, 22151), (Start: 42 @22163 has 2 MA's), (46, 22175), (47, 22184), (57, 22238), (59, 22250), (69, 22295), (73, 22316), (85, 22379), (103, 22469), (104, 22472),

Gene: Damien_36 Start: 32876, Stop: 33355, Start Num: 28

Candidate Starts for Damien_36:

(22, 32783), (Start: 28 @32876 has 183 MA's), (29, 32888), (Start: 36 @32927 has 16 MA's), (45, 32966), (60, 33047), (63, 33062), (79, 33146), (80, 33149), (99, 33263),

Gene: Datway_29 Start: 22112, Stop: 22552, Start Num: 28

Candidate Starts for Datway_29:

(Start: 28 @22112 has 183 MA's), (30, 22127), (33, 22148), (Start: 36 @22163 has 16 MA's), (37, 22166), (40, 22181), (Start: 42 @22193 has 2 MA's), (46, 22205), (57, 22262), (59, 22274), (69, 22319), (73, 22340), (85, 22403),

Gene: Deano_29 Start: 22141, Stop: 22536, Start Num: 36

Candidate Starts for Deano_29:

(16, 21868), (18, 21919), (Start: 28 @22090 has 183 MA's), (Start: 34 @22129 has 4 MA's), (Start: 36 @22141 has 16 MA's), (40, 22159), (Start: 42 @22171 has 2 MA's), (46, 22183), (47, 22192), (57, 22246), (59, 22258), (69, 22303), (73, 22324), (85, 22387), (103, 22477), (104, 22480),

Gene: DeerParkTS_31 Start: 22474, Stop: 22902, Start Num: 28

Candidate Starts for DeerParkTS_31:

(Start: 28 @22474 has 183 MA's), (Start: 34 @22513 has 4 MA's), (Start: 39 @22540 has 1 MA's), (51, 22588), (55, 22615), (57, 22621), (62, 22642), (63, 22651), (69, 22678), (85, 22756), (97, 22819), (102, 22840), (104, 22846),

Gene: Dhanush_29 Start: 22085, Stop: 22531, Start Num: 28

Candidate Starts for Dhanush_29:

(16, 21863), (18, 21914), (Start: 28 @22085 has 183 MA's), (Start: 34 @22124 has 4 MA's), (Start: 36 @22136 has 16 MA's), (40, 22154), (Start: 42 @22166 has 2 MA's), (46, 22178), (47, 22187), (57, 22241), (59, 22253), (69, 22298), (73, 22319), (85, 22382), (103, 22472), (104, 22475),

Gene: DirtyDunning_29 Start: 22078, Stop: 22521, Start Num: 28

Candidate Starts for DirtyDunning_29:

(16, 21856), (18, 21907), (Start: 28 @22078 has 183 MA's), (Start: 34 @22117 has 4 MA's), (38, 22135), (Start: 42 @22159 has 2 MA's), (63, 22264), (69, 22291), (74, 22312), (81, 22354), (85, 22372), (91, 22396), (94, 22414),

Gene: DismalFunk_31 Start: 26497, Stop: 26916, Start Num: 28

Candidate Starts for DismalFunk_31:

(Start: 28 @26497 has 183 MA's), (31, 26524), (Start: 34 @26536 has 4 MA's), (40, 26566), (45, 26587), (55, 26647), (59, 26665), (62, 26674), (64, 26686), (69, 26710), (78, 26737), (81, 26752), (106, 26872), (109, 26884),

Gene: DismalStressor_31 Start: 26497, Stop: 26916, Start Num: 28

Candidate Starts for DismalStressor_31:

(Start: 28 @26497 has 183 MA's), (31, 26524), (Start: 34 @26536 has 4 MA's), (40, 26566), (45, 26587), (55, 26647), (59, 26665), (62, 26674), (64, 26686), (69, 26710), (78, 26737), (81, 26752), (106, 26872), (109, 26884),

Gene: DontArgue_29 Start: 20793, Stop: 21221, Start Num: 28

Candidate Starts for DontArgue_29:

(21, 20691), (24, 20748), (Start: 28 @20793 has 183 MA's), (32, 20823), (48, 20898), (53, 20916), (63, 20970), (69, 20997), (77, 21027), (85, 21075), (87, 21081), (102, 21159), (103, 21162), (104, 21165),

Gene: Doughnut_32 Start: 26578, Stop: 26997, Start Num: 28

Candidate Starts for Doughnut_32:

(Start: 28 @26578 has 183 MA's), (31, 26605), (Start: 34 @26617 has 4 MA's), (40, 26647), (55, 26728), (57, 26734), (59, 26746), (64, 26767), (68, 26788), (69, 26791), (106, 26953), (109, 26965),

Gene: Drake94_29 Start: 20541, Stop: 20966, Start Num: 28

Candidate Starts for Drake94_29:

(21, 20439), (24, 20496), (Start: 28 @20541 has 183 MA's), (33, 20577), (Start: 34 @20580 has 4 MA's), (35, 20589), (Start: 36 @20592 has 16 MA's), (37, 20595), (Start: 39 @20607 has 1 MA's), (43, 20625), (49, 20649), (53, 20664), (55, 20682), (69, 20745), (72, 20760), (85, 20820), (90, 20838), (97, 20883), (102, 20904), (103, 20907),

Gene: DroogsArmy_30 Start: 24905, Stop: 25333, Start Num: 28

Candidate Starts for DroogsArmy_30:

(Start: 28 @24905 has 183 MA's), (30, 24920), (33, 24941), (Start: 34 @24944 has 4 MA's), (35, 24953), (45, 24995), (48, 25010), (58, 25061), (63, 25082), (69, 25109), (85, 25187), (88, 25199), (90, 25205), (91, 25211), (97, 25250), (102, 25271),

Gene: Druantia_29 Start: 22083, Stop: 22529, Start Num: 28

Candidate Starts for Druantia_29:

(16, 21861), (18, 21912), (Start: 28 @22083 has 183 MA's), (Start: 34 @22122 has 4 MA's), (Start: 36 @22134 has 16 MA's), (40, 22152), (Start: 42 @22164 has 2 MA's), (46, 22176), (47, 22185), (57, 22239), (59, 22251), (69, 22296), (73, 22317), (85, 22380), (103, 22470), (104, 22473),

Gene: DustyMartin_34 Start: 22506, Stop: 22931, Start Num: 28

Candidate Starts for DustyMartin_34:

(21, 22404), (23, 22458), (24, 22461), (Start: 28 @22506 has 183 MA's), (Start: 39 @22572 has 1 MA's), (55, 22647), (57, 22653), (64, 22686), (69, 22710), (85, 22785), (88, 22797), (95, 22830), (97, 22848), (102, 22869), (103, 22872),

Gene: Eagle_28 Start: 22082, Stop: 22528, Start Num: 28

Candidate Starts for Eagle_28:

(16, 21860), (18, 21911), (Start: 28 @22082 has 183 MA's), (30, 22097), (Start: 36 @22133 has 16 MA's), (Start: 42 @22163 has 2 MA's), (44, 22169), (46, 22175), (57, 22238), (63, 22268), (69, 22295), (73, 22316), (85, 22379), (102, 22466), (104, 22472),

Gene: Eaglepride_31 Start: 22419, Stop: 22844, Start Num: 28

Candidate Starts for Eaglepride_31:

(21, 22320), (23, 22374), (24, 22377), (Start: 28 @22419 has 183 MA's), (Start: 34 @22458 has 4 MA's), (35, 22467), (Start: 39 @22485 has 1 MA's), (48, 22524), (49, 22527), (53, 22542), (55, 22560), (69, 22623), (85, 22698), (87, 22704), (91, 22722), (102, 22782), (104, 22788),

Gene: Eapen_29 Start: 22081, Stop: 22527, Start Num: 28

Candidate Starts for Eapen_29:

(16, 21859), (18, 21910), (Start: 28 @22081 has 183 MA's), (Start: 34 @22120 has 4 MA's), (Start: 36 @22132 has 16 MA's), (40, 22150), (Start: 42 @22162 has 2 MA's), (46, 22174), (47, 22183), (57, 22237), (59, 22249), (69, 22294), (73, 22315), (85, 22378), (103, 22468), (104, 22471),

Gene: Edison31_30 Start: 22449, Stop: 22874, Start Num: 28

Candidate Starts for Edison31_30:

(21, 22344), (23, 22398), (24, 22401), (Start: 28 @22449 has 183 MA's), (Start: 34 @22488 has 4 MA's), (35, 22497), (Start: 39 @22515 has 1 MA's), (48, 22554), (49, 22557), (53, 22572), (55, 22590), (69, 22653), (85, 22728), (87, 22734), (97, 22791), (102, 22812), (104, 22818),

Gene: Eris_28 Start: 22082, Stop: 22528, Start Num: 28

Candidate Starts for Eris_28:

(16, 21860), (18, 21911), (Start: 28 @22082 has 183 MA's), (Start: 34 @22121 has 4 MA's), (Start: 36 @22133 has 16 MA's), (40, 22151), (Start: 42 @22163 has 2 MA's), (46, 22175), (47, 22184), (57, 22238), (59, 22250), (69, 22295), (73, 22316), (85, 22379), (103, 22469), (104, 22472),

Gene: Eros_29 Start: 22133, Stop: 22528, Start Num: 36

Candidate Starts for Eros_29:

(16, 21860), (18, 21911), (Start: 28 @22082 has 183 MA's), (Start: 34 @22121 has 4 MA's), (Start: 36 @22133 has 16 MA's), (40, 22151), (Start: 42 @22163 has 2 MA's), (46, 22175), (47, 22184), (57, 22238), (59, 22250), (69, 22295), (73, 22316), (85, 22379), (103, 22469), (104, 22472),

Gene: Eurydice_29 Start: 22079, Stop: 22525, Start Num: 28

Candidate Starts for Eurydice_29:

(16, 21857), (18, 21908), (Start: 28 @22079 has 183 MA's), (Start: 34 @22118 has 4 MA's), (Start: 36 @22130 has 16 MA's), (40, 22148), (Start: 42 @22160 has 2 MA's), (46, 22172), (47, 22181), (57, 22235), (59, 22247), (63, 22265), (69, 22292), (73, 22313), (85, 22376), (103, 22466), (104, 22469),

Gene: Farewell_29 Start: 27075, Stop: 27485, Start Num: 28

Candidate Starts for Farewell_29:

(7, 26667), (12, 26796), (13, 26802), (14, 26847), (Start: 28 @27075 has 183 MA's), (Start: 36 @27126 has 16 MA's), (Start: 39 @27141 has 1 MA's), (40, 27144), (41, 27153), (50, 27189), (59, 27237), (70, 27282), (101, 27423), (104, 27432), (107, 27447), (110, 27462),

Gene: Findley_31 Start: 26489, Stop: 26908, Start Num: 28

Candidate Starts for Findley_31:

(Start: 28 @26489 has 183 MA's), (31, 26516), (Start: 34 @26528 has 4 MA's), (40, 26558), (45, 26579), (55, 26639), (59, 26657), (62, 26666), (64, 26678), (69, 26702), (78, 26729), (81, 26744), (106, 26864), (109, 26876),

Gene: Florean_29 Start: 22079, Stop: 22525, Start Num: 28

Candidate Starts for Florean_29:

(16, 21857), (18, 21908), (Start: 28 @22079 has 183 MA's), (Start: 34 @22118 has 4 MA's), (Start: 36 @22130 has 16 MA's), (40, 22148), (Start: 42 @22160 has 2 MA's), (46, 22172), (47, 22181), (57, 22235), (59, 22247), (69, 22292), (73, 22313), (85, 22376), (103, 22466), (104, 22469),

Gene: Flux_29 Start: 22082, Stop: 22528, Start Num: 28

Candidate Starts for Flux_29:

(16, 21860), (18, 21911), (Start: 28 @22082 has 183 MA's), (Start: 34 @22121 has 4 MA's), (Start: 36 @22133 has 16 MA's), (40, 22151), (Start: 42 @22163 has 2 MA's), (46, 22175), (47, 22184), (57, 22238), (59, 22250), (69, 22295), (73, 22316), (85, 22379), (103, 22469), (104, 22472),

Gene: ForesterFrank_31 Start: 23916, Stop: 24344, Start Num: 28

Candidate Starts for ForesterFrank_31:

(19, 23757), (Start: 28 @23916 has 183 MA's), (35, 23964), (38, 23973), (55, 24057), (56, 24060), (57, 24063), (69, 24120), (85, 24198), (102, 24282), (103, 24285), (104, 24288),

Gene: Funston_29 Start: 22082, Stop: 22528, Start Num: 28

Candidate Starts for Funston_29:

(16, 21860), (18, 21911), (Start: 28 @22082 has 183 MA's), (Start: 34 @22121 has 4 MA's), (Start: 36 @22133 has 16 MA's), (40, 22151), (Start: 42 @22163 has 2 MA's), (46, 22175), (47, 22184), (52, 22205), (57, 22238), (59, 22250), (69, 22295), (73, 22316), (85, 22379), (103, 22469), (104, 22472),

Gene: Gadost_29 Start: 22137, Stop: 22532, Start Num: 36

Candidate Starts for Gadost_29:

(16, 21864), (18, 21915), (Start: 28 @22086 has 183 MA's), (Start: 34 @22125 has 4 MA's), (Start: 36 @22137 has 16 MA's), (40, 22155), (Start: 42 @22167 has 2 MA's), (46, 22179), (47, 22188), (52, 22209), (57, 22242), (59, 22254), (69, 22299), (73, 22320), (85, 22383), (103, 22473), (104, 22476),

Gene: Goose_30 Start: 22410, Stop: 22835, Start Num: 28

Candidate Starts for Goose_30:

(21, 22311), (23, 22365), (24, 22368), (Start: 28 @22410 has 183 MA's), (32, 22440), (Start: 39 @22476 has 1 MA's), (43, 22494), (49, 22518), (69, 22614), (85, 22689), (94, 22731), (97, 22752), (102, 22773), (103, 22776), (104, 22779),

Gene: HINdeR_29 Start: 25006, Stop: 25437, Start Num: 28

Candidate Starts for HINdeR_29:

(Start: 28 @25006 has 183 MA's), (33, 25042), (48, 25111), (57, 25153), (63, 25183), (69, 25210), (85, 25291), (88, 25303), (90, 25309), (102, 25375), (103, 25378),

Gene: HamSlice_28 Start: 22080, Stop: 22526, Start Num: 28

Candidate Starts for HamSlice_28:

(16, 21858), (18, 21909), (Start: 28 @22080 has 183 MA's), (Start: 34 @22119 has 4 MA's), (Start: 36 @22131 has 16 MA's), (40, 22149), (Start: 42 @22161 has 2 MA's), (46, 22173), (47, 22182), (57, 22236), (59, 22248), (69, 22293), (73, 22314), (85, 22377), (103, 22467), (104, 22470),

Gene: Happiness_29 Start: 22088, Stop: 22534, Start Num: 28

Candidate Starts for Happiness_29:

(16, 21866), (18, 21917), (Start: 28 @22088 has 183 MA's), (30, 22103), (Start: 36 @22139 has 16 MA's), (Start: 42 @22169 has 2 MA's), (44, 22175), (46, 22181), (57, 22244), (63, 22274), (69, 22301), (73, 22322), (85, 22385), (102, 22472), (104, 22478),

Gene: Herbertwm_27 Start: 21048, Stop: 21473, Start Num: 28

Candidate Starts for Herbertwm_27:

(Start: 28 @21048 has 183 MA's), (33, 21084), (47, 21150), (54, 21174), (57, 21195), (69, 21252), (85, 21327), (90, 21345), (102, 21411), (104, 21417),

Gene: Holli_29 Start: 21872, Stop: 22318, Start Num: 28

Candidate Starts for Holli_29:

(16, 21650), (18, 21701), (Start: 28 @21872 has 183 MA's), (Start: 34 @21911 has 4 MA's), (Start: 36 @21923 has 16 MA's), (40, 21941), (Start: 42 @21953 has 2 MA's), (46, 21965), (47, 21974), (52, 21995), (57, 22028), (59, 22040), (69, 22085), (73, 22106), (85, 22169), (103, 22259), (104, 22262),

Gene: Houdini22_29 Start: 22137, Stop: 22532, Start Num: 36

Candidate Starts for Houdini22_29:

(16, 21864), (18, 21915), (Start: 28 @22086 has 183 MA's), (Start: 34 @22125 has 4 MA's), (Start: 36 @22137 has 16 MA's), (40, 22155), (Start: 42 @22167 has 2 MA's), (46, 22179), (47, 22188), (52, 22209), (57, 22242), (59, 22254), (69, 22299), (73, 22320), (85, 22383), (103, 22473), (104, 22476),

Gene: Huxley_29 Start: 22185, Stop: 22589, Start Num: 34

Candidate Starts for Huxley_29:

(16, 21924), (18, 21975), (Start: 28 @22146 has 183 MA's), (Start: 34 @22185 has 4 MA's), (38, 22203), (Start: 42 @22227 has 2 MA's), (57, 22302), (63, 22332), (69, 22359), (74, 22380), (81, 22422), (85, 22440), (91, 22464), (94, 22482),

Gene: ICleared_29 Start: 22080, Stop: 22526, Start Num: 28

Candidate Starts for ICleared_29:

(16, 21858), (18, 21909), (Start: 28 @22080 has 183 MA's), (Start: 34 @22119 has 4 MA's), (Start: 36 @22131 has 16 MA's), (40, 22149), (Start: 42 @22161 has 2 MA's), (46, 22173), (47, 22182), (57, 22236), (59, 22248), (63, 22266), (69, 22293), (73, 22314), (85, 22377), (103, 22467), (104, 22470),

Gene: Iceman_30 Start: 22371, Stop: 22817, Start Num: 28

Candidate Starts for Iceman_30:

(16, 22149), (18, 22200), (Start: 28 @22371 has 183 MA's), (Start: 34 @22410 has 4 MA's), (Start: 36 @22422 has 16 MA's), (40, 22440), (Start: 42 @22452 has 2 MA's), (46, 22464), (47, 22473), (57, 22527), (59, 22539), (69, 22584), (73, 22605), (85, 22668), (103, 22758), (104, 22761),

Gene: IdentityCrisis_28 Start: 23464, Stop: 23874, Start Num: 28

Candidate Starts for IdentityCrisis_28:

(12, 23185), (13, 23191), (14, 23236), (Start: 28 @23464 has 183 MA's), (Start: 36 @23515 has 16 MA's), (41, 23542), (50, 23578), (59, 23626), (70, 23671), (101, 23812), (104, 23821), (107, 23836), (110, 23851),

Gene: Iracema64_30 Start: 22393, Stop: 22836, Start Num: 28

Candidate Starts for Iracema64_30:

(16, 22171), (18, 22222), (Start: 28 @22393 has 183 MA's), (Start: 34 @22432 has 4 MA's), (38, 22450), (Start: 42 @22474 has 2 MA's), (63, 22579), (69, 22606), (74, 22627), (81, 22669), (85, 22687), (91, 22711), (94, 22729),

Gene: IronMan_32 Start: 23977, Stop: 24408, Start Num: 28

Candidate Starts for IronMan_32:

(Start: 28 @23977 has 183 MA's), (33, 24013), (Start: 39 @24043 has 1 MA's), (48, 24082), (55, 24118), (69, 24181), (85, 24262), (88, 24274), (91, 24286), (94, 24304), (97, 24325), (102, 24346), (103, 24349), (104, 24352),

Gene: Jaan_33 Start: 24366, Stop: 24797, Start Num: 28

Candidate Starts for Jaan_33:

(Start: 28 @24366 has 183 MA's), (33, 24402), (Start: 39 @24432 has 1 MA's), (48, 24471), (55, 24507), (69, 24570), (85, 24651), (88, 24663), (94, 24693), (102, 24735), (103, 24738), (104, 24741),

Gene: Jaykayelowell_29 Start: 22117, Stop: 22524, Start Num: 34

Candidate Starts for Jaykayelowell_29:

(16, 21856), (18, 21907), (Start: 28 @22078 has 183 MA's), (Start: 34 @22117 has 4 MA's), (Start: 36 @22129 has 16 MA's), (40, 22147), (Start: 42 @22159 has 2 MA's), (46, 22171), (47, 22180), (57, 22234), (59, 22246), (69, 22291), (73, 22312), (85, 22375), (103, 22465), (104, 22468),

Gene: JetBlade_29 Start: 22130, Stop: 22525, Start Num: 36

Candidate Starts for JetBlade_29:

(16, 21857), (18, 21908), (Start: 28 @22079 has 183 MA's), (Start: 34 @22118 has 4 MA's), (Start: 36 @22130 has 16 MA's), (40, 22148), (Start: 42 @22160 has 2 MA's), (46, 22172), (47, 22181), (57, 22235), (59, 22247), (69, 22292), (73, 22313), (85, 22376), (103, 22466), (104, 22469),

Gene: JoongJeon_29 Start: 22082, Stop: 22528, Start Num: 28

Candidate Starts for JoongJeon_29:

(16, 21860), (18, 21911), (Start: 28 @22082 has 183 MA's), (Start: 34 @22121 has 4 MA's), (Start: 36 @22133 has 16 MA's), (40, 22151), (Start: 42 @22163 has 2 MA's), (46, 22175), (47, 22184), (57, 22238), (59, 22250), (69, 22295), (73, 22316), (85, 22379), (103, 22469), (104, 22472),

Gene: JustASigh_28 Start: 27518, Stop: 27970, Start Num: 27

Candidate Starts for JustASigh_28:

(15, 27302), (17, 27335), (20, 27389), (Start: 27 @27518 has 1 MA's), (41, 27596), (57, 27671), (81, 27794), (83, 27806), (89, 27827), (102, 27908),

Gene: KFPoly_29 Start: 22082, Stop: 22525, Start Num: 28

Candidate Starts for KFPoly_29:

(16, 21860), (18, 21911), (Start: 28 @22082 has 183 MA's), (Start: 34 @22121 has 4 MA's), (38, 22139), (Start: 42 @22163 has 2 MA's), (57, 22238), (63, 22268), (69, 22295), (74, 22316), (81, 22358), (85, 22376), (91, 22400), (94, 22418),

Gene: Kampy_29 Start: 22161, Stop: 22526, Start Num: 42

Candidate Starts for Kampy_29:

(16, 21858), (18, 21909), (Start: 28 @22080 has 183 MA's), (Start: 34 @22119 has 4 MA's), (Start: 36 @22131 has 16 MA's), (40, 22149), (Start: 42 @22161 has 2 MA's), (46, 22173), (47, 22182), (57, 22236), (59, 22248), (63, 22266), (69, 22293), (73, 22314), (85, 22377), (103, 22467), (104, 22470),

Gene: Katalie136_29 Start: 22103, Stop: 22543, Start Num: 28

Candidate Starts for Katalie136_29:

(Start: 28 @22103 has 183 MA's), (30, 22118), (33, 22139), (Start: 36 @22154 has 16 MA's), (37, 22157), (40, 22172), (Start: 42 @22184 has 2 MA's), (46, 22196), (57, 22253), (59, 22265), (69, 22310), (73, 22331), (85, 22394),

Gene: KekoraPapaka_28 Start: 22133, Stop: 22528, Start Num: 36

Candidate Starts for KekoraPapaka_28:

(16, 21860), (18, 21911), (Start: 28 @22082 has 183 MA's), (Start: 34 @22121 has 4 MA's), (Start: 36 @22133 has 16 MA's), (40, 22151), (Start: 42 @22163 has 2 MA's), (46, 22175), (47, 22184), (57, 22238), (59, 22250), (69, 22295), (73, 22316), (85, 22379), (103, 22469), (104, 22472),

Gene: KiSi_32 Start: 26826, Stop: 27248, Start Num: 28

Candidate Starts for KiSi_32:

(Start: 28 @26826 has 183 MA's), (Start: 34 @26865 has 4 MA's), (Start: 36 @26877 has 16 MA's), (40, 26895), (57, 26976), (69, 27033), (85, 27105), (86, 27108), (94, 27147),

Gene: Kingmustik0402_29 Start: 22125, Stop: 22520, Start Num: 36

Candidate Starts for Kingmustik0402_29:

(16, 21852), (18, 21903), (Start: 28 @22074 has 183 MA's), (Start: 34 @22113 has 4 MA's), (Start: 36 @22125 has 16 MA's), (40, 22143), (Start: 42 @22155 has 2 MA's), (46, 22167), (47, 22176), (57, 22230), (59, 22242), (69, 22287), (73, 22308), (85, 22371), (103, 22461), (104, 22464),

Gene: KittenMittens_29 Start: 20549, Stop: 20974, Start Num: 28

Candidate Starts for KittenMittens_29:

(21, 20447), (24, 20504), (Start: 28 @20549 has 183 MA's), (33, 20585), (Start: 34 @20588 has 4 MA's), (35, 20597), (Start: 36 @20600 has 16 MA's), (37, 20603), (Start: 39 @20615 has 1 MA's), (43, 20633), (49, 20657), (53, 20672), (55, 20690), (69, 20753), (72, 20768), (85, 20828), (90, 20846), (97, 20891), (102, 20912), (103, 20915),

Gene: Koan_29 Start: 22133, Stop: 22528, Start Num: 36

Candidate Starts for Koan_29:

(16, 21860), (18, 21911), (Start: 28 @22082 has 183 MA's), (Start: 34 @22121 has 4 MA's), (Start: 36 @22133 has 16 MA's), (40, 22151), (Start: 42 @22163 has 2 MA's), (46, 22175), (47, 22184), (57, 22238), (59, 22250), (69, 22295), (73, 22316), (85, 22379), (103, 22469), (104, 22472),

Gene: Konstantine_41 Start: 34077, Stop: 34556, Start Num: 28

Candidate Starts for Konstantine_41:

(22, 33984), (Start: 28 @34077 has 183 MA's), (29, 34089), (Start: 36 @34128 has 16 MA's), (45, 34167), (60, 34248), (63, 34263), (79, 34347), (80, 34350), (99, 34464),

Gene: Koreni_28 Start: 21728, Stop: 22174, Start Num: 28

Candidate Starts for Koreni_28:

(16, 21506), (18, 21557), (Start: 28 @21728 has 183 MA's), (Start: 34 @21767 has 4 MA's), (Start: 36 @21779 has 16 MA's), (40, 21797), (Start: 42 @21809 has 2 MA's), (46, 21821), (47, 21830), (57, 21884), (59, 21896), (69, 21941), (73, 21962), (85, 22025), (103, 22115), (104, 22118),

Gene: Kratark_29 Start: 22077, Stop: 22520, Start Num: 28

Candidate Starts for Kratark_29:

(16, 21855), (18, 21906), (Start: 28 @22077 has 183 MA's), (Start: 34 @22116 has 4 MA's), (38, 22134), (Start: 42 @22158 has 2 MA's), (57, 22233), (63, 22263), (69, 22290), (74, 22311), (81, 22353), (85, 22371), (91, 22395), (94, 22413),

Gene: Kremtemulon_29 Start: 22130, Stop: 22576, Start Num: 28

Candidate Starts for Kremtemulon_29:

(16, 21908), (18, 21959), (Start: 28 @22130 has 183 MA's), (Start: 34 @22169 has 4 MA's), (Start: 36 @22181 has 16 MA's), (40, 22199), (Start: 42 @22211 has 2 MA's), (46, 22223), (47, 22232), (57, 22286), (59, 22298), (69, 22343), (73, 22364), (85, 22427), (103, 22517), (104, 22520),

Gene: Kristoff_31 Start: 22613, Stop: 23038, Start Num: 28

Candidate Starts for Kristoff_31:

(21, 22508), (23, 22562), (24, 22565), (Start: 28 @22613 has 183 MA's), (Start: 34 @22652 has 4 MA's), (35, 22661), (Start: 39 @22679 has 1 MA's), (48, 22718), (49, 22721), (53, 22736), (55, 22754), (69, 22817), (85, 22892), (87, 22898), (97, 22955), (102, 22976), (104, 22982),

Gene: Kyee_29 Start: 22083, Stop: 22526, Start Num: 28

Candidate Starts for Kyee_29:

(16, 21861), (18, 21912), (Start: 28 @22083 has 183 MA's), (Start: 34 @22122 has 4 MA's), (38, 22140), (Start: 42 @22164 has 2 MA's), (57, 22239), (63, 22269), (69, 22296), (74, 22317), (81, 22359), (85, 22377), (91, 22401), (94, 22419),

Gene: LHTSCC_30 Start: 22396, Stop: 22842, Start Num: 28

Candidate Starts for LHTSCC_30:

(16, 22174), (18, 22225), (Start: 28 @22396 has 183 MA's), (30, 22411), (Start: 36 @22447 has 16 MA's), (Start: 42 @22477 has 2 MA's), (44, 22483), (46, 22489), (57, 22552), (63, 22582), (69, 22609), (73, 22630), (85, 22693), (102, 22780), (104, 22786),

Gene: Landor_31 Start: 24018, Stop: 24449, Start Num: 28

Candidate Starts for Landor_31:

(Start: 28 @24018 has 183 MA's), (33, 24054), (Start: 39 @24084 has 1 MA's), (48, 24123), (55, 24159), (69, 24222), (85, 24303), (88, 24315), (94, 24345), (102, 24387), (103, 24390), (104, 24393),

Gene: LappelDuVide_29 Start: 22079, Stop: 22525, Start Num: 28

Candidate Starts for LappelDuVide_29:

(16, 21857), (18, 21908), (Start: 28 @22079 has 183 MA's), (Start: 34 @22118 has 4 MA's), (Start: 36 @22130 has 16 MA's), (40, 22148), (Start: 42 @22160 has 2 MA's), (46, 22172), (47, 22181), (52, 22202), (57, 22235), (59, 22247), (69, 22292), (73, 22313), (85, 22376), (103, 22466), (104, 22469),

Gene: LeMond_32 Start: 26897, Stop: 27319, Start Num: 28

Candidate Starts for LeMond_32:

(Start: 28 @26897 has 183 MA's), (Start: 34 @26936 has 4 MA's), (Start: 36 @26948 has 16 MA's), (40, 26966), (57, 27047), (69, 27104), (85, 27176), (86, 27179), (94, 27218),

Gene: Lemur_29 Start: 22079, Stop: 22525, Start Num: 28

Candidate Starts for Lemur_29:

(16, 21857), (18, 21908), (Start: 28 @22079 has 183 MA's), (Start: 34 @22118 has 4 MA's), (Start: 36 @22130 has 16 MA's), (40, 22148), (Start: 42 @22160 has 2 MA's), (46, 22172), (47, 22181), (57, 22235), (59, 22247), (69, 22292), (73, 22313), (85, 22376), (103, 22466), (104, 22469),

Gene: LeoAvram_29 Start: 22160, Stop: 22525, Start Num: 42

Candidate Starts for LeoAvram_29:

(16, 21857), (18, 21908), (Start: 28 @22079 has 183 MA's), (Start: 34 @22118 has 4 MA's), (Start: 36 @22130 has 16 MA's), (40, 22148), (Start: 42 @22160 has 2 MA's), (46, 22172), (47, 22181), (57, 22235), (59, 22247), (63, 22265), (69, 22292), (73, 22313), (85, 22376), (103, 22466), (104, 22469),

Gene: LittleB_29 Start: 22082, Stop: 22528, Start Num: 28

Candidate Starts for LittleB_29:

(16, 21860), (18, 21911), (Start: 28 @22082 has 183 MA's), (Start: 34 @22121 has 4 MA's), (Start: 36 @22133 has 16 MA's), (40, 22151), (Start: 42 @22163 has 2 MA's), (46, 22175), (47, 22184), (57, 22238), (59, 22250), (69, 22295), (73, 22316), (85, 22379), (103, 22469), (104, 22472),

Gene: LittleGuy_29 Start: 22025, Stop: 22471, Start Num: 28

Candidate Starts for LittleGuy_29:

(16, 21803), (18, 21854), (Start: 28 @22025 has 183 MA's), (Start: 34 @22064 has 4 MA's), (Start: 36 @22076 has 16 MA's), (40, 22094), (Start: 42 @22106 has 2 MA's), (46, 22118), (47, 22127), (57, 22181), (63, 22211), (69, 22238), (73, 22259), (85, 22322), (103, 22412), (104, 22415),

Gene: LochMonster_29 Start: 22096, Stop: 22500, Start Num: 34

Candidate Starts for LochMonster_29:

(16, 21835), (18, 21886), (Start: 28 @22057 has 183 MA's), (Start: 34 @22096 has 4 MA's), (38, 22114), (Start: 42 @22138 has 2 MA's), (63, 22243), (69, 22270), (74, 22291), (81, 22333), (85, 22351), (91, 22375), (94, 22393),

Gene: Lorenzo_29 Start: 22082, Stop: 22528, Start Num: 28

Candidate Starts for Lorenzo_29:

(16, 21860), (18, 21911), (Start: 28 @22082 has 183 MA's), (Start: 34 @22121 has 4 MA's), (Start: 36 @22133 has 16 MA's), (40, 22151), (Start: 42 @22163 has 2 MA's), (46, 22175), (47, 22184), (57, 22238), (59, 22250), (69, 22295), (73, 22316), (85, 22379), (103, 22469), (104, 22472),

Gene: Loser_33 Start: 24176, Stop: 24604, Start Num: 28

Candidate Starts for Loser_33:

(Start: 28 @24176 has 183 MA's), (Start: 39 @24242 has 1 MA's), (47, 24278), (48, 24281), (57, 24323), (64, 24356), (69, 24380), (84, 24455), (85, 24458), (94, 24500), (102, 24542), (103, 24545), (104, 24548),

Gene: Lunsford_30 Start: 22130, Stop: 22525, Start Num: 36

Candidate Starts for Lunsford_30:

(16, 21857), (18, 21908), (Start: 28 @22079 has 183 MA's), (Start: 34 @22118 has 4 MA's), (Start: 36 @22130 has 16 MA's), (40, 22148), (Start: 42 @22160 has 2 MA's), (46, 22172), (47, 22181), (57, 22235), (59, 22247), (69, 22292), (73, 22313), (85, 22376), (103, 22466), (104, 22469),

Gene: Marcoliusprime_31 Start: 26497, Stop: 26916, Start Num: 28

Candidate Starts for Marcoliusprime_31:

(Start: 28 @26497 has 183 MA's), (31, 26524), (Start: 34 @26536 has 4 MA's), (40, 26566), (45, 26587), (55, 26647), (59, 26665), (62, 26674), (64, 26686), (69, 26710), (78, 26737), (81, 26752), (106, 26872), (109, 26884),

Gene: MarkPhew_33 Start: 26795, Stop: 27217, Start Num: 28

Candidate Starts for MarkPhew_33:

(Start: 28 @26795 has 183 MA's), (Start: 36 @26846 has 16 MA's), (40, 26864), (44, 26882), (57, 26945), (69, 27002), (94, 27116),

Gene: Marshawn_34 Start: 27478, Stop: 27912, Start Num: 28

Candidate Starts for Marshawn_34:

(Start: 28 @27478 has 183 MA's), (Start: 34 @27517 has 4 MA's), (Start: 39 @27544 has 1 MA's), (40, 27547), (69, 27688), (85, 27769), (87, 27775), (98, 27841), (103, 27859), (104, 27862), (105, 27868), (107, 27874),

Gene: Maverick_29 Start: 22082, Stop: 22528, Start Num: 28

Candidate Starts for Maverick_29:

(16, 21860), (18, 21911), (Start: 28 @22082 has 183 MA's), (Start: 34 @22121 has 4 MA's), (Start: 36 @22133 has 16 MA's), (40, 22151), (Start: 42 @22163 has 2 MA's), (46, 22175), (47, 22184), (57, 22238), (59, 22250), (69, 22295), (73, 22316), (85, 22379), (103, 22469), (104, 22472),

Gene: Maxo_29 Start: 22080, Stop: 22526, Start Num: 28

Candidate Starts for Maxo_29:

(16, 21858), (18, 21909), (Start: 28 @22080 has 183 MA's), (Start: 34 @22119 has 4 MA's), (Start: 36 @22131 has 16 MA's), (40, 22149), (Start: 42 @22161 has 2 MA's), (46, 22173), (47, 22182), (57, 22236), (59, 22248), (63, 22266), (69, 22293), (73, 22314), (85, 22377), (103, 22467), (104, 22470),

Gene: Mayonnaise_29 Start: 22082, Stop: 22528, Start Num: 28

Candidate Starts for Mayonnaise_29:

(16, 21860), (18, 21911), (Start: 28 @22082 has 183 MA's), (Start: 34 @22121 has 4 MA's), (Start: 36 @22133 has 16 MA's), (40, 22151), (Start: 42 @22163 has 2 MA's), (46, 22175), (47, 22184), (57, 22238), (59, 22250), (69, 22295), (73, 22316), (85, 22379), (103, 22469), (104, 22472),

Gene: Mazhar510_29 Start: 22083, Stop: 22529, Start Num: 28

Candidate Starts for Mazhar510_29:

(16, 21861), (18, 21912), (Start: 28 @22083 has 183 MA's), (Start: 34 @22122 has 4 MA's), (Start: 36 @22134 has 16 MA's), (40, 22152), (Start: 42 @22164 has 2 MA's), (46, 22176), (47, 22185), (52, 22206), (57, 22239), (59, 22251), (69, 22296), (73, 22317), (85, 22380), (103, 22470), (104, 22473),

Gene: Medusa_29 Start: 22083, Stop: 22529, Start Num: 28

Candidate Starts for Medusa_29:

(16, 21861), (18, 21912), (Start: 28 @22083 has 183 MA's), (Start: 34 @22122 has 4 MA's), (Start: 36 @22134 has 16 MA's), (40, 22152), (Start: 42 @22164 has 2 MA's), (46, 22176), (47, 22185), (57, 22239), (59, 22251), (69, 22296), (73, 22317), (85, 22380), (103, 22470), (104, 22473),

Gene: MeeZee_29 Start: 22082, Stop: 22528, Start Num: 28

Candidate Starts for MeeZee_29:

(16, 21860), (18, 21911), (Start: 28 @22082 has 183 MA's), (Start: 34 @22121 has 4 MA's), (Start: 36 @22133 has 16 MA's), (40, 22151), (Start: 42 @22163 has 2 MA's), (46, 22175), (47, 22184), (57, 22238), (59, 22250), (63, 22268), (69, 22295), (73, 22316), (85, 22379), (103, 22469), (104, 22472),

Gene: Megatron06_38 Start: 33409, Stop: 33888, Start Num: 28

Candidate Starts for Megatron06_38:

(22, 33316), (Start: 28 @33409 has 183 MA's), (29, 33421), (Start: 36 @33460 has 16 MA's), (45, 33499), (60, 33580), (63, 33595), (79, 33679), (80, 33682), (99, 33796),

Gene: Melvin_29 Start: 22082, Stop: 22528, Start Num: 28

Candidate Starts for Melvin_29:

(16, 21860), (18, 21911), (Start: 28 @22082 has 183 MA's), (Start: 34 @22121 has 4 MA's), (Start: 36 @22133 has 16 MA's), (40, 22151), (Start: 42 @22163 has 2 MA's), (46, 22175), (47, 22184), (57, 22238), (59, 22250), (69, 22295), (73, 22316), (85, 22379), (103, 22469), (104, 22472),

Gene: Millski_28 Start: 22085, Stop: 22531, Start Num: 28

Candidate Starts for Millski_28:

(16, 21863), (18, 21914), (Start: 28 @22085 has 183 MA's), (Start: 34 @22124 has 4 MA's), (Start: 36 @22136 has 16 MA's), (40, 22154), (Start: 42 @22166 has 2 MA's), (46, 22178), (47, 22187), (57, 22241), (59, 22253), (69, 22298), (73, 22319), (85, 22382), (103, 22472), (104, 22475),

Gene: Milly_31 Start: 26470, Stop: 26889, Start Num: 28

Candidate Starts for Milly_31:

(Start: 28 @26470 has 183 MA's), (31, 26497), (Start: 34 @26509 has 4 MA's), (40, 26539), (55, 26620), (59, 26638), (62, 26647), (64, 26659), (69, 26683), (78, 26710), (106, 26845), (109, 26857),

Gene: Miramae_29 Start: 22046, Stop: 22474, Start Num: 28

Candidate Starts for Miramae_29:

(Start: 28 @22046 has 183 MA's), (33, 22082), (Start: 34 @22085 has 4 MA's), (35, 22094), (55, 22187), (57, 22193), (61, 22211), (63, 22223), (69, 22250), (84, 22325), (85, 22328), (97, 22391), (102, 22412), (104, 22418),

Gene: Morpher26_29 Start: 22103, Stop: 22543, Start Num: 28

Candidate Starts for Morpher26_29:

(Start: 28 @22103 has 183 MA's), (30, 22118), (33, 22139), (Start: 36 @22154 has 16 MA's), (37, 22157), (40, 22172), (Start: 42 @22184 has 2 MA's), (46, 22196), (57, 22253), (59, 22265), (69, 22310), (73, 22331), (85, 22394),

Gene: Morrow_29 Start: 22085, Stop: 22531, Start Num: 28

Candidate Starts for Morrow_29:

(16, 21863), (18, 21914), (Start: 28 @22085 has 183 MA's), (Start: 34 @22124 has 4 MA's), (Start: 36 @22136 has 16 MA's), (40, 22154), (Start: 42 @22166 has 2 MA's), (46, 22178), (47, 22187), (57, 22241), (59, 22253), (63, 22271), (69, 22298), (73, 22319), (85, 22382), (103, 22472), (104, 22475),

Gene: Mufasa_32 Start: 26578, Stop: 26997, Start Num: 28

Candidate Starts for Mufasa_32:

(Start: 28 @26578 has 183 MA's), (31, 26605), (Start: 34 @26617 has 4 MA's), (40, 26647), (55, 26728), (57, 26734), (59, 26746), (64, 26767), (68, 26788), (69, 26791), (106, 26953), (109, 26965),

Gene: Mundrea_29 Start: 22067, Stop: 22495, Start Num: 28

Candidate Starts for Mundrea_29:

(Start: 28 @22067 has 183 MA's), (Start: 34 @22106 has 4 MA's), (35, 22115), (43, 22151), (55, 22208), (63, 22244), (69, 22271), (81, 22331), (84, 22346), (85, 22349), (91, 22373), (97, 22412), (102,

22433),

Gene: Nebs_29 Start: 22079, Stop: 22525, Start Num: 28

Candidate Starts for Nebs_29:

(16, 21857), (18, 21908), (Start: 28 @22079 has 183 MA's), (Start: 34 @22118 has 4 MA's), (Start: 36 @22130 has 16 MA's), (40, 22148), (Start: 42 @22160 has 2 MA's), (46, 22172), (47, 22181), (57, 22235), (59, 22247), (63, 22265), (69, 22292), (73, 22313), (85, 22376), (103, 22466), (104, 22469),

Gene: Nemo27_29 Start: 22081, Stop: 22527, Start Num: 28

Candidate Starts for Nemo27_29:

(16, 21859), (18, 21910), (Start: 28 @22081 has 183 MA's), (Start: 34 @22120 has 4 MA's), (Start: 36 @22132 has 16 MA's), (40, 22150), (Start: 42 @22162 has 2 MA's), (46, 22174), (47, 22183), (52, 22204), (57, 22237), (59, 22249), (69, 22294), (73, 22315), (85, 22378), (103, 22468), (104, 22471),

Gene: Noelle_29 Start: 22160, Stop: 22600, Start Num: 28

Candidate Starts for Noelle_29:

(Start: 28 @22160 has 183 MA's), (30, 22175), (33, 22196), (Start: 36 @22211 has 16 MA's), (Start: 42 @22241 has 2 MA's), (46, 22253), (57, 22310), (63, 22340), (69, 22367), (84, 22448), (85, 22451), (90, 22469), (93, 22487), (94, 22493),

Gene: NorthStar_29 Start: 22133, Stop: 22528, Start Num: 36

Candidate Starts for NorthStar_29:

(16, 21860), (18, 21911), (Start: 28 @22082 has 183 MA's), (Start: 34 @22121 has 4 MA's), (Start: 36 @22133 has 16 MA's), (40, 22151), (Start: 42 @22163 has 2 MA's), (46, 22175), (47, 22184), (57, 22238), (59, 22250), (69, 22295), (73, 22316), (85, 22379), (103, 22469), (104, 22472),

Gene: NotAPhaseMom_29 Start: 22137, Stop: 22532, Start Num: 36

Candidate Starts for NotAPhaseMom_29:

(16, 21864), (18, 21915), (Start: 28 @22086 has 183 MA's), (Start: 34 @22125 has 4 MA's), (Start: 36 @22137 has 16 MA's), (40, 22155), (Start: 42 @22167 has 2 MA's), (46, 22179), (47, 22188), (52, 22209), (57, 22242), (59, 22254), (69, 22299), (73, 22320), (85, 22383), (103, 22473), (104, 22476),

Gene: Nyxis_29 Start: 22025, Stop: 22471, Start Num: 28

Candidate Starts for Nyxis_29:

(16, 21803), (18, 21854), (Start: 28 @22025 has 183 MA's), (Start: 34 @22064 has 4 MA's), (Start: 36 @22076 has 16 MA's), (40, 22094), (Start: 42 @22106 has 2 MA's), (46, 22118), (47, 22127), (57, 22181), (63, 22211), (69, 22238), (73, 22259), (85, 22322), (103, 22412), (104, 22415),

Gene: OKCentral2016_30 Start: 22182, Stop: 22541, Start Num: 39

Candidate Starts for OKCentral2016_30:

(21, 22017), (23, 22071), (24, 22074), (Start: 28 @22116 has 183 MA's), (32, 22146), (Start: 39 @22182 has 1 MA's), (43, 22200), (49, 22224), (69, 22320), (85, 22395), (94, 22437), (97, 22458), (102, 22479), (103, 22482), (104, 22485),

Gene: OKaNui_30 Start: 22135, Stop: 22581, Start Num: 28

Candidate Starts for OKaNui_30:

(16, 21913), (18, 21964), (Start: 28 @22135 has 183 MA's), (Start: 34 @22174 has 4 MA's), (Start: 36 @22186 has 16 MA's), (40, 22204), (Start: 42 @22216 has 2 MA's), (46, 22228), (47, 22237), (57, 22291), (59, 22303), (69, 22348), (73, 22369), (85, 22432), (103, 22522), (104, 22525),

Gene: Oaker_36 Start: 33133, Stop: 33612, Start Num: 28

Candidate Starts for Oaker_36:

(22, 33040), (Start: 28 @33133 has 183 MA's), (29, 33145), (Start: 36 @33184 has 16 MA's), (45, 33223), (60, 33304), (63, 33319), (79, 33403), (80, 33406), (99, 33520),

Gene: Obama12_30 Start: 22398, Stop: 22844, Start Num: 28

Candidate Starts for Obama12_30:

(16, 22176), (18, 22227), (Start: 28 @22398 has 183 MA's), (30, 22413), (Start: 36 @22449 has 16 MA's), (Start: 42 @22479 has 2 MA's), (44, 22485), (46, 22491), (57, 22554), (63, 22584), (69, 22611), (73, 22632), (85, 22695), (102, 22782), (104, 22788),

Gene: Ohfah_29 Start: 22079, Stop: 22525, Start Num: 28

Candidate Starts for Ohfah_29:

(16, 21857), (18, 21908), (Start: 28 @22079 has 183 MA's), (Start: 34 @22118 has 4 MA's), (Start: 36 @22130 has 16 MA's), (40, 22148), (Start: 42 @22160 has 2 MA's), (46, 22172), (47, 22181), (57, 22235), (59, 22247), (63, 22265), (69, 22292), (73, 22313), (85, 22376), (103, 22466), (104, 22469),

Gene: Oscar_32 Start: 26898, Stop: 27320, Start Num: 28

Candidate Starts for Oscar_32:

(Start: 28 @26898 has 183 MA's), (Start: 34 @26937 has 4 MA's), (Start: 36 @26949 has 16 MA's), (40, 26967), (57, 27048), (69, 27105), (85, 27177), (86, 27180), (94, 27219),

Gene: Palestino_28 Start: 22082, Stop: 22528, Start Num: 28

Candidate Starts for Palestino_28:

(16, 21860), (18, 21911), (Start: 28 @22082 has 183 MA's), (Start: 34 @22121 has 4 MA's), (Start: 36 @22133 has 16 MA's), (40, 22151), (Start: 42 @22163 has 2 MA's), (46, 22175), (47, 22184), (57, 22238), (59, 22250), (63, 22268), (69, 22295), (73, 22316), (85, 22379), (103, 22469), (104, 22472),

Gene: PeaceMeal1_29 Start: 20550, Stop: 20975, Start Num: 28

Candidate Starts for PeaceMeal1_29:

(21, 20448), (24, 20505), (Start: 28 @20550 has 183 MA's), (33, 20586), (Start: 34 @20589 has 4 MA's), (35, 20598), (Start: 36 @20601 has 16 MA's), (37, 20604), (Start: 39 @20616 has 1 MA's), (43, 20634), (49, 20658), (53, 20673), (55, 20691), (69, 20754), (72, 20769), (85, 20829), (90, 20847), (97, 20892), (102, 20913), (103, 20916),

Gene: Peaches_29 Start: 22081, Stop: 22527, Start Num: 28

Candidate Starts for Peaches_29:

(16, 21859), (18, 21910), (Start: 28 @22081 has 183 MA's), (Start: 34 @22120 has 4 MA's), (Start: 36 @22132 has 16 MA's), (40, 22150), (Start: 42 @22162 has 2 MA's), (46, 22174), (47, 22183), (57, 22237), (59, 22249), (69, 22294), (73, 22315), (85, 22378), (103, 22468), (104, 22471),

Gene: Perplexer_29 Start: 22100, Stop: 22540, Start Num: 28

Candidate Starts for Perplexer_29:

(Start: 28 @22100 has 183 MA's), (30, 22115), (33, 22136), (Start: 36 @22151 has 16 MA's), (37, 22154), (40, 22169), (Start: 42 @22181 has 2 MA's), (46, 22193), (57, 22250), (59, 22262), (69, 22307), (73, 22328), (85, 22391),

Gene: PeterPeter_29 Start: 22082, Stop: 22528, Start Num: 28

Candidate Starts for PeterPeter_29:

(16, 21860), (18, 21911), (Start: 28 @22082 has 183 MA's), (Start: 34 @22121 has 4 MA's), (Start: 36 @22133 has 16 MA's), (40, 22151), (Start: 42 @22163 has 2 MA's), (46, 22175), (47, 22184), (57, 22238), (59, 22250), (69, 22295), (73, 22316), (85, 22379), (103, 22469), (104, 22472),

Gene: PetiteSangsue_29 Start: 22103, Stop: 22543, Start Num: 28

Candidate Starts for PetiteSangsue_29:

(Start: 28 @22103 has 183 MA's), (30, 22118), (33, 22139), (Start: 36 @22154 has 16 MA's), (37, 22157), (40, 22172), (Start: 42 @22184 has 2 MA's), (46, 22196), (57, 22253), (59, 22265), (69, 22310), (73, 22331), (85, 22394),

Gene: Phacado_29 Start: 22081, Stop: 22527, Start Num: 28

Candidate Starts for Phacado_29:

(16, 21859), (18, 21910), (Start: 28 @22081 has 183 MA's), (Start: 34 @22120 has 4 MA's), (Start: 36 @22132 has 16 MA's), (40, 22150), (Start: 42 @22162 has 2 MA's), (46, 22174), (47, 22183), (52, 22204), (57, 22237), (59, 22249), (69, 22294), (73, 22315), (85, 22378), (103, 22468), (104, 22471),

Gene: Phaded_33 Start: 24365, Stop: 24796, Start Num: 28

Candidate Starts for Phaded_33:

(Start: 28 @24365 has 183 MA's), (33, 24401), (Start: 39 @24431 has 1 MA's), (48, 24470), (55, 24506), (69, 24569), (85, 24650), (88, 24662), (94, 24692), (102, 24734), (103, 24737), (104, 24740),

Gene: Phelipe_29 Start: 22082, Stop: 22528, Start Num: 28

Candidate Starts for Phelipe_29:

(16, 21860), (18, 21911), (Start: 28 @22082 has 183 MA's), (Start: 34 @22121 has 4 MA's), (Start: 36 @22133 has 16 MA's), (40, 22151), (Start: 42 @22163 has 2 MA's), (46, 22175), (47, 22184), (52, 22205), (57, 22238), (59, 22250), (69, 22295), (73, 22316), (85, 22379), (103, 22469), (104, 22472),

Gene: Phighter1804_29 Start: 22060, Stop: 22503, Start Num: 28

Candidate Starts for Phighter1804_29:

(16, 21838), (18, 21889), (Start: 28 @22060 has 183 MA's), (Start: 34 @22099 has 4 MA's), (38, 22117), (Start: 42 @22141 has 2 MA's), (63, 22246), (69, 22273), (74, 22294), (81, 22336), (85, 22354), (91, 22378), (94, 22396),

Gene: Phontbonne_29 Start: 22026, Stop: 22472, Start Num: 28

Candidate Starts for Phontbonne_29:

(16, 21804), (18, 21855), (Start: 28 @22026 has 183 MA's), (Start: 34 @22065 has 4 MA's), (Start: 36 @22077 has 16 MA's), (40, 22095), (Start: 42 @22107 has 2 MA's), (46, 22119), (47, 22128), (57, 22182), (59, 22194), (63, 22212), (69, 22239), (73, 22260), (85, 22323), (102, 22410), (104, 22416),

Gene: Phreeze_36 Start: 32876, Stop: 33355, Start Num: 28

Candidate Starts for Phreeze_36:

(22, 32783), (Start: 28 @32876 has 183 MA's), (29, 32888), (Start: 36 @32927 has 16 MA's), (45, 32966), (60, 33047), (63, 33062), (80, 33149), (99, 33263),

Gene: Pine5_18 Start: 14642, Stop: 15085, Start Num: 25

Candidate Starts for Pine5_18:

(25, 14642), (26, 14663), (29, 14690), (37, 14729), (61, 14843), (62, 14846), (67, 14867), (71, 14873), (81, 14912), (92, 14963), (93, 14966), (100, 15014), (108, 15047), (111, 15068),

Gene: Pipcraft_29 Start: 22082, Stop: 22528, Start Num: 28

Candidate Starts for Pipcraft_29:

(16, 21860), (18, 21911), (Start: 28 @22082 has 183 MA's), (Start: 34 @22121 has 4 MA's), (Start: 36 @22133 has 16 MA's), (40, 22151), (Start: 42 @22163 has 2 MA's), (46, 22175), (47, 22184), (57, 22238), (59, 22250), (69, 22295), (73, 22316), (85, 22379), (103, 22469), (104, 22472),

Gene: Polymorphads_29 Start: 22079, Stop: 22525, Start Num: 28

Candidate Starts for Polymorphads_29:

(16, 21857), (18, 21908), (Start: 28 @22079 has 183 MA's), (Start: 34 @22118 has 4 MA's), (Start: 36 @22130 has 16 MA's), (40, 22148), (Start: 42 @22160 has 2 MA's), (46, 22172), (47, 22181), (57,

22235), (59, 22247), (63, 22265), (69, 22292), (73, 22313), (85, 22376), (103, 22466), (104, 22469),

Gene: Poompha_29 Start: 20548, Stop: 20973, Start Num: 28

Candidate Starts for Poompha_29:

(21, 20446), (24, 20503), (Start: 28 @20548 has 183 MA's), (33, 20584), (Start: 34 @20587 has 4 MA's), (35, 20596), (Start: 36 @20599 has 16 MA's), (37, 20602), (Start: 39 @20614 has 1 MA's), (43, 20632), (49, 20656), (53, 20671), (55, 20689), (69, 20752), (72, 20767), (85, 20827), (90, 20845), (97, 20890), (102, 20911), (103, 20914),

Gene: Predator_38 Start: 32067, Stop: 32546, Start Num: 28

Candidate Starts for Predator_38:

(Start: 28 @32067 has 183 MA's), (29, 32079), (30, 32082), (45, 32157), (55, 32217), (60, 32238), (69, 32280), (75, 32310), (85, 32361), (99, 32454),

Gene: Prudy_32 Start: 24267, Stop: 24695, Start Num: 28

Candidate Starts for Prudy_32:

(Start: 28 @24267 has 183 MA's), (32, 24297), (48, 24372), (57, 24414), (63, 24444), (65, 24453), (69, 24471), (85, 24549), (102, 24633), (103, 24636), (104, 24639),

Gene: Puissant_35 Start: 33364, Stop: 33843, Start Num: 28

Candidate Starts for Puissant_35:

(Start: 28 @33364 has 183 MA's), (Start: 36 @33415 has 16 MA's), (45, 33454), (60, 33535), (79, 33634), (84, 33655), (85, 33658), (99, 33751),

Gene: Pumbaa_29 Start: 22057, Stop: 22503, Start Num: 28

Candidate Starts for Pumbaa_29:

(16, 21835), (18, 21886), (Start: 28 @22057 has 183 MA's), (Start: 34 @22096 has 4 MA's), (Start: 36 @22108 has 16 MA's), (40, 22126), (Start: 42 @22138 has 2 MA's), (46, 22150), (47, 22159), (57, 22213), (59, 22225), (63, 22243), (69, 22270), (73, 22291), (85, 22354), (103, 22444), (104, 22447),

Gene: Rebeuca_31 Start: 22614, Stop: 23039, Start Num: 28

Candidate Starts for Rebeuca_31:

(21, 22509), (23, 22563), (24, 22566), (Start: 28 @22614 has 183 MA's), (Start: 34 @22653 has 4 MA's), (35, 22662), (Start: 39 @22680 has 1 MA's), (48, 22719), (49, 22722), (53, 22737), (55, 22755), (69, 22818), (85, 22893), (87, 22899), (97, 22956), (102, 22977), (104, 22983),

Gene: RedRock_33 Start: 24334, Stop: 24762, Start Num: 28

Candidate Starts for RedRock_33:

(Start: 28 @24334 has 183 MA's), (33, 24370), (35, 24382), (48, 24439), (55, 24475), (69, 24538), (85, 24616), (94, 24658), (97, 24679), (102, 24700), (104, 24706),

Gene: Refuge_33 Start: 25341, Stop: 25766, Start Num: 28

Candidate Starts for Refuge_33:

(Start: 28 @25341 has 183 MA's), (Start: 36 @25392 has 16 MA's), (44, 25428), (50, 25455), (69, 25548), (72, 25563), (85, 25620), (91, 25644), (94, 25662), (109, 25731),

Gene: Relief_29 Start: 22131, Stop: 22526, Start Num: 36

Candidate Starts for Relief_29:

(16, 21858), (18, 21909), (Start: 28 @22080 has 183 MA's), (Start: 34 @22119 has 4 MA's), (Start: 36 @22131 has 16 MA's), (40, 22149), (Start: 42 @22161 has 2 MA's), (46, 22173), (47, 22182), (52, 22203), (57, 22236), (59, 22248), (69, 22293), (73, 22314), (85, 22377), (103, 22467), (104, 22470),

Gene: RhynO_31 Start: 22595, Stop: 23020, Start Num: 28

Candidate Starts for RhynO_31:

(21, 22493), (23, 22547), (24, 22550), (Start: 28 @22595 has 183 MA's), (Start: 39 @22661 has 1 MA's), (55, 22736), (69, 22799), (85, 22874), (88, 22886), (95, 22919), (97, 22937), (102, 22958), (103, 22961),

Gene: RockieBear_28 Start: 22133, Stop: 22528, Start Num: 36

Candidate Starts for RockieBear_28:

(16, 21860), (18, 21911), (Start: 28 @22082 has 183 MA's), (Start: 34 @22121 has 4 MA's), (Start: 36 @22133 has 16 MA's), (40, 22151), (Start: 42 @22163 has 2 MA's), (46, 22175), (47, 22184), (57, 22238), (59, 22250), (69, 22295), (73, 22316), (85, 22379), (103, 22469), (104, 22472),

Gene: Romney_29 Start: 22082, Stop: 22528, Start Num: 28

Candidate Starts for Romney_29:

(16, 21860), (18, 21911), (Start: 28 @22082 has 183 MA's), (Start: 34 @22121 has 4 MA's), (Start: 36 @22133 has 16 MA's), (40, 22151), (Start: 42 @22163 has 2 MA's), (46, 22175), (47, 22184), (57, 22238), (59, 22250), (69, 22295), (73, 22316), (85, 22379), (103, 22469), (104, 22472),

Gene: Roosevelt_29 Start: 22082, Stop: 22528, Start Num: 28

Candidate Starts for Roosevelt_29:

(16, 21860), (18, 21911), (Start: 28 @22082 has 183 MA's), (Start: 34 @22121 has 4 MA's), (Start: 36 @22133 has 16 MA's), (40, 22151), (Start: 42 @22163 has 2 MA's), (46, 22175), (47, 22184), (57, 22238), (59, 22250), (69, 22295), (73, 22316), (85, 22379), (103, 22469), (104, 22472),

Gene: Rosa24_28 Start: 22057, Stop: 22503, Start Num: 28

Candidate Starts for Rosa24_28:

(16, 21835), (18, 21886), (Start: 28 @22057 has 183 MA's), (Start: 34 @22096 has 4 MA's), (38, 22114), (Start: 42 @22138 has 2 MA's), (63, 22243), (69, 22270), (74, 22291), (81, 22333), (85, 22351), (91, 22375), (94, 22393),

Gene: Rowdy_34 Start: 22506, Stop: 22931, Start Num: 28

Candidate Starts for Rowdy_34:

(21, 22404), (23, 22458), (24, 22461), (Start: 28 @22506 has 183 MA's), (Start: 39 @22572 has 1 MA's), (55, 22647), (57, 22653), (64, 22686), (69, 22710), (85, 22785), (88, 22797), (95, 22830), (97, 22848), (102, 22869), (103, 22872),

Gene: Ruin_29 Start: 22078, Stop: 22524, Start Num: 28

Candidate Starts for Ruin_29:

(16, 21856), (18, 21907), (Start: 28 @22078 has 183 MA's), (Start: 34 @22117 has 4 MA's), (Start: 36 @22129 has 16 MA's), (40, 22147), (Start: 42 @22159 has 2 MA's), (46, 22171), (47, 22180), (57, 22234), (59, 22246), (69, 22291), (73, 22312), (85, 22375), (103, 22465), (104, 22468),

Gene: Sabertooth_29 Start: 22079, Stop: 22525, Start Num: 28

Candidate Starts for Sabertooth_29:

(16, 21857), (18, 21908), (Start: 28 @22079 has 183 MA's), (Start: 34 @22118 has 4 MA's), (Start: 36 @22130 has 16 MA's), (40, 22148), (Start: 42 @22160 has 2 MA's), (46, 22172), (47, 22181), (57, 22235), (59, 22247), (69, 22292), (73, 22313), (85, 22376), (103, 22466), (104, 22469),

Gene: Sbash_28 Start: 25821, Stop: 26231, Start Num: 28

Candidate Starts for Sbash_28:

(6, 25332), (12, 25542), (13, 25548), (14, 25593), (Start: 28 @25821 has 183 MA's), (Start: 36 @25872 has 16 MA's), (Start: 39 @25887 has 1 MA's), (40, 25890), (41, 25899), (50, 25935), (59, 25983), (63, 26001), (70, 26028), (88, 26100), (104, 26178), (107, 26193), (110, 26208),

Gene: Scamp_29 Start: 22082, Stop: 22528, Start Num: 28

Candidate Starts for Scamp_29:

(16, 21860), (18, 21911), (Start: 28 @22082 has 183 MA's), (Start: 34 @22121 has 4 MA's), (Start: 36 @22133 has 16 MA's), (40, 22151), (Start: 42 @22163 has 2 MA's), (46, 22175), (47, 22184), (57, 22238), (59, 22250), (63, 22268), (69, 22295), (73, 22316), (85, 22379), (103, 22469), (104, 22472),

Gene: Scarlett_32 Start: 26899, Stop: 27321, Start Num: 28

Candidate Starts for Scarlett_32:

(Start: 28 @26899 has 183 MA's), (Start: 34 @26938 has 4 MA's), (Start: 36 @26950 has 16 MA's), (40, 26968), (57, 27049), (69, 27106), (85, 27178), (86, 27181), (94, 27220),

Gene: SenorClean_29 Start: 22133, Stop: 22528, Start Num: 36

Candidate Starts for SenorClean_29:

(16, 21860), (18, 21911), (Start: 28 @22082 has 183 MA's), (Start: 34 @22121 has 4 MA's), (Start: 36 @22133 has 16 MA's), (40, 22151), (Start: 42 @22163 has 2 MA's), (46, 22175), (47, 22184), (57, 22238), (59, 22250), (69, 22295), (73, 22316), (85, 22379), (103, 22469), (104, 22472),

Gene: Severus_29 Start: 20548, Stop: 20973, Start Num: 28

Candidate Starts for Severus_29:

(21, 20446), (24, 20503), (Start: 28 @20548 has 183 MA's), (33, 20584), (Start: 34 @20587 has 4 MA's), (35, 20596), (Start: 36 @20599 has 16 MA's), (37, 20602), (Start: 39 @20614 has 1 MA's), (43, 20632), (49, 20656), (53, 20671), (55, 20689), (69, 20752), (72, 20767), (85, 20827), (90, 20845), (97, 20890), (102, 20911), (103, 20914),

Gene: Shaka_29 Start: 22082, Stop: 22528, Start Num: 28

Candidate Starts for Shaka_29:

(16, 21860), (18, 21911), (Start: 28 @22082 has 183 MA's), (Start: 34 @22121 has 4 MA's), (Start: 36 @22133 has 16 MA's), (40, 22151), (Start: 42 @22163 has 2 MA's), (46, 22175), (47, 22184), (57, 22238), (59, 22250), (69, 22295), (73, 22316), (85, 22379), (103, 22469), (104, 22472),

Gene: Shapes_34 Start: 22506, Stop: 22931, Start Num: 28

Candidate Starts for Shapes_34:

(21, 22404), (23, 22458), (24, 22461), (Start: 28 @22506 has 183 MA's), (Start: 39 @22572 has 1 MA's), (55, 22647), (57, 22653), (64, 22686), (69, 22710), (85, 22785), (88, 22797), (95, 22830), (97, 22848), (102, 22869), (103, 22872),

Gene: SheldonCooper_30 Start: 22448, Stop: 22843, Start Num: 36

Candidate Starts for SheldonCooper_30:

(16, 22175), (18, 22226), (Start: 28 @22397 has 183 MA's), (30, 22412), (Start: 36 @22448 has 16 MA's), (Start: 42 @22478 has 2 MA's), (44, 22484), (46, 22490), (57, 22553), (63, 22583), (69, 22610), (73, 22631), (85, 22694), (102, 22781), (104, 22787),

Gene: Shygu2_29 Start: 22094, Stop: 22534, Start Num: 28

Candidate Starts for Shygu2_29:

(Start: 28 @22094 has 183 MA's), (30, 22109), (33, 22130), (35, 22142), (Start: 36 @22145 has 16 MA's), (37, 22148), (40, 22163), (Start: 42 @22175 has 2 MA's), (46, 22187), (57, 22244), (59, 22256), (69, 22301), (73, 22322), (85, 22385),

Gene: Skipitt_29 Start: 22118, Stop: 22525, Start Num: 34

Candidate Starts for Skipitt_29:

(16, 21857), (18, 21908), (Start: 28 @22079 has 183 MA's), (Start: 34 @22118 has 4 MA's), (Start: 36 @22130 has 16 MA's), (40, 22148), (Start: 42 @22160 has 2 MA's), (46, 22172), (47, 22181), (57, 22235), (59, 22247), (69, 22292), (73, 22313), (85, 22376), (103, 22466), (104, 22469),

Gene: Sparky_29 Start: 27110, Stop: 27520, Start Num: 28

Candidate Starts for Sparky_29:

(7, 26702), (12, 26831), (13, 26837), (14, 26882), (Start: 28 @27110 has 183 MA's), (Start: 36 @27161 has 16 MA's), (Start: 39 @27176 has 1 MA's), (40, 27179), (41, 27188), (50, 27224), (59, 27272), (70, 27317), (101, 27458), (104, 27467), (107, 27482), (110, 27497),

Gene: Sparxx_29 Start: 22080, Stop: 22526, Start Num: 28

Candidate Starts for Sparxx_29:

(16, 21858), (18, 21909), (Start: 28 @22080 has 183 MA's), (Start: 34 @22119 has 4 MA's), (Start: 36 @22131 has 16 MA's), (40, 22149), (Start: 42 @22161 has 2 MA's), (46, 22173), (47, 22182), (57, 22236), (59, 22248), (69, 22293), (73, 22314), (85, 22377), (103, 22467), (104, 22470),

Gene: Spino_29 Start: 22082, Stop: 22528, Start Num: 28

Candidate Starts for Spino_29:

(16, 21860), (18, 21911), (Start: 28 @22082 has 183 MA's), (Start: 34 @22121 has 4 MA's), (Start: 36 @22133 has 16 MA's), (40, 22151), (Start: 42 @22163 has 2 MA's), (46, 22175), (47, 22184), (57, 22238), (59, 22250), (69, 22295), (73, 22316), (85, 22379), (103, 22469), (104, 22472),

Gene: Stasia_30 Start: 22574, Stop: 22963, Start Num: 36

Candidate Starts for Stasia_30:

(Start: 28 @22523 has 183 MA's), (30, 22538), (33, 22559), (Start: 36 @22574 has 16 MA's), (Start: 42 @22604 has 2 MA's), (46, 22616), (57, 22673), (63, 22703), (69, 22730), (85, 22814), (88, 22826), (90, 22832), (93, 22850), (102, 22901),

Gene: SteMason_28 Start: 22133, Stop: 22528, Start Num: 36

Candidate Starts for SteMason_28:

(16, 21860), (18, 21911), (Start: 28 @22082 has 183 MA's), (Start: 34 @22121 has 4 MA's), (Start: 36 @22133 has 16 MA's), (40, 22151), (Start: 42 @22163 has 2 MA's), (46, 22175), (47, 22184), (52, 22205), (57, 22238), (59, 22250), (69, 22295), (73, 22316), (85, 22379), (103, 22469), (104, 22472),

Gene: Steamy_31 Start: 23486, Stop: 23908, Start Num: 28

Candidate Starts for Steamy_31:

(Start: 28 @23486 has 183 MA's), (33, 23522), (Start: 34 @23525 has 4 MA's), (44, 23573), (69, 23693), (85, 23765), (96, 23825), (103, 23855),

Gene: Stink_30 Start: 22383, Stop: 22811, Start Num: 28

Candidate Starts for Stink_30:

(Start: 28 @22383 has 183 MA's), (33, 22419), (Start: 34 @22422 has 4 MA's), (35, 22431), (48, 22488), (55, 22524), (57, 22530), (61, 22548), (63, 22560), (69, 22587), (84, 22662), (85, 22665), (95, 22710), (97, 22728), (102, 22749), (104, 22755),

Gene: Strobilo_31 Start: 26470, Stop: 26889, Start Num: 28

Candidate Starts for Strobilo_31:

(Start: 28 @26470 has 183 MA's), (31, 26497), (Start: 34 @26509 has 4 MA's), (40, 26539), (45, 26560), (55, 26620), (59, 26638), (62, 26647), (64, 26659), (69, 26683), (78, 26710), (81, 26725), (106, 26845), (109, 26857),

Gene: Stuck_32 Start: 26166, Stop: 26576, Start Num: 28

Candidate Starts for Stuck_32:

(1, 24354), (2, 24693), (3, 24939), (4, 25155), (5, 25278), (6, 25677), (12, 25887), (13, 25893), (14, 25938), (Start: 28 @26166 has 183 MA's), (Start: 36 @26217 has 16 MA's), (Start: 39 @26232 has 1 MA's), (40, 26235), (50, 26280), (59, 26328), (66, 26358), (70, 26373), (88, 26445), (104, 26523), (107,

26538), (110, 26553),

Gene: Sultana_29 Start: 22083, Stop: 22529, Start Num: 28

Candidate Starts for Sultana_29:

(16, 21861), (18, 21912), (Start: 28 @22083 has 183 MA's), (Start: 34 @22122 has 4 MA's), (Start: 36 @22134 has 16 MA's), (40, 22152), (Start: 42 @22164 has 2 MA's), (46, 22176), (47, 22185), (57, 22239), (59, 22251), (69, 22296), (73, 22317), (85, 22380), (103, 22470), (104, 22473),

Gene: TM4_33 Start: 26676, Stop: 27095, Start Num: 28

Candidate Starts for TM4_33:

(Start: 28 @26676 has 183 MA's), (31, 26703), (Start: 34 @26715 has 4 MA's), (40, 26745), (55, 26826), (57, 26832), (62, 26853), (64, 26865), (69, 26889), (106, 27051), (109, 27063),

Gene: Taquarus_29 Start: 22085, Stop: 22531, Start Num: 28

Candidate Starts for Taquarus_29:

(16, 21863), (18, 21914), (Start: 28 @22085 has 183 MA's), (Start: 34 @22124 has 4 MA's), (Start: 36 @22136 has 16 MA's), (40, 22154), (Start: 42 @22166 has 2 MA's), (46, 22178), (47, 22187), (52, 22208), (57, 22241), (59, 22253), (69, 22298), (73, 22319), (85, 22382), (103, 22472), (104, 22475),

Gene: Thanksgivukkah_29 Start: 22086, Stop: 22529, Start Num: 28

Candidate Starts for Thanksgivukkah_29:

(16, 21864), (18, 21915), (Start: 28 @22086 has 183 MA's), (Start: 34 @22125 has 4 MA's), (38, 22143), (Start: 42 @22167 has 2 MA's), (57, 22242), (63, 22272), (69, 22299), (74, 22320), (81, 22362), (85, 22380), (91, 22404), (94, 22422),

Gene: Thumb_36 Start: 32873, Stop: 33352, Start Num: 28

Candidate Starts for Thumb_36:

(22, 32780), (Start: 28 @32873 has 183 MA's), (29, 32885), (Start: 36 @32924 has 16 MA's), (45, 32963), (60, 33044), (63, 33059), (79, 33143), (80, 33146), (99, 33260),

Gene: Timshel_30 Start: 25135, Stop: 25563, Start Num: 28

Candidate Starts for Timshel_30:

(Start: 28 @25135 has 183 MA's), (30, 25150), (33, 25171), (Start: 34 @25174 has 4 MA's), (35, 25183), (45, 25225), (48, 25240), (58, 25291), (63, 25312), (69, 25339), (85, 25417), (88, 25429), (90, 25435), (91, 25441), (97, 25480), (102, 25501),

Gene: TinaFeyge_29 Start: 22079, Stop: 22525, Start Num: 28

Candidate Starts for TinaFeyge_29:

(16, 21857), (18, 21908), (Start: 28 @22079 has 183 MA's), (Start: 34 @22118 has 4 MA's), (Start: 36 @22130 has 16 MA's), (40, 22148), (Start: 42 @22160 has 2 MA's), (46, 22172), (47, 22181), (57, 22235), (59, 22247), (69, 22292), (73, 22313), (85, 22376), (103, 22466), (104, 22469),

Gene: Tinybot_28 Start: 22062, Stop: 22505, Start Num: 28

Candidate Starts for Tinybot_28:

(16, 21840), (18, 21891), (Start: 28 @22062 has 183 MA's), (Start: 34 @22101 has 4 MA's), (38, 22119), (Start: 42 @22143 has 2 MA's), (63, 22248), (69, 22275), (74, 22296), (81, 22338), (85, 22356), (91, 22380), (94, 22398),

Gene: TiroTheta9_29 Start: 22079, Stop: 22525, Start Num: 28

Candidate Starts for TiroTheta9_29:

(16, 21857), (18, 21908), (Start: 28 @22079 has 183 MA's), (Start: 34 @22118 has 4 MA's), (Start: 36 @22130 has 16 MA's), (40, 22148), (Start: 42 @22160 has 2 MA's), (46, 22172), (47, 22181), (57, 22235), (59, 22247), (69, 22292), (73, 22313), (85, 22376), (103, 22466), (104, 22469),

Gene: Topanga_30 Start: 22541, Stop: 22963, Start Num: 28

Candidate Starts for Topanga_30:

(21, 22439), (23, 22493), (24, 22496), (Start: 28 @22541 has 183 MA's), (32, 22571), (33, 22577), (Start: 36 @22592 has 16 MA's), (38, 22598), (48, 22646), (53, 22664), (69, 22745), (72, 22760), (85, 22820), (93, 22856), (94, 22862), (102, 22904), (103, 22907), (104, 22910),

Gene: Trike_28 Start: 20556, Stop: 20981, Start Num: 28

Candidate Starts for Trike_28:

(21, 20454), (24, 20511), (Start: 28 @20556 has 183 MA's), (33, 20592), (Start: 34 @20595 has 4 MA's), (35, 20604), (Start: 36 @20607 has 16 MA's), (37, 20610), (Start: 39 @20622 has 1 MA's), (43, 20640), (49, 20664), (53, 20679), (55, 20697), (64, 20736), (69, 20760), (72, 20775), (85, 20835), (90, 20853), (97, 20898), (102, 20919), (103, 20922),

Gene: Tristan_31 Start: 24040, Stop: 24468, Start Num: 28

Candidate Starts for Tristan_31:

(Start: 28 @24040 has 183 MA's), (33, 24076), (35, 24088), (Start: 39 @24106 has 1 MA's), (48, 24145), (55, 24181), (69, 24244), (85, 24322), (88, 24334), (91, 24346), (102, 24406), (103, 24409), (104, 24412),

Gene: TroyPia_29 Start: 22082, Stop: 22528, Start Num: 28

Candidate Starts for TroyPia_29:

(16, 21860), (18, 21911), (Start: 28 @22082 has 183 MA's), (Start: 34 @22121 has 4 MA's), (Start: 36 @22133 has 16 MA's), (40, 22151), (Start: 42 @22163 has 2 MA's), (46, 22175), (47, 22184), (57, 22238), (59, 22250), (69, 22295), (73, 22316), (85, 22379), (103, 22469), (104, 22472),

Gene: Twister_30 Start: 22447, Stop: 22872, Start Num: 28

Candidate Starts for Twister_30:

(21, 22342), (23, 22396), (24, 22399), (Start: 28 @22447 has 183 MA's), (Start: 34 @22486 has 4 MA's), (35, 22495), (Start: 39 @22513 has 1 MA's), (48, 22552), (49, 22555), (53, 22570), (55, 22588), (69, 22651), (85, 22726), (87, 22732), (97, 22789), (102, 22810), (104, 22816),

Gene: TygerBlood_29 Start: 22133, Stop: 22528, Start Num: 36

Candidate Starts for TygerBlood_29:

(16, 21860), (18, 21911), (Start: 28 @22082 has 183 MA's), (Start: 34 @22121 has 4 MA's), (Start: 36 @22133 has 16 MA's), (40, 22151), (Start: 42 @22163 has 2 MA's), (46, 22175), (47, 22184), (57, 22238), (59, 22250), (69, 22295), (73, 22316), (85, 22379), (103, 22469), (104, 22472),

Gene: Ulysses_28 Start: 21803, Stop: 22246, Start Num: 28

Candidate Starts for Ulysses_28:

(16, 21581), (18, 21632), (Start: 28 @21803 has 183 MA's), (Start: 34 @21842 has 4 MA's), (38, 21860), (Start: 42 @21884 has 2 MA's), (63, 21989), (69, 22016), (74, 22037), (81, 22079), (85, 22097), (91, 22121), (94, 22139),

Gene: WalterMcMickey_30 Start: 22447, Stop: 22872, Start Num: 28

Candidate Starts for WalterMcMickey_30:

(21, 22342), (23, 22396), (24, 22399), (Start: 28 @22447 has 183 MA's), (Start: 34 @22486 has 4 MA's), (35, 22495), (Start: 39 @22513 has 1 MA's), (48, 22552), (49, 22555), (53, 22570), (55, 22588), (69, 22651), (85, 22726), (87, 22732), (97, 22789), (102, 22810), (104, 22816),

Gene: Wander_29 Start: 22082, Stop: 22528, Start Num: 28

Candidate Starts for Wander_29:

(16, 21860), (18, 21911), (Start: 28 @22082 has 183 MA's), (Start: 34 @22121 has 4 MA's), (Start: 36 @22133 has 16 MA's), (40, 22151), (Start: 42 @22163 has 2 MA's), (46, 22175), (47, 22184), (57, 22238), (59, 22250), (69, 22295), (73, 22316), (85, 22379), (103, 22469), (104, 22472),

Gene: Wilbur_29 Start: 22082, Stop: 22528, Start Num: 28

Candidate Starts for Wilbur_29:

(16, 21860), (18, 21911), (Start: 28 @22082 has 183 MA's), (Start: 34 @22121 has 4 MA's), (Start: 36 @22133 has 16 MA's), (40, 22151), (Start: 42 @22163 has 2 MA's), (46, 22175), (47, 22184), (57, 22238), (59, 22250), (69, 22295), (73, 22316), (85, 22379), (103, 22469), (104, 22472),

Gene: Wile_29 Start: 22113, Stop: 22553, Start Num: 28

Candidate Starts for Wile_29:

(Start: 28 @22113 has 183 MA's), (30, 22128), (33, 22149), (Start: 36 @22164 has 16 MA's), (37, 22167), (40, 22182), (Start: 42 @22194 has 2 MA's), (46, 22206), (57, 22263), (59, 22275), (69, 22320), (73, 22341), (85, 22404),

Gene: Wizard007_29 Start: 22084, Stop: 22530, Start Num: 28

Candidate Starts for Wizard007_29:

(16, 21862), (18, 21913), (Start: 28 @22084 has 183 MA's), (Start: 34 @22123 has 4 MA's), (Start: 36 @22135 has 16 MA's), (40, 22153), (Start: 42 @22165 has 2 MA's), (46, 22177), (47, 22186), (57, 22240), (59, 22252), (69, 22297), (73, 22318), (85, 22381), (103, 22471), (104, 22474),

Gene: Xena_29 Start: 22100, Stop: 22540, Start Num: 28

Candidate Starts for Xena_29:

(Start: 28 @22100 has 183 MA's), (30, 22115), (33, 22136), (Start: 36 @22151 has 16 MA's), (37, 22154), (40, 22169), (Start: 42 @22181 has 2 MA's), (46, 22193), (57, 22250), (59, 22262), (69, 22307), (73, 22328), (85, 22391),

Gene: YoSam321_29 Start: 22079, Stop: 22525, Start Num: 28

Candidate Starts for YoSam321_29:

(16, 21857), (18, 21908), (Start: 28 @22079 has 183 MA's), (Start: 34 @22118 has 4 MA's), (Start: 36 @22130 has 16 MA's), (40, 22148), (Start: 42 @22160 has 2 MA's), (46, 22172), (47, 22181), (57, 22235), (59, 22247), (69, 22292), (73, 22313), (85, 22376), (103, 22466), (104, 22469),

Gene: ZoeJ_31 Start: 26475, Stop: 26894, Start Num: 28

Candidate Starts for ZoeJ_31:

(Start: 28 @26475 has 183 MA's), (31, 26502), (Start: 34 @26514 has 4 MA's), (40, 26544), (55, 26625), (59, 26643), (62, 26652), (64, 26664), (69, 26688), (78, 26715), (106, 26850), (109, 26862),