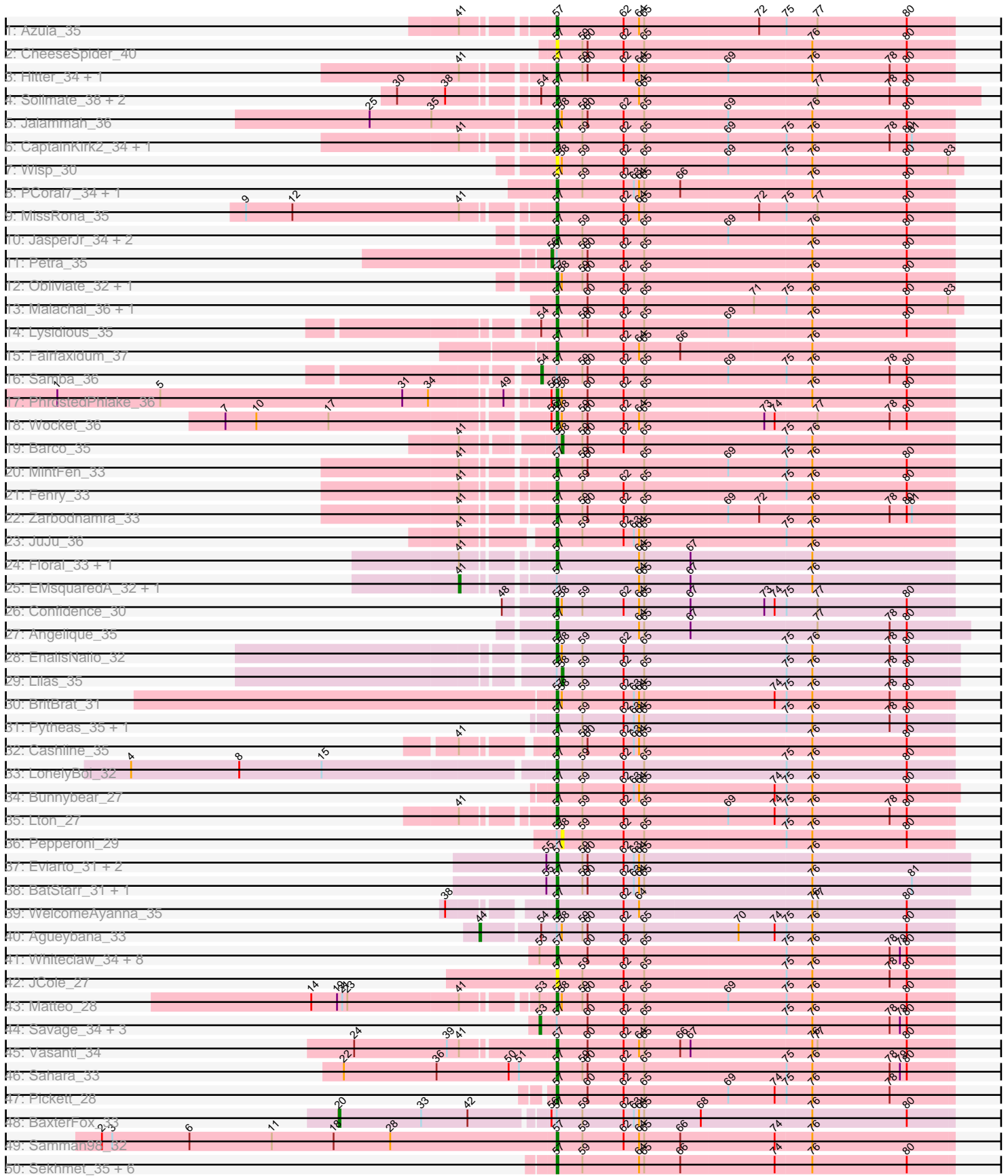
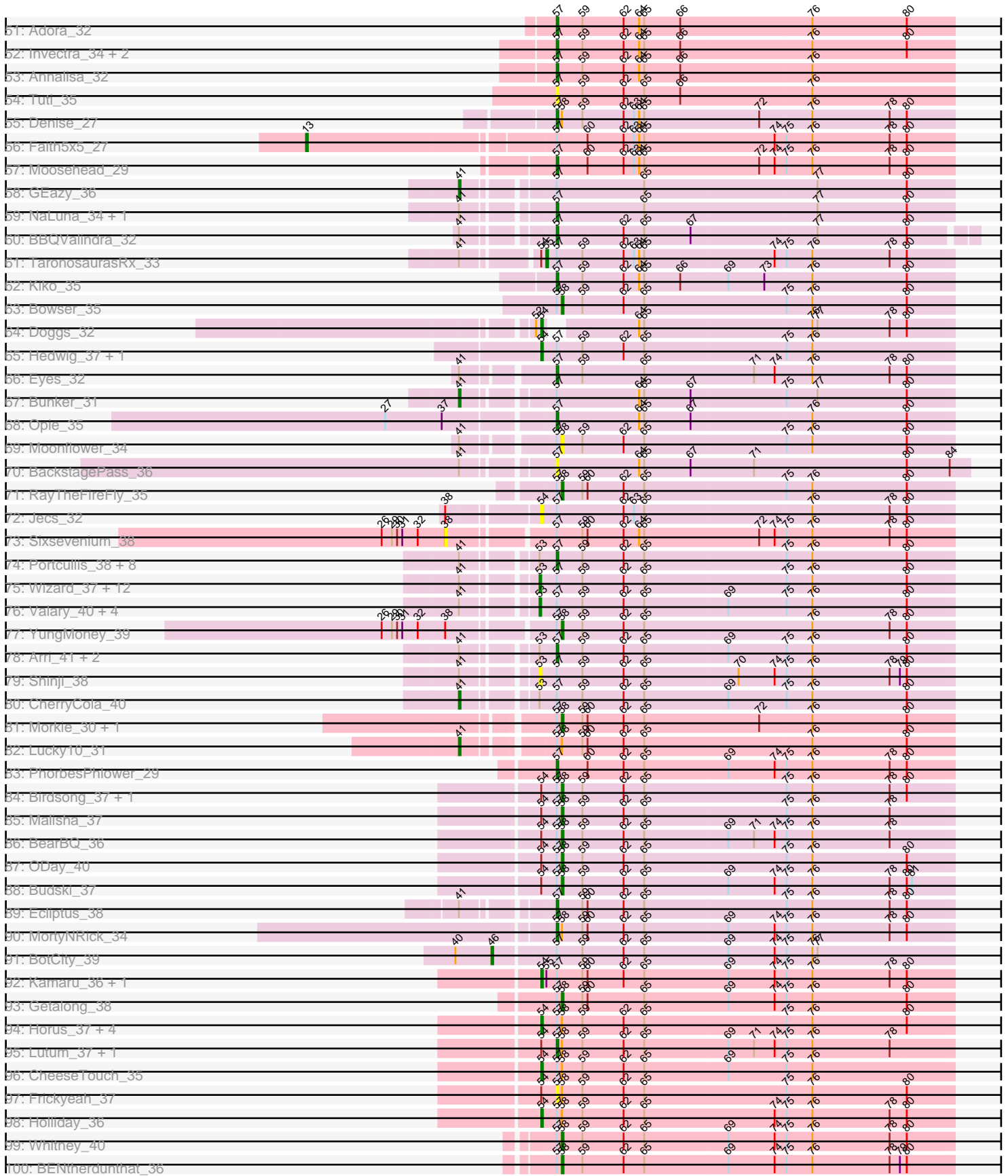


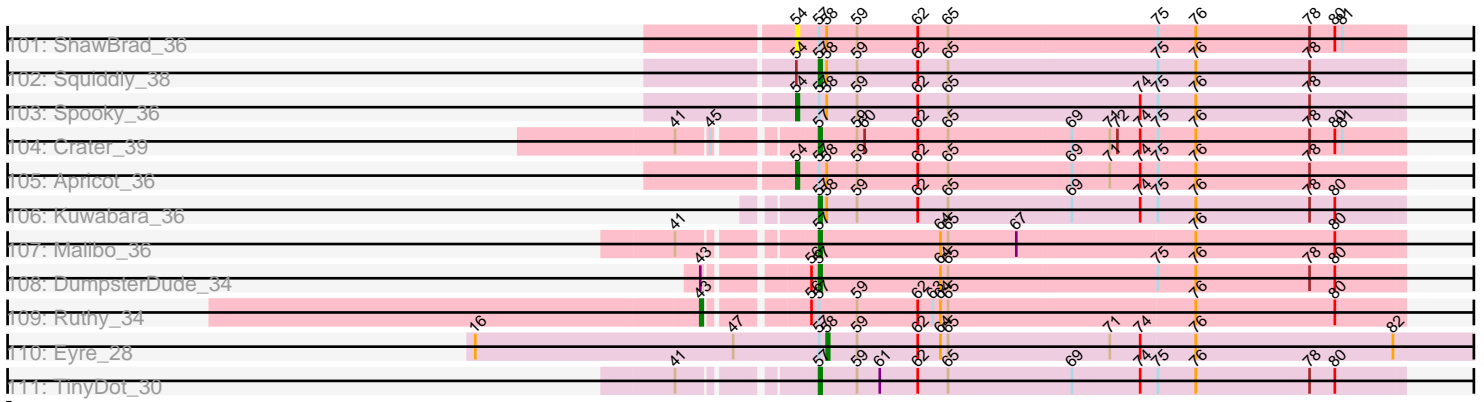
Pham 296276



Pham 296276



Pham 296276



Note: Tracks are now grouped by subcluster and scaled. Switching in subcluster is indicated by changes in track color. Track scale is now set by default to display the region 30 bp upstream of start 1 to 30 bp downstream of the last possible start. If this default region is judged to be packed too tightly with annotated starts, the track will be further scaled to only show that region of the ORF with annotated starts. This action will be indicated by adding "Zoomed" to the title. For starts, yellow indicates the location of called starts comprised solely of Glimmer/GeneMark auto-annotations, green indicates the location of called starts with at least 1 manual gene annotation.

Pham 296276 Report

This analysis was run 04/25/26 on database version 644.

Pham number 296276 has 181 members, 20 are drafts.

Phages represented in each track:

- Track 1 : Azula_35
- Track 2 : CheeseSpider_40
- Track 3 : Hitter_34, Archis_36
- Track 4 : Soilmate_38, CarolAnn_37, Blino_37
- Track 5 : Jalammah_36
- Track 6 : CaptainKirk2_34, Delian_35
- Track 7 : Wisp_30
- Track 8 : PCoral7_34, Toast_34
- Track 9 : MissRona_35
- Track 10 : JasperJr_34, UmaThurman_31, Guacamole_34
- Track 11 : Petra_35
- Track 12 : Obliviate_32, ZiggyZoo_34
- Track 13 : Malachai_36, Begonia_36
- Track 14 : Lysidious_35
- Track 15 : Fairfaxidum_37
- Track 16 : Samba_36
- Track 17 : PhrostedPhlake_36
- Track 18 : Wocket_36
- Track 19 : Barco_35
- Track 20 : MintFen_33
- Track 21 : Fenry_33
- Track 22 : Zarbodnamra_33
- Track 23 : JuJu_36
- Track 24 : Floral_33, Pollux_34
- Track 25 : EMSquaredA_32, Marteena_32
- Track 26 : Confidence_30
- Track 27 : Angelique_35
- Track 28 : EnalisNailo_32
- Track 29 : Lilas_35
- Track 30 : BritBrat_31
- Track 31 : Pytheas_35, Jablanski_35
- Track 32 : Cashline_35
- Track 33 : LonelyBoi_32
- Track 34 : Bunnybear_27
- Track 35 : Lton_27
- Track 36 : Pepperoni_29
- Track 37 : Eviarto_31, Nymphadora_31, TimTam_31

- Track 38 : BatStarr_31, Bosnia_31
- Track 39 : WelcomeAyanna_35
- Track 40 : Agueybana_33
- Track 41 : Whiteclaw_34, Jalleen_33, Mocha12_34, Clap_34, Haley23_34, GemG_34, Cynthia_34, TuertoX_34, Gizermo_34
- Track 42 : JCole_27
- Track 43 : Matteo_28
- Track 44 : Savage_34, Sproutie_34, Yinzer_33, Ebert_35
- Track 45 : Vasanti_34
- Track 46 : Sahara_33
- Track 47 : Pickett_28
- Track 48 : BaxterFox_33
- Track 49 : Samman98_32
- Track 50 : Sekhmet_35, DobbysSock_28, Rizz_34, Dorito_30, MichaelScott_33, Clark_33, Beenie_28
- Track 51 : Adora_32
- Track 52 : Invectra_34, Thimann_32, PhriskyACE_33
- Track 53 : Annalisa_32
- Track 54 : Tuti_35
- Track 55 : Denise_27
- Track 56 : Faith5x5_27
- Track 57 : Moosehead_29
- Track 58 : GEazy_36
- Track 59 : NaLuna_34, HannahD_34
- Track 60 : BBQValindra_32
- Track 61 : TaronosaurusRx_33
- Track 62 : Kiko_35
- Track 63 : Bowser_35
- Track 64 : Doggs_32
- Track 65 : Hedwig_37, DirtyBoi_35
- Track 66 : Eyes_32
- Track 67 : Bunker_31
- Track 68 : Opie_35
- Track 69 : Moonflower_34
- Track 70 : BackstagePass_36
- Track 71 : RayTheFireFly_35
- Track 72 : Jecs_32
- Track 73 : Sixsevenium_38
- Track 74 : Portcullis_38, PullumCavea_37, Jambalaya_37, Egi03_38, Phlop_37, Fireball_38, CoveyB_40, Togo_37, Savbucketdawg_37
- Track 75 : Wizard_37, TillyBobJoe_37, Gezellig_37, Halo3_38, JohnPork_38, KimmyK_39, Nubi_38, Danyall_40, Twister6_40, Salvador_37, Evamon_37, SmokingBunny_37, Sendy_38
- Track 76 : Valary_40, Barb_40, PinkCoffee_40, ClamChowder_40, RogerDodger_41
- Track 77 : YungMoney_39
- Track 78 : Arri_41, VanDeWege_41, Fugax_41
- Track 79 : Shinji_38
- Track 80 : CherryCola_40
- Track 81 : Morkie_30, OneDirection_28
- Track 82 : Lucky10_31
- Track 83 : PhorbesPhlower_29
- Track 84 : Birdsong_37, Phabuloso_34
- Track 85 : Malisha_37

- Track 86 : BearBQ_36
- Track 87 : ODay_40
- Track 88 : Budski_37
- Track 89 : Ecliptus_38
- Track 90 : MortyNRick_34
- Track 91 : BotCity_39
- Track 92 : Kamaru_36, LitninMcQueen_35
- Track 93 : Getalong_38
- Track 94 : Horus_37, Phistory_37, Asapag_37, Leroy_37, Periwinkle_40
- Track 95 : Lutum_37, Kenna_36
- Track 96 : CheeseTouch_35
- Track 97 : Frickyeah_37
- Track 98 : Holliday_36
- Track 99 : Whitney_40
- Track 100 : BENtherdunthat_36
- Track 101 : ShawBrad_36
- Track 102 : Squiddly_38
- Track 103 : Spooky_36
- Track 104 : Crater_39
- Track 105 : Apricot_36
- Track 106 : Kuwabara_36
- Track 107 : Malibo_36
- Track 108 : DumpsterDude_34
- Track 109 : Ruthy_34
- Track 110 : Eyre_28
- Track 111 : TinyDot_30

Summary of Final Annotations (See graph section above for start numbers):

The start number called the most often in the published annotations is 57, it was called in 97 of the 161 non-draft genes in the pham.

Genes that call this "Most Annotated" start:

• Adora_32, Angelique_35, Annalisa_32, Archis_36, Arri_41, Azula_35, BBQValindra_32, BackstagePass_36, BatStarr_31, Beenie_28, Begonia_36, Blino_37, Bosnia_31, BritBrat_31, Bunnybear_27, CaptainKirk2_34, CarolAnn_37, Cashline_35, CheeseSpider_40, Clap_34, Clark_33, Confidence_30, CoveyB_40, Crater_39, Cynthia_34, Delian_35, Denise_27, DobbysSock_28, Dorito_30, DumpsterDude_34, Ecliptus_38, Egi03_38, EnalisNailo_32, Eviarto_31, Eyes_32, Fairfaxidum_37, Fenry_33, Fireball_38, Floral_33, Frickyeah_37, Fugax_41, GemG_34, Gizermo_34, Guacamole_34, Haley23_34, HannahD_34, Hitter_34, Invecetra_34, JCole_27, Jablanski_35, Jalammah_36, Jalleen_33, Jambalaya_37, JasperJr_34, JuJu_36, Kenna_36, Kiko_35, Kuwabara_36, LonelyBoi_32, Lton_27, Lutum_37, Lysidious_35, Malachai_36, Malibo_36, Matteo_28, MichaelScott_33, MintFen_33, MissRona_35, Mocha12_34, Moosehead_29, MortyNRick_34, NaLuna_34, Nymphadora_31, Obliviate_32, Opie_35, PCoral7_34, Phlop_37, PhorbesPhlower_29, PhriskyACE_33, PhrostedPhlake_36, Pickett_28, Pollux_34, Portcullis_38, PullumCavea_37, Pytheas_35, Rizz_34, Sahara_33, Samman98_32, Savbucketdawg_37, Sekhmet_35, Soilmate_38, Squiddly_38, Thimann_32, TimTam_31, TinyDot_30, Toast_34, Togo_37, TuertoX_34, Tuti_35,

UmaThurman_31, VanDeWege_41, Vasanti_34, WelcomeAyanna_35, Whiteclaw_34, Wisp_30, Wocket_36, Zarbodnamra_33, ZiggyZoo_34,

Genes that have the "Most Annotated" start but do not call it:

- Agueybana_33, Apricot_36, Asapag_37, BENtherdunthat_36, Barb_40, Barco_35, BaxterFox_33, BearBQ_36, Birdsong_37, BotCity_39, Bowser_35, Budski_37, Bunker_31, CheeseTouch_35, CherryCola_40, ClamChowder_40, Danyall_40, DirtyBoi_35, EMSquaredA_32, Ebert_35, Evamon_37, Eyre_28, Faith5x5_27, GEazy_36, Getalong_38, Gezellig_37, Halo3_38, Hedwig_37, Holliday_36, Horus_37, Jecs_32, JohnPork_38, Kamaru_36, KimmyK_39, Leroy_37, Lilas_35, LitninMcQueen_35, Lucky10_31, Malisha_37, Marteena_32, Moonflower_34, Morkie_30, Nubi_38, ODay_40, OneDirection_28, Pepperoni_29, Periwinkle_40, Petra_35, Phabuloso_34, Phistory_37, PinkCoffee_40, RayTheFireFly_35, RogerDodger_41, Ruthy_34, Salvador_37, Samba_36, Savage_34, Sendy_38, ShawBrad_36, Shinji_38, Sixsevenium_38, SmokingBunny_37, Spooky_36, Sproutie_34, TaronosaurusRx_33, TillyBobJoe_37, Twister6_40, Valary_40, Whitney_40, Wizard_37, Yinzer_33, YungMoney_39,

Genes that do not have the "Most Annotated" start:

- Doggs_32,

Summary by start number:

Start 13:

- Found in 1 of 181 (0.6%) of genes in pham
- Manual Annotations of this start: 1 of 161
- Called 100.0% of time when present
- Phage (with cluster) where this start called: Faith5x5_27 (CZ6),

Start 20:

- Found in 1 of 181 (0.6%) of genes in pham
- Manual Annotations of this start: 1 of 161
- Called 100.0% of time when present
- Phage (with cluster) where this start called: BaxterFox_33 (CZ3),

Start 38:

- Found in 7 of 181 (3.9%) of genes in pham
- No Manual Annotations of this start.
- Called 14.3% of time when present
- Phage (with cluster) where this start called: Sixsevenium_38 (DC),

Start 41:

- Found in 65 of 181 (35.9%) of genes in pham
- Manual Annotations of this start: 6 of 161
- Called 9.2% of time when present
- Phage (with cluster) where this start called: Bunker_31 (DB), CherryCola_40 (DC1), EMSquaredA_32 (CY1), GEazy_36 (DB), Lucky10_31 (DH), Marteena_32 (CY1),

Start 43:

- Found in 2 of 181 (1.1%) of genes in pham
- Manual Annotations of this start: 1 of 161
- Called 50.0% of time when present
- Phage (with cluster) where this start called: Ruthy_34 (DW),

Start 44:

- Found in 1 of 181 (0.6%) of genes in pham
- Manual Annotations of this start: 1 of 161
- Called 100.0% of time when present
- Phage (with cluster) where this start called: Agueybana_33 (CZ1),

Start 46:

- Found in 1 of 181 (0.6%) of genes in pham
- Manual Annotations of this start: 1 of 161
- Called 100.0% of time when present
- Phage (with cluster) where this start called: BotCity_39 (DN),

Start 53:

- Found in 46 of 181 (25.4%) of genes in pham
- Manual Annotations of this start: 19 of 161
- Called 50.0% of time when present
- Phage (with cluster) where this start called: Barb_40 (DC1), ClamChowder_40 (DC1), Danyall_40 (DC1), Ebert_35 (CZ2), Evamon_37 (DC1), Gezellig_37 (DC1), Halo3_38 (DC1), JohnPork_38 (DC), KimmyK_39 (DC1), Nubi_38 (DC1), PinkCoffee_40 (DC1), RogerDodger_41 (DC1), Salvador_37 (DC1), Savage_34 (CZ2), Sendy_38 (DC), Shinji_38 (DC1), SmokingBunny_37 (DC1), Sproutie_34 (CZ2), TillyBobJoe_37 (DC1), Twister6_40 (DC1), Valary_40 (DC1), Wizard_37 (DC1), Yinzer_33 (CZ2),

Start 54:

- Found in 33 of 181 (18.2%) of genes in pham
- Manual Annotations of this start: 15 of 161
- Called 51.5% of time when present
- Phage (with cluster) where this start called: Apricot_36 (DN3), Asapag_37 (DN1), CheeseTouch_35 (DN1), DirtyBoi_35 (DB), Doggs_32 (DB), Hedwig_37 (DB), Holliday_36 (DN1), Horus_37 (DN1), Jecs_32 (DB), Kamaru_36 (DN1), Leroy_37 (DN1), LitninMcQueen_35 (DN1), Periwinkle_40 (DN1), Phistory_37 (DN1), Samba_36 (CV), ShawBrad_36 (DN1), Spooky_36 (DN2),

Start 55:

- Found in 8 of 181 (4.4%) of genes in pham
- Manual Annotations of this start: 1 of 161
- Called 12.5% of time when present
- Phage (with cluster) where this start called: TaronosaurusRx_33 (DB),

Start 56:

- Found in 6 of 181 (3.3%) of genes in pham
- Manual Annotations of this start: 1 of 161
- Called 16.7% of time when present
- Phage (with cluster) where this start called: Petra_35 (CV),

Start 57:

- Found in 180 of 181 (99.4%) of genes in pham
- Manual Annotations of this start: 97 of 161
- Called 60.0% of time when present
- Phage (with cluster) where this start called: Adora_32 (CZ4), Angelique_35 (CY1), Annalisa_32 (CZ4), Archis_36 (CV), Arri_41 (DC1), Azula_35 (CV), BBQValindra_32

(DB), BackstagePass_36 (DB), BatStarr_31 (CZ1), Beenie_28 (CZ4), Begonia_36 (CV), Blino_37 (CV), Bosnia_31 (CZ1), BritBrat_31 (CY2), Bunnybear_27 (CZ), CaptainKirk2_34 (CV), CarolAnn_37 (CV), Cashline_35 (CY6), CheeseSpider_40 (CV), Clap_34 (CZ2), Clark_33 (CZ4), Confidence_30 (CY1), CoveyB_40 (DC1), Crater_39 (DN3), Cynthia_34 (CZ2), Delian_35 (CV), Denise_27 (CZ5), DobbysSock_28 (CZ4), Dorito_30 (CZ4), DumpsterDude_34 (DW), Ecliptus_38 (DN), Egi03_38 (DC1), EnalisNailo_32 (CY1), Eviarto_31 (CZ1), Eyes_32 (DB), Fairfaxidum_37 (CV), Fenry_33 (CV), Fireball_38 (DC1), Floral_33 (CY1), Frickyeah_37 (DN1), Fugax_41 (DC1), GemG_34 (CZ2), Gizermo_34 (CZ2), Guacamole_34 (CV), Haley23_34 (CZ2), HannahD_34 (DB), Hitter_34 (CV), Invectra_34 (CZ4), JCole_27 (CZ2), Jablanski_35 (CY3), Jalammah_36 (CV), Jalleen_33 (CZ2), Jambalaya_37 (DC1), JasperJr_34 (CV), JuJu_36 (CV), Kenna_36 (DN1), Kiko_35 (DB), Kuwabara_36 (DN4), LonelyBoi_32 (CY7), Lton_27 (CZ), Lutum_37 (DN1), Lysidious_35 (CV), Malachai_36 (CV), Malibo_36 (DW), Matteo_28 (CZ2), MichaelScott_33 (CZ4), MintFen_33 (CV), MissRona_35 (CV), Mocha12_34 (CZ2), Moosehead_29 (CZ6), MortyNRick_34 (DN), NaLuna_34 (DB), Nymphadora_31 (CZ1), Obliviate_32 (CV), Opie_35 (DB), PCoral7_34 (CV), Phlop_37 (DC1), PhorbesPhlower_29 (DH), PhriskyACE_33 (CZ4), PhrostedPhlake_36 (CV), Pickett_28 (CZ2), Pollux_34 (CY1), Portcullis_38 (DC1), PullumCavea_37 (DC1), Pytheas_35 (CY3), Rizz_34 (CZ4), Sahara_33 (CZ2), Samman98_32 (CZ4), Savbucketdawg_37 (DC1), Sekhmet_35 (CZ4), Soilmate_38 (CV), Squiddly_38 (DN2), Thimann_32 (CZ4), TimTam_31 (CZ1), TinyDot_30 (singleton), Toast_34 (CV), Togo_37 (DC1), TuertoX_34 (CZ2), Tuti_35 (CZ4), UmaThurman_31 (CV), VanDeWege_41 (DC1), Vasanti_34 (CZ2), WelcomeAyanna_35 (CZ1), Whiteclaw_34 (CZ2), Wisp_30 (CV), Wocket_36 (CV), Zarbodnamra_33 (CV), ZiggyZoo_34 (CV),

Start 58:

- Found in 48 of 181 (26.5%) of genes in pham
- Manual Annotations of this start: 17 of 161
- Called 39.6% of time when present
- Phage (with cluster) where this start called: BENTherdunthat_36 (DN1), Barco_35 (CV), BearBQ_36 (DN), Birdsong_37 (DN), Bowser_35 (DB), Budski_37 (DN), Eyre_28 (singleton), Getalong_38 (DN1), Lilas_35 (CY1), Malisha_37 (DN), Moonflower_34 (DB), Morkie_30 (DH), ODay_40 (DN), OneDirection_28 (CZ6), Pepperoni_29 (CZ), Phabuloso_34 (DN1), RayTheFireFly_35 (DB), Whitney_40 (DN1), YungMoney_39 (DC1),

Summary by clusters:

There are 24 clusters represented in this pham: DN, singleton, DH, CZ2, CZ3, CZ1, CZ6, DC, CZ4, CZ5, DW, DN4, DN1, DN3, DN2, CY3, CY2, CY1, CY7, CY6, DB, CZ, CV, DC1,

Info for manual annotations of cluster CV:

- Start number 54 was manually annotated 1 time for cluster CV.
- Start number 56 was manually annotated 1 time for cluster CV.
- Start number 57 was manually annotated 26 times for cluster CV.
- Start number 58 was manually annotated 1 time for cluster CV.

Info for manual annotations of cluster CY1:

- Start number 41 was manually annotated 2 times for cluster CY1.
- Start number 57 was manually annotated 5 times for cluster CY1.

- Start number 58 was manually annotated 1 time for cluster CY1.

Info for manual annotations of cluster CY2:

- Start number 57 was manually annotated 1 time for cluster CY2.

Info for manual annotations of cluster CY3:

- Start number 57 was manually annotated 2 times for cluster CY3.

Info for manual annotations of cluster CY6:

- Start number 57 was manually annotated 1 time for cluster CY6.

Info for manual annotations of cluster CY7:

- Start number 57 was manually annotated 1 time for cluster CY7.

Info for manual annotations of cluster CZ:

- Start number 57 was manually annotated 2 times for cluster CZ.

Info for manual annotations of cluster CZ1:

- Start number 44 was manually annotated 1 time for cluster CZ1.
- Start number 57 was manually annotated 6 times for cluster CZ1.

Info for manual annotations of cluster CZ2:

- Start number 53 was manually annotated 3 times for cluster CZ2.
- Start number 57 was manually annotated 12 times for cluster CZ2.

Info for manual annotations of cluster CZ3:

- Start number 20 was manually annotated 1 time for cluster CZ3.

Info for manual annotations of cluster CZ4:

- Start number 57 was manually annotated 11 times for cluster CZ4.

Info for manual annotations of cluster CZ5:

- Start number 57 was manually annotated 1 time for cluster CZ5.

Info for manual annotations of cluster CZ6:

- Start number 13 was manually annotated 1 time for cluster CZ6.
- Start number 57 was manually annotated 1 time for cluster CZ6.
- Start number 58 was manually annotated 1 time for cluster CZ6.

Info for manual annotations of cluster DB:

- Start number 41 was manually annotated 2 times for cluster DB.
- Start number 54 was manually annotated 3 times for cluster DB.
- Start number 55 was manually annotated 1 time for cluster DB.
- Start number 57 was manually annotated 5 times for cluster DB.
- Start number 58 was manually annotated 2 times for cluster DB.

Info for manual annotations of cluster DC1:

- Start number 41 was manually annotated 1 time for cluster DC1.
- Start number 53 was manually annotated 16 times for cluster DC1.
- Start number 57 was manually annotated 12 times for cluster DC1.
- Start number 58 was manually annotated 1 time for cluster DC1.

Info for manual annotations of cluster DH:

- Start number 41 was manually annotated 1 time for cluster DH.
- Start number 57 was manually annotated 1 time for cluster DH.
- Start number 58 was manually annotated 1 time for cluster DH.

Info for manual annotations of cluster DN:

- Start number 46 was manually annotated 1 time for cluster DN.
- Start number 57 was manually annotated 2 times for cluster DN.
- Start number 58 was manually annotated 5 times for cluster DN.

Info for manual annotations of cluster DN1:

- Start number 54 was manually annotated 9 times for cluster DN1.
- Start number 57 was manually annotated 2 times for cluster DN1.
- Start number 58 was manually annotated 4 times for cluster DN1.

Info for manual annotations of cluster DN2:

- Start number 54 was manually annotated 1 time for cluster DN2.
- Start number 57 was manually annotated 1 time for cluster DN2.

Info for manual annotations of cluster DN3:

- Start number 54 was manually annotated 1 time for cluster DN3.
- Start number 57 was manually annotated 1 time for cluster DN3.

Info for manual annotations of cluster DN4:

- Start number 57 was manually annotated 1 time for cluster DN4.

Info for manual annotations of cluster DW:

- Start number 43 was manually annotated 1 time for cluster DW.
- Start number 57 was manually annotated 2 times for cluster DW.

Gene Information:

Gene: Adora_32 Start: 28689, Stop: 28462, Start Num: 57

Candidate Starts for Adora_32:

(Start: 57 @28689 has 97 MA's), (59, 28674), (62, 28650), (64, 28641), (65, 28638), (66, 28617), (76, 28542), (80, 28488),

Gene: Agueybana_33 Start: 28613, Stop: 28344, Start Num: 44

Candidate Starts for Agueybana_33:

(Start: 44 @28613 has 1 MA's), (Start: 54 @28580 has 15 MA's), (Start: 57 @28571 has 97 MA's), (Start: 58 @28568 has 17 MA's), (59, 28556), (60, 28553), (62, 28532), (65, 28520), (70, 28466), (74, 28445), (75, 28439), (76, 28424), (80, 28370),

Gene: Angelique_35 Start: 28945, Stop: 28709, Start Num: 57

Candidate Starts for Angelique_35:

(Start: 57 @28945 has 97 MA's), (64, 28897), (65, 28894), (67, 28867), (77, 28795), (78, 28753), (80, 28744),

Gene: Annalisa_32 Start: 26879, Stop: 26652, Start Num: 57

Candidate Starts for Annalisa_32:

(Start: 57 @26879 has 97 MA's), (59, 26864), (62, 26840), (64, 26831), (65, 26828), (66, 26807), (76, 26732),

Gene: Apricot_36 Start: 28503, Stop: 28267, Start Num: 54

Candidate Starts for Apricot_36:

(Start: 54 @28503 has 15 MA's), (Start: 57 @28494 has 97 MA's), (Start: 58 @28491 has 17 MA's), (59, 28479), (62, 28455), (65, 28443), (69, 28395), (71, 28380), (74, 28368), (75, 28362), (76, 28347), (78, 28302),

Gene: Archis_36 Start: 29314, Stop: 29087, Start Num: 57

Candidate Starts for Archis_36:

(Start: 41 @29359 has 6 MA's), (Start: 57 @29314 has 97 MA's), (59, 29299), (60, 29296), (62, 29275), (64, 29266), (65, 29263), (69, 29215), (76, 29167), (78, 29122), (80, 29113),

Gene: Arri_41 Start: 33726, Stop: 33499, Start Num: 57

Candidate Starts for Arri_41:

(Start: 41 @33771 has 6 MA's), (Start: 53 @33735 has 19 MA's), (Start: 57 @33726 has 97 MA's), (59, 33711), (62, 33687), (65, 33675), (69, 33627), (75, 33594), (76, 33579), (80, 33525),

Gene: Asapag_37 Start: 30095, Stop: 29859, Start Num: 54

Candidate Starts for Asapag_37:

(Start: 54 @30095 has 15 MA's), (Start: 57 @30086 has 97 MA's), (Start: 58 @30083 has 17 MA's), (59, 30071), (62, 30047), (65, 30035), (75, 29954), (76, 29939), (80, 29885),

Gene: Azula_35 Start: 29026, Stop: 28799, Start Num: 57

Candidate Starts for Azula_35:

(Start: 41 @29071 has 6 MA's), (Start: 57 @29026 has 97 MA's), (62, 28987), (64, 28978), (65, 28975), (72, 28909), (75, 28894), (77, 28876), (80, 28825),

Gene: BBQValindra_32 Start: 27582, Stop: 27346, Start Num: 57

Candidate Starts for BBQValindra_32:

(Start: 41 @27627 has 6 MA's), (Start: 57 @27582 has 97 MA's), (62, 27543), (65, 27531), (67, 27504), (77, 27432), (80, 27381),

Gene: BENtherdunthat_36 Start: 28355, Stop: 28131, Start Num: 58

Candidate Starts for BENtherdunthat_36:

(Start: 57 @28358 has 97 MA's), (Start: 58 @28355 has 17 MA's), (59, 28343), (62, 28319), (65, 28307), (69, 28259), (74, 28232), (75, 28226), (76, 28211), (78, 28166), (79, 28160), (80, 28157),

Gene: BackstagePass_36 Start: 29151, Stop: 28915, Start Num: 57

Candidate Starts for BackstagePass_36:

(Start: 41 @29196 has 6 MA's), (Start: 57 @29151 has 97 MA's), (64, 29103), (65, 29100), (67, 29073), (71, 29037), (80, 28950), (84, 28926),

Gene: Barb_40 Start: 33752, Stop: 33516, Start Num: 53

Candidate Starts for Barb_40:

(Start: 41 @33788 has 6 MA's), (Start: 53 @33752 has 19 MA's), (Start: 57 @33743 has 97 MA's), (59, 33728), (62, 33704), (65, 33692), (69, 33644), (75, 33611), (76, 33596), (80, 33542),

Gene: Barco_35 Start: 29527, Stop: 29303, Start Num: 58

Candidate Starts for Barco_35:

(Start: 41 @29575 has 6 MA's), (Start: 57 @29530 has 97 MA's), (Start: 58 @29527 has 17 MA's), (59, 29515), (60, 29512), (62, 29491), (65, 29479), (75, 29398), (76, 29383),

Gene: BatStarr_31 Start: 28844, Stop: 28608, Start Num: 57

Candidate Starts for BatStarr_31:

(Start: 55 @28850 has 1 MA's), (Start: 57 @28844 has 97 MA's), (59, 28829), (60, 28826), (62, 28805), (63, 28799), (64, 28796), (65, 28793), (76, 28697), (81, 28640),

Gene: BaxterFox_33 Start: 29026, Stop: 28679, Start Num: 20

Candidate Starts for BaxterFox_33:

(Start: 20 @29026 has 1 MA's), (33, 28978), (42, 28951), (Start: 56 @28909 has 1 MA's), (Start: 57 @28906 has 97 MA's), (59, 28891), (62, 28867), (63, 28861), (64, 28858), (65, 28855), (68, 28822), (76, 28759), (80, 28705),

Gene: BearBQ_36 Start: 29718, Stop: 29494, Start Num: 58

Candidate Starts for BearBQ_36:

(Start: 54 @29730 has 15 MA's), (Start: 57 @29721 has 97 MA's), (Start: 58 @29718 has 17 MA's), (59, 29706), (62, 29682), (65, 29670), (69, 29622), (71, 29607), (74, 29595), (75, 29589), (76, 29574), (78, 29529),

Gene: Beenie_28 Start: 26674, Stop: 26447, Start Num: 57

Candidate Starts for Beenie_28:

(Start: 57 @26674 has 97 MA's), (59, 26659), (64, 26626), (65, 26623), (66, 26602), (74, 26548), (76, 26527), (80, 26473),

Gene: Begonia_36 Start: 30625, Stop: 30392, Start Num: 57

Candidate Starts for Begonia_36:

(Start: 57 @30625 has 97 MA's), (60, 30607), (62, 30586), (65, 30574), (71, 30511), (75, 30493), (76, 30478), (80, 30424), (83, 30400),

Gene: Birdsong_37 Start: 29810, Stop: 29586, Start Num: 58

Candidate Starts for Birdsong_37:

(Start: 54 @29822 has 15 MA's), (Start: 57 @29813 has 97 MA's), (Start: 58 @29810 has 17 MA's), (59, 29798), (62, 29774), (65, 29762), (75, 29681), (76, 29666), (78, 29621), (80, 29612),

Gene: Blino_37 Start: 31465, Stop: 31223, Start Num: 57

Candidate Starts for Blino_37:

(30, 31546), (38, 31519), (Start: 54 @31474 has 15 MA's), (Start: 57 @31465 has 97 MA's), (64, 31417), (65, 31414), (77, 31315), (78, 31273), (80, 31264),

Gene: Bosnia_31 Start: 28844, Stop: 28608, Start Num: 57

Candidate Starts for Bosnia_31:

(Start: 55 @28850 has 1 MA's), (Start: 57 @28844 has 97 MA's), (59, 28829), (60, 28826), (62, 28805), (63, 28799), (64, 28796), (65, 28793), (76, 28697), (81, 28640),

Gene: BotCity_39 Start: 29685, Stop: 29425, Start Num: 46

Candidate Starts for BotCity_39:

(40, 29706), (Start: 46 @29685 has 1 MA's), (Start: 57 @29652 has 97 MA's), (59, 29637), (62, 29613), (65, 29601), (69, 29553), (74, 29526), (75, 29520), (76, 29505), (77, 29502),

Gene: Bowser_35 Start: 28606, Stop: 28382, Start Num: 58

Candidate Starts for Bowser_35:

(Start: 57 @28609 has 97 MA's), (Start: 58 @28606 has 17 MA's), (59, 28594), (62, 28570), (65, 28558), (75, 28477), (76, 28462), (80, 28408),

Gene: BritBrat_31 Start: 29502, Stop: 29275, Start Num: 57

Candidate Starts for BritBrat_31:

(Start: 57 @29502 has 97 MA's), (Start: 58 @29499 has 17 MA's), (59, 29487), (62, 29463), (63, 29457), (64, 29454), (65, 29451), (74, 29376), (75, 29370), (76, 29355), (78, 29310), (80, 29301),

Gene: Budski_37 Start: 30045, Stop: 29821, Start Num: 58

Candidate Starts for Budski_37:

(Start: 54 @30057 has 15 MA's), (Start: 57 @30048 has 97 MA's), (Start: 58 @30045 has 17 MA's), (59, 30033), (62, 30009), (65, 29997), (69, 29949), (74, 29922), (75, 29916), (76, 29901), (78, 29856), (80, 29847), (81, 29844),

Gene: Bunker_31 Start: 27927, Stop: 27655, Start Num: 41

Candidate Starts for Bunker_31:

(Start: 41 @27927 has 6 MA's), (Start: 57 @27882 has 97 MA's), (64, 27834), (65, 27831), (67, 27804), (75, 27750), (77, 27732), (80, 27681),

Gene: Bunnybear_27 Start: 27053, Stop: 26823, Start Num: 57

Candidate Starts for Bunnybear_27:

(Start: 57 @27053 has 97 MA's), (59, 27038), (62, 27014), (63, 27008), (64, 27005), (65, 27002), (74, 26927), (75, 26921), (76, 26906), (80, 26852),

Gene: CaptainKirk2_34 Start: 28619, Stop: 28392, Start Num: 57

Candidate Starts for CaptainKirk2_34:

(Start: 41 @28664 has 6 MA's), (Start: 57 @28619 has 97 MA's), (59, 28604), (62, 28580), (65, 28568), (69, 28520), (75, 28487), (76, 28472), (78, 28427), (80, 28418), (81, 28415),

Gene: CarolAnn_37 Start: 31464, Stop: 31222, Start Num: 57

Candidate Starts for CarolAnn_37:

(30, 31545), (38, 31518), (Start: 54 @31473 has 15 MA's), (Start: 57 @31464 has 97 MA's), (64, 31416), (65, 31413), (77, 31314), (78, 31272), (80, 31263),

Gene: Cashline_35 Start: 29499, Stop: 29272, Start Num: 57

Candidate Starts for Cashline_35:

(Start: 41 @29544 has 6 MA's), (Start: 57 @29499 has 97 MA's), (59, 29484), (60, 29481), (62, 29460), (63, 29454), (64, 29451), (65, 29448), (76, 29352), (80, 29298),

Gene: CheeseSpider_40 Start: 28731, Stop: 28504, Start Num: 57

Candidate Starts for CheeseSpider_40:

(Start: 57 @28731 has 97 MA's), (59, 28716), (60, 28713), (62, 28692), (65, 28680), (76, 28584), (80, 28530),

Gene: CheeseTouch_35 Start: 26657, Stop: 26421, Start Num: 54

Candidate Starts for CheeseTouch_35:

(Start: 54 @26657 has 15 MA's), (Start: 57 @26648 has 97 MA's), (Start: 58 @26645 has 17 MA's), (59, 26633), (62, 26609), (65, 26597), (69, 26549), (75, 26516), (76, 26501),

Gene: CherryCola_40 Start: 34544, Stop: 34272, Start Num: 41

Candidate Starts for CherryCola_40:

(Start: 41 @34544 has 6 MA's), (Start: 53 @34508 has 19 MA's), (Start: 57 @34499 has 97 MA's), (59, 34484), (62, 34460), (65, 34448), (69, 34400), (75, 34367), (76, 34352), (80, 34298),

Gene: ClamChowder_40 Start: 33752, Stop: 33516, Start Num: 53

Candidate Starts for ClamChowder_40:

(Start: 41 @33788 has 6 MA's), (Start: 53 @33752 has 19 MA's), (Start: 57 @33743 has 97 MA's), (59, 33728), (62, 33704), (65, 33692), (69, 33644), (75, 33611), (76, 33596), (80, 33542),

Gene: Clap_34 Start: 26548, Stop: 26321, Start Num: 57

Candidate Starts for Clap_34:

(Start: 53 @26557 has 19 MA's), (Start: 57 @26548 has 97 MA's), (60, 26530), (62, 26509), (65, 26497), (75, 26416), (76, 26401), (78, 26356), (79, 26350), (80, 26347),

Gene: Clark_33 Start: 26491, Stop: 26264, Start Num: 57

Candidate Starts for Clark_33:

(Start: 57 @26491 has 97 MA's), (59, 26476), (64, 26443), (65, 26440), (66, 26419), (74, 26365), (76, 26344), (80, 26290),

Gene: Confidence_30 Start: 26910, Stop: 26683, Start Num: 57

Candidate Starts for Confidence_30:

(48, 26937), (Start: 57 @26910 has 97 MA's), (Start: 58 @26907 has 17 MA's), (59, 26895), (62, 26871), (64, 26862), (65, 26859), (67, 26832), (73, 26790), (74, 26784), (75, 26778), (77, 26760), (80, 26709),

Gene: CoveyB_40 Start: 33543, Stop: 33316, Start Num: 57

Candidate Starts for CoveyB_40:

(Start: 41 @33588 has 6 MA's), (Start: 53 @33552 has 19 MA's), (Start: 57 @33543 has 97 MA's), (59, 33528), (62, 33504), (65, 33492), (75, 33411), (76, 33396), (80, 33342),

Gene: Crater_39 Start: 29158, Stop: 28931, Start Num: 57

Candidate Starts for Crater_39:

(Start: 41 @29203 has 6 MA's), (45, 29191), (Start: 57 @29158 has 97 MA's), (59, 29143), (60, 29140), (62, 29119), (65, 29107), (69, 29059), (71, 29044), (72, 29041), (74, 29032), (75, 29026), (76, 29011), (78, 28966), (80, 28957), (81, 28954),

Gene: Cynthia_34 Start: 26548, Stop: 26321, Start Num: 57

Candidate Starts for Cynthia_34:

(Start: 53 @26557 has 19 MA's), (Start: 57 @26548 has 97 MA's), (60, 26530), (62, 26509), (65, 26497), (75, 26416), (76, 26401), (78, 26356), (79, 26350), (80, 26347),

Gene: Danyall_40 Start: 33554, Stop: 33318, Start Num: 53

Candidate Starts for Danyall_40:

(Start: 41 @33590 has 6 MA's), (Start: 53 @33554 has 19 MA's), (Start: 57 @33545 has 97 MA's), (59, 33530), (62, 33506), (65, 33494), (75, 33413), (76, 33398), (80, 33344),

Gene: Delian_35 Start: 28617, Stop: 28390, Start Num: 57

Candidate Starts for Delian_35:

(Start: 41 @28662 has 6 MA's), (Start: 57 @28617 has 97 MA's), (59, 28602), (62, 28578), (65, 28566), (69, 28518), (75, 28485), (76, 28470), (78, 28425), (80, 28416), (81, 28413),

Gene: Denise_27 Start: 24591, Stop: 24364, Start Num: 57

Candidate Starts for Denise_27:

(Start: 57 @24591 has 97 MA's), (Start: 58 @24588 has 17 MA's), (59, 24576), (62, 24552), (63, 24546), (64, 24543), (65, 24540), (72, 24474), (76, 24444), (78, 24399), (80, 24390),

Gene: DirtyBoi_35 Start: 29162, Stop: 28926, Start Num: 54

Candidate Starts for DirtyBoi_35:

(Start: 54 @29162 has 15 MA's), (Start: 57 @29153 has 97 MA's), (59, 29138), (62, 29114), (65, 29102), (75, 29021), (76, 29006),

Gene: DobbysSock_28 Start: 25413, Stop: 25186, Start Num: 57

Candidate Starts for DobbysSock_28:

(Start: 57 @25413 has 97 MA's), (59, 25398), (64, 25365), (65, 25362), (66, 25341), (74, 25287), (76, 25266), (80, 25212),

Gene: Doggs_32 Start: 28809, Stop: 28585, Start Num: 54

Candidate Starts for Doggs_32:

(52, 28812), (Start: 54 @28809 has 15 MA's), (64, 28764), (65, 28761), (76, 28665), (77, 28662), (78, 28620), (80, 28611),

Gene: Dorito_30 Start: 25057, Stop: 24830, Start Num: 57

Candidate Starts for Dorito_30:

(Start: 57 @25057 has 97 MA's), (59, 25042), (64, 25009), (65, 25006), (66, 24985), (74, 24931), (76, 24910), (80, 24856),

Gene: DumpsterDude_34 Start: 31000, Stop: 30773, Start Num: 57

Candidate Starts for DumpsterDude_34:

(Start: 43 @31036 has 1 MA's), (Start: 56 @31003 has 1 MA's), (Start: 57 @31000 has 97 MA's), (64, 30952), (65, 30949), (75, 30868), (76, 30853), (78, 30808), (80, 30799),

Gene: EMSquaredA_32 Start: 27060, Stop: 26788, Start Num: 41

Candidate Starts for EMSquaredA_32:

(Start: 41 @27060 has 6 MA's), (Start: 57 @27015 has 97 MA's), (64, 26967), (65, 26964), (67, 26937), (76, 26868),

Gene: Ebert_35 Start: 26481, Stop: 26245, Start Num: 53

Candidate Starts for Ebert_35:

(Start: 53 @26481 has 19 MA's), (Start: 57 @26472 has 97 MA's), (60, 26454), (62, 26433), (65, 26421), (75, 26340), (76, 26325), (78, 26280), (79, 26274), (80, 26271),

Gene: Ecliptus_38 Start: 30614, Stop: 30387, Start Num: 57

Candidate Starts for Ecliptus_38:

(Start: 41 @30659 has 6 MA's), (Start: 57 @30614 has 97 MA's), (59, 30599), (60, 30596), (62, 30575), (65, 30563), (75, 30482), (76, 30467), (78, 30422), (80, 30413),

Gene: Egi03_38 Start: 33223, Stop: 32996, Start Num: 57

Candidate Starts for Egi03_38:

(Start: 41 @33268 has 6 MA's), (Start: 53 @33232 has 19 MA's), (Start: 57 @33223 has 97 MA's), (59, 33208), (62, 33184), (65, 33172), (75, 33091), (76, 33076), (80, 33022),

Gene: EnalisNailo_32 Start: 27995, Stop: 27765, Start Num: 57

Candidate Starts for EnalisNailo_32:

(Start: 57 @27995 has 97 MA's), (Start: 58 @27992 has 17 MA's), (59, 27980), (62, 27956), (65, 27944), (75, 27863), (76, 27848), (78, 27803), (80, 27794),

Gene: Evamon_37 Start: 33573, Stop: 33337, Start Num: 53

Candidate Starts for Evamon_37:

(Start: 41 @33609 has 6 MA's), (Start: 53 @33573 has 19 MA's), (Start: 57 @33564 has 97 MA's), (59, 33549), (62, 33525), (65, 33513), (75, 33432), (76, 33417), (80, 33363),

Gene: Eviarto_31 Start: 28820, Stop: 28584, Start Num: 57

Candidate Starts for Eviarto_31:

(Start: 55 @28826 has 1 MA's), (Start: 57 @28820 has 97 MA's), (59, 28805), (60, 28802), (62, 28781), (63, 28775), (64, 28772), (65, 28769), (76, 28673),

Gene: Eyes_32 Start: 27913, Stop: 27686, Start Num: 57

Candidate Starts for Eyes_32:

(Start: 41 @27958 has 6 MA's), (Start: 57 @27913 has 97 MA's), (59, 27898), (65, 27862), (71, 27799), (74, 27787), (76, 27766), (78, 27721), (80, 27712),

Gene: Eyre_28 Start: 24310, Stop: 24032, Start Num: 58

Candidate Starts for Eyre_28:

(16, 24448), (47, 24346), (Start: 57 @24313 has 97 MA's), (Start: 58 @24310 has 17 MA's), (59, 24298), (62, 24274), (64, 24265), (65, 24262), (71, 24199), (74, 24187), (76, 24166), (82, 24088),

Gene: Fairfaxidum_37 Start: 30093, Stop: 29866, Start Num: 57

Candidate Starts for Fairfaxidum_37:

(Start: 57 @30093 has 97 MA's), (62, 30054), (64, 30045), (65, 30042), (66, 30021), (76, 29946),

Gene: Faith5x5_27 Start: 23741, Stop: 23379, Start Num: 13

Candidate Starts for Faith5x5_27:

(Start: 13 @23741 has 1 MA's), (Start: 57 @23606 has 97 MA's), (60, 23588), (62, 23567), (63, 23561), (64, 23558), (65, 23555), (74, 23480), (75, 23474), (76, 23459), (78, 23414), (80, 23405),

Gene: Fenry_33 Start: 28854, Stop: 28627, Start Num: 57

Candidate Starts for Fenry_33:

(Start: 41 @28899 has 6 MA's), (Start: 57 @28854 has 97 MA's), (59, 28839), (62, 28815), (65, 28803), (75, 28722), (76, 28707), (80, 28653),

Gene: Fireball_38 Start: 33687, Stop: 33460, Start Num: 57

Candidate Starts for Fireball_38:

(Start: 41 @33732 has 6 MA's), (Start: 53 @33696 has 19 MA's), (Start: 57 @33687 has 97 MA's), (59, 33672), (62, 33648), (65, 33636), (75, 33555), (76, 33540), (80, 33486),

Gene: Floral_33 Start: 29088, Stop: 28861, Start Num: 57

Candidate Starts for Floral_33:

(Start: 41 @29133 has 6 MA's), (Start: 57 @29088 has 97 MA's), (64, 29040), (65, 29037), (67, 29010), (76, 28941),

Gene: Frickyeah_37 Start: 28187, Stop: 27960, Start Num: 57

Candidate Starts for Frickyeah_37:

(Start: 54 @28196 has 15 MA's), (Start: 57 @28187 has 97 MA's), (Start: 58 @28184 has 17 MA's), (59, 28172), (62, 28148), (65, 28136), (75, 28055), (76, 28040), (80, 27986),

Gene: Fugax_41 Start: 33735, Stop: 33508, Start Num: 57

Candidate Starts for Fugax_41:

(Start: 41 @33780 has 6 MA's), (Start: 53 @33744 has 19 MA's), (Start: 57 @33735 has 97 MA's), (59, 33720), (62, 33696), (65, 33684), (69, 33636), (75, 33603), (76, 33588), (80, 33534),

Gene: GEazy_36 Start: 28931, Stop: 28659, Start Num: 41

Candidate Starts for GEazy_36:

(Start: 41 @28931 has 6 MA's), (Start: 57 @28886 has 97 MA's), (65, 28835), (77, 28736), (80, 28685),

Gene: GemG_34 Start: 26548, Stop: 26321, Start Num: 57

Candidate Starts for GemG_34:

(Start: 53 @26557 has 19 MA's), (Start: 57 @26548 has 97 MA's), (60, 26530), (62, 26509), (65, 26497), (75, 26416), (76, 26401), (78, 26356), (79, 26350), (80, 26347),

Gene: Getalong_38 Start: 30905, Stop: 30681, Start Num: 58

Candidate Starts for Getalong_38:

(Start: 57 @30908 has 97 MA's), (Start: 58 @30905 has 17 MA's), (59, 30893), (60, 30890), (65, 30857), (69, 30809), (74, 30782), (75, 30776), (76, 30761), (80, 30707),

Gene: Gezellig_37 Start: 33705, Stop: 33469, Start Num: 53

Candidate Starts for Gezellig_37:

(Start: 41 @33741 has 6 MA's), (Start: 53 @33705 has 19 MA's), (Start: 57 @33696 has 97 MA's), (59, 33681), (62, 33657), (65, 33645), (75, 33564), (76, 33549), (80, 33495),

Gene: Gizermo_34 Start: 26548, Stop: 26321, Start Num: 57

Candidate Starts for Gizermo_34:

(Start: 53 @26557 has 19 MA's), (Start: 57 @26548 has 97 MA's), (60, 26530), (62, 26509), (65, 26497), (75, 26416), (76, 26401), (78, 26356), (79, 26350), (80, 26347),

Gene: Guacamole_34 Start: 29704, Stop: 29477, Start Num: 57

Candidate Starts for Guacamole_34:

(Start: 57 @29704 has 97 MA's), (59, 29689), (62, 29665), (65, 29653), (69, 29605), (76, 29557), (80, 29503),

Gene: Haley23_34 Start: 26548, Stop: 26321, Start Num: 57

Candidate Starts for Haley23_34:

(Start: 53 @26557 has 19 MA's), (Start: 57 @26548 has 97 MA's), (60, 26530), (62, 26509), (65, 26497), (75, 26416), (76, 26401), (78, 26356), (79, 26350), (80, 26347),

Gene: Halo3_38 Start: 33998, Stop: 33762, Start Num: 53

Candidate Starts for Halo3_38:

(Start: 41 @34034 has 6 MA's), (Start: 53 @33998 has 19 MA's), (Start: 57 @33989 has 97 MA's), (59, 33974), (62, 33950), (65, 33938), (75, 33857), (76, 33842), (80, 33788),

Gene: HannahD_34 Start: 28251, Stop: 28024, Start Num: 57

Candidate Starts for HannahD_34:

(Start: 41 @28296 has 6 MA's), (Start: 57 @28251 has 97 MA's), (65, 28200), (77, 28101), (80, 28050),

Gene: Hedwig_37 Start: 29585, Stop: 29349, Start Num: 54

Candidate Starts for Hedwig_37:

(Start: 54 @29585 has 15 MA's), (Start: 57 @29576 has 97 MA's), (59, 29561), (62, 29537), (65, 29525), (75, 29444), (76, 29429),

Gene: Hitter_34 Start: 28938, Stop: 28711, Start Num: 57

Candidate Starts for Hitter_34:

(Start: 41 @28983 has 6 MA's), (Start: 57 @28938 has 97 MA's), (59, 28923), (60, 28920), (62, 28899), (64, 28890), (65, 28887), (69, 28839), (76, 28791), (78, 28746), (80, 28737),

Gene: Holliday_36 Start: 28771, Stop: 28535, Start Num: 54

Candidate Starts for Holliday_36:

(Start: 54 @28771 has 15 MA's), (Start: 57 @28762 has 97 MA's), (Start: 58 @28759 has 17 MA's), (59, 28747), (62, 28723), (65, 28711), (74, 28636), (75, 28630), (76, 28615), (78, 28570), (80, 28561),

Gene: Horus_37 Start: 30117, Stop: 29881, Start Num: 54

Candidate Starts for Horus_37:

(Start: 54 @30117 has 15 MA's), (Start: 57 @30108 has 97 MA's), (Start: 58 @30105 has 17 MA's), (59, 30093), (62, 30069), (65, 30057), (75, 29976), (76, 29961), (80, 29907),

Gene: Invectra_34 Start: 27219, Stop: 26992, Start Num: 57

Candidate Starts for Invectra_34:

(Start: 57 @27219 has 97 MA's), (59, 27204), (62, 27180), (64, 27171), (65, 27168), (66, 27147), (76, 27072), (80, 27018),

Gene: JCole_27 Start: 23464, Stop: 23237, Start Num: 57

Candidate Starts for JCole_27:

(Start: 57 @23464 has 97 MA's), (59, 23449), (62, 23425), (65, 23413), (75, 23332), (76, 23317), (78, 23272), (80, 23263),

Gene: Jablanski_35 Start: 30024, Stop: 29797, Start Num: 57

Candidate Starts for Jablanski_35:

(Start: 57 @30024 has 97 MA's), (59, 30009), (62, 29985), (63, 29979), (64, 29976), (65, 29973), (75, 29892), (76, 29877), (78, 29832), (80, 29823),

Gene: Jalammah_36 Start: 30107, Stop: 29880, Start Num: 57

Candidate Starts for Jalammah_36:

(25, 30212), (35, 30176), (Start: 57 @30107 has 97 MA's), (Start: 58 @30104 has 17 MA's), (59, 30092), (60, 30089), (62, 30068), (65, 30056), (69, 30008), (76, 29960), (80, 29906),

Gene: Jalleen_33 Start: 26187, Stop: 25960, Start Num: 57

Candidate Starts for Jalleen_33:

(Start: 53 @26196 has 19 MA's), (Start: 57 @26187 has 97 MA's), (60, 26169), (62, 26148), (65, 26136), (75, 26055), (76, 26040), (78, 25995), (79, 25989), (80, 25986),

Gene: Jambalaya_37 Start: 33343, Stop: 33116, Start Num: 57

Candidate Starts for Jambalaya_37:

(Start: 41 @33388 has 6 MA's), (Start: 53 @33352 has 19 MA's), (Start: 57 @33343 has 97 MA's), (59, 33328), (62, 33304), (65, 33292), (75, 33211), (76, 33196), (80, 33142),

Gene: JasperJr_34 Start: 29704, Stop: 29477, Start Num: 57

Candidate Starts for JasperJr_34:

(Start: 57 @29704 has 97 MA's), (59, 29689), (62, 29665), (65, 29653), (69, 29605), (76, 29557), (80, 29503),

Gene: Jecs_32 Start: 27371, Stop: 27135, Start Num: 54

Candidate Starts for Jecs_32:

(38, 27419), (Start: 54 @27371 has 15 MA's), (Start: 57 @27362 has 97 MA's), (62, 27323), (63, 27317), (65, 27311), (76, 27215), (78, 27170), (80, 27161),

Gene: JohnPork_38 Start: 33073, Stop: 32837, Start Num: 53

Candidate Starts for JohnPork_38:

(Start: 41 @33109 has 6 MA's), (Start: 53 @33073 has 19 MA's), (Start: 57 @33064 has 97 MA's), (59, 33049), (62, 33025), (65, 33013), (75, 32932), (76, 32917), (80, 32863),

Gene: JuJu_36 Start: 29305, Stop: 29078, Start Num: 57

Candidate Starts for JuJu_36:

(Start: 41 @29350 has 6 MA's), (Start: 57 @29305 has 97 MA's), (59, 29290), (62, 29266), (63, 29260), (64, 29257), (65, 29254), (75, 29173), (76, 29158),

Gene: Kamaru_36 Start: 28771, Stop: 28535, Start Num: 54

Candidate Starts for Kamaru_36:

(Start: 54 @28771 has 15 MA's), (Start: 55 @28768 has 1 MA's), (Start: 57 @28762 has 97 MA's), (59, 28747), (60, 28744), (62, 28723), (65, 28711), (69, 28663), (74, 28636), (75, 28630), (76, 28615), (78, 28570), (80, 28561),

Gene: Kenna_36 Start: 29098, Stop: 28871, Start Num: 57

Candidate Starts for Kenna_36:

(Start: 54 @29107 has 15 MA's), (Start: 57 @29098 has 97 MA's), (Start: 58 @29095 has 17 MA's), (59, 29083), (62, 29059), (65, 29047), (69, 28999), (71, 28984), (74, 28972), (75, 28966), (76, 28951), (78, 28906),

Gene: Kiko_35 Start: 27318, Stop: 27091, Start Num: 57

Candidate Starts for Kiko_35:

(Start: 57 @27318 has 97 MA's), (59, 27303), (62, 27279), (64, 27270), (65, 27267), (66, 27246), (69, 27219), (73, 27198), (76, 27171), (80, 27117),

Gene: KimmyK_39 Start: 34287, Stop: 34051, Start Num: 53

Candidate Starts for KimmyK_39:

(Start: 41 @34323 has 6 MA's), (Start: 53 @34287 has 19 MA's), (Start: 57 @34278 has 97 MA's), (59, 34263), (62, 34239), (65, 34227), (75, 34146), (76, 34131), (80, 34077),

Gene: Kuwabara_36 Start: 29465, Stop: 29238, Start Num: 57

Candidate Starts for Kuwabara_36:

(Start: 57 @29465 has 97 MA's), (Start: 58 @29462 has 17 MA's), (59, 29450), (62, 29426), (65, 29414), (69, 29366), (74, 29339), (75, 29333), (76, 29318), (78, 29273), (80, 29264),

Gene: Leroy_37 Start: 30118, Stop: 29882, Start Num: 54

Candidate Starts for Leroy_37:

(Start: 54 @30118 has 15 MA's), (Start: 57 @30109 has 97 MA's), (Start: 58 @30106 has 17 MA's), (59, 30094), (62, 30070), (65, 30058), (75, 29977), (76, 29962), (80, 29908),

Gene: Lilas_35 Start: 29703, Stop: 29476, Start Num: 58

Candidate Starts for Lilas_35:

(Start: 57 @29706 has 97 MA's), (Start: 58 @29703 has 17 MA's), (59, 29691), (62, 29667), (65, 29655), (75, 29574), (76, 29559), (78, 29514), (80, 29505),

Gene: LitninMcQueen_35 Start: 28514, Stop: 28278, Start Num: 54

Candidate Starts for LitninMcQueen_35:

(Start: 54 @28514 has 15 MA's), (Start: 55 @28511 has 1 MA's), (Start: 57 @28505 has 97 MA's), (59, 28490), (60, 28487), (62, 28466), (65, 28454), (69, 28406), (74, 28379), (75, 28373), (76, 28358), (78, 28313), (80, 28304),

Gene: LonelyBoi_32 Start: 30030, Stop: 29803, Start Num: 57

Candidate Starts for LonelyBoi_32:

(4, 30270), (8, 30207), (15, 30159), (Start: 57 @30030 has 97 MA's), (59, 30015), (62, 29991), (65, 29979), (75, 29898), (76, 29883), (80, 29829),

Gene: Lton_27 Start: 23149, Stop: 22922, Start Num: 57

Candidate Starts for Lton_27:

(Start: 41 @23194 has 6 MA's), (Start: 57 @23149 has 97 MA's), (59, 23134), (62, 23110), (65, 23098), (69, 23050), (74, 23023), (75, 23017), (76, 23002), (78, 22957), (80, 22948),

Gene: Lucky10_31 Start: 26592, Stop: 26320, Start Num: 41

Candidate Starts for Lucky10_31:

(Start: 41 @26592 has 6 MA's), (Start: 57 @26547 has 97 MA's), (Start: 58 @26544 has 17 MA's), (59, 26532), (60, 26529), (62, 26508), (65, 26496), (76, 26400), (80, 26346),

Gene: Lutum_37 Start: 29098, Stop: 28871, Start Num: 57

Candidate Starts for Lutum_37:

(Start: 54 @29107 has 15 MA's), (Start: 57 @29098 has 97 MA's), (Start: 58 @29095 has 17 MA's), (59, 29083), (62, 29059), (65, 29047), (69, 28999), (71, 28984), (74, 28972), (75, 28966), (76, 28951), (78, 28906),

Gene: Lysidious_35 Start: 29428, Stop: 29201, Start Num: 57

Candidate Starts for Lysidious_35:

(Start: 54 @29437 has 15 MA's), (Start: 57 @29428 has 97 MA's), (59, 29413), (60, 29410), (62, 29389), (65, 29377), (69, 29329), (76, 29281), (80, 29227),

Gene: Malachai_36 Start: 30625, Stop: 30392, Start Num: 57

Candidate Starts for Malachai_36:

(Start: 57 @30625 has 97 MA's), (60, 30607), (62, 30586), (65, 30574), (71, 30511), (75, 30493), (76, 30478), (80, 30424), (83, 30400),

Gene: Malibo_36 Start: 29104, Stop: 28877, Start Num: 57

Candidate Starts for Malibo_36:

(Start: 41 @29149 has 6 MA's), (Start: 57 @29104 has 97 MA's), (64, 29056), (65, 29053), (67, 29026), (76, 28957), (80, 28903),

Gene: Malisha_37 Start: 29280, Stop: 29056, Start Num: 58

Candidate Starts for Malisha_37:

(Start: 54 @29292 has 15 MA's), (Start: 57 @29283 has 97 MA's), (Start: 58 @29280 has 17 MA's), (59, 29268), (62, 29244), (65, 29232), (75, 29151), (76, 29136), (78, 29091),

Gene: Marteena_32 Start: 27060, Stop: 26788, Start Num: 41

Candidate Starts for Marteena_32:

(Start: 41 @27060 has 6 MA's), (Start: 57 @27015 has 97 MA's), (64, 26967), (65, 26964), (67, 26937), (76, 26868),

Gene: Matteo_28 Start: 24466, Stop: 24239, Start Num: 57

Candidate Starts for Matteo_28:

(14, 24595), (19, 24580), (21, 24577), (23, 24574), (Start: 41 @24511 has 6 MA's), (Start: 53 @24475 has 19 MA's), (Start: 57 @24466 has 97 MA's), (Start: 58 @24463 has 17 MA's), (59, 24451), (60, 24448), (62, 24427), (65, 24415), (69, 24367), (75, 24334), (76, 24319), (80, 24265),

Gene: MichaelScott_33 Start: 27967, Stop: 27740, Start Num: 57

Candidate Starts for MichaelScott_33:

(Start: 57 @27967 has 97 MA's), (59, 27952), (64, 27919), (65, 27916), (66, 27895), (74, 27841), (76, 27820), (80, 27766),

Gene: MintFen_33 Start: 29240, Stop: 29013, Start Num: 57

Candidate Starts for MintFen_33:

(Start: 41 @29285 has 6 MA's), (Start: 57 @29240 has 97 MA's), (59, 29225), (60, 29222), (65, 29189), (69, 29141), (75, 29108), (76, 29093), (80, 29039),

Gene: MissRona_35 Start: 29026, Stop: 28799, Start Num: 57

Candidate Starts for MissRona_35:

(9, 29194), (12, 29167), (Start: 41 @29071 has 6 MA's), (Start: 57 @29026 has 97 MA's), (62, 28987), (64, 28978), (65, 28975), (72, 28909), (75, 28894), (77, 28876), (80, 28825),

Gene: Mocha12_34 Start: 26548, Stop: 26321, Start Num: 57

Candidate Starts for Mocha12_34:

(Start: 53 @26557 has 19 MA's), (Start: 57 @26548 has 97 MA's), (60, 26530), (62, 26509), (65, 26497), (75, 26416), (76, 26401), (78, 26356), (79, 26350), (80, 26347),

Gene: Moonflower_34 Start: 28635, Stop: 28411, Start Num: 58

Candidate Starts for Moonflower_34:

(Start: 41 @28683 has 6 MA's), (Start: 57 @28638 has 97 MA's), (Start: 58 @28635 has 17 MA's), (59, 28623), (62, 28599), (65, 28587), (75, 28506), (76, 28491), (80, 28437),

Gene: Moosehead_29 Start: 23632, Stop: 23405, Start Num: 57

Candidate Starts for Moosehead_29:

(Start: 57 @23632 has 97 MA's), (60, 23614), (62, 23593), (63, 23587), (64, 23584), (65, 23581), (72, 23515), (74, 23506), (75, 23500), (76, 23485), (78, 23440), (80, 23431),

Gene: Morkie_30 Start: 25204, Stop: 24980, Start Num: 58

Candidate Starts for Morkie_30:

(Start: 57 @25207 has 97 MA's), (Start: 58 @25204 has 17 MA's), (59, 25192), (60, 25189), (62, 25168), (65, 25156), (72, 25090), (76, 25060), (80, 25006),

Gene: MortyNRick_34 Start: 28519, Stop: 28292, Start Num: 57

Candidate Starts for MortyNRick_34:

(Start: 57 @28519 has 97 MA's), (Start: 58 @28516 has 17 MA's), (59, 28504), (60, 28501), (62, 28480), (65, 28468), (69, 28420), (74, 28393), (75, 28387), (76, 28372), (78, 28327), (80, 28318),

Gene: NaLuna_34 Start: 28251, Stop: 28024, Start Num: 57

Candidate Starts for NaLuna_34:

(Start: 41 @28296 has 6 MA's), (Start: 57 @28251 has 97 MA's), (65, 28200), (77, 28101), (80, 28050),

Gene: Nubi_38 Start: 33576, Stop: 33340, Start Num: 53

Candidate Starts for Nubi_38:

(Start: 41 @33612 has 6 MA's), (Start: 53 @33576 has 19 MA's), (Start: 57 @33567 has 97 MA's), (59, 33552), (62, 33528), (65, 33516), (75, 33435), (76, 33420), (80, 33366),

Gene: Nymphadora_31 Start: 28844, Stop: 28608, Start Num: 57

Candidate Starts for Nymphadora_31:

(Start: 55 @28850 has 1 MA's), (Start: 57 @28844 has 97 MA's), (59, 28829), (60, 28826), (62, 28805), (63, 28799), (64, 28796), (65, 28793), (76, 28697),

Gene: ODay_40 Start: 30569, Stop: 30345, Start Num: 58

Candidate Starts for ODay_40:

(Start: 54 @30581 has 15 MA's), (Start: 57 @30572 has 97 MA's), (Start: 58 @30569 has 17 MA's), (59, 30557), (62, 30533), (65, 30521), (75, 30440), (76, 30425), (80, 30371),

Gene: Obliviate_32 Start: 28122, Stop: 27895, Start Num: 57

Candidate Starts for Obliviate_32:

(Start: 57 @28122 has 97 MA's), (Start: 58 @28119 has 17 MA's), (59, 28107), (60, 28104), (62, 28083), (65, 28071), (76, 27975), (80, 27921),

Gene: OneDirection_28 Start: 23826, Stop: 23602, Start Num: 58

Candidate Starts for OneDirection_28:

(Start: 57 @23829 has 97 MA's), (Start: 58 @23826 has 17 MA's), (59, 23814), (60, 23811), (62, 23790), (65, 23778), (72, 23712), (76, 23682), (80, 23628),

Gene: Opie_35 Start: 29554, Stop: 29327, Start Num: 57

Candidate Starts for Opie_35:

(27, 29647), (37, 29614), (Start: 57 @29554 has 97 MA's), (64, 29506), (65, 29503), (67, 29476), (76, 29407), (80, 29353),

Gene: PCoral7_34 Start: 28574, Stop: 28347, Start Num: 57

Candidate Starts for PCoral7_34:

(Start: 57 @28574 has 97 MA's), (59, 28559), (62, 28535), (63, 28529), (64, 28526), (65, 28523), (66, 28502), (76, 28427), (80, 28373),

Gene: Pepperoni_29 Start: 24972, Stop: 24748, Start Num: 58

Candidate Starts for Pepperoni_29:

(Start: 57 @24975 has 97 MA's), (Start: 58 @24972 has 17 MA's), (59, 24960), (62, 24936), (65, 24924), (75, 24843), (76, 24828), (80, 24774),

Gene: Periwinkle_40 Start: 30562, Stop: 30326, Start Num: 54

Candidate Starts for Periwinkle_40:

(Start: 54 @30562 has 15 MA's), (Start: 57 @30553 has 97 MA's), (Start: 58 @30550 has 17 MA's), (59, 30538), (62, 30514), (65, 30502), (75, 30421), (76, 30406), (80, 30352),

Gene: Petra_35 Start: 29575, Stop: 29345, Start Num: 56

Candidate Starts for Petra_35:

(Start: 56 @29575 has 1 MA's), (Start: 57 @29572 has 97 MA's), (59, 29557), (60, 29554), (62, 29533), (65, 29521), (76, 29425), (80, 29371),

Gene: Phabuloso_34 Start: 28807, Stop: 28583, Start Num: 58

Candidate Starts for Phabuloso_34:

(Start: 54 @28819 has 15 MA's), (Start: 57 @28810 has 97 MA's), (Start: 58 @28807 has 17 MA's), (59, 28795), (62, 28771), (65, 28759), (75, 28678), (76, 28663), (78, 28618), (80, 28609),

Gene: Phistory_37 Start: 29459, Stop: 29223, Start Num: 54

Candidate Starts for Phistory_37:

(Start: 54 @29459 has 15 MA's), (Start: 57 @29450 has 97 MA's), (Start: 58 @29447 has 17 MA's), (59, 29435), (62, 29411), (65, 29399), (75, 29318), (76, 29303), (80, 29249),

Gene: Phlop_37 Start: 33648, Stop: 33421, Start Num: 57

Candidate Starts for Phlop_37:

(Start: 41 @33693 has 6 MA's), (Start: 53 @33657 has 19 MA's), (Start: 57 @33648 has 97 MA's), (59, 33633), (62, 33609), (65, 33597), (75, 33516), (76, 33501), (80, 33447),

Gene: PhorbesPhlower_29 Start: 24583, Stop: 24356, Start Num: 57

Candidate Starts for PhorbesPhlower_29:

(Start: 57 @24583 has 97 MA's), (60, 24565), (62, 24544), (65, 24532), (69, 24484), (74, 24457), (75, 24451), (76, 24436), (78, 24391), (80, 24382),

Gene: PhriskyACE_33 Start: 27013, Stop: 26786, Start Num: 57

Candidate Starts for PhriskyACE_33:

(Start: 57 @27013 has 97 MA's), (59, 26998), (62, 26974), (64, 26965), (65, 26962), (66, 26941), (76, 26866), (80, 26812),

Gene: PhrostedPhlake_36 Start: 29288, Stop: 29061, Start Num: 57

Candidate Starts for PhrostedPhlake_36:

(1, 29564), (5, 29504), (31, 29363), (34, 29348), (49, 29312), (Start: 56 @29291 has 1 MA's), (Start: 57 @29288 has 97 MA's), (Start: 58 @29285 has 17 MA's), (60, 29270), (62, 29249), (65, 29237), (76, 29141), (80, 29087),

Gene: Pickett_28 Start: 23332, Stop: 23105, Start Num: 57

Candidate Starts for Pickett_28:

(Start: 57 @23332 has 97 MA's), (60, 23314), (62, 23293), (65, 23281), (69, 23233), (74, 23206), (75, 23200), (76, 23185), (78, 23140),

Gene: PinkCoffee_40 Start: 33761, Stop: 33525, Start Num: 53

Candidate Starts for PinkCoffee_40:

(Start: 41 @33797 has 6 MA's), (Start: 53 @33761 has 19 MA's), (Start: 57 @33752 has 97 MA's), (59, 33737), (62, 33713), (65, 33701), (69, 33653), (75, 33620), (76, 33605), (80, 33551),

Gene: Pollux_34 Start: 29088, Stop: 28861, Start Num: 57

Candidate Starts for Pollux_34:

(Start: 41 @29133 has 6 MA's), (Start: 57 @29088 has 97 MA's), (64, 29040), (65, 29037), (67, 29010), (76, 28941),

Gene: Portcullis_38 Start: 33064, Stop: 32837, Start Num: 57

Candidate Starts for Portcullis_38:

(Start: 41 @33109 has 6 MA's), (Start: 53 @33073 has 19 MA's), (Start: 57 @33064 has 97 MA's), (59, 33049), (62, 33025), (65, 33013), (75, 32932), (76, 32917), (80, 32863),

Gene: PullumCavea_37 Start: 33648, Stop: 33421, Start Num: 57

Candidate Starts for PullumCavea_37:

(Start: 41 @33693 has 6 MA's), (Start: 53 @33657 has 19 MA's), (Start: 57 @33648 has 97 MA's), (59, 33633), (62, 33609), (65, 33597), (75, 33516), (76, 33501), (80, 33447),

Gene: Pytheas_35 Start: 30023, Stop: 29796, Start Num: 57

Candidate Starts for Pytheas_35:

(Start: 57 @30023 has 97 MA's), (59, 30008), (62, 29984), (63, 29978), (64, 29975), (65, 29972), (75, 29891), (76, 29876), (78, 29831), (80, 29822),

Gene: RayTheFireFly_35 Start: 29149, Stop: 28925, Start Num: 58

Candidate Starts for RayTheFireFly_35:

(Start: 57 @29152 has 97 MA's), (Start: 58 @29149 has 17 MA's), (59, 29137), (60, 29134), (62, 29113), (65, 29101), (75, 29020), (76, 29005), (80, 28951),

Gene: Rizz_34 Start: 27277, Stop: 27050, Start Num: 57

Candidate Starts for Rizz_34:

(Start: 57 @27277 has 97 MA's), (59, 27262), (64, 27229), (65, 27226), (66, 27205), (74, 27151), (76, 27130), (80, 27076),

Gene: RogerDodger_41 Start: 33903, Stop: 33667, Start Num: 53

Candidate Starts for RogerDodger_41:

(Start: 41 @33939 has 6 MA's), (Start: 53 @33903 has 19 MA's), (Start: 57 @33894 has 97 MA's), (59, 33879), (62, 33855), (65, 33843), (69, 33795), (75, 33762), (76, 33747), (80, 33693),

Gene: Ruthy_34 Start: 29303, Stop: 29040, Start Num: 43

Candidate Starts for Ruthy_34:

(Start: 43 @29303 has 1 MA's), (Start: 56 @29270 has 1 MA's), (Start: 57 @29267 has 97 MA's), (59, 29252), (62, 29228), (63, 29222), (64, 29219), (65, 29216), (76, 29120), (80, 29066),

Gene: Sahara_33 Start: 26218, Stop: 25991, Start Num: 57

Candidate Starts for Sahara_33:

(22, 26341), (36, 26287), (50, 26245), (51, 26239), (Start: 57 @26218 has 97 MA's), (59, 26203), (60, 26200), (62, 26179), (65, 26167), (75, 26086), (76, 26071), (78, 26026), (79, 26020), (80, 26017),

Gene: Salvador_37 Start: 33571, Stop: 33335, Start Num: 53

Candidate Starts for Salvador_37:

(Start: 41 @33607 has 6 MA's), (Start: 53 @33571 has 19 MA's), (Start: 57 @33562 has 97 MA's), (59, 33547), (62, 33523), (65, 33511), (75, 33430), (76, 33415), (80, 33361),

Gene: Samba_36 Start: 30626, Stop: 30390, Start Num: 54

Candidate Starts for Samba_36:

(Start: 54 @30626 has 15 MA's), (Start: 57 @30617 has 97 MA's), (59, 30602), (60, 30599), (62, 30578), (65, 30566), (69, 30518), (75, 30485), (76, 30470), (78, 30425), (80, 30416),

Gene: Samman98_32 Start: 26076, Stop: 25849, Start Num: 57

Candidate Starts for Samman98_32:

(2, 26340), (3, 26334), (6, 26289), (11, 26241), (18, 26205), (28, 26172), (Start: 57 @26076 has 97 MA's), (59, 26061), (62, 26037), (64, 26028), (65, 26025), (66, 26004), (74, 25950), (76, 25929),

Gene: Savage_34 Start: 26557, Stop: 26321, Start Num: 53

Candidate Starts for Savage_34:

(Start: 53 @26557 has 19 MA's), (Start: 57 @26548 has 97 MA's), (60, 26530), (62, 26509), (65, 26497), (75, 26416), (76, 26401), (78, 26356), (79, 26350), (80, 26347),

Gene: Savbucketdawg_37 Start: 33343, Stop: 33116, Start Num: 57

Candidate Starts for Savbucketdawg_37:

(Start: 41 @33388 has 6 MA's), (Start: 53 @33352 has 19 MA's), (Start: 57 @33343 has 97 MA's), (59, 33328), (62, 33304), (65, 33292), (75, 33211), (76, 33196), (80, 33142),

Gene: Sekhmet_35 Start: 27809, Stop: 27582, Start Num: 57

Candidate Starts for Sekhmet_35:

(Start: 57 @27809 has 97 MA's), (59, 27794), (64, 27761), (65, 27758), (66, 27737), (74, 27683), (76, 27662), (80, 27608),

Gene: Sendy_38 Start: 33777, Stop: 33541, Start Num: 53

Candidate Starts for Sendy_38:

(Start: 41 @33813 has 6 MA's), (Start: 53 @33777 has 19 MA's), (Start: 57 @33768 has 97 MA's), (59, 33753), (62, 33729), (65, 33717), (75, 33636), (76, 33621), (80, 33567),

Gene: ShawBrad_36 Start: 28681, Stop: 28445, Start Num: 54

Candidate Starts for ShawBrad_36:

(Start: 54 @28681 has 15 MA's), (Start: 57 @28672 has 97 MA's), (Start: 58 @28669 has 17 MA's), (59, 28657), (62, 28633), (65, 28621), (75, 28540), (76, 28525), (78, 28480), (80, 28471), (81, 28468),

Gene: Shinji_38 Start: 33014, Stop: 32778, Start Num: 53

Candidate Starts for Shinji_38:

(Start: 41 @33050 has 6 MA's), (Start: 53 @33014 has 19 MA's), (Start: 57 @33005 has 97 MA's), (59, 32990), (62, 32966), (65, 32954), (70, 32900), (74, 32879), (75, 32873), (76, 32858), (78, 32813), (79, 32807), (80, 32804),

Gene: Sixsevenium_38 Start: 32514, Stop: 32233, Start Num: 38

Candidate Starts for Sixsevenium_38:

(26, 32550), (29, 32544), (30, 32541), (31, 32538), (32, 32529), (38, 32514), (Start: 57 @32460 has 97 MA's), (59, 32445), (60, 32442), (62, 32421), (64, 32412), (65, 32409), (72, 32343), (74, 32334), (75, 32328), (76, 32313), (78, 32268), (80, 32259),

Gene: SmokingBunny_37 Start: 33562, Stop: 33326, Start Num: 53

Candidate Starts for SmokingBunny_37:

(Start: 41 @33598 has 6 MA's), (Start: 53 @33562 has 19 MA's), (Start: 57 @33553 has 97 MA's), (59, 33538), (62, 33514), (65, 33502), (75, 33421), (76, 33406), (80, 33352),

Gene: Soilmate_38 Start: 31464, Stop: 31222, Start Num: 57

Candidate Starts for Soilmate_38:

(30, 31545), (38, 31518), (Start: 54 @31473 has 15 MA's), (Start: 57 @31464 has 97 MA's), (64, 31416), (65, 31413), (77, 31314), (78, 31272), (80, 31263),

Gene: Spooky_36 Start: 28938, Stop: 28702, Start Num: 54

Candidate Starts for Spooky_36:

(Start: 54 @28938 has 15 MA's), (Start: 57 @28929 has 97 MA's), (Start: 58 @28926 has 17 MA's), (59, 28914), (62, 28890), (65, 28878), (74, 28803), (75, 28797), (76, 28782), (78, 28737),

Gene: Sproutie_34 Start: 26557, Stop: 26321, Start Num: 53

Candidate Starts for Sproutie_34:

(Start: 53 @26557 has 19 MA's), (Start: 57 @26548 has 97 MA's), (60, 26530), (62, 26509), (65, 26497), (75, 26416), (76, 26401), (78, 26356), (79, 26350), (80, 26347),

Gene: Squiddly_38 Start: 30313, Stop: 30086, Start Num: 57

Candidate Starts for Squiddly_38:

(Start: 54 @30322 has 15 MA's), (Start: 57 @30313 has 97 MA's), (Start: 58 @30310 has 17 MA's), (59, 30298), (62, 30274), (65, 30262), (75, 30181), (76, 30166), (78, 30121),

Gene: TaronosaurusRx_33 Start: 28265, Stop: 28032, Start Num: 55

Candidate Starts for TaronosaurusRx_33:

(Start: 41 @28307 has 6 MA's), (Start: 54 @28268 has 15 MA's), (Start: 55 @28265 has 1 MA's), (Start: 57 @28259 has 97 MA's), (59, 28244), (62, 28220), (63, 28214), (64, 28211), (65, 28208), (74, 28133), (75, 28127), (76, 28112), (78, 28067), (80, 28058),

Gene: Thimann_32 Start: 26356, Stop: 26129, Start Num: 57

Candidate Starts for Thimann_32:

(Start: 57 @26356 has 97 MA's), (59, 26341), (62, 26317), (64, 26308), (65, 26305), (66, 26284), (76, 26209), (80, 26155),

Gene: TillyBobJoe_37 Start: 33366, Stop: 33130, Start Num: 53

Candidate Starts for TillyBobJoe_37:

(Start: 41 @33402 has 6 MA's), (Start: 53 @33366 has 19 MA's), (Start: 57 @33357 has 97 MA's), (59, 33342), (62, 33318), (65, 33306), (75, 33225), (76, 33210), (80, 33156),

Gene: TimTam_31 Start: 28844, Stop: 28608, Start Num: 57

Candidate Starts for TimTam_31:

(Start: 55 @28850 has 1 MA's), (Start: 57 @28844 has 97 MA's), (59, 28829), (60, 28826), (62, 28805), (63, 28799), (64, 28796), (65, 28793), (76, 28697),

Gene: TinyDot_30 Start: 24493, Stop: 24266, Start Num: 57

Candidate Starts for TinyDot_30:

(Start: 41 @24538 has 6 MA's), (Start: 57 @24493 has 97 MA's), (59, 24478), (61, 24469), (62, 24454), (65, 24442), (69, 24394), (74, 24367), (75, 24361), (76, 24346), (78, 24301), (80, 24292),

Gene: Toast_34 Start: 28574, Stop: 28347, Start Num: 57

Candidate Starts for Toast_34:

(Start: 57 @28574 has 97 MA's), (59, 28559), (62, 28535), (63, 28529), (64, 28526), (65, 28523), (66, 28502), (76, 28427), (80, 28373),

Gene: Togo_37 Start: 33553, Stop: 33326, Start Num: 57

Candidate Starts for Togo_37:

(Start: 41 @33598 has 6 MA's), (Start: 53 @33562 has 19 MA's), (Start: 57 @33553 has 97 MA's), (59, 33538), (62, 33514), (65, 33502), (75, 33421), (76, 33406), (80, 33352),

Gene: TuertoX_34 Start: 26548, Stop: 26321, Start Num: 57

Candidate Starts for TuertoX_34:

(Start: 53 @26557 has 19 MA's), (Start: 57 @26548 has 97 MA's), (60, 26530), (62, 26509), (65, 26497), (75, 26416), (76, 26401), (78, 26356), (79, 26350), (80, 26347),

Gene: Tuti_35 Start: 27599, Stop: 27372, Start Num: 57

Candidate Starts for Tuti_35:

(Start: 57 @27599 has 97 MA's), (59, 27584), (62, 27560), (65, 27548), (66, 27527), (76, 27452),

Gene: Twister6_40 Start: 33465, Stop: 33229, Start Num: 53

Candidate Starts for Twister6_40:

(Start: 41 @33501 has 6 MA's), (Start: 53 @33465 has 19 MA's), (Start: 57 @33456 has 97 MA's), (59, 33441), (62, 33417), (65, 33405), (75, 33324), (76, 33309), (80, 33255),

Gene: UmaThurman_31 Start: 28735, Stop: 28508, Start Num: 57

Candidate Starts for UmaThurman_31:

(Start: 57 @28735 has 97 MA's), (59, 28720), (62, 28696), (65, 28684), (69, 28636), (76, 28588), (80, 28534),

Gene: Valary_40 Start: 34508, Stop: 34272, Start Num: 53

Candidate Starts for Valary_40:

(Start: 41 @34544 has 6 MA's), (Start: 53 @34508 has 19 MA's), (Start: 57 @34499 has 97 MA's), (59, 34484), (62, 34460), (65, 34448), (69, 34400), (75, 34367), (76, 34352), (80, 34298),

Gene: VanDeWege_41 Start: 33791, Stop: 33564, Start Num: 57

Candidate Starts for VanDeWege_41:

(Start: 41 @33836 has 6 MA's), (Start: 53 @33800 has 19 MA's), (Start: 57 @33791 has 97 MA's), (59, 33776), (62, 33752), (65, 33740), (69, 33692), (75, 33659), (76, 33644), (80, 33590),

Gene: Vasanti_34 Start: 26861, Stop: 26634, Start Num: 57

Candidate Starts for Vasanti_34:

(24, 26972), (39, 26918), (Start: 41 @26912 has 6 MA's), (Start: 57 @26861 has 97 MA's), (60, 26843), (62, 26822), (64, 26813), (65, 26810), (66, 26789), (67, 26783), (76, 26714), (77, 26711), (80, 26660),

Gene: WelcomeAyanna_35 Start: 30384, Stop: 30157, Start Num: 57

Candidate Starts for WelcomeAyanna_35:

(38, 30435), (Start: 57 @30384 has 97 MA's), (62, 30345), (64, 30336), (76, 30237), (77, 30234), (80, 30183),

Gene: Whiteclaw_34 Start: 26548, Stop: 26321, Start Num: 57

Candidate Starts for Whiteclaw_34:

(Start: 53 @26557 has 19 MA's), (Start: 57 @26548 has 97 MA's), (60, 26530), (62, 26509), (65, 26497), (75, 26416), (76, 26401), (78, 26356), (79, 26350), (80, 26347),

Gene: Whitney_40 Start: 32148, Stop: 31924, Start Num: 58

Candidate Starts for Whitney_40:

(Start: 57 @32151 has 97 MA's), (Start: 58 @32148 has 17 MA's), (59, 32136), (62, 32112), (65, 32100), (69, 32052), (74, 32025), (75, 32019), (76, 32004), (78, 31959), (80, 31950),

Gene: Wisp_30 Start: 27726, Stop: 27493, Start Num: 57

Candidate Starts for Wisp_30:

(Start: 57 @27726 has 97 MA's), (Start: 58 @27723 has 17 MA's), (59, 27711), (62, 27687), (65, 27675), (69, 27627), (75, 27594), (76, 27579), (80, 27525), (83, 27501),

Gene: Wizard_37 Start: 33705, Stop: 33469, Start Num: 53

Candidate Starts for Wizard_37:

(Start: 41 @33741 has 6 MA's), (Start: 53 @33705 has 19 MA's), (Start: 57 @33696 has 97 MA's), (59, 33681), (62, 33657), (65, 33645), (75, 33564), (76, 33549), (80, 33495),

Gene: Wocket_36 Start: 28733, Stop: 28506, Start Num: 57

Candidate Starts for Wocket_36:

(7, 28913), (10, 28895), (17, 28853), (Start: 56 @28736 has 1 MA's), (Start: 57 @28733 has 97 MA's), (Start: 58 @28730 has 17 MA's), (59, 28718), (60, 28715), (62, 28694), (64, 28685), (65, 28682), (73, 28613), (74, 28607), (77, 28583), (78, 28541), (80, 28532),

Gene: Yinzer_33 Start: 26557, Stop: 26321, Start Num: 53

Candidate Starts for Yinzer_33:

(Start: 53 @26557 has 19 MA's), (Start: 57 @26548 has 97 MA's), (60, 26530), (62, 26509), (65, 26497), (75, 26416), (76, 26401), (78, 26356), (79, 26350), (80, 26347),

Gene: YungMoney_39 Start: 34979, Stop: 34755, Start Num: 58

Candidate Starts for YungMoney_39:

(26, 35072), (29, 35066), (30, 35063), (31, 35060), (32, 35051), (38, 35036), (Start: 57 @34982 has 97 MA's), (Start: 58 @34979 has 17 MA's), (59, 34967), (62, 34943), (65, 34931), (76, 34835), (78, 34790), (80, 34781),

Gene: Zarbodnamra_33 Start: 28639, Stop: 28412, Start Num: 57

Candidate Starts for Zarbodnamra_33:

(Start: 41 @28684 has 6 MA's), (Start: 57 @28639 has 97 MA's), (59, 28624), (60, 28621), (62, 28600), (65, 28588), (69, 28540), (72, 28522), (76, 28492), (78, 28447), (80, 28438), (81, 28435),

Gene: ZiggyZoo_34 Start: 28938, Stop: 28711, Start Num: 57

Candidate Starts for ZiggyZoo_34:

(Start: 57 @28938 has 97 MA's), (Start: 58 @28935 has 17 MA's), (59, 28923), (60, 28920), (62, 28899), (65, 28887), (76, 28791), (80, 28737),