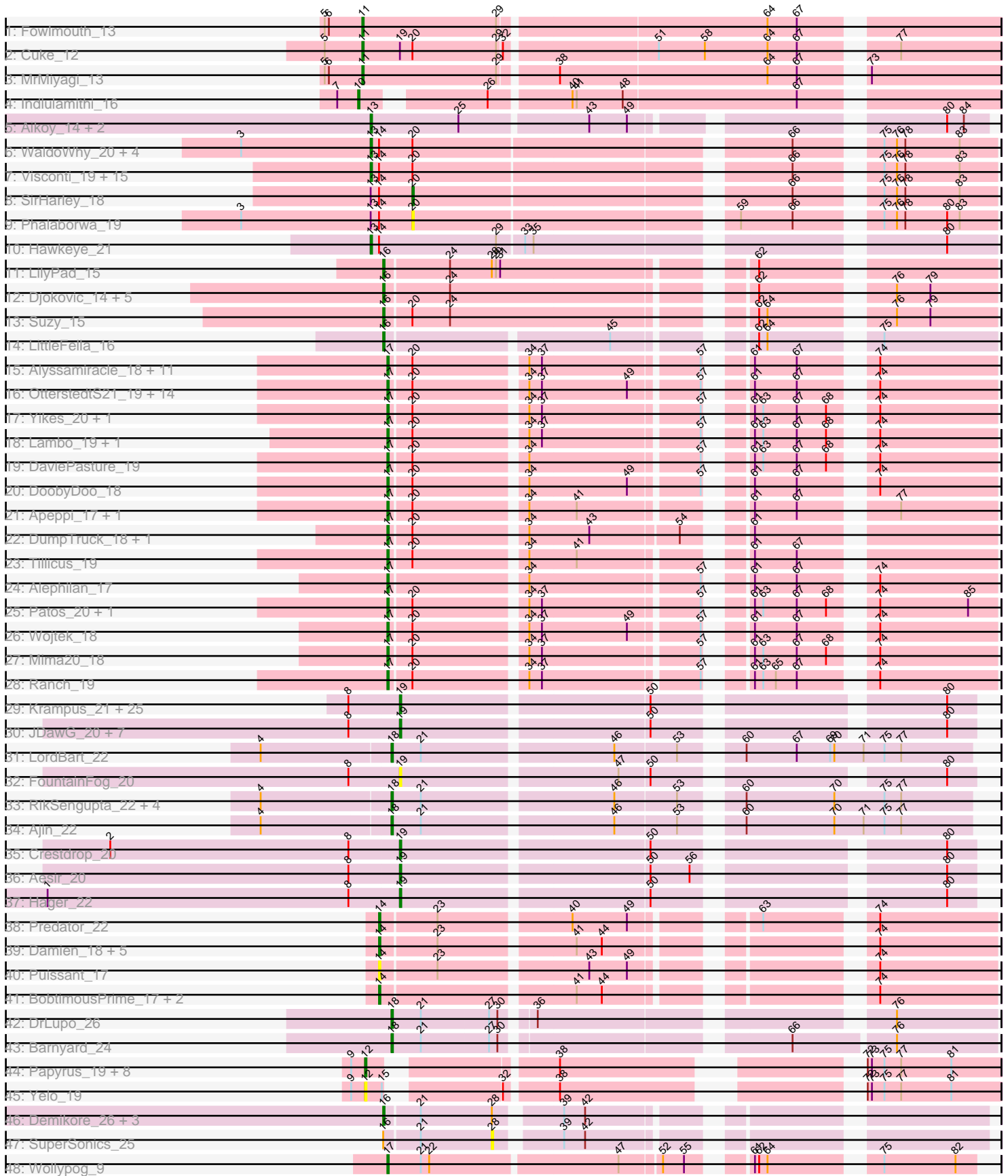


Pham 296303



Note: Tracks are now grouped by subcluster and scaled. Switching in subcluster is indicated by changes in track color. Track scale is now set by default to display the region 30 bp upstream of start 1 to 30 bp downstream of the last possible start. If this default region is judged to be packed too tightly with annotated starts, the track will be further scaled to only show that region of the ORF with annotated starts. This action will be indicated by adding "Zoomed" to the title. For starts, yellow indicates the location of called starts comprised solely of Glimmer/GeneMark auto-annotations, green indicates the location of called starts with at least 1 manual gene annotation.

Pham 296303 Report

This analysis was run 04/25/26 on database version 644.

Pham number 296303 has 158 members, 16 are drafts.

Phages represented in each track:

- Track 1 : Fowlmouth_13
- Track 2 : Cuke_12
- Track 3 : MrMiyagi_13
- Track 4 : Indlulamithi_16
- Track 5 : Aikoy_14, Onyinye_15, Leopard_14
- Track 6 : WaldoWhy_20, Chill_20, Delton_19, BigMama_17, Prager_19
- Track 7 : Visconti_19, Butterscotch_19, KandZ_19, Gumball_18, Thoth_19, Nova_19, Adjutor_20, Penelope2018_19, SuperheroCarly_19, PLOT_20, Troll4_19, Erk16_19, Giuseppe_19, Mopey_19, Helpful_20, PBI1_20
- Track 8 : SirHarley_18
- Track 9 : Phalaborwa_19
- Track 10 : Hawkeye_21
- Track 11 : LilyPad_15
- Track 12 : Djokovic_14, Madi_14, Terapin_14, BiteSize_14, Sienna_14, BeyonCage_14
- Track 13 : Suzy_15
- Track 14 : LittleFella_16
- Track 15 : Alyssmiracle_18, Rumi_18, Astralis_17, Charminar_17, Stormer_17, Genamy16_18, Riduram_17, Zany_18, NovaSharks_18, Avian_17, Jamemuya19_17, RazorC_17
- Track 16 : OtterstedtS21_19, Gibbin_20, Fulcrum_20, Lila22_19, Sampudon_19, GretelLyn_19, MoiGyank_21, Sadboi_19, LavAbarElk_17, Jalebi_19, BirthdayBoy_20, Pywacket_18, GOATification_20, Rota_18, Rukungu_19
- Track 17 : Yikes_20, ParvusTarda_19
- Track 18 : Lambo_19, Erutan_19
- Track 19 : DaviePasture_19
- Track 20 : DoobyDoo_18
- Track 21 : Apeppi_17, LuckyLeo_18
- Track 22 : DumpTruck_18, Xenia2_19
- Track 23 : Tillicus_19
- Track 24 : Alephilan_17
- Track 25 : Patos_20, NorManre_20
- Track 26 : Wojtek_18
- Track 27 : Mima20_18
- Track 28 : Ranch_19
- Track 29 : Krampus_21, Chivey_20, Hiddenleaf_20, Neptune_21, Pharpay_21, Gilda_21, Anakin_21, Rachella_21, DannyDe_20, Poultruss_20, Haunter_21,

Kate_21, AnnaSerena_21, CoolCookie_21, FreddieHg_20, OhDear_21, SilentWarrior_20, Potty_21, Artiphact_21, Tedro_21, JingleBells_20, Cybele_21, OverHedge_21, NarutoRun_21, PhunaPhoke_21, Snakehole_22

- Track 30 : JDawG_20, Rie18_21, Dauntless_20, MortySmith_19, Annapurna_20, Erudite_20, Karate_20, Tongui_20
- Track 31 : LordBart_22
- Track 32 : FountainFog_20
- Track 33 : RikSengupta_22, TinyMiny_22, Kors_22, Bramble_22, Sparcetus_22
- Track 34 : Ajin_22
- Track 35 : Crestdrop_20
- Track 36 : Aesir_20
- Track 37 : Hager_22
- Track 38 : Predator_22
- Track 39 : Damien_18, Cborch11_19, Phreeze_18, Konstantine_23, Beckerton_18, Oaker_18
- Track 40 : Puissant_17
- Track 41 : BobtimousPrime_17, Megatron06_20, Thumb_18
- Track 42 : DrLupo_26
- Track 43 : Barnyard_24
- Track 44 : Papyrus_19, MontyDev_19, Send513_19, Nilo_20, Candle_19, Weiss13_19, Riparian_19, Rope_19, Zenon_20
- Track 45 : Yelo_19
- Track 46 : Demikore_26, Labelle_25, Madrugua_24, Patience_26
- Track 47 : SuperSonics_25
- Track 48 : Wollypog_9

Summary of Final Annotations (See graph section above for start numbers):

The start number called the most often in the published annotations is 17, it was called in 38 of the 142 non-draft genes in the pham.

Genes that call this "Most Annotated" start:

- Alephilan_17, Alyssamiracle_18, Apeppi_17, Astralis_17, Avian_17, BirthdayBoy_20, Charminar_17, DaviePasture_19, DoobyDoo_18, DumpTruck_18, Erutan_19, Fulcrum_20, GOATification_20, Genamy16_18, Gibbin_20, GretellLyn_19, Jalebi_19, Jamemuya19_17, Lambo_19, LavAbarElk_17, Lila22_19, LuckyLeo_18, Mima20_18, MoiGyank_21, NorManre_20, NovaSharks_18, OtterstedtS21_19, ParvusTarda_19, Patos_20, Pywacket_18, Ranch_19, RazorC_17, Riduram_17, Rota_18, Rukungu_19, Rumi_18, Sadboi_19, Sampudon_19, Stormer_17, Tillicus_19, Wojtek_18, Wollypog_9, Xenia2_19, Yikes_20, Zany_18,

Genes that have the "Most Annotated" start but do not call it:

-

Genes that do not have the "Most Annotated" start:

- Adjutor_20, Aesir_20, Aikoy_14, Ajin_22, Anakin_21, AnnaSerena_21, Annapurna_20, Artiphact_21, Barnyard_24, Beckerton_18, Beyoncage_14, BigMama_17, BiteSize_14, BobtimousPrime_17, Bramble_22, Butterscotch_19, Candle_19, Cborch11_19, Chill_20, Chivey_20, CoolCookie_21, Crestdrop_20, Cuke_12, Cybele_21, Damien_18, DannyDe_20, Dauntless_20, Delton_19,

Demikore_26, Djokovic_14, DrLupo_26, Erk16_19, Erudite_20, FountainFog_20, Fowlmouth_13, FreddieHg_20, Gilda_21, Giuseppe_19, Gumball_18, Hager_22, Haunter_21, Hawkeye_21, Helpful_20, Hiddenleaf_20, Indlulamithi_16, JDawG_20, JingleBells_20, KandZ_19, Karate_20, Kate_21, Konstantine_23, Kors_22, Krampus_21, Labelle_25, Leopard_14, LilyPad_15, LittleFella_16, LordBart_22, Madi_14, Madrugá_24, Megatron06_20, MontyDev_19, Mopey_19, MortySmith_19, MrMiyagi_13, NarutoRun_21, Neptune_21, Nilo_20, Nova_19, Oaker_18, OhDear_21, Onyinye_15, OverHedge_21, PBI1_20, PLOT_20, Papyrus_19, Patience_26, Penelope2018_19, Phalaborwa_19, Pharpay_21, Phreeze_18, PhunaPhoke_21, Potty_21, Poultruss_20, Prager_19, Predator_22, Puissant_17, Rachella_21, Rie18_21, RikSengupta_22, Riparian_19, Rope_19, Send513_19, Sienna_14, SilentWarrior_20, SirHarley_18, Snakehole_22, Sparcetus_22, SuperSonics_25, SuperheroCarly_19, Suzy_15, Tedro_21, Terapin_14, Thoth_19, Thumb_18, TinyMiny_22, Tongui_20, Troll4_19, Visconti_19, WaldoWhy_20, Weiss13_19, Yelo_19, Zenon_20,

Summary by start number:

Start 10:

- Found in 1 of 158 (0.6%) of genes in pham
- Manual Annotations of this start: 1 of 142
- Called 100.0% of time when present
- Phage (with cluster) where this start called: Indlulamithi_16 (AC),

Start 11:

- Found in 3 of 158 (1.9%) of genes in pham
- Manual Annotations of this start: 3 of 142
- Called 100.0% of time when present
- Phage (with cluster) where this start called: Cuke_12 (AC), Fowlmouth_13 (AC), MrMiyagi_13 (AC),

Start 12:

- Found in 10 of 158 (6.3%) of genes in pham
- Manual Annotations of this start: 9 of 142
- Called 100.0% of time when present
- Phage (with cluster) where this start called: Candle_19 (R), MontyDev_19 (R), Nilo_20 (R), Papyrus_19 (R), Riparian_19 (R), Rope_19 (R), Send513_19 (R), Weiss13_19 (R), Yelo_19 (R), Zenon_20 (R),

Start 13:

- Found in 27 of 158 (17.1%) of genes in pham
- Manual Annotations of this start: 25 of 142
- Called 92.6% of time when present
- Phage (with cluster) where this start called: Adjutor_20 (D1), Aikoy_14 (AE), BigMama_17 (D1), Butterscotch_19 (D1), Chill_20 (D1), Delton_19 (D1), Erk16_19 (D1), Giuseppe_19 (D1), Gumball_18 (D1), Hawkeye_21 (D2), Helpful_20 (D1), KandZ_19 (D1), Leopard_14 (AE), Mopey_19 (D1), Nova_19 (D1), Onyinye_15 (AE), PBI1_20 (D1), PLOT_20 (D1), Penelope2018_19 (D1), Prager_19 (D1), SuperheroCarly_19 (D1), Thoth_19 (D1), Troll4_19 (D1), Visconti_19 (D1), WaldoWhy_20 (D1),

Start 14:

- Found in 35 of 158 (22.2%) of genes in pham

- Manual Annotations of this start: 9 of 142
- Called 31.4% of time when present
- Phage (with cluster) where this start called: Beckerton_18 (H1), BobtimousPrime_17 (H1), Cborch11_19 (H1), Damien_18 (H1), Konstantine_23 (H1), Megatron06_20 (H1), Oaker_18 (H1), Phreeze_18 (H1), Predator_22 (H1), Puissant_17 (H1), Thumb_18 (H1),

Start 16:

- Found in 14 of 158 (8.9%) of genes in pham
- Manual Annotations of this start: 12 of 142
- Called 92.9% of time when present
- Phage (with cluster) where this start called: Beyoncage_14 (DG1), BiteSize_14 (DG1), Demikore_26 (U), Djokovic_14 (DG1), Labelle_25 (U), LilyPad_15 (DG1), LittleFella_16 (DG2), Madi_14 (DG1), Madrugada_24 (U), Patience_26 (U), Sienna_14 (DG1), Suzy_15 (DG1), Terapin_14 (DG1),

Start 17:

- Found in 45 of 158 (28.5%) of genes in pham
- Manual Annotations of this start: 38 of 142
- Called 100.0% of time when present
- Phage (with cluster) where this start called: Alephilan_17 (DV), Alyssamiracle_18 (DV), Apeppi_17 (DV), Astralis_17 (DV), Avian_17 (DV), BirthdayBoy_20 (DV), Charminar_17 (DV), DaviePasture_19 (DV), DoobyDoo_18 (DV), DumpTruck_18 (DV), Erutan_19 (DV), Fulcrum_20 (DV), GOATification_20 (DV), Genamy16_18 (DV), Gibbin_20 (DV), GretelLyn_19 (DV), Jalebi_19 (DV), Jamemuya19_17 (DV), Lambo_19 (DV), LavAbarElk_17 (DV), Lila22_19 (DV), LuckyLeo_18 (DV), Mima20_18 (DV), MoiGyank_21 (DV), NorManre_20 (DV), NovaSharks_18 (DV), OtterstedtS21_19 (DV), ParvusTarda_19 (DV), Patos_20 (DV), Pywacket_18 (DV), Ranch_19 (DV), RazorC_17 (DV), Riduram_17 (DV), Rota_18 (DV), Rukungu_19 (DV), Rumi_18 (DV), Sadboi_19 (DV), Sampudon_19 (DV), Stormer_17 (DV), Tillicus_19 (DV), Wojtek_18 (DV), Wollypog_9 (singleton), Xenia2_19 (DV), Yikes_20 (DV), Zany_18 (DV),

Start 18:

- Found in 9 of 158 (5.7%) of genes in pham
- Manual Annotations of this start: 9 of 142
- Called 100.0% of time when present
- Phage (with cluster) where this start called: Ajin_22 (EF), Barnyard_24 (H2), Bramble_22 (EF), DrLupo_26 (H2), Kors_22 (EF), LordBart_22 (EF), RikSengupta_22 (EF), Sparcetus_22 (EF), TinyMiny_22 (EF),

Start 19:

- Found in 39 of 158 (24.7%) of genes in pham
- Manual Annotations of this start: 35 of 142
- Called 97.4% of time when present
- Phage (with cluster) where this start called: Aesir_20 (EF), Anakin_21 (EF), AnnaSerena_21 (EF), Annapurna_20 (EF), Artiphact_21 (EF), Chivey_20 (EF), CoolCookie_21 (EF), Crestdrop_20 (EF), Cybele_21 (EF), DannyDe_20 (EF), Dauntless_20 (EF), Erudite_20 (EF), FountainFog_20 (EF), FreddieHg_20 (EF), Gilda_21 (EF), Hager_22 (EF), Haunter_21 (EF), Hiddenleaf_20 (EF), JDawG_20 (EF), JingleBells_20 (EF), Karate_20 (EF), Kate_21 (EF), Krampus_21 (EF), MortySmith_19 (EF), NarutoRun_21 (EF), Neptune_21 (EF), OhDear_21 (EF), OverHedge_21 (EF), Pharpay_21 (EF), PhunaPhoke_21 (EF), Potty_21 (EF),

Poultress_20 (EF), Rachella_21 (EF), Rie18_21 (EF), SilentWarrior_20 (EF), Snakehole_22 (EF), Tedro_21 (EF), Tongui_20 (EF),

Start 20:

- Found in 68 of 158 (43.0%) of genes in pham
- Manual Annotations of this start: 1 of 142
- Called 2.9% of time when present
- Phage (with cluster) where this start called: Phalaborwa_19 (D1), SirHarley_18 (D1),

Start 28:

- Found in 6 of 158 (3.8%) of genes in pham
- No Manual Annotations of this start.
- Called 16.7% of time when present
- Phage (with cluster) where this start called: SuperSonics_25 (U),

Summary by clusters:

There are 13 clusters represented in this pham: AC, H1, AE, H2, EF, singleton, DG2, DG1, U, DV, R, D2, D1,

Info for manual annotations of cluster AC:

- Start number 10 was manually annotated 1 time for cluster AC.
- Start number 11 was manually annotated 3 times for cluster AC.

Info for manual annotations of cluster AE:

- Start number 13 was manually annotated 3 times for cluster AE.

Info for manual annotations of cluster D1:

- Start number 13 was manually annotated 21 times for cluster D1.
- Start number 20 was manually annotated 1 time for cluster D1.

Info for manual annotations of cluster D2:

- Start number 13 was manually annotated 1 time for cluster D2.

Info for manual annotations of cluster DG1:

- Start number 16 was manually annotated 8 times for cluster DG1.

Info for manual annotations of cluster DG2:

- Start number 16 was manually annotated 1 time for cluster DG2.

Info for manual annotations of cluster DV:

- Start number 17 was manually annotated 37 times for cluster DV.

Info for manual annotations of cluster EF:

- Start number 18 was manually annotated 7 times for cluster EF.
- Start number 19 was manually annotated 35 times for cluster EF.

Info for manual annotations of cluster H1:

- Start number 14 was manually annotated 9 times for cluster H1.

Info for manual annotations of cluster H2:

- Start number 18 was manually annotated 2 times for cluster H2.

Info for manual annotations of cluster R:

- Start number 12 was manually annotated 9 times for cluster R.

Info for manual annotations of cluster U:

- Start number 16 was manually annotated 3 times for cluster U.

Gene Information:

Gene: Adjutor_20 Start: 12729, Stop: 13136, Start Num: 13

Candidate Starts for Adjutor_20:

(Start: 13 @12729 has 25 MA's), (Start: 14 @12735 has 9 MA's), (Start: 20 @12759 has 1 MA's), (66, 13008), (75, 13056), (76, 13065), (78, 13071), (83, 13110),

Gene: Aesir_20 Start: 11440, Stop: 11808, Start Num: 19

Candidate Starts for Aesir_20:

(8, 11404), (Start: 19 @11440 has 35 MA's), (50, 11608), (56, 11635), (80, 11788),

Gene: Aikoy_14 Start: 5054, Stop: 5449, Start Num: 13

Candidate Starts for Aikoy_14:

(Start: 13 @5054 has 25 MA's), (25, 5117), (43, 5204), (49, 5231), (80, 5420), (84, 5432),

Gene: Ajin_22 Start: 11605, Stop: 11991, Start Num: 18

Candidate Starts for Ajin_22:

(4, 11515), (Start: 18 @11605 has 9 MA's), (21, 11626), (46, 11755), (53, 11797), (60, 11830), (70, 11893), (71, 11914), (75, 11929), (77, 11941),

Gene: Alephilan_17 Start: 13251, Stop: 13628, Start Num: 17

Candidate Starts for Alephilan_17:

(Start: 17 @13251 has 38 MA's), (34, 13341), (57, 13455), (61, 13473), (67, 13503), (74, 13545),

Gene: Alyssamiracle_18 Start: 11658, Stop: 12035, Start Num: 17

Candidate Starts for Alyssamiracle_18:

(Start: 17 @11658 has 38 MA's), (Start: 20 @11673 has 1 MA's), (34, 11748), (37, 11757), (57, 11862), (61, 11880), (67, 11910), (74, 11952),

Gene: Anakin_21 Start: 11650, Stop: 12018, Start Num: 19

Candidate Starts for Anakin_21:

(8, 11614), (Start: 19 @11650 has 35 MA's), (50, 11818), (80, 11998),

Gene: AnnaSerena_21 Start: 11659, Stop: 12027, Start Num: 19

Candidate Starts for AnnaSerena_21:

(8, 11623), (Start: 19 @11659 has 35 MA's), (50, 11827), (80, 12007),

Gene: Annapurna_20 Start: 10859, Stop: 11227, Start Num: 19

Candidate Starts for Annapurna_20:

(8, 10823), (Start: 19 @10859 has 35 MA's), (50, 11027), (80, 11207),

Gene: Apeppi_17 Start: 13373, Stop: 13750, Start Num: 17

Candidate Starts for Apeppi_17:

(Start: 17 @13373 has 38 MA's), (Start: 20 @13388 has 1 MA's), (34, 13463), (41, 13496), (61, 13595), (67, 13625), (77, 13682),

Gene: Artiphact_21 Start: 11651, Stop: 12019, Start Num: 19
Candidate Starts for Artiphact_21:
(8, 11615), (Start: 19 @11651 has 35 MA's), (50, 11819), (80, 11999),

Gene: Astralis_17 Start: 11658, Stop: 12035, Start Num: 17
Candidate Starts for Astralis_17:
(Start: 17 @11658 has 38 MA's), (Start: 20 @11673 has 1 MA's), (34, 11748), (37, 11757), (57, 11862),
(61, 11880), (67, 11910), (74, 11952),

Gene: Avian_17 Start: 11658, Stop: 12035, Start Num: 17
Candidate Starts for Avian_17:
(Start: 17 @11658 has 38 MA's), (Start: 20 @11673 has 1 MA's), (34, 11748), (37, 11757), (57, 11862),
(61, 11880), (67, 11910), (74, 11952),

Gene: Barnyard_24 Start: 14273, Stop: 14668, Start Num: 18
Candidate Starts for Barnyard_24:
(Start: 18 @14273 has 9 MA's), (21, 14294), (27, 14342), (30, 14348), (66, 14528), (76, 14597),

Gene: Beckerton_18 Start: 13163, Stop: 13546, Start Num: 14
Candidate Starts for Beckerton_18:
(Start: 14 @13163 has 9 MA's), (23, 13202), (41, 13292), (44, 13310), (74, 13463),

Gene: Beyoncage_14 Start: 9137, Stop: 9526, Start Num: 16
Candidate Starts for Beyoncage_14:
(Start: 16 @9137 has 12 MA's), (24, 9182), (62, 9374), (76, 9455), (79, 9479),

Gene: BigMama_17 Start: 12805, Stop: 13212, Start Num: 13
Candidate Starts for BigMama_17:
(3, 12712), (Start: 13 @12805 has 25 MA's), (Start: 14 @12811 has 9 MA's), (Start: 20 @12835 has 1
MA's), (66, 13084), (75, 13132), (76, 13141), (78, 13147), (83, 13186),

Gene: BirthdayBoy_20 Start: 14104, Stop: 14481, Start Num: 17
Candidate Starts for BirthdayBoy_20:
(Start: 17 @14104 has 38 MA's), (Start: 20 @14119 has 1 MA's), (34, 14194), (37, 14203), (49, 14263),
(57, 14308), (61, 14326), (67, 14356), (74, 14398),

Gene: BiteSize_14 Start: 9137, Stop: 9526, Start Num: 16
Candidate Starts for BiteSize_14:
(Start: 16 @9137 has 12 MA's), (24, 9182), (62, 9374), (76, 9455), (79, 9479),

Gene: BobtimousPrime_17 Start: 13083, Stop: 13466, Start Num: 14
Candidate Starts for BobtimousPrime_17:
(Start: 14 @13083 has 9 MA's), (41, 13212), (44, 13230), (74, 13383),

Gene: Bramble_22 Start: 11570, Stop: 11956, Start Num: 18
Candidate Starts for Bramble_22:
(4, 11480), (Start: 18 @11570 has 9 MA's), (21, 11591), (46, 11720), (53, 11762), (60, 11795), (70,
11858), (75, 11894), (77, 11906),

Gene: Butterscotch_19 Start: 12789, Stop: 13196, Start Num: 13
Candidate Starts for Butterscotch_19:

(Start: 13 @12789 has 25 MA's), (Start: 14 @12795 has 9 MA's), (Start: 20 @12819 has 1 MA's), (66, 13068), (75, 13116), (76, 13125), (78, 13131), (83, 13170),

Gene: Candle_19 Start: 13157, Stop: 13534, Start Num: 12

Candidate Starts for Candle_19:

(9, 13148), (Start: 12 @13157 has 9 MA's), (38, 13268), (72, 13439), (73, 13442), (75, 13451), (77, 13463), (81, 13499),

Gene: Cborch11_19 Start: 12626, Stop: 13009, Start Num: 14

Candidate Starts for Cborch11_19:

(Start: 14 @12626 has 9 MA's), (23, 12665), (41, 12755), (44, 12773), (74, 12926),

Gene: Charminar_17 Start: 11658, Stop: 12035, Start Num: 17

Candidate Starts for Charminar_17:

(Start: 17 @11658 has 38 MA's), (Start: 20 @11673 has 1 MA's), (34, 11748), (37, 11757), (57, 11862), (61, 11880), (67, 11910), (74, 11952),

Gene: Chill_20 Start: 12795, Stop: 13202, Start Num: 13

Candidate Starts for Chill_20:

(3, 12702), (Start: 13 @12795 has 25 MA's), (Start: 14 @12801 has 9 MA's), (Start: 20 @12825 has 1 MA's), (66, 13074), (75, 13122), (76, 13131), (78, 13137), (83, 13176),

Gene: Chivey_20 Start: 10852, Stop: 11220, Start Num: 19

Candidate Starts for Chivey_20:

(8, 10816), (Start: 19 @10852 has 35 MA's), (50, 11020), (80, 11200),

Gene: CoolCookie_21 Start: 11657, Stop: 12025, Start Num: 19

Candidate Starts for CoolCookie_21:

(8, 11621), (Start: 19 @11657 has 35 MA's), (50, 11825), (80, 12005),

Gene: Crestdrop_20 Start: 10726, Stop: 11094, Start Num: 19

Candidate Starts for Crestdrop_20:

(2, 10519), (8, 10690), (Start: 19 @10726 has 35 MA's), (50, 10894), (80, 11074),

Gene: Cuke_12 Start: 8316, Stop: 8744, Start Num: 11

Candidate Starts for Cuke_12:

(5, 8289), (Start: 11 @8316 has 3 MA's), (Start: 19 @8343 has 35 MA's), (Start: 20 @8352 has 1 MA's), (29, 8412), (32, 8415), (51, 8517), (58, 8550), (64, 8595), (67, 8616), (77, 8673),

Gene: Cybele_21 Start: 11627, Stop: 11995, Start Num: 19

Candidate Starts for Cybele_21:

(8, 11591), (Start: 19 @11627 has 35 MA's), (50, 11795), (80, 11975),

Gene: Damien_18 Start: 12625, Stop: 13008, Start Num: 14

Candidate Starts for Damien_18:

(Start: 14 @12625 has 9 MA's), (23, 12664), (41, 12754), (44, 12772), (74, 12925),

Gene: DannyDe_20 Start: 10844, Stop: 11212, Start Num: 19

Candidate Starts for DannyDe_20:

(8, 10808), (Start: 19 @10844 has 35 MA's), (50, 11012), (80, 11192),

Gene: Dauntless_20 Start: 11369, Stop: 11737, Start Num: 19

Candidate Starts for Dauntless_20:

(8, 11333), (Start: 19 @11369 has 35 MA's), (50, 11537), (80, 11717),

Gene: DaviePasture_19 Start: 13861, Stop: 14238, Start Num: 17

Candidate Starts for DaviePasture_19:

(Start: 17 @13861 has 38 MA's), (Start: 20 @13876 has 1 MA's), (34, 13951), (57, 14065), (61, 14083), (63, 14089), (67, 14113), (68, 14134), (74, 14155),

Gene: Delton_19 Start: 12801, Stop: 13208, Start Num: 13

Candidate Starts for Delton_19:

(3, 12708), (Start: 13 @12801 has 25 MA's), (Start: 14 @12807 has 9 MA's), (Start: 20 @12831 has 1 MA's), (66, 13080), (75, 13128), (76, 13137), (78, 13143), (83, 13182),

Gene: Demikore_26 Start: 15829, Stop: 16200, Start Num: 16

Candidate Starts for Demikore_26:

(Start: 16 @15829 has 12 MA's), (21, 15853), (28, 15904), (39, 15943), (42, 15958),

Gene: Djokovic_14 Start: 9137, Stop: 9526, Start Num: 16

Candidate Starts for Djokovic_14:

(Start: 16 @9137 has 12 MA's), (24, 9182), (62, 9374), (76, 9455), (79, 9479),

Gene: DoobyDoo_18 Start: 13038, Stop: 13415, Start Num: 17

Candidate Starts for DoobyDoo_18:

(Start: 17 @13038 has 38 MA's), (Start: 20 @13053 has 1 MA's), (34, 13128), (49, 13197), (57, 13242), (61, 13260), (67, 13290), (74, 13332),

Gene: DrLupo_26 Start: 14684, Stop: 15067, Start Num: 18

Candidate Starts for DrLupo_26:

(Start: 18 @14684 has 9 MA's), (21, 14705), (27, 14753), (30, 14759), (36, 14777), (76, 14996),

Gene: DumpTruck_18 Start: 13292, Stop: 13672, Start Num: 17

Candidate Starts for DumpTruck_18:

(Start: 17 @13292 has 38 MA's), (Start: 20 @13307 has 1 MA's), (34, 13382), (43, 13424), (54, 13484), (61, 13517),

Gene: Erk16_19 Start: 12792, Stop: 13199, Start Num: 13

Candidate Starts for Erk16_19:

(Start: 13 @12792 has 25 MA's), (Start: 14 @12798 has 9 MA's), (Start: 20 @12822 has 1 MA's), (66, 13071), (75, 13119), (76, 13128), (78, 13134), (83, 13173),

Gene: Erudite_20 Start: 11369, Stop: 11737, Start Num: 19

Candidate Starts for Erudite_20:

(8, 11333), (Start: 19 @11369 has 35 MA's), (50, 11537), (80, 11717),

Gene: Erutan_19 Start: 13551, Stop: 13928, Start Num: 17

Candidate Starts for Erutan_19:

(Start: 17 @13551 has 38 MA's), (Start: 20 @13566 has 1 MA's), (34, 13641), (37, 13650), (57, 13755), (61, 13773), (63, 13779), (67, 13803), (68, 13824), (74, 13845),

Gene: FountainFog_20 Start: 10978, Stop: 11346, Start Num: 19

Candidate Starts for FountainFog_20:

(8, 10942), (Start: 19 @10978 has 35 MA's), (47, 11125), (50, 11146), (80, 11326),

Gene: Fowlmouth_13 Start: 8487, Stop: 8915, Start Num: 11

Candidate Starts for Fowlmouth_13:

(5, 8460), (6, 8463), (Start: 11 @8487 has 3 MA's), (29, 8583), (64, 8766), (67, 8787),

Gene: FreddieHg_20 Start: 10868, Stop: 11236, Start Num: 19

Candidate Starts for FreddieHg_20:

(8, 10832), (Start: 19 @10868 has 35 MA's), (50, 11036), (80, 11216),

Gene: Fulcrum_20 Start: 14084, Stop: 14461, Start Num: 17

Candidate Starts for Fulcrum_20:

(Start: 17 @14084 has 38 MA's), (Start: 20 @14099 has 1 MA's), (34, 14174), (37, 14183), (49, 14243), (57, 14288), (61, 14306), (67, 14336), (74, 14378),

Gene: GOATification_20 Start: 14084, Stop: 14461, Start Num: 17

Candidate Starts for GOATification_20:

(Start: 17 @14084 has 38 MA's), (Start: 20 @14099 has 1 MA's), (34, 14174), (37, 14183), (49, 14243), (57, 14288), (61, 14306), (67, 14336), (74, 14378),

Gene: Genamy16_18 Start: 11658, Stop: 12035, Start Num: 17

Candidate Starts for Genamy16_18:

(Start: 17 @11658 has 38 MA's), (Start: 20 @11673 has 1 MA's), (34, 11748), (37, 11757), (57, 11862), (61, 11880), (67, 11910), (74, 11952),

Gene: Gibbin_20 Start: 14144, Stop: 14521, Start Num: 17

Candidate Starts for Gibbin_20:

(Start: 17 @14144 has 38 MA's), (Start: 20 @14159 has 1 MA's), (34, 14234), (37, 14243), (49, 14303), (57, 14348), (61, 14366), (67, 14396), (74, 14438),

Gene: Gilda_21 Start: 11651, Stop: 12019, Start Num: 19

Candidate Starts for Gilda_21:

(8, 11615), (Start: 19 @11651 has 35 MA's), (50, 11819), (80, 11999),

Gene: Giuseppe_19 Start: 12781, Stop: 13188, Start Num: 13

Candidate Starts for Giuseppe_19:

(Start: 13 @12781 has 25 MA's), (Start: 14 @12787 has 9 MA's), (Start: 20 @12811 has 1 MA's), (66, 13060), (75, 13108), (76, 13117), (78, 13123), (83, 13162),

Gene: Gretellyn_19 Start: 14418, Stop: 14795, Start Num: 17

Candidate Starts for Gretellyn_19:

(Start: 17 @14418 has 38 MA's), (Start: 20 @14433 has 1 MA's), (34, 14508), (37, 14517), (49, 14577), (57, 14622), (61, 14640), (67, 14670), (74, 14712),

Gene: Gumball_18 Start: 12739, Stop: 13146, Start Num: 13

Candidate Starts for Gumball_18:

(Start: 13 @12739 has 25 MA's), (Start: 14 @12745 has 9 MA's), (Start: 20 @12769 has 1 MA's), (66, 13018), (75, 13066), (76, 13075), (78, 13081), (83, 13120),

Gene: Hager_22 Start: 11222, Stop: 11590, Start Num: 19

Candidate Starts for Hager_22:

(1, 10970), (8, 11186), (Start: 19 @11222 has 35 MA's), (50, 11390), (80, 11570),

Gene: Haunter_21 Start: 11064, Stop: 11432, Start Num: 19

Candidate Starts for Haunter_21:

(8, 11028), (Start: 19 @11064 has 35 MA's), (50, 11232), (80, 11412),

Gene: Hawkeye_21 Start: 12664, Stop: 13071, Start Num: 13

Candidate Starts for Hawkeye_21:

(Start: 13 @12664 has 25 MA's), (Start: 14 @12670 has 9 MA's), (29, 12754), (33, 12772), (35, 12778), (80, 13036),

Gene: Helpful_20 Start: 12789, Stop: 13196, Start Num: 13

Candidate Starts for Helpful_20:

(Start: 13 @12789 has 25 MA's), (Start: 14 @12795 has 9 MA's), (Start: 20 @12819 has 1 MA's), (66, 13068), (75, 13116), (76, 13125), (78, 13131), (83, 13170),

Gene: Hiddenleaf_20 Start: 10852, Stop: 11220, Start Num: 19

Candidate Starts for Hiddenleaf_20:

(8, 10816), (Start: 19 @10852 has 35 MA's), (50, 11020), (80, 11200),

Gene: Indlulamithi_16 Start: 10589, Stop: 11005, Start Num: 10

Candidate Starts for Indlulamithi_16:

(7, 10574), (Start: 10 @10589 has 1 MA's), (26, 10664), (40, 10718), (41, 10721), (48, 10754), (67, 10877),

Gene: JDawG_20 Start: 11434, Stop: 11802, Start Num: 19

Candidate Starts for JDawG_20:

(8, 11398), (Start: 19 @11434 has 35 MA's), (50, 11602), (80, 11782),

Gene: Jalebi_19 Start: 14594, Stop: 14971, Start Num: 17

Candidate Starts for Jalebi_19:

(Start: 17 @14594 has 38 MA's), (Start: 20 @14609 has 1 MA's), (34, 14684), (37, 14693), (49, 14753), (57, 14798), (61, 14816), (67, 14846), (74, 14888),

Gene: Jamemuya19_17 Start: 11658, Stop: 12035, Start Num: 17

Candidate Starts for Jamemuya19_17:

(Start: 17 @11658 has 38 MA's), (Start: 20 @11673 has 1 MA's), (34, 11748), (37, 11757), (57, 11862), (61, 11880), (67, 11910), (74, 11952),

Gene: JingleBells_20 Start: 10933, Stop: 11301, Start Num: 19

Candidate Starts for JingleBells_20:

(8, 10897), (Start: 19 @10933 has 35 MA's), (50, 11101), (80, 11281),

Gene: KandZ_19 Start: 12889, Stop: 13296, Start Num: 13

Candidate Starts for KandZ_19:

(Start: 13 @12889 has 25 MA's), (Start: 14 @12895 has 9 MA's), (Start: 20 @12919 has 1 MA's), (66, 13168), (75, 13216), (76, 13225), (78, 13231), (83, 13270),

Gene: Karate_20 Start: 11072, Stop: 11440, Start Num: 19

Candidate Starts for Karate_20:

(8, 11036), (Start: 19 @11072 has 35 MA's), (50, 11240), (80, 11420),

Gene: Kate_21 Start: 11659, Stop: 12027, Start Num: 19

Candidate Starts for Kate_21:

(8, 11623), (Start: 19 @11659 has 35 MA's), (50, 11827), (80, 12007),

Gene: Konstantine_23 Start: 13827, Stop: 14210, Start Num: 14

Candidate Starts for Konstantine_23:

(Start: 14 @13827 has 9 MA's), (23, 13866), (41, 13956), (44, 13974), (74, 14127),

Gene: Kors_22 Start: 11651, Stop: 12037, Start Num: 18

Candidate Starts for Kors_22:

(4, 11561), (Start: 18 @11651 has 9 MA's), (21, 11672), (46, 11801), (53, 11843), (60, 11876), (70, 11939), (75, 11975), (77, 11987),

Gene: Krampus_21 Start: 11657, Stop: 12025, Start Num: 19

Candidate Starts for Krampus_21:

(8, 11621), (Start: 19 @11657 has 35 MA's), (50, 11825), (80, 12005),

Gene: Labelle_25 Start: 15831, Stop: 16202, Start Num: 16

Candidate Starts for Labelle_25:

(Start: 16 @15831 has 12 MA's), (21, 15855), (28, 15906), (39, 15945), (42, 15960),

Gene: Lambo_19 Start: 14088, Stop: 14465, Start Num: 17

Candidate Starts for Lambo_19:

(Start: 17 @14088 has 38 MA's), (Start: 20 @14103 has 1 MA's), (34, 14178), (37, 14187), (57, 14292), (61, 14310), (63, 14316), (67, 14340), (68, 14361), (74, 14382),

Gene: LavAbarElk_17 Start: 12521, Stop: 12898, Start Num: 17

Candidate Starts for LavAbarElk_17:

(Start: 17 @12521 has 38 MA's), (Start: 20 @12536 has 1 MA's), (34, 12611), (37, 12620), (49, 12680), (57, 12725), (61, 12743), (67, 12773), (74, 12815),

Gene: Leopard_14 Start: 5232, Stop: 5627, Start Num: 13

Candidate Starts for Leopard_14:

(Start: 13 @5232 has 25 MA's), (25, 5295), (43, 5382), (49, 5409), (80, 5598), (84, 5610),

Gene: Lila22_19 Start: 14042, Stop: 14419, Start Num: 17

Candidate Starts for Lila22_19:

(Start: 17 @14042 has 38 MA's), (Start: 20 @14057 has 1 MA's), (34, 14132), (37, 14141), (49, 14201), (57, 14246), (61, 14264), (67, 14294), (74, 14336),

Gene: LilyPad_15 Start: 9856, Stop: 10245, Start Num: 16

Candidate Starts for LilyPad_15:

(Start: 16 @9856 has 12 MA's), (24, 9901), (28, 9931), (29, 9934), (31, 9937), (62, 10093),

Gene: LittleFella_16 Start: 11757, Stop: 12137, Start Num: 16

Candidate Starts for LittleFella_16:

(Start: 16 @11757 has 12 MA's), (45, 11907), (62, 11985), (64, 11991), (75, 12057),

Gene: LordBart_22 Start: 11567, Stop: 11953, Start Num: 18

Candidate Starts for LordBart_22:

(4, 11477), (Start: 18 @11567 has 9 MA's), (21, 11588), (46, 11717), (53, 11759), (60, 11792), (67, 11828), (69, 11852), (70, 11855), (71, 11876), (75, 11891), (77, 11903),

Gene: LuckyLeo_18 Start: 13373, Stop: 13750, Start Num: 17

Candidate Starts for LuckyLeo_18:

(Start: 17 @13373 has 38 MA's), (Start: 20 @13388 has 1 MA's), (34, 13463), (41, 13496), (61, 13595), (67, 13625), (77, 13682),

Gene: Madi_14 Start: 9137, Stop: 9526, Start Num: 16

Candidate Starts for Madi_14:

(Start: 16 @9137 has 12 MA's), (24, 9182), (62, 9374), (76, 9455), (79, 9479),

Gene: Madruga_24 Start: 15500, Stop: 15871, Start Num: 16

Candidate Starts for Madruga_24:

(Start: 16 @15500 has 12 MA's), (21, 15524), (28, 15575), (39, 15614), (42, 15629),

Gene: Megatron06_20 Start: 13160, Stop: 13543, Start Num: 14

Candidate Starts for Megatron06_20:

(Start: 14 @13160 has 9 MA's), (41, 13289), (44, 13307), (74, 13460),

Gene: Mima20_18 Start: 13771, Stop: 14148, Start Num: 17

Candidate Starts for Mima20_18:

(Start: 17 @13771 has 38 MA's), (Start: 20 @13786 has 1 MA's), (34, 13861), (37, 13870), (57, 13975), (61, 13993), (63, 13999), (67, 14023), (68, 14044), (74, 14065),

Gene: MoiGyank_21 Start: 14455, Stop: 14832, Start Num: 17

Candidate Starts for MoiGyank_21:

(Start: 17 @14455 has 38 MA's), (Start: 20 @14470 has 1 MA's), (34, 14545), (37, 14554), (49, 14614), (57, 14659), (61, 14677), (67, 14707), (74, 14749),

Gene: MontyDev_19 Start: 12815, Stop: 13192, Start Num: 12

Candidate Starts for MontyDev_19:

(9, 12806), (Start: 12 @12815 has 9 MA's), (38, 12926), (72, 13097), (73, 13100), (75, 13109), (77, 13121), (81, 13157),

Gene: Mopey_19 Start: 12789, Stop: 13196, Start Num: 13

Candidate Starts for Mopey_19:

(Start: 13 @12789 has 25 MA's), (Start: 14 @12795 has 9 MA's), (Start: 20 @12819 has 1 MA's), (66, 13068), (75, 13116), (76, 13125), (78, 13131), (83, 13170),

Gene: MortySmith_19 Start: 10831, Stop: 11199, Start Num: 19

Candidate Starts for MortySmith_19:

(8, 10795), (Start: 19 @10831 has 35 MA's), (50, 10999), (80, 11179),

Gene: MrMiyagi_13 Start: 8487, Stop: 8915, Start Num: 11

Candidate Starts for MrMiyagi_13:

(5, 8460), (6, 8463), (Start: 11 @8487 has 3 MA's), (29, 8583), (38, 8619), (64, 8766), (67, 8787), (73, 8823),

Gene: NarutoRun_21 Start: 11650, Stop: 12018, Start Num: 19

Candidate Starts for NarutoRun_21:

(8, 11614), (Start: 19 @11650 has 35 MA's), (50, 11818), (80, 11998),

Gene: Neptune_21 Start: 11627, Stop: 11995, Start Num: 19

Candidate Starts for Neptune_21:

(8, 11591), (Start: 19 @11627 has 35 MA's), (50, 11795), (80, 11975),

Gene: Nilo_20 Start: 13154, Stop: 13531, Start Num: 12

Candidate Starts for Nilo_20:

(9, 13145), (Start: 12 @13154 has 9 MA's), (38, 13265), (72, 13436), (73, 13439), (75, 13448), (77, 13460), (81, 13496),

Gene: NorManre_20 Start: 13650, Stop: 14027, Start Num: 17

Candidate Starts for NorManre_20:

(Start: 17 @13650 has 38 MA's), (Start: 20 @13665 has 1 MA's), (34, 13740), (37, 13749), (57, 13854), (61, 13872), (63, 13878), (67, 13902), (68, 13923), (74, 13944), (85, 14007),

Gene: Nova_19 Start: 13216, Stop: 13623, Start Num: 13

Candidate Starts for Nova_19:

(Start: 13 @13216 has 25 MA's), (Start: 14 @13222 has 9 MA's), (Start: 20 @13246 has 1 MA's), (66, 13495), (75, 13543), (76, 13552), (78, 13558), (83, 13597),

Gene: NovaSharks_18 Start: 11658, Stop: 12035, Start Num: 17

Candidate Starts for NovaSharks_18:

(Start: 17 @11658 has 38 MA's), (Start: 20 @11673 has 1 MA's), (34, 11748), (37, 11757), (57, 11862), (61, 11880), (67, 11910), (74, 11952),

Gene: Oaker_18 Start: 12884, Stop: 13267, Start Num: 14

Candidate Starts for Oaker_18:

(Start: 14 @12884 has 9 MA's), (23, 12923), (41, 13013), (44, 13031), (74, 13184),

Gene: OhDear_21 Start: 11656, Stop: 12024, Start Num: 19

Candidate Starts for OhDear_21:

(8, 11620), (Start: 19 @11656 has 35 MA's), (50, 11824), (80, 12004),

Gene: Onyinye_15 Start: 5220, Stop: 5615, Start Num: 13

Candidate Starts for Onyinye_15:

(Start: 13 @5220 has 25 MA's), (25, 5283), (43, 5370), (49, 5397), (80, 5586), (84, 5598),

Gene: OtterstedtS21_19 Start: 13740, Stop: 14117, Start Num: 17

Candidate Starts for OtterstedtS21_19:

(Start: 17 @13740 has 38 MA's), (Start: 20 @13755 has 1 MA's), (34, 13830), (37, 13839), (49, 13899), (57, 13944), (61, 13962), (67, 13992), (74, 14034),

Gene: OverHedge_21 Start: 11624, Stop: 11992, Start Num: 19

Candidate Starts for OverHedge_21:

(8, 11588), (Start: 19 @11624 has 35 MA's), (50, 11792), (80, 11972),

Gene: PBI1_20 Start: 12720, Stop: 13127, Start Num: 13

Candidate Starts for PBI1_20:

(Start: 13 @12720 has 25 MA's), (Start: 14 @12726 has 9 MA's), (Start: 20 @12750 has 1 MA's), (66, 12999), (75, 13047), (76, 13056), (78, 13062), (83, 13101),

Gene: PLOT_20 Start: 12792, Stop: 13199, Start Num: 13

Candidate Starts for PLOT_20:

(Start: 13 @12792 has 25 MA's), (Start: 14 @12798 has 9 MA's), (Start: 20 @12822 has 1 MA's), (66, 13071), (75, 13119), (76, 13128), (78, 13134), (83, 13173),

Gene: Papyrus_19 Start: 12816, Stop: 13193, Start Num: 12

Candidate Starts for Papyrus_19:

(9, 12807), (Start: 12 @12816 has 9 MA's), (38, 12927), (72, 13098), (73, 13101), (75, 13110), (77, 13122), (81, 13158),

Gene: ParvusTarda_19 Start: 13222, Stop: 13599, Start Num: 17

Candidate Starts for ParvusTarda_19:

(Start: 17 @13222 has 38 MA's), (Start: 20 @13237 has 1 MA's), (34, 13312), (37, 13321), (57, 13426), (61, 13444), (63, 13450), (67, 13474), (68, 13495), (74, 13516),

Gene: Patience_26 Start: 16390, Stop: 16761, Start Num: 16

Candidate Starts for Patience_26:

(Start: 16 @16390 has 12 MA's), (21, 16414), (28, 16465), (39, 16504), (42, 16519),

Gene: Patos_20 Start: 13650, Stop: 14027, Start Num: 17

Candidate Starts for Patos_20:

(Start: 17 @13650 has 38 MA's), (Start: 20 @13665 has 1 MA's), (34, 13740), (37, 13749), (57, 13854), (61, 13872), (63, 13878), (67, 13902), (68, 13923), (74, 13944), (85, 14007),

Gene: Penelope2018_19 Start: 12789, Stop: 13196, Start Num: 13

Candidate Starts for Penelope2018_19:

(Start: 13 @12789 has 25 MA's), (Start: 14 @12795 has 9 MA's), (Start: 20 @12819 has 1 MA's), (66, 13068), (75, 13116), (76, 13125), (78, 13131), (83, 13170),

Gene: Phalaborwa_19 Start: 12852, Stop: 13229, Start Num: 20

Candidate Starts for Phalaborwa_19:

(3, 12729), (Start: 13 @12822 has 25 MA's), (Start: 14 @12828 has 9 MA's), (Start: 20 @12852 has 1 MA's), (59, 13065), (66, 13101), (75, 13149), (76, 13158), (78, 13164), (80, 13194), (83, 13203),

Gene: Pharpay_21 Start: 11672, Stop: 12040, Start Num: 19

Candidate Starts for Pharpay_21:

(8, 11636), (Start: 19 @11672 has 35 MA's), (50, 11840), (80, 12020),

Gene: Phreeze_18 Start: 12625, Stop: 13008, Start Num: 14

Candidate Starts for Phreeze_18:

(Start: 14 @12625 has 9 MA's), (23, 12664), (41, 12754), (44, 12772), (74, 12925),

Gene: PhunaPhoke_21 Start: 11645, Stop: 12013, Start Num: 19

Candidate Starts for PhunaPhoke_21:

(8, 11609), (Start: 19 @11645 has 35 MA's), (50, 11813), (80, 11993),

Gene: Potty_21 Start: 11650, Stop: 12018, Start Num: 19

Candidate Starts for Potty_21:

(8, 11614), (Start: 19 @11650 has 35 MA's), (50, 11818), (80, 11998),

Gene: Poultriss_20 Start: 11423, Stop: 11791, Start Num: 19

Candidate Starts for Poultriss_20:

(8, 11387), (Start: 19 @11423 has 35 MA's), (50, 11591), (80, 11771),

Gene: Prager_19 Start: 12801, Stop: 13208, Start Num: 13

Candidate Starts for Prager_19:

(3, 12708), (Start: 13 @12801 has 25 MA's), (Start: 14 @12807 has 9 MA's), (Start: 20 @12831 has 1 MA's), (66, 13080), (75, 13128), (76, 13137), (78, 13143), (83, 13182),

Gene: Predator_22 Start: 14150, Stop: 14533, Start Num: 14

Candidate Starts for Predator_22:

(Start: 14 @14150 has 9 MA's), (23, 14189), (40, 14276), (49, 14315), (63, 14384), (74, 14450),

Gene: Puissant_17 Start: 13081, Stop: 13464, Start Num: 14

Candidate Starts for Puissant_17:

(Start: 14 @13081 has 9 MA's), (23, 13120), (43, 13219), (49, 13246), (74, 13381),

Gene: Pywacket_18 Start: 14579, Stop: 14956, Start Num: 17

Candidate Starts for Pywacket_18:

(Start: 17 @14579 has 38 MA's), (Start: 20 @14594 has 1 MA's), (34, 14669), (37, 14678), (49, 14738), (57, 14783), (61, 14801), (67, 14831), (74, 14873),

Gene: Rachella_21 Start: 11653, Stop: 12021, Start Num: 19

Candidate Starts for Rachella_21:

(8, 11617), (Start: 19 @11653 has 35 MA's), (50, 11821), (80, 12001),

Gene: Ranch_19 Start: 12588, Stop: 12965, Start Num: 17

Candidate Starts for Ranch_19:

(Start: 17 @12588 has 38 MA's), (Start: 20 @12603 has 1 MA's), (34, 12678), (37, 12687), (57, 12792), (61, 12810), (63, 12816), (65, 12825), (67, 12840), (74, 12882),

Gene: RazorC_17 Start: 11658, Stop: 12035, Start Num: 17

Candidate Starts for RazorC_17:

(Start: 17 @11658 has 38 MA's), (Start: 20 @11673 has 1 MA's), (34, 11748), (37, 11757), (57, 11862), (61, 11880), (67, 11910), (74, 11952),

Gene: Riduram_17 Start: 11628, Stop: 12005, Start Num: 17

Candidate Starts for Riduram_17:

(Start: 17 @11628 has 38 MA's), (Start: 20 @11643 has 1 MA's), (34, 11718), (37, 11727), (57, 11832), (61, 11850), (67, 11880), (74, 11922),

Gene: Rie18_21 Start: 11004, Stop: 11372, Start Num: 19

Candidate Starts for Rie18_21:

(8, 10968), (Start: 19 @11004 has 35 MA's), (50, 11172), (80, 11352),

Gene: RikSengupta_22 Start: 11688, Stop: 12074, Start Num: 18

Candidate Starts for RikSengupta_22:

(4, 11598), (Start: 18 @11688 has 9 MA's), (21, 11709), (46, 11838), (53, 11880), (60, 11913), (70, 11976), (75, 12012), (77, 12024),

Gene: Riparian_19 Start: 12615, Stop: 12992, Start Num: 12

Candidate Starts for Riparian_19:

(9, 12606), (Start: 12 @12615 has 9 MA's), (38, 12726), (72, 12897), (73, 12900), (75, 12909), (77, 12921), (81, 12957),

Gene: Rope_19 Start: 12807, Stop: 13184, Start Num: 12

Candidate Starts for Rope_19:

(9, 12798), (Start: 12 @12807 has 9 MA's), (38, 12918), (72, 13089), (73, 13092), (75, 13101), (77, 13113), (81, 13149),

Gene: Rota_18 Start: 13546, Stop: 13923, Start Num: 17

Candidate Starts for Rota_18:

(Start: 17 @13546 has 38 MA's), (Start: 20 @13561 has 1 MA's), (34, 13636), (37, 13645), (49, 13705), (57, 13750), (61, 13768), (67, 13798), (74, 13840),

Gene: Rukungu_19 Start: 14287, Stop: 14664, Start Num: 17

Candidate Starts for Rukungu_19:

(Start: 17 @14287 has 38 MA's), (Start: 20 @14302 has 1 MA's), (34, 14377), (37, 14386), (49, 14446), (57, 14491), (61, 14509), (67, 14539), (74, 14581),

Gene: Rumi_18 Start: 11658, Stop: 12035, Start Num: 17

Candidate Starts for Rumi_18:

(Start: 17 @11658 has 38 MA's), (Start: 20 @11673 has 1 MA's), (34, 11748), (37, 11757), (57, 11862), (61, 11880), (67, 11910), (74, 11952),

Gene: Sadboi_19 Start: 14418, Stop: 14795, Start Num: 17

Candidate Starts for Sadboi_19:

(Start: 17 @14418 has 38 MA's), (Start: 20 @14433 has 1 MA's), (34, 14508), (37, 14517), (49, 14577), (57, 14622), (61, 14640), (67, 14670), (74, 14712),

Gene: Sampudon_19 Start: 14594, Stop: 14971, Start Num: 17

Candidate Starts for Sampudon_19:

(Start: 17 @14594 has 38 MA's), (Start: 20 @14609 has 1 MA's), (34, 14684), (37, 14693), (49, 14753), (57, 14798), (61, 14816), (67, 14846), (74, 14888),

Gene: Send513_19 Start: 13157, Stop: 13534, Start Num: 12

Candidate Starts for Send513_19:

(9, 13148), (Start: 12 @13157 has 9 MA's), (38, 13268), (72, 13439), (73, 13442), (75, 13451), (77, 13463), (81, 13499),

Gene: Sienna_14 Start: 9137, Stop: 9526, Start Num: 16

Candidate Starts for Sienna_14:

(Start: 16 @9137 has 12 MA's), (24, 9182), (62, 9374), (76, 9455), (79, 9479),

Gene: SilentWarrior_20 Start: 10860, Stop: 11228, Start Num: 19

Candidate Starts for SilentWarrior_20:

(8, 10824), (Start: 19 @10860 has 35 MA's), (50, 11028), (80, 11208),

Gene: SirHarley_18 Start: 12751, Stop: 13128, Start Num: 20

Candidate Starts for SirHarley_18:

(Start: 13 @12721 has 25 MA's), (Start: 14 @12727 has 9 MA's), (Start: 20 @12751 has 1 MA's), (66, 13000), (75, 13048), (76, 13057), (78, 13063), (83, 13102),

Gene: Snakehole_22 Start: 10949, Stop: 11317, Start Num: 19

Candidate Starts for Snakehole_22:

(8, 10913), (Start: 19 @10949 has 35 MA's), (50, 11117), (80, 11297),

Gene: Sparcetus_22 Start: 11567, Stop: 11953, Start Num: 18

Candidate Starts for Sparcetus_22:

(4, 11477), (Start: 18 @11567 has 9 MA's), (21, 11588), (46, 11717), (53, 11759), (60, 11792), (70, 11855), (75, 11891), (77, 11903),

Gene: Stormer_17 Start: 11658, Stop: 12035, Start Num: 17

Candidate Starts for Stormer_17:

(Start: 17 @11658 has 38 MA's), (Start: 20 @11673 has 1 MA's), (34, 11748), (37, 11757), (57, 11862), (61, 11880), (67, 11910), (74, 11952),

Gene: SuperSonics_25 Start: 15632, Stop: 15928, Start Num: 28

Candidate Starts for SuperSonics_25:

(Start: 16 @15557 has 12 MA's), (21, 15581), (28, 15632), (39, 15671), (42, 15686),

Gene: SuperheroCarly_19 Start: 12651, Stop: 13058, Start Num: 13

Candidate Starts for SuperheroCarly_19:

(Start: 13 @12651 has 25 MA's), (Start: 14 @12657 has 9 MA's), (Start: 20 @12681 has 1 MA's), (66, 12930), (75, 12978), (76, 12987), (78, 12993), (83, 13032),

Gene: Suzy_15 Start: 10365, Stop: 10754, Start Num: 16

Candidate Starts for Suzy_15:

(Start: 16 @10365 has 12 MA's), (Start: 20 @10383 has 1 MA's), (24, 10410), (62, 10602), (64, 10608), (76, 10683), (79, 10707),

Gene: Tedro_21 Start: 11123, Stop: 11491, Start Num: 19

Candidate Starts for Tedro_21:

(8, 11087), (Start: 19 @11123 has 35 MA's), (50, 11291), (80, 11471),

Gene: Terapin_14 Start: 9137, Stop: 9526, Start Num: 16

Candidate Starts for Terapin_14:

(Start: 16 @9137 has 12 MA's), (24, 9182), (62, 9374), (76, 9455), (79, 9479),

Gene: Thoth_19 Start: 12786, Stop: 13193, Start Num: 13

Candidate Starts for Thoth_19:

(Start: 13 @12786 has 25 MA's), (Start: 14 @12792 has 9 MA's), (Start: 20 @12816 has 1 MA's), (66, 13065), (75, 13113), (76, 13122), (78, 13128), (83, 13167),

Gene: Thumb_18 Start: 12626, Stop: 13009, Start Num: 14

Candidate Starts for Thumb_18:

(Start: 14 @12626 has 9 MA's), (41, 12755), (44, 12773), (74, 12926),

Gene: Tillicus_19 Start: 12967, Stop: 13344, Start Num: 17

Candidate Starts for Tillicus_19:

(Start: 17 @12967 has 38 MA's), (Start: 20 @12982 has 1 MA's), (34, 13057), (41, 13090), (61, 13189), (67, 13219),

Gene: TinyMiny_22 Start: 11586, Stop: 11972, Start Num: 18

Candidate Starts for TinyMiny_22:

(4, 11496), (Start: 18 @11586 has 9 MA's), (21, 11607), (46, 11736), (53, 11778), (60, 11811), (70, 11874), (75, 11910), (77, 11922),

Gene: Tongui_20 Start: 10996, Stop: 11364, Start Num: 19

Candidate Starts for Tongui_20:

(8, 10960), (Start: 19 @10996 has 35 MA's), (50, 11164), (80, 11344),

Gene: Troll4_19 Start: 12790, Stop: 13197, Start Num: 13

Candidate Starts for Troll4_19:

(Start: 13 @12790 has 25 MA's), (Start: 14 @12796 has 9 MA's), (Start: 20 @12820 has 1 MA's), (66, 13069), (75, 13117), (76, 13126), (78, 13132), (83, 13171),

Gene: Visconti_19 Start: 12799, Stop: 13206, Start Num: 13

Candidate Starts for Visconti_19:

(Start: 13 @12799 has 25 MA's), (Start: 14 @12805 has 9 MA's), (Start: 20 @12829 has 1 MA's), (66, 13078), (75, 13126), (76, 13135), (78, 13141), (83, 13180),

Gene: WaldoWhy_20 Start: 12795, Stop: 13202, Start Num: 13

Candidate Starts for WaldoWhy_20:

(3, 12702), (Start: 13 @12795 has 25 MA's), (Start: 14 @12801 has 9 MA's), (Start: 20 @12825 has 1 MA's), (66, 13074), (75, 13122), (76, 13131), (78, 13137), (83, 13176),

Gene: Weiss13_19 Start: 12847, Stop: 13224, Start Num: 12

Candidate Starts for Weiss13_19:

(9, 12838), (Start: 12 @12847 has 9 MA's), (38, 12958), (72, 13129), (73, 13132), (75, 13141), (77, 13153), (81, 13189),

Gene: Wojtek_18 Start: 13295, Stop: 13672, Start Num: 17

Candidate Starts for Wojtek_18:

(Start: 17 @13295 has 38 MA's), (Start: 20 @13310 has 1 MA's), (34, 13385), (37, 13394), (49, 13454), (57, 13499), (61, 13517), (67, 13547), (74, 13589),

Gene: Wollypog_9 Start: 8239, Stop: 8610, Start Num: 17

Candidate Starts for Wollypog_9:

(Start: 17 @8239 has 38 MA's), (21, 8263), (22, 8269), (47, 8398), (52, 8425), (55, 8440), (61, 8470), (62, 8473), (64, 8479), (75, 8545), (82, 8596),

Gene: Xenia2_19 Start: 13334, Stop: 13714, Start Num: 17

Candidate Starts for Xenia2_19:

(Start: 17 @13334 has 38 MA's), (Start: 20 @13349 has 1 MA's), (34, 13424), (43, 13466), (54, 13526), (61, 13559),

Gene: Yelo_19 Start: 13157, Stop: 13534, Start Num: 12

Candidate Starts for Yelo_19:

(9, 13148), (Start: 12 @13157 has 9 MA's), (15, 13169), (32, 13235), (38, 13268), (72, 13439), (73, 13442), (75, 13451), (77, 13463), (81, 13499),

Gene: Yikes_20 Start: 14679, Stop: 15056, Start Num: 17

Candidate Starts for Yikes_20:

(Start: 17 @14679 has 38 MA's), (Start: 20 @14694 has 1 MA's), (34, 14769), (37, 14778), (57, 14883), (61, 14901), (63, 14907), (67, 14931), (68, 14952), (74, 14973),

Gene: Zany_18 Start: 13808, Stop: 14185, Start Num: 17

Candidate Starts for Zany_18:

(Start: 17 @13808 has 38 MA's), (Start: 20 @13823 has 1 MA's), (34, 13898), (37, 13907), (57, 14012), (61, 14030), (67, 14060), (74, 14102),

Gene: Zenon_20 Start: 13159, Stop: 13536, Start Num: 12

Candidate Starts for Zenon_20:

(9, 13150), (Start: 12 @13159 has 9 MA's), (38, 13270), (72, 13441), (73, 13444), (75, 13453), (77, 13465), (81, 13501),