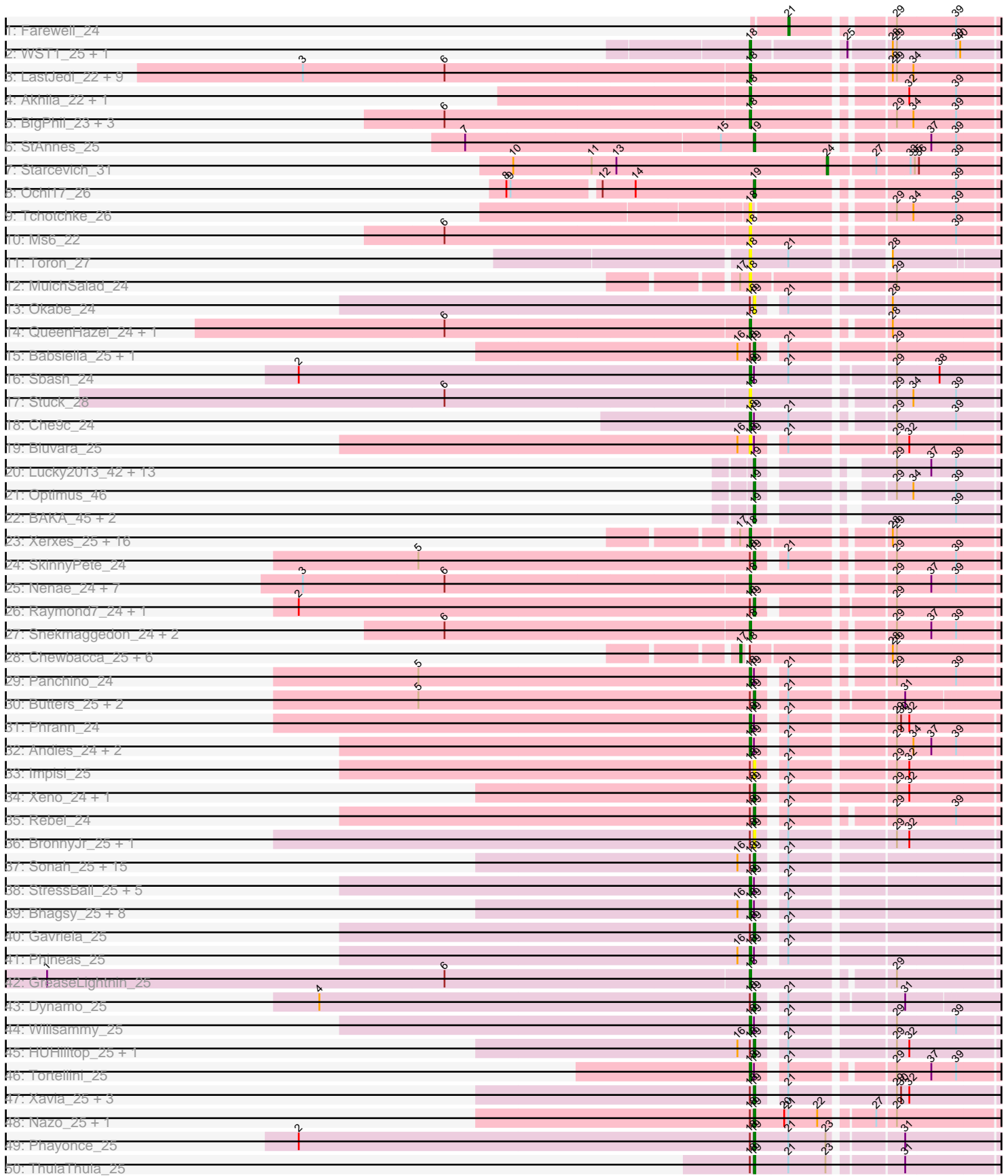
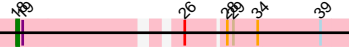


Pham 296312



51: Purky_25



A series of horizontal lines for writing, starting from the top margin and extending to the bottom of the page. The lines are evenly spaced and cover most of the page area.

Note: Tracks are now grouped by subcluster and scaled. Switching in subcluster is indicated by changes in track color. Track scale is now set by default to display the region 30 bp upstream of start 1 to 30 bp downstream of the last possible start. If this default region is judged to be packed too tightly with annotated starts, the track will be further scaled to only show that region of the ORF with annotated starts. This action will be indicated by adding "Zoomed" to the title. For starts, yellow indicates the location of called starts comprised solely of Glimmer/GeneMark auto-annotations, green indicates the location of called starts with at least 1 manual gene annotation.

Pham 296312 Report

This analysis was run 04/25/26 on database version 644.

Pham number 296312 has 153 members, 23 are drafts.

Phages represented in each track:

- Track 1 : Farewell_24
- Track 2 : WST1_25, IdentityCrisis_24
- Track 3 : LastJedi_22, Koella_22, Phloss_24, Fulbright_24, Brocalys_23, Pippy_22, Jennelsea_22, Squirty_23, Crumble_22, Clifton_22
- Track 4 : Akhila_22, MilanaBonita_22
- Track 5 : BigPhil_23, Cerasum_23, Velveteen_23, Sarma624_23
- Track 6 : StAnnes_25
- Track 7 : Starceвич_31
- Track 8 : Ochi17_26
- Track 9 : Tchotchke_26
- Track 10 : Ms6_22
- Track 11 : Toron_27
- Track 12 : MulchSalad_24
- Track 13 : Okabe_24
- Track 14 : QueenHazel_24, Xula_23
- Track 15 : Babsiella_25, HC_25
- Track 16 : Sbash_24
- Track 17 : Stuck_28
- Track 18 : Che9c_24
- Track 19 : Bluvara_25
- Track 20 : Lucky2013_42, Porcelain_41, Courthouse_42, Superphikiman_42, Shaboozey_36, Hannaconda_39, MiaZeal_42, Ariel_42, Nibley_37, KashFlow_36, BronnyJames_36, LittleE_48, DmpstrDiver_43, Squint_41
- Track 21 : Optimus_46
- Track 22 : BAKA_45, Omega_47, Gonephishing_43
- Track 23 : Xerxes_25, Silvy_25, Parmesanjohn_25, Tessdabest_24, Duplicity_25, Cubone_25, Journey_25, Charlie_25, Melville_25, LilSpotty_28, Gex_25, Smurph_25, Bosection6_25, Aggie_25, Tapioca_25, Magsby_25, Tortoise12_25
- Track 24 : SkinnyPete_24
- Track 25 : Nenae_24, Hanako_24, PhancyPhin_24, Purgamenstris_24, Redi_24, Spinach_24, BabeRuth_24, ShrimpFriedEgg_24
- Track 26 : Raymond7_24, MichelleMyBell_25
- Track 27 : Snekmaggedon_24, SpongeBob_24, Jamie19_24
- Track 28 : Chewbacca_25, Pipsqueaks_25, Carcharodon_25, EGUunicorn_25, Schnauzer_25, Philonius_25, Silvafighter_25
- Track 29 : Panchino_24
- Track 30 : Butters_25, Rubeelu_25, Kevin1_25

- Track 31 : Phrann_24
- Track 32 : Andies_24, Shweta_24, Scitech_24
- Track 33 : Impisi_25
- Track 34 : Xeno_24, Techage_25
- Track 35 : Rebel_24
- Track 36 : BronnyJr_25, GaloreK_25
- Track 37 : Sonah_25, Venti_25, Polkaroo_25, Fishburne_25, PeanutPie_25, StevieRay_25, FirstPlacePfu_25, Bunnies_25, Chubbello_25, Vidya_25, Jebeks_25, Etoile_25, Donovan_25, Ksqared_25, Phegasus_25, Juniormint_25
- Track 38 : StressBall_25, Glaske_25, KilKor_25, Phalm_25, Megiddo_25, CactusJack_25
- Track 39 : Bhagsy_25, Brusacoram_25, Mangethe_25, Necropolis_25, Majeke_25, Thespis_25, Malithi_25, Zilizebeth_25, Arib1_25
- Track 40 : Gavriela_25
- Track 41 : Phineas_25
- Track 42 : GreaseLightnin_25
- Track 43 : Dynamo_25
- Track 44 : Willsammy_25
- Track 45 : HUHilltop_25, Langerak_25
- Track 46 : Tortellini_25
- Track 47 : Xavia_25, Atcoo_25, Camster_25, Kari_25
- Track 48 : Nazo_25, BigNuz_25
- Track 49 : Phayonce_25
- Track 50 : ThulaThula_25
- Track 51 : Purky_25

Summary of Final Annotations (See graph section above for start numbers):

The start number called the most often in the published annotations is 18, it was called in 70 of the 130 non-draft genes in the pham.

Genes that call this "Most Annotated" start:

- Aggie_25, Akhila_22, Andies_24, Arib1_25, BabeRuth_24, Bhagsy_25, BigPhil_23, Bluvara_25, Bosection6_25, Brocalys_23, Brusacoram_25, CactusJack_25, Cerasum_23, Charlie_25, Che9c_24, Clifton_22, Crumble_22, Cubone_25, Duplicity_25, Fulbright_24, Gex_25, Glaske_25, GreaseLightnin_25, Hanako_24, IdentityCrisis_24, Jamie19_24, Jennelsea_22, Journey_25, KilKor_25, Koella_22, LastJedi_22, LilSpotty_28, Magsby_25, Majeke_25, Malithi_25, Mangethe_25, Megiddo_25, Melville_25, MilanaBonita_22, Ms6_22, MulchSalad_24, Necropolis_25, Nenae_24, Panchino_24, ParmesanJohn_25, Phalm_25, PhancyPhin_24, Phineas_25, Phloss_24, Phrann_24, Pippy_22, Purgamenstris_24, Purky_25, QueenHazel_24, Redi_24, Sarma624_23, Sbash_24, Scitech_24, ShrimpFriedEgg_24, Shweta_24, Silvy_25, Smurph_25, Snekmaggon_24, Spinach_24, SpongeBob_24, Squirty_23, StressBall_25, Stuck_28, Tapioca_25, Tchotchke_26, Tessdabest_24, Thespis_25, Toron_27, Tortellini_25, Tortoise12_25, Velveteen_23, WST1_25, Willsammy_25, Xerxes_25, Xula_23, Zilizebeth_25,

Genes that have the "Most Annotated" start but do not call it:

- Atcoo_25, Babsiella_25, BigNuz_25, BronnyJr_25, Bunnies_25, Butters_25, Camster_25, Carcharodon_25, Chewbacca_25, Chubbello_25, Donovan_25,

Dynamo_25, EGUnicorn_25, Etoile_25, FirstPlacePfu_25, Fishburne_25, GaloreK_25, Gavriela_25, HC_25, HUHilltop_25, Impisi_25, Jebeks_25, Juniormint_25, Kari_25, Kevin1_25, Ksquared_25, Langerak_25, MichelleMyBell_25, Nazo_25, Okabe_24, PeanutPie_25, Phayonce_25, Phegasus_25, Philonius_25, Pipsqueaks_25, Polkaroo_25, Raymond7_24, Rebel_24, Rubeelu_25, Schnauzer_25, Silvafighter_25, SkinnyPete_24, Sonah_25, StevieRay_25, Techage_25, ThulaThula_25, Venti_25, Vidya_25, Xavia_25, Xeno_24,

Genes that do not have the "Most Annotated" start:

- Ariel_42, BAKA_45, BronnyJames_36, Courthouse_42, DmpstrDiver_43, Farewell_24, Gonephishing_43, Hannaconda_39, KashFlow_36, LittleE_48, Lucky2013_42, MiaZeal_42, Nibley_37, Ochi17_26, Omega_47, Optimus_46, Porcelain_41, Shaboozey_36, Squint_41, StAnnes_25, Starceвич_31, Superphikiman_42,

Summary by start number:

Start 17:

- Found in 25 of 153 (16.3%) of genes in pham
- Manual Annotations of this start: 7 of 130
- Called 28.0% of time when present
- Phage (with cluster) where this start called: Carcharodon_25 (N), Chewbacca_25 (N), EGUnicorn_25 (N), Philonius_25 (N), Pipsqueaks_25 (N), Schnauzer_25 (N), Silvafighter_25 (N),

Start 18:

- Found in 131 of 153 (85.6%) of genes in pham
- Manual Annotations of this start: 70 of 130
- Called 61.8% of time when present
- Phage (with cluster) where this start called: Aggie_25 (N), Akhila_22 (F1), Andies_24 (N), Arib1_25 (P1), BabeRuth_24 (N), Bhagsy_25 (P1), BigPhil_23 (F1), Bluvara_25 (I3), Bosection6_25 (N), Brocalys_23 (F1), Brusacoram_25 (P1), CactusJack_25 (P1), Cerasum_23 (F1), Charlie_25 (N), Che9c_24 (I2), Clifton_22 (F1), Crumble_22 (F1), Cubone_25 (N), Duplicity_25 (N), Fulbright_24 (N), Gex_25 (N), Glaske_25 (P1), GreaseLightnin_25 (P1), Hanako_24 (N), IdentityCrisis_24 (AJ), Jamie19_24 (N), Jennelsea_22 (F1), Journey_25 (N), KilKor_25 (P1), Koella_22 (F1), LastJedi_22 (F1), LilSpotty_28 (singleton), Magsby_25 (N), Majeke_25 (P1), Malithi_25 (P1), Mangethe_25 (P1), Megiddo_25 (P1), Melville_25 (N), MilanaBonita_22 (F1), Ms6_22 (F1), MulchSalad_24 (F7), Necropolis_25 (P1), Nенаe_24 (N), Panchino_24 (N), Parmesanjohn_25 (N), Phalm_25 (P1), PhancyPhin_24 (N), Phineas_25 (P1), Phloss_24 (N), Phrann_24 (N), Pippy_22 (F1), Purgamenstris_24 (N), Purky_25 (P6), QueenHazel_24 (I1), Redi_24 (N), Sarma624_23 (F1), Sbash_24 (I2), Scitech_24 (N), ShrimpFriedEgg_24 (N), Shweta_24 (N), Silvy_25 (N), Smurph_25 (N), Snekmaggon_24 (N), Spinach_24 (N), SpongeBob_24 (N), Squirty_23 (F3), StressBall_25 (P1), Stuck_28 (I2), Tapioca_25 (N), Tchotchke_26 (F1), Tessdabest_24 (N), Thespis_25 (P1), Toron_27 (F6), Tortellini_25 (P2), Tortoise12_25 (N), Velveteen_23 (F1), WST1_25 (AJ), Willsammy_25 (P1), Xerxes_25 (N), Xula_23 (I1), Zilizebeth_25 (P1),

Start 19:

- Found in 90 of 153 (58.8%) of genes in pham
- Manual Annotations of this start: 51 of 130
- Called 70.0% of time when present

- Phage (with cluster) where this start called: Ariel_42 (J), Atcoo_25 (P1), BAKA_45 (J), Babsiella_25 (I1), BigNuz_25 (P4), BronnyJames_36 (J), BronnyJr_25 (P1), Bunnies_25 (P1), Butters_25 (N), Camster_25 (P1), Chubbello_25 (P1), Courthouse_42 (J), DmpstrDiver_43 (J), Donovan_25 (P1), Dynamo_25 (P1), Etoile_25 (P1), FirstPlacePfu_25 (P1), Fishburne_25 (P1), GaloreK_25 (P1), Gavriela_25 (P1), Gonephishing_43 (J), HC_25 (I1), HUHilltop_25 (P1), Hannaconda_39 (J), Impisi_25 (N), Jebeks_25 (P1), Juniormint_25 (P1), Kari_25 (P1), KashFlow_36 (J), Kevin1_25 (N), Ksquared_25 (P1), Langerak_25 (P1), LittleE_48 (J), Lucky2013_42 (J), MiaZeal_42 (J), MichelleMyBell_25 (N), Nazo_25 (P4), Nibley_37 (J), Ochi17_26 (F1), Okabe_24 (F8), Omega_47 (J), Optimus_46 (J), PeanutPie_25 (P1), Phayonce_25 (P5), Phegasus_25 (P1), Polkaroo_25 (P1), Porcelain_41 (J), Raymond7_24 (N), Rebel_24 (N), Rubeelu_25 (N), Shaboozey_36 (J), SkinnyPete_24 (N), Sonah_25 (P1), Squint_41 (J), StAnnes_25 (F1), StevieRay_25 (P1), Superphikiman_42 (J), Techage_25 (P1), ThulaThula_25 (P5), Venti_25 (P1), Vidya_25 (P1), Xavia_25 (P3), Xeno_24 (N),

Start 21:

- Found in 69 of 153 (45.1%) of genes in pham
- Manual Annotations of this start: 1 of 130
- Called 1.4% of time when present
- Phage (with cluster) where this start called: Farewell_24 (AF),

Start 24:

- Found in 1 of 153 (0.7%) of genes in pham
- Manual Annotations of this start: 1 of 130
- Called 100.0% of time when present
- Phage (with cluster) where this start called: Starcevich_31 (F1),

Summary by clusters:

There are 19 clusters represented in this pham: P2, P3, singleton, P1, P6, P4, F6, F1, I1, I3, J, AJ, N, F8, F3, F7, AF, I2, P5,

Info for manual annotations of cluster AF:

- Start number 21 was manually annotated 1 time for cluster AF.

Info for manual annotations of cluster AJ:

- Start number 18 was manually annotated 1 time for cluster AJ.

Info for manual annotations of cluster F1:

- Start number 18 was manually annotated 12 times for cluster F1.
- Start number 19 was manually annotated 2 times for cluster F1.
- Start number 24 was manually annotated 1 time for cluster F1.

Info for manual annotations of cluster F3:

- Start number 18 was manually annotated 1 time for cluster F3.

Info for manual annotations of cluster I1:

- Start number 18 was manually annotated 2 times for cluster I1.
- Start number 19 was manually annotated 2 times for cluster I1.

Info for manual annotations of cluster I2:

- Start number 18 was manually annotated 2 times for cluster I2.

Info for manual annotations of cluster J:

- Start number 19 was manually annotated 14 times for cluster J.

Info for manual annotations of cluster N:

- Start number 17 was manually annotated 7 times for cluster N.
- Start number 18 was manually annotated 31 times for cluster N.
- Start number 19 was manually annotated 8 times for cluster N.

Info for manual annotations of cluster P1:

- Start number 18 was manually annotated 18 times for cluster P1.
- Start number 19 was manually annotated 20 times for cluster P1.

Info for manual annotations of cluster P2:

- Start number 18 was manually annotated 1 time for cluster P2.

Info for manual annotations of cluster P3:

- Start number 19 was manually annotated 1 time for cluster P3.

Info for manual annotations of cluster P4:

- Start number 19 was manually annotated 2 times for cluster P4.

Info for manual annotations of cluster P5:

- Start number 19 was manually annotated 2 times for cluster P5.

Info for manual annotations of cluster P6:

- Start number 18 was manually annotated 1 time for cluster P6.

Gene Information:

Gene: Aggie_25 Start: 22170, Stop: 22349, Start Num: 18

Candidate Starts for Aggie_25:

(Start: 17 @22167 has 7 MA's), (Start: 18 @22170 has 70 MA's), (28, 22254), (29, 22257),

Gene: Akhila_22 Start: 21918, Stop: 22094, Start Num: 18

Candidate Starts for Akhila_22:

(Start: 18 @21918 has 70 MA's), (32, 22017), (39, 22050),

Gene: Andies_24 Start: 21768, Stop: 21941, Start Num: 18

Candidate Starts for Andies_24:

(Start: 18 @21768 has 70 MA's), (Start: 19 @21771 has 51 MA's), (Start: 21 @21786 has 1 MA's), (29, 21855), (34, 21867), (37, 21879), (39, 21897),

Gene: Arib1_25 Start: 22882, Stop: 23055, Start Num: 18

Candidate Starts for Arib1_25:

(16, 22873), (Start: 18 @22882 has 70 MA's), (Start: 19 @22885 has 51 MA's), (Start: 21 @22900 has 1 MA's),

Gene: Ariel_42 Start: 34845, Stop: 35006, Start Num: 19
Candidate Starts for Ariel_42:
(Start: 19 @34845 has 51 MA's), (29, 34920), (37, 34944), (39, 34962),

Gene: Atcoo_25 Start: 23373, Stop: 23543, Start Num: 19
Candidate Starts for Atcoo_25:
(Start: 18 @23370 has 70 MA's), (Start: 19 @23373 has 51 MA's), (Start: 21 @23388 has 1 MA's), (29, 23457), (30, 23460), (32, 23466),

Gene: BAKA_45 Start: 38282, Stop: 38443, Start Num: 19
Candidate Starts for BAKA_45:
(Start: 19 @38282 has 51 MA's), (39, 38399),

Gene: BabeRuth_24 Start: 21647, Stop: 21823, Start Num: 18
Candidate Starts for BabeRuth_24:
(3, 21329), (6, 21431), (Start: 18 @21647 has 70 MA's), (29, 21737), (37, 21761), (39, 21779),

Gene: Babsiella_25 Start: 22893, Stop: 23063, Start Num: 19
Candidate Starts for Babsiella_25:
(16, 22881), (Start: 18 @22890 has 70 MA's), (Start: 19 @22893 has 51 MA's), (Start: 21 @22908 has 1 MA's), (29, 22977),

Gene: Bhagsy_25 Start: 22883, Stop: 23056, Start Num: 18
Candidate Starts for Bhagsy_25:
(16, 22874), (Start: 18 @22883 has 70 MA's), (Start: 19 @22886 has 51 MA's), (Start: 21 @22901 has 1 MA's),

Gene: BigNuz_25 Start: 23510, Stop: 23683, Start Num: 19
Candidate Starts for BigNuz_25:
(Start: 18 @23507 has 70 MA's), (Start: 19 @23510 has 51 MA's), (20, 23531), (Start: 21 @23534 has 1 MA's), (22, 23552), (27, 23585), (29, 23597),

Gene: BigPhil_23 Start: 21863, Stop: 22039, Start Num: 18
Candidate Starts for BigPhil_23:
(6, 21647), (Start: 18 @21863 has 70 MA's), (29, 21953), (34, 21965), (39, 21995),

Gene: Bluvara_25 Start: 22957, Stop: 23130, Start Num: 18
Candidate Starts for Bluvara_25:
(16, 22948), (Start: 18 @22957 has 70 MA's), (Start: 19 @22960 has 51 MA's), (Start: 21 @22975 has 1 MA's), (29, 23044), (32, 23053),

Gene: Bosection6_25 Start: 22169, Stop: 22348, Start Num: 18
Candidate Starts for Bosection6_25:
(Start: 17 @22166 has 7 MA's), (Start: 18 @22169 has 70 MA's), (28, 22253), (29, 22256),

Gene: Brocalys_23 Start: 21674, Stop: 21850, Start Num: 18
Candidate Starts for Brocalys_23:
(3, 21356), (6, 21458), (Start: 18 @21674 has 70 MA's), (28, 21761), (29, 21764), (34, 21776),

Gene: BronnyJames_36 Start: 33375, Stop: 33536, Start Num: 19
Candidate Starts for BronnyJames_36:
(Start: 19 @33375 has 51 MA's), (29, 33450), (37, 33474), (39, 33492),

Gene: BronnyJr_25 Start: 23344, Stop: 23514, Start Num: 19

Candidate Starts for BronnyJr_25:

(Start: 18 @23341 has 70 MA's), (Start: 19 @23344 has 51 MA's), (Start: 21 @23359 has 1 MA's), (29, 23428), (32, 23437),

Gene: Brusacoram_25 Start: 22876, Stop: 23049, Start Num: 18

Candidate Starts for Brusacoram_25:

(16, 22867), (Start: 18 @22876 has 70 MA's), (Start: 19 @22879 has 51 MA's), (Start: 21 @22894 has 1 MA's),

Gene: Bunnies_25 Start: 22901, Stop: 23071, Start Num: 19

Candidate Starts for Bunnies_25:

(16, 22889), (Start: 18 @22898 has 70 MA's), (Start: 19 @22901 has 51 MA's), (Start: 21 @22916 has 1 MA's),

Gene: Butters_25 Start: 21584, Stop: 21754, Start Num: 19

Candidate Starts for Butters_25:

(5, 21341), (Start: 18 @21581 has 70 MA's), (Start: 19 @21584 has 51 MA's), (Start: 21 @21599 has 1 MA's), (31, 21671),

Gene: CactusJack_25 Start: 23141, Stop: 23314, Start Num: 18

Candidate Starts for CactusJack_25:

(Start: 18 @23141 has 70 MA's), (Start: 19 @23144 has 51 MA's), (Start: 21 @23159 has 1 MA's),

Gene: Camster_25 Start: 22914, Stop: 23081, Start Num: 19

Candidate Starts for Camster_25:

(Start: 18 @22911 has 70 MA's), (Start: 19 @22914 has 51 MA's), (Start: 21 @22929 has 1 MA's), (29, 22995), (30, 22998), (32, 23004),

Gene: Carcharodon_25 Start: 22166, Stop: 22348, Start Num: 17

Candidate Starts for Carcharodon_25:

(Start: 17 @22166 has 7 MA's), (Start: 18 @22169 has 70 MA's), (28, 22253), (29, 22256),

Gene: Cerasum_23 Start: 21863, Stop: 22039, Start Num: 18

Candidate Starts for Cerasum_23:

(6, 21647), (Start: 18 @21863 has 70 MA's), (29, 21953), (34, 21965), (39, 21995),

Gene: Charlie_25 Start: 22169, Stop: 22348, Start Num: 18

Candidate Starts for Charlie_25:

(Start: 17 @22166 has 7 MA's), (Start: 18 @22169 has 70 MA's), (28, 22253), (29, 22256),

Gene: Che9c_24 Start: 23013, Stop: 23189, Start Num: 18

Candidate Starts for Che9c_24:

(Start: 18 @23013 has 70 MA's), (Start: 19 @23016 has 51 MA's), (Start: 21 @23040 has 1 MA's), (29, 23103), (39, 23145),

Gene: Chewbacca_25 Start: 22166, Stop: 22348, Start Num: 17

Candidate Starts for Chewbacca_25:

(Start: 17 @22166 has 7 MA's), (Start: 18 @22169 has 70 MA's), (28, 22253), (29, 22256),

Gene: Chubbello_25 Start: 22878, Stop: 23048, Start Num: 19

Candidate Starts for Chubbello_25:

(16, 22866), (Start: 18 @22875 has 70 MA's), (Start: 19 @22878 has 51 MA's), (Start: 21 @22893 has 1 MA's),

Gene: Clifton_22 Start: 21987, Stop: 22163, Start Num: 18

Candidate Starts for Clifton_22:

(3, 21669), (6, 21771), (Start: 18 @21987 has 70 MA's), (28, 22074), (29, 22077), (34, 22089),

Gene: Courthouse_42 Start: 35249, Stop: 35410, Start Num: 19

Candidate Starts for Courthouse_42:

(Start: 19 @35249 has 51 MA's), (29, 35324), (37, 35348), (39, 35366),

Gene: Crumble_22 Start: 22034, Stop: 22210, Start Num: 18

Candidate Starts for Crumble_22:

(3, 21716), (6, 21818), (Start: 18 @22034 has 70 MA's), (28, 22121), (29, 22124), (34, 22136),

Gene: Cubone_25 Start: 22191, Stop: 22370, Start Num: 18

Candidate Starts for Cubone_25:

(Start: 17 @22188 has 7 MA's), (Start: 18 @22191 has 70 MA's), (28, 22275), (29, 22278),

Gene: DmpstrDiver_43 Start: 37897, Stop: 38058, Start Num: 19

Candidate Starts for DmpstrDiver_43:

(Start: 19 @37897 has 51 MA's), (29, 37972), (37, 37996), (39, 38014),

Gene: Donovan_25 Start: 22868, Stop: 23038, Start Num: 19

Candidate Starts for Donovan_25:

(16, 22856), (Start: 18 @22865 has 70 MA's), (Start: 19 @22868 has 51 MA's), (Start: 21 @22883 has 1 MA's),

Gene: Duplicity_25 Start: 22169, Stop: 22348, Start Num: 18

Candidate Starts for Duplicity_25:

(Start: 17 @22166 has 7 MA's), (Start: 18 @22169 has 70 MA's), (28, 22253), (29, 22256),

Gene: Dynamo_25 Start: 23268, Stop: 23438, Start Num: 19

Candidate Starts for Dynamo_25:

(4, 22953), (Start: 18 @23265 has 70 MA's), (Start: 19 @23268 has 51 MA's), (Start: 21 @23283 has 1 MA's), (31, 23355),

Gene: EGUunicorn_25 Start: 22166, Stop: 22348, Start Num: 17

Candidate Starts for EGUunicorn_25:

(Start: 17 @22166 has 7 MA's), (Start: 18 @22169 has 70 MA's), (28, 22253), (29, 22256),

Gene: Etoile_25 Start: 22879, Stop: 23049, Start Num: 19

Candidate Starts for Etoile_25:

(16, 22867), (Start: 18 @22876 has 70 MA's), (Start: 19 @22879 has 51 MA's), (Start: 21 @22894 has 1 MA's),

Gene: Farewell_24 Start: 23918, Stop: 24067, Start Num: 21

Candidate Starts for Farewell_24:

(Start: 21 @23918 has 1 MA's), (29, 23981), (39, 24023),

Gene: FirstPlacePfu_25 Start: 22879, Stop: 23049, Start Num: 19

Candidate Starts for FirstPlacePfu_25:

(16, 22867), (Start: 18 @22876 has 70 MA's), (Start: 19 @22879 has 51 MA's), (Start: 21 @22894 has 1 MA's),

Gene: Fishburne_25 Start: 22879, Stop: 23049, Start Num: 19

Candidate Starts for Fishburne_25:

(16, 22867), (Start: 18 @22876 has 70 MA's), (Start: 19 @22879 has 51 MA's), (Start: 21 @22894 has 1 MA's),

Gene: Fulbright_24 Start: 21973, Stop: 22146, Start Num: 18

Candidate Starts for Fulbright_24:

(3, 21655), (6, 21757), (Start: 18 @21973 has 70 MA's), (28, 22057), (29, 22060), (34, 22072),

Gene: GaloreK_25 Start: 22875, Stop: 23045, Start Num: 19

Candidate Starts for GaloreK_25:

(Start: 18 @22872 has 70 MA's), (Start: 19 @22875 has 51 MA's), (Start: 21 @22890 has 1 MA's), (29, 22959), (32, 22968),

Gene: Gavriela_25 Start: 23144, Stop: 23314, Start Num: 19

Candidate Starts for Gavriela_25:

(Start: 18 @23141 has 70 MA's), (Start: 19 @23144 has 51 MA's), (Start: 21 @23159 has 1 MA's),

Gene: Gex_25 Start: 22165, Stop: 22344, Start Num: 18

Candidate Starts for Gex_25:

(Start: 17 @22162 has 7 MA's), (Start: 18 @22165 has 70 MA's), (28, 22249), (29, 22252),

Gene: Glaske_25 Start: 23141, Stop: 23314, Start Num: 18

Candidate Starts for Glaske_25:

(Start: 18 @23141 has 70 MA's), (Start: 19 @23144 has 51 MA's), (Start: 21 @23159 has 1 MA's),

Gene: Gonephishing_43 Start: 36458, Stop: 36619, Start Num: 19

Candidate Starts for Gonephishing_43:

(Start: 19 @36458 has 51 MA's), (39, 36575),

Gene: GreaseLightnin_25 Start: 23125, Stop: 23301, Start Num: 18

Candidate Starts for GreaseLightnin_25:

(1, 22621), (6, 22909), (Start: 18 @23125 has 70 MA's), (29, 23215),

Gene: HC_25 Start: 22949, Stop: 23119, Start Num: 19

Candidate Starts for HC_25:

(16, 22937), (Start: 18 @22946 has 70 MA's), (Start: 19 @22949 has 51 MA's), (Start: 21 @22964 has 1 MA's), (29, 23033),

Gene: HUHilltop_25 Start: 22879, Stop: 23049, Start Num: 19

Candidate Starts for HUHilltop_25:

(16, 22867), (Start: 18 @22876 has 70 MA's), (Start: 19 @22879 has 51 MA's), (Start: 21 @22894 has 1 MA's), (29, 22963), (32, 22972),

Gene: Hanako_24 Start: 21647, Stop: 21823, Start Num: 18

Candidate Starts for Hanako_24:

(3, 21329), (6, 21431), (Start: 18 @21647 has 70 MA's), (29, 21737), (37, 21761), (39, 21779),

Gene: Hannaconda_39 Start: 33830, Stop: 33991, Start Num: 19

Candidate Starts for Hannaconda_39:

(Start: 19 @33830 has 51 MA's), (29, 33905), (37, 33929), (39, 33947),

Gene: IdentityCrisis_24 Start: 20626, Stop: 20802, Start Num: 18

Candidate Starts for IdentityCrisis_24:

(Start: 18 @20626 has 70 MA's), (25, 20686), (28, 20713), (29, 20716), (39, 20758), (40, 20761),

Gene: Impisi_25 Start: 21790, Stop: 21960, Start Num: 19

Candidate Starts for Impisi_25:

(Start: 18 @21787 has 70 MA's), (Start: 19 @21790 has 51 MA's), (Start: 21 @21805 has 1 MA's), (29, 21874), (32, 21883),

Gene: Jamie19_24 Start: 21647, Stop: 21823, Start Num: 18

Candidate Starts for Jamie19_24:

(6, 21431), (Start: 18 @21647 has 70 MA's), (29, 21737), (37, 21761), (39, 21779),

Gene: Jebeks_25 Start: 22864, Stop: 23034, Start Num: 19

Candidate Starts for Jebeks_25:

(16, 22852), (Start: 18 @22861 has 70 MA's), (Start: 19 @22864 has 51 MA's), (Start: 21 @22879 has 1 MA's),

Gene: Jennelsea_22 Start: 21987, Stop: 22163, Start Num: 18

Candidate Starts for Jennelsea_22:

(3, 21669), (6, 21771), (Start: 18 @21987 has 70 MA's), (28, 22074), (29, 22077), (34, 22089),

Gene: Journey_25 Start: 22169, Stop: 22348, Start Num: 18

Candidate Starts for Journey_25:

(Start: 17 @22166 has 7 MA's), (Start: 18 @22169 has 70 MA's), (28, 22253), (29, 22256),

Gene: Juniormint_25 Start: 22923, Stop: 23093, Start Num: 19

Candidate Starts for Juniormint_25:

(16, 22911), (Start: 18 @22920 has 70 MA's), (Start: 19 @22923 has 51 MA's), (Start: 21 @22938 has 1 MA's),

Gene: Kari_25 Start: 22879, Stop: 23046, Start Num: 19

Candidate Starts for Kari_25:

(Start: 18 @22876 has 70 MA's), (Start: 19 @22879 has 51 MA's), (Start: 21 @22894 has 1 MA's), (29, 22960), (30, 22963), (32, 22969),

Gene: KashFlow_36 Start: 33451, Stop: 33612, Start Num: 19

Candidate Starts for KashFlow_36:

(Start: 19 @33451 has 51 MA's), (29, 33526), (37, 33550), (39, 33568),

Gene: Kevin1_25 Start: 21582, Stop: 21752, Start Num: 19

Candidate Starts for Kevin1_25:

(5, 21339), (Start: 18 @21579 has 70 MA's), (Start: 19 @21582 has 51 MA's), (Start: 21 @21597 has 1 MA's), (31, 21669),

Gene: KilKor_25 Start: 23141, Stop: 23314, Start Num: 18

Candidate Starts for KilKor_25:

(Start: 18 @23141 has 70 MA's), (Start: 19 @23144 has 51 MA's), (Start: 21 @23159 has 1 MA's),

Gene: Koella_22 Start: 21999, Stop: 22175, Start Num: 18

Candidate Starts for Koella_22:

(3, 21681), (6, 21783), (Start: 18 @21999 has 70 MA's), (28, 22086), (29, 22089), (34, 22101),

Gene: Ksquared_25 Start: 22901, Stop: 23071, Start Num: 19

Candidate Starts for Ksquared_25:

(16, 22889), (Start: 18 @22898 has 70 MA's), (Start: 19 @22901 has 51 MA's), (Start: 21 @22916 has 1 MA's),

Gene: Langerak_25 Start: 22863, Stop: 23033, Start Num: 19

Candidate Starts for Langerak_25:

(16, 22851), (Start: 18 @22860 has 70 MA's), (Start: 19 @22863 has 51 MA's), (Start: 21 @22878 has 1 MA's), (29, 22947), (32, 22956),

Gene: LastJedi_22 Start: 22030, Stop: 22206, Start Num: 18

Candidate Starts for LastJedi_22:

(3, 21712), (6, 21814), (Start: 18 @22030 has 70 MA's), (28, 22117), (29, 22120), (34, 22132),

Gene: LilSpotty_28 Start: 23137, Stop: 23316, Start Num: 18

Candidate Starts for LilSpotty_28:

(Start: 17 @23134 has 7 MA's), (Start: 18 @23137 has 70 MA's), (28, 23221), (29, 23224),

Gene: LittleE_48 Start: 39362, Stop: 39508, Start Num: 19

Candidate Starts for LittleE_48:

(Start: 19 @39362 has 51 MA's), (29, 39422), (37, 39446), (39, 39464),

Gene: Lucky2013_42 Start: 35376, Stop: 35537, Start Num: 19

Candidate Starts for Lucky2013_42:

(Start: 19 @35376 has 51 MA's), (29, 35451), (37, 35475), (39, 35493),

Gene: Magsby_25 Start: 22166, Stop: 22345, Start Num: 18

Candidate Starts for Magsby_25:

(Start: 17 @22163 has 7 MA's), (Start: 18 @22166 has 70 MA's), (28, 22250), (29, 22253),

Gene: Majeke_25 Start: 22882, Stop: 23055, Start Num: 18

Candidate Starts for Majeke_25:

(16, 22873), (Start: 18 @22882 has 70 MA's), (Start: 19 @22885 has 51 MA's), (Start: 21 @22900 has 1 MA's),

Gene: Malithi_25 Start: 22801, Stop: 22974, Start Num: 18

Candidate Starts for Malithi_25:

(16, 22792), (Start: 18 @22801 has 70 MA's), (Start: 19 @22804 has 51 MA's), (Start: 21 @22819 has 1 MA's),

Gene: Mangethe_25 Start: 22882, Stop: 23055, Start Num: 18

Candidate Starts for Mangethe_25:

(16, 22873), (Start: 18 @22882 has 70 MA's), (Start: 19 @22885 has 51 MA's), (Start: 21 @22900 has 1 MA's),

Gene: Megiddo_25 Start: 23141, Stop: 23314, Start Num: 18

Candidate Starts for Megiddo_25:

(Start: 18 @23141 has 70 MA's), (Start: 19 @23144 has 51 MA's), (Start: 21 @23159 has 1 MA's),

Gene: Melville_25 Start: 22169, Stop: 22348, Start Num: 18

Candidate Starts for Melville_25:

(Start: 17 @22166 has 7 MA's), (Start: 18 @22169 has 70 MA's), (28, 22253), (29, 22256),

Gene: MiaZeal_42 Start: 35060, Stop: 35221, Start Num: 19

Candidate Starts for MiaZeal_42:

(Start: 19 @35060 has 51 MA's), (29, 35135), (37, 35159), (39, 35177),

Gene: MichelleMyBell_25 Start: 21653, Stop: 21820, Start Num: 19

Candidate Starts for MichelleMyBell_25:

(2, 21323), (Start: 18 @21650 has 70 MA's), (Start: 19 @21653 has 51 MA's), (29, 21734),

Gene: MilanaBonita_22 Start: 21918, Stop: 22094, Start Num: 18

Candidate Starts for MilanaBonita_22:

(Start: 18 @21918 has 70 MA's), (32, 22017), (39, 22050),

Gene: Ms6_22 Start: 21500, Stop: 21676, Start Num: 18

Candidate Starts for Ms6_22:

(6, 21284), (Start: 18 @21500 has 70 MA's), (39, 21632),

Gene: MulchSalad_24 Start: 21938, Stop: 22111, Start Num: 18

Candidate Starts for MulchSalad_24:

(Start: 17 @21935 has 7 MA's), (Start: 18 @21938 has 70 MA's), (29, 22025),

Gene: Nazo_25 Start: 23510, Stop: 23686, Start Num: 19

Candidate Starts for Nazo_25:

(Start: 18 @23507 has 70 MA's), (Start: 19 @23510 has 51 MA's), (20, 23531), (Start: 21 @23534 has 1 MA's), (22, 23555), (27, 23588), (29, 23600),

Gene: Necropolis_25 Start: 22876, Stop: 23049, Start Num: 18

Candidate Starts for Necropolis_25:

(16, 22867), (Start: 18 @22876 has 70 MA's), (Start: 19 @22879 has 51 MA's), (Start: 21 @22894 has 1 MA's),

Gene: Nenae_24 Start: 21647, Stop: 21823, Start Num: 18

Candidate Starts for Nenae_24:

(3, 21329), (6, 21431), (Start: 18 @21647 has 70 MA's), (29, 21737), (37, 21761), (39, 21779),

Gene: Nibley_37 Start: 33891, Stop: 34052, Start Num: 19

Candidate Starts for Nibley_37:

(Start: 19 @33891 has 51 MA's), (29, 33966), (37, 33990), (39, 34008),

Gene: Ochi17_26 Start: 25511, Stop: 25684, Start Num: 19

Candidate Starts for Ochi17_26:

(8, 25340), (9, 25343), (12, 25403), (14, 25427), (Start: 19 @25511 has 51 MA's), (39, 25640),

Gene: Okabe_24 Start: 22042, Stop: 22212, Start Num: 19

Candidate Starts for Okabe_24:

(Start: 18 @22039 has 70 MA's), (Start: 19 @22042 has 51 MA's), (Start: 21 @22057 has 1 MA's), (28, 22123),

Gene: Omega_47 Start: 39998, Stop: 40156, Start Num: 19

Candidate Starts for Omega_47:

(Start: 19 @39998 has 51 MA's), (39, 40112),

Gene: Optimus_46 Start: 39166, Stop: 39324, Start Num: 19
Candidate Starts for Optimus_46:
(Start: 19 @39166 has 51 MA's), (29, 39238), (34, 39250), (39, 39280),

Gene: Panchino_24 Start: 21760, Stop: 21927, Start Num: 18
Candidate Starts for Panchino_24:
(5, 21520), (Start: 18 @21760 has 70 MA's), (Start: 19 @21763 has 51 MA's), (Start: 21 @21778 has 1 MA's), (29, 21841), (39, 21883),

Gene: Parmesanjohn_25 Start: 22169, Stop: 22348, Start Num: 18
Candidate Starts for Parmesanjohn_25:
(Start: 17 @22166 has 7 MA's), (Start: 18 @22169 has 70 MA's), (28, 22253), (29, 22256),

Gene: PeanutPie_25 Start: 22886, Stop: 23056, Start Num: 19
Candidate Starts for PeanutPie_25:
(16, 22874), (Start: 18 @22883 has 70 MA's), (Start: 19 @22886 has 51 MA's), (Start: 21 @22901 has 1 MA's),

Gene: Phalm_25 Start: 23141, Stop: 23314, Start Num: 18
Candidate Starts for Phalm_25:
(Start: 18 @23141 has 70 MA's), (Start: 19 @23144 has 51 MA's), (Start: 21 @23159 has 1 MA's),

Gene: PhancyPhin_24 Start: 21644, Stop: 21820, Start Num: 18
Candidate Starts for PhancyPhin_24:
(3, 21326), (6, 21428), (Start: 18 @21644 has 70 MA's), (29, 21734), (37, 21758), (39, 21776),

Gene: Phayonce_25 Start: 23436, Stop: 23615, Start Num: 19
Candidate Starts for Phayonce_25:
(2, 23106), (Start: 18 @23433 has 70 MA's), (Start: 19 @23436 has 51 MA's), (Start: 21 @23460 has 1 MA's), (23, 23487), (31, 23532),

Gene: Phegasus_25 Start: 22885, Stop: 23055, Start Num: 19
Candidate Starts for Phegasus_25:
(16, 22873), (Start: 18 @22882 has 70 MA's), (Start: 19 @22885 has 51 MA's), (Start: 21 @22900 has 1 MA's),

Gene: Philonius_25 Start: 22166, Stop: 22348, Start Num: 17
Candidate Starts for Philonius_25:
(Start: 17 @22166 has 7 MA's), (Start: 18 @22169 has 70 MA's), (28, 22253), (29, 22256),

Gene: Phineas_25 Start: 23247, Stop: 23420, Start Num: 18
Candidate Starts for Phineas_25:
(16, 23238), (Start: 18 @23247 has 70 MA's), (Start: 19 @23250 has 51 MA's), (Start: 21 @23265 has 1 MA's),

Gene: Phloss_24 Start: 21976, Stop: 22149, Start Num: 18
Candidate Starts for Phloss_24:
(3, 21658), (6, 21760), (Start: 18 @21976 has 70 MA's), (28, 22060), (29, 22063), (34, 22075),

Gene: Phrann_24 Start: 22023, Stop: 22196, Start Num: 18
Candidate Starts for Phrann_24:
(Start: 18 @22023 has 70 MA's), (Start: 19 @22026 has 51 MA's), (Start: 21 @22041 has 1 MA's), (29, 22110), (30, 22113), (32, 22119),

Gene: Pippy_22 Start: 22026, Stop: 22202, Start Num: 18

Candidate Starts for Pippy_22:

(3, 21708), (6, 21810), (Start: 18 @22026 has 70 MA's), (28, 22113), (29, 22116), (34, 22128),

Gene: Pipsqueaks_25 Start: 22166, Stop: 22348, Start Num: 17

Candidate Starts for Pipsqueaks_25:

(Start: 17 @22166 has 7 MA's), (Start: 18 @22169 has 70 MA's), (28, 22253), (29, 22256),

Gene: Polkaroo_25 Start: 22895, Stop: 23065, Start Num: 19

Candidate Starts for Polkaroo_25:

(16, 22883), (Start: 18 @22892 has 70 MA's), (Start: 19 @22895 has 51 MA's), (Start: 21 @22910 has 1 MA's),

Gene: Porcelain_41 Start: 35060, Stop: 35221, Start Num: 19

Candidate Starts for Porcelain_41:

(Start: 19 @35060 has 51 MA's), (29, 35135), (37, 35159), (39, 35177),

Gene: Purgamenstris_24 Start: 21647, Stop: 21823, Start Num: 18

Candidate Starts for Purgamenstris_24:

(3, 21329), (6, 21431), (Start: 18 @21647 has 70 MA's), (29, 21737), (37, 21761), (39, 21779),

Gene: Purky_25 Start: 23130, Stop: 23306, Start Num: 18

Candidate Starts for Purky_25:

(Start: 18 @23130 has 70 MA's), (Start: 19 @23133 has 51 MA's), (26, 23199), (28, 23217), (29, 23220), (34, 23232), (39, 23262),

Gene: QueenHazel_24 Start: 23056, Stop: 23232, Start Num: 18

Candidate Starts for QueenHazel_24:

(6, 22840), (Start: 18 @23056 has 70 MA's), (28, 23143),

Gene: Raymond7_24 Start: 22039, Stop: 22206, Start Num: 19

Candidate Starts for Raymond7_24:

(2, 21709), (Start: 18 @22036 has 70 MA's), (Start: 19 @22039 has 51 MA's), (29, 22120),

Gene: Rebel_24 Start: 21448, Stop: 21612, Start Num: 19

Candidate Starts for Rebel_24:

(Start: 18 @21445 has 70 MA's), (Start: 19 @21448 has 51 MA's), (Start: 21 @21463 has 1 MA's), (29, 21526), (39, 21568),

Gene: Redi_24 Start: 21647, Stop: 21823, Start Num: 18

Candidate Starts for Redi_24:

(3, 21329), (6, 21431), (Start: 18 @21647 has 70 MA's), (29, 21737), (37, 21761), (39, 21779),

Gene: Rubeelu_25 Start: 21584, Stop: 21754, Start Num: 19

Candidate Starts for Rubeelu_25:

(5, 21341), (Start: 18 @21581 has 70 MA's), (Start: 19 @21584 has 51 MA's), (Start: 21 @21599 has 1 MA's), (31, 21671),

Gene: Sarma624_23 Start: 21863, Stop: 22039, Start Num: 18

Candidate Starts for Sarma624_23:

(6, 21647), (Start: 18 @21863 has 70 MA's), (29, 21953), (34, 21965), (39, 21995),

Gene: Sbash_24 Start: 23052, Stop: 23234, Start Num: 18
Candidate Starts for Sbash_24:
(2, 22725), (Start: 18 @23052 has 70 MA's), (Start: 19 @23055 has 51 MA's), (Start: 21 @23079 has 1 MA's), (29, 23145), (38, 23175),

Gene: Schnauzer_25 Start: 22166, Stop: 22348, Start Num: 17
Candidate Starts for Schnauzer_25:
(Start: 17 @22166 has 7 MA's), (Start: 18 @22169 has 70 MA's), (28, 22253), (29, 22256),

Gene: Scitech_24 Start: 21768, Stop: 21941, Start Num: 18
Candidate Starts for Scitech_24:
(Start: 18 @21768 has 70 MA's), (Start: 19 @21771 has 51 MA's), (Start: 21 @21786 has 1 MA's), (29, 21855), (34, 21867), (37, 21879), (39, 21897),

Gene: Shaboozey_36 Start: 33375, Stop: 33536, Start Num: 19
Candidate Starts for Shaboozey_36:
(Start: 19 @33375 has 51 MA's), (29, 33450), (37, 33474), (39, 33492),

Gene: ShrimpFriedEgg_24 Start: 21647, Stop: 21823, Start Num: 18
Candidate Starts for ShrimpFriedEgg_24:
(3, 21329), (6, 21431), (Start: 18 @21647 has 70 MA's), (29, 21737), (37, 21761), (39, 21779),

Gene: Shweta_24 Start: 21778, Stop: 21951, Start Num: 18
Candidate Starts for Shweta_24:
(Start: 18 @21778 has 70 MA's), (Start: 19 @21781 has 51 MA's), (Start: 21 @21796 has 1 MA's), (29, 21865), (34, 21877), (37, 21889), (39, 21907),

Gene: Silvafighter_25 Start: 22166, Stop: 22348, Start Num: 17
Candidate Starts for Silvafighter_25:
(Start: 17 @22166 has 7 MA's), (Start: 18 @22169 has 70 MA's), (28, 22253), (29, 22256),

Gene: Silvy_25 Start: 22170, Stop: 22349, Start Num: 18
Candidate Starts for Silvy_25:
(Start: 17 @22167 has 7 MA's), (Start: 18 @22170 has 70 MA's), (28, 22254), (29, 22257),

Gene: SkinnyPete_24 Start: 21787, Stop: 21951, Start Num: 19
Candidate Starts for SkinnyPete_24:
(5, 21544), (Start: 18 @21784 has 70 MA's), (Start: 19 @21787 has 51 MA's), (Start: 21 @21802 has 1 MA's), (29, 21865), (39, 21907),

Gene: Smurph_25 Start: 22169, Stop: 22348, Start Num: 18
Candidate Starts for Smurph_25:
(Start: 17 @22166 has 7 MA's), (Start: 18 @22169 has 70 MA's), (28, 22253), (29, 22256),

Gene: Snekmaggedon_24 Start: 21647, Stop: 21823, Start Num: 18
Candidate Starts for Snekmaggedon_24:
(6, 21431), (Start: 18 @21647 has 70 MA's), (29, 21737), (37, 21761), (39, 21779),

Gene: Sonah_25 Start: 22869, Stop: 23039, Start Num: 19
Candidate Starts for Sonah_25:
(16, 22857), (Start: 18 @22866 has 70 MA's), (Start: 19 @22869 has 51 MA's), (Start: 21 @22884 has 1 MA's),

Gene: Spinach_24 Start: 21647, Stop: 21823, Start Num: 18
Candidate Starts for Spinach_24:
(3, 21329), (6, 21431), (Start: 18 @21647 has 70 MA's), (29, 21737), (37, 21761), (39, 21779),

Gene: SpongeBob_24 Start: 21647, Stop: 21823, Start Num: 18
Candidate Starts for SpongeBob_24:
(6, 21431), (Start: 18 @21647 has 70 MA's), (29, 21737), (37, 21761), (39, 21779),

Gene: Squint_41 Start: 35179, Stop: 35340, Start Num: 19
Candidate Starts for Squint_41:
(Start: 19 @35179 has 51 MA's), (29, 35254), (37, 35278), (39, 35296),

Gene: Squirty_23 Start: 21695, Stop: 21868, Start Num: 18
Candidate Starts for Squirty_23:
(3, 21377), (6, 21479), (Start: 18 @21695 has 70 MA's), (28, 21779), (29, 21782), (34, 21794),

Gene: StAnnes_25 Start: 25400, Stop: 25573, Start Num: 19
Candidate Starts for StAnnes_25:
(7, 25196), (15, 25376), (Start: 19 @25400 has 51 MA's), (37, 25511), (39, 25529),

Gene: Starcevich_31 Start: 26193, Stop: 26324, Start Num: 24
Candidate Starts for Starcevich_31:
(10, 25968), (11, 26025), (13, 26043), (Start: 24 @26193 has 1 MA's), (27, 26226), (33, 26247), (35, 26250), (36, 26253), (39, 26280),

Gene: StevieRay_25 Start: 22870, Stop: 23028, Start Num: 19
Candidate Starts for StevieRay_25:
(16, 22858), (Start: 18 @22867 has 70 MA's), (Start: 19 @22870 has 51 MA's), (Start: 21 @22885 has 1 MA's),

Gene: StressBall_25 Start: 23141, Stop: 23314, Start Num: 18
Candidate Starts for StressBall_25:
(Start: 18 @23141 has 70 MA's), (Start: 19 @23144 has 51 MA's), (Start: 21 @23159 has 1 MA's),

Gene: Stuck_28 Start: 23375, Stop: 23551, Start Num: 18
Candidate Starts for Stuck_28:
(6, 23159), (Start: 18 @23375 has 70 MA's), (29, 23465), (34, 23477), (39, 23507),

Gene: Superphikiman_42 Start: 35242, Stop: 35403, Start Num: 19
Candidate Starts for Superphikiman_42:
(Start: 19 @35242 has 51 MA's), (29, 35317), (37, 35341), (39, 35359),

Gene: Tapioca_25 Start: 22169, Stop: 22348, Start Num: 18
Candidate Starts for Tapioca_25:
(Start: 17 @22166 has 7 MA's), (Start: 18 @22169 has 70 MA's), (28, 22253), (29, 22256),

Gene: Tchotchke_26 Start: 25034, Stop: 25207, Start Num: 18
Candidate Starts for Tchotchke_26:
(Start: 18 @25034 has 70 MA's), (29, 25121), (34, 25133), (39, 25163),

Gene: Techage_25 Start: 22870, Stop: 23040, Start Num: 19
Candidate Starts for Techage_25:

(Start: 18 @22867 has 70 MA's), (Start: 19 @22870 has 51 MA's), (Start: 21 @22885 has 1 MA's), (29, 22954), (32, 22963),

Gene: Tessdabest_24 Start: 22166, Stop: 22345, Start Num: 18

Candidate Starts for Tessdabest_24:

(Start: 17 @22163 has 7 MA's), (Start: 18 @22166 has 70 MA's), (28, 22250), (29, 22253),

Gene: Thespis_25 Start: 22876, Stop: 23049, Start Num: 18

Candidate Starts for Thespis_25:

(16, 22867), (Start: 18 @22876 has 70 MA's), (Start: 19 @22879 has 51 MA's), (Start: 21 @22894 has 1 MA's),

Gene: ThulaThula_25 Start: 23442, Stop: 23621, Start Num: 19

Candidate Starts for ThulaThula_25:

(Start: 18 @23439 has 70 MA's), (Start: 19 @23442 has 51 MA's), (Start: 21 @23466 has 1 MA's), (23, 23493), (31, 23538),

Gene: Toron_27 Start: 25474, Stop: 25641, Start Num: 18

Candidate Starts for Toron_27:

(Start: 18 @25474 has 70 MA's), (Start: 21 @25501 has 1 MA's), (28, 25561),

Gene: Tortellini_25 Start: 23480, Stop: 23647, Start Num: 18

Candidate Starts for Tortellini_25:

(Start: 18 @23480 has 70 MA's), (Start: 19 @23483 has 51 MA's), (Start: 21 @23498 has 1 MA's), (29, 23561), (37, 23585), (39, 23603),

Gene: Tortoise12_25 Start: 22169, Stop: 22348, Start Num: 18

Candidate Starts for Tortoise12_25:

(Start: 17 @22166 has 7 MA's), (Start: 18 @22169 has 70 MA's), (28, 22253), (29, 22256),

Gene: Velveteen_23 Start: 21863, Stop: 22039, Start Num: 18

Candidate Starts for Velveteen_23:

(6, 21647), (Start: 18 @21863 has 70 MA's), (29, 21953), (34, 21965), (39, 21995),

Gene: Venti_25 Start: 22879, Stop: 23049, Start Num: 19

Candidate Starts for Venti_25:

(16, 22867), (Start: 18 @22876 has 70 MA's), (Start: 19 @22879 has 51 MA's), (Start: 21 @22894 has 1 MA's),

Gene: Vidya_25 Start: 22879, Stop: 23049, Start Num: 19

Candidate Starts for Vidya_25:

(16, 22867), (Start: 18 @22876 has 70 MA's), (Start: 19 @22879 has 51 MA's), (Start: 21 @22894 has 1 MA's),

Gene: WST1_25 Start: 20638, Stop: 20814, Start Num: 18

Candidate Starts for WST1_25:

(Start: 18 @20638 has 70 MA's), (25, 20698), (28, 20725), (29, 20728), (39, 20770), (40, 20773),

Gene: Willsammy_25 Start: 23145, Stop: 23318, Start Num: 18

Candidate Starts for Willsammy_25:

(Start: 18 @23145 has 70 MA's), (Start: 19 @23148 has 51 MA's), (Start: 21 @23163 has 1 MA's), (29, 23232), (39, 23274),

Gene: Xavia_25 Start: 23502, Stop: 23672, Start Num: 19

Candidate Starts for Xavia_25:

(Start: 18 @23499 has 70 MA's), (Start: 19 @23502 has 51 MA's), (Start: 21 @23517 has 1 MA's), (29, 23586), (30, 23589), (32, 23595),

Gene: Xeno_24 Start: 21783, Stop: 21953, Start Num: 19

Candidate Starts for Xeno_24:

(Start: 18 @21780 has 70 MA's), (Start: 19 @21783 has 51 MA's), (Start: 21 @21798 has 1 MA's), (29, 21867), (32, 21876),

Gene: Xerxes_25 Start: 22166, Stop: 22345, Start Num: 18

Candidate Starts for Xerxes_25:

(Start: 17 @22163 has 7 MA's), (Start: 18 @22166 has 70 MA's), (28, 22250), (29, 22253),

Gene: Xula_23 Start: 22578, Stop: 22754, Start Num: 18

Candidate Starts for Xula_23:

(6, 22362), (Start: 18 @22578 has 70 MA's), (28, 22665),

Gene: Zilizebeth_25 Start: 22876, Stop: 23049, Start Num: 18

Candidate Starts for Zilizebeth_25:

(16, 22867), (Start: 18 @22876 has 70 MA's), (Start: 19 @22879 has 51 MA's), (Start: 21 @22894 has 1 MA's),