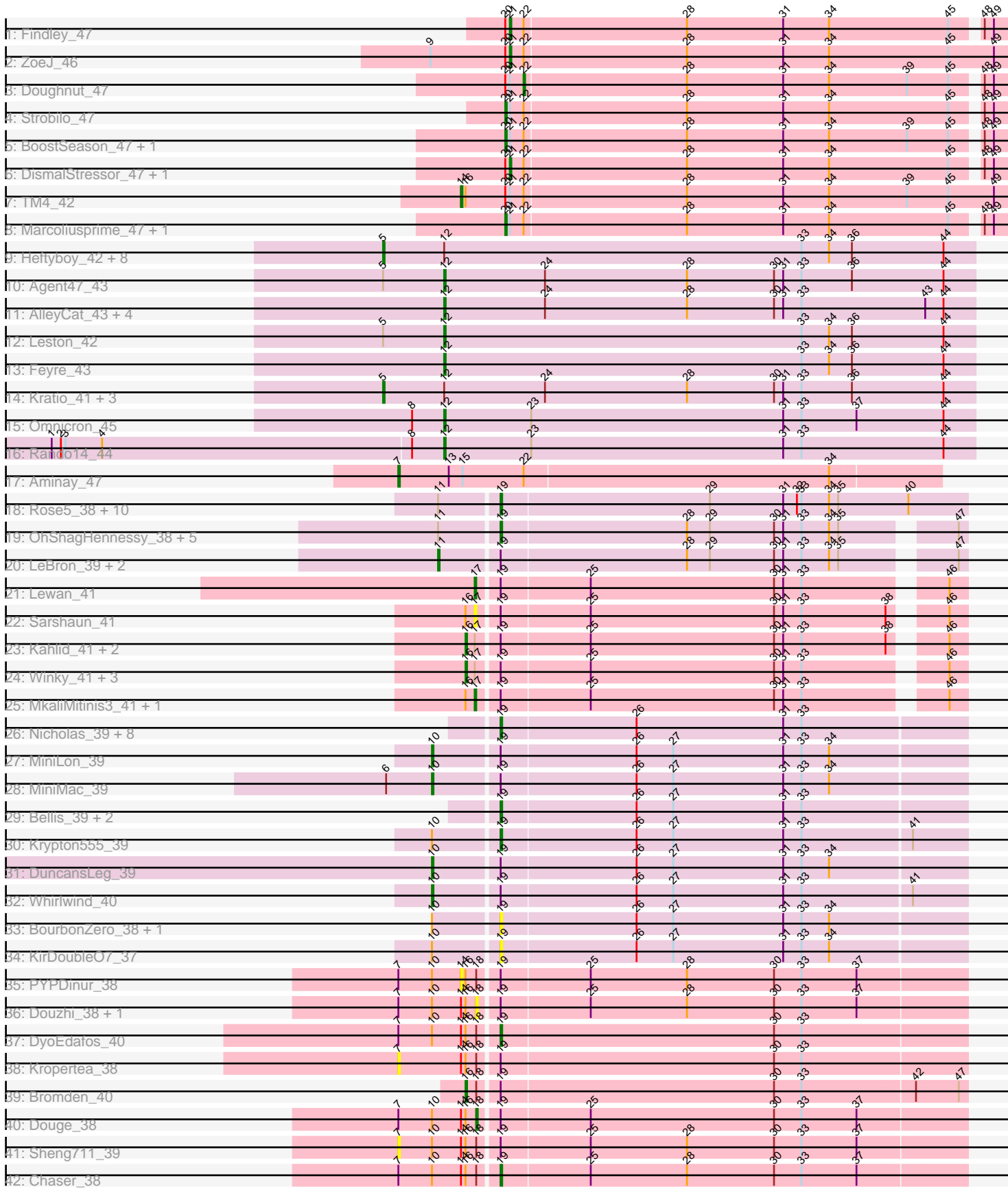


Pham 296436



Note: Tracks are now grouped by subcluster and scaled. Switching in subcluster is indicated by changes in track color. Track scale is now set by default to display the region 30 bp upstream of start 1 to 30 bp downstream of the last possible start. If this default region is judged to be packed too tightly with annotated starts, the track will be further scaled to only show that region of the ORF with annotated starts. This action will be indicated by adding "Zoomed" to the title. For starts, yellow indicates the location of called starts comprised solely of Glimmer/GeneMark auto-annotations, green indicates the location of called starts with at least 1 manual gene annotation.

Pham 296436 Report

This analysis was run 04/25/26 on database version 644.

Pham number 296436 has 95 members, 11 are drafts.

Phages represented in each track:

- Track 1 : Findley_47
- Track 2 : ZoeJ_46
- Track 3 : Doughnut_47
- Track 4 : Strobilo_47
- Track 5 : BoostSeason_47, Mufasa_47
- Track 6 : DismalStressor_47, Milly_47
- Track 7 : TM4_42
- Track 8 : Marcoliusprime_47, DismalFunk_47
- Track 9 : Heftyboy_42, Guillsminger_43, Gengar_42, OkiRoe_42, Waterfoul_43, Paola_42, Thyatira_44, Miryou_44, SoSeph_42
- Track 10 : Agent47_43
- Track 11 : AlleyCat_43, Edugator_42, Psycho_43, Larva_43, Dadosky_43
- Track 12 : Leston_42
- Track 13 : Feyre_43
- Track 14 : Kratio_41, InvictusManeo_42, ViviJ_42, Collard_42
- Track 15 : Omnicron_45
- Track 16 : Rando14_44
- Track 17 : Aminay_47
- Track 18 : Rose5_38, Calm_39, Tyson_38, CicholasNage_39, Wyatt2_39, MAckerman_39, Zaria_39, Acquire49_39, Silverleaf_38, AvadaKedavra_39, Halena_38
- Track 19 : OhShagHennessy_38, Poochiewood_38, Wamburgrxpress_39, Enceladus_38, Appletree2_38, DirkDirk_38
- Track 20 : LeBron_39, UPIE_39, JoeDirt_38
- Track 21 : Lewan_41
- Track 22 : Sarshaun_41
- Track 23 : Kahlid_41, Loadrie_41, Wigglewiggle_41
- Track 24 : Winky_41, Breezona_41, Rumpelstiltskin_41, Faith1_41
- Track 25 : MkaliMitinis3_41, LilDestine_41
- Track 26 : Nicholas_39, Red305_39, Lumos_39, Jubie_39, Snenia_39, Clautastrophe_39, MsGreen_39, Kingsolomon_39, TriFive_39
- Track 27 : MiniLon_39
- Track 28 : MiniMac_39
- Track 29 : Bellis_39, Moostard_39, Finnry_39
- Track 30 : Krypton555_39
- Track 31 : DuncansLeg_39
- Track 32 : Whirlwind_40

- Track 33 : BourbonZero_38, Ellson_39
- Track 34 : KirDoubleO7_37
- Track 35 : PYPDinur_38
- Track 36 : Douzhi_38, BrainDrainer_39
- Track 37 : DyoEdafos_40
- Track 38 : Kropertea_38
- Track 39 : Bromden_40
- Track 40 : Douge_38
- Track 41 : Sheng711_39
- Track 42 : Chaser_38

Summary of Final Annotations (See graph section above for start numbers):

The start number called the most often in the published annotations is 19, it was called in 30 of the 84 non-draft genes in the pham.

Genes that call this "Most Annotated" start:

- Acquire49_39, Appletree2_38, AvadaKedavra_39, Bellis_39, BourbonZero_38, Calm_39, Chaser_38, CicholasNage_39, Clautastrophe_39, DirkDirk_38, DyoEdafos_40, Ellson_39, Enceladus_38, Finnry_39, Halena_38, Jubie_39, Kingsolomon_39, KirDoubleO7_37, Krypton555_39, Lumos_39, MAckerman_39, Moostard_39, MsGreen_39, Nicholas_39, OhShagHennessy_38, Poochiewood_38, Red305_39, Rose5_38, Silverleaf_38, Snenia_39, TriFive_39, Tyson_38, Wamburgxpress_39, Wyatt2_39, Zaria_39,

Genes that have the "Most Annotated" start but do not call it:

- BrainDrainer_39, Breezona_41, Bromden_40, Douge_38, Douzhi_38, DuncansLeg_39, Faith1_41, JoeDirt_38, Kahlid_41, Kropertea_38, LeBron_39, Lewan_41, LilDestine_41, Loadrie_41, MiniLon_39, MiniMac_39, MkaliMitinis3_41, PYPDinur_38, Rumpelstiltskin_41, Sarshaun_41, Sheng711_39, UPIE_39, Whirlwind_40, Wigglewiggle_41, Winky_41,

Genes that do not have the "Most Annotated" start:

- Agent47_43, AlleyCat_43, Aminay_47, BoostSeason_47, Collard_42, Dadosky_43, DismalFunk_47, DismalStressor_47, Doughnut_47, Edugator_42, Feyre_43, Findley_47, Gengar_42, Guillsminger_43, Heftyboy_42, InvictusManeo_42, Kratio_41, Larva_43, Leston_42, Marcoliusprime_47, Milly_47, Miryou_44, Mufasa_47, OkiRoe_42, Omnicron_45, Paola_42, Psycho_43, Rando14_44, SoSeph_42, Strobilo_47, TM4_42, Thyatira_44, ViviJ_42, Waterfoul_43, ZoeJ_46,

Summary by start number:

Start 5:

- Found in 15 of 95 (15.8%) of genes in pham
- Manual Annotations of this start: 13 of 84
- Called 86.7% of time when present
- Phage (with cluster) where this start called: Collard_42 (K5), Gengar_42 (K5), Guillsminger_43 (K5), Heftyboy_42 (K5), InvictusManeo_42 (K5), Kratio_41 (K5), Miryou_44 (K5), OkiRoe_42 (K5), Paola_42 (K5), SoSeph_42 (K5), Thyatira_44 (K5), ViviJ_42 (K5), Waterfoul_43 (K5),

Start 7:

- Found in 9 of 95 (9.5%) of genes in pham
- Manual Annotations of this start: 1 of 84
- Called 33.3% of time when present
- Phage (with cluster) where this start called: Aminay_47 (K7), Kropertea_38 (L4), Sheng711_39 (L4),

Start 10:

- Found in 15 of 95 (15.8%) of genes in pham
- Manual Annotations of this start: 4 of 84
- Called 26.7% of time when present
- Phage (with cluster) where this start called: DuncansLeg_39 (L3), MiniLon_39 (L3), MiniMac_39 (L3), Whirlwind_40 (L3),

Start 11:

- Found in 20 of 95 (21.1%) of genes in pham
- Manual Annotations of this start: 3 of 84
- Called 15.0% of time when present
- Phage (with cluster) where this start called: JoeDirt_38 (L1), LeBron_39 (L1), UPIE_39 (L1),

Start 12:

- Found in 23 of 95 (24.2%) of genes in pham
- Manual Annotations of this start: 10 of 84
- Called 43.5% of time when present
- Phage (with cluster) where this start called: Agent47_43 (K5), AlleyCat_43 (K5), Dadosky_43 (K5), Edugator_42 (K5), Feyre_43 (K5), Larva_43 (K5), Leston_42 (K5), Omnicron_45 (K5), Psycho_43 (K5), Rando14_44 (K5),

Start 14:

- Found in 9 of 95 (9.5%) of genes in pham
- Manual Annotations of this start: 1 of 84
- Called 22.2% of time when present
- Phage (with cluster) where this start called: PYPDinur_38 (L4), TM4_42 (K2),

Start 16:

- Found in 20 of 95 (21.1%) of genes in pham
- Manual Annotations of this start: 8 of 84
- Called 40.0% of time when present
- Phage (with cluster) where this start called: Breezona_41 (L2), Bromden_40 (L4), Faith1_41 (L2), Kahlid_41 (L2), Loadrie_41 (L2), Rumpelstiltskin_41 (L2), Wigglewiggler_41 (L2), Winky_41 (L2),

Start 17:

- Found in 11 of 95 (11.6%) of genes in pham
- Manual Annotations of this start: 3 of 84
- Called 36.4% of time when present
- Phage (with cluster) where this start called: Lewan_41 (L2), LilDestine_41 (L2), MkaliMitinis3_41 (L2), Sarshaun_41 (L2),

Start 18:

- Found in 9 of 95 (9.5%) of genes in pham

- Manual Annotations of this start: 1 of 84
- Called 33.3% of time when present
- Phage (with cluster) where this start called: BrainDrainer_39 (L4), Douge_38 (L4), Douzhi_38 (L4),

Start 19:

- Found in 60 of 95 (63.2%) of genes in pham
- Manual Annotations of this start: 30 of 84
- Called 58.3% of time when present
- Phage (with cluster) where this start called: Acquire49_39 (L1), Appletree2_38 (L1), AvadaKedavra_39 (L1), Bellis_39 (L3), BourbonZero_38 (L3), Calm_39 (L1), Chaser_38 (L4), CicholasNage_39 (L1), Clautastrophe_39 (L3), DirkDirk_38 (L1), DyoEdafos_40 (L4), Ellson_39 (L3), Enceladus_38 (L1), Finnry_39 (L3), Halena_38 (L1), Jubie_39 (L3), Kingsolomon_39 (L3), KirDoubleO7_37 (L3), Krypton555_39 (L3), Lumos_39 (L3), MAckerman_39 (L1), Moostard_39 (L3), MsGreen_39 (L3), Nicholas_39 (L3), OhShagHennessy_38 (L1), Poochiewood_38 (L1), Red305_39 (L3), Rose5_38 (L1), Silverleaf_38 (L1), Snenia_39 (L3), TriFive_39 (L3), Tyson_38 (L1), Wamburgrxpress_39 (L1), Wyatt2_39 (L1), Zaria_39 (L1),

Start 20:

- Found in 11 of 95 (11.6%) of genes in pham
- Manual Annotations of this start: 5 of 84
- Called 45.5% of time when present
- Phage (with cluster) where this start called: BoostSeason_47 (K2), DismalFunk_47 (K2), Marcoliusprime_47 (K2), Mufasa_47 (K2), Strobilo_47 (K2),

Start 21:

- Found in 11 of 95 (11.6%) of genes in pham
- Manual Annotations of this start: 4 of 84
- Called 36.4% of time when present
- Phage (with cluster) where this start called: DismalStressor_47 (K2), Findley_47 (K2), Milly_47 (K2), ZoeJ_46 (K2),

Start 22:

- Found in 12 of 95 (12.6%) of genes in pham
- Manual Annotations of this start: 1 of 84
- Called 8.3% of time when present
- Phage (with cluster) where this start called: Doughnut_47 (K2),

Summary by clusters:

There are 7 clusters represented in this pham: K2, L4, K7, L3, K5, L1, L2,

Info for manual annotations of cluster K2:

- Start number 14 was manually annotated 1 time for cluster K2.
- Start number 20 was manually annotated 5 times for cluster K2.
- Start number 21 was manually annotated 4 times for cluster K2.
- Start number 22 was manually annotated 1 time for cluster K2.

Info for manual annotations of cluster K5:

- Start number 5 was manually annotated 13 times for cluster K5.
- Start number 12 was manually annotated 10 times for cluster K5.

Info for manual annotations of cluster K7:

- Start number 7 was manually annotated 1 time for cluster K7.

Info for manual annotations of cluster L1:

- Start number 11 was manually annotated 3 times for cluster L1.
- Start number 19 was manually annotated 16 times for cluster L1.

Info for manual annotations of cluster L2:

- Start number 16 was manually annotated 7 times for cluster L2.
- Start number 17 was manually annotated 3 times for cluster L2.

Info for manual annotations of cluster L3:

- Start number 10 was manually annotated 4 times for cluster L3.
- Start number 19 was manually annotated 12 times for cluster L3.

Info for manual annotations of cluster L4:

- Start number 16 was manually annotated 1 time for cluster L4.
- Start number 18 was manually annotated 1 time for cluster L4.
- Start number 19 was manually annotated 2 times for cluster L4.

Gene Information:

Gene: Acquire49_39 Start: 33043, Stop: 33345, Start Num: 19

Candidate Starts for Acquire49_39:

(Start: 11 @33007 has 3 MA's), (Start: 19 @33043 has 30 MA's), (29, 33178), (31, 33226), (32, 33235), (33, 33238), (34, 33256), (35, 33262), (40, 33307),

Gene: Agent47_43 Start: 34663, Stop: 35010, Start Num: 12

Candidate Starts for Agent47_43:

(Start: 5 @34624 has 13 MA's), (Start: 12 @34663 has 10 MA's), (24, 34729), (28, 34822), (30, 34879), (31, 34885), (33, 34897), (36, 34930), (44, 34990),

Gene: AlleyCat_43 Start: 34517, Stop: 34864, Start Num: 12

Candidate Starts for AlleyCat_43:

(Start: 12 @34517 has 10 MA's), (24, 34583), (28, 34676), (30, 34733), (31, 34739), (33, 34751), (43, 34832), (44, 34844),

Gene: Aminay_47 Start: 36566, Stop: 36913, Start Num: 7

Candidate Starts for Aminay_47:

(Start: 7 @36566 has 1 MA's), (13, 36599), (15, 36608), (Start: 22 @36647 has 1 MA's), (34, 36845),

Gene: Appletree2_38 Start: 32985, Stop: 33272, Start Num: 19

Candidate Starts for Appletree2_38:

(Start: 11 @32949 has 3 MA's), (Start: 19 @32985 has 30 MA's), (28, 33105), (29, 33120), (30, 33162), (31, 33168), (33, 33180), (34, 33198), (35, 33204), (47, 33267),

Gene: AvadaKedavra_39 Start: 33052, Stop: 33354, Start Num: 19

Candidate Starts for AvadaKedavra_39:

(Start: 11 @33016 has 3 MA's), (Start: 19 @33052 has 30 MA's), (29, 33187), (31, 33235), (32, 33244), (33, 33247), (34, 33265), (35, 33271), (40, 33316),

Gene: Bellis_39 Start: 34657, Stop: 34956, Start Num: 19

Candidate Starts for Bellis_39:

(Start: 19 @34657 has 30 MA's), (26, 34744), (27, 34768), (31, 34840), (33, 34852),

Gene: BoostSeason_47 Start: 36788, Stop: 37108, Start Num: 20

Candidate Starts for BoostSeason_47:

(Start: 20 @36788 has 5 MA's), (Start: 21 @36791 has 4 MA's), (Start: 22 @36800 has 1 MA's), (28, 36905), (31, 36968), (34, 36998), (39, 37049), (45, 37076), (48, 37091), (49, 37097),

Gene: BourbonZero_38 Start: 34636, Stop: 34935, Start Num: 19

Candidate Starts for BourbonZero_38:

(Start: 10 @34597 has 4 MA's), (Start: 19 @34636 has 30 MA's), (26, 34723), (27, 34747), (31, 34819), (33, 34831), (34, 34849),

Gene: BrainDrainer_39 Start: 33307, Stop: 33618, Start Num: 18

Candidate Starts for BrainDrainer_39:

(Start: 7 @33259 has 1 MA's), (Start: 10 @33280 has 4 MA's), (Start: 14 @33298 has 1 MA's), (Start: 16 @33301 has 8 MA's), (Start: 18 @33307 has 1 MA's), (Start: 19 @33319 has 30 MA's), (25, 33376), (28, 33439), (30, 33496), (33, 33514), (37, 33550),

Gene: Breezona_41 Start: 34392, Stop: 34697, Start Num: 16

Candidate Starts for Breezona_41:

(Start: 16 @34392 has 8 MA's), (Start: 17 @34398 has 3 MA's), (Start: 19 @34410 has 30 MA's), (25, 34467), (30, 34587), (31, 34593), (33, 34605), (46, 34686),

Gene: Bromden_40 Start: 33855, Stop: 34172, Start Num: 16

Candidate Starts for Bromden_40:

(Start: 16 @33855 has 8 MA's), (Start: 18 @33861 has 1 MA's), (Start: 19 @33873 has 30 MA's), (30, 34050), (33, 34068), (42, 34140), (47, 34167),

Gene: Calm_39 Start: 33058, Stop: 33360, Start Num: 19

Candidate Starts for Calm_39:

(Start: 11 @33022 has 3 MA's), (Start: 19 @33058 has 30 MA's), (29, 33193), (31, 33241), (32, 33250), (33, 33253), (34, 33271), (35, 33277), (40, 33322),

Gene: Chaser_38 Start: 33136, Stop: 33435, Start Num: 19

Candidate Starts for Chaser_38:

(Start: 7 @33076 has 1 MA's), (Start: 10 @33097 has 4 MA's), (Start: 14 @33115 has 1 MA's), (Start: 16 @33118 has 8 MA's), (Start: 18 @33124 has 1 MA's), (Start: 19 @33136 has 30 MA's), (25, 33193), (28, 33256), (30, 33313), (33, 33331), (37, 33367),

Gene: CicholasNage_39 Start: 33079, Stop: 33381, Start Num: 19

Candidate Starts for CicholasNage_39:

(Start: 11 @33043 has 3 MA's), (Start: 19 @33079 has 30 MA's), (29, 33214), (31, 33262), (32, 33271), (33, 33274), (34, 33292), (35, 33298), (40, 33343),

Gene: Clautastrophe_39 Start: 34655, Stop: 34954, Start Num: 19

Candidate Starts for Clautastrophe_39:

(Start: 19 @34655 has 30 MA's), (26, 34742), (31, 34838), (33, 34850),

Gene: Collard_42 Start: 34585, Stop: 34971, Start Num: 5

Candidate Starts for Collard_42:

(Start: 5 @34585 has 13 MA's), (Start: 12 @34624 has 10 MA's), (24, 34690), (28, 34783), (30, 34840), (31, 34846), (33, 34858), (36, 34891), (44, 34951),

Gene: Dadosky_43 Start: 34519, Stop: 34866, Start Num: 12

Candidate Starts for Dadosky_43:

(Start: 12 @34519 has 10 MA's), (24, 34585), (28, 34678), (30, 34735), (31, 34741), (33, 34753), (43, 34834), (44, 34846),

Gene: DirkDirk_38 Start: 33045, Stop: 33332, Start Num: 19

Candidate Starts for DirkDirk_38:

(Start: 11 @33009 has 3 MA's), (Start: 19 @33045 has 30 MA's), (28, 33165), (29, 33180), (30, 33222), (31, 33228), (33, 33240), (34, 33258), (35, 33264), (47, 33327),

Gene: DismalFunk_47 Start: 37222, Stop: 37542, Start Num: 20

Candidate Starts for DismalFunk_47:

(Start: 20 @37222 has 5 MA's), (Start: 21 @37225 has 4 MA's), (Start: 22 @37234 has 1 MA's), (28, 37339), (31, 37402), (34, 37432), (45, 37510), (48, 37525), (49, 37531),

Gene: DismalStressor_47 Start: 37225, Stop: 37542, Start Num: 21

Candidate Starts for DismalStressor_47:

(Start: 20 @37222 has 5 MA's), (Start: 21 @37225 has 4 MA's), (Start: 22 @37234 has 1 MA's), (28, 37339), (31, 37402), (34, 37432), (45, 37510), (48, 37525), (49, 37531),

Gene: Douge_38 Start: 33062, Stop: 33373, Start Num: 18

Candidate Starts for Douge_38:

(Start: 7 @33014 has 1 MA's), (Start: 10 @33035 has 4 MA's), (Start: 14 @33053 has 1 MA's), (Start: 16 @33056 has 8 MA's), (Start: 18 @33062 has 1 MA's), (Start: 19 @33074 has 30 MA's), (25, 33131), (30, 33251), (33, 33269), (37, 33305),

Gene: Doughnut_47 Start: 36847, Stop: 37155, Start Num: 22

Candidate Starts for Doughnut_47:

(Start: 20 @36835 has 5 MA's), (Start: 21 @36838 has 4 MA's), (Start: 22 @36847 has 1 MA's), (28, 36952), (31, 37015), (34, 37045), (39, 37096), (45, 37123), (48, 37138), (49, 37144),

Gene: Douzhi_38 Start: 33168, Stop: 33479, Start Num: 18

Candidate Starts for Douzhi_38:

(Start: 7 @33120 has 1 MA's), (Start: 10 @33141 has 4 MA's), (Start: 14 @33159 has 1 MA's), (Start: 16 @33162 has 8 MA's), (Start: 18 @33168 has 1 MA's), (Start: 19 @33180 has 30 MA's), (25, 33237), (28, 33300), (30, 33357), (33, 33375), (37, 33411),

Gene: DuncansLeg_39 Start: 34634, Stop: 34972, Start Num: 10

Candidate Starts for DuncansLeg_39:

(Start: 10 @34634 has 4 MA's), (Start: 19 @34673 has 30 MA's), (26, 34760), (27, 34784), (31, 34856), (33, 34868), (34, 34886),

Gene: DyoEdafos_40 Start: 33408, Stop: 33707, Start Num: 19

Candidate Starts for DyoEdafos_40:

(Start: 7 @33348 has 1 MA's), (Start: 10 @33369 has 4 MA's), (Start: 14 @33387 has 1 MA's), (Start: 16 @33390 has 8 MA's), (Start: 18 @33396 has 1 MA's), (Start: 19 @33408 has 30 MA's), (30, 33585), (33, 33603),

Gene: Edugator_42 Start: 34944, Stop: 35291, Start Num: 12

Candidate Starts for Edugator_42:

(Start: 12 @34944 has 10 MA's), (24, 35010), (28, 35103), (30, 35160), (31, 35166), (33, 35178), (43, 35259), (44, 35271),

Gene: Ellson_39 Start: 34649, Stop: 34948, Start Num: 19

Candidate Starts for Ellson_39:

(Start: 10 @34610 has 4 MA's), (Start: 19 @34649 has 30 MA's), (26, 34736), (27, 34760), (31, 34832), (33, 34844), (34, 34862),

Gene: Enceladus_38 Start: 33028, Stop: 33315, Start Num: 19

Candidate Starts for Enceladus_38:

(Start: 11 @32992 has 3 MA's), (Start: 19 @33028 has 30 MA's), (28, 33148), (29, 33163), (30, 33205), (31, 33211), (33, 33223), (34, 33241), (35, 33247), (47, 33310),

Gene: Faith1_41 Start: 34392, Stop: 34697, Start Num: 16

Candidate Starts for Faith1_41:

(Start: 16 @34392 has 8 MA's), (Start: 17 @34398 has 3 MA's), (Start: 19 @34410 has 30 MA's), (25, 34467), (30, 34587), (31, 34593), (33, 34605), (46, 34686),

Gene: Feyre_43 Start: 35869, Stop: 36216, Start Num: 12

Candidate Starts for Feyre_43:

(Start: 12 @35869 has 10 MA's), (33, 36103), (34, 36121), (36, 36136), (44, 36196),

Gene: Findley_47 Start: 37218, Stop: 37535, Start Num: 21

Candidate Starts for Findley_47:

(Start: 20 @37215 has 5 MA's), (Start: 21 @37218 has 4 MA's), (Start: 22 @37227 has 1 MA's), (28, 37332), (31, 37395), (34, 37425), (45, 37503), (48, 37518), (49, 37524),

Gene: Finnry_39 Start: 34658, Stop: 34957, Start Num: 19

Candidate Starts for Finnry_39:

(Start: 19 @34658 has 30 MA's), (26, 34745), (27, 34769), (31, 34841), (33, 34853),

Gene: Gengar_42 Start: 34445, Stop: 34831, Start Num: 5

Candidate Starts for Gengar_42:

(Start: 5 @34445 has 13 MA's), (Start: 12 @34484 has 10 MA's), (33, 34718), (34, 34736), (36, 34751), (44, 34811),

Gene: Guillsminger_43 Start: 34416, Stop: 34802, Start Num: 5

Candidate Starts for Guillsminger_43:

(Start: 5 @34416 has 13 MA's), (Start: 12 @34455 has 10 MA's), (33, 34689), (34, 34707), (36, 34722), (44, 34782),

Gene: Halena_38 Start: 33054, Stop: 33356, Start Num: 19

Candidate Starts for Halena_38:

(Start: 11 @33018 has 3 MA's), (Start: 19 @33054 has 30 MA's), (29, 33189), (31, 33237), (32, 33246), (33, 33249), (34, 33267), (35, 33273), (40, 33318),

Gene: Heftyboy_42 Start: 34566, Stop: 34952, Start Num: 5

Candidate Starts for Heftyboy_42:

(Start: 5 @34566 has 13 MA's), (Start: 12 @34605 has 10 MA's), (33, 34839), (34, 34857), (36, 34872), (44, 34932),

Gene: InvictusManeo_42 Start: 34628, Stop: 35014, Start Num: 5

Candidate Starts for InvictusManeo_42:

(Start: 5 @34628 has 13 MA's), (Start: 12 @34667 has 10 MA's), (24, 34733), (28, 34826), (30, 34883), (31, 34889), (33, 34901), (36, 34934), (44, 34994),

Gene: JoeDirt_38 Start: 32990, Stop: 33313, Start Num: 11

Candidate Starts for JoeDirt_38:

(Start: 11 @32990 has 3 MA's), (Start: 19 @33026 has 30 MA's), (28, 33146), (29, 33161), (30, 33203), (31, 33209), (33, 33221), (34, 33239), (35, 33245), (47, 33308),

Gene: Jubie_39 Start: 34656, Stop: 34955, Start Num: 19

Candidate Starts for Jubie_39:

(Start: 19 @34656 has 30 MA's), (26, 34743), (31, 34839), (33, 34851),

Gene: Kahlid_41 Start: 34398, Stop: 34703, Start Num: 16

Candidate Starts for Kahlid_41:

(Start: 16 @34398 has 8 MA's), (Start: 17 @34404 has 3 MA's), (Start: 19 @34416 has 30 MA's), (25, 34473), (30, 34593), (31, 34599), (33, 34611), (38, 34665), (46, 34692),

Gene: Kingsolomon_39 Start: 34655, Stop: 34954, Start Num: 19

Candidate Starts for Kingsolomon_39:

(Start: 19 @34655 has 30 MA's), (26, 34742), (31, 34838), (33, 34850),

Gene: KirDoubleO7_37 Start: 34677, Stop: 34976, Start Num: 19

Candidate Starts for KirDoubleO7_37:

(Start: 10 @34638 has 4 MA's), (Start: 19 @34677 has 30 MA's), (26, 34764), (27, 34788), (31, 34860), (33, 34872), (34, 34890),

Gene: Kratio_41 Start: 34179, Stop: 34565, Start Num: 5

Candidate Starts for Kratio_41:

(Start: 5 @34179 has 13 MA's), (Start: 12 @34218 has 10 MA's), (24, 34284), (28, 34377), (30, 34434), (31, 34440), (33, 34452), (36, 34485), (44, 34545),

Gene: Kropertea_38 Start: 33171, Stop: 33530, Start Num: 7

Candidate Starts for Kropertea_38:

(Start: 7 @33171 has 1 MA's), (Start: 14 @33210 has 1 MA's), (Start: 16 @33213 has 8 MA's), (Start: 18 @33219 has 1 MA's), (Start: 19 @33231 has 30 MA's), (30, 33408), (33, 33426),

Gene: Krypton555_39 Start: 34572, Stop: 34871, Start Num: 19

Candidate Starts for Krypton555_39:

(Start: 10 @34533 has 4 MA's), (Start: 19 @34572 has 30 MA's), (26, 34659), (27, 34683), (31, 34755), (33, 34767), (41, 34836),

Gene: Larva_43 Start: 34386, Stop: 34733, Start Num: 12

Candidate Starts for Larva_43:

(Start: 12 @34386 has 10 MA's), (24, 34452), (28, 34545), (30, 34602), (31, 34608), (33, 34620), (43, 34701), (44, 34713),

Gene: LeBron_39 Start: 33034, Stop: 33357, Start Num: 11

Candidate Starts for LeBron_39:

(Start: 11 @33034 has 3 MA's), (Start: 19 @33070 has 30 MA's), (28, 33190), (29, 33205), (30, 33247), (31, 33253), (33, 33265), (34, 33283), (35, 33289), (47, 33352),

Gene: Leston_42 Start: 34584, Stop: 34931, Start Num: 12

Candidate Starts for Leston_42:

(Start: 5 @34545 has 13 MA's), (Start: 12 @34584 has 10 MA's), (33, 34818), (34, 34836), (36, 34851), (44, 34911),

Gene: Lewan_41 Start: 34391, Stop: 34690, Start Num: 17

Candidate Starts for Lewan_41:

(Start: 17 @34391 has 3 MA's), (Start: 19 @34403 has 30 MA's), (25, 34460), (30, 34580), (31, 34586), (33, 34598), (46, 34679),

Gene: LilDestine_41 Start: 34396, Stop: 34695, Start Num: 17

Candidate Starts for LilDestine_41:

(Start: 16 @34390 has 8 MA's), (Start: 17 @34396 has 3 MA's), (Start: 19 @34408 has 30 MA's), (25, 34465), (30, 34585), (31, 34591), (33, 34603), (46, 34684),

Gene: Loadrie_41 Start: 34424, Stop: 34729, Start Num: 16

Candidate Starts for Loadrie_41:

(Start: 16 @34424 has 8 MA's), (Start: 17 @34430 has 3 MA's), (Start: 19 @34442 has 30 MA's), (25, 34499), (30, 34619), (31, 34625), (33, 34637), (38, 34691), (46, 34718),

Gene: Lumos_39 Start: 34652, Stop: 34951, Start Num: 19

Candidate Starts for Lumos_39:

(Start: 19 @34652 has 30 MA's), (26, 34739), (31, 34835), (33, 34847),

Gene: MAckerman_39 Start: 33048, Stop: 33350, Start Num: 19

Candidate Starts for MAckerman_39:

(Start: 11 @33012 has 3 MA's), (Start: 19 @33048 has 30 MA's), (29, 33183), (31, 33231), (32, 33240), (33, 33243), (34, 33261), (35, 33267), (40, 33312),

Gene: Marcoliusprime_47 Start: 37222, Stop: 37542, Start Num: 20

Candidate Starts for Marcoliusprime_47:

(Start: 20 @37222 has 5 MA's), (Start: 21 @37225 has 4 MA's), (Start: 22 @37234 has 1 MA's), (28, 37339), (31, 37402), (34, 37432), (45, 37510), (48, 37525), (49, 37531),

Gene: Milly_47 Start: 37198, Stop: 37515, Start Num: 21

Candidate Starts for Milly_47:

(Start: 20 @37195 has 5 MA's), (Start: 21 @37198 has 4 MA's), (Start: 22 @37207 has 1 MA's), (28, 37312), (31, 37375), (34, 37405), (45, 37483), (48, 37498), (49, 37504),

Gene: MiniLon_39 Start: 34425, Stop: 34763, Start Num: 10

Candidate Starts for MiniLon_39:

(Start: 10 @34425 has 4 MA's), (Start: 19 @34464 has 30 MA's), (26, 34551), (27, 34575), (31, 34647), (33, 34659), (34, 34677),

Gene: MiniMac_39 Start: 34422, Stop: 34760, Start Num: 10

Candidate Starts for MiniMac_39:

(6, 34392), (Start: 10 @34422 has 4 MA's), (Start: 19 @34461 has 30 MA's), (26, 34548), (27, 34572), (31, 34644), (33, 34656), (34, 34674),

Gene: Miryou_44 Start: 36748, Stop: 37134, Start Num: 5

Candidate Starts for Miryou_44:

(Start: 5 @36748 has 13 MA's), (Start: 12 @36787 has 10 MA's), (33, 37021), (34, 37039), (36, 37054), (44, 37114),

Gene: MkaliMitinis3_41 Start: 34400, Stop: 34699, Start Num: 17

Candidate Starts for MkaliMitinis3_41:

(Start: 16 @34394 has 8 MA's), (Start: 17 @34400 has 3 MA's), (Start: 19 @34412 has 30 MA's), (25, 34469), (30, 34589), (31, 34595), (33, 34607), (46, 34688),

Gene: Moostard_39 Start: 34657, Stop: 34956, Start Num: 19

Candidate Starts for Moostard_39:

(Start: 19 @34657 has 30 MA's), (26, 34744), (27, 34768), (31, 34840), (33, 34852),

Gene: MsGreen_39 Start: 34655, Stop: 34954, Start Num: 19

Candidate Starts for MsGreen_39:

(Start: 19 @34655 has 30 MA's), (26, 34742), (31, 34838), (33, 34850),

Gene: Mufasa_47 Start: 36779, Stop: 37099, Start Num: 20

Candidate Starts for Mufasa_47:

(Start: 20 @36779 has 5 MA's), (Start: 21 @36782 has 4 MA's), (Start: 22 @36791 has 1 MA's), (28, 36896), (31, 36959), (34, 36989), (39, 37040), (45, 37067), (48, 37082), (49, 37088),

Gene: Nicholas_39 Start: 34655, Stop: 34954, Start Num: 19

Candidate Starts for Nicholas_39:

(Start: 19 @34655 has 30 MA's), (26, 34742), (31, 34838), (33, 34850),

Gene: OhShagHennessy_38 Start: 33016, Stop: 33303, Start Num: 19

Candidate Starts for OhShagHennessy_38:

(Start: 11 @32980 has 3 MA's), (Start: 19 @33016 has 30 MA's), (28, 33136), (29, 33151), (30, 33193), (31, 33199), (33, 33211), (34, 33229), (35, 33235), (47, 33298),

Gene: OkiRoe_42 Start: 34418, Stop: 34804, Start Num: 5

Candidate Starts for OkiRoe_42:

(Start: 5 @34418 has 13 MA's), (Start: 12 @34457 has 10 MA's), (33, 34691), (34, 34709), (36, 34724), (44, 34784),

Gene: Omnicron_45 Start: 34067, Stop: 34414, Start Num: 12

Candidate Starts for Omnicron_45:

(8, 34046), (Start: 12 @34067 has 10 MA's), (23, 34124), (31, 34289), (33, 34301), (37, 34337), (44, 34394),

Gene: PYPDinur_38 Start: 33159, Stop: 33479, Start Num: 14

Candidate Starts for PYPDinur_38:

(Start: 7 @33120 has 1 MA's), (Start: 10 @33141 has 4 MA's), (Start: 14 @33159 has 1 MA's), (Start: 16 @33162 has 8 MA's), (Start: 18 @33168 has 1 MA's), (Start: 19 @33180 has 30 MA's), (25, 33237), (28, 33300), (30, 33357), (33, 33375), (37, 33411),

Gene: Paola_42 Start: 34416, Stop: 34802, Start Num: 5

Candidate Starts for Paola_42:

(Start: 5 @34416 has 13 MA's), (Start: 12 @34455 has 10 MA's), (33, 34689), (34, 34707), (36, 34722), (44, 34782),

Gene: Pochiewood_38 Start: 33044, Stop: 33331, Start Num: 19

Candidate Starts for Pochiewood_38:

(Start: 11 @33008 has 3 MA's), (Start: 19 @33044 has 30 MA's), (28, 33164), (29, 33179), (30, 33221), (31, 33227), (33, 33239), (34, 33257), (35, 33263), (47, 33326),

Gene: Psycho_43 Start: 34516, Stop: 34863, Start Num: 12

Candidate Starts for Psycho_43:

(Start: 12 @34516 has 10 MA's), (24, 34582), (28, 34675), (30, 34732), (31, 34738), (33, 34750), (43, 34831), (44, 34843),

Gene: Rando14_44 Start: 33637, Stop: 33984, Start Num: 12

Candidate Starts for Rando14_44:

(1, 33382), (2, 33388), (3, 33391), (4, 33415), (8, 33616), (Start: 12 @33637 has 10 MA's), (23, 33694), (31, 33859), (33, 33871), (44, 33964),

Gene: Red305_39 Start: 34655, Stop: 34954, Start Num: 19

Candidate Starts for Red305_39:

(Start: 19 @34655 has 30 MA's), (26, 34742), (31, 34838), (33, 34850),

Gene: Rose5_38 Start: 33043, Stop: 33345, Start Num: 19

Candidate Starts for Rose5_38:

(Start: 11 @33007 has 3 MA's), (Start: 19 @33043 has 30 MA's), (29, 33178), (31, 33226), (32, 33235), (33, 33238), (34, 33256), (35, 33262), (40, 33307),

Gene: Rumpelstiltskin_41 Start: 34659, Stop: 34964, Start Num: 16

Candidate Starts for Rumpelstiltskin_41:

(Start: 16 @34659 has 8 MA's), (Start: 17 @34665 has 3 MA's), (Start: 19 @34677 has 30 MA's), (25, 34734), (30, 34854), (31, 34860), (33, 34872), (46, 34953),

Gene: Sarshaun_41 Start: 34432, Stop: 34731, Start Num: 17

Candidate Starts for Sarshaun_41:

(Start: 16 @34426 has 8 MA's), (Start: 17 @34432 has 3 MA's), (Start: 19 @34444 has 30 MA's), (25, 34501), (30, 34621), (31, 34627), (33, 34639), (38, 34693), (46, 34720),

Gene: Sheng711_39 Start: 33120, Stop: 33479, Start Num: 7

Candidate Starts for Sheng711_39:

(Start: 7 @33120 has 1 MA's), (Start: 10 @33141 has 4 MA's), (Start: 14 @33159 has 1 MA's), (Start: 16 @33162 has 8 MA's), (Start: 18 @33168 has 1 MA's), (Start: 19 @33180 has 30 MA's), (25, 33237), (28, 33300), (30, 33357), (33, 33375), (37, 33411),

Gene: Silverleaf_38 Start: 33043, Stop: 33345, Start Num: 19

Candidate Starts for Silverleaf_38:

(Start: 11 @33007 has 3 MA's), (Start: 19 @33043 has 30 MA's), (29, 33178), (31, 33226), (32, 33235), (33, 33238), (34, 33256), (35, 33262), (40, 33307),

Gene: Snenia_39 Start: 34656, Stop: 34955, Start Num: 19

Candidate Starts for Snenia_39:

(Start: 19 @34656 has 30 MA's), (26, 34743), (31, 34839), (33, 34851),

Gene: SoSeph_42 Start: 34566, Stop: 34952, Start Num: 5

Candidate Starts for SoSeph_42:

(Start: 5 @34566 has 13 MA's), (Start: 12 @34605 has 10 MA's), (33, 34839), (34, 34857), (36, 34872), (44, 34932),

Gene: Strobilo_47 Start: 37197, Stop: 37517, Start Num: 20

Candidate Starts for Strobilo_47:

(Start: 20 @37197 has 5 MA's), (Start: 21 @37200 has 4 MA's), (Start: 22 @37209 has 1 MA's), (28, 37314), (31, 37377), (34, 37407), (45, 37485), (48, 37500), (49, 37506),

Gene: TM4_42 Start: 31544, Stop: 31900, Start Num: 14

Candidate Starts for TM4_42:

(Start: 14 @31544 has 1 MA's), (Start: 16 @31547 has 8 MA's), (Start: 20 @31571 has 5 MA's), (Start: 21 @31574 has 4 MA's), (Start: 22 @31583 has 1 MA's), (28, 31688), (31, 31751), (34, 31781), (39, 31832), (45, 31859), (49, 31889),

Gene: Thyatira_44 Start: 36765, Stop: 37151, Start Num: 5

Candidate Starts for Thyatira_44:

(Start: 5 @36765 has 13 MA's), (Start: 12 @36804 has 10 MA's), (33, 37038), (34, 37056), (36, 37071), (44, 37131),

Gene: TriFive_39 Start: 34655, Stop: 34954, Start Num: 19

Candidate Starts for TriFive_39:

(Start: 19 @34655 has 30 MA's), (26, 34742), (31, 34838), (33, 34850),

Gene: Tyson_38 Start: 33044, Stop: 33346, Start Num: 19

Candidate Starts for Tyson_38:

(Start: 11 @33008 has 3 MA's), (Start: 19 @33044 has 30 MA's), (29, 33179), (31, 33227), (32, 33236), (33, 33239), (34, 33257), (35, 33263), (40, 33308),

Gene: UPIE_39 Start: 33006, Stop: 33329, Start Num: 11

Candidate Starts for UPIE_39:

(Start: 11 @33006 has 3 MA's), (Start: 19 @33042 has 30 MA's), (28, 33162), (29, 33177), (30, 33219), (31, 33225), (33, 33237), (34, 33255), (35, 33261), (47, 33324),

Gene: ViviJ_42 Start: 34385, Stop: 34771, Start Num: 5

Candidate Starts for ViviJ_42:

(Start: 5 @34385 has 13 MA's), (Start: 12 @34424 has 10 MA's), (24, 34490), (28, 34583), (30, 34640), (31, 34646), (33, 34658), (36, 34691), (44, 34751),

Gene: Wamburgexpress_39 Start: 33057, Stop: 33344, Start Num: 19

Candidate Starts for Wamburgexpress_39:

(Start: 11 @33021 has 3 MA's), (Start: 19 @33057 has 30 MA's), (28, 33177), (29, 33192), (30, 33234), (31, 33240), (33, 33252), (34, 33270), (35, 33276), (47, 33339),

Gene: Waterfoul_43 Start: 34659, Stop: 35045, Start Num: 5

Candidate Starts for Waterfoul_43:

(Start: 5 @34659 has 13 MA's), (Start: 12 @34698 has 10 MA's), (33, 34932), (34, 34950), (36, 34965), (44, 35025),

Gene: Whirlwind_40 Start: 34375, Stop: 34713, Start Num: 10

Candidate Starts for Whirlwind_40:

(Start: 10 @34375 has 4 MA's), (Start: 19 @34414 has 30 MA's), (26, 34501), (27, 34525), (31, 34597), (33, 34609), (41, 34678),

Gene: Wigglewobble_41 Start: 34425, Stop: 34730, Start Num: 16

Candidate Starts for Wigglewobble_41:

(Start: 16 @34425 has 8 MA's), (Start: 17 @34431 has 3 MA's), (Start: 19 @34443 has 30 MA's), (25, 34500), (30, 34620), (31, 34626), (33, 34638), (38, 34692), (46, 34719),

Gene: Winky_41 Start: 34392, Stop: 34697, Start Num: 16

Candidate Starts for Winky_41:

(Start: 16 @34392 has 8 MA's), (Start: 17 @34398 has 3 MA's), (Start: 19 @34410 has 30 MA's), (25, 34467), (30, 34587), (31, 34593), (33, 34605), (46, 34686),

Gene: Wyatt2_39 Start: 33043, Stop: 33345, Start Num: 19

Candidate Starts for Wyatt2_39:

(Start: 11 @33007 has 3 MA's), (Start: 19 @33043 has 30 MA's), (29, 33178), (31, 33226), (32, 33235), (33, 33238), (34, 33256), (35, 33262), (40, 33307),

Gene: Zaria_39 Start: 33058, Stop: 33360, Start Num: 19

Candidate Starts for Zaria_39:

(Start: 11 @33022 has 3 MA's), (Start: 19 @33058 has 30 MA's), (29, 33193), (31, 33241), (32, 33250), (33, 33253), (34, 33271), (35, 33277), (40, 33322),

Gene: ZoeJ_46 Start: 36666, Stop: 36992, Start Num: 21

Candidate Starts for ZoeJ_46:

(9, 36615), (Start: 20 @36663 has 5 MA's), (Start: 21 @36666 has 4 MA's), (Start: 22 @36675 has 1 MA's), (28, 36780), (31, 36843), (34, 36873), (45, 36951), (49, 36981),