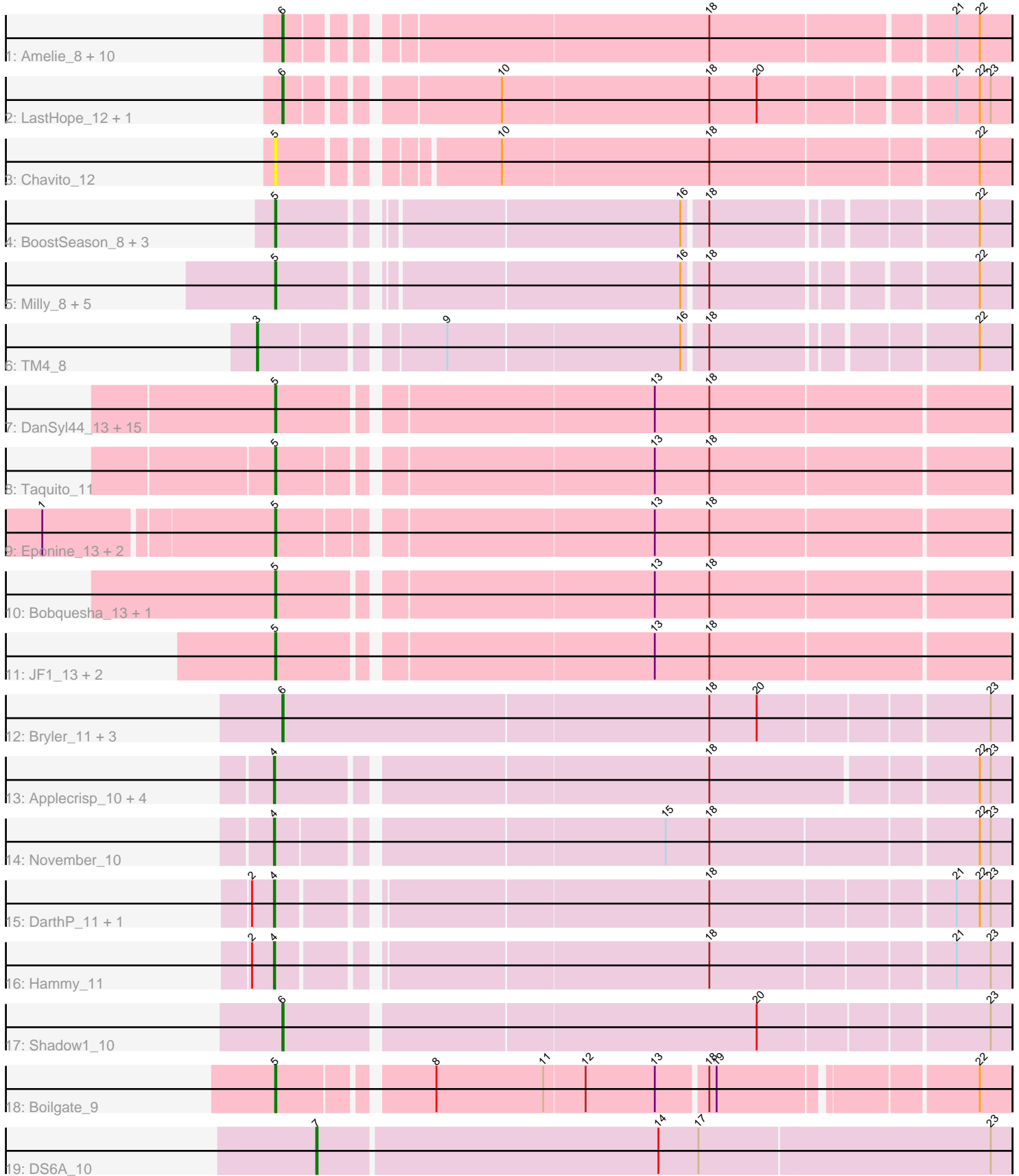


Pham 296560



Note: Tracks are now grouped by subcluster and scaled. Switching in subcluster is indicated by changes in track color. Track scale is now set by default to display the region 30 bp upstream of start 1 to 30 bp downstream of the last possible start. If this default region is judged to be packed too tightly with annotated starts, the track will be further scaled to only show that region of the ORF with annotated starts. This action will be indicated by adding "Zoomed" to the title. For starts, yellow indicates the location of called starts comprised solely of Glimmer/GeneMark auto-annotations, green indicates the location of called starts with at least 1 manual gene annotation.

Pham 296560 Report

This analysis was run 04/25/26 on database version 644.

Pham number 296560 has 66 members, 8 are drafts.

Phages represented in each track:

- Track 1 : Amelie_8, Nutello_8, SgtBeansprout_8, Mdavu_8, Trice_8, Binglebops_8, LilPharaoh_8, Enkosi_8, Nikao_8, Teejan_8, Torres_8
- Track 2 : LastHope_12, TingHuaYa_12
- Track 3 : Chavito_12
- Track 4 : BoostSeason_8, Doughnut_8, Mufasa_8, ZoeJ_8
- Track 5 : Milly_8, Strobilo_8, DismalStressor_8, DismalFunk_8, Findley_8, Marcoliusprime_8
- Track 6 : TM4_8
- Track 7 : DanSyl44_13, Lebo14_13, Slarp_13, Cheetobro_13, Patt_13, Mitti_13, Qhanda_13, Fionnbharth_13, Wintermute_13, Chancellor_13, YasnayaPolyana_13, MissDaisy_13, Kraw_13, OmniCritical_13, Malthus_13, SamScheppers_11
- Track 8 : Taquito_11
- Track 9 : Eponine_13, Juliette_13, Ruthiejr_12
- Track 10 : Bobquesha_13, Reptar3000_13
- Track 11 : JF1_13, Y2_13, Y10_13
- Track 12 : Bryler_11, Cain_11, Sunflower1121_10, Phrank_11
- Track 13 : Applecrisp_10, Fefferhead_11, Ellie_9, Lavahound_10, Amgine_10
- Track 14 : November_10
- Track 15 : DarthP_11, Amohnition_11
- Track 16 : Hammy_11
- Track 17 : Shadow1_10
- Track 18 : Boilgate_9
- Track 19 : DS6A_10

Summary of Final Annotations (See graph section above for start numbers):

The start number called the most often in the published annotations is 5, it was called in 33 of the 58 non-draft genes in the pham.

Genes that call this "Most Annotated" start:

- Bobquesha_13, Boilgate_9, BoostSeason_8, Chancellor_13, Chavito_12, Cheetobro_13, DanSyl44_13, DismalFunk_8, DismalStressor_8, Doughnut_8, Eponine_13, Findley_8, Fionnbharth_13, JF1_13, Juliette_13, Kraw_13, Lebo14_13, Malthus_13, Marcoliusprime_8, Milly_8, MissDaisy_13, Mitti_13, Mufasa_8,

OmniCritical_13, Patt_13, Qhanda_13, Reptar3000_13, Ruthiejr_12, SamScheppers_11, Slarp_13, Strobilo_8, Taquito_11, Wintermute_13, Y10_13, Y2_13, YasnayaPolyana_13, ZoeJ_8,

Genes that have the "Most Annotated" start but do not call it:

-

Genes that do not have the "Most Annotated" start:

- Amelie_8, Amgine_10, Amohndition_11, Applecrisp_10, Biglebops_8, Bryler_11, Cain_11, DS6A_10, DarthP_11, Ellie_9, Enkosi_8, Fefferhead_11, Hammy_11, LastHope_12, Lavahound_10, LilPharaoh_8, Mdavu_8, Nikao_8, November_10, Nutello_8, Phrank_11, SgtBeansprout_8, Shadow1_10, Sunflower1121_10, TM4_8, Teejan_8, TingHuaYa_12, Torres_8, Trice_8,

Summary by start number:

Start 3:

- Found in 1 of 66 (1.5%) of genes in pham
- Manual Annotations of this start: 1 of 58
- Called 100.0% of time when present
- Phage (with cluster) where this start called: TM4_8 (K2),

Start 4:

- Found in 9 of 66 (13.6%) of genes in pham
- Manual Annotations of this start: 8 of 58
- Called 100.0% of time when present
- Phage (with cluster) where this start called: Amgine_10 (K6), Amohndition_11 (K6), Applecrisp_10 (K6), DarthP_11 (K6), Ellie_9 (K6), Fefferhead_11 (K6), Hammy_11 (K6), Lavahound_10 (K6), November_10 (K6),

Start 5:

- Found in 37 of 66 (56.1%) of genes in pham
- Manual Annotations of this start: 33 of 58
- Called 100.0% of time when present
- Phage (with cluster) where this start called: Bobquesha_13 (K4), Boilgate_9 (K8), BoostSeason_8 (K2), Chancellor_13 (K4), Chavito_12 (K1), Cheetobro_13 (K4), DanSyl44_13 (K4), DismalFunk_8 (K2), DismalStressor_8 (K2), Doughnut_8 (K2), Eponine_13 (K4), Findley_8 (K2), Fionnbharth_13 (K4), JF1_13 (K4), Juliette_13 (K4), Kraw_13 (K4), Lebo14_13 (K4), Malthus_13 (K4), Marcoliusprime_8 (K2), Milly_8 (K2), MissDaisy_13 (K4), Mitti_13 (K4), Mufasa_8 (K2), OmniCritical_13 (K4), Patt_13 (K4), Qhanda_13 (K4), Reptar3000_13 (K4), Ruthiejr_12 (K4), SamScheppers_11 (K4), Slarp_13 (K4), Strobilo_8 (K2), Taquito_11 (K4), Wintermute_13 (K4), Y10_13 (K4), Y2_13 (K4), YasnayaPolyana_13 (K4), ZoeJ_8 (K2),

Start 6:

- Found in 18 of 66 (27.3%) of genes in pham
- Manual Annotations of this start: 15 of 58
- Called 100.0% of time when present
- Phage (with cluster) where this start called: Amelie_8 (K1), Biglebops_8 (K1), Bryler_11 (K6), Cain_11 (K6), Enkosi_8 (K1), LastHope_12 (K1), LilPharaoh_8 (K1), Mdavu_8 (K1), Nikao_8 (K1), Nutello_8 (K1), Phrank_11 (K6), SgtBeansprout_8 (K1), Shadow1_10 (K6), Sunflower1121_10 (K6), Teejan_8 (K1), TingHuaYa_12 (K1),

Torres_8 (K1), Trice_8 (K1),

Start 7:

- Found in 1 of 66 (1.5%) of genes in pham
- Manual Annotations of this start: 1 of 58
- Called 100.0% of time when present
- Phage (with cluster) where this start called: DS6A_10 (singleton),

Summary by clusters:

There are 6 clusters represented in this pham: singleton, K2, K1, K6, K4, K8,

Info for manual annotations of cluster K1:

- Start number 6 was manually annotated 10 times for cluster K1.

Info for manual annotations of cluster K2:

- Start number 3 was manually annotated 1 time for cluster K2.
- Start number 5 was manually annotated 10 times for cluster K2.

Info for manual annotations of cluster K4:

- Start number 5 was manually annotated 22 times for cluster K4.

Info for manual annotations of cluster K6:

- Start number 4 was manually annotated 8 times for cluster K6.
- Start number 6 was manually annotated 5 times for cluster K6.

Info for manual annotations of cluster K8:

- Start number 5 was manually annotated 1 time for cluster K8.

Gene Information:

Gene: Amelie_8 Start: 6589, Stop: 7137, Start Num: 6

Candidate Starts for Amelie_8:

(Start: 6 @6589 has 15 MA's), (18, 6904), (21, 7093), (22, 7111),

Gene: Amgine_10 Start: 6944, Stop: 7507, Start Num: 4

Candidate Starts for Amgine_10:

(Start: 4 @6944 has 8 MA's), (18, 7274), (22, 7481), (23, 7490),

Gene: Amohnition_11 Start: 7198, Stop: 7755, Start Num: 4

Candidate Starts for Amohnition_11:

(2, 7180), (Start: 4 @7198 has 8 MA's), (18, 7522), (21, 7711), (22, 7729), (23, 7738),

Gene: Applecrisp_10 Start: 7342, Stop: 7908, Start Num: 4

Candidate Starts for Applecrisp_10:

(Start: 4 @7342 has 8 MA's), (18, 7675), (22, 7882), (23, 7891),

Gene: Biglebops_8 Start: 6589, Stop: 7137, Start Num: 6

Candidate Starts for Biglebops_8:

(Start: 6 @6589 has 15 MA's), (18, 6904), (21, 7093), (22, 7111),

Gene: Bobquesha_13 Start: 8298, Stop: 8870, Start Num: 5

Candidate Starts for Bobquesha_13:

(Start: 5 @8298 has 33 MA's), (13, 8586), (18, 8631),

Gene: Boilgate_9 Start: 7303, Stop: 7857, Start Num: 5

Candidate Starts for Boilgate_9:

(Start: 5 @7303 has 33 MA's), (8, 7414), (11, 7501), (12, 7534), (13, 7591), (18, 7630), (19, 7636), (22, 7831),

Gene: BoostSeason_8 Start: 5333, Stop: 5878, Start Num: 5

Candidate Starts for BoostSeason_8:

(Start: 5 @5333 has 33 MA's), (16, 5636), (18, 5654), (22, 5852),

Gene: Bryler_11 Start: 6246, Stop: 6824, Start Num: 6

Candidate Starts for Bryler_11:

(Start: 6 @6246 has 15 MA's), (18, 6591), (20, 6630), (23, 6807),

Gene: Cain_11 Start: 6234, Stop: 6812, Start Num: 6

Candidate Starts for Cain_11:

(Start: 6 @6234 has 15 MA's), (18, 6579), (20, 6618), (23, 6795),

Gene: Chancellor_13 Start: 8544, Stop: 9116, Start Num: 5

Candidate Starts for Chancellor_13:

(Start: 5 @8544 has 33 MA's), (13, 8832), (18, 8877),

Gene: Chavito_12 Start: 6370, Stop: 6924, Start Num: 5

Candidate Starts for Chavito_12:

(Start: 5 @6370 has 33 MA's), (10, 6520), (18, 6688), (22, 6898),

Gene: Cheetobro_13 Start: 8544, Stop: 9116, Start Num: 5

Candidate Starts for Cheetobro_13:

(Start: 5 @8544 has 33 MA's), (13, 8832), (18, 8877),

Gene: DS6A_10 Start: 7559, Stop: 8122, Start Num: 7

Candidate Starts for DS6A_10:

(Start: 7 @7559 has 1 MA's), (14, 7835), (17, 7868), (23, 8105),

Gene: DanSyl44_13 Start: 8547, Stop: 9119, Start Num: 5

Candidate Starts for DanSyl44_13:

(Start: 5 @8547 has 33 MA's), (13, 8835), (18, 8880),

Gene: DarthP_11 Start: 7198, Stop: 7755, Start Num: 4

Candidate Starts for DarthP_11:

(2, 7180), (Start: 4 @7198 has 8 MA's), (18, 7522), (21, 7711), (22, 7729), (23, 7738),

Gene: DismalFunk_8 Start: 5349, Stop: 5891, Start Num: 5

Candidate Starts for DismalFunk_8:

(Start: 5 @5349 has 33 MA's), (16, 5652), (18, 5670), (22, 5865),

Gene: DismalStressor_8 Start: 5349, Stop: 5891, Start Num: 5

Candidate Starts for DismalStressor_8:

(Start: 5 @5349 has 33 MA's), (16, 5652), (18, 5670), (22, 5865),

Gene: Doughnut_8 Start: 5333, Stop: 5878, Start Num: 5
Candidate Starts for Doughnut_8:
(Start: 5 @5333 has 33 MA's), (16, 5636), (18, 5654), (22, 5852),

Gene: Ellie_9 Start: 7015, Stop: 7581, Start Num: 4
Candidate Starts for Ellie_9:
(Start: 4 @7015 has 8 MA's), (18, 7348), (22, 7555), (23, 7564),

Gene: Enkosi_8 Start: 6589, Stop: 7137, Start Num: 6
Candidate Starts for Enkosi_8:
(Start: 6 @6589 has 15 MA's), (18, 6904), (21, 7093), (22, 7111),

Gene: Eponine_13 Start: 8420, Stop: 8992, Start Num: 5
Candidate Starts for Eponine_13:
(1, 8240), (Start: 5 @8420 has 33 MA's), (13, 8708), (18, 8753),

Gene: Fefferhead_11 Start: 7185, Stop: 7748, Start Num: 4
Candidate Starts for Fefferhead_11:
(Start: 4 @7185 has 8 MA's), (18, 7515), (22, 7722), (23, 7731),

Gene: Findley_8 Start: 5349, Stop: 5891, Start Num: 5
Candidate Starts for Findley_8:
(Start: 5 @5349 has 33 MA's), (16, 5652), (18, 5670), (22, 5865),

Gene: Fionnbharth_13 Start: 8534, Stop: 9106, Start Num: 5
Candidate Starts for Fionnbharth_13:
(Start: 5 @8534 has 33 MA's), (13, 8822), (18, 8867),

Gene: Hammy_11 Start: 7195, Stop: 7752, Start Num: 4
Candidate Starts for Hammy_11:
(2, 7177), (Start: 4 @7195 has 8 MA's), (18, 7519), (21, 7708), (23, 7735),

Gene: JF1_13 Start: 8533, Stop: 9105, Start Num: 5
Candidate Starts for JF1_13:
(Start: 5 @8533 has 33 MA's), (13, 8821), (18, 8866),

Gene: Juliette_13 Start: 8420, Stop: 8992, Start Num: 5
Candidate Starts for Juliette_13:
(1, 8240), (Start: 5 @8420 has 33 MA's), (13, 8708), (18, 8753),

Gene: Kraw_13 Start: 8453, Stop: 9025, Start Num: 5
Candidate Starts for Kraw_13:
(Start: 5 @8453 has 33 MA's), (13, 8741), (18, 8786),

Gene: LastHope_12 Start: 6334, Stop: 6882, Start Num: 6
Candidate Starts for LastHope_12:
(Start: 6 @6334 has 15 MA's), (10, 6484), (18, 6652), (20, 6691), (21, 6838), (22, 6856), (23, 6865),

Gene: Lavahound_10 Start: 6944, Stop: 7507, Start Num: 4
Candidate Starts for Lavahound_10:
(Start: 4 @6944 has 8 MA's), (18, 7274), (22, 7481), (23, 7490),

Gene: Lebo14_13 Start: 8547, Stop: 9119, Start Num: 5

Candidate Starts for Lebo14_13:
(Start: 5 @8547 has 33 MA's), (13, 8835), (18, 8880),

Gene: LilPharaoh_8 Start: 6589, Stop: 7137, Start Num: 6
Candidate Starts for LilPharaoh_8:
(Start: 6 @6589 has 15 MA's), (18, 6904), (21, 7093), (22, 7111),

Gene: Malthus_13 Start: 8453, Stop: 9025, Start Num: 5
Candidate Starts for Malthus_13:
(Start: 5 @8453 has 33 MA's), (13, 8741), (18, 8786),

Gene: Marcoliusprime_8 Start: 5349, Stop: 5891, Start Num: 5
Candidate Starts for Marcoliusprime_8:
(Start: 5 @5349 has 33 MA's), (16, 5652), (18, 5670), (22, 5865),

Gene: Mdavu_8 Start: 6577, Stop: 7125, Start Num: 6
Candidate Starts for Mdavu_8:
(Start: 6 @6577 has 15 MA's), (18, 6892), (21, 7081), (22, 7099),

Gene: Milly_8 Start: 5349, Stop: 5891, Start Num: 5
Candidate Starts for Milly_8:
(Start: 5 @5349 has 33 MA's), (16, 5652), (18, 5670), (22, 5865),

Gene: MissDaisy_13 Start: 8319, Stop: 8891, Start Num: 5
Candidate Starts for MissDaisy_13:
(Start: 5 @8319 has 33 MA's), (13, 8607), (18, 8652),

Gene: Mitti_13 Start: 8457, Stop: 9029, Start Num: 5
Candidate Starts for Mitti_13:
(Start: 5 @8457 has 33 MA's), (13, 8745), (18, 8790),

Gene: Mufasa_8 Start: 5333, Stop: 5878, Start Num: 5
Candidate Starts for Mufasa_8:
(Start: 5 @5333 has 33 MA's), (16, 5636), (18, 5654), (22, 5852),

Gene: Nikao_8 Start: 6589, Stop: 7137, Start Num: 6
Candidate Starts for Nikao_8:
(Start: 6 @6589 has 15 MA's), (18, 6904), (21, 7093), (22, 7111),

Gene: November_10 Start: 7032, Stop: 7598, Start Num: 4
Candidate Starts for November_10:
(Start: 4 @7032 has 8 MA's), (15, 7326), (18, 7362), (22, 7572), (23, 7581),

Gene: Nutello_8 Start: 6589, Stop: 7137, Start Num: 6
Candidate Starts for Nutello_8:
(Start: 6 @6589 has 15 MA's), (18, 6904), (21, 7093), (22, 7111),

Gene: OmniCritical_13 Start: 8444, Stop: 9016, Start Num: 5
Candidate Starts for OmniCritical_13:
(Start: 5 @8444 has 33 MA's), (13, 8732), (18, 8777),

Gene: Patt_13 Start: 8295, Stop: 8867, Start Num: 5
Candidate Starts for Patt_13:

(Start: 5 @8295 has 33 MA's), (13, 8583), (18, 8628),

Gene: Phrank_11 Start: 6234, Stop: 6800, Start Num: 6

Candidate Starts for Phrank_11:

(Start: 6 @6234 has 15 MA's), (18, 6567), (20, 6606), (23, 6783),

Gene: Qhanda_13 Start: 8553, Stop: 9125, Start Num: 5

Candidate Starts for Qhanda_13:

(Start: 5 @8553 has 33 MA's), (13, 8841), (18, 8886),

Gene: Reptar3000_13 Start: 8297, Stop: 8869, Start Num: 5

Candidate Starts for Reptar3000_13:

(Start: 5 @8297 has 33 MA's), (13, 8585), (18, 8630),

Gene: Ruthiejr_12 Start: 8151, Stop: 8723, Start Num: 5

Candidate Starts for Ruthiejr_12:

(1, 7971), (Start: 5 @8151 has 33 MA's), (13, 8439), (18, 8484),

Gene: SamScheppers_11 Start: 8060, Stop: 8632, Start Num: 5

Candidate Starts for SamScheppers_11:

(Start: 5 @8060 has 33 MA's), (13, 8348), (18, 8393),

Gene: SgtBeansprout_8 Start: 6589, Stop: 7137, Start Num: 6

Candidate Starts for SgtBeansprout_8:

(Start: 6 @6589 has 15 MA's), (18, 6904), (21, 7093), (22, 7111),

Gene: Shadow1_10 Start: 6145, Stop: 6711, Start Num: 6

Candidate Starts for Shadow1_10:

(Start: 6 @6145 has 15 MA's), (20, 6517), (23, 6694),

Gene: Slarp_13 Start: 8544, Stop: 9116, Start Num: 5

Candidate Starts for Slarp_13:

(Start: 5 @8544 has 33 MA's), (13, 8832), (18, 8877),

Gene: Strobilo_8 Start: 5349, Stop: 5891, Start Num: 5

Candidate Starts for Strobilo_8:

(Start: 5 @5349 has 33 MA's), (16, 5652), (18, 5670), (22, 5865),

Gene: Sunflower1121_10 Start: 6147, Stop: 6722, Start Num: 6

Candidate Starts for Sunflower1121_10:

(Start: 6 @6147 has 15 MA's), (18, 6489), (20, 6528), (23, 6705),

Gene: TM4_8 Start: 5384, Stop: 5944, Start Num: 3

Candidate Starts for TM4_8:

(Start: 3 @5384 has 1 MA's), (9, 5516), (16, 5702), (18, 5720), (22, 5918),

Gene: Taquito_11 Start: 8133, Stop: 8702, Start Num: 5

Candidate Starts for Taquito_11:

(Start: 5 @8133 has 33 MA's), (13, 8418), (18, 8463),

Gene: Teejan_8 Start: 6589, Stop: 7137, Start Num: 6

Candidate Starts for Teejan_8:

(Start: 6 @6589 has 15 MA's), (18, 6904), (21, 7093), (22, 7111),

Gene: TingHuaYa_12 Start: 6338, Stop: 6886, Start Num: 6

Candidate Starts for TingHuaYa_12:

(Start: 6 @6338 has 15 MA's), (10, 6488), (18, 6656), (20, 6695), (21, 6842), (22, 6860), (23, 6869),

Gene: Torres_8 Start: 6589, Stop: 7137, Start Num: 6

Candidate Starts for Torres_8:

(Start: 6 @6589 has 15 MA's), (18, 6904), (21, 7093), (22, 7111),

Gene: Trice_8 Start: 6589, Stop: 7137, Start Num: 6

Candidate Starts for Trice_8:

(Start: 6 @6589 has 15 MA's), (18, 6904), (21, 7093), (22, 7111),

Gene: Wintermute_13 Start: 8533, Stop: 9105, Start Num: 5

Candidate Starts for Wintermute_13:

(Start: 5 @8533 has 33 MA's), (13, 8821), (18, 8866),

Gene: Y10_13 Start: 8533, Stop: 9105, Start Num: 5

Candidate Starts for Y10_13:

(Start: 5 @8533 has 33 MA's), (13, 8821), (18, 8866),

Gene: Y2_13 Start: 8533, Stop: 9105, Start Num: 5

Candidate Starts for Y2_13:

(Start: 5 @8533 has 33 MA's), (13, 8821), (18, 8866),

Gene: YasnayaPolyana_13 Start: 8534, Stop: 9106, Start Num: 5

Candidate Starts for YasnayaPolyana_13:

(Start: 5 @8534 has 33 MA's), (13, 8822), (18, 8867),

Gene: ZoeJ_8 Start: 5306, Stop: 5842, Start Num: 5

Candidate Starts for ZoeJ_8:

(Start: 5 @5306 has 33 MA's), (16, 5603), (18, 5621), (22, 5816),