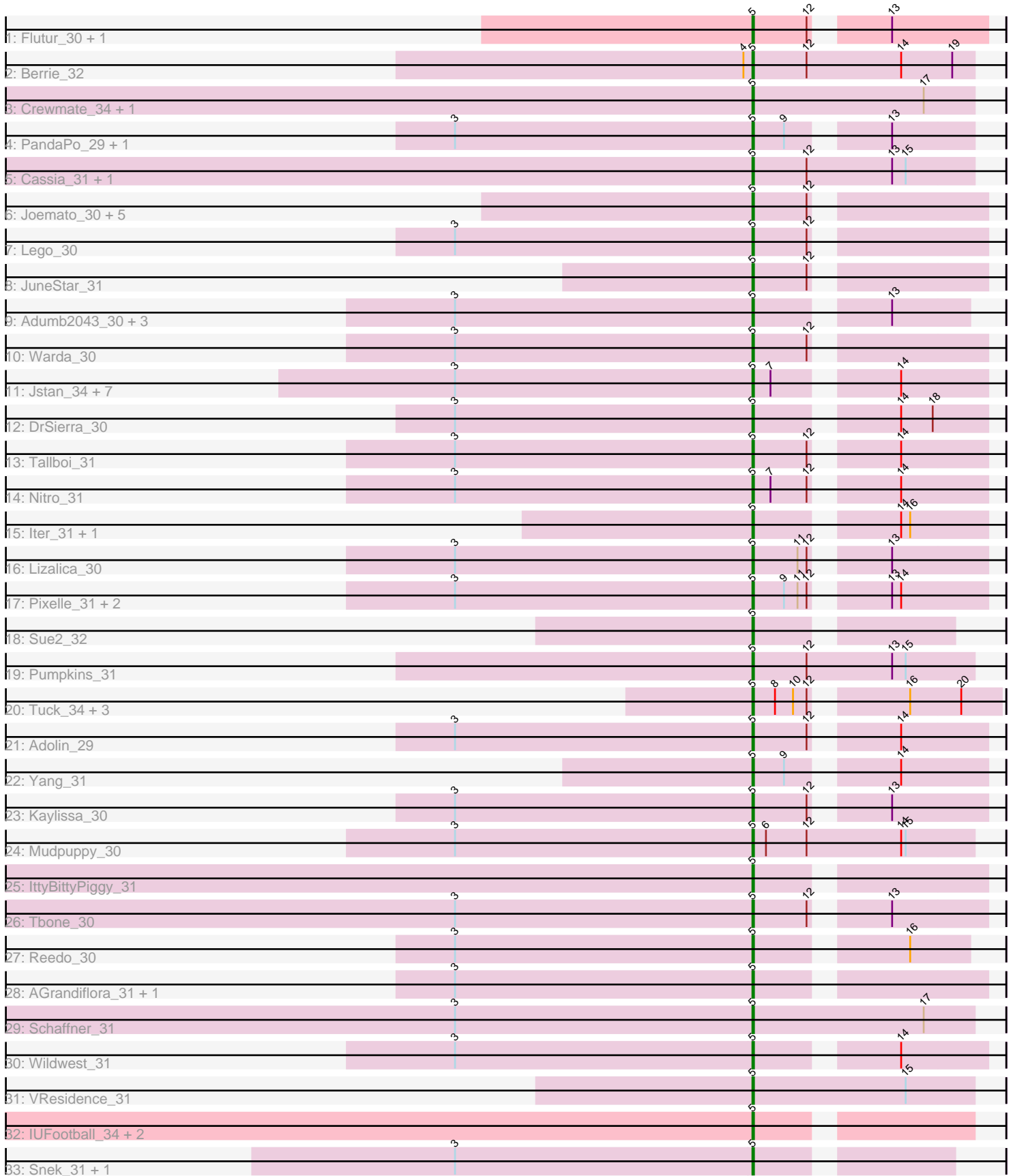


Zoomed Pham 296578



Note: Tracks are now grouped by subcluster and scaled. Switching in subcluster is indicated by changes in track color. Track scale is now set by default to display the region 30 bp upstream of start 1 to 30 bp downstream of the last possible start. If this default region is judged to be packed too tightly with annotated starts, the track will be further scaled to only show that region of the ORF with annotated starts. This action will be indicated by adding "Zoomed" to the title. For starts, yellow indicates the location of called starts comprised solely of Glimmer/GeneMark auto-annotations, green indicates the location of called starts with at least 1 manual gene annotation.

Pham 296578 Report

This analysis was run 04/25/26 on database version 644.

Pham number 296578 has 62 members, 13 are drafts.

Phages represented in each track:

- Track 1 : Flutur_30, Cyan_30
- Track 2 : Berrie_32
- Track 3 : Crewmate_34, ObiToo_33
- Track 4 : PandaPo_29, MissSwiss_29
- Track 5 : Cassia_31, TforTroy_32
- Track 6 : Joemato_30, JohnDoe_30, Simpson_32, Tutumahutu_30, Powerpuff_32, YesChef_30
- Track 7 : Lego_30
- Track 8 : JuneStar_31
- Track 9 : Adumb2043_30, Turab_30, Amploria_30, AEgle_30
- Track 10 : Warda_30
- Track 11 : Jstan_34, Niobe_32, Elezi_32, Eraser_32, London_32, Skelbel_33, Asa16_32, Subaru_33
- Track 12 : DrSierra_30
- Track 13 : Tallboi_31
- Track 14 : Nitro_31
- Track 15 : Iter_31, Ascela_31
- Track 16 : Lizalica_30
- Track 17 : Pixelle_31, Tian_31, Amyev_31
- Track 18 : Sue2_32
- Track 19 : Pumpkins_31
- Track 20 : Tuck_34, Janeemi_33, Phives_33, Community_32
- Track 21 : Adolin_29
- Track 22 : Yang_31
- Track 23 : Kaylissa_30
- Track 24 : Mudpuppy_30
- Track 25 : IttyBittyPiggy_31
- Track 26 : Tbone_30
- Track 27 : Reedo_30
- Track 28 : AGrandiflora_31, DrManhattan_29
- Track 29 : Schaffner_31
- Track 30 : Wildwest_31
- Track 31 : VResidence_31
- Track 32 : IUFootball_34, Liebe_34, Maureen_34
- Track 33 : Snek_31, Tweety19_31

Summary of Final Annotations (See graph section above for start numbers):

The start number called the most often in the published annotations is 5, it was called in 49 of the 49 non-draft genes in the pham.

Genes that call this "Most Annotated" start:

- AEgle_30, AGrandiflora_31, Adolin_29, Adumb2043_30, Amploria_30, Amyev_31, Asa16_32, Ascela_31, Berrie_32, Cassia_31, Community_32, Crewmate_34, Cyan_30, DrManhattan_29, DrSierra_30, Elezi_32, Eraser_32, Flutur_30, IUFootball_34, Iter_31, IttyBittyPiggy_31, Janeemi_33, Joemato_30, JohnDoe_30, Jstan_34, JuneStar_31, Kaylissa_30, Lego_30, Liebe_34, Lizalica_30, London_32, Maureen_34, MissSwiss_29, Mudpuppy_30, Niobe_32, Nitro_31, ObiToo_33, PandaPo_29, Phives_33, Pixelle_31, Powerpuff_32, Pumpkins_31, Reedo_30, Schaffner_31, Simpson_32, Skelbel_33, Snek_31, Subaru_33, Sue2_32, Tallboi_31, Tbone_30, TforTroy_32, Tian_31, Tuck_34, Turab_30, Tutumahutu_30, Tweety19_31, VResidence_31, Warda_30, Wildwest_31, Yang_31, YesChef_30,

Genes that have the "Most Annotated" start but do not call it:

-

Genes that do not have the "Most Annotated" start:

-

Summary by start number:

Start 5:

- Found in 62 of 62 (100.0%) of genes in pham
- Manual Annotations of this start: 49 of 49
- Called 100.0% of time when present
- Phage (with cluster) where this start called: AEgle_30 (AZ1), AGrandiflora_31 (AZ1), Adolin_29 (AZ1), Adumb2043_30 (AZ1), Amploria_30 (AZ1), Amyev_31 (AZ1), Asa16_32 (AZ1), Ascela_31 (AZ1), Berrie_32 (AZ1), Cassia_31 (AZ1), Community_32 (AZ1), Crewmate_34 (AZ1), Cyan_30 (AZ1), DrManhattan_29 (AZ1), DrSierra_30 (AZ1), Elezi_32 (AZ1), Eraser_32 (AZ1), Flutur_30 (AZ), IUFootball_34 (AZ2), Iter_31 (AZ1), IttyBittyPiggy_31 (AZ1), Janeemi_33 (AZ1), Joemato_30 (AZ1), JohnDoe_30 (AZ1), Jstan_34 (AZ1), JuneStar_31 (AZ1), Kaylissa_30 (AZ1), Lego_30 (AZ1), Liebe_34 (AZ2), Lizalica_30 (AZ1), London_32 (AZ1), Maureen_34 (AZ2), MissSwiss_29 (AZ1), Mudpuppy_30 (AZ1), Niobe_32 (AZ1), Nitro_31 (AZ1), ObiToo_33 (AZ1), PandaPo_29 (AZ1), Phives_33 (AZ1), Pixelle_31 (AZ1), Powerpuff_32 (AZ1), Pumpkins_31 (AZ1), Reedo_30 (AZ1), Schaffner_31 (AZ1), Simpson_32 (AZ1), Skelbel_33 (AZ1), Snek_31 (AZ3), Subaru_33 (AZ1), Sue2_32 (AZ1), Tallboi_31 (AZ1), Tbone_30 (AZ1), TforTroy_32 (AZ1), Tian_31 (AZ1), Tuck_34 (AZ1), Turab_30 (AZ1), Tutumahutu_30 (AZ1), Tweety19_31 (AZ3), VResidence_31 (AZ1), Warda_30 (AZ1), Wildwest_31 (AZ1), Yang_31 (AZ1), YesChef_30 (AZ1),

Summary by clusters:

There are 4 clusters represented in this pham: AZ1, AZ2, AZ, AZ3,

Info for manual annotations of cluster AZ1:

•Start number 5 was manually annotated 45 times for cluster AZ1.

Info for manual annotations of cluster AZ2:

•Start number 5 was manually annotated 2 times for cluster AZ2.

Info for manual annotations of cluster AZ3:

•Start number 5 was manually annotated 2 times for cluster AZ3.

Gene Information:

Gene: AEgle_30 Start: 23889, Stop: 24014, Start Num: 5

Candidate Starts for AEgle_30:

(3, 23694), (Start: 5 @23889 has 49 MA's), (13, 23964),

Gene: AGrandiflora_31 Start: 23907, Stop: 24044, Start Num: 5

Candidate Starts for AGrandiflora_31:

(3, 23712), (Start: 5 @23907 has 49 MA's),

Gene: Adolin_29 Start: 22352, Stop: 22489, Start Num: 5

Candidate Starts for Adolin_29:

(3, 22157), (Start: 5 @22352 has 49 MA's), (12, 22388), (14, 22433),

Gene: Adumb2043_30 Start: 23888, Stop: 24013, Start Num: 5

Candidate Starts for Adumb2043_30:

(3, 23693), (Start: 5 @23888 has 49 MA's), (13, 23963),

Gene: Amploria_30 Start: 23888, Stop: 24013, Start Num: 5

Candidate Starts for Amploria_30:

(3, 23693), (Start: 5 @23888 has 49 MA's), (13, 23963),

Gene: Amyev_31 Start: 25812, Stop: 25949, Start Num: 5

Candidate Starts for Amyev_31:

(3, 25617), (Start: 5 @25812 has 49 MA's), (9, 25833), (11, 25842), (12, 25848), (13, 25887), (14, 25893),

Gene: Asa16_32 Start: 26064, Stop: 26201, Start Num: 5

Candidate Starts for Asa16_32:

(3, 25869), (Start: 5 @26064 has 49 MA's), (7, 26076), (14, 26145),

Gene: Ascela_31 Start: 24067, Stop: 24204, Start Num: 5

Candidate Starts for Ascela_31:

(Start: 5 @24067 has 49 MA's), (14, 24148), (16, 24154),

Gene: Berrie_32 Start: 25131, Stop: 25277, Start Num: 5

Candidate Starts for Berrie_32:

(4, 25128), (Start: 5 @25131 has 49 MA's), (12, 25167), (14, 25230), (19, 25263),

Gene: Cassia_31 Start: 24506, Stop: 24652, Start Num: 5

Candidate Starts for Cassia_31:

(Start: 5 @24506 has 49 MA's), (12, 24542), (13, 24599), (15, 24608),

Gene: Community_32 Start: 26254, Stop: 26400, Start Num: 5
Candidate Starts for Community_32:
(Start: 5 @26254 has 49 MA's), (8, 26269), (10, 26281), (12, 26290), (16, 26341), (20, 26374),

Gene: Crewmate_34 Start: 24765, Stop: 24911, Start Num: 5
Candidate Starts for Crewmate_34:
(1, 24177), (Start: 5 @24765 has 49 MA's), (17, 24879),

Gene: Cyan_30 Start: 23990, Stop: 24127, Start Num: 5
Candidate Starts for Cyan_30:
(Start: 5 @23990 has 49 MA's), (12, 24026), (13, 24065),

Gene: DrManhattan_29 Start: 22342, Stop: 22479, Start Num: 5
Candidate Starts for DrManhattan_29:
(3, 22147), (Start: 5 @22342 has 49 MA's),

Gene: DrSierra_30 Start: 23019, Stop: 23156, Start Num: 5
Candidate Starts for DrSierra_30:
(3, 22824), (Start: 5 @23019 has 49 MA's), (14, 23100), (18, 23121),

Gene: Elezi_32 Start: 26079, Stop: 26216, Start Num: 5
Candidate Starts for Elezi_32:
(3, 25884), (Start: 5 @26079 has 49 MA's), (7, 26091), (14, 26160),

Gene: Eraser_32 Start: 26071, Stop: 26208, Start Num: 5
Candidate Starts for Eraser_32:
(3, 25876), (Start: 5 @26071 has 49 MA's), (7, 26083), (14, 26152),

Gene: Flutur_30 Start: 24220, Stop: 24357, Start Num: 5
Candidate Starts for Flutur_30:
(Start: 5 @24220 has 49 MA's), (12, 24256), (13, 24295),

Gene: IUFootball_34 Start: 26280, Stop: 26408, Start Num: 5
Candidate Starts for IUFootball_34:
(Start: 5 @26280 has 49 MA's),

Gene: Iter_31 Start: 24066, Stop: 24203, Start Num: 5
Candidate Starts for Iter_31:
(Start: 5 @24066 has 49 MA's), (14, 24147), (16, 24153),

Gene: IttyBittyPiggy_31 Start: 24291, Stop: 24428, Start Num: 5
Candidate Starts for IttyBittyPiggy_31:
(1, 23706), (2, 23781), (Start: 5 @24291 has 49 MA's),

Gene: Janeemi_33 Start: 26271, Stop: 26420, Start Num: 5
Candidate Starts for Janeemi_33:
(Start: 5 @26271 has 49 MA's), (8, 26286), (10, 26298), (12, 26307), (16, 26358), (20, 26391),

Gene: Joemato_30 Start: 23990, Stop: 24127, Start Num: 5
Candidate Starts for Joemato_30:
(Start: 5 @23990 has 49 MA's), (12, 24026),

Gene: JohnDoe_30 Start: 23984, Stop: 24121, Start Num: 5

Candidate Starts for JohnDoe_30:
(Start: 5 @23984 has 49 MA's), (12, 24020),

Gene: Jstan_34 Start: 26065, Stop: 26202, Start Num: 5
Candidate Starts for Jstan_34:
(3, 25870), (Start: 5 @26065 has 49 MA's), (7, 26077), (14, 26146),

Gene: JuneStar_31 Start: 26197, Stop: 26334, Start Num: 5
Candidate Starts for JuneStar_31:
(Start: 5 @26197 has 49 MA's), (12, 26233),

Gene: Kaylissa_30 Start: 23956, Stop: 24093, Start Num: 5
Candidate Starts for Kaylissa_30:
(3, 23761), (Start: 5 @23956 has 49 MA's), (12, 23992), (13, 24031),

Gene: Lego_30 Start: 23910, Stop: 24047, Start Num: 5
Candidate Starts for Lego_30:
(3, 23715), (Start: 5 @23910 has 49 MA's), (12, 23946),

Gene: Liebe_34 Start: 26280, Stop: 26408, Start Num: 5
Candidate Starts for Liebe_34:
(Start: 5 @26280 has 49 MA's),

Gene: Lizalica_30 Start: 23981, Stop: 24118, Start Num: 5
Candidate Starts for Lizalica_30:
(3, 23786), (Start: 5 @23981 has 49 MA's), (11, 24011), (12, 24017), (13, 24056),

Gene: London_32 Start: 26079, Stop: 26216, Start Num: 5
Candidate Starts for London_32:
(3, 25884), (Start: 5 @26079 has 49 MA's), (7, 26091), (14, 26160),

Gene: Maureen_34 Start: 26280, Stop: 26408, Start Num: 5
Candidate Starts for Maureen_34:
(Start: 5 @26280 has 49 MA's),

Gene: MissSwiss_29 Start: 22404, Stop: 22532, Start Num: 5
Candidate Starts for MissSwiss_29:
(3, 22209), (Start: 5 @22404 has 49 MA's), (9, 22425), (13, 22479),

Gene: Mudpuppy_30 Start: 23961, Stop: 24107, Start Num: 5
Candidate Starts for Mudpuppy_30:
(3, 23766), (Start: 5 @23961 has 49 MA's), (6, 23970), (12, 23997), (14, 24060), (15, 24063),

Gene: Niobe_32 Start: 26065, Stop: 26202, Start Num: 5
Candidate Starts for Niobe_32:
(3, 25870), (Start: 5 @26065 has 49 MA's), (7, 26077), (14, 26146),

Gene: Nitro_31 Start: 25381, Stop: 25518, Start Num: 5
Candidate Starts for Nitro_31:
(3, 25186), (Start: 5 @25381 has 49 MA's), (7, 25393), (12, 25417), (14, 25462),

Gene: ObiToo_33 Start: 24505, Stop: 24651, Start Num: 5
Candidate Starts for ObiToo_33:

(1, 23917), (Start: 5 @24505 has 49 MA's), (17, 24619),

Gene: PandaPo_29 Start: 22404, Stop: 22532, Start Num: 5

Candidate Starts for PandaPo_29:

(3, 22209), (Start: 5 @22404 has 49 MA's), (9, 22425), (13, 22479),

Gene: Phives_33 Start: 26091, Stop: 26237, Start Num: 5

Candidate Starts for Phives_33:

(Start: 5 @26091 has 49 MA's), (8, 26106), (10, 26118), (12, 26127), (16, 26178), (20, 26211),

Gene: Pixelle_31 Start: 25832, Stop: 25969, Start Num: 5

Candidate Starts for Pixelle_31:

(3, 25637), (Start: 5 @25832 has 49 MA's), (9, 25853), (11, 25862), (12, 25868), (13, 25907), (14, 25913),

Gene: Powerpuff_32 Start: 25102, Stop: 25239, Start Num: 5

Candidate Starts for Powerpuff_32:

(Start: 5 @25102 has 49 MA's), (12, 25138),

Gene: Pumpkins_31 Start: 24916, Stop: 25062, Start Num: 5

Candidate Starts for Pumpkins_31:

(Start: 5 @24916 has 49 MA's), (12, 24952), (13, 25009), (15, 25018),

Gene: Reedo_30 Start: 22565, Stop: 22690, Start Num: 5

Candidate Starts for Reedo_30:

(3, 22370), (Start: 5 @22565 has 49 MA's), (16, 22652),

Gene: Schaffner_31 Start: 25148, Stop: 25294, Start Num: 5

Candidate Starts for Schaffner_31:

(1, 24563), (2, 24638), (3, 24953), (Start: 5 @25148 has 49 MA's), (17, 25262),

Gene: Simpson_32 Start: 23990, Stop: 24127, Start Num: 5

Candidate Starts for Simpson_32:

(Start: 5 @23990 has 49 MA's), (12, 24026),

Gene: Skelbel_33 Start: 26065, Stop: 26202, Start Num: 5

Candidate Starts for Skelbel_33:

(3, 25870), (Start: 5 @26065 has 49 MA's), (7, 26077), (14, 26146),

Gene: Snek_31 Start: 23138, Stop: 23254, Start Num: 5

Candidate Starts for Snek_31:

(3, 22943), (Start: 5 @23138 has 49 MA's),

Gene: Subaru_33 Start: 26079, Stop: 26216, Start Num: 5

Candidate Starts for Subaru_33:

(3, 25884), (Start: 5 @26079 has 49 MA's), (7, 26091), (14, 26160),

Gene: Sue2_32 Start: 24851, Stop: 24967, Start Num: 5

Candidate Starts for Sue2_32:

(Start: 5 @24851 has 49 MA's),

Gene: Tallboi_31 Start: 25409, Stop: 25546, Start Num: 5

Candidate Starts for Tallboi_31:

(3, 25214), (Start: 5 @25409 has 49 MA's), (12, 25445), (14, 25490),

Gene: Tbone_30 Start: 23985, Stop: 24122, Start Num: 5

Candidate Starts for Tbone_30:

(1, 23400), (3, 23790), (Start: 5 @23985 has 49 MA's), (12, 24021), (13, 24060),

Gene: TforTroy_32 Start: 24790, Stop: 24936, Start Num: 5

Candidate Starts for TforTroy_32:

(Start: 5 @24790 has 49 MA's), (12, 24826), (13, 24883), (15, 24892),

Gene: Tian_31 Start: 25812, Stop: 25949, Start Num: 5

Candidate Starts for Tian_31:

(3, 25617), (Start: 5 @25812 has 49 MA's), (9, 25833), (11, 25842), (12, 25848), (13, 25887), (14, 25893),

Gene: Tuck_34 Start: 26635, Stop: 26781, Start Num: 5

Candidate Starts for Tuck_34:

(Start: 5 @26635 has 49 MA's), (8, 26650), (10, 26662), (12, 26671), (16, 26722), (20, 26755),

Gene: Turab_30 Start: 23888, Stop: 24013, Start Num: 5

Candidate Starts for Turab_30:

(3, 23693), (Start: 5 @23888 has 49 MA's), (13, 23963),

Gene: Tutumahutu_30 Start: 23960, Stop: 24097, Start Num: 5

Candidate Starts for Tutumahutu_30:

(Start: 5 @23960 has 49 MA's), (12, 23996),

Gene: Tweety19_31 Start: 23137, Stop: 23253, Start Num: 5

Candidate Starts for Tweety19_31:

(3, 22942), (Start: 5 @23137 has 49 MA's),

Gene: VResidence_31 Start: 24143, Stop: 24289, Start Num: 5

Candidate Starts for VResidence_31:

(Start: 5 @24143 has 49 MA's), (15, 24245),

Gene: Warda_30 Start: 23960, Stop: 24097, Start Num: 5

Candidate Starts for Warda_30:

(3, 23765), (Start: 5 @23960 has 49 MA's), (12, 23996),

Gene: Wildwest_31 Start: 23961, Stop: 24098, Start Num: 5

Candidate Starts for Wildwest_31:

(3, 23766), (Start: 5 @23961 has 49 MA's), (14, 24042),

Gene: Yang_31 Start: 24306, Stop: 24443, Start Num: 5

Candidate Starts for Yang_31:

(Start: 5 @24306 has 49 MA's), (9, 24327), (14, 24387),

Gene: YesChef_30 Start: 23961, Stop: 24098, Start Num: 5

Candidate Starts for YesChef_30:

(Start: 5 @23961 has 49 MA's), (12, 23997),