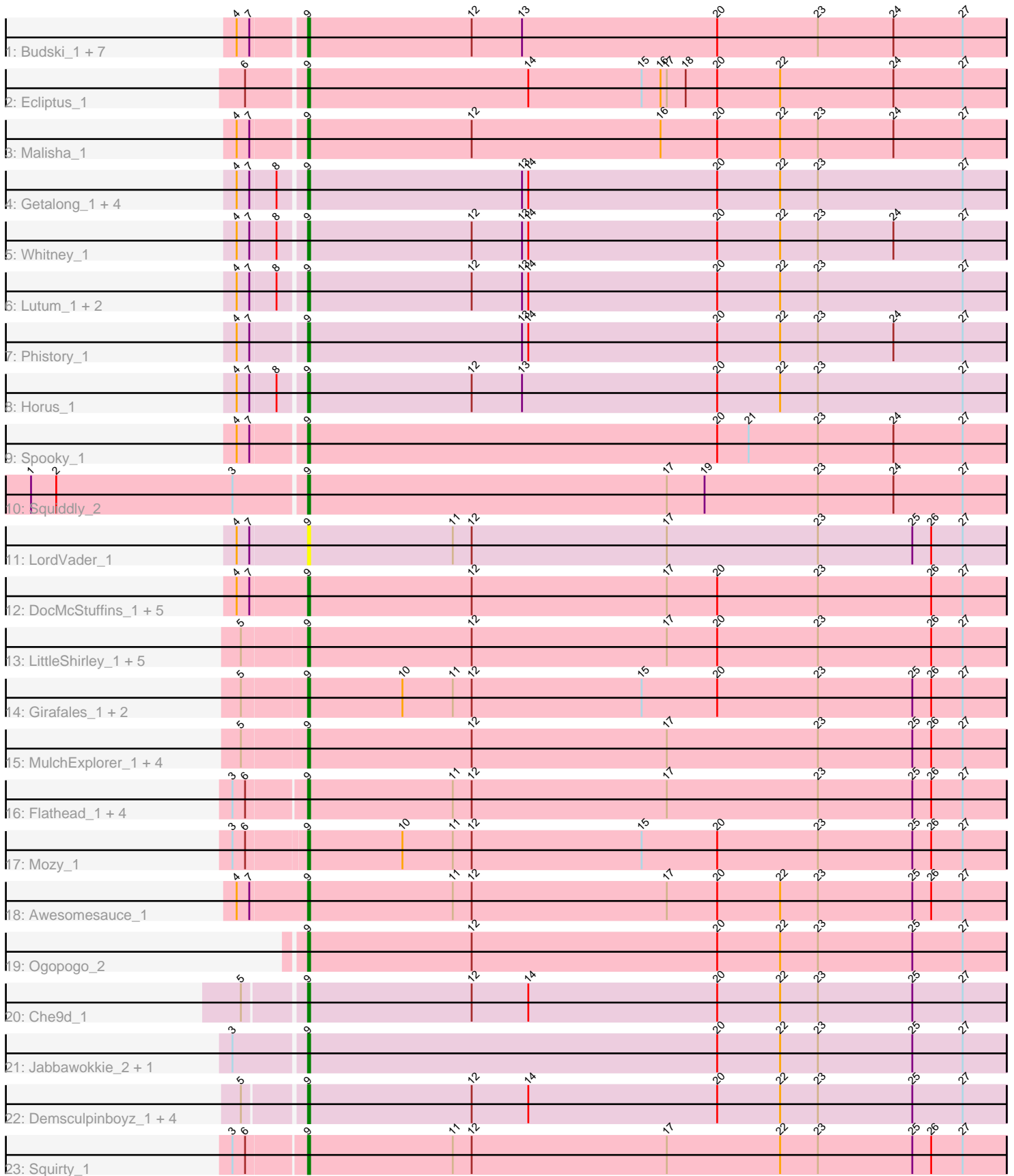


Pham 296580



Note: Tracks are now grouped by subcluster and scaled. Switching in subcluster is indicated by changes in track color. Track scale is now set by default to display the region 30 bp upstream of start 1 to 30 bp downstream of the last possible start. If this default region is judged to be packed too tightly with annotated starts, the track will be further scaled to only show that region of the ORF with annotated starts. This action will be indicated by adding "Zoomed" to the title. For starts, yellow indicates the location of called starts comprised solely of Glimmer/GeneMark auto-annotations, green indicates the location of called starts with at least 1 manual gene annotation.

Pham 296580 Report

This analysis was run 04/25/26 on database version 644.

Pham number 296580 has 61 members, 5 are drafts.

Phages represented in each track:

- Track 1 : Budski_1, Holliday_1, Kamaru_1, BotCity_1, Phabuloso_1, CheeseTouch_1, LitninMcQueen_1, ODay_1
- Track 2 : Ecliptus_1
- Track 3 : Malisha_1
- Track 4 : Getalong_1, Asapag_1, BENtherdunthat_1, Leroy_1, Frickyeah_1
- Track 5 : Whitney_1
- Track 6 : Lutum_1, Periwinkle_1, Kenna_1
- Track 7 : Phistory_1
- Track 8 : Horus_1
- Track 9 : Spooky_1
- Track 10 : Squiddly_2
- Track 11 : LordVader_1
- Track 12 : DocMcStuffins_1, TootsiePop_1, ChickenDinner_1, Piper2020_1, Misha28_1, Aloeri_1
- Track 13 : LittleShirley_1, Slim_1, Rialto_1, Mova_1, Totinger_1, Emmaloid_1
- Track 14 : Girafales_1, Tchotchke_1, Quico_1
- Track 15 : MulchExplorer_1, Kimberlium_1, Plumbus_1, Juice456_1, Job42_1
- Track 16 : Flathead_1, Frankie_1, Hegedechwinu_1, Brushbloom_1, Doomslug_1
- Track 17 : Mozy_1
- Track 18 : Awesomesauce_1
- Track 19 : Ogopogo_2
- Track 20 : Che9d_1
- Track 21 : Jabbawokkie_2, Zapner_2
- Track 22 : Demsculpinboyz_1, Avani_1, Yoshi_1, Soul22_1, SilverChicken_1
- Track 23 : Squirty_1

Summary of Final Annotations (See graph section above for start numbers):

The start number called the most often in the published annotations is 9, it was called in 56 of the 56 non-draft genes in the pham.

Genes that call this "Most Annotated" start:

- Aloeri_1, Asapag_1, Avani_1, Awesomesauce_1, BENtherdunthat_1, BotCity_1, Brushbloom_1, Budski_1, Che9d_1, CheeseTouch_1, ChickenDinner_1,

Demsculpinboyz_1, DocMcStuffins_1, Doomslug_1, Ecliptus_1, Emmaloid_1, Flathead_1, Frankie_1, Frickyeah_1, Getalong_1, Girafales_1, Hegedechwinu_1, Holliday_1, Horus_1, Jabbawokkie_2, Job42_1, Juice456_1, Kamaru_1, Kenna_1, Kimberlium_1, Leroy_1, LitninMcQueen_1, LittleShirley_1, LordVader_1, Lutum_1, Malisha_1, Misha28_1, Mova_1, Mozy_1, MulchExplorer_1, ODay_1, Ogopogo_2, Periwinkle_1, Phabuloso_1, Phistory_1, Piper2020_1, Plumbus_1, Quico_1, Rialto_1, SilverChicken_1, Slim_1, Soul22_1, Spooky_1, Squiddly_2, Squirty_1, Tchotchke_1, TootsiePop_1, Totinger_1, Whitney_1, Yoshi_1, Zapner_2,

Genes that have the "Most Annotated" start but do not call it:

-

Genes that do not have the "Most Annotated" start:

-

Summary by start number:

Start 9:

- Found in 61 of 61 (100.0%) of genes in pham
- Manual Annotations of this start: 56 of 56
- Called 100.0% of time when present
- Phage (with cluster) where this start called: Aloeri_1 (F1), Asapag_1 (DN1), Avani_1 (F2), Awesomesauce_1 (F1), BENtherdunthat_1 (DN1), BotCity_1 (DN), Brushbloom_1 (F1), Budski_1 (DN), Che9d_1 (F2), CheeseTouch_1 (DN1), ChickenDinner_1 (F1), Demsculpinboyz_1 (F2), DocMcStuffins_1 (F1), Doomslug_1 (F), Ecliptus_1 (DN), Emmaloid_1 (F1), Flathead_1 (F1), Frankie_1 (F1), Frickyeah_1 (DN1), Getalong_1 (DN1), Girafales_1 (F1), Hegedechwinu_1 (F1), Holliday_1 (DN1), Horus_1 (DN1), Jabbawokkie_2 (F2), Job42_1 (F1), Juice456_1 (F1), Kamaru_1 (DN1), Kenna_1 (DN1), Kimberlium_1 (F1), Leroy_1 (DN1), LitninMcQueen_1 (DN1), LittleShirley_1 (F1), LordVader_1 (F), Lutum_1 (DN1), Malisha_1 (DN), Misha28_1 (F1), Mova_1 (F1), Mozy_1 (F1), MulchExplorer_1 (F1), ODay_1 (DN), Ogopogo_2 (F1), Periwinkle_1 (DN1), Phabuloso_1 (DN1), Phistory_1 (DN1), Piper2020_1 (F1), Plumbus_1 (F1), Quico_1 (F1), Rialto_1 (F1), SilverChicken_1 (F2), Slim_1 (F1), Soul22_1 (F2), Spooky_1 (DN2), Squiddly_2 (DN2), Squirty_1 (F3), Tchotchke_1 (F1), TootsiePop_1 (F1), Totinger_1 (F1), Whitney_1 (DN1), Yoshi_1 (F2), Zapner_2 (F2),

Summary by clusters:

There are 7 clusters represented in this pham: DN, F1, F2, F3, F, DN1, DN2,

Info for manual annotations of cluster DN:

- Start number 9 was manually annotated 5 times for cluster DN.

Info for manual annotations of cluster DN1:

- Start number 9 was manually annotated 15 times for cluster DN1.

Info for manual annotations of cluster DN2:

- Start number 9 was manually annotated 2 times for cluster DN2.

Info for manual annotations of cluster F1:

- Start number 9 was manually annotated 26 times for cluster F1.

Info for manual annotations of cluster F2:

•Start number 9 was manually annotated 7 times for cluster F2.

Info for manual annotations of cluster F3:

•Start number 9 was manually annotated 1 time for cluster F3.

Gene Information:

Gene: Aloeri_1 Start: 42, Stop: 374, Start Num: 9

Candidate Starts for Aloeri_1:

(4, 9), (7, 15), (Start: 9 @42 has 56 MA's), (12, 120), (17, 213), (20, 237), (23, 285), (26, 339), (27, 354),

Gene: Asapag_1 Start: 39, Stop: 371, Start Num: 9

Candidate Starts for Asapag_1:

(4, 9), (7, 15), (8, 27), (Start: 9 @39 has 56 MA's), (13, 141), (14, 144), (20, 234), (22, 264), (23, 282), (27, 351),

Gene: Avani_1 Start: 38, Stop: 370, Start Num: 9

Candidate Starts for Avani_1:

(5, 11), (Start: 9 @38 has 56 MA's), (12, 116), (14, 143), (20, 233), (22, 263), (23, 281), (25, 326), (27, 350),

Gene: Awesomesauce_1 Start: 42, Stop: 374, Start Num: 9

Candidate Starts for Awesomesauce_1:

(4, 9), (7, 15), (Start: 9 @42 has 56 MA's), (11, 111), (12, 120), (17, 213), (20, 237), (22, 267), (23, 285), (25, 330), (26, 339), (27, 354),

Gene: BENtherdunthat_1 Start: 39, Stop: 371, Start Num: 9

Candidate Starts for BENtherdunthat_1:

(4, 9), (7, 15), (8, 27), (Start: 9 @39 has 56 MA's), (13, 141), (14, 144), (20, 234), (22, 264), (23, 282), (27, 351),

Gene: BotCity_1 Start: 39, Stop: 371, Start Num: 9

Candidate Starts for BotCity_1:

(4, 9), (7, 15), (Start: 9 @39 has 56 MA's), (12, 117), (13, 141), (20, 234), (23, 282), (24, 318), (27, 351),

Gene: Brushbloom_1 Start: 40, Stop: 372, Start Num: 9

Candidate Starts for Brushbloom_1:

(3, 7), (6, 13), (Start: 9 @40 has 56 MA's), (11, 109), (12, 118), (17, 211), (23, 283), (25, 328), (26, 337), (27, 352),

Gene: Budski_1 Start: 39, Stop: 371, Start Num: 9

Candidate Starts for Budski_1:

(4, 9), (7, 15), (Start: 9 @39 has 56 MA's), (12, 117), (13, 141), (20, 234), (23, 282), (24, 318), (27, 351),

Gene: Che9d_1 Start: 48, Stop: 380, Start Num: 9

Candidate Starts for Che9d_1:

(5, 21), (Start: 9 @48 has 56 MA's), (12, 126), (14, 153), (20, 243), (22, 273), (23, 291), (25, 336), (27, 360),

Gene: CheeseTouch_1 Start: 39, Stop: 371, Start Num: 9

Candidate Starts for CheeseTouch_1:

(4, 9), (7, 15), (Start: 9 @39 has 56 MA's), (12, 117), (13, 141), (20, 234), (23, 282), (24, 318), (27, 351),

Gene: ChickenDinner_1 Start: 42, Stop: 374, Start Num: 9

Candidate Starts for ChickenDinner_1:

(4, 9), (7, 15), (Start: 9 @42 has 56 MA's), (12, 120), (17, 213), (20, 237), (23, 285), (26, 339), (27, 354),

Gene: Demsculpinboyz_1 Start: 38, Stop: 370, Start Num: 9

Candidate Starts for Demsculpinboyz_1:

(5, 11), (Start: 9 @38 has 56 MA's), (12, 116), (14, 143), (20, 233), (22, 263), (23, 281), (25, 326), (27, 350),

Gene: DocMcStuffins_1 Start: 42, Stop: 374, Start Num: 9

Candidate Starts for DocMcStuffins_1:

(4, 9), (7, 15), (Start: 9 @42 has 56 MA's), (12, 120), (17, 213), (20, 237), (23, 285), (26, 339), (27, 354),

Gene: Doomslug_1 Start: 40, Stop: 372, Start Num: 9

Candidate Starts for Doomslug_1:

(3, 7), (6, 13), (Start: 9 @40 has 56 MA's), (11, 109), (12, 118), (17, 211), (23, 283), (25, 328), (26, 337), (27, 352),

Gene: Ecliptus_1 Start: 40, Stop: 372, Start Num: 9

Candidate Starts for Ecliptus_1:

(6, 13), (Start: 9 @40 has 56 MA's), (14, 145), (15, 199), (16, 208), (17, 211), (18, 220), (20, 235), (22, 265), (24, 319), (27, 352),

Gene: Emmaloid_1 Start: 41, Stop: 373, Start Num: 9

Candidate Starts for Emmaloid_1:

(5, 11), (Start: 9 @41 has 56 MA's), (12, 119), (17, 212), (20, 236), (23, 284), (26, 338), (27, 353),

Gene: Flathead_1 Start: 40, Stop: 372, Start Num: 9

Candidate Starts for Flathead_1:

(3, 7), (6, 13), (Start: 9 @40 has 56 MA's), (11, 109), (12, 118), (17, 211), (23, 283), (25, 328), (26, 337), (27, 352),

Gene: Frankie_1 Start: 40, Stop: 372, Start Num: 9

Candidate Starts for Frankie_1:

(3, 7), (6, 13), (Start: 9 @40 has 56 MA's), (11, 109), (12, 118), (17, 211), (23, 283), (25, 328), (26, 337), (27, 352),

Gene: Frickyeah_1 Start: 39, Stop: 371, Start Num: 9

Candidate Starts for Frickyeah_1:

(4, 9), (7, 15), (8, 27), (Start: 9 @39 has 56 MA's), (13, 141), (14, 144), (20, 234), (22, 264), (23, 282), (27, 351),

Gene: Getalong_1 Start: 39, Stop: 371, Start Num: 9

Candidate Starts for Getalong_1:

(4, 9), (7, 15), (8, 27), (Start: 9 @39 has 56 MA's), (13, 141), (14, 144), (20, 234), (22, 264), (23, 282), (27, 351),

Gene: Girafales_1 Start: 41, Stop: 373, Start Num: 9

Candidate Starts for Girafales_1:

(5, 11), (Start: 9 @41 has 56 MA's), (10, 86), (11, 110), (12, 119), (15, 200), (20, 236), (23, 284), (25, 329), (26, 338), (27, 353),

Gene: Hegedechwinu_1 Start: 40, Stop: 372, Start Num: 9

Candidate Starts for Hegedechwinu_1:

(3, 7), (6, 13), (Start: 9 @40 has 56 MA's), (11, 109), (12, 118), (17, 211), (23, 283), (25, 328), (26, 337), (27, 352),

Gene: Holliday_1 Start: 39, Stop: 371, Start Num: 9

Candidate Starts for Holliday_1:

(4, 9), (7, 15), (Start: 9 @39 has 56 MA's), (12, 117), (13, 141), (20, 234), (23, 282), (24, 318), (27, 351),

Gene: Horus_1 Start: 39, Stop: 371, Start Num: 9

Candidate Starts for Horus_1:

(4, 9), (7, 15), (8, 27), (Start: 9 @39 has 56 MA's), (12, 117), (13, 141), (20, 234), (22, 264), (23, 282), (27, 351),

Gene: Jabbawokkie_2 Start: 561, Stop: 893, Start Num: 9

Candidate Starts for Jabbawokkie_2:

(3, 528), (Start: 9 @561 has 56 MA's), (20, 756), (22, 786), (23, 804), (25, 849), (27, 873),

Gene: Job42_1 Start: 41, Stop: 373, Start Num: 9

Candidate Starts for Job42_1:

(5, 11), (Start: 9 @41 has 56 MA's), (12, 119), (17, 212), (23, 284), (25, 329), (26, 338), (27, 353),

Gene: Juice456_1 Start: 41, Stop: 373, Start Num: 9

Candidate Starts for Juice456_1:

(5, 11), (Start: 9 @41 has 56 MA's), (12, 119), (17, 212), (23, 284), (25, 329), (26, 338), (27, 353),

Gene: Kamaru_1 Start: 39, Stop: 371, Start Num: 9

Candidate Starts for Kamaru_1:

(4, 9), (7, 15), (Start: 9 @39 has 56 MA's), (12, 117), (13, 141), (20, 234), (23, 282), (24, 318), (27, 351),

Gene: Kenna_1 Start: 39, Stop: 371, Start Num: 9

Candidate Starts for Kenna_1:

(4, 9), (7, 15), (8, 27), (Start: 9 @39 has 56 MA's), (12, 117), (13, 141), (14, 144), (20, 234), (22, 264), (23, 282), (27, 351),

Gene: Kimberlium_1 Start: 41, Stop: 373, Start Num: 9

Candidate Starts for Kimberlium_1:

(5, 11), (Start: 9 @41 has 56 MA's), (12, 119), (17, 212), (23, 284), (25, 329), (26, 338), (27, 353),

Gene: Leroy_1 Start: 39, Stop: 371, Start Num: 9

Candidate Starts for Leroy_1:

(4, 9), (7, 15), (8, 27), (Start: 9 @39 has 56 MA's), (13, 141), (14, 144), (20, 234), (22, 264), (23, 282), (27, 351),

Gene: LitninMcQueen_1 Start: 39, Stop: 371, Start Num: 9

Candidate Starts for LitninMcQueen_1:

(4, 9), (7, 15), (Start: 9 @39 has 56 MA's), (12, 117), (13, 141), (20, 234), (23, 282), (24, 318), (27, 351),

Gene: LittleShirley_1 Start: 41, Stop: 373, Start Num: 9

Candidate Starts for LittleShirley_1:

(5, 11), (Start: 9 @41 has 56 MA's), (12, 119), (17, 212), (20, 236), (23, 284), (26, 338), (27, 353),

Gene: LordVader_1 Start: 42, Stop: 374, Start Num: 9

Candidate Starts for LordVader_1:

(4, 9), (7, 15), (Start: 9 @42 has 56 MA's), (11, 111), (12, 120), (17, 213), (23, 285), (25, 330), (26, 339), (27, 354),

Gene: Lutum_1 Start: 39, Stop: 371, Start Num: 9

Candidate Starts for Lutum_1:

(4, 9), (7, 15), (8, 27), (Start: 9 @39 has 56 MA's), (12, 117), (13, 141), (14, 144), (20, 234), (22, 264), (23, 282), (27, 351),

Gene: Malisha_1 Start: 39, Stop: 371, Start Num: 9

Candidate Starts for Malisha_1:

(4, 9), (7, 15), (Start: 9 @39 has 56 MA's), (12, 117), (16, 207), (20, 234), (22, 264), (23, 282), (24, 318), (27, 351),

Gene: Misha28_1 Start: 42, Stop: 374, Start Num: 9

Candidate Starts for Misha28_1:

(4, 9), (7, 15), (Start: 9 @42 has 56 MA's), (12, 120), (17, 213), (20, 237), (23, 285), (26, 339), (27, 354),

Gene: Mova_1 Start: 41, Stop: 373, Start Num: 9

Candidate Starts for Mova_1:

(5, 11), (Start: 9 @41 has 56 MA's), (12, 119), (17, 212), (20, 236), (23, 284), (26, 338), (27, 353),

Gene: Mozy_1 Start: 40, Stop: 372, Start Num: 9

Candidate Starts for Mozy_1:

(3, 7), (6, 13), (Start: 9 @40 has 56 MA's), (10, 85), (11, 109), (12, 118), (15, 199), (20, 235), (23, 283), (25, 328), (26, 337), (27, 352),

Gene: MulchExplorer_1 Start: 41, Stop: 373, Start Num: 9

Candidate Starts for MulchExplorer_1:

(5, 11), (Start: 9 @41 has 56 MA's), (12, 119), (17, 212), (23, 284), (25, 329), (26, 338), (27, 353),

Gene: ODay_1 Start: 39, Stop: 371, Start Num: 9

Candidate Starts for ODay_1:

(4, 9), (7, 15), (Start: 9 @39 has 56 MA's), (12, 117), (13, 141), (20, 234), (23, 282), (24, 318), (27, 351),

Gene: Ogopogo_2 Start: 299, Stop: 631, Start Num: 9

Candidate Starts for Ogopogo_2:

(Start: 9 @299 has 56 MA's), (12, 377), (20, 494), (22, 524), (23, 542), (25, 587), (27, 611),

Gene: Periwinkle_1 Start: 39, Stop: 371, Start Num: 9

Candidate Starts for Periwinkle_1:

(4, 9), (7, 15), (8, 27), (Start: 9 @39 has 56 MA's), (12, 117), (13, 141), (14, 144), (20, 234), (22, 264), (23, 282), (27, 351),

Gene: Phabuloso_1 Start: 39, Stop: 371, Start Num: 9

Candidate Starts for Phabuloso_1:

(4, 9), (7, 15), (Start: 9 @39 has 56 MA's), (12, 117), (13, 141), (20, 234), (23, 282), (24, 318), (27, 351),

Gene: Phistory_1 Start: 39, Stop: 371, Start Num: 9

Candidate Starts for Phistory_1:

(4, 9), (7, 15), (Start: 9 @39 has 56 MA's), (13, 141), (14, 144), (20, 234), (22, 264), (23, 282), (24, 318), (27, 351),

Gene: Piper2020_1 Start: 42, Stop: 374, Start Num: 9

Candidate Starts for Piper2020_1:

(4, 9), (7, 15), (Start: 9 @42 has 56 MA's), (12, 120), (17, 213), (20, 237), (23, 285), (26, 339), (27, 354),

Gene: Plumbus_1 Start: 41, Stop: 373, Start Num: 9

Candidate Starts for Plumbus_1:

(5, 11), (Start: 9 @41 has 56 MA's), (12, 119), (17, 212), (23, 284), (25, 329), (26, 338), (27, 353),

Gene: Quico_1 Start: 41, Stop: 373, Start Num: 9

Candidate Starts for Quico_1:

(5, 11), (Start: 9 @41 has 56 MA's), (10, 86), (11, 110), (12, 119), (15, 200), (20, 236), (23, 284), (25, 329), (26, 338), (27, 353),

Gene: Rialto_1 Start: 41, Stop: 373, Start Num: 9

Candidate Starts for Rialto_1:

(5, 11), (Start: 9 @41 has 56 MA's), (12, 119), (17, 212), (20, 236), (23, 284), (26, 338), (27, 353),

Gene: SilverChicken_1 Start: 38, Stop: 370, Start Num: 9

Candidate Starts for SilverChicken_1:

(5, 11), (Start: 9 @38 has 56 MA's), (12, 116), (14, 143), (20, 233), (22, 263), (23, 281), (25, 326), (27, 350),

Gene: Slim_1 Start: 41, Stop: 373, Start Num: 9

Candidate Starts for Slim_1:

(5, 11), (Start: 9 @41 has 56 MA's), (12, 119), (17, 212), (20, 236), (23, 284), (26, 338), (27, 353),

Gene: Soul22_1 Start: 38, Stop: 370, Start Num: 9

Candidate Starts for Soul22_1:

(5, 11), (Start: 9 @38 has 56 MA's), (12, 116), (14, 143), (20, 233), (22, 263), (23, 281), (25, 326), (27, 350),

Gene: Spooky_1 Start: 39, Stop: 371, Start Num: 9

Candidate Starts for Spooky_1:

(4, 9), (7, 15), (Start: 9 @39 has 56 MA's), (20, 234), (21, 249), (23, 282), (24, 318), (27, 351),

Gene: Squiddly_2 Start: 730, Stop: 1062, Start Num: 9

Candidate Starts for Squiddly_2:

(1, 601), (2, 613), (3, 697), (Start: 9 @730 has 56 MA's), (17, 901), (19, 919), (23, 973), (24, 1009), (27, 1042),

Gene: Squirty_1 Start: 40, Stop: 372, Start Num: 9

Candidate Starts for Squirty_1:

(3, 7), (6, 13), (Start: 9 @40 has 56 MA's), (11, 109), (12, 118), (17, 211), (22, 265), (23, 283), (25, 328), (26, 337), (27, 352),

Gene: Tchotchke_1 Start: 41, Stop: 373, Start Num: 9

Candidate Starts for Tchotchke_1:

(5, 11), (Start: 9 @41 has 56 MA's), (10, 86), (11, 110), (12, 119), (15, 200), (20, 236), (23, 284), (25, 329), (26, 338), (27, 353),

Gene: TootsiePop_1 Start: 42, Stop: 374, Start Num: 9

Candidate Starts for TootsiePop_1:

(4, 9), (7, 15), (Start: 9 @42 has 56 MA's), (12, 120), (17, 213), (20, 237), (23, 285), (26, 339), (27, 354),

Gene: Totinger_1 Start: 41, Stop: 373, Start Num: 9

Candidate Starts for Totinger_1:

(5, 11), (Start: 9 @41 has 56 MA's), (12, 119), (17, 212), (20, 236), (23, 284), (26, 338), (27, 353),

Gene: Whitney_1 Start: 39, Stop: 371, Start Num: 9

Candidate Starts for Whitney_1:

(4, 9), (7, 15), (8, 27), (Start: 9 @39 has 56 MA's), (12, 117), (13, 141), (14, 144), (20, 234), (22, 264), (23, 282), (24, 318), (27, 351),

Gene: Yoshi_1 Start: 38, Stop: 370, Start Num: 9

Candidate Starts for Yoshi_1:

(5, 11), (Start: 9 @38 has 56 MA's), (12, 116), (14, 143), (20, 233), (22, 263), (23, 281), (25, 326), (27, 350),

Gene: Zapner_2 Start: 562, Stop: 894, Start Num: 9

Candidate Starts for Zapner_2:

(3, 529), (Start: 9 @562 has 56 MA's), (20, 757), (22, 787), (23, 805), (25, 850), (27, 874),