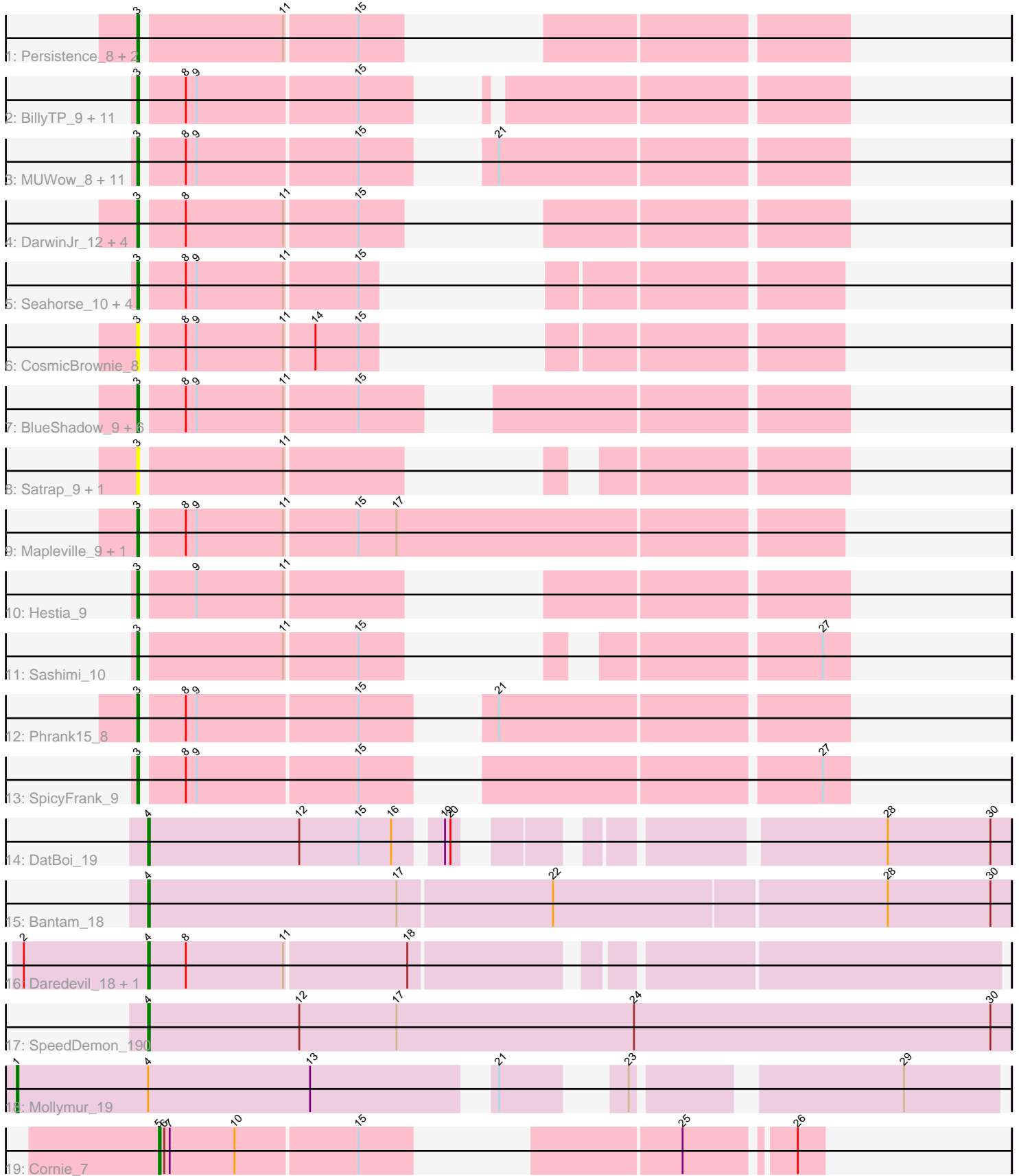


Pham 296593



Note: Tracks are now grouped by subcluster and scaled. Switching in subcluster is indicated by changes in track color. Track scale is now set by default to display the region 30 bp upstream of start 1 to 30 bp downstream of the last possible start. If this default region is judged to be packed too tightly with annotated starts, the track will be further scaled to only show that region of the ORF with annotated starts. This action will be indicated by adding "Zoomed" to the title. For starts, yellow indicates the location of called starts comprised solely of Glimmer/GeneMark auto-annotations, green indicates the location of called starts with at least 1 manual gene annotation.

Pham 296593 Report

This analysis was run 04/25/26 on database version 644.

Pham number 296593 has 60 members, 19 are drafts.

Phages represented in each track:

- Track 1 : Persistence_8, Ding_9, JakeTheSnake_9
- Track 2 : BillyTP_9, Auxilium_9, Bhageatrice_11, Faja_9, EvePickles_9, JellyBread_9, AdaS_9, Raphaella_9, NewKitty_10, Windest_10, Sporco_10, CookieBear_9
- Track 3 : MUWow_8, BasketStar_9, YoungHarleezy_9, Gorpy_9, BenchScraper_9, Vopal_10, Lasker_9, MaterMagnus_9, Aikyam_9, Sakai_9, SonDevVon_8, Richie_9
- Track 4 : DarwinJr_12, Crescenzo_9, MurphyJoseph_9, Anekin_8, GumGum_9
- Track 5 : Seahorse_10, Isolde_10, Nyilah_8, Tiff81_10, Kabloowy_9
- Track 6 : CosmicBrownie_8
- Track 7 : BlueShadow_9, LeBruni_9, Globfish_9, MidnightRain_9, RadFad_9, ThayneTheZag_9, Hillester_9
- Track 8 : Satrap_9, Shukran_9
- Track 9 : Mapleville_9, Lawnathon_9
- Track 10 : Hestia_9
- Track 11 : Sashimi_10
- Track 12 : Phrank15_8
- Track 13 : SpicyFrank_9
- Track 14 : DatBoi_19
- Track 15 : Bantam_18
- Track 16 : Daredevil_18, Towmatter_17
- Track 17 : SpeedDemon_190
- Track 18 : Mollymur_19
- Track 19 : Cornie_7

Summary of Final Annotations (See graph section above for start numbers):

The start number called the most often in the published annotations is 3, it was called in 34 of the 41 non-draft genes in the pham.

Genes that call this "Most Annotated" start:

- AdaS_9, Aikyam_9, Anekin_8, Auxilium_9, BasketStar_9, BenchScraper_9, Bhageatrice_11, BillyTP_9, BlueShadow_9, CookieBear_9, CosmicBrownie_8, Crescenzo_9, DarwinJr_12, Ding_9, EvePickles_9, Faja_9, Globfish_9, Gorpy_9, GumGum_9, Hestia_9, Hillester_9, Isolde_10, JakeTheSnake_9, JellyBread_9,

Kabloowy_9, Lasker_9, Lawnathon_9, LeBruni_9, MUWow_8, Mapleville_9, MaterMagnus_9, MidnightRain_9, MurphyJoseph_9, NewKitty_10, Nyilah_8, Persistence_8, Phrank15_8, RadFad_9, Raphaella_9, Richie_9, Sakai_9, Sashimi_10, Satrap_9, Seahorse_10, Shukran_9, SonDevVon_8, SpicyFrank_9, Sporco_10, ThayneTheZag_9, Tiff81_10, Vopal_10, Windest_10, YoungHarleezy_9,

Genes that have the "Most Annotated" start but do not call it:

-

Genes that do not have the "Most Annotated" start:

- Bantam_18, Cornie_7, Daredevil_18, DatBoi_19, Mollymur_19, SpeedDemon_190, Towmatter_17,

Summary by start number:

Start 1:

- Found in 1 of 60 (1.7%) of genes in pham
- Manual Annotations of this start: 1 of 41
- Called 100.0% of time when present
- Phage (with cluster) where this start called: Mollymur_19 (DL),

Start 3:

- Found in 53 of 60 (88.3%) of genes in pham
- Manual Annotations of this start: 34 of 41
- Called 100.0% of time when present
- Phage (with cluster) where this start called: AdaS_9 (AY), Aikyam_9 (AY), Anekin_8 (AY), Auxilium_9 (AY), BasketStar_9 (AY), BenchScraper_9 (AY), Bhageatrice_11 (AY), BillyTP_9 (AY), BlueShadow_9 (AY), CookieBear_9 (AY), CosmicBrownie_8 (AY), Crescenzo_9 (AY), DarwinJr_12 (AY), Ding_9 (AY), EvePickles_9 (AY), Faja_9 (AY), Globfish_9 (AY), Gorpy_9 (AY), GumGum_9 (AY), Hestia_9 (AY), Hillester_9 (AY), Isolde_10 (AY), JakeTheSnake_9 (AY), JellyBread_9 (AY), Kabloowy_9 (AY), Lasker_9 (AY), Lawnathon_9 (AY), LeBruni_9 (AY), MUWow_8 (AY), Mapleville_9 (AY), MaterMagnus_9 (AY), MidnightRain_9 (AY), MurphyJoseph_9 (AY), NewKitty_10 (AY), Nyilah_8 (AY), Persistence_8 (AY), Phrank15_8 (AY), RadFad_9 (AY), Raphaella_9 (AY), Richie_9 (AY), Sakai_9 (AY), Sashimi_10 (AY), Satrap_9 (AY), Seahorse_10 (AY), Shukran_9 (AY), SonDevVon_8 (AY), SpicyFrank_9 (AY), Sporco_10 (AY), ThayneTheZag_9 (AY), Tiff81_10 (AY), Vopal_10 (AY), Windest_10 (AY), YoungHarleezy_9 (AY),

Start 4:

- Found in 6 of 60 (10.0%) of genes in pham
- Manual Annotations of this start: 5 of 41
- Called 83.3% of time when present
- Phage (with cluster) where this start called: Bantam_18 (DL), Daredevil_18 (DL), DatBoi_19 (DL), SpeedDemon_190 (DL), Towmatter_17 (DL),

Start 5:

- Found in 1 of 60 (1.7%) of genes in pham
- Manual Annotations of this start: 1 of 41
- Called 100.0% of time when present
- Phage (with cluster) where this start called: Cornie_7 (F5),

Summary by clusters:

There are 3 clusters represented in this pham: AY, DL, F5,

Info for manual annotations of cluster AY:

- Start number 3 was manually annotated 34 times for cluster AY.

Info for manual annotations of cluster DL:

- Start number 1 was manually annotated 1 time for cluster DL.
- Start number 4 was manually annotated 5 times for cluster DL.

Info for manual annotations of cluster F5:

- Start number 5 was manually annotated 1 time for cluster F5.

Gene Information:

Gene: AdaS_9 Start: 6955, Stop: 7278, Start Num: 3

Candidate Starts for AdaS_9:

(Start: 3 @6955 has 34 MA's), (8, 6976), (9, 6982), (15, 7069),

Gene: Aikyam_9 Start: 6941, Stop: 7279, Start Num: 3

Candidate Starts for Aikyam_9:

(Start: 3 @6941 has 34 MA's), (8, 6962), (9, 6968), (15, 7055), (21, 7094),

Gene: Anekin_8 Start: 7092, Stop: 7391, Start Num: 3

Candidate Starts for Anekin_8:

(Start: 3 @7092 has 34 MA's), (8, 7113), (11, 7167), (15, 7206),

Gene: Auxilium_9 Start: 6955, Stop: 7278, Start Num: 3

Candidate Starts for Auxilium_9:

(Start: 3 @6955 has 34 MA's), (8, 6976), (9, 6982), (15, 7069),

Gene: Bantam_18 Start: 12759, Stop: 13229, Start Num: 4

Candidate Starts for Bantam_18:

(Start: 4 @12759 has 5 MA's), (17, 12897), (22, 12981), (28, 13161), (30, 13218),

Gene: BasketStar_9 Start: 6994, Stop: 7332, Start Num: 3

Candidate Starts for BasketStar_9:

(Start: 3 @6994 has 34 MA's), (8, 7015), (9, 7021), (15, 7108), (21, 7147),

Gene: BenchScraper_9 Start: 6955, Stop: 7293, Start Num: 3

Candidate Starts for BenchScraper_9:

(Start: 3 @6955 has 34 MA's), (8, 6976), (9, 6982), (15, 7069), (21, 7108),

Gene: Bhageatrice_11 Start: 8150, Stop: 8488, Start Num: 3

Candidate Starts for Bhageatrice_11:

(Start: 3 @8150 has 34 MA's), (8, 8171), (9, 8177), (15, 8264),

Gene: BillyTP_9 Start: 6949, Stop: 7278, Start Num: 3

Candidate Starts for BillyTP_9:

(Start: 3 @6949 has 34 MA's), (8, 6970), (9, 6976), (15, 7063),

Gene: BlueShadow_9 Start: 6939, Stop: 7277, Start Num: 3
Candidate Starts for BlueShadow_9:
(Start: 3 @6939 has 34 MA's), (8, 6960), (9, 6966), (11, 7014), (15, 7053),

Gene: CookieBear_9 Start: 6955, Stop: 7278, Start Num: 3
Candidate Starts for CookieBear_9:
(Start: 3 @6955 has 34 MA's), (8, 6976), (9, 6982), (15, 7069),

Gene: Cornie_7 Start: 5933, Stop: 6220, Start Num: 5
Candidate Starts for Cornie_7:
(Start: 5 @5933 has 1 MA's), (6, 5936), (7, 5939), (10, 5975), (15, 6041), (25, 6152), (26, 6206),

Gene: CosmicBrownie_8 Start: 7070, Stop: 7348, Start Num: 3
Candidate Starts for CosmicBrownie_8:
(Start: 3 @7070 has 34 MA's), (8, 7091), (9, 7097), (11, 7145), (14, 7160), (15, 7184),

Gene: Crescenzo_9 Start: 7020, Stop: 7319, Start Num: 3
Candidate Starts for Crescenzo_9:
(Start: 3 @7020 has 34 MA's), (8, 7041), (11, 7095), (15, 7134),

Gene: Daredevil_18 Start: 11636, Stop: 12079, Start Num: 4
Candidate Starts for Daredevil_18:
(2, 11567), (Start: 4 @11636 has 5 MA's), (8, 11657), (11, 11711), (18, 11777),

Gene: DarwinJr_12 Start: 8323, Stop: 8622, Start Num: 3
Candidate Starts for DarwinJr_12:
(Start: 3 @8323 has 34 MA's), (8, 8344), (11, 8398), (15, 8437),

Gene: DatBoi_19 Start: 13601, Stop: 14020, Start Num: 4
Candidate Starts for DatBoi_19:
(Start: 4 @13601 has 5 MA's), (12, 13685), (15, 13718), (16, 13736), (19, 13757), (20, 13760), (28, 13952), (30, 14009),

Gene: Ding_9 Start: 6965, Stop: 7249, Start Num: 3
Candidate Starts for Ding_9:
(Start: 3 @6965 has 34 MA's), (11, 7040), (15, 7079),

Gene: EvePickles_9 Start: 6997, Stop: 7335, Start Num: 3
Candidate Starts for EvePickles_9:
(Start: 3 @6997 has 34 MA's), (8, 7018), (9, 7024), (15, 7111),

Gene: Faja_9 Start: 6941, Stop: 7279, Start Num: 3
Candidate Starts for Faja_9:
(Start: 3 @6941 has 34 MA's), (8, 6962), (9, 6968), (15, 7055),

Gene: Globfish_9 Start: 6999, Stop: 7322, Start Num: 3
Candidate Starts for Globfish_9:
(Start: 3 @6999 has 34 MA's), (8, 7020), (9, 7026), (11, 7074), (15, 7113),

Gene: Gorpy_9 Start: 6949, Stop: 7287, Start Num: 3
Candidate Starts for Gorpy_9:
(Start: 3 @6949 has 34 MA's), (8, 6970), (9, 6976), (15, 7063), (21, 7102),

Gene: GumGum_9 Start: 7024, Stop: 7323, Start Num: 3
Candidate Starts for GumGum_9:
(Start: 3 @7024 has 34 MA's), (8, 7045), (11, 7099), (15, 7138),

Gene: Hestia_9 Start: 7089, Stop: 7388, Start Num: 3
Candidate Starts for Hestia_9:
(Start: 3 @7089 has 34 MA's), (9, 7116), (11, 7164),

Gene: Hillester_9 Start: 6939, Stop: 7277, Start Num: 3
Candidate Starts for Hillester_9:
(Start: 3 @6939 has 34 MA's), (8, 6960), (9, 6966), (11, 7014), (15, 7053),

Gene: Isolde_10 Start: 7012, Stop: 7350, Start Num: 3
Candidate Starts for Isolde_10:
(Start: 3 @7012 has 34 MA's), (8, 7033), (9, 7039), (11, 7087), (15, 7126),

Gene: JakeTheSnake_9 Start: 6979, Stop: 7278, Start Num: 3
Candidate Starts for JakeTheSnake_9:
(Start: 3 @6979 has 34 MA's), (11, 7054), (15, 7093),

Gene: JellyBread_9 Start: 6948, Stop: 7271, Start Num: 3
Candidate Starts for JellyBread_9:
(Start: 3 @6948 has 34 MA's), (8, 6969), (9, 6975), (15, 7062),

Gene: Kabloowy_9 Start: 7022, Stop: 7366, Start Num: 3
Candidate Starts for Kabloowy_9:
(Start: 3 @7022 has 34 MA's), (8, 7043), (9, 7049), (11, 7097), (15, 7136),

Gene: Lasker_9 Start: 6948, Stop: 7286, Start Num: 3
Candidate Starts for Lasker_9:
(Start: 3 @6948 has 34 MA's), (8, 6969), (9, 6975), (15, 7062), (21, 7101),

Gene: Lawnathon_9 Start: 7023, Stop: 7397, Start Num: 3
Candidate Starts for Lawnathon_9:
(Start: 3 @7023 has 34 MA's), (8, 7044), (9, 7050), (11, 7098), (15, 7137), (17, 7158),

Gene: LeBruni_9 Start: 6994, Stop: 7302, Start Num: 3
Candidate Starts for LeBruni_9:
(Start: 3 @6994 has 34 MA's), (8, 7015), (9, 7021), (11, 7069), (15, 7108),

Gene: MUWow_8 Start: 7027, Stop: 7365, Start Num: 3
Candidate Starts for MUWow_8:
(Start: 3 @7027 has 34 MA's), (8, 7048), (9, 7054), (15, 7141), (21, 7180),

Gene: Mapleville_9 Start: 7093, Stop: 7467, Start Num: 3
Candidate Starts for Mapleville_9:
(Start: 3 @7093 has 34 MA's), (8, 7114), (9, 7120), (11, 7168), (15, 7207), (17, 7228),

Gene: MaterMagnus_9 Start: 6941, Stop: 7279, Start Num: 3
Candidate Starts for MaterMagnus_9:
(Start: 3 @6941 has 34 MA's), (8, 6962), (9, 6968), (15, 7055), (21, 7094),

Gene: MidnightRain_9 Start: 6939, Stop: 7277, Start Num: 3

Candidate Starts for MidnightRain_9:
(Start: 3 @6939 has 34 MA's), (8, 6960), (9, 6966), (11, 7014), (15, 7053),

Gene: Mollymur_19 Start: 13604, Stop: 14080, Start Num: 1
Candidate Starts for Mollymur_19:
(Start: 1 @13604 has 1 MA's), (Start: 4 @13676 has 5 MA's), (13, 13766), (21, 13853), (23, 13898),
(29, 14030),

Gene: MurphyJoseph_9 Start: 6950, Stop: 7249, Start Num: 3
Candidate Starts for MurphyJoseph_9:
(Start: 3 @6950 has 34 MA's), (8, 6971), (11, 7025), (15, 7064),

Gene: NewKitty_10 Start: 7170, Stop: 7508, Start Num: 3
Candidate Starts for NewKitty_10:
(Start: 3 @7170 has 34 MA's), (8, 7191), (9, 7197), (15, 7284),

Gene: Nyilah_8 Start: 7024, Stop: 7368, Start Num: 3
Candidate Starts for Nyilah_8:
(Start: 3 @7024 has 34 MA's), (8, 7045), (9, 7051), (11, 7099), (15, 7138),

Gene: Persistence_8 Start: 7047, Stop: 7346, Start Num: 3
Candidate Starts for Persistence_8:
(Start: 3 @7047 has 34 MA's), (11, 7122), (15, 7161),

Gene: Phrank15_8 Start: 7093, Stop: 7431, Start Num: 3
Candidate Starts for Phrank15_8:
(Start: 3 @7093 has 34 MA's), (8, 7114), (9, 7120), (15, 7207), (21, 7246),

Gene: RadFad_9 Start: 6939, Stop: 7277, Start Num: 3
Candidate Starts for RadFad_9:
(Start: 3 @6939 has 34 MA's), (8, 6960), (9, 6966), (11, 7014), (15, 7053),

Gene: Raphaella_9 Start: 6955, Stop: 7278, Start Num: 3
Candidate Starts for Raphaella_9:
(Start: 3 @6955 has 34 MA's), (8, 6976), (9, 6982), (15, 7069),

Gene: Richie_9 Start: 6955, Stop: 7293, Start Num: 3
Candidate Starts for Richie_9:
(Start: 3 @6955 has 34 MA's), (8, 6976), (9, 6982), (15, 7069), (21, 7108),

Gene: Sakai_9 Start: 6949, Stop: 7287, Start Num: 3
Candidate Starts for Sakai_9:
(Start: 3 @6949 has 34 MA's), (8, 6970), (9, 6976), (15, 7063), (21, 7102),

Gene: Sashimi_10 Start: 7112, Stop: 7393, Start Num: 3
Candidate Starts for Sashimi_10:
(Start: 3 @7112 has 34 MA's), (11, 7187), (15, 7226), (27, 7379),

Gene: Satrap_9 Start: 6950, Stop: 7231, Start Num: 3
Candidate Starts for Satrap_9:
(Start: 3 @6950 has 34 MA's), (11, 7025),

Gene: Seahorse_10 Start: 7220, Stop: 7498, Start Num: 3

Candidate Starts for Seahorse_10:

(Start: 3 @7220 has 34 MA's), (8, 7241), (9, 7247), (11, 7295), (15, 7334),

Gene: Shukran_9 Start: 6950, Stop: 7231, Start Num: 3

Candidate Starts for Shukran_9:

(Start: 3 @6950 has 34 MA's), (11, 7025),

Gene: SonDevVon_8 Start: 6942, Stop: 7280, Start Num: 3

Candidate Starts for SonDevVon_8:

(Start: 3 @6942 has 34 MA's), (8, 6963), (9, 6969), (15, 7056), (21, 7095),

Gene: SpeedDemon_190 Start: 13066, Stop: 13545, Start Num: 4

Candidate Starts for SpeedDemon_190:

(Start: 4 @13066 has 5 MA's), (12, 13150), (17, 13204), (24, 13336), (30, 13534),

Gene: SpicyFrank_9 Start: 7003, Stop: 7341, Start Num: 3

Candidate Starts for SpicyFrank_9:

(Start: 3 @7003 has 34 MA's), (8, 7024), (9, 7030), (15, 7117), (27, 7327),

Gene: Sporco_10 Start: 7000, Stop: 7329, Start Num: 3

Candidate Starts for Sporco_10:

(Start: 3 @7000 has 34 MA's), (8, 7021), (9, 7027), (15, 7114),

Gene: ThayneTheZag_9 Start: 6976, Stop: 7314, Start Num: 3

Candidate Starts for ThayneTheZag_9:

(Start: 3 @6976 has 34 MA's), (8, 6997), (9, 7003), (11, 7051), (15, 7090),

Gene: Tiff81_10 Start: 7112, Stop: 7456, Start Num: 3

Candidate Starts for Tiff81_10:

(Start: 3 @7112 has 34 MA's), (8, 7133), (9, 7139), (11, 7187), (15, 7226),

Gene: Towmatter_17 Start: 11458, Stop: 11901, Start Num: 4

Candidate Starts for Towmatter_17:

(2, 11389), (Start: 4 @11458 has 5 MA's), (8, 11479), (11, 11533), (18, 11599),

Gene: Vopal_10 Start: 7012, Stop: 7350, Start Num: 3

Candidate Starts for Vopal_10:

(Start: 3 @7012 has 34 MA's), (8, 7033), (9, 7039), (15, 7126), (21, 7165),

Gene: Windest_10 Start: 7012, Stop: 7335, Start Num: 3

Candidate Starts for Windest_10:

(Start: 3 @7012 has 34 MA's), (8, 7033), (9, 7039), (15, 7126),

Gene: YoungHarleezy_9 Start: 6953, Stop: 7291, Start Num: 3

Candidate Starts for YoungHarleezy_9:

(Start: 3 @6953 has 34 MA's), (8, 6974), (9, 6980), (15, 7067), (21, 7106),