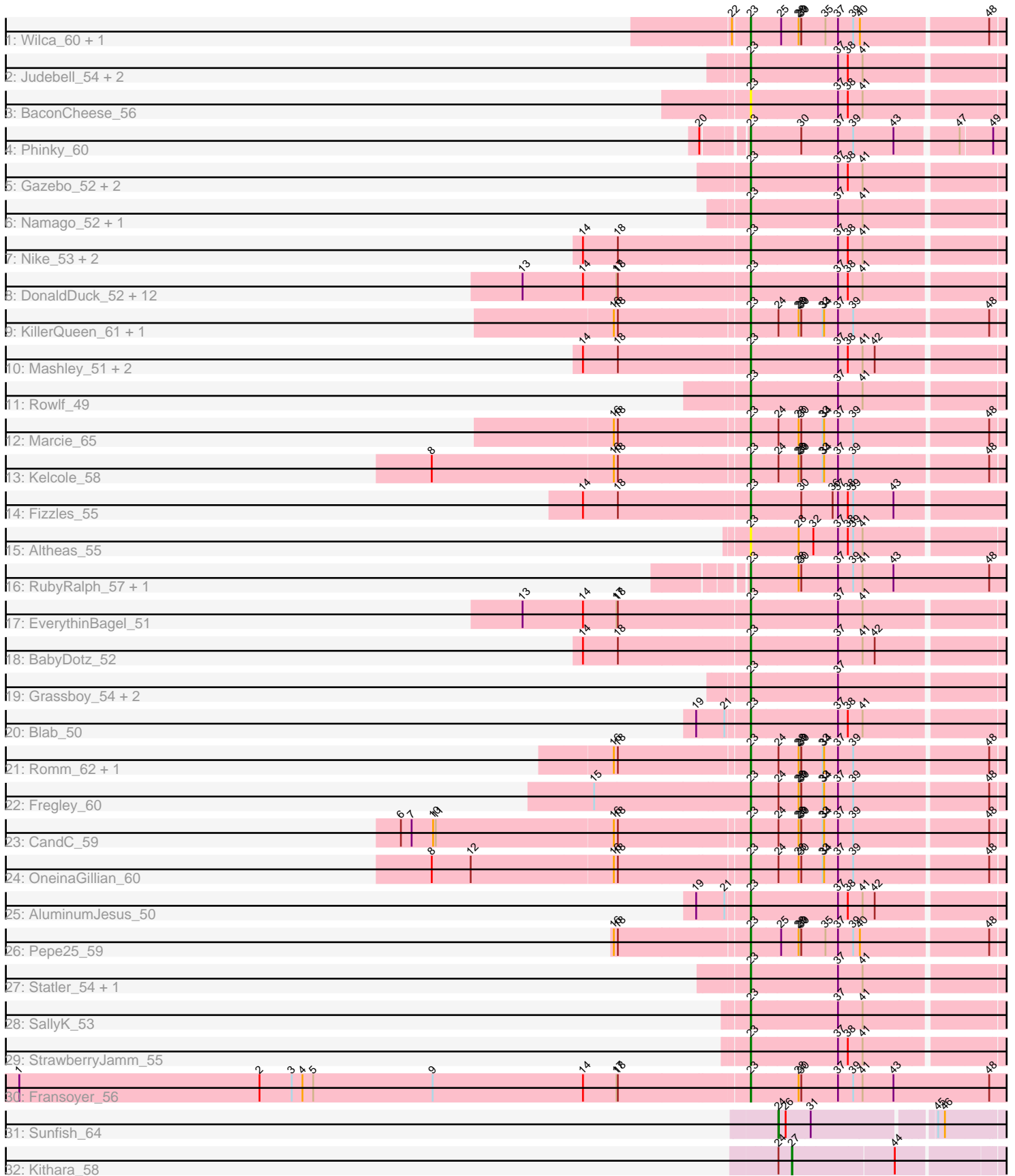


Pham 296595



Note: Tracks are now grouped by subcluster and scaled. Switching in subcluster is indicated by changes in track color. Track scale is now set by default to display the region 30 bp upstream of start 1 to 30 bp downstream of the last possible start. If this default region is judged to be packed too tightly with annotated starts, the track will be further scaled to only show that region of the ORF with annotated starts. This action will be indicated by adding "Zoomed" to the title. For starts, yellow indicates the location of called starts comprised solely of Glimmer/GeneMark auto-annotations, green indicates the location of called starts with at least 1 manual gene annotation.

Pham 296595 Report

This analysis was run 04/25/26 on database version 644.

Pham number 296595 has 60 members, 8 are drafts.

Phages represented in each track:

- Track 1 : Wilca_60, BirdInFrench_60
- Track 2 : Judebell_54, Mentos_56, WheelerS25_58
- Track 3 : BaconCheese_56
- Track 4 : Phinky_60
- Track 5 : Gazebo_52, MorillMayhem_53, Mila11_55
- Track 6 : Namago_52, Kyva_54
- Track 7 : Nike_53, SlySloth_55, Squash_55
- Track 8 : DonaldDuck_52, Quammi_50, Viceroy_51, Wheelie_52, Casend_53, Wayne3_54, Jehoshaphat_54, Llemily_52, Teehee_53, Zhafia_55, Sillytadpoles_53, Rudy_50, Phabia_52
- Track 9 : KillerQueen_61, Tempo_60
- Track 10 : Mashley_51, Hyperion_52, Lonelysoil_51
- Track 11 : Rowlf_49
- Track 12 : Marcie_65
- Track 13 : Kelcole_58
- Track 14 : Fizzles_55
- Track 15 : Altheas_55
- Track 16 : RubyRalph_57, SadLad_58
- Track 17 : EverythinBagel_51
- Track 18 : BabyDotz_52
- Track 19 : Grassboy_54, Tissue_53, Zagie_52
- Track 20 : Blab_50
- Track 21 : Romm_62, RobinRose_62
- Track 22 : Fregley_60
- Track 23 : CandC_59
- Track 24 : OneinaGillian_60
- Track 25 : AluminumJesus_50
- Track 26 : Pepe25_59
- Track 27 : Statler_54, FrankDeliGuy_49
- Track 28 : SallyK_53
- Track 29 : StrawberryJamm_55
- Track 30 : Fransoyer_56
- Track 31 : Sunfish_64
- Track 32 : Kithara_58

Summary of Final Annotations (See graph section above for start numbers):

The start number called the most often in the published annotations is 23, it was called in 50 of the 52 non-draft genes in the pham.

Genes that call this "Most Annotated" start:

- Altheas_55, AluminumJesus_50, BabyDotz_52, BaconCheese_56, BirdInFrench_60, Blab_50, CandC_59, Casend_53, DonaldDuck_52, EverythinBagel_51, Fizzles_55, FrankDeliGuy_49, Fransoyer_56, Fregley_60, Gazebo_52, Grassboy_54, Hyperion_52, Jehoshaphat_54, Judebell_54, Kelcole_58, KillerQueen_61, Kyva_54, Llemily_52, Lonelysoil_51, Marcie_65, Mashley_51, Mentos_56, Mila11_55, MorillMayhem_53, Namago_52, Nike_53, OneinaGillian_60, Pepe25_59, Phabia_52, Phinky_60, Quammi_50, RobinRose_62, Romm_62, Rowlf_49, RubyRalph_57, Rudy_50, SadLad_58, SallyK_53, Sillytadpoles_53, SlySloth_55, Squash_55, Statler_54, StrawberryJamm_55, Teehee_53, Tempo_60, Tissue_53, Viceroy_51, Wayne3_54, WheelerS25_58, Wheelie_52, Wilca_60, Zagie_52, Zhafia_55,

Genes that have the "Most Annotated" start but do not call it:

-

Genes that do not have the "Most Annotated" start:

- Kithara_58, Sunfish_64,

Summary by start number:

Start 23:

- Found in 58 of 60 (96.7%) of genes in pham
- Manual Annotations of this start: 50 of 52
- Called 100.0% of time when present
- Phage (with cluster) where this start called: Altheas_55 (EG), AluminumJesus_50 (EG), BabyDotz_52 (EG), BaconCheese_56 (EG), BirdInFrench_60 (EG), Blab_50 (EG), CandC_59 (EG), Casend_53 (EG), DonaldDuck_52 (EG), EverythinBagel_51 (EG), Fizzles_55 (EG), FrankDeliGuy_49 (EG), Fransoyer_56 (EG), Fregley_60 (EG), Gazebo_52 (EG), Grassboy_54 (EG), Hyperion_52 (EG), Jehoshaphat_54 (EG), Judebell_54 (EG), Kelcole_58 (EG), KillerQueen_61 (EG), Kyva_54 (EG), Llemily_52 (EG), Lonelysoil_51 (EG), Marcie_65 (EG), Mashley_51 (EG), Mentos_56 (EG), Mila11_55 (EG), MorillMayhem_53 (EG), Namago_52 (EG), Nike_53 (EG), OneinaGillian_60 (EG), Pepe25_59 (EG), Phabia_52 (EG), Phinky_60 (EG), Quammi_50 (EG), RobinRose_62 (EG), Romm_62 (EG), Rowlf_49 (EG), RubyRalph_57 (EG), Rudy_50 (EG), SadLad_58 (EG), SallyK_53 (EG), Sillytadpoles_53 (EG), SlySloth_55 (EG), Squash_55 (EG), Statler_54 (EG), StrawberryJamm_55 (EG), Teehee_53 (EG), Tempo_60 (EG), Tissue_53 (EG), Viceroy_51 (EG), Wayne3_54 (EG), WheelerS25_58 (EG), Wheelie_52 (EG), Wilca_60 (EG), Zagie_52 (EG), Zhafia_55 (EG),

Start 24:

- Found in 11 of 60 (18.3%) of genes in pham
- Manual Annotations of this start: 1 of 52
- Called 9.1% of time when present
- Phage (with cluster) where this start called: Sunfish_64 (singleton),

Start 27:

- Found in 1 of 60 (1.7%) of genes in pham
- Manual Annotations of this start: 1 of 52
- Called 100.0% of time when present
- Phage (with cluster) where this start called: Kithara_58 (singleton),

Summary by clusters:

There are 2 clusters represented in this pham: EG, singleton,

Info for manual annotations of cluster EG:

- Start number 23 was manually annotated 50 times for cluster EG.

Gene Information:

Gene: Altheas_55 Start: 41582, Stop: 41049, Start Num: 23

Candidate Starts for Altheas_55:

(Start: 23 @41582 has 50 MA's), (28, 41477), (32, 41444), (37, 41390), (38, 41372), (39, 41360), (41, 41339),

Gene: AluminumJesus_50 Start: 40557, Stop: 40024, Start Num: 23

Candidate Starts for AluminumJesus_50:

(19, 40662), (21, 40602), (Start: 23 @40557 has 50 MA's), (37, 40365), (38, 40347), (41, 40314), (42, 40287),

Gene: BabyDotz_52 Start: 41571, Stop: 41038, Start Num: 23

Candidate Starts for BabyDotz_52:

(14, 41922), (18, 41844), (Start: 23 @41571 has 50 MA's), (37, 41379), (41, 41328), (42, 41301),

Gene: BaconCheese_56 Start: 42464, Stop: 41931, Start Num: 23

Candidate Starts for BaconCheese_56:

(Start: 23 @42464 has 50 MA's), (37, 42272), (38, 42254), (41, 42221),

Gene: BirdInFrench_60 Start: 41682, Stop: 41146, Start Num: 23

Candidate Starts for BirdInFrench_60:

(22, 41715), (Start: 23 @41682 has 50 MA's), (25, 41616), (28, 41577), (29, 41574), (30, 41571), (35, 41517), (37, 41490), (39, 41457), (40, 41442), (48, 41175),

Gene: Blab_50 Start: 40404, Stop: 39871, Start Num: 23

Candidate Starts for Blab_50:

(19, 40509), (21, 40449), (Start: 23 @40404 has 50 MA's), (37, 40212), (38, 40194), (41, 40161),

Gene: CandC_59 Start: 41331, Stop: 40795, Start Num: 23

Candidate Starts for CandC_59:

(6, 42081), (7, 42057), (10, 42009), (11, 42003), (16, 41613), (18, 41607), (Start: 23 @41331 has 50 MA's), (Start: 24 @41271 has 1 MA's), (28, 41226), (29, 41223), (30, 41220), (33, 41172), (34, 41169), (37, 41139), (39, 41106), (48, 40824),

Gene: Casend_53 Start: 41375, Stop: 40842, Start Num: 23

Candidate Starts for Casend_53:

(13, 41864), (14, 41729), (17, 41654), (18, 41651), (Start: 23 @41375 has 50 MA's), (37, 41183), (38, 41165), (41, 41132),

Gene: DonaldDuck_52 Start: 40724, Stop: 40191, Start Num: 23

Candidate Starts for DonaldDuck_52:

(13, 41213), (14, 41078), (17, 41003), (18, 41000), (Start: 23 @40724 has 50 MA's), (37, 40532), (38, 40514), (41, 40481),

Gene: EverythinBagel_51 Start: 41085, Stop: 40552, Start Num: 23

Candidate Starts for EverythinBagel_51:

(13, 41574), (14, 41439), (17, 41364), (18, 41361), (Start: 23 @41085 has 50 MA's), (37, 40893), (41, 40842),

Gene: Fizzles_55 Start: 41709, Stop: 41167, Start Num: 23

Candidate Starts for Fizzles_55:

(14, 42063), (18, 41985), (Start: 23 @41709 has 50 MA's), (30, 41598), (36, 41529), (37, 41517), (38, 41499), (39, 41487), (43, 41400),

Gene: FrankDeliGuy_49 Start: 40705, Stop: 40172, Start Num: 23

Candidate Starts for FrankDeliGuy_49:

(Start: 23 @40705 has 50 MA's), (37, 40513), (41, 40462),

Gene: Fransoyer_56 Start: 43297, Stop: 42740, Start Num: 23

Candidate Starts for Fransoyer_56:

(1, 44917), (2, 44380), (3, 44308), (4, 44284), (5, 44260), (9, 43993), (14, 43657), (17, 43582), (18, 43579), (Start: 23 @43297 has 50 MA's), (28, 43192), (30, 43186), (37, 43105), (39, 43075), (41, 43054), (43, 42988), (48, 42778),

Gene: Fregley_60 Start: 41596, Stop: 41060, Start Num: 23

Candidate Starts for Fregley_60:

(15, 41938), (Start: 23 @41596 has 50 MA's), (Start: 24 @41536 has 1 MA's), (28, 41491), (29, 41488), (30, 41485), (33, 41437), (34, 41434), (37, 41404), (39, 41371), (48, 41089),

Gene: Gazebo_52 Start: 41255, Stop: 40722, Start Num: 23

Candidate Starts for Gazebo_52:

(Start: 23 @41255 has 50 MA's), (37, 41063), (38, 41045), (41, 41012),

Gene: Grassboy_54 Start: 41195, Stop: 40662, Start Num: 23

Candidate Starts for Grassboy_54:

(Start: 23 @41195 has 50 MA's), (37, 41003),

Gene: Hyperion_52 Start: 41032, Stop: 40499, Start Num: 23

Candidate Starts for Hyperion_52:

(14, 41383), (18, 41305), (Start: 23 @41032 has 50 MA's), (37, 40840), (38, 40822), (41, 40789), (42, 40762),

Gene: Jehoshaphat_54 Start: 41643, Stop: 41110, Start Num: 23

Candidate Starts for Jehoshaphat_54:

(13, 42132), (14, 41997), (17, 41922), (18, 41919), (Start: 23 @41643 has 50 MA's), (37, 41451), (38, 41433), (41, 41400),

Gene: Judebell_54 Start: 41095, Stop: 40562, Start Num: 23

Candidate Starts for Judebell_54:

(Start: 23 @41095 has 50 MA's), (37, 40903), (38, 40885), (41, 40852),

Gene: Kelcole_58 Start: 41559, Stop: 41023, Start Num: 23

Candidate Starts for Kelcole_58:

(8, 42240), (16, 41841), (18, 41835), (Start: 23 @41559 has 50 MA's), (Start: 24 @41499 has 1 MA's), (28, 41454), (29, 41451), (30, 41448), (33, 41400), (34, 41397), (37, 41367), (39, 41334), (48, 41052),

Gene: KillerQueen_61 Start: 41809, Stop: 41273, Start Num: 23

Candidate Starts for KillerQueen_61:

(16, 42091), (18, 42085), (Start: 23 @41809 has 50 MA's), (Start: 24 @41749 has 1 MA's), (28, 41704), (29, 41701), (30, 41698), (33, 41650), (34, 41647), (37, 41617), (39, 41584), (48, 41302),

Gene: Kithara_58 Start: 44459, Stop: 44022, Start Num: 27

Candidate Starts for Kithara_58:

(Start: 24 @44489 has 1 MA's), (Start: 27 @44459 has 1 MA's), (44, 44243),

Gene: Kyva_54 Start: 41252, Stop: 40719, Start Num: 23

Candidate Starts for Kyva_54:

(Start: 23 @41252 has 50 MA's), (37, 41060), (41, 41009),

Gene: Llemily_52 Start: 40419, Stop: 39886, Start Num: 23

Candidate Starts for Llemily_52:

(13, 40908), (14, 40773), (17, 40698), (18, 40695), (Start: 23 @40419 has 50 MA's), (37, 40227), (38, 40209), (41, 40176),

Gene: Lonelysoil_51 Start: 40628, Stop: 40095, Start Num: 23

Candidate Starts for Lonelysoil_51:

(14, 40979), (18, 40901), (Start: 23 @40628 has 50 MA's), (37, 40436), (38, 40418), (41, 40385), (42, 40358),

Gene: Marcie_65 Start: 42458, Stop: 41922, Start Num: 23

Candidate Starts for Marcie_65:

(16, 42740), (18, 42734), (Start: 23 @42458 has 50 MA's), (Start: 24 @42398 has 1 MA's), (28, 42353), (30, 42347), (33, 42299), (34, 42296), (37, 42266), (39, 42233), (48, 41951),

Gene: Mashley_51 Start: 40811, Stop: 40278, Start Num: 23

Candidate Starts for Mashley_51:

(14, 41162), (18, 41084), (Start: 23 @40811 has 50 MA's), (37, 40619), (38, 40601), (41, 40568), (42, 40541),

Gene: Mentos_56 Start: 42003, Stop: 41470, Start Num: 23

Candidate Starts for Mentos_56:

(Start: 23 @42003 has 50 MA's), (37, 41811), (38, 41793), (41, 41760),

Gene: Mila11_55 Start: 42279, Stop: 41746, Start Num: 23

Candidate Starts for Mila11_55:

(Start: 23 @42279 has 50 MA's), (37, 42087), (38, 42069), (41, 42036),

Gene: MorillMayhem_53 Start: 41156, Stop: 40623, Start Num: 23

Candidate Starts for MorillMayhem_53:

(Start: 23 @41156 has 50 MA's), (37, 40964), (38, 40946), (41, 40913),

Gene: Namago_52 Start: 40373, Stop: 39840, Start Num: 23

Candidate Starts for Namago_52:

(Start: 23 @40373 has 50 MA's), (37, 40181), (41, 40130),

Gene: Nike_53 Start: 41346, Stop: 40813, Start Num: 23

Candidate Starts for Nike_53:

(14, 41697), (18, 41619), (Start: 23 @41346 has 50 MA's), (37, 41154), (38, 41136), (41, 41103),

Gene: OneinaGillian_60 Start: 41461, Stop: 40925, Start Num: 23

Candidate Starts for OneinaGillian_60:

(8, 42142), (12, 42055), (16, 41743), (18, 41737), (Start: 23 @41461 has 50 MA's), (Start: 24 @41401 has 1 MA's), (28, 41356), (30, 41350), (33, 41302), (34, 41299), (37, 41269), (39, 41236), (48, 40954),

Gene: Pepe25_59 Start: 40992, Stop: 40456, Start Num: 23

Candidate Starts for Pepe25_59:

(16, 41274), (18, 41268), (Start: 23 @40992 has 50 MA's), (25, 40926), (28, 40887), (29, 40884), (30, 40881), (35, 40827), (37, 40800), (39, 40767), (40, 40752), (48, 40485),

Gene: Phabia_52 Start: 40834, Stop: 40301, Start Num: 23

Candidate Starts for Phabia_52:

(13, 41323), (14, 41188), (17, 41113), (18, 41110), (Start: 23 @40834 has 50 MA's), (37, 40642), (38, 40624), (41, 40591),

Gene: Phinky_60 Start: 42967, Stop: 42434, Start Num: 23

Candidate Starts for Phinky_60:

(20, 43045), (Start: 23 @42967 has 50 MA's), (30, 42856), (37, 42775), (39, 42745), (43, 42658), (47, 42532), (49, 42463),

Gene: Quammi_50 Start: 40534, Stop: 40001, Start Num: 23

Candidate Starts for Quammi_50:

(13, 41023), (14, 40888), (17, 40813), (18, 40810), (Start: 23 @40534 has 50 MA's), (37, 40342), (38, 40324), (41, 40291),

Gene: RobinRose_62 Start: 41973, Stop: 41437, Start Num: 23

Candidate Starts for RobinRose_62:

(16, 42255), (18, 42249), (Start: 23 @41973 has 50 MA's), (Start: 24 @41913 has 1 MA's), (28, 41868), (29, 41865), (30, 41862), (33, 41814), (34, 41811), (37, 41781), (39, 41748), (48, 41466),

Gene: Romm_62 Start: 41970, Stop: 41434, Start Num: 23

Candidate Starts for Romm_62:

(16, 42252), (18, 42246), (Start: 23 @41970 has 50 MA's), (Start: 24 @41910 has 1 MA's), (28, 41865), (29, 41862), (30, 41859), (33, 41811), (34, 41808), (37, 41778), (39, 41745), (48, 41463),

Gene: Rowlf_49 Start: 40488, Stop: 39955, Start Num: 23

Candidate Starts for Rowlf_49:

(Start: 23 @40488 has 50 MA's), (37, 40296), (41, 40245),

Gene: RubyRalph_57 Start: 43444, Stop: 42887, Start Num: 23

Candidate Starts for RubyRalph_57:

(Start: 23 @43444 has 50 MA's), (28, 43339), (30, 43333), (37, 43252), (39, 43222), (41, 43201), (43, 43135), (48, 42925),

Gene: Rudy_50 Start: 40570, Stop: 40037, Start Num: 23

Candidate Starts for Rudy_50:

(13, 41059), (14, 40924), (17, 40849), (18, 40846), (Start: 23 @40570 has 50 MA's), (37, 40378), (38, 40360), (41, 40327),

Gene: SadLad_58 Start: 44298, Stop: 43741, Start Num: 23

Candidate Starts for SadLad_58:

(Start: 23 @44298 has 50 MA's), (28, 44193), (30, 44187), (37, 44106), (39, 44076), (41, 44055), (43, 43989), (48, 43779),

Gene: SallyK_53 Start: 41489, Stop: 40956, Start Num: 23

Candidate Starts for SallyK_53:

(Start: 23 @41489 has 50 MA's), (37, 41297), (41, 41246),

Gene: Sillytadpoles_53 Start: 40407, Stop: 39874, Start Num: 23

Candidate Starts for Sillytadpoles_53:

(13, 40896), (14, 40761), (17, 40686), (18, 40683), (Start: 23 @40407 has 50 MA's), (37, 40215), (38, 40197), (41, 40164),

Gene: SlySloth_55 Start: 41132, Stop: 40599, Start Num: 23

Candidate Starts for SlySloth_55:

(14, 41483), (18, 41405), (Start: 23 @41132 has 50 MA's), (37, 40940), (38, 40922), (41, 40889),

Gene: Squash_55 Start: 41205, Stop: 40672, Start Num: 23

Candidate Starts for Squash_55:

(14, 41556), (18, 41478), (Start: 23 @41205 has 50 MA's), (37, 41013), (38, 40995), (41, 40962),

Gene: Statler_54 Start: 41207, Stop: 40674, Start Num: 23

Candidate Starts for Statler_54:

(Start: 23 @41207 has 50 MA's), (37, 41015), (41, 40964),

Gene: StrawberryJamm_55 Start: 40667, Stop: 40134, Start Num: 23

Candidate Starts for StrawberryJamm_55:

(Start: 23 @40667 has 50 MA's), (37, 40475), (38, 40457), (41, 40424),

Gene: Sunfish_64 Start: 42539, Stop: 42087, Start Num: 24

Candidate Starts for Sunfish_64:

(Start: 24 @42539 has 1 MA's), (26, 42524), (31, 42470), (45, 42227), (46, 42212),

Gene: Teehee_53 Start: 41640, Stop: 41107, Start Num: 23

Candidate Starts for Teehee_53:

(13, 42129), (14, 41994), (17, 41919), (18, 41916), (Start: 23 @41640 has 50 MA's), (37, 41448), (38, 41430), (41, 41397),

Gene: Tempo_60 Start: 41838, Stop: 41302, Start Num: 23

Candidate Starts for Tempo_60:

(16, 42120), (18, 42114), (Start: 23 @41838 has 50 MA's), (Start: 24 @41778 has 1 MA's), (28, 41733), (29, 41730), (30, 41727), (33, 41679), (34, 41676), (37, 41646), (39, 41613), (48, 41331),

Gene: Tissue_53 Start: 41091, Stop: 40558, Start Num: 23

Candidate Starts for Tissue_53:

(Start: 23 @41091 has 50 MA's), (37, 40899),

Gene: Viceroy_51 Start: 40540, Stop: 40007, Start Num: 23

Candidate Starts for Viceroy_51:

(13, 41029), (14, 40894), (17, 40819), (18, 40816), (Start: 23 @40540 has 50 MA's), (37, 40348), (38, 40330), (41, 40297),

Gene: Wayne3_54 Start: 41403, Stop: 40870, Start Num: 23

Candidate Starts for Wayne3_54:

(13, 41892), (14, 41757), (17, 41682), (18, 41679), (Start: 23 @41403 has 50 MA's), (37, 41211), (38, 41193), (41, 41160),

Gene: WheelerS25_58 Start: 41981, Stop: 41448, Start Num: 23

Candidate Starts for WheelerS25_58:

(Start: 23 @41981 has 50 MA's), (37, 41789), (38, 41771), (41, 41738),

Gene: Wheelie_52 Start: 40724, Stop: 40191, Start Num: 23

Candidate Starts for Wheelie_52:

(13, 41213), (14, 41078), (17, 41003), (18, 41000), (Start: 23 @40724 has 50 MA's), (37, 40532), (38, 40514), (41, 40481),

Gene: Wilca_60 Start: 41682, Stop: 41146, Start Num: 23

Candidate Starts for Wilca_60:

(22, 41715), (Start: 23 @41682 has 50 MA's), (25, 41616), (28, 41577), (29, 41574), (30, 41571), (35, 41517), (37, 41490), (39, 41457), (40, 41442), (48, 41175),

Gene: Zagie_52 Start: 40873, Stop: 40340, Start Num: 23

Candidate Starts for Zagie_52:

(Start: 23 @40873 has 50 MA's), (37, 40681),

Gene: Zhafia_55 Start: 41204, Stop: 40671, Start Num: 23

Candidate Starts for Zhafia_55:

(13, 41693), (14, 41558), (17, 41483), (18, 41480), (Start: 23 @41204 has 50 MA's), (37, 41012), (38, 40994), (41, 40961),