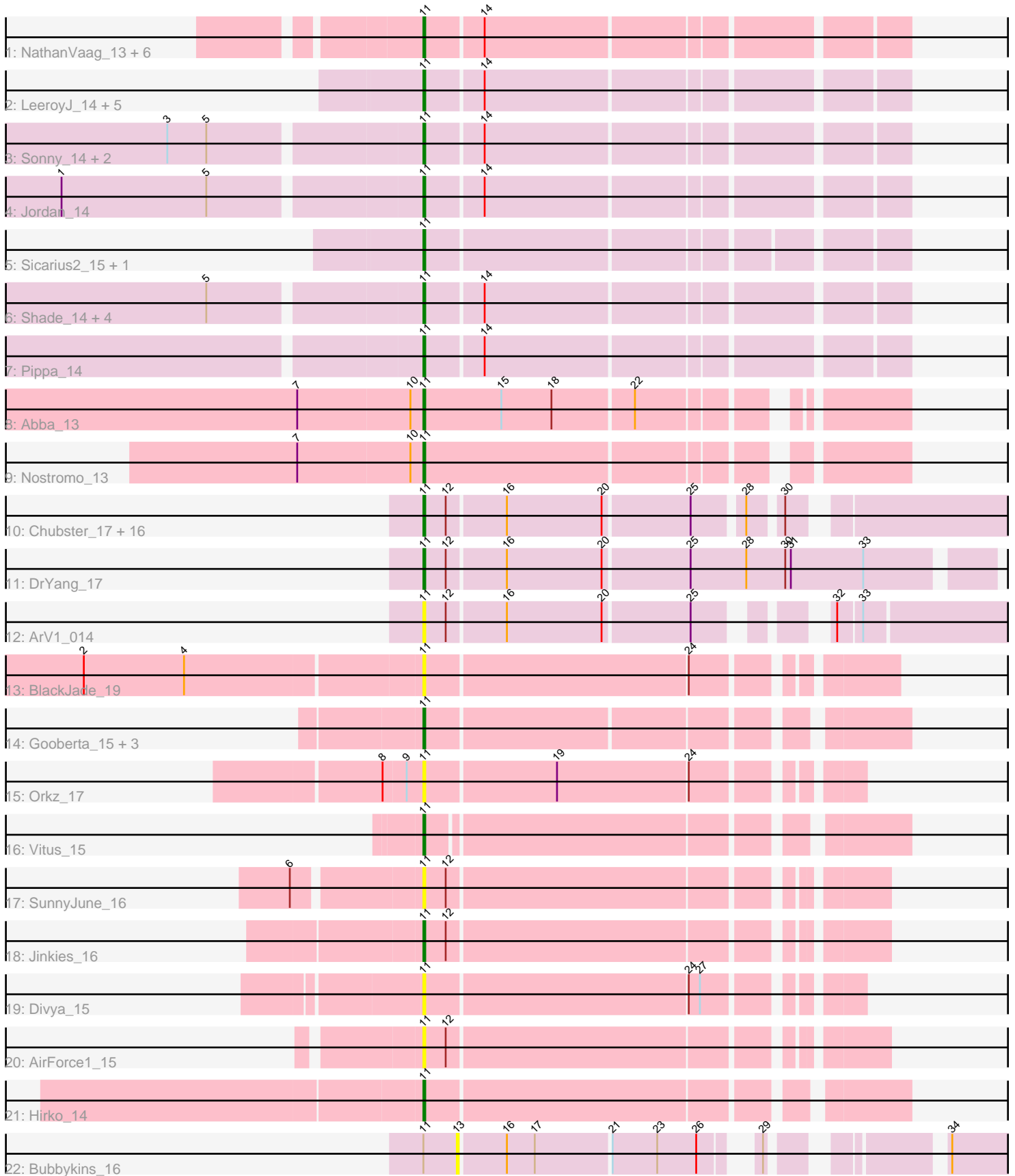


Pham 296596



Note: Tracks are now grouped by subcluster and scaled. Switching in subcluster is indicated by changes in track color. Track scale is now set by default to display the region 30 bp upstream of start 1 to 30 bp downstream of the last possible start. If this default region is judged to be packed too tightly with annotated starts, the track will be further scaled to only show that region of the ORF with annotated starts. This action will be indicated by adding "Zoomed" to the title. For starts, yellow indicates the location of called starts comprised solely of Glimmer/GeneMark auto-annotations, green indicates the location of called starts with at least 1 manual gene annotation.

Pham 296596 Report

This analysis was run 04/25/26 on database version 644.

Pham number 296596 has 59 members, 11 are drafts.

Phages represented in each track:

- Track 1 : NathanVaag_13, Franzy_13, Jawnski_13, Brent_13, Piccoletto_13, Beans_13, King2_13
- Track 2 : LeeroyJ_14, Timinator_14, StevieBAY_14, BigDome_14, GravityBall_14, BarretLemon_14
- Track 3 : Sonny_14, Zartrosa_14, JKerns_14
- Track 4 : Jordan_14
- Track 5 : Sicarius2_15, Wyborn_15
- Track 6 : Shade_14, BossLady_14, Grekaycon_14, Martha_14, TaeYoung_14
- Track 7 : Pippa_14
- Track 8 : Abba_13
- Track 9 : Nostromo_13
- Track 10 : Chubster_17, Lymara_17, RosiePosie_17, Chipper1996_170, EdgarPoe_17, Mordred_17, Linus_17, Tophat_17, HumptyDumpty_17, JayCookie_17, MoyaNatalis_17, Chocolat_17, Kabreeze_17, Conboy_17, JaNo_17, Scavito_17, PrincessTrina_17
- Track 11 : DrYang_17
- Track 12 : ArV1_014
- Track 13 : BlackJade_19
- Track 14 : Gooberta_15, Music_15, GoldDust_15, Vibaki_15
- Track 15 : Orkz_17
- Track 16 : Vitus_15
- Track 17 : SunnyJune_16
- Track 18 : Jinkies_16
- Track 19 : Divya_15
- Track 20 : AirForce1_15
- Track 21 : Hirko_14
- Track 22 : Bubbykins_16

Summary of Final Annotations (See graph section above for start numbers):

The start number called the most often in the published annotations is 11, it was called in 48 of the 48 non-draft genes in the pham.

Genes that call this "Most Annotated" start:

- Abba_13, AirForce1_15, ArV1_014, BarretLemon_14, Beans_13, BigDome_14, BlackJade_19, BossLady_14, Brent_13, Chipper1996_170, Chocolat_17, Chubster_17, Conboy_17, Divya_15, DrYang_17, EdgarPoe_17, Franzy_13, GoldDust_15, Gooberta_15, GravityBall_14, Grekaycon_14, Hirko_14, HumptyDumpty_17, JKerns_14, JaNo_17, Jawnski_13, JayCookie_17, Jinkies_16, Jordan_14, Kabreeze_17, King2_13, LeeroyJ_14, Linus_17, Lymara_17, Martha_14, Mordred_17, MoyaNatalis_17, Music_15, NathanVaag_13, Nostromo_13, Orkz_17, Piccoletto_13, Pippa_14, PrincessTrina_17, RosiePosie_17, Scavito_17, Shade_14, Sicarius2_15, Sonny_14, StevieBAY_14, SunnyJune_16, TaeYoung_14, Timinator_14, Tophat_17, Vibaki_15, Vitus_15, Wyborn_15, Zartrosa_14,

Genes that have the "Most Annotated" start but do not call it:

- Bubbykins_16,

Genes that do not have the "Most Annotated" start:

-

Summary by start number:

Start 11:

- Found in 59 of 59 (100.0%) of genes in pham
- Manual Annotations of this start: 48 of 48
- Called 98.3% of time when present
- Phage (with cluster) where this start called: Abba_13 (AO3), AirForce1_15 (FL), ArV1_014 (AR), BarretLemon_14 (AO2), Beans_13 (AO1), BigDome_14 (AO2), BlackJade_19 (FL), BossLady_14 (AO2), Brent_13 (AO1), Chipper1996_170 (AR), Chocolat_17 (AR), Chubster_17 (AR), Conboy_17 (AR), Divya_15 (FL), DrYang_17 (AR), EdgarPoe_17 (AR), Franzy_13 (AO1), GoldDust_15 (FL), Gooberta_15 (FL), GravityBall_14 (AO2), Grekaycon_14 (AO2), Hirko_14 (FL), HumptyDumpty_17 (AR), JKerns_14 (AO2), JaNo_17 (AR), Jawnski_13 (AO1), JayCookie_17 (AR), Jinkies_16 (FL), Jordan_14 (AO2), Kabreeze_17 (AR), King2_13 (AO1), LeeroyJ_14 (AO2), Linus_17 (AR), Lymara_17 (AR), Martha_14 (AO2), Mordred_17 (AR), MoyaNatalis_17 (AR), Music_15 (FL), NathanVaag_13 (AO1), Nostromo_13 (AO3), Orkz_17 (FL), Piccoletto_13 (AO1), Pippa_14 (AO2), PrincessTrina_17 (AR), RosiePosie_17 (AR), Scavito_17 (AR), Shade_14 (AO2), Sicarius2_15 (AO2), Sonny_14 (AO2), StevieBAY_14 (AO2), SunnyJune_16 (FL), TaeYoung_14 (AO2), Timinator_14 (AO2), Tophat_17 (AR), Vibaki_15 (FL), Vitus_15 (FL), Wyborn_15 (AO2), Zartrosa_14 (AO2),

Start 13:

- Found in 1 of 59 (1.7%) of genes in pham
- No Manual Annotations of this start.
- Called 100.0% of time when present
- Phage (with cluster) where this start called: Bubbykins_16 (UNK),

Summary by clusters:

There are 6 clusters represented in this pham: AR, AO3, AO2, AO1, UNK, FL,

Info for manual annotations of cluster AO1:

- Start number 11 was manually annotated 7 times for cluster AO1.

Info for manual annotations of cluster AO2:

- Start number 11 was manually annotated 17 times for cluster AO2.

Info for manual annotations of cluster AO3:

- Start number 11 was manually annotated 2 times for cluster AO3.

Info for manual annotations of cluster AR:

- Start number 11 was manually annotated 17 times for cluster AR.

Info for manual annotations of cluster FL:

- Start number 11 was manually annotated 5 times for cluster FL.

Gene Information:

Gene: Abba_13 Start: 10446, Stop: 10676, Start Num: 11

Candidate Starts for Abba_13:

(7, 10380), (10, 10440), (Start: 11 @10446 has 48 MA's), (15, 10488), (18, 10515), (22, 10557),

Gene: AirForce1_15 Start: 10338, Stop: 10562, Start Num: 11

Candidate Starts for AirForce1_15:

(Start: 11 @10338 has 48 MA's), (12, 10350),

Gene: ArV1_014 Start: 10967, Stop: 11242, Start Num: 11

Candidate Starts for ArV1_014:

(Start: 11 @10967 has 48 MA's), (12, 10979), (16, 11009), (20, 11060), (25, 11105), (32, 11153), (33, 11165),

Gene: BarretLemon_14 Start: 10650, Stop: 10889, Start Num: 11

Candidate Starts for BarretLemon_14:

(Start: 11 @10650 has 48 MA's), (14, 10680),

Gene: Beans_13 Start: 10336, Stop: 10575, Start Num: 11

Candidate Starts for Beans_13:

(Start: 11 @10336 has 48 MA's), (14, 10366),

Gene: BigDome_14 Start: 10638, Stop: 10877, Start Num: 11

Candidate Starts for BigDome_14:

(Start: 11 @10638 has 48 MA's), (14, 10668),

Gene: BlackJade_19 Start: 12286, Stop: 12516, Start Num: 11

Candidate Starts for BlackJade_19:

(2, 12109), (4, 12163), (Start: 11 @12286 has 48 MA's), (24, 12424),

Gene: BossLady_14 Start: 10652, Stop: 10891, Start Num: 11

Candidate Starts for BossLady_14:

(5, 10544), (Start: 11 @10652 has 48 MA's), (14, 10682),

Gene: Brent_13 Start: 10318, Stop: 10557, Start Num: 11

Candidate Starts for Brent_13:

(Start: 11 @10318 has 48 MA's), (14, 10348),

Gene: Bubbykins_16 Start: 12202, Stop: 12444, Start Num: 13

Candidate Starts for Bubbykins_16:

(Start: 11 @12184 has 48 MA's), (13, 12202), (16, 12226), (17, 12241), (21, 12280), (23, 12304), (26, 12325), (29, 12343), (34, 12412),

Gene: Chipper1996_170 Start: 12616, Stop: 12897, Start Num: 11

Candidate Starts for Chipper1996_170:

(Start: 11 @12616 has 48 MA's), (12, 12628), (16, 12658), (20, 12709), (25, 12754), (28, 12778), (30, 12793),

Gene: Chocolat_17 Start: 12617, Stop: 12898, Start Num: 11

Candidate Starts for Chocolat_17:

(Start: 11 @12617 has 48 MA's), (12, 12629), (16, 12659), (20, 12710), (25, 12755), (28, 12779), (30, 12794),

Gene: Chubster_17 Start: 12387, Stop: 12668, Start Num: 11

Candidate Starts for Chubster_17:

(Start: 11 @12387 has 48 MA's), (12, 12399), (16, 12429), (20, 12480), (25, 12525), (28, 12549), (30, 12564),

Gene: Conboy_17 Start: 12615, Stop: 12896, Start Num: 11

Candidate Starts for Conboy_17:

(Start: 11 @12615 has 48 MA's), (12, 12627), (16, 12657), (20, 12708), (25, 12753), (28, 12777), (30, 12792),

Gene: Divya_15 Start: 10634, Stop: 10846, Start Num: 11

Candidate Starts for Divya_15:

(Start: 11 @10634 has 48 MA's), (24, 10772), (27, 10778),

Gene: DrYang_17 Start: 12571, Stop: 12864, Start Num: 11

Candidate Starts for DrYang_17:

(Start: 11 @12571 has 48 MA's), (12, 12583), (16, 12613), (20, 12664), (25, 12709), (28, 12739), (30, 12760), (31, 12763), (33, 12802),

Gene: EdgarPoe_17 Start: 12615, Stop: 12896, Start Num: 11

Candidate Starts for EdgarPoe_17:

(Start: 11 @12615 has 48 MA's), (12, 12627), (16, 12657), (20, 12708), (25, 12753), (28, 12777), (30, 12792),

Gene: Franzy_13 Start: 10318, Stop: 10557, Start Num: 11

Candidate Starts for Franzy_13:

(Start: 11 @10318 has 48 MA's), (14, 10348),

Gene: GoldDust_15 Start: 12216, Stop: 12449, Start Num: 11

Candidate Starts for GoldDust_15:

(Start: 11 @12216 has 48 MA's),

Gene: Gooberta_15 Start: 12216, Stop: 12449, Start Num: 11

Candidate Starts for Gooberta_15:

(Start: 11 @12216 has 48 MA's),

Gene: GravityBall_14 Start: 10649, Stop: 10888, Start Num: 11

Candidate Starts for GravityBall_14:

(Start: 11 @10649 has 48 MA's), (14, 10679),

Gene: Grekaycon_14 Start: 10661, Stop: 10900, Start Num: 11

Candidate Starts for Grekaycon_14:

(5, 10553), (Start: 11 @10661 has 48 MA's), (14, 10691),

Gene: Hirko_14 Start: 11651, Stop: 11887, Start Num: 11

Candidate Starts for Hirko_14:

(Start: 11 @11651 has 48 MA's),

Gene: HumptyDumpty_17 Start: 12614, Stop: 12895, Start Num: 11

Candidate Starts for HumptyDumpty_17:

(Start: 11 @12614 has 48 MA's), (12, 12626), (16, 12656), (20, 12707), (25, 12752), (28, 12776), (30, 12791),

Gene: JKerns_14 Start: 10688, Stop: 10927, Start Num: 11

Candidate Starts for JKerns_14:

(3, 10559), (5, 10580), (Start: 11 @10688 has 48 MA's), (14, 10718),

Gene: JaNo_17 Start: 12614, Stop: 12895, Start Num: 11

Candidate Starts for JaNo_17:

(Start: 11 @12614 has 48 MA's), (12, 12626), (16, 12656), (20, 12707), (25, 12752), (28, 12776), (30, 12791),

Gene: Jawnski_13 Start: 10331, Stop: 10570, Start Num: 11

Candidate Starts for Jawnski_13:

(Start: 11 @10331 has 48 MA's), (14, 10361),

Gene: JayCookie_17 Start: 12617, Stop: 12898, Start Num: 11

Candidate Starts for JayCookie_17:

(Start: 11 @12617 has 48 MA's), (12, 12629), (16, 12659), (20, 12710), (25, 12755), (28, 12779), (30, 12794),

Gene: Jinkies_16 Start: 12256, Stop: 12480, Start Num: 11

Candidate Starts for Jinkies_16:

(Start: 11 @12256 has 48 MA's), (12, 12268),

Gene: Jordan_14 Start: 10658, Stop: 10897, Start Num: 11

Candidate Starts for Jordan_14:

(1, 10472), (5, 10550), (Start: 11 @10658 has 48 MA's), (14, 10688),

Gene: Kabreeze_17 Start: 12614, Stop: 12895, Start Num: 11

Candidate Starts for Kabreeze_17:

(Start: 11 @12614 has 48 MA's), (12, 12626), (16, 12656), (20, 12707), (25, 12752), (28, 12776), (30, 12791),

Gene: King2_13 Start: 10320, Stop: 10559, Start Num: 11

Candidate Starts for King2_13:

(Start: 11 @10320 has 48 MA's), (14, 10350),

Gene: LeeroyJ_14 Start: 10649, Stop: 10888, Start Num: 11

Candidate Starts for LeeroyJ_14:

(Start: 11 @10649 has 48 MA's), (14, 10679),

Gene: Linus_17 Start: 12614, Stop: 12895, Start Num: 11

Candidate Starts for Linus_17:

(Start: 11 @12614 has 48 MA's), (12, 12626), (16, 12656), (20, 12707), (25, 12752), (28, 12776), (30, 12791),

Gene: Lymara_17 Start: 12616, Stop: 12897, Start Num: 11

Candidate Starts for Lymara_17:

(Start: 11 @12616 has 48 MA's), (12, 12628), (16, 12658), (20, 12709), (25, 12754), (28, 12778), (30, 12793),

Gene: Martha_14 Start: 10599, Stop: 10838, Start Num: 11

Candidate Starts for Martha_14:

(5, 10491), (Start: 11 @10599 has 48 MA's), (14, 10629),

Gene: Mordred_17 Start: 12614, Stop: 12895, Start Num: 11

Candidate Starts for Mordred_17:

(Start: 11 @12614 has 48 MA's), (12, 12626), (16, 12656), (20, 12707), (25, 12752), (28, 12776), (30, 12791),

Gene: MoyaNatalis_17 Start: 12617, Stop: 12898, Start Num: 11

Candidate Starts for MoyaNatalis_17:

(Start: 11 @12617 has 48 MA's), (12, 12629), (16, 12659), (20, 12710), (25, 12755), (28, 12779), (30, 12794),

Gene: Music_15 Start: 12086, Stop: 12319, Start Num: 11

Candidate Starts for Music_15:

(Start: 11 @12086 has 48 MA's),

Gene: NathanVaag_13 Start: 10324, Stop: 10563, Start Num: 11

Candidate Starts for NathanVaag_13:

(Start: 11 @10324 has 48 MA's), (14, 10354),

Gene: Nostromo_13 Start: 10650, Stop: 10883, Start Num: 11

Candidate Starts for Nostromo_13:

(7, 10584), (10, 10644), (Start: 11 @10650 has 48 MA's),

Gene: Orkz_17 Start: 10714, Stop: 10926, Start Num: 11

Candidate Starts for Orkz_17:

(8, 10693), (9, 10705), (Start: 11 @10714 has 48 MA's), (19, 10783), (24, 10852),

Gene: Piccoletto_13 Start: 10325, Stop: 10564, Start Num: 11

Candidate Starts for Piccoletto_13:

(Start: 11 @10325 has 48 MA's), (14, 10355),

Gene: Pippa_14 Start: 10697, Stop: 10936, Start Num: 11

Candidate Starts for Pippa_14:

(Start: 11 @10697 has 48 MA's), (14, 10727),

Gene: PrincessTrina_17 Start: 12617, Stop: 12898, Start Num: 11

Candidate Starts for PrincessTrina_17:

(Start: 11 @12617 has 48 MA's), (12, 12629), (16, 12659), (20, 12710), (25, 12755), (28, 12779), (30, 12794),

Gene: RosiePosie_17 Start: 12617, Stop: 12898, Start Num: 11

Candidate Starts for RosiePosie_17:

(Start: 11 @12617 has 48 MA's), (12, 12629), (16, 12659), (20, 12710), (25, 12755), (28, 12779), (30, 12794),

Gene: Scavito_17 Start: 12614, Stop: 12895, Start Num: 11

Candidate Starts for Scavito_17:

(Start: 11 @12614 has 48 MA's), (12, 12626), (16, 12656), (20, 12707), (25, 12752), (28, 12776), (30, 12791),

Gene: Shade_14 Start: 10637, Stop: 10876, Start Num: 11

Candidate Starts for Shade_14:

(5, 10529), (Start: 11 @10637 has 48 MA's), (14, 10667),

Gene: Sicarius2_15 Start: 11144, Stop: 11380, Start Num: 11

Candidate Starts for Sicarius2_15:

(Start: 11 @11144 has 48 MA's),

Gene: Sonny_14 Start: 10658, Stop: 10897, Start Num: 11

Candidate Starts for Sonny_14:

(3, 10529), (5, 10550), (Start: 11 @10658 has 48 MA's), (14, 10688),

Gene: StevieBAY_14 Start: 10649, Stop: 10888, Start Num: 11

Candidate Starts for StevieBAY_14:

(Start: 11 @10649 has 48 MA's), (14, 10679),

Gene: SunnyJune_16 Start: 12120, Stop: 12344, Start Num: 11

Candidate Starts for SunnyJune_16:

(6, 12057), (Start: 11 @12120 has 48 MA's), (12, 12132),

Gene: TaeYoung_14 Start: 10662, Stop: 10901, Start Num: 11

Candidate Starts for TaeYoung_14:

(5, 10554), (Start: 11 @10662 has 48 MA's), (14, 10692),

Gene: Timinator_14 Start: 10649, Stop: 10888, Start Num: 11

Candidate Starts for Timinator_14:

(Start: 11 @10649 has 48 MA's), (14, 10679),

Gene: Tophat_17 Start: 12616, Stop: 12897, Start Num: 11

Candidate Starts for Tophat_17:

(Start: 11 @12616 has 48 MA's), (12, 12628), (16, 12658), (20, 12709), (25, 12754), (28, 12778), (30, 12793),

Gene: Vibaki_15 Start: 12095, Stop: 12331, Start Num: 11

Candidate Starts for Vibaki_15:

(Start: 11 @12095 has 48 MA's),

Gene: Vitus_15 Start: 11899, Stop: 12132, Start Num: 11

Candidate Starts for Vitus_15:

(Start: 11 @11899 has 48 MA's),

Gene: Wyborn_15 Start: 11005, Stop: 11241, Start Num: 11

Candidate Starts for Wyborn_15:
(Start: 11 @11005 has 48 MA's),

Gene: Zartrosa_14 Start: 10661, Stop: 10900, Start Num: 11

Candidate Starts for Zartrosa_14:
(3, 10532), (5, 10553), (Start: 11 @10661 has 48 MA's), (14, 10691),