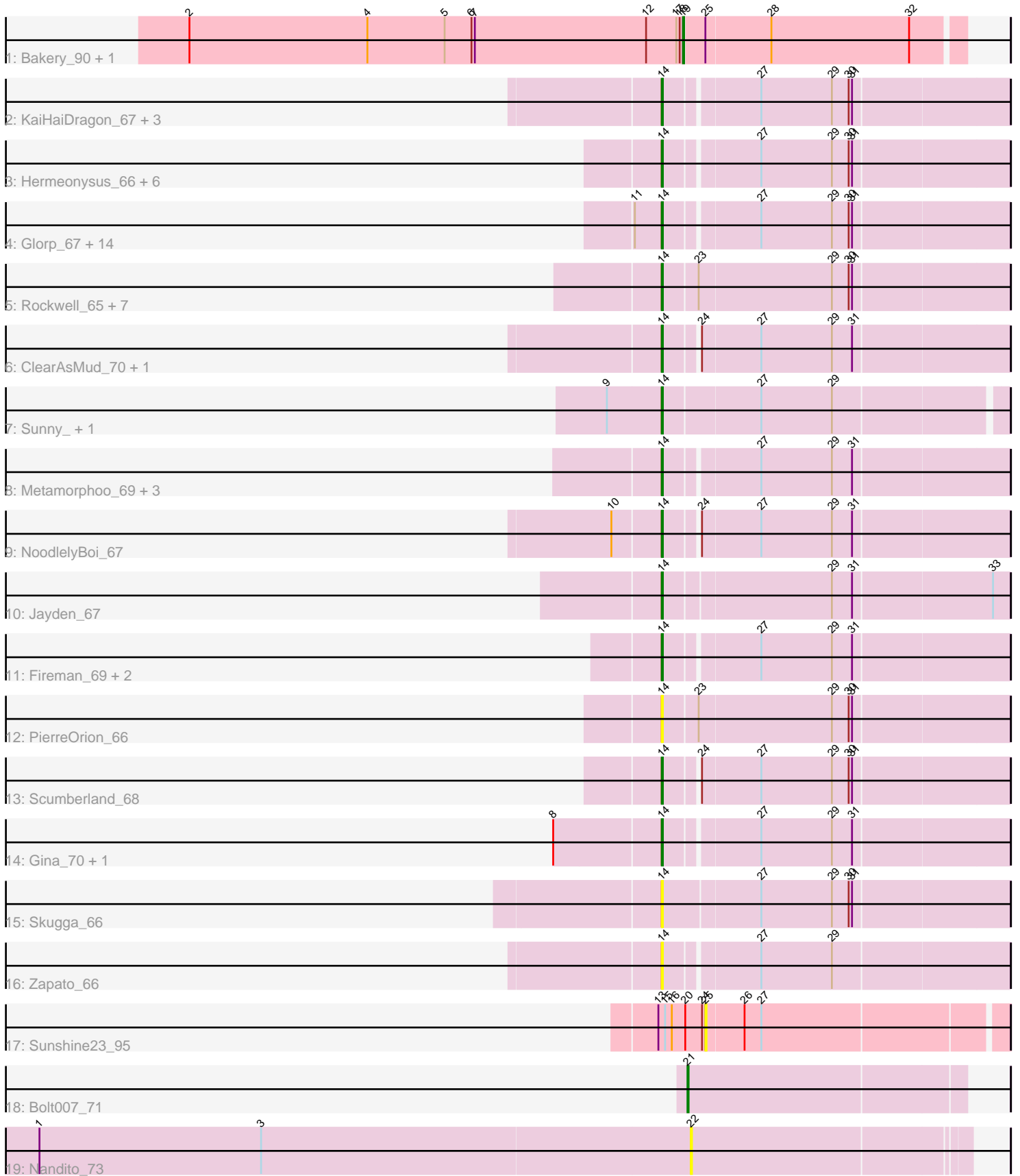


Pham 296600



Note: Tracks are now grouped by subcluster and scaled. Switching in subcluster is indicated by changes in track color. Track scale is now set by default to display the region 30 bp upstream of start 1 to 30 bp downstream of the last possible start. If this default region is judged to be packed too tightly with annotated starts, the track will be further scaled to only show that region of the ORF with annotated starts. This action will be indicated by adding "Zoomed" to the title. For starts, yellow indicates the location of called starts comprised solely of Glimmer/GeneMark auto-annotations, green indicates the location of called starts with at least 1 manual gene annotation.

Pham 296600 Report

This analysis was run 04/25/26 on database version 644.

Pham number 296600 has 58 members, 10 are drafts.

Phages represented in each track:

- Track 1 : Bakery_90, Sixsevenium_87
- Track 2 : KaiHaiDragon_67, EarickHC_67, Yeti_68, Piperis_67
- Track 3 : Hermeonysus_66, Quhwah_70, Savannah_65, Germa_68, LittleFortune_68, Cranjis_67, BeagleBug_65
- Track 4 : Glorp_67, Shotgun_66, PhedwardCullen_65, Phorgeous_66, Jefe_66, Busephilis_65, Ganandorf_65, Crisis_67, Selwyn23_67, Pulchra_68, CrazyRich_65, Lucretia_66, Antares_66, Phrancesco_66, Honeyfin_67
- Track 5 : Rockwell_65, Paschalis_66, Jollipop_67, Kowalski_65, PiperSansNom_67, Onika_65, Ramiel05_65, BrazzalePHS_65
- Track 6 : ClearAsMud_70, SirFrank_66
- Track 7 : Sunny_, Merry_
- Track 8 : Metamorphoo_69, Shrubaron_70, Tyrumbra_65, RobsFeet_70
- Track 9 : NoodlelyBoi_67
- Track 10 : Jayden_67
- Track 11 : Fireman_69, Smarties_76, Ariadne_76
- Track 12 : PierreOrion_66
- Track 13 : Scumberland_68
- Track 14 : Gina_70, Teamocil_70
- Track 15 : Skugga_66
- Track 16 : Zapato_66
- Track 17 : Sunshine23_95
- Track 18 : Bolt007_71
- Track 19 : Nandito_73

Summary of Final Annotations (See graph section above for start numbers):

The start number called the most often in the published annotations is 14, it was called in 46 of the 48 non-draft genes in the pham.

Genes that call this "Most Annotated" start:

- Antares_66, Ariadne_76, BeagleBug_65, BrazzalePHS_65, Busephilis_65, ClearAsMud_70, Cranjis_67, CrazyRich_65, Crisis_67, EarickHC_67, Fireman_69, Ganandorf_65, Germa_68, Gina_70, Glorp_67, Hermeonysus_66, Honeyfin_67, Jayden_67, Jefe_66, Jollipop_67, KaiHaiDragon_67, Kowalski_65, LittleFortune_68,

Lucretia_66, Merry_, Metamorphoo_69, NoodlelyBoi_67, Onika_65, Paschalis_66, PhedwardCullen_65, Phorgeous_66, Phrancesco_66, PierreOrion_66, PiperSansNom_67, Piperis_67, Pulchra_68, Quhwah_70, Ramiel05_65, RobsFeet_70, Rockwell_65, Savannah_65, Scumberland_68, Selwyn23_67, Shotgun_66, Shrubaron_70, SirFrank_66, Skugga_66, Smarties_76, Sunny_, Teamocil_70, Tyrumbra_65, Yeti_68, Zapato_66,

Genes that have the "Most Annotated" start but do not call it:

-

Genes that do not have the "Most Annotated" start:

- Bakery_90, Bolt007_71, Nandito_73, Sixsevenium_87, Sunshine23_95,

Summary by start number:

Start 14:

- Found in 53 of 58 (91.4%) of genes in pham
- Manual Annotations of this start: 46 of 48
- Called 100.0% of time when present
- Phage (with cluster) where this start called: Antares_66 (EC), Ariadne_76 (EC), BeagleBug_65 (EC), BrazzalePHS_65 (EC), Busephilis_65 (EC), ClearAsMud_70 (EC), Cranjis_67 (EC), CrazyRich_65 (EC), Crisis_67 (EC), EarickHC_67 (EC), Fireman_69 (EC), Ganandorf_65 (EC), Germa_68 (EC), Gina_70 (EC), Glorp_67 (EC), Hermeonysus_66 (EC), Honeyfin_67 (EC), Jayden_67 (EC), Jefe_66 (EC), Jollipop_67 (EC), KaiHaiDragon_67 (EC), Kowalski_65 (EC), LittleFortune_68 (EC), Lucretia_66 (EC), Merry_ (EC), Metamorphoo_69 (EC), NoodlelyBoi_67 (EC), Onika_65 (EC), Paschalis_66 (EC), PhedwardCullen_65 (EC), Phorgeous_66 (EC), Phrancesco_66 (EC), PierreOrion_66 (EC), PiperSansNom_67 (EC), Piperis_67 (EC), Pulchra_68 (EC), Quhwah_70 (EC), Ramiel05_65 (EC), RobsFeet_70 (EC), Rockwell_65 (EC), Savannah_65 (EC), Scumberland_68 (EC), Selwyn23_67 (EC), Shotgun_66 (EC), Shrubaron_70 (EC), SirFrank_66 (EC), Skugga_66 (EC), Smarties_76 (EC), Sunny_ (EC), Teamocil_70 (EC), Tyrumbra_65 (EC), Yeti_68 (EC), Zapato_66 (EC),

Start 19:

- Found in 2 of 58 (3.4%) of genes in pham
- Manual Annotations of this start: 1 of 48
- Called 100.0% of time when present
- Phage (with cluster) where this start called: Bakery_90 (DC1), Sixsevenium_87 (DC),

Start 21:

- Found in 1 of 58 (1.7%) of genes in pham
- Manual Annotations of this start: 1 of 48
- Called 100.0% of time when present
- Phage (with cluster) where this start called: Bolt007_71 (FH),

Start 22:

- Found in 1 of 58 (1.7%) of genes in pham
- No Manual Annotations of this start.
- Called 100.0% of time when present
- Phage (with cluster) where this start called: Nandito_73 (FH),

Start 25:

- Found in 3 of 58 (5.2%) of genes in pham
- No Manual Annotations of this start.
- Called 33.3% of time when present
- Phage (with cluster) where this start called: Sunshine23_95 (FG),

Summary by clusters:

There are 5 clusters represented in this pham: FH, DC1, DC, EC, FG,

Info for manual annotations of cluster DC1:

- Start number 19 was manually annotated 1 time for cluster DC1.

Info for manual annotations of cluster EC:

- Start number 14 was manually annotated 46 times for cluster EC.

Info for manual annotations of cluster FH:

- Start number 21 was manually annotated 1 time for cluster FH.

Gene Information:

Gene: Antares_66 Start: 41631, Stop: 41924, Start Num: 14

Candidate Starts for Antares_66:

(11, 41607), (Start: 14 @41631 has 46 MA's), (27, 41709), (29, 41772), (30, 41787), (31, 41790),

Gene: Ariadne_76 Start: 43251, Stop: 43544, Start Num: 14

Candidate Starts for Ariadne_76:

(Start: 14 @43251 has 46 MA's), (27, 43329), (29, 43392), (31, 43410),

Gene: Bakery_90 Start: 58633, Stop: 58391, Start Num: 19

Candidate Starts for Bakery_90:

(2, 59074), (4, 58915), (5, 58846), (6, 58822), (7, 58819), (12, 58666), (17, 58639), (18, 58636), (Start: 19 @58633 has 1 MA's), (25, 58615), (28, 58558), (32, 58435),

Gene: BeagleBug_65 Start: 41411, Stop: 41704, Start Num: 14

Candidate Starts for BeagleBug_65:

(Start: 14 @41411 has 46 MA's), (27, 41489), (29, 41552), (30, 41567), (31, 41570),

Gene: Bolt007_71 Start: 45075, Stop: 44833, Start Num: 21

Candidate Starts for Bolt007_71:

(Start: 21 @45075 has 1 MA's),

Gene: BrazzalePHS_65 Start: 41393, Stop: 41692, Start Num: 14

Candidate Starts for BrazzalePHS_65:

(Start: 14 @41393 has 46 MA's), (23, 41423), (29, 41540), (30, 41555), (31, 41558),

Gene: Busephilis_65 Start: 41338, Stop: 41631, Start Num: 14

Candidate Starts for Busephilis_65:

(11, 41314), (Start: 14 @41338 has 46 MA's), (27, 41416), (29, 41479), (30, 41494), (31, 41497),

Gene: ClearAsMud_70 Start: 41913, Stop: 42206, Start Num: 14

Candidate Starts for ClearAsMud_70:

(Start: 14 @41913 has 46 MA's), (24, 41940), (27, 41991), (29, 42054), (31, 42072),

Gene: Cranjjs_67 Start: 41586, Stop: 41879, Start Num: 14

Candidate Starts for Cranjjs_67:

(Start: 14 @41586 has 46 MA's), (27, 41664), (29, 41727), (30, 41742), (31, 41745),

Gene: CrazyRich_65 Start: 41392, Stop: 41685, Start Num: 14

Candidate Starts for CrazyRich_65:

(11, 41368), (Start: 14 @41392 has 46 MA's), (27, 41470), (29, 41533), (30, 41548), (31, 41551),

Gene: Crisis_67 Start: 41401, Stop: 41694, Start Num: 14

Candidate Starts for Crisis_67:

(11, 41377), (Start: 14 @41401 has 46 MA's), (27, 41479), (29, 41542), (30, 41557), (31, 41560),

Gene: EarickHC_67 Start: 41323, Stop: 41616, Start Num: 14

Candidate Starts for EarickHC_67:

(Start: 14 @41323 has 46 MA's), (27, 41401), (29, 41464), (30, 41479), (31, 41482),

Gene: Fireman_69 Start: 43363, Stop: 43656, Start Num: 14

Candidate Starts for Fireman_69:

(Start: 14 @43363 has 46 MA's), (27, 43441), (29, 43504), (31, 43522),

Gene: Ganandorf_65 Start: 41419, Stop: 41712, Start Num: 14

Candidate Starts for Ganandorf_65:

(11, 41395), (Start: 14 @41419 has 46 MA's), (27, 41497), (29, 41560), (30, 41575), (31, 41578),

Gene: Germa_68 Start: 41249, Stop: 41542, Start Num: 14

Candidate Starts for Germa_68:

(Start: 14 @41249 has 46 MA's), (27, 41327), (29, 41390), (30, 41405), (31, 41408),

Gene: Gina_70 Start: 41480, Stop: 41773, Start Num: 14

Candidate Starts for Gina_70:

(8, 41387), (Start: 14 @41480 has 46 MA's), (27, 41558), (29, 41621), (31, 41639),

Gene: Glorp_67 Start: 41383, Stop: 41676, Start Num: 14

Candidate Starts for Glorp_67:

(11, 41359), (Start: 14 @41383 has 46 MA's), (27, 41461), (29, 41524), (30, 41539), (31, 41542),

Gene: Hermeonysus_66 Start: 41314, Stop: 41607, Start Num: 14

Candidate Starts for Hermeonysus_66:

(Start: 14 @41314 has 46 MA's), (27, 41392), (29, 41455), (30, 41470), (31, 41473),

Gene: Honeyfin_67 Start: 41574, Stop: 41867, Start Num: 14

Candidate Starts for Honeyfin_67:

(11, 41550), (Start: 14 @41574 has 46 MA's), (27, 41652), (29, 41715), (30, 41730), (31, 41733),

Gene: Jayden_67 Start: 41914, Stop: 42210, Start Num: 14

Candidate Starts for Jayden_67:

(Start: 14 @41914 has 46 MA's), (29, 42058), (31, 42076), (33, 42196),

Gene: Jefe_66 Start: 41369, Stop: 41662, Start Num: 14
Candidate Starts for Jefe_66:
(11, 41345), (Start: 14 @41369 has 46 MA's), (27, 41447), (29, 41510), (30, 41525), (31, 41528),

Gene: Jollipop_67 Start: 41751, Stop: 42050, Start Num: 14
Candidate Starts for Jollipop_67:
(Start: 14 @41751 has 46 MA's), (23, 41781), (29, 41898), (30, 41913), (31, 41916),

Gene: KaiHaiDragon_67 Start: 41323, Stop: 41616, Start Num: 14
Candidate Starts for KaiHaiDragon_67:
(Start: 14 @41323 has 46 MA's), (27, 41401), (29, 41464), (30, 41479), (31, 41482),

Gene: Kowalski_65 Start: 41388, Stop: 41687, Start Num: 14
Candidate Starts for Kowalski_65:
(Start: 14 @41388 has 46 MA's), (23, 41418), (29, 41535), (30, 41550), (31, 41553),

Gene: LittleFortune_68 Start: 41679, Stop: 41972, Start Num: 14
Candidate Starts for LittleFortune_68:
(Start: 14 @41679 has 46 MA's), (27, 41757), (29, 41820), (30, 41835), (31, 41838),

Gene: Lucretia_66 Start: 41301, Stop: 41594, Start Num: 14
Candidate Starts for Lucretia_66:
(11, 41277), (Start: 14 @41301 has 46 MA's), (27, 41379), (29, 41442), (30, 41457), (31, 41460),

Gene: Merry_ Start: 43564, Stop: 43854, Start Num: 14
Candidate Starts for Merry_:
(9, 43516), (Start: 14 @43564 has 46 MA's), (27, 43648), (29, 43711),

Gene: Metamorphoo_69 Start: 42657, Stop: 42950, Start Num: 14
Candidate Starts for Metamorphoo_69:
(Start: 14 @42657 has 46 MA's), (27, 42735), (29, 42798), (31, 42816),

Gene: Nandito_73 Start: 45609, Stop: 45370, Start Num: 22
Candidate Starts for Nandito_73:
(1, 46188), (3, 45990), (22, 45609),

Gene: NoodlelyBoi_67 Start: 42162, Stop: 42455, Start Num: 14
Candidate Starts for NoodlelyBoi_67:
(10, 42120), (Start: 14 @42162 has 46 MA's), (24, 42189), (27, 42240), (29, 42303), (31, 42321),

Gene: Onika_65 Start: 41397, Stop: 41696, Start Num: 14
Candidate Starts for Onika_65:
(Start: 14 @41397 has 46 MA's), (23, 41427), (29, 41544), (30, 41559), (31, 41562),

Gene: Paschalis_66 Start: 41416, Stop: 41715, Start Num: 14
Candidate Starts for Paschalis_66:
(Start: 14 @41416 has 46 MA's), (23, 41446), (29, 41563), (30, 41578), (31, 41581),

Gene: PhedwardCullen_65 Start: 41139, Stop: 41432, Start Num: 14
Candidate Starts for PhedwardCullen_65:
(11, 41115), (Start: 14 @41139 has 46 MA's), (27, 41217), (29, 41280), (30, 41295), (31, 41298),

Gene: Phorgeous_66 Start: 41205, Stop: 41498, Start Num: 14

Candidate Starts for Phorgeous_66:
(11, 41181), (Start: 14 @41205 has 46 MA's), (27, 41283), (29, 41346), (30, 41361), (31, 41364),

Gene: Phrancesco_66 Start: 41528, Stop: 41821, Start Num: 14
Candidate Starts for Phrancesco_66:
(11, 41504), (Start: 14 @41528 has 46 MA's), (27, 41606), (29, 41669), (30, 41684), (31, 41687),

Gene: PierreOrion_66 Start: 41628, Stop: 41927, Start Num: 14
Candidate Starts for PierreOrion_66:
(Start: 14 @41628 has 46 MA's), (23, 41658), (29, 41775), (30, 41790), (31, 41793),

Gene: PiperSansNom_67 Start: 41707, Stop: 42006, Start Num: 14
Candidate Starts for PiperSansNom_67:
(Start: 14 @41707 has 46 MA's), (23, 41737), (29, 41854), (30, 41869), (31, 41872),

Gene: Piperis_67 Start: 41330, Stop: 41623, Start Num: 14
Candidate Starts for Piperis_67:
(Start: 14 @41330 has 46 MA's), (27, 41408), (29, 41471), (30, 41486), (31, 41489),

Gene: Pulchra_68 Start: 41726, Stop: 42019, Start Num: 14
Candidate Starts for Pulchra_68:
(11, 41702), (Start: 14 @41726 has 46 MA's), (27, 41804), (29, 41867), (30, 41882), (31, 41885),

Gene: Quhwah_70 Start: 42015, Stop: 42308, Start Num: 14
Candidate Starts for Quhwah_70:
(Start: 14 @42015 has 46 MA's), (27, 42093), (29, 42156), (30, 42171), (31, 42174),

Gene: Ramiel05_65 Start: 41388, Stop: 41687, Start Num: 14
Candidate Starts for Ramiel05_65:
(Start: 14 @41388 has 46 MA's), (23, 41418), (29, 41535), (30, 41550), (31, 41553),

Gene: RobsFeet_70 Start: 42943, Stop: 43236, Start Num: 14
Candidate Starts for RobsFeet_70:
(Start: 14 @42943 has 46 MA's), (27, 43021), (29, 43084), (31, 43102),

Gene: Rockwell_65 Start: 41418, Stop: 41717, Start Num: 14
Candidate Starts for Rockwell_65:
(Start: 14 @41418 has 46 MA's), (23, 41448), (29, 41565), (30, 41580), (31, 41583),

Gene: Savannah_65 Start: 41445, Stop: 41738, Start Num: 14
Candidate Starts for Savannah_65:
(Start: 14 @41445 has 46 MA's), (27, 41523), (29, 41586), (30, 41601), (31, 41604),

Gene: Scumberland_68 Start: 41640, Stop: 41933, Start Num: 14
Candidate Starts for Scumberland_68:
(Start: 14 @41640 has 46 MA's), (24, 41667), (27, 41718), (29, 41781), (30, 41796), (31, 41799),

Gene: Selwyn23_67 Start: 41557, Stop: 41850, Start Num: 14
Candidate Starts for Selwyn23_67:
(11, 41533), (Start: 14 @41557 has 46 MA's), (27, 41635), (29, 41698), (30, 41713), (31, 41716),

Gene: Shotgun_66 Start: 41324, Stop: 41617, Start Num: 14
Candidate Starts for Shotgun_66:

(11, 41300), (Start: 14 @41324 has 46 MA's), (27, 41402), (29, 41465), (30, 41480), (31, 41483),

Gene: Shrubaron_70 Start: 42538, Stop: 42831, Start Num: 14

Candidate Starts for Shrubaron_70:

(Start: 14 @42538 has 46 MA's), (27, 42616), (29, 42679), (31, 42697),

Gene: SirFrank_66 Start: 41608, Stop: 41901, Start Num: 14

Candidate Starts for SirFrank_66:

(Start: 14 @41608 has 46 MA's), (24, 41635), (27, 41686), (29, 41749), (31, 41767),

Gene: Sixsevenium_87 Start: 57614, Stop: 57372, Start Num: 19

Candidate Starts for Sixsevenium_87:

(2, 58055), (4, 57896), (5, 57827), (6, 57803), (7, 57800), (12, 57647), (17, 57620), (18, 57617), (Start: 19 @57614 has 1 MA's), (25, 57596), (28, 57539), (32, 57416),

Gene: Skugga_66 Start: 41866, Stop: 42165, Start Num: 14

Candidate Starts for Skugga_66:

(Start: 14 @41866 has 46 MA's), (27, 41950), (29, 42013), (30, 42028), (31, 42031),

Gene: Smarties_76 Start: 43251, Stop: 43544, Start Num: 14

Candidate Starts for Smarties_76:

(Start: 14 @43251 has 46 MA's), (27, 43329), (29, 43392), (31, 43410),

Gene: Sunny_ Start: 43566, Stop: 43856, Start Num: 14

Candidate Starts for Sunny_:

(9, 43518), (Start: 14 @43566 has 46 MA's), (27, 43650), (29, 43713),

Gene: Sunshine23_95 Start: 57525, Stop: 57268, Start Num: 25

Candidate Starts for Sunshine23_95:

(13, 57567), (15, 57561), (16, 57555), (20, 57543), (24, 57528), (25, 57525), (26, 57492), (27, 57477),

Gene: Teamocil_70 Start: 41573, Stop: 41866, Start Num: 14

Candidate Starts for Teamocil_70:

(8, 41480), (Start: 14 @41573 has 46 MA's), (27, 41651), (29, 41714), (31, 41732),

Gene: Tyrumbra_65 Start: 42225, Stop: 42518, Start Num: 14

Candidate Starts for Tyrumbra_65:

(Start: 14 @42225 has 46 MA's), (27, 42303), (29, 42366), (31, 42384),

Gene: Yeti_68 Start: 41362, Stop: 41655, Start Num: 14

Candidate Starts for Yeti_68:

(Start: 14 @41362 has 46 MA's), (27, 41440), (29, 41503), (30, 41518), (31, 41521),

Gene: Zapato_66 Start: 42216, Stop: 42509, Start Num: 14

Candidate Starts for Zapato_66:

(Start: 14 @42216 has 46 MA's), (27, 42294), (29, 42357),