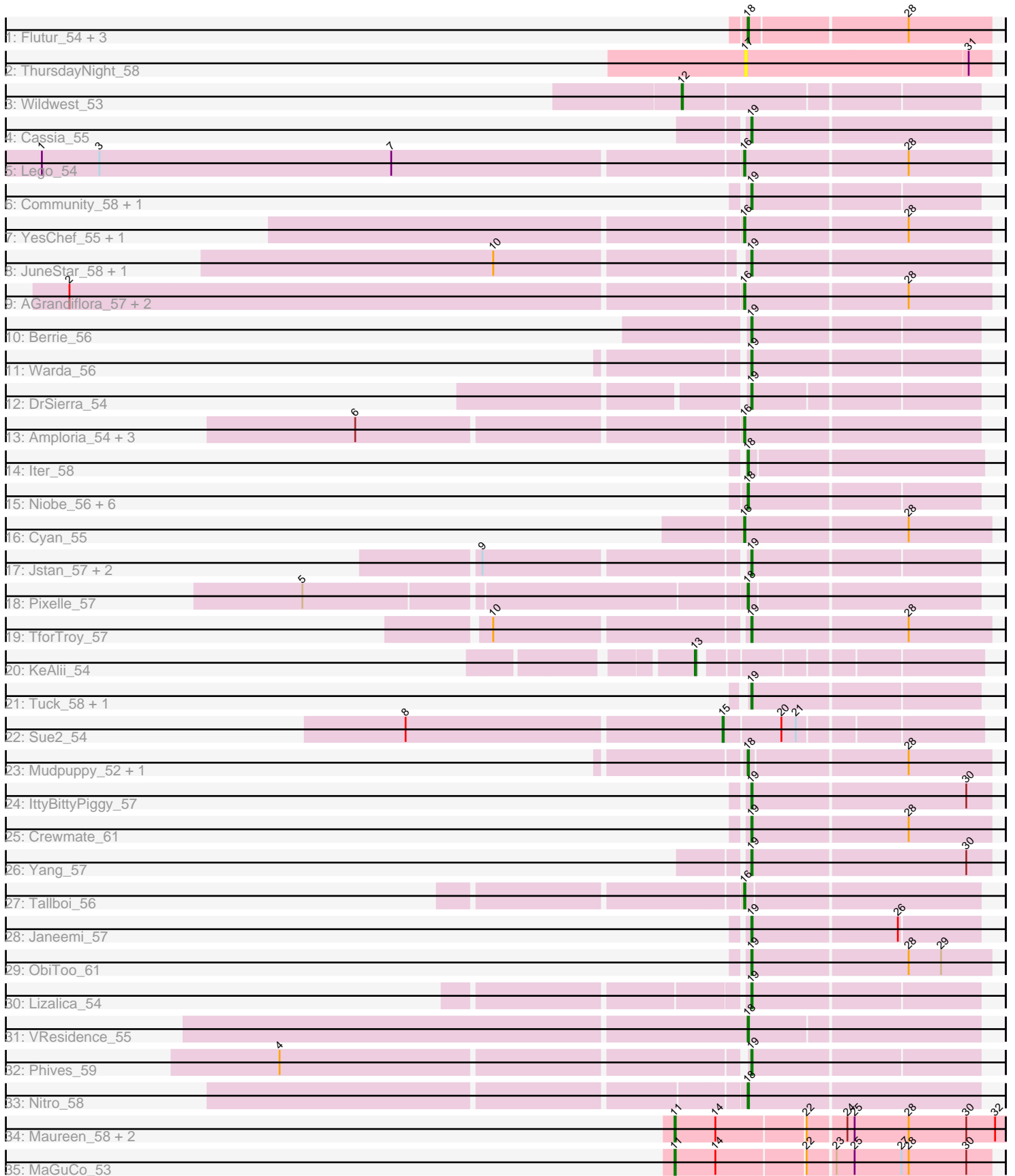


Pham 296601



Note: Tracks are now grouped by subcluster and scaled. Switching in subcluster is indicated by changes in track color. Track scale is now set by default to display the region 30 bp upstream of start 1 to 30 bp downstream of the last possible start. If this default region is judged to be packed too tightly with annotated starts, the track will be further scaled to only show that region of the ORF with annotated starts. This action will be indicated by adding "Zoomed" to the title. For starts, yellow indicates the location of called starts comprised solely of Glimmer/GeneMark auto-annotations, green indicates the location of called starts with at least 1 manual gene annotation.

Pham 296601 Report

This analysis was run 04/25/26 on database version 644.

Pham number 296601 has 58 members, 13 are drafts.

Phages represented in each track:

- Track 1 : Flutur_54, JohnDoe_55, Tutumahutu_56, Kaylissa_56
- Track 2 : ThursdayNight_58
- Track 3 : Wildwest_53
- Track 4 : Cassia_55
- Track 5 : Lego_54
- Track 6 : Community_58, Pumpkins_54
- Track 7 : YesChef_55, Powerpuff_57
- Track 8 : JuneStar_58, Schaffner_55
- Track 9 : AGrandiflora_57, Joemato_55, Simpson_57
- Track 10 : Berrie_56
- Track 11 : Warda_56
- Track 12 : DrSierra_54
- Track 13 : Amploria_54, Turab_53, AEgle_52, Adumb2043_53
- Track 14 : lter_58
- Track 15 : Niobe_56, Tian_56, Skelbel_57, Asa16_56, Eraser_56, London_56, Amyev_57
- Track 16 : Cyan_55
- Track 17 : Jstan_57, Elezi_55, Subaru_56
- Track 18 : Pixelle_57
- Track 19 : TforTroy_57
- Track 20 : KeAlii_54
- Track 21 : Tuck_58, Ascela_58
- Track 22 : Sue2_54
- Track 23 : Mudpuppy_52, Tbone_55
- Track 24 : IttyBittyPiggy_57
- Track 25 : Crewmate_61
- Track 26 : Yang_57
- Track 27 : Tallboi_56
- Track 28 : Janeemi_57
- Track 29 : ObiToo_61
- Track 30 : Lizalica_54
- Track 31 : VResidence_55
- Track 32 : Phives_59
- Track 33 : Nitro_58
- Track 34 : Maureen_58, IUFootball_58, Liebe_58
- Track 35 : MaGuCo_53

Summary of Final Annotations (See graph section above for start numbers):

The start number called the most often in the published annotations is 19, it was called in 18 of the 45 non-draft genes in the pham.

Genes that call this "Most Annotated" start:

- Ascela_58, Berrie_56, Cassia_55, Community_58, Crewmate_61, DrSierra_54, Elezi_55, IttyBittyPiggy_57, Janeemi_57, Jstan_57, JuneStar_58, Lizalica_54, ObiToo_61, Phives_59, Pumpkins_54, Schaffner_55, Subaru_56, TforTroy_57, Tuck_58, Warda_56, Yang_57,

Genes that have the "Most Annotated" start but do not call it:

-

Genes that do not have the "Most Annotated" start:

- AEgle_52, AGrandiflora_57, Adumb2043_53, Amploria_54, Amyev_57, Asa16_56, Cyan_55, Eraser_56, Flutur_54, IUFootball_58, Iter_58, Joemato_55, JohnDoe_55, Kaylissa_56, KeAlii_54, Lego_54, Liebe_58, London_56, MaGuCo_53, Maureen_58, Mudpuppy_52, Niobe_56, Nitro_58, Pixelle_57, Powerpuff_57, Simpson_57, Skelbel_57, Sue2_54, Tallboi_56, Tbone_55, ThursdayNight_58, Tian_56, Turab_53, Tutumahutu_56, VResidence_55, Wildwest_53, YesChef_55,

Summary by start number:

Start 11:

- Found in 4 of 58 (6.9%) of genes in pham
- Manual Annotations of this start: 3 of 45
- Called 100.0% of time when present
- Phage (with cluster) where this start called: IUFootball_58 (AZ2), Liebe_58 (AZ2), MaGuCo_53 (AZ2), Maureen_58 (AZ2),

Start 12:

- Found in 1 of 58 (1.7%) of genes in pham
- Manual Annotations of this start: 1 of 45
- Called 100.0% of time when present
- Phage (with cluster) where this start called: Wildwest_53 (AZ1),

Start 13:

- Found in 1 of 58 (1.7%) of genes in pham
- Manual Annotations of this start: 1 of 45
- Called 100.0% of time when present
- Phage (with cluster) where this start called: KeAlii_54 (AZ1),

Start 15:

- Found in 1 of 58 (1.7%) of genes in pham
- Manual Annotations of this start: 1 of 45
- Called 100.0% of time when present
- Phage (with cluster) where this start called: Sue2_54 (AZ1),

Start 16:

- Found in 12 of 58 (20.7%) of genes in pham
- Manual Annotations of this start: 7 of 45
- Called 100.0% of time when present
- Phage (with cluster) where this start called: AEgle_52 (AZ1), AGrandiflora_57 (AZ1), Adumb2043_53 (AZ1), Amploria_54 (AZ1), Cyan_55 (AZ1), Joemato_55 (AZ1), Lego_54 (AZ1), Powerpuff_57 (AZ1), Simpson_57 (AZ1), Tallboi_56 (AZ1), Turab_53 (AZ1), YesChef_55 (AZ1),

Start 17:

- Found in 1 of 58 (1.7%) of genes in pham
- No Manual Annotations of this start.
- Called 100.0% of time when present
- Phage (with cluster) where this start called: ThursdayNight_58 (AZ),

Start 18:

- Found in 17 of 58 (29.3%) of genes in pham
- Manual Annotations of this start: 14 of 45
- Called 100.0% of time when present
- Phage (with cluster) where this start called: Amyev_57 (AZ1), Asa16_56 (AZ1), Eraser_56 (AZ1), Flutur_54 (AZ), Iter_58 (AZ1), JohnDoe_55 (AZ1), Kaylissa_56 (AZ1), London_56 (AZ1), Mudpuppy_52 (AZ1), Niobe_56 (AZ1), Nitro_58 (AZ1), Pixelle_57 (AZ1), Skelbel_57 (AZ1), Tbone_55 (AZ1), Tian_56 (AZ1), Tutumahutu_56 (AZ1), VResidence_55 (AZ1),

Start 19:

- Found in 21 of 58 (36.2%) of genes in pham
- Manual Annotations of this start: 18 of 45
- Called 100.0% of time when present
- Phage (with cluster) where this start called: Ascela_58 (AZ1), Berrie_56 (AZ1), Cassia_55 (AZ1), Community_58 (AZ1), Crewmate_61 (AZ1), DrSierra_54 (AZ1), Elezi_55 (AZ1), IttyBittyPiggy_57 (AZ1), Janeemi_57 (AZ1), Jstan_57 (AZ1), JuneStar_58 (AZ1), Lizalica_54 (AZ1), ObiToo_61 (AZ1), Phives_59 (AZ1), Pumpkins_54 (AZ1), Schaffner_55 (AZ1), Subaru_56 (AZ1), TforTroy_57 (AZ1), Tuck_58 (AZ1), Warda_56 (AZ1), Yang_57 (AZ1),

Summary by clusters:

There are 3 clusters represented in this pham: AZ1, AZ2, AZ,

Info for manual annotations of cluster AZ1:

- Start number 12 was manually annotated 1 time for cluster AZ1.
- Start number 13 was manually annotated 1 time for cluster AZ1.
- Start number 15 was manually annotated 1 time for cluster AZ1.
- Start number 16 was manually annotated 7 times for cluster AZ1.
- Start number 18 was manually annotated 14 times for cluster AZ1.
- Start number 19 was manually annotated 18 times for cluster AZ1.

Info for manual annotations of cluster AZ2:

- Start number 11 was manually annotated 3 times for cluster AZ2.

Gene Information:

Gene: AEgle_52 Start: 37591, Stop: 37782, Start Num: 16

Candidate Starts for AEgle_52:

(6, 37285), (Start: 16 @37591 has 7 MA's),

Gene: AGrandiflora_57 Start: 38760, Stop: 38960, Start Num: 16

Candidate Starts for AGrandiflora_57:

(2, 38211), (Start: 16 @38760 has 7 MA's), (28, 38892),

Gene: Adumb2043_53 Start: 37614, Stop: 37805, Start Num: 16

Candidate Starts for Adumb2043_53:

(6, 37308), (Start: 16 @37614 has 7 MA's),

Gene: Amploria_54 Start: 37795, Stop: 37986, Start Num: 16

Candidate Starts for Amploria_54:

(6, 37489), (Start: 16 @37795 has 7 MA's),

Gene: Amyev_57 Start: 40846, Stop: 41031, Start Num: 18

Candidate Starts for Amyev_57:

(Start: 18 @40846 has 14 MA's),

Gene: Asa16_56 Start: 39543, Stop: 39728, Start Num: 18

Candidate Starts for Asa16_56:

(Start: 18 @39543 has 14 MA's),

Gene: Ascela_58 Start: 39002, Stop: 39196, Start Num: 19

Candidate Starts for Ascela_58:

(Start: 19 @39002 has 18 MA's),

Gene: Berrie_56 Start: 38817, Stop: 38999, Start Num: 19

Candidate Starts for Berrie_56:

(Start: 19 @38817 has 18 MA's),

Gene: Cassia_55 Start: 38504, Stop: 38698, Start Num: 19

Candidate Starts for Cassia_55:

(Start: 19 @38504 has 18 MA's),

Gene: Community_58 Start: 40395, Stop: 40577, Start Num: 19

Candidate Starts for Community_58:

(Start: 19 @40395 has 18 MA's),

Gene: Crewmate_61 Start: 40124, Stop: 40318, Start Num: 19

Candidate Starts for Crewmate_61:

(Start: 19 @40124 has 18 MA's), (28, 40250),

Gene: Cyan_55 Start: 38301, Stop: 38501, Start Num: 16

Candidate Starts for Cyan_55:

(Start: 16 @38301 has 7 MA's), (28, 38433),

Gene: DrSierra_54 Start: 37220, Stop: 37399, Start Num: 19

Candidate Starts for DrSierra_54:

(Start: 19 @37220 has 18 MA's),

Gene: Elezi_55 Start: 39303, Stop: 39485, Start Num: 19
Candidate Starts for Elezi_55:
(9, 39096), (Start: 19 @39303 has 18 MA's),

Gene: Eraser_56 Start: 39550, Stop: 39735, Start Num: 18
Candidate Starts for Eraser_56:
(Start: 18 @39550 has 14 MA's),

Gene: Flutur_54 Start: 38613, Stop: 38807, Start Num: 18
Candidate Starts for Flutur_54:
(Start: 18 @38613 has 14 MA's), (28, 38739),

Gene: IUFootball_58 Start: 41412, Stop: 41675, Start Num: 11
Candidate Starts for IUFootball_58:
(Start: 11 @41412 has 3 MA's), (14, 41445), (22, 41514), (24, 41544), (25, 41550), (28, 41595), (30, 41643), (32, 41667),

Gene: Iter_58 Start: 38994, Stop: 39182, Start Num: 18
Candidate Starts for Iter_58:
(Start: 18 @38994 has 14 MA's),

Gene: IttyBittyPiggy_57 Start: 38132, Stop: 38326, Start Num: 19
Candidate Starts for IttyBittyPiggy_57:
(Start: 19 @38132 has 18 MA's), (30, 38306),

Gene: Janeemi_57 Start: 39872, Stop: 40054, Start Num: 19
Candidate Starts for Janeemi_57:
(Start: 19 @39872 has 18 MA's), (26, 39989),

Gene: Joemato_55 Start: 38382, Stop: 38582, Start Num: 16
Candidate Starts for Joemato_55:
(2, 37833), (Start: 16 @38382 has 7 MA's), (28, 38514),

Gene: JohnDoe_55 Start: 38368, Stop: 38562, Start Num: 18
Candidate Starts for JohnDoe_55:
(Start: 18 @38368 has 14 MA's), (28, 38494),

Gene: Jstan_57 Start: 39307, Stop: 39489, Start Num: 19
Candidate Starts for Jstan_57:
(9, 39100), (Start: 19 @39307 has 18 MA's),

Gene: JuneStar_58 Start: 41416, Stop: 41610, Start Num: 19
Candidate Starts for JuneStar_58:
(10, 41221), (Start: 19 @41416 has 18 MA's),

Gene: Kaylissa_56 Start: 38763, Stop: 38960, Start Num: 18
Candidate Starts for Kaylissa_56:
(Start: 18 @38763 has 14 MA's), (28, 38892),

Gene: KeAlii_54 Start: 38009, Stop: 38218, Start Num: 13
Candidate Starts for KeAlii_54:
(Start: 13 @38009 has 1 MA's),

Gene: Lego_54 Start: 38079, Stop: 38279, Start Num: 16

Candidate Starts for Lego_54:

(1, 37506), (3, 37554), (7, 37797), (Start: 16 @38079 has 7 MA's), (28, 38211),

Gene: Liebe_58 Start: 41412, Stop: 41675, Start Num: 11

Candidate Starts for Liebe_58:

(Start: 11 @41412 has 3 MA's), (14, 41445), (22, 41514), (24, 41544), (25, 41550), (28, 41595), (30, 41643), (32, 41667),

Gene: Lizalica_54 Start: 37826, Stop: 38008, Start Num: 19

Candidate Starts for Lizalica_54:

(Start: 19 @37826 has 18 MA's),

Gene: London_56 Start: 39541, Stop: 39726, Start Num: 18

Candidate Starts for London_56:

(Start: 18 @39541 has 14 MA's),

Gene: MaGuCo_53 Start: 39882, Stop: 40133, Start Num: 11

Candidate Starts for MaGuCo_53:

(Start: 11 @39882 has 3 MA's), (14, 39915), (22, 39984), (23, 40005), (25, 40020), (27, 40059), (28, 40065), (30, 40113),

Gene: Maureen_58 Start: 41411, Stop: 41674, Start Num: 11

Candidate Starts for Maureen_58:

(Start: 11 @41411 has 3 MA's), (14, 41444), (22, 41513), (24, 41543), (25, 41549), (28, 41594), (30, 41642), (32, 41666),

Gene: Mudpuppy_52 Start: 38242, Stop: 38436, Start Num: 18

Candidate Starts for Mudpuppy_52:

(Start: 18 @38242 has 14 MA's), (28, 38368),

Gene: Niobe_56 Start: 39544, Stop: 39729, Start Num: 18

Candidate Starts for Niobe_56:

(Start: 18 @39544 has 14 MA's),

Gene: Nitro_58 Start: 40465, Stop: 40653, Start Num: 18

Candidate Starts for Nitro_58:

(Start: 18 @40465 has 14 MA's),

Gene: ObiToo_61 Start: 39721, Stop: 39915, Start Num: 19

Candidate Starts for ObiToo_61:

(Start: 19 @39721 has 18 MA's), (28, 39847), (29, 39874),

Gene: Phives_59 Start: 40511, Stop: 40693, Start Num: 19

Candidate Starts for Phives_59:

(4, 40142), (Start: 19 @40511 has 18 MA's),

Gene: Pixelle_57 Start: 40947, Stop: 41132, Start Num: 18

Candidate Starts for Pixelle_57:

(5, 40599), (Start: 18 @40947 has 14 MA's),

Gene: Powerpuff_57 Start: 39483, Stop: 39683, Start Num: 16

Candidate Starts for Powerpuff_57:
(Start: 16 @39483 has 7 MA's), (28, 39615),

Gene: Pumpkins_54 Start: 39127, Stop: 39321, Start Num: 19
Candidate Starts for Pumpkins_54:
(Start: 19 @39127 has 18 MA's),

Gene: Schaffner_55 Start: 38968, Stop: 39162, Start Num: 19
Candidate Starts for Schaffner_55:
(10, 38773), (Start: 19 @38968 has 18 MA's),

Gene: Simpson_57 Start: 38386, Stop: 38586, Start Num: 16
Candidate Starts for Simpson_57:
(2, 37837), (Start: 16 @38386 has 7 MA's), (28, 38518),

Gene: Skelbel_57 Start: 39544, Stop: 39729, Start Num: 18
Candidate Starts for Skelbel_57:
(Start: 18 @39544 has 14 MA's),

Gene: Subaru_56 Start: 39303, Stop: 39485, Start Num: 19
Candidate Starts for Subaru_56:
(9, 39096), (Start: 19 @39303 has 18 MA's),

Gene: Sue2_54 Start: 38086, Stop: 38286, Start Num: 15
Candidate Starts for Sue2_54:
(8, 37828), (Start: 15 @38086 has 1 MA's), (20, 38131), (21, 38143),

Gene: Tallboi_56 Start: 39686, Stop: 39874, Start Num: 16
Candidate Starts for Tallboi_56:
(Start: 16 @39686 has 7 MA's),

Gene: Tbone_55 Start: 38934, Stop: 39128, Start Num: 18
Candidate Starts for Tbone_55:
(Start: 18 @38934 has 14 MA's), (28, 39060),

Gene: TforTroy_57 Start: 39052, Stop: 39246, Start Num: 19
Candidate Starts for TforTroy_57:
(10, 38854), (Start: 19 @39052 has 18 MA's), (28, 39178),

Gene: ThursdayNight_58 Start: 39681, Stop: 39881, Start Num: 17
Candidate Starts for ThursdayNight_58:
(17, 39681), (31, 39864),

Gene: Tian_56 Start: 40845, Stop: 41030, Start Num: 18
Candidate Starts for Tian_56:
(Start: 18 @40845 has 14 MA's),

Gene: Tuck_58 Start: 40300, Stop: 40482, Start Num: 19
Candidate Starts for Tuck_58:
(Start: 19 @40300 has 18 MA's),

Gene: Turab_53 Start: 37635, Stop: 37826, Start Num: 16
Candidate Starts for Turab_53:

(6, 37329), (Start: 16 @37635 has 7 MA's),

Gene: Tutumahutu_56 Start: 38356, Stop: 38553, Start Num: 18

Candidate Starts for Tutumahutu_56:

(Start: 18 @38356 has 14 MA's), (28, 38485),

Gene: VResidence_55 Start: 37492, Stop: 37677, Start Num: 18

Candidate Starts for VResidence_55:

(Start: 18 @37492 has 14 MA's),

Gene: Warda_56 Start: 38671, Stop: 38853, Start Num: 19

Candidate Starts for Warda_56:

(Start: 19 @38671 has 18 MA's),

Gene: Wildwest_53 Start: 38260, Stop: 38493, Start Num: 12

Candidate Starts for Wildwest_53:

(Start: 12 @38260 has 1 MA's),

Gene: Yang_57 Start: 39052, Stop: 39246, Start Num: 19

Candidate Starts for Yang_57:

(Start: 19 @39052 has 18 MA's), (30, 39226),

Gene: YesChef_55 Start: 38342, Stop: 38542, Start Num: 16

Candidate Starts for YesChef_55:

(Start: 16 @38342 has 7 MA's), (28, 38474),