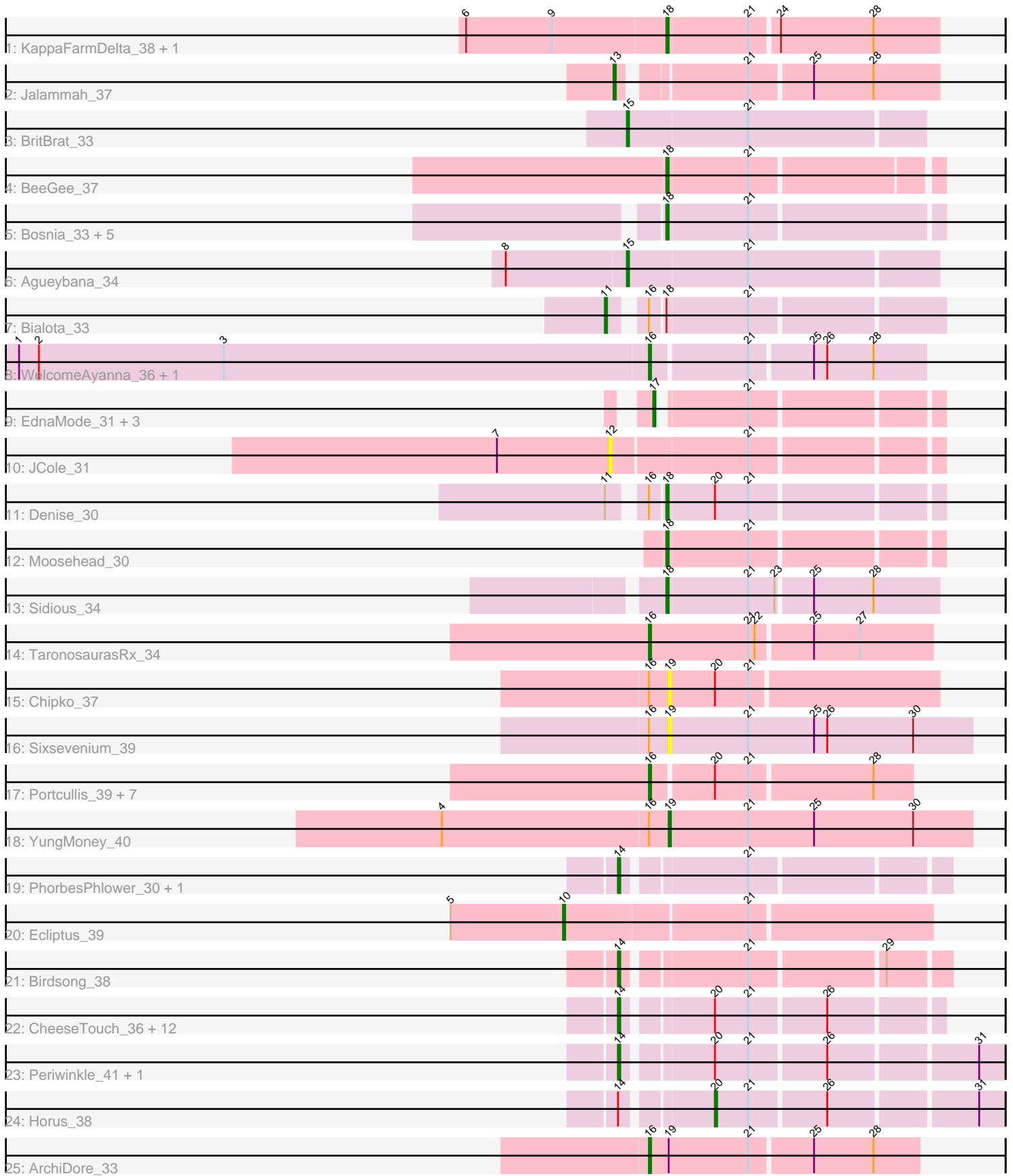


Pham 296618



Note: Tracks are now grouped by subcluster and scaled. Switching in subcluster is indicated by changes in track color. Track scale is now set by default to display the region 30 bp upstream of start 1 to 30 bp downstream of the last possible start. If this default region is judged to be packed too tightly with annotated starts, the track will be further scaled to only show that region of the ORF with annotated starts. This action will be indicated by adding "Zoomed" to the title. For starts, yellow indicates the location of called starts comprised solely of Glimmer/GeneMark auto-annotations, green indicates the location of called starts with at least 1 manual gene annotation.

Pham 296618 Report

This analysis was run 04/25/26 on database version 644.

Pham number 296618 has 56 members, 7 are drafts.

Phages represented in each track:

- Track 1 : KappaFarmDelta_38, Wocket_37
- Track 2 : Jalammah_37
- Track 3 : BritBrat_33
- Track 4 : BeeGee_37
- Track 5 : Bosnia_33, Herod_33, Eviarto_33, Nymphadora_33, TimTam_33, BatStarr_33
- Track 6 : Agueybana_34
- Track 7 : Bialota_33
- Track 8 : WelcomeAyanna_36, ThankyouJordi_36
- Track 9 : EdnaMode_31, LordFarquaad_33, Nettuno_31, Lamberg_31
- Track 10 : JCole_31
- Track 11 : Denise_30
- Track 12 : Moosehead_30
- Track 13 : Sidious_34
- Track 14 : TaronosaurusRx_34
- Track 15 : Chipko_37
- Track 16 : Sixsevenium_39
- Track 17 : Portcullis_39, Sendy_39, TillyBobJoe_38, SmokingBunny_38, CoveyB_41, Fireball_39, Savbucketdawg_38, JohnPork_39
- Track 18 : YungMoney_40
- Track 19 : PhorbesPhlower_30, Kamaru_37
- Track 20 : Ecliptus_39
- Track 21 : Birdsong_38
- Track 22 : CheeseTouch_36, Lutum_38, Kenna_37, ODay_41, Frickyeah_38, Asapag_38, Holliday_37, BearBQ_37, Apricot_37, Phistory_38, ShawBrad_37, Getalong_39, Phabuloso_35
- Track 23 : Periwinkle_41, Leroy_38
- Track 24 : Horus_38
- Track 25 : ArchiDore_33

Summary of Final Annotations (See graph section above for start numbers):

The start number called the most often in the published annotations is 14, it was called in 16 of the 49 non-draft genes in the pham.

Genes that call this "Most Annotated" start:

- Apricot_37, Asapag_38, BearBQ_37, Birdsong_38, CheeseTouch_36, Frickyeah_38, Getalong_39, Holliday_37, Kamaru_37, Kenna_37, Leroy_38, Lutum_38, ODay_41, Periwinkle_41, Phabuloso_35, Phistory_38, PhorbesPhlower_30, ShawBrad_37,

Genes that have the "Most Annotated" start but do not call it:

- Horus_38,

Genes that do not have the "Most Annotated" start:

- Agueybana_34, ArchiDore_33, BatStarr_33, BeeGee_37, Bialota_33, Bosnia_33, BritBrat_33, Chipko_37, CoveyB_41, Denise_30, Ecliptus_39, EdnaMode_31, Eviarto_33, Fireball_39, Herod_33, JCole_31, Jalammah_37, JohnPork_39, KappaFarmDelta_38, Lamberg_31, LordFarquaad_33, Moosehead_30, Nettuno_31, Nymphadora_33, Portcullis_39, Savbucketdawg_38, Sendy_39, Sidious_34, Sixsevenium_39, SmokingBunny_38, TaronosaurusRx_34, ThankyouJordi_36, TillyBobJoe_38, TimTam_33, WelcomeAyanna_36, Wocket_37, YungMoney_40,

Summary by start number:

Start 10:

- Found in 1 of 56 (1.8%) of genes in pham
- Manual Annotations of this start: 1 of 49
- Called 100.0% of time when present
- Phage (with cluster) where this start called: Ecliptus_39 (DN),

Start 11:

- Found in 2 of 56 (3.6%) of genes in pham
- Manual Annotations of this start: 1 of 49
- Called 50.0% of time when present
- Phage (with cluster) where this start called: Bialota_33 (CZ1),

Start 12:

- Found in 1 of 56 (1.8%) of genes in pham
- No Manual Annotations of this start.
- Called 100.0% of time when present
- Phage (with cluster) where this start called: JCole_31 (CZ2),

Start 13:

- Found in 1 of 56 (1.8%) of genes in pham
- Manual Annotations of this start: 1 of 49
- Called 100.0% of time when present
- Phage (with cluster) where this start called: Jalammah_37 (CV),

Start 14:

- Found in 19 of 56 (33.9%) of genes in pham
- Manual Annotations of this start: 16 of 49
- Called 94.7% of time when present
- Phage (with cluster) where this start called: Apricot_37 (DN3), Asapag_38 (DN1), BearBQ_37 (DN), Birdsong_38 (DN), CheeseTouch_36 (DN1), Frickyeah_38 (DN1), Getalong_39 (DN1), Holliday_37 (DN1), Kamaru_37 (DN1), Kenna_37 (DN1), Leroy_38 (DN1), Lutum_38 (DN1), ODay_41 (DN), Periwinkle_41 (DN1),

Phabuloso_35 (DN1), Phistory_38 (DN1), PhorbesPhlower_30 (DH), ShawBrad_37 (DN1),

Start 15:

- Found in 2 of 56 (3.6%) of genes in pham
- Manual Annotations of this start: 2 of 49
- Called 100.0% of time when present
- Phage (with cluster) where this start called: Agueybana_34 (CZ1), BritBrat_33 (CY2),

Start 16:

- Found in 17 of 56 (30.4%) of genes in pham
- Manual Annotations of this start: 10 of 49
- Called 70.6% of time when present
- Phage (with cluster) where this start called: ArchiDore_33 (DW), CoveyB_41 (DC1), Fireball_39 (DC1), JohnPork_39 (DC), Portcullis_39 (DC1), Savbucketdawg_38 (DC1), Sedy_39 (DC), SmokingBunny_38 (DC1), TaronosaurusRx_34 (DB), ThankyouJordi_36 (CZ1), TillyBobJoe_38 (DC1), WelcomeAyanna_36 (CZ1),

Start 17:

- Found in 4 of 56 (7.1%) of genes in pham
- Manual Annotations of this start: 4 of 49
- Called 100.0% of time when present
- Phage (with cluster) where this start called: EdnaMode_31 (CZ2), Lamberg_31 (CZ2), LordFarquaad_33 (CZ2), Nettuno_31 (CZ2),

Start 18:

- Found in 13 of 56 (23.2%) of genes in pham
- Manual Annotations of this start: 12 of 49
- Called 92.3% of time when present
- Phage (with cluster) where this start called: BatStarr_33 (CZ1), BeeGee_37 (CY5), Bosnia_33 (CZ1), Denise_30 (CZ5), Eviarto_33 (CZ1), Herod_33 (CZ1), KappaFarmDelta_38 (CV), Moosehead_30 (CZ6), Nymphadora_33 (CZ1), Sidious_34 (CZ7), TimTam_33 (CZ1), Wocket_37 (CV),

Start 19:

- Found in 4 of 56 (7.1%) of genes in pham
- Manual Annotations of this start: 1 of 49
- Called 75.0% of time when present
- Phage (with cluster) where this start called: Chipko_37 (DB), Sixsevenium_39 (DC), YungMoney_40 (DC1),

Start 20:

- Found in 26 of 56 (46.4%) of genes in pham
- Manual Annotations of this start: 1 of 49
- Called 3.8% of time when present
- Phage (with cluster) where this start called: Horus_38 (DN1),

Summary by clusters:

There are 16 clusters represented in this pham: DN, CY2, CZ7, DH, CY5, CZ2, DB, CZ1, CZ6, DC, CZ5, DN1, DN3, DW, CV, DC1,

Info for manual annotations of cluster CV:

- Start number 13 was manually annotated 1 time for cluster CV.
- Start number 18 was manually annotated 2 times for cluster CV.

Info for manual annotations of cluster CY2:

- Start number 15 was manually annotated 1 time for cluster CY2.

Info for manual annotations of cluster CY5:

- Start number 18 was manually annotated 1 time for cluster CY5.

Info for manual annotations of cluster CZ1:

- Start number 11 was manually annotated 1 time for cluster CZ1.
- Start number 15 was manually annotated 1 time for cluster CZ1.
- Start number 16 was manually annotated 2 times for cluster CZ1.
- Start number 18 was manually annotated 6 times for cluster CZ1.

Info for manual annotations of cluster CZ2:

- Start number 17 was manually annotated 4 times for cluster CZ2.

Info for manual annotations of cluster CZ5:

- Start number 18 was manually annotated 1 time for cluster CZ5.

Info for manual annotations of cluster CZ6:

- Start number 18 was manually annotated 1 time for cluster CZ6.

Info for manual annotations of cluster CZ7:

- Start number 18 was manually annotated 1 time for cluster CZ7.

Info for manual annotations of cluster DB:

- Start number 16 was manually annotated 1 time for cluster DB.

Info for manual annotations of cluster DC1:

- Start number 16 was manually annotated 6 times for cluster DC1.
- Start number 19 was manually annotated 1 time for cluster DC1.

Info for manual annotations of cluster DH:

- Start number 14 was manually annotated 1 time for cluster DH.

Info for manual annotations of cluster DN:

- Start number 10 was manually annotated 1 time for cluster DN.
- Start number 14 was manually annotated 3 times for cluster DN.

Info for manual annotations of cluster DN1:

- Start number 14 was manually annotated 11 times for cluster DN1.
- Start number 20 was manually annotated 1 time for cluster DN1.

Info for manual annotations of cluster DN3:

- Start number 14 was manually annotated 1 time for cluster DN3.

Info for manual annotations of cluster DW:

- Start number 16 was manually annotated 1 time for cluster DW.

Gene Information:

Gene: Agueybana_34 Start: 28703, Stop: 28840, Start Num: 15

Candidate Starts for Agueybana_34:

(8, 28649), (Start: 15 @28703 has 2 MA's), (21, 28757),

Gene: Apricot_37 Start: 28555, Stop: 28686, Start Num: 14

Candidate Starts for Apricot_37:

(Start: 14 @28555 has 16 MA's), (Start: 20 @28591 has 1 MA's), (21, 28606), (26, 28639),

Gene: ArchiDore_33 Start: 28546, Stop: 28665, Start Num: 16

Candidate Starts for ArchiDore_33:

(Start: 16 @28546 has 10 MA's), (Start: 19 @28555 has 1 MA's), (21, 28591), (25, 28618), (28, 28645),

Gene: Asapag_38 Start: 30147, Stop: 30278, Start Num: 14

Candidate Starts for Asapag_38:

(Start: 14 @30147 has 16 MA's), (Start: 20 @30183 has 1 MA's), (21, 30198), (26, 30231),

Gene: BatStarr_33 Start: 29140, Stop: 29259, Start Num: 18

Candidate Starts for BatStarr_33:

(Start: 18 @29140 has 12 MA's), (21, 29176),

Gene: BearBQ_37 Start: 29782, Stop: 29913, Start Num: 14

Candidate Starts for BearBQ_37:

(Start: 14 @29782 has 16 MA's), (Start: 20 @29818 has 1 MA's), (21, 29833), (26, 29866),

Gene: BeeGee_37 Start: 29928, Stop: 30044, Start Num: 18

Candidate Starts for BeeGee_37:

(Start: 18 @29928 has 12 MA's), (21, 29964),

Gene: Bialota_33 Start: 29702, Stop: 29839, Start Num: 11

Candidate Starts for Bialota_33:

(Start: 11 @29702 has 1 MA's), (Start: 16 @29714 has 10 MA's), (Start: 18 @29720 has 12 MA's), (21, 29756),

Gene: Birdsong_38 Start: 29874, Stop: 30008, Start Num: 14

Candidate Starts for Birdsong_38:

(Start: 14 @29874 has 16 MA's), (21, 29925), (29, 29982),

Gene: Bosnia_33 Start: 29140, Stop: 29259, Start Num: 18

Candidate Starts for Bosnia_33:

(Start: 18 @29140 has 12 MA's), (21, 29176),

Gene: BritBrat_33 Start: 29905, Stop: 30036, Start Num: 15

Candidate Starts for BritBrat_33:

(Start: 15 @29905 has 2 MA's), (21, 29959),

Gene: CheeseTouch_36 Start: 26709, Stop: 26840, Start Num: 14

Candidate Starts for CheeseTouch_36:

(Start: 14 @26709 has 16 MA's), (Start: 20 @26745 has 1 MA's), (21, 26760), (26, 26793),

Gene: Chipko_37 Start: 31077, Stop: 31196, Start Num: 19
Candidate Starts for Chipko_37:
(Start: 16 @31068 has 10 MA's), (Start: 19 @31077 has 1 MA's), (Start: 20 @31098 has 1 MA's), (21, 31113),

Gene: CoveyB_41 Start: 33552, Stop: 33665, Start Num: 16
Candidate Starts for CoveyB_41:
(Start: 16 @33552 has 10 MA's), (Start: 20 @33579 has 1 MA's), (21, 33594), (28, 33648),

Gene: Denise_30 Start: 25534, Stop: 25650, Start Num: 18
Candidate Starts for Denise_30:
(Start: 11 @25516 has 1 MA's), (Start: 16 @25528 has 10 MA's), (Start: 18 @25534 has 12 MA's),
(Start: 20 @25555 has 1 MA's), (21, 25570),

Gene: Ecliptus_39 Start: 30584, Stop: 30745, Start Num: 10
Candidate Starts for Ecliptus_39:
(5, 30533), (Start: 10 @30584 has 1 MA's), (21, 30665),

Gene: EdnaMode_31 Start: 25366, Stop: 25482, Start Num: 17
Candidate Starts for EdnaMode_31:
(Start: 17 @25366 has 4 MA's), (21, 25402),

Gene: Eviarto_33 Start: 29116, Stop: 29235, Start Num: 18
Candidate Starts for Eviarto_33:
(Start: 18 @29116 has 12 MA's), (21, 29152),

Gene: Fireball_39 Start: 33696, Stop: 33809, Start Num: 16
Candidate Starts for Fireball_39:
(Start: 16 @33696 has 10 MA's), (Start: 20 @33723 has 1 MA's), (21, 33738), (28, 33792),

Gene: Frickyeah_38 Start: 28248, Stop: 28379, Start Num: 14
Candidate Starts for Frickyeah_38:
(Start: 14 @28248 has 16 MA's), (Start: 20 @28284 has 1 MA's), (21, 28299), (26, 28332),

Gene: Getalong_39 Start: 30968, Stop: 31099, Start Num: 14
Candidate Starts for Getalong_39:
(Start: 14 @30968 has 16 MA's), (Start: 20 @31004 has 1 MA's), (21, 31019), (26, 31052),

Gene: Herod_33 Start: 29140, Stop: 29259, Start Num: 18
Candidate Starts for Herod_33:
(Start: 18 @29140 has 12 MA's), (21, 29176),

Gene: Holliday_37 Start: 28823, Stop: 28954, Start Num: 14
Candidate Starts for Holliday_37:
(Start: 14 @28823 has 16 MA's), (Start: 20 @28859 has 1 MA's), (21, 28874), (26, 28907),

Gene: Horus_38 Start: 30205, Stop: 30327, Start Num: 20
Candidate Starts for Horus_38:
(Start: 14 @30169 has 16 MA's), (Start: 20 @30205 has 1 MA's), (21, 30220), (26, 30253), (31, 30316),

Gene: JCole_31 Start: 25778, Stop: 25918, Start Num: 12
Candidate Starts for JCole_31:
(7, 25727), (12, 25778), (21, 25838),

Gene: Jalammah_37 Start: 30167, Stop: 30301, Start Num: 13
Candidate Starts for Jalammah_37:
(Start: 13 @30167 has 1 MA's), (21, 30218), (25, 30245), (28, 30272),

Gene: JohnPork_39 Start: 33073, Stop: 33186, Start Num: 16
Candidate Starts for JohnPork_39:
(Start: 16 @33073 has 10 MA's), (Start: 20 @33100 has 1 MA's), (21, 33115), (28, 33169),

Gene: Kamaru_37 Start: 28823, Stop: 28954, Start Num: 14
Candidate Starts for Kamaru_37:
(Start: 14 @28823 has 16 MA's), (21, 28874),

Gene: KappaFarmDelta_38 Start: 28584, Stop: 28703, Start Num: 18
Candidate Starts for KappaFarmDelta_38:
(6, 28494), (9, 28533), (Start: 18 @28584 has 12 MA's), (21, 28620), (24, 28632), (28, 28674),

Gene: Kenna_37 Start: 29159, Stop: 29290, Start Num: 14
Candidate Starts for Kenna_37:
(Start: 14 @29159 has 16 MA's), (Start: 20 @29195 has 1 MA's), (21, 29210), (26, 29243),

Gene: Lamberg_31 Start: 25366, Stop: 25482, Start Num: 17
Candidate Starts for Lamberg_31:
(Start: 17 @25366 has 4 MA's), (21, 25402),

Gene: Leroy_38 Start: 30170, Stop: 30328, Start Num: 14
Candidate Starts for Leroy_38:
(Start: 14 @30170 has 16 MA's), (Start: 20 @30206 has 1 MA's), (21, 30221), (26, 30254), (31, 30317),

Gene: LordFarquaad_33 Start: 26678, Stop: 26794, Start Num: 17
Candidate Starts for LordFarquaad_33:
(Start: 17 @26678 has 4 MA's), (21, 26714),

Gene: Lutum_38 Start: 29159, Stop: 29290, Start Num: 14
Candidate Starts for Lutum_38:
(Start: 14 @29159 has 16 MA's), (Start: 20 @29195 has 1 MA's), (21, 29210), (26, 29243),

Gene: Moosehead_30 Start: 23681, Stop: 23797, Start Num: 18
Candidate Starts for Moosehead_30:
(Start: 18 @23681 has 12 MA's), (21, 23717),

Gene: Nettuno_31 Start: 25366, Stop: 25482, Start Num: 17
Candidate Starts for Nettuno_31:
(Start: 17 @25366 has 4 MA's), (21, 25402),

Gene: Nymphadora_33 Start: 29140, Stop: 29259, Start Num: 18
Candidate Starts for Nymphadora_33:
(Start: 18 @29140 has 12 MA's), (21, 29176),

Gene: ODay_41 Start: 30633, Stop: 30764, Start Num: 14
Candidate Starts for ODay_41:
(Start: 14 @30633 has 16 MA's), (Start: 20 @30669 has 1 MA's), (21, 30684), (26, 30717),

Gene: Periwinkle_41 Start: 30614, Stop: 30772, Start Num: 14
Candidate Starts for Periwinkle_41:
(Start: 14 @30614 has 16 MA's), (Start: 20 @30650 has 1 MA's), (21, 30665), (26, 30698), (31, 30761),

Gene: Phabuloso_35 Start: 28871, Stop: 29002, Start Num: 14
Candidate Starts for Phabuloso_35:
(Start: 14 @28871 has 16 MA's), (Start: 20 @28907 has 1 MA's), (21, 28922), (26, 28955),

Gene: Phistory_38 Start: 29511, Stop: 29642, Start Num: 14
Candidate Starts for Phistory_38:
(Start: 14 @29511 has 16 MA's), (Start: 20 @29547 has 1 MA's), (21, 29562), (26, 29595),

Gene: PhorbesPhlower_30 Start: 24643, Stop: 24777, Start Num: 14
Candidate Starts for PhorbesPhlower_30:
(Start: 14 @24643 has 16 MA's), (21, 24694),

Gene: Portcullis_39 Start: 33073, Stop: 33186, Start Num: 16
Candidate Starts for Portcullis_39:
(Start: 16 @33073 has 10 MA's), (Start: 20 @33100 has 1 MA's), (21, 33115), (28, 33169),

Gene: Savbucketdawg_38 Start: 33352, Stop: 33465, Start Num: 16
Candidate Starts for Savbucketdawg_38:
(Start: 16 @33352 has 10 MA's), (Start: 20 @33379 has 1 MA's), (21, 33394), (28, 33448),

Gene: Sendy_39 Start: 33777, Stop: 33890, Start Num: 16
Candidate Starts for Sendy_39:
(Start: 16 @33777 has 10 MA's), (Start: 20 @33804 has 1 MA's), (21, 33819), (28, 33873),

Gene: ShawBrad_37 Start: 28733, Stop: 28864, Start Num: 14
Candidate Starts for ShawBrad_37:
(Start: 14 @28733 has 16 MA's), (Start: 20 @28769 has 1 MA's), (21, 28784), (26, 28817),

Gene: Sidious_34 Start: 29708, Stop: 29827, Start Num: 18
Candidate Starts for Sidious_34:
(Start: 18 @29708 has 12 MA's), (21, 29744), (23, 29756), (25, 29771), (28, 29798),

Gene: Sixsevenium_39 Start: 32477, Stop: 32614, Start Num: 19
Candidate Starts for Sixsevenium_39:
(Start: 16 @32468 has 10 MA's), (Start: 19 @32477 has 1 MA's), (21, 32513), (25, 32543), (26, 32549),
(30, 32588),

Gene: SmokingBunny_38 Start: 33562, Stop: 33675, Start Num: 16
Candidate Starts for SmokingBunny_38:
(Start: 16 @33562 has 10 MA's), (Start: 20 @33589 has 1 MA's), (21, 33604), (28, 33658),

Gene: TaronosaurusRx_34 Start: 28268, Stop: 28393, Start Num: 16
Candidate Starts for TaronosaurusRx_34:
(Start: 16 @28268 has 10 MA's), (21, 28313), (22, 28316), (25, 28340), (27, 28361),

Gene: ThankyouJordi_36 Start: 30245, Stop: 30364, Start Num: 16
Candidate Starts for ThankyouJordi_36:
(1, 29960), (2, 29969), (3, 30053), (Start: 16 @30245 has 10 MA's), (21, 30287), (25, 30314), (26,
30320), (28, 30341),

Gene: TillyBobJoe_38 Start: 33366, Stop: 33479, Start Num: 16

Candidate Starts for TillyBobJoe_38:

(Start: 16 @33366 has 10 MA's), (Start: 20 @33393 has 1 MA's), (21, 33408), (28, 33462),

Gene: TimTam_33 Start: 29140, Stop: 29259, Start Num: 18

Candidate Starts for TimTam_33:

(Start: 18 @29140 has 12 MA's), (21, 29176),

Gene: WelcomeAyanna_36 Start: 30392, Stop: 30511, Start Num: 16

Candidate Starts for WelcomeAyanna_36:

(1, 30107), (2, 30116), (3, 30200), (Start: 16 @30392 has 10 MA's), (21, 30434), (25, 30461), (26, 30467), (28, 30488),

Gene: Wocket_37 Start: 28749, Stop: 28868, Start Num: 18

Candidate Starts for Wocket_37:

(6, 28659), (9, 28698), (Start: 18 @28749 has 12 MA's), (21, 28785), (24, 28797), (28, 28839),

Gene: YungMoney_40 Start: 34999, Stop: 35136, Start Num: 19

Candidate Starts for YungMoney_40:

(4, 34897), (Start: 16 @34990 has 10 MA's), (Start: 19 @34999 has 1 MA's), (21, 35035), (25, 35065), (30, 35110),