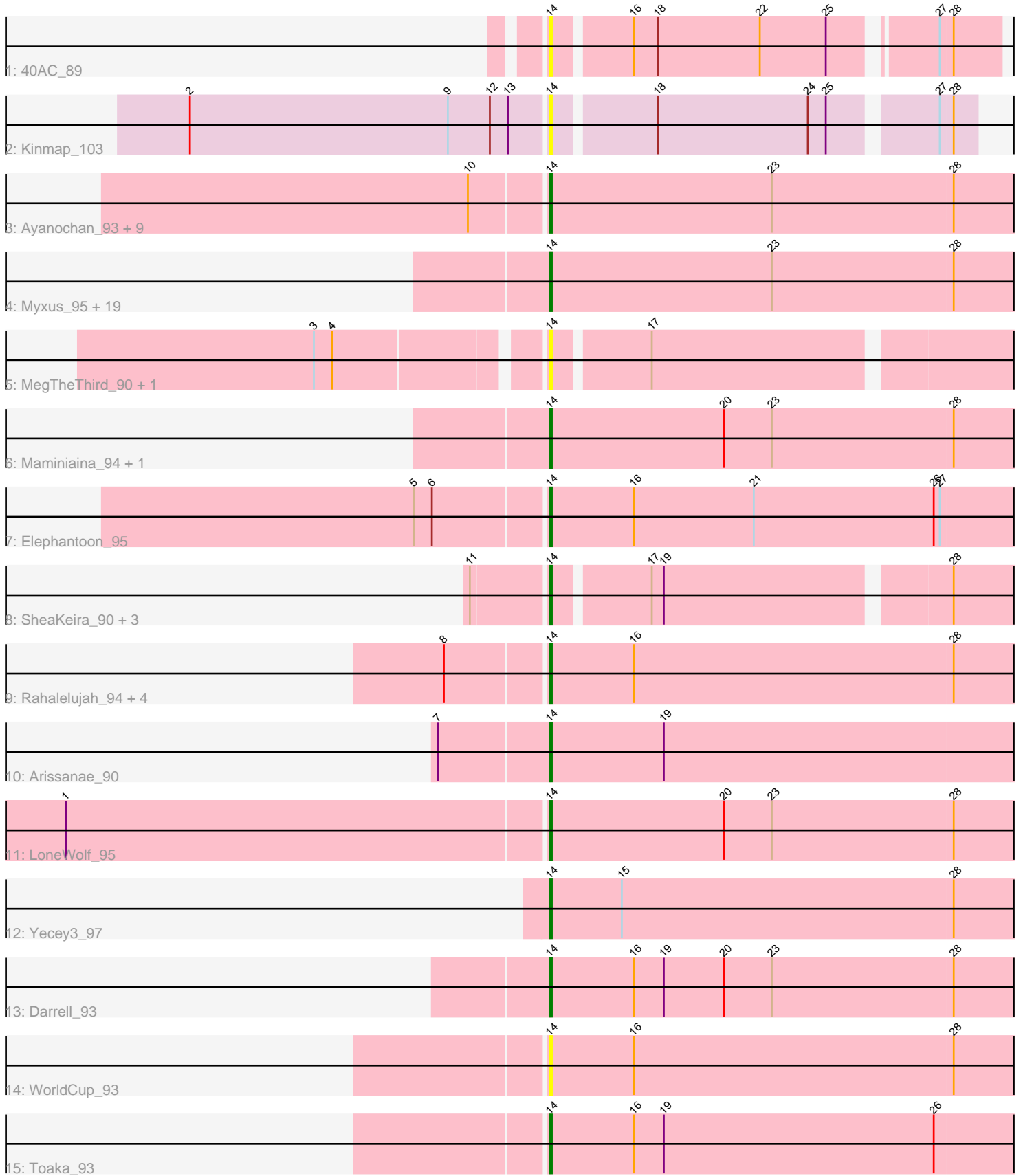


Pham 296644



Note: Tracks are now grouped by subcluster and scaled. Switching in subcluster is indicated by changes in track color. Track scale is now set by default to display the region 30 bp upstream of start 1 to 30 bp downstream of the last possible start. If this default region is judged to be packed too tightly with annotated starts, the track will be further scaled to only show that region of the ORF with annotated starts. This action will be indicated by adding "Zoomed" to the title. For starts, yellow indicates the location of called starts comprised solely of Glimmer/GeneMark auto-annotations, green indicates the location of called starts with at least 1 manual gene annotation.

## Pham 296644 Report

This analysis was run 04/25/26 on database version 644.

Pham number 296644 has 52 members, 18 are drafts.

Phages represented in each track:

- Track 1 : 40AC\_89
- Track 2 : Kinmap\_103
- Track 3 : Ayanochan\_93, Qobbit\_93, ExplosioNervosa\_93, EmyBug\_92, Alma\_93, Fayely\_93, Spouty\_93, Eidsmoe\_93, Conquerage\_93, Priya\_93
- Track 4 : Myxus\_95, Halex\_94, Phonnegut\_95, Pioneer\_95, Phaeder\_95, Catalina\_97, Jiawan\_93, Ugenie5\_82, HortumSL17\_96, Tubs\_95, Hanray\_93, Scherzo\_93, PackMan\_90, Beemo\_95, Sachima\_91, EdogawaKiddo\_94, RyeScarlet\_96, Onglai\_93, Aliter\_88, Lilleskat\_92
- Track 5 : MegTheThird\_90, Celestiallunch\_89
- Track 6 : Maminiaina\_94, BogosyJay\_94
- Track 7 : Elephantoon\_95
- Track 8 : SheaKeira\_90, Charm\_90, Klodlith\_91, DreamTeam1\_91
- Track 9 : Rahalelujah\_94, Vanisoa\_90, Minispark\_92, CogOmlette\_92, Bellris\_92
- Track 10 : Arissanae\_90
- Track 11 : LoneWolf\_95
- Track 12 : Yecey3\_97
- Track 13 : Darrell\_93
- Track 14 : WorldCup\_93
- Track 15 : Toaka\_93

### ***Summary of Final Annotations (See graph section above for start numbers):***

The start number called the most often in the published annotations is 14, it was called in 34 of the 34 non-draft genes in the pham.

Genes that call this "Most Annotated" start:

- 40AC\_89, Aliter\_88, Alma\_93, Arissanae\_90, Ayanochan\_93, Beemo\_95, Bellris\_92, BogosyJay\_94, Catalina\_97, Celestiallunch\_89, Charm\_90, CogOmlette\_92, Conquerage\_93, Darrell\_93, DreamTeam1\_91, EdogawaKiddo\_94, Eidsmoe\_93, Elephantoon\_95, EmyBug\_92, ExplosioNervosa\_93, Fayely\_93, Hanray\_93, Halex\_94, HortumSL17\_96, Jiawan\_93, Kinmap\_103, Klodlith\_91, Lilleskat\_92, LoneWolf\_95, Maminiaina\_94, MegTheThird\_90, Minispark\_92, Myxus\_95, Onglai\_93, PackMan\_90, Phaeder\_95, Phonnegut\_95, Pioneer\_95, Priya\_93, Qobbit\_93, Rahalelujah\_94, RyeScarlet\_96, Sachima\_91, Scherzo\_93,

SheaKeira\_90, Spouty\_93, Toaka\_93, Tubs\_95, Ugenie5\_82, Vanisoa\_90, WorldCup\_93, Yecey3\_97,

Genes that have the "Most Annotated" start but do not call it:

- 

Genes that do not have the "Most Annotated" start:

- 

### Summary by start number:

Start 14:

- Found in 52 of 52 ( 100.0% ) of genes in pham
- Manual Annotations of this start: 34 of 34
- Called 100.0% of time when present
- Phage (with cluster) where this start called: 40AC\_89 (A17), Aliter\_88 (A9), Alma\_93 (A9), Arissanae\_90 (A9), Ayanochan\_93 (A9), Beemo\_95 (A9), Bellris\_92 (A9), BogosyJay\_94 (A9), Catalina\_97 (A9), Celestialunch\_89 (A9), Charm\_90 (A9), CogOmlette\_92 (A9), Conquerage\_93 (A9), Darrell\_93 (A9), DreamTeam1\_91 (A9), EdogawaKiddo\_94 (A9), Eidsmoe\_93 (A9), Elephantoon\_95 (A9), EmyBug\_92 (A9), ExplosioNervosa\_93 (A9), Fayely\_93 (A9), Hanray\_93 (A9), Horex\_94 (A9), HortumSL17\_96 (A9), Jiawan\_93 (A9), Kinmap\_103 (A21), Klodlith\_91 (A9), Lilleskat\_92 (A9), LoneWolf\_95 (A9), Maminina\_94 (A9), MegTheThird\_90 (A9), Minispark\_92 (A9), Myxus\_95 (A9), Onglai\_93 (A9), PackMan\_90 (A9), Phaeder\_95 (A9), Phonnegut\_95 (A9), Pioneer\_95 (A9), Priya\_93 (A9), Qobbit\_93 (A9), Rahalelujah\_94 (A9), RyeScarlet\_96 (A9), Sachima\_91 (A9), Scherzo\_93 (A9), SheaKeira\_90 (A9), Spouty\_93 (A9), Toaka\_93 (A9), Tubs\_95 (A9), Ugenie5\_82 (A9), Vanisoa\_90 (A9), WorldCup\_93 (A9), Yecey3\_97 (A9),

### Summary by clusters:

There are 3 clusters represented in this pham: A9, A21, A17,

Info for manual annotations of cluster A9:

- Start number 14 was manually annotated 34 times for cluster A9.

### Gene Information:

Gene: 40AC\_89 Start: 50824, Stop: 50618, Start Num: 14

Candidate Starts for 40AC\_89:

(Start: 14 @50824 has 34 MA's), (16, 50788), (18, 50776), (22, 50725), (25, 50692), (27, 50647), (28, 50641),

Gene: Aliter\_88 Start: 47544, Stop: 47314, Start Num: 14

Candidate Starts for Aliter\_88:

(Start: 14 @47544 has 34 MA's), (23, 47433), (28, 47343),

Gene: Alma\_93 Start: 50375, Stop: 50145, Start Num: 14

Candidate Starts for Alma\_93:

(10, 50411), (Start: 14 @50375 has 34 MA's), (23, 50264), (28, 50174),

Gene: Arissanae\_90 Start: 50239, Stop: 50009, Start Num: 14

Candidate Starts for Arissanae\_90:

(7, 50293), (Start: 14 @50239 has 34 MA's), (19, 50182),

Gene: Ayanochan\_93 Start: 50166, Stop: 49936, Start Num: 14

Candidate Starts for Ayanochan\_93:

(10, 50202), (Start: 14 @50166 has 34 MA's), (23, 50055), (28, 49965),

Gene: Beemo\_95 Start: 50377, Stop: 50147, Start Num: 14

Candidate Starts for Beemo\_95:

(Start: 14 @50377 has 34 MA's), (23, 50266), (28, 50176),

Gene: Bellris\_92 Start: 49943, Stop: 49713, Start Num: 14

Candidate Starts for Bellris\_92:

(8, 49991), (Start: 14 @49943 has 34 MA's), (16, 49901), (28, 49742),

Gene: BogosyJay\_94 Start: 50379, Stop: 50149, Start Num: 14

Candidate Starts for BogosyJay\_94:

(Start: 14 @50379 has 34 MA's), (20, 50292), (23, 50268), (28, 50178),

Gene: Catalina\_97 Start: 50491, Stop: 50261, Start Num: 14

Candidate Starts for Catalina\_97:

(Start: 14 @50491 has 34 MA's), (23, 50380), (28, 50290),

Gene: Celestiallunch\_89 Start: 49579, Stop: 49358, Start Num: 14

Candidate Starts for Celestiallunch\_89:

(3, 49684), (4, 49675), (Start: 14 @49579 has 34 MA's), (17, 49534),

Gene: Charm\_90 Start: 49777, Stop: 49556, Start Num: 14

Candidate Starts for Charm\_90:

(11, 49813), (Start: 14 @49777 has 34 MA's), (17, 49732), (19, 49726), (28, 49591),

Gene: CogOmlette\_92 Start: 49940, Stop: 49710, Start Num: 14

Candidate Starts for CogOmlette\_92:

(8, 49988), (Start: 14 @49940 has 34 MA's), (16, 49898), (28, 49739),

Gene: Conquerage\_93 Start: 50151, Stop: 49921, Start Num: 14

Candidate Starts for Conquerage\_93:

(10, 50187), (Start: 14 @50151 has 34 MA's), (23, 50040), (28, 49950),

Gene: Darrell\_93 Start: 49542, Stop: 49312, Start Num: 14

Candidate Starts for Darrell\_93:

(Start: 14 @49542 has 34 MA's), (16, 49500), (19, 49485), (20, 49455), (23, 49431), (28, 49341),

Gene: DreamTeam1\_91 Start: 49748, Stop: 49527, Start Num: 14

Candidate Starts for DreamTeam1\_91:

(11, 49784), (Start: 14 @49748 has 34 MA's), (17, 49703), (19, 49697), (28, 49562),

Gene: EdogawaKiddo\_94 Start: 50453, Stop: 50223, Start Num: 14

Candidate Starts for EdogawaKiddo\_94:

(Start: 14 @50453 has 34 MA's), (23, 50342), (28, 50252),

Gene: Eidsmoe\_93 Start: 50144, Stop: 49914, Start Num: 14  
Candidate Starts for Eidsmoe\_93:  
(10, 50180), (Start: 14 @50144 has 34 MA's), (23, 50033), (28, 49943),

Gene: Elephantoon\_95 Start: 50266, Stop: 50036, Start Num: 14  
Candidate Starts for Elephantoon\_95:  
(5, 50329), (6, 50320), (Start: 14 @50266 has 34 MA's), (16, 50224), (21, 50164), (26, 50074), (27, 50071),

Gene: EmyBug\_92 Start: 50146, Stop: 49916, Start Num: 14  
Candidate Starts for EmyBug\_92:  
(10, 50182), (Start: 14 @50146 has 34 MA's), (23, 50035), (28, 49945),

Gene: ExplosioNervosa\_93 Start: 50212, Stop: 49982, Start Num: 14  
Candidate Starts for ExplosioNervosa\_93:  
(10, 50248), (Start: 14 @50212 has 34 MA's), (23, 50101), (28, 50011),

Gene: Fayely\_93 Start: 50120, Stop: 49890, Start Num: 14  
Candidate Starts for Fayely\_93:  
(10, 50156), (Start: 14 @50120 has 34 MA's), (23, 50009), (28, 49919),

Gene: Hanray\_93 Start: 50442, Stop: 50212, Start Num: 14  
Candidate Starts for Hanray\_93:  
(Start: 14 @50442 has 34 MA's), (23, 50331), (28, 50241),

Gene: Horex\_94 Start: 50455, Stop: 50225, Start Num: 14  
Candidate Starts for Horex\_94:  
(Start: 14 @50455 has 34 MA's), (23, 50344), (28, 50254),

Gene: HortumSL17\_96 Start: 50489, Stop: 50259, Start Num: 14  
Candidate Starts for HortumSL17\_96:  
(Start: 14 @50489 has 34 MA's), (23, 50378), (28, 50288),

Gene: Jiawan\_93 Start: 50472, Stop: 50242, Start Num: 14  
Candidate Starts for Jiawan\_93:  
(Start: 14 @50472 has 34 MA's), (23, 50361), (28, 50271),

Gene: Kinmap\_103 Start: 51048, Stop: 50851, Start Num: 14  
Candidate Starts for Kinmap\_103:  
(2, 51225), (9, 51096), (12, 51075), (13, 51066), (Start: 14 @51048 has 34 MA's), (18, 51000), (24, 50925), (25, 50916), (27, 50868), (28, 50862),

Gene: Klodlith\_91 Start: 49850, Stop: 49629, Start Num: 14  
Candidate Starts for Klodlith\_91:  
(11, 49886), (Start: 14 @49850 has 34 MA's), (17, 49805), (19, 49799), (28, 49664),

Gene: Lilleskat\_92 Start: 50443, Stop: 50213, Start Num: 14  
Candidate Starts for Lilleskat\_92:  
(Start: 14 @50443 has 34 MA's), (23, 50332), (28, 50242),

Gene: LoneWolf\_95 Start: 50480, Stop: 50250, Start Num: 14  
Candidate Starts for LoneWolf\_95:

(1, 50717), (Start: 14 @50480 has 34 MA's), (20, 50393), (23, 50369), (28, 50279),

Gene: Maminiaina\_94 Start: 50361, Stop: 50131, Start Num: 14

Candidate Starts for Maminiaina\_94:

(Start: 14 @50361 has 34 MA's), (20, 50274), (23, 50250), (28, 50160),

Gene: MegTheThird\_90 Start: 49797, Stop: 49576, Start Num: 14

Candidate Starts for MegTheThird\_90:

(3, 49902), (4, 49893), (Start: 14 @49797 has 34 MA's), (17, 49752),

Gene: Minispark\_92 Start: 49937, Stop: 49707, Start Num: 14

Candidate Starts for Minispark\_92:

(8, 49985), (Start: 14 @49937 has 34 MA's), (16, 49895), (28, 49736),

Gene: Myxus\_95 Start: 50489, Stop: 50259, Start Num: 14

Candidate Starts for Myxus\_95:

(Start: 14 @50489 has 34 MA's), (23, 50378), (28, 50288),

Gene: Onglai\_93 Start: 48644, Stop: 48414, Start Num: 14

Candidate Starts for Onglai\_93:

(Start: 14 @48644 has 34 MA's), (23, 48533), (28, 48443),

Gene: PackMan\_90 Start: 48403, Stop: 48173, Start Num: 14

Candidate Starts for PackMan\_90:

(Start: 14 @48403 has 34 MA's), (23, 48292), (28, 48202),

Gene: Phaeder\_95 Start: 50364, Stop: 50134, Start Num: 14

Candidate Starts for Phaeder\_95:

(Start: 14 @50364 has 34 MA's), (23, 50253), (28, 50163),

Gene: Phonnegut\_95 Start: 50376, Stop: 50146, Start Num: 14

Candidate Starts for Phonnegut\_95:

(Start: 14 @50376 has 34 MA's), (23, 50265), (28, 50175),

Gene: Pioneer\_95 Start: 50376, Stop: 50146, Start Num: 14

Candidate Starts for Pioneer\_95:

(Start: 14 @50376 has 34 MA's), (23, 50265), (28, 50175),

Gene: Priya\_93 Start: 50147, Stop: 49917, Start Num: 14

Candidate Starts for Priya\_93:

(10, 50183), (Start: 14 @50147 has 34 MA's), (23, 50036), (28, 49946),

Gene: Qobbit\_93 Start: 50109, Stop: 49879, Start Num: 14

Candidate Starts for Qobbit\_93:

(10, 50145), (Start: 14 @50109 has 34 MA's), (23, 49998), (28, 49908),

Gene: Rahalelujah\_94 Start: 49952, Stop: 49722, Start Num: 14

Candidate Starts for Rahalelujah\_94:

(8, 50000), (Start: 14 @49952 has 34 MA's), (16, 49910), (28, 49751),

Gene: RyeScarlet\_96 Start: 50362, Stop: 50132, Start Num: 14

Candidate Starts for RyeScarlet\_96:

(Start: 14 @50362 has 34 MA's), (23, 50251), (28, 50161),

Gene: Sachima\_91 Start: 50390, Stop: 50160, Start Num: 14

Candidate Starts for Sachima\_91:

(Start: 14 @50390 has 34 MA's), (23, 50279), (28, 50189),

Gene: Scherzo\_93 Start: 50407, Stop: 50177, Start Num: 14

Candidate Starts for Scherzo\_93:

(Start: 14 @50407 has 34 MA's), (23, 50296), (28, 50206),

Gene: SheaKeira\_90 Start: 49660, Stop: 49439, Start Num: 14

Candidate Starts for SheaKeira\_90:

(11, 49696), (Start: 14 @49660 has 34 MA's), (17, 49615), (19, 49609), (28, 49474),

Gene: Spouty\_93 Start: 50146, Stop: 49916, Start Num: 14

Candidate Starts for Spouty\_93:

(10, 50182), (Start: 14 @50146 has 34 MA's), (23, 50035), (28, 49945),

Gene: Toaka\_93 Start: 50289, Stop: 50059, Start Num: 14

Candidate Starts for Toaka\_93:

(Start: 14 @50289 has 34 MA's), (16, 50247), (19, 50232), (26, 50097),

Gene: Tubs\_95 Start: 50364, Stop: 50134, Start Num: 14

Candidate Starts for Tubs\_95:

(Start: 14 @50364 has 34 MA's), (23, 50253), (28, 50163),

Gene: Ugenie5\_82 Start: 47851, Stop: 47621, Start Num: 14

Candidate Starts for Ugenie5\_82:

(Start: 14 @47851 has 34 MA's), (23, 47740), (28, 47650),

Gene: Vanisoa\_90 Start: 50582, Stop: 50352, Start Num: 14

Candidate Starts for Vanisoa\_90:

(8, 50630), (Start: 14 @50582 has 34 MA's), (16, 50540), (28, 50381),

Gene: WorldCup\_93 Start: 50038, Stop: 49808, Start Num: 14

Candidate Starts for WorldCup\_93:

(Start: 14 @50038 has 34 MA's), (16, 49996), (28, 49837),

Gene: Yecey3\_97 Start: 50292, Stop: 50062, Start Num: 14

Candidate Starts for Yecey3\_97:

(Start: 14 @50292 has 34 MA's), (15, 50256), (28, 50091),