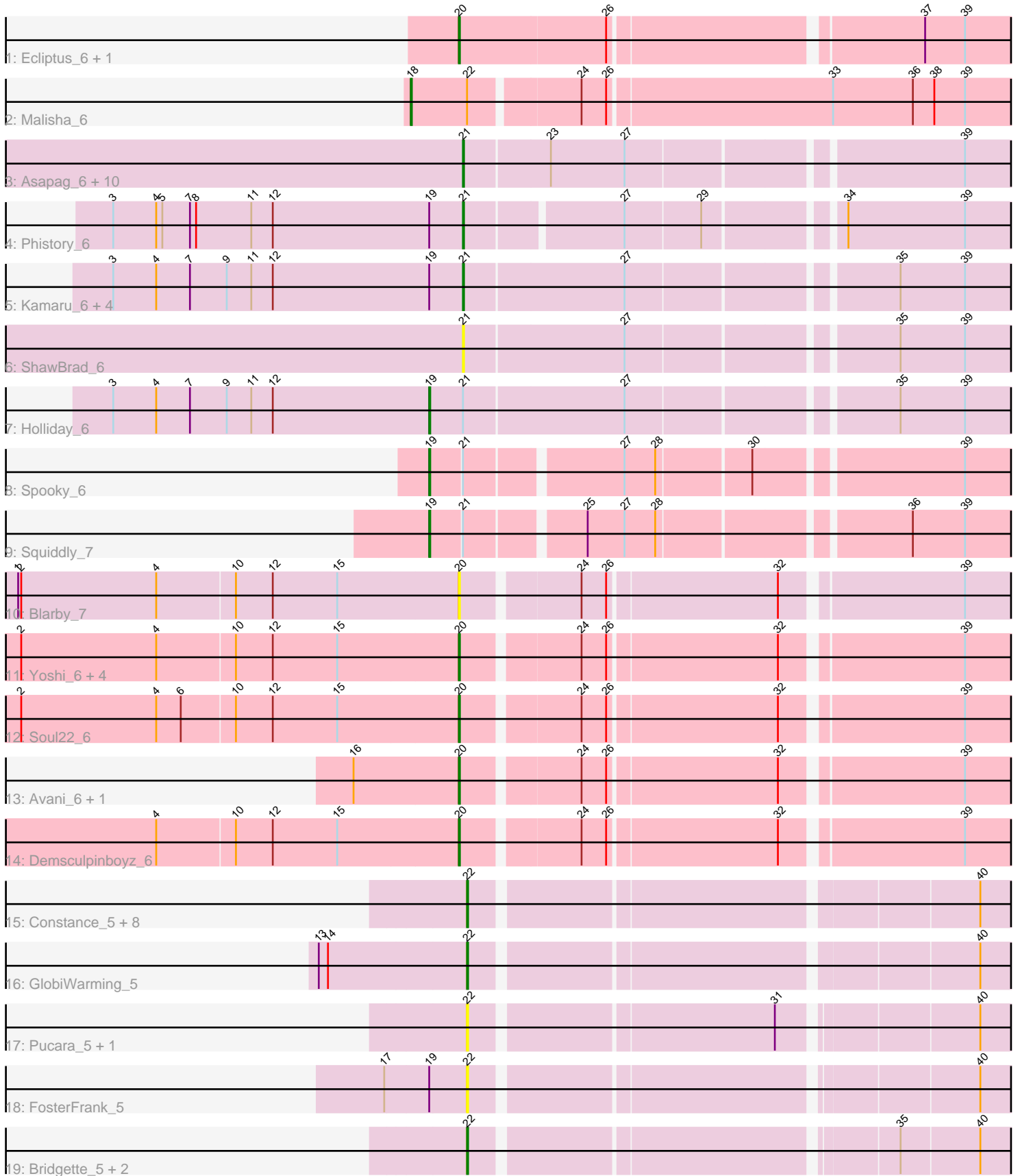


Pham 296662



Note: Tracks are now grouped by subcluster and scaled. Switching in subcluster is indicated by changes in track color. Track scale is now set by default to display the region 30 bp upstream of start 1 to 30 bp downstream of the last possible start. If this default region is judged to be packed too tightly with annotated starts, the track will be further scaled to only show that region of the ORF with annotated starts. This action will be indicated by adding "Zoomed" to the title. For starts, yellow indicates the location of called starts comprised solely of Glimmer/GeneMark auto-annotations, green indicates the location of called starts with at least 1 manual gene annotation.

Pham 296662 Report

This analysis was run 04/25/26 on database version 644.

Pham number 296662 has 50 members, 11 are drafts.

Phages represented in each track:

- Track 1 : Ecliptus_6, ODay_6
- Track 2 : Malisha_6
- Track 3 : Asapag_6, Whitney_6, Getalong_6, Lutum_6, Leroy_6, Kenna_6, BotCity_6, BENtherdunthat_6, Periwinkle_6, Frickyeah_6, Horus_6
- Track 4 : Phistory_6
- Track 5 : Kamaru_6, Budski_6, Phabuloso_6, LitninMcQueen_6, CheeseTouch_6
- Track 6 : ShawBrad_6
- Track 7 : Holliday_6
- Track 8 : Spooky_6
- Track 9 : Squiddly_7
- Track 10 : Blarby_7
- Track 11 : Yoshi_6, Jabbawokkie_7, Zapner_7, Che9d_6, Ogopogo_7
- Track 12 : Soul22_6
- Track 13 : Avani_6, SilverChicken_6
- Track 14 : Demsculpinboyz_6
- Track 15 : Constance_5, PeggyLeg03_5, LilyBell_5, Judy_5, Eileen_5, Peas_5, NidoQ_5, KayMoney_5, NikkiHotWheels_5
- Track 16 : GlobiWarming_5
- Track 17 : Pucara_5, HotPotato_5
- Track 18 : FosterFrank_5
- Track 19 : Bridgette_5, Karkharias_5, Henrique_5

Summary of Final Annotations (See graph section above for start numbers):

The start number called the most often in the published annotations is 21, it was called in 16 of the 39 non-draft genes in the pham.

Genes that call this "Most Annotated" start:

- Asapag_6, BENtherdunthat_6, BotCity_6, Budski_6, CheeseTouch_6, Frickyeah_6, Getalong_6, Horus_6, Kamaru_6, Kenna_6, Leroy_6, LitninMcQueen_6, Lutum_6, Periwinkle_6, Phabuloso_6, Phistory_6, ShawBrad_6, Whitney_6,

Genes that have the "Most Annotated" start but do not call it:

- Holliday_6, Spooky_6, Squiddly_7,

Genes that do not have the "Most Annotated" start:

- Avani_6, Blarby_7, Bridgette_5, Che9d_6, Constance_5, Demsculpinboyz_6, Ecliptus_6, Eileen_5, FosterFrank_5, GlobiWarming_5, Henrique_5, HotPotato_5, Jabbawokkie_7, Judy_5, Karkharias_5, KayMoney_5, LilyBell_5, Malisha_6, NidoQ_5, NikkiHotWheels_5, ODay_6, Ogopogo_7, Peas_5, PeggyLeg03_5, Pucara_5, SilverChicken_6, Soul22_6, Yoshi_6, Zapner_7,

Summary by start number:

Start 18:

- Found in 1 of 50 (2.0%) of genes in pham
- Manual Annotations of this start: 1 of 39
- Called 100.0% of time when present
- Phage (with cluster) where this start called: Malisha_6 (DN),

Start 19:

- Found in 10 of 50 (20.0%) of genes in pham
- Manual Annotations of this start: 3 of 39
- Called 30.0% of time when present
- Phage (with cluster) where this start called: Holliday_6 (DN1), Spooky_6 (DN2), Squiddly_7 (DN2),

Start 20:

- Found in 12 of 50 (24.0%) of genes in pham
- Manual Annotations of this start: 10 of 39
- Called 100.0% of time when present
- Phage (with cluster) where this start called: Avani_6 (F2), Blarby_7 (F), Che9d_6 (F2), Demsculpinboyz_6 (F2), Ecliptus_6 (DN), Jabbawokkie_7 (F2), ODay_6 (DN), Ogopogo_7 (F1), SilverChicken_6 (F2), Soul22_6 (F2), Yoshi_6 (F2), Zapner_7 (F2),

Start 21:

- Found in 21 of 50 (42.0%) of genes in pham
- Manual Annotations of this start: 16 of 39
- Called 85.7% of time when present
- Phage (with cluster) where this start called: Asapag_6 (DN1), BENtherdunthat_6 (DN1), BotCity_6 (DN), Budski_6 (DN), CheeseTouch_6 (DN1), Frickyeah_6 (DN1), Getalong_6 (DN1), Horus_6 (DN1), Kamaru_6 (DN1), Kenna_6 (DN1), Leroy_6 (DN1), LitninMcQueen_6 (DN1), Lutum_6 (DN1), Periwinkle_6 (DN1), Phabuloso_6 (DN1), Phistory_6 (DN1), ShawBrad_6 (DN1), Whitney_6 (DN1),

Start 22:

- Found in 17 of 50 (34.0%) of genes in pham
- Manual Annotations of this start: 9 of 39
- Called 94.1% of time when present
- Phage (with cluster) where this start called: Bridgette_5 (FA), Constance_5 (FA), Eileen_5 (FA), FosterFrank_5 (FA), GlobiWarming_5 (FA), Henrique_5 (FA), HotPotato_5 (FA), Judy_5 (FA), Karkharias_5 (FA), KayMoney_5 (FA), LilyBell_5 (FA), NidoQ_5 (FA), NikkiHotWheels_5 (FA), Peas_5 (FA), PeggyLeg03_5 (FA), Pucara_5 (FA),

Summary by clusters:

There are 7 clusters represented in this pham: DN, F1, F2, F, FA, DN1, DN2,

Info for manual annotations of cluster DN:

- Start number 18 was manually annotated 1 time for cluster DN.
- Start number 20 was manually annotated 2 times for cluster DN.
- Start number 21 was manually annotated 2 times for cluster DN.

Info for manual annotations of cluster DN1:

- Start number 19 was manually annotated 1 time for cluster DN1.
- Start number 21 was manually annotated 14 times for cluster DN1.

Info for manual annotations of cluster DN2:

- Start number 19 was manually annotated 2 times for cluster DN2.

Info for manual annotations of cluster F1:

- Start number 20 was manually annotated 1 time for cluster F1.

Info for manual annotations of cluster F2:

- Start number 20 was manually annotated 7 times for cluster F2.

Info for manual annotations of cluster FA:

- Start number 22 was manually annotated 9 times for cluster FA.

Gene Information:

Gene: Asapag_6 Start: 4327, Stop: 4878, Start Num: 21

Candidate Starts for Asapag_6:

(Start: 21 @4327 has 16 MA's), (23, 4408), (27, 4480), (39, 4786),

Gene: Avani_6 Start: 4307, Stop: 4855, Start Num: 20

Candidate Starts for Avani_6:

(16, 4205), (Start: 20 @4307 has 10 MA's), (24, 4412), (26, 4436), (32, 4595), (39, 4760),

Gene: BENtherdunthat_6 Start: 4327, Stop: 4878, Start Num: 21

Candidate Starts for BENtherdunthat_6:

(Start: 21 @4327 has 16 MA's), (23, 4408), (27, 4480), (39, 4786),

Gene: Blarby_7 Start: 4831, Stop: 5379, Start Num: 20

Candidate Starts for Blarby_7:

(1, 4405), (2, 4408), (4, 4540), (10, 4615), (12, 4651), (15, 4714), (Start: 20 @4831 has 10 MA's), (24, 4936), (26, 4960), (32, 5119), (39, 5284),

Gene: BotCity_6 Start: 4325, Stop: 4876, Start Num: 21

Candidate Starts for BotCity_6:

(Start: 21 @4325 has 16 MA's), (23, 4406), (27, 4478), (39, 4784),

Gene: Bridgette_5 Start: 5076, Stop: 5570, Start Num: 22

Candidate Starts for Bridgette_5:

(Start: 22 @5076 has 9 MA's), (35, 5457), (40, 5532),

Gene: Budski_6 Start: 4327, Stop: 4875, Start Num: 21

Candidate Starts for Budski_6:

(3, 3985), (4, 4027), (7, 4060), (9, 4096), (11, 4120), (12, 4141), (Start: 19 @4294 has 3 MA's), (Start: 21 @4327 has 16 MA's), (27, 4480), (35, 4723), (39, 4786),

Gene: Che9d_6 Start: 4316, Stop: 4864, Start Num: 20

Candidate Starts for Che9d_6:

(2, 3893), (4, 4025), (10, 4100), (12, 4136), (15, 4199), (Start: 20 @4316 has 10 MA's), (24, 4421), (26, 4445), (32, 4604), (39, 4769),

Gene: CheeseTouch_6 Start: 4327, Stop: 4875, Start Num: 21

Candidate Starts for CheeseTouch_6:

(3, 3985), (4, 4027), (7, 4060), (9, 4096), (11, 4120), (12, 4141), (Start: 19 @4294 has 3 MA's), (Start: 21 @4327 has 16 MA's), (27, 4480), (35, 4723), (39, 4786),

Gene: Constance_5 Start: 5077, Stop: 5574, Start Num: 22

Candidate Starts for Constance_5:

(Start: 22 @5077 has 9 MA's), (40, 5536),

Gene: Demsculpinboyz_6 Start: 4307, Stop: 4855, Start Num: 20

Candidate Starts for Demsculpinboyz_6:

(4, 4016), (10, 4091), (12, 4127), (15, 4190), (Start: 20 @4307 has 10 MA's), (24, 4412), (26, 4436), (32, 4595), (39, 4760),

Gene: Ecliptus_6 Start: 4342, Stop: 4902, Start Num: 20

Candidate Starts for Ecliptus_6:

(Start: 20 @4342 has 10 MA's), (26, 4483), (37, 4768), (39, 4807),

Gene: Eileen_5 Start: 5037, Stop: 5534, Start Num: 22

Candidate Starts for Eileen_5:

(Start: 22 @5037 has 9 MA's), (40, 5496),

Gene: FosterFrank_5 Start: 5039, Stop: 5533, Start Num: 22

Candidate Starts for FosterFrank_5:

(17, 4961), (Start: 19 @5003 has 3 MA's), (Start: 22 @5039 has 9 MA's), (40, 5495),

Gene: Frickyeah_6 Start: 4327, Stop: 4878, Start Num: 21

Candidate Starts for Frickyeah_6:

(Start: 21 @4327 has 16 MA's), (23, 4408), (27, 4480), (39, 4786),

Gene: Getalong_6 Start: 4327, Stop: 4878, Start Num: 21

Candidate Starts for Getalong_6:

(Start: 21 @4327 has 16 MA's), (23, 4408), (27, 4480), (39, 4786),

Gene: GlobiWarming_5 Start: 5032, Stop: 5529, Start Num: 22

Candidate Starts for GlobiWarming_5:

(13, 4891), (14, 4900), (Start: 22 @5032 has 9 MA's), (40, 5491),

Gene: Henrique_5 Start: 5037, Stop: 5531, Start Num: 22

Candidate Starts for Henrique_5:

(Start: 22 @5037 has 9 MA's), (35, 5418), (40, 5493),

Gene: Holliday_6 Start: 4294, Stop: 4875, Start Num: 19

Candidate Starts for Holliday_6:

(3, 3985), (4, 4027), (7, 4060), (9, 4096), (11, 4120), (12, 4141), (Start: 19 @4294 has 3 MA's), (Start: 21 @4327 has 16 MA's), (27, 4480), (35, 4723), (39, 4786),

Gene: Horus_6 Start: 4327, Stop: 4878, Start Num: 21

Candidate Starts for Horus_6:

(Start: 21 @4327 has 16 MA's), (23, 4408), (27, 4480), (39, 4786),

Gene: HotPotato_5 Start: 5037, Stop: 5534, Start Num: 22

Candidate Starts for HotPotato_5:

(Start: 22 @5037 has 9 MA's), (31, 5316), (40, 5496),

Gene: Jabbawokkie_7 Start: 4830, Stop: 5378, Start Num: 20

Candidate Starts for Jabbawokkie_7:

(2, 4407), (4, 4539), (10, 4614), (12, 4650), (15, 4713), (Start: 20 @4830 has 10 MA's), (24, 4935), (26, 4959), (32, 5118), (39, 5283),

Gene: Judy_5 Start: 5076, Stop: 5573, Start Num: 22

Candidate Starts for Judy_5:

(Start: 22 @5076 has 9 MA's), (40, 5535),

Gene: Kamaru_6 Start: 4327, Stop: 4875, Start Num: 21

Candidate Starts for Kamaru_6:

(3, 3985), (4, 4027), (7, 4060), (9, 4096), (11, 4120), (12, 4141), (Start: 19 @4294 has 3 MA's), (Start: 21 @4327 has 16 MA's), (27, 4480), (35, 4723), (39, 4786),

Gene: Karkharias_5 Start: 5037, Stop: 5531, Start Num: 22

Candidate Starts for Karkharias_5:

(Start: 22 @5037 has 9 MA's), (35, 5418), (40, 5493),

Gene: KayMoney_5 Start: 5037, Stop: 5531, Start Num: 22

Candidate Starts for KayMoney_5:

(Start: 22 @5037 has 9 MA's), (40, 5493),

Gene: Kenna_6 Start: 4327, Stop: 4878, Start Num: 21

Candidate Starts for Kenna_6:

(Start: 21 @4327 has 16 MA's), (23, 4408), (27, 4480), (39, 4786),

Gene: Leroy_6 Start: 4328, Stop: 4879, Start Num: 21

Candidate Starts for Leroy_6:

(Start: 21 @4328 has 16 MA's), (23, 4409), (27, 4481), (39, 4787),

Gene: LilyBell_5 Start: 5052, Stop: 5546, Start Num: 22

Candidate Starts for LilyBell_5:

(Start: 22 @5052 has 9 MA's), (40, 5508),

Gene: LitninMcQueen_6 Start: 4327, Stop: 4875, Start Num: 21

Candidate Starts for LitninMcQueen_6:

(3, 3985), (4, 4027), (7, 4060), (9, 4096), (11, 4120), (12, 4141), (Start: 19 @4294 has 3 MA's), (Start: 21 @4327 has 16 MA's), (27, 4480), (35, 4723), (39, 4786),

Gene: Lutum_6 Start: 4327, Stop: 4878, Start Num: 21

Candidate Starts for Lutum_6:

(Start: 21 @4327 has 16 MA's), (23, 4408), (27, 4480), (39, 4786),

Gene: Malisha_6 Start: 5305, Stop: 5919, Start Num: 18

Candidate Starts for Malisha_6:

(Start: 18 @5305 has 1 MA's), (Start: 22 @5359 has 9 MA's), (24, 5458), (26, 5482), (33, 5695), (36, 5773), (38, 5794), (39, 5824),

Gene: NidoQ_5 Start: 5094, Stop: 5591, Start Num: 22

Candidate Starts for NidoQ_5:

(Start: 22 @5094 has 9 MA's), (40, 5553),

Gene: NikkiHotWheels_5 Start: 5034, Stop: 5531, Start Num: 22

Candidate Starts for NikkiHotWheels_5:

(Start: 22 @5034 has 9 MA's), (40, 5493),

Gene: ODay_6 Start: 4340, Stop: 4900, Start Num: 20

Candidate Starts for ODay_6:

(Start: 20 @4340 has 10 MA's), (26, 4481), (37, 4766), (39, 4805),

Gene: Ogopogo_7 Start: 4568, Stop: 5116, Start Num: 20

Candidate Starts for Ogopogo_7:

(2, 4145), (4, 4277), (10, 4352), (12, 4388), (15, 4451), (Start: 20 @4568 has 10 MA's), (24, 4673), (26, 4697), (32, 4856), (39, 5021),

Gene: Peas_5 Start: 5037, Stop: 5534, Start Num: 22

Candidate Starts for Peas_5:

(Start: 22 @5037 has 9 MA's), (40, 5496),

Gene: PeggyLeg03_5 Start: 5077, Stop: 5574, Start Num: 22

Candidate Starts for PeggyLeg03_5:

(Start: 22 @5077 has 9 MA's), (40, 5536),

Gene: Periwinkle_6 Start: 4327, Stop: 4878, Start Num: 21

Candidate Starts for Periwinkle_6:

(Start: 21 @4327 has 16 MA's), (23, 4408), (27, 4480), (39, 4786),

Gene: Phabuloso_6 Start: 4327, Stop: 4875, Start Num: 21

Candidate Starts for Phabuloso_6:

(3, 3985), (4, 4027), (7, 4060), (9, 4096), (11, 4120), (12, 4141), (Start: 19 @4294 has 3 MA's), (Start: 21 @4327 has 16 MA's), (27, 4480), (35, 4723), (39, 4786),

Gene: Phistory_6 Start: 4325, Stop: 4867, Start Num: 21

Candidate Starts for Phistory_6:

(3, 3986), (4, 4028), (5, 4034), (7, 4061), (8, 4067), (11, 4121), (12, 4142), (Start: 19 @4295 has 3 MA's), (Start: 21 @4325 has 16 MA's), (27, 4469), (29, 4541), (34, 4661), (39, 4775),

Gene: Pucara_5 Start: 5039, Stop: 5533, Start Num: 22

Candidate Starts for Pucara_5:

(Start: 22 @5039 has 9 MA's), (31, 5318), (40, 5495),

Gene: ShawBrad_6 Start: 4327, Stop: 4875, Start Num: 21

Candidate Starts for ShawBrad_6:

(Start: 21 @4327 has 16 MA's), (27, 4480), (35, 4723), (39, 4786),

Gene: SilverChicken_6 Start: 4307, Stop: 4855, Start Num: 20

Candidate Starts for SilverChicken_6:

(16, 4205), (Start: 20 @4307 has 10 MA's), (24, 4412), (26, 4436), (32, 4595), (39, 4760),

Gene: Soul22_6 Start: 4306, Stop: 4854, Start Num: 20

Candidate Starts for Soul22_6:

(2, 3883), (4, 4015), (6, 4039), (10, 4090), (12, 4126), (15, 4189), (Start: 20 @4306 has 10 MA's), (24, 4411), (26, 4435), (32, 4594), (39, 4759),

Gene: Spooky_6 Start: 4301, Stop: 4870, Start Num: 19

Candidate Starts for Spooky_6:

(Start: 19 @4301 has 3 MA's), (Start: 21 @4331 has 16 MA's), (27, 4472), (28, 4502), (30, 4589), (39, 4778),

Gene: Squiddly_7 Start: 4994, Stop: 5563, Start Num: 19

Candidate Starts for Squiddly_7:

(Start: 19 @4994 has 3 MA's), (Start: 21 @5024 has 16 MA's), (25, 5129), (27, 5165), (28, 5195), (36, 5420), (39, 5471),

Gene: Whitney_6 Start: 4327, Stop: 4878, Start Num: 21

Candidate Starts for Whitney_6:

(Start: 21 @4327 has 16 MA's), (23, 4408), (27, 4480), (39, 4786),

Gene: Yoshi_6 Start: 4306, Stop: 4854, Start Num: 20

Candidate Starts for Yoshi_6:

(2, 3883), (4, 4015), (10, 4090), (12, 4126), (15, 4189), (Start: 20 @4306 has 10 MA's), (24, 4411), (26, 4435), (32, 4594), (39, 4759),

Gene: Zapner_7 Start: 4831, Stop: 5379, Start Num: 20

Candidate Starts for Zapner_7:

(2, 4408), (4, 4540), (10, 4615), (12, 4651), (15, 4714), (Start: 20 @4831 has 10 MA's), (24, 4936), (26, 4960), (32, 5119), (39, 5284),