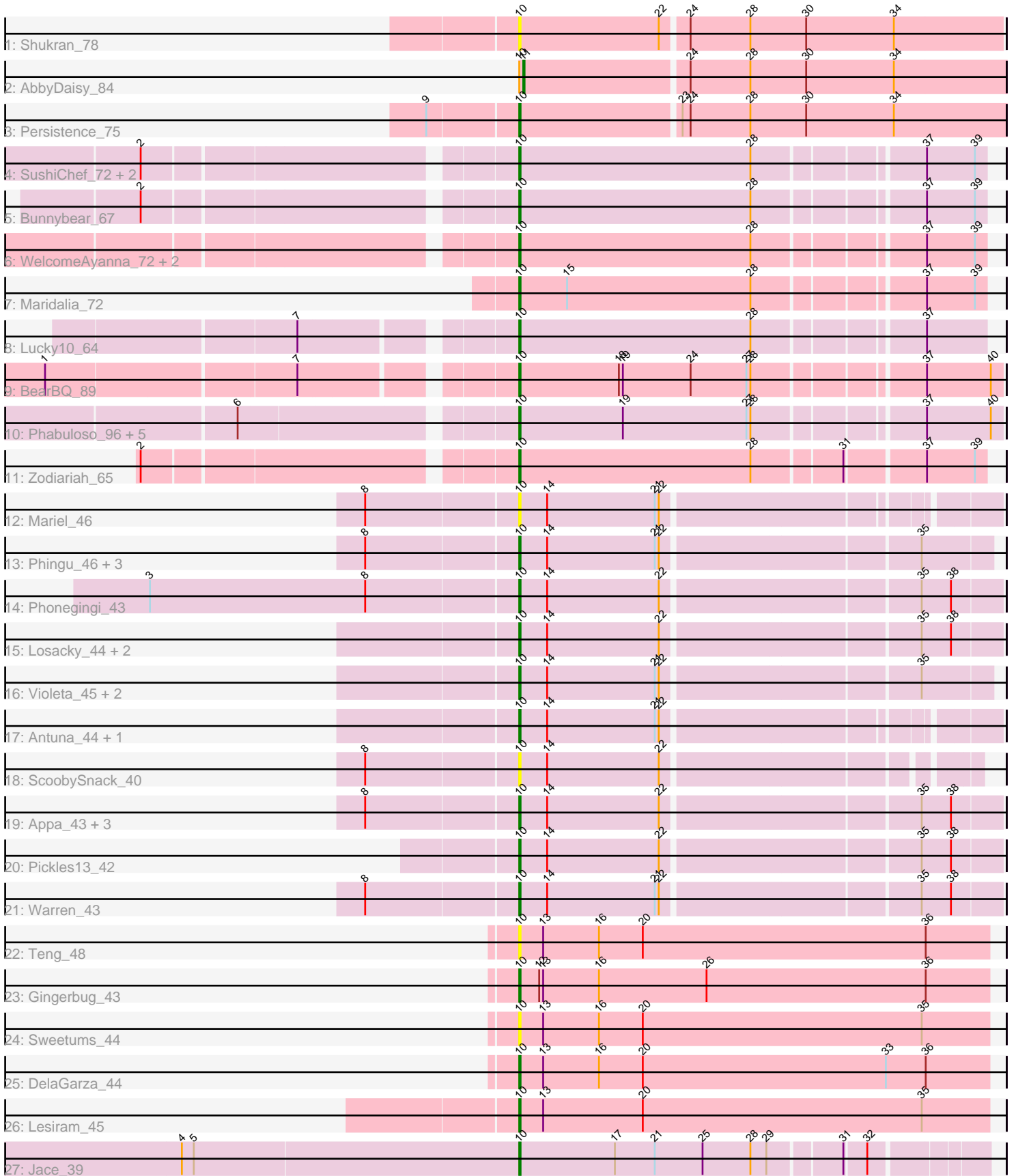


Pham 296677



Note: Tracks are now grouped by subcluster and scaled. Switching in subcluster is indicated by changes in track color. Track scale is now set by default to display the region 30 bp upstream of start 1 to 30 bp downstream of the last possible start. If this default region is judged to be packed too tightly with annotated starts, the track will be further scaled to only show that region of the ORF with annotated starts. This action will be indicated by adding "Zoomed" to the title. For starts, yellow indicates the location of called starts comprised solely of Glimmer/GeneMark auto-annotations, green indicates the location of called starts with at least 1 manual gene annotation.

Pham 296677 Report

This analysis was run 04/25/26 on database version 644.

Pham number 296677 has 47 members, 15 are drafts.

Phages represented in each track:

- Track 1 : Shukran_78
- Track 2 : AbbyDaisy_84
- Track 3 : Persistence_75
- Track 4 : SushiChef_72, Madeline_66, Madavieve_68
- Track 5 : Bunnybear_67
- Track 6 : WelcomeAyanna_72, RavenCo17_68, ThankyouJordi_72
- Track 7 : Maridalia_72
- Track 8 : Lucky10_64
- Track 9 : BearBQ_89
- Track 10 : Phabuloso_96, BotCity_91, Kenna_84, BENtherdunthat_89, Lutum_90, Getalong_92
- Track 11 : Zodiariah_65
- Track 12 : Mariel_46
- Track 13 : Phingu_46, Blett_43, Bush_44, NCRodriguez_45
- Track 14 : Phonegingi_43
- Track 15 : Losacky_44, Jakelyne_46, Guzman_43
- Track 16 : Violeta_45, Carrillo_45, CookieDog_43
- Track 17 : Antuna_44, MenE_44
- Track 18 : ScoobySnack_40
- Track 19 : Appa_43, Winchester007_59, PhillyJawn_44, Dropshot_43
- Track 20 : Pickles13_42
- Track 21 : Warren_43
- Track 22 : Teng_48
- Track 23 : Gingerbug_43
- Track 24 : Sweetums_44
- Track 25 : DelaGarza_44
- Track 26 : Lesiram_45
- Track 27 : Jace_39

Summary of Final Annotations (See graph section above for start numbers):

The start number called the most often in the published annotations is 10, it was called in 31 of the 32 non-draft genes in the pham.

Genes that call this "Most Annotated" start:

- Antuna_44, Appa_43, BENtherdunthat_89, BearBQ_89, Blett_43, BotCity_91, Bunnybear_67, Bush_44, Carrillo_45, CookieDog_43, DelaGarza_44, Dropshot_43, Getalong_92, Gingerbug_43, Guzman_43, Jace_39, Jakelyne_46, Kenna_84, Lesiram_45, Losacky_44, Lucky10_64, Lutum_90, Madavieve_68, Madeline_66, Maridalia_72, Mariel_46, MenE_44, NCRodriguez_45, Persistence_75, Phabuloso_96, PhillyJawn_44, Phingu_46, Phonegingi_43, Pickles13_42, RavenCo17_68, ScoobySnack_40, Shukran_78, SushiChef_72, Sweetums_44, Teng_48, ThankyouJordi_72, Violeta_45, Warren_43, WelcomeAyanna_72, Winchester007_59, Zodiariah_65,

Genes that have the "Most Annotated" start but do not call it:

- AbbyDaisy_84,

Genes that do not have the "Most Annotated" start:

-

Summary by start number:

Start 10:

- Found in 47 of 47 (100.0%) of genes in pham
- Manual Annotations of this start: 31 of 32
- Called 97.9% of time when present
- Phage (with cluster) where this start called: Antuna_44 (GA), Appa_43 (GA), BENtherdunthat_89 (DN1), BearBQ_89 (DN), Blett_43 (GA), BotCity_91 (DN), Bunnybear_67 (CZ), Bush_44 (GA), Carrillo_45 (GA), CookieDog_43 (GA), DelaGarza_44 (GF), Dropshot_43 (GA), Getalong_92 (DN1), Gingerbug_43 (GF), Guzman_43 (GA), Jace_39 (singleton), Jakelyne_46 (GA), Kenna_84 (DN1), Lesiram_45 (GF), Losacky_44 (GA), Lucky10_64 (DH), Lutum_90 (DN1), Madavieve_68 (CZ1), Madeline_66 (CZ1), Maridalia_72 (CZ1), Mariel_46 (GA), MenE_44 (GA), NCRodriguez_45 (GA), Persistence_75 (AY), Phabuloso_96 (DN1), PhillyJawn_44 (GA), Phingu_46 (GA), Phonegingi_43 (GA), Pickles13_42 (GA), RavenCo17_68 (CZ8), ScoobySnack_40 (GA), Shukran_78 (AY), SushiChef_72 (CZ), Sweetums_44 (GF), Teng_48 (GF), ThankyouJordi_72 (CZ1), Violeta_45 (GA), Warren_43 (GA), WelcomeAyanna_72 (CZ1), Winchester007_59 (GA), Zodiariah_65 (DW),

Start 11:

- Found in 1 of 47 (2.1%) of genes in pham
- Manual Annotations of this start: 1 of 32
- Called 100.0% of time when present
- Phage (with cluster) where this start called: AbbyDaisy_84 (AY),

Summary by clusters:

There are 11 clusters represented in this pham: DN, singleton, DH, GF, CZ1, CZ8, CZ, DN1, GA, AY, DW,

Info for manual annotations of cluster AY:

- Start number 10 was manually annotated 1 time for cluster AY.
- Start number 11 was manually annotated 1 time for cluster AY.

Info for manual annotations of cluster CZ:

- Start number 10 was manually annotated 1 time for cluster CZ.

Info for manual annotations of cluster CZ1:

- Start number 10 was manually annotated 4 times for cluster CZ1.

Info for manual annotations of cluster CZ8:

- Start number 10 was manually annotated 1 time for cluster CZ8.

Info for manual annotations of cluster DH:

- Start number 10 was manually annotated 1 time for cluster DH.

Info for manual annotations of cluster DN:

- Start number 10 was manually annotated 2 times for cluster DN.

Info for manual annotations of cluster DN1:

- Start number 10 was manually annotated 5 times for cluster DN1.

Info for manual annotations of cluster DW:

- Start number 10 was manually annotated 1 time for cluster DW.

Info for manual annotations of cluster GA:

- Start number 10 was manually annotated 11 times for cluster GA.

Info for manual annotations of cluster GF:

- Start number 10 was manually annotated 3 times for cluster GF.

Gene Information:

Gene: AbbyDaisy_84 Start: 48452, Stop: 48808, Start Num: 11

Candidate Starts for AbbyDaisy_84:

(Start: 10 @48449 has 31 MA's), (Start: 11 @48452 has 1 MA's), (24, 48572), (28, 48617), (30, 48659), (34, 48725),

Gene: Antuna_44 Start: 26934, Stop: 27266, Start Num: 10

Candidate Starts for Antuna_44:

(Start: 10 @26934 has 31 MA's), (14, 26955), (21, 27036), (22, 27039),

Gene: Appa_43 Start: 26832, Stop: 27176, Start Num: 10

Candidate Starts for Appa_43:

(8, 26721), (Start: 10 @26832 has 31 MA's), (14, 26853), (22, 26937), (35, 27120), (38, 27141),

Gene: BENtherdunthat_89 Start: 48908, Stop: 49252, Start Num: 10

Candidate Starts for BENtherdunthat_89:

(6, 48719), (Start: 10 @48908 has 31 MA's), (19, 48986), (27, 49079), (28, 49082), (37, 49196), (40, 49244),

Gene: BearBQ_89 Start: 50470, Stop: 50814, Start Num: 10

Candidate Starts for BearBQ_89:

(1, 50149), (7, 50329), (Start: 10 @50470 has 31 MA's), (18, 50545), (19, 50548), (24, 50599), (27, 50641), (28, 50644), (37, 50758), (40, 50806),

Gene: Blett_43 Start: 27033, Stop: 27371, Start Num: 10
Candidate Starts for Blett_43:
(8, 26922), (Start: 10 @27033 has 31 MA's), (14, 27054), (21, 27135), (22, 27138), (35, 27321),

Gene: BotCity_91 Start: 50437, Stop: 50781, Start Num: 10
Candidate Starts for BotCity_91:
(6, 50248), (Start: 10 @50437 has 31 MA's), (19, 50515), (27, 50608), (28, 50611), (37, 50725), (40, 50773),

Gene: Bunnybear_67 Start: 47210, Stop: 47542, Start Num: 10
Candidate Starts for Bunnybear_67:
(2, 46955), (Start: 10 @47210 has 31 MA's), (28, 47384), (37, 47498), (39, 47534),

Gene: Bush_44 Start: 26981, Stop: 27319, Start Num: 10
Candidate Starts for Bush_44:
(8, 26870), (Start: 10 @26981 has 31 MA's), (14, 27002), (21, 27083), (22, 27086), (35, 27269),

Gene: Carrillo_45 Start: 26954, Stop: 27292, Start Num: 10
Candidate Starts for Carrillo_45:
(Start: 10 @26954 has 31 MA's), (14, 26975), (21, 27056), (22, 27059), (35, 27242),

Gene: CookieDog_43 Start: 26954, Stop: 27292, Start Num: 10
Candidate Starts for CookieDog_43:
(Start: 10 @26954 has 31 MA's), (14, 26975), (21, 27056), (22, 27059), (35, 27242),

Gene: DelaGarza_44 Start: 26877, Stop: 26524, Start Num: 10
Candidate Starts for DelaGarza_44:
(Start: 10 @26877 has 31 MA's), (13, 26859), (16, 26817), (20, 26784), (33, 26601), (36, 26571),

Gene: Dropshot_43 Start: 26667, Stop: 27011, Start Num: 10
Candidate Starts for Dropshot_43:
(8, 26556), (Start: 10 @26667 has 31 MA's), (14, 26688), (22, 26772), (35, 26955), (38, 26976),

Gene: Getalong_92 Start: 51363, Stop: 51707, Start Num: 10
Candidate Starts for Getalong_92:
(6, 51174), (Start: 10 @51363 has 31 MA's), (19, 51441), (27, 51534), (28, 51537), (37, 51651), (40, 51699),

Gene: Gingerbug_43 Start: 27395, Stop: 27042, Start Num: 10
Candidate Starts for Gingerbug_43:
(Start: 10 @27395 has 31 MA's), (12, 27380), (13, 27377), (16, 27335), (26, 27254), (36, 27089),

Gene: Guzman_43 Start: 26931, Stop: 27275, Start Num: 10
Candidate Starts for Guzman_43:
(Start: 10 @26931 has 31 MA's), (14, 26952), (22, 27036), (35, 27219), (38, 27240),

Gene: Jace_39 Start: 29450, Stop: 29782, Start Num: 10
Candidate Starts for Jace_39:
(4, 29198), (5, 29207), (Start: 10 @29450 has 31 MA's), (17, 29522), (21, 29552), (25, 29588), (28, 29624), (29, 29636), (31, 29687), (32, 29702),

Gene: Jakelyne_46 Start: 27042, Stop: 27386, Start Num: 10
Candidate Starts for Jakelyne_46:

(Start: 10 @27042 has 31 MA's), (14, 27063), (22, 27147), (35, 27330), (38, 27351),

Gene: Kenna_84 Start: 48181, Stop: 48525, Start Num: 10

Candidate Starts for Kenna_84:

(6, 47992), (Start: 10 @48181 has 31 MA's), (19, 48259), (27, 48352), (28, 48355), (37, 48469), (40, 48517),

Gene: Lesiram_45 Start: 26848, Stop: 26495, Start Num: 10

Candidate Starts for Lesiram_45:

(Start: 10 @26848 has 31 MA's), (13, 26830), (20, 26755), (35, 26545),

Gene: Losacky_44 Start: 27052, Stop: 27396, Start Num: 10

Candidate Starts for Losacky_44:

(Start: 10 @27052 has 31 MA's), (14, 27073), (22, 27157), (35, 27340), (38, 27361),

Gene: Lucky10_64 Start: 40485, Stop: 40817, Start Num: 10

Candidate Starts for Lucky10_64:

(7, 40344), (Start: 10 @40485 has 31 MA's), (28, 40659), (37, 40773),

Gene: Lutum_90 Start: 49343, Stop: 49687, Start Num: 10

Candidate Starts for Lutum_90:

(6, 49154), (Start: 10 @49343 has 31 MA's), (19, 49421), (27, 49514), (28, 49517), (37, 49631), (40, 49679),

Gene: Madavieve_68 Start: 47342, Stop: 47674, Start Num: 10

Candidate Starts for Madavieve_68:

(2, 47087), (Start: 10 @47342 has 31 MA's), (28, 47516), (37, 47630), (39, 47666),

Gene: Madeline_66 Start: 47902, Stop: 48234, Start Num: 10

Candidate Starts for Madeline_66:

(2, 47647), (Start: 10 @47902 has 31 MA's), (28, 48076), (37, 48190), (39, 48226),

Gene: Maridalia_72 Start: 47222, Stop: 47554, Start Num: 10

Candidate Starts for Maridalia_72:

(Start: 10 @47222 has 31 MA's), (15, 47258), (28, 47396), (37, 47510), (39, 47546),

Gene: Mariel_46 Start: 27425, Stop: 27757, Start Num: 10

Candidate Starts for Mariel_46:

(8, 27314), (Start: 10 @27425 has 31 MA's), (14, 27446), (21, 27527), (22, 27530),

Gene: MenE_44 Start: 26956, Stop: 27288, Start Num: 10

Candidate Starts for MenE_44:

(Start: 10 @26956 has 31 MA's), (14, 26977), (21, 27058), (22, 27061),

Gene: NCRodriguez_45 Start: 27175, Stop: 27513, Start Num: 10

Candidate Starts for NCRodriguez_45:

(8, 27064), (Start: 10 @27175 has 31 MA's), (14, 27196), (21, 27277), (22, 27280), (35, 27463),

Gene: Persistence_75 Start: 44425, Stop: 44784, Start Num: 10

Candidate Starts for Persistence_75:

(9, 44362), (Start: 10 @44425 has 31 MA's), (23, 44542), (24, 44548), (28, 44593), (30, 44635), (34, 44701),

Gene: Phabuloso_96 Start: 50835, Stop: 51179, Start Num: 10
Candidate Starts for Phabuloso_96:
(6, 50646), (Start: 10 @50835 has 31 MA's), (19, 50913), (27, 51006), (28, 51009), (37, 51123), (40, 51171),

Gene: PhillyJawn_44 Start: 26829, Stop: 27173, Start Num: 10
Candidate Starts for PhillyJawn_44:
(8, 26718), (Start: 10 @26829 has 31 MA's), (14, 26850), (22, 26934), (35, 27117), (38, 27138),

Gene: Phingu_46 Start: 27066, Stop: 27404, Start Num: 10
Candidate Starts for Phingu_46:
(8, 26955), (Start: 10 @27066 has 31 MA's), (14, 27087), (21, 27168), (22, 27171), (35, 27354),

Gene: Phonegingi_43 Start: 26878, Stop: 27222, Start Num: 10
Candidate Starts for Phonegingi_43:
(3, 26605), (8, 26767), (Start: 10 @26878 has 31 MA's), (14, 26899), (22, 26983), (35, 27166), (38, 27187),

Gene: Pickles13_42 Start: 27142, Stop: 27486, Start Num: 10
Candidate Starts for Pickles13_42:
(Start: 10 @27142 has 31 MA's), (14, 27163), (22, 27247), (35, 27430), (38, 27451),

Gene: RavenCo17_68 Start: 47032, Stop: 47364, Start Num: 10
Candidate Starts for RavenCo17_68:
(Start: 10 @47032 has 31 MA's), (28, 47206), (37, 47320), (39, 47356),

Gene: ScoobySnack_40 Start: 26668, Stop: 26985, Start Num: 10
Candidate Starts for ScoobySnack_40:
(8, 26557), (Start: 10 @26668 has 31 MA's), (14, 26689), (22, 26773),

Gene: Shukran_78 Start: 45292, Stop: 45648, Start Num: 10
Candidate Starts for Shukran_78:
(Start: 10 @45292 has 31 MA's), (22, 45397), (24, 45415), (28, 45460), (30, 45502), (34, 45568),

Gene: SushiChef_72 Start: 49109, Stop: 49441, Start Num: 10
Candidate Starts for SushiChef_72:
(2, 48854), (Start: 10 @49109 has 31 MA's), (28, 49283), (37, 49397), (39, 49433),

Gene: Sweetums_44 Start: 26961, Stop: 26608, Start Num: 10
Candidate Starts for Sweetums_44:
(Start: 10 @26961 has 31 MA's), (13, 26943), (16, 26901), (20, 26868), (35, 26658),

Gene: Teng_48 Start: 26868, Stop: 26515, Start Num: 10
Candidate Starts for Teng_48:
(Start: 10 @26868 has 31 MA's), (13, 26850), (16, 26808), (20, 26775), (36, 26562),

Gene: ThankyouJordi_72 Start: 49350, Stop: 49682, Start Num: 10
Candidate Starts for ThankyouJordi_72:
(Start: 10 @49350 has 31 MA's), (28, 49524), (37, 49638), (39, 49674),

Gene: Violeta_45 Start: 26945, Stop: 27283, Start Num: 10
Candidate Starts for Violeta_45:
(Start: 10 @26945 has 31 MA's), (14, 26966), (21, 27047), (22, 27050), (35, 27233),

Gene: Warren_43 Start: 26888, Stop: 27232, Start Num: 10

Candidate Starts for Warren_43:

(8, 26777), (Start: 10 @26888 has 31 MA's), (14, 26909), (21, 26990), (22, 26993), (35, 27176), (38, 27197),

Gene: WelcomeAyanna_72 Start: 49497, Stop: 49829, Start Num: 10

Candidate Starts for WelcomeAyanna_72:

(Start: 10 @49497 has 31 MA's), (28, 49671), (37, 49785), (39, 49821),

Gene: Winchester007_59 Start: 32944, Stop: 33288, Start Num: 10

Candidate Starts for Winchester007_59:

(8, 32833), (Start: 10 @32944 has 31 MA's), (14, 32965), (22, 33049), (35, 33232), (38, 33253),

Gene: Zodiariah_65 Start: 48508, Stop: 48843, Start Num: 10

Candidate Starts for Zodiariah_65:

(2, 48253), (Start: 10 @48508 has 31 MA's), (28, 48682), (31, 48745), (37, 48799), (39, 48835),