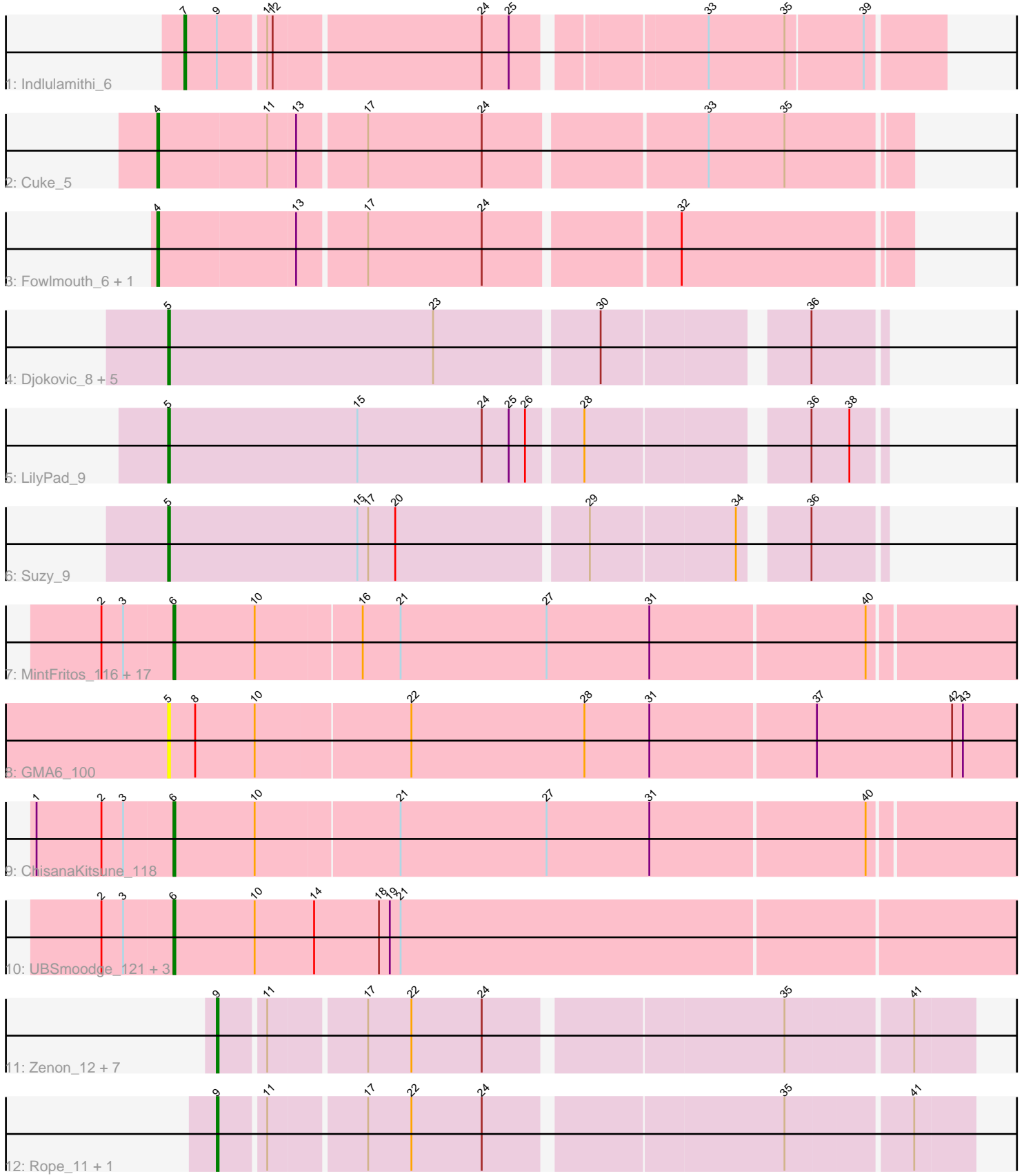


Pham 296688



Note: Tracks are now grouped by subcluster and scaled. Switching in subcluster is indicated by changes in track color. Track scale is now set by default to display the region 30 bp upstream of start 1 to 30 bp downstream of the last possible start. If this default region is judged to be packed too tightly with annotated starts, the track will be further scaled to only show that region of the ORF with annotated starts. This action will be indicated by adding "Zoomed" to the title. For starts, yellow indicates the location of called starts comprised solely of Glimmer/GeneMark auto-annotations, green indicates the location of called starts with at least 1 manual gene annotation.

Pham 296688 Report

This analysis was run 04/25/26 on database version 644.

Pham number 296688 has 46 members, 16 are drafts.

Phages represented in each track:

- Track 1 : Indlulamithi_6
- Track 2 : Cuke_5
- Track 3 : Fowlmouth_6, MrMiyagi_6
- Track 4 : Djokovic_8, Terapin_8, Sienna_8, BiteSize_8, Beyoncage_8, Madi_8
- Track 5 : LilyPad_9
- Track 6 : Suzy_9
- Track 7 : MintFritos_116, Argena_118, Hanem_118, Pakusa_113, Mikronejon_114, Schomber_117, Amoonguss_117, Gray_116, Chidiebere_119, Oogie_114, Kabocha_120, Toneprano_116, Twin_114, Lenoshki_115, Farrylious_117, Aloki_111, EmoNemo_112, Beted_115
- Track 8 : GMA6_100
- Track 9 : ChisanaKitsune_118
- Track 10 : UBSmoodge_121, FruityLoops_117, FlyingTortilla_116, ScarletRaider_117
- Track 11 : Zenon_12, Yelo_11, Papyrus_11, Send513_11, Weiss13_11, Nilo_12, Candle_11, MontyDev_11
- Track 12 : Rope_11, Riparian_11

Summary of Final Annotations (See graph section above for start numbers):

The start number called the most often in the published annotations is 9, it was called in 9 of the 30 non-draft genes in the pham.

Genes that call this "Most Annotated" start:

- Candle_11, MontyDev_11, Nilo_12, Papyrus_11, Riparian_11, Rope_11, Send513_11, Weiss13_11, Yelo_11, Zenon_12,

Genes that have the "Most Annotated" start but do not call it:

- Indlulamithi_6,

Genes that do not have the "Most Annotated" start:

- Aloki_111, Amoonguss_117, Argena_118, Beted_115, Beyoncage_8, BiteSize_8, Chidiebere_119, ChisanaKitsune_118, Cuke_5, Djokovic_8, EmoNemo_112, Farrylious_117, FlyingTortilla_116, Fowlmouth_6, FruityLoops_117, GMA6_100,

Gray_116, Hanem_118, Kabocha_120, Lenoshki_115, LilyPad_9, Madi_8, Mikronejon_114, MintFritos_116, MrMiyagi_6, Oogie_114, Pakusa_113, ScarletRaider_117, Schomber_117, Sienna_8, Suzy_9, Terapin_8, Toneprano_116, Twin_114, UBSmoodge_121,

Summary by start number:

Start 4:

- Found in 3 of 46 (6.5%) of genes in pham
- Manual Annotations of this start: 3 of 30
- Called 100.0% of time when present
- Phage (with cluster) where this start called: Cuke_5 (AC), Fowlmouth_6 (AC), MrMiyagi_6 (AC),

Start 5:

- Found in 9 of 46 (19.6%) of genes in pham
- Manual Annotations of this start: 8 of 30
- Called 100.0% of time when present
- Phage (with cluster) where this start called: Beyoncage_8 (DG1), BiteSize_8 (DG1), Djokovic_8 (DG1), GMA6_100 (DQ), LilyPad_9 (DG1), Madi_8 (DG1), Sienna_8 (DG1), Suzy_9 (DG1), Terapin_8 (DG1),

Start 6:

- Found in 23 of 46 (50.0%) of genes in pham
- Manual Annotations of this start: 9 of 30
- Called 100.0% of time when present
- Phage (with cluster) where this start called: Alok_111 (DQ), Amoonguss_117 (DQ), Argena_118 (DQ), Beted_115 (DQ), Chidiebere_119 (DQ), ChisanaKitsune_118 (DQ), EmoNemo_112 (DQ), Farrylious_117 (DQ), FlyingTortilla_116 (DQ), FruityLoops_117 (DQ), Gray_116 (DQ), Hanem_118 (DQ), Kabocha_120 (DQ), Lenoshki_115 (DQ), Mikronejon_114 (DQ), MintFritos_116 (DQ), Oogie_114 (DQ), Pakusa_113 (DQ), ScarletRaider_117 (DQ), Schomber_117 (DQ), Toneprano_116 (DQ), Twin_114 (DQ), UBSmoodge_121 (DQ),

Start 7:

- Found in 1 of 46 (2.2%) of genes in pham
- Manual Annotations of this start: 1 of 30
- Called 100.0% of time when present
- Phage (with cluster) where this start called: Indlulamithi_6 (AC),

Start 9:

- Found in 11 of 46 (23.9%) of genes in pham
- Manual Annotations of this start: 9 of 30
- Called 90.9% of time when present
- Phage (with cluster) where this start called: Candle_11 (R), MontyDev_11 (R), Nilo_12 (R), Papyrus_11 (R), Riparian_11 (R), Rope_11 (R), Send513_11 (R), Weiss13_11 (R), Yelo_11 (R), Zenon_12 (R),

Summary by clusters:

There are 4 clusters represented in this pham: R, DG1, AC, DQ,

Info for manual annotations of cluster AC:

- Start number 4 was manually annotated 3 times for cluster AC.
- Start number 7 was manually annotated 1 time for cluster AC.

Info for manual annotations of cluster DG1:

- Start number 5 was manually annotated 8 times for cluster DG1.

Info for manual annotations of cluster DQ:

- Start number 6 was manually annotated 9 times for cluster DQ.

Info for manual annotations of cluster R:

- Start number 9 was manually annotated 9 times for cluster R.

Gene Information:

Gene: Alok1_111 Start: 82312, Stop: 82782, Start Num: 6

Candidate Starts for Alok1_111:

(2, 82273), (3, 82285), (Start: 6 @82312 has 9 MA's), (10, 82357), (16, 82414), (21, 82435), (27, 82516), (31, 82573), (40, 82690),

Gene: Amoonguss_117 Start: 82945, Stop: 83415, Start Num: 6

Candidate Starts for Amoonguss_117:

(2, 82906), (3, 82918), (Start: 6 @82945 has 9 MA's), (10, 82990), (16, 83047), (21, 83068), (27, 83149), (31, 83206), (40, 83323),

Gene: Argena_118 Start: 83361, Stop: 83831, Start Num: 6

Candidate Starts for Argena_118:

(2, 83322), (3, 83334), (Start: 6 @83361 has 9 MA's), (10, 83406), (16, 83463), (21, 83484), (27, 83565), (31, 83622), (40, 83739),

Gene: Beted_115 Start: 84225, Stop: 84695, Start Num: 6

Candidate Starts for Beted_115:

(2, 84186), (3, 84198), (Start: 6 @84225 has 9 MA's), (10, 84270), (16, 84327), (21, 84348), (27, 84429), (31, 84486), (40, 84603),

Gene: Beyoncage_8 Start: 5498, Stop: 5872, Start Num: 5

Candidate Starts for Beyoncage_8:

(Start: 5 @5498 has 8 MA's), (23, 5645), (30, 5732), (36, 5834),

Gene: BiteSize_8 Start: 5498, Stop: 5872, Start Num: 5

Candidate Starts for BiteSize_8:

(Start: 5 @5498 has 8 MA's), (23, 5645), (30, 5732), (36, 5834),

Gene: Candle_11 Start: 6411, Stop: 6803, Start Num: 9

Candidate Starts for Candle_11:

(Start: 9 @6411 has 9 MA's), (11, 6435), (17, 6486), (22, 6510), (24, 6549), (35, 6705), (41, 6771),

Gene: Chidiebere_119 Start: 83442, Stop: 83912, Start Num: 6

Candidate Starts for Chidiebere_119:

(2, 83403), (3, 83415), (Start: 6 @83442 has 9 MA's), (10, 83487), (16, 83544), (21, 83565), (27, 83646), (31, 83703), (40, 83820),

Gene: ChisanaKitsune_118 Start: 82458, Stop: 82928, Start Num: 6

Candidate Starts for ChisanaKitsune_118:

(1, 82383), (2, 82419), (3, 82431), (Start: 6 @82458 has 9 MA's), (10, 82503), (21, 82581), (27, 82662), (31, 82719), (40, 82836),

Gene: Cuke_5 Start: 3636, Stop: 4034, Start Num: 4

Candidate Starts for Cuke_5:

(Start: 4 @3636 has 3 MA's), (11, 3696), (13, 3711), (17, 3747), (24, 3810), (33, 3927), (35, 3969),

Gene: Djokovic_8 Start: 5498, Stop: 5872, Start Num: 5

Candidate Starts for Djokovic_8:

(Start: 5 @5498 has 8 MA's), (23, 5645), (30, 5732), (36, 5834),

Gene: EmoNemo_112 Start: 82514, Stop: 82984, Start Num: 6

Candidate Starts for EmoNemo_112:

(2, 82475), (3, 82487), (Start: 6 @82514 has 9 MA's), (10, 82559), (16, 82616), (21, 82637), (27, 82718), (31, 82775), (40, 82892),

Gene: Farrylious_117 Start: 83113, Stop: 83583, Start Num: 6

Candidate Starts for Farrylious_117:

(2, 83074), (3, 83086), (Start: 6 @83113 has 9 MA's), (10, 83158), (16, 83215), (21, 83236), (27, 83317), (31, 83374), (40, 83491),

Gene: FlyingTortilla_116 Start: 86256, Stop: 86732, Start Num: 6

Candidate Starts for FlyingTortilla_116:

(2, 86217), (3, 86229), (Start: 6 @86256 has 9 MA's), (10, 86301), (14, 86334), (18, 86370), (19, 86376), (21, 86382),

Gene: Fowlmouth_6 Start: 3802, Stop: 4200, Start Num: 4

Candidate Starts for Fowlmouth_6:

(Start: 4 @3802 has 3 MA's), (13, 3877), (17, 3913), (24, 3976), (32, 4078),

Gene: FruityLoops_117 Start: 85762, Stop: 86238, Start Num: 6

Candidate Starts for FruityLoops_117:

(2, 85723), (3, 85735), (Start: 6 @85762 has 9 MA's), (10, 85807), (14, 85840), (18, 85876), (19, 85882), (21, 85888),

Gene: GMA6_100 Start: 73320, Stop: 73802, Start Num: 5

Candidate Starts for GMA6_100:

(Start: 5 @73320 has 8 MA's), (8, 73335), (10, 73368), (22, 73452), (28, 73548), (31, 73584), (37, 73674), (42, 73749), (43, 73755),

Gene: Gray_116 Start: 82771, Stop: 83241, Start Num: 6

Candidate Starts for Gray_116:

(2, 82732), (3, 82744), (Start: 6 @82771 has 9 MA's), (10, 82816), (16, 82873), (21, 82894), (27, 82975), (31, 83032), (40, 83149),

Gene: Hanem_118 Start: 82312, Stop: 82782, Start Num: 6

Candidate Starts for Hanem_118:

(2, 82273), (3, 82285), (Start: 6 @82312 has 9 MA's), (10, 82357), (16, 82414), (21, 82435), (27, 82516), (31, 82573), (40, 82690),

Gene: Indlulamithi_6 Start: 3798, Stop: 4190, Start Num: 7

Candidate Starts for Indlulamithi_6:

(Start: 7 @3798 has 1 MA's), (Start: 9 @3816 has 9 MA's), (11, 3840), (12, 3843), (24, 3954), (25, 3969), (33, 4065), (35, 4107), (39, 4149),

Gene: Kabocha_120 Start: 84255, Stop: 84725, Start Num: 6

Candidate Starts for Kabocha_120:

(2, 84216), (3, 84228), (Start: 6 @84255 has 9 MA's), (10, 84300), (16, 84357), (21, 84378), (27, 84459), (31, 84516), (40, 84633),

Gene: Lenoshki_115 Start: 84225, Stop: 84695, Start Num: 6

Candidate Starts for Lenoshki_115:

(2, 84186), (3, 84198), (Start: 6 @84225 has 9 MA's), (10, 84270), (16, 84327), (21, 84348), (27, 84429), (31, 84486), (40, 84603),

Gene: LilyPad_9 Start: 6255, Stop: 6629, Start Num: 5

Candidate Starts for LilyPad_9:

(Start: 5 @6255 has 8 MA's), (15, 6360), (24, 6429), (25, 6444), (26, 6453), (28, 6480), (36, 6591), (38, 6612),

Gene: Madi_8 Start: 5498, Stop: 5872, Start Num: 5

Candidate Starts for Madi_8:

(Start: 5 @5498 has 8 MA's), (23, 5645), (30, 5732), (36, 5834),

Gene: Mikronejon_114 Start: 82792, Stop: 83262, Start Num: 6

Candidate Starts for Mikronejon_114:

(2, 82753), (3, 82765), (Start: 6 @82792 has 9 MA's), (10, 82837), (16, 82894), (21, 82915), (27, 82996), (31, 83053), (40, 83170),

Gene: MintFritos_116 Start: 83266, Stop: 83736, Start Num: 6

Candidate Starts for MintFritos_116:

(2, 83227), (3, 83239), (Start: 6 @83266 has 9 MA's), (10, 83311), (16, 83368), (21, 83389), (27, 83470), (31, 83527), (40, 83644),

Gene: MontyDev_11 Start: 6069, Stop: 6461, Start Num: 9

Candidate Starts for MontyDev_11:

(Start: 9 @6069 has 9 MA's), (11, 6093), (17, 6144), (22, 6168), (24, 6207), (35, 6363), (41, 6429),

Gene: MrMiyagi_6 Start: 3802, Stop: 4200, Start Num: 4

Candidate Starts for MrMiyagi_6:

(Start: 4 @3802 has 3 MA's), (13, 3877), (17, 3913), (24, 3976), (32, 4078),

Gene: Nilo_12 Start: 6411, Stop: 6803, Start Num: 9

Candidate Starts for Nilo_12:

(Start: 9 @6411 has 9 MA's), (11, 6435), (17, 6486), (22, 6510), (24, 6549), (35, 6705), (41, 6771),

Gene: Oogie_114 Start: 84275, Stop: 84745, Start Num: 6

Candidate Starts for Oogie_114:

(2, 84236), (3, 84248), (Start: 6 @84275 has 9 MA's), (10, 84320), (16, 84377), (21, 84398), (27, 84479), (31, 84536), (40, 84653),

Gene: Pakusa_113 Start: 82240, Stop: 82710, Start Num: 6

Candidate Starts for Pakusa_113:

(2, 82201), (3, 82213), (Start: 6 @82240 has 9 MA's), (10, 82285), (16, 82342), (21, 82363), (27, 82444), (31, 82501), (40, 82618),

Gene: Papyrus_11 Start: 6070, Stop: 6462, Start Num: 9

Candidate Starts for Papyrus_11:

(Start: 9 @6070 has 9 MA's), (11, 6094), (17, 6145), (22, 6169), (24, 6208), (35, 6364), (41, 6430),

Gene: Riparian_11 Start: 5869, Stop: 6261, Start Num: 9

Candidate Starts for Riparian_11:

(Start: 9 @5869 has 9 MA's), (11, 5893), (17, 5944), (22, 5968), (24, 6007), (35, 6163), (41, 6229),

Gene: Rope_11 Start: 6061, Stop: 6453, Start Num: 9

Candidate Starts for Rope_11:

(Start: 9 @6061 has 9 MA's), (11, 6085), (17, 6136), (22, 6160), (24, 6199), (35, 6355), (41, 6421),

Gene: ScarletRaider_117 Start: 85473, Stop: 85949, Start Num: 6

Candidate Starts for ScarletRaider_117:

(2, 85434), (3, 85446), (Start: 6 @85473 has 9 MA's), (10, 85518), (14, 85551), (18, 85587), (19, 85593), (21, 85599),

Gene: Schomber_117 Start: 82643, Stop: 83113, Start Num: 6

Candidate Starts for Schomber_117:

(2, 82604), (3, 82616), (Start: 6 @82643 has 9 MA's), (10, 82688), (16, 82745), (21, 82766), (27, 82847), (31, 82904), (40, 83021),

Gene: Send513_11 Start: 6411, Stop: 6803, Start Num: 9

Candidate Starts for Send513_11:

(Start: 9 @6411 has 9 MA's), (11, 6435), (17, 6486), (22, 6510), (24, 6549), (35, 6705), (41, 6771),

Gene: Sienna_8 Start: 5498, Stop: 5872, Start Num: 5

Candidate Starts for Sienna_8:

(Start: 5 @5498 has 8 MA's), (23, 5645), (30, 5732), (36, 5834),

Gene: Suzy_9 Start: 6741, Stop: 7115, Start Num: 5

Candidate Starts for Suzy_9:

(Start: 5 @6741 has 8 MA's), (15, 6846), (17, 6852), (20, 6867), (29, 6969), (34, 7047), (36, 7077),

Gene: Terapin_8 Start: 5498, Stop: 5872, Start Num: 5

Candidate Starts for Terapin_8:

(Start: 5 @5498 has 8 MA's), (23, 5645), (30, 5732), (36, 5834),

Gene: Toneprano_116 Start: 82959, Stop: 83429, Start Num: 6

Candidate Starts for Toneprano_116:

(2, 82920), (3, 82932), (Start: 6 @82959 has 9 MA's), (10, 83004), (16, 83061), (21, 83082), (27, 83163), (31, 83220), (40, 83337),

Gene: Twin_114 Start: 82989, Stop: 83459, Start Num: 6

Candidate Starts for Twin_114:

(2, 82950), (3, 82962), (Start: 6 @82989 has 9 MA's), (10, 83034), (16, 83091), (21, 83112), (27, 83193), (31, 83250), (40, 83367),

Gene: UBSmoodge_121 Start: 86043, Stop: 86519, Start Num: 6

Candidate Starts for UBSmoodge_121:

(2, 86004), (3, 86016), (Start: 6 @86043 has 9 MA's), (10, 86088), (14, 86121), (18, 86157), (19, 86163), (21, 86169),

Gene: Weiss13_11 Start: 6100, Stop: 6492, Start Num: 9

Candidate Starts for Weiss13_11:

(Start: 9 @6100 has 9 MA's), (11, 6124), (17, 6175), (22, 6199), (24, 6238), (35, 6394), (41, 6460),

Gene: Yelo_11 Start: 6411, Stop: 6803, Start Num: 9

Candidate Starts for Yelo_11:

(Start: 9 @6411 has 9 MA's), (11, 6435), (17, 6486), (22, 6510), (24, 6549), (35, 6705), (41, 6771),

Gene: Zenon_12 Start: 6413, Stop: 6805, Start Num: 9

Candidate Starts for Zenon_12:

(Start: 9 @6413 has 9 MA's), (11, 6437), (17, 6488), (22, 6512), (24, 6551), (35, 6707), (41, 6773),