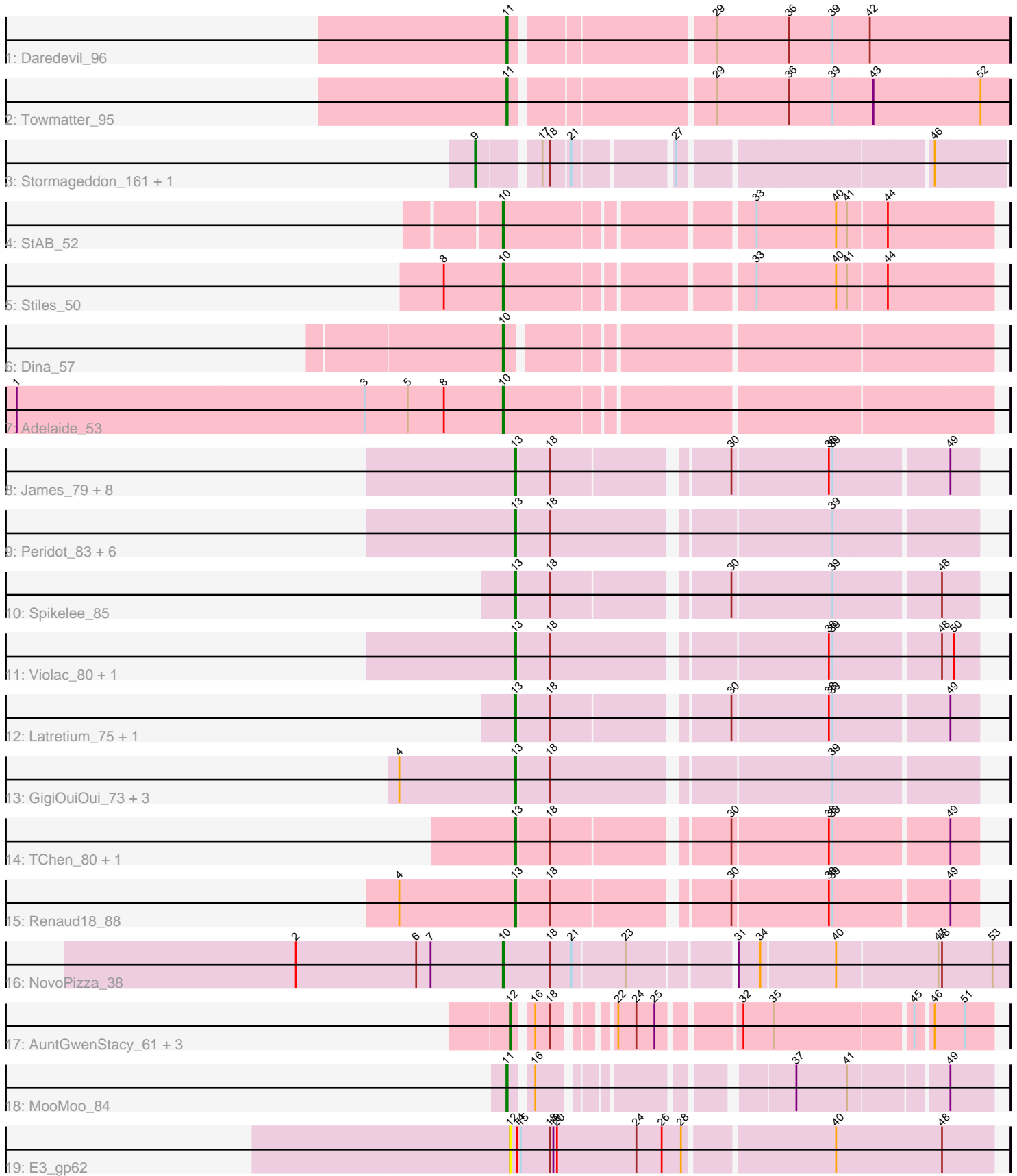


Pham 296704



Note: Tracks are now grouped by subcluster and scaled. Switching in subcluster is indicated by changes in track color. Track scale is now set by default to display the region 30 bp upstream of start 1 to 30 bp downstream of the last possible start. If this default region is judged to be packed too tightly with annotated starts, the track will be further scaled to only show that region of the ORF with annotated starts. This action will be indicated by adding "Zoomed" to the title. For starts, yellow indicates the location of called starts comprised solely of Glimmer/GeneMark auto-annotations, green indicates the location of called starts with at least 1 manual gene annotation.

Pham 296704 Report

This analysis was run 04/25/26 on database version 644.

Pham number 296704 has 43 members, 4 are drafts.

Phages represented in each track:

- Track 1 : Daredevil_96
- Track 2 : Towmatter_95
- Track 3 : Stormageddon_161, RedWattleHog_160
- Track 4 : StAB_52
- Track 5 : Stiles_50
- Track 6 : Dina_57
- Track 7 : Adelaide_53
- Track 8 : James_79, DRBy19_82, Jarcob_78, IbOuu_73, ShroomBoi_79, OlympiaSaint_78, Clifton_71, Philus_81, Bipolar_81
- Track 9 : Peridot_83, Nivrat_75, Fastidio_79, LilMoolah_77, Totinger_81, Starcevich_79, LittleShirley_85
- Track 10 : Spikelee_85
- Track 11 : Violac_80, Che8_82
- Track 12 : Latretium_75, OwlsT2W_80
- Track 13 : GigiOuiOui_73, Vivum_79, PhlipPhlop_80, EmiMonkey_79
- Track 14 : TChen_80, LunaStella_78
- Track 15 : Renaud18_88
- Track 16 : NovoPizza_38
- Track 17 : AuntGwenStacy_61, Faiyaz_61, Typha_60, Hilltopfarm_60
- Track 18 : MooMoo_84
- Track 19 : E3_gp62

Summary of Final Annotations (See graph section above for start numbers):

The start number called the most often in the published annotations is 13, it was called in 26 of the 39 non-draft genes in the pham.

Genes that call this "Most Annotated" start:

- Bipolar_81, Che8_82, Clifton_71, DRBy19_82, EmiMonkey_79, Fastidio_79, GigiOuiOui_73, IbOuu_73, James_79, Jarcob_78, Latretium_75, LilMoolah_77, LittleShirley_85, LunaStella_78, Nivrat_75, OlympiaSaint_78, OwlsT2W_80, Peridot_83, Philus_81, PhlipPhlop_80, Renaud18_88, ShroomBoi_79, Spikelee_85, Starcevich_79, TChen_80, Totinger_81, Violac_80, Vivum_79,

Genes that have the "Most Annotated" start but do not call it:

-

Genes that do not have the "Most Annotated" start:

- Adelaide_53, AuntGwenStacy_61, Daredevil_96, Dina_57, E3_gp62, Faiyaz_61, Hilltopfarm_60, MooMoo_84, NovoPizza_38, RedWattleHog_160, StAB_52, Stiles_50, Stormageddon_161, Towmatter_95, Typha_60,

Summary by start number:

Start 9:

- Found in 2 of 43 (4.7%) of genes in pham
- Manual Annotations of this start: 2 of 39
- Called 100.0% of time when present
- Phage (with cluster) where this start called: RedWattleHog_160 (DX), Stormageddon_161 (DX),

Start 10:

- Found in 5 of 43 (11.6%) of genes in pham
- Manual Annotations of this start: 5 of 39
- Called 100.0% of time when present
- Phage (with cluster) where this start called: Adelaide_53 (EP), Dina_57 (EP), NovoPizza_38 (Q), StAB_52 (EP), Stiles_50 (EP),

Start 11:

- Found in 3 of 43 (7.0%) of genes in pham
- Manual Annotations of this start: 3 of 39
- Called 100.0% of time when present
- Phage (with cluster) where this start called: Daredevil_96 (DL), MooMoo_84 (singleton), Towmatter_95 (DL),

Start 12:

- Found in 5 of 43 (11.6%) of genes in pham
- Manual Annotations of this start: 3 of 39
- Called 100.0% of time when present
- Phage (with cluster) where this start called: AuntGwenStacy_61 (Y), E3_gp62 (singleton), Faiyaz_61 (Y), Hilltopfarm_60 (Y), Typha_60 (Y),

Start 13:

- Found in 28 of 43 (65.1%) of genes in pham
- Manual Annotations of this start: 26 of 39
- Called 100.0% of time when present
- Phage (with cluster) where this start called: Bipolar_81 (F1), Che8_82 (F1), Clifton_71 (F1), DRBy19_82 (F1), EmiMonkey_79 (F1), Fastidio_79 (F1), GigiOuiOui_73 (F1), IbOuu_73 (F1), James_79 (F1), Jarcob_78 (F1), Latretium_75 (F1), LilMoolah_77 (F1), LittleShirley_85 (F1), LunaStella_78 (F4), Nivrat_75 (F1), OlympiaSaint_78 (F1), OwlsT2W_80 (F1), Peridot_83 (F1), Philus_81 (F1), PhilipPhlop_80 (F1), Renaud18_88 (F4), ShroomBoi_79 (F1), Spikelee_85 (F1), Starcevich_79 (F1), TChen_80 (F4), Totinger_81 (F1), Violac_80 (F1), Vivum_79 (F1),

Summary by clusters:

There are 8 clusters represented in this pham: F1, DL, F4, singleton, Q, DX, Y, EP,

Info for manual annotations of cluster DL:

- Start number 11 was manually annotated 2 times for cluster DL.

Info for manual annotations of cluster DX:

- Start number 9 was manually annotated 2 times for cluster DX.

Info for manual annotations of cluster EP:

- Start number 10 was manually annotated 4 times for cluster EP.

Info for manual annotations of cluster F1:

- Start number 13 was manually annotated 23 times for cluster F1.

Info for manual annotations of cluster F4:

- Start number 13 was manually annotated 3 times for cluster F4.

Info for manual annotations of cluster Q:

- Start number 10 was manually annotated 1 time for cluster Q.

Info for manual annotations of cluster Y:

- Start number 12 was manually annotated 3 times for cluster Y.

Gene Information:

Gene: Adelaide_53 Start: 41100, Stop: 41483, Start Num: 10

Candidate Starts for Adelaide_53:

(1, 40698), (3, 40986), (5, 41022), (8, 41052), (Start: 10 @41100 has 5 MA's),

Gene: AuntGwenStacy_61 Start: 44340, Stop: 44672, Start Num: 12

Candidate Starts for AuntGwenStacy_61:

(Start: 12 @44340 has 3 MA's), (16, 44352), (18, 44364), (22, 44397), (24, 44412), (25, 44427), (32, 44484), (35, 44508), (45, 44613), (46, 44625), (51, 44649),

Gene: Bipolar_81 Start: 49898, Stop: 50251, Start Num: 13

Candidate Starts for Bipolar_81:

(Start: 13 @49898 has 26 MA's), (18, 49925), (30, 50057), (38, 50135), (39, 50138), (49, 50228),

Gene: Che8_82 Start: 48631, Stop: 48987, Start Num: 13

Candidate Starts for Che8_82:

(Start: 13 @48631 has 26 MA's), (18, 48658), (38, 48871), (39, 48874), (48, 48958), (50, 48967),

Gene: Clifton_71 Start: 46466, Stop: 46819, Start Num: 13

Candidate Starts for Clifton_71:

(Start: 13 @46466 has 26 MA's), (18, 46493), (30, 46625), (38, 46703), (39, 46706), (49, 46796),

Gene: DRBy19_82 Start: 50195, Stop: 50548, Start Num: 13

Candidate Starts for DRBy19_82:

(Start: 13 @50195 has 26 MA's), (18, 50222), (30, 50354), (38, 50432), (39, 50435), (49, 50525),

Gene: Daredevil_96 Start: 64552, Stop: 64944, Start Num: 11

Candidate Starts for Daredevil_96:

(Start: 11 @64552 has 3 MA's), (29, 64705), (36, 64765), (39, 64801), (42, 64831),

Gene: Dina_57 Start: 40543, Stop: 40917, Start Num: 10

Candidate Starts for Dina_57:

(Start: 10 @40543 has 5 MA's),

Gene: E3_gp62 Start: 24510, Stop: 24896, Start Num: 12

Candidate Starts for E3_gp62:

(Start: 12 @24510 has 3 MA's), (14, 24516), (15, 24519), (18, 24543), (19, 24546), (20, 24549), (24, 24615), (26, 24636), (28, 24651), (40, 24768), (48, 24855),

Gene: EmiMonkey_79 Start: 52180, Stop: 52536, Start Num: 13

Candidate Starts for EmiMonkey_79:

(4, 52084), (Start: 13 @52180 has 26 MA's), (18, 52207), (39, 52423),

Gene: Faiyaz_61 Start: 44330, Stop: 44662, Start Num: 12

Candidate Starts for Faiyaz_61:

(Start: 12 @44330 has 3 MA's), (16, 44342), (18, 44354), (22, 44387), (24, 44402), (25, 44417), (32, 44474), (35, 44498), (45, 44603), (46, 44615), (51, 44639),

Gene: Fastidio_79 Start: 45442, Stop: 45798, Start Num: 13

Candidate Starts for Fastidio_79:

(Start: 13 @45442 has 26 MA's), (18, 45469), (39, 45685),

Gene: GigiOuiOui_73 Start: 47038, Stop: 47394, Start Num: 13

Candidate Starts for GigiOuiOui_73:

(4, 46942), (Start: 13 @47038 has 26 MA's), (18, 47065), (39, 47281),

Gene: Hilltopfarm_60 Start: 44032, Stop: 44364, Start Num: 12

Candidate Starts for Hilltopfarm_60:

(Start: 12 @44032 has 3 MA's), (16, 44044), (18, 44056), (22, 44089), (24, 44104), (25, 44119), (32, 44176), (35, 44200), (45, 44305), (46, 44317), (51, 44341),

Gene: lbOuu_73 Start: 46272, Stop: 46625, Start Num: 13

Candidate Starts for lbOuu_73:

(Start: 13 @46272 has 26 MA's), (18, 46299), (30, 46431), (38, 46509), (39, 46512), (49, 46602),

Gene: James_79 Start: 49530, Stop: 49883, Start Num: 13

Candidate Starts for James_79:

(Start: 13 @49530 has 26 MA's), (18, 49557), (30, 49689), (38, 49767), (39, 49770), (49, 49860),

Gene: Jarcob_78 Start: 49127, Stop: 49480, Start Num: 13

Candidate Starts for Jarcob_78:

(Start: 13 @49127 has 26 MA's), (18, 49154), (30, 49286), (38, 49364), (39, 49367), (49, 49457),

Gene: Latretium_75 Start: 45992, Stop: 46345, Start Num: 13

Candidate Starts for Latretium_75:

(Start: 13 @45992 has 26 MA's), (18, 46019), (30, 46151), (38, 46229), (39, 46232), (49, 46322),

Gene: LilMoolah_77 Start: 48185, Stop: 48448, Start Num: 13

Candidate Starts for LilMoolah_77:

(Start: 13 @48185 has 26 MA's), (18, 48212), (39, 48428),

Gene: LittleShirley_85 Start: 49115, Stop: 49471, Start Num: 13

Candidate Starts for LittleShirley_85:

(Start: 13 @49115 has 26 MA's), (18, 49142), (39, 49358),

Gene: LunaStella_78 Start: 47826, Stop: 48179, Start Num: 13

Candidate Starts for LunaStella_78:

(Start: 13 @47826 has 26 MA's), (18, 47853), (30, 47985), (38, 48063), (39, 48066), (49, 48156),

Gene: MooMoo_84 Start: 49010, Stop: 49342, Start Num: 11

Candidate Starts for MooMoo_84:

(Start: 11 @49010 has 3 MA's), (16, 49025), (37, 49193), (41, 49235), (49, 49307),

Gene: Nivrat_75 Start: 48058, Stop: 48321, Start Num: 13

Candidate Starts for Nivrat_75:

(Start: 13 @48058 has 26 MA's), (18, 48085), (39, 48301),

Gene: NovoPizza_38 Start: 33244, Stop: 32846, Start Num: 10

Candidate Starts for NovoPizza_38:

(2, 33415), (6, 33316), (7, 33304), (Start: 10 @33244 has 5 MA's), (18, 33205), (21, 33187), (23, 33145), (31, 33064), (34, 33046), (40, 32986), (47, 32905), (48, 32902), (53, 32860),

Gene: OlympiaSaint_78 Start: 48472, Stop: 48825, Start Num: 13

Candidate Starts for OlympiaSaint_78:

(Start: 13 @48472 has 26 MA's), (18, 48499), (30, 48631), (38, 48709), (39, 48712), (49, 48802),

Gene: OwlsT2W_80 Start: 48157, Stop: 48510, Start Num: 13

Candidate Starts for OwlsT2W_80:

(Start: 13 @48157 has 26 MA's), (18, 48184), (30, 48316), (38, 48394), (39, 48397), (49, 48487),

Gene: Peridot_83 Start: 48830, Stop: 49186, Start Num: 13

Candidate Starts for Peridot_83:

(Start: 13 @48830 has 26 MA's), (18, 48857), (39, 49073),

Gene: Philus_81 Start: 50171, Stop: 50524, Start Num: 13

Candidate Starts for Philus_81:

(Start: 13 @50171 has 26 MA's), (18, 50198), (30, 50330), (38, 50408), (39, 50411), (49, 50501),

Gene: PhlipPhlop_80 Start: 52180, Stop: 52536, Start Num: 13

Candidate Starts for PhlipPhlop_80:

(4, 52084), (Start: 13 @52180 has 26 MA's), (18, 52207), (39, 52423),

Gene: RedWattleHog_160 Start: 106582, Stop: 106965, Start Num: 9

Candidate Starts for RedWattleHog_160:

(Start: 9 @106582 has 2 MA's), (17, 106627), (18, 106633), (21, 106648), (27, 106720), (46, 106909),

Gene: Renaud18_88 Start: 49125, Stop: 49478, Start Num: 13

Candidate Starts for Renaud18_88:

(4, 49029), (Start: 13 @49125 has 26 MA's), (18, 49152), (30, 49284), (38, 49362), (39, 49365), (49, 49455),

Gene: ShroomBoi_79 Start: 48390, Stop: 48743, Start Num: 13

Candidate Starts for ShroomBoi_79:

(Start: 13 @48390 has 26 MA's), (18, 48417), (30, 48549), (38, 48627), (39, 48630), (49, 48720),

Gene: Spikelee_85 Start: 50696, Stop: 51049, Start Num: 13

Candidate Starts for Spikelee_85:

(Start: 13 @50696 has 26 MA's), (18, 50723), (30, 50855), (39, 50936), (48, 51020),

Gene: StAB_52 Start: 41624, Stop: 42001, Start Num: 10

Candidate Starts for StAB_52:

(Start: 10 @41624 has 5 MA's), (33, 41810), (40, 41876), (41, 41885), (44, 41915),

Gene: Starcevich_79 Start: 49396, Stop: 49752, Start Num: 13

Candidate Starts for Starcevich_79:

(Start: 13 @49396 has 26 MA's), (18, 49423), (39, 49639),

Gene: Stiles_50 Start: 40247, Stop: 40624, Start Num: 10

Candidate Starts for Stiles_50:

(8, 40199), (Start: 10 @40247 has 5 MA's), (33, 40433), (40, 40499), (41, 40508), (44, 40538),

Gene: Stormageddon_161 Start: 107546, Stop: 107929, Start Num: 9

Candidate Starts for Stormageddon_161:

(Start: 9 @107546 has 2 MA's), (17, 107591), (18, 107597), (21, 107612), (27, 107684), (46, 107873),

Gene: TChen_80 Start: 49777, Stop: 50130, Start Num: 13

Candidate Starts for TChen_80:

(Start: 13 @49777 has 26 MA's), (18, 49804), (30, 49936), (38, 50014), (39, 50017), (49, 50107),

Gene: Totinger_81 Start: 48192, Stop: 48548, Start Num: 13

Candidate Starts for Totinger_81:

(Start: 13 @48192 has 26 MA's), (18, 48219), (39, 48435),

Gene: Towmatter_95 Start: 64634, Stop: 65026, Start Num: 11

Candidate Starts for Towmatter_95:

(Start: 11 @64634 has 3 MA's), (29, 64787), (36, 64847), (39, 64883), (43, 64916), (52, 65003),

Gene: Typha_60 Start: 44340, Stop: 44672, Start Num: 12

Candidate Starts for Typha_60:

(Start: 12 @44340 has 3 MA's), (16, 44352), (18, 44364), (22, 44397), (24, 44412), (25, 44427), (32, 44484), (35, 44508), (45, 44613), (46, 44625), (51, 44649),

Gene: Violac_80 Start: 49457, Stop: 49813, Start Num: 13

Candidate Starts for Violac_80:

(Start: 13 @49457 has 26 MA's), (18, 49484), (38, 49697), (39, 49700), (48, 49784), (50, 49793),

Gene: Vivum_79 Start: 50082, Stop: 50438, Start Num: 13

Candidate Starts for Vivum_79:

(4, 49986), (Start: 13 @50082 has 26 MA's), (18, 50109), (39, 50325),