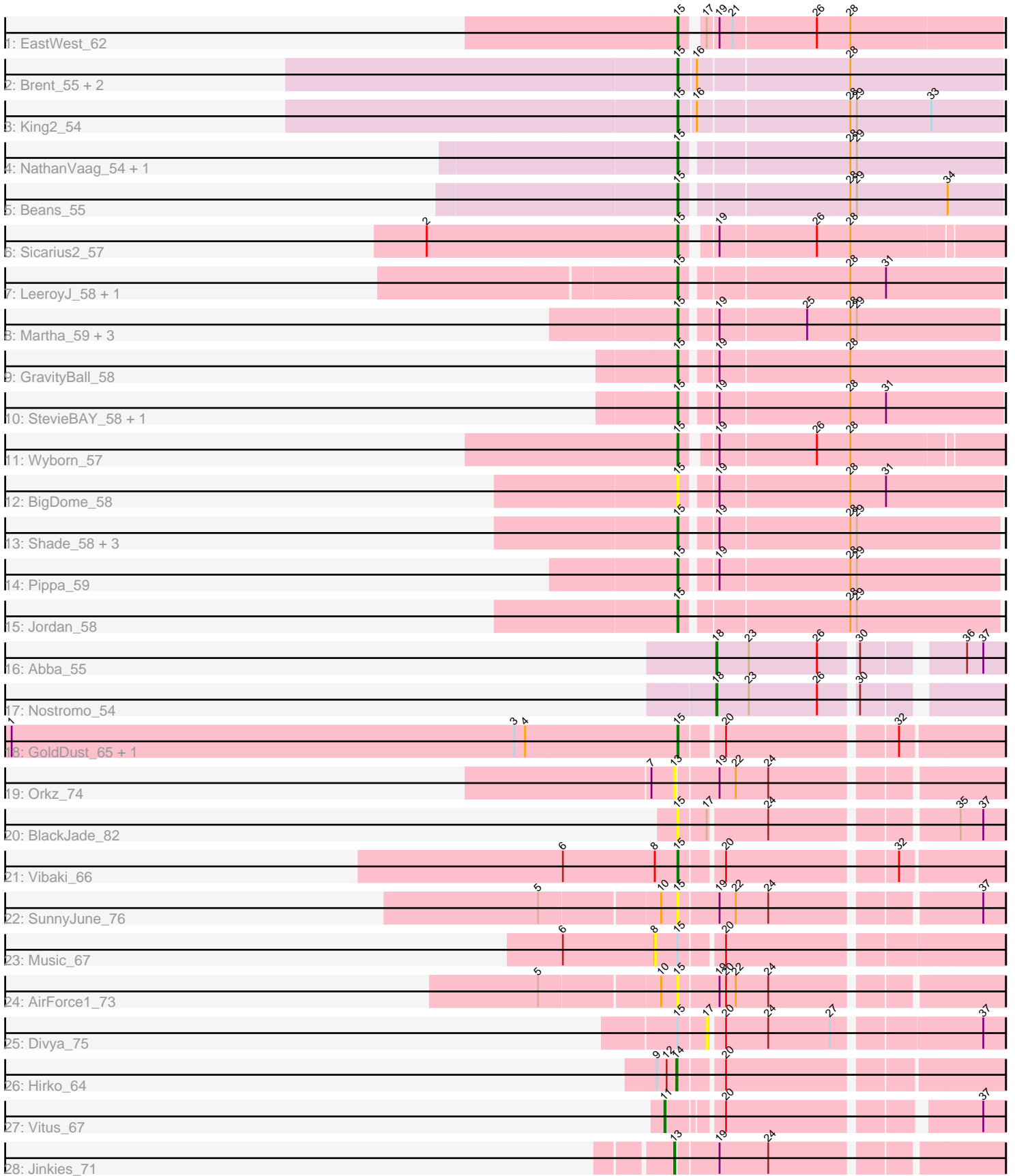


Pham 296722



Note: Tracks are now grouped by subcluster and scaled. Switching in subcluster is indicated by changes in track color. Track scale is now set by default to display the region 30 bp upstream of start 1 to 30 bp downstream of the last possible start. If this default region is judged to be packed too tightly with annotated starts, the track will be further scaled to only show that region of the ORF with annotated starts. This action will be indicated by adding "Zoomed" to the title. For starts, yellow indicates the location of called starts comprised solely of Glimmer/GeneMark auto-annotations, green indicates the location of called starts with at least 1 manual gene annotation.

Pham 296722 Report

This analysis was run 04/25/26 on database version 644.

Pham number 296722 has 40 members, 8 are drafts.

Phages represented in each track:

- Track 1 : EastWest_62
- Track 2 : Brent_55, Jawnski_54, Franzy_55
- Track 3 : King2_54
- Track 4 : NathanVaag_54, Piccoletto_55
- Track 5 : Beans_55
- Track 6 : Sicarius2_57
- Track 7 : LeeroyJ_58, BarretLemon_58
- Track 8 : Martha_59, BossLady_60, TaeYoung_60, Grekaycon_59
- Track 9 : GravityBall_58
- Track 10 : StevieBAY_58, Timinator_58
- Track 11 : Wyborn_57
- Track 12 : BigDome_58
- Track 13 : Shade_58, JKerns_58, Zartrosa_58, Sonny_57
- Track 14 : Pippa_59
- Track 15 : Jordan_58
- Track 16 : Abba_55
- Track 17 : Nostromo_54
- Track 18 : GoldDust_65, Gooberta_65
- Track 19 : Orkz_74
- Track 20 : BlackJade_82
- Track 21 : Vibaki_66
- Track 22 : SunnyJune_76
- Track 23 : Music_67
- Track 24 : AirForce1_73
- Track 25 : Divya_75
- Track 26 : Hirko_64
- Track 27 : Vitus_67
- Track 28 : Jinkies_71

Summary of Final Annotations (See graph section above for start numbers):

The start number called the most often in the published annotations is 15, it was called in 27 of the 32 non-draft genes in the pham.

Genes that call this "Most Annotated" start:

- AirForce1_73, BarretLemon_58, Beans_55, BigDome_58, BlackJade_82, BossLady_60, Brent_55, EastWest_62, Franzy_55, GoldDust_65, Gooberta_65, GravityBall_58, Grekaycon_59, JKerns_58, Jawnski_54, Jordan_58, King2_54, LeeroyJ_58, Martha_59, NathanVaag_54, Piccoletto_55, Pippa_59, Shade_58, Sicarius2_57, Sonny_57, StevieBAY_58, SunnyJune_76, TaeYoung_60, Timinator_58, Vibaki_66, Wyborn_57, Zartrosa_58,

Genes that have the "Most Annotated" start but do not call it:

- Divya_75, Music_67,

Genes that do not have the "Most Annotated" start:

- Abba_55, Hirko_64, Jinkies_71, Nostromo_54, Orkz_74, Vitus_67,

Summary by start number:

Start 8:

- Found in 2 of 40 (5.0%) of genes in pham
- No Manual Annotations of this start.
- Called 50.0% of time when present
- Phage (with cluster) where this start called: Music_67 (FL),

Start 11:

- Found in 1 of 40 (2.5%) of genes in pham
- Manual Annotations of this start: 1 of 32
- Called 100.0% of time when present
- Phage (with cluster) where this start called: Vitus_67 (FL),

Start 13:

- Found in 2 of 40 (5.0%) of genes in pham
- Manual Annotations of this start: 1 of 32
- Called 100.0% of time when present
- Phage (with cluster) where this start called: Jinkies_71 (FL), Orkz_74 (FL),

Start 14:

- Found in 1 of 40 (2.5%) of genes in pham
- Manual Annotations of this start: 1 of 32
- Called 100.0% of time when present
- Phage (with cluster) where this start called: Hirko_64 (FL),

Start 15:

- Found in 34 of 40 (85.0%) of genes in pham
- Manual Annotations of this start: 27 of 32
- Called 94.1% of time when present
- Phage (with cluster) where this start called: AirForce1_73 (FL), BarretLemon_58 (AO2), Beans_55 (AO1), BigDome_58 (AO2), BlackJade_82 (FL), BossLady_60 (AO2), Brent_55 (AO1), EastWest_62 (AO), Franzy_55 (AO1), GoldDust_65 (FL), Gooberta_65 (FL), GravityBall_58 (AO2), Grekaycon_59 (AO2), JKerns_58 (AO2), Jawnski_54 (AO1), Jordan_58 (AO2), King2_54 (AO1), LeeroyJ_58 (AO2), Martha_59 (AO2), NathanVaag_54 (AO1), Piccoletto_55 (AO1), Pippa_59 (AO2), Shade_58 (AO2), Sicarius2_57 (AO2), Sonny_57 (AO2), StevieBAY_58 (AO2), SunnyJune_76 (FL), TaeYoung_60 (AO2), Timinator_58 (AO2), Vibaki_66 (FL), Wyborn_57 (AO2), Zartrosa_58 (AO2),

Start 17:

- Found in 3 of 40 (7.5%) of genes in pham
- No Manual Annotations of this start.
- Called 33.3% of time when present
- Phage (with cluster) where this start called: Divya_75 (FL),

Start 18:

- Found in 2 of 40 (5.0%) of genes in pham
- Manual Annotations of this start: 2 of 32
- Called 100.0% of time when present
- Phage (with cluster) where this start called: Abba_55 (AO3), Nostromo_54 (AO3),

Summary by clusters:

There are 5 clusters represented in this pham: AO, AO3, FL, AO2, AO1,

Info for manual annotations of cluster AO:

- Start number 15 was manually annotated 1 time for cluster AO.

Info for manual annotations of cluster AO1:

- Start number 15 was manually annotated 7 times for cluster AO1.

Info for manual annotations of cluster AO2:

- Start number 15 was manually annotated 17 times for cluster AO2.

Info for manual annotations of cluster AO3:

- Start number 18 was manually annotated 2 times for cluster AO3.

Info for manual annotations of cluster FL:

- Start number 11 was manually annotated 1 time for cluster FL.
- Start number 13 was manually annotated 1 time for cluster FL.
- Start number 14 was manually annotated 1 time for cluster FL.
- Start number 15 was manually annotated 2 times for cluster FL.

Gene Information:

Gene: Abba_55 Start: 37377, Stop: 37613, Start Num: 18

Candidate Starts for Abba_55:

(Start: 18 @37377 has 2 MA's), (23, 37407), (26, 37470), (30, 37500), (36, 37578), (37, 37593),

Gene: AirForce1_73 Start: 43136, Stop: 43414, Start Num: 15

Candidate Starts for AirForce1_73:

(5, 43016), (10, 43121), (Start: 15 @43136 has 27 MA's), (19, 43172), (20, 43178), (22, 43187), (24, 43217),

Gene: BarretLemon_58 Start: 40379, Stop: 40663, Start Num: 15

Candidate Starts for BarretLemon_58:

(Start: 15 @40379 has 27 MA's), (28, 40523), (31, 40556),

Gene: Beans_55 Start: 40120, Stop: 40404, Start Num: 15

Candidate Starts for Beans_55:

(Start: 15 @40120 has 27 MA's), (28, 40264), (29, 40270), (34, 40354),

Gene: BigDome_58 Start: 40598, Stop: 40882, Start Num: 15

Candidate Starts for BigDome_58:

(Start: 15 @40598 has 27 MA's), (19, 40625), (28, 40742), (31, 40775),

Gene: BlackJade_82 Start: 44256, Stop: 44528, Start Num: 15

Candidate Starts for BlackJade_82:

(Start: 15 @44256 has 27 MA's), (17, 44280), (24, 44331), (35, 44487), (37, 44508),

Gene: BossLady_60 Start: 40759, Stop: 41040, Start Num: 15

Candidate Starts for BossLady_60:

(Start: 15 @40759 has 27 MA's), (19, 40786), (25, 40864), (28, 40903), (29, 40909),

Gene: Brent_55 Start: 40359, Stop: 40649, Start Num: 15

Candidate Starts for Brent_55:

(Start: 15 @40359 has 27 MA's), (16, 40374), (28, 40509),

Gene: Divya_75 Start: 43372, Stop: 43626, Start Num: 17

Candidate Starts for Divya_75:

(Start: 15 @43348 has 27 MA's), (17, 43372), (20, 43384), (24, 43423), (27, 43480), (37, 43606),

Gene: EastWest_62 Start: 39551, Stop: 39829, Start Num: 15

Candidate Starts for EastWest_62:

(Start: 15 @39551 has 27 MA's), (17, 39566), (19, 39575), (21, 39587), (26, 39662), (28, 39692),

Gene: Franzy_55 Start: 40375, Stop: 40665, Start Num: 15

Candidate Starts for Franzy_55:

(Start: 15 @40375 has 27 MA's), (16, 40390), (28, 40525),

Gene: GoldDust_65 Start: 43081, Stop: 43356, Start Num: 15

Candidate Starts for GoldDust_65:

(1, 42469), (3, 42934), (4, 42943), (Start: 15 @43081 has 27 MA's), (20, 43117), (32, 43264),

Gene: Gooberta_65 Start: 43701, Stop: 43976, Start Num: 15

Candidate Starts for Gooberta_65:

(1, 43089), (3, 43554), (4, 43563), (Start: 15 @43701 has 27 MA's), (20, 43737), (32, 43884),

Gene: GravityBall_58 Start: 40677, Stop: 40961, Start Num: 15

Candidate Starts for GravityBall_58:

(Start: 15 @40677 has 27 MA's), (19, 40704), (28, 40821),

Gene: Grekaycon_59 Start: 40639, Stop: 40920, Start Num: 15

Candidate Starts for Grekaycon_59:

(Start: 15 @40639 has 27 MA's), (19, 40666), (25, 40744), (28, 40783), (29, 40789),

Gene: Hirko_64 Start: 42841, Stop: 43116, Start Num: 14

Candidate Starts for Hirko_64:

(9, 42823), (12, 42832), (Start: 14 @42841 has 1 MA's), (20, 42877),

Gene: JKerns_58 Start: 40705, Stop: 40986, Start Num: 15

Candidate Starts for JKerns_58:

(Start: 15 @40705 has 27 MA's), (19, 40732), (28, 40849), (29, 40855),

Gene: Jawnski_54 Start: 39884, Stop: 40174, Start Num: 15

Candidate Starts for Jawnski_54:

(Start: 15 @39884 has 27 MA's), (16, 39899), (28, 40034),

Gene: Jinkies_71 Start: 43799, Stop: 44077, Start Num: 13

Candidate Starts for Jinkies_71:

(Start: 13 @43799 has 1 MA's), (19, 43835), (24, 43880),

Gene: Jordan_58 Start: 40519, Stop: 40800, Start Num: 15

Candidate Starts for Jordan_58:

(Start: 15 @40519 has 27 MA's), (28, 40663), (29, 40669),

Gene: King2_54 Start: 40236, Stop: 40526, Start Num: 15

Candidate Starts for King2_54:

(Start: 15 @40236 has 27 MA's), (16, 40251), (28, 40386), (29, 40392), (33, 40461),

Gene: LeeroyJ_58 Start: 40408, Stop: 40692, Start Num: 15

Candidate Starts for LeeroyJ_58:

(Start: 15 @40408 has 27 MA's), (28, 40552), (31, 40585),

Gene: Martha_59 Start: 40744, Stop: 41025, Start Num: 15

Candidate Starts for Martha_59:

(Start: 15 @40744 has 27 MA's), (19, 40771), (25, 40849), (28, 40888), (29, 40894),

Gene: Music_67 Start: 43320, Stop: 43619, Start Num: 8

Candidate Starts for Music_67:

(6, 43236), (8, 43320), (Start: 15 @43341 has 27 MA's), (20, 43377),

Gene: NathanVaag_54 Start: 39900, Stop: 40184, Start Num: 15

Candidate Starts for NathanVaag_54:

(Start: 15 @39900 has 27 MA's), (28, 40044), (29, 40050),

Gene: Nostromo_54 Start: 38405, Stop: 38641, Start Num: 18

Candidate Starts for Nostromo_54:

(Start: 18 @38405 has 2 MA's), (23, 38435), (26, 38498), (30, 38528),

Gene: Orkz_74 Start: 41657, Stop: 41935, Start Num: 13

Candidate Starts for Orkz_74:

(7, 41636), (Start: 13 @41657 has 1 MA's), (19, 41693), (22, 41708), (24, 41738),

Gene: Piccoletto_55 Start: 40093, Stop: 40377, Start Num: 15

Candidate Starts for Piccoletto_55:

(Start: 15 @40093 has 27 MA's), (28, 40237), (29, 40243),

Gene: Pippa_59 Start: 40715, Stop: 40996, Start Num: 15

Candidate Starts for Pippa_59:

(Start: 15 @40715 has 27 MA's), (19, 40742), (28, 40859), (29, 40865),

Gene: Shade_58 Start: 40441, Stop: 40722, Start Num: 15

Candidate Starts for Shade_58:

(Start: 15 @40441 has 27 MA's), (19, 40468), (28, 40585), (29, 40591),

Gene: Sicarius2_57 Start: 38499, Stop: 38774, Start Num: 15

Candidate Starts for Sicarius2_57:

(2, 38268), (Start: 15 @38499 has 27 MA's), (19, 38523), (26, 38610), (28, 38640),

Gene: Sonny_57 Start: 40191, Stop: 40472, Start Num: 15

Candidate Starts for Sonny_57:

(Start: 15 @40191 has 27 MA's), (19, 40218), (28, 40335), (29, 40341),

Gene: StevieBAY_58 Start: 40674, Stop: 40958, Start Num: 15

Candidate Starts for StevieBAY_58:

(Start: 15 @40674 has 27 MA's), (19, 40701), (28, 40818), (31, 40851),

Gene: SunnyJune_76 Start: 43573, Stop: 43851, Start Num: 15

Candidate Starts for SunnyJune_76:

(5, 43453), (10, 43558), (Start: 15 @43573 has 27 MA's), (19, 43609), (22, 43624), (24, 43654), (37, 43831),

Gene: TaeYoung_60 Start: 40717, Stop: 40998, Start Num: 15

Candidate Starts for TaeYoung_60:

(Start: 15 @40717 has 27 MA's), (19, 40744), (25, 40822), (28, 40861), (29, 40867),

Gene: Timinator_58 Start: 40523, Stop: 40807, Start Num: 15

Candidate Starts for Timinator_58:

(Start: 15 @40523 has 27 MA's), (19, 40550), (28, 40667), (31, 40700),

Gene: Vibaki_66 Start: 42903, Stop: 43178, Start Num: 15

Candidate Starts for Vibaki_66:

(6, 42798), (8, 42882), (Start: 15 @42903 has 27 MA's), (20, 42939), (32, 43086),

Gene: Vitus_67 Start: 42256, Stop: 42531, Start Num: 11

Candidate Starts for Vitus_67:

(Start: 11 @42256 has 1 MA's), (20, 42301), (37, 42511),

Gene: Wyborn_57 Start: 39509, Stop: 39784, Start Num: 15

Candidate Starts for Wyborn_57:

(Start: 15 @39509 has 27 MA's), (19, 39533), (26, 39620), (28, 39650),

Gene: Zartrosa_58 Start: 40489, Stop: 40770, Start Num: 15

Candidate Starts for Zartrosa_58:

(Start: 15 @40489 has 27 MA's), (19, 40516), (28, 40633), (29, 40639),