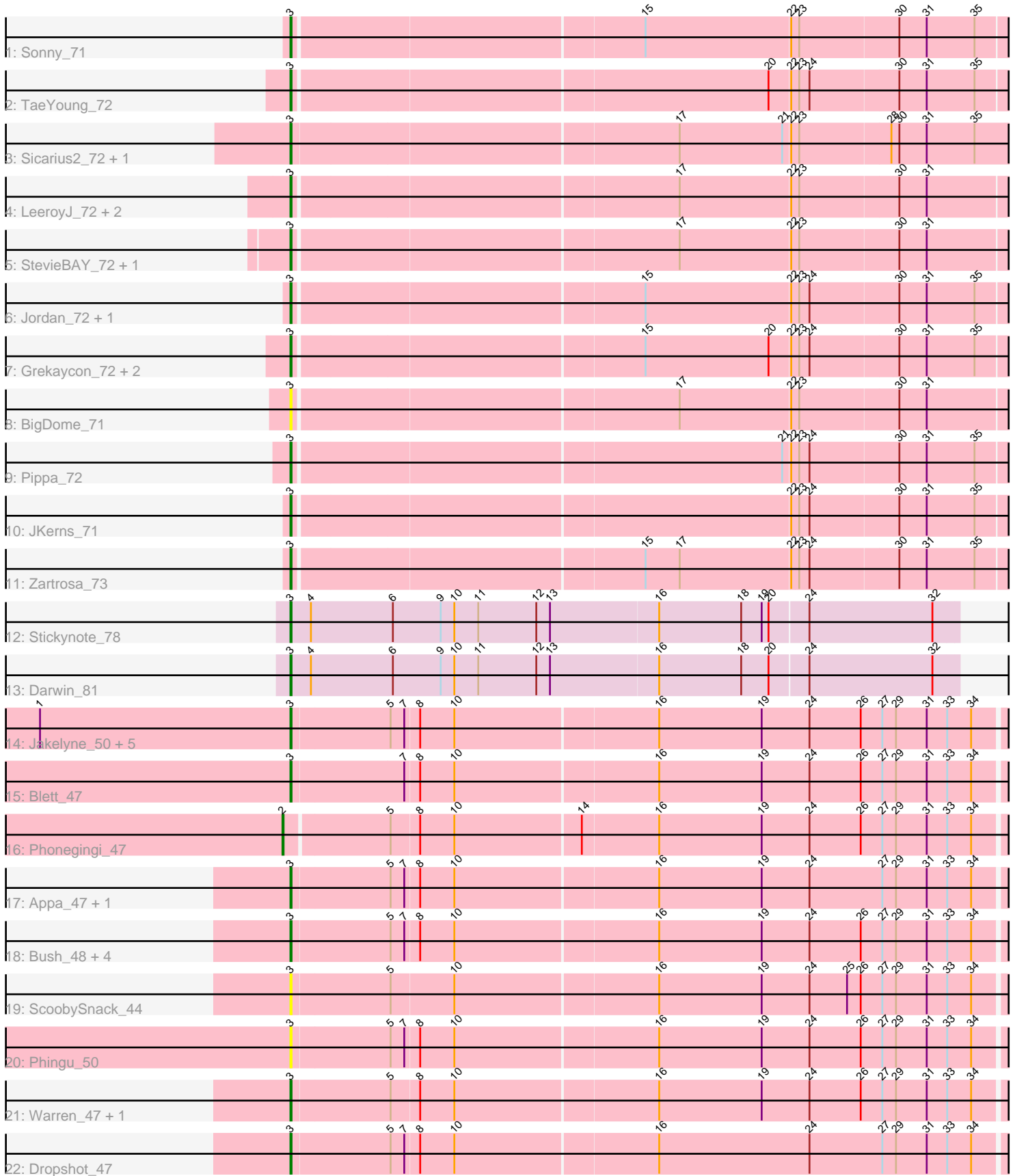


Pham 296727



Note: Tracks are now grouped by subcluster and scaled. Switching in subcluster is indicated by changes in track color. Track scale is now set by default to display the region 30 bp upstream of start 1 to 30 bp downstream of the last possible start. If this default region is judged to be packed too tightly with annotated starts, the track will be further scaled to only show that region of the ORF with annotated starts. This action will be indicated by adding "Zoomed" to the title. For starts, yellow indicates the location of called starts comprised solely of Glimmer/GeneMark auto-annotations, green indicates the location of called starts with at least 1 manual gene annotation.

Pham 296727 Report

This analysis was run 04/25/26 on database version 644.

Pham number 296727 has 40 members, 10 are drafts.

Phages represented in each track:

- Track 1 : Sonny_71
- Track 2 : TaeYoung_72
- Track 3 : Sicarius2_72, Wyborn_71
- Track 4 : LeeroyJ_72, GravityBall_71, Timinator_72
- Track 5 : StevieBAY_72, BarretLemon_71
- Track 6 : Jordan_72, Shade_71
- Track 7 : Grekaycon_72, Martha_71, BossLady_73
- Track 8 : BigDome_71
- Track 9 : Pippa_72
- Track 10 : JKerns_71
- Track 11 : Zartrosa_73
- Track 12 : Stickynote_78
- Track 13 : Darwin_81
- Track 14 : Jakelyne_50, Carrillo_49, Violeta_49, Guzman_47, CookieDog_47, Antuna_49
- Track 15 : Blett_47
- Track 16 : Phonegingi_47
- Track 17 : Appa_47, PhillyJawn_48
- Track 18 : Bush_48, Losacky_49, Mariel_50, NCRodriguez_49, MenE_49
- Track 19 : ScoobySnack_44
- Track 20 : Phingu_50
- Track 21 : Warren_47, Pickles13_46
- Track 22 : Dropshot_47

Summary of Final Annotations (See graph section above for start numbers):

The start number called the most often in the published annotations is 3, it was called in 29 of the 30 non-draft genes in the pham.

Genes that call this "Most Annotated" start:

- Antuna_49, Appa_47, BarretLemon_71, BigDome_71, Blett_47, BossLady_73, Bush_48, Carrillo_49, CookieDog_47, Darwin_81, Dropshot_47, GravityBall_71, Grekaycon_72, Guzman_47, JKerns_71, Jakelyne_50, Jordan_72, LeeroyJ_72, Losacky_49, Mariel_50, Martha_71, MenE_49, NCRodriguez_49, PhillyJawn_48,

Phingu_50, Pickles13_46, Pippa_72, ScoobySnack_44, Shade_71, Sicarius2_72, Sonny_71, StevieBAY_72, Stickynote_78, TaeYoung_72, Timinator_72, Violeta_49, Warren_47, Wyborn_71, Zartrosa_73,

Genes that have the "Most Annotated" start but do not call it:

-

Genes that do not have the "Most Annotated" start:

- Phonegingi_47,

Summary by start number:

Start 2:

- Found in 1 of 40 (2.5%) of genes in pham
- Manual Annotations of this start: 1 of 30
- Called 100.0% of time when present
- Phage (with cluster) where this start called: Phonegingi_47 (GA),

Start 3:

- Found in 39 of 40 (97.5%) of genes in pham
- Manual Annotations of this start: 29 of 30
- Called 100.0% of time when present
- Phage (with cluster) where this start called: Antuna_49 (GA), Appa_47 (GA), BarretLemon_71 (AO2), BigDome_71 (AO2), Blett_47 (GA), BossLady_73 (AO2), Bush_48 (GA), Carrillo_49 (GA), CookieDog_47 (GA), Darwin_81 (EN), Dropshot_47 (GA), GravityBall_71 (AO2), Grekaycon_72 (AO2), Guzman_47 (GA), JKerns_71 (AO2), Jakelyne_50 (GA), Jordan_72 (AO2), LeeroyJ_72 (AO2), Losacky_49 (GA), Mariel_50 (GA), Martha_71 (AO2), MenE_49 (GA), NCRodriguez_49 (GA), PhillyJawn_48 (GA), Phingu_50 (GA), Pickles13_46 (GA), Pippa_72 (AO2), ScoobySnack_44 (GA), Shade_71 (AO2), Sicarius2_72 (AO2), Sonny_71 (AO2), StevieBAY_72 (AO2), Stickynote_78 (EN), TaeYoung_72 (AO2), Timinator_72 (AO2), Violeta_49 (GA), Warren_47 (GA), Wyborn_71 (AO2), Zartrosa_73 (AO2),

Summary by clusters:

There are 3 clusters represented in this pham: EN, AO2, GA,

Info for manual annotations of cluster AO2:

- Start number 3 was manually annotated 17 times for cluster AO2.

Info for manual annotations of cluster EN:

- Start number 3 was manually annotated 2 times for cluster EN.

Info for manual annotations of cluster GA:

- Start number 2 was manually annotated 1 time for cluster GA.
- Start number 3 was manually annotated 10 times for cluster GA.

Gene Information:

Gene: Antuna_49 Start: 29896, Stop: 30522, Start Num: 3

Candidate Starts for Antuna_49:

(1, 29677), (Start: 3 @29896 has 29 MA's), (5, 29980), (7, 29992), (8, 30004), (10, 30034), (16, 30208), (19, 30298), (24, 30340), (26, 30385), (27, 30403), (29, 30415), (31, 30442), (33, 30460), (34, 30481),

Gene: Appa_47 Start: 29661, Stop: 30287, Start Num: 3

Candidate Starts for Appa_47:

(Start: 3 @29661 has 29 MA's), (5, 29745), (7, 29757), (8, 29769), (10, 29799), (16, 29973), (19, 30063), (24, 30105), (27, 30168), (29, 30180), (31, 30207), (33, 30225), (34, 30246),

Gene: BarretLemon_71 Start: 45350, Stop: 45970, Start Num: 3

Candidate Starts for BarretLemon_71:

(Start: 3 @45350 has 29 MA's), (17, 45677), (22, 45773), (23, 45779), (30, 45863), (31, 45887),

Gene: BigDome_71 Start: 45592, Stop: 46212, Start Num: 3

Candidate Starts for BigDome_71:

(Start: 3 @45592 has 29 MA's), (17, 45919), (22, 46015), (23, 46021), (30, 46105), (31, 46129),

Gene: Blett_47 Start: 29847, Stop: 30473, Start Num: 3

Candidate Starts for Blett_47:

(Start: 3 @29847 has 29 MA's), (7, 29943), (8, 29955), (10, 29985), (16, 30159), (19, 30249), (24, 30291), (26, 30336), (27, 30354), (29, 30366), (31, 30393), (33, 30411), (34, 30432),

Gene: BossLady_73 Start: 45907, Stop: 46527, Start Num: 3

Candidate Starts for BossLady_73:

(Start: 3 @45907 has 29 MA's), (15, 46204), (20, 46312), (22, 46330), (23, 46336), (24, 46345), (30, 46420), (31, 46444), (35, 46486),

Gene: Bush_48 Start: 29795, Stop: 30421, Start Num: 3

Candidate Starts for Bush_48:

(Start: 3 @29795 has 29 MA's), (5, 29879), (7, 29891), (8, 29903), (10, 29933), (16, 30107), (19, 30197), (24, 30239), (26, 30284), (27, 30302), (29, 30314), (31, 30341), (33, 30359), (34, 30380),

Gene: Carrillo_49 Start: 29769, Stop: 30395, Start Num: 3

Candidate Starts for Carrillo_49:

(1, 29550), (Start: 3 @29769 has 29 MA's), (5, 29853), (7, 29865), (8, 29877), (10, 29907), (16, 30081), (19, 30171), (24, 30213), (26, 30258), (27, 30276), (29, 30288), (31, 30315), (33, 30333), (34, 30354),

Gene: CookieDog_47 Start: 29769, Stop: 30395, Start Num: 3

Candidate Starts for CookieDog_47:

(1, 29550), (Start: 3 @29769 has 29 MA's), (5, 29853), (7, 29865), (8, 29877), (10, 29907), (16, 30081), (19, 30171), (24, 30213), (26, 30258), (27, 30276), (29, 30288), (31, 30315), (33, 30333), (34, 30354),

Gene: Darwin_81 Start: 59286, Stop: 58708, Start Num: 3

Candidate Starts for Darwin_81:

(Start: 3 @59286 has 29 MA's), (4, 59268), (6, 59196), (9, 59154), (10, 59142), (11, 59121), (12, 59070), (13, 59058), (16, 58965), (18, 58893), (20, 58869), (24, 58836), (32, 58728),

Gene: Dropshot_47 Start: 29496, Stop: 30122, Start Num: 3

Candidate Starts for Dropshot_47:

(Start: 3 @29496 has 29 MA's), (5, 29580), (7, 29592), (8, 29604), (10, 29634), (16, 29808), (24, 29940), (27, 30003), (29, 30015), (31, 30042), (33, 30060), (34, 30081),

Gene: GravityBall_71 Start: 45608, Stop: 46228, Start Num: 3

Candidate Starts for GravityBall_71:

(Start: 3 @45608 has 29 MA's), (17, 45935), (22, 46031), (23, 46037), (30, 46121), (31, 46145),

Gene: Grekaycon_72 Start: 45820, Stop: 46440, Start Num: 3

Candidate Starts for Grekaycon_72:

(Start: 3 @45820 has 29 MA's), (15, 46117), (20, 46225), (22, 46243), (23, 46249), (24, 46258), (30, 46333), (31, 46357), (35, 46399),

Gene: Guzman_47 Start: 29752, Stop: 30378, Start Num: 3

Candidate Starts for Guzman_47:

(1, 29533), (Start: 3 @29752 has 29 MA's), (5, 29836), (7, 29848), (8, 29860), (10, 29890), (16, 30064), (19, 30154), (24, 30196), (26, 30241), (27, 30259), (29, 30271), (31, 30298), (33, 30316), (34, 30337),

Gene: JKerns_71 Start: 45847, Stop: 46467, Start Num: 3

Candidate Starts for JKerns_71:

(Start: 3 @45847 has 29 MA's), (22, 46270), (23, 46276), (24, 46285), (30, 46360), (31, 46384), (35, 46426),

Gene: Jakelyne_50 Start: 29862, Stop: 30488, Start Num: 3

Candidate Starts for Jakelyne_50:

(1, 29643), (Start: 3 @29862 has 29 MA's), (5, 29946), (7, 29958), (8, 29970), (10, 30000), (16, 30174), (19, 30264), (24, 30306), (26, 30351), (27, 30369), (29, 30381), (31, 30408), (33, 30426), (34, 30447),

Gene: Jordan_72 Start: 45972, Stop: 46592, Start Num: 3

Candidate Starts for Jordan_72:

(Start: 3 @45972 has 29 MA's), (15, 46269), (22, 46395), (23, 46401), (24, 46410), (30, 46485), (31, 46509), (35, 46551),

Gene: LeeroyJ_72 Start: 45537, Stop: 46157, Start Num: 3

Candidate Starts for LeeroyJ_72:

(Start: 3 @45537 has 29 MA's), (17, 45864), (22, 45960), (23, 45966), (30, 46050), (31, 46074),

Gene: Losacky_49 Start: 30027, Stop: 30653, Start Num: 3

Candidate Starts for Losacky_49:

(Start: 3 @30027 has 29 MA's), (5, 30111), (7, 30123), (8, 30135), (10, 30165), (16, 30339), (19, 30429), (24, 30471), (26, 30516), (27, 30534), (29, 30546), (31, 30573), (33, 30591), (34, 30612),

Gene: Mariel_50 Start: 30234, Stop: 30860, Start Num: 3

Candidate Starts for Mariel_50:

(Start: 3 @30234 has 29 MA's), (5, 30318), (7, 30330), (8, 30342), (10, 30372), (16, 30546), (19, 30636), (24, 30678), (26, 30723), (27, 30741), (29, 30753), (31, 30780), (33, 30798), (34, 30819),

Gene: Martha_71 Start: 45756, Stop: 46376, Start Num: 3

Candidate Starts for Martha_71:

(Start: 3 @45756 has 29 MA's), (15, 46053), (20, 46161), (22, 46179), (23, 46185), (24, 46194), (30, 46269), (31, 46293), (35, 46335),

Gene: MenE_49 Start: 29918, Stop: 30544, Start Num: 3

Candidate Starts for MenE_49:

(Start: 3 @29918 has 29 MA's), (5, 30002), (7, 30014), (8, 30026), (10, 30056), (16, 30230), (19, 30320), (24, 30362), (26, 30407), (27, 30425), (29, 30437), (31, 30464), (33, 30482), (34, 30503),

Gene: NCRodriguez_49 Start: 29988, Stop: 30614, Start Num: 3

Candidate Starts for NCRodriguez_49:

(Start: 3 @29988 has 29 MA's), (5, 30072), (7, 30084), (8, 30096), (10, 30126), (16, 30300), (19, 30390), (24, 30432), (26, 30477), (27, 30495), (29, 30507), (31, 30534), (33, 30552), (34, 30573),

Gene: PhillyJawn_48 Start: 29658, Stop: 30284, Start Num: 3

Candidate Starts for PhillyJawn_48:

(Start: 3 @29658 has 29 MA's), (5, 29742), (7, 29754), (8, 29766), (10, 29796), (16, 29970), (19, 30060), (24, 30102), (27, 30165), (29, 30177), (31, 30204), (33, 30222), (34, 30243),

Gene: Phingu_50 Start: 29883, Stop: 30509, Start Num: 3

Candidate Starts for Phingu_50:

(Start: 3 @29883 has 29 MA's), (5, 29967), (7, 29979), (8, 29991), (10, 30021), (16, 30195), (19, 30285), (24, 30327), (26, 30372), (27, 30390), (29, 30402), (31, 30429), (33, 30447), (34, 30468),

Gene: Phonegingi_47 Start: 29697, Stop: 30326, Start Num: 2

Candidate Starts for Phonegingi_47:

(Start: 2 @29697 has 1 MA's), (5, 29784), (8, 29808), (10, 29838), (14, 29946), (16, 30012), (19, 30102), (24, 30144), (26, 30189), (27, 30207), (29, 30219), (31, 30246), (33, 30264), (34, 30285),

Gene: Pickles13_46 Start: 29965, Stop: 30591, Start Num: 3

Candidate Starts for Pickles13_46:

(Start: 3 @29965 has 29 MA's), (5, 30049), (8, 30073), (10, 30103), (16, 30277), (19, 30367), (24, 30409), (26, 30454), (27, 30472), (29, 30484), (31, 30511), (33, 30529), (34, 30550),

Gene: Pippa_72 Start: 45803, Stop: 46423, Start Num: 3

Candidate Starts for Pippa_72:

(Start: 3 @45803 has 29 MA's), (21, 46220), (22, 46226), (23, 46232), (24, 46241), (30, 46316), (31, 46340), (35, 46382),

Gene: ScoobySnack_44 Start: 29458, Stop: 30084, Start Num: 3

Candidate Starts for ScoobySnack_44:

(Start: 3 @29458 has 29 MA's), (5, 29542), (10, 29596), (16, 29770), (19, 29860), (24, 29902), (25, 29935), (26, 29947), (27, 29965), (29, 29977), (31, 30004), (33, 30022), (34, 30043),

Gene: Shade_71 Start: 45610, Stop: 46230, Start Num: 3

Candidate Starts for Shade_71:

(Start: 3 @45610 has 29 MA's), (15, 45907), (22, 46033), (23, 46039), (24, 46048), (30, 46123), (31, 46147), (35, 46189),

Gene: Sicarius2_72 Start: 43729, Stop: 44355, Start Num: 3

Candidate Starts for Sicarius2_72:

(Start: 3 @43729 has 29 MA's), (17, 44059), (21, 44149), (22, 44155), (23, 44161), (28, 44239), (30, 44245), (31, 44269), (35, 44311),

Gene: Sonny_71 Start: 45533, Stop: 46153, Start Num: 3

Candidate Starts for Sonny_71:

(Start: 3 @45533 has 29 MA's), (15, 45830), (22, 45956), (23, 45962), (30, 46046), (31, 46070), (35, 46112),

Gene: StevieBAY_72 Start: 45827, Stop: 46447, Start Num: 3

Candidate Starts for StevieBAY_72:

(Start: 3 @45827 has 29 MA's), (17, 46154), (22, 46250), (23, 46256), (30, 46340), (31, 46364),

Gene: Stickynote_78 Start: 58516, Stop: 57938, Start Num: 3

Candidate Starts for Stickynote_78:

(Start: 3 @58516 has 29 MA's), (4, 58498), (6, 58426), (9, 58384), (10, 58372), (11, 58351), (12, 58300), (13, 58288), (16, 58195), (18, 58123), (19, 58105), (20, 58099), (24, 58066), (32, 57958),

Gene: TaeYoung_72 Start: 45728, Stop: 46348, Start Num: 3

Candidate Starts for TaeYoung_72:

(Start: 3 @45728 has 29 MA's), (20, 46133), (22, 46151), (23, 46157), (24, 46166), (30, 46241), (31, 46265), (35, 46307),

Gene: Timinator_72 Start: 45650, Stop: 46270, Start Num: 3

Candidate Starts for Timinator_72:

(Start: 3 @45650 has 29 MA's), (17, 45977), (22, 46073), (23, 46079), (30, 46163), (31, 46187),

Gene: Violeta_49 Start: 29760, Stop: 30386, Start Num: 3

Candidate Starts for Violeta_49:

(1, 29541), (Start: 3 @29760 has 29 MA's), (5, 29844), (7, 29856), (8, 29868), (10, 29898), (16, 30072), (19, 30162), (24, 30204), (26, 30249), (27, 30267), (29, 30279), (31, 30306), (33, 30324), (34, 30345),

Gene: Warren_47 Start: 29704, Stop: 30330, Start Num: 3

Candidate Starts for Warren_47:

(Start: 3 @29704 has 29 MA's), (5, 29788), (8, 29812), (10, 29842), (16, 30016), (19, 30106), (24, 30148), (26, 30193), (27, 30211), (29, 30223), (31, 30250), (33, 30268), (34, 30289),

Gene: Wyborn_71 Start: 44464, Stop: 45090, Start Num: 3

Candidate Starts for Wyborn_71:

(Start: 3 @44464 has 29 MA's), (17, 44794), (21, 44884), (22, 44890), (23, 44896), (28, 44974), (30, 44980), (31, 45004), (35, 45046),

Gene: Zartrosa_73 Start: 45863, Stop: 46483, Start Num: 3

Candidate Starts for Zartrosa_73:

(Start: 3 @45863 has 29 MA's), (15, 46160), (17, 46190), (22, 46286), (23, 46292), (24, 46301), (30, 46376), (31, 46400), (35, 46442),