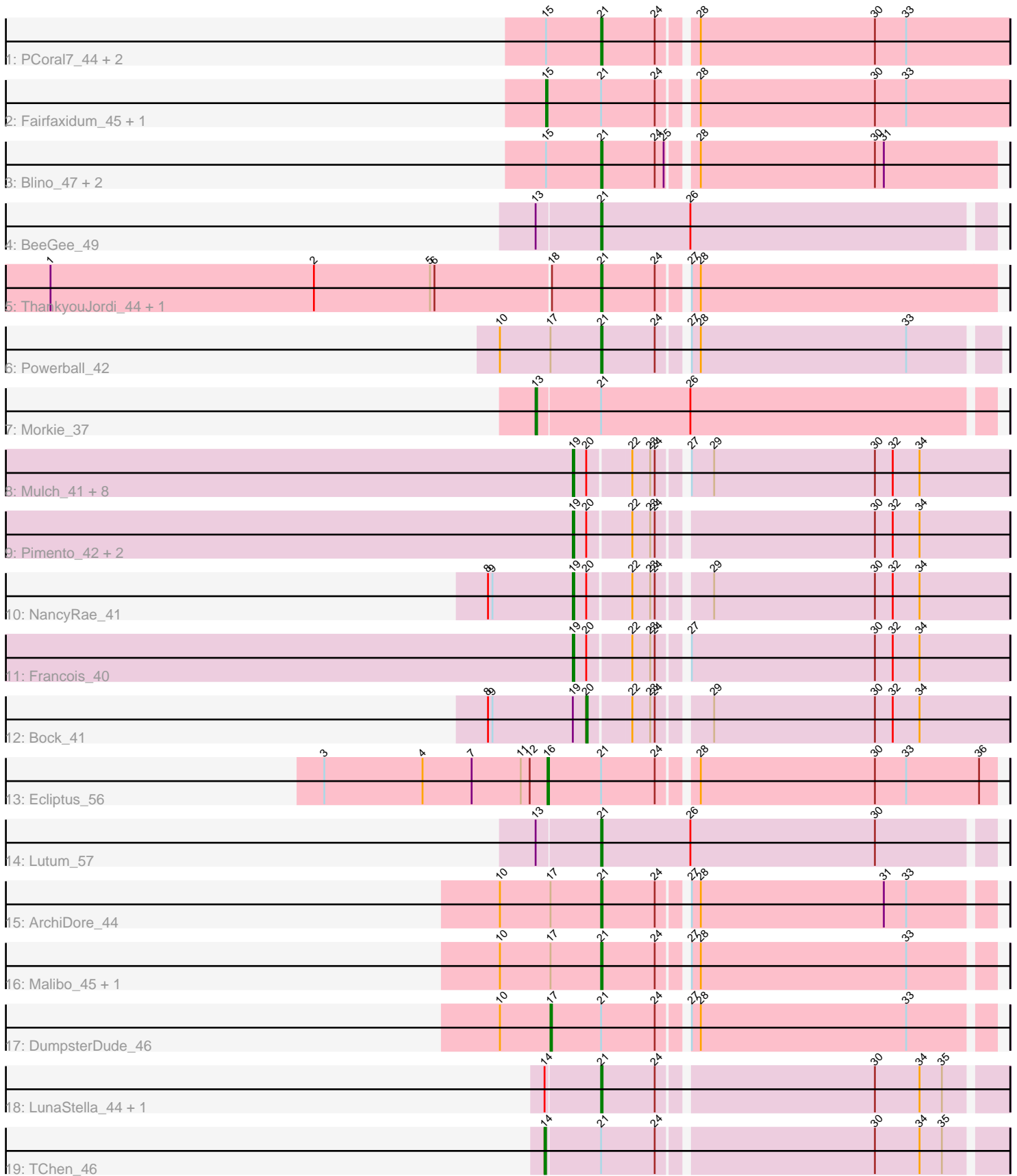


Pham 296754



Note: Tracks are now grouped by subcluster and scaled. Switching in subcluster is indicated by changes in track color. Track scale is now set by default to display the region 30 bp upstream of start 1 to 30 bp downstream of the last possible start. If this default region is judged to be packed too tightly with annotated starts, the track will be further scaled to only show that region of the ORF with annotated starts. This action will be indicated by adding "Zoomed" to the title. For starts, yellow indicates the location of called starts comprised solely of Glimmer/GeneMark auto-annotations, green indicates the location of called starts with at least 1 manual gene annotation.

Pham 296754 Report

This analysis was run 04/25/26 on database version 644.

Pham number 296754 has 37 members, 1 are drafts.

Phages represented in each track:

- Track 1 : PCoral7_44, PrincePatrick_43, William_45
- Track 2 : Fairfaxidum_45, Toast_44
- Track 3 : Blino_47, CarolAnn_46, Soilmate_49
- Track 4 : BeeGee_49
- Track 5 : ThankyouJordi_44, WelcomeAyanna_44
- Track 6 : Powerball_42
- Track 7 : Morkie_37
- Track 8 : Mulch_41, Ayotoya_41, GrandSlam_41, Nadeem_41, WheatThin_41, Parada_41, Brylie_41, Chop_41, Hamood_41
- Track 9 : Pimento_42, BetterKatz_41, DelRio_42
- Track 10 : NancyRae_41
- Track 11 : Francois_40
- Track 12 : Bock_41
- Track 13 : Ecliptus_56
- Track 14 : Lutum_57
- Track 15 : ArchiDore_44
- Track 16 : Malibo_45, Ruthy_44
- Track 17 : DumpsterDude_46
- Track 18 : LunaStella_44, MooMoo_43
- Track 19 : TChen_46

Summary of Final Annotations (See graph section above for start numbers):

The start number called the most often in the published annotations is 21, it was called in 15 of the 36 non-draft genes in the pham.

Genes that call this "Most Annotated" start:

- ArchiDore_44, BeeGee_49, Blino_47, CarolAnn_46, LunaStella_44, Lutum_57, Malibo_45, MooMoo_43, PCoral7_44, Powerball_42, PrincePatrick_43, Ruthy_44, Soilmate_49, ThankyouJordi_44, WelcomeAyanna_44, William_45,

Genes that have the "Most Annotated" start but do not call it:

- DumpsterDude_46, Ecliptus_56, Fairfaxidum_45, Morkie_37, TChen_46, Toast_44,

Genes that do not have the "Most Annotated" start:

- Ayotoya_41, BetterKatz_41, Bock_41, Brylie_41, Chop_41, DelRio_42, Francois_40, GrandSlam_41, Hamood_41, Mulch_41, Nadeem_41, NancyRae_41, Parada_41, Pimento_42, WheatThin_41,

Summary by start number:

Start 13:

- Found in 3 of 37 (8.1%) of genes in pham
- Manual Annotations of this start: 1 of 36
- Called 33.3% of time when present
- Phage (with cluster) where this start called: Morkie_37 (DH),

Start 14:

- Found in 3 of 37 (8.1%) of genes in pham
- Manual Annotations of this start: 1 of 36
- Called 33.3% of time when present
- Phage (with cluster) where this start called: TChen_46 (F4),

Start 15:

- Found in 8 of 37 (21.6%) of genes in pham
- Manual Annotations of this start: 2 of 36
- Called 25.0% of time when present
- Phage (with cluster) where this start called: Fairfaxidum_45 (CV), Toast_44 (CV),

Start 16:

- Found in 1 of 37 (2.7%) of genes in pham
- Manual Annotations of this start: 1 of 36
- Called 100.0% of time when present
- Phage (with cluster) where this start called: Ecliptus_56 (DN),

Start 17:

- Found in 5 of 37 (13.5%) of genes in pham
- Manual Annotations of this start: 1 of 36
- Called 20.0% of time when present
- Phage (with cluster) where this start called: DumpsterDude_46 (DW),

Start 19:

- Found in 15 of 37 (40.5%) of genes in pham
- Manual Annotations of this start: 14 of 36
- Called 93.3% of time when present
- Phage (with cluster) where this start called: Ayotoya_41 (DI), BetterKatz_41 (DI), Brylie_41 (DI), Chop_41 (DI), DelRio_42 (DI), Francois_40 (DI), GrandSlam_41 (DI), Hamood_41 (DI), Mulch_41 (DI), Nadeem_41 (DI), NancyRae_41 (DI), Parada_41 (DI), Pimento_42 (DI), WheatThin_41 (DI),

Start 20:

- Found in 15 of 37 (40.5%) of genes in pham
- Manual Annotations of this start: 1 of 36
- Called 6.7% of time when present
- Phage (with cluster) where this start called: Bock_41 (DI),

Start 21:

- Found in 22 of 37 (59.5%) of genes in pham
- Manual Annotations of this start: 15 of 36
- Called 72.7% of time when present
- Phage (with cluster) where this start called: ArchiDore_44 (DW), BeeGee_49 (CY5), Blino_47 (CV), CarolAnn_46 (CV), LunaStella_44 (F4), Lutum_57 (DN1), Malibo_45 (DW), MooMoo_43 (singleton), PCoral7_44 (CV), Powerball_42 (CZ4), PrincePatrick_43 (CV), Ruthy_44 (DW), Soilmate_49 (CV), ThankyouJordi_44 (CZ1), WelcomeAyanna_44 (CZ1), William_45 (CV),

Summary by clusters:

There are 11 clusters represented in this pham: DN, singleton, F4, DH, CY5, DI, CZ1, CZ4, DN1, DW, CV,

Info for manual annotations of cluster CV:

- Start number 15 was manually annotated 2 times for cluster CV.
- Start number 21 was manually annotated 5 times for cluster CV.

Info for manual annotations of cluster CY5:

- Start number 21 was manually annotated 1 time for cluster CY5.

Info for manual annotations of cluster CZ1:

- Start number 21 was manually annotated 2 times for cluster CZ1.

Info for manual annotations of cluster CZ4:

- Start number 21 was manually annotated 1 time for cluster CZ4.

Info for manual annotations of cluster DH:

- Start number 13 was manually annotated 1 time for cluster DH.

Info for manual annotations of cluster DI:

- Start number 19 was manually annotated 14 times for cluster DI.
- Start number 20 was manually annotated 1 time for cluster DI.

Info for manual annotations of cluster DN:

- Start number 16 was manually annotated 1 time for cluster DN.

Info for manual annotations of cluster DN1:

- Start number 21 was manually annotated 1 time for cluster DN1.

Info for manual annotations of cluster DW:

- Start number 17 was manually annotated 1 time for cluster DW.
- Start number 21 was manually annotated 3 times for cluster DW.

Info for manual annotations of cluster F4:

- Start number 14 was manually annotated 1 time for cluster F4.
- Start number 21 was manually annotated 1 time for cluster F4.

Gene Information:

Gene: ArchiDore_44 Start: 36013, Stop: 36261, Start Num: 21

Candidate Starts for ArchiDore_44:

(10, 35947), (Start: 17 @35980 has 1 MA's), (Start: 21 @36013 has 15 MA's), (24, 36049), (27, 36064), (28, 36070), (31, 36193), (33, 36208),

Gene: Ayotoya_41 Start: 33075, Stop: 33353, Start Num: 19

Candidate Starts for Ayotoya_41:

(Start: 19 @33075 has 14 MA's), (Start: 20 @33084 has 1 MA's), (22, 33111), (23, 33123), (24, 33126), (27, 33141), (29, 33156), (30, 33264), (32, 33276), (34, 33294),

Gene: BeeGee_49 Start: 36014, Stop: 36271, Start Num: 21

Candidate Starts for BeeGee_49:

(Start: 13 @35972 has 1 MA's), (Start: 21 @36014 has 15 MA's), (26, 36074),

Gene: BetterKatz_41 Start: 32601, Stop: 32837, Start Num: 19

Candidate Starts for BetterKatz_41:

(Start: 19 @32601 has 14 MA's), (Start: 20 @32610 has 1 MA's), (22, 32637), (23, 32649), (24, 32652), (30, 32790), (32, 32802), (34, 32820),

Gene: Blino_47 Start: 38067, Stop: 38321, Start Num: 21

Candidate Starts for Blino_47:

(Start: 15 @38031 has 2 MA's), (Start: 21 @38067 has 15 MA's), (24, 38103), (25, 38109), (28, 38124), (30, 38241), (31, 38247),

Gene: Bock_41 Start: 32304, Stop: 32573, Start Num: 20

Candidate Starts for Bock_41:

(8, 32238), (9, 32241), (Start: 19 @32295 has 14 MA's), (Start: 20 @32304 has 1 MA's), (22, 32331), (23, 32343), (24, 32346), (29, 32376), (30, 32484), (32, 32496), (34, 32514),

Gene: Brylie_41 Start: 32342, Stop: 32620, Start Num: 19

Candidate Starts for Brylie_41:

(Start: 19 @32342 has 14 MA's), (Start: 20 @32351 has 1 MA's), (22, 32378), (23, 32390), (24, 32393), (27, 32408), (29, 32423), (30, 32531), (32, 32543), (34, 32561),

Gene: CarolAnn_46 Start: 38066, Stop: 38320, Start Num: 21

Candidate Starts for CarolAnn_46:

(Start: 15 @38030 has 2 MA's), (Start: 21 @38066 has 15 MA's), (24, 38102), (25, 38108), (28, 38123), (30, 38240), (31, 38246),

Gene: Chop_41 Start: 32822, Stop: 33100, Start Num: 19

Candidate Starts for Chop_41:

(Start: 19 @32822 has 14 MA's), (Start: 20 @32831 has 1 MA's), (22, 32858), (23, 32870), (24, 32873), (27, 32888), (29, 32903), (30, 33011), (32, 33023), (34, 33041),

Gene: DelRio_42 Start: 33530, Stop: 33808, Start Num: 19

Candidate Starts for DelRio_42:

(Start: 19 @33530 has 14 MA's), (Start: 20 @33539 has 1 MA's), (22, 33566), (23, 33578), (24, 33581), (30, 33719), (32, 33731), (34, 33749),

Gene: DumpsterDude_46 Start: 38205, Stop: 38486, Start Num: 17

Candidate Starts for DumpsterDude_46:

(10, 38172), (Start: 17 @38205 has 1 MA's), (Start: 21 @38238 has 15 MA's), (24, 38274), (27, 38289), (28, 38295), (33, 38433),

Gene: Ecliptus_56 Start: 37774, Stop: 38064, Start Num: 16

Candidate Starts for Ecliptus_56:

(3, 37624), (4, 37690), (7, 37723), (11, 37756), (12, 37762), (Start: 16 @37774 has 1 MA's), (Start: 21 @37810 has 15 MA's), (24, 37846), (28, 37867), (30, 37984), (33, 38005), (36, 38053),

Gene: Fairfaxidum_45 Start: 35457, Stop: 35756, Start Num: 15

Candidate Starts for Fairfaxidum_45:

(Start: 15 @35457 has 2 MA's), (Start: 21 @35493 has 15 MA's), (24, 35529), (28, 35550), (30, 35667), (33, 35688),

Gene: Francois_40 Start: 32426, Stop: 32704, Start Num: 19

Candidate Starts for Francois_40:

(Start: 19 @32426 has 14 MA's), (Start: 20 @32435 has 1 MA's), (22, 32462), (23, 32474), (24, 32477), (27, 32492), (30, 32615), (32, 32627), (34, 32645),

Gene: GrandSlam_41 Start: 32822, Stop: 33100, Start Num: 19

Candidate Starts for GrandSlam_41:

(Start: 19 @32822 has 14 MA's), (Start: 20 @32831 has 1 MA's), (22, 32858), (23, 32870), (24, 32873), (27, 32888), (29, 32903), (30, 33011), (32, 33023), (34, 33041),

Gene: Hamood_41 Start: 32822, Stop: 33100, Start Num: 19

Candidate Starts for Hamood_41:

(Start: 19 @32822 has 14 MA's), (Start: 20 @32831 has 1 MA's), (22, 32858), (23, 32870), (24, 32873), (27, 32888), (29, 32903), (30, 33011), (32, 33023), (34, 33041),

Gene: LunaStella_44 Start: 33802, Stop: 34059, Start Num: 21

Candidate Starts for LunaStella_44:

(Start: 14 @33766 has 1 MA's), (Start: 21 @33802 has 15 MA's), (24, 33838), (30, 33976), (34, 34006), (35, 34021),

Gene: Lutum_57 Start: 36995, Stop: 37252, Start Num: 21

Candidate Starts for Lutum_57:

(Start: 13 @36953 has 1 MA's), (Start: 21 @36995 has 15 MA's), (26, 37055), (30, 37178),

Gene: Malibo_45 Start: 35237, Stop: 35485, Start Num: 21

Candidate Starts for Malibo_45:

(10, 35171), (Start: 17 @35204 has 1 MA's), (Start: 21 @35237 has 15 MA's), (24, 35273), (27, 35288), (28, 35294), (33, 35432),

Gene: MooMoo_43 Start: 34078, Stop: 34335, Start Num: 21

Candidate Starts for MooMoo_43:

(Start: 14 @34042 has 1 MA's), (Start: 21 @34078 has 15 MA's), (24, 34114), (30, 34252), (34, 34282), (35, 34297),

Gene: Morkie_37 Start: 28817, Stop: 29116, Start Num: 13

Candidate Starts for Morkie_37:

(Start: 13 @28817 has 1 MA's), (Start: 21 @28859 has 15 MA's), (26, 28919),

Gene: Mulch_41 Start: 32342, Stop: 32620, Start Num: 19

Candidate Starts for Mulch_41:

(Start: 19 @32342 has 14 MA's), (Start: 20 @32351 has 1 MA's), (22, 32378), (23, 32390), (24, 32393), (27, 32408), (29, 32423), (30, 32531), (32, 32543), (34, 32561),

Gene: Nadeem_41 Start: 32342, Stop: 32620, Start Num: 19

Candidate Starts for Nadeem_41:

(Start: 19 @32342 has 14 MA's), (Start: 20 @32351 has 1 MA's), (22, 32378), (23, 32390), (24, 32393), (27, 32408), (29, 32423), (30, 32531), (32, 32543), (34, 32561),

Gene: NancyRae_41 Start: 32352, Stop: 32630, Start Num: 19

Candidate Starts for NancyRae_41:

(8, 32295), (9, 32298), (Start: 19 @32352 has 14 MA's), (Start: 20 @32361 has 1 MA's), (22, 32388), (23, 32400), (24, 32403), (29, 32433), (30, 32541), (32, 32553), (34, 32571),

Gene: PCoral7_44 Start: 34911, Stop: 35174, Start Num: 21

Candidate Starts for PCoral7_44:

(Start: 15 @34875 has 2 MA's), (Start: 21 @34911 has 15 MA's), (24, 34947), (28, 34968), (30, 35085), (33, 35106),

Gene: Parada_41 Start: 32342, Stop: 32620, Start Num: 19

Candidate Starts for Parada_41:

(Start: 19 @32342 has 14 MA's), (Start: 20 @32351 has 1 MA's), (22, 32378), (23, 32390), (24, 32393), (27, 32408), (29, 32423), (30, 32531), (32, 32543), (34, 32561),

Gene: Pimento_42 Start: 31999, Stop: 32277, Start Num: 19

Candidate Starts for Pimento_42:

(Start: 19 @31999 has 14 MA's), (Start: 20 @32008 has 1 MA's), (22, 32035), (23, 32047), (24, 32050), (30, 32188), (32, 32200), (34, 32218),

Gene: Powerball_42 Start: 33050, Stop: 33301, Start Num: 21

Candidate Starts for Powerball_42:

(10, 32984), (Start: 17 @33017 has 1 MA's), (Start: 21 @33050 has 15 MA's), (24, 33086), (27, 33101), (28, 33107), (33, 33245),

Gene: PrincePatrick_43 Start: 33264, Stop: 33527, Start Num: 21

Candidate Starts for PrincePatrick_43:

(Start: 15 @33228 has 2 MA's), (Start: 21 @33264 has 15 MA's), (24, 33300), (28, 33321), (30, 33438), (33, 33459),

Gene: Ruthy_44 Start: 35600, Stop: 35848, Start Num: 21

Candidate Starts for Ruthy_44:

(10, 35534), (Start: 17 @35567 has 1 MA's), (Start: 21 @35600 has 15 MA's), (24, 35636), (27, 35651), (28, 35657), (33, 35795),

Gene: Soilmate_49 Start: 38066, Stop: 38320, Start Num: 21

Candidate Starts for Soilmate_49:

(Start: 15 @38030 has 2 MA's), (Start: 21 @38066 has 15 MA's), (24, 38102), (25, 38108), (28, 38123), (30, 38240), (31, 38246),

Gene: TChen_46 Start: 35717, Stop: 36010, Start Num: 14

Candidate Starts for TChen_46:

(Start: 14 @35717 has 1 MA's), (Start: 21 @35753 has 15 MA's), (24, 35789), (30, 35927), (34, 35957), (35, 35972),

Gene: ThankyouJordi_44 Start: 36245, Stop: 36499, Start Num: 21

Candidate Starts for ThankyouJordi_44:

(1, 35879), (2, 36056), (5, 36134), (6, 36137), (18, 36212), (Start: 21 @36245 has 15 MA's), (24, 36281), (27, 36296), (28, 36302),

Gene: Toast_44 Start: 34875, Stop: 35174, Start Num: 15

Candidate Starts for Toast_44:

(Start: 15 @34875 has 2 MA's), (Start: 21 @34911 has 15 MA's), (24, 34947), (28, 34968), (30, 35085), (33, 35106),

Gene: WelcomeAyanna_44 Start: 36392, Stop: 36646, Start Num: 21

Candidate Starts for WelcomeAyanna_44:

(1, 36026), (2, 36203), (5, 36281), (6, 36284), (18, 36359), (Start: 21 @36392 has 15 MA's), (24, 36428), (27, 36443), (28, 36449),

Gene: WheatThin_41 Start: 32342, Stop: 32620, Start Num: 19

Candidate Starts for WheatThin_41:

(Start: 19 @32342 has 14 MA's), (Start: 20 @32351 has 1 MA's), (22, 32378), (23, 32390), (24, 32393), (27, 32408), (29, 32423), (30, 32531), (32, 32543), (34, 32561),

Gene: William_45 Start: 34949, Stop: 35212, Start Num: 21

Candidate Starts for William_45:

(Start: 15 @34913 has 2 MA's), (Start: 21 @34949 has 15 MA's), (24, 34985), (28, 35006), (30, 35123), (33, 35144),