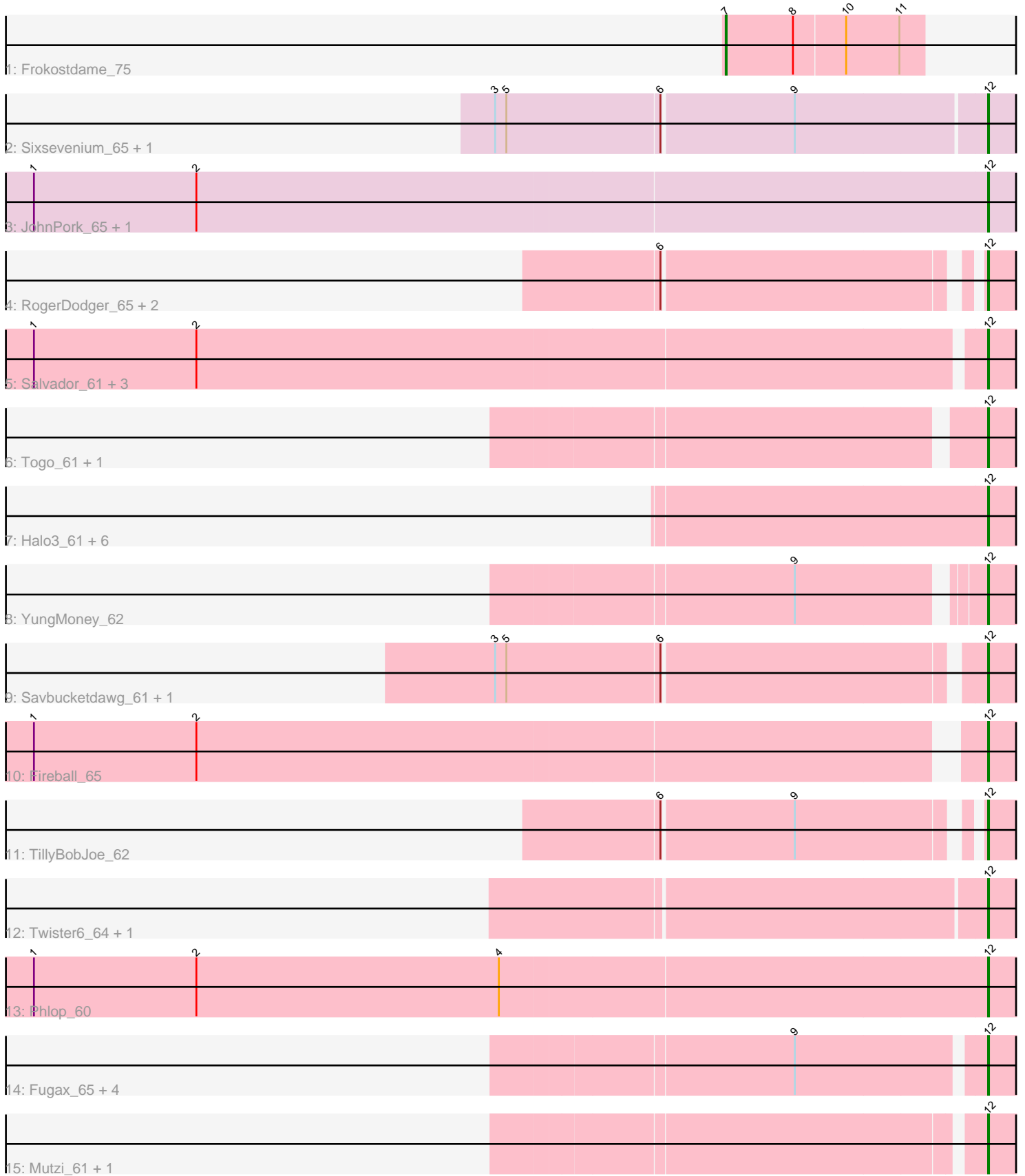


Pham 296755



Note: Tracks are now grouped by subcluster and scaled. Switching in subcluster is indicated by changes in track color. Track scale is now set by default to display the region 30 bp upstream of start 1 to 30 bp downstream of the last possible start. If this default region is judged to be packed too tightly with annotated starts, the track will be further scaled to only show that region of the ORF with annotated starts. This action will be indicated by adding "Zoomed" to the title. For starts, yellow indicates the location of called starts comprised solely of Glimmer/GeneMark auto-annotations, green indicates the location of called starts with at least 1 manual gene annotation.

Pham 296755 Report

This analysis was run 04/25/26 on database version 644.

Pham number 296755 has 36 members, 4 are drafts.

Phages represented in each track:

- Track 1 : Frokostdame_75
- Track 2 : Sixsevenium_65, Bakery_67
- Track 3 : JohnPork_65, Portcullis_64
- Track 4 : RogerDodger_65, PullumCavea_61, Danyall_63
- Track 5 : Salvador_61, Evamon_61, Nubi_62, Sendy_63
- Track 6 : Togo_61, SmokingBunny_62
- Track 7 : Halo3_61, Arri_63, Wizard_60, CoveyB_63, VanDeWege_64, Valary_63, Gezellig_60
- Track 8 : YungMoney_62
- Track 9 : Savbucketdawg_61, Jambalaya_61
- Track 10 : Fireball_65
- Track 11 : TillyBobJoe_62
- Track 12 : Twister6_64, CherryCola_63
- Track 13 : Phlop_60
- Track 14 : Fugax_65, Barb_64, PinkCoffee_64, ClamChowder_64, KimmyK_63
- Track 15 : Mutzi_61, Shinji_61

Summary of Final Annotations (See graph section above for start numbers):

The start number called the most often in the published annotations is 12, it was called in 31 of the 32 non-draft genes in the pham.

Genes that call this "Most Annotated" start:

- Arri_63, Bakery_67, Barb_64, CherryCola_63, ClamChowder_64, CoveyB_63, Danyall_63, Evamon_61, Fireball_65, Fugax_65, Gezellig_60, Halo3_61, Jambalaya_61, JohnPork_65, KimmyK_63, Mutzi_61, Nubi_62, Phlop_60, PinkCoffee_64, Portcullis_64, PullumCavea_61, RogerDodger_65, Salvador_61, Savbucketdawg_61, Sendy_63, Shinji_61, Sixsevenium_65, SmokingBunny_62, TillyBobJoe_62, Togo_61, Twister6_64, Valary_63, VanDeWege_64, Wizard_60, YungMoney_62,

Genes that have the "Most Annotated" start but do not call it:

-

Genes that do not have the "Most Annotated" start:

- Frokostdame_75,

Summary by start number:

Start 7:

- Found in 1 of 36 (2.8%) of genes in pham
- Manual Annotations of this start: 1 of 32
- Called 100.0% of time when present
- Phage (with cluster) where this start called: Frokostdame_75 (CV),

Start 12:

- Found in 35 of 36 (97.2%) of genes in pham
- Manual Annotations of this start: 31 of 32
- Called 100.0% of time when present
- Phage (with cluster) where this start called: Arri_63 (DC1), Bakery_67 (DC1), Barb_64 (DC1), CherryCola_63 (DC1), ClamChowder_64 (DC1), CoveyB_63 (DC1), Danyall_63 (DC1), Evamon_61 (DC1), Fireball_65 (DC1), Fugax_65 (DC1), Gezellig_60 (DC1), Halo3_61 (DC1), Jambalaya_61 (DC1), JohnPork_65 (DC), KimmyK_63 (DC1), Mutzi_61 (DC1), Nubi_62 (DC1), Phlop_60 (DC1), PinkCoffee_64 (DC1), Portcullis_64 (DC1), PullumCavea_61 (DC1), RogerDodger_65 (DC1), Salvador_61 (DC1), Savbucketdawg_61 (DC1), Sendy_63 (DC), Shinji_61 (DC1), Sixsevenium_65 (DC), SmokingBunny_62 (DC1), TillyBobJoe_62 (DC1), Togo_61 (DC1), Twister6_64 (DC1), Valary_63 (DC1), VanDeWege_64 (DC1), Wizard_60 (DC1), YungMoney_62 (DC1),

Summary by clusters:

There are 3 clusters represented in this pham: DC, CV, DC1,

Info for manual annotations of cluster CV:

- Start number 7 was manually annotated 1 time for cluster CV.

Info for manual annotations of cluster DC1:

- Start number 12 was manually annotated 31 times for cluster DC1.

Gene Information:

Gene: Arri_63 Start: 46905, Stop: 47132, Start Num: 12

Candidate Starts for Arri_63:

(Start: 12 @46905 has 31 MA's),

Gene: Bakery_67 Start: 49144, Stop: 49371, Start Num: 12

Candidate Starts for Bakery_67:

(3, 48634), (5, 48646), (6, 48808), (9, 48946), (Start: 12 @49144 has 31 MA's),

Gene: Barb_64 Start: 46782, Stop: 47009, Start Num: 12

Candidate Starts for Barb_64:

(9, 46593), (Start: 12 @46782 has 31 MA's),

Gene: CherryCola_63 Start: 47527, Stop: 47745, Start Num: 12
Candidate Starts for CherryCola_63:
(Start: 12 @47527 has 31 MA's),

Gene: ClamChowder_64 Start: 46782, Stop: 47009, Start Num: 12
Candidate Starts for ClamChowder_64:
(9, 46593), (Start: 12 @46782 has 31 MA's),

Gene: CoveyB_63 Start: 46620, Stop: 46838, Start Num: 12
Candidate Starts for CoveyB_63:
(Start: 12 @46620 has 31 MA's),

Gene: Danyall_63 Start: 46877, Stop: 47095, Start Num: 12
Candidate Starts for Danyall_63:
(6, 46568), (Start: 12 @46877 has 31 MA's),

Gene: Evamon_61 Start: 46320, Stop: 46547, Start Num: 12
Candidate Starts for Evamon_61:
(1, 45324), (2, 45498), (Start: 12 @46320 has 31 MA's),

Gene: Fireball_65 Start: 47177, Stop: 47395, Start Num: 12
Candidate Starts for Fireball_65:
(1, 46199), (2, 46373), (Start: 12 @47177 has 31 MA's),

Gene: Frokostdame_75 Start: 47547, Stop: 47756, Start Num: 7
Candidate Starts for Frokostdame_75:
(Start: 7 @47547 has 1 MA's), (8, 47619), (10, 47673), (11, 47730),

Gene: Fugax_65 Start: 46774, Stop: 47001, Start Num: 12
Candidate Starts for Fugax_65:
(9, 46585), (Start: 12 @46774 has 31 MA's),

Gene: Gezellig_60 Start: 46773, Stop: 46991, Start Num: 12
Candidate Starts for Gezellig_60:
(Start: 12 @46773 has 31 MA's),

Gene: Halo3_61 Start: 47358, Stop: 47576, Start Num: 12
Candidate Starts for Halo3_61:
(Start: 12 @47358 has 31 MA's),

Gene: Jambalaya_61 Start: 46624, Stop: 46842, Start Num: 12
Candidate Starts for Jambalaya_61:
(3, 46129), (5, 46141), (6, 46303), (Start: 12 @46624 has 31 MA's),

Gene: JohnPork_65 Start: 46910, Stop: 47128, Start Num: 12
Candidate Starts for JohnPork_65:
(1, 45899), (2, 46073), (Start: 12 @46910 has 31 MA's),

Gene: KimmyK_63 Start: 47216, Stop: 47443, Start Num: 12
Candidate Starts for KimmyK_63:
(9, 47027), (Start: 12 @47216 has 31 MA's),

Gene: Mutzi_61 Start: 48055, Stop: 48282, Start Num: 12

Candidate Starts for Mutzi_61:
(Start: 12 @48055 has 31 MA's),

Gene: Nubi_62 Start: 46425, Stop: 46652, Start Num: 12
Candidate Starts for Nubi_62:
(1, 45429), (2, 45603), (Start: 12 @46425 has 31 MA's),

Gene: Phlop_60 Start: 46782, Stop: 47009, Start Num: 12
Candidate Starts for Phlop_60:
(1, 45771), (2, 45945), (4, 46269), (Start: 12 @46782 has 31 MA's),

Gene: PinkCoffee_64 Start: 46788, Stop: 47015, Start Num: 12
Candidate Starts for PinkCoffee_64:
(9, 46599), (Start: 12 @46788 has 31 MA's),

Gene: Portcullis_64 Start: 46910, Stop: 47128, Start Num: 12
Candidate Starts for Portcullis_64:
(1, 45899), (2, 46073), (Start: 12 @46910 has 31 MA's),

Gene: PullumCavea_61 Start: 46958, Stop: 47176, Start Num: 12
Candidate Starts for PullumCavea_61:
(6, 46649), (Start: 12 @46958 has 31 MA's),

Gene: RogerDodger_65 Start: 47080, Stop: 47298, Start Num: 12
Candidate Starts for RogerDodger_65:
(6, 46771), (Start: 12 @47080 has 31 MA's),

Gene: Salvador_61 Start: 46318, Stop: 46545, Start Num: 12
Candidate Starts for Salvador_61:
(1, 45322), (2, 45496), (Start: 12 @46318 has 31 MA's),

Gene: Savbucketdawg_61 Start: 46624, Stop: 46842, Start Num: 12
Candidate Starts for Savbucketdawg_61:
(3, 46129), (5, 46141), (6, 46303), (Start: 12 @46624 has 31 MA's),

Gene: Sendy_63 Start: 46626, Stop: 46853, Start Num: 12
Candidate Starts for Sendy_63:
(1, 45630), (2, 45804), (Start: 12 @46626 has 31 MA's),

Gene: Shinji_61 Start: 46489, Stop: 46716, Start Num: 12
Candidate Starts for Shinji_61:
(Start: 12 @46489 has 31 MA's),

Gene: Sixsevenium_65 Start: 48373, Stop: 48600, Start Num: 12
Candidate Starts for Sixsevenium_65:
(3, 47863), (5, 47875), (6, 48037), (9, 48175), (Start: 12 @48373 has 31 MA's),

Gene: SmokingBunny_62 Start: 46918, Stop: 47136, Start Num: 12
Candidate Starts for SmokingBunny_62:
(Start: 12 @46918 has 31 MA's),

Gene: TillyBobJoe_62 Start: 46777, Stop: 46995, Start Num: 12
Candidate Starts for TillyBobJoe_62:

(6, 46468), (9, 46606), (Start: 12 @46777 has 31 MA's),

Gene: Togo_61 Start: 46918, Stop: 47136, Start Num: 12

Candidate Starts for Togo_61:

(Start: 12 @46918 has 31 MA's),

Gene: Twister6_64 Start: 46678, Stop: 46896, Start Num: 12

Candidate Starts for Twister6_64:

(Start: 12 @46678 has 31 MA's),

Gene: Valary_63 Start: 47527, Stop: 47745, Start Num: 12

Candidate Starts for Valary_63:

(Start: 12 @47527 has 31 MA's),

Gene: VanDeWege_64 Start: 46867, Stop: 47085, Start Num: 12

Candidate Starts for VanDeWege_64:

(Start: 12 @46867 has 31 MA's),

Gene: Wizard_60 Start: 46773, Stop: 46991, Start Num: 12

Candidate Starts for Wizard_60:

(Start: 12 @46773 has 31 MA's),

Gene: YungMoney_62 Start: 48904, Stop: 49113, Start Num: 12

Candidate Starts for YungMoney_62:

(9, 48727), (Start: 12 @48904 has 31 MA's),