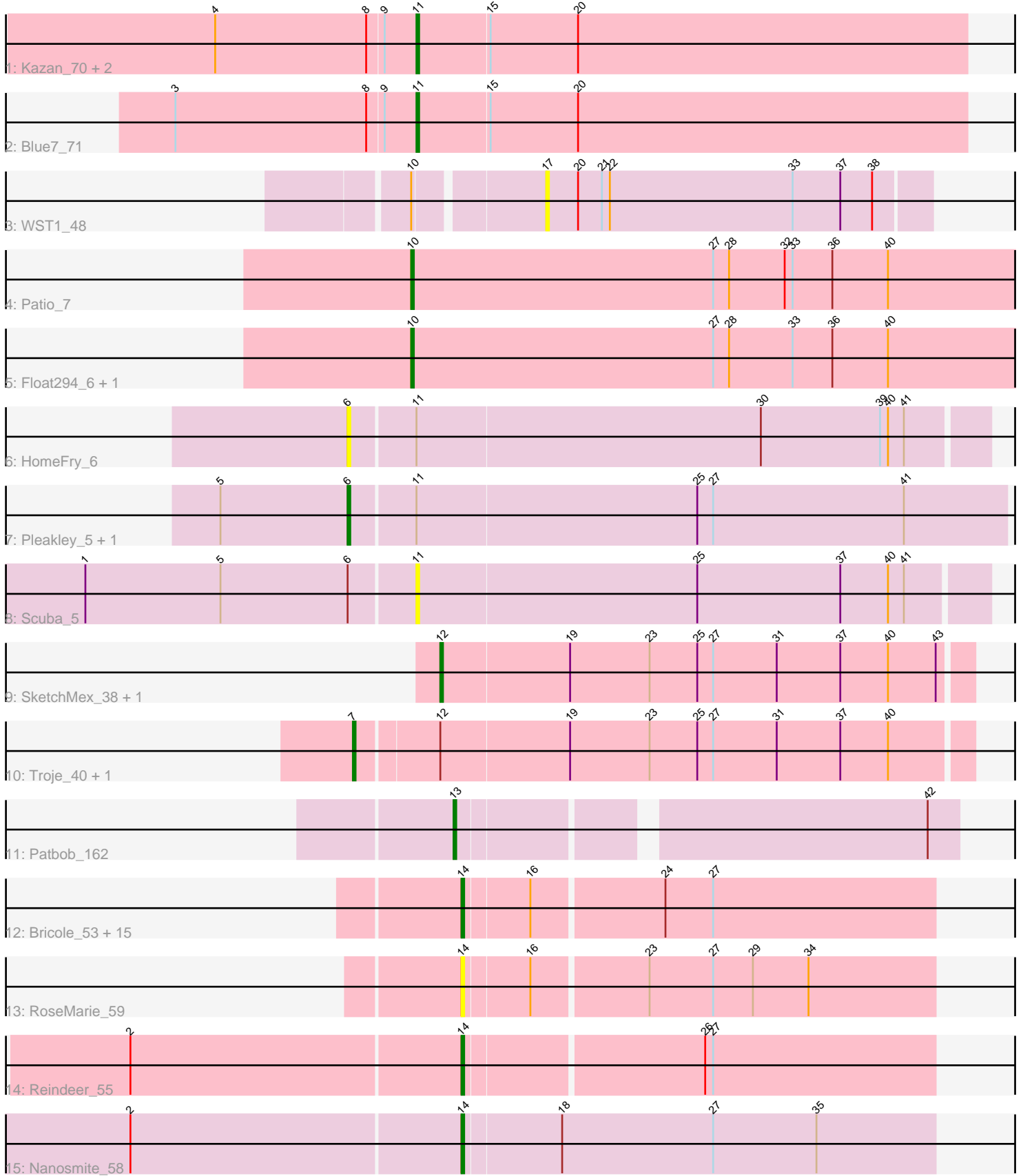


# Pham 296760



Note: Tracks are now grouped by subcluster and scaled. Switching in subcluster is indicated by changes in track color. Track scale is now set by default to display the region 30 bp upstream of start 1 to 30 bp downstream of the last possible start. If this default region is judged to be packed too tightly with annotated starts, the track will be further scaled to only show that region of the ORF with annotated starts. This action will be indicated by adding "Zoomed" to the title. For starts, yellow indicates the location of called starts comprised solely of Glimmer/GeneMark auto-annotations, green indicates the location of called starts with at least 1 manual gene annotation.

## Pham 296760 Report

This analysis was run 04/25/26 on database version 644.

Pham number 296760 has 36 members, 6 are drafts.

Phages represented in each track:

- Track 1 : Kazan\_70, SmellyB\_69, SuperAwesome\_69
- Track 2 : Blue7\_71
- Track 3 : WST1\_48
- Track 4 : Patio\_7
- Track 5 : Float294\_6, Skysand\_6
- Track 6 : HomeFry\_6
- Track 7 : Pleakley\_5, Fury\_5
- Track 8 : Scuba\_5
- Track 9 : SketchMex\_38, Biskit\_40
- Track 10 : Troje\_40, Blondies\_41
- Track 11 : Patbob\_162
- Track 12 : Bricole\_53, Dulcita\_54, Glaske16\_54, TpudiCK\_55, LilhomieP\_52, Bongo\_53, Diminimus\_54, FreakyGoo\_54, KleverKiS\_54, IPhane7\_53, Skinny\_54, SlimJimmy\_52, PegLeg\_53, Izel\_54, Auspice\_53, TyDawg\_53
- Track 13 : RoseMarie\_59
- Track 14 : Reindeer\_55
- Track 15 : Nanosmite\_58

### ***Summary of Final Annotations (See graph section above for start numbers):***

The start number called the most often in the published annotations is 14, it was called in 16 of the 30 non-draft genes in the pham.

Genes that call this "Most Annotated" start:

- Auspice\_53, Bongo\_53, Bricole\_53, Diminimus\_54, Dulcita\_54, FreakyGoo\_54, Glaske16\_54, IPhane7\_53, Izel\_54, KleverKiS\_54, LilhomieP\_52, Nanosmite\_58, PegLeg\_53, Reindeer\_55, RoseMarie\_59, Skinny\_54, SlimJimmy\_52, TpudiCK\_55, TyDawg\_53,

Genes that have the "Most Annotated" start but do not call it:

- 

Genes that do not have the "Most Annotated" start:

- Biskit\_40, Blondies\_41, Blue7\_71, Float294\_6, Fury\_5, HomeFry\_6, Kazan\_70, Patbob\_162, Patio\_7, Pleakley\_5, Scuba\_5, SketchMex\_38, Skysand\_6, SmellyB\_69, SuperAwesome\_69, Troje\_40, WST1\_48,

### Summary by start number:

#### Start 6:

- Found in 4 of 36 ( 11.1% ) of genes in pham
- Manual Annotations of this start: 2 of 30
- Called 75.0% of time when present
- Phage (with cluster) where this start called: Fury\_5 (CR5), HomeFry\_6 (CR5), Pleakley\_5 (CR5),

#### Start 7:

- Found in 2 of 36 ( 5.6% ) of genes in pham
- Manual Annotations of this start: 2 of 30
- Called 100.0% of time when present
- Phage (with cluster) where this start called: Blondies\_41 (CT), Troje\_40 (CT),

#### Start 10:

- Found in 4 of 36 ( 11.1% ) of genes in pham
- Manual Annotations of this start: 3 of 30
- Called 75.0% of time when present
- Phage (with cluster) where this start called: Float294\_6 (CR3), Patio\_7 (CR3), Skysand\_6 (CR3),

#### Start 11:

- Found in 8 of 36 ( 22.2% ) of genes in pham
- Manual Annotations of this start: 4 of 30
- Called 62.5% of time when present
- Phage (with cluster) where this start called: Blue7\_71 (A6), Kazan\_70 (A6), Scuba\_5 (CR5), SmellyB\_69 (A6), SuperAwesome\_69 (A6),

#### Start 12:

- Found in 4 of 36 ( 11.1% ) of genes in pham
- Manual Annotations of this start: 2 of 30
- Called 50.0% of time when present
- Phage (with cluster) where this start called: Biskit\_40 (CT), SketchMex\_38 (CT),

#### Start 13:

- Found in 1 of 36 ( 2.8% ) of genes in pham
- Manual Annotations of this start: 1 of 30
- Called 100.0% of time when present
- Phage (with cluster) where this start called: Patbob\_162 (FC),

#### Start 14:

- Found in 19 of 36 ( 52.8% ) of genes in pham
- Manual Annotations of this start: 16 of 30
- Called 100.0% of time when present
- Phage (with cluster) where this start called: Auspice\_53 (M1), Bongo\_53 (M1), Bricole\_53 (M1), Diminimus\_54 (M1), Dulcita\_54 (M1), FreakyGoo\_54 (M1), Glaske16\_54 (M1), IPhane7\_53 (M1), Izel\_54 (M1), KleverKiS\_54 (M1), LilhomieP\_52 (M1), Nanosmite\_58 (M3), PegLeg\_53 (M1), Reindeer\_55 (M1),

RoseMarie\_59 (M1), Skinny\_54 (M1), SlimJimmy\_52 (M1), TpudiCK\_55 (M1), TyDawg\_53 (M1),

Start 17:

- Found in 1 of 36 ( 2.8% ) of genes in pham
- No Manual Annotations of this start.
- Called 100.0% of time when present
- Phage (with cluster) where this start called: WST1\_48 (AJ),

### **Summary by clusters:**

There are 8 clusters represented in this pham: CR3, CR5, AJ, FC, M1, M3, A6, CT,

Info for manual annotations of cluster A6:

- Start number 11 was manually annotated 4 times for cluster A6.

Info for manual annotations of cluster CR3:

- Start number 10 was manually annotated 3 times for cluster CR3.

Info for manual annotations of cluster CR5:

- Start number 6 was manually annotated 2 times for cluster CR5.

Info for manual annotations of cluster CT:

- Start number 7 was manually annotated 2 times for cluster CT.
- Start number 12 was manually annotated 2 times for cluster CT.

Info for manual annotations of cluster FC:

- Start number 13 was manually annotated 1 time for cluster FC.

Info for manual annotations of cluster M1:

- Start number 14 was manually annotated 15 times for cluster M1.

Info for manual annotations of cluster M3:

- Start number 14 was manually annotated 1 time for cluster M3.

### **Gene Information:**

Gene: Auspice\_53 Start: 38208, Stop: 38381, Start Num: 14

Candidate Starts for Auspice\_53:

(Start: 14 @38208 has 16 MA's), (16, 38232), (24, 38280), (27, 38298),

Gene: Biskit\_40 Start: 27315, Stop: 27118, Start Num: 12

Candidate Starts for Biskit\_40:

(Start: 12 @27315 has 2 MA's), (19, 27267), (23, 27237), (25, 27219), (27, 27213), (31, 27189), (37, 27165), (40, 27147), (43, 27129),

Gene: Blondies\_41 Start: 27663, Stop: 27436, Start Num: 7

Candidate Starts for Blondies\_41:

(Start: 7 @27663 has 2 MA's), (Start: 12 @27633 has 2 MA's), (19, 27585), (23, 27555), (25, 27537), (27, 27531), (31, 27507), (37, 27483), (40, 27465),

Gene: Blue7\_71 Start: 40393, Stop: 40187, Start Num: 11  
Candidate Starts for Blue7\_71:  
(3, 40483), (8, 40411), (9, 40405), (Start: 11 @40393 has 4 MA's), (15, 40366), (20, 40333),

Gene: Bongo\_53 Start: 38212, Stop: 38385, Start Num: 14  
Candidate Starts for Bongo\_53:  
(Start: 14 @38212 has 16 MA's), (16, 38236), (24, 38284), (27, 38302),

Gene: Bricole\_53 Start: 38194, Stop: 38367, Start Num: 14  
Candidate Starts for Bricole\_53:  
(Start: 14 @38194 has 16 MA's), (16, 38218), (24, 38266), (27, 38284),

Gene: Diminimus\_54 Start: 38207, Stop: 38380, Start Num: 14  
Candidate Starts for Diminimus\_54:  
(Start: 14 @38207 has 16 MA's), (16, 38231), (24, 38279), (27, 38297),

Gene: Dulcita\_54 Start: 38208, Stop: 38381, Start Num: 14  
Candidate Starts for Dulcita\_54:  
(Start: 14 @38208 has 16 MA's), (16, 38232), (24, 38280), (27, 38298),

Gene: Float294\_6 Start: 4362, Stop: 4592, Start Num: 10  
Candidate Starts for Float294\_6:  
(Start: 10 @4362 has 3 MA's), (27, 4476), (28, 4482), (33, 4506), (36, 4521), (40, 4542),

Gene: FreakyGoo\_54 Start: 38208, Stop: 38381, Start Num: 14  
Candidate Starts for FreakyGoo\_54:  
(Start: 14 @38208 has 16 MA's), (16, 38232), (24, 38280), (27, 38298),

Gene: Fury\_5 Start: 2948, Stop: 3193, Start Num: 6  
Candidate Starts for Fury\_5:  
(5, 2900), (Start: 6 @2948 has 2 MA's), (Start: 11 @2972 has 4 MA's), (25, 3077), (27, 3083), (41, 3155),

Gene: Glaske16\_54 Start: 38207, Stop: 38380, Start Num: 14  
Candidate Starts for Glaske16\_54:  
(Start: 14 @38207 has 16 MA's), (16, 38231), (24, 38279), (27, 38297),

Gene: HomeFry\_6 Start: 2918, Stop: 3154, Start Num: 6  
Candidate Starts for HomeFry\_6:  
(Start: 6 @2918 has 2 MA's), (Start: 11 @2942 has 4 MA's), (30, 3071), (39, 3116), (40, 3119), (41, 3125),

Gene: IPhane7\_53 Start: 38212, Stop: 38385, Start Num: 14  
Candidate Starts for IPhane7\_53:  
(Start: 14 @38212 has 16 MA's), (16, 38236), (24, 38284), (27, 38302),

Gene: Izel\_54 Start: 38207, Stop: 38380, Start Num: 14  
Candidate Starts for Izel\_54:  
(Start: 14 @38207 has 16 MA's), (16, 38231), (24, 38279), (27, 38297),

Gene: Kazan\_70 Start: 40266, Stop: 40060, Start Num: 11  
Candidate Starts for Kazan\_70:

(4, 40341), (8, 40284), (9, 40278), (Start: 11 @40266 has 4 MA's), (15, 40239), (20, 40206),

Gene: KleverKiS\_54 Start: 38188, Stop: 38361, Start Num: 14

Candidate Starts for KleverKiS\_54:

(Start: 14 @38188 has 16 MA's), (16, 38212), (24, 38260), (27, 38278),

Gene: LilhomieP\_52 Start: 38212, Stop: 38385, Start Num: 14

Candidate Starts for LilhomieP\_52:

(Start: 14 @38212 has 16 MA's), (16, 38236), (24, 38284), (27, 38302),

Gene: Nanosmite\_58 Start: 39866, Stop: 40042, Start Num: 14

Candidate Starts for Nanosmite\_58:

(2, 39743), (Start: 14 @39866 has 16 MA's), (18, 39902), (27, 39959), (35, 39998),

Gene: Patbob\_162 Start: 111552, Stop: 111728, Start Num: 13

Candidate Starts for Patbob\_162:

(Start: 13 @111552 has 1 MA's), (42, 111717),

Gene: Patio\_7 Start: 5032, Stop: 5262, Start Num: 10

Candidate Starts for Patio\_7:

(Start: 10 @5032 has 3 MA's), (27, 5146), (28, 5152), (32, 5173), (33, 5176), (36, 5191), (40, 5212),

Gene: PegLeg\_53 Start: 38211, Stop: 38384, Start Num: 14

Candidate Starts for PegLeg\_53:

(Start: 14 @38211 has 16 MA's), (16, 38235), (24, 38283), (27, 38301),

Gene: Pleakley\_5 Start: 2948, Stop: 3193, Start Num: 6

Candidate Starts for Pleakley\_5:

(5, 2900), (Start: 6 @2948 has 2 MA's), (Start: 11 @2972 has 4 MA's), (25, 3077), (27, 3083), (41, 3155),

Gene: Reindeer\_55 Start: 39414, Stop: 39587, Start Num: 14

Candidate Starts for Reindeer\_55:

(2, 39291), (Start: 14 @39414 has 16 MA's), (26, 39501), (27, 39504),

Gene: RoseMarie\_59 Start: 41858, Stop: 42031, Start Num: 14

Candidate Starts for RoseMarie\_59:

(Start: 14 @41858 has 16 MA's), (16, 41882), (23, 41924), (27, 41948), (29, 41963), (34, 41984),

Gene: Scuba\_5 Start: 3052, Stop: 3264, Start Num: 11

Candidate Starts for Scuba\_5:

(1, 2929), (5, 2980), (Start: 6 @3028 has 2 MA's), (Start: 11 @3052 has 4 MA's), (25, 3157), (37, 3211), (40, 3229), (41, 3235),

Gene: SketchMex\_38 Start: 27315, Stop: 27118, Start Num: 12

Candidate Starts for SketchMex\_38:

(Start: 12 @27315 has 2 MA's), (19, 27267), (23, 27237), (25, 27219), (27, 27213), (31, 27189), (37, 27165), (40, 27147), (43, 27129),

Gene: Skinny\_54 Start: 38641, Stop: 38814, Start Num: 14

Candidate Starts for Skinny\_54:

(Start: 14 @38641 has 16 MA's), (16, 38665), (24, 38713), (27, 38731),

Gene: Skysand\_6 Start: 4364, Stop: 4594, Start Num: 10

Candidate Starts for Skysand\_6:

(Start: 10 @4364 has 3 MA's), (27, 4478), (28, 4484), (33, 4508), (36, 4523), (40, 4544),

Gene: SlimJimmy\_52 Start: 38195, Stop: 38368, Start Num: 14

Candidate Starts for SlimJimmy\_52:

(Start: 14 @38195 has 16 MA's), (16, 38219), (24, 38267), (27, 38285),

Gene: SmellyB\_69 Start: 40260, Stop: 40054, Start Num: 11

Candidate Starts for SmellyB\_69:

(4, 40335), (8, 40278), (9, 40272), (Start: 11 @40260 has 4 MA's), (15, 40233), (20, 40200),

Gene: SuperAwesome\_69 Start: 40265, Stop: 40059, Start Num: 11

Candidate Starts for SuperAwesome\_69:

(4, 40340), (8, 40283), (9, 40277), (Start: 11 @40265 has 4 MA's), (15, 40238), (20, 40205),

Gene: TpudiCK\_55 Start: 38211, Stop: 38384, Start Num: 14

Candidate Starts for TpudiCK\_55:

(Start: 14 @38211 has 16 MA's), (16, 38235), (24, 38283), (27, 38301),

Gene: Troje\_40 Start: 27694, Stop: 27467, Start Num: 7

Candidate Starts for Troje\_40:

(Start: 7 @27694 has 2 MA's), (Start: 12 @27664 has 2 MA's), (19, 27616), (23, 27586), (25, 27568), (27, 27562), (31, 27538), (37, 27514), (40, 27496),

Gene: TyDawg\_53 Start: 38212, Stop: 38385, Start Num: 14

Candidate Starts for TyDawg\_53:

(Start: 14 @38212 has 16 MA's), (16, 38236), (24, 38284), (27, 38302),

Gene: WST1\_48 Start: 30928, Stop: 31071, Start Num: 17

Candidate Starts for WST1\_48:

(Start: 10 @30883 has 3 MA's), (17, 30928), (20, 30940), (21, 30949), (22, 30952), (33, 31021), (37, 31039), (38, 31051),