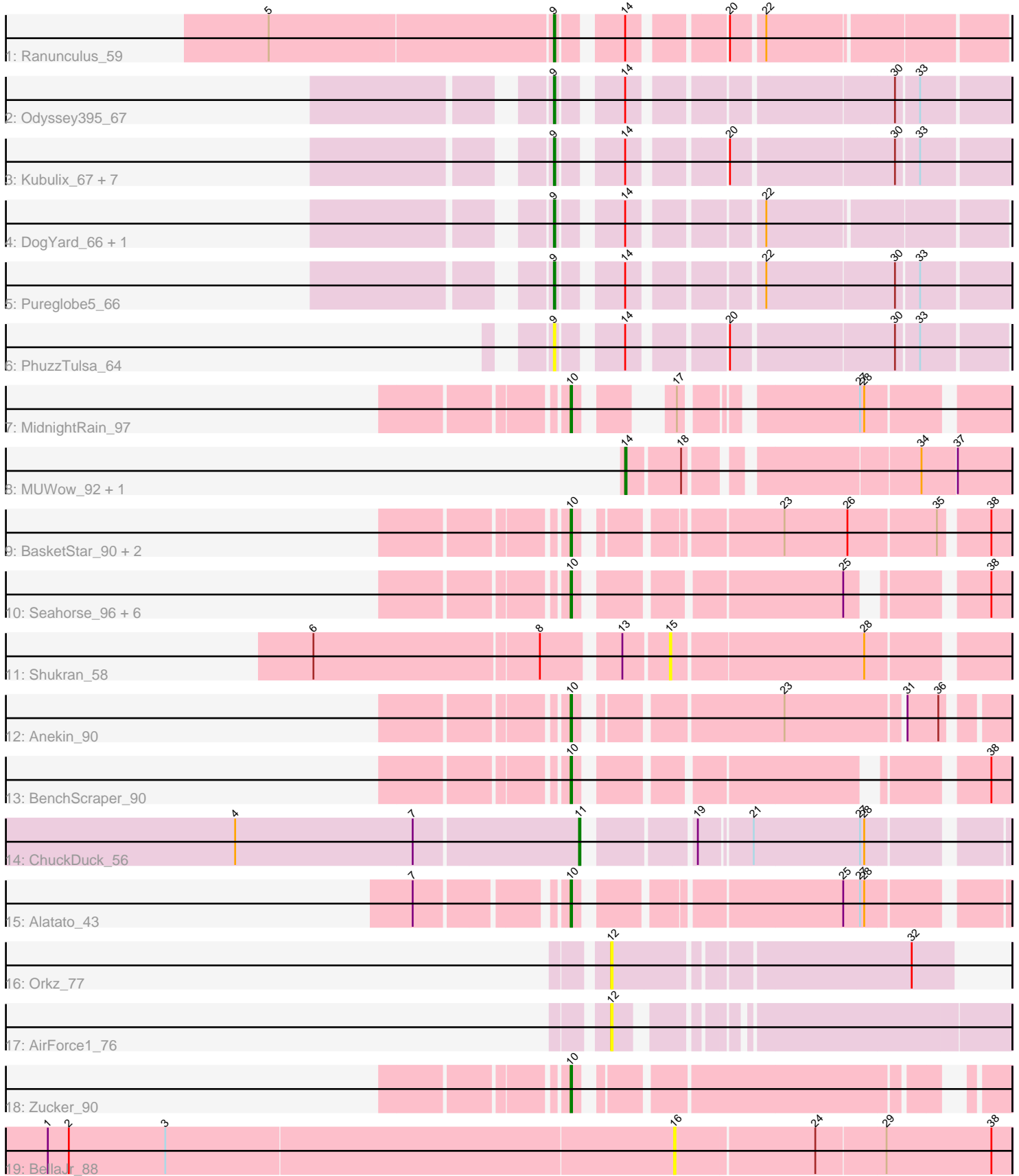


Pham 296764



Note: Tracks are now grouped by subcluster and scaled. Switching in subcluster is indicated by changes in track color. Track scale is now set by default to display the region 30 bp upstream of start 1 to 30 bp downstream of the last possible start. If this default region is judged to be packed too tightly with annotated starts, the track will be further scaled to only show that region of the ORF with annotated starts. This action will be indicated by adding "Zoomed" to the title. For starts, yellow indicates the location of called starts comprised solely of Glimmer/GeneMark auto-annotations, green indicates the location of called starts with at least 1 manual gene annotation.

Pham 296764 Report

This analysis was run 04/25/26 on database version 644.

Pham number 296764 has 36 members, 15 are drafts.

Phages represented in each track:

- Track 1 : Ranunculus_59
- Track 2 : Odyssey395_67
- Track 3 : Kubulix_67, RIPWilbur_66, MellowYellow_67, NyleyClemson_66, Beagle_67, RazzB_66, Pointis_64, Hive_63
- Track 4 : DogYard_66, Popstraw_62
- Track 5 : Pureglobe5_66
- Track 6 : PhuzzTulsa_64
- Track 7 : MidnightRain_97
- Track 8 : MUWow_92, NewKitty_91
- Track 9 : BasketStar_90, DarwinJr_94, Isolde_91
- Track 10 : Seahorse_96, Gorpy_88, Mapleville_84, Crescenzo_93, Nyilah_97, Richie_93, Sakai_87
- Track 11 : Shukran_58
- Track 12 : Anekin_90
- Track 13 : BenchScraper_90
- Track 14 : ChuckDuck_56
- Track 15 : Alatato_43
- Track 16 : Orkz_77
- Track 17 : AirForce1_76
- Track 18 : Zucker_90
- Track 19 : BellaJr_88

Summary of Final Annotations (See graph section above for start numbers):

The start number called the most often in the published annotations is 10, it was called in 10 of the 21 non-draft genes in the pham.

Genes that call this "Most Annotated" start:

- Alatato_43, Anekin_90, BasketStar_90, BenchScraper_90, Crescenzo_93, DarwinJr_94, Gorpy_88, Isolde_91, Mapleville_84, MidnightRain_97, Nyilah_97, Richie_93, Sakai_87, Seahorse_96, Zucker_90,

Genes that have the "Most Annotated" start but do not call it:

-

Genes that do not have the "Most Annotated" start:

- AirForce1_76, Beagle_67, BellaJr_88, ChuckDuck_56, DogYard_66, Hive_63, Kubulix_67, MUWow_92, MellowYellow_67, NewKitty_91, NyleyClemson_66, Odyssey395_67, Orkz_77, PhuzzTulsa_64, Pointis_64, Popstraw_62, Pureglobe5_66, RIPWilbur_66, Ranunculus_59, RazzB_66, Shukran_58,

Summary by start number:

Start 9:

- Found in 14 of 36 (38.9%) of genes in pham
- Manual Annotations of this start: 9 of 21
- Called 100.0% of time when present
- Phage (with cluster) where this start called: Beagle_67 (AP2), DogYard_66 (AP2), Hive_63 (AP2), Kubulix_67 (AP2), MellowYellow_67 (AP2), NyleyClemson_66 (AP2), Odyssey395_67 (AP2), PhuzzTulsa_64 (AP2), Pointis_64 (AP2), Popstraw_62 (AP2), Pureglobe5_66 (AP2), RIPWilbur_66 (AP2), Ranunculus_59 (AP), RazzB_66 (AP2),

Start 10:

- Found in 15 of 36 (41.7%) of genes in pham
- Manual Annotations of this start: 10 of 21
- Called 100.0% of time when present
- Phage (with cluster) where this start called: Alatato_43 (FB), Anekin_90 (AY), BasketStar_90 (AY), BenchScraper_90 (AY), Crescenzo_93 (AY), DarwinJr_94 (AY), Gorpy_88 (AY), Isolde_91 (AY), Mapleville_84 (AY), MidnightRain_97 (AY), Niyilah_97 (AY), Richie_93 (AY), Sakai_87 (AY), Seahorse_96 (AY), Zucker_90 (FN),

Start 11:

- Found in 1 of 36 (2.8%) of genes in pham
- Manual Annotations of this start: 1 of 21
- Called 100.0% of time when present
- Phage (with cluster) where this start called: ChuckDuck_56 (FA),

Start 12:

- Found in 2 of 36 (5.6%) of genes in pham
- No Manual Annotations of this start.
- Called 100.0% of time when present
- Phage (with cluster) where this start called: AirForce1_76 (FL), Orkz_77 (FL),

Start 14:

- Found in 16 of 36 (44.4%) of genes in pham
- Manual Annotations of this start: 1 of 21
- Called 12.5% of time when present
- Phage (with cluster) where this start called: MUWow_92 (AY), NewKitty_91 (AY),

Start 15:

- Found in 1 of 36 (2.8%) of genes in pham
- No Manual Annotations of this start.
- Called 100.0% of time when present
- Phage (with cluster) where this start called: Shukran_58 (AY),

Start 16:

- Found in 1 of 36 (2.8%) of genes in pham

- No Manual Annotations of this start.
- Called 100.0% of time when present
- Phage (with cluster) where this start called: BellaJr_88 (FN),

Summary by clusters:

There are 7 clusters represented in this pham: FA, AP2, AP, FB, AY, FL, FN,

Info for manual annotations of cluster AP:

- Start number 9 was manually annotated 1 time for cluster AP.

Info for manual annotations of cluster AP2:

- Start number 9 was manually annotated 8 times for cluster AP2.

Info for manual annotations of cluster AY:

- Start number 10 was manually annotated 8 times for cluster AY.
- Start number 14 was manually annotated 1 time for cluster AY.

Info for manual annotations of cluster FA:

- Start number 11 was manually annotated 1 time for cluster FA.

Info for manual annotations of cluster FB:

- Start number 10 was manually annotated 1 time for cluster FB.

Info for manual annotations of cluster FN:

- Start number 10 was manually annotated 1 time for cluster FN.

Gene Information:

Gene: AirForce1_76 Start: 43771, Stop: 44016, Start Num: 12

Candidate Starts for AirForce1_76:

(12, 43771),

Gene: Alatato_43 Start: 27741, Stop: 28007, Start Num: 10

Candidate Starts for Alatato_43:

(7, 27651), (Start: 10 @27741 has 10 MA's), (25, 27906), (27, 27918), (28, 27921),

Gene: Anekin_90 Start: 50152, Stop: 50415, Start Num: 10

Candidate Starts for Anekin_90:

(Start: 10 @50152 has 10 MA's), (23, 50278), (31, 50356), (36, 50377),

Gene: BasketStar_90 Start: 49766, Stop: 50035, Start Num: 10

Candidate Starts for BasketStar_90:

(Start: 10 @49766 has 10 MA's), (23, 49886), (26, 49931), (35, 49991), (38, 50021),

Gene: Beagle_67 Start: 42365, Stop: 42090, Start Num: 9

Candidate Starts for Beagle_67:

(Start: 9 @42365 has 9 MA's), (Start: 14 @42329 has 1 MA's), (20, 42272), (30, 42164), (33, 42149),

Gene: BellaJr_88 Start: 49498, Stop: 49731, Start Num: 16

Candidate Starts for BellaJr_88:

(1, 49054), (2, 49069), (3, 49138), (16, 49498), (24, 49594), (29, 49642), (38, 49717),

Gene: BenchScraper_90 Start: 48171, Stop: 48425, Start Num: 10

Candidate Starts for BenchScraper_90:

(Start: 10 @48171 has 10 MA's), (38, 48411),

Gene: ChuckDuck_56 Start: 35927, Stop: 36187, Start Num: 11

Candidate Starts for ChuckDuck_56:

(4, 35687), (7, 35813), (Start: 11 @35927 has 1 MA's), (19, 35990), (21, 36023), (27, 36098), (28, 36101),

Gene: Crescenzo_93 Start: 51175, Stop: 51429, Start Num: 10

Candidate Starts for Crescenzo_93:

(Start: 10 @51175 has 10 MA's), (25, 51340), (38, 51415),

Gene: DarwinJr_94 Start: 51289, Stop: 51558, Start Num: 10

Candidate Starts for DarwinJr_94:

(Start: 10 @51289 has 10 MA's), (23, 51409), (26, 51454), (35, 51514), (38, 51544),

Gene: DogYard_66 Start: 42560, Stop: 42288, Start Num: 9

Candidate Starts for DogYard_66:

(Start: 9 @42560 has 9 MA's), (Start: 14 @42524 has 1 MA's), (22, 42446),

Gene: Gorpy_88 Start: 50899, Stop: 51153, Start Num: 10

Candidate Starts for Gorpy_88:

(Start: 10 @50899 has 10 MA's), (25, 51064), (38, 51139),

Gene: Hive_63 Start: 42585, Stop: 42313, Start Num: 9

Candidate Starts for Hive_63:

(Start: 9 @42585 has 9 MA's), (Start: 14 @42549 has 1 MA's), (20, 42492), (30, 42384), (33, 42369),

Gene: Isolde_91 Start: 50741, Stop: 51010, Start Num: 10

Candidate Starts for Isolde_91:

(Start: 10 @50741 has 10 MA's), (23, 50861), (26, 50906), (35, 50966), (38, 50996),

Gene: Kubulix_67 Start: 42478, Stop: 42203, Start Num: 9

Candidate Starts for Kubulix_67:

(Start: 9 @42478 has 9 MA's), (Start: 14 @42442 has 1 MA's), (20, 42385), (30, 42277), (33, 42262),

Gene: MUWow_92 Start: 50937, Stop: 51179, Start Num: 14

Candidate Starts for MUWow_92:

(Start: 14 @50937 has 1 MA's), (18, 50973), (34, 51117), (37, 51141),

Gene: Mapleville_84 Start: 48385, Stop: 48639, Start Num: 10

Candidate Starts for Mapleville_84:

(Start: 10 @48385 has 10 MA's), (25, 48550), (38, 48625),

Gene: MellowYellow_67 Start: 42565, Stop: 42293, Start Num: 9

Candidate Starts for MellowYellow_67:

(Start: 9 @42565 has 9 MA's), (Start: 14 @42529 has 1 MA's), (20, 42472), (30, 42364), (33, 42349),

Gene: MidnightRain_97 Start: 51392, Stop: 51628, Start Num: 10

Candidate Starts for MidnightRain_97:
(Start: 10 @51392 has 10 MA's), (17, 51431), (27, 51536), (28, 51539),

Gene: NewKitty_91 Start: 50380, Stop: 50622, Start Num: 14
Candidate Starts for NewKitty_91:
(Start: 14 @50380 has 1 MA's), (18, 50416), (34, 50560), (37, 50584),

Gene: Nyilah_97 Start: 49853, Stop: 50107, Start Num: 10
Candidate Starts for Nyilah_97:
(Start: 10 @49853 has 10 MA's), (25, 50018), (38, 50093),

Gene: NyleyClemson_66 Start: 42180, Stop: 41908, Start Num: 9
Candidate Starts for NyleyClemson_66:
(Start: 9 @42180 has 9 MA's), (Start: 14 @42144 has 1 MA's), (20, 42087), (30, 41979), (33, 41964),

Gene: Odyssey395_67 Start: 42602, Stop: 42327, Start Num: 9
Candidate Starts for Odyssey395_67:
(Start: 9 @42602 has 9 MA's), (Start: 14 @42566 has 1 MA's), (30, 42401), (33, 42386),

Gene: Orkz_77 Start: 42490, Stop: 42714, Start Num: 12
Candidate Starts for Orkz_77:
(12, 42490), (32, 42685),

Gene: PhuzzTulsa_64 Start: 42826, Stop: 42554, Start Num: 9
Candidate Starts for PhuzzTulsa_64:
(Start: 9 @42826 has 9 MA's), (Start: 14 @42790 has 1 MA's), (20, 42733), (30, 42625), (33, 42610),

Gene: Pointis_64 Start: 42405, Stop: 42130, Start Num: 9
Candidate Starts for Pointis_64:
(Start: 9 @42405 has 9 MA's), (Start: 14 @42369 has 1 MA's), (20, 42312), (30, 42204), (33, 42189),

Gene: Popstraw_62 Start: 42319, Stop: 42047, Start Num: 9
Candidate Starts for Popstraw_62:
(Start: 9 @42319 has 9 MA's), (Start: 14 @42283 has 1 MA's), (22, 42205),

Gene: Pureglobe5_66 Start: 42849, Stop: 42574, Start Num: 9
Candidate Starts for Pureglobe5_66:
(Start: 9 @42849 has 9 MA's), (Start: 14 @42813 has 1 MA's), (22, 42735), (30, 42648), (33, 42633),

Gene: RIPWilbur_66 Start: 42443, Stop: 42171, Start Num: 9
Candidate Starts for RIPWilbur_66:
(Start: 9 @42443 has 9 MA's), (Start: 14 @42407 has 1 MA's), (20, 42350), (30, 42242), (33, 42227),

Gene: Ranunculus_59 Start: 44856, Stop: 44584, Start Num: 9
Candidate Starts for Ranunculus_59:
(5, 45054), (Start: 9 @44856 has 9 MA's), (Start: 14 @44820 has 1 MA's), (20, 44763), (22, 44742),

Gene: RazzB_66 Start: 42311, Stop: 42039, Start Num: 9
Candidate Starts for RazzB_66:
(Start: 9 @42311 has 9 MA's), (Start: 14 @42275 has 1 MA's), (20, 42218), (30, 42110), (33, 42095),

Gene: Richie_93 Start: 50743, Stop: 50997, Start Num: 10
Candidate Starts for Richie_93:

(Start: 10 @50743 has 10 MA's), (25, 50908), (38, 50983),

Gene: Sakai_87 Start: 49610, Stop: 49864, Start Num: 10

Candidate Starts for Sakai_87:

(Start: 10 @49610 has 10 MA's), (25, 49775), (38, 49850),

Gene: Seahorse_96 Start: 54256, Stop: 54510, Start Num: 10

Candidate Starts for Seahorse_96:

(Start: 10 @54256 has 10 MA's), (25, 54421), (38, 54496),

Gene: Shukran_58 Start: 32719, Stop: 32940, Start Num: 15

Candidate Starts for Shukran_58:

(6, 32485), (8, 32641), (13, 32689), (15, 32719), (28, 32851),

Gene: Zucker_90 Start: 50853, Stop: 51107, Start Num: 10

Candidate Starts for Zucker_90:

(Start: 10 @50853 has 10 MA's),